

Quick Facts

Florida State University

Location	Tallahassee, Florida
Founded	1851
Enrollment	34,500
Symbol	Seminoles
School Colors	Garnet and Gold
President	Talbot "Sandy" D'Alemberte

Florida State Athletics

Affiliation	NCAA Division I
Conference	Atlantic Coast
Athletic Director	Dave Hart, Jr.
Associate Athletic Director	Kim Record
Sports Information Director	Rob Wilson
SID Softball	Elliott Finebloom
SID Office Phone	(850) 644-5656
SID Fax	(850) 644-3820
Mailing Address	P.O. Box 2195 Tallahassee, Fl. 32316
SID email	epf9464@garnet.acns.fsu.edu

FSU Softball

Home Facility	Seminole Softball Complex
Head Coach	Dr. JoAnne Graf (23rd Season)
Assistant Coach	Heather Compton (2nd Season)
Assistant Coach	Louie Berndt (2nd Season)
Softball Office Fax	(850) 645-3201

2000 Review

Overall Record	.51-27
ACC Record/Finish	.6-2/1st
NCAA Tournament	Tied/9th
Final NFCA Ranking	17th

A Note to the Media, Fans and Opponents

Florida State softball contact Elliott Finebloom of the Sports Information Office is ready to assist you with any questions or requests you may have about the 2001 Seminole Softball program, media guide, coaches and student-athletes. Please do not hesitate to phone, fax or write a letter to the sports information office at P.O. Box 2195; Tallahassee, Florida 32316; (850) 644-5656 phone; (850) 644-3820 fax, if we can further assist you.

Players & Coaches Interviews

All players and coaches interviews can be arranged through the sports information office by contacting Elliott Finebloom at (850) 644-5656 at least 24 hours in advance. Players home phone numbers will not be released.

How to Cover the Seminoles

Members of the media are supplied with weekly press releases, including updated individual tournament and career statistics, as well as conference and national rankings and information on upcoming games. This information may be obtained in the sports information office or at www.seminoles.com

Where the Home Matches will be

All 2000 Seminole softball home games take place at the Seminole Soccer/Softball Complex (capacity 1000). The softball field is located just south of the FSU football practice field off of Stadium Drive. Media members will be provided parking passes and will be seated in a designated area. Please notify the sports information office prior to home matches for credentials to be assigned. Any accredited photographer wishing to shoot the matches must check in with Finebloom prior to game day so proper credentials can be assigned.

FSU on the Web

Check out the Florida State softball program on the web. Go to your internet site and type in www.seminoles.com. Once you are in the site follow the directions to the home of the Seminoles web page.



Table of Contents

Media Information	1
Seminole Softball	2
2001 Outlook	3
Dr. JoAnne Graf	6
Louie Berndt	9
Heather Compton	10
Rosters	11
Schedule	12
Senior Bios	14
Junior Bios	20
Sophomore Bios	24
Newcomer Bios	25
Seminoles in the Pros	27
2000 Review	28
Post Season Play	33
ACC Honors/ACC Review	34
About the ACC	35
Honors and Awards	36
Individual Records	38
All-Time Letterwinners	42
Series Records	43
Year-by-Year Records	44
Seminole Softball Complex	50
This is Tallahassee	52
This is FSU	54
Support Services	56
Academic Support	57
Life Skills	58
NCAA Information	59
Photo Roster	60



Sandy D'Alemberte
FSU President



Dave Hart, Jr.
Director of Athletics



Kim Record
Associate Director
of Athletics



Elliott Finebloom
Softball SID

Florida State University Media Outlets

Newspapers:

TALLAHASSEE DEMOCRAT
P.O. Box 990; Tallahassee, Florida 32302
phone: (850) 599-2166 fax: (850) 599-2301

FSVIEW
P.O. Box 20331; Tallahassee, Florida 32316
phone: (850) 561-6653 fax: (850) 561-6578

THE OSCEOLA
402 Dunwoody Street; Tallahassee, Florida 32304
phone: (850) 222-7733 fax: (850) 224-3627

FLORIDA TIMES-UNION
One Riverside Avenue, Suite 304; Tallahassee, Florida 32301
phone: (850) 224-7515 fax: (850) 681-2961

ORLANDO SENTINEL
336 East College Avenue, Suite 303; Tallahassee, Florida 32301
phone: (850) 222-5564 fax: (850) 224-0979

Television/Radio:

WCTV - TV (CBS affiliate)
P.O. Box 3048; Tallahassee, Florida 32315
phone: (850) 893-2126 fax: (850) 668-3851

WTLX - TV (ABC affiliate)
8927 Thomasville Road; Tallahassee, Florida 32312
phone: (850) 893-1313 fax: (850) 668-3851

WNLS - Sports Radio 1270 AM
325 John Knox Road, Suite E-200; Tallahassee, Florida 32303
phone: (850) 386-6143 fax: (850) 385-8789

Media Guide Credits

The 2001 Seminole Softball media guide is a publication of the Florida State University Sports Information Office. Edited by Elliott Finebloom, writing and research assistance Thina Thomas, Bill Baker, John Lovesque, and Layrine Ruzyla.. Designed by Cade & Associates Advertising, Tallahassee, FL. Photography by FSU Photo Lab, Ross Obley, Ryals Lee, Tom Casazza. Printing by FSU Printing Services. Special Thanks to the Georgia Pride for the photos on page 27.

The Florida State University offers equal opportunity in its employment and educational activities in compliance with Title IX, Section 5-4 of the Rehabilitation Act of 1973 and other civil rights laws. This document is available upon request in alternate formats for individuals with print related disabilities. Contact the ADA office, 301 Westcott Administration Building, for more information.

Seminole Softball

Remembering the Past & Ensuring the Future

Florida State All-Americans



Darby Cottle
1981, 1982



Natalie Drouin
1982



Serita Brooks
2nd Team, 2000



Susan Buttery
2nd Team, 1993



Myssi Calkins
2nd Team, 1993



Danielle Cox
1st Team, 1999



Tiffany Daniels
1st Team, 1987



Lisa Davidson
1st Team, 1993



Renee Espinoza
2nd Team, 1996



Kristy Fuentes
3rd Team, 1997



Toni Gutierrez
2nd Team, 1992



Christy Larsen
3rd Team, 1991



Cindy Lawton
3rd Team, 1995



Marla Looper
3rd Team, 1994



Jan Sikes
1982



Susan Painter
1982

Florida State University Athletics Hall of Fame



Darby Cottle-Veazey
Inducted 1988



Susan Painter
Inducted 2000



Julie Larsen-Baker
Inducted 1995



Toni Ribonette
1982



Shamalene Wilson
1st Team, 1996
3rd Team, 1995
2nd Team, 1994

Florida State Endowments

Betty Palmer

The first endowed position scholarship for women's athletics at FSU was named in honor of Betty Palmer and fully-funded by Dr. Fran Cannon. The scholarship is held by the Seminoles starting shortstop and honors a woman who preached values as well as skills and shaped the lives of many young women throughout her life as a faculty member at FSU and a recreation supervisor.

Dr. JoAnne Graf

The architect of one of the most successful Division I softball programs in collegiate sports and the first Division I coach to reach the 1,000 win plateau, this fully-endowed scholarship honors FSU head coach Dr. JoAnne Graf. Coach Graf has achieved an unprecedented level of success throughout her 22 seasons at the helm of the Seminole softball program. Not only has she won two slow pitch National Championships but her teams have appeared in five College World Series, made 13 NCAA Regional appearances and won eight ACC titles. This endowment will ensure Coach Graf's winning legacy for years to come. Funds are continuing to be raised for this scholarship.

Judy Spainhour

This fully-endowed scholarship is funded by Professors Charles and Joan Haworth in honor of Judy Spainhour. The gift is made in appreciation of Judy's spirit and support of FSU's women's softball. The Haworths are recognizing Judy for her special sense of humor and warmth and her continued support of FSU athletics.

Carla Bingham

The fourth endowed scholarship for Seminole softball is in honor of one of our own. Carla Bingham was a two-time All-American and played third base for FSU in 1982 and 1983. She helped FSU to a 102-21 record over those two seasons and was a member of FSU's 1982 AIAW National Championship team. In 1997, Carla lost her battle with breast cancer and this scholarship assures her memory will live forever. This scholarship is continuing to be funded.

Kari Keith

Kari Keith was an amazing athlete who came to Florida State on a softball scholarship in 1986 but went on to become a two-sport star on the track and the softball diamond. Keith, from Ft. Lauderdale, FL, played softball for all four years and was named to the Lady Seminole Invitational All-Tournament Team in 1987 and 1988. Although she had never picked up a javelin in her life, Keith broke the school record and qualified for the NCAA championships in just her second meet ever. She was in training for the 1992 Olympic games when she lost her life in a two-car accident in Tallahassee. This endowed scholarship pays tribute to one of FSU's best and brightest.

2001 Season Outlook

The Seminoles enter the 2001 season very optimistic and excited due to the way they finished the 2000 campaign. Although the squad started off slow due to a large turnover in starters and coaches, they finished strong and established themselves as one of the teams to beat in 2001. It was a tough ending to the 2000 season since the Seminoles finished one game short of the College World Series but the team they lost to (UCLA) ended up finishing second in the World Series. FSU once again has its sites set on a trip to Oklahoma City for a shot at the national championship.

The 2001 squad is also excited about their ACC competition, which continues to improve every year. It will be tough for the Seminoles to win their seventh straight conference championship but that is always one of their goals. This year's team features a great group of kids coming back and a bunch of super newcomers that should lead to a very exciting season. Head coach JoAnne Graf believes the 2001 squad is going to have a lot of fun and will play well together. The Seminoles are looking forward to another great year.

Position Breakdown

Pitchers

The Seminoles head into the new season with an exceptional group of players at the pitching position. Returnees Leslie Malerich and Jen White-Stokes should offer the maturity and leadership needed, while newcomer Jessica van der Linden brings the necessary skills and a fresh approach to a difficult position.

Leslie Malerich was FSU's No. 1 pitcher last year and dominated conference play and post-season play in an exceptional overall year. She went 35-15 and posted a 1.21 ERA. Malerich has received a number of awards including All-ACC, ACC Tournament MVP, All-Regional Tournament team and second team All-Southeast region. By gaining maturity and experience every year, she has become a much tougher player.

Jen White-Stokes is a senior who possesses the necessary composure on the mound and she was 13-9 with a 2.48 ERA and 14 complete games in 2000. This is the first time she has entered a season completely healthy since her freshman year and that should benefit both her personal play and the team greatly. The Seminoles are looking forward to Jen having a confident and injury-free year.

Jessica van der Linden is a newcomer to the Seminoles and she is the first left-handed pitcher the school has ever had. Though she has yet to face a college hitter because of an injury sustained last fall, she is extremely competitive and intense on the mound. Her versatility should allow her to gain the confidence needed to play at this level and she should improve throughout the season as she gets used to the college game. Her resourcefulness will allow her to play first base or an outfield position, as well as the pitching position.

Infield

The competition to start at first base is wide-open as the Seminoles enter the season. Three talented players will be vying for the starting nod. Van der Linden, who will also be pitching this year, played first base occasionally in high school, as well as in 18 and under softball leagues. She is very familiar with the position and has the advantage of being left-handed.

Beth Wade is a redshirt freshman that is still adjusting to the fast pitch game. She has played baseball and will be competing for the first base position. Elisa Velasco worked at first base in the fall and will compete for playing time at the position when she is not catching.



Brandi Stuart is a great all-around player and she returns after starting every game last year. She is a strong defensive player with tremendous range. She also gives the Seminoles a lot of speed and power at the plate. Freshman Skyla Cox should also see significant playing time at second base. She will learn a lot playing behind Stuart and that will help her gain valuable experience and confidence at the collegiate level.

Natalie Bennett enters the 2001 season as the Seminole's starting short-stop and she should really solidify the front of the infield. After coming in last year as a junior college transfer from Drake, Bennett proved that she is an exceptional defensive player and she should show improvement on the offensive end this season. Stephanie Elowsky, who appeared in 32 games last season, will back up Bennett at short.

Much like the opposite corner of the field, third base will also be a battle between three outstanding players. Staci Brandon, Becky Brock and Jackie Hirschfield will go into the 2001 season competing for the starting nod at third. Brandon, who played left field last year, spent much of her junior college career at the third base. She batted .370, recorded 25 RBI's and finished second on the team with a slugging percentage of .453.

Becky Brock started 55 games last season and her .955 fielding percentage is a strong testament to her defensive skills. Hirschfield has shown a great deal of improvement from last season both offensively and defensively and her speed and range have improved considerably. The battle for the starting job at third should be closely contested throughout the pre-season.

Elisa Velasco, Julie Jordan and Kimmie Carter will all be fighting for the starting catching position. They are all equally consistent, have similar playing experience and are adept at calling games. Each is an exceptional catcher and Coach Graf is comfortable with all three players behind the plate. This is another position that the coaching staff hopes will produce the best starter through heated competition.



Outfield

Monique Marier is projected to start in left field and she has the strongest arm in the outfield. Marier should also be a strong offensive player this year after leading the nation in junior college with 27 home runs in 1999.

Rita Brooks, FSU's 18th All-American, started every game in 2000 and heads into 2001 as the starter in center field. Brooks was named first team All-Southeast Region, All-ACC and a member of the ACC All-Tournament Team after leading the Seminoles and the conference with a .401 batting average. Brooks is an exceptional player and FSU's best base runner. She was tied for the team led in stolen bases (42) and led the Seminoles in hits (99), triples (8), runs scored (54) and at bats (247). Her 99 hits in 2000 established a new single-season record for Florida State. If Brooks is able to get on base like the coaches know she is capable of, the Seminoles should see a lot of victories again this season.

Freshman Leah Armstrong possesses exceptional athletic ability and enters FSU after garnering All-State honors last season. Armstrong will be extremely valuable as a pinch runner and should also see time in center field while she learns how the team operates.



n Outlook

Two returnees and an impressive freshman will handle right field duties this season. When Carter is not catching, she will be using her skills in right field. Gauger will also be used in right and as a designated hitter, one of her best positions. Velasco could also see some action in right field when she is not catching or playing first.

The 2001 Senior Class

Coach Graf believes she enters the 2001 season with a strong senior class. "In the past, we have lacked senior leadership," said Graf. "I don't think that is going to be a problem this season". The Seminoles have a number of exceptional leaders and Natalie Bennett is one of them. She is mature, she is enthusiastic and she loves the game of softball. Bennett is a great leader in FSU's infield and the coaching staff feels very lucky that Bennett transferred to Florida State from Drake last season.

Staci Brandon, despite entering just her second year after transferring from Pheonix College, has been an impact player for FSU. She got off to a slow start in 2000 but just exploded as she got into shape and got used to Division I pitching. Brandon is a natural leader since she does not like to lose and won the team's clutch award last season. Brooks, also a transfer student, should provide needed leadership in the outfield. She is an outstanding athlete and Graf feels fortunate just to get the opportunity to coach a player of Brooks' caliber. Brooks is a great player already and she isn't even at her full potential yet. She was the first outfielder selected in the 2000 WPSL senior draft and the Seminole coaching staff believes she is good enough to represent the USA on the Olympic softball team. She has that type of ability and just needs to push herself and want it badly enough.

Stephanie Elowsky and Robin Gauger both came into the program and had to fill backup roles which was tough for them but they have done it for the team. Graf expects that type of contribution to continue this year. Playing in back-up roles has been mentally tough on both of them but they have responded well and that speaks volumes about the type of leadership they continually exhibit.

"When younger players see that it is OK to fill a role and take pride in the important contribution they can still make, it is a vital part of the success of any athletic program," said Graf. "These kids go to class, they don't get in trouble and they have set some good guidelines for the younger players and the rest of the team."

The 2001 Squad

This 2001 Seminoles are an interesting mixture. The team isn't all power or all speed. They aren't going to hit every ball over the fence but they should have better overall team speed than in past seasons. The 2001 squad will be very aggressive offensively since they return a strong pitching staff and feel very confident that that staff will keep them in almost every game.

"I don't think there is a team we can't compete with. If you look at our scores from last year, no one really blew us away," said Graf. "We were in every ball game and I think it will be the same this year."





Dr. JoAnne Graf

Head Coach
Florida State University
Florida State '75
23rd Season
1055-312-6

Dr. JoAnne Graf and Florida State University softball. You simply can't think of one without thinking of the other, because for the past 22 years, this relationship has developed into the creation of one of the nation's premier softball programs.

Over the past two decades, Graf has maintained the philosophy that hard work and dedication produce positive results. It is because of this attitude, there are not many things that Graf has not accomplished in her 22-year coaching career.

It seems with each and every year, Graf celebrates yet another landmark accomplishment. On May 6, 1999 in a 2-1 victory over rival South Florida, Graf became the first coach in Division I softball to earn 1,000 Division I wins, including slow and fast pitch competition. Adding even more flavor to this amazing feat is that each of every one of Graf's 1,000 victories came at Florida State. Now that's loyalty at its finest!

Graf has been named the ACC Coach of the Year three times after leading the Seminoles to consecutive conference titles in 1992 and 1993 and co-championship status in 1997. In 1995, she was selected the ACC/Metro Conference Coach of the Year after guiding Florida State to a 9-1 league record and an automatic bid to NCAA regional play. She has led FSU to 12 seasons of 50 wins or more, including two seasons when the 'Noles recorded more than 60 victories. She has guided FSU to eight ACC championship titles.

Under Coach Graf's direction, Florida State has been to the NCAA College World Series in Oklahoma City five times and in 17 years of fast-pitch competition, she has directed the Seminoles to 13 NCAA regional tournament appearances. Florida State has also finished among the nation's top 13 teams in 11 of the past 15 seasons, with its highest ranking coming in 1990 when the Lady Seminoles placed third at the College World Series. But the success didn't begin there. In her first five years at Florida State, Graf accumulated 219 wins playing the best slow-pitch competition in the nation. She claimed two national titles while coaching five All-Americans as she established a solid basis to build upon.

Graf, who was voted the South Region Coach-of-the-Year in 1986, has seen 62 of her players selected to NCAA All-South Region teams, including three players in 2000. Her coaching has produced 12 All-Americans since 1990, including three first team selections in left fielder Danielle Cox (1999), center fielder Shama Wilson (1996) and second baseman Lisa Davidson (1993).





A 1975 graduate of Florida State, Graf returned to her alma mater after two years at the University of North Carolina-Greensboro where she earned her master's degree in physical education. Graf also worked in the athletic department at UNC-Greensboro as head coach for the university's men's and women's swim teams while also serving as assistant softball coach.

Graf, who serves as director of the FSU softball camp each summer, is a former president of the Florida Collegiate Athletic Association. She has also served as a member of the NCAA Softball Committee and chaired the NCAA Softball Advisory Committee for the South Region.

In 1992, Graf added "Dr." to her name after completing her doctorate degree in athletic administration at FSU

LADY SEMINOLE SOFTBALL UNDER DR. JOANNE GRAF		
1979	26-15	.634
1980	37-10	.787
1981	54- 7	.882
1982	56-10	.848
1983	46-11	.807
1984	41- 5-2	.875
1985	50-12-2	.797
1986	42- 7	.857
1987	50-14	.781
1988	44-14	.759
1989	39-14	.736
1990	47-16	.750
1991	62-12	.838
1992	63-9	.875
1993	52-9	.852
1994	50-19	.724
1995	58-15	.795
1996	51-21	.708
1997	45-19-1	.700
1998	51-21	.708
1999	40-25-1	.614
2000	51-27	.654
CAREER	1055-312-6	



Dr. JoAnne Graf

GRAF'S MILESTONE VICTORIES

No.	Date	Score/Opponent
1000	May 6, 1999	2-1 vs South Florida
900	April 10, 1997	6-0 vs. North Carolina
800	April 7, 1995	15-0 vs. North Carolina
700	April 17, 1993	4-2 vs. Virginia
600	February 23, 1992	2-0 vs. West Florida
500	March 13, 1990	5-0 vs. Virginia
400	April 26, 1987	2-0 vs. Oklahoma State
300	April 5, 1985	10-1 vs. NE Louisiana
200	March 26, 1983	3-2 vs. Florida
100	April 10, 1981	3-2 vs. NC State
1	February 26, 1979	3-1 vs Chipola College

TOP 10 WINNINGEST ACTIVE COACHES (PCT)

COACH, TEAM	YRS	RECORD	PCT
1. Sue Enquist, UCLA	12	579-117-1	.831
2. Mike Candrea, Arizona	15	806-168-0	.828
3. DR. JOANNE GRAF, FLORIDA STATE	17	836-259-6	.759
4. Margie Wright, Fresno State	21	939-304-3	.754
5. Yvette Girouard, LSU	20	759-250-0	.752
6. Patty Gasso, Oklahoma	6	303-101-0	.750
7. Mike McGovern, Ill.-Chicago	11	536-202-1	.725
8. Joyce Compton, South Carolina	18	764-305-1	.714
9. Bill Galloway, Louisiana Tech	22	848-343-2	.711
10. Sandy Fischer, Oklahoma St	22	825-335-3	.709



TOP 10 WINNINGEST COACHES (VICTORIES)

COACH, TEAM	YRS	RECORD
1. Judi Garman, Cal St. Fullerton*	28	1124-406-4
2. DR. JOANNE GRAF, FLORIDA ST.	22	1055-312-6
3. Margie Wright, Fresno State	21	939-304-3
4. Bill Galloway, Louisiana Tech	23	892-354-2
5. Sharron Backus, UCLA*	21	847-167-3
6. Gayle Blevins, Iowa	21	846-409-5
7. Sandy Fischer, Oklahoma State	22	825-335-3
8. Mike Candrea, Arizona	15	806-168-0
9. Bob Brock, Texas A&M*	18	731-301-1
10. Joyce Compton, South Carolina	18	764-305-1

(*denotes inactive coach)





Louie Berndt

Assistant Coach
Florida State University
Western Michigan '83
2nd Season

Louie Berndt, an FSU assistant coach in 1989, returned to Florida State in 1999 to serve as the top assistant coach for the Seminole softball program.

Berndt comes to FSU after serving as the head softball coach at Marshall University the past six seasons. Berndt was brought to Marshall to help jumpstart its softball program which was reinstated in 1993. In 1994, Berndt made her head coaching debut and guided the Thundering Herd to a 17-21 record. In 1995, in just her second season at the helm, Berndt led Marshall to its first ever Southern Conference Tournament title and to its first NCAA Tournament. She was named the Southern Conference Coach of the Year in 1996 after the squad set numerous school records with a 39-23 record.

Berndt also developed a softball Booster Club while at Marshall and designed a new 1,000-square foot softball locker room, complete with a players' lounge, an adjacent 1,680-square foot indoor batting cage and a playing field located in the heart of campus. Several of Berndt's players at Marshall received All-Conference accolades, including back-to-back freshman "Player of the Year" honors.

Berndt is a graduate of Western Michigan University, where she was a two-time All-American at second base. She led the Broncos to three NCAA Tournament bids, including two World Series berths. The team leader in hitting three straight seasons, Berndt had a career .321 batting average and .973 fielding percentage. An All-Mid American Conference and NCAA All-Region selection, Berndt was also invited to the Pan American Team tryouts and was selected to play in the Tri-Nation Games in Colorado Springs, Colo., during her senior year.

In 1985, Berndt turned her efforts to the coaching ranks as an assistant coach at Nicholls State. She helped lead Nicholls to a school-record 47 wins that year. In 1987, the Lady Colonels won the Gulf Star Conference Championship. Berndt joined the Florida State staff as a pitching and out-field coach for the 1989 season. She helped the Seminoles to a Top 20 ranking and a second-place finish at the Southwest Regionals. From 1989 to 1993, Berndt helped rebuild a struggling Ohio State softball program. The Buckeyes won the Big Ten Championship in 1990 and advanced to NCAA Regionals.

Some of Berndt's responsibilities at Florida State will include recruiting, coaching the outfield and serving as the coordinator of the JoAnne Graf softball summer camps.





Heather Compton

Assistant Coach
Florida State University
UCLA '94
2nd Season

Former UCLA standout Heather Compton, a pitcher with the Tampa Bay Firestix and Ohio Pride of the Women's Professional Softball League, joined the Florida State softball staff as an assistant coach in 1999.

An outstanding collegiate pitcher, Compton is a 1994 graduate of UCLA where she earned a degree in political science while lettering four years for the Bruins' softball team. She led UCLA to World Series appearances in each of her four seasons and was a member of the Bruins' 1990 and 1992 national championship teams. Compton garnered first team All-American honors in 1991 and was also named to the All-College World Series team. She ranks among UCLA's career leaders in five categories, including wins (67), appearances (84), strikeouts (540), innings pitched (538.2) and ERA (0.52).

Compton also has international playing experience. She was a member of the USA National Team that earned a gold medal at the 1994 Pan American Games in Guatemala and then went on to play for league champion Poneke Kilbernic Softball Club in New Zealand from 1994 through 1996. She spent the summer of 1996 with the Brioski Junior Softball Team and posted the best record in the Italian Pro Softball League.

Compton, who also taught three years of social studies and special education at Righetti High School in California, will serve as the Seminoles' pitching coach and also taught two physical education classes at FSU.

Compton also had tremendous success with the Ohio Pride of the WPSL. During the 2000 season, Compton compiled a 7-3 record with a 1.34 ERA. She pitched seven complete games, recorded three shutouts, pitched 68 innings and held opponents to a .150 batting average. Compton also set a WPSL record by striking out 17 batters in one game and capturing WPSL AT&T Wireless Services Pitcher of the Week honors on three occasions. She culminated her season by being named to the 2000 WPSL All-Star Team where she pitched against USA softball in Honolulu, HI.



Softball Support Staff



Robin Gibson
Athletic Trainer



Dave Sabin
Manager



Javier Perez
Student Trainer



Craig Campanozzi
Seminole
Productions

Team Roster

2001 FLORIDA STATE SOFTBALL

No.	NAME	POSITION	YEAR	BATS/THROWS	HOMETOWN/PREVIOUS SCHOOL
51	Leah Armstrong	CF	FR	L/R	Jacksonville, FL/Espiscopal HS
43	Natalie Bennett	SS	SR	R/R	Belleville, IL/Belleville East HS
10	Staci Brandon	3B	SR	R/R	Peoria, AZ/Phoenix College
2	Becky Brock	3B	JR	R/R	Macclenny, FL/Baker County HS
15	Rita Brooks	CF	SR	L/R	Tuscaloosa, AL/North Florida CC
8	Kimmy Carter	C/RF	JR	R/R	Palm Beach Gardens, FL/North Florida CC
6	Skyla Cox	2B	FR	R/R	Marietta, GA/Walton HS
32	Stephanie Elowsky	SS/DH	SR	R/R	Pensacola, FL/Pensacola JC
25	Robyn Gauger	P/RF/DH	SR	R/R	St. Marks, FL/Gulf Coast CC
24	Jackie Hirschfeld	3B	JR	R/R	Tampa, FL/Tampa Catholic
3	Julie Jordan	C/RF	FR	R/R	Garden Grove, CA/Pacifica HS
23	Leslie Malerich	P	JR	R/R	Merrillville, IN/Merrillville HS
4	Monique Marier	LF	JR	R/R	Tampa, FL/Lake City CC
29	Brandi Stuart	2B	SO	R/R	Cerritos, CA/Cerritos HS
99	Jessica van der Linden	1B/P	FR	L/L	Cerritos, CA/Cerritos HS
9	Elisa Velasco	C/1B	FR	R/R	Hesperia, CA/A.B. Miller HS
11	Beth Wade	1B	R-FR	R/R	Colquitt, GA/Miller County HS
12	Jennifer White-Stokes	P	SR	R/R	Tuttle, OK/Tuttle HS

JoAnne Graf - Head Coach
 Louie Berndt - Asst Coach
 Heather Compton - Asst Coach

Robin Gibson - Trainer
 Dave Sabin - Manager

BY THE NUMBER

NO.	NAME
2	Becky Brock
3	Julie Jordan
4	Monique Marier
6	Skyla Cox
8	Kimmy Carter
9	Elisa Velasco
10	Staci Brandon
11	Beth Wade
12	Jennifer White-Stokes
15	Rita Brooks
23	Leslie Malerich
24	Jackie Hirschfeld
25	Robyn Gauger
29	Brandi Stuart
32	Stephanie Elowsky
43	Natalie Bennett
51	Leah Armstrong
99	Jessica van der Linden





SEMINOLE

February

SUNDAY	MONDAY	TUESDAY	WEDNESDAY	THURSDAY	FRIDAY	SATURDAY
				1	2	3 @ Georgia So. 1 & 3 p.m.
4	5	6	7	8	9 Tomahawk 	10 Tomahawk Bash
11 Seminole Classic	12	13	14	15	16 Sunshine State 	17 Sunshine State
18 Sunshine State Tourney	19	20 Mercer 3 & 5 p.m.	21	22	23 @ Florida Atlantic 	24 @ Florida Atlantic
25 FL Atlantic University Tourney	26	27	28			

March

SUNDAY	MONDAY	TUESDAY	WEDNESDAY	THURSDAY	FRIDAY	SATURDAY
				1	2 Seminole 	3 Challenge
4 Seminole Challenge	5	6 @ FAMU 6 p.m.	7	8	9 @ San Diego 	10 State Tourney
11	12	13	14 Nebraska 5:30 p.m.	15 Iowa State 3 p.m.	16 Lady Seminole 	17 Invitational
18 Lady 'Nole Invitational	19 UMass 5:30 p.m.	20 UConn 5 & 7 p.m.	21	22	23	24
25	26	27	28 FAMU 6 p.m.	29	30	31 @ GA Tech 1 & 3 p.m.

April

SUNDAY	MONDAY	TUESDAY	WEDNESDAY	THURSDAY	FRIDAY	SATURDAY
1 @ GA State  12 & 2 p.m.	2	3	4	5	6 @ UNC  4 & 6 p.m.	7 @ Tar Heel  Invitational
8 @ Tar Heel  Invitational	9	10	11 @ FAMU  6 p.m.	12	13	14 @ Jacksonville State  1 & 3 p.m.
15 @ UA (B-ham)  1 & 3 p.m.	16	17 FAMU  6 p.m.	18 @ UF  4 & 6 p.m.	19	20	21 E Carolina  1 & 3 p.m.
22	23	24	25	26	27	28 Virginia  1 & 3 p.m.
29 @ Troy State  2 & 4 p.m.	30					

May

SUNDAY	MONDAY	TUESDAY	WEDNESDAY	THURSDAY	FRIDAY	SATURDAY
		1	2	3	4	5 Maryland  12 & 2 p.m.
6	7	8	9	10	11 ACC TOURNAMENT 	12 TOURNAMENT 
13 ACC TOURNAMENT 	14	15	16	17 N C A A 	18 R E G I O N A L S 	19 N C A A 
20 N C A A R E G I O N A L S 	21	22	23	24 	25 	26 
27 N C A A C O L L E G E W O R L D S E R I E S 	28 C O L L E G E W O R L D S E R I E S 	29	30	31		



Natalie Bennett

HometownBelleville, IL
YearSenior
PositionSS
Bats/ThrowsRight/Right



Favorite FSU Moment:

"My favorite moment from last year was Brandi's grand slam against Florida in the bottom of the seventh inning. I remember her fouling off about ten pitches in a row. That was a great feeling when we saw that ball sailing over the fence!"

43

2000: Starter at shortstop... transferred from Drake University...was one of just four players to start all 78 games... was third on the team with 31 RBIs off of 50 hits... batted .235... had nine multi-hit games and nine multi-RBI games... was tied for first on the team with 11 doubles... led the team with 22 sacrifices... had three hits, including a double, and two RBI in 8-1 win over Ohio...had a nine-game hitting streak... hit her first home run of the season vs. Florida International on April 2 and had an in-the park home run vs. Campbell on her birthday. **At Drake:** Two-year starter... earned second team all-conference honors at shortstop in 1999... a team captain... was named to the 1998 MVC All-Tournament Team. **High School:** Garnered second team high school All-American honors... was a two-time first team All-Area and All-Conference selection... pegged the squad's Golden Glove Award winner as a junior... was a member of the 1995 Illinois state champion team and earned second team All-Area and All-Conference honors as a sophomore... holds career records for RBIs in a season (43) and career (105)... also lettered in basketball and volleyball... was an Illinois State scholar. **Personal:** Is majoring in math... a Dean's List member... was born April 22, 1979.

BENNETT at the plate...

Year	Avg.	G	AB	R	H	RBI	2B	3B	HR	BB	SO	SB-SBA
2000	.235	78	213	23	50	31	11	3	2	13	35	1-3
Totals	.235	78	213	23	50	31	11	3	2	13	35	1-3





Staci Brandon

HometownPeoria, AZ
 YearSenior
 Position3B/OF
 Bats/ThrowsLeft/Right



10

2000: Consistent performer... served as leadoff hitter... played in 63 games with 53 starts as a designated hitter and at left field... ranked second on the team and third in the ACC with a .370 batting average... earned First Team All-Southeast Region honors... named to the Los Angeles Regional All-Tournament Team ... also earned All-ACC honors and ACC All-Tournament team honors... had two, seven-game hitting streaks... recorded 20 multi-hit games... had eight multi-RBI games... earned ACC Player of the Week honors on April 17th after batting .435 with 10 hits, eight RBI and six runs... was named to the Florida State Invitational All-Tournament team after batting .750, with two RBIs and three runs scored... was 7-for-9 in stolen bases... had back-to-back three RBI games vs. FAMU on April 9th and 12th... hit safely in 26 of the last 34 games, including 18 of the last 23.

Junior College: Played for two years and led the conference in batting average in 1999... was a first team NJCAA All-American... also garnered All-Conference and All-Region honors. **Personal:** Majoring in nursing... was born October 26, 1977...member of the ACC Academic Honor Roll

Favorite FSU Moment:

"I remember when we were put on probation and sent to our rooms for the night. We would all peak out of our rooms and throw something at the next door to get their attention. We all ended up laying with our heads out the door talking."

BRANDON at the plate...

Year	Avg.	G	AB	R	H	RBI	2B	3B	HR	BB	SO	SB-SBA
2000	.370	63	181	29	67	25	5	5	0	7	11	7-9
Totals	.370	63	181	29	67	25	5	5	0	7	11	7-9





Serita Brooks

Hometown Tuscaloosa, AL
Year Senior
Position Outfield
Bats/Throws Left/Right



15

2000: Starter in center field... junior college transfer who quickly made a name for herself... was pegged a second team Louisville Slugger All-American... also earned first team All-Southeast Region honors... was an All-ACC selection and member of the ACC All-Tournament Team... led the team and the ACC with a .401 batting average... also the team leader in hits with 99, triples with eight, runs scored with 54, stolen bases with 42 and at bats with 247... her 99 hits set a new FSU single-season record... was one of four players to play in all 78 games... hit safely in 23 of the last 25 games, including a 12-game hitting streak - her longest of the season... was fourth on the team with 30 RBI's... earned all-tournament honors at the Los Angeles regional after batting .317 with three RBI... was named to the All-Tournament Teams at both the Fresno State Tournament and the Tallahassee Democrat Florida State Invitational... batted .529 in the Invitational with a double, triple, two runs scored and three RBI's... had hits in the first seven games of the season... also had a 10-game hitting streak... was the team-leader with 30 multi-hit games... had six multi-RBI games... had two home runs, vs. Villanova and an inside-the-park blast vs. Ohio... twice recorded three steals in a game... earned ACC Player of the Week honors on February 28th. **Junior College:** Played for two seasons at North Florida Community College... was first-team All Conference and second team All-State as a sophomore... was listed in Who's Who Among Junior College Athletes... earned Dean's List distinction. **Personal:** Major is sport management... was born August 25, 1979.

Favorite FSU Moment:

"We were in Maryland at Chili's and waiting for the bus outside. We decided to do one of our cheers. Since our team is as crazy as we are, we were going all out dancing and singing. Everyone in the restaurant was looking and laughing at us."

BROOKS at the plate...

Year	Avg.	G	AB	R	H	RBI	2B	3B	HR	BB	SO	SB-SBA
2000	.401	78	247	54	99	30	5	8	2	15	31	42-49
Totals	.401	78	247	54	99	30	5	8	2	15	31	42-49





Stephanie Elowsky

HometownPensacola, FL
 YearSenior
 PositionSS
 Bats/ThrowsRight/Right



32 **2000:** Played in 32 games with four starts... recorded four hits... had RBI against Bethune-Cookman and Texas. **Junior College:** Was named outstanding offensive player two consecutive years at Pensacola Junior College... broke four school records in hitting... made first-team all-conference in final season. **Personal:** Major is sports management... born October 12, 1979... Dean's List member... member of the ACC Academic Honor Roll

Favorite FSU Moment:

"On one road trip, some of us really wanted to go to the mall instead of sightseeing. We ended up staying on the bus, eating snickers, sleeping and getting to know too much about our driver. The motto for the trip became 'I'm not going, take me to the mall!'"

ELOWSKY at the plate...

Year	Avg.	G	AB	R	H	RBI	2B	3B	HR	BB	SO	SB-SBA
2000	.154	32	26	3	4	2	1	0	0	2	7	0-1
Totals	.154	32	26	3	4	2	1	0	0	2	7	0-1





Robyn Gauger

HometownSt. Marks, FL
YearSenior
PositionP/1B/OF
Bats/ThrowsRight/Right



25

2000: Made 15 appearances and was 3-3 with one shutout and one save... was second on the pitching staff with a 2.25 ERA.... struck out a season-high seven batters in her season debut vs. Mercer on February 16... pitched her second complete game in win vs. Florida International on April 2... also played some outfield... had 20 at bats and had two hits and one run scored. **Junior College:** Garnered first team Panhandle Conference and second team All-State honors... was also a member of the All-State academic team... team made the FCCAA state championship as a freshman and earned All-Tournament team honors... was Big Bend Player of the Year as a senior in high school. **Personal:** Major is sports management... born on August 13, 1979... brother Michael is a former Florida State baseball player...member of the ACC Academic Honor Roll.

Favorite FSU Moment:

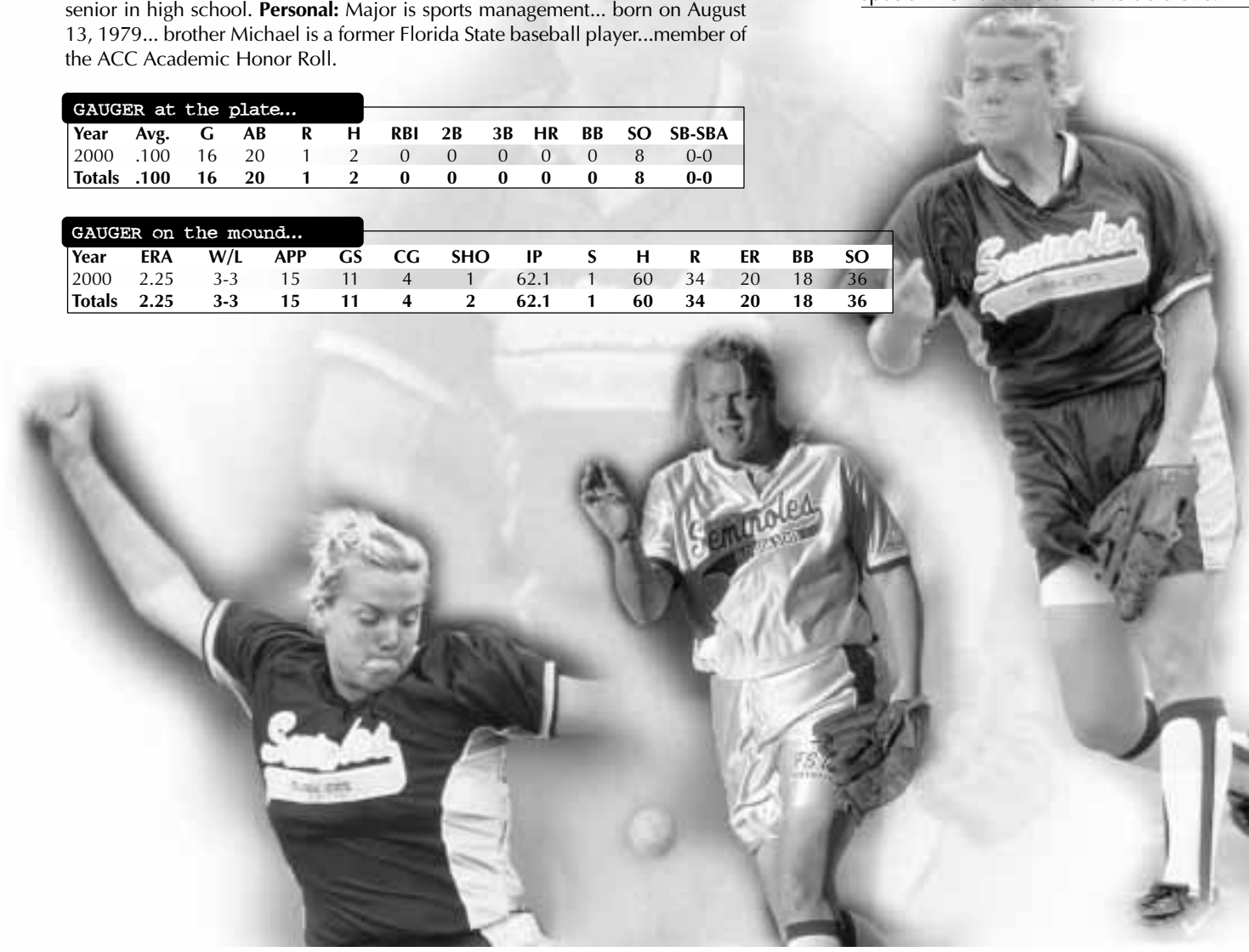
"My best moment would be when I got to pitch against FIU and it was televised. All of my family got to watch it and the best part was that I got the win. My family doesn't get to see me play that often so it was a special moment and a memorable one."

GAUGER at the plate..

Year	Avg.	G	AB	R	H	RBI	2B	3B	HR	BB	SO	SB-SBA
2000	.100	16	20	1	2	0	0	0	0	0	8	0-0
Totals	.100	16	20	1	2	0	0	0	0	0	8	0-0

GAUGER on the mound..

Year	ERA	W/L	APP	GS	CG	SHO	IP	S	H	R	ER	BB	SO
2000	2.25	3-3	15	11	4	1	62.1	1	60	34	20	18	36
Totals	2.25	3-3	15	11	4	2	62.1	1	60	34	20	18	36





Jennifer White-Stokes

HometownTuttle, OK
YearSenior
PositionPitcher
Bats/ThrowsRight/Right



Favorite FSU Moment:

"When Robyn and I saw Jack Nicholson at the Atlanta airport."

12 **2000:** Strong hitting pitcher... was 13-9 with a 2.48 ERA and 14 complete games... suffered from bicep tendonitis and made just four appearances in the month of April... came back strong and helped FSU earn the SASA automatic bid with complete-game victories vs. Virginia and Maryland... batted .214... hit an inside-the-park home run vs. FAMU on Feb. 12... had four shutouts... threw a one-hitter with nine strikeouts against Miami of Ohio on March 17... had three multi-hit games and one three-RBI game... started the season with a three-game hitting streak. **1999:** Compiled a 16-16 pitching record and appeared in 37 games... named ACC Pitcher of the Week for March 16th... recorded her first shutout of the year against Campbell and had a team-high seven on the season... led the pitching squad with 24 complete games... was third in the conference with a 1.53 ERA... struck out 164 batters and pitched 214.2 innings... had 24 hits, including one home run, while batting .255... drove in eight runs. **1998:** Saw action in 39 games, returning to action in NCAA regional play after missing six weeks of action with a rib injury... earned second team All-Southeast Region honors... although sidelined, still led the country with 26 victories until April 14th... was FSU's ace on the mound with a 26-8 record and a 1.37 ERA... was tied for first in the ACC with a 1.37 ERA... earned ACC Pitcher of the Week honors three times... earned victories over No. 3 Washington and No. 2 Fresno State... also pitched FSU to victory over nationally-ranked LSU... had five shutouts... had 27 complete games in 36 appearances... struck out 123 batters and walked just 36 in 215.1 innings pitched... held opponents to a .214 batting average... was named the Most Valuable Player of the Tallahassee Democrat Florida State Invitational after leading FSU to the title with a 5-0 record and six RBIs... also batted for herself and had 25 hits and 11 RBIs... on the batting end, had four multiple hit games... drove in a season-high three runs vs. Central Michigan... struck out eight batters in five games **High School:** Two-time high school All-American... four-year letter-winner in softball and basketball... named to the Principal's honor roll. **Personal:** Majoring in elementary education... played ASA summer ball with the Decatur Twister... born on Feb. 1, 1978... nickname is JW... married Frank Stokes in December, 1999... member of the ACC Academic Honor Roll.

WHITE-STOKES at the plate...

Year	Avg.	G	AB	R	H	RBI	2B	3B	HR	BB	SO	SB-SBA
1998	.284	39	88	10	25	11	3	1	0	6	21	4-5
1999	.255	39	94	10	24	8	4	1	1	6	17	1-1
2000	.214	28	56	5	12	6	1	2	1	3	9	1-1
Totals	.251	106	238	25	61	25	8	4	2	15	47	6-7

WHITE-STOKES on the mound...

Year	ERA	W/L	APP	GS	CG	SHO	IP	S	H	R	ER	BB	SO
1998	1.37	26-8	36	27	26	5	215.1	0	169	57	42	36	123
1999	1.53	16-16	37	28	24	7	214.2	0	177	61	47	51	164
2000	2.48	13-9	29	26	14	4	149.1	0	140	64	53	40	82
Totals	1.79	55-33	102	81	64	16	578.4	0	486	82	142	127	369





Becky Brock

HometownMacclenny, FL
YearJunior
Position3B
Bats/ThrowsRight/Right



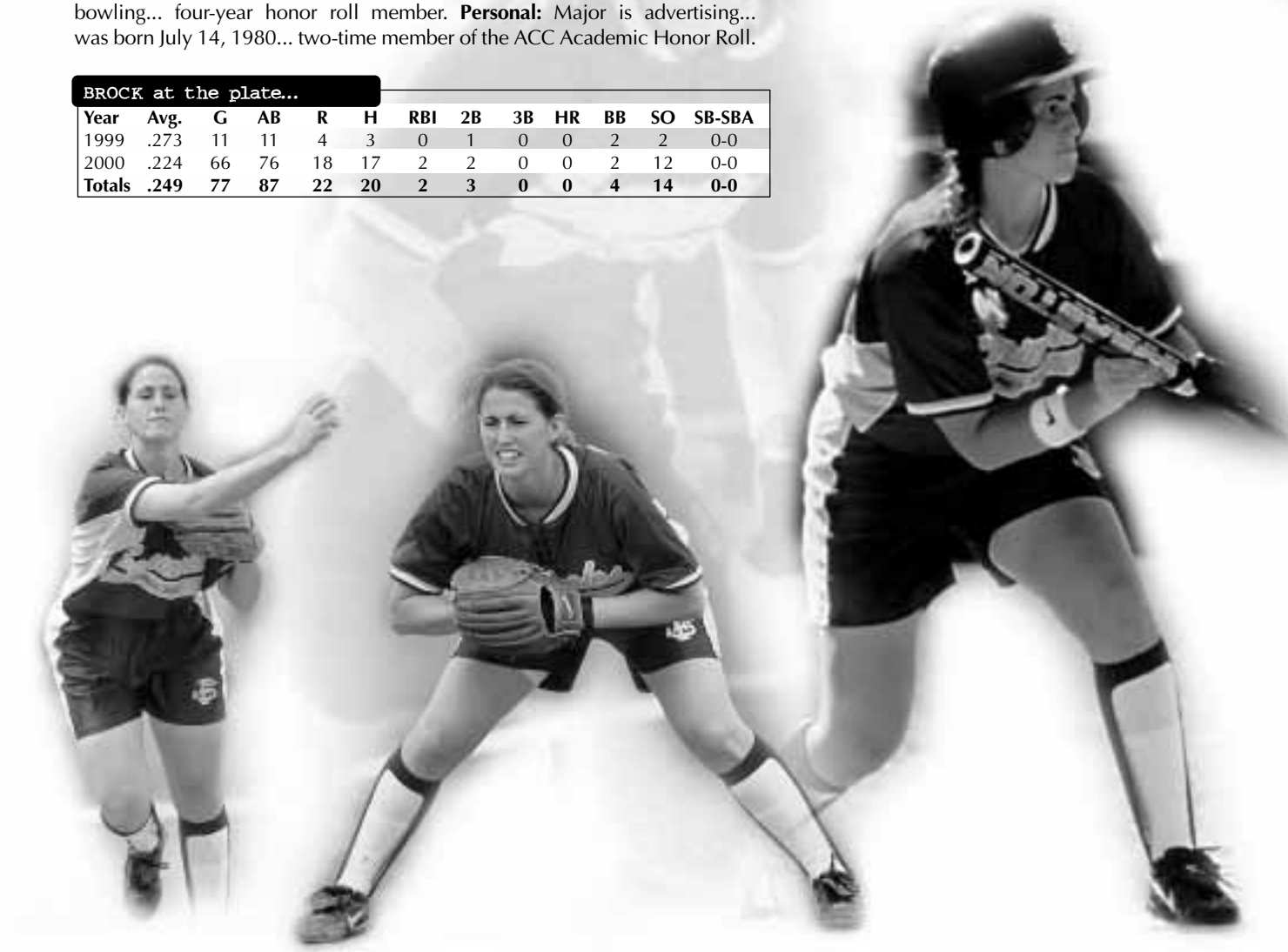
2000: Starter at third base... was solid defensively... played in 66 games... batted .224... had one multi-hit and multi-RBI game... was also used occasionally as a pinch-runner. **1999:** Gained valuable experience playing behind four-year starter Jesse McGregor... saw action in 11 games at the shortstop position... had one RBI and one double on the season... batting average was .273. **High School:** Named the team's best offensive player as a senior after earning defensive player of the year honors in 1996 and 1997... pegged Baker County's Female Scholar-Athlete of the Year in 1998... also lettered in basketball and volleyball and earned Most Valuable Player accolades in both in 1998... competed in golf and bowling... four-year honor roll member. **Personal:** Major is advertising... was born July 14, 1980... two-time member of the ACC Academic Honor Roll.

Favorite FSU Moment:

"When our three coaches played three of us in a basketball game at Kimmy Carter's house in Boca Raton. We had a good time and of course, Natalie, Beth and I won the game."

BROCK at the plate...

Year	Avg.	G	AB	R	H	RBI	2B	3B	HR	BB	SO	SB-SBA
1999	.273	11	11	4	3	0	1	0	0	2	2	0-0
2000	.224	66	76	18	17	2	2	0	0	2	12	0-0
Totals	.249	77	87	22	20	2	3	0	0	4	14	0-0





Kimmy Carter

Hometown Palm Beach Gardens, FL
Year Junior
Position Outfield/Catcher
Bats/Throws Right/Right



8 **2000:** Solid starter in right field... batted .243... had two home runs... was one of just four players who started all 78 games... was second on the team, along with Brandi Stuart, with six triples... also ranked second with 19 sacrifices and eight doubles... was third on the squad with 33 runs... was sixth on the team with 49 hits and fifth with 29 RBI... was first on the team with 29 walks... had seven stolen bases... had two, three-RBI games and six multi-RBI games in all, including driving in the two runs in FSU's 2-0 victory over No. 20 Long Beach State in the NCAA regionals... had a six-game hitting streak... had 10 multi-hit games. **1999:** Right fielder who played in 49 games and worked herself into a starting role... was named ACC and SAA Player of the Week for May 11th... recorded her first RBI against Utah... had 21 RBIs on the season -- the most of all newcomers... had 37 hits, including nine extra-base hits and was among the team leaders with a .294 batting average... recorded two doubles against Furman... hit two triples against UNC-Charlotte and had five RBI's in the last week of the regular season... was tied for first on the team and in the ACC with five triples. **High School:** Was chosen the Class 2A Player of the Year for small schools into the Palm Beach Post and Ft. Lauderdale Sun Sentinel as a sophomore and a senior... was the team's Most Valuable Player for three consecutive years... served as team captain for two years... was a three-time all-area and three time all-state first team selection... chosen the Female Athlete of the Year in junior and senior years... led team in batting and stealing in final two seasons... ranked second in the county with a .647 batting average as a senior... selected to the all star select team as a senior and earned the district title... was on the 18-under World Series champion team in 1998... also played soccer and volleyball... selected a Scholar Athlete as a junior and senior. **Personal:** Major is English Education... played summer ball with the Palm Beach Gardens Lady Gators... born October 6, 1980... sister played tennis at Samford University... father is 18-year baseball veteran and all-star Gary Carter.

Favorite FSU Moment:

"I will never forget the times on the long bus rides when we would sing and dance to 'Jiggalo', play games like Tablo and just act goofy together. I am so thankful to be on a team that can bring me such happiness through such great teammates."



CARTER at the plate...

Year	Avg.	G	AB	R	H	RBI	2B	3B	HR	BB	SO	SB-SBA
1999	.294	49	126	19	37	21	4	5	0	10	27	5-6
2000	.243	78	202	38	49	29	8	6	2	29	45	7-10
Totals	.154	127	328	57	86	50	12	11	2	39	72	12-16





Jackie Hirschfeld

HometownTampa, FL
 YearJunior
 Position3B
 Bats/ThrowsRight/Right



24

2000: Played in 23 games with three starts... had two hits vs. Mercer on Feb. 16th and vs. Auburn on April 15th... fielded 1.000 in limited playing time... had an RBI in FAMU game on April 12th and April 16th vs. Auburn... had one stolen base. **1999:** Saw action in 15 games at third base behind four-year starter Tami Post... was 3-of-9 at the plate (.333)... was perfect at the plate against Campbell... drove in the winning run against Florida International. **High School:** Earned first team All-Conference and All-County honors and was a second team All-State selection...garnered Offensive Most Valuable Player honors as a senior...also lettered four years in basketball and volleyball... an honor roll member. **Personal:** Played summer ball and worked for the Tampa Bay Firestix professional softball team... major is business... born November 11, 1979.

Favorite FSU Moment:

"The time when Felicia Williams was put into run but on her way out of the dugout she slipped and hit her head cause she was so excited. She is now remembered by the statement 'Fe's gonna run, Fe's gonna run'"

HIRSCHFELD at the plate...

Year	Avg.	G	AB	R	H	RBI	2B	3B	HR	BB	SO	SB-SBA
1999	.300	15	10	0	3	1	0	0	0	3	2	0-0
2000	.077	23	26	3	2	2	0	0	0	4	6	1-1
Totals	.189	38	36	3	5	3	0	0	0	7	8	1-1





Leslie Malerich

HometownMerrillville, IN
YearJunior
PositionPitcher
Bats/ThrowsRight/Right



23

2000: FSU's ace on the mound... was the team leader with a 35-15 record and a 1.21 ERA... was a second team All-Southeast Region selection... earned All-ACC honors... garnered All-Tournament team honors at the Los Angeles regional, going 3-1 and had an RBI at the plate... was named the Most Valuable Player at the 2000 ACC Softball Championships after leading FSU to the title... set a new FSU single-season record with 58 appearances... with 35 wins, tied the FSU single-season pitching record for victories... is among just five FSU pitchers all-time to reach the 30-win mark... led the FSU pitching staff with 243 strikeouts and 16 shutouts... pitched an amazing 323 innings... earned ACC Pitcher of the Week honors six times... was named to the UTC Frost Cutlery Challenge All-Tournament Team and also earned MVP honors after notching three wins, including two shutouts, and a save... recorded her first career perfect game against Princeton on March 15... also had a no-hitter vs. FAMU... had 37 complete games... struck out season-high 11 batters vs. FAU on Feb. 12... had stretches where she didn't give up an earned run in 17, 25 & 46 consecutive innings... held the opposition to a .194 batting average. **1999:** Saw a great deal of action playing behind veterans Stacy Venable and Jennifer White... finished the season with an 11-8 record and a 2.03 ERA... had four shutouts and pitched 145 innings... struck out 93 batters and appeared in 32 games... had her first career no-hitter against Toledo. **High School:** Was the state of Indiana softball strikeout leader in 1996, 1997 and 1998... with 1,003 career strikeouts, is second all-time in the state of Indiana... was a Miss Softball Nominee in 1998... selected a two-time 1st team All-State honoree... helped her team to the state title in 1997 and was named the Player and Athlete of the Year in Indiana... twice earned conference Most Valuable Player... earned second team All-State accolades as a sophomore... holds every pitching record at her high school... also lettered and received numerous honors in volleyball and swimming... named the 1998 Merrillville High School Athlete of the Year. **Personal:** Major is sports management... her sister plays softball and volleyball at Aurora University in Illinois... born February 29, 1980...member of the ACC Academic Honor Roll

Favorite FSU Moment:

"Kimmy, Dana and I went to see the movie 'Never Been Kissed.' In the movie, Drew Barrymore falls flat on her face in one scene. So that night I did the 'What's up girlfriends' impression, falling on my face and all. It became my trademark that year."



MALERICH at the plate..

Year	Avg.	G	AB	R	H	RBI	2B	3B	HR	BB	SO	SB-SBA
1999	.273	11	11	4	3	0	1	0	0	2	2	0-0
2000	.160	16	25	2	4	2	0	0	0	3	11	0-0
Totals	.217	27	36	6	7	2	1	0	0	5	13	0-0

MALERICH on the mound..

Year	ERA	W/L	APP	GS	CG	SHO	IP	S	H	R	ER	BB	SO
1999	2.03	11-8	32	19	12	4	145.0	0	0	117	62	42	34
2000	1.21	35-15	58	41	37	16	323.0	2	222	84	56	72	243
Totals	1.62	46-23	90	60	49	20	468.0	2	222	201	118	114	277



Brandi Stuart

HometownCerritos, CA
YearSophomore
Position2B/IF
Bats/ThrowsRight/Right



Favorite FSU Moment

"We were in Fresno, CA and had been playing really bad. It got to the point where Coach Graff put us in what we like to call 'jail'. My family had come up to Fresno to see me play and visit and becoming prisoner j-31129 didn't really help."

29

2000: Only freshman to play in 2000... was the starter at second base... was third on the team with a .339 batting average... an All-ACC selection... was tied for first on the team with 42 stolen bases... was second on the squad with 79 hits, 233 at bats, 39 runs and 36 RBI... was one of just four players to start every game... recorded hits in nine of the last 10 games... hit a grand slam in the bottom of the seventh inning to give FSU a 6-3 win over UF... had four hits and five RBIs against Florida... had two home runs on the year... had 21 multi-hit games... was third on the team with 17 walks... had eight multi-steal games... was named to the UTC Frost Cutlery Challenge All-Tournament team... won ACC Player of the Week award for April 24th after hitting .583... had a six game hitting streak in mid-March... had three RBIs vs. FIU on April 2 and four RBIs vs. UF on April 5... longest hitting streak was 10 games just prior to the ACC Tournament. **High School:** Was a member of the first team All-Press Telegram dream team all four years... earned conference Most Valuable Player honors her senior year... garnered All-State accolades in final season. **Personal:** Major is communications... was born on November, 29, 1981... Dean's List member in 1999 and 2000...member of the ACC Academic Honor Roll.

STUART at the plate...

Year	Avg.	G	AB	R	H	RBI	2B	3B	HR	BB	SO	SB-SBA
2000	.339	78	233	39	79	36	6	6	2	17	34	42-47
Totals	.339	78	233	39	79	36	6	6	2	17	34	42-47





Monique Marier

HometownClearwater, FL
YearJunior
PositionOF
Bats/ThrowsRight/Right

4 Junior College: Garnered first team all-state honors...was first team all conference MVP...first team All-American for NFCA... first team All-American for NJCAA...led the nation in home runs in 1999 with 27...named Florida Player of the Year...was a member of Who's Who Among American Junior College students...played on 32-0 state championship volleyball team...member of her high school's athletic Hall of Fame. **Personal:** Major is information studies...was born on January 27, 1980.



Leah Armstrong

HometownJacksonville, FL
YearFreshman
PositionOF
Bats/ThrowsLeft/Right

51 High School: First team All-State and All-Conference as a senior...garnered outfield MVP honors senior season...earned MVP tournament honors for Summer World Series as a member of the 2000 World Series Championship Team...received Coach's Award junior year...led region in batting average (.604)...third team All-State and All-Conference as a junior...garnered best offensive player freshman and sophomore year...led the district and region in stolen bases as a sophomore and again as a junior...highest district and regional batting average during freshman and junior season...FACA Player of the Year (Class 3A) as a sophomore...was also voted captain and Best All-Around Player for the volleyball team as a senior. **Personal:** Honor roll throughout high school...National Spanish Honor Society...member of Chi Alpha...major is criminology...was born December 17, 1981.



Skyla Cox

HometownMarietta, GA
YearFreshman
PositionUtility/2B
Bats/ThrowsRight/Right

b High School: Was a member of 1998 State championship team in Georgia...member of All-State second team...member of East Cobb state championship team...named best defensive player in tenth through twelfth grades...named student athlete of the week several times. **Personal:** Major is education...was born on March 12, 1982...her father is the manager of the Atlanta Braves.





Julie Jordan

HometownGarden Grove, CA
YearFreshman
PositionC/OF
Bats/ThrowsRight/Right

3 **High School:** Was member of C.I.F. division III championship team twice...played on national championship team...C.I.F. scholar athlete 1998-2000...was a member of the honor roll all four years of high school...member of the Principal's honor roll...also played volleyball. **Personal:** Major is graphic design...was born June 19, 1982.



Jessica Van Der Linden

HometownCerritos, CA
YearFreshman
PositionP/1B/OF
Bats/ThrowsLeft/Left

99 **High School:** Was Long Beach Press Telegram Dream Team Player of the Year...was a member of the two time C.I.F. Southern Section Division II champions...was All C.I. F. first team in 1999 and 2000...Cerritos MVP in 1999 and 2000...C.I.F. Southern Section Division II Player of the Year 1999 and 2000...graduated with honors...played for the Puerto Rican National Team at the South American Olympic Qualifier in Venezuela...also played volleyball. **Personal:** Major is communication...was born on January 6, 1982.



Elisa Velasco

HometownHesperia, CA
YearFreshman
PositionC/1B
Bats/ThrowsRight/Right

9 **High School:** Was a four year varsity letter winner at A.B. Miller High School...offensive player of the year junior and senior seasons...first team all league junior and senior seasons...MVP senior season...first team all-county senior season...named scholar athlete four years...won eight academic gold medals...recipient of US Army Scholar Athlete award. **Personal:** Major is communications...was born April 27, 1982.



Beth Wade

HometownColquitt, GA
YearRedshirt Freshman
Position3B/1B
Bats/ThrowsRight/Right

11 **High School:** Talented athlete... will add depth to a virtually new infield... was selected the female athlete of the year as a senior... pegged the GACA Class A South Georgia Player of the Year... also played basketball... was listed in Who's Who Among High School Students four straight years... was valedictorian of her class. **Personal:** Major is education... was born on August 25, 1980... member of the ACC Academic Honor Roll

Seminoles in the Pros



Leslie Adams
Carolina Diamonds (1997-99)



Myssi Caulkins
Georgia Pride (1999)



Danielle Cox
Georgia Pride (1999)



Renee Espinoza
Georgia Pride (1997)



Kristy Fuentes
Georgia Pride (1998)

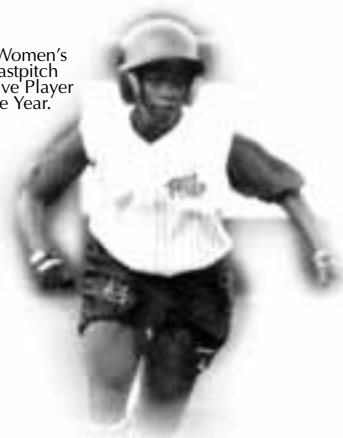
Shannon Mitchem
Silver Bullets (1993-98)



Laurie Shepard
Silver Bullets (1995-98)



1998 Women's
Pro Fastpitch
Defensive Player
of the Year.



Shama Wilson
Georgia Pride (1997-00)

2000 Season Review

FSU MAKES 13th REGIONAL APPEARANCE

Florida State entered the West Regional with the daunting task of facing No. 20 Long Beach State, No. 15 Iowa State and No. 3 UCLA if the team hoped to advance to its sixth College World Series. The Seminoles opened the regional with a 2-0 win over Long Beach State and a 4-1 victory over Iowa State. FSU, ranked No. 24 at the time, then dropped their next game to the hometown Bruins by the score of 6-1. FSU bounced back and staved off elimination with an impressive 4-2 win over the Hawkeyes. Florida State had to once again go up against the Bruins if the squad wanted the opportunity to head to Oklahoma City for the CWS. The Seminoles dropped the match 7-1 to UCLA in the championship game and ended their season at 51-27.

SEMINOLES COUNTINUE ACC DOMINANCE WITH SIXTH-STRAIGHT ACC TITLE

Just like their football counterparts, the Florida State softball team is in the midst of a decade of dominance in the Atlantic Coast Conference. In 2000, the Seminoles captured their eighth conference championship since joining the ACC nine years ago. FSU had to win three games on the final day of the tournament to secure its sixth straight title but with tournament MVP Leslie Malerich on the mound an eighth title didn't seem like an unreachable goal. In her third victory of the day (FSU defeated Maryland 3-0 and Virginia 3-1 earlier in the day to advance to the championship game), Malerich, who pitched 17 and two-thirds innings of shutout softball on Monday alone, recorded a 2-0 victory over Virginia for her 15th shutout of the season and the 2000 ACC Championship.

BROOKS EARNS ALL-AMERICAN

Serita Brooks was named to the 2000 Louisville Slugger All-America second team. Brooks, who started all 78 games at center field for Florida State, led the Seminoles and the Atlantic Coast Conference with a .401 batting average. A first team All-Southeast Region selection, Brooks also earned All-Tournament team honors at the Los Angeles regional after batting .317 with three RBI. She was the team leader in hits with 99, runs scored with 54, triples with eight, stolen bases with 42 and at bats with 247. An All-ACC selection, Brooks, whose 99 hits tied the FSU single-season record, had 30 multi-hit games on the year and hit safely in 23 of the last 25 games of the season. With the distinction, Brooks become the 18th Seminole softball player to earn All-America honors.

EASTON HONORS

Four Florida State softball players were named to Easton All-American teams. The Seminoles, who were one game away from going to the College World Series, tied UCLA and LSU for the most players on the three teams. Serita Brooks earned first team honors, Staci Brandon was named to the second team while Leslie Malerich and Brandi Stuart garnered third team recognition.

ALL REGION HONORS

Staci Brandon and Serita Brooks earned All-Southeast Region first team honors while Leslie Malerich earned second team recognition.

ALL-ACC HONORS

Four Florida State softball players garnered All-Atlantic Coast Conference honors for the 2000 season. Staci Brandon, Serita Brooks, Leslie Malerich and Brandi Stuart were all selected to the squad after leading the team to FSU's 8th ACC Tournament crown.

ACC ALL-TOURNAMENT TEAM HONORS

FSU was well-represented on the 2000 ACC Championships All-Tournament Team. Joining Leslie Malerich, who earned Most Valuable Player honors, were Serita Brooks, Natalie Bennett and Staci Brandon.



The final SASA standings...

FSU	8-2
UNC	8-2
UVA	5-5
Maryland	4-6
Ga. Tech	3-7
E. Carolina	2-8

WHY SHE'S THE BEST

With practically an entire new team and coaching staff, Coach Graf had quite a year! Just three starters and 11 letterwinners returned from last year's squad. With the exception of catcher, FSU replaced the entire infield and also had newcomers in both left and center fields.

This year's pitching ace Leslie Malerich started just 19 games last year and had just 12 complete games. Coach Graf also welcomed a new staff in assistants Louie Berndt and Heather Compton. The Lady

Seminoles met nearly all their goals last season... achieving a team GPA of over 3.0 (3.115), winning the ACC and getting to regionals.

WHY WAS IT IMPORTANT?

FSU's last road swing to Virginia and Maryland may have been the most important series of the season. With the sweep of both Virginia and Maryland, the Seminole earned the SASA automatic bid to regionals. The five ACC schools and East Carolina make up the Southern Atlantic Softball Alliance. All six teams play a doubleheader throughout the season and the team with the best record at the end of that competition earns an automatic bid to regionals. FSU and North Carolina each finished with an 8-2 record, but the Tribe swept the Tar Heels in head-to-head competition.

MISS CLUTCH

Teresa Edenfield made just about every hit count. The senior had 50 hits on the year and a team-leading 46 RBI off those hits. Edenfield had the best season of her FSU career. Coming into the season, she had just 34 career RBI but ended 2000 with more than doubled that mark. She had 12 career doubles through the first three years and had 11 in 2000 alone. She also set marks in hits with 50 (previous high was 31 in 1998), and home runs with four (had just one previously).

MALERICH AMONG ELITE GROUP

Leslie Malerich led the Seminole pitching staff with 35 wins. She picked up three wins alone in the final day of the ACC Tournament with the last win giving her her 30th win of the season. Only four other FSU pitchers have reached the 30-win mark since the Tribe went to fastpitch in 1984. They are Christy Larsen, 33 (1991); Toni Gutierrez, 35 (1992); Renee Espinoza, 30 (1996) and Kristy Fuentes, 32 (1997).

ACC PITCHERS AND PLAYERS OF THE WEEK

FSU was well represented in the league's weekly honors last season...

Weekly Honors...

May 8	Teresa Edenfield	Player
May 1	Leslie Malerich	Player (tourney MVP)
April 24	Brandi Stuart	Player
	Leslie Malerich	Pitcher
April 17	Staci Brandon	Player
	Leslie Malerich	Pitcher
March 27	Leslie Malerich	Pitcher
March 20	Leslie Malerich	Pitcher
Feb. 28	Serita Brooks	Player
Feb. 21	Leslie Malerich	Pitcher

RECORDS AND NEARING RECORDS

With 58 appearances in 2000, Leslie Malerich surpassed the previous record of 48 appearances held by Kristy Fuentes in 1997. Serita Brooks set a new record for hits in a single season with 99, passing Danielle Cox's record of 98 hits set in 1999. She also set the at bats record with 247, passing Susan Buttery who had 240 in 1992. Teresa Edenfield's 46 RBIs was just three away from the single season mark of 49 set by Penny Siqueiros in 1992. With 49 strikeouts, Edenfield also set a new single-season mark, surpassing Leslie Barton's 42 in the 1991 season. Natalie Bennett's 22 sacrifices was just three away from Shannon Mitchem's 25 in 1992.

GO-TO GIRL

FSU won 17 of its last 19 regular-season games last year and Leslie Malerich was probably the main reason. Malerich earned 13 of those victories and was the pitcher of record, going 8-2, in 10 straight games from April 8th to April 21st.



ON A ROLL

Heading into the ACC Tournament, Brandi Stuart was on a 10-game hitting streak and hit safely in 17 of the last 20 games. In the tourney, however, Stuart went hitless until the final game, in which she had a single.

GET THE BROOM OUT

The Tribe recorded 12 sweeps this season, including the last five series of the year.

PUTTING A STOP TO 'EM

ACC Tourney MVP Leslie Malerich pitched 17 and two-thirds innings of shutout ball on the final day of the ACC Tournament. Prior to Auburn's run in the 13th inning in the second game of the doubleheader on April 15th, Malerich had pitched 25.1 consecutive innings without giving up a run. She pitched 16 innings that Saturday alone. Early in the season, Malerich had a stretch in which she didn't give up an earned run in 46 consecutive innings.

SHUTTING 'EM OUT!

Florida State pitching produced 23 shutouts in 2000, including a no-hitter against Florida A&M and a perfect game against Princeton. Leslie Malerich led the unit with 16 solo and two combined shutouts. The Seminoles were shut out seven times last year.

HOME RUN CLUB

The Seminoles had 17 home runs last year while FSU pitching has allowed 13. The Tribe had a total of seven in 1999. Teresa Edenfield led the team with four, Kelly Miller had three while Kimmy Carter, Brandi Stuart, Natalie Bennett and Serita Brooks each had two and Jenn White-Stokes and Andi Lyons each had one.

ON THE BASEPATHS

The Seminoles definitely have speed in the line-up. Serita Brooks and Brandi Stuart led the team with 42 apiece. As a team, FSU recorded 117 stolen bases to its opponents' 38.

TOO CLOSE FOR COMFORT

The Seminoles were 48-25 heading into regionals. Eleven of the Tribe's 25 losses in the regular season were by just one run and five of those games went extra innings before being decided.

BROOKS AND BRANDON TIE ACC MARK

Serita Brooks, who batted .529, and Staci Brandon, who batted .500 with a team-high four RBI, each recorded nine hits in the ACC Tournament, tying the tournament record for hits.

TOO MANY HITS

Auburn belted 16 hits in the second game of the April 15th doubleheader (10 in first seven hittings). It's the most hits that FSU pitching allowed in 2000. UNC had 10 hits in the first game of the DH, marking just the third time that FSU pitching had allowed double-digit hits last season. FSU had a 1-2 record in those games.

NEW HIGH

FSU set a new season-high with 14 hits in game two of the DH with Auburn on April 15th, but only eight of the hits were in the first seven innings. The Tribe did it for real in its 10-3 win over Maryland on May 4th.

MARATHON GAME

Game two of the Auburn series went 13 innings, three hours and 52 minutes. The two teams combined for 30 hits. The 13 innings were the most innings FSU had played in a game last season. It moved the Tribe to 2-6 in extra-inning ball games in 2000. Prior to the game with Auburn, the Seminoles went nine innings in a 1-0 win over Bethune-Cookman on Feb. 19.

LIKE TO WIN BIG

When the Seminoles win, they seem to win big! The Tribe was 18-3 in games decided by five or more runs. FSU hasn't had as much success with the close games though. The Seminoles were 13-11 in one-run games.

WASN'T IT JUST GRAND!

Freshman Brandi Stuart blasted a grand slam home run in the bottom of the seventh inning of game one vs. Florida to lift the Lady Seminoles to a 6-3 victory over the Gators. It was Stuart's first career grand slam and her second home run of the year. Stuart was the only freshman playing on the team last season (Beth Wade redshirted).

Seminole Quickly...

Batting Leader:	Serita Brooks, .401
Hits Leader:	Serita Brooks, 99
Runs Leader:	Serita Brooks, 54
Doubles Leader:	Natalie Bennett, 11 Teresa Edenfield, 11
Triples Leader:	Serita Brooks, 8
Home Runs Leader:	Teresa Edenfield, 4
RBI's Leader:	Teresa Edenfield, 46
Stolen Bases Leader:	Serita Brooks, 42 Brandi Stuart, 42
ERA Leader:	Leslie Malerich, 1.21 (35-15 final record)

For the Record..

ACC Tourney Record:4-1
ACC Record:6-2
SASA Record:8-2
Home:21-10
Away:18-3
Neutral:12-14
Tournament Play:24-22
vs ranked opponents4-13
Day Games43-22
Night Games8-5
One run games13-11
Two run games7-3
Five+ run games18-5
Extra innings2-6
Shutouts23-7



On Review

MORE ALL TOURNAMENT HONORS

The Seminoles were well represented on the UTC Frost Cutlery Challenge All-Tournament Team. Joining Malerich, who also earned MVP honors, were Becky Wallace, Brandi Stuart and Teresa Edenfield. Wallace batted .462 with two RBIs. Stuart batted .353 with three runs scored and three RBIs while Edenfield batted .316 with four RBIs.

COME-FROM-BEHIND

Florida State showed some real fight against Wisconsin in the final day of the UTC Frost Cutlery Challenge. Down 5-0 after two innings, the Tribe scored two runs in the fourth and then exploded for four runs on five hits in the seventh inning. After giving up five runs in the second inning, Jenn White-Stokes allowed just three Badger hits the next four innings and Leslie Malerich came into the game in the seventh to earn the save.

INSIDE-THE-PARK

Junior Serita Brooks used her speed to round the bases for her second home run of the season vs. Ohio, but first in-the-park home run. It is the third in-the-park home run for the Seminoles in 2000 as Jenn White-Stokes recorded one vs. FAMU on February 12th and Natalie Bennett had one on April 22nd vs. Campbell.

ALL-TOURNAMENT HONORS

Juniors Staci Brandon and Serita Brooks were named to the 2000 Tallahassee Democrat Florida State Invitational All-Tournament team. Brandon led all FSU players with a .750 batting average on 9-of-12 at the plate with two RBIs and three runs scored. Brooks hit .529 on 9-of-17, including a double and a triple, and scored two runs and drove in three others.

EDENFIELD CAME BACK STRONG

Senior Teresa Edenfield missed the majority of the FSU Invitational with a sprained left knee. She saw one at bat in the five games and it was a hit against Northern Iowa. Edenfield returned to action on Wednesday, March 22nd and played in all eight of FSU's games that week and what a week she had! She batted .346 with nine hits, including two doubles, and a team-leading seven RBIs.

PERFECTION!

Leslie Malerich faced 21 batters and threw five strikeouts against Princeton for her first career perfect game at FSU! It was also her sixth shutout of the 2000 season.

BROOKS HONORED

Junior Serita Brooks was named to the Fresno State Hallowell Chevrolet All-Tournament team after batting .474 with two RBI's and going a perfect 4-4 in stolen bases.

FINAL STATISTICS FOR FSU SOFTBALL 2000

(All games Sorted by Batting avg)

Record: 51-27 Home: 19-10 Away: 20-2 Neutral: 12-15 Conference: 8-2

Overall Statistics for Florida State (as of May 21, 2000)

PLAYER	AVG	GP-GS	AB	R	H	2B	3B	HR	RBI	TB	SLG%	BB	HBP	SO	GDP	OB%	SF	SH	SB-ATT	PO	A	E	FLD%
Serita Brooks	.401	78-78	247	54	99	5	8	2	30	126	.510	15	2	31	0	.436	2	16	42-49	56	7	2	.969
Staci Brandon	.370	63-53	181	29	67	5	5	0	25	82	.453	7	1	11	0	.395	1	2	7-9	12	0	0	1.000
Brandi Stuart	.339	78-78	233	39	79	6	2	36	103	.442	.17	0	34	0	.382	1	10	42-47	190	145	17	.952	
Kimmy Carter	.243	78-78	202	33	49	8	6	2	29	75	.371	29	3	45	0	.343	2	17	7-10	53	8	1	.984
Teresa Edenfield	.239	73-73	209	19	50	11	0	4	46	73	.349	14	0	49	0	.283	3	9	4-6	192	21	8	.964
Natalie Bennett	.235	78-78	213	23	50	11	3	2	31	73	.343	13	1	35	1	.281	1	21	1-3	117	173	19	.939
Andi Lyons	.226	67-63	137	26	31	3	1	1	11	39	.285	23	2	19	0	.341	2	8	0-0	238	37	5	.982
Kelly Miller	.224	54-52	134	12	30	7	0	3	10	46	.343	15	2	26	0	.309	1	12	2-2	168	60	9	.962
Becky Brock	.224	66-55	76	18	17	2	0	0	2	19	.250	2	0	12	0	.244	0	6	0-0	52	138	9	.955
Jenn White-Stokes	.214	28-24	56	5	12	1	2	1	6	20	.357	3	0	9	0	.254	0	6	1-1	4	41	0	1.000
Becky Wallace	.208	64-60	173	4	36	6	1	0	19	44	.254	12	1	34	0	.261	2	4	1-2	498	26	7	.987
Felicia Williams	.179	66-17	56	30	10	0	0	0	2	10	.179	3	2	20	0	.246	0	0	9-12	6	0	1	.857
Leslie Malerich	.160	16-9	25	2	4	0	0	0	2	4	.160	3	1	11	0	.276	0	1	0-0	13	105	5	.959
Stephanie Elowsky	.154	32-4	26	3	4	1	0	0	2	5	.192	2	0	7	0	.207	1	1	0-1	1	1	0	1.000
Robyn Gauger	.100	16-5	20	1	2	0	0	0	0	2	.100	0	0	8	0	.100	0	0	0-0	3	37	3	.930
Jackie Hirschfeld	.077	23-3	26	3	2	0	0	0	2	2	.077	4	1	6	0	.226	0	0	1-1	1	5	0	1.000
TOTALS	.269	78-78	2014	301	542	66	32	17	253	723	.359	162	16	357	1	.326	16	113	117-143	1604	804	86	.966
OPPONENTS	.216	78-78	1956	182	422	71	5	13	156	542	.277	130	38	361	4	.278	1	67	38-54	1564	699	127	.947

LOB - Team (460), Opp (413). DPs turned - Team (25), Opp (15). CI - Team (3), A. Lyons 2, T. Edenfield 1. IBB - Team (1), K. Miller 1, Opp (5). Picked off - K. Miller 1, T. Edenfield 1, B. Stuart 1.

(All games Sorted by Earned run avg)

PLAYER	ERA	W-L	APP	GS	CG	SHO/CBO	SV	IP	H	R	ER	BB	SO	2B	3B	HR	AB	B/Avg WP	HBP	BK	SFA	SHA	
Leslie Malerich	1.21	35-15	58	41	37	16/2	2	323.0	222	84	56	72	243	36	2	5	1145	.194	28	26	0	0	40
Robyn Gauger	2.25	3-3	15	11	4	1/2	1	62.1	60	34	20	18	36	9	1	1	246	.244	5	5	0	0	7
Jenn White-Stokes	2.48	13-9	29	26	14	4/0	0	149.1	140	64	53	40	82	26	2	7	565	.248	4	7	0	1	20
TOTALS	1.69	51-27	78	78	55	23/2	3	534.2	422	182	129	130	361	71	5	13	1956	.216	37	38	0	1	67
OPPONENTS	2.91	27-51	78	78	51	7/1	1	521.1	542	301	217	162	357	66	32	17	2014	.269	28	16	0	16	113

PB - Team (12), T. Edenfield 9, A. Lyons 3, Opp (13). Pickoffs - Team (2), L. Malerich 2. SBA/ATT - A. Lyons (25-35), L. Malerich (18-27), T. Edenfield (13-19), White-Stokes (11-16), R. Gauger (9-11).

SEMINOLE 2000 Season Review

GAME BY GAME RESULTS FOR FSU SOFTBALL 2000

Game Results for Florida State (as of May 21, 2000)

(All games)

DATE	OPPOSING TEAM	W/L	SCORE	PITCHER OF RECORD
2/6	Georgia Southern	W	8-0	White-Stokes (W 1-0)
2/6	Georgia Southern	W	6-1	L. Malerich (W 1-0)
2/9	Florida A&M	W	9-0	L. Malerich (W 2-0)
#2/11	California-Berkeley	L	0-1	White-Stokes (L 1-1)
#2/12	Florida Atlantic	L	2-3	L. Malerich (L 2-1)
#2/12	Florida A&M	W	8-7	L. Malerich (W 3-1)
#2/13	Florida Atlantic	W	2-0	L. Malerich (W 4-1)
#2/13	California-Berkeley	L	0-1	White-Stokes (L 1-2)
2/16	Mercer	W	7-0	White-Stokes (W 2-2)
2/16	Mercer	W	7-4	L. Malerich (W 5-1)
2/19	Bethune-Cookman	W	9-0	L. Malerich (W 6-1)
2/19	Bethune-Cookman	W	1-0	L. Malerich (W 7-1)
2/20	Stetson	W	2-0	L. Malerich (W 8-1)
2/20	Stetson	W	8-2	L. Malerich (W 9-1)
\$2/26	Eastern Michigan	W	5-1	White-Stokes (W 3-2)
\$2/26	Florida Atlantic	W	2-0	L. Malerich (W 10-1)
\$2/27	Villanova	L	2-3	L. Malerich (L 10-2)
\$2/27	Furman	W	8-0	R. Gauger (W 1-0)
%3/3	Fresno State	L	0-2	L. Malerich (L 10-3)
%3/3	Harvard	W	6-2	White-Stokes (W 4-2)
%3/4	Texas	L	0-1	L. Malerich (L 10-4)
%3/4	Mississippi State	L	0-4	White-Stokes (L 4-3)
%3/5	Louisiana-Lafayette	L	1-9	L. Malerich (L 10-5)
3/7	Pacific	L	2-5	White-Stokes (L 4-4)
!3/10	UCLA	L	0-3	R. Gauger (L 1-1)
!3/10	Mississippi	L	2-3	L. Malerich (L 10-6)
!3/11	Cal-Poly	L	4-5	White-Stokes (L 4-5)
!3/11	Fresno State	L	1-2	L. Malerich (L 10-7)
!3/12	Illinois State	W	1-0	L. Malerich (W 11-7)
!3/12	Texas Tech	W	3-0	White-Stokes (W 5-5)
3/15	Princeton	W	4-3	White-Stokes (W 6-5)
3/15	Princeton	W	2-0	L. Malerich (W 12-7)
^3/17	Troy State	W	2-1	L. Malerich (W 13-7)
^3/17	Miami of Ohio	W	8-0	White-Stokes (W 7-5)
^3/17	Kansas	L	1-4	L. Malerich (L 13-8)
^3/18	Northern Iowa	W	6-2	White-Stokes (W 8-5)
^3/18	Michigan	L	1-6	L. Malerich (L 13-9)
3/22	Ohio	W	8-1	White-Stokes (W 9-5)
3/22	Ohio	W	6-1	L. Malerich (W 14-9)
&3/24	Louisiana-Lafayette	L	1-2	White-Stokes (L 9-6)
&3/24	Tenn.-Chattanooga	W	1-0	L. Malerich (W 15-9)
&3/25	Wisconsin	W	3-0	L. Malerich (W 16-9)
&3/25	Louisiana-Lafayette	L	2-6	White-Stokes (L 9-7)
&3/26	Wisconsin	W	6-5	White-Stokes (W 10-7)
&3/26	Tenn.-Chattanooga	W	2-1	L. Malerich (W 17-9)
*4/01	Georgia Tech	L	1-2	L. Malerich (L 17-10)
*4/01	Georgia Tech	L	2-8	White-Stokes (L 10-8)
4/02	Fla. International	L	2-4	L. Malerich (L 17-11)
4/02	Fla. International	W	8-3	R. Gauger (W 2-1)
4/05	Univ. of Florida	W	6-3	L. Malerich (W 18-11)
4/05	Univ. of Florida	L	3-5	R. Gauger (L 2-2)
4/08	Southern Miss	L	0-9	R. Gauger (L 2-3)
4/08	Florida A&M	W	3-0	L. Malerich (W 19-11)
4/09	Southern Miss	L	1-4	L. Malerich (L 19-12)
4/09	Florida A&M	W	9-1	L. Malerich (W 20-12)
4/12	Florida A&M	W	7-0	L. Malerich (W 21-12)
4/15	Auburn	W	7-0	L. Malerich (W 22-12)
4/15	Auburn	L	4-5	L. Malerich (L 22-13)
*4/16	North Carolina	W	10-9	L. Malerich (W 23-13)
*4/16	North Carolina	W	5-4	L. Malerich (W 24-13)
*4/21	East Carolina	W	1-0	L. Malerich (W 25-13)
*4/21	East Carolina	W	7-0	L. Malerich (W 26-13)
4/22	Campbell	W	7-1	White-Stokes (W 11-8)
4/22	Campbell	W	9-1	R. Gauger (W 3-3)
@4/29	Maryland	W	6-2	L. Malerich (W 27-13)
@4/30	Virginia	L	2-4	L. Malerich (L 27-14)
@5/01	Univ. of Maryland	W	3-0	L. Malerich (W 28-14)
@5/01	Univ. of Virginia	W	3-1	L. Malerich (W 29-14)
@5/01	Univ. of Virginia	W	2-0	L. Malerich (W 30-14)
*5/03	Virginia	W	3-2	L. Malerich (W 31-14)
*5/03	Virginia	W	6-2	White-Stokes (W 12-8)
*5/04	Maryland	W	10-3	L. Malerich (W 32-14)
*5/04	Maryland	W	3-2	White-Stokes (W 13-8)
+5/18	Long Beach State	W	2-0	L. Malerich (W 33-14)
+5/19	Iowa	W	4-1	L. Malerich (W 34-14)
+5/20	UCLA	L	1-6	White-Stokes (L 13-9)
5/20	Iowa	W	4-2	L. Malerich (W 35-14)
5/21	UCLA	L	1-7	L. Malerich (L 35-15)

*Conference game ^FSU Invitational
 # Seminole Classic & U-T-C Tournament
 \$ FAU Tournament @ ACC Tournament
 % NFCA Leadoff Classic ! Hallowell Classic
 () extra inning game



Post Season Play

1986 South Regional

Ruston, Louisiana

OPPONENT	FSU	OPP	W-L
Louisiana Tech	0	4	L
Louisiana Tech	0	1	L

Final National Ranking - 9th

1987 South Regional

Tallahassee, Florida

OPPONENT	FSU	OPP	W-L
Adelphi	1	0	W
Adelphi	3	1	W

College World Series

OPPONENT	FSU	OPP	W-L
Cal-State Fullerton	0	4	L
Central Michigan	0	1	L

Final National Ranking - 7th

1988 South Regional

Ruston, Louisiana

OPPONENT	FSU	OPP	W-L
Texas A&M	0	1	L
Louisiana Tech	1	6	L

Final National Ranking - 9th

1989 South Regional

Tallahassee, Florida

OPPONENT	FSU	OPP	W-L
South Carolina	1	2	L
Louisiana Tech	1	3	L

Final National Ranking - 9th

1990 South Regional

Lafayette, Louisiana

OPPONENT	FSU	OPP	W-L
Texas A&M	5	0	W
SW Louisiana	4	3	W
SW Louisiana	2	1	W

College World Series

OPPONENT	FSU	OPP	W-L
Fresno State	1	0	W
Oklahoma State	1	4	L
Nevada-Las Vegas	4	1	W
UCLA	1	3	L

Final National Ranking - 3rd

1991 South Regional

Lafayette, Louisiana

OPPONENT	FSU	OPP	W-L
SW Louisiana	1	0	W
Oklahoma State	2	0	W
Oklahoma State	4	3	W

College World Series

OPPONENT	FSU	OPP	W-L
UCLA	0	1	L
UNLV	1	0	W
Fresno State	0	3	L

Final National Ranking - 5th

1992 South Regional

Lafayette, Louisiana

OPPONENT	FSU	OPP	W-L
SW Louisiana	1	0	W
UNLV	4	0	W
SW Louisiana	1	0	W

College World Series

OPPONENT	FSU	OPP	W-L
California	0	3	L
UMASS	2	4	L

Final National Ranking - 7th

1993 South Regional

Tallahassee, Florida

OPPONENT	FSU	OPP	W-L
Kansas	0	1	L
Iowa	5	3	W
Kansas	5	0	W
Kansas	2	1	W

College World Series

OPPONENT	FSU	OPP	W-L
Oklahoma State	2	5	L
Connecticut	1	2	L

Final National Ranking - 7th

1994 South Regional

Stillwater, Oklahoma

OPPONENT	FSU	OPP	W-L
Oklahoma	1	3	L
Providence	1	2	L

Final National Ranking - 9th

1995 West Regional

Tucson, Arizona

OPPONENT	FSU	OPP	W-L
Nebraska	1	6	L
Ohio	2	0	W
Nebraska	6	2	W
Arizona	0	15	L

Final National Ranking - 9th

1996 South Regional

Tallahassee, Florida

OPPONENT	FSU	OPP	W-L
South Florida	3	1	W
Arizona	6	9	L
South Florida	6	0	W
Arizona	3	10	L

Final National Ranking - 9th

1998 Midwest Regional

Stillwater, Oklahoma

OPPONENT	FSU	OPP	W-L
Oklahoma State	0	4	L
Stanford	0	1	L

Final National Ranking - 9th

2000 West Regional

Los Angeles, California

OPPONENT	FSU	OPP	W-L
Long Beach State	2	0	W
Iowa	4	1	W
UCLA	1	6	L
Iowa	4	2	W
UCLA	1	7	L

FSU IN THE NCAA PLAYOFFS

All-Time Record	21-18
Appearances	13
First Appearance	1986

FSU IN THE COLLEGE WORLD SERIES

All-Time Record	3-10
Appearances	5
First Appearance	1987
Last Appearance	1993



ACC Honors & Review

ANNUAL ACC SOFTBALL CHAMPIONS

YEAR	CHAMPION	HEAD COACH	RUNNERUP	SITE
1992	Florida State	Dr. JoAnne Graf	Virginia	Tallahassee, Fla.
1993	Florida State	Dr. JoAnne Graf	Virginia	Tallahassee, Fla.
1994	Virginia	Peggy Kellers	Florida State	Tallahassee, Fla.
1995	Florida State	Dr. JoAnne Graf	Georgia Tech	Tallahassee, Fla.
1996	Florida State	Dr. JoAnne Graf	North Carolina	Raleigh, N.C.
1997	FSU/Maryland	Graf/Gina LaMandre		Marietta, Ga.
1998	Florida State	Dr. JoAnne Graf	Virginia	Tallahassee, Fla.
1999	Florida State	Dr. JoAnne Graf	Virginia	Tallahassee, Fla.
2000	Florida State	Dr. JoAnne Graf	Virginia	Tallahassee, Fla.



ATLANTIC COAST CONFERENCE HONORS

YEAR	PLAYER OF THE YEAR	COACH OF THE YEAR	ROOKIE OF THE YEAR	TOURNEY MVP
1992	Toni Gutierrez, FSU	Dr. JoAnne Graf, FSU	Stephanie Weitman, GAT	Susan Buttery, FSU
1993	Eileen Schmidt, UVA	Dr. JoAnne Graf, FSU	Shamalene Wilson, FSU	Lisa Davidson, FSU
1994	Beverly Smith, UNC	Peggy Kellers, UVA	Laura Williams, GAT	Michelle Collins, UVA
1995	Cindy Lawton, FSU	Regina Tomaselli, GAT	Kristy Hull, FSU	Cindy Lawton, FSU
1996	Shamalene Wilson, FSU	Donna Papa, UNC	Kelly Shipman, MD	Renee Espinoza, FSU
1997	Laura Williams, GAT	Dr. JoAnne Graf, FSU	Anne Knobbe, GAT	Kristy Fuentes, FSU Kelly Shipman, MD
1998	Brandy Arthur, UNC	Donna Papa, UNC	Radara McHugh, UNC	Stacy Venable, FSU
1999	Kelly Shipman, MD	Gina LaMandre, MD	Kristen Dennis, UVA	Danielle Cox, FSU
2000	Michelle Semmes, UNC	Donna Papa, UNC	Ruby Rojas, Virginia	Leslie Malerich, FSU

2000 ACC PLAY

Tournament MVP

LESLIE MALERICH, FLORIDA STATE

Player of the year

Michelle Semmes, North Carolina

Rookie of the Year

Ruby Rojas, Virginia

Coach of the Year

Donna Papa, North Carolina

Final Standings

FLORIDA STATE - ACC CHAMPIONS

ACC Tournament

(April 29 - May 1 Tallahassee, FL)

SATURDAY

Virginia d. Georgia Tech 7-6
FLORIDA STATE D. MARYLAND 6-2
Virginia d. North Carolina 3-1

SUNDAY

Maryland d. Georgia Tech 2-1
Virginia d. Florida State 4-1
Maryland d. North Carolina 4-3

MONDAY

FLORIDA STATE D. MARYLAND 3-0
FLORIDA STATE D. VIRGINIA 3-1
FLORIDA STATE D. VIRGINIA 2-0

All-ACC Softball Team

FLORIDA STATE (4) - Staci Brandon, Serita Brooks, Leslie Malerich, Brandi Stuart; **Georgia Tech (1)** - Anne Knobbe; **Maryland (2)** - Jennifer Potzman, Beth Radford; **North Carolina (4)** - Natalie Anter, Crystal Henderson, Michelle Semmes, Radara McHugh; **Virginia (1)** - Kristen Dennis

ACC All-Tournament Team

FLORIDA STATE (4) - Serita Brooks, Natalie Bennett, Staci Brandon, Leslie Malerich; **Georgia Tech (1)** - Heather Sumrow; **Maryland (1)** - Sarah Putnam; **North Carolina (1)** - Crystal Henderson; **Virginia (4)** - Meaghan Young, Ruby Rojas, Amy Peay, Chrissy Quinn

CONFERENCE RECORD

Team	W	L	T	Pct.
FLORIDA STATE	6	2	0	.750
North Carolina	6	2	0	.750
Maryland	3	5	0	.375
Virginia	3	5	0	.375
Georgia Tech	2	6	0	.250

OVERALL RECORD

Team	W	L	T	Pct.
North Carolina	47	17	0	.734
FLORIDA STATE	51	27	0	.654
Maryland	27	28	0	.491
Georgia Tech	25	33	0	.431
Virginia	27	38	0	.415



About the ACC

The Tradition

Consistency. It's the mark of true excellence in any endeavor.

However, in today's intercollegiate athletics, competition has become so balanced and so competitive that it is virtually impossible to maintain a high level of consistency.

Yet the Atlantic Coast Conference has defied the odds. Now in its 46th year of competition, the ACC has long enjoyed the reputation as one of the strongest and most competitive intercollegiate conferences in the nation. And that is not mere conjecture, the numbers support it.

Since the league's inception in 1953, ACC schools have captured 72 national championships, including 37 in men's competition and 35 in women's. In addition, 108 men and 26 women have earned the coveted title of NCAA champion.

2000 In Review

The 1999-2000 Academic year concluded with the league pocketing four more national team titles and four individual ACC crowns. In all, the ACC has won 36 national team titles in the last ten years. The ACC's 1999-2000 national champions were Maryland in women's lacrosse and women's field hockey, North Carolina in women's soccer and Florida State in football.

In addition, Georgia Tech was runner up in men's golf. Overall, ACC teams posted a 79-54-2 (.593) mark in NCAA Tournament play. The ACC placed at least one team in the Top 10 nationally in 19 of the 25 sports sponsored by the leagues. Other records of note during the 1999-2000 season include 85 teams competing at NCAA Championships, five football bowl appearances and 35 Top 10 showings. The ACC Academic Honor Roll record was broken for the 13th straight year in 1999-2000 as 1,659 student-athletes were recognized for their work in the classroom.

The Championships

The conference will conduct championship competition in 25 sports during the 1999-2000 academic year - 12 for men and 13 for women.

The first ACC championship was held in swimming on February 25, 1954. The conference did not conduct championships in cross country, wrestling or tennis during the first year.

The 12 sports for men include football, cross country, soccer, basketball, swimming, indoor and outdoor track, wrestling, baseball, tennis, golf and lacrosse. Fencing, which was started in 1971, was

discontinued in 1981.

Women's sports were initiated in 1977 with the first championship meet being held in tennis at Wake Forest University, October 6-8. Conference championships for women are currently conducted in cross country, volleyball, field hockey, soccer, basketball, swimming, indoor and outdoor track, tennis, golf, lacrosse, softball and rowing.

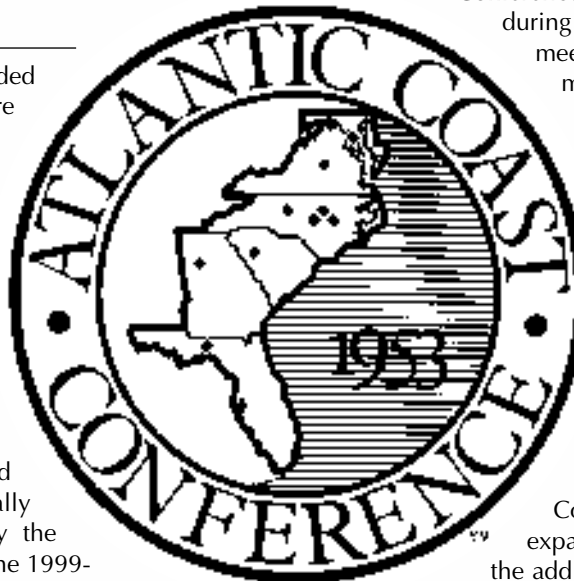
The History

The Atlantic Coast Conference was founded on May 8, 1953, at the Sedgefield Inn near Greensboro, N.C., with seven charter members - Clemson, Duke, Maryland, North Carolina, North Carolina State, South Carolina and Wake Forest - drawing up the conference bylaws.

The withdrawal of seven schools from the Southern Conference came early on the morning of May 8, 1953, during the Southern Conference's annual spring meeting. On June 14, 1953, the seven members met in Raleigh, N.C., where a set of bylaws was adopted and the name officially became the Atlantic Coast Conference.

On December 4, 1953, conference officials met again at Sedgefield and officially admitted the University of Virginia. The first, and only, withdrawal of a school from the ACC came on June 30, 1971 when the University of South Carolina tendered its resignation.

The conference operated with seven members until April 3, 1978, when Georgia Tech was admitted. The Atlanta school withdrew from the Southeastern Conference in January of 1964. The ACC expanded to nine members on July 1, 1991, with the addition of Florida State.



H o n o r s a n

ALL-REGION

- 1982** Darby Cottle, Toney Donaldson, Natalie Drouin, Susan Painter, Toni Robinette, Kelly Shaw, Jan Sikes
- 1984** Greta Bahn, Laurie Holler - 1st team
Teresa Collins - 2nd team
- 1985** Greta Bahn, Laurie Holler, Tina Kyler, Julie Larsen
- 1986** Carolyn Fiero, Julie Larsen - 1st team
Laurie Holler - 2nd team
- 1987** Tiffany Daniels, Carolyn Fiero, Julie Larsen - 1st team
- 1988** Tiffany Daniels, Christy Larsen - 1st team
Julie Larsen - 2nd team
- 1989** Debbie DeJohn, Christy Larsen - 1st team
- 1990** Christy Larsen, Penny Siqueiros - 1st team
Debbie DeJohn, Julie Rice - 2nd team
- 1992** Susan Buttery, Toni Gutierrez - 1st team
Leslie Adams - 2nd team
Leslie Barton - honorable mention
- 1993** Lisa Davidson, Marla Looper - 1st team
- 1994** Marla Looper, Laurie Shepard, Shamalene Wilson - 1st team
Rebecca Aase, Lisa Davidson, Cindy Lawton - 2nd team
- 1995** Renee Espinoza, Kristy Hull, Shamalene Wilson - 1st team
- 1996** Myssi Calkins, Renee Espinoza, Shamalene Wilson - 1st team
Kristy Hull - 2nd team
- 1997** Myssi Calkins - 2nd team
Kristy Fuentes - 3rd team
- 1998** Dana Bailey, Corrie Williams - 1st Team
Christy Cerecedes, Kristy Hull, Jennifer White - 2nd Team
- 1999** Danielle Cox - 1st team
Christy Cerecedes - 2nd team
- 2000** Staci Brandon, Serita Brooks - 1st team
Leslie Malerich - 2nd team

ALL-ATLANTIC COAST CONFERENCE

- 1992** Rebecca Aase, Leslie Adams, Susan Buttery
- 1993** Rebecca Aase, Leslie Barton, Susan Buttery, Lisa Davidson, Toni Gutierrez, Marla Looper
- 1994** Lisa Davidson, Marla Looper, Shamalene Wilson
- 1995** Wendy Braye, Renee Espinoza, Kristy Fuentes, Cindy Lawton, Misty Molin, Laurie Shepard, Shamalene Wilson, Niki Zenger
- 1996** Myssi Calkins, Renee Espinoza, Shamalene Wilson
- 1997** Wendy Braye, Myssi Calkins, Kristy Fuentes, Kristy Hull, Misty Molin
- 1998** Dana Bailey, Kristy Hull, Jesse McGregor, Stacy Venable



- 1999** Danielle Cox, Stacy Venable
- 2000** Staci Brandon, Serita Brooks, Leslie Malerich, Brandi Stuart

ALL-TOURNAMENT TEAMS

1981 NATIONAL CHAMPIONSHIPS

Charlotte Cates, Darby Cottle, Natalie Drouin, Carol O'Domski, Susan Painter

FLORIDA INVITAIONAL

Charlotte Cates, Darby Cottle, Jan Sikes

SOUTH FLORIDA INVITAIONAL

Darby Cottle, Pat Mangan, Carol O'Domski, Venus Ross, Jan Sikes

NORTH CAROLINA STATE INVITAIONAL

Charlotte Cates, Darby Cottle, Toni Robinette, Venus Ross

IAIW REGION III

Darby Cottle, Natalie Drouin, Cathy Gooding, Carol O'Domski, Venus Ross

1982 FLORIDA STATE INVITAIONAL

Darby Cottle, Cathy Gooding, Susan Painter, Toni Robinette

SOUTH FLORIDA INVITAIONAL

Darby Cottle, Toney Donaldson, Cathy Gooding

NORTH CAROLINA STATE INVITAIONAL

Darby Cottle, Toney Donaldson, Natalie Drouin, Susan Painter, Jan Sikes, Sandie Williams

REGIONAL CHAMPIONSHIPS

Darby Cottle, Toney Donaldson, Cathy Gooding, Susan Painter, Toni Robinette, Kelly Shaw, Jan Sikes

NATIONAL CHAMPIONSHIPS

Darby Cottle, Susan Painter, Toni Robinette, Linda Tyrrell, Sandie Williams

1983 FLORIDA INVITAIONAL

Cathy Gooding, LeAnn Harrell, Kelly Tillman

1983 SOUTH FLORIDA INVITAIONAL

Darby Cottle, Toney Donaldson, LeAnn Harrell, Carla Long

FLORIDA STATE INVITAIONAL

Teresa Collins, Toney Donaldson, Cathy Gooding, LeAnn Harrell

NORTH CAROLINA STATE INVITAIONAL

Theresa Collins, Darby Cottle (MVP), LeAnn Harrell, Carla Long, Cricket Olafson, Sunnie O'Neal, Susan Painter

STATE CHAMPIONSHIPS

Darby Cottle, LeAnn Harrell, Susan Painter

NATIONAL CHAMPIONSHIPS

Darby Cottle, Toney Donaldson, LeAnn Harrell, Carla Long, Cricket Olafson, Susan Painter



LESLIE MALERICH WITH 2000 ACC TOURNAMENT MVP & CHAMPIONSHIP TROPHIES

d Awards

- 1984 LADY SEMINOLE INVITATIONAL**
Shelley Berube, Cathy Gooding, Tina Kyler (MVP), Leslie Miller, Susan Painter
LADY FLAME INVITATIONAL
Teresa Collins, Tina Kyler
- 1985 LADY SEMINOLE INVITATIONAL**
Greta Bahn, Laurie Holler, Wendy Rogers
SOUTH CAROLINA INVITAIONAL
Amy Snider
FLORIDA COLLEGIATE CHAMPIONSHIP
Greta Bahn, Shelley Berude, Tina Kyler, Leslie Miller (MVP), Wendy Rogers
- 1986 LADY SEMINOLE INVITATIONAL**
Carolyn Fiero, Julie Larsen
SOUTH CAROLINA INVITAIONAL
Barbara Gillespie, Julie Larsen (MVP)
- 1987 SOUTH FLORIDA INVITAIONAL**
Tiffany Daniels, Judi Davison, Carolyn Fiero
LADY SEMINOLE INVITAIONAL
Kari Keith
- 1988 SOUTH FLORIDA INVITAIONAL**
Tiffany Daniels
LADY SEMINOLE INVITAIONAL
Lori Crouse, Tiffany Daniels (MVP), Kari Keith, Christy Larsen, Julie Larsen
NATIONAL INVITAIONAL CHAMPIONSHIP
Tiffany Daniels, Christy Larsen
- 1989 FROST CUTLERY INVITAIONAL**
Debbie DeJohn, Kelly Flaczinski, Christy Larsen
LADY SEMINOLE INVITATIONAL
Kelly Flaczinski
- 1990 NCAA WOMEN'S COLLEGE WORLD SERIES**
Leslie Barton, Debbie DeJohn
- 1991 LADY SEMINOLE INVITATIONAL**
Tina Getherall
- 1992 LADY SEMINOLE INVITATIONAL**
Leslie Barton, Toni Gutierrez (MVP)
ACC CHAMPIONSHIPS
Rebecca Aase, Leslie Adams, Leslie Barton, Susan Buttery (MVP), Toni Gutierrez, Shannan Mitchem, Penny Siqueiros
SOUTH FLORIDA INVITAIONAL
Lisa Davidson
TAR HEEL INVITATIONAL
Toni Gutierrez (MVP)
- 1993 TAR HEEL INVITATIONAL**
Lisa Davidson
LADY SEMINOLE INVITATIONAL
Marla Looper
ACC CHAMPIONSHIPS
Leslie Barton, Susan Buttery, Heather Conway, Lisa Davidson (MVP), Toni Gutierrez, Marla Looper
- 1994 SOUTH FLORIDA INVITAIONAL**
Cindy Lawton, Shamalene Wilson
ACC CHAMPIONSHIPS
Marla Looper, Jennifer Olow, Windy Weltz, Shamalene Wilson
LADY SEMINOLE INVITATIONAL
Shamalene Wilson
TAR HEEL INVITATIONAL
Jennifer Olow, Shamalene Wilson
- 1995 ACC CHAMPIONSHIPS**
Wendy Braye, Myssi Calkins, Renee Espinoza, Heather Feltmann, Kristy Fuentes, Kristy Hull
TAR HEEL INVITATIONAL
Renee Espinoza, Cindy Lawton, Misty Molin
GLADSTONE'S/USF SOFTBALL CLASSIC
Wendy Braye, Renee Espinoza (MVP), Cindy Lawton
LADY SEMINOLE INVITATIONAL
Krsity Hull, Cindy Lawton, Misty Molin, Laurie Shepard
- 1996 SPEEDLINE/USF SOFTBALL CLASSIC**
Renee Espinoza, Shamalene Wilson
LADY SEMINOLE INVITATIONAL
Kristy Hull, Shamalene Wilson
TAR HEEL INVITATIONAL
Myssi Calkins, Kristy Fuentes
ACC CHAMPIONSHIPS
Renee Espinoza (MVP), Kristy Hull, Windy Weltz, Shamalene Wilson
1997 SPEEDLINE/USF SOFTBALL CLASSIC
Wendy Braye
TAR HEEL INVITATIONAL
Myssi Calkins, Kristy Fuentes, Misty Molin, Tami Post
ACC CHAMPIONSHIPS
Myssi Calkins, Kristy Fuentes (MVP), Kristy Hull, Tami Post
- 1998 TALLAHASSEE DEMOCRAT/FLORIDA STATE INVITATIONAL**
Dana Bailey, Kristy Hull, Jennifer White (MVP)
GEORGIA BUZZ CLASSIC
Jesse McGregor
ACC CHAMPIONSHIPS
Dana Bailey, Kristy Hull, Jesse McGregor, Stacy Venable (MVP), Corrie Williams
- 1999 TALLAHASSEE DEMOCRAT/FLORIDA STATE INVITATIONAL**
Danielle Cox
ACC CHAMPIONSHIPS
Danielle Cox (MVP), Teresa Edenfield, Tami Post, Stacy Venable
- 2000 UTC FROST CUTLERY CHALLENGE**
Leslie Malerich (MVP), Becky Wallace, Brandi Stuart, Teresa Edenfield
TALLAHASSEE DEMOCRAT/FLORIDA STATE INVITATIONAL
Staci Brandon, Serita Brooks
ACC CHAMPIONSHIPS
Leslie Malerich (MVP), Serita Brooks, Natalie Bennett, Staci Brandon

OTHER ACCOMPLISHMENTS

- 1981 ASA Outstanding Athlete** - Darby Cottle
USOC Best Amateur Softball Player in the Nation - Darby Cottle
FAIAW Softball Coach of the Year - JoAnne Graf
- 1982 Olympia Award** - Darby Cottle
Broderick Award - Darby Cottle
- 1992 ACC Player of the Year** - Toni Gutierrez
ACC Coach of the Year - JoAnne Graf
Most Valuable Pitcher in the South Florida Invitational
Toni Gutierrez
- 1993 ACC Rookie of the Year** - Shamalene Wilson
ACC Coach of the Year - JoAnne Graf
- 1995 ACC Rookie of the Year** - Kristy Hull
ACC Player of the Year - Cindy Lawton
- 1996 ACC Player of the Year** - Shamalene Wilson
1997 Coach of the Year - Dr. JoAnne Graf
- 1999 ACC Weaver-James-Corrigan Postgraduate Scholarship**
Stacy Venable
- 2000 Easton All-American**
Serita Brooks - 1st team
Staci Brandon - 2nd team
Leslie Malerich, Brandi Stuart - 3rd team

I n d i v i d u a

YEARLY LEADERS-OFFENSIVE (SINCE 1984)

Batting Average

1984	Greta Bahn	.331
1985	Greta Bahn	.274
1986	Carolyn Fiero	.352
1987	Tiffany Daniels	.391
1988	Tiffany Daniels	.340
1989	Tiffany Daniels	.350
1990	Penny Siqueiros	.313
	Leslie Barton	.313
1991	Penny Siqueiros	.329
1992	Penny Siqueiros	.381
1993	Susan Buttery	.377
1994	Shamalene Wilson	.380
1995	Cindy Lawton	.383
1996	Shamalene Wilson	.402
1997	Myssi Calkins	.374
1998	Dana Bailey	.342
1999	Danielle Cox	.432
2000	Serita Brooks	.401

Runs

1984	Greta Bahn	36
1985	Greta Bahn	35
1986	Barbara Gillespie	24
1987	Tiffany Daniels	63
1988	Tiffany Daniels	39
1989	Tiffany Daniels	35
1990	Christy Larsen	30
1991	Susan Buttery	43
1992	Susan Buttery	59
1993	Susan Buttery	58
1994	Shamalene Wilson	55
1995	Shamalene Wilson	55
1996	Shamalene Wilson	72
1997	Myssi Calkins	55
1998	Kristy Hull	42
1999	Danielle Cox	52
2000	Serita Brooks	54

Hits

1984	Greta Bahn	39
1985	Greta Bahn	54
1986	Carolyn Fiero	42
1987	Tiffany Daniels	79
1988	Tiffany Daniels	55
1989	Tiffany Daniels	56
1990	Penny Siqueiros	56
1991	Penny Siqueiros	71
1992	Susan Buttery	84
1993	Susan Buttery	78
1994	Shamalene Wilson	81
1995	Cindy Lawton	87
	Kristy Hull	
1996	Shamalene Wilson	92
1997	Myssi Calkins	82
1998	Dana Bailey	69
1999	Danielle Cox	98
2000	Serita Brooks	99

Doubles

1984	Teresa Collins	7
1985	Greta Bahn	4

1986	Carolyn Fiero	5
1987	Carolyn Fiero	6
1988	Christy Larsen	5
1989	Tiffany Daniels	8
1990	Christy Larsen	7
1991	Penny Siqueiros	7
1992	Leslie Barton	11
1993	Leslie Barton	8
	Lisa Davidson	
1994	Lisa Davidson	10
	Shamalene Wilson	
1995	Cindy Lawton	16
1996	Jesse McGregor	9
1997	Wendy Braye	11
1998	Corrie Williams	14
1999	Christy Cerecedes	12
2000	Teresa Edenfield	11
	Natalie Bennett	11

Triples

1984	Greta Bahn	6
1985	Laurie Holler	9
1986	Carolyn Fiero	5
1987	Tiffany Daniels	11
1988	Tiffany Daniels	6
1989	Christy Larsen	4
1990	Leslie Barton	3
	Toni Gutierrez	
	Julie Rice	
1991	Penny Siqueiros	5
1992	Susan Buttery	9
1993	Lisa Davidson	9
1994	Shamalene Wilson	9
1995	Shamalene Wilson	11
1996	Shamalene Wilson	7
1997	Misty Molin	4
1998	Danielle Cox	4
1999	Christy Cerecedes	5
	Kimmy Carter	5
2000	Serita Brooks	8



Home Runs

1984	Teresa Collins	7
1985	Wendy Rogers	5
1986	Carolyn Fiero	6
1987	Tiffany Daniels	10
1988	Tiffany Daniels	6
1989	Tiffany Daniels	6
1990	Leslie Barton	5
1991	Susan Buttery	3
1992	Lisa Davidson	6

1993	Leslie Barton	5
1994	Lisa Davidson	7
1995	Shamalene Wilson	5
1996	Shamalene Wilson	3
1997	Wendy Braye	4
1998	Corrie Williams	3
1999	Danielle Cox	2
2000	Teresa Edenfield	4

Runs Batted In

1984	Greta Bahn	25
	Teresa Collins	
1985	Wendy Rogers	31
1986	Carolyn Fiero	25
1987	Tiffany Daniels	41
1988	Lori Crouse	33
1989	Tiffany Daniels	28
1990	Penny Siqueiros	23
1991	Penny Siqueiros	31
1992	Penny Siqueiros	49
1993	Leslie Barton	47
1994	Shamalene Wilson	36
1995	Cindy Lawton	46
1996	Shamalene Wilson	45
1997	Misty Molin	38
1998	Corrie Williams	40
1999	Kimmy Carter	21
2000	Teresa Edenfield	46

Stolen Bases

1984	Sunnie O'Neal	11
1985	Greta Bahn	15
	Barbara Gillespie	
1986	Greta Bahn	20
1987	Tiffany Daniels	23
1988	Christy Larsen	12
1989	Tiffany Daniels	25
1990	Jodie Bullock	7
1991	Tina Getherall	11
1992	Leslie Barton	35
1993	Shamalene Wilson	25
1994	Myssi Calkins	44
1995	Shamalene Wilson	39
1996	Shamalene Wilson	69
1997	Myssi Calkins	61
1998	Dana Bailey	27
1999	Danielle Cox	73
2000	Serita Brooks	42
	Brandi Stuart	42

Bases on Balls

1984	Greta Bahn	21
1985	Greta Bahn	25
1986	Laurie Holler	24
1987	Tiffany Daniels	39
1988	Tiffany Daniels	26
1989	Tiffany Daniels	24
1990	Jodie Bullock	17
1991	Susan Buttery	23
1992	Leslie Barton	29
1993	Lisa Davidson	28
1994	Jen Olow	23

1 Records

1995	Wendy Bray	22
1996	Kristy Hull	20
1997	Windy Weltz	30
1998	Christy Cerecedes	30
1999	Christy Cerecedes	24
	Corrie Williams	24
2000	Kimmy Carter	29

Sacrifice Hits

1984	Tina Kyler	11
1985	Tina Kyler	17
1986	Karyn Palgut	13
1987	Lynn Steele	18
1988	Kari Keith	14
1989	Kelly Flaczinski	17
1990	Shannan Mitchem	18
1991	Kelly Flaczinski	15
	Tina Getherall	
1992	Shannan Mitchem	25
1993	Shamalene Wilson	17
1994	Myssi Calkins	21
1995	Windy Weltz	16
1996	Kristy Hull	18
1997	Windy Weltz	25
1998	Kristy Hull	21
1999	Jesse McGregor	23
2000	Natalie Bennett	21



YEARLY LEADERS-PITCHING (SINCE 1984)

Appearances

1984	Tina Kyler	23
1985	Tina Kyler	26
1986	Julie Larsen	33
1987	Julie Larsen	37
1988	Julie Larsen	24
1989	Debbie DeJohn	32
1990	Debbie DeJohn	35
1991	Christy Larsen	43
1992	Toni Gutierrez	44
1993	Marla Looper	25
1994	Marla Looper	36
1995	Renee Espinoza	39
1996	Renee Espinoza	40
1997	Kristy Fuentes	48
1998	Stacy Venable	36
1999	Jennifer White-Stokes	37
2000	Leslie Malerich	58

Innings Pitched

1984	Tina Kyler	157
1985	Tina Kyler	182
1986	Julie Larsen	225
1987	Julie Larsen	237

1988	Julie Larsen	174
1989	Debbie DeJohn	223
1990	Debbie DeJohn	225
1991	Christy Larsen	275
1992	Toni Gutierrez	285
1993	Marla Looper	165.2
1994	Marla Looper	191.1
1995	Renee Espinoza	221.1
1996	Renee Espinoza	253.0
1997	Kristy Fuentes	310.0
1998	Jennifer White-Stokes	215.1
1999	Jennifer White-Stokes	214.2
2000	Leslie Malerich	323.0

Wins

1984	Shelley Berube	18
1985	Julie Larsen	18
1986	Julie Larsen	25
1987	Julie Larsen	25
	Debbie DeJohn	
1988	Debbie DeJohn	18
1989	Debbie DeJohn	22
1990	Debbie DeJohn	25
1991	Christy Larsen	33
1992	Toni Gutierrez	35
1993	Marla Looper	20
1994	Marla Looper	21
1995	Renee Espinoza	26
1995	Renee Espinoza	30
1997	Kristy Fuentes	32
1998	Jennifer White-Stokes	26
1999	Jennifer White-Stokes	16
2000	Leslie Malerich	35

Strikeouts

1984	Tina Kyler	248
1985	Tina Kyler	209
1986	Julie Larsen	271
1987	Julie Larsen	224
1988	Julie Larsen	164
1989	Christy Larsen	166
1990	Christy Larsen	201
1991	Christy Larsen	307
1992	Toni Gutierrez	295
1993	Marla Looper	143
1994	Marla Looper	167
1995	Renee Espinoza	212
1996	Renee Espinoza	220
1997	Kristy Fuentes	240
1998	Jennifer White-Stokes	123
1999	Jennifer White-Stokes	164
2000	Leslie Malerich	243

Earned Run Average

1984	Shelley Berube	0.22
1985	Julie Larsen	0.29
1986	Julie Larsen	0.37
1987	Debbie DeJohn	0.51
1988	Christy Larsen	0.90
1989	Debbie DeJohn	0.53
1990	Toni Gutierrez	0.14
1991	Toni Gutierrez	0.59
1992	Toni Gutierrez	0.47

1993	Marla Looper	0.42
1994	Marla Looper	1.10
1995	Renee Espinoza	1.33
1996	Renee Espinoza	0.83
1997	Kristy Fuentes	1.15
1998	Jennifer White-Stokes	1.37
1999	Stacy Venable	1.04
2000	Leslie Malerich	1.21

Bases on Balls

1984	Shelley Berube	16
1985	Julie Larsen	30
1986	Roxanne Hantelmann	18
1987	Debbie DeJohn	56
1988	Debbie DeJohn	32
1989	Debbie DeJohn	35
1990	Christy Larsen	22
1991	Toni Gutierrez	38
1992	Toni Gutierrez	54
1993	Toni Gutierrez	28
1994	Marla Looper	39
1995	Kristy Fuentes	71
1996	Niki Zenger	47
1997	Kristy Fuentes	83
1998	Stacy Venable	65
1999	Jennifer White-Stokes	51
2000	Leslie Malerich	72

Hits

1984	Shelley Berube	33
1985	Tina Kyler	63
1986	Roxanne Hantelmann	65
1987	Julie Larsen	114
	Debbie DeJohn	114
1988	Christy Larsen	54
1989	Christy Larsen	83
1990	Christy Larsen	57
1991	Toni Gutierrez	87
1992	Rebecca Aase	96
1993	Rebecca Aase	66
1994	Rebecca Aase	108
1995	Renee Espinoza	142
1996	Niki Zenger	124
1997	Kristy Fuentes	214
1998	Stacy Venable	179
1999	Jennifer White-Stokes	177
2000	Leslie Malerich	222

Runs

1984	Shelley Berube	10
1985	Julie Larsen	10
1986	Roxanne Hantelmann	17
1987	Julie Larsen	41
	Debbie DeJohn	
1988	Christy Larsen	25
1989	Debbie DeJohn	33
1990	Christy Larsen	17
1991	Toni Gutierrez	22
1992	Rebecca Aase	31
1993	Rebecca Aase	16
	Toni Gutierrez	
1994	Rebecca Aase	43
1995	Renee Espinoza	55

I n d i v i d u a

1996	Renee Espinoza	51
1997	Kristy Fuentes	67
1998	Stacy Venable	68
1999	Leslie Malerich	62
2000	Leslie Malerich	84

CAREER RECORDS

			<i>Games</i>
Kristy Hull	281	1995-98	
Tami Post	277	1996-99	
Myssi Calkins	271	1994-97	
Jesse McGregor	267	1996-99	
Shamalene Wilson	262	1993-96	
Wendy Braye	259	1994-97	
Shannan Mitchem	258	1989-92	
Susan Buttery	256	1990-93	

			<i>At Bats</i>
Shamalene Wilson	846	1993-96	
Kristy Hull	821	1995-98	
Susan Buttery	767	1990-93	
Myssi Calkins	764	1994-97	
Jesse McGregor	750	1996-99	
Leslie Barton	695	1990-93	
Christy Larsen	687	1988-91	
Wendy Braye	686	1994-97	

			<i>Runs</i>
Shamalene Wilson	223	1993-96	
Susan Buttery	170	1990-93	
Myssi Calkins	166	1994-97	
Kristy Hull	155	1995-98	
Tiffany Daniels	148	1986-89	
Leslie Barton	131	1990-93	

			<i>Hits</i>
Shamalene Wilson	310	1993-96	
Kristy Hull	155	1995-98	
Myssi Calkins	253	1994-97	
Susan Buttery	245	1990-93	
Penny Siqueiros	219	1989-92	
Leslie Barton	216	1990-93	
Jesse McGregor	205	1996-99	

			<i>Doubles</i>
Wendy Braye	35	1994-97	
Corrie Williams	38	1996-99	
Lisa Davidson	27	1991-94	
Cindy Lawton	25	1994-95	
Misty Molin	25	1995-98	
Jesse McGregor	24	1996-99	

			<i>Triples</i>
Shamalene Wilson	30	1993-96	
Tiffany Daniels	21	1986-89	
Lisa Davidson	19	1991-94	
Leslie Barton	17	1990-93	
Susan Buttery	16	1990-93	

			<i>Home Runs</i>
Tiffany Daniels	24	1986-89	
Lisa Davidson	19	1991-94	
Shamalene Wilson	16	1993-96	
Leslie Barton	14	1990-93	
Susan Buttery	10	1990-93	

			<i>Stolen Bases</i>
Myssi Calkins	185	1994-97	
Shamalene Wilson	161	1993-96	

Danielle Cox	73	1998-99
Leslie Barton	66	1990-93
Tiffany Daniels	61	1986-89
Dana Bailey	60	1996-99
Kristy Hull	51	1995-98
Greta Bahn	41	1984-86

			<i>Bases on Balls</i>
Lisa Davidson	114	1991-94	
Tiffany Daniels	92	1986-89	
Kristy Hull	72	1995-98	
Corrie Williams	71	1996-99	
Leslie Barton	70	1990-93	
Windy Weltz	65	1994-97	

			<i>Runs Batted In</i>
Leslie Barton	131	1990-93	
Kristy Hull	114	1995-98	
Shamalene Wilson	112	1993-96	
Penny Siqueiros	110	1989-92	
Tiffany Daniels	103	1986-89	
Corrie Williams	99	1996-99	
Misty Molin	97	1995-98	

ACC CELEBRATION



			<i>Batting Average</i>
Shamalene Wilson	.366	1993-96	
Danielle Cox	.366	1998-99	
Cindy Lawton	.358	1994-95	
Tiffany Daniels	.356	1986-89	
Kristy Hull	.335	1995-98	
Penny Siqueiros	.333	1989-92	
Myssi Calkins	.331	1994-97	

PITCHING-CAREER RECORDS

			<i>Games</i>
Kristy Fuentes	125	1994-97	
Debbie DeJohn	121	1987-90	
Julie Larsen	113	1985-88	
Christy Larsen	107	1988-91	
Toni Gutierrez	104	1990-93	

			<i>Innings Pitched</i>
Debbie DeJohn	798	1987-90	
Julie Larsen	759	1985-88	
Kristy Fuentes	698.1	1994-97	
Toni Gutierrez	651	1990-93	
Christy Larsen	604	1988-91	

			<i>Wins</i>
Debbie DeJohn	90	1987-90	
Julie Larsen	85	1985-89	

Christy Larsen	77	1988-91
Toni Gutierrez	74	1990-93
Kristy Fuentes	72	1994-97

			<i>Strikeouts</i>
Julie Larsen	834	1985-88	
Christy Larsen	758	1988-91	
Toni Gutierrez	648	1990-93	
Kristy Fuentes	501	1994-97	
Tina Kyler	457	1984-85	

			<i>Shutouts</i>
Christy Larsen	52	1988-91	
Toni Gutierrez	51	1990-93	
Julie Larsen	50	1985-88	
Debbie DeJohn	43	1987-90	
Rebecca Aase	43	1991-94	

			<i>Earned Run Average</i>
Shelley Berube	0.38	1984-85	
Toni Gutierrez	0.47	1990-93	
Tina Kyler	0.50	1984-85	
Rebecca Aase	0.65	1991-93	
Marla Looper	0.78	1993-94	
Rebecca Aase	0.84	1991-94	

TEAM SEASON RECORDS

			<i>Victories</i>
Most in a Season			63, 1992 (63-9)

			<i>Streaks</i>
Longest Winning Streak			32, 1985 (March 4th to March 26th)
Longest Losing Streak			8, 2000 (March 4th to March 11th)

			<i>Winning Percentage</i>
Highest in Season			.875, 1984 and 1992

			<i>Shutouts</i>
Fewest Times Shutout in Season			2, 1997 (65 Games), 2, 1995 (61 Games)
Most Times Shutout in Season			10, 1994
Longest Streak Without Being Shutout			46, 1984

Most Recorded in Season	41, 1992
Most Consecutive	17, 1993
Consecutive Scoreless Innings Pitched	124 2/3, 1993

			<i>Runs</i>
Most in Game			17 vs. FAMU, 1987
Most Allowed in Game			16 vs. Auburn, 2000



1 Records

Largest Winning Margin
17 vs. FAMU, 1987
Largest Losing Margin
15 vs. Arizona, 1995
Most in Season
364, 1992
Most Allowed in a Season
182, 2000

Hits

Most in Season 628, 1995
Most Allowed in Season 442, 1998

Doubles

Most in Season 71, 1999
Most Allowed in Season 69, 1998

Triples

Most in Season 33, 1994
Most Allowed in Season 23, 1994

Home Runs

Most in Season 23, 1992
Most Allowed in Season 23, 1997

Runs Batted In

Most in Season 288, 1992

Batting Average

Highest in Season .316, 1995
(628-1985)

Highest Allowed in Season
.242, 1998

Stolen Bases

Most in Season 160, 1996
(72 games)
Most Allowed in Season 53, 1991
(58 attempts)

FIELDING

Putouts

Most in Season 1,604; 2000
(78 games)

Assists

Most in Season 804, 2000
(78 games)

Errors

Most in Season 98, 1996
(72 games)

Most by Opponents in Season
155, 1995

Fielding Percentage

Highest in Season .976, 1993
(61 games)

Highest in Season .950, 1997
(64 games)

Pitching Appearances

Most in Season 78, 2000

Innings Pitched

Most in Season 534.2, 2000
(78 games)

Most by Opponents
521.1, 2000
(78 games)

No Hitters

Most in Season 8, 1986 (49 games)

Earned Run Average

Lowest in Season 0.37, 1984
(18 ER-339.2 IP)

Highest in Season 1.69, 2000
(129 ER-534.2 IP)

INDIVIDUAL SEASON RECORDS

Most Games Played:

Kimmy Carter, 78, 2000
Brandy Stuart, 78, 2000
Serita Brooks, 78, 2000
Natalie Bennett, 78, 2000

At Bats:

Serita Brooks, 247, 2000

Runs:

Shamalene Wilson, 72, 1996

Hits:

Serita Brooks, 99, 2000

Doubles:

Cindy Lawton, 16, 1995

Triples:

Tiffany Daniels, 11, 1987;
Shamalene Wilson, 11, 1995

Home Runs:

Tiffany Daniels, 10, 1987

RBI's:

Penny Siqueiros, 49, 1992

Walks:

Tiffany Daniels, 39, 1987

Strikeouts:

Teresa Edenfield, 49, 2000

Batting Average:

Shamalene Wilson, .402, 1996

Stolen Bases:

Danielle Cox, 73
(82 attempts), 1999

Sacrifices:

Shannon Mitchem, 25, 1992

Putouts:

Becky Wallace, 498, 2000

Assists:

Cindy Lawton, 189, 1995

Errors:

Jesse McGregor, 34, 1996

COACH GRAF AND DANIELLE COX



Fielding Pct.: Julie Rice, 1.000
(320 chances), 1990

Appearances: Leslie Malerich, 58, 2000

Games Started:

Leslie Malerich, 41, 2000

Wins:

Toni Gutierrez, 35, 1992

Leslie Malerich, 35, 2000

Losses:

Jennifer White 16, 1999

Runs (Most): Leslie Malerich, 84, 2000

Runs (Least): Julie Larsen, 10, 1985;
Shelley Berube, 10, 1984;
Rebecca Aase, 10, 1994

Earned Runs (Most):

Leslie Malerich, 56, 2000

Earned Runs (Least):

Toni Gutierrez, 1,
(in 50 innings) 1990

Hits (Most):

Leslie Malerich, 222,

(in 323 innings) 2000

Walks (Most): Kristy Fuentes, 83, 1997

Walks (Least): Toni Gutierrez, 10, 1990

Strikeouts: Christy Larsen, 307, 1991

Hit Batsmen: Leslie Malerich, 26, 2000

Earned Run Average:

Toni Gutierrez, 0.14,

1990, (50 innings)

Most Doubles Allowed:

Kristy Fuentes, 36, 1997

Leslie Malerich, 36, 2000



Most Triples Allowed:

Rebecca Aase, 11, 1994

Most Home Runs Allowed:

K. Fuentes, S. Venable,

11, 1997

Most Consecutive Victories:

Rebecca Aase, 50,

Feb, 15, 1991 - April 24, 1993

Best Win Percentage:

1.000 Rebecca Aase,

1992, (28-0)

All-Time Letterwinners

A	
Rebecca Aase	1991-94
Leslie Adams	1992-93
Shannon Aiken	1989
Kim Averill	1989

B	
Greta Bahn	1984-86
Dana Bailey	1996-99
Leslie Barton	1990-93
Jill Bellamy	1986-88
Natalie Bennett	2000
Shelley Berube	1984
Michelle Bishop	1995
Staci Brandon	2000
Wendy Braye	1994-97
Becky Brock	1999-00
Serita Brooks	2000
Jennifer Brown	1998
Jodie Bullock	1990
Jennifer Butler	1995
Susan Buttery	1990-93

C	
Myssi Calkins	1994-97
Kimmy Carter	1999-00
Christy Cerecedes	1998-99
Rosalind Chou	1996-97
Teresa Collins	1984
Heather Conway	1992-93
Dina Cooper	1984
Suzanne Cooper	1987
Shawnda Corbin	1988
Danielle Cox	1998-99
Lori Crouse	1986-89

D	
Tiffany Daniels	1986-89
Lisa Davidson	1991-94
Wendy Davis	1984
Judi Davison	1985-87
Debbie DeJohn	1987-90
Jennie Dillmore	1992-93
Tabitha Doka	1994
Jennifer Drawdy	1994

E	
Teresa Edenfield	1997-00
Stephanie Elowsky	2000
Sherri Emetario	1986-87
Renee Espinoza	1995-96
Bonnie Evans	1988

F	
Heather Feltmann	1993-95
Stephanie Ferlita	1995-96
Carolyn Fiero	1986-87
Kelly Flaczinski	1988-91
Kristy Fuentes	1994-97

G	
Robyn Gauger	2000
Tina Getherall	1990-92
Barbara Gillespie	1985-86
Cathy Gooding	1984
Cindy Gordon	1992-93
Toni Gutierrez	1990-93

H	
Lisa Hall	1998
Roxanne Hantelmann	1986
LeAnn Harrell	1984
Becky Harrison	1988-91
Jackie Hirschfeld	1998-00
B.J. Hodges	1990-91
Laurie Holler	1985-86
Kristy Hull	1995-98

K	
Kari Keith	1986-89
Sarah King	1997-98
Tina Kyler	1984

L	
Hunter LaFountain	1989-90
Christy Larsen	1988-91
Julie Larsen	1985-88
Monica Lawfield	1984
Cindy Lawton	1994-95
Marla Looper	1993-94
Andi Lyons	1999-00

M	
Leslie Malerich	1999-00
Sandy Martinez	1988-89
Meggan Matson	1997
Jesse McGregor	1996-99
Lora Migliaccio	1988-91
Shannon Mitchem	1989-92
Kelly Miller	1998-00
Leslie Miller	1984
LaTanya Mitchell	1999-00
Misty Molin	1995-98

N	
Heidi Nelson	1984

O	
Cricket Olafson	1984
Jennifer Olow	1991-94
Sunnie O'Neal	1984
Sherri Owens	1988

P	
Robin Pace	1984
Susan Painter	1984
Adrienne Pearson	1994-95
Tami Post	1996-99
Chris Priester	1986

R	
Julie Rice	1988-91
Brenda Richardson	1989
Daphne Russell	1987-88

S	
Kelly Schnute	1995-96
Laurie Shepard	1992-95
Tracy Simmons	1987
Penny Siqueiros	1989-92
Debbie Smith	1986
Amy Snider	1984-86
Lynn Steele	1985-87
Brandi Stuart	2000
Stacie Symonds	1994

T	
Windy Taff	1996-97
Cynthia Thoma	1972-73
Laurie Tiedt	1984-87
Kelly Tillman	1984

V	
Stacy Venable	1997-99
Dana Vickery	1999

W	
Becky Wallace	1997-00
Windy Weltz	1994-97
Jennifer White-Stokes	1998-00
Corrie Williams	1996-99
Felicia Williams	1999-00
Shamalene Wilson	1993-96
Tina Wood	1993-94

Z	
Niki Zenger	1995-96

Series Records

Overall Records

OPPONENT	W	L	T
Adelphi	5	1	0
Alabama	2	1	0
Arizona	0	7	0
Arizona State	1	4	0
Auburn	4	1	1
Austin Peay	1	0	0
Ball State	7	0	1
Baylor	2	2	0
Bowling Green	6	0	0
Bradley	5	0	0
Brown	2	0	0
Cal - Berkeley	0	4	0
Cal - Poly Pomona	1	0	0
Cal - State Fullerton	2	5	0
Cal - State Northridge	0	3	0
Campbell	6	0	0
Central Michigan	5	2	0
Coastal Carolina	3	0	0
Colorado State	1	1	0
Connecticut	16	3	0
Creighton	2	1	0
Davis & Elkins	1	0	0
Dayton	1	0	0
Depaul	0	1	0
Detroit	3	0	0
Drake	2	0	0
Drexel	4	0	0
East Carolina	16	1	0
East Central CC	2	0	0
Eastern Illinois	7	0	0
Eastern Michigan	14	0	0
Florida*	3	3	0
Florida A & M	59	4	0
Florida Atlantic	2	3	0
Florida International	2	0	0
Fresno State	1	1	0
Furman	1	0	0
Georgia	3	1	0
Georgia Southern	7	1	0
Georgia State	8	1	0
Georgia Tech	23	1	0
Grambling State	5	0	0
Hofstra	8	1	0
Illinois-Chicago	3	2	0
Illinois State	6	0	0
Indiana	8	1	0
Iowa	3	2	0
Iowa State	2	0	0
Kansas	5	3	0
Kent	4	0	0
Liberty	1	0	0
Limestone	4	0	0
Long Beach State	0	1	0
Louisiana State	1	1	0
Louisiana Tech	2	11	2
Maine	2	0	0
Marshall	2	0	0

Maryland	9	2	0
Massachusetts	11	3	0
Mercer	16	1	0
Miami (Ohio)	10	6	0
McNeese	0	1	0
Michigan	1	5	0
Michigan State	5	3	0
Millikin	1	0	0
Minnesota	3	0	0
Mississippi	1	0	0
Mississippi State	4	1	0
Mississippi Univ.-Women	3	0	0
Missouri	1	5	0
Nebraska	3	7	0
Nevada-Las Vegas UNLV	2	1	0
New Mexico	3	0	0
New Mexico State	1	0	0
New Orleans	2	0	0
Nicholls State	8	2	0
North Carolina	30	6	0
North Carolina-Charlotte	12	0	0
No. Carolina-Wilmington	7	0	0
Northeast Louisiana	3	0	1
Northern Illinois	4	3	0
Northern Iowa	6	1	0
Northwest Louisiana	2	0	0
Northwestern	2	1	0
Notre Dame	2	1	0
Ohio	5	0	0
Ohio State	10	1	0
Oklahoma	4	3	0
Oklahoma City College	2	0	0
Oklahoma State	6	8	0
Onondaga CC	4	0	0
Oregon	2	2	0
Pacific	1	0	0
Penn State	3	0	0
Princeton	6	0	0
Providence	0	1	0
Purdue	2	1	0
Quincy College	2	0	0
Radford College	1	0	0
Rhode Island	2	0	0
Rider College	2	0	0
Robert Morris	4	1	0
Rutgers	5	0	0
Sacramento State	1	0	0
Saginaw Valley State	3	0	0
Samford	2	0	0
Sam Houston State	1	1	0
South Carolina	16	15	0
South Florida	37	12	0
Southern Illinois	4	2	0
Southern Mississippi	6	1	0
Southwestern Louisiana	9	3	0
Southwest Missouri State	2	1	0
St. Louis CC	2	0	0
Stanford	1	1	0
Stephen F. Austin	1	1	0

Stetson	12	1	0
Susquehanna	2	0	0
Temple	12	1	0
Tennessee-Chattanooga	2	0	0
Tennessee Tech	3	0	0
Texas	0	1	0
Texas A&M	1	4	0
Texas-Arlington	0	1	0
Toledo	8	1	0
Troy State	7	2	1
UCLA	0	5	0
UNLV	1	0	0
Utah	3	5	0
Utah State	3	1	0
Valparaiso	2	0	0
Virginia	36	12	0
Washington	1	3	0
West Florida	42	4	0
Western Illinois	7	3	0
Wichita State	1	0	0
Winthrop	5	0	0
Wisconsin	0	1	0
Wright State	1	0	0
Yale	1	0	0
Youngstown State	4	0	0

LADY SEMINOLE INVITATIONAL

Year	Champion	MVP
1984	Florida State	Tina Kyler Florida State
1985	Florida State	Beth Hawkins Bradley
1986	South Florida	Debbie Morash South Florida
1987	South Florida	Lisa Lines South Florida
1988	Florida State	Tiffany Daniels Florida State
1989	Northern Illinois	Jill Justin Northern Illinois
1990	Pool Champions:	Southwestern Louisiana, Illinois State, Nebraska and South Florida; no MVP's or All-Tournament Team was chosen.
1991	Florida State/ Creighton	No MVP's were chosen
1992	Florida State	Toni Gutierrez Florida State
1993	Florida State	Leslie Adams Florida State
1994	Texas A&M	Jennifer McFalls Texas A&M
1995	Michigan	Sarah Griffin Michigan
1996	South Florida	Monica Triner South Florida
1997	Michigan State	Stefanie Noffsinger Michigan State
1998	Florida State	Jennifer White Florida State
1999	UMass	Danielle Henderson UMass
2000	Michigan	Marissa Young Michigan

SEMINOLE

year by year

1978 (46-9)

OPPONENT	FSU	OPP
Lake City CC	10	8
Florida A&M	15	3
Central CC	15	0
Florida A&M	11	1
Central CC	17	1
Central CC	17	3
Florida	6	2
Miami	18	1
Florida Int'l	5	2
West Palm JC	8	3
Florida	5	2
Florida Central	3	8
Florida Central	10	5
Florida	4	0
South Florida	4	5
Jacksonville	20	0
Jacksonville	6	0
Florida	10	1
Florida Central	5	1
Flagler College	0	5
Florida Central	0	4
Florida	1	0
Florida	4	0
Lake City CC	11	6
Lake City CC	10	2
South Florida	10	4
Lake City CC	1	0
Flagler College	12	11
Florida	8	2
Jacksonville	4	2
Jacksonville	2	1
South Florida	2	3
Stetson	9	1
Florida Int'l	4	3
Florida	8	1
Florida Central	1	7
Florida	4	1
Florida	6	4
Stetson	11	0
South Florida	3	2
Florida Central	10	9
Florida Tech	7	4
Auburn	4	2
Auburn	6	1
Armstrong St	4	0
Southern Miss	9	1
Delta State	4	5
Florida Int'l	3	0
Delta State	5	2
South Florida	3	6
Armstrong St	10	3
Delta State	8	3
South Florida	5	1
Florida	1	0
Florida	2	4

1979 (26-15)

OPPONENT	FSU	OPP
Chipola CC	3	1
Florida A&M	11	1
Chipola CC	1	5
Chipola CC	6	7
Brevard CC	4	3
Brevard CC	14	0
Broward No CC	15	2

Dade South CC	1	2
Miami	3	1
Dade North CC	3	4
Jacksonville	10	0
Florida	0	2
Florida A&M	7	2
South Florida	6	2
Florida	1	4



South Florida	0	1
Lake City CC	3	1
Lake City CC	4	3
Florida A&M	5	0
Flagler College	8	10
Central Florida	8	1
Jacksonville	4	3
Lake City CC	1	4
Lake City CC	5	3
Lake City CC	0	2
Florida	0	5
Dade North CC	15	0
Lake City CC	0	7
Jacksonville	2	1
Jacksonville	10	3
Florida	2	0
Florida	1	2
Flagler College	14	2
Florida	3	2
South Florida	6	5
Florida	7	3

1980 (37-10)

OPPONENT	FSU	OPP
N. Florida JC	1	2
N. Florida JC	5	4
Central Florida	5	1
Florida	0	2
Brevard CC	11	0
Brevard CC	4	1
Florida A&M	10	2
Florida JC	5	1
Flagler College	11	0
Lake City CC	6	5
Florida	5	4
Lake City CC	2	3
South Florida	1	0
South Florida	5	1
Central Florida	7	3
South Florida	8	9
Fl. Southern	9	3
Florida	3	5
Florida	5	4
Florida A&M	10	5
Stetson	14	2
Florida Int'l	11	1
Florida	4	2
Flagler College	5	2
Flagler College	17	4

Chipola CC	10	0
Lake City CC	1	3
Appalachian St	23	1
N. Kentucky	15	4
Florida	1	7
N.C. State	7	4
Florida	0	5
Chipola CC	11	3
Chipola CC	11	3
Miami	22	4
South Florida	11	1
Central Florida	3	2
Florida	3	2
N. Florida JC	4	2
N. Florida JC	2	1
Auburn	4	3
Auburn	4	3
W. GA College	3	0
Auburn	20	11
Florida	0	1
Auburn	10	3
Florida	0	4

1981 (54-7)

OPPONENT	FSU	OPP
Chipola JC	12	0
Chipola JC	12	0
Auburn	5	1
East Carolina	9	2
Florida A&M	11	0
Florida	3	0
Florida	3	4
Florida	5	2
Lake City CC	4	3
Miami Dade N. JC	5	0
Miami	9	0
Broward Cen. CC	2	3
Palm Beach JC	4	0
Florida	5	0
South Florida	2	0
Florida Int'l	7	0
Flagler College	16	0
Flagler College	13	0
Edward Waters	21	2
Edward Waters	10	0
South Florida	7	5
Stetson	9	0
Florida Int'l	9	2
Florida	1	5
South Florida	5	1
Florida	2	5
Florida	2	9
Jacksonville	5	0
Georgia State	14	2
Georgia Sthwstrn	9	1
Valdosta State	16	5
Georgia Southern	4	3
Georgia State	17	2
Georgia Tech	12	2
Armstrong State	17	4
Lake City CC	16	2
Flagler College	11	2
Flagler College	5	0
Edward Waters	15	0
Edward Waters	8	0
Western Carolina	1	0
N.C. State	3	2
East Carolina	12	0

East Carolina	4	9
East Carolina	2	5
Florida A&M	7	1
Florida	5	1
Chipola JC	14	1
Chipola JC	15	1
Eckerd College	14	3
South Florida	5	1
Florida	4	3
S. Florida	5	0
Livingston St.	15	2
Georgia Southern	16	0
South Florida	9	5
South Florida	8	4
Western Carolina	13	9
N.C. State	4	3
East Carolina	12	3
North Carolina	4	1

1982 (56-10)

OPPONENT	FSU	OPP
Florida A&M	13	4
Florida A&M	9	0
Chipola JC	15	0
Brevard JC	6	0
South Florida	3	0
Florida	3	0
Florida	6	5
Chipola JC	15	0
Chipola JC	8	2
South Florida	3	0
Mississippi	8	1
Valencia CC	15	0
Florida	2	4
Lake City CC	5	7
East Carolina	2	8
Florida A&M	12	11
Florida A&M	12	4
Georgia State	15	0
Georgia State	17	0
Wilmington Coll.	10	2
Jacksonville	11	8
Fort Valley St.	30	5
Pensacola JC	9	0
Jacksonville	1	3
Lake City CC	11	10
South Florida	0	6
Florida Int'l	8	7
Palm Beach JC	5	4
Florida	11	12
South Florida	16	9
Florida	8	1
Florida	6	1
Jacksonville	9	2
Florida	0	14
Georgia Southern	39	5
South Florida	16	14
Florida	15	4
Florida	2	3
Florida	2	11
Pensacola JC	9	3
Lake City CC	8	4
East Carolina	5	0
North Carolina	11	0
N. Kentucky	6	0
N.C. State	6	0
Chipola JC	15	0
Chipola JC	17	0

Year Records

Florida	4	3
Florida A&M	19	5
Lake City CC	15	6
Lake City CC	7	6
Stetson	19	1
Florida Int'l	9	1
Florida	1	2
South Florida	6	5
Florida	5	1
Florida	9	8
Columbus College	12	0
Miss.U.for Women	10	1
South Florida	9	1
South Florida	1	1
South Florida	5	2
Georgia Southern	10	0
South Florida	17	2

South Florida	0	2
Lake City CC	0	1
Cleveland State	14	2
Cleveland State	2	0
Florida A&M	14	2
Florida A&M	7	6
South Florida	2	0
Florida Southern	8	0
Palm Beach JC	6	5
South Florida	4	2
Florida	3	2
South Florida	4	7
South Florida	9	0
Jacksonville	2	0
Jacksonville	4	2
Pensacola JC	2	1
East Carolina	0	2
East Carolina	5	4
UNC-Charlotte	12	0
N.C. State	7	1
Cleveland State	5	3
Northern KY	17	1
Jacksonville	0	1
Jacksonville	3	2
Florida A&M	10	0
Florida A&M	12	3
Lake City CC	0	2
Lake City CC	9	4
Stetson	14	0
West Florida	5	1
Florida	5	2
Florida	7	8
Florida	0	2
Northern KY	13	4
East Carolina	3	2
Florida	8	3
South Florida	2	11
South Florida	3	4

1984 (41-5-2)

OPPONENT	FSU	OPP
Florida A&M	12	0
Florida A&M	9	0
Stephen F. Austin	0	2
SW Louisiana	1	0
Louisiana Tech	0	0
Texas A&M	2	6
Baylor	2	3
NE Louisiana	0	0
Grambling	7	0
Grambling	4	0
Mississippi State	1	0
Mississippi State	6	2
Miss.U.for Women	3	0
Miss.U.for Women	6	2
Southern Miss	1	0
Southern Miss	1	0
St. Louis CC	11	1
Mississippi State	5	0
George Mason	5	0
Florida A&M	10	0
Onondaga JC	4	1
Onondaga JC	10	0
Western Illinois	1	3
Western Illinois	3	1
Rider College	10	0
Rider College	4	0
Saginaw Valley	1	0

Saginaw Valley	7	2
East Carolina	2	0
East Carolina	3	0
North Carolina	1	0
North Carolina	5	0
Nicholls State	1	2
Southern Miss	3	0
Miss.U.for Women	2	1
Liberty Baptist	9	0
Davis & Elkins	9	0
Radford	8	0
Ohio State	5	2
North Carolina	3	1
Penn State	5	0
Florida A&M	11	1
Florida A&M	11	0
New Orleans	9	0
New Orleans	10	0

1985 (50-12-2)

OPPONENT	FSU	OPP
South Florida	2	1
South Florida	3	4
Florida A&M	3	0
Florida A&M	5	0
Susquehanna	11	0
Susquehanna	8	2
Louisiana Tech	0	0
McNeese State	0	4
Ball State	0	0
Missouri	0	1
Detroit	5	0
Detroit	6	1
Temple	2	0
Temple	3	0
Grambling	11	0
Grambling	10	0
Saginaw Valley	6	0
NE Louisiana	1	0
Grambling	7	0
Florida A&M	3	0
Quincy College	4	2
Quincy College	1	0
Onondaga CC	10	0
Onondaga CC	8	1
Western Illinois	1	0
Millikin	6	0
Michigan State	2	0
Michigan State	5	0
Bradley	2	0
Bradley	3	1
Furman	13	0
Stetson	2	1
Rutgers	4	0
Toledo	3	2
SW Missouri St.	4	3
Ohio State	3	2
South Florida	2	1
Bradley	1	0
Ohio State	3	2
Ohio State	11	1
Brown	14	0
Brown	14	2
SW Missouri St.	0	1
Stanford	9	1
Baylor	4	5
Utah State	0	2
New Mexico	3	2

Louisiana Tech	1	2
Texas A&M	1	2
NE Louisiana	10	1
Adelphi	0	2
Louisiana Tech	3	4
Georgia State	7	0
George Mason	5	0
George Mason	3	0
South Carolina	1	0
Louisiana Tech	2	1
Georgia State	4	1
South Florida	0	2
South Florida	1	0
South Carolina	1	3
South Carolina	0	1
South Carolina	2	1
Florida A&M	17	0
Florida A&M	7	1
Oklahoma	0	1
Oklahoma State	1	4
Baylor	10	0
Oklahoma	6	1
Baylor	8	1
Oklahoma State	2	0
Adelphi	1	0
Adelphi	3	1
Cal State-Fullerton	0	3
Central Michigan	0	1

1986 (42-7)

OPPONENT	FSU	OPP
West Florida	5	0
West Florida	6	0
South Florida	1	0
South Florida	2	1
Ball State	4	0
Ball State	3	2
Valparaiso	5	0
Valparaiso	2	0
Virginia	4	0
Virginia	1	2
Temple	7	0
Temple	2	0
Limestone	4	0
Limestone	1	0



UNC-Charlotte	19	4
Armstrong State	9	2
Edison	4	2
S. Florida	0	2
Lake City CC	0	1
Florida	9	4

1983 (46-11)

OPPONENT	FSU	OPP
West Florida	10	4
West Florida	10	9
Lake City CC	2	1
Lake City CC	3	4
West Florida	3	1
Jacksonville	5	2
Pensacola JC	3	2
Florida	5	1
Florida	5	0
Florida Atlantic	16	0
Florida Atlantic	10	4
Campbell College	19	2
East Carolina	14	8
Miami Dade N.	8	1
West Florida	17	4
Jacksonville	15	1
Lake City CC	3	1
Armstrong State	9	2
Edison	4	2



Florida Southern	7	0
Florida Southern	2	0
Maine	1	0
Maine	10	0
Michigan State	2	0
Tennessee Tech	8	0
Tennessee Tech	11	1
Western Illinois	11	0
Toledo	4	0
Florida Southern	7	3
Rutgers	3	0



SEMINOLE

year by year

Nevada- Reno	8	1
Furman	3	2
Mississippi State	3	1
Western Illinois	4	6
Ohio	10	0
Ohio	5	1
Ohio State	8	0
Ohio State	3	2
Oklahoma State	3	2
Utah	2	6
Texas A & M	1	0
St. Mary's	2	1
Sam Houston	3	2
Oklahoma State	2	1
Arizona State	0	2
West Florida	3	0
West Florida	5	1
Furman	0	1
East Carolina	3	0
North Carolina	1	0
South Carolina	3	0
South Florida	3	0
Louisiana Tech	0	4
Louisiana Tech	0	1

South Florida	5	4
Nicholls	5	1
George Mason	3	0
South Carolina	1	0
Louisiana Tech	2	1
Georgia State	4	1
South Florida	0	2
South Florida	1	0
South Carolina	1	3

Eastern Illinois	3	2
Eastern Illinois	11	1
Ohio State	6	1
Ohio State	2	1
Italian Nat'l Team	4	3
Nicholls State	1	0
Nicholls State	2	1
Nicholls State	8	3
Utah	3	0
South Carolina	0	1
Utah	4	8
South Carolina	1	3
South Florida	8	5
South Florida	8	1
Florida A&M	3	0
Florida A&M	2	1
West Florida	5	3
West Florida	1	2
Kansas	2	1
Nebraska	0	5
Creighton	4	0
Creighton	0	2
Georgia State	5	0
Georgia State	2	1
Texas A&M	0	1
Louisiana Tech	1	6

Temple	3	1
Nicholls State	3	1
Arizona State	3	7
Miami (Ohio)	3	4
Miami (Ohio)	0	1
Illinois State	2	0
Connecticut	3	0
Miami (Ohio)	5	0
Southern Illinois	4	2
SW Missouri St	14	0
Stetson	6	0
North Carolina	1	2
Northern Illinois	0	3
Northern Illinois	2	5
South Florida	4	2
South Florida	8	1
Florida A&M	3	0
Florida A&M	4	1
Nebraska	0	1
Kansas	3	2
Arizona State	3	2
Kansas	1	0
Nebraska	2	4
East Carolina	3	0
Furman	5	0
SW Louisiana	4	2
North Carolina	3	1
South Florida	2	0
Virginia	2	0
Nicholls State	2	0
West Florida	3	2
West Florida	3	0
Louisiana Tech	0	1
Nicholls State	1	0
Nicholls State	0	2
Louisiana Tech	0	1
South Carolina	1	2
Louisiana Tech	1	3



South Carolina	0	1
South Carolina	2	1
Florida A&M	17	0
Florida A&M	7	1
Oklahoma	0	1
Oklahoma State	1	4
Baylor	10	0
Oklahoma	6	1
Baylor	8	1
Oklahoma State	2	0
Adelphi	1	0
Adelphi	3	1
Cal State-Fullerton	0	3
Central Michigan	0	1

1987 (50-14)

OPPONENT	FSU	OPP
Stetson	7	0
Stetson	3	4
Florida A&M	8	1
Florida A&M	6	3
UNC-Wilmington	3	1
UNC-Wilmington	2	0
Virginia	7	0
Virginia	2	5
Limestone	6	0
Limestone	11	0
Temple	0	1
Temple	6	3
East Carolina	10	0
East Carolina	2	1
Eastern Michigan	8	1
Bradley	2	0
Stetson	16	0
Temple	5	0
South Carolina	0	4
Rutgers	4	0
Winthrop	8	0
South Florida	3	7
South Carolina	0	2
Miami (Ohio)	3	0
Miami (Ohio)	3	2
Tennessee Tech	10	0
Kent State	16	0
Bowling Green	4	0
Southern Miss	13	3
Nicholls State	5	0
Furman	1	0
Toledo	0	3
Toledo	9	6
Toledo	8	1
Bowling Green	12	2
Bowling Green	3	1
Ohio	3	0
Ohio	6	2
West Florida	1	0
West Florida	4	0
Furman	8	2

1988 (44-14)

OPPONENT	FSU	OPP
West Florida	1	0
West Florida	1	0
Florida A&M	14	3
Florida A&M	11	0
Eastern Michigan	3	1
Eastern Michigan	4	3
Temple	3	0
Temple	2	0
North Carolina	4	2
North Carolina	8	4
Louisiana Tech	0	7
North Carolina	2	1
Eastern Michigan	7	4
South Florida	2	1
Virginia	4	0
Temple	4	3
Okla. City College	5	0
South Carolina	1	5
Central Michigan	6	2
Southern Illinois	5	1
Southern Illinois	1	2
Virginia	5	0
Virginia	7	1
Florida A&M	7	0
NE Louisiana	5	1
Maine	1	0
Northern Illinois	3	4
Miami (Ohio)	5	1
Furman	2	0
Eastern Illinois	2	1
Northern Illinois	2	1

1989 (39-14)

OPPONENT	FSU	OPP
West Florida	3	2
West Florida	1	5
Florida A&M	11	0
Florida A&M	4	0
Eastern Michigan	2	0
Eastern Michigan	5	1
Temple	2	1
Temple	8	2



Virginia	4	2
Virginia	5	1
East Carolina	5	0
East Carolina	5	0
Missouri	6	0
Western Illinois	5	2
New Mexico	3	2

1990 (48-16)

OPPONENT	FSU	OPP
West Florida	1	0
West Florida	1	0
Florida A&M	6	2
Florida A&M	4	0
Eastern Michigan	1	0
Eastern Michigan	1	0
Michigan	1	0
Michigan	2	3
UNC-Wilmington	6	1
UNC-Wilmington	5	0
Indiana	1	2
Iowa	0	5
Central Michigan	1	0
South Florida	2	1
Maine	7	0
Oklahoma	0	1
Southern Illinois	4	0
Virginia	1	0
Virginia	5	0
Indiana	1	0
Indiana	2	0
Connecticut	1	3
Stetson	3	2
SW Louisiana	1	2
Oklahoma	3	2
Adelphi	4	0
Nebraska	2	1

Records

Missouri	1	2
Missouri	1	2
Northern Iowa	0	1
Northern Iowa	4	2
Princeton	5	0
Princeton	6	0
Georgia State	2	0
Georgia State	8	0
Southern Miss	4	0
Georgia Tech	10	0
Wichita State	1	0
Austin Peay	5	1
Michigan State	2	0
Georgia State	0	1
South Florida	4	1
South Florida	2	0
Stephen F. Austin	5	2
Sam Houston	0	2
Oklahoma State	1	2
Texas A&M	3	1
Texas-Arlington	0	2
Southern Miss	11	0
North Carolina	1	0
East Carolina	7	2
South Carolina	0	2
South Carolina	3	0
Florida A&M	10	0
Florida A&M	2	0
West Florida	2	0
West Florida	6	0
Texas A&M	5	0
SW Louisiana	4	3
SW Louisiana	2	1
Fresno State	1	0
Oklahoma State	1	4
Nevada-Las Vegas	4	1
UCLA	0	3

1991 (61-12)

OPPONENT	FSU	OPP
California	0	4
New Mexico	9	1
UCLA	2	5
Sacramento State	4	0
Pacific	4	3
Arizona	0	8
Cal St.-Northridge	0	1
West Florida	4	3
West Florida	0	5
Georgia Southern	6	2
Georgia Southern	5	1
Florida A&M	8	0
Florida A&M	4	0
South Florida	2	0
South Florida	0	2
Ball State	5	0
Samford	2	1
Samford	6	0
Detroit	9	0
Western Illinois	2	1
Indiana	3	1
Winthrop	4	1
Eastern Michigan	1	0
Oklahoma	7	1
South Carolina	3	4
Connecticut	2	1
Connecticut	1	0
Virginia	9	1

Virginia	2	1
Creighton	3	2
Miami (Ohio)	0	8
East Carolina	13	0
Western Illinois	2	1
Rhode Island	6	0
Winthrop	2	0
Indiana	6	2
Bradley	2	0
Northern Iowa	3	1
Northern Iowa	2	1
Miami (Ohio)	0	8
Miami (Ohio)	5	1
Drexel	2	0
Drexel	7	1
Bowling Green	2	0
Bowling Green	9	0
Dayton	3	0
Toledo	1	0
Northwestern	2	0
South Florida	6	5
Samford	4	0
North Carolina	5	0
South Carolina	4	1
Notre Dame	7	0
South Florida	2	0
Winthrop	4	1
SW Louisiana	3	0
Georgia Southern	4	0
Georgia Southern	9	1
Florida A&M	7	1
Florida A&M	11	1
Virginia	1	2
Eastern Michigan	3	2
Virginia	0	2
West Florida	1	0
West Florida	7	0
Connecticut	2	0
Princeton	4	3



Massachusetts	2	0
SW Louisiana	1	0
Oklahoma State	2	0
Oklahoma State	4	3
UCLA	0	1
Nevada-Las Vegas	3	1
Fresno State	0	3

1992 (63-9)

OPPONENT	FSU	OPP
Samford	10	0
Samford	7	0
Florida A&M	12	0
Florida A&M	10	0
West Florida	2	0
West Florida	2	0

Georgia Southern	8	0
Georgia Southern	13	3
Northwestern	10	0
Northwestern	1	0
Ball State	2	0
Ball State	9	0
South Florida	5	1
South Florida	3	0
Robert Morris	1	0
Robert Morris	14	1
Adelphi	12	2
Penn State	7	0
Virginia	10	0
Samford	4	3
Hofstra	14	4
North Carolina	12	1
Oklahoma City	2	1
Rutgers	1	0
Rutgers	8	4
Virginia	0	1
Virginia	5	2
Miami (Ohio)	0	2
Northern Iowa	2	0
Bradley	3	2
Princeton	7	0
Bowling Green	4	0
Adelphi	5	0
South Florida	1	0
Kent State	6	0
Princeton	2	1
Drexel	3	0
Drexel	4	0
Kent State	2	1
Kent State	8	0
Cal-State Fullerton	4	5
Missouri	1	2
Ohio State	1	0
Arizona	0	2
Illinois State	7	2
Ohio State	0	3
Georgia Southern	6	0
Georgia Southern	2	0
Florida A&M	7	0
Florida A&M	6	0
UNC-Wilmington	7	1
North Carolina	0	1
Winthrop	3	1
Georgia Tech	10	0
East Carolina	5	2
South Carolina	3	2
Georgia Tech	6	0
North Carolina	11	0
Virginia	11	1
South Carolina	2	0
South Carolina	6	0
South Carolina	2	0
West Florida	6	0
West Florida	11	2
Connecticut	1	0
Massachusetts	3	1
Connecticut	4	3
SW Louisiana	1	0
Nevada-Las Vegas	4	0
SW Louisiana	1	0
California	0	3
Massachusetts	2	4



1993 (52-9)

OPPONENT	FSU	OPP
Samford	3	1
Samford	3	1
West Florida	6	1
West Florida	3	1
Florida A&M	7	0
Mercer	5	0
Mercer	7	0
South Florida	10	0
South Florida	7	0
Georgia Tech	3	0
Georgia Tech	2	0
Florida A&M	10	0
Central Michigan	5	0
Georgia Southern	6	0
Hofstra	6	0
Iowa	3	0
Connecticut	1	0
Connecticut	8	0
Northern Iowa	7	0
Drake	6	0
Georgia State	1	0
SW Louisiana	1	2
Rhode Island	10	0
Eastern Illinois	7	2
Virginia	7	0
Southern Illinois	1	0
SW Louisiana	2	1
Toledo	11	0
Toledo	4	0
Fresno State	1	2
Cal Poly Pomona	1	0
Minnesota	3	1
Utah	2	3
Cal State-Fullerton	4	1
Florida A&M	10	0
Florida A&M	4	1
UNC-Wilmington	12	0
Virginia	3	2
Coastal Carolina	8	0
Hofstra	10	2
Coastal Carolina	9	1
East Carolina	13	0
Georgia Tech	12	0
Virginia	0	1
Georgia Tech	11	0
Virginia	2	0
Virginia	4	2
South Carolina	4	6
South Carolina	7	0
South Carolina	8	0
Connecticut	1	4
South Florida	1	0
Massachusetts	5	0
West Florida	5	0
West Florida	7	0

SEMINOLE

Year by Year

Kansas	0	1
Iowa	5	3
Kansas	5	0
Kansas	2	1
Oklahoma State	2	5
Connecticut	1	2

1994 (50-19)

OPPONENT	FSU	OPP
Mercer	9	3
Mercer	6	0
NC-Charlotte	4	0
NC-Charlotte	7	1
George Mason	3	0
South Carolina	1	0
Louisiana Tech	2	1
Georgia State	4	1
South Florida	0	2
South Florida	1	0
South Carolina	1	3
South Carolina	0	1
South Carolina	2	1
Florida A&M	17	0
Florida A&M	7	1
Oklahoma	0	1
Oklahoma State	1	4
Baylor	10	0
Oklahoma	6	1
Baylor	8	1
Oklahoma State	2	0
Adelphi	1	0
Adelphi	3	1
Cal State-Fullerton	0	3
Central Michigan	0	1

1995 (58-18)

OPPONENT	FSU	OPP
Stetson	8	0
Stetson	2	0
Oklahoma St.	1	5
Cal-St. Fullerton	5	9
Oregon	3	2
New Mexico St.	4	0



Illinois St.	10	2
Arizona	1	7
Troy State	3	1
Troy State	3	0
Georgia Tech	9	4
Georgia Tech	10	1
UNC-Charlotte	6	0
UNC-Charlotte	8	0
Mercer	3	0
Mercer	10	2
North Carolina	6	3
North Carolina	3	1
Marshall	8	0
Marshall	7	0
Indiana State	8	0

Illinois-Chicago	1	3
Iowa	0	4
Robert Morris	3	0
North Carolina	8	2
Yale	11	1
Virginia	2	1
Oklahoma State	7	4
Illinois-Chicago	1	0
Virginia	3	2
Virginia	3	0
Samford	14	0
Miami (OH)	9	1
Michigan	1	2
Northern Illinois	3	0
Illinois-Chicago	3	0
Iowa State	2	0
Michigan	0	5
Massachusetts	5	4
Massachusetts	4	3
South Carolina	1	2
South Carolina	2	3
Hofstra	5	1
South Carolina	3	6
Hofstra	8	2
Florida A&M	8	0
South Florida	4	0
South Florida	3	4
Florida A&M	9	0
Florida A&M	10	0
Campbell	4	0
North Carolina	15	0
East Carolina	10	2
Campbell	7	1
East Carolina	4	3
North Carolina	2	1
Florida A&M	6	0
West Florida	8	0
West Florida	3	2
North Carolina	4	0
Georgia Tech	2	1
Georgia Tech	5	2
West Florida	9	3
West Florida	3	0
South Florida	0	3
South Carolina	5	4
Massachusetts	0	8
South Carolina	6	0
Massachusetts	2	0
Nebraska	1	6
Ohio	2	0
Nebraska	6	2
Arizona	0	15

1996 (51-21)

OPPONENT	FSU	OPP
Mercer	4	1
Mercer	5	2
West Florida	8	0
West Florida	8	0
Georgia Southern	2	1
Georgia Southern	5	0
UNLV	2	3
Washington	6	13
Arizona	4	8
Illinois State	4	1
Utah State	6	5
Cal State Fullerton	11	12
Stetson	1	0
Stetson	6	2
FAMU	8	0

Washington	1	3
Massachusetts	4	1
Long Beach State	1	2
Oregon	1	0
Cal State Northridge	1	2
UNC-Charlotte	7	1
UNC-Charlotte	6	0
Troy State	5	2
Troy State	1	2
East Carolina	2	1
UT-Chattanooga	5	2



Ball State	4	2
Penn State	4	3
Indiana	3	1
Michigan State	6	2
UCLA	0	4
Notre Dame	0	1
Drake	1	0
Ohio State	0	1
Southern Illinois	3	4
Eastern Michigan	7	0
Massachusetts	3	1
Michigan	1	6
Connecticut	3	0
Connecticut	6	0
Bradley	4	1
Bradley	7	2
Georgia Tech	2	0
Georgia Tech	1	3
FAMU	7	2
FAMU	13	0
FAMU	4	0
Virginia	8	0
Virginia	5	4
Maryland	4	0
Maryland	6	2
North Carolina	2	3
North Carolina	4	5
Campbell	6	1
Florida Atlantic	0	1
South Carolina	4	2
North Carolina	2	0
Maryland	8	0
Georgia Tech	5	4
Maryland	3	0
North Carolina	3	1

West Florida	6	0
West Florida	10	0
South Florida	1	0
South Florida	1	4
South Carolina	5	1
South Carolina	3	5
South Carolina	2	1
South Florida	3	1
Arizona	6	9
South Florida	6	0
Arizona	3	10

1997 (45-19-1)

OPPONENT	FSU	OPP
Georgia Southern	8	0
Georgia Southern	5	3
Florida A&M	7	0
Nebraska	2	1
Fresno State	0	2
Oregon	1	6
Utah	2	6
Ohio State	7	2
Cal State Fullerton	4	2
Florida	1	3
Florida	8	1
Mercer	1	0
Mercer	5	1
Florida A&M	8	0
Northwestern	2	0
Washington	3	8
Oklahoma	2	1
UConn	10	3
Louisiana Tech	2	6
Ball State	4	0
East Carolina	10	0
Michigan State	2	6
Hofstra	1	2
Arkansas	4	0
Indiana	3	2
Iowa	1	7
Miami (OH)	2	1
Louisiana Tech	2	3
Wisconsin	3	12
UT-Chattanooga	3	1
UConn	2	1
Bradley	4	0
Eastern Michigan	5	1
UConn	0	1
UConn	8	2
Georgia Tech	5	1
Georgia Tech	8	5
Maryland	1	0
Maryland	3	0
Youngstown State	8	2
Youngstown State	6	3
Troy State	3	2
Troy State	1	1
Florida A&M	1	2
Virginia	8	0
Virginia	3	6
North Carolina	6	0
North Carolina	12	4
Florida Atlantic	5	1
Campbell	4	1
Coastal Carolina	12	2
Coastal Carolina	2	1
Florida Atlantic	4	0
North Carolina	5	4
Maryland	4	3
Maryland	1	2

Year Records

Florida A&M	7	0
UNC Charlotte	6	1
UNC Charlotte	3	1
Alabama	2	0
Alabama	5	6
Auburn	2	0
Auburn	1	2
South Florida	3	4
South Florida	1	3

1998 (51-21)

OPPONENT	FSU	OPP
Mercer	5	1
Mercer	9	1
Georgia Southern	6	2
Georgia Southern	3	1
Oregon	0	2
Purdue	8	1
Washington	1	0
Fresno State	2	1
West Florida	9	3
West Florida	10	6
Florida A&M	4	2
Florida A&M	6	0
Troy State	0	5
Troy State	5	4
Indiana	3	2
Arizona State	1	6
UMass	4	0
Cal State-Northridge	3	4
South Carolina	0	3
Cal State-Berkley	1	4
Georgia	6	5
Illinois-Chicago	1	3
Central Michigan	10	1
Purdue	5	4
Missouri	1	3
Alabama	4	1
Texas	1	9
UNC-Charlotte	4	1
UNC-Charlotte	4	1
Miami-Ohio	1	4
Miami-Ohio	1	3
Purdue	0	1
Northern Iowa	3	0
Louisiana State	4	2
Eastern Michigan	4	2
Robert Morris	4	1
Penn State	3	0
Central Michigan	11	4
Mississippi	4	2
UMass	1	0
Connecticut	6	4
Connecticut	9	0
North Carolina	3	2
North Carolina	7	6
Youngstown State	1	0
Youngstown State	10	2
Wright State	8	3
Georgia State	8	0
Indiana State	6	1
Utah	2	1
Utah	1	4
West Florida	2	1
West Florida	5	3
Georgia Tech	3	2
Georgia Tech	4	1
Florida	3	8

Florida	5	3
Florida A&M	1	3
Auburn	5	1
Auburn	8	3
Florida A&M	4	1
Virginia	1	4
Virginia	0	3
Maryland	3	5
Maryland	9	1
Maryland	1	0
Virginia	10	0
Virginia	2	1
South Florida	2	1
South Florida	2	3
Oklahoma State	0	4
Stanford	0	1



1999 (41-25)

OPPONENT	FSU	OPP
Georgia Southern	1	3
Georgia Southern	2	0
Florida A&M	2	3
Utah State	12	3
Utah	1	5
Cal-Berkley	0	4
Nebraska	1	4
UNLV	9	6
Mercer	9	0
Mercer	10	0
Auburn	4	2
Auburn	0	0
Colorado State	3	2
Nebraska	0	1
DePaul	3	5
Arizona State	0	2
Colorado State	4	5
Campbell Univ.	5	0
Campbell Univ.	2	0
Mississippi State	1	2
Hofstra	6	5
Michigan	0	5
Florida Atlantic	4	8
Georgia	5	0
South Florida	1	2

Miami-Ohio	2	0
Miami -Ohio	6	2
Westren Illinois	0	1
Toledo	9	1
Furman	2	0
Maryland	2	0
Central Michigan	1	5
Massachusetts	1	2
Massachusetts	6	0
Virginia	8	2
Virginia	2	1
Minnesota	5	0
Minnesota	5	2
Maryland	4	1
Maryland	3	5
Michigan State	0	3
Troy State	6	1
Michigan State	4	5
Troy State	7	0
Florida A&M	2	1
Georgia Tech	7	0
Georgia Tech	8	5
Georgia	0	5
Georgia	6	0
Florida	0	2
Florida	6	4
North Carolina	0	6
North Carolina	8	3
Florida Atlantic	0	1
Southern Miss.	0	1
Florida A&M	10	1
Florida A&M	3	8
Fl. International	6	1
Fl. International	1	0
UNC-Charlotte	10	1
UNC-Charlotte	12	5
South Florida	2	1
South Florida	5	1
North Carolina	2	1
Virginia	1	0
Virginia	3	0

2000 (51-27)

OPPONENT	FSU	OPP
Georgia Southern	8	0
Georgia Southern	6	1
Florida A&M	9	0
California-Berkeley	0	1
Florida Atlantic	2	3
Florida A&M	8	7
Florida Atlantic	2	0
California-Berkeley	0	1
Mercer	7	0
Mercer	7	4
Bethune-Cookman	9	0
Bethune-Cookman	1	0
Stetson	2	0
Stetson	8	2
Eastern Michigan	5	1
Florida Atlantic	2	0
Villanova	2	3
Furman	8	0
Fresno State	0	2
Harvard	6	2
Texas	0	1
Mississippi State	0	4
Louisiana-Lafayette	1	9
Pacific	2	5

UCLA	0	3
Mississippi	2	3
Cal-Poly	4	5
Fresno State	1	2
Illinois State	1	0
Texas Tech	3	0
Princeton	4	3
Princeton	2	0
Troy State	2	1
Miami of Ohio	8	0
Kansas	1	4
Northern Iowa	6	2
Michigan	1	6
Ohio	8	1
Ohio	6	1
Louisiana-Lafayette	1	2
Tenn.-Chattanooga	1	0
Wisconsin	3	0
Louisiana-Lafayette	2	6
Wisconsin	6	5
Tenn.-Chattanooga	2	1
Georgia Tech	1	2
Georgia Tech	2	8
Fla. International	2	4
Fla. International	8	3
Univ. of Florida	6	3
Univ. of Florida	3	5
Southern Miss	0	9
Florida A&M	3	0
Southern Miss	1	4
Florida A&M	9	1
Florida A&M	7	0
Auburn	7	0
Auburn	4	5
North Carolina	10	9
North Carolina	5	4
East Carolina	1	0
East Carolina	7	0
Campbell	7	1
Campbell	9	1
Maryland	6	2
Virginia	2	4
Maryland	3	0
Virginia	3	1
Virginia	2	0
Virginia	3	2
Virginia	6	2
Maryland	10	3
Maryland	3	2
Long Beach State	2	0
Iowa	4	1
UCLA	1	6
Iowa	4	2
UCLA	1	7





SEMINOLE

Seminole Softball

FIELD OF DREAMS

Florida State's dream of a new, state-of-the-art softball complex became reality when ground was broken in a ceremony in the spring of 1998. Construction workers worked continuously to complete the facility which also houses the Seminole soccer stadium. The result was the creation of one of the nation's premier collegiate softball and soccer facilities.

The complex, which was completed in the spring of 1999, includes ticket and concessions buildings and spacious press boxes, including press seating and radio/television booths. The two-level team building features a reception area, softball and soccer coaches offices which overlook their respective stadiums, a combined workroom, large team and coaches lock-errooms and training and equipment rooms.

The Seminole Softball/Soccer Complex is located in between the Dick Howser Baseball Stadium and the Mike Long Track on Chieftan Way. The facility can be accessed from both Chieftan Way and Stadium Drive.

The Florida State Soccer/Softball Complex was "officially" opened with a ribbon-cutting ceremony on Saturday, April 17th. The event, which was held in conjunction with Florida State's 30th Anniversary of Women's Intercollegiate Athletics Spring Celebration, drew approximately 150 spectators, including University dignitaries and Athletics Department personnel. Several former Florida State student-athletes and staff also returned for the monumental event.

The ceremony began with the ribbon-cutting at the front gates of the complex. FSU President Sandy D'Alemberte, Director of Athletics Dave Hart, Softball Head Coach Dr. JoAnne Graf and Soccer Head Coach Patrick Baker, and team representatives did the honors. Among the speakers in the program were D'Alemberte, Hart, Associate Athletics Director Kim Record and Dianne Montgomery, Dean of the School of Social Work, who serves as Chair of the Title IX Committee and is a member of the FSU Athletics Board. Dr. Judith Blucker, FSU's first softball coach and now a Vice President at Florida International University, also addressed the crowd.

Following a tour of the facility and a bar-beque, the Lady Seminoles entertained guests on the field with a sweep of Florida International!



Architects: Gilchrist and Crowe
Construction: Completed, spring 1999
Field Dimensions: . . .200' - right and left field
 .220' - center field
Stadium Capacity: . . .1,000



SEMINOLE SOFTBALL COMPLEX RECORDS

(Seminole Firsts)

Game	Florida State 9 Mercer 0 (Feb. 19, 1999)
Pitch	3:05 pm. (Feb. 19, 1999)
Game time	1 hr. 30 min.
Batter	Stephanie Anunson (Mercer) Flied out to leftfield
Hit	Danielle Cox (Florida State) vs. Mercer (Feb. 19, 1999)
2B	Andi Lyons (Florida State) vs. Mercer (Feb. 19, 1999)
3B	Tami Post (Florida State) vs. Mercer (Feb. 19, 1999)
HR	Danielle Cox (Florida State) vs. Mercer (Feb. 19, 1999)
Walk	Corrie Williams (Florida State) by Jenifer Milam (Mercer) (Feb. 19, 1999)
Strikeout	Christine Hall (Mercer) by Jen White (Florida State) (Feb. 19, 1999)
Sacrifice	Christy Cerecedes vs. Mercer (Feb. 19, 1999)
Stolen base	Danielle Cox vs. Mercer (Feb. 19, 1999)
Error	Cheri Rasmussen (Mercer) (Feb. 19, 1999)
Win	Jen White (Florida State) vs. Mercer (Feb. 19, 1999)
Loss	Jennifer Milam (Mercer) vs. Florida State (Feb. 19, 1999)
Perfect Game	Leslie Malerich (FSU) vs. Princeton (March 15, 2000)

tball Complex

TEAM RECORDS BATTING

At bats:	51 - Auburn vs. Florida State (April 15, 2000)
Runs scored:	14 - Cal-Berkeley vs. FAMU (Feb. 12, 2000)
Hits:	16 - Florida State vs. Michigan State (March 28, 1999) #
RBI's:	10 - Florida State vs. Mercer (Feb. 19, 1999)
	10 - Cal-Berkeley vs. Florida State (Feb. 12, 2000)
	5 - Auburn vs. Florida State (April 15, 2000)
Doubles:	
Triples:	1 (12 times)
Home runs:	1 (9 times)
Walks:	11 - Miami (OH) vs. Fresno State (March 12, 1999)*
Strikeouts:	16 - Western Illinois vs. UMass (March 12, 1999)*
	16 - Florida State vs. UMass (March 16, 1999)
Sacrifice Hits:	6 - Florida State vs. Virginia (March 18, 1999)
Stolen bases:	7 - Florida State vs. Mercer (Feb. 19, 1999)
	7 - Florida State vs. Florida A&M (April 14, 1999)
Caught stealing:	2 - Campbell vs. Florida State (March 1, 1999)
	2 - Florida State vs. Miami-Ohio (March 12, 1999)

FIELDING

Putouts:	39 - Florida State vs Auburn (April 15, 2000)
Assists:	22 - FSU vs. Auburn (April 15, 2000)
Errors:	7 - Florida State vs. Georgia Tech (April 1, 2000)

PITCHING

Innings pitched:	11 - Michigan State vs. Florida State (March 28, 1999)#
Runs allowed:	10 - Mercer vs. Florida State (Feb. 19, 1999)
	10 - Miami-Ohio vs. Fresno State (March 12, 1999)*
	10 - Furman vs. Ole Miss (March 13, 1999)*
Earned runs:	8 - Mercer vs. Florida State (Feb. 19, 1999)
	8 - Toledo vs. Florida State (March 12, 1999)*
	8 - Furman vs. Ole Miss (March 13, 1999)*
Walks allowed:	11 - Miami-Ohio vs. Fresno State (March 12, 1999)*
Strikeouts:	16 - UMass vs. Western Illinois (March 13, 1999)*
	16 - UMass vs. Florida State (March 16, 1999)
Hits allowed:	16 - Michigan State vs. Florida State (March 28, 1999)#

INDIVIDUAL RECORDS BATTING

At bats:	7 Serita Brooks (FSU) vs. Auburn (April 15, 2000)
	7 Ashley Moore (AUB) vs. Florida State (April 15, 2000)
Runs scored:	3 (seven players)
Hits:	4 - Dana Bailey (FSU) vs. Toledo (March 12, 1999)
	4 - Kimmy Carter (FSU) vs. Mich. State (March 28, 1999)#
	4 - Danielle Cox (FSU) vs. UNC (May 14, 1999) @
	4 - Marcella Passerlli (AUB) vs. FSU (April 15, 2000)
RBI's:	4 - Teresa Edenfield (FSU) vs. UNC (April 16, 2000)
Doubles:	2 - Becky Wallace (FSU) vs. Cambell (March 1, 1999)
	2 - Corrie Williams (FSU) vs. Minnesota (March 22, 1999)
	2 - Fawna Lackovic (Md) vs. Ga. Tech (May 15, 1999)@
Triples:	1 (11 players)
Home runs:	1 (nine players)
Total Bases:	10 - Mandy Galas (UMass) vs. Marshall (March 12, 1999)*
Walks:	3 - Kimmy Carter (FSU) vs. Mercer (Feb. 19, 1999)
	3 - Christy Cerecedes (FSU) vs. Mich. State (Mar.28,1999)#
	3 - Margaret Hollis (Mich. State) vs. FSU (March 28, 1999)#
	3 - Natalie Anter (UNC) vs. FSU (May 14, 1999)@
Strikeouts:	4 - Jana Todd (Fresno State) vs. UMass (March 14, 1999)*
Sac hits:	2 - Becky Manson (C. Mich) vs. FSU (March 14, 1999)*
	2 - Katie Kenderske (UMass) vs. FSU (March 16, 1999)
	2 - Molly Hugan (Mich State) vs. FSU (March 28, 1999)#
	2 - Chrisy Quinn (UVA) vs. Md. (May 14, 1999)@
	2 - Amy Sandler (Md.) vs. UVA (May 14, 1999)@
Stolen bases:	3 - Danielle Cox (FSU) vs. Mercer (Feb. 19, 1999)
	3 - Dana Bailey (FSU) vs. Mercer (Feb. 19, 1999)
	3 - Danielle Cox (FSU) vs. UVA (March 18, 1999)

FIELDING

Putouts:	20 - Becky Wallace (FSU) vs. Auburn (April 15, 2000)
Assists:	8 - Jesse McGregor (FSU) vs UVA (May 15, 1999)@
Errors:	5 - Shannon Beeler (Minn.) vs. FSU (March 22, 1999)

PITCHING

Innings pitched:	13 - Jennifer Lofton (AUB) vs. Florida State (April 15, 2000)
Runs allowed:	10 - Amber Alford (FAMU) vs. FSU (April 14, 1999)
Earned runs:	8 - Jennifer Milam (Mercer) vs. FSU (Feb. 19, 1999)
Walks allowed:	8 - Ab. Arnold (Miami-Ohio) vs. FSU (March 10, 1999)
Strikeouts:	16 - Danielle Henderson (UMass) vs. W. Ill. (Mar 13, 1999)*
	16 - Danielle Henderson (UMass) vs. FSU (March 16, 1999)
Hits allowed:	14 - Amber Alford (FAMU) vs. FSU (April 14, 1999)
No-hitters:	Leslie Malavitch (FSU) vs. Toledo (March 12, 1999)*
	Carrie Jeffries (Umass) vs. W. Illinois (March 15, 1999)
Perfect Game:	Leslie Malerich (FSU) vs. Princeton (March 15, 2000)

TOP TEN ATTENDANCE

1. 842	April 17, 1999 (FSU 6 FIU 1, FSU 1 FIU 0)
2. 639	April 14, 1999 (FSU 10 FAMU 1; FAMU 8 FSU 3)
3. 633	May 15, 1999 (Md. 7 Ga. Tech 0) ACC Tournament
4. 626	May 6, 1999 (FSU 5 S. Fla 1, FSU 2 S. Fla. 1)
5. 617	May 15, 1999 (FSU 1 UVA 0) ACC Tournament
6. 554	May 16, 1999 (FSU 3 UVA 0) ACC Championship Game
7. 533	May 14, 1999 (FSU 2 UNC 1, 10 innings) ACC Tournament
8. 514	April 5, 2000 (FSU 6 Florida 3; Florida 5, FSU 3)
9. 387	March 24, 1999 (FSU 4 Md. 1; Md. 5 FSU 3)
10. 357	Feb. 19, 1999 (FSU 9 Mercer 0; FSU 10 Mercer 0) Opening Day



* - Tallahassee Democrat Tournament
- FSU Softball Classic
@ - ACC Tournament

This is Tall



Near, but far from the glaring strips of neon amusement, and the castles and crowds of Disney, lies another magical place in the Sunshine State — one of plantations, politics and great pride. Often described as “The Other Florida” with its deep-rooted history, rolling hills, canopy roads of moss-draped oaks, cool climate and Southern-style hospitality; it is a Florida few have seen. It is Tallahassee — Florida with a Southern accent.

Best known as Florida’s capital, Tallahassee is an intimate neo-metropolitan city where the power of state government, the academic and the artistic are complemented by subtle, old-fashioned charm. It is the perfect two- or three-day diversion for the more than 41 million annual visitors to Florida and 13 million residents.

Tallahassee touts a menagerie of sights including one of the world’s deepest freshwater springs, site of America’s first Christmas, a wildlife habitat, Capitol buildings, fascinating museums of history, sprawling plantations, highly acclaimed fishing and hunting adventures and nearby beaches. Spirited area festivals range from celebrations of Tallahassee’s spectacular spring and swamp stomps to genuine rattlesnake roundups and seafood festivals.

With the Gulf of Mexico just 20 miles south and the Georgia border only 14 miles north, Tallahassee rests between the foothills of the Appalachian Mountains and the juncture of Florida’s panhandle and peninsula. Nearer in miles to Atlanta than to Miami, Tallahassee more closely resembles its Southern neighbors than Florida in topography, climate and lifestyle.

Accentuating Tallahassee’s Southern persona are lush rolling hills, likened to the seven hills of Rome, and five “official” canopy roads of patriarch oaks. The fertile, rich soil and four distinct, yet pleasant, seasons breed floral brilliance and natural vitality year-round.

Like the city itself, the story of how Tallahassee was chosen as the state capital is rich in history. In 1823, two explorers set out — one on horseback from St. Augustine and the other by boat from Pensacola — to find a permanent, central location for the Legislature to convene. The two met at a beautiful site that the Creek and Seminole Indians called “tallahassee” — derived from the words “talwa” meaning town and “ahasee” meaning old. The rendezvous point remains Florida’s capital.

The “old town” has undergone many changes, but one thing remains the same — it is still a government town fiercely proud and dedicated to preserving its heritage. The Capitol buildings, both old and new, epitomize Tallahassee’s perseverance. The 22nd floor of the New Capitol provides a panoramic scope of a sophisticated Southern city awash in a sea of flowering azaleas, snowy dogwoods, towering pines, fragrant magnolias, and hundreds of shimmering lakes, springs, swamps, rivers and sink holes. Special legislative viewing galleries are open during the legislative session.

Below, in the shade of giant live oaks, proudly stands the Old Capitol, originally constructed in 1845 and restored to its 1902 splendor complete with red-and-white candy-striped awnings, a dome adorned with stained glass, antique furnishings and political memorabilia.



Tallahassee



Across from the Old Capitol are the 40-foot twin granite towers of the Vietnam Veteran's Memorial, and the blue stone Union Bank, Florida's oldest surviving financial institution. The nostalgic Old Town Trolley, a replica turn-of-the-century street car, carries passengers through restored Adams Street Commons to numerous other historical downtown shops for free — unheard of even 100 years ago.

Minutes from downtown lies the Governor's Mansion, which resembles the home of Florida's military hero Andrew Jackson; and the 52-acre natural animal habitat and 1880s farm of the Tallahassee Museum of History and Natural Science, which provide the rare chance to walk and talk with native Florida animals

Tallahassee remains firmly linked with the past as evidenced by the unearthed 1539 winter encampment of Spanish Hernando de Soto, the site of the first Christmas celebration in America. Visitors travel back through time as they stand in the shadow of a giant 12,000-year-old American Mastodon at the Museum of Florida History or explore other historical spots including The Knott House that Rhymes, The Columns, San Luis Mission, Lake Jackson State Archaeological Site, Natural Bridge Battlefield, First Presbyterian Church, Brokaw-McDougall House, Goodwood Plantation and Adams Street Commons.

Nearby, alligators lazing in the sunshine and anhinga "snake birds" perched on twisted cypress branches are seen at Wakulla Springs, one of the world's deepest fresh water springs and site of many underwater scenes in the "Tarzan" movies with Johnny Weissmuller and Maureen O'Sullivan. Safaris aboard glass-bottomed and jungle cruise boats whisk visitors within arm's length of "The Other Florida."

Outdoor enthusiasts enjoy adventures including boating and fishing on area lakes, rivers, ponds and the Gulf — just 30 minutes away. Lakes Seminole, Jackson and Talquin are renowned in the bass fishing world for yielding the "big ones," and dense forests offer an abundance of prize-winning game. Local wildlife areas such as the Florida National Scenic Trail, St. Marks National Wildlife Refuge and Apalachicola National Forest are among many spots for camping, picnicking, swimming, biking and exploring.

Appealing to the strokes of different folks, Tallahassee also features 99 holes of golf on six courses and a proliferation of tennis centers. Sideline athletes cheer the nationally-ranked Florida State Seminoles, Florida A&M Rattlers and the Tallahassee Tiger Sharks, of the East Coast Hockey League, Tallahassee Thunder of Arena 2 football league. And always a sure bet are the nearby greyhound races.

A sport of sorts, shopping at two regional malls and many specialty centers offer many "playing options" — from popular chains to curiosity and antique shops.

Cultural interests are sparked by widely-acclaimed museums and galleries and elaborate entertainment at the 14,000-seat Tallahassee-Leon County Civic Center.

Tallahassee is a collaboration of power-play politics and classical character splashed with a twist of Southern beauty and charm. Tallahassee is Florida with a Southern accent.



This i



Florida State University, a coeducational graduate research institution, stands among the nation's elite in both academics and athletics, as it celebrates its sesquicentennial anniversary in 2001.

Located on the oldest continuous site of higher education in Florida and building upon the impeccable reputation of its beginnings as a distinguished liberal arts college for women, the university has grown in the past 53 years as an institution of national and international esteem. Its stature is evident in its recent record of excellence:

*In 1994, Florida State was classified a "**Research University I**" by the Carnegie Foundation, placing it among the nation's top research universities.

*In 2000, following approval by the 2000 Florida Legislature, FSU created the Institute of Medical Sciences as a transitional unit that will evolve into the College of Medicine by fall 2001. The college

will increase the quality of Florida medical care by training primary care physicians with a focus on treating the elderly and people in underserved areas such as rural communities and inner cities.

*In 2000, FSU bought the **most powerful university-owned supercomputer in the world**. The IBM RS/6000 Supercomputer can perform 2.5 trillion calculations per second. Located in the School of Computational Science and Information Technology, the supercomputer will be used by FSU researchers to predict hurricanes and compare DNA sequences as complex as those of the human genome.

*In 2000, FSU was ranked 18th among universities in the "America's Most Wired Colleges" ranking by Yahoo! Internet Life Magazine.

***The Challenger Learning Center of Tallahassee**, a project of the FAMU-FSU College of Engineering, is scheduled to open in March 2002. The center, to be built on Klemm Plaza in downtown Tallahassee, will feature a space mission simulator common to all of the centers, and a 300 seat IMAX theater and a domed planetarium laser theater. It will serve middle schools in a 66-county area of North Florida, Southeast Alabama and South Georgia. The 39 Challenger Learning Centers throughout the United States, Canada and Europe introduce more than 350,000 middle school students annually to the exciting possibilities of science, engineering and technology.

***LEXIS®-NEXIS® Academic Universe**, the online information service that FSU helped develop and test from 1995 to 1998, is now used at more than 1,200 universities and colleges.

*As a testament to FSU's effort to foster a spirit of community service among its students, FSU ranks second in Florida and third in the Southeast for producing 27 currently serving Peace Corps volunteers. The Center for Civic Education and Service was established in 1994 to promote civic responsibility and community involvement through service as integral elements of the liberal arts education at FSU. Through ServScript, students' service may be recorded on their official academic transcript.

*In 2000, the Ph.D. program in the College of Business has the highest minority enrollment of any Ph.D. business program in the United States. In recent years, it has graduated more minority doctoral students than any other Ph.D. granting institution.

*In 2000, the National Geographic Society and FSU started the **Florida Geographic Alliance** that will bolster geographic education among Florida school children by preparing and equipping Florida's K-12 teachers with better information and tools.

*In 1999, FSU was selected by the U.S. Department of Energy to become one of the research institutions to operate the Oak Ridge National Laboratory (ORNL), a multiprogram science and technology laboratory in Oak Ridge, Tenn., headed by the University of



SFSU



Tennessee-Battelle. The five-year management and operations contract is valued at about \$2.5 billion. FSU was invited to join ORNL because of its strong faculty research activities in material sciences, structural biology, computational sciences and magnet technologies.

*In fiscal year 1999-2000, FSU reached the highest level of external funding for research in its history, attracting more than \$116.9 million. The amount represents a 15.5 percent increase over last year's award level.

*In fiscal year 1999-2000, the FSU Foundation raised \$89.7 million, the largest amount ever raised in a single year at FSU. The amount represents a 21 percent increase over the previous year.

*At more than \$287.4 million, FSU's endowment has been ranked 150th in the nation by the National Association of College and University Business Officers, the benchmark of higher education fundraising success, in 2000. Since 1994, FSU's endowment ranking has surpassed 156 other institutions.

*Among public institutions with National Merit Scholar in 1999, FSU was ranked No. 12 with 284. Among those with National Achievement Scholars, FSU was ranked No. 3 with 73.

*In December 1999, researchers at the National High Magnetic Field Laboratory used a hybrid magnet to conduct the lab's first research in continuous magnetic fields of 45 tesla, or one million times the Earth's magnetic field. The \$100 million magnet lab which was established in 1990 by the National Science Foundation, is run by FSU in partnership with the University of Florida and the Los Alamos National Laboratory. Vice President Al Gore spoke at the dedication of the magnet lab in October 1994.

*In 1999, FSU created the Institute on World War II and the Human Experience to "save the memories of those who saved the world" by collecting letters, diaries, memoirs and photos from participants in the war effort, in order to preserve the materials for classroom teaching, scholarly research and public viewing.

As this list of highlights attests, Florida State has excelled in the 1990s with exceptional strength, energy and vision for the future. Under the leadership of the university's 12th president, Talbot "Sandy" D'Alemberte, who took office in January 1994, FSU will continue to build on the foundation of its history of excellence in scholarship, research and service.

A senior member of the 10-member State University System, FSU was founded as an institution of higher learning in 1851 by legislative act and began in Tallahassee with its first students in 1857.



Support Services

Strength and Conditioning



JANNA WALKUP
Strength and
Conditioning Coach

The Strong Shall Survive is the motto of the strength and conditioning staff at Florida State. It is also this philosophy that has made Seminole athletes in all sports among the strongest, fastest and most fit anywhere. At Florida State, the strong not only survive, they win too! At Florida State, a supervised program has been developed for volleyball, emphasizing the objectives of not only building bodies, but strengthening and conditioning them.

Strength coach Janna Walkup, who is in her first year on the Florida State strength and conditioning staff, individually customizes programs for each of the athletes beginning with pre-conditioning before the season gets underway. FSU takes pride in customizing the programs to help student-athletes reach their maximum potential.

Walkup, who was a member of the inaugural Seminole soccer team in 1996, was a four-year starter at defender for the Seminoles. A native of Orlando, Fla., Walkup earned a bachelor's degree in nutrition and fitness from FSU in April of 1999 and a master's degree in sports administration this summer. A certified personal trainer, Walkup became a Certified Strength and Conditioning Specialist in June.

Weight Room

The Tully Gymnasium weight room recently took on a whole new look following a complete renovation in 1996. The facility, which was expanded by 2,000 square feet, is now 3,500



square feet in size fresh with a new stereo system, drop ceiling, lighting and mondo rubber flooring.

Over \$140,000 worth of new exercise equipment was added to the Lady Seminole weight room, including 16 cardiovascular pieces such as Life Fitness, Stairmaster and Textrix. All Florida State women athletes train in the state-of-the-art facility.

Medical Care & Treatment

An athlete can expect to receive the best care and treatment possible with the athletic training team at Florida State. Prior to competition, all FSU student-athletes undergo screening in order to detect any potential injuries. If a problem is detected, the athlete may be placed on a prevention care system which may include any kind of treatment from icing to exercising.

Though the prevention of injuries is the main objective, some injuries are unavoidable. Rehabilitation is another component of the Florida State training room. The FSU athletic training staff will work with the athlete and provide an intense rehabilitation schedule that will allow the athlete to successfully rehabilitate after an injury. Some injuries and illnesses may be referred to the Seminole team physicians at the Tallahassee Orthopedic Center, who, for many years, have worked in conjunction with the FSU athletic training staff in successfully rehabilitating athletes after an injury. Nutrition counseling and drug testing are also responsibilities of the athletic training team which is dedicated to providing the best care possible for all FSU student-athletes.

Head Women's Athletic Trainer Robin Gibson handles the athletic training duties for the Lady Seminole softball team. Gibson, a 1985 graduate of San Diego State, is in her 14th year at Florida State. She began working at FSU as a graduate assistant in 1986 and worked with women's basketball for one season. She became a full-time member of the Seminole athletic training staff in 1988 -- the same year she began handling the training duties for the softball team. Gibson was elevated to the Head Women's Trainer in 1990 and became the Associate Director of Sports Medicine in 1998. She oversees a staff of 15 fulltime and student trainers who handle the athletic training duties for all FSU's women's sports which comprises more than 200 student-athletes. Gibson is a licensed athletic trainer in the state of Florida and is a long-time member of the National Athletic Trainers' Association.



ROBIN GIBSON
Head Women's
Athletic Trainer

Academic Support

Academic, personal and professional support are essential to college success. At Florida State University, we have developed an outstanding support program which enables student-athletes to reach their full potential.

FSU's academic support philosophy is "to offer an academic support program integrated with the total university that will assess all student-athletes with the transition into college and provide continued support in all phases of academic and professional development culminating with graduation, job placement or graduate school."

To accomplish this goal, FSU has developed an academic environment which facilitates the academic success of student-athletes. Student success is encouraged through competent academic counseling, career exploration, planning and placement and academic assistance through tutorial programs and mentors.

The program operates on a "proactive" rather "reactive" approach. At Florida State, the academic staff does not wait for an academic crisis to occur. They gather important background information and build an academic profile on all student-athletes to assess their needs in advance. Coaches also stay informed on the daily progress of each student athlete.

The academic support services are located in the state-of-the-art University Center and are on the sixth floor of the \$126 million facility. It includes private study carrels, a tutorial study area and a computer lab outfitted with 16 new IBM computers and laser printers. In addition, athletic sky boxes are utilized for group and individual tutorial instruction.

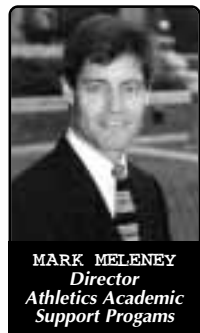
FSU offers 16 Schools and Colleges with 99 undergraduate degrees and 75 post-baccalaureate degrees.

Mark Meleney became Florida State's Director of Athletic Academic Support Programs in 1997 and brings 12 years of advising experience to the position. Over the past five years, Meleney has played an integral role in the development of a comprehensive program of student athlete support, which in 1996 won the "Program of Excellence" award from Athletic Management Magazine.

A native of Iowa, Meleney began his college education at Buena Vista College, where he earned varsity letters in football and baseball. Upon transferring to Florida State, he earned Bachelor's degrees in Management and Finance in 1986 and received a Master's in Athletic Administration from FSU in 1997. He is currently pursuing his Ph.D. in Athletic Administration.

Meleney oversees an academic staff comprised of five academic counselors, and administrative assistant, several graduate assistants, individualized learning specialists and a cadre of about 70 tutors and mentors.

Meleney and his wife Sarah are the parents of a five-year-old daughter, Montana Shea.



MARK MELENEY
Director
Athletics Academic
Support Programs

Amy White is in her sixth year with the FSU Athletic Academic Support Staff where she serves as the Academic Counselor for the volleyball, baseball, soccer and men's and women's golf teams.

White is responsible for coordinating support services for these student-athletes, monitoring their academic progress and counseling them on academic issues such as course and major selection, study habits and eligibility requirements. She also assists in the recruiting process for these programs.

In addition to her counseling duties, White is the Academic Honors, Awards and Scholarship Coordinator, as well as the coordinator of the annual Golden Torch Gala, a black-tie event which recognizes the student-athletes for academic achievements. She also serves as the sports psychology consultant for all FSU student-athletes.

A native of Pensacola, Fla., White is a 1993 graduate of the University of West Florida where she earned a Bachelor's degree in psychology. She received a Master's degree in sports psychology from Florida State in 1995 and is currently a Ph.D. candidate in sports psychology.



AMY WHITE
Academic Counselor



Life Skills and Student Development

the n.o.l.e.s. program

NEW OPPORTUNITIES FOR LEADERSHIP EDUCATION AND SERVICE



Community Service

Serving the community is the focus of our Seminole Spirit program. Student-athletes are challenged to give service to our community and individuals who are in need. With a clearly defined program of service, student-athletes are given the opportunity to develop the foundation for a lifelong commitment to volunteerism. The Seminole Spirit Student-Athlete Speakers' Bureau enables student-athletes to improve their speaking skills, develop effective communication and impact the lives of others through their service as role models in our community.

Leadership Development

The Florida State University Department of Athletics is committed to developing programs of excellence that foster leadership development. The foundation of the leadership development program are the Seminole Leadership Institutes that are held four times a year. These Institutes offer student-athletes the opportunity to learn skills that will benefit them as students, as athletes, and as they pursue their goals after leaving Florida State. The Institutes are based on building communication skills. Students have the opportunity to use the values and work ethic taught by athletic participation as the framework for their leadership development. The Institutes attract outstanding guest speakers who challenge Seminole student-athletes to achieve their greatest potential and use their leadership skills to positively influence others.



JOHN LATA
Coordinator

Developed by the Florida State University Department of Athletics, the NOLES program represents a commitment to the total growth and development of the student-athlete. This program establishes an administrative commitment to academic and athletic excellence. Those efforts will be supported with programs and services in personal development, career development and community service.

Personal Development

Fostering the development of personal growth is a fundamental component of the NOLES program. These support programs ensure that the student-athlete will be provided opportunities to focus on personal growth issues such as values clarification, goal setting, fiscal planning, decision making and personal responsibility. Programming focuses on helping student-athletes develop a healthy lifestyle while they are at Florida State and habits that will benefit them for life.

Career Development

Preparing for life after college sports is a major focus of the NOLES Career Development program. The program is designed to work cooperatively with the University's Career Services to acquaint students with the job search process, provide networking opportunities and ultimately assist with job placement. This program places a



AMY MAGNUSON
Sports Nutritionist

priority on the development of the total person, with the goal of elevating individuals who will have rewarding careers and productive lifestyles after they leave Florida State.

The Student-Athlete Advisory Council (SAAC) serves as the advisory board to the NOLES program and the athletics administration. The prestigious board comprised of two representatives of each athletic team at FSU, also recommends programming and serves as a liaison between student-athletes and the athletics administration. The Advisory Council plans and implements various events for student-athletes and serves as the department's most visible ambassadors. The SAAC hosts the annual Golden Nole banquet and plans such events as orientation for incoming student-athletes and the back-to-school picnic.



Associate Athletics Director For Student Services Pam Overton was presented with the first annual Dr. Gene Hooks Award for the outstanding CHAMPS program coordinator as chosen by the Division I-A Athletics Directors.



NCAA Compliance

The following information is provided by the Florida State Office of Compliance for prospective student athletes. It is intended as a guideline to introduce some of the rules governing NCAA athletic involvement.

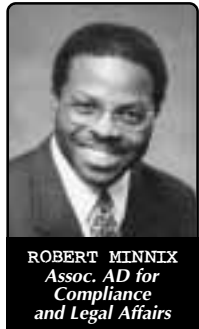
Who is Permitted to Recruit for FSU?

Only Florida State University coaches who have successfully completed the NCAA Recruiting Rules Examination on an annual basis may be involved in the recruitment process. Representatives of our athletics interests may not make any recruiting contacts. This includes letters, telephone calls or face-to-face contact on or off campus with a prospect or the prospect's parents.

Key Terms You Should Know

You become a prospective student-athlete if you have started classes for the ninth grade. Before the ninth grade, you become a prospective student-athlete if the college provides you (or your relatives or friends) any financial aid or other benefits that the college does not provide to prospective students generally.

A contact is any face-to-face encounter between a prospect or the prospect's legal guardian and an institutional staff member or athletic representative during which any dialogue occurs in excess of an exchange of greeting. NOTE: At the Division I level, athletic representatives (boosters) may not contact you for the purpose of recruiting. A college coach may contact you in person off the college campus beginning July 1 after completion of your junior year in high school.



An evaluation is any off-campus activity designed to assess your academic qualifications or athletic ability, including any visit to your high school (during which no contact occurs) or the observation of any practice or competition in which you participate.



During your senior year, you can have one expense-paid official visit to a particular campus. You may receive no more than five visits. During your official visit, which may not exceed 48 hours, you may receive round-trip transportation between your home and the campus, and you (and your parents) may receive meals, lodging and complimentary admission to campus athletics events.

Phone Calls and Letters

Phone calls from faculty members and coaches (but not boosters) are permitted beginning July 1 after completion of your junior year. A college coach or faculty member is limited to one telephone call per week except when it is:

- During the five days immediately before your official visit to the university
- On the day of a coach's off-campus contact with you
- During the time beginning with the initial National Letter of Intent signing date in your sport through the two days after signing date

Letters from coaches and faculty members (but not boosters) are not permitted until September 1 at the beginning of your junior year in high school. A Division I university may provide you with the following printed materials:

- General correspondence, including letters, U.S. Postal Service postcards and institutional note cards
- Game programs which may not include posters and one Student Athlete Handbook can be provided only during official or unofficial visits to the university's campus
- NCAA educational information
- Pre-enrollment information subsequent to signing a National Letter of Intent with the university
- One athletic publication which may include only one color of printing inside the covers
- Official academic, admissions and student services publications published or videotapes produced by the institution and available to all students
- Schedule cards
- Questionnaires which may be provided prior to your junior year
- Summer camp brochures which may be provided prior to your junior year.

Alumni and Boosters Do's and Don'ts

You may forward information about prospective student-athletes to the appropriate coaches.

You may have contact with a prospect regarding permissible pre-enrollment activities such as summer employment, provided the prospect has already signed a National Letter of Intent and the Compliance Office is aware that you are making these contacts in regard to employment.

You may have a telephone conversation with a prospect only if the prospect initiates the call. Such a call may not be prearranged by an institutional staff member and you are not permitted to have a recruiting conversation, but may exhibit normal civility. You must refer any questions about our athletics programs to an athletics department staff member/coach.

You may view a prospect's contest at your own initiative provided you do not contact the prospect or his/her parents. In addition, you may not contact a prospect's coach, principal, or counselor in an attempt to evaluate the prospect.

You may continue established family relationships with friends and neighbors. Contacts with sons and daughters of these families are permitted as long as they are not made for recruiting purposes or encouraged by Florida State University coaches.

You may not become involved in making arrangements to receive money or financial aid of any kind for a prospect or the prospect's family and friends.

You may not make contact with a prospective, student-athlete and his/her parents when the prospect is on campus for an official or unofficial recruiting visit.

You may not transport, pay or arrange for payment of transportation costs for a prospect, and his/her relatives or friends to visit campus (or elsewhere).

You may not pay or arrange for payment of summer camp registration fees for a prospect.

You may not provide anything to a prospect, the prospect's family or friends without prior approval from the athletics' Compliance Office.

SEMINOLE



Natalie Bennett
Senior
Belleville, IL • SS



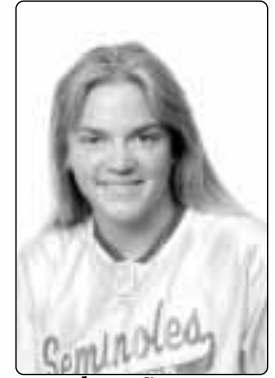
Staci Brandon
Senior
Peoria, AZ • 3B



Rita Brooks
Senior
Tuscaloosa, AL • CF



Stephanie Elowsky
Senior
Pensacola, FL • SS/DH



Robyn Gauger
Senior
St. Marks, FL • P/RF/DH



Jennifer White-Stokes
Senior
Tuttle, OK • P



Becky Brock
Junior
Macclenny, FL • 3B



Kimmy Carter
Junior
Palm Beach Gardens, FL
C/RF



Jackie Hirschfeld
Junior
Tampa, FL • 3B



Monique Marier
Junior
Tampa, FL • LF



Leslie Malerich
Junior
Merrillville, IN • P



Brandi Stuart
Sophomore
Cerritos, CA • 2B



Leah Armstrong
Freshman
Jacksonville, FL • CF



Skyla Cox
Freshman
Marietta, GA • 2B



Julie Jordan
Freshman
Garden Grove, CA • C/RF



Jessica van der Linden
Freshman
Cerritos, CA • 1B/P



Elisa Velasco
Freshman
Hesperia, CA • C/1B



Beth Wade
Redshirt Freshman
Colquitt, GA • 1B