

# Media Info

## A Note to the Media, Fans & Opponents

Florida State assistant sports information director Elliott Finebloom of the Sports Information Office is ready to assist you with any questions or requests you may have about the 2003 Seminole softball program, media guide, coaches and student-athletes. Please do not hesitate to phone, fax or write a letter to the sports information office at University Center C, Ste. C5406; Tallahassee, Florida 32306; (850) 644-5656 phone; (850) 644-3820 fax; efineblm@mail.fsu.edu email, if we can further assist you.

## Players & Coaches Interviews

All players and coaches interviews must be arranged through the sports information office by contacting Elliott Finebloom at (850) 644-5656 at least 24 hours in advance. Player's home phone numbers will not be released.

## How to Cover the Seminoles

Members of the media are supplied with weekly press releases, including updated individual tournament and career statistics, as well as conference and national rankings and information on upcoming games. This information may be obtained in the sports information office and will be updated after every match at [www.seminoles.com](http://www.seminoles.com)

## Where the Home Games will be

All 2003 Seminole softball home games take place at the Seminole Soccer/Softball Complex (capacity 1000). The softball stadium is located just south of the FSU football practice field off of Stadium Drive. Media members will be provided parking passes and will be seated in a designated area. Please notify the sports information office prior to home games for credentials to be assigned. Any accredited photographer wishing to shoot the games must check in with Finebloom prior to game day so proper credentials can be assigned.

## Florida State Media Outlets

### Florida Times-Union (Local)

(850) 224-7515; Fax (850) 681-2961;  
bthomas@jacksonville.com  
Bob Thomas  
336 E. College Ave., Suite 304,  
Tallahassee, FL 32301

### FSView

(850) 561-6653; Fax (850) 574-6578  
PO Box 20331, Tallahassee, FL 32316

### Gainesville Sun

(352) 378-1411; Fax (352) 338-3128;  
news\_sports@gvillesun.com  
Doris Yon  
PO Drawer A, Gainesville, FL 32602

### Orlando Sentinel

(850) 222-5564; Fax (850) 224-0979;  
jrobbins@orlandosentinel.com  
Josh Robbins  
PO Box 28333, Orlando, FL 32802

### Osceola, The

(850) 222-7733; Fax (850) 224-3627;  
news@osceolaneews.com  
Jim Lamar  
402 Dunwoody St., Tallahassee, FL 32304

### St. Petersburg Times

(813) 226-3347; Fax (813) 226-3381  
sptsnews@sptimes.com  
Brian Landman  
PO Box 1211, St. Petersburg, FL 33731

### Tallahassee Democrat

(850) 599-2316; Fax (850) 599-2301;  
sportsresults@taldem.com  
Jack Corcoran, Randy Beard  
277 N. Magnolia Dr., Tallahassee, FL 32301

### Tampa Tribune (Local)

(850) 222-8382; Fax (850) 222-4772;  
carlsondoug@att.net  
Doug Carlson  
336 E. College Ave., Tallahassee, FL 32301

## Television/Radio

### Sunshine Network

(407) 648-1150; Fax (407) 245-2571;  
apemple@sunsinetwork.com  
Tom Block, Barry Milligan  
390 N. Orange Ave. Suite 1075,  
Orlando, FL 32801

### WCTV-TV (CBS)

(850) 893-2126; Fax (850) 668-3851  
LGordon490@aol.com  
Lee Gordon, Travis Bell,  
Beau Bishop, Ric Ritesh  
PO Box 3048, Tallahassee, FL 32315

### WFSU-Radio

(850) 487-3086; Fax (850) 487-3293;  
buzzc@tfn.net  
Buzz Conover  
1600 Red Barber Plaza, Tallahassee, FL  
32310

### WFLA-RADIO

(850) 386-6143; Fax (850) 383-0747;  
WNLS-AM@clearchannel.com  
Eric Luallen, Jeff Cameron  
325 John Knox Rd, Suite E-200,  
Tallahassee, FL 32303


### WTXL-TV (ABC)

(850) 893-1313; Fax (850) 668-1460;  
pscott@wtxl.com  
Preston Scott and Matt Stitsinger  
8927 Thomasville Rd., Tallahassee, FL  
32312

## FSU on the Web

All the game stories, updated stats, weekly releases and Seminole softball news you could ever ask for is available 24 hours a day, 365 days a year at [seminoles.com](http://seminoles.com). The official FSU athletics website is your first stop for all the information you could ever need on the Seminole softball team and is updated immediately following each match.

## ESPN Appearances in 2002

	California	5
	Arizona	5
	Florida State	4
	Arizona State	4



# 2003 Outlook



**Brandi Stuart**

## 2003 General Outlook

### Notes:

- Florida State returns seven starters and 12 letterwinners from the most successful team in the history of the program.
- The Seminoles have advanced to at least the NCAA Regional finals in the last three seasons.

### Graf's take:

I think anytime you have a very successful season like we had last year, it puts a lot of pressure on you the following season. I think opponents really get up to play you but I think our players really learned a lot last year on how to handle that and I think they will be able to handle that this year. I think it will make our team more 'tournament tough' and better in the postseason.

We'll give everyone an opportunity to play and compete for spots and see how it works out. I think our balance will be a big asset. We have a strong bench and if anyone gets injured they will be able to step in immediately. I think we are deep with talent, probably more so than we have been in the past. I feel really good and believe we will keep improving throughout the season.

## Returning to the College World Series

### Notes:

- Only three schools have been to the Women's College World Series more times than Florida State and only five have made more NCAA Regional appearances.
- Dr. JoAnne Graf is one of only three coaches to lead a team to the WCWS in three different decades.

### Graf's take:

I think these players now know how much fun it is getting to the College World Series as well as what it takes to make

it there. I think our run to Oklahoma City last year will turn out to be a positive rather than seeing a letdown this year. I really think it will make them hungrier. The kids are working very hard and it is going to be a fun season.

I think we got a big confidence boost from what we accomplished last year but it also points out the parity in our sport. More than ever, on any given day any team can beat anyone in the country. With as many one-run games as we've played over the years, I believe there are a lot of teams out there that could have done what we were able to do had they been in the right place at the right time and played well at the end. The gap is closing and it is going to get tougher each and every year to get back to the World Series, especially with the expansion of the NCAA Tournament to 64 teams but it is a viable goal for us.

## Schedule Strength

### Notes:

- The Seminoles will play 14 teams that qualified for the NCAA Regionals in 2002 with six of those games being played at the Seminole Softball Complex. They will face College World Series runner-up Arizona at the prestigious KIA Classic in a rematch of last year's WCWS semi-final game.
- Florida State will participate in seven tournaments that feature 30 teams that played in the 2002 NCAA Regionals and six teams that went to the 2002 College World Series.
- The 2003 Seminoles will play in what are widely considered the two best collegiate tournaments in softball. After finishing in a tie for third at the 2002 Kia Classic, the Seminoles will make a return visit to one of the nation's premiere tournaments. The team will also return to the NFCA Leadoff Classic after a two-year absence.

### Graf's take:

I think we have an even tougher schedule this year with the addition of the NFCA Leadoff Classic, which is one of the top tournaments in the country. That's what I like. I like to play tough teams. Maybe our win/loss record won't be as good as if we padded our schedule but I think it pays off at crunch time because our kids have seen that caliber of team before.

We play some of our toughest games of the year early in the season but that tells us what we have to work with and gets us ready for the conference battles and the postseason. If we do well against those tough out-of-conference teams, it will strengthen our case to make NCAA Regionals for the fourth straight year.

## The ACC

### Notes:

- Florida State has won eight ACC Championships while no other school in the conference has won the title more than once.
- After last year's 6-0 conference record, FSU has now won the ACC regular season title eight times in 11 years.

- Florida State has placed an ACC record 51 players on All-ACC softball teams in the conference's 11 years of sponsoring the sport and 39% of 131 All-ACC selections have been Seminoles.

#### **Graf's take:**

I think the kids really want to regain that ACC title. After winning it eight times it has been a couple of years since we won the title. Sometimes I think because the ACC Title doesn't carry an automatic NCAA bid, getting to NCAA Regionals sometimes meant more to the team than the conference crown. I think they are refocused on trying to regain the ACC Championship. It is kind of exciting this year because the ACC is so balanced and every team has now won the championship. I think any team can win it this year and they all have strong returning players. The conference will be very tough this season.

## **At the Plate**

#### **Notes:**

- FSU returns its top three leaders for batting average, top four run scorers, three of the top leaders for hits, its top three doubles hitters, two of the top three triples hitters and two of its top three home run hitters.
- The Seminoles return a leader in every major statistical hitting category from last season including average, runs scored, hits, doubles, triples, and home runs.
- Florida State returners scored 76% of the total runs scored from last season.

#### **Graf's take:**

Even though we lose players who accounted for 40% of our RBIs in 2002, I think we have players who are going to step up. We also have new players coming in that I am confident will be able to step in and contribute. We expect big things from our newcomers. We did lose some very good players and some great players but I feel we have done a good job of replacing them. It is just a matter of getting the young kids some experience. Overall we were fairly young last year and those players have been through Division I ball now and they are going to be better this year. I am excited about that.

We are going to utilize the talent we have. If we have kids who can hit home runs obviously we are going to let them do that. If we have to manufacture runs, we have the speed and skill to do that. We have a lot of options offensively to get runs on the board and support our pitching staff. I think our young players from last season are going to explode this year.

## **On the Defense**

#### **Notes:**

- Florida State returners started 84% of the games for the Seminoles in the infield in 2002.
- Beth Wade has compiled an impressive career fielding percentage of .975 at first base for the Seminoles. In 445 chances, Wade has 401 putouts and 33 assists, while making only 11 errors.
- The right side of the infield was pretty busy last season in fielding double plays. Brandi Stuart and Beth Wade helped to turn 14 and 11 double play's, respectively.
- Since Brandi Stuart arrived at Florida State back in 2000, She has started in 223 consecutive games at second base for the Seminoles and she is now just 59 games shy of FSU's career record for games played.

#### **Graf's take:**

Last year was kind of tough defensively because sometimes we had four or five new players starting for us. They are now experienced players and they will be a little calmer. That is going to make it easier for me as the infield coach. We return a lot of people in the outfield also so I think we have a really good nucleus. I think we will be a much improved team defensively. Our communication will be better because the kids have worked together now.



## **Behind the Plate**

#### **Notes:**

- Junior Elisa Vasquez enters 2003 as the projected starter behind the plate. She started 25 games last season and was the primary catcher for pitcher Jessica van der Linden.
- Last season, catcher Julie Jordan accumulated a perfect 1.000 fielding percentage, failing to make an error in 106 chances from behind the plate. In just two seasons, Jordan has made only two errors playing in right field and behind the plate.

#### **Graf's take:**

The catching position will be different losing someone as dynamic and enthusiastic as Kimmy Carter. All three of our catchers (BillieAnne Gay, Julie Jordan and Elisa Vasquez) are quieter than Kimmy was and are going to have to lead from a different perspective. They won't be as vocal so they will have to exude confidence and they have to give their pitchers confidence. They will be different types of catchers but I think they will have the same type of authority.

## **In the Circle**

#### **Notes:**

- Last season Jessica van der Linden and Casey Hunter combined for a 20-6 record with three saves and an ERA of 1.55. In 2002 van der Linden and Hunter appeared in 43 games, while pitching a combined 212.1 innings for the Seminoles.
- In her first two seasons with the Seminoles, van der Linden has held opposing batters below a .200 batting average. She has led the team the past two seasons holding opponents to a .111 batting average in 2001 and a .193 average her sophomore year. More than half of van der Linden's starts in 2002 were complete games.
- Heading into 2003, van der Linden replaces Leslie Malerich as the No. 1 starter in the Seminole rotation. Malerich left Florida State as the all-time winningest pitcher with 107 victories. But when comparing the two in their first two seasons, van der Linden has the edge in ERA with an impressive .123, .065 points lower than Malerich's combined .188 ERA in 1999 and 2000.



**van der Linden**

**Graf's take:**

Leslie Malerich had an outstanding career and replacing her is going to be very tough. She was so tough mentally and we will miss that. Jessica van der Linden and Casey Hunter have both had good falls and freshman Julie Hauck is still learning. On top of that, junior college transfer Lesley Palmer comes in and we need to see what she can do because she has never pitched at this level. There is a little bit of an element of the unknown with the two newcomers but Jess and Casey will be ready to pick up the slack. That said, there is no getting around the fact that we are going to miss Leslie and we are going to have to be better as a team to make up for that.

Jess is one of the most competitive people that we have on the team. She has to stay tough though she plays every game and has done that for the last two years. That is one concern considering she will be pitching more this year but she is the type of athlete that will welcome that challenge. We are also expecting Casey to make a tremendous leap this spring. She has looked so much better this fall. It has just been unbelievable. She is a type of pitcher that is dominating and she will surprise a lot of people this year.

**The Newcomers**

**Notes:**

- This year's newcomers feature a Gatorade Player of the Year, an NFCA/Louisville Slugger 1st team All-American, several 1st team All-County, All-Conference, and All-State members and a NJCAA 1st team All-American.
- Five of FSU's seven newcomers have been to the final four in their state high school tournament and four have gone on to win state championships.

**Graf's take:**

They (the freshmen) are going to be very important to us as a group. Natasha Jacob is going to step in right away and play for us. She is going to be the biggest impact player of the newcomers this season. Julie Hauck will probably need this year to get herself up to the Division I level of play, which is normal for a high school pitcher. BillieAnne Gay will be our third-string catcher so we aren't going to be asking too much from her. Lesley Palmer is another newcomer who could make an immediate impact. She is a big, strong player who is intimidating in the infield. She has matured a lot and will be ready to contribute and has the potential to be the type of hitter Monique Marier was. She can give us a long ball threat. The players we need to

contribute this year will do a good job and the other members of our freshman class will have time to adjust to the college game.

**Senior Leadership**

**Notes:**

- Brandi Stuart is the only four-year senior on the 2003 squad. Shandra Colzie, Shundra Colzie and Robyn Larson all transferred to FSU as juniors. In 2001, FSU graduated six seniors of which only one was a four-year Seminole.
- This group of seniors combined to play in 29 games and make 14 starts in the 2002 NCAA Regional and Women's College World Series.

**Graf's take:**

It is going to be important for this group to lead since most of them will be starting. Robyn Larson played a key role in 2002 as a back-up player who came in and helped get us to the World Series. Both Shandra and Shundra Colzie got a lot of playing time in their first season and then Brandi Stuart has been a four-year starter. Those four seniors will have a big impact. Even though only Brandi has been here for four years, this group has experience and they are going to be a great senior class. Brandi obviously had an exceptional year last year, which resulted in 1st team All-American honors and we hope she has the same type of season in 2003 or better. I know that is going to be tough for her because everyone knows her name now and we saw that teams intentionally walked her more frequently towards the end of the season. She is one of our co-captains again this year and will be our senior leader in so many ways. Brandi will be an important part of our success.

**The Coaching Staff**

**Notes:**

- The Seminole coaching staff has been named the best in the southeast region for two straight years by Speedline and the NFCA.

**Graf's take:**

We have a new pitching coach this year and I think Eve (Gaw) has done a wonderful job since arriving here in the fall. We are excited she is at Florida State. She has national team caliber and World Series experience. The pitchers have responded very well to her enthusiasm. She is very energetic. She knows the game and more importantly she loves the game. She has been a good addition to our staff. I feel we have a very strong staff going into this season and a very strong team. This is going to be a fun year.



**Shandra Colzie**

# Quick Facts

President .....T. K. Wetherell  
 Location .....Tallahassee, Florida  
 Enrollment .....35,462  
 Founded .....1851  
 Symbol .....Seminoles  
 Colors .....Garnet and Gold  
 Conference .....Atlantic Coast Conference  
 Athletics Director .....Dave Hart, Jr.  
 Sr Associate Athletics Director .....Kim Record

SID Phone .....(850) 644-5656  
 SID Fax .....(850) 644-3820  
 Finebloom's home phone .....(850) 402-1154  
 Finebloom's cell .....(850) 321-7096  
 Finebloom's email .....efineblm@mailer.fsu.edu  
 Softball Press Box .....(850) 645-3243  
 Web site .....www.seminoles.com

## SEMINOLE SOFTBALL

Head Coach .....Dr. JoAnne Graf (FSU '75)  
 Career and FSU record .....1168-344-6  
 Seasons at FSU .....Entering 25th  
 Assistant Coaches .....Louie Berndt, Eve Gaw  
 Softball Office Phone .....(850) 644-9594  
 NCAA Regional Appearances .....15 (1986-96, 98, 2000-02)  
 World Series Appearances .....6 (1987, 1990-93, 2002)  
 Home Field/Capacity .....Seminole Softball Complex/1,000  
 2002 Finish .....2002 WCWS Semi-Finalist (T3rd)  
 Final NFCA Ranking .....4th  
 Position returning/lost .....5/3  
 Pitchers returning/lost .....2/1  
 Letterwinners returning/lost .....11/6

## CONFERENCE INFORMATION

Conference .....ACC  
 ACC Regular Season .....6-0/1st Place  
 ACC Tournament .....Semi-finals  
 Conference website .....www.theacc.com

## SEASON RECAP

2002 Record .....55-20  
 Home: .....25-7  
 Away: .....7-0  
 Neutral: .....23-13  
 Non-Conference: .....49-20  
 vs ranked opponents .....11-11  
 Day Games .....37-15  
 Night Games .....18-5  
 One run games .....20-6  
 Two run games .....4-6  
 Five+ run games .....18-4  
 Extra innings .....5-4  
 Shutouts .....19-7

## SPORTS INFORMATION STAFF

SID .....Rob Wilson  
 Asst. SID/Softball .....Elliott Finebloom  
 SID Address .....University Center C  
 Ste. C5406  
 Tallahassee, FL, 32306

## RETURNING STARTERS

PLAYER	POS	CLASS	GP/GS	Avg.	Runs	Hits	RBI	TB
Shandra Colzie	OF/DP	SR	63/50	.239	27	34	5	35
Shundra Colzie	OF	SR	64/54	.297	37	47	14	69
Tatiana George	SS	SO	71/69	.242	39	50	20	68
Brandi Stuart	2B	SR	75/75	.391	63	81	45	134
Beth Wade	1B	JR	61/57	.205	10	32	16	44
Jessica van der Linden	CF	JR	75-75	.336	38	72	35	99

PLAYER	CLASS	W-L	ERA	APP	GS	CG	IP	SO
Casey Hunter	SO	4-0	2.10	11	2	1	36.2	45
Jessica van der Linden	JR	16-6	1.43	32	31	16	175.2	175

## RETURNING LETTERWINNERS

PLAYER	POS	CLASS	GP/GS	Avg.	Runs	Hits	RBI	TB
Julie Jordan	25-16	JR	25/16	.163	2	8	1	8
Robyn Larson	3B-SS	SR	21/7	.182	4	4	0	6
Bryttani Lindheim	3B-SS	SO	45/42	.171	5	13	1	13
Elisa Vasquez	C	JR	62/54	.225	12	34	15	38

## STARTERS LOST

PLAYER	POS	CLASS	GP/GS	Avg.	Runs	Hits	RBI	TB
Kimmy Carter	C	SR	75/75	.289	25	59	53	83
Monique Marier	LF	SR	69/69	.251	15	50	41	88
Becky Brock	3B	SR	62/49	.202	12	19	4	21

PLAYER	CLASS	W-L	ERA	APP	GS	CG	IP	SO
Leslie Malerich	SR	35-14	1.38	55	42	36	315.1	255

## LETTERWINNERS LOST

PLAYER	POS	CLASS	GP/GS	Avg.	Runs	Hits	RBI	TB
Jackie Hirschfeld	3B	SR	31/0	.318	3	7	4	7

## NEWCOMERS

PLAYER	POS	CLASS	LAST SCHOOL	HOMETOWN
Carly Brieske	OF	FR	Countryside High School	Safety Harbor, FL
Carey Galuppi	SS/2B	FR	Westminster High School	Ft. Lauderdale, FL
BillieAnne Gay	C	FR	Lincoln High School	Tallahassee, FL
Julie Hauck	P	FR	Yukon High School	Yukon, OK
Natasha Jacob	OF	FR	Coppell High School	Coppell, TX
Lesley Palmer	3B	SO	Lake City CC	Dale City, VA
Julie Tiggis	1B	FR	Royal Palm Beach High School	Royal Palm Bch, FL



## SILVER MOMENTS

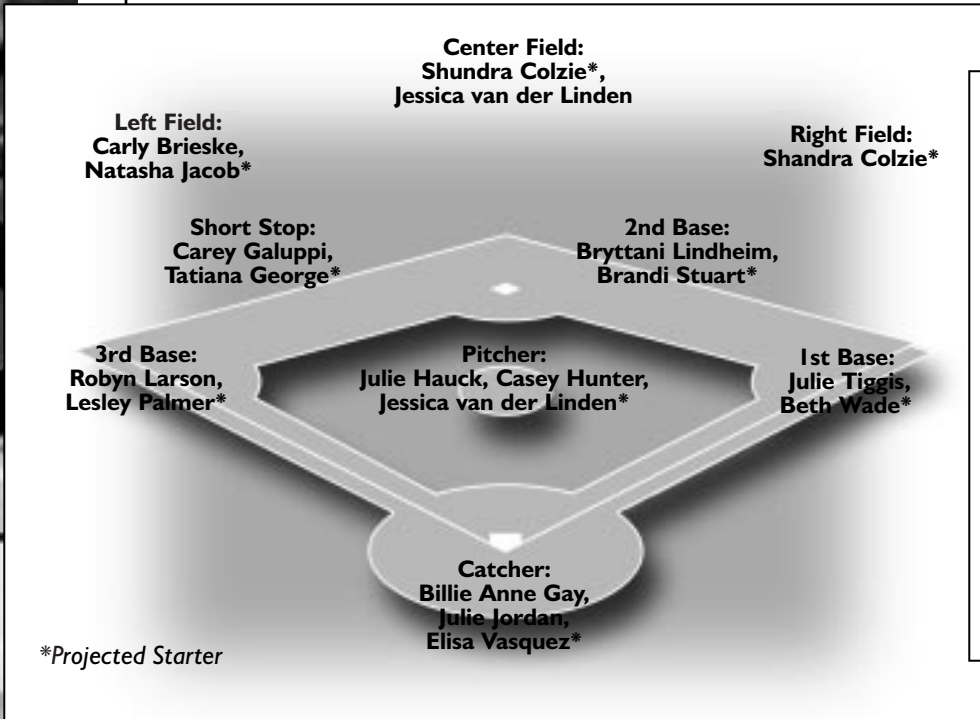


### 25th Anniversary Alumna Weekend

Dr. JoAnne Graf enters the 2003 softball season celebrating her 25th anniversary as head coach of the Seminole softball program. The future NFCA Hall of Famer has set more records and has overseen more success than almost any coach in the history of Division I softball. This past fall 100's of former players, coaches and friends of the FSU softball program returned to Tallahassee to celebrate Graf's legendary career. Inspired by a weekend's worth of memories and stories, we will be focusing in on some of the greatest moments and accomplishments from Graf's 24 year career throughout the 2003 Seminole softball media guide.

# 2003 Florida State

## Women's Softball Roster



\*Projected Starter

NUMERICAL ROSTER

2	.....	Julie Tiggis
3	.....	Julie Jordan
7	.....	Casey Hunter
8	.....	BillieAnne Gay
9	.....	Elisa Vasquez
10	.....	Julie Hauck
11	.....	Beth Wade
12	.....	Carly Brieske
13	.....	Natasha Jacob
14	.....	Robyn Larson
15	.....	Lesley Palmer
19	.....	Shundra Colzie
20	.....	Shandra Colzie
29	.....	Brandi Stuart
33	.....	Tatiana George
37	.....	Bryttani Lindheim
44	.....	Carey Galuppi
99	.....	Jessica van der Linden

NO.	NAME	POS	B/T	YR	HOMETOWN (SCHOOL)
12	Carly Brieske	OF	R-R	FR	Safety Harbor, FL (Countryside)
20	Shandra Colzie	OF/DP	L-R	SR	Miami, FL (Santa Fe CC)
19	Shundra Colzie	OF	R-R	SR	Miami, FL (Santa Fe CC)
8	BillieAnne Gay	C	R-R	FR	Tallahassee, FL (Lincoln)
44	Carey Galuppi	SS/2B	R-R	FR	Ft. Lauderdale, FL (Westminster)
33	Tatiana George	SS/OF	R-R	SO	Fontana, CA (Bloomington)
10	Julie Hauck	P	R-R	FR	Yukon, OK (Yukon)
7	Casey Hunter	P	R-R	SO	Millstadt, IL (Belleville West)
13	Natasha Jacob	OF	R/L-R	FR	Coppell, TX (Coppell)
3	Julie Jordan	C	R-R	JR	Garden Grove, CA (Pacifica)
14	Robyn Larson	SS/3B	R-R	SR	Bothell, WA (Florida CC)
37	Bryttani Lindheim	2B/SS	R-R	SO	Mission Viejo, CA (El Toro)
15	Lesley Palmer	3B/P	R-R	R-SO	Dale City, VA (Lake City CC)
29	Brandi Stuart	2B	R-R	SR	Cerritos, CA (Cerritos)
2	Julie Tiggis	1B	R-R	FR	Royal Palm Bch., FL (Royal Palm Bch.)
99	Jessica van der Linden	P/OF	L-L	JR	Cerritos, CA (Cerritos)
9	Elisa Vasquez	C	R-R	JR	Hesperia, CA (A.B. Miller)
11	Beth Wade	1B	R-R	R-JR	Colquitt, GA (Miller County)

**Pronunciation Guide**  
 Carly Brieske .....Bris-key  
 Shandra Colzie .....SHAN-dra  
 Shundra Colzie .....SHUN-dra  
 Carey Galuppi .....Gull-up-E  
 Tatiana George .....Tat-E-ana  
 Julie Hauck .....How-k  
 Julie Tiggis .....Tig-iss

JoAnne Graf - Head Coach  
 Louie Berndt - Asst Coach  
 Eve Gaw - Asst Coach

Cathy Laguens - Student Trainer  
 Bart Bennett - Manager  
 Robin Gibson - Trainer

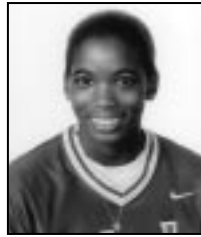
# Photo Roster



#12 Carly Brieske  
Freshman • OF  
Saftey Harbor, FL



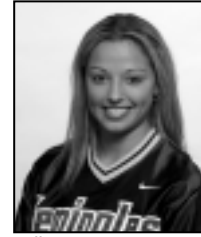
#20 Shandra Colzie  
Senior • OF/DP  
Miami, FL



#19 Shundra Colzie  
Senior • OF  
Miami, FL



#8 BillieAnne Gay  
Freshman • C  
Tallahassee, FL



#44 Carey Galuppi  
Freshman • SS/2B  
Ft. Lauderdale, FL



#33 Tatiana George  
Sophomore • SS/OF  
Fontana, CA



#10 Julie Hauck  
Freshman • P  
Yukon, OK



#7 Casey Hunter  
Sophomore • P  
Millstadt, IL



#13 Natasha Jacob  
Freshman • OF  
Coppell, TX



#3 Julie Jordan  
Junior • C  
Garden Grove, CA



#14 Robyn Larson  
Senior • SS/3B  
Bothell, WA



#37 Bryttani Lindheim  
Sophomore • SS/2B  
Mission Viejo, CA



#15 Lesley Palmer  
Redshirt Sophomore • 3B/P  
Dale City, VA



#29 Brandi Stuart  
Senior • 2B  
Cerritos, CA



#2 Julie Tiggis  
Freshman • 1B  
Royal Palm Beach, FL



#99 Jessica van der Linden  
Junior • P/OF  
Cerritos, CA



#9 Elisa Vasquez  
Junior • C  
Hesperia, CA

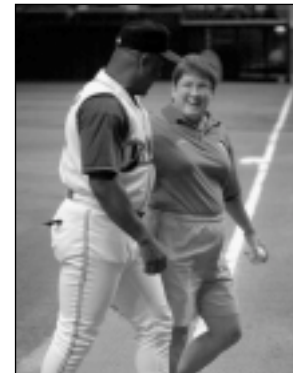


#11 Beth Wade  
Redshirt Junior • 1B  
Colquitt, GA



## SILVER MOMENTS

### Take Me Out To The Ballpark



After 23 years of accomplishments on the softball field coach Graf added another first to her list in the summer of 2001. After FSU's run to the NCAA Regional finals that season, Graf was honored by the Tampa Bay Devil Rays as she was asked to throw out the first pitch before a game with the Florida Marlins at Tropicana Field.