

SEMINOLE SOFTBALL

2

0

0

8



PREVIEW COACHES ATHLETES REVIEW HONORS & AWARDS RESULTS & RECORDS THE UNIVERSITY THIS IS FSU SOFTBALL

THIS IS FSU SOFTBALL



SEMINOLE SOFTBALL

2

0

0

8

JoANNE GRAF FIELD



FIELD OF DREAMS

Florida State University is home to one of the premier softball complexes in the nation. JoAnne Graf Field at the Seminole Softball Complex is state-of-the-art in every facet and provides Florida State softball players with an all-inclusive complex that includes locker rooms, meeting rooms and one of the best playing surfaces anywhere in the country. JoAnne Graf Field hosted back-to-back NCAA Regionals in 2001 and 2002 and then again in 2004.

Florida State has posted 247 wins in its nine years at the complex. Even more impressive, FSU has gone 194-42 at the complex the last seven years for an amazing .822 winning percentage. The complex was also featured in *Athletic Business Magazine's* 2002 Architectural Showcase.

Florida State's dream of a new, state-of-the-art softball complex became reality when ground was broken in a ceremony in the spring of 1998. Construction workers worked continuously to complete the facility, which also houses the Seminole soccer stadium. The result was the creation of one of the nation's premier collegiate softball and soccer facilities. The complex, which was completed in the spring of 1999, includes ticket and concessions buildings and spacious press boxes with radio/television booths. The two-level Mary Ann Stiles & Barry Smith Team Building features a reception area, softball and soccer coaches offices, which overlook their respective stadiums, a combined workroom, large team and coaches locker rooms and training and equipment rooms.

The Florida State Soccer/Softball Complex was "officially" opened with a ribbon-cutting ceremony Saturday, April 17 1999. The event, which was held in conjunction with Florida State's 30th Anniversary of Women's Intercollegiate Athletics Spring Celebration, drew approximately 150 spectators, including University dignitaries and athletics department personnel. Several former Florida State student-athletes and staff also returned for the monumental event.

The ceremony began with the ribbon-cutting at the front gates of the complex. FSU President Sandy D'Alemberte, Director of Athletics Dave Hart, Softball Head Coach Dr. JoAnne Graf and Soccer Head Coach Patrick Baker, and team representatives did the honors. Among the speakers in the program were D'Alemberte, Hart, Associate Athletics Director Kim Record and Dianne Montgomery, former Dean of the School of Social Work, who served as Chair of the Title IX Committee and was a member of the FSU Athletics Board. Dr. Judith Blucker, FSU's first softball coach and former Vice President at Florida International University, also addressed the crowd. Following a tour of the facility and a barbecue, the Seminoles entertained guests on the field with a sweep of Florida International.

Two major changes were made to the complex in the last three seasons. On April 2, 2005, university president Dr. T.K. Wetherell and Hart officially renamed the softball stadium "JoAnne Graf Field at the Seminole Softball Complex." She joins Bob Heck at Georgia State as the only two active softball coaches with fields named after them. It was only fitting that one day later Graf crossed the 1,300-win plateau with a 5-2 triumph over Virginia Tech. This fall the stadium

got a facelift as a Florida State will unveil a brand new video scoreboard for the 2007 season. The board uses the same technology that is used at most outdoor professional stadiums. The ProStar is capable of displaying video clips, live video, animation, player headshots, graphics and statistics in 4.3 trillion colors.

The Seminole Softball/Soccer Complex is located in between the Dick Howser Baseball Stadium and the Mike Long Track on Chieftan Way. The facility can be accessed from both Chieftan Way and Stadium Drive.

COMPLEX INFORMATION:

- Architects:** Gilchrist and Crowe
- Construction:** Completed, spring 1999
- Field Dimensions:** 200' - right and left field 220' - center field
- Stadium Capacity:** 1,000

SEMINOLE SOFTBALL

2 0 0 8

TOP 10 ALL-TIME ATTENDANCE:

- 912 May 15, 2004 (FSU 8 UNC 0) ACC Tournament
- 842 April 17, 1999 (FSU 6 FIU 1; FSU 1 FIU 0)
- 818 May 23, 2004 (FSU 0 ORE 1; FSU 2 ORE 0) NCAA Tournament
- 809 May 22, 2004 (FSU 5 ORE 4) NCAA Tournament
- 807 May 21, 2004 (FSU 3 CSUN 1) NCAA Tournament
- 737 May 20, 2004 (FSU 4 LIU 0) NCAA Tournament
- 730 May 9, 2003 (FSU 10 UVA 1) ACC Tournament
- 682 May 10, 2003 (FSU GT 3) ACC Tournament
- 655 May 14, 2003 (FSU 3 GT 2) ACC Tournament
- 639 April 14, 1999 (FSU 10 FAMU 1; FAMU 8 FSU 3)

TOP 10 REGULAR SEASON HOME ATTENDANCE:

- 842 April 17, 1999 (FSU 6, FIU 1; FSU 1, FIU 0)
- 639 April 14, 1999 (FSU 10, FAMU 1; FAMU 8, FSU 3)
- 626 May 6, 1999 (FSU 5, USF 1; FSU 2, USF 1)
- 618 April 26, 2003 (FSU 5, UVA 0; FSU 12, UVA 1)
- 567 April 5, 2006 (FSU 4, UF 0, FSU 6, UF 5)
- 520 March 25, 2004 (FSU 5, FIU 1; FSU 11, FIU 0)
- 520 April 2, 2005 (FSU 4, VT 2; FSU 3, VT 2)
- 514 April 5, 2000 (FSU 6, UF 3; UF 5, FSU 3)
- 508 April 17, 2002 (UF 7, FSU 1; FSU 6, UF 1)
- 505 February 7, 2004 (FSU 11, ISU 3; FSU 8, UL 0)

DIRECTIONS:

FROM: INTERSTATE 10

Take I-10 to Exit 209A. Go west on HWY 90 to Monroe St. Make a left and go South on Monroe St. to Jefferson St. Make a right (Becomes Pensacola St.), follow to Chieftan Way and make a right. Parking lot will be the first left.

FROM: AIRPORT

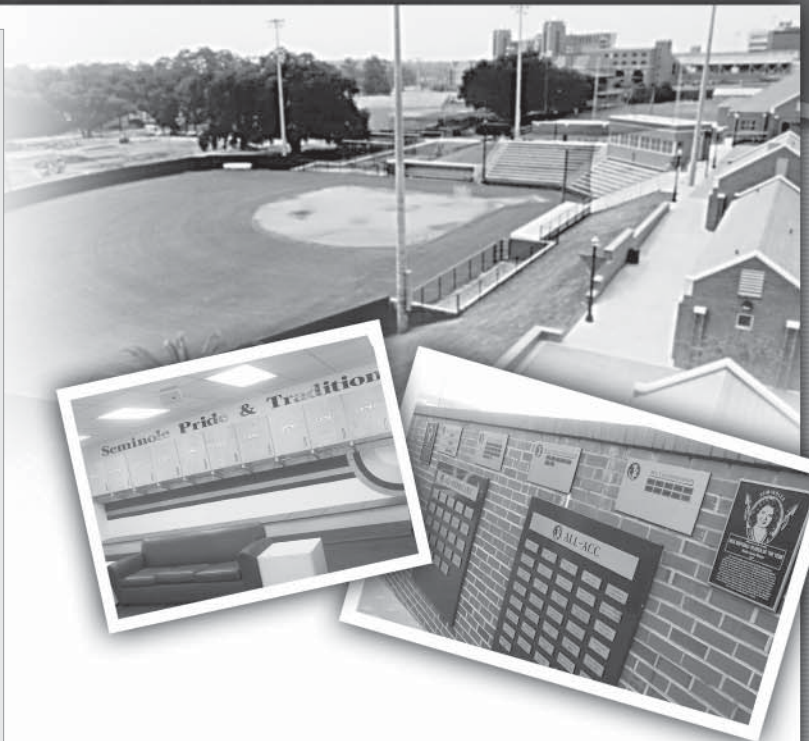
Go North on Capital Circle to Pensacola Street. Make a right on Pensacola Street and follow to Stadium Dr. Make a left and at the first stop light (Spirit Way) go right. Complex and parking is on the right.

FROM: HWY 90 WEST (QUINCY)

Go East on HWY 90 (Tennessee St.) to Ocala St. Make right and take Ocala St. to Pensacola St. Make a left and go East on Pensacola St. to Stadium Dr. Make a left and at the first stop light (Spirit Way) go right. Complex and parking is on the right.

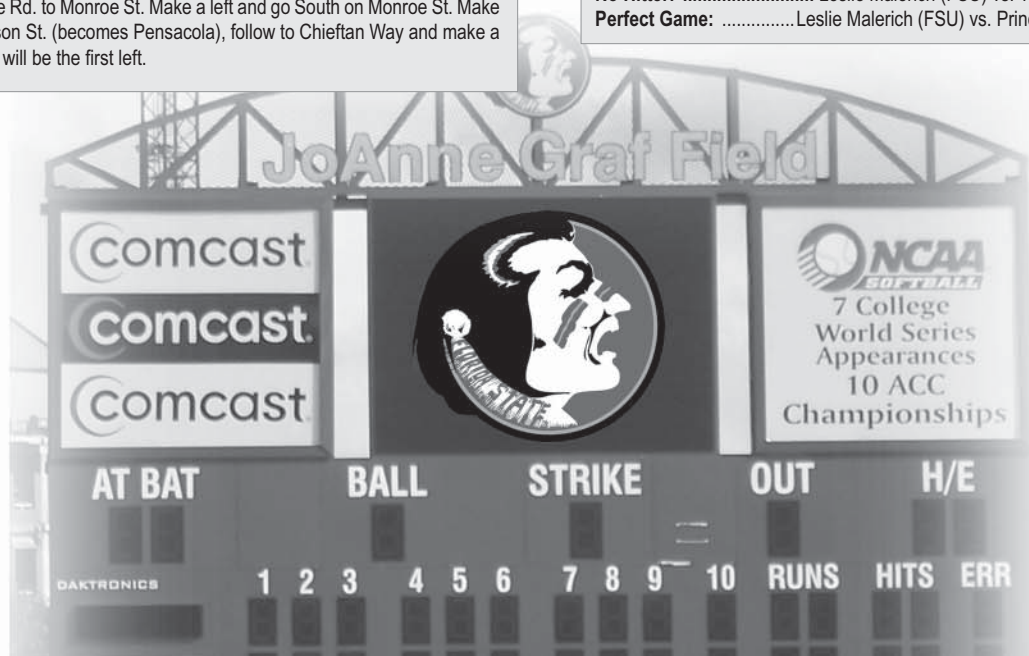
FROM: ROUTE 319 (THOMASVILLE RD.)

Take Thomasville Rd. to Monroe St. Make a left and go South on Monroe St. Make a right on Jefferson St. (becomes Pensacola), follow to Chieftan Way and make a right. Parking lot will be the first left.



JOANNE GRAF FIELD FIRSTS:

- Game:** Florida State 9, Mercer 0 (Feb. 19, 1999)
- Pitch:** 3:05 pm. (Feb. 19, 1999)
- Game Time:** 1 hr. 30 min.
- Batter:** Stephanie Anunson (Mercer) Flied out to left fi eld
- Hit:** Danielle Cox (Florida State) vs. Mercer (Feb. 19, 1999)
- 2B:** Andi Lyons (Florida State) vs. Mercer (Feb. 19, 1999)
- 3B:** Tami Post (Florida State) vs. Mercer (Feb. 19, 1999)
- HR:** Danielle Cox (Florida State) vs. Mercer (Feb. 19, 1999)
- Walk:** Corrie Williams (Florida State) by Jenifer Milam (Mercer) (Feb. 19, 1999)
- Strikeout:** Christine Hall (Mercer) by Jen White (Florida State) (Feb. 19, 1999)
- Sacrifice:** Christy Cerecedes vs. Mercer (Feb. 19, 1999)
- Stolen Base:** Danielle Cox vs. Mercer (Feb. 19, 1999)
- Error:** Cheri Rasmussen (Mercer) (Feb. 19, 1999)
- Win:** Jen White (Florida State) vs. Mercer (Feb. 19, 1999)
- Loss:** Jennifer Milam (Mercer) vs. Florida State (Feb. 19, 1999)
- No Hitter:** Leslie Malerich (FSU) vs. Toledo (March 12, 1999)
- Perfect Game:** Leslie Malerich (FSU) vs. Princeton (March 15, 2000)



PREVIEW COACHES ATHLETES REVIEW HONORS & AWARDS RESULTS & RECORDS THE UNIVERSITY THIS IS FSU SOFTBALL



SEMINOLE SOFTBALL

2

0

0

8



THIS IS FSU SOFTBALL

Seven trips to the Women's College World Series, 20 NCAA Tournaments, 24 All-Americans, 10 conference titles in 15 years and one of the nations' premier softball facilities and that's just scratching the surface of what it means to play softball at Florida State. From the time FSU won its first national championship in 1981, the nation's best players have come to play for legendary head coach Dr. JoAnne Graf and wear Garnet and Gold. For over two decades those players have made FSU one of the most dominant softball programs in the history of collegiate softball.

Only five teams in the history of the NCAA have been to more WCWS than Florida State and no school east of Arizona has been to more NCAA Tournaments than the Seminoles. Florida State's success on the field is remarkable. The Seminoles have won 75% of the 1855 games they have played and have never endured a losing season under the guidance of coach Graf who enters her 30th season at the helm in 2008. Only UCLA has amassed more program wins than Florida State's 1180 since 1984 and the Seminoles have a winning record against over 80% of the 165 opponents they have faced in the program's illustrious 29-year history. Nothing has changed recently either as over the last 15 seasons, FSU has amassed 805 wins for an average of more than 50 victories a season.

Winning is a big part of what it means to be a Seminole and a reason players come to Tallahassee, but it is so much more. Getting an opportunity to play for one of the sport's coaching greats is another big draw. After celebrating her 25th anniversary at Florida State in 2003, coach Graf spent the off-season preparing for the biggest honor of her professional career. In 2003, the FSU graduate was inducted into the National Fastpitch Coaches' Association (NFCA) Hall of Fame the year after she broke the NFCA record for the most wins ever by a softball coach (1355).

On February 22, 2006, Florida State defeated Jacksonville to make Graf just the second coach in NCAA Division I history to record 1,100 fastpitch victories. Graf ranks in the top four of five of the NCAA's six all-time coaching categories. Only two active coach in Division I softball history have more than 900 wins and a higher percentage than Coach Graf.



As dominant as Florida State has been over the past two decades, its unprecedented success is even more pronounced when you look at what the squad has done in its 15 years of Atlantic Coast Conference play. The Seminoles have been crowned ACC champions 10 times and have produced 10 ACC Tournament MVP's. Graf has been named the conference's top coach on six occasions and a Seminole has taken home the conference's MVP trophy five times as well. Florida State is 103-33 all-time in ACC play winning a gaudy 75% of its conference games and the Tribe has finished atop the ACC regular season standings 12 times in 15 years. Since 1992, Florida State has more NCAA Tournament appearances (19-to-14) and All-Americans (22-to-16) than the rest of the conference combined. Florida State's ACC dominance was never more evident than when the Seminoles placed an astounding 24 players out of 53 on the ACC's 50th anniversary softball team.

One of the great joys of playing softball at FSU is stepping on the diamond at the state-of-the-art JoAnne Graf Field at the Seminole Softball Complex, which is one of the nation's top facilities. The softball specific stadium includes ticket and concession buildings, stadium seating and a spacious press box, radio/television booths and high speed Internet access. The two-level Mary Ann Stiles & Barry Smith Team Building houses the coaches' offices which overlook the softball field, a reception area, a combined workroom, large team and coach's locker rooms, visiting team locker rooms and training and equipment rooms.

Playing for one of the nation's top programs under the guidance of the country's premiere softball coach, graduating from a prestigious university and playing on a 'field of dreams' are all a part of the package that is Florida State softball.

THIS IS FSU SOFTBALL THE UNIVERSITY RESULTS & RECORDS HONORS & AWARDS REVIEW ATHLETES COACHES PREVIEW



PRO/INTERNATIONAL PLAYERS



Laurie Shepard
Silver Bullets
(1995-98)

Casey Hunter
Connecticut Brackets
(2006)

Renée Espinoza
Georgia Pride
(1997)

Jessica van der Linden
Arizona Heat
(2004)

Yuruby Alicart
Venezuelan National Team

Tatiana George
Harlem Diamonds
(2005)

Brandi Stuart
Akron Racers
(2004)

Myssi Calkins
Georgia Pride
(1999)

Shannon Mitchem
Silver Bullets
(1993-98)

Leslie Malerich
Connecticut Brackets
(2005-06)

Tiffany McDonald
British National Team
(2006)

Shamalene Wilson
Georgia Pride (1997)
1998 Women's Pro Fast Pitch
Defensive Player of the Year

Leslie Adams
Carolina Diamonds
(1997-99)

Kristy Fuentes
Georgia Pride
(1998)

Veronica Wootson
Akron Racers
(2007)

Elisa Vasquez
Houston
(2004)

RECENT 'NOLES IN THE PROS

- Florida State graduate Yuruby Alicart will play for the Venezuelan National Team at the 2008 Olympic Games in Beijing this summer.
- Veronica Wootson joined the ranks of former Seminoles playing in the pros in 2007 when she played second base for the Akron Racers and won the Nokona American Glove Award for Offensive Player of the Year.
- Current FSU pitcher, senior Tiffany McDonald, was a member of the British National Team as a guest player for the ISF World Championships in China in 2006.



SEMINOLE SOFTBALL

2 0 0 8

JESSICA van der LINDEN

2004 USA SOFTBALL
AND HONDA
NATIONAL PLAYER
OF THE YEAR



Sports Illustrated Photo Shoot



Halftime recognition at UNC football game



Anna Graf

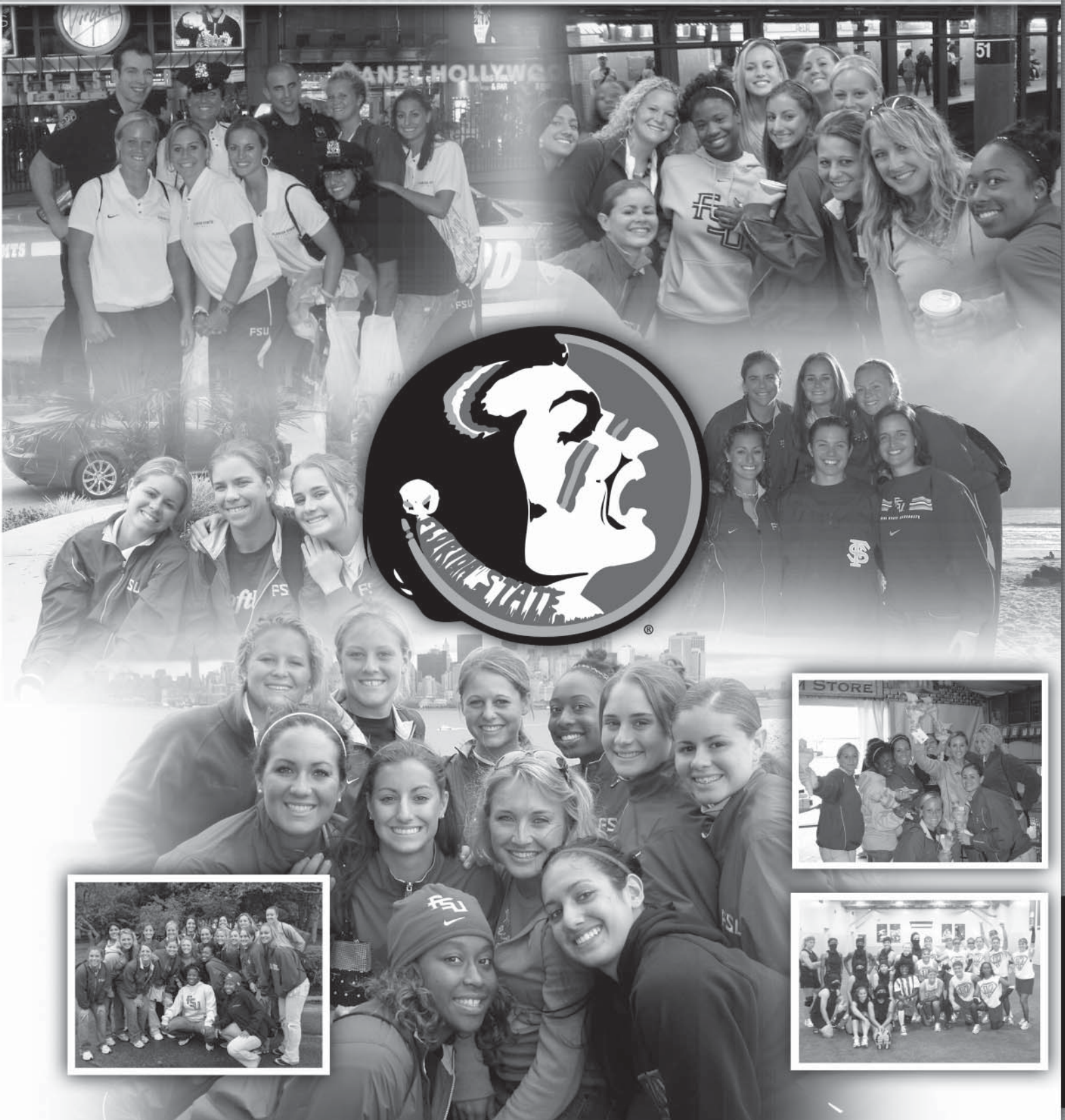


THIS IS FSU SOFTBALL THE UNIVERSITY RESULTS & RECORDS HONORS & AWARDS REVIEW ATHLETES COACHES PREVIEW

SEMINOLE SOFTBALL

2008

OFF THE FIELD W/ THE SEMINOLES

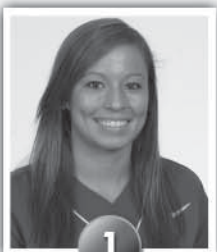


PREVIEW COACHES ATHLETES REVIEW HONORS & AWARDS RESULTS & RECORDS THE UNIVERSITY THIS IS FSU SOFTBALL



SEMINOLE SOFTBALL

RADIO/TV ROSTER



1

KRISTIE MCCONN

IF • Freshman
Broken Arrow, Okla.
(Bishop Kelley)



2

MELISSA MAY

P • Junior
San Diego, Calif.
(Ranch Bernardo)



3

KELLY LANGSTON

IF • Senior
Sopchoppy, Fla.
(Tallahassee CC)



5

WHITNEY BUCKMON

OF • Senior
Stone Mountain, Ga.
(Union Grove)



7

MONICA MONTEZ

OF • Sophomore
Corona, Calif.
(Corona)



8

TERESE GOBER

P • Sophomore
McDonough, Ga.
(Union Grove)



9

BRITTANY OSMON

IF • Senior
San Diego, Calif.
(Mt. Carmel)



12

JESSICA GILMORE

OF/C • Junior
Fort Walton Beach, Fla.
(Georgia)



15

CARLY WYNN

OF • Sophomore
Sharpsburg, Ga.
(Northgate)



18

MICHELLE SNYDER

IF • Junior
Wenatchee, Wash.
(Eastmont)



19

ASHLEY STAGER

IF • Freshman
Trinity, Fla.
(South Plantation)



20

ROBYN PETROVICH

IF • Senior
Plantation, Fla.
(Chiles)



23

TIFFANY MCDONALD

P • Senior
Belfair, Wash.
(North Mason)



25

SARAH HAMILTON

P • Freshman
Tallahassee, Fla.
(Chiles)



28

BRITTANY JOSEPH

UTIL • Freshman
Laurel, De.
(Sussex Technical)



32

ROBYN AHRBERG

C • Sophomore
Stillwater, Okla.
(Stillwater)



44

CAMILLE GARCIA

IF • Sophomore
Sandia Pueblo, NM
(Walnut, CA)



77

ALLISON COLLINS

C • Freshman
Niceville, Fla.
(Niceville)



JoANNE GRAF

Head Coach
30th Season
Florida State, 1975



LOUIE BERNDT

Associate Head Coach
10th Season
Western Michigan, 1983



BARBARA SHERWOOD

Assistant Coach
1st Season
Troy, 1998



ROBIN GIBSON

Head Athletic Trainer
20th Season
San Diego State, 1985