

# Women's Tennis

FLORIDA STATE UNIVERSITY



SEMINOLE SPORTS ONLINE  
[www.seminoles.com](http://www.seminoles.com)  
OFFICIAL FSU SPORTS WEBSITE

# Table of Contents

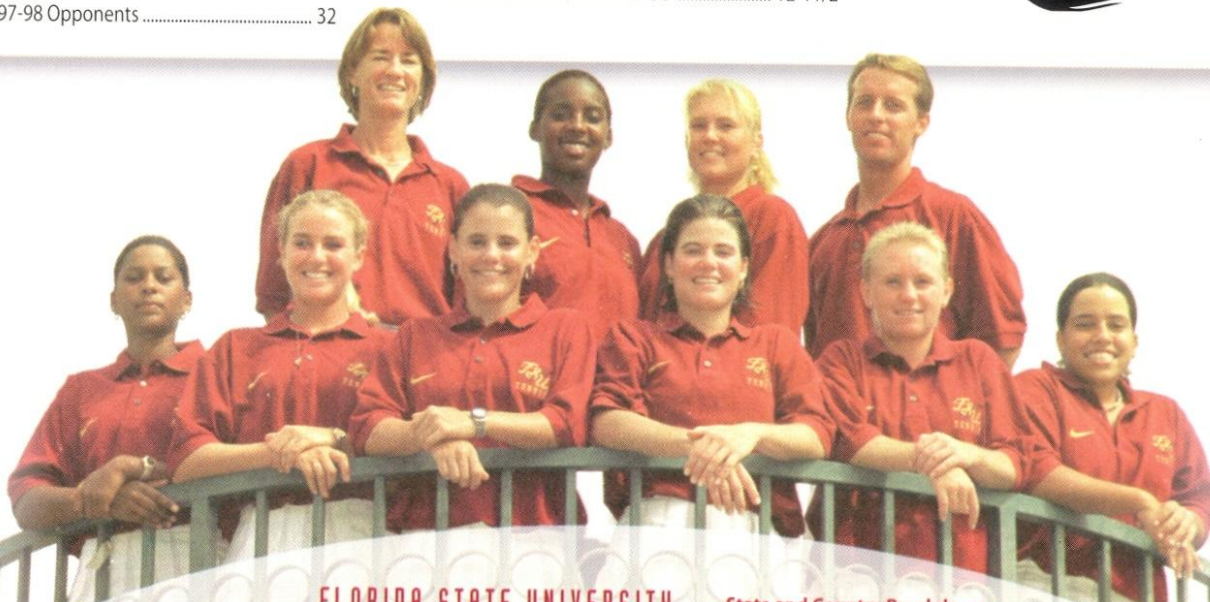
# TABLE OF CONTENTS

## Contents:

Media Information .....	1
This Is Tallahassee .....	2-3
This Is Florida State University .....	4-5
1998 Preview .....	6-7
Coach Bios .....	8-9
Player Bios .....	10-11
Player Bios .....	12-13
1997 Review .....	14
1997 Statistics .....	15
1997 ACC Statistics .....	16-17
Around the ACC .....	18
Atlantic Coast Conference .....	19
Year by Year Results .....	20-21
Honors & Awards .....	22
Speicher Tennis Center .....	23
All-Time Information .....	24-25
Support Services .....	26
Athletic Care .....	27
Life Skills .....	28
NCAA Information .....	29
Year by Year Records .....	30
Conference Info .....	31
1997-98 Opponents .....	32

## Florida State University Quick Facts:

Location .....	Tallahassee, Florida	Assistant Coach .....	Tim Bauer
Enrollment .....	30,200	Years at FSU .....	Second Season
Founded .....	1857	Tennis Office Phone .....	(850) 644-1092
Nickname .....	Lady Seminoles	1996-97 Record/Conference .....	12-11/6-2 (3rd)
Colors .....	Garnet and Gold	1997 Final Ranking .....	No. 37 ITA/Rolax
Conference .....	Atlantic Coast	Players Returning/Lost .....	5/4
Affiliation .....	NCAA Division I	Newcomers .....	4
President .....	Talbot "Sandy" D'Alemberte		
Home Courts .....	Don Loucks Varsity Courts ..... at the Scott Speicher Tennis Center		
Athletic Director .....	Dave Hart, Jr.		
Assistant Athletic Director .....	Kim Record		
Sports Information Director .....	Rob Wilson		
SID Office Phone .....	(850) 644-1403		
Tennis Contact .....	Joe Hornstein		
<b>Tennis Contact Phone .....</b>	<b>(850) 644-5656</b>		
<b>Tennis Contact Home Phone .</b>	<b>(850) 575-0451</b>		
Sports Information Fax Number .	(850) 644-3820		
Sports Information Mailing Address .....	..... P.O. Box 2195 Tallahassee, FL 32316		
Head Coach .....	Lise Gregory		
Overall Record/Years at FSU .....	12-11/2		



## FLORIDA STATE UNIVERSITY 1997-98 WOMEN'S TENNIS ROSTER

Name	Class	Major	Hometown
Kia Åsberg .....	FR	Undecided	Lysekil, Sweden
Natalie Carratala .....	FR	Undecided	Miami, Florida
Nanette Duxin .....	FR	Undecided	Montevideo, Uruguay
Sasha Hanna .....	JR	Communciations	Montego Bay, Jamaica
Helena Karlsson .....	SR	Finance	Ostersund, Sweden
Rakina Payne .....	SR	Marketing	Chicago, Illinois
Kylie Thompson .....	JR	Psychology	Honea Path, South Carolina
Christy Travis .....	FR	Undecided	Palmetto, Florida
Ali Weber .....	SO	Communications	Clermont, Florida

### State and Country Breakdown...

Florida .....	3
Illinois .....	1
South Carolina .....	1
Jamaica .....	1
Sweden .....	2

### Pronunciations...

Kia Åsberg .....	KEE - uh AHZ - berg
Natalie Carratala .....	cara - TAHL - luh
Nanette Duxin .....	doo - Shawn
Helena Karlsson .....	hill - LEAN - nuh CARL - sun
Rakina Payne .....	Rah - KEEN - nuh
Kylie Thompson .....	KYE - lee
Ali Weber .....	AL - lee
Lise Gregory .....	LEE - suh



# Media Information

## A Note to the Media, Fans and Opponents

Lady Seminole Tennis contact Joe Hornstein of the Florida State University Sports Information Office is ready to assist you with any questions or requests you may have about the 1997-98 Seminole tennis program, media guide, coaches and student-athletes. Please do not hesitate to phone, fax or write a letter to the sports information office at P.O. Box 2195; Tallahassee, Florida 32316; (850) 644-1403 phone; (850) 644-3820 fax, if we can further assist you.

## How to cover the Seminoles

Members of the media are supplied with weekly press releases, including updated individual tournament and career statistics, as well as conference and national rankings and information on upcoming matches or events. Results and statistics may be obtained in the sports information office or off the Atlantic Coast Conference's faxback system. Pertinent team and player information will also be available at the Scott Speicher Tennis Center for all home matches. If you would like to schedule personal interviews with the coaches or players, contact Hornstein in the FSU Sports Information office at least 24 hours in advance. Head Coach Lise Gregory is generally available in her office during weekday mornings.

## Where the home matches will be

All 1997-98 Seminole Tennis home matches take place at the Scott Speicher Tennis Center (capacity 1000). The courts are located off of Chieftain Way directly behind the Bobby E. Leach Center. Parking for the facility is located to the west of the site. Media members will be provided parking passes and will be seated in a designated area. Please notify the sports information office prior to home matches for credentials to be assigned. Any accredited photographer wishing to shoot the matches must check in with Hornstein prior to gameday so proper credentials can be assigned.

## FSU on the web

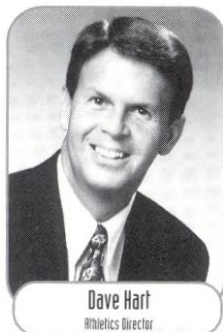
Check out the Florida State women's tennis program on the web. Go to your internet site and type in [www.seminoles.com](http://www.seminoles.com). Once you are in the site follow the directions to the home of the Florida State Lady Seminoles web page.

## ACC FaxBack System:

ACC tennis standings and statistics are available on ACC FaxBack each Tuesday morning. Call (850) 854-5859, from the handset of your fax machine, and follow the directions. The ACC code for the tennis release is 6350. The FSU tennis release can be found on the system under code 32350, Tuesday afternoons.

## Media Guide Credits

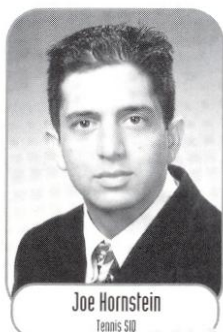
The 1997-98 Seminole Women's Tennis media guide is a publication of the Florida State University Sports Information Office. Edited and written by Joe Hornstein. Designed by Marsiglio & Murphy Design Group, Inc. Photography by Landa Oz Photography, Ross Obley, Ryals Lee and the University Photo Lab. Printing by FSU Printing.



Dave Hart  
Athletics Director



Him Record  
Associate Athletics Director



Joe Hornstein  
Tennis SID



## Florida State University Media Outlets

### Newspapers:

#### TALLAHASSEE DEMOCRAT

P.O. Box 990; Tallahassee, Florida 32302  
phone: (850) 599-2166 fax: (850) 599-2301

#### THE FLAMBEAU

P.O. Box 20287; Tallahassee, Florida 32316  
phone: (850) 681-6695 fax: (850) 681-3577

#### FSVIEW

P.O. Box 20331; Tallahassee, Florida 32316  
phone: (850) 561-6653 fax: (850) 561-6578

#### THE OSCEOLA

402 Dunwoody Street; Tallahassee, Florida 32304  
phone: (850) 222-7733 fax: (850) 224-3627

#### FLORIDA TIMES-UNION

One Riverside Avenue, Suite 304; Tallahassee, Florida 32301  
phone: (850) 224-7515 fax: (850) 681-2961

#### ORLANDO SENTINEL

336 East College Avenue, Suite 303; Tallahassee, Florida 32301  
phone: (850) 222-5564 fax: (850) 224-0979

### Television/Radio:

#### WCTV - TV (CBS affiliate)

P.O. Box 3048; Tallahassee, Florida 32315  
phone: (850) 893-2126 fax: (850) 668-3851

#### WTXL - TV (ABC affiliate)

8927 Thomasville Road; Tallahassee, Florida 32312  
phone: (850) 893-1313 fax: (850) 668-3851

#### WTWC - TV (NBC affiliate)

8440 Deerlake Road; Tallahassee, Florida 32312  
phone: (850) 893-9892 fax: (850) 893-3646

#### WNLS - Sports Radio 1270 AM

325 John Knox Road, Suite E-200; Tallahassee, Florida 32303  
phone: (850) 386-6143 fax: (850) 385-8789



# This Is Tallahassee

## THIS IS TALLAHASSEE

Near, but far from the glaring strips of neon amusement, and the castles and crowds of Disney, lies another magical place in the Sunshine State — one of pow-wows, plantations, politics and great pride. Often described as “The Other Florida” with its deep-rooted history, rolling hills, canopy roads of moss-draped oaks, cool climate and Southern-style hospitality; it is a Florida few have seen. It is Tallahassee — Florida with a Southern accent.

Best known as Florida’s capital, Tallahassee is an intimate neo-metropolitan city where the power of state government, the academic and the artistic are complemented by subtle, old-fashioned charm. It is the perfect two- or three-day diversion for the more than 41 million annual visitors to Florida and 13 million residents.

Tallahassee touts a menagerie of sights including one of the world’s deepest freshwater springs, site of America’s first Christmas, a wildlife habitat, Capitol buildings, fascinating museums of history, sprawling plantations, highly acclaimed fishing and hunting adventures and nearby beaches. Spirited area festivals range from celebrations of Tallahassee’s spectacular spring and swamp stomps to genuine rattlesnake roundups and seafood festivals.

With the Gulf of Mexico just 20 miles south and the Georgia border only 14 miles north, Tallahassee rests between the foothills of the Appalachian Mountains and the juncture of Florida’s panhandle and peninsula. Nearer in miles to Atlanta than to Miami, Tallahassee more closely resembles its Southern neighbors than Florida in topography, climate and lifestyle.

Accentuating Tallahassee’s Southern persona are lush rolling hills, likened to the seven hills of Rome, and five “official” canopy roads of patriarch oaks. The fertile, rich soil and four distinct, yet pleasant, seasons breed floral brilliance and natural vitality year-round.

Like the city itself, the story of how Tallahassee was chosen as the state capital is rich in history. In 1823, two explorers set out — one on horseback from St. Augustine and the other by boat from Pensacola — to find a permanent, central location for the Legislature to convene. The two met at a beautiful site that the Creek and Seminole Indians called “tallahassee” — derived from

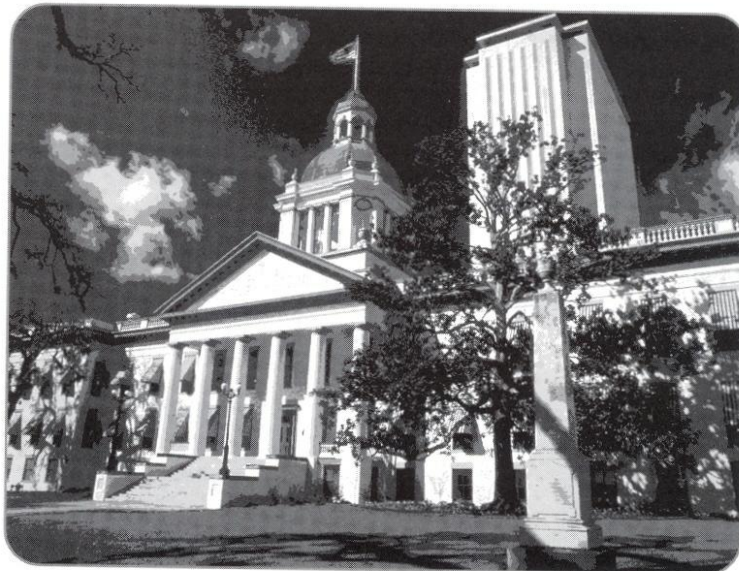
the words “talwa” meaning town and “ahasee” meaning old. The rendezvous point remains Florida’s capital.

The “old town” has undergone many changes, but one thing remains the same — it is still a government town fiercely proud and dedicated to preserving its heritage. The Capitol buildings, both old and new, epitomize Tallahassee’s perseverance.

The 22nd floor of the New Capitol provides a panoramic scope of a sophisticated Southern city awash in a sea of flowering azaleas, snowy dogwoods, towering pines, fragrant magnolias,

and hundreds of shimmering lakes, springs, swamps, rivers and sink holes. Special legislative viewing galleries are open during the legislative session.

Below, in the shade of giant live oaks, proudly stands the Old Capitol, originally constructed in 1845 and restored to its 1902 splendor complete with red-and-white candy-striped awnings, a dome adorned with stained glass, antique furnishings and political memorabilia.

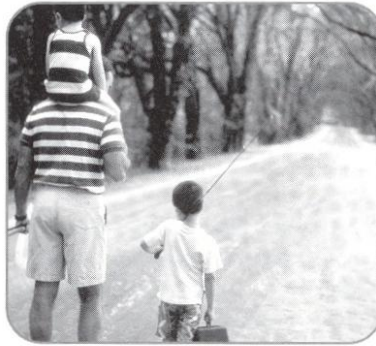


Across from the Old Capitol are the 40-foot twin granite towers of the Vietnam Veteran's Memorial, and the blue stone Union Bank, Florida's oldest surviving financial institution. The nostalgic Old Town Trolley, a replica turn-of-the-century street car, carries passengers through restored Adams Street Commons to numerous other historical d o w n t o w n shops for free — unheard of even 100 years ago.

Minutes from downtown lies the Governor's Mansion, which resembles the home of Florida's military hero Andrew Jackson; and the 52-acre natural animal habitat and 1880s farm of the Tallahassee Museum of History and Natural Science, which provide the rare chance to walk and talk with native Florida animals.

Tallahassee remains firmly linked with the past as evidenced by the unearthed 1539 winter encampment of Spanish Hernando de Soto, the site of the first Christmas celebration in America. Visitors travel back through time as they stand in the shadow of a giant 12,000-year-old American Mastodon at the Museum of Florida History or explore other historical spots including The Knott House that Rhymes, The Columns, San Luis Mission, Lake Jackson State Archaeological Site, Natural Bridge Battlefield, First Presbyterian Church, Brokaw-McDougall House, Goodwood Plantation and Adams Street Commons.

Nearby, alligators lazing in the sunshine and anhinga "snake birds" perched on twisted cypress branches are seen at Wakulla Springs, one of the world's deepest freshwater springs and site of many underwater scenes in the "Tarzan" movies with Johnny Weissmuller and



M a u r e e n O'Sullivan. Safaris aboard glass-bottomed and jungle cruise boats whisk visitors within arm's length of "The Other Florida."

Outdoor enthusiasts enjoy adventures including boating and fishing on area lakes, rivers, ponds and the Gulf — just 30 minutes away. Lakes Seminole, Jackson and Talquin are renowned in the bass fishing world for yielding the "big ones," and dense forests offer an abundance of prize-winning game. Local wildlife areas such as the Florida National Scenic Trail,

St. Marks National Wildlife Refuge and Apalachicola National Forest are among many spots for camping, picnicking, swimming, biking and exploring.

Appealing to the strokes of different folks, Tallahassee also features 99 holes of golf on six courses and a proliferation of tennis centers. Sideline athletes cheer the nationally-ranked Florida State Seminoles, Florida A&M Rattlers and the Tallahassee Tiger Sharks, of the East Coast Hockey League. And always a sure bet are the nearby greyhound races.

A sport of sorts, shopping at two regional malls and many specialty centers offer many "playing options" — from popular chains to curiosity and antique shops.

Cultural interests are sparked by widely-acclaimed museums and galleries and elaborate entertainment at the 14,000-seat Tallahassee-Leon County Civic Center.

Tallahassee is a collaboration of power-play politics and classical character splashed with a twist of Southern beauty and charm. Tallahassee is Florida with a Southern accent.

# This Is Florida State University

**F**lorida State University, celebrating its golden anniversary as a coeducational graduate research institution in 1997, has joined the nation's elite in both academics and athletics.

**Located on the oldest continuous site of higher education in Florida** and building rapidly on the framework of a highly regarded liberal arts college for women, the University has emerged over the past 50 years as an institution of national and international esteem. Its stature is evidenced by a number of additions to its record of excellence in the 1990s:

- In 1994, Florida State was classified a **"Research University I"** by the Carnegie Foundation, placing it among the nation's top research universities.

- In 1994, the college referral service, "Who's Who Among American High School Students," placed FSU among its top 10 — with such universities as Harvard, Duke, Stanford, North Carolina-Chapel Hill, Michigan-Ann Arbor and Yale — of most frequent choices of more than 100,000 of the nation's best and brightest high school students who asked that a specific college be notified of their recognition in "Who's Who."

- Vice President of the United States Al Gore spoke at the dedication of the **National High Magnetic Field Laboratory**

at Florida State in 1994. The National Science Foundation established the \$100 million magnet lab in 1990 at FSU, which is partnered in research with the Los Alamos National Laboratory and the University of Florida. A Nobel laureate in physics and a top Russian physicist were among the first scholars drawn to the faculty. The **world's largest magnet** — two stories high and capable of generating 45 tesla or 1 million times the Earth's magnetic field — was installed in 1995 at the **NHMFL**, located in the **off-campus research complex**, Innovation Park. In 1996, the NSF renewed and increased by 50 percent the NHMFL's funding for another five years.

- FSU created the first multipurpose student identification/banking card. The **Card Application Technology Center** is a

national leader in "smart card" systems.

- At the forefront of supercomputing since obtaining its first high-speed computer in 1985, FSU took yet another step in

ultrafast and parallel computing in 1990 when it acquired **two supercomputers**, the Thinking Machine Corp. Connection Machine and the Cray Y-MP.

- In fall 1994, the first tenants moved into the east side of the \$100 million **University Center**, a classroom-and-office facility at Doak Campbell Stadium; the stadium's south end zone also was enclosed and the adjacent Moore Athletic Center expanded. With the completion of the west side in 1996, University Center now provides 550,000 square feet of much needed academic space and a centralized location for student services.

- In 1990, Florida State **ranked second in popularity nationwide** among high school seniors, based on the number of students who request that their Scholastic Aptitude Test (SAT) scores be sent to an institution. FSU was the only institution listed among the top 10 choices of both black and white college-bound students.

- FSU's high-tech program in **structural biology** in 1991 received the University's largest single foundation grant, \$4 million.

- Capping more than a decade of national prominence in intercollegiate athletics, Florida State's athletic teams, nicknamed **"Seminoles,"** joined the **Atlantic Coast Conference** as its ninth member in 1990. The FSU football team won the **1993 National Championship** and its quarterback, Charlie Ward, won the University's first **Heisman Trophy**.

- The **Dr. Bobby E. Leach Center**, a state-of-the-art student recreation facility, with a pool, saunas, basketball and racquet-sport courts, was completed in 1991.

- **FSU ranked 20th in the nation for 1990-91 in the number of black Ph.D. students it graduates.** Over the five years, 1986 to 1990, FSU ranked eighth nationally by granting doctorates to 70 African-Americans.

As this list of highlights attests, Florida State is excelling in the 1990s with exceptional strength, energy and vision for the future.

Under the leadership of the University's 12th president, **Talbot "Sandy" D'Alemberte**, who took office in January 1994, FSU will continue to build on the foundation of its history of excellence in scholarship, research and service.

A senior member of the 10-member **State University System**, FSU was founded as an institution of higher learning in 1851 by legislative act and began in Tallahassee with its first students in 1857.

Today, FSU's operating budget is **\$474.3 million**. Faculty and administrators generate more than **\$102 million** annually in external funding to supplement state-sponsored research. Three direct-support organizations serve to bolster the Uni-

W  
O  
M  
E  
N  
S



## On Playing for Florida State and Being a Seminole

**Sasha Hanna** - "There's an intensity. There is also a pressure to succeed, one that I put on myself. It is very emotional to be a part of something that so many people look up to or wish they could be a part of."

**Rakina Payne** - "It's an honor!"

**Kylie Thompson** - "To me, being a Seminole is a huge source of personal pride. Very few people have an opportunity to join an organization with a reputation like that of Florida State. Our team and the Seminole athletic body, in general, are one big family."

**Kia Åsberg** - "It is truly an honor being part of Florida State University. I felt the school spirit from the first day I arrived on campus and to this very moment...once a Seminole, always a Seminole."

**Natalie Carratala** - "It has been a great experience."

**Helena Karlsson** - "It's like being part of a family. It's a great team."

versity: **FSU Foundation**, which raises millions in private gifts to support academics, **Seminole Boosters** and **FSU Alumni Association**.

The main campus is spread over **451.6 acres in Tallahassee**; FSU, which has one of the smallest campuses in the SUS, has been actively acquiring land in the 1990s after years of being landlocked at 347 acres. FSU owns 1,281 acres in Leon, Bay, Franklin and Sarasota counties.

Within the state, the University maintains facilities at its **25-acre campus in Panama City**, its **Marine Laboratory** on the Gulf of Mexico, the **Appleton Museum** in Ocala and the **Asolo Performing Arts Center** in Sarasota. The **Center for Professional Development and Public Service**, housed in the **Augustus B. Turnbull III Florida State Conference Center** on the edge of the campus, provides extensive credit and non-credit continuing education programs statewide.

Florida State offers **286 graduate and undergraduate degree programs** through its **eight colleges** — Arts and Sciences; Business; Communication; Education; Engineering (operated jointly with Florida A&M University, a historically black institution); Human Sciences; Law; and Social Sciences (which also incorporates the **Reubin Askew School of Public Administration and Policy**) — and **eight schools** — Criminology and

Criminal Justice; Information Studies; Motion Picture, Television and Recording Arts; Music; Nursing; Social Work; Theatre; and Visual Arts and Dance.

With 1,655 members, the FSU faculty has included **nine National Academy of Sciences elected members**, **nine American Academy of Arts and Sciences fellows** and **five Nobel laureates**. It is backed by 2,887 administrative/professional and support staff.

Library holdings at Florida State include **2.1 million book titles**, **16,384 serials**

and **4.5 million microforms**. The main library facility, the **Robert M. Strozier Library**, is linked by computer to other state university and national research libraries. The **Paul A.M. Dirac Science Center Library** is located at the heart of the University's science research complex. FSU also maintains extensive music, library science and law libraries.

**Graduate students, who number more than 5,929**, pursue advanced degrees in fields as diverse as business administration and theoretical particle physics. A majority of research done at FSU is the direct result of student effort, culminating in numerous books, monographs and journal articles relating to the whole spectrum of intellectual interests and the practical needs of society.

FSU, a residential campus, places a high priority on its **30,264 students** and their needs and interests (of the student population: 45 percent are male; 55 percent are female; 20.1 percent are minorities; and 2.5 percent are foreign students). The **University Honors Program**, **Disabled Student Services**, **International Student Center**, **Student Government**, **Flying High Circus** and intramural sports are among more than 200 organizations and activities in which students may participate.

In all areas of its mission — excellence in teaching, research and public service — **Florida State University** is advancing boldly toward the 21st century.



# 1998 Preview

## W O M E N S T E N N I S

The 1998 version of Florida State women's tennis will offer a balanced attack for the Seminoles as they enter the new season. Five veterans of dual match competition return to the FSU line up, with four newcomers to the program added in.

Along with the upside potential the Seminoles show on the court, their off the court happenings add to the upward escalation of the program. The team was named FSU's Golden Torch Award winner, going to the school's athletic program with the highest academic team GPA. The team also placed a number of its players on the All-ACC Academic Honor Roll and FSU's Dean's List.

"Three of our starting singles players (Lori Sowell, Ann Olsson and Lori Junker) have graduated so our returning athletes will play a big part in determining the success of this team," commented second-year head coach Lise Gregory.

Sowell, a former two-time All-American as well as annual All-ACC selection, and Olsson, another All-ACC pick as a senior last season, have graduated. Also gone are Junker, a mainstay within the middle of the FSU line up and Ashley Delaney, a formidable doubles opponent in her last year of competition.

Veteran play returns in the form of Kia Åsberg, Ali Weber, Kylie Thompson and Rakina Payne.

"We won a lot of our matches last year by out-working and out-competing our opponents," said Gregory. "That will be one of our strengths again this season."

Åsberg, a sophomore from Sweden, played mainly at No. 3 singles in 1997 after joining the team in the spring, but has some experience at the No. 2 position. She went 12-8 at No. 3 singles and defeated regionally ranked players from Rice and Wake Forest. To close the season, Åsberg won nine of her final 12 matches.

"Kia came to FSU in the spring and despite not having the fall to adjust to college tennis, she had a very good season," said Gregory. "She spent the first part of the summer in Tallahassee and put in some extra work, really improving several aspects of her game."

Weber, a sophomore from Clermont, was perhaps the most pleasant surprise for the Seminoles in 1997 as a freshman. She had a team-leading 26 victories last year at No. 3 through 6 singles, earning the ACC flight 5 regular season singles championship and goes into the 1998 season with a team-leading eight singles victories.

"Ali did an unbelievable job as a freshman, probably the Co-MVP with Ann Olsson for the season," said Gregory. "She is a great competitor and is always looking for ways to get better."

Thompson, a junior from South Carolina, suffered through nagging injuries last season which hindered her singles play. As a doubles partner, she was one of the team's most consistent performers. This past fall, she won her flight's singles championship at the Lady Seminole Fall Tennis Classic showing her growth and maturity as a collegiate player.

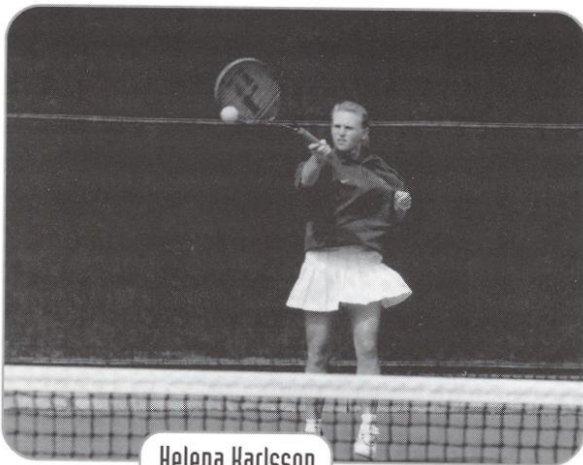
"Kylie is a very good athlete and a natural doubles player," said Gregory. "With the maturity she gained last year and continued improvement to her footwork, she will contribute considerably in the spring."

Payne, a senior from Chicago, is the team's only returning senior and is one of FSU's most athletic talents. Her hard-fighting ways on the court have brought some success as she has advanced to her flight's finals in some of the past fall tournaments.

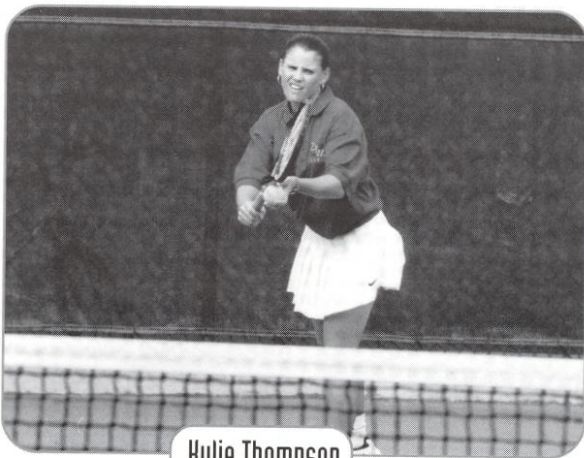
"Raks' is probably the most improved player on the team," added Gregory. "She is an absolute pleasure to work with and stayed in Tallahassee for the summer to work on her game. She will definitely push the bottom of the line up."

Joining the Seminoles this year, are a group of talented players with diverse backgrounds.

Helena Karlsson, a senior from Sweden, played the past three seasons at Virginia Commonwealth and transferred to FSU for her final season. She brings needed experience and leadership to the line up. Her presence is already noted as she advanced to her flight's semifinals of the Lady Seminole Fall Classic and teamed with Natalie Carratala to win the flight B championship at that tournament.



Helena Karlsson



Kylie Thompson



"Helena will be one of two seniors on this year's squad," said Gregory. "She is a true 'Swede' in that her work ethic is exemplary. She will be the most experienced member of the team and has great leadership qualities."

Carratala, a freshman from Miami, comes to FSU with a long list of accomplishments on the tennis courts, including several doubles trophies in many established junior tournaments. She has already gained a tremendous amount of experience in both singles and doubles with seven singles victories and a trip to the semifinals of two fall tournaments. She teamed with Karlsson to win their flight's championship at the Lady Seminole tournament.

"Natalie is a very good doubles player and a great team member," said Gregory. "I really enjoy working with her, because she has a lot of potential and, more importantly, she is a worker."

Christy Travis, a freshman from Palmetto, is a young and talented singles and doubles player. As a prep player at Bradenton Christian she was an annual team MVP and an all-conference selection, as well as all-academic honoree.

Nanette Duxin, a freshman from Uruguay, joins the team for the 1998 dual match season. In her native Montevideo, she has achieved a junior ranking as high as No. 1 in Uruguay's open division and has participated with her national team in the Federation and Continental Cup tournaments. She has claimed several French Junior titles from 1992-95.

"This group understands my philosophy and what is expected of them and I foresee a couple of them being great leaders," added Gregory. "We are going to be one of the hardest working teams in the country but this team realizes that hard work can be a whole lot of fun."

The team opens the 1998 year at the Minnesota Invitational in January. From there they take on the ACC in the annual ACC Indoor Championships at the Cone-Kenfield Tennis Center in Chapel Hill, NC.

The Atlantic Coast Conference, led by Duke and Wake Forest, look to be as strong as ever as the two schools have been top-ten ranked for most of the 1990's. Throw into the 1998 schedule usual top-ranked Florida and other Top 25 non-conference opponents South Florida, Miami and Alabama-Birmingham and the season will be as challenging as any other.

The actual dual, head-to-head, season begins when Georgia Southern comes to the Scott Speicher Tennis Center on February 7. The Lady Eagles are an annual opponent of the Seminoles and have gotten stronger each season as they dominate the Southern Conference.

Following the match with GSU, Alabama-Birmingham comes to town the very next day. The Blazers are led by an arsenal of international players, especially a talented freshman that dethroned three top 15 players in this past fall's ITA National Hardcourt Championships and was featured in *Sports Illustrated*.

The match with the Gators comes next in mid-February, followed by ACC matches at Georgia Tech, Clemson and Maryland.

The perennial No. 1-ranked Gators are always a tough challenge and give the opportunity for the FSU players to face some of the nation's top young talent. The Yellow Jackets and Lady Tigers are usually ranked in the nation's top 50 and the Terrapins have shown much progress the past few seasons.

Most of the dual match season takes place in March as the Seminoles face 12 opponents, led by conference foes Wake Forest, Virginia and NC State, plus USF and Miami.

The Demon Deacons is another chance for FSU to play against a perennial Top 5 opponent. The Cavaliers and Wolfpack are just as important as they have battled the 'Noles in year's past for the higher seeding in the postseason ACC tennis tournament.

In-state rivals USF and Miami have become as important of

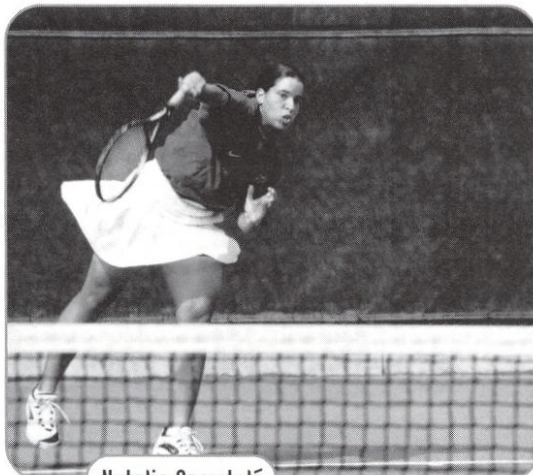
an opponent as any other. Both teams, although are not in FSU's conference, are in the same region. Therefore, wins against these teams go a long way in NCAA regional seeding.

In April, prior to the ACC tournament, FSU will have conference tune-ups with NCAA Championships regular Duke, with North Carolina closing out the regular season.

The Blue Devils have been conference champions nearly every year since the early 1980's. Nationally, their talent is as strong as Florida, Stanford or UCLA. The Tar Heels will look to avenge last season's meeting as the 'Noles won 7-2.

The Seminoles have fared well in the ACC Championships, having advanced to the semifinals nearly every year since joining the conference in 1992.

FSU's roster shows a lot of depth, with the returning players having played from the No. 2 to the No. 6 singles positions. To add to their singles experience, each is an accomplished doubles player as well. Both the veterans and newcomers received quite a bit of playing time in the fall at the Lady Seminole and Gator Classics, plus the Rolex South regional.



Natalie Carratala

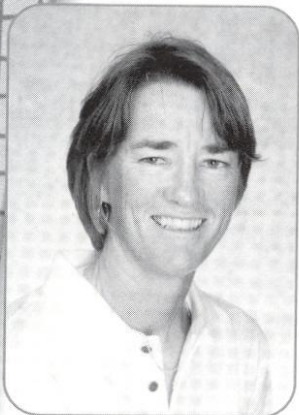
## On the Upcoming 1998 Season and Schedule

**Kylie Thompson** - "We have the luxury of playing some of the toughest teams in the country. That, combined with our facilities, coaching staff, academic support system and pride in being a Seminole, makes FSU one of the premier institutions of higher learning in the nation."

**Sasha Hanna** - "We have a real intense season coming up. We are all looking forward to the tough competition ahead of us."

**Helena Karlsson** - "We have a tough schedule, with a lot of home matches. We hope for a lot of supportive audiences."

# Coach Bios



## LISE GREGORY

University of Miami, '87  
2nd Season at FSU

### HEAD COACH

W  
O  
M  
E  
N  
S  
T  
E  
N  
S  
I  
S

won  
it  
again  
last  
year.

Balburn  
Raic.

Lise Gregory's program is starting to take shape in just her second year in Tallahassee. Last year, prior to her first season as head coach of the Seminole women's tennis team, Gregory insisted that Florida State would contend among the Atlantic Coast Conference's top teams, challenge FSU's non-conference opponents tougher and grow stronger as a total program.

The team finished above .500 and with four more wins than the 1996 season squad. The Seminoles finished third in the ACC, behind top 10 ranked Duke and Wake Forest and defeated non-conference Auburn, Florida International, Rice, Illinois and South Florida. In fact, 21 of 23 scheduled opponents held a national ranking by season's end. FSU wins came against 11 of them.

Growing stronger as a program is shown by the team's Golden Torch Award, given to the FSU athletics program with the highest team GPA. Women's tennis achieved a team GPA of 3.46, plus eight were mentioned in the All-ACC Honor Roll and four made the FSU Dean's List.

In addition to the on-court and classroom guidance Gregory has brought to the program, she has also put together the "Golden Spear Spirit Club". The Golden Spears are a group of Tallahassee community members, nearing 75 at the start of the 1998 dual match season, who show support for the FSU tennis program by coming out to the matches and cheering on the Seminoles.

Gregory's 1998 recruiting is comprised of four new payers in Helena Karlsson, Natalie Carratala', Christy Travis and Nanette Duxin. Karlsson is a senior transfer from Virginia Commonwealth and played with FSU this past fall. Carratala' and Travis are freshmen who also have played during FSU's fall tournament season. Duxin will join the Seminoles in the spring, as did Gregory's first recruit Kia Åsberg, who joined FSU prior to the 1997 dual match season.

Gregory, a former seven-time All-American and NCAA champion at the University of Miami, served as the assistant coach for women's tennis at Vanderbilt University for the 1996 season. She assisted Commodore head coach Geoff Macdonald in guiding the program to its second consecutive NCAA Championship appearance and a Top 10 ranking. She has also had additional coaching experience on the private level, as a USTA Area Training Center coach and as Inter-sectional and Zonal coach for the Florida Tennis Association. The

highlight of her professional career was a No. 4 world doubles ranking in 1990 with partner Gretchen Magers. She was ranked No. 18 individually.

As a player for the Hurricanes, Gregory earned an amazing seven NCAA All-America honors for her singles and doubles play as well as an NCAA doubles championship in 1986 with teammate Ronnie Reis. Together, they compiled an impressive 84-10 record over four years, while consistently being ranked among the nation's top five singles and doubles players throughout. She was named to Tennis Magazine's All-Star team as a senior in 1987 and as a junior in 1986.

As a professional, Gregory won 16 tournament titles in 23 finals appearances, including seven Virginia Slims doubles championships on the way to a career-high No. 18 world doubles ranking in 1990. She was a doubles quarterfinalist at the 1991 Australian Open, a Grand Slam event, as well as one of the top eight teams in the world that participated in the year-ending Virginia Slims Championship.

"Playing the tour was a great experience and in many ways it has helped me be a better coach," said Gregory. "I know I can help the team no matter what the situation is."

"The upcoming season is going to be an interesting one for us. Three of our top four players have graduated, so we are fairly inexperienced. We do have a very close team that works hard and wants to get better, so I think we'll see them over-achieving."

### The Gregory File

- World ranked 18th in doubles
- World ranked 4th as a doubles team in 1990
- World ranked 167th in singles
- 16 professional doubles titles and 23 finals appearances
- Named All-American seven times (three singles, four doubles) in four year career in Miami
- NCAA doubles champion and ITCA National Indoor champion in 1986 (with a 29-0 record)
- Teaching professional for two and a half years
- USTA Area Training Center Coach (1995)
- Florida Tennis Association 14 Zonal Coach (1995)
- Florida Tennis Association, U-18 Inter-Sectional Coach (1997)
- Golden Spear Club, founder



# TIM BAUER

## ASSISTANT COACH

Furman - 1993  
Florida - 1995  
2nd Season at FSU

Tim Bauer's dedication to the training of elite tennis players can be seen in his long list of accomplishments within the field. Prior to his naming as the assistant women's tennis coach in 1996, Bauer served as both a coach and Director of Exercise Physiology and Sport Psychology at the Van der Meer Tennis Academy on Hilton Head Island, SC. Additionally, Bauer directs his own summer junior camps on his native Long Island, NY. His involvement with the ATP and WTA touring professionals has brought him to several tour events, including four U.S. Opens.

A former player at Furman University in Greenville, SC from 1990-93, Bauer completed a Master's Degree in Exercise and Sport Science at the University of Florida in 1995. While at Florida, Bauer was an instructor in the College of Health and Human Performance and continues to be an invited speaker on topics of elite athletic performance and talent detection. Bauer also assists the USTA, serving as a coach at USTA Area Training Center camps for top-ranked juniors.

Bauer brings a diverse background of experience to the Lady Seminoles. Since his arrival, he has spent

time getting familiarized with the team members, focusing on bringing their mental and physical performances to higher levels. Recruiting also receives a large portion of Bauer's attention, as he evaluates the available talent for future Lady Seminole squads.

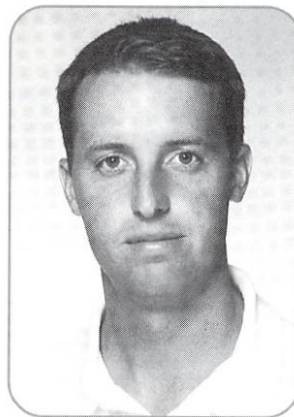
"Considering the support of our athletic department, our facilities and the addition of Coach Lise Gregory, I feel FSU is ready to

start an aggressive climb to the top of NCAA women's tennis" said Bauer.

Bauer maintains contact with the pro tour and has served as a professional consultant to several players world ranked in the Top 100, including WTA professionals Patricia Hy-Boulais (#61), Katarzyna Nowak (#65) and the ATP's Grant Stafford (#91).

"Tim is a great addition to our staff," said Head Coach Lise Gregory. "His teaching ability and love of the game make him

an invaluable asset to this program." *His background in exercise science gives us a big advantage because he can tailor the quickness, footwork & conditioning workouts to each player's needs.*



### On the Coaching you Recieve at Florida State

*Ali Weber - "Coach Gregory and Bauer make an ultimate team and really compliment each other. They genuinely care about their players."*

*Sasha Hanna - "They are caring, involved, intense and sympathetic to us as student-athletes."*

## Golden Spear Club

The Golden Spear Club is designed to provide "grass roots" support for the men's and women's tennis programs at Florida State University.

The objective of the club is to assist the athletic department in promoting FSU tennis in Leon County and throughout Florida and to assist us in generating interest and enthusiasm for our program.

The membership to the Golden Spear Club helps support the club's activities and the Florida State University Tennis Program. Although Golden Spear club memberships are **not** accompanied with Booster Club benefits, you can take pride in the fact that FSU Tennis will remain nationally competitive because of the support.

FSU Athletics welcomes you to become a part of the Golden Spear Club and join other tennis enthusiasts in the fun of supporting FSU tennis. Go Noles!

## GOLDEN SPEAR CLUB BENEFITS

Membership  
\$50 - Individual  
\$75 - Family (includes up to 2 adults and 3 children)

- Seminole Tennis T-shirt (one per membership)
- 2 pro-ams with men's and women's teams and coaches
- Limited Use of Varsity Courts
- Quarterly Newsletter
- Complimentary Parking During Matches.

For Information Call: Assistant Women's Tennis Coach Tim Bauer at (850) 644-1099 or by fax (850) 644-3451.

W  
O  
M  
E  
N  
S

8

T  
E  
N  
N  
I  
S



# Player Bios

WOMEN'S TENNIS



## KIA ÅSBERG

Sophomore  
Lyesehil, Sweden  
(Tretorn Tennis Academy)

### COACH GREGORY:

*"Kia came to FSU in the spring (1997) and despite not having the fall (1996) to adjust to college tennis, she had a very good season. She spent part of last summer in Tallahassee and put in some extra work, really improving several aspects of her game."*

**1997 Fall:** Went 2-7 in singles during the fall, defeating Marie Eve-Girard of South Florida and Nena Bonacic of NC State...teamed with Sasha Hanna, going 2-4 in doubles. **1996-97:** Came to FSU for the 1997 dual match season...played No. 3 singles for the Seminoles...went 12-8 at No. 3 singles...defeated regionally ranked players from Rice and Wake Forest in singles...won nine of her final 12 matches to close the season...teamed with Hanna at No. 2 doubles, going 5-5 overall...also saw doubles action with Lori Sowell and Ali Weber...had a 4-1 ACC doubles record with Hanna...named to the FSU Dean's list during the spring. **High school and other accomplishments:** Finished first in the Swedish Junior Championships (18 and under) in 1994...also finished first in doubles (21 and under) in 1995...had a second place showing in the 21 and under

bracket...claimed various junior doubles titles in Sweden...had a No. 2 ranking in Sweden as an 18-year-old. **Personal:** Majoring in psychology...born June 16, 1976...has played tennis competitively for over 12 years...daughter of Jan-Olof and Eva Åsberg.

### ÅSBERG CAREER STATISTICS

#### Singles

Year	@1	@2	@3	@4	@5	@6	Duals	Fall	Total
1996-97	0-1	12-8					12-9	1-1	13-10
	0-1	12-8					12-9	1-1	13-10

#### Doubles

Year	@1	@2	@3	Duals	Fall	Total
1996-97	4-5	3-2	7-7	2-1	9-8	w/ Sasha Hanna, Lori Sowell, Ali Weber
	4-5	3-2	7-7	2-1	9-8	



## NATALIE CARRATALÁ

Freshman  
Miami, Florida  
(St. Brendan)

### COACH GREGORY:

*"Natalie is a very good doubles player and a great team member. I really enjoy working with her, because she has a lot of potential and, more importantly, she is a worker."*

**1997 Fall:** Had a 7-5 singles record in fall competition...reached the semifinals of the Lady Seminole Fall Classic, Gator Fall Classic and Yellow Jacket Invitational...defeated 7th-seeded Zuzanna Borucka of Syracuse at the Gator Fall Classic...went 5-2 in doubles action with Helena Karlsson...with Karlsson, won the flight B doubles championship at the Lady Seminole Fall Classic and advanced to the backdraw finals at the Gator Fall Classic...also teamed with Kylie Thompson in doubles. **High school and other accomplishments:** Received team MVP award at St. Brendan's following freshman, junior and senior years...named to the All-Dade County first team after freshman and junior seasons...a second team honoree following sophomore and honorable mention after senior years...ranked in the top 10 in Florida's U-18 singles...as a junior, won the 1995 International Grass Court Tournament at Philadelphia in doubles and the 1995 doubles competition at the USTA Indoor National Tournament in Michigan. **Personal:** Born November 23, 1978...majoring in FSU's undergraduate studies program...daughter of Carmen and Felipe Carratalá...an honor roll student all four years of high school.

lowing sophomore and honorable mention after senior years...ranked in the top 10 in Florida's U-18 singles...as a junior, won the 1995 International Grass Court Tournament at Philadelphia in doubles and the 1995 doubles competition at the USTA Indoor National Tournament in Michigan. **Personal:** Born November 23, 1978...majoring in FSU's undergraduate studies program...daughter of Carmen and Felipe Carratalá...an honor roll student all four years of high school.



## NANETTE DUXIN

Freshman  
Montevideo, Uruguay

### COACH GREGORY:

*"Nanette has had some excellent results in juniors and has experience playing team events (Federation Cup). She should contribute immediately."*

**High school and other accomplishments:** Has achieved a ranking as high as No. 1 in Uruguay's open division...had a WTA ranking of 784 in 1994...participated with her national team in the Federation and Continental Cup tournaments (1996-97)...has claimed several French Junior titles from 1992-95...was a semifinalist in WTA \$10,000 Challenger (Brazil, 1994). **Personal:** Born January 22, 1979...majoring in FSU's undergraduate studies program.

**COACH GREGORY:**

*"Sasha started to enjoy tennis again last year and it showed in her results. She came up with some big wins when we really needed it (for example, against Baylor and South Florida). She put in a lot of extra time in the weight room and will see the benefits of that this year."*

**SASHA HANNA**

Junior  
Montego Bay, Jamaica  
(Stratford/Houston, TX)



**1997 Fall:** Went 4-5 in singles through the fall...won three of four matches at the Lady Seminole Fall Classic, advancing to the flight B finals...teamed with Kia Åsberg in doubles action going 2-4...won one of two matches at both the Lady Seminole Fall Classic and Yellow Jacket Invitational with Åsberg. **1996-97:** Played at No. 4 through 6 singles...played primarily at No. 6 singles...went 13-20 overall and 10-12 during the dual match season...had a 5-5 singles record against ACC opponents...teamed with Åsberg and Ashley Delaney in doubles play...went 5-5 during dual match play primarily at No. 2 doubles with Åsberg...also had a 4-1 ACC doubles record with Åsberg. **1995-96:** Played at No. 3 through 5 singles...defeated dual match opponents from Jacksonville, Georgia Southern, Maryland and Georgia Tech...started off the fall season with six straight wins...won the Flight C championship at the 1995 Lady Seminole Classic...went 5-3 in ACC doubles competition with Olsson at No. 2...won the Flight 3 regular season ACC doubles championship with Olsson...won the Flight C doubles championship at the 1995 Lady Seminole Fall Classic. **High School and other accomplishments:** Ranked as the No. 1 junior and No. 2 senior player in her native country of Jamaica by the Jamaican Lawn Tennis Association...held a junior world ranking by the International Tennis Federation (ITF) in singles and doubles...at age 14, won the Phillips Trophy (Caribbean Ladies title), the youngest player to do so...a participant in the 1992, 1993 and 1997 U.S. Junior Open...represented Jamaica in the 1992 and 1993 Federation Cup...played for the 1995 Jamaican Federation Cup team in which she won both singles and doubles.

**HANNA CAREER STATISTICS**

**Singles**

Year	@1	@2	@3	@4	@5	@6	Duals	Fall	Total
1995-96				0-1	4-12	0-2	4-15	7-5	11-20
1996-97				0-2	1-2	9-8	10-12	3-8	13-20
				<b>0-3</b>	<b>5-14</b>	<b>9-10</b>	<b>14-27</b>	<b>10-13</b>	<b>24-40</b>

**Doubles**

Year	@1	@2	@3	Duals	Fall	Total
1995-96		7-4		7-4	4-2	11-6 w/ Ann Olsson, Lori Junker
1996-97		4-7	1-0	5-7	5-2	10-9 w/ Kia Åsberg, Ashley Delaney, Ann Olsson, Rakina Payne
		<b>11-11</b>	<b>1-0</b>	<b>12-11</b>	<b>9-4</b>	<b>21-15</b>

**Personal:** Trained in Houston, TX prior to coming to FSU...born April 18, 1977...daughter of Dalkeith and Jennifer Hanna.

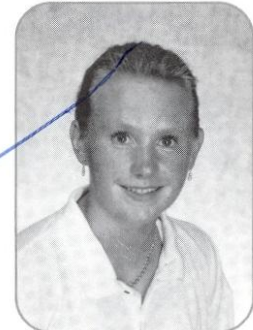
W  
O  
M  
E  
N  
S  
  
T  
E  
N  
N  
I  
S

**COACH GREGORY:**

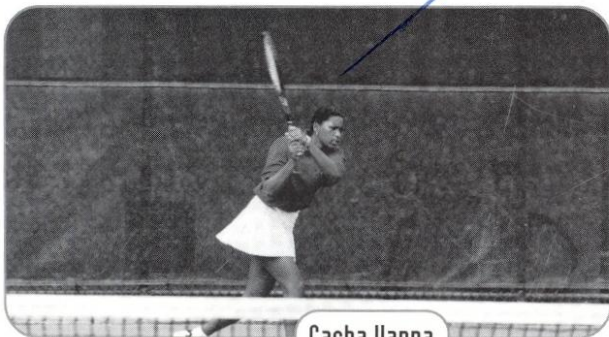
*"Helena is a true 'Swede' in that her work ethic is exemplary. She will be the most experienced member of the team and has great leadership qualities"*

**HELENA KARLSSON**

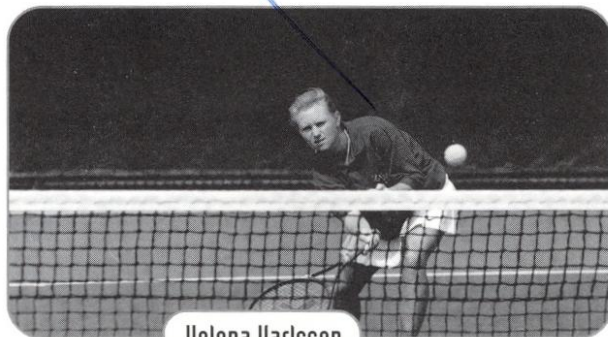
Senior  
Ostersund, Sweden  
(Tretorn Tennis Academy /Virginia Commonwealth)



**Fall 1997:** Posted a 3-7 singles record through fall competition...advanced to the semifinals of the Lady Seminole Fall Classic...teamed with Natalie Carratala and Ali Weber in doubles action...with Carratala, posted a 5-2 record and won the flight B championship at the Lady Seminole Fall Classic...also advanced to the backdraw finals of the Gator Fall Classic...with Weber, claimed the C flight championship at the Yellow Jacket Invitational...a current member of the Student Advisory Board. **At VCU:** After three years of varsity competition, has accumulated an overall singles record of 30-33 and a doubles record of 25-21. **1996-97:** Played at No. 1 and 2 singles for the Rams...had an overall 15-18 singles record, 7-12 in dual matches...posted a 7-10 record at No. 2 singles...teamed with Sofia Hiort in doubles, going 8-7 overall, 5-5 in dual matches. **1995-96:** Posted a 5-4 record in fall tournaments and went 4-3 at the No. 5 singles position during dual match season...with Liliana Manoukian, went 11-8 in doubles, including wins over four Colonial Conference opponents. **1994-95:** Had a 6-5 record in singles tournaments...went 5-4 in dual match singles action at No. 6...also played some at No. 3 and 4 singles...posted an 8-8 record with three doubles partners. **High school and other accomplishments:** Was ranked No. 5 in under 18 girls division in Sweden and No. 42 in the seniors division during 1994. **Personal:** Born April 10, 1975...majoring in Finance...daughter of Lars Erik and Karin Karlsson.



Sasha Hanna



Helena Karlsson



# Player Bios



## RAKINA PAYNE

Senior  
Chicago, Illinois  
(St. Ignatius/Florida)

### COACH GREGORY:

*'Raks' is probably the most improved player on the team. She is absolute pleasure to work with and stayed in Tallahassee for the summer to work on her game, so she will definitely push the bottom of the line up."*

**1997 Fall:** Had a 4-4 singles record through fall competition...defeated tournament No. 2 seed Natalie Luna of Florida International on the way to the finals of the Lady Seminole Fall Classic...also advanced to the flight C doubles final at the Lady Seminole with Kylie Thompson...went 4-2 with Christy Travis in doubles action...won two of three matches at both the Gator Fall Classic and Yellow Jacket Invitational...**1996-97:** Played in just two dual matches during the season...saw most action during the fall tournament season...won her first career singles victory at FSU against Tara Tiller of Samford...had four doubles partners throughout the year...had two dual match doubles matches with Lori Sowell (#1) and Thompson (#3). **1995-96:** Did not play. **1994-95:** Played sparingly with the Seminoles during 1995-96...had one singles match and two doubles matches,

one of which was with Ashley Delaney. High school and other accomplishments: Ran track at the University of Florida during her freshman year...played in various U-14 and U-16 national tournaments as a junior. Personal: Born January 4, 1975...majoring in Marketing.

### PAYNE CAREER STATISTICS

#### Singles

Year	@1	@2	@3	@4	@5	@6	Duals	Fall	Total
1994-95						0-1	0-1	0-0	0-1
1995-96	DID NOT PLAY								
1996-97						0-2	0-2	3-6	3-8
						0-3	0-3	3-6	3-9

#### Doubles

Year	@1	@2	@3	Duals	Fall	Total	
1994-95			0-1	1-2	0-0	1-2	w/ Ashley Delaney, Samantha Greenspan
1995-96	DID NOT PLAY						
1996-97	0-1		0-1	0-2	6-3	6-5	w/ Sasha Hanna, Ali Weber, Lori Sowell, Kylie Thompson
	0-1	0-1	1-2	1-4	6-3	7-7	

WOMEN'S TENNIS



## KYLIE THOMPSON

Junior  
Honea Path, South Carolina  
(Belton-Honea Path)

### COACH GREGORY:

*"Kylie is a good athlete and a natural doubles player. With the maturity she gained last year and continued improvement to her footwork, she will contribute considerably in the spring."*

**1997 Fall:** Has a 6-2 overall singles record after fall competition...won her flight's championship at the Lady Seminole Fall Classic...went 1-1 at both the Gator Fall Classic and Yellow Jacket Invitational...advanced to the flight B finals of the Lady Seminole Fall Classic with Rakina Payne. **1996-97:** Was sidelined for parts of the season due to injury...participated in just four singles matches all year...saw dual match doubles action with Ashley Delaney, Weber and Payne...went 4-3 at No. 3 doubles with Weber, 7-6 overall. **1995-96: Played entire dual match season at No. 6 singles and No. 3 doubles** with Lori Junker...played most of the dual match season with a fracture in her wrist...had two ACC singles victories over Laura Cowman of N.C. State and Brandy Kirchner of Georgia Tech...was 5-3 at No. 3 doubles with Junker...won the No. 3 regular season doubles flight. **High school and other accomplishments:** Won the 1990, 1991 and 1993 South Carolina Junior Singles Championships...won the backdraw at the 1994 Outback Gator Bowl Tournament in Ponte Vedre Beach, Florida...named to the All-Region team 1990-94...named region's Player of the Year 1992-94...team's MVP 1992 to 1994...named to the All-State team 1992 to 1994...selected as a member of the South Carolina Junior Wightman Cup Team...named high school's most outstanding female athlete for 1995. **Personal:** Born June 19, 1978...majoring in Religion/English...member of the National Honor Society and Beta Club student council...skipped her junior year of high school and completed her senior year early to attend FSU...daughter of Mike and Angie Thompson.

### THOMPSON CAREER STATISTICS

#### Singles

Year	@1	@2	@3	@4	@5	@6	Duals	Fall	Total
1995-96					0-1	3-15	3-16	1-3	4-19
1996-97						0-1	0-1	1-2	1-3
					0-1	3-16	3-17	2-5	5-22

#### Doubles

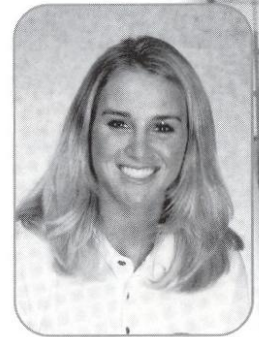
Year	@1	@2	@3	Duals	Fall	Total	
1995-96	1-0	0-1	5-3	6-4	1-0	7-4	w/ Lori Junker, Ann Olsson, Elke Juul
1996-97		0-2	5-4	5-6	3-3	8-9	w/ Ashley Delaney, Rakina Payne, Ali Weber
	1-0	0-3	10-7	11-10	4-3	15-13	

**COACH GREGORY:**

*"Christy loves to play and is always doing extra. Her improvement has been rapid."*

# CHRISTY TRAVIS

Freshman  
Palmetto, Florida  
(Bradenton Christian)



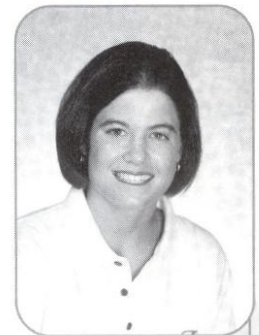
**1997 Fall:** Had a 3-2 singles record during the fall...won two of three matches at the Yellow Jacket Invitational...had a 4-2 doubles record with Rakina Payne...won two of three matches at both the Gator Fall Classic and Yellow Jacket Invitational. **High school and other accomplishments:** Played No. 1 singles and doubles for Bradenton Christian all four years...was also the captain and team MVP of that squad each year...named All-Conference three times...won the Bay Conference' Scholarship Athlete award following 11th and 12th grades...finalist at the K-Swiss Christmas Bowl Tennis Classic, 1994-95...was a finalist at the Junior Satellite State Closed Singles Championship, 1993...placed fourth in the Walt Disney World Tennis Championship, 1994...was a member of the National Honor Society all four years and the Spanish Honor Society for two years...an active member of FCA during high school. **Personal:** Born August 28, 1979...brother, Jay, is a member of the FSU men's tennis team...majoring in Communications...daughter of Ron and Gail Travis.

**COACH GREGORY:**

*"Ali did an unbelievable job as a freshman, probably the Co-MVP with Ann Olsson for the season. She is a great competitor and is always looking for ways to get better."*

# ALI WEBER

Sophomore  
Clermont, Florida  
(South Lake)



**1997 Fall:** Leads the team with an 8-5 overall record through fall competition...won the flight B backdraw championship at the Gator Fall Classic...went 2-1 at the Yellow Jacket Invitational, advancing to the semifinals of the main draw...teamed with Helena Karlsson at the Yellow Jacket Invitational, winning the flight C bracket championship...also teamed with Kylie Thompson, going 1-1 at the Gator Fall Classic...**1996-97:** Played at No. 3 through 6 singles during the dual match season...set a freshman record with 26 overall singles victories...led the team with 15 dual match singles wins and the 26 overall...had a fall season singles record of 11-6 and a 13-5 record at No. 5 singles...claimed the Flight 5 ACC singles championship with a perfect 7-0 record at No. 5 singles during ACC play...had an 8-2 overall ACC singles record...had win streaks of six and seven matches throughout the year...won her flight at the 1996 Lady Seminole Fall Classic...advanced to the semifinals of the ACC Indoor Championships...played at No. 3 doubles with Kia Åsberg and Thompson...had an overall dual match doubles record of 6-5 with both partners...defeated both tandems in ACC doubles matches...had an overall doubles record of 12-10 with various partners. **High school and other accomplishments:** Held a No. 44 national ranking in U-14 singles, No. 7 in the state...was a doubles finalist at the U-14 national claycourts...a fast, scrappy player with good groundstrokes...had a top ten singles ranking or better in Florida 12-18 age groups...high school district champion sophomore through junior years. **Personal:** Born August 28, 1978...majoring in Sports Management.

**WEBER CAREER STATISTICS**

**Singles**

Year	@1	@2	@3	@4	@5	@6	Duals	Fall	Total
1996-97				0-2	13-5	2-0	15-7	11-6	26-13
				0-2	13-5	2-0	15-7	11-6	26-13

**Doubles**

Year	@1	@2	@3	Duals	Fall	Total
1996-97			6-5	6-5	10-8	16-13
			6-5	6-5	10-8	16-13

w/ Kia Åsberg, Lori Junker, Rakina Payne, Kylie Thompson



Ali Weber

S  
T  
E  
N  
N  
I  
S

# 1997 Review

W  
O  
M  
E  
N  
S  
T  
E  
N  
N  
I

**T**he Florida State women's tennis team finished the 1997 regular season on a high note by qualifying for the NCAA Southeast Region tournament, on the campus of Vanderbilt University. It was the second consecutive appearance in post-season play for the Lady Seminoles and third overall.

The Lady Seminoles (12-10), led by seniors Lori Sowell and Ann Olsson, faced top-seeded and host-school Vandy in the opening round. Although FSU was defeated in that first match of the postseason, the 1997 season showed many areas of success and progress for future seasons to benefit from.

In her first year as head coach, **Lise**

**Gregory** guided the team back to a winning

form following an 8-11 record the season prior. The

Lady Seminoles also advanced into the semifinal rounds of the Atlantic Coast Conference tournament against second-seeded and top ten ranked Wake Forest, an accomplishment FSU has achieved each year since joining the conference back in 1992. The third-seeded Tribe were defeated by the higher-ranked Demon Deacons, 5-1, in that semifinal round.

The women defeated No. 6 seed Georgia Tech in the opening round of play, 5-1, the previous day. No. 2 singles player Ann Olsson went undefeated at the conference tournament, including a straight set upset win over No. 62 Maggie Harris of Wake Forest 6-2, 6-2.

Sowell, an All-American in singles during 1995 and 1996, re-

ceived national ranking recognition throughout the entire season, including the fall tournament

season, culminating in All-Conference honors with Olsson. Sowell's All-ACC honor was her third straight, while former junior college all-american Olsson was honored for the first time. Olsson and Sowell were also nationally ranked as a doubles tandem at No. 39 by season's end.



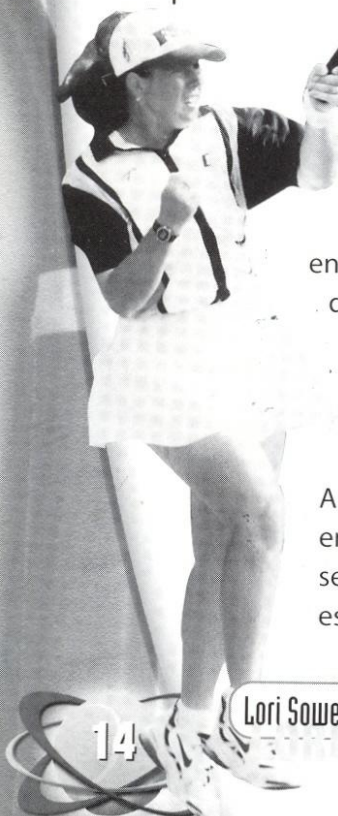
Ann Olsson

Freshman Ali Weber was the lone Seminole to pick

up a flight championship as she was the top singles player at the No. 5 position with a conference singles record of 7-1.

With a challenging 1997 dual match schedule and some quality wins, the Lady Seminoles were able to keep their ITA/Rolux national ranking all season. Of that 1997 schedule, 21 out of 23 matches were against nationally-ranked opponents by season's end and wins occurred against nationally ranked squads such as Rice, NC State and South Florida. It was those victories that kept the Lady Seminoles among the Southeast's finest.

As far as the 1997 Atlantic Coast Conference competition was concerned, Florida State was among the league's best with six regular season wins. The Lady Seminoles had conference victories over Georgia Tech, Clemson, North Carolina, NC State, Maryland and Virginia. The Tribe also avenged 1996 losses to Virginia and UNC to round out its third place conference finish behind nationally-prominent Duke and Wake Forest.



Lori Sowell



# 1997 Statistics

## 1997 STATISTICS

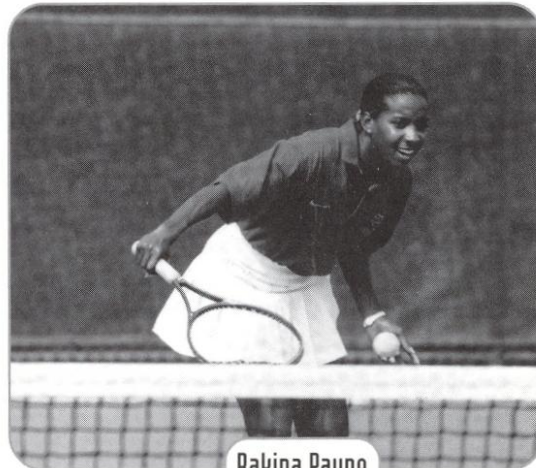
### Overall-Record Playing at:

SINGLES	All	Dual	ACC	1	2	3	4	5	6
Lori Sowell	18-17	11-12	6-4	11-12					
Ann Olsson	19-14	13-10	8-2		13-9	0-1			
Kia Asberg	13-11	12-10	4-5		0-1	12-9			
Lori Junker	13-15	9-12	6-4			1-0	8-11	0-1	
Ali Weber	26-13	15-7	8-2				0-2	13-5	2-0
Sasha Hanna	13-21	10-13	5-5				0-2	1-2	9-9
Rakina Payne	4-7	0-2	0-0						0-2
Kylie Thompson	1-3	0-1	0-1						0-1
Ashley Delaney	0-0	0-0	0-0						



### Overall-Record Playing at:

DOUBLES	All	Dual	ACC	1	2	3
Asberg - Hanna	5-5	5-5	4-1		4-5	1-0
Asberg - Sowell	2-1	0-0	0-0			
Asberg - Weber	2-2	2-2	0-0			2-2
Delaney - Hanna	1-3	0-2	0-0		0-2	
Delaney - Thompson	1-2	1-2	0-0		0-2	1-0
Delaney - Junker	6-6	6-6	4-3		1-5	5-1
Hanna - Olsson	1-1	0-0	0-0			
Hanna - Payne	3-0	0-0	0-0			
Junker - Weber	0-1	0-0	0-0			
Olsson - Sowell	14-9	10-7	3-3	10-7		
Payne - Weber	3-1	0-0	0-0			
Payne - Sowell	0-1	0-1	0-1	0-1		
Payne - Thompson	0-1	0-1	0-1			0-1
Thompson - Weber	7-6	4-3	2-0			4-3



Rakina Payne

WOMEN'S

TENNIS



Kia Asberg

Date	Opponent	W - L	Score	Regional	when played National	Final 5 National
2/8	• South Alabama	L	2-7	#8		#28
2/9	• Vanderbilt	L	0-9	#4	#15	#15
2/15	• Auburn	W	7-1	#7		
2/16	• Miami	L	3-6	#5	#25	#44
2/17	• Florida International	W	8-1	#12		
H 2/22	• GEORGIA TECH	W	8-1			#66
2/23	• CALIFORNIA	L	2-7	#2	#18	#11
H 3/1	• CLEMSON	W	6-3	#6	#26	#70
H 3/5	• FLORIDA	L	0-9	#1	#1	#1
H 3/8	• NORTH CAROLINA	W	7-2	#7	#60	#48
3/11	• Baylor	L	4-5	#7	#51	#36
3/13	• Rice	W	5-4	#2	#34	#43
3/14	• Houston	L	4-5	#6	#46	#37
H 3/18	• DUKE	L	1-7	#1	#5	#4
3/21	• North Carolina State	W	6-3	#8	#51	#58
3/22	• Wake Forest	L	2-6	#2	#9	#8
H 3/25	• MARYLAND	W	7-2			#54
H 3/28	• ILLINOIS	W	8-1	#9	#43	#56
4/5	• Virginia	W	7-2	#10	#58	#50
4/10	• South Florida	W	5-4	#6	#31	#26
4/18	• Georgia Tech - ^	W	5-1		#61	#66
4/19	Wake Forest - ^	L	1-5	#2	#9	#8
5/9	Vanderbilt @	L	0-5	#4	#15	#15

^ - ACC Women's Tennis Championships (Norcross, GA)

@ - NCAA Southeast Regional (Nashville, TN)

[5-2]

# 1997 ACC Statistics

Team	Conference			For	Overall					
	Won	Lost	Pct.		Opp.	Won	Lost	Pct.	For	Opp.
Duke	8	0	1.000	64	6	24	4	.857	172	40
Wake Forest	7	1	.875	55	12	19	7	.731	144	65
Florida State	6	2	.750	44	26	12	11	.522	99	96
North Carolina	4	4	.500	29	42	10	14	.417	91	121
Maryland	3	5	.375	30	41	8	11	.421	84	78
Georgia Tech	2	6	.250	22	50	12	10	.545	96	96
Clemson	2	6	.250	28	43	6	14	.300	66	99
NC State	2	6	.250	18	43	9	15	.375	74	119
Virginia	2	6	.250	24	48	7	11	.389	67	90

## VS. NON-ACC OPPONENTS

62-53 (.539)

## ACC TOURNAMENT RESULTS

**(Norcross, Ga., Apr. 17-20):** First Round - #8 NC State d. #9 Virginia 5-3. Quarterfinals - **#3 Florida State** d. #6 Georgia Tech 5-1; #2 Wake Forest d. #7 Clemson 5-0; #1 Duke d. #8 NC State 5-0; #4 North Carolina d. #5 Maryland 5-4. Semifinals - Wake Forest d. **Florida State 5-1**; Duke d. North Carolina 6-0. Finals - Duke d. Wake Forest 5-2.

## ACC TOURNAMENT MVP

Karin Miller, Duke

## ACC SINGLES FLIGHT CHAMPIONS

No. 1 Karin Miller, Duke; No. 2 Amy Jensen, Wake Forest; No. 3 Nicola Kaiwai, Wake Forest; No. 4 Lule Aydin, Wake Forest; **No. 5 Ali Weber**; No. 6 Jeni Burnett, North Carolina.

## ACC DOUBLES FLIGHT CHAMPIONS

No. 1 Kate-Maree Mair/Stefanie Woerz, Clemson; No. 2 Paige Boiko/Kendall White, Virginia; No. 3 Wendy Fix/Kristin Sanderson, Duke.

## ALL-ATLANTIC COAST CONFERENCE

Clemson (1) - Stefanie Woerz.; Duke (3) - Karin Miller, Karen O'Sullivan, Vanessa Webb; **Florida State (2) - Ann Olsson, Lori Sowell**; Maryland (1) - Lorraine Bittles; North Carolina (1) - Jeni Burnette; Wake Forest (4) - Lule Aydin, Maggie Harris, Amy Jensen, Nicola Kaiwai.

## ACC PLAYER OF THE YEAR

Karin Miller, Duke.

## ACC ROOKIE OF THE YEAR

Karin Miller, Duke.

## ACC COACH OF THE YEAR

Lew Gerrard, Wake Forest.

WOMEN'S TENNIS



Ali Weber



Lori Sowell



Ann Olsson