



FLORIDA STATE UNIVERSITY



# TENNIS



MEDIA GUIDE





# 1998-1999 Women's Tennis Roster

**Head Coach: Lise Gregory (3rd Season)**

**Assistant Coach: Tim Bauer (3rd Season)**

NAME	CLASS	MAJOR	HOMETOWN
Kia Asberg	JR	Psychology	Lysekil, Sweden
Jessica Balbuena	FR	Undecided	The Woodlands, Texas
Natalie Carratalá	SO	Media Prod. & Art	Miami, Florida
Nanette Duxin	SO	Business	Montevideo, Uruguay
Alida Gallovits	FR	Undecided	Timisoara, Romania
Marina Raic	FR	Communications	Friedrichshafen, Germany
Kylie Thompson	SR	Religion/English	Honea Path, S. Carolina
Christy Travis	SO	Communications	Palmetto, Florida
Ali Weber	JR	Public Relations	Clermont, Florida

## PRONUNCIATIONS

Kia Asberg	KEE - uh AHZ - barry
Jessica Balbuena	BALL - bway - nuh
Natalie Carratalá	cara - TAHL - luh
Nanette Duxin	Dux - Ahh
Alida Gallovits	ah-LEE-da - GAL-o-vich
Marina Raic	RYCHE
Kylie Thompson	KYE - lee
Ali Weber	AL - lee
Lise Gregory	LEE - suh

## STATE AND COUNTRY BREAKDOWN

Florida	3
South Carolina	1
Texas	1
Germany	1
Romania	1
Sweden	1
Uruguay	1

## QUICK FACTS ON FLORIDA STATE UNIVERSITY

Location	Tallahassee, Florida
Founded	1858
Enrollment	30,519
Symbol	Seminole
School Colors	Garnet and Gold
President	Talbot "Sandy" D'Alemberte

## QUICK FACTS ON FLORIDA STATE ATHLETICS

Affiliation	NCAA Division I
Conference	Atlantic Coast
Athletic Director	David Hart, Jr.
Associate Athletic Director	Kim Record
Sports Information Director	Rob Wilson
SID for Tennis	Jason Byrne
SID Office Phone	(850) 644-1403
SID Fax	(850) 644-3820
Mailing Address	P.O. Box 2195 Tallahassee, Fl. 32316

## QUICK FACTS ON FSU WOMEN'S TENNIS

Home Facility	Scott Speicher Tennis Center
Head Coach	Lisa Gregory (3rd Season)
Assistant Coach	Tim Bauer (3rd Season)
Tennis Office Phone	(850) 644-5946
Tennis Office Fax	(850) 644-3451
1997-98 Record	12-12 (2-6 in ACC)



## CONTENTS:

Media Information	1	Year by Year Results	20-21
This Is Tallahassee	2-3	Honors & Awards	22
This Is Florida State University	4-5	Speicher Tennis Center	23
1999 Preview	6-7	All-Time Information	24-25
Coach Bios	8-9	Support Services	26
Player Bios	10-13	Athletic Care	27
1998 Review	14	Life Skills	28
1998 Statistics	15	NCAA Information	29
1998 ACC Statistics	16-17	Year by Year Records	30
Around the ACC	18	Conference Info	31
Atlantic Coast Conference	19	Top Academics	32





# Media Information

## Florida State University Media Outlets

### **NEWSPAPERS:**

#### **Tallahassee Democrat**

P.O. Box 990  
Tallahassee, Florida 32302  
phone: (850)599-2166  
fax: (850) 599-2301

#### **FSUview**

P.O. Box 20331  
Tallahassee, Florida 32316  
phone: (850) 561-6653  
fax: (850) 561-6578

#### **The Osceola**

402 Dunwoody Street  
Tallahassee, Florida 32304  
phone: (850) 222-7733  
fax: (850) 224-3627

#### **Florida Times-Union**

One Riverside Avenue, Suite 304  
Tallahassee, Florida 32301  
phone: (850) 224-7515  
fax: (850) 681-2961

#### **Orlando Sentinel**

336 East College Avenue, Suite 303  
Tallahassee, Florida 32301  
phone: (850) 222-5564  
fax: (850) 224-0979

### **TELEVISION/RADIO:**

#### **WCTU-TV (CBS affiliate)**

P.O. Box 3048  
Tallahassee, Florida 32315  
phone: (850) 893-2126  
fax: (850) 668-3851

#### **WTXL-TV (ABC affiliate)**

8927 Thomasville Road  
Tallahassee, Florida 32312  
phone: (850) 893-1313  
fax: (850) 668-3851

#### **WTWC -TV (NBC affiliate)**

8440 Deerlake Road  
Tallahassee, Florida 32312  
phone: (850) 893-9892  
fax: (850) 893-3646

#### **WNLS-Sports Radio 1270 AM**

325 John Knox Road, Suite E-200  
Tallahassee, Florida 32303  
phone: (850) 386-6143  
fax: (850) 385-8789

### **A Note to the Media, Fans and Opponents**

Florida State tennis contact Jason Byrne of the Sports Information Office is ready to assist you with any questions or requests you may have about the 1998-99 Seminole Tennis program, media guide, coaches and student-athletes. Please do not hesitate to phone, fax or write a letter to the sports information office at P.O. Box 2195; Tallahassee, Florida 32316; (850) 644-1403 phone; (850) 644-3820 fax, if we can further assist you.

### **How to cover the Seminoles**

Members of the media are supplied with weekly press releases, including updated individual tournament and career statistics, as well as conference and national rankings and information on upcoming matches or events. Results and statistics may be obtained in the sports information office or off the Atlantic Coast Conference's faxback system. Pertinent team and player information will also be available at the Scott Speicher Tennis Center for all home matches. If you would like to schedule personal interviews with the coaches or players contact Byrne in the FSU Sports Information office at least 24 hours in advance. Head Coach Lise Gregory is generally available in her office during weekday mornings.

### **Where the home matches will be**

All 1998-99 Seminole Tennis home matches take place at the Scott Speicher Tennis Center (capacity 1000). The courts are located off of Chieftain Way directly behind the Bobby E. Leach Center. Parking for the facility is located to the west of the site. Media members will be provided parking passes and will be seated in a designated area. Please notify the sports information office prior to home matches for credentials to be assigned. Any accredited photographer wishing to shoot the matches must check in with Byrne prior to gameday so proper credentials can be assigned.

### **FSU on the web**

Check out the Florida State women's tennis program on the web. Go to your internet site and type in [www.seminoles.com](http://www.seminoles.com). Once you are in the site follow the directions to the home of the Florida State Lady Seminoles web page.

### **ACC FaxBack System:**

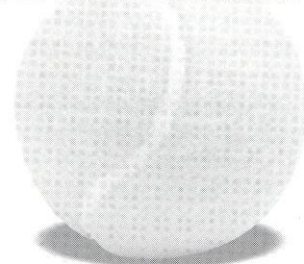
ACC tennis standings and statistics are available on ACC FaxBack each Tuesday morning. Call (850) 854-5859, from the handset of your fax machine, and follow the directions. The ACC code for the tennis release is 6350. The FSU tennis release can be found on the system under code 32350, Tuesday afternoons.

### **Media Guide Credits**

The 1998-99 Seminole Tennis media guide is a publication of the Florida State University Sports Information Office. Edited and written by Jason Byrne. Designed by M&M Creative Services, Inc. Photography by Landa Oz Photography, Ross Obley, Ryals Lee and the University Photo Lab. Printing by FSU Printing Services.

The Florida State University offers equal opportunity in its employment and educational activities in compliance with Title IX, Section 5-4 of the Rehabilitation Act of 1973 and other civil rights laws.

This document is available upon request in alternate formats for individuals with print related disabilities. Contact the ADA office, 301 Westcott Administration Building, for more information.



© 1999 M&MCS



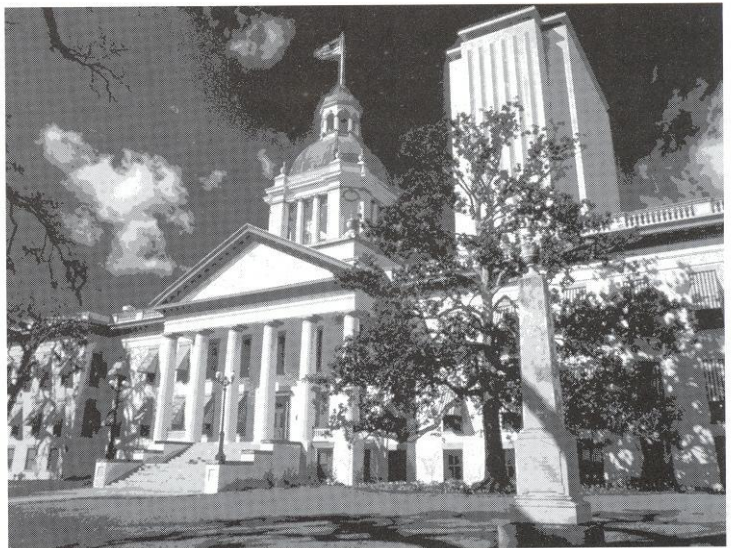
# This Is Tallahassee

Near, but far from the glaring strips of neon amusement, and the castles and crowds of Disney, lies another magical place in the Sunshine State — one of powwows, plantations, politics and great pride. Often described as "The Other Florida" with its deep-rooted history, rolling hills, canopy roads of moss-draped oaks, cool climate and Southern-style hospitality; it is a Florida few have seen. It is Tallahassee — Florida with a Southern accent.

Best known as Florida's capital, Tallahassee is an intimate neo-metropolitan city where the power of state government, the academic and the artistic are complemented by subtle, old-fashioned charm. It is the perfect two- or three-day diversion for the more than 41 million annual visitors to Florida and 13 million residents.

Tallahassee touts a menagerie of sights including one of the world's deepest freshwater springs, site of America's first Christmas, a wildlife habitat, Capitol buildings, fascinating museums of history, sprawling plantations, highly acclaimed fishing and hunting adventures and nearby beaches. Spirited area festivals range from celebrations of Tallahassee's spectacular spring and swamp stomps to genuine rattlesnake roundups and seafood festivals.

With the Gulf of Mexico just 20 miles south and the Georgia border only 14 miles north, Tallahassee rests between the foothills of the Appalachian Mountains and the juncture of Florida's panhandle and peninsula. Nearer in miles to Atlanta than to Miami, Tallahassee



Like the city itself, the story of how Tallahassee was chosen as the state capital is rich in history. In 1823, two explorers set out — one on horseback from St. Augustine and the other by boat from Pensacola — to find a permanent, central location for the Legislature to convene. The two met at a beautiful site that the Creek and Seminole Indians called "tallahassee" — derived from the words "talwa" meaning town and "ahasee" meaning old. The rendezvous point remains Florida's capital.

The "old town" has undergone many changes, but one thing remains the same — it is still a government town fiercely proud and dedicated to preserving its heritage. The Capitol buildings, both old and new, epitomize Tallahassee's perseverance.

The 22nd floor of the New Capitol provides a panoramic scope of a sophisticated Southern city awash in a sea of flowering azaleas, snowy dogwoods, towering pines, fragrant magnolias, and hundreds of shimmering lakes, springs, swamps, rivers and sink holes. Special legislative viewing galleries are open during the legislative session.

Below, in the shade of giant live oaks, proudly stands the Old Capitol, originally constructed in 1845 and restored to its 1902 splendor complete with red-and-white candy-striped awnings, a dome adorned with stained glass, antique furnishings and political memorabilia.

Across from the Old Capitol are the 40-foot twin granite towers of the Vietnam Veteran's Memorial, and the blue stone Union Bank, Florida's oldest surviving finan-



more closely resembles its Southern neighbors than Florida in topography, climate and lifestyle.

Accentuating Tallahassee's Southern persona are lush rolling hills, likened to the seven hills of Rome, and five "official" canopy roads of patriarch oaks. The fertile, rich soil and four distinct, yet pleasant, seasons breed floral brilliance and natural vitality year-round.



cial institution. The nostalgic Old Town Trolley, a replica turn-of-the-century street car, carries passengers through restored Adams Street Commons to numerous other historical downtown shops for free — unheard of even 100 years ago.



Minutes from downtown lies the Governor's Mansion, which resembles the home of Florida's military hero Andrew Jackson; and the 52-acre natural animal habitat and 1880s farm of the Tallahassee Museum of History and Natural Science, which provide the rare chance to walk and talk with native Florida animals.

Tallahassee remains firmly linked with the past as evidenced by the unearthed 1539 winter encampment of Spanish Hernando de Soto, the site of the first Christmas celebration in America. Visitors travel back through time as they stand in the shadow of a giant 12,000-year-old American Mastodon at the Museum of Florida History or explore other historical spots including The Knott House that Rhymes, The Columns, San Luis Mission, Lake Jackson State Archaeological Site, Natural Bridge Battlefield, First Presbyterian Church, Brokaw-McDougall House, Goodwood Plantation and Adams Street Commons.

Nearby, alligators lazing in the sunshine and anhinga "snake birds" perched on twisted cypress branches are seen at Wakulla Springs, one of the world's deepest freshwater

springs and site of many underwater scenes in the "Tarzan" movies with Johnny Weissmuller and Maureen O'Sullivan. Safaris aboard glass-bottomed and jungle cruise boats whisk visitors within arm's length of "The Other Florida."

Outdoor enthusiasts enjoy adventures including boating and fishing on area lakes, rivers, ponds and the Gulf — just 30 minutes away. Lakes Seminole, Jackson and Talquin are renowned in the bass fishing world for yielding the "big ones," and dense forests offer an abundance of prize-winning game. Local wildlife areas such as the Florida National Scenic Trail, St. Marks National Wildlife Refuge and Apalachicola National Forest are among many spots for camping, picnicking, swimming, biking and exploring.

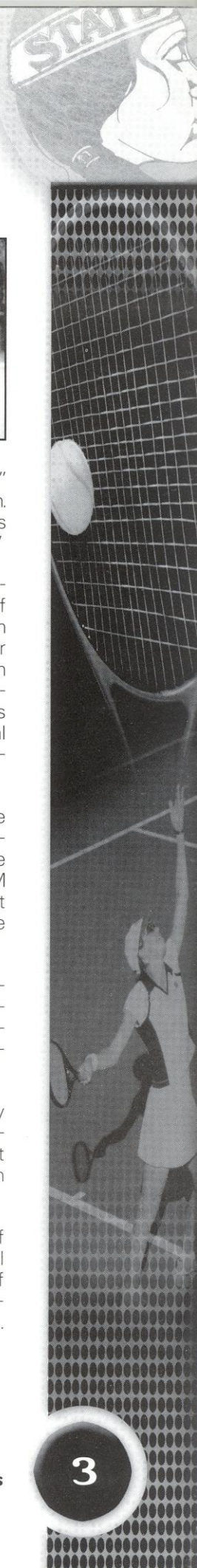
Appealing to the strokes of different folks, Tallahassee also features 99 holes of golf on six courses and a proliferation of tennis centers. Sideline athletes cheer the nationally-ranked Florida State Seminoles, Florida A&M Rattlers and the Tallahassee Tiger Sharks, of the East Coast Hockey League. And always a sure bet are the nearby greyhound races.



A sport of sorts, shopping at two regional malls and many specialty centers offer many "playing options" — from popular chains to curiosity and antique shops.

Cultural interests are sparked by widely-acclaimed museums and galleries and elaborate entertainment at the 14,000-seat Tallahassee-Leon County Civic Center.

Tallahassee is a collaboration of power-play politics and classical character splashed with a twist of Southern beauty and charm. Tallahassee is Florida with a Southern accent.





# This Is Florida State

**F**lorida State University, celebrating its golden anniversary as a coeducational graduate research institution in 1997, has joined the nation's elite in both academics and athletics.

Located on the oldest continuous site of higher education in Florida and building rapidly on the framework of a highly regarded liberal arts college for women, the University has emerged over the past 50 years as an institution of national and international esteem. Its stature is evidenced by a number of additions to its record of excellence in the 1990s:

- In 1994, Florida State was classified a "**Research University I**" by the Carnegie Foundation, placing it among the nation's top research universities.

- In 1994, the college referral service, "Who's Who Among American High School Students," placed FSU among its top 10 — with such universities as Harvard, Duke, Stanford, North Carolina-Chapel Hill, Michigan-Ann Arbor and Yale — of most frequent choices of more than 100,000 of the nation's best and brightest high school students who asked that a specific college be notified of their recognition in "Who's Who."

- Vice President of the United States Al Gore spoke at the dedication of the **National High Magnetic Field Laboratory** at Florida State in 1994. The National Science Foundation established the \$100 million magnet lab in 1990 at FSU, which is partnered in research with the Los Alamos National Laboratory and the University of Florida. A Nobel laureate in physics and a top Russian physicist were among the first scholars drawn to the faculty. The **world's largest magnet** — two stories high and capable of generating 45 tesla or 1 million times the Earth's magnetic field — was installed in 1995 at the NHMFL, located in the **off-campus research complex**, Innovation Park. In 1996, the NSF renewed and increased by 50 percent the NHMFL's funding for another five years.

- FSU created the first multipurpose student identification/banking card. The **Card Application Technology Center** is a national leader in "smart card" systems.

- At the forefront of supercomputing since obtaining its first high-speed computer in 1985, FSU took yet another step in ultrafast and parallel computing in 1990 when it acquired **two**

**supercomputers**, the Thinking Machine Corp. Connection Machine and the Cray Y-MP.

- In fall 1994, the first tenants moved into the east side of the \$100 million **University Center**, a classroom-and-office facility at Doak Campbell Stadium; the stadium's south end zone also was enclosed and the adjacent Moore Athletic Center expanded. With the completion of the west side in 1996, University Center now provides 550,000 square feet of much needed academic space and a centralized location for student services.

- In 1990, Florida State **ranked second in popularity nationwide** among high school seniors, based on the number of students who request that their Scholastic Aptitude Test (SAT) scores be sent to an institution. FSU was the only institution listed among the top 10 choices of both black and white college-bound students.

- FSU's high-tech program in **structural biology** in 1991 received the University's largest single foundation grant, \$4 million.

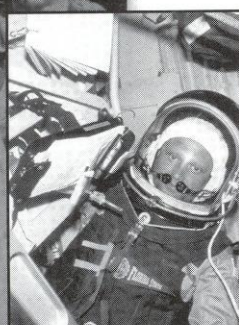
- Capping more than a decade of national prominence in intercollegiate athletics, Florida State's athletic teams, nicknamed "**Seminoles**," joined the **Atlantic Coast Conference** as its ninth member in 1990. The FSU football team won the **1993 National Championship** and its quarterback, Charlie Ward, won the University's first **Heisman Trophy**.

- The **Dr. Bobby E. Leach Center**, a state-of-the-art student recreation facility, with a pool, saunas, basketball and racquet-sport courts, was completed in 1991.

- FSU ranked 20th in the nation for 1990-91 in the number of **black Ph.D. students it graduates**. Over the five years, 1986 to 1990, FSU ranked eighth nationally by granting doctorates to 70 African-Americans.

As this list of highlights attests, Florida State is excelling in the 1990s with exceptional strength, energy and vision for the future.

Under the leadership of the University's 12th president, Talbot "**Sandy**" D'Alemberte, who took office in January 1994, FSU will continue to build on the foundation of its history of excellence in scholarship, research and service.





## On Playing for Florida State and Being a Seminole

A senior member of the 10-member **State University System**, FSU was founded as an institution of higher learning in 1851 by legislative act and began in Tallahassee with its first students in 1857.

Today, FSU's operating budget is **\$474.3 million**. Faculty and administrators generate more than **\$102 million** annually in external funding to supplement state-sponsored research. Three direct-support organizations serve to bolster the University: **FSU Foundation**, which raises millions in private gifts to support academics, **Seminole Boosters** and **FSU Alumni Association**.

The main campus is spread over **451.6 acres** in Tallahassee; FSU, which has one of the smallest campuses in the SUS, has been actively acquiring land in the 1990s after years of being landlocked at 347 acres. FSU owns 1,281 acres in Leon, Bay, Franklin and Sarasota counties.

Within the state, the University maintains facilities at its **25-acre campus** in Panama City, its **Marine Laboratory** on the Gulf of Mexico, the Appleton Museum in Ocala and the Asolo Performing Arts Center in Sarasota. The **Center for Professional Development and Public Service**, housed in the **Augustus B. Turnbull III Florida State Conference Center** on the edge of the campus, provides extensive credit and non-credit continuing education programs statewide.

Florida State offers **286 graduate and undergraduate degree programs** through its **eight colleges** — Arts and Sciences; Business; Communication; Education; Engineering (operated jointly with Florida A&M University, a historically black institution); Human Sciences; Law; and Social Sciences (which also incorporates the Reubin Askew School of Public Administration and Policy) — and **eight schools** — Criminology and Criminal Justice; Information Studies; Motion Picture, Television and Recording Arts; Music; Nursing; Social Work;



"I am proud of being a Seminole and of having the opportunity to play at Florida State"  
- **Marina Raic**

"It is an honor and a great pleasure, something I will be proud of for the rest of my life."  
- **Kia Åsberg**

"Best experience of my life."  
- **Natalie Carratala'**

"I'm proud to be a member of the women's tennis team and a Seminole forever."  
- **Ali Weber**

Theatre; and Visual Arts and Dance.

With 1,655 members, the FSU faculty has included **nine National Academy of Sciences elected members**, **nine American Academy of Arts and Sciences fellows** and **five Nobel laureates**. It is backed by 2,887 administrative/professional and support staff.

Library holdings at Florida State include **2.1 million book titles**, **16,384 serials** and **4.5 million microforms**. The main library facility, the **Robert M. Strozier Library**, is linked by computer to other state university and national research libraries. The **Paul A.M. Dirac Science Center Library** is located at the heart of the University's science research complex. FSU also maintains extensive music, library science and law libraries.

**Graduate students, who number more than 5,929**, pursue advanced degrees in fields as diverse as business administration and theoretical particle physics. A majority of research done at FSU is the direct result of student effort, culminating in numerous books, monographs and journal articles relating to the whole spectrum of intellectual interests and the practical needs of society.

FSU, a residential campus, places a high priority on its **30,264 students** and their needs and interests (of the student population: 45 percent are male; 55 percent are female; 20.1 percent are minorities; and 2.5 percent are foreign students). The **University Honors Program**, **Disabled Student Services**, **International Student Center**, **Student Government**, **Flying High Circus** and intramural sports are among more than 200 organizations and activities in which students may participate.

In all areas of its mission — excellence in teaching, research and public service — **Florida State University** is advancing boldly toward the 21st century.



# 1999 Women's Tennis Preview

The 1999 Florida State women's tennis team will offer a balanced Lady Seminole attack as they enter the new season. Six veterans return from last seasons dual match line-up and the addition of three talented freshmen to the team will make the Seminoles a serious competitor for the ACC title.

Ali Weber, a junior from Clermont, Florida, and Nanette Duxin, a sophomore from Uruguay, are the Seminoles' top returning players. Their leadership and experience will be a key factor in Florida State's success this season.

"Ali did an unbelievable job for us as a sophomore," said head coach Lise Gregory. "She was very competitive for us at number one and number two singles and had great wins over some of the best in the country."

Nanette Duxin will follow in Ali's footsteps and could play at the top of the Seminole line-up as a sophomore. Although this is only her second season on the team, Duxin's success in the fall proves that she is ready to be a team leader. Duxin won the 1998 Roberta Alison Classic defeating several top-ranked opponents along the way to her flight A championship.

"There is a huge difference in Nanette's play this year," said Gregory. "Her confidence level is much higher and she now realizes she can beat anyone she faces."

The 'Noles also expect a tremendous amount of leadership from another junior on the 1999 roster, Kia Asberg. Kia has had success for the 'Noles at every po-

sition she has played. Her attitude and work ethic make her one of the toughest competitors on the team. "We are very fortunate to have upperclassmen like Kia and Ali who are well-respected for their playing abilities and their exceptional attitudes. They care very much about this team and they lead by example. They make my job easy."

The Lady Seminoles also return two extremely hard working sophomores, Christy Travis and Natalie Carratalá, as well as senior Kylie Thompson, who was a consistent performer last spring and is looking forward to another solid season.

The final three team members for the 1999 Lady Seminoles are Jessica Balbuena, from The Woodlands, Texas, Marina Raic, from Friedrichshafen, Germany, and Alida Gallovits from Romania. These talented freshmen will play in the heart of the Florida State line-up and make major contributions in the upcoming season. Balbuena and Raic have been successful in 1998 fall tournaments, which is a glimpse of the bright future to come for these two young Seminoles, while Gallovits only arrived in Tallahassee in January.

"Jessica and Marina have already begun to make the necessary adjustments in order to be successful at the collegiate level," said Gregory. "They will be definite contributors in our spring season. Alida only started school in January so everything is new to her. There is always a little adjustment period, but she has played at a very high level and is really going to help the team."



Natalie Carratalá

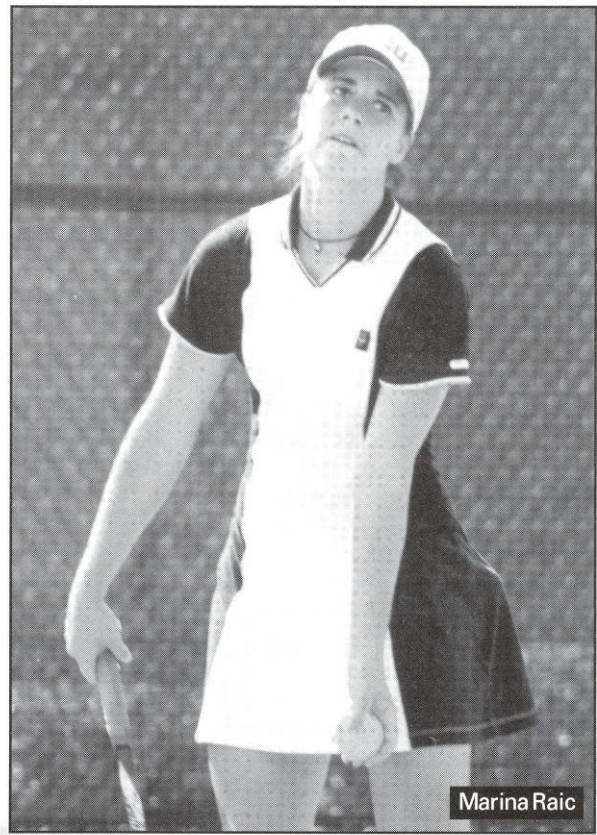


"We have five or six people who are capable of playing #1 on this team. It's exciting to be in a situation like that, but we can't forget that talent is nothing without hard work and hustle."

In addition to the promising potential that the Lady Seminoles have shown on the court, they have always excelled off the court. The 1998 Seminole women's tennis team was awarded Florida State University's Golden Torch Award for the second year in a row. This award goes to the athletic program with the highest team GPA. Moreover, the Lady 'Noles placed eight of it's team members on the ACC Academic Honor Roll and five on FSU's Dean's List.



Jessica Balbuena



Marina Raic

## On the Upcoming **99** Season and Schedule

"Our schedule is tough but so are we! The goal is to win the ACC championship."  
- **Kia Asberg**

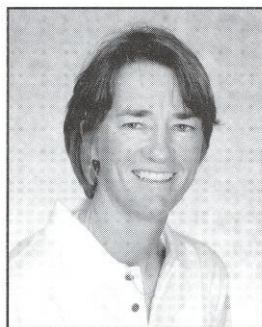
"Our schedule is tough but I think we're going to have our best season ever."  
- **Ali Weber**

"I feel fortunate to be able to surround myself with a great group of people: not only as teammates but as friends."  
- **Natalie Carratalá**

"Our team is very close and everyone knows they can count on each other."  
- **Ali Weber**



# Coaches



## Lise Gregory Head Coach

University of Miami, '87  
Third Season at FSU

Lise Gregory's program is coming into its own as the head coach begins her third season in Tallahassee. When she took over the program,

Gregory insisted that Florida State would contend among the Atlantic Coast Conference's top teams, challenge FSU's non-conference opponents tougher and grow stronger as a program. Her third team appears ready to make that commitment happen.

The team finished with a 12-12 record last year which included a berth in the NCAA Regionals. The Lady Seminoles finished strong winning five of their last six dual matches before going 1-1 at the ACC Championships. Coach Gregory's philosophy of playing some of the nation's best teams was evident in 1997-98 and even more obvious when glancing at the 1998-99 schedule, which includes four teams ranked among the Top Ten.

While the programs emergence on the court is apparent, their commitment and performance in the classroom is equally impressive. The Lady Seminole tennis program has won back-to-back Golden Torch Trophies, which are given annually to the FSU athletics program with the highest team GPA. Women's tennis achieved a team GPA of 3.46, plus eight were mentioned in the All-ACC Honor Roll and five made the FSU Dean's List.

In addition to the on-court and classroom guidance Gregory has brought to the program, she has also put together the "Golden Spear Club". The Golden Spears are a group of Tallahassee community members, nearing 100 at the start of the 1999 dual match season, who show support for the FSU tennis program by coming out to the matches and cheering on the Seminoles.

Gregory, a former seven-time All-American and NCAA champion at the University of Miami, served as the assistant coach for women's tennis at Vanderbilt University for the 1996 season. She assisted Commodore head coach Geoff Macdonald in guiding the program to its second consecutive NCAA Championship appearance and a Top 10 ranking. She has also had additional coaching experience on the private level, as a USTA Area Training Center coach and as a USTA inter-sectional and Zonal coach. The highlight of her professional career was a No. 18 world doubles ranking in 1990 when Gregory and partner

Gretchen Magers were the fourth ranked team in the world.

As a player for the Hurricanes, Gregory earned an amazing seven NCAA All-America honors for her singles and doubles play as well as an NCAA doubles championship in 1986 with teammate Ronni Reis. Together, they com-

pleted an impressive 84-10 record over four years, while the University of Miami team was consistently ranked among the nation's Top Five. She was named to *Tennis Magazine's* All-Star team as a senior in 1987 and as a junior in 1986.

As a professional, Gregory won nine tournament titles in 16 finals appearances, including seven Virginia Slims doubles championships on the way to a career-high No. 18 world doubles ranking in 1990, and won the singles at the \$25,000 Challenger in Philadelphia in 1987. She was a doubles quarterfinalist at the 1991 Australian Open, a Grand Slam event, as well as one of the top eight teams in the world that participated in the year-ending Virginia Slims Championship.

"Playing the tour was a great experience and in many ways it has helped me be a better coach," said Gregory. "I know I can help the team no matter what the situation.

"I'm excited about this year. We are quite young but our freshmen will play toward the top of the line-up. This team is incredibly supportive of one another. We work hard and we work smart. We're in great shape thanks to Tim's (Bauer) conditioning program, and if we continue to take care of the little things, it's going to be a fun spring."

### The Gregory File

- World ranked 18th in doubles
- World ranked 4th as a doubles team in 1990
- World ranked 167th in singles
- Nine professional doubles titles and seven final appearances
- Won singles championship at the \$25,000 Challenger in Philadelphia in 1987
- Named All-American seven times (three singles, four doubles) in four year career at the University of Miami.
- NCAA doubles champion and ITCA National Indoor champion in 1986 with a 29-0 record
- USTA Area Training Center Coach (1995)
- Assistant Coach at Vanderbilt in 1996
- Florida Tennis Association U14 Zonal Coach, 1995
- Florida Tennis Association, U-18 Inter-Sectional Coach, 1997
- FTA U16 Inter-sectional coach in 1998
- Golden Spear Club, founder





## Tim Bauer, ms Assistant Coach

Furman University, '93  
University of Florida, '95

**T**im Bauer's dedication to the training of elite tennis players can be seen in his long list of accomplishments in

the field. Prior to his naming as the assistant women's tennis coach, Bauer's work with ATP and WTA touring professionals brought him to several tour events including the Grand Slams: Wimbledon, Roland Garros, and five U.S. Opens.

A former player at Furman University in Greenville, South Carolina from 1990-93, Bauer completed a Master's Degree in Exercise and Sport Science at the University of Florida in 1995. While at the University of Florida, Bauer was a Sport Science Instructor in the College of Health and Human Performance and continues to be an invited speaker on topics of Eastern bloc sport science, Elite athletic performance and Talent detection and training. Elite amateur and professional athletes in several other sports continue to consult with Bauer on performance issues concerning Sport Psychology and Exercise Physiology.

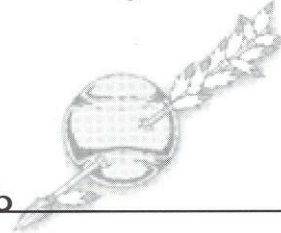
Bauer brings this diverse background of coaching and sport science experience to the Lady Seminoles for a third season. Bauer continues to spend time with each team member, aiming to raise the mental and physical aspects of their individual match performances to new heights. Tennis specific conditioning is designed, organized and directed by Bauer with the primary goals of injury prevention and maximized performance. According to Bauer: "This year's team has gotten off to a great start. There is a determination and dedication among the team that will surely result in success, if efforts are maintained. We aim to leave no stone unturned regarding our team's preparation." Recruiting also receives Bauer's attention, as he evaluates talent available for future Lady Seminole squads.

"This year our player's attitudes epitomize the word "team". Everyone is putting their efforts together, both on and off the court, and this team focus is already evident in match play. With continued dedication this season could prove to be the most successful yet, and a glimpse at the bright future for this young program. I feel quite fortunate to work with athletes who are not only players with class, but such fine people as well," remarked Bauer.

Bauer continues to coach outside the sphere of collegiate tennis, directing summer junior camps on his native Long Island, as well as assisting the USTA, by serving as a coach at USTA Area Training Center camps for the USTA's top ranked juniors. Regarding professional tennis, Bauer maintains contact with the pro tour and

has served as a professional consultant to several players formerly world ranked in the top 100, including WTA players Patricia Hy-Boulais (Canadian #1, WTA #28), Katarzyna Nowak (Polish #1, WTA #65), Li Fang (Chinese #1, WTA #35), and Grant Stafford (ATP #78) among others. Additionally, Bauer has coached scores of world ranked ITF juniors from countries including: USA, Poland, Sweden, Norway, Germany, the former D.D.R., South Africa, Russia, and Australia.

"Tim's teaching ability and love of the game make him an invaluable asset to this program," said head coach Lise Gregory. "His background in exercise science gives us a big advantage because he can tailor the quickness, footwork and conditioning workouts to each player's needs."



### Golden Spear Club

The Golden Spear Club is designed to provide "grass roots" support for the men's and women's tennis programs at Florida State University.

The objective of the club is to assist the athletic department in promoting FSU tennis in Leon County and throughout Florida and to assist in generating interest and enthusiasm for the program.

Membership in the Golden Spear Club helps support the club's activities and the Florida State University Tennis Program. Although Golden Spear club memberships are **not** accompanied with Booster Club benefits, you can take pride in the fact that FSU Tennis will remain nationally competitive because of the support.

FSU Athletics welcomes you to become a part of the Golden Spear Club and join other tennis enthusiasts in the fun of supporting FSU tennis. Go Noles!

### Golden Spear Club Benefits

Membership: \$50, Individual; \$75, Family (includes up to 2 adults and 3 children)

- Seminole Tennis T-shirt (one per membership)
- 2 pro-ams with men's and women's teams and coaches
- Limited Use of Varsity Courts
- Quarterly Newsletter
- Complimentary Parking During Matches.

For Information Call: Assistant Women's Tennis Coach Tim Bauer at (850) 644-1099 or by fax (850) 644-3451.



# Players



## Kia Åsberg

Junior  
Lysekil, Sweden  
(Tretorn Tennis Academy)

### Coch Gregory:

"Kia is a great competitor especially when she is playing for her team. She has improved every aspect of her game and is going to be even tougher to beat than last year."

**1998 Fall:** Played in three singles tournaments this fall winning the consolation at the Roberta Alison Fall Classic at Alabama and reaching the quarterfinals at the Lady Seminole Classic...posted a 6-4 singles record this fall...paired with Ali Weber over three fall tournaments and recorded a 5-3 record which included advancing to the finals at the Roberta Alison Classic...was 1-1 with Christy Travis as a partner in the Gator Classic for an overall doubles record of 6-4 this fall... **1997-98:** Played the No. 3 singles spot throughout the spring posting a 14-9 dual match record...teamed with Sasha Hanna as FSU's No. 1 doubles team posting a 4-11 record in spring dual matches including a win in the first round of the ACC Championships... earned a place on the Dean's List, ACC Honor Roll and was the teams Golden Torch Winner as the top academic performer...**1996-97:** Came to FSU for the 1997 dual match season...played No. 3 singles for the Seminoles...went 12-8 at No. 3 singles...defeated regionally ranked players from Rice and Wake Forest in singles...won nine of her final 12 matches to close the season...teamed with Hanna at No. 2 doubles, going 5-5 overall...also saw doubles action with Lori Sowell and Ali Weber...had a 4-1 ACC doubles record with Hanna...named to the FSU Dean's list during the spring. **High school and other accomplishments:** Finished first in the Swedish Junior Championships (18 and under) in 1994...also finished first in doubles (21 and under) in 1995...had a second place showing in the 21 and under bracket...claimed various junior doubles titles in Sweden...had a No. 2 ranking in Sweden as an 18-year-old. **Personal:** Majoring in psychology...born June 16, 1976...daughter of Jan-Olof and Eva Åsberg.

### ÅSBERG CAREER STATISTICS

#### Singles

Year	@1	@2	@3	@4	@5	@6	Duals	Fall	Total
1996-97	0-1	12-8					12-9	1-1	13-10
1997-98		0-2	12-9	2-0			14-9	2-7	16-16
	0-1	12-10	12-9	2-0			26-18	3-8	29-26

#### Doubles

Year	@1	@2	@3	Duals	Fall	Total
1996-97	4-5	3-2	7-7	2-1	9-8	w/ Sasha Hanna, Lori Sowell, Ali Weber
1997-98	2-8	1-3	0-0	4-11	2-4	6-14 w/ Sasha Hanna
	2-8	5-8	3-2	11-18	4-5	15-22



## Jessica Balbuena

Freshman  
The Woodlands, Texas

**1998 Fall:** Has already played 11 matches as a Lady Seminole this past fall and posted a 6-5 record...reached the finals of the Roberta Alison Classic in Alabama before losing to Stacy Ryan of Vanderbilt...won five of her first seven singles matches this fall...posted a 3-3 record in doubles during the fall playing with Marina Raic (2-1), Natalie Carratala (0-1) and 1-1 with Nanette Duxin... **High school and other accomplishments:** Great all-around athlete who was three year all-state soccer player...has won three national doubles titles at age 16; national indoors, clay court and hard court champion...ranked among the Top 20 juniors in the United States in 1997...won a total of five I.T.F. events in 1997 in Aruba, Dominican Republic and Jamaica...semi-finalist at the Easter Bowl singles tournament in March of 1997...also competed in swimming, softball, gymnastics and track...earned third team all-state honors as a swimmer...**Personal:** Born August 26, 1978...will not declare a major until sophomore year...daughter of Arturo Balbuena and Patricia Montano...her mother played on the Mexican olympic team and played Roland Garros...mother also won the Orange Bowl tournament for 18-year-olds while she was only 16...father was a bull fighter.

March of 1997...also competed in swimming, softball, gymnastics and track...earned third team all-state honors as a swimmer...**Personal:** Born August 26, 1978...will not declare a major until sophomore year...daughter of Arturo Balbuena and Patricia Montano...her mother played on the Mexican olympic team and played Roland Garros...mother also won the Orange Bowl tournament for 18-year-olds while she was only 16...father was a bull fighter.

### Coch Gregory:

"Jess was heavily recruited by some of the best programs in the country so we are fortunate to have her. She has so much potential it is scary."

### On Florida State's Coaching

"On the coaching you receive at Florida State: The best possible for players in our situation. We get tremendous support from our coaches who possesses a great deal of knowledge." -**Kia Asberg**

On the coaching you receive at Florida State: The coaching is outstanding! It doesn't get any better than this. They definitely give it 110%. Their hard work makes the team want to work harder. Simple as that." -**Natalie Carratala**

"On the coaching you receive at Florida State: It takes the perfect ingredients to create a successful player and/or team. Our coaches know exactly how to motivate each person to perform at their highest level." -**Kylie Thompson**

"On the coaching you receive at Florida State: The coaches are very knowledgeable and you learn something new every day." -**Ali Weber**





# Natalie Carratala'

Sophomore  
Miami, Florida (St. Brendan)

**Coach Gregory:**  
"Nat has greatly improved her consistency and her fitness. She has added a whole new dimension to her game."

**1998 Fall:** Finished the fall 7-4 with wins in seven of her last nine matches...reached semifinals of the Lady Seminole Classic before losing three set match to reach finals...4-3 as a doubles player in the fall with Nanette Duxin (3-1), Jessica Babuena (0-1) and Christy Travis (1-1). **1997-98:** Played primarily the No. 5 singles spot in the spring but also played at No. 4 and No. 6...posted a 5-9 record over the spring including competition against Vanderbilt in the NCAA Tournament...played with three doubles partners posting a 5-2 record with Helena Karlsson, a 9-9 record with Nanette Duxin and a 1-5 record with Kylie Thompson...had a 7-5 singles record in fall competition...reached the semifinals of the Lady Seminole Fall Classic, Gator Fall Classic and Yellow Jacket Invitational...went 5-2 in

doubles action with Helena Karlsson...with Karlsson, won the flight B doubles championship at the Lady Seminole Fall Classic and advanced to the backdraw finals at the Gator Fall Classic...also teamed with Kylie Thompson in doubles. **High school and other accomplishments:** Received team MVP award at St. Brendan's following freshman, junior and senior years...named to the All-Dade County first team after freshman and junior seasons...a second team honoree following sophomore and honorable mention after senior years...as a junior, won the 1995 International Grass Court Tournament at Philadelphia in doubles and the 1995 doubles competition at the USTA Indoor National Tournament in Michigan. **Personal:** Born November 23, 1978...majoring in Media Production and minoring in Art...daughter of Carmen and Felipe Carratala'...earned a place on the ACC Honor Roll for academics in 1997-98 and was member of last year's team that won the Golden Torch Award as top overall academic team at Florida State.

## CARRATALA' CAREER STATISTICS

### Singles

Year	@1	@2	@3	@4	@5	@6	Duals	Fall	Total
1997-98				1-1	2-5	2-3	5-9	8-6	13-15

### Doubles

Year	@1	@2	@3	Duals	Fall	Total
1997-98	0-3	6-5		6-8	9-8	15-16 w/ Nanette Duxin, Helena Karlsson, Kylie Thompson



# Nanette Duxin

Sophomore  
Montevideo, Uruguay

**Coach Gregory:**  
"The most important thing Nanette had to improve was her strength and she has definitely done that. She is a lot faster as a result and her game has really benefitted."

**1998 Fall:** Recorded an 8-3 record this past fall that included a big win at the Roberta Alison Fall Classic at Alabama...defeated Vanderbilt stars Kristy Blumberg and Kriston Radford at Alabama...reached the quarter finals of the Lady Seminole Classic...record was second best on the squad for the fall season...5-3 as a doubles player in the fall pairing with Natalie Carratala to finish 3-1 at the Roberta Alison Classic, with Ali Weber to finish 1-1 at the Gator Classic and with Jessica Balbuena to finish 1-1 at the Lady Seminole Classic... **1997-98:** Played last spring at No. 1 and No. 2 with seven of the last eight matches at No. 1...posted a 12-11 dual match record for the spring that included a dramatic three set loss in the NCAA Regionals...won seven of her last eight matches on the season and recorded a 7-4 record in ACC competition...teamed

with Natalie Carratala' at No. 2 doubles for a 9-9 record and with Kylie Thompson to close out the year with a 5-1 record for an overall doubles record of 14-10. **High school and other accomplishments:** Has achieved a ranking as high as No. 1 in Uruguay's open division...had a WTA ranking of 784 in 1994...played for her national team in the Federation and Continental Cup tournaments (1996-97)...has played at the first division interclubs in France for the past four years...has claimed several French Junior titles from 1992-95...was a semifinalist in WTA \$10,000 Challenger (Brazil, 1994). **Personal:** Born January 22, 1979...majoring in business.

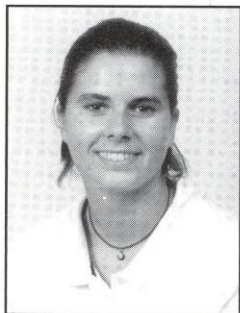
## DUXIN CAREER STATISTICS

### Singles

Year	@1	@2	@3	@4	@5	@6	Duals	Fall	Total
1997-98	3-9	9-4					12-13		12-13

### Doubles

Year	@1	@2	@3	Duals	Fall	Total
1997-98	0-2	10-5		10-7		10-7 w/ Natalie Carratala', Kylie Thompson



# Marina Raic

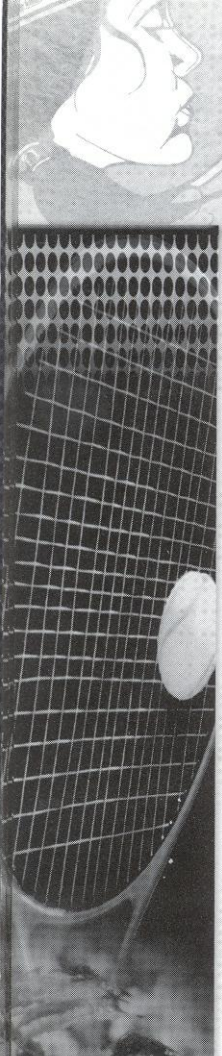
Freshman  
Friedrichshafen, Germany

**Coach Gregory:**  
"Marina is very professional about everything she does. She is strong and talented and the more experience she gains the better she is going to get."

**1998 Fall:** Posted a team best 9-3 record over three fall tournaments...defeated teammate Ali Weber to win the Lady Seminole Fall Classic...won her last five straight fall singles matches and eight of her last nine...teamed with Kylie Thompson in two fall tournaments with identical 2-1 records in the Gator Classic and the Lady Seminole Classic...posted a 2-1 record with Jessica Balbuena in the Roberta Alison Classic at Alabama...overall doubles record for the fall was 6-3... **High school and other accomplishments:** While in Germany was state champion in singles (winter '94)...second in state championships (summer '94)...had German women's ranking of 108 in 1996...won second place in German Grand Prix Tournament...graduated to play in second highest division of league

tennis. **Personal:** Born August 20, 1978...parents are Croations living in Germany...majoring in communications.





# Alida Gallouits

Freshman  
Timisoara, Romania

**High school and other accomplishments:** Won the singles at the ITF Tournament in Cairo, Egypt in 1995...Also won the ITF tournament in Scopje, Macedonia (1997) and Maribor, Slovenia (1996)...placed third at ITF tournaments in Tel Aviv, Israel (1995), Sofia, Bulgaria (1997 and '98), Istanbul, Turkey (1998)...reached quarter-finals of the Orange Bowl Tournament in 1995...ranked among the WTA Top 500 in the world since 1995...finished second in the masters division of the national championships in 1997...finished third in the singles national championships for juniors in 1995 and fourth in 1994...played second at the national championships in doubles as a junior in 1995... **Personal:** Born November 6, 1978...graduated third in her high school class...mother played handball in the Olympics and father competed in the Olympic pentathlon.

### Coach Gregory:

"Even though she is just a freshman she is an experienced tennis player. She is very, very smart and extremely fast. She will force people to play very good tennis to beat her."



# Kylie Thompson

Senior  
Honea Path, South Carolina (Belton-Honea Path)

**1998 Fall:** Played in two fall tournaments posting a 4-2 record...reached the semifinals of the Lady Seminole Classic at the Speicher Tennis Center and reached the quarterfinals of the Gator Fall Classic in Gainesville...4-2 in doubles during the fall with identical 2-1 tournaments with Marina Raic at the Gator Classic and Lady Seminole Classic... **1997-98:** Played at No. 6 singles virtually all of last spring posting a 7-6 record (13-8 including the fall)...won five of her last eight dual matches including a first round ACC Championship win...finished 4-3 in the ACC during the spring...posted an 8-13 doubles record in the spring...in fall singles she was 6-2 overall and won her flight's championship at the Lady Seminole Fall Classic...went 1-1 at both the Gator Fall Classic and Yellow Jacket Invitational...advanced to the flight C finals of the Lady Seminole Fall Classic with Rakina Payne. **1996-97:** Was sidelined for parts of the season due to injury...participated in just four singles matches all year...saw dual match doubles action with Ashley Delaney, Weber and Payne...went 4-3 at No. 3 doubles with Weber, 7-6 overall. **1995-96:** Played entire dual match season at No. 6 singles and No. 3 doubles with Lori Junker...played most of the dual match season with a fracture in her wrist...was 5-3 at No. 3 doubles with Junker...won the ACC No. 3 regular season doubles flight. **High school and other accomplishments:** Won the 1990, 1991 and 1993 South Carolina Junior Singles Championships...won the backdraw at

### Coach Gregory:

"Last year Kylie's patience paid off and she got to play a lot of singles for us. She came up with some very big wins in both singles and doubles."

## THOMPSON CAREER STATISTICS

### Singles

Year	@1	@2	@3	@4	@5	@6	Duals	Fall	Total
1995-96					0-1	3-15	3-16	1-3	4-19
1996-97						0-1	0-1	1-2	1-3
1997-98					0-2	7-5	7-6	6-2	13-8
					<b>0-3</b>	<b>10-21</b>	<b>10-23</b>	<b>8-7</b>	<b>18-30</b>

### Doubles

Year	@1	@2	@3	Duals	Fall	Total	
1995-96	1-0	0-1	5-3	6-4	1-0	7-4	w/ Lori Junker, Ann Olsson, Elke Juul
1996-97		0-2	5-4	5-6	3-3	8-9	w/ Ashley Delaney, Rakina Payne, Ali Weber
	<b>1-0</b>	<b>0-3</b>	<b>10-7</b>	<b>11-10</b>	<b>4-3</b>	<b>15-13</b>	

the 1994 Outback Gator Bowl Tournament in Ponte Vedre Beach, Florida...named to the All-Region team 1990-94...named region's Player of the Year 1992-94...team's MVP 1992 to 1994...named to the All-State team 1992 to 1994...selected as a member of the South Carolina Junior Wightman Cup Team...named high school's most outstanding female athlete for 1995. **Personal:** Born June 19, 1978...majoring in Religion/English...member of the National Honor Society and Beta Club student council...skipped her junior year of high school and completed her senior year early to attend FSU...daughter of Mike and Angie Thompson...excellent student who has earned a spot on the ACC Honor Roll for the last two years.







# Christy Travis

Sophomore  
Palmetto, Florida (Bradenton Christian)

### Coach Gregory:

"Incredibly unselfish, extremely hard-working and a joy to be around. Christy has improved beyond recognition."

**1998 Fall:** Played in three fall tournaments and posted a 5-5 record...lost in the quarterfinals of the Roberta Allison Tournament held at Alabama and in the C flight quarter finals at the Lady Seminole Classic...finished the fall with an overall 2-2 record in doubles...1-1 at the Gator Classic and with Natalie Carratala at the Lady Seminole Classic... **1997-98:** Posted an overall 3-3 record last year...won two of three matches at the Yellow Jacket Invitational...had a 2-2 doubles record with Rakina Payne...won two of three matches at both the Gator Fall Classic and Yellow Jacket Invitational. **High school and other accomplishments:** Played No. 1 singles and doubles for Bradenton Christian all four years...was also the captain and team MVP of that squad each year...named All-Conference three times...won the Bay Conference' Scholarship

Athlete award following 11th and 12th grades...finalist at the K-Swiss Christmas Bowl Tennis Classic, 1994-95...was a finalist at the Junior Satellite State Closed Singles Championship, 1993...placed fourth in the Walt Disney World Tennis Championship, 1994...was a member of the National Honor Society all four years and the Spanish Honor Society for two years...an active member of FCA during high school. **Personal:** Born August 28, 1979...brother, Jay, is a former member of the FSU men's tennis team...majoring in Communications...daughter of Ron and Gail Travis...made the ACC Honor Roll and Dean's List in 1997-98.

### TRAVIS CAREER STATISTICS

#### Singles

Year	@1	@2	@3	@4	@5	@6	Duals	Fall	Total
1997-98							0-0	3-3	3-3

#### Doubles

Year	@1	@2	@3	Duals	Fall	Total
1997-98			0-1	0-1	4-2	4-3

### Coach Gregory:

"One of Ali's favorite sayings is "so money baby!" and it pretty much describes Ali on and off the court. I can count on her day in and day out to give every thing she has to get the job done."



# Ali Weber

Junior  
Clermont, Florida (South Lake)

**1998 Fall:** Played 14 fall matches with a 7-7 final fall record...lost to teammate Marina Raic in the finals of the Lady Seminole Classic...worked through the third round of the consolation bracket at the South Regions in Athens...won five of her last eight fall singles matches...posted a 6-4 doubles record playing most of the time with Kia Asberg...reached the finals of the Roberta Alison Classic with a 3-1 record while teamed with Asberg, and finished 1-1 with her at both the Lady Seminole and South Regionals...played with Nanette Duxin at the Gator Classic where they were 1-1... **1997-98:** Played No. 1 and No. 2 singles throughout last year posting an overall record of 21-16, including a 13-11 dual match record...paired with Helena Karlsson and recorded a 18-6 record playing mostly at

No. 3 doubles...led the team with an 8-5 overall singles record through fall competition...won the flight B backdraw championship at the Gator Fall Classic...reached semi-finals of the Yellow Jacket Invitational...teamed with Helena Karlsson at the Yellow Jacket Invitational, winning the flight C bracket championship. **1996-97:** Played at No. 3 through 6 singles during the dual match season...set a freshman record with 26 overall singles victories...led the team with 15 dual match singles wins...had a fall season singles record of 11-6...claimed the Flight 5 ACC singles championship with a perfect 7-0 record at No. 5 singles during ACC play...had win streaks of six and seven matches throughout the year...won her flight at the 1996 Lady Seminole Fall Classic...had an overall doubles record of 12-10 with various partners.

**High school and other accomplishments:** Held a No. 44 national ranking in U-14 singles, No. 7 in the state...earned a No. 12 state ranking for U-16's singles...was a doubles finalist at the U-14 national claycourts...a fast, scrappy player with good groundstrokes...had a top ten singles ranking or better in Florida 12-18 age groups...high school district champion sophomore through junior years. **Personal:** Born August 28, 1978...majoring in Public Relations...won the Golden Nole Award for 1997-98 as the team most valuable player...excellent classwork earned her a spot on the ACC Honor Roll and the FSU Dean's List last year.

### WEBER CAREER STATISTICS

#### Singles

Year	@1	@2	@3	@4	@5	@6	Duals	Fall	Total
1996-97				0-2	13-5	2-0	15-7	11-6	26-13
1997-98	4-6	9-5					21-16	8-5	21-16
	4-6	9-5		0-2	13-5	2-0	36-23	19-11	47-29

#### Doubles

Year	@1	@2	@3	Duals	Fall	Total
1996-97			6-5	6-5	10-8	12-10
1997-98			6-5	6-5	10-8	12-10
						w/ Kia Asberg, Lori Junker, Rakina Payne, Kylie Thompson



# 1997-98 Review

The Florida State women's tennis team closed the 1998 season on a high note by qualifying for the NCAA Southeast Regional tournament for the third straight year. The Lady Seminoles played Vanderbilt in the NCAA's for the second straight year, while it was the fourth NCAA Regional appearance in the history of the Lady Seminole program.

The Lady Seminoles also finished the year strong at the ACC Tournament advancing to the second round in Atlanta. FSU defeated North Carolina in the first round before facing Top Five ranked Duke in the second round. FSU met with success in doubles at the ACC's as well with teams of Ali Weber and Helena Karlsson, and Nanette Duxin and Natalie Carratala's finishing as runner-ups for the championships.

FSU took on perennial power Vanderbilt in the first round of the NCAA Regionals following the ACC Tournament and stretched the Lady Commodores to three sets in five of six singles matches before being edged for the win.

Last year's Lady Seminole squad posted a 12-12 dual match record which was not indicative of the season the team enjoyed. Coach Lise Gregory stuck with her philosophy of playing the very best teams she can find and along those lines she put a very difficult schedule in front of her squad. The Lady Seminoles would face the No. 1 and No. 2 ranked teams in the country in addition to a number of Top 20 ranked programs. Included on the regular season schedule was the always difficult Atlantic Coast Conference schedule featuring one of the strongest conference match-ups in the country.

"I would not trade last season for anything," admits Gregory. "We played a very difficult schedule so it was tough to come out with a great record, but the team competed so very well throughout the year. It is very gratifying as a coach to be around players you enjoy so much and who work so hard to get better. I really saw them feed off each other and improve themselves on the court and in the classroom. This team was very supportive of each other and it made the season a real joy."

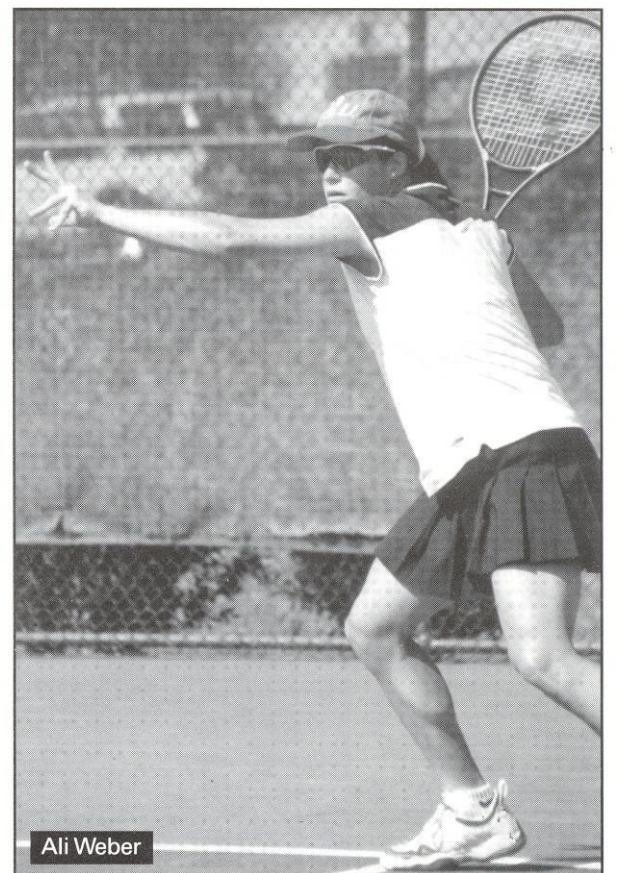
Perhaps the highlight of the season was a dramatic singles win by Ali Weber over Top Five ranked Dawn Buth of Florida (6-4, 6-3). "That was an exciting win for the whole team," said Gregory. Weber made the move from No. 5 singles where she played as a freshman in 1996-97 to No. 1 as a sophomore and proved she could win at the top of the FSU ladder. Weber played at No. 1 or No. 2 singles all spring switching with true freshman Nanette Duxin at the top. Duxin began her first college tennis ever in January and found herself playing right at the top from the very start.

Kia Asberg was nearly an automatic point at No. 3 singles the entire year. The only lull in her 1997-98 season came when bronchitis affected her play midway through the year.

Coach Gregory did a lot of switching in the remaining three singles spots rotating Natalie Carratala', Sasha Hanna, Helena Karlsson and Kylie Thompson throughout the spring season.

FSU's doubles teams were led by Ali Weber and Helena Karlsson who were counted on for points nearly every time they took the court. Last year's Lady Seminole doubles teams were very similar in strength. "We had great balance within our doubles teams," said Gregory. "They were interchangeable in the 1-3 spots and their play improved as the season progressed."

"As I look back at last year it was a very nice to see the players rub off on each other," said Gregory. "They genuinely enjoyed being around each other and you could see the players picking each other up in different aspects of their lives. We had a team that did not have a great deal of experience, but which improved all year."



Ali Weber



# 1998 Statistics

## Florida State Women's Tennis

### Cumulative Stats for 1997-98 Season

#### Overall Record Playing At:

SINGLES	All	Dual	ACC	1	2	3	4	5	6
Kia Asberg	16-16	14-9	6-3	0-0	0-0	12-8	2-1	0-0	0-0
Nat Carratala'	13-15	5-9	1-5	0-0	0-0	0-0	1-1	2-5	2-3
Sasha Hanna	14-18	10-13	4-6	0-0	0-0	0-1	5-4	5-7	1-1
Hel. Karlsson	10-22	7-15	1-9	0-0	0-0	1-2	4-16	3-1	2-3
Rakina Payne	4-4	0-0	0-0	0-0	0-0	0-0	0-0	0-0	0-0
K. Thompson	13-8	7-6	4-3	0-0	0-0	0-0	0-0	0-3	7-3
C. Travis	3-3	0-0	0-1	0-0	0-0	0-0	0-0	0-0	0-0
Ali Weber	21-15	13-10	4-6	4-6	9-4	0-0	0-0	0-0	0-0
Nanette Duxin	12-13	11-12	7-4	3-9	9-4	0-0	0-0	0-0	0-0

#### Overall Record Playing At:

DOUBLES	All	Dual	Streak	ACC	1	2	3
Asberg /Hanna	6-14	4-11	1W	2-7	2-8	1-3	0-0
Carratala/Karlsson	5-2	0-0	1L	0-0	0-0	0-0	0-0
Payne/Thompson	2-1	0-0	1L	0-0	0-0	0-0	0-0
Carratala/Duxin	9-9	6-6	1L	6-2	0-1	6-5	0-0
Duxin/Thompson	4-1	4-1	1W	1-1	0-1	4-0	0-0
Weber/Thompson	1-1	0-0	1L	0-0	0-0	0-0	0-0
Hanna/Thompson	0-5	0-5	5L	0-2	0-5	0-0	0-0
Payne/Travis	4-3	0-1	1L	1-0	0-0	0-0	0-1
Carratala/Thompson	1-5	0-2	5L	0-1	0-2	0-0	0-0
Karlsson/Weber	17-7	14-6	6W	5-4	0-0	1-0	13-6



Nanette Duxin

#### 1997-98 Results

#### Florida State Women's Tennis (12-12)

Minnesota	L	2-5
Syracuse	W	5-2
H Georgia Southern	W	7-2
Florida	L	1-8
Georgia Tech	L	4-5
Clemson	L	4-5
Maryland	L	4-5
Virginia	W	5-4
H South Florida	W	6-3
H Houston	W	7-2
H Virginia Tech	L	4-5
H Baylor	W	5-4
H Wake Forest	L	3-6
H NC State	L	4-5
South Alabama	L	1-8
Auburn	W	6-3
H Illinois	W	6-3
H Jacksonville	W	7-0
H Florida International	W	6-3
Duke	L	1-8
North Carolina	W	5-4
North Carolina (ACC)	W	7-2
Duke (ACC)	L	5-0
Vanderbilt (NCAA)	L	6-0

[7-3]

#### World's #4 Ranked Player Plays Exhibition at FSU

FSU's tennis program and the Tallahassee community got a special treat in November when tennis star Amanda Coetzer played an exhibition match at the Speicher Tennis Center. Coetzer shared some old memories with fellow South African tennis pro and head FSU coach Lise Gregory. Coetzer earned the nickname "Giant Killer" on the tour and ranked fourth in 1997 scoring three victories over Steffi Graf and one against Martina Hingis.

Although she traveled nearly 100,000 miles on the tour last year, Coetzer came to Tallahassee to take part in an exhibition to benefit the FSU program. The Golden Spear Club organized an outstanding exhibition program which included many of Tallahassee's USTA members, tennis supports and Seminole fans. She hit a few balls with Ali Weber as well as playing a point with several lucky junior players. She posed for photos and signed autographs for nearly two hours after the exhibition.



# 1998 ACC Statistics

## THE ACC VS. NON-ACC OPPONENTS

77-49 (.611)

## ACC TOURNAMENT RESULTS

(Atlanta, Ga., April 23-26): 1st Round - #8 Florida State d. #9 North Carolina 7-2. Quarterfinals - #3 NC State d. #6 Clemson 5-4, #2 Wake Forest d. #7 Georgia Tech 5-1, #1 Duke d. #8 Florida State 5-0, #4 Maryland d. #5 Virginia 5-1. Semifinals - Wake Forest d. NC State 5-0, Duke d. Maryland 5-0. Finals - Duke d. Wake Forest 5-2.

## ACC TOURNAMENT MVP

Kathy Sell, Duke

## ACC SINGLES FLIGHT CHAMPIONS

No. 1 Vanessa Webb, Duke; No. 2 Kristen Sanderson, Duke; No. 3 Bobbie Guthrie, Georgia Tech; No. 4 Karen Goldstein, Duke; No. 5 Kathy Sell, Duke; No. 6 Laura Zifer, Duke.

## ACC DOUBLES FLIGHT CHAMPIONS

No. 1 Karen Goldstein-Vanessa Webb, Duke; No. 2 Etresia Kruger-Kate-Maree Mair, Clemson; Lule Aydin-Mariel Verban, Wake Forest; No. 3 Leslie Cook-Christie Schweer, Virginia.

## ALL-ATLANTIC COAST CONFERENCE

Duke (4) - Karen Goldstein, Megan Miller, Kristin Sanderson, Vanessa Webb; Maryland (2) - Lorraine Bittles, Meg Griffin; Wake Forest (2) Lule Aydin, Mariel Verban; Clemson - Catherine Glavin; Georgia Tech - Bobbi Guthrie; NC State Blair Sutton.

## ACC PLAYER OF THE YEAR

Vanessa Webb, Duke

## ACC ROOKIE OF THE YEAR

Mariel Verban, Wake Forest

## ACC COACH OF THE YEAR

Jenny Garrity, NC State

## 1998 ACC Final Standings

Team	W	L	Pct.
Duke	8	0	1.00
Wake Forest	7	1	.875
NC State	5	3	.625
Maryland	4	4	.500
Virginia	4	4	.500
Clemson	3	5	.375
Georgia Tech	2	6	.250
Florida State	2	6	.250
North Carolina	1	7	.125



Kia Asberg

Helena Karlsson

Natalie Carratalá