

Georgia Tech 5, Florida State 4 • February 21

SINGLES

- 1 Duxin (FS) d. Ursulet... 6-3,6-2
- 2 Weber (FS) d. Uy... 3-6,6-2,6-3
- 3 Guthrie (GT) d. Karlsson... 7-5,6-2
- 4 Asberg (FS) d. Parker... 6-2,6-2
- 5 Richards (GT) d. Carratala... 6-3,6-2
- 6 Hanna (FS) d. Jenkin... 6-3,6-2

DOUBLES

- 1 Guthrie-Ursulet (GT) d. Asberg-Hanna... 9-7
- 2 Jenkin-Uy (GT) d. Carratala-Duxin... 8-6
- 3 Parker-Richards (GT) d. Karlsson-Weber... 8-5

Clemson 5, Florida State 4 • February 22

SINGLES

- 1 Weber (FS) d. Woerz... 6-7(4),6-3,6-0
- 2 Kruger (CU) d. Duxin... 7-6(5),6-0
- 3 Asberg (FS) d. Carr... 6-2,6-4
- 4 Oldock (CU) d. Karlsson... 7-6(2),7-6(5)
- 5 Galvin (CU) d. Hanna... 6-4,6-1
- 6 Mair (CU) d. Carratala... 7-6(6),7-6(1)

DOUBLES

- 1 Kruger-Mair (CU) d. Asberg-Hanna... 8-3
- 2 Carratala-Duxin (FS) d. Carr-Galvin... 9-8(1)
- 3 Karlsson-Weber (FS) d. Oldock-Woerz... 8-4

Florida State 5, Virginia 4 • March 1

SINGLES

- 1 Boiko (V) d. Weber... 7-6,7-6
- 2 Duxin (FS) d. Gingold... 6-3,6-4
- 3 Asberg (FS) d. Hill... 6-1,6-0
- 4 Cook (V) d. Karlsson... 4-6,6-0,6-3
- 5 Hanna (FS) d. Schweer... 6-1,6-3
- 6 Thompson (FS) d. Weaver... 6-4,6-4

DOUBLES

- 1 Gingold-Hill (V) d. Asberg-Hanna... 8-6
- 2 Carratala-Duxin (FS) d. Boiko-White... 8-5
- 3 Cook-Schweer (V) d. Karlsson-Weber... 8-1

Wake Forest 6, Florida State 3 • March 14

SINGLES

- 1 Weber (FS) d. Kaiwai... 6-2,6-2
- 2 Duxin (FS) d. Aydin... 7-5,7-6
- 3 Verban (WF) d. Karlsson... 6-0,6-1
- 4 Kurz (WF) d. Hanna... 6-0,6-3
- 5 Milton (WF) d. Carratala... 6-1,6-3
- 6 Houston (WF) d. Thompson... 6-3,6-3

DOUBLES

- 1 Kaiwai-Kurz (WF) d. Hanna-Thompson... 9-8
- 2 Carratala-Duxin (FS) d. Aydin-Verban... 9-7
- 3 Milton-Ullring (WF) d. Karlsson-Weber... 8-4

N.C. State 5, Florida State 4 • March 15

SINGLES

- 1 Sutton (ST) d. Weber... 6-1,6-1
- 2 Duxin (FS) d. Bonacic... 6-4,6-7,6-4
- 3 Gildemeister (ST) d. Asberg... 2-6,6-1,retired
- 4 Hanna (FS) d. Roberts... 6-7,6-2,6-3
- 5 Glover (ST) d. Carratala... 6-1,6-2
- 6 Thompson (FS) d. Barragan... 6-1,6-2

DOUBLES

- 1 Bonacic-Sutton (ST) d. Hanna-Thompson... 9-7
- 2 Gildemeister-Roberts (ST) d. Carratala-Duxin... 8-4
- 3 Karlsson-Weber (FS) d. Barragan-Glover... 8-4

Maryland 5, Florida State 4 • March 25

SINGLES

- 1 Griffin (M) d. Weber... 6-2,6-3
- 2 Bittles (M) d. Duxin... 6-0,6-4
- 3 Asberg (FS) d. Ivanisevic... 2-6,6-1,6-0
- 4 Karlsson (FS) d. Terrill... 6-2,6-4
- 5 Walkowitz (M) d. Carratala... 6-1,6-1
- 6 Pavelko (M) d. Hanna... 6-2,6-4

DOUBLES

- 1 Bittles-Griffin (M) d. Asberg-Hanna... 8-2
- 2 Carratala-Duxin (FS) d. Terrill-Walkowitz... 8-5
- 3 Karlsson-Weber (FS) d. Ivanisevic-Pavelko... 8-3

Duke 8, Florida State 1 • April 9

SINGLES

- 1 Webb (DU) d. Duxin... 6-1,6-0
- 2 Sanderson (DU) d. Weber... 6-2,6-0
- 3 Goldstein (DU) d. Asberg... 6-3,6-0
- 4 Sell (DU) d. Hanna... 7-5,6-3
- 5 Zifer (DU) d. Thompson... 6-3,6-3
- 6 McCance (DU) d. Karlsson... 6-4,6-4

DOUBLES

- 1 Goldstein-Webb (DU) d. Duxin-Thompson... 8-2
- 2 Sanderson-Sell (DU) d. Asberg-Hanna... 8-5
- 3 Karlsson-Weber (FS) d. McCance-Zifer... 8-3

Florida State 5, North Carolina 4 • April 10

SINGLES

- 1 Zaganczyk (NC) d. Duxin... 6-2,6-3
- 2 Weber (FS) d. Hackler... 6-4,3-6,6-4
- 3 Asberg (FS) d. Hawkins... 6-3,6-1
- 4 Zalinski (NC) d. Hanna... 6-2,6-0
- 5 Burnette (NC) d. Karlsson... 6-2,6-4
- 6 Thompson (FS) d. Niebling... 6-3,6-3

DOUBLES

- 1 Hackler-Niebling (NC) d. Asberg-Hanna... 9-8(6)
- 2 Duxin-Thompson (FS) d. Hawkins-Zalinski... 8-6
- 3 Karlsson-Weber (FS) d. Burnette-Zaganczyk... 9-7

Florida State Record Against the ACC (2-6)

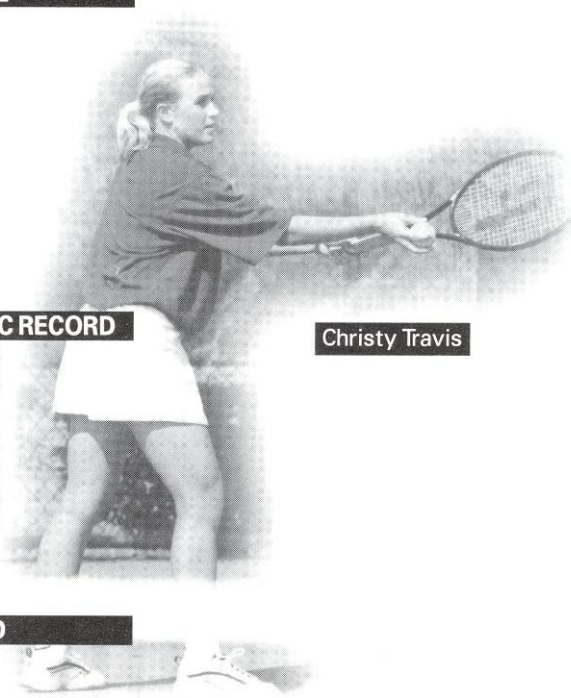
OPPONENT	DATE	LOCATION	W/L	SCORE
Georgia Tech	2/21	Atlanta	L	4-5
Clemson	2/22	Clemson	L	4-5
Maryland	2/28	College Park	L	4-5
Virginia	3/1	Charlottesville	W	5-4
Wake Forest	3/14	Wake Forest	L	3-6
N.C. State	3/15	Tallahassee	L	4-5
Duke	4/9	Durham	L	1-8
North Carolina	4/10	Chapel Hill	W	5-4

Individual Record Versus ACC Opponents (Dual Matches Only)

	1	2	3	4	5	6	ACC RECORD
Nanette Duxin	1-2	3-2					4-4
Ali Weber	2-3	2-1					4-4
Helena Karlsson			0-2	1-2	0-1	0-1	1-6
Kia Asberg			4-2	1-0			5-2
Natalie Carratala					0-4	0-1	0-5
Sasha Hanna				1-3	1-1	1-1	3-5
Kylie Thompson					0-1	3-1	3-2

Doubles Records Versus ACC Opponents (Dual Matches Only)

	1	2	3	ACC RECORD
Hanna - Asberg	0-5	0-1		0-6
Hanna - Thompson	0-2			0-2
Duxin - Carratala		4-2		4-2
Weber - Karlsson			5-3	5-3
Thompson - Duxin	0-1	1-0		1-1



Christy Travis

Around the ACC

ACC TOURNAMENT HISTORY (Since FSU's joining in 1992)

TEAM COMPETITION

Year	Team Champion	Head Coach	Runner Up	Site
1992	Duke	Geoff Macdonald	Wake Forest	Charlotte, North Carolina
1993	Duke	Geoff Macdonald	Clemson	Charlotte, North Carolina
1994	Duke	Geoff Macdonald	Florida State	Charlotte, North Carolina
1995	Duke	Jody Hayden	Wake Forest	Greenwood, South Carolina
1996	Duke	Jody Hayden	Wake Forest	Greenwood, South Carolina
1997	Duke	Jamie Ashworth	Wake Forest	Norcross, Georgia
1998	Duke	Jamie Ashworth	Wake Forest	Atlanta Georgia

ATLANTIC COAST CONFERENCE HONORS

Year	ACC Tournament MVP	Coach of the Year	Player of the Year	Rookie of the Year
1992	Susan Sommerville, Duke	Geoff Macdonald, Duke	Cinda Gurney, UNC	
1993	Christine Neuman, Duke	Andy Johnston, Clemson	Cinda Gurney, UNC	
1994	Wendy Lyons, Duke	Alice Reen, Florida State	Audra Brannon, FSU	Lori Sowell, FSU
1995	Wendy Lyons, Duke	Lew Gerrard, WFU	Monica Mraz, Duke	Laura Zifer, Duke
1996	Laura Zifer, Duke	Jim Laitta, Maryland	Sophie Woorons, Clemson	Vanessa Webb, Duke
1997	Karin Miller, Duke	Lew Gerrard, WFU	Karin Miller, Duke	Karin Miller, Duke
1998	Kathy Sell, Duke	Jenny Garrity, NCSU	Vanessa Webb, Duke	Mariel Verban, WF

SINGLES & DOUBLES RESULTS

No. 1 Singles		No. 2 Singles		No. 3 Singles	
1992	Cinda Gurney, Duke	1992	Angela Bernal, North Carolina	1992	Liz Barker, Wake Forest
1993	Cinda Gurney, Duke	1993	Christine Neuman, Duke	1993	Amy Young, Clemson
1994	Audra Brannon, Florida State	1994	Lori Sowell, Florida State	1994	Emma Peetz, Clemson
1995	Wendy Lyons, Duke	1995	Wendy Lyons, Duke	1995	Cristina Caparis, Wake Forest
1996	Sophie Woorons, Clemson	1996	Jan Barrett, Clemson	1996	Ann Olsson, Florida State
1997	Karin Miller, Duke	1997	Amy Jensen, Wake Forest	1997	Nicola Kaiwai, Wake Forest
1998	Vanessa Webb, Duke	1998	Kristin Sunderson, Duke	1998	Bobbie Guthrie, Georgia Tech

No. 4 Singles		No. 5 Singles		No. 6 Singles	
1992	Diane McKeon, Wake Forest	1992	Tracey Hiete, Duke	1992	Scotti Thomas, North Carolina
1993	Shannon King, Clemson	1993	Alison Cohen, Virginia	1993	Tracey Zawacki, Wake Forest
1994	Jan Barrett, Clemson	1994	Maggie Harris, Wake Forest	1994	Kim Schiff, Duke
1995	Karen O-Sullivan, Duke	1995	Wendy Fix, Duke	1995	Maggie Harris, Wake Forest
1996	Devrin Carr, Clemson	1996	Stacy Gingold, Virginia	1996	Alison Levy, North Carolina
1997	Lule Aydin, Wake Forest	1997	Ali Weber, Florida State	1997	Jeni Burnette, North Carolina
1998	Karen Goldstein, Duke	1998	Kathy Sell, Duke	1998	Laura Zifer, Duke

No. 1 Doubles

1992	Cinda Gurney/Alisha Portnoy, North Carolina
1993	Janice Durden/Shannon King, Clemson
1994	Audra Brannon/Elke Juul, Florida State
1995	Wendy Lyons/Monica Mraz, Duke
1996	Elke Juul/Lori Sowell, Florida State
1997	Kate-Maree Mair/Stefani Woerz, Clemson
1998	Karen Goldstein/Vanessa Webb, Duke

No. 2 Doubles

1992	Wendy Lyons/Monica Mraz, Duke
1993	Alison Cohen/Ly-Lan Schofield, Virginia
1994	Maggie Harris/Patty Murren, Wake Forest
1995	Wendy Fix/Laura Zifer, Duke
1996	Sasha Hanna/Ann Olsson, Florida State
1997	Paige Boiko/Kendall White, Virginia
1998	Etresia Kruger/Kate Maree-Mair, Clemson

No. 3 Doubles

1992	Hillary McKinney/Meredith Lukoff, Duke
1993	Elke Juul/Sandi Ecclestone, Florida State
1994	Wendy Fix/Kim Schiff, Duke
1995	Ashley Delaney/Lori Junker, Florida State
1996	Lori Junker/Kylie Thompson, Florida State
1997	Wendy Fix/Kristin Sanderson, Duke
1998	Leslie Cook/Christie Schweer, Virginia



Atlantic Coast Conference

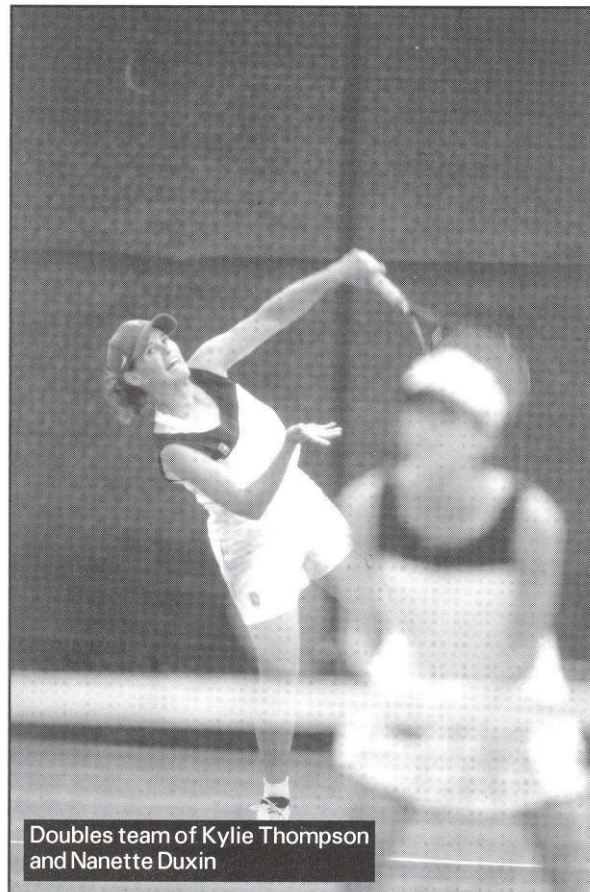
The Atlantic Coast Conference has long served as a model of collegiate women's tennis. With a high academic standard and sound fundamental belief in tennis, these nine programs: Florida State, Clemson, Duke, Georgia Tech, Maryland, North Carolina, North Carolina State, Virginia and Wake Forest have all excelled beyond the point of expectation.

Long known for its talented depth, the ACC has been no stranger to the national scope, as seven of its nine programs during the 1997-98 season were nationally ranked, with Duke and Wake Forest surfacing in the Top 15. With players scattered throughout the national rankings from No. 1 to 100, the ACC had four ITA All-Americans.

At the 1998 ACC Championships in Atlanta, Ga., the Lady Seminoles were seeded eighth behind Georgia Tech. FSU faced No. 9 seed North Carolina in the first round. The Lady Seminoles won the opening match 7-2. FSU had reached the semifinal rounds each season since joining the conference in 1992. Top-seeded Duke, holding a #2 national ranking, defeated the Lady 'Noles 5-0.

Although the Duke Blue Devils have been the team to beat in ACC women's tennis over the past decade, the league has witnessed streaks of champions. North Carolina had the most success in the early years, winning championships from 1977 to 1980. From 1981 to 1987, Clemson strung together seven consecutive titles. Duke was the team that snapped the Lady Tigers winning streak in 1988, and have been on top of the ACC women's tennis scene ever since.

The 1998 season will be the 22nd year of women's tennis competition for the Atlantic Coast Conference. Beginning in 1977, the ACC started crowning a conference champion. This process has not been without its changes during the past 22 years though. In 1982, the tournament was held in the spring for the first time. In 1990, the tournament determined the ACC team champion while the singles and doubles champions were determined during regular season play.



Doubles team of Kylie Thompson and Nanette Duxin

Year by Year Results

Team Results from 1982 season through current:

1982 - Anne Rizza (23-17)

Florida A&M	W	9-0
South Carolina	L	2-7
Oklahoma State	W	5-4
Texas Christian	W	6-3
Tulane	W	9-0
South Florida	W	5-4
Florida A&M	W	8-0
Rollins	L	2-7
Florida	L	1-7
Louisiana State	W	6-3
Clemson	W	5-4
Auburn	W	9-0
Southwest Louisiana	W	9-0
Northwest Louisiana	W	7-0
Mississippi Univ. for Women	W	8-0
North Carolina	W	6-3
South Carolina	L	3-5
Mississippi	L	4-5
Purdue	W	7-1
Texas	L	0-8
Southern Methodist	W	6-2
Texas Christian	L	4-5
North Texas State	W	6-2
Louisville	W	8-1
Ohio State	W	9-0
South Alabama	W	7-2
Indiana	L	2-7
Harvard	W	8-1
Clemson	L	4-5
South Florida	L	4-5
Miami, Fla.	L	2-7
Florida	L	1-8
Georgia	L	3-6
Rollins	L	2-7
South Florida	L	4-5
North Carolina	L	1-8
Iowa	W	7-2
Georgia	W	5-4
Princeton	W	5-4
North Carolina	L	0-5

1983 - Anne Rizza (18-8)

Stetson	W	7-2
Florida Junior College	W	7-2
Clemson	L	0-9
Uburn	W	8-1
College of Charleston	W	9-0
Rollins	L	1-8
Louisiana Tech	W	7-0
Northeast Louisiana	W	8-1
Alabama	W	8-1
Rice	L	3-6
South Florida	W	5-4
Duke	W	6-3
Indiana	L	2-7
Ohio State	W	9-0

Iowa	W	7-2
Georgia	W	6-3
Georgia State	W	9-0
Tennessee	W	6-3
Northwestern	L	4-5
Rollins	W	6-3
Florida	L	3-6
South Florida	L	3-6
Florida	L	4-5
Vanderbilt	W	8-1
Alabama	W	8-1
Tulane	W	5-4

1984 - Anne Rizza (15-13)

Rollins	L	3-6
Tennessee	W	8-1
South Carolina	L	4-5
Houston	L	4-5
Tennessee - Chattanooga	W	5-4
Vanderbilt	W	8-0
Auburn	W	7-2
Florida Junior College	W	8-1
Tulane	W	6-0
Georgia	W	7-2
Northeast Louisiana	W	5-1
Alabama	W	7-2
Oklahoma State	L	4-5
South Alabama	W	7-2
Florida	L	2-7
South Carolina	W	5-4
Oklahoma State	L	4-5
Georgia	W	6-3
Mississippi	L	2-5
Mississippi State	W	9-0
Rice	L	3-6
New Mexico	W	5-1
Miami, Ohio	W	6-3
Northwestern	L	1-8
Rollins	L	4-5
Florida	L	1-8
Miami, Fla.	L	3-6
South Florida	L	3-6

1985 - Anne Rizza (13-14)

Georgia Tech	W	6-1
South Florida	L	1-8
Alabama	W	6-3
North Florida	W	7-2
Florida Junior College	W	9-0
Rollins	W	5-4
Florida	L	1-8
North Carolina	W	7-2
Louisiana State	L	2-7
South Florida	L	0-8
Wichita State	W	6-3
Wake Forest	W	7-2
Duke	L	4-5
North Carolina	L	2-7
Texas Christian	L	3-6
South Carolina	L	4-5

Northwestern	L	3-6
Georgia	W	5-4
Florida	L	1-8
South Florida	L	3-6
Miami, Fla.	L	1-8
Rollins	W	7-2
Mississippi	L	2-6
Auburn	W	8-1
Memphis State	W	9-0
Tulane	L	4-5
Virginia Tech	W	7-2

1986 - Anne Rizza (17-10)

North Florida	W	6-3
Florida Junior College	W	9-0
Florida	L	1-8
Southern Methodist	L	3-6
Rollins	W	8-1
Houston	L	3-6
South Florida	W	5-4
Alabama	W	6-3
Auburn	W	7-2
Florida	L	1-8
Purdue	W	6-3
Baylor	W	9-0
Mississippi	W	5-4
South Alabama	L	2-7
Southwest Missouri	W	8-1
Texas Christian	L	3-6
Clemson	L	0-9
South Alabama	L	3-6
Virginia Tech	W	9-0
Georgia Tech	W	7-2
Wisconsin	W	5-4
Mississippi State	W	7-2
Stetson	W	9-0
South Florida	L	2-7
Rollins	W	6-0
Virginia Tech	W	8-1
South Carolina	L	4-5

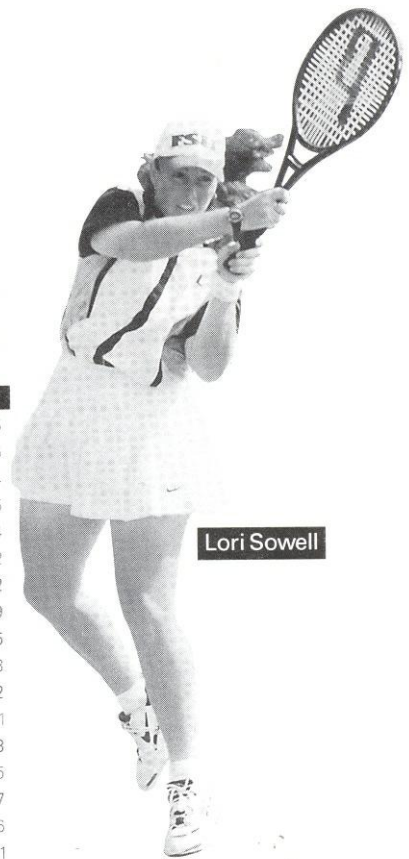
1987 - Patti Henderson (11-15)

Vanderbilt	L	4-5
Tennessee	L	4-5
William & Mary	W	5-4
South Carolina	L	0-5
Auburn	W	5-4
Florida Junior College	W	7-2
North Florida	W	7-2
Florida	L	0-9
Mississippi State	L	4-5
Furman	W	6-3
Purdue	W	7-2
Columbia	W	8-1
South Florida	W	6-3
Miami, Ohio	L	4-5
North Carolina	L	2-7
Wake Forest	L	3-6
Virginia Tech	W	8-1
California - Irvine	L	3-6

Rice	L	4-5
California - Santa Barbara	L	2-7
Southern Methodist	L	1-8
Florida	L	0-9
Rollins	L	3-6
Louisville	W	7-2
Memphis State	W	9-0
South Carolina	L	3-6

1988 - Patti Henderson (14-12)

Florida	L	1-8
Florida A&M	W	8-1
Alabama - Birmingham	W	7-2
North Florida	L	3-6
Northeast Louisiana	W	6-3
Houston	L	1-8
Mississippi	L	4-5
Virginia Tech	W	5-4
North Carolina	L	2-7
Furman	W	9-0
Louisiana State	L	4-5
Stetson	W	8-1
South Florida	W	5-4
Rollins	W	6-3
Auburn	L	3-6
Baylor	W	9-0



Lori Sowell

New Mexico	W	5-4
South Carolina	L	1-7
Indiana	L	1-8
Mississippi State	L	1-5
Georgia State	W	9-0
South Florida	W	5-4
Flagler	L	2-7
Southern Methodist	W	9-0
Louisville	W	9-0
South Carolina	L	0-6

1989 - Patti Henderson (13-7)

Tulane	W	8-1
South Florida	L	4-5
Florida	L	0-9
South Alabama	W	5-3
Jacksonville	W	9-0
Northeast Louisiana	W	6-0
Auburn	W	5-4
South Alabama	L	3-6
Florida International	W	9-0
Flagler	L	4-5
North Florida	W	6-3
Mississippi	L	3-6
Kansas State	W	5-1
Yale	L	4-5
South Florida	W	6-3
Wisconsin	L	1-8
Rollins	W	6-3
Clemson	W	5-4
Lamar	W	9-0
Houston	W	5-4

1990 - Patti Henderson (17-8)

South Florida	W	7-1
Rollins	W	8-1
Santa Fe	W	9-0
North Florida	W	8-1
Florida	L	0-9
U.S. International	L	3-6
Arizona	L	4-5
Rice	W	6-0
Northeast Louisiana	W	7-0
South Alabama	W	7-1
Houston	L	2-7
Mississippi	W	5-4
Georgia Tech	W	7-1
Louisiana Tech	W	7-2
Florida International	W	8-1
Louisiana State	L	4-5
Miami, Fla.	L	1-8
New Mexico	W	7-0
South Florida	W	7-2
Wisconsin	L	4-5
Rollins	W	8-1
Michigan	W	8-1
Wake Forest	W	5-4
South Carolina	L	2-6
Boca Raton	W	8-1

1991 - Patti Henderson (13-9)

Florida	L	0-9
North Carolina	L	2-7
Miami, Fla.	L	4-5
Tulane	W	9-0
Rice	W	7-2

Louisiana State	W	5-4
Northeast Louisiana	W	9-0
Auburn	W	7-2
South Florida	W	9-0
Alabama	W	6-3
Michigan	W	7-2
Rollins	W	9-0
Wake Forest	L	4-5
Mississippi State	W	7-2
Trinity	W	7-2
Houston	L	4-5
Texas Christian	L	3-6
Southwest Louisiana	W	8-1
Wisconsin	L	3-6
Northwestern	L	2-7
Flagler	W	7-2
Duke	L	1-6

1992 - Alice Reen (13-10)

Northwestern	L	3-6
Wisconsin	L	2-7
Alabama	L	0-6
Flagler	W	7-2
Rollins	W	8-1
Virginia	W	7-2
Michigan	W	6-3
South Florida	W	7-2
North Carolina State	W	9-0
Miami, Fla.	L	2-7
Southern Methodist	W	5-3
Mississippi State	L	4-5
North Carolina	W	5-4
Duke	L	1-8
Georgia Tech	W	8-1
Illinois	L	4-5
South Alabama	W	6-1
Florida International	W	6-3
Georgia	L	3-6
Clemson	L	3-6
Wake Forest	W	5-4
Virginia	W	6-0
Wake Forest	L	2-5

1993 - Alice Reen (13-9)

Georgia Tech	W	8-1
California - Santa Barbara	L	4-5
Rice	L	4-5
Arizona	L	2-6
Florida International	W	8-1
Miami, Fla.	L	2-7
Rollins	W	8-1
Michigan	W	6-3
South Florida	W	5-4
Clemson	L	4-5
North Carolina	W	7-2
Wake Forest	L	4-5
Oklahoma	W	6-3
North Carolina State	W	6-0
Maryland	W	8-1
Tennessee	L	3-6
Virginia	W	5-4
Southwestern Louisiana	W	6-3
Georgia	L	2-5
South Alabama	W	5-4
North Carolina	W	5-3
Clemson	L	2-7

1994 - Alice Reen (15-10)

Georgia Tech	W	9-0
Miami, Fla.	L	4-5
Florida	L	1-8
Maryland	W	9-0
Kentucky	L	1-7
Tennessee	L	4-5
South Florida	W	5-4
Wake Forest	W	5-4
Clemson	L	3-6
Georgia	L	1-5
North Carolina State	W	7-2
Virginia	W	6-3
Mississippi State	W	5-1
Rice	W	7-2
Houston	W	5-1
Texas	L	3-6
Texas A&M	W	5-4
Florida International	W	5-1
North Carolina	W	7-2
Duke	L	4-5
South Alabama	W	7-2
North Carolina State	W	5-1
Clemson	W	5-3
Duke	L	0-5
Arizona	L	3-5

1995 - Alice Reen (11-10)

Florida	L	1-7
Vanderbilt	L	4-5
Georgia Southern	W	8-0
South Florida	L	4-5
North Carolina	W	5-4
Duke	L	1-6
Tennessee	W	5-4
Clemson	W	5-4
Maryland	W	8-1
Texas A&M	W	5-2
Georgia	L	0-6
Virginia	W	8-1
South Carolina	L	3-6
Miami, Fla.	L	3-6
Florida International	W	5-4
San Diego	L	2-6
Georgia Tech	W	6-0
North Carolina State	W	5-4
Wake Forest	L	3-6
Virginia	W	5-3
Wake Forest	L	2-5

1996 - Alice Reen (8-11)

Vanderbilt	L	0-8
Jacksonville	W	8-0
Miami, Fla.	W	5-3
Georgia Southern	W	7-2
Maryland	W	6-2
Clemson	W	5-4
Georgia	L	1-6
Wake Forest	L	4-5
North Carolina State	W	8-1
Virginia	L	4-5
Notre Dame	L	1-6
Mississippi	L	2-5
North Carolina	L	4-5
Duke	L	1-8

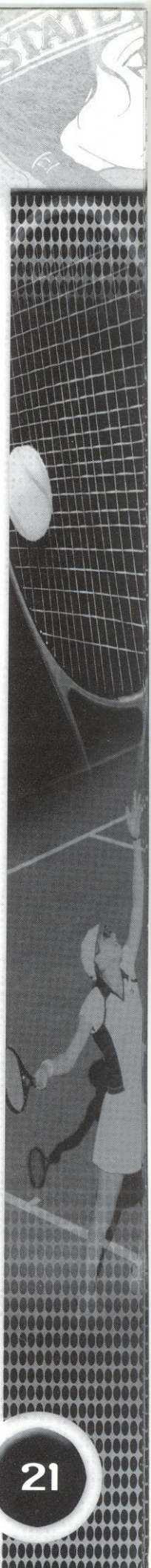
Florida	L	1-8
Georgia Tech	W	8-1
Virginia	W	5-3
Duke	L	0-6
South Carolina	L	2-5

1997 - Lise Gregory (12-11)

South Alabama	L	2-7
Vanderbilt	L	0-9
Auburn	W	7-1
Miami, Fla.	L	3-6
Florida International	W	8-1
Georgia Tech	W	8-1
California	L	2-7
Clemson	W	6-3
Florida	L	0-9
North Carolina	W	7-2
Baylor	L	4-5
Rice	W	5-4
Houston	L	4-5
Duke	L	1-7
North Carolina State	W	6-3
Wake Forest	L	2-6
Maryland	W	7-2
Illinois	W	8-1
Virginia	W	7-2
South Florida	W	5-4
Georgia Tech	W	5-1
Wake Forest	L	1-5
Vanderbilt	L	0-5

1998 - Lise Gregory (12-12)

Georgia Southern	W	7-2
Florida	L	1-8
Georgia Tech	L	4-5
Clemson	L	4-5
Maryland	L	4-5
Virginia	W	5-4
South Florida	W	6-3
Houston	W	7-2
Virginia Tech	L	4-5
Baylor	W	5-4
Wake Forest	L	3-6
NC State	L	4-5
South Alabama	L	1-8
Auburn	W	6-3
Illinois	W	6-3
Jacksonville	W	7-0
Florida International	W	6-3
Duke	L	1-8
North Carolina	W	5-4
North Carolina (ACC)	W	7-2
Duke (ACC)	L	5-0
Vanderbilt	L	6-0



Honors & Awards

A History of Honors and Awards

FSU Athletics Hall of Fame

Patti Henderson - 1992
Buffy Baker - 1997

Metro Conference Coach of the Year

Anne Rizza - 1981, 1983 & 1984
Patti Henderson - 1989

ACC Coach of the Year

Alice Reen - 1994

Metro Conference Champions

1981, 1983, 1984 & 1989

Metro Conference Player of the Year

Suzanne Doumar - 1981
Patti Henderson - 1986
Keri Preng - 1989
Buffy Baker - 1991

ACC Player of the Year

Audra Brannon - 1994

ACC Rookie of the Year

Lori Sowell - 1994

All American

Audra Brannon - 1993 (doubles)
Laura Randmaa - 1993 (doubles)
Lori Sowell - 1995 (singles) & 1996 (singles)

All-ACC

Audra Brannon - 1992-94
Elke Juul - 1995 & 1996
Laura Randmaa - 1993
Lori Sowell - 1994-97
Ann Olsson - 1997

Metro Conference Tournament MVP

Patti Henderson - 1986
Keri Preng - 1989
Buffy Baker - 1991

Metro Conference All-Tournament Team

Buffy Baker - 1988-91
Keri Preng - 1988 & 1989
Kirsten Turk - 1989
Ann Waggoner - 1990

Metro Conference Flight Champions

Suzanne Doumar - 1981, No. 1 singles & No. 1 doubles
Jaime Kaplan - 1981, No. 1 doubles
Lisa Erghott - 1983, No. 5 singles
Patti Henderson - 1983, No. 2 doubles; 1984, No. 3 singles & No. 1 doubles; 1985, No. 2 singles
Debbie Pollack - 1983, No. 4 singles
Jenny Cerino - 1984, No. 6 singles & No. 2 doubles;
1985, No. 5 singles & No. 3 doubles
Sue Hatch - 1984, No. 2 singles & No. 2 doubles
Lee McGuire - 1984, No. 1 doubles
Buffy Baker - 1989, No. 1 doubles; 1990, No. 1 doubles; 1991, No. 1 singles & No. 1 doubles
Nicki Ivy - 1989, No. 6 singles; 1991, No. 3 doubles
Kirsten Turk - 1989, No. 3 singles
Keri Preng - 1989, No. 1 doubles
Christina Tee - 1991, No. 4 singles & No. 2 doubles
Robin Cifaldi - 1991, No. 2 doubles
Audra Brannon - 1991, No. 2 singles & No. 1 doubles
Ann Waggoner - 1991, No. 3 doubles

ACC Flight Champions

Elke Juul - 1993, No. 3 doubles; 1994, No. 1 doubles;
1996, No. 1 doubles

Sandi Ecclestone - 1993, No. 3 doubles
Audra Brannon - 1994, No. 1 singles & No. 1 doubles
Lori Sowell - 1994, No. 2 singles; 1996, No. 1 doubles
Ashley Delaney - 1995, No. 3 doubles
Lori Junker - 1995, No. 3 doubles; 1996, No. 3 doubles
Ann Olsson - 1996, No. 3 singles & No. 2 doubles
Sasha Hanna - 1996, No. 2 doubles
Kylie Thompson - 1996, No. 3 doubles
Ali Weber - 1997, No. 5 singles

Miscellaneous Honors

Buffy Baker - 1988 Roberta Alison Southern Intercollegiate (champion, No. 1 singles); 1989 Roberta Alison Southern Intercollegiate (champion, No. 1 singles); 1989 Women's Intercollegiate Championships (champion, No. 1 singles)
Keri Preng - 1988 Barnett Bank Women's Intercollegiate State Championships (champion, No. 6 singles)
Laura Sarkilahi - 1988 Barnett Bank Women's Intercollegiate State Championships (champion, No. 5 singles)
Audra Brannon - 1993 Arthur Ashe Award Recipient

Post Season Invitations

Association of Intercollegiate Athletics for Women

1982 team - AIAW National Championships, 6th Place

Doubles

Jaime Kaplan - 1982; named to the AIAW all-region II team
Suzanne Doumar - 1982

National Collegiate Athletic Association

1994 team - NCAA Championships, First Round

Singles

Jamie Kaplan - 1983
Audra Brannon - 1993 & 1994
Lori Sowell - 1994, 1995 & 1996

Doubles

Jamie Kaplan - 1983
Lee McGuire - 1983
Patti Henderson - 1985
Sue Hatch - 1985
Audra Brannon - 1993, 1994

Laura Randmaa - 1993
Elke Juul - 1994, 1995 & 1996
Lori Sowell - 1995 & 1996

Academic Honors

FSU's Golden Torch Award (Highest G.P.A.)

1985, 1986, 1987, 1988, 1989, 1997, 1998

Nicki Ivy, 1991
Ashley Delaney, 1994

Metro Conference Commissioner's List

Claudia Gaughf - 1985
Sue Hatch - 1985, 1986
Kirsten Turk - 1986, 1987, 1988 & 1989
Chris Joyce - 1986, 1987 & 1988
Jill Urban - 1986 & 1987
Keri Preng - 1989
Kirsten Balsler - 1989 & 1990
Lori Webster - 1990
Shana Nozick - 1990
Christina Tee - 1990

ACC Academic Honor Roll

Buffy Baker - 1992
Ashley Delaney - 1994-97
Sandi Ecclestone - 1994
Amy Hanby - 1992-93
Nicki Ivy - 1992
Lori Junker - 1995-97
Laura Randmaa - 1994
Lori Sowell - 1994 & 1996-97
Chrissie Tee - 1992
Elke Juul - 1996
Kylie Thompson - 1996-98
Sasha Hanna - 1997, 98
Ann Olsson - 1997
Ali Weber - 1997, 98
Rakina Payne - 1997, 98
Kia Asberg - 1998
Natalie Carratala - 1998
Helena Kaavison - 1998
Christy Travis - 1998



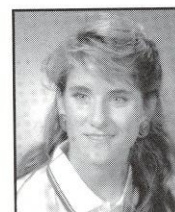
Audra Brannon



Laura Randmaa



Lori Sowell



Buffy Baker

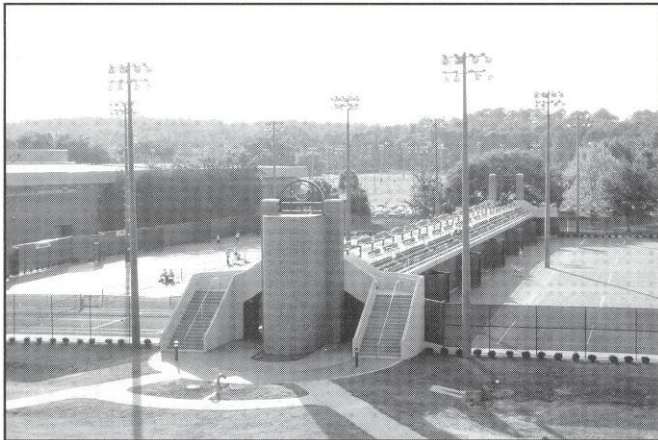


Patti Henderson

Speicher Tennis Center

With the first stage of construction completed in the Summer of 1993, the Scott Speicher Tennis Center at the Donald Loucks Courts opened its gates to the public for the first time at a Children's Miracle Network charity tournament. Since then, many successful and admirable tournaments have graced the courts at one of Florida State University's premier athletic facilities.

Costing \$1.2 million to build and then another \$800,000 for recent additions, Florida State's Speicher Tennis Center has become an example of the increasing dedication and commitment the University has to all of its 17 varsity athletic programs.



The Speicher Tennis Center houses 12 lighted hard courts, over 1,000 court level seats, coaching offices, men's and women's lockerrooms, equipment and storage rooms, a team lounge and a public address system. The growing pride Florida State has for its tennis program and its premier tennis center was honored just after its opening in 1994, when the United States Tennis Association (USTA) awarded the structure with its "Top Notch" facility award.

The Speicher Tennis Center was named in honor of Lieutenant Commander Michael Scott Speicher, a graduate of Florida State University and the first American casualty during Operation Desert Storm. By Presidential directive, the facility bears the name the "Scott Speicher Tennis Center."

H. Donald Loucks was the program's first tennis coach and is aptly known as the pioneer of Florida State tennis. He began his coaching career in 1936 at the University School of Florida State College for Women where he coached all sports. This was the beginning of an association with Florida State which crossed six decades, 1936 - 1980, ending in his retirement as Pro-

fessor Emeritus of Physical Education. In 1942, while serving as an officer in the Army, Loucks was stationed at West Point where he coached plebe basketball and tennis teams.

In 1947, Loucks became Florida State's first basketball coach and a year later was named the schools' first tennis coach. His tennis team was the first athletic team to have a winning season. The varsity tennis courts were named for him in 1981. He served as Dean of Men from 1957 - 1967 and was known as a servant of leadership, service and devotion to many worthy causes.



The Speicher Tennis Center was designed by EMO/Architects, Inc., a Tallahassee-based architectural firm, in collaboration with Global Consult Group, Inc., an internationally recognized Tennis Facility Design Consultant. The complex was funded by private sources and supervised through the state university system of Florida.

Through its short three year existence, the Scott Speicher Tennis Center at the Donald Loucks Courts has served as the home courts for all Florida State men's and women's home dual matches, the annual Seminole Fall Classics, City of Tallahassee tennis championships, various USTA regional and zonal tournaments, the 1994 and 1995 Men's intercollegiate men's tournament and the annual Children's Miracle Network Charity Inviational benefitting Shands Hospital in Gainesville.

On Playing at the Speicher Tennis Center

"One of the main things that attracted me to FSU was the quality of our athletic facilities. There is no doubt that Florida State boasts some of the finest facilities in the country. Luckily, the Speicher Center continues this tradition of excellence."

- Kylie Thompson

All-Time Information

All-Time Dual Match Season Roster (1978-Current)

Leslee Abisch, 1978

Kia Asberg, 1997-

Elizabeth "Buffy" Baker, 1988-91

Kirsten Balsler, 1988-90

Mary Beck, 1978

Gigi Boesch, 1981

Audra Brannon, 1990-94

Bresha Byrd, 1993

Natalie Carratala', 1998-

Jenny Cerino, 1983-86

Robin Cifaldi, 1991-92

Beth Clay, 1981-83

Cheryl Cordes, 1981

Beth Corn, 1987

Ashley Delaney, 1994-97

Debbie Deluccia, 1978

Suzanne Doumar, 1983

Nanette Duxin, 1998-

Sandi Ecclestone, 1993-94

Lisa Ehr Gott, 1981-84

Darlene Finnegan, 1985

Laura Jo Garcia, 1978

Khristen Getz, 1981

Jenny Graf, 1992-94

Yvonne Gsteiger, 1978

Claudia Gaughf, 1983-86

Jenny Green, 1986

Amy Hanby, 1992-93

Sasha Hanna, 1995-98

Dee Ann Hansel, 1981

Jean Harrington, 1978

Sue Hatch, 1984-87

Patti Henderson, 1983-86

Elizabeth Hinson, 1978

Jennifer Hyde, 1991-94

Leslie Ivy, 1991-92

Nicki Ivy, 1989-90

Chris Joyce, 1986-89

Lori Junker, 1994-97

Elke Juul, 1992-96

Jaime Kaplan, 1983

Helena Karlsson, 1998

Darlene Kennedy, 1984

Claudette Laliberte, 1978

Sharon MacPhee, 1990

Lee McGuire, 1983-84

Dana Medalie, 1983-84

Melissa Miller, 1978

Laurie Mueller, 1981

Susan Mueller, 1981-84

Penne Nieporte, 1981

Shana Nozick, 1989-90

Josephine O'Gorman, 1987

Ann Olsson, 1995-97

Sharon Ondrula, 1978

Rakina Payne, 1995, 1997-98

Anna Polihrom, 1978

Debbie Pollack, 1983-84

Keri Preng, 1987-90

Tanya Racoobian, 1988

Diane Ramsey, 1978

Laura Randmaa, 1993-94

Laura Ribovich, 1986

Valerie Rive, 1986

Laura Sarkilahti, 1989-91

Sherry Shores, 1978

Tracey Smith, 1987-89

Lori Sowell, 1993-97

Christina Tee, 1990-92

Kim Temples, 1985-87

Kylie Thompson, 1995-

Mary Thym, 1993-95

Christy Travis, 1998-

Kirsten Turk, 1987-89

Jill Urban, 1987-89

Ann Waggoner, 1990-91

Ali Weber 1997-

Lori Webster, 1990

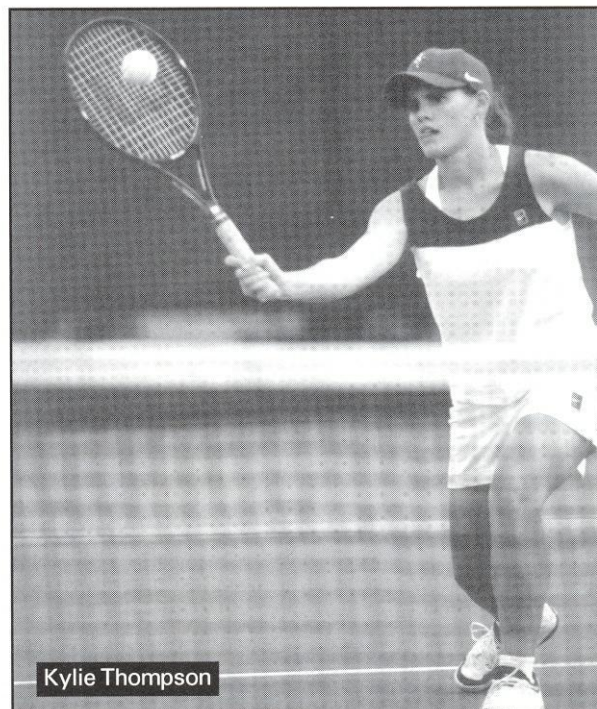
Paula Whitebrook, 1983-86

Mary Ellen Wilkinson, 1978

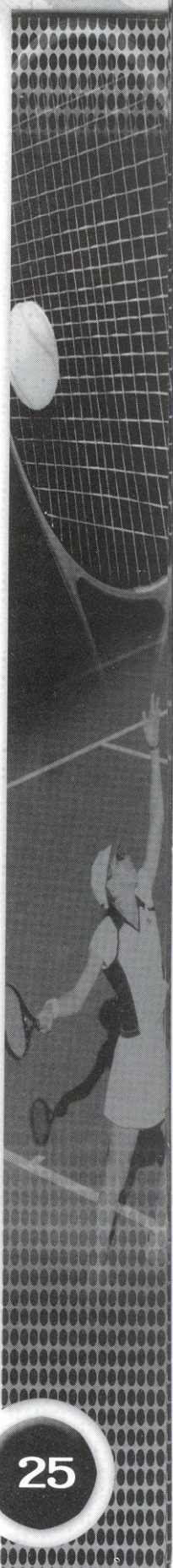
Mary Wood, 1986-87

Women's Tennis All-Time Records vs. Opponents 1981-1987

Opponent	W	L	First	Last
Alabama	6	1	1983	1992
Alabama-Birmingham	1	0	1988	1988
Arizona	0	3	1990	1994
Auburn	10	1	1982	1998
Baylor	3	1	1986	1998
California	0	1	1997	1997
Cal-Irvine	0	1	1987	1987
Cal-Santa Barbara	0	2	1987	1993
Clemson	6	8	1982	1998
College of Charleston	1	0	1983	1983
Columbia	1	0	1987	1987
Duke	1	11	1983	1998
Flagler	2	2	1988	1992
Florida	0	21	1982	1998
Florida A&M	3	0	1982	1988
Florida International	8	0	1989	1998
Florida Junior College	5	0	1983	1987



Kylie Thompson



Opponent	W	L	First	Last	Opponent	W	L	First	Last	Opponent	W	L	First	Last
Furman	2	0	1987	1988	Michigan	4	0	1990	1993	South Alabama	7	5	1982	1998
Georgia	5	6	1982	1996	Mississippi	2	6	1982	1996	South Carolina	1	12	1982	1996
Georgia Southern	3	0	1995	1998	Mississippi State	4	3	1984	1994	Southern Methodist	3	2	1982	1992
Georgia State	2	0	1983	1988	Mississippi Univ.for Women	1	0	1982	1982	South Florida	15	10	1982	1998
Georgia Tech	10	1	1985	1998	New Mexico	3	0	1984	1990	Southwestern Louisiana	3	0	1982	1993
Harvard	1	0	1982	1982	North Carolina	10	7	1982	1998	Southwest Missouri	1	0	1986	1986
Houston	3	6	1984	1998	North Carolina State	7	1	1992	1998	Stetson	3	0	1983	1988
Illinois	2	1	1992	1998	North Florida	5	1	1985	1990	Tennessee	3	3	1983	1995
Indiana	0	3	1982	1988	Northeast Louisiana	6	0	1983	1991	Tennessee-Chattanooga	1	0	1984	1984
Iowa	2	0	1982	1983	Northwestern	0	5	1983	1992	Texas	0	2	1982	1994
Jacksonville	3	0	1989	1998	Northwest Louisiana	1	0	1982	1982	Texas A&M	2	0	1994	1995
Kansas State	1	0	1989	1989	North Texas State	1	0	1982	1982	Texas Christian	1	4	1982	1991
Kentucky	0	1	1994	1994	Notre Dame	0	1	1996	1996	Trinity	1	0	1991	1991
Lamar	1	0	1989	1989	Ohio State	2	0	1982	1983	Tulane	5	1	1982	1991
Louisiana State	2	3	1982	1991	Oklahoma	1	0	1993	1993	U.S. International	0	1	1990	1990
Louisiana Tech	2	0	1983	1990	Oklahoma State	1	2	1982	1984	Vanderbilt	2	5	1983	1997
Louisville	3	0	1982	1988	Princeton	1	0	1982	1982	Virginia	9	1	1992	1998
Lynn (Boca Raton)	1	0	1990	1990	Purdue	3	0	1982	1987	Virginia Tech	5	1	1985	1998
Maryland	5	1	1993	1998	Rice	4	5	1983	1997	Wake Forest	4	10	1985	1998
Memphis State	2	0	1985	1987	Rollins	12	6	1982	1993	Wichita State	1	0	1985	1985
Miami, FL	1	10	1982	1997	San Diego	0	1	1995	1995	William & Mary	1	0	1987	1987
Miami, OH	1	1	1984	1987	Santa Fe	1	0	1990	1990	Wisconsin	1	4	1986	1992
										Yale	0	1	1989	1989

FSU Women's Coaching History



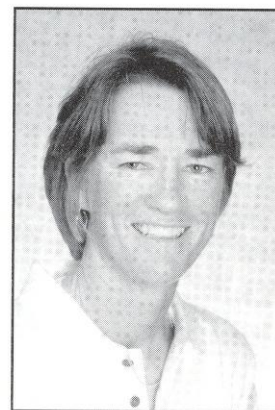
Anne Rizza
1982-86 (86-62)



Patti Henderson
1987-91 (68-51)



Alice Reen
1992-96 (60-50)



Lise Gregory
1996-98 [24-23]

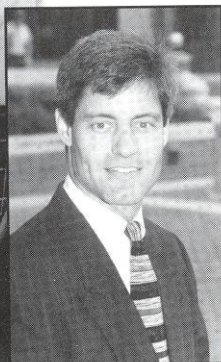
Support Services

An Overview of an Academic Support Program on the Rise

Academic, personal and professional support are essential to college success. At the Florida State University, we have developed an outstanding support program which enables student-athletes to reach their full potential.

Our philosophy is "to offer an academic support program integrated with the total university that will assist all student-athletes with the transition into college and provide continued support in all phases of academic and professional development culminating with graduation, job placement or graduate school."

To accomplish this goal we have developed an academic environment which facilitates the academic success of student-athletes. Student success is encouraged through competent academic counseling, career exploration, planning and placement and academic assistance through tutorial programs.



Mark Meleney
Director

Our program operates on a "proactive" rather than "reactive" approach. At Florida State, our academic staff does not wait for academic crises to occur. We gather important background information and build an academic profile on all student-athletes to assess their needs in advance. We also stay informed on the daily progress of each student-athlete.

Our academic support staff includes a director, five counselors, and three graduate interns forming a group of profes-



Academic Support Staff

On Florida State's Academics Support Program

"FSU does a lot for us athletes and I appreciate it. Especially the academic advisors do a great job."

- Marina Raic

"Florida State is very serious in its commitment to produce complete student athletes. We're given every opportunity to succeed, both on the court and in the classroom. That translates into the production of effective people after college."

- Kylie Thompson

sionals serving the needs of all our student-athletes. Mark Meleney is entering his second year as the director of the Athletics Academics Support after serving as one of the program's academic counselors for eight years prior. Academic Counselor Kevin White will handle the women's tennis program duties in 1997.

In 1994, the academic programs moved to the state-of-the-art University Center and are located on the 6th floor of the \$126,000,000 facility. It includes private study carrels, a tutorial study area and a computer lab outfitted with 16 state-of-the-art IBM computers and laser printers. In addition, athletic sky boxes are utilized for group and individualized tutorial instruction sessions.

utilized for group and individualized tutorial instruction sessions.

Athletic Care

Strength, Conditioning, Medical Care & Treatment

Strength training, conditioning, medical care and treatment are a vital aspect of an athlete's performance on the field. At Florida State, a specially designed program is developed for women's tennis, emphasizing the objectives of strengthening and conditioning the athletes along with the proper medical attention.

Strength and Conditioning coach Ron Miller, assistant Joe Beckham and staff individually customize programs for each of the athletes, beginning with pre-conditioning, before the season even gets underway. Assistant Athletic Trainer Kari Langley, A.T.C., will handle the athletic training duties for the women's tennis team.

This season, Miller will be working with Beckham in customizing a sound workout for the women's tennis team. The workout is instrumental in improving muscular endurance, strength and cardiovascular conditioning on the field. The coaches believe so strongly in the program that they even participate themselves. FSU takes pride in customizing the programs to help student athletes reach their maximum potential.

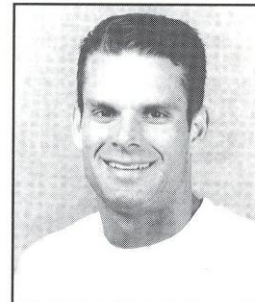
Miller, who holds professional memberships in the National Strength and Conditioning Association and Aerobics and Fitness Association, works with the players in sport specific training which includes strengthening the major muscle groups used in soccer.

Athletes at Florida State University receive the best care and treatment possible. All of the student athletes undergo a preseason examination in order to prevent and detect any potential injuries that an athlete

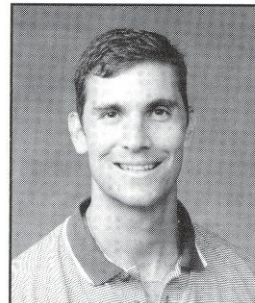
may incur. If a problem is detected, the athlete is placed on a prevention care program which may include any kind of treatment from icing to exercising.

Though preventing injuries is the main objective, they are sometimes a part of participating in athletics. Rehabilitation is another important component of the Seminole training room. Brown and the rest of the FSU training staff will work with the athlete and provide an intense rehabilitation schedule that will allow the athlete to successfully rehabilitate after an injury. More serious injuries and illnesses are referred to the Seminole team physicians at the Tallahassee Orthopedic Center, who for many years have worked in conjunction with the FSU training room in successfully rehabilitating numerous athletes after an injury.

Brown, a licensed certified athletic trainer in the state of Florida, came to FSU in the Fall of 1995 to pursue her Master's study in Sports Administration. This will be her third season with the women's soccer program after spending the first two seasons as the graduate assistant trainer. She not only works closely with team physicians, but also provides evaluation and advanced first aid, injury prevention, rehabilitation, counseling and guidance, education and administration. Nutrition counseling and drug testing are also responsibilities of the athletic training team which is dedicated to providing the best care possible for all FSU student-athletes.



Ron Miller
Strength & Conditioning Coach



Joe Beckham
Women's Tennis Strength Coach



Kari Langley, A.T.C.
Assistant Athletic Trainer

On Florida State's Strength & Conditioning Program

"It's tough but it's the right way to prepare us for the season."

- Marina Raic

"They push you to do a little bit more than you think you are capable of and I like that."

- Kia Åsberg

"Our coaches have always placed a strong emphasis on conditioning and it has proven to be a big advantage."

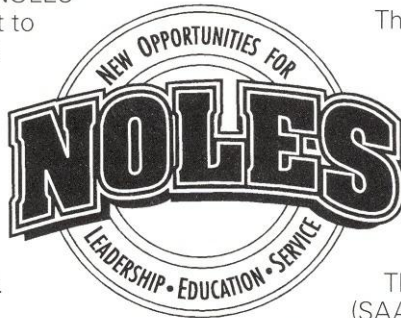
- Ali Weber

Life Skills

The N.O.L.E.S. Program

NEW OPPORTUNITIES FOR LEADERSHIP, EDUCATION AND SERVICE

Developed by the Florida State University Department of Athletics, the NOLES program represents a commitment to the total growth and development of the student-athlete. This program establishes an administrative commitment to academic and athletic excellence. Those efforts will be supported with programs and services in personal development, career development and community service.



Personal Development

Fostering the development of personal growth is a fundamental component of the NOLES program. These support programs ensure that the student-athlete will be provided opportunities to focus on personal growth issues such as values clarification, goal setting, fiscal planning, decision making and personal responsibility. Programming focuses on helping student-athletes develop a healthy lifestyle while they are at Florida State and habits that will benefit them for life.

Career Development

Preparing for life after college sports is a major focus of the NOLES Career Development program. The program is designed to work cooperatively with the University's Career Services to acquaint students with the job search process, provide networking opportunities and ultimately assist with job placement. This program places a priority on the development of the total person, with the goal of developing individuals who will have rewarding careers and productive lifestyles after they leave Florida State.

Community Service

Serving the community is the focus of our Seminole Spirit program. Student-athletes are challenged to give service to our community and individuals who are in need. With a clearly defined program of service, student-athletes are given the opportunity to develop the foundation for a lifelong commitment to volunteerism. The Seminole Spirit Student-Athlete Speakers' Bureau enables student-athletes to improve their speaking skills, develop effective communication and impact the lives of others through their service as role models in our community.

Leadership Development

The Florida State University Department of Athletics is committed to developing programs of excellence that foster leadership development. The foundation of the leadership development program will be the two councils that represent the student-athletes at the University.

The Student-Athlete Advisory Council (SAAC) serves as the advisory board to the NOLES program and the athletics administration. The prestigious board, comprised of two representatives of each athletic team at FSU, also recommends programming and serves as a liaison between student-athletes and the athletics administration. The Advisory Council plans and implements various events for student-athletes and serves as the department's most visible ambassadors. The SAAC planned and hosted the annual Golden Nole banquet for the first time last year and have recently planned such events as orientation for incoming student-athletes and the back-to-school picnic.



Student Athletic Advisory Council

NCAA Information

The following information is provided by the Florida State Office of Compliance for prospective student athletes. It is intended as a guideline to introduce some of the rules governing NCAA athletic involvement.

Who is permitted to recruit for FSU?

Only Florida State University coaches who have successfully completed the NCAA Recruiting Rules Examination on an annual basis may be involved in the recruitment process. Representatives of our athletics interests **may not** make any recruiting contacts. This includes letters, telephone calls or face-to-face contact on or off campus with a prospect or the prospect's parents.

Key terms you should know

You become a **prospective student-athlete** if you have started classes for the ninth grade. Before the ninth grade, you become a prospective student-athlete if the college provides you (or your relatives or friends) any financial aid or other benefits that the college does not provide to prospective students generally.

A **contact** is any face-to-face encounter between a prospect or the prospect's legal guardian and an institutional staff member or athletic representative during which any dialogue occurs in excess of an exchange of greeting. NOTE: At the Division I level, athletic representatives (boosters) may not contact you for the purpose of recruiting. A college coach may contact you in person off the college campus beginning July 1 after completion of your junior year in high school.

An **evaluation** is any off-campus activity designed to access your academic qualifications or athletic ability, including any visit to your high school (during which no contact occurs) or the observation of any practice or competition in which you participate.

During your senior year, you can have one expense-paid **official visit** to a particu-

lar campus. You may receive no more than five visits. During your official visit, which may not exceed 48 hours, you may receive round-trip transportation between your home and the campus, and you (and your parents) may receive meals, lodging and complimentary admission to campus athletics events.

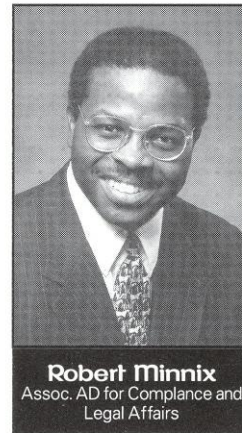
Phone calls and letters

Phone calls from faculty members and coaches (but not boosters) are permitted beginning July 1 (August 15 for football) after completion of your junior year. A college coach or faculty member is limited to **one telephone call per week** except when it is:

- During the five days immediately before your official visit to the university
- On the day of a coach's off-campus contact with you
- During the time beginning with the initial National Letter of Intent signing date in your sport through the two days after signing date
- In the sport of football only, during the permissible off-campus contact periods and during the 48 hours prior to and 48 hours after 8:00 a.m. on the initial signing date for the National Letter of Intent.

Letters from coaches and faculty members (but not boosters) are not permitted until September 1 at the beginning of your junior year in high school. A Division I university may provide you with the following printed materials:

- General correspondence, including letters, U.S. Postal Service postcards and institutional note cards
- Game programs which may not include posters and one Student Athlete Handbook can be provided only during official or unofficial visits to the university's campus
- NCAA educational information
- Pre-enrollment information subsequent to signing a National Letter of Intent with the university
- One athletic publication which may include only one color of printing inside the covers
- Official academic, admissions and



Robert Minnix
Assoc. AD for Compliance and
Legal Affairs

student services publications published or videotapes produced by the institution and available to all students

- Schedule cards
- Questionnaires which may be provided prior to your junior year
- Summer camp brochures which may be provided prior to your junior year.

Alumni and Boosters Do's and Don'ts

You may forward information about prospective student-athletes to the appropriate coaches.

You may have contact with a prospect regarding permissible pre-enrollment activities such as summer employment, provided the prospect has already signed a National Letter of Intent and the Compliance Office is aware that you are making these contacts in regard to employment.

You may have a telephone conversation with a prospect **only** if the prospect initiates the call. Such a call may not be pre-arranged by an institutional staff member and you are not permitted to have a recruiting conversation, but may exhibit normal civility. You must refer any questions about our athletics programs to an athletics department staff member/coach.

You may view a prospect's contest at your own initiative provided you do not contact the prospect or his/her parents. In addition, you may not contact a prospect's coach, principal, or counselor in an attempt to evaluate the prospect.

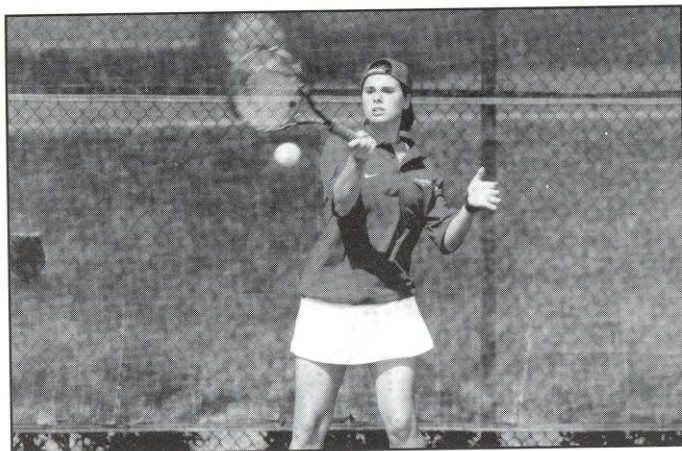
You may continue established family relationships

Year by Year Records

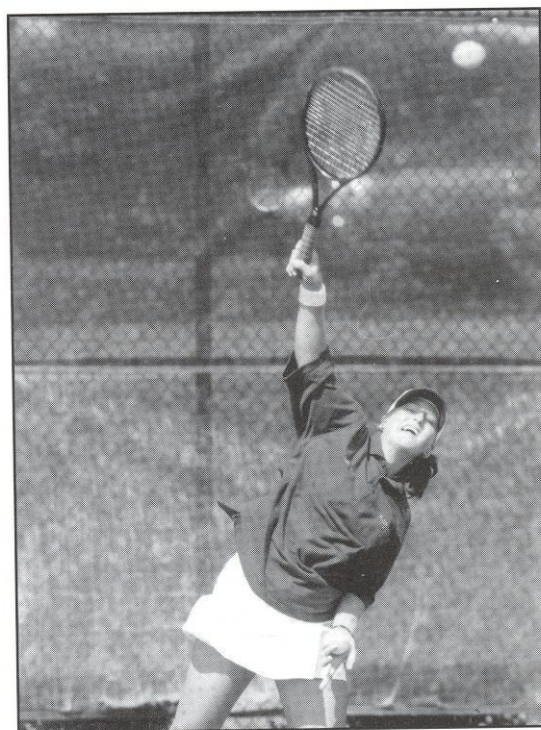
FSU Year by Year Records

Year	Coach	Asst. Coach	W-L	PCT	Conf. (finish)	Post-Season (seed)	Ranking
1980	Anne Rizza	None	21-11	.656	Metro (2nd)	None	Unranked
1981	Anne Rizza	None	24-15	.615	Metro (1st)	None	#18
1982	Anne Rizza	None	23-18	.561	Metro (2nd)	AIAW Chmps. (6th)	Unranked
1983	Anne Rizza	None	18-8	.692	Metro (1st)	None	Unranked
1984	Anne Rizza	None	15-13	.608	Metro (1st)	None	Unranked
1985	Anne Rizza	None	13-14	.481	Metro (2nd)	None	Unranked
1986	Anne Rizza	None	17-10	.630	Metro (2nd)	None	Unranked
1987	Anne Rizza	Patti Henderson	11-16	.407	Metro (2nd)	None	Unranked
1988	Patti Henderson	Kim Philo	14-12	.538	Metro (2nd)	None	Unranked
1989	Patti Henderson	Kim Philo	13-7	.650	Metro (1st)	None	Unranked
1990	Patti Henderson	Shannon Krieger	13-9	.591	Metro (2nd)	None	Unranked
1991	Patti Henderson	Lori Webster	13-10	.565	Metro (1st)	None	Unranked
1992	Alice Reen	Buffy Baker	13-10	.565	ACC (3rd)	None	Unranked
1993	Alice Reen	Jenny Mainz	13-9	.591	ACC (3rd)	None	ARV
1994	Alice Reen	Jenny Mainz	15-10	.600	ACC (2nd)	NCAA Chmps. (19th)	#22
1995	Alice Reen	Jenny Mainz	11-10	.524	ACC (3rd)	None	#31
1996	Alice Reen	Michelle McMillen	8-11	.420	ACC (4th)	NCAA Regionals (8th)	#35
1997	Lise Gregory	Tim Bauer	12-11	.521	ACC (3rd)	NCAA Regionals (8th)	#37
1998	Lise Gregory	Tim Bauer	12-12	.500	ACC (8th)	NCAA Regionals (8th)	#49

Seminole Newcomers



Marina Raic



Jessica Balbuena

Conference History

Metro Conference History

The Metro Conference, originally tabbed the Metro Six, was formed on June 13, 1975. Its charter members included the Cincinnati, Georgia Tech, Louisville, Memphis State, St. Louis and Tulane.

Expansion was soon on the horizon, as the league membership increased to its size to seven schools when the Florida State University was admitted on July 28, 1976.

After Georgia Tech left the conference following the 1978 season, Virginia Tech quickly filled the void. Then St. Louis left the Metro. But waiting in the wings was the University of South Carolina who joined in 1983 to increase the membership to eight schools. However, Tulane forfeited its membership when its basketball program was discontinued following the 1984-85 season.



Year	Site	Team Champion	Individual Champion
1981	Tallahassee, Florida	Florida State	Suzanne Doumar, Florida State
1982	Memphis, Tennessee	Tulane	Andrea Fink, Virginia Tech
1983	New Orleans, Louisiana	Florida State	Lisa Askanase, Virginia Tech
1984	New Orleans, Louisiana	Florida State	Johna Chafin, South Carolina
1985	Memphis, Tennessee	South Carolina	Rita Winebarger, South Carolina
1986	Columbia, South Carolina	South Carolina	Patti Henderson, Florida State
1987	Hattiesburg, Mississippi	South Carolina	Rita Winebarger, South Carolina
1988	Tallahassee, Florida	South Carolina	Paulette Roux, South Carolina
1989	Cincinnati, Ohio	Florida State	Keri Pregel, Florida State
1990	Louisville, Kentucky	South Carolina	Nathalie Rodriguez, South Carolina
1991	Memphis, Tennessee	Florida State	Buffy Baker, Florida State

1983

Singles Championship

Round 64

Tracy Blumentritt (Rice) d. Jaime Kaplan (FSU) 3-6, 6-3, 6-0

Doubles Championship

Round 32

Jamie Kaplan - Lee McGuire (FSU) d. Margaret Redfern - Joy Tacon (Houston) 7-6, 7-5, 6-4

Round 16

#1 Louise Allen - Gretchen Rush (Trinity) d. Jamie Kaplan - Lee McGuire (FSU) 6-1, 6-0

1985

Doubles Championship

Round 32

Kiki Rozwadowski - Lori MacGill (S. Florida) d. Sue Hatch - Patti Henderson (FSU) 6-2, 6-3

1993

Singles Championship

Round 64

Suzi Italiano (Southern Cal) d. Audra Brannon (FSU) 6-4, 7-6

Doubles Championship

Round 32

Audra Brannon - Laura Randmaa (FSU) d. Danielle Paradine - Jody Yin (Indiana) 6-3, 6-1

Round 16

Audra Brannon - Laura Randmaa (FSU) d. Melissa Mazzotta - Maria Pilar Valls (Miami) 7-6 (6), 4-6, 6-1

Round 8

#3 Laxmi Poruri - Heather Willens (Stanford) d. Audra Brannon - Laura Randmaa (FSU) 7-6 (2) 6-3

1994

Team Championship

Round 20

#16 Arizona d. #19 FSU 5-3

Singles Championship

Round 64

Marie-Laure Bougnol (Ole Miss) d. #9-16 Audra Brannon (FSU) 6-4, 6-4
Maggie Simkova (Southern Cal) d. Lori Sowell (FSU) 1-6, 6-0, 6-4

Doubles Championship

Round 32

Nicole Elliott - Vera Vitels (California) d. Audra Brannon - Elke Juul (FSU) 7-5, 6-2

1995

Singles Championship

Round 64

Lori Sowell (FSU) d. #8 Katie Schlukebir (Stanford) 6-4, 6-1

Round 32

Lori Sowell (FSU) d. Melissa Zimpfer (Tennessee) 7-5, 6-4

Round 16

Lori Sowell (FSU) d. #14 Joelle Schad (Arizona State) 6-0, 3-3, ret.

Round 8

#2 Keri Phebus (UCLA) d. Lori Sowell (FSU) 6-0, 6-2

1996

NCAA South Regional

South Carolina 5, Florida State 2

Singles Championship

Round 64

Lori Sowell (FSU) d. #9-16 Farley Taylor (Texas) 7-5, 7-6

Round 32

Lori Sowell (FSU) def. Stephanie Sammaritano (Arizona) 6-4, 7-5

Round 16

#6 Ania Bleszynski (Stanford) d. Lori Sowell (FSU) 7-5, 6-3

Doubles Championship

Round 32

#4 Paige Yaroshuk - Keri Phebus (UCLA) d. Lori Sowell - Elke Juul (FSU) 6-1, 6-1

1997

NCAA Southeast Regional

Vanderbilt 5, Florida State 1

1998

NCAA Southeast Regional

Vanderbilt 6, Florida State 0



Top Academics

Undergraduate Academic Degrees Offered at Florida State University

Area and Ethnic Studies

American Studies
Asian Studies
Asian Studies
Russian & East European Studies
Slavic & East European Studs.
Latin-American & Caribbean Studies
Latin-Am. & Carib. Studs./Business

Mass Communications

Mass Communication
Media Performance
Media Communication
Media Production
Advertising
Interpersonal Communication
Communication Studies
Communication for Business
General Communication
Mass Communication
Speech Communication
Comm. Theory & Research
Public Relations
Communication/Art
Communication/Science

Computer and Information Services

Computer and Information Sciences
Computer Science

Education

Education
Mental Retardation
Visual Disabilities
Emotional Disturbances/Learning
Learning Disabilities
Elementary Education
Early Childhood Science Education
Art Education
English Education
Multilingual/Multicultural Education
Health Education
Family & Consumer Sciences Education
Mathematics Education
Music Education
Physical Education
Sports Management
Sports Administration
Reading Education
Social Studies Education
Social Science Secondary Science and/or Teaching
Math Teaching

Engineering

Civil Engineering
Electrical Engineering
Mechanical Engineering

Industrial Engineering
Chemical Engineering
Environmental Engineering
Bioengineering
Materials Engineering

Foreign Languages

Russian
Russian/Business
German
German/Business
German and Russian
German and Spanish
German and Italian
Greek
French
French/Business
French and Russian
French and Spanish
French and German
French and Italian
Italian
Italian/Business
Italian and Russian
Italian and Spanish
Latin
Spanish
Spanish/Business
Classics
Classical Civilizations
Classics & Religion
Classical Archaeology
Greek & Latin
Audiology & Speech Path.
Music Therapy

Health Professions and Related Sciences

Rehabilitation Services
Nursing
Home Economics/Human Sciences
Human Sciences
Dietetics
Nutrition & Fitness

Home Economics/ Human Sciences

Food & Nutrition
Food & Nutrition Science
Family, Child, & Consumer Science
Consumer Economics
Child Development
Housing
Clothing, Textiles & Merch
Apparel Design & Technology
Merchandising
Textiles

Letters

English
English Linguistics
English Literature

Creative Writing
English/Business

Liberal/ General Studies

Humanities
Women's Studies

Life Sciences

Biological Sciences
Medical Science
Biochemistry

Mathematics

Mathematics
Applied Mathematics
Actuarial Mathematics
Statistics

Parks, Recreation, Leisure and Fitness

Leisure Services & Studies

Philosophy, Religion and Theology

Philosophy
Religion
Religion & Classics

Physical Sciences

Physics - Biology
Physics - Biology-Premed.
Physics - Health Physics
Physics - Biophysics
Physics - Management
Physics - Environ'l Sci.
Physics - Oceanography
Physics - Geology
Physics - Education
Physics - Music Technology
Physics - Philosophy
Physics - Computer Science
Physics - Government
Meteorology
Analytical Chemistry
Biochemistry
Inorganic Chemistry
Nuclear Chemistry
Organic Chemistry
Physical Chemistry
Environmental Chemistry
Chemical Science
Geology

Psychology

Psychology
General Experimental Psych
Clinical Psychology

Protective Services

Criminology

Public Administration

Social Work

Social Sciences

Social Science
Anthropology

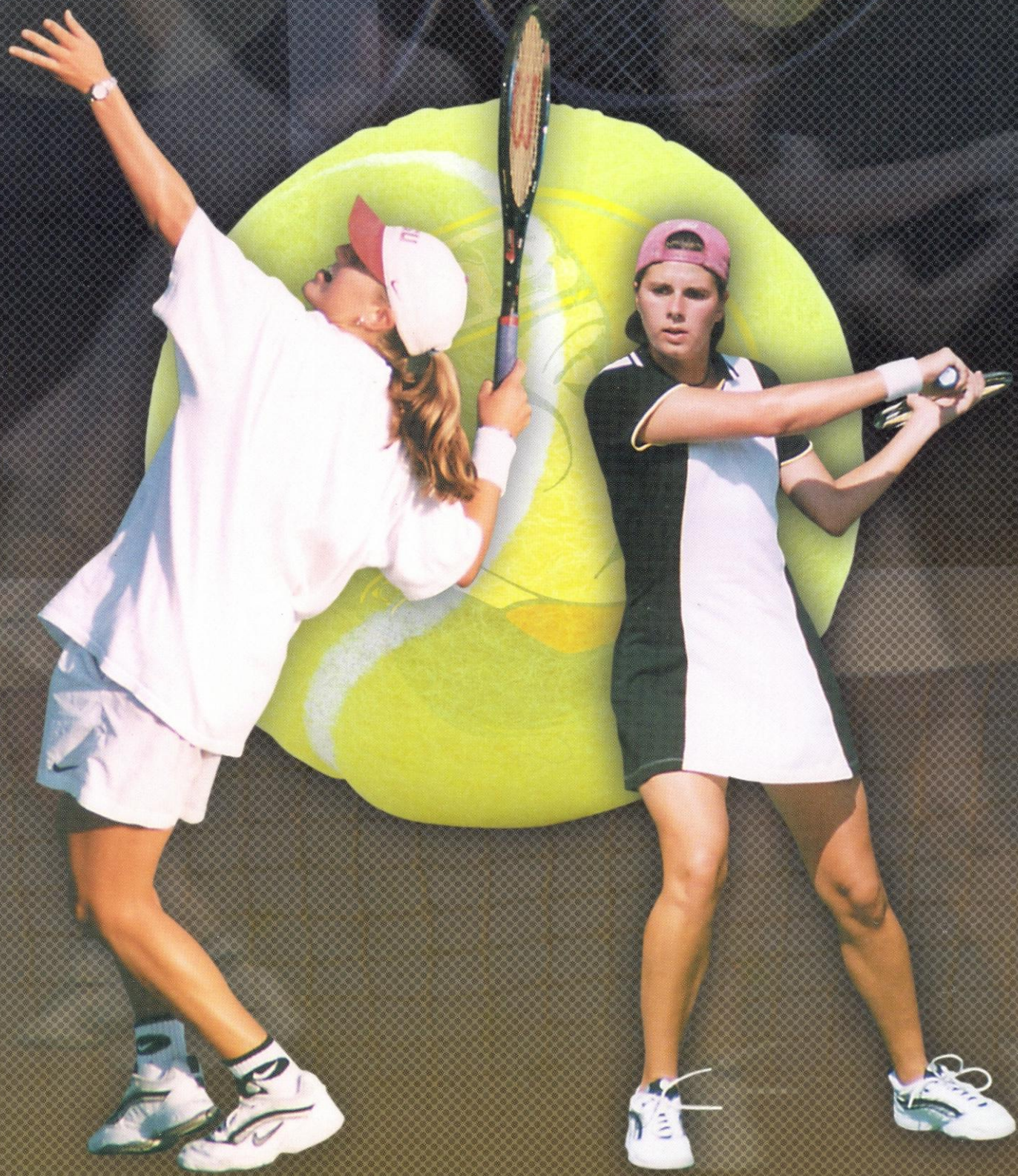
Economics
Applied Economics
Geography
History
International Affairs
Political Science
Sociology

Visual and Performing Arts

Dance
Craft Design
Interior Design
Theatre
Acting
Design/Technology
Musical Theatre - Theatre
Motion Pic, TV & Recording Arts
Studio Art
History & Criticism of Art
Music - Liberal Arts
Music History & Literature
Music Performance
Musical Theatre
Music Composition
Music Theory

Business and Management

Business Administration
Entrepreneurship & Small Business Management
Management
Operations Management
Human Resource Mgmt
Accounting
Finance
Risk Management-Insurance
Hospitality Admin.
Multinational Business
Operations
Management Info. Systems
Marketing
Real Estate





98/99 SCHEDULE

FALL 1998

DATE	OPPONENT	SITE	TIME
9/18-20	Roberta Allison Classic	Tuscaloosa, AL	All Day
10/16-18	Gator Classic	Gainesville, FL	All Day
10/30-11/1	Lady Seminole Classic	Tallahassee	All Day
11/13-16	South Regionals	Athens, GA	All Day

SPRING 1999

DATE	OPPONENT	SITE	TIME
1/22-24	ACC Indoors	Raleigh-Durham, NC	All Day
1/30	Jacksonville	Tallahassee	2:00 pm
1/31	Illinois	Tallahassee	11:00 am
2/6	Southern Mississippi	Tallahassee	11:00 am
2/7	Auburn	Tallahassee	1:00 pm
2/12	Georgia State	Tallahassee	2:00 pm
2/13	Florida	Tallahassee	11:00 am
2/14	Georgia Southern	Tallahassee	12:00 pm
2/20	South Florida	Tampa, FL	11:00 am
2/23	S. Alabama	Tallahassee	2:00 pm
2/27	Vanderbilt	Tallahassee	11:00 am
3/6	Miami	Miami, FL	11:00 am
3/7	FIU	Miami, FL	11:00 am
3/9	Baylor	Waco, TX	9:00 am
3/10	Houston	Houston, TX	2:00 pm
3/12	Rice	Houston, TX	11:00 am
3/13	Tulane	Houston, TX	11:00 am
3/20	Virginia	Tallahassee	11:00 am
3/21	Maryland	Tallahassee	11:00 am
3/24	University of Kansas	Tallahassee	2:00 pm
3/26	Wake Forest	Tallahassee	2:30 pm
3/28	NC State	Tallahassee	12:00 pm
4/2	Duke	Durham, NC	2:00 pm
4/3	UNC	Chapel Hill, NC	11:00 am
4/10	Georgia Tech	Atlanta, GA	11:00 am
4/11	Clemson	Clemson, SC	12:00 pm
4/22-25	ACC's	Atlanta	
5/14-16	Regionals	TBA	
5/20-28	NCAA's	TBA	

***Bold** indicates home games