

FLORIDA STATE UNIVERSITY



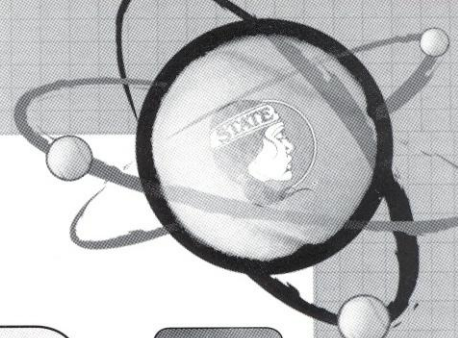
Tennis

1999 • 2000

1998-1999 Highlights

- Ranked in the top 20 for the first time since 1981
- Head coach was voted Coach of the Year in the ACC
- Three student-athletes honored with All-ACC Athletic status
- Nine student-athletes attained All-ACC Academic status
- Nationally recognized tough schedule which always includes Duke, Florida, Vanderbilt and Wake Forest
- Two student-athletes nominated for Rookie of the Year in the ACC
- Two singles players ranked in the top 80 during season, and one in the top 50
- Two doubles teams ranked in the top 50 during the season





A Note to the Media, Fans and Opponents

Florida State tennis contact Jason Byrne of the Sports Information Office is ready to assist you with any questions or requests you may have about the 1999-2000 Seminole Tennis program, media guide, coaches and student-athletes. Please do not hesitate to phone, fax or write a letter to the sports information office at P.O. Box 2195; Tallahassee, Florida 32316; (850) 644-1403 phone; (850) 644-3820 fax, if we can further assist you. You may also find pertinent information on the Lady Seminole Tennis program on the Internet. Type www.seminoles.com and follow the directions to the Lady Seminole Tennis Home page.

How to cover the Seminoles

All 1999-2000 Seminole Tennis home matches take place at the Scott Speicher Tennis Center (capacity 1000). The courts are located off of Chieftain Way directly behind the Bobby E. Leach Center. Parking for the facility is located to the west of the site. Media members will be provided parking passes and will be seated in a designated area. Please notify the sports information office prior to home matches for credentials to be assigned. Any accredited photographer wishing to shoot the matches must check in with Byrne prior to gameday so proper credentials can be assigned. If you would like to schedule personal interviews with the coaches or players contact Byrne in the FSU Sports Information office at least 24 hours in advance. Head Coach Lise Gregory is generally available in her office during weekday mornings.

ACC FaxBack System:

ACC tennis standings and statistics are available on ACC FaxBack each Tuesday morning, Call (850) 854-5859, from the handset of your fax machine, and follow the directions. The ACC code for the tennis release is 6350. The FSU tennis release can be found on the system under code 32350, Tuesday afternoons.

Media Guide Credits

The 1999-2000 Seminole Tennis media guide is a publication of the Florida State University Sports Information Office. Editor: Jason Byrne, Assistant Editors: Ketsia Colimon and Sara Banks. Designed by M&M Creative Services, Inc. Photography by Landa Oz Photography, Ross Obley, Tom Casazza, Ryals Lee and the University Photo Lab. Printing by FSU Printing Services.

This document is available upon request in alternate formats for individuals with print related disabilities. Contact the ADA office, 301 Westcott Administration Building, for more information.

On the front cover: Alida Galloviets, Marina Raic, and Jessica Balbuena



© 1999 M&MCS

Contents

| | |
|------------------------|----|
| Media Information | 1 |
| This is Tallahassee | 2 |
| This is FSU | 4 |
| Women's Tennis Preview | 6 |
| Coaching Staff | 8 |
| Player Bios | 10 |
| 1998-1999 Review | 14 |
| 1999 Statistics | 15 |
| 1999 ACC Statistics | 16 |
| ACC Bio | 17 |
| Around the ACC | 18 |
| Year-by-Year Results | 19 |
| Honors and Awards | 21 |
| Speicher Tennis Center | 22 |
| Golden Spear Club | 23 |
| All-time Information | 24 |
| Support Services | 26 |
| Athletic Care | 27 |
| Life Skills | 28 |
| NCAA Information | 29 |
| Year-by-Year Records | 30 |
| NCAA History | 31 |
| Top Academics | 32 |



Sandy D'Alemberte
FSU President



Dave Hart
Athletics Director



Kim Record
Associate Athletics
Director



Jason Byrne
Tennis SID



Dexter Lamont
Marketing Assistant

QUICK FACTS ON FLORIDA STATE UNIVERSITY

| | |
|---------------|----------------------------|
| Location | Tallahassee, Florida |
| Founded | 1858 |
| Enrollment | 30,519 |
| Symbol | Seminoles |
| School Colors | Garnet and Gold |
| President | Talbot "Sandy" D'Alemberte |

QUICK FACTS ON FLORIDA STATE ATHLETICS

| | |
|-----------------------------|--|
| Affiliation | NCAA Division I |
| Conference | Atlantic Coast |
| Athletic Director | Dave Hart, Jr. |
| Associate Athletic Director | Kim Record |
| Sports Information Director | Rob Wilson |
| Assistant SID | Tina Thomas |
| SID Tennis | Jason Byrne |
| SID Office Phone | (850) 644-1403 |
| SID Fax | (850) 644-3820 |
| Mailing Address | P.O. Box 2195 Tallahassee, FL 32316 |

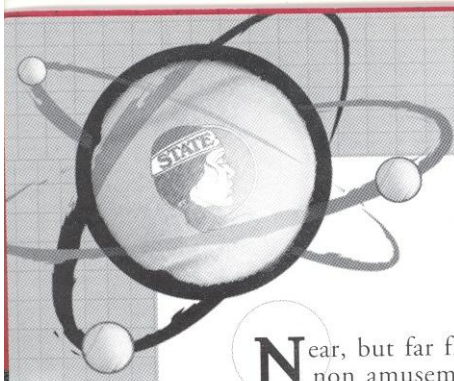
QUICK FACTS ON FSU WOMEN'S TENNIS

| | |
|---------------------|---|
| Home Facility | Scott Speicher Tennis Center |
| Coaching Staff | Lise Gregory (4th Season) Tim Bauer (4th Season) |
| Tennis Office Phone | (850) 644-5946 |
| Tennis Office Fax | (850) 644-3451 |
| 1998-99 Record | 21-7 (6-2 in ACC) |

Returning Starters (7):

Kia Asberg, Jessica Balbuena, Natalie Carratala, Nanette Duxin, Alida Galloviets, Marina Raic, Ali Weber





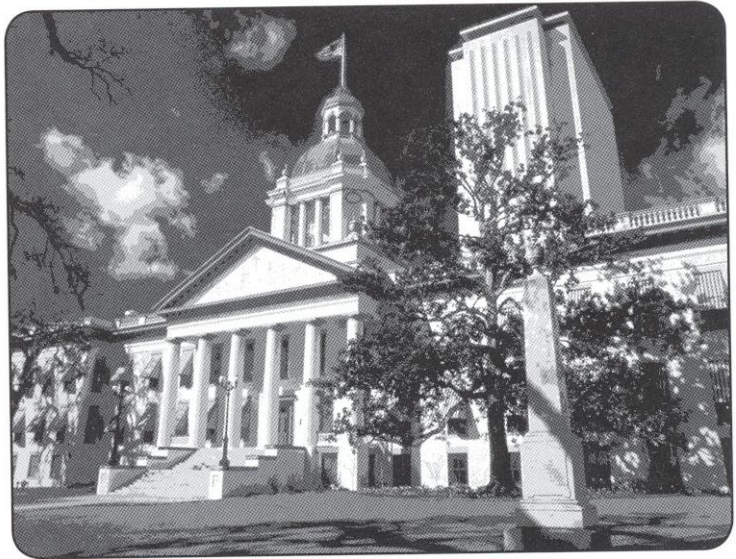
This Is Tallahassee

Near, but far from the glaring strips of non amusement, and the castles and crowds of Disney, lies another magical place in the Sunshine State — one of pow-wows, plantations, politics and great pride. Often described as “The Other Florida” with its deep-rooted history, rolling hills, canopy roads of moss-draped oaks, cool climate and Southern-style hospitality; it is a Florida few have seen. It is Tallahassee — Florida with a Southern accent.

Best known as Florida’s capital, Tallahassee is an intimate neo-metropolitan city where the power of state government, the academic and the artistic are complemented by subtle, old-fashioned charm. It is the perfect two- or three-day diversion for the more than 41 million annual visitors to Florida and 13 million residents.

Tallahassee touts a menagerie of sights including one of the world’s deepest freshwater springs, site of America’s first Christmas, a wildlife habitat, Capitol buildings, fascinating museums of history, sprawling plantations, highly acclaimed fishing and hunting adventures and nearby beaches. Spirited area festivals range from celebrations of Tallahassee’s spectacular spring and swamp stomps to genuine rattlesnake roundups and seafood festivals.

With the Gulf of Mexico just 20 miles south and the Georgia border only 14 miles north, Tallahassee rests between the foothills of the Appalachian Mountains and the juncture of Florida’s panhandle and peninsula. Nearer in miles to Atlanta than to Miami, Tallahassee more closely resembles its Southern neighbors than Florida in topography, climate and lifestyle.



find a permanent, central location for the Legislature to convene. The two met at a beautiful site that the Creek and Seminole Indians called “tallahassee” — derived from the words “talwa” meaning town and “ahasee” meaning old. The rendezvous point remains Florida’s capital.

The “old town” has undergone many changes, but one thing remains the same — it is still a government town fiercely proud and dedicated to preserving its heritage. The Capitol buildings, both old and new, epitomize Tallahassee’s perseverance.

The 22nd floor of the New Capitol provides a panoramic scope of a sophisticated Southern city awash in a sea of flowering azaleas, snowy dogwoods, towering pines, fragrant magnolias, and hundreds of shimmering lakes, springs, swamps, rivers and sink holes. Special legislative viewing galleries are open during the legislative session.

Below, in the shade of giant live oaks, proudly stands the Old Capitol, originally constructed in 1845 and restored to its 1902 splendor complete with red-and-white candy-striped awnings, a dome adorned with stained glass, antique furnishings and political memorabilia.

Across from the Old Capitol are the 40-foot twin granite towers of the Vietnam Veteran’s Memorial, and the blue stone Union Bank, Florida’s oldest surviving financial institution. The nostalgic Old Town Trolley, a replica turn-of-the-century street car, carries passengers through restored Adams Street Commons to numerous other historical downtown shops for free — unheard of even 100 years ago.

Minutes from downtown lies the Governor’s Mansion, which resembles the home of Florida’s military hero



Accentuating Tallahassee’s Southern persona are lush rolling hills, likened to the seven hills of Rome, and five “official” canopy roads of patriarch oaks. The fertile, rich soil and four distinct, yet pleasant, seasons breed floral brilliance and natural vitality year-round.

Like the city itself, the story of how Tallahassee was chosen as the state capital is rich in history. In 1823, two explorers set out — one on horseback from St. Augustine and the other by boat from Pensacola — to



Andrew Jackson; and the 52-acre natural animal habitat and 1880s farm of the Tallahassee Museum of History and Natural Science, which provide the rare chance to walk and talk with native Florida animals.

Tallahassee remains firmly linked with the past as evidenced by the unearthed 1539 winter encampment of Spanish Hernando de Soto, the site of the first Christmas celebration in America. Visitors travel back through time as they stand in the shadow of a giant 12,000-year-old American Mastodon at the Museum of Florida History or explore other historical spots including The Knott House that Rhymes, The Columns, San Luis Mission, Lake Jackson State Archaeological Site, Natural Bridge Battlefield, First Presbyterian Church, Brokaw-McDougall House, Goodwood Plantation and Adams Street Commons.

Nearby, alligators lazing in the sunshine and anhinga "snake birds" perched on twisted cypress branches are seen at Wakulla Springs, one of the world's deepest fresh-water springs and site of many underwater scenes in the "Tarzan" movies with Johnny Weissmuller and Maureen O'Sullivan. Safaris aboard glass-bottomed and jungle cruise boats whisk visitors within arm's length of "The Other Florida."

Outdoor enthusiasts enjoy adventures including boating and fishing on area lakes, rivers, ponds and the Gulf — just 30 minutes away. Lakes Seminole, Jackson and Talquin are renowned in the bass fishing world for yielding the "big ones," and dense forests offer an abundance of prize-winning game. Local wildlife areas such as the Florida National Scenic Trail, St. Marks National Wildlife Refuge and Apalachicola National Forest are among many spots for camping, picnicking, swimming, biking and exploring.



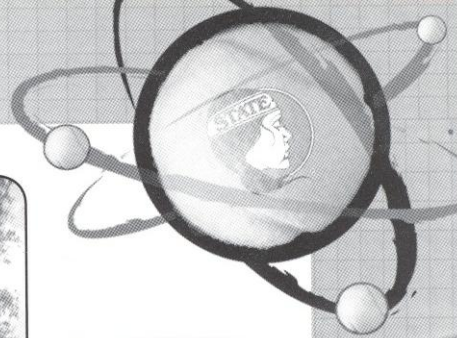
Appealing to the strokes of different folks, Tallahassee also features 99 holes of golf on six courses and a proliferation of tennis centers. Sideline athletes cheer the nationally-ranked Florida State Seminoles, Florida A&M Rattlers and the Tallahassee Tiger Sharks, of the East Coast Hockey League. And always a sure bet are the nearby greyhound races.

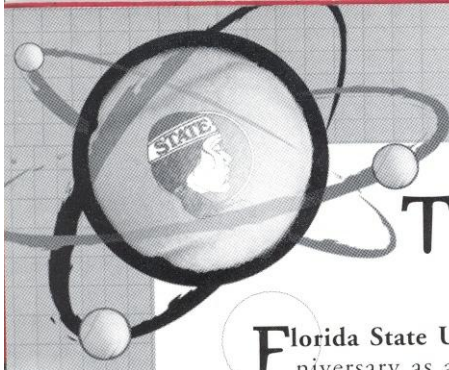
Asport of sorts, shopping at two regional malls and many specialty centers offer many "playing options" — from popular chains to curiosity and antique shops.



Cultural interests are sparked by widely-acclaimed museums and galleries and elaborate entertainment at the 14,000-seat Tallahassee-Leon County Civic Center.

Tallahassee is a collaboration of power-play politics and classical character splashed with a twist of Southern beauty and charm. Tallahassee is Florida with a Southern accent.





This Is Florida State

Florida State University, celebrated its golden anniversary as a coeducational graduate research institution in 1997, has joined the nation's elite in both academics and athletics.



Located on the oldest continuous site of higher education in Florida and building rapidly on the framework of a highly regarded liberal arts college for women, the University has emerged over the past 50 years as an institution of national and international esteem. Its stature is evidenced by a number of additions to its record of excellence in the 1990s:

- In 1994, Florida State was classified a **"Research University I"** by the Carnegie Foundation, placing it among the nation's top research universities.



- In 1994, the college referral service, "Who's Who Among American High School Students," placed FSU among its top 10 — with such universities as Harvard, Duke, Stanford, North Carolina-Chapel Hill, Michigan-Ann Arbor and Yale — of most frequent choices of more than 100,000 of the nation's best and brightest high school students who asked that a specific college be notified of their recognition in "Who's Who."



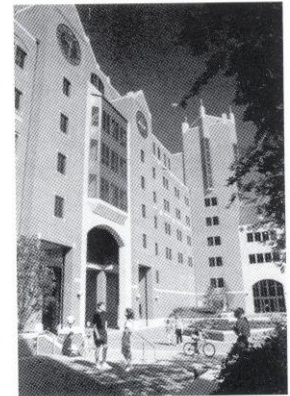
- Vice President of the United States Al Gore spoke at the dedication of the **National High Magnetic Field Laboratory** at Florida State in 1994. The National Science Foundation established the \$100 million magnet lab in 1990 at FSU, which is partnered in research with the Los Alamos National Laboratory and the University of Florida. A Nobel laureate in physics and a top Russian physicist were among the first scholars drawn to the faculty. The **world's largest magnet** — two stories high and capable of generating 45 tesla or 1 million times the Earth's magnetic field — was installed in 1995 at the NHMFL, located in the **off-campus research complex**, Innovation Park. In 1996, the NSF renewed and increased by 50 percent the NHMFL's funding for another five years.



- FSU created the first multipurpose student identification/banking card. The **Card Application Technology Center** is a national leader in "smart card" systems.

- At the forefront of supercomputing since obtaining its first high-speed computer in 1985,

FSU took yet another step in ultrafast and parallel computing in 1990 when it acquired **two supercomputers**, the Thinking Machine Corp. Connection Machine and the Cray Y-MP.



- In fall 1994, the first tenants moved into the east side of the \$100 million **University Center**, a classroom-and-office facility at Doak Campbell Stadium; the stadium's south end zone also was enclosed and the adjacent Moore Athletic Center expanded. With the completion of the west side in 1996, University Center now provides 550,000 square feet of much needed academic space and a centralized location for student services.

- In 1990, Florida State **ranked second in popularity nationwide** among high school seniors, based on the number of students who request that their Scholastic Aptitude Test (SAT) scores be sent to an institution. FSU was the only institution listed among the top 10 choices of both black and white college-bound students.

- FSU's high-tech program in **structural biology** in 1991 received the University's largest single foundation grant, \$4 million.

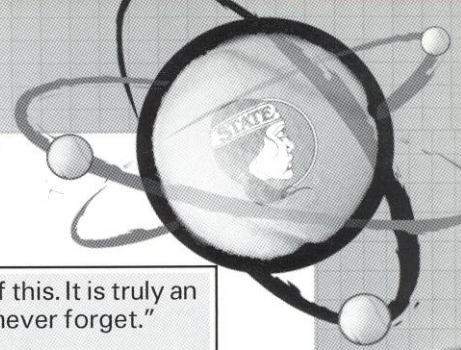
- Capping more than a decade of national prominence in intercollegiate athletics, Florida State's athletic teams, nicknamed **"Seminoles,"** joined the **Atlantic Coast Conference** as its ninth member in 1990. The FSU football team won the **1993 National Championship** and its quarterback, Charlie Ward, won the University's first **Heisman Trophy**.

- The **Dr. Bobby E. Leach Center**, a state-of-the-art student recreation facility, with a pool, saunas, basketball and racquet-sport courts, was completed in 1991.

- **FSU ranked 20th in the nation for 1990-91 in the number of black Ph.D. students it graduates.** Over the five years, 1986 to 1990, FSU ranked eighth nationally by granting doctorates to 70 African-Americans.

As this list of highlights attests, Florida State is excelling in the 1990s with exceptional strength, energy and vision for the future.

Under the leadership of the University's 12th president, **Talbot "Sandy" D'Alemberte**, who took office in January 1994, FSU will continue to build on the



On Playing for FSU and Being a Seminole

foundation of its history of excellence in scholarship, research and service.

A senior member of the 10-member **State University System**, FSU was founded as an institution of higher learning in 1851 by legislative act and began in Tallahassee with its first students in 1857.

Today, FSU's operating budget is **\$474.3 million**. Faculty and administrators generate more than **\$102 million** annually in external funding to supplement state-sponsored research. Three direct-support organizations serve to bolster the University: **FSU Foundation**, which raises millions in private gifts to support academics, **Seminole Boosters** and **FSU Alumni Association**.

The main campus is spread over **451.6 acres in Tallahassee**; FSU, which has one of the smallest campuses in the SUS, has been actively acquiring land in the 1990s after years of being landlocked at 347 acres. FSU owns 1,281 acres in Leon, Bay, Franklin and Sarasota counties.

Within the state, the University maintains facilities at its **25-acre campus in Panama City**, its **Marine Laboratory** on the Gulf of Mexico, the Appleton Museum in Ocala and the Asolo Performing Arts Center in Sarasota. The **Center for Professional Development and Public Service**, housed in the **Augustus B. Turnbull III Florida State Conference Center** on the edge of the campus, provides extensive credit and non-credit continuing education programs statewide.

Florida State offers **286 graduate and undergraduate degree programs** through its **eight colleges** — Arts and Sciences; Business; Communication; Education; Engineering (operated jointly with Florida A&M University, a historically black institution); Human Sciences; Law; and Social Sciences (which also incorporates the Reubin Askew School of Public Administration and Policy) — and **eight schools** — Criminology and



"I'm so proud to be part of all of this. It is truly an honor and something I will never forget."

- **Kia Åsberg**

"It is great, not just the tennis, but the school, the team, everything."

- **Jessica Balbuena**

"I am very happy to be a member of the women's tennis team and I am proud of being a Seminole."

- **Alida Gallovits**

"Coming to FSU has been an experience of a lifetime and I'll be a Seminole forever."

- **Ali Weber**

Criminal Justice; Information Studies; Motion Picture, Television and Recording Arts; Music; Nursing; Social Work; Theatre; and Visual Arts and Dance.

With 1,655 members, the FSU faculty has included **nine National Academy of Sciences elected members**, **nine American Academy of Arts and Sciences fellows** and **five Nobel laureates**. It is backed by 2,887 administrative/professional and support staff.

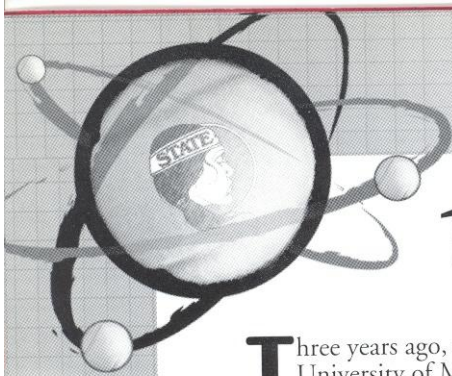
Library holdings at Florida State include **2.1 million book titles**, **16,384 serials** and **4.5 million microforms**. The main library facility, the **Robert M. Strozier Library**, is linked by computer to other state university and national research libraries. The **Paul A.M. Dirac Science Center Library** is located at the heart of the University's science research complex. FSU also maintains extensive music, library science and law libraries.

Graduate students, who number more than 5,929, pursue advanced degrees in fields as diverse as business administration and theoretical particle physics. A majority of research done at FSU is the direct result of student effort, culminating in numerous books, monographs and journal articles relating to the whole spectrum of intellectual interests and the practical needs of society.

FSU, a residential campus, places a high priority on its **30,264 students** and their needs and interests (of the student population: 45 percent are male; 55 percent are female; 20.1 percent are minorities; and 2.5 percent are foreign students). The **University Honors Program**, **Disabled Student Services**, **International Student Center**, **Student Government**, **Flying High Circus** and intramural sports are among more than 200 organizations and activities in which students may participate.

In all areas of its mission — excellence in teaching, research and public service — **Florida State University** is advancing boldly toward the 21st century.





1999-2000 Preview

Three years ago, a former All-American from the University of Miami stepped onto the Florida State campus and began to turn the women's tennis program into one of the nation's elite. After three seasons at FSU, head coach Lise Gregory has led her Lady Seminoles to three consecutive NCAA appearances as well as three straight Golden Torch Awards, an honor given to the team with the highest grade point average among FSU's athletic teams.

Accompanying Gregory along this journey has been FSU assistant coach Tim Bauer. Bauer, a graduate of Furman University, joined Gregory in the summer of 1996. The two have formed an excellent partnership that provides the players with a constant balance combining hard work and pure fun.

"Coach and Tim are amazing," said junior Christy Travis. "They create the perfect balance for us as players."

The 1999-2000 Florida State women's tennis team returns eight of nine players and all seven of its starters from a dual match season that saw the Lady Seminoles win 21 matches for the first time in 17 years. Gregory's squad is made up of two seniors, three juniors and three sophomores. The two seniors, Kia Asberg and Ali Weber, have combined to win 132 singles matches in their FSU careers.

"Ali's so money!," remarked junior Natalie Carratala. "She's a great competitor with the quickest feet."

Weber, who was 6-3 in matches that went three sets last year, tallied three come-from-behind victories in 1999. A two-time ACC Flight Champion, Weber looks to lead this year's squad further than any FSU squad has gone before.

"We hope to work hard and compete our way to the top in 2000," said Weber.

Asberg returns after a 1998-99 season that saw her compile the second-winningest season in school history with 30 wins, as well as set the longest winning streak in FSU history with teammate Marina Raic. Asberg and Raic won 15 consecutive matches, beginning and ending their streak on the same days. Coming off a year in which she was named All-ACC, Asberg will be looked upon to provide consistency and leadership in both singles and doubles. Last season, Asberg played doubles with both Weber and Natalie Carratala and compiled 16 wins.

"Kia has such a strong will, she is probably the most devoted person who is always ready to give everything for the team," said junior Nanette Duxin.

Raic, a sophomore, opened her FSU career with 31 wins as a freshman to set the FSU single season win record. A native of Croatia, Raic was part of one of FSU's finest recruiting classes in 1998. Jessica Balbuena from Texas and Alida Gallovits of Romania completed a

freshmen class that won 74 singles matches last year.

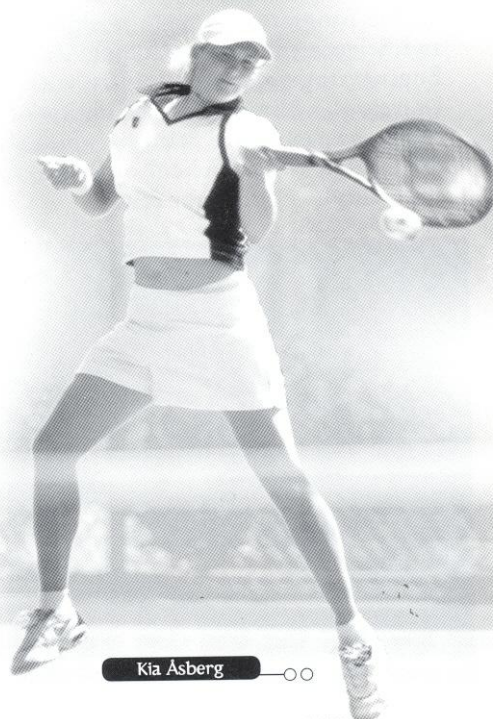
"We were very fortunate to have one of the best freshmen classes in the country last year," said head coach Lise Gregory. "It's really impressive to see what they accomplished."

Gallovits and Raic were two of six conference freshman to be named All-ACC. Gallovits, who plays No. 1 singles and doubles for FSU, has used the summer to get herself more physically and mentally better prepared for facing the opponent's No. 1 player each and every match.

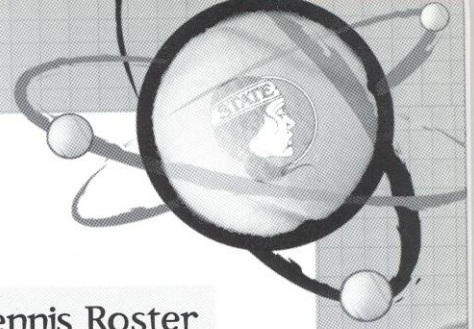
"Alida is such an intelligent player who moves extremely well and has a solid all court game," remarked Asberg.

Sophomore Jessica Balbuena has made tremendous strides over the summer and is expected to play higher in the lineup this year after seeing time at No. 4 singles as a freshman. Over the summer, Balbuena won an ITA Summer Circuit tournament in Austin, Texas, defeating the country's 78th-ranked player in the finals. Balbuena's accomplishments this summer have not gone unnoticed by the coaching staff that will look at practice and off-season work as indicators as to who will play where this upcoming season.

"During the off-season some players, particularly Jessica, have dedicated their efforts towards moving their games to the next level," said Bauer. "They will find



Kia Asberg



that their hard work will pay off this spring.”

Junior Nanette Duxin, who spent five weeks in the top 100 of the ITA singles rankings in 1999, returns as part of a starting lineup that won 75 percent of their singles matches in the spring. Duxin led the team in come-from-behind wins with six in 1999 and her and Gallovits won 13 matches at No. 1 doubles. Her preparation and knowledge of the game should make her a force to be reckoned with for the rest of her Florida State career.

Battling the starters for playing time are juniors Natalie Carratala and Christy Travis. Finding time to fill-in for starters is a tough situation to be in, but their value to the 23rd-ranked team in the country does not go unnoticed by their teammates.

“Nat is a great tennis player who is always fun to be around,” said Weber

“Christy has improved her tennis incredibly,” announced an impressed Gallovits. “I admire her team spirit and how she is always ready to help people.”

Travis, whose brother Jay plays for Florida State’s men’s tennis team, has performed well in fall tournaments throughout her career and is looking to use that experience in the spring dual matches. Carratala, who teamed with Asberg at the end of last year in doubles, has compiled 27 doubles wins during her first two years at FSU.

This fall the coaching staff will take a long look at possible doubles combinations and starters singles positions for the upcoming spring dual match season.

“They have made my job a lot harder,” said Gregory. “With everyone playing so well last year and training so hard this summer, Tim and I will have some tough decisions to make on who will be best where. It’s a nice problem to have though.”

Last year’s top doubles team of Gallovits and Duxin finished the year ranked 49th in the country and Asberg and Weber spent five weeks ranked in the top 50 early on in the season. However, Gregory is looking to shake up the doubles teams to provide a more reliable complement to a strong singles’ lineup.

Last year, the Lady Seminoles won all three doubles matches eight times and two of three doubles matches five times. Securing those doubles points could be the difference in competing for the conference championship and winning the trophy. FSU’s seven losses last year came against top 25 teams, and five of those seven losses were by only one point.

“We have a few people who don’t realize how good they can be,” said Gregory. “When they understand that and gain a little confidence, they will be virtually unbeatable.”

When the 23rd-ranked Lady Seminoles take the courts this year and begin a schedule that will include

1999-2000 Women’s Tennis Roster

Head Coach: Lise Gregory (4th Season)

Assistant Coach: Tim Bauer (4th Season)

Roster

| Name | Class | Major | Hometown |
|-------------------|-------|-------------------|----------------------|
| Kia Asberg | SR | Psychology | Lysekil, Sweden |
| Jessica Balbuena | SO | Education | The Woodlands, Texas |
| Natalie Carratala | JR | Media Prod. & Art | Miami, Florida |
| Nanette Duxin | JR | Int’l Business | Montevideo, Uruguay |
| Alida Gallovits | SO | Undecided | Timisoara, Romania |
| Marina Raic | SO | Communications | Dubrovnik, Croatia |
| Christy Travis | JR | Communications | Palmetto, Florida |
| Ali Weber | SR | Public Relations | Clermont, Florida |

Pronunciations

| | |
|-------------------|------------------------|
| Kia Asberg | KEE - uh AHZ - Barry |
| Jessica Balbuena | BALL - bway - nuh |
| Natalie Carratala | cara - TAHL - luh |
| Nanette Duxin | Dux - Ahh |
| Alida Gallovits | ah-LEE-da - GAL-o-vich |
| Marina Raic | RYCHE |
| Ali Weber | AL - lee |
| Lise Gregory | LEE - suh |

State and Country

Breakdown

| | |
|---------|---|
| Croatia | 1 |
| Florida | 3 |
| Texas | 1 |
| Romania | 1 |
| Sweden | 1 |
| Uruguay | 1 |

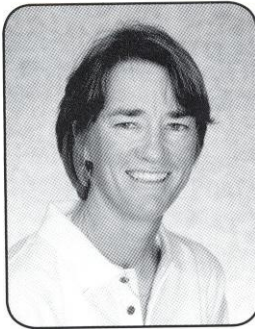
five teams ranked in the top 30, they will begin to realize that they can compete against the nation’s best. After an off-season of intense training, just competing won’t be their goal.

The potential for a return trip to the NCAA Tournament for the fourth consecutive year under Gregory is within reach, and the goal of being one of the top programs in the country seems closer than it ever has for the Florida State women’s tennis program.

Natalie Carratala



Coaches



Lise Gregory
Head Coach
University of Miami, '87
Fourth Season at FSU

Lise Gregory has made tremendous strides in her first three years at the helm of the Florida State women's tennis program. While striving to new heights, Gregory has instilled a spirit of consistency and class both on the court and in the classroom.

In each of her first three years at FSU, the Lady Seminoles have made trips to the NCAA Tournament and have earned the Golden Torch Award, which is given to the FSU team with the highest GPA. Gregory's success has not gone unnoticed as she was honored as the Atlantic Coast Conference's Coach of the Year in 1999. When Gregory took over the program, she insisted that Florida State would become one of the best programs in the nation. Her fourth squad appears ready to continue the success of those before it and has the potential to become one of the nation's top 10 teams.

Gregory's 1998-99 team finished with a 21-7 record, including its fourth consecutive berth into NCAA Regionals. The Lady Seminoles spent most of the season ranked in the Top 20 before finishing the year 23rd with its third winningest season in the program's 20 year history. Glancing at the 1999-2000 schedule, it looks as though Coach Gregory has provided her team with a chance to gain even more experience against top-notch programs as the schedule consists of three teams in the Top 10 and six in the Top 20.

While the program's emergence on the court is apparent, its commitment and performance in the classroom is equally impressive. In winning its third straight Golden Torch Trophy, the women's tennis team achieved a team GPA of 3.7 in 1999. Nine team members were honored on the All-ACC Academic Team and eight made the Dean's List. In addition to the on-court and classroom guidance Gregory has brought to the program, she has also created the "Golden Spear Club". The Golden Spears are a group of Tallahassee community members, nearing 100 at the start of the 2000 dual match season, who provide support to the FSU tennis program.

Gregory, a former seven-time All-American and NCAA champion at the University of Miami, served as the assistant women's tennis coach at Vanderbilt University in 1996 before arriving at FSU. At Vanderbilt, she assisted Commodore head coach Geoff Macdonald in guiding the program to its second consecutive NCAA Championship appearance and a Top 10 ranking. She also has additional coaching experience on the private level, as a USTA Area Training Center coach and as a USTA inter-sectional and Zonal coach.

As a player for the Hurricanes, Gregory earned an amazing seven NCAA All-America honors for her singles and doubles play as well as an NCAA doubles championship in 1986 with teammate Ronni Reis. Together, the duo compiled an

impressive 84-10 record over four years, while the University of Miami team was consistently ranked among the nation's Top Five. Gregory was named to Tennis Magazine's All-Star team in both 1986 and 1987. As a professional, Gregory won nine tournament titles in 16 finals appearances, including seven Virginia Slims doubles championships on the way to a career-high No. 18 world doubles ranking in 1990.

She also won the singles at the \$25,000 Challenger in Philadelphia in 1987. Perhaps the highlight of her professional career was a No. 18 world doubles ranking in 1990 when Gregory and partner Gretchen Magers were the fourth-ranked team in the world. In 1991, Gregory was a doubles quarter finalist at the Australian Open, a Grand Slam event, as well as one of the top eight teams in the world that participated in the year-ending Virginia Slims Championship. "Playing the tour was a great experience and in many ways it has helped me be a better coach," said Gregory. "I know I can help the team no matter what the situation." The 1999-2000 edition of the Florida State women's tennis team should be a familiar one as all eight team members are returnees from last year's squad. "We basically have the same team back this year," said Gregory. "We have so much depth. Everybody is capable of playing at the top of the line-up and our freshmen have a year of experience under their belts. It's exciting because they are a great group of people who also happen to be very good tennis players."



The Gregory File

- Named All-American seven times (three singles, four doubles) in four-year career at the University of Miami.
- NCAA doubles champion and ITCA National Indoor champion with a 29-0 record, 1986
- World ranked 167th in singles in 1988
- World ranked 4th as a doubles team in 1990
- World ranked 18th in doubles in 1990
- Won singles championship at the \$25,000 Challenger in Philadelphia in 1987
- USTA Area Training Center Coach, 1995
- Nine professional doubles titles and seven finals appearances
- Florida Tennis Association U14 Zonal Coach, 1995
- Assistant Coach at Vanderbilt, 1996
- Florida Tennis Association U18 Inter-sectional Coach, 1997
- Florida Tennis Association U16 Inter-sectional Coach, 1998
- Golden Spear Club, founder
- University of Miami Hall of Fame Inductee, February 1999
- ACC Coach of the Year, 1999





Tim Bauer, MS
Assistant Coach
 Furman University, '93
 University of Florida, '95
 Fourth Season at FSU

Tim Bauer's dedication to the training of elite tennis players is evident by his long list of accomplishments in

the field. Bauer brings a diverse background of coaching and sport science experience to the Lady Seminoles as he begins his fourth season as an assistant to head coach Lise Gregory.

Prior to his naming as FSU's assistant women's tennis coach, Bauer's work with ATP and WTA touring professionals brought him to several tour events including the Grand Slams: Wimbledon, Roland Garros, and five U.S. Opens.

A former player at Furman University in Greenville, S.C., from 1990-93, Bauer completed a Master's Degree in Exercise and Sport Science at the University of Florida in 1995. While at Florida, Bauer was a Sport Science Instructor in the College of Health and Human Performance and continues to be an invited speaker on topics of Eastern bloc sport science, Elite athletic performance and Talent detection and training. Elite amateur and professional athletes in several other sports continue to consult with Bauer on performance issues concerning Sport Psychology and Exercise Physiology.

Bauer continues to spend time with each team member, aiming to raise the mental and physical aspects of their individual match performances to new heights. Tennis specific conditioning is designed, organized and directed by Bauer with the primary goals being injury prevention and maximizing performance. According to Bauer: "We have the talent, but the heart of our players will lead us to success. The desire to succeed will bring us to another highly successful season. This year's team has the potential to establish themselves as a top 20 power. We are looking to take the next step forward."

Recruiting also receives Bauer's attention, as he evaluates talent available for future Lady Seminole squads. With a strong, young team returning for the 1999-2000 season, Bauer and Gregory have set their sights on the year 2000 recruiting class.

"With all of our players returning, the outlook for success should be excellent," remarked Bauer.

Bauer continues to coach outside the sphere of collegiate tennis, directing summer junior camps on his native Long Island, as well as serving as a coach at USTA Area Training Center camps for top-ranked juniors. Regarding professional tennis, Bauer maintains contact with the

pro tour and has served as a professional consultant to several players formerly world ranked in the top 100, including WTA players Patricia Hy-Boulais (Canadian #1, WTA #28), Katarzyna Nowak (Polish #1, WTA #65), Li Fang (Chinese #1, WTA #35), and Grant Stafford (ATP #78) among others.

Additionally, Bauer has coached scores of world ranked ITF juniors from countries including the United States, Poland, Sweden, Norway, Germany, the former D.D.R., South Africa, Russia and Australia.

"Tim's teaching ability and love of the game makes him an invaluable asset to this program," said Gregory. "His background in exercise science gives us a big advantage because he can tailor the quickness, footwork and conditioning workouts to each player's needs."

On the Coaching Staff

"The best coaches I've ever worked with. They care for their players and they know how to get us where we want to be."

- **Kia Asberg**

"Excellent, it is good to have a coach who has been there, done that, and an assistant coach who seeks perfection."

- **Jessica Balbuena**

"Excellent! Our coaches can motivate you in order to get to the next level while still keeping it fun."

- **Natalie Carratala**

"Tim and coach are just great compliments. They do a great job in trying to assist and help us on and off the court."

- **Nanette Duxin**



Players



Kia Asberg

Senior
Lysekil, Sweden
(Tretorn Tennis Academy)

Coach Gregory: "Every coach should have a Kia on their team. She's always looking for ways to help the team, on and off the court."

Alida Calhoun: "Kia is a great competitor. She works hard every practice. She plays for the team. She is a great friend who is always ready to listen and to help."

Jessica Balbuena: "Very much a team player, more than an individual."

1998-99: An all-ACC selection...was second on the team with 30 wins for the year...her 30 wins were the second most in school history...named team co-MVP (Golden Nole Award) along with Marina Raic...was 6-2 in ACC regular season play...had a career high 24 dual match wins ...lost only four of 28 matches all spring...played No. 4 through No. 6 singles...along with teammate Marina Raic, set FSU consecutive match win streak record with 15 straight wins...played doubles with Ali Weber and Natalie Carratala, winning a total of 16 doubles matches for the year...started the spring ranked 37th in the country in doubles with Weber...played

in three singles tournaments during the fall, winning the consolation at the Roberta Alison Fall Classic at Alabama and reaching the quarterfinals at the Lady Seminole Classic...posted a 6-4 singles record in the fall...paired with Ali Weber over three fall tournaments and recorded a 5-3 doubles record which included advancing to the finals of the Roberta Alison Fall Classic...member of the All-ACC Academic team...named to the Dean's List for the third straight year...**1997-98:** Played the No. 3 singles spot throughout the spring posting a 14-9 dual match record...teamed with Sasha Hanna as FSU's No. 1 doubles team posting a 4-11 record in spring dual matches including a win in the first round of the ACC Championships... earned a place on the Dean's List, ACC Honor Roll and was the team's Golden Torch Winner as the top academic performer...**1996-97:** Came to FSU for the 1997 dual match season...played No. 3 singles for the Seminoles...went 12-8 at No. 3 singles...defeated regionally ranked players from Rice and Wake Forest in singles...won nine of her final 12 matches to close the season...teamed with Hanna at No. 2 doubles, going 4-1 in ACC and 5-5 overall...named to the FSU Dean's list during the spring...High school and other accomplishments: Finished first in the Swedish Junior Championships (18 and under) in 1994...also finished first in doubles (21 and under) in 1995...had a second place showing in the 21 and under bracket...claimed various junior doubles titles in Sweden...had a No. 2 ranking in Sweden as an 18-year-old...**Personal:** majoring in psychology...born June 16, 1976...daughter of Jan-Olof and Eva Asberg.

ASBERG CAREER STATISTICS

Singles

| Year | @1 | @2 | @3 | @4 | @5 | @6 | Spring | Fall | Total |
|---------------|------------|------------|--------------|------------|------------|-------------|--------------|-------------|--------------|
| 1996-97 | | 0-1 | 12-8 | | | | 12-9 | 1-1 | 13-10 |
| 1997-98 | | 0-2 | 12-9 | 2-0 | | | 14-9 | 2-7 | 16-16 |
| 1998-99 | | | 3-1 | 9-2 | 12-1 | | 24-4 | 6-4 | 30-8 |
| Career | 0-0 | 0-3 | 24-17 | 5-1 | 9-2 | 12-1 | 50-22 | 9-12 | 59-34 |

Doubles

| Year | @1 | @2 | @3 | Duals | Fall | Total |
|---------------|------------|-------------|-------------|--------------|------------|--------------|
| 1996-97 | | 4-5 | 3-2 | 7-7 | 2-1 | 9-8 |
| 1997-98 | 2-8 | 1-3 | | 4-11 | 2-4 | 6-14 |
| 1998-99 | 1-0 | 3-4 | 7-4 | 11-8 | 5-3 | 16-11 |
| Career | 3-8 | 8-12 | 10-6 | 22-26 | 9-8 | 31-33 |

Coach Gregory: "Jess learned so much last year and got better and better as the season went on. She has worked very hard over the past six months and deserves a lot of success."

Natalie Carratala: "Has amazing power on her groundstrokes and she works mighty hard."

Alida Calhoun: "In the last year she has improved her game very much. She is very talented and she tries her best every practice. Her game is very complex and it's very difficult to win against her."



Jessica Balbuena

Sophomore
The Woodlands, Texas

1998-99: Won ITA Tournament this summer in Arlington, Texas defeating the country's 78th-ranked player in the finals...was a constant at No. 4 singles for the Lady Seminoles in her first year here in Tallahassee...was third on the team in wins with 27...finished the season with a five-match winning streak...won all three of her postseason matches at No. 4 singles...posted a 14-9 doubles record this dual match season with fellow freshman Marina Raic...posted a 6-5 record in fall tournaments...reached the finals of the Roberta Alison Classic in Alabama before losing to Stacy Ryan of Vanderbilt...won five of her first seven singles matches to start her career at FSU...posted a 3-3 record in doubles during the fall...member of the All-ACC Academic

team, as well as the Dean's List...**High school and other accomplishments:** Great all-around athlete who was three year all-state soccer player...has won three national doubles titles...ranked among the Top 20 juniors in the United States in 1997...won a total of five I.T.F. events in 1997 in Aruba, Dominican Republic and Jamaica...semi-finalist at the Easter Bowl singles tournament in March of 1997...also competed in swimming, softball, gymnastics and track...earned third team all-state honors as a swimmer...**Personal:** Born April 15, 1980...majoring in education...daughter of Arturo Balbuena and Patricia Montano...her mother played on the Mexican Olympic team and won the Orange Bowl tournament for 18-year-olds while she was only 16...her father was a bull fighter.

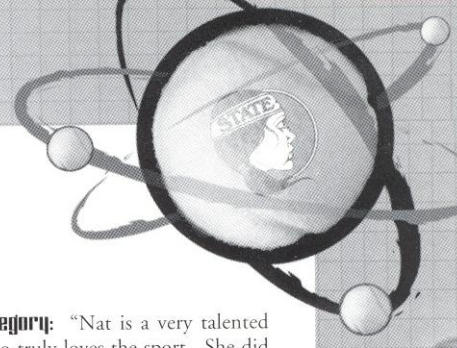
BALBUENA CAREER STATISTICS

Singles

| Year | @1 | @2 | @3 | @4 | @5 | @6 | Spring | Fall | Total |
|---------------|----|----|-----|-------------|------------|------------|-------------|------------|--------------|
| 1998-99 | | | 2-0 | 10-6 | 6-1 | 3-0 | 21-7 | 6-5 | 27-12 |
| Career | | | | 10-6 | 6-1 | 3-0 | 21-7 | 6-5 | 27-12 |

Doubles

| Year | @1 | @2 | @3 | Duals | Fall | Total |
|---------------|------------|------------|------------|-------------|------------|---------------------------------|
| 1998-99 | 0-1 | 9-7 | 5-1 | 14-9 | 3-3 | 17-12 w/ Carratala, Duxin, Raic |
| Career | 0-1 | 9-7 | 5-1 | 14-9 | 3-3 | 17-12 |



Natalie Carratala'

Junior
Miami, Florida (St. Brendan)

1998-99: Finished the season as a part of FSU's No. 3 doubles team along with Kia Asberg... compiled eight wins in 13 doubles matches this spring... finished the year with an 8-6 singles record...will compete for a starting singles position next dual match season...finished the fall winning seven of her last nine matches...reached finals of the Lady Seminole Classic "C" flight...named to ACC Honor Roll...**1997-98:** Played primarily the No. 5 singles spot in the spring and posted a 5-9 record...missed second half of the season because of tendonitis in her knee...played with three doubles partners posting a 5-2 record with Helena Karlsson, a 9-9 record with Nanette Duxin and a 1-5 record with Kylie Thompson...had a 7-5 singles record in

fall competition...reached the semifinals of the Lady Seminole Fall Classic, Gator Fall Classic and Yellow Jacket Invitational...with Karlsson, won the flight "B" doubles championship at the Lady Seminole Fall Classic...**High school and other accomplishments:** Received team MVP award at St. Brendan's following freshmen, junior and senior years...named to the All-Dade County first team after freshmen and junior seasons...a second team honoree following sophomore and honorable mention after senior years...as a junior, won the 1995 International Grass Court Tournament at Philadelphia in doubles and the 1995 doubles competition at the USTA Indoor National Tournament in Michigan...**Personal:** Born November 23, 1978...majoring in Media Production and minoring in Art...daughter of Carmen and Felipe Carratala'...earned a place on the ACC Honor Roll for academics in 1997-98 and was member of last year's team that won the Golden Torch Award as top overall academic team at Florida State.

CARRATALA' CAREER STATISTICS

Singles

| Year | @1 | @2 | @3 | @4 | @5 | @6 | Spring | Fall | Total |
|---------------|----|----|----|------------|------------|------------|-------------|--------------|--------------|
| 1997-98 | | | | 1-1 | 2-5 | 2-3 | 5-9 | 8-6 | 13-15 |
| 1998-99 | | | | | | 1-0 | 1-2 | 7-4 | 8-6 |
| Career | | | | 1-1 | 2-5 | 3-3 | 6-11 | 15-10 | 21-21 |

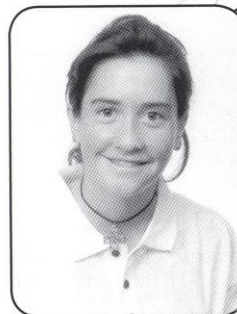
Doubles

| Year | @1 | @2 | @3 | Duals | Fall | Total |
|---------------|------------|------------|------------|--------------|--------------|--|
| 1997-98 | 0-3 | 6-5 | | 6-8 | 9-8 | 15-16 w/Duxin, Karlson, Thompson |
| 1998-99 | | 0-1 | 8-5 | 8-6 | 4-3 | 12-9 w/Asberg, Gallovits, Raic, Thompson |
| Career | 0-3 | 6-6 | 8-5 | 14-14 | 13-11 | 27-25 |

Coach Gregory: "Nat is a very talented player who truly loves the sport. She did a great job in doubles for us last year and won some pivotal matches."

Christy Truitt: "Keeps a great perspective on things and reminds us not to stress."

Marina Raic: "She rollerblades and skateboards as much as she plays tennis!"



Nanette Duxin

Junior
Montevideo, Uruguay

1998-99: posted a 23-15 record...played primarily at No. 2 singles during the spring...played 10 matches against ranked opponents...early in the spring she was ranked 48th in the nation in singles...was 5-3 in the ACC during the regular season...had two five-match winning streaks, including one to start the year...recorded 13 wins at No. 1 doubles with partner Alida Gallovits...finished the season ranked 49th in the country in doubles with Gallovits...posted an 8-3 record during the fall that included a big win at the Roberta Alison Fall Classic at Alabama...defeated Vanderbilt stars Kristy Blumberg and Kriston Radford at Alabama...reached the quarterfinals of the Lady Seminole Classic...3-3 as a doubles player in the fall paired with Natalie Carratala,

with Ali Weber, and with Jessica Balbuena...**1997-98:** Played last spring at No. 1 and No. 2 with seven of the last eight matches at No. 1...posted a 12-11 dual match record for the spring...won seven of her last eight matches on the season and recorded a 6-4 record in ACC competition...teamed with Natalie Carratala' at No. 2 doubles for a 7-5 record and with Kylie Thompson to close out the year with a 5-1 record for an overall doubles record of 12-6...**High school and other accomplishments:** Has achieved a ranking as high as No. 1 in Uruguay's open division...had a WTA ranking of 784 in 1994...played for her national team in the Federation and Continental Cup tournaments (1996-97)...has played at the first division interclubs in France...has claimed several French Junior titles from 1992-95...was a semi-finalist in WTA \$10,000 Challenger (Brazil, 1994). **Personal:** Born January 22, 1979...member of the ACC Honor Roll and Dean's List in 1999...majoring in international business.

DUXIN CAREER STATISTICS

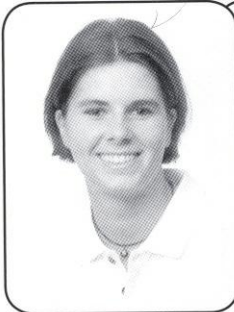
Singles

| Year | @1 | @2 | @3 | @4 | @5 | @6 | Spring | Fall | Total |
|---------------|------------|--------------|------------|----|----|----|--------------|------------|--------------|
| 1997-98 | 3-9 | 9-4 | | | | | 12-13 | | 12-13 |
| 1998-99 | 1-0 | 12-11 | 2-1 | | | | 15-12 | 8-3 | 23-15 |
| Career | 4-9 | 21-15 | 2-1 | | | | 27-25 | 8-3 | 35-28 |

Doubles

| Year | @1 | @2 | @3 | Duals | Fall | Total |
|---------------|--------------|-------------|----|--------------|------------|--|
| 1997-98 | 1-1 | 11-5 | | 12-6 | | 12-6 w/ Carratala', Thompson |
| 1998-99 | 13-9 | | | 13-9 | 3-3 | 16-12 w/ Balbuena, Carratala', Raic, Weber |
| Career | 14-10 | 11-5 | | 25-15 | 3-3 | 28-18 |





Marina Raic

Sophomore
Dubrovnik, Croatia

1998-99: Was named to the All-ACC team in her first year at FSU...nominated for ACC Rookie of the Year...was co-MVP of the team along with Kia Asberg...set a school record with 31 wins this year...set another FSU record with a 15-match winning streak, along with teammate Kia Asberg...played primarily at No. 3 singles after starting the season at No. 5...was 11-3 at No. 3 singles...teamed with Balbuena to win 16 of 26 doubles matches for the year...the two had a five-match winning streak at the end of March...posted a team best 9-3 record over three fall tournaments...defeated

teammate Ali Weber to win the Lady Seminole Fall Classic "B" flight... overall doubles record for the fall was 6-3...**High school and other accomplishments:** While in Germany, was state champion in singles (winter '94)...second in state championships (summer '94)...had German women's ranking of 108 in 1996...won second place in German Grand Prix Tournament...**Personal:** Born August 20, 1978...named to the All-ACC Academic team as a freshman as well as FSU's Dean's List...parents are Croatians living in Germany...pursuing a major in communications.

RAIC CAREER STATISTICS

Singles

| Year | @1 | @2 | @3 | @4 | @5 | @6 | Spring | Fall | Total |
|---------------|----|------------|-------------|------------|------------|----|-------------|------------|-------------|
| 1998-99 | | 2-1 | 11-3 | 2-0 | 7-2 | | 22-6 | 9-3 | 31-9 |
| Career | | 2-1 | 11-3 | 2-0 | 7-2 | | 22-6 | 9-3 | 31-9 |

Doubles

| Year | @1 | @2 | @3 | Duals | Fall | Total |
|---------------|------------|------------|------------|--------------|------------|---|
| 1998-99 | 0-1 | 9-8 | 5-1 | 14-10 | 7-4 | 21-14 w/ Balbuena, Carratala', Thompson |
| Career | 0-1 | 9-8 | 5-1 | 14-10 | 7-4 | 21-14 |

Coach Gregory: "Her results speak for themselves. She's one of the best freshmen to ever come through FSU."

Nanette Duxin: "The greatest person with a spectacular game. It's not for nothing that we call her the Croatian Sensation."

Kia Asberg: "Powerful serve and groundstrokes. When she puts her mind into something she does it extremely well."



Alida Gallovits

Sophomore
Timisoara, Romania

1998-99: Opened FSU career with three consecutive wins...played 27 of 28 FSU dual matches at No. 1 singles, winning 15 of those 27 matches...defeated three ranked opponents including 15th-ranked Lioudmila Skavronskaia from the University of Miami...played three matches against top 10 nationally ranked opponents...posted a 5-3 record in conference play...spent 11 weeks ranked in the top 100 in the ITA's national rankings, before finishing the season No. 92...played No. 1 doubles with Nanette Duxin, winning five of eight ACC regular season matches and finishing the season ranked as the 49th-ranked doubles team...was one of three FSU women and one of six freshmen to be named to the All-ACC Team...was nominated for ACC

Rookie of the Year award...**High school and other accomplishments:** Won the singles portion of the ITF Tournament in Cairo, Egypt in 1995...Also won the ITF tournament in Scopje, Macedonia (1997) and Maribor, Slovenia (1996)...placed third at ITF tournaments in Tel Aviv, Israel (1995), Sofia, Bulgaria (1997 and '98), Istanbul, Turkey (1998)...reached quarterfinals of the Orange Bowl Tournament in 1995...ranked among the WTA Top 500 in the world since 1995...finished second in the masters division of the national championships in 1997...finished third in the singles national championships for juniors in 1995 and fourth in 1994... second at the national championships in doubles as a junior in 1995...**Personal:** Born November 6, 1978...graduated third in her high school class...mother played handball in the Olympics and father competed in the pentathlon.

GALLOVITS CAREER STATISTICS

Singles

| Year | @1 | @2 | @3 | @4 | @5 | @6 | Spring | Fall | Total |
|---------------|--------------|------------|----|----|----|----|--------------|------|--------------|
| 1998-99 | 15-12 | 1-0 | | | | | 16-12 | | 16-12 |
| Career | 15-12 | 1-0 | | | | | 16-12 | | 16-12 |

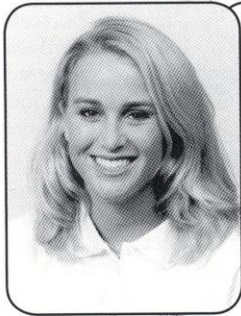
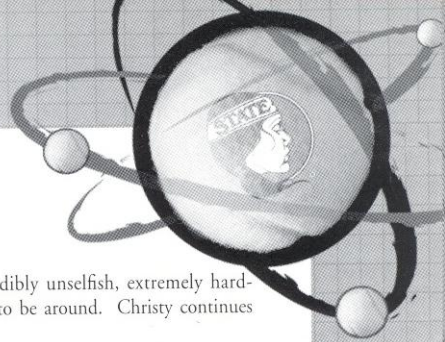
Doubles

| Year | @1 | @2 | @3 | Duals | Fall | Total |
|---------------|-------------|----|------------|-------------|------|---------------------------|
| 1998-99 | 13-9 | | 1-0 | 14-9 | | 14-9 w/ Carratala', Duxin |
| Career | 13-9 | | 1-0 | 14-9 | | 14-9 |

Coach Gregory: "Alida is a great athlete and a quick learner. That combination makes her very tough to beat and a pleasure to coach."

Nanette Carratala: "Gallovits can run anything down and her game is extremely solid."

Ali Weber: "Great strokes and footwork as well as an awesome personality. She can dance as well as she can play tennis!"



Christy Travis

Junior
Palmetto, Florida (Bradenton Christian)

1998-99: Will push the returning starters for a starting spot in the spring...represented the Lady Seminoles at the ACC Women's Indoor Championships...played in three fall tournaments and posted a 5-5 record...lost in the quarterfinals of the Roberta Allison Tournament held at Alabama and in the "C" flight quarterfinals at the Lady Seminole Classic...finished the fall with an overall record of 2-2 in doubles...**1997-98:** Posted a 3-3 overall record last year...won two of three matches at the Yellow Jacket Invitational...had a 2-2 doubles record with Rakina Payne...won two of three matches at both the Gator Fall Classic and Yellow Jacket Invitational...**High school and other accomplishments:** Played No. 1 singles and doubles for

Bradenton Christian all four years...was also the captain and team MVP of that squad each year...named All-Conference three times...won the Bay Conference' Scholarship Athlete award following 11th and 12th grades...finalist at the K-Swiss Christmas Bowl Tennis Classic, 1994-95...was a finalist at the Junior Satellite State Closed Singles Championship, 1993...placed fourth in the Walt Disney World Tennis Championship, 1994...was a member of the National Honor Society all four years and the Spanish Honor Society for two years...an active member of FCA during high school...**Personal:** Born August 28, 1979...brother, Jay, is a member of the FSU men's tennis team...majoring in communications...daughter of Ron and Gail Travis...made the ACC Honor Roll and Dean's List in each of the past two years.

TRAVIS CAREER STATISTICS

Singles

| Year | @1 | @2 | @3 | @4 | @5 | @6 | Spring | Fall | Total |
|---------------|----|----|----|----|----|----|------------|------------|-------------|
| 1997-98 | | | | | | | 0-0 | 3-3 | 3-3 |
| 1998-99 | | | | | | | 0-2 | 5-5 | 5-7 |
| Career | | | | | | | 0-2 | 8-8 | 8-10 |

Doubles

| Year | @1 | @2 | @3 | Duals | Fall | Total |
|---------------|----|----|----|------------|------------|------------|
| 1997-98 | | | | 0-1 | 4-2 | 4-3 |
| 1998-99 | | | | 0-0 | 2-2 | 2-2 |
| Career | | | | 0-1 | 6-4 | 6-5 |

Coach Gregory: "Incredibly unselfish, extremely hard-working and a pleasure to be around. Christy continues to improve every year."

Ali Weber: "Talented player with an unbelievable work ethic and attitude. Would do anything for her teammates."

Nanette Duxin: "The sweetest person and the best shopping partner. I'm still waiting for her to invite me to the Campus Lodge pool!"



Ali Weber

Senior
Clermont, Florida (South Lake)

1998-99: Posted a 26-16 record playing No. 2 through No. 6 singles...was ACC Flight Champion at No. 6 singles...ended the season on a five-match winning streak, including a win in all three of FSU's postseason matches...played six matches against top ranked opponents, winning two of them...tied her career high in wins with 26...had 20 or more wins for the third consecutive year...teamed with Kia Asberg in doubles to win 11 matches on the year...Asberg and Weber were ranked in the ITA's top 100 for five weeks at the beginning of the season...played 14 fall matches with a 7-7 final fall record...lost to teammate Marina Raic in the finals of the Lady Seminole Classic...reached the doubles finals of the Roberta Allison Classic while teamed with

Asberg...**1997-98:** Played No. 1 and No. 2 singles throughout last year posting an overall record of 21-16, including a 13-11 dual match record...was ranked 83rd in the nation by the ITA...beat the eighth-ranked player in the nation en route to being ranked 83rd in the country by the ITA...paired with Helena Karlsson and recorded a 18-6 record playing mostly at No. 3 doubles...led the team with an 8-5 overall singles record through fall competition...reached semifinals of the Yellow Jacket Invitational...teamed with Helena Karlsson to win the flight "C" Yellow Jacket Invitational doubles championship...**1996-97:** Played at No. 3 through 6 singles during the dual match season...set a freshman record with 26 overall singles victories...led the team with 15 dual match singles wins...had a fall season singles record of 11-6...claimed the Flight 5 ACC singles championship with a perfect 7-0 record at No. 5 singles during ACC play...had win streaks of six and seven matches throughout the year...won her flight at the 1996 Lady Seminole Fall Classic...had an overall doubles record of 12-10 with various partners...**High school and other accomplishments:** Held a No. 44 national ranking in U-14 singles...was a doubles finalist at the U-14 national clay courts...had a top ten singles ranking or better in Florida 12-18 age groups...high school district champion sophomore through junior years...**Personal:** Born August 28, 1978...majoring in Public Relations...won the Golden 'Nole Award for 1997-98 as the team's most valuable player...excellence in the classroom earned her a spot on the ACC Honor Roll and the FSU Dean's List the past two years.

Coach Gregory: "I'm lucky to have had Ali around from the beginning. She's given so much to this program and is one of the leader's of this team."

Jessica Balbuena: "Incredibly competitive, she has had the most amazing comebacks."

Christy Travis: "Shorty is a great leader for our team and can always make us laugh. She truly is an amazing person."

WEBER CAREER STATISTICS

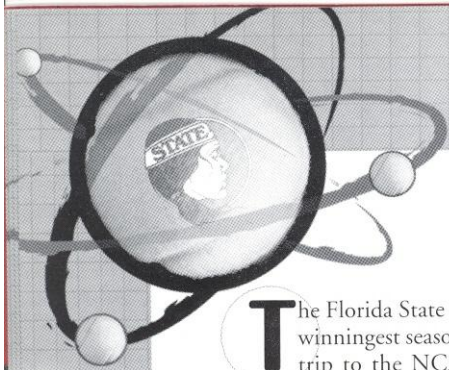
Singles

| Year | @1 | @2 | @3 | @4 | @5 | @6 | Spring | Fall | Total |
|---------------|------------|-------------|------------|------------|-------------|-------------|--------------|--------------|--------------|
| 1996-97 | | | | 0-2 | 13-5 | 2-0 | 15-7 | 11-6 | 26-13 |
| 1997-98 | 4-6 | 9-5 | | | | | 13-11 | 8-5 | 21-16 |
| 1998-99 | | 1-0 | 6-3 | 3-3 | 0-1 | 9-2 | 19-9 | 7-7 | 26-16 |
| Career | 4-6 | 10-5 | 6-3 | 3-5 | 13-6 | 11-2 | 47-27 | 26-18 | 73-45 |

Doubles

| Year | @1 | @2 | @3 | Duals | Fall | Total |
|---------------|------------|------------|--------------|--------------|--------------|---|
| 1996-97 | | | | 6-5 | 6-5 | 10-8 w/ Asberg, Junker, Payne, Thompson |
| 1997-98 | | 1-0 | 13-6 | 14-6 | 1-1 | 15-7 w/ Karlsson, Thompson |
| 1998-99 | 1-0 | 3-4 | 3-1 | 7-5 | 6-4 | 13-9 w/ Asberg, Carratala', Duxin |
| Career | 1-0 | 4-4 | 22-12 | 27-16 | 17-13 | 54-29 |





1998-99 Review

The Florida State women's tennis team capped off its third-winningest season in school history with its fourth straight trip to the NCAA Tournament. The Lady Seminoles selection into the NCAA field marked their fifth appearance in the program's 20 seasons.

The 1999 Lady Seminoles tied and surpassed a number of school records en route to a 21-7 season. Their 21 wins were the most since 1982, and their seven losses tied the 1989 team for the fewest in school history. FSU's eight-match win streak in March tied the program's longest streak, set back in 1984. On March 9th, the Lady Seminoles cracked the Top 20 for the first time in 18 years. They went as high as 18th in the country on April 6th, and remained in the Top 20 for three months before finishing the season ranked 23rd.

Head Coach Lise Gregory, in just her third year at the helm, won her first ACC Coach of the Year award in 1999. Gregory has compiled 45 career wins and has led FSU to the NCAA Tournament in each of her first three years. This past year, the Lady Seminoles headed to South Bend, Indiana for the Notre Dame Regional. They played the University of Iowa in the first round and lost a hard-fought match 5-4. Five of the seven matches FSU lost in 1999 were by only one point. Six of the seven losses came against teams that were ranked in the Top 25 at the time, with Iowa going from 38th to 25th in the final poll after defeating FSU and Notre Dame in the NCAA Tournament.

The 1998-99 Noles were a well-balanced team, with all six of their singles starters winning over 15 dual matches. Overall, the Lady Seminoles had five players with records boasting 23 wins or more for the year. As a team, the Lady Seminoles won 66 percent of their single matches. In their spring dual matches alone, the Lady Noles won 118 of 168 single matches. They swept all six singles matches from their opponents seven times and their four 9-0 shutouts were the most by an FSU team since 1991. In doubles, the Lady Seminoles took all three matches eight times in the spring.

Throughout the dual match season, the Lady Seminoles knew they could count on certain positions in the lineup. In the spring they were dominating at the No. 3, No. 5, and No. 6 singles positions. At No. 3, freshman Marina Raic won 11 of the 14 matches she played in to help give FSU a season record of 21-7 at the No. 3 position. At No. 5, four players combined to win 22 of 28 matches. At No. 6, behind the 12-1 record of junior Kia Asberg and the 9-2 record of junior Ali Weber, FSU posted a 25-3 record. Weber was declared the ACC Flight Champion at No. 6 singles and Raic was named the runner-up for the Flight Championship at No. 3 singles.

For the first time in school history, Florida State placed three players on the All-ACC team. Asberg, Raic, and freshman Alida Gallovits were named to the team with Raic and Gallovits joining four other conference freshmen on the 1999 squad. The Lady Seminoles made some remarkable strides in ACC play in 1999, reversing a 2-6 record in 1998 to post a 6-2 record. FSU entered the ACC Tournament as the No. 3 seed and advanced all the way to the semifinals.

Entering the season with just three starters with collegiate playing experience, Coach Gregory went into the 1999 dual match season with a few uncertainties. Providing veteran leadership for a relatively young squad were Asberg, Weber, and

sophomore sensation Nanette Duxin. Asberg would go on to have one of the finest seasons in school history. She was 23-4 in dual match contests and along with Raic, set a school record with a 15-match winning streak. Her 30-8 overall record was the second best in school history behind Raic's 31-9 record. Asberg teamed with sophomore Natalie Carratala to win four of five ACC matches at No. 3 doubles, where they were named runner-ups for the ACC Flight Championship.

One of FSU's all-time greatest competitors, Ali Weber, went 25-16 to win over 20 matches for the third consecutive year and captured the second ACC Flight Championship of her career. Duxin had a solid year at No. 2 singles, winning 12 of 23 matches in that position. She also teamed with Gallovits to form FSU's No. 1 doubles tandem, as they ended the season as the ACC Flight Champion Runners-up at No.1 doubles, and the nation's 49th ranked team.

The uncertainties coach Gregory felt at the beginning of the season quickly vanished as Romanian newcomer Alida Gallovits strolled onto FSU's campus in January. Gallovits finished the season as the highest-ranked Lady Seminole at No. 92 in the country. She posted 16 wins at No. 1 singles including victories over two of the nation's top-ranked players.

Gallovits, however, wouldn't be the only newcomer to make an impact for the Lady Seminoles. Fellow freshmen Jessica Balbuena and Marina Raic jumped into the scene right from the beginning. Balbuena won 27 matches in her first year and ended the season on a five-match winning streak, including victories in all three of Florida State's post-season matches. In doubles, Balbuena teamed with Raic to form a duo that will be competitive for years to come. In their first season together, they won 16 of 26 matches. As for Raic, it took her just one year at FSU to set the school's record for wins in a season with 31. She also set a school record with teammate Kia Asberg, when the two won 15 consecutive matches from February 14th to April 2nd.

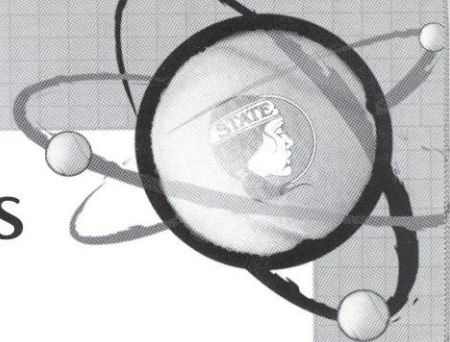
An exciting season for the Lady Seminoles ended in heartbreak but a shot at redemption will be waiting for this talented group as they will get a chance to face the team that upset them in the NCAA Tournament in the year 2000. Coach Gregory felt this past season was an enormous building block for the future. Many players gained valuable experience and the team stuck together through good and bad times. The realization that this talented, tight-knit group has a lot more tennis ahead of them, should mean less heartbreak and more celebration for the future of Lady Seminole tennis.

Highlights

- 21-7 record was best in 17 years.
- Third straight NCAA appearance.
- Ranked in the Top 20 for three months.
- 3 singles players ranked in Top 100 during the season. (Weber, Duxin, and Gallovits)
- 2 doubles teams ranked in Top 50 during the season. (Weber/Asberg, Duxin/Gallovits)
- Head Coach, Lise Gregory, voted ACC Coach of the Year.
- 2 players with 30 wins and 15 match-win streaks. (Asberg and Raic)
- 3 players named to the All-ACC Athletic Team. (Asberg, Gallovits, and Raic)
- All 9 team members honored with All-ACC Academic status.
- Team GPA of 3.7.
- Third straight GOLDEN TORCH AWARD, awarded to FSU's top team GPA.



1999 Statistics



Florida State Women's Tennis

Cumulative Stats for 1998-99 Season

*ACC = ACC Regular Season Matches Only

Overall Record Playing At:

| SINGLES | All | Dual | Streak | ACC | 1 | 2 | 3 | 4 | 5 | 6 |
|--------------------|---------------|---------------|--------|--------------|--------------|--------------|-------------|--------------|-------------|-------------|
| Kia Asberg | 30-8 | 24-4 | W2 | 6-2 | 0-0 | 0-0 | 0-0 | 3-1 | 9-2 | 12-1 |
| Jessica Balbuena | 27-12 | 21-7 | W5 | 5-3 | 0-0 | 0-0 | 2-0 | 10-6 | 6-1 | 3-0 |
| Natalie Carratala | 8-6 | 1-0 | W1 | 0-0 | 0-0 | 0-0 | 0-0 | 0-0 | 0-0 | 1-0 |
| Nanette Duxin | 23-15 | 15-12 | L2 | 5-3 | 1-0 | 12-11 | 2-1 | 0-0 | 0-0 | 0-0 |
| Alida Gallovits | 16-12 | 16-12 | W1 | 5-3 | 15-12 | 1-0 | 0-0 | 0-0 | 0-0 | 0-0 |
| Marina Raic | 31-9 | 22-6 | L1 | 5-3 | 0-0 | 2-1 | 11-3 | 2-0 | 7-2 | 0-0 |
| Kylie Thompson | 4-2 | 0-0 | L1 | 0-0 | 0-0 | 0-0 | 0-0 | 0-0 | 0-0 | 0-0 |
| Christy Travis | 5-7 | 0-0 | L3 | 0-0 | 0-0 | 0-0 | 0-0 | 0-0 | 0-0 | 0-0 |
| Ali Weber | 26-16 | 19-9 | W5 | 5-3 | 0-0 | 1-0 | 6-3 | 3-3 | 0-1 | 9-2 |
| Team Totals | 170-87 | 118-50 | | 31-17 | 16-12 | 16-12 | 21-7 | 18-10 | 22-6 | 25-3 |

Overall Record Playing At:

| DOUBLES | Overall | Dual | Streak | ACC | 1 | 2 | 3 |
|---------------------|--------------|--------------|--------|-------------|--------------|--------------|-------------|
| Gallovits/Duxin | 13-9 | 13-9 | L2 | 5-3 | 13-9 | 0-0 | 0-0 |
| Weber/Asberg | 11-8 | 6-5 | L1 | 0-0 | 1-0 | 3-4 | 2-1 |
| Balbuena/Raic | 16-10 | 14-9 | L4 | 4-3 | 0-1 | 9-7 | 5-1 |
| Gallovits/Carratala | 1-0 | 1-0 | W1 | 0-0 | 0-0 | 0-0 | 1-0 |
| Thompson/Carratala | 2-2 | 2-2 | L1 | 0-1 | 0-0 | 0-0 | 2-2 |
| Thompson/Weber | 1-0 | 1-0 | W1 | 1-0 | 0-0 | 0-0 | 1-0 |
| Asberg/Carratala | 5-3 | 5-3 | L2 | 4-1 | 0-0 | 0-0 | 5-3 |
| Raic/Carratala | 0-1 | 0-1 | L1 | 0-1 | 0-0 | 0-1 | 0-0 |
| Team Totals | 49-33 | 42-29 | | 14-9 | 14-10 | 12-12 | 16-7 |

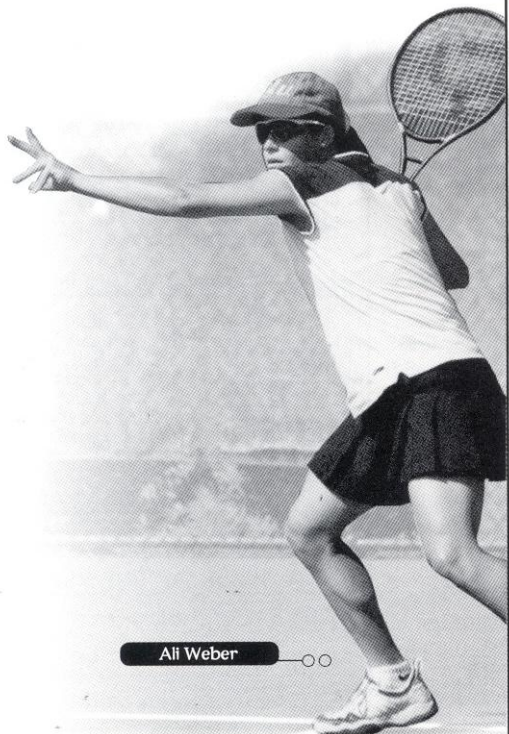
Women's Tennis Schedule and Results

Spring 1999

| | | | | | |
|------------|-----------|-----------------------|--------------------|------|------|
| Jan. 22-24 | Fri.-Sun. | ACC Indoors | Raleigh-Durham, NC | Ind. | ---- |
| Jan. 30 | Sat. | Jacksonville | Tallahassee | 9-0 | 1-0 |
| Jan. 31 | Sun. | Illinois | Tallahassee | 5-1 | 2-0 |
| Feb. 6 | Sat. | Southern Miss | Tallahassee | 9-0 | 3-0 |
| Feb. 7 | Sun. | Auburn | Tallahassee | 7-2 | 4-0 |
| Feb. 12 | Fri. | Georgia State | Tallahassee | 6-0 | 5-0 |
| Feb. 13 | Sat.. | Florida | Tallahassee | 1-8 | 5-1 |
| Feb. 14 | Sun. | Ga. Southern | Tallahassee | 8-1 | 6-1 |
| Feb. 20 | Sat. | South Florida | Tampa, FL | 8-1 | 7-1 |
| Feb. 23 | Tue. | S. Alabama | Tallahassee | 5-1 | 8-1 |
| Feb. 27 | Sat. | Vanderbilt | Tallahassee | 4-5 | 8-2 |
| Mar. 6 | Sat. | Miami | Miami, FL | 4-5 | 8-3 |
| Mar. 7 | Sun. | Florida International | Miami, FL | 7-2 | 9-3 |
| Mar. 9 | Tues. | Baylor | Waco, TX | 7-2 | 10-3 |
| Mar. 10 | Wed. | Houston | Houston, TX | 5-4 | 11-3 |
| Mar. 12 | Fri. | Rice | at Rice | 6-3 | 12-3 |
| Mar. 13 | Sat.. | Tulane | at Rice | 5-4 | 13-3 |
| Mar. 20 | Sat. | Virginia | Tallahassee | 6-3 | 14-3 |
| Mar. 21 | Sun. | Maryland | Tallahassee | 9-0 | 15-3 |
| Mar. 24 | Wed. | Kansas | Tallahassee | 6-3 | 16-3 |
| Mar. 26 | Fri. | Wake Forest | Tallahassee | 4-5 | 16-4 |
| Mar. 28 | Sun. | North Carolina State | Tallahassee | 9-0 | 17-4 |
| April 2 | Fri. | Duke | Durham, NC | 0-9 | 17-5 |
| April 3 | Sat. | North Carolina | Chapel Hill, NC | 6-3 | 18-5 |
| April 10 | Sat. | Georgia Tech | Atlanta, GA | 6-3 | 19-5 |
| April 11 | Sun. | Clemson | Clemson, SC | 5-4 | 20-5 |
| April 23 | Fri. | Virginia* | Atlanta, GA | 5-1 | 21-5 |
| April 24 | Sat. | Wake Forest* | Atlanta, GA | 4-5 | 21-6 |
| May 15 | Sat. | Iowa** | South Bend, IN | 4-5 | 21-7 |

* - ACC Tournament

** - NCAA Regionals



Ali Weber

1999 ACC Statistics

1999 ACC Regular Season Match by Match

Florida State 6, Virginia 3 - March 20, 1999

Singles

| | |
|-----------------------------------|---------------|
| 1 Gallovits (FSU) d. Boiko (UVA) | 7-6, 6-4 |
| 2 Duxin (FSU) d. Gingold (UVA) | 7-6, 2-6, 6-4 |
| 3 Raic (FSU) d. O'Donnell (UVA) | 6-4, 6-2 |
| 4 Cook (UVA) d. Weber (FSU) | 7-6, 6-3 |
| 5 Balbuena (FSU) d. Schweer (UVA) | 6-4, 6-3 |
| 6 Asberg (FSU) d. Weaver (UVA) | 6-0, 6-0 |

Doubles

| | |
|--|------|
| 1 Duxin/Gallovits (FSU) d. Boiko/Gingold (UVA) | 8-5 |
| 2 Cook/Schweer (UVA) d. Balbuena/Raic (FSU) | def. |
| 3 O'Donnell/Weaver (UVA) d. Carratala/Thompson (FSU) | 10-8 |

Florida State 9, Maryland 0 - March 21, 1999

Singles

| | |
|-------------------------------------|----------|
| 1 Gallovits (FSU) d. Griffin (MD) | 6-2, 7-5 |
| 2 Duxin (FSU) d. Walkowitz (MD) | 6-1, 6-2 |
| 3 Raic (FSU) d. Bittles (MD) | 6-2, 6-4 |
| 4 Balbuena (FSU) d. Ivanisevic (MD) | 6-3, 7-5 |
| 5 Asberg (FSU) d. Perkins (MD) | 6-4, 6-3 |
| 6 Weber (FSU) d. Pavelko (MD) | 6-0, 6-0 |

Doubles

| | |
|---|------|
| 1 Duxin/Gallovits (FSU) d. Bittles/Griffin (MD) | 8-4 |
| 2 Balbuena/Raic (FSU) d. Terrill/Walkowitz (MD) | def. |
| 3 Thompson/Weber (FSU) d. Pavelko/Perkins (MD) | 8-4 |

Wake Forest 5, Florida State 4 - March 26, 1999

Singles

| | |
|----------------------------------|----------|
| 1 Verban (WF) d. Gallovits (FSU) | 6-3, 6-0 |
| 2 Bergman (WF) d. Duxin (FSU) | 6-3, 6-4 |
| 3 Raic (FSU) d. Haus (WF) | 6-4, 6-2 |
| 4 Houston (WF) d. Balbuena (FSU) | 7-6, 6-4 |
| 5 Asberg (FSU) d. Milton (WF) | 6-4, 6-0 |
| 6 Weber (FSU) d. Miller (WF) | 6-3, 6-3 |

Doubles

| | |
|--|-----|
| 1 Verban/Bergman (WF) d. Duxin/Gallovits (FSU) | 8-4 |
| 2 Balbuena/Raic (FSU) d. Miller/Milton (WF) | 8-3 |
| 3 Haus/Houston (WF) d. Asberg/Carratala (FSU) | 8-6 |

Florida State 9, North Carolina State 0 - March 28, 1999

Singles

| | |
|-------------------------------------|----------|
| 1 Gallovits (FSU) d. Bonacic (NCS) | 6-3, 6-3 |
| 2 Raic (FSU) d. Gildermeister (NCS) | 6-3, 6-4 |
| 3 Duxin (FSU) d. Barragan (NCS) | 7-6, 6-4 |
| 4 Asberg (FSU) d. Glover (NCS) | 6-1, 6-3 |
| 5 Balbuena (FSU) d. Nicholls (NCS) | 6-2, 7-5 |
| 6 Weber (FSU) d. Gildemeister (NCS) | 6-3, 6-1 |

Doubles

| | |
|--|-----|
| 1 Duxin/Gallovits (FSU) d. Bonacic/Glover (NCS) | 9-8 |
| 2 Balbuena/Raic (FSU) d. K. Gildermeister/ M. Gildermeister (NCS) | 9-7 |
| 3 Asberg/Carratala (FSU) d. Borragan/Piana (NCS) | 8-4 |

Duke 9, Florida State 0 - April 2, 1999

Singles

| | |
|------------------------------------|---------------|
| 1 Webb (DU) d. Gallovits (FSU) | 6-1, 6-1 |
| 2 Sanderson (DU) d. Duxin (FSU) | 6-2, 6-2 |
| 3 Miller (DU) d. Raic (FSU) | 6-3, 6-3 |
| 4 Goldstein (DU) d. Balbuena (FSU) | 6-0, 2-6, 6-2 |
| 5 Sell (DU) d. Asberg (FSU) | 6-4, 6-2 |
| 6 Biro (DU) d. Weber (FSU) | 3-6, 6-2, 6-4 |

Doubles

| | |
|--|-----|
| 1 Goldstein/Webb (DU) d. Gallovits/Duxin (FSU) | 8-1 |
|--|-----|

Individual Results Versus ACC Opponents

(Regular Season Only)

| SINGLES | ACC | 1 | 2 | 3 | 4 | 5 | 6 |
|-------------------|-----|-----|-----|-----|-----|-----|-----|
| Kia Asberg | 6-2 | 0-0 | 0-0 | 0-0 | 2-1 | 3-1 | 1-0 |
| Jessica Balbuena | 5-3 | 0-0 | 0-0 | 0-0 | 1-3 | 4-0 | 0-0 |
| Natalie Carratala | 0-0 | 0-0 | 0-0 | 0-0 | 0-0 | 0-0 | 0-0 |
| Nanette Duxin | 5-3 | 0-0 | 3-2 | 2-1 | 0-0 | 0-0 | 0-0 |
| Alida Gallovits | 5-3 | 5-3 | 0-0 | 0-0 | 0-0 | 0-0 | 0-0 |
| Marina Raic | 5-3 | 0-0 | 2-1 | 3-2 | 0-0 | 0-0 | 0-0 |
| Kylie Thompson | 0-0 | 0-0 | 0-0 | 0-0 | 0-0 | 0-0 | 0-0 |
| Christy Travis | 0-0 | 0-0 | 0-0 | 0-0 | 0-0 | 0-0 | 0-0 |
| Ali Weber | 5-3 | 0-0 | 0-0 | 0-0 | 0-1 | 0-0 | 5-2 |

| DOUBLES | ACC | 1 | 2 | 3 |
|--------------------|-----|-----|-----|-----|
| Gallovits/Duxin | 5-3 | 5-3 | 0-0 | 0-0 |
| Balbuena/Raic | 4-3 | 0-0 | 4-3 | 0-0 |
| Thompson/Carratala | 0-1 | 0-0 | 0-0 | 0-1 |
| Thompson/Weber | 1-0 | 0-0 | 0-0 | 1-0 |
| Asberg/Carratala | 4-1 | 0-0 | 0-0 | 4-1 |
| Raic/Carratala | 0-1 | 0-0 | 0-1 | 0-0 |

| | |
|--|-----|
| 2 Siebel/Biro (DU) d. Raic/Carratala (FSU) | 8-3 |
| 3 Miller/Sell (DU) d. Balbuena/Weber (FSU) | DNP |

Florida State 6, North Carolina 3 - April 3, 1999

Singles

| | |
|-------------------------------------|---------------|
| 1 Gallovits (FSU) d. Zagancyk (UNC) | 6-4, 6-4 |
| 2 Racic (FSU) d. Hill (UNC) | 4-6, 6-4, 7-5 |
| 3 Hawkins (UNC) d. Duxin (FSU) | 6-4, 6-1 |
| 4 Hackler (UNC) d. Balbuena (FSU) | 2-6, 6-4, 6-4 |
| 5 Asberg (FSU) d. Zalinski (UNC) | 6-1, 6-1 |
| 6 Burnett (UNC) d. Weber (FSU) | 6-2, 7-5 |

Doubles

| | |
|---|-----|
| 1 Gallovits/Duxin (FSU) d. Hackler/Zagancyk (UNC) | 8-3 |
| 2 Balbuena/Raic (FSU) d. Burnette/Zalinski (UNC) | 8-6 |
| 3 Asberg/Carratala (FSU) d. Hawkins/Hill (UNC) | 9-8 |

Florida State 6, Georgia Tech 3 - April 10, 1999

Singles

| | |
|----------------------------------|---------------|
| 1 Gallovits (FSU) d. Pardo (GT) | 6-2, 6-4 |
| 2 Miller (GT) d. Raic (FSU) | 6-3, 6-4 |
| 3 Duxin (FSU) d. Guthrie (GT) | 6-3, 6-3 |
| 4 Asberg (FSU) d. Uy (GT) | 6-1, 6-0 |
| 5 Balbuena (FSU) d. Jenkins (GT) | 6-3, 2-6, 6-4 |
| 6 Weber (FSU) d. Richards (GT) | 7-5, 6-1 |

Doubles

| | |
|--|-----|
| 1 Miller/Pardo (GT) d. Duxin/Gallovits (FSU) | 8-3 |
| 2 Jenkins/Guthrie (GT) d. Raic/Balbuena (FSU) | 8-6 |
| 3 Asberg/Carratala (FSU) d. Parker/Richards (GT) | 8-3 |

Florida State 5, Clemson 4 - April 11, 1999

Singles

| | |
|-----------------------------------|---------------|
| 1 Giraldo (CU) d. Gallovits (FSU) | 6-3, 3-6, 6-3 |
| 2 Duxin (FSU) d. Mair (CU) | 6-3, 6-3 |
| 3 Galvin (CU) d. Raic (FSU) | 6-4, 6-3 |
| 4 Hincapie (CU) d. Asberg (FSU) | 6-4, 6-2 |
| 5 Balbuena (FSU) d. Clausen (CU) | 6-2, 6-3 |
| 6 Weber (FSU) d. Odeck (CU) | 6-7, 6-3, 6-3 |

Doubles

| | |
|--|-----|
| 1 Duxin/Gallovits (FSU) d. Giraldo/Mair (CU) | 8-5 |
| 2 Clausen/Hincapie (CU) d. Balbuena/Raic (FSU) | 8-1 |
| 3 Asberg/Carratala (FSU) d. Chandler/Galvin (CU) | 8-5 |

1999 ACC Final Standings

| Team | W | L | Pct. |
|----------------|---|---|------|
| Duke | 8 | 0 | 1.00 |
| Wake Forest | 7 | 1 | .875 |
| Florida State | 6 | 2 | .750 |
| North Carolina | 4 | 4 | .500 |
| Maryland | 4 | 4 | .500 |
| Virginia | 3 | 5 | .375 |
| Clemson | 2 | 6 | .250 |
| Georgia Tech | 2 | 6 | .250 |
| N.C. State | 0 | 8 | .000 |

ACC TOURNAMENT RESULTS

(Atlanta, Ga., April 22-25, 1999): 1st Round - #8 Georgia Tech d. #9 N.C. State 6-2. Quarterfinals - #3 Florida State d. #6 Virginia 5-1, #2 Wake Forest d. #7 Clemson 5-3, #1 Duke d. #8 Georgia Tech 5-0, #4 North Carolina d. #5 Maryland 5-3. Semifinals - #2 Wake Forest d. #3 Florida State 5-4, #1 Duke d. #4 North Carolina 5-0. Finals - #1 Duke d. #2 Wake Forest 5-0.

ACC TOURNAMENT MVP

Karen Goldstein, Duke

ACC SINGLES FLIGHT CHAMPIONS

No. 1 Vanessa Webb, Duke; No. 2 Janet Bergman, Wake Forest; No. 3 Megan Miller, Duke; No. 4 Karen Goldstein, Duke; No. 5 AnneMarie Milton, Wake Forest; No. 6 Ali Weber, Florida State.

ACC DOUBLES FLIGHT CHAMPIONS

No. 1 Karen Goldstein - Vanessa Webb, Duke; No. 2 Bobbi Guthrie - Tamarra Jenkin, Georgia Tech; No. 3 Megan Miller - Kathy Sell, Duke.

ALL-ATLANTIC COAST CONFERENCE

Clemson (1) - Carmina Gilaldo; Duke (5) - Karen Goldstein, Megan Miller, Kristin Sanderson, Kathy Sell, Vanessa Webb; Florida State (3) - Kia Asberg, Alida Gallovits, Marina Raic; Georgia Tech (1) - Mason Miller; Maryland (1) - Meg Griffin; Wake Forest (3) - Janet Bergman, Maren Haus, Mariel Verban.

ACC PLAYER OF THE YEAR

Vanessa Webb, Duke

ACC ROOKIE OF THE YEAR

Janet Bergman, Wake Forest

ACC COACH OF THE YEAR

Lise Gregory, Florida State