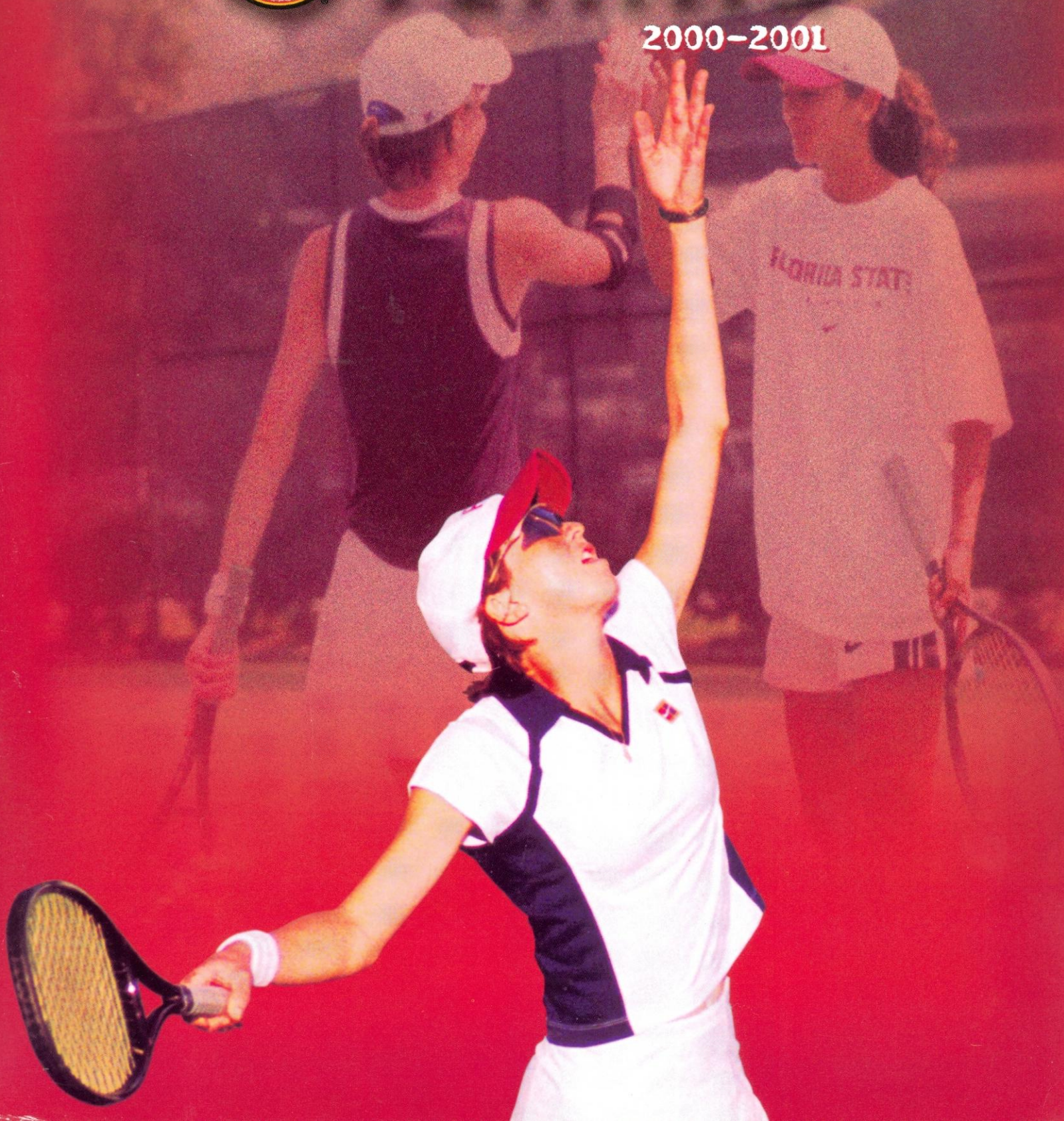


FLORIDA STATE UNIVERSITY WOMEN'S



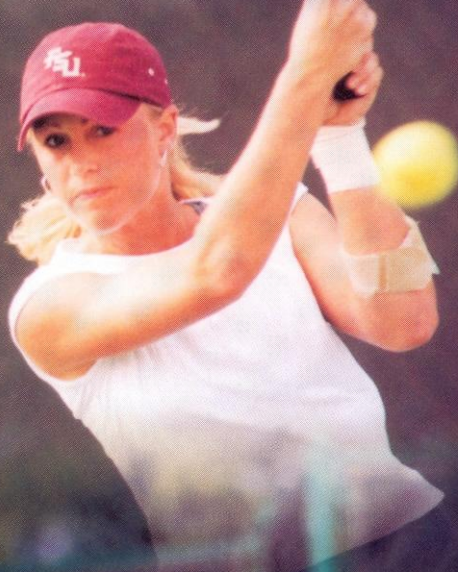
TENNIS

2000-2001



1999-2000 WOMEN'S TENNIS ACCOMPLISHMENTS

- ▶ The women's tennis team has made four consecutive trips to the NCAA Tournament and has captured four straight Golden Torch Awards, an award given to the FSU athletic team with the highest GPA.
- ▶ Alida Gallovits finished the season rated 48th in the nation by the ITA.
- ▶ The team was ranked in the top 25 all season, including a high of 19th.
- ▶ The doubles team of Ali Weber and Jessica Balbuena won eight consecutive matches at No. 3 doubles and were named ACC Flight Champions for No. 3 doubles.
- ▶ Seventeen wins in 2000 tied the 1986 team for sixth best in school history.
- ▶ Nine losses in 2000 were tied for the third fewest in school history.
- ▶ Coach Gregory has the highest winning percentage in FSU Women's Tennis coaching history, with a career record of 62-39 (61.4%).
- ▶ In 2000, Coach Gregory passed Alice Reen for third place in all-time wins at FSU.
- ▶ Kia Asberg led the team in wins with 29 (the third most in school history) and had a 13-match winning streak.
- ▶ The team had a seven-match winning streak from February 9th to March 24th.
- ▶ The team played one of the toughest schedules in the nation in 2000, with 20 of 26 opponents being ranked by the ITA.
- ▶ The Lady Seminoles won 11 of 20 matches against ranked opponents.
- ▶ Six of FSU's nine losses were against teams ranked in the top 20.
- ▶ Weber concluded the season with her fourth consecutive 20-win year at FSU. She was also named ACC Flight Champion for No. 6 singles for the second consecutive season. In her career, Weber won four flight championships (No. 5 singles, No. 6 singles (twice) and No. 3 doubles).
- ▶ Following the 2000 season, Asberg and Gallovits were named All-ACC for the second straight year. (Raic was in 1999.)
- ▶ Asberg was awarded both the Cissie Learie Sportsmanship Award by the ITA and the Weaver-James-Corrigan Post-Graduate Scholarship by the ACC in 2000. She was also named the Golden Nole Award recipient as team MVP in 2000.



Quick Facts

FLORIDA STATE UNIVERSITY

Location	Tallahassee, Florida
Founded	1851
Enrollment	34,500
Symbol	Lady Seminoles
School Colors	Garnet and Gold
President	Talbot "Sandy" D'Alemberte

FLORIDA STATE ATHLETICS

Affiliation	NCAA Division I
Conference	Atlantic Coast
Athletic Director	Dave Hart, Jr.
Associate Athletic Director	Kim Record
Sports Information Director	Rob Wilson
SID Tennis	Jennifer Dowling
SID Office Phone	(850) 644-1403
SID Fax	(850) 644-3820
Mailing Address	P.O. Box 2195 Tallahassee, Fl. 32316

FSU WOMEN'S TENNIS

Home Facility	Scott Speicher Tennis Center
Head Coach	Lise Gregory (5th Season)
Assistant Coach	Brian Burdette (1st Season)
Tennis Office Phone	(850) 644-5946
Tennis Office Fax	(850) 644-3451

1999-2000 REVIEW

Overall Record	17-9
ACC Record/Finish	4-4 record / 5th in the ACC
NCAA Tournament	W-1 st round vs Illinois, L-2 nd round vs UF
Final ITA Ranking	No. 22

A NOTE TO THE MEDIA, FANS AND OPPONENTS

Florida State tennis contact Jennifer Dowling of the Sports Information Office is ready to assist you with any questions or requests you may have about the 2000-2001 Seminole Tennis program, media guide, coaches and student-athletes. Please do not hesitate to phone, fax or write a letter to the sports information office at P.O. Box 2195; Tallahassee, Florida 32316; (850) 644-1403 phone; (850) 644-3820 fax, if we can further assist you.

HOW TO COVER THE SEMINOLES

Members of the media are supplied with weekly press releases, including updated individual tournament and career statistics, as well as conference and national rankings and information on upcoming matches or events. Results and statistics may be obtained in the sports information office or off the seminole website at www.seminoles.com. Pertinent team and player information will also be available at the Scott Speicher Tennis Center for all home matches. If you would like to schedule personal interviews with the coaches or players contact Dowling in the FSU Sports Information office at least 24 hours in advance. Head Coach Lise Gregory is generally available in her office during weekday mornings.

WHERE THE HOME MATCHES WILL BE

All 2000-2001 Seminole Tennis home matches take place at the Scott Speicher Tennis Center (capacity 1000). The courts are located off of Chieftain Way directly behind the Bobby E. Leach Center. Parking for the facility is located to the west of the site. Media members will be provided parking passes and will be seated in a designated area. Please notify the sports information office prior to home matches for credentials to be assigned. Any accredited photographer wishing to shoot the matches must check in with Dowling prior to game day so proper credentials can be assigned.

FSU ON THE WEB

Check out the Florida State tennis program on the web. Go to your internet site and type in www.seminoles.com. Once you are in the site follow the directions to the home of the Seminoles web page.

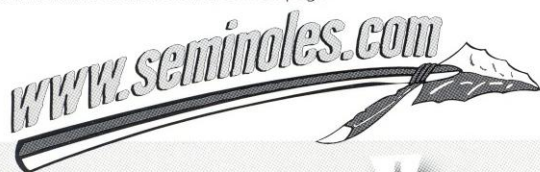


Table of Contents

Media Information	1
This is Tallahassee	2
This is FSU	4
2000-2001 Preview	6
Gregory Bio	8
Burdette Bio	9
Player Bios	10-13
1999-2000 Review	14
2000 Statistics	15
ACC Statistics	16
ACC Bio	17
Around the ACC	18
Year by Year Results	19-20
Honors and Awards	21
Scott Speicher Tennis Center	22
Golden Spear Club	23
All-Time Information	24
All-Time Records	25
Support Services	26
Strength and Conditioning	27
Life Skills	28
NCAA Information	29
Year by Year Records	30
NCAA Tournament History	31
Top Academics	32

FLORIDA STATE UNIVERSITY MEDIA OUTLETS

Newspapers:

TALLAHASSEE DEMOCRAT
P.O. Box 990; Tallahassee, Florida 32302
phone: (850) 599-2166 fax: (850) 599-2301
FSVIEW

P.O. Box 20331; Tallahassee, Florida 32316
phone: (850) 561-6653 fax: (850) 561-6578
THE OSCEOLA

402 Dunwoody Street; Tallahassee, Florida 32304
phone: (850) 222-7733 fax: (850) 224-3627
FLORIDA TIMES-UNION

One Riverside Avenue, Suite 304; Tallahassee, Florida 32301
phone: (850) 224-7515 fax: (850) 681-2961

ORLANDO SENTINEL
336 East College Avenue, Suite 303; Tallahassee, Florida 32301
phone: (850) 222-5564 fax: (850) 224-0979

Television/Radio:

WCTV - TV (CBS affiliate)
P.O. Box 3048; Tallahassee, Florida 32315
phone: (850) 893-2126 fax: (850) 668-3851
WTLX - TV (ABC affiliate)
8927 Thomasville Road; Tallahassee, Florida 32312
phone: (850) 893-1313 fax: (850) 668-3851
WTWC - TV (NBC affiliate)

8440 Deerlake Road; Tallahassee, Florida 32312
phone: (850) 893-9892 fax: (850) 893-3646
WNLS - Sports Radio 1270 AM
325 John Knox Road, Suite E-200; Tallahassee, Florida 32303
phone: (850) 386-6143 fax: (850) 385-8789

MEDIA GUIDE CREDITS

The 2000-2001 Seminole Tennis media guide is a publication of the Florida State University Sports Information Office. Edited and written by Jennifer Dowling and Tina Thomas. Writing and research assistance by Jason Byrne, Alayne Ruzyla and Courtney Simmons. Designed by Cade & Associates Advertising. Photography by Tom Casazza, Landa Oz Photography, Ross Obley, Ryals Lee and the University Photo Lab. Printing by FSU Printing Services.

The Florida State University offers equal opportunity in its employment and educational activities in compliance with Title IX, Section 5-4 of the Rehabilitation Act of 1973 and other civil rights laws. This document is available upon request in alternate formats for individuals with print related disabilities. Contact the ADA office, 301 Westcott Administration Building, for more information.



TM



Sandy D'Alemberte
FSU President



Dave Hart, Jr.
Director of Athletics



Kim Record
Associate Director of Athletics



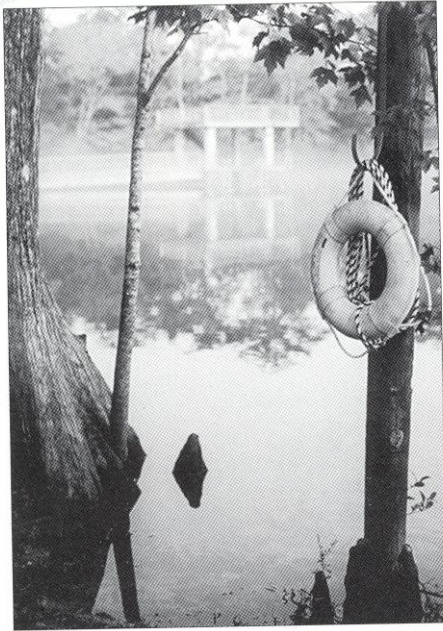
Jennifer Dowling
Tennis SID



Laura Mettes
Sports Promotions



This is Ta



Near, but far from the glaring strips of neon amusement, and the castles and crowds of Disney, lies another magical place in the Sunshine State — one of plantations, politics and great pride. Often described as “The Other Florida” with its deep-rooted history, rolling hills, canopy roads of moss-draped oaks, cool climate and Southern-style hospitality; it is a Florida few have seen. It is Tallahassee — Florida with a Southern accent.

Best known as Florida’s capital, Tallahassee is an intimate neo-metropolitan city where the power of state government, the academic and the artistic are complemented by subtle, old-fashioned charm. It is the perfect two- or three-day diversion for the more than 41 million annual visitors to Florida and 13 million residents.

Tallahassee touts a menagerie of sights including one of the world’s deepest freshwater springs, site of America’s first Christmas, a wildlife habitat, Capitol buildings, fascinating museums of history, sprawling plantations, highly acclaimed fishing and hunting adventures and nearby beaches. Spirited area festivals range from celebrations of Tallahassee’s spectacular spring and swamp stomps to genuine rattlesnake roundups and seafood festivals.

With the Gulf of Mexico just 20 miles south and the Georgia border only 14 miles north, Tallahassee rests between the foothills of the Appalachian Mountains and the juncture of Florida’s panhandle and peninsula. Nearer in miles to Atlanta than to Miami, Tallahassee more closely resembles its

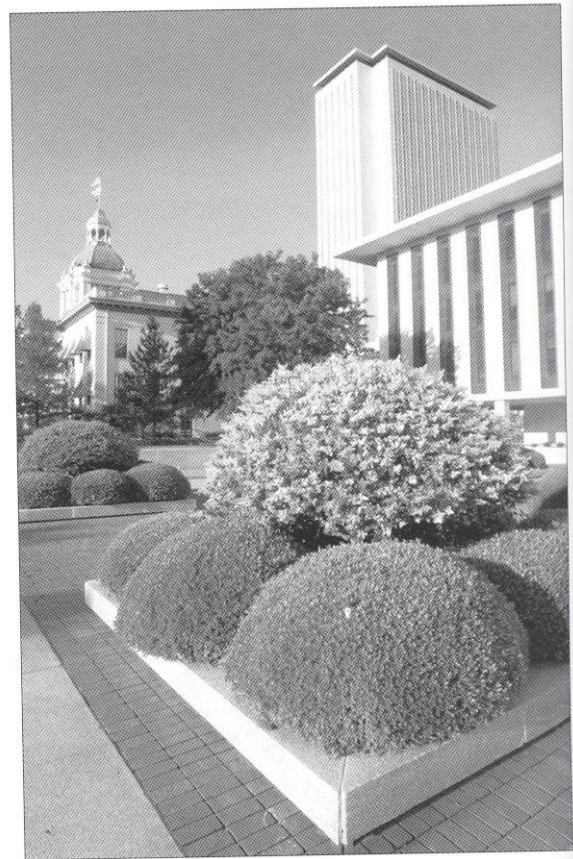
Southern neighbors than Florida in topography, climate and lifestyle.

Accentuating Tallahassee’s Southern persona are lush rolling hills, likened to the seven hills of Rome, and five “official” canopy roads of patriarch oaks. The fertile, rich soil and four distinct, yet pleasant, seasons breed floral brilliance and natural vitality year-round.

Like the city itself, the story of how Tallahassee was chosen as the state capital is rich in history. In 1823, two explorers set out — one on horseback from St. Augustine and the other by boat from Pensacola — to find a permanent, central location for the Legislature to convene. The two met at a beautiful site that the Creek and Seminole Indians called “tallahassee” — derived from the words “talwa” meaning town and “ahasee” meaning old. The rendezvous point remains Florida’s capital.

The “old town” has undergone many changes, but one thing remains the same — it is still a government town fiercely proud and dedicated to preserving its heritage. The Capitol buildings, both old and new, epitomize Tallahassee’s perseverance. The 22nd floor of the New Capitol provides a panoramic scope of a sophisticated Southern city awash in a sea of flowering azaleas, snowy dogwoods, towering pines, fragrant magnolias, and hundreds of shimmering lakes, springs, swamps, rivers and sink holes. Special legislative viewing galleries are open during the legislative session.

Below, in the shade of giant live oaks, proudly stands the Old Capitol, originally constructed in 1845 and restored to its 1902 splendor complete with red-and-white candy-striped awnings, a dome adorned with stained glass, antique furnishings and political memorabilia.



Across from the Old Capitol are the 40-foot twin granite towers of the Vietnam Veteran’s Memorial, and the blue stone Union Bank, Florida’s oldest surviving financial institution. The nostalgic Old Town Trolley, a replica turn-of-the-century street car, carries passengers through restored Adams Street Commons to numerous other historical downtown shops for free — unheard of even 100 years ago.

Tallahassee



TM

Minutes from downtown lies the Governor's Mansion, which resembles the home of Florida's military hero Andrew Jackson; and the 52-acre natural animal habitat and 1880s farm of the Tallahassee Museum of History and Natural Science, which provide the rare chance to walk and talk with native Florida animals

Tallahassee remains firmly linked with the past as evidenced by the unearthed 1539 winter encampment of Spanish Hernando de Soto, the site of the first Christmas celebration in America. Visitors travel back through time as they stand in the shadow of a giant 12,000-year-old American Mastodon at the Museum of Florida History or explore other historical spots including The Knott House that Rhymes, The Columns, San Luis Mission, Lake Jackson State Archaeological Site, Natural Bridge Battlefield, First Presbyterian Church, Brokaw-McDougall House, Goodwood Plantation and Adams Street Commons.

Nearby, alligators lazing in the sunshine and anhinga "snake birds" perched on twisted cypress branches are seen at Wakulla Springs, one of the world's deepest fresh water springs and site of many underwater scenes in the "Tarzan" movies with Johnny Weissmuller and Maureen O'Sullivan. Safaris aboard glass-bottomed and jungle cruise boats whisk visitors within arm's length of "The Other Florida."

Outdoor enthusiasts enjoy adventures including boating and fishing on area lakes, rivers, ponds and the Gulf — just 30 minutes away. Lakes Seminole, Jackson and Talquin are renowned in the bass fishing world for yielding the "big ones," and dense forests offer an abundance of prize-winning game. Local wildlife areas such

as the Florida National Scenic Trail, St. Marks National Wildlife Refuge and Apalachicola National Forest are among many spots for camping, picnicking, swimming, biking and exploring.

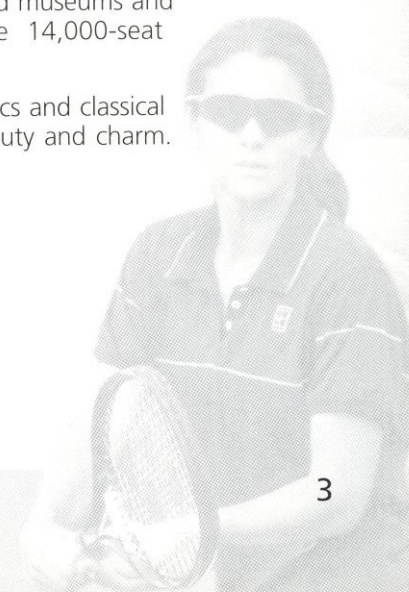
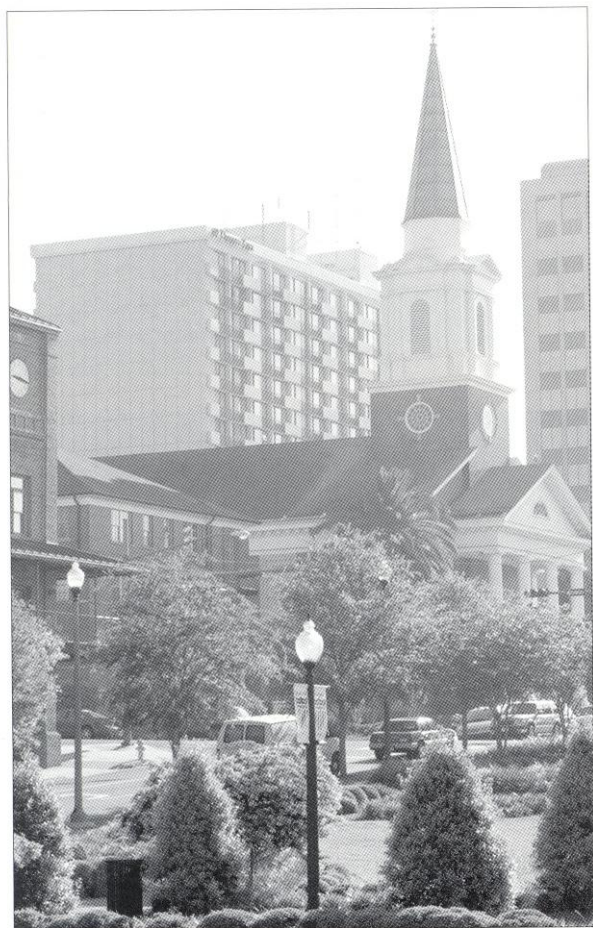
Appealing to the strokes of different folks, Tallahassee

also features 99 holes of golf on six courses and a proliferation of tennis centers. Sideline athletes cheer the nationally-ranked Florida State Seminoles, Florida A&M Rattlers and the Tallahassee Tiger Sharks, of the East Coast Hockey League, Tallahassee Thunder of Arena 2 football league. And always a sure bet are the nearby greyhound races.

A sport of sorts, shopping at two regional malls and many specialty centers offer many "playing options" — from popular chains to curiosity and antique shops.

Cultural interests are sparked by widely-acclaimed museums and galleries and elaborate entertainment at the 14,000-seat Tallahassee-Leon County Civic Center.

Tallahassee is a collaboration of power-play politics and classical character splashed with a twist of Southern beauty and charm. Tallahassee is Florida with a Southern accent.





T h i s i

Florida State University, a coeducational graduate research institution, stands among the nation's elite in both academics and athletics, as it celebrates its sesquicentennial anniversary in 2001.

Located on the oldest continuous site of higher education in Florida and building upon the impeccable reputation of its beginnings as a distinguished liberal arts college for women, the university has grown in the past 53 years as an institution of national and international esteem. Its stature is evident in its recent record of excellence:

*In 1994, Florida State was classified a **"Research University I"** by the Carnegie Foundation, placing it among the nation's top research universities.

*In 2000, following approval by the 2000 Florida Legislature, FSU created the Institute of Medical Sciences as a transitional unit that will evolve into the College of Medicine by fall 2001. The college will increase the quality of Florida medical care by training primary care physicians with a focus on treating the elderly and people in underserved areas such as rural communities and inner cities.

*In 2000, FSU bought the **most powerful university-owned supercomputer in the world**. The IBM RS/6000 Supercomputer can perform 2.5 trillion calculations per second. Located in the School of Computational Science and Information Technology, the supercomputer will be used by FSU researchers to predict hurricanes and compare DNA sequences as complex as those of the human genome.

*In 2000, FSU was ranked 18th among universities in the "America's Most Wired Colleges" ranking by Yahoo! Internet Life Magazine.

***The Challenger Learning Center of Tallahassee**, a project of the FAMU-FSU College of Engineering, is scheduled to open in March 2002. The center, to be built on Kleman Plaza in downtown Tallahassee, will feature a space mission simulator common to all of the centers, and a 300 seat IMAX theater and a domed planetarium laser theater. It will serve middle schools in a 66-county area of North Florida, Southeast Alabama and South Georgia. The 39 Challenger Learning Centers throughout the United States, Canada and Europe introduce more than 350,000 middle school students annually to the exciting possibilities of science, engineering and technology.

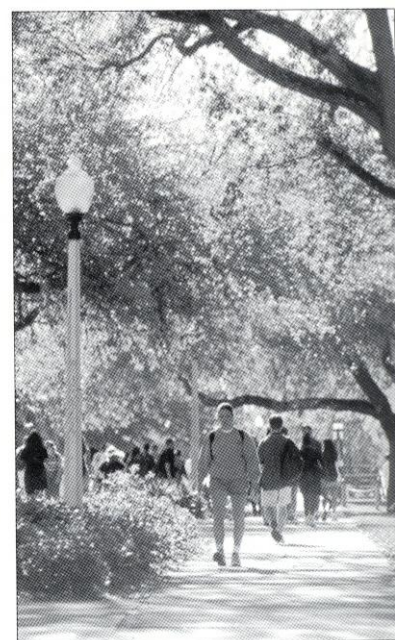
***LEXIS®-NEXIS® Academic Universe**, the online information service that FSU helped develop and test from 1995 to 1998, is now used at more than 1,200 universities and colleges.

*As a testament to FSU's effort to foster a spirit of community service among its students, FSU ranks second in Florida and third in the Southeast for producing 27 currently serving Peace Corps volunteers. The Center for Civic Education and Service was established in 1994 to promote civic responsibility and community involvement through service as integral elements of the liberal arts education at FSU. Through ServScript, students' service may be recorded on their official academic transcript.

*In 2000, the Ph.D. program in the College of Business has the highest minority enrollment of any Ph.D. business program in the United States. In recent years, it has graduated more minority doctoral students than any other Ph.D. granting institution.

*In 2000, the National Geographic Society and FSU started the **Florida Geographic Alliance** that will bolster geographic education among Florida school children by preparing and equipping Florida's K-12 teachers with better information and tools.

*In 1999, FSU was selected by the U.S. Department of Energy to become one of the research institutions to operate the Oak Ridge National Laboratory (ORNL), a multiprogram science and technology laboratory in Oak Ridge, Tenn., headed by the University of Tennessee-Battelle. The five-year management and operations contract is





valued at about \$2.5 billion. FSU was invited to join ORNL because of its strong faculty research activities in material sciences, structural biology, computational sciences and magnet technologies.

*In fiscal year 1999-2000, FSU reached the highest level of external funding for research in its history, attracting more than \$116.9 million. The amount represents a 15.5 percent increase over last year's award level.

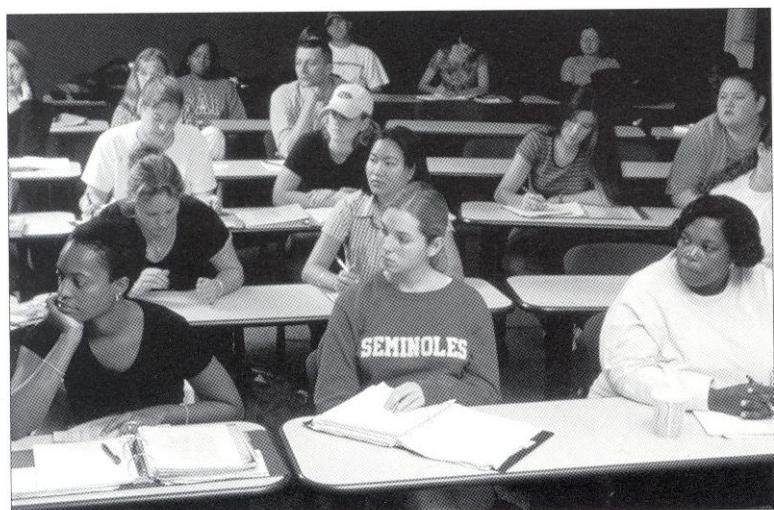
*In fiscal year 1999-2000, the FSU Foundation raised \$89.7 million, the largest amount ever raised in a single year at FSU. The amount represents a 21 percent increase over the previous year.

*At more than \$287.4 million, FSU's endowment has been ranked 150th in the nation by the National Association of College and University Business Officers, the benchmark of higher education fundraising success, in 2000. Since 1994, FSU's endowment ranking has surpassed 156 other institutions.

*Among public institutions with National Merit Scholars in 1999, FSU was ranked No. 12 with 284. Among those with National Achievement Scholars, FSU was ranked No. 3 with 73.

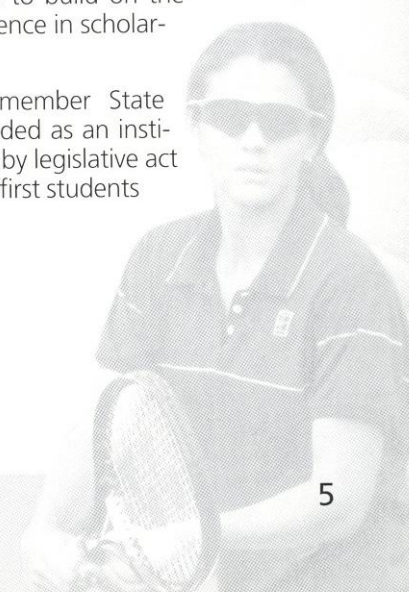
*In December 1999, researchers at the National High Magnetic Field Laboratory used a hybrid magnet to conduct the lab's first research in continuous magnetic fields of 45 tesla, or one million times the Earth's magnetic field. The \$100 million magnet lab, which was established in 1990 by the National Science Foundation, is run by FSU in partnership with the University of Florida and the Los Alamos National Laboratory. Vice President Al Gore spoke at the dedication of the magnet lab in October 1994.

*In 1999, FSU created the Institute on World War II and the Human Experience to "save the memories of those who saved the world" by collecting letters, diaries, memoirs and photos from participants in the war effort, in order to preserve the materials for classroom teaching, scholarly research and public viewing.



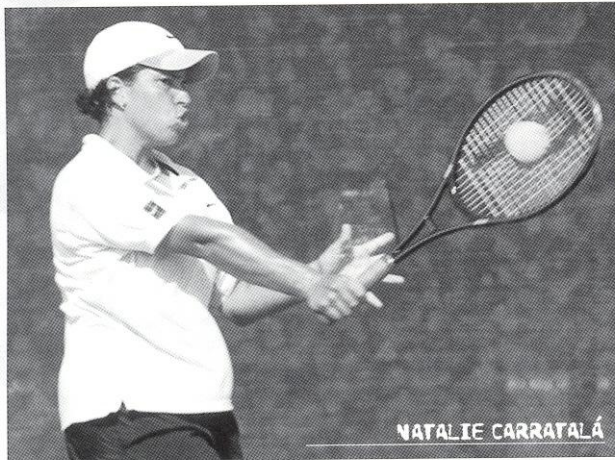
As this list of highlights attests, Florida State has excelled in the 1990s with exceptional strength, energy and vision for the future. Under the leadership of the university's 12th president, Talbot "Sandy" D'Alemberte, who took office in January 1994, FSU will continue to build on the foundation of its history of excellence in scholarship, research and service.

A senior member of the 10-member State University System, FSU was founded as an institution of higher learning in 1851 by legislative act and began in Tallahassee with its first students in 1857.

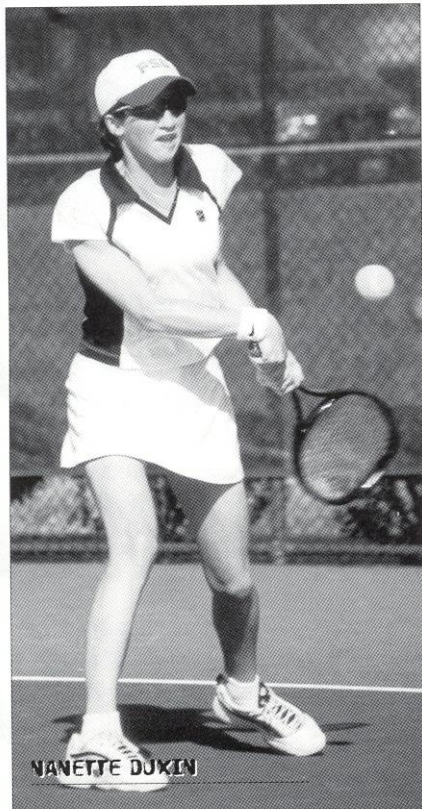




2 0 0 0 - 2 0 0 1



NATALIE CARRATALÁ



NANETTE DUXIN

Four years ago, a former All-American from the University of Miami stepped onto the Florida State campus and began to turn the women's tennis program into one of the nation's elite. After four seasons at FSU, head coach Lise Gregory has led her Lady Seminoles to four consecutive NCAA appearances as well as four straight Golden Torch Awards, an honor given to the team with the highest grade point average among FSU's athletics teams.

"Lise is extremely excited about this year's Florida State tennis program," said assistant coach Brian Burdette. "Her enthusiasm spills onto myself and the girls."

Accompanying Gregory along this continuing journey will be newcomer assistant coach Burdette. Burdette, a graduate of Auburn University, joined Gregory and the rest of the Florida State staff this summer. He hopes to combine his personal knowledge and experience with Gregory's to improve upon the team's recent success.

"The women on this team are so very talented," raved Burdette. "They are some of the hardest working people I have ever been around. The combination of talent and hard work will lead this team to add to the success of past teams. I believe this team has the ability to be one of the best in the nation."

The 2000-01 Florida State women's tennis team returns six players from last season's team that saw the Lady Seminoles go 17-9. With 17 wins, the 2000 team tied the 1986 team for sixth best in school history. Gregory's present squad is made up of four seniors, two juniors and two freshmen.

"We have four seniors and they are all really motivated to make this a good year," said Gregory. "That excitement and desire is contagious, and I see the rest of the team following their lead."

Each of the four seniors returning this year are looking forward to another dynamic season. Natalie Carratalá sat out last spring due to an injury that limited her to just three singles and five doubles matches in the fall. As a junior, she won four of five doubles matches with former teammate Kia Asberg, including a win in the consolation "B" draw doubles final of the Lady Seminole Classic. She believes this year, injury-free, can be an immense success for herself and her team. Nanette Duxin went 14-8 at No. 2 singles for FSU during the 1999-00 season. Duxin teamed with Alida Gallovits to play No. 1 doubles for the third consecutive season going 13-8 in 2000. They are ranked No. 39 in the nation this year and are an excellent team.

"Nanette is a really hard worker who never gives up, and a great role model on the tennis courts," raved Gallovits.

Seniors Marina Raic and Christy Travis also head into the 2001 season with high hopes. Raic, named the "Croatian Sensation" by teammates, played primarily at No. 5 and No. 6 singles throughout last year. She also boasts a respectable 46-26 career record for Florida State. She also holds the record for the most wins in a season, with 31 in her freshman year. This season, both she and Travis believe they can continue to add more numbers into the win column for the Seminoles. The two have always made a huge impact on the team, and they will continue to do so.

"Marina is such a strong person and extremely focused on doing the best she can," said freshman Beth Lawrence. "Christy can support the girls on this team like no one else."

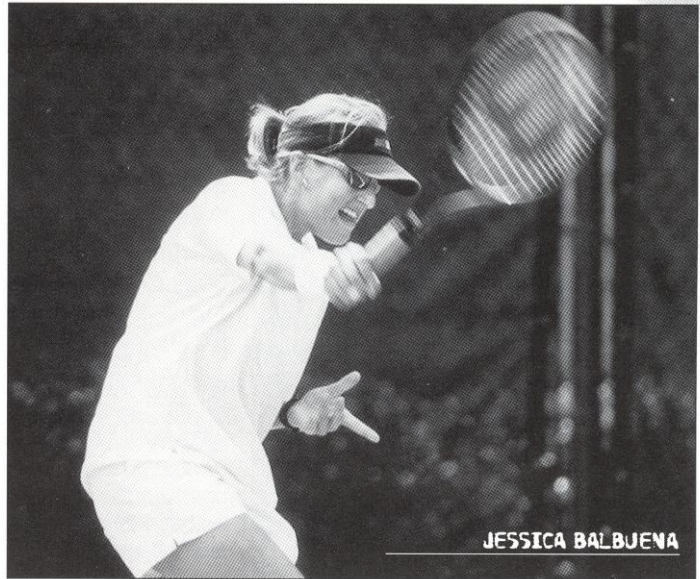
Each of the returning younger players, including juniors Jessica Balbuena and Alida Gallovits, will provide the Seminoles with the skill and determination necessary for

P r e v i e w



TM

ALIDA GALLOVITS



JESSICA BALBUENA

another winning season. Gallovits has already posted two tournament victories during fall play, and is ranked No. 39 in the nation. The Seminoles expect her to have a significant impact on the national scene this season. Gallovits is not only bringing with her the experiences from last year, but also carries with her the experience of competing in many professional tournaments and national championships.

"Alida is very competitive on the court, but at the same time she knows how to have some fun," said Balbuena.

Heralded freshman Christina Denny already made her mark when she posted a victory as the Flight B Singles Division Champion in the Fall Lady Seminole Classic. Denny came close to another division championship this year when she fell to teammate Gallovits in the final round of the Yellow Jacket Invitational, held at Georgia Tech University. Only bigger and better things are expected from the team's newcomer. Denny brings not only a competitive energy to the team this year, but is also one of the most relaxed members of the squad.

"She has a fantastic attitude, is one of the best athletes on the team, and has an excellent all-court game," said Gregory.

Elizabeth Lawrence, as a sophomore transfer, has pleasantly surprised coaches at the early start of this season, and the coaches expect great improvement from her as the season progresses.

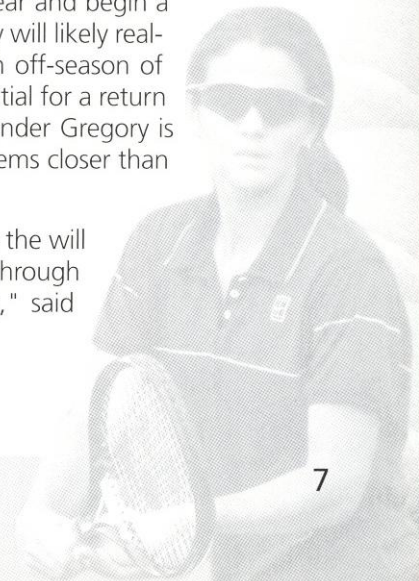
MARINA RAIC



"We have worked extremely hard on the court this fall and the conditioning program that strength and conditioning coach Sterling Brown put the team through has shown each individual that they are capable of more than they could have imagined," said Gregory. "If expectations and preparation equal success, then this will be a very good year."

When the 22nd-ranked Lady Seminoles take the courts this year and begin a schedule that will include four teams ranked in the top 10, they will likely realize that they can compete against the nation's best. After an off-season of intense training, just competing won't be their goal. The potential for a return trip to the NCAA Tournament for the fifth consecutive year under Gregory is well within reach, and the goal of being a top ten program seems closer than it ever has for the Florida State women's tennis program.

"It has been said that many have the will to win, but few have the will to prepare to win. I believe this team has prepared for success through a tough fall season and will succeed in the upcoming spring," said Burdette.





Head Coach

LISE GREGORY

THE GREGORY FILE

- * Named All-American seven times (three singles, four doubles) in four-year career at the University of Miami.
- * NCAA doubles champion and ITCA National Indoor champion with a 29-0 record, 1986
- * World ranked 18th in doubles (1990)
- * World ranked 4th as a doubles team in 1990
- * World ranked 167th in singles (1988)
- * Won singles championship at the \$25,000 Challenger in Philadelphia in 1987
- * USTA Area Training Center Coach, 1995
- * Nine professional doubles titles and seven finals appearances
- * Florida Tennis Association U14 Zonal Coach, 1995
- * Assistant Coach at Vanderbilt, 1996
- * Florida Tennis Association U18 Inter-sectional Coach, 1997
- * Golden Spear Club, founder
- * Florida Tennis Association U16 Inter-sectional Coach, 1998
- * University of Miami Hall of Fame Inductee, February 1999
- * ACC Coach of the year, 1999

Head Coach Lise Gregory has made tremendous strides in her first four years at the helm of the Florida State women's tennis program. While striving to reach new heights, Gregory has instilled a spirit of consistency and class both on the court and in the classroom.

In each of her first four years at FSU, the Lady Seminoles have made trips to the NCAA Tournament and have earned the Golden Torch Award, which is given to the FSU team with the highest GPA. Gregory's success has not gone unnoticed as she was honored as the Atlantic Coast Conference's Coach of the Year in 1999. When Gregory took over the program, she insisted that Florida State would become one of the best programs in the nation. Her fifth squad appears ready to build on the success of those before it and has the potential to become one of the nation's top 10 teams.

Gregory's 1999-2000 team finished with a 17-9 record and gained its fifth consecutive berth into the NCAA Regionals. The Lady Seminoles spent most of the season ranked in the Top 20 before finishing the year 22nd, tying with its second winningest season in the program's 20-year history. Coach Gregory has the highest winning percentage in FSU Women's Tennis Coaching history, with a career record of 62-39 for a .614 winning percentage. Gregory is now ranked third in all-time wins at FSU. Glancing at the 2000-01 schedule, it looks as though Coach Gregory has provided her team with a chance to gain even more experience against top-notch programs as the schedule consists of four teams in the Top 10 and seven in the Top 50.

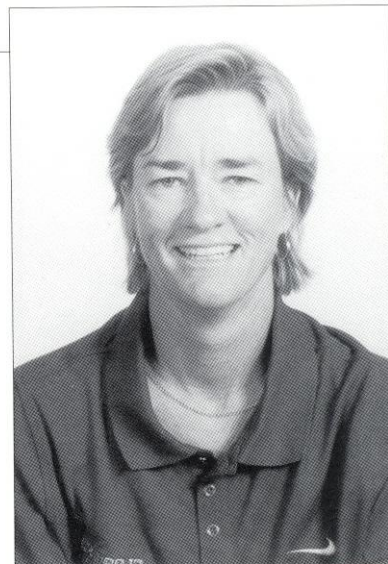
While the program's emergence on the court is apparent, its commitment and performance in the classroom is equally impressive. In winning its fourth straight Golden Torch Trophy, the women's tennis team achieved a team GPA of 3.6 in 2000. Eight team members were honored on the All-ACC Academic Honor Roll and six made the Dean's List. In addition to the on-court and classroom guidance Gregory has brought to the program, she has also created the "Golden Spear Club". The Golden Spears are a group of Tallahassee community members, nearing 130 at the start of the 2001 dual match season, who provide support to the FSU tennis program.

Gregory, a former seven-time All-American and NCAA champion at the University of Miami, served as the assistant women's tennis coach at Vanderbilt University in 1996 before arriving at FSU. At Vanderbilt, she assisted Commodore Head Coach Geoff MacDonald in guiding the program to its second consecutive NCAA Championship appearance and a Top 10 ranking. She also has additional coaching experience on the private level, as a USTA Area Training Center coach and as a USTA inter-sectional and Zonal coach.

As a player for the Hurricanes, Gregory earned an amazing seven NCAA All-America honors for her singles and doubles play as well as a NCAA doubles championship in 1986 with teammate Ronni Reis. Together, the duo compiled an impressive 84-10 record over four years, while Miami was consistently ranked among the nation's Top Five. Gregory was named to Tennis Magazine's All-Star team in both 1986 and 1987. As a professional, Gregory won nine tournament titles in 16 finals appearances, including seven Virginia Slims doubles championships on the way to a career-high No. 18 world doubles ranking in 1990.

She also won the singles at the \$25,000 Challenger in Philadelphia in 1987. Perhaps the highlight of her professional career was a No. 18 world doubles ranking in 1990 when Gregory and partner Gretchen Magers were the fourth-ranked team in the world. In 1991, Gregory was a doubles quarterfinalist at the Australian Open, a Grand Slam event, as well as one of the top eight teams in the world that participated in the year-ending Virginia Slims Championship.

"Playing the tour was a great experience and in many ways it has helped me be a better coach," said Gregory. "I know I can help the team no matter what the situation." The 2000-01 edition of the Florida State women's tennis team should be a familiar one as six of the eight team members are returnees from last year's squad. "We basically have the same team back this year" said Gregory. "We have so much depth. Everyone is capable of playing at the top of the line-up. It's exciting because they are a great group of people who also happen to be very good tennis players."



University of Miami '87
Fifth Season at FSU

Assistant Coach



**Auburn University '95 & '98
First Season at FSU**

BRIAN BURDETTE

In his first season at Florida State, Brian Burdette brings dedication and a long list of accomplishments to the Lady Seminole women's tennis team. Burdette's diverse tennis background will provide a new dimension to an already successful women's program.

"I am so excited about receiving the opportunity to work at Florida State," said Burdette. "The campus and our facilities here are awesome."

Before joining the Florida State staff, Burdette was head coach at Central Alabama Community College for three years. In each year of Burdette's tenure at Central Alabama Community College, he produced a top 25 finish for both the men's and women's teams, with rankings as high as third and sixth, respectively. During the 1998 season, All-American Thato Kgosimore and Rian Greaves won the ITA Rolex Southeastern Regional Championships and Central Alabama Community College earned a fourth overall doubles finish at the National Small College Championships. The 1999 season delivered another ITA Rolex Southeastern Regional Double Championship from All-American Amanda Umphrey and Shannon Johnson and an eighth overall finish at the National Small College Championships. In addition, Burdette's coaching produced four players ranked in the Top 25 nationally.

"Brian loves the sport and loves to teach," raved head coach Lise Gregory. "His enthusiasm is contagious and the team responds to him in a very positive way. I look forward to working with him

for a long time, and to making this one of the premier programs in the country."

Burdette also spent time as an assistant coach for an Auburn University women's tennis team that posted back-to-back top 25 finishes. The 1995-96 season produced an NCAA National Championship appearance. Burdette has also been an instructor for several years at the Florida Gator, Clemson Tiger and Auburn Tiger Tennis Camps. Burdette also served as Auburn's Strength and Conditioning Coach for Olympic Sports and Tennis Director of PARD for the Anniston Parks and Recreation Department. For the past three years, Burdette has also been a member of the NJCCAA Southeast Regional Ranking Committee.

"I truly enjoy working with Lise, she is undoubtedly one of the top coaches in the country," said Burdette. "She really understands the game and knows how to develop the players. Her experience on the pro tour and her tremendous success as a college player really allows her a unique perspective, which sets her apart from other collegiate coaches. She is a true player's coach because she has been there herself and she understands what it takes to excel both on and off the tennis court."

Burdette received his Bachelor of Science degree in Mathematics and History from Auburn University and graduated magna cum laude. He continued his education and received his Master's Degree in Mathematics Education from Auburn. Burdette and wife Kelli are expecting their first child.

2000-2001 FSU WOMEN'S TENNIS ROSTER

Jessica Balbuena	Junior	The Woodlands, TX
Natalie Carratalá	Senior	Miami, FL
Christina Denny	Freshman	Canton, OH
Nanette Duxin	Senior	Montevideo, Uruguay
Alida Gallovits	Sophomore	Timisoara, Romania
Beth Lawrence	Sophomore	Sarasota, FL
Marina Raic	Senior	Dubrovnik, Croatia
Christy Travis	Senior	Palmetto, FL

Lise Gregory (Head Coach)

Brian Burdette (Assistant Coach)

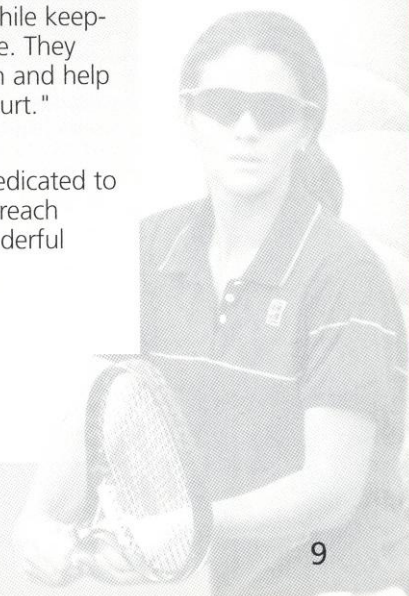
ON THE COACHES

"The coaching staff is absolutely amazing. They continue to raise our games to the next level while keeping it fun at the same time. They really care about this team and help us both on and off the court."

- **Christy Travis**

"Coach Gregory is very dedicated to her job and in helping us reach our goal. Brian has a wonderful sense of humor and adds energy to every practice."

- **Jessica Balbuena**





Player Bio

NATALIE CARRATALÁ

"Nat has a lot of ability and really loves to play tennis. She has been held back by injuries for the past year and a half so hopefully we can get her back on th court and beating some people soon."—Coach Gregory
 "She is the coolest roommate and friend, one of the most relaxed people on this Earth."—Nanette Duxin
 "It's great to be around her because she makes you forget about your headaches!"—Marina Raic

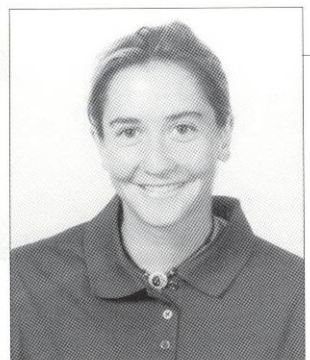


Senior-Miami, Florida

1999-00: Sat out the spring with injuries which limited her to just three singles and five doubles matches in the fall...won four of five matches when teamed with Kia Asberg including a win in the consolation "B" draw doubles finals of the Lady Seminole Fall Classic over a team from USF...had a four-match winning streak in doubles before the injury forced her to miss the rest of the year...1998-99: Finished the season as a part of FSU's No. 3 doubles team along with Kia Asberg... compiled eight wins in 13 doubles matches in the spring... finished the year with an 8-6 singles record...finished the fall winning seven of her last nine matches...reached the finals of the Lady Seminole Classic "C" flight...1997-98: Played primarily the No. 5 singles spot in the spring and posted a 5-9 record...missed second half of the season because of tendonitis in her knee...played with three doubles partners posting a 5-2 record with Helena Karlson, a 9-9 record with Nanette Duxin and a 1-5 record with Kylie Thompson...had a 7-5 singles record in fall competition...reached the semifinals of the Lady Seminole Fall Classic, Gator Fall Classic and Yellow Jacket Invitational...with Karlson, won the flight "B" doubles championship at the Lady Seminole Fall Classic...**High school and other accomplishments:** Received team MVP award at St. Brendan's following freshman, junior and senior years...named to the All-Dade County first team after freshman and junior seasons...a second team honoree following sophomore and honorable mention after senior years...as a junior, won the 1995 International Grass Court Tournament at Philadelphia in doubles and the 1995 doubles competition at the USA Indoor National Tournament in Michigan...**Personal:** Born November 23, 1978...majoring in Media Production and minoring in Art...daughter of Carmen and Felipe Carratalá...earned a place on the ACC Honor Roll for academics in 1997-98 and was member of last year's team that won the Golden Torch Award as top overall academic team at Florida State... greatest accomplishment is the fact that she biked down a volcano in Hawaii. **Favorites:** Actor is Al Pacino... song is I Can't Get No Satisfaction by the Rolling Stones... place to vacation is Maui, Hawaii... **Interesting Fact:** Carratalá loves X-Treme sports and has a soft speed.

Carratalá Career Statistics									
Singles									
Year	@1	@2	@3	@4	@5	@6	Spring	Fall	Total
97-98				1-1	2-5	2-3	5-9	8-6	13-15
98-99						1-0	1-2	7-4	8-6
99-00	1-2							1-2	1-2
Overall				1-1	2-5	3-3	6-11	16-12	22-23

Doubles									
Year	@1	@2	@3	Spring	Fall	Total			
97-98	0-3	6-5		6-8	9-8	15-16	w/Duxin, Karlson, Thompson		
98-99		0-1	8-5	8-6	4-3	12-9	w/Asberg, Gallovits, Raic, Thompson		
99-00					5-2	5-2	w/ Duxin, Asberg		
Overall	0-3	6-6	8-5	14-14	18-13	27-25			



NANETTE DUXIN

"Nanette has a very good understanding of the game, and her intelligence on the court wins her a lot of matches. She is a tough competitor, has a great work ethic and is an Academic All-American to boot!"—Coach Gregory
 "She is very smart and she uses this talent on the court very well. Nanette is my doubles partner and it's a pleasure to play with her."—Alida Gallovits

Senior-Montevideo, Uruguay

back-to-back 5-3 ACC seasons. 1998-99: Posted a 23-15 record...played primarily at No. 2 singles during the spring...played 10 matches against ranked opponents...early in the spring she was ranked 48th in the nation in singles...was 5-3 in the ACC during the regular season...had two five-match winning streaks, including one to start the year...recorded 13 wins at No. 1 doubles with partner Alida Gallovits...finished the season ranked 49th in the country in doubles with Gallovits...posted an 8-3 record during the fall that included a big win at the Roberta Alison Fall Classic at Alabama...defeated Vanderbilt stars Kristy Blumberg and Kriston Radford at Alabama...reached the quarterfinals of the Lady Seminole Classic...1997-98: Played in spring at No. 1 and No. 2 with seven of the last eight matches at No. 1...posted a 12-11 dual match record for the spring...won seven of her last eight matches on the season and recorded a 6-4 record in ACC competition...teamed with Natalie Carratalá at No. 2 doubles for a 7-5 record and with Kylie Thompson to close out the year with a 5-1 record for an overall doubles record of 12-6...**High school and other accomplishments:** Achieved a ranking as high as No. 1 in Uruguay's open division...had a WTA ranking of 784 in 1994...played for her national team in the Federation and Continental Cup tournaments (1996-97)... played at the first division interclubs in France...claimed several French Junior titles from 1992-95...was a semi-finalist in WTA \$10,000 Challenger (Brazil, 1994). **Personal:** Born January 22, 1979...member of the ACC Honor Roll and Dean's List in 1999...majoring in business. **Favorites:** Actors Tom Cruise, Mel Gibson, and Richard Gere...movie is the Gladiator and American Beauty...vacation spot is Punta del Este. **Interesting Fact:** She is always cold, and she hates to be cold!

Duxin Career Statistics										
Singles										
Year	@1	@2	@3	@4	@5	@6	Spring	Fall	Total	
97-98	3-9	9-4					12-13		12-13	
98-99	1-0	12-11	2-1				15-12	8-3	23-15	
99-00			14-8	0-3			14-11	3-5	17-16	
Overall	4-9	21-15	2-1				41-36	11-8	37-23	

Doubles										
Year	@1	@2	@3	Spring	Fall	Total				
97-98	1-1	11-5		12-6		12-6	w/Carratalá, Thompson			
98-99	13-9			13-9	3-3	16-12	w/Balbuena, Carratalá, Raic, Weber			
99-00	12-7	2-1		14-8	0-2	14-10	w/Balbuena, Raic, Gallovits			
Overall	26-17	13-6		39-23	3-5	42-28				





MARINA RAIC



Senior-Dubronvik, Croatia

"Marina has great strokes and power. Her ability to blow people off the court is impressive. Marina's desire to have a successful senior year is very apparent and it would be well deserved if she has a great season." - Coach Gregory

"The greatest person with a spectacular game. It's not for nothing that we call her the Croatian Sensation." - Nanette Duxin

1999-00: Played primarily at No. 5 and No. 6 singles, winning 11 out of 20 matches...posted two, three-match winning streaks during her sophomore season that helped her become the youngest Lady Seminole to win her 40th career match...formed the No. 2 FSU doubles team with Kia

Asberg...1998-99: Was named to the All-ACC team in her first year at FSU...nominated for ACC Rookie of the Year...was co-MVP of the team along with Kia Asberg...set a school record with 31 wins...set another FSU record with a 15-match winning streak, along with teammate Kia Asberg...played primarily at No. 3 singles after starting the season at No. 5...was 11-3 at No. 3 singles...teamed with Balbuena to win 16 of 26 doubles matches for the year...the two had a five-match winning streak at the end of March...posted a team best 9-3 record over three fall tournaments...defeated teammate Ali Weber to win the Lady Seminole Fall Classic "B" flight... overall doubles record for the fall was 6-3...High

school and other accomplishments: While in Germany, was state champion in singles (winter '94)...second in state championships (summer '94)...had German women's ranking of 108 in 1996...won second place in German Grand Prix Tournament... **Personal:** Born August 20, 1978...named to the All-ACC Academic team as a freshman and sophomore as well as FSU's Dean's List...parents are Croatians living in Germany...pursuing a major in communications. **Favorites:** Likes sushi, TCBY, chocolate, and loves sweets...song is The River and Amazed...actors include Mel Gibson, Sean Connery, and Julia Roberts...vacation spot is Dubronvik, Croatia. **Interesting Fact:** She is an Oreo milkshake addict, therefore receiving the nickname "Oreo" and has never said no to any kind of chocolate.

Raic Career Statistics

Singles

Year	@1	@2	@3	@4	@5	@6	Spring	Fall	Total
98-99		2-1	11-3	2-0	7-2		22-6	9-3	31-9
99-00				1-2	6-6	5-4	12-12	3-5	15-17
Overall		2-1	11-3	3-2	13-8	5-4	34-18	12-8	46-26

Doubles

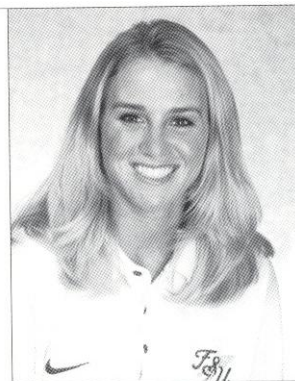
Year	@1	@2	@3	Spring	Fall	Total
98-99	0-1	9-8	5-1	14-10	7-4	21-14 w/ Balbuena, Carratalá, Thompson
99-00		8-6	5-1	13-7	9-8	15-11 w/Asberg, Duxin, Gallovits
Overall	0-1	17-14	10-2	27-17	16-12	36-25

CHRISTY TRAVIS

"Christy is a wonderful person to have on a team. She is always looking for ways to help out her teammates and she pushes them everyday in practice and conditioning. Her game has improved steadily and that is a testament to all the hard work she has put into it." - Coach Gregory

"The sweetest person and the best shopping partner. I am still waiting for her to invite me to the Campus Lodge pool!" - Nanette Duxin

1999-00: Won first match of the dual season at No. 6 against Jacksonville on February 18th...five of six wins this season were in straight sets...advanced to the semifinals of the Roberta Allison Fall Classic D draw in September. 1998-99: Represented the Lady Seminoles at the ACC Women's Indoor Championships...played in three fall tournaments and posted a 5-5 record...lost in the quarterfinals of the Roberta Allison Tournament held at Alabama and in the "C" flight quarterfinals at the Lady Seminole Classic...finished the fall with an overall record of 2-2 in doubles...1997-98: Posted a 3-3 overall record...won two of three matches at the Yellow Jacket Invitational...had a 2-2 doubles record with Rakina Payne...won two of three matches at both the Gator Fall Classic and Yellow Jacket Invitational...**High school and other accomplishments:** Played No. 1 singles and doubles for Bradenton Christian all four years...was also the captain and team MVP of that squad each year...named All-Conference three times...won the Bay Conference' Scholarship Athlete award following 11th and 12th grades...finalist at the K-Swiss Christmas Bowl Tennis Classic, 1994-95...was a finalist at the Junior



Senior-Palmetto, Florida

Travis Career Statistics

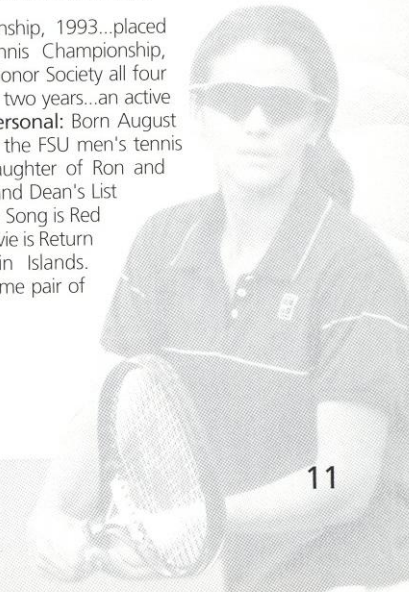
Singles

Year	@1	@2	@3	@4	@5	@6	Spring	Fall	Total
97-98							0-0	3-3	3-3
98-99							0-2	5-5	5-7
99-00						1-3	1-3	5-4	6-7
Overall						1-3	1-5	13-12	14-17

Doubles

Year	@1	@2	@3	Spring	Fall	Total
97-98				0-1	4-2	4-3
98-99				0-0	2-2	2-2
99-00			0-1	0-1	0-1	0-3
Overall			0-1	0-2	6-5	6-8

Satellite State Closed Singles Championship, 1993...placed fourth in the Walt Disney World Tennis Championship, 1994...was a member of the National Honor Society all four years and the Spanish Honor Society for two years...an active member of FCA during high school...**Personal:** Born August 28, 1979...brother, Jay, is a member of the FSU men's tennis team...majoring in communications...daughter of Ron and Gail Travis...made the ACC Honor Roll and Dean's List in each of the past two years. **Favorites:** Song is Red Wine... actress is Julia Roberts... movie is Return to Me... vacation spot is the Virgin Islands. **Pre-game ritual:** Always wears the same pair of star socks, but she does wash them!





Player Bi

JESSICA BALBUENA

"Jess is extremely talented and is physically the strongest on the team. She has great hands and is capable of doing some amazing things with the ball, while her shot selection has improved immeasurably." -Coach Gregory

"Has amazing power on her groundstrokes and she works mighty hard." -Natalie Carratalá

"In the last year she has improved her game very much. She is very talented and she tries her best every practice. Her game is very complex and it's very difficult to win against her." -Alida Gallovits



Junior
The Woodlands, Texas

Balbuena's Career Statistics

Singles

Year	@1	@2	@3	@4	@5	@6	Spring	Fall	Total
98-99			2-0	10-6	6-1	3-0	21-7	6-5	27-12
99-00		0-1	4-3	6-10	0-1	0-0	10-15	7-8	17-23
Overall		0-1	6-3	16-16	6-2	3-0	31-15	13-13	44-35

Doubles

Year	@1	@2	@3	Spring	Fall	Total
98-99	0-1	9-7	5-11	4-9	3-3	17-12w/Carratalá, Duxin, Raic
99-00	0-3	2-1	10-3	13-7	7-4	20-11w/Weber, Asberg, Duxin, Travis
Overall	0-4	11-8	15-14	17-16	10-7	37-23

1999-00: Has won 44 singles matches in the first two years of her career...followed a 27 win freshman campaign with 17 in this season...has won seven of 12 tiebreakers during her career...teamed with Ali Weber to play No. 3 doubles where the two won the ACC Flight Championship...along with Weber, went 10-2 at No. 3 and had a team high eight-match winning streak. 1998-99: Won ITA Tournament in the summer in Arlington, Texas defeating the country's 78th-ranked player in the finals...was a constant at No. 4 singles for the Lady Seminoles in her first...was third on the team in wins with 27...finished the season with a five-match winning streak...won all three of her post-season matches at No. 4 singles...posted a 14-9 doubles record this dual match season with fellow freshman Marina Raic...posted a 6-5 record in fall tournaments...reached the finals of the Roberta Alison Classic in Alabama before losing to Stacy Ryan of Vanderbilt...won five of her first seven singles matches to start her career at FSU...posted a 3-3 record in doubles during the fall...member of the All-ACC Academic team, as well as the

Dean's List...High school and other accomplishments: Great all-around athlete who was a three year all-state soccer player...won three national doubles titles...ranked among the Top 20 juniors in the United States in 1997...won a total of five ITF events in 1997 in Aruba, Dominican Republic and Jamaica...semi-finalist at the Easter Bowl singles tournament in March of 1997...also competed in swimming, softball, gymnastics and track...earned third team all-state honors as a swimmer...Personal: Born August 26, 1978...education major...daughter of Arturo Balbuena and Patricia Montano...her mother played on the Mexican Olympic team and won the Orange Bowl tournament for 18-year-olds while she was only 16...her father was a bull fighter...like to get her masters degree in Education, write a book someday, and teach bilingual elementary school children. Favorites: Actor is Al Pacino...movie is Almost Famous...and would like to vacation to Monaco.

ALIDA GALLOVITS



Junior
Timisoara, Romania

"Alida's game is evolving all of the time. She has always been a very talented athlete and now that she has adapted her game to hard courts and become more aggressive, she is one of the best players in the country." -Coach Gregory

"She's a star; successful at everything she attempts, tennis, dancing, shopping, studying, and friendships." -Christy Travis

1999-00: Finished the season ranked No. 48 in the country by the ITA...named to the All-ACC tennis team for second straight year...has defeated seven ranked players during her two-year career, including four this season No. 8, No. 21, No. 52 and No. 91...went 6-2 at No. 1 singles in the ACC and 16-10 for the season at No. 1...had a seven-match winning streak in the fall...won the A Draw Lady Seminole Classic Championship in October...played No. 1 doubles with second year partner Nanette Duxin and the duo won eight of their last 11 matches. 1998-99: Opened FSU career with three consecutive

wins...played 27 of 28 FSU dual matches at No. 1 singles, winning 15 of those 27 matches...defeated three ranked opponents including 15th-ranked Lioudmila Skavronskaia from

the University of Miami...posted a 5-3 record in conference play...spent 11 weeks ranked in the top 100 in the ITA's national rankings, before finishing the season No. 92...played No. 1 doubles with Nanette Duxin, winning five of eight ACC regular season matches and finishing the season ranked as the 49th-ranked doubles team...was one of three FSU women and one of six freshmen to be named to the All-ACC Team...was nominated for ACC Rookie of the Year award...All-ACC academic with a 4.0 GPA for the entire year...High school and other accomplishments: Won the singles portion of the ITF Tournament in Cairo, Egypt in 1995...Also won the ITF tournament in Scopje, Macedonia (1997) and Maribor, Slovenia (1996)...placed third at ITF tournaments in Tel Aviv, Israel (1995), Sofia, Bulgaria (1997 and 1998), Istanbul, Turkey (1998)...reached quarterfinals of the Orange Bowl Tournament in 1995...ranked among the WTA Top 500 in the world since 1995...finished second in the masters division of the national championships in 1997...finished third in the singles national championships for juniors in 1995 and fourth in 1994...second at the national championships in doubles as a junior in 1995...Personal: Born November 6, 1978...graduated third in her high school class...mother played handball in the Olympics and father competed in the pentathlon...parents were her inspiration and are her role models...finished last year with a 4.0 GPA...would like to work for IMG after she graduates...biggest inspiration is to have a happy and healthy family, to be able to support her parents and live as close to them as possible...Favorites: Actor is Brad Pitt...song is Bon Jovi's It's My Life...movie is Meet Joe Black...vacation spot is Ma'earsea, Croatia.

Gallovits Career Statistics

Singles

Year	@1	@2	@3	@4	@5	@6	Spring	Fall	Total
98-99	15-12	1-0					16-12		16-12
99-00	16-10						16-10	9-3	25-13
Overall	31-22	1-0					32-22	9-3	41-25

Doubles

Year	@1	@2	@3	Spring	Fall	Total
98-99	13-9		1-0	13-9		14-9 w/Carratalá, Duxin
99-00	11-7	2-1		13-8	4-3	17-11 w/Duxin, Raic, Weber
Overall	24-16	2-1	1-0	26-17	4-3	31-20



CHRISTINA DENNY



**Freshman
Canton, Ohio**

"Unbelievable competitor! Christina even hates to lose when we play ultimate Frisbee. She has a fantastic attitude, is one of the best athletes on the team, and has an excellent all-court game." -Coach Gregory

"Christina is the most focused person on the tennis court that I have ever seen." -Beth Lawrence

High School and other accomplishments: Her freshman year of high school was ranked No. 9 in the nation...junior year finished the season ranked No. 6...she won the No. 2 Division singles and states her senior year...was on her high school honor roll all four years...was the class speaker at her graduation...would

like to play professional tennis after college...**Personal:** Born April 9, 1982...daughter of Charles and Charlotte Denny...father Charles played tennis...major is computer science...**Interesting Facts:**...is very easy to get along with, but don't test her...she is double jointed in her middle finger...pigeon toed...has Indian in her background...has blonde hairs...is very tender-headed...one of her legs is longer than the other.

BETH LAWRENCE



**Freshman
Sarasota, FL**

"Beth is a hard worker and is going to improve daily as she adjusts to Division I college tennis. She competes very well and is a very fast learner so I can see her going from strength to strength." -Coach Gregory

"Beth always manages to keep her head up, and never gives up." -Christina Denny

High School and other accomplishments:...Graduated from high school with highest honors...was on the Dean's List throughout high school...played at Singles No. 1, No. 2 and No. 3, and doubles No. 1, while at Florida Southern College in Lakeland, Florida...in singles play she went 11-7, while playing doubles with

teammate Claire Hall they went 10-6 in 2000...**Personal:** Celebrates a December 16th, 1980 birthday...daughter of George and Chris Lawrence...major is undecided...would like to be a Zoo Veterinarian. **Favorites:** Song is Something in the Way She Moves by James Taylor...movie is the Breakfast Club...loves the water and sunsets. **Interesting Fact:** Teaches four and five year olds tennis every summer...she loves to surf!

TOP ACADEMICS

Kia Asberg won the ACC Post-Graduate scholarship (Weaver-James-Corrigan Scholarship)

Team GPA for 1999-00, an incredible 3.75

Three members of the 1999-00 team finished with a 4.0 GPA (Kia Asberg, Alida Gallovits and Ali Weber)

Eight student athletes attained All-ACC Academic Status

Three members named ITA Scholar Athlete All-American (Nanette Duxin, Ali Weber and Kia Asberg)





1999-2000 Review

The Florida State women's tennis team, led by the first senior class in Coach Gregory's tenure, accomplished what no other FSU women's tennis team had done before. They won an NCAA Tournament match, defeating Illinois 5-3 for FSU's first ever tournament victory. Led by seniors Kia Asberg and Ali Weber, the Lady Seminoles spent the entire season in the top 25 and five weeks in the top 20 before closing out the season at No. 22.

The 2000 season marked a chance for the Lady Seminoles to prove that their 1999 success was no fluke and the Lady Seminoles did just that, winning nine of their first 11 matches. The Lady Seminoles came out on fire and carried a seven-match winning streak into March that included a win over Iowa, the team they lost to in the first round of the 1999 NCAA Tournament. The Lady Seminoles' 2000 schedule was one of the toughest in the nation as FSU faced 20 ranked opponents in the spring. The Lady Seminoles finished the season 17-9 and made their fifth consecutive trip to the NCAA Tournament as they continued to solidify their position as one of the up-and-coming programs in the country by winning 11 of those 20 matches against ranked foes.

With seven starters back from 1999, the 2000 Lady Seminoles combined experience with talent and utilized their off-court closeness to overcome adversity throughout the season. Early in the spring, the team found out that junior Natalie Carratalá would miss the remainder of the season with an elbow injury. Carratalá had played No. 3 doubles in 1999 with Asberg and had won four of five matches in the fall of 2000 with Asberg before the injury forced her to the sidelines. In early March, FSU saw their seven-match winning streak snapped at home by Baylor, the country's 29th-ranked team. The 5-4 upset marked the first time the Lady Seminoles had lost at home in eight matches. However, the Lady Noles would not fold, winning the next four matches including three on the road to pull their record to 13-3 heading into the last month of the season.



The final month of the season saw the Lady Noles overcome minor injuries to junior Nanette Duxin and sophomores Jessica Balbuena, Marina Raic and Alida Gallovits. However, the most severe injury was to Weber. Already recognized as one of FSU's winningest players and gunning for her fourth consecutive 20-win season, Weber solidified herself as one of the grittest players in Lady Seminole history in 2000. Playing with an injured shoulder throughout the season, Weber overcame the pain to win her fourth ACC Flight Championship. Weber was such a competitor and was in such great condition that her matches routinely took longer than everyone else's and fittingly, after playing for nearly four hours in the Lady Seminoles first ever tournament victory the day before, Weber and Asberg, the two seniors on the team, were the final two Lady Seminoles on the court in the final match of the year, each fighting and rooting each other on to prolong their illustrious careers.

Asberg left Florida State as one of the most recognized players in Lady Seminole history. Garnering almost every award manageable, the Swedish native put together back-to-back All-ACC seasons. After winning the second-most matches in school history as a junior, Asberg came out and won the third most as a senior. Asberg also responded to her 15-match school record-setting winning streak as a junior by putting together a 13-match winning streak as a senior. The team's Golden Nole recipient, or team MVP, was also awarded two other prestigious post-season honors including the ITA's National Cissie Leary Sportsmanship Award and the ACC's Weaver-James-Corrigan Post-Graduate Scholarship.

Behind the leadership of the two distinguished seniors, Coach Gregory was able to capitalize on the experience her younger players received playing as true freshmen the year before and challenge the team to play 13 matches on the road, nine of which were against teams ranked in the Top 40. FSU won eight matches on the road in 2000 and four of nine against the teams in the Top 40. The 8-5 away record continued Florida

State's road success from a year earlier when the Lady Seminoles were 10-4 away from Tallahassee en route to winning the third-most matches in school history.

The Scott Speicher Tennis Center continued to be a source of strength for the Lady Seminoles and Coach Gregory in 2000 as FSU lost just four of 13 matches on the Don Loucks Courts. In Gregory's four-year era, the Lady Seminoles have won 68 percent of their home matches including 20 of the last 27.

On April 21st, Florida State defeated Georgia Tech 5-3 in the first round of the ACC Tournament to give Gregory career win No. 61 and move her into third place in all-time wins at Florida State. Gregory, in just her fourth year at the helm, holds the highest winning percentage among the four head coaches in Lady Seminole tennis history at .614 and is just six wins shy of moving into second-place all-time in career wins.

The conclusion of the 2000 season saw Coach Gregory's first recruiting class graduate and leave behind a legacy for the future classes to build upon. After four straight years of NCAA Tournament appearances and four straight Golden Torch Awards, an award given to the FSU athletic team with the highest GPA, Asberg and Weber helped instill a tradition of excellence into all aspects of a student-athletes life at Florida State University.



2000 Statistics



TM

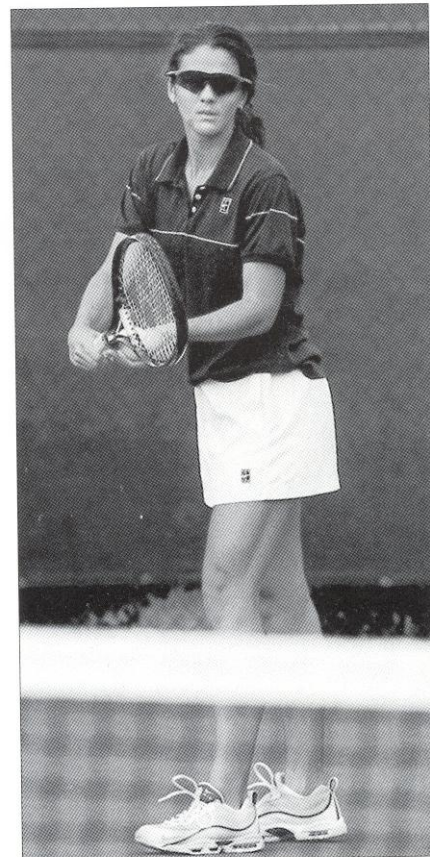
Overall Record Playing At:

SINGLES	ALL	DUAL	STREAK	ACC	1	2	3	4	5	6
Kia Asberg	88-42	20-5	W1	6-2	0-0	2-1	12-2	4-2	1-0	1-0
Jessica Balbuena	44-35	10-15	L6	4-4	0-0	0-1	4-3	6-10	0-1	0-0
Natalie Carratalá	22-23	0-0	L1	0-0	0-0	0-0	0-0	0-0	0-0	0-0
Nanette Duxin	52-45	14-11	L1	4-4	0-0	14-8	0-3	0-0	0-0	0-0
Alida Gallovits	41-25	16-10	L1	6-2	16-10	0-0	0-0	0-0	0-0	0-0
Marina Raic	46-26	12-12	L2	2-5	0-0	0-0	0-0	1-2	6-6	5-4
Christy Travis	14-17	1-3	L3	0-1	0-0	0-0	0-0	0-0	0-0	1-3
Ali Weber	94-62	14-11	L3	5-3	0-0	0-0	0-0	0-1	6-6	8-4
Team Totals	401-275	87-67		27-21	16-10	16-10	16-8	11-15	13-13	15-11

Overall Record Playing At:

DOUBLES	OVERALL	DUAL	STREAK	ACC	1	2	3
Gallovits/Duxin	25-14	13-8	W2	5-3	11-7	2-1	0-0
Raic/Asberg	13-7	13-7	L4	3-4	0-0	8-6	5-1
Balbuena/Travis	0-1	0-1	L1	0-0	0-0	0-0	0-1
Duxin/Balbuena	1-0	1-0	W1	0-0	1-0	0-0	0-0
Weber/Gallovits	2-1	0-0	L1	0-0	0-0	0-0	0-0
Asberg/Balbuena	2-1	0-0	W2	0-0	0-0	0-0	0-0
Gallovits/Raic	2-2	0-0	L1	0-0	0-0	0-0	0-0
Weber/Balbuena	17-9	12-6	W1	5-2	0-3	2-1	10-2
Asberg/Carratalá	7-2	0-0	W4	0-0	0-0	0-0	0-0
TEAM TOTALS	53-37	39-22		13-9	12-10	12-8	15-4

Cumulative Stats for 1999-2000 Matches Only
 *ACC=ACC Regular Season Matches Only



ALIDA GALLOVITS

WOMEN'S TENNIS SCHEDULE AND RESULTS

Spring 2000

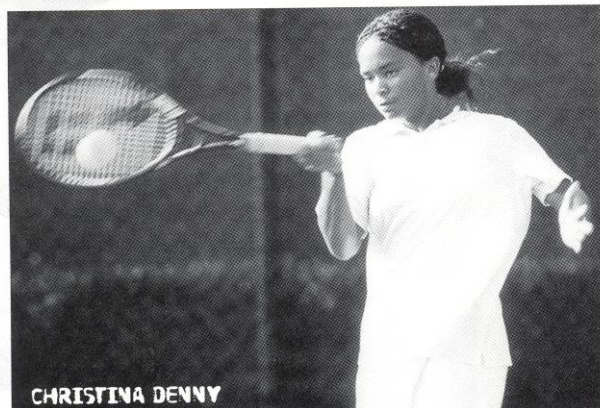
DATE	DAY	OPPONENT	LOCATION	RESULT
Jan. 21-24	Fri.-Sun.	ACC Indoors	Chapel Hill, NC	Ind.
Jan. 28	Sat.	Georgia State	Tallahassee	1-0
Jan. 29	Sun.	Georgia Southern	Tallahassee	8-1
Feb. 4	Fri.	Vanderbilt (#16)	Nashville, TN	1-8
Feb. 5	Sat.	Iowa(#36)	Nashville, TN	5-4
Feb. 9	Wed.	Florida (#2)	Gainesville, FL	1-5
Feb. 12	Sat.	Auburn (#44)	Auburn, AL	6-3
Feb. 18	Fri.	Jacksonville	Tallahassee	9-0
Feb. 19	Sat.	Florida Int'l (#73)	Tallahassee	5-4
Feb. 20	Sun.	Southern Mississippi	Tallahassee	6-3
Feb. 28	Mon.	LSU(#24)	Tallahassee	5-4
Mar. 4	Sat.	South Florida	Tallahassee	7-2
Mar. 5	Sun.	Miami (#30)	Tallahassee	5-1
Mar. 8	Wed.	Baylor (#29)	Tallahassee	4-5
Mar. 9	Thur.	Tulane (#45)	Tallahassee	7-2
Mar. 18	Sat.	Maryland	College Park, MD	9-0
Mar. 19	Sun.	Virginia (#40)	Charlottesville, VA	7-2
Mar. 24	Fri.	North Carolina (#51)	Chapel Hill, NC	5-2
Mar. 25	Sat.	Wake Forest (#3)	Winston-Salem, NC	1-8
Mar. 26	Sun.	N.C. State	Raleigh, NC	8-1
Mar. 29	Wed.	Duke (#11)	Tallahassee	2-7
April 3	Mon.	Utah	Tallahassee	7-2
April 8	Sat.	Georgia Tech(#43)	Tallahassee	4-5
April 9	Sun.	Clemson (#29)	Tallahassee	4-5
April 21	Fri.	Georgia Tech (#32)^	Atlanta, GA	5-3
April 22	Sat.	Wake Forest (#3) ^	Atlanta, GA	0-5
May 12	Fri.	Illinois (#36) %	Gainesville, FL	5-3
May 13	Sat.	Florida (#4) %	Gainesville, FL	0-5

^ - ACC Tournament
 % - NCAA Regionals

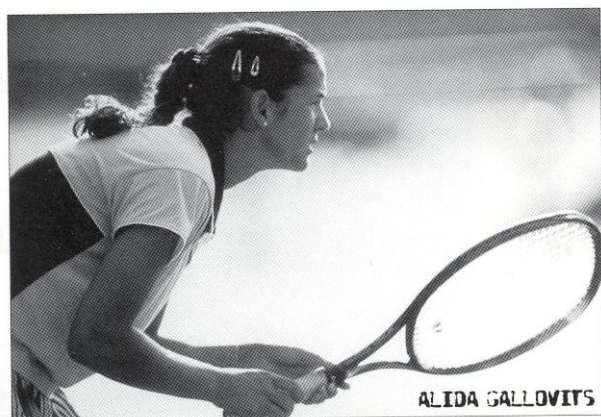




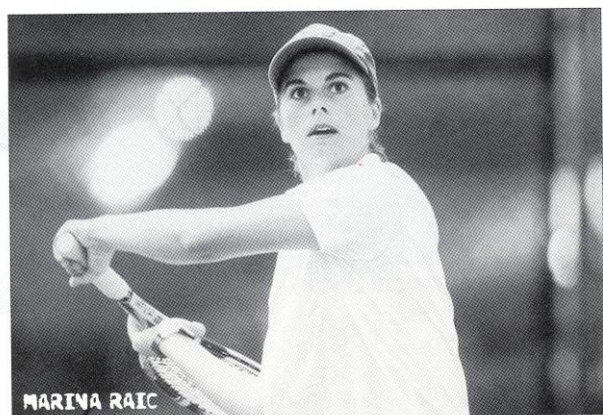
2000 ACC Statistics



CHRISTINA DENNY



ALIDA GALLOVITS



MARINA RAIC

THE ACC VS. NON-ACC OPPONENTS

ACC TOURNAMENT RESULTS

(Norcross, Ga., April 20-23, 2000)

- 1st Round - #8 North Carolina d. #9 N.C. State 5-0
 Quarterfinals - #3 Clemson d. #6 Virginia 3-2, #2 Duke d. #7 Maryland 5-0, #1 Wake Forest d. #8 North Carolina 5-1, #5 Florida State d. #4 Georgia Tech 5-3
 Semifinals - Duke d. Clemson 5-1, Wake Forest d. Florida State 5-0
 Finals - Duke d. Wake Forest 5-3

ACC TOURNAMENT MVP

Megan Miller, Duke

ACC SINGLES FLIGHT CHAMPIONS

- No. 1 Carmina Giraldo, Clemson
 No. 2 Jessica Johnson, Maryland
 No. 3 Janet Bergman, Wake Forest
 No. 4 Jaime Wong, Georgia Tech
 No. 5 Jen Tuchband, Virginia
 No. 6 Ali Weber, Florida State

ACC DOUBLES FLIGHT CHAMPIONS

- No. 1 Janet Bergman - Bea Bielick, Wake Forest
 No. 2 Renata Brito - Laurence Jayet, Clemson
 No. 3 Jessica Balbuena - Ali Weber, Florida State

ALL-ATLANTIC COAST CONFERENCE

- Clemson (1) Carmina Gilaldo
 Duke (3) Erica Biro, Megan Miller, Kathy Sell
 Florida State (2) Kia Asberg, Alida Gallovits
 Georgia Tech (1) Jaime Wong
 Maryland (2) Delila Causevic, Jessica Johnson
 North Carolina (1) Marlene Mejia
 Wake Forest (3) Janet Bergman, Bea Bielick, Adria Engel

ACC PLAYER OF THE YEAR

Adria Engel, Wake Forest

ACC ROOKIE OF THE YEAR

Adria Engel, Wake Forest

ACC COACH OF THE YEAR

Brian Fleishman, Wake Forest

INDIVIDUAL RESULTS VERSUS ACC OPPONENTS

(REGULAR SEASON ONLY)

Name	ACC	1	2	3	4	5	6
Kia Asberg	6-2	0-0	1-0	4-2	1-0	0-0	0-0
Jessica Balbuena	4-4	0-0	0-0	1-0	3-4	0-0	0-0
Natalie Carratalá	0-0	0-0	0-0	0-0	0-0	0-0	0-0
Nanette Duxin	4-4	0-0	4-3	0-1	0-0	0-0	0-0
Alida Gallovits	6-2	6-2	0-0	0-0	0-0	0-0	0-0
Marina Raic	2-5	0-0	0-0	0-0	0-0	2-3	0-2
Christy Travis	0-1	0-0	0-0	0-0	0-0	0-0	0-1
Ali Weber	5-3	0-0	0-0	0-0	0-0	1-2	4-1

DOUBLES

Name	ACC	1	2	3
N. Duxin and A. Gallovits	5-3	5-3	0-0	0-0
J. Balbuena and A. Weber	5-2	0-0	2-0	3-2
K. Asberg and M. Raic	3-4	0-0	1-4	2-0

