

ACC Biography



THE TRADITION

Consistency. It's the mark of true excellence in any endeavor. However in today's intercollegiate athletics, competition has become so balanced and so competitive that it is virtually impossible to maintain a high level of consistency. Yet the ACC has defied the odds. Now in its 48th year of competition, the ACC has long enjoyed the reputation as one of the strongest and most competitive intercollegiate conferences in the nation. And that is not a mere conjecture, the numbers support it.

Since the league's inception in 1953, ACC schools have captured 79 national championships, including 39 in men's competition and 40 in women's. In addition, 119 men and 29 women have earned the coveted title of NCAA champion.

1999-2000 IN REVIEW

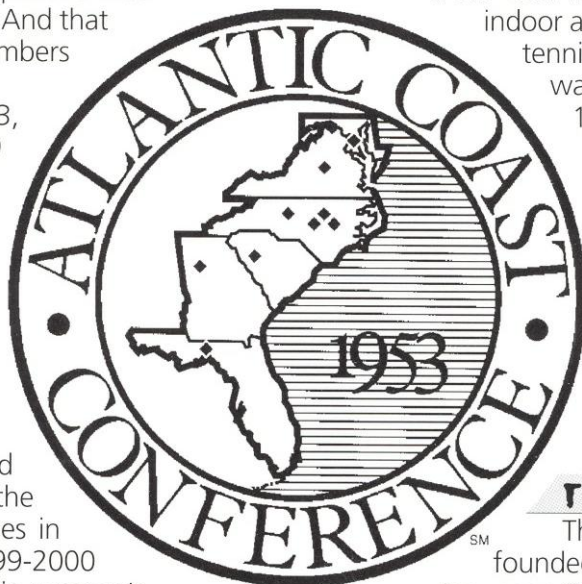
The 1999-2000 Academic year concluded with the league pocketing four more national team titles and four individual ACC crowns. In all, the ACC has won 36 national team titles in the last ten years. The ACC's 1999-2000 national champions were Maryland in women's lacrosse and women's field hockey, North Carolina in women's soccer and Florida State in football. In addition, Georgia Tech was runner up in men's golf. Overall, ACC teams posted a 79-54-2 (.593) mark in NCAA Tournament play. The ACC placed at least one team in the Top 10 nationally in 19 of the 25 sports sponsored by the leagues. Other records of note during the 1999-2000 season include 85 teams competing at NCAA Championships, five football bowl appearances and 35 Top 10 showings. The ACC Academic Honor Roll record was broken for the 13th straight year in 1999-2000 as 1,659 student-athletes were recognized for their work in the classroom.

CHRISTY TRAVIS



THE CHAMPIONSHIPS

The conference will conduct championship competition in 25 sports during the 2000-2001 academic year-12 for men and 13 for women. The first ACC championship was held in swimming on February 25, 1954. The conference did not conduct championships in cross country, wrestling, or tennis during the first year. The 12 sports for men include football, cross country, soccer, basketball, swimming, indoor and outdoor track, wrestling, baseball, tennis, golf, and lacrosse. Fencing, which was started in 1971, was discovered in 1981. Women's sports were initiated in 1977 with the first championship meet being held in tennis at Wake Forest University, October 6-8. Conference championships for women are currently conducted in cross country, volleyball, field hockey, soccer, basketball, swimming, indoor and outdoor track, tennis, golf, lacrosse, softball, and rowing.



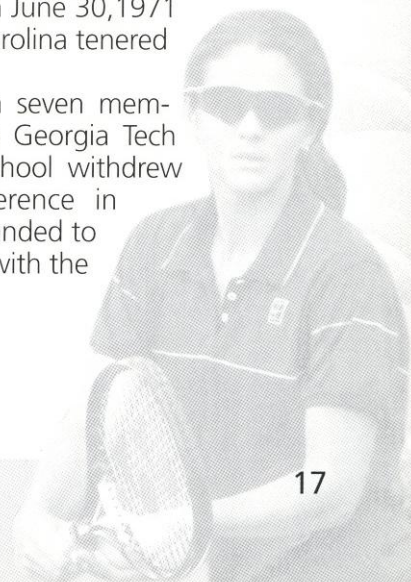
THE HISTORY

The Atlantic Coast Conference was founded on May 8, 1953, at the Sedgefield Inn near Greensboro, N.C., with seven charter members-Clemson, Duke, Maryland, North Carolina, North Carolina State, South Carolina and Wake Forest-drawing up the conference bylaws.

The withdrawal of seven schools from the Southern Conference came early on the morning of May 8, 1953, during the Southern Conference's annual spring meeting. On June 14, 1953, the seven members met in Raleigh N.C., where a set of bylaw was adopted and the name officially became the Atlantic Coast Conference.

On December 4, 1953, conference officials met again at Sedgefield and officially admitted the University of Virginia. The first, and only, withdrawal of a school from the ACC came on June 30, 1971 when the University of South Carolina tendered its resignation.

The conference operated with seven members until April 3, 1978, when Georgia Tech was admitted. The Atlanta school withdrew from the Southeastern Conference in January of 1964. The ACC expanded to nine members on July 1, 1991, with the addition of Florida State.





Around the ACC

ATLANTIC COAST CONFERENCE HONORS

YEAR	ACC TOURNAMENT MVP	COACH OF THE YEAR	PLAYER OF THE YEAR	ROOKIE OF THE YEAR
1992	Susan Sommerville, Duke	Geoff Macdonald, Duke	Cinda Gurney, UNC	
1993	Christine Neuman, Duke	Andy Johnston, Clemson	Cinda Gurney, UNC	
1994	Wendy Lyons, Duke	Alice Reen, Florida State	Audra Brannon, FSU	Lori Sowell, FSU
1995	Wendy Lyons, Duke	Lew Gerrard, WFU	Monica Mraz, Duke	Laura Zifer, Duke
1996	Laura Zifer, Duke	Jim Laitta, Maryland	Sophie Woorons, Clemson	Vanessa Webb, Duke
1997	Karin Miller, Duke	Lew Gerrard, WFU	Karin Miller, Duke	Karin Miller, Duke
1998	Kathy Sell, Duke	Jenny Garrity, NCSU	Vanessa Webb, Duke	Mariel Verban, WF
1999	Karen Goldstein, Duke	Lise Gregory, FSU	Vanessa Webb, Duke	Janet Bergman, UCF
2000	Megan Miller, Duke	Brian Fleishman, Wake Forest	Adria Engel, Wake Forest	Adria Engel, Wake Forest

SINGLES HONORS

YEAR	No. 1 SINGLES	No. 2 SINGLES	No. 3 SINGLES
1992	Cinda Gurney, Duke	Angela Bernal, North Carolina	Liz Barker, Wake Forest
1993	Cinda Gurney, Duke	Christine Neuman, Duke	Amy Young, Clemson
1994	Audra Brannon, Florida State	Lori Sowell, Florida State	Emma Peetz, Clemson
1995	Wendy Lyons, Duke	Wendy Lyons, Duke	Cristina Caparis, Wake Forest
1996	Sophie Woorons, Clemson	Jan Barrett, Clemson	Ann Olsson, Florida State
1997	Karin Miller, Duke	Amy Jensen, Wake Forest	Nicola Kaiwai, Wake Forest
1998	Vanessa Webb, Duke	Kristin Sunderson, Duke	Bobbie Guthrie, Georgia Tech
1999	Vanessa Webb, Duke	Janet Bergman, Wake Forest	Megan Miller, Duke
2000	Carmina Giraldo, Clemson	Jessica Johnson, Maryland	Janet Bergman, Wake Forest

SINGLES HONORS (CONTINUED)

YEAR	No. 4 SINGLES	No. 5 SINGLES	No. 6 SINGLES
1992	Diane McKeon, Wake Forest	Tracey Hiete, Duke	Scotti Thomas, North Carolina
1993	Shannon King, Clemson	Alison Cohen, Virginia	Tracey Zawacki, Wake Forest
1994	Jan Barrett, Clemson	Maggie Harris, Wake Forest	Kim Schiff, Duke
1995	Karen O-Sullivan, Duke	Wendy Fix, Duke	Maggie Harris, Wake Forest
1996	Devrin Carr, Clemson	Stacy Gingold, Virginia	Alison Levy, North Carolina
1997	Lule Aydin, Wake Forest	Ali Weber, Florida State	Jeni Burnette, North Carolina
1998	Karen Goldstein, Duke	Kathy Sell, Duke	Laura Zifer, Duke
1999	Karen Goldstein, Duke	Anne Marie Milton, Wake Forest	Ali Weber, Florida State
2000	Jamie Wang, Georgia Tech	Jen Tuchbend, Virginia	Ali Weber, Florida State

TEAM COMPETITION

YEAR	TEAM CHAMPION	HEAD COACH	RUNNER UP	SITE
1992	Duke	Geoff Macdonald	Wake Forest	Charlotte, North Carolina
1993	Duke	Geoff Macdonald	Clemson	Charlotte, North Carolina
1994	Duke	Geoff Macdonald	Florida State	Charlotte, North Carolina
1995	Duke	Jody Hayden	Wake Forest	Greenwood, South Carolina
1996	Duke	Jody Hayden	Wake Forest	Greenwood, South Carolina
1997	Duke	Jamie Ashworth	Wake Forest	Atlanta, Georgia
1998	Duke	Jamie Ashworth	Wake Forest	Atlanta, Georgia
1999	Duke	Jamie Ashworth	Wake Forest	Atlanta, Georgia
2000	Duke	Jamie Ashworth	Wake Forest	Atlanta, Georgia

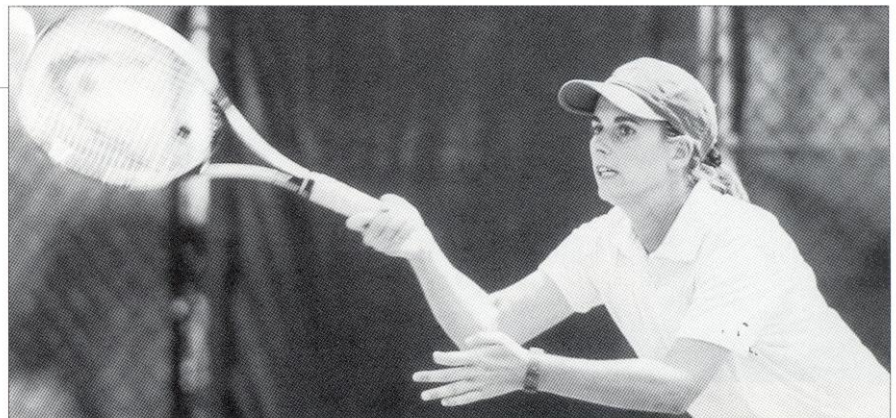
DOUBLES HONORS

No. 1 DOUBLES	
1992	Cinda Gurney/Alisha Portnoy, North Carolina
1993	Janice Durden/Shannon King, Clemson
1994	Audra Brannon/Elke Juul, Florida State
1995	Wendy Lyons/Monica Mraz, Duke
1996	Elke Juul/Lori Sowell, Florida State
1997	Kate-Maree Mair/Stefani Woerz, Clemson
1998	Karen Goldstein/Vanessa Webb, Duke
1999	Karen Goldstein/Vanessa Webb, Duke
2000	Janet Bergman/Bea Bielik, Wake Forest

No. 2 DOUBLES	
1992	Wendy Lyons/Monica Mraz, Duke
1993	Alison Cohen/Ly-Lan Schofield, Virginia
1994	Maggie Harris/Patty Murren, Wake Forest
1995	Wendy Fix/Laura Zifer, Duke
1996	Sasha Hanna/Ann Olsson, Florida State
1997	Paige Boiko/Kendall White, Virginia
1998	Etresia Kruger/Kate Maree-Mair, Clemson
1999	Bobbi Guthrie/Tamarra Jenkin, Georgia Tech
2000	Renata Brito/Laurence Jayet, Clemson

No. 3 DOUBLES	
1992	Hillary McKinney/Meredith Lukoff, Duke
1993	Elke Juul/Sandi Ecclestone, Florida State
1994	Wendy Fix/Kim Schiff, Duke
1995	Ashley Delaney/Lori Junker, Florida State
1996	Lori Junker/Kylie Thompson, Florida State
1997	Wendy Fix/Kristin Sanderson, Duke
1998	Leslie Cook/Christie Schweer, Virginia
1999	Megan Miller/Kathy Sell, Duke
2000	Jessica Balbuena/Ali Weber, Florida State

MARINA RAIC



Year-by-Year Results



1982 ANNE RIZZA (23-17)

Florida A&M	W	9-0
South Carolina	L	2-7
Oklahoma State	W	5-4
Texas Christian	W	6-3
Tulane	W	9-0
South Florida	W	5-4
Florida A&M	W	8-0
Rollins	L	2-7
Florida	L	1-7
Louisiana State	W	6-3
Clemson	W	5-4
Auburn	W	9-0
Southwest Louisiana	W	9-0
Northwest Louisiana	W	7-0
Miss. Univ. for Women	W	8-0
North Carolina	W	6-3
South Carolina	L	3-5
Mississippi	L	4-5
Purdue	W	7-1
Texas	L	0-8
Southern Methodist	W	6-2
Texas Christian	L	4-5
North Texas State	W	6-2
Louisville	W	8-1
Ohio State	W	9-0
South Alabama	W	7-2
Indiana	L	2-7
Harvard	W	8-1
Clemson	L	4-5
South Florida	L	4-5
Miami, Fla.	L	2-7
Florida	L	1-8
Georgia	L	3-6
Rollins	L	2-7
South Florida	L	4-5
North Carolina	L	1-8
Iowa	W	7-2
Georgia	W	5-4
Princeton	W	5-4
North Carolina	L	0-5

1983 ANNE RIZZA (18-8)

Stetson	W	7-2
Florida Junior College	W	7-2
Clemson	L	0-9
Auburn	W	8-1
College of Charleston	W	9-0
Rollins	L	1-8
Louisiana Tech	W	7-0
Northeast Louisiana	W	8-1
Alabama	W	8-1
Rice	L	3-6
South Florida	W	5-4
Duke	W	6-3
Indiana	L	2-7
Ohio State	W	9-0
Iowa	W	7-2
Georgia	W	6-3
Georgia State	W	9-0
Tennessee	W	6-3
Northwestern	L	4-5
Rollins	W	6-3
Florida	L	3-6
South Florida	L	3-6
Florida	L	4-5
Vanderbilt	W	8-1
Alabama	W	8-1
Tulane	W	5-4

1984 ANNE RIZZA (15-13)

Rollins	L	3-6
Tennessee	W	8-1
South Carolina	L	4-5
Houston	L	4-5
Tennessee-Chattanooga	W	5-4
Vanderbilt	W	8-0
Auburn	W	7-2
Florida Junior College	W	8-1
Tulane	W	6-0
Georgia	W	7-2
Northeast Louisiana	W	5-1
Alabama	W	7-2
Oklahoma State	L	4-5
South Alabama	W	7-2
Florida	L	2-7
South Carolina	W	5-4
Oklahoma State	L	4-5
Georgia	W	6-3
Mississippi	L	2-5
Mississippi State	W	9-0
Rice	L	3-6
New Mexico	W	5-1
Miami, Ohio	W	6-3
Northwestern	L	1-8
Rollins	L	4-5
Florida	L	1-8
Miami, Fla.	L	3-6
South Florida	L	3-6

1985 ANNE RIZZA (13-14)

Georgia Tech	W	6-1
South Florida	L	1-8
Alabama	W	6-3
North Florida	W	7-2
Florida Junior College	W	9-0
Rollins	W	5-4
Florida	L	1-8
North Carolina	W	7-2
Louisiana State	L	2-7
South Florida	L	0-8
Wichita State	W	6-3
Wake Forest	W	7-2
Duke	L	4-5
North Carolina	L	2-7
Texas Christian	L	3-6
South Carolina	L	4-5
Northwestern	L	3-6
Georgia	W	5-4
Florida	L	1-8
South Florida	L	3-6
Miami, Fla.	L	1-8
Rollins	W	7-2
Mississippi	L	2-6
Auburn	W	8-1
Memphis State	W	9-0
Tulane	L	4-5
Virginia Tech	W	7-2

1986 ANNE RIZZA (17-10)

North Florida	W	6-3
Florida Junior College	W	9-0
Florida	L	1-8
Southern Methodist	L	3-6
Rollins	W	8-1
Houston	L	3-6
South Florida	W	5-4
Alabama	W	6-3
Auburn	W	7-2
Florida	L	1-8

Purdue	W	6-3
Baylor	W	9-0
Mississippi	W	5-4
South Alabama	L	2-7
Southwest Missouri	W	8-1
Texas Christian	L	3-6
Clemson	L	0-9
South Alabama	L	3-6
Virginia Tech	W	9-0
Georgia Tech	W	7-2
Wisconsin	W	5-4
Mississippi State	W	7-2
Stetson	W	9-0
South Florida	L	2-7
Rollins	W	6-0
Virginia Tech	W	8-1
South Carolina	L	4-5

1987 PATTI HENDERSON (11-15)

Vanderbilt	L	4-5
Tennessee	L	4-5
William & Mary	W	5-4
South Carolina	L	0-5
Auburn	W	5-4
Florida Junior College	W	7-2
North Florida	W	7-2
Florida	L	0-9
Mississippi State	L	4-5
Furman	W	6-3
Purdue	W	7-2
Columbia	W	8-1
South Florida	W	6-3
Miami, Ohio	L	4-5
North Carolina	L	2-7
Wake Forest	L	3-6
Virginia Tech	W	8-1
California - Irvine	L	3-6
Rice	L	4-5
California-Santa Barbara	L	2-7
Southern Methodist	L	1-8
Florida	L	0-9
Rollins	L	3-6
Louisville	W	7-2
Memphis State	W	9-0
South Carolina	L	3-6

1988 PATTI HENDERSON (14-12)

Florida	L	1-8
Florida A&M	W	8-1
Alabama - Birmingham	W	7-2
North Florida	L	3-6
Northeast Louisiana	W	6-3
Houston	L	1-8
Mississippi	L	4-5
Virginia Tech	W	5-4
North Carolina	L	2-7
Furman	W	9-0
Louisiana State	L	4-5
Stetson	W	8-1
South Florida	W	5-4
Rollins	W	6-3
Auburn	L	3-6
Baylor	W	9-0
New Mexico	W	5-4
South Carolina	L	1-7
Indiana	L	1-8
Mississippi State	L	1-5
Georgia State	W	9-0
South Florida	W	5-4
Flagler	L	2-7

Southern Methodist	W	9-0
Louisville	W	9-0
South Carolina	L	0-6

1989 PATTI HENDERSON (13-7)

Tulane	W	8-1
South Florida	L	4-5
Florida	L	0-9
South Alabama	W	5-3
Jacksonville	W	9-0
Northeast Louisiana	W	6-0
Auburn	W	5-4
South Alabama	L	3-6
Florida International	W	9-0
Flagler	L	4-5
North Florida	W	6-3
Mississippi	L	3-6
Kansas State	W	5-1
Yale	L	4-5
South Florida	W	6-3
Wisconsin	L	1-8
Rollins	W	6-3
Clemson	W	5-4
Lamar	W	9-0
Houston	W	5-4

1990 PATTI HENDERSON (17-8)

South Florida	W	7-1
Rollins	W	8-1
Santa Fe	W	9-0
North Florida	W	8-1
Florida	L	0-9
U.S. International	L	3-6
Arizona	L	4-5
Rice	W	6-0
Northeast Louisiana	W	7-0
South Alabama	W	7-1
Houston	L	2-7
Mississippi	W	5-4
Georgia Tech	W	7-1
Louisiana Tech	W	7-2
Florida International	W	8-1
Louisiana State	L	4-5
Miami, Fla.	L	1-8
New Mexico	W	7-0
South Florida	W	7-2
Wisconsin	L	4-5





Year-by-Year Results

Rollins	W	8-1
Michigan	W	8-1
Wake Forest	W	5-4
South Carolina	L	2-6
Boca Raton	W	8-1

1991 PATTI HENDERSON (13-9)

Florida	L	0-9
North Carolina	L	2-7
Miami, Fla.	L	4-5
Tulane	W	9-0
Rice	W	7-2
Louisiana State	W	5-4
Northeast Louisiana	W	9-0
Auburn	W	7-2
South Florida	W	9-0
Alabama	W	6-3
Michigan	W	7-2
Rollins	W	9-0
Wake Forest	L	4-5
Mississippi State	W	7-2
Trinity	W	7-2
Houston	L	4-5
Texas Christian	L	3-6
Southwest Louisiana	W	8-1
Wisconsin	L	3-6
Northwestern	L	2-7
Flagler	W	7-2
Duke	L	1-6

1992 ALICE REEN (13-10)

Northwestern	L	3-6
Wisconsin	L	2-7
Alabama	L	0-6
Flagler	W	7-2
Rollins	W	8-1
Virginia	W	7-2
Michigan	W	6-3
South Florida	W	7-2
North Carolina State	W	9-0
Miami, Fla.	L	2-7
Southern Methodist	W	5-3
Mississippi State	L	4-5
North Carolina	W	5-4
Duke	L	1-8
Georgia Tech	W	8-1
Illinois	L	4-5
South Alabama	W	6-1
Florida International	W	6-3
Georgia	L	3-6
Clemson	L	3-6
Wake Forest	W	5-4

Virginia	W	6-0
Wake Forest	L	2-5

1993 ALICE REEN (13-9)

Georgia Tech	W	8-1
California-Santa Barbara	L	4-5
Rice	L	4-5
Arizona	L	2-6
Florida International	W	8-1
Miami, Fla.	L	2-7
Rollins	W	8-1
Michigan	W	6-3
South Florida	W	5-4
Clemson	L	4-5
North Carolina	W	7-2
Wake Forest	L	4-5
Oklahoma	W	6-3
North Carolina State	W	6-0
Maryland	W	8-1
Tennessee	L	3-6
Virginia	W	5-4
Southwestern Louisiana	W	6-3
Georgia	L	2-5
South Alabama	W	5-4
North Carolina	W	5-3
Clemson	L	2-7

1994 ALICE REEN (15-10)

Georgia Tech	W	9-0
Miami, Fla.	L	4-5
Florida	L	1-8
Maryland	W	9-0
Kentucky	L	1-7
Tennessee	L	4-5
South Florida	W	5-4
Wake Forest	W	5-4
Clemson	L	3-6
Georgia	L1-5	
North Carolina State	W	7-2
Virginia	W	6-3
Mississippi State	W	5-1
Rice	W	7-2
Houston	W	5-1
Texas	L	3-6
Texas A&M	W	5-4
Florida International	W	5-1
North Carolina	W	7-2
Duke	L	4-5
South Alabama	W	7-2
North Carolina State	W	5-1
Clemson	W	5-3
Duke	L	0-5
Arizona	L	3-5

1995 ALICE REEN (11-10)

Florida	L	1-7
Vanderbilt	L	4-5
Georgia Southern	W	8-0
South Florida	L	4-5
North Carolina	W	5-4
Duke	L	1-6
Tennessee	W	5-4
Clemson	W	5-4
Maryland	W	8-1

Texas A&M	W	5-2	Wake Forest	L	3-6
Georgia	L	0-6	NC State	L	4-5
Virginia	W	8-1	South Alabama	L	1-8
South Carolina	L	3-6	Auburn	W	6-3
Miami, Fla.	L	3-6	Illinois	W	6-3
Florida International	W	5-4	Jacksonville	W	7-0
San Diego	L	2-6	Florida International	W	6-3
Georgia Tech	W	6-0	Duke	L	1-8
North Carolina State	W	5-4	North Carolina	W	5-4
Wake Forest	L	3-6	North Carolina (ACC)	W	7-2
Virginia	W	5-3	Duke (ACC)	L	5-0
Wake Forest	L	2-5	Vanderbilt (NCAA)	L	6-0

1996 ALICE REEN (8-11)

Vanderbilt	L	0-8
Jacksonville	W	8-0
Miami, Fla.	W	5-3
Georgia Southern	W	7-2
Maryland	W	6-2
Clemson	W	5-4
Georgia	L	1-6
Wake Forest	L	4-5
North Carolina State	W	8-1
Virginia	L	4-5
Notre Dame	L	1-6
Mississippi	L	2-5
North Carolina	L	4-5
Duke	L	1-8
Florida	L	1-8
Georgia Tech	W	8-1
Virginia	W	5-3
Duke	L	0-6
South Carolina	L	2-5

1997 LISE GREGORY (12-11)

South Alabama	L	2-7
Vanderbilt	L	0-9
Auburn	W	7-1
Miami, Fla.	L	3-6
Florida International	W	8-1
Georgia Tech	W	8-1
California	L	2-7
Clemson	W	6-3
Florida	L	0-9
North Carolina	W	7-2
Baylor	L	4-5
Rice	W	5-4
Houston	L	4-5
Duke	L	1-7
North Carolina State	W	6-3
Wake Forest	L	2-6
Maryland	W	7-2
Illinois	W	8-1
Virginia	W	7-2
South Florida	W	5-4
Georgia Tech (ACC)	W	5-1
Wake Forest (ACC)	L	1-5
Vanderbilt (NCAA)	L	0-5

1998 LISE GREGORY (12-12)

Georgia Southern	W	7-2
Florida	L	1-8
Georgia Tech	L	4-5
Clemson	L	4-5
Maryland	L	4-5
Virginia	W	5-4
South Florida	W	6-3
Houston	W	7-2
Virginia Tech	L	4-5
Baylor	W	5-4

1999 LISE GREGORY (21-7)

Jacksonville	W	9-0
Illinois	W	5-1
Southern Miss	W	9-0
Auburn	W	7-2
Georgia State	W	6-0
Florida	L	1-8
Georgia Southern	W	8-1
South Florida	W	8-1
South Alabama	W	5-1
Vanderbilt	L	4-5
Miami	L	4-5
Florida International	W	7-2
Baylor	W	7-2
Houston	W	5-4
Rice	W	6-3
Tulane	W	5-4
Virginia	W	6-3
Maryland	W	9-0
Kansas	W	6-3
Wake Forest	L	4-5
North Carolina State	W	9-0
Duke	L	0-9
North Carolina	W	6-3
Georgia Tech	W	6-3
Clemson	W	5-4
Virginia (ACC)	W	5-1
Wake Forest (ACC)	L	4-5
Iowa (NCAA)	L	4-5

2000 LISE GREGORY (17-9)

Georgia Southern	W	8-1
Vanderbilt	L	1-8
Iowa	W	5-4
Florida	L	1-5
Auburn	W	6-3
Jacksonville	W	9-0
Southern Miss	W	6-3
LSU	W	5-4
South Florida	W	7-2
Miami	W	5-1
Baylor	L	4-5
Tulane	W	7-2
Maryland	W	9-0
Virginia	W	7-2
North Carolina	W	5-2
Wake Forest	L	1-8
North Carolina State	W	8-1
Duke	L	2-7
Utah	W	7-2
Georgia Tech	L	4-5
Clemson	L	4-5
Georgia Tech	W	5-3
Wake Forest	L	0-5
Illinois	W	5-3
Florida	L	0-5



A History of Honors and Awards



TM

FSU ATHLETICS HALL OF FAME

Patti Henderson - 1992
Buffy Baker - 1997

METRO CONFERENCE COACH OF THE YEAR

Anne Rizza - 1981, 1983 & 1984
Patti Henderson - 1989

ACC COACH OF THE YEAR

Alice Reen - 1994
Lise Gregory-1999

METRO CONFERENCE CHAMPIONS

1981, 1983, 1984 & 1989

METRO CONFERENCE PLAYER OF THE YEAR

Suzanne Doumar - 1981
Patti Henderson - 1986
Keri Preng - 1989
Buffy Baker - 1991

ACC PLAYER OF THE YEAR

Audra Brannon - 1994

ACC ROOKIE OF THE YEAR

Lori Sowell - 1994

ALL AMERICAN

Audra Brannon - 1993 (doubles)
Laura Randmaa - 1993 (doubles)
Lori Sowell - 1995 (singles) & 1996 (singles)

ALL-ACC

Audra Brannon - 1992-94
Ann Olsson - 1997
Elke Juul - 1995 & 1996
Kia Asberg-1999-00
Alida Gallovits-1999-00
Lori Sowell - 1994-97
Marina Raic-1999

METRO CONFERENCE TOURNAMENT MVP

Patti Henderson - 1986
Keri Preng - 1989
Buffy Baker - 1991

METRO CONFERENCE ALL-TOURNAMENT

Buffy Baker - 1988-91
Keri Preng - 1988 & 1989
Kirsten Turk - 1989
Ann Waggoner - 1990

METRO CONFERENCE FLIGHT CHAMPIONS

Suzanne Doumar - 1981, No. 1 singles & No. 1 doubles
Jaime Kaplan - 1981, No. 1 doubles
Lisa Erghott - 1983, No. 5 singles
Patti Henderson - 1983, No. 2 doubles; 1984, No. 3 singles & No. 1 doubles; 1985, No. 2 singles
Debbie Pollack - 1983, No. 4 singles
Jenny Cerino - 1984, No. 6 singles & No. 2 doubles; 1985, No. 5 singles & No. 3 doubles
Sue Hatch - 1984, No. 2 singles & No. 2 doubles
Lee McGuire - 1984, No. 1 doubles
Buffy Baker - 1989, No. 1 doubles; 1990, No. 1 doubles; 1991, No. 1 singles & No. 1 doubles

Nicki Ivy - 1989, No. 6 singles; 1991, No. 3 doubles
Kirsten Turk - 1989, No. 3 singles
Keri Preng - 1989, No. 1 doubles
Christina Tee - 1991, No. 4 singles & No. 2 doubles
Robin Cifaldi - 1991, No. 2 doubles
Audra Brannon - 1991, No. 2 singles & No. 1 doubles
Ann Waggoner - 1991, No. 3 doubles

ACC FLIGHT CHAMPIONS

Elke Juul - 1993, No. 3 doubles; 1994, No. 1 doubles; 1996, No. 1 doubles
Sandi Ecclestone - 1993, No. 3 doubles
Audra Brannon - 1994, No. 1 singles & No. 1 doubles
Lori Sowell - 1994, No. 2 singles; 1996, No. 1 doubles
Ashley Delaney - 1995, No. 3 doubles
Lori Junker - 1995, No. 3 doubles; 1996, No. 3 doubles
Ann Olsson - 1996, No. 3 singles & No. 2 doubles
Sasha Hanna - 1996, No. 2 doubles
Kylie Thompson - 1996, No. 3 doubles
Ali Weber - 1997, No. 5 singles; 1999, No. 6 singles; 2000, No. 6 singles & No. 3 doubles
Jessica Balbuena - 2000, No. 3 doubles

MISCELLANEOUS HONORS

Buffy Baker - 1988 Roberta Alison Southern Intercollegiate (champion, No. 1 singles); 1989 Roberta Alison Southern Intercollegiate (champion, No. 1 singles); 1989 Women's Intercollegiate Championships (champion, No. 1 singles)
Keri Preng - 1988 Barnett Bank Women's Intercollegiate State Championships (champion, No. 6 singles)
Laura Sarkilahti - 1988 Barnett Bank Women's Intercollegiate State Championships (champion, No. 5 singles)
Audra Brannon - 1993 Arthur Ashe Award Recipient

POST SEASON INVITATIONS

ASSOCIATION OF INTERCOLLEGIATE ATHLETICS FOR WOMEN

Team - 1994, 1996-99 AIAW National Championships, 6th Place

DOUBLES

Jaime Kaplan - 1982; named to the AIAW all-region II team
Suzanne Doumar - 1982

NATIONAL COLLEGIATE ATHLETICS ASSOCIATION

Team - 1994, 1996-00

SINGLES

Jamie Kaplan - 1983
Audra Brannon - 1993 & 1994
Lori Sowell - 1994, 1995 & 1996

Alida Gallovits - 2000

DOUBLES

Jamie Kaplan - 1983
Lee McGuire - 1983
Patti Henderson - 1985
Sue Hatch - 1985
Audra Brannon - 1993, 1994
Laura Randmaa - 1993
Elke Juul - 1994, 1995 & 1996
Lori Sowell - 1995 & 1996





Scott Speicher Tennis Center



With the first stage of construction completed in the Summer of 1993, the Scott Speicher Tennis Center at the Donald Loucks Courts opened its gates to the public for the first time at a Children's Miracle Network charity tournament. Since then, many successful tournaments including the 1996 NCAA Women's Championships, have graced the courts at one of Florida State University's premier athletic facilities.

Costing \$1.2 million to build and then another \$800,000 for recent additions, Florida State's Speicher Tennis Center has become an example of the increasing dedication and commitment the University has to all of its 17 varsity athletic programs.

The Speicher Tennis Center houses 12 lighted hard courts, over 1,000 court level seats, coaching offices, men's and women's locker rooms, equipment and storage rooms, a team lounge and a public address system. The growth and storage rooms, a team lounge and a public address system in 1994, when the

ing pride Florida State has for its tennis program and it's premier tennis center was honored just after it's opening in 1994, when the United States Tennis Association (USTA) awarded the structure with it's "Top Notch" facility award.

The Speicher Tennis Center was named in honor of Lieutenant Commander Michael Scott Speicher, a graduate of Florida State University and the first American casualty during Operation Desert Storm. By Presidential directive, the facility bears the name the "Scott Speicher Tennis Center."

H. Donald Loucks was the program's first tennis coach and is aptly known as the pioneer of Florida State tennis. He began his coaching career in 1936 at the University School of Florida State College for Women where he coached all sports. This was the beginning of an association with Florida State which crossed six decades, 1936 - 1980, ending in his retirement as Professor Emeritus of Physical Education. In 1942, while serving as an officer in the Army, Loucks was stationed at West Point where he coached plebe basketball and tennis teams.

In 1947, Loucks became Florida State's first basketball coach and a year later was named the school's first tennis coach. His tennis team was the first athletic team to have a winning season. The varsity tennis courts were named for him in 1981. He served as Dean of Men from 1957 - 1967 and was known as a servant of leadership, service and devotion to many worthy causes.

The Speicher Tennis Center was designed by EMO/Architects, Inc., a Tallahassee-based architectural firm, in collaboration with Global Consult Group, Inc., an internationally recognized Tennis Facility Design Consultant. The complex was funded by private sources and supervised through the state university system of Florida.

Through its seven year existence, the Scott Speicher Tennis Center at the Donald Loucks Courts has served as the home courts for all Florida State men's and women's home dual matches, the annual Seminole Fall Classics, City of Tallahassee tennis championships, various USTA regional and zonal tournaments, the 1994 and 1995 Men's Intercollegiate tournament and the annual Children's Miracle Network Charity Invitational benefitting Shands Hospital in Gainesville.



ON THE SCOTT SPEICHER TENNIS CENTER

"It's an amazing facility that meets all of our needs." - Christy Travis
"Our tennis center has great facilities. I like our courts very much and know that we are very confident when we play on them." - Alida Gallovits
"Compared to what I've seen until now, the Scott Speicher Center is one of the best facilities." - Marina Raic



Golden Spear Club



WORLD'S #4 RANKED PLAYER PLAYS EXHIBITION AT FSU COURTESY OF THE GOLDEN SPEAR CLUB

The Golden Spear Club helped kick off the 1998-99 season by giving the FSU women's tennis program and the Tallahassee community a special treat in November. Tennis star Amanda Coetzer was brought in to play an exhibition match at the Scott Speicher Tennis Center. Coetzer shared some old memories with fellow South African tennis pro and head FSU coach Lise Gregory. Coetzer earned the nickname "Giant Killer" on the tour and ranked fourth in 1997 scoring three victories over Steffi Graf and one against Martina Hingis.

Although she traveled nearly 100,000 miles on the tour last year, Coetzer came to Tallahassee to take part in an exhibition to benefit the FSU program. The Golden Spear Club organized an outstanding exhibition program which included many of Tallahassee's USTA members, tennis supporters and Seminole fans. She hit a few balls with senior Ali Weber as well as playing a point with several lucky junior players. She posed for photos and signed autographs for nearly two hours after the exhibition.

HOW TO BECOME A GOLDEN SPEAR CLUB MEMBER

Membership: \$25, Juniors (18 and under);
\$50, Adult; \$75, Family (includes up to 2 adults
and 3 children)

Benefits of Club Membership:

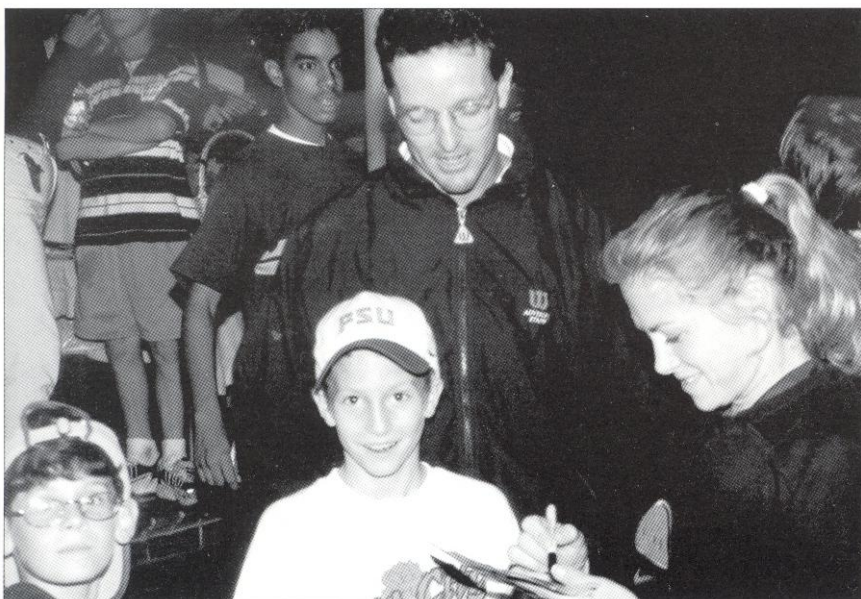
- Seminole Tennis T-shirt (one per membership)
- 2 pro-ams with men's and women's teams and coaches
- Scheduled use of varsity courts
- Quarterly Newsletter
- Post-match recaps via email
- Complimentary parking during matches

For more information call: Brian Burdette, assistant women's tennis coach, at (850) 644-1099 or by fax (850) 644-3451.

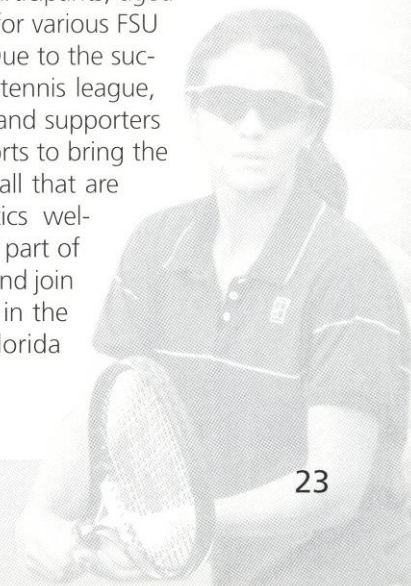
ABOUT THE GOLDEN SPEAR CLUB

The Golden Spear Club is designed to provide "grass roots" support for the men's and women's tennis programs at Florida State University. The objective of the club is to assist the athletic department in promoting FSU tennis in Leon County and throughout Florida and to assist in generating interest and enthusiasm for the program.

Membership in the Golden Spear Club helps support the club's activities and the Florida State University tennis program. Although Golden Spear Club memberships are not accompanied with Booster Club benefits, you can take pride in the fact that FSU tennis will remain nationally competitive because of the support. As the 200-01 season gets underway, membership in the club has reached over 130 Seminole supporters.



Through the Golden Spear's commitment to FSU tennis, a junior team tennis league kicked off in the fall of 1999. With over 30 participants in the inaugural year of the league, players from both the FSU men's and women's teams volunteered to coach the six junior league teams. On three Sundays this past fall, participants, aged seven to 14, competed for various FSU prizes and giveaways. Due to the success of the junior team tennis league, Golden Spear founders and supporters have increased their efforts to bring the excitement of tennis to all that are interested. FSU Athletics welcomes you to become a part of the Golden Spear Club and join other tennis enthusiasts in the fun of supporting Florida State tennis. Go Noles!





All-Time Information

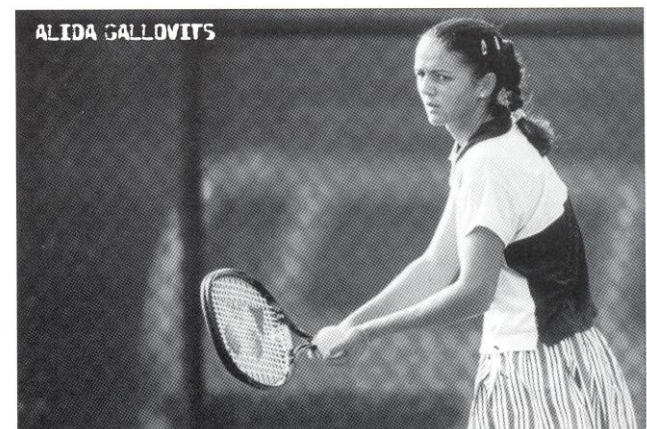
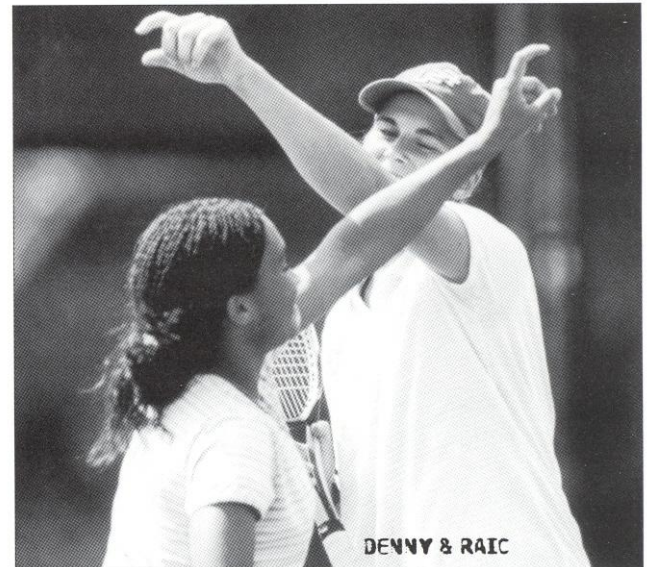
All-Time Dual-Match Season Roster (1978-Current)

Leslee Abisch, 1978
 Kia Asberg, 1997-00
 Elizabeth "Buffy" Baker, 1988-91
Jessica Balbuena, 1999-00
 Kirsten Balser, 1988-90
 Mary Beck, 1978
 Gigi Boesch, 1981
 Audra Brannon, 1990-94
 Bresha Byrd, 1993
Natalie Carratalá, 1998-00
 Jenny Cerino, 1983-86
 Robin Cifaldi, 1991-92
 Beth Clay, 1981-83
 Cheryl Cordes, 1981
 Beth Corn, 1987
 Ashley Delaney, 1994-97
 Debbie Deluccia, 1978
 Suzanne Doumar, 1983
Nanette Duxin, 1998-00
 Sandi Ecclestone, 1993-94
 Lisa Ehrgott, 1981-84
 Darlene Finnegan, 1985
Alida Gallovits, 1999-00
 Laura Jo Garcia, 1978
 Kristen Getz, 1981
 Jenny Graf, 1992-94
 Yvonne Gsteiger, 1978
 Claudia Gaughf, 1983-86
 Jenny Green, 1986
 Amy Hanby, 1992-93
 Sasha Hanna, 1995-98
 Dee Ann Hansel, 1981
 Jean Harrington, 1978
 Sue Hatch, 1984-87
 Patti Henderson, 1983-86
 Elizabeth Hinson, 1978
 Jennifer Hyde, 1991-94
 Leslie Ivy, 1991-92
 Nicki Ivy, 1989-90

Chris Joyce, 1986-89
 Lori Junker, 1994-97
 Elke Juul, 1992-96
 Jaime Kaplan, 1983
 Helena Karlson, 1998
 Darlene Kennedy, 1984
 Claudette Laliberte, 1978
 Sharon MacPhee, 1990
 Lee McGuire, 1983-84
 Dana Medalie, 1983-84
 Melissa Miller, 1978
 Laurie Mueller, 1981
 Susan Mueller, 1981-84
 Penne Nieporte, 1981
 Shana Nozick, 1989-90
 Josephine O'Gorman, 1987
 Ann Olsson, 1995-97
 Sharon Ondrula, 1978
 Rakina Payne, 1995, 1997-98
 Anna Polihrom, 1978
 Debbie Pollack, 1983-84
 Keri Preng, 1987-90
 Tanya Racoobian, 1988
Marina Raic, 1999-00
 Diane Ramsey, 1978
 Laura Randmaa, 1993-94
 Laura Ribovich, 1986
 Valerie Rive, 1986
 Laura Sarkilahti, 1989-91
 Sherry Shores, 1978
 Tracey Smith, 1987-89
 Lori Sowell, 1993-97
 Christina Tee, 1990-92
 Kim Temples, 1985-87
 Kylie Thompson, 1995-99
 Mary Thym, 1993-95
Christy Travis, 1998-00
 Kirsten Turk, 1987-89
 Jill Urban, 1987-89
 Ann Waggoner, 1990-91
 Ali Weber 1997-00
 Lori Webster, 1990
 Paula Whitebrook, 1983-86
 Mary Ellen Wilkinson, 1978
 Mary Wood, 1986-87

FSU'S TOP 10 ALL-TIME WINNINEST SEASONS

1.	Marina Raic	31-9	.775	1998-99
2.	Kia Asberg	30-8	.789	1998-99
3.	Buffy Baker	28-7	.750	1987-88
4.	Buffy Baker	27-9	.750	1988-89
	Jessica Balbuena	27-12	.692	1998-99
6.	Ali Weber	26-13	.667	1996-97
	Ali Weber	26-16	.619	1998-99
8.	Lori Sowell	25-15	.625	1994-95
9.	Nanette Duxin	23-15	.605	1998-99
10.	Lisa Ehrgott	21-5	.807	1982-83
	Audra Brannon	21-6	.778	1990-91
	Jamie Kaplan	21-7	.750	1982-83
	Patti Henderson	21-9	.700	1985-86
	Ali Weber	21-16	.568	1997-98



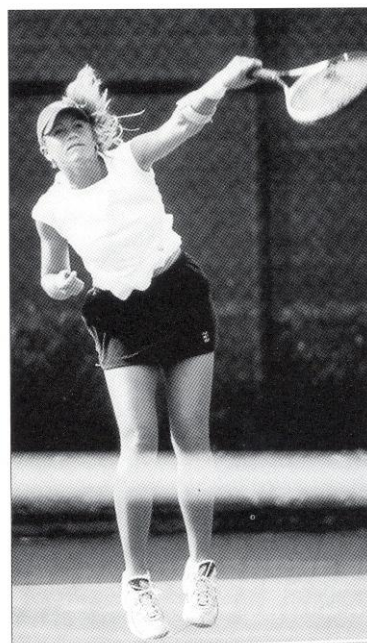
All-Time Records



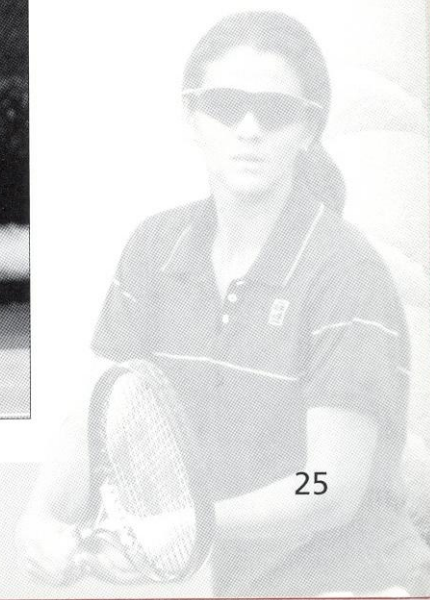
WOMEN'S TENNIS ALL-TIME RECORDS VS. OPPONENTS 1981-2000

OPPONENT	W	L	FIRST	LAST
Alabama	6	1	1983	1992
Alabama-Birmingham	1	0	1988	1988
Arizona	0	3	1990	1994
Auburn	12	1	1982	1999
Baylor	4	2	1986	1999
California	0	1	1997	1997
Cal-Irvine	0	1	1987	1987
Cal-Santa Barbara	0	2	1987	1993
Clemson	7	9	1982	1999
College of Charleston	1	0	1983	1983
Columbia	1	0	1987	1987
Duke	1	13	1983	1999
Flagler	2	2	1988	1992
Florida	0	23	1982	1999
Florida A&M	3	0	1982	1988
Florida International	10	0	1989	1999
Florida Junior College	5	0	1983	1987
Furman	2	0	1987	1988
Georgia	5	6	1982	1996
Georgia Southern	5	0	1995	1999
Georgia State	3	0	1983	1999
Georgia Tech	12	2	1985	1999
Harvard	1	0	1982	1982
Houston	4	6	1984	1999
Illinois	4	1	1992	1999
Indiana	0	3	1982	1988
Iowa	3	1	1982	1999
Jacksonville	5	0	1989	1999
Kansas	1	0	1999	1999
Kansas State	1	0	1989	1989
Kentucky	0	1	1994	1994
Lamar	1	0	1989	1989
Louisiana State	3	3	1982	1991
Louisiana Tech	2	0	1983	1990
Louisville	3	0	1982	1988
Lynn (Boca Raton)	1	0	1990	1990
Maryland	7	1	1993	1999
Memphis State	2	0	1985	1987
Miami, FL	2	11	1982	1999
Miami, OH	1	1	1984	1987
Michigan	4	0	1990	1993
Mississippi	2	6	1982	1996
Mississippi State	4	3	1984	1994
Mississippi Univ. for Women	1	0	1982	1982
New Mexico	3	0	1984	1990
North Carolina	12	7	1982	1999
North Carolina State	9	1	1992	1999
North Florida	5	1	1985	1990
Northeast Louisiana	6	0	1983	1991
Northwestern	0	5	1983	1992
Northwest Louisiana	1	0	1982	1982
North Texas State	1	0	1982	1982
Notre Dame	0	1	1996	1996
Ohio State	2	0	1982	1983
Oklahoma	1	0	1993	1993

OPPONENT	W	L	FIRST	LAST
Oklahoma State	1	2	1982	1984
Princeton	1	0	1982	1982
Purdue	3	0	1982	1987
Rice	5	5	1983	1999
Rollins	12	6	1982	1993
San Diego	0	1	1995	1995
Santa Fe	1	0	1990	1990
South Alabama	8	5	1982	1999
South Carolina	1	12	1982	1996
Southern Methodist	3	2	1982	1992
South Florida	17	10	1982	1999
Southwestern Louisiana	3	0	1982	1993
Southwest Missouri	1	0	1986	1986
Southern Miss	2	0	1999	1999
Stetson	3	0	1983	1988
Tennessee	3	3	1983	1995
Tennessee-Chattanooga	1	0	1984	1984
Texas	0	2	1982	1994
Texas A&M	2	0	1994	1995
Texas Christian	1	4	1982	1991
Trinity	1	0	1991	1991
Tulane	7	1	1982	1999
U.S. International	0	1	1990	1990
Utah	1	0	2000	2000
Vanderbilt	2	7	1983	1999
Virginia	12	1	1992	1999
Virginia Tech	5	1	1985	1998
Wake Forest	4	14	1985	1999
Wichita State	1	0	1985	1985
William & Mary	1	0	1987	1987
Wisconsin	1	4	1986	1992
Yale	0	1	1989	1989



CHRISTY TRAVIS





Support Services

Academic, personal and professional support are essential to college success. At the Florida State University, we have developed an outstanding support program which enables student-athletes to reach their full potential. Our philosophy is "to offer an academic support program integrated with the total university that will assist all student-athletes with the transition into college and provide continued support in all phases of academic and professional development culminating with graduation, job placement or graduate school."

To accomplish this goal we have developed an academic environment which facilitates the academic success of student-athletes. Student success is encouraged through competent academic counseling, career exploration, planning and placement and academic assistance through tutorial programs.

Our program operates on a "proactive" rather than "reactive" approach. At Florida State, our academic staff does not wait for academic crises to occur. We gather important background information and build an academic profile on all student-athletes to assess their needs in advance. We also stay informed on the daily progress of each student-athlete.

The academic support services are located in the state-of-the-art University Center and are on the sixth floor of the \$126 million facility. It includes private study desks, a tutorial study area and a computer lab outfitted with 16 new IBM computers and laser printers. In addition, athletic sky boxes are utilized for group and individual tutorial instruction.

FSU offers 16 Schools and Colleges with 99 undergraduate degrees and 75 post-baccalaureate degrees.

TENNIS FACTS

The 1999-2000 FSU Women's Tennis Team was ranked in the Top 25 all season, and finished at No. 22 in the country

They also won their fourth consecutive Golden Torch Award



ATHLETIC ACADEMIC SUPPORT STAFF



MARK MELONEY
Director, Athletic Academic Support Programs

Mark Meloney became Florida State's Director of Athletic Support Programs in 1997 and brings 13 years of advising experience to the position. Over the past six years, meloney has played an integral role in development of a comprehensive program of student athlete support, which in 1996 won the "Program of Excellence" award from Athletic Management Magazine.

A native of Iowa, Meloney began his college education at Buena Vista College, where he earned varsity letters in football and baseball. Upon transferring to Florida State, he earned Bachelor's degree's in Management and Finance in 1986 and received a Masters in Athletic Administration from FSU in 1997. He is currently pursuing his Ph.D. in Athletic Administration.

Meloney oversees an academic staff comprised of five academic counselors, and administrative assistant, several graduate assistants, individualized learning specialists and a cadre of about 70 tutors and mentors.

Meloney and his wife Sarah are the parents of a six year old daughter, Montana Shea.

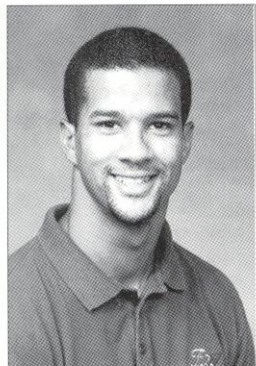


Strength and Conditioning



STRENGTH/CONDITIONING

The Strong Shall Survive is the motto of the strength and conditioning staff at Florida State. It is also this philosophy that has made Seminole athletes in all sports among the strongest, fastest and fittest anywhere. At Florida State, the strong not only survive, they win too!



STERLING BROWN
Strength Training Coach

At Florida State, a supervised program has been developed for tennis, emphasizing the objectives of not only building bodies, but strengthening and conditioning them. Sterling Brown is in his fifth year on the Florida State strength and conditioning staff and first as the Head Women's Strength and Conditioning Coach. He oversees the strength and conditioning for FSU's women's teams and works specifically with the Seminole tennis and women's tennis programs. Brown individually customizes programs for each of the athletes beginning with pre-conditioning before the season gets underway. FSU takes pride in customizing the programs to help student-athletes reach their maximum potential.

A former athlete himself, Brown was a four-year letterwinner in football at the University of Richmond. As a starting wide receiver, Brown set numerous reception records for the Spiders. Brown, a native of Fort Lee, N.J., is married to the former Myssi Calkins. The couple have a daughter, Jaden, who is one.

WEIGHT ROOM

The Tully Gymnasium weight room took on a whole new look following a complete renovation in 1996 and additional improvements have been made to the facility every year since. The weight room went from 1,500 square feet to 3,500 square feet in size in 1996, fresh with a new stereo system, drop ceiling, lighting and mondo rubber flooring. Over \$140,000 worth of new exercise equipment was added to the Lady Seminole weight room, including 16 cardiovascular pieces such as Life Fitness, Stairmaster and Textrix. The facility was expanded to 4,500 square feet this past summer with a new squat rack and platform.



Tully Weight Room

MEDICAL CARE AND TREATMENT

An athlete can expect to receive the best care and treatment possible from the athletic training staff at Florida State University. Prior to competition, all FSU student-athletes undergo screening in order to detect any potential injuries. If a problem is detected, the athlete may be placed on a prevention care system which may include any kind of treatment from icing to exercising.

Langley is a 1996 graduate of Valdosta State University where she earned a Bachelor's degree with honors in sports medicine. She joined the Florida State staff in July of 1998 after working the past two years as a graduate assistant athletic trainer at Michigan State University while pursuing a master's degree in Kinesiology.

At MSU, Langley's primary responsibility was serving as the head women's gymnastics athletic trainer. In addition to coordinating all phases of health care for the MSU gymnasts, some of Langley's other responsibilities included assisting with preseason football and student-athlete drug testing and coordinating mass physicals for 14 of MSU's athletic teams.



KARI LANGLEY
Athletic Trainer

In addition to her women's tennis athletic training duties, Langley also supervises the athletic training of women's basketball and coordinates annual drug testing of all FSU female athletes.

A native of Akron, Ohio, Langley is a certified member of the National Athletic Trainers Association and is also a certified Red Cross CPR/First Aid Instructor.

Though the prevention of injuries is the main objective, some injuries are unavoidable. Rehabilitation is another component of the Florida State training room. The FSU athletic training staff will work with the athlete and provide an intense rehabilitation schedule that will allow the athlete to successfully rehabilitate after an injury. Some injuries and illnesses may be referred to the Seminole team physicians at the Tallahassee Orthopedic Center, who, for many years, have worked in conjunction with the FSU athletic training staff in successfully rehabilitating athletes after an injury.





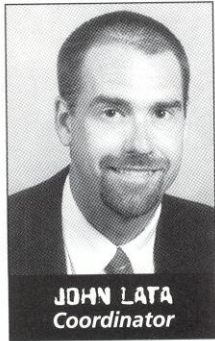
Life Skills and Student Development

THE N.O.L.E.S. PROGRAM

NEW OPPORTUNITIES FOR LEADERSHIP EDUCATION AND SERVICE



Developed by the Florida State University Department of Athletics, the NOLES program represents a commitment to the total growth and development of the student-athlete. This program establishes an administrative commitment to academic and athletic excellence. Those efforts will be supported with programs and services in personal development, career development and community service.



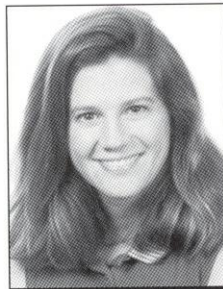
JOHN LATA
Coordinator

PERSONAL DEVELOPMENT

Fostering the development of personal growth is a fundamental component of the NOLES program. These support programs ensure that the student-athlete will be provided opportunities to focus on personal growth issues such as values clarification, goal setting, fiscal planning, decision making and personal responsibility. Programming focuses on helping student-athletes develop a healthy lifestyle while they are at Florida State and habits that will benefit them for life.

CAREER DEVELOPMENT

Preparing for life after college sports is a major focus of the NOLES Career Development program. The program is designed to work cooperatively with the University's Career Services to acquaint students with the job search process, provide networking opportunities and ultimately assist with job placement. This program places a priority on the development of the total person, with the goal of developing individuals who will have rewarding careers and productive lifestyles after they leave Florida State.



AMY MAGNUSON
Sports Nutritionist

COMMUNITY SERVICE

Serving the community is the focus of our Seminole Spirit program. Student-athletes are challenged to give service to our community and individuals who are in need. With a clearly defined program of service, student-athletes are given the opportunity to develop the foundation for a lifelong commitment to volunteerism. The Seminole Spirit Student-Athlete Speakers' Bureau enables student-athletes to improve their speaking skills, develop effective communication and impact the lives of others through their service as role models in our community.

LEADERSHIP DEVELOPMENT

The Florida State University Department of Athletics is committed to developing programs of excellence that foster leadership development. The foundation of the leadership development program are the Seminole Leadership Institutes that are held four times a year. These Institutes offer student-athletes the opportunity to learn skills that will benefit them as students, as athletes, and as they pursue their goals after leaving Florida State. The Institutes are based on building communication skills. Students have the opportunity to use the values and work ethic taught by athletic participation as the framework for their leadership development. The Institutes attract outstanding guest speakers who challenge Seminole student-athletes to achieve their greatest potential and use their leadership skills to positively influence others.

The Student-Athlete Advisory Council (SAAC) serves as the advisory board to the NOLES program and the athletics administration. The prestigious board comprised of two representatives of each athletic team at FSU, also recommends programming and serves as a liaison between student-athletes and the athletics administration. The Advisory Council plans and implements various events for student-athletes and serves as the department's most visible ambassadors. The SAAC hosts the annual Golden Nole banquet and plans such events as orientation for incoming student-athletes and the back-to-school picnic.



Associate Athletics Director For Student Services Pam Overton was presented with the first annual Dr. Gene Hooks Award for the outstanding CHAMPS program coordinator as chosen by the Division I-A Athletics Directors.



NCAA Compliance



The following information is provided by the Florida State Office of Compliance for prospective student athletes. It is intended as a guideline to introduce some of the rules governing NCAA athletic involvement.

WHO IS PERMITTED TO RECRUIT FOR FSU?

Only Florida State University coaches who have successfully completed the NCAA Recruiting Rules Examination on an annual basis may be involved in the recruitment process. Representatives of our athletics interests may not make any recruiting contacts. This includes letters, telephone calls or face-to-face contact on or off campus with a prospect or the prospect's parents.

KEY TERMS YOU SHOULD KNOW

You become a prospective student-athlete if you have started classes for the ninth grade. Before the ninth grade, you become a prospective student-athlete if the college provides you (or your relatives or friends) any financial aid or other benefits that the college does not provide to prospective students generally.

A contact is any face-to-face encounter between a prospect or the prospect's legal guardian and an institutional staff member or athletic representative during which any dialogue occurs in excess of an exchange of greeting. NOTE: At the Division I level, athletic representatives (boosters) may not contact you for the purpose of recruiting. A college coach may contact you in person off the college campus beginning July 1 after completion of your junior year in high school.



ROBERT MINNIX
Assoc. AD for
Compliance
and Legal Affairs

An evaluation is any off-campus activity designed to access your academic qualifications or athletic ability, including any visit to your high school (during which no contact occurs) or the observation of any practice or competition in which you participate.

During your senior year, you can have one expense-paid official visit to a particular campus. You may receive no more than five visits. During your official visit, which may not exceed 48 hours, you may receive round-trip transportation between your home and the campus, and you (and your parents) may receive meals, lodging and complimentary admission to campus athletics events.

PHONE CALLS AND LETTERS

Phone calls from faculty members and coaches (but not boosters) are permitted beginning July 1 after completion of your junior year. A college coach or faculty member is limited to one telephone call per week except when it is:

- During the five days immediately before your official visit to the university
- On the day of a coach's off-campus contact with you
- During the time beginning with the initial National Letter of Intent signing date in your sport through the two days after signing date

Letters from coaches and faculty members (but not boosters) are not permitted until September 1 at the beginning of your junior year in high

school. A Division I university may provide you with the following printed materials:

- General correspondence, including letters, U.S. Postal Service postcards and institutional note cards
- Game programs which may not include posters and one Student Athlete Handbook can be provided only during official or unofficial visits to the university's campus
- NCAA educational information
- Pre-enrollment information subsequent to signing a National Letter of Intent with the university
- One athletic publication which may include only one color of printing inside the covers
- Official academic, admissions and student services publications published or videotapes produced by the institution and available to all students
- Schedule cards
- Questionnaires which may be provided prior to your junior year
- Summer camp brochures which may be provided prior to your junior year.

ALUMNI AND BOOSTERS DO'S AND DON'TS

You may forward information about prospective student-athletes to the appropriate coaches.

You may have contact with a prospect regarding permissible pre-enrollment activities such as summer employment, provided the prospect has already signed a National Letter of Intent and the Compliance Office is aware that you are making these contacts in regard to employment.

You may have a telephone conversation with a prospect only if the prospect initiates the call. Such a call may not be prearranged by an institutional staff member and you are not permitted to have a recruiting conversation, but may exhibit normal civility. You must refer any questions about our athletics programs to an athletics department staff member/coach.

You may view a prospect's contest at your own initiative provided you do not contact the prospect or his/her parents. In addition, you may not contact a prospect's coach, principal, or counselor in an attempt to evaluate the prospect.

You may continue established family relationships with friends and neighbors. Contacts with sons and daughters of these families are permitted as long as they are not made for recruiting purposes or encouraged by Florida State University coaches.

You may not become involved in making arrangements to receive money or financial aid of any kind for a prospect or the prospect's family and friends.

You may not make contact with a prospective student-athlete and his/her parents when the prospect is on campus for an official or unofficial recruiting visit.

You may not transport, pay or arrange for payment of transportation costs for a prospect, and his/her relatives or friends to visit campus (or elsewhere).

You may not pay or arrange for payment of summer camp registration fees for a prospect.

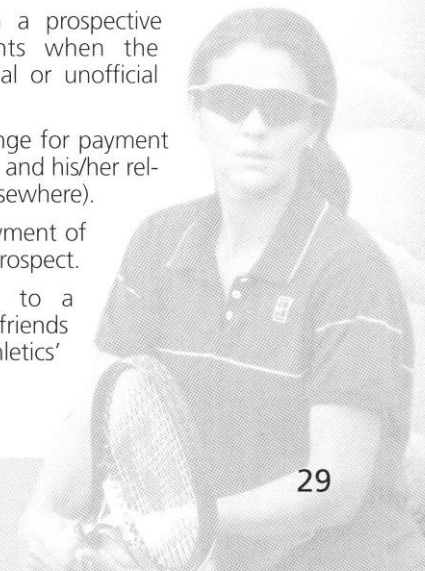
You may not provide anything to a prospect, the prospect's family or friends without prior approval from the athletics' Compliance Office.



PENNIE PARKER
Director of
Compliance



BRIAN BATTLE
Assistant Director
of Compliance





Year-by-Year Records

YEAR	COACH	ASST. COACH	W-L	PCT	CONF. (FINISH)	POST-SEASON (SEED)	RANKING
1980	Anne Rizza	None	21-11	.656	Metro (2nd)	None	Unranked
1981	Anne Rizza	None	24-15	.615	Metro (1st)	None	#18
1982	Anne Rizza	None	23-18	.561	Metro (2nd)	AIAW Chmps. (6th)	Unranked
1983	Anne Rizza	None	18-8	.692	Metro (1st)	None	Unranked
1984	Anne Rizza	None	15-13	.608	Metro (1st)	None	Unranked
1985	Anne Rizza	None	13-14	.481	Metro (2nd)	None	Unranked
1986	Anne Rizza	None	17-10	.630	Metro (2nd)	None	Unranked
1987	Anne Rizza	Patti Henderson	11-16	.407	Metro (2nd)	None	Unranked
1988	Patti Henderson	Kim Philo	14-12	.538	Metro (2nd)	None	Unranked
1989	Patti Henderson	Kim Philo	13-7	.650	Metro (1st)	None	Unranked
1990	Patti Henderson	Shannon Krieger	13-9	.591	Metro (2nd)	None	Unranked
1991	Patti Henderson	Lori Webster	13-10	.565	Metro (1st)	None	Unranked
1992	Alice Reen	Buffy Baker	13-10	.565	ACC (3rd)	None	Unranked
1993	Alice Reen	Jenny Mainz	13-9	.591	ACC (3rd)	None	ARV
1994	Alice Reen	Jenny Mainz	15-10	.600	ACC (2nd)	NCAA Chmps. (19th)	#22
1995	Alice Reen	Jenny Mainz	11-10	.524	ACC (3rd)	None	#31
1996	Alice Reen	Michelle McMillen	8-11	.420	ACC (4th)	NCAA Regionals (8th)	#35
1997	Lise Gregory	Tim Bauer	12-11	.521	ACC (3rd)	NCAA Regionals (8th)	#37
1998	Lise Gregory	Tim Bauer	12-12	.500	ACC (8th)	NCAA Regionals (8th)	#49
1999	Lise Gregory	Tim Bauer	21-7	.750	ACC (3rd)	NCAA Regionals (2nd)	#23
2000	Lise Gregory	Dave Balogh	17-9	.654	ACC (5th)	NCAA Regionals (2nd)	#22

FSU WOMEN'S COACHING HISTORY



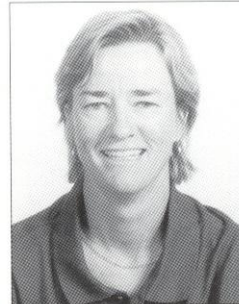
ANNE RIZZA
1980-86 (86-62)



ALICE REEN
1992-96 (60-50)



PATTI HENDERSON
1987-91 (68-61)



LISE GREGORY
1996-00 (45-30)

TENNIS FACTS

Coach Gregory maintains the highest winning percentage in FSU Women's Tennis history.

1999-2000 was the team's fifth consecutive trip to the NCAA Tournament and FSU's first ever win.

NCAA Tournament History



1983

SINGLES CHAMPIONSHIP

Round 64

Tracy Blumentritt (Rice) d. Jaime Kaplan (FSU) 3-6, 6-3, 6-0

DOUBLES CHAMPIONSHIP

Round 32

Jamie Kaplan - Lee McGuire (FSU) d. Margaret Redfern - Joy Tacon (Houston) 7-6, 7-5, 6-4

Round 16

#1 Louise Allen - Gretchen Rush (Trinity) d. Jamie Kaplan - Lee McGuire (FSU) 6-1, 6-0

1985

DOUBLES CHAMPIONSHIP

Round 32

Kiki Rozwadowski - Lori MacGill (S. Florida) d. Sue Hatch - Patti Henderson (FSU) 6-2, 6-3

1993

SINGLES CHAMPIONSHIP

Round 64

Suzi Italiano (Southern Cal) d. Audra Brannon (FSU) 6-4, 7-6

DOUBLES CHAMPIONSHIP

Round 32

Audra Brannon - Laura Randmaa (FSU) d. Danielle Paradine - Jody Yin (Indiana) 6-3, 6-1

Round 16

Audra Brannon - Laura Randmaa (FSU) d. Melissa Mazzotta - Maria Pilar Valls (Miami) 7-6 (6), 4-6, 6-1

Round 8

#3 Laxmi Poruri - Heather Willens (Stanford) d. Audra Brannon - Laura Randmaa (FSU) 7-6 (2) 6-3

1994

TEAM CHAMPIONSHIP

Round 20

#16 Arizona d. #19 FSU 5-3

SINGLES CHAMPIONSHIP

Round 64

Marie-Laure Bougnol (Ole Miss) d. #9-16 Audra Brannon (FSU) 6-4, 6-4
Maggie Simkova (Southern Cal) d. Lori Sowell (FSU) 1-6, 6-0, 6-4

DOUBLES CHAMPIONSHIP

Round 32

Nicole Elliott - Vera Vitels (California) d. Audra Brannon - Elke Juul (FSU) 7-5, 6-2

1995

SINGLES CHAMPIONSHIP

Round 64

Lori Sowell (FSU) d. #8 Katie Schlukebir (Stanford) 6-4, 6-1

Round 32

Lori Sowell (FSU) d. Melissa Zimpfer (Tennessee) 7-5, 6-4

Round 16

Lori Sowell (FSU) d. #14 Joelle Schad (Arizona State) 6-0, 3-3, ret.

Round 8

#2 Keri Phebus (UCLA) d. Lori Sowell (FSU) 6-0, 6-2

1996

NCAA SOUTH REGIONAL

South Carolina 5, Florida State 2

SINGLES CHAMPIONSHIP

Round 64

Lori Sowell (FSU) d. #9-16 Farley Taylor (Texas) 7-5, 7-6

Round 32

Lori Sowell (FSU) def. Stephanie Sammaritano (Arizona) 6-4, 7-5

Round 16

#6 Ania Bleszynski (Stanford) d. Lori Sowell (FSU) 7-5, 6-3

DOUBLES CHAMPIONSHIP

Round 32

#4 Paige Yaroshuk - Keri Phebus (UCLA) d. Lori Sowell - Elke Juul (FSU) 6-1, 6-1

1997

NCAA SOUTHEAST REGIONAL

Vanderbilt 5, Florida State 1

1998

NCAA SOUTHEAST REGIONAL

Vanderbilt 6, Florida State 0

1999

NCAA MIDWEST REGIONAL

Iowa 5, Florida State 4

2000

NCAA SOUTH REGIONAL

Florida State 5, Illinois 3

Florida 5, Florida State 0

SINGLES CHAMPIONSHIP

Round 64

Bea Bielak (Wake Forest) d. Alida Gallovits (FSU)





Top Academics

UNDERGRADUATE ACADEMIC DEGREES OFFERED AT FLORIDA STATE UNIVERSITY

Academic Honors

FSU'S GOLDEN TORCH AWARD (HIGHEST GPA)

1985, 1986, 1987, 1988, 1989,
1997, 1998, 1999

Nicki Ivy, 1991
Ashley Delaney, 1994

METRO CONFERENCE

COMMISSIONER'S LIST

Claudia Gaughf - 1985

Sue Hatch - 1985, 1986

Kirsten Turk - 1986, 1987,
1988-89

Chris Joyce - 1986, 1987 & 1988

Jill Urban - 1986 & 1987

Keri Preng - 1989

Kirsten Balser - 1989 & 1990

Lori Webster - 1990

Shana Nozick - 1990

Christina Tee - 1990

ACC ACADEMIC HONOR ROLL

Buffy Baker - 1992

Ashley Delaney - 1994-97

Sandi Ecclestone - 1994

Amy Hanby - 1992-93

Nicki Ivy - 1992

Lori Junker - 1995-97

Laura Randmaa - 1994

Lori Sowell - 1994 & 1996-97

Chrissie Tee - 1992

Elke Juul - 1996

Kylie Thompson - 1996-99

Sasha Hanna - 1997, 98

Ann Olsson - 1997

Ali Weber - 1997-00

Rakina Payne - 1997, 98

Kia Asberg - 1998-00

Natalie Carratalá - 1998-99

Helena Kaavlon - 1998

Christy Travis - 1998-99

Marina Raic - 1999

Alida Gallovits - 1999

Nanette Duxin - 1999-00

Jessica Balbuena - 1999

Area and Ethnic Studies

American Studies

Asian Studies

Asian Studies

Russian & East European Studies

Slavic & East European Studies

Latin-American & Caribbean Studies

Latin-Am. & Carib. Stds./Business

Mass Communications

Mass Communication

Media Performance

Media Communication

Media Production

Advertising

Interpersonal Communication

Communication Studies

Communication for Business

General Communication

Mass Communication

Speech Communication

Comm. Theory & Research

Public Relations

Communication/Art

Communication/Science

Computer and Information Services

Computer and Information Sciences

Computer Science

Education

Education

Mental Retardation

Visual Disabilities

Emotional Disturbances/Learning

Learning Disabilities

Elementary Education

Early Childhood Science Education

Art Education

English Education

Multilingual/Multicultural Education

Health Education

Family & Consumer Sciences Education

Mathematics Education

Music Education

Physical Education

Sports Management

Sports Administration

Reading Education

Social Studies Education

Social Science Secondary Science and/or Teaching

Math Teaching

Engineering

Civil Engineering

Electrical Engineering

Mechanical Engineering

Industrial Engineering

Chemical Engineering

Environmental Engineering

Bioengineering

Materials Engineering

Foreign Languages

Russian

Russian/Business

German

German/Business

German and Russian

German and Spanish

German and Italian

Greek

French

French/Business

French and Russian

French and Spanish

French and German

French and Italian

Italian

Italian/Business

Italian and Russian

Italian and Spanish

Latin

Spanish

Spanish/Business

Classics

Classical Civilizations

Classics & Religion

Classical Archaeology

Greek & Latin

Audiology & Speech Path.

Music Therapy

Health Professions and Related Sciences

Rehabilitation Services

Nursing

Home Economics/Human Sciences

Human Sciences

Dietetics

Nutrition & Fitness

Home Economics/Human Sciences

Food & Nutrition

Food & Nutrition Science

Family, Child, & Consumer Science

Consumer Economics

Child Development

Housing

Clothing, Textiles & Merch

Apparel Design & Technology

Merchandising

Textiles

Letters

English

English Linguistics

English Literature

Creative Writing

English/Business

Liberal/ General Studies

Humanities

Women's Studies

Life Sciences

Biological Sciences

Medical Science

Biochemistry

Mathematics

Mathematics

Applied Mathematics

Actuarial Mathematics

Statistics

Parks, Recreation, Leisure and Fitness

Leisure Services & Studies

Philosophy, Religion and Theology

Philosophy

Religion

Religion & Classics

Physical Sciences

Physics - Biology

Physics - Biology-Premed.

Physics - Health Physics

Physics - Biophysics

Physics - Management

Physics - Environ'l Sci.

Physics - Oceanography

Physics - Geology

Physics - Education

Physics - Music Technology

Physics - Philosophy

Physics - Computer Science

Physics - Government

Meteorology

Analytical Chemistry

Biochemistry

Inorganic Chemistry

Nuclear Chemistry

Organic Chemistry

Physical Chemistry

Environmental Chemistry

Chemical Science

Geology

Psychology

Psychology

General Experimental Psych

Clinical Psychology

Protective Services

Criminology

Public Administration

Social Work

Social Sciences

Social Science

Anthropology

Economics

Applied Economics

Geography

History

International Affairs

Political Science

Sociology

Visual and Performing Arts

Dance

Craft Design

Interior Design

Theatre

Acting

Design/Technology

Musical Theatre - Theatre

Motion Pic, TV & Recording Arts

Studio Art

History & Criticism of Art

Music - Liberal Arts

Music History & Literature

Music Performance

Musical Theatre

Music Composition

Music Theory

Business and Management

Business Administration

Entrepreneurship & Small Business Management

Management

Operations Management

Human Resource Mgmt

Accounting

Finance

Risk Management-Insurance

Hospitality Admn.

Multinational Business Operations

Management Info. Systems

Marketing

Real Estate

OFF THE COURT AND IN THE CLASSROOM

Head Coach Lise Gregory came to Florida State with a vision of making the Lady Seminole program one of the best in the nation. After four years and five straight trips to the NCAA Tournament, the Lady Seminoles are poised to solidify their 22nd ranking when the dual match season gets underway in January.

However, quite possibly an impressive component of the Lady Seminole women's tennis program is not what they do on the court, but in the classroom.

In the fall, as the team trains and participates in tournaments, the focus is on getting a good start on the academic year. In each of Gregory's first four years at FSU, the women's tennis team has won the Golden Torch Award, an award given to the team with the highest GPA among FSU's athletic teams. The commitment to academic excellence has been a goal of Gregory's since she was an All-American at the University of Miami.

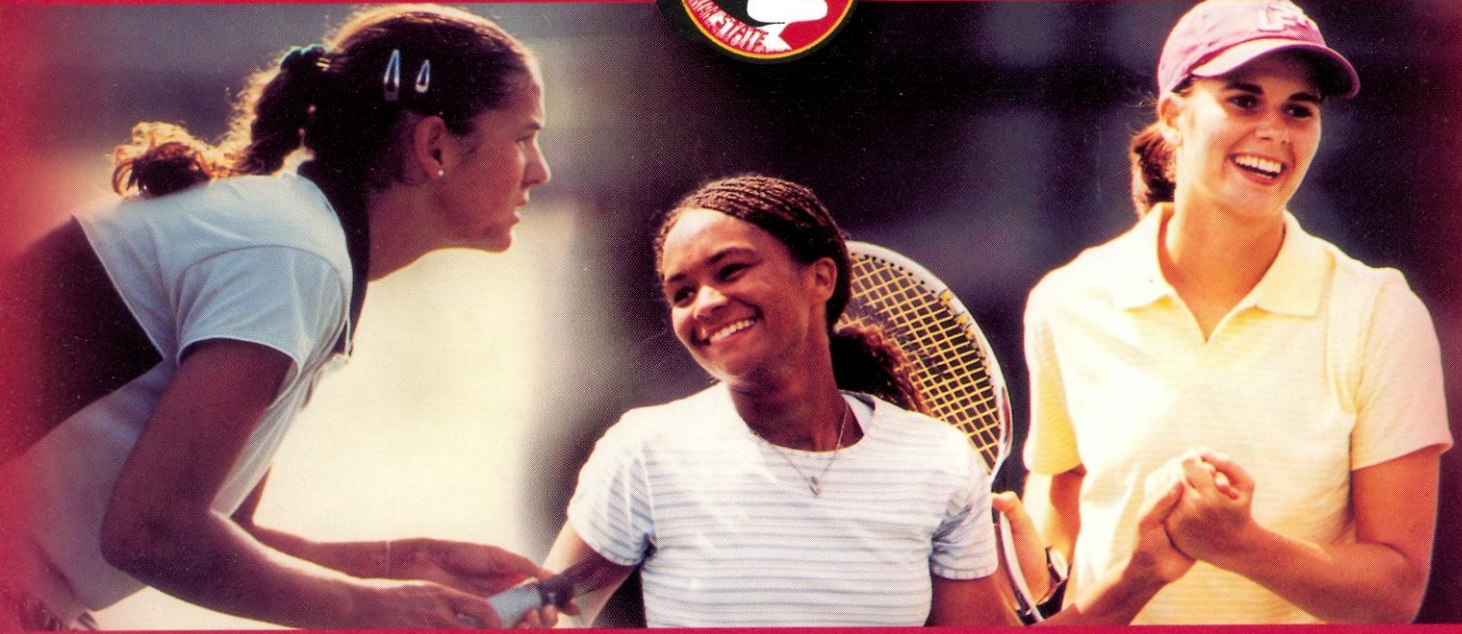
Gregory's goal of providing her players with a well-balanced experience as an FSU student-athlete seems to be coming to fruition as she enters her fifth year. Under Gregory's leadership, FSU has claimed 28 spots on the ACC Academic Honor Roll, including six members of the 1999-00 team. Three members of the women's tennis team were named All-American Academics with a 4.0 GPA, as three members were named ITA Scholar Athlete All-American. With a team GPA of 3.75, and six of nine players returning from a team that won the third most matches in school history in 1998, the sky's the limit for the Lady Seminoles, both on and off the court.



2000



2001



FLORIDA STATE UNIVERSITY WOMEN'S TENNIS





Florida State University

TENNIS

2000-2001

September	29-Oct. 1	Lady Seminole Classic	ALL DAY
October	20-22	@Georgia Tech Invitational	ALL DAY
	27-29	@Hurricane Classic (Miami, FL)	ALL DAY
November	3-7	@Regionals (Mobile, AL)	ALL DAY
January	27	Georgia Southern	Noon
	28	Bethune-Cookman College	Noon
February	4	Alabama	11:00 A.M.
	9	Florida	4:00 P.M.
	11	@LSU	TBA
	12	@Tulane	3:30 P.M.
	15-18	TEAM INDOORS	TBA
	24	@University of Miami	Noon
	25	@Florida Atlantic University	11:00 A.M.
28	@University of South Florida	2:00 P.M.	
March	6	Michigan State	2:30 P.M.
	8	Marquette	2:30 P.M.
	11	@Pepperdine (Malibu, CA)	1:00 P.M.
	12	@Loyola Marymount University (CA)	1:30 P.M.
	13	@San Deigo State Univeristy	2:00 P.M.
	18	University of Virginia	10:00 A.M.
	19	Maryland	2:30 P.M.
	24	North Carolina State	11:00 A.M.
	25	Wake Forest	11:00 A.M.
	31	@University of North Carolina	1:00 P.M.
April	1	@Duke University	11:00 A.M.
	7	@Georgia Tech	Noon
	8	@Clemson	Noon
	19-22	@ACC (Orlando, FL)	ALL DAY