



**Junior**



**Freshmen**



**Sophomores**





## TABLE OF CONTENTS

### TEAM INFORMATION

Quick Facts _____	3
2006-07 Outlook _____	4
2006-07 Roster _____	6
Seminole on the Road _____	7

### COACHING STAFF

Head Coach Jennifer Hyde _____	10
Assistant Coach Oliver Foreman _____	12

### ATHLETES

Tapiwa Marobela _____	14
Carolin Walter _____	16
Ania Rynarzewska _____	18
Lauren Macfarlane _____	20
Jessica Wentz _____	22
Katie Rybakova _____	24
Federica Suess _____	25

### SEMINOLE SUPPORT

Support Staff/Seminole Productions _____	26
Scott Speicher Tennis Center _____	27

### 2006-07 SEASON REVIEW

2006-07 Recap _____	28
2006-07 Season in Pictures _____	30

### UNIVERSITY INFORMATION

Booster Support _____	32
Premier Program _____	33
This Is Florida State _____	36
University Facts _____	38
Prominent Alumni _____	39

Athletic Administration _____	40
Academic Services _____	41
Student Services & Personal Development _____	42
NCAA Compliance _____	43
This Is Tallahassee _____	44
This Is The ACC _____	48

### SEMINOLE HISTORY

Hall of Fame _____	50
Honors and Awards _____	52
FSU Coaching History _____	54
All-Time Dual Match History _____	57
Seminole Tennis Records _____	55
All-Time Records _____	58
All-Time Results _____	59

### MEDIA INFORMATION

Media Information _____	64
Media Outlets _____	65
Seminole on the Web _____	66
Radio/TV Chart _____	67



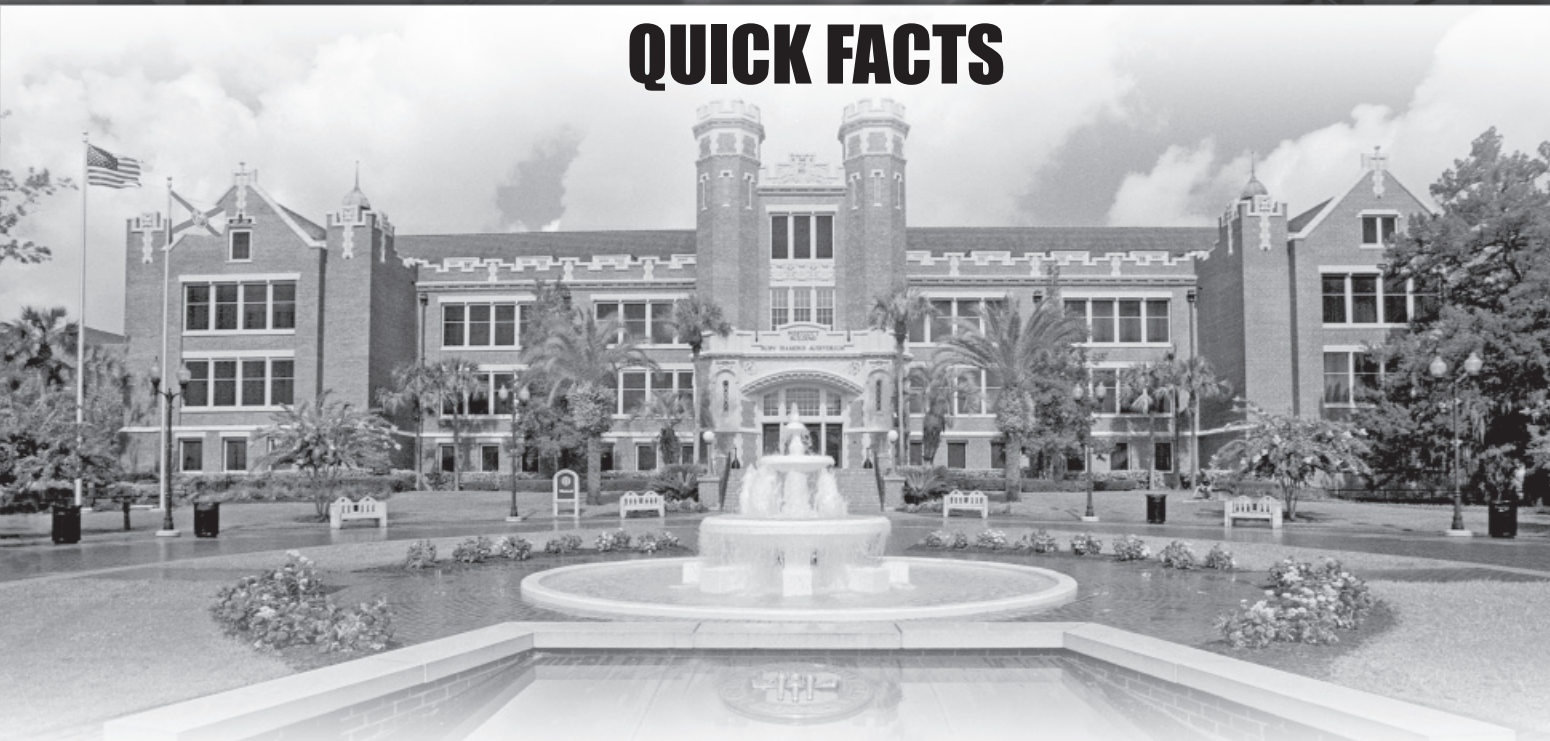
### MEDIA GUIDE CREDITS



The 2007-08 Seminole Tennis media guide is a publication of the Florida State University Sports Information Office. Cover and layout design by Grant Hawkins Design, Dallas, Texas. Edited and written by Shannon O'Neil. Writing and research assistance by Brett Brecheisen, Carl Cohn, Peter Noonan, Sarah Hunsford Melissa Wheeler, Tyler Kirchbaum and Justin Casserly. Editorial assistance by Tina Dechausay and Michael Smoose. Photography by Ross Obley, Ryals Lee, Jr., Bill Lax, Brandon Goodman, Mike Olivella and the University Photo Lab. Cover photography by Ryals Lee, Jr. Printing by FSU Printing Services. The Florida State University offers equal opportunity in its employment and educational activities in compliance with Title IX, Section 5-4 of the Rehabilitation Act of 1973 and other civil rights laws. This document is available upon request in alternate formats for individuals with print-related disabilities. Contact the ADA office, 301 Westcott Administration Building, for more information



# QUICK FACTS



## UNIVERSITY INFORMATION

Location \_\_\_\_\_ Tallahassee, Fla  
 Symbol \_\_\_\_\_ Seminoles  
 Colors \_\_\_\_\_ Garnet and Gold  
 Enrollment \_\_\_\_\_ 38,553  
 President \_\_\_\_\_ Dr. T.K. Wetherell  
 Athletic Director \_\_\_\_\_ Dave Hart, Jr.  
 Senior AD (women's tennis) \_\_\_\_\_ Brian Battle  
 Conference \_\_\_\_\_ Atlantic Coast  
 Affiliation \_\_\_\_\_ NCAA Division I

## 2007 SEASON IN REVIEW

2006 Record \_\_\_\_\_ 16-8  
 2006 ACC Record/Finish \_\_\_\_\_ 8-5/T-5th  
 Final ITA Ranking \_\_\_\_\_ 19th  
 Letterwinners R/L \_\_\_\_\_ 5/2  
 Newcomers \_\_\_\_\_ 2

## SID INFORMATION

Sports Information Director \_\_\_\_\_ Tina Dechausay  
 Women's Tennis SID \_\_\_\_\_ Shannon O'Neil  
 Phone Number \_\_\_\_\_ 850.644.5653  
 Fax Number \_\_\_\_\_ 850.644.7630  
 Cell Number \_\_\_\_\_ 904.377.2643  
 Email Address \_\_\_\_\_ slo03c@fsu.edu  
 Mailing Address \_\_\_\_\_ Florida State University  
 403 Stadium Drive  
 Tallahassee, FL 32306  
 Athletic Website \_\_\_\_\_ www.seminoles.com  
 Conference Website \_\_\_\_\_ www.theacc.com

## WOMEN'S TENNIS INFORMATION

Head Coach \_\_\_\_\_ Jennifer Hyde (FSU '95)  
 Record at FSU/Years \_\_\_\_\_ 36-30/3  
 Career Record/Years \_\_\_\_\_ 91-89/8  
 Assistant Coach \_\_\_\_\_ Oliver Foreman (MTS '02)  
 Office Phone \_\_\_\_\_ 850.644.5946  
 Office Fax \_\_\_\_\_ 850.644.7630  
 Home Facility \_\_\_\_\_ Scott Speicher Tennis Center

## FLORIDA STATE ADMINISTRATION



**Dr. T.K. Wetherell**  
FSU President



**Dave Hart, Jr.**  
Athletics Director



**Brian Battle**  
Associate AD



## 2007-08 OUTLOOK

Thanks to last year's standout performances, the bar is set higher than ever for the 2007-08 Florida State women's tennis squad. But with 2007 ITA South Region Coach of the Year **Jennifer Hyde** and assistant coach **Oliver Foreman** behind them, this year's Seminole line-up is more than ready to rise to the occasion and take on the challenge.

"This will be the team that can help us get to the next level," said Hyde. "I think this is a team that just loves to compete. When game day rolls around, there's not one of them who's not ready to go mentally. I'm very excited to build on the great year that we had in 2007 and continue to keep a narrow vision of our goals to win an ACC and eventual NCAA Championship."

### THE SCHEDULE

"Once again this year we have a very strong schedule," said Hyde. "We're going to be tested a lot during the earlier part of the spring, which will better prepare us for the challenging ACC schedule, and also for post-season play."

The Seminoles will swing into the spring with a program-first trip to Honolulu for the Hawaii Invitational in January. Of its first eleven matches upon returning from the Aloha State, FSU will be host to ten at the Scott Speicher Tennis Center.

Home opponents will include fellow Floridian teams UCF, Florida A&M, Stetson, Jacksonville and Miami. In addition to ACC rivals Georgia Tech, Clemson and UNC, Florida State will also host Duke in its last home match of the regular season. Last year, the Seminoles defeated the Blue Devils in Durham, notching their first win over the top-ranked team since 1983. Except for a first-time venture to Las Vegas, most of the Seminoles' road games will take place in ACC territory, including stops in Blacksburg, Boston, College Park and Charlottesville.



*Tapiwa Marobela*

Following the regular season, the Seminoles will travel to Orlando for the ACC Championships (April 17-20) before making a repeat appearance at the NCAA Regionals in May.

### THE VETERANS

Florida State returns five veterans to this year's squad including seniors **Carolyn Walter** (Bingen, Germany) and **Tapiwa Marobela** (Gaborone, Botswana). Since transferring to FSU in 2005, Walter has posted a 27-13 singles record and an astounding 30-9 doubles mark. Marobela enters the new year on the heels of her most successful season to date, having recorded a 23-12 mark in singles and 19-6 in doubles. Together, the seniors pose a dominant doubles threat, having lost just one match while paired together last season. They also kicked off the 2007 fall season by sweeping the doubles competition at the Roberta Alison Invitational.

"Carolyn will continue to be someone that we can rely on to be a consistent performer during competition," said Hyde. "With Tapiwa, her work ethic is second to none. I'm expecting her to play a lead role on the team this year."

This will be a team that  
can help us get to  
the next level.

- Coach Jennifer Hyde



*Carolyn Walter*

www.seminoles.com



When game day rolls around,  
there's not one of them who's  
not ready to go mentally.

- Coach Jennifer Hyde

Junior **Ania Rynarzewska** (Inowroclaw, Poland) spent most of last season recovering from surgery, but still managed to attain the No. 52 spot in the national rankings and post an 8-1 record on the Seminoles' home court.

"Ania has the ability to just plain out-grind people," said Hyde. "She has a lot of wins simply because she decides to stay on the court longer than her opponents."

Sophomores **Lauren Macfarlane** (Ogden, Utah) and **Jessica Wente** (Whitehouse, Texas) will look to build on successful freshman seasons this year as they move into more upperclassmen roles. Macfarlane starts the 2007-08 season for the Seminoles at No. 41, her highest ranking to date. That ranking comes as a result of a stellar freshman season where Macfarlane posted a 28-8 singles record for an .807 win percentage—the third highest in FSU history. She also tied for fourth place in all-time single-season dual match wins with 21. Wente also had a stellar freshman season as she ended the year on a five-match win streak and a 26-11 record in both singles and doubles.

"I'm looking for Lauren to build on her freshman success and continue to improve and grow her in confidence and aggression on the court," said Hyde. "I think Jessica will continue to blossom like she did last year and now I think she's going to contribute with an upperclassman mentality. Her leadership abilities are becoming more and more visible."

## THE NEWCOMERS

Florida State welcomes freshmen **Katie Rybakova** (Coral Springs, Fla.) and **Federica Suess** (Ludwigshafen, Germany), two talented new additions to this year's roster. Rybakova kicked off the fall season with a complete singles and doubles sweep at the Georgia Tech Invitational, immediately establishing herself as one of the Seminoles' top players. Suess also got off to a powerful start at Florida State, winning her singles flight at the Roberta Alison.



*Lauren Macfarlane*

"I'm very excited about the new freshmen class," said Hyde. "Fedi brings a work ethic to this program and a commitment to this program that's very unique, she's a workhorse. And Katie comes in very solid technically. She knows how to play the game very well."

Though the bar may be raised higher than ever for this year's squad, if any team can make it happen, it's this one. With an all-star cast of returning veterans and freshman standouts and a dynamic duo of experienced coaches, this Florida State squad will ensure that next year's bar is even higher.



www.Seminoles.com



# 2007-08 ROSTER



**Back row:** Asst. Coach Oliver Foreman, Trainer Kellie Cox, Lauren Macfarlane, Jessica Wentte, and Federica Suess  
**Front row:** Tapiwa Marobela, Carolin Walter, Katie Rybakova, Ania Rynarzewska, and Head Coach Jennifer Hyde

<b>NAME</b>	<b>HT</b>	<b>CL</b>	<b>HOMETOWN</b>	<b>LAST SCHOOL</b>
Macfarlane, Lauren	5-8	SO	Ogden, Utah	Weber High School
Marobela, Tapiwa	5-7	SR	Gaborone, Botswana	Clapham High School
Rybakova, Katie	5-7	FR	Coral Springs, Fla.	Broward Virtual Education High
Rynarzewska, Ania	5-7	JR	Inowroclaw, Poland	Warsaw School Complex/Polish Embassy, Berlin
Suess, Federica	5-8	FR	Ludwigshafen, Germany	Kurpfalz-Gymnasium Mannheim
Walter, Carolin	5-6	SR	Bingen, Germany	Baylor University
Wentte, Jessica	5-8	SO	Whitehouse, Texas	Whitehouse High School

## COACHING STAFF

Jennifer Hyde - Head Coach, 4th season

Oliver Foreman - Assistant Coach, 3rd season



# SEMINOLES ON THE ROAD



In 2007-08 Florida State will compete in 12 different states throughout the year, including a trip to Hawaii in mid-January and a trip to Las Vegas, Nevada in mid-March. The following is a list of states the Seminoles will compete in this season:

**Florida**  
**Georgia**  
**Alabama**  
**California**  
**Hawaii**  
**Nevada**  
**North Carolina**  
**Massachusetts**  
**Virginia**  
**Maryland**  
**Ohio**  
**Wisconsin**

## ROAD TRIP WITH THE 'NOLES

### FALL

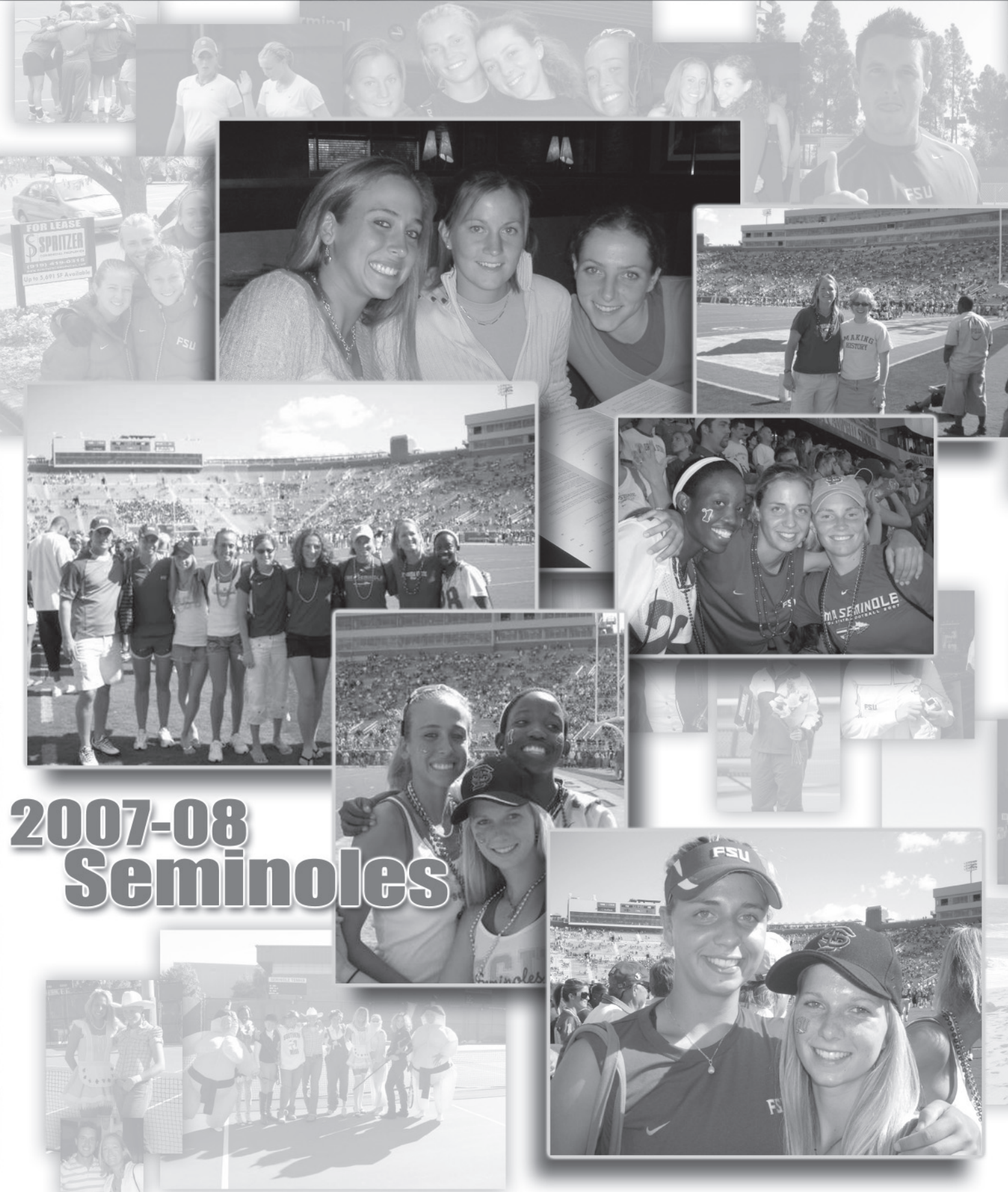
Sept. 21-23	at Georgia Tech Fall Invite	Atlanta, Ga.
Sept. 28-30	at Roberta Alison Invitational	Tuscaloosa, Ala.
Sept. 29-Oct. 7	at Riviera All American	Malibu, Calif.
Oct. 20-23	at Regionals	Athens, Ga.
Nov. 2-4	at ITA Individual Indoor National Championships	Columbus, Ohio
Nov. 2-4	FSU Invitational	Tallahassee, Fla.

### SPRING

Jan. 15-21	at Hawaii Invitational	Honolulu, Hawaii
Jan. 26	Jacksonville	Tallahassee, Fla.
Feb. 1	Rice	Tallahassee, Fla.
Feb. 3	Illinois/Stetson	Tallahassee, Fla.
Feb. 7-10	at ITA Team Indoor National Championships	Madison, Wis.
Feb. 9	UCF/FAMU	Tallahassee, Fla.
Feb. 16	South Alabama	Tallahassee, Fla.
Feb. 20	at Florida	Gainesville, Fla.
Feb. 24	LSU	Tallahassee, Fla.
Feb. 29	Miami	Tallahassee, Fla.
March 2	Florida International	Tallahassee, Fla.
March 7	Georgia Tech	Tallahassee, Fla.
March 9	Clemson	Tallahassee, Fla.
March 12	at UNLV	Las Vegas, Nev.
March 21	at Virginia Tech	Blacksburg, Va.
March 23	at Virginia	Charlottesville, Va.
March 28	North Carolina	Tallahassee, Fla.
March 30	Duke	Tallahassee, Fla.
April 4	at Boston College	Boston, Mass.
April 6	at Maryland	College Park, Md.
April 11	at Wake Forest	Winston-Salem, N.C.
April 13	at NC State	Raleigh, N.C.
April 17-20	ACC Championships	Orlando, Fla.
May 9-11	NCAA Regionals	TBA
May 16-19	NCAA Sweet 16	Tulsa, Okla.
May 22-27	NCAA Individual Championships	Tulsa, Okla.



# Florida State 2007-08 WOMEN'S TENNIS



www.seminoles.com

## 2007-08 Seminoles





# Florida State

2007-08 WOMEN'S TENNIS



www.seminoles.com





## Jennifer Hyde

**Head Coach  
Fourth Season  
Alpharetta, Georgia  
Florida State, '95**



Head coach Jennifer Hyde, the 2007 ITA South Region Coach of the Year, enters her fourth season with Florida State University on the heels of her best coaching performance to date. Hyde led FSU to its highest ranking in program history (13th), an NCAA tournament berth, eight top-60 wins and a 16-8 season record in just her third year with the Garnet and Gold. Such high accomplishments in such a short period of time illustrate only the beginning of what Hyde has in store for the Seminoles. With the 2007-08 season on the horizon, Hyde looks to continue her alma mater's upward track toward greatness, ultimately hoping to cement the women's tennis team as one of the best athletic programs at Florida State.

Hyde first arrived in Tallahassee as a student-athlete in 1990. The Alpharetta, Ga., native enjoyed an impressive career with the Seminoles—establishing herself as a four-year letter winner, NCAA Tournament participant (1994) and ACC flight champion in doubles alongside teammate Jenny Graf. Ironically, Hyde would captain the 1994 Seminole squad whose No. 17 ranking would stand as Florida State's highest ranking until her 2007 squad climbed four spots higher.

After graduating from FSU in 1995, Hyde began her coaching career as an assistant for the Seminoles prior to heading north to the University of Iowa in 1995. Hyde spent two years in the midwest before returning to the south with assistant coaching stints at the University of Alabama (1997-98) and the University of North Carolina (1998-99).

It was with the Tar Heels that Hyde would begin to establish herself as one of the best young coaches in the sport. With her assistance, UNC enjoyed one of its best seasons in program history, moving from outside all the national polls to a top-25 ranking and the school's first NCAA tournament berth. Hyde also made strides off the court in the recruitment realm, identifying and signing two, top-five prospects for the Tar Heels.



www.seminoles.com



# 2007 ITA South Region Coach of the Year

The University of Houston recognized her unquestionable skill and presence within the sport and handed Hyde her first head coaching position in 1999. Hyde spent five increasingly successful years with the Cougars, building on her previous accomplishments with a third-place finish in the Conference USA as well as the program's most dual-match wins since 1997.

Hyde came full-circle upon her return to Tallahassee in July 2004, becoming just the fifth women's tennis head coach in Seminole history. In her first year, Hyde coached Florida State into the top 30 and capped the regular season with an NCAA Tournament appearance. Hyde continued to build the program in 2005-06, notching victories over two nationally ranked teams and coaching freshman Ania Rynarzewska to a spot on the All-ACC team.

Things built to an all-time high for Hyde and the Seminoles in 2006-07. In addition to the NCAA berth, ITA South Region Coach of the Year and No. 13 rank, Hyde also coached the Seminoles to a 5th-place ACC finish, 9-1 home record and eight, top-60 victories, including the team's first win over Duke since 1983. Hyde also helped put two more Seminoles, Lauren Macfarlane and Nicola Slater, on the All-ACC team in 2007.

Off the court, Hyde has continued the team's success in the classroom. With her guidance, the team secured the Golden Torch Award, given to the Florida State team with the highest GPA, for its ninth year in a row. In addition, three Seminoles have landed spots on the All-ACC Academic team, All-ACC Honor Roll and ITA Scholar Athletes list in Hyde's three years as head coach.

At the end of the day, whether it's across the net or behind the desk, Jennifer Hyde has continued to use her skills and experience both from her student-athlete days in Tallahassee and her coaching days around the country to make Florida State into one of the best women's tennis programs in the nation. She continues to personify the Seminoles' trademark Unconquered spirit, driving her players and her program to new highs each season.



## in their own words

*"Jennifer Hyde is a person with a generous and hard-working character. I am proud to say she is my coach. Because of her belief in her team and her players, we are able to achieve so much more."*

– Katie Rybakova

*"I have been with Jen since my freshman year and by now I can comfortably say that she believes at the end of the day, having 'heart' is what will get our team through the tough matches and achieve our team goals."*

– Tapiwa Marobela

*"Being at FSU is a great experience and without Jen, this experience wouldn't be possible. By bringing me here she made my dreams come true. Now, she helps me to achieve my other goals: those athletic ones as well as those in academic spheres. She is a person of a great heart. I know I can always count on her."*

– Ania Rynarzewska

*"I think Jen is a very good head coach because she leads us in the right direction, she knows what is best for us, and she is an expert on how to make everyone want to stay out on the court until we win!"*

– Jessica Wentz

*"Jen and Oliver are both good coaches because they can clearly draw the line between what we do on and off the court. On the court they make us work hard while off the court we can all have fun with them."*

– Federica Suess

*"I think that Jen and Oliver are both the best coaches you can have as a college tennis player. They treat each player with respect, care for everybody on the team and are always open for you. If you need them, they are there twenty-four hours a day."*

– Carolin Walter



www.Seminoles.com



## Oliver Foreman

**Assistant Coach  
Third Season  
East Sussex, United Kingdom  
Middle Tennessee State, '02**



Former professional tennis player Oliver Foreman enters his third season as an assistant coach at Florida State, boasting a list of personal and coaching accolades that have helped him lead the Seminoles to success on and off the court. Foreman, a British native, has played an instrumental role in guiding the Florida State women's tennis program to a new pinnacle of achievement, especially in the 2006-07 season.

A member of the Professional Tennis Tour from 2002-04, Foreman won the 2002 Irish National Open in both the doubles and singles competitions. He also made it to the final pre-qualifying round for Wimbledon in 1998 and 2000.

Prior to his professional career, Foreman competed at Middle Tennessee State where he was named to the Ohio Valley All-Conference team (1998, 99) and the Sunbelt All-Conference Team (2001, 02). He also made it as high as the number-five spot in the national doubles rankings during his collegiate career. Among the highlights of his college accomplishments was a win in the consolation of the 2001 National Indoor Championships, regarded as the fifth leg of the college slams.

Foreman's second and most recent season with the Seminoles ended with a No. 17 ranking, an NCAA Tournament berth, a fifth-place ACC finish and 16-8 season record. With his assistance, Florida State broke a school record, reaching as high as 13th place in the national rankings during the season. The team also posted a 9-1 record at home and succeeded in beating Duke for the first time since 1983 en route to an 8-5 ACC record.





Foreman's career at MTSU culminated his senior year in 2002 as he broke into the top-100 collegiate singles rankings, the top-five collegiate doubles rankings and reached the quarterfinals of the ITA All-American Championships. Foreman also qualified for the NCAA Tournament three years in a row (2000-02).

Off the court, Foreman made a powerful impact at MTSU as well, serving on the Student Athlete Advisory Council (2001-02) and notching a spot on the Dean's List twice (2001-02).

His academic success has been a valuable asset for Florida State, as Foreman's guidance has contributed in the women's tennis team securing the Golden Torch Award, given to the Florida State team with the highest GPA, for its ninth consecutive year. Academically, the team has also landed spots on the All-ACC Academic team, All-ACC Honor Roll and ITA Scholar Athletes list in Foreman's two years with the program.

Wherever the Florida State women's tennis team may go in the future, be it on the court or off, it is certain that assistant coach Oliver Foreman will continue to be one of the key figures pushing the program to new heights.



## in their own words

*"Oliver is both a great coach and a great friend. He will help you out both on the court and off of it. I am so happy for the opportunity to work with him."*

– Katie Rybakova

*"I think Oliver is a hard worker and believes in hard work that needs to be put in, in order to achieve one's desired goals."*

– Tapiwa Marobela

*"My first year at FSU was also Oliver's first year. Together with the team we went through ups of victory and downs of failure. Every time I was down, he helped me to get up again to become a better player and better person. As a coach, he is very motivating and inspiring. He makes me work hard even on my weak days. Oliver is also a great friend who is there to support us off the court."*

– Ania Rynarzewska

*"Jen and Oliver are awesome! They not only care about our tennis game, but they care about our school work, and our lives outside of tennis."*

– Lauren Macfarlane

*"I think Oliver is a great weapon for our women's tennis team because he can go out on the court and work us to death to make us better as tennis players. He knows what he has to do as an assistant coach and he's doing a great job."*

– Jessica Wente

*"Oliver is a very good coach because he actually hits with us, which really helps us to find the rhythm of the game."*

– Federica Suess



www.Seminoles.com



## Tapiwa Marobela

Senior • 5-7  
Gaborone, Botswana  
Clapham High School  
(Pretoria, South Africa)



**Junior Year (2006-07): Singles:** Went 13-10 with two four-match win streaks...primarily played in the Seminoles' five-spot...took every singles win in two sets except for two in the Florida State Spring Invitational...**Doubles:** Defeated San Diego State's Krausove/Mielsen 8-3 in the NCAA tournament...boasted a combined record of 19-6 for the spring and fall seasons with various partners... lost just one match while paired with Carolin Walter for the first part of the season...finished the spring partnered with Lauren Macfarlane for a 5-3 record including a win over San Diego State in the first round of the NCAA tournament.

**Sophomore Year (2005-06): Singles:** Had an overall singles record of 8-13 with three ACC wins against Maryland, Georgia Tech and Virginia...earned six of her eight wins in two sets...**Doubles:** Finished with a 6-15 record in doubles action...had four partners during the season.

**Freshman Year (2004-05): Singles:** Played in 21 of 22 matches for FSU...only rookie to see considerable playing time on the court...started the majority of her contests at number five spot in singles... had a season-best, four-match win streak beginning on March 18 against Maryland...**Doubles:** Notched 13 victories playing primarily with junior captain Miranda Foley...went 10-2 to end the season at number three doubles.

**High School and Other Accomplishments:** Solid player with experience on the junior women's tennis circuit...was a member of the Botswana Federal Cup Team...won two International Tennis Federation junior circuit singles titles...won three doubles titles as a player on the ITF junior circuit...named Botswana's Sports Woman of the Year during her junior season at Clapham High School.

**Personal:** Born on April 30, 1987... daughter of Masego and Chillisoma Marobela... has a younger sister named Shathani... majoring in sport management... attended the same high school as former Seminole Roxanne Clarke...was coached in high school by Dermot Sweeney...nickname is "Taps"...name is pronounced Ta-PEE-Wa Ma-RAW-bee-Ila.



Her work ethic is  
second to none

- Coach Jennifer Hyde



# a little more on tapiwa



**Why did you decide to come to FSU?** I decided to come to Florida State because of the beautiful campus and wonderful people I met on my recruiting trip. I found the whole FSU athlete experience so surreal and definitely became excited about the prospect of attending FSU.

**List your three favorite things about Florida State:**

- 1) The FSU athletics family
- 2) The pride that people have about FSU
- 3) The campus and Doak Campbell Stadium

**What's been your best experience at FSU so far?** Last year, our spring season was amazing; playing in front of the tennis fans at FSU.

**Where is your favorite place to go on campus?** The team lounge at the tennis courts; I take a nap there and just chill out in between classes and practice.

**What's the best thing about being a Seminole?** The family atmosphere!

**What's your favorite time of year in Tallahassee?** Fall—football season; especially when we play Miami and Florida!

**What professional tennis players do you look up to?** Venus Williams

**Which of the four Grand Slam events (French Open, US Open, Australian Open, or Wimbledon) would you rather play in?** Australian Open

**If you could play against any professional tennis player of the past or present, who would it be?** Steffi Graf

**What are some of your pre-match rituals? Is there a specific food you eat, music you listen to, etc.?** I listen to songs in my iPod that I can sing along to, which helps me relax a little bit the night before.

**What are you looking forward to the most this season?** Making more history! Especially aiming to break the top 10 rankings; which an FSU women's tennis team has never done.

**What person inspires you the most, both on and off the court and why?** On court—Venus Williams (she's just really graceful), off court—my mother (my advisor)

**Which reality show would you rather audition for: Survivor, Fear Factor, So You Think You Can Dance, or American Idol? Do you think you would win?** Survivor—yes I would destroy them!

## hyde's eyes

*"I have great expectations for Tapiwa coming into her senior year. She's learned a lot about the philosophy of tennis. She knows what's expected and so far her work ethic is second to none. I'm expecting her to play a lead role on the team this year. I'm really excited for her as she goes into her final season at FSU."*



www.Seminoles.com



## career statistics

### SINGLES

	1	2	3	4	5	6	Dual	Fall	Overall
04-05	-	-	1-0	0-5	6-9	-	7-14	6-3	13-17
05-06	3-2	2-4	1-1	0-5	2-1	-	8-13	-	8-13
06-07	-	-	1-0	-	4-7	5-3	9-10	10-2	23-12
<b>Career</b>	<b>3-2</b>	<b>2-4</b>	<b>3-1</b>	<b>0-10</b>	<b>12-17</b>	<b>5-3</b>	<b>24-37</b>	<b>16-5</b>	<b>44-42</b>

### DOUBLES

	1	2	3	Dual	Overall
04-05	0-0	0-0	13-8	13-8	13-8
05-06	2-3	1-3	3-9	6-15	6-15
06-07	-	6-3	3-1	9-4	19-6
<b>Career</b>	<b>2-3</b>	<b>7-6</b>	<b>19-18</b>	<b>28-27</b>	<b>38-29</b>



## Carolin Walter

Senior • 5-6  
Bingen, Germany  
Baylor University



**Junior Year (2006-07): Singles:** Posted a 25-13 record for the fall and spring seasons... defeated No. 107 Ashley Joelson of UCLA in three sets in the second round of the NCAA Tournament...ended the season on a six-match win streak...lost only three times at home...**Doubles:** Recorded a combined mark of 26-9 with multiple partners...spent most of the spring season paired with senior Nicola Slater finishing with a record of 14-5 and a No. 16 rating... the pair reached as high as No. 14 in the national rankings... defeated Duke's No.5 pairing in the nation with Slater...Dominated ranked opponents with Slater defeating six of nine in spring play...

**Junior Year [Medical Redshirt] (2005-06):** One of three new transfers on the Florida State women's tennis team...enrolled at FSU in January of 2006 after a standout career at Baylor...entered the Seminole program ranked No. 18 in the nation...took a medical red shirt for most of the season after suffering a torn tendon in her foot.

**Sophomore Year [At Baylor] (2004-05): Singles:** One of two ranked players in singles for the Lady Bears... finished the season ranked No. 50 in the nation ...selected to compete in the NCAA Singles Tournament, advancing to the round of 32 before falling to eventual runner-up Audra Cohen of Northwestern (6-1, 7-5) ...won all three singles matches in the Big 12 Tournament and two in the first three rounds of the NCAA Championships...had a 10-match win streak

snapped in the NCAA Tournament...posted a 6-2 fall record and was the only Bear to earn an invite to the ITA All-American...went 2-1 against ranked opponents.

**Freshman Year (2003-04 at Baylor): Singles:** Only ranked player for the Bears at No.48... named Big 12 Player of the Week for matches played from March 30 - April 5...only Baylor player to compete in the Lady Bears' No. 1 spot despite being a freshman...went 14-9 for the spring season...won five of 12 matches versus ranked opponents...went 25-11 for the season in singles...finished 14-9 in dual match play and 7-4 in Big 12 action... **Doubles:** Was 15-13 for the year in doubles with four different partners...went 10-5 with primary partner Daria Potapova, finishing 7-4 in Big 12 matches.

**High School and Other Accomplishments:** Attended Hildegardis Gymnasium in Bingen, Germany...ranked No. 80 in German women's standings...attained an ITF World Junior ranking of No. 395 in 2000.

**Personal:** Born Feb. 22, 1984, in Bingen, Germany... daughter of Eckhard and Sabine Walter...majoring in multinational business...loves to compete in all kinds of sports... also enjoys playing the piano.

we definitely look to carolin  
for a consistent performance

- Coach Jennifer Hyde



www.Seminoles.com





# a little more on carolin



**Why did you decide to come to FSU?** I really liked the coaches, the team and the school has a great campus with good facilities.

**List your three favorite things about Florida State:**

- 1) My team & coaches
- 2) The facilities
- 3) The weather

**What's been your best experience at FSU so far?** Being more than welcomed as a transfer.

**What are your goals while you're at Florida State?** To graduate and win an ACC Championship.

**What's the best thing about being a Seminole?** Team and school spirit

**List your three favorite things about Tallahassee:**

- 1) The close location to the beach
- 2) FSU
- 3) The weather

**What's your favorite time of year in Tallahassee?** Spring

**What professional tennis players do you look up to?** Benedikt Dorsch, my fiancé!

**Which of the four Grand Slam events (French Open, US Open, Australian Open, or Wimbledon) would you rather play in?** Australian Open

**If you could play against any professional tennis player of the past or present, who would it be?** Steffi Graf

**What are some of your pre-match rituals? Is there a specific food you eat, music you listen to, etc.?** Before I go on the court I always put a new grip on my racquet.

**What has been your best match at FSU so far and why?** I clinched the match last year against Duke. I played three sets and throughout the third set all my teammates were standing on the sideline supporting me. It was a great feeling to win for them—it was overall a good ranked win for the team.

**What are you looking forward to the most this season?** Try to be even more successful with the team and creating a good first year for the freshmen to show them what college tennis is like and how fun it is to play on such a team.

## hyde's eyes

*"Carolin is one of the most experienced players we have on the team, having played on a very high collegiate level since she came to the states. This year she's also going to add depth to the team. We definitely look to Carolin for a consistent performance—and she's done that since she's been here. We're going to continue to look to her for that as she finishes her career here at Florida State."*



www.Seminoles.com



## career statistics

### SINGLES

	1	2	3	4	5	6	Dual	Fall	Overall
05-06	1-0	-	-	-	-	1-0	2-0	-	2-0
06-07	0-2	0-1	1-0	14-2	1-2	-	16-7	7-5	25-13
<b>Career</b>	<b>1-2</b>	<b>0-1</b>	<b>1-0</b>	<b>14-2</b>	<b>1-2</b>	<b>1-0</b>	<b>18-7</b>	<b>7-5</b>	<b>27-13</b>

### DOUBLES

	1	2	3	Dual	Overall
05-06	2-0	-	-	2-0	2-0
06-07	14-4	2-0	2-1	18-5	28-9
<b>Career</b>	<b>16-4</b>	<b>2-0</b>	<b>2-1</b>	<b>20-5</b>	<b>30-9</b>



## Ania Rynarzewska

**Junior • 5-7**  
**Inowroclaw, Poland**  
**Warsaw School Complex**  
**(Polish Embassy, Berlin)**



**Sophomore Year (2006-07):** Spent the first half of the season recovering from surgery...**Singles:** Was ranked as high as No. 52 during the season...went 15-11 in singles play for the spring and fall...managed an 8-1 record at home...**Doubles:** Competed with three different partners throughout the season...went 5-1 with in the fall...lost just one doubles match at Scott Speicher Tennis Center.

**Freshman Year (2005-06):** Named to the All-ACC and All-ACC Academic teams...**Singles:** One of four newcomers and three freshmen on the Florida State women's tennis team... competed mostly in the singles' No. 1 spot...went 6-16 in singles action.**Doubles:** Was 11-10 in pairs action...played mostly with fellow freshman Suzanna Mansour...had three separate three-match win streaks.

**High School and Other Accomplishments:** Prepped at Warsaw School Complex in the Polish Embassy (Berlin)... won the singles' national championship title in 2004...also part of the 2004 national championship-winning team...considered one of the top Polish junior tennis players...competed with the Polish National Women's Team at the age of 17...ranked at No. 1 in the Polish junior division for both singles and doubles in 2004...Ranked No. 1 in Berlin juniors as well..... National Polish Champion runner-up in doubles...

International Polish Champion runner-up in doubles for 2003...took part in the European Championships in Klosters, Switzerland...earned world ranking points in both singles and doubles...Also ran track and won competitions in the arts.

**Personal:** Born on March 11, 1983...daughter of Maria Rynarzewska and Zygmunt Rynarzewski...majoring in public relations...has two older siblings, Sylwia and Tomasz... sister Sylwia played semi-professional tennis... attended high school at the Polish Embassy complex in Berlin, Germany, for children of Polish citizenship who temporarily stay abroad...is a member of the Florida State Forensics Team...has a passion for cooking...upon graduation, she plans to pursue a career in public relations or coaching...last name is pronounced Rina-shef-ska.



ania has a lot of wins simply because she decides to stay on the court longer than her opponents

- Coach Jennifer Hyde



# a little more on ania



**Why did you decide to come to FSU?** I liked the program both academically as well as the athletic program. Of course Jen Hyde was another major factor. She is a great coach.

**List your three favorite things about Florida State:**

- 1) Facilities
- 2) Athletic staff & faculty
- 3) Great programs

**What's been your best experience at FSU so far?** Being a part of the team that made history.

**What are your goals while you're at Florida State?** To improve as a person, a student and an athlete. I want to get as close to perfection as possible.

**What's the best thing about being a Seminole?** It is the pride and honor that comes with it.

**List your favorite things about Tallahassee:**

- 1) It's not overwhelming
- 2) It's home to FSU!

**What professional tennis player do you look up to?** Monica Seles

**Which of the four Grand Slam events (French Open, US Open, Australian Open, or Wimbledon) would you rather play in?** US Open

**If you could play against any professional tennis player of the past or present, who would it be?** Martina Navratilova, she's a living legend.

**What are you looking forward to the most this season?** To make even more history! The first step has been taken. Now it's time for the next one.

**Do you have any hidden talents?** Art. I love art. I used to win art competitions in drawing and painting.

**What person inspires you the most, both on and off the court and why?** Lately, Oliver Foreman. He has huge love for tennis but also always stays positive and mentally strong. He is very supportive. He is a coach and a friend. I admire that.

**What's the one thing in your life you absolutely couldn't live without? Why?** Toothbrush and toothpaste! But jokes aside—my family. Even though they are far away, I know they are there for me.

**Where do you see yourself in five years?** I hope I will have a PhD and be a well-known PR practitioner. I also hope that around that time I will start getting ready for my own family.

## hyde's eyes

*"Ania has the ability to out-grind people. She has a lot of wins simply because she decides to stay on the court longer than her opponents. We will continue to look to her in the doubles line-up to fill a void where she didn't have the opportunity to play last year. I'm very excited to see what she can bring us."*



## career statistics

### SINGLES

	1	2	3	4	5	6	Dual	Fall	Overall
05-06	1-0	-	-	-	-	1-0	2-0	-	2-0
06-07	-	2-3	7-6	-	-	-	9-9	6-3	15-12
<b>Career</b>	<b>1-0</b>	<b>2-3</b>	<b>7-6</b>	<b>-</b>	<b>-</b>	<b>1-0</b>	<b>11-9</b>	<b>6-3</b>	<b>17-12</b>

### DOUBLES

	1	2	3	Dual	Overall
05-06	2-0	-	-	2-0	2-0
06-07	-	1-6	2-0	3-6	8-9
<b>Career</b>	<b>2-0</b>	<b>1-6</b>	<b>2-0</b>	<b>5-6</b>	<b>10-9</b>



## Lauren Macfarlane

Sophomore • 5-8  
Ogden, Utah  
Weber High School



**Freshman Year (2006-07):** Named to the 2007 All-ACC Academic Team...**Singles:** Standout player in her first year with the team...posted a 28-8 record for an .807 win percentage which ranks third in FSU history...named to the 2007 All-ACC team...tied for fourth in program history for single season dual match wins with 21...only the 10th Seminole with 20 or more wins in a single season...ranked as high as No. 58 during the season...went 14-1 at the Scott Speicher Tennis Center...participated in the NCAA Individual competition as an alternate...**Doubles:** Invited to the 2006 Indoor National Championships along with doubles partner Nicola Slater....went 18-6 with Slater for the fall and spring seasons before switching partners...Slater and Macfarlane climbed to No. 27 in ITA doubles rankings early in the spring...also competed with teammates Tapiwa Marobela and Ania Rynarzewska...posted a 26-14 doubles record with all three partners for both the spring and fall seasons.

**Personal:** Born on September 5, 1988...daughter of Garrett and Sam Macfarlane...majoring in marketing...graduated in the top 10% of her class...officer in FBLA...volunteered with the Ogden Symphony Ballet and Ogden Opera Guild...father Garrett coached and played tennis at Utah State...mother ran track at Utah State...older sister Hadley played tennis at BYU and Boise State...younger sister Mary Anne was ranked No. 43 in the 2006 USTA National Junior Rankings.



**High School and Other Accomplishments:** Two-time high school All-American...captured state championship title in 2004 and 2005...won the regional championship all four years...ranked 17th nationally in the Girls 18 and under division...ranked number one in the Intermountain division in the girls' under 16 and under 18 divisions...member of the Intermountain Intersectional team for two years...member of the Intermountain Junior Fed Cup one year...also participated in track and field.

lauren is the type of personality and player who can lead this team to the level we're trying to achieve this year

- Coach Jennifer Hyde

www.seminoles.com



# a little more on lauren



**Why did you come to FSU?** Because of the coaches (Jen & Oliver) and I just liked the campus. It was the best fit for me.

**List your three favorite things about Florida State:**

- 1) My team & coaches
- 2) The staff & all the other people on campus that I meet with daily
- 3) The football games

**What's been your best experience at FSU so far?** Last year (my freshman year) was so much fun. It was my first year in college tennis and we did so well making history to be ranked #13.

**What are your goals while you're at Florida State?** While I'm here I hope to become an All-American and help the team to a conference and/or National Championship.

**List your three favorite things about Tallahassee:**

- 1) Not too big, but not too small.
- 2) A college town
- 3) The friends I have made here

**What's your favorite time of year in Tallahassee?** The spring

**What professional tennis players do you look up to?** I always love to watch Andre Aggasi. And when she was playing, I also liked to watch Ana Ivonovic.

**Which of the four Grand Slam events (French Open, US Open, Australian Open, or Wimbledon) would you rather play in?** US Open

**If you could play against any professional tennis player of the past or present, who would it be?** Steffi Graf

**What do you think your biggest strengths are on the court?** Being aggressive and my groundstrokes.

**What are you looking forward to the most this season?** Playing as a team and getting better as a team. Seeing our team's full potential!

**What person inspires you the most, both on and off the court and why?** My dad, he is the one who got me into tennis and has been my coach all through my junior years, but he has also taught me how important it is to be a good person, not just a good tennis player.

**What's the one thing in your life you absolutely couldn't live without? Why?** My family because they are my biggest fans on and off the court and we are all so close.

**Which reality show would you rather audition for: Survivor, Fear Factor, So You Think You Can Dance, or American Idol? Do you think you would win?** Survivor, only because I can't sing or dance and I can't stand anything crawling on me. I don't think I'm crazy enough to win!

**Where do you see yourself in five years?** Finished with school, maybe with a real job. Or maybe trying to play some future pro tennis tournaments.

## hyde's eyes

*"Lauren had a very successful freshman campaign. I'm looking for her to continue to build, improve and grow in her confidence from that success. I think she's the type of personality and player who can lead this team to the level we're trying to achieve this year."*



www.Seminoles.com



## career statistics

### SINGLES

	1	2	3	4	5	6	Dual	Fall	Overall
06-07	4-1	10-2	4-1	-	-	-	18-4	10-4	28-8
Career	4-1	10-2	4-1	-	-	-	18-4	10-4	28-8

### DOUBLES

	1	2	3	Dual	Overall
06-07	4-1	5-9	3-0	12-10	27-15
Career	4-1	5-9	3-0	12-10	27-15



## Jessica Wenthe

Sophomore • 5-8  
Whitehouse, Texas  
Whitehouse High School



**Freshman Year (2006-07): Singles:** Posted a 25-11 record for the fall and spring...ended the season on a five-match win streak...defeated 11 of 14 opponents at home...took down Duke's Jessi Robinson in straight sets in helping the Seminoles to their first victory over the Blue Devils since 1983...**Doubles:** Finished with a combined record of 26-10 for the season...notched a 13-2 record at home...paired with senior Miranda Foley for all but three matches in fall and spring play going 24-9...finished 10-5 in the ACC along with Foley.

**Personal:** Born March 1, 1988...daughter of Larry and Janet Wenthe... majoring in hospitality... member of the National Honor Society in high school...earned a spot on the honor roll every year from 2002-2006... member of HOSA...mother participates in USTA 3.5 leagues...sister played tennis in high school.

**High School and Other Accomplishments:** Captured the tennis state championship title in 2005 ... Also in 2005, was a member of Texas' first Junior Fed Cup Championship Team in 23 years...competed in the state finals in 2003, 2004 and 2006... dominated local competition as a regional champion four years running... ranked 12th in doubles her senior year... played basketball freshman through senior years as well...named second team all-district in basketball her senior year... voted Most Athletic her senior year.



i think jessica will continue  
to blossom like she did last year

- Coach Jennifer Hyde



# a little more on jessica



**Why did you decide to come to FSU?** The campus is very beautiful. I also was impressed how well athletes are treated for their academics. FSU gives so many opportunities to athletes to achieve their dreams.

**List your three favorite things about Florida State:**

- 1) The campus is beautiful
- 2) The support we get from the community
- 3) The business school is in the top 25 in the nation

**What's been your best experience at FSU so far?** Coming close to beating Florida last season! We lost 4-3 and that's the best ever FSU women's tennis team has ever been to beating those darn Gators!

**What are your goals while you're at Florida State?** To graduate with a GPA 3.5 or higher in hospitality

**What's the best thing about being a Seminole?** The spirit that the people have for the Seminoles

**List your three favorite things about Tallahassee:**

- 1) Somewhat close to the beach
- 2) Not that much traffic
- 3) A lot of good places to eat

**What's your favorite time of year in Tallahassee?** Spring

**What professional tennis players do you look up to?** The Bryan Brothers and James Blake (he's my favorite player)

**Which of the four Grand Slam events (French Open, US Open, Australian Open, or Wimbledon) would you rather play in?** Australian Open

**If you could play against any professional tennis player of the past or present, who would it be?** Lindsay Davenport

**What are some of your pre-match rituals? Is there a specific food you eat, music you listen to, etc.?** I have to see if my boyfriend has texted me good luck! I usually listen to music in the car with the team to get me in the tennis mood.

**What are you looking forward to the most this season?** I am looking forward to a great season with making it to the Sweet 16 and winning ACC's. We have two freshmen that will bring a lot to the team to make us better individually.

**What person inspires you the most, both on and off the court and why?** My boyfriend Jonathas because without him I wouldn't be where I am today. With Jonathas being in my life, I know I will bring more to the team this year than last year because I am happier than I was.

**Which reality show would you rather audition for: Survivor, Fear Factor, So You Think You Can Dance, or American Idol? Do you think you would win?** None of the above! I would rather audition for The Amazing Race and yes I could win for sure! I'm thinking about signing up after college.

## hyde's eyes

*"I think this year's going to be a very exciting year for Jessica. After having that freshman season under her belt and having a chance to learn the ropes and embrace the team environment and the setting. I think she will continue to blossom like she did last year. I'm looking for her to contribute with an upperclassman mentality."*



www.Seminoles.com



## career statistics

### SINGLES

	1	2	3	4	5	6	Dual	Fall	Overall
06-07	-	-	-	4-2	5-2	6-3	15-7	8-4	26-11
Career	-	-	-	4-2	5-2	6-3	15-7	8-4	26-11

### DOUBLES

	1	2	3	Dual	Overall
06-07	-	4-2	10-6	14-8	26-11
Career	-	4-2	10-6	14-8	26-11



## Katie Rybakova

Freshman • 5-7  
Coral Springs, Florida  
Broward Virtual Education High



**High School and Other Accomplishments:** Ranked #6 in Florida's under-18 girls category...made the final round at the 2006 ITF Costa Rica Bowl...fought her way to the quarterfinals twice in 2006 on the Jerry Simmons ITF Junior Circuit...had a very successful year in 2005...won ITF junior circuit singles competitions in both Jamaica and Trinidad and Tobago...came out on top in doubles as well, winning ITF-sponsored tournaments in the Bahamas and Costa Rica in 2005...graduated valedictorian in 2007 with a 4.0 GPA.

**Personal:** Born Dec. 27, 1989...daughter of Nick and Galina Rybakova...born in Moscow, moved to New York at age one...first name is Ekaterina...plans to attend graduate nursing school and become a nurse practitioner...speaks fluent Russian.

### hyde's eyes

*"Katie has the ability to be an impact player in her freshman year and for the duration of her career. She comes in very solid technically. There are very few things to work on with her. She knows how to play the game very well. It's just a matter of developing a few more things and a little bit more depth to her game. I think it will be very exciting to see what she can do this first year, she's definitely going to be an impact player for the program."*



## a little more on katie

**Why did you decide to come to FSU?** I love the atmosphere at FSU. People are so friendly everywhere. The life here is perfect overall; you have great tennis with a team which works hard and helps you out and cheers you on, great education with which you can start your adult life, and a great social circle where you get to meet friends that turn into family.

**What are your goals while you're at Florida State?** I'd love to do well at tournaments in both single and team divisions. It will be my goal to strive for the very best. Education-wise I will study nursing and hopefully go to graduate school after.

**List your favorite things about Tallahassee:**

- 1) The general air of friendliness
- 2) The packed city and the nature a bit further away (best of both worlds!)

**What professional tennis players do you look up to?** I look up to Roger Federer. There is no one better than him and he makes tennis look so easy. Every stroke is so effortless and relaxed.

**Which of the four Grand Slam events (French Open, US Open, Australian Open, or Wimbledon) would you rather play in?** US Open, I'm from New York

**If you could play against any professional tennis player of the past or present, who would it be?** Roger Federer or Martina Hingis

**What are some of your pre-match rituals? Is there a specific food you eat, music you listen to, etc.?** I'm really superstitious. If I eat something specific before a match and win, I'll eat that everyday. Otherwise I listen to a lot of music that gets my adrenaline flowing like rock or rap.

**What are you looking forward to the most this season?** Being part of a great team and competing hard!

**What person inspires you the most, both on and off the court and why?** My mom; she's independent, hard-working and yet knows how to let loose and have fun. She treats everyone with respect and works hard for every goal she makes.

**What's the one thing in your life you absolutely couldn't live without? Why?** Tennis, or sport in general. I would die of stress-overdose otherwise!

**Which reality show would you rather audition for: Survivor, Fear Factor, So You Think You Can Dance, or American Idol? Do you think you would win?** It's a tie between Fear Factor and So You Think You Can Dance. I wouldn't win either because I can't eat gross things nor can I dance, but it would be a heck of an experience.

**Where do you see yourself in five years?** Being a best-selling author or a working nurse or both. And I will try and pursue my tennis by playing futures during the summer as well.

katie has the ability to be an  
impact player in her freshman year

- Coach Jennifer Hyde





## Federica Suess

Freshman • 5-8  
Germany

Hurpfalz-Gymnasium Mannheim



**High School and Other Accomplishments:** Three-time state champion in 2000, 2001 and 2003...fell short of the doubles quarterfinals just twice in all tournaments she participated in from Feb. 2005 to Feb. 2006...went as far as the semifinals at the \$10,000 Melilla event in Spain...reached the quarterfinals in doubles at seven different tournaments in 2005-06.

**Personal:** Born Oct. 27, 1987...daughter of Thomas and Lucia Suess...roommates with fellow Seminole freshman Katie Rybakova.



### hyde's eyes

*"Federica brings a work ethic and a commitment to this program that's very unique. Day in and day out she is an unbelievable worker and I think she will lead as a freshman with that mentality and her commitment to becoming a better tennis player and a better teammate. She's a workhorse. And I think that as we're starting to build this program, we continue to get in players who make hard work the foundation of their game and that's a big part of our philosophy."*

## a little more on federica

**Why did you decide to come to FSU?** Because of its good academic reputation and its great tennis team.

**List your three favorite things about Florida State:**

- 1) Beautiful campus
- 2) Nice and friendly people
- 3) Perfect opportunities to improve your tennis

**What are your goals while you're at Florida State?** I want to improve my tennis, become a real good tennis player and earn a good degree.

**What's the best thing about being a Seminole?** The feeling of being a part of the Seminole family.

**What professional tennis players do you look up to?** Ana Ivanovic, Jelena Jankovic, and Justine Henin

**Which of the four Grand Slam events (French Open, US Open, Australian Open, or Wimbledon) would you rather play in?** US Open

**If you could play against any professional tennis player of the past or present, who would it be?** Steffi Graf

**What are some of your pre-match rituals? Is there a specific food you eat, music you listen to, etc.?** I look for a quiet place where I listen to the music and focus on my match.

**Do you have any hidden talents?** I speak six languages--four living ones and two dead ones.

**What person(s) inspires you the most, both on and off the court?** My mother and father

**What's the one thing in your life you absolutely couldn't live without? Why?** Tennis because it makes me feel active and food—I love good Italian food!

federica brings a work ethic  
and a commitment to this  
program that's very unique

- Coach Jennifer Hyde



## SUPPORT STAFF/SEMINOLE PRODUCTIONS



**Kat White**  
*Office Assistant*



**Alison Hart**  
*Student Assistant*



**Chris Grosse**  
*Promotions and Marketing*



**Dave Plettl**  
*Strength and Conditioning*



**Scott Smith**  
*Facility Management*



**Kellie Cox**  
*Athletic Trainer*



**Myra Atwell**  
*Equipment Manager*



**Ryan Soule**  
*Team Manager*



**Mark Rodin**  
*Director of Video Operations*



**Jim Garbarino**  
*Producer/Director  
Bobby Bowden Show/  
Mike Martin Show*

Established in 1987, Seminole Productions handles virtually every video production need for Florida State Athletics. Under the direction of Mark Rodin, Seminole Productions produces the Bobby Bowden Show, the Seminole Basketball Report with Leonard Hamilton and the Mike Martin Show, as well as Seminole Sports Magazine and Seminole Uprising. Seminole Productions also produces all of the in-game entertainment needs for Seminole Vision.



**D.D. Garbarino**  
*Producer/Director  
Seminole Sports Magazine*



**Jerry Tootle**  
*Producer/Director  
Leonard Hamilton Show*



www.seminoles.com



## SCOTT SPEICHER TENNIS CENTER



With the first stage of construction completed in the summer of 1993, the Scott Speicher Tennis Center at the Donald Loucks Courts opened its gates to the public for the first time at a Children's Miracle Network charity tournament. Since then, many successful tournaments including the 1996 NCAA Women's Championships, have graced the courts at one of Florida State University's premier athletic facilities.

Costing \$1.2 million to build and then another \$800,000 for recent additions, Florida State's Speicher Tennis Center has become an example of the increasing dedication and commitment the University has to all of its 17 varsity athletic programs.

The Speicher Tennis Center houses 12 lighted hard courts, over 1,000 court level seats, coaching offices, men's and women's locker rooms, equipment and storage rooms, a team lounge and a public address system. The growing pride Florida State has for its tennis program and its premier tennis center was honored just after it's opening in 1994, when the United States Tennis Association (USTA) awarded the structure with its "Top Notch" facility award.

The Speicher Tennis Center was named in honor of Lieutenant Commander Michael Scott Speicher, a graduate of Florida State University. Speicher was considered the first American casualty during Operation Desert Storm, but was later reclassified by the United State's government as missing in action in 2001 and missing/captured a year later. By Presidential directive, the facility bears the name the "Scott Speicher Tennis Center."

In 1947, Loucks became Florida State's first basketball coach and a year later was named the school's first tennis coach. The varsity tennis courts were named for Loucks in 1981. He served as Dean of men from 1957-1967 and was known as a servant of leadership, service and devotion to many worthy causes.

The Speicher Tennis Center was designed by EMO/Architects, Inc., a Tallahassee-based architectural firm, in collaboration with Global Consult Group, Inc., an internationally recognized Tennis Facility Design Consultant. The complex was funded by private sources and supervised through the state university system of Florida.

Through its 13-year existence, the Scott Speicher Tennis Center at the Donald Loucks Courts has served as the home courts for all Florida State men's and women's home dual matches, the annual Seminole Fall Classic, City of Tallahassee tennis championships, various USTA regional and zonal tournaments, the 1994 and 1995 Men's Intercollegiate tournament and the annual Children's Miracle Network Charity Invitational benefiting Shands Hospital in Gainesville.

### HOME RESULTS

1992	9-3	2000	9-5
1993	5-4	2001	5-3
1994	8-0	2002	10-7
1995	6-4	2003	6-4
1996	4-4	2004	11-4
1997	5-2	2005	7-3
1998	7-3	2006	7-7
1999	11-3	2007	9-1



## 2006-07 SEASON IN REVIEW



When "Making History" was selected as the Florida State women's tennis 2006-07 season slogan, the team couldn't have known how appropriate the title would be by the year's end. From start to finish, the team would certainly make a mark in the Seminole history books with its highest ranking in school history (13th), second-round NCAA Tournament appearance, 9-1 home record and fifth-place rank in the ACC.

The Seminoles also had a long list of individual accomplishments to file in the history books for 06-07. Head coach Jennifer Hyde became the second coach in Florida State lore to be named Wilson/ITA South Region Coach of the Year. Freshman All-ACC selection Lauren Macfarlane secured the number three spot in the record books for single season dual match winning percentage (.807) and the number four spot for single season dual match singles wins (21). Macfarlane, one of only 10 Seminoles to ever notch more than 20 wins in a season, also joined her doubles partner, senior Nicola Slater, in being the first Seminoles ever invited to the Indoor National Championships.

At home in the Scott Speicher Tennis Center, the Seminoles dominated their opponents 9-1 over the course of the spring season. Among the teams defeated by FSU on its home turf were ACC rivals No. 38 NC State, No. 14 Wake Forest, Virginia, Virginia Tech, Boston College and Maryland. Five opponents—Stetson, Florida A&M, Virginia Tech, Boston College and Maryland—were shut out by the Seminoles.

It was a full-circle season for Florida State on the road, as it started and ended the year in California. The Seminoles kicked off the fall season at San Diego State for the SDSU Invitational and wrapped up the spring season at UCLA for the NCAA Tournament.

A pair of major victories at No. 21 Duke and San Diego State highlighted Florida State's 06-07 road wins. In a well-fought, 4-3 triumph, the Seminoles took down the Blue Devils for the first time since 1983 with Macfarlane, Slater, junior Carolin Walter and freshman Jessica Wentz supplying the individual wins to put the Seminoles over the top.



*Carolin Walter*



## 2006-07 SEASON IN REVIEW



*Lauren Macfarlane and Nicola Slater*

In their second match-up of the season, Florida State also upset San Diego State in the first round of the NCAA Tournament to advance against UCLA.

Florida State's accomplishments in 06-07 were most impressive as compared to the team's 2005-06 season. Never in Seminole history has a team made

such a dramatic turnaround as the squad of five veterans and two freshmen did last year (see chart). In twelve months' time, the Seminoles went from a season record of 9-13 to 16-8, a final ranking of No. 72 to No. 17, an ACC record of 2-10 to 8-5 and an ACC ranking of 10 to 5. While the team had just two top-70 victories in 05-06, the 06-07 season left eight top-60 teams in the wake of a powerful Seminole program.

Seniors Slater and Miranda Foley wrapped up their collegiate careers with a pair of successful season finishes. Slater secured a spot on the All-ACC team after posting a 20-7 record in doubles while also defeating four top-75 singles opponents and six top-20 doubles opponents. Foley notched a 16-9 doubles mark including eight victories over ACC opponents alongside doubles partner Wenthe.

Off the court, the Seminoles dominated the classroom competition as well, winning the prestigious Golden Torch Award, given to the Florida State athletic team with the highest GPA, for the ninth year in a row. On an individual level, Slater and Macfarlane were both named to the All-ACC Academic team and the ACC Honor Roll, along with Foley and junior Tapiwa Marobela.

Florida State may have selected "Making History" as its 2006-07 season slogan long before play began, but by the end of the year it would be the perfect title for the perfect season. The Seminoles made a slough of notable changes in the history books, but the question is—what will the 2007-08 team have to say about that?



www.Seminoles.com



## 2006-07 Season In Pictures

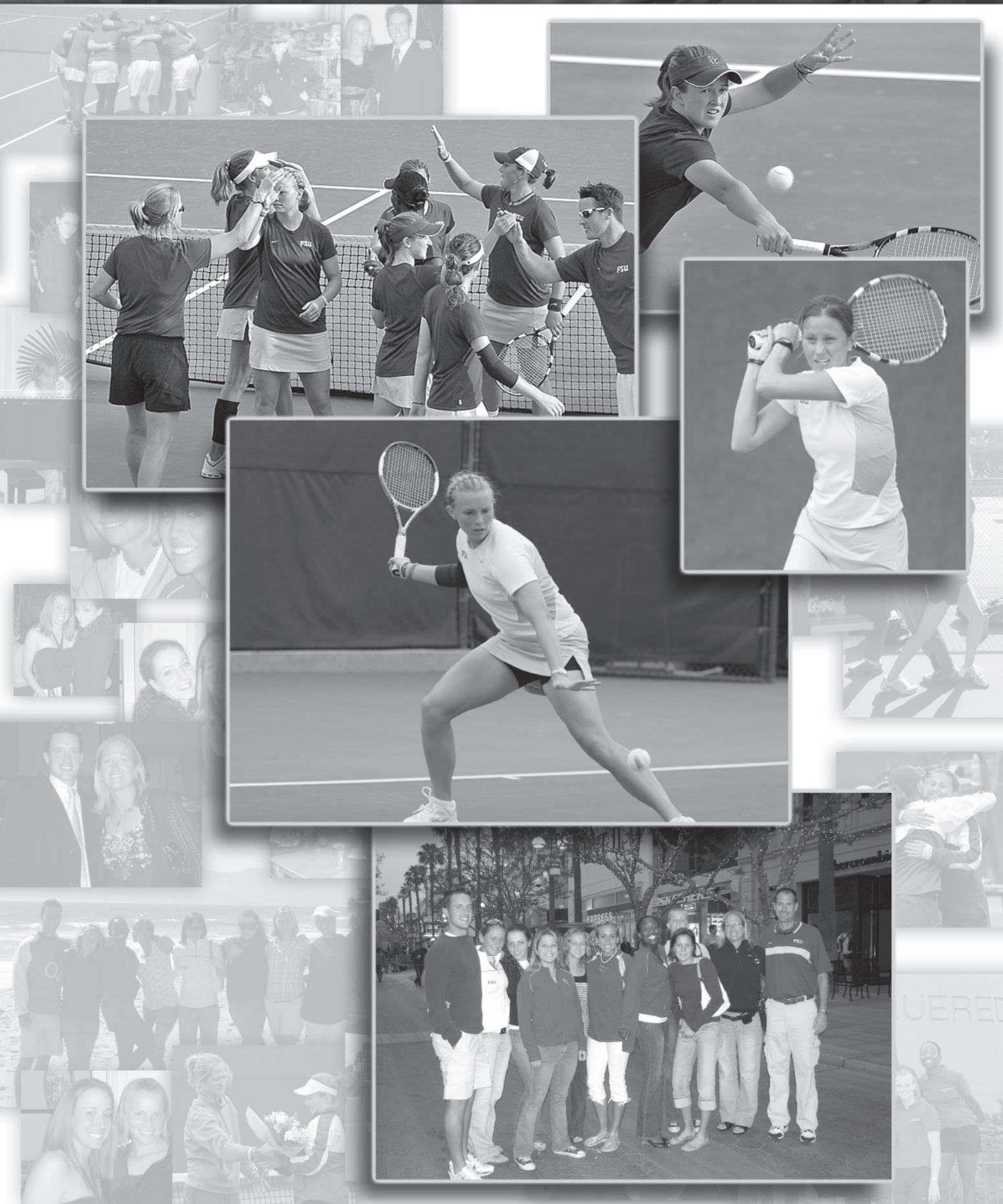


www.seminoles.com



# Florida State

2007-08 WOMEN'S TENNIS



www.Seminoles.com



# BOOSTER SUPPORT

## ABOUT THE GOLDEN SPEAR CLUB

The Golden Spear Club is designed to provide "grass roots" support for the men's and women's tennis programs at Florida State University.

The objective of the club is to assist the athletics department in promoting FSU tennis in Leon County and throughout Florida and to assist us in generating interest in and enthusiasm for our program.

Your membership to The Golden Spear Club is TAX DEDUCTIBLE and helps support the club's activities and the Florida State University Tennis Program. Although Golden Spear Club memberships are not accompanied with Booster Club benefits, you can take pride in the fact that FSU Tennis will remain nationally competitive because of your support.

We welcome you to become a part of the Golden Spear Club and join other tennis enthusiasts in the fun of supporting FSU Tennis. Go Noles!

### How to become a Golden Spear Club Member

Membership: \$25, Juniors; \$50, Adult; \$75, Family

For more information, contact:

**Head Coach Jennifer Hyde**

P.O. Box 2195

Tallahassee, FL 32316

Phone: (850) 644-1092

Fax: (850) 644-7630



www.seminoles.com

## TENNIS ENDOWED SCHOLARSHIPS



**Ginny Futch**

From Miami to Minneapolis, and from Warsaw to Walla Walla, young men and women come to Florida State University to embrace educational excellence, and to compete as a Seminole. Many would not have the opportunity to receive that college education without their athletic scholarship. These young people work hard, and proudly represent Florida State as a winner on the national stage, attracting the attention to our University that winners bring.

Florida State Athletics provides each of our men's and women's teams with the maximum number of scholarships allowed by the NCAA. In addition to the student-athlete competitors, scholarships are also provided to student trainers, managers and graduate assistants who are vital to the athletic program.

The last 15 years have seen a three-fold rise in the cost of athletic scholarships at Florida State. Today, more than \$300,000 is needed to permanently endow a Florida State athletic scholarship. Most of the top public universities with whom Florida State competes and to whom we are compared, have endowed all of their athletic scholarships.

Established in 1986 under the direction of William M. Parker of Clearwater, the Seminole Boosters Endowed Scholarship Program is the final step toward perpetual funding of all scholarships for student-athletes at Florida State.

Those individuals who contribute to the endowment fund for athletic scholarships at Florida State University gain membership in the Seminole Heritage Foundation.

Thanks to the efforts of Ginny Futch, Bette Sprague and James Howarth the endowment of the Florida State tennis programs are well on their way.



**Bette Sprague**





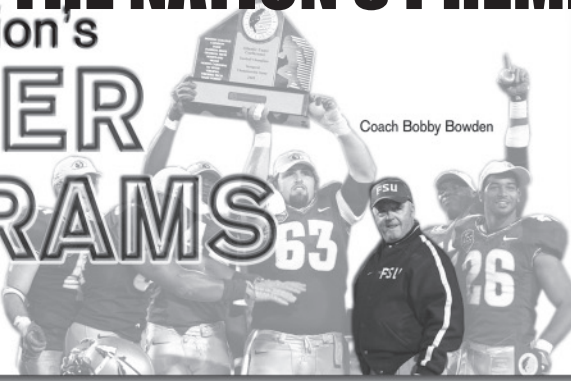


## ONE OF THE NATION'S PREMIER PROGRAMS

# One of the Nation's PREMIER PROGRAMS



Coach JoAnne Graf



Coach Bobby Bowden

COACHES OF THE YEAR	
National	13
Regional	34
Atlantic Coast Conference	35
Metro Conference	12
ACTIVE COACH LISTING - DIVISION I	
Bobby Bowden	366 victories (1st all-time)
JoAnne Graf	1,180 victories (2nd all-time)
Mike Martin	1,484 victories (4th all-time)



Coach Bob Braman

### COACHING EXCELLENCE...

When it comes to legendary head coaches, it is hard to argue anyone has been as fortunate. The Seminoles have had three coaches who have established records that rank them with the greatest coaches in NCAA history.

Florida State is the only NCAA school with three coaches in the top five for all-time victories in their respective sport and in the top five in wins and winning percentage among active coaches. Bobby Bowden (football), JoAnne Graf (softball) and Mike Martin (baseball) have combined for 3,030 wins and each coach appears in the top four for active winning percentage, active wins or all-time victories.

The caliber of coaches at Florida State is second to none and year after year, these coaches are recognized for excellence nationally, regionally and at the conference level. Track and field and cross country head coach Bob Braman capped off another spectacular season as he guided the Seminoles to their second consecutive men's outdoor track and field national championship in 2007. Braman, the ACC Indoor and Outdoor Coach of the Year, was also recognized on the men's side as the Co-Coach of the Year in the South District, while being honored as the East Region and National Coach of the Year during the outdoor season. Jennifer Hyde collected South Region Wilson/ITA Coach of the Year accolades as she led the women's tennis team to one of the finest turn-a-rounds in school history. After leading the women to their first conference championship a season ago, swimming and diving head coach Neil Harper guided the men to their first league title en route to being named the ACC Coach of the Year. Martin's legacy was secured as he was enshrined into the American Baseball Coaches Association Hall of Fame on January 5, 2007. He would round out the accolades in 2006-07 claiming his fifth ACC Coach of the Year honor.



Coach Mark Krikorian



Coach Jennifer Hyde

### IN THE COMMUNITY...

Seminole student-athletes are committed to making a positive impact on the community, serving over 5,500 hours of community service during the 2006-07 school year. They help to raise thousands of dollars in direct support to charities.

The National Consortium for Academics and Sports honored FSU Athletics for the most successful outreach and community service program in which FSU student-athletes impacted the lives of over 150,000 youths.

Student-Athletes have volunteered their time to work with elementary, middle, and high school students within the Leon County School system. In addition, Seminole student-athletes have participated in projects such as Kids' Day (hosted by the Boys and Girls Club), Bowl for Kids' Sake (fundraiser for Big Brothers Big Sisters), The Heart Ball (fundraiser for the American Heart Association), Relay for Life, and Special Olympics to name a few.



Coach Mike Martin



www.Seminoles.com



### POSTGRADUATE SCHOLARSHIPS...

In November 2005, two-time All-American shot putter Garrett Johnson became just the second FSU student and first FSU student-athlete to be selected a Rhodes Scholar when he was chosen as one of 32 college students from throughout the United States to study at the University of Oxford and one of less than 100 from around the world who joined the prestigious academic program in 2006. The program's criteria are based on academic success, leadership potential, personal integrity and physical vigor.

Florida State athletes have earned over \$350,000 in post-graduate scholarships in the past 13 years as well as other numerous academic honors and awards. They have also received 33 post-graduate scholarships from the ACC since 1993 including Sarah Griffin (volleyball), Alex Kennon (swimming and diving), Tom Lancashire (track and field) and Kelly Rowland (soccer) who were among 45 recipients of the scholarship awards in 2007. In addition, Garrett Johnson (track and field) earned the ACC Scholar Award in 2006.

In 1996, Seminole senior Daryl Bush was the first ever recipient of the State Farm National Scholar Athlete of the Year award, now given annually.

Florida State boasts two NACDA Post-Graduate Award winner in the last seven years. The scholarship, which was originated in 2001, grants \$10,000 scholarships to its recipients.



Andrew Diakos

Garrett Johnson



LeKendra McCollum



David Castillo



Lacy Jansen



Football's Chris Hope received the 2002 NACDA Postgraduate Scholarship.



Alex Kennon



### IN THE CLASSROOM...

Florida State named a school-record 204 student-athletes to the Atlantic Coast Conference Honor Roll in 2007. At the conclusion of the 2006-07 school year, seven of Florida State's athletic teams had a 3.0 or better cumulative grade point average. In the spring 2007 semester 10 Seminole teams had at least a 3.0 semester GPA while the average team semester GPA was a 2.80.

Since joining the ACC in 1991, Florida State has had seven National Football Foundation and College Hall of Fame National Scholar Athlete Award winners.

In 2001, Heisman Trophy winning quarterback Chris Weinke was the recipient of the inaugural ACC Scholar Award which is presented annually to an excellent athlete and top scholar who plans to pursue a professional athletic career. Since 2001, football's Chris Hope (2002), baseball's Matt Lynch (2003) and track and field's Garrett Johnson (2006) have also earned the award.

Six Seminole student athletes earned the prestigious Arthur Ashe Junior Sports Scholar Award including FSU football player Myron Rolle. The Arthur Ashe Jr. Sports Scholar Awards were established in 1992 and serve to honor minority student athletes who exhibit academic excellence and community activism, as well as athletic prowess.

Florida State had 13 student-athletes garner District Academic All-American honors in 2006-07 including Drew Weatherford (Football), Mami Yamaguchi and Katrin Schmidt (Soccer), Sarah Griffin (Volleyball), Nikki Anthony and Alicia Gladden (Women's Basketball), Melissa May (Softball), Roomy Altman (Swimming), Caroline Westrup (Women's Golf), Jonas Blitz (Men's Golf), Alex Kennon (Swimming) and Javier Garcia-Tuning, Tom Lancashire and Andrew Lemoncello (Track & Cross Country).

Florida State has more all-time ACC Academic Honor Roll selections (2,412) than all-time All-ACC honorees (1,783). Since 1970, 32 FSU student-athletes have earned National Academic All-American honors. Florida State boasted one NCAA Postgraduate Scholarship winner (Alex Kennon - Swimming) in 2007 as well.



Kelly Rowland



Sarah Griffin



Jonas Blitz



Alicia Gladden



Caroline Westrup



# Florida State

## 2007-08 WOMEN'S TENNIS



Nicholas Smith



### TOP ATHLETES...

When you consider the top athletes who don the Garnet and Gold, it's easy to see why Florida State has enjoyed such success over the years. Of the 37 national awards for athletic achievements Florida State student-athletes have earned, eight have been for the top athlete in the nation award in their respective sports. Florida State boasts two Heisman Trophy winners, three Golden Spikes winners, a USA Softball National Player of the Year, a National Men's Track Athlete of the Year and a Honda Award winner for softball.

From football, to diving, to tennis, to track and field, several of Florida State's student-athletes achieve All-America status each year. FSU boasts 749 first team All-America selections as well as several regional and national award winners. Over the years, FSU has enjoyed 1,783 All-ACC selections. Even more impressive is that 30 student-athletes have been crowned individual national champions in their respective sports.

### TOP TEAMS...

Great athletes make great teams and Florida State has a rich history when it comes to great teams on both the national and conference level and has earned 13 national championships over the years including the back-to-back 2006 and 2007 NCAA Men's Outdoor Track and Field titles. In 1999, the Florida State Seminoles became the first football team to go wire-to-wire as the Associated Press' No. 1 team when the squad went 12-0 on its way to the program's second national championship. FSU teams have combined for 159 NCAA Tournament appearances and 39 ACC team titles. Florida State's team sports have earned 8,419 victories and eight of the Florida State's team sports have an all-time winning record.

Barbara Parker



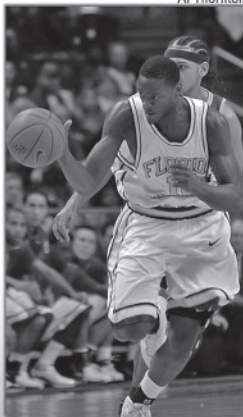
Natalie Tirapelli



Walter Dix



Al Thornton



Sam Chang



Heisman Trophy winners  
Charlie Ward and Chris Weinke





# THIS IS FLORIDA STATE

From its pre-Civil War beginnings as the Seminary West of the Suwannee to a nearly four-decade stint as the Florida State College for Women to its return to coeducational status as a university, Florida State University has developed into an internationally acclaimed research institution with excellence in teaching, research and public service.

The university enrolls almost 40,000 undergraduate, graduate and professional students. Of these, 28 percent are minorities. Students are from all 50 states and the District of Columbia, as well as 133 foreign countries.

Florida State offers an impressive breadth of academic degree programs. Students may take courses of study leading to a baccalaureate degree in 99 programs, a master's degree in 112 degree programs, a doctorate in 73 degree programs, a specialist certification in 26 degree programs, and a professional designation in two degree programs. Courses are offered through 16 colleges — Arts and Sciences; Business; Communication; Criminology and Criminal Justice; Education; Engineering; Human Sciences; Information; Law; Medicine; Motion Picture, Television and Recording Arts; Music; Nursing; Social Sciences; Social Work; and Visual Arts, Theatre and Dance.

Students have the opportunity to work and study alongside members of the prestigious National Academy of Sciences, members of the American Academy of Arts and Sciences, winners of the Pulitzer Prize and a Nobel laureate. Florida State faculty also led several scholarly fields in citations of published work.

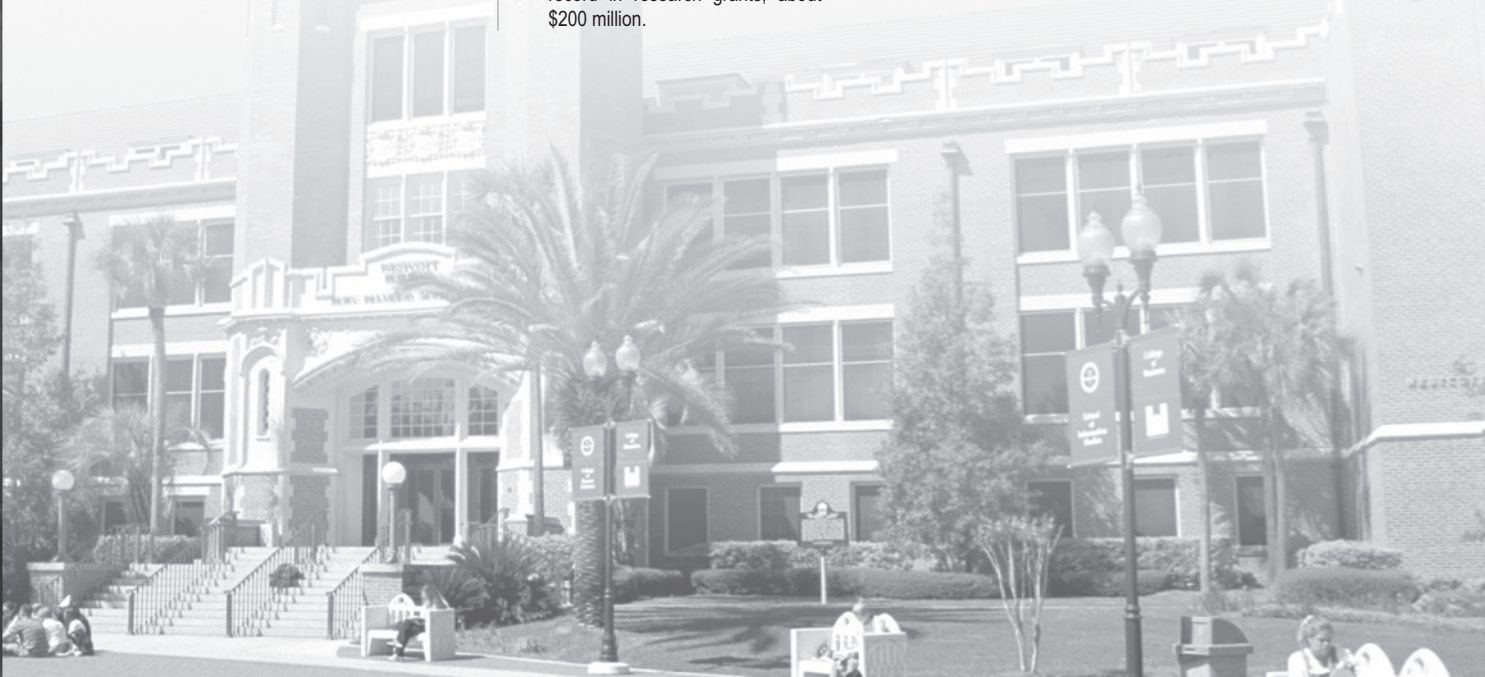
Several members of the Florida State faculty were recognized with major awards in 2007. Trailblazing chemistry Professor Alan G. Marshall, who has won worldwide acclaim for contributions to the field of analytical chemistry, received the prestigious 2007 Chemical Pioneer Award from the

American Institute of Chemists, and Eliza Dresang, the Eliza Atkins Gleason Professor in the College of Information, won the 2007 Scholastic Library Publishing Award.

Florida State has many academic programs that consistently rank among those at the nation's top 25 public universities, including programs in business, chemistry, creative writing, criminology, ecology and evolutionary biology, information, law, meteorology, oceanography, physics, political science, psychology, public policy, sociology and statistics.

The university had many noteworthy achievements in 2006-07. Among them:

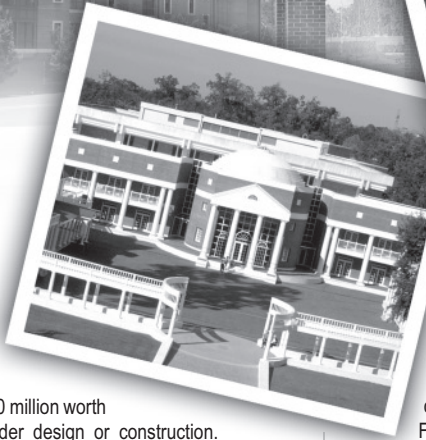
- Florida State hired clusters of stellar professors, national and international leaders in their fields, in one of the most ambitious, innovative hiring plans in the United States — part of the Pathways of Excellence Initiative, the university's effort to become one of the nation's top research and graduate education universities.
- FSU doctoral faculty in five academic areas was ranked among the tops in the nation according to the Faculty Scholarly Productivity Index: social work -- #4; Spanish -- #4; marketing -- #5; oceanography -- #8; and atmospheric sciences -- #10.
- FSU was ranked No. 1 in the nation among top research universities in graduation rates for African-Americans.
- The university increased its production of Ph.D.s by 18 percent in 2006 and won a new record in research grants, about \$200 million.



www.seminoles.com



# Florida State 2007-08 WOMEN'S TENNIS



*Dr. T.K. Wetherell congratulates Garrett Johnson on winning the Rhodes Scholarship*

- FSU had a building boom with \$500 million worth of facilities under design or construction. Officials broke ground on a new facility that could vault Florida State to the top of the list of American universities specializing in research into new materials. The \$17-million building will house the Center of Excellence in Advanced Materials.
- The first groups of College of Medicine students arrived at newly established Regional Medical School campuses in Fort Pierce and Daytona Beach.
- FSU Student Government President Joe O'Shea won a prestigious Truman Award. O'Shea also was one of just 20 undergraduates named to USA Today's elite 2007 All-USA College Academic First Team.
- The Florida State track and field team won its second-in-a-row NCAA championship and was honored at the White House.

At FSU, students have the opportunity to conduct research in specialized interdisciplinary centers, such as the National High Magnetic Field Laboratory, the Institute of Molecular Biophysics, and the School of Computational Science; to participate in interdisciplinary work across campus, such as programs that integrate economics, geography, climate forecasting, law and other environmental courses and programs; and to work with faculty to forge new relationships among professions, including medicine, the physical sciences, engineering, business and law.

Students at Florida State also are encouraged to participate in international education through the university's programs in England, Italy, Switzerland, France, Panama, China, Costa Rica, Spain, Russia, the Czech Republic, Greece, Croatia, Germany, Ireland and the Caribbean. The university's study sites in Valencia, Spain; Florence, Italy; London, England; and the Republic of Panama are considered by many to be among the nation's best.

FSU's main campus is spread over 450.5 acres in Tallahassee. Within the state, the university maintains facilities in Panama City, at its Coastal and Marine Laboratory on the Gulf of Mexico, and at the Asolo Performing Arts Center in Sarasota. In addition, Academic & Professional Program Services provides non-credit professional outreach, online academic degree programs, support for faculty and students in the campus.fsu.edu teaching and learning environment, faculty development and assessment services. APPS also hosts seminars for organizations from all over the country, and organize faculty conferences and special campus events.

Florida State also operates the Ringling Center for the Cultural Arts in Sarasota, which includes the John and Mable Ringling Museum of Art, the largest museum/university complex in the nation.

Library holdings at Florida State include 2.9 million book titles and 9.1 million microforms. The university's library holdings rank among the top 30 public research universities in the United States.

The main library facility, the Robert M. Strozler Library, is linked by computer to other state university and national research libraries. Florida State also maintains science, music, library and information science, medicine, engineering and law libraries, as well as the Mildred and Claude Pepper Library, which houses the papers, photographs, audio recordings, video recordings and memorabilia of the longtime congressman from Florida. Library materials and services also are available at the university's Panama City campus, as well as at the international study centers, and a collection of art and related materials is on display at the John and Mable Ringling Museum of Art in Sarasota. Collectively, the Florida State libraries are a member of the Association of Research Libraries, an association of the top research university libraries in the United States.

www.Seminoles.com



# UNIVERSITY FACTS

**BACKGROUND:** The Florida State University is one of eleven units of the Division of Colleges and Universities of the Florida Board of Education...It was established as the Seminary West of the Suwannee by an act of the Florida Legislature in 1851 and first offered instruction at the postsecondary level in 1857...Its Tallahassee campus has been the site of an institution of higher education longer than any other site in the state...In 1905, the Buckman Act reorganized higher education in the state and designated the Tallahassee school as the Florida Female College...In 1909, it was renamed Florida State College for Women... In 1947, the school returned to co-educational status, and the name was changed to The Florida State University...It has grown from an enrollment of 2,583 in 1946 to an enrollment of 40,474 in the Fall Semester 2006.

**ENROLLMENT (FALL, 2005):** Total, 40,474...76.7% undergrad, 20.2% grad, 3.1% unclassified...79.9% in-state...93.8% from the United States... students from all 50 states and the District of Columbia are in attendance...18 states contributed over 100 students each...19 foreign countries contributed over 25 students each...female, 56.4%...male, 43.6%...minority, 24.9%...international, 3.2%.

**ACREAGE:** Main Campus: 451.6 acres in Tallahassee, Leon County (main campus)...Panama City Branch: 25.6 acres in Panama City, Bay County...The university owns a total of 1,530.4 acres in Leon, Bay, Franklin, Sarasota, & Gadsden counties...Sites are leased in Marion and Leon counties in Florida, and other locations overseas.

**COLLEGES/DEGREE PROGRAMS:** With 16 colleges and schools, students may take courses of study leading to the baccalaureate degree in 99 degree programs, to the master's degree in 112 degree programs, to the advanced master's degree in one program, to the specialist degree in 26 degree programs, to the doctorate degree in 73 degree programs, and to the professional degree in two degree programs. The academic divisions are the Colleges of Arts and Sciences, Business, Communication, Criminology and Criminal Justice, Education, Engineering, Human Sciences, Information, Law, Medicine, Music, Social Science, Social Work and Visual Arts, Theatre and Dance; and the Schools of Motion Picture, Television, and Recording Arts and Nursing.

**OPERATING BUDGET (2006-07):** \$1,011,736,496

**DEGREES AWARDED FOR 2005-06:** Bachelor, 6,938... Masters, 1,821...Doctorate, 325...Medical Doctorate, 36...Specialist, 51...Judge Doctorate, 240... Total, 9,411

**ENTERING FRESHMAN FACTS (FALL, 2006):** The middle 50 percent High School GPA, 3.3-3.9; SAT score 1090-1240, ACT score 23-27. There were 46 National Merit Scholars, 17 National Achievement Scholars, and 16 Hispanic Scholars enrolled as undergraduate students during the Fall 2006 term.

**RETENTION RATE:** First year, 100%...second year, 88%... third year, 77%...fourth year, 74%.

**FACULTY/STAFF:** Total 2,291...FSU's faculty includes some past graduates, such as former astronauts Dr. Norm Thagard, who teaches Electrical Engineering, and Winston Scott who serves as Vice President of Student Affairs...FSU's faculty has included six dynamic Nobel Laureates: 12 members elected to National Academy of Sciences...10 members of the American Academy of Arts and Sciences...and two Pulitzer Prize winners Ellen T. Zwillich and Robert Olen Butler.

**EDUCATIONAL ADVANTAGES:** Florida State University has a uniqueness in providing programs that are consistent in excellence across the board, from fine arts and humanities to the hard sciences...The balance of programs is based on FSU's long tradition as a leading liberal arts institution combined with its position as one of the top 10 universities in generating research-based revenues...FSU is the most wired campus in Florida, and was recently ranked 18th most connected university in the nation by Yahoo! Internet Life.

**EDUCATIONAL OPPORTUNITIES ABROAD:** FSU offers a variety of overseas study opportunities for students during the regular academic year. FSU has study centers located in Florence, Italy; Panama City, Republic of Panama; Valencia, Spain; and London, England. Courses at the study centers are offered each semester and cover a wide range of subject areas perfect for meeting general and liberal studies requirements. International Programs also offers study programs, some general and some major specific, in: Cairns, Australia; Salvador, Brazil; Tianjin, China; San Jose, Costa Rica; Dubrovnik, Croatia; Prague, Czech Republic; Napo, Ecuador; London, England; Paris, France; Dublin, Ireland; Tokyo, Japan; Moscow, Russia; and Leysin, Switzerland. A summer Law program is offered in Oxford, England. There is one Linkage Institute, FLORICA, in Costa Rica, and Beyond Borders programs in Turrialba, Costa Rica, Kingston, Jamaica, and Dresden, Germany.

**EXTRACURRICULAR ACTIVITIES:** FSU has over 400 student organizations that allow students to find their own niche.

**FINANCIAL AID:** FSU offers two types of financial assistance: need-based and merit-based...Over \$160 million is given away for financial assistance each year.

**STUDENT/FACULTY RATIO:** 18-1... Many of the general education classes are large, lecture classes; however, over 70 percent of major classes have less than 40 students.

**RESEARCH:** The Florida State University has built a reputation as a strong research center in both the sciences and the humanities. It is expected that more than \$100 million in external funds will be generated this year by the university faculty and administration as supplements to state funds used for research. These external funds are in the form of contracts and grants from private foundations, industries, and government agencies, and are used to support research, improve research facilities, and provide stipends for graduate students.

**SPONSORED RESEARCH (2005-06):** \$173,605,359

**LIBRARY HOLDINGS:** The University Library System contains over 2.9 million volumes, of which more than 334,000 are available electronically as e-books. The libraries subscribe to more than 51,000 current serials including academic journals, professional and trade journals, and major newspapers from around the country and the globe in both paper and electronic formats. The libraries also subscribe to more than 300 databases. The FSU Libraries include 8 libraries on campus: The Robert Manning Strozler Library, Paul A. M. Dirac Science Library, Mildred and Claude Pepper Library, Warren Allen Music Library, Harold Goldstein Library and Information Science Library, College of Law Library, College of Medicine Medical Library, and the College of Engineering Library. Library materials and services are also available at the FSU Panama City Campus, as well as International Programs study centers in London, Florence, and Panama, and a collection of art and related materials at the John and Mable Ringling Museum of Art in Sarasota, Florida.

## 10 LEADING STATES OF ORIGIN (ENROLLMENT)

Florida	32,326
Georgia	935
Virginia	426
New York	324
Texas	267
Pennsylvania	264
North Carolina	259
New Jersey	209
Maryland	206
California	186

## FLORIDA STATE BOARD OF TRUSTEES



**JIM SMITH**  
Chairman  
Tallahassee, FL



**HAROLD KNOWLES**  
Vice Chairman  
Tallahassee, FL



**DERRICK BROOKS**  
Tampa, FL



**SUSAN BUSCH-TRANSOU**  
Midway, FL



**EMILY FLEMING DUDA**  
Oviedo, FL



**DAVID FORD**  
New York, NY



**MANNY GARCIA**  
Winter Springs, FL



**WILLIAM ANDREW HAGGARD**  
Coral Gables, FL



**RICHARD MCFARLAIN**  
Tallahassee, FL



**DR. E. ANN MCGEE**  
Winter Springs, FL



**LESLIE PANTIN, JR.**  
Miami, FL



**JOE O-SHEA**  
Student Govt. Assoc. Pres.



**JAYNE M. STANDLEY**  
Tallahassee, FL



**DR. T.K. WETHERELL**  
FSU President



## FAMOUS ALUMNI

### RITA COOLIDGE

Rita Coolidge, a two-time Grammy Award winner, has worked with Joe Cocker on his "Mad Dog and Englishman" tour and also toured and recorded with the likes of Eric Clapton, Jimi Hendrix, Bob Dylan, Leon Russell and Stephen Stills.

### LEE CORSO

Lee Corso, a college football analyst for ESPN, joined the network in 1987 after 28 years of football coaching experience at the college and professional levels. He is a game analyst for Thursday night telecasts and is a studio analyst for College GameDay.

### BARBARA HARRIS

Barbara Harris is the Editor-In-Chief of SHAPE Magazine, the largest national monthly health and fitness publication for women in the United States. She lettered in volleyball at FSU from 1974-77.

### TRAYLOR HOWARD

Traylor Howard is an actress best known for her role as "Sharon" in the ABC TV series "Two Guys and a Girl." Her feature film credits include "Me, Myself & Irene," with Jim Carey (2000), "Dirty Work," and "Confessions of a Sexist Pig." She is currently featured as "Natalie" in the series "Monk" on the USA Network.

### JOHN MARKS

John Marks, Mayor of the City of Tallahassee, is the managing partner of the Tallahassee office of Adorno & Yoss. He received his B.S. degree in 1969 from the Florida State University School of Business and his Juris Doctor degree in 1972 from the FSU College of Law. Mr. Marks also served four years in the U.S. Air Force as a Judge Advocate.

### GABRIELLE REECE

Gabrielle Reece began modeling in 1989 and has appeared on numerous magazine covers. She is internationally recognized as a top fashion model and spokesperson for several companies, including Nike. Reece co-wrote a book with Karen Karbo (July 1997) about her life as a pro volleyball player "Big Girl in the Middle."

### BURT REYNOLDS

Burt Reynolds, who has enjoyed enormous success as an actor and director in feature films, television and stage productions, is a Golden Globe winner, Oscar nominee, Emmy Award winner, winner of 12 People's Choice Awards including five for favorite motion picture actor and three for favorite all-round male entertainer.

### DR. TONEA STEWART

Dr. Tonea Stewart is a professional actress, tenured Professor and Director of Theatre Arts at Alabama State University. As an actor, she is best known for her recurring role in "In the Heat of the Night" as Aunt Etta Kibbe.

### NORM THAGARD

Former NASA Astronaut, Norm Thagard, logged over 140 days in space during five space flights. He is currently on Faculty at FSU in the College of Engineering.

### OTHER DISTINGUISHED ALUMNI

**John Altmire**, U.S. Congressman from Pennsylvania

**Reubin Askew**, former Governor of Florida

**Paul Azinger**, professional golfer

**Alan Ball**, award-winning writer, received the 1999 Academy Award for Best Original Screenplay for "American Beauty"

**John W. Bradley**, actor, "The New Adventures of Robin Hood"

**Clifton Campbell**, playwright

**Charlie Crist**, Governor of Florida

**Davis Gaines**, performer, "The Phantom of the Opera"

**Jane Geddes**, professional golfer

**Paul Gleason**, actor, "Trading Places," "The Breakfast Club"

**Parris Glendinning**, former Governor of Maryland

**Hubert Green**, professional golfer

**Tara Dawn Holland Christensen**, Miss America 1997

**Linda Keever**, Editor in Chief Florida Trend Magazine

**Jeff Kottkamp**, Florida Lt. Governor

**Tony LaRussa**, Manager, St. Louis Cardinals

**Doug Marlette**, Pulitzer Prize winner for editorial cartooning

**Mel Martinez**, U.S. Senator - Florida

**DeLane Matthews**, actress

**Michael Piontek**, actor

**Henry Polic**, actor

**Charles G. Rex**, New York Philharmonic

**Victor Rivers**, actor and spokesperson for The National Network To End Domestic Violence

**Stephen J. Rothman**, theatre director

**Winston Scott**, former NASA astronaut

**Steven Sears**, writer and producer

**Randy Ser**, theatrical director

**Sonny Shroyer**, actor, "The Dukes of Hazard"

**Richard Simmons**, diet and exercise guru

**Robert Ulrich**, actor, "Vega\$, " "Spencer For Hire"

**Dr. Valint Vazsonyi**, international concert pianist

**Claudia Waite**, award-winning soprano

**Ellen Taaffe Zwillich**, first woman to win Pulitzer Prize in music

**Linda Zoghby**, opera singer



Tallahassee Mayor John Marks



Rita Coolidge



Paul Gleason



Traylor Howard



Gabrielle Reece



Dr. Tonea Stewart



Head football coach Bobby Bowden with Florida Governor Charlie Crist

Shape Magazine Editor-in-Chief, Barbara Harris

ESPN Game Day's Lee Corso

Actor Burt Reynolds with former Seminole Warrick Dunn

www.Seminoles.com



# ATHLETIC ADMINISTRATION



## DR. T.K. WETHERELL President, Florida State University

Dr. Thomas Kent "T.K." Wetherell became the 13<sup>th</sup> president of Florida State University on January 6, 2003. He is the first university alumnus to serve as president of Florida State. A career educator with more than 30 years of experience in the State of Florida's educational system, Dr. Wetherell is also the only FSU president with experience in all four major divisions within higher education, having held positions in the offices of academic affairs, student services, business affairs, and college development. He has held leadership positions in two-year as well as four-year colleges, and he has served as a faculty member in both public and private institutions of higher education.

Dr. Wetherell is recognized as a high-energy, student-oriented president. He is an innovator who challenges faculty, staff and administrators to set high professional and personal standards. During his tenure as president, Florida State realized its dream of establishing, receiving full accreditation and graduating the first class of the nation's first public new allopathic medical school in the last 25 years.

Under Dr. Wetherell's leadership Florida State has undertaken the university's most extensive construction program, adding three new residence halls, a general purpose classroom building, new food services facilities, parking garages, an alumni center, research facilities, massive renovation projects, a Heritage Walk system throughout campus, as well as the construction of a new medical school.

Dr. Wetherell established the Pathways to Excellence program designed to enhance Florida State University's stature as a public graduate research university. The Pathways to Excellence program is designed with the Association of American Universities evaluation criteria as its basis. In addition to issuing a challenge to the university's community to reach a higher level academically, Dr. Wetherell also made available online data that will allow the public and individual faculty to monitor the university's and their respective academic department's success in this endeavor.

Dr. Wetherell is an outstanding advocate for higher education and has been called the state's most "politically astute president." In addition to his political insight, Dr. Wetherell is expert in resource development and led the university to successfully complete Florida State's second major capital campaign. During the campaign Dr. Wetherell gave the largest gift a seated president of a public research university has ever given to an institution in the United States. As president, Dr. Wetherell has also been the university's most vocal advocate for a community service program as part of students' college experience.

Dr. Wetherell has been inducted into Florida State University's Hall of Fame and was the recipient of the prestigious Moore-Stone Award, the Circle of Gold Award and the university's Distinguished Service Award. In addition, he has also been awarded an honorary Doctorate of Letters from Flagler College.

Dr. Wetherell served in the Florida House of Representatives from 1980 to 1992, the last two years as Speaker of the House. During his tenure in the House he served as chairman of the appropriations committee and the higher education committee. The Miami Herald named him one of the Top Ten Legislative Leaders in the House each year from 1987 until 1992. During his years in the legislative process Florida enacted some of the most progressive education legislation in America.

A third-generation Floridian, Dr. Wetherell was born on December 22, 1945 in Daytona Beach, Florida. He attended Port Orange Elementary School and Mainland Senior High School, where he was active in service clubs, student government and athletics. He attended Florida State University on a football scholarship and played on the 1963-67 football teams. He still holds the record for the longest kickoff return in Florida State University history. He earned his bachelor's and master's degrees in social studies education from FSU in 1967 and 1968 respectively. He earned a doctorate in education administration from FSU in 1974.

Dr. Wetherell is married to Virginia B. Wetherell, who was appointed by Governor Chiles as Secretary of the Florida Department of Environmental Protection from 1991 to 1998. She previously served as a state legislator representing Pensacola. She currently is president of Wetherell Consulting Services. They are the parents of three children: Kent, Blakely, and Page, and have two grandchildren: Emily and Tyler. Wetherell's personal interests include outdoor recreation, travel and aviation.



## DAVE HART FSU Director of Athletics

His peers use terms and words such as class, integrity, respect, visionary and national leader to describe Dave Hart, Jr. Bolstered by his leadership and vision, the current and future state of a still young athletics program at Florida State University is vibrant and inspiring. Hart is widely viewed as one of the nation's top athletics directors. It is a reputation he has earned.

Dave Hart begins his 12th year as Florida State's Athletics Director. Hart has led the FSU athletics program since 1995 with comprehensive success in mind. The athletics department budget has doubled from 20 to more than 40 million dollars since Hart arrived, with a high percentage of that increase going towards the growth and development of women's athletics programs at FSU. Student-athletes have reached new heights in academic performance within University, Conference and national circles. Florida State student-athletes, coaches, administrators and teams are being recognized nationally on a regular basis for honors and awards. Excellence in competition is evidenced across the board with the Seminoles finishing in the Top 20 nationally in the Directors' Cup this past year.

Hart has served on several prestigious committees at conference and national levels during his career in athletics administration. He has been a member of the NCAA Council, the NCAA Honors and Awards Committee and the NCAA Special Events and Postseason Bowls Committee as well as a consultant to the NCAA Student-Athlete Advisory Council.

Since his arrival at Florida State, Hart has negotiated unprecedented multi-million dollar contracts for the department totaling in excess of 100 million dollars while planning and guiding the development and implementation of an extensive and comprehensive facilities master plan for athletics which totals more than 125 million dollars. He initiated a multi-faceted Student Development/Life Skills program for all student-athletes, which has been recognized nationally as a "Program of Excellence" by the Division I-A Athletics Directors' Association. He spearheaded the rewriting of the department's mission statement to put the student-athlete at the core of everything the athletics department does in its goal to build comprehensive excellence throughout the many components of the department.

Hart met his wife, the former Pam Humble, while at Alabama and they have three children, Rick, Jamie and Kelly. The Harts' also have three grandchildren, Trevor, Caroline and McKinley.



Dave and Pam Hart

## UNIVERSITY ADMINISTRATION

President .....	Dr. T.K. Wetherell
Provost & Executive Vice President	
for Academic Affairs .....	Lawrence G. Abele
Dean of the Faculties & Deputy Provost .....	Dr. Anne Rowe
Vice President for Research .....	Dr. Kirby Kemper
Vice President for Student Affairs .....	Mary Coburn
Senior Vice President for Finance	
& Administration .....	John R. Carnaghi
Vice President for University Relations .....	Lee Hinkle
General Counsel .....	Betty J. Steffens

www.seminoles.com





## ACADEMIC SERVICES

### MISSION STATEMENT

The primary focus of the Athletic Academic Support Program is to provide an environment which facilitates the academic success of each student-athlete. Student success is encouraged through competent academic counseling, study skills development, individualized assessment and support, and a wide array of tutorial services.

### AN OVERVIEW OF AN AWARD-WINNING ACADEMIC SUPPORT PROGRAM

Academic, personal and professional support is essential to college success. At The Florida State University, an outstanding support program has been developed that enables student-athletes to reach their full potential.

Florida State Athletic Academic Support Program Director, Mark Meloney states, "Our philosophy is to offer an academic support program integrated with the total University that will assist all student athletes with the transition into college and provide continued support in all phases of academic and professional development, culminating with graduation, job placement or graduate school."

Florida State's program operates on a "proactive" rather than "reactive" approach. The academic staff does not wait for crises to occur. They gather important background information on each entering student-athlete, build an academic profile, and develop individualized support programs which are tailored to the unique needs of each student athlete. They also stay informed on the daily progress of the student-athletes through consistent communication with the Florida State faculty.

In the summer of 2004, the Academic Support Program moved into their new home, a state-of-the-art facility in the newly constructed Moore Athletic Center. The multi-million dollar structure, which is located in the north end zone of Doak Campbell Stadium, is the home of Florida State athletics. Some of the features of the new academic support area include a 32-station computer lab for student-athletes, 10 private tutorial rooms, the use of two 50-seat classrooms, and a five-station "Learning Center" for student-athletes with learning deficiencies and/or disabilities. The compliance, student services, business, sports information and athletics marketing offices are also housed in the facility, providing a more efficient and functional department, thus allowing student-athletes the opportunity for balance and improved time management.

The academic support staff is comprised of a director, 2 associate directors, an administrative assistant, six academic counselors, two learning specialists, several graduate assistants, and approximately 50 tutors and mentors.

### TUTOR & MENTOR PROGRAM

The athletics department at Florida State University has made a commitment to providing the student-athletes with one of the finest and most comprehensive tutorial and mentor programs in the nation. The tutorial program is just one of several key support services that is available to all student-athletes as they progress towards their ultimate goal of obtaining a college degree. Florida State hires approximately 50 tutors a year, from a variety of academic departments, who are committed to providing a proactive, individualized approach in assisting student-athletes with course comprehension and study skills. In addition, mentors are academic role models who have demonstrated the ability to teach and give guidance in areas of academic developmental skills. They are responsible for providing assistance in the development of skills such as note taking, test preparation and communication with faculty. In essence, mentors become an extension of the academic counselor as they keep the academic performance of their student-athletes under close observation and report to the academic counselors each week. The tutors and mentors are usually seniors or graduate level students who have outstanding academic backgrounds.

### STUDY HALL

In an effort to help ensure the academic success of the student-athletes, professionally supervised study sessions for each athletic team are organized. The main focus of the study hall program is to help students develop consistent and appropriate study patterns by providing a structured setting to work on class assignments and to provide tutorial assistance before academic problems arise. Although the criteria for study hall is left to the discretion of each academic counselor, typically most freshmen, first year transfers, and upperclassmen who have not yet achieved a satisfactory cumulative grade point average are asked to attend study hall.



**MARK MELENEY**

*Director of Athletic Academic Support Program*



**KYLIE AMATO**

*Women's Soccer Academic Program Specialist*

ATHLETIC  
ACADEMIC  
SUPPORT



Junior Ania Rynarzewska received the 2007 Golden Torch Award for having the highest GPA on the women's tennis team.



# STUDENT SERVICES & DEVELOPMENT

## STUDENT-ATHLETE ADVISORY COUNCIL

- Allen, Tori - Track & Field
- Barry, Brianna - Volleyball
- Batchelor, Kandia - Track & Field
- Bowman, Laura (SEC) - Cross Country
- Boyajian, Ryan - Men's Tennis
- Breeden, Casaan - Men's Basketball
- Brown, Everette - Football
- Buckelew, Tiffany - Women's Basketball
- Burke, Brendan - Swimming & Diving
- Carr, Jessie - Swimming & Diving
- Clark, Charles - Track & Field
- Cruz, Javo - Cross Country
- Deye, Bobby - Men's Tennis
- Echefu, Uche - Men's Basketball
- Edwards, Becky - Soccer
- Erickson, Shawn - Swimming & Diving
- Freshour, Mara - Women's Basketball
- Gano, Graham - Football
- Garcia-Tunon, Javier (Pres.) - Track & Field
- Gianeskis, Elizabeth - Soccer
- Hanna, Carissa - Swimming & Diving
- Kemp, Ashley - Women's Golf
- Marobela, Tapiwa - Women's Tennis**
- May, Melissa - Softball
- McDonald, Tiffany - Softball
- Moore, Cayla - Women's Basketball
- O'Connor, Ruairi - Baseball
- Rademacher, Stacy - Swimming & Diving
- Rolle, Myron (Vice-Pres) - Football
- Ruch, Bradley - Men's Golf
- Rynarzewska, Ania - Women's Tennis**
- Savage, Matt - Men's Golf
- Snyder, Michelle - Softball
- Thomas Jr., Tony - Baseball
- Thompson, Makini - Volleyball
- Tilbrook, Alex - Swimming & Diving
- Urban, Meredith - Cross Country
- Westrup, Caroline - Women's Golf

## LIFE SKILLS

Developed by the Florida State University Department of Athletics, the N.O.L.E.S. program represents a commitment to the total growth and development of each student-athlete. The program establishes an administrative commitment to academic and athletic excellence. Those efforts will be supported with programs and services in personal and career development service.

## PERSONAL DEVELOPMENT

Fostering the development of personal growth is a fundamental component of the N.O.L.E.S. program. The support programs ensure that the student-athlete will be provided with opportunities to focus on personal growth areas such as value clarification, goal setting, fiscal planning, decision making and personal responsibility. Programming focuses on helping the student-athlete develop a healthy lifestyle while they are at Florida State and habits that will benefit them for life.

## CAREER DEVELOPMENT

Preparing for life after college is a major focus of the N.O.L.E.S. program. The program is designed to work in cooperation with Florida State's Career Center to acquaint students with the job search process, provide networking opportunities and ultimately assist with job placement. The program places a priority on the development of the total person, with the goal of developing

individuals who will have rewarding careers and productive lifestyles after they leave Florida State. The newest addition to the Career Development program is the Senior Transition Seminar offered through the Office of Student Services. The course is offered to all senior student-athletes with exhausting eligibility and is designed to assist with resume building, networking with former student-athletes, and tips on transitioning from intercollegiate athletics into the working world.



**JOHN LATA**  
Director of Student Services

## COMMUNITY SERVICE

Serving the community is the focus of the Seminole Spirit program. Student-athletes are challenged to provide service to our community and individuals who are in need. With a clearly defined program of service, student-athletes are given the opportunity to develop lifelong commitment to volunteerism. Over the years, the commitment to community service has grown leaps and bounds. The FSU athletic department was recently recognized by the National Consortium for Academics and Sports for the most successful outreach and community service program in which FSU student-athletes impacted the lives of over 150,000 youths.

## LEADERSHIP DEVELOPMENT

The Florida State University Department of Athletics is committed to developing programs of excellence that foster leadership development. The Student-Athlete Advisory Council (SAAC) has been in place in the Florida State University Athletic Department for ten years, and consists of a fantastic group of motivated student-athletes. The SAAC consists of 42 student-athletes, at least two from every team, and they meet every two weeks to discuss issues confronting student-athletes, here at FSU, as well as in the Atlantic Coast Conference and across the nation. The SAAC at FSU has many responsibilities: they take the lead on a variety of events, starting with the New Student-Athlete Orientation, Peers Helping Athletes Transition (PHAT) Tuesdays with freshmen student-athletes, the Culture Fest (student-athletes celebrating diversity within the athletic department), the Welcome Back Picnic and culminating with the Golden Nole Awards year ending banquet where seniors from each team are honored and student-athletes who have excelled in the area of community service are awarded.





# NCAA COMPLIANCE

## FLORIDA STATE UNIVERSITY COMPLIANCE OFFICE

The following information is provided by the Florida State Office of Compliance for prospective student-athletes. It is intended as a guideline to introduce you to some of the rules governing NCAA athletics.

## KEY DEFINITIONS YOU SHOULD KNOW

**Representative of Athletics Interests:** A representative of the institution's athletics interests (AKA Booster) is an individual who is known (or should have been known) by a member of the institution's athletic department to:

- \* Have participated in or to be a member of an agency or organization promoting the institution's intercollegiate athletics program;
- \* Have made financial contributions to the athletics department of to an athletics booster organization of that institution;
- \* Be assisting or to have been requested (by the athletics department staff) to assist in the recruitment of prospects;
- \* Be assisting or to have assisted in providing benefits to enrolled student-athletes or their families; or
- \* Have been otherwise in promoting the institution's athletics program.

\*\*\* Once an individual is identified as a representative, the person retains that identity forever \*\*\*

**Prospective Student-Athlete:** A prospective student-athlete ("prospect") is a student who has started classes for the ninth grade, regardless whether he or she participates in athletics. A prospective student-athlete maintains his or her identity as a prospect, even after he or she signs a National Letter of Intent or financial aid agreement, until he or she attends the first day of practice or participates in an official team practice, whichever is earlier.

**Contact:** A contact is any face-to-face encounter between a prospect or the prospect's parents, relatives or legal guardian(s) and an institutional staff member during which any dialogue occurs in excess of an exchange of a greeting.

**Evaluation:** An evaluation is any off-campus activity designed to assess your academic qualifications or athletic ability, including any visit to your high school (during which no contact occurs) or the observation of any practice or competition in which you participate.

## PHONE CALLS AND LETTERS

Phone calls from coaches (but not boosters) are permitted beginning July 1 before your senior year in high school. A coach is limited to one phone call per week except that unlimited phone calls may be made:

- \* During the five days immediately before your official visit to the university;
- \* On the day of a coach's off-campus contact with you.
- \* During the time beginning with the National Letter of Intent signing date through the two days after the signing date and after a National Letter of Intent or scholarship agreement is signed.

A Prospect of Any Age Could Receive the Following From a Coach:

- \* Questionnaire
- \* Camp brochure
- \* NCAA educational information
- \* Business Card
- \* None-athletics institutional publications

After September 1 of a Prospect's Junior Year, a Coach Could Provide

- \* Written correspondence, including letters and e-mails
- \* Game programs (only on an official or unofficial visit)
- \* Media Guide
- \* Official academic, admission and student services publications and videotapes produced by the institution and are available to all students
- \* Any other information may be provided via the institution's web site.

## WHO IS PERMITTED TO RECRUIT FOR FLORIDA STATE?

Only Florida State University coaches who have successfully completed the NCAA Recruiting Rules Examination on an annual basis may be involved in the recruitment process. Boosters may not make any recruiting contacts. This includes letters, telephone calls or face-to-face contact on or off campus with a prospect or the prospect's parents.

## ALUMNI AND BOOSTERS DO'S AND DON'TS

- \* You may forward information about prospective student-athletes to the appropriate coaches.
- \* You may have contact with a prospect regarding permissible pre-enrollment activities such as summer employment, provided the prospect has already signed a National Letter of Intent and the Compliance Office is aware you are making these contacts in regard to employment.
- \* You may have a telephone conversation with a prospect only if the prospect initiates the call. Such a call may not be prearranged by an institutional staff member and you are not permitted to have a recruiting conversation, but may exhibit normal civility. You must refer any questions about our athletic programs to an athletics department staff member/coach.
- \* You may view a prospect's contest at your own initiative provided you do not contact the prospect or his/her parents. In addition, you may not contact a prospect's coach, principal or counselor in an attempt to evaluate the prospect.
- \* You may continue established family relationships with friends and neighbors. Contacts with sons and daughters of these families are permitted as long as they are not made for recruiting purposes or encouraged by Florida State University coaches.
- \* You may not become involved in making arrangements to receive money or financial aid of any kind for a prospect or the prospect's family and friends.
- \* You may not make contact with a prospective student-athlete and his/her parents when the prospect is on campus for an official or unofficial recruiting visit.
- \* You may not transport, pay or arrange for payment of transportation costs for a prospect and his/her relatives or friends to visit campus (or elsewhere).
- \* You may not pay or arrange for payment of summer camp registration fees for a prospect.
- \* You may not provide anything to a prospect, the prospect's family or friends without prior approval from the Compliance Office.

For more information, please contact the Florida State Compliance Office at (850) 644-4272.



**BOB MINNIX**  
Senior Associate Athletics  
Director for Compliance



**BRIAN BATTLE**  
Associate Athletics Director  
for Compliance



**ELIZABETH BOOKWALTER**  
Compliance Coordinator

www.Seminoles.com



# THIS IS TALLAHASSEE

Among low, rolling hills, down moss draped canopy roads, within picturesque historical districts, and across seas of flowering azaleas lies a magical part of the Sunshine State — Tallahassee — Florida's capital city. With its intriguing combination of power-play politics and classic character splashed with a twist of beauty and charm, Tallahassee is a genteel Southern belle with good manners, old plantation homes and y'all-come hospitality — a side of Florida few expect to find.

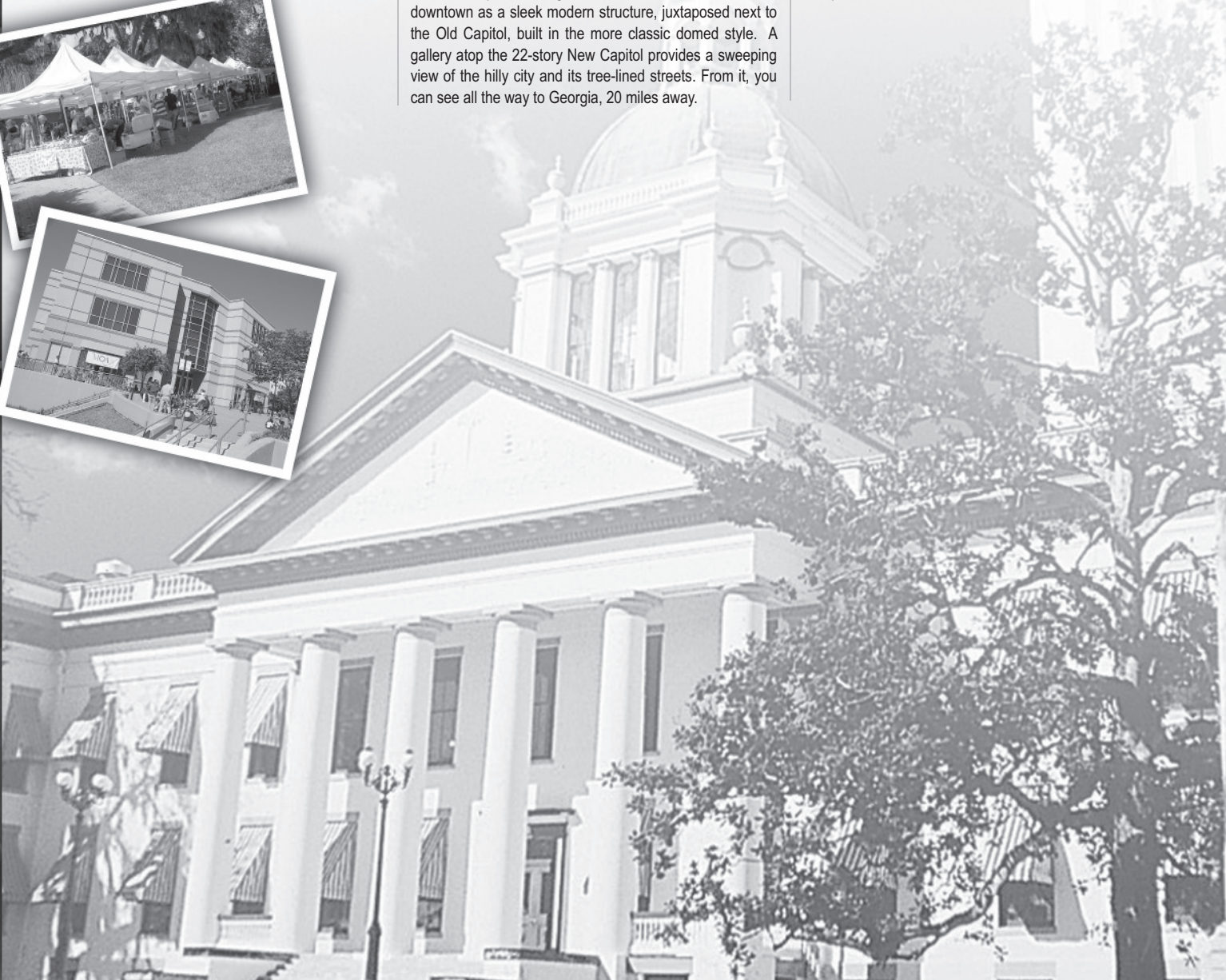
With the Gulf of Mexico just 25 miles south and the Georgia border only 14 miles north, Tallahassee rests between the foothills of the Appalachian Mountains and the juncture of Florida's panhandle and peninsula in an area known as

"The Big Bend." Nearer in miles to Atlanta than to Miami, Tallahassee more closely resembles its' Georgia neighbor than Florida in topography, climate and lifestyle.

Like the city itself, the story of how Tallahassee was chosen as the state capital is rich in history. In 1823, two explorers set out — one on horseback from St. Augustine and the other by boat from Pensacola — to establish a permanent, central location for the seat of government. The two met at a beautiful site that the Creek and Seminole Indians called "tallahassee" — derived from the words "talwa," meaning town, and "ahassee," meaning old. This historic meeting place remains Florida's capital today.

The New Capitol building rises at the center of Tallahassee's downtown as a sleek modern structure, juxtaposed next to the Old Capitol, built in the more classic domed style. A gallery atop the 22-story New Capitol provides a sweeping view of the hilly city and its tree-lined streets. From it, you can see all the way to Georgia, 20 miles away.

Around the capitol complex, a 10-block historic district spreads, preserving the town's gracious old homes along a linear park and holding a historic inn, bars and restaurants patronized by Senators and sophomores alike. With no shortage of culture, downtown also offers museums, theater and art galleries. Artists have turned the old warehouses of Downtown Industrial Park into the studios and cafes of Railroad Square. The Museum of Florida History, nearby, is highly acclaimed for its scan of the state's past, and The Mary Brogan Museum of Art & Science, along with changing art exhibits, brings learning to a kid's level with hands-on exhibits. Other sightseeing favorites include the floral masterpiece of Alfred B. Maclay State Gardens; Bradley's Country Store; FAMU Black Archives; and the Tallahassee Antique Car Museum.



www.seminoles.com



# DONALD L. TUCKER CENTER

The Donald L. Tucker Center is a multi-purpose convention and entertainment facility featuring a 12,100 seat arena, Luxury Suites and Club Seats and over 52,000 sq. ft. of meeting and exhibition space plus an arena view restaurant, Spotlight Grille. The Civic Center hosts a wide variety of concerts, family shows, Broadway shows, ice shows and sporting events including FSU basketball.

It is easy to understand why over one million people a year flock to the Donald L. Tucker Center, what with the varied array of attractions it offers. Some people go to the Tucker Center to enjoy the sounds of rock, country, pop and urban concerts. Some go for the thrills of basketball, rodeos and three-ring spectaculars. While others come for conventions, banquets, expositions, or consumer and trade shows. Located downtown on Pensacola Street, the Tucker Center is only two blocks from the Capitol building.



The area surrounding Tallahassee reveals numerous other historic and archaeological treasures, such as De Soto State Archaeological and Historical Site, Lake Jackson State Archaeological Site, Mission San Luis, Natural Bridge Battlefield and San Marcos de Apalache. Visitors can explore prehistoric Florida at the Museum of Florida History, where they are greeted by a giant 12,000-year-old mastodon pulled from nearby Wakulla Springs.

On the shores of Wakulla Springs, alligators still laze under the watchful eyes of "snake birds" perched on twisted cypress trees. The site of many underwater scenes in "Tarzan" movies, it's one of the world's deepest freshwater springs. Glass-bottomed boat tours across these mystical waters are available.

Nearby small towns offer fascinating excursions to places such as Pebble Hill Plantation, Florida Caverns State Park, Monticello Opera House and St. George Island.



www.Seminoles.com

### TALLAHASSEE UP CLOSE

- Tallahassee is home to more than 60,000 college students between Florida State University, Florida A&M University and Tallahassee Community College.
- Thirty percent of Tallahassee's population is 18-24 years old.
- The average maximum temperature in Tallahassee is 78 degrees and almost twenty-five percent of the year the temperature is above 90 degrees.
- There are over 150,000 people living in the Tallahassee area and over 300,000 in the metropolitan area.
- The capital of the State of Florida has been located in Tallahassee since 1823.



## THE CAPITOL

One of five tower Capitols in the U.S. features panoramic view from 22-floor observatory/art gallery, House and Senate viewing galleries.

## CHALLENGER LEARNING CENTER

The Challenger Learning Center of Tallahassee is a 32,000 square foot facility located on beautiful Kleman Plaza in downtown Tallahassee. The Challenger Learning Center is the K-12 outreach facility of the Florida A&M University — Florida State University College of Engineering and a visitor destination. The Center features a state-of-the-art Space Mission Simulator and utilizes the immersiveness of an IMAX theatre and a digital domed planetarium to create an unforgettable experience for all.

## MACLAY STATE GARDENS

Enchanting floral architecture surrounds 1930s home of NY financier Alfred B. Maclay. Impressive grounds feature 200+ floral varieties plus hiking, biking and nature trails, swimming, fishing and boating.

## MARY BROGAN MUSEUM OF ART & SCIENCE

Interactive hands-on science center and national traveling art and science exhibitions.

## MISSION SAN LUIS

Site of Spanish/Indian village settled from 1656-1704. Ongoing excavations/ exhibits/ reconstructions.

## MUSEUM OF FLORIDA HISTORY

Permanent exhibits include a nine-foot mastodon, Spanish galleon treasures, Civil War memorabilia, reconstructed steamboat and Prehistoric Florida plus traveling exhibits.



LEFT: The Museum of Florida History

ABOVE: The Challenger Learning Center

## OUR CAPITOL MUSEUM

Restored to 1902 appearance featuring red candy-striped awnings, stained glass dome, House and Senate Chambers, Supreme Court and Governor's office.

## TALLAHASSEE ANTIQUE CAR MUSEUM

Impressive showroom features award winning Chevys, one-of-a-kind Ford Roadster, 1913 CarNation Tourer, 1931 Duesenberg, 1956 T-Bird, Delorean, Cadillacs, Corvettes and more. Plus two original Bat Mobiles.



## MUSEUM AND CULTURE

The federal Institute of Museum and Library Services (IMLS) named the Tallahassee Museum of History and Natural Science as one of the nation's exemplary museums on September 19, 2000. The Tallahassee Museum, along with 176 other museums, was selected out of a field of 823 applications from museums throughout the nation in a highly competitive competition. The museum features a 52-acre natural habitat zoo, nature trails, authentic 1880s farmstead, hands-on Discovery Center, birds of prey aviary, reptile exhibits, annual events and more!

www.seminoles.com



## CANOPY ROADS

The abundance of trees and timber is a resource uncommon to many other areas of the state. The beauty of the local trees is exemplified in Maclay Gardens State Park, which is the site of several of Florida's champion trees including the flowering Dogwood, the Hawthorn tree, the Horsesugar tree, the Sweetbay Magnolia and the Silverbell tree. These trees and others often extend their branches over the roadway to create a canopied effect, a feature that is held in high esteem by local residents and visitors.



## WHERE'S THE BEACH?

Where sunny days are filled with the great outdoors...where time is measured by tides and life's rhythms move with the surf...beaches are just a short drive from Tallahassee.

### ALLIGATOR POINT

Natural dune public beach, 45 miles south of Tallahassee

### CARRABELLE

Coarse public beach, featuring swimming and shelling, 60 miles southwest of Tallahassee

### DEKLE BEACH

Pristine sandy beach, clear water featuring boating, swimming, picnicking and more, 70 miles east of Tallahassee

### MASHES SANDS BEACH

Public beach, shallow bay water featuring swimming and crabbing, 40 miles southwest of Tallahassee

### ST. GEORGE ISLAND

Pristine 29-mile barrier island beach, clear water, featuring swimming, shelling, boating, and fishing, 80 miles southwest of Tallahassee

### SHELL POINT

Lovely, small peninsula surrounded by St. Marks Wildlife refuge. Secluded beach and clear water that is popular for sailing and windsurfing, 25 miles south of Tallahassee



## TALLAHASSEE'S AN ALL-AMERICAN CITY!

On June 26, 1999, judges from the National Civic League named Tallahassee as one of 10 cities to win the prestigious All-America City (AAC) award from the 1999 All-America City conference in Philadelphia. The All-America City award is the most prestigious and coveted award a community can win. The annual award recognizes exemplary, grassroots and problem-solving efforts of communities that cooperatively tackle challenges and achieve measurable results. Judging is based on the overall level of community involvement in solving critical local problems, including public-private partnerships.

"This is clearly one of the most exciting things to ever happen to Tallahassee," said a jubilant Mayor Scott Maddox. "For those of us who call Tallahassee home, the All-America City award verifies what we've known for so long — that we have one of the greatest cities in all of America!"

www.Seminoles.com



# Florida State

## 2007-08 WOMEN'S TENNIS



# THIS IS THE ACC



**BOSTON COLLEGE**



**CLEMSON**



**DUKE**



**FLORIDA STATE**



**GEORGIA TECH**



**MARYLAND**



**MIAMI**



**NORTH CAROLINA**



**NC STATE**



**VIRGINIA**



**VIRGINIA TECH**



**WAKE FOREST**



### THE TRADITION

Consistency. It is the mark of true excellence in any endeavor.

However, in today's intercollegiate athletics, competition has become so balanced and so competitive that it is virtually impossible to maintain a high level of consistency.

Yet the Atlantic Coast Conference has defied the odds. Now in its 55th year of competition, the ACC has long enjoyed the reputation as one of the strongest and most competitive intercollegiate conferences in the nation. And that is not mere conjecture, the numbers support it.

Since the league's inception in 1953, ACC schools have captured 105 national championships, including 56 in women's competition and 49 in men's. In addition, NCAA individual titles have gone to ACC student-athletes 139 times in men's competition and 86 times in women's action.

The success of women's tennis in the ACC has been profound since it became a conference sport in 1983. It reached unprecedented levels in 2007 with the league sweeping all three NCAA team, singles and doubles championship titles. Georgia Tech captured the team trophy, while Miami's Audra Cohen won the singles crown and the doubles championship was claimed by Sara Anundsen and Jenna Long from North Carolina.

The team and doubles titles were both firsts in the history of ACC tennis. Georgia Tech became the first school to take home the team championship and it was also the first NCAA championship in any sport for the Yellow Jackets. North Carolina's tandem of Anundsen and Long made its mark in the league record books as the first national doubles champion.

Only the second player in the league to have been tabbed Intercollegiate Tennis Association National Player of the Year twice in her career, Miami's Cohen became the third national women's singles champion from the ACC. Duke's Vanessa Webb was the league's first NCAA individual singles champion in 1998, and the ACC produced a second national singles champion a few years later in Wake Forest's Bea Bielik (2002).

Cohen is also among a trio of ACC women's tennis players to have captured the elite Honda Sports Award. She joined Georgia Tech's Kristi Miller and Duke's Webb, who first earned the honor in 1999. Miami's Cohen (2006-07) and Georgia Tech's Miller (2005-06) are the league's only two-time recipients of the national award.

In all, the league boasts five National Players of the Year, four National Rookie Players of the Year and four annual Honda Sports Award winners.

Over 130 players have earned All-America distinction by the ITA, NCAA or both organizations, including Duke's Amanda Johnson (2001-04) and Vanessa Webb (1996-99). Both are the only four-time ITA All-America recipients in ACC women's tennis history.

ACC women's tennis has been a strong contender in the NCAA Tournament since 1982. The league has been well-represented in the national event in all but two years (1985 and 1989). An ACC school has advanced to the NCAA semifinals in each of the last five years, and the league has had at least one team in the quarterfinals in the last 17 seasons.

For the second straight year, women's tennis matched an all-time high with nine of its league members qualifying for the NCAA Tournament that included a league-best six teams advancing to the second round. The 2006 campaign was the first time nine teams went to the national event and it matched that mark again last season.

The 2006 season marked the first time an ACC team (Miami) advanced to the NCAA finals since 1998, falling short to No. 1 Stanford. Georgia Tech took it a step further in 2007 as the Yellow Jackets clinched the first-ever NCAA Women's Tennis team title for the ACC and the school. Duke was the first league member to make an appearance in the finals of the national tournament in 1998, the same year the Blue Devils produced individual singles champion Vanessa Webb.

Women's tennis has also demonstrated success in the classroom with approximately 30 student-athletes receiving Academic All-America citations. In addition, the league has had 35 tabbed ITA Scholar Athletes.

### 2006-07 NATIONAL CHAMPIONSHIPS

Field Hockey ..... Maryland  
Women's Soccer ..... North Carolina  
Women's Tennis ..... Georgia Tech  
Women's Golf ..... Duke  
Men's Track & Field ..... Florida State

### THE CHAMPIONSHIPS

The conference will conduct championship competition in 24 sports during the 2007-08 academic year - 12 for men and 12 for women.

The first ACC championship was held in swimming on February 25, 1954. The conference did not conduct championships in cross country, wrestling or tennis during the first year.

The 12 sports for men include football, cross country, soccer, basketball, swimming, indoor and outdoor track, wrestling, baseball, tennis, golf and lacrosse. Fencing, which was started in 1971, was discontinued in 1981.

Women's sports were initiated in 1977 with the first championship meet being held in tennis at Wake Forest University.

Championships for women are currently conducted in cross country, field hockey, soccer, basketball, swimming, indoor and outdoor track, tennis, golf, lacrosse, softball and rowing.

### A HISTORY

The Atlantic Coast Conference was founded on May 8, 1953, at the Sedgefield Inn near Greensboro, N.C., with seven charter members - Clemson, Duke, Maryland, North Carolina, North Carolina State, South Carolina and Wake Forest - drawing up the conference by-laws.

The withdrawal of seven schools from the Southern Conference came early on the morning of May 8, 1953, during the Southern Conference's annual spring meeting. On June 14, 1953, the seven members met in Raleigh, N.C., where a set of bylaws was adopted and the name became officially the Atlantic Coast Conference.

Suggestions from fans for the name of the new conference appeared in the region's newspapers prior to the meeting in Raleigh. Some of the names suggested were: Dixie, Mid South, Mid Atlantic, East Coast, Seaboard, Colonial, Tobacco, Blue-Gray, Piedmont, Southern Seven and the Shoreline.

Duke's Eddie Cameron recommended that the name of the conference be the Atlantic Coast Conference, and the motion was passed unanimously. The meeting concluded with each member institution assessed \$200.00 to pay for conference expenses.

On December 4, 1953, conference officials met again at Sedgefield and officially admitted the University of Virginia as the league's eighth member. The first, and only, withdrawal of a school from the ACC came on June 30, 1971, when the University of South Carolina tendered its resignation.

The ACC operated with seven members until April 3, 1978, when the Georgia Institute of Technology was admitted. The Atlanta school had withdrawn from the Southeastern Conference in January of 1964.

The ACC expanded to nine members on July 1, 1991, with the addition of Florida State University.

The conference expanded to 11 members on July 1, 2004, with the addition of the University of Miami and Virginia Polytechnic Institute and State University. On October 17, 2003, Boston College accepted an invitation to become the league's 12th member starting July 1, 2005.





# The RECORD BOOK



# FLORIDA STATE HALL OF FAME



## Buffy Baker

Buffy Baker was one of the most successful players in history of FSU women's tennis. Baker accumulated 94 singles wins from 1987-91 playing at the number one and two positions for the Seminoles. She led FSU in individual wins in each of her four seasons and was a terrific doubles player winning the Metro Conference title three years in a row. She was a four-time All-Metro Conference selection and four time MVP of the FSU squad. She closed out her playing career in 1991 by winning the Metro Conference crown at No. 1 singles and No. 1 doubles and earned conference Most Valuable Player honors while leading the team to a first-place finish ahead of South Carolina.



## Lori Sowell

Lori Sowell's impact at FSU was immediate in 1994 when she played at the number two singles position compiling an overall record of 24-9 and was voted All-ACC and ACC Rookie of the Year in her first season. She went on to earn All-America honors twice during her Seminole career advancing to the quarterfinals of the 1996 NCAA Tournament which was further than any FSU women's player had before. She was a four-time All-ACC selection and four-time Academic All-ACC selection. She was the Seminole team MVP as a senior and finished with 62 individual match wins and 61 career doubles wins.



2007 Hall of Fame Inductee Audra Brannon with athletic director Dave Hart, Jr.



## Audra Brannon

In 2007, Audra Brannon became the third women's tennis player inducted into the Florida State Athletics Hall of Fame. Preceded by Buffy Baker in 1997 and Lori Sowell in 2003, the 1993 All-American was one of this year's nine-member cast invited to join the elite group of former Seminoles. A native of Hixson, Tenn., Brannon arrived at Florida State in the fall of 1990 and immediately began to make an impact on the Seminole program. In her senior year, Brannon was named ACC

Player of the Year, following the Seminoles' advance to the Round of 20 in the 1994 NCAA Tournament. Brannon was also selected to participate in the individual NCAA singles and doubles competitions in 1993 and '94, where she progressed as far as the doubles round of eight with partner Laura Randmaa. Brannon was also a three-year member of the All-ACC team and the doubles winner of the Metro Conference Flight Championships in 1991.



2007 Hall of Fame Inductee Audra Brannon with athletic director Dave Hart, Jr.



# HONORS AND AWARDS

### Hall of Fame

Patti Henderson \_\_\_\_\_ 1992  
 Buffy Baker \_\_\_\_\_ 1997  
 Audra Brannon \_\_\_\_\_ 2007

### Metro Conference Coach of the Year

Anne Rizza \_\_\_\_\_ 1981, 1983 & 1984  
 Patti Henderson \_\_\_\_\_ 1989

### ACC Coach of the Year

Alice Reen \_\_\_\_\_ 1994  
 Lise Gregory \_\_\_\_\_ 1999, 2004

### ITA South Region Coach of the Year

Lise Gregory \_\_\_\_\_ 2004  
 Jennifer Hyde \_\_\_\_\_ 2007

### ITA/Arthur Ashe Jr. Award for Leadership and Sportsmanship

Audra Brannon \_\_\_\_\_ 1993  
 Nanette Duxin \_\_\_\_\_ 2001  
 Alida Gallovits \_\_\_\_\_ 2002  
 Anca Dumitrescu \_\_\_\_\_ 2004\*  
 Mihaela Moldovan \_\_\_\_\_ 2005

\* - co-player

### ITA South Region Senior Player of the Year

Anca Dumitrescu \_\_\_\_\_ 2004

### ITA South Region Rookie of the Year

Mihaela Moldovan \_\_\_\_\_ 2003

### CoSIDA Academic All-American

Mihaela Moldovan \_\_\_\_\_ 2004

### ACC Weaver-James-Corrigan Award

Audra Brannon \_\_\_\_\_ 1993  
 Kia Asberg \_\_\_\_\_ 2000  
 Alida Gallovits \_\_\_\_\_ 2002  
 Anca Dumitrescu \_\_\_\_\_ 2004  
 Mihaela Moldovan \_\_\_\_\_ 2005

### Metro Conference Champions

1981, 1983, 1984 & 1989

### Metro Conference Player of the Year

Suzanne Doumar \_\_\_\_\_ 1981  
 Patti Henderson \_\_\_\_\_ 1986  
 Keri Preng \_\_\_\_\_ 1989  
 Buffy Baker \_\_\_\_\_ 1991

### ACC Player of the Year

Audra Brannon \_\_\_\_\_ 1994

### ACC Rookie of the Year

Lori Sowell \_\_\_\_\_ 1994

### All-American

Audra Brannon \_\_\_\_\_ 1993 \_\_\_\_\_ doubles  
 Laura Randmaa \_\_\_\_\_ 1993 \_\_\_\_\_ doubles  
 Lori Sowell \_\_\_\_\_ 1995 \_\_\_\_\_ singles  
 \_\_\_\_\_ 1996 \_\_\_\_\_ singles

Mihaela Moldovan \_\_\_\_\_ 2005 \_\_\_\_\_ singles

### All-ACC Team

Audra Brannon \_\_\_\_\_ 1992-94  
 Ann Olsson \_\_\_\_\_ 1997  
 Elke Juul \_\_\_\_\_ 1995-1996  
 Kia Asberg \_\_\_\_\_ 1999-00  
 Laura Randmaa \_\_\_\_\_ 1993  
 Alida Gallovits \_\_\_\_\_ 1999-01  
 Lori Sowell \_\_\_\_\_ 1994-97  
 Marina Raic \_\_\_\_\_ 1999  
 Anca Dumitrescu \_\_\_\_\_ 2003-04  
 Mihaela Moldovan \_\_\_\_\_ 2004-05  
**Ania Rynarzewska \_\_\_\_\_ 2006**  
**Lauren Macfarlane \_\_\_\_\_ 2007**  
 Nicola Slater \_\_\_\_\_ 2007

### Metro Conference Tournament MVP

Patti Henderson \_\_\_\_\_ 1986  
 Keri Preng \_\_\_\_\_ 1989  
 Buffy Baker \_\_\_\_\_ 1991

### Metro Conference All-Tournament Team

Buffy Baker \_\_\_\_\_ 1988-91  
 Keri Preng \_\_\_\_\_ 1988 -1989  
 Kirsten Turk \_\_\_\_\_ 1989  
 Ann Waggoner \_\_\_\_\_ 1990

### Metro Conference Flight Champions

Suzanne Doumar \_\_\_\_\_ 1981 \_\_\_\_\_ No. 1 singles & No. 1 doubles  
 Jaime Kaplan \_\_\_\_\_ 1981 \_\_\_\_\_ No. 1 doubles  
 Lisa Erghott \_\_\_\_\_ 1983 \_\_\_\_\_ No. 5 singles  
 Patti Henderson \_\_\_\_\_ 1983 \_\_\_\_\_ No. 2 doubles  
 \_\_\_\_\_ 1984 \_\_\_\_\_ No. 3 singles & No. 1 doubles  
 \_\_\_\_\_ 1985 \_\_\_\_\_ No. 2 singles  
 Debbie Pollack \_\_\_\_\_ 1983 \_\_\_\_\_ No. 4 singles  
 Jenny Cerino \_\_\_\_\_ 1984 \_\_\_\_\_ No. 6 singles & No. 2 doubles  
 \_\_\_\_\_ 1985 \_\_\_\_\_ No. 5 singles & No. 3 doubles  
 Sue Hatch \_\_\_\_\_ 1984 \_\_\_\_\_ No. 2 singles & No. 2 doubles  
 Lee McGuire \_\_\_\_\_ 1984 \_\_\_\_\_ No. 1 doubles  
 Buffy Baker \_\_\_\_\_ 1989 \_\_\_\_\_ No. 1 doubles;  
 \_\_\_\_\_ 1990 \_\_\_\_\_ No. 1 doubles  
 \_\_\_\_\_ 1991 \_\_\_\_\_ No. 1 singles & No. 1 doubles  
 Nicki Ivy \_\_\_\_\_ 1989 \_\_\_\_\_ No. 6 singles;  
 \_\_\_\_\_ 1991 \_\_\_\_\_ No. 3 doubles  
 Kirsten Turk \_\_\_\_\_ 1989 \_\_\_\_\_ No. 3 singles  
 Keri Preng \_\_\_\_\_ 1989 \_\_\_\_\_ No. 1 doubles  
 Christina Tee \_\_\_\_\_ 1991 \_\_\_\_\_ No. 4 singles & No. 2 doubles  
 \_\_\_\_\_ 1991 \_\_\_\_\_ No. 2 doubles  
 Audra Brannon \_\_\_\_\_ 1991 \_\_\_\_\_ No. 2 singles & No. 1 doubles  
 Ann Waggoner \_\_\_\_\_ 1991 \_\_\_\_\_ No. 3 doubles

### ACC Flight Champions

Elke Juul \_\_\_\_\_ 1993 \_\_\_\_\_ No. 3 doubles

\_\_\_\_\_ 1994 \_\_\_\_\_ No. 1 doubles  
 \_\_\_\_\_ 1996 \_\_\_\_\_ No. 1 doubles  
 Sandi Ecclestone \_\_\_\_\_ 1993 \_\_\_\_\_ No. 3 doubles  
 Audra Brannon \_\_\_\_\_ 1994 \_\_\_\_\_ No. 1 singles & No. 1 doubles  
 Lori Sowell \_\_\_\_\_ 1994 \_\_\_\_\_ No. 2 singles  
 \_\_\_\_\_ 1996 \_\_\_\_\_ No. 1 doubles  
 Ashley Delaney \_\_\_\_\_ 1995 \_\_\_\_\_ No. 3 doubles  
 Lori Junker \_\_\_\_\_ 1995 \_\_\_\_\_ No. 3 doubles  
 \_\_\_\_\_ 1996 \_\_\_\_\_ No. 3 doubles  
 Ann Olsson \_\_\_\_\_ 1996 \_\_\_\_\_ No. 3 singles & No. 2 doubles  
 Sasha Hanna \_\_\_\_\_ 1996 \_\_\_\_\_ No. 2 doubles  
 Kylie Thompson \_\_\_\_\_ 1996 \_\_\_\_\_ No. 3 doubles  
 Ali Weber \_\_\_\_\_ 1997 \_\_\_\_\_ No. 5 singles  
 \_\_\_\_\_ 1999 \_\_\_\_\_ No. 6 singles  
 \_\_\_\_\_ 2000 \_\_\_\_\_ No. 6 singles & No. 3 doubles  
 Jessica Balbuena \_\_\_\_\_ 2000 \_\_\_\_\_ No. 3 doubles

### Miscellaneous Honors

Kia Asberg  
 2000 Cissie Leary Sportsmanship Award (national winner)

Buffy Baker  
 1988 Roberta Allison Southern Intercollegiate (champion, No. 1 singles)  
 1989 Roberta Alison Southern Intercollegiate (champion, No. 1 singles)  
 1989 Women's Intercollegiate Championships (champion, No. 1 singles)

Christina Denny  
 2003 Lady Seminole Fall Classic (Flight B - singles)

Anca Dumitrescu  
 2003 Lady Seminole Fall Classic (Flight A - singles)

Nanette Duxin  
 1998 Roberta Allison Invitational (Flight A - singles)

Alida Gallovits  
 1999 Lady Seminole Classic Champion (Flight A-singles)  
 2000 Georgia Tech Invite (Flight A-singles)  
 Hurricane Classic Champion (Flight A-singles)  
 ACC 50th Anniversary Team

Keri Preng  
 1988 Barnett Bank Women's Intercollegiate State Championships (champion, No. 6 singles)

Laura Sarkilahti  
 1988 Barnett Bank Women's Intercollegiate State Championships (champion, No. 5 singles)



# HONORS AND AWARDS

Lori Sowell  
1996 Lady Seminole Classic Champion  
(Flight A-singles)

Natalie Tirapelli  
2003 Roberta Allison Fall Classic  
(Flight H-singles)

### Team MVP's

1997 \_\_\_\_\_ Lori Sowell  
1998 \_\_\_\_\_ Ali Weber  
1999 \_\_\_\_\_ Marina Raic and Kia Asberg  
2000 \_\_\_\_\_ Kia Asberg  
2001 \_\_\_\_\_ Alida Gallovits  
2002 \_\_\_\_\_ Christina Denny  
2003 \_\_\_\_\_ Anca Dumitrescu  
2004 \_\_\_\_\_ Mihaela Moldovan  
2005 \_\_\_\_\_ Mihaela Moldovan  
2006 \_\_\_\_\_ Suzanna Mansour and Nicola Slater  
2007 \_\_\_\_\_

### POST SEASON INVITATIONS

Association of Intercollegiate Athletics for Women  
Team  
1984 AIAW National Championships  
6th Place  
Doubles  
Jaime Kaplan & Suzanne Doumar (1982)  
named to the AIAW All-Region II Team

### National Collegiate Athletic Association Team

1994, 1996, 1997, 1998, 1999, 2000,  
2001, 2002, 2004, 2005, 2007

### Singles

Jaime Kaplan \_\_\_\_\_ 1983  
Audra Brannon \_\_\_\_\_ 1993 -1994  
Lori Sowell \_\_\_\_\_ 1994 - 1996  
Alida Gallovits \_\_\_\_\_ 2000-01  
Anca Dumitrescu \_\_\_\_\_ 2002, 2004  
Mihaela Moldovan \_\_\_\_\_ 2005

### Doubles

Jaime Kaplan \_\_\_\_\_ 1983  
Lee McGuire \_\_\_\_\_ 1983  
Patti Henderson \_\_\_\_\_ 1985  
Sue Hatch \_\_\_\_\_ 1985  
Audra Brannon \_\_\_\_\_ 1993 -1994  
Laura Randmaa \_\_\_\_\_ 1993  
Elke Juul \_\_\_\_\_ 1994 -1996  
Lori Sowell \_\_\_\_\_ 1995-1996  
Mihaela Moldovan \_\_\_\_\_ 2005  
Lindsay Deason \_\_\_\_\_ 2005  
**Lauren Macfarlane \_\_\_\_\_ 2007**  
Nicola Slater \_\_\_\_\_ 2007

### ACADEMIC HONORS

#### FSU's Golden Torch Award

(Highest Team GPA)  
1985, 1986, 1987, 1988, 1989, 1997,  
1998, 1999, 2000, 2001, 2002, 2003,  
2004, 2005, 2006, 2007

#### ITA All-Academic Team

2002, 2004, 2006

#### FSU's Golden Torch Award

(Highest Individual GPA)  
Nicki Ivy \_\_\_\_\_ 1991  
Ashley Delaney \_\_\_\_\_ 1994  
Kia Asberg \_\_\_\_\_ 2000  
Alida Gallovits \_\_\_\_\_ 2000  
Marina Raic \_\_\_\_\_ 2000  
Mihaela Moldovan \_\_\_\_\_ 2003  
Lisa Nystrom Skold \_\_\_\_\_ 2006

#### Metro Conference Commissioner's List

Claudia Gaughf \_\_\_\_\_ 1985  
Sue Hatch \_\_\_\_\_ 1985, 1986  
Kirsten Turk \_\_\_\_\_ 1986-89  
Chris Joyce \_\_\_\_\_ 1986-1988  
Jill Urban \_\_\_\_\_ 1986-1987  
Keri Preng \_\_\_\_\_ 1989  
Kirsten Balsler \_\_\_\_\_ 1989-1990  
Lori Webster \_\_\_\_\_ 1990  
Shana Nozick \_\_\_\_\_ 1990  
Christina Tee \_\_\_\_\_ 1990

#### ACC Academic Honor Roll

Kia Asberg \_\_\_\_\_ 1998-00  
Buffy Baker \_\_\_\_\_ 1992  
Jessica Balbuena \_\_\_\_\_ 1999-01  
Natalie Carratalá \_\_\_\_\_ 1998-99, 01  
Nicole Cercone \_\_\_\_\_ 2004  
Brooke Cordell \_\_\_\_\_ 2002-04  
Lindsay Deason \_\_\_\_\_ 2004  
Ashley Delaney \_\_\_\_\_ 1994-97  
Christina Denny \_\_\_\_\_ 2000-04  
Anca Dumitrescu \_\_\_\_\_ 2001-04  
Nanette Duxin \_\_\_\_\_ 1999-02  
Sandi Ecclestone \_\_\_\_\_ 1994  
Meredith Fish \_\_\_\_\_ 2001-02  
Alida Gallovits \_\_\_\_\_ 1999, 01; 02  
Amy Hanby \_\_\_\_\_ 1992-93  
Sasha Hanna \_\_\_\_\_ 1997, 98  
Nicki Ivy \_\_\_\_\_ 1992  
Elke Juul \_\_\_\_\_ 1996  
Lori Junker \_\_\_\_\_ 1995-97  
Helena Karlsson \_\_\_\_\_ 1998  
Beth Lawrence \_\_\_\_\_ 2000-03  
Lauren Macfarlane \_\_\_\_\_ 2007  
Alina Mihailescu \_\_\_\_\_ 2002-04  
Mihaela Moldovan \_\_\_\_\_ 2002-04  
Ann Olsson \_\_\_\_\_ 1997  
Rakina Payne \_\_\_\_\_ 1997-98  
Marina Raic \_\_\_\_\_ 1999-01  
Laura Randmaa \_\_\_\_\_ 1994  
Ania Rynarzewska \_\_\_\_\_ 2007

Nicola Slater \_\_\_\_\_ 2007  
Lori Sowell \_\_\_\_\_ 1994-97  
Amberly Tantee \_\_\_\_\_ 2004  
Chrisie Tee \_\_\_\_\_ 1992  
Kylie Thompson \_\_\_\_\_ 1996-99  
Natalie Tirapelli \_\_\_\_\_ 2002-04  
Christy Travis \_\_\_\_\_ 1998-99, 01  
Lauren Walker \_\_\_\_\_ 2001-02  
Ali Weber \_\_\_\_\_ 1997-00  
Brittany Veal \_\_\_\_\_ 2001-03

#### ITA Scholar-Athletes

Brooke Cordell \_\_\_\_\_ 2004  
Lindsay Deason \_\_\_\_\_ 2004  
Christina Denny \_\_\_\_\_ 2004  
Anca Dumitrescu \_\_\_\_\_ 2004  
Miranda Foley \_\_\_\_\_ 2006  
Alida Gallovits \_\_\_\_\_ 2002  
Elizabeth Lawrence \_\_\_\_\_ 2002  
Alina Mihailescu \_\_\_\_\_ 2004, 2006  
Mihaela Moldovan \_\_\_\_\_ 2004  
Lisa Nystrom-Skold \_\_\_\_\_ 2006  
Ania Rynarzewska \_\_\_\_\_ 2006  
Amber Tantee \_\_\_\_\_ 2004

#### CoSIDA Academic All-District III Team

Mihaela Moldovan \_\_\_\_\_ 2004, 2005

#### All-ACC Academic Team

Ania Rynarzewska \_\_\_\_\_ 2006  
Lauren Macfarlane \_\_\_\_\_ 2007  
Nicola Slater \_\_\_\_\_ 2007



Buffy Baker

www.Seminoles.com



# FSU COACHING HISTORY



**Anne Davis**  
1980-86 (8 seasons)  
(141-105, .573)

Year	Coach	Asst. Coach	W-L	PCT	Conf. (finish)	Post-Season (seed)	Ranking
1980	Anne Davis	None	21-11	.656	Metro (2nd)	None	NR
1981	Anne Davis	None	24-15	.615	Metro (1st)	None	#18
1982	Anne Davis	None	23-18	.561	Metro (2nd)	AIAW Chmps. (6th)	NR
1983	Anne Davis	None	18-8	.692	Metro (1st)	None	NR
1984	Anne Davis	None	15-13	.608	Metro (1st)	None	NR
1985	Anne Davis	None	13-14	.481	Metro (2nd)	None	NR
1986	Anne Davis	None	17-10	.630	Metro (2nd)	None	NR
1987	Anne Davis	Patti Henderson	11-16	.407	Metro (2nd)	None	NR

**Notes:** Was one of the first head coaches in the women's tennis program history...Davis earned Metro Conference Coach of the Year honors in 1981...ranked in the top 20 in the nation during the 1982 preseason...former USF tennis standout who played on teams that finished a program high of 11th...led the Seminoles to its highest national finish - sixth place in 1982.



**Patti Henderson**  
1987-91 (four seasons)  
(53-38, .582)

Year	Coach	Asst. Coach	W-L	PCT	Conf. (finish)	Post-Season (seed)	Ranking
1988	Patti Henderson	Kim Philo	14-12	.538	Metro (2nd)	None	NR
1989	Patti Henderson	Kim Philo	13-7	.650	Metro (1st)	None	NR
1990	Patti Henderson	Shannon Krieger	13-9	.591	Metro (2nd)	None	NR
1991	Patti Henderson	Lori Webster	13-10	.565	Metro (1st)	None	NR

**Notes:** Only woman in Metro Conference history to earn MVP honors as a student-athlete and then conference coach of the year accolades... won two Metro Conference Team Championships in her four-year stint with the Seminoles...recruited and coached current Seminole head coach Jennifer Hyde... inducted into the Florida State Hall of Fame in 1992...during her four year playing career at FSU, she compiled a 68-36 singles record while accounting for 71 doubles wins...NCAA Championships qualifier in the doubles in 1985... first FSU women's tennis student-athlete to 20 singles wins in a season (a/o 1986)... was a graduate assistant for one year before taking the head coach position.



**Alice Reen**  
1992-96 (five seasons)  
(60-50, .545)

Year	Coach	Asst. Coach	W-L	PCT	Conf. (finish)	Post-Season (seed)	Ranking
1992	Alice Reen	Buffy Baker	13-10	.565	ACC (3rd)	None	NR
1993	Alice Reen	Jenny Mainz	13-9	.591	ACC (3rd)	None	ARV
1994	Alice Reen	Jenny Mainz	15-10	.600	ACC (2nd)	NCAA Chmps. (19th)	#22
1995	Alice Reen	Jenny Mainz	11-10	.524	ACC (3rd)	None	#31
1996	Alice Reen	Michelle McMillen	8-11	.420	ACC (4th)	NCAA Regionals (8th)	#35

**Notes:** Over five years, averaged 12 victories per season...coached current Seminole head coach Jennifer Hyde...led Florida State to its highest NCAA ranking in school history (No. 17 - 1994)...was the head coach at the University of Arkansas before taking over in Tallahassee... graduate of the University of Georgia...led the Seminoles to its highest finish in Atlantic Coast Conference history, finishing in second place in 1994...was named ACC Coach of the Year in 1994.



**Lise Gregory**  
1996-2004 (eight seasons)  
(119-83, .589)

Year	Coach	Asst. Coach	W-L	PCT	Conf. (finish)	Post-Season (seed)	Ranking
1997	Lise Gregory	Tim Bauer	12-11	.521	ACC (3rd)	NCAA Regionals (8th)	#37
1998	Lise Gregory	Tim Bauer	12-12	.500	ACC (8th)	NCAA Regionals (8th)	#49
1999	Lise Gregory	Tim Bauer	21-7	.750	ACC (3rd)	NCAA Regionals (2nd)	#23
2000	Lise Gregory	Dave Balogh	17-9	.654	ACC (5th)	NCAA Regionals (2nd)	#22
2001	Lise Gregory	Brian Burdette	14-11	.560	ACC (4th)	NCAA Regionals (3rd)	#36
2002	Lise Gregory	Brian Burdette	12-15	.444	ACC (8th)	NCAA Regionals (3rd)	#49
2003	Lise Gregory	Brian Burdette	13-10	.565	ACC (6th)	None	#55
2004	Lise Gregory	Brian Burdette	18-8	.692	ACC (3rd)	NCAA Regionals (2nd)	#26

**Notes:** Gregory was the women's tennis head coach for eight seasons in Tallahassee...only Seminole head coach to earn Atlantic Coast Conference Coach of the Year honors twice (1999, 2004)...has the best winning percentage among all head coaches at .587...was named ITA South Region Coach of the Year in 2004.



**Jennifer Hyde**  
2004 - pres.  
(36-33, .520)

Year	Coach	Asst. Coach	W-L	PCT	Conf. (finish)	Post-Season (seed)	Ranking
2005	Jen Hyde	Hayden Perez	11-12	.478	ACC (8th)	NCAA Regionals (1st)	#43
2006	Jen Hyde	Oliver Foreman	9-13	.409	ACC (10th)	None	#72
2007	Jen Hyde	Oliver Foreman	16-8	.667	ACC (5th)	NCAA Regionals (2nd)	#19

**Notes:** Named 2007 ITA South Region Coach of the Year...Returned to her alma matter in 2004 to lead the Seminole squad... Captain of the 1994 team that finished at No. 17 in the nation...Only the second alum to return to coach at Florida State...Led the team to the postseason for the ninth time in the last ten seasons in her first year...Coached the 2007 squad to its highest ranking in program history (No. 13)...Pushed the Seminoles into the NCAA Tournament for the second time in her first three years as head coach...Coached the Seminoles to their ninth-consecutive Golden Torch Award in 2007.



# ALL-TIME DUAL MATCH ROSTER

## FSU'S TOP 10 ALL-TIME SINGLE SEASON WIN LEADERS

1. Mihaela Moldovan	33-4	.892	2003-04
2. <b>Lauren Macfarlane</b>	<b>21-5</b>	<b>.808</b>	<b>2006-07</b>
3. Marina Raic	31-9	.775	1998-99
4. Kia Asberg	30-8	.789	1998-99
5. Kia Asberg	29-8	.784	1999-00
6. Buffy Baker	28-7	.750	1987-88
Buffy Baker	27-9	.750	1988-89
8. Roxanne Clarke	27-10	.730	2003-04
9. Christina Denny	27-10	.730	2003-04
10. Jessica Balbuena	27-12	.692	1998-99

## ACC CHAMPIONSHIPS RECORD

<b>1992</b>		
Virginia (ACC)	W	6-0
Wake Forest (ACC)	L	2-5
<b>1993</b>		
North Carolina (ACC)	W	5-3
Clemson (ACC)	L	2-7
<b>1994</b>		
N.C. State (ACC)	W	5-1
Clemson (ACC)	W	5-3
Duke (ACC)	L	0-5
<b>1995</b>		
Virginia (ACC)	W	5-3
Wake Forest (ACC)	L	2-5
<b>1996</b>		
Virginia (ACC)	W	5-3
Duke (ACC)	L	0-6
<b>1997</b>		
Georgia Tech (ACC)	W	5-1
Wake Forest (ACC)	L	1-5
<b>1998</b>		
North Carolina (ACC)	W	7-2
Duke (ACC)	L	5-0
<b>1999</b>		
Virginia (ACC)	W	5-1
Wake Forest (ACC)	L	4-5
<b>2000</b>		
Georgia Tech (ACC)	W	5-3
Wake Forest (ACC)	L	0-5
<b>2001</b>		
Georgia Tech (ACC)	W	4-2
Duke (ACC)	L	0-4
<b>2002</b>		
Maryland (ACC)	W	4-3
North Carolina (ACC)	L	1-4
<b>2003</b>		
North Carolina (ACC)	L	0-4
<b>2004</b>		
Wake (ACC)	W	4-2
Duke (ACC)	L	1-4
<b>2005</b>		
Virginia (ACC)	W	4-3
Georgia Tech (ACC)	L	4-1
<b>2006</b>		
Wake Forest (ACC)	L	4-1
<b>2007</b>		
Boston College	W	4-0
Miami	L	4-3

## ALL-TIME ROSTER

Leslee Abisch 1978  
 Kia Asberg 1997-00  
 Elizabeth "Buffy" Baker 1988-91  
 Jessica Balbuena 1999-01  
 Kirsten Balsler 1988-90  
 Mary Beck 1978  
 Gigi Boesch 1981  
 Audra Brannon 1990-94  
 Bresha Byrd 1993  
 Natalie Carratalá 1998-01  
 Nicole Cercone 2004  
 Jenny Cerino 1983-86  
 Robin Cifaldi 1991-92  
 Roxanne Clarke 2004-05  
 Beth Clay 1981-83  
 Brooke Cordell 2002-04  
 Cheryl Cordes 1981  
 Beth Corn 1987  
 Lindsay Deason 2004-05  
 Ashley Delaney 1994-97  
 Debbie Deluccia 1978  
 Christina Denny 2001-04  
 Suzanne Doumar 1983  
 Anca Dumitrescu 2002-04  
 Nanette Duxin 1998-01  
 Whitney Eber 2006  
 Sandi Ecclestone 1993-94  
 Lisa Ehrgott 1981-84  
 Darlene Finnegan 1985  
 Meredith Fish 2002-03  
 Miranda Foley 2005-07  
 Alida Gallovits 1999-01  
 Laura Jo Garcia 1978  
 Khristen Getz 1981  
 Daniela Gheorghe 2002-04  
 Jenny Graf 1992-94  
 Yvonne Gsteiger 1978  
 Claudia Gaughf 1983-86  
 Jenny Green 1986  
 Amy Hanby 1992-93  
 Sasha Hanna 1995-98  
 Dee Ann Hansel 1981  
 Jean Harrington 1978  
 Sue Hatch 1984-87  
 Patti Henderson 1983-86  
 Elizabeth Hinson 1978  
**Jennifer Hyde 1991-94**  
 Leslie Ivy 1991-92  
 Nicki Ivy 1989-90  
 Chris Joyce 1986-89

Lori Junker 1994-97  
 Elke Juul 1992-96  
 Jaime Kaplan 1983  
 Helena Karlson 1998  
 Darlene Kennedy 1984  
 Claudette Laliberte 1978  
 Beth Lawrence 2001-03  
**Lauren Macfarlane 2006-07**  
 Sharon MacPhee 1990  
 Suzanna Mansour 2006  
**Tapiwa Marobela 2005-07**  
 Lee McGuire 1983-84  
 Dana Medalie 1983-84  
 Alina Mihailescu 2002-06  
 Melissa Miller 1978  
 Mihaela Moldovan 2002-05  
 Laurie Mueller 1981  
 Susan Mueller 1981-84  
 Penne Nieporte 1981  
 Shana Nozick 1989-90  
 Josephine O'Gorman 1987  
 Ann Olsson 1995-97  
 Sharon Ondrula 1978  
 Rakina Payne 1995, 1997-98  
 Anna Polihrom 1978  
 Debbie Pollack 1983-84  
 Keri Preng 1987-90  
 Tanya Racoobian 1988  
 Marina Raic 1999-01  
 Diane Ramsey 1978

Laura Randmaa 1993-94  
 Laura Ribovich 1986  
 Valerie Rive 1986  
**Ania Rynarzewska 2006-07**  
 Laura Sarkilahti 1989-91  
 Samantha Schoeffel 2001  
 Sherry Shores 1978  
 Lisa Nystrom Skold 2006  
 Nicola Slater 2006-07  
 Tracey Smith 1987-89  
 Lori Sowell 1993-97  
 Yana Stoeva 2005  
 Amberly Tantee 2002-05  
 Christina Tee 1990-92  
 Kim Temples 1985-87  
 Kylie Thompson 1995-99  
 Mary Thym 1993-95  
 Natalie Tirapelli 2002-05  
 Christy Travis 1998-01  
 Kirsten Turk 1987-89  
 Jill Urban 1987-89  
 Brittany Veal 2001-03  
 Ann Waggoner 1990-91  
**Carolyn Walter 2006-07**  
 Ali Weber 1997-00  
 Lori Webster 1990  
**Jessica Wente 2006-07**  
 Paula Whitebrook 1983-86  
 Mary Ellen Wilkinson 1978  
 Mary Wood 1986-87



Sue Hatch



www.Seminoles.com



# NCAA TOURNAMENT HISTORY

Records - Team: 3-11; Singles: 6-10; Doubles 3-6

### 1983

#### Singles Championship

Round 64

Tracy Blumentritt (Rice) d. Jaime Kaplan (FSU) 3-6, 6-3, 6-0

#### Doubles Championship

Round 32

Jamie Kaplan - Lee McGuire (FSU) d. Margaret Redfern - Joy Tacon (Houston) 7-6, 7-5, 6-4

Round 16

#1 Louise Allen - Gretchen Rush (Trinity) d. Jamie Kaplan - Lee McGuire (FSU) 6-1, 6-0

### 1985

#### Doubles Championship

Round 32

Kiki Rozwadowski - Lori MacGill (S. Florida) d. Sue Hatch - Patti Henderson (FSU) 6-2, 6-3

### 1993

#### Singles Championship

Round 64

Suzi Italiano (Southern Cal) d. Audra Brannon (FSU) 6-4, 7-6

#### Doubles Championship

Round 32

Audra Brannon - Laura Randmaa (FSU) d. Danielle Paradine - Jody Yin (Indiana) 6-3, 6-1

Round 16

Audra Brannon - Laura Randmaa (FSU) d. Melissa Mazzotta - Maria Pilar Valls (Miami) 7-6 (6), 4-6, 6-1

Round 8

#3 Laxmi Poruri - Heather Willens (Stanford) d. Audra Brannon - Laura Randmaa (FSU) 7-6 (2) 6-3

### 1994

#### Team Championship

Round 20

#16 Arizona d. #19 FSU 5-3

#### Singles Championship

Round 64

Marie-Laure Bougnol (Ole Miss) d. #9-16 Audra Brannon (FSU) 6-4, 6-4

Maggie Simkova (Southern Cal) d. Lori Sowell (FSU) 1-6, 6-0, 6-4

#### Doubles Championship

Round 32

Nicole Elliott - Vera Vitels (California) d. Audra Brannon - Elke Juul (FSU) 7-5, 6-2

### 1995

#### Singles Championship

Round 64

Lori Sowell (FSU) d. #8 Katie Schlukibir (Stanford) 6-4, 6-1

Round 32

Lori Sowell (FSU) d. Melissa Zimpfer (Tennessee) 7-5, 6-4

Round 16

Lori Sowell (FSU) d. #14 Joelle Schad (Arizona State) 6-0, 3-3, ret.

Round 8

#2 Keri Phebus (UCLA) d. Lori Sowell (FSU) 6-0, 6-2

### 1996

#### NCAA South Regional

South Carolina 5, Florida State 2

#### Singles Championship

Round 64

Lori Sowell (FSU) d. #9-16 Farley Taylor (Texas) 7-5, 7-6

Round 32

Lori Sowell (FSU) def. Stephanie Sammaritano (Arizona) 6-4, 7-5

Round 16

#6 Ania Bleszynski (Stanford) d. Lori Sowell (FSU) 7-5, 6-3

#### Doubles Championship

Round 32

#4 Paige Yaroshuk - Keri Phebus (UCLA) d. Lori Sowell - Elke Juul (FSU) 6-1, 6-1

### 1997

#### NCAA Southeast Regional

Vanderbilt 5, Florida State 1

### 1998

#### NCAA Southeast Regional

Vanderbilt 6, Florida State 0

### 1999

#### NCAA Midwest Regional

Iowa 5, Florida State 4

### 2000

#### NCAA South Regional

Florida State 5, Illinois 3

Florida 5, Florida State 0

#### Singles Championship

Round 64

Bea Bielik (Wake Forest) d. Alida Gallovits (FSU)

### 2001

#### NCAA South Regional

South Carolina 4, Florida State 2

#### Singles Championship

Round 64

#59 Alida Gallovits (FSU) d.

#45 Maria Phillips (Oklahoma St.) 7-6, 7-6

#2 Ansley Cargill (Duke) d.

#59 Alida Gallovits (FSU) 6-1, 6-0

### 2002

#### NCAA South Regional

Virginia Commonwealth

University (VCU) 4, FSU 0

#### Singles Championship

Round 64

#5 Agara Cioroch (UGA) d.

Anca Dumitrescu (FSU) 6-2, 6-2

### 2004

#### NCAA South Regional

FSU 4, Marshall 2

Vanderbilt 4, FSU 1

#### Singles Championship

Round 64

#27 Megan Muth (William & Mary) d.

Anca Dumitrescu (FSU), 6-2, 5-7, 7-6

### 2005

#### NCAA South Regional

FIU 4, FSU 2

#### Singles Championship

Round 64

Chloe Carlotti (Mississippi) d.

Mihaela Moldovan (FSU), 6-1, 7-5

#### Doubles Championship

Round 32

Alice Barnes-Erin Burdette (Stanford) d.

Mihaela Moldovan-Lindsay Deason (FSU), 6-3, 6-4

### 2007

#### NCAA Regional

San Diego State 0, FSU 4

UCLA 4, FSU 2

#### Doubles Championship

Round 32

Olga Borisova-Marianna Yuferova (Virginia Commonwealth) d.

Nicola Slater-Lauren Macfarlane (FSU), 5-7, 6-4, 6-4







# SEMINOLE TENNIS RECORDS

### TOP 10 DUAL MATCH SINGLE SEASON WIN PERCENTAGE

1. Mihaela Moldovan	2004	26-0	1.000
2. Kia Asberg	1999	24-4	.857
3. Buffy Baker	1987	21-5	.808
<b>Lauren Macfarlane</b>	<b>2007</b>	<b>21-5</b>	<b>.808</b>
5. Kia Asberg	2000	20-5	.800
Keri Preng	1990	20-5	.800
7. Marina Raic	1999	22-6	.785
8. Audra Brannon	1991	21-6	.777
9. Mihaela Moldovan	2005	17-5	.773
10. Buffy Baker	1989	16-5	.762

### SINGLE SEASON DUAL MATCH SINGLES WINS

1. Mihaela Moldovan	2004	26
2. Kia Asberg	1999	24
3. Marina Raic	1999	22
4. Buffy Baker	1988	21
Audra Brannon	1991	21
Jessica Balbuena	1999	21
<b>Lauren Macfarlane</b>	<b>2007</b>	<b>21</b>
7. Patti Henderson	1986	20
Keri Preng	1990	20
Kia Asberg	2000	20
10. Buffy Baker	1988	19
Ali Weber	1999	19

### 20 DUAL MATCH SINGLE SEASON WINS

Patti Henderson	1986	20
Buffy Baker	1988	21
Keri Preng	1990	20
Audra Brannon	1991	21
Kia Asberg	1999	24
Jessica Balbuena	1999	21
Marina Raic	1999	22
Kia Asberg	2000	20
Mihaela Moldovan	2004	26
<b>Lauren Macfarlane</b>	<b>2007</b>	<b>21</b>



Alida Gallovits

### CAREER SINGLES WINS

1. Ali Weber	1997-00	94
2. Buffy Baker	1988-91	91
3. Kia Asberg	1997-00	88
4. Alida Gallovits	1999-01	77
5. Mihaela Moldovan	2003-05	76
6. Jessica Balbuena	1999-01	74
7. Audra Brannon	1991-94	70
8. Kirsten Turk	1986-89	67
9. Nicki Ivy	1989-92	65
10. Elke Juul	1992-96	64
Anca Dumitrescu	2001-04	64

### CAREER DOUBLES WINS

1. Jessica Balbuena	1999-01	73
2. Alida Gallovits	1999-01	63
3. Audra Brannon	1991-94	62
4. Lori Sowell	1994-97	61
5. Ali Weber	1997-00	61
6. Nicki Ivy	1989-92	58
7. Nanette Duxin	1998-01	57
8. Elke Juul	1992-96	55
9. Keri Preng	1987-90	55
10. Kia Asberg	1997-00	50



Jessica Balbuena





# ALL-TIME RECORDS

Opponent	W	L	First	Last
Alabama	7	5	1983	2005
Alabama-Birmingham	3	0	1988	2006
Arizona	0	3	1990	1994
Auburn	13	2	1982	2006
Baylor	5	3	1986	2005
Bethune-Cookman	1	0	2006	2006
Boston College	3	0	2006	2007
California	0	1	1997	1997
Cal-Irvine	0	1	1987	1987
Cal-Santa Barbara	0	2	1987	1993
Central Florida	4	0	2002	2005
Clemson	8	15	1982	2007
College of Charleston	1	0	1983	1983
Columbia	1	0	1987	1987
Duke	2	22	1983	2007
Flagler	2	2	1988	1992
Florida	0	30	1982	2007
Florida A&M	8	0	1982	2007
Florida Atlantic	1	0	2002	2002
Florida International	13	5	1989	2007
Florida Junior College	5	0	1983	1987
Furman	3	0	1987	2003
Georgia	5	7	1982	2007
Georgia Southern	10	0	1995	2006
Georgia State	3	0	1983	1999
Georgia Tech	16	7	1985	2007
Harvard	2	0	1982	2002
Houston	5	6	1984	2007
Illinois	4	1	1992	1999
Indiana	0	3	1982	1988
Iowa	3	1	1982	1999
Jacksonville	7	0	1989	2007
Kansas	1	0	1999	1999
Kansas State	1	0	1989	1989
Kentucky	0	1	1994	1994
Lamar	1	0	1989	1989
Louisiana State	6	6	1982	2007
Louisiana Tech	2	0	1983	1990
Louisville	3	0	1982	1988
Lynn (Boca Raton)	1	0	1990	1990
Maryland	14	2	1993	2007
Memphis State	2	0	1985	1987
Miami, FL	2	17	1982	2007
Miami, OH	1	1	1984	1987
Michigan	4	0	1990	1993
Michigan State	2	0	2001	2002
Mississippi	2	6	1982	1996
Mississippi State	4	3	1984	1994
Mississippi Univ. for Women	1	0	1982	1982

Opponent	W	L	First	Last
New Mexico	3	0	1984	1990
North Carolina	13	15	1982	2007
North Carolina State	15	2	1992	2007
North Florida	5	1	1985	1990
Northeast Louisiana	6	0	1983	1991
Northwestern	0	5	1983	1992
Northwest Louisiana	1	0	1982	1982
North Texas State	1	0	1982	1982
Notre Dame	0	1	1996	1996
Ohio State	2	0	1982	1983
Oklahoma	1	0	1993	1993
Oklahoma State	1	2	1982	1984
Penn State	1	0	2004	2004
Pepperdine	0	1	2001	2001
Princeton	1	0	1982	1982
Purdue	3	0	1982	1987
Rice	8	5	1983	2007
Rollins	12	6	1982	1993
San Diego	1	1	1995	2005
San Diego State	3	0	2001	2005
Santa Fe	1	0	1990	1990
South Alabama	8	7	1982	2003
South Carolina	1	12	1982	1996
Southern Methodist	3	2	1982	1992
South Florida	22	10	1982	2005
Southwestern Louisiana	3	0	1982	1993
Southwest Missouri	1	0	1986	1986
Southern Miss	2	0	1999	1999
Stetson	7	0	1983	2007
Tennessee	3	3	1983	1995
Tennessee-Chattanooga	1	0	1984	1984
Texas	0	2	1982	1994
Texas A&M	2	0	1994	1995
Texas Christian	1	4	1982	1991
Trinity	1	0	1991	1991
Troy	1	0	2006	2006
Tulane	8	4	1982	2005
UCLA	0	1	2007	2007
U.S. International	0	1	1990	1990
Utah	1	0	2000	2000
Vanderbilt	2	8	1983	2002
Virginia Commonwealth	0	1	2002	2002
Virginia	17	4	1992	2007
Virginia Tech	8	1	1985	2007
Wake Forest	7	20	1985	2007
Wichita State	1	0	1985	1985
William & Mary	1	0	1987	1987
Wisconsin	1	4	1986	1992
Yale	0	1	1989	1989



# ALL-TIME RESULTS

## 1982

Head Coach: Anne Rizza

Record: 23-17

Florida A&M	W	9-0
South Carolina	L	2-7
Oklahoma State	W	5-4
Texas Christian	W	6-3
Tulane	W	9-0
South Florida	W	5-4
Florida A&M	W	8-0
Rollins	L	2-7
Florida	L	1-7
Louisiana State	W	6-3
Clemson	W	5-4
Auburn	W	9-0
Southwest Louisiana	W	9-0
Northwest Louisiana	W	7-0
Miss. Univ. for Women	W	8-0
North Carolina	W	6-3
South Carolina	L	3-5
Mississippi	L	4-5
Purdue	W	7-1
Texas	L	0-8
Southern Methodist	W	6-2
Texas Christian	L	4-5
North Texas State	W	6-2
Louisville	W	8-1
Ohio State	W	9-0
South Alabama	W	7-2
Indiana	L	2-7
Harvard	W	8-1
Clemson	L	4-5
South Florida	L	4-5
Miami, Fla.	L	2-7
Florida	L	1-8
Georgia	L	3-6
Rollins	L	2-7
South Florida	L	4-5
North Carolina	L	1-8
Iowa	W	7-2
Georgia	W	5-4
Princeton	W	5-4
North Carolina	L	0-5

## 1983

Head Coach: Anne Rizza

Record: 18-8

Stetson	W	7-2
Florida Junior College	W	7-2
Clemson	L	0-9
Auburn	W	8-1
College of Charleston	W	9-0
Rollins	L	1-8
Louisiana Tech	W	7-0
Northeast Louisiana	W	8-1
Alabama	W	8-1
Rice	L	3-6
South Florida	W	5-4
Duke	W	6-3
Indiana	L	2-7
Ohio State	W	9-0
Iowa	W	7-2
Georgia	W	6-3
Georgia State	W	9-0
Tennessee	W	6-3
Northwestern	L	4-5
Rollins	W	6-3
Florida	L	3-6
South Florida	L	3-6
Florida	L	4-5
Vanderbilt	W	8-1
Alabama	W	8-1
Tulane	W	5-4

## 1984

Head Coach: Anne Rizza

Record: 15-13

Rollins	L	3-6
Tennessee	W	8-1
South Carolina	L	4-5
Houston	L	4-5
Tennessee-Chattanooga	W	5-4
Vanderbilt	W	8-0
Auburn	W	7-2
Florida Junior College	W	8-1
Tulane	W	6-0
Georgia	W	7-2
Northeast Louisiana	W	5-1
Alabama	W	7-2
Oklahoma State	L	4-5
South Alabama	W	7-2
Florida	L	2-7
South Carolina	W	5-4
Oklahoma State	L	4-5
Georgia	W	6-3
Mississippi	L	2-5
Mississippi State	W	9-0
Rice	L	3-6
New Mexico	W	5-1
Miami, Ohio	W	6-3
Northwestern	L	1-8
Rollins	L	4-5
Florida	L	1-8
Miami, Fla.	L	3-6
South Florida	L	3-6

## 1985

Head Coach: Anne Rizza

Record: 13-14

Georgia Tech	W	6-1
South Florida	L	1-8
Alabama	W	6-3
North Florida	W	7-2
Florida Junior College	W	9-0
Rollins	W	5-4
Florida	L	1-8
North Carolina	W	7-2
Louisiana State	L	2-7
South Florida	L	0-8
Wichita State	W	6-3
Wake Forest	W	7-2
Duke	L	4-5
North Carolina	L	2-7
Texas Christian	L	3-6
South Carolina	L	4-5
Northwestern	L	3-6
Georgia	W	5-4
Florida	L	1-8
South Florida	L	3-6
Miami, Fla.	L	1-8
Rollins	W	7-2
Mississippi	L	2-6
Auburn	W	8-1
Memphis State	W	9-0
Tulane	L	4-5
Virginia Tech	W	7-2

## 1986

Head Coach: Anne Rizza

Record: 17-10

North Florida	W	6-3
Florida Junior College	W	9-0
Florida	L	1-8
Southern Methodist	L	3-6
Rollins	W	8-1
Houston	L	3-6
South Florida	W	5-4
Alabama	W	6-3
Auburn	W	7-2
Florida	L	1-8
Purdue	W	6-3
Baylor	W	9-0
Mississippi	W	5-4
South Alabama	L	2-7
Southwest Missouri	W	8-1
Texas Christian	L	3-6
Clemson	L	0-9
South Alabama	L	3-6
Virginia Tech	W	9-0
Georgia Tech	W	7-2
Wisconsin	W	5-4
Mississippi State	W	7-2
Stetson	W	9-0
South Florida	L	2-7
Rollins	W	6-0
Virginia Tech	W	8-1
South Carolina	L	4-5





# ALL-TIME RESULTS

## 1987

Head Coach: Patti Henderson  
(11-15)

Vanderbilt	L	4-5
Tennessee	L	4-5
William & Mary	W	5-4
South Carolina	L	0-5
Auburn	W	5-4
Florida Junior College	W	7-2
North Florida	W	7-2
Florida	L	0-9
Mississippi State	L	4-5
Furman	W	6-3
Purdue	W	7-2
Columbia	W	8-1
South Florida	W	6-3
Miami, Ohio	L	4-5
North Carolina	L	2-7
Wake Forest	L	3-6
Virginia Tech	W	8-1
California - Irvine	L	3-6
Rice	L	4-5
California-Santa Barbara	L	2-7
Southern Methodist	L	1-8
Florida	L	0-9
Rollins	L	3-6
Louisville	W	7-2
Memphis State	W	9-0
South Carolina	L	3-6

## 1988

Head Coach: Patti Henderson  
Record: 14-12

Florida	L	1-8
Florida A&M	W	8-1
Alabama - Birmingham	W	7-2
North Florida	L	3-6
Northeast Louisiana	W	6-3
Houston	L	1-8
Mississippi	L	4-5
Virginia Tech	W	5-4
North Carolina	L	2-7
Furman	W	9-0
Louisiana State	L	4-5
Stetson	W	8-1
South Florida	W	5-4
Rollins	W	6-3
Auburn	L	3-6
Baylor	W	9-0
New Mexico	W	5-4
South Carolina	L	1-7
Indiana	L	1-8
Mississippi State	L	1-5
Georgia State	W	9-0
South Florida	W	5-4
Flagler	L	2-7
Southern Methodist	W	9-0
Louisville	W	9-0
South Carolina	L	0-6

## 1989

Head Coach: Patti Henderson  
Record: 13-7

Tulane	W	8-1
South Florida	L	4-5
Florida	L	0-9
South Alabama	W	5-3
Jacksonville	W	9-0
Northeast Louisiana	W	6-0
Auburn	W	5-4
South Alabama	L	3-6
Florida International	W	9-0
Flagler	L	4-5
North Florida	W	6-3
Mississippi	L	3-6
Kansas State	W	5-1
Yale	L	4-5
South Florida	W	6-3
Wisconsin	L	1-8
Rollins	W	6-3
Clemson	W	5-4
Lamar	W	9-0
Houston	W	5-4

## 1990

Head Coach: Patti Henderson  
Record: 17-8

South Florida	W	7-1
Rollins	W	8-1
Santa Fe	W	9-0
North Florida	W	8-1
Florida	L	0-9
U.S. International	L	3-6
Arizona	L	4-5
Rice	W	6-0
Northeast Louisiana	W	7-0
South Alabama	W	7-1
Houston	L	2-7
Mississippi	W	5-4
Georgia Tech	W	7-1
Louisiana Tech	W	7-2
Florida International	W	8-1
Louisiana State	L	4-5
Miami, Fla.	L	1-8
New Mexico	W	7-0
South Florida	W	7-2
Wisconsin	L	4-5
Rollins	W	8-1
Michigan	W	8-1
Wake Forest	W	5-4
South Carolina	L	2-6
Boca Raton	W	8-1

## 1991

Head Coach: Patti Henderson  
Record: 13-9

Florida	L	0-9
North Carolina	L	2-7
Miami, Fla.	L	4-5
Tulane	W	9-0
Rice	W	7-2
Louisiana State	W	5-4
Northeast Louisiana	W	9-0
Auburn	W	7-2
South Florida	W	9-0
Alabama	W	6-3
Michigan	W	7-2
Rollins	W	9-0
Wake Forest	L	4-5
Mississippi State	W	7-2
Trinity	W	7-2
Houston	L	4-5
Texas Christian	L	3-6
Southwest Louisiana	W	8-1
Wisconsin	L	3-6
Northwestern	L	2-7
Flagler	W	7-2
Duke	L	1-6

## 1992

Head Coach: Alice Reen  
Record: 13-10

Northwestern	L	3-6
Wisconsin	L	2-7
Alabama	L	0-6
Flagler	W	7-2
Rollins	W	8-1
Virginia	W	7-2
Michigan	W	6-3
South Florida	W	7-2
North Carolina State	W	9-0
Miami, Fla.	L	2-7
Southern Methodist	W	5-3
Mississippi State	L	4-5
North Carolina	W	5-4
Duke	L	1-8
Georgia Tech	W	8-1
Illinois	L	4-5
South Alabama	W	6-1
Florida International	W	6-3
Georgia	L	3-6
Clemson	L	3-6
Wake Forest	W	5-4
Virginia	W	6-0
Wake Forest	L	2-5



# ALL-TIME RESULTS

### 1993

Head Coach: Alice Reen

Record: 13-9

Georgia Tech	W	8-1
California-Santa Barbara	L	4-5
Rice	L	4-5
Arizona	L	2-6
Florida International	W	8-1
Miami, Fla.	L	2-7
Rollins	W	8-1
Michigan	W	6-3
South Florida	W	5-4
Clemson	L	4-5
North Carolina	W	7-2
Wake Forest	L	4-5
Oklahoma	W	6-3
North Carolina State	W	6-0
Maryland	W	8-1
Tennessee	L	3-6
Virginia	W	5-4
Southwestern Louisiana	W	6-3
Georgia	L	2-5
South Alabama	W	5-4
North Carolina (ACC)	W	5-3
Clemson (ACC)	L	2-7

### 1995

Head Coach: Alice Reen

Record: 11-10

Florida	L	1-7
Vanderbilt	L	4-5
Georgia Southern	W	8-0
South Florida	L	4-5
North Carolina	W	5-4
Duke	L	1-6
Tennessee	W	5-4
Clemson	W	5-4
Maryland	W	8-1
Texas A&M	W	5-2
Georgia	L	0-6
Virginia	W	8-1
South Carolina	L	3-6
Miami, Fla.	L	3-6
Florida International	W	5-4
San Diego	L	2-6
Georgia Tech	W	6-0
North Carolina State	W	5-4
Wake Forest	L	3-6
Virginia (ACC)	W	5-3
Wake Forest (ACC)	L	2-5

### 1996

Head Coach: Alice Reen

Record: 8-11

Vanderbilt	L	0-8
Jacksonville	W	8-0
Miami, Fla.	W	5-3
Georgia Southern	W	7-2
Maryland	W	6-2
Clemson	W	5-4
Georgia	L	1-6
Wake Forest	L	4-5
North Carolina State	W	8-1
Virginia	L	4-5
Notre Dame	L	1-6
Mississippi	L	2-5
North Carolina	L	4-5
Duke	L	1-8
Florida	L	1-8
Georgia Tech	W	8-1
Virginia (ACC)	W	5-3
Duke (ACC)	L	0-6
South Carolina (NCAA)	L	2-5

### 1994

Head Coach: Alice Reen

Record: 15-10

Georgia Tech	W	9-0
Miami, Fla.	L	4-5
Florida	L	1-8
Maryland	W	9-0
Kentucky	L	1-7
Tennessee	L	4-5
South Florida	W	5-4
Wake Forest	W	5-4
Clemson	L	3-6
Georgia	L	1-5
North Carolina State	W	7-2
Virginia	W	6-3
Mississippi State	W	5-1
Rice	W	7-2
Houston	W	5-1
Texas	L	3-6
Texas A&M	W	5-4
Florida International	W	5-1
North Carolina	W	7-2
Duke	L	4-5
South Alabama	W	7-2
N.C. State (ACC)	W	5-1
Clemson (ACC)	W	5-3
Duke (ACC)	L	0-5
Arizona	L	3-5





# ALL-TIME RESULTS

## 1997

Head Coach: Lise Gregory

Record: 12-11

South Alabama	L	2-7
Vanderbilt	L	0-9
Auburn	W	7-1
Miami, Fla.	L	3-6
Florida International	W	8-1
Georgia Tech	W	8-1
California	L	2-7
Clemson	W	6-3
Florida	L	0-9
North Carolina	W	7-2
Baylor	L	4-5
Rice	W	5-4
Houston	L	4-5
Duke	L	1-7
North Carolina State	W	6-3
Wake Forest	L	2-6
Maryland	W	7-2
Illinois	W	8-1
Virginia	W	7-2
South Florida	W	5-4
Georgia Tech (ACC)	W	5-1
Wake Forest (ACC)	L	1-5
Vanderbilt (NCAA)	L	0-5

## 1998

Head Coach: Lise Gregory

Record: 12-12

Georgia Southern	W	7-2
Florida	L	1-8
Georgia Tech	L	4-5
Clemson	L	4-5
Maryland	L	4-5
Virginia	W	5-4
South Florida	W	6-3
Houston	W	7-2
Virginia Tech	L	4-5
Baylor	W	5-4
Wake Forest	L	3-6
NC State	L	4-5
South Alabama	L	1-8
Auburn	W	6-3
Illinois	W	6-3
Jacksonville	W	7-0
Florida International	W	6-3
Duke	L	1-8
North Carolina	W	5-4
North Carolina (ACC)	W	7-2
Duke (ACC)	L	5-0
Vanderbilt (NCAA)	L	6-0

## 1999

Head Coach: Lise Gregory

Record: 21-7

Jacksonville	W	9-0
Illinois	W	5-1
Southern Miss	W	9-0
Auburn	W	7-2
Georgia State	W	6-0
Florida	L	1-8
Georgia Southern	W	8-1
South Florida	W	8-1
South Alabama	W	5-1
Vanderbilt	L	4-5
Miami	L	4-5
Florida International	W	7-2
Baylor	W	7-2
Houston	W	5-4
Rice	W	6-3
Tulane	W	5-4
Virginia	W	6-3
Maryland	W	9-0
Kansas	W	6-3
Wake Forest	L	4-5
North Carolina State	W	9-0
Duke	L	0-9
North Carolina	W	6-3
Georgia Tech	W	6-3
Clemson	W	5-4
Virginia (ACC)	W	5-1
Wake Forest (ACC)	L	4-5
Iowa (NCAA)	L	4-5

## 2000

Head Coach: Lise Gregory

Record: 17-9

Georgia Southern	W	8-1
Vanderbilt	L	1-8
Iowa	W	5-4
Florida	L	1-5
Auburn	W	6-3
Jacksonville	W	9-0
Southern Miss	W	6-3
LSU	W	5-4
South Florida	W	7-2
Miami	W	5-1
Baylor	L	4-5
Tulane	W	7-2
Maryland	W	9-0
Virginia	W	7-2
North Carolina	W	5-2
Wake Forest	L	1-8
North Carolina State	W	8-1
Duke	L	2-7
Utah	W	7-2
Georgia Tech	L	4-5
Clemson	L	4-5
Georgia Tech (ACC)	W	5-3
Wake Forest (ACC)	L	0-5
Illinois (NCAA)	W	5-3
Florida (NCAA)	L	0-5

## 2001

Head Coach: Lise Gregory

Record: 14-11

Georgia State	W	7-0
Bethune-Cookman	W	def.
Alabama	L	3-4
Florida	L	0-7
Tulane	W	4-3
LSU	L	3-4
Miami	L	3-4
FIU	L	2-5
South Florida	W	4-3
Michigan State	W	7-0
Marquette	W	6-1
Pepperdine	L	3-4
Loyola Marymount	W	4-3
San Diego State	W	4-3
NC State	W	6-1
Wake Forest	L	3-4
North Carolina	L	1-6
Duke	L	0-7
Georgia Tech	W	6-1
Clemson	W	5-2
Maryland	W	5-2
Virginia	W	4-3
Georgia Tech (ACC)	W	4-2
Duke (ACC)	L	0-4
South Carolina (NCAA)	L	2-4

## 2002

Head Coach: Lise Gregory

Record: 12-15

Florida A&M	W	6-1
Georgia Southern	W	7-0
Vanderbilt	L	0-7
Central Florida	W	4-3
Louisiana State	W	4-3
Florida Atlantic	W	5-1
Auburn	L	3-4
Florida	L	1-5
Jacksonville	W	5-1
South Alabama	L	3-4
Alabama	L	3-4
Miami	L	3-4
Harvard	W	5-2
Michigan State	W	6-1
Florida International	L	3-4
South Florida	W	6-1
Maryland	L	3-4
Virginia	L	3-4
North Carolina State	W	5-2
Wake Forest	L	1-6
North Carolina	L	1-6
Duke	L	1-6
Georgia Tech	W	6-1
Clemson	L	3-4
Maryland (ACC)	W	4-3
North Carolina (ACC)	L	1-4
VCU (NCAA)	L	0-4



# ALL-TIME RESULTS

## 2003

Head Coach: Lise Gregory

Record: 13-10

Florida A&M	W	7-0
Stetson	W	7-0
Georgia Southern	W	7-0
Central Florida	W	6-1
Tulane	L	3-4
LSU	W	4-3
Furman	W	6-1
Florida	L	0-7
Alabama	L	3-4
South Florida	W	7-0
Baylor	W	4-3
Rice	W	4-3
South Alabama	L	2-5
FIU	W	4-3
Virginia	L	3-4
Wake Forest	W	4-3
N.C. State	W	6-1
Maryland	W	6-1
North Carolina	L	1-6
Duke	L	1-6
Georgia Tech	L	2-5
Clemson	L	1-6
North Carolina (ACC)	L	0-4

## 2004

Head Coach: Lise Gregory

Record: 18-8

Ga. Southern	W	7-0
Troy State	W	7-0
Stetson	W	7-0
Rice	W	5-1
UCF	W	6-1
UAB	W	7-0
Alabama	L	2-5
Florida	L	1-6
LSU	L	3-4
USF	W	5-2
FIU	W	6-1
Tulane	L	3-4
Michigan State	W	5-2
Penn State	W	6-1
Maryland	W	5-2
Virginia	W	6-1
N.C. State	W	7-0
Wake Forest	W	6-1
North Carolina	W	4-3
Duke	L	3-4
Georgia Tech	W	4-3
Clemson	L	3-4
Wake (ACC)	W	4-2
Duke (ACC)	L	1-4
Marshall (NCAA)	W	4-2
Vanderbilt (NCAA)	L	1-4

## 2005

Head Coach: Jennifer Hyde

Record: 11-12

Baylor	L	5-2
UCF	W	7-0
Alabama	W	5-2
Florida	L	6-1
Tulane	L	4-3
USF	W	4-3
San Diego	W	4-3
San Diego State	W	4-3
Miami	L	5-2
FIU	L	5-2
Virginia Tech	W	7-0
Maryland	W	6-1
Virginia	W	6-1
N.C. State	W	7-0
Wake Forest	L	4-3
North Carolina	L	6-1
Duke	L	4-3
Georgia Tech	L	5-2
Clemson	L	7-0
Florida A&M	W	7-0
Virginia (ACC)	W	4-3
Georgia Tech (ACC)	L	4-1
FIU (NCAA)	L	4-2

## 2006

Head Coach: Jennifer Hyde

Record: 9-13

Auburn	W	4-3
Bethune-Cookman	W	7-0
FAMU	W	5-0
Stetson	W	6-1
Florida	L	7-0
Georgia Southern	7-0	
Troy State	W	4-3
LSU	L	5-2
UAB	W	5-2
FIU	L	5-2
Miami	L	7-0
Boston College	W	4-2
Maryland	L	4-3
North Carolina	L	6-1
N.C. State	L	5-2
Wake Forest	L	7-0
Clemson	L	4-3
Georgia Tech	L	4-2
Virginia	L	6-1
Virginia Tech	W	4-3
Duke	L	4-1
Wake Forest (ACC)	L	4-1

## 2007

Head Coach: Jennifer Hyde

Record: 16-8

Jacksonville	W	6-1
Georgia	L	1-6
Rice	W	6-1
Houston	W	5-1
Stetson	W	7-0
Florida A&M	W	7-0
LSU	W	5-2
Florida	L	3-4
Florida International	W	4-3
Miami	L	3-4
NC State	W	5-2
Wake Forest	W	4-3
Clemson	L	5-2
Georgia Tech	L	6-1
Virginia	W	4-3
Virginia Tech	W	7-0
North Carolina	L	7-0
Duke	W	4-3
Boston College (ACC)	W	4-0
Miami (ACC)	L	4-3
San Diego State (NCAA)	W	4-0
UCLA (NCAA)	L	4-2





# MEDIA INFORMATION

## A NOTE TO THE MEDIA, FANS AND OPPONENTS

Florida State graduate assistant Shannon O'Neil of the Sports Information Office is ready to assist you with any questions or requests you may have about the Seminole women's tennis program. Please do not hesitate to phone, fax or write a letter to the FSU Sports Information Office at P.O. Box 2195, Tallahassee, Florida 32316, phone - (850) 644-5653, fax - (850) 644-3820, email - slo03c@fsu.edu, if we can further assist you.

## HOW TO COVER THE SEMINOLES

Members of the media are supplied with weekly press releases, including updated individual tournament and career statistics, as well as conference and national rankings and information on upcoming matches or events. Results and statistics may be obtained through the sports information office via email, fax or by accessing the official Florida State website - [www.seminoles.com](http://www.seminoles.com). Pertinent team and player information will also be available at the Scott Speicher Tennis Center prior to all home matches. If you would like to schedule interviews with the coaches or student-athletes, contact Shannon O'Neil at least 24 hours in advance.

## WHERE THE HOME MATCHES WILL BE

All 2006-07 Seminole tennis home matches will take place at the Scott Speicher Tennis Center (capacity 1000), located off of Chieftain Way, directly behind Tully Gymnasium. Parking for the facility is located to the west of the tennis center. Media members will be provided parking passes and will be seated in a designated area. Please notify the sports information office prior to home matches for credentials. Any accredited photographer wishing to shoot the matches must check in with Shannon O'Neil prior to the match, so proper credentials can be assigned.

## FSU ON THE WEB

Check out the Florida State women's tennis program on the web. Connect to your internet service provider and type in [www.seminoles.com](http://www.seminoles.com). Once you are in the Seminoles home page, follow the directions to the women's tennis web page.

## MEDIA GUIDE CREDITS

The 2007-08 Seminole Tennis media guide is a publication of the Florida State University Sports Information Office. Cover and layout design by Grant Hawkins Design, Dallas, Texas. Edited and written by Shannon O'Neil. Writing and research assistance by Brett Brecheisen, Carl Cohn, Peter Noonan, and Sarah Hunsford. Editorial assistance by Tina Dechausay and Michael Smoose. Photography by Ross Obley, Ryals Lee, Jr., Bill Lax, Brandon Goodman and the University Photo Lab. Cover photography by Ryals Lee, Jr. Printing by FSU Printing Services. The Florida State University offers equal opportunity in its employment and educational activities in compliance with Title IX, Section 5-4 of the Rehabilitation Act of 1973 and other civil rights laws. This document is available upon request in alternate formats for individuals with print related disabilities. Contact the ADA office, 301 Westcott Administration Building, for more information.



## SPORTS INFORMATION DIRECTORY

### VOLLEYBALL CONTACT



**Shannon O'Neil**  
- Graduate Assistant  
- Phone: (850) 645-7683  
- Email: slo03c@fsu.edu



**Tina Dechausay**  
Sports Information Director



**Chuck Walsh**  
Associate SID



**Elliott Finebloom**  
Associate SID



**Michael Smoose**  
Assistant SID



**Katy Baker**  
Assistant SID



**Jason Leturmy**  
Assistant SID



**Ryan Pensy**  
Director of Digital Media



**Layne Herdt**  
Graduate Assistant



**Maryjane Gardner**  
Administrative Assistant

**Contact Us At:**  
Phone 850.644.1403  
Fax 850.644.3820

**Address Inquiries to:**  
Florida State Sports Information  
PO Drawer 2195  
Tallahassee, FL 32316

**Ship Overnight Packages to:**  
Shannon O'Neil  
FSU Sports Information  
525 Stadium Dr.  
Tallahassee, FL 32306





# MEDIA OUTLETS

## PRINT MEDIA

**Associated Press (Local)** ..... (850) 224-1211  
 Fax (850) 224-2099 • Brent Kallestad\*  
 336 E. College Ave., Suite 301 Tallahassee, FL 32301

**Bradenton Herald** ..... (941) 745-7007  
 Fax (850) 745-7097 • Roger Mooney (C)  
 102 Manatee Ave., W., Bradenton, FL 34205

**Daytona Beach News-Journal** ..... (386) 252-1511  
 Fax (386) 253-8433 • sports@news-jrn.com • Ken Willis (C)  
 901 Sixth Street, Daytona Beach, FL 32120

**Florida Times-Union (Local)** ..... (850) 224-7515, x14  
 Fax (850) 681-2961 • bob.thomas@jacksonville.com • Bob Thomas\*  
 336 E. College Avenue, Suite 304, Tallahassee, FL 32301

**Florida Times-Union** ..... 1 (800) 255-4679  
 Fax (904) 359-4147 • tusports@jacksonville.com  
 Mike Freeman (C), Mark Woods (C), Gene Frenette (C)  
 One Riverside Avenue, Jacksonville, FL 32202

**Ft. Lauderdale Sun-Sentinel** ..... (954) 356-4645  
 Fax (954) 356-4566 • cbarnes@sun-sentinel.com  
 Craig Barnes\*, Dave Hyde (C)  
 New River Center, 200 E. Las Olas Blvd., Ft. Lauderdale, FL 33301

**Ft. Myers News-Press** ..... (239) 335-0357  
 Fax (239) 334-0708 • vlewis@news-press.com  
 Virginia Lewis, Craig Handel (C), Deron Snyder (C), Glenn Miller (C)  
 2442 Dr. Martin Luther King Jr. Blvd., Ft. Myers, FL 33901

**FSView** ..... (850) 561-6653  
 TBA  
 954 Brevard Street, Tallahassee, FL 32304

**Gainesville Sun** ..... (352) 378-1411  
 Fax (352) 338-3128 • news\_sports@gvillesun.com • Pat Dooley (C)  
 PO Drawer A, Gainesville, FL 32602

**Lakeland Ledger** ..... (863) 802-7569  
 Fax (863) 802-7812 • Rick Brown\*  
 PO Box 408, Lakeland, FL 33802

**Miami Herald** ..... (305) 376-2387  
 Fax (305) 376-2295 • sports@herald.com  
 Jeff Shain\*, Bill Van Smith, Edwin Pope (C)  
 One Herald Plaza, Miami, FL 33132-1693

**Northwest Florida Daily News** ..... (850) 863-1111, x423  
 Cal Powell • 200 Racetrack Road • Ft. Walton Beach, FL 32548

**Ocala Star-Banner** ..... (352) 867-4146  
 Fax (352) 867-4018 • Dwight Collins\*  
 PO Box 490, Ocala, FL 34478

**Orlando Sentinel (Local)** ..... (850) 222-5564  
 Fax (850) 224-0979 • ebadger@orlandosentinel.com • Emily Badger\*  
 336 E. College Avenue, Suite 303, Tallahassee, FL 32301

**Orlando Sentinel** ..... (407) 420-5474  
 Fax (407) 420-5069 • sports@orlandosentinel.com  
 Mike Bianchi (C), David Whitley (C)  
 633 N. Orange Avenue, Orlando, FL 32801

**The Osceola** ..... (850) 222-7733  
 Fax (850) 224-3627 • news@osceolanews.com  
 Derek Redd, Rick Jones  
 402 Dunwoody Street, Tallahassee, FL 32304

**Palatka Daily News** ..... (386) 328-2721  
 Fax (386) 312-5209 • Kerry Dunning\*, Ryan Gilchrest  
 1825 St. John's Ave., Palatka, FL 32177

**Palm Beach Post** ..... (561) 820-4440  
 Fax (561) 820-4481 • pbsports@pbpost.com  
 Dave George (C), Tom D'Angelo\*  
 2751 S. Dixie Highway, W. Palm Beach, FL 33405

**Panama City News-Herald** ..... (850) 747-5065  
 Fax (850) 747-5097 • nhsports@pcnh.com • Tim Hathcock  
 PO Box 1940, Panama City, FL 32401

**Pensacola News-Journal** ..... (850) 435-8552  
 Fax (850) 434-6241 • sports@pensacolanewsjournal.com  
 101 E. Romana Street, Pensacola, FL 32502

**Sarasota Herald-Tribune** ..... (941) 957-5172  
 Fax (941) 957-5276 • newscoast.com  
 Chris Anderson, Doug Fernandez (C)  
 801 S. Tamiami Trail, Sarasota, FL 34236

**St. Petersburg Times** ..... (813) 226-3347  
 Fax (813) 226-3381 • sptsnews@sptimes.com  
 Brian Landman\*, Gary Shelton (C)  
 PO Box 1211, St. Petersburg, FL 33731

**Tallahassee Democrat** ..... (850) 599-2167  
 Fax (850) 599-2301 • sports@tallahassee.com  
 Steve Ellis, Randy Beard (C), Jack Corcoran\*  
 277 N. Magnolia Drive, Tallahassee, FL 32301

**Tampa Tribune (Local)** ..... (850) 294-3088  
 Fax (850) 222-4772 • scarter@tampatrib.com  
 Scott Carter\* • 336 E. College Avenue, Tallahassee, FL 32301

**Tampa Tribune** ..... (813) 259-7655  
 Fax (813) 259-8148 • sports@tampatrib.com  
 Martin Fennelly (C), Joey Johnston (C), Joe Henderson (C)  
 PO Box 191, Tampa, FL 33601

\*Beat writer (C) Columnist

## ELECTRONIC MEDIA

**Cable 47** ..... (850) 487-3170  
 WFSU Television Center

**Sun Sports Network** ..... (407) 245-2511  
 Fax (407) 245-2571  
 390 N. Orange Ave. Suite 1075, Orlando, FL 32801

**WCTV-TV (CBS)** ..... (850) 906-0477  
 Fax (850) 668-3851 • Elton Gumbel  
 4000 County Rd. 12, Tallahassee, FL 32312

**WNLS Radio** ..... (850) 422-3107  
 Fax (850) 514-4441 • Jeff Cameron, Preston Scott  
 325 John Knox Rd, Bldg. G, Tallahassee, FL 32303

**FSU Headlines/TV & Radio** ..... (850) 644-1360  
 Fax (850) 644-8344 • Dennis Schnittker, Jay Wirth, Frank Calzado,  
 Katie Flannagin, Tom Block

**WTXL-TV (ABC)** ..... (850) 893-1313  
 (850) 668-1460 • Brad Dalton, Sean Smith  
 1600-2 Red Barber Plaza, Tallahassee, FL 32310



# Florida State 2007-08 WOMEN'S TENNIS



## SEMINOLES ON THE WEB

### LOG ON TO SEMINOLES.COM

Check out the Florida State women's tennis program on the web. Connect to your internet service provider and type in [www.seminoles.com](http://www.seminoles.com). Once you are in the Seminoles home page, follow the directions to the women's tennis web page.



# www.seminoles.com

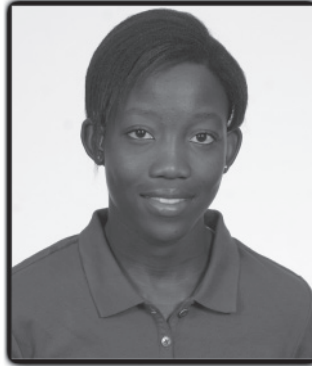




# RADIO/TV CHART



**Lauren Macfarlane**  
5-8, Sophomore  
Ogden, Utah  
(Weber High School)



**Tapiwa Marobela**  
5-7, Senior  
Gaborone, Botswana  
(Clapham)



**Katie Rybakova**  
5-7, Freshman  
Coral Springs  
(Broward Virtual Education High)



**Ania Rynarzewska**  
5-7, Junior  
Inowroclaw, Poland  
(Warsaw School Complex)



**Federica Suess**  
5-8, Freshman  
Ludwigshafen, Germany  
(Kurpfalz-Gymnasium Mannheim)



**Carolin Walter**  
5-6, Senior  
Bingen, Germany  
(Baylor)



**Jessica Wentz**  
5-8, Sophomore  
Whitehouse, Texas  
(Whitehouse High School)



**Jennifer Hyde**  
Head Coach  
4th Season



**Oliver Foreman**  
Assistant Coach  
3rd Season



www.Seminoles.com



FLORIDA STATE