



TABLE OF CONTENTS

02	Executive and Support Staff
03	Season Outlook
06	Roster
07	Meet The Coaches
10	Head Coach Jennifer Hyde
12	Assistant Coach Oliver Foreman
14	Ania Rynarzewska
16	Lauren Macfarlane
18	Jessica Sucupira (Wente)
20	Bonny Davidson
22	Katie Rybakova
24	Federica Suess
26	Justine Humair
27	07-08 Review
30	07-08 Results
31	The University
32	Scott Speicher Center
33	Booster Support
34	An Elite Program
37	This is the ACC
38	This is FSU
40	University Facts
41	University Famous Alumni
42	Academic Services
43	Student Services
44	NCAA Compliance
45	Strength & Conditioning
46	This is Tallahassee
49	Seminole Tennis History
50	Hall of Fame
51	Champion In Life
52	Honors & Awards
54	FSU Coaching History
55	All-Time Dual Match Roster
56	NCAA Tournament History
58	Tennis Records
59	All-Time Series Records
60	All-Time Results
64	Media Information
66	Opponents
68	Radio - TV Chart

QUICK FACTS ➤

UNIVERSITY INFORMATION

Location	Tallahassee, Fla.
Symbol	Seminoles
Colors	Garnet and Gold
Enrollment	38,553
President	Dr. T.K. Wetherell
Athletics Director	Randy Spetman
Assistant AD/Tennis Oversight	Brandi Stuart
Conference	Atlantic Coast
Affiliation	NCAA Division I

WOMEN'S TENNIS INFORMATION

Head Coach	Jennifer Hyde (FSU '95)
Record at FSU/Years	55-38/5
Career Record/Years	110-97/11
Assistant Coach	Oliver Foreman (MTS '02)
Office Phone	850.644.5946
Office Fax	850.644.3451
Home Facility	Scott Speicher Tennis Center

2008 SEASON IN REVIEW

2008 Record	19-8
2008 ACC Record/Finish	6-4/6th
Final ITA Ranking	18th
Letterwinners R/L	6/2
Newcomers	1

SID INFORMATION

Sports Information Director	Tina Dechausay
Women's Tennis SID	Tania Fernandez
Phone Number	850.644.5653
Fax Number	850.644.3820
Cell Number	786.554.0527
Email Address	tsf04@fsu.edu
Mailing Address	Florida State University 403 Stadium Dr. Room D107 Tallahassee, FL 32306 www.seminoles.com
Athletic Website	www.theacc.com
Conference Website	

CREDITS:

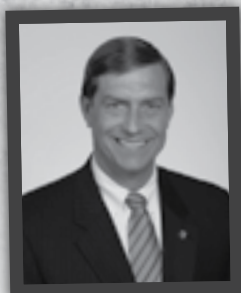
Editor: Tania Fernandez. Research Assistance and Writing: Tina Dechausay, Maryjane Gardner, Alex Douglas, Ultima Rogers and Shannon O'Neil. Photography: Ross Obley, Ryals Lee, Jr., Mike Olivella, Jennifer Hyde, Tania Fernandez, women's tennis team and the University Photo Lab. Cover photography by Ryals Lee, Jr. Design: Julie Long, Shannon O'Neil and Toni Tesori of Full Circle Studio. Printing: FSU Printing Services. This document is available upon request in alternate formats for individuals with print-related disabilities. Contact the ADA office, 301 Westcott Administration Building, for more information.



EXECUTIVE STAFF »



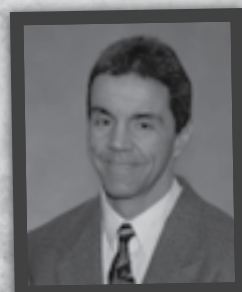
*Dr. TK Wetherell
President*



*Randy Spetman
Athletics Director*



*Kellie Elliot
Deputy Athletics Director / SWA*



*Monk Bonasorte
Senior Associate
Athletics Director*

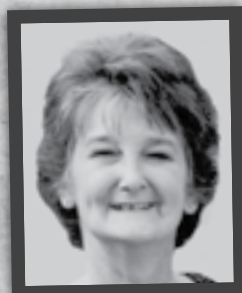


*Brandi Stuart
Assistant Athletics Director*



*Gary Huff
Senior Associate
Athletics Director*

SUPPORT STAFF »



*Myra Atwell
Equipment Manager*



*Kellie Cox
Assistant Athletic Trainer*



*Miranda Foley
Team Manager*



*Brian Ginsberg
Team Manager*



*Caitlin Quinn
Strength and Conditioning
Graduate Assistant*



*Chris Rettkowski
Assistant Director of
Event Management*

40 AND FABULOUS

While women's athletics has held a rich tradition in Tallahassee since the early 1900's when Florida State was the Florida State College for Women, the 2008 season marks the 40th anniversary for a continuous women's athletics program at Florida State University. In 1968, the volleyball team was FSU's first women's intercollegiate team and a new era began in 1995 with the addition of women's soccer. Over the years, FSU has enjoyed fabulous success in its women's athletic programs including five national championships and numerous regional and conference championships.



SEASON
OUTLOOK

MEET THE COACHES
AND SEMINOLES

REVIEW

THE
UNIVERSITY

SEMINOLE
TENNIS HISTORY



SEASON OUTLOOK

SEASON OUTLOOK WITH HEAD COACH JENNIFER HYDE ►

HOW BENEFICIAL IS IT TO COMPETE IN SUCH A STRONG CONFERENCE LIKE THE ACC?

The ACC is among the best tennis conferences in the nation, if not the strongest tennis conference in the nation. Having a chance to play in this league gives us opportunities to play against the best teams and the best players, week in and week out. These opportunities are crucial in continuing to move up in the ranks and helping establish the FSU Women's Tennis Program as one of the nation's elite.

WHAT IS YOUR ASSESSMENT OF THIS YEAR'S SCHEDULE?

Our schedule this year is highly competitive, both within the league, as well as throughout the region and nation. We always create a schedule that will push our players, allowing them to see some of the best possible tennis they can see in their college careers. This year's schedule is no different, and I'm very excited to see this team compete against the nation's best again this year.

WHAT GOALS HAVE YOU SET FOR THIS YEAR AND WHAT STEPS ARE NECESSARY IN ORDER TO ACCOMPLISH THIS?

I think each year we have done a great job of taking things to another level. Two years ago we went from the #72 ranked team in the nation to as high as #13. Last year, we were as high as #12 and hosted the NCAA's for the first time in program history, advancing to the round of 32. No team in program history has made it to the Sweet 16. We had every opportunity to do that last year but came up a little short. This season I know the team is hungrier than ever to get that monkey off our backs. That is a great motivation each day as we work through the season. How do we get there? There is NO substitute for hard work. The girls know that when they put in the work and commit themselves to that, the rewards will be seen over time. They respect that process and know it comes one day, one practice at a time.

FOR THE FIRST TIME IN PROGRAM HISTORY, FLORIDA STATE HOSTED THE FIRST AND SECOND ROUNDS OF THE NCAA TOURNAMENT. HOW PROUD DID THAT MAKE YOU AND YOUR TEAM FEEL?

Last year when we were selected as one of the top 16 teams to host the NCAA's, I don't think I had words to express that 'high' that we all felt. We were just off the mark at #17 in 2007, and to finally accomplish our goal which was set very early in the season, it was a feeling I know I won't soon forget. I'm not sure if everyone on the team realized the magnitude of that accomplishment, even after some good explanation, but I know I certainly did. To witness that progress and to have goals set and then met, it really makes you believe in what we do each day. It was an incredible feat for the team, and now we have to keep working to make sure that hosting is the standard each year.

YOU HAD THE OPPORTUNITY DURING SPRING TO HAVE A COMBINATION OF PLAYERS AT THE DOUBLES MATCHES. HOW DID THIS HELP YOU LEARN THE PLAYER'S STRENGTHS?

It takes some time to figure out the chemistry in doubles partnerships. Sometimes, it's recognized quickly and easily. For example, Jessica Sucupira (Wente) and Lauren Macfarlane clicked right away. I don't know if I've ever coached two players whose chemistry during competition was as solid as theirs. They both absolutely LOVE to compete and that desire pulled them through a ton of matches last year. We will use the fall season to try out a number of combina-

tions so that as we enter into the spring season we have a better or clearer idea of what our options might be for our dual match season. This may very well shift back and forth over time, but we will work very hard this fall to establish our best partnerships.

WHO WILL YOUR TEAM LOOK TO FOR LEADERSHIP?

We have a few leaders on our team that we need to step up and have a voice. Lauren Macfarlane is one of those players who leads not only by example through work ethic and commitment, but also through her selflessness, always putting the team before herself. Her excitement about being a Seminole is contagious, and this energy spreads throughout this team.

Ania Rynarzewska, our lone senior, will definitely be looked upon to lead our team this season. She is our most experienced player who has had three solid years to learn the ropes within the program. She's worked hard during that time to discover and recognize her leadership style and how to be the best leader she can. That's a very difficult role at times but I think she is poised to take over that role within the team.

I also think we have many other people on the team capable of stepping up and leading in their own way. I'm not a fan of having 'captains' on a team because it might quiet someone's voice who we all could benefit from hearing. I look forward to watching all of this unfold as the season progresses and seeing who is willing to put themselves in that crucial leadership position.

HOW IMPORTANT IS IT TO DEFEND YOUR HOME-COURT?

Our record at home over the last two years has been amazing. There is a definite advantage to playing at our home courts with our home crowd cheering us on. Of 20 matches played at home in two years we've won all but four. We definitely take full advantage in hosting teams on our courts.

WHAT IS THE KEY TO SURPASSING LAST YEAR'S SUCCESS AND PAVING A NEW WAY FOR YOUR PROGRAM?

As each new year comes along your goal is to always build from what you accomplished the year before. We have quite a bit of momentum from the success we've had during our last two seasons, but you can only ride that for so long. I think we have to continue to find new ways to challenge the players to get better, and keep finding ways to be better coaches for our team. I don't think that process ever stops. We have so many of the intangibles in place on this team right now, and that makes all of us ever more excited for the season that sits in front of us. I think the core foundation of our program remains intact, and now we have to raise the bar in every aspect in order to take things to that next level. We are poised to turn that corner, and we remain focused on continuing to take this program to new heights each year.

JENNIFER HYDE



LAUREN MACFARLANE

SEASON OUTLOOK WITH ASSISTANT COACH OLIVER FOREMAN ▶

WHICH PLAYER WILL YOU LOOK TO FOR LEADING THE TEAM TO A NEW LEVEL OF EXCELLENCE?

Looking at the current team, I could definitely say that there are two or three girls that certainly have the ability to take this team to new heights. Leadership is a huge role to play but I do think that we have a couple of girls that are willing to step up, make sacrifices and take responsibility. I will give you those names after our first event this fall, but only if you can guarantee your support in the stands this spring!

HOW WILL THIS SEASON'S SCHEDULE PREPARE YOU FOR THE TOUGH ACC COMPETITION THAT BEGINS IN THE SPRING?

I would say that this fall competition is one of the strongest fall schedules in the country. Our first competition is the Furman Fall Classic comprised of five or six top 20 schools, following that is the All American Championships, where we will face the top 125 players in the country. Our third event is the ITA Regional Championships and since we are in the strongest region in the country it doesn't get much tougher. The remaining two tournaments are our very own Seminole Invite and annually we seem to excel in this tournament but again we will be facing seven other teams all gunning for a top 20 rankings, and the Miami Invitational and as you know that's always a huge rivalry, and another top 10 team.

With the level of competition during this fall the girls will undoubtedly be prepared for any ACC competition we will be facing, and injury permitting will continue to create history here at Florida State.

WHAT DO YOU FEEL IS THE KEY TO SUCCESS FOR THIS TEAM TO BEING A TOP RATED TENNIS PROGRAM IN THE COUNTRY?

I think there are probably three things that will be key for the success of this team:

1) Work Ethic/Attitude – There are going to be many days where

student-athletes come out for practice/strength & conditioning and will be feeling about 75 percent, but it's those days that can separate the national champions from a top 20 team. How you approach those days can be applied both on and off the court, and separates mediocrity from success, becoming a good team or a great one!

2) Team Cohesiveness – Probably the most underrated asset in any team setting. One of the things that seems to be most commonly forgotten that no matter your differences (and of course everyone is different) you both have a common goal, to become the best team you can possibly be. I will take a group of average student-athletes that work together any day over a group of exceptional student-athletes that work as individuals.

3) Two percent a day philosophy – Unequivocally work ethic and this philosophy go hand in hand, but if all you do is try to improve two percent a day on any given facet of your game you will become a great student-athlete.

WHAT STEPS WILL YOU NEED TO TAKE TO MAKE THIS TEAM A TOP RATED PROGRAM?

I will continue to instill the qualities into this team that are qualities required of national champions, world-class athletes, and the finest student-athletes. Sacrifices will have to be made, continue to build a team that holds each other accountable, aiding our student-athletes to manage their time efficiently and effectively, work, work, work, and more work. If we can integrate these qualities into our student athletes on a daily basis, we will be a very successful team.

OLIVER FOREMAN



JESSICA SUCUPIRA (WENTE)

2008-2009 TEAM ROSTER »

NAME	HT	CL	HOMETOWN	LAST SCHOOL
Davidson, Bonny	5-4	SO	Johannesburg, South Africa	Roedean School
Humair, Justine	5-10	FR	Sulpice, Switzerland	University of Miami Online High
Macfarlane, Lauren	5-8	JR	Ogden, Utah	Weber High School
Rybakova, Katie	5-7	SO	Coral Springs, Fla.	Broward Virtual Education High
Rynarzewska, Ania	5-7	SR	Inowroclaw, Poland	Warsaw School Complex/Polish Embassy, Berlin
Suess, Federica	5-8	SO	Ludwigshafen, Germany	Kurpfalz-Gymnasium Mannheim
Sucipira (Wente), Jessica	5-8	JR	Whitehouse, Texas	Whitehouse High School



SEASON
OUTLOOK

MEET THE COACHES
AND SEMINOLES

REVIEW

THE
UNIVERSITY

SEMINOLE
TENNIS HISTORY

MEET THE COACHES AND SEMINOLES



2009 FLORIDA STATE WOMEN'S TENNIS MEDIA GUIDE





HEAD COACH JENNIFER HYDE

5TH SEASON | ALPHARETTA, GA | FLORIDA STATE '95



ANIA RYNARZEWSKA

"Jen is a very reliable person. I know that I can always count on her. She plays a huge role in my life. No matter what age the team members are, she always tries to help each individual make the right decisions as we face our little ups and downs."

LAUREN MACFARLANE

"I can't say enough good things about Jen. She cares so much about the team and always wants what is best for each of us individually and as a group."

JESSICA SUCUPIRA (WENTE)

"Jen is an awesome head coach. Not only does she drive us into the ground with hard training and conditioning, she also knows what is best for the team. Her belief in the team makes us who we are today on the court. I am proud to say she is my coach."

KATIE RYBAKOVA

"Jen loves her team with all her heart and we love her even more right back. No words can explain how appreciative I am for her support and effort. In my eyes, she and the team are family."

FEDERICA SUESS

"Jennifer is a great person and head coach. She always knows what to say before a match to get us pumped and excited."

BONNY DAVIDSON

"Jen is an excellent coach that cares about every single one of us on the team. She not only cares about how we develop as tennis players but as people too."

BIO ➤

Head Coach Jennifer Hyde begins her fifth season with Florida State with a list of accomplishments that only keep rising each year. Hyde has led the Seminoles to a higher ranking each year, posted numerous student-athletes on the All-Academic Honor Roll, placed four players on the All-Time dual match winning percentage list and consistently sent athletes to compete at the NCAA Singles Championships.

With the 2008-09 season on the horizon, Hyde looks to continue her alma mater's upward track toward greatness, ultimately hoping to cement the women's tennis team as one of the best athletic programs at Florida State. Since Hyde began her coaching career at Florida State, the Seminoles have stepped up to a new and intensified level of playing for the program.

Hyde directed the Seminoles to a new high in 2008. For the first time in program history, Florida State hosted the first and second round of the NCAA Tournament. Hyde led her team to two victorious matches over in-state rival Miami and after beating the 12th ranked North Carolina Tar Heels, the Seminoles reached a No. 12 ranking, the highest ranking in the women tennis program's history. With the help of big wins against top ranked programs during the 2008 season, the Seminoles finished the year with an overall record of 19-7, the highest winning season since 1999 and second highest all time at Florida State. Hyde also guided her team to the semifinals of the ACC Tournament which is only the second time in program history this has been accomplished. From start to end, Hyde placed her team in the top 16 of the country with seven shut-out matches throughout the year. The impressive launch to the 2008 spring season was not only the best start in program history, but also stands out as the best in ACC history. Although many believe that the hype dimmers down towards the end of a season, this was just the opposite reaction for Hyde when she coached freshman Katie Rybakova to a top 20 national ranking in which Rybakova also received a bid to participate in the NCAA Singles Championships as a freshman.

Hyde and the Seminoles made long strides in the 2006-07 season. In addition to the NCAA berth, ITA South Region Coach of the Year and a No. 13 ranking, Hyde also coached the Seminoles to a 5th-place ACC finish, 9-1 home record and eight, top-60 victories, including the team's first win over Duke since 1983. Hyde also helped put two more Seminoles, Lauren Macfarlane and Nicola Slater, on the All-ACC team in 2007.

In just her third year with the Garnet and Gold, Hyde led FSU to its then highest ranking in program history (13th), an NCAA tournament berth, eight top-60 wins and a 16-8 season record. Such high accomplishments in such a short period of time illustrate only the beginning of what Hyde has in store for the Seminoles.

Hyde came full-circle upon her return to Tallahassee in July 2004, becoming just the fifth women's tennis head coach in Seminole history. In her first year, Hyde coached Florida State into the top 30 and capped the regular season with an NCAA Tournament appearance. Hyde continued to build the program in 2005-06, notching victories over two nationally ranked teams and coaching freshman Ania Rynarzewski to a spot on the All-ACC team.

The University of Houston recognized her unquestionable skill and presence within the sport and handed Hyde her first head coaching position in 1999. Hyde spent five increasingly successful years with the Cougars, building on her previous accomplishments with a third-place finish in the Conference USA as well as the program's most dual-match wins since 1997.

It was with the Tar Heels in 1998-99 that Hyde would begin to establish herself as one of the best young coaches in the sport. With her assistance, UNC enjoyed one of its best seasons in program history, moving from outside all the national polls to a top-25 ranking and the school's first NCAA tournament berth. While an assistant coach at North Carolina, Hyde also made strides off the court in the recruitment realm, identifying and signing two top-five prospects for the Tar Heels.





After graduating from FSU in 1995, Hyde began her coaching career as an assistant for the Seminoles prior to heading north to the University of Iowa in 1995. Hyde spent two years in the midwest before returning to the south with an assistant coaching stint at the University of Alabama (1997-98).

Hyde first arrived in Tallahassee as a student-athlete in 1991. The Alpharetta, Ga., native enjoyed an impressive career with the Seminoles—establishing herself as a four-year letter winner, NCAA Tournament participant (1994) and ACC flight champion in doubles alongside teammate Jenny Graf. Ironically, Hyde would captain the 1994 Seminole squad whose No. 17 ranking stands as the highest year end ranking to date. Since the arrival of Hyde in Tallahassee as the head coach, the women's team has been ranked in a better position each year. The 'Noles finished 19th in 2006, 18th in 2007, so time will tell if No. 17 is on the horizon.

Off the court, Hyde has continued the team's success in the classroom. With her guidance, the team secured the Golden Torch Award, given to the Florida State athletic team with the highest GPA, for its ninth year in a row (four out of five years with Coach Hyde). In addition, numerous Seminoles have landed spots on the All-ACC Academic team, All-ACC Honor Roll and ITA Scholar Athletes list in Hyde's tenure as head coach.

At the end of the day, whether it's across the net or behind the desk, Jennifer Hyde has continued to use her skills and experience both from her student-athlete days in Tallahassee and her coaching days around the country. She continues to personify the Seminoles' trademark Unconquered spirit, driving her players and her program to new highs each season. With her vision of higher expectations for the program, Hyde will definitely push the Seminoles even further this year in order to become one of the top ranked women's tennis programs in the country.



FUN QUESTIONS »

1. WHERE IS YOUR DREAM LOCATION THAT YOU WOULD LIKE TO TRAVEL WITH THE SEMINOLES?

Hyde: My dream location to travel with the team was probably Hawaii. Last January (2007) over MLK weekend we traveled with our men's team to a tournament at the Univ. of Hawaii. It was an incredible trip for all of us and the competition was very good for us to start off our spring season. San Diego is also an incredible trip to make with the team, with good California schools to play against and some incredible beaches and activities to do in our off-time.

2. WHAT IS YOUR FUNNIEST MEMORY WITH THE NOLES?

Hyde: Last spring we were in Las Vegas for spring break. We had tickets to Cirque de Soleil one evening, and before the show we decided to have dinner at a really nice French restaurant on the Strip. Dinner was taking longer than we had expected, so we rushed through dinner as fast as we could and went down to the taxi station to get a quick ride to the show. The taxi line was about 50 people deep, so we all had to hoof it down the Strip in Las Vegas to our show. It was about 90 degrees, we were in heels and dressy clothes and we all were dodging the crowds on the streets as we sprinted as fast as possible down the walkway. It was a solid mile/mile and a half run from start to finish, and it was absolutely hilarious to watch from behind as everyone was weaving in and out of the crowds, yelling 'excuse me, excuse' as they passed people. After $\frac{3}{4}$ of a mile the pace slowed considerably and the blisters from our dress shoes were rubbing raw. We hadn't planned on cross training that night, but we did. Thank goodness we all had seats next to each other.

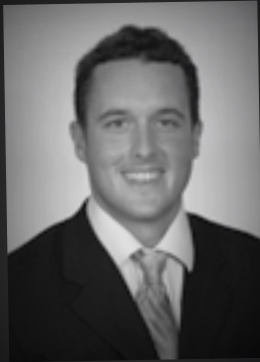
3. IF YOU COULD GO BACK TO ANY DECADE, WHAT WOULD IT BE AND WHY?

Hyde: I'd have to say I would go back to the 80's, most likely because the music in the 80's is by far the best decade for music, ever. My iPod is loaded with 80's hits, along with an array of other time periods. I think they really knew how to write and perform music during the 80's.



ASSISTANT COACH OLIVER FOREMAN

4TH SEASON | EAST BOURNE, ENGLAND | MIDDLE TENNESSEE '02



FEDERICA GUESS

"He is so much fun, but knows exactly where to draw the line between hard work and fun."

KATIE RYBAKOVA

"Oliver is the big brother of the group. He is a shoulder to cry on, a hug when you need it and a helping hand and voice through so

many matches. Most importantly, he is someone who would never let his team down."

JESSICA SUCUPIRA (WENTE)

"Oliver is such a great coach. He comes on the court with a great attitude everyday. He works us very hard which pushes us to be better tennis players everyday. He knows what needs to be done on and off the court in order for us to achieve our goals."

BONNY DAVIDSON

"Oliver is a big brother to all of us. He is great at keeping tennis fun while pushing us to improve in our games."

LAUREN MACFARLANE

"Oliver has so much knowledge about the game and does such a great job in teaching us everyday. His personality and flavor he brings to practices and matches make it so much fun. He loves to have a good time but knows when to be serious."

ANIA RYNARZEWSKA

"Oliver is the most motivated person I have ever met. He is one big ball of energy. It is amazing how he can lift up the team when we are feeling a lack of energy or have some sort of weakness. He keeps us going. That is the great thing about him. Without him, we wouldn't be the team we are."

BIO »

Former professional tennis player Oliver Foreman enters his fourth season as an assistant coach at Florida State, boasting a list of personal and coaching accolades that have helped him lead the Seminoles to success on and off the court. Foreman, a British native, has played an instrumental role in guiding the Florida State women's tennis program to a new pinnacle of achievement, especially in the 2007-08 season. With the direction of Coach Hyde, Foreman helped the Seminoles to a top 16 seeding in the NCAA tournament, two top upsets over UNC and Miami and the highest ranking in program history at No. 12 last year. Foreman also took part in the honored role when Florida State hosted the first and second rounds of the NCAA Tournament which was also a first for the program. Foreman was an integral part in the 11 clean sweeps the Seminoles boasted in regular season dual competition, a school record. Only has Florida State has improved since the day Foreman stepped foot on the courts, but he continues to pull the program to higher levels of success.

Foreman's second season with the Seminoles ended with a No. 17 ranking, an NCAA Tournament berth, a fifth-place ACC finish and a 16-8 season record. With his assistance, Florida State broke a then school record, reaching as high as 13th place in the national rankings during the season. The team also posted a 9-1 record at home and succeeded in beating Duke for the first time since 1983 en route to an 8-5 ACC record.

In Foreman's first stint as an assistant coach, he took the role of player development and recruiting. With head coach Jennifer Hyde's direction, Foreman helped the Seminoles to a great beginning season as the 'Noles won seven of nine matches with a four game winning streak. Florida State finished the season with a 9-13 record and a ranking at No. 72.

A member of the Professional Tennis Tour from 2002-04, Foreman won the 2002 Irish National Open in both the doubles and singles competitions. He also made it to the final pre-qualifying round for Wimbledon in 1998 and 2000.

Prior to his professional career, Foreman competed at Middle Tennessee State where he was named to the Ohio Valley All-Conference team (1998, 99) and the Sunbelt All-Conference Team (2001, 02). He also made it as high as the number-five spot in the national doubles rankings during his collegiate career. Among the highlights of his college accomplishments was a win in the consolation of the 2001 National Indoor Championships, regarded as the fifth leg of the college slams.

Foreman's career at MTSU culminated his senior year in 2002 as he broke into the top-100 collegiate singles rankings, the top-five collegiate doubles rankings and reached the quarterfinals of the ITA All-American Championships. Foreman also qualified for the NCAA Tournament three years in a row (2000-02).

Off the court, Foreman made a powerful impact at MTSU as well, serving on the Student Athlete Advisory Council (2001-02) and notching a spot on the Dean's List twice (2001-02).

His academic success has been a valuable asset for Florida State, as Foreman's guidance has contributed in the women's tennis team securing the Golden Torch Award, given to the Florida State team with the highest GPA, for its ninth consecutive year. Academically, the team has also landed spots on the All-ACC Academic team, All-ACC Honor Roll and ITA Scholar Athletes list in Foreman's three years with the program.

Wherever the Florida State women's tennis team may go in the future, be it on the court or off, it is certain that assistant coach Oliver Foreman will continue to be one of the key figures pushing the program to new heights.

FUN QUESTIONS »

1. WHERE IS YOUR DREAM LOCATION THAT YOU WOULD LIKE TO TRAVEL WITH THE SEMINOLES?

Foreman: It would be great to head over to Europe and travel to a few countries over there. I'm thinking England and play some of the top Collegiate/University teams there. Having said that, if we were to head back to Waikiki Beach I certainly wouldn't complain.

2. WHAT IS YOUR FUNNIEST MEMORY WITH THE NOLES?

Foreman: Oooo, a tricky one. There have been quite a few and probably none of which you can put into words, but I'll give it a try. Jennifer seems to have a habit of instead of wearing socks as normal humans might do, she tends to travel with socks scattered around the van/hotel. Gobbles 'Lauren Macfarlane' likes to take these socks and tape them to various objects she finds funny. One of which would be the van antenna which Jen only realized an hour into our journey back home. Gobbles also taped her socks to the exit sign down stairs in the lobby of the hotel at 6am. People continued to walk under this dangling sock oblivious to its wrath. Oh and this wasn't a clean sock either. I believe Jen was asked not to return unless her socks were firmly placed on her feet and her shoe laces were tied VERY tight!

3. IF YOU COULD GO BACK TO ANY DECADE, WHAT WOULD IT BE AND WHY?

Foreman: Any decade...well I have only lived through three. The 80's: not sure I could handle the haircuts or fashion back then, but the music was awesome. The 90's: I was in my teens and high school was a lot of fun. I seemed to spend most of my time playing every sport imaginable and loved every minute of it. 2000's: I played professional tennis, and now work for the greatest college in the U.S. I also have to mention my wonderful girlfriend Lane who I met right here in Tallahassee two years ago. With that said, my choice would be to stay in the present moment!



SENIOR ANIA RYNARZEWSKA

INOWROCLAW, POLAND | WARSAW SCHOOL COMPLEX/POLISH EMBASSY, BERLIN



"RELENTLESS"

We will be looking to Ania's wisdom and experience to lead a relatively young team. We have great expectations for her for her senior year. She has the keen ability to keep people playing a lot longer than what they are used to. She has the uncanny ability to outlast her opponent. She stays on the court as long as she possibly can be. She is usually the last one of the courts and that is a huge strength to have on the team.

-Coach Hyde

1. AS A VETERAN OF THE TEAM, WHAT IS THE BIGGEST CHALLENGE YOU FACE THIS YEAR?

My Responsibilities; As the only senior and oldest member of the team, I am responsible to lead by example. Luckily the team is a bunch of great kids who are responsible and fun to be around

2. WHAT IS YOUR FAVORITE HOME COOKED MEAL?

Any meals cooked at home

3. WHERE IS YOUR DREAM PLACE TO PLAY A TENNIS MATCH?

US-Open

4. WHAT SPORT DO YOU ENJOY TO PLAY BESIDES TENNIS?

Not really play but I love track and field, especially sprints.

5. WHAT IS YOUR FAVORITE PART OF TALLAHASSEE AND WHY?

FSU

6. ON YOUR FREE TIME, WHAT DO YOU ENJOY DOING?

Reading, cooking and spending time with my closest friends.

7. IF YOU COULD CHOOSE ONE PROFESSIONAL TENNIS PLAYER TO SPEND A DAY WITH, WHO WOULD IT BE AND WHY?

Monica Seles

8. WHAT IS THE BEST PART OF YOUR HOMETOWN?

My family, great parks and health resort.

9. WHAT IS YOUR FAVORITE LOCATION THAT YOU HAVE VISITED WITH THE SEMINOLES?

Hawaii

10. WHAT ARE YOUR GOALS FOR THIS UPCOMING SEASON?

To make it the best year ever for myself and the team

11. WHAT IS YOUR IDEAL CAREER?

Researcher



BIO ➤

JUNIOR YEAR (2007-08):

Fully recovered from an injury her sophomore year to post a 16-9 (4-4 fall and 12-5 spring) singles record and a 17-13 (7-2 fall and 10-11 spring) doubles mark for her junior season.

SINGLES:

- Secured a 10-4 dual match mark after struggling through the fall.
- Pulled out a difficult win against LSU's Nicole Kantor in her only appearance on court four with a 6-4, 3-6, 1-0 (11-9) finish.
- Took three victories in ACC singles play against Virginia Tech, Virginia and North Carolina.
- Helped lead the Seminoles to a 4-3 upset of #12 UNC with a 6-2, 6-1 defeat of Sophie Grabinski on court five.

DOUBLES:

- Climbed to #33 in the national rankings with freshman Katie Rybakova after an 8-6 upset of Duke's #3 ranked Mang/Granson duo in Tallahassee.
- Also with Rybakova, secured an 8-1 win over the Jackson/Weaver tandem from Samford in the first round of the NCAA Tournament.
- Finished the year with a 17-13 overall mark in doubles play.
- Spent most of the season on court one, but still thrived in the two spot with a 3-1 mark and the three spot with a 2-1 finish.

SOPHOMORE YEAR (2006-07):

Spent the first half of the season recovering from surgery.

SINGLES:

- Was ranked as high as No. 52 during the season.
- Went 15-11 in singles play for the spring and fall.
- Managed an 8-1 record at home.

DOUBLES:

- Competed with three different partners throughout the season.
- Went 5-1 with Suzanna Mansour in the fall.
- Lost just one doubles match at the Scott Speicher Tennis Center.

FRESHMAN YEAR (2005-06):

SINGLES:

- One of four newcomers and three freshmen on the Florida State women's tennis team.
- Competed mostly in the singles' No. 1 spot.
- Went 6-16 in singles action.

DOUBLES:

- Was 11-10 in pairs action.
- Played mostly with fellow freshman Suzanna Mansour.
- Had three separate three-match win streaks.

HIGH SCHOOL AND OTHER ACCOMPLISHMENTS:

- Prepped at Warsaw School Complex in the Polish Embassy (Berlin).
- Won the singles' national championship title in 2004.
- Considered one of the top Polish junior tennis players.
- Competed with the Polish National Women's Team at the age of 17.
- Ranked at No. 1 in the Polish junior division for both singles and doubles in 2004; Ranked No. 1 in Berlin juniors as well.
- National Polish Champion runner-up in doubles.
- International Polish Champion runner-up in doubles for 2003.
- Took part in the European Championships in Klosters, Switzerland.
- Earned world ranking points in both singles and doubles.
- Also ran track and won competitions in the arts.

PERSONAL:

- Born on March 11, 1983.
- Graduate student in the Integrated Marketing Communication program; hopes to begin her Ph.D. in the fall.
- Was a member of the Florida State Forensics Team.
- Daughter of Maria Rynarzewska and Zygmunt Rynarzewski.
- Has two older siblings, Sylwia and Tomasz; Sister Sylwia played semi-professional tennis.
- Attended high school at the Polish Embassy complex in Berlin, Germany, for children of Polish citizenship who temporarily stay abroad.
- Last name is pronounced Rin-a-shef-ska.
- A three-time ACC Academic Honor Roll member.

CAREER STATISTICS

SINGLES

	1	2	3	4	5	6	Dual	Fall	Overall
05-06	1-0	-	-	-	-	1-0	2-0	-	2-0
06-07	-	2-3	7-6	-	-	-	9-9	6-3	15-12
07-08	-	-	-	1-0	8-2	1-2	10-4	4-4	16-9
Career	1-0	2-3	7-6	1-0	8-2	2-2	21-13	10-7	33-21

DOUBLES

	1	2	3	Dual	Overall
05-06	2-0	-	-	2-0	2-0
06-07	-	1-6	2-0	3-6	8-9
07-08	4-8	3-1	2-1	9-10	17-13
Career	6-8	4-7	4-1	14-16	27-22

JUNIOR LAUREN MACFARLANE

OGDEN, UTAH | WEBER HIGH SCHOOL



"HEART AND SOUL"

I expect Lauren to lead towards the top of our lineup. She always puts her team before herself. She leads by example with all the things she does on and off the court. She has an unbelievable work ethic. She loves collegiate tennis. She loves her team and Florida State. She truly bleeds garnet and gold. We will continue to look to better her game.

-Coach Hyde

1. AS A VETERAN OF THE TEAM, WHAT IS THE BIGGEST CHALLENGE YOU FACE THIS YEAR?

I think the biggest thing is staying focused on the present and not worrying about the past.

2. WHAT IS YOUR FAVORITE HOME COOKED MEAL?

My grandma makes amazing sweet pulled pork, and my mom makes killer pizza!!

3. WHERE IS YOUR DREAM PLACE TO PLAY A TENNIS MATCH?

At the US Open

4. WHAT SPORT DO YOU ENJOY TO PLAY BESIDES TENNIS?

Volleyball and Badminton

5. WHAT IS YOUR FAVORITE PART OF TALLAHASSEE AND WHY?

I love the people and the school! There is such a special environment here in the city and on campus. It makes me feel so comfortable. Everyone does everything they can to make it possible for us to succeed.

6. ON YOUR FREE TIME, WHAT DO YOU ENJOY DOING?

Spending time with friends and family and watching movies!

7. IF YOU COULD CHOOSE ONE PROFESSIONAL TENNIS PLAYER TO SPEND A DAY WITH, WHO WOULD IT BE AND WHY?

Roger Federer, I just admire how he is on the court. I would love to talk to him about how his mind works on the court and learn from him.

8. WHAT IS THE BEST PART OF YOUR HOMETOWN?

The people, I love going home and seeing everyone. I have lived there pretty much my whole life and feel very established.

9. WHAT IS YOUR FAVORITE LOCATION THAT YOU HAVE VISITED WITH THE SEMINOLES?

I would have to say last year when we went to Hawaii!

10. WHAT ARE YOUR GOALS FOR THIS UPCOMING SEASON?

Team wise I am sure we are aiming for at least a top ten ranking and sustaining it! Hosting NCAA regional's again and making it to the final site. I really believe with all the girls we have on the team this year these goals are entirely attainable! Individually, I would like to get into the NCAA tournament this spring, make it to indoor nationals this fall, meaning I will have to do well at our fall regional tournament.

11. WHAT IS YOUR IDEAL CAREER?

I'm not totally sure but I would love to work at a major corporation either doing marketing or running some part of the business.



BIO ➤

SOPHOMORE (2007-08):

Followed a successful freshman year with a dynamic sophomore performance that included a repeat appearance on the All-ACC team.

SINGLES:

- Defeated Duke's No. 68 Tara Iyer 5-7, 6-4, 7-6(4).
- Posted an 18-6 dual-match record for a .750 win percentage.
- Posted 10 straight wins after dropping her first match of the season at the Hawaii Invitational.
- Spent most of the season in the number two spot posting a 12-1 record including a huge 6-1, 6-0 victory over Florida's No. 58-ranked Megan Alexander.
- Finished 6-5 on court one including a 7-6, 4-6, 1-0(10-7) win over No. 28 Elena Gantcheva of UNLV.
- Came back from a 3-6 first set loss against Texas' Courtney Zauft in the second round of the NCAA Championships to win the last two sets 6-4, 6-1.
- Overall singles record was 25-10 (5-3 fall and 20-7 spring)

DOUBLES:

- In tandem with fellow sophomore Jessica Wente, Macfarlane posted an incredible 21-3 dual match record with 27 wins overall, 12 in the ACC.
- Went 3-0 with Wente at the ACC Tournament playing in the three spot including a hard-fought 9-7 win over Duke's Nze/Zsilinszka duo that gave FSU the team doubles point.
- The sophomore sensations also took down the Mello/Zauft team from Texas in the second round of the NCAA Tournament with an 8-5 decision.
- Started the spring with an eight straight wins.

FRESHMAN YEAR (2006-07):

Named to the 2007 All-ACC Academic Team.

SINGLES:

- Standout player in her first year with the team.
- Posted a 28-8 record for a .807 win percentage which ranks No. 3 in FSU history.
- Named to the 2007 All-ACC team.
- Tied for fourth in program history for single season dual match wins with 21.
- Only the 10th Seminole with 20 or more wins in a single season.

- Ranked as high as No. 58 during the season.
- Went 14-1 at the Scott Speicher Tennis Center.
- Participated in the NCAA Individual competition as an alternate.

DOUBLES:

- Invited to the 2006 Indoor National Championships along with doubles partner Nicola Slater.
- Went 18-6 with Slater for the fall and spring seasons before switching partners.
- Slater and Macfarlane climbed to No. 27 in ITA doubles rankings early in the spring.
- Also competed with teammates Tapiwa Marobela and Ania Rynarzewska.
- Posted a 26-14 doubles record with all three partners for both the spring and fall seasons.

HIGH SCHOOL AND OTHER ACCOMPLISHMENTS:

- Two-time high school All-American. Captured state championship title in 2004 and 2005.
- Won the regional championship all four years.
- Ranked 17th nationally in the Girls 18 and under division.
- Ranked number one in the Intermountain division in the girls' under 16 and under 18 divisions.
- Member of the Intermountain Intersectional team for two years.
- Member of the Intermountain Junior Fed Cup one year...also participated in track and field.

PERSONAL:

- Born on September 5, 1988.
- Daughter of Garrett and Sam Macfarlane.
- Father Garrett coached and played tennis at Utah State.
- Mother ran track at Utah State.
- Older sister Hadley played tennis at BYU and Boise State. She is now an assistant women's tennis coach at Boise State.
- Younger sister Mary Anne is currently ranked No. 25 in the 2008 USTA National Junior Rankings.
- Graduated in the top 10% of her class.
- Officer in FBLA.
- Majoring in marketing.
- Volunteered with the Ogden Symphony Ballet and Ogden Opera Guild.

CAREER STATISTICS

SINGLES

	1	2	3	4	5	6	Dual	Fall	Overall
06-07	4-1	10-2	4-1	-	-	-	18-4	10-4	28-8
07-08	6-5	12-1	-	-	-	-	18-6	5-3	25-10
Career	10-6	22-3	4-1	-	-	-	36-10	15-7	53-18

DOUBLES

	1	2	3	Dual	Overall
06-07	4-1	5-9	3-0	12-10	27-15
07-08	3-0	6-1	12-2	21-3	27-6
Career	7-1	11-10	15-2	33-13	54-21

JUNIOR

JESSICA SUCUPIRA (WENTE)

WHITEHOUSE, TEXAS | WHITEHOUSE HIGH SCHOOL



"GAME-DAY GIRL"

Jessica loves to compete. She is so feisty and fiery. She is truly one of most competitive girls on the team. She loves game day!

-Coach Hyde

1. AS A VETERAN OF THE TEAM, WHAT IS THE BIGGEST CHALLENGE YOU FACE THIS YEAR?

To be able to guide my team as a leader

2. WHAT IS YOUR FAVORITE HOME COOKED MEAL?

Iowa hamballs w/ fresh green beans, scalloped potatoes and corn bread

3. WHERE IS YOUR DREAM PLACE TO PLAY A TENNIS MATCH?

Center court at the US Open

4. WHAT SPORT DO YOU ENJOY TO PLAY BESIDES TENNIS?

Basketball

5. WHAT IS YOUR FAVORITE PART OF TALLAHASSEE AND WHY?

Tallahassee doesn't have hardly any traffic like other big cities and there are a lot of FSU supporters.

6. ON YOUR FREE TIME, WHAT DO YOU ENJOY DOING?

I enjoy playing World of Warcraft with my husband Jonathas

7. IF YOU COULD CHOOSE ONE PROFESSIONAL TENNIS PLAYER TO SPEND A DAY WITH, WHO WOULD IT BE AND WHY?

Roger Federer because he is a genuine person that has respect to the game of tennis. I would have him teach me his tricks to winning so effortlessly.

8. WHAT IS THE BEST PART OF YOUR HOMETOWN?

Since I lived in Texas, my family up north would want to come down during the winter just to get out of the cold for a while. A little family reunion.

9. WHAT IS YOUR FAVORITE LOCATION THAT YOU HAVE VISITED WITH THE SEMINOLES?

Hawaii

10. WHAT ARE YOUR GOALS FOR THIS UPCOMING SEASON?

My goal is too have more wins this season in singles and doubles and take my team to win the ACC's and the National Championships.

11. WHAT IS YOUR IDEAL CAREER?

Own or manage a luxury hotel/resort in either Florida, Texas, California, Colorado, or New York.



BIO ➤

SOPHOMORE YEAR (2007-08):

Posted an overall 21-18 (5-7 fall and 16-11 spring) mark in singles play and an incredible 32-8 record in doubles.

SINGLES:

- Secured a huge victory over Miami's No. 62 Bianca Eichkorn 7-6(4), 7-6(4) to give the Seminoles a 5-2 upset of the No. 10 Hurricanes.
- Posted a 6-0, 6-3 victory over Boston College's Katharine Attwell in the first round of the ACC Tournament.
- Notched another first round victory in the NCAA Championship with a 6-1, 6-2 defeat of Samford's Katie Weaver.
- Spent most of the year as the Seminoles' clean-up hitter on court four.

DOUBLES:

- Played all her dual-matches with fellow sophomore Lauren Macfarlane posting an impressive 28-5 mark.
- Secured 32 wins overall including 12 in the ACC.
- Went 3-0 with Macfarlane at the ACC Tournament playing in the three spot including a tough 9-7 win over Duke's Nze/Zsilinszka duo that gave FSU the team doubles point.
- The sophomores also took down the Mello/Zauft team from Texas in the second round of the NCAA Tournament with an 8-5 decision.
- Started the spring with an eight straight wins.

FRESHMAN YEAR (2006-07):

SINGLES:

- Posted a 26-11 record for the fall and spring.
- Ended the season on a five-match win streak.
- Defeated 11 of 14 opponents at home.
- Took down Duke's Jessi Robinson in straight sets in helping the Seminoles to their first victory over the Blue Devils since 1983.

DOUBLES:

- Finished with a combined record of 26-11.
- Notched a 13-2 record at home.

- Paired with senior Miranda Foley for all but three matches in fall and spring play going 24-9.
- Finished 10-5 in the ACC along with Foley.

HIGH SCHOOL AND OTHER ACCOMPLISHMENTS:

- Captured the tennis state championship title in 2005.
- Also in 2005, was a member of Texas' first Junior Fed Cup Championship Team in 23 years.
- Competed in the state finals in 2003, 2004, 2005 and 2006.
- Dominated local competition as a regional champion four years running.
- Ranked 12th in doubles her senior year.
- Played basketball freshman through senior years as well... named second team all-district in basketball her senior year.
- Voted Most Athletic her senior year.

PERSONAL:

- Born March 1, 1988.
- Daughter of Larry and Janet Wenthe.
- Majoring in hospitality.
- Formerly Jessica Wenthe; married to former FSU tennis player Jonathas Sucupira.
- Member of the National Honor Society in high school.
- Earned a spot on the honor roll every year from 2002-2006.
- Member of HOSA.
- Mother participates in USTA 3.5 leagues.
- Sister played tennis in high school.
- Two time ACC Academic Honor Roll member



CAREER STATISTICS

SINGLES

	1	2	3	4	5	6	Dual	Fall	Overall
06-07	-	-	-	4-2	5-2	6-3	15-7	8-4	26-11
07-08	-	-	1-0	12-10	1-1	-	14-11	4-7	20-18
Career	-	-	-	16-12	6-3	6-3	29-18	12-11	46-29

DOUBLES

	1	2	3	Dual	Overall
06-07	-	4-2	10-6	14-8	26-11
07-08	3-0	6-1	12-2	21-3	32-8
Career	3-0	6-3	22-8	35-11	58-19

SOPHOMORE KATIE RYBAKOVA

CORAL SPRINGS, FLORIDA | BROWARD VIRTUAL EDUCATION HIGH



"PASSIONATE"

Katie is coming off a tremendous freshman season. She was ranked as high as 18th in the country. She hits the ball then most college women in tennis. We are looking forward to develop her court presence a bit more. Physically she has everything, but we need to work on her mental aspect of tennis. We are expecting another phenomenal season from her. She just wants to win so badly. Just watching her move you can tell she is passionate.

- Coach Hyde

1. AS A VETERAN OF THE TEAM, WHAT IS THE BIGGEST CHALLENGE YOU FACE THIS YEAR?

I wouldn't consider myself a veteran quite yet; I still got a lot to learn!

2. WHAT IS YOUR FAVORITE HOME COOKED MEAL?

Spaghetti and meatballs

3. WHERE IS YOUR DREAM PLACE TO PLAY A TENNIS MATCH?

U.S. open

4. WHAT SPORT DO YOU ENJOY TO PLAY BESIDES TENNIS?

Soccer

5. WHAT IS YOUR FAVORITE PART OF TALLAHASSEE AND WHY?

I like the campus; I always found it very beautiful with the trees and brick buildings.

6. ON YOUR FREE TIME, WHAT DO YOU ENJOY DOING?

Reading, cooking, and hanging out with the girls.

7. IF YOU COULD CHOOSE ONE PROFESSIONAL TENNIS PLAYER TO SPEND A DAY WITH, WHO WOULD IT BE AND WHY?

Bagdatis; I think he would make me laugh! He is very charismatic.

8. WHAT IS THE BEST PART OF YOUR HOMETOWN?

My family!

9. WHAT IS YOUR FAVORITE LOCATION THAT YOU HAVE VISITED WITH THE SEMINOLES?

I believe it would be a tie between Hawaii and Las Vegas.

10. WHAT ARE YOUR GOALS FOR THIS UPCOMING SEASON?

My main goal for this season would be to stay consistent mentally and physically, and of course for our team to do well!

11. WHAT IS YOUR IDEAL CAREER?

A principal or an English professor at a University.



BIO ➤

FRESHMAN YEAR (2007-08):

Moved right into the top position on the FSU squad in her first season with much success.

- Invited to the 2008 NCAA Singles Tournament in May 2008
- Named to the 2008 All-ACC team.
- Began the season ranked #16 in the country.

SINGLES:

- Posted an impressive 18-7 dual match record playing mostly in the Seminoles' number one slot and 28-12 (10-2 fall and 18-10 spring) overall record.
- Went 2-1 against Top 15 opponents with a pair of huge victories over Duke's No. 14 Ellah Nze and Georgia Tech's No. 4 Amanda McDowell.
- Recorded an 8-6 record in the number one spot and a 10-1 record in the number two spot for the Seminoles.
- Defeated Duke's Tara Iyer 6-4, 6-3 in the third round of the ACC Tournament.
- Also defeated four players in fall play who went on to earn Top 30 rankings:
 - Whitney McCray (Georgia Tech)
 - Whitney Benick (Florida)
 - Laura Vallverdu (Miami)
 - Kirsten Flower (Georgia Tech)
- Was invited to the FILA/ITA Riviera All-American Tournament during fall play.
- Advanced to the finals of the ITA South Regionals where she took Georgia Tech senior Kristi Miller to a third-set tiebreaker to determine the final outcome.

DOUBLES:

- Combined with junior Ania Rynarzewska to reach No. 33 in the doubles rankings after defeating Duke's No. 3 tandems of Melissa Mang and Amanda Granson in an 8-6 upset.
- Defeated Miami's Eichkorn/Seenauth duo 8-1 with senior Carolin Walter to help the Seminoles upset No. 10 Miami 5-2.
- Finished the season with a 17-16 (7-3 fall and 10-13 spring) overall mark in doubles playing mostly on court one during her dual-matches.

HIGH SCHOOL AND OTHER ACCOMPLISHMENTS:

- Ranked No. 6 in Florida's under-18 girl's category.
- Made the final round at the 2006 ITF Costa Rica Bowl.
- Fought her way to the quarterfinals twice in 2006 on the Jerry Simmons ITF Junior Circuit.
- Won ITF junior circuit singles competitions in both Jamaica and Trinidad and Tobago.
- Came out on top in doubles as well, winning ITF-sponsored tournaments in the Bahamas and Costa Rica in 2005.
- Graduated valedictorian in 2007 with a 4.0 GPA.

PERSONAL:

- Born Dec. 27, 1989.
- Daughter of Nick and Galina Rybakova.
- Born in Moscow, moved to New York at age one.
- First name is Ekaterina.
- Speaks fluent Russian.
- Majoring in English education.
- 2008 ACC Academic Honor Roll member



CAREER STATISTICS

SINGLES

	1	2	3	4	5	6	Dual	Fall	Overall
07-08	-	-	-	-	1-0	1-1	2-1		2-2
Career	-	-	-	-	1-0	1-1	2-1		2-2

DOUBLES

	1	2	3	Dual	Overall
07-08	-	-	1-0	1-0	3-1
Career	-	-	1-0	1-0	3-1

SOPHOMORE FEDERICA SUESS

LUDWIGSHAFEN, GERMANY | KURPFALZ GYMNASIUM MANNHEIM



"DETERMINED"

Last year, Fede was one of our most consistent performers. As a freshman, that is asking a lot. She definitely stepped up. She outworks her opponent. She is willing to work harder than anyone she steps on court with. She is a prime example of hard work pays off. We want to get her moving a little bit forward. We are looking to develop her transition game.

- Coach Hyde

1. AS A VETERAN OF THE TEAM, WHAT IS THE BIGGEST CHALLENGE YOU FACE THIS YEAR?

There are a lot of challenges we have to face this year and I am excited about all of them!

2. WHAT IS YOUR FAVORITE HOME COOKED MEAL?

I don't know if there is enough space on this page to write all that down... One of my favorite meals is "tortelli di zucca". (Italian)

3. WHERE IS YOUR DREAM PLACE TO PLAY A TENNIS MATCH?

On the center court of Wimbledon

4. WHAT SPORT DO YOU ENJOY TO PLAY BESIDES TENNIS?

Ski and Snowboarding

5. WHAT IS YOUR FAVORITE PART OF TALLAHASSEE AND WHY?

Well obviously our tennis courts, because they are our second home... Having dual matches there with the team is the best thing ever!

6. ON YOUR FREE TIME, WHAT DO YOU ENJOY DOING?

I am trying to learn French at the moment, so I am studying for that in my free time.. Otherwise I like to hang out with my friends, watch movies, go to the lake or beach...And I enjoy eating well and trying out new things...

7. IF YOU COULD CHOOSE ONE PROFESSIONAL TENNIS PLAYER TO SPEND A DAY WITH, WHO WOULD IT BE AND WHY?

There are a lot of tennis players I would like to get to know..I maybe would choose Steffi Graf, because she is from my home club and she is a very humble person. She has no problem to talk to people and seems to be a great person.

8. WHAT IS THE BEST PART OF YOUR HOMETOWN?

Well where I live now in Germany there is the biggest chemical company in the world. At night all the lights are on and illuminate the city; I think it looks very special and pretty. Otherwise when you go to the city there are a lot of antique buildings, which look very pretty; we have for example a big castle in the middle of the city where now our university is in.

9. WHAT IS YOUR FAVORITE LOCATION THAT YOU HAVE VISITED WITH THE SEMINOLES?

Definitely Hawaii. I would have never thought I would ever go to Hawaii and then it happened not long after I arrived to Tallahassee. That was definitely an unforgettable highlight for me that I hope to repeat!?

10. WHAT ARE YOUR GOALS FOR THIS UPCOMING SEASON?

Our goals are to continue to build on this year's success. Win Acc's and make it to the sweet 16.

11. WHAT IS YOUR IDEAL CAREER?

After college I want to get my Master in Business and my ideal career would be to become a manager of a nice hotel in a nice location (maybe Italy or Spain).



BIO ➔

FRESHMAN YEAR (2007-08):

Topped off a successful freshman season by sliding into eighth place on the Seminoles' Top 10 Dual Match Single Season Win Percentage list.

SINGLES:

- Surpassed 20 singles wins in her first season with the Garnet & Gold recording a 31-9 (10-4 fall and 21-5 spring) overall record including an 18-5 dual match mark and a 10-3 ACC record.
- Played mostly on court six where she secured 15 wins including two victories in the ACC Championship over Boston College and Miami.
- Posted her best win of the season over Georgia Tech's No.39 Kirsten Flower on court five with a 7-5(2), 6-3 victory that put the Seminoles within one point of defeating the Yellow Jackets.

DOUBLES:

- Posted a 23-7 (7-1 fall and 16-6 spring) overall record with a 14-5 dual match mark during her first season.
- Went undefeated at the ACC Tournament with senior Carolin Walter with three wins over Boston College, Miami and Duke.
- Also secured a major first-round win over Samford's Morgan/Mallory tandem 8-4 in the NCAA Tournament.
- Played mostly on court two where she notched a 6-3 mark but was undefeated (4-0) on court three.
- Was 7-1 during the fall with various partners.

HIGH SCHOOL AND OTHER ACCOMPLISHMENTS:

- Three-time state champion in 2000, 2001 and 2003.
- Reached the quarterfinals in doubles at seven different tournaments in 2005-06.
- Achieved WTA ranking of 1300 singles and 850 in doubles.

PERSONAL:

- Born Oct. 27, 1987.
- Daughter of Thomas and Lucia Suess.
- Majoring in hospitality.
- 2008 ACC Academic Honor Roll member



CAREER STATISTICS

SINGLES

	1	2	3	4	5	6	Dual	Fall	Overall
07-08	-	-	-	-	3-0	15-5	18-5	10-4	31-9
Career	-	-	-	-	3-0	15-5	18-5	10-4	31-9

DOUBLES

	1	2	3	Dual	Overall
07-08	4-2	6-3	4-0	14-5	23-7
Career	4-2	6-3	4-0	14-5	23-7

SOPHOMORE BONNY DAVIDSON

JOHANNESBURG, SOUTH AFRICA | ROEDEAN SCHOOL



"QUIET WARRIOR"

Bonny has come along. She has come leaps and bounds since she arrived at FSU. She is unbelievable at the net, unbelievable instincts in singles and doubles. She has an amazing all round game. We are really excited about the progress she has made. We are going to be looking to her to step up.

-Coach Hyde

1. AS A VETERAN OF THE TEAM, WHAT IS THE BIGGEST CHALLENGE YOU FACE THIS YEAR?

Constantly improving on my game and staying in good shape

2. WHAT IS YOUR FAVORITE HOME COOKED MEAL?

A good south african braai with boerewors and steak

3. WHERE IS YOUR DREAM PLACE TO PLAY A TENNIS MATCH?

Centre court at Wimbledon

4. WHAT SPORT DO YOU ENJOY TO PLAY BESIDES TENNIS?

Field hockey and golf

5. WHAT IS YOUR FAVORITE PART OF TALLAHASSEE AND WHY?

Campus, I love the red brick buildings and the whole atmosphere.

6. ON YOUR FREE TIME, WHAT DO YOU ENJOY DOING?

Spending time with my friends, occasionally reading a good book otherwise internet and TV

7. IF YOU COULD CHOOSE ONE PROFESSIONAL TENNIS PLAYER TO SPEND A DAY WITH, WHO WOULD IT BE AND WHY?

Roger Federer. I think that he is the greatest player (so far) and it would be nice to find out what his thoughts were when he was breaking so many records.

8. WHAT IS THE BEST PART OF YOUR HOMETOWN?

My family

9. WHAT IS YOUR FAVORITE LOCATION THAT YOU HAVE VISITED WITH THE SEMINOLES?

Hawaii without a doubt

10. WHAT ARE YOUR GOALS FOR THIS UPCOMING SEASON?

To keep improving on my game and help the team be the best in school history

11. WHAT IS YOUR IDEAL CAREER?

I still do not know, something to do with medicine and possibly sport



BIO ➔**FRESHMAN YEAR (2007-08):**

Joined the team in January for the spring season.

SINGLES:

- Saw limited play due to illness.
- Finished with a 2-2 record for the year.
- Helped the Seminoles defeat Boston College with a 4-6, 6-3, 3-1(2) win over the Eagles' Gia Nafarrete on court six.
- Secured her first victory for the Garnet & Gold over Letrice Boyd of Florida A&M with a 6-0, 6-1 win on court five.

DOUBLES:

- Showed her prowess in doubles with a 3-1 record for the year.
- All three wins came with senior Tapiwa Marobela over Kansas, Alabama and Stetson.
- Notched two wins the Hawaii Invitational over Kansas' Torarczyk/Martinez tandem 8-3 and Alabama's Brenes/Bigos duo 8-6.

PREP:

- Reached as high as No. 178 in the 2007 ITF Singles rankings.
- Won the ITF South Central African Doubles Circuit title in 2007.
- Represented the Republic of South Africa at the African Games in 2006.
- Named school player of the year in 2005.
- Received academic color honors in school.
- Participated in tennis, hockey and swimming.

PERSONAL:

- Daughter of Glynis and Desmond Davidson.
- Born Sept. 17, 1990.
- Majoring in exercise science.

**CAREER STATISTICS****SINGLES**

	1	2	3	4	5	6	Dual	Fall	Overall
07-08	-	-	-	-	1-0	1-1	2-1		2-2
Career	-	-	-	-	1-0	1-1	2-1		2-2

DOUBLES

	1	2	3	Dual	Overall
07-08	-	-	1-0	1-0	3-1
Career	-	-	1-0	1-0	3-1

FRESHMAN JUSTINE HUMAIR

SULPICE, SWITZERLAND | UNIVERSITY OF MIAMI ONLINE HIGH SCHOOL



"RAWNESS"

Justine has a lot of rawness to her game. She is very talented and very athletic. She has a big forehand and serve hand. She has a lot of weapons that are beneficial to college players. We are very excited to start working with her and to give her more of a game plan. We want to better her strategy because she has some amazing weapons that she can use. She has a lot of untapped talent.

-Coach Hyde

1. AS A FRESHMAN ON THE TEAM, WHAT IS THE BIGGEST CHALLENGE YOU FACE?

Right now, only injuries

2. WHAT IS YOUR FAVORITE HOME COOKED MEAL?

Fondue

3. WHERE IS YOUR DREAM PLACE TO PLAY A TENNIS MATCH?

On the central court of the French Open

4. WHAT SPORT BESIDES TENNIS?

Skiing

5. ON YOUR FREE TIME, WHAT DO YOU ENJOY DOING?

Hang out with friends, shop, go on the internet and ski.

6. IF YOU COULD CHOOSE ONE PROFESSIONAL TENNIS PLAYER TO SPEND A DAY WITH, WHO WOULD IT BE AND WHY?

Jeremy Chardy because I love spending time with him

7. WHAT IS THE BEST PART OF YOUR HOMETOWN?

Being by the lake. Everything is close and no long distances.

8. WHAT ARE YOUR GOALS FOR THIS UPCOMING SEASON?

To be injury free while also improving our team ranking.

9. WHAT IS YOUR IDEAL CAREER?

I would like to play some years on the tour. Otherwise, I want to become a sports manager.



BIO ➤

PREP:

- Competed in several international tennis tournaments
- Left Switzerland at age 16 to attend Saddlebrook Tennis Academy in Tampa, Fla.
- Graduated with a 4.0 G.P.A.
- Brother plays tennis back in Switzerland
- Always ranked in the top 10 in Switzerland in her age bracket.
- Ranked in the European 16's and under poll.

PERSONAL:

- Majoring in International business
- Born January 1, 1989
- Daughter of Monika and Pascal Humair. Has a brother in Switzerland who also plays tennis.



SEASON
OUTLOOK

MEET THE COACHES
AND SEMINOLES

REVIEW

THE
UNIVERSITY

SEMINOLE
TENNIS HISTORY



2007-08

REVIEW



2007-08 SEASON REVIEW ►

When the words "Florida State" finally danced across the big screen, the Seminoles' 2007-08 women's tennis squad erupted in elated cheers. After 26 years, they had finally accomplished what no other women's tennis team in Florida State history had done before—they were hosting the first and second rounds of the NCAA Division I Tennis Championships.

It was the icing on the cake on another wildly successful season for the Seminoles that pushed them up one more rung on the NCAA ladder.

From start to finish, Florida State earned that final seed in the NCAA's elite top 16 teams through a string of six straight shut-outs to start the season, two top 10 upsets over UNC and Miami, the highest ranking in program history at No. 12 and a place in the final four ACC teams at the conference tournament.

In all, head coach Jennifer Hyde and assistant coach Oliver Foreman guided the team to three huge upsets over top 15 teams including two take-downs of in-state, conference rival Miami. The Seminoles first overpowered the Hurricanes 5-2 at home in the Scott Speicher Tennis Center on February 29, then again in a 4-2 decision in the second round of the ACC Tournament. Florida State also dealt a blow at home to 12th ranked UNC when senior Carolin Walter delivered a hard-fought three-set victory to put the Seminoles on top of the Tar Heels, 4-3.



Following that powerful win over North Carolina, the Seminoles bested their top ranking from 2007 with a spot at No. 12 in the nation. It was the highest ranking any team in Florida State women's tennis history had ever achieved since the program began in 1982.

But the Seminoles weren't done rewriting the record books just yet. As the regular season came to a close, Florida State headed south to Altamonte Springs, Fla., for the 2008 ACC Championships. Soon the Seminoles' found themselves in all-too familiar territory facing No. 11 Miami in the second round of the tournament just as they had done the year before. Senior Tapiwa Marobela, who had given the Hurricanes their victory in 2007, took the brunt of the team's burden on her shoulders and used it to push her way to victory over Miami's Caren Seenauth despite losing the first set in a 2-6, 6-3, 6-3 battle. Marobela's win made the 07-08 squad just the second in school history to make it to the semi-finals of the ACC Tournament.

Florida State's performance at the conference championship got the attention of the NCAA and perhaps was the final key in unlocking the Seminoles' first home court advantage in the national tournament.

In the first round of the NCAA tournament, a record-setting crowd at Speicher helped cheer the Seminoles to a 4-0 win over Samford that set up a second-round

match against the No. 19 Texas Longhorns. Florida State put up a valiant fight, worthy of its successful season, but in the end it was the Longhorns who would move on to the third round of the tournament in Tulsa, Okla.

Florida State boasted a long list of individual accomplishments during the 2007-08 season as well. Freshman Katie Rybakova began the spring ranked No. 16 in the nation after a stellar fall performance that included an invitation to the FILA/ITA Riviera All-American Tournament in Malibu, Ca. with sophomore Lauren Macfarlane. Rybakova and junior Ania Rynarzewska also hit No. 33 on the doubles charts after upsetting Duke's No. 3 tandem of Amanda Granson and Melissa Mang 8-6 in March.

It was certainly another year of tremendous highs for the Florida State women's tennis program. For the second season in a row, the Seminoles raised the bar into previously unknown territory atop the cream of the NCAA crop. Now they have passed the red pen for making changes in the history books on to the next squad with the hopes that program will continue its upward movement.



The 2007-08 Seminole women's tennis team on senior day, back row (left to right): Head Coach Jennifer Hyde, Katie Rybakova, Bonny Davidson, Federica Suess, Lauren Macfarlane, Jessica Sucupira (Wente), Ania Rynarzewska, Ania Rynarzewska and Assistant Coach Oliver Foreman. Bottom row (left to right): Tapiwa Marobela and Carolin Walter.

2007-08 STATS »

SINGLES STATS BY POSITION

Name	1	2	3	4	5	6	Total
Davidson	-	-	-	-	1-0	1-1	2-1
Macfarlane	6-5	12-1	-	-	-	-	18-6
Marobela	-	-	-	3-1	5-3	1-0	9-4
Rybakova	8-6	10-1	-	-	-	-	18-7
Rynarzewska	-	-	-	1-0	8-2	1-2	10-4
Suess	-	-	-	-	3-0	15-5	18-5
Walter	-	1-0	19-5	-	-	-	20-5
Wente	-	-	1-0	12-10	1-1	-	14-11

DOUBLES STATS BY POSITION

Name	1	2	3	Total
Davidson	-	-	1-0	1-0
Macfarlane	3-0	6-1	12-2	21-3
Marobela	1-2	2-2	6-0	9-4
Rybakova	4-7	2-3	3-1	9-11
Rynarzewska	4-8	3-1	2-1	9-10
Suess	4-2	6-3	4-0	14-5
Walter	7-3	6-4	5-0	18-7
Wente	3-0	6-1	12-2	21-3



The 2007-08 squad during the women's tennis program's first trip to Hawaii in January of 2008.



SEASON
OUTLOOK

MEET THE COACHES
AND SEMINOLES

REVIEW

THE
UNIVERSITY

SEMINOLE
TENNIS HISTORY



THE UNIVERSITY



THIS IS

SCOTT SPEICHER TENNIS CENTER »

With the first stage of construction completed in the summer of 1993, the Scott Speicher Tennis Center at the Donald Loucks Courts opened its gates to the public for the first time at a Children's Miracle Network charity tournament. Since then, many successful tournaments including the 1996 NCAA Women's Championships and 2007 and 2008 NCAA Regionals have graced the courts at one of Florida State University's premier athletic facilities.

Costing \$1.2 million to build and then another \$800,000 for recent additions, Florida State's Speicher Tennis Center has become an example of the increasing dedication and commitment the University has to all of its 19 varsity athletic programs.

The Speicher Tennis Center houses 12 lighted hard courts, over 1,000 court level seats, coaching offices, men's and women's locker rooms, equipment and storage rooms, a team lounge and a public address system. The growing pride Florida State has for its tennis program and its premier tennis center was honored just after it's opening in 1994, when the United States Tennis Association (USTA) awarded the structure with its "Top Notch" facility award.

The Speicher Tennis Center was named in honor of Lieutenant Commander Michael Scott Speicher, a graduate of Florida State University. Speicher was considered the first American casualty during Operation Desert Storm, but was later reclassified by the United States' government as missing in action in 2001 and missing/captured a year later. By Presidential directive, the facility bears the name the "Scott Speicher Tennis Center."

In 1947, Loucks became Florida State's first basketball coach and a year later was named the school's first tennis coach. His tennis team was the first athletic team. The varsity tennis courts were named for Loucks in 1981. He served as Dean of men from 1957-1967 and was known as a servant of leadership, service and devotion to many worthy causes.

The Speicher Tennis Center was designed by EMO/Architects, Inc., a Tallahassee-based architectural firm, in collaboration with Global Consult Group, Inc., an internationally recognized Tennis Facility Design Consultant. The complex was funded by private sources and supervised through the state university system of Florida.



Through its 15 year existence, the Scott Speicher Tennis Center at the Donald Loucks Courts has served as the home courts for all Florida State men's and women's home dual matches, the annual Seminole Fall Classics, City of Tallahassee tennis championships, various USTA regional and zonal tournaments, the 1994 and 1995 Men's Intercollegiate tournament and the annual Children's Miracle Network Charity Invitational benefiting Shands Hospital in Gainesville.

In 2008, Florida State had the honor of hosting the first and second rounds of the NCAA Tournament at the Speicher Tennis Center.

"It was an incredible feat for the team, and now we have to keep working to make sure that hosting is the standard each year," said head coach Jennifer Hyde.

The past two years, the tennis center has also been the site for the ITA Summer Circuit for men's and women's tennis in which high school and collegiate athletes participate in singles and double matches.



THIS IS

SEMINOLE BOOSTER SUPPORT ➤

The Seminole squad enjoys the annual tennis banquet sponsored by Seminole Boosters.

THE ANNUAL BANQUET

Each year, the Florida State men's and women's tennis programs serve up the Seminole Tennis Kick-Off Banquet to ring in the new season and get fans and supporters fired up for the season. Boosters, local supporters, former coaches and athletes and many other faces come together annually to celebrate Florida State's success and recognize the accomplishments of the student-athletes on and off the court and in academics and community service. The banquet gives the Florida State tennis programs the opportunity to show their appreciation to all the supporters for their continued efforts to keep Florida State among the elite tennis programs in the nation.

The event is held on the eve of the home opener and usually draws more than 500 people. Past special guests have included NFL quarterback and former Seminole Brad Johnson and Tony Trabert, a five time Grand Slam winner. The 2009 banquet, which will be the sixth annual, will feature Malavai Washington, who has won 14 singles titles.

"This event gives the seniors from both the men's and women's teams the chance to say a few words to their teams, coaches and the community about their experience as a tennis player and student of Florida State," said women's head coach Jennifer Hyde.

GOLDEN SPEAR CLUB

The Golden Spear Club is designed to provide "grass roots" support for the men's and women's tennis programs at Florida State University.

The objective of the club is to assist the athletics department in promoting FSU tennis in Leon County and throughout Florida and to assist us in generating interest in and enthusiasm for our program.

Your membership to The Golden Spear Club is TAX DEDUCTIBLE and helps support the club's activities and the Florida State University Tennis Program. Although Golden Spear Club memberships are not accompanied with Booster Club benefits, you can take pride in the fact that FSU Tennis will remain nationally competitive because of your support.

We welcome you to become a part of the Golden Spear Club and join other tennis enthusiasts in the fun of supporting FSU Tennis. Go Noles!

HOW TO BECOME A GOLDEN SPEAR CLUB MEMBER:

Membership:
\$25, Juniors;
\$50, Adult;
\$75, Family

For more information, contact:

Head Coach
Jennifer Hyde

P.O. Box 2195
Tallahassee, FL 32316
Phone: (850) 644-1092
Fax: (850) 644-7630

THE ENDOWED SCHOLARSHIPS

From Miami to Minneapolis, and from Warsaw to Walla Walla, young men and women come to Florida State University to embrace educational excellence, and to compete as a Seminole. Many would not have the opportunity to receive that college education without their athletic scholarship. These young people work hard, and proudly represent Florida State as a winner on the national stage, attracting the attention to our University that winners bring.

Florida State Athletics provides each of our men's and women's teams with the maximum number of scholarships allowed by the NCAA. In addition to the student-athlete competitors, scholarships are also provided to student trainers, managers and graduate assistants who are vital to the athletic program.

The last 15 years have seen a three-fold rise in the cost of athletic scholarships at Florida State. Today, more than \$300,000 is needed to permanently endow a Florida State athletic scholarship. Most of the top public universities with whom Florida State competes and to whom we are compared, have endowed all of their athletic scholarships.

Established in 1986 under the direction of William M. Parker of Clearwater, the Seminole Boosters Endowed Scholarship Program is the final step toward perpetual funding of all scholarships for student-athletes at Florida State.

Those individuals who contribute to the endowment fund for athletic scholarships at Florida State University gain membership in the Seminole Heritage Foundation.



Florida State Athletics...An Elite Program

*In 2007-08,
13 Seminole student-athletes
garnered District Academic
All-America honors.*

*Florida State student-athletes have earned over \$390,000 in
postgraduate scholarships, including 36 from the ACC,
over the last 14 years as well as other numerous academic honors and awards.*

IN THE CLASSROOM

*In 2005, Garrett Johnson became the first FSU student-athlete
selected a Rhodes Scholar*

*All of FSU's athletic teams achieved scores above the required 925 in the
Academic Progress Rate data based on the last four years. Softball and
Men's Golf earned Public Recognition Awards for earning high marks.*

*170 Seminole student-athletes were named to the 2008 ACC Academic Honor Roll
while six of Florida State's athletic teams had a 3.0 or better cumulative GPA.*

Five coaches with 10 or more years at FSU, including two coaches of 30 or more years of service

COACHING EXCELLENCE

*14 National Coaches of the Year
37 ACC Coaches of the Year
37 Regional Coaches of the Year*

Congratulations #1

1500
CAREER WINS

Two coaches who rank in the top three among current coaches for career victories

IN THE COMMUNITY

Two-time National Consortium of Academics and Sports Outreach Program of the Year for Division I for reaching over 150,000 youth.

Student-Athletes perform more than 5,000 hours of community service annually.



4 Golden Spikes winners

2 Heisman Trophy winners

Hermann Award for soccer

TOP ATHLETES

777 First Team All-Americans

1,853 All-ACC selections

37 Individual National Champions

40 National Achievement Awards,

including 10 top athlete in the nation awards

National Men's Track Athlete of the Year

USA Softball National Player of the Year

43 ACC Team Titles

TOP TEAMS

*14 National Championships including
back-to-back-to-back*

NCAA Men's Outdoor Track & Field titles

*175 NCAA Postseason
team appearances including three
straight women's soccer College Cup appearances
and four in the last five years.*



1999 Football Seminoles

first football team to go wire-to-wire as the AP No. 1 team



THIS IS THE ACC ➔

2007-08 IN REVIEW

The 2007-08 academic year saw league teams capturing four national team titles and 12 individual NCAA crowns. In all, the ACC has won 43 national team titles over the last 12 years. The ACC has won two or more NCAA titles in 26 of the past 28 years.

A total of 140 ACC teams placed in NCAA post-season competition in 2007-08. League teams compiled a 119-69 (.633) mark against non-conference opponents in NCAA championship competition. In addition, the ACC had 188 student-athletes earn first team All-America honors this past year. Overall, the league had 303 first, second or third team All-Americans. In addition, the ACC produced 11 national Players of the Year and five national Coach of the Year honorees.

In ACC women's tennis, the league send eight teams to the NCAA Tournament which marked the ninth year in a row and the 10th time in the last 11 years the league has had at least five representatives in the national postseason tournament. Clemson, Duke, Florida State, Georgia Tech, Miami and North Carolina were among top 16 overall seeds in the 2008 NCAA Championship.

The ACC had 18 selections – 13 singles and five doubles teams – participate in the NCAA Tournament in 2008 and a total of 17 student-athletes from six league schools were among the 64 singles players and 32 doubles teams tabbed for singles and doubles competition.

2007-08 NATIONAL CHAMPIONSHIPS

Field Hockey North Carolina
Ice Hockey Boston College
Men's Soccer Wake Forest
Men's Track & Field Florida State

THE CHAMPIONSHIPS

The conference will conduct championship competition in 24 sports during the 2008-09 academic year - 12 for men and 13 for women.

The first ACC championship was held in swimming on February 25, 1954. The conference did not conduct championships in cross country, wrestling or tennis during the first year.

The 12 sports for men include football, cross country, soccer, basketball, swimming, indoor and outdoor track, wrestling, baseball, tennis, golf and lacrosse. Fencing, which was started in 1971, was discontinued in 1981. Women's sports were initiated in 1977 with the first championship meet being held in tennis at Wake Forest University. Championships for women are currently conducted in cross country, field hockey, soccer, basketball, swimming, indoor and outdoor track, tennis, golf, lacrosse, softball and rowing with volleyball deciding its champion by regular season play.

A HISTORY

The Atlantic Coast Conference was founded on May 8, 1953, at the Sedgefield Inn near Greensboro, N.C., with seven charter members - Clemson, Duke, Maryland, North Carolina, North Carolina State, South Carolina and Wake Forest - drawing up the conference by-laws.

The withdrawal of seven schools from the Southern Conference came early on the morning of May 8, 1953, during the Southern Conference's annual spring meeting. On June 14, 1953, the seven members met in Raleigh, N.C., where a set of bylaws was adopted and the name became officially the Atlantic Coast Conference.

Suggestions from fans for the name of the new conference appeared in the region's newspapers prior to the meeting in Raleigh. Some of the names suggested were: Dixie, Mid South, Mid Atlantic, East Coast, Seaboard, Colonial, Tobacco, Blue-Gray, Piedmont, Southern Seven and the Shoreline.

Duke's Eddie Cameron recommended that the name of the conference be the Atlantic Coast Conference, and the motion was passed unanimously. The meeting concluded with each member institution assessed \$200.00 to pay for conference expenses.

On December 4, 1953, conference officials met again at Sedgefield and officially admitted the University of Virginia as the league's eighth member. The first, and only, withdrawal of a school from the ACC came on June 30, 1971, when the University of South Carolina tendered its resignation.

The ACC operated with seven members until April 3, 1978, when the Georgia Institute of Technology was admitted. The Atlanta school had withdrawn from the Southeastern Conference in January of 1964. The ACC expanded to nine members on July 1, 1991, with the addition of Florida State University.

The conference expanded to 11 members on July 1, 2004, with the addition of the University of Miami and Virginia Polytechnic Institute and State University. On October 17, 2003, Boston College accepted an invitation to become the league's 12th member starting July 1, 2005.

FLORIDA STATE TENNIS ON THE ACC ACADEMIC HONOR ROLL

- 1994: Ashley Delaney, Sandra Ecclestone, Laura Randmaa, Lori Sowell
1995: Ashley Delaney, Lori Junker
1996: Ashley Delaney, Lori Junker, Elke Juul, Lori Sowell, Kylie Thompson
1997: Ashley Delaney, Sasha Hanna, Lori Junker, Ann Olsson, Lori Sowell, Kylie Thompson, Alison Weber
1998: Kia Asberg, Natalie Carratala, Sasha Hanna, Helena Karlsson, Kylie Thompson, Christy Travis, Alison Weber
1999: Kia Asberg, Jessica Balbuena, Natalie Carratala, Nanetta Duxin, Marina Raic, Kylie Thompson, Christy Travis, Alison Weber
2000: Kia Asberg, Jessica Balbuena, Natalie Carratala, Nanette Duxin, Alida Gallovits, Marina Raic, Christy Travis, Alison Weber
2001: Kia Asberg, Natalie Carratala, Christina Denny, Nanette Duxin, Alida Gallovits, Beth Lawrence, Marina Raic, Christy Travis
2002: Jessica Balbuena, Christina Denny, Anca Dumitrescu, Meredith Fish, Alida Gallovits, Beth Lawrence, Brittany Veal, Lauren Walker
2003: Brooke Cordell, Christina Denny, Anca Dumitrescu, Beth Lawrence, Alina Mihailescu, Mihaela Moldovan, Natalie Tirapelli, Brittany Veal
2004: Nicole Cercone, Brooke Cordell, Lindsay Deason, Christina Denny, Anca Dumitrescu, Alina Mihailescu, Mihaela Moldovan, Amberly Tantee, Natalie Tirapelli
2005: Roxanne Clarke, Lindsay Deason, Miranda Foley, Tapiwa Marobela, Alina Mihailescu, Mihaela Moldovan, Yana Stoeva, Amberly Tantee, Natalie Tirapelli
2006: Whitney Eber, Miranda Foley, Suzanne Mansour, Tapiwa Marobela, Alina Mihailescu, Lisa Nystrom-Skoid, Ania Rynarzewska
2007: Miranda Foley, Lauren Macfarlane, Tapiwa Marobela, Ania Rynarzewska, Nicola Slater, Jessica Wentz
2008: Tapiwa Marobela, Katie Rybakova, Ania Rynarzewska, Federica Suess, Carolin Walter, Jessica Wentz

BRYAN HALL

THIS IS

FLORIDA STATE UNIVERSITY ➔



WESTCOTT BUILDING

From its pre-Civil War beginnings as the Seminary West of the Suwannee to a nearly four-decade stint as the Florida State College for Women to its return to coeducational status as a university, Florida State University has evolved into an internationally recognized research institution. Committed to preparing graduates for the ever-expanding opportunities of a global society, FSU is celebrated not only for its world-class research but also for its teaching and record of public service.

Florida State University enrolls about 41,000 undergraduate, graduate and professional students, of which nearly 30 percent are minorities and 57 percent are women. FSU students come from every county in Florida, all 50 states and the District of Columbia, and more than 128 countries.

The university offers an impressive breadth of academic degree programs, including 99 at the bachelor's degree level; 112 at the master's level; 26 at an advanced master's/specialist's level; 73 at the doctoral level; and two at a professional degree level. Courses are offered through 16 colleges — Arts and Sciences; Business; Communication; Criminology and Criminal Justice; Education; Engineering; Human Sciences; Information; Law; Medicine; Motion Picture, Television and Recording Arts; Music; Nursing; Social Sciences; Social Work; and Visual Arts, Theatre and Dance.

Florida State is a Carnegie Doctoral/Research Extensive institution, awarding more than 2,000 graduate and professional degrees each year. Doctoral faculty in five academic areas have been ranked among the tops in the nation according to the Faculty Scholarly Productivity Index: social work — #4; Spanish — #4; marketing — #5; oceanography — #8; and atmospheric sciences — #10. FSU has many undergraduate and graduate academic programs that consistently rank among the nation's top 25 at public universities, among them programs in business, chemistry, communication disorders, creative writing, criminology, ecology and evolutionary biology, education, information, law, meteorology, oceanography, physics, political science, psychology, public policy, sociology and statistics.

At Florida State, students have the opportunity to work and study alongside members of the prestigious National Academy of Sciences; members of the American Academy of Arts and Sciences; winners of the Pulitzer Prize; Guggenheim Fellows; a Nobel laureate; and other globally recognized teachers and researchers, including faculty who lead several scholarly fields in citations of published work. Students can choose to conduct research in specialized interdisciplinary centers such as the National High Magnetic Field Laboratory, the Institute of Molecular Biophysics, and the School of Computational Science. They can participate in interdisciplinary work across campus through programs that integrate economics, geography, climate forecasting, law and other environmental courses and programs; or work alongside faculty to forge new relationships among professions, including medicine, the physical sciences, engineering, business and law.

Students at Florida State also are encouraged to participate in international education through the university's programs in England, Italy, Switzerland, France, Panama, China, Costa Rica, Spain, Russia, the Czech Republic, Greece, Croatia, Germany, Ireland and the Caribbean. The university's study sites in Valencia, Spain; Florence, Italy; and London, England are considered by many to be among the nation's best.

The university logged many noteworthy achievements in 2007-2008:

- Alan G. Marshall, FSU's Robert O. Lawton Professor of Chemistry and Biochemistry and director of the Ion Cyclotron Resistance Program at the National High Magnetic Field Laboratory, received the 2008 Ralph and Helen Oesper Award from the Cincinnati Section of the American Chemical Society — eight of the past 26 awardees of the prestigious Oesper award went on to win the Nobel Prize.
- Professor Kathleen Yancey, director of the English department's graduate program in Rhetoric and Composition, became president of the National Council of Teachers of English.
- Max Gunzburger, a Francis Eppes Professor and director of the School of Computational Science, earned the distinguished W.T. and Idalia Reid Prize in Mathematics from the Society for Industrial and Applied Mathematics (SIAM) for his work in computational mathematics and his mathematical models of science and engineering problems.
- FSU Student Government President Joe O'Shea became one of just 32 U.S. college students selected for a 2008 Rhodes Scholarship, the oldest and most prestigious international study award bestowed on American students. O'Shea, who won a Truman Scholarship in 2007, also was one of just 20 undergraduates named to USA Today's 2007 All-USA College Academic First Team.
- FSU Film School student Paul Seetachitt crafted a 30-second public service announcement that took first place in a national competition sponsored by the Center for International Disaster Relief. Honors won by other Film School students over the past year included a Student Academy Award; two collegiate-level "Emmy" awards; and two Directors Guild of America awards for the nation's best minority and female student filmmakers.
- Over the past year, the university has won research grants totaling more than \$196 million.
- FSU was ranked No. 1 in the nation among top research universities in graduation rates for African-Americans.
- FSU is currently developing, designing, breaking ground for or constructing about \$500 million worth of facilities, and the new Chemical Sciences Laboratory and the James E. "Jim" King Life Sciences Building are world-class examples that herald the dawn of a new era for Florida State's science community.
- The FSU track and field team won its third-in-a-row NCAA championship.
- Thirteen FSU student-athletes and coaches from three sports represented the Seminoles and eight different countries at the 2008 Summer Olympic Games in Beijing, China. And, closer to home, a commitment to community service put FSU student-athletes at the top of the Outreach Honor Roll from the National Consortium for Academics and Sports.

- Two leaders in medicine, Florida State University and Mayo Clinic, signed an agreement to work as research partners in the quest to improve health care outcomes for Floridians and all Americans. The agreement calls for interaction and collaboration between researchers at FSU and Mayo Clinic in Jacksonville, Fla., the establishment of joint research programs, and the exchange of scientific and educational literature and research -- and opens up unique opportunities to turn basic science into new cures for a variety of diseases, from cancer to Alzheimer's.
- The collective strength of biomedical research at Florida State and the scientists who lead it has earned an extremely competitive \$2 million High-End Instrumentation grant from the National Institutes of Health. The grant and an additional \$2.8 million in FSU matching funds will be used to purchase a state-of-the-art robotic electron microscope that will place the university among the very top imaging centers in the world. FSU scientists will use the unique robotic microscope to advance their cutting-edge research on HIV/AIDS, heart disease, hypertension and cancer.
- FSU is bringing together researchers with expertise in a variety of fields to develop new strategies for dealing with Florida's energy challenges. The new Florida Energy Systems Consortium is a collaborative effort among the state's 11 public universities to address key issues pertaining to energy, climate and the environment -- with a particular focus on promoting renewable energy. Florida Gov. Charlie Crist signed into law a comprehensive energy bill establishing the consortium and providing a total of \$50 million in funding, to be divided among four core institutions -- FSU (with \$8.75 million), the University of Central Florida, the University of Florida and the University of South Florida.
- The university has been selected as the lead institution for the new Florida Center for Advanced Aero-Propulsion, a collaborative project featuring the state's premier researchers in aerospace and aviation. Of \$14.57 million in funding appropriated to create the center, FSU will get the largest portion -- nearly \$6 million -- to oversee center operations and develop research and policy that unites scholars from various disciplines and universities.

Florida State's main campus is spread over 450.5 acres in Tallahassee. Within the state, the university maintains facilities in Panama City, at its Coastal and Marine Laboratory on the Gulf of Mexico, and at the Asolo Performing Arts Center in Sarasota. The university also operates the Ringling Center for the Cultural Arts in Sarasota, which includes the John and Mable Ringling Museum of Art -- the largest museum/university complex in the nation.

Library holdings at Florida State include 2.9 million book titles and 9.1 million microforms and rank among those at the nation's top 30 public research universities. Collectively, the FSU libraries belong to the Association of Research Libraries, whose membership is comprised of the top research university libraries in the United States.

FLORIDA STATE MEDICAL SCHOOL



FLORIDA STATE LAW SCHOOL



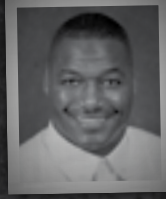
BOARD OF TRUSTEES



Jim Smith
Chairman
Tallahassee, FL



Harold Knowles
Vice Chairman
Tallahassee, FL



Derrick Brooks
Tampa FL



Susan Busch-
Transou
Midway, FL



Emily Fleming Duda
Oviedo, FL



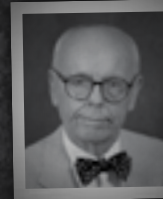
David Ford
New York, NY



Manny Garcia
Winter Springs, FL



William Andrew
Haggard
Coral Gables, FL



Richard Mcfarlain
Tallahassee, FL



James E. Kinsey, Jr.
Ft. Myers FL



Leslie Pantin, Jr.
Miami, FL



Laymon A. Hicks
Student Govt. Assoc.
President



Jayne M. Standley
Tallahassee, FL



T.K. Wetherell
FSU President

UNIVERSITY FACTS ➤

BACKGROUND: The Florida State University is one of eleven units of the Division of Colleges and Universities of the Florida Board of Education...It was established as the Seminary West of the Suwannee by an act of the Florida Legislature in 1851 and first offered instruction at the postsecondary level in 1857...Its Tallahassee campus has been the site of an institution of higher education longer than any other site in the state...In 1905, the Buckman Act reorganized higher education in the state and designated the Tallahassee school as the Florida Female College...In 1909, it was renamed Florida State College for Women...In 1947, the school returned to co-educational status, and the name was changed to The Florida State University...It has grown from an enrollment of 2,583 in 1946 to an enrollment of 41,065 in the Fall Semester 2007.

ENROLLMENT (FALL, 2007): Total, 41,065 ...76.7% undergrad, 20.8% grad, 2.5% unclassified...80.7% in-state...93.7% from the United States...students from all 50 states and the District of Columbia are in attendance...18 states contributed over 100 students each...21 foreign countries contributed over 25 students each...female, 55.7%...male, 44.3%...minority, 25.1%...international, 3.1%.

ACREAGE: Main Campus: 450.5 acres in Tallahassee, Leon County (main campus)...Panama City Branch: 25.6 acres in Panama City, Bay County...The university owns a total of 1,545.5 acres in Leon, Bay, Franklin, Sarasota, & Gadsden counties...Sites are leased in Marion and Leon counties in Florida, and other locations overseas.

COLLEGES/DEGREE PROGRAMS: With 16 colleges and schools, students may take courses of study leading to the baccalaureate degree in 101 degree programs, to the master's degree in 114 degree programs, to the advanced master's degree in one program, to the specialist degree in 26 degree programs, to the doctorate degree in 73 degree programs, and to the professional degree in two degree programs. The academic divisions are the Colleges of Arts and Sciences, Business, Communication, Criminology and Criminal Justice, Education, Engineering, Human Sciences, Information, Law, Medicine, Music, Social Science, Social Work and Visual Arts, Theatre and Dance; and the Schools of Motion Picture, Television, and Recording Arts and Nursing.

OPERATING BUDGET (2007-08): \$1,093,306,080

DEGREES AWARDED FOR 2007-08: Bachelor, 7,189...Masters, 1,989
Doctorate, 350...Medical Doctorate, 48...Specialist, 54...Judge Doctorate, 233... Total, 9,863

ENTERING FRESHMAN FACTS (FALL, 2007): The middle 50 percent High School GPA, 3.3-3.9; SAT score 1110-1260, ACT score 23-28. There were 55 National Merit Scholars, 12 National Achievement Scholars, and 15 Hispanic Scholars enrolled as undergraduate students during the Fall 2007 term.

RETENTION RATE: First year, 100%...second year, 88.1%...third year, 80.9%...fourth year, 76.1%

FACULTY/STAFF: Total 2,359...FSU's faculty includes some past graduates, such as former astronauts Dr. Norm Thagard, who teaches Electrical Engineering, and Winston Scott who serves as Vice President of Student Affairs...FSU's faculty has included six dynamic Nobel Laureates: 12 members elected to National Academy of Sciences...10 members of the American Academy of Arts and Sciences...and two Pulitzer Prize winners Ellen T. Zwilich and Robert Olen Butler.

EDUCATIONAL ADVANTAGES: Florida State University has a uniqueness in providing programs that are consistent in excellence across the board, from fine arts and humanities to the hard sciences...The balance of programs is based on FSU's long tradition as a leading liberal arts institution combined with its position as one of the top 10 universities in generating research-based revenues...FSU was ranked 18th most connected university in the nation by Yahoo! Internet Life.

EDUCATIONAL OPPORTUNITIES ABROAD: FSU offers a variety of overseas study opportunities for students during the regular academic year. FSU has study centers located in Florence, Italy; Panama City, Republic of Panama; Valencia, Spain; and London, England. Courses at the study centers are offered each semester and cover a wide range of subject areas perfect for meeting general and liberal studies requirements. International Programs also offers study programs, some general and some major specific, in: Cairns, Australia; Salvador, Brazil; Tianjin, China; San Jose, Costa Rica; Dubrovnik, Croatia; Prague, Czech Republic; Napo, Ecuador; London, England; Paris, France; Dublin, Ireland; Tokyo, Japan; Moscow, Russia; and Laysin, Switzerland. A summer Law program is offered in Oxford, England. There is one Linkage Institute, FLORICA, in Costa Rica, and Beyond Borders programs in Turrialba, Costa Rica, Kingston, Jamaica, and Dresden, Germany.

EXTRACURRICULAR ACTIVITIES: FSU has over 400 student organizations that allow students to find their own niche.

FINANCIAL AID: FSU offers two types of financial assistance:

need-based and merit-based...Over \$160 million is given away for financial assistance each year.

STUDENT/FACULTY RATIO: 18-1... Many of the general education classes are large, lecture classes; however, over 80% of major classes have less than 50 students.

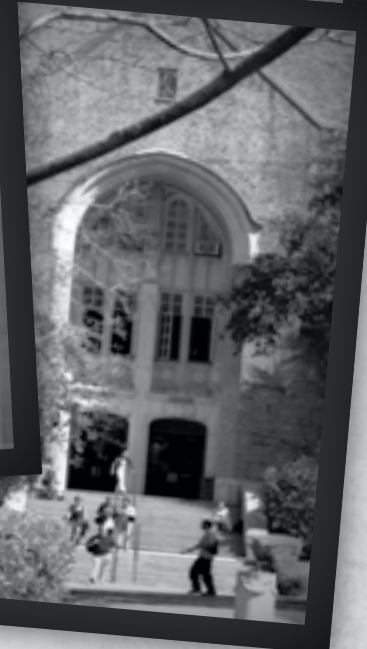
RESEARCH: The Florida State University has built a reputation as a strong research center in both the sciences and the humanities. It is expected that more than \$100 million in external funds will be generated this year by the university faculty and administration as supplements to state funds used for research. These external funds are in the form of contracts and grants from private foundations, industries, and government agencies, and are used to support research, improve research facilities, and provide stipends for graduate students.

SPONSORED RESEARCH (2007-08): \$201,569,624

LIBRARY HOLDINGS: The University Library System contains over 3.4 million volumes, of which more than 451,000 are available electronically as e-books. The libraries subscribe to more than 107,000 current serials including academic journals, professional and trade journals, and major newspapers from around the country and the globe in both paper and electronic formats. The libraries also subscribe to more than 350 databases. The FSU Libraries include 8 libraries on campus: The Robert Manning Strozier Library, Paul A. M. Dirac Science Library, Mildred and Claude Pepper Library, Warren Allen Music Library, Harold Goldstein Library and Information Science Library, College of Law Library, College of Medicine Medical Library, and the College of Engineering Library. Library materials and services are also available at the FSU Panama City Campus, as well as International Programs study centers in London, Florence, and Panama, and a collection of art and related materials at the John and Mable Ringling Museum of Art in Sarasota, Florida.

10 Leading States of Origin:

Florida- 33,154
Georgia- 882
Virginia- 409
New York- 311
Texas- 267
North Carolina- 265
Pennsylvania- 246
New Jersey- 212
Maryland- 206
California- 194





BARBARA HARRIS



LEE CORSO



WARRICK DUNN



BURT REYNOLDS

PROMINENT ALUMNI ▶

ASTRONAUTS

Carolyn S. Griner
Winston Scott

ENTERTAINERS

Daniel Bakkedahl
Faye Dunaway
Davis Gaines
Cheryl Hines
Christine Lahti
Sonny Shroyer
Robert Urich

FITNESS EXPERT

Richard Simmons

JUDICIARY

Kenneth B. Bell
Susan H. Black
Raoul G. Cantero, III

MILITARY LEADERS

Ron J. Friedman
Jay Garner
Franklin L. Hagenbeck
Paul David Miller
Kenneth Minihan

MISS AMERICA

Tara Dawn Holland
Christensen

MUSICIANS

Rita Coolidge
Ray Key
Sean Mackin
Jim Morrison
Charles G. Rex
Claudia Waite
David Ward-Steinman
Dr. Valint Vazsonyi

POLITICAL LEADERS

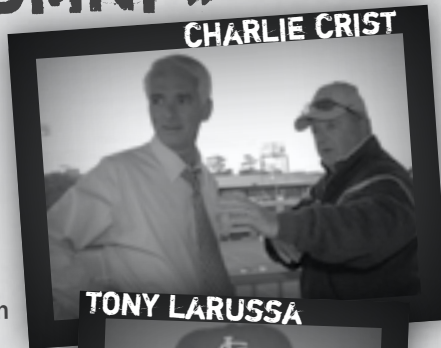
Jason Altmire
Reuben Askew
Jim Bacchus
Allen Boyd, Jr.
Kathy Castor
Paris Glendenning
Jeff Kottkamp
Mel Martinez
Jim Towey

PULITZER PRIZE WINNERS

Doug Marlette
Ellen Taaffe Zwillich

WRITERS

Alan Ball



CHARLIE CRIST

TONY LARUSSA



NORM THAGARD



MAYOR JOHN MARKS



RITA COOLIDGE



PAUL GLEASON



TRAYLOR
HOWARD



GABRIELLE
REECE



DR. TONEY
STEWART



ACADEMIC SERVICES ➤

MISSION STATEMENT

The primary mission of the Athletic Academic Support program is to provide an environment that facilitates the academic success of each student-athlete. The focus is to provide a comprehensive support program integrated with the total University that will assist all student-athletes with the transition into college and provide continued support in all phases of academic and professional development, culminating with graduation, job placement or graduate school.

ACADEMIC ADVISING

The advisors in Academic Support serve as the lower-division advising unit for all student-athletes. The staff advises students through the Liberal Studies curriculum and degree prerequisites. The advisors work with the students in a number of areas related to the academic experience at Florida State University, but with a primary emphasis in advising and monitoring the progress toward the selected degree program, taking into consideration, all variables, which would enhance or impede each student's progress toward the goal of graduation.

STUDY HALL

Professionally supervised study sessions for each athletic team are organized in order to help ensure the academic success of the student-athletes. The main focus of the study hall program is to help students develop consistent and appropriate study patterns by providing a structured setting to work on class assignments and to provide tutorial assistance before academic problems arise. Although the criteria for study hall is left to the discretion of each academic counselor, typically, most freshmen, first year transfers, and upperclassmen who have not yet achieved a satisfactory cumulative grade point average are asked to attend study hall.

TUTOR AND MENTOR PROGRAM

The tutorial program is available to all student-athletes as they progress towards their ultimate goal of obtaining a college degree. Approximately, 65 tutors are hired a year, from a variety of academic departments. Each tutor is committed to providing a proactive, individualized approach in assisting student-athletes with course comprehension and study skills. The tutors are graduate level students or undergraduates that excel in a specific area of study. All mentors are graduate or PhD level students who have outstanding academic backgrounds.

Mentors are academic role models who have demonstrated the ability to teach and give guidance in areas of academic developmental skills. They are responsible for providing assistance in the development of skills such as note taking, test preparation, and communication with faculty. In essence, mentors become an extension of the academic counselor as they keep the academic performance of their student-athletes under close observation and report to the academic counselors each week.

COMPUTER LAB

The Athletic Academic Support Computer Lab is located in the Athletic Academic Support wing at the Moore Athletics Center. It is outfitted with 30 PC compatible computers and several laser printers. The computer lab is available to student-athletes six days a week with extended hours during finals week. The entire Athletic Academic Support wing is also equipped with wireless internet.

SUMMER BRIDGE PROGRAM

Athletic Academic Support, in conjunction with Athletic Student Services and the University, offers incoming student-athletes a "Summer Bridge Program" to aid in the transition from high school to college. The program is a week long intensive orientation that incorporates the University orientation with

the athletics department orientation. This orientation highlights many different topics that are important for student-athlete success. In addition to introducing the student-athlete to academic policies and procedures, other topics covered include nutrition, student life, community service, technology on campus, media training and compliance.

ACADEMIC HONORS AND AWARDS PROGRAM

The Academic Support Program is committed to recognizing the academic success of all student-athletes. The annual "Golden Torch Gala," a black-tie academic awards banquet organized by Seminole Boosters, Inc., occurs each fall. At this event, the ACC Honor Roll student-athletes, as well as the individuals with the highest GPA on their respective teams, and the men's & women's teams with the highest GPA are recognized.

Team meetings are held each year, during which time student-athletes are notified of potential honors and awards and are encouraged to apply. Combining a strong grade point average with athletic accomplishments, community service activities, and leadership experiences make for a student-athlete capable of obtaining unlimited academic honors, awards, and postgraduate opportunities.

Florida State University student-athletes have achieved great success in obtaining recognition for academic excellence. More than \$390,000 in Postgraduate Scholarship monies has been granted to FSU student-athletes over the past 14 years, as well as numerous other academic honors and awards. During the 2007-08 academic year, 13 Seminole student-athletes were named District Academic All-Americans, including Buster Posey and Matt Fairel (baseball), Myron Rolle (Football), Caroline Westrup (Golf), Becky Edwards, Kirsten van de Ven and Katrin Schmidt (Soccer), Robin Ahrberg, Carly Wynn and Melissa May (Softball), Mara Freshour (Women's Basketball) and Javier Garcia-Tunon and Lydia Willemse (Track & Cross Country).

At the conclusion of the 2007-08 school year, 170 Seminole student-athletes were named to the ACC Academic Honor Roll while six of Florida State's athletic teams had a 3.0 or better cumulative grade point average. In the spring 2008 semester, 197 Seminoles achieved a 3.0 GPA or better, eight athletic teams had a 3.0 or better GPA and the average team semester GPA was a 2.8. Eleven student-athletes made the Spring 2008 President's List with a perfect 4.0 GPA while 60 student-athletes earned Dean's List status with a GPA of 3.5 or better.

Kandia Batchelor (Track & Field), Whitney Brummett (Golf) and Abbie King (Swimming & Diving) were three of 41 Atlantic Coast Conference scholar-athletes named 2008 ACC Weaver-James-Corrigan Postgraduate Scholarship Award recipients.

Academic reform continues to take hold on college and university campuses nationwide, and according to the latest data from the NCAA, Florida State athletics is making the grade. All of FSU's athletic teams scored above the cut-point of 925 in the Academic Progress Rate data based on the last four years (2003-04 through 2006-07). Two Florida State athletic teams - softball and men's golf - earned Public Recognition Awards for earning high scores in the latest Academic Progress Rate (APR) compilation. These teams posted multi-year APR scores in the top 10 percent of all squads in their respective sports.



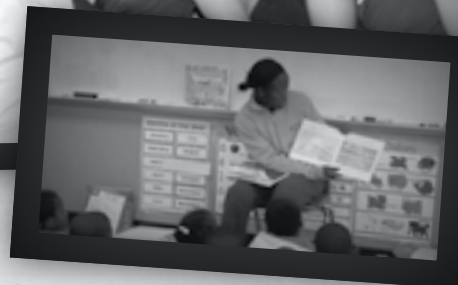
BILL SHULTS

Director of Academic Support



KYLIE AMATO

Assistant Director of Academic Support



STUDENT SERVICES ➔

NEW OPPORTUNITIES FOR LEADERSHIP, EDUCATION AND SERVICE (N.O.L.E.S.)

Developed by the Florida State University Department of Athletics, the N.O.L.E.S. program represents a commitment to the total growth and development of each student-athlete. The program establishes an administrative commitment to academic and athletic excellence. Those efforts will be supported with programs and services in personal and career development service.

PERSONAL DEVELOPMENT

Fostering the development of personal growth is a fundamental component of the N.O.L.E.S. program. The support programs ensure that the student-athlete will be provided with opportunities to focus on personal growth areas such as values clarification, goal setting, fiscal planning, decision making and personal responsibility. Programming focuses on helping the student-athlete develop a healthy lifestyle while they are at Florida State and habits that will benefit them for life.

CAREER DEVELOPMENT

Preparing for life after college is a major focus of the N.O.L.E.S. program. The program is designed to work in cooperation with Florida State's Career Center to acquaint students with the job search process, provide networking opportunities and ultimately assist with job placement. The program place a priority on the development of the total person, with the goal of developing individuals who will have rewarding careers and productive lifestyles after the leave Florida State.

COMMUNITY SERVICE

Serving the community is the Focus of the Seminole Spirit program. Student-athletes are challenged to give service to our community and individuals who are in need. With a clearly defined program of service, student-athletes are given the opportunity to develop lifelong commitment to volunteerism. Over the years, the commitment to community service has grown leaps and bounds. The Florida State University department of athletics has been recognized in both of the last two years by the National Consortium for Academics and Sports for the most successful outreach and community service program in which Seminole student-athletes have impacted the lives of over 150,000 youths. The Women's Golf team has been a major contribution in the community service effort winning the Athletic Director's Cup for Service in each of the last seven years.

LEADERSHIP DEVELOPMENT

The Florida State University Department of Athletics is committed to developing programs of excellence that foster leadership development. The Student-Athlete Advisory Council (SAAC) has been in place in the Florida State University Athletic Department for ten years, and consists of a fantastic group of motivated student-athletes. The SAAC consists of 42 student-athletes, at least two from every team, and they meet every two weeks to discuss issues confronting student-athletes, here at FSU, as well as in the Atlantic Coast Conference and across the nation. The SAAC at FSU has many responsibilities: they take the lead on a variety of events, starting with the New Student-Athlete Orientation, Peers Helping Athletes Transition (PHAT) Tuesdays, the International Student-Athlete Culture Feast, the Welcome Back Picnic and culminating with the Golden Nole Awards year ending banquet where seniors from each team are honored and student-athletes who have excelled in the area of community service are awarded.



BRANDI STUART
Assistant Athletics
Director for Student
Services and Personal
Development



JOHN LATA
Director of Student Services



YASHIVA EDWARDS
Assistant Director of
Student Services



NCAA COMPLIANCE ➤

The following information is provided by the Florida State University Compliance Office for prospective student-athletes, alumni and boosters. It is intended as a guideline to introduce you to some of the rules governing NCAA athletics.

KEY DEFINITIONS YOU SHOULD KNOW

- **Representatives of Athletics Interests:** A representative of athletics interests, commonly called a booster, is any individual who is known (or should have been known) by a member of the institution's athletic department that has ever:
 - Contributed financially to the athletics department or to its booster club.
 - Joined the institution's booster club or any sport specific support group.
 - Provided benefits to enrolled student-athletes or their families.
 - Assisted in any manner in the recruitment of prospective student-athletes.
 - Promoted the institution's athletics program.
 - Purchased season tickets.

*** Once an individual is identified as a representative, the person retains that identity forever. ***

- **Prospective Student-Athlete:** A prospective student-athlete "prospect" is any student who has started classes for the ninth grade regardless of his/her athletics ability and/or participation. Any student younger who receives any benefit from an institution or representatives of athletics interests immediately becomes a prospective student-athlete. In addition, student-athletes enrolled in preparatory school or two-year colleges or officially withdrawn from a four-year institution are considered prospective student-athletes. A prospective student-athlete remains a prospect even after he or she has signed a National Letter of Intent or accepts an offer of financial aid or admissions to attend an institution. The prospect remains a prospect until he/she reports for the first day of classes for a regular term (fall or spring) or the first official day of practice, whichever occurs earlier.

- **Contact:** A contact is any face-to-face encounter between a prospect or the prospect's parents, relatives or legal guardian(s) and an institutional staff member during which any dialogue occurs in excess of an exchange of a greeting.

- **Evaluation:** An evaluation is any off-campus activity designed to assess the prospect's academic qualifications or athletic ability, including any visit to his/her high school (during which no contact occurs) or the observation of a prospect's practice or competition at any site.

PHONE CALLS AND LETTERS

Phone calls from coaches (but not boosters) are permitted beginning July 1 before the prospect's senior year in high school. A coach is limited to one phone call per week except that unlimited phone calls may be made:

- During the five days immediately before an official visit to the university;
- On the day of a coach's off-campus contact with a prospect; or
- * During the time beginning with the National Letter of Intent signing date through the two days after the signing date and the day after a National Letter of Intent or scholarship agreement is signed.

A PROSPECT OF ANY AGE COULD RECEIVE THE FOLLOWING FROM A COACH:

- Questionnaire
- Camp brochure
- NCAA educational information
- Non-athletics institutional publications (official academic, admission and student services publications and videotapes produced by the institution and are available to all students)

AFTER SEPTEMBER 1ST OF A PROSPECT'S JUNIOR YEAR, A COACH COULD PROVIDE:

- Written correspondence, including letters and e-mails
- Business Cards
- Media Guide
- Game programs (only on an official or unofficial visit)

- Pre-enrollment information after prospect signs National Letter of Intent or has been admitted
- Any other information may be provided via the institution's web site

WHO IS PERMITTED TO RECRUIT FOR FLORIDA STATE UNIVERSITY?

Only Florida State coaches who have successfully completed the NCAA Recruiting Rules Examination on an annual basis may be involved in the recruitment process. Boosters may not make any recruiting contacts. This includes letters, telephone calls or face-to-face contact on or off campus with a prospect or the prospect's parents.

ALUMNI AND BOOSTERS DO'S AND DON'TS

- You may forward information about prospects to the appropriate coaches.
- You may have contact with a prospect regarding permissible pre-enrollment activities such as summer employment, provided the prospect has already signed a National Letter of Intent and the Compliance Office is aware you are making these contacts in regard to employment.
- You may have a telephone conversation with a prospect only if the prospect initiates the call. Such a call may not be prearranged by an institutional staff member and you are not permitted to have a recruiting conversation, but may exhibit normal civility. You must refer any questions about our athletic programs to an athletics department staff member/coach.
- You may view a prospect's contest at your own initiative provided you do not contact the prospect or his/her parents. In addition, you may not contact a prospect's coach, principal or counselor in an attempt to evaluate the prospect.
- You may continue established family relationships with friends and neighbors. Contacts with sons and daughters of these families are permitted as long as they are not made for recruiting purposes or encouraged by Florida State University coaches.
- You may not become involved in making arrangements to receive money or financial aid of any kind for a prospect or the prospect's family and friends.
- You may not make contact with a prospect and his/her parents when the prospect is on campus for an official or unofficial recruiting visit.
- You may not transport, pay or arrange for payment of transportation costs for a prospect and his/her relatives or friends to visit campus (or elsewhere).
- You may not pay or arrange for payment of summer camp registration fees for a prospect.
- * You may not provide anything to a prospect, the prospect's family or friends without prior approval from the Compliance Office.

For more information, please contact the Florida State University Compliance Office at (850) 644-4272.



BRIAN BATTLE

Associate Athletics Director
for Compliance



JODY SMITH

Assistant Athletics Director
for Compliance



ELIZABETH BOOKWALTER

Compliance Coordinator



BRET COWLEY

Compliance Assistant



STRENGTH AND CONDITIONING »

Jon Jost, Director of Strength and Speed, oversees the women's tennis team's performance enhancement program that is implemented by Assistant Director Dave Plettl.

The FSU strength and conditioning program is designed to improve athletic performance through an individualized regimen addressing, flexibility, strength, power, balance, motor control, and conditioning. The goal of the program is to maximize the performance of each athlete, while reducing the risk of injury.

Before a strength program is designed for an athlete, they are put through a series of physical tests to evaluate their strengths and to identify areas of improvement. A program is then designed for each student-athlete that will address specific areas and enhance performance on the course.

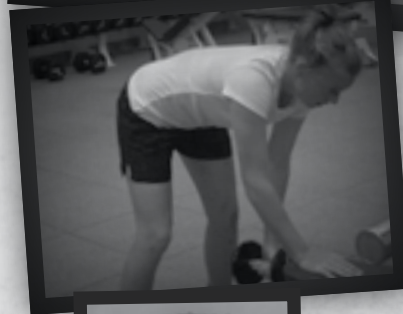
Dave Plettl, who is in his ninth year as an assistant strength and conditioning coach at Florida State, works with the women's tennis program. He individually customizes programs for each of the athletes beginning with pre-conditioning before the season gets underway.

In the spring of 2005, Plettl, a native of Bailey, Colo., was named Master Strength and Conditioning Coach by the Collegiate Strength and Conditioning Coaches association (CSCCa). The honor is the highest given in the strength and conditioning profession and highlighted the organization's conference held in Salt Lake City.

"This is an incredible honor for Dave," CSCCa Executive Director Chuck Stiggins said. "Being named a Master Strength and Conditioning Coach signifies a commitment to student-athletes, a commitment to Florida State University athletics and a commitment to his profession. We are honored to have Dave as a member of our association. He is truly a standard bearer to all strength and conditioning coaches nationwide."

Plettl is a 1991 graduate of the University of Colorado, where he earned a Bachelor's degree in political science and history. He came to Florida State from the University of Texas where he served two years as an assistant strength and conditioning coach. Plettl received Master specialist in Sports Conditioning from the International Sports Sciences Association in September 2001 as well as by the Collegiate Strength and Conditioning Coaches Association in May 2004.

He and his wife, the former Christa Miller, are the proud parents of daughters, Lydia Rose and Rebecca Rose and son Samuel.



Top: The Seminoles warm up on the free weights. Above: Federica Suess builds her strength on the bar. Left: Bonny Davidson works on her shoulders with a dumbbell.



DAVE PLETTL
Strength and
Conditioning Coach



THIS IS

TALLAHASSEE, FLORIDA »

Among low, rolling hills, down moss draped canopy roads, within picturesque historical districts, and across seas of flowering azaleas lies a magical part of the Sunshine State — Tallahassee — Florida's capital city. With its intriguing combination of power-play politics and classic character splashed with a twist of beauty and charm, Tallahassee is a genteel Southern belle with good manners, old plantation homes and y'all-come hospitality — a side of Florida few expect to find.

With the Gulf of Mexico just 25 miles south and the Georgia border only 14 miles north, Tallahassee rests between the foothills of the Appalachian Mountains and the juncture of Florida's panhandle and peninsula in an area known as "The Big Bend." Nearer in miles to Atlanta than to Miami, Tallahassee more closely resembles its' Georgia neighbor than Florida in topography, climate and lifestyle.

Like the city itself, the story of how Tallahassee was chosen as the state capital is rich in history. In 1823, two explorers set out — one on horseback from St. Augustine and the other by boat from Pensacola — to establish a permanent, central location for the seat of government. The two met at a beautiful site that the Creek and Seminole Indians called "tallahassee" — derived from the words "talwa," meaning town, and "ahassee," meaning old. This historic meeting place remains Florida's capital today.

The new Capitol building rises at the center of Tallahassee's downtown as a sleek modern structure, juxtaposed next to the Old Capitol, built in the more classic domed style. A gallery atop the 22-story New Capitol provides a sweeping view of the hilly city and its tree-lined streets. From it, you can see all the way to Georgia, 20 miles away.



Around the capitol complex, a 10-block historic district spreads, preserving the town's gracious old homes along a linear park and holding a historic inn, bars and restaurants patronized by Senators and sophomores alike. With no shortage of culture, downtown also offers museums, theater and art galleries. Artists have turned the old warehouses of Downtown Industrial Park into the studios and cafes of Railroad Square. The Museum of Florida History, nearby, is highly acclaimed for its scan of the state's past, and The Mary Brogan Museum of Art & Science, along with changing art exhibits, brings learning to a kid's level with hands-on exhibits. Other sightseeing favorites include the floral masterpiece of Alfred B. Maclay State Gardens; Bradley's Country Store; FAMU Black Archives; and the Tallahassee Antique Car Museum.

The area surrounding Tallahassee reveals numerous other historic and archaeological treasures, such as De Soto State Archaeological and Historical Site, Lake Jackson State Archaeological Site, Mission San Luis, Natural Bridge Battlefield and San Marcos de Apalache. Visitors can explore prehistoric Florida at the Museum of Florida History, where they are greeted by a giant 12,000-year-old mastodon pulled from nearby Wakulla Springs.

On the shores of Wakulla Springs, alligators still laze under the watchful eyes of "snake birds" perched on twisted cypress trees. The site of many underwater scenes in "Tarzan" movies, it's one of the world's deepest freshwater springs. Glass-bottomed boat tours across these mystical waters are available.

Nearby small towns offer fascinating excursions to places such as Pebble Hill Plantation, Florida Caverns State Park, Monticello Opera House and St. George Island.

DONALD L. TUCKER CENTER

The Donald L. Tucker Center is a multi-purpose convention and entertainment facility featuring a 12,100 seat arena, Luxury Suites and Club Seats and over 52,000 sq. ft. of meeting and exhibition space plus an arena view restaurant, Spotlight Grille. The Civic Center hosts a wide variety of concerts, family shows, Broadway shows, ice shows and sporting events including FSU basketball.

It is easy to understand why over one million people a year flock to the Donald L. Tucker Center, what with the varied array of attractions it offers. Some people go to the Tucker



Top left: State capital building. Left: Picturesque canopy road in Tallahassee. Above: Maclay Gardens.

Top right: Students experiencing the Challenger Learning Center in downtown Tallahassee. Right: Visitors enjoy a glass bottom boat tour at Wakulla Springs, just south of the capital city.

2009 FLORIDA STATE WOMEN'S TENNIS MEDIA GUIDE

Center to enjoy the sounds of rock, country, pop and urban concerts. Some go for the thrills of basketball, rodeos and three-ring spectaculars. While others come for conventions, banquets, expositions, or consumer and trade shows.

Located downtown on Pensacola Street, the Tucker Center is only two blocks from the Capitol building.

TALLAHASSEE UP CLOSE...

- Tallahassee is home to more than 60,000 college students between Florida State University, Florida A&M University and Tallahassee Community College.
- Nearly sixty percent of Tallahassee's population is between the ages of 18-44.
- The average maximum temperature in Tallahassee is 78 degrees and almost twenty-five percent of the year the temperature is above 90 degrees.
- There are over 150,000 people living in the Tallahassee area and over 300,000 in the metropolitan area.
- The capital of the State of Florida has been located in Tallahassee since 1823.
- The Gulf of Mexico is just 20 miles south of Tallahassee and the Georgia border is just 14 miles to the north.

CANOPY ROADS

The abundance of trees and timber is a resource uncommon to many other areas of the state. The beauty of the local trees is exemplified in Maclay Gardens State Park, which is the site of several of Florida's champion trees including the flowering Dogwood, the Hawthorn tree, the Horsesugar tree, the Sweetbay Magnolia and the Silverbell tree. These trees and others often extend their branches over the roadway to create a canopied effect, a feature that is held in high esteem by local residents and visitors.

WHERE'S THE BEACH?

Where sunny days are filled with the great outdoors...where time is measured by tides and life's rhythms move with the surf...beaches are just a short drive from Tallahassee.

Alligator Point

Natural dune public beach, 45 miles south of Tallahassee

CARRABELLE.

Coarse public beach, featuring swimming and shelling, 60 miles southwest of Tallahassee

DEKLE BEACH

Pristine sandy beach, clear water featuring boating, swimming, picnicking and more, 70 miles east of Tallahassee

MASHES SANDS BEACH

Public beach, shallow bay water featuring swimming and crabbing, 40 miles southwest of Tallahassee

ST. GEORGE ISLAND

Pristine 29-mile barrier island beach, clear water, featuring swimming, shelling, boating, and fishing, 80 miles southwest of Tallahassee

SHELL POINT

Lovely, small peninsula surrounded by St. Marks Wildlife refuge. Secluded beach and clear water that is popular for sailing and windsurfing, 25 miles south of Tallahassee



Top: Visitors enjoying the pristine beaches of the Florida panhandle. Above: The historic Knott House museum in downtown Tallahassee.



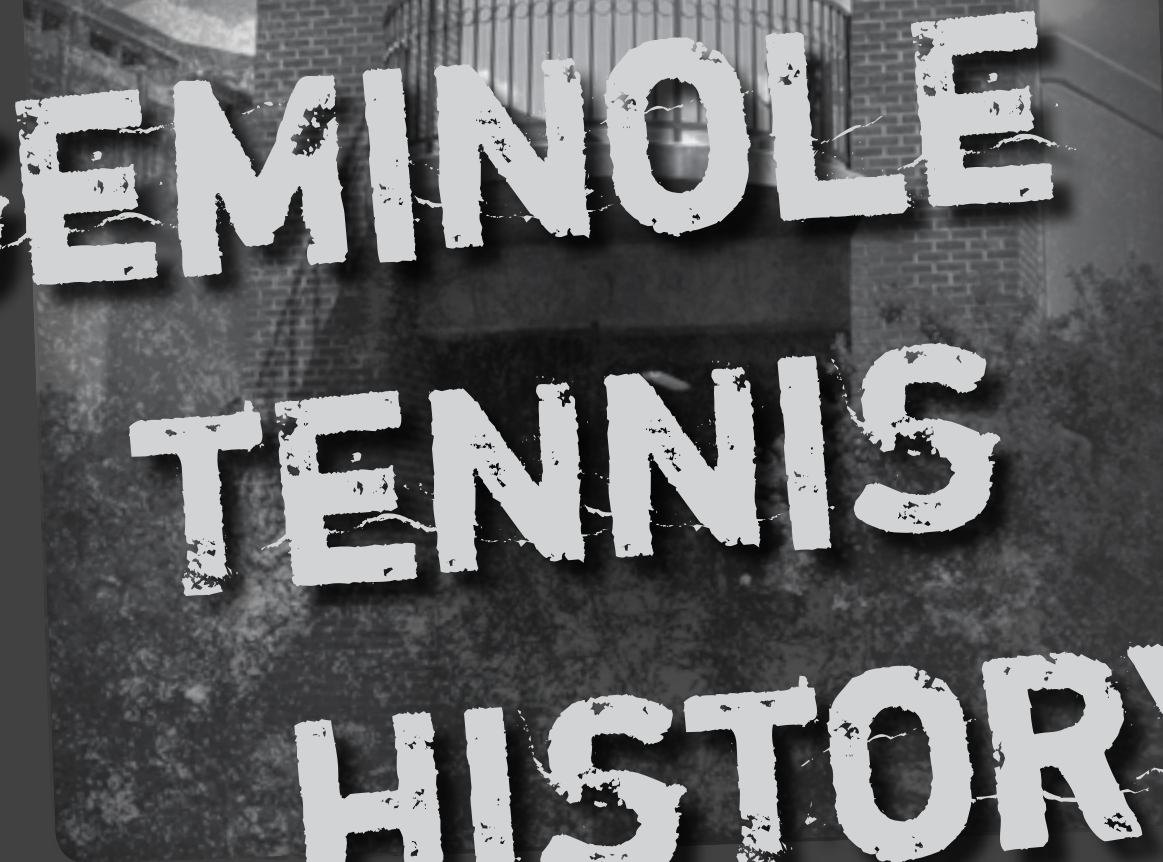
SEASON
OUTLOOK

MEET THE COACHES
AND SEMINOLES

REVIEW

THE
UNIVERSITY

SEMINOLE
TENNIS HISTORY



SEMINOLE TENNIS HISTORY

FLORIDA STATE ATHLETICS HALL OF FAME MEMBERS »



AUDRA BRANNON

In 2007, Audra Brannon became the third women's tennis player inducted into the Florida State Athletics Hall of Fame. Preceded by Buffy Baker in 1997 and Lori Sowell in 2003, the 1993 All-American was one of this year's nine-member cast invited to join the elite group of former Seminoles. A native of Hixson, Tenn., Brannon arrived at Florida State in the fall of 1990 and immediately began to make an impact on the Seminole program. In her senior year, Brannon was named ACC Player of the Year, following the Seminoles' advance to the Round of 20 in the 1994 NCAA Tournament. Brannon was also selected to participate in the individual NCAA singles and doubles competitions in 1993 and '94, where she progressed as far as the doubles round of eight with partner Laura Randmaa. Brannon was also a three-year member of the All-ACC team and the doubles winner of the Metro Conference Flight Championships in 1991.



BUFFY BAKER

Buffy Baker was one of the most successful players in history of FSU women's tennis. Baker accumulated 94 singles wins from 1987-91 playing at the number one and two positions for the Seminoles. She led FSU in individual wins in each of her four seasons and was a terrific doubles player winning the Metro Conference title three years in a row. She was a four-time All-Metro Conference selection and four time MVP of the FSU squad. She closed out her playing career in 1991 by winning the Metro Conference crown at No. 1 singles and No. 1 doubles and earned conference Most Valuable Player honors while leading the team to a first-place finish ahead of South Carolina.



LORI SOWELL

Lori Sowell's impact at FSU was immediate in 1994 when she played at the number two singles position compiling an overall record of 24-9 and was voted All-ACC and ACC Rookie of the Year in her first season. She went on to earn All-America honors twice during her Seminole career advancing to the quarterfinals of the 1996 NCAA Tournament which was further than any FSU women's player had before. She was a four-time All-ACC selection and four-time Academic All-ACC selection. She was the Seminole team MVP as a senior and finished with 62 individual match wins and 61 career doubles wins.

CHAMPION IN LIFE »

Since 1999, Seminole Boosters, Inc., and the Florida State Department of Athletics, has put on the "Champions Beyond the Game" Brunch, to honor the accomplishments of past female Seminole student-athletes. The event also serves as a platform for these successful alums to open the eyes of the women who don the Garnet and Gold today by educating them on their own experiences as student-athletes and beyond. In 2007, former FSU tennis player Jaime Kaplan was honored.

Kaplan, a native to Macon, Ga., attended the University of Georgia from 1979-81 and then attended Florida State University from 1981-83. While attending FSU, she ranked No. 1 in tennis singles and doubles for two consecutive years. In 1983, she participated in the NCAA Singles and Doubles Championships. As Kaplan, class of 1983 and the first player in the history of FSU Tennis to qualify for NCAA's, moved to the podium during the brunch to begin her address, she was quickly interrupted by a ring from her cell phone. She politely took the call and it was from her friend "opportunity."

"A life around sports has made it possible for opportunity to call me a lot," Kaplan said. "When I was nine years old and started playing tennis, I started hanging out with opportunities' friends. So "discipline" and I would go to the tennis courts everyday, sometimes for nine hours ago. We worked hard and when we thought we had enough, we did some more.

"Because tennis is a sport where you are mostly your own referee, I met "integrity." So I had been hanging out with "discipline, courage, tenacity and teamwork" for a pretty long time and guess what, "opportunity" called me for the first time, a full scholarship to college. Now I didn't get the college right the first time, but two years later, I knew I needed more to become a professional tennis player. "Opportunity" called again and soon I was a Lady Seminole."

Following her collegiate career, Kaplan went on to play in five Wimbledons, four U.S. Opens, four French Opens, one Australian Open and won five doubles' titles and also held a World Singles ranking of #252 and a World Doubles ranking of # 91.

After an outstanding professional career, Jaime then be-

came the founder and event manager of the Association for Retarded Citizens and Macon Rescue Mission and has raised over \$1,410,000 in 18 years. In 1996, she was selected by the United Way to be the Olympic Torch Relay torchbearer. That same year, she was named among the "Top Ten Influential Sports Figures of the Decade," by the Macon Telegraph and the following year, was honored on the list of "Top Ten All-Time Female Athletes." The honors have not stopped for Kaplan, who in 2005, was inducted into the Georgia Sports Hall of Fame, which includes athletes from all sports. In 2006, she was inducted into the Georgia Tennis Hall of Fame.

"Through sports I've met so many people, made so many contacts, and broadened my knowledge of the world," Kaplan said. "So many things, but mostly sports, have enhanced my life. I'm able to touch so many lives, be able to raise money for charity, teaching the great game of tennis to a beginner, being a hero or role model to someone. I try not to just teach tennis to the kids I teach, I try to introduce them to discipline, integrity, flexibility, patience, organization, teamwork, tenacity, leadership, dedication, excellence and courage."



Jaime Kaplan, Head Coach Jennifer Hyde, Anne Davis and Ania Rynarzewska



HONORS AND AWARDS ▶

FSU ATHLETICS HALL OF FAME

Patti Henderson 1992
Buffy Baker 1997
Audra Brannon 2007

METRO CONFERENCE COACH OF THE YEAR

Anne Rizza 1981, 1983 & 1984
Patti Henderson 1989

ACC COACH OF THE YEAR

Alice Reen 1994
Lise Gregory 1999, 2004

ITA SOUTH REGION

Coach of the Year
Lise Gregory 2004
Jennifer Hyde 2007

ITA/ARTHUR ASHE JR. AWARD FOR LEADERSHIP AND SPORTSMANSHIP

Audra Brannon 1993
Nanette Duxin 2001
Alida Gallovits 2002
Anca Dumitrescu 2004*
Mihaela Moldovan 2005

* - co-player

ITA SOUTH REGION

SENIOR PLAYER OF THE YEAR

Anca Dumitrescu 2004

ITA SOUTH REGION

ROOKIE OF THE YEAR

Mihaela Moldovan 2003

COSIDA ACADEMIC ALL-AMERICAN

Mihaela Moldovan 2004

ACC WEAVER-JAMES-CORRIGAN AWARD

Audra Brannon 1993
Kia Asberg 2000
Alida Gallovits 2002
Anca Dumitrescu 2004
Mihaela Moldovan 2005

METRO CONFERENCE CHAMPIONS

1981, 1983, 1984 & 1989

METRO CONFERENCE PLAYER OF THE YEAR

Suzanne Doumar 1981
Patti Henderson 1986
Keri Preng 1989
Buffy Baker 1991

ACC PLAYER OF THE YEAR

Audra Brannon 1994

ACC ROOKIE OF THE YEAR

Lori Sowell 1994

ALL-AMERICAN

Audra Brannon 1993 doubles
Laura Randmaa 1993 doubles
Lori Sowell 1995 singles
& 1996 singles
Mihaela Moldovan 2005 singles

ALL-ACC TEAM

Audra Brannon 1992-94
Ann Olsson 1997
Elke Juul 1995-1996
Kia Asberg 1999-00
Laura Randmaa 1993
Alida Gallovits 1999-01
Lori Sowell 1994-97
Marina Raic 1999
Anca Dumitrescu 2003-04
Mihaela Moldovan 2004-05
Ania Rynarzewska 2006
Lauren Macfarlane 2007-08
Nicola Slater 2007
Katie Rybakova 2008

METRO CONFERENCE TOURNAMENT MVP

Patti Henderson 1986
Keri Preng 1989
Buffy Baker 1991

METRO CONFERENCE ALL-TOURNAMENT TEAM

Buffy Baker 1988-91
Keri Preng 1988 -1989
Kirsten Turk 1989
Ann Waggoner 1990

METRO CONFERENCE FLIGHT CHAMPIONS

Suzanne Doumar 1981, No. 1 singles & No. 1 doubles
Jaime Kaplan 1981, No. 1 doubles
Lisa Erghott 1983, No. 5 singles
Patti Henderson 1983, No. 2 doubles
1984, No. 3 singles & No. 1 doubles
1985, No. 2 singles
Debbie Pollack 1983, No. 4 singles

Jenny Cerino 1984, No. 6 singles & No. 2 doubles

1985, No. 5 singles & No. 3 doubles
Sue Hatch 1984, No. 2 singles & No. 2 doubles

Lee McGuire 1984, No. 1 doubles
Buffy Baker 1989, No. 1 doubles;
1990, No. 1 doubles
1991, No. 1 singles & No. 1 doubles
Nicki Ivy 1989, No. 6 singles;
1991, No. 3 doubles

Kirsten Turk 1989, No. 3 singles
Keri Preng 1989, No. 1 doubles
Christina Tee 1991, No. 4 singles & No. 2 doubles

Robin Cifaldi 1991, No. 2 doubles
Audra Brannon 1991, No. 2 singles & No. 1 doubles
Ann Waggoner 1991, No. 3 doubles

ACC FLIGHT CHAMPIONS

Elke Juul 1993, No. 3 doubles
1994, No. 1 doubles
1996, No. 1 doubles
Sandi Ecclestone 1993, No. 3 doubles
Audra Brannon 1994, No. 1 singles & No. 1 doubles
Lori Sowell 1994, No. 2 singles
1996, No. 1 doubles
Ashley Delaney 1995, No. 3 doubles
Lori Junker 1995, No. 3 doubles
1996, No. 3 doubles
Ann Olsson 1996, No. 3 singles & No. 2 doubles
Sasha Hanna 1996, No. 2 doubles
Kylie Thompson 1996, No. 3 doubles
Ali Weber 1997, No. 5 singles
1999, No. 6 singles
2000, No. 6 singles & No. 3 doubles
Jessica Balbuena 2000, No. 3 doubles

MISCELLANEOUS HONORS

Kia Asberg
2000 Cissie Leary Sportsmanship Award (national winner)
Buffy Baker
1988 Roberta Allison Southern Intercollegiate (champion, No. 1 singles)
1989 Roberta Alison Southern

Intercollegiate
(champion, No. 1 singles)
1989 Women's Intercollegiate
Championships
(champion, No. 1 singles)
Christina Denny
2003 Lady Seminole Fall Classic
(Flight B - singles)
Anca Dumitrescu
2003 Lady Seminole Fall Classic
(Flight A - singles)
Nanette Duxin
1998 Roberta Allison Invitational
(Flight A - singles)
Alida Gallovits
1999 Lady Seminole Classic Champion
(Flight A-singles)
2000 Georgia Tech Invite
(Flight A-singles)
Hurricane Classic Champion
(Flight A-singles)
ACC 50th Anniversary Team
Keri Preng
1988 Barnett Bank Women's
Intercollegiate State Championships
(champion, No. 6 singles)
Laura Sarkilahti
1988 Barnett Bank Women's
Intercollegiate State Championships
(champion, No. 5 singles)
Lori Sowell
1996 Lady Seminole Classic Champion
(Flight A-singles)
Natalie Tirapelli
2003 Roberta Allison Fall Classic
(Flight H-singles)

TEAM MVP'S

1997 Lori Sowell
1998 Ali Weber
1999 Marina Raic and Kia Asberg
2000 Kia Asberg
2001 Alida Gallovits
2002 Christina Denny
2003 Anca Dumitrescu
2004 Mihaela Moldovan
2005` Mihaela Moldovan
2006 Suzanna Mansour and Nicola Slater
2007 Carolin Walter and Lauren Macfarlane
2008 Carolin Walter and Federica Suess

POST SEASON INVITATIONS
ASSOCIATION OF INTERCOLLEGIATE
ATHLETICS FOR WOMEN TEAM

1984 AIAW National Championships
6th Place

DOUBLES

Jaime Kaplan & Suzanne Doumar (1982)
named to the AIAW All-Region II Team

**NATIONAL COLLEGIATE ATHLETIC
ASSOCIATION TEAM**

1994, 1996, 1997, 1998, 1999, 2000,
2001, 2002, 2004, 2005, 2007, 2008

SINGLES

Jaime Kaplan 1983
Audra Brannon 1993 -1994
Lori Sowell 1994 - 1996
Alida Gallovits 2000-01
Anca Dumitrescu 2002, 2004
Mihaela Moldovan 2005
Katie Rybakova 2008

DOUBLES

Jaime Kaplan 1983
Lee McGuire 1983
Patti Henderson 1985
Sue Hatch - 1985
Audra Brannon 1993 -1994
Laura Randmaa 1993
Elke Juul 1994 -1996
Lori Sowell 1995-1996
Mihaela Moldovan 2005
Lindsay Deason 2005
Lauren Macfarlane 2007
Nicola Slater 2007

ACADEMIC HONORS**FSU'S GOLDEN TORCH AWARD**

(Highest Team GPA)

1985, 1986, 1987, 1988, 1989, 1997,
1998, 1999, 2000, 2001, 2002, 2003,
2004, 2005, 2006, 2007

ITA ALL-ACADEMIC TEAM

2002, 2004, 2006

FSU'S GOLDEN TORCH AWARD

(Highest Individual GPA)

Nicki Ivy 1991
Ashley Delaney 1994
Kia Asberg 2000
Alida Gallovits 2000
Marina Raic 2000
Mihaela Moldovan 2003
Lisa Nystrom Skold 2006

**METRO CONFERENCE
COMMISSIONER'S LIST**

Claudia Gaughf 1985

Sue Hatch 1985, 1986

Kirsten Turk 1986-89

Chris Joyce 1986-1988

Jill Urban 1986-1987

Keri Preng 1989

Kirsten Balsler 1989-1990

Lori Webster 1990

Shana Nozick 1990

Christina Tee 1990

ACC ACADEMIC HONOR ROLL

Kia Asberg 1998-00

Buffy Baker 1992

Jessica Balbuena 1999-01

Natalie Carratalá 1998-99, 01

Nicole Cercone 2004

Brooke Cordell 2002-04

Lindsay Deason 2004

Ashley Delaney 1994-97

Christina Denny 2000-04

Anca Dumitrescu 2001-04

Nanette Duxin 1999-02

Sandi Ecclestone 1994

Meredith Fish 2001-02

Alida Gallovits 1999, 01; 02

Amy Hanby 1992-93

Sasha Hanna 1997, 98

Nicki Ivy 1992

Elke Juul 1996

Lori Junker 1995-97

Helena Karlsson 1998

Beth Lawrence 2000-03

Lauren Macfarlane 2007

Tapiwa Marobela 2008

Alina Mihailescu 2002-04

Mihaela Moldovan 2002-04

Ann Olsson 1997

Rakina Payne 1997-98

Marina Raic 1999-01

Laura Randmaa 1994

Katie Rybakova 2008

Ania Rynarzewska 2007-08

Nicola Slater 2007

Lori Sowell 1994-97

Jessica Sucupira (Wente) 2008

Federica Suess 2008

Amberly Tantee 2004

Chrissie Tee 1992

Kylie Thompson 1996-99

Natalie Tirapelli 2002-04

Christy Travis 1998-99, 01

Lauren Walker 2001-02

Carolin Walter 2008

Ali Weber 1997-00

Brittany Veal 2001-03

FSU COACHING HISTORY ➔



ANNE DAVIS 1980-86 (8 seasons) (141-105, .573)

Year	Coach	Asst.Coach	W-LPCT	Conf. (finish)	Post-Season (seed)	Ranking
1980	Anne Davis	None	21-11 .656	Metro (2nd)	None	N
1981	Anne Davis	None	24-15 .615	Metro (1st)	None	#18
1982	Anne Davis	None	23-18 .561	Metro (2nd)	AIAW Chmps. (6th)	NR
1983	Anne Davis	None	18-8 .692	Metro (1st)	None	NR
1984	Anne Davis	None	15-13 .608	Metro (1st)	None	NR
1985	Anne Davis	None	13-14 .481	Metro (2nd)	None	NR
1986	Anne Davis	None	17-10 .630	Metro (2nd)	None	NR
1987	Anne Davis	Patti Henderson	11-16 .407	Metro (2nd)	None	NR

Notes: Was one of the first head coaches in the women's tennis program history...Davis earned Metro Conference Coach of the Year honors in 1981...ranked in the top 20 in the nation during the 1982 preseason...former USF tennis standout who played on teams that finished a program high of 11th...led the Seminoles to its highest national finish - sixth place in 1982.



PATTI HENDERSON 1987-91 (four seasons) (53-38, .582)

Year	Coach	Asst.Coach	W-LPCT	Conf. (finish)	Post-Season (seed)	Ranking
1988	Patti Henderson	Kim Philo	14-12 .538	Metro (2nd)	None	NR
1989	Patti Henderson	Kim Philo	13-7 .650	Metro (1st)	None	NR
1990	Patti Henderson	Shannon Krieger	13-9 .591	Metro (2nd)	None	NR
1991	Patti Henderson	Lori Webster	13-10 .565	Metro (1st)	None	NR

Notes: Only woman in Metro Conference history to earn MVP honors as a student-athlete and then conference coach of the year accolades...won two Metro Conference Team Championships in her four-year stint with the Seminoles...recruited and coached current Seminole head coach Jennifer Hyde...inducted into the Florida State Hall of Fame in 1992...during her four year playing career at FSU, she compiled a 68-36 singles record while accounting for 71 doubles wins...NCAA Championships qualifier in the doubles in 1985... first FSU women's tennis student-athlete to 20 singles wins in a season (a/o 1986)... was a graduate assistant for one year before taking the head coach position.



ALICE REEN 1992-96 (five seasons) (60-50, .545)

Year	Coach	Asst.Coach	W-LPCT	Conf. (finish)	Post-Season (seed)	Ranking
1992	Alice Reen	Buffy Baker	13-10 .565	ACC (3rd)	None	NR
1993	Alice Reen	Jenny Mainz	13-9 .591	ACC (3rd)	None	ARV
1994	Alice Reen	Jenny Mainz	15-10 .600	ACC (2nd)	NCAA Chmps. (19th)	#22
1995	Alice Reen	Jenny Mainz	11-10 .524	ACC (3rd)	None	#31
1996	Alice Reen	Michelle McMillen	8-11 .420	ACC (4th)	NCAA Regionals (8th)	#35

Notes: Over five years, averaged 12 victories per season...coached current Seminole head coach Jennifer Hyde...led Florida State to its highest NCAA ranking in school history (No. 17 - 1994)...was the head coach at the University of Arkansas before taking over in Tallahassee...graduate of the University of Georgia...led the Seminoles to its highest finish in Atlantic Coast Conference history, finishing in second place in 1994...was named ACC Coach of the Year in 1994.



LISE GREGORY 1996-2004 (eight seasons) (119-83, .589)

Year	Coach	Asst.Coach	W-LPCT	Conf. (finish)	Post-Season (seed)	Ranking
1997	Lise Gregory	Tim Bauer	12-11 .521	ACC (3rd)	NCAA Regionals (8th)	#37
1998	Lise Gregory	Tim Bauer	12-12 .500	ACC (8th)	NCAA Regionals (8th)	#49
1999	Lise Gregory	Tim Bauer	21-7 .750	ACC (3rd)	NCAA Regionals (2nd)	#23
2000	Lise Gregory	Dave Balogh	17-9 .654	ACC (5th)	NCAA Regionals (2nd)	#22
2001	Lise Gregory	Brian Burdette	14-11 .560	ACC (4th)	NCAA Regionals (3rd)	#36
2002	Lise Gregory	Brian Burdette	12-15 .444	ACC (8th)	NCAA Regionals (3rd)	#49
2003	Lise Gregory	Brian Burdette	13-10 .565	ACC (6th)	None	#55
2004	Lise Gregory	Brian Burdette	18-8 .692	ACC (3rd)	NCAA Regionals (2nd)	#26

Notes: Gregory was the women's tennis head coach for eight seasons in Tallahassee...only Seminole head coach to earn Atlantic Coast Conference Coach of the Year honors twice (1999, 2004)...has the best winning percentage among all head coaches at .587...was named ITA South Region Coach of the Year in 2004.



JENNIFER HYDE 2004 - Present (55-41, .573)

Year	Coach	Asst.Coach	W-LPCT	Conf. (finish)	Post-Season (seed)	Ranking
2005	Jen Hyde	Hayden Perez	11-12 .478	ACC (8th)	NCAA Regionals (1st)	#43
2006	Jen Hyde	Oliver Foreman	9-13 .409	ACC (10th)	None	#72
2007	Jen Hyde	Oliver Foreman	16-8	.667	ACC (5th) NCAA Regionals (2nd)	#19
2008	Jen Hyde	Oliver Foreman	19-8	.704	ACC (6th) NCAA Regionals (2nd)	#18

Notes: Returned to her alma mater in July 2004 to lead the Seminole squad...Captain of the 1994 team that finished at No. 17 in the nation...Only the second alum to return to coach at Florida State...Has led the Seminoles to three NCAA Tournaments...Named the 2007 ITA South Region Coach of the Year...Coached the Seminoles to their ninth consecutive Golden Torch Award in 2007...Guided the 2008 squad to the highest ranking in program history (No. 12)...Hosted the first and second rounds of the 2008 NCAA Tournament for the first time in school history...Led the Seminoles to the third round of the ACC Tournament in 2008 which is just the second time in school history.

ALL-TIME DUAL MATCH ROSTER ▶

ACC CHAMPIONSHIPS RECORD

1992 Virginia W 6-0 Wake Forest L 2-5	1998 North Carolina W 7-2 Duke L 5-0	2004 Wake W 4-2 Duke L 1-4
1993 North Carolina W 5-3 Clemson L 2-7	1999 Virginia W 5-1 Wake Forest L 4-5	2005 Virginia W 4-3 Georgia Tech L 4-1
1994 N.C. State W 5-1 Clemson W 5-3 Duke L 0-5	2000 Georgia Tech W 5-3 Wake Forest L 0-5	2006 Wake Forest L 4-1
1995 Virginia W 5-3 Wake Forest L 2-5	2001 Georgia Tech W 4-2 Duke L 0-4	2007 Boston College W 4-0 Miami L 4-3
1996 Virginia W 5-3 Duke L 0-6	2002 Maryland W 4-3 North Carolina L 1-4	2008 Boston College W 5-0 Miami W 4-2 Duke L 4-2
1997 Georgia Tech W 5-1 Wake Forest L 1-5	2003 North Carolina L 0-4	

FSU'S TOP 10

ALL-TIME SINGLE-SEASON WIN LEADERS

1. Mihaela Moldovan	33-4	.892	2003-04
2. Lauren Macfarlane	21-5	.808	2006-07
3. Kia Asberg	30-8	.789	1998-99
4. Kia Asberg	29-8	.784	1999-00
5. Marina Raic	31-9	.775	1998-99
6. Federica Suess	31-9	.775	2007-08
7. Carolin Walter	29-8	.763	2007-08
8. Buffy Baker	28-7	.750	1987-88
Buffy Baker	27-9	.750	1988-89
9. Roxanne Clarke	27-10	.730	2003-04
10. Christina Denny	27-10	.730	2003-04

ALL-TIME ROSTER

Leslee Abisch 1978
Kia Asberg 1997-00
Elizabeth "Buffy" Baker 1988-91
Jessica Balbuena 1999-01
Kirsten Balsler 1988-90
Mary Beck 1978
Gigi Boesch 1981
Audra Brannon 1990-94
Bresha Byrd 1993
Natalie Carratalá 1998-01
Nicole Cercone 2004
Jenny Cerino 1983-86
Robin Cifaldi 1991-92
Roxanne Clarke 2004-05
Beth Clay 1981-83
Brooke Cordell 2002-04
Cheryl Cordes 1981
Beth Corn 1987
Bonny Davidson 2007-08
Lindsay Deason 2004-05
Ashley Delaney 1994-97
Debbie Deluccia 1978
Christina Denny 2001-04
Suzanne Doumar 1983
Anca Dumitrescu 2002-04
Nanette Duxin 1998-01
Whitney Eber 2006
Sandi Ecclestone 1993-94
Lisa Ehrgott 1981-84
Darlene Finnegan 1985

Meredith Fish 2002-03
Miranda Foley 2005-07
Alida Gallovits 1999-01
Laura Jo Garcia 1978
Khristen Getz 1981
Daniela Gheorghe 2002-04
Jenny Graf 1992-94
Yvonne Gsteiger 1978
Claudia Gaughf 1983-86
Jenny Green 1986
Amy Hanby 1992-93
Sasha Hanna 1995-98
Dee Ann Hansel 1981
Jean Harrington 1978
Sue Hatch 1984-87
Patti Henderson 1983-86
Elizabeth Hinson 1978
Justine Humair 2008
Jennifer Hyde 1991-94
Leslie Ivy 1991-92
Nicki Ivy 1989-90
Chris Joyce 1986-89
Lori Junker 1994-97
Elke Juul 1992-96
Jaime Kaplan 1983
Helena Karlson 1998
Darlene Kennedy 1984
Claudette Laliberte 1978
Beth Lawrence 2001-03
Lauren Macfarlane 2006-08
Sharon MacPhee 1990

Suzanna Mansour 2006
Tapiwa Marobela 2005-07
Lee McGuire 1983-84
Dana Medalie 1983-84
Alina Mihailescu 2002-06
Melissa Miller 1978
Mihaela Moldovan 2002-05
Laurie Mueller 1981
Susan Mueller 1981-84
Penne Nieporte 1981
Shana Nozick 1989-90
Josephine O'Gorman 1987
Ann Olsson 1995-97
Sharon Ondrula 1978
Rakina Payne 1995, 1997-98
Anna Polihrom 1978
Debbie Pollack 1983-84
Keri Preng 1987-90
Tanya Racoobian 1988
Marina Raic 1999-01
Diane Ramsey 1978
Laura Randmaa 1993-94
Laura Ribovich 1986
Valerie Rive 1986
Katie Rybakova 2007-08
Ania Rynarzewska 2006-08
Laura Sarkilahti 1989-91
Federica Suess 2007-08
Samantha Schoeffel 2001
Sherry Shores 1978
Lisa Nystrom Skold 2006

Nicola Slater 2006-07
Tracey Smith 1987-89
Lori Sowell 1993-97
Yana Stoeva 2005
Jessica Sucupira (Wente) 2006-08
Amberly Tantee 2002-05
Christina Tee 1990-92
Kim Temples 1985-87
Kylie Thompson 1995-99
Mary Thym 1993-95
Natalie Tirapelli 2002-05
Christy Travis 1998-01
Kirsten Turk 1987-89
Jill Urban 1987-89
Brittany Veal 2001-03
Ann Waggoner 1990-91
Carolin Walter 2006-07
Ali Weber 1997-00
Lori Webster 1990
Paula Whitebrook 1983-86
Mary Ellen Wilkinson 1978
Mary Wood 1986-87

NCAA TOURNAMENT HISTORY ▶

RECORDS - TEAM: 3-11; SINGLES: 6-10; DOUBLES 3-6

1983

Singles Championship



Round 64

Tracy Blumentritt (Rice)
d. Jaime Kaplan (FSU)
3-6, 6-3, 6-0

Doubles Championship

Round 32

Jamie Kaplan - Lee

McGuire (FSU) d. Margaret Redfern - Joy Tacon (Houston) 7-6, 7-5, 6-4

Round 16

#1 Louise Allen - Gretchen Rush (Trinity) d. Jamie Kaplan - Lee McGuire (FSU) 6-1, 6-0

1985

Doubles Championship

Round 32

Kiki Rozwadowski - Lori MacGill (S. Florida) d. Sue Hatch - Patti Henderson (FSU) 6-2, 6-3

1993

Singles Championship

Round 64

Suzi Italiano (Southern Cal) d. Audra Brannon (FSU) 6-4, 7-6

Doubles Championship

Round 32

Audra Brannon - Laura Randmaa (FSU) d. Danielle Paradine - Jody Yin (Indiana) 6-3, 6-1

Round 16

Audra Brannon - Laura Randmaa (FSU) d. Melissa Mazzotta - Maria Pilar Valls (Miami) 7-6 (6), 4-6, 6-1

Round 8

#3 Laxmi Poruri - Heather Willens (Stanford) d. Audra Brannon - Laura Randmaa (FSU) 7-6 (2) 6-3

1994

Team Championship

Round 20

#16 Arizona d. #19 FSU 5-3

Records - Team: 1-10; Singles: 6-10; Doubles 3-5

Singles Championship

Round 64

Marie-Laure Bougnol (Ole Miss) d. #9-16 Audra Brannon (FSU) 6-4, 6-4
Maggie Simkova (Southern Cal) d. Lori Sowell (FSU) 1-6, 6-0, 6-4

Doubles Championship

Round 32

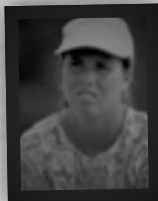
Nicole Elliott - Vera Vitels (California) d. Audra Brannon - Elke Juul (FSU) 7-5, 6-2

1995

Singles Championship

Round 64

Lori Sowell (FSU) d. #8 Katie Schlukebir (Stanford)



6-4, 6-1

Round 32

Lori Sowell (FSU) d. Melissa Zimpfer (Tennessee) 7-5, 6-4

Round 16

Lori Sowell (FSU) d.

#14 Joelle Schad (Arizona State) 6-0, 3-3, ret.

Round 8

#2 Keri Phebus (UCLA) d. Lori Sowell (FSU) 6-0, 6-2

1996

NCAA South Regional South Carolina 5, Florida State 2

Singles Championship

Round 64

Lori Sowell (FSU) d. #9-16 Farley Taylor (Texas) 7-5, 7-6

Round 32

Lori Sowell (FSU) def. Stephanie Sammaritano (Arizona) 6-4, 7-5

Round 16

#6 Ania Bleszynski (Stanford) d. Lori Sowell (FSU) 7-5, 6-3

Doubles Championship

Round 32

#4 Paige Yaroshuk - Keri Phebus (UCLA) d. Lori Sowell - Elke Juul (FSU) 6-1, 6-1

1997

NCAA Southeast Regional Vanderbilt 5, Florida State 1

1998

NCAA Southeast Regional Vanderbilt 6, Florida State 0

1999

NCAA Midwest Regional Iowa 5, Florida State 4

2000

NCAA South Regional

Florida State 5, Illinois 3

Florida 5, Florida State 0

Singles Championship

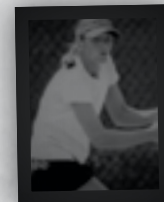
Round 64

Bea Bielik (Wake Forest) d. Alida Gallovits (FSU)

2001

NCAA South Regional South Carolina 4, Florida State 2

Singles Championship



Round 64

#59 Alida Gallovits (FSU) d. #45 Maria Phillips (Oklahoma St.) 7-6, 7-6
#2 Ansley Cargill (Duke) d. #59 Alida Gallovits

(FSU) 6-1, 6-0

2002

NCAA South Regional Virginia Commonwealth University (VCU) 4, FSU 0

Singles Championship

Round 64

#5 Agara Cioroch (UGA) d. Anca Dumitrescu (FSU) 6-2, 6-2

2004

NCAA South Regional FSU 4, Marshall 2
Vanderbilt 4, FSU 1

Singles Championship

Round 64

#27 Megan Muth (William & Mary) d.
Anca Dumitrescu (FSU), 6-2, 5-7, 7-6

2005

NCAA South Regional
FIU 4, FSU 2

Singles Championship



Round 64

Chloe Carlotti (Mississippi) d.
Mihaela Moldovan
(FSU), 6-1, 7-5
Doubles Championship

Round 32

Alice Barnes-Erin
Burdette (Stanford) d.
Mihaela Moldovan-Lindsay Deason
(FSU), 6-3, 6-4

2007

NCAA Regional
San Diego State 0, FSU 4
UCLA 4, FSU 2

Doubles Championship

Round 32

Olga Borisova-Marianna Yuferova
(Virginia Commonwealth) d.
Nicola Slater-Lauren Macfarlane (FSU),
5-7, 6-4, 6-4

2008

NCAA Regional
Samford 0, FSU 4
No. 19 Texas 5, FSU 2

Singles Championship

Round 64

Gabriela Niculescu (USC) d.
Katie Rybacova (FSU) 6-4, 4-6, 7-6
(10-8)



SEMINOLE TENNIS RECORDS »

TOP 10 DUAL MATCH SINGLE SEASON WIN PERCENTAGE

1. Mihaela Moldovan	2004	26-0	1.000
2. Kia Asberg	1999	24-4	.857
3. Buffy Baker	1987	21-5	.808
Lauren Macfarlane	2007	21-5	.808
5. Kia Asberg	2000	20-5	.800
Keri Preng	1990	20-5	.800
Caroline Walter	2008	20-5	.800
8. Marina Raic	1999	22-6	.785
9. Federica Sues	2008	18-5	.783
10. Audra Brannon	1991	21-6	.777

SINGLE SEASON DUAL MATCH SINGLES WINS

Mihaela Moldovan	2004	26
Kia Asberg	1999	24
Marina Raic	1999	22
Buffy Baker	1988	21
Audra Brannon	1991	21
Jessica Balbuena	1999	21
Lauren Macfarlane	2007	21
Patti Henderson	1986	20
Keri Preng	1990	20
Kia Asberg	2000	20

20 DUAL MATCH SINGLE SEASON WINS

Patti Henderson	1986	20
Buffy Baker	1988	21
Keri Preng	1990	20
Audra Brannon	1991	21
Kia Asberg	1999	24
Jessica Balbuena	1999	21
Marina Raic	1999	22
Kia Asberg	2000	20
Mihaela Moldovan	2004	26
Lauren Macfarlane	2007	21



LAUREN MACFARLANE

CAREER SINGLES WINS

1. Ali Weber	1997-00	94
2. Buffy Baker	1988-91	91
3. Kia Asberg	1997-00	88
4. Alida Gallovits	1999-01	77
5. Mihaela Moldovan	2003-05	76
6. Jessica Balbuena	1999-01	74
7. Audra Brannon	1991-94	70
8. Kirsten Turk	1986-89	67
9. Nicki Ivy	1989-92	65
10. Elke Juul	1992-96	64
Anca Dumitrescu	2001-04	64

CAREER DOUBLES WINS

1. Jessica Balbuena	1999-01	73
2. Alida Gallovits	1999-01	63
3. Audra Brannon	1991-94	62
4. Lori Sowell	1994-97	61
5. Ali Weber	1997-00	61
6. Nicki Ivy	1989-92	58
7. Nanette Duxin	1998-01	57
8. Elke Juul	1992-96	55
9. Keri Preng	1987-90	55
10. Caroline Walter	2006-08	53

ALL-TIME SERIES RECORDS »

OPPONENT	W	L	FIRST	LAST	OPPONENT	W	L	FIRST	LAST
Alabama	7	5	1983	2005	North Carolina	14	15	1982	2008
Alabama	7	5	1983	2005	North Carolina State	14	3	1992	2008
Alabama-Birmingham	3	0	1988	2006	North Florida	5	1	1985	1990
Arizona	0	3	1990	1994	Northeast Louisiana	6	0	1983	1991
Auburn	9	1	1982	2008	Northwestern	0	5	1983	1992
Baylor	5	3	1986	2005	Northwest Louisiana	1	0	1982	1982
Bethune-Cookman	2	0	2001	2006	North Texas State	1	0	1982	1982
Boston College	4	0	2006	2008	Notre Dame	0	1	1996	1996
California	0	1	1997	1997	Ohio State	2	0	1982	1983
Cal-Irvine	0	1	1987	1987	Oklahoma	1	0	1993	1993
Cal-Santa Barbara	0	2	1987	1993	Oklahoma State	1	2	1982	1984
Central Florida	5	0	2002	2008	Penn State	1	0	2004	2004
Clemson	8	16	1982	2008	Pepperdine	0	1	2001	2001
College of Charleston	1	0	1983	1983	Princeton	1	0	1982	1982
Columbia	1	0	1987	1987	Purdue	3	0	1982	1987
Duke	2	23	1983	2008	Rice	9	4	1983	2008
Flagler	2	2	1988	1992	Rollins	12	6	1982	1993
Florida	0	31	1982	2008	Samford	1	0	2008	2008
Florida A&M	9	0	1982	2008	San Diego	1	1	1995	2005
Florida Atlantic	1	0	2002	2002	San Diego State	3	0	2001	2005
Florida International	13	0	1989	2008	Santa Fe	1	0	1990	1990
Florida Junior College	5	0	1983	1987	South Alabama	8	7	1982	2003
Furman	3	0	1987	2003	South Carolina	1	13	1982	1996
Georgia	5	7	1982	2007	Southern Methodist	3	2	1982	1992
Georgia Southern	8	0	1995	2006	South Florida	22	10	1982	2005
Georgia State	4	0	1983	1999	Southwestern Louisiana	3	0	1982	1993
Georgia Tech	16	8	1985	2008	Southwest Missouri	1	0	1986	1986
Harvard	2	0	1982	2002	Southern Miss	2	0	1999	1999
Houston	5	6	1984	2007	Stetson	8	0	1983	2008
Illinois	4	1	1992	1999	Tennessee	3	3	1983	1995
Indiana	0	3	1982	1988	Tennessee-Chattanooga	1	0	1984	1984
Iowa	3	1	1982	1999	Texas	0	3	1982	2008
Jacksonville	8	0	1989	2008	Texas A&M	2	0	1994	1995
Kansas	1	0	1999	1999	Texas Christian	1	4	1982	1991
Kansas State	1	0	1989	1989	Trinity	1	0	1991	1991
Kentucky	0	1	1994	1994	Troy	1	0	2006	2006
Lamar	1	0	1989	1989	Tulane	8	4	1982	2005
Louisiana State	7	6	1982	2008	UCLA	0	1	2007	2007
Louisiana Tech	2	0	1983	1990	UNLV	1	0	2008	2008
Louisville	3	0	1982	1988	U.S. International	0	1	1990	1990
Lynn (Boca Raton)	1	0	1990	1990	Utah	1	0	2000	2000
Maryland	13	3	1993	2008	Vanderbilt	2	8	1983	2002
Memphis State	2	0	1985	1987	Virginia Commonwealth	0	1	2002	2002
Miami, FL	4	18	1982	2008	Virginia	17	5	1992	2008
Miami, OH	1	1	1984	1987	Virginia Tech	9	1	1985	2008
Michigan	4	0	1990	1993	Wake Forest	8	19	1985	2008
Michigan State	3	0	2001	2002	Wichita State	1	0	1985	1985
Mississippi	2	6	1982	1996	William & Mary	1	0	1987	1987
Mississippi State	4	3	1984	1994	Wisconsin	1	4	1986	1992
Mississippi Univ. for Women	1	0	1982	1982	Yale	0	1	1989	1989
New Mexico	3	0	1984	1990					

ALL-TIME RESULTS ▶

1982

Head Coach: Anne Rizza

Record: 23-17

Florida A&M	W	9-0
South Carolina	L	2-7
Oklahoma State	W	5-4
Texas Christian	W	6-3
Tulane	W	9-0
South Florida	W	5-4
Florida A&M	W	8-0
Rollins	L	2-7
Florida	L	1-7
Louisiana State	W	6-3
Clemson	W	5-4
Auburn	W	9-0
Southwest Louisiana	W	9-0
Northwest Louisiana	W	7-0
Miss. Univ. for Women	W	8-0
North Carolina	W	6-3
South Carolina	L	3-5
Mississippi	L	4-5
Purdue	W	7-1
Texas	L	0-8
Southern Methodist	W	6-2
Texas Christian	L	4-5
North Texas State	W	6-2
Louisville	W	8-1
Ohio State	W	9-0
South Alabama	W	7-2
Indiana	L	2-7
Harvard	W	8-1
Clemson	L	4-5
South Florida	L	4-5
Miami, Fla.	L	2-7
Florida	L	1-8
Georgia	L	3-6
Rollins	L	2-7
South Florida	L	4-5
North Carolina	L	1-8
Iowa	W	7-2
Georgia	W	5-4
Princeton	W	5-4
North Carolina	L	0-5

1983

Head Coach: Anne Rizza

Record: 18-8

Stetson	W	7-2
Florida Junior College	W	7-2
Clemson	L	0-9
Auburn	W	8-1
College of Charleston	W	9-0
Rollins	L	1-8
Louisiana Tech	W	7-0
Northwest Louisiana	W	8-1
Alabama	W	8-1
Rice	L	3-6
South Florida	W	5-4
Duke	W	6-3
Indiana	L	2-7
Ohio State	W	9-0
Iowa	W	7-2
Georgia	W	6-3
Georgia State	W	9-0
Tennessee	W	6-3
Northwestern	L	4-5
Rollins	W	6-3

Florida	L	3-6
South Florida	L	3-6
Florida	L	4-5
Vanderbilt	W	8-1
Alabama	W	8-1
Tulane	W	5-4

1984

Head Coach: Anne Rizza

Record: 15-13

Rollins	L	3-6
Tennessee	W	8-1
South Carolina	L	4-5
Houston	L	4-5
Tennessee- Chattanooga	W	5-4
Vanderbilt	W	8-0
Auburn	W	7-2
Florida Junior College	W	8-1
Tulane	W	6-0
Georgia	W	7-2
Northwest Louisiana	W	5-1
Alabama	W	7-2
Oklahoma State	L	4-5
South Alabama	W	7-2
Florida	L	2-7
South Carolina	W	5-4
Oklahoma State	L	4-5
Georgia	W	6-3
Mississippi	L	2-5
Mississippi State	W	9-0
Rice	L	3-6
New Mexico	W	5-1
Miami, Ohio	W	6-3
Northwestern	L	1-8
Rollins	L	4-5
Florida	L	1-8
Miami, Fla.	L	3-6
South Florida	L	3-6

1985

Head Coach: Anne Rizza

Record: 13-14

Georgia Tech	W	6-1
South Florida	L	1-8
Alabama	W	6-3
North Florida	W	7-2
Florida Junior College	W	9-0
Rollins	W	5-4
Florida	L	1-8
North Carolina	W	7-2
Louisiana State	L	2-7
South Florida	L	0-8
Wichita State	W	6-3
Wake Forest	W	7-2
Duke	L	4-5
North Carolina	L	2-7
Texas Christian	L	3-6
South Carolina	L	4-5
Northwestern	L	3-6
Georgia	W	5-4
Florida	L	1-8
South Florida	L	3-6
Miami, Fla.	L	1-8
Rollins	W	7-2
Mississippi	L	2-6

Auburn	W	8-1
Memphis State	W	9-0
Tulane	L	4-5
Virginia Tech	W	7-2

1986

Head Coach: Anne Rizza

Record: 17-10

North Florida	W	6-3
Florida- Junior College	W	9-0
Florida	L	1-8
Southern Methodist	L	3-6
Rollins	W	8-1
Houston	L	3-6
South Florida	W	5-4
Alabama	W	6-3
Auburn	W	7-2
Florida	L	1-8
Purdue	W	6-3
Baylor	W	9-0
Mississippi	W	5-4
South Alabama	L	2-7
Southwest Missouri	W	8-1
Texas Christian	L	3-6
Clemson	L	0-9
South Alabama	L	3-6
Virginia Tech	W	9-0
Georgia Tech	W	7-2
Wisconsin	W	5-4
Mississippi State	W	7-2
Stetson	W	9-0
South Florida	L	2-7
Rollins	W	6-0
Virginia Tech	W	8-1
South Carolina	L	4-5

1987

Head Coach: Patti Henderson

Record: 11-15

Vanderbilt	L	4-5
Tennessee	L	4-5
William & Mary	W	5-4
South Carolina	L	0-5
Auburn	W	5-4
Florida Junior College	W	7-2
North Florida	W	7-2
Florida	L	0-9
Mississippi State	L	4-5
Furman	W	6-3
Purdue	W	7-2
Columbia	W	8-1
South Florida	W	6-3
Miami, Ohio	L	4-5
North Carolina	L	2-7
Wake Forest	L	3-6
Virginia Tech	W	8-1
California - Irvine	L	3-6
Rice	L	4-5
California- Santa Barbara	L	2-7
Southern Methodist	L	1-8
Florida	L	0-9
Rollins	L	3-6
Louisville	W	7-2
Memphis State	W	9-0
South Carolina	L	3-6

ALL-TIME RESULTS ➔

1988

Head Coach: Patti Henderson

Record: 14-12

Florida	L	1-8
Florida A&M	W	8-1
Alabama -		
Birmingham	W	7-2
North Florida	L	3-6
Northeast Louisiana	W	6-3
Houston	L	1-8
Mississippi	L	4-5
Virginia Tech	W	5-4
North Carolina	L	2-7
Furman	W	9-0
Louisiana State	L	4-5
Stetson	W	8-1
South Florida	W	5-4
Rollins	W	6-3
Auburn	L	3-6
Baylor	W	9-0
New Mexico	W	5-4
South Carolina	L	1-7
Indiana	L	1-8
Mississippi State	L	1-5
Georgia State	W	9-0
South Florida	W	5-4
Flagler	L	2-7
Southern Methodist	W	9-0
Louisville	W	9-0
South Carolina	L	0-6

1989

Head Coach: Patti Henderson

Record: 13-7

Tulane	W	8-1
South Florida	L	4-5
Florida	L	0-9
South Alabama	W	5-3
Jacksonville	W	9-0
Northeast Louisiana	W	6-0
Auburn	W	5-4
South Alabama	L	3-6
Florida International	W	9-0
Flagler	L	4-5
North Florida	W	6-3
Mississippi	L	3-6
Kansas State	W	5-1
Yale	L	4-5
South Florida	W	6-3
Wisconsin	L	1-8
Rollins	W	6-3
Clemson	W	5-4
Lamar	W	9-0
Houston	W	5-4

1990

Head Coach: Patti Henderson

Record: 17-8

South Florida	W	7-1
Rollins	W	8-1
Santa Fe	W	9-0
North Florida	W	8-1
Florida	L	0-9
U.S. International	L	3-6
Arizona	L	4-5
Rice	W	6-0
Northeast Louisiana	W	7-0

South Alabama	W	7-1
Houston	L	2-7
Mississippi	W	5-4
Georgia Tech	W	7-1
Louisiana Tech	W	7-2
Florida International	W	8-1
Louisiana State	L	4-5
Miami, Fla.	L	1-8
New Mexico	W	7-0
South Florida	W	7-2
Wisconsin	L	4-5
Rollins	W	8-1
Michigan	W	8-1
Wake Forest	W	5-4
South Carolina	L	2-6
Boca Raton	W	8-1

1991

Head Coach: Patti Henderson

Record: 13-9

Florida	L	0-9
North Carolina	L	2-7
Miami, Fla.	L	4-5
Tulane	W	9-0
Rice	W	7-2
Louisiana State	W	5-4
Northeast Louisiana	W	9-0
Auburn	W	7-2
South Florida	W	9-0
Alabama	W	6-3
Michigan	W	7-2
Rollins	W	9-0
Wake Forest	L	4-5
Mississippi State	W	7-2
Trinity	W	7-2
Houston	L	4-5
Texas Christian	L	3-6
Southwest Louisiana	W	8-1
Wisconsin	L	3-6
Northwestern	L	2-7
Flagler	W	7-2
Duke	L	1-6

1992

Head Coach: Alice Reen

Record: 13-10

Northwestern	L	3-6
Wisconsin	L	2-7
Alabama	L	0-6
Flagler	W	7-2
Rollins	W	8-1
Virginia	W	7-2
Michigan	W	6-3
South Florida	W	7-2
North Carolina State	W	9-0
Miami, Fla.	L	2-7
Southern Methodist	W	5-3
Mississippi State	L	4-5
North Carolina	W	5-4
Duke	L	1-8
Georgia Tech	W	8-1
Illinois	L	4-5
South Alabama	W	6-1
Florida International	W	6-3
Georgia	L	3-6
Clemson	L	3-6
Wake Forest	W	5-4
Virginia	W	6-0
Wake Forest	L	2-5

1993

Head Coach: Alice Reen

Record: 13-9

Georgia Tech	W	8-1
California-		
Santa Barbara	L	4-5
Rice	L	4-5
Arizona	L	2-6
Florida International	W	8-1
Miami, Fla.	L	2-7
Rollins	W	8-1
Michigan	W	6-3
South Florida	W	5-4
Clemson	L	4-5
North Carolina	W	7-2
Wake Forest	L	4-5
Oklahoma	W	6-3
North Carolina State	W	6-0
Maryland	W	8-1
Tennessee	L	3-6
Virginia	W	5-4
Southwestern		
Louisiana	W	6-3
Georgia	L	2-5
South Alabama	W	5-4
North Carolina (ACC)	W	5-3
Clemson (ACC)	L	2-7

1994

Head Coach: Alice Reen

Record: 15-10

Georgia Tech	W	9-0
Miami, Fla.	L	4-5
Florida	L	1-8
Maryland	W	9-0
Kentucky	L	1-7
Tennessee	L	4-5
South Florida	W	5-4
Wake Forest	W	5-4
Clemson	L	3-6
Georgia	L	1-5
North Carolina State	W	7-2
Virginia	W	6-3
Mississippi State	W	5-1
Rice	W	7-2
Houston	W	5-1
Texas	L	3-6
Texas A&M	W	5-4
Florida International	W	5-1
North Carolina	W	7-2
Duke	L	4-5
South Alabama	W	7-2
N.C. State (ACC)	W	5-1
Clemson (ACC)	W	5-3
Duke (ACC)	L	0-5
Arizona	L	3-5

1995

Head Coach: Alice Reen

Record: 11-10

Florida	L	1-7
Vanderbilt	L	4-5
Georgia Southern	W	8-0
South Florida	L	4-5
North Carolina	W	5-4
Duke	L	1-6
Tennessee	W	5-4
Clemson	W	5-4



ALL-TIME RESULTS »

Maryland	W	8-1
Texas A&M	W	5-2
Georgia	L	0-6
Virginia	W	8-1
South Carolina	L	3-6
Miami, Fla.	L	3-6
Florida International	W	5-4
San Diego	L	2-6
Georgia Tech	W	6-0
North Carolina State	W	5-4
Wake Forest	L	3-6
Virginia (ACC)	W	5-3
Wake Forest (ACC)	L	2-5

1996

Head Coach: Alice Reen
Record: 8-11

Vanderbilt	L	0-8
Jacksonville	W	8-0
Miami, Fla.	W	5-3
Georgia Southern	W	7-2
Maryland	W	6-2
Clemson	W	5-4
Georgia	L	1-6
Wake Forest	L	4-5
North Carolina State	W	8-1
Virginia	L	4-5
Notre Dame	L	1-6
Mississippi	L	2-5
North Carolina	L	4-5
Duke	L	1-8
Florida	L	1-8
Georgia Tech	W	8-1
Virginia (ACC)	W	5-3
Duke (ACC)	L	0-6
South Carolina (NCAA)	L	2-5

1997

Head Coach: Lise Gregory
Record: 12-11

South Alabama	L	2-7
Vanderbilt	L	0-9
Auburn	W	7-1
Miami, Fla.	L	3-6
Florida International	W	8-1
Georgia Tech	W	8-1
California	L	2-7
Clemson	W	6-3
Florida	L	0-9
North Carolina	W	7-2
Baylor	L	4-5
Rice	W	5-4
Houston	L	4-5
Duke	L	1-7
North Carolina State	W	6-3
Wake Forest	L	2-6
Maryland	W	7-2
Illinois	W	8-1
Virginia	W	7-2
South Florida	W	5-4
Georgia Tech (ACC)	W	5-1
Wake Forest (ACC)	L	1-5
Vanderbilt (NCAA)	L	0-5

1998

Head Coach: Lise Gregory
Record: 12-12

Georgia Southern	W	7-2
Florida	L	1-8
Georgia Tech	L	4-5
Clemson	L	4-5
Maryland	L	4-5
Virginia	W	5-4
South Florida	W	6-3
Houston	W	7-2
Virginia Tech	L	4-5
Baylor	W	5-4
Wake Forest	L	3-6
NC State	L	4-5
South Alabama	L	1-8
Auburn	W	6-3
Illinois	W	6-3
Jacksonville	W	7-0
Florida International	W	6-3
Duke	L	1-8
North Carolina	W	5-4
North Carolina (ACC)	W	7-2
Duke (ACC)	L	5-0
Vanderbilt (NCAA)	L	6-0

1999

Head Coach: Lise Gregory
Record: 21-7

Jacksonville	W	9-0
Illinois	W	5-1
Southern Miss	W	9-0
Auburn	W	7-2
Georgia State	W	6-0
Florida	L	1-8
Georgia Southern	W	8-1
South Florida	W	8-1
South Alabama	W	5-1
Vanderbilt	L	4-5
Miami	L	4-5
Florida International	W	7-2
Baylor	W	7-2
Houston	W	5-4
Rice	W	6-3
Tulane	W	5-4
Virginia	W	6-3
Maryland	W	9-0
Kansas	W	6-3
Wake Forest	L	4-5
North Carolina State	W	9-0
Duke	L	0-9
North Carolina	W	6-3
Georgia Tech	W	6-3
Clemson	W	5-4
Virginia (ACC)	W	5-1
Wake Forest (ACC)	L	4-5
Iowa (NCAA)	L	4-5

2000

Head Coach: Lise Gregory
Record: 17-9

Georgia Southern	W	8-1
Vanderbilt	L	1-8
Iowa	W	5-4
Florida	L	1-5
Auburn	W	6-3

Jacksonville	W	9-0
Southern Miss	W	6-3
LSU	W	5-4
South Florida	W	7-2
Miami	W	5-1
Baylor	L	4-5
Tulane	W	7-2
Maryland	W	9-0
Virginia	W	7-2
North Carolina	W	5-2
Wake Forest	L	1-8
North Carolina State	W	8-1
Duke	L	2-7
Utah	W	7-2
Georgia Tech	L	4-5
Clemson	L	4-5
Georgia Tech (ACC)	W	5-3
Wake Forest (ACC)	L	0-5
Illinois (NCAA)	W	5-3
Florida (NCAA)	L	0-5

2001

Head Coach: Lise Gregory
Record: 14-11

Georgia State	W	7-0
Bethune-Cookman	W	def.
Alabama	L	3-4
Florida	L	0-7
Tulane	W	4-3
LSU	L	3-4
Miami	L	3-4
FIU	L	2-5
South Florida	W	4-3
Michigan State	W	7-0
Marquette	W	6-1
Pepperdine	L	3-4
Loyola Marymount	W	4-3
San Diego State	W	4-3
NC State	W	6-1
Wake Forest	L	3-4
North Carolina	L	1-6
Duke	L	0-7
Georgia Tech	W	6-1
Clemson	W	5-2
Maryland	W	5-2
Virginia	W	4-3
Georgia Tech (ACC)	W	4-2
Duke (ACC)	L	0-4
South Carolina (NCAA)	L	2-4

2002

Head Coach: Lise Gregory
Record: 12-15

Florida A&M	W	6-1
Georgia Southern	W	7-0
Vanderbilt	L	0-7
Central Florida	W	4-3
Louisiana State	W	4-3
Florida Atlantic	W	5-1
Auburn	L	3-4
Florida	L	1-5
Jacksonville	W	5-1
South Alabama	L	3-4
Alabama	L	3-4
Miami	L	3-4
Harvard	W	5-2

ALL-TIME RESULTS ➤

Michigan State	W	6-1
Florida International	L	3-4
South Florida	W	6-1
Maryland	L	3-4
Virginia	L	3-4
North Carolina State	W	5-2
Wake Forest	L	1-6
North Carolina	L	1-6
Duke	L	1-6
Georgia Tech	W	6-1
Clemson	L	3-4
Maryland (ACC)	W	4-3
North Carolina (ACC)	L	1-4
VCU (NCAA)	L	0-4

2003

Head Coach: Lise Gregory

Record: 13-10

Florida A&M	W	7-0
Stetson	W	7-0
Georgia Southern	W	7-0
Central Florida	W	6-1
Tulane	L	3-4
LSU	W	4-3
Furman	W	6-1
Florida	L	0-7
Alabama	L	3-4
South Florida	W	7-0
Baylor	W	4-3
Rice	W	4-3
South Alabama	L	2-5
FIU	W	4-3
Virginia	L	3-4
Wake Forest	W	4-3
N.C. State	W	6-1
Maryland	W	6-1
North Carolina	L	1-6
Duke	L	1-6
Georgia Tech	L	2-5
Clemson	L	1-6
North Carolina (ACC)	L	0-4

2004

Head Coach: Lise Gregory

Record: 18-8

Ga. Southern	W	7-0
Troy State	W	7-0
Stetson	W	7-0
Rice	W	5-1
UCF	W	6-1
UAB	W	7-0
Alabama	L	2-5
Florida	L	1-6
LSU	L	3-4
USF	W	5-2
FIU	W	6-1
Tulane	L	3-4
Michigan State	W	5-2
Penn State	W	6-1
Maryland	W	5-2
Virginia	W	6-1
N.C. State	W	7-0
Wake Forest	W	6-1
North Carolina	W	4-3
Duke	L	3-4
Georgia Tech	W	4-3
Clemson	L	3-4

Wake (ACC)	W	4-2
Duke (ACC)	L	1-4
Marshall (NCAA)	W	4-2
Vanderbilt (NCAA)	L	1-4

2005

Head Coach: Jennifer Hyde

Record: 11-12

Baylor	L	5-2
UCF	W	7-0
Alabama	W	5-2
Florida	L	6-1
Tulane	L	4-3
USF	W	4-3
San Diego	W	4-3
San Diego State	W	4-3
Miami	L	5-2
FIU	L	5-2
Virginia Tech	W	7-0
Maryland	W	6-1
Virginia	W	6-1
N.C. State	W	7-0
Wake Forest	L	4-3
North Carolina	L	6-1
Duke	L	4-3
Georgia Tech	L	5-2
Clemson	L	7-0
Florida A&M	W	7-0
Virginia (ACC)	W	4-3
Georgia Tech (ACC)	L	4-1
FIU (NCAA)	L	4-2

2006

Head Coach: Jennifer Hyde

Record: 9-13

Auburn	W	4-3
Bethune-Cookman	W	7-0
FAMU	W	5-0
Stetson	W	6-1
Florida	L	7-0
Georgia Southern	W	7-0
Troy State	W	4-3
LSU	L	5-2
UAB	W	5-2
FIU	L	5-2
Miami	L	7-0
Boston College	W	4-2
Maryland	L	4-3
North Carolina	L	6-1
N.C. State	L	5-2
Wake Forest	L	7-0
Clemson	L	4-3
Georgia Tech	L	4-2
Virginia	L	6-1
Virginia Tech	W	4-3
Duke	L	4-1
Wake Forest (ACC)	L	4-1

2007

Head Coach: Jennifer Hyde

Record: 16-8

Jacksonville	W	6-1
Georgia	L	1-6
Rice	W	6-1
Houston	W	5-1
Stetson	W	7-0

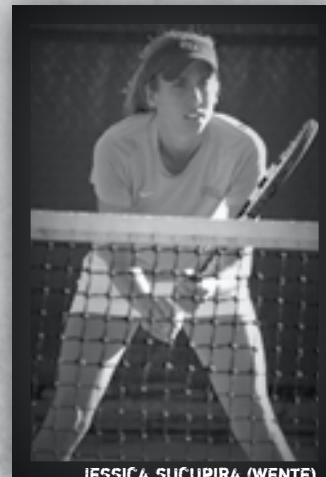
Florida A&M	W	7-0
LSU	W	5-2
Florida	L	3-4
Florida International	W	4-3
Miami	L	3-4
NC State	W	5-2
Wake Forest	W	4-3
Clemson	L	5-2
Georgia Tech	L	6-1
Virginia	W	4-3
Virginia Tech	W	7-0
North Carolina	L	7-0
Duke	W	4-3
Boston College (ACC)	W	4-0
Miami (ACC)	L	4-3
San Diego State (NCAA)	W	4-0
UCLA (NCAA)	L	4-2

2008

Head Coach: Jennifer Hyde

Record: 19-8

Rice	W	7-0
Stetson	W	7-0
UCF	W	7-0
FAMU	W	6-0
Jacksonville	W	7-0
Auburn	W	5-2
Florida	L	6-1
LSU	W	8-1
Miami	W	5-2
FIU	W	7-0
Clemson	L	5-2
UNLV	W	7-0
Virginia Tech	W	7-0
Virginia	L	4-3
UNC	W	4-3
No. 6 Duke	L	4-3
Georgia Tech	L	4-3
Maryland	W	5-2
Boston College	W	6-1
Wake Forest	W	6-1
NC State	L	4-3
Boston College (ACC)	W	5-0
Miami (ACC)	W	4-2
Duke (ACC)	L	4-2
Samford (NCAA)	W	4-0
Texas (NCAA)	L	5-2



JESSICA SUCUPIRA (WENTE)

MEDIA INFORMATION »

All interviews with women's tennis coaches and student-athletes must be coordinated through the Florida State Sports Information Office by contacting women's tennis SID Tania Fernandez by phone (850) 644-4836 or by email (tsf04@fsu.edu). She is ready to assist you with any questions or requests you may have about the Seminole women's tennis program.

COVERING THE SEMINOLES

Press releases and information on upcoming matches or events as well as results and statistics may be obtained by accessing Seminoles.com, the official athletics website of Florida State University. Pertinent team and player information will also be available at the Scott Speicher Tennis Center prior to all home matches.

WHERE THE HOME MATCHES ARE

All Seminole tennis home matches take place at the Scott Speicher Tennis Center (capacity 1000), located on Chieftain Way, on the Florida State campus. Any accredited photographer wishing to shoot the matches must check in with Tania Fernandez prior to the match, so proper credentials can be assigned.

MEDIA

Associated Press (Local)	(850) 224-1211
Florida Times-Union (Local)	(850) 224-7515, x1
Florida Times-Union	(800) 255-4679
Ft. Lauderdale Sun-Sentinel	(954) 356-4645
FSView	(850) 561-6653
Miami Herald	(305) 376-2387
Orlando Sentinel (Local)	(850) 222-5564
Orlando Sentinel	(407) 420-5474
The Osceola	(850) 222-7733
Palm Beach Post	(561) 820-4440
Panama City News-Herald	(850) 747-5065
St. Petersburg Times	(813) 226-3347
Tallahassee Democrat	(850) 599-2167
Tampa Tribune	(813) 259-7655
Sun Sports/FSN Florida	(407) 245-2511
WCTV-TV (CBS)	(850) 906-0477
WNLS Radio	(850) 422-3107
FSU Headlines/TV & Radio	(850) 644-1360
WTXL-TV (ABC)	(850) 893-1313

SEMINOLES.COM

Florida State University's athletics website is Seminoles.com which is the official, most comprehensive website of Seminole athletics.



SPORTS INFORMATION DIRECTORY



SID: Tina Dechausay
850-644-1403 (O)
850-694-1369 (C)
tthomas@fsu.edu

Associate SID:
Chuck Walsh
850-644-1077 (O)
850-694-2540 (C)
cwalsh@fsu.edu

Associate SID:
Elliott Finebloom
850-644-0615 (O)
850-694-1768 (C)
efinebloom@fsu.edu

Assistant SID: Jason Leturmy
850-644-5656 (O)
850-694-2583 (C)
jleturmy@fsu.edu

Assistant SID:
Ace Hunt
850-644-4836 (O)
850-491-3116 (C)
aohunt@fsu.edu

TENNIS CONTACT:

Graduate Assistant:
Tania Fernandez
850-644-5653 (O)
tsf04@fsu.edu

Assistant SID:
Katy Baker
850-645-7683 (O)
850-694-3317 (C)
kbaker@fsu.edu

Program Assistant:
Maryjane Gardner
850-644-2016 (O)
mg03f@fsu.edu

Graduate Assistant:
Layne Herdt
850-644-3920 (O)
layne.herdt@gmail.com

Director of Digital Media:
Ryan Pensy
850-645-1273 (O)
850-694-2925 (C)
rpensy@fsu.edu



MEDIA INFORMATION »

Mark Rodin - Program Director

Jim Garbarino - Associate Program Director and Videoboard Operations Supervisor

DD Garbarino, Jerry Tootle - Senior Producers

Jim Shaw - Videoboard Coordinator

Phil Jackson - Asst. Videoboard coordinator

Brant Wells - Producer/Editor

Greg Christopher - Digital/On Line Media Producer

Chris Provine - Animator



Established in 1987, Seminole Productions handles virtually every video production need for Florida State

Athletics and teaches advanced courses in video production and performance to FSU Communication students. Seminole Productions produces Florida State's coaches' shows, as well as Seminole Sports Magazine and contracted shows for Sun Sports/Fox Sports Net. Seminole Productions also produces all of the production elements for Seminole Vision, the in-game entertainment productions for all of FSU football, basketball, and baseball home contests. Seminole Productions also provides visual communications support for Government and other agencies throughout the state of Florida.

With an experienced, award-winning staff and creative and talented students, Seminole Productions is looked at as a leader in sports production, graphics and corporate video. Creating the perfect blend of high-tech wizardry with good ole' Seminole sports action is a big part of what Seminole Productions is all about.

SEMINOLES ALL-ACCESS

Seminole All-Access is the multimedia home on Seminoles.com for video highlights, interviews, press conferences, live game audio and exclusive subscriber-only features. Monthly subscriptions start at \$9.95 with yearly subscriptions starting at \$79.95.



THEACC.COM

The Atlantic Coast Conference official website can be accessed by visiting www.TheACC.com. In addition to links of all 12 ACC school athletic websites, TheACC.com will have weekly tennis releases, including standings and records. The ACC Player of the Week will be posted on Tuesday afternoons.



ACC ALL-ACCESS

Raycom Sports and the Atlantic Coast Conference, in partnership with CBS College Sports, will offer online video streaming of ACC sports during the 2008-09 academic year. The broadband network, called ACC Select, will primarily stream sports that are not available through traditional broadcast and cable television distribution. Go to www.ACCSelect.com for complete details.



OPPONENT INFORMATION ▶

BOSTON COLLEGE

University Information

Location Chestnut Hill MA
 Symbol Eagles
 Enrollment 14,500
 President Rev. William P. Leahy
 Athletic Director Gene DeFilippo
 Conference Atlantic Coast Conference
 Affiliation NCAA

Women's Tennis Information

Head Coach Nigel Bentley
 Record at BC/Years 71-75
 Office Phone (617) 552-3171
 Office Fax
 Home Facility Flynn Recreation Complex

2008 Season In Review

2007 Record 5-17
 2007 ACC Record/Finish 0-11/12th
 Final ITA Ranking 15
 Letterwinners R/L 7/1
 Newcomers 3

SID Information

Sports Information Director Chris Cameron
 Women's Tennis SID Ben Warnick
 Phone Number (617) 552-4508
 Fax Number (617) 552-4903
 Email Address warnickb@bc.edu
 Athletic Website www.theacc.com
 Conference Website www.bceagles.com

CLEMSON

University Information

Location Clemson, SC
 Symbol Tigers
 Enrollment 17,309
 President James F. Barker
 Athletic Director Terry Don Phillips
 Conference Atlantic Coast Conference
 Affiliation NCAA, Division 1

Women's Tennis Information

Head Coach Nancy Harris
 Record at Clemson/Years 157-94/10 years
 Office Phone (864) 656-1323
 Office Fax (864) 656-6386
 Home Facility Hoke Sloan Tennis Center

2008 Season In Review

2007 Record 22-5
 2007 ACC Record/Finish 4-0/1st
 Final ITA Ranking 11th
 Letterwinners R/L 7/3
 Newcomers 1

SID Information

Sports Information Director Tim Bourret
 Women's Tennis SID Christine Long
 Phone Number (864) 656-1920
 Fax Number (864) 656-0299
 Email Address longc@clemsontigers.edu
 Athletic Website www.clemsontigers.com
 Conference Website www.theacc.com

EASTERN MICHIGAN

University Information

Location East Lansing, Mich.
 Symbol Spartans
 Enrollment 45,520
 President Dr. Lou Anna K. Simon
 Athletic Director Mark Hollis
 Conference Big 10
 Affiliation NCAA, Division 1

Women's Tennis Information

Head Coach Erica Perkins
 Record at MSU/Years 12-12/1 year
 Office Phone (517) 432-0636
 Office Fax (517) 432-4393
 Home Facility MSU Indoor Tennis Facility

2008 Season In Review

2007 Record 12-12
 2007 Big 10 Record/Finish 2-8/9th
 Final ITA Ranking N/A
 Letterwinners R/L 5/3
 Newcomers 6

SID Information

Sports Information Director John Lewandowski
 Women's Tennis SID Shawn Davis
 Phone Number (517) 355-2271
 Fax Number (517) 353-9636
 Email Address cerickson@ath.msu.edu
 Athletic Website www.msuspartans.com
 Conference Website www.theacc.com

FURMAN

University Information

Location Greenville, S.C.
 Symbol Paladins
 Enrollment 2,600
 President Dr. David E. Shi
 Athletic Director Dr. Gary Clark
 Conference Southern
 Affiliation NCAA Division 1

Women's Tennis Information

Head Coach Debbie Southern
 Record at Furman/Years 364-222/24th
 Office Phone (864) 294-3428
 Office Fax (864) 294-2980
 Home Facility Minor Herndon Mikel Tennis Center

2008 Season In Review

2007 Record 16-9
 2007 Southern Record/Finish 9-0/1st
 Final ITA Ranking 71
 Letterwinners R/L 5/4
 Newcomers 2

SID Information

Sports Information Director Hunter Reid
 Women's Tennis SID Kim Tonkin
 Phone Number (864) 294-3062
 Fax Number (864) 294-3061
 Email Address kim.tonkin@furman.edu
 Athletic Website www.furmanpaladins.com
 Conference Website www.soconports.com

GEORGIA STATE

University Information

Location Atlanta, Ga.
 Symbol Panthers
 Enrollment 27,000
 President Dr. Carl V. Patton
 Athletic Director Mary McElroy
 Conference Colonial Athletic Association
 Affiliation NCAA Division 1

Women's Tennis Information

Head Coach Miha Lisac
 Record at Ga.State/Years 1st year
 Office Phone (404) 413-4072
 Office Fax (404) 413-4001
 Home Facility Piedmont Park Tennis Center

2008 Season In Review

2007 Record 11-9
 2007 CAA Record/Finish 1-2/4th
 Final ITA Ranking N/A
 Letterwinners R/L 4/3
 Newcomers 2

SID Information

Sports Information Director Allison George
 Women's Tennis SID Deandra Duggens
 Phone Number (404) 413-4034
 Fax Number (404) 413-4035
 Email Address athdd@langate.gsu.edu
 Athletic Website GeorgiaStateSports.com
 Conference Website www.caasports.com

GEORGIA TECH

University Information

Location Atlanta, Ga.
 Symbol Yellow Jackets
 Enrollment 16,793
 President Dr. G. Wayne Clough
 Athletic Director Dan Radakovitch
 Conference Atlantic Coast
 Affiliation NCAA

Women's Tennis Information

Head Coach Bryan Shelton
 Record at Ga. Tech/Years 139-62/8 years
 Office Phone (404) 894-0458
 Office Fax (404) 894-1248
 Home Facility Bill Moore Tennis Center

2008 Season In Review

2007 Record 29-1
 2007 ACC Record/Finish 10-1/1st
 Final ITA Ranking 1st
 Letterwinners R/L 4/2
 Newcomers 4

SID Information

Sports Information Director Dean Buchan
 Women's Tennis SID Dan Goldberger
 Phone Number (404) 894-5445
 Fax Number (404) 894-1248
 Email Address dgoldberger@athletics.gatech.edu

Athletic Website
 Conference Website

www.ramblinwreck.com
 www.theacc.com

LOUISIANA STATE UNIVERSITY

University Information

Location Baton Rouge, La
 Symbol Bengal Tigers
 Enrollment 29,317
 President Dr. William Jenkins
 Athletic Director Stanley "Skip" Bertman
 Conference Southeastern
 Affiliation NCAA, Division 1

Women's Tennis Information

Head Coach Tony Minnis
 Record at LSU/Years 224-172
 Office Phone (225) 578-8226
 Office Fax (225) 578-1861
 Home Facility W.T. Robinson Tennis Stadium

2008 Season In Review

2007 Record 16-10
 2007 Southeastern Record/Finish 6-5/8th
 Final ITA Ranking 7th
 Letterwinners R/L 8/1
 Newcomers 2

SID Information

Sports Information Director Michael Bonnette
 Women's Tennis SID Jake Terry
 Phone Number (225) 578-8226
 Fax Number (225) 578-1861
 Email Address jterry9@fsu.edu
 Athletic Website www.LSUsports.net
 Conference Website www.secsports.com

MARYLAND

University Information

Location College Park, Md
 Symbol Terrapins
 Enrollment 35,102
 President Dr. C.D. Mote Jr.
 Athletic Director Deborah A. Yow
 Conference Atlantic Coast Conference
 Affiliation NCAA

Women's Tennis Information

Head Coach Martin Novak
 Record at Maryland/Years 60-73/8 years
 Office Phone (301) 314-6601
 Office Fax (301) 405-0955
 Home Facility Tennis Center at College Park

2008 Season In Review

2007 Record 8-15
 2007 ACC Record/Finish 1-10/10th
 Final ITA Ranking N/A
 Letterwinners R/L 4/4
 Newcomers 0

SID Information

Sports Information Director Doug Dull
 Women's Tennis SID Rose DiPaula
 Phone Number (301) 314-1843
 Fax Number (301) 314-9094
 Email Address rdipaula@umd.edu
 Athletic Website www.umterps.com
 Conference Website www.theacc.com

MIAMI

University Information

Location Coral Gables, Fla.
 Symbol Hurricanes
 Enrollment 15,250
 President Dr. Donna E. Shalala
 Athletic Director Paul Dee
 Conference Atlantic Coast Conference
 Affiliation NCAA, Division 1

Women's Tennis Information

Head Coach Paige Yaroshuk-Tews
 Record at UM/Years 118-37/7 years
 Office Phone (305) 284-5174
 Office Fax (305) 284-2807
 Home Facility Neil Schiff Tennis Center

2008 Season In Review

2007 Record 22-7
 2007 ACC Record/Finish 8-3/3rd
 Final ITA Ranking 9th
 Letterwinners R/L 5/3
 Newcomers 3

SID Information

Sports Information Director Dennis Jezek Jr.
 Women's Tennis SID Rob Dunning
 Phone Number (305) 284-3230
 Fax Number (305) 284-2807
 Email Address rdunning@miami.edu



OPPONENT INFORMATION »

Athletic Website
Conference Website

MICHIGAN STATE

University Information

Location East Lansing, Mich.
Symbol Spartans
Enrollment 45,520
President Dr. Lou Anna K. Simon
Athletic Director Mark Hollis
Conference Big 10
Affiliation NCAA, Division 1

Women's Tennis Information

Head Coach Erica Perkins
Record at MSU/Years 12-12/ 1 year
Office Phone (517) 432-0636
Office Fax (517) 432-4393
Home Facility MSU Indoor Tennis Facility

2008 Season In Review

2007 Record 12-12
2007 Big 10 Record/Finish 2-8/9th
Final ITA Ranking 3
Letterwinners R/L 5/3
Newcomers 6

SID Information

Sports Information Director Lori Schulze
Women's Tennis SID Chad Erickson
Phone Number (517)355-2271
Fax Number (517) 353-9636
Email Address cerickson@ath.msu.edu
Athletic Website www.mnspartans.com
Conference Website www.theacc.com

NORTH CAROLINA STATE

University Information

Location Raleigh, N.C.
Symbol Wolfpack
Enrollment 31,792
President Dr. James L. Oblinger
Athletic Director Lee Fowler
Conference Atlantic Coast Conference
Affiliation NCAA

Women's Tennis Information

Head Coach Hans Olsen
Record at NC State/Years 196-163/12 years
Office Phone (919) 515-7674
Office Fax (919) 515-2898
Home Facility J.W. Isenhour Tennis Center

2008 Season In Review

2007 Record 13-11
2007 ACC Record/Finish 7-4/8th
Final ITA Ranking 41
Letterwinners R/L 6/5
Newcomers 1

SID Information

Sports Information Director Annabelle V. Meyers
Women's Tennis SID Pat Norris
Phone Number (919) 515-1180
Fax Number (919) 515-2898
Email Address pat_norris@ncsu.edu
Athletic Website www.gopack.com
Conference Website www.theacc.com

TEXAS CHRISTIAN UNIVERSITY

University Information

Location Fort Worth, TX
Symbol Horned Frogs
Enrollment 8,668
President Victor J. Boshchini
Athletic Director Daniel B. Morrison
Conference Mountain West
Affiliation

Women's Tennis Information

Head Coach Jefferson Hammond
Record at TCU/Years 37-17/2
Office Phone (817) 257-7969
Office Fax (817) 257-7964
Home Facility Bayard H. Friedman Tennis Center

2008 Season In Review

2007 Record 17-11
2007 MWC Record/Finish 1-7/T-1st
Final ITA Ranking 38th
Letterwinners R/L 4/2
Newcomers 2

SID Information

Sports Information Director Mark Cohen
Women's Tennis SID Jaime Handy
Phone Number (817) 257-5379
Fax Number (817) 257-7984
Email Address j.handy@tcu.edu
Athletic Website www.GoFrogs.com
Conference Website www.theMWC.com

www.hurricanesports.com
www.theacc.com

UNIVERSITY OF FLORIDA

University Information

Location Gainesville, Fla.
Symbol Gators
Enrollment 51,520
President Dr. J. Bernard Machen
Athletic Director Jeremy Foley
Conference Southeastern
Affiliation NCAA, Division 1

Women's Tennis Information

Head Coach Roland Thornquist
Record at UF/Years 149-13/ 6yrs
Office Phone (352) 375-4683
Office Fax (352) 372-8159
Home Facility Linder Stadium at Ring Tennis Complex

2008 Season In Review

2007 Record 24/3
2007 Southeastern Record/Finish 10-1/1st
Final ITA Ranking 6th
Letterwinners R/L Lost: 6/1
Newcomers 2

SID Information

Sports Information Director Kathy Cafazzo
Women's Tennis SID (352) 375-4683 ext. 6133
Phone Number (352) 372-8159
Fax Number Kathy@gators.ufl.edu
Email Address www.GatorZone.com
Athletic Website www.secsports.com
Conference Website

UNIVERSITY OF NORTH CAROLINA

University Information

Location Chapel Hill N.C.
Symbol Tar Heels
Enrollment 27,700
President Dr. James Moeser
Athletic Director Dick Baddour
Conference Atlantic Coast
Affiliation NCAA Division 1

Women's Tennis Information

Head Coach Brian Kalbas
Record at UNC/Years 92-35/4
Office Phone (919) 962-6262
Office Fax (919) 962-2604
Home Facility Cone/Kenfield Tennis Center

2008 Season In Review

2007 Record 23-9
2007 ACC Record/Finish 8-3/T-3rd
Final ITA Ranking 12th
Letterwinners R/L 9/3
Newcomers 0

SID Information

Sports Information Director Emeritus Rick Brewer
Women's Tennis SID Bobby Hundley
Phone Number (919) 843-5678
Fax Number (919) 962-0612
Email Address bobbyhundley@unc.edu
Athletic Website www.TarHeelBlue.com
Conference Website www.theacc.com

UNIVERSITY OF SOUTH FLORIDA

University Information

Location Tampa, Fla.
Symbol Bulls
Enrollment 43,885
President Dr. Judy Greshaft
Athletic Director Doug Woolard
Conference Big East
Affiliation NCAA, Division 1

Women's Tennis Information

Head Coach Austin Moreno
Record at USF/Years 17-6
Office Phone (813) 974-4121
Office Fax (813) 974-5328
Home Facility USF Varsity Tennis Courts

2008 Season In Review

2007 Record 18-7
2007 Big East Record/Finish 5-2/2
Final ITA Ranking 41
Letterwinners R/L 8/3
Newcomers 3

SID Information

Sports Information Director Chris Freet
Women's Tennis SID Brad Borghetti
Phone Number (813) 974-4029
Fax Number (813) 974-5328
Email Address ahollen@admin.usf.edu
Athletic Website www.gousfbulls.com
Conference Website www.bigeast.org

UNIVERSITY OF VIRGINIA

University Information

Location Charlottesville, Va.
Symbol Cavaliers
Enrollment 20,399
President John T. Casteen III
Athletic Director Craig Littlepage
Conference Atlantic Coast Conference
Affiliation NCAA, Division 1

Women's Tennis Information

Head Coach Mark Guilbeau
Record at Virginia/Years 26-2/2 years
Office Phone (434) 982-5734
Office Fax (434)982-4926
Home Facility Snyder Tennis Center

2008 Season In Review

2007 Record 12-12
2007 ACC Record/Finish 4-7/8th
Final ITA Ranking 14th
Letterwinners R/L 5/3
Newcomers 0

SID Information

Sports Information Director James Madison
Women's Tennis SID Steve Kirkland
Phone Number (434) 982-5525
Fax Number (434) 982-5525
Email Address skirkland@virginia.edu
Athletic Website www.virginiasports.com
Conference Website www.theacc.com

VIRGINIA TECH

University Information

Location Blacksburg, Va.
Symbol Hokies
Enrollment 28,000
President Dr. Charles Steger
Athletic Director Jim Weaver
Conference Atlantic Coast Conference
Affiliation NCAA

Women's Tennis Information

Head Coach Terry Ann Zawacki-Woods
Record at VT/Years 12-12/1st
Office Phone (540) 231-9971
Office Fax (540) 231-2002
Home Facility Burrows-Burleson Tennis Center

2008 Season In Review

2007 Record 12-12
2007 ACC Record/Finish 2-9/10th
Final ITA Ranking 60
Letterwinners R/L 8/3
Newcomers 2

SID Information

Sports Information Director Dave Smith
Women's Tennis SID Torey Hurst
Phone Number (540) 231-8823
Fax Number (540) 231-2002
Email Address tohurst@vt.edu
Athletic Website www.hokiesports.com
Conference Website www.theacc.com

WAKE FOREST UNIVERSITY

University Information

Location Winston-Salem, N.C.
Symbol Demon Deacons
Enrollment 4,321
President Nathan O. Hatch
Athletic Director Ron Wellman
Conference Atlantic Coast
Affiliation NCAA

Women's Tennis Information

Head Coach Chad Skerupka
Record at WF/Years 29-18/2 years
Office Phone (336) 758-5752
Office Fax (336) 758-5140
Home Facility Leighton Stadium

2008 Season In Review

2007 Record 15-6
2007 ACC Record/Finish 7-4/6th
Final ITA Ranking 20
Letterwinners R/L 6/2
Newcomers 2

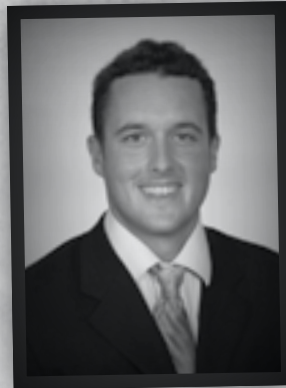
SID Information

Sports Information Director Michael Bertsch
Women's Tennis SID Katy Hamlett
Phone Number (336) 758-4120
Fax Number (336) 758-5140
Email Address hamletkd@wfu.edu
Athletic Website www.wakeforestsports.com
Conference Website www.theacc.com

RADIO-TV CHART »



**HEAD COACH
JENNIFER HYDE**



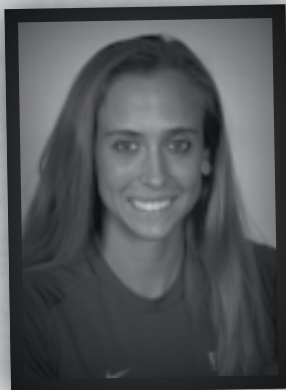
**ASSISTANT COACH
OLIVER FOREMAN**



**SENIOR
ANIA RYNARZEWSKA**



**JUNIOR
LAUREN MACFARLANE**



**JUNIOR
JESSICA SUCUPIRA**



**SOPHOMORE
BONNY DAVIDSON**



**SOPHOMORE
KATIE RYBAKOVA**



**SOPHOMORE
FEDERICA SUESS**



**FRESHMAN
JUSTINE HUMAIR**