

**JOIN THE
CREW
IN
92**

**1992 ATLANTIC
COAST CONFERENCE**



FLORIDA STATE VOLLEYBALL

**FSU QUICK FACTS
AT A GLANCE**

LocationTallahassee, Florida
 Founded 1857
 Enrollment 29,000
 President Dr. Dale Lick
 Nickname Lady Seminoles
 Home Arena Tully Gym (3,525)
 Affiliation NCAA Division I
 Conference Atlantic Coast

ATHLETIC ADMINISTRATION

Athletic Director Bob Goin
 Associate Athletic Director Dr. Janice Stocker
 Asst. to the Associate AD Missy Garrett
 Athletic Director (904) 644-1079
 Associate Director (904) 644-1091

SPORTS INFORMATION STAFF

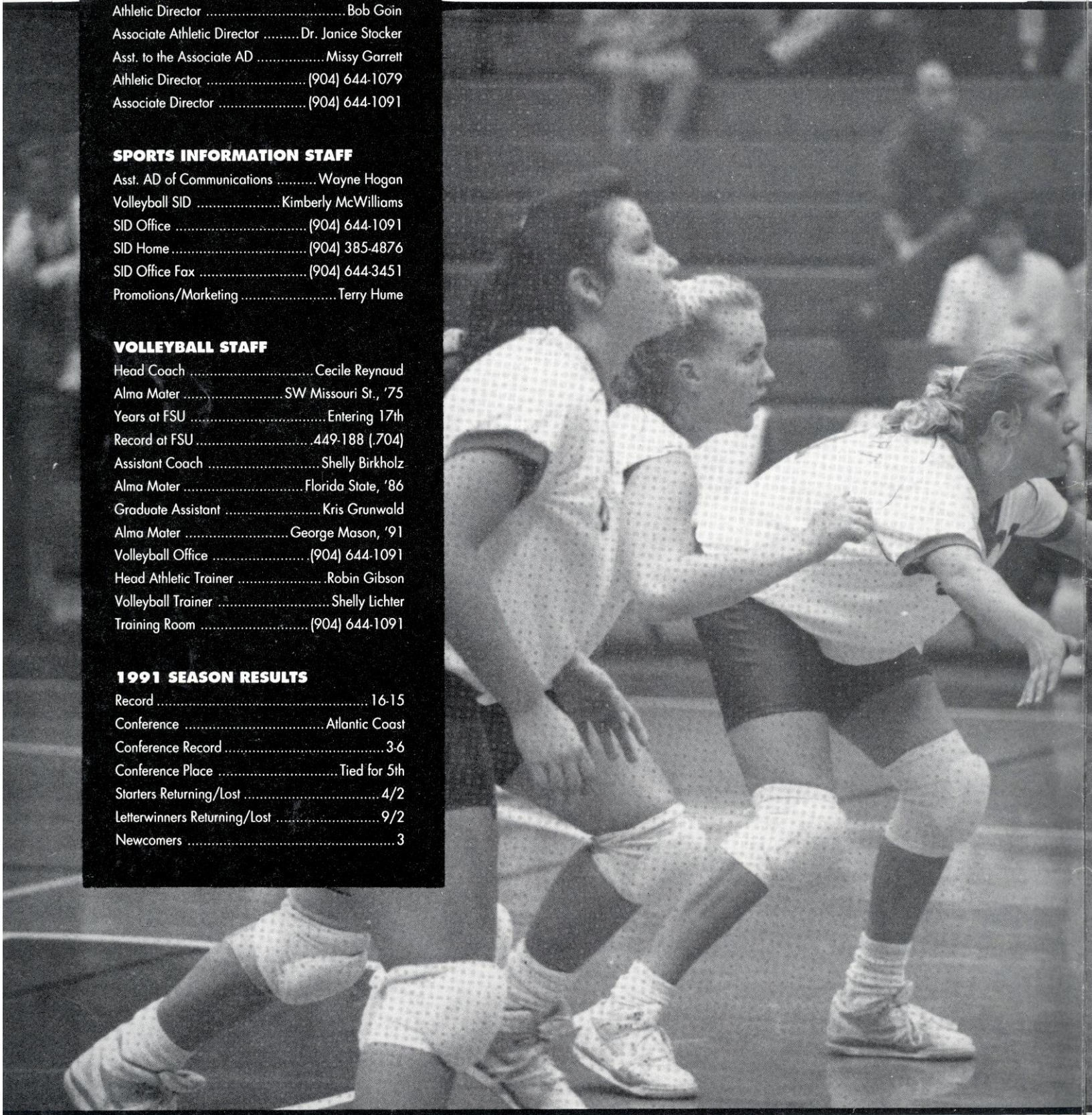
Asst. AD of Communications Wayne Hogan
 Volleyball SID Kimberly McWilliams
 SID Office (904) 644-1091
 SID Home (904) 385-4876
 SID Office Fax (904) 644-3451
 Promotions/Marketing Terry Hume

VOLLEYBALL STAFF

Head Coach Cecile Reynaud
 Alma Mater SW Missouri St., '75
 Years at FSU Entering 17th
 Record at FSU 449-188 (.704)
 Assistant Coach Shelly Birkholz
 Alma Mater Florida State, '86
 Graduate Assistant Kris Grunwald
 Alma Mater George Mason, '91
 Volleyball Office (904) 644-1091
 Head Athletic Trainer Robin Gibson
 Volleyball Trainer Shelly Lichter
 Training Room (904) 644-1091

1991 SEASON RESULTS

Record 16-15
 Conference Atlantic Coast
 Conference Record 3-6
 Conference Place Tied for 5th
 Starters Returning/Lost 4/2
 Letterwinners Returning/Lost 9/2
 Newcomers 3



CONTENTS

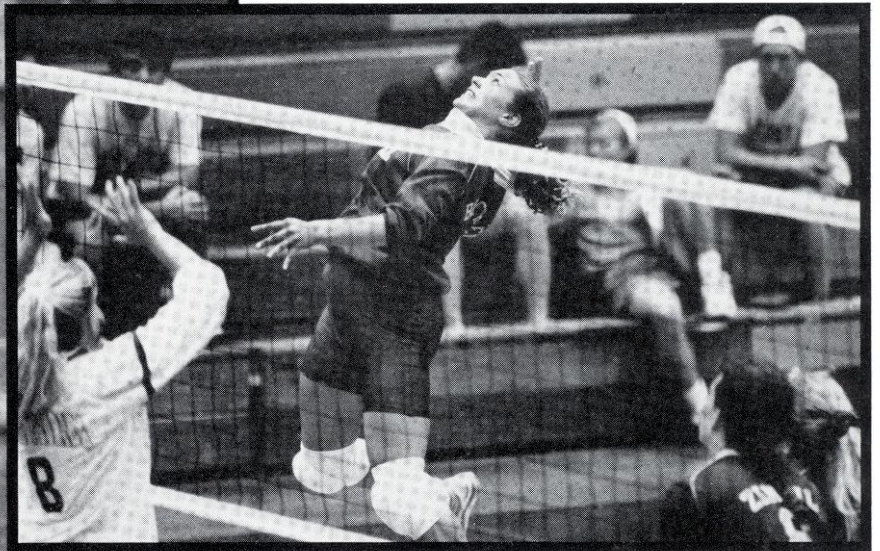
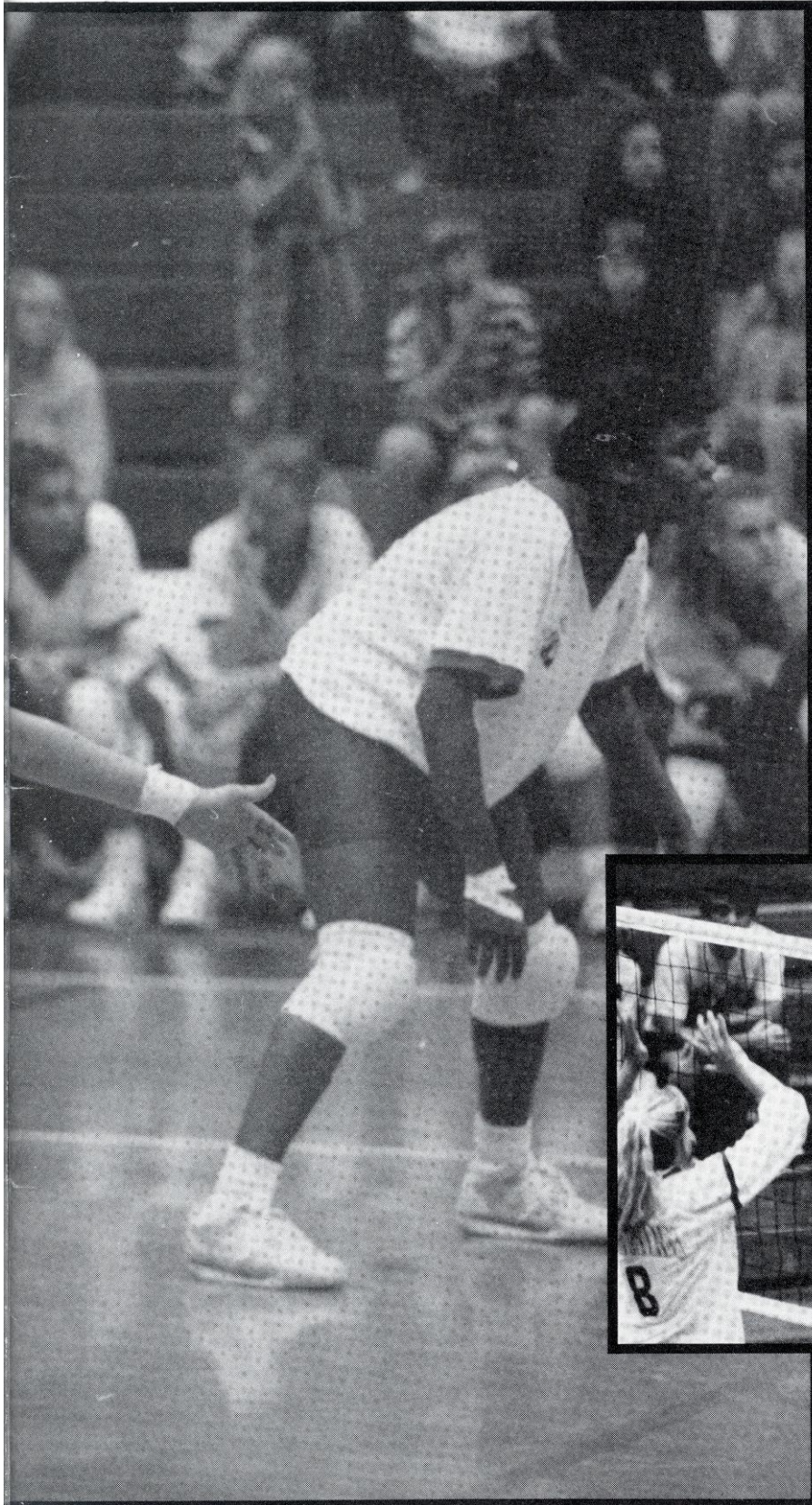
WELCOME TO TALLAHASSEE 2-3
FLORIDA STATE UNIVERSITY 4-5
STUDENT-ATHLETES AT FSU 6-7
1992 OUTLOOK 8-9
CECILE REYNAUD 10-11
ASSISTANT COACHES 12
TEAM PROFILES 13-17
1991 REVIEW 18-19
1991 STATS & HONORS 20-21
OPPONENTS 22-24
RECORD BOOK 25-32

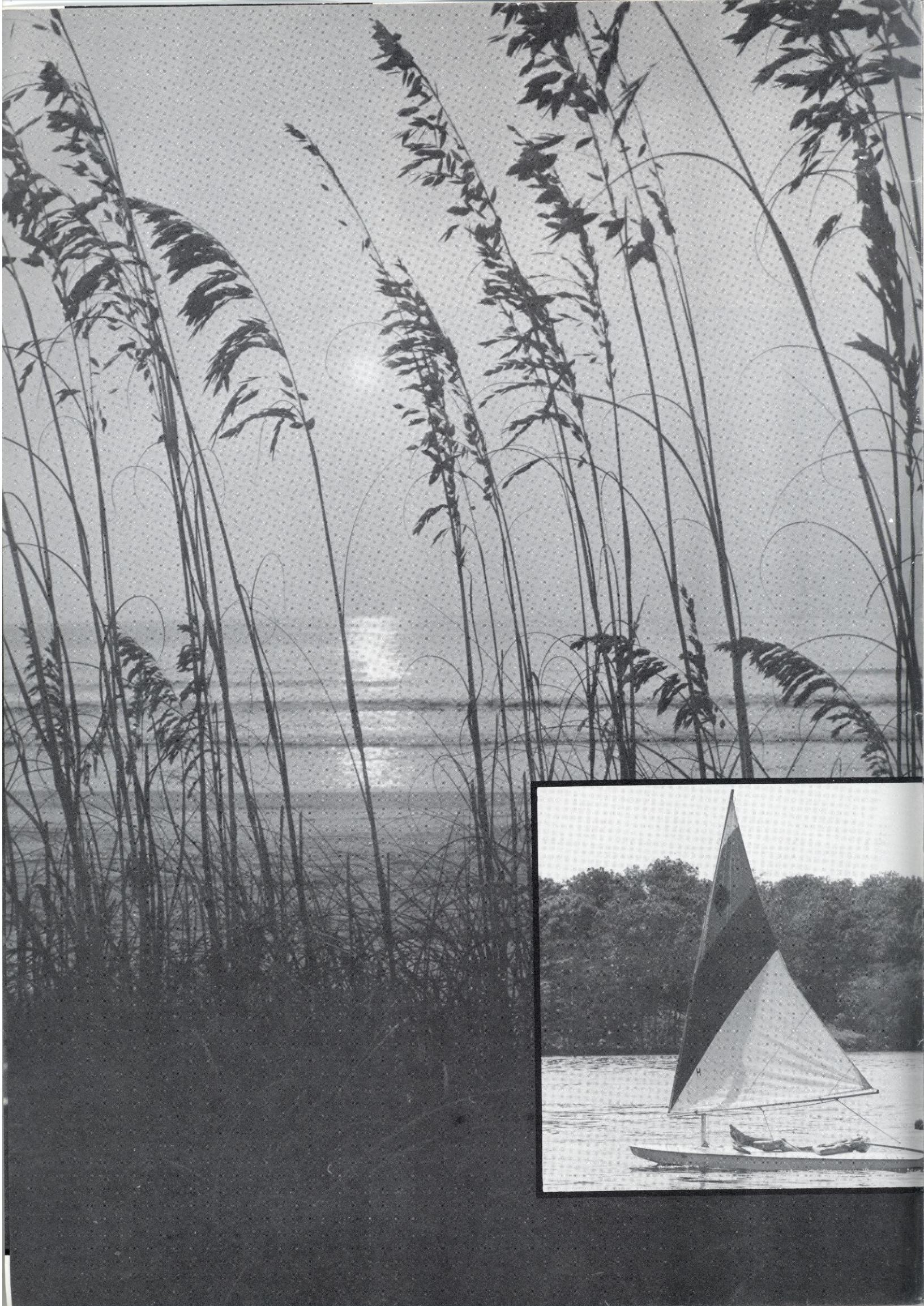
CREDITS

The 1992 Volleyball Media Guide was written by Assistant Sports Information Director Kim McWilliams with assistance from Sports Information Graduate Assistant Meredith Heins. Graphic Design by Roxanne McGrath at McGrath Communication Design. Photography provided by Bucky Parrish and Ross Obley. Printing by Florida Printing.

COVER:

Cover photo by Ray Stanyard. Featured on the cover are the FSU seniors and juniors: Bianca Stevens, Sherry Cowling, Jennifer Cichy, Jennifer McCall, and Vicki Zinkil. R/V LADY SEMINOLE, Florida State University Marine Laboratory.





Just a few blocks from Florida State University is the towering capitol building located in the center of the city. Tallahassee, the political nerve center of one of the fastest growing states in the nation, offers a clean industry, southern hospitality, cultural diversity and academic excellence.

More than 192,000 people live in Tallahassee and in the surrounding Leon County area. Residents enjoy subtropical summers, colorful foliage in the spring and autumn, and cool winters.

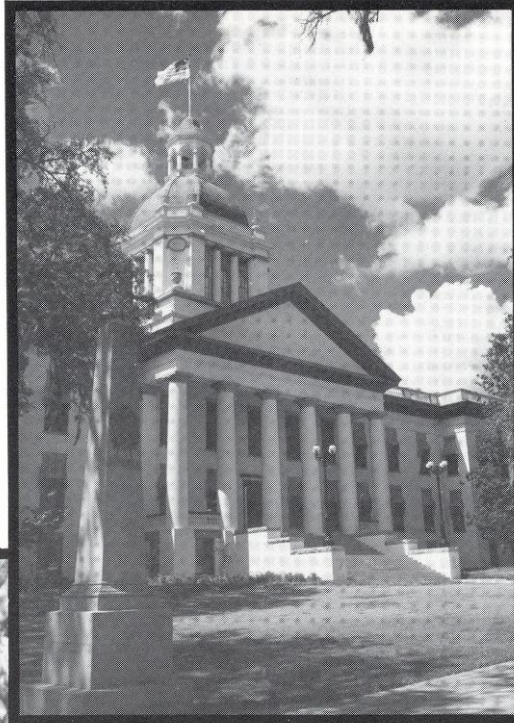
Go in any direction from Tallahassee and find action-packed recreation. Fishing on Lake Jackson, canoeing, water skiing or sailing at the University's Reservation, sunning on nearby Gulf of Mexico beaches, bird-watching at Wakulla Springs and St. Marks are all a special part of Tallahassee's appeal.

Annual events in Tallahassee are a big part of the community involvement. Springtime Tallahassee draws a crowd of more than 200,000 during its four-week jubilee in March and April. A downtown parade,

festival in the park, city-wide race and balloon rally all make Springtime Tallahassee great fun for everyone.

Residents also look forward to the Celebration of Lights in December when the Civic Center parking lot is turned into an ice skating rink along with lighting festivities and a 3K run in the downtown area. The LPGA Tour brings the world's top female golfers and FSU alumni like Jane Geddes, Colleen Walker and Barbara Bunkowsky, who compete each May for the largest purse on the tour at the Centel Classic hosted by the Killbuck County Club. Summer-time brings a city wide fourth of July Celebration at Tom Brown Park and of course, fall means Seminole fever as the Florida State football team kicks off another exciting year.

With a median age of 27 years old, studies have shown that Tallahassee is relatively young, affluent, well-educated, ethnically diverse and growing by leaps and bounds. Whether a student, professional or retiree, Tallahassee has something for everyone to enjoy.



THE UNIVERSITY . . .

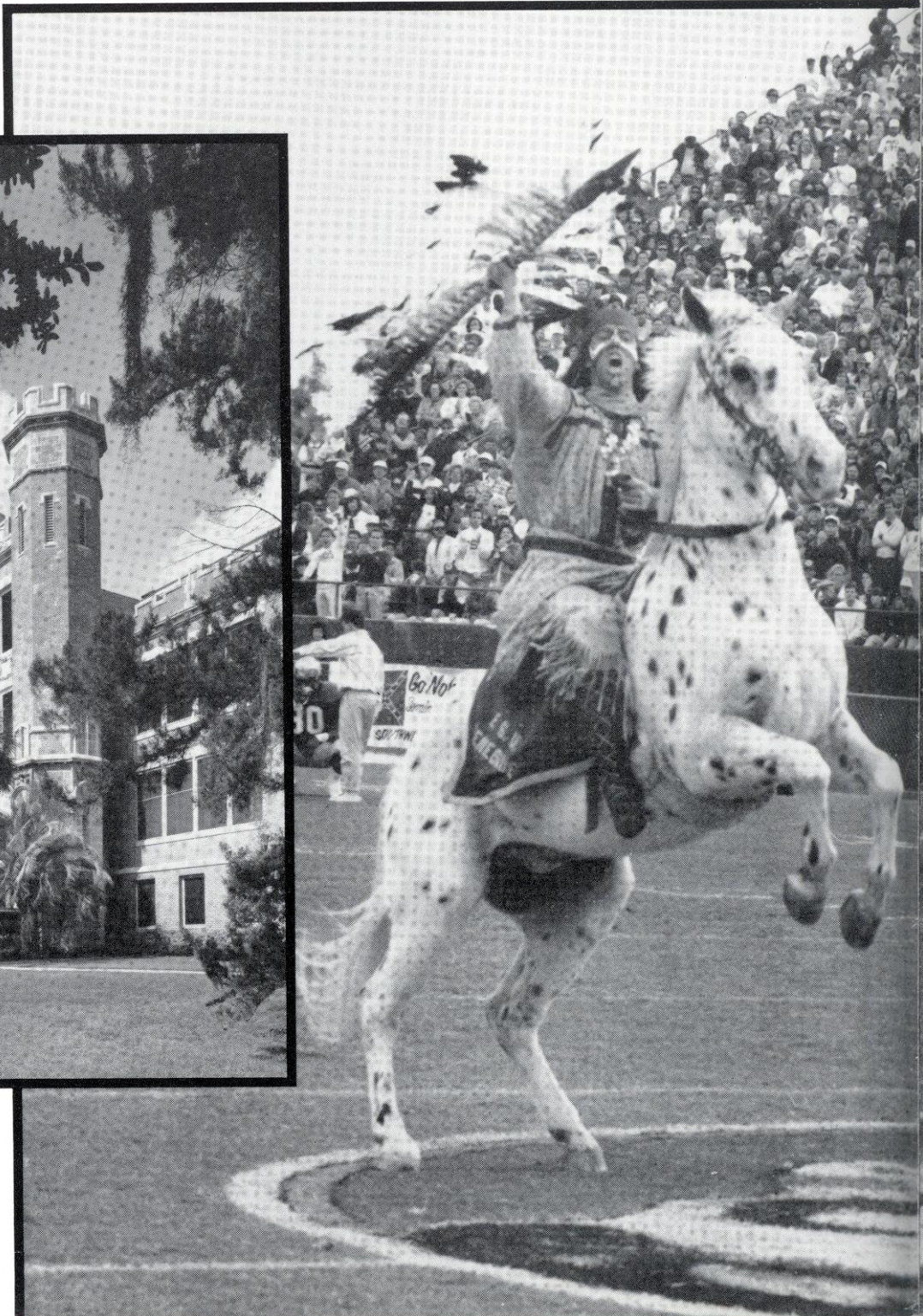
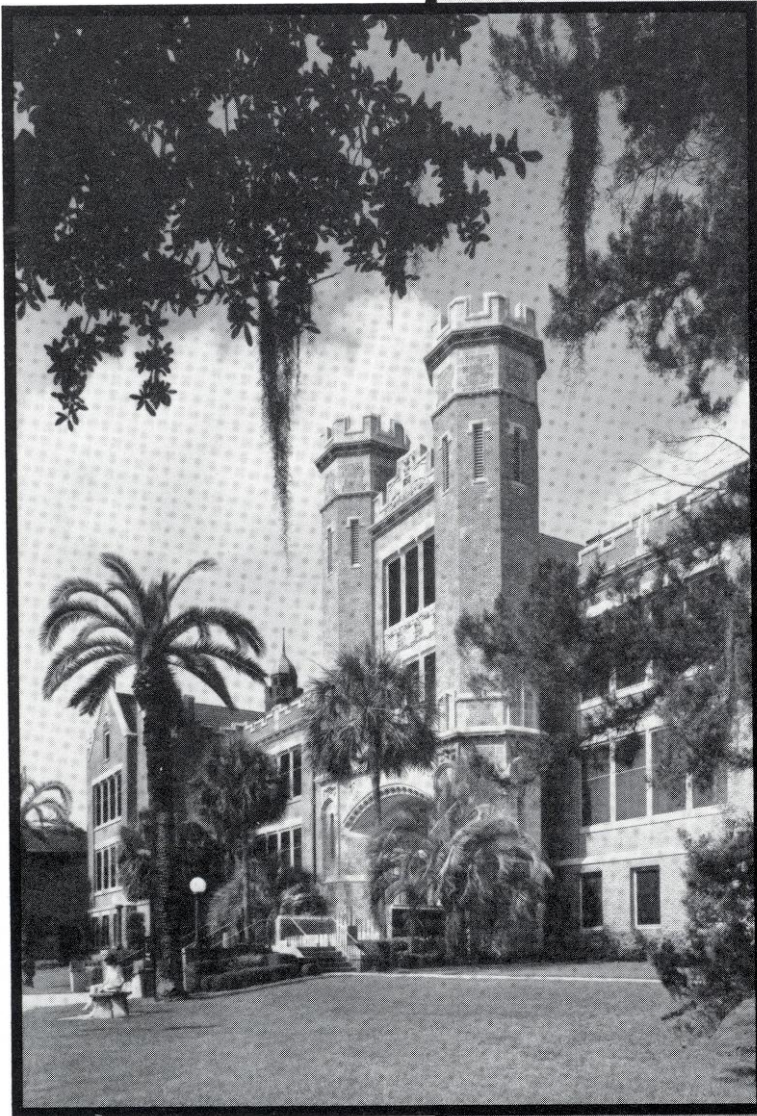
From its beginning as "The Seminary West of the Suwannee" in 1857, Florida State University has grown to stretch across 347 acres of rolling oak and pine-covered hills to comprise a campus which has educated millions of students over the last century.

Florida State University has boasted a heritage of service and scholarship since the beginning when the legislature passed an act authorizing two state colleges — one east (now University of Florida) and one west of the meandering Suwannee River.

Starting with a 130-member coed enrollment in 1857,

the Seminary survived the Civil War, reconstruction, radical social changes, and a variety of name changes to emerge in 1909 as the Florida State College for Women.

It was helped back into coed status in 1947 by a legislature anxious to open up the state's educational resources to thousands of degree-seeking ex-GI's from World War II. It also was granted a new name "Florida State University." The University's expanse and complexity today contrast vividly with its beginning. Sixteen schools and colleges within the University serve more than 29,000 students who are enrolled in the 276 graduate and undergraduate degree programs and live and work among



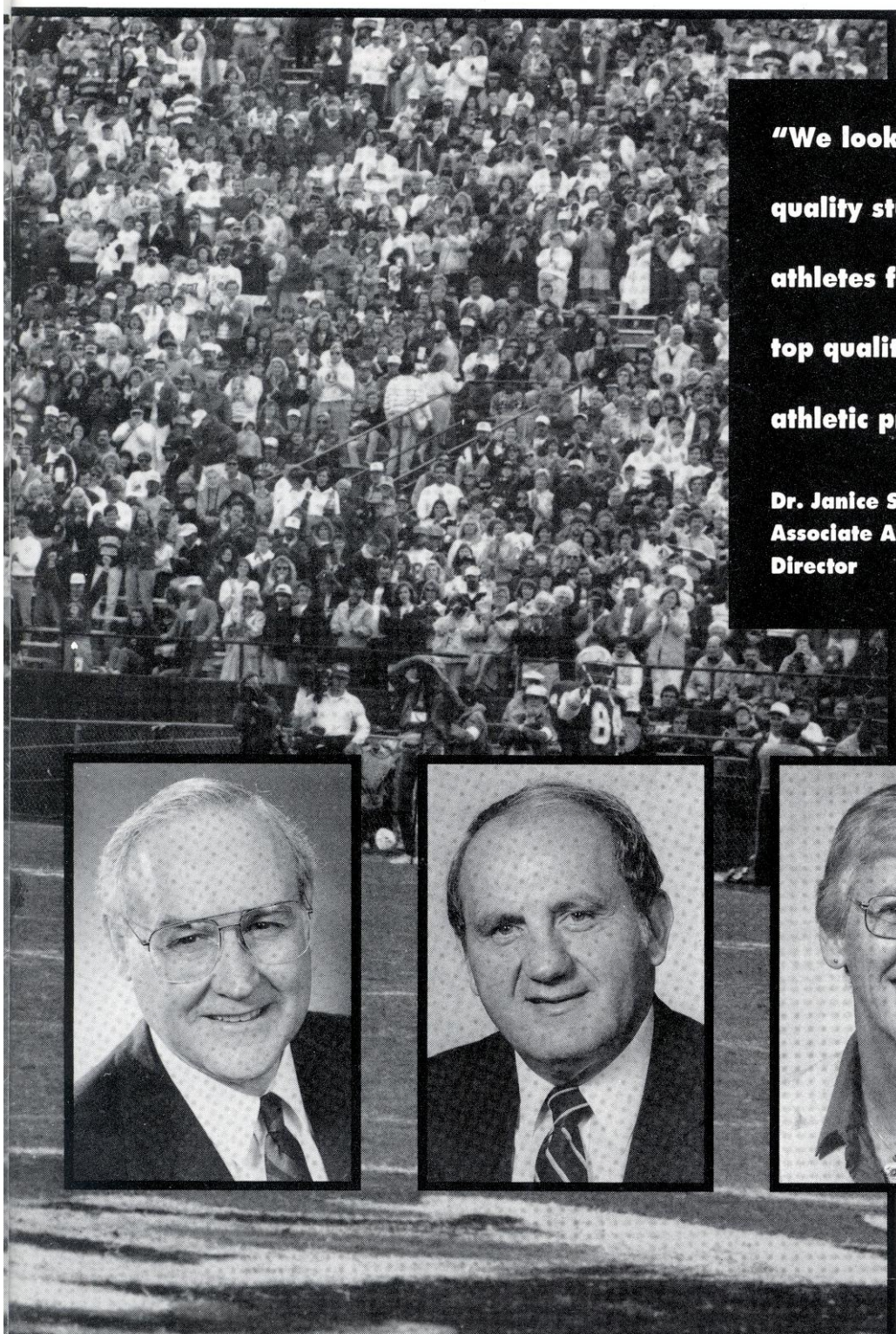
1,300 faculty and 2,600 staff members. About 5,000 degrees are awarded every year.

In the past several years, the University has joined an elite group of universities in the United States which produce more than 200 doctoral graduates annually. Emphasis on graduate research and study at the University continues to grow, and today more than 4,000 graduate students pursue a variety of degrees.

Student life at Florida State University also offers young people ample opportunity to acquire leadership skills and to apply their classroom learning in student government, residence hall government, Greek social

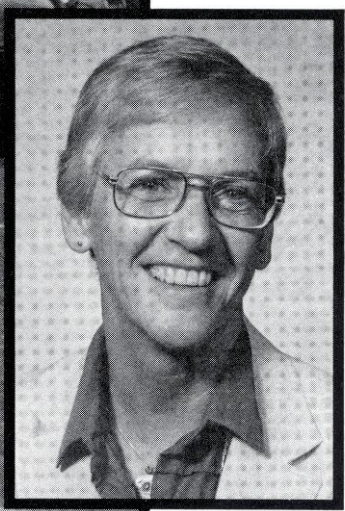
organizations, honors programs, departmental organizations and more than 200 other registered student organizations active on campus. The FSU Artist Series, the Distinguished Lecture Series and outstanding music, theater and dance production provide enjoyable evenings for the entire community.

Being a student at Florida State University means stepping into a tradition of more than 130 years of higher education. From its Flying High Circus to its Supercomputer Computations Research, Florida State provides a panorama of excitement, blending the educational and social sides of campus life.



"We look for top quality student-athletes for our top quality athletic program."

Dr. Janice Stocker
Associate Athletic Director



FROM LEFT TO RIGHT:
DALE LICK, FLORIDA STATE UNIVERSITY PRESIDENT; BOB GOIN, ATHLETIC DIRECTOR; JAN STOCKER, ASSOCIATE ATHLETIC DIRECTOR

ACADEMIC ADVISING

The primary concern of being a student-athlete at Florida State University is getting an education and taking advantage of the many opportunities offered to assist players. Trudy Raybun's Office of Academic Advising aids each student who participates in the volleyball sports program with her admission, class schedule, registration, and the normal progression towards a degree. Raybun and her two graduate assistants also monitor each athlete in their class performance and recommend tutors when necessary.

Academic Support is supervised by Nick Menacof, who oversees the study hall area and tutorials his office provides. As student-

athletes learn to juggle practicing 20 hours a week and making six road trips during their season, plus a full class load, they find comfort in knowing there is a support staff to help them accomplish the ultimate goal of receiving a quality education.

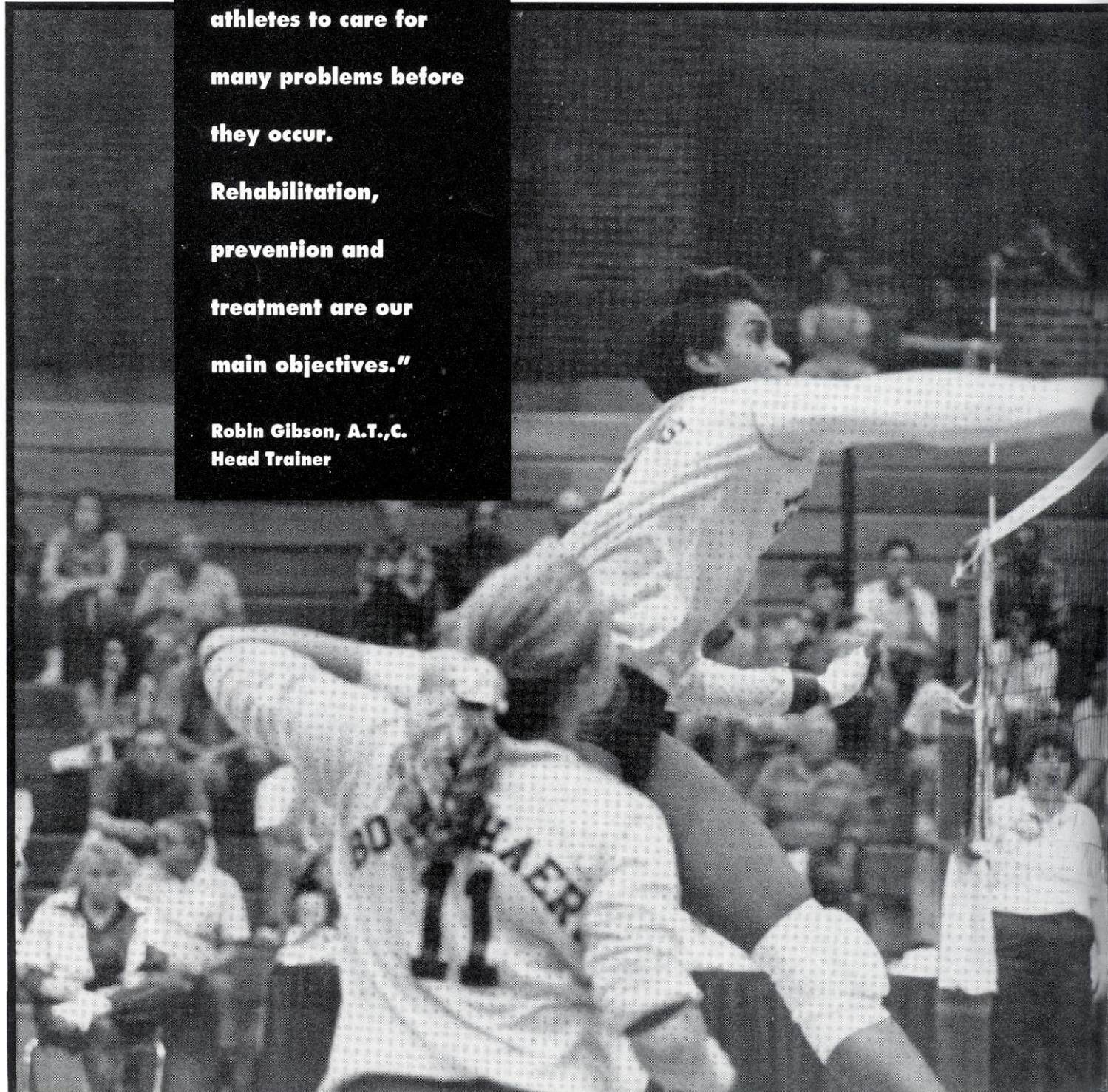
STRENGTH TRAINING AND CONDITIONING

Strength training and conditioning is an important part of an athlete's performance on the court. At Florida State, a supervised program is developed for volleyball, emphasizing the objectives of strengthening and conditioning the athletes. Strength coach Matt Hamparian individually customizes programs for each of the athletes beginning with pre-conditioning before the season gets underway. The workouts are modeled after the National Strength and Conditioning Association's volleyball training program.

"We work closely with the coaches and the athletes to care for many problems before they occur.

Rehabilitation, prevention and treatment are our main objectives."

**Robin Gibson, A.T.,C.
Head Trainer**



Hamparian works with the players in sport specific training which includes conditioning the major muscles groups used in volleyball. The coaches believe so strongly in the program that they even participate themselves. FSU takes pride in customizing the programs to help student-athletes reach their maximum potential.

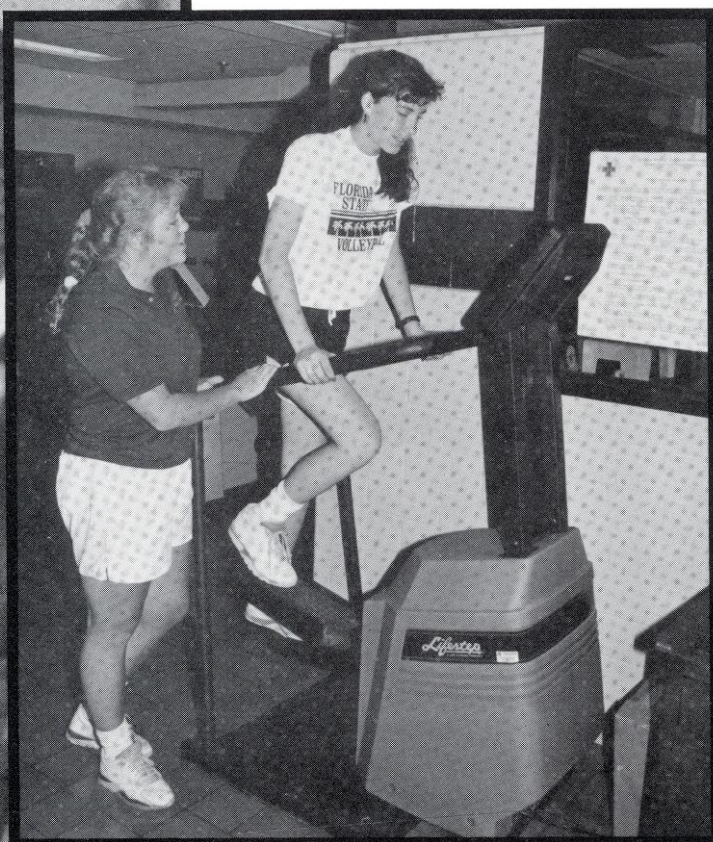
PREVENTION CARE AND TREATMENT

Being an athlete at Florida State University means receiving the best care and treatment possible. All of the student-athletes undergo pre-season screening so a certified trainer can detect any potential injuries an athlete may incur. If a problem is detected, the athlete is placed on a prevention care program which may include any kind of treatment from icing to exercising. The

program is closely monitored by Head Trainer Robin Gibson or one of her nine staff members.

Rehabilitation is another important component of the Seminole training room. Though preventing injuries is the main objective, they are sometimes a part of participating in athletics. More serious injuries and illnesses are referred to the Seminole team physicians at the Tallahassee Orthopedic Center who, for many years, have worked in conjunction with the FSU training room in successfully rehabilitating numerous athletes after an injury.

Body fat measurements, weight control, and drug testing are all responsibilities of the athletic training team which is dedicated to providing the best care possible for all FSU student-athletes.



BELOW, LEFT TO RIGHT:

MATT HAMPARIAN,

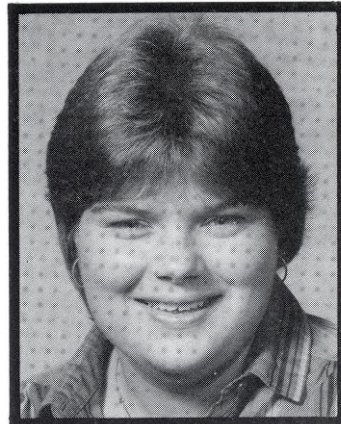
STRENGTH COACH;

ROBIN GIBSON,

HEAD TRAINER;

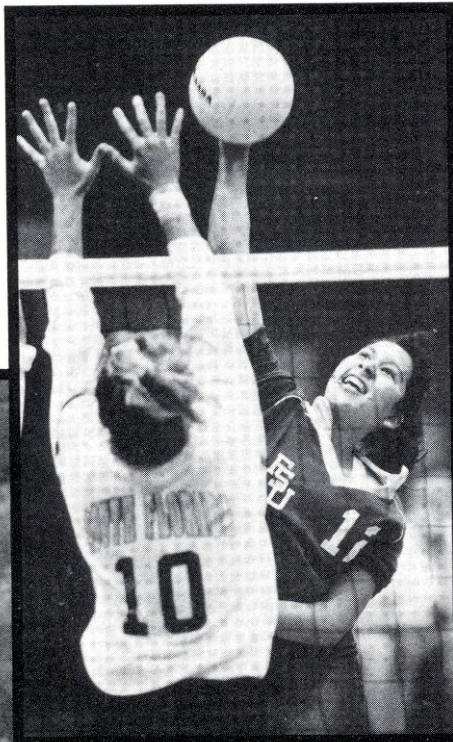
TRUDY RAYBUN,

ACADEMIC ADVISOR



Head Coach Cecile Reynaud is certain that if her team played the same tough schedule as last season, things would be a lot different. It is the result of a more experienced team that will take the court for Florida State this year. After a struggle with youthfulness in 1991, Reynaud expects to be "at least two or three points better" after losing only two players and returning a handful of talented athletes.

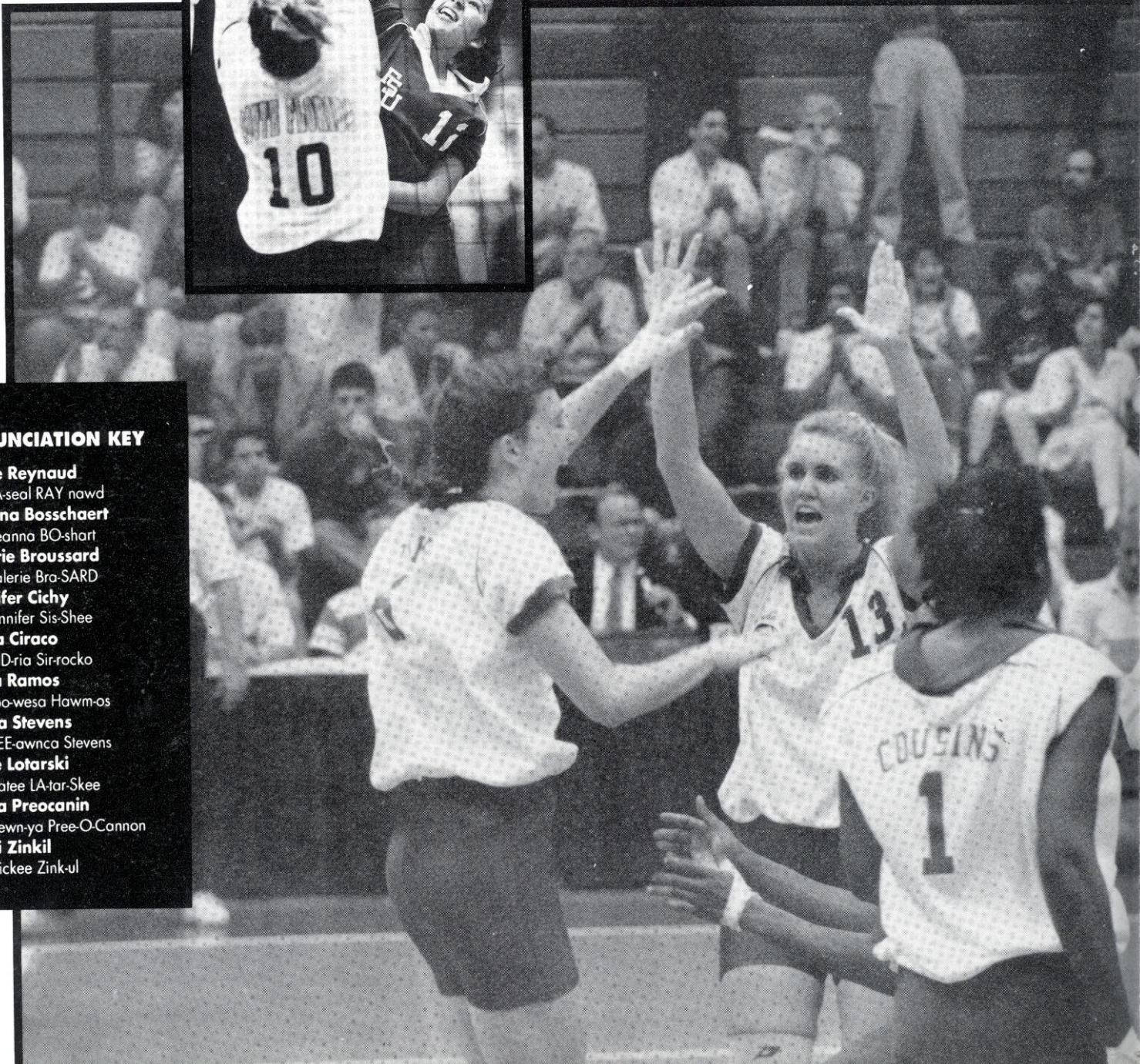
Returning for her final season is Virgin Island native **Bianca Stevens** who has provided strength and intimidation as a middle hitter. Stevens nearly tripled



her kills last year from the 1990 season and was one of the major blocking forces on the team. The other half of the blocking force is junior **Vicki Zinkil** who after just two seasons ranks fifth in Florida State's all-time solo blocks. Adding depth to the middle position will be returning sophomore **Adria Ciraco** who provided a strong back-up role in over half the matches in 1991.

The setters position looks to be more stable this upcoming season. Junior, **Jennifer McCall** who has established herself in her first two years at Florida State will be joined by senior **Sherry Cowling**. Cowling sat out last season after transferring to FSU from Syracuse where she was a veteran MVP as well as a Regional All-American.

Deanna Bosschaert and **Luiza Ramos** made an impressive start last season as freshmen. Bosschaert hit



PRONUNCIATION KEY

- Cecile Reynaud**
SA-seal RAY nawd
- Deanna Bosschaert**
Deanna BO-shart
- Valerie Broussard**
Valerie Bra-SARD
- Jennifer Cichy**
Jennifer Sis-Shee
- Adria Ciraco**
AID-ria Sir-rocko
- Luiza Ramos**
Loo-wesa Hawm-os
- Biana Stevens**
BEE-awnca Stevens
- Catie Lotarski**
Katee LA-tar-Skee
- Sonia Preocanin**
Sewn-ya Pree-O-Cannon
- Vicki Zinkil**
Vickee Zink-ul

.653 at the premiere ACC Tournament which puts her in the conference record book, and Ramos broke the Florida State record for most digs in a single match in just the third match of her career. Joining the duo on the outside will be fellow sophomores **Catie Lotarski** and **Jennifer Jones**. Junior **Jennifer Cichy** will again concentrate on the defensive effort for the Tribe. Reynaud looks for Cichy to play an important leadership role on and off the court.

Two newcomers *join the crew in '92*, **Valerie Broussard** and **Sonia Preocanin**. Broussard is a middle hitter from St. Martinville, Louisiana and Preocanin, an Ontario native, will red shirt her first year because of a knee injury.

The goals are clear for the Florida State squad in 1992: winning the ACC, being ranked in the top four regionally, breaking into the Top 25 nationally, and playing

in post-season competition.

"We'll talk about our goals from the beginning," said Reynaud. "Training wise - we're going back to the basics and simplifying our drills so that our base is solid. We're looking forward to a challenging schedule with several new opponents. I'm really excited about the tournaments at Hofstra and Notre Dame where we'll see some strong inter-regional competition."

A few new faces will be coming south as well. Minnesota will make its first trip down in several years. The Big 10 team will compete in the Florida State Classic which is sure to draw a big crowd again this season. Strong regional teams from Houston, Texas A&M, and of course the Florida Gators will also be visiting Tully Gym for an exciting 1992 season.

ALPHABETICAL ROSTER

NO.	PLAYER	YR.	HOMETOWN	HT.	POSITION
11	Deanna Bosschaert	So	Dundas, Ontario	5-10	Outside Hitter
6	Valerie Broussard	Fr	St. Martinville, LA	5-11	Middle Hitter
3	Jennifer Cichy	Jr	Rockville, MD	5-10	Def. Specialist
4	Adria Ciraco	So	E. Quogue, NY	5-10	Middle Hitter
1	Sherry Cowling	Sr	Miami, FL	5-9	Setter
9	Jennifer Jones	So	Austin, TX	5-11	Outside Hitter
5	Catie Lotarski	So	Chicago, IL	5-10	Outside Hitter
13	Jennifer McCall	Jr	Littleton, CO	5-11	Setter
7	Sonia Preocanin	Fr	Hamilton, Ontario	6-2	Outside Hitter
12	Luiza Ramos	So	Fortaleza, Brazil	5-8	Outside Hitter
14	Bianca Stevens	Sr	St. Croix, V.I.	6-1	Middle Hitter
8	Vicki Zinkil	Jr	Stevensville, MI	6-1	Middle Hitter

NUMERICAL ROSTER

NO.	PLAYER	YR.	HOMETOWN	HT.	POSITION
1	Sherry Cowling	Sr	Miami, FL	5-9	Setter
3	Jennifer Cichy	Jr	Rockville, MD	5-10	Def. Specialist
4	Adria Ciraco	So	E. Quogue, NY	5-10	Middle Hitter
5	Catie Lotarski	So	Chicago, IL	5-10	Outside Hitter
6	Valerie Broussard	Fr	St. Martinville, LA	5-11	Middle Hitter
7	Sonia Preocanin	Fr	Hamilton, Ontario	6-2	Outside Hitter
8	Vicki Zinkil	Jr	Stevensville, MI	6-1	Middle Hitter
9	Jennifer Jones	So	Austin, TX	5-11	Outside Hitter
11	Deanna Bosschaert	So	Dundas, Ontario	5-10	Outside Hitter
12	Luiza Ramos	So	Fortaleza, Brazil	5-8	Outside Hitter
13	Jennifer McCall	Jr	Littleton, CO	5-11	Setter
14	Bianca Stevens	Sr	St. Croix, V.I.	6-1	Middle Hitter

BREAKDOWN BY YEAR

SENIORS: (2)

Cowling, Stevens

JUNIORS: (3)

Cichy, McCall, Zinkil

SOPHOMORES: (5)

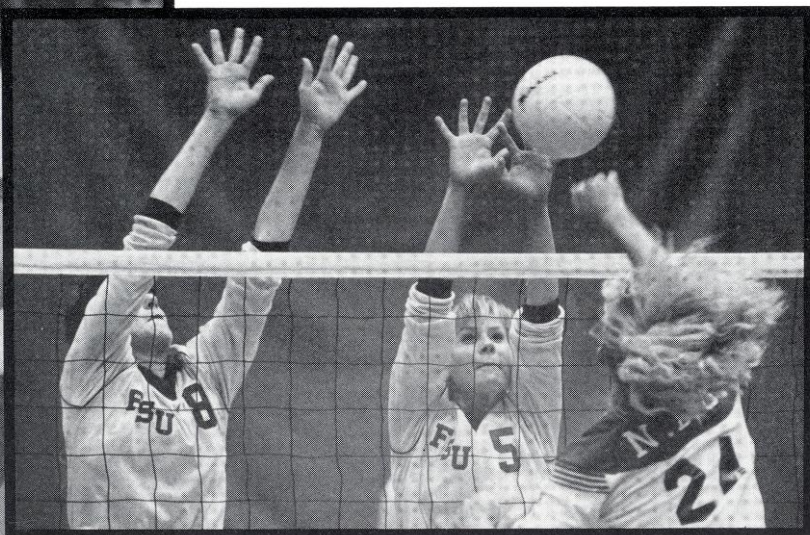
Bosschaert, Ciraco, Jones, Lotarski, Ramos

FRESHMEN: (1)

Broussard

REDSHIRT: (1)

Preocanin



HEAD COACH PROFILE

CECILE REYNAUD • 17TH SEASON SW MISSOURI STATE, 1975 449-188-1 (.704)

Volleyball at Florida State and Cecile Reynaud have enjoyed great success over the last 16 years. After a transitional year of departing the Metro Conference to the highly competitive ACC, Reynaud returns her team back to the basics.

Reynaud enters her 17th season at the helm of the Lady Seminole volleyball squad with just as much enthusiasm but more experience as she did in 1976. During her tenure, the Lady Seminoles have yet to encounter a losing season and have averaged 28 wins a year. With a 449-188-1 overall record, Reynaud is undoubtedly one of the most successful coaches in volleyball today. Since joining the NCAA Division I, the Lady Seminoles have captured six Metro Conference championships and made six NCAA tournament appearances since 1983 - four which have been in the last five seasons.

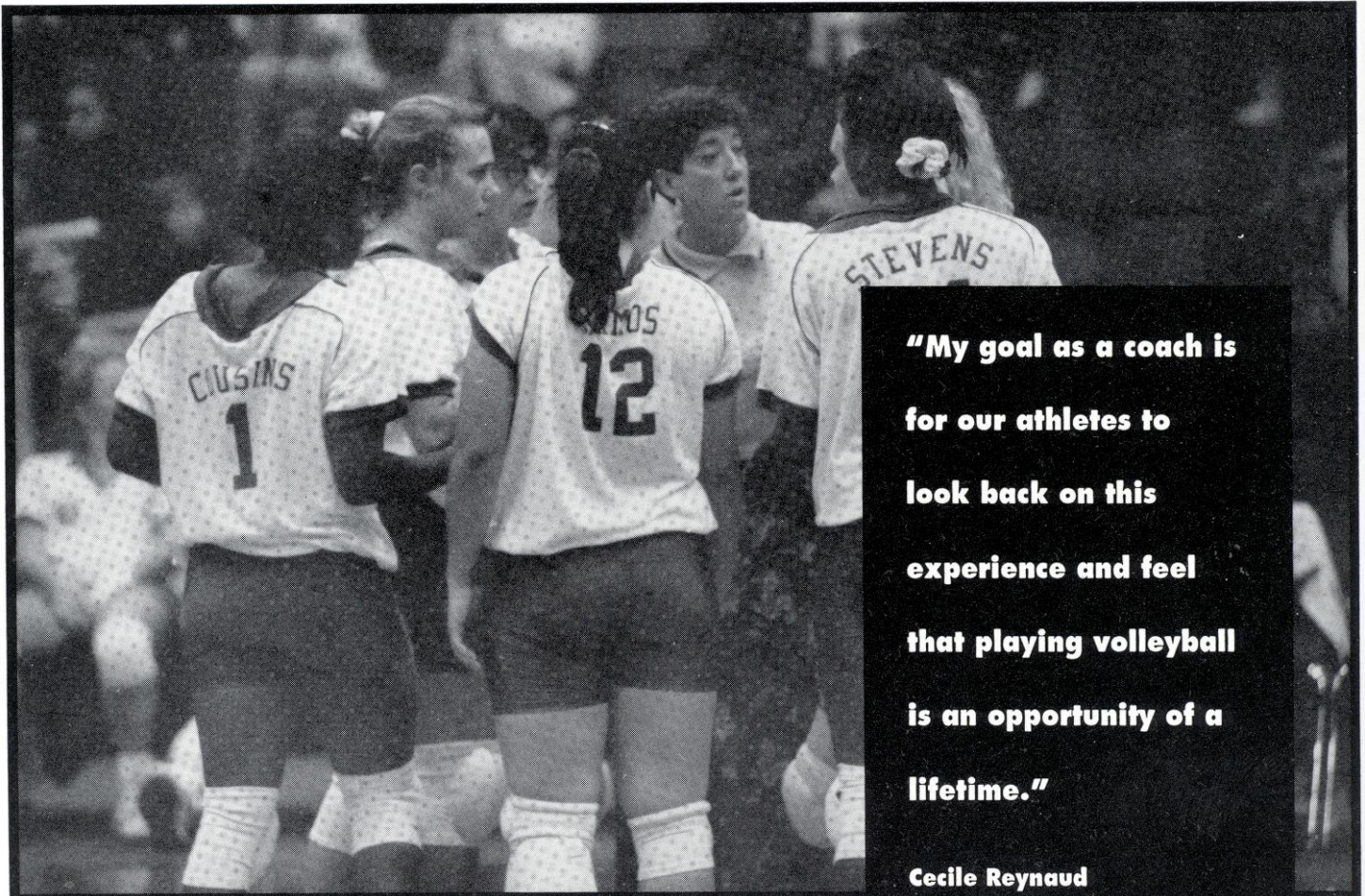
A two-time Metro Conference Coach of the Year, Reynaud was also honored as Coach of the Year by the 1981 Florida Association of Intercollegiate Athletics for Women and the 1989 AVCA South Region. In 1983, she went to the international level and served as the assistant coach at the World University Games in Canada, and in 1985, was head coach for the United States Junior National

Team which toured Japan and China. She has also been on the AVCA All-America Committee, the Volleyball International Board of Advisors, and the Zone Coordinator for the 1986 and 1987 Olympic Festival. She has continued to serve as the co-commissioner or commissioner for the Olympic Festival since 1988.

Reynaud participated in the 1990 Goodwill Games as the technical secretary and is past-president of the American Volleyball Coaches Association. Currently, she is active on the USVBA Board of Directors and Executive Committee as well as the Volleyball Monthly Coaches Advisory Board.

As an expert on the game, Reynaud has been a technical consultant for two *Power Volleyball* films and the third edition of the book *Power Volleyball*. She has also co-authored numerous articles pertaining to women's athletics and continues to be active on the speakers circuit. Reynaud has been an instructor at more than 35 camps across the country and hosts her own camp each year which attracts nearly 500 young volleyball players from as far away as Canada and the Virgin Islands.

A 1975 graduate of Southwest Missouri State, Reynaud enjoyed an outstanding athletic career on the volleyball team and was twice named among the Outstanding College Athletes in America. In 1983, she was inducted into the Southwest Missouri State Women's Athletic Hall of Fame. Reynaud completed her Master's degree at Florida State in 1979.



"My goal as a coach is for our athletes to look back on this experience and feel that playing volleyball is an opportunity of a lifetime."

**Cecile Reynaud
Head Coach**



REYNAUD'S CAREER RECORD

1976	33-14	State runner-up
1977	25-13	State winner, 4th at Regionals
1978	28-14	State winner, 1st at Regionals, 20th at AIAW Nationals
1979	31-19	State runner-up, 1st at Regionals, 14th at AIAW Nationals
1980	43-14-1	State winner, 3rd at Regionals
1981	43-8	State winner, 1st at Regionals, 4th at AIAW Nationals
1982	27-17	3rd in Metro Conference
1983	31-6	1st in Metro Conference, 17th at NCAA Nationals
1984	20-13	3rd in Metro Conference
1985	22-10	1st in Metro Conference, 17th at NCAA Nationals
1986	25-11	1st in Metro Conference, 17th at NCAA Nationals
1987	22-11	1st in Metro Conference, 17th at NCAA Nationals
1988	28-8	1st in Metro Conference, 17th at NCAA Nationals
1989	30-5	1st in Metro Conference, 17th at NCAA Nationals
1990	25-10	3rd in Metro Conference, 17th at NCAA Nationals
1991	16-15	5th in Atlantic Coast Conference
TOTAL		449-188-1

ASSISTANT COACHES PROFILES

SHELLY BIRKHOLZ • ASSISTANT COACH 6TH SEASON • FLORIDA STATE, 1986

Shelly Birkholz returns for her sixth year assisting Reynaud with the Florida State team. Last season, Birkholz returned to her position after a year's absence when she served as the Indiana women's coordinator for the Fellowship of Christian Athletes. Previously, Birkholz was the assistant from 1986 through the 1989 seasons during which the Lady Seminoles made three appearances in the NCAA tournament.

After a standout prep career at Hononegah High School in Roscoe, Illinois, Birkholz accepted a volleyball scholarship at FSU. Knee surgery side-lined her as a sophomore, however Birkholz continued to play an important role on the Lady Seminole team for the next two years.

Birkholz graduated from Florida State in 1986 with a degree in leisure services before she officially joined the coaching staff. She continued her education and earned her Master's degree in 1988.

She currently coordinates recruiting, monitors the academic progress of the players and provides Reynaud with input on daily practices and matches. She also assists and participates in the team's training and workout sessions which led to her selection and top two finish at the American Gladiators competition held in Tallahassee last spring.

As one of the organizers of the FSU huddle for FCA, Birkholz continues her speaking engagements around the state. In 1991, she served as an administrative assistant for the volleyball delegation at the Olympic Festival in Los

Angeles. Birkholz also coached the Big Bend USVBA 18 and older team last spring and assists in the Cecile Reynaud Volleyball Camp each summer.

KRIS GRUNWALD • GRADUATE ASSISTANT 2ND SEASON • GEORGE MASON, 1991

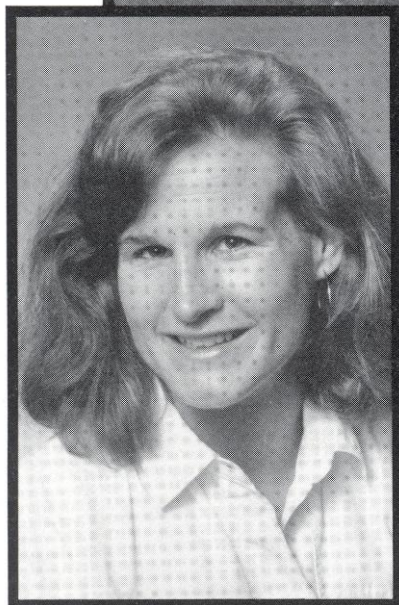
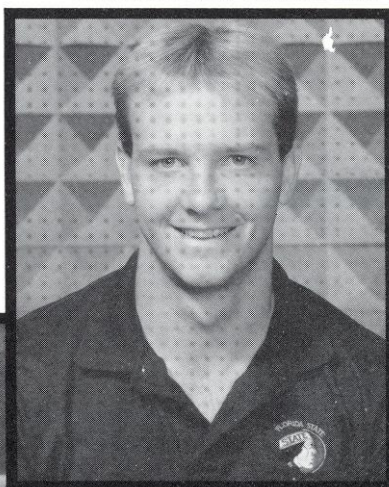
Kris Grunwald joined the Lady Seminoles after a successful academic and athletic career at George Mason University. In 1991, he completed an impressive four-year stint on the nationally ranked men's volleyball team while holding a 3.6 GPA in Mathematics.

While at GMU, Grunwald was twice selected first team All-East and Honorable Mention All-American as well as being named to the Dean's List three times and to the Athletic Honor Roll four times. He is a veteran of five Empire State Games, the State Games of New York, and the 1987 Olympic Festival Team. His 1988 GMU squad participated in the NCAA Volleyball Final.

Last year, Grunwald was selected to play on the prestigious First Investors USVBA team of Atlanta. He helped lead the team to championships at the Caribbean and Hi-Neighbor tournaments as well as a bronze medal in the silver division at the national championship.

Grunwald will continue his duties specializing with the

teams middle blockers and assisting Reynaud and Birkholz with the team's practices, and matches for the Lady Seminoles this season.



#11, DEANNA BOSSCHAERT • 5-10, SOPHOMORE, OUTSIDE HITTER DUNDAS, ONTARIO (Berkeley Prep)

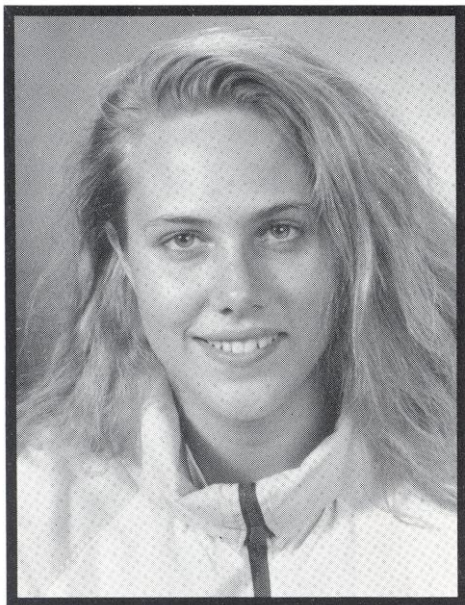
An effective offensive player on both the right and left sides ... ended the season on a strong note by being selected to the ACC All-Tournament team ... **AS A FRESHMAN:** started in 28 of 30 matches her freshman year ... hit a career high of 25 kills against Virginia at the ACC Championship ... led FSU in service aces, was third on the team in kills (289) and total blocks (67) for the season ... high school teammate of FSU newcomer Sonia Preocanin ... **HIGH SCHOOL:** originally from Ontario where she played for Parkside High School in Dundas ... played on the Ontario Volleyball Midget All-Star team her freshman year ... club team took the Province championship and fifth place in the national tournament ... named MVP at the McMaster University High School Tournament ... Provincial Volleyball Club team placed fourth at Nationals her junior year ... moved to Tampa her senior year and played for Randy Dagostino at Berkeley which won Class 1A State Championship in 1990 ... named All-Star at the state tournament ... *St. Petersburg Times* and *Tampa Tribune's* Volleyball Player of the Year ... named All-County and All-Conference ... **PERSONAL:** plays beach volleyball and basketball ... enjoys photography ... majoring in applied math ... born November 10, 1973.

BOSSCHAERT AT FSU ...

YEAR	MP	GP	K	E	TA	PCT	SA	BS	BA	BE	DIG
1991	30	106	289	158	738	.177	42	7	60	8	236

#11 BOSSCHAERT CAREER HIGHS ...

KILLS - 25, vs. Virginia (11/23/91)
 ATTACKS - 56, vs. Loyola Marymount (9/13/91)
 HITTING PCT. - .666 (8k, 0e, 12 at) vs NE Louisiana (9/5/91)
 SERVICE ACES - 6, vs. Georgia Tech (11/10/91)
 SOLO BLOCKS - 2, vs. NE Louisiana (9/5/91)
 BLOCK ASSISTS - 5, vs. Loyola Marymount (9/13/91),
 Fl. International (9/21/91)
 DIGS - 22, vs. Maryland (10/18/91)
 ASSISTS - 5, vs. William and Mary (11/2/91)
 and Georgia Tech (11/10/91)



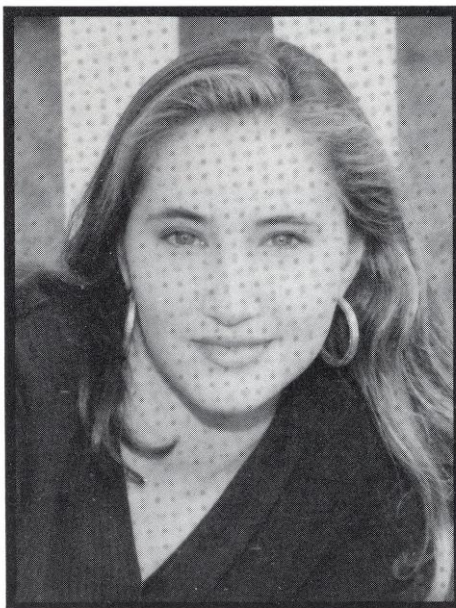
#11 DEANNA BOSSCHAERT

#6 VALERIE BROUSSARD • 5-11, FRESHMAN, MIDDLE HITTER ST. MARTINVILLE, LA (Episcopal)

One of two freshmen to join the Lady Seminole squad this season ... comes from strong club background, the Cajunland Club Team ... very committed to the sport ... expected to see playing time as a middle hitter ... **HIGH SCHOOL:** helped lead her Episcopal School of Acadiana to four consecutive state titles in Louisiana... named most valuable player at the 1991 state championship ... selected *Lafayette Advertiser* /Pepsi All-Acadiana MVP last season ... a three time All-Acadiana and All-District player and two-time All-State selection ... **PERSONAL:** plans to major in dietetics at Florida State ... born November 2, 1974.

#3, JENNIFER CICHY • 5-10, JUNIOR, DEFENSIVE SPECIALIST ROCKVILLE, MD (Thomas S. Wooton)

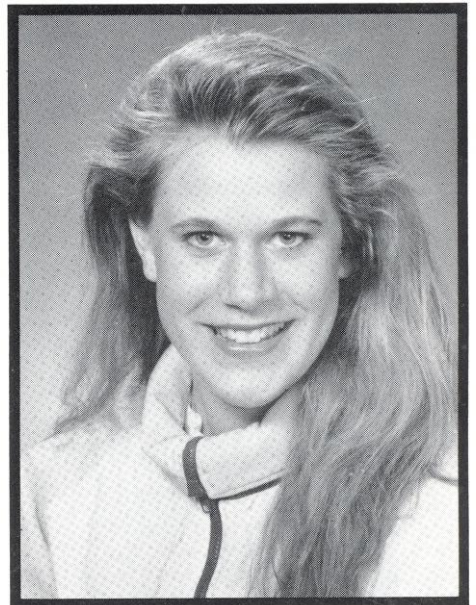
Has the potential to be one of the team leaders in '92 ... matured "incredibly" as a person and athlete says Reynaud ... will contribute greatly to the success of the team this season ... academically sound student-athlete ... outgoing personality on and off the court ... **HIGH SCHOOL:** a four-year letter-winner at Wooton High School ... led her team in taking seven consecutive state titles ... MVP of her high school team her senior year ... selected first team All-Metropolitan by the Washington Post and first team All-County by the *Montgomery County Journal* ... played five years on the Capital Volleyball club team ... played at the



#6 VALERIE BROUSSARD

#3 CICHY CAREER HIGHS ...

KILLS - N/A
 ATTACKS - 1, vs. Eastern Kentucky (9/2/90)
 and FAMU (10/8/91)
 HITTING PCT. - N/A
 SERVICE ACES - N/A
 SOLO BLOCKS - N/A
 BLOCK ASSISTS - N/A
 DIGS - 3, vs. FAMU (10/8/91)
 ASSISTS - N/A



#3 JENNIFER CICHY

TEAM PROFILES

first World Women's Youth Volleyball Cup in Brazil in 1989 ... **PERSONAL:** Collects clowns for a hobby ... enjoys country music and making friends ... majoring in leisure services ... born February 25, 1972.

CICHY AT FSU ...

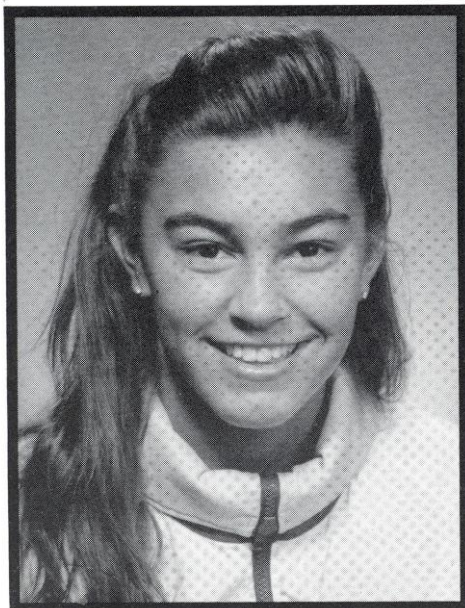
YEAR	MP	GP	K	E	TA	PCT	SA	BS	BA	BE	DIG
1990	10	11	*	1	2	-.500	*	*	*	*	12
1991	3	4	*	*	1	.000	*	*	*	*	5
TOTAL	13	15	0	1	3	-.333	0	0	0	0	17

#4, ADRIA CIRACO • 5-10, SOPHOMORE, MIDDLE HITTER EAST QUOGUE, NY (Westhampton Beach)

Earned a starting position during the spring season ... all-around skills rank high among the team ... should see a lot more playing time this year ... recovered quickly from a knee scope in the spring and is expected to come back strong ... **AS A FRESHMAN:** played in 18 matches in '91 ... had a career high of two kills on three occasions and picked up seven digs against South Florida in September ... had a season total of 32 digs ... **HIGH SCHOOL:** finished an impressive prep career at Westhampton Beach H.S. where she excelled in volleyball, basketball and tennis ... named Most Valuable Player of her '91 volleyball squad and a two-time MVP in tournament competition ... a four-time All-League winner with three All-Conference honors ... led her Long Island Big Apple club team to two regional championships and an East Coast title ... club team won the New York State Silver Medal at the Empire Games in 1989 ... participated in the National Jr. Olympics in 1990 and 1991 ... also selected All-League and All-Conference in

#4 CIRACO CAREER HIGHS ...

KILLS - 2, on three occasions
 ATTACKS - 6, vs. FAMU (10/8/91) and Pitt (11/15/91)
 HITTING PCT. - .667 (2k, 0e, 3at) vs. Virginia (9/26/91)
 SERVICE ACES - 1, on three occasions
 SOLO BLOCKS - N/A
 BLOCK ASSISTS - 1, on four occasions
 DIGS - 7, vs. South Florida (9/21/91)
 ASSISTS - 1, vs. FAMU (10/8/91)



#4 ADRIA CIRACO

tennis ... named Outstanding Senior Athlete by the Westhampton Beach Coaches Association ... **PERSONAL:** enjoys skiing and shopping ... would one day like to be a sportscaster ... majoring in communications ... born April 30, 1973.

CIRACO AT FSU ...

YEAR	MP	GP	K	E	TA	PCT	SA	BS	BA	BE	DIG
1991	18	41	6	3	17	.176	5	*	4	3	32

#1 SHERRY COWLING • 5-9, SENIOR, SETTER MIAMI, FL (Syracuse/Miami Lakes)

Transferred to Florida State from Syracuse University to play her senior season after sitting out a year ... will likely step in as a strong leader on the court in the setter's position ... a member of the 1990 Olympic Festival silver medal squad ... named American Volleyball Coaches Association Regional All-America ... selected to the all-tournament teams at the George Washington and Big East Tournaments ... also took MVP honors at the USF Invitational in 1990 ... named Orangewomen MVP her freshman year at Syracuse ... named MVP in two tournaments that same year ... was the team leader with 1072 assists ... **HIGH SCHOOL:** a four sport letter-winner at Hialeah-Miami Lakes High School ... four-time MVP in volleyball ... chosen Athlete of the Year for three consecutive years ... one of six setters listed in Volleyball Monthly Fabulous 50 ... graduated in the top one percent of her class ... **PERSONAL:** will finish her major in economics/business at Florida State ... born August 7, 1970.

#9 JONES CAREER HIGHS ...

KILLS - 1, vs. FAMU (10/8/91)
 ATTACKS - 1, on three occasions
 HITTING PCT. - 1.000 (1k, 0e, 1at) vs. FAMU (10/8/91)
 SERVICE ACES - 3, vs. NCSU (10/11/91)
 SOLO BLOCKS - N/A
 BLOCK ASSISTS - N/A
 DIGS - 10, vs. Maryland (10/18/91)
 ASSISTS - 2, vs. FAMU (10/8/91)



#1 SHERRY COWLING



#9 JENNIFER JONES

#9, JENNIFER (J.J.) JONES • 5-11, SOPHOMORE, OUTSIDE HITTER AUSTIN, TX (John H. Reagan)

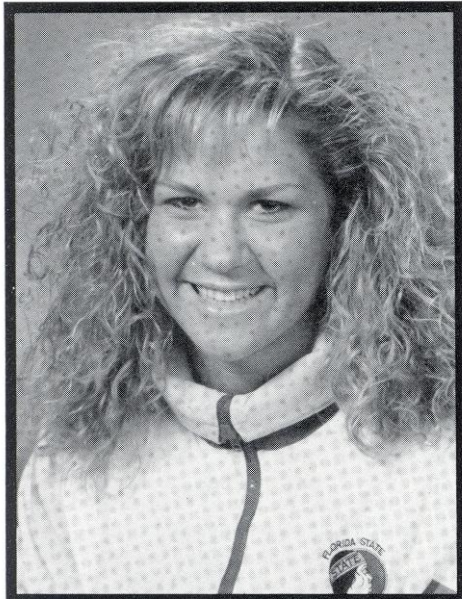
Showed potential on the right side as a blocker ... also a strong server ... could contribute in the middle or possibly the right side in '92 ... **AS A FRESHMAN:** saw action in 20 matches ... picked up 64 digs on the season ... had three service aces against conference rival N.C. State ... picked up a career high of 10 digs against Maryland in October ... **HIGH SCHOOL:** earned four letters at Reagan and played six years for the Austin Volleyball Association club team ... selected to the All-Central Texas team last season ... three-time All-District team member... led Reagan to Class 4A state finals in '91 ... holds high school record for number of service aces (82) in a season ... club team finished second at the Lone Star Classic Championship ... named Best All-Around and Best Playset Attacker at San Diego State University camp ... served as president of student council ... member of Who's Who ... **PERSONAL:** sent a singing telegram to Reynaud to accept her scholarship ... enjoys horses, soccer and computers ... majoring in elementary education ... born August 10, 1973.

JONES AT FSU ...

YEAR	MP	GP	K	E	TA	PCT	SA	BS	BA	BE	DIG
1991	20	55	2	1	5	.200	5	*	*	*	64

#5, CATIE LOTARSKI • 5-10, SOPHOMORE, OUTSIDE HITTER CHICAGO, IL (St. Francis)

A physically strong player who is expected to be more aggressive as a sophomore **AS A FRESHMAN:** played in



#5 CATIE LOTARSKI

#5 LOTARSKI CAREER HIGHS ...

KILLS - 8, vs. NE Louisiana (9/5/91)
 ATTACKS - 16, vs. NE Louisiana (9/5/91)
 HITTING PCT. - .400 (2k, 0e, 5at), vs. Idaho (9/14/91)
 SERVICE ACES - 3, vs. Georgia (11/9/91)
 SOLO BLOCKS - 1, vs. NE Louisiana (9/5/91)
 BLOCK ASSISTS - 4, vs. UNC (9/21/91)
 DIGS - 10, vs. NE Louisiana (9/5/91)
 ASSISTS - 1, vs. Pitt (11/15/91)

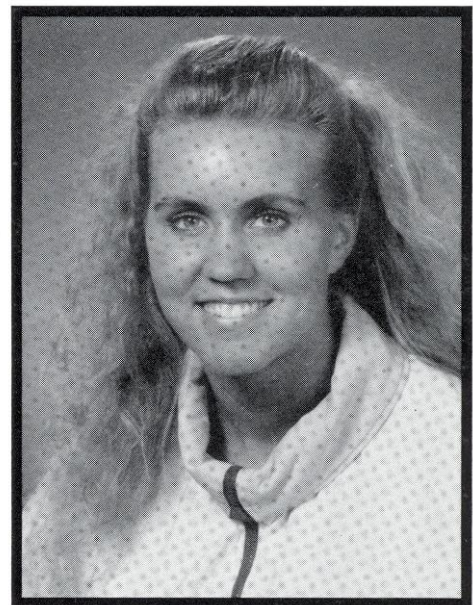
53 games last season as an outside hitter ... hit a career high eight kills in the season opener against Northeast Louisiana ... had 34 kills in 112 attempts ... also picked up 69 digs defensively for the Lady Seminoles ... **HIGH SCHOOL:** a six-year varsity letter-winner at St. Francis ... three-time Academic All-Conference in both volleyball and basketball ... named to the All-Area teams for volleyball and basketball ... All-State first team in basketball and honorable mention in volleyball ... *Sun Times* and *Daily Herald*'s Basketball Player of the Week ... Most Improved Player on the volleyball team ... played for Circus club team of Chicago ... MVP of the St. Francis basketball team ... **PERSONAL:** enjoys all sports and working with young children ... majoring in elementary education ... born February 5, 1973.

LOTARSKI AT FSU ...

YEAR	MP	GP	K	E	TA	PCT	SA	BS	BA	BE	DIG
1991	22	53	34	22	112	.107	7	1	12	4	69

#13, JENNIFER MCCALL • 5-11, JUNIOR, SETTER LITTLETON, CO (Heritage)

Called a "coaches dream" by Reynaud ... a dedicated athlete with high work ethics and team leadership ... will be an important factor out on the floor this season ... **AS A SOPHOMORE:** was one of the starting setters last year while she recovered from knee surgery ... tied the individual match record for most assists against Duke (68) on October 20, 1991 ... moved into fifth place in the career record book for assists with 1,342 in just two seasons ...



#13 JENNIFER MCCALL

#13 McCALL CAREER HIGHS ...

KILLS - 12, vs. George Washington (11/10/90)
 ATTACKS - 20, vs. George Washington (11/10/90)
 HITTING PCT. - 1.000, vs. (2k, 0e, 2at), vs. Loyola Marymount (9/13/91)
 SERVICE ACES - 3, vs. Fresno State (11/10/91), FAMU (10/8/91)
 SOLO BLOCKS - 1, on three occasions
 BLOCK ASSISTS - 6, vs. Loyola Marymount (9/22/91)
 DIGS - 22, vs. Maryland (10/18/91)
 ASSISTS - 68, vs. Duke (10/20/91)

TEAM PROFILES

AS A FRESHMAN: played in 34 of 35 matches for the Seminoles ... a physically conditioned player who filled the "quarterback role" on the court ... recorded 63 set assists against Louisville in November and 20 digs against Memphis State ... had 12 kills against George Washington ... **HIGH SCHOOL:** three-time Continental League first team selection ... played in All-State games in Colorado after her senior year ... named MVP on her Heritage team in both her junior and senior years ... earned all-tournament honors at a 20-team Overland Tournament ... played club ball for Sudden Impact of Denver ... member of the National Honor Society ... president of the tutoring committee ... received the Randy Campbell Award for Academic and Athletic excellence while a student at Heritage ... **PERSONAL:** inherited physical strength from her father who is a football coach... majoring in physical education ... born February 10, 1972.

MCCALL AT FSU ...

YEAR	MP	GP	K	E	TA	PCT	AST	SA	BS	BA	DG
1990	34	117	100	372	83	.222	893	34	5	62	228
1991	18	53	30	20	101	.099	449	14	2	10	96
TOTAL	52	170	130	57	384	.190	1342	48	7	72	324

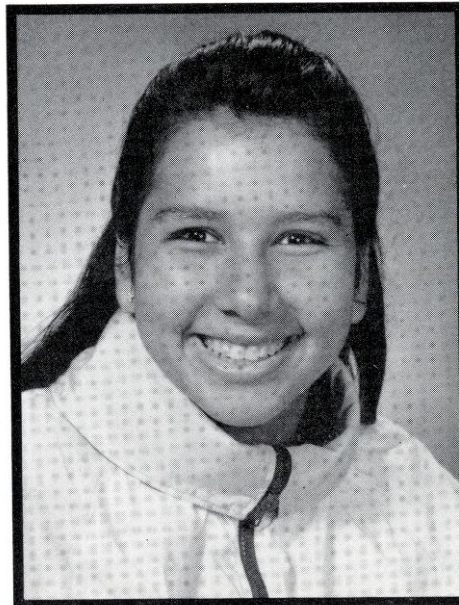
#7 SONIA PREOCANIN • 6-2, FRESHMAN, OUTSIDE HITTER

HAMILTON, ONTARIO (Hill Park Secondary)

Expected to be a red shirt her first season due to knee surgery ... will be a very intimidating blocker in the front row ... can also play on the right side ... the tallest player on the Lady Seminole squad ... a strong academic background ... former teammate of Seminole Deanna Bosschaert ... one of two Canadians on the squad ... **HIGH SCHOOL:** was captain of her Hamilton team for three years ... a five-time Most Valuable Player ... also a stand out



#7 SONIA PREOCANIN



#12 LUIZA RAMOS

basketball player ... played for the Raiders Club team in Canada ... helped lead her Hill Park high school team to three city championships ... received the Dofasco Award for the top business student ... **PERSONAL:** an academic honor student ... plans to major in business ... enjoys all sports and is a strong swimmer ... born January 9, 1973.

#12, LUIZA RAMOS • 5-8, SOPHOMORE, OUTSIDE HITTER FORTALEZA, BRAZIL (Ft. Myers)

An outstanding athlete who took over the outside position last season as a freshman ... picked up the nickname the "Brazilian Mouse" for her squeal after a kill ... extremely quick player ... **AS A FRESHMAN:** second on the team in kills with 371 ... broke the individual school record for digs with 38 against Loyola Marymount in the third match of her career ... selected to the all-tournament teams at the UC-Irvine Invitational and Florida Four Tournament ... led the team with 419 digs, the most of any freshman in the last seven years at FSU ... also added 31 service aces ... **HIGH SCHOOL:** an outstanding athlete after only playing one year at Ft. Myers High... selected 1990 Mizuno All-American (second team) by *USA Today* ... led her Ft. Myers high school team to the 3A Florida State Championship ... named to the Florida All-State and All-Star teams ... selected All-Conference in 1990 ... *Ft. Myers News-Press* named her Player of the Year ... also named to the All-Southwest Florida team ... **PERSONAL:** would like to return to Brazil after graduation from FSU ... enjoys the movies ... majoring in computer science ... born February 14, 1974.

RAMOS AT FSU ...

YEAR	MP	GP	K	E	TA	PCT	SA	BS	BA	DG
1991	30	111	371	213	889	.177	31	10	30	419

#12 RAMOS CAREER HIGHS ...

KILLS - 20, vs. UC-Irvine (9/14/91), Duke (10/20/91)
 ATTACKS - 58, vs. UC-Irvine (9/14/91)
 HITTING PCT. - .470 (10k, 2e, 17 at), vs. Rice (9/28/91)
 SERVICE ACES - 4, vs. Virginia (9/26/91)
 SOLO BLOCKS - 2, vs. Virginia (9/26/91), Pitt (11/15/91)
 BLOCK ASSISTS - 4, vs. UNC (10/12/91), Virginia (11/23/91)
 DIGS - 38, vs. Loyola Marymount (9/13/91)
 ASSISTS - 9, vs. UNC (11/22/91)