

Player Profile



#12 LUIZA RAMOS

5-8, SENIOR, OUTSIDE HITTER, FORTALEZA, BRAZIL (Ft. Myers)

Strong all-around player who excels both defensively and offensively...hardest hitter on team who also possesses a soft passing touch...should contend for

All-American honors...a two time All-Atlantic Coast Conference performer...member of both the 1,000 kill and dig clubs...begins senior year already listed in the Top 5 in four career categories...possesses an overpowering jump-serve...enters season needing 58 service aces to take over the top-spot on the career chart...is already listed atop the career digs list (1,263)...broke the single season kills per game record in '93 with a 4.60 average...holds the record for most digs in a match with 38...nine service aces vs. Auburn tied school record...answers to the nickname "Mouse"...**1993:** First team All-ACC selection...named Most Valuable Player at the LSU Invitational Tournament...garnered ACC Player of the Week honors (9/14)...ranked in three conference statistical categories...missed six matches due to hamstring injury...registered double figure kills and digs in the same match 19 times...played in 28 matches...led the team in kills in 16 matches...generated team high digs 11 times...tied school record with nine service aces in season opening match against Auburn...hit a career high 63.6 percent (16k, 2e, 22a) at Southern Miss...hit over 30 percent in eight matches...second best hitting percentage (.254) on the squad...led the team in kills (446), attacks (998), digs (394) and service aces (45)...named to the ACC All-Tournament team...posted team high kills in all three ACC Tournament matches...also had three double-doubles...had match high 23 kills in semifinal win over Clemson...dug 25 balls in championship loss to Duke to lead all players...recorded double-doubles in all three ACC Tournament

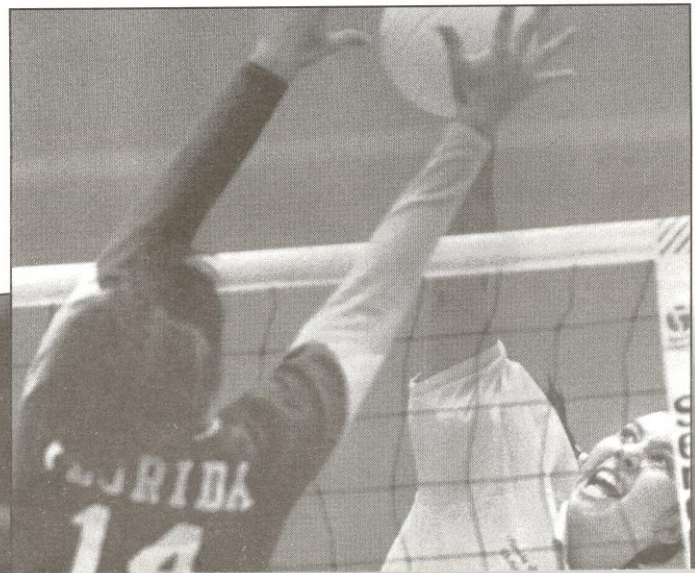
matches and both NCAA contests...played key role in NCAA Tournament opening round win over DePaul...posted season high kills (26) and digs (28) numbers in the match...came back with 25 kills in second round loss to Pacific...**1992:** Selected to the All-ACC second team...chosen to the ACC All-Tournament team after putting away 54 kills and picking up 60 digs in three matches...pounded a then career high 23 kills against Duke at the ACC Tourney...selected MVP of the USF Invitational and Hofstra Classic...named to Gator Invitational All-Tournament team...hit a then career high .483 with 18 kills against Clemson...second in the conference in kills per game (3.82), fourth in digs per game (3.68), and fifth in aces per game (0.46)...checks in at fifth place on the single season list for kills per game and third for digs...led the team in kills (451), kills per game (3.82), aces (54), and digs (450)...**1991:** Second on the team in kills with 371...broke the individual school record for digs with 38 against Loyola Marymount in the third match of her career...selected to the All-Tournament teams at the UC-Irvine Invitational and Florida Four Tournament...led the team with 419 digs, the most of any freshman in the last seven years at FSU...also added 31 service aces...**HIGH SCHOOL:** An outstanding athlete after only playing one year at Ft. Myers High...selected 1990 Mizuno All-American (second team) by *USA Today*...led her Ft. Myers high school team to the 3A Florida State Championship...named to the Florida All-State and All-Star teams...selected All-Conference in 1990...*Ft. Myers News-Press* named her Player of the Year...also named to the All-Southwest Florida team...**PERSONAL:** Aspires to return to her native Brazil and play professionally...majoring in management information systems...born February 14, 1974.

RAMOS AT FSU

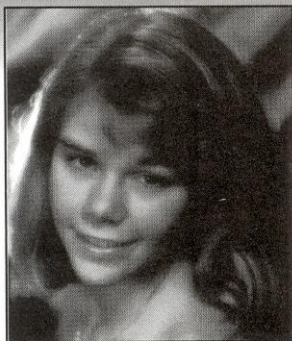
YEAR	MP	GP	K	E	TA	PCT	SA	SE	AST	BS	BA	BE	RE	BHE	DG
1991	30	111	371	213	889	.177	31	57	44	10	30	8	30	1	419
1992	33	118	451	238	1032	.206	54	87	29	7	27	4	26	7	450
1993	28	97	446	193	998	.254	45	80	33	6	35	7	31	3	394
TOTAL	91	326	1268	644	2919	.214	130	224	106	23	92	19	87	11	1263

RAMOS CAREER HIGHS

KILLS	26, vs DePaul (12/1/93)
ATTACKS	61, vs Pacific (12/5/93)
HITTING %	.636, vs. Southern Miss. (9/11/93) (16k, 2e, 22a)
ACES	9, vs. Auburn (9/3/93)@
SOLO BLCKS	2, several times
BLCK ASSTS	4, several times
DIGS	38, vs. Loyola Marymount (9/13/91)*
ASSISTS	9, vs. North Carolina (11/22/91)
	@ tied school record * school record



Newcomer Profiles

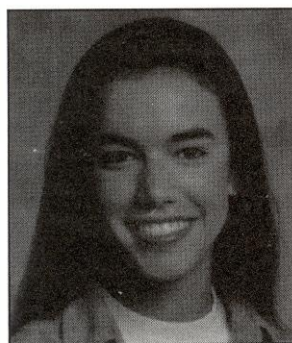


#15 LAURA ARNOLD

5-8, FRESHMAN, OUTSIDE HITTER, STUART, FL (Martin County)

Player of the future for Florida State at the outside hitter position...one of four true freshmen on the squad...three sport athlete in high school...**High School:** Two-time Most Valuable Player...

named to *Palm Beach Post's* All-Area team two straight years...three year All-Conference selection...led team to District Championship senior year...four-year fastpitch softball letter winner...also played varsity basketball...**Personal:** Undecided on major...born September 3, 1976.



#14 SUSAN HAWKS

6-2, FRESHMAN, MIDDLE HITTER, TAMPA, FL (Chamberlain)

Has looked impressive in junior tournaments...athletic ability has coaches anxious to see her compete at the collegiate level...hopes to contribute as a freshman...one of the tallest team members...will team with classmate Susan Johnson to give Seminoles a youthful blocking presence...**High**

School: Florida 5A Player of the Year...team MVP as a senior and freshman...*Tampa Tribune* All-County and All-Region selection...named to the *St. Pete Times'* Suncoast Team...National Honor Society member...Rose Diaz Player of the Year...**Personal:** Undecided upon college major...aspiring model...born May 11, 1976.



#13 SUSAN JOHNSON

6-1, FRESHMAN, MIDDLE HITTER, FT. WAYNE, IN (Northrop)

One of two middle hitters signed in the off-season...will compete for void left by graduation of Vicki Zinkil...one of three Seminoles measuring over six-feet tall...gives FSU a dominant blocking threat...a three sport high school athlete...**High School:** Second team All-State selection as a senior...three time All-Conference team member...voted team's "Best Offensive Player" three straight

years...led team to first ever semifinal appearance in the state championship tournament...garnered 1992 AAU All-American honors...established four new blocking records at Northrop...Sertoma Award recipient recognizing excellence in athletics and academics...three time All-Conference basketball selection...named Academic All-State team in basketball...also a two year track participant...**Personal:** Intends to major in biology...born September 23, 1975.

Newcomer Profiles



#8

MAUREEN McCARTHY

5-9, FRESHMAN, SETTER, QUINCY, MA (North Quincy)

Will challenge for playing time at the setter position... one of five freshmen on the

1994 roster...a three sport high school athlete...**High School:** Named three consecutive years to both the *Boston Globe* and *Patriot Ledger* All-Scholastic teams...

three year Old Colony League All-Star...led team to three Bay State Games gold medals...National Honor Society member...elected student union president as a senior...also participated in basketball and track...

Personal: Has not decided on a major...spent summer working as life guard...born March 3, 1976.



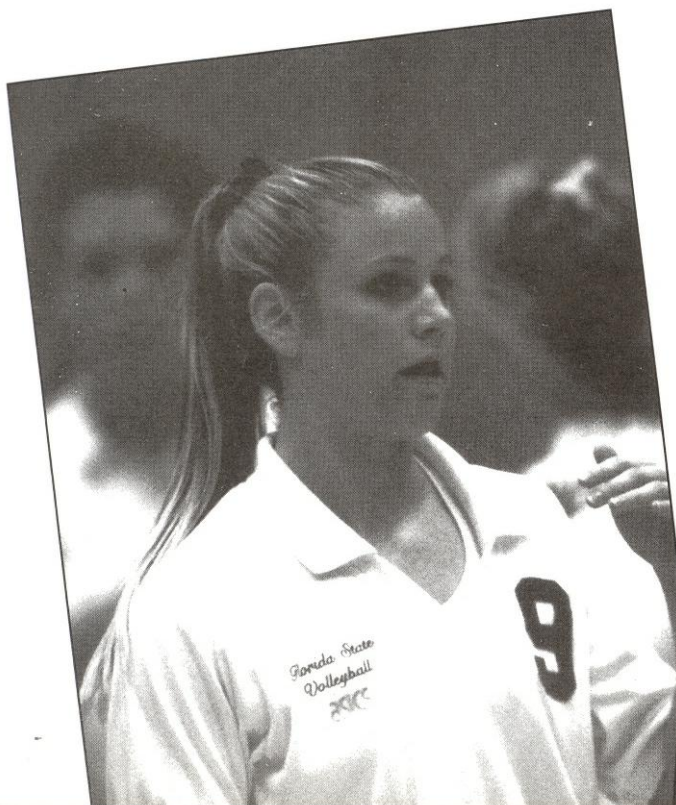
#9

HEIDI SORENSEN

5-11, FRESHMAN, MIDDLE HITTER, LYONS, CO (Longmont)

Redshirt freshman who must wait her turn while learning the Florida State system...one of five freshmen on the '94 roster...possesses outstanding athletic ability...will contend for playing time at middle hitter spot...played with the Boulder Gold Club team during off-season...**HIGH**

SCHOOL: Earned Most Improved Player Award after her freshman year...contributed as an outside hitter and a defensive specialist...also was a member of the track team her freshman year and received Sprinter of the Year Award...competed in District and State competition in 200 meter dash and long jump...**PERSONAL:** Perusing degree in English...born February 12, 1975.



1993 YEAR IN REVIEW

The 1993 season was a benchmark year for the Florida State volleyball program. Florida State advanced to the second round of the NCAA Championship Tournament for the first time in the school's history.

The Seminoles registered their 17th 20-win season along the way by finishing the campaign at 24-10.

Making its sixth NCAA appearance in the last seven years and eighth overall, Florida State powered past DePaul with an exciting four-game victory. In a night of firsts and career best performances, FSU moved into the second round. Playing in the friendly confines of Tully Gym, the Seminoles received career efforts from three starters.

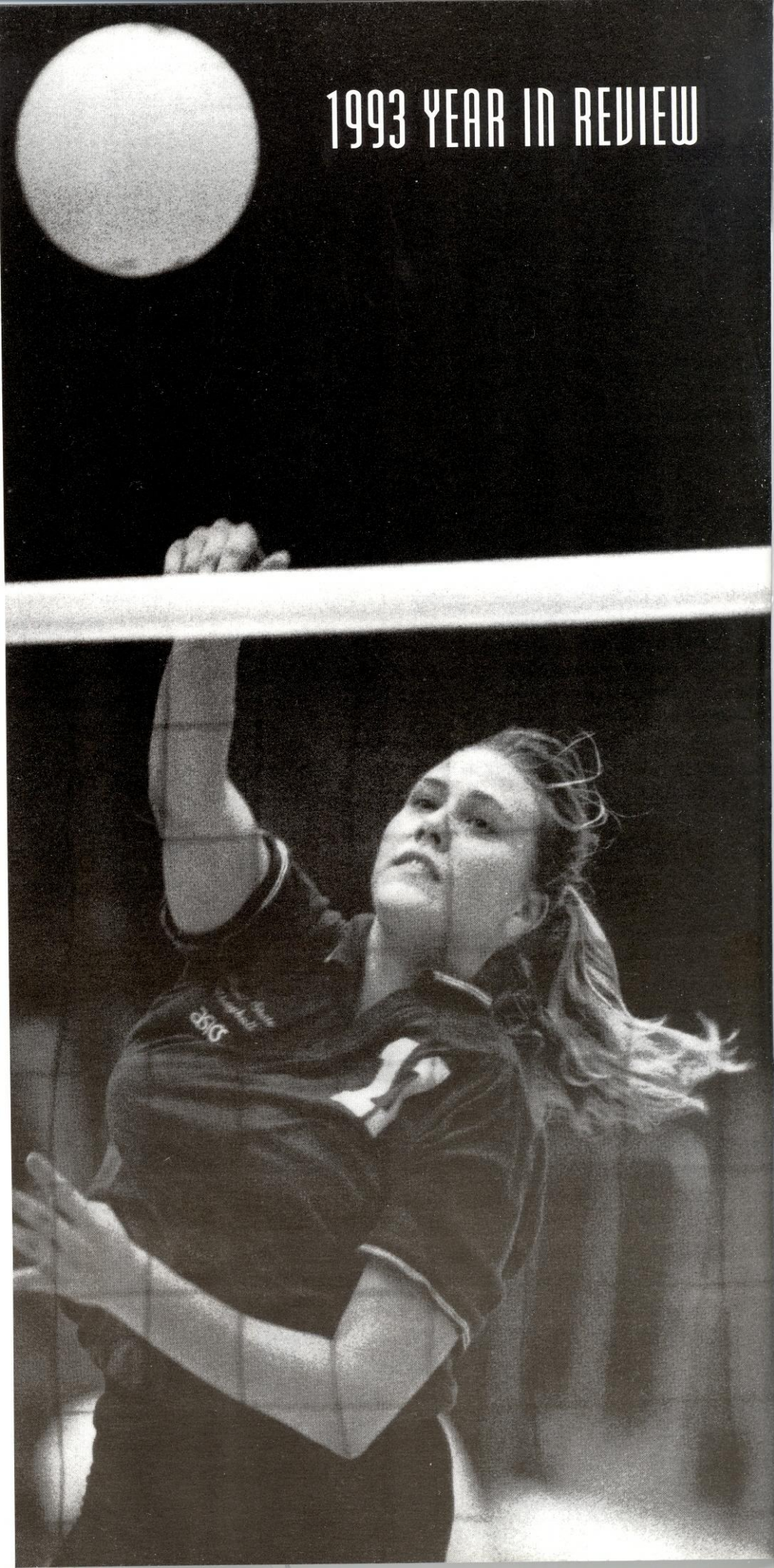
Outside hitter Luiza Ramos and middle hitter Vicki Zinkil led the offensive charge. Ramos put away a career and match high 26 kills, while Zinkil responded with a career best 24. Defensively, Franci Rard turned in a 31 dig performance and Ramos added 28.

Florida State then moved on to face 11th-ranked University of the Pacific in the first ever meeting between the two schools. Because of a scheduling conflict with a holiday craft show, UOP was forced to travel east to Tallahassee for its second round showdown with the Seminoles.

UOP dashed the Seminoles' championship hopes with a four game triumph (6-15, 17-15, 6-15, 9-15). With the loss, head coach Cecile Reynaud was forced to wait until the 1994 season for her illustrious 500th career victory. In her 18th season at the helm of the FSU program, Reynaud finished the '93 campaign with a 499-206 career mark.

After finishing third in Atlantic Coast Conference regular season play with a 9-5 record, the Seminoles reached the championship game of the conference tournament for the second consecutive year. In a rematch of the 1992 final, Florida State fell to Duke in straight games (6-15, 6-15, 5-15).

Two Seminoles garnered All-ACC honors. Luiza Ramos was named to the first team while Vicki Zinkil was tabbed a



The Seminoles registered their 17th 20-win season along the way finishing the campaign at 24-10.

FSU reached the 2nd round of the NCAA Championship for the first time in school history.

member of the second team. Ramos then made it a clean sweep when the junior joined teammate Franci Rard on the All-Tournament squad.

Ramos and Zinkil also added conference Player of the Week honors to their lists of ACC accomplishments. Ramos garnered the league's first weekly honor of the '93 season on September 13. Two weeks later, Zinkil was named.

As a team Florida State led the ACC in kills per game (16.22) and assists per game (14.90). FSU also ranked third in service aces per contest (1.87), fourth in both hitting percentage (.235) and digs per game (17.58), and fifth in blocks per game (2.33).

Individually, Seminoles were listed in five categories. Luiza Ramos was third in aces per game (.46) and kills per game (4.60), while ranking fourth in digs per game (4.06). Jennifer McCall finished third in assists per game (12.31), Vicki Zinkil was second in blocks per game (1.37), and Franci Rard placed third in digs per game (4.08).

En route to its 24-10 finish, Florida State had to overcome several bouts with injuries. FSU played 15 matches without its starting lineup. Outside hitter Deanna Bosschaert missed most

of the ACC Tournament and all of the NCAA's when she incurred a second degree ankle sprain after landing on an opponent's foot in the Tribe's opening round match against North Carolina. Luiza Ramos was sidelined for six matches mid-season with a pulled hamstring. Just as Ramos returned to the lineup Franci Rard sprained her posterior tibialis forcing the senior outside hitter to miss six matches.

Although injuries were a hot topic, two players avoided the injury bug and started all 34 matches. Both Vicki Zinkil and Valerie Broussard played in all 120 games.

During the year the Seminoles put together a pair of streaks. FSU won 10 consecutive matches between September 18 and October 15. During that span the Seminoles won 17 straight games. The Seminoles then encountered a tailspin in November losing four matches in a row and only managing to win one of 13 games.

Florida State enjoyed a school record eight consecutive weeks of being ranked before the Seminoles fell out of the poll in Week 10. During the run, FSU enjoyed one of its highest rankings ever, checking into the 17th spot. FSU climbed back into the rankings in the final poll, checking in at 25th. *(continued)*



continued from previous page

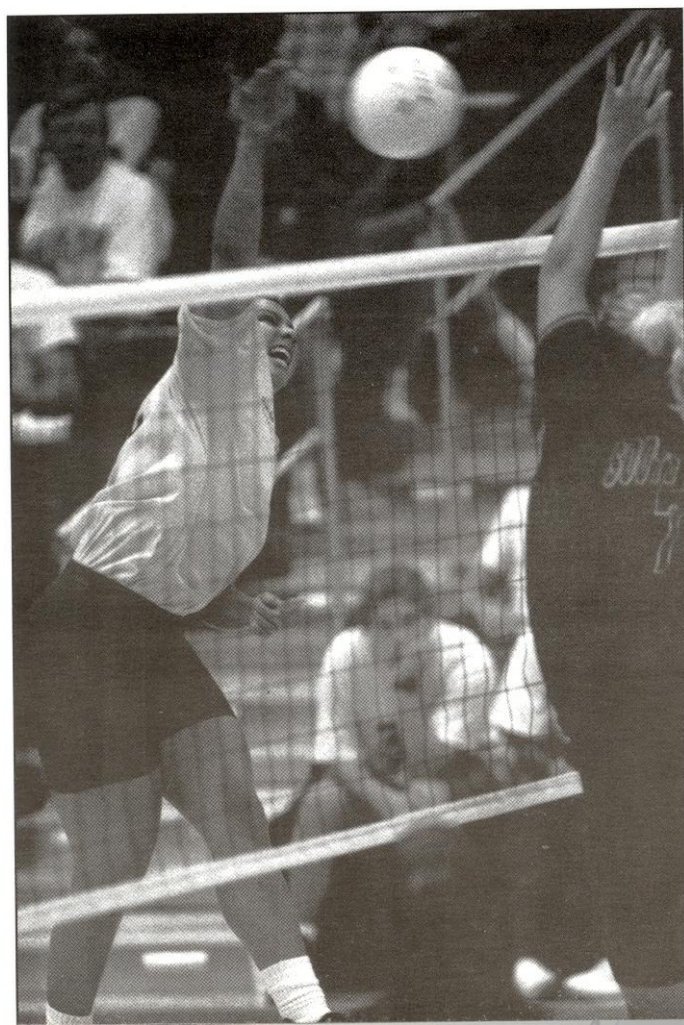
1993 was also a banner year for personal milestones. Three Seminoles surpassed the 1,000 career kill mark. Vicki Zinkil and Luiza Ramos broke the mark at Maryland on October 16. Deanna Bosschaert joined the club in the regular season finale against Troy State. Ramos also became a member of the 1,000 dig club during the Maryland match.

The Seminoles also assaulted the record books. Luiza Ramos tied the school record for aces in a match with nine in leading the Seminoles to a straight game victory over Auburn.

The FSU assist record was broken as Jen McCall dished out 74, two more than the previous mark set by Sherry Cowling in 1992, in a five game win over South Florida.

Two players established new single season marks during the year. Jen McCall took over the top spot in set assists with 1,452 breaking the old record of 1,410 set in 1989 by Nancy Gaspadarek. Luiza Ramos established a new kills per game record with a 4.60 average surpassing the 4.41 average established by Maggie Philgence in 1990.

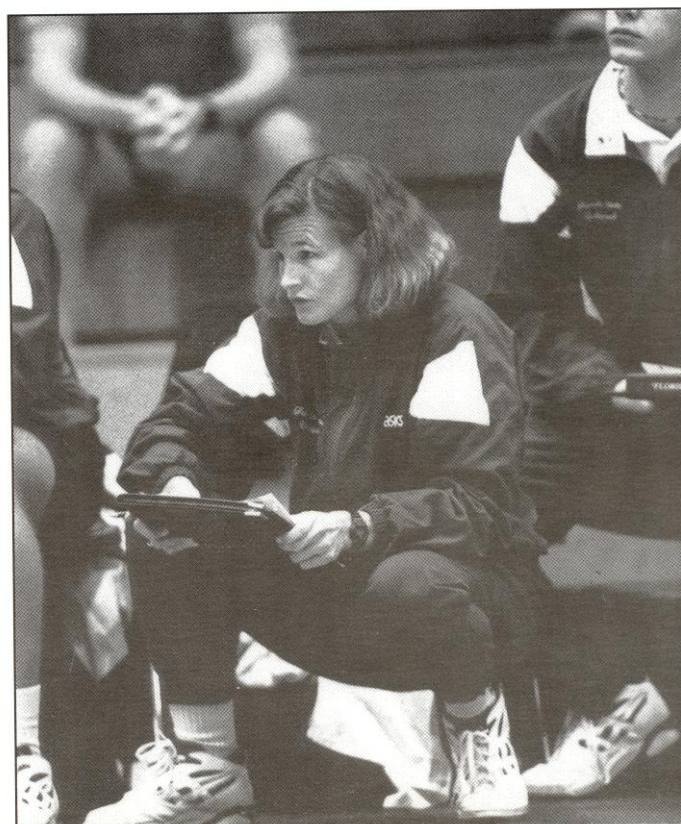
Several players etched their names in the career record book. In three years, Luiza Ramos' 1,263 career digs established a new record. Vicki Zinkil left her mark in the blocking records. She finished her career ranked second in solo blocks



(179), third in block assists (432) and third in total blocks (611). Jennifer McCall took over the second spot in set assists with a career total of 2,888. Both Ramos and Deanna Bosschaert finished their junior years listed fourth and fifth, respectively, on the career service aces chart.

Jennifer McCall also was recognized for her classroom accomplishments when she was named to the District III GTE Academic All-American team.

Vicki Zinkil and Luiza Ramos garnered All-Region honors. Zinkil was named to the All-South Region second team while Ramos was selected to the third team.





1993 RESULTS

RECORD: 24-10 (14-3 HOME; 5-6 AWAY; 5-1 NEUTRAL; 9-5 ACC).

DATE	W/L	N/H/A	OPPONENT	GP	SCORES				
FSU CLASSIC									
09/03	W	H	Auburn	3-0	15-6	15-4	15-3		
09/04	W	H	South Florida	3-2	13-15	15-8	15-10	12-15	15-10
09/04	L	H	SW Missouri State	1-3	16-14	0-15	6-15	7-15	
09/07	W	H	Florida	3-2	15-0	8-15	4-15	15-13	15-13

LSU TOURNAMENT

09/10	W	N	LSU	3-1	15-12	15-4	10-15	15-7	
09/11	W	N	Loyola Marymount	3-1	15-12	12-15	15-2	15-10	
09/11	W	N	Southern Miss	3-0	15-6	15-3	15-8		
09/17	L	A	Texas A & M	1-3	13-15	13-15	16-14	11-15	
09/17	W	A	Houston	3-0	15-11	15-9	15-2		
09/19	W	A	Rice	3-1	15-10	15-9	8-15	15-10	
09/24	W	H	Clemson	3-2	15-7	16-14	8-15	12-15	15-11
09/25	W	A	Georgia Tech	3-0	15-8	15-6	15-9		
09/27	W	H	Jacksonville	3-1	15-7	13-15	15-7	15-3	
10/01	W	H	N.C. State	3-0	15-12	15-8	15-13		
10/02	W	H	N.C. State	3-0	15-3	15-7	15-8		
10/03	W	H	Arkansas St.	3-0	15-3	15-9	15-2		
10/08	W	H	Florida Atlantic	3-0	15-8	15-6	15-4		
10/15	W	A	Virginia	3-0	15-9	15-5	15-10		
10/16	L	A	Maryland	0-3	13-15	14-16	14-16		
10/22	L	H	Duke	1-3	13-15	15-11	9-15	13-15	
10/23	W	H	North Carolina	3-1	15-13	8-15	15-4	15-12	
10/29	W	H	Virginia	3-0	15-6	15-8	15-12		
10/30	W	H	Maryland	3-0	15-9	15-12	15-11		
11/05	L	A	Georgia Tech	1-3	8-15	10-15	15-9	12-15	
11/06	L	A	Clemson	0-3	4-15	10-15	4-15		
11/09	L	A	Florida	0-3	6-15	11-15	14-16		
11/12	L	A	Duke	0-3	3-15	12-15	6-15		
11/13	W	H	North Carolina	3-1	15-10	15-12	13-15	15-12	
11/16	W	N	Troy State	3-0	15-6	15-5	15-3		

ACC CHAMPIONSHIPS

11/19	W	N	North Carolina	3-0	15-13	15-3	15-7		
11/20	W	N	Clemson	3-0	17-15	15-12	15-7		
11/21	L	N	Duke	0-3	6-15	6-15	5-15		

NCAA TOURNAMENT (1st Round)

12/01	W	H	DePaul	3-1	15-8	7-15	15-10	15-13	
-------	---	---	--------	-----	------	------	-------	-------	--

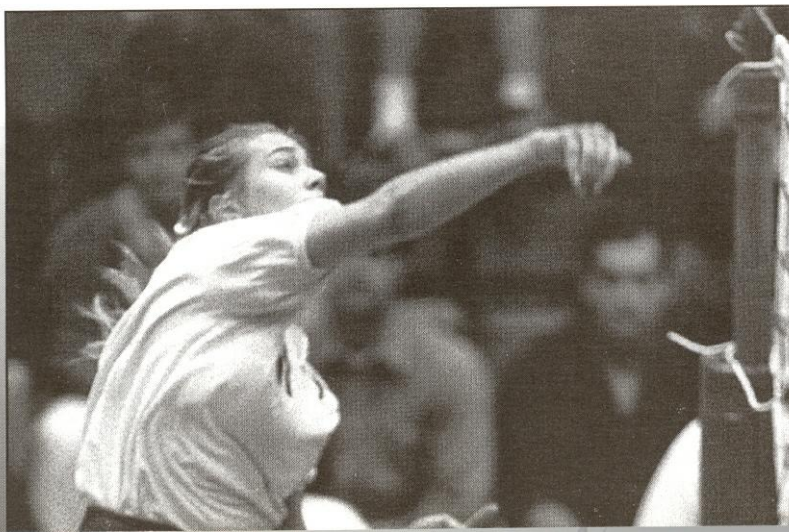
NCAA TOURNAMENT (2nd Round)

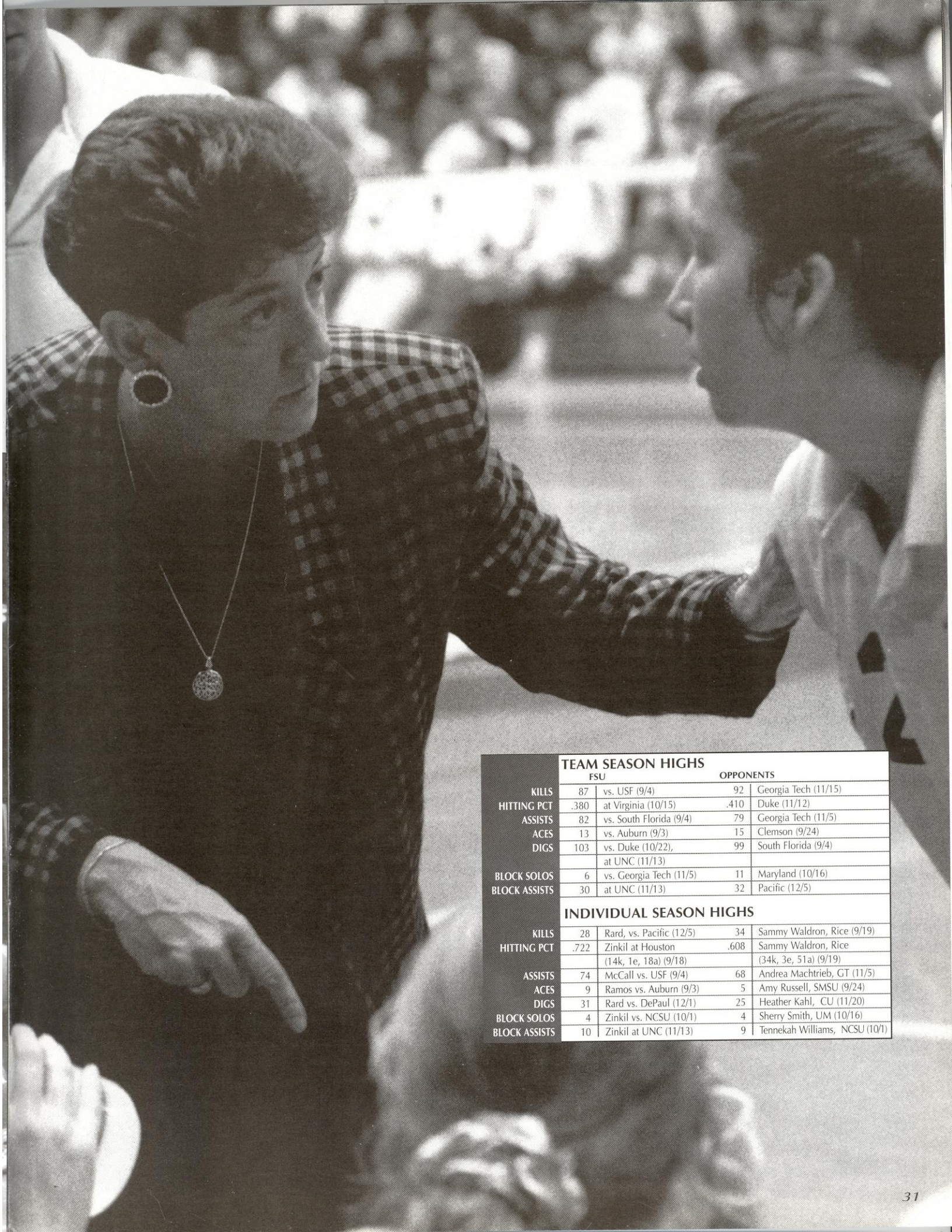
12/05	L	H	Pacific	1-3	6-15	17-15	6-15	9-15	
-------	---	---	---------	-----	------	-------	------	------	--

FSU IN THE POLLS

Florida State enjoyed a school record eight consecutive weeks of being ranked before the Seminoles fell out of the poll in Week 10. During the run, FSU enjoyed one of its best rankings ever, checking into the 17th spot. FSU climbed back into the rankings in the final regular season poll, checking in at 25th. The highest Florida State has been ranked was 15th during the 1982 season.

PreseasonN/R
Week 1N/R
Week 221st
Week 323rd
Week 421st
Week 519th
Week 617th
Week 720th
Week 823rd
Week 923rd
Week 10N/R
Week 11N/R
Week 1225th





TEAM SEASON HIGHS

	FSU		OPPONENTS	
KILLS	87	vs. USF (9/4)	92	Georgia Tech (11/15)
HITTING PCT	.380	at Virginia (10/15)	.410	Duke (11/12)
ASSISTS	82	vs. South Florida (9/4)	79	Georgia Tech (11/5)
ACES	13	vs. Auburn (9/3)	15	Clemson (9/24)
DIGS	103	vs. Duke (10/22), at UNC (11/13)	99	South Florida (9/4)
BLOCK SOLOS	6	vs. Georgia Tech (11/5)	11	Maryland (10/16)
BLOCK ASSISTS	30	at UNC (11/13)	32	Pacific (12/5)

INDIVIDUAL SEASON HIGHS

KILLS	28	Rard, vs. Pacific (12/5)	34	Sammy Waldron, Rice (9/19)
HITTING PCT	.722	Zinkil at Houston (14k, 1e, 18a) (9/18)	.608	Sammy Waldron, Rice (34k, 3e, 51a) (9/19)
ASSISTS	74	McCall vs. USF (9/4)	68	Andrea Machtrieb, GT (11/5)
ACES	9	Ramos vs. Auburn (9/3)	5	Amy Russell, SMSU (9/24)
DIGS	31	Rard vs. DePaul (12/1)	25	Heather Kahl, CU (11/20)
BLOCK SOLOS	4	Zinkil vs. NCSU (10/1)	4	Sherry Smith, UM (10/16)
BLOCK ASSISTS	10	Zinkil at UNC (11/13)	9	Tennekah Williams, NCSU (10/1)

FINAL PLAYER STATS 1993

All Matches Record: 24-10 Home: 14-3 Away: 5-6 Neutral: 5-1

PLAYER	MP	GP	K	E	TA	PCT	A	SA	SE	RE	DG	BS	BA	TB	BE	BHE
Zinkil	34	120	421	114	966	.318	34	27	36	26	295	31	133	164	20	10
Ramos	28	97	446	193	998	.254	33	45	80	31	394	6	35	41	7	3
Broussard	34	120	218	92	567	.222	30	26	61	5	244	19	83	102	26	3
Bosshaert	30	106	366	168	897	.221	33	44	74	37	246	2	55	57	6	6
Rard	28	96	323	131	911	.211	26	29	42	17	392	1	22	23	11	4
McCall	34	118	90	41	245	.200	1452	26	16	0	251	6	73	79	14	27
Diamond	19	33	7	4	21	.143	140	7	9	1	42	0	3	3	1	8
Ciraco	29	73	14	9	42	.119	16	2	13	9	85	0	2	2	1	0
Lotarski	27	73	57	39	226	.080	23	15	22	25	158	0	20	20	5	4
Preocanin	3	7	4	6	15	-.133	1	3	1	3	2	0	2	2	1	0
TEAM RE										3						
FSU	34	120	421	114	966	.318	34	27	36	26	295	31	133	164	20	10
Opp.	34	120	1744	762	4846	.203	1609	158	381	227	1951	72	442	293	88	71

ACC Matches Record: 9-5 Home: 7-1 Away: 2-4 Neutral: 0-0

PLAYER	MP	GP	K	E	TA	PCT	A	SA	SE	RE	DG	BS	BA	TB	BE	BHE
Zinkil	14	48	165	50	405	.284	15	10	14	11	136	19	58	77	10	1
Broussard	14	48	107	38	271	.255	13	13	21	5	116	14	30	44	7	1
Ramos	10	34	164	71	370	.251	11	18	34	13	147	3	12	15	2	2
McCall	14	48	44	19	117	.214	612	14	6	0	119	3	29	32	4	6
Rard	8	27	83	36	238	.197	11	4	8	5	103	0	7	7	3	1
Bosshaert	14	48	182	96	467	.184	10	17	41	18	146	1	25	26	4	3
Ciraco	11	28	13	8	40	.125	13	1	9	8	41	0	2	2	1	0
Lotarski	10	31	36	19	125	.136	13	10	11	11	76	0	11	11	4	1
Preocanin	1	1	0	0	0	.000	0	0	0	0	0	0	0	0	0	0
Diamond	7	13	2	2	8	.000	42	3	1	1	15	0	0	0	0	2
TEAM RE										0						
FSU	14	48	796	339	2041	.224	740	90	145	73	899	40	174	127	35	17
Opp.	14	48	726	311	2030	.204	665	72	161	90	808	43	185	127	32	16

ALL-TIME LETTER WINNERS

Barbara Barnes1978-79
 Shelly Birkholz1982-85
 Joy Blanchard1978-82
 Kim Britt1984-86
Deanna Bosshaert ...**1991-93**
 Amy Bronson1988-90
 Julie Brown1979-83
Valerie Broussard ...**1993**
 Cordelia Campbell1978
 Jennifer Cichy1990-92
Adria Ciraco**1991-93**
 Kristine Cousins1990-91
 Sherry Cowling1992
 Cathy Copeland1987
 Alica Cross1979-82
 Brandi Cumin1990-91
 Camy Davies1979-82
 Laura Davis1973-76
Patty Diamond**1993**
 Carol Forsten1981-84
 Lynne Fullhart1985

Nancy Gaspardak1986-89
 Pam Griffin1973-76
 Barbara Harris1974-77
 Valene Harris1974-77
 Colette Housh1983
 Terry Hume1973-76
 Janice Hunt1977-78
 Michele Hurd1974-77
 Jametta Jackson1984
 Linda Johnson1978
 Jennifer Jones1991-92
 Deanne Kaleta1985-88
 Shannon Kelly1987-88
 Nancy Kinnunen1975-76
 Donna Krai1982-85
 Jamie Kuhn1979-80
 Shannon Lages1980-83
Catie Lotarski**1991-93**
 Maria Magoulas1986-89
 Wendy Markham1985
 Jennifer Marraffino ...1987-90

Charlotte Martin1974-77
 Jennifer McCall1990-93
 Gloria McIntosh1981
 Barbara Mellen1979-81
 Debbie Meyer1987-90
 Stacy Moneymaker ...1983
 Joan Morris1983-86
 Gina Muensterman ...1985-86
 Candi Orsini1974-77
 Karyn Palgut1981-84
 Maggie Philgence ...1987-90
 Rhonda Petty1980-81
 Julie Plattner1986
Sonia Preocanin**1993**
Luiza Ramos**1991-93**
 Franci Rard1993
 Marci Rard1987
 Gabrielle Reece1987-90
 Yolanda Restrepo ...1976-80
 Marie Sanders1980-83
 Lisa Smith1983-84

Sherry Smith1984
 Margaret Stephens ...1977-80
 Bianca Stevens1989-92
 Sally Summer1980-83
 Marybeth Sutcliffe ...1987-90
 Marianne Tobolski ...1985
 Julie Todd1984-87
 Nancy Townsend1977-80
 Sonia Trevino1988-89
 Sue Usher1976-80
 Twanna Walker1985-89
 Lisa Warman1981-84
 Margie Wessel1977-80
 Rebecca White1988
 Mary Williams1981-83
 Velma Wright1978-90
 Jackie Young1981-84
 Vicki Zinkil1989-93

Bold indicates players on the 1994 Florida State Roster

PER GAME PCT.

Per Game Average

PLAYER	K	TA	SA	DG	TB	A
Zinkil	3.51	8.05	0.23	2.46	1.37	0.28
Ramos	4.60	10.29	0.46	4.06	0.42	0.34
Broussard	1.82	4.73	0.22	2.03	0.85	0.25
Bosschaert	3.45	8.46	.042	2.32	0.54	0.31
Rard	3.36	9.49	0.30	4.08	0.24	0.27
McCall	0.76	2.08	0.22	2.13	0.67	12.31
Diamond	0.21	0.64	0.21	1.27	0.09	4.24
Ciraco	0.19	0.58	0.03	1.16	0.03	0.22
Lotarski	0.78	3.10	0.21	2.16	0.27	0.32
Preocanin	0.57	2.14	0.43	0.29	0.29	0.14
FSU	16.22	40.73	1.87	17.58	2.33	14.90
Opp.	14.53	40.38	1.32	16.26	2.44	13.41

Per Game Average/ACC Matches

PLAYER	K	TA	SA	DG	TB	A
Zinkil	3.44	8.44	0.21	2.83	1.60	0.31
Broussard	2.23	5.65	0.27	2.42	0.92	0.27
Ramos	4.82	10.88	0.53	4.32	0.44	0.32
McCall	0.92	2.44	0.29	2.48	0.67	12.75
Rard	3.07	8.81	0.15	3.81	0.26	0.41
Bosschaert	3.79	9.73	0.35	3.04	0.54	0.21
Lotarski	1.16	4.03	0.32	2.45	0.35	0.42
Ciraco	0.46	1.43	0.04	1.46	0.07	0.46
Preocanin	0.00	0.00	0.00	0.00	0.00	0.00
Diamond	0.15	0.62	0.23	1.15	0.00	3.23
FSU	16.58	42.52	1.88	18.73	2.65	15.42
Opp.	15.13	42.29	1.50	16.83	2.64	13.85

FSU's 1993 RECORD WHEN

- At home: 14-3
- On the road: 5-6
- At neutral site: 5-1
- In five game matches: 3-0
- In four game matches: 7-5
- In three game matches: 14-5
- vs. ACC: 9-5
- In tournament play: 8-3
- Playing at night: 20-8
- Playing during the day: 4-2
- When winning first game: 23-1
- When losing first game: 1-9
- Longest game winning streak: 17
- Longest winning streak: 10 matches
- Longest losing streak: 4 matches
- Hitting above 30%: 7-0
- Hitting below 30%: 17-10
- Hitting above 25%: 15-1
- When hitting less than opponent: 2-10
- When out hitting opponent: 22-0
- When opponent hits above 25%: 7-4
- When opponent hits below 20%: 18-1
- In September: 11-2
- In October: 8-2
- In November: 4-5
- In December: 1-1

1993 HONORS

Jennifer McCall

FSU Classic All-Tournament Team
 LSU Invitational All-Tournament Team
 GTE Academic All-American (District III)

Luiza Ramos

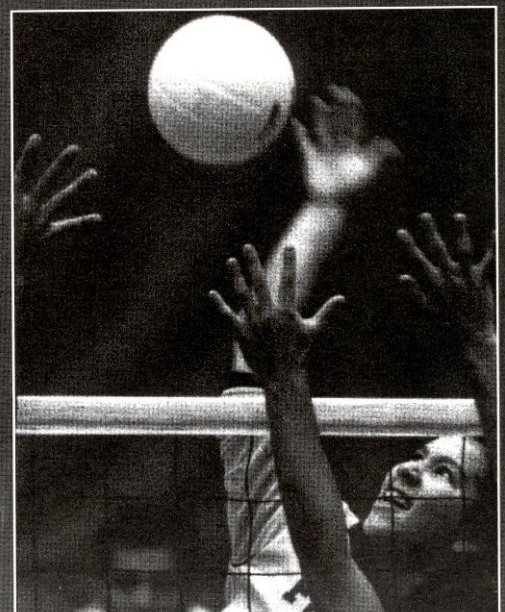
LSU Invitational Tournament MVP
 ACC Player of the Week (9/14)
 All-ACC
 ACC All-Tournament Team
 AVCA All-South Region (3rd Team)

Franci Rard

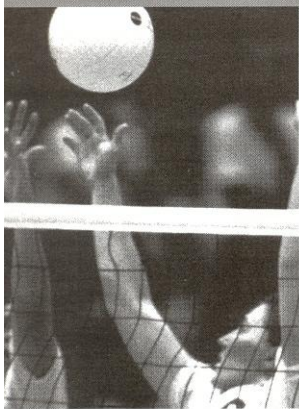
LSU Invitational All-Tournament Team
 ACC All-Tournament Team

Vicki Zinkil

FSU Classic All-Tournament Team
 ACC Player of the Week (9/27)
 All-ACC (2nd Team)
 AVCA All-South Region (2nd Team)



1993 FINAL ACC STANDINGS



Team	CONFERENCE				OVERALL				Home	Road	Neu	Last 5
	W	L	Pct	For Opp	W	L	Pct	For Opp				
Duke	14	0	1.000	42 8	30	3	.910	90 23	12-0	10-3	7-0	4-1
Clemson	10	4	.714	35 17	27	8	.750	88 32	13-4	9-3	5-1	3-2
Florida State	9	5	.643	29 9	24	10	.706	77 43	13-3	8-6	5-1	3-2
Georgia Tech	8	6	.571	25 26	25	13	.658	91 47	12-4	6-5	7-4	3-2
Maryland	6	8	.429	22 29	16	13	.552	54 47	9-5	3-6	4-2	1-4
North Carolina	4	10	.286	18 33	15	15	.516	57 59	9-7	7-5	0-3	2-3
Virginia	3	11	.214	13 32	12	20	.375	46 66	7-7	3-9	1-5	1-4
N.C. State	2	12	.143	13 35	12	17	.414	47 59	2-8	5-8	5-1	1-4

ACC TOURNAMENT RESULTS

(Durham, N.C., Nov. 19-21): *First Round*- Duke d. N.C. State (15-8, 15-3, 15-9); Maryland d. Georgia Tech (15-13,15-10, 5-15,6-15,15-13); Clemson d. Virginia (15-12,15-12, 15-11); **Florida State d. North Carolina (15-13, 15-3, 15-7)**. *Semifinals* - Duke d. Maryland (11-15,15-4,15-2,15-5); **Florida State d. Clemson (17-15,15-12,15-7)**. *Finals*- Duke d. Florida State (15-6,15-6,15-5).

ALL-TOURNAMENT TEAM

Ashley Wacholder, Duke; Jen Rohrig, Duke; Cappy Meyer, Duke; **Luiza Ramos, FSU**; **Franci Rard, FSU**; Robin Kibben, Clem; Sherry Smith, Md.

ACC TOURNAMENT MOST VALUABLE PLAYER

Ashley Wacholder, Duke.

NCAA TOURNAMENT

(Madison, Wisc., Dec. 18: *First Round* Duke d. Louisville (15-12, 15-11,15-13), **Florida State d. DePaul (15-8, 7-15,15-10,15-13)**, Houston d. Clemson (15-11,15-10,15-10). *Second Round*- **Pacific d. Florida State (15-6, 15-17, 15-6, 15-9)**, Duke d. Kentucky (15-12, 15-9, 15-12). *Regional Quarterfinals* - Texas d. Duke (9-15, 12-15, 11-15).

ALL-FRESHMAN

Julie Rodriguez, Clem; Jennifer Schmit, NCS; Dana Builteman, UVA; Jill Heavey, Clem; Cheri Hughes, UVA; Jennifer Orr, GaT; Andrea Nachtrieb, GaT.

ACC PLAYER OF THE YEAR

Ashley Wacholder, Duke.

ACC ROOKIE OF THE YEAR

Julie Rodriguez, Clemson.

ACC COACH OF THE YEAR

Jon Wilson, Duke.

ACC PLAYERS OF THE WEEK

S13-**Luiza Ramos, FSU**; S20-Robin Kibben, Clem; S28-**Vicki Zinkil, FSU**; 04-Jen Rohrig, Duke; 011-Robin Kibben, Clem, 018-Nicole Lantagne, Md*; 025-Jen Rohrig, Duke; N2Ashley Wacholder, Duke; N9-Cris Omiecinski, GaT*; N1 5-Robin Kibben, Clem.

* denotes AVCA Player of the Week.

ACC VS. NON-CONFERENCE OPPONENTS: 106-43 (.711)

ALL-ATLANTIC COAST CONFERENCE

First Team - Robin Kibben, Clem; Nicole Lantagne, Md; Cris Omiecinski, GaT; **Luiza Ramos, FSU**; Jen Rohrig, Duke; Ashley Wacholder, Duke.
Second Team - Cappy Meyer, Duke; Andrea Nachtrieb, GaT; Adrian-Nicol, Duke; Sherri Smith Md; Courtney Stanton, UVA; **Vicki Zinkil, FSU**.

HITTING PERCENTAGE (min. 3 att/game)

Adrian Nicole, Duke396
Jen Rohrig, Duke355
Robin Kibben, Clemson354
Sherri Smith, Maryland339
Nicole Lantagne, Maryland318

ACES PER GAME

Andrea Nachtrieb, Georgia Tech0.63
Jennifer Wagner, Georgia Tech0.52
Luiza Ramos, Florida State0.46
Meghan McEnery, Clemson0.40
Collette Dingsen, North Carolina0.40

KILLS PER GAME

Robin Kibben, Clemson5.02
Ashley Wacholder, Duke4.67
Luiza Ramos, Florida State4.60
Jen Rohrig, Duke4.55
Cris Omiecinski, Georgia Tech4.46

DIGS PER GAME

Andrea Hudy, Maryland4.21
Gretchen Guenther, N.C. State4.16
Franci Rard, Florida State4.08
Luiza Ramos, Florida State4.06
Jenny Schmit, N.C. State3.73

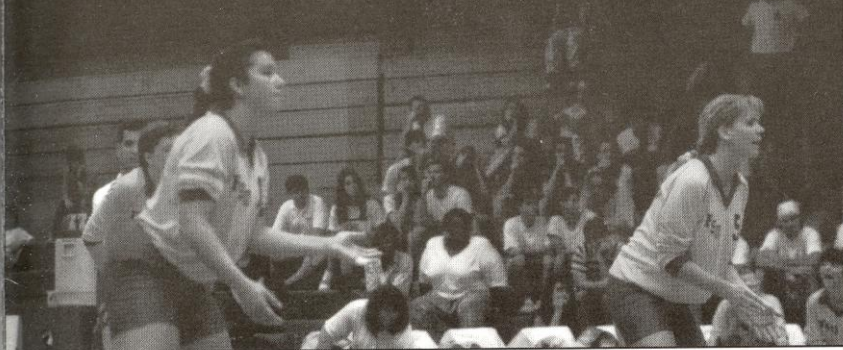
ASSISTS LEADERS

Cappy Meyer, Duke13.23
Melissa Mau, N.C. State13.14
Jennifer McCall, Florida State12.31
Heather Kahl, Clemson11.93
Nicole Lantagne, Maryland11.23

BLOCKS PER GAME

Jen Rohrig, Duke1.39
Vicki Zinkil, Florida State1.37
Sherry Smith, Maryland1.26
Robin Kibben, Clemson1.18
Tennekah Williams, N.C. State1.14

SERIES RECORDS



TEAM	LAST MEETING	W-L
Alabama	1992	9-10
Alabama-Birmingham	1991	6-1
Appalachian State	1981	2-0
Arizona	1985	0-3
Arizona State	1984	0-1
Arkansas State	1993	2-1
Auburn	1993	7-0
Baylor	1990	2-0
Berry College	1976	2-1
Brigham Young	1989	1-4
Butler	1990	1-0
Cal-Berkeley	1989	1-1
Cal-Irvine	1991	0-1
CENTRAL FLORIDA	1992	22-7
Cincinnati	1990	15-2
CLEMSON	1993	8-1
College of Charleston	1977	0-1
Colorado	1990	0-1
Colorado State	1988	0-1
Columbus College	1978	2-0
DePAUL	1993	1-0
DUKE	1993	3-8
East Tennessee State	1981	2-0
Eastern Kentucky	1988	3-4
Eastern Washington	1990	1-0
Flagler College	1981	4-0
FLORIDA	1993	20-13
Florida A & M	1992	13-0
FLORIDA ATLANTIC	1993	1-0
Florida Institute of Technology	1987	1-0
Florida International	1991	9-4
Florida Junior College	1980	2-0
Florida Southern	1982	4-1
FRESNO STATE	1990	0-1
George Washington	1990	1-1
Georgetown	1992	2-0
GEORGIA	1991	10-8
Georgia Southern	1990	1-0
Georgia State	1992	3-0
GEORGIA TECH	1993	2-2
Gulf Coast Community College	1979	2-0
Hofstra	1992	3-0
Houston	1993	4-7
Idaho	1991	1-0
Illinois	1986	0-1
Illinois-Chicago	1987	2-1
Illinois State	1989	4-1
Indiana-Evansville	1984	1-0
Indian River Community College	1981	1-0
IOWA	1984	0-1
Iowa State	1979	1-0
JACKSONVILLE	1993	16-0
Kentucky	1990	4-5
Lake City Community College	1980	6-0
Lamar	1988	2-0
LaSalle	1992	1-0
Long Beach State	1992	0-2
LOUISIANA STATE	1993	10-7
Louisville	1990	9-5
Loyola Marymount	1993	2-1
MARYLAND	1993	4-2
McNeese State	1992	1-0
MEMPHIS STATE	1990	15-2
Miami	1981	11-8
Miami Dade-North CC	1976	1-0
Miami Dade-South CC	1980	3-4
Michigan State	1986	1-1
Middle Tennessee State	1981	1-0
Milligan College	1977	1-0
MINNESOTA	1992	6-6
Mississippi	1986	3-0

TEAM	LAST MEETING	W-L
Mississippi State	1982	6-0
Mississippi College for Women	1980	7-5
Montevallo	1980	2-0
Morehead State	1990	4-0
Nebraska	1982	0-2
New Mexico	1986	0-1
New Orleans	1984	6-0
Nicholls State	1981	4-0
NORTH CAROLINA	1993	14-2
North Carolina-Greensboro	1976	1-0
NORTH CAROLINA STATE	1993	6-2
North Florida Junior College	1979	2-0
North Texas State	1978	0-1
Northeast Louisiana	1991	1-0
Northern Arizona	1989	1-0
Northwestern	1985	1-1
Northwest Louisiana	1977	1-0
NOTRE DAME	1992	0-1
Ohio State	1981	0-1
Oklahoma	1979	1-0
Pacific	1993	0-1
PENN STATE	1988	1-1
Pepperdine	1978	0-1
Pittsburgh	1992	2-2
Portland State	1981	0-1
Purdue	1989	2-2
Rice	1993	4-0
Rhode Island	1983	1-0
Rollins College	1981	1-0
Rutgers	1982	0-2
San Diego State	1983	0-1
Sam Houston State	1981	2-1
South Alabama	1992	11-0
South Carolina	1990	16-7
South Carolina-Spartanburg	1980	1-0
SOUTH FLORIDA	1993	30-1
Southeast Louisiana	1979	1-0
Southern University	1983	1-0
SOUTHERN ILLINOIS	1985	1-1
Southern Mississippi	1993	14-0
Southwest Missouri St.	1993	1-6
Southwest Texas State	1991	33-1
Southwestern Louisiana	1977	1-0
St. Louis University	1980	0-2
Stetson University	1983	1-0
Syracuse	1992	1-0
Tampa	1988	1-0
Temple	1991	1-0
Tennessee	1989	8-6
Tennessee-Chattanooga	1983	4-0
Tennessee Tech	1982	1-0
Texas	1990	0-5
Texas A&M	1993	3-4
Texas-Arlington	1985	1-3
Texas Tech	1986	4-1
Troy State	1993	1-0
Tulane	1990	9-1
Tuskegee Institute	1976	1-0
UCLA	1979	0-2
Utah State	1981	0-1
Valdosta State	1977	1-0
VIRGINIA	1993	7-1
Virginia Tech	1990	13-0
West Georgia State	1977	2-0
West Virginia	1980	2-0
William & Mary	1992	2-1
Winthrop College	1980	2-0
Wyoming	1990	0-1
Xavier	1985	1-0

*1993 Opponents Bold

OPPONENT PROFILES



PENN STATE SEPTEMBER 10

Symbol: Nittany Lions
Location: University Park, PA
Enrollment: 30,500
Colors: Blue & White
Arena/Capacity: Recreation Bldg/7,400
Conference: Big 10
Conference Record/Finish: 18-2/1st
1993 Overall Record: 31-5
Post Season Play: NCAA Finals
Coach/Year at School: Russ Rose/15th
Record at School/Overall: 497-102/Same
Alma Mater/Year: George Washington/'75
Starters Returning/Lost: 5/1
Top Returnees: Salima Davidson, S, 5-9, Sr,
Saundi Lamoureux, MB, 6-2, Sr
SID Contact/Phone: Kathy Cafazzo/(814)864-1757
SID Fax: (814)863-3165



FRESNO STATE SEPTEMBER 17

Symbol: Bulldogs
Location: Fresno, CA
Enrollment: 18,902
Colors: Cardinal & Blue
Arena/Capacity: North Gym/2,026
Conference: Western Athletic
Conference Record/Finish: 6-8/6th
1993 Overall Record: 11-19
Post Season Play: N/A
Coach/Year at School: Lindy Vivas/3rd
Record at School/Overall: 53-46/125-106
Alma Mater/Year: UCLA/'80
Starters Returning/Lost: 3/3
Top Returnees: Roseanne Brown, MB, 6-0, Sr,
Brenda Gregeresen, S, 5-7, Jr
SID Contact/Phone: Josh Lehman/(209)278-2509
SID Fax: (209)278-4689



SOUTHERN ILLINOIS SEPTEMBER 2, SEPTEMBER 3

Symbol: Salukis
Location: Carbondale, IL
Enrollment: 24,000
Colors: Maroon & White
Arena/Capacity: Davies Gymnasium/1250
Conference: Missouri Valley
Conference Record/Finish: 7-9/tied for 4th
1993 Overall Record: 14-13
Post Season Play: N/A
Coach/Year at School: Sonya Locke/4th
Record at School/Overall: 44-45/79-50
Alma Mater/Year: Southern Illinois/'83
Starters Returning/Lost: 5/1
Top Returnees: Kim Cassidy, S, 5-6, Sr,
Deb Heyne, MB, 6-0, Sr
SID Contact/Phone: Mitchell Parkinson/(618)453-5470
SID Fax: (618)536-2152



UCLA SEPTEMBER 10

Symbol: Bruins
Location: Los Angeles, CA
Enrollment: 34,000
Colors: Blue & Gold
Arena/Capacity: Pauley Pavillion/12,800
Conference: Pacific-10
Conference Record/Finish: 17-1/1st
1993 Overall Record: 30-2
Post Season Play: NCAA Regional Final
Coach/Year at School: Andy Banachowski/28th
Record at School/Overall: 740-148/Same
Alma Mater/Year: UCLA, 1968
Starters Returning/Lost: 4/2
Top Returnees: Annett Buckner, 5-11, Sr, OH;
Jenny Johnson, 5-10, Jr, OH
SID Contact/Phone: Elaine Adams/ (310)206-6831
SID Fax: (310)825-8664



MINNESOTA SEPTEMBER 17

Symbol: Golden Gophers
Location: Minneapolis, MN
Enrollment: 37,548
Colors: Maroon & Gold
Arena/Capacity: Sports Pavilion/5,700
Conference: Big 10
Conference Record/Finish: 14-6/tied for 3rd
1993 Overall Record: 24-10
Post Season Play: NCAA 3rd round
Coach/Year at School: Stephanie Schleuder/13th
Record at School/Overall: 242-158/540-270
Alma Mater/Year: Minnesota-Duluth/'72
Starters Returning/Lost: 5/1
Top Returnees: Katrien DeDecker, OH, 6-2, So,
Heidi Olhausen, OH, 5-11, Jr
SID Contact/Phone: Dianne Boyer/(612)624-3335
SID Fax: (612)624-8018



IOWA SEPTEMBER 3

Symbol: Hawkeyes
Location: Iowa City, IA
Enrollment: 27,000
Colors: Black & Gold
Arena/Capacity: Carver-Hawkeye Arena/15,500
Conference: Big Ten
Conference Record/Finish: 3-17/11th
1993 Overall Record: 11-21
Post Season Play: N/A
Coach/Year at School: Linda Schoenstedt/4th
Record at School/Overall: 31-67/362-221
Alma Mater/Year: Creighton/'76
Starters Returning/Lost: 6/0
Top Returnees: Tiffany Meligan, MH, 6-1, Jr,
Lisa Dockray, S, 6-1, Jr
SID Contact/Phone: Mindy Brown/(319)335-9268
SID Fax: (319)335-9417



FLORIDA SEPTEMBER 13, OCTOBER 31

Symbol: Gators
Location: Gainesville, FL
Enrollment: 35,000
Colors: Orange & Blue
Arena/Capacity: O'Connell Center/12,500
Conference: Southeast
Conference Record/Finish: 14-0/1st
1993 Overall Record: 33-4
Post Season Play: NCAA Final Four
Coach/Year at School: Mary Wise/4th
Record at School/Overall: 102-11/183-74
Alma Mater/Year: Purdue/'81
Starters Returning/Lost: 4/2
Top Returnees: Oycan Gokberk, MB, 6-2, Jr,
Missy Aggert, S, 5-9, Jr
SID Contact/Phone: TBA/(904)375-4683 ext. 6120
SID Fax: (904)375-4809



DUKE SEPTEMBER 23, OCTOBER 28

Symbol: Blue Devils
Location: Durham, NC
Enrollment: 6,130
Colors: Royal Blue & White
Arena/Capacity: Cameron Indoor Stadium/9,314
Conference: Atlantic Coast
Conference Record/Finish: 14-0/1st
1993 Overall Record: 30-3
Post Season Play: NCAA 3rd round
Coach/Year at School: Jon Wilson/15th
Record at School/Overall: 277-181/Same
Alma Mater/Year: UMass/'76
Starters Returning/Lost: 4/2
Top Returnees: Ashley Wacholder, OH, 5-9, Sr,
Adrian Nicol, MB, 5-11, Sr
SID Contact/Phone: Lori Regnier-Winters/(919)493-3842
SID Fax: (919)684-2489



LOUISIANA STATE SEPTEMBER 9

Symbol: Tigers
Location: Baton Rouge, LA
Enrollment: 24,753
Colors: Purple & Gold
Arena/Capacity: Pete Maravich Assembly
Center/14,236
Conference: Southeast
Conference Record/Finish: 8-6/4th
1993 Overall Record: 21-16
Post Season Play: NIVC Champions
Coach/Year at School: Scott Lugler/10th
Record at School/Overall: 261-85/401-175
Alma Mater/Year: Missouri/'66
Starters Returning/Lost: 3/3
Top Returnees: Tiffany Miller, MB, 6-1, Sr,
Luciana Santana, S, 5-11, Jr
SID Contact/Phone: Adam Young/(504)388-8226
SID Fax: (504)388-1861



DEPAUL SEPTEMBER 16

Symbol: Blue Demons
Location: Chicago, IL
Enrollment: 16,414
Colors: Royal Blue & Scarlet
Arena/Capacity: Alumni Hall/5,300
Conference: Great Midwest
Conference Record/Finish: 9-3/2nd
1993 Overall Record: 22-14
Post Season Play: NCAA 1st round
Coach/Year at School: Anna Marie Marassa/7th
Record at School/Overall: 132-92/Same
Alma Mater/Year: DePaul/'87
Starters Returning/Lost: 3/3
Top Returnees: Sheila Carroll, S, 5-9, Sr,
Margaret Humphrey, OH, 5-9, Sr
SID Contact/Phone: Scott Reed/(312)362-8415
SID Fax: (312)362-8076



NORTH CAROLINA SEPTEMBER 24, OCTOBER 29

Symbol: Tar Heels
Location: Chapel Hill, NC
Enrollment: 23,794
Colors: Carolina Blue & White
Arena/Capacity: Carmichael Auditorium/10,000
Conference: Atlantic Coast
Conference Record/Finish: 4-10/6th
1993 Overall Record: 16-15
Post Season Play: N/A
Coach/Year at School: Joe Sagula/5th
Record at School/Overall: 67-62/270-185
Alma Mater/Year: SUNY-New Paltz/'78
Starters Returning/Lost: 4/2
Top Returnees: Coletweh Dingens, SW, 5-10, Sr,
Katie Galloway, SW, 6-0, Sr
SID Contact/Phone: Sheri West/(919)962-2123
SID Fax: (919)962-0612



CLEMSON SEPTEMBER 30, NOVEMBER 11

Symbol: Tigers
Location: Clemson, SC
Enrollment: 16,614
Colors: Orange & Purple
Arena/Capacity: Jervy Gym/3,500
Conference: Atlantic Coast
Conference Record/Finish: 10-4/2nd
1993 Overall Record: 27-8
Post Season Play: NCAA 1st round
Coach/Year at School: Jolene Jordan-Hoover/2nd
Record at School/Overall: 27-8/130-39
Alma Mater/Year: Illinois State/'86
Starters Returning/Lost: 6/0
Top Returnees: Robin Kibben, MB, 6-1, Sr,
Julie Rodriguez, OH, 5-10, So
SID Contact/Phone: Sam Blackman/(803)656-2114
SID Fax: (803)656-0299



JACKSONVILLE OCTOBER 18

Symbol: Dolphins
Location: Jacksonville, FL
Enrollment: 2400
Colors: Green & Gold
Arena/Capacity: Swisher Gymnasium/1000
Conference: Sun Belt
Conference Record/Finish: 1-8/9th
1993 Overall Record: 9-25
Post Season Play: N/A
Coach/Year at School: Ann Marie Wessel/1st
Record at School/Overall: 0-0/Same
Alma Mater/Year: Clemson/'93
Starters Returning/Lost: 5/1
Top Returnees: Michelle Glover, S, 5-7, Sr;
Julie Heipp, OH, 5-9, Sr
SID Contact/Phone: Richard Paige/(904)745-7402
SID Fax: (904)743-0067



CENTRAL FLORIDA NOVEMBER 15

Symbol: Golden Knights
Location: Orlando, FL
Enrollment: 24,000
Colors: Black & Gold
Arena/Capacity: UCF Arena/5,100
Conference: Trans America
Conference Record/Finish: 8-0/1st
1993 Overall Record: 35-8
Post Season Play: NIVC participant
Coach/Year at School: Laura Smith/3rd
Record at School/Overall: 74-36/Same
Alma Mater/Year: UCF/'88
Starters Returning/Lost: 4/2
Top Returnees: Miram Metzcus, OH, Sr;
Emily Queisser, S, Jr
SID Contact/Phone: Bob Cefalo/(407)823-2464
SID Fax: (407)823-5266



GEORGIA TECH OCTOBER 1, NOVEMBER 12

Symbol: Yellow Jackets
Location: Atlanta, GA
Enrollment: 12,900
Colors: Old Gold & White
Arena/Capacity: Heisman Gym/2,000
Conference: Atlantic Coast
Conference Record/Finish: 8-7/4th
1993 Overall Record: 25-13
Post Season Play: NIVC 4th round
Coach/Year at School: Shelton Collier/4th
Record at School/Overall: 82-32/378-125
Alma Mater/Year: Ohio State/'77
Starters Returning/Lost: 6/0
Top Returnees: Kerry Annel, MB, 6-0, Jr,
Chris Omiecinski, OH, 5-10, Jr
SID Contact/Phone: Heidi Heilert/(404)894-5445
SID Fax: (404)853-2674



MARYLAND OCTOBER 21, NOVEMBER 4

Symbol: Terrapins
Location: College Park, MD
Enrollment: 21,799
Colors: Red, White, Black and Gold
Arena/Capacity: Cole Field House/14,500
Conference: Atlantic Coast
Conference Record/Finish: 6-8/5th
1993 Overall Record: 16-13
Post Season Play: N/A
Coach/Year at School: Janice Kruger/6th
Record at School/Overall: 113-82/466-178
Alma Mater/Year: Nebraska/'77
Starters Returning/Lost: 4/2
Top Returnees: Sherry Smith, MH, 6-0, So;
Kelly Malins, MH, 6-1, Sr
SID Contact/Phone: Heidi McGuigan/(301)314-7062
SID Fax: (301)314-9094



SOUTH FLORIDA NOVEMBER 25

Symbol: Bulls
Location: Tampa, FL
Enrollment: 34,000
Colors: Green & Gold
Arena/Capacity: The Corral/1,000
Conference: Metro
Conference Record/Finish: 6-0/1st
1993 Overall Record: 23-7
Post Season Play: NCAA 1st round
Coach/Year at School: Perri Hankins/4th
Record at School/Overall: 56-36/63-63
Alma Mater/Year: Ball St./79
Starters Returning/Lost: 3/3
Top Returnees: Erica Berggren, MB, 6-0, So;
Haylee Red, OH, 5-9, Jr
SID Contact/Phone: Jack Heilig/(813)974-2125
SID Fax: (813)974-5328



NORTH CAROLINA STATE OCTOBER 7, OCTOBER 8

Symbol: Wolfpack
Location: Raleigh, NC
Enrollment: 27,156
Colors: Red & White
Arena/Capacity: Reynolds Coliseum/13,000
Conference: Atlantic Coast
Conference Record/Finish: 2-12/8th
1993 Overall Record: 12-17
Post Season Play: N/A
Coach/Year at School: Kim Hall/1st
Record at School/Overall: 0-0/Same
Alma Mater/Year: Wheaton College/'89
Starters Returning/Lost: 4/2
Top Returnees: Rhonda Surratt, OH, 5-9, Jr,
Melissa Mau, S, 5-11, Jr
SID Contact/Phone: TBA/(919)515-1182
SID Fax: (919)515-2898



VIRGINIA OCTOBER 22, NOVEMBER 5

Symbol: Cavaliers
Location: Charlottesville, VA
Enrollment: 18,073
Colors: Orange & Blue
Arena/Capacity: Memorial Gym/2500
Conference: Atlantic Coast
Conference Record/Finish: 3-11/7th
1993 Overall Record: 12-20
Post Season Play: N/A
Coach/Year at School: Karen Uhler/5th
Record at School/Overall: 61-68/109/99
Alma Mater/Year: Eastern Illinois/'80
Starters Returning/Lost: 5/1
Top Returnees: Dana Builteman, S, 5-10, So,
Courtney Stanton, OH, 5-10, Jr
SID Contact/Phone: Cathy Tapogna/(804)982-5500
SID Fax: (804)982-5525



MEMPHIS STATE NOVEMBER 26

Symbol: Tigers
Location: Memphis, TN
Enrollment: 21,500
Colors: Blue & Gray
Arena/Capacity: Elma Roane Field House/3,000
Conference: Great Midwest
Conference Record/Finish: 11-1/1st
1993 Overall Record: 25-11
Post Season Play: N/A
Coach/Year at School: Penny Lucas-White/4th
Record at School/Overall: 55-52/Same
Alma Mater/Year: Memphis State/'84
Starters Returning/Lost: 4/2
Top Returnees: Jamie Runkle, OH, 5-7, Sr,
Cherilyn Bright, MH, 5-11, Sr
SID Contact/Phone: Sherilyn Fiveash/(901)678-2337
SID Fax: (901)678-4134



FLORIDA ATLANTIC OCTOBER 14

Symbol: Owls
Location: Boca Raton, Florida
Enrollment: 16,500
Colors: Blue & Gray
Arena/Capacity: FAU Gym/5,000
Conference: Trans America Athletic Conference
Conference Record/Finish: 4-4/4th
1993 Overall Record: 13-12
Post Season Play: N/A
Coach/Year at School: Leo Uzcategui/(5th)
Record at School/Overall: 74-54/Same
Alma Mater/Year: University Rio de Janeiro
Starters Returning/Lost: 4/2
Top Returnees: Fernanda Silva, 5-8, Jr, OH
Jennifer Paquet, 5-7, Sr, OH
SID Contact/Phone: Katrina McCormick/(407)367-3595
SID Fax: (407)367-3963



NOTRE DAME OCTOBER 24

Symbol: Fighting Irish
Location: Notre Dame, IN
Enrollment: 10,126
Colors: Gold & Blue
Arena/Capacity: Joyce Arena/11,418
Conference: Midwestern Collegiate
Conference Record/Finish: 5-0/1st
1993 Overall Record: 27-8
Post Season Play: NCAA 4th round
Coach/Year at School: Debbie Brown/4th
Record at School/Overall: 83-26/200-109
Alma Mater/Year: Arizona State/'82
Starters Returning/Lost: 4/3
Top Returnees: Christy Peters, OH, 5-11, Sr,
Nicole Coates, OH, 5-7, Sr
SID Contact/Phone: Dave Reed/(219)631-7516
SID Fax: (219)631-7941



GEORGIA NOVEMBER 26

Symbol: Bulldogs
Location: Athens, GA
Enrollment: 28,395
Colors: Red & Black
Arena/Capacity: Spacenter/2,400
Conference: Southeast
Conference Record/Finish: 12-2/2nd
1993 Overall Record: 29-6
Post Season Play: NCAA 3rd round
Coach/Year at School: Jim Iams/6th
Record at School/Overall: 134-49/175-74
Alma Mater/Year: Stanford/'74
Starters Returning/Lost: 4/2
Top Returnees: Priscilla Pacheco, OH, 5-11, Sr,
Hadli Anstine, MB, 6-0, Jr
SID Contact/Phone: Resa Wright/(706)542-1621
SID Fax: (706)542-9339

CAREER RECORDS

MATCHES PLAYED

1. Sally Summer	189	1980-83
2. Alicia Cross	188	1979-82
3. Camy Davis	175	1979-83
4. Marie Sanders	164	1980-83
5. Julie Brown	155	1979-83
6. Karyn Palgut	153	1981-84
7. Carol Forsten	145	1981-84
8. Shannon Lages	143	1980-83
9. Maggie Philgence	138	1987-90
10. Deanne Kaleta	137	1985-88

KILL ATTEMPTS

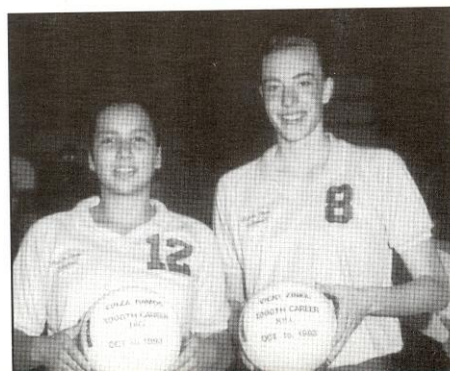
1. Maggie Philgence	4793	1987-90
2. Julie Todd	3470	1984-87
3. Deanne Kaleta	3191	1985-88
4. Joan Morris	3189	1983-86
5. Luiza Ramos	2919	1991-93
6. Vicki Zinkil	2800	1989-93
7. Sally Summer	2790	1980-83
8. Karyn Palgut	2737	1981-84
9. Gabrielle Reece	2709	1987-90
10. Alicia Cross	2207	1979-82

KILLS

1. Maggie Philgence	2110	1987-90
2. Julie Todd	1615	1984-87
3. Joan Morris	1285	1983-86
4. Luiza Ramos	1268	1991-93
5. Karyn Palgut	1228	1981-84
6. Deanne Kaleta	1195	1985-88
7. Gabrielle Reece	1179	1987-90
8. Vicki Zinkil	1178	1989-93
9. Sally Summer	1057	1980-83
10. Alicia Cross	1027	1979-82

HITTING PERCENTAGE

1. Alicia Cross	.360	1979-82
2. Donna Krai	.306	1982-85
Maggie Philgence	.306	1987-90
4. Julie Brown	.301	1979-83
5. Julie Todd	.295	1984-87
6. Karyn Palgut	.285	1981-84
7. Vicki Zinkil	.273	1989-93
8. Shannon Lages	.272	1980-83
9. Sally Summer	.271	1980-83
10. Gabrielle Reece	.270	1987-90



SERVICE ACES

1. Donna Krai	188	1982-85
2. Julie Todd	133	1984-87
3. Karyn Palgut	132	1981-84
4. Luiza Ramos	130	1991-93
5. Deanna Bosschaert	128	1991-93
6. Maggie Philgence	118	1987-90
7. Deanne Kaleta	117	1985-88
8. Jennifer McCall	111	1990-93
9. Nancy Gaspadarek	104	1986-89
10. Amy Bronson	103	1988-90

SOLO BLOCKS

1. Gabrielle Reece	240	1987-90
2. Vicki Zinkil	179	1989-93
3. Bianca Stevens	129	1989-92
4. Julie Brown	127	1979-83
5. Julie Todd	126	1984-87
6. Deanne Kaleta	116	1985-88
7. Maggie Philgence	69	1987-90
8. Joan Morris	58	1983-86
9. Shannon Lages	54	1980-83
10. Karyn Palgut	51	1981-84

BLOCK ASSISTS

1. Julie Todd	609	1984-87
2. Gabrielle Reece	507	1987-90
3. Vicki Zinkil	432	1989-93
4. Deanne Kaleta	402	1985-89
5. Maggie Philgence	315	1987-90
6. Julie Brown	270	1979-83
7. Nancy Gaspadarek	262	1986-89
8. Karyn Palgut	254	1981-84
9. Amy Bronson	230	1988-90
10. Joan Morris	228	1983-86

TOTAL BLOCKS

1. Gabrielle Reece	747	1987-90
2. Julie Todd	735	1984-87
3. Vicki Zinkil	611	1989-90
4. Alicia Cross	594	1979-83
5. Deanne Katela	518	1985-88
6. Julie Brown	504	1979-83
7. Maggie Philgence	384	1987-90
8. Bianca Stevens	323	1989-92
9. Karyn Palgut	305	1981-84
10. Nancy Gaspadarek	278	1986-89

SET ASSISTS

1. Nancy Gaspadarek	4804	1986-89
2. Jennifer McCall	2888	1990-93
3. Marie Sanders	2815	1980-83
4. Donna Krai	2050	1982-85
5. Barb Mellen	1589	1979-81
6. Jennifer Marraffino	1054	1987-90
7. Sherry Cowling	874	1992
Brandi Cumin	874	1990-91
9. Kim Britt	750	1984-85
10. Nancy Townsend	441	1979-80

DIGS

1. Luiza Ramos	1263	1991-93
2. Maggie Philgence	1185	1987-90
3. Nancy Gaspadarek	1150	1986-89
4. Deanne Kaleta	1083	1985-88
5. Joan Morris	985	1983-86
6. Julie Todd	908	1984-87
7. Marybeth Sutcliffe	871	1987-90
8. Jennifer McCall	845	1990-93
9. Deanna Bosschaert	779	1991-93
10. Maria Magoulas	777	1986-89



INDIVIDUAL SINGLE SEASON RECORDS

HITTING PERCENTAGE

1. Margie Wessel	.420	1980
2. Julie Brown	.382	1981
3. Shannon Lages	.360	1980
4. Alicia Cross	.356	1981
5. Julie Todd	.351	1987
6. Maggie Philgence	.333	1990
7. Maggie Philgence	.329	1988
8. Rhonda Petty	.320	1980
9. Deanne Kaleta	.319	1988
10. Vicki Zinkil	.318	1993

KILLS

1. Maggie Philgence	.579	1990
2. Joan Morris	.571	1986
Maggie Philgence	.571	1989
4. Maggie Philgence	.546	1988
5. Julie Todd	.513	1986
6. Julie Todd	.466	1987
7. Luiza Ramos	.451	1992
8. Luiza Ramos	.446	1993
9. Deanne Kaleta	.436	1988
10. Kristine Cousins	.421	1990

KILL ATTEMPTS

1. Joan Morris	.1389	1986
2. Maggie Philgence	.1305	1989
3. Maggie Philgence	.1265	1990
4. Maggie Philgence	.1217	1988
5. Kristine Cousins	.1149	1990
6. Julie Todd	.1135	1986
7. Sally Summer	.1054	1982
8. Kristine Cousins	.1040	1991
Deanne Kaleta	.1040	1988
10. Luiza Ramos	.1032	1992

SET ASSISTS

1. Jennifer McCall	.1452	1993
2. Nancy Gaspadarek	.1410	1989
3. Sherry Cowling	.1348	1992
4. Nancy Gaspadarek	.1216	1986
5. Nancy Gaspadarek	.1159	1987
6. Marie Sanders	.1112	1982
7. Nancy Gaspadarek	.1019	1988
8. Donna Krai	.994	1985
9. Barb Mellen	.984	1981
10. Jennifer McCall	.893	1990

KILLS PER GAME

1. Luiza Ramos	4.60	1993
2. Maggie Philgence	4.41	1990
3. Maggie Philgence	4.32	1989
4. Joan Morris	4.26	1986
5. Maggie Philgence	4.16	1988
6. Julie Todd	3.85	1987
7. Luiza Ramos	3.82	1992
8. Julie Todd	3.80	1986
9. Vicki Zinkil	3.51	1993
10. Kristine Cousins	3.50	1991

SERVICE ACES

1. Donna Krai	.90	1983
2. Karyn Palgut	.55	1984
3. Karyn Palgut	.54	1982
Luiza Ramos	.54	1992
5. Marie Sandars	.53	1983
6. Alicia Cross	.52	1982
7. Marie Sandars	.51	1982
8. Kristine Cousins	.49	1990
9. Lynne Fullhart	.48	1985
10. Amy Bronson	.47	1989

TOTAL BLOCKS

1. Cardelia Campbell	.286	1979
2. Julie Todd	.273	1987
3. Alicia Cross	.270	1979
4. Julie Todd	.238	1986
5. Gabrielle Reece	.212	1989
6. Julie Brown	.195	1983
7. Julie Brown	.194	1981
8. Gabrielle Reece	.189	1990
9. Deanne Kaleta	.181	1986
10. Gabrielle Reece	.175	1987

BLOCK ASSISTS

1. Julie Todd	.223	1987
2. Julie Todd	.199	1986
3. Gabrielle Reece	.143	1989
4. Deanne Kaleta	.137	1988
5. Julie Brown	.134	1983
Deanne Kaleta	.134	1986
7. Vicki Zinkil	.133	1993
8. Julie Brown	.132	1981
Gabrielle Reece	.132	1987
10. Vicki Zinkil	.127	1989

SOLO BLOCKS

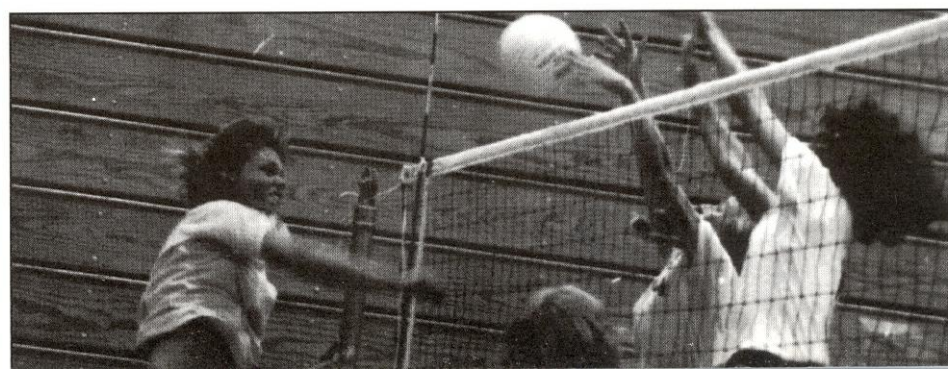
1. Gabrielle Reece	.69	1989
2. Gabrielle Reece	.68	1990
3. Julie Brown	.62	1981
4. Julie Brown	.61	1983
5. Gabrielle Reece	.60	1988
6. Vicki Zinkil	.53	1991
7. Bianca Stevens	.52	1991
8. Julie Todd	.50	1987
9. Deanne Kaleta	.47	1986
10. Marianne Tobolski	.45	1985

BLOCKS PER GAME

1. Julie Todd	2.26	1987
2. Vicki Zinkil	1.87	1990
3. Julie Todd	1.76	1986
4. Vicki Zinkil	1.68	1989
5. Gabrielle Reece	1.65	1989
6. Gabrielle Reece	1.64	1987
7. Julie Brown	1.55	1983
Gabrielle Reece	1.55	1987
9. Julie Brown	1.50	1981
Gabrielle Reece	1.50	1990

DIGS

1. Joan Morris	.460	1986
2. Luiza Ramos	.450	1992
3. Kristine Cousins	.440	1990
4. Luiza Ramos	.419	1991
5. Sonia Trevino	.403	1989
6. Maggie Philgence	.399	1990
7. Luiza Ramos	.394	1993
8. Franci Rard	.392	1993
9. Kristine Cousins	.379	1991
10. Nancy Gaspadarek	.364	1986



TEAM RECORDS

SINGLE SEASON RECORDS

KILLS

1993	.1946
1988	.1883
1990	.1861
1986	.1860
1981	.1840

ACES

1983	.333
1982	.317
1984	.267
1992	.236
1988	.225

TOTAL BLOCKS

1987	.865
1989	.793
1986	.793
1981	.658
1990	.632

HITTING PCT.

1980	.330
1981	.308
1988	.286
1987	.264
1990	.258

DIGS

1986	.2241
1990	.2181
1993	.2109
1992	.1987
1989	.1951

BLOCK ASSISTS

1987	.709
1986	.684
1989	.634
1988	.524
1981	.517

ATTEMPTS

1993	.4888
1982	.4876
1986	.4839
1989	.4761
1988	.4721

ASSISTS

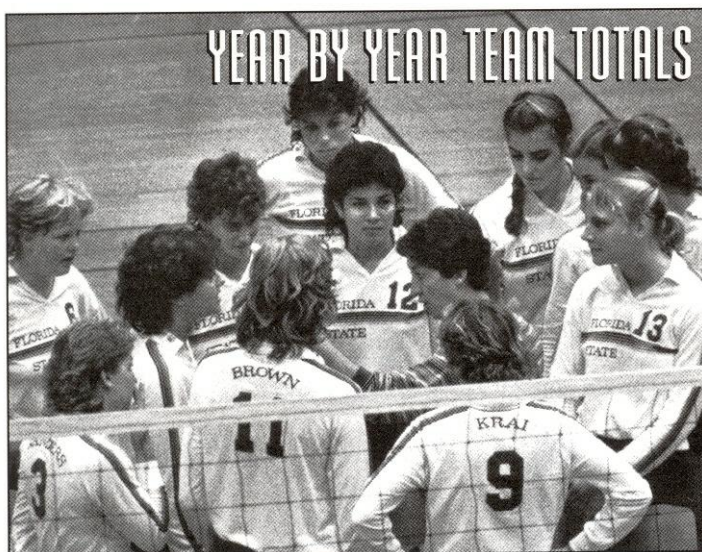
1993	.1788
1988	.1648
1990	.1620
1989	.1573
1981	.1570

BLOCK SOLOS

1989	.159
1987	.156
1983	.153
1990	.150
1991	.144

ALL-TIME TEAM RECORDS

BEST OVERALL RECORD	30-5 (.857) 1989
MOST WINS	43, 1981
WORST RECORD	16-15 (.516) 1991
MOST LOSSES	19, 1979
BEST RECORD IN CONFERENCE PLAY	10-0 (1983, 1989)
BEST METRO CONFERENCE FINISH	1st (1983, 85, 86, 87, 88, 89)
BEST ACC FINISH	Tie for 1st (1992)
CONSECUTIVE GAMES WON	35 (1981)
CONSECUTIVE MATCHES WON	21 (1981)
HIGHEST AIAW NATIONAL TOURNAMENT FINISH	4th (1981)
HIGHEST NCAA RANKING	15th (1983)



YEAR BY YEAR TEAM TOTALS

HITTING PCT.

1979 season	.150
1980 season	.330
1981 season	.308
1982 season	.215
1983 season	.238
1984 season	.255
1985 season	.222
1986 season	.229
1987 season	.264
1988 season	.286
1989 season	.231
1990 season	.258
1991 season	.197
1992 season	.236
1993 season	.235

ACES

1982	.317
1983	.333
1984	.267
1985	.189
1986	.200
1987	.165
1988	.225
1989	.219
1990	.217
1991	.213
1992	.236
1993	.224

TOTAL BLOCKS

1981	.658
1982	.493
1983	.585
1984	.524
1985	.518
1986	.793
1987	.865
1988	.660
1989	.793
1990	.632
1991	.453
1992	.440
1993	.493

KILLS

1979	.1057
1980	.1022
1981	.1840
1982	.1816
1983	.1674
1984	.1693
1985	.1470
1986	.1860
1987	.1642
1988	.1883
1989	.1838
1990	.1861
1991	.1668
1992	.1784
1993	.1946

ATTEMPTS

1979	.3342
1980	.1956
1981	.4012
1982	.4876
1983	.4140
1984	.3875
1985	.3722
1986	.4839
1987	.4034
1988	.4721
1989	.4761
1990	.4667
1991	.4342
1992	.4210
1993	.4888

DIGS

1982	.282
1983	.141
1984	.1417
1985	.1383
1986	.2241
1987	.1558
1988	.1816
1989	.1951
1990	.2181
1991	.1885
1992	.987
1993	.2109

BLOCK ASSISTS

1980	.163
1981	.517
1982	.388
1983	.432
1984	.455
1985	.376
1986	.684
1987	.709
1988	.524
1989	.634
1990	.482
1991	.309
1992	.309
1993	.428

BLOCK SOLOS

1980	.47
1981	.141
1982	.105
1983	.153
1984	.69
1985	.142
1986	.109
1987	.156
1988	.136
1989	.159
1990	.150
1991	.144
1992	.131
1993	.65

ASSISTS

1979	.1105
1980	.796
1981	.1570
1983	.1330
1984	.1269
1985	.1342
1986	.1514
1987	.1441
1988	.1648
1989	.1573
1990	.1620
1991	.1444
1992	.1556
1993	.1788

YEAR-BY-YEAR LEADERS

TEAM MATCH RECORDS

BEST ATTACK
61% vs. Florida A&M (1981)

MOST DIGS
123 vs. Georgia Tech (1992)

MOST BLOCK ASSISTS
48 vs. Illinois-Chicago (1987)

MOST SOLO BLOCKS
18 vs. Minnesota (1992)

MOST SET ASSISTS
88 vs Duke (1992)

MOST SERVICE ACES
17 vs. Florida A&M (1990)

TEAM SINGLE SEASON RECORDS

MOST KILL ATTEMPTS
4,888 (1993)

MOST KILLS
1,948 (1993)

BEST ATTACK PERCENTAGE
.330 (1980)

MOST SERVICE ACES
333 (1983)

MOST SOLO BLOCKS
159 (1989)

MOST BLOCK ASSISTS
709(1987)

MOST DIGS
2,241 (1986)

INDIVIDUAL MATCH RECORDS

MOST ACES IN A MATCH
9, Bronson vs. Northern Arizona (1989); Ramos vs. Auburn (1993)

MOST KILLS IN A MATCH
35, Morris vs. Sam Houston State (1986)

MOST DIGS IN A MATCH
38, Ramos vs. Loyola Marymount (1991)

MOST BLOCK ASSISTS IN A MATCH
17, Todd vs. Tulane (1987)

MOST SOLO BLOCKS IN A MATCH
8, Kaleta vs. USF (1987); Stevens vs. Ga. Tech (1992)

MOST ASSISTS IN A MATCH
74, McCall vs. South Florida (1993)

MOST CONSECUTIVE GAMES PLAYED
391, Kaleta (1986-88)

MOST CONSECUTIVE MATCHES PLAYED
189, Summer (1980-83)

KILLS

1979 Nancy Townsend	.273
1980 Margie Wessel	.200
1981 Alicia Cross	.330
1982 Karyn Palgut	.394
1983 Sally Summer	.300
1984 Karyn Palgut	.328
1985 Julie Todd	.361
1986 Joan morris	.571
1987 Julie Todd	.466
1988 Maggie Philgence	.546
1989 Maggie Philgence,	.571
1990 Maggie Philgence	.579
1991 Kristine Cousins	.385
1992 Luiza Ramos	.451
1993 Luiza Ramos	.446



ACES

1982 Karyn Palgut	.54
1983 Donna Krai	.90
1984 Karyn Palgut	.55
1985 Lynne Fullhart	.48
1986 Joan Morris	.45
1987 Julie Todd	.35
1988 Deanne Katela	.44
1989 Amy Bronson	.47
1990 Kristine Cousins	.49
1991 Deanna Bosschaert	.42
1992 Luiza Ramos	.54
1993 Luiza Ramos	.45

TOTAL BLOCKS

1979 Cordelia Campbell	.286
1980 Alicia Cross	.68
1981 Julie brown	.194
1982 Shannon Lages	.122
1983 Julie Brown	.195
1984 Joan Morris	.121
1985 Marianne Tobolski	.134
1986 Julie Todd	.238
1987 Julie Todd	.273
1988 Gabrielle Reece	.171
1989 Gabrielle Reece	.212
1990 Gabrielle Reece	.189
1991 Vicki Zinkil	.133
1992 Bianca Stevens	.133
1993 Vicki Zinkil	.164

HITTING PERCENTAGE

1979 Nancy Townsend	.370
1980 Alicia Cross	.520
1981 Julie Brown	.382
1982 Shannon Lages	.278
1983 Donna Krai	.296
1984 Donna Krai	.490
1985 Julie Todd	.278
1986 Julie Todd	.297
1987 Julie Todd	.351
1988 Maggie Philgence	.329
1989 Gabrielle Reece	.279
1990 Maggie Philgence	.333
1991 Kristine Cousins	.230
1992 Sherry Cowling	.390
1993 Vicki Zinkil	.318

DIGS

1982 Karyn Palgut	.162
1983 Sally Summer	.228
1984 Karyn Palgut	.335
1985 Joan Morris	.309
1986 Joan Morris	.460
1987 Deanne Kaleta	.285
1988 Deanne Kaleta	.327
1989 Sonia Trevino	.403
1990 Kristine Cousins	.440
1991 Luiza Ramos	.419
1992 Luiza Ramos	.450
1993 Luiza Ramos	.394

BLOCK ASSISTS

1980 Alicia Cross	.45
1981 Julie Brown	.132
1982 Alicia Cross	.92
1983 Julie Brown	.134
1984 Joan Morris	.100
1985 Julie Todd	.93
1986 Julie Todd	.199
1987 Julie Todd	.223
1988 Deanne Kaleta	.137
1989 Gabrielle Reece	.143
1990 Gabrielle Reece	.121
1991 Vicki Zinkil	.80
1992 Vicki Zinkil	.74
1993 Vicki Zinkil	.133

ATTEMPTS

1979 Nancy Townsend	.773
1980 Margie Wessel	.375
1981 Carol Forsten	.693
1982 Sally Summer	.1054
1983 Sally Summer	.779
1984 Joan Morris	.754
1985 Joan Morris	.834
1986 Joan Morris	.1389
1987 Maggie Philgence	.1006
1988 Maggie Philgence	.1217
1989 Maggie Philgence	.1305
1990 Maggie Philgence	.1265
1991 Kristine Cousins	.1040
1992 Luiza Ramos	.1032
1993 Luiza Ramos	.998

ASSISTS

1979 Barbara Mellen	.492
1980 Marie Sanders	.565
1981 Barbara Mellen	.984
1983 Marie Sanders	.732
1984 Donna Krai	.604
1985 Donna Krai	.994
1986 Nancy Gaspadarek	.1216
1987 Nancy Gaspadarek	.1159
1988 Nancy Gaspadarek	.1019
1989 Nancy Gaspadarek	.1410
1990 Jennifer McCall	.893
1991 Brandi Cumin	.837
1992 Sherry Cowling	.1348
1993 Jennifer McCall	.1452

BLOCK SOLOS

1980 Alicia Cross	.23
1981 Julie Brown	.62
1982 Shannon Lages	.32
1983 Julie Brown	.61
1984 Joan Morris	.21
1985 Marianne Tobolski	.45
1986 Deanne Kaleta	.47
1987 Julie Todd	.50
1988 Gabrielle Reece	.60
1989 Gabrielle Reece	.69
1990 Gabrielle Reece	.68
1991 Vicki Zinkil	.53
1992 Bianca Stevens	.60
1993 Vicki Zinkil	.31

YEARLY RESULTS

1976-93

Head Coach
CECILE REYNAUD
Record 33-14

1 9 7 6

MUW INVITATIONAL

LSU	L	2-15, 15-7, 14-16
Montevallo	W	15-3, 15-9
North Alabama	W	15-8, 15-12
MUW	W	15-0, 15-3
Mississippi	L	13-15, 15-8, 9-15
Berry College	W	15-11, 6-15, 19-17

UNC-GREENSBORO INVITATIONAL

Eastern Kentucky	W	10-15, 15-5, 15-12
UNC-Greensboro	W	15-9, 14-16, 15-6
George Washington	L	11-15, 15-7, 10-15
Miami-Dade South	L	3-15, 7-15
Maryland	W	15-3, 1-15, 15-13
Illinois-Chicago	L	5-15, 3-15

FSU INVITATIONAL (3rd Place)

Auburn	W	15-13, 15-9
MUW	W	17-5, 15-13
North Carolina	W	11-15, 15-10, 15-13
Flagler	W	15-4, 15-9
Central Florida	W	15-9, 15-9
Alabama	L	10-15, 11-15
MUW	L	15-7, 8-15, 13-15

GEORGIA INVITATIONAL (1st Place)

Auburn	W	10-15, 15-6, 15-4
West Georgia	W	15-6, 15-11
Tenn.-Chattanooga	W	15-11, 15-2
Berry College	L	15-1, 6-15, 6-15
South Carolina	W	15-7, 13-15, 15-11
Mississippi St.	W	15-7, 15-10
Berry College	W	18-16, 15-4

WEST GEORGIA INVITATIONAL (2nd Place)

Tuskegee	W	15-1, 15-6
Tennessee	W	6-15, 15-6, 16-14
FIU	L	11-15, 12-15
Tennessee	W	15-5, 15-8
MUW	L	16-18, 11-15
South Florida	W	15-8, 15-5
Tennessee	W	15-6, 15-4
FIU	W	15-8, 15-13
MUW	L	14-16, 7-15

FLAGLER INVITATIONAL (2nd Place)

Lake City CC	W	15-8, 15-8
Central Florida	W	15-4, 15-12
Miami-Dade North	W	15-12, 6-15, 15-2
South Florida	W	15-5, 15-5
Jacksonville	W	15-3, 15-12
Flagler	W	15-8, 15-12
Miami-Dade South	L	15-17, 7-15

STATE TOURNAMENT (2nd Place)

Florida	W	15-0, 15-7
FIU	L	7-15, 9-15
Florida	W	15-3, 9-15, 15-1
FIU	W	13-15, 15-3, 15-13
FIU	L	6-15, 8-15

Head Coach
CECILE REYNAUD
Record 25-13

1 9 7 7

MUW INVITATIONAL

Nicholls State	W	16-14, 10-15, 15-9
Mississippi	W	7-15, 17-15, 15-8
Columbus College	W	15-2, 15-10
Alabama	L	10-15, 3-15
MUW	L	15-6, 10-15, 11-15
LSU	L	1-15, 11-15

NEW ORLEANS INVITATIONAL (3rd Place)

South Alabama	W	15-8, 15-5
Tulane	W	15-8, 15-13
SW Louisiana	W	15-8, 15-6
Northwestern St.	W	15-1, 8-15, 15-3
Central Florida	L	8-15, 15-13, 10-15
Nicholls State	W	15-5, 15-3

FSU INVITATIONAL (5th Place)

Georgia	W	16-4, 15-10
Central Florida	L	6-15, 4-15
Tenn.-Chattanooga	W	15-10, 15-3
South Carolina	L	11-15, 15-11, 12-15
Miami-Dade South	L	10-15, 2-15

GEORGIA INVITATIONAL

South Carolina	L	9-15, 15-7, 8-15
West Georgia	W	15-10, 15-0
Tenn.-Chattanooga	W	15-13, 15-11
Georgia State	W	15-4, 15-7
Mississippi St.	W	15-8, 15-17, 15-4
College of Charleston	L	12-15, 15-7, 7-15

WEST GEORGIA INVITATIONAL (2nd Place)

Valdosta State	W	15-2, 15-4
Milligan College	W	15-3, 15-7
Georgia	W	9-15, 15-2, 15-7
Appalachian St.	W	15-11, 15-2
E. Tennessee St.	W	15-9, 15-1
South Carolina	L	15-7, 9-15

STATE TOURNAMENT (1st Place)

Florida	W	10-15, 15-13, 15-7
South Florida	W	15-11, 10-15, 15-13
South Florida	W	2-15, 15-11, 17-15

REGIONAL TOURNAMENT (4th Place)

Mississippi St.	W	15-1, 15-10
Florida	W	11-15, 15-10, 15-13
Alabama	L	9-15, 10-15
South Florida	W	15-12, 15-10, 11-15, 16-14
Alabama	L	3-15, 14-16, 15-11, 9-15
MUW	L	10-15, 13-15, 15-5, 15-7, 17-19

Head Coach
CECILE REYNAUD
Record 28-14

1 9 7 8

MUW INVITATIONAL

Arkansas St.	L	15-5, 17-19, 15-17
Columbus College	W	15-1, 15-0
Memphis State	W	15-11, 15-3
MUW	W	15-2, 15-11
New Orleans	W	15-3, 15-13
Mississippi	L	10-15, 15-8, 3-15, 15-5, 11-15

MIAMI-DADE INVITATIONAL (2nd Place)

Florida Southern	W	16-14, 15-10
South Florida	W	15-10, 15-7
Miami-Dade South	W	11-15, 16-14, 17-15
South Florida	W	12-15, 15-9, 15-9
Miami-Dade South	W	7-15, 15-6, 15-12
Florida Tech	L	14-16, 5-15
FIU	W	15-6, 16-14
Florida Tech	L	9-15, 7-15

FSU INVITATIONAL

New Orleans	W	15-5, 15-3
Florida Southern	W	16-14, 15-6
South Carolina	W	16-14, 15-13
Tennessee	L	12-15, 8-15
Miami	W	15-3, 15-4
South Carolina	L	15-7, 8-15, 10-15

SW MISSOURI ST. INVITATIONAL

Illinois State	W	15-12, 15-12
Texas A&M	W	15-10, 16-14
Cincinnati	W	15-12, 15-11, 15-12
Nebraska	L	12-15, 15-10, 12-15
North Texas St.	L	5-15, 10-15

ALABAMA INVITATIONAL

Alabama	L	7-15, 10-15, 11-15
Mississippi	W	5-15, 15-12, 15-8, 15-11
Cincinnati	W	15-12, 15-11, 15-12
MUW	W	15-6, 11-15, 8-15, 15-10, 15-5

STATE TOURNAMENT (1st Place)

South Florida	W	15-5, 7-15, 15-9
Miami	W	15-5, 13-15, 15-7

REGIONAL TOURNAMENT (1st Place)

Georgia State	W	15-4, 15-4
Mississippi St.	W	15-9, 15-2
Alabama	W	15-3, 15-2
Alabama	W	15-13, 15-13, 15-4
Mississippi	W	15-12, 10-15, 15-11, 13-15, 15-2

NATIONAL AIAW TOURNAMENT

SW Missouri St.	L	15-12, 11-15, 6-15
Arizona	L	11-15, 16-14, 1-15
Texas A&M	L	9-15, 8-15
Pepperdine	L	5-15, 15-12, 3-15
UCLA	L	2-15, 15-12, 7-15

Head Coach
CECILE REYNAUD
Record 31-19

1 9 7 9

ALABAMA INVITATIONAL (3rd Place)

South Carolina	W	15-10, 3-15, 15-8
MUW	W	15-12, 15-7
Central Florida	L	2-15, 15-7, 8-15
Miami	W	15-10, 16-14
Alabama	L	9-15, 11-15
Oklahoma	W	15-7, 7-15, 16-14

MUW INVITATIONAL (1st Place)

Arkansas St.	W	15-10, 15-8
SE Louisiana	W	15-4, 15-5
Nicholls State	W	15-6, 20-18
MUW	W	15-9, 15-12
Memphis State	W	15-8, 13-15, 15-12, 15-8
Alabama	W	15-7, 15-6, 15-10

CENTRAL FLORIDA INVITATIONAL

Oklahoma	L	9-15, 12-15
Alabama	L	11-15, 15-8, 5-15
Miami-Dade South	L	8-15, 11-15
LSU	W	15-6, 13-15, 15-13
Auburn	W	15-5, 15-7
Central Florida	L	7-15, 6-15
Miami	L	9-15, 15-10, 14-16
N. Florida JC	W	15-2, 15-5, 14-16, 15-12
Lake City JC	W	15-8, 15-5, 15-11

FSU INVITATIONAL

South Florida	W	15-8, 15-7
Auburn	W	15-6, 15-10
North Carolina	W	15-10, 10-15, 15-12
Florida Southern	W	15-8, 15-8
Miami	L	12-15, 15-7, 12-15
North Carolina	W	15-11, 15-12
South Alabama	W	15-6, 16-14
Gulf Coast CC	W	15-1, 15-5

SW MISSOURI INVITATIONAL

SW Missouri St.	L	2-15, 3-15
Houston	L	5-15, 13-15
Iowa State	W	15-1, 15-6
Minnesota	L	15-9, 12-15, 7-15
Cincinnati	L	11-15, 9-15
Gulf Coast CC	W	15-2, 15-2
N. Florida JC	W	15-8, 15-2, 15-1
Lake City JC	W	15-11, 15-0, 18-16

STATE TOURNAMENT (2nd Place)

Miami	L	10-15, 14-16, 7-15
-------	---	--------------------

REGIONAL TOURNAMENT (1st Place)

Georgia	W	6-15, 15-7, 15-6
Alabama	L	13-15, 15-13, 12-15
Mississippi St.	W	15-6, 15-11
Alabama	W	15-13, 15-6
Miami	L	9-15, 18-16, 8-15
Alabama	W	14-16, 15-11, 15-10
Miami	W	15-9, 4-15, 15-9
Miami	W	8-15, 15-6, 15-12

NATIONAL TOURNAMENT

Brigham Young	L	16-14, 7-15, 7-15
Houston	L	9-15, 8-15
UCLA	L	9-15, 5-15
Purdue	L	14-16, 14-16

Head Coach
CECILE REYNAUD
Record 43-14

1 9 8 0

Tennessee	L	15-4,7-15,10-15,8-15
ALABAMA INVITATIONAL		
Central Florida	L	8-15,8-15
Texas Tech	W	15-6,10-15,15-10
Alabama-Birm.	W	15-9,15-4
Memphis State	L	13-15,8-15
METRO CONFERENCE TOURNAMENT (2nd Place)		
Louisville	W	15-7,15-9
Virginia Tech	W	13-15,15-4,15-2
Memphis State	W	15-8,15-9
St. Louis	L	17-15,12-15,11-15
Tulane	W	15-11,16-14
Cincinnati	W	15-6,16-14
Memphis State	W	10-15,15-12,15-10
St. Louis	L	12-15,15-7,6-15
Flagler	W	15-1,15-2
Jacksonville	W	15-4,15-9
Florida JC	W	15-1,15-1
CENTRAL FLORIDA INVITATIONAL (4th Place)		
FIU	L	10-15,9-15
Miami	W	15-10,15-7
Central Florida	W	15-11,15-10
South Carolina-Spartanburg	W	15-2,15-3
LSU	W	15-7,15-4
Miami	L	10-15,13-15
LSU	W	15-13,15-5
Alabama	L	10-15,7-15
South Alabama	W	15-5,15-1
Lake City CC	W	15-7,15-6
FSU INVITATIONAL		
MUW	W	15-10,15-9
South Florida	W	15-0,15-2
Oklahoma State	W	15-6,15-7
Jacksonville	W	15-0,15-5
Miami	W	15-13,17-15
Tennessee	L	15-8,3-15,11-15
South Alabama	W	15-12,15-12,15-9
JACKSONVILLE INVITATIONAL (1st Place)		
Lake City JC	W	15-5,15-9
Central Florida	W	16-14,15-11
Montevallo	W	15-0,15-4
Winthrop College	W	15-6,15-11
Winthrop College	W	16-14,15-2
Central Florida	W	15-0,15-5
Miami	W	17-15,10-15,15-7
MIAMI INVITATIONAL (3rd Place)		
Florida Southern	W	15-8,16-14
FIU	W	9-15,16-14,15-3
Central Florida	W	15-1,15-3
Miami	L	10-15,15-13,9-15
Miami-Dade South	W	15-10,15-12
Miami	L	8-15,8-15
Jacksonville	W	15-6,15-4,15-5
Lake City JC	W	15-5,15-11,15-11
Florida JC	W	15-8,15-1
Florida A&M	W	15-1,16-14
STATE TOURNAMENT (1st Place)		
Miami	W	15-10,9-15,15-8,16-14
AIAW REGIONAL TOURNAMENT (3rd Place)		
South Alabama	W	15-5,15-5
Auburn	W	15-1,15-2
Mississippi	L	15-1,9-15,14-16
Mississippi	W	15-8,15-6
Alabama	L	14-16,15-11,11-15
Miami	L	13-15,4-15

Head Coach
CECILE REYNAUD
Record 43-0

1 9 8 1

Central Florida	W	17-15,15-13
Ohio State	L	12-15,9-15
ALABAMA INVITATIONAL (1st Place)		
Georgia	W	14-16,15-8,15-11
Baylor	W	15-4,15-1
Minnesota	W	15-12,7-15,15-11
Alabama	W	15-9,15-7
Miami	W	15-10,15-2
Texas Tech	W	8-15,15-2,15-8

Minnesota	W	15-8,15-12
Georgia	W	16-14,15-9,15-3
SW MISSOURI ST. INVITATIONAL		
SW Missouri St.	L	4-15,13-15
Northwestern	L	7-15,8-15
Houston	W	15-5,15-11
Minnesota	L	12-15,7-15
Purdue	W	15-7,16-14
FSU INVITATIONAL (1st Place)		
Jacksonville	W	15-1,15-5
South Carolina	W	15-8,15-4
Alabama-Birm.	W	15-6,15-11
Alabama	W	15-7,15-4
North Carolina	W	15-2,15-11
Alabama	W	15-10,15-10
Clemson	W	15-10,15-5
Central Florida	W	15-5,15-2,15-4
TENNESSEE INVITATIONAL (1st Place)		
Middle Tenn. St.	W	15-7,15-3,15-8
Rollins College	W	15-9,15-0,15-4
E. Tennessee St.	W	15-2,15-6,15-11
Memphis State	W	15-13,15-13,15-4
Appalachian St.	W	15-1,15-8,15-8
Tennessee	W	15-9,15-11,10-15,15-12
Eastern Kentucky	W	15-3,3-15,15-4,15-10
Kentucky	W	15-8,4-15,15-13,12-15,16-14
LSU INVITATIONAL (3rd Place)		
Nicholls State	W	15-3,15-3
Tennessee	W	15-10,15-3
Sam Houston	W	15-13,15-10
New Orleans	W	6-15,15-4,15-7
LSU	L	15-8,9-15,7-15
Sam Houston	W	15-9,15-9
Indian River CC	W	15-5,15-8,16-14
Flagler	W	15-4,15-10
Florida A&M	W	15-1,15-2
FAIAW STATE CHAMPIONSHIP (1st Place)		
Central Florida	W	15-7,15-3,16-14
AIAW REGION III TOURNAMENT (1st Place)		
Mississippi	W	15-3,15-8
Miami	W	15-8,15-12
Central Florida	W	15-12,15-9
Georgia	W	15-1,15-5
AIAW NATIONAL CHAMPIONSHIP (4th Place)		
North Carolina	W	15-5,15-10,15-1
Portland State	L	15-7,9-15,10-15,18-20
Minnesota	W	15-6,15-13,15-11
Texas	L	15-12,3-15,15-5,11-15,15-12
Texas-Arlington	W	15-11,18-20,15-11
Utah State	L	9-15,15-13,10-15

Head Coach
CECILE REYNAUD
Record 27-17

1 9 8 2

LSU INVITATIONAL (1st Place)		
Tulane	W	15-2,15-10,15-13
LSU	W	15-8,15-8,15-8
South Alabama	W	15-4,11-15,15-11,15-8
New Orleans	W	15-0,15-4,15-0
Central Florida	W	15-9,15-3,15-10
SW MISSOURI ST. INVITATIONAL		
Illinois State	W	15-13,15-4,13-15,15-8
Texas Tech	W	15-7,15-2,15-4
SW Missouri St.	W	15-8,15-8,7-15,15-9
Nebraska	L	9-15,15-15,15-3,15-12,7-15
Texas-Arlington	L	7-15,15-8,15-2,7-15,11-15
Morehead State	W	15-9,15-1,8-15,15-10
FSU INVITATIONAL (2nd Place)		
Mississippi St.	W	15-4,15-6
Illinois	W	15-4,15-6
Jacksonville	W	15-7,15-12
Eastern Kentucky	L	15-17,1-15
South Florida	W	15-2,15-7
North Carolina	W	15-9,15-6
Minnesota	W	15-11,8-15,15-13
Eastern Kentucky	L	15-2,10-15,3-15
Rutgers	L	13-15,9-15
Central Florida	W	15-10,15-7
Rutgers	L	9-15,13-15
Florida Southern	L	12-15,15-13,12-15
Florida A&M	W	15-4,15-10,15-6
Texas	L	15-8,2-15,15-17,15-4,12-15

TEXAS A&M CLASSIC		
SW Missouri St.	L	8-15,15-8,14-16,12-15
Texas A&M	L	5-15,16-14,6-15,12-15
LSU	W	15-10,13-15,15-4,15-3
Kentucky	L	8-15,15-10,14-16,15-3,11-15
SW Missouri St.	L	15-4,7-15,15-5,5-15,13-15
MOREHEAD STATE INVITATIONAL (1st Place)		
Morehead State	W	15-10,15-7
Memphis State	W	15-7,15-10
Eastern Kentucky	L	8-15,10-15
Tennessee Tech	W	15-10,15-10
Morehead State	W	15-12,13-15,10-15,15-6,15-8
Kentucky	L	15-4,7-15,9-15,15-12,3-15
METRO CONFERENCE CHAMPIONSHIP (3rd Place)		
Tulane	W	15-5,15-12
Memphis State	W	15-7,15-1
Cincinnati	L	15-10,13-15,5-15
Southern Miss.	W	15-3,15-2
Virginia Tech	W	15-11,15-3
Louisville	L	13-15,15-12,12-15
Louisville	L	12-15,15-11,16-14,13-15,13-15
Memphis State	W	15-5,15-5,15-7

Head Coach
CECILE REYNAUD
Record 31-6

1 9 8 3

LSU INVITATIONAL (1st Place)		
Clemson	W	15-7,15-0,15-4
Rice	W	15-13,15-9,15-7
New Orleans	W	15-9,15-5,15-4
Southern	W	15-8,15-4,15-2
LSU	W	13-15,15-11,8-15,15-10,15-8
PITT INVITATIONAL (3rd Place)		
Pittsburgh	L	13-15,5-15,15-11,9-15
Penn State	W	15-12,15-7,13-15,15-6
Louisville	L	10-15,13-15,15-12,6-15
Louisville	W	15-1,15-10,15-3
Virginia Tech	W	14-16,15-4,15-9,15-5
Cincinnati	W	12-15,15-11,15-12,15-12
South Florida	W	15-5,15-9,15-5
FSU INVITATIONAL (1st Place)		
Tenn.-Chattanooga	W	15-3,15-3,15-9
South Carolina	W	15-12,15-8,15-4
Clemson	W	15-8,15-7,15-4
South Florida	W	15-6,15-3,15-10
North Carolina	W	15-7,15-5,15-12
Memphis State	W	15-1,15-8,8-15,15-11
Southern Miss.	W	15-2,15-1,15-4
South Carolina	W	13-15,15-4,9-15,15-8,16-14
Tulane	W	15-13,15-5,15-3
Florida A&M	W	15-2,15-6,15-8
Stetson	W	15-3,15-2,15-7
LONGHORN INVITATIONAL (3rd Place)		
Texas	L	6-15,13-15,3-15
LSU	W	15-6,15-4,15-10
San Diego State	L	11-15,7-15,11-15
Houston	L	15-11,8-15,8-15,8-15,14-16
Clemson	W	15-17,15-11,15-7,15-9
NORTH CAROLINA INVITATIONAL (1st Place)		
Duke	W	15-9,11-15,15-8,15-8
Georgia	W	15-5,15-7,15-12
North Carolina	W	15-13,15-12,15-10
North Carolina St.	W	15-6,15-3,15-7
Rhode Island	W	15-12,10-15,15-3,12-15,15-10
METRO CONFERENCE TOURNAMENT (1st Place)		
Southern Miss.	W	15-0,15-0,15-4
Cincinnati	W	13-15,15-12,15-12,15-9
South Carolina	W	13-15,15-8,15-9,10-15,15-4
NCAA TOURNAMENT 1st Round		
Tennessee	L	15-12,15-12,1-15,10-15,8-15



YEARLY RESULTS 1976-93

Head Coach
CECILE REYNAUD
Record 20-13

1984

Minnesota	W	8-15,15-10,15-13,15-9
Lamar	W	15-11,15-6,15-11
Illinois State	L	1-15,6-15,4-15
Texas A&M	L	4-15,1-15,16-14,11-15
Southern Illinois	L	13-15,15-12,14-16,15-17
LSU	W	11-15,12-15,15-8,15-13,15-8
Houston	L	15-12,8-15,7-15,11-15
Central Florida	W	15-13,15-2,15-4
Tulane	W	15-9,15-2,15-10
New Orleans	W	8-15,15-3,15-10,15-2
Southern Miss.	W	15-8,15-3,15-8
Florida	W	15-11,15-9,15-11
Tennessee	L	8-15,7-15,9-15
Memphis State	W	15-2,16-14,15-7
Florida A&M	W	15-1,15-2,15-7
South Florida	W	15-11,16-14,15-7
Virginia Tech	W	15-10,15-11,15-10
South Carolina	W	7-15,15-6,15-10,13-15,16-14
Central Florida	W	15-3,15-9,15-8
North Carolina St.	W	15-5,15-9,15-11
Louisville	L	6-15,8-15,11-15
Cincinnati	W	15-7,13-15,15-5,15-11
Eastern Kentucky	L	14-16,7-15,12-15
Hofstra	W	9-15,15-11,15-13,9-15,15-12
Georgia	L	10-15,15-13,13-15,15-5,13-15
METRO CONFERENCE TOURNAMENT		
Virginia Tech	W	15-1,15-6,15-8
South Carolina	L	11-15,11-15,11-15
Evansville	W	15-8,15-4,15-4
LSU	L	11-15,15-12,9-15,13-15
Brigham Young	L	14-16,0-15,2-15
Arizona State	L	10-15,7-15,4-15
Iowa	L	3-15,2-15,12-15

Head Coach
CECILE REYNAUD
Record 22-10

1985

Georgia	L	4-15,10-15,6-15
Florida	L	15-1,15-4,6-15,1-15,15-17
Florida	W	15-8,12-15,15-7,4-15,17-15
Central Florida	W	15-10,15-5,15-8
South Florida	W	17-15,8-15,15-9,15-3
Florida	W	4-15,15-7,9-15,15-6,15-7
Memphis State	W	15-5,15-13,12-15,15-2
Xavier	W	15-3,15-7,15-10
Southern Illinois	W	15-6,3-15,5-15,15-12,15-13
Florida A&M	W	15-9,15-4,15-2
South Florida	W	15-9,15-4,15-2
South Carolina	L	9-15,15-6,7-15,15-3,13-15
Virginia Tech	W	15-6,15-13,15-6
Mississippi	W	7-15,15-10,13-15,15-1,15-4
South Alabama	W	15-12,15-0,15-7
Arizona	L	7-15,4-15,7-15
Tennessee	W	8-15,15-11,15-11,16-14
Central Florida	W	15-10,15-9,15-3
Kentucky	L	14-16,18-16,17-15,13-15,7-15
Southern Miss.	W	15-6,15-7,15-8
Tulane	W	15-8,13-15,15-10,15-9
Texas-Arlington	L	4-15,14-16,2-15
Louisville	W	16-14,15-6,15-5
Cincinnati	W	15-3,15-9,15-7
Northwestern	W	9-15,16-14,8-15,15-9,15-11
LSU	L	13-15,16-14,15-9,7-15,8-15
Florida	W	15-8,15-8,15-7
METRO CONFERENCE TOURNAMENT (1st Place)		
Southern Miss.	W	15-13,15-13,15-3
South Carolina	W	15-1,15-3,13-15,15-12
Brigham Young	L	2-15,6-15,5-15
Georgia	L	9-15,16-14,7-15,11-15
NCAA TOURNAMENT (1st Round)		
Georgia	L	6-15,1-15,11-15

Head Coach
CECILE REYNAUD
Record 25-11

1986

Florida	W	15-11,9-15,15-7,13-15,15-10
Michigan State	W	15-10,11-15,15-13,15-8
Illinois	L	11-15,10-15,0-15
Central Florida	W	15-3,15-8,15-2
Michigan State	L	13-15,13-5,4-15
Georgia	L	12-15,15-13,5-15,4-15
South Florida	W	8-15,15-11,9-15,15-4,15-3
Florida	W	9-15,15-1,15-6,15-8
Central Florida	W	15-9,15-8,15-8
New Mexico	L	2-15,13-15,13-15
LSU	L	8-15,0-15,6-15
Sam Houston St.	L	15-13,6-15,14-16,15-9,14-16
Mississippi	W	15-13,15-11,15-7
Southern Miss.	W	15-1,15-2,15-5
South Alabama	W	15-4,15-5,15-7
South Florida	W	13-15,15-5,15-12,15-13
South Carolina	W	6-15,15-8,15-8,15-8
Virginia Tech	W	15-7,15-3,15-11
Florida A&M	W	15-2,15-6,15-4
Memphis State	W	15-10,15-8,13-15,10-15,15-4
North Carolina State	W	15-10,15-3,15-9
Tennessee	L	10-15,15-7,15-4,13-15,10-15
Jacksonville	W	15-12,15-4,11-15,6-15,15-7
Purdue	L	9-15,10-15,13-15
Tennessee	W	13-15,15-9,16-14,15-6
Pittsburgh	W	15-12,17-15,11-15,5-15,15-13
Cincinnati	W	15-8,15-8,15-3
Louisville	W	15-11,15-12,17-15
North Carolina	W	9-15,7-15,16-14,15-8,15-6
Texas Tech	L	10-15,12-15,12-15
Duke	L	10-15,14-16,12-15
Florida	W	8-15,15-5,15-1,15-9
METRO CONFERENCE TOURNAMENT (1st Place)		
Virginia Tech	W	15-7,16-14,15-10
South Carolina	W	7-15,15-13,15-3,15-7
Brigham Young	L	9-15,7-15,15-9,5-15
Cal-Berkeley	W	15-12,15-9,11-15,4-15,15-9

Head Coach
CECILE REYNAUD
Record 22-11

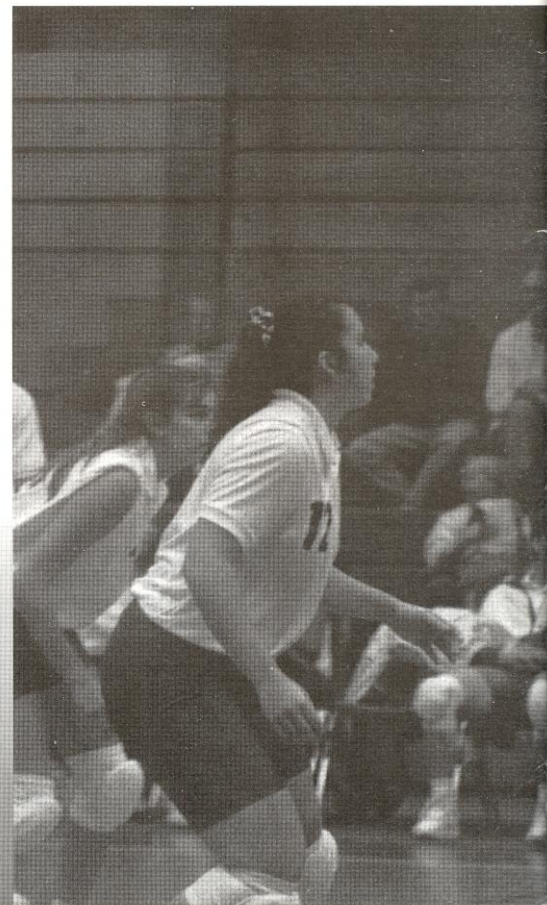
1987

South Alabama	W	15-5,15-7,15-1
Minnesota	L	12-15,6-15,14-16
Alabama-Birmingham	W	15-5,15-4,15-4
South Florida	W	15-2,16-14,15-3
Georgia	W	16-14,15-8,15-11
FLORIDA EIGHT TOURNAMENT		
Jacksonville	W	15-5,15-3,15-11
Florida	L	3-15,15-8,15-6,10-15,8-15
Florida Tech	W	15-4,15-0,15-2
South Carolina	W	15-9,15-12,13-15,11-15,15-4
Virginia Tech	W	15-5,15-9,15-8
Florida A&M	W	15-2,15-12,15-6
Florida	W	15-3,10-15,15-9,15-13
Southern Miss.	W	15-7,15-0,15-5
Jacksonville	W	15-12,15-3,15-10
Tulane	L	15-1,15-12,11-15,16-18,13-15
South Florida	W	15-6,15-4,15-10
Virginia	W	15-10,15-6,15-12
Southwest Texas St.	L	15-6,12-15,7-15,11-15
Louisville	W	15-7,15-12,15-10
Cincinnati	W	15-12,15-10,7-15,7-15,15-8
Illinois-Chicago	W	15-10,15-4,15-5
Memphis State	W	15-7,15-2,15-9
Kentucky	L	13-15,7-15,4-15
Central Florida	W	15-4,15-13,15-4
Florida	L	15-8,12-15,11-15,17-15,9-15
Duke	W	15-12,15-6,11-15,15-5
North Carolina State	L	9-15,15-11,12-15,15-3,6-15
North Carolina	L	7-15,9-15,15-13,3-15
METRO CONFERENCE TOURNAMENT		
South Carolina	W	15-9,15-4,12-15,15-8
Cincinnati	W	15-4,15-12,6-15,15-11
Houston	L	15-7,15-3,11-15,8-15,11-15
Long Beach State	L	10-15,17-15,15-2,9-15,11-15
NCAA TOURNAMENT (1st Round)		
Texas	L	6-15,11-15,9-15

Head Coach
CECILE REYNAUD
Record 28-8

1988

Alabama-Birmingham	W	15-2,15-5,15-1
Jacksonville	W	15-10,15-11,15-12
Texas-Arlington	L	4-15,7-15,11-15
Penn State	L	15-13,13-15,8-15,5-15
FLORIDA EIGHT CLASSIC (2nd Place)		
Florida International	W	15-0,15-1,15-1
South Florida	W	15-13,15-5,15-8
Florida	L	16-14,11-15,13-15,14-16
Florida A&M	W	15-6,15-6,15-7
Georgia	W	15-8,15-11,12-15,15-9
Florida	L	10-15,7-15,11-15
South Carolina	L	10-15,13-15,15-17
Virginia	W	17-15,15-11,15-8
Virginia Tech	W	15-6,15-6,15-7
Houston	L	15-1,5-15,15-3,3-15,4-15
Lamar	W	15-7,10-15,15-1,14-4
Rice	W	12-15,11-15,15-6,15-9,15-2
Memphis State	W	13-15,15-1,9-15,15-5,15-13
Central Florida	W	15-8,15-0,15-1
Jacksonville	W	15-4,15-8,15-7
Tampa	W	15-13,15-3,15-8
South Florida	W	15-10,12-15,14-16,15-13,15-12
Florida	W	5-15,15-3,15-11,15-10
Cincinnati	W	12-15,15-13,13-15,15-13,15-4
Louisville	W	15-7,15-6,15-5
William & Mary	W	15-3,11-15,15-10,12-15,15-10
South Florida	W	9-15,15-5,15-5,12-15,15-7
West Virginia	W	15-12,15-8,11-15,14-16,15-4
Southern Miss.	W	15-8,15-6,15-5
LSU	L	10-15,9-15,22-20,10-15
KENTUCKY WILDCAT CLASSIC (1st Place)		
Eastern Kentucky	W	15-9,15-13,15-4
Kentucky	W	15-10,16-14,13-15,15-12
Southwest Texas State	W	10-15,18-16,15-9,13-15,15-1
METRO CONFERENCE TOURNAMENT (1st Place)		
Southern Miss.	W	15-10,15-5,15-6
South Carolina	W	15-8,15-13,15-6
Cincinnati	W	10-15,15-10,15-7,15-9
NCAA TOURNAMENT (1st Round)		
Colorado State	L	3-15,5-15,15-9,7-15



YEARLY RESULTS 1976-93

Head Coach
CECILE REYNAUD
Record 30-5

1989

GEORGE WASHINGTON LABOR DAY FESTIVAL, (2nd Pl.)

Northern Arizona	W	15-17,15-4,15-7,15-3
Georgetown	W	15-6,15-9,15-4
Minnesota	L	8-15,17-15,7-15,7-15
Duke	W	15-7,15-7,7-15,13-15,15-5
Minnesota	L	8-15,13-15,11-15
Florida	W	9-15,15-12,15-6,13-15,15-10

FLORIDA EIGHT CLASSIC (First Place)

Florida International	W	15-2,13-15,15-8,15-2
South Florida	W	15-13,15-8,7-15,10-15,15-13
Florida	W	15-12,15-5,15-4
Illinois State	W	12-15,15-7,12-15,15-6,15-9
Morehead State	W	15-4,15-2,15-11
Illinois State	W	15-11,15-8,2-15,15-7
Kentucky	W	15-13,6-15,15-13,11-15,16-14
Tennessee	W	15-10,16-14,15-11
Florida A&M	W	15-6,15-5,15-2
Southern Miss.	W	15-6,15-6,15-7
Tulane	W	15-4,15-0,11-15,15-5
Jacksonville	W	15-1,15-1,15-2
Louisville	W	15-5,15-10,15-7
Cincinnati	W	15-8,15-4,8-15,15-11
Purdue	W	15-12,15-13,15-13
South Alabama	W	15-8,15-10,15-9
South Florida	L	15-3,5-15,13-15,12-15
Alabama-Birmingham	W	13-15,15-6,15-11,15-10
Memphis State	W	14-16,8-15,15-11,15-9,15-11
Louisiana State	W	12-15,15-9,7-15,15-5,15-9
South Carolina	W	15-8,15-4,15-2
Virginia Tech	W	15-4,15-9,15-5
Florida	L	13-15,15-9,11-15,10-15

KENTUCKY WILDCAT CLASSIC (1st Place)

Brigham Young	W	15-6,15-17,8-15,15-11,15-11
Kentucky	W	8-15,6-15,15-10,15-5,15-5

METRO CONFERENCE TOURNAMENT (1st Place)

Southern Miss.	W	15-2,15-3,15-7
Louisville	W	15-2,15-7,15-9
Cincinnati	W	15-12,15-4,15-7

NCAA TOURNAMENT (1st Round)

California	L	15-11,11-15,13-15,13-15
------------	---	-------------------------

Head Coach
CECILE REYNAUD
Record 25-10

1990

UNIVERSITY OF GEORGIA TOURNAMENT (2nd Place)

Alabama-Birmingham	W	15-7,15-13,15-11
Butler	W	13-15,15-9,15-10,15-3
Georgia	L	15-10,15-12,11-15,8-15,14-16
Eastern Washington	W	9-15,15-5,15-3,15-3
Southern Miss.	W	15-8,15-9,15-5

FLORIDA CLASSIC (1st Place)

South Florida	W	15-5,15-11,15-5
Florida	L	11-15,16-14,11-15,15-5,12-15
Florida International	W	16-14,15-9,15-1
Georgia Southern	W	15-2,15-1,15-7

COLORADO CLASSIC (4th Place)

Wyoming	L	16-14,11-15,15-6,2-15,13-15
Loyola-Marymount	L	7-15,15-9,4-15,15-13,6-15
Colorado	L	4-15,5-15,15-9,5-15
SW Texas State	W	15-8,15-6,15-6
Texas	L	8-15,15-11,9-15,15-9,5-15
Tulane	W	15-8,15-7,15-12
Virginia Tech	W	15-4,15-4,15-5
South Carolina	W	15-5,15-8,15-6
South Florida	W	11-15,15-10,15-4,15-12
Florida	W	15-12,10-15,15-4,15-12
Memphis State	L	16-14,15-11,8-15,8-15,11-15
Florida A&M	W	15-1,15-2,15-4
Baylor	W	15-5,15-7,15-4
Florida International	W	15-10,15-4,15-3
Auburn	W	15-7,15-6,15-3
Jacksonville	W	15-4,15-2,15-7
Georgia	W	15-4,15-6,15-12
Florida	W	15-5,15-6,15-12
Cincinnati	W	15-8,14-16,15-4,15-17,15-9
Louisville	W	15-13,15-3,15-13

FLORIDA STATE CLASSIC (2nd Place)

Fresno State	L	15-7,11-15,4-15,15-17
George Washington	W	15-2,16-18,15-6,3-15,15-3
Houston	W	15-6,12-15,15-10,15-4

METRO CONFERENCE (3rd Place)

Virginia Tech	W	15-11,15-9,15-4
Louisville	L	15-3,6-15,14-16,15-10,14-16

NCAA TOURNAMENT (1st Round)

Kentucky	L	12-15,10-15,15-10,10-15
----------	---	-------------------------

Head Coach
CECILE REYNAUD
Record 16-15

1991

Northeast Louisiana	W	15-3,15-2,15-11
Central Florida	W	15-10,15-1,15-7
ANTEATER INVITATIONAL, IRVINE, CA (2nd place)		
Loyola Marymount	W	18-16,13-15,20-18,17-15
Idaho	W	16-14,15-2,15-6
UC-Irvine	L	18-16,15-13,13-15,15-8,13-15

FLORIDA 4 TOURNAMENT, TALLAHASSEE, FL (2nd place)

Florida	L	12-15,5-15,12-15
FL International	W	15-6,15-9,15-7
South Florida	W	15-9,15-13,15-3
Virginia	W	15-13,6-15,15-10,15-6
Rice	W	15-33,15-8,15-11
Jacksonville	W	15-8,15-6,15-12
Texas A&M	W	15-7,15-11,11-15,15-8
Houston	L	8-15,7-15,15-13,3-15
Florida A&M	W	15-1,15-8,15-3
N.C. State	L	11-15,15-4,15-12,11-15,9-15
North Carolina	L	13-15,7-15,13-15
SW Texas St.	W	15-13,15-11,15-13
Maryland	L	12-15,8-15,15-1,17-15,16-18
Duke	L	16-14,6-15,15-12,14-16,13-15
Georgia	L	13-15,15-13,15-17,15-12,13-15
Hofstra	W	15-3,15-5,9-15,15-8
William & Mary	L	13-15,15-13,15-17,15-12,13-15
Clemson	W	15-12,15-9,15-9
Georgia	L	9-15,12-15,1-15
Georgia Tech	L	13-15,7-15,15-7,15-4,11-15

FLORIDA STATE CLASSIC, TALLAHASSEE, FL (3rd place)

Pittsburgh	L	13-15,3-15,15-9,2-15
AL-Birmingham	L	15-11,8-15,15-4,13-15,12-15
Temple	W	15-1,15-11,15-6
Florida	L	5-15,11-15,5-15

ACC TOURNAMENT, CHARLOTTESVILLE, VA (Tied for 3rd place)

North Carolina	W	15-7,15-6,15-6
Virginia	L	11-15,9-15,16-14,6-15

Head Coach
CECILE REYNAUD
Record 26-8

1992

GATOR INVITATIONAL (Gainesville, FL)

Georgia State	W	15-7,15-2,15-3
South Florida	W	15-3,15-11,15-10
Florida	L	5-15,6-15,5-15

FLORIDA STATE CLASSIC

Minnesota	L	15-12,14-16,5-15,5-15
Minnesota	W	15-7,13-15,13-15,15-13,15-6
McNeese State	W	15-6,15-3,15-12

SOUTH FLORIDA TOURNAMENT (Tampa, FL)

Georgetown	W	15-8,15-11,15-5
Alabama	W	15-10,15-12,15-3
South Florida	W	15-6,15-4,16-14
Houston	W	11-15,15-13,11-15,15-6,15-8
Texas A&M	W	15-7,15-8,16-14
Jacksonville	W	15-7,15-3,15-7
Duke	L	6-15,13-15,15-12,3-15
North Carolina	W	15-8,15-11,15-8

NOTRE DAME CLASSIC (South Bend IN)

Notre Dame	L	15-12,5-15,15-7,1-15,15-17
Long Beach State	L	15-11,2-15,9-15,11-15
Pittsburgh	W	15-6,12-15,9-15,15-10,15-11
Florida A&M	W	15-2,15-5,15-1
Georgia Tech	W	15-12,12-15,15-6,7-15,15-12
South Alabama	W	15-5,15-10,15-3
Clemson	W	15-8,15-7,15-4

HOFSTRA CLASSIC (Hempsted, NY)

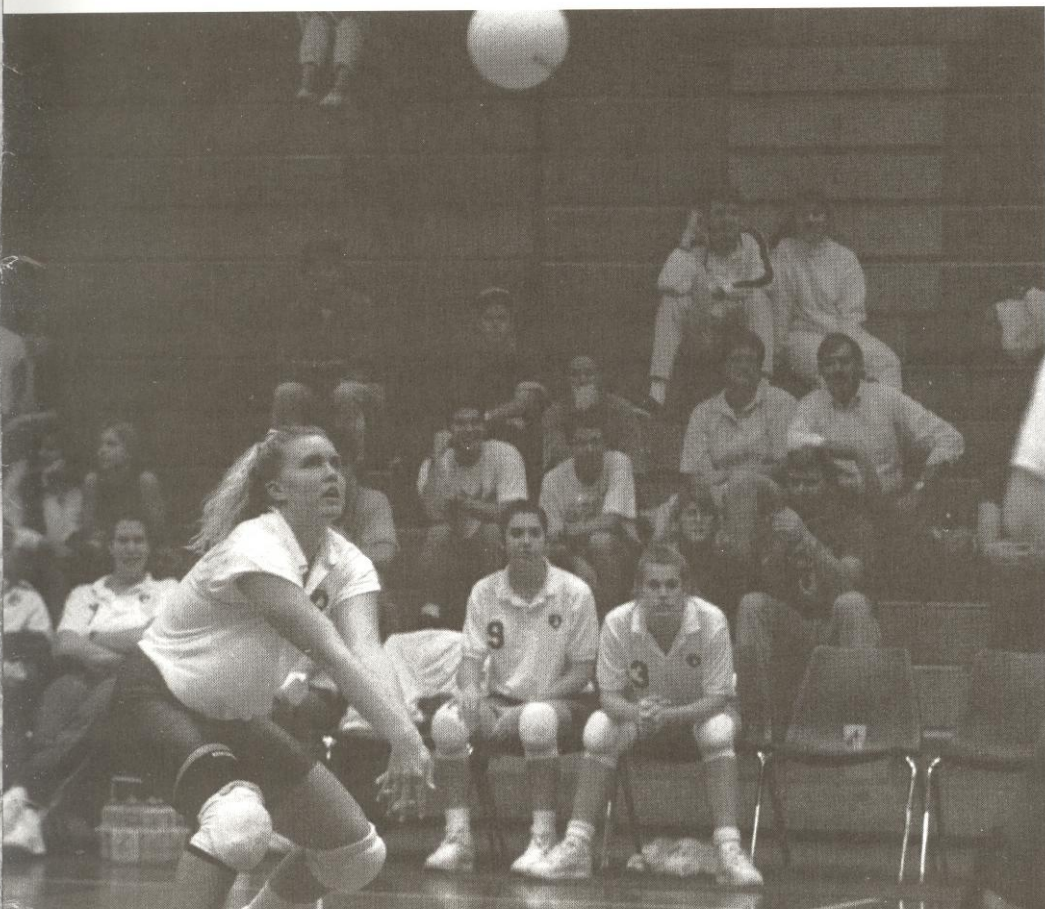
Syracuse	W	15-10,15-10,15-12
Hofstra	W	15-5,15-11,15-5
La Salle	W	15-6,15-1,15-8
Maryland	W	15-13,6-15,15-9,5-13
Virginia	W	15-9,15-7,15-3
William & Mary	W	15-10,12-15,15-1,15-10
Central Florida	W	15-10,15-2,15-3
NC State	W	15-6,15-5,15-11
Florida	L	8-15,8-15,11-15

ACC CHAMPIONSHIP (College Park, MD)

Virginia	W	15-7,15-3,15-4
Maryland	W	8-15,15-8,12-15,15-10,15-8
Duke	L	9-15,15-9,15-11,11-15,11-15

NCAA Championship (1st Round)

Florida	L	9-15,3-15,10-15
---------	---	-----------------



1994 VOLLEYBALL SCHEDULE

Fri.	Sept. 2	Southern Illinois	Tallahassee, FL
Sat.	Sept. 3	Iowa	Tallahassee, FL
Sat.	Sept. 3	Southern Illinois	Tallahassee, FL

VOLLEYBALL MONTHLY INVITATIONAL

Fri.	Sept. 9	LSU	Tallahassee, FL
Sat.	Sept. 10	Penn State	Tallahassee, FL
Sat.	Sept. 10	UCLA	Tallahassee, FL

Tue.	Sept. 13	Florida	Gainesville, FL
------	----------	---------	-----------------

MINNESOTA TOURNAMENT

Fri.	Sept. 16	DePaul	Minneapolis, MN
Sat.	Sept. 17	Fresno State	Minneapolis, MN
Sat.	Sept. 17	Minnesota	Minneapolis, MN

Fri.	Sept. 23	Duke	Durham, NC
Sat.	Sept. 24	North Carolina	Chapel Hill, NC
Fri.	Sept. 30	Clemson	Tallahassee, FL
Sat.	Oct. 1	Georgia Tech	Tallahassee, FL
Fri.	Oct. 7	North Carolina State	Raleigh, NC
Sat.	Oct. 8	North Carolina State	Raleigh, NC
Fri.	Oct. 14	Florida Atlantic	Tallahassee, FL
Tue.	Oct. 18	Jacksonville	Tallahassee, FL
Fri.	Oct. 21	Maryland	College Park, MD
Sat.	Oct. 22	Virginia	Charlottesville, VA
Mon.	Oct. 24	Notre Dame	Tallahassee, FL
Fri.	Oct. 28	Duke	Tallahassee, FL
Sat.	Oct. 29	North Carolina	Tallahassee, FL
Mon.	Oct. 31	Florida	Tallahassee, FL
Fri.	Nov. 4	Maryland	Tallahassee, FL
Sat.	Nov. 5	Virginia	Tallahassee, FL
Fri.	Nov. 11	Clemson	Clemson, SC
Sat.	Nov. 12	Georgia Tech	Atlanta, GA
Tue.	Nov. 15	Central Florida	Tallahassee, FL

Nov. 18-20	ACC TOURNAMENT	Chapel Hill, NC
------------	----------------	-----------------

GEORGIA HOLIDAY CLASSIC

Fri.	Nov. 25	South Florida	Athens, GA
Sat.	Nov. 26	Memphis State	Athens, GA
Sat.	Nov. 26	Georgia	Athens, GA

Nov. 30- Dec. 17, NCAA CHAMPIONSHIP TOURNAMENT, TBA

