

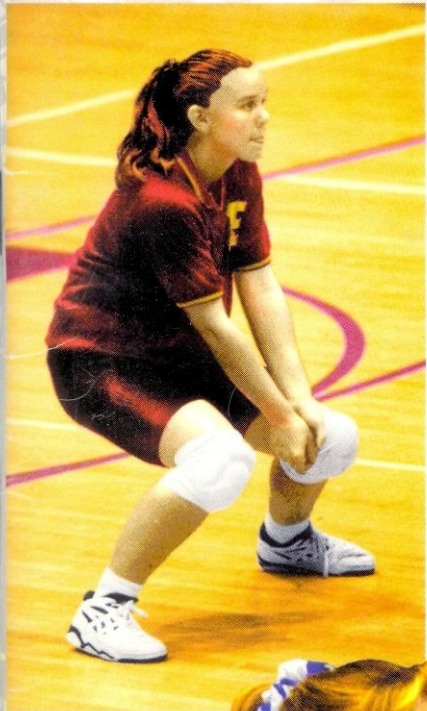
1995

FLORIDA

STATE



*Volleyball*



## *FSU Quick Facts*

Location ..... Tallahassee, Florida  
Founded ..... 1857  
Enrollment ..... 29,000  
President ..... Sandy D'Alemberte  
Nickname ..... Lady Seminoles  
Home Arena ..... Tully Gym (2,500)  
Affiliation ..... NCAA Division I  
Conference ..... Atlantic Coast

### **ATHLETIC ADMINISTRATION**

Athletic Director ..... Dave Hart, Jr.  
Inter. Asst. Athletic Director .. Cecile Reynaud  
Athletic Director Phone ..... (904) 644-1079

### **SPORTS INFORMATION STAFF**

Director ..... Rob Wilson  
Volleyball SID ..... Vicki Zinkil  
SID Office Phone ..... (904) 644-0615  
SID Home Phone ..... (904) 574-6420  
SID Office Fax ..... (904) 644-3820  
Promotions & Marketing ..... Kim McWilliams  
Asst. Marketing Director ..... John Wesley

### **VOLLEYBALL STAFF**

Head Coach ..... Cecile Reynaud  
Alma Mater ..... SW Missouri St., '75  
Years at FSU ..... Entering 20th  
Record at FSU ..... 516-222 (.699)  
Assistant Coach ..... Shelly Birkholz  
Alma Mater ..... Florida State, '86  
Assistant Coach ..... Sherry Cowling  
Alma Mater ..... Florida State, '93  
Volleyball Office Phone ..... (904) 644-1091  
Head Coach Phone ..... (904) 644-3796  
Head Athletic Trainer ..... Robin Gibson  
Volleyball Trainer ..... Shelly Lichter  
Training Room Phone ..... (904) 644-1091

### **1994 SEASON RESULTS**

Record ..... 17-16  
Conference ..... Atlantic Coast  
Conference Record ..... 7-7  
Regular Season Conference Finish ..... 5th  
Conference Tournament Finish ..... 3rd  
Starters Returning/Lost ..... 3/3  
Letterwinners Returning/Lost ..... 6/5  
Newcomers ..... 5  
Redshirt Freshmen ..... 1

### **CREDITS**

Editor ..... Vicki Zinkil  
Photography ..... Ross Obley, FSU Photo Lab,  
Kandance Thomas, Lance Rothstein



# Travel Itinerary

## SOUTH FLORIDA INVITATIONAL

AUGUST 31, SEPTEMBER 1, 2

Quality Suites Hotel  
3001 University Center Drive  
Tampa, FL 33612  
(813) 971-8930  
Fax: (813) 971-8935

## RHODE ISLAND INVITATIONAL

SEPTEMBER 7-9

Sheraton Tara Airport Hotel  
18850 Post Road  
Warwick, RI 02886  
(401) 738-4000  
Fax: (401) 738-8206

## GEORGIA TECH, CLEMSON

SEPTEMBER 21-23

J.W. Marriott  
3300 Lenox Rd. NE  
Buckhead, GA  
(404) 262-8635  
Fax: (404) 262-8603

## DUKE, N.C. STATE

SEPTEMBER 28-30

Omni Europa  
1 Europa Drive  
Chapel Hill, NC 27514  
(919) 968-4900  
Fax: (919) 968-3520

## VIRGINIA

OCTOBER 26, 27

Hampton Inn  
2035 India Road  
Charlottesville, VA 22902  
(804) 978-7888  
Fax: (804) 973-0436

## MARYLAND

OCTOBER 28

Holiday Inn Calverton  
4095 Powder Mill Road  
Beltsville, MD 20705  
(301) 937-4422  
Fax: (301) 937-4455

## ACC TOURNAMENT

NOVEMBER 15-18

Hampton Inn  
120 Interstate Blvd.  
Anderson, SC  
(803) 375-1999  
Fax: (813) 971-8935

# Table of Contents

THIS IS TALLAHASSEE .....	2
THIS IS FLORIDA STATE .....	4
THIS IS FLORIDA STATE VOLLEYBALL .....	6
UNIVERSITY SUPPORT SERVICES .....	8
FLORIDA STATE VOLLEYBALL HISTORY .....	10
1995 OUTLOOK .....	12
1995 LADY SEMINOLE ROSTERS .....	14
A CLOSER LOOK AT THE LADY SEMINOLES ...	15
HEAD COACH CECILE REYNAUD .....	16
CECILE REYNAUD'S 20TH SEASON! .....	18
ASSISTANT COACHES .....	20
PLAYER PROFILE — LAURA ARNOLD .....	22
PLAYER PROFILE — VALERIE BROUSSARD .....	23
PLAYER PROFILE — PATTY DIAMOND .....	24
PLAYER PROFILE — SUSAN JOHNSON .....	25
PLAYER PROFILE — MAUREEN MCCARTHY ....	26
PLAYER PROFILE — SONIA PREOCANIN .....	27
LADY SEMINOLE NEWCOMERS .....	28
1994 YEAR IN REVIEW .....	30
1994 RESULTS .....	32
ALL-TIME LETTERWINNERS .....	33
1994 SEASON HIGHS .....	33
1994 STATISTICS .....	34
1994 HONORS .....	35
1994 FINAL ACC STANDINGS .....	36
SERIES RECORDS .....	37
1995 OPPONENTS .....	38
INDIVIDUAL CAREER RECORDS .....	42
INDIVIDUAL SINGLE-SEASON RECORDS .....	43
TEAM RECORDS .....	44
INDIVIDUAL YEAR-BY-YEAR LEADERS .....	45
1976-1994 YEARLY RECORDS .....	46
VOLLEYBALL LEGENDS .....	52

# THIS IS Tallahassee

Near, but far from the glaring strips of neon amusement, and the castles and crowds of Disney, lies another magical place in the Sunshine State — one of pow-wows, plantations, politics and great pride. Often described as “The Other Florida” with its deep-rooted history, rolling hills, canopy roads of moss-draped oaks, cool climate and Southern-style hospitality; it is a Florida few have seen. It is Tallahassee — Florida with a Southern accent.

Best known as Florida’s capital, Tallahassee is an intimate neometropolitan city where the power of state government, the academic and the artistic are complimented by subtle, old-fashioned charm.

Tallahassee — derived from the words “talwa” meaning town and “ahasee” meaning old — has undergone many changes, but one thing remains the same — it is still a government town fiercely proud and dedicated to preserving its heritage.

The famous Gulf beaches and major metropolitan areas of the South are a short trip from Tallahassee. As Florida’s capital city, Tallahassee offers the grace and charm of a small city, while Atlanta, Jacksonville, Tampa, Orlando and New Orleans are within easy driving distance. ★

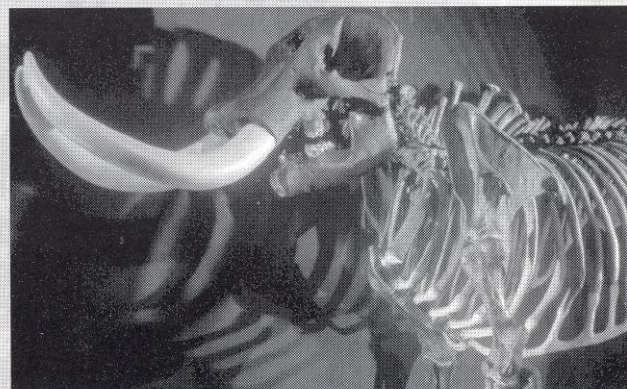
## *Climate:*

Tallahassee enjoys four distinct seasons with an average annual temperature of 67 degrees. Weather conditions are mild and moist due to close proximity to the Gulf. Summer temperatures are subtropical with an average of 83 degrees while winters average a pleasant 50 degrees.

*The Capitol buildings, both old and new, epitomize Tallahassee’s perseverance. With the 22-story New Capitol towering overhead since 1977, the Old Capitol, erected in 1845, has been restored to its 1902 appearance complete with red-and-white candy-striped awnings and a gracious dome adorned with stained glass. The 22nd floor of the New Capitol reveals a spectacular view of the rolling hills of Leon County all the way to the shimmering Gulf of Mexico. Chambers of the House and Senate buzz with political zeal during the March through May legislative session.*



The first Christmas mass celebrated in the United States was held in Tallahassee.



Standing nine feet tall, Herman, a skeletal prehistoric mastodon — originally weighing about five tons — was pulled from Wakulla Springs in the 1930s. The Museum of Florida History also features the Prehistoric Florida Exhibit, Spanish treasures, war relics and even a riverboat.



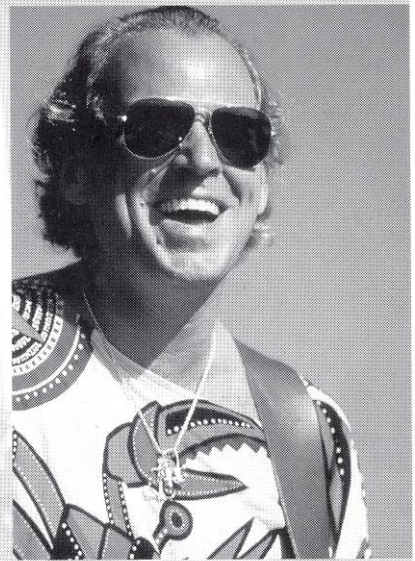
Downtown Tallahassee grew as a trade center with Florida’s first railroad — a simple mule-drawn, rail trolley epitomizing the leisurely pace of Southern life — connecting Tallahassee and St. Marks. The 16-mile railroad has now been paved as the St. Mark’s Bike Trail, and the Old Trolley remains a stylish way to get around.



Only 13 miles from the Capitol, amid alligators, aningas and tranquility is the 2,900-acre Wakulla Springs State Park. Visitors can drift lazily aboard a jungle cruise boat on Wakulla Springs while the alligators sun on the shore. Tallahassee's underwater passages have intrigued adventurers from around the world — even National Geographic magazine attempts to uncover the hidden mysteries of the springs in many issues.



The Winter Festival and Celebration of Lights, an outdoor celebration of holiday lights, music and the arts with activities including a night glow parade, Jingle Bell Run and Santa's Enchanted Forest has become a popular wintertime event in Tallahassee.



As one of the largest arenas in Florida, the Tallahassee-Leon County Civic Center, situated on 22 downtown acres, provides the ideal setting for "star-studded" events. The Civic Center Arena was the site of the 1995 NCAA Basketball Southeast Regional while Jacksonville native Jimmy Buffet makes regular visits to Tallahassee.

### *What Others Are Saying About Tallahassee:*

“Where else in the Sunshine state can you pretend to be the governor, peruse pirates’ plunder, and peer breathlessly at a daring young man on a flying trapeze — all in the same day?”

— SOUTHERN LIVING

“After a visit to Tallahassee, you’ll leave Florida with a whole new image of the magic kingdom — and you won’t have to worry about mouse ears getting smashed in your suitcase.”

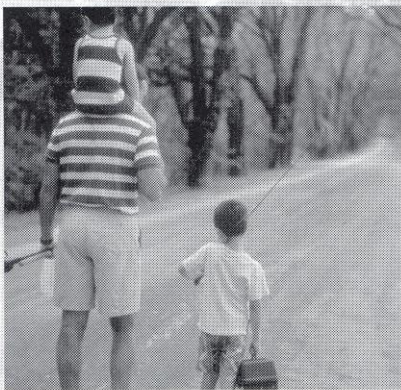
— DISCOVERY

“Tallahassee, Florida’s capital city, has charm with a distinctly Southern accent...”

— BOSTON HERALD



Red wolves, Florida panthers, alligators and other fascinating wildlife in a 52-acre habitat highlight the Tallahassee Museum of History and Natural Science.



Low sprawling oaks, draped with Spanish moss create dramatic emerald tunnels of dancing sunlight on Tallahassee’s famous Canopy Roads.



Noted for water sports, including sailing and wind surfing, Shell Point Resort is located just 25 miles south of Tallahassee.



Springtime Tallahassee has blossomed over 25 years into a four-week jubilee with parades, festivals, contests, crafts and amusement.

# THIS IS *Florida State*

*A* senior member of the 10-member State University System, FSU was founded as an institution of higher learning in 1852 by legislative act and began in Tallahassee with its first students in 1857. Today, Florida State's operating budget is \$442 million. Faculty and administrators generate more than \$95 million annually in external funding to supplement state-sponsored research. Three direct-support organizations serve to bolster the University: the FSU Foundation, which raises millions in private gifts to support academics, the Seminole Boosters and the FSU Alumni Association.

Florida State continues to progress and grow — from its pre-Civil War foundation as the Seminary West of the Suwannee, through the early 20th century as the academically respected Florida State College for Women, returning to coeducational status as a university in 1947, to its modern development as an acclaimed research institution, a top-ranked competitor in intercollegiate athletics and as a standard-setter in the basic sciences and the performing arts. ★



The Dr. Bobby E. Leach Center, a state-of-the-art student recreation facility, with an indoor pool, saunas, basketball and racquet-sport courts, was completed in 1991. And in June, a 2300 square foot free weight area was completed.

*Florida State University, nearing its golden anniversary as a co-educational graduate research institution, has joined the nation's elite in both academics and athletics. Located on the oldest continuous site of higher education in Florida and building rapidly on the framework of a highly regarded liberal arts college for women, the University has emerged over the past 48 years as an institution of national and international esteem.*



With 1,568 members, the FSU faculty currently includes five members of the National Academy of Sciences and eight members of the American Academy of Arts and Sciences, and has included five Nobel laureates. It is backed by 2,987 administrative/professional and support staff.



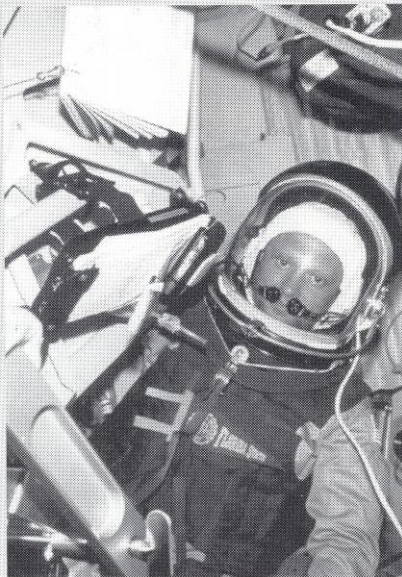
FSU ranked 20th in the nation for 1990-91 in the number of black Ph.D. students it graduates. Over the five years from 1986 to 1990, FSU ranked eighth nationally by granting doctorates to 70 African-Americans.



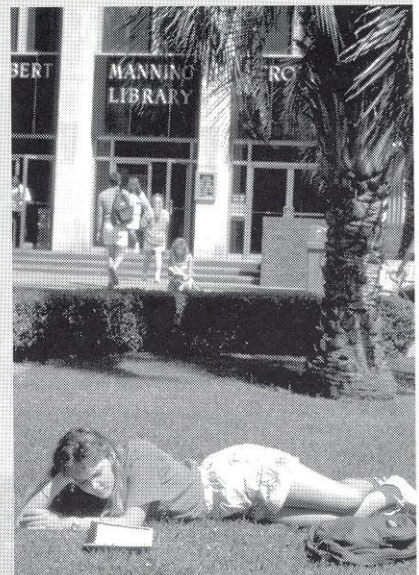
FSU's high-tech program in structural biology in 1991 received the University's largest single foundation grant, \$4 million, to position it among the leaders in the field worldwide.



Vice President of the United States Al Gore spoke at the dedication of the National High Magnetic Field Laboratory at Florida State in October 1994. The National Science Foundation established the \$100 million magnet lab at Florida State, which is partnered in research with the Los Alamos National Laboratory and the University of Florida, in 1990. A Nobel laureate in physics and a top Russian physicist were among the first scholars drawn to the faculty by the magnet lab. The world's largest magnet — two stories high and capable of generating 45 tesla or 1 million times the Earth's magnetic field — is to be installed in 1995 at the NHMFL, located in the off-campus research complex, Innovation Park.



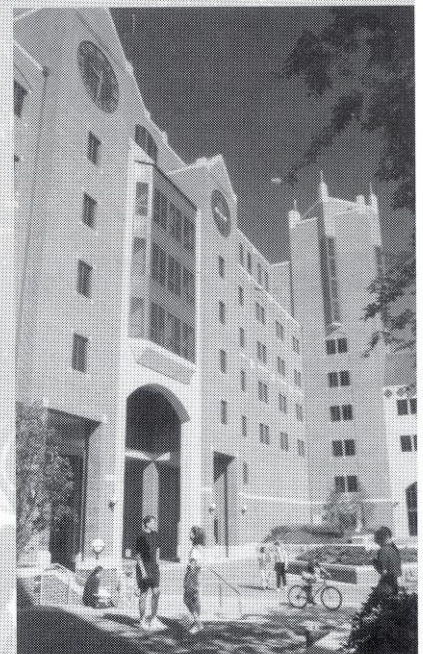
Florida State University alumnus, Dr. Norman Thaggard ended the longest space flight in U.S. history in July after a historic mission on the Russian space station Mir. Thaggard who received his undergraduate degree in engineering at FSU in 1965 and his masters a year later, is an avid Seminole football fan and brought his cosmonaut counterparts to their first college football game in Tallahassee last year. Thaggard's Florida State pennant could be clearly seen in the space shuttle aboard Mir during press conferences. Thaggard has been on three space missions including the historic six-day flight on the Challenger in 1983 that included Sally Ride.



Library holdings at Florida State include 2.06 million book titles, 18,498 serials and 4.25 million microforms. The main library facility, the Robert M. Strozier Library, is linked via computerized information systems to other state university and national research libraries. The Paul A.M. Dirac Science Center Library is located at the heart of the University's science research complex. FSU also maintains extensive music, library science and law libraries, and the Mildred and Claude Pepper Library houses the personal and professional papers of one of Florida's best known political couples.



Florida State ranks first in popularity nationwide among high school seniors, based on the number of students who request their Scholastic Aptitude Test (SAT) and American College Test (ACT) scores be sent to an institution. FSU was the only institution listed among the top 10 choices of both black and white college-bound students. Florida State is also tops in the state for community college transfers as FSU admits over 3,000 transfer students every fall semester.



In fall 1994, the first tenants moved in to the east side of the \$82 million University Center, a classroom-and-office facility at Doak Campbell Stadium. The stadium's south end zone also was enclosed and the adjacent Moore Athletic Center expanded. When the west side is completed in 1996, the University Center will provide 550,000 square feet of much needed academic space and a centralized location for student services.

# THIS IS FLORIDA STATE

## *Volleyball*

*Right: During the 1994 pre-season practices, the team took some time off from its training sessions to relax a little. The squad visited a ropes course in Woodville, FL and enjoyed a day of fun, testing themselves and trusting each other, working together as a team for the first time for the 1994 season.*



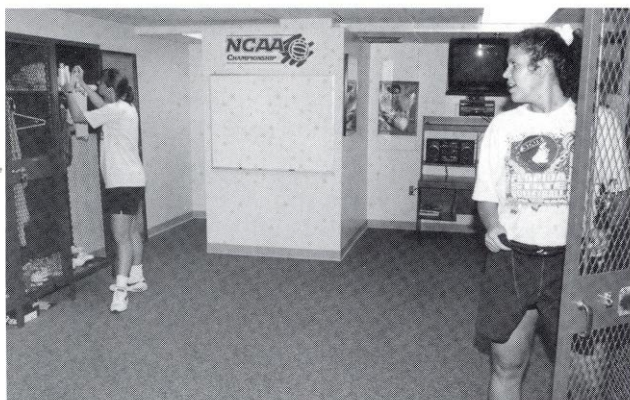
*Right: Besides traveling to the Atlantic Coast Conference schools, FSU also plays in tournaments from coast-to-coast across the country. In the past few years, the Lady 'Noles have competed in California, New York, Colorado and Texas.*



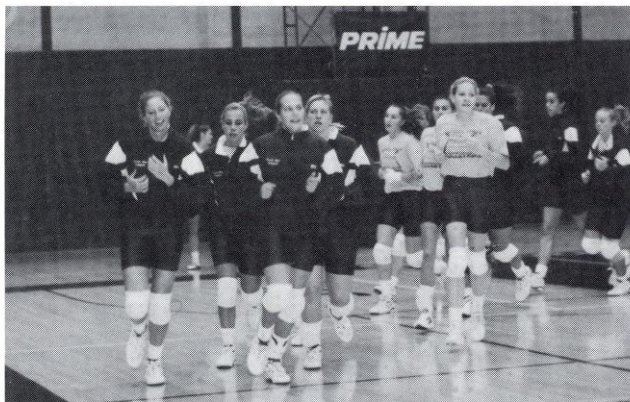
*Below: Each year Florida State honors its top student athletes who receive academic honor roll status at the Golden Torch Gala.*







*Left: The volleyball team enjoys a spacious locker room which includes individual showers, a TV viewing area for watching game films and a study area.*



*Left, Middle: Florida State volleyball can be seen throughout the southeast United States on channels such as Prime, SportsChannel and the Sunshine Network.*

*Below: Each year the athletic department holds its "Say No to Drugs Day." Representatives from each of FSU's athletic teams speak at Tallahassee area schools on the importance of staying in school and away from drugs. The volleyball team has been actively speaking since the program began. Luiza Ramos was featured with other standout athletes in the "Give Your Dreams A Chance" promotional poster handed out at the schools.*



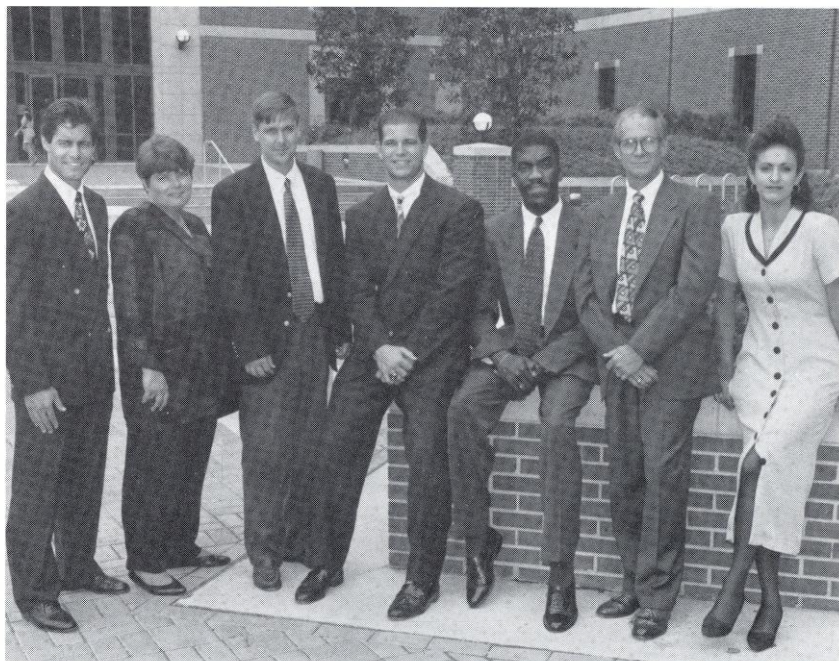
# UNIVERSITY *Support Services*

## *Academics*

Florida State University is committed to the academic success of its student-athletes. Under the direction of Dr. Roger Grooters, the FSU athletic department's Academic Support Program is in place to meet the personal, academic and professional needs of each student-athlete.

Grooters and his staff aid student-athletes with admission, class scheduling, registration, and the normal progression towards a degree. Unveiled last fall was a new state-of-the-art academic center as part of the University Center expansion. The center provides study hall and tutoring rooms, as well as a resource area with study carols, computers and basic reference materials.

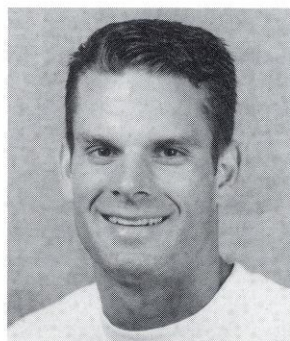
Class attendance is closely monitored during the playing and practice seasons. Throughout the school year, nightly study halls and tutoring sessions help the student-athletes stay on course. Student-athletes have unlimited access to mentors who provide one-on-one tutoring. The academic support staff works closely with the faculty members at Florida State as well as with the athletic department's own office of Student Services.



*The Academic Support Staff.*

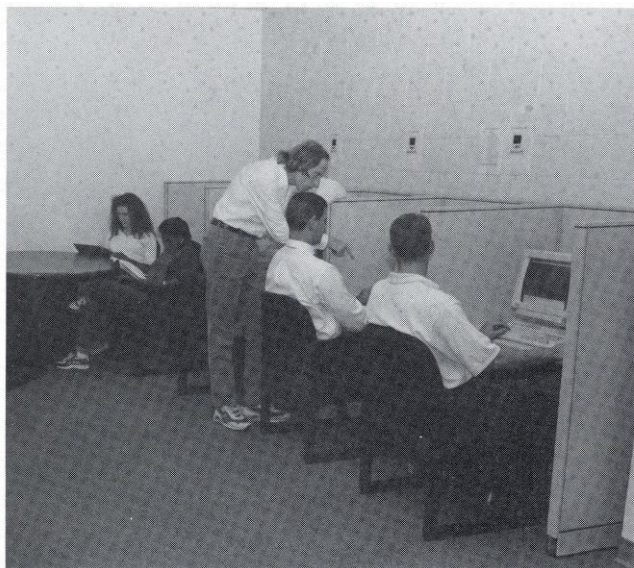
For everyone in the Florida State athletic department—from coaches and academic support personnel to student services staff and administration—giving each student-athlete every opportunity to earn a degree is the primary goal. And every year, that goal is becoming reality for more and more Florida State student-athletes.

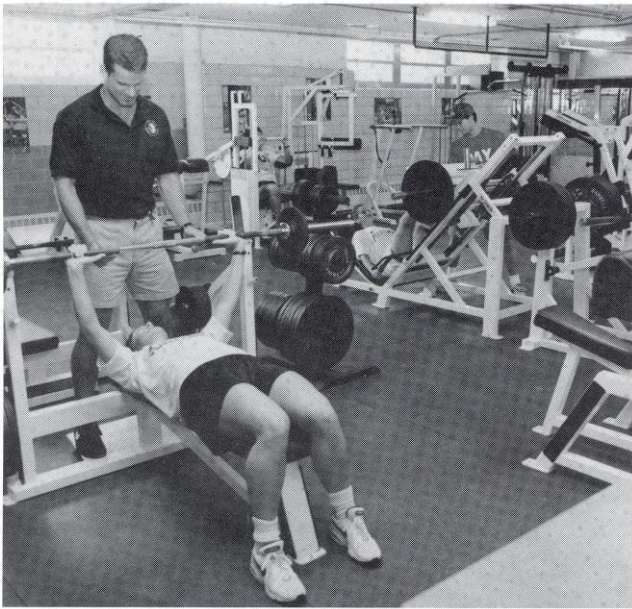
## *Strength Training & Conditioning*



**RON MILLER**  
*Strength & Conditioning  
Coach*

Strength training and conditioning is an important part of an athlete's performance on the court. At Florida State, a supervised program is developed for volleyball, emphasizing the objectives of not building bodies, but strengthening and conditioning them. Strength coach Ron Miller individually customizes





Strength coach Ron Miller works with each athlete to help them obtain top physical condition for optimum performance on the court.

programs for each of the athletes beginning with pre-conditioning before the season gets underway. The workouts are modeled after the National Strength and Conditioning Association's volleyball training program.

Miller works with the players in sport specific training which includes conditioning the major muscle groups used in volleyball. FSU takes pride in customizing the programs to help student-athletes reach their maximum potential.

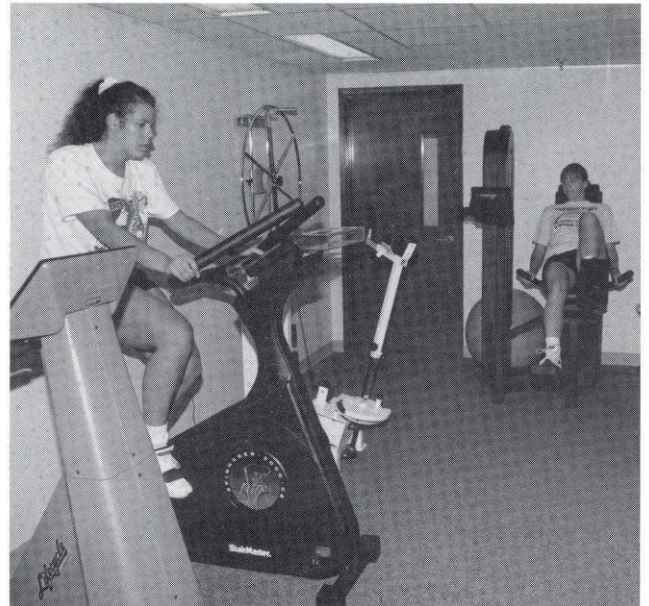
## Prevention Care & Treatment



SHELLY LICHTER, M.S., A.T., C.  
Volleyball Trainer

Being an athlete at Florida State University means receiving the best care and treatment possible. All of the student-athletes undergo pre-season screening so a certified trainer can detect any

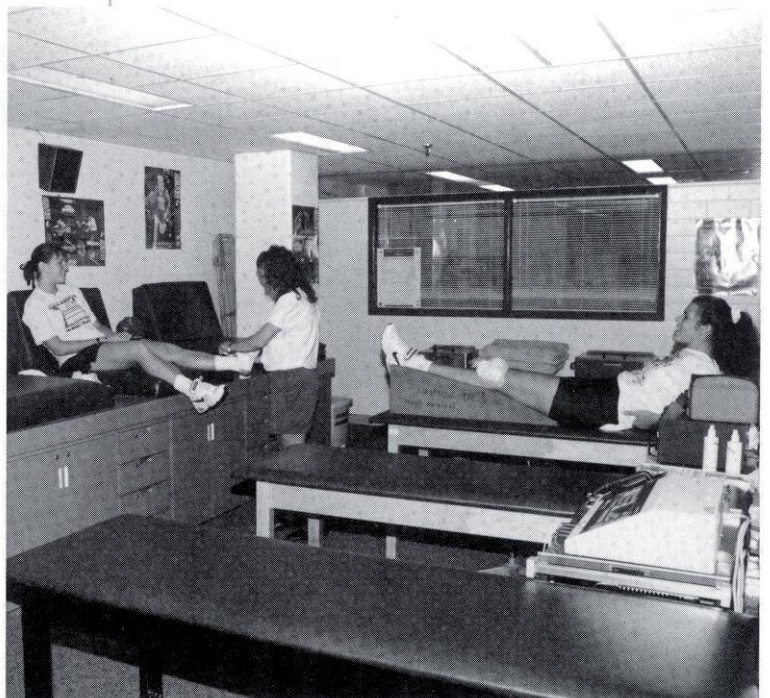
potential injuries an athlete may incur. If a problem is detected, the athlete is placed on a prevention care program which may include any kind of treatment from icing to exercising. The program is closely monitored by Volleyball Trainer Shelly Lichter. Shelly is an Assistant Trainer with the FSU Athletic Training staff and has worked with the volleyball team for three years.



The FSU athletic trainers use the rehabilitation room to assure complete recovery of their athletes.

Rehabilitation is another important component of the Seminole training room. Though preventing injuries is the main objective, they are unavoidable for the athletes who participate in sports. More serious injuries and illnesses are referred to the Seminole team physicians at the Tallahassee Orthopedic Center who, for many years, have worked in conjunction with the FSU training room in successfully rehabilitating numerous athletes after an injury.

Nutrition counseling and drug testing are both responsibilities of the athletic training team which is dedicated to providing the best care possible for all FSU student-athletes. ★



Assistant trainer Shelly Lichter works with the volleyball team to help care for and prevent any injuries that may occur.

# FLORIDA STATE VOLLEYBALL

## History

Since its beginning in 1968 with a group of physical education students and a volunteer coach, Florida State volleyball has shed its club team roots to become one of the nation's premiere programs.

In its infancy it was not uncommon for the group of aspiring athletes and teachers to pay their own way to tournaments and share warm-up suits with the other women's club teams. The club struggled to become established in those early years as team members were faced with having to find a new volunteer head coach each of the program's first five years.

After Florida State made its first ever appearance at the AIAW National Tournament in 1971, Dr. Billie Jones assumed the coaching duties on a permanent basis for the next six seasons. Under Jones' direction the Seminoles amassed a 107-22 record, and

volleyball at Florida State became a mainstay.

Success continued for the program as it returned to the AIAW National Tournament in 1973, '74 and '75, while competing for state and regional championships along the way. Popularity for the sport began to grow. Former FSU basketball head coach Hugh Durham and his wife Melinda were two of the team's biggest supporters, often attending home matches. In just a few short years, Florida State volleyball became recognized as one of the sport's up-and-coming programs.

Current head coach Cecile Reynaud continued to build on the foundation laid by her predecessors. Under Reynaud's guidance, FSU qualified for the AIAW National Tournament three more times. After its third successive AIAW appearance in 1981, Florida State joined the NCAA and began competing in the Metro Conference in '82.

Before FSU joined the Atlantic Coast Conference in 1992, it had captured six Metro Conference titles.

In four years of ACC play the Seminoles have an ACC regular season co-championship to their credit.

Since Florida State became a NCAA volleyball member in 1982, the Seminoles have qualified for the National Championship Tournament eight times, including six appearances in the last eight years. Many of FSU's volleyball alumni have gone on to play professionally.

Whether it be in Europe or the sandy shores of California, Florida State's top athletes often choose to continue playing the game they love. Currently, three FSU volleyball players are on tour with the professional beach circuit.

Perhaps the most famous of the FSU volleyball alumni is Nike spokeswoman and

### Tournament History

#### CONFERENCE TOURNAMENTS

CONF.	YEAR	SITE	HOST	FINISH
METRO	1982	Tallahassee, FL	FSU	3rd Place
METRO	1983	Louisville, KY	Louisville	Champions
METRO	1984	Columbia, SC	South Carolina	3rd Place
METRO	1985	Hattiesburg, MS	Southern Miss	Champions
METRO	1986	Blacksburg, VA	Virginia Tech	Champions
METRO	1987	Memphis, TN	Memphis State	Champions
METRO	1988	Cincinnati, OH	Cincinnati	Champions
METRO	1989	Tallahassee, FL	FSU	Champions
METRO	1990	Louisville, KY	Louisville	3rd Place
ACC	1991	Charlottesville, VA	Virginia	3rd Place
ACC	1992	College Park, MD	Maryland	Runner-Up
ACC	1993	Durham, NC	Duke	Runner-Up
ACC	1994	Chapel Hill, NC	North Carolina	3rd Place

#### NCAA CHAMPIONSHIPS

YEAR	SITE	RESULT	SCORE
1983	Tallahassee	Lost to Tennessee	15-12, 15-12, 1-15, 10-15, 8-15
1985	Athens	Lost to Georgia	6-15, 1-15, 11-15
1987	Austin	Lost to Texas	6-15, 11-15, 9-15
1988	Tallahassee	Lost to Colorado St.	3-15, 5-15, 15-9, 7-15
1989	Tallahassee	Lost to California	15-11, 11-15, 13-15, 13-15
1990	Lexington	Lost to Kentucky	12-15, 10-15, 15-10, 10-15
1992	Gainesville	Lost to Florida	9-15, 3-15, 10-15
1993	Tallahassee	Beat DePaul	15-8, 7-15, 15-10, 15-13
	Tallahassee	Lost to Pacific	6-15, 17-15, 6-15, 9-15

world-class model Gabrielle Reece. After enjoying a standout career at Florida State, Reece has gone on to captain Team Nike on the pro beach circuit. She also has a regular fitness column in *ELLE* magazine and appears on MTV Sports.

In the 27 years since its inception, Florida State volleyball has prided itself in giving athletes the opportunity to reach their full potential both on the court and in the classroom. Pride, tradition and success are all part of what is known as Seminole Volleyball. ★

## *FSU Volleyball Coaches*

1968 .....	Martha Pat Moore
1969 .....	Dr. Judy Blucher
1970 .....	Dr. Billie Jones
1971 .....	Dr. Linda Warren
1972-75 .....	Dr. Billie Jones (107-22)
1976-present .....	Cecile Reynaud (516-222)

## *Player Achievement Awards*

### **METRO CONFERENCE ALL-TOURNAMENT TEAM**

1980 .....	Marie Sanders, Shannon Lages
1982 ...	Alicia Cross, Karyn Palgut, Marie Sanders
1983 .....	Karyn Palgut*, Sally Summer, Marie Sanders
1984 .....	Karyn Palgut
1985 .....	Joan Morris*, Donna Krai, Julie Todd, Julie Plattner
1986 .....	Joan Morris*, Deanne Kaleta, Julie Todd, Julie Plattner
1987 .....	Julie Todd*, Nancy Gaspadarek, Deanne Kaleta
1988 .....	Deanne Kaleta*, Nancy Gaspadarek, Maggie Philgence
1989 .....	Nancy Gaspadarek*, Sonia Treveno, Gabrielle Reece, Maggie Philgence
1990 .....	Maggie Philgence

*\*Most Valuable Player of the Tournament*

### **METRO ALL-CONFERENCE PLAYERS**

1985 .....	Donna Krai, Joan Morris
1986 .....	Joan Morris, Julie Todd
1987 .....	Nancy Gaspadarek, Deanne Kaleta, Julie Todd
1988 .....	Nancy Gaspadarek, Deanne Kaleta, Maggie Philgence
1989 .....	Nancy Gaspadarek, Maggie Philgence, Gabrielle Reece
1990 .....	Maggie Philgence, Gabrielle Reece

### **METRO ROOKIE OF THE YEAR**

1985 .....	Lynne Fullhart
1986 .....	Nancy Gaspadarek
1987 .....	Maggie Philgence

### **METRO COACH OF THE YEAR**

1988 .....	Cecile Reynaud
1989 .....	Cecile Reynaud

### **ATLANTIC COAST CONFERENCE ALL-TOURNAMENT TEAM**

1991 .....	Deanna Bosschaert
1992 .....	Sherry Cowling, Bianca Stevens, Luiza Ramos (2nd Team)
1993 .....	Luiza Ramos, Franci Rard
1994 .....	Luiza Ramos

### **ATLANTIC COAST ALL-CONFERENCE PLAYERS**

1991 .....	Kristine Cousins (2nd Team)
1992 .....	Sherry Cowling, Bianca Stevens, Luiza Ramos
1993 .....	Luiza Ramos, Vicki Zinkil (2nd Team)
1994 .....	Luiza Ramos

### **ATLANTIC COAST CONFERENCE COACH OF THE YEAR**

1992 .....	Cecile Reynaud
------------	----------------

### **ACC ACADEMIC HONOR ROLL**

1991 .....	Catie Lotarski, Jennifer McCall, Vicki Zinkil
1992 .....	Deanna Bosschaert, Jennifer Cichy, Jennifer McCall
1993 .....	Deanna Bosschaert, Catie Lotarski, Jennifer McCall, Franci Rard
1994 .....	Deanna Bosschaert, Valerie Broussard, Adria Ciraco, Susan Johnson, Catie Lotarski, Maureen McCarthy, Christy Minko, Paola Pichardo, Luiza Ramos

### **ACC ALL-FRESHMAN TEAM**

1994 .....	Maureen McCarthy
------------	------------------

# 1995 *Outlook*

The 1995 Lady Seminole roster may have the appearance that something is missing...and there is, seniors. In fact, the 1995 squad includes only three upperclassmen. Ten freshmen and sophomores dot the roster this season. Head coach Cecile Reynaud has quite a challenge ahead of her entering her 20th

The first challenge is the task of replacing FSU's two outside hitters, Luiza Ramos and Deanna Bosschaert.

"Two people who have played for four years will be critical to replace," Reynaud admitted, "especially since they were both primary passers." These two players received the majority of the sets so the Lady Seminole's offense will have a brand new look this season.

*"The biggest strength for this young new team will be its size. Florida State has four players over six feet tall..."*

season at Florida State. The veteran coach has a novice squad. This challenge, however, does not make Coach Reynaud nervous, instead she is glad to have the opportunity to review basics with her young team and will also have the chance to make a big impact on such a young squad.

Accompanying the exiting seniors is Adria Ciraco, the 1994 team's middle hitter. The final graduate is outside hitter Catie Lotarski. These four individuals had been the nucleus of the team which played its toughest schedule ever last season.

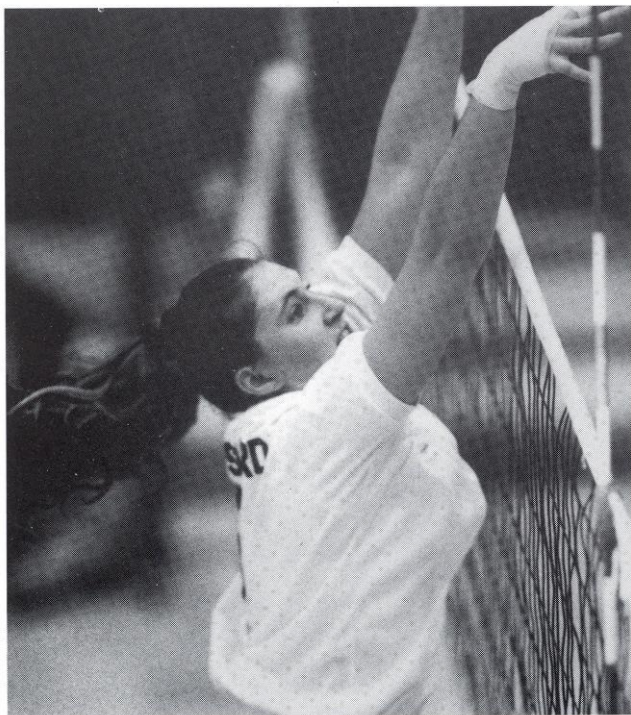
The biggest strength for this young new team will be its size. Florida State has four players over six feet tall, which include three middle hitters and an outside. With such a tall lineup, blocking should be a strength. One of the biggest impacts on the team could be the emergence of Susan Hawks. After a redshirt season, Hawks will be listed as a freshman, but is expected to play much older than that. She showed great leadership potential in spring practice and is anxious for her first collegiate season.

This young team will look to its few upperclassmen for leadership, which is just what Coach Reynaud wants. In particular, the squad will look to junior Patty Diamond for some guidance.

"Patty is a confident player," Reynaud said. "She communicates well with the coaching staff and the players. Her personality is that of a leader."

## *Middles*

The middle position may be the toughest in the game. It will be crucial for the success of this season to have two healthy middles ready to play. Leading the charge defensively and offensively will be junior Valerie Broussard. The Seminoles have an experienced middle in Broussard who has not missed a match since starting her career at Florida State.



FSU returns leading blocker Valerie Broussard to dominate at the net once again in 1995.

Broussard looks to be a major impact for the Seminoles returning for 1995 as the team leader in hitting percentage and blocking from last season.

Hawks and Susan Johnson will also challenge for a middle position. Both have strong blocking skills, and Johnson gained valuable experience last season as a freshman appearing in 26 matches.

A newcomer to the middle crew is Nicole Allen. Allen is a strong athletic player who could also appear in the starting lineup.

"Nicole is a quick, strong athlete," Reynaud said. "She is going to be a dynamic player, she can be very explosive."

## *Outsiders*

The outside position has been occupied by the same two people for the past four years. With many outside hitters to choose from, this may be the toughest position to fill. According to Reynaud, Laura Arnold is coming off a great spring.

"Laura had days in practice where she was an offensive weapon," Reynaud said. After defensive playing time her freshman year, Reynaud is looking to utilize Arnold in every aspect of the game. Arnold will have the chance to become an offensive threat this season.

One of the tallest members of the squad, junior Sonia Preocanin, has been used sparingly throughout her career. 1995 may bring her into the spotlight as one of FSU's right side players, putting up an intimidating block for all opponents. A strong, vocal player, Preocanin may be coming into her own this season.

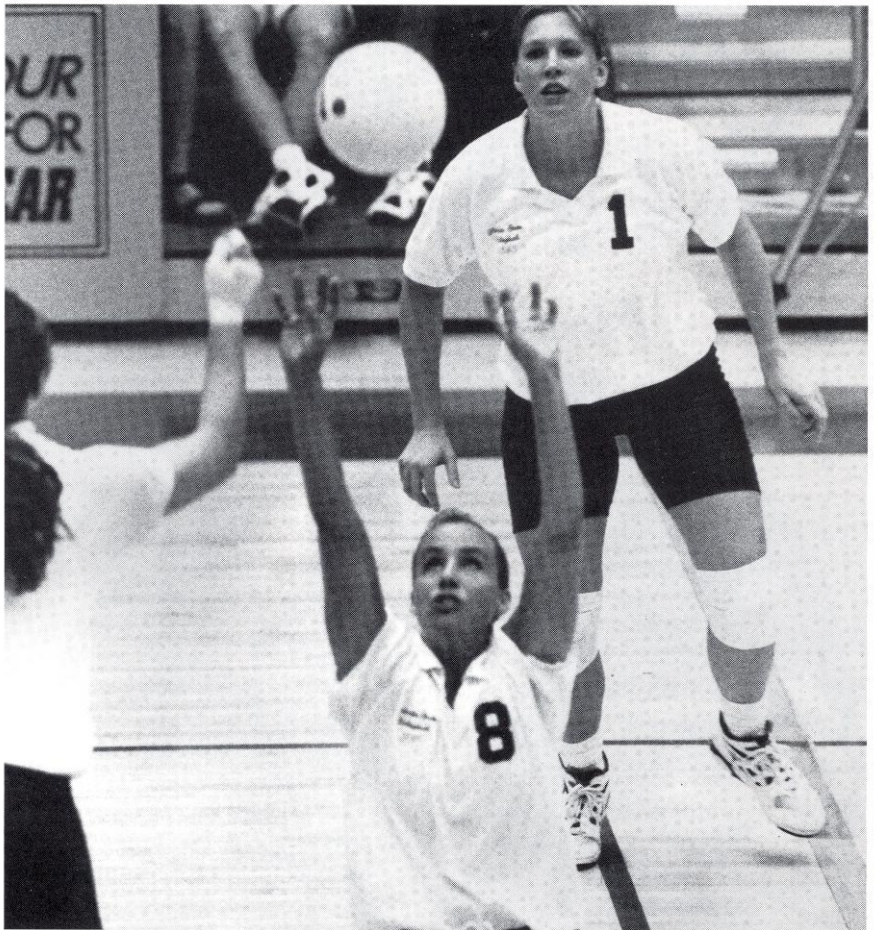
Three freshman will also be battling for a starting position. LaToya Presberry, Sarah Rickertson and Holly Schneider will compete for playing time. Reynaud described Presberry as a player with, "excellent technique, an all-around athlete who is exciting to watch."

Rickertson has been described as a "good all-around player." She comes from a great high school and club program and her versatility will allow her to come in and "fit in wherever we need her."

Schneider, a physically strong athlete with a competitive attitude could add some fire to the lineup. Reynaud described her as, "an explosive, intense player coming from a strong volleyball background."

## *Setters*

Last season both Diamond and Maureen McCarthy were used as setters. This season, they



McCarthy (front) and Diamond shared setting duties last year and will challenge for that role once again this season.

will both be battling it out for a starting position once again. The setter's role is to lead her team to victory. Reynaud believes both of her setters have the ability to change the momentum of the game.

According to Reynaud each of the potential setters has different strengths.

"Patty has an outstanding block and a great defensive attitude," Reynaud said. "Maureen is very successful with a lot of the quick sets and jump sets, and she runs the team well."

The 1995 season will provide a challenging Atlantic Coast Conference schedule for the Seminoles. Many outstanding players have graduated from the conference and some coaching changes have occurred. This leaves the door wide open for the conference championship. This year's team hopes to knock it down.

Along with the rigorous ACC schedule, FSU will face rival Florida, South Florida, Rhode Island, Washington, and Houston which should all prove to be tough for the young squad.

The 1995 Florida State volleyball team is looking to return to the Atlantic Coast Conference Championships and the NCAA Tournament. With no seniors on the team and only three juniors, time will tell which of the young players will emerge to lead the team to victory. In Reynaud's 20th season of collegiate coaching at FSU, she will be looking to finish as she has every other year, with a winning season. ★

# 1995 LADY SEMINOLE *Rosters*

## *Florida State Alphabetical Roster*

3	Nicole Allen	FR	MH	6'0"	Fort Myers, FL
15	Laura Arnold	SO	OH	5'8"	Stuart, FL
6	Valerie Broussard	JR	MH	5'11"	Lafayette, LA
1	Patty Diamond	JR	S	5'10"	Livonia, MI
14	Susan Hawks	FR*	MH	6'2"	Tampa, FL
13	Susan Johnson	SO	MH	6'1"	Ft. Wayne, IN
8	Maureen McCarthy	SO	S	5'9"	Quincy, MA
5	Christy Minko	SO	DS	5'7"	Fort Myers, FL
9	Paola Pichardo	SO	DS	5'8"	Ft. Lauderdale, FL
7	Sonia Preocanin	JR	OH	6'2"	Hamilton, ONT
4	LaToya Presberry	FR	OH	5'8"	Detroit, MI
12	Sarah Rickertson	FR	OH	5'9"	Helena, AL
10	Holly Schneider	FR	OH	5'11"	Ft. Wayne, IN

\* 1994 Redshirt

## *Florida State Numerical Roster*

1	Patty Diamond	JR	S	5'10"	Livonia, MI
3	Nicole Allen	FR	MH	6'0"	Fort Myers, FL
4	LaToya Presberry	FR	OH	5'8"	Detroit, MI
5	Christy Minko	SO	DS	5'7"	Fort Myers, FL
6	Valerie Broussard	JR	MH	5'11"	Lafayette, LA
7	Sonia Preocanin	JR	OH	6'2"	Hamilton, ONT
8	Maureen McCarthy	SO	S	5'9"	Quincy, MA
9	Paola Pichardo	SO	DS	5'8"	Ft. Lauderdale, FL
10	Holly Schneider	FR	OH	5'11"	Ft. Wayne, IN
12	Sarah Rickertson	FR	OH	5'9"	Helena, AL
13	Susan Johnson	SO	MH	6'1"	Ft. Wayne, IN
14	Susan Hawks	FR*	MH	6'2"	Tampa, FL
15	Laura Arnold	SO	OH	5'8"	Stuart, FL

<b>HEAD COACH</b> .....	Cecile Reynaud (SW Missouri, 1975)
<b>ASSISTANT COACHES</b> .....	Shelly Birkholz (Florida State, 1986) Sherry Cowling (Florida State, 1993)
<b>UNDERGRADUATE STUDENT ASSISTANT COACH</b> .....	Luiza Ramos
<b>VOLUNTEER COACH</b> .....	Stuart Ryan
<b>MANAGER</b> .....	Colin Thomas
<b>TRAINER</b> .....	Shelly Lichter



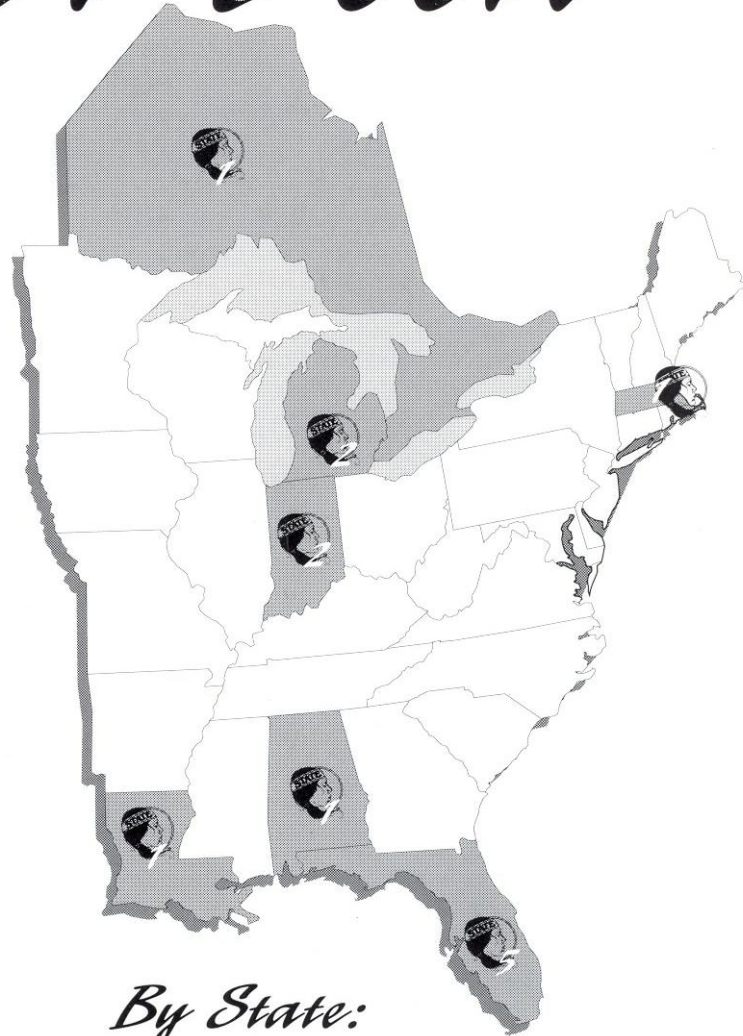
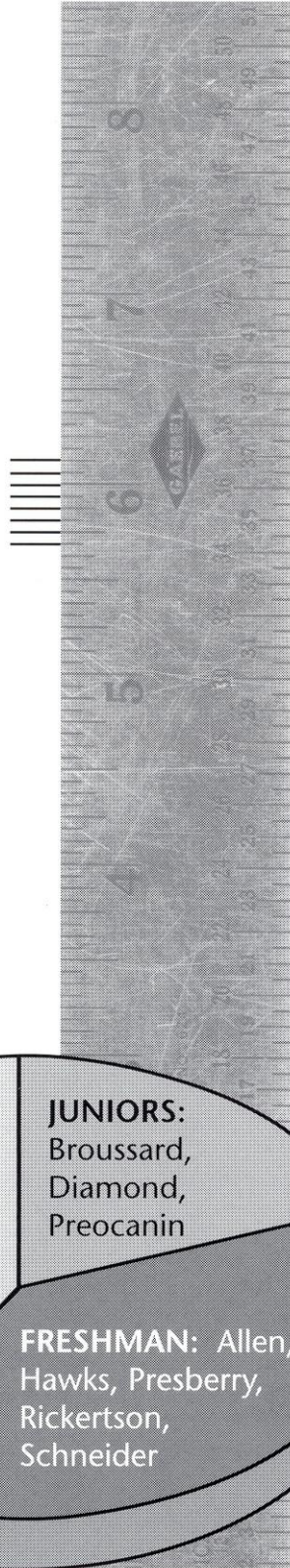
# THE LADY SEMINOLES

## *A Closer Look*

### *By Height:*

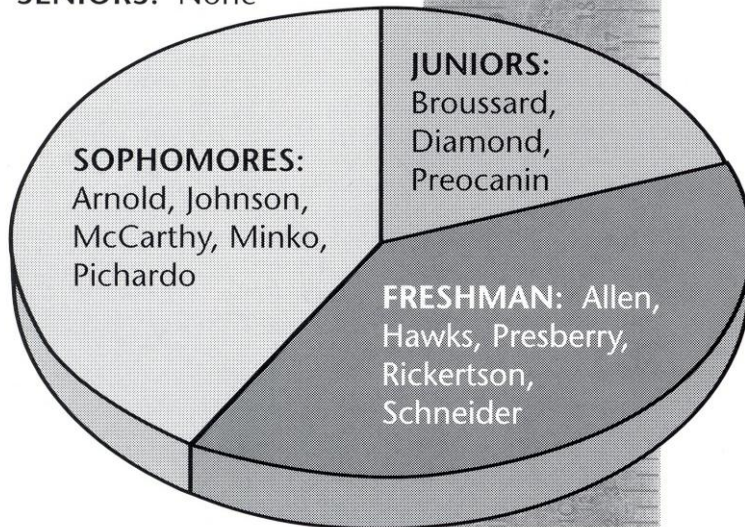
Hawks	6-2
Preocanin	
Johnson	6-1
Allen	6-0
Broussard Schneider	5-11
Diamond	5-10
McCarthy Rickertson	5-9
Arnold Pichardo Presberry	5-8
Minko	5-7

(1"=approximately 1')



### *By Class:*

**SENIORS:** None



### *By State:*

**FLORIDA (5)** – Allen, Arnold, Hawks, Minko, Pichardo  
**LOUISIANA (1)** – Broussard  
**MICHIGAN (2)** – Diamond, Presberry  
**INDIANA (2)** – Johnson, Schneider  
**MASSACHUSETTS (1)** – McCarthy  
**ONTARIO, CANADA (1)** – Preocanin  
**ALABAMA (1)** – Rickertson

### *By Position:*

**MIDDLES:** Allen, Broussard, Hawks, Johnson  
**OUTSIDES:** Arnold, Preocanin, Presberry, Rickertson, Schneider  
**SETTERS:** Diamond, McCarthy  
**DEFENSIVE SPECIALISTS:** Minko, Pichardo

# HEAD COACH

# *Cecile Reynaud*

*20th Season:* CAREER RECORD 516-222 (.699)  
ALMA MATER: SOUTHWEST MISSOURI STATE, 1975

**F**lorida State University Athletics has been fortunate enough to have two of the best coaches in the country working with its athletes for almost two decades in each of their respective sports. Cecile Reynaud and Bobby Bowden, each entering their 20th season would shy away from this credit, feeling they are the ones fortunate to have

been on staff for so many years and to have had the opportunity to work with Florida State and its athletes. That is what is so great about each of them, each is well known, accomplished and respected in their sport. Two honorable coaches who care about their athletes, both class acts.

Coaching, Reynaud feels, is teaching people about life, and she uses a volleyball to do that. When looking back on her 19 previous seasons for her greatest moment, she has some great victories to choose from. But, after a smile and a few laughs remembering these blasts from the past she decides the best part of having coached Lady Seminole volleyball for 20 years is that she has been fortunate enough to work with so many student-athletes and form lasting relationships. For that she feels lucky.

Well as luck would have it, Coach Reynaud notched her 500th career victory in the first match of the 1994 season against Southern Illinois. This milestone victory places her among an elite list of coaches in the 500 win club. What a relief it was to



## *Most Career Victories* AMONG ACTIVE COACHES

	W	L	PCT	YRS
1. Andy Banachowski (UCLA)	772	152	.836	28
2. Linda Dollar (SW Missouri State)	742	254	.745	23
3. Mick Haley (Texas)	722	174	.806	21
4. Elaine Michaelis (BYU)	705	178	.798	33
5. Marilyn McReavy Nolen (St. Louis)	640	241	.726	23
6. Terry Pettit (Nebraska)	596	135	.815	21
7. Geri Polvino (Eastern Kentucky)	594	375	.613	28
8. Barbara Viera (Delaware)	588	353	.625	23
9. Dave Shoji (Hawaii)	553	120	.822	20
10. Russ Rose (Penn State)	528	106	.833	16
11. <b>CECILE REYNAUD (FLORIDA STATE)</b>	<b>516</b>	<b>222</b>	<b>.699</b>	<b>19</b>
12. Debby Colberg (Sacramento State)	499	162	.755	18
13. Kathy Gregory (UC Santa Barbara)	490	234	.677	20
14. Mike Hebert (Illinois)	488	227	.682	19
15. Janice Kruger (Maryland)	484	191	.717	16

## *Reynaud's Milestone Victories*

100 vs. Lake City JC (1979)	15-8, 15-5, 15-11
200 vs. Georgia (1981)	15-1, 15-5
300 vs. Northwestern (1985)	9-15, 16-14, 8-15, 15-9, 15-11
400 vs. Memphis State (1989)	14-16, 8-15, 15-11, 15-9, 15-11
500 vs. Southern Illinois (1994)	15-7, 15-4, 15-6

earn that victory in the opener with the Lady Seminoles facing the toughest schedule in school history. Challenging powerhouses UCLA, Penn State, and LSU in the early season along with rival Florida, then plowing past the always tough Atlantic Coast Conference foes. FSU played 10 teams in 1994 that reached the NCAA Tournament including two final four participants.

Looking back over 19 seasons of volleyball, one thing stands out. Reynaud has never had a losing season. With their impressive regular seasons, post season play has become familiar to the Lady Seminoles as well. Florida State has made eight NCAA post-season appearances, six of which are in the last eight years and two appearances in the Atlantic Coast Conference Championship game in only four years of ACC competition.

Along with Reynaud's coaching duties, she is currently serving as interim assistant athletic director, a position she was named to July 1, 1994. The assistant AD oversees 13 of Florida State's sports. Being assistant AD has been both exciting and challenging. The greatest challenge of all being the extra travel, and the fact that more people need access to her as an administrator. However, for Coach Reynaud, players will always come first.

Reynaud's successes in coaching are impressive and numerous as are her graduates. In 19 years of coaching, Reynaud has an excellent graduation rate. Among four-year volleyball letterwinners, all but two have earned their college degree, close to a 98% graduation rate. These graduates include two GTE Academic All-Americans and numerous honor roll students in the past five years.

A two-time Metro Conference Coach of the Year, Reynaud was also honored as Coach of the Year by the Atlantic Coast Conference in 1992. She was also named Florida Association of Intercollegiate Athletics for Women Coach of the Year in 1991 and in 1989 she garnered AVCA South Region Coach of the Year accolades.

Presently, Reynaud is a member of the Volleyball Hall of Fame selection committee. She is also active on the USVBA Board of Directors and Executive Committee.

In 1983, she went to the international level and served as the assistant coach at the World University Games in Canada and in 1985 was head coach for the United States Junior National Team which toured Japan and China. She has been on the AVCA All-America Committee and was the Zone Coordinator for 1986 and 1987 Olympic Festivals. She has continued to serve as the commissioner for the Olympic Festival since 1988. Reynaud will also be working with the 1996 Centennial Olympic Games in Atlanta as the Deputy Competition Manager, where she will be in charge of the Athens, GA venue for 10 days of competition.

Reynaud participated in the 1990 Goodwill Games as the technical secretary and is past-president of the American Volleyball Coaches Association.

As an expert on the game, Reynaud has been a technical consultant for two Power Volleyball films and the third edition of the book "Power Volleyball." She has co-authored numerous articles pertaining to women's athletics and continues to be active on the speakers' circuit.

Reynaud has been an instructor at more than 35 camps across the country and hosts her own each year which attracts hundreds of young volleyball players.

A 1975 graduate of Southwest Missouri State, Reynaud enjoyed an outstanding athletic career on the volleyball team and was twice named among the Outstanding College Athletes in America. In 1983, she was inducted into the school's Women's Athletic Hall of Fame.

In addition to an already challenging schedule, Reynaud has returned to Florida State as a graduate student in pursuit of a Ph.D. in athletic administration. ★

## Coaching Record

1976	33-14	State Runner-up
1977	25-13	State Champion 4th at Regionals
1978	28-14	State Champion 1st at Regionals A1AW Nationals First Round
1979	31-19	State Runner-up 1st at Regionals A1AW Nationals Second Round
1980	43-14	State Champion 3rd at Regionals
1981	43-8	State Champions 1st at Regionals A1AW Nationals Third Round
1982	27-17	3rd in Metro Conference Metro Tournament 3rd Place
1983	31-6	1st in Metro Conference Metro Tournament 3rd Place NCAA First Round
1984	20-13	3rd in Metro Conference Metro Tournament 3rd Place
1985	22-10	1st in Metro Conference Metro Tournament 1st Place NCAA First Round
1986	25-11	1st in Metro Conference Metro Tournament 1st Place NCAA First Round
1987	22-11	1st in Metro Conference Metro Tournament 1st Place NCAA First Round
1988	28-8	1st in Metro Conference Metro Tournament 1st Place NCAA First Round
1989	30-5	1st in Metro Conference Metro Tournament 1st Place NCAA First Round
1990	25-10	3rd in Metro Conference Metro Tournament 3rd Place NCAA First Round
1991	16-15	5th in ACC ACC Tournament 3rd Place
1992	26-8	Tied 1st in ACC ACC Tournament 2nd Place NCAA First Round
1993	24-10	3rd in ACC ACC Tournament 2nd Place NCAA Second Round
1994	17-16	5th in ACC ACC Tournament 3rd Place
<b>TOTAL</b>	<b>516-222</b>	

# CECILE REYNAUD'S *20th Season!*

"Cecile Reynaud has been one of the most positive influences in my life. A great coach, teacher of life, and has been a true friend. She should feel great pride in being a part of my many successes."

—*Gabrielle Reece '90*

Professional Volleyball Player/Model  
California



"Cecile has touched my life so that I still desire to play, coach and strive to learn more about the game so that I can pass on this wonderful sport to others. Recently I played in my first USAV national championship, and was setting. I constantly was hearing her voice, 'Know where the shortest blocker is,' 'Feed all your hitters,' 'Try to always run the middle on the first play to keep the middle blocker guessing' and others. When I coach my juniors, many of my words could just as well have her voice instead of mine. I hope she never copyrights what she has said, or I'll owe a million."

—*Nancy Townsend-Cothron '80*  
Physical Education Teacher, Dowdell  
Junior High, Tampa, Florida

"There are a thousand memories I have of the two years I spent under Cecile. We had a lot of fun. I don't know how the team gets to tournaments today, but we drove in State cars. We spent countless hours on the road driving to tournaments throughout the Southeast. What a blast!!"

—*Michele Hurd '78*  
Computer specialist NASA  
California

"...having played volleyball at Florida State for Cecile definitely brought structure and direction to my college days. I had instant friends and 'family' which is important when you are young and miles away from home. I had a lot of fun and made many lifelong friends."

—*Jackie Young-Daley '85*  
Human Resources, Apertus Technologies  
Bloomington, Minnesota



“One of the most important decisions in my life was where to go to college. I chose FSU because I heard that coach Reynaud was a great teacher of the game and was excellent at developing talent. Cecile sparked my spirit of competition, relied on my leadership and gave me the opportunity to express my opinions. Each victory was a reflection of Cecile’s hard work, experience and powers of motivation.”

—*Sally Summer Rozanski '83*  
Homemaker, Miami, Florida

“I was a summer walk-on transfer student from a small private college who dreamed of one day playing at AIAW nationals. Cecile Reynaud gave me that opportunity. It showed me that anything is possible if you put forth the effort.”

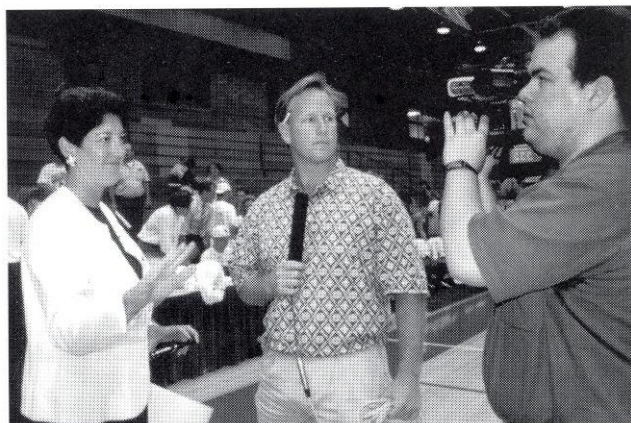
—*Jamie Kuhn-Gore '80*  
Psychologist  
Fort Myers, Florida

“...her influence cannot be confined to merely my college years. While I was attending FSU she provided me with encouragement, praise and recognition, and the confidence to succeed. While this was important then, I have found those four years to be more beneficial than what it appears at face value. Since then I have realized how important it is to set goals, strive to reach them and have the confidence and determination to do so. The importance of teamwork ...working with others; praising and complimenting those you work with for the common goal...are important lessons one can use in any aspect of business or management.”

—*Marie Sanders Molitor '83*  
Manager, Customer Service Department,  
Talbots, Sudbury, Massachusetts

“From my first jog around Tallahassee with my bun-huggers on — to laps around the track at 6:00 a.m. on Sunday, Cecile taught me discipline and instilled self confidence in me. Thanks for teaching me to believe in me.”

—*Julie Plattner '86*  
Chef, Co-Owner Stagecoach Inn  
Restaurant, Springfield, Illinois



“Cecile influenced my college years and decision to become a volleyball coach because of her knowledge and love for the game as well as her unselfish dedication and attitude. Her spirit was uncanny and I learned a lot from her. My experience of being a Lady 'Nole has helped me to become the best coach that I can be.”

—*Velma Wright '79*  
Physical Education, Forest Hill Community  
High School, Riviera Beach, Florida

“My first year at FSU, Cecile reminded us that there were only four years available to us to compete at NCAA level and encouraged us to take advantage of each opportunity along the way. I often think back to my time at FSU with the hope that I will also live today to the fullest.”

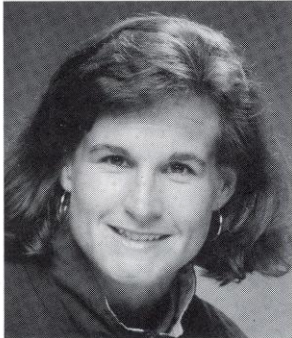
—*Carol Forsten '84*  
Adolescent Psychologist  
Port Macquarie, New South Wales,  
Australia



# ASSISTANT *Coaches*

## *Shelly Birkholz*

ASSISTANT COACH, 9TH SEASON,  
FLORIDA STATE, 1986



Shelly Birkholz returns for her ninth year as an assistant coach at Florida State. Four years ago, Birkholz returned to her position after a year's absence when she served as the Indiana women's coordinator for the Fellowship of Christian Athletes. Previously, Birkholz was the assistant from 1986 through the

1989 seasons during which time the Lady Seminoles made three appearances in the NCAA tournament.



After a standout prep career at Hononegah High School in Roscoe, Illinois, and with the Sports Performance team, Birkholz accepted a volleyball scholarship at FSU. Knee surgery sidelined her as a sophomore, however Birkholz continued to play an important role on the Lady Seminole team for the next two years.

Birkholz graduated from Florida State in 1986 with a degree in leisure services before she officially joined the coaching staff. She continued her education and earned her master's degree in 1988.

She currently coordinates recruiting, monitors the academic progress of the players and provides Reynaud with input on daily practices and matches. She also assists and participates in the team's training and workout sessions which led to her selection and top two finish at the American Gladiators competition held in Tallahassee in the spring of '92.

As one of the organizers of the FSU huddle for FCA, Birkholz continues her speaking engagements around the state. In 1991, she served as an administrative assistant for the volleyball delegation at the Olympic Festival in Los Angeles. Birkholz also assists with the Cecile Reynaud Volleyball Camp each summer.

## *Sherry Cowling*

ASSISTANT COACH, 2ND SEASON,  
FLORIDA STATE, 1993



Sherry Cowling begins her second season as an assistant coach after a standout senior season playing for Reynaud. After receiving her degree in economics, Cowling taught history at an area high school and coached the volleyball team. During this time she was very involved in the Tallahassee Community and promoting youth volleyball. Cowling was honored with an award for her excellent community service throughout the year while at Godby High School.

In one season of play at Florida State, Cowling established a new school record, since broken, when she registered 72 assists in a match against Duke. She was also honored as a GTE Academic All-American and named to the American Volleyball Coaches Association All-South Region team.

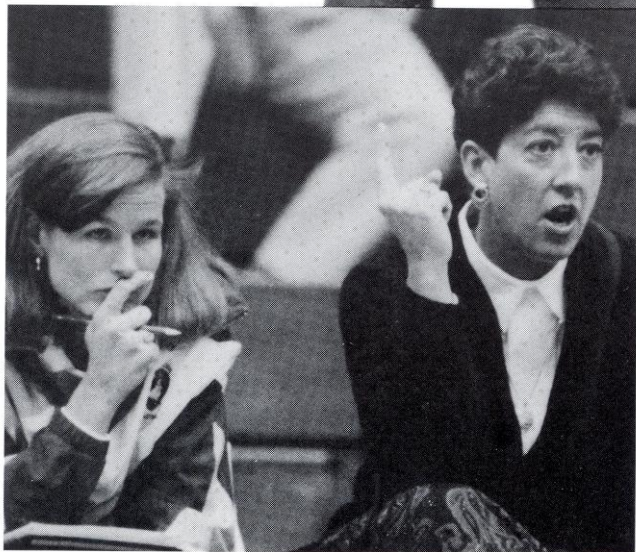
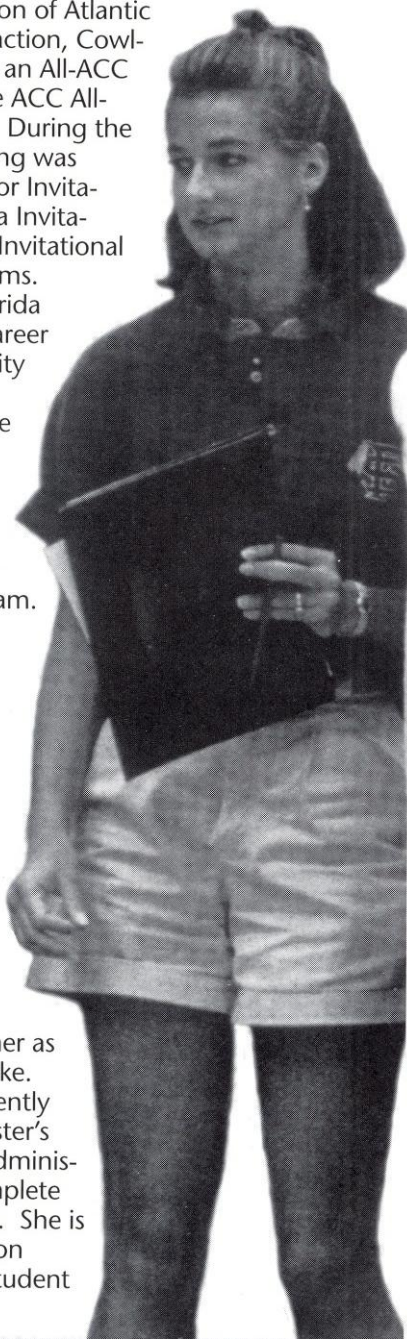
In a single season of Atlantic Coast Conference action, Cowling was selected as an All-ACC member and to the ACC All-Tournament team. During the 1992 season Cowling was selected to the Gator Invitational, South Florida Invitational, and Hofstra Invitational All-Tournament teams.

The Miami, Florida native began her career at Syracuse University where she played three seasons before transferring to Florida State.

Cowling also was the setter for the 1990 Silver medal Olympic Festival team.

Cowling could not be any more involved with the sport she loves. Along with her FSU coaching duties, Cowling has been coaching with the Big Bend Juniors Club for three years, and trained with the Bud Light four-woman professional beach tour over the summer as a setter for Team Nike.

Cowling is currently working on her master's degree in athletic administration and will complete the degree this year. She is also engaged to Jason Clouet, a master's student at FSU as well.



## *Luiza Ramos*

### UNDERGRADUATE STUDENT ASSISTANT



After one of the most successful careers in Florida State history, Luiza Ramos will be involved with Lady Seminole volleyball in a different manner. Ramos will join the coaching staff while finishing her business degree in management information systems.

A Brazilian native, Ramos attended Ft. Myers High School as a foreign exchange student. Ramos established a new career dig record and ranks second in career kills. Ramos joined the coaching ranks last spring when she became involved with coaching at the Juniors level with the Big Bend Club.

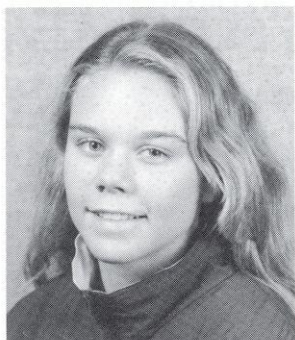
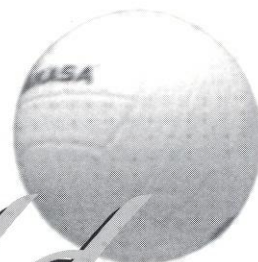


# Player Profile

## #15

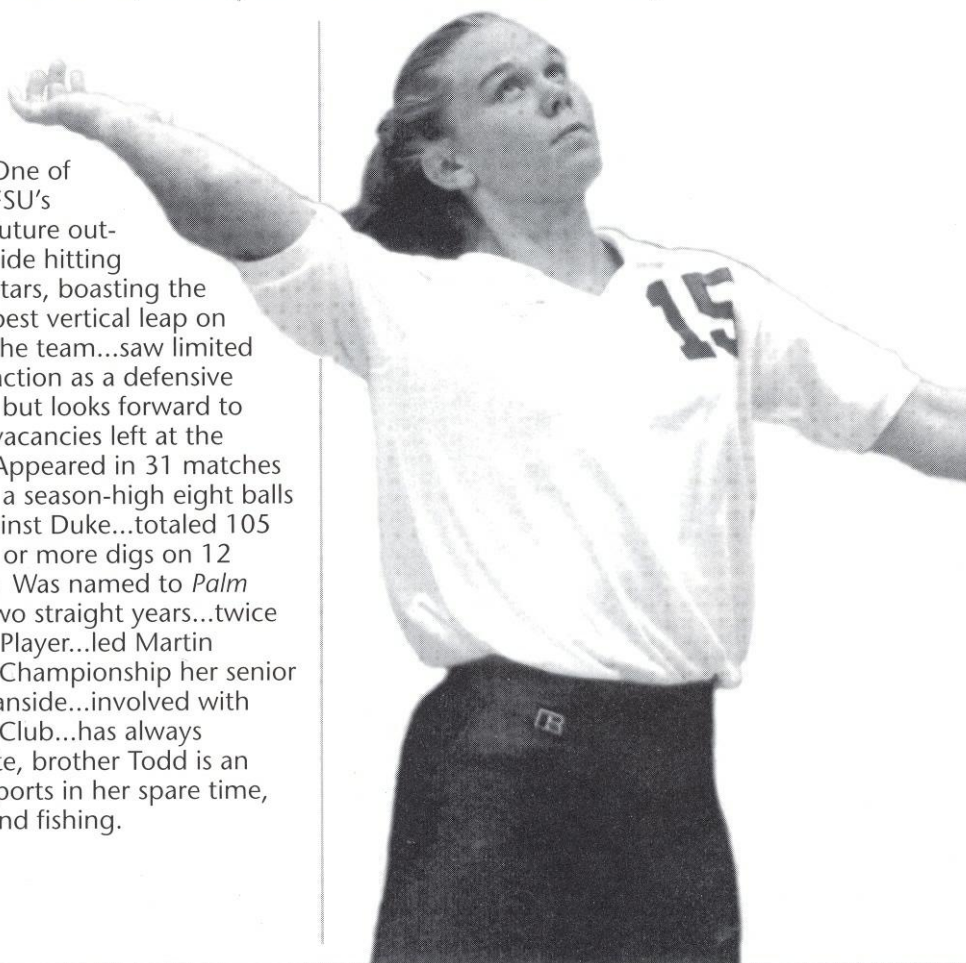
# Laura Arnold

5-8, SOPHOMORE, OUTSIDE HITTER  
STUART, FL (MARTIN COUNTY)



One of FSU's future outside hitting stars, boasting the best vertical leap on the team...saw limited action as a defensive

specialist her freshman year but looks forward to more offensive action with vacancies left at the outside hitter spot. **1994:** Appeared in 31 matches for FSU as a freshman...dug a season-high eight balls in the ACC Tournament against Duke...totaled 105 digs on the season...had six or more digs on 12 occasions. **HIGH SCHOOL:** Was named to *Palm Beach Post's* All-Area team two straight years...twice awarded the Most Valuable Player...led Martin County High to the District Championship her senior year...played club with Oceanside...involved with basketball, softball and Key Club...has always wanted to go to Florida State, brother Todd is an FSU alumni...enjoys water sports in her spare time, including boating, diving, and fishing.



### Arnold at Florida State

YEAR	MP	GP	K	E	TA	PCT.	SA	SE	AST	BS	BA	BE	RE	BHE	DIG
1994	31	101	3	2	16	.063	2	4	12	0	0	2	22	0	105

### Arnold's Career Highs

KILLS .....	2 vs. UCF (11/15/94)
ATTACKS .....	3 vs. UCF (11/15/94)
HITTING % .....	.667 vs. UCF (2k, 0e, 3a), (11/15/94)
SERVICE ACES .....	1 vs. DePaul (9/16/94), vs. Maryland (10/21/94)
DIGS .....	8 vs. Duke (11/19/94)
ASSISTS .....	2 vs. Clemson (9/30/94)



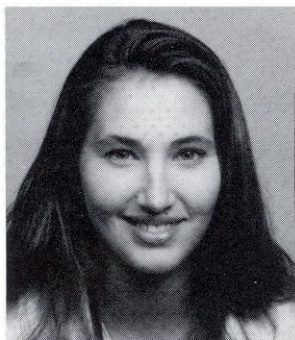
# Player Profile

## #6

# Valerie Broussard

5-11, JUNIOR, MIDDLE HITTER

LAFAYETTE, LA (EPISCOPAL)



An experienced middle blocker who looks to be a part of the first FSU volleyball team to win an ACC Championship... volleyball runs in the Broussard family, her older sister Jeanne played for Boston College... dedicated athlete who is majoring in dietics and nutrition and fitness with hopes of becoming a sports nutritionist someday... enjoys reading, cooking, traveling, and outdoor sports.

**1994:** Team leader in blocks and block assists ...played in every match

of the season...came on strong in the second half of the season to lead the team with multiple solo blocks on seven occasions...had seven total blocks on three occasions...season-high 18 kills



and seven blocks against ACC foe Virginia...finished with 87 total blocks and a team-leading .268 hitting percentage...recorded 15 digs against home state LSU in the early part of the season.

**1993:** One of two players to see action in all 116 games...registered 102 blocks...also tallied 19 solo blocks...reached double figure kills on six occasions ...best all-round performance came in a five-game win over Clemson...hit .400 in the match, totalling 13 kills and 11 digs...Clemson match marked her only double-double of the season...came back the next night to turn in a then career-high 14 digs vs. Georgia Tech... had a career-high 15 kills in first meeting with N.C. State...hit a then career-best .519 in the match...led the team in kills in regular season finale win over Troy State...put away 11 balls in the match on 18 attempts ...turned in a career-best 17 dig performance in ACC Tournament semifinal victory over Clemson...one of four Seminoles to pound out double-figure kills (10) in NCAA opening round win over DePaul. **1992:** Opted for a medical redshirt after being diagnosed with stress fractures in both legs after summer workouts. **HIGH SCHOOL:** Led Episcopal School of Acadiana to four consecutive Louisiana state titles...named most valuable player at the 1991 state championship...selected *Lafayette Advertiser/Pepsi All-Acadiana MVP*...three-time All-Acadiana and All-District player...twice an All-State selection...played for the Cajunland club team.

### Broussard at Florida State

YEAR	MP	GP	K	E	TA	PCT.	SA	SE	AST	BS	BA	BE	RE	BHE	DIG
1993	34	120	218	92	567	.222	26	61	30	19	83	26	5	3	244
1994	33	107	224	75	555	.268	21	26	20	28	59	39	0	8	133
<b>TOTAL</b>	<b>67</b>	<b>227</b>	<b>442</b>	<b>167</b>	<b>1122</b>	<b>.245</b>	<b>47</b>	<b>87</b>	<b>50</b>	<b>47</b>	<b>142</b>	<b>65</b>	<b>5</b>	<b>11</b>	<b>377</b>

### Broussard's Career Highs

KILLS .....	18 vs. Virginia (11/5/94)
ATTACKS .....	36 vs. Virginia (11/5/94)
HITTING % .....	.867 vs. South Florida (13k, 0e, 15a), (11/25/94)
SERVICE ACES .....	4 vs. Jacksonville (10/18/94)
SOLO BLOCKS .....	5 vs. Central Florida (11/15/94)
BLOCK ASSISTS .....	7 vs. Clemson (9/30/94)
DIGS .....	17 vs. Clemson (11/20/93)
ASSISTS .....	5 vs. Virginia (10/22/94)

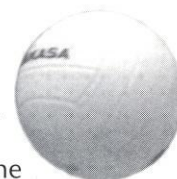
# Player Profile

## #1

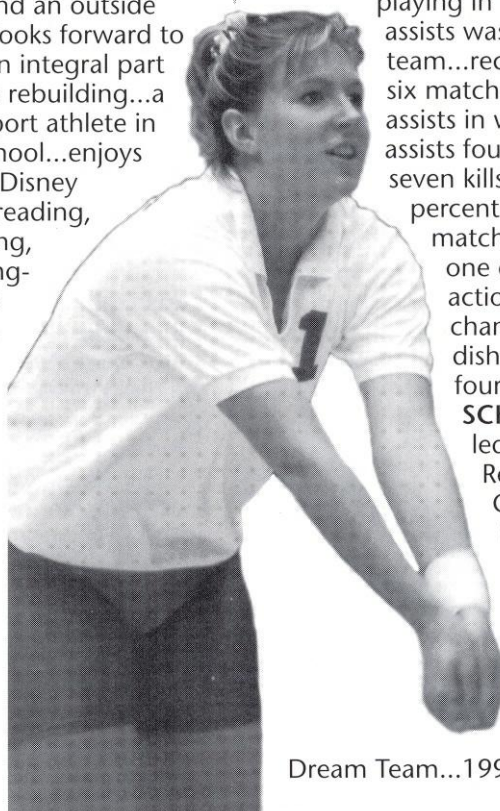
# Patty Diamond

5-10, JUNIOR, SETTER/OUTSIDE HITTER

LIVONIA, MI (STEVENSON)



A versatile athlete who has seen action as a setter and an outside hitter...looks forward to being an integral part of FSU's rebuilding...a three-sport athlete in high school...enjoys visiting Disney World, reading, exercising, and hang-



State. **1993:** Used primarily to back-up Jennifer McCall...called upon in 33 games, playing in 19 matches...140

assists was second highest on the team...recorded 10 or more assists in six matches...dished out a career-best 17 assists in win over Florida...totalled nine assists four times...ended season with seven kills, 42 digs and a .143 hitting percentage...played in both NCAA

matches accounting for six assists and one dig in win over DePaul...saw action in the ACC Tournament championship match vs. Duke...dished 11 assists and chipped in four digs in the match. **HIGH**

**SCHOOL:** Graduated cum laude...led squad to four District, one Regional, three Division and one Conference championship during her four years at Stevenson...selected to seven All-Tournament teams...two-time All-State selection...named 1992 MVP and 1993 co-MVP of her high school team...earned 1992 *Detroit Free Press* Athlete of the Week honors...*Detroit News*

Dream Team...1993 AAU All-American.

ing out...brother Bo attends FSU as well...involved with the "Say No to Drugs" campaign and the President's Athletic Academic Council.

**1994:** Split time setting with Maureen McCarthy and as an outside hitter to give the Seminoles more hitting options...provided solid blocking in the front row with the third-highest blocking numbers behind the two middles...recorded 221 digs on the season, including eight occasions of double figures...while assuming the setting duties, tossed up 304 assists including a career-high 61 against Fresno

## Diamond at Florida State

YEAR	MP	GP	K	E	TA	PCT.	SA	SE	AST	BS	BA	BE	RE	BHE	DIG
1993	19	33	7	4	21	.143	7	9	140	0	3	1	1	8	42
1994	31	93	52	32	192	.104	27	53	304	4	32	3	6	11	221
<b>TOTAL</b>	<b>50</b>	<b>126</b>	<b>59</b>	<b>36</b>	<b>213</b>	<b>.108</b>	<b>34</b>	<b>62</b>	<b>444</b>	<b>4</b>	<b>35</b>	<b>4</b>	<b>7</b>	<b>19</b>	<b>263</b>

## Diamond's Career Highs

KILLS .....	7 vs. Fresno State (9/17/94)
ATTACKS .....	17 vs. Fresno State (9/17/94)
HITTING % .....	.353 vs. Fresno State (7k, 1e, 17a), (9/17/94)
SERVICE ACES .....	3 on three occasions
SOLO BLOCKS .....	2 vs. LSU (9/9/94)
BLOCK ASSISTS .....	4 vs. Virginia (11/5/94)
DIGS .....	24 vs. N.C. State (10/7/94)
ASSISTS .....	61 vs. Fresno State (9/17/94)

# Player Profile

## #13

# Susan Johnson

6-1, SOPHOMORE, MIDDLE HITTER  
FT. WAYNE, IN (NORTHROP)

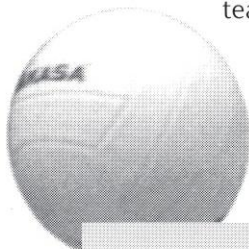


Extremely talented player who showed great potential in her freshman campaign...was a stand-out athlete at Northrop High involved in basketball, track and FCA... enjoys being with friends and reading in her spare time...undecided on a major. **1994:** Gained valuable playing experi-

and academics...three-time All-Conference basketball selection...named Academic All-State team in basketball...played for the Ft. Wayne Volleyball Club.



ence as a freshman appearing in 26 matches... started the season with a bang recording a team-high 12 kills off 17 attempts with no errors for a .706 in the opening match against Southern Illinois ...notched a season-high five blocks the next night against Southern Illinois again...one of the 'Noles toughest from behind the service line, led the squad on five occasions in service aces...season-high five aces against Georgia Tech. **HIGH SCHOOL:** Second team All-State selection as a senior...three-time All-Conference team member...voted team's "Best Offensive Player" three straight years...led team to first ever semi-final appearance in the state championship tournament...garnered 1992 and 1994 AAU All-American honors...established four new blocking records at Northrop...Sertoma Award recipient recognizing excellence in athletics



### Johnson at Florida State

YEAR	MP	GP	K	E	TA	PCT.	SA	SE	AST	BS	BA	BE	RE	BHE	DIG
1994	26	66	60	41	198	.096	23	38	8	4	19	10	8	2	72

### Johnson's Career Highs

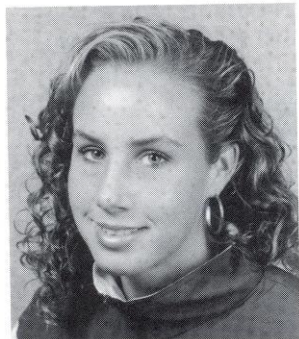
KILLS .....	12 vs. Southern Illinois (9/2/94)
ATTACKS .....	25 vs. DePaul (9/16/94)
HITTING % .....	.706 vs. Southern Illinois (12k, 0e, 17a), (9/2/94)
SERVICE ACES .....	5 vs. Georgia Tech (10/1/94)
SOLO BLOCKS .....	2 vs. Southern Illinois (9/2/94)
BLOCK ASSISTS .....	5 vs. Southern Illinois (9/3/94)
DIGS .....	10 vs. DePaul (9/16/94)
ASSISTS .....	3 vs. Florida (10/31/94)

Player Profile

#8

# Maureen McCarthy

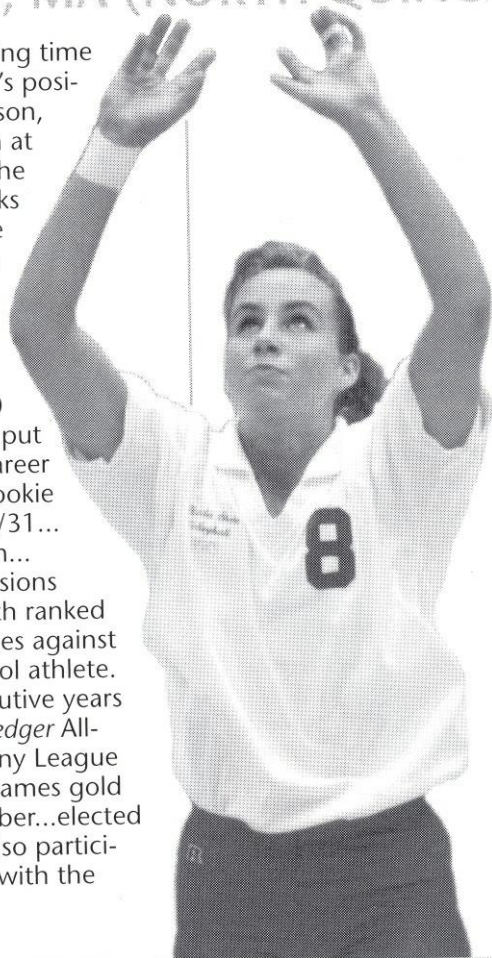
5-9, SOPHOMORE, SETTER  
QUINCY, MA (NORTH QUINCY)



Shared playing time at the setter's position last season, strong finish at the end of the season...looks to challenge for full-time setting duties this season.

**1994:** Led

the team in assists with 1,101...over 10 per game...outstanding freshman year put her seventh in the single-season and career record book for assists...earned ACC Rookie of the Week honors for the week of 10/31... named to the ACC's All-Freshman team... recorded over 50 assists on seven occasions including a season-high 64 against 12th ranked Notre Dame...had a season-high six aces against South Florida...a three-sport high school athlete.  
**HIGH SCHOOL:** Named three consecutive years to both the *Boston Globe* and *Patriot Ledger* All-Scholastic teams...three-year Old Colony League All-Star...led team to three Bay State Games gold medals...National Honor Society member...elected student union president as a senior...also participated in basketball and track...played with the Massachusetts Patriots Club team.



## McCarthy at Florida State

YEAR	MP	GP	K	E	TA	PCT.	SA	SE	AST	BS	BA	BE	RE	BHE	DIG
1994	31	103	65	27	208	.183	30	69	1101	3	28	6	1	21	200

## McCarthy's Career Highs

KILLS	7 vs. UNC (9/24/94)
ATTACKS	14 vs. N.C. State (10/7/94)
HITTING %	.750 vs. Maryland (3k, 0e, 4a), (10/21/94)
SERVICE ACES	6 vs. South Florida (11/25/94)
SOLO BLOCKS	1 on three occasions
BLOCK ASSISTS	3 vs. Clemson (9/30/94), N.C. State (10/8/94)
DIGS	22 vs. Virginia (11/5/94)
ASSISTS	64 vs. Notre Dame (10/24/94)