

FLORIDA STATE UNIVERSITY



L A D Y S E M I N O L E

# VOLLEYBALL

19 96

## 1996 TRAVEL ITINERARY

### Purdue University - September 5, 6 & 7

Ramada Inn - 4221 State Road 26E  
Lafayette, Indiana 47905  
(317) 447-9460 • FAX (317) 447-4905

### University of Florida - September 12 & 13

University Center - 1535 Southwest Archer Road  
Gainesville, Florida 32608  
(352) 371-3333

### University of Maryland - September 20

Holiday Inn Calverton - 4095 Powder Mill Road  
Beltsville, Maryland 20705  
(301) 937-4422 • FAX (301) 937-4455

### University of Virginia - September 21

Holiday Inn - 1600 Emmet Street  
Charlottesville, Virginia 22901  
(804) 293-9111 • FAX (804) 977-2780

### Clemson University - October 10 & 11

Hampton Inn - 120 Interstate Boulevard  
Anderson, South Carolina 29621  
(803) 375-1999 • FAX (803) 375-1099

### Georgia Tech - October 12

Courtyard Marriott - 1132 Techwood Drive  
Atlanta, Georgia 30318  
(404) 607-1112 • FAX (404) 607-8257

### North Carolina and N.C. State - October 17 & 18

Omni Europa - One Europa Drive  
Chapel Hill, North Carolina 27514  
(919) 968-4900

### Wake Forest - October 31 & November 1

Adams Mark Winston Plaza Hotel  
425 North Cherry Road  
Winston-Salem, North Carolina 27101  
(910) 725-3500 • FAX (910) 721-2240

### Duke University - November 2

Omni Europa - One Europa Drive  
Chapel Hill, North Carolina 27514  
(919) 968-4900

### ACC Tournament

November 20 - 23 • Courtyard Marriott  
1132 Techwood Drive  
Atlanta, Georgia 30318  
(404) 607-1112 • FAX (404) 607-8257

## CREDITS

Editor: Vicki Zinkil

Writing and Research: Vicki Zinkil,

David Peters, Joe Hornstein

Photography: L.A. Roffenstein, FSU Photo Lab,

Ross Obley, Kandance Thomas, FSU Volleyball Team

Design: Marsiglio & Murphy Design Group, Inc.

Printing: Rapid Press

# MEDIA INFORMATION

## GENERAL INFORMATION

Fall Practice: The players will report for the 1996 season on August 9th and begin two-a-day practice on August 10th. Practices are scheduled to be held in Tully Gymnasium. Individual sessions will be in the mornings from 8:00 to 12:00 and team practice will be from 2:00 to 5:00 pm and again from 7:00 to 9:00 pm daily. Once the school year begins, August 26, the team will practice from 3:00 to 6:00 pm daily. Practices are open to the media and the public. Days and times are subject to change without notice.

## INTERVIEW POLICY

Players and coaches are available for interviews throughout the week daily. All interview requests are to be made through the Sports Information office, preferably with a 24 hour notice. On match days, the requested players and coach will be made available approximately 10 minutes following the match.

## CREDENTIALS

Credential requests can be made through the Florida State Sports Information Office at the Moore Athletic Center. Vicki Zinkil and David Peters will serve as the contact for the volleyball team and can be reached at (904) 644-1403 (PETERS) or (904) 644-1895 (ZINKIL).

## SERVICES

Florida State University utilizes the ACC Faxback system to keep results, statistics and releases updated. Any other requests may be made through the Sports Information office.

## ACC FAXBACK

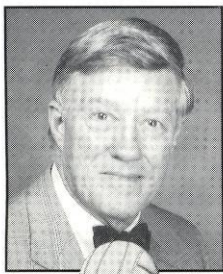
To access the ACC Faxback dial (910) 854-5859 from the handset of your fax machine. Proceed by pressing 1 twice, then enter the document number you wish to order followed by the pound key. Once your order has been confirmed you will be asked to press the start button on your fax machine.

ACC Weekly Release	5850
(The ACC will post a weekly release for volleyball each Tuesday during the season. The release will reflect the statistics and records of each team through the previous Sunday.)	
ACC Schedule	5854
Florida State Release	31850
Florida State Roster	31851
Last Box Score	31852
Florida State Schedule	31854

This document is available in alternative format upon request for persons with print related disabilities. Contact the ADA office, 301 Westcott Administration Building, for more information.

## TABLE OF CONTENTS

Media Information	1
This Is Tallahassee	2
This Is Florida State	4
This is FSU Volleyball	6
Support Services	8
FSU Volleyball History	10
Tully Gymnasium	12
Honor Roll	13
Famous Alumnae	14
1996 Outlook	16
Roster	18
Coaches	20
Players	24
1995 Year in Review	34
1995 Results	36
Letterwinners	39
ACC	40
Series Records	42
1996 Opponents	43
Statistics	47
Yearly Records	51
Speed Chart	IBC



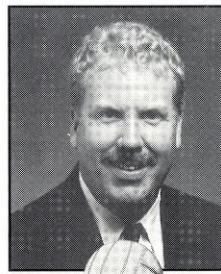
**SANDY D'ALEMBERTE**  
FSU PRESIDENT



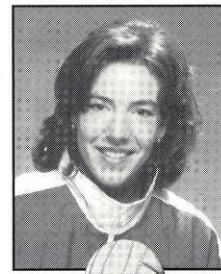
**DAVE HART**  
ATHLETIC DIRECTOR



**KIM RECORD**  
ASSOCIATE ATHLETIC  
DIRECTOR



**ROB WILSON**  
SPORTS INFORMATION  
DIRECTOR



**VICKI ZINKIL**  
VOLLEYBALL SID

## FLORIDA STATE VOLLEYBALL QUICK FACTS

Location ..... Tallahassee, Florida  
 Founded ..... 1857  
 Enrollment ..... 30,200  
 Nickname ..... Lady Seminoles  
 Colors ..... Garnet and Gold  
 Symbols ..... Chief Osceola and Renegade  
 National Affiliation ..... NCAA Division I  
 Conference ..... Atlantic Coast  
 Home Court ..... Tully Gymnasium (2,500)  
 President ..... Talbot "Sandy" D'Alemberte  
 Director of Athletics ..... Dave Hart  
 Associate Athletics Director/SWA ... Kim Record

## VOLLEYBALL STAFF

Head Coach ..... Cecile Reynaud  
 Record at Florida State ..... 527-241 (.686)

Assistant Coaches .. Sherry Cowling (Florida State '93)  
 Vicki Zinkil (Florida State '94)  
 Strength Coach ..... Ron Miller  
 Trainer ..... Shelly Mullenix  
 Manager ..... Colin Thomas  
 Academic Advisor ..... Jim Pignataro  
 Intercollegiate Athletic Coord. ... Melissa Dawson

## VOLLEYBALL FACTS

All-Time Record ..... 634-263 (24 seasons)  
 All-Time ACC Record ..... 34-34 (5 seasons)  
 1995 Record ..... 11-19  
 1995 Conference Record ..... 3-11  
 Starters Returning .. 6 (Holly Schneider, SO, OH;  
 LaToya Presberry, SO, OH; Patty Diamond, SR, S;  
 Susan Hawks, SO, MH; Susan Johnson, JR, MH;  
 Maureen McCarthy, JR, S)  
 Starters Lost ..... None

Letterwinners Returning ..... 9  
 Letterwinners Lost ..... 2  
 Top Newcomers 3 (Kensy Zulueta, FR, 5-7, S; Aisha  
 Thornton, FR, 6-2, MH; Courtney Dipert, FR, 5-5, DS)

## SPORTS INFORMATION

Director ..... Rob Wilson  
 Volleyball Contacts .... Vicki Zinkil and David Peters  
 Sports Information Phone ..... (904) 644-1403  
 Zinkil's Home Phone ..... (904) 574-6420  
 Fax Number ..... (904) 644-3820  
 Florida State Athletics Website .....  
<http://www.fsu.edu/athletic/>  
 FSU Volleyball Home Page .....  
<http://ocean.fsu.edu/oce/nancy/vball/vball.html>  
 Mailing Address:  
 P.O. Box 2195  
 Tallahassee, Florida 32316

# THIS IS TALLAHASSEE

Near, but far from the glaring strips of neon amusement, and the castles and crowds of Disney, lies another magical place in the Sunshine State — one of powwows, plantations, politics and great pride. Often described as “The Other Florida” with its deep-rooted history, rolling hills, canopy roads of moss-draped oaks, cool climate and Southern-style hospitality; it is a Florida few have seen. It is Tallahassee — Florida with a Southern accent.

Best known as Florida’s capital, Tallahassee is an intimate neo-metropolitan city where the power of state government, the academic and the artistic are complemented by subtle, old-fashioned charm. It is the perfect two- or three-day diversion for the more than 41 million annual visitors to Florida and 13 million residents.

Tallahassee touts a menagerie of sights including one

phy, climate and lifestyle.

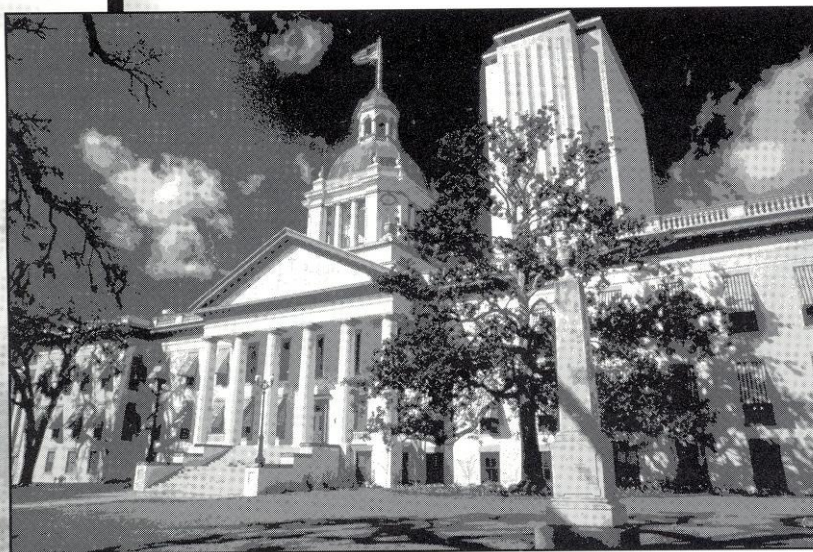
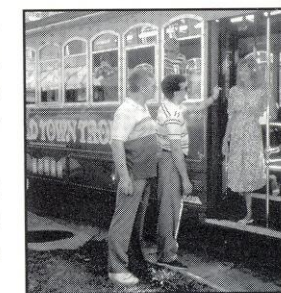
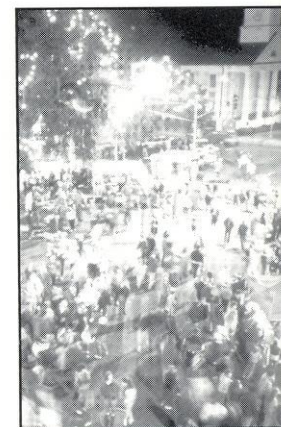
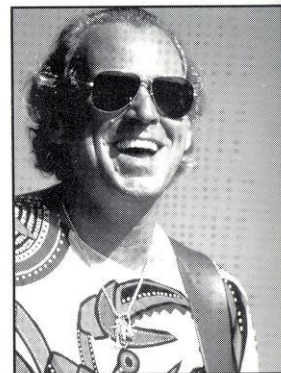
Accentuating Tallahassee’s Southern persona are lush rolling hills, likened to the seven hills of Rome, and five “official” canopy roads of patriarch oaks. The fertile, rich soil and four distinct, yet pleasant, seasons breed floral brilliance and natural vitality year-round.

Like the city itself, the story of how Tallahassee was chosen as the state capital is rich in history. In 1823, two explorers set out — one on horseback from St. Augustine and the other by boat from Pensacola — to find a permanent, central location for the Legislature to convene. The two met at a beautiful site that the Creek and Seminole Indians called “tallahassee” — derived from the words “talwa” meaning town and “ahasee” meaning old. The rendezvous point remains Florida’s capital.

The “old town” has undergone many changes, but one thing remains the same — it is still a government town fiercely proud and dedicated to preserving its heritage. The Capitol buildings, both old and new, epitomize Tallahassee’s perseverance.

The 22nd floor of the New Capitol provides a panoramic scope of a sophisticated Southern city awash in a sea of flowering azaleas, snowy dogwoods, towering pines, fragrant magnolias, and hundreds of shimmering lakes, springs, swamps, rivers and sink holes. Special legislative viewing galleries are open during the legislative session.

Below, in the shade of giant live oaks, proudly stands the Old Capitol, originally constructed in



of the world’s deepest freshwater springs, site of America’s first Christmas, a wildlife habitat, Capitol buildings, fascinating museums of history, sprawling plantations, highly acclaimed fishing and hunting adventures and nearby beaches. Spirited area festivals range from celebrations of Tallahassee’s spectacular spring and swamp stomps to genuine rattlesnake roundups and seafood festivals.

With the Gulf of Mexico just 20 miles south and the Georgia border only 14 miles north, Tallahassee rests between the foothills of the Appalachian Mountains and the juncture of Florida’s panhandle and peninsula. Nearer in miles to Atlanta than to Miami, Tallahassee more closely resembles its Southern neighbors than Florida in topogra-

1845 and restored to its 1902 splendor complete with red-and-white candy-striped awnings, a dome adorned with stained glass, antique furnishings and political memorabilia.

Across from the Old Capitol are the 40-foot twin granite towers of the Vietnam Veteran's Memorial, and the blue stone Union Bank, Florida's oldest surviving financial institution. The nostalgic Old Town Trolley, a replica turn-of-the-century street car, carries passengers through restored Adams Street Commons to numerous other historical downtown shops for free — unheard of even 100 years ago.

Minutes from downtown lies the Governor's Mansion, which resembles the home of Florida's military hero Andrew Jackson; and the 52-acre natural animal habitat and 1880s farm of the Tallahassee Museum of History and Natural Science, which provide the rare chance to walk and talk with native Florida animals.

Tallahassee remains firmly linked with the past as evidenced by the unearthed 1539 winter encampment of Spanish Hernando de Soto, the site of the first Christmas celebration in America. Visitors travel back through time as they stand in the shadow of a giant 12,000-year-old American Mastodon at the Museum of Florida History or explore other historical spots including The Knott House that Rhymes, The Columns, San Luis Mission, Lake Jackson State Archaeological Site, Natural Bridge Battlefield, First Presbyterian Church, Brokaw-McDougall House, Goodwood Plantation and Adams Street Commons.

Nearby, alligators lazing in the sunshine and anhinga "snake birds" perched on twisted cypress branches are seen at Wakulla Springs, one of the world's deepest freshwater springs and site of many underwater scenes in the "Tarzan" movies with Johnny Weissmuller and Maureen O'Sullivan.



Safaris aboard glass-bottomed and jungle cruise boats whisk visitors within arm's length of "The Other Florida."

Outdoor enthusiasts enjoy adventures including boating and fishing on area lakes, rivers, ponds and the Gulf — just 30 minutes away. Lakes Seminole, Jackson and Talquin are renowned in the bass fishing world for yielding the "big ones," and dense forests offer an abundance of prize-winning game. Local wildlife areas such as the Florida National Scenic Trail, St. Marks National Wildlife Refuge and Apalachicola National Forest are among many spots for camping, picnicking, swimming, biking and exploring.

Appealing to the strokes of different folks, Tallahassee also features 99 holes of golf on six courses and a proliferation of tennis centers. Sideline athletes cheer the nationally-ranked Florida State Seminoles, Florida A&M Rattlers and the Tallahassee Tiger Sharks, of the East Coast Hockey League. And always a sure bet are the nearby greyhound races.

A sport of sorts, shopping at two regional malls and many specialty centers offer many "playing options" — from popular chains to curiosity and antique shops.

Cultural interests are sparked by widely-acclaimed museums and galleries and elaborate entertainment at the 14,000-seat Tallahassee-Leon County Civic Center.

Tallahassee is a collaboration of power-play politics and classical character splashed with a twist of Southern beauty and charm. Tallahassee is Florida with a Southern accent.



# THIS IS FLORIDA STATE

**F**lorida State University, which will mark its golden anniversary as a coeducational graduate research institution in 1997, has joined the nation's elite in both academics and athletics.

Located on the oldest continuous site of higher education in Florida and building rapidly on the framework of a highly regarded liberal arts college for women, the University has emerged over the past 49 years as an institution of national and international esteem. Its stature is evidenced by a number of additions to its record of excellence in the 1990s:

- In 1994, Florida State was classified a "Research University I" by the Carnegie Foundation, placing it among the nation's top research universities.
- In 1994, the college referral service, "Who's Who Among American High School Students," placed FSU among its top 10 — with such

universities as Harvard, Duke, Stanford, North Carolina-Chapel Hill, Michigan-Ann Arbor and Yale — of most frequent choices of more than 100,000 of the nation's best and brightest high school students who asked that a specific college be notified of their recognition in "Who's Who."

- Vice President of the United States Al Gore spoke at the dedication of the National High Magnetic Field Laboratory at Florida State in 1994. The National Science Foundation established the \$100 million magnet lab at FSU, which is partnered in research with the Los Alamos National Laboratory and the University of Florida, in 1990. A Nobel laureate in physics and a top Russian physicist were among the first scholars drawn to the facility. The world's largest magnet

— two stories high and capable of generating 45 tesla or 1 million times the Earth's magnetic field — was installed in 1995 at the NHMFL, located in the off-campus research complex, Innovation Park. In 1996, the NSF renewed and increased by 50 percent the NHMFL's funding for another five years.

- FSU created the first multipurpose student identification/banking card. The Card Application Technology Center is a national leader in "smart card" systems.

- At the forefront of supercomputing since obtaining its first high speed computer in 1985, FSU took yet another step in ultrafast and parallel computing in 1990 when it acquired two supercomputers, the Thinking Machine Corp. Connection Machine and the Cray Y-MP.
- In fall 1994, the first tenants moved into the east side of the \$100 million University Center, a classroom-and-office facility at Doak Campbell Stadium; the stadium's south end zone was also enclosed and the adjacent Moore Athletic Center expanded. When the west side is completed in 1996, University Center will provide 550,000 square feet of much needed academic space and a centralized location for student services.
- One of the first academic areas to make its home in University Center, was the FSU School of Motion Picture, Television and Recording Arts. Offering training for one of Florida's fastest growing industries, FSU conferred its first master's degree in film in 1991 and its first bachelor's in film in 1993. The film school's students have already produced national and international award-winning films.
- The Center for Civic Education and Service was established in 1994 aimed at promoting community involvement and civic responsibility as integral elements of a liberal arts education at FSU. The center supports such service-learning programs as Project Amistades, which provides educational services to migrant farmworkers. Through ServScript, student's service may be recorded on their official academic transcript.
- In 1990, Florida State ranked second in popularity nationwide among high school seniors, based on the number of students who request that their Scholastic Aptitude Test (SAT) scores be sent to an institution. FSU was the only institution listed among the top 10 choices of both black and white college-bound students.
- FSU's high-tech program in structural biology in 1991 received the University's largest single foundation grant, \$4 million.
- Capping more than a decade of national prominence in intercollegiate athletics, Florida State's athletic teams, nicknamed "Seminoles," joined the Atlantic Coast Conference as its ninth member in 1990. The FSU football team won the 1993 National Championship and its quarterback, Charlie Ward, won the University's first Heisman Trophy.
- To better understand the world's cultural diversity, FSU undergraduate students are required to complete at least two courses that focus on diverse traditions beyond Western civilization. The multicultural study requirement, in effect since 1991, complements a long-established liberal studies program at Florida State.
- The Dr. Bobby E. Leach Center, a state-of-the-art student recreation facility, with a pool, saunas, basketball and racquet-sport courts, was completed in 1991.
- The Appleton Museum of Art in Ocala, its vast art collection and an eminent scholar chair were donated to FSU and Central Florida Community College in 1990.
- FSU ranked 20th in the nation for 1990-91 in the number of black Ph.D. students it graduates. Over the five years, 1986 to 1990, FSU ranked eighth nationally by granting doctorates to 70 African-Americans.
- FSU acquired the Asolo Performing Arts Center in Sarasota, home to the graduate theater program, the FSU/Asolo Conservatory of Professional Actor Training.

As this list of highlights attests, Florida State is excelling in the



1990's with exceptional strength, energy and vision for the future. Under the leadership of the University's 12th president, Talbot "Sandy" D'Alemberte, who took office in January 1994, FSU will continue to build on the foundation of its history of excellence in scholarship, research and service.



18,296 serials and 4.4 million microforms. The main library facility, the Robert M. Strozier Library, is linked by computer to other state university and national research libraries. The Paul A.M. Dirac Science Center Library is located at the heart of the University's science research complex. FSU also maintains extensive

music, library science and law libraries.

On the top floor of the Dirac Library is the headquarters of the Supercomputer Computations Research Institute, a multidisciplinary, multinational program established in 1984 that brings together some 50 scientists, engineers and technicians.

Also providing research opportunities is the tandem Van de Graff Superconducting Accelerator Laboratory, which houses two powerful atom smashers and has been ranked among the top four nuclear research centers in the nation by the National Science Foundation.

Graduate students, who number more than 5,856, pursue advanced degrees in fields as diverse as business administration and theoretical particle physics. A majority of research done at FSU is the direct result of student effort, culminating in numerous books, monographs and journal articles relating to the whole spectrum of intellectual interests and the practical needs of society.

FSU, a residential campus, places a high priority on its 30,268 students and their needs and interests (of the student population: 45 percent are male; 55 percent are female; 18.5 percent are minorities; and 2.4 percent are foreign students). The University Honors Program, Disabled Student Services, International Student Center, Student Government, Flying High Circus and intramural sports are among more than 200 organizations and activities in which students can participate.

Situated in the heart of the state's thriving capital city, Florida State's main campus blends Gothic and modern styles of architecture with the oaks, pines, dogwoods, palms and azaleas of North Florida.

Florida State continues to progress and grow from its pre-Civil War foundation as the Seminary West of the Suwannee, through the early 20th century as the academically respected Florida State College for Women, returning to coeducational status as a university in 1947, to its modern development as an acclaimed research institution, a top-ranked competitor in intercollegiate athletics and as a standard-setter in the basic sciences and the performing arts.

In all areas of its mission — excellence in teaching, research and public service — Florida State University is advancing boldly toward the 21st century.

A senior member of the 10-member State University System, FSU was founded as an institution of higher learning in 1851 by legislative act and began in Tallahassee with its first students in 1857.

Today, FSU's operating budget is \$452.5 million. Faculty and administrators generate more than \$99.9 million annually in external funding to supplement state-sponsored research. Three direct-support organizations serve to bolster the University; FSU Foundation, which raises millions in private gifts to support academics, Seminole Boosters and FSU Alumni Association.

The main campus is spread over 450.6 acres in Tallahassee; FSU, which has one of the smallest campuses in the SUS, has been actively acquiring land in the 1990s after years of being landlocked at 847 acres. FSU owns 1,303 acres in Leon, Bay, Franklin and Sarasota counties.

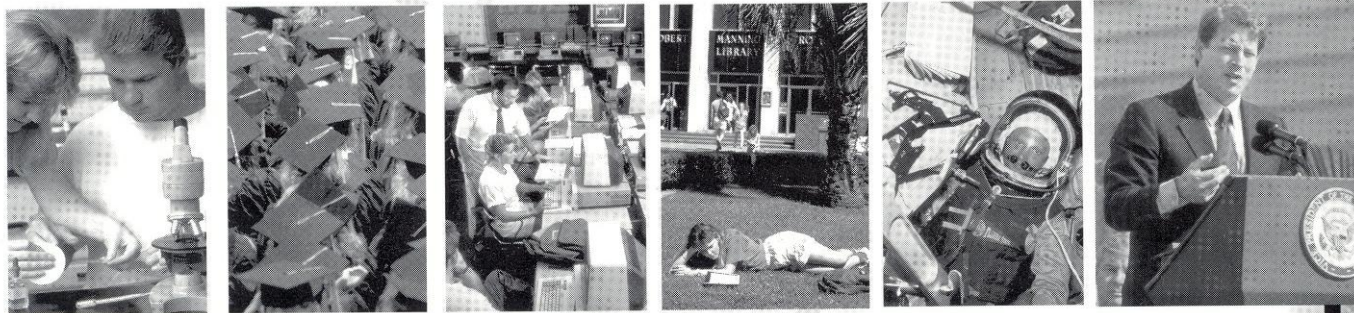
Within the state, the University maintains facilities at its 25-acre campus in Panama City, its Marine Laboratory on the Gulf of Mexico, the Appleton Museum in Ocala and the Asolo Performing Arts Center in Sarasota. The Center for Professional Development and Public Service, housed in the Augustus B. Turnbull III Florida State Conference Center on the edge of the campus, provides extensive credit and non-credit continuing education programs statewide.

For years FSU has reached far beyond Florida through international programs in Switzerland, France, Panama, Costa Rica and the Caribbean. FSU's study centers in Florence, Italy and London, England are considered by many to be the nation's best in Europe.

Florida State offers 283 graduate and undergraduate degree programs through its eight colleges — Arts and Sciences; Business; Communication; Education; Engineering (operated jointly with Florida A&M University, a historically black institution); Human Sciences; Law; and Social Sciences (which also incorporates the Reubin Askew School of Public Administration and Policy) — and eight schools — Criminology and Criminal Justice; Library and Information Studies; Motion Picture, Television and Recording Arts; Music; Nursing; Social Work; Theatre; and Visual Arts and Dance.

With 1,671 members, the FSU faculty has five National Academy of Sciences members and eight American Academy of Arts and Sciences members, and has included five Nobel laureates. It is backed by 2,990 administrative/professional and support staff.

Library holdings at Florida State include 2.1 million book titles,

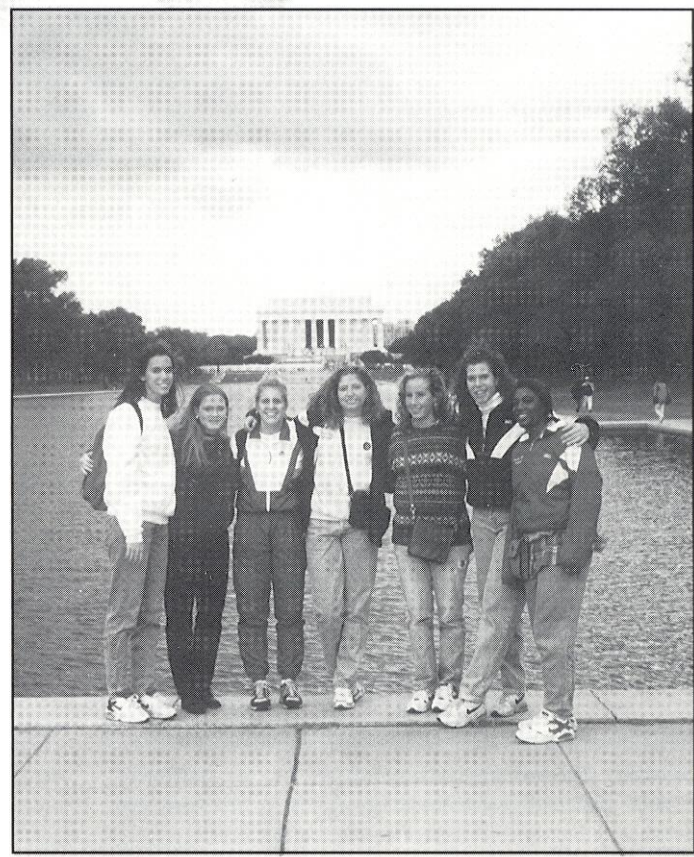


# THIS IS FSU VOLLEYBALL

**B**eing a member of the Florida State Volleyball team is an exciting experience for a collegiate athlete. The Lady Seminoles travel far and wide to compete against top-ranked opponents. In recent years, the team has traveled the friendly skies from California, Texas and Colorado to Minnesota and Indiana. In 1995, Florida State made an appearance in Rhode Island along with its Atlantic Coast Conference stops along Tobacco Road.

This season, the team will travel north to play in the Purdue Tournament, and challenge top competition at the University of Florida Classic, including UCLA and host, Florida Gators.

Even while on their home court of Tully Gymnasium, the Lady Seminoles have the opportunity to be seen throughout the southeast. Sunshine Network televises selected home matches each season. This season fans can catch exciting Lady Seminole volleyball action vs. Atlantic Coast Conference foe North Carolina, who was one of three ACC schools to make post season appearances in 1995. Clemson, who will be looking to avenge last year's loss to Florida State in



the Atlantic Coast Conference Tournament, and in-state rivals the Florida Gators.

While not competing, the volleyball team stays active within the Athletic Department. During the spring semester, Florida State sponsors its annual "Say No to Drugs" day. This is an opportunity for student-athletes from each sport to speak at Tallahassee area schools about the importance of staying in school and away from drugs. The volleyball team has been active participants in the program since its beginning.

Another link to the Tallahassee community is with its younger volleyball fans. After a match, the play-





ers are available for autographs and to talk with the fans about the game.

Along with success on the court, the Florida State volleyball program boasts one of the highest graduation rates within the athletic department. Among four-year letter winners, all but two have graduated in Coach Cecile Reynaud's tenure. This accounts for close to 98% of all volleyball athletes over 20 years.



Top athletic competition, graduating from a prestigious University, serving the community and serving up fun are all a part of Florida State Volleyball.



# SUPPORT SERVICES

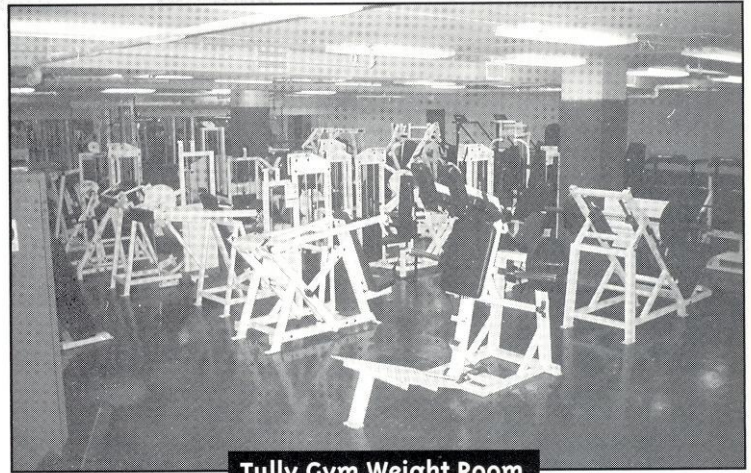
## ACADEMICS

Florida State University is committed to the academic success of its student-athletes. Under the direction of Dr. Roger Grooters, the FSU athletic department's Academic Support Program is in place to meet the personal, academic and professional needs of each student-athlete.

Grooters and his staff aid student-athletes with admission, class scheduling, registration, and the normal progression towards a degree. Unveiled in 1994 was a new state-of-the-art academic center as part of the University Center expansion. The center provides study hall and tutoring rooms, as well as a resource area with study carols, computers and basic reference materials.

Class attendance is closely monitored during the playing and practice seasons. Throughout the school year, nightly study halls and tutoring sessions help the student-athletes stay on course. Student-athletes have unlimited access to mentors who provide one-on-one tutoring. The academic support staff works closely with the faculty members at Florida State as well as with the athletic department's own office of Student Services.

For everyone in the Florida State athletic department—from coaches and academic support personnel to student services staff and administration—giving each student-athlete every opportunity to earn a degree is the primary goal. And every year, that goal is becoming reality for more and more Florida State student-athletes.

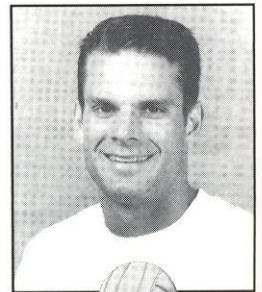


**Tully Gym Weight Room**

## STRENGTH TRAINING & CONDITIONING

Strength training and conditioning is an important part of an athlete's performance on the court. At Florida State, a supervised program is developed for volleyball, emphasizing the objectives of not building bodies, but strengthening and conditioning them. Strength coach Ron Miller individually customizes programs for each of the athletes beginning with pre-conditioning before the season gets underway. The workouts are modeled after the National Strength and Conditioning Association's volleyball training program.

Miller works with the players in sport specific training which includes conditioning the major muscle groups used in volleyball. FSU takes pride in customizing the programs to help student-athletes reach their maximum potential.

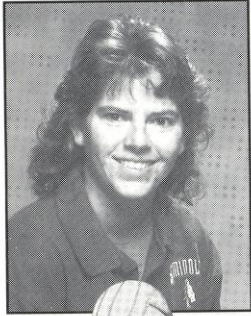


**RON MILLER**  
M.S., CSCS



**Academic Support Staff**

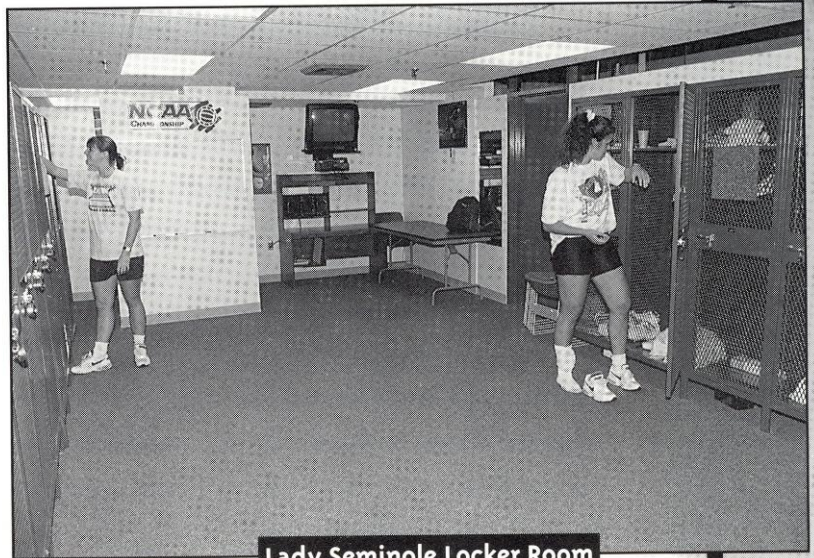
## EQUIPMENT MANAGER



**MELISSA DAWSON**  
INTERCOLLEGIATE ATHLETICS  
COORDINATOR

A member of the Florida State Athletic staff since 1990, Melissa Dawson begins her sixth season with FSU Volleyball and first as Intercollegiate Athletic Coordinator which, among other things, includes home event management and equipment duties for the volleyball team.

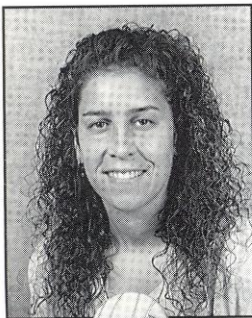
A native of Hernando, Florida, Dawson attended Florida State earning her undergraduate degree in Physical Education in April of 1992 and her masters in Athletic Administration in April of 1996.



**Lady Seminole Locker Room**

## PREVENTION CARE & TREATMENT

Being an athlete at Florida State University means receiving the best care and treatment possible. All of the student-athletes undergo pre-season screening so a certified trainer can detect any potential injuries an athlete may incur. If a problem is detected, the athlete is placed on a prevention care program which may include any kind of treatment from icing to exercising. The program is closely monitored by Volleyball Trainer Shelly Mullenix. Shelly is an Assistant Trainer with the FSU Athletic Training staff and

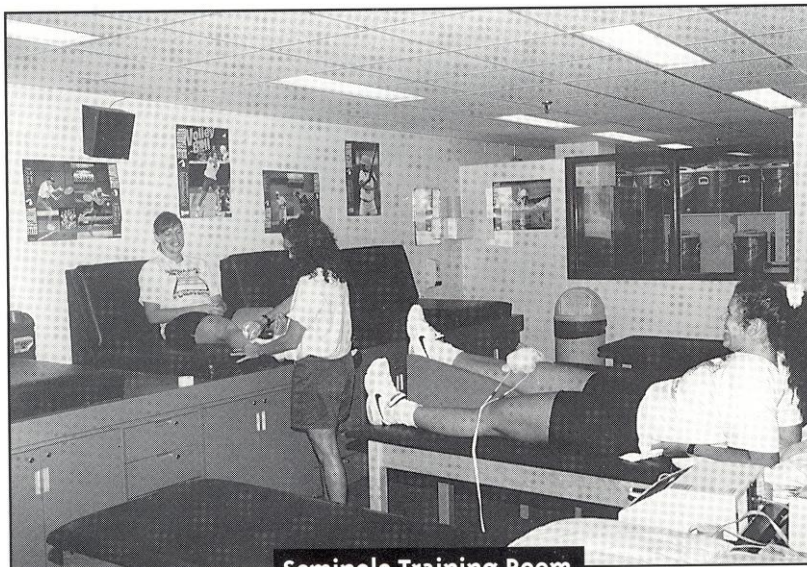


**SHELLY MULLENIX**  
M.S., A.T., C.

has worked with the volleyball team for four years.

Rehabilitation is another important component of the Seminole training room. Though preventing injuries is the main objective, they are unavoidable for the athletes who participate in sports. More serious injuries and illnesses are referred to the Seminole team physicians at the Tallahassee Orthopedic Center who, for many years, have worked in conjunction with the FSU training room in successfully rehabilitating numerous athletes after an injury.

Nutrition counseling and drug testing are both responsibilities of the athletic training team which is dedicated to providing the best care possible for all FSU student-athletes.



**Seminole Training Room**

# FSU VOLLEYBALL HISTORY

Since its beginning in 1968 with a group of physical education students and a volunteer coach, Florida State volleyball has shed its club team roots to become one of the nation's premiere programs.

In its infancy it was not uncommon for the group of aspiring athletes and teachers to pay their own way to tournaments and share warm-up suits with the other women's club teams. The club struggled to become established in those early years as team members were faced with having to find a new volunteer head coach each of the program's first five years.

After Florida State made its first ever appearance at the AIAW National Tournament in 1971, Dr. Billie Jones assumed the coaching duties on a permanent basis for the next six seasons. Under Jones' direction the Seminoles amassed a 107-22 record, and volleyball at Florida State became a mainstay.

Success continued for the program as it returned to the AIAW National Tournament in 1973, '74 and '75, while competing for state and regional champion-

## FSU VOLLEYBALL COACHES

1968	Martha Pat Moore
1969	Dr. Judy Blucher
1970	Dr. Billie Jones
1971	Dr. Linda Warren
1972-75	Dr. Billie Jones (107-22)
1976-present	Cecile Reynaud (827-241)

539-260

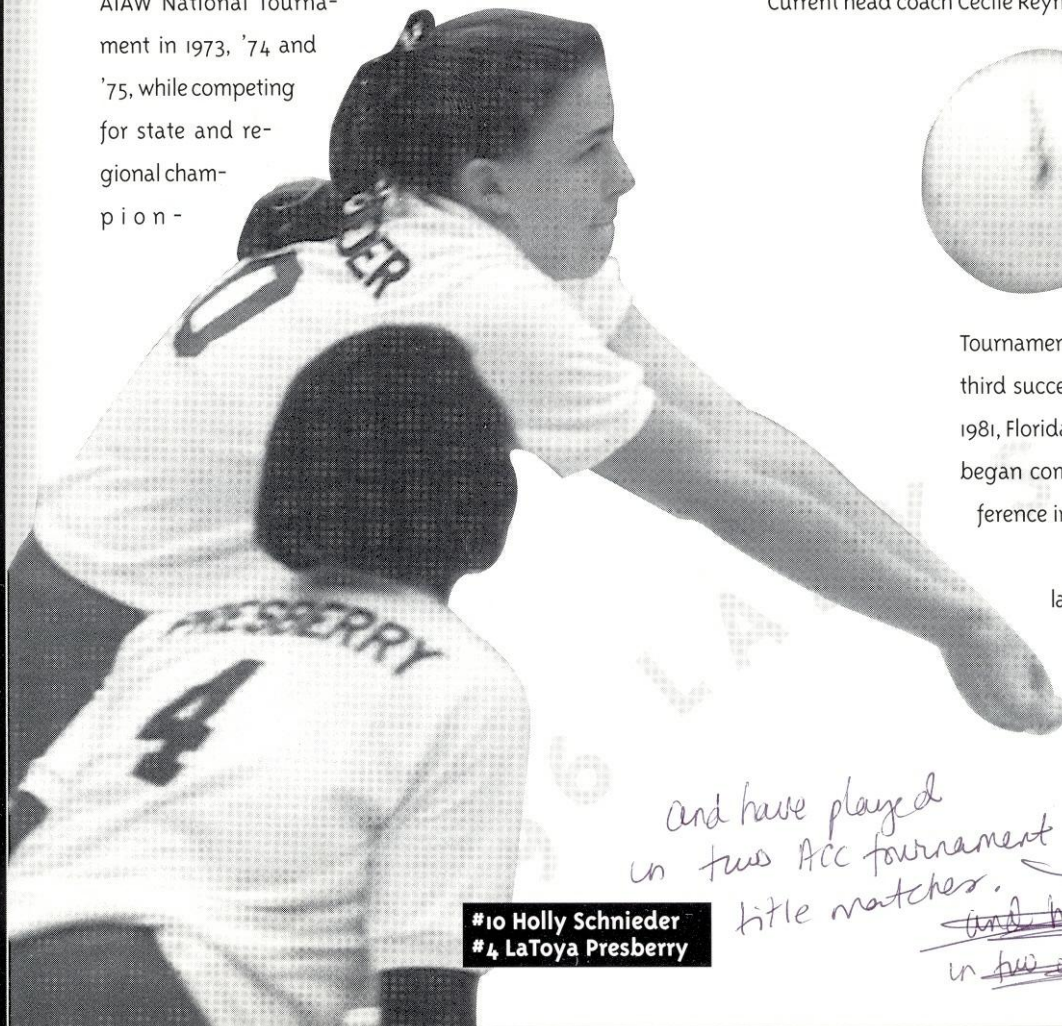
ships along the way. Popularity for the sport began to grow. Former FSU basketball head coach Hugh Durham and his wife Melinda were two of the team's biggest supporters, often attending home matches. In just a few short years, Florida State volleyball became recognized as one of the sport's up-and-coming programs.

Current head coach Cecile Reynaud continued to build on

the foundation laid by her predecessors. Under Reynaud's guidance, FSU qualified for the AIAW National

Tournament three more times. After its third successive AIAW appearance in 1981, Florida State joined the NCAA and began competing in the Metro Conference in '82.

Before FSU joined the Atlantic Coast Conference in 1992, it had captured six Metro Conference titles. In five years of ACC play the Seminoles have an ACC regular season co-championship to their credit.



*and have played in two ACC tournament title matches.*

*and have played in two other title matches.*

#10 Holly Schnieder  
#4 LaToya Presberry

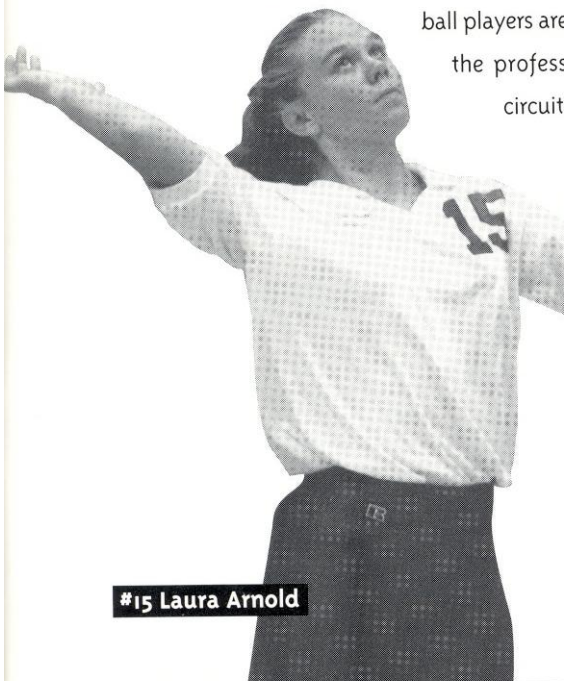


Since Florida State became a NCAA volleyball member in 1982, the Seminoles have qualified for the National Championship Tournament eight times, including six appearances in the last nine years. Many of FSU's volleyball alumni have gone on to play professionally. Whether it be in Europe or the sandy shores of California, Florida State's top athletes often choose to continue playing the game they love. Currently, three FSU volleyball players are on tour with

Perhaps the most famous of the FSU volleyball alumni is Nike spokeswoman and world-class model Gabrielle Reece. After enjoying a standout career at Florida State, Reece has gone on to captain Team Nike on the pro beach circuit. She also has a regular fitness column in *ELLE* magazine and appears on MTV Sports.

In the 28 years since its inception, Florida State volleyball has prided itself in giving athletes the opportunity to reach their full potential both on the court and in the classroom. Pride, tradition and success are all part of what is known as Seminole Volleyball.

the professional beach circuit.



#15 Laura Arnold

### NCAA CHAMPIONSHIPS

YEAR	SITE	OPPONENT	SCORE
1983	Tallahassee	Tennessee	15-12, 15-12, 1-15, 10-15, 8-15
1985	Athens	Georgia	6-15, 1-15, 11-15
1987	Austin	Texas	6-15, 11-15, 9-15
1988	Tallahassee	Colorado St.	3-15, 5-15, 15-9, 7-15
1989	Tallahassee	California	15-11, 11-15, 13-15, 13-15
1990	Lexinton	Kentucky	12-15, 10-15, 15-10, 10-15
1992	Gainesville	Florida	9-15, 3-15, 10-15
1993	Tallahassee	DePaul	15-8, 7-15, 15-10, 15-13
	Tallahassee	Pacific	6-15, 17-15, 6-15, 9-15

### TOURNAMENT HISTORY CONFERENCE TOURNAMENTS

CONF.	YEAR	SITE	HOST	FINISH
METRO	1982	Tallahassee, FL	FSU	3rd Place
METRO	1983	Louisville, KY	Louisville	Champions
METRO	1984	Columbia, SC	South Carolina	3rd Place
METRO	1985	Hattiesburg, MS	Southern Miss	Champions
METRO	1986	Blacksburg, VA	Virginia Tech	Champions
METRO	1987	Memphis, TN	Memphis State	Champions
METRO	1988	Cincinnati, OH	Cincinnati	Champions
METRO	1989	Tallahassee, FL	FSU	Champions
METRO	1990	Louisville, KY	Louisville	3rd Place
ACC	1991	Charlottesville, VA	Virginia	3rd Place
ACC	1992	College Park, MD	Maryland	Runner-up
ACC	1993	Durham, NC	Duke	Runner-up
ACC	1994	Chapel Hill, NC	North Carolina	3rd Place
ACC	1995	Clemson, SC	Clemson	3rd Place

- ACC 1996 Atlanta, GA C Tech 5th place

# TULLY GYMNASIUM

## TULLY GYM FACILITY RECORDS

1976	5-2
1977	2-3
1978	4-2
1979	7-1
1980	10-1
1981	19-3
1982	13-5
1983	8-0
1984	8-4
1985	8-8
1986	11-3
1987	12-4
1988	11-0
1989	17-1
1990	15-1
1991	8-7
1992	11-2
1993	13-2
1994	11-6
1995	6-8
<b>Overall</b>	<b>199-63 (.760)</b>



1996

Overall 207-69

1,190  
207-69

Tully Gymnasium has been the home to Florida State Volleyball since its inception in 1968. The Florida State team has accumulated a ~~199-63~~ record on its home court for a winning percentage of ~~.760~~ in the past ~~20~~ years in the facility.

The 2,500 capacity gymnasium underwent a \$250,000 renovation prior to the 1993 season. The gym floor was resurfaced and repainted. The bleachers were replaced on one side with pull out arena-style padded seating with armrests to create a movie theater experience while watching the Lady Seminoles.

The 1996 Lady Seminole home schedule will provide some top quality competition for fans including rowdy-rival Florida who has witnessed heartbreak in the capital city, thanks to the friendly confines of Tully Gym. Along with the ACC opponents, FSU will also face Georgia to close out the regular season.

Season tickets to all Lady Seminole volleyball matches can be purchased through the Florida State Athletic Ticket Office at the Moore Athletic Center from 8:30 to 5:00, Monday through Friday. A season ticket to all ~~13~~ home matches is only \$30 for adults and \$10 for children (18 and under) and senior citizens. Individual match tickets are \$3 for adults and \$1.00 for children and seniors.

Season and reserve tickets may be purchased by phone (904) 644-1830 with a major credit card. General admission tickets may be purchased the night of the match. The ticket table will open one hour prior to match time.

## 1996 HOME SCHEDULE

### August

30	Fri.	Florida Atlantic	7 P.M.
31	Sat.	Florida Atlantic	1 P.M.

### September

27	Fri.	Clemson	7 P.M.
29	Sun.	Georgia Tech	1 P.M.

### October

4	Fri.	Duke	7 P.M.
6	Sun.	Wake Forest	1 P.M.
25	Fri.	North Carolina	7 P.M.
27	Sun.	N.C. State	1 P.M.
29	Tue.	Jacksonville	7 P.M.

### November

8	Fri.	Virginia	7 P.M.
10	Sun.	Maryland	1 P.M.
12	Tue.	Florida	7 P.M.
16	Sat.	Georgia	2 P.M.

GAME TELEVISED ON SUNSHINE NETWORK

# HONOR ROLL

## AVCA ALL-REGION

Carol Forsten, '84  
Joan Morris, '86  
Julie Todd, '87  
Nancy Gaspadarek, '87, '88, '89  
Maggie Philgence, '87, '88, '89, '90  
Deanne Kaleta, '88  
Gabrielle Reece, '89  
Luiza Ramos, '92, '93, '94  
Sherry Cowling, '92  
Bianca Stevens, '92  
Vicki Zinkil, '93

## ACC PLAYER OF THE WEEK

Adria Ciraco, '94  
Bianca Stevens, '92  
Kristine Cousins, '91  
Luiza Ramos, '93  
Vicki Zinkil, '93  
*LaToya Presberry, '96*

## ACC ROOKIE OF THE WEEK

Maureen McCarthy, '94  
Holly Schneider, '95  
LaToya Presberry, '95  
*Aisha Thornton, '96*

## METRO CONFERENCE PLAYER OF THE WEEK

Nancy Gaspadarek, '87  
Maggie Philgence, '89, '90, '90  
Gabrielle Reece, '89, '90

## ACADEMIC ALL-AMERICAN

Carol Forsten, '84  
Sonia Trevino, '89  
Sherry Cowling, '92  
Jennifer McCall, '93

## AUSTRALIAN NATIONAL TEAM

Carol Forsten, '82

## OLYMPIC FESTIVAL

Julie Todd, '85  
Maggie Philgence, '91  
Sherry Cowling, '90

## ACC ACADEMIC HONOR ROLL

Catie Lotarski, '91, '93, '94  
Jennifer McCall, '91, '92, '93  
Vicki Zinkil, '91  
Deanna Bosschaert, '92, '93, '94  
Jennifer Cichy, '92  
Franci Rard, '93  
Valerie Broussard, '94, '95, '96  
Adria Ciraco, '94  
Susan Johnson, '94, '95, '96  
Maureen McCarthy, '94, '95, '96  
Christy Minko, '94, '95, '96  
Luiza Ramos, '94  
Patty Diamond, '95, '96  
LaToya Presberry, '95, '96  
Holly Schneider, '95, '96  
Sarah Rickertsen, '95, '96

## METRO CONFERENCE ALL-TOURNAMENT

Marie Sanders, '80  
Shannon Lages, '80  
Alicia Cross, '82  
Karyn Palgut, '82, '83, '84  
Marie Sanders, '82, '83  
Sally Summer, '83  
Joan Morris, '85, '86  
Donna Krai, '85  
Julie Todd, '85, '85, '87  
Deanne Kaleta, '86, '87, '88  
Julie Plattner, '86  
Nancy Gaspadarek, '87, '88, '89  
Maggie Philgence, '88, '89, '90  
Sonia Trevino, '89  
Gabrielle Reece, '89

## METRO CONFERENCE TOURNAMENT MVP

Karyn Palgut, '82  
Joan Morris, '85, '86  
Julie Todd, '87  
Deanne Kaleta, '88  
Nancy Gaspadarek, '89

## METRO ROOKIE OF THE YEAR

Lynne Fullhart, '85  
Nancy Gaspadarek, '86  
Maggie Philgence, '87

## METRO ALL-CONFERENCE PLAYERS

Donna Krai, '85  
Joan Morris, '85, '86  
Julie Todd, '86, '87  
Nancy Gaspadarek, '87, '88, '89  
Deanne Kaleta, '87, '88  
Maggie Philgence, '88, '89, '90  
Gabrielle Reece, '89, '90

## ACC ALL-TOURNAMENT TEAM

Deanna Bosschaert, '91  
Sherry Cowling, '92  
Bianca Stevens, '92  
Luiza Ramos, '92, '93, '94  
Franci Rard, '93  
LaToya Presberry, '95  
Holly Schneider, '95

## ACC ALL-CONFERENCE PLAYERS

Kristine Cousins, '91  
Sherry Cowling, '92  
Bianca Stevens, '92  
Luiza Ramos, '92, '93, '94  
Vicki Zinkil, '93

## ACC ALL-FRESHMAN TEAM

Maureen McCarthy, '94  
Holly Schneider, '95  
*Aisha Thornton, '96*

## DODGE NATIONAL ATHLETIC AWARDS MOST INSPIRING COLLEGIATE ATHLETE

Gabrielle Reece, '89

## ROLLING STONE MAGAZINE WONDER WOMEN OF SPORT

Gabrielle Reece, '89

## PROFESSIONAL VOLLEYBALL

Gabrielle Reece,  
Team Lady Footlocker (Bud Light Four-Woman Tour) '92  
Team Nike (Bud Light Four-Woman Tour) '93, '94, '95, '96  
Maggie Philgence, France

*place in order*

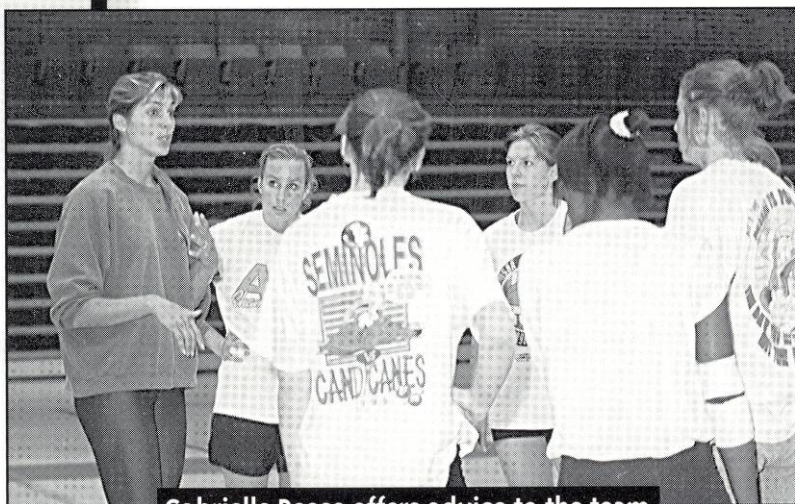
*Valerie*  
*Patty Diamond*  
*Susan Johnson*  
*Maureen McCarthy*  
*Christy Minko*  
*LaToya Presberry*

*4 5*

# FAMOUS ALUMNAE

## GABRIELLE REECE

The most famous alumni of Florida State volleyball, Gabrielle Reece has gone on to pursue a career in the sport she loves. Captaining Team Nike for the Bud Light four-woman tour only scratches the surface of Reece's busy schedule. After a stint on the popular MTV sports television show as cohost with Dan Cortese,



Gabrielle Reece offers advice to the team

? { Reece currently has her own syndicated show "The Extremist" which airs on CBS.

Along with her television and volleyball careers, Reece finds time to be a supermodel. Named one of the 50 most beautiful people by *People* magazine in recent years, as well as one of the five most beautiful women in the world by *ELLE* magazine, Reece has been selected as the spokesperson for Coppertone skin products.

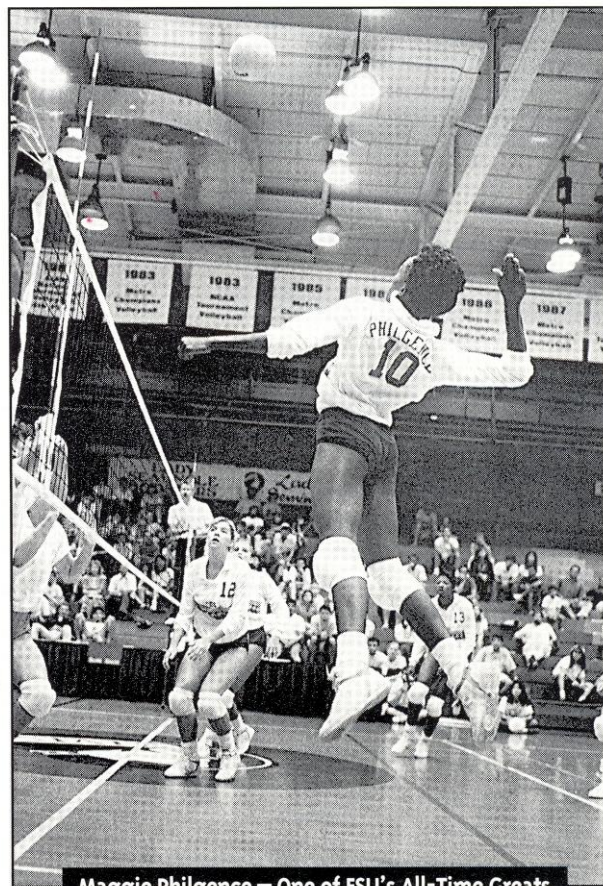
? { Despite the hectic work and travel schedule, Reece still is devoted to helping Florida State volleyball. By watching the team play whenever possible Reece lends her tips to the young Lady Seminoles. This past spring, on a visit to Tallahassee, Reece worked with the team in practice and offered words of advice to the team on success in the world of sports.

## MAGGIE PHILGENCE

In her senior season, Philgence was named to five all-tournament teams, selected Metro Conference Player of the Week twice, as well as being listed on the All-Metro Conference team and American Volleyball Coaches Association All-South Region team. Her statistics also ranked in the top around the nation. She has left her mark in the Florida State record books as well as with the NCAA. Philgence is now ranked 17th in the NCAA for her career kills (2,110) and tops the FSU career charts. She also led the Metro in hitting percentage (.333) and kills per game (4.41) throughout her final season.

After breaking six school records during the 1990 season, Philgence was drafted to the South Team for the Olympic Festival in Los Angeles. Philgence helped lead her team to the championship game where the South defeated the West to claim the gold medal.

Upon graduation, Philgence traveled overseas to play professional volleyball with the international league in France.



Maggie Philgence — One of FSU's All-Time Greats





**Sherry Cowling — Assistant Coach**

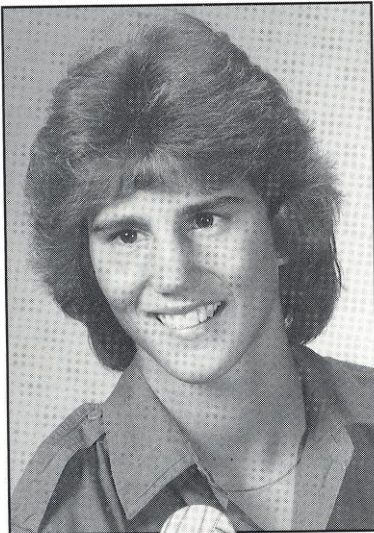
**SHERRY COWLING** - *clovet*

Although spending only one year under Coach Reynaud as a player, Sherry Cowling has left her mark on Florida State Volleyball history. *clovet*

As GTE Academic All-America, Cowling set a record for assists in a single game with 72 vs. Duke which has since been broken. She also ranks third on the single-season charts for set assists. During her college career, Cowling competed on the silver medal squad for the 1990 Olympic Festival. *clovet*

**KARYN PALGUT**

A three-sport athlete at Florida State, Palgut lettered in Volleyball, (Four) Basketball (One) and Softball (Two) from 1982-86. After a successful collegiate career that saw her named to the All-Metro Tournament team three times, including the distinction of MVP, she competed in the 1982 Olympic Festival on the East team. Upon graduation, Palgut joined the U.S. Women's National Team for Handball and had a successful career. She partici-



**KARYN PALGUT**  
U.S. OLYMPIAN

pated in the Goodwill games, the Pan American Games (Gold Medal) and the 1988 and 1992 Olympics receiving a 7th and 6th place respectively.

**BARBARA HARRIS**

After a playing career spanning from 1974-77, Harris has had a successful career in the magazine industry as Editor-in-Chief at *Shape*. She joined the company in 1987 and lives in California.



**BARBARA HARRIS**  
EDITOR — SHAPE

**LISA WARMAN GUNNING**

A familiar face around the Florida State volleyball court, Gunning was with the team from 1981-84 but still returns to Tully Gym as a sports commentator for the Sunshine Network.



**Lisa Gunning — Sunshine Network Sportscaster**

# 1996 TEAM OUTLOOK

Most students tend to daydream while in a lecture during their college years, doctoral student and Coach Cecile Reynaud doodles on her notebook. But, what the veteran coach pencils out is quite another story. She works on plays, she creates serve receive patterns and starting lineups. All of this is evidence of the anticipation mounting as the coaches and players prepare for the 1996 volleyball season.

With six returning starters, the Lady Seminoles hit the ground running this spring spending some valuable time training for a successful fall season.

"The time that we put in the gym this spring was incredible," said Reynaud. "I think it is going to be invaluable for this upcoming season. My full attention and full focus was on the team for the first time in two years. We spent a lot of time on tactics and now we really should be able to move to a different level."

The main goal of the team this season is to return to the top triad in the conference. After accomplishing that, the team wishes to return to the NCAA Tournament, a task which has eluded them over the past two years. Florida State made six of seven post-season appearances prior to the 1994 season.

"I think they worked so hard this spring and they paid the price on a lot of things," said Reynaud. "Maybe we are now over the hump. Everybody in that gym this spring was willing to do whatever they needed to. I hope we turn the corner with this young team. They have got a lot of confidence after the spring season, but that came after months and months of hard work."

Leading the way for 1996 will be Patty Diamond. Diamond co-captained the squad last season and will serve as captain in the upcoming season.

"Patty came in and really played with much more poise this spring," said Reynaud. "We were able to use her in the middle and to set and defensively. She really came around and I think I really saw the senior getting ready to come out in her."

## OUTSIDES

The strongest returning position this season will be the outside hitters. LaToya Presberry and Holly Schneider led the team in practically every category and capped off their rookie seasons each landing a position on the ACC All-Tournament Team.

Schneider, last year's MVP, as a freshman, was the first rookie in Lady Seminole history to lead the team in kills. She will return to her familiar left-side position for another season of success.

"Holly played well this past spring and trained very hard," said Reynaud. "I think she is going to be a key to our success. If we can isolate her on the outside she will be able to score."

LaToya Presberry will be another top returnee, but with a new look. Presberry will be moved to the right side for 1996. "This will provide a bigger block for the team," said Reynaud. "She also can be used more offensively as a play set hitter and she can set the ball, if needed, very well. She will really improve our strength on the right side."

Back to the left side, Reynaud has penciled in Laura Arnold. Arnold is in her junior season and will be a starter for Florida State.

"Laura started for us last year at the beginning of the year," said Reynaud. "But, then LaToya stepped in and really took that position away from her. Laura is ready to take that starting position back. She has really matured, plays real hard. She is also extremely competitive. If we were to start today, she would be starting on our left side."

Sarah Rickertsen returns for her sophomore campaign this season ready to play wherever Reynaud may need her.

"Sarah saw quite a bit of playing time this past year in a





number of different positions," said Reynaud. "Sarah is going to be someone to come in and fill in where we need her. She is a great role player."

## MIDDLES

The middle position was shared by three players in 1995. The surprise of the season was Susan Hawks, who will return for her sophomore season. The key to success for Hawks is to stay healthy. Shoulder surgery caused her to sit out her true freshman season and an illness caused her to miss part of spring training this season.

"Physically, if she comes back as strong as she can be is critical so she can be strong at the net this year. If we can get her hitting down, she will be great. Her blocking is strong but she has to be a threat offensively for us too."

Susan Johnson also returns as a starting middle blocker. Johnson has one more year of experience under her belt and is ready to become a force in the Atlantic Coast Conference.

"Susan really improved a lot this semester," said Reynaud. "I think physically she can be a great middle blocker for us. She is hitting the ball much better and she is getting much smarter on her blocking. The more she learns about the game, the better she gets."

A newcomer to the middle blocking group is Aisha Thornton. Aisha hails from the Chicago area and will look to contribute as soon as she can. Thornton has the physical capability but just needs to learn the FSU system.

"Aisha is going to be physically intimidating to a lot of people," said Reynaud. "She is extremely athletic and is going to have to go through a training period to learn our offense and defense. We will be able to use her presence on the floor. I think she is going to be a really gifted athlete to work with."

## SETTERS

Coach Reynaud will have a variety of setters to choose from this season with the return of Patty Diamond and Maureen McCarthy, in addition to newcomer Kensy Zulueta. If Reynaud wants a leader on the court she will go straight to Diamond.

"She has got great leadership skills," said Reynaud. "She doesn't ask anything more of her team than she does of herself. I think she is going to be our key to us making it back into the NCAA Tournament this year. I thought she really matured as a player this spring."

Another experienced setter for Reynaud is Maureen

McCarthy. McCarthy has started for Florida State in each of her previous two seasons while splitting time with Diamond last year.

Kensy Zulueta will come in and challenge all for starting honors. The freshman comes from a great club program and is used to the sweet taste of success.

"Kensy is going to come in and will add a lot of knowledge and experience from setting at a high level of competition," said Reynaud. "She is also extremely competitive. She played on one of the top programs in the country in Orange County and that experience is really going to help us out. Kensy will fit in right away with our team."

## DEFENSE

Defense has been an essential part of Reynaud's master plan to resurface to the top of the conference this season. One of the spark plugs for this team is in defensive specialist Christy Minko.

"Minko was instrumental in getting the team on the ball defensively," said Reynaud. "I think she will be a real leader on the floor for us defensively."

A newcomer to the back row will be Courtney Dipert. "Dipert will be a good option to put out on the floor defensively," said Reynaud. "She can also hit some out of the back row. She is going to help us right away."

The Seminoles will be traveling around the country once again, in the quest for a successful season. One of the first road ventures will be to the Purdue Tournament.

"We have an opportunity to play at Purdue which will be exciting," said Reynaud. "We may have more fans there than anybody else because we have so many kids on our team from the north. That is going to be a great second weekend for us to play a variety of teams from some different conferences."

Another top tournament for FSU will be in Gator country. "The tournament in Gainesville will be the top competition for us all year," said Reynaud.

The Atlantic Coast Conference schedule will be a challenge for Florida State as well. With three ACC teams making post-season appearances the title is up for grabs once again.

"The ACC Tournament is close enough (Atlanta) this year that we should be able to get some fans from Tallahassee there," said Reynaud. "I think our team will be exciting to watch this year and people will want to follow us."

With six starters returning and the crop of newcomers loaded with talent, it is no wonder that the student/coach spends her classroom days dreaming about the future.

# 1996 TEAM ROSTER

## 1996 Alphabetical Roster

15	Laura Arnold	JR	OH	5'8"	Stuart, FL
1	Patty Diamond	SR	S/OH	5'10"	Livonia, MI
3	Courtney Dipert	FR	DS	5'5"	Lisle, IL
14	Susan Hawks	SO	MH	6'2"	Tampa, FL
13	Susan Johnson	JR	MH	6'1"	Ft. Wayne, IN
8	Maureen McCarthy	JR	S	5'9"	Quincy, MA
5	Christy Minko	JR	DS	5'7"	Fort Myers, FL
4	LaToya Presberry	SO	OH	5'8"	Detroit, MI
12	Sarah Rickertsen	SO	OH	5'8"	Helena, AL
10	Holly Schneider	SO	OH	5'10"	Ft. Wayne, IN
11	Aisha Thornton	FR	MH	6'2"	Country Club Hills, IL
7	Kensy Zulueta	FR	S	5'7"	Mission Viejo, CA

## 1996 Numerical Roster

1	Patty Diamond	SR	S/OH	5'10"	Livonia, MI
3	Courtney Dipert	FR	DS	5'5"	Lisle, IL
4	LaToya Presberry	SO	OH	5'8"	Detroit, MI
5	Christy Minko	JR	DS	5'7"	Fort Myers, FL
7	Kensy Zulueta	FR	S	5'7"	Mission Viejo, CA
8	Maureen McCarthy	JR	S	5'9"	Quincy, MA
10	Holly Schneider	SO	OH	5'10"	Ft. Wayne, IN
11	Aisha Thornton	FR	MH	6'2"	Country Club Hills, IL
12	Sarah Rickertsen	SO	OH	5'8"	Helena, AL
13	Susan Johnson	JR	MH	6'1"	Ft. Wayne, IN
14	Susan Hawks	SO	MH	6'2"	Tampa, FL
15	Laura Arnold	JR	OH	5'8"	Stuart, FL

HEAD COACH ..... Cecile Reynaud (SW Missouri, 1975)

ASSISTANT COACHES ..... Sherry Cowling (Florida State, 1993)

Vicki Zinkil (Florida State, 1994)

MANAGER ..... Colin Thomas

TRAINER ..... Shelly Mullenix

### PRONUNCIATION GUIDE

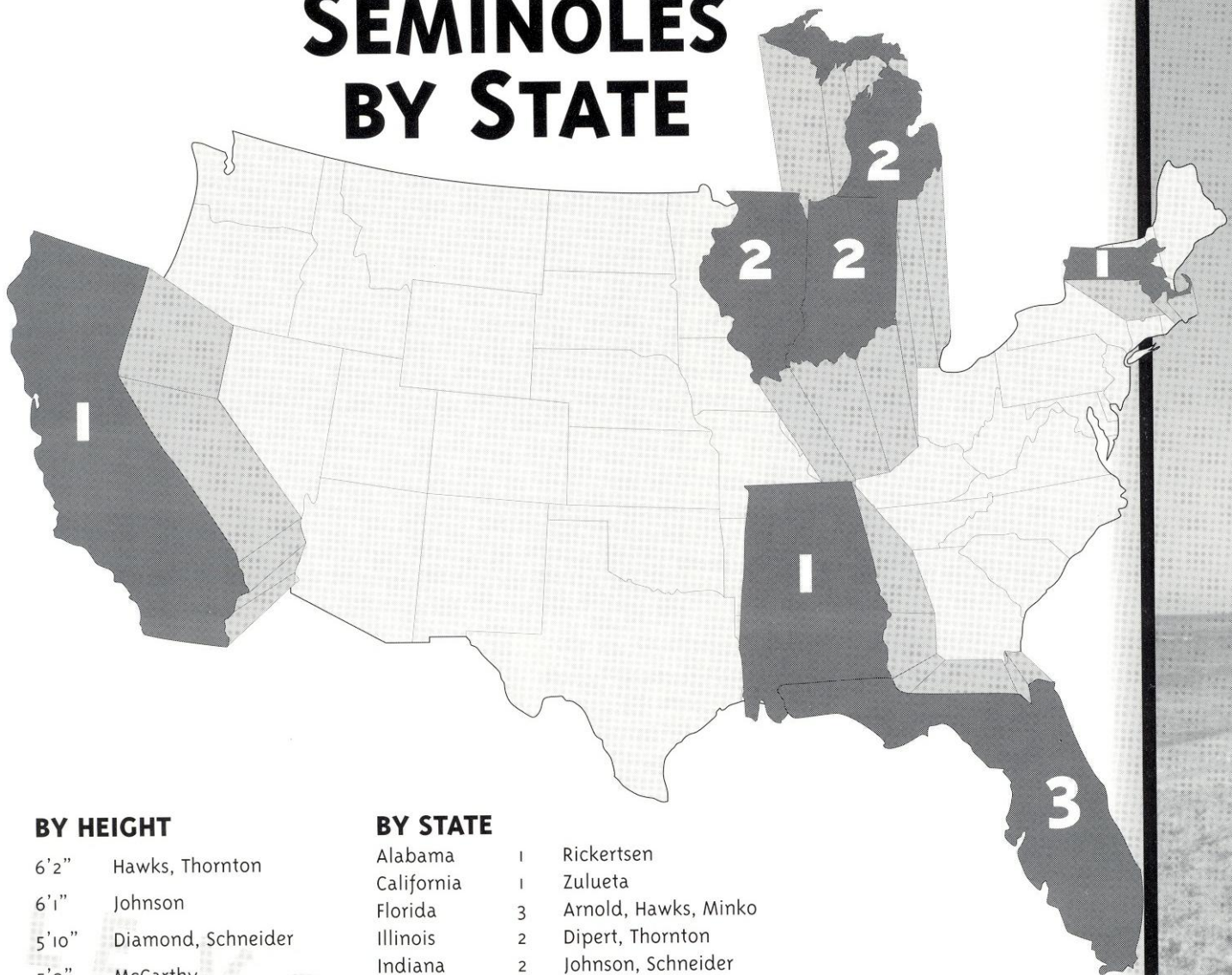
Dipert ..... Die-purt

Aishia ..... Eye-eesha

Zulueta ..... Zoo-wet-ah

# A CLOSER LOOK...

## SEMINOLES BY STATE



### BY HEIGHT

- 6'2" Hawks, Thornton
- 6'1" Johnson
- 5'10" Diamond, Schneider
- 5'9" McCarthy
- 5'8" Arnold, Presberry, Rickertsen
- 5'7" Minko, Zulueta
- 5'5" Dipert

### BY STATE

- Alabama 1 Rickertsen
- California 1 Zulueta
- Florida 3 Arnold, Hawks, Minko
- Illinois 2 Dipert, Thornton
- Indiana 2 Johnson, Schneider
- Massachusetts 1 McCarthy
- Michigan 2 Diamond, Presberry

### BY POSITION

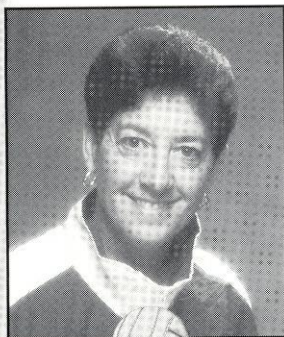
- Middles 3 Hawks, Johnson, Thornton
- Outsides 5 Arnold, Diamond, Presberry, Rickertsen, Schneider
- Setters 3 Diamond, McCarthy, Zulueta
- Defensive Specialists 2 Dipert, Minko

### BY CLASS

- Seniors 1 Diamond
- Juniors 4 Arnold, Johnson, McCarthy, Minko
- Sophomores 4 Hawks, Presberry, Rickertsen, Schneider
- Freshman 3 Dipert, Thornton, Zulueta

# FSU COACHING STAFF

Coach Cecile Reynaud has coached and participated in volleyball at many levels throughout her career. A 20 year veteran of the Florida State Athletics staff, Reynaud recently took her volleyball expertise to an international level yet again. This past summer she served as the Deputy Competition Manager for the 1996 Centennial Olympic Games. Years of volleyball experience paid off as she was in charge of the Athens, GA venue for 10 days of Olympic competition.



**COACH CECILE REYNAUD**  
LADY SEMINOLE HEAD COACH

Although the Olympics job took her away from Tallahassee for the summer it has made her anxious as ever for the 1996 Florida State volleyball season to begin. With six starters returning, Reynaud has reason to be excited. As a coach, Reynaud has surpassed many milestones in her 20 year tenure at Florida State. Most recently, Coach Reynaud notched her 500th career victory in the first match of the 1994 season against

Championship game in only five years of ACC competition. Her goal is to reclaim a place in the top three of the Atlantic Coast Conference and return to the NCAA Tournament. With their impressive regular seasons, post season play had become familiar to the Lady Seminoles. Florida State has made eight NCAA post-season appearances, six of which are in the last nine years and two appearances in the Atlantic Coast Conference

## MOST CAREER VICTORIES AMONG ACTIVE COACHES

	W	L	PCT	YRS
1. Andy Banachowski (UCLA)	795	161	.831	29
2. Mick Haley (Texas-Austin)	750	181	.805	21
3. Elaine Michaelis (BYU)	727	187	.795	34
4. Marilyn McReavy-Nolen (St. Louis)	668	242	.734	25
5. Terry Petit (Nebraska)	626	136	.821	22
6. Barbara Viera (Delaware)	613	366	.626	24
7. Dr. Gen Polvino (Eastern Kentucky)	611	390	.610	29
8. Dave Shoji (Hawai' i)	584	121	.828	21
9. Mike Hebert (Minnesota)	527	257	.69	20
10. Russ Rose (Penn State)	555	114	.829	17
11. Debby Coldberg (Sacramento State)	534	137	.761	20
12. Janice Kruger (Maryland)	529	210	.715	18
<b>13. Cecile Reynaud (Florida State)</b>	<b>527</b>	<b>241</b>	<b>.686</b>	<b>20</b>
14. Kathy Gregory (UC-Santa Barbara)	518	243	.679	21
15. Samye Johnson (Mississippi State)	489	250	.661	19



Southern Illinois. This milestone victory places her among an elite list of coaches in the 500 win club.

Looking back over 20 seasons of volleyball, Reynaud has led some young teams to victory which is her inten-

tion for this season. Her goal is to reclaim a place in the top three of the Atlantic Coast Conference and return to the NCAA Tournament. With their impressive regular seasons, post season play had become familiar to the Lady Seminoles. Florida State has made eight NCAA post-season appearances, six of which are in the last nine years and two appearances in the Atlantic Coast Conference

Championship game in only five years of ACC competition. Reynaud's successes in coaching are impressive and numerous as are her graduates. In 20 years of coaching, Reynaud has an excellent graduation rate. Among four-year volleyball letterwinners, all but two have earned their college degree, close to a 98% graduation rate. These graduates include two GTE Academic All-Americans and numerous honor roll students in the past five years.

A two-time Metro Conference Coach of the Year, Reynaud was also honored as Coach of the Year by the Atlantic Coast Conference in 1992. She was also named Florida Association of Intercollegiate Athletics for Women Coach of the Year in 1991 and in 1989 she garnered AVCA South Region Coach of the Year accolades.

This past May, in Dallas, Texas at the USA Volleyball National Meetings Reynaud received the George J. Fischer Leader in Volleyball Award. This award recognizes long-time-significant contributions to volleyball programs and activities in the United States.

Presently, Reynaud is a member of the Volleyball Hall of Fame selection committee. She is also active on the USVBA Board of Directors and Executive Committee.

In 1983, she went to the international level and served

## COACHING RECORD

1976	33-14	State Runner-up
1977	25-13	State Champion 4th at Regionals
1978	28-14	State Champion 1st at Regionals AIAW Nationals First Round
1979	31-19	State Runner-up 1st at Regionals AIAW nationals Second Round
1980	43-14	State Champion 3rd at Regionals
1981	43-8	State Champions 1st at Regionals AIAW Nationals Third Round
1982	27-17	3rd in Metro Conference Metro Tournament 3rd Place
1983	31-6	1st in Metro Conference Metro Tournament 3rd Place NCAA First Round
1984	20-13	3rd in Metro Conference Metro Tournament 3rd Place
1985	22-10	1st in Metro Conference Metro Tournament 1st Place NCAA First Round
1986	25-11	1st in Metro Conference Metro Tournament 1st Place NCAA First Round
1987	22-11	1st in Metro Conference Metro Tournament 1st Place NCAA First Round
1988	28-8	1st in Metro Conference Metro Tournament 1st Place NCAA First Round
1989	30-5	1st in Metro Conference Metro Tournament 1st Place NCAA First Round
1990	25-10	3rd in Metro Conference Metro Tournament 3rd Place NCAA First Round
1991	16-15	5th in ACC ACC Tournament 3rd Place
1992	26-8	Tied 1st in ACC ACC Tournament 2nd Place NCAA First Round
1993	24-10	3rd in ACC ACC Tournament 2nd Place NCAA Second Round
1994	17-16	5th in ACC ACC Tournament 3rd Place
1995	11-19	7th in ACC ACC Tournament 3rd Place
<b>TOTAL</b>	<b>527-241</b>	

as the assistant coach at the World University Games in Canada and in 1985 was head coach for the United States Junior National Team which toured Japan and China. She has been on the AVCA All-America Committee and was the Zone Coordinator for 1986 and 1987 Olympic Festivals. She has continued to serve as the commissioner for the Olympic Festival since 1988. Reynaud participated in the 1990 Goodwill Games as the technical secretary and is past-president of the American Volleyball Coaches Association.

As an expert on the game, Reynaud has been a technical consultant for two Power Volleyball films and the third edition of the book "Power Volleyball." She has co-authored numerous articles pertaining to women's athletics and continues to be active on the speakers' circuit.

Reynaud has been an instructor at more than 35 camps across the country and hosts her own each year which attracts hundreds of young volleyball players.

A 1975 graduate of Southwest Missouri State, Reynaud enjoyed an outstanding athletic career on the volleyball team and was twice named among the Outstanding College Athletes in America. In 1983, she was inducted into the school's Women's Athletic Hall of Fame.

In addition to an already challenging schedule, Reynaud has returned to Florida State as a student in pursuit of a Ph.D. in athletic administration.



## REYNAUD'S MILESTONE VICTORIES

<b>100</b> vs. Lake City JC (1979)	15-8, 15-5, 15-11
<b>200</b> vs. Georgia (1981)	15-1, 15-5
<b>300</b> vs. Northwestern (1985)	9-15, 16-14, 8-15, 15-9, 15-11
<b>400</b> vs. Memphis State (1989)	14-16, 8-15, 15-11, 15-9, 15-11
<b>500</b> vs. Southern Illinois (1994)	15-7, 15-4, 15-6

# ASSISTANT COACHES



## SHERRY COWLING

**ASSISTANT COACH, 3RD SEASON,  
FLORIDA STATE, 1993**

Sherry Cowling begins her third season on the Florida State coaching staff, but her first year as the program's top assistant coach. After a standout senior season playing for Reynaud and receiving her degree in economics, Cowling taught history at an area high school and coached the volleyball team. After her high school stint, Cowling joined the college ranks as the second assistant for FSU. During that time she was very involved in the Tallahassee Community and promoting youth volleyball. Cowling was honored with an award for her excellent community service throughout the year while at Godby High School.

Cowling's main duties involve recruiting for Florida State, as well as scheduling matches and assisting the athletes with their academic programs along with the day to

leyball Coaches Association All-South Region team.

In a single season of Atlantic Coast Conference action, Cowling was selected as an All-ACC member and to the ACC All-Tournament team. During the 1992 season Cowling was selected to the Gator Invitational, South Florida Invitational, and Hofstra Invitational All-Tournament teams.

The Miami, Florida native began her career at Syracuse University where she played three seasons before transferring to Florida State. Cowling also was the setter for the 1990 Silver medal Olympic Festival team.

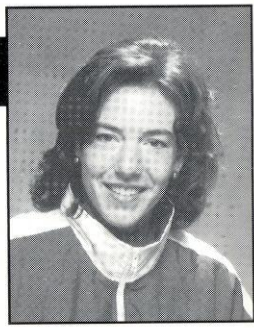
Cowling could not be any more involved with the sport she loves. Along with her FSU coaching duties, Cowling has coached with the Big Bend Juniors Club for three years, and trains for the professional beach tour over the summers.

Cowling completed her master's degree in December of 1995 in athletic administration. She is engaged to Jason Clouet, a master's student at FSU. The two keep busy making plans for their spring '97 wedding.



## VICKI ZINKIL

**ASSISTANT COACH, 1ST SEASON  
FLORIDA STATE, 1994**



Entering her first season as an assistant coach for the Florida State women's volleyball team, Vicki Zinkil will primarily serve with the team's middle blockers, as well as with the organization of team travel.

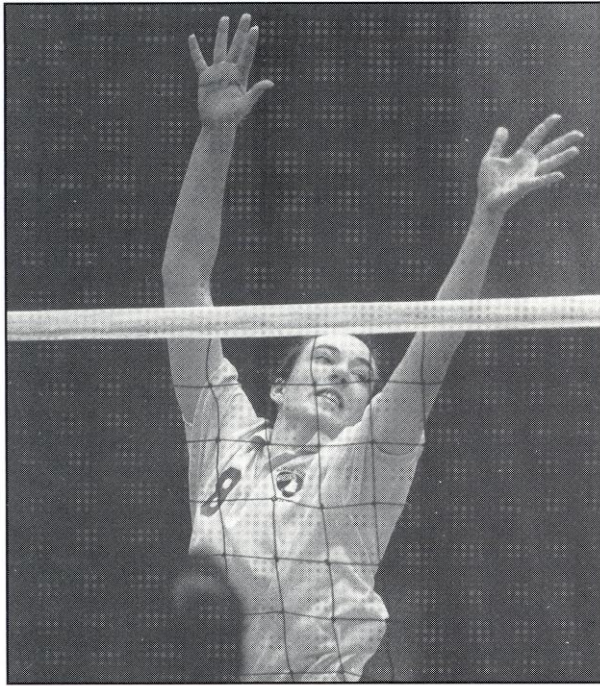
As a middle blocker with the Lady Seminole's from 1989-93, Zinkil can be found all over the FSU career record charts, as well as listing's in the individual single season records and year by year leaders.

As one of FSU's all-time greatest blockers she has the following career standings in that area: No. 2 in solo blocks (179), No. 3 in block assists (432) and No. 3 in total blocks (611). She is also among the tops in the individual single season blocks categories. She lead the team from 1991-93 in block assists and was the team leader in 1991 and 1993 in total blocks and block solos.

As a senior, Zinkil's career was highlighted by being chosen as an Atlantic Coast Conference Player of the Week and post-season to the All-ACC second team and All-ACC Honor Roll, including All-AVCA South Region honors. As a four-year letterwinner Zinkil helped lead the Seminoles to three NCAA appearances and two trips to the ACC Tournament Championship finals.

Following her graduation with a degree in Business





## COLIN THOMAS

**MANAGER, 4TH SEASON,  
SPORT MANAGEMENT MAJOR**

Colin Thomas begins his 4th season with the Florida State volleyball team. Along with his daily class schedule as a Sport Management major, Thomas' duties include management of the facility and setup for practice and matches. Thomas is also in charge of video for each game and practice. He assists in practice day to day as well as keeping score during the matches.

Thomas, a south Florida native, spent this past summer working at the Olympics in Atlanta. He was a transportation supervisor in the Olympic Village.

## JILL HOOMES

**SECRETARY, 10TH SEASON**

*11th*

Jill Hoomes begins her 10th season as Cecile Reynaud's secretary. She assumed this position after serving with the Art Department on campus.

A native of Pensacola, Florida, Hoomes attended Pensacola Junior College. She and her husband Tim have one son Levon, 7.

Marketing, the native from Stevensville, Mich., worked with Florida Citrus Sports in Orlando. She helped organize such events as the Texaco Star Classic, in which the Florida State football team played Notre Dame, and the Florida Citrus Bowl.

Zinkil then returned to Tallahassee in 1994 to work in the FSU Athletic Department's sports information office as the sports information director for women's volleyball.

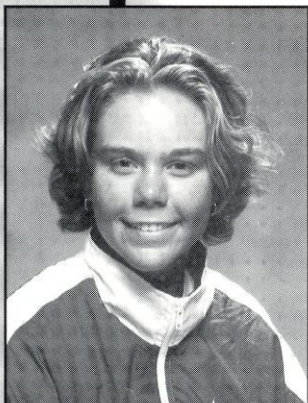
As a coach with the team in 1996, she will also have contact with the sports information office. All media-related requests should be made in her attention, but still through the sports information office.



# PLAYER BIOGRAPHIES

## #15 LAURA ARNOLD

5-8 • JUNIOR  
 OUTSIDE HITTER  
 STUART, FL (MARTIN COUNTY)  
 OCEANSIDE

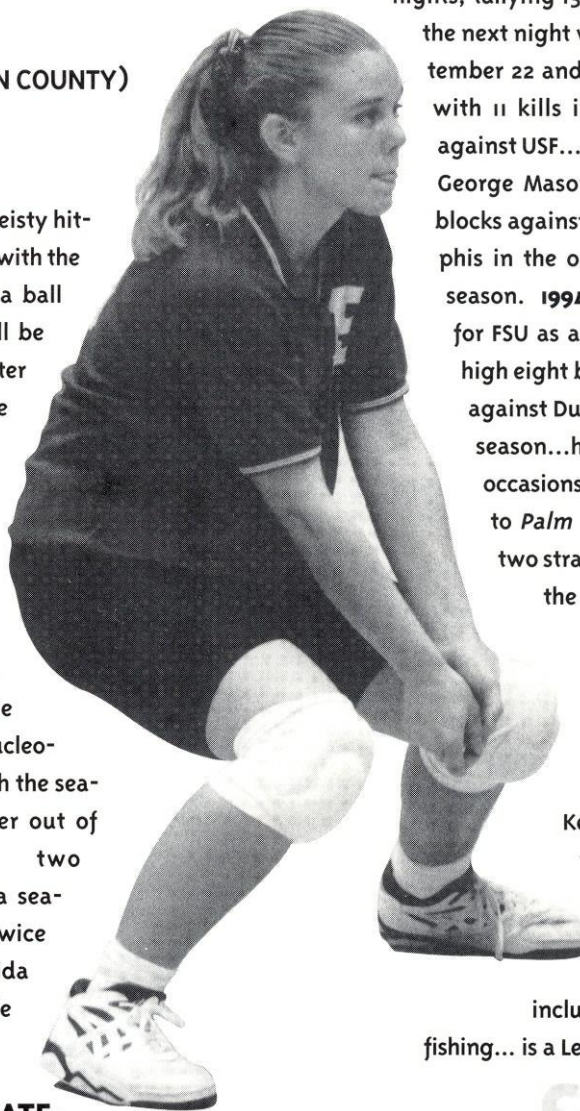


A solid player with a feisty hitting attitude coupled with the tenacity to never let a ball drop on defense...Will be

looked to as a starting outside hitter after limited time on the left side last season...Improved tremendously physically and mentally through the spring season to earn back her starting position. **1995:** As a sophomore had her season and career-high 13 kills against Tennessee Tech in

September...came down with mononucleosis midway through the season which held her out of practice for two weeks...recorded a season high 13 digs twice against South Florida

and Georgia Tech...dug up double digit balls on back-to-back



nights, tallying 13 vs. Tech and coming back the next night with 10 vs. Clemson on September 22 and 23...had a double-double with 11 kills in addition to the 13 digs against USF...served up two aces against George Mason in September...had two blocks against Tennessee Tech and Memphis in the opening tournament of the season. **1994:** Appeared in 31 matches for FSU as a freshman...dug a season-high eight balls in the ACC Tournament against Duke...totaled 105 digs on the season...had six or more digs on 12 occasions. **HIGH SCHOOL:** Was named to *Palm Beach Post's* All-Area team two straight years...twice awarded

the Most Valuable Player...led Martin County High to the District Championship her senior year...played club with Oceanside... involved with basketball, softball and Key Club...has always wanted to go to Florida State, brother

Todd is an FSU alumni...enjoys water sports in her spare time,

including boating, diving, and fishing... is a Leisure major.

### DOUBLE-DIGIT PERFORMANCES

	1995		
Tenn. Tech	9/1	10 kills	10 digs
South Fla.	9/2	11 kills	13 digs
Washington	9/9	10 kills	
Ga. Tech	9/22		13 digs
Clemson	9/23		10 digs
Duke	11/4		10 digs

### ARNOLD AT FLORIDA STATE

Year	MP	GP	K	E	TA	Pct.	SA	SE	AST	BS	BA	BE	RE	BHE	DIG
1994	31	101	3	2	16	.063	2	4	12	0	0	2	22	0	105
1995	16	45	96	69	311	.087	5	26	8	0	11	3	18	1	86
<b>TOTAL</b>	<b>47</b>	<b>146</b>	<b>99</b>	<b>71</b>	<b>327</b>	<b>.086</b>	<b>7</b>	<b>30</b>	<b>20</b>	<b>0</b>	<b>11</b>	<b>5</b>	<b>40</b>	<b>1</b>	<b>191</b>

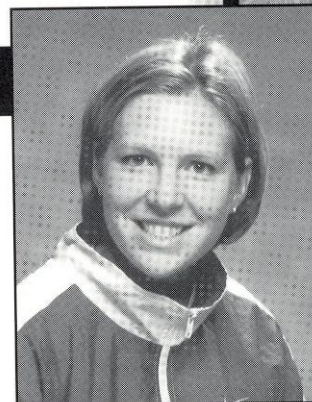
### ARNOLD'S CAREER HIGHS

KILLS	13 vs. Tennessee Tech (9/1/95)
ATTACKS	41 vs. South Florida (9/2/95)
HITTING %	.375 vs. Jacksonville (4k, 1e, 8a), (9/6/95)
SERVICE ACES	2 vs. George Mason (9/9/95)
DIGS	13 vs. South Florida (9/2/95) and Georgia Tech (9/22/95)
ASSISTS	2 vs. three opponents
BLOCK ASSISTS	2 vs. Tennessee Tech (9/2/95) and Memphis (9/2/95)



# #1 PATTY DIAMOND

5-10 • SENIOR  
 SETTER/OUTSIDE HITTER  
 LIVONIA, MI (STEVENSON)  
 CRUSADERS CLUB



A versatile athlete who sees action as a setter, an outside and a middle hitter...Diamond is described as a player who must be on the floor for Reynaud, she possesses excellent leadership qualities and really matured as a player prior to this season...Plays with poise and confidence at whatever position and has the ability to change the pace of a game. 1995: Co-Captained the

team in digs for six matches...dug a season-high 21 balls against N.C. State on September 30...had streaks of three matches twice where she dug double-digit balls...puts up a good block as well, coming in 3rd on the team for block assists behind two of the middle blockers. 1994: Split time setting with Maureen McCarthy and as an outside hitter... provided solid blocking in the front row with the third-highest blocking numbers, once again, behind the two middles...recorded 221 digs on the season... while assuming the setting duties, tossed up 304 assists including a career-high 61 against Fresno State. 1993: Used primarily as a back-up...called upon in 33 games, playing in 19 matches...140 assists was second highest on the team...dished out a career-best 17 assists in win over Florida...played in both NCAA matches and saw action in the ACC Tournament championship match vs. Duke. HIGH SCHOOL: Graduated cum laude... led squad to four District, one Regional, three Division and one Conference championship while at Stevenson...selected to seven All-Tournament teams...two-time All-State selection...named 1992 MVP and 1993 co-MVP of her high school team...earned 1992 *Detroit Free Press* Athlete of the Week honors...*Detroit News* Dream Team...1993 AAU All-American...involved with the "Say No to Drugs" campaign and the President's Athletic Academic Council...is a Nutrition and Fitness major.

squad along with Valerie Broussard...split time as a setter and a right side hitter last season so that leadership and court presence was always evident...as a setter, ranked second in assists with 455...broke into the FSU career record book and currently ranks 9th for set assists with 905...as a hitter, she has a way of finding the open court with finesse, recording 81 kills...Defensively, Diamond is one of the scrappiest players on the team and her "don't quit" attitude cost her to sit out a few matches mid-season when she suffered a concussion diving for a ball during the New Orleans match on October 21...led

### DOUBLE DIGIT PERFORMANCES

#### 1995

USF	9/2	20 digs
Houston	9/16	11 digs
Ga. Tech	9/22	15 digs
N.C. State	9/30	21 digs
Ga. Tech	10/6	15 digs
Clemson	10/7	19 digs
UNC	10/13	18 digs
JU	10/17	11 digs
Maryland	11/11	15 digs
Clemson	11/16	12 digs

#### 1994

Fresno St.	9/17	16 digs
N.C. State	10/7	24 digs
FAU	10/14	10 digs
Maryland	10/21	20 digs
Notre Dame	10/24	12 digs
Duke	10/28	15 digs
Florida	10/31	12 digs
Maryland	11/4	11 digs

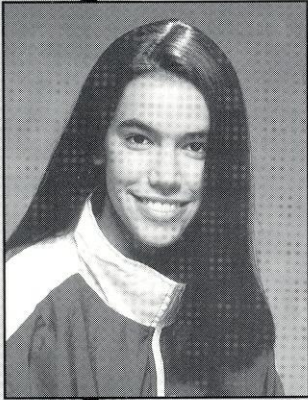
20+ dig matches: four  
 double-digit digs: 18

### DIAMOND AT FLORIDA STATE

Year	MP	GP	K	E	TA	Pct.	SA	SE	AST	BS	BA	BE	RE	BHE	DIG
1993	19	33	7	4	21	.143	7	9	140	0	3	1	1	8	42
1994	31	93	52	32	192	.104	27	53	304	4	32	3	6	11	221
1995	28	98	81	36	260	.173	19	28	461	0	50	2	16	16	245
<b>TOTAL</b>	<b>78</b>	<b>224</b>	<b>140</b>	<b>72</b>	<b>473</b>	<b>.144</b>	<b>53</b>	<b>90</b>	<b>905</b>	<b>4</b>	<b>85</b>	<b>6</b>	<b>23</b>	<b>35</b>	<b>508</b>

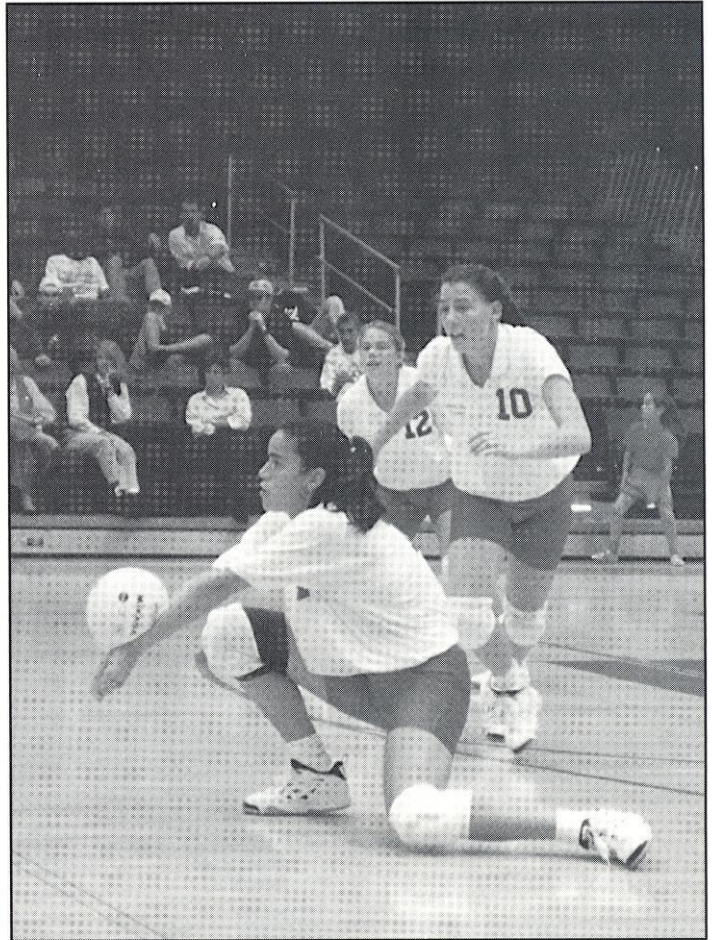
### DIAMOND'S CAREER HIGHS

Kills	10 vs. UNC (10/13/95)
Attacks	21 vs. Maryland (11/11/95)
Hitting %	.625 vs. Tennessee Tech (5k, oe, 8a), (9/2/95)
Service Aces	3 vs. four opponents
Solo Blocks	2 vs. Louisiana State (9/9/94)
Block Assists	6 vs. Maryland (11/11/95)
Digs	24 vs. N.C. State (10/7/94)
Assists	61 vs. Fresno State (9/17/94)



# #14 SUSAN HAWKS

6-2 • SOPHOMORE  
MIDDLE HITTER  
TAMPA, FL (CHAMBERLAIN)  
TAMPA BAY JUNIORS



An excellent blocker who can put up an intimidating wall to opposing hitters...Has a positive attitude which spreads throughout the team when she plays...her spirit is contagious and she lights up the court. **1995:** Improved with every game of the 1995 season...was sidelined mid-season due to knee surgery, but returned in November with a bang...went on to hit .333 (36k, 7e, 87a) from November 3 for a stretch of five games preceding the ACC Tournament...this stretch included two error-free performances vs. South Alabama on November 7, and N.C. State on November 3...Long arms create a wall at the net, denying opponents to total 41 total blocks, 17 of which came in the games following "the return"...Defensively, dug up 43 balls, 35 coming in the five game pre-tournament stretch.

**DOUBLE DIGIT PERFORMANCES**  
**1995**  
Clemson 11/16 11 digs

**1994:** Red-shirted for true freshman season due to shoulder surgery, spent the year on the sidelines. **HIGH SCHOOL:** Played for the Tampa Bay Juniors club team...a member of the National Honor Society...Florida 5A Player of the Year at Chamberlain, honored as the Most Valuable Player her junior and senior years and received the

Rose Diaz Florida Player of the Year award...majoring in Leisure and has hopes of becoming a high school English teacher...in her spare time, enjoys the beach and being with her family...brother Michael plays basketball at Oglethorpe University...participated in FSU's "Say No To Drugs Day."

## HAWKS AT FLORIDA STATE

Year	MP	GP	K	E	TA	Pct.	SA	SE	AST	BS	BA	BE	RE	BHE	DIG
1995	17	50	82	35	230	.204	2	12	6	12	39	1	3	1	58

## HAWKS' CAREER HIGHS

- KILLS ..... 9 vs. Duke (11/4/95)
- ATTACKS ..... 26 vs. Clemson (11/16/95)
- HITTING % ..... .500 vs. Duke (9k, 1e, 16a), (11/4/95) and vs. S. Alabama (8k, 0e, 16a)
- SERVICE ACES ..... 1 vs. South Alabama (11/7/95) and vs. Clemson (11/16/95)
- DIGS ..... 11 vs. Clemson (11/16/95)
- BLOCK ASSISTS ..... 6 vs. Maryland (11/11/95)
- SOLO BLOCKS ..... 3 vs. Virginia (11/10/95)

# #13 SUSAN JOHNSON

6-1 • JUNIOR  
MIDDLE HITTER  
FT. WAYNE, IN (NORTHROP)  
FT. WAYNE JUNIORS



Extremely talented player who has shown great potential as a middle hitter in her first two seasons...Returning starter and force in the middle for FSU...After a strong spring semester she is hitting the ball much harder and getting a lot smarter on her blocking skills. **1995:** Was one of three FSU hitters to get over 20 kills in a match last season...got her career-highs against two ACC foes this season...scored her career-high 21 kills against Clemson on September 23...Johnson dug her career high 12 balls against North Carolina...also recorded her career-high six block assists against Jacksonville and turned around to match that total against New Orleans in the next contest...has gotten double-digit kills on six occasions, leading the team four times throughout the year...ranked second on the team in all blocking categories. **1994:** Gained valuable playing experience as a freshman appearing in 26 matches... started the season with a bang recording a team-high 12 kills off 17 attempts with no errors for a .706 in the opening match against Southern Illinois ...notched a season-high five

blocks the next night against Southern Illinois again...one of the 'Noles toughest from behind the service line, led the squad on five occasions in service aces...career-high five aces against Georgia Tech. **HIGH SCHOOL:** Second team All-State selection as a senior...three-time All-Conference team member...voted team's "Best Offensive Player" three straight years...garnered 1992 and 1994 AAU All-American honors...established four new blocking records at Northrop...Sertoma Award recipient recognizing excellence in athletics and academics...played for the Ft. Wayne Volleyball Club...was a stand-out athlete at Northrop High involved in basketball, track and FCA... majoring in Nutrition and Fitness with an emphasis in pre-physical therapy.

## DOUBLE DIGIT PERFORMANCES

1995			
Clemson	9/23	21 kills	
N.C. State	9/30		10 digs
Clemson	10/7	10 kills	
UNC	10/13	10 kills	
Virginia	10/27	16 kills	
N.C. State	11/3	16 kills	
Virginia	11/10	11 kills	
Clemson	11/16	18 kills	14 digs
1994			
S. Illinois	9/2	12 kills	
DePaul	9/16		10 digs

20+ kill matches: one  
double-digit kills: eight  
double-digit digs: three

## JOHNSON AT FLORIDA STATE

Year	MP	GP	K	E	TA	Pct.	SA	SE	AST	BS	BA	BE	RE	BHE	DIG
1994	26	66	60	41	198	.096	23	38	8	4	19	10	8	2	72
1995	27	90	199	78	526	.230	18	43	13	13	54	11	29	3	126
<b>TOTAL</b>	<b>53</b>	<b>156</b>	<b>259</b>	<b>119</b>	<b>724</b>	<b>.193</b>	<b>41</b>	<b>81</b>	<b>21</b>	<b>17</b>	<b>73</b>	<b>21</b>	<b>37</b>	<b>5</b>	<b>198</b>

## JOHNSON'S CAREER HIGHS

KILLS ..... 21 vs. Clemson (9/23/95)  
 ATTACKS ..... 37 vs. Clemson (9/23/95)  
 HITTING % ..... .706 vs. Southern Illinois (12k, 0e, 17a), (9/2/94)  
 SERVICE ACES ..... 5 vs. Georgia Tech (10/1/94)  
 SOLO BLOCKS ..... 2 vs. four opponents  
 BLOCK ASSISTS ..... 6 vs. Jacksonville (10/17/95) and New Orleans (10/21/95)  
 DIGS ..... 14 vs. Clemson (11/16/95)  
 ASSISTS ..... 3 vs. Florida (10/31/94)



# #8 MAUREEN MCCARTHY

5-9 • JUNIOR  
 SETTER  
 QUINCY, MA (NORTH QUINCY)  
 MASS PATRIOTS

Shared playing time at the setter's position last season, strong finish at the end of the season...looks to challenge for fulltime setting duties this season. **1995:**

Led the team once again with 773 assists after splitting time in a 6-2 setting role...ranks 5th on the career assists chart with 1,874 assists...leads the team in aces per game with a .35 aces per game average, which also ranked her among the ACC leaders...led FSU for the match with aces seven times this season...had her season and team high assists during an ACC contest vs. Virginia, dishing out 63 in the four-game match...most kills came against North Carolina when McCarthy dumped the ball 15 times (also a high for the year) and scored on seven of those for a .400 hitting percentage...recorded 24 blocks on the season including three solo blocks. **1994:** Led the team in assists with 1,101...over 10 per game...outstanding freshman year put her seventh in the single-season and career record book

for assists...earned ACC Rookie of the Week honors for the week of 10/31... named to the ACC's All-Freshman team... recorded over 50 assists on seven occasions including a season-high 64 against 12th ranked Notre Dame...had a season-high six aces against South Florida...a three-sport high school athlete. **HIGH SCHOOL:** Named three consecutive years to both the *Boston Globe*

and *Patriot Ledger* All-Scholastic teams...three-year Old Colony League All-Star...National Honor Society member...elected student union president as a senior...played with the Massachusetts Patriots Club team...is majoring in Nutrition and Fitness.



### DOUBLE DIGIT PERFORMANCES

#### 1995

N.C. State	9/20	10 digs
Maryland	11/11	11 digs
Clemson	11/16	16 digs

#### 1994

Maryland	10/21	13 digs
Florida	10/31	11 digs
Virginia	11/5	22 digs
Clemson	11/11	10 digs
Maryland	11/18	11 digs
South Fla.	11/25	10 digs

20+ dig matches: one  
 double-digit digs: nine

### MCCARTHY AT FLORIDA STATE

Year	MP	GP	K	E	TA	Pct.	SA	SE	AST	BS	BA	BE	RE	BHE	DIG
1994	31	103	65	27	208	.183	30	69	1101	3	28	6	1	21	200
1995	24	80	44	16	132	.212	27	46	773	3	21	7	0	15	158
<b>TOTAL</b>	<b>55</b>	<b>183</b>	<b>109</b>	<b>43</b>	<b>340</b>	<b>.194</b>	<b>57</b>	<b>115</b>	<b>1874</b>	<b>6</b>	<b>49</b>	<b>13</b>	<b>1</b>	<b>36</b>	<b>358</b>

### MCCARTHY'S CAREER HIGHS

KILLS	7 vs. UNC (9/24/94) and UNC (10/13/95)
ATTACKS	15 vs. UNC (10/13/95)
HITTING %	.750 vs. Maryland (3k, oe, 4a), (10/21/94)
SERVICE ACES	6 vs. South Florida (11/25/94)
SOLO BLOCKS	1 vs. four opponents
BLOCK ASSISTS	3 vs. three opponents
DIGS	22 vs. Virginia (11/5/94)
ASSISTS	70 vs. Clemson (11/16/95)