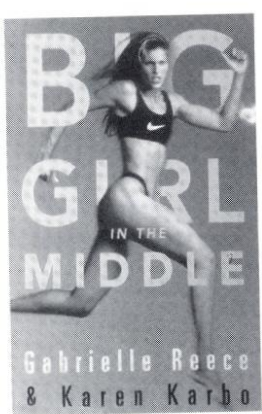


Famous Alumnae

GABRIELLE REECE



The most famous alumni of Florida State volleyball, Gabrielle Reece has gone on to pursue a career in the sport that she loves. Captaining Team Nike for the Bud Light four-woman tour only scratches the surface of Reece's busy schedule.

After a stint on a popular MTV sports television show as cohost with Dan Cortese, Reece had her own syndicated show "The Extremist" which aired on CBS. Gabby is also going to be writing articles for the new magazine "Sports for Women."

Along with her television and volleyball careers, Reece finds time to be a supermodel. Named one of the 50 most beautiful people by *People* magazine in recent years, as well as one of the five most beautiful women in the world by *ELLE* magazine, Reece has been selected as the spokesperson for Coppertone skin products.

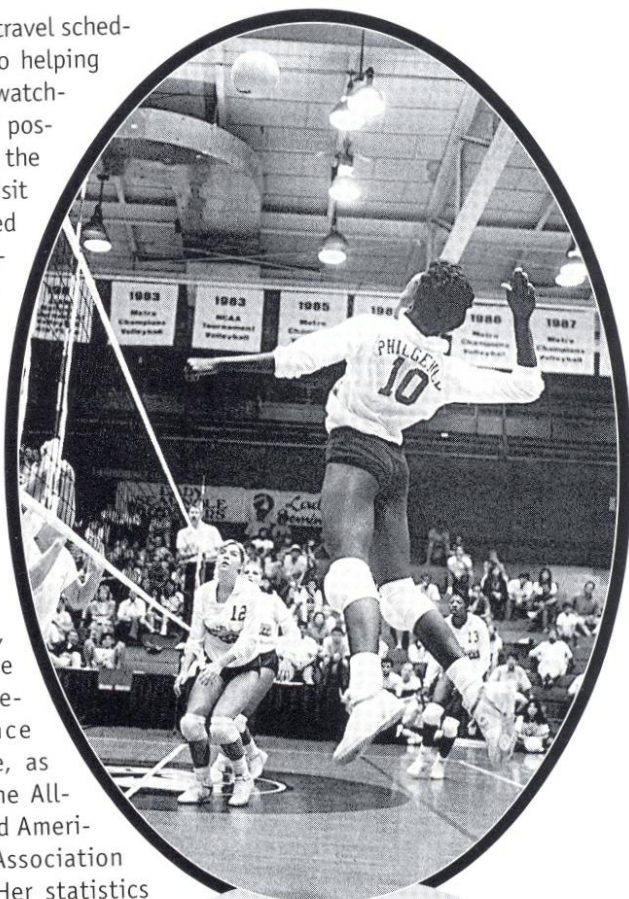
Despite the hectic work and travel schedule, Reece still is devoted to helping Florida State volleyball. By watching the team play whenever possible Reece lends her tips to the young Lady Seminoles. On a visit to Tallahassee, Reece worked with the team in spring practice and offered words of advice to the team on success in the world of sports.

She was selected to the Florida State Athletics Hall of Fame this fall.

MAGGIE PHILGENCE

In her senior season, Philgence was named to five all-tournament teams, selected Metro Conference Player of the Week twice, as well as being listed on the All-Metro Conference team and American Volleyball Coaches Association All-South Region team. Her statistics also ranked in the top around the nation. She has left her mark in the Florida State record books as well as with the NCAA. Philgence is now ranked 17th in the NCAA for her career kills (2,110)

Maggie Philgence - One of FSU's All-Time Greats



and tops the FSU career charts. She also led the Metro in hitting percentage (.333) and kills per game (4.41) throughout her final season.

After breaking six school records during the 1990 season, Philgence was drafted to the South Team for the Olympic Festival in Los Angeles. Philgence helped lead her team to the championship game where the South defeated the West to claim the gold medal.

Upon graduation, Philgence traveled overseas to play professional volleyball with the international league in France.

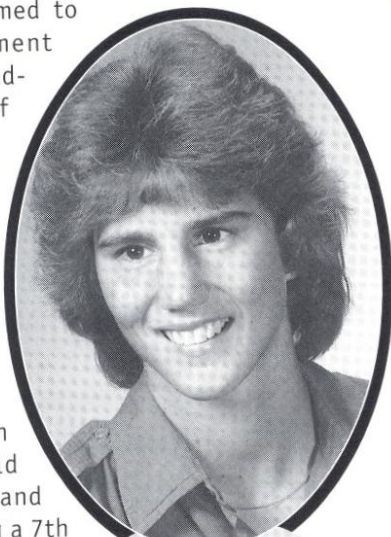
42



Gabrielle Reece offers advice to the team

KARYN PALGUT

A three-sport athlete at Florida State, Palgut lettered in volleyball (four), basketball (one) and softball (two) from 1982-86. After a successful collegiate career that saw her named to the All-Metro Tournament team three times, including the distinction of MVP, she competed in the 1982 Olympic Festival on the East team. Upon graduation, Palgut joined the U.S. Women's National Team for Handball and had a successful career. She participated in the Goodwill games, the Pan American Games (Gold Medal) and the 1988 and 1992 Olympics receiving a 7th and 6th place respectively.



Karyn Palgut
U.S. Olympian



Lisa Gunning -Sunshine
Network Sportscaster

LISA WARMAN GUNNING

A familiar face around the Florida State volleyball court, Gunning was with the team from 1981-84 but still returns to Tully Gym as a sports commentator for the Sunshine Network.



Barbra Harris
Editor - SHAPE

BARBARA HARRIS

After a playing career spanning from 1974-77, Harris has had a successful career in the magazine industry as Editor-in-Chief at *Shape*.

SHERRY COWLING CLOUET

Although spending only one year under Coach Reynaud as a player, Sherry Clouet has left her mark on Florida State Volleyball history.

As GTE a Academic All-America, Clouet set a record for assists in a single game with 72 vs. Duke which has since been broken. She also ranks third on the single-season charts for set assists. During her college career, Clouet competed on the silver medal squad for the 1990 Olympic Festival. Clouet is in her fourth season on the FSU volleyball staff and in her second season as the top assistant coach.

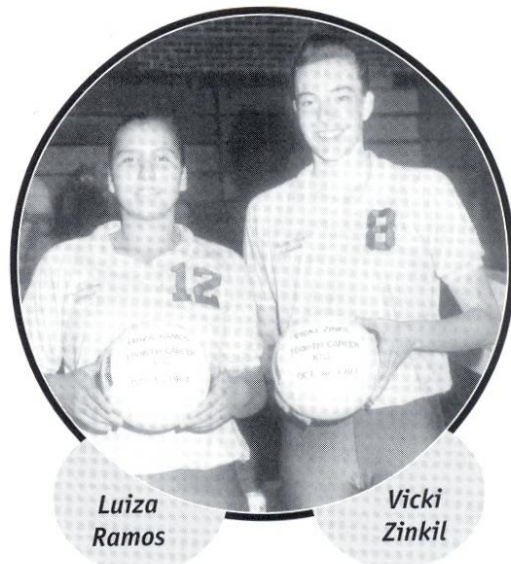


Sherry
Clouet -
Assistant Coach

All-Time Letterwinners

Laura Arnold 1994-96
 Barbara Barnes 1978-79
 Shelly Birkholz 1982-85
 Joy Blanchard 1978-82
 Kim Britt 1984-86
 Deanna Bosschaert 1991-94
 Amy Bronson 1988-90
 Julie Brown 1979-83
 Valerie Broussard 1993-95
 Cordelia Campbell 1978
 Jennifer Cichy 1990-92
 Adria Ciraco 1991-94
 Kristine Cousins 1990-91
 Sherry Cowling 1992
 Cathy Copeland 1987
 Alica Cross 1979-82
 Brandi Cumin 1990-91
 Camy Davies 1979-82
 Laura Davis 1973-76
 Patty Diamond 1993-96
Courtney Dipert 1996
 Carol Forsten 1981-84
 Lynne Fullhart 1985
 Nancy Gaspadarek 1986-89
 Pam Griffin 1973-76
 Barbara Harris 1974-77
 Valene Harris 1974-77
Susan Hawks 1995-96
 Colette Housh 1983

Terry Hume 1973-76
 Janice Hunt 1977-78
 Michele Hurd 1974-77
 Jametta Jackson 1984
 Linda Johnson 1978
Susan Johnson 1994-96
 Jennifer Jones 1991-92
 Deanne Kaleta 1985-88
 Shannon Kelly 1987-88
 Nancy Kinnunen 1975-76
 Donna Krai 1982-85
 Jamie Kuhn 1979-80
 Shannon Lages 1980-83
 Catie Lotarski 1991-94
 Maria Magoulas 1986-89
 Wendy Markham 1985
 Jennifer Marraffino 1987-90
 Charlotte Martin 1974-77
 Jennifer McCall 1990-93
 Maureen McCarthy 1994-96
 Gloria McIntosh 1981
 Barbara Mellen 1979-81
 Debbie Meyer 1987-90
Christy Minko 1995-96
 Stacy MoneyMaker 1983
 Joan Morris 1983-86
 Gina Muensterman 1985-86
 Candi Orsini 1974-77
 Karyn Palgut 1981-84



Luiza Ramos

Vicki Zinkil



Maggie Philgence and Gabrielle Reece

Bold indicates players on the 1997 Florida State Roster

Maggie Philgence 1987-90
 Rhonda Petty 1980-81
 Julie Plattner 1986
 Sonia Preocanin 1993-95
LaToya Presberry 1995-96
 Luiza Ramos 1991-94
 Franci Rard 1993
 Marci Rard 1987
 Gabrielle Reece 1987-90
 Yolanda Restrepo 1976-80
Sarah Rickertsen 1995-96
 Marie Sanders 1980-83
Holly Schneider 1995-96
 Lisa Smith 1983-84
 Sherry Smith 1984
 Margaret Stephens 1977-80
 Bianca Stevens 1989-92
 Sally Summer 1980-83
 Marybeth Sutcliffe 1987-90
Aisha Thornton 1996
 Marianne Tobolski 1985
 Julie Todd 1984-87
 Nancy Townsend 1977-80
 Sonia Trevino 1988-89
 Sue Usher 1976-80
 Twanna Walker 1985-89
 Lisa Warman 1981-84
 Margie Wessel 1977-80
 Rebecca White 1988
 Mary Williams 1981-83
 Velma Wright 1978-80
 Jackie Young 1981-84
 Vicki Zinkil 1989-93
Kensy Zulueta 1996

Series Records

TEAM	LAST MEETING	W-L
Alabama	1992	9-10
Appalachian State	1981	2-0
Alabama-Birmingham	1991	6-1
Arizona	1985	0-3
Arizona State	1984	0-1
Arkansas State	1993	2-1
Auburn	1996	7-1
Ball State	1996	0-1
Baylor	1990	2-0
Berry College	1976	2-1
Brigham Young	1989	1-4
Butler	1990	1-0
Cal-Berkeley	1989	1-1
Cal-Irvine	1991	0-1
Central Florida	1994	23-7
Cincinnati	1990	15-2
CLEMSON	1996	10-6
College of Charleston	1975	1-1
Colorado	1990	0-1
Colorado State	1988	0-1
Columbus College	1978	2-0
DePaul	1994	2-0
DUKE	1996	3-15
East Tennessee State	1981	2-0
Eastern Kentucky	1988	3-4
Eastern Washington	1990	1-0
Flagler College	1981	4-0
FLORIDA	1996	21-18
Florida A&M	1992	13-0
FLORIDA ATLANTIC	1996	4-0
Florida Institute of Technology	1987	1-0
FLORIDA INTERNATIONAL	1991	9-4
Florida Junior College	1980	2-0
Florida Southern	1982	4-1
Fresno State	1994	0-2
George Mason	1995	0-1
George Washington	1990	1-1
Georgetown	1992	2-0
Georgia	1996	11-9
GEORGIA SOUTHERN	1990	1-0
GEORGIA STATE	1992	3-0
GEORGIA TECH	1996	2-9
Gulf Coast Community College	1979	2-0
Hofstra	1992	3-0
Houston	1995	4-8
Idaho	1991	1-0
Illinois	1986	0-1
Illinois-Chicago	1987	2-1
Illinois State	1989	4-1
Indiana-Evansville	1984	1-0
Indian River Community College	1981	1-0
Iowa	1994	0-2
Iowa State	1979	1-0
Jacksonville	1996	21-0
Kentucky	1990	4-5
Lake City Community College	1980	6-0
Lamar	1988	2-0
LaSalle	1992	1-0
Long Beach State	1992	0-2
Louisiana State	1994	10-8
Louisville	1990	9-5
Loyola Marymount	1993	2-1
MARYLAND	1996	6-8
McNeese State	1992	1-0
Memphis	1995	16-2
Miami	1981	11-8
Miami of Ohio	1996	0-1
Miami Dade-North CC	1976	1-0
Miami Dade-South CC	1980	3-4
Michigan State	1986	1-1
Middle Tennessee State	1981	1-0
Milligan College	1977	1-0
Minnesota	1994	6-7
Mississippi	1986	3-0

TEAM	LAST MEETING	W-L
MISSISSIPPI STATE	1982	6-0
Mississippi University for Women	1980	7-5
Montevallo	1980	2-0
Morehead State	1990	4-0
Nebraska	1982	0-2
New Mexico	1986	0-1
New Orleans	1995	7-0
Nicholls State	1981	4-0
North Alabama	1976	1-0
NORTH CAROLINA	1996	18-4
North Carolina-Greensboro	1976	1-0
NORTH CAROLINA STATE	1996	10-4
North Florida Junior College	1979	2-0
North Texas State	1978	0-1
Northeast Louisiana	1991	1-0
Northern Arizona	1989	1-0
Northwestern	1985	1-1
Northwest Louisiana	1977	1-0
Notre Dame	1994	1-1
Ohio State	1981	0-1
Oklahoma	1979	1-0
Oklahoma State	1980	1-0
Pacific	1993	0-1
Penn State	1994	1-2
Pepperdine	1978	0-1
Pittsburgh	1992	2-2
Portland State	1981	0-1
PURDUE	1996	2-3
Rice	1993	4-0
Rhode Island	1995	1-1
Rollins College	1981	1-0
Rutgers	1982	0-2
San Diego State	1983	0-1
Sam Houston State	1981	2-1
SOUTH ALABAMA	1995	12-0
South Carolina	1990	16-7
South Carolina-Spartanburg	1980	1-0
South Florida	1995	31-2
Southeast Louisiana	1979	1-0
Southern University	1983	1-0
Southern Illinois	1996	3-2
Southern Mississippi	1993	14-0
Southwest Missouri State	1993	1-6
Southwest Texas State	1991	3-1
Southwestern Louisiana	1977	1-0
St. Louis University	1980	0-2
Stetson University	1983	1-0
Syracuse	1992	1-0
Tampa	1988	1-0
Temple	1991	1-0
Tennessee	1989	8-6
Tennessee-Chattanooga	1983	4-0
Tennessee Tech	1982	2-0
Texas	1990	0-5
Texas A&M	1993	3-4
Texas-Arlington	1985	1-3
Texas Tech	1986	4-1
Troy State	1996	2-0
Tulane	1990	9-1
Tuskegee Institute	1976	1-0
UCLA	1996	0-4
Utah State	1981	0-1
Valdosta State	1977	1-0
VIRGINIA	1996	21-3
Virginia Tech	1990	13-0
WAKE FOREST	1996	2-0
Washington	1995	0-1
West Georgia State	1977	2-0
West Virginia	1980	2-0
William & Mary	1992	2-1
Winthrop College	1980	2-0
Wyoming	1990	0-1
Xavier	1985	1-0

1997 OPPONENTS IN BOLD CAPS

1997 Opponents



BOSTON COLLEGE FRI., AUG. 29 AT TALLAHASSEE, FLA.

Nickname Eagles
 Location Chestnut Hill, Mass.
 Enrollment 8,894
 Colors Maroon and Gold
 Arena/Capacity Power Gymnasium/950
 Conference Big East
 Conference Record/Finish 0-11/ 12th
 1996 Overall Record 13-19
 Post Season Play N/A
 Head Coach/Year at School Nadine Lilavois/6th
 Record at School/Overall 62-107/129-156
 Alma Mater/Year Hofstra/1985
 Starters Returning/Lost 5/2
 Top Returnees ... Natalie Scott, 6-0, MH, Sr., Amy Laurence, 5-9, OH, Sr.
 SID Contact/Phone Reid Oslin/617-552-3004
 SID Fax 617-552-4903
 Fax on Demand 401-861-0616
 Conference Code #102450
 Web Site www.bc.edu/athletics

1996 Overall Record 13-19
 Post Season Play N/A
 Head Coach/Year at School Joey Vrazel/3rd
 Record at School/Overall 8-20/same
 Alma Mater/Year Texas A&M/1984
 Starters Returning/Lost 3/3
 Top Returnees Linda Menconi, Sr, S, 5-8
 SID Contact/Phone Tom Schott/765-494-3145
 SID Fax 770-494-5447
 Fax on Demand 770-399-3066
 Conference Code 282
 Release/Stats 3035



MICHIGAN FRI., SEPT. 5 AT ANN ARBOR, MICH.

Nickname Wolverines
 Location Ann Arbor, Mich.
 Enrollment 34,469
 Colors Maize and Blue
 Arena\Capacity Cliff Keen Arena/1,800
 Conference Big Ten
 Conference Record/Finish 9-11/6th
 1996 Overall Record 14-17
 Post Season Play N/A
 Head Coach/Year at School Greg Giovanazzi/6th
 Record at School/Overall 71-86/same
 Alma Mater/Year UCLA/1981
 Starters Returning/Lost 5/2
 Top Returnees .. Sarah Jackson, MB, 6-0, Sr., Linnea Mendoza, S, 5-8, Sr.
 SID Contact/Phone Amy Carlton/313-763-4423
 SID Fax 313-647-1188
 Fax On Demand 770-399-3066
 Conference Code 282
 Web Site http://www.umich.edu/~mgoblue/

46



MISSISSIPPI STATE SAT., AUG. 30 AT TALLAHASSEE, FLA.

Nickname Bulldogs
 Location Starkville, Miss.
 Enrollment 14,066
 Colors Maroon and White
 Arena/Capacity Humphrey Coliseum/10,000
 Conference Southeastern (Western)
 Conference Record/Finish 3-12/5th
 1996 Overall Record 18-19
 Post Season Play N/A
 Head Coach/Year at School Brenda Bowlin/1st
 Record at School/Overall 0-0/93-73
 Alma Mater/Year Salisbury State/1989
 Starters Returning/Lost 4/2
 Top Returnees .. Temeka Thomas, MB, 5-10, Sr., Tara Domal, MB, 6-0, Jr.
 SID Contact/Phone Joe Dier/601-325-8040
 SID Fax 601-325-3654
 Fax on Demand 770-399-3066
 Conference Code 732



MONTANA SAT., SEPT. 6 AT ANN ARBOR, MICH.

Nickname Lady Griz
 Location Missoula, Mt.
 Enrollment 11,886
 Colors Copper, Silver and Gold
 Arena/Capacity Dahlberg Arena/8,950
 Conference Big Sky
 Conference Record/Finish 7-9/T3rd
 1996 Overall Record 11-15
 Post Season Play N/A
 Head Coach/Year at School Dick Scott/20th
 Record at School/Overall 383-266/494-286
 Alma Mater/Year Montana State/1965
 Starters Returning/Lost 4/2
 Top Returnees Jaime Holleman, 5-8, RSH, Jr., Shayla Thisselle, 5-11, RSH, Jr.
 SID Contact/Phone Linda McCarthy/406-243-5414
 SID Fax 406-243-6859
 Fax on Demand 770-399-3066
 Conference Code 272



PURDUE SAT., AUG. 30 AT TALLAHASSEE, FLA.

Nickname Boilermakers
 Location West Lafayette, Ind.
 Enrollment 35,156
 Colors Old Gold and Black
 Arena/Capacity Intercollegiate Athletic Facility/1,650
 Conference Big Ten
 Conference Record/Finish 6-14/8th



EASTERN MICHIGAN
SAT., SEPT. 6 AT ANN ARBOR, MICH.

Nickname Eagles
Location Ypsilanti, Mich.
Enrollment 24,000
Colors Green and White
Arena/Capacity Bowen Field House/5,000
Conference Mid-American
Conference Record/Finish 1-16/10th
1996 Overall Record 7-21
Post Season Play N/A
Head Coach/Year at School Kim Berrington/2nd
Record at School/Overall 7-21/110-97
Alma Mater/Year South Carolina/1985
Starters Returning/Lost 5/1
Top Returnees Ramona Cox, MB, 5-10, Sr.
SID Contact/Phone Emily Griffin/313-487-0317
SID Fax 313-485-3840
Fax on Demand 770-399-3066
Conference Code 622



GEORGIA STATE
SAT., SEPT. 13 AT TALLAHASSEE, FLA.

Nickname Panthers
Location Atlanta, Ga.
Enrollment 24,000
Colors Royal Blue and White
Arena/Capacity G.S.U. Sports Arena/4,200
Conference Trans-American Athletic
Conference Record/Finish 4-2/3rd
1996 Overall Record 17-10
Post Season Play N/A
Head Coach/Year at School Sandi Stein/5th
Record at School/Overall 60-72/142-193
Alma Mater/Year Troy State/1986
Starters Returning/Lost 4/2
Top Returnees .. Quan Vong, 5-7, S, Sr., Samantha Walker, 5-9, OH, Jr.
SID Contact/Phone Ramsey Baker/404-651-3168
SID Fax 404-651-3204
FAX on Demand 770-399-3066
Conference Code 1088
Wed Site georgiastate.com



GEORGIA SOUTHERN
WED., SEPT. 10 AT TALLAHASSEE, FLA.

Nickname Eagles
Location Statesboro, Ga.
Enrollment 14,216
Colors Blue and White
Arena/Capacity Hanner Fieldhouse/4,378
Conference Southern
Conference Record/Finish 0-14/8th
1996 Overall Record 2-30
Post Season Play N/A
Head Coach/Year at School Eddie Matthews/2nd
Record at School/Overall 2-30/13-102
Alma Mater/Year North Carolina/1993
Starters Returning/Lost 3/3
Top Returnees Amy Flaherty,S,5-7,Jr. April Rhodes,S/Oh,5-8,Jr.
SID Contact/Phone Julie Ciezkowski/912-681-5239
SID Fax 912-681-0046
Fax on Demand 770-399-3066
Code 72
Web Site <http://www.gasou.edu>



FLORIDA INTERNATIONAL
FRI, SEPT. 19 AT BOCA RATON, FLA.

Nickname Golden Panthers
Location Miami, Fla.
Enrollment 30,000
Colors Blue, Yellow and Red
Arena/Capacity Golden Panther Arena/5,000
Conference Trans America Athletic
Conference Record/Finish 2-4/3rd South Div.
1996 Overall Record 12-12
Post Season Play N/A
Head Coach/Year at School John Trojaniak/11th
Record At School/Overall 115-145/283-283
Alma Mater/Year DePaul/1972
Starters Returning/Lost 5/1
Top Returnees Aimee Wells,S,Sr.
SID Contact/Phone J. Darin Darst/305-348-2084
SID Fax 305-348-2963
Fax on Demand 770-399-3066
Conference Code 8222
Web Site www.fiu.edu/~athletic



FLORIDA ATLANTIC
FRI., SEPT. 12 AT TALLAHASSEE, FLA.
FRI., SEPT. 19 AT BOCA RATON, FLA.

Nickname Owls
Location Boca Raton, Fla.
Enrollment 19,300
Colors Blue and Grey
Arena/Capacity FAU Gym/5,000
Conference Trans America Athletic
Conference Record/Finish 4-2/2nd
1995 Overall Record 15-15
Post Season Play N/A
Head Coach/Year at School Jody Brown/3rd
Record at School/Overall 27-28/same
Alma Mater/Year Graceland/1985
Starters Returning/Lost 5/1
Top Returnees Stacy Peterson, SR, OH, 5-10, Kim Pruitt, Jr, OH, 5-11
SID Contact/Phone Katrina McCormack/561-367-3163
SID Fax 561-367-2996
Fax on Demand 770-399-3066
Conference Code 8222



MERCER
SAT., SEPT. 20 AT BOCA RATON, FLA.

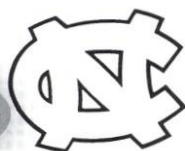
Nickname Bears
Location Macon, Ga.
Enrollment 2,356
Colors Black and Orange
Arena/Capacity Porter Gym/800
Conference Trans America Athletic
Conference Record/Finish 4-2/T1st East
1996 Overall Record 23-13
Post Season Play N/A
Head Coach/Year at School Tracy Graham-Lester/2nd
Record at School/Overall 23-13/same
Alma Mater/Year Iowa State/1991
Starters Returning/Lost 5/1
Top Returnees Courtney Schneider,5-11,MH,Jr.
SID Contact/Phone Kevin Coulombe/912-752-2735
SID Fax 912-752-5350
Fax on Demand 770-399-3066
Conference Code 8222



FLORIDA

WED., SEPT. 24 AT TALLAHASSEE, FLA.
TUE., NOV. 4 AT GAINESVILLE, FLA.

Nickname Gators
Location Gainesville, Fla.
Enrollment 40,000
Colors Orange and Blue
Arena/Capacity Stephen C. O'Connell Center/12,000
Conference Southeastern
Conference Record/Finish 14-0/1st
1996 Overall Record 37-2
Post Season Play Advanced to Final Four
Head Coach/Year at School Mary Wise/7th
Record at School/Overall 202-21/283-84
Alma Mater/Year Purdue/1981
Starters Returning/Lost 4/2
Top Returnees Nina Foster, 6-2, Sr., MB, Nikki Shade, 5-9, Sr., S
SID Contact/Phone Mary Wagner/352-375-4683, ext. 6128
SID Fax 352-375-4809
Fax on Demand 770-399-3066
Conference Code 732
Release 1596
Stats Only 1597
Web Site <http://www.uaa.ufl.edu>



NORTH CAROLINA

FRI., SEPT. 26 AT CHAPEL HILL, N.C.
FRI., OCT. 31 AT TALLAHASSEE, FLA.

Nickname Tar Heels
Location Chapel Hill, N.C.
Enrollment 24,439
Colors Carolina Blue and White
Arena/Capacity Carmichael Auditorium/10,000
Conference Atlantic Coast
Conference Record/Finish 9-7, T4th
1996 Overall Record 20-12
Post Season Play N/A
Head Coach/Year at School Joe Sagula/8th
Record at School/Overall 118-110/ 321-233
Alma Mater/Year SUNY-New Paltz/1978
Starters Returning/Lost 5/1
Top Returnees .. Tori Seibert, MH/OH, 5-11, So., Erin Berg, S, 5-10, Jr.
SID Contact/Phone Matt Bowers/919-962-2123
SID Fax 919-962-0612
Faxback 910-854-5859
Release 61850
Schedule/Roster 61854
Web Site www.adp.unc.edu/sis/athletics/home.htm



NC STATE

SAT., SEPT. 27 AT RALEIGH, N.C.
SAT., NOV. 1 AT TALLAHASSEE, FLA.

Nickname Wolfpack
Location Raleigh, N.C.
Enrollment 27,169
Colors Red and White
Arena/Capacity Reynolds Coliseum/5,000
Conference Atlantic Coast

Conference Record/Finish 4-12/8th
1996 Overall Record 21-16
Post Season Play N/A
Head Coach/Year at School Kim Hall/4th
Record at School/Overall 53-54/same
Alma Mater/Year Wheaton College/1991
Starters Returning/Lost 6/1
Top Returnees Amy Lemerman, SR, 6-1, MH
SID Contact/Phone Alison Fanner/919-515-2102
SID Fax 919-515-2898
Faxback 910-854-5859
Release 71850
Schedule/Roster 71854



CLEMSON

FRI., OCT. 3 AT TALLAHASSEE, FLA.
SUN., OCT. 26 AT CLEMSON, S.C.

Nickname Tigers
Location Clemson, S.C.
Enrollment 16,327
Colors Burnt Orange and Northwest Purple
Arena/Capacity Jervey Gym/3,500
Conference Atlantic Coast
Conference Record/Finish 9-7/T4th
1996 Overall Record 17-15
Post Season Play N/A
Head Coach/Year at School Jolene Jordan Hoover/ 5th
Record at School/Overall 95-41/188-72
Alma Mater/Year Illinois State/1985
Starters Returning/Lost 3/3
Top Returnees Michelle Thieke, S, 5-8, Sr.
SID Contact/Phone Amy Moore/864-656-2114
SID Fax 864-656-0299
Faxback 910-854-5859
Release 11850
Schedule/Roster 11854



GEORGIA TECH

SUN., OCT. 5 AT TALLAHASSEE, FLA.
SAT., OCT. 25 AT ATLANTA, GA.

Nickname Yellow Jackets
Location Atlanta, Ga.
Enrollment 13,000
Colors Old Gold and White
Arena/Capacity O'Keefe Gymnasium
Conference Atlantic Coast
Conference Record/Finish 11-5/2nd
1996 Overall Record 32-8
Post Season Play NCAA Second Round
Head Coach/Year at School Shelton Collier/7th
Record at School/Overall 169-56/465-149
Alma Mater/Year Ohio State/1977
Starters Returning/Lost 4/1
Top Returnees .. Carla Gartner, RS, 6-2, Jr., Chelle Komula, MB, 5-11, Sr.
SID Contact/Phone Erika Austin/404-894-5445
SID Fax 404-894-1248
Fax on Demand 910-854-5859
Release 41850
Schedule/Roster 41854



VIRGINIA

FRI., OCT. 10 AT CHARLOTTEVILLE, VA.
SAT., NOV. 8 AT TALLAHASSEE, FLA.

Nickname Cavaliers
 Location Charlottesville, Va.
 Enrollment 18,398
 Colors Orange and Blue
 Arena/Capacity Memorial Gym/2,500
 Conference Atlantic Coast
 Conference Record/Finish 7-9/6th
 1996 Overall Record 24-11
 Post Season Play N/A
 Head Coach/Year at School Melissa Aldrich Shelton/3rd
 Record at School/Overall 33-33
 Alma Mater/Year William & Mary/1991
 Starters Returning/Lost 4/2
 Top Returnees Amy Mitchell, 5-11, OH, Sr.
 SID Contact/Phone John Dever/804982-5500
 SID Fax 804-982-5525
 Faxback 910-854-5859
 Release 81850
 Schedule/Roster 81854



MARYLAND

SUN., OCT. 12 AT COLLEGE PARK, MD.
FRI., NOV. 7 AT TALLAHASSEE, FLA.

Nickname Terrapins
 Location College Park, Md.
 Enrollment 30,371
 Colors Red, White, Black and Gold
 Arena/Capacity Ritchie Coliseum/1,700
 Conference Atlantic Coast
 Conference Record/Finish 16-0/1st
 1996 Overall Record 26-5
 Post Season Play NCAA Second Round
 Head Coach/Year at School Janice Kruger/10th
 Record at School/Overall 180-110/532-206
 Alma Mater/Year Nebraska/1977
 Starters Returning/Lost 3/3
 Top Returnees .. Conya Jabari, 6-0, Sr., MH, Eden Kroeger, 5-7, Sr., S
 SID Contact/Phone Tricia Harris/301-314-7063
 SID Fax 301-314-9094
 Faxback 910-854-5859
 Release 51850
 Schedule/Roster 51854



SOUTH ALABAMA

THU., OCT. 16 AT TALLAHASSEE, FLA.

Nickname Lady Jaguars
 Location Mobile, Ala.
 Enrollment 12,041
 Colors Red, White and Blue
 Arena/Capacity Jaguar Gym/3,138
 Conference Sun Belt
 Conference Record/Finish 0-9/10th
 1996 Overall Record 4-23

Post Season Play N/A
 Head Coach/Year at School Ginger Mayson/3rd
 Record at School/Overall 56-26-2/123-207-2
 Alma Mater/Year South Alabama/1977
 Starters Returning/Lost 4/2
 Top Returnees Keri Powell, OH, 5-9, Jr., Lydia Ladd, OH, 5-5, Jr.
 SID Contact/Phone Doc Cagle/334-460-7035
 SID Fax 334-460-7297
 Fax on Demand 770-399-3066
 Conference Code 722



DUKE

FRI., OCT. 17 AT TALLAHASSEE, FLA.
SUN., NOV. 16 AT DURHAM, N.C.

Nickname Blue Devils
 Location Durham, N.C.
 Enrollment 6,057
 Colors Royal Blue and White
 Arena/Capacity Cameron Indoor Stadium/9,314
 Conference Atlantic Coast
 Conference Record/Finish 10-6/3rd
 1996 Overall Record 15-12
 Post Season Play N/A
 Head Coach/Year at School Linda Gensing/3rd
 Record at School/Overall 22-30/83-53
 Alma Mater/Year Iowa/1987
 Starters Returning/Lost 5/1
 Top Returnees .. Maureen Reindl, OH, 5-11, Sr, Megan Irvine, MB, 6-0, Jr.
 SID Contact/Phone Rich Pefley/919-684-2633
 SID Fax 919-684-2489
 Faxback 910-854-5859
 Release 21850
 Schedule/Roster 21854



WAKE FOREST

SUN., OCT. 19 AT TALLAHASSEE, FLA.
SAT., NOV. 15 AT WINSTON-SALEM, N.C.

Nickname Demon Deacons
 Location Winston-Salem, N.C.
 Enrollment 3,771
 Colors Old Gold and Black
 Arena/Capacity Reynolds Gym/1,500
 Conference Atlantic Coast
 Conference Record/Finish 10-23
 1996 Overall Record 10-23
 Post Season Play N/A
 Head Coach/Year at School Mary Jones/2nd
 Record at School/Overall 10-23
 Alma Mater/Year Kentucky/1991
 Starters Returning/Lost 5/1
 Top Returnees Amy Pyles, OH, 5-10, Sr.
 SID Contact/Phone TBA/910-758-5640
 SID Fax 910-758-5640
 Faxback 910-854-5859
 Release 91850
 Schedule/Roster 91854
 Web Site <http://www.wfu.edu/sports>

Ind. Career Records

MATCHES PLAYED

1. Sally Summer	189, 1980-83
2. Alicia Cross	188, 1979-82
3. Camy Davis	175, 1979-83
4. Marie Sanders	164, 1980-83
5. Julie Brown	155, 1979-83
6. Karyn Palgut	153, 1981-84
7. Carol Forsten	145, 1981-84
8. Shannon Lages	143, 1980-83
9. Maggie Philgence	138, 1987-90
10. Deanne Kaleta	137, 1985-88

KILL ATTEMPTS

1. Maggie Philgence	4793, 1987-90
2. Luiza Ramos	4321, 1991-94
3. Deanna Bosschaert	3749, 1991-94
4. Julie Todd	3470, 1984-87
5. Deanne Kaleta	3191, 1985-88
6. Joan Morris	3189, 1983-86
7. Vicki Zinkil	2800, 1989-93
8. Sally Summer	2790, 1980-83
9. Karyn Palgut	2737, 1981-84
10. Gabrielle Reece	2709, 1987-90

KILLS

1. Maggie Philgence	2110, 1987-90
2. Luiza Ramos	1847, 1991-94
3. Julie Todd	1615, 1984-87
4. Deanna Bosschaert	1436, 1991-94
5. Joan Morris	1285, 1983-86
6. Karyn Palgut	1228, 1981-84
7. Deanne Kaleta	1195, 1985-88
8. Gabrielle Reece	1179, 1987-90
9. Vicki Zinkil	1178, 1989-93
10. Sally Summer	1057, 1980-83

HITTING PERCENTAGE

1. Alicia Cross	360, 1979-82
2. Donna Krai	306, 1982-85
3. Maggie Philgence	306, 1987-90
4. Julie Brown	301, 1979-83
5. Julie Todd	295, 1984-87
6. Karyn Palgut	285, 1981-84
7. Vicki Zinkil	273, 1989-93
8. Shannon Lages	272, 1980-83
9. Sally Summer	271, 1980-83
10. Gabrielle Reece	270, 1987-90

SERVICE ACES

1. Donna Krai	188, 1982-85
2. Luiza Ramos	183, 1991-94
3. Deanna Bosschaert	170, 1991-94
4. Julie Todd	133, 1984-87
5. Karyn Palgut	132, 1981-84
6. Maggie Philgence	118, 1987-90
7. Deanne Kaleta	117, 1985-88
8. Jennifer McCall	111, 1990-93
9. Nancy Gaspardarek	104, 1986-89
10. Amy Bronson	103, 1988-90

SOLO BLOCKS

1. Gabrielle Reece	240, 1987-90
2. Vicki Zinkil	179, 1989-93
3. Bianca Stevens	129, 1989-92
4. Julie Brown	127, 1979-83
5. Julie Todd	126, 1984-87
6. Deanne Kaleta	116, 1985-88
7. Valerie Broussard	71, 1993-95
8. Maggie Philgence	69, 1987-90
9. Joan Morris	58, 1983-86
10. Shannon Lages	54, 1980-83

BLOCK ASSISTS

1. Julie Todd	609, 1984-87
2. Gabrielle Reece	507, 1987-90
3. Vicki Zinkil	432, 1989-93
4. Deanne Kaleta	402, 1985-89
5. Maggie Philgence	315, 1987-90
6. Julie Brown	270, 1979-83
7. Nancy Gaspardarek	262, 1986-89
8. Karyn Palgut	254, 1981-84
9. Amy Bronson	230, 1988-90
10. Joan Morris	228, 1983-86

TOTAL BLOCKS

1. Gabrielle Reece	747, 1987-90
2. Julie Todd	735, 1984-87
3. Vicki Zinkil	611, 1989-90
4. Alicia Cross	594, 1979-83
5. Deanne Kaleta	518, 1985-88
6. Julie Brown	504, 1979-83
7. Maggie Philgence	384, 1987-90
8. Bianca Stevens	323, 1989-92
9. Karyn Palgut	305, 1981-84
10. Valerie Broussard	294, 1993-95

SET ASSISTS

1. Nancy Gaspardarek	4804, 1986-89
2. Jennifer McCall	2888, 1990-93
3. Marie Sanders	2815, 1980-83
4. Maureen McCarthy	2297, 1994-96
5. Donna Krai	2050, 1982-85
6. Barb Mellen	1589, 1979-81
7. Sherry Cowling	1348, 1992
8. Patty Diamond	1107, 1993-96
9. Jennifer Marraffino	1054, 1987-90
10. Brandi Cumin	874, 1990-91

DIGS

1. Luiza Ramos	1771, 1991-94
2. Maggie Philgence	1185, 1987-90
3. Nancy Gaspardarek	1150, 1986-89
4. Deanne Kaleta	1083, 1985-88
5. Deanna Bosschaert	1054, 1991-94
6. Joan Morris	985, 1983-86
7. Julie Todd	908, 1984-87
8. Marybeth Sutcliffe	871, 1987-90
9. Jennifer McCall	845, 1990-93
10. Kristine Cousins	819, 1990-91

Ind. Season Records

HITTING PERCENTAGE

1. Margie Wessel	420, 1980
2. Julie Todd	382, 1981
3. Shannon Lages	360, 1980
4. Alicia Cross	356, 1981
5. Julie Todd	351, 1987
6. Maggie Philgence	333, 1990
7. Maggie Philgence	329, 1988
8. Rhonda Petty	320, 1980
9. Deanne Kaleta	319, 1988
10. Vicki Zinkil	318, 1993

KILLS

1. Maggie Philgence	579, 1990
Luiza Ramos	579, 1994
3. Joan Morris	571, 1986
Maggie Philgence	571, 1989
5. Maggie Philgence	546, 1988
6. Julie Todd	513, 1986
7. Julie Todd	466, 1987
8. Luiza Ramos	451, 1992
9. Luiza Ramos	446, 1993
10. LaToya Presberry	438, 1996

KILL ATTEMPTS

1. Luiza Ramos	1402, 1994
2. Joan Morris	1389, 1986
3. Maggie Philgence	1305, 1989
4. Maggie Philgence	1265, 1990
5. Deanna Bosschaert	1237, 1994
6. Maggie Philgence	1217, 1988
7. Kristine Cousins	1149, 1990
8. Julie Todd	1135, 1986
LaToya Presberry	1135, 1996
10. Holly Schneider	1099, 1996

TOTAL BLOCKS

1. Cordelia Campbell	286, 1979
2. Julie Todd	273, 1987
3. Alicia Cross	270, 1979
4. Julie Todd	238, 1986
5. Gabrielle Reece	212, 1989
6. Julie Brown	195, 1983
7. Julie Brown	194, 1981
8. Gabrielle Reece	189, 1990
9. Deanne Kaleta	181, 1986
10. Gabrielle Reece	175, 1987

SET ASSISTS

1. Jennifer McCall	1452, 1993
2. Nancy Gaspardarek	1410, 1989
3. Sherry Cowling	1348, 1992
4. Nancy Gaspardarek	1216, 1986
5. Nancy Gaspardarek	1159, 1987
6. Marie Sanders	1112, 1982
7. Maureen McCarthy	1101, 1994
8. Nancy Gaspardarek	1019, 1988
9. Donna Krai	994, 1985
10. Barb Mellen	984, 1981

KILLS PER GAME

1. Luiza Ramos	4.87, 1994
2. Luiza Ramos	4.60, 1993
3. Maggie Philgence	4.41, 1990
4. Maggie Philgence	4.32, 1989
5. Joan Morris	4.26, 1986

6. Maggie Philgence	4.16, 1988
7. LaToya Presberry	3.88, 1996
8. Julie Todd	3.85, 1987
9. Luiza Ramos	3.82, 1992
10. Julie Todd	3.80, 1986

SERVICE ACES

1. Donna Krai	90, 1983
2. Karyn Palgut	55, 1984
3. Karyn Palgut	54, 1982
Luiza Ramos	54, 1992
5. Marie Sanders	53, 1983
6. Alicia Cross	52, 1982
7. Marie Sanders	51, 1982
Luiza Ramos	51, 1994
9. Kristine Cousins	49, 1990
10. Lynne Fullhart	48, 1985

DIGS

1. Luiza Ramos	507, 1994
2. Joan Morris	460, 1986
3. Luiza Ramos	450, 1992
4. Kristine Cousins	440, 1990
5. Luiza Ramos	419, 1991
6. Sonia Trevino	403, 1989
7. Maggie Philgence	399, 1990
8. Luiza Ramos	394, 1993
9. Franci Rard	392, 1993
10. Kristine Cousins	379, 1991

BLOCK ASSISTS

1. Julie Todd	223, 1987
2. Julie Todd	199, 1986
3. Gabrielle Reece	143, 1989
4. Deanne Kaleta	137, 1988
5. Julie Brown	134, 1983
Deanne Kaleta	134, 1986
7. Vicki Zinkil	133, 1993
8. Julie Brown	132, 1981
Gabrielle Reece	132, 1987
10. Vicki Zinkil	127, 1989

SOLO BLOCKS

1. Gabrielle Reece	69, 1989
2. Gabrielle Reece	68, 1990
3. Julie Brown	62, 1981
4. Julie Brown	61, 1983
5. Gabrielle Reece	60, 1988
6. Vicki Zinkil	53, 1991
7. Bianca Stevens	52, 1991
8. Julie Todd	50, 1987
9. Deanne Kaleta	47, 1986
10. Marianne Tobolski	45, 1985

BLOCKS PER GAME

1. Julie Todd	2.26, 1987
2. Vicki Zinkil	1.87, 1990
3. Julie Todd	1.76, 1986
4. Vicki Zinkil	1.68, 1989
5. Gabrielle Reece	1.65, 1989
6. Gabrielle Reece	1.64, 1987
7. Julie Brown	1.55, 1983
Gabrielle Reece	1.55, 1987
9. Julie Brown	1.50, 1981
Gabrielle Reece	1.50, 1990

Team Season Records

KILLS

1. 1993	1946
2. 1988	1883
3. 1990	1861
4. 1986	1860
5. 1981	1840

HITTING %

1. 1980 season	.330
2. 1981 season	.308
3. 1988 season	.286
4. 1987 season	.264
5. 1990 season	.258

ATTEMPTS

1. 1993	4888
2. 1982	4876
3. 1986	4839
4. 1989	4761
5. 1994	4736

ACES

1. 1983	333
2. 1982	317
3. 1984	267
4. 1994	249
5. 1992	236

DIGS

1. 1986	2241
2. 1990	2181
3. 1993	2109
4. 1992	1987
5. 1989	1951

ASSISTS

1. 1993	1788
2. 1988	1648
3. 1990	1620
4. 1989	1573
5. 1981	1570

TOTAL BLOCKS

1. 1987	865
2. 1989	793
3. 1986	793
4. 1981	658
5. 1990	632

BLOCK ASSISTS

1. 1987	709
2. 1986	684
3. 1989	634
4. 1988	524
5. 1981	517

BLOCK SOLOS

1. 1989	159
2. 1987	156
3. 1983	153
4. 1990	150
5. 1991	144

Year by Year Team Records

KILLS

1979	1057
1980	1022
1981	1840
1982	1816
1983	1674
1984	1693
1985	1470
1986	1860
1987	1642
1988	1883
1989	1838
1990	1861
1991	1668
1992	1784
1993	1946
1994	1722
1995	1513
1996	1753

HITTING PERCENTAGE

1979 season	.150
1980 season	.330
1981 season	.308
1982 season	.215
1983 season	.238
1984 season	.255
1985 season	.222
1986 season	.229
1987 season	.264
1988 season	.286
1989 season	.231
1990 season	.258
1991 season	.197
1992 season	.236
1993 season	.235
1994 season	.181
1995 season	.199
1996 season	.214

ATTEMPTS

1979	3342
1980	1956
1981	4012
1982	4876
1983	4140
1984	3875
1985	3722
1986	4839
1987	4034
1988	4721
1989	4761
1990	4667
1991	4342
1992	4210
1993	4888
1994	4736
1995	4127
1996	4686

ACES

1982	317
1983	333
1984	267
1985	189
1986	200
1987	165
1988	225
1989	219
1990	217
1991	213
1992	236
1993	224
1994	249
1995	146
1996	192

DIGS

1982	282
1983	141
1984	1417
1985	1383
1986	2241

1987	1558
1988	1816
1989	1951
1990	2181
1991	1885
1992	1987
1993	2109
1994	1820
1995	1649
1996	1714

TOTAL BLOCKS

1981	658
1982	493
1983	585
1984	524
1985	518
1986	793
1987	865
1988	660
1989	793
1990	632
1991	453
1992	440
1993	493
1994	203
1995	234
1996	229

BLOCK ASSISTS

1980	163
1981	517
1982	388
1983	432
1984	455
1985	376
1986	684
1987	709
1988	524
1989	634
1990	482
1991	309
1992	309
1993	428

1994	261
1995	348
1996	291

BLOCK SOLOS

1980	47
1981	141
1982	105
1983	153
1984	69
1985	142
1986	109
1987	156
1988	136
1989	159
1990	150
1991	144
1992	131
1993	65
1994	72
1995	60
1996	83

ASSISTS

1979	1105
1980	796
1981	1570
1983	1330
1984	1269
1985	1342
1986	1514
1987	1441
1988	1648
1989	1573
1996	1620
1990	1444
1991	1556
1992	1788
1993	1539
1994	1341
1995	1528
1996	1528

Individual Leaders

KILLS

1979	Nancy Townsend	273
1980	Margie Wessel	200
1981	Alicia Cross	330
1982	Karyn Palgut	394
1983	Sally Summer	300
1984	Karyn Palgut	328
1985	Julie Todd	361
1986	Joan Morris	571
1987	Julie Todd	466
1988	Maggie Philgence	546
1989	Maggie Philgence	571
1990	Maggie Philgence	579
1991	Kristine Cousins	385
1992	Luiza Ramos	451
1993	Luiza Ramos	446
1994	Luiza Ramos	579
1995	Holly Schneider	411
1996	LaToya Presberry	438

HITTING PERCENTAGE

1979	Nancy Townsend	370
1980	Alicia Cross	520
1981	Julie Brown	382
1982	Shannon Lages	278
1983	Donna Krai	296
1984	Donna Krai	490
1985	Julie Todd	278
1986	Julie Todd	297
1987	Julie Todd	351
1988	Maggie Philgence	329
1989	Gabrielle Reece	279
1990	Maggie Philgence	333
1991	Kristine Cousins	230
1992	Sherry Cowling	390
1993	Vicki Zinkil	318
1994	Valerie Broussard	268
1995	Valerie Broussard	270
1996	Aisha Thornton	264

ATTEMPTS

1979	Nancy Townsend	773
1980	Margie Wessel	375
1981	Carol Forsten	693
1982	Sally Summer	1054
1983	Sally Summer	779
1984	Joan Morris	754
1985	Joan Morris	834
1986	Joan Morris	1389
1987	Maggie Philgence	1006
1988	Maggie Philgence	1217
1989	Maggie Philgence	1305
1990	Maggie Philgence	1265
1991	Kristine Cousins	1040
1992	Luiza Ramos	1032
1993	Luiza Ramos	998
1994	Luiza Ramos	1402
1995	Holly Schneider	1035
1996	LaToya Presberry	1135

ACES

1982	Karyn Palgut	54
1983	Donna Krai	90
1984	Karyn Palgut	55
1985	Lynne Fullhart	48
1986	Joan Morris	45
1987	Julie Todd	35
1988	Deanne Kaleta	44
1989	Amy Bronson	47
1990	Kristine Cousins	49
1991	Deanna Bosschaert	42
1992	Luiza Ramos	54
1993	Luiza Ramos	45
1994	Luiza Ramos	51
1995	Holly Schneider	29
1996	Holly Schneider	37

DIGS

1982	Karyn Palgut	62
1983	Sally Summer	228
1984	Karyn Palgut	335
1985	Joan Morris	309
1986	Joan Morris	460
1987	Deanne Kaleta	285
1988	Deanne Kaleta	327
1989	Sonia Trevino	403
1990	Kristine Cousins	440
1991	Luiza Ramos	419
1992	Luiza Ramos	450
1993	Luiza Ramos	394
1994	Luiza Ramos	507
1995	Holly Schneider	303
1996	LaToya Presberry	345

ASSISTS

1979	Barbara Mellen	492
1980	Marie Sanders	565
1981	Barbara Mellen	984
1983	Marie Sanders	732
1984	Donna Krai	604
1985	Donna Krai	994
1986	Nancy Gaspadarek	1216
1987	Nancy Gaspadarek	1159
1988	Nancy Gaspadarek	1019
1989	Nancy Gaspadarek	1410
1990	Jennifer McCall	893
1991	Brandi Cumin	837
1992	Sherry Cowling	1348
1993	Jennifer McCall	1452
1994	Maureen McCarthy	1101
1995	Maureen McCarthy	773
1996	Kensy Zulueta	802

TOTAL BLOCKS

1979	Cordelia Campbell	286
1980	Alicia Cross	68
1981	Julie Brown	194
1982	Shannon Lages	122
1983	Julie Brown	195
1984	Joan Morris	121
1985	Marianne Tobolski	134
1986	Julie Todd	238
1987	Julie Todd	273
1988	Gabrielle Reece	171
1989	Gabrielle Reece	212
1990	Gabrielle Reece	189
1991	Vicki Zinkil	133
1992	Bianca Stevens	133
1993	Vicki Zinkil	164
1994	Valerie Broussard	87
1995	Valerie Broussard	105
1996	Aisha Thornton	120

BLOCK ASSISTS

1980	Alicia Cross	45
1981	Julie Brown	132
1982	Alicia Cross	92
1983	Julie Brown	134
1984	Joan Morris	100
1985	Julie Todd	93
1986	Julie Todd	199
1987	Julie Todd	223
1988	Deanne Kaleta	137
1989	Gabrielle Reece	143
1990	Gabrielle Reece	121
1991	Vicki Zinkil	80
1992	Vicki Zinkil	74
1993	Vicki Zinkil	133
1994	Valerie Broussard	59
1995	Valerie Broussard	81
1996	Aisha Thornton	80

BLOCK SOLOS

1980	Alicia Cross	23
1981	Julie Brown	62
1982	Shannon Lages	32
1983	Julie Brown	61
1984	Joan Morris	21
1985	Marianne Tobolski	45
1986	Deanne Kaleta	47
1987	Julie Todd	50
1988	Gabrielle Reece	60
1989	Gabrielle Reece	69
1990	Gabrielle Reece	68
1991	Vicki Zinkil	53
1992	Bianca Stevens	60
1993	Vicki Zinkil	31
1994	Valerie Broussard	28
1995	Valerie Broussard	24
1996	Aisha Thornton	40

Yearly Records

1976 (33-14) HEAD COACH CECILE REYNAUD

MUW INVITATIONAL		
LSU	L	2-15, 15-7, 14-16
Montevallo	W	15-3, 15-9
North Alabama	W	15-8, 15-12
MUW	W	15-0, 15-3
Mississippi	L	13-15, 15-8, 9-15
Berry College	W	15-11, 6-15, 19-17

UNC-GREENSBORO INVITATIONAL		
Eastern Kentucky	W	10-15, 15-5, 15-12
UNC-Greensboro	W	15-9, 14-16, 15-6
George Washington	L	11-15, 15-7, 10-15
Miami-Dade South	L	3-15, 7-15
Maryland	W	15-3, 1-15, 15-13
Illinois-Chicago	L	5-15, 3-15

FSU INVITATIONAL (3RD PLACE)		
Auburn	W	15-13, 15-9
MUW	W	17-5, 15-13
North Carolina	W	11-15, 15-10, 15-13
Flagler	W	15-4, 15-9
Central Florida	W	15-9, 15-9
Alabama	L	10-15, 11-15
MUW	L	15-7, 8-15, 13-15

GEORGIA INVITATIONAL (1ST PLACE)		
Auburn	W	10-15, 15-6, 15-4
West Georgia	W	15-6, 15-11
Tenn-Chattanooga	W	15-11, 15-2
Berry College	L	15-1, 6-15, 6-15
South Carolina	W	15-7, 13-15, 15-11
Mississippi St.	W	15-7, 15-10
Berry College	W	18-16, 15-4

WEST GEORGIA INVITATIONAL (2ND PLACE)		
Tuskegee	W	15-1, 15-6
Tennessee	W	6-15, 15-6, 16-14
FIU	L	11-15, 12-15
Tennessee	W	15-5, 15-8
MUW	L	16-18, 11-15
South Florida	W	15-8, 15-5
Tennessee	W	15-6, 15-4
FIU	W	15-8, 15-13
MUW	L	14-16, 7-15

FLAGLER INVITATIONAL (2ND PLACE)		
Lake City CC	W	15-8, 15-8
Central Florida	W	15-4, 15-12
Miami-Dade North	W	15-12, 6-15, 15-2
South Florida	W	15-5, 15-5
Jacksonville	W	15-3, 15-12
Flagler	W	15-8, 15-12
Miami-Dade South	L	15-17, 7-15

STATE TOURNAMENT (2ND PLACE)		
Florida	W	15-0, 15-7
FIU	L	7-15, 9-15
Florida	W	15-3, 9-15, 15-1
FIU	W	13-15, 15-3, 15-13
FIU	L	6-15, 8-15

1977 (25-13) HEAD COACH CECILE REYNAUD

MUW INVITATIONAL		
Nicholls State	W	16-14, 10-15, 15-9
Mississippi	W	7-15, 17-15, 15-8
Columbus College	W	15-2, 15-10
Alabama	L	10-15, 3-15
MUW	L	15-6, 10-15, 11-15
LSU	L	1-15, 11-15

NEW ORLEANS INVITATIONAL (3RD PLACE)		
South Alabama	W	15-8, 15-5

Tulane	W	15-8, 15-13
SW Louisiana	W	15-8, 15-6
Northwestern St.	W	15-1, 8-15, 15-3
Central Florida	L	8-15, 15-13, 10-15
Nicholls State	W	15-5, 15-3

FSU INVITATIONAL (5TH PLACE)		
Georgia	W	16-14, 15-10
Central Florida	L	6-15, 4-15
Tenn.-Chattanooga	W	15-10, 15-3
South Carolina	L	11-15, 15-11, 12-15
Miami-Dade South	L	10-15, 2-15

GEORGIA INVITATIONAL		
South Carolina	L	9-15, 15-7, 8-15
West Georgia	W	15-10, 15-0
Tenn.-Chattanooga	W	15-13, 15-11
Georgia State	W	15-4, 15-7
Mississippi St.	W	15-8, 15-17, 15-4
College of Charleston	L	12-15, 15-7, 7-15

WEST GEORGIA INVITATIONAL (2ND PLACE)		
Valdosta State	W	15-2, 15-4
Milligan College	W	15-3, 15-7
Georgia	W	9-15, 15-2, 15-7
Appalachian St.	W	15-11, 15-2
E. Tennessee St.	W	15-9, 15-1
South Carolina	L	15-7, 9-15

STATE TOURNAMENT (1ST PLACE)		
Florida	W	10-15, 15-13, 15-7
South Florida	W	15-11, 10-15, 15-13
South Florida	W	2-15, 15-11, 17-15

REGIONAL TOURNAMENT (4TH PLACE)		
Mississippi St.	W	15-1, 15-10
Florida	W	11-15, 15-10, 15-13
Alabama	L	9-15, 10-15
South Florida	W	15-12, 15-0, 11-15, 16-14
Alabama	L	3-15, 14-16, 15-11, 9-15
MUW	L	10-15, 13-15, 15-5, 15-7, 17-19

1978 (28-14) HEAD COACH CECILE REYNAUD

MUW INVITATIONAL		
Arkansas St.	L	15-5, 17-19, 15-17
Columbus College	W	15-1, 15-0
Memphis State	W	15-11, 15-3
MUW	W	15-2, 15-11
New Orleans	W	15-3, 15-13
Mississippi	L	10-15, 15-8, 3-15, 15-5, 11-15

MIAMI-DADE INVITATIONAL (2ND PLACE)		
Florida Southern	W	16-14, 15-10
South Florida	W	15-10, 15-7
Miami-Dade South	W	11-15, 16-14, 17-15
South Florida	W	12-15, 15-9, 15-9
Miami-Dade South	W	7-15, 15-6, 15-12
Florida Tech	L	14-16, 5-15
FIU	W	15-6, 16-14
Florida Tech	L	9-15, 7-15

FSU INVITATIONAL		
New Orleans	W	15-5, 15-3
Florida Southern	W	16-14, 15-6
South Carolina	W	16-14, 15-13
Tennessee	L	12-15, 8-15
Miami	W	15-3, 15-4
South Carolina	L	15-7, 8-15, 10-15

SW MISSOURI ST. INVITATIONAL		
Illinois State	W	15-12, 15-12
Texas A&M	W	15-10, 16-14
Cincinnati	W	15-12, 15-11, 15-12
Nebraska	L	12-15, 15-10, 12-15
North Texas St.	L	5-15, 10-15

ALABAMA INVITATIONAL			
Alabama	L	7-15, 10-15, 11-15	
Mississippi	W	5-15, 15-12, 15-8, 15-11	
Cincinnati	W	15-12, 15-11, 15-12	
MUW	W	15-6, 11-15, 8-15, 15-10, 15-5	

STATE TOURNAMENT (1ST PLACE)			
South Florida	W	15-5, 7-15, 15-9	
Miami	W	15-4, 15-9, 15-4, 15-9	
Florida	W	15-5, 13-15, 15-7	

REGIONAL TOURNAMENT (1ST PLACE)			
Georgia State	W	15-4, 15-4	
Mississippi St.	W	15-9, 15-2	
Alabama	W	15-3, 15-2	
Alabama	W	15-13, 15-13, 15-4	
Mississippi	W	15-12, 10-15, 15-11, 13-15, 15-2	

NATIONAL AIAW TOURNAMENT			
SW Missouri St.	L	15-12, 11-15, 6-15	
Arizona	L	11-15, 16-14, 1-15	
Texas A&M	L	9-15, 8-15	
Pepperdine	L	5-15, 15-12, 3-15	
UCLA	L	2-15, 15-12, 7-15	

1979 (31-19) HEAD COACH CECILE REYNAUD

ALABAMA INVITATIONAL (3RD PLACE)			
South Carolina	W	15-10, 3-15, 15-8	
MUW	W	15-12, 15-7	
Central Florida	L	2-15, 15-7, 8-15	
Miami	W	15-10, 16-14	
Alabama	L	9-15, 11-15	
Oklahoma	W	15-7, 7-15, 16-14	

MUW INVITATIONAL (1ST PLACE)			
Arkansas St.	W	15-10, 15-8	
SE Louisiana	W	15-4, 15-5	
Nicholls State	W	15-6, 20-18	
MUW	W	15-9, 15-12	
Memphis State	W	15-8, 13-15, 15-12, 15-8	
Alabama	W	15-7, 15-6, 15-10	

CENTRAL FLORIDA INVITATIONAL			
Oklahoma	L	9-15, 12-15	
Alabama	L	11-15, 15-8, 5-15	
Miami-Dade South	L	8-15, 11-15	
LSU	W	15-6, 13-15, 15-13	
Auburn	W	15-5, 15-7	
Central Florida	L	7-15, 6-15	
Miami	L	9-15, 15-10, 14-16	
N. Florida JC	W	15-2, 15-5, 14-16, 15-12	
Lake City CC	W	15-8, 15-5, 15-11	

FSU INVITATIONAL			
South Florida	W	15-8, 15-7	
Auburn	W	15-6, 15-10	
North Carolina	W	15-10, 10-15, 15-12	
Florida Southern	W	15-8, 15-8	
Miami	L	12-15, 15-7, 12-15	
North Carolina	W	15-11, 15-12	
South Alabama	W	15-6, 16-14	
Gulf Coast CC	W	15-1, 15-5	

SW MISSOURI ST. INVITATIONAL			
SW Missouri St.	L	2-15, 3-15	
Houston	L	5-15, 13-15	
Iowa State	W	15-1, 15-6	
Minnesota	L	15-9, 12-15, 7-15	
Cincinnati	L	11-15, 9-15	
Gulf Coast CC	W	15-2, 15-2	
N. Florida JC	W	15-8, 15-2, 15-1	
Lake City JC	W	15-11, 15-0, 18-16	

STATE TOURNAMENT (2ND PLACE)			
Miami	L	10-15, 14-16, 7-15	

REGIONAL TOURNAMENT (1ST PLACE)			
Georgia	W	6-15, 15-7, 15-6	
Alabama	L	13-15, 15-13, 12-15	
Mississippi St.	W	15-6, 15-11	
Alabama	W	15-13, 15-6	
Miami	L	9-15, 18-16, 8-15	
Alabama	W	14-16, 15-11, 15-10	
Miami	W	15-9, 4-15, 15-9	
Miami	W	8-15, 15-6, 15-12	

NATIONAL TOURNAMENT			
Brigham Young	L	16-14, 7-15, 7-15	
Houston	L	9-15, 8-15	
UCLA	L	9-15, 5-15	

Purdue L 14-16, 14-16

1980 (43-14) HEAD COACH CECILE REYNAUD

Tennessee L 15-4, 7-15, 10-15, 8-15

ALABAMA INVITATIONAL			
Central Florida	L	8-15, 8-15	
Texas Tech	W	15-6, 10-15, 15-10	
Alabama-Birm.	W	15-9, 15-4	
Memphis State	L	13-15, 8-15	

METRO CONFERENCE TOURNAMENT (2ND PLACE)			
Louisville	W	15-7, 15-9	
Virginia Tech	W	13-15, 15-4, 15-2	
Memphis State	W	15-8, 15-9	
St. Louis	L	17-15, 12-15, 11-15	
Tulane	W	15-11, 16-14	
Cincinnati	W	15-6, 16-14	
Memphis State	W	10-15, 15-12, 15-10	
St. Louis	L	12-15, 15-7, 6-15	
Flagler	W	15-1, 15-2	
Jacksonville	W	15-4, 15-9	
Florida JC	W	15-1, 15-1	

CENTRAL FLORIDA INVITATIONAL (4TH PLACE)			
FIU	L	10-15, 9-15	
Miami	W	15-10, 15-7	
Central Florida	W	15-11, 15-10	
SC-Spartanburg	W	15-2, 15-3	
LSU	W	15-7, 15-4	
Miami	L	10-15, 13-15	
LSU	W	15-13, 15-5	
Alabama	L	10-15, 7-15	
South Alabama	W	15-5, 15-1	
Lake City CC	W	15-7, 15-6	

FSU INVITATIONAL			
MUW	W	15-10, 15-9	
South Florida	W	15-0, 15-2	
Oklahoma State	W	15-6, 15-7	
Jacksonville	W	15-0, 15-5	
Miami	W	15-13, 17-15	
Tennessee	L	15-8, 3-15, 11-15	
South Alabama	W	15-12, 15-12, 15-9	

JACKSONVILLE INVITATIONAL (1ST PLACE)			
Lake City CC	W	15-5, 15-9	
Central Florida	W	16-14, 15-11	
Montevallo	W	15-0, 15-4	
Winthrop College	W	15-6, 15-11	
Winthrop College	W	16-14, 15-2	
Central Florida	W	15-0, 15-5	
Miami	W	17-15, 10-15, 15-7	

MIAMI INVITATIONAL (3RD PLACE)			
Florida Southern	W	15-8, 16-14	
FIU	W	9-15, 16-14, 15-3	
Central Florida	W	15-1, 15-3	
Miami	L	10-15, 15-13, 9-15	
Miami-Dade South	W	15-10, 15-12	
Miami	L	8-15, 8-15	
Jacksonville	W	15-6, 15-4, 15-5	
Lake City CC	W	15-5, 15-11, 15-11	
Florida JC	W	15-8, 15-1	
Florida A&M	W	15-1, 16-14	

STATE TOURNAMENT (1ST PLACE)			
Miami	W	15-10, 9-15, 15-8, 16-14	

AIAW REGIONAL TOURNAMENT (3RD PLACE)			
South Alabama	W	15-5, 15-5	
Auburn	W	15-1, 15-2	
Mississippi	L	15-1, 9-15, 14-16	
Mississippi	W	15-8, 15-6	
Alabama	L	14-16, 15-11, 11-15	
Miami	L	13-15, 4-15	

1981 (43-8) HEAD COACH CECILE REYNAUD

Central Florida	W	17-15, 15-13
Ohio State	L	12-15, 9-15

ALABAMA INVITATIONAL (1ST PLACE)			
Georgia	W	14-16, 15-8, 15-11	
Baylor	W	15-4, 15-1	
Minnesota	W	15-12, 7-15, 15-11	
Alabama	W	15-9, 15-7	
Miami	W	15-10, 15-2	

Texas Tech	W	8-15, 15-2, 15-8
Minnesota	W	15-8, 15-12
Georgia	W	16-14, 15-9, 15-3
SW MISSOURI ST. INVITATIONAL		
SW Missouri St.	L	4-15, 13-15
Northwestern	L	7-15, 8-15
Houston	W	15-5, 15-11
Minnesota	L	12-15, 7-15
Purdue	W	15-7, 16-14
FSU INVITATIONAL (1ST PLACE)		
Jacksonville	W	15-1, 15-5
South Carolina	W	15-8, 15-4
Alabama-Birm.	W	15-6, 15-11
Alabama	W	15-7, 15-4
North Carolina	W	15-2, 15-11
Alabama	W	15-10, 15-10
Clemson	W	15-10, 15-5
Central Florida	W	15-5, 15-2, 15-4
TENNESSEE INVITATIONAL (1ST PLACE)		
Middle Tenn. St.	W	15-7, 15-3, 15-8
Rollins College	W	15-9, 15-0, 15-4
E. Tennessee St.	W	15-2, 15-6, 15-11
Memphis State	W	15-13, 15-13, 15-4
Appalachian St.	W	15-1, 15-8, 15-8
Tennessee	W	15-9, 15-11, 10-15, 15-12
Eastern Kentucky	W	15-3, 3-15, 15-4, 15-10
Kentucky	W	15-8, 4-15, 15-13, 12-15, 16-14
LSU INVITATIONAL (3RD PLACE)		
Nicholls State	W	15-3, 15-3
Tennessee	W	15-10, 15-3
Sam Houston	W	15-13, 15-10
New Orleans	W	6-15, 15-4, 15-7
LSU	L	15-8, 9-15, 7-15
Sam Houston	W	15-9, 15-9
Indian River CC	W	15-5, 15-8, 16-14
Flagler	W	15-4, 15-10
Florida A&M	W	15-1, 15-2
FAIAW STATE CHAMPIONSHIP (1ST PLACE)		
Central Florida	W	15-7, 15-3, 16-14
AIAW REGION III TOURNAMENT (1ST PLACE)		
Mississippi	W	15-3, 15-8
Miami	W	15-8, 15-12
Central Florida	W	15-12, 15-9
Georgia	W	15-1, 15-5
AIAW NATIONAL CHAMPIONSHIP (4TH PLACE)		
North Carolina	W	15-5, 15-10, 15-1
Portland State	L	15-7, 9-15, 10-15, 18-20
Minnesota	W	15-6, 15-13, 15-11
Texas	L	15-12, 3-15, 15-5, 11-15, 15-12
Texas-Arlington	W	15-11, 18-20, 15-11
Utah State	L	9-15, 15-13, 10-15

1982 (27-17)

HEAD COACH CECILE REYNAUD

LSU INVITATIONAL (1ST PLACE)		
Tulane	W	15-2, 15-10, 15-13
LSU	W	15-8, 15-8, 15-8
South Alabama	W	15-4, 11-15, 15-11, 15-8
New Orleans	W	15-0, 15-4, 15-0
Central Florida	W	15-9, 15-3, 15-10
SW MISSOURI ST. INVITATIONAL		
Illinois State	W	15-13, 15-4, 13-15, 15-8
Texas Tech	W	15-7, 15-2, 15-4
SW Missouri State	W	15-8, 15-8, 7-15, 15-9
Nebraska	L	9-15, 5-15, 15-3, 15-12, 7-15
Texas-Arlington	L	7-15, 15-8, 15-2, 7-15, 11-15
Moorehead State	W	15-9, 15-1, 8-15, 15-10
FSU INVITATIONAL (2ND PLACE)		
Mississippi St.	W	15-4, 15-6
Illinois	W	15-4, 15-6
Jacksonville	W	15-7, 15-12
Eastern Kentucky	L	15-17, 1-15
South Florida	W	15-2, 15-7
North Carolina	W	15-9, 15-6
Minnesota	W	15-11, 8-15, 15-13
Eastern Kentucky	L	15-2, 10-15, 3-15
Rutgers	L	13-15, 9-15
Central Florida	W	15-10, 15-7
Rutgers	L	9-15, 13-15
Florida Southern	L	12-15, 15-13, 12-15

Florida A&M	W	15-4, 15-10, 15-6
Texas	L	15-8, 2-15, 15-17, 15-4, 12-15
TEXAS A&M CLASSIC		
SW Missouri State	L	8-15, 15-8, 14-16, 12-15
Texas A&M	L	5-15, 16-14, 6-15, 12-15
LSU	W	15-10, 13-15, 15-4, 15-3
Kentucky	L	8-15, 15-10, 14-16, 15-3, 11-15
SW Missouri State	L	15-4, 7-15, 15-5, 5-15, 13-15
MOREHEAD STATE INVITATIONAL (1ST PLACE)		
Morehead State	W	15-10, 15-7
Memphis State	W	15-7, 15-10
Eastern Kentucky	L	8-15, 10-15
Tennessee Tech	W	15-10, 15-10
Morehead State	W	15-12, 13-15, 10-15, 15-6, 15-8
Kentucky	L	15-4, 7-15, 9-15, 15-12, 3-15
METRO CONFERENCE CHAMPIONSHIP (3RD PLACE)		
Tulane	W	15-5, 15-12
Memphis State	W	15-7, 15-1
Cincinnati	L	15-10, 13-15, 5-15
Southern Miss	W	15-3, 15-2
Virginia Tech	W	15-11, 15-3
Louisville	L	13-15, 15-12, 12-15
Louisville	L	12-15, 15-11, 16-14, 13-15, 13-15
Memphis State	W	15-5, 15-5, 15-7

1983 (31-6)

HEAD COACH CECILE REYNAUD

LSU INVITATIONAL (1ST PLACE)		
Clemson	W	15-7, 15-0, 15-4
Rice	W	15-13, 15-9, 15-7
New Orleans	W	15-9, 15-5, 15-4
Southern	W	15-8, 15-4, 15-2
LSU	W	13-15, 15-11, 8-15, 15-10, 15-8
PITT INVITATIONAL (3RD PLACE)		
Pittsburgh	L	13-15, 5-15, 15-11, 9-15
Penn State	W	15-12, 15-7, 13-15, 15-6
Louisville	L	10-15, 13-15, 15-12, 6-15
Louisville	W	15-1, 15-10, 15-3
Virginia Tech	W	14-16, 15-4, 15-9, 15-5
Cincinnati	W	12-15, 15-11, 15-12, 15-12
South Florida	W	15-5, 15-9, 15-5
FSU INVITATIONAL (1ST PLACE)		
Tenn. Chattanooga	W	15-3, 15-3, 15-9
South Carolina	W	15-12, 15-8, 15-4
Clemson	W	15-8, 15-7, 15-4
South Florida	W	15-6, 15-3, 15-10
North Carolina	W	15-7, 15-5, 15-12
Memphis State	W	15-1, 15-8, 8-15, 15-11
Southern Miss	W	15-2, 15-1, 15-4
South Carolina	W	13-15, 15-4, 9-15, 15-8, 16-14
Tulane	W	15-13, 15-5, 15-3
Florida A&M	W	15-2, 15-6, 15-8
Stetson	W	15-3, 15-2, 15-7
LONGHORN INVITATIONAL (3RD PLACE)		
Texas	L	6-15, 13-15, 3-15
LSU	W	15-6, 15-4, 15-10
San Diego State	L	11-15, 7-15, 11-15
Houston	L	15-11, 8-15, 8-15, 15-8, 14-16
Clemson	W	15-17, 15-11, 15-7, 15-9
NORTH CAROLINA INVITATIONAL (1ST PLACE)		
Duke	W	15-9, 11-15, 15-8, 15-8
Georgia	W	15-5, 15-7, 15-12
North Carolina	W	15-13, 15-12, 15-10
NC State	W	15-6, 15-3, 15-7
Rhode Island	W	15-12, 10-15, 15-3, 12-15, 15-10
METRO CONFERENCE TOURNAMENT (1ST PLACE)		
Southern Miss	W	15-0, 15-0, 15-4
Cincinnati	W	13-15, 15-12, 15-12, 15-9
South Carolina	W	13-15, 15-8, 15-9, 10-15, 15-4
NCAA TOURNAMENT 1ST ROUND		
Tennessee	L	15-12, 15-12, 1-15, 10-15, 8-15

1984 (20-13)

HEAD COACH CECILE REYNAUD

Minnesota	W	8-15, 15-10, 15-13, 15-9
Lamar	W	15-11, 15-6, 15-11
Illinois State	L	1-15, 6-15, 4-15
Texas A&M	L	4-15, 1-15, 16-14, 11-15
Southern Illinois	L	13-15, 15-12, 14-16, 15-17

LSU	W	11-15, 12-15, 15-8, 15-13, 15-8
Houston	L	15-12, 8-15, 7-15, 11-15
Central Florida	W	15-13, 15-2, 15-4
Tulane	W	15-9, 15-2, 15-10
New Orleans	W	8-15, 15-3, 15-10, 15-2
Southern Miss	W	15-8, 15-3, 15-8
Florida	W	15-11, 15-9, 15-11
Tennessee	L	8-15, 7-15, 9-15
Memphis State	W	15-2, 16-14, 15-7
Florida A&M	W	15-1, 15-2, 15-7
Florida	W	15-10, 15-5, 15-4
South Florida	W	15-11, 16-14, 15-7
Virginia Tech	W	15-10, 15-11, 15-10
South Carolina	W	7-15, 15-6, 15-10, 13-15, 16-14
Central Florida	W	15-3, 15-9, 15-8
NC State	W	15-5, 15-9, 15-11
Louisville	L	6-15, 8-15, 11-15
Cincinnati	W	15-7, 13-15, 15-5, 15-11
Eastern Kentucky	L	14-16, 7-15, 12-15
Hofstra	W	9-15, 15-11, 15-13, 9-15, 15-12
Georgia	L	10-15, 15-13, 13-15, 15-5, 13-15

METRO CONFERENCE TOURNAMENT

Virginia Tech	W	15-1, 15-6, 15-8
South Carolina	L	11-15, 11-15, 11-15
Evansville	W	15-8, 15-4, 15-4
LSU	L	11-15, 15-12, 9-15, 13-15
Brigham Young	L	14-16, 0-15, 2-15
Arizona State	L	10-15, 7-15, 4-15
Iowa	L	3-15, 2-15, 12-15

**1985 (22-10)
HEAD COACH CECILE REYNAUD**

Georgia	L	4-15, 10-15, 6-15
Florida	L	15-1, 15-4, 6-15, 1-15, 14-16
Florida	W	15-8, 12-15, 15-7, 4-15, 17-15
Central Florida	W	15-10, 15-5, 15-8
South Florida	W	17-15, 8-15, 15-9, 15-3
Florida	W	4-15, 15-7, 9-15, 15-6, 15-7
Memphis State	W	15-5, 15-13, 12-15, 15-2
Xavier	W	15-3, 15-7, 15-10
Southern Illinois	W	15-6, 3-15, 5-15, 15-12, 15-13
Florida A&M	W	15-9, 15-4, 15-2
South Florida	W	15-9, 15-4, 15-2
South Carolina	L	9-15, 15-6, 7-15, 15-3, 13-15
Virginia Tech	W	15-6, 15-13, 15-6
Mississippi	W	7-15, 15-10, 13-15, 15-1, 15-4
South Alabama	W	15-12, 15-0, 15-7
Arizona	L	7-15, 4-15, 7-15
Tennessee	W	8-15, 15-11, 15-11, 16-14
Central Florida	W	15-10, 15-9, 15-3
Kentucky	L	14-16, 18-16, 17-15, 13-15, 7-15
Southern Miss	W	15-6, 15-7, 15-8
Tulane	W	15-8, 13-15, 15-10, 15-9
Texas-Arlington	L	4-15, 14-16, 2-15
Louisville	W	16-14, 15-6, 15-5
Cincinnati	W	15-3, 15-9, 15-7
Northwestern	W	9-15, 16-14, 8-15, 15-9, 15-11
LSU	L	13-15, 16-14, 15-9, 7-15, 8-15
Florida	W	15-8, 15-8, 15-7

METRO CONFERENCE TOURNAMENT (1ST PLACE)

Southern Miss	W	15-13, 15-13, 15-3
South Carolina	W	15-1, 15-3, 13-15, 15-12
Brigham Young	L	2-15, 6-15, 5-15
Georgia	L	9-15, 16-14, 7-15, 11-15

NCAA TOURNAMENT (1ST ROUND)

Georgia	L	6-15, 1-15, 11-15
---------	---	-------------------

**1986 (25-11)
HEAD COACH CECILE REYNAUD**

Florida	W	15-11, 9-15, 15-7, 13-15, 15-10
Michigan State	W	15-10, 11-15, 15-13, 15-8
Illinois	L	11-15, 10-15, 0-15
Central Florida	W	15-3, 15-8, 15-2
Michigan State	L	13-15, 13-15, 4-15
Georgia	L	12-15, 15-13, 5-15, 4-15
South Florida	W	8-15, 15-11, 9-15, 15-4, 15-3
Florida	W	9-15, 15-1, 15-6, 15-8
Central Florida	W	15-9, 15-8, 15-8
New Mexico	L	2-15, 13-15, 13-15

LSU	L	8-15, 0-15, 6-15
Sam Houston State	L	15-13, 6-15, 14-16, 15-9, 14-16
Mississippi	W	15-13, 15-11, 15-7
Southern Miss.	W	15-1, 15-2, 15-5
South Alabama	W	15-4, 15-5, 15-7
South Florida	W	13-15, 15-5, 15-12, 15-13
South Carolina	W	6-15, 15-8, 15-8, 15-8
Virginia Tech	W	15-7, 15-3, 15-11
Florida A&M	W	15-2, 15-6, 15-4
Memphis State	W	15-10, 15-8, 13-15, 10-15, 15-4
NC State	W	15-10, 15-3, 15-9
Tennessee	L	10-15, 15-7, 15-4, 13-15, 10-15
Jacksonville	W	15-12, 15-4, 11-15, 6-15, 15-7
Purdue	L	9-15, 10-15, 13-15
Tennessee	W	13-15, 15-9, 16-14, 15-6
Pittsburgh	W	15-12, 17-15, 11-15, 5-15, 15-13
Cincinnati	W	15-8, 15-8, 15-3
Louisville	W	15-11, 15-12, 17-15
North Carolina	W	9-15, 7-15, 16-14, 15-8, 15-6
Texas Tech	L	10-15, 12-15, 12-15
Duke	L	10-15, 14-16, 12-15
Florida	W	8-15, 15-5, 15-1, 15-9

METRO CONFERENCE TOURNAMENT (1ST PLACE)

Virginia Tech	W	15-7, 16-14, 15-10
South Carolina	W	7-15, 15-13, 15-3, 15-7
Brigham Young	L	9-15, 7-15, 15-9, 5-15
Cal-Berkeley	W	15-12, 15-9, 11-15, 4-15, 15-9

**1987 (22-11)
HEAD COACH CECILE REYNAUD**

South Alabama	W	15-5, 15-7, 15-1
Minnesota	L	12-15, 6-15, 14-16
Alabama-Birm	W	15-5, 15-4, 15-4
South Florida	W	15-2, 16-14, 15-3
Georgia	W	16-14, 15-8, 15-11

FLORIDA EIGHT TOURNAMENT

Jacksonville	W	15-5, 15-3, 15-11
Florida	L	3-15, 15-8, 15-6, 10-15, 8-15
Florida Tech	W	15-4, 15-0, 15-2
South Carolina	W	15-9, 15-12, 13-15, 11-15, 15-4
Virginia Tech	W	15-5, 15-9, 15-8
Florida A&M	W	15-2, 15-12, 15-6
Florida	W	15-3, 10-15, 15-9, 15-13
Southern Miss	W	15-7, 15-0, 15-5
Jacksonville	W	15-12, 15-3, 15-10
Tulane	L	15-1, 15-12, 11-15, 16-18, 13-15
South Florida	W	15-6, 15-4, 15-10
Virginia	W	15-10, 15-6, 15-12
SW Texas State	L	15-6, 12-15, 7-15, 11-15
Louisville	W	15-7, 15-12, 15-10
Cincinnati	W	15-12, 15-10, 7-15, 7-15, 15-8
Illinois-Chicago	W	15-10, 15-4, 15-5
Memphis State	W	15-7, 15-2, 15-9
Kentucky	L	13-15, 7-15, 4-15
Central Florida	W	15-4, 15-13, 15-4
Florida	L	15-8, 12-15, 11-15, 17-15, 9-15
Duke	W	15-12, 15-6, 11-15, 15-5
NC State	L	9-15, 15-11, 12-15, 15-3, 6-15
North Carolina	L	7-15, 9-15, 15-13, 3-15

METRO CONFERENCE TOURNAMENT

South Carolina	W	15-9, 15-4, 12-15, 15-8
Cincinnati	W	15-4, 15-12, 6-15, 15-11
Houston	L	15-7, 15-3, 11-15, 8-15, 11-15
Long Beach State	L	10-15, 17-15, 15-2, 9-15, 11-15

NCAA TOURNAMENT (1ST ROUND)

Texas	L	6-15, 11-15, 9-15
-------	---	-------------------

**1988 (28-8)
HEAD COACH CECILE REYNAUD**

Alabama-Birm.	W	15-2, 15-5, 15-1
Jacksonville	W	15-10, 15-11, 15-12
Texas-Arlington	L	4-15, 7-15, 11-15
Penn State	L	15-13, 13-15, 8-15, 5-15

FLORIDA EIGHT CLASSIC (2ND PLACE)

Florida International	W	15-0, 15-1, 15-1
South Florida	W	15-13, 15-5, 15-8
Florida	L	16-14, 11-15, 13-15, 14-16
Florida A&M	W	15-6, 15-6, 15-7
Georgia	W	15-8, 15-11, 12-15, 15-9

Florida	L	10-15, 7-15, 11-15
South Carolina	L	10-15, 13-15, 15-17
Virginia	W	17-15, 15-11, 15-8
Virginia Tech	W	15-6, 15-6, 15-7
Houston	L	15-1, 5-15, 15-3, 3-15, 4-15
Lamar	W	15-7, 10-15, 15-1, 15-4
Rice	W	12-15, 11-15, 15-6, 15-9, 15-2
Memphis State	W	13-15, 15-1, 9-15, 15-5, 15-13
Central Florida	W	15-8, 15-0, 15-1
Jacksonville	W	15-4, 15-8, 15-7
Tampa	W	15-13, 15-3, 15-8
South Florida	W	15-10, 12-15, 14-16, 15-13, 15-12
Florida	W	5-15, 15-3, 15-11, 15-10
Cincinnati	W	12-15, 15-13, 13-15, 15-13, 15-4
Louisville	W	15-7, 15-6, 15-5
William & Mary	W	15-3, 11-15, 15-10, 12-15, 15-10
South Florida	W	9-15, 15-5, 15-5, 12-15, 15-7
West Virginia	W	15-12, 15-8, 11-15, 14-16, 15-4
Southern Miss.	W	15-8, 15-6, 15-5
LSU	L	10-15, 9-15, 22-20, 10-15

KENTUCKY WILDCAT CLASSIC (1ST PLACE)

Eastern Kentucky	W	15-9, 15-13, 15-4
Kentucky	W	15-10, 16-14, 13-15, 15-12
SW Texas State	W	10-15, 18-16, 15-9, 13-15, 15-1

METRO CONFERENCE TOURNAMENT (1ST PLACE)

Southern Miss	W	15-9, 15-13, 15-4
South Carolina	W	15-8, 15-13, 15-6
Cincinnati	W	10-15, 15-10, 15-7, 15-9

NCAA TOURNAMENT (1ST ROUND)

Colorado State	L	3-15, 5-15, 15-9, 7-15
----------------	---	------------------------

1989 (30-5)

HEAD COACH CECILE REYNAUD

GEORGE WASHINGTON LABOR DAY FESTIVAL (2ND PLACE)

Northern Arizona	W	15-17, 15-4, 15-7, 15-3
Georgetown	W	15-6, 15-9, 15-4
Minnesota	L	8-15, 17-15, 7-15, 7-15
Duke	W	15-7, 15-7, 7-15, 13-15, 15-5
Minnesota	L	8-15, 13-15, 11-15
Florida	W	9-15, 15-12, 15-6, 13-15, 15-10

FLORIDA EIGHT CLASSIC (1ST PLACE)

Florida International	W	15-2, 13-15, 15-8, 15-2
South Florida	W	15-13, 15-8, 7-15, 10-15, 15-13
Florida	W	15-12, 15-5, 15-4
Illinois State	W	12-15, 15-7, 12-15, 15-6, 15-9
Morehead State	W	15-4, 15-2, 15-11
Illinois State	W	15-11, 15-8, 2-15, 15-7
Kentucky	W	15-13, 6-15, 15-13, 11-15, 16-14
Tennessee	W	15-10, 16-14, 15-11
Florida A&M	W	15-6, 15-5, 15-2
Southern Miss	W	15-6, 15-6, 15-7
Tulane	W	15-4, 15-0, 11-15, 15-5
Jacksonville	W	15-1, 15-1, 15-2
Louisville	W	15-5, 15-10, 15-7
Cincinnati	W	15-8, 15-4, 8-15, 15-11
Purdue	W	15-12, 15-13, 15-13
South Alabama	W	15-8, 15-10, 15-9
South Florida	L	15-3, 5-15, 13-15, 12-15
Alabama-Birm	W	13-15, 15-6, 15-11, 15-10
Memphis State	W	14-16, 8-15, 15-11, 15-9, 15-11
Louisiana State	W	12-15, 15-9, 7-15, 15-5, 15-9
South Carolina	W	15-8, 15-4, 15-2
Virginia Tech	W	15-4, 15-9, 15-5
Florida	L	13-15, 15-9, 11-15, 10-15

KENTUCKY WILDCAT CLASSIC (1ST PLACE)

Brigham Young	W	15-6, 15-17, 8-15, 15-11, 15-11
Kentucky	W	8-15, 6-15, 15-10, 15-5, 15-5

METRO CONFERENCE TOURNAMENT (1ST PLACE)

Southern Miss	W	15-2, 15-3, 15-7
Louisville	W	15-2, 15-7, 15-9
Cincinnati	W	15-12, 15-4, 15-7

NCAA TOURNAMENT (1ST ROUND)

California	L	15-11, 11-15, 13-15, 13-15
------------	---	----------------------------

1990 (25-10)

HEAD COACH CECILE REYNAUD

UNIVERSITY OF GEORGIA TOURNAMENT (2ND PLACE)

Alabama-Birm	W	15-7, 15-13, 15-11
Butler	W	13-15, 15-9, 15-10, 15-3
Georgia	L	15-10, 15-12, 11-15, 8-15, 14-16

Eastern Washington	W	9-15, 15-5, 15-3, 15-3
Southern Miss	W	15-8, 15-9, 15-5

FLORIDA CLASSIC (1ST PLACE)

South Florida	W	15-5, 15-11, 15-5
Florida	L	11-15, 16-14, 11-15, 15-5, 12-15
Florida International	W	16-14, 15-9, 15-1
Georgia Southern	W	15-2, 15-1, 15-7

COLORADO CLASSIC (4TH PLACE)

Wyoming	L	16-14, 11-15, 15-6, 2-15, 13-15
Loyola-Marymount	L	7-15, 15-9, 4-15, 15-13, 6-15
Colorado	L	4-15, 5-15, 15-9, 5-15
SW Texas State	W	15-8, 15-6, 15-6
Texas	L	8-15, 15-11, 9-15, 15-9, 5-15
Tulane	W	15-8, 15-7, 15-12
Virginia Tech	W	15-4, 15-4, 15-5
South Carolina	W	15-5, 15-8, 15-6
South Florida	W	11-15, 15-10, 15-4, 15-12
Florida	W	15-12, 10-15, 15-4, 15-12
Memphis State	L	16-14, 15-11, 8-15, 8-15, 11-15
Florida A&M	W	15-1, 15-2, 15-4
Baylor	W	15-5, 15-7, 15-4
Florida International	W	15-10, 15-4, 15-3
Auburn	W	15-7, 15-6, 15-3
Jacksonville	W	15-4, 15-2, 15-7
Georgia	W	15-4, 15-6, 15-12
Florida	W	15-5, 15-6, 15-12
Cincinnati	W	15-8, 14-16, 15-4, 15-17, 15-9
Louisville	W	15-13, 15-3, 15-13

FLORIDA STATE CLASSIC (2ND PLACE)

Fresno State	L	15-7, 11-15, 4-15, 15-17
George Washington	W	15-2, 16-18, 15-6, 3-15, 15-3
Houston	W	15-6, 12-15, 15-10, 15-4

METRO CONFERENCE TOURNAMENT (3RD PLACE)

Virginia Tech	W	15-11, 15-9, 15-4
Louisville	L	15-3, 6-15, 14-16, 15-10, 14-16

NCAA TOURNAMENT (1ST ROUND)

Kentucky	L	12-15, 10-15, 15-10, 10-15
----------	---	----------------------------

1991 (16-15)

HEAD COACH CECILE REYNAUD

Northeast Louisiana	W	15-3, 15-2, 15-11
Central Florida	W	15-10, 15-1, 15-7

ANTEATER INVITATIONAL, IRVINE, CA (2ND PLACE)

Loyola Marymount	W	18-16, 13-15, 20-18, 17-15
Idaho	W	16-14, 15-2, 15-6
UC-Irvine	L	18-16, 15-13, 13-15, 8-15, 13-15

FLORIDA 4 TOURNAMENT (2ND PLACE)

Florida	L	12-15, 5-15, 12-15
Florida International	W	15-6, 15-9, 15-7
South Florida	W	15-9, 15-13, 15-3
Virginia	W	15-13, 6-15, 15-10, 15-6
Rice	W	15-3, 15-8, 15-11
Jacksonville	W	15-8, 15-6, 15-12
Texas A&M	W	15-7, 15-11, 11-15, 15-8
Houston	L	8-15, 7-15, 15-13, 3-15
Florida A&M	W	15-1, 15-8, 15-3
NC State	L	11-15, 15-4, 15-12, 11-15, 9-15
North Carolina	L	13-15, 7-15, 13-15
SW Texas State	W	15-13, 15-11, 15-13
Maryland	L	12-15, 8-15, 15-1, 17-15, 16-18
Duke	L	16-14, 6-15, 15-12, 14-16, 13-15
Georgia	L	13-15, 15-13, 15-17, 15-12, 13-15
Hofstra	W	15-3, 15-5, 9-15, 15-8
William & Mary	L	13-15, 15-13, 15-17, 15-12, 13-15
Clemson	W	15-12, 15-9, 15-9
Georgia	L	9-15, 12-15, 1-15
Georgia Tech	L	13-15, 7-15, 15-7, 15-4, 11-15

FLORIDA STATE CLASSIC (3RD PLACE)

Pittsburgh	L	13-15, 3-15, 15-9, 2-15
Alabama-Birm	L	15-11, 8-15, 15-4, 13-15, 12-15
Temple	W	15-1, 15-11, 15-6
Florida	L	5-15, 11-15, 5-15

ACC TOURNAMENT (3RD PLACE)

North Carolina	W	15-7, 15-6, 15-6
Virginia	L	11-15, 9-15, 16-14, 6-15

1992 (26-8)

HEAD COACH CECILE REYNAUD

Georgia State	W	15-7, 15-2, 15-3
---------------	---	------------------

South Florida	W	15-3, 15-11, 15-10
Florida	L	5-15, 6-15, 5-15

FLORIDA STATE CLASSIC

Minnesota	L	15-12, 14-16, 5-15, 5-15
Minnesota	W	15-7, 13-15, 13-15, 15-13, 15-6
McNeese State	W	15-6, 15-3, 15-12

SOUTH FLORIDA TOURNAMENT

Georgetown	W	15-8, 15-11, 15-5
Alabama	W	15-10, 15-12, 15-3
South Florida	W	15-6, 15-4, 16-14
Houston	W	11-15, 15-13, 11-15, 15-6, 15-8
Texas A&M	W	15-7, 15-8, 16-14
Jacksonville	W	15-7, 15-3, 15-7
Duke	L	6-15, 13-15, 15-12, 3-15
North Carolina	W	15-8, 15-11, 15-8

NOTRE DAME CLASSIC

Notre Dame	L	15-12, 5-15, 15-7, 1-15, 15-17
Long Beach State	L	15-11, 2-15, 9-15, 11-15
Pittsburgh	W	15-6, 12-15, 9-15, 15-10, 15-11
Florida A&M	W	15-2, 15-5, 15-1
Georgia Tech	W	15-12, 12-15, 15-6, 7-15, 15-12
South Alabama	W	15-5, 15-10, 15-3
Clemson	W	15-8, 15-7, 15-4

HOFSTRA CLASSIC

Syracuse	W	15-10, 15-10, 15-12
Hofstra	W	15-5, 15-11, 15-5
LaSalle	W	15-6, 15-1, 15-8
Maryland	W	15-13, 6-15, 15-9, 15-13
Virginia	W	15-9, 15-7, 15-3
William & Mary	W	15-10, 12-15, 15-1, 15-10
Central Florida	W	15-10, 15-2, 15-3
NC State	W	15-6, 15-5, 15-11
Florida	L	8-15, 8-15, 11-15

ACC TOURNAMENT

Virginia	W	15-7, 15-3, 15-4
Maryland	W	8-15, 15-8, 12-15, 15-10, 15-8
Duke	L	9-15, 15-9, 15-11, 11-15, 11-15

NCAA CHAMPIONSHIP (1ST ROUND)

Florida	L	9-15, 3-15, 10-15
---------	---	-------------------

1993 (24-10)

HEAD COACH CECILE REYNAUD

FLORIDA STATE CLASSIC

Auburn	W	15-6, 15-4, 15-3
South Florida	W	13-15, 15-8, 15-10, 12-15, 15-10
SW Missouri State	L	16-14, 0-15, 6-15, 7-15
Florida	W	15-0, 8-15, 4-15, 15-13, 15-13

LSU TOURNAMENT

LSU	W	15-12, 15-4, 10-15, 15-7
Loyola Marymount	W	15-12, 12-15, 15-2, 15-10
Southern Miss	W	15-6, 15-3, 15-8
Texas A&M	L	13-15, 13-15, 16-14, 11-15
Houston	W	15-11, 15-9, 15-2
Rice	W	15-10, 15-9, 8-15, 15-10
Clemson	W	15-7, 16-14, 8-15, 12-15, 15-11
Georgia Tech	W	15-8, 15-6, 15-9
Jacksonville	W	15-7, 13-15, 15-7, 15-3
NC State	W	15-12, 15-8, 15-13
NC State	W	15-3, 15-7, 15-8
Arkansas State	W	15-3, 15-9, 15-2
Florida Atlantic	W	15-8, 15-6, 15-4
Virginia	W	15-9, 15-5, 15-10
Maryland	L	13-15, 14-16, 14-16
Duke	L	13-15, 15-11, 9-15, 13-15
North Carolina	W	15-13, 8-15, 15-4, 15-12
Virginia	W	15-6, 15-8, 15-12
Maryland	W	15-9, 15-12, 15-11
Georgia Tech	L	8-15, 10-15, 15-9, 12-15
Clemson	L	4-15, 10-15, 4-15
Florida	L	6-15, 11-15, 14-16
Duke	L	3-15, 12-15, 6-15
North Carolina	W	15-10, 15-12, 13-15, 15-12
Troy State	W	15-6, 15-5, 15-3

ACC TOURNAMENT

North Carolina	W	15-13, 15-3, 15-7
Clemson	W	17-15, 15-12, 15-7
Duke	L	6-15, 6-15, 5-15

NCAA TOURNAMENT (1ST ROUND)

DePaul	W	15-8, 7-15, 15-10, 15-13
--------	---	--------------------------

NCAA TOURNAMENT (2ND ROUND)

Pacific	L	6-15, 17-15, 6-15, 9-15
---------	---	-------------------------

1994 (17-16)

HEAD COACH CECILE REYNAUD

Southern Illinois	W	15-7, 15-4, 15-6
Iowa	L	8-15, 6-15, 11-15
Southern Illinois	W	9-15, 15-5, 15-10, 15-7

VOLLEYBALL MONTHLY INVITATIONAL

Louisiana State	L	12-15, 15-12, 15-5, 13-15, 13-15
Penn State	L	4-15, 3-15, 10-15
UCLA	L	4-15, 6-15, 4-15
Florida	L	8-15, 12-15, 2-15

MINNESOTA CLASSIC

Duke	L	4-15, 6-15, 10-15
North Carolina	L	11-15, 15-8, 12-15, 15-12, 15-17
Clemson	W	13-15, 15-5, 15-4, 10-15, 15-11
Georgia Tech	L	14-16, 7-15, 1-15
North Carolina St.	W	14-16, 15-5, 15-13, 15-13
North Carolina St.	W	15-12, 15-11, 15-5
Florida Atlantic	W	15-7, 15-2, 15-7
Jacksonville	W	15-1, 15-3, 15-10
Maryland	L	15-7, 13-15, 11-15, 7-15
Virginia	W	15-6, 15-6, 15-9
Notre Dame	W	15-10, 8-15, 17-15, 15-12
Duke	L	4-15, 9-15, 7-15
North Carolina	W	15-7, 15-13, 15-12
Florida	W	15-9, 15-13, 15-12
Maryland	W	15-10, 3-15, 16-14, 15-12
Virginia	W	15-8, 15-12, 4-15, 14-16, 20-18
Clemson	L	6-15, 3-15, 5-15
Georgia Tech	L	14-16, 7-15, 1-15
Central Florida	W	15-5, 15-17, 15-13, 15-13

ACC TOURNAMENT

Maryland	W	16-14, 15-6, 5-15, 15-12
Duke	L	8-15, 7-15, 8-15

GEORGIA HOLIDAY CLASSIC

South Florida	W	11-15, 16-14, 15-6, 15-7
Georgia	L	8-15, 15-5, 6-15, 6-1

1995 (11-19)

HEAD COACH CECILE REYNAUD

SOUTH FLORIDA CLASSIC

Tennessee Tech	W	15-5, 15-7, 7-15, 15-8
Memphis	W	15-10, 15-1, 15-10
South Florida	L	15-13, 8-15, 3-15, 5-15
Jacksonville	W	15-2, 15-4, 15-7

RHODE ISLAND CLASSIC

Rhode Island	L	14-16, 3-15, 2-15
Washington	L	1-15, 14-16, 5-15
George Mason	L	11-15, 7-15, 9-15
College of Charleston	W	15-5, 15-8, 15-10
Houston	L	13-15, 15-12, 9-15, 3-15
Georgia Tech	L	4-15, 16-14, 6-15, 13-15
Clemson	L	3-15, 15-13, 7-15, 16-18
Duke	L	1-15, 7-15, 12-15
NC State	L	15-11, 5-15, 15-9, 11-15, 11-15
Georgia Tech	L	11-15, 14-16, 9-15
Clemson	L	16-14, 1-15, 9-15, 15-9, 3-15
Florida	L	15-12, 5-15, 10-15, 6-15
North Carolina	W	8-15, 15-10, 15-11, 10-15, 17-15
North Carolina	L	13-15, 15-13, 15-5, 5-15, 10-15
Jacksonville	W	15-8, 12-15, 15-9, 15-6
New Orleans	W	15-11, 15-07, 15-3
Virginia	W	13-15, 15-8, 15-10, 15-13
Maryland	L	5-15, 5-15, 11-15
Florida	L	4-15, 3-15, 2-15
NC State	L	16-18, 12-15, 8-15
Duke	L	10-15, 5-15, 9-15
South Alabama	W	15-11, 15-4, 15-8
Virginia	W	15-9, 15-11, 15-12
Maryland	L	15-5, 13-15, 11-15, 7-15

ACC TOURNAMENT

Clemson	W	15-8, 6-15, 6-15, 16-14, 15-13
Maryland	L	9-15, 11-15, 3-15

Speed Chart

Kate Hemlepp
5'11" • Freshman
Outside Hitter
Boca Raton, FL



#1

Fiona Bolten
5'9" • Junior
Setter
Tampa, FL



#2

Courtney Dipert
5'5" • Sophomore
Defensive Specialist
Lisle, IL



#3

LaToya Presberry
5'8" • Junior
Outside Hitter
Detroit, MI



#4

Christy Minko
5'7" • Senior
Defensive Specialist
Fort Myers, FL



#5

Kensy Zulueta
5'7" • Sophomore
Setter
Mission Viejo, CA



#7

Jennifer Werrick
6'0" • Freshman
Outside Hitter
Lakeland, FL



#9

#10



Holly Schneider
5'10" • Junior
Outside Hitter
Fort Wayne, IN

#11



Aisha Thornton
6'2" • Sophomore
Middle Hitter
Country Club Hills, IL

#12



Sarah Rickertsen
5'8" • Junior
Outside Hitter
Helena, AL

#13



Susan Johnson
6'1" • Senior
Middle Hitter
Fort Wayne, IN

#14



Susan Hawks
6'2" • Junior
Middle Hitter
Tampa, FL

#15

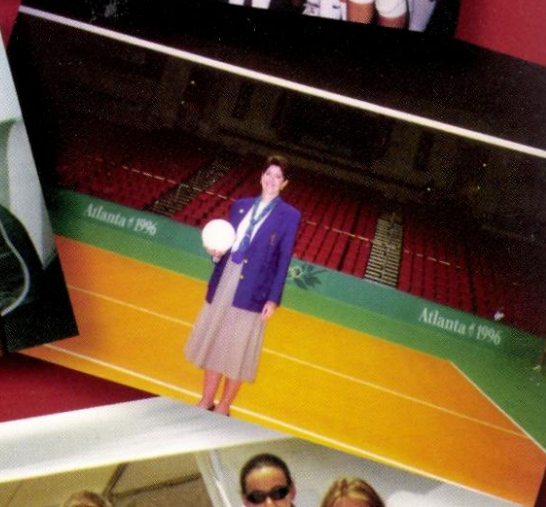


Laura Arnold
5'8" • Senior
Outside Hitter
Stuart, FL



Cecile Reynaud
Head Coach
22nd Season
SW Missouri State '75

Seminole scrapbook



CONGRATULATIONS
M. JUHL SOCCER
L. PRESSBERRY VOLLEY
ACC PLAYERS
OF THE WEEK





1997 SCHEDULE

FLORIDA STATE CLASSIC

Fri.	Aug. 29	Boston College	7:00 pm	Tallahassee, FL
Sat.	Aug. 30	Mississippi State	12:00 pm	Tallahassee, FL
Sat.	Aug. 30	Purdue	7:00 pm	Tallahassee, FL

MICHIGAN TOURNAMENT

Fri.	Sept. 5	Michigan	7:30 pm	Ann Arbor, MI
Sat.	Sept. 6	Montana	12:30 pm	Ann Arbor, MI
Sat.	Sept. 6	Eastern Michigan	5:00 pm	Ann Arbor, MI

Wed.	Sept. 10	Georgia Southern	7:00 pm	Tallahassee, FL
Fri.	Sept. 12	Florida Atlantic	7:00 pm	Tallahassee, FL
Sat.	Sept. 13	Georgia State	12:30 pm	Tallahassee, FL

FLORIDA ATLANTIC TOURNAMENT

Fri.	Sept. 19	Florida International	2:00 pm	Boca Raton, FL
Fri.	Sept. 19	Florida Atlantic	7:00 pm	Boca Raton, FL
Sat.	Sept. 20	Mercer	12:30 pm	Boca Raton, FL

Wed.	Sept. 24	Florida	7:00 pm	Tallahassee, FL
Fri.	Sept. 26	North Carolina	7:00 pm	Chapel Hill, NC
Sat.	Sept. 27	North Carolina State	6:30 pm	Raleigh, NC
Fri.	Oct. 3	Clemson	7:00 pm	Tallahassee, FL
Sun.	Oct. 5	Georgia Tech	1:00 pm	Tallahassee, FL
Fri.	Oct. 10	Virginia	7:00 pm	Charlottesville, VA
Sun.	Oct. 12	Maryland	2:00 pm	College Park, MD
Thu.	Oct. 16	South Alabama	7:00 pm	Tallahassee, FL
Fri.	Oct. 17	Duke	5:00 pm	Tallahassee, FL
Sun.	Oct. 19	Wake Forest	1:00 pm	Tallahassee, FL
Sat.	Oct. 25	Georgia Tech	7:00 pm	Atlanta, GA
Sun.	Oct. 26	Clemson	3:00 pm	Clemson, SC
Fri.	Oct. 31	North Carolina	7:00 pm	Tallahassee, FL
Sat.	Nov. 1	North Carolina State	8:00 pm	Tallahassee, FL
Tue.	Nov. 4	Florida	7:00 pm	Gainesville, FL
Fri.	Nov. 7	Maryland	7:00 pm	Tallahassee, FL
Sat.	Nov. 8	Virginia	4:00 pm	Tallahassee, FL
Sat.	Nov. 15	Wake Forest	7:00 pm	Winston-Salem, NC
Sun.	Nov. 16	Duke	2:00 pm	Durham, NC

Nov. 21 - 23

Atlantic Coast Conference Tournament Raleigh, NC

Game Televised on Sunshine Network

