

## SANTA CLARA



Sat., Sept. 11, DeKalb, Ill.

Nickname ..... Broncos  
 Location ..... Santa Clara, CA  
 Colors ..... Cardinal and White  
 Arena/Capacity ..... Toso Pavilion/5,000  
 Conference ..... West Coast  
 Conference Record/Finish ..... 11-3/2nd  
 1998 Overall Record ..... 20-10  
 Postseason Play ..... NCAA Tournament  
 Head Coach/Year at School ..... Jon Wallace/1st  
 Record at School/Career Record ..... 1st season  
 Alma Mater/Year ..... UC Santa Barbara/1989  
 Starters Returning/Lost ..... 6/0  
 Letterwinners Returning/Lost ..... 13/3  
 SID Contact/Phone ..... Jim Young/(408) 554-4661  
 SID Fax ..... (408) 554-6942  
 Fax on Demand ..... (770) 399-3066 (9378)  
 Release Code #/Stats Only # ..... 1925/1926  
 Website ..... www.santaclarabroncos.com



## NORTHERN ILLINOIS

Sat., Sept. 11, DeKalb, Ill.

Nickname ..... Huskies  
 Location ..... DeKalb, IL  
 Colors ..... Cardinal and Black  
 Arena/Capacity ..... Chick Evans Field House/6,044  
 Conference ..... Mid-American (West Division)  
 Conference Record/Finish ..... 15-3/1st (tie)  
 1998 Overall Record ..... 27-7  
 Postseason Play ..... NCAA Tournament (2nd round)  
 Head Coach/Year at School ..... Todd Kress/1st  
 Record at School/Career Record ..... 1st year/94-45  
 Alma Mater/Year ..... Cincinnati/1992  
 Starters Returning/Lost ..... 3/3  
 Letterwinners Returning/Lost ..... 6/6  
 SID Contact/Phone ..... TBA/(815) 753-1706  
 SID Fax ..... (815) 753-9540  
 Fax on Demand ..... (800) 300-2050  
 Release Code #/Stats Only # ..... 3011/3012  
 Website ..... www.niu.edu/athletics



## UC SANTA BARBARA

Wed., Sept. 15, Tallahassee, Fla.

Nickname ..... Gauchos  
 Location ..... Santa Barbara, CA  
 Colors ..... Blue and Gold  
 Arena/Capacity ..... The Thunderdome/6,000  
 Conference ..... Big West  
 Conference Record/Finish ..... 13-3/2nd in West  
 1998 Overall Record ..... 28-6  
 Postseason Play ..... NCAA Tournament (Sweet 16)  
 Head Coach/Year at School ..... Kathy Gregory/24th  
 Record at School/Career Record ..... 599-263/599-263  
 Alma Mater/Year ..... Cal State Los Angeles/1968  
 Starters Returning/Lost ..... 3/3  
 Letterwinners Returning/Lost ..... 7/6

SID Contact/Phone ..... Tim Cummins/(805) 893-8603  
 SID Fax ..... (805) 893-4537  
 Fax on Demand ..... (770) 563-1131 (292)  
 Release Code #/Stats Only # ..... 1710/1712  
 Website ..... www.gogauchos.ucsb.edu



## FLORIDA ATLANTIC

Fri., Sept. 17, Tallahassee, Fla.

Nickname ..... Owls  
 Location ..... Boca Raton, FL  
 Colors ..... Blue and Grey  
 Arena/Capacity ..... FAU Gym/5,000  
 Conference ..... Trans America Athletic  
 Conference Record/Finish ..... 4-0/1st  
 1998 Overall Record ..... 16-6  
 Postseason Play ..... NCAA Tournament  
 Head Coach/Year at School ..... Jody Brown/5th  
 Record at School/Career Record ..... 58-44/58-44  
 Alma Mater/Year ..... Graceland (Iowa)/1985  
 Starters Returning/Lost ..... 3/3  
 Letterwinners Returning/Lost ..... 6/4  
 SID Contact/Phone ..... Katrina McCormack/(561) 297-3163  
 SID Fax ..... (561) 297-2996  
 Fax on Demand ..... N/A  
 Website ..... www.fausports.com



## LIBERTY



Sat., Sept. 18, Tallahassee, Fla.

Nickname ..... Flames  
 Location ..... Lynchburg, VA  
 Colors ..... Red, White and Blue  
 Arena/Capacity ..... Vines Center/9,000  
 Conference ..... Big South  
 Conference Record/Finish ..... 9-1/1st  
 1998 Overall Record ..... 21-14  
 Postseason Play ..... None  
 Head Coach/Year at School ..... Laura Hatfield/2nd  
 Record at School/Career Record ..... 21-14/21-14  
 Alma Mater/Year ..... Liberty/1993  
 Starters Returning/Lost ..... 4/3  
 Letterwinners Returning/Lost ..... 9/3  
 SID Contact/Phone ..... Monique Scholes/(804) 582-2292  
 SID Fax ..... (804) 582-2076  
 Fax on Demand ..... (201) 363-9222  
 Release Code #/Stats Only # ..... 2330/2311  
 Website ..... www.liberty.edu/athletics

## DUKE



Fri., Sept. 24, Durham, N.C.

Fri., Oct. 29, Tallahassee, Fla.

Nickname ..... Blue Devils  
 Location ..... Durham, NC  
 Colors ..... Royal Blue and White  
 Arena/Capacity ..... Cameron Indoor Stadium/9,314  
 Conference ..... Atlantic Coast  
 Conference Record/Finish ..... 4-12/9th  
 1998 Overall Record ..... 9-20  
 Postseason Play ..... None





Head Coach/Year at School ..... Jolene Nagel/1st  
Record at School/Career Record ..... 0-0/205-134  
Alma Mater/Year ..... Edinboro/1983  
Starters Returning/Lost ..... 4/2  
Letterwinners Returning/Lost ..... 9/2  
SID Contact/Phone ..... Dwayne Harrison/(919) 684-2633  
SID Fax ..... (919) 684-2489  
Fax on Demand ..... (336) 854-5859  
Release Code # ..... 21850  
Website ..... www.GoDuke.com

## WAKE FOREST

Sat., Sept. 25, Winston-Salem, N.C.

Sun., Oct. 31, Tallahassee, Fla.



Nickname ..... Demon Deacons  
Location ..... Winston-Salem, NC  
Color ..... Old Gold & Black  
Arena/Capacity ..... Reynolds Gym/2,000  
Conference ..... Atlantic Coast  
Conference Record/Finish ..... 7-9/6th  
1998 Overall Record ..... 21-12  
Postseason Play ..... None  
Head Coach/Year at School ..... Mary Buczek/4th  
Record at School/Career Record ..... 39-59/39-59  
Alma Mater/Year ..... Kentucky/1991  
Starters Returning/Lost ..... 5/1  
Letterwinners Returning/Lost ..... 11/3  
SID Contact/Phone ..... TBA/(336) 758-5640  
SID Fax ..... (336) 758-5140  
Fax on Demand ..... (336) 854-5859  
Release Code #/Stats Only # ..... 91850/91850  
Website ..... www.wakeforestsports.com

## FLORIDA

Tue., Sept. 28, Tallahassee, Fla.

Tue., Nov. 9, Gainesville, Fla.



Nickname ..... Gators  
Location ..... Gainesville, FL  
Colors ..... Orange and Blue  
Arena/Capacity ..... Stephen C. O'Connell Center/12,000  
Conference ..... Southeastern  
Conference Record/Finish ..... 14-0/1st  
1998 Overall Record ..... 35-3  
Postseason Play ..... NCAA Tournament (final four)  
Head Coach/Year at School ..... Mary Wise/8th  
Record at School/Career Record ..... 271-28/352-91  
Alma Mater/Year ..... Purdue/1981  
Starters Returning/Lost ..... 4/3  
Letterwinners Returning/Lost ..... 7/4  
SID Contact/Phone ..... Johanna Sarnowski/(352) 375-4683  
SID Fax ..... (352) 375-4809  
Fax on Demand ..... (770) 399-3066 (732)  
Release Code #/Stats Only # ..... 1596/1597  
Website ..... www.uca.ufl.edu

Fri., Oct. 1, Tallahassee, Fla.

Sat., Oct. 23, College Park, Md.

Nickname ..... Terrapins  
Location ..... College Park, MD  
Color ..... Red, White, Black and Gold  
Arena/Capacity ..... Ritchie Coliseum/1,850  
Conference ..... Atlantic Coast  
Conference Record/Finish ..... 5-11/7th  
1998 Overall Record ..... 13-16  
Postseason Play ..... None  
Head Coach/Year at School ..... Janice Kruger/12th  
Record at School/Career Record ..... 219-128/591-230-6  
Alma Mater/Year ..... Nebraska/1977  
Starters Returning/Lost ..... 5/1  
Letterwinners Returning/Lost ..... 8/5  
SID Contact/Phone ..... Stephanie Mociun/(301) 314-0763  
SID Fax ..... (301) 314-9094  
Fax on Demand ..... (336) 854-5859  
Release Code #/Stats Only # ..... 51850/51854  
Website ..... www.umterps.com

## VIRGINIA

Sun., Oct. 3, Tallahassee, Fla.

Fri., Oct. 22, Charlottesville, Va.



Nickname ..... Cavaliers  
Location ..... Charlottesville, VA  
Colors ..... Navy and Orange  
Arena/Capacity ..... University Hall/8,457  
Conference ..... Atlantic Coast  
Conference Record/Finish ..... 12-4/2nd  
1998 Overall Record ..... 26-8  
Postseason Play ..... NCAA Tournament  
Head Coach/Year at School ..... Melissa Aldrich Shelton/5th  
Record at School/Career Record ..... 77-57/77-57  
Alma Mater/Year ..... William and Mary/1991  
Starters Returning/Lost ..... 4/2  
Letterwinners Returning/Lost ..... 9/4  
SID Contact/Phone ..... Adam Jones/(804) 982-5500  
SID Fax ..... (804) 982-5525  
Fax on Demand ..... (336) 854-5859  
Release Code #/Stats Only # ..... 81850/81852  
Website ..... www.virginiasports.com

## CLEMSON

Fri., Oct. 8, Clemson, S.C.

Fri., Nov. 5, Tallahassee, Fla.



Nickname ..... Tigers  
Location ..... Clemson, SC  
Colors ..... Orange and Purple  
Arena/Capacity ..... Jervey Gym/1,000  
Conference ..... Atlantic Coast  
Conference Record/Finish ..... 10-6/4th (tie)  
1998 Overall Record ..... 22-11  
Postseason Play ..... NCAA Tournament  
Head Coach/Year at School ..... Jolene Jordan Hoover/6th  
Record at School/Career Record ..... 61-31/236-91  
Alma Mater/Year ..... Illinois State/1986  
Starters Returning/Lost ..... 6/0

## MARYLAND



Letterwinners Returning/Lost ..... 9/1  
 SID Contact/Phone ..... Julie Pare/(864) 656-1920  
 SID Fax ..... (864) 306-0299  
 Fax on Demand ..... (336) 854-5859  
 Release Code #/Stats Only # ..... 11850/11851  
 Website ..... www.clemsonfigers.com

## GEORGIA TECH

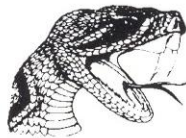
Sat., Oct. 9, Atlanta, Ga.  
 Sun, Nov. 7, Tallahassee, Fla.



Nickname ..... Yellow Jackets  
 Location ..... Atlanta, GA  
 Colors ..... Old Gold and White  
 Arena/Capacity ..... O'Keefe Gymnasium/2,000  
 Conference ..... Atlantic Coast  
 Conference Record/Finish ..... 10-6/4th (tie)  
 1998 Overall Record ..... 22-13  
 Postseason Play ..... None  
 Head Coach/Year at School ..... Shelton Collier/9th  
 Record at School/Career Record ..... 210-84/506-177  
 Alma Mater/Year ..... Ohio State/1977  
 Starters Returning/Lost ..... 5/1  
 Letterwinners Returning/Lost ..... 9/5  
 SID Contact/Phone ..... Melissa Jenkins/(404) 894-5445  
 SID Fax ..... (404) 894-1248  
 Fax on Demand ..... (336) 854-5859  
 Release Code #/Stats Only # ..... 41850/41850  
 Website ..... www.ramblinwreck.com

## FLORIDA A&M

Mon., Oct. 11, Tallahassee, Fla.



Nickname ..... Rattlerettes  
 Location ..... Tallahassee, FL  
 Colors ..... Orange and Kelly Green  
 Arena/Capacity ..... Galther Gym/3,365  
 Conference ..... Mid-Eastern Athletic  
 Conference Record/Finish ..... 6-2/4th  
 1998 Overall Record ..... 10-17  
 Postseason Play ..... None  
 Head Coach/Year at School ..... Tony Trifonov/3rd  
 Record at School/Career Record ..... 28-31/28-31  
 Alma Mater/Year ..... National Sports Academy/1990  
 Starters Returning/Lost ..... 3/3  
 Letterwinners Returning/Lost ..... 5/2  
 SID Contact/Phone ..... Azize Kilpatrick/(850) 561-2701  
 SID Fax ..... (850) 599-3200  
 Fax on Demand ..... (770) 563-1131  
 Release Code # ..... 1415  
 Website ..... www.famu.edu

## NORTH CAROLINA

Fri., Oct. 15, Tallahassee, Fla.  
 Fri., Nov. 12, Chapel Hill, N.C.



Nickname ..... Tar Heels  
 Location ..... Chapel Hill, NC  
 Color ..... Carolina Blue & White  
 Arena/Capacity ..... Carmichael Auditorium/10,000

Conference ..... Atlantic Coast  
 Conference Record/Finish ..... 13-3/1st  
 1998 Overall Record ..... 29-8  
 Postseason Play ..... NCAA Tournament (2nd round)  
 Head Coach/Year at School ..... Joe Sagula/10th  
 Record at School/Career Record ..... 161-135/364-258  
 Alma Mater/Year ..... SUNY-New Paltz/1978  
 Starters Returning/Lost ..... 4/2  
 Letterwinners Returning/Lost ..... 11/3  
 SID Contact/Phone ..... Jenny Wiedeke/ (919) 962-2123  
 SID Fax ..... (919) 962-0612  
 Fax on Demand ..... (336) 854-5859  
 Release Code #/Stats Only # ..... 71850/72250  
 Website ..... www.tarheelblue.com

## NC STATE

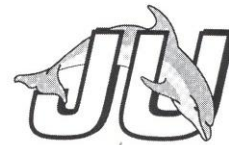
Sun., Oct. 17, Tallahassee, Fla.  
 Sat., Nov. 13, Raleigh, N.C.



Nickname ..... Wolfpack  
 Location ..... Raleigh, NC  
 Colors ..... Red and White  
 Arena/Capacity ..... Reynolds Coliseum/12,400  
 Conference ..... Atlantic Coast  
 Conference Record/Finish ..... 0-16/9th  
 1998 Overall Record ..... 11-20  
 Postseason Play ..... None  
 Head Coach/Year at School ..... Kim Hall/6th  
 Record at School/Career Record ..... 76-97/76-97  
 Alma Mater/Year ..... Wheaton College/1991  
 Starters Returning/Lost ..... 4/2  
 Letterwinners Returning/Lost ..... 8/2  
 SID Contact/Phone ..... Chuck Castellano/(919) 515-2102  
 SID Fax ..... (919) 515-2898  
 Fax on Demand ..... (336) 854-5859  
 Release Code #/Stats Only # ..... 71850/72250  
 Website ..... www.ncsu.edu/athletics

## JACKSONVILLE

Tue., Oct. 19, Jacksonville, Fla.



Nickname ..... Dolphins  
 Location ..... Jacksonville, FL  
 Colors ..... Green and White  
 Arena/Capacity ..... Swiser Gym/1,000  
 Conference ..... Trans America Athletic  
 Conference Record/Finish ..... 1-3/7th  
 1998 Overall Record ..... 12-16  
 Postseason Play ..... None  
 Head Coach/Year at School .. Ann-Marie Wessel-Indorf/6th  
 Record at School/Career Record ..... 64-90/64-90  
 Alma Mater/Year ..... Clemson/1992  
 Starters Returning/Lost ..... 2/4  
 Letterwinners Returning/Lost ..... 7/6  
 SID Contact/Phone ..... George Sorensen/(904) 745-7402  
 SID Fax ..... (904) 745-7179  
 Fax on Demand ..... N/A  
 Website ..... www.ju.edu



# individual career records since 1976

## MATCHES PLAYED

1. Sally Summer .....	189, 1980-83
2. Alicia Cross .....	188, 1979-82
3. Camy Davis .....	175, 1979-83
4. Marie Sanders .....	164, 1980-83
5. Julie Brown .....	155, 1979-83
6. Karyn Palgut .....	153, 1981-84
7. Carol Forsten .....	145, 1981-84
8. Shannon Lages .....	143, 1980-83
9. Maggie Philgence .....	138, 1987-90
10. Deanne Kaleta .....	137, 1985-88

## KILL ATTEMPTS

1. Maggie Philgence .....	4793, 1987-90
2. Holly Schneider .....	4615, 1995-98
3. Luiza Ramos .....	4321, 1991-94
4. Deanna Bosschaert .....	3749, 1991-94
5. Julie Todd .....	3470, 1984-87
6. LaToya Washington .....	3269, 1995-98
7. Deanne Kaleta .....	3191, 1985-88
8. Joan Morris .....	3189, 1983-86
9. Vicki Zinkil .....	2800, 1989-93
10. Sally Summer .....	2790, 1980-83

## KILLS

1. Maggie Philgence .....	2110, 1987-90
2. Luiza Ramos .....	1847, 1991-94
3. Holly Schneider .....	1704, 1995-98
4. Julie Todd .....	1615, 1984-87
5. Deanna Bosschaert .....	1436, 1991-94
6. Joan Morris .....	1285, 1983-86
7. LaToya Washington .....	1271, 1995-98
8. Karyn Palgut .....	1228, 1981-84
9. Deanne Kaleta .....	1195, 1985-88
10. Gabrielle Reece .....	1179, 1987-90

## HITTING PERCENTAGE

1. Alicia Cross .....	.360, 1979-82
2. <b>Aisha Thornton</b> .....	<b>.329, 1995-98</b>
3. Donna Krai .....	.306, 1982-85
4. Maggie Philgence .....	.306, 1987-90
5. Julie Brown .....	.301, 1979-83
6. Susan Hawks .....	.299, 1995-98
7. Julie Todd .....	.295, 1984-87
8. Karyn Palgut .....	.285, 1981-84
9. Vicki Zinkil .....	.273, 1989-93
10. Shannon Lages .....	.272, 1980-83

## SERVICE ACES

1. Donna Krai .....	188, 1982-85
2. Luiza Ramos .....	183, 1991-94
3. Deanna Bosschaert .....	170, 1991-94
4. Holly Schneider .....	169, 1995-98
5. Julie Todd .....	133, 1984-87
6. Karyn Palgut .....	132, 1981-84
7. Maggie Philgence .....	118, 1987-90
8. Deanne Kaleta .....	117, 1985-88
9. Jennifer McCall .....	111, 1990-93
10. Nancy Gaspadarek .....	104, 1986-89

## SOLO BLOCKS

1. Gabrielle Reece .....	240, 1987-90
2. Vicki Zinkil .....	179, 1989-93
3. Bianca Stevens .....	129, 1989-92
4. Julie Brown .....	127, 1979-83
5. Julie Todd .....	126, 1984-87
6. Deanne Kaleta .....	116, 1985-88
7. <b>Aisha Thornton</b> .....	<b>104, 1996-98</b>
8. Susan Hawks .....	79, 1995-98
9. Valerie Broussard .....	71, 1993-95
10. Maggie Philgence .....	69, 1987-90

## BLOCK ASSISTS

1. Julie Todd .....	609, 1984-87
2. Gabrielle Reece .....	507, 1987-90
3. Vicki Zinkil .....	432, 1989-93
4. Deanne Kaleta .....	402, 1985-89
5. Maggie Philgence .....	315, 1987-90
6. Susan Hawks .....	274, 1995-98
7. <b>Aisha Thornton</b> .....	<b>273, 1996-98</b>
8. Julie Brown .....	270, 1979-83
9. Nancy Gaspadarek .....	262, 1986-89
10. Karyn Palgut .....	254, 1981-84

## TOTAL BLOCKS

1. Gabrielle Reece .....	747, 1987-90
2. Julie Todd .....	735, 1984-87
3. Vicki Zinkil .....	611, 1989-90
4. Alicia Cross .....	594, 1979-83
5. Deanne Kaleta .....	518, 1985-88
6. Julie Brown .....	504, 1979-83
7. <b>Maggie Philgence</b> .....	<b>384, 1987-90</b>
8. <b>Aisha Thornton</b> .....	<b>377, 1996-98</b>
9. Susan Hawks .....	353, 1995-98
10. Bianca Stevens .....	323, 1989-92

## SET ASSISTS

1. Nancy Gaspadarek .....	4804, 1986-89
2. Fiona Bolten .....	2979, 1997-98
3. Jennifer McCall .....	2888, 1990-93
4. Marie Sanders .....	2815, 1980-83
5. Maureen McCarthy .....	2297, 1994-96
6. Donna Krai .....	2050, 1982-85
7. Barb Mellen .....	1589, 1979-81
8. Sherry Cowling .....	1348, 1992
9. <b>Kensy Zulueta</b> .....	<b>1182, 1996-98</b>
10. Patty Diamond .....	1107, 1993-96

## DIGS

1. Luiza Ramos .....	1771, 1991-94
2. Holly Schneider .....	1426, 1995-98
3. Maggie Philgence .....	1185, 1987-90
4. Nancy Gaspadarek .....	1150, 1986-89
5. Deanne Kaleta .....	1083, 1985-88
6. Deanna Bosschaert .....	1054, 1991-94
7. LaToya Washington .....	1019, 1995-98
8. Joan Morris .....	985, 1983-86
9. Julie Todd .....	908, 1984-87
10. Marybeth Sutcliffe .....	871, 1987-90



# individual season records since 1976

## HITTING PERCENTAGE

1. Margie Wessel .....	420, 1980
2. Julie Brown .....	382, 1981
3. Shannon Lages .....	360, 1980
4. <b>Aisha Thornton .....</b>	<b>366, 1997</b>
5. <b>Norisha Campbell .....</b>	<b>360, 1998</b>
6. Alicia Cross .....	356, 1981
7. Julie Todd .....	351, 1987
8. <b>Aisha Thornton .....</b>	<b>352, 1998</b>
9. Susan Hawks .....	339, 1997
10. Maggie Philgence .....	333, 1990

## KILLS

1. Maggie Philgence .....	579, 1990
Luiza Ramos .....	579, 1994
3. Joan Morris .....	571, 1986
Maggie Philgence .....	571, 1989
5. Maggie Philgence .....	546, 1988
6. Julie Todd .....	513, 1986
7. Holly Schneider .....	480, 1998
8. Julie Todd .....	466, 1987
9. Luiza Ramos .....	451, 1992
10. Luiza Ramos .....	446, 1993

## KILL ATTEMPTS

1. Luiza Ramos .....	1402, 1994
2. Joan Morris .....	1389, 1986
3. Holly Schneider .....	1321, 1998
4. Maggie Philgence .....	1305, 1989
5. Maggie Philgence .....	1265, 1990
6. Deanna Bosschaert .....	1237, 1994
7. Maggie Philgence .....	1217, 1988
8. Holly Schneider .....	1160, 1997
9. Kristine Cousins .....	1149, 1990
10. Julie Todd .....	1135, 1986
LaToya Washington .....	1135, 1996

## TOTAL BLOCKS

1. Cordelia Campbell .....	286, 1979
2. Julie Todd .....	273, 1987
3. Alicia Cross .....	270, 1979
4. Julie Todd .....	238, 1986
5. Gabrielle Reece .....	212, 1989
6. Julie Brown .....	195, 1983
7. Julie Brown .....	194, 1981
8. Gabrielle Reece .....	189, 1990
9. Deanne Kaleta .....	181, 1986
10. Gabrielle Reece .....	175, 1987

## SET ASSISTS

1. Fiona Bolten .....	1744, 1998
2. Jennifer McCall .....	1452, 1993
3. Nancy Gaspadarek .....	1410, 1989
4. Sherry Cowling .....	1348, 1992
5. Fiona Bolten .....	1235, 1997
6. Nancy Gaspadarek .....	1216, 1986
7. Nancy Gaspadarek .....	1159, 1987
8. Marie Sanders .....	1112, 1982
9. Maureen McCarthy .....	1101, 1994
10. Nancy Gaspadarek .....	1019, 1988

## KILLS PER GAME

1. Luiza Ramos .....	4.87, 1994
2. Luiza Ramos .....	4.60, 1993
3. Maggie Philgence .....	4.41, 1990
4. Maggie Philgence .....	4.32, 1989

5. Joan Morris .....	4.26, 1986
6. Maggie Philgence .....	4.16, 1988
7. LaToya Washington .....	3.88, 1996
8. <b>Aisha Thornton .....</b>	<b>3.87, 1998</b>
9. Julie Todd .....	3.85, 1987
10. Luiza Ramos .....	3.82, 1992

## SERVICE ACES

1. Donna Krai .....	90, 1983
2. Holly Schneider .....	57, 1997
3. Karyn Palgut .....	55, 1984
4. Karyn Palgut .....	54, 1982
Luiza Ramos .....	54, 1992
5. Marie Sanders .....	53, 1983
6. Alicia Cross .....	52, 1982
7. Marie Sanders .....	51, 1982
Luiza Ramos .....	51, 1994
8. Kristine Cousins .....	49, 1990

## DIGS

1. Luiza Ramos .....	507, 1994
2. Joan Morris .....	460, 1986
3. Luiza Ramos .....	450, 1992
4. Kristine Cousins .....	440, 1990
5. Holly Schneider .....	421, 1998
6. Luiza Ramos .....	419, 1991
7. Sonia Trevino .....	403, 1989
8. Holly Schneider .....	401, 1997
9. Maggie Philgence .....	399, 1990
10. Luiza Ramos .....	394, 1993

## BLOCK ASSISTS

1. Julie Todd .....	223, 1987
2. Julie Todd .....	199, 1986
3. Gabrielle Reece .....	143, 1989
4. Deanne Kaleta .....	137, 1988
5. Julie Brown .....	134, 1983
Deanne Kaleta .....	134, 1986
7. Vicki Zinkil .....	133, 1993
8. Julie Brown .....	132, 1981
Gabrielle Reece .....	132, 1987
10. Vicki Zinkil .....	127, 1989

## SOLO BLOCKS

1. Gabrielle Reece .....	69, 1989
2. Gabrielle Reece .....	68, 1990
3. Julie Brown .....	62, 1981
4. Julie Brown .....	61, 1983
5. Gabrielle Reece .....	60, 1988
6. Vicki Zinkil .....	53, 1991
7. Bianca Stevens .....	52, 1991
8. Julie Todd .....	50, 1987
9. Deanne Kaleta .....	47, 1986
10. Marianne Tobolski .....	45, 1985

## BLOCKS PER GAME

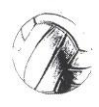
1. Julie Todd .....	2.26, 1987
2. Vicki Zinkil .....	1.87, 1990
3. Julie Todd .....	1.76, 1986
4. Vicki Zinkil .....	1.68, 1989
5. Gabrielle Reece .....	1.65, 1989
6. Gabrielle Reece .....	1.64, 1987
7. Julie Brown .....	1.55, 1983
Gabrielle Reece .....	1.55, 1987
9. Julie Brown .....	1.50, 1981
Gabrielle Reece .....	1.50, 1990



# team records since 1976

## team season records

<b>KILLS</b>	<b>ACES</b>	<b>TOTAL BLOCKS</b>
1. 1998 ..... 2189	1. 1983 ..... 333	1. 1987 ..... 865
2. 1993 ..... 1946	2. 1982 ..... 317	2. 1989 ..... 793
3. 1997 ..... 1904	3. 1984 ..... 267	3. 1986 ..... 793
4. 1988 ..... 1883	4. 1994 ..... 249	4. 1981 ..... 658
5. 1990 ..... 1861	5. 1992 ..... 236	5. 1990 ..... 632
<b>HITTING %</b>	<b>DIGS</b>	<b>BLOCK ASSISTS</b>
1. 1980 ..... .330	1. 1986 ..... 2241	1. 1987 ..... 709
2. 1981 ..... .308	2. 1990 ..... 2181	2. 1986 ..... 684
3. 1988 ..... .286	3. 1993 ..... 2109	3. 1989 ..... 634
4. 1987 ..... .264	4. 1998 ..... 2081	4. 1988 ..... 524
5. 1998 ..... .261	5. 1992 ..... 1987	5. 1981 ..... 517
<b>ATTEMPTS</b>	<b>ASSISTS</b>	<b>BLOCK SOLOS</b>
1. 1998 ..... 5328	1. 1998 ..... 1962	1. 1989 ..... 159
2. 1993 ..... 4888	2. 1993 ..... 1788	2. 1987 ..... 156
3. 1982 ..... 4876	3. 1988 ..... 1648	3. 1983 ..... 153
4. 1986 ..... 4839	4. 1997 ..... 1643	4. 1990 ..... 150
5. 1989 ..... 4761	5. 1990 ..... 1620	5. 1991 ..... 144



## year-by-year team records since 1979

<b>KILLS</b>	1992 ..... 236	1988 ..... 225	1987 ..... 865	1982 ..... 105
1979 ..... 1057	1993 ..... 235	1989 ..... 219	1988 ..... 660	1983 ..... 153
1980 ..... 1022	1994 ..... 181	1990 ..... 217	1989 ..... 793	1984 ..... 69
1981 ..... 1840	1995 ..... 199	1991 ..... 213	1990 ..... 632	1985 ..... 142
1982 ..... 1816	1996 ..... 214	1992 ..... 236	1991 ..... 453	1986 ..... 109
1983 ..... 1674	1997 ..... 260	1993 ..... 224	1992 ..... 440	1987 ..... 156
1984 ..... 1693	1998 ..... 261	1994 ..... 249	1993 ..... 493	1988 ..... 136
1985 ..... 1470		1995 ..... 146	1994 ..... 203	1989 ..... 159
1986 ..... 1860	<b>ATTEMPTS</b>	1996 ..... 192	1995 ..... 234	1990 ..... 150
1987 ..... 1642	1979 ..... 3342	1997 ..... 218	1996 ..... 229	1991 ..... 144
1988 ..... 1883	1980 ..... 1956	1998 ..... 190	1997 ..... 281	1992 ..... 131
1989 ..... 1838	1981 ..... 4012		1998 ..... 320	1993 ..... 65
1990 ..... 1861	1982 ..... 4876	<b>DIGS</b>		1994 ..... 72
1991 ..... 1668	1983 ..... 4140	1982 ..... 282	<b>BLOCK ASSISTS</b>	1995 ..... 60
1992 ..... 1784	1984 ..... 3875	1983 ..... 141	1980 ..... 163	1996 ..... 83
1993 ..... 1946	1985 ..... 3722	1984 ..... 1417	1981 ..... 517	1997 ..... 70
1994 ..... 1722	1986 ..... 4839	1985 ..... 1383	1982 ..... 388	1998 ..... 94
1995 ..... 1513	1987 ..... 4034	1986 ..... 2241	1983 ..... 432	
1996 ..... 1753	1988 ..... 4721	1987 ..... 1558	1984 ..... 455	<b>ASSISTS</b>
1997 ..... 1904	1989 ..... 4761	1988 ..... 1816	1985 ..... 376	1979 ..... 1105
1998 ..... 2189	1990 ..... 4667	1989 ..... 1951	1986 ..... 684	1980 ..... 796
	1991 ..... 4342	1990 ..... 2181	1987 ..... 709	1981 ..... 1570
	1992 ..... 4210	1991 ..... 1885	1988 ..... 524	1983 ..... 1330
	1993 ..... 4888	1992 ..... 1987	1989 ..... 634	1984 ..... 1269
<b>HITTING PERCENTAGE</b>	1994 ..... 4736	1993 ..... 2109	1990 ..... 482	1985 ..... 1342
1979 ..... .150	1995 ..... 4127	1994 ..... 1820	1991 ..... 309	1986 ..... 1514
1980 ..... .330	1996 ..... 4686	1995 ..... 1649	1992 ..... 309	1987 ..... 1441
1981 ..... .308	1997 ..... 4681	1996 ..... 1714	1993 ..... 428	1988 ..... 1648
1982 ..... .215	1998 ..... 5328	1997 ..... 1894	1994 ..... 261	1989 ..... 1573
1983 ..... .238		1998 ..... 2081	1995 ..... 348	1990 ..... 1620
1984 ..... .255	<b>ACES</b>		1996 ..... 291	1991 ..... 1444
1985 ..... .222	1982 ..... 317	<b>TOTAL BLOCKS</b>	1997 ..... 422	1992 ..... 1556
1986 ..... .229	1983 ..... 333	1981 ..... 658	1998 ..... 452	1993 ..... 1788
1987 ..... .264	1984 ..... 267	1982 ..... 493		1994 ..... 1539
1988 ..... .286	1985 ..... 189	1983 ..... 585	<b>BLOCK SOLOS</b>	1995 ..... 1341
1989 ..... .231	1986 ..... 200	1984 ..... 524	1980 ..... 47	1996 ..... 1528
1990 ..... .258	1987 ..... 165	1985 ..... 518	1981 ..... 141	1997 ..... 1643
1991 ..... .197		1986 ..... 793		1998 ..... 1962



# individual year-by-year leaders since 1979

## KILLS

1979	Nancy Townsend	273
1980	Margie Wessel	200
1981	Alicia Cross	330
1982	Karyn Palgut	394
1983	Sally Summer	300
1984	Karyn Palgut	328
1985	Julie Todd	361
1986	Joan Morris	571
1987	Julie Todd	466
1988	Maggie Philgence	546
1989	Maggie Philgence	571
1990	Maggie Philgence	579
1991	Kristine Cousins	385
1992	Luiza Ramos	451
1993	Luiza Ramos	446
1994	Luiza Ramos	579
1995	Holly Schneider	411
1996	LaToya Washington	438
1997	Holly Schneider	400
1998	Holly Schneider	480

## HITTING PERCENTAGE

1979	Nancy Townsend	.370
1980	Alicia Cross	.520
1981	Julie Brown	.382
1982	Shannon Lages	.278
1983	Donna Krai	.296
1984	Donna Krai	.490
1985	Julie Todd	.278
1986	Julie Todd	.297
1987	Julie Todd	.351
1988	Maggie Philgence	.329
1989	Gabrielle Reece	.279
1990	Maggie Philgence	.333
1991	Kristine Cousins	.230
1992	Sherry Cowling	.390
1993	Vicki Zinkil	.318
1994	Valerie Broussard	.268
1995	Valerie Broussard	.270
1996	Aisha Thornton	.264
1997	Aisha Thornton	.366
1998	Norisha Campbell	.360

## ATTEMPTS

1979	Nancy Townsend	773
1980	Margie Wessel	375
1981	Carol Forsten	693
1982	Sally Summer	1054
1983	Sally Summer	779
1984	Joan Morris	754
1985	Joan Morris	834
1986	Joan Morris	1389
1987	Maggie Philgence	1006
1988	Maggie Philgence	1217
1989	Maggie Philgence	1305
1990	Maggie Philgence	1265
1991	Kristine Cousins	1040
1992	Luiza Ramos	1032
1993	Luiza Ramos	998
1994	Luiza Ramos	1402
1995	Holly Schneider	1035
1996	LaToya Washington	1135
1997	Holly Schneider	1160
1998	Holly Schneider	1321

## ACES

1982	Karyn Palgut	54
1983	Donna Krai	90
1984	Karyn Palgut	55
1985	Lynne Fullhart	48
1986	Joan Morris	45
1987	Julie Todd	35
1988	Deanne Kaleta	44
1989	Amy Bronson	47
1990	Kristine Cousins	49
1991	Deanna Bosschaert	42
1992	Luiza Ramos	54
1993	Luiza Ramos	45
1994	Luiza Ramos	51
1995	Holly Schneider	29
1996	Holly Schneider	37
1997	Holly Schneider	57
1998	Holly Schneider	44

## DIGS

1982	Karyn Palgut	62
1983	Sally Summer	228
1984	Karyn Palgut	335
1985	Joan Morris	309
1986	Joan Morris	460
1987	Deanne Kaleta	285
1988	Deanne Kaleta	327
1989	Sonia Trevino	403
1990	Kristine Cousins	440
1991	Luiza Ramos	419
1992	Luiza Ramos	450
1993	Luiza Ramos	394
1994	Luiza Ramos	507
1995	Holly Schneider	303
1996	LaToya Washington	345
1997	Holly Schneider	401
1998	Jennifer Werrick	354

## ASSISTS

1979	Barbara Mellen	492
1980	Marie Sanders	565
1981	Barbara Mellen	984
1983	Marie Sanders	732
1984	Donna Krai	604
1985	Donna Krai	994
1986	Nancy Gaspadarek	1216
1987	Nancy Gaspadarek	1159
1988	Nancy Gaspadarek	1019
1989	Nancy Gaspadarek	1410
1990	Jennifer McCall	893
1991	Brandi Cumin	837
1992	Sherry Cowling	1348
1993	Jennifer McCall	1452
1994	Maureen McCarthy	1101
1995	Maureen McCarthy	773
1996	Kensy Zulueta	802
1997	Fiona Bolten	1235
1998	Fiona Bolten	1744

## TOTAL BLOCKS

1979	Cordelia Campbell	286
1980	Alicia Cross	68
1981	Julie Brown	194
1982	Shannon Lages	122
1983	Julie Brown	195
1984	Joan Morris	121
1985	Marianne Tobolski	134
1986	Julie Todd	238
1987	Julie Todd	273
1988	Gabrielle Reece	171
1989	Gabrielle Reece	212
1990	Gabrielle Reece	189
1991	Vicki Zinkil	133
1992	Bianca Stevens	133
1993	Vicki Zinkil	164
1994	Valerie Broussard	87
1995	Valerie Broussard	105
1996	Aisha Thornton	120
1997	Susan Hawks	135
1998	Aisha Thornton	134

## BLOCK ASSISTS

1980	Alicia Cross	45
1981	Julie Brown	132
1982	Alicia Cross	92
1983	Julie Brown	134
1984	Joan Morris	100
1985	Julie Todd	93
1986	Julie Todd	199
1987	Julie Todd	223
1988	Deanne Kaleta	137
1989	Gabrielle Reece	143
1990	Gabrielle Reece	121
1991	Vicki Zinkil	80
1992	Vicki Zinkil	74
1993	Vicki Zinkil	133
1994	Valerie Broussard	59
1995	Valerie Broussard	81
1996	Aisha Thornton	80
1997	Susan Hawks	104
1998	Susan Hawks	104

## BLOCK SOLOS

1980	Alicia Cross	23
1981	Julie Brown	62
1982	Shannon Lages	32
1983	Julie Brown	61
1984	Joan Morris	21
1985	Marianne Tobolski	45
1986	Deanne Kaleta	47
1987	Julie Todd	50
1988	Gabrielle Reece	60
1989	Gabrielle Reece	69
1990	Gabrielle Reece	68
1991	Vicki Zinkil	53
1992	Bianca Stevens	60
1993	Vicki Zinkil	31
1994	Valerie Broussard	28
1995	Valerie Broussard	24
1996	Aisha Thornton	40
1997	Susan Hawks	31
1998	Aisha Thornton	38



**year by year records**

**1976 (33-14)**

**HEAD COACH CECILE REYNAUD**



**FLAGLER INVITATIONAL (2nd Place)**

Lake City CC	W	15-8, 15-8
Central Florida	W	15-4, 15-12
Miami-Dade North	W	15-12, 6-15, 15-2
South Florida	W	15-5, 15-5
Jacksonville	W	15-3, 15-12
Flagler	W	15-8, 15-12
Miami-Dade South	L	15-17, 7-15

**STATE TOURNAMENT (2nd Place)**

Florida	W	15-0, 15-7
FIU	L	7-15, 9-15
Florida	W	15-3, 9-15, 15-1
FIU	W	13-15, 15-3, 15-13
FIU	L	6-15, 8-15

**1977 (25-13)**

**HEAD COACH CECILE REYNAUD**



**MUW INVITATIONAL**

LSU	L	2-15, 15-7, 14-16
Montevallo	W	15-3, 15-9
North Alabama	W	15-8, 15-12
MUW	W	15-0, 15-3
Mississippi	L	13-15-, 15-8, 9-15
Berry College	W	15-11, 6-15, 19-17

**UNC-GREENSBORO INVITATIONAL**

Eastern Kentucky	W	10-15, 15-5, 15-12
UNC-Greensboro	W	15-9, 14-16, 15-6
George Washington	L	11-15, 15-7, 10-15
Miami-Dade South	L	3-15, 7-15
Maryland	W	15-3, 1-15, 15-13
Illinois-Chicago	L	5-15, 3-15

**FSU INVITATIONAL (3rd Place)**

Auburn	W	15-13, 15-9
MUW	W	17-5, 15-13
North Carolina	W	11-15, 15-10, 15-13
Flagler	W	15-4, 15-9
Central Florida	W	15-9, 15-9
Alabama	L	10-15, 11-15
MUW	L	15-7, 8-15, 13-15

**GEORGIA INVITATIONAL (1st Place)**

Auburn	W	10-15, 15-6, 15-4
West Georgia	W	15-6, 15-11
Tenn-Chattanooga	W	15-11, 15-2
Berry College	L	15-1, 6-15, 6-15
South Carolina	W	15-7, 13-15, 15-11
Mississippi St.	W	15-7, 15-10
Berry College	W	18-16, 15-4

**WEST GEORGIA INVITATIONAL (2nd Place)**

Tuskegee	W	15-1, 15-6
Tennessee	W	6-15, 15-6, 16-14
FIU	L	11-15, 12-15
Tennessee	W	15-5, 15-8
MUW	L	16-18, 11-15
South Florida	W	15-8, 15-5
Tennessee	W	15-6, 15-4
FIU	W	15-8, 15-13
MUW	L	14-16, 7-15

**MUW INVITATIONAL**

Nicholls State	W	16-14, 10-15, 15-9
Mississippi	W	7-15, 17-15, 15-8
Columbus College	W	15-2, 15-10
Alabama	L	10-15, 3-15
MUW	L	15-6, 10-15, 11-15
LSU	L	1-15, 11-15

**NEW ORLEANS INVITATIONAL (3rd Place)**

South Alabama	W	15-8, 15-5
Tulane	W	15-8, 15-13
SW Louisiana	W	15-8, 15-6
Northwestern St.	W	15-1, 8-15, 15-3
Central Florida	L	8-15, 15-13, 10-15
Nicholls State	W	15-5, 15-3

**FSU INVITATIONAL (5th Place)**

Georgia	W	16-14, 15-10
Central Florida	L	6-15, 4-15
Tenn.-Chattanooga	W	15-10, 15-3
South Carolina	L	11-15, 15-11, 12-15
Miami-Dade South	L	10-15, 2-15

**GEORGIA INVITATIONAL**

South Carolina	L	9-15, 15-7, 8-15
West Georgia	W	15-10, 15-0
Tenn.-Chattanooga	W	15-13, 15-11
Georgia State	W	15-4, 15-7
Mississippi St.	W	15-8, 15-17, 15-4
College of Charleston	L	12-15, 15-7, 7-15





**WEST GEORGIA INVITATIONAL (2nd Place)**

Valdosta State	W	15-2, 15-4
Milligan College	W	15-3, 15-7
Georgia	W	9-15, 15-2, 15-7
Appalachian St.	W	15-11, 15-2
E. Tennessee St.	W	15-9, 15-1
South Carolina	L	15-7, 9-15

**STATE TOURNAMENT (1st Place)**

Florida	W	10-15, 15-13, 15-7
South Florida	W	15-11, 10-15, 15-13
South Florida	W	2-15, 15-11, 17-15

**REGIONAL TOURNAMENT (4th Place)**

Mississippi St.	W	15-1, 15-10
Florida	W	11-15, 15-10, 15-13
Alabama	L	9-15, 10-15
South Florida	W	15-12, 15-0, 11-15, 16-14
Alabama	L	3-15, 14-16, 15-11, 9-15
MUW	L	10-15, 13-15, 15-5, 15-7, 17-19

**1978 (28-14)****HEAD COACH CECILE REYNAUD****MUW INVITATIONAL**

Arkansas St.	L	15-5, 17-19, 15-17
Columbus College	W	15-1, 15-0
Memphis State	W	15-11, 15-3
MUW	W	15-2, 15-11
New Orleans	W	15-3, 15-13
Mississippi	L	10-15, 15-8, 3-15, 15-5, 11-15

**MIAMI-DADE INVITATIONAL (2nd Place)**

Florida Southern	W	16-14, 15-10
South Florida	W	15-10, 15-7
Miami-Dade South	W	11-15, 16-14, 17-15
South Florida	W	12-15, 15-9, 15-9
Miami-Dade South	W	7-15, 15-6, 15-12
Florida Tech	L	14-16, 5-15
FIU	W	15-6, 16-14
Florida Tech	L	9-15, 7-15

**FSU INVITATIONAL**

New Orleans	W	15-5, 15-3
Florida Southern	W	16-14, 15-6
South Carolina	W	16-14, 15-13
Tennessee	L	12-15, 8-15
Miami	W	15-3, 15-4
South Carolina	L	15-7, 8-15, 10-15

**SW MISSOURI ST. INVITATIONAL**

Illinois State	W	15-12, 15-12
Texas A&M	W	15-10, 16-14
Cincinnati	W	15-12, 15-11, 15-12
Nebraska	L	12-15, 15-10, 12-15

North Texas St. L 5-15, 10-15

**ALABAMA INVITATIONAL**

Alabama	L	7-15, 10-15, 11-15
Mississippi	W	5-15, 15-12, 15-8, 15-11
Cincinnati	W	15-12, 15-11, 15-12
MUW	W	15-6, 11-15, 8-15, 15-10, 15-5

**STATE TOURNAMENT (1st Place)**

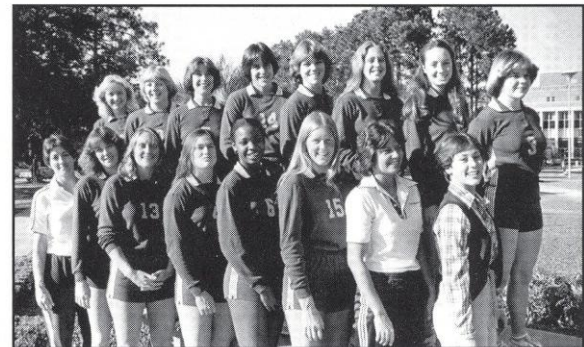
South Florida	W	15-5, 7-15, 15-9
Miami	W	15-4, 15-9, 15-4, 15-9
Florida	W	15-5, 13-15, 15-7

**REGIONAL TOURNAMENT (1st Place)**

Georgia State	W	15-4, 15-4
Mississippi St.	W	15-9, 15-2
Alabama	W	15-3, 15-2
Alabama	W	15-13, 15-13, 15-4
Mississippi	W	15-12, 10-15, 15-11, 13-15, 15-2

**NATIONAL AIAW TOURNAMENT**

SW Missouri St.	L	15-12, 11-15, 6-15
Arizona	L	11-15, 16-14, 1-15
Texas A&M	L	9-15, 8-15
Pepperdine	L	5-15, 15-12, 3-15
UCLA	L	2-15, 15-12, 7-15

**1979 (31-19)****HEAD COACH CECILE REYNAUD****ALABAMA INVITATIONAL (3rd Place)**

South Carolina	W	15-10, 3-15, 15-8
MUW	W	15-12, 15-7
Central Florida	L	2-15, 15-7, 8-15
Miami	W	15-10, 16-14
Alabama	L	9-15, 11-15
Oklahoma	W	15-7, 7-15, 16-14

**MUW INVITATIONAL (1st Place)**

Arkansas St.	W	15-10, 15-8
SE Louisiana	W	15-4, 15-5
Nicholls State	W	15-6, 20-18
MUW	W	15-9, 15-12
Memphis State	W	15-8, 13-15, 15-12, 15-8
Alabama	W	15-7, 15-6, 15-10

**CENTRAL FLORIDA INVITATIONAL**

Oklahoma	L	9-15, 12-15
Alabama	L	11-15, 15-8, 5-15
Miami-Dade South	L	8-15, 11-15
LSU	W	15-6, 13-15, 15-13
Auburn	W	15-5, 15-7
Central Florida	L	7-15, 6-15
Miami	L	9-15, 15-10, 14-16



N. Florida JC	W	15-2, 15-5, 14-16, 15-12
Lake City CC	W	15-8, 15-5, 15-11

**FSU INVITATIONAL**

South Florida	W	15-8, 15-7
Auburn	W	15-6, 15-10
North Carolina	W	15-10, 10-15, 15-12
Florida Southern	W	15-8, 15-8
Miami	L	12-15, 15-7, 12-15
North Carolina	W	15-11, 15-12
South Alabama	W	15-6, 16-14
Gulf Coast CC	W	15-1, 15-5

**SW MISSOURI ST. INVITATIONAL**

SW Missouri St.	L	2-15, 3-15
Houston	L	5-15, 13-15
Iowa State	W	15-1, 15-6
Minnesota	L	15-9, 12-15, 7-15
Cincinnati	L	11-15, 9-15
Gulf Coast CC	W	15-2, 15-2
N. Florida JC	W	15-8, 15-2, 15-1
Lake City JC	W	15-11, 15-0, 18-16

**STATE TOURNAMENT (2nd Place)**

Miami	L	10-15, 14-16, 7-15
-------	---	--------------------

**REGIONAL TOURNAMENT (1st Place)**

Georgia	W	6-15, 15-7, 15-6
Alabama	L	13-15, 15-13, 12-15
Mississippi St.	W	15-6, 15-11
Alabama	W	15-13, 15-6
Miami	L	9-15, 18-16, 8-15
Alabama	W	14-16, 15-11, 15-10
Miami	W	15-9, 4-15, 15-9
Miami	W	8-15, 15-6, 15-12

**AIAW NATIONAL TOURNAMENT**

Brigham Young	L	16-14, 7-15, 7-15
Houston	L	9-15, 8-15
UCLA	L	9-15, 5-15
Purdue	L	14-16, 14-16
Tennessee	L	15-4, 7-15, 10-15, 8-15

**1980 (43-14)**  
**HEAD COACH CECILE REYNAUD**



**ALABAMA INVITATIONAL**

Central Florida	L	8-15, 8-15
Texas Tech	W	15-6, 10-15, 15-10
Alabama-Birm.	W	15-9, 15-4
Memphis State	L	13-15, 8-15

**METRO CONFERENCE TOURNAMENT (2nd Place)**

Louisville	W	15-7, 15-9
Virginia Tech	W	13-15, 15-4, 15-2
Memphis State	W	15-8, 15-9
St. Louis	L	17-15, 12-15, 11-15
Tulane	W	15-11, 16-14
Cincinnati	W	15-6, 16-14
Memphis State	W	10-15, 15-12, 15-10
St. Louis	L	12-15, 15-7, 6-15
Flagler	W	15-1, 15-2
Jacksonville	W	15-4, 15-9
Florida JC	W	15-1, 15-1

**CENTRAL FLORIDA INVITATIONAL (4th Place)**

FIU	L	10-15, 9-15
Miami	W	15-10, 15-7
Central Florida	W	15-11, 15-10
SC-Spartanburg	W	15-2, 15-3
LSU	W	15-7, 15-4
Miami	L	10-15, 13-15
LSU	W	15-13, 15-5
Alabama	L	10-15, 7-15
South Alabama	W	15-5, 15-1
Lake City CC	W	15-7, 15-6

**FSU INVITATIONAL**

MUW	W	15-10, 15-9
South Florida	W	15-0, 15-2
Oklahoma State	W	15-6, 15-7
Jacksonville	W	15-0, 15-5
Miami	W	15-13, 17-15
Tennessee	L	15-8, 3-15, 11-15
South Alabama	W	15-12, 15-12, 15-9

**JACKSONVILLE INVITATIONAL (1st Place)**

Lake City CC	W	15-5, 15-9
Central Florida	W	16-14, 15-11
Montevallo	W	15-0, 15-4
Winthrop College	W	15-6, 15-11
Winthrop College	W	16-14, 15-2
Central Florida	W	15-0, 15-5
Miami	W	17-15, 10-15, 15-7

**MIAMI INVITATIONAL (3rd Place)**

Florida Southern	W	15-8, 16-14
FIU	W	9-15, 16-14, 15-3
Central Florida	W	15-1, 15-3
Miami	L	10-15, 15-13, 9-15
Miami-Dade South	W	15-10, 15-12
Miami	L	8-15, 8-15
Jacksonville	W	15-6, 15-4, 15-5
Lake City CC	W	15-5, 15-11, 15-11
Florida JC	W	15-8, 15-1
Florida A&M	W	15-1, 16-14

**STATE TOURNAMENT (1st Place)**

Miami	W	15-10, 9-15, 15-8, 16-14
-------	---	--------------------------

**AIAW REGIONAL TOURNAMENT (3rd Place)**

South Alabama	W	15-5, 15-5
Auburn	W	15-1, 15-2
Mississippi	L	15-1, 9-15, 14-16
Mississippi	W	15-8, 15-6
Alabama	L	14-16, 15-11, 11-15
Miami	L	13-15, 4-15

# 1981 (43-8)

HEAD COACH CECILE REYNAUD



Central Florida	W	17-15, 15-13
Ohio State	L	12-15, 9-15

### ALABAMA INVITATIONAL (1st Place)

Georgia	W	14-16, 15-8, 15-11
Baylor	W	15-4, 15-1
Minnesota	W	15-12, 7-15, 15-11
Alabama	W	15-9, 15-7
Miami	W	15-10, 15-2
Texas Tech	W	8-15, 15-2, 15-8
Minnesota	W	15-8, 15-12
Georgia	W	16-14, 15-9, 15-3

### SW MISSOURI ST. INVITATIONAL

SW Missouri St.	L	4-15, 13-15
Northwestern	L	7-15, 8-15
Houston	W	15-5, 15-11
Minnesota	L	12-15, 7-15
Purdue	W	15-7, 16-14

### FSU INVITATIONAL (1st Place)

Jacksonville	W	15-1, 15-5
South Carolina	W	15-8, 15-4
Alabama-Birm.	W	15-6, 15-11
Alabama	W	15-7, 15-4
North Carolina	W	15-2, 15-11
Alabama	W	15-10, 15-10
Clemson	W	15-10, 15-5
Central Florida	W	15-5, 15-2, 15-4

### TENNESSEE INVITATIONAL (1st Place)

Middle Tenn. St.	W	15-7, 15-3, 15-8
Rollins College	W	15-9, 15-0, 15-4
E. Tennessee St.	W	15-2, 15-6, 15-11
Memphis State	W	15-13, 15-13, 15-4
Appalachian St.	W	15-1, 15-8, 15-8
Tennessee	W	15-9, 15-11, 10-15, 15-12
Eastern Kentucky	W	15-3, 3-15, 15-4, 15-10
Kentucky	W	15-8, 4-15, 15-13, 12-15, 16-14

### LSU INVITATIONAL (3rd Place)

Nicholls State	W	15-3, 15-3
Tennessee	W	15-10, 15-3
Sam Houston	W	15-13, 15-10
New Orleans	W	6-15, 15-4, 15-7
LSU	L	15-8, 9-15, 7-15
Sam Houston	W	15-9, 15-9
Indian River CC	W	15-5, 15-8, 16-14
Flagler	W	15-4, 15-10
Florida A&M	W	15-1, 15-2

### FAIAW STATE CHAMPIONSHIP (1st Place)

Central Florida	W	15-7, 15-3, 16-14
-----------------	---	-------------------

### AIAW REGION III TOURNAMENT (1st Place)

Mississippi	W	15-3, 15-8
Miami	W	15-8, 15-12
Central Florida	W	15-12, 15-9
Georgia	W	15-1, 15-5

### AIAW NATIONAL CHAMPIONSHIP (4th Place)

North Carolina	W	15-5, 15-10, 15-1
Portland State	L	15-7, 9-15, 10-15, 18-20
Minnesota	W	15-6, 15-13, 15-11
Texas	L	15-12, 3-15, 15-5, 11-15, 15-12
Texas-Arlington	W	15-11, 18-20, 15-11
Utah State	L	9-15, 15-13, 10-15

# 1982 (27-17)

HEAD COACH CECILE REYNAUD



### LSU INVITATIONAL (1st Place)

Tulane	W	15-2, 15-10, 15-13
LSU	W	15-8, 15-8, 15-8
South Alabama	W	15-4, 11-15, 15-11, 15-8
New Orleans	W	15-0, 15-4, 15-0
Central Florida	W	15-9, 15-3, 15-10

### SW MISSOURI ST. INVITATIONAL

Illinois State	W	15-13, 15-4, 13-15, 15-8
Texas Tech	W	15-7, 15-2, 15-4
SW Missouri State	W	15-8, 15-8, 7-15, 15-9
Nebraska	L	9-15, 5-15, 15-3, 15-12, 7-15
Texas-Arlington	L	7-15, 15-8, 15-2, 7-15, 11-15
Moorehead State	W	15-9, 15-1, 8-15, 15-10

### FSU INVITATIONAL (2nd Place)

Mississippi St.	W	15-4, 15-6
Illinois	W	15-4, 15-6
Jacksonville	W	15-7, 15-12
Eastern Kentucky	L	15-17, 1-15
South Florida	W	15-2, 15-7
North Carolina	W	15-9, 15-6
Minnesota	W	15-11, 8-15, 15-13
Eastern Kentucky	L	15-2, 10-15, 3-15
Rutgers	L	13-15, 9-15
Central Florida	W	15-10, 15-7
Rutgers	L	9-15, 13-15
Florida Southern	L	12-15, 15-13, 12-15
Florida A&M	W	15-4, 15-10, 15-6
Texas	L	15-8, 2-15, 15-17, 15-4, 12-15

### TEXAS A&M CLASSIC



SW Missouri State	L	8-15, 15-8, 14-16, 12-15
Texas A&M	L	5-15, 16-14, 6-15, 12-15
LSU	W	15-10, 13-15, 15-4, 15-3
Kentucky	L	8-15, 15-10, 14-16, 15-3, 11-15
SW Missouri State	L	15-4, 7-15, 15-5, 5-15, 13-15

### **MOREHEAD STATE INVITATIONAL (1st Place)**

Morehead State	W	15-10, 15-7
Memphis State	W	15-7, 15-10
Eastern Kentucky	L	8-15, 10-15
Tennessee Tech	W	15-10, 15-10
Morehead State	W	15-12, 13-15, 10-15, 15-6, 15-8
Kentucky	L	15-4, 7-15, 9-15, 15-12, 3-15

### **METRO CONFERENCE CHAMPIONSHIP (3rd Place)**

Tulane	W	15-5, 15-12
Memphis State	W	15-7, 15-1
Cincinnati	L	15-10, 13-15, 5-15
Southern Miss	W	15-3, 15-2
Virginia Tech	W	15-11, 15-3
Louisville	L	13-15, 15-12, 12-15
Louisville	L	12-15, 15-11, 16-14, 13-15, 13-15
Memphis State	W	15-5, 15-5, 15-7

## **1983 (31-6)**

**HEAD COACH CECILE REYNAUD**



### **LSU INVITATIONAL (1st Place)**

Clemson	W	15-7, 15-0, 15-4
Rice	W	15-13, 15-9, 15-7
New Orleans	W	15-9, 15-5, 15-4
Southern	W	15-8, 15-4, 15-2
LSU	W	13-15, 15-11, 8-15, 15-10, 15-8

### **PITT INVITATIONAL (3rd Place)**

Pittsburgh	L	13-15, 5-15, 15-11, 9-15
Penn State	W	15-12, 15-7, 13-15, 15-6
Louisville	L	10-15, 13-15, 15-12, 6-15
Louisville	W	15-1, 15-10, 15-3
Virginia Tech	W	14-16, 15-4, 15-9, 15-5
Cincinnati	W	12-15, 15-11, 15-12, 15-12
South Florida	W	15-5, 15-9, 15-5

### **FSU INVITATIONAL (1st Place)**

Tenn. Chattanooga	W	15-3, 15-3, 15-9
South Carolina	W	15-12, 15-8, 15-4
Clemson	W	15-8, 15-7, 15-4
South Florida	W	15-6, 15-3, 15-10
North Carolina	W	15-7, 15-5, 15-12
Memphis State	W	15-1, 15-8, 8-15, 15-11

Southern Miss	W	15-2, 15-1, 15-4
South Carolina	W	13-15, 15-4, 9-15, 15-8, 16-14
Tulane	W	15-13, 15-5, 15-3
Florida A&M	W	15-2, 15-6, 15-8
Stetson	W	15-3, 15-2, 15-7

### **LONGHORN INVITATIONAL (3rd Place)**

Texas	L	6-15, 13-15, 3-15
LSU	W	15-6, 15-4, 15-10
San Diego State	L	11-15, 7-15, 11-15
Houston	L	15-11, 8-15, 8-15, 15-8, 14-16
Clemson	W	15-17, 15-11, 15-7, 15-9

### **NORTH CAROLINA INVITATIONAL (1st Place)**

Duke	W	15-9, 11-15, 15-8, 15-8
Georgia	W	15-5, 15-7, 15-12
North Carolina	W	15-13, 15-12, 15-10
NC State	W	15-6, 15-3, 15-7
Rhode Island	W	15-12, 10-15, 15-3, 12-15, 15-10

### **METRO CONFERENCE TOURNAMENT (1st Place)**

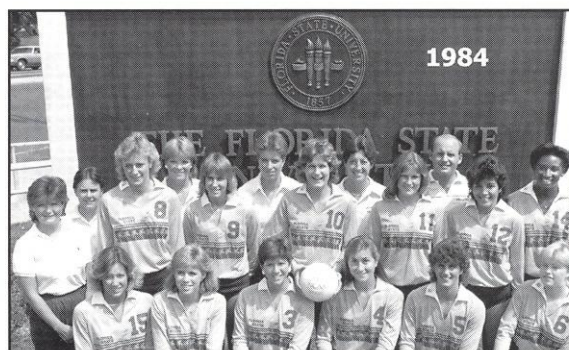
Southern Miss	W	15-0, 15-0, 15-4
Cincinnati	W	13-15, 15-12, 15-12, 15-9
South Carolina	W	13-15, 15-8, 15-9, 10-15, 15-4

### **NCAA TOURNAMENT 1st Round**

Tennessee	L	15-12, 15-12, 1-15, 10-15, 8-15
-----------	---	---------------------------------

## **1984 (20-13)**

**HEAD COACH CECILE REYNAUD**



Minnesota	W	8-15, 15-10, 15-13, 15-9
Lamar	W	15-11, 15-6, 15-11
Illinois State	L	1-15, 6-15, 4-15
Texas A&M	L	4-15, 1-15, 16-14, 11-15
Southern Illinois	L	13-15, 15-12, 14-16, 15-17
LSU	W	11-15, 12-15, 15-8, 15-13, 15-8
Houston	L	15-12, 8-15, 7-15, 11-15
Central Florida	W	15-13, 15-2, 15-4
Tulane	W	15-9, 15-2, 15-10
New Orleans	W	8-15, 15-3, 15-10, 15-2
Southern Miss	W	15-8, 15-3, 15-8
Florida	W	15-11, 15-9, 15-11
Tennessee	L	8-15, 7-15, 9-15
Memphis State	W	15-2, 16-14, 15-7
Florida A&M	W	15-1, 15-2, 15-7
Florida	W	15-10, 15-5, 15-4
South Florida	W	15-11, 16-14, 15-7
Virginia Tech	W	15-10, 15-11, 15-10
South Carolina	W	7-15, 15-6, 15-10, 13-15, 16-14
Central Florida	W	15-3, 15-9, 15-8
NC State	W	15-5, 15-9, 15-11



Louisville	L	6-15, 8-15, 11-15
Cincinnati	W	15-7, 13-15, 15-5, 15-11
Eastern Kentucky	L	14-16, 7-15, 12-15
Hofstra	W	9-15, 15-11, 15-13, 9-15, 15-12
Georgia	L	10-15, 15-13, 13-15, 15-5, 13-15

**METRO CONFERENCE TOURNAMENT**

Virginia Tech	W	15-1, 15-6, 15-8
South Carolina	L	11-15, 11-15, 11-15
Evansville	W	15-8, 15-4, 15-4
LSU	L	11-15, 15-12, 9-15, 13-15
Brigham Young	L	14-16, 0-15, 2-15
Arizona State	L	10-15, 7-15, 4-15
Iowa	L	3-15, 2-15, 12-15

**1985 (22-10)**

**HEAD COACH CECILE REYNAUD**



Georgia	L	4-15, 10-15, 6-15
Florida	L	15-1, 15-4, 6-15, 1-15, 14-16
Florida	W	15-8, 12-15, 15-7, 4-15, 17-15
Central Florida	W	15-10, 15-5, 15-8
South Florida	W	17-15, 8-15, 15-9, 15-3
Florida	W	4-15, 15-7, 9-15, 15-6, 15-7
Memphis State	W	15-5, 15-13, 12-15, 15-2
Xavier	W	15-3, 15-7, 15-10
Southern Illinois	W	15-6, 3-15, 5-15, 15-12, 15-13
Florida A&M	W	15-9, 15-4, 15-2
South Florida	W	15-9, 15-4, 15-2
South Carolina	L	9-15, 15-6, 7-15, 15-3, 13-15
Virginia Tech	W	15-6, 15-13, 15-6
Mississippi	W	7-15, 15-10, 13-15, 15-1, 15-4
South Alabama	W	15-12, 15-0, 15-7
Arizona	L	7-15, 4-15, 7-15
Tennessee	W	8-15, 15-11, 15-11, 16-14
Central Florida	W	15-10, 15-9, 15-3
Kentucky	L	14-16, 18-16, 17-15, 13-15, 7-15
Southern Miss	W	15-6, 15-7, 15-8
Tulane	W	15-8, 13-15, 15-10, 15-9
Texas-Arlington	L	4-15, 14-16, 2-15
Louisville	W	16-14, 15-6, 15-5
Cincinnati	W	15-3, 15-9, 15-7
Northwestern	W	9-15, 16-14, 8-15, 15-9, 15-11
LSU	L	13-15, 16-14, 15-9, 7-15, 8-15
Florida	W	15-8, 15-8, 15-7

**METRO CONFERENCE TOURNAMENT (1st Place)**

Southern Miss	W	15-13, 15-13, 15-3
South Carolina	W	15-1, 15-3, 13-15, 15-12
Brigham Young	L	2-15, 6-15, 5-15
Georgia	L	9-15, 16-14, 7-15, 11-15

**NCAA TOURNAMENT (1st Round)**

Georgia	L	6-15, 1-15, 11-15
---------	---	-------------------

**1986 (25-11)**

**HEAD COACH CECILE REYNAUD**



Florida	W	15-11, 9-15, 15-7, 13-15, 15-10
Michigan State	W	15-10, 11-15, 15-13, 15-8
Illinois	L	11-15, 10-15, 0-15
Central Florida	W	15-3, 15-8, 15-2
Michigan State	L	13-15, 13-15, 4-15
Georgia	L	12-15, 15-13, 5-15, 4-15
South Florida	W	8-15, 15-11, 9-15, 15-4, 15-3
Florida	W	9-15, 15-1, 15-6, 15-8
Central Florida	W	15-9, 15-8, 15-8
New Mexico	L	2-15, 13-15, 13-15
LSU	L	8-15, 0-15, 6-15
Sam Houston State	L	15-13, 6-15, 14-16, 15-9, 14-16
Mississippi	W	15-13, 15-11, 15-7
Southern Miss.	W	15-1, 15-2, 15-5
South Alabama	W	15-4, 15-5, 15-7
South Florida	W	13-15, 15-5, 15-12, 15-13
South Carolina	W	6-15, 15-8, 15-8, 15-8
Virginia Tech	W	15-7, 15-3, 15-11
Florida A&M	W	15-2, 15-6, 15-4
Memphis State	W	15-10, 15-8, 13-15, 10-15, 15-4
NC State	W	15-10, 15-3, 15-9
Tennessee	L	10-15, 15-7, 15-4, 13-15, 10-15
Jacksonville	W	15-12, 15-4, 11-15, 6-15, 15-7
Purdue	L	9-15, 10-15, 13-15
Tennessee	W	13-15, 15-9, 16-14, 15-6
Pittsburgh	W	15-12, 17-15, 11-15, 5-15, 15-13
Cincinnati	W	15-8, 15-8, 15-3
Louisville	W	15-11, 15-12, 17-15
North Carolina	W	9-15, 7-15, 16-14, 15-8, 15-6
Texas Tech	L	10-15, 12-15, 12-15
Duke	L	10-15, 14-16, 12-15
Florida	W	8-15, 15-5, 15-1, 15-9

**METRO CONFERENCE TOURNAMENT (1st Place)**

Virginia Tech	W	15-7, 16-14, 15-10
South Carolina	W	7-15, 15-13, 15-3, 15-7
Brigham Young	L	9-15, 7-15, 15-9, 5-15
Cal-Berkeley	W	15-12, 15-9, 11-15, 4-15, 15-9



# 1987 (22-11)

HEAD COACH CECILE REYNAUD



South Alabama	W	15-5, 15-7, 15-1
Minnesota	L	12-15, 6-15, 14-16
Alabama-Birm	W	15-5, 15-4, 15-4
South Florida	W	15-2, 16-14, 15-3
Georgia	W	16-14, 15-8, 15-11

### FLORIDA EIGHT TOURNAMENT

Jacksonville	W	15-5, 15-3, 15-11
Florida	L	3-15, 15-8, 15-6, 10-15, 8-15
Florida Tech	W	15-4, 15-0, 15-2
South Carolina	W	15-9, 15-12, 13-15, 11-15, 15-4
Virginia Tech	W	15-5, 15-9, 15-8
Florida A&M	W	15-2, 15-12, 15-6
Florida	W	15-3, 10-15, 15-9, 15-13
Southern Miss	W	15-7, 15-0, 15-5
Jacksonville	W	15-12, 15-3, 15-10
Tulane	L	15-1, 15-12, 11-15, 16-18, 13-15
South Florida	W	15-6, 15-4, 15-10
Virginia	W	15-10, 15-6, 15-12
SW Texas State	L	15-6, 12-15, 7-15, 11-15
Louisville	W	15-7, 15-12, 15-10
Cincinnati	W	15-12, 15-10, 7-15, 7-15, 15-8
Illinois-Chicago	W	15-10, 15-4, 15-5
Memphis State	W	15-7, 15-2, 15-9
Kentucky	L	13-15, 7-15, 4-15
Central Florida	W	15-4, 15-13, 15-4
Florida	L	15-8, 12-15, 11-15, 17-15, 9-15
Duke	W	15-12, 15-6, 11-15, 15-5
NC State	L	9-15, 15-11, 12-15, 15-3, 6-15
North Carolina	L	7-15, 9-15, 15-13, 3-15

### METRO CONFERENCE TOURNAMENT

South Carolina	W	15-9, 15-4, 12-15, 15-8
Cincinnati	W	15-4, 15-12, 6-15, 15-11
Houston	L	15-7, 15-3, 11-15, 8-15, 11-15
Long Beach State	L	10-15, 17-15, 15-2, 9-15, 11-15

### NCAA TOURNAMENT (1st Round)

Texas	L	6-15, 11-15, 9-15
-------	---	-------------------

# 1988 (28-8)

HEAD COACH CECILE REYNAUD



Alabama-Birm.	W	15-2, 15-5, 15-1
Jacksonville	W	15-10, 15-11, 15-12
Texas-Arlington	L	4-15, 7-15, 11-15
Penn State	L	15-13, 13-15, 8-15, 5-15

### FLORIDA EIGHT CLASSIC (2nd Place)

Florida International	W	15-0, 15-1, 15-1
South Florida	W	15-13, 15-5, 15-8
Florida	L	16-14, 11-15, 13-15, 14-16
Florida A&M	W	15-6, 15-6, 15-7
Georgia	W	15-8, 15-11, 12-15, 15-9
Florida	L	10-15, 7-15, 11-15
South Carolina	L	10-15, 13-15, 15-17
Virginia	W	17-15, 15-11, 15-8
Virginia Tech	W	15-6, 15-6, 15-7
Houston	L	15-1, 5-15, 15-3, 3-15, 4-15
Lamar	W	15-7, 10-15, 15-1, 15-4
Rice	W	12-15, 11-15, 15-6, 15-9, 15-2
Memphis State	W	13-15, 15-1, 9-15, 15-5, 15-13
Central Florida	W	15-8, 15-0, 15-1
Jacksonville	W	15-4, 15-8, 15-7
Tampa	W	15-13, 15-3, 15-8
South Florida	W	15-10, 12-15, 14-16, 15-13, 15-12
Florida	W	5-15, 15-3, 15-11, 15-10
Cincinnati	W	12-15, 15-13, 13-15, 15-13, 15-4
Louisville	W	15-7, 15-6, 15-5
William & Mary	W	15-3, 11-15, 15-10, 12-15, 15-10
South Florida	W	9-15, 15-5, 15-5, 12-15, 15-7
West Virginia	W	15-12, 15-8, 11-15, 14-16, 15-4
Southern Miss.	W	15-8, 15-6, 15-5
LSU	L	10-15, 9-15, 22-20, 10-15

### KENTUCKY WILDCAT CLASSIC (1st Place)

Eastern Kentucky	W	15-9, 15-13, 15-4
Kentucky	W	15-10, 16-14, 13-15, 15-12
SW Texas State	W	10-15, 18-16, 15-9, 13-15, 15-1

### METRO CONFERENCE TOURNAMENT (1st Place)

Southern Miss	W	15-9, 15-13, 15-4
South Carolina	W	15-8, 15-13, 15-6
Cincinnati	W	10-15, 15-10, 15-7, 15-9

### NCAA TOURNAMENT (1st Round)

Colorado State	L	3-15, 5-15, 15-9, 7-15
----------------	---	------------------------



# 1989 (30-5)

HEAD COACH CECILE REYNAUD



# 1990 (25-10)

HEAD COACH CECILE REYNAUD



### GEORGE WASHINGTON LABOR DAY FESTIVAL(2nd Place)

Northern Arizona	W	15-17, 15-4, 15-7, 15-3
Georgetown	W	15-6, 15-9, 15-4
Minnesota	L	8-15, 17-15, 7-15, 7-15
Duke	W	15-7, 15-7, 7-15, 13-15, 15-5
Minnesota	L	8-15, 13-15, 11-15
Florida	W	9-15, 15-12, 15-6, 13-15, 15-10

### FLORIDA EIGHT CLASSIC (1st Place)

Florida International	W	15-2, 13-15, 15-8, 15-2
South Florida	W	15-13, 15-8, 7-15, 10-15, 15-13
Florida	W	15-12, 15-5, 15-4
Illinois State	W	12-15, 15-7, 12-15, 15-6, 15-9
Morehead State	W	15-4, 15-2, 15-11
Illinois State	W	15-11, 15-8, 2-15, 15-7
Kentucky	W	15-13, 6-15, 15-13, 11-15, 16-14
Tennessee	W	15-10, 16-14, 15-11
Florida A&M	W	15-6, 15-5, 15-2
Southern Miss	W	15-6, 15-6, 15-7
Tulane	W	15-4, 15-0, 11-15, 15-5
Jacksonville	W	15-1, 15-1, 15-2
Louisville	W	15-5, 15-10, 15-7
Cincinnati	W	15-8, 15-4, 8-15, 15-11
Purdue	W	15-12, 15-13, 15-13
South Alabama	W	15-8, 15-10, 15-9
South Florida	L	15-3, 5-15, 13-15, 12-15
Alabama-Birm	W	13-15, 15-6, 15-11, 15-10
Memphis State	W	14-16, 8-15, 15-11, 15-9, 15-11
Louisiana State	W	12-15, 15-9, 7-15, 15-5, 15-9
South Carolina	W	15-8, 15-4, 15-2
Virginia Tech	W	15-4, 15-9, 15-5
Florida	L	13-15, 15-9, 11-15, 10-15

### KENTUCKY WILDCAT CLASSIC (1st Place)

Brigham Young	W	15-6, 15-17, 8-15, 15-11, 15-11
Kentucky	W	8-15, 6-15, 15-10, 15-5, 15-5

### METRO CONFERENCE TOURNAMENT (1st Place)

Southern Miss	W	15-2, 15-3, 15-7
Louisville	W	15-2, 15-7, 15-9
Cincinnati	W	15-12, 15-4, 15-7

### NCAA TOURNAMENT (1st Round)

California	L	15-11, 11-15, 13-15, 13-15
------------	---	----------------------------

### UNIVERSITY OF GEORGIA TOURNAMENT (2nd Place)

Alabama-Birm	W	15-7, 15-13, 15-11
Butler	W	13-15, 15-9, 15-10, 15-3
Georgia	L	15-10, 15-12, 11-15, 8-15, 14-16
Eastern Washington	W	9-15, 15-5, 15-3, 15-3
Southern Miss	W	15-8, 15-9, 15-5

### FLORIDA CLASSIC (1st Place)

South Florida	W	15-5, 15-11, 15-5
Florida	L	11-15, 16-14, 11-15, 15-5, 12-15
Florida International	W	16-14, 15-9, 15-1
Georgia Southern	W	15-2, 15-1, 15-7

### COLORADO CLASSIC (4th Place)

Wyoming	L	16-14, 11-15, 15-6, 2-15, 13-15
Loyola-Marymount	L	7-15, 15-9, 4-15, 15-13, 6-15
Colorado	L	4-15, 5-15, 15-9, 5-15
SW Texas State	W	15-8, 15-6, 15-6
Texas	L	8-15, 15-11, 9-15, 15-9, 5-15
Tulane	W	15-8, 15-7, 15-12
Virginia Tech	W	15-4, 15-4, 15-5
South Carolina	W	15-5, 15-8, 15-6
South Florida	W	11-15, 15-10, 15-4, 15-12
Florida	W	15-12, 10-15, 15-4, 15-12
Memphis State	L	16-14, 15-11, 8-15, 8-15, 11-15
Florida A&M	W	15-1, 15-2, 15-4
Baylor	W	15-5, 15-7, 15-4
Florida International	W	15-10, 15-4, 15-3
Auburn	W	15-7, 15-6, 15-3
Jacksonville	W	15-4, 15-2, 15-7
Georgia	W	15-4, 15-6, 15-12
Florida	W	15-5, 15-6, 15-12
Cincinnati	W	15-8, 14-16, 15-4, 15-17, 15-9
Louisville	W	15-13, 15-3, 15-13

### FLORIDA STATE CLASSIC (2nd Place)

Fresno State	L	15-7, 11-15, 4-15, 15-17
George Washington	W	15-2, 16-18, 15-6, 3-15, 15-3
Houston	W	15-6, 12-15, 15-10, 15-4

### METRO CONFERENCE TOURNAMENT (3rd Place)

Virginia Tech	W	15-11, 15-9, 15-4
Louisville	L	15-3, 6-15, 14-16, 15-10, 14-16

### NCAA TOURNAMENT (1st Round)

Kentucky	L	12-15, 10-15, 15-10, 10-15
----------	---	----------------------------



### 1991 (16-15)

HEAD COACH CECILE REYNAUD



Northeast Louisiana	W	15-3, 15-2, 15-11
Central Florida	W	15-10, 15-1, 15-7

#### ANTEATER INVITATIONAL, IRVINE, CA (2nd Place)

Loyola Marymount	W	18-16, 13-15, 20-18, 17-15
Idaho	W	16-14, 15-2, 15-6
UC-Irvine	L	18-16, 15-13, 13-15, 8-15, 13-15

#### FLORIDA 4 TOURNAMENT (2nd Place)

Florida	L	12-15, 5-15, 12-15
Florida International	W	15-6, 15-9, 15-7
South Florida	W	15-9, 15-13, 15-3
Virginia	W	15-13, 6-15, 15-10, 15-6
Rice	W	15-3, 15-8, 15-11
Jacksonville	W	15-8, 15-6, 15-12
Texas A&M	W	15-7, 15-11, 11-15, 15-8
Houston	L	8-15, 7-15, 15-13, 3-15
Florida A&M	W	15-1, 15-8, 15-3
NC State	L	11-15, 15-4, 15-12, 11-15, 9-15
North Carolina	L	13-15, 7-15, 13-15
SW Texas State	W	15-13, 15-11, 15-13
Maryland	L	12-15, 8-15, 15-1, 17-15, 16-18
Duke	L	16-14, 6-15, 15-12, 14-16, 13-15
Georgia	L	13-15, 15-13, 15-17, 15-12, 13-15
Hofstra	W	15-3, 15-5, 9-15, 15-8
William & Mary	L	13-15, 15-13, 15-17, 15-12, 13-15
Clemson	W	15-12, 15-9, 15-9
Georgia	L	9-15, 12-15, 1-15
Georgia Tech	L	13-15, 7-15, 15-7, 15-4, 11-15

#### FLORIDA STATE CLASSIC (3rd Place)

Pittsburgh	L	13-15, 3-15, 15-9, 2-15
Alabama-Birm	L	15-11, 8-15, 15-4, 13-15, 12-15
Temple	W	15-1, 15-11, 15-6
Florida	L	5-15, 11-15, 5-15

#### ACC TOURNAMENT (3rd Place)

North Carolina	W	15-7, 15-6, 15-6
Virginia	L	11-15, 9-15, 16-14, 6-15

### 1992 (26-8)

HEAD COACH CECILE REYNAUD



#### GATOR INVITATIONAL

Georgia State	W	15-7, 15-2, 15-3
South Florida	W	15-3, 15-11, 15-10
Florida	L	5-15, 6-15, 5-15

#### FLORIDA STATE CLASSIC

Minnesota	L	15-12, 14-16, 5-15, 5-15
Minnesota	W	15-7, 13-15, 13-15, 15-13, 15-6
McNeese State	W	15-6, 15-3, 15-12

#### SOUTH FLORIDA TOURNAMENT

Georgetown	W	15-8, 15-11, 15-5
Alabama	W	15-10, 15-12, 15-3
South Florida	W	15-6, 15-4, 16-14
Houston	W	11-15, 15-13, 11-15, 15-6, 15-8
Texas A&M	W	15-7, 15-8, 16-14
Jacksonville	W	15-7, 15-3, 15-7
Duke	L	6-15, 13-15, 15-12, 3-15
North Carolina	W	15-8, 15-11, 15-8

#### NOTRE DAME CLASSIC

Notre Dame	L	15-12, 5-15, 15-7, 1-15, 15-17
Long Beach State	L	15-11, 2-15, 9-15, 11-15
Pittsburgh	W	15-6, 12-15, 9-15, 15-10, 15-11
Florida A&M	W	15-2, 15-5, 15-1
Georgia Tech	W	15-12, 12-15, 15-6, 7-15, 15-12
South Alabama	W	15-5, 15-10, 15-3
Clemson	W	15-8, 15-7, 15-4

#### HOFSTRA CLASSIC

Syracuse	W	15-10, 15-10, 15-12
Hofstra	W	15-5, 15-11, 15-5
LaSalle	W	15-6, 15-1, 15-8
Maryland	W	15-13, 6-15, 15-9, 15-13
Virginia	W	15-9, 15-7, 15-3
William & Mary	W	15-10, 12-15, 15-1, 15-10
Central Florida	W	15-10, 15-2, 15-3
NC State	W	15-6, 15-5, 15-11
Florida	L	8-15, 8-15, 11-15

#### ACC TOURNAMENT

Virginia	W	15-7, 15-3, 15-4
Maryland	W	8-15, 15-8, 12-15, 15-10, 15-8
Duke	L	9-15, 15-9, 15-11, 11-15, 11-15

#### NCAA CHAMPIONSHIP (1st Round)

Florida	L	9-15, 3-15, 10-15
---------	---	-------------------





# 1993 (24-10)

HEAD COACH CECILE REYNAUD



# 1994 (17-16)

HEAD COACH CECILE REYNAUD



### FLORIDA STATE CLASSIC

Auburn	W	15-6, 15-4, 15-3
South Florida	W	13-15, 15-8, 15-10, 12-15, 15-10
SW Missouri State	L	16-14, 0-15, 6-15, 7-15
Florida	W	15-0, 8-15, 4-15, 15-13, 15-13
<b>LSU TOURNAMENT</b>		
LSU	W	15-12, 15-4, 10-15, 15-7
Loyola Marymount	W	15-12, 12-15, 15-2, 15-10
Southern Miss	W	15-6, 15-3, 15-8
Texas A&M	L	13-15, 13-15, 16-14, 11-15
Houston	W	15-11, 15-9, 15-2
Rice	W	15-10, 15-9, 8-15, 15-10
Clemson	W	15-7, 16-14, 8-15, 12-15, 15-11
Georgia Tech	W	15-8, 15-6, 15-9
Jacksonville	W	15-7, 13-15, 15-7, 15-3
NC State	W	15-12, 15-8, 15-13
NC State	W	15-3, 15-7, 15-8
Arkansas State	W	15-3, 15-9, 15-2
Florida Atlantic	W	15-8, 15-6, 15-4
Virginia	W	15-9, 15-5, 15-10
Maryland	L	13-15, 14-16, 14-16
Duke	L	13-15, 15-11, 9-15, 13-15
North Carolina	W	15-13, 8-15, 15-4, 15-12
Virginia	W	15-6, 15-8, 15-12
Maryland	W	15-9, 15-12, 15-11
Georgia Tech	L	8-15, 10-15, 15-9, 12-15
Clemson	L	4-15, 10-15, 4-15
Florida	L	6-15, 11-15, 14-16
Duke	L	3-15, 12-15, 6-15
North Carolina	W	15-10, 15-12, 13-15, 15-12
Troy State	W	15-6, 15-5, 15-3

### ACC TOURNAMENT

North Carolina	W	15-13, 15-3, 15-7
Clemson	W	17-15, 15-12, 15-7
Duke	L	6-15, 6-15, 5-15

### NCAA TOURNAMENT (1st Round)

DePaul	W	15-8, 7-15, 15-10, 15-13
--------	---	--------------------------

### NCAA TOURNAMENT (2nd Round)

Pacific	L	6-15, 17-15, 6-15, 9-15
---------	---	-------------------------

Southern Illinois	W	15-7, 15-4, 15-6
Iowa	L	8-15, 6-15, 11-15
Southern Illinois	W	9-15, 15-5, 15-10, 15-7

### VOLLEYBALL MONTHLY INVITATIONAL

Louisiana State	L	12-15, 15-12, 15-5, 13-15, 13-15
Penn State	L	4-15, 3-15, 10-15
UCLA	L	4-15, 6-15, 4-15
Florida	L	8-15, 12-15, 2-15

### MINNESOTA CLASSIC

DePaul	W	15-11, 11-15, 14-16, 17-15, 15-4
Fresno State	L	15-7, 13-15, 9-15, 14-16
Minnesota	L	3-15, 6-15, 10-15
Duke	L	4-15, 6-15, 10-15
North Carolina	L	11-15, 15-8, 12-15, 15-12, 15-17
Clemson	W	13-15, 15-5, 15-4, 10-15, 15-11
Georgia Tech	L	14-16, 7-15, 1-15
North Carolina St.	W	14-16, 15-5, 15-13, 15-13
North Carolina St.	W	15-12, 15-11, 15-5
Florida Atlantic	W	15-7, 15-2, 15-7
Jacksonville	W	15-1, 15-3, 15-10
Maryland	L	15-7, 13-15, 11-15, 7-15
Virginia	W	15-6, 15-6, 15-9
Notre Dame	W	15-10, 8-15, 17-15, 15-12
Duke	L	4-15, 9-15, 7-15
North Carolina	W	15-7, 15-13, 15-12
Florida	W	15-9, 15-13, 15-12
Maryland	W	15-10, 3-15, 16-14, 15-12
Virginia	W	15-8, 15-12, 4-15, 14-16, 20-18
Clemson	L	6-15, 3-15, 5-15
Georgia Tech	L	14-16, 7-15, 1-15
Central Florida	W	15-5, 15-17, 15-13, 15-13

### ACC TOURNAMENT

Maryland	W	16-14, 15-6, 5-15, 15-12
Duke	L	8-15, 7-15, 8-15

### GEORGIA HOLIDAY CLASSIC

South Florida	W	11-15, 16-14, 15-6, 15-7
Georgia	L	8-15, 15-5, 6-15, 6-1



# 1995 (11-19)

HEAD COACH CECILE REYNAUD



### SOUTH FLORIDA CLASSIC

Tennessee Tech	W	15-5, 15-7, 7-15, 15-8
Memphis	W	15-10, 15-1, 15-10
South Florida	L	15-13, 8-15, 3-15, 5-15
Jacksonville	W	15-2, 15-4, 15-7

### RHODE ISLAND CLASSIC

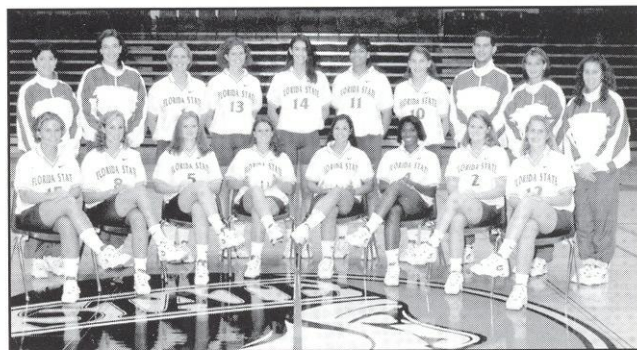
Rhode Island	L	14-16, 3-15, 2-15
Washington	L	1-15, 14-16, 5-15
George Mason	L	11-15, 7-15, 9-15
College of Charleston	W	15-5, 15-8, 15-10
Houston	L	13-15, 15-12, 9-15, 3-15
Georgia Tech	L	4-15, 16-14, 6-15, 13-15
Clemson	L	3-15, 15-13, 7-15, 16-18
Duke	L	1-15, 7-15, 12-15
NC State	L	15-11, 5-15, 15-9, 11-15, 11-15
Georgia Tech	L	11-15, 14-16, 9-15
Clemson	L	16-14, 1-15, 9-15, 15-9, 3-15
Florida	L	15-12, 5-15, 10-15, 6-15
North Carolina	W	8-15, 15-10, 15-11, 10-15, 17-15
North Carolina	L	13-15, 15-13, 15-5, 5-15, 10-15
Jacksonville	W	15-8, 12-15, 15-9, 15-6
New Orleans	W	15-11, 15-07, 15-3
Virginia	W	13-15, 15-8, 15-10, 15-13
Maryland	L	5-15, 5-15, 11-15
Florida	L	4-15, 3-15, 2-15
NC State	L	16-18, 12-15, 8-15
Duke	L	10-15, 5-15, 9-15
South Alabama	W	15-11, 15-4, 15-8
Virginia	W	15-9, 15-11, 15-12
Maryland	L	15-5, 13-15, 11-15, 7-15

### ACC TOURNAMENT

Clemson	W	15-8, 6-15, 6-15, 16-14, 15-13
Maryland	L	9-15, 11-15, 3-15

# 1996 (12-19)

HEAD COACH CECILE REYNAUD



Florida Atlantic	W	15-5, 15-9, 15-7
Florida Atlantic	W	15-1, 15-7, 15-3

### PURDUE INVITATIONAL

Southern Illinois	L	11-15, 15-9, 15-11, 8-15, 10-15
Miami (Ohio)	L	13-15, 10-15, 14-16
Purdue	L	11-15, 15-6, 9-15, 4-15
Jacksonville	W	13-15, 15-1, 15-6, 15-9

### FLORIDA CLASSIC

Florida	L	3-15, 11-15, 0-15
UCLA	L	2-15, 9-15, 13-15
Ball State	L	7-15, 8-15, 8-15
Maryland	L	5-15, 4-15, 4-15
Virginia	L	15-13, 13-15, 9-15, 5-15
Clemson	L	15-7, 15-8, 12-15, 10-15, 17-19
Georgia Tech	L	11-15, 12-15, 15-11, 12-15
Auburn	L	3-15, 8-15, 12-15
Duke	L	9-15, 10-15, 10-15
Wake Forest	W	10-15, 15-9, 15-6, 15-9
Clemson	L	13-15, 16-14, 14-16, 5-15
Georgia Tech	L	4-15, 15-9, 6-15, 6-15
North Carolina	W	15-11, 16-14, 6-15, 15-8
NC State	W	9-15, 7-15, 15-10, 15-10, 15-12
North Carolina	W	10-15, 15-8, 9-15, 15-7, 15-10
NC State	W	15-11, 8-15, 15-13, 15-6
Jacksonville	W	15-3, 16-14, 15-2
Wake Forest	W	15-12, 15-8, 15-7
Duke	L	15-13, 13-15, 5-15, 11-15
Virginia	L	15-7, 11-15, 5-15, 10-15
Maryland	L	3-15, 12-15, 16-14, 13-15
Florida	L	11-15, 11-15, 8-15
Georgia	W	3-15, 2-15, 16-14, 15-12, 16-14
Troy State	W	15-1, 15-9, 15-6

### ACC TOURNAMENT

Georgia Tech	L	8-15, 12-15, 8-15
--------------	---	-------------------



### 1997 (25-9)

HEAD COACH CECILE REYNAUD



#### FLORIDA STATE CLASSIC

Boston College	W	15-7, 15-4, 15-11
Mississippi State	W	15-5, 15-12, 15-8
Purdue	W	15-13, 15-7, 15-4

#### MICHIGAN ALLSPORT CLASSIC

Michigan	W	7-15, 15-5, 15-6, 15-12
Montana	W	15-8, 15-3, 15-8
Eastern Michigan	W	15-13, 15-10, 15-5
Georgia Southern	W	15-5, 15-0, 15-3
Florida Atlantic	W	15-3, 15-3, 15-7
Georgia State	W	15-11, 15-4, 15-6

#### FLORIDA ATLANTIC TOURNAMENT

Florida International	W	15-9, 15-5, 15-4
Florida Atlantic	W	15-3, 15-7, 15-6
Mercer	W	15-9, 15-7, 15-7
Florida	L	11-15, 11-15, 10-15
North Carolina	L	13-15, 6-15, 6-15
North Carolina State	W	15-5, 15-8, 15-3
Clemson	W	15-13, 14-16, 15-4, 15-13
Georgia Tech	W	15-12, 15-9, 9-15, 10-14
Virginia	W	15-8, 6-15, 15-6, 15-9
Maryland	L	15-8, 8-15, 7-15, 12-15
South Alabama	W	15-4, 15-3, 15-7
Duke	L	7-15, 15-8, 13-15, 11-15
Wake Forreest	W	11-15, 15-12, 15-6, 15-4
Georgia Tech	L	13-15, 15-8, 9-15, 7-15
Clemson	W	5-15, 15-6, 15-5, 20-18
North Carolina	W	15-12, 9-15, 15-10, 15-13
North Carolina State	W	15-3, 10-15, 15-12, 15-6
Florida	L	7-15, 5-15, 1-15
Maryland	L	13-15, 9-15, 15-10, 8-15
Virginia	W	15-0, 15-6, 15-6
Wake Forreest	W	15-3, 15-10, 15-2
Duke	W	13-15, 15-7, 15-7, 14-16, 15-10

#### ACC TOURNAMENT

Virginia	W	15-9, 9-15, 17-15, 13-15, 15-8
Georgia Tech	L	14-16, 10-15, 15-5, 6-15

#### NCAA TOURNAMENT

South Florida	L	15-8, 4-15, 13-15, 15-7, 9-15
---------------	---	-------------------------------



Florida State University's 1998 ACC Volleyball Champions



**photo speed chart**



**2 martha hamilton**  
6'0" • Freshman  
Scarborough, Ontario  
Outside Hitter



**3 courtney dipert**  
5'5" • Senior  
Lisle, IL  
Defensive Specialist



**4 kristin frye**  
6'0" • Freshman  
Ft. Wayne, IN  
Middle/Outside Hitter



**5 elizabeth pound**  
6'1" • Sophomore  
Neptune Beach, FL  
Middle Hitter



**6 luana ruiz azevedo**  
5'10" • Sophomore  
Sao Jose dos Campos, Brazil  
Outside Hitter



**7 kensy zulueta**  
5'7" • Senior  
Mission Viejo, CA  
Setter



**8 norisha campbell**  
6'4" • Sophomore  
University City, TX  
Middle Hitter



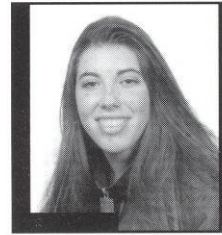
**9 jennifer werrick**  
6'0" • Junior  
Lakeland, FL  
Outside Hitter



**10 jamie hibbard**  
5'8" • Freshman  
Ft. Wayne, IN  
Setter



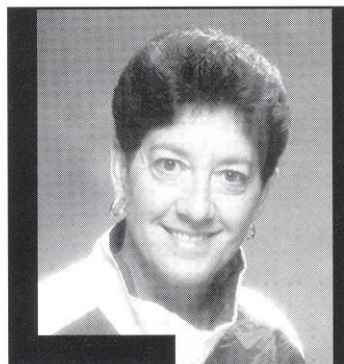
**11 aisha thornton**  
6'2" • Senior  
Country Club Hills, IL  
Middle Hitter



**12 alexandra sevillano**  
5'8" • Freshman  
Clearwater, FL  
Outside Hitter



**13 erica bunch**  
6'2" • Freshman  
Crawfordville, FL  
Outside Hitter



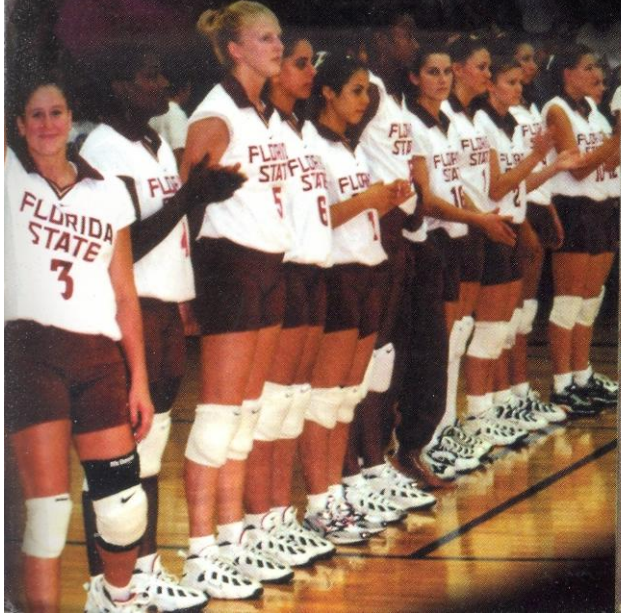
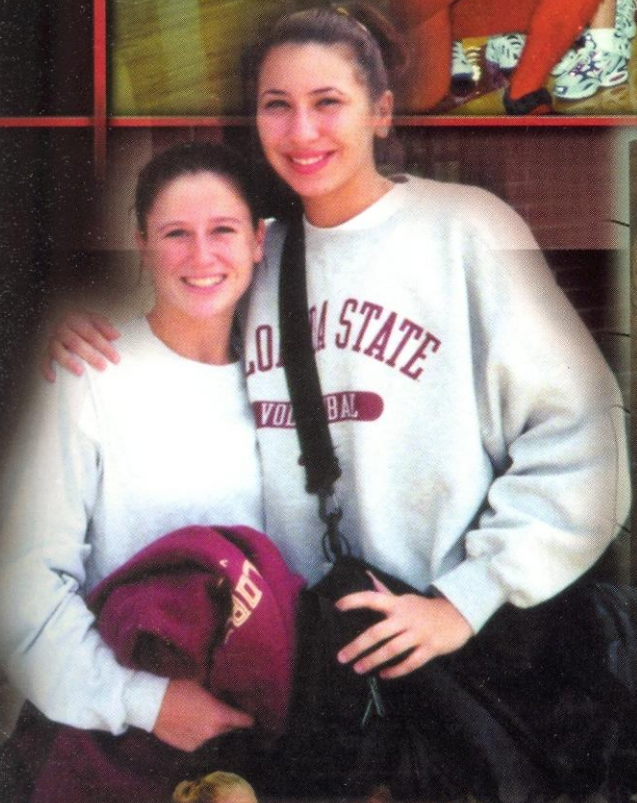
**dr. cecile reynaud**  
24th season  
SW Missouri State, 1975  
Head Coach



**14 dawn hough**  
6'2" • Freshman  
Brandon, FL  
Middle Hitter



# Florida state university volleyball





# 1999 schedule

Wed. Sept. 1	Auburn*	7:00 pm	Tallahassee, FL	Mon. Oct. 11	Florida A&M*	8:00 pm	Tallahassee, FL
<b>Florida State Classic</b>				Fri. Oct. 15	North Carolina	7:00 pm	Tallahassee, FL
Fri. Sept. 3	South Carolina	7:00 pm	Tallahassee, FL	Sun. Oct. 17	NC State	1:00 pm	Tallahassee, FL
Sat. Sept. 4	Florida Int'l	12:00 pm	Tallahassee, FL	Tue. Oct. 19	Jacksonville	7:00 pm	Jacksonville, FL
Sat. Sept. 4	Indiana	7:00 pm	Tallahassee, FL	Fri. Oct. 22	Virginia	7:00 pm	Charlottesville, VA
<b>Northern Illinois Invitational</b>				Sat. Oct. 23	Maryland	5:00 pm	College Park, MD
Fri. Sept. 10	Texas-Arlington	5:30 pm	DeKalb, IL	Fri. Oct. 29	Duke	7:00 pm	Tallahassee, FL
Sat. Sept. 11	Santa Clara	11:00 am	DeKalb, IL	Sun. Oct. 31	Wake Forest*	3:30 pm	Tallahassee, FL
Sat. Sept. 11	Northern Illinois	8:00 pm	DeKalb, IL	Fri. Nov. 5	Clemson	7:00 pm	Tallahassee, FL
Wed. Sept. 15	UC Santa Barbara	7:00 pm	Tallahassee, FL	Sun. Nov. 7	Georgia Tech	1:00 pm	Tallahassee, FL
Fri. Sept. 17	Florida Atlantic	7:00 pm	Tallahassee, FL	Tue. Nov. 9	Florida	7:00 pm	Gainesville, FL
Sat. Sept. 18	Liberty	12:00 pm	Tallahassee, FL	Fri. Nov. 12	North Carolina	7:00 pm	Chapel Hill, NC
Fri. Sept. 24	Duke	7:30 pm	Durham, NC	Sat. Nov. 13	NC State	5:00 pm	Raleigh, NC
Sat. Sept. 25	Wake Forest	7:00 pm	Winston-Salem, NC	Nov. 18 - 21	Atlantic Coast Conference Tournament @ Disney's Wide World of Sports Complex		Orlando, FL
Tue. Sept. 28	Florida*	7:00 pm	Tallahassee, FL				
Fri. Oct. 1	Maryland	7:00 pm	Tallahassee, FL				
Sun. Oct. 3	Virginia	12:30 pm	Tallahassee, FL				
Fri. Oct. 8	Clemson	7:00 pm	Clemson, SC				
Sat. Oct. 9	Georgia Tech	7:30 pm	Atlanta, GA				

**Home matches** played in Tully Gym. All times are Eastern.  
\*Sunshine Network televised home matches