

underwater scenes in “Tarzan” movies, it’s one of the world’s deepest freshwater springs. Glass-bottomed boat tours across these mystical waters are available.

Other sightseeing favorites include the floral masterpiece of Alfred B. Maclay State Gardens; Bradley’s Country Store; FAMU Black Archives; and the Tallahassee Antique Car Museum. Nearby small towns offer fascinating excursions to places such as Pebble Hill Plantation, Florida Caverns State Park, Monticello Opera House and St. George Island.

Tallahassee is almost as rich in cultural treasures as it is in history. A widely-acclaimed collection of art, science and history museums and galleries, year-round festivals and non-stop entertainment at the 14,000-seat Tallahassee-Leon County Civic Center, feed a variety of cultural appetites.

Visitors with a hunger for the great outdoors will find Tallahassee ideal for all types of outdoor recreation—from canoeing down dark, cypress-lined rivers and biking up steep slopes to exploring backcountry wildernesses and hunting for bobwhite quail. Area lakes, rivers, ponds and the Gulf — just 30 minutes away — offer a paradise for boating and fishing. Lakes Jackson and Talquin are renowned in the bass fishing world for yielding the “big ones.” Local wildlife areas, such as the St. Marks National Wildlife Refuge and Apalachicola National Forest, are perfect spots for camping, picnicking, swimming, biking and exploring.

And while Tallahassee also features eight golf courses and plenty of places to raise a racquet, it’s a wild array of spectator sports that leave the crowds

screaming for more. The Florida State Seminoles and Florida A&M Rattlers provide collegiate action while the Tallahassee Thunder is the city’s featured arena football team. And always a sure bet are the nearby greyhound races.

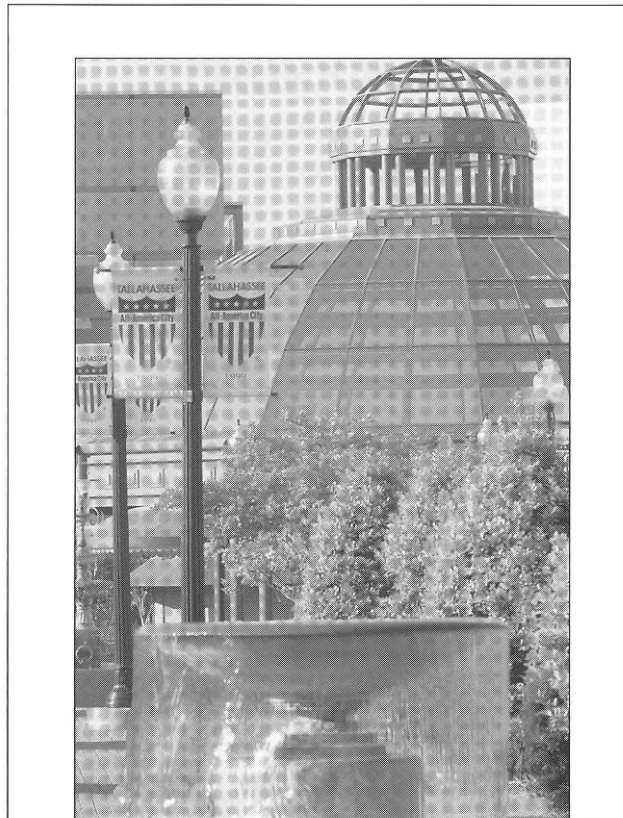
For another favorite “sport” — shopping — two large regional malls and many specialty centers offer an array of “playing options,” from popular chains to curiosity and antique shops. Unique shopping locales include downtown parks, lakeside cottages and small Southern towns. Tallahassee serves a scrumptious selection of tantalizing restaurants ranging from fast food to five-star. Local specialties include homemade country sausage, melt-in-your-mouth steaks, wild game and succulent seafood fresh from the Gulf.

From luxury to economy, accommodations are plentiful and include restored bed and breakfasts, rustic “gentlemen” lodges, beachside escapes and comfortable chain hotels. For those who choose to follow in the footsteps of early travelers, Tallahassee also boasts 15 beautiful campsites. Continuous air service, Amtrak and four major highways make it easy for visitors to get to Tallahassee. But no matter how you arrive, the history and hospitality of Tallahassee make it

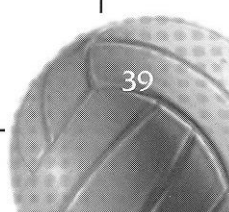
difficult to ever leave for long.

Tallahassee-Leon County Civic Center

It is easy to understand why over one million people a year flock to the Tallahassee-Leon County Civic Center, what with the varied array of attractions it offers. Consider: a \$33.8 million



POPULATION	
City148,400
County243,300



versatile, contemporary complex with excellent facilities and a cooperative and efficient staff that knows its business. The Civic Center hosts a wide variety of concerts, family shows, Broadway shows, ice shows and sporting events. Some people come to the Civic Center to enjoy the sounds of rock, country, pop and urban concerts. Some come for the thrills of basketball, ice hockey, rodeos, arena football and three-ring spectacles.

Climate

Tallahassee has the mild, moist climate characteristics of the Gulf States and experiences a subtropical summer similar to the rest of Florida. In contrast to the Florida peninsula, however, the panhandle, of which Tallahassee is a part, experiences four seasons.

Museums and Culture

The federal Institute of Museum and Library Services (IMLS) named the Tallahassee Museum of History and Natural Science as one of the nation's exemplary museums on September 19, 2000. The Tallahassee Museum, along with 176 other museums, was selected out of a field of 823 applications from museums throughout the nation in a highly competitive competition. The museum features a 52-acre natural habitat zoo, nature trails, authentic 1880s farmstead, hands-on Discovery Center, birds of prey aviary, reptile exhibits, annual events and more!

Other points of interest include:

Mary Brogan Museum of Art & Science

Interactive hands-on science center and national traveling art and science exhibitions.

Mission San Luis

Site of Spanish/Indian village settled from 1656-1704. Ongoing excavations/exhibits/reconstructions.

PHYSIOGRAPHY

Tallahassee's rolling landscape, typical of regions further north, is unique among the major cities of Florida. Some areas of the county, including the downtown ridge encompassing the Capitol complex, City Hall and the County Courthouse, exceed elevations of 200 feet. The highest elevation in Leon County is 288 feet, found in the northern part of the county. To the south of the city, the hills yield to the flat terrain that is typical throughout the peninsula of Florida.



Museum of Florida History

Permanent exhibits include a nine-foot mastodon, Spanish galleon treasures, Civil War memorabilia, reconstructed steamboat and Prehistoric Florida plus traveling exhibits.

Old Capitol Museum

Restored to 1902 appearance featuring red candy-striped awnings, stained glass dome, House and Senate Chambers, Supreme Court and Governor's office.

Maclay State Gardens

Enchanting floral architecture surrounds 1930s home of NY financier Alfred B. Maclay. Impressive grounds feature 200+ floral varieties plus hiking, biking and nature trails, swimming, fishing and boating.

Tallahassee Antique Car Museum

Impressive showroom features award winning Chevys, one-of-a-kind Ford Roadster, 1913 CarNation Tourer, 1931 Duesenberg, 1956 T-Bird, Delorean, Cadillacs, Corvettes and more. Plus two original Bat Mobiles.

The Capitol

One of 5 tower Capitols in the U.S. features panoramic view from 22-floor observatory/art

gallery, House and Senate viewing galleries.

Where's The Beach?

Where sunny days are filled with the great outdoors...where time is measured by tides and life's rhythms move with the surf...beaches are just a short drive from Tallahassee.

Alligator Point

Natural dune public beach, 45 miles south of Tallahassee

Carrabelle

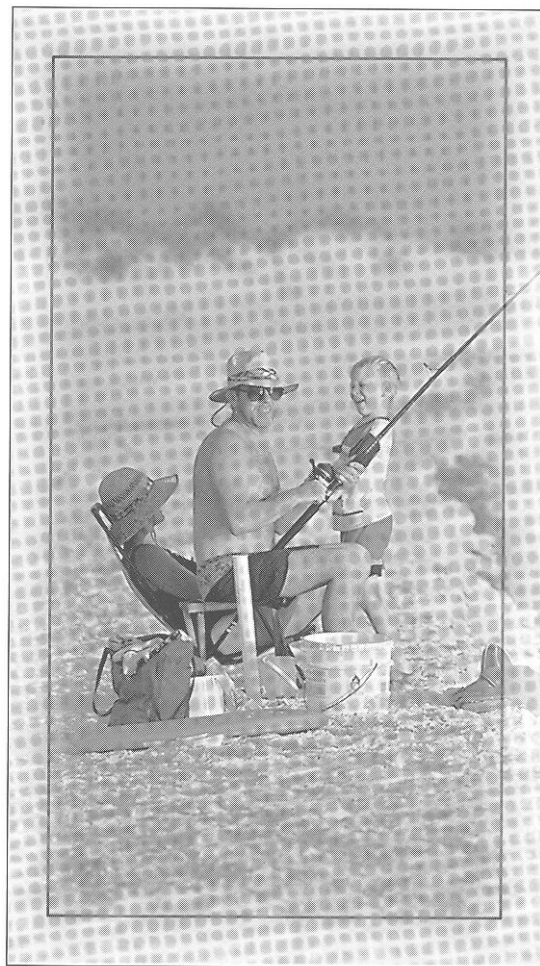
Coarse public beach, featuring swimming and shelling, 60 miles southwest of Tallahassee

Dekle Beach

Pristine sandy beach, clear water featuring boating, swimming, picnicking and more, 70 miles east of Tallahassee

Mashes Sands Beach

Public beach, shallow bay water featuring swimming and crabbing, 40 miles southwest of Tallahassee



St. George Island

Pristine 29-mile barrier island beach, clear water, featuring swimming, shelling, boating, and fishing, 80 miles southwest of Tallahassee

Shell Point

Lovely, small peninsula surrounded by St. Marks Wildlife refuge. Secluded beach and clear water that is popular for sailing and windsurfing, 25 miles south of Tallahassee

Canopy Roads

The abundance of trees and timber is a resource uncommon to many other areas of the state. The beauty of the local trees is exemplified in Maclay Gardens State Park, which is the site of several of Florida's champion trees including the flowering Dogwood, the Hawthorn tree, the Horsesugar tree, the Sweetbay Magnolia and the Silverbell tree. These trees and others often extend their branches over the roadway to create a canopied effect, a feature that is held in high esteem by local residents and visitors.



Lucy McDaniel never imagined that she would become the first woman in the State of Florida to donate more than \$1 million to women's athletics. McDaniel is among a growing band of pioneer philanthropists across the country who have realized the importance, if not necessity, of private support of women's intercollegiate athletics.

But pioneering is nothing new to the FSU graduate, who attended college before women competed intercollegiately. When she arrived at FSU in 1955 she was a national qualifier in swimming and gymnastics. FSU swim coach Bim Stults welcomed her to work out with the men's team and FSU's national championship gymnasts also invited her to train with them in Tully Gym, but she was denied that opportunity because the administration did not feel it appropriate for her to swim or work out with the men. So, McDaniel settled for synchronized swimming with the Tarpons, which is a combination of the two sports.

Following graduation, she coached at Palm Beach High and started a gymnastics program at Miami Senior while running over 100 summer clinics across the United States. After serving ten years at Stetson University, she joined the staff at Florida Technology University, before it became University of Central Florida. She taught and started the school's first intercollegiate teams in softball and volleyball where she rang up a perfect 55-0 record -- believed to be an NCAA record -- to win the Division II national title.

"I had watched man after man, couple after couple, donating a million or two million to Florida State but there was never, ever, one woman to come forward with a major gift to women's athletics," said McDaniel. "The Committee of Thirty is educating women and men that women's scholarships, equipment and travel cost the same as men's, and that our women athletes need the same private help. I felt strongly that if one woman stepped forward, surely others would follow, but I didn't think it would be me."

"I am starting my twenty-sixth year in college athletics and I have never heard of one individual making that large of a gift to one individual women's sport," head coach Cecile Reynaud said. "It has to be one of the first gifts like it in the country and hopefully, the beginning of many more gifts like it to women's teams. The time is right for women that have been fortunate to make those kind of gifts, and when they do, you will see women's programs make a big jump."

McDaniel first gave \$100,000 to endow a volleyball scholarship at Florida State and later designated another \$50,000 so the team could play a European tour in May of 2000. McDaniel wanted to do more, so she asked her accountant to run through her financial statements to see what she would be able to gift now and later in her will. When the accountant told her, she called Seminole Booster

Planned Giving Director Joel Padgett to start the process.

The snag came when Padgett mentioned publicizing what is the largest gift in FSU women's athletics history by a woman. McDaniel, who has kept her wealth private, was uncomfortable with publicity or the idea that the volleyball court inside Tully Gym would be named "The Lucy McDaniel Arena".

A portion of McDaniel's \$1 million-plus gift is a will gift. "There will be no fighting over my will now, because I have taken care of everything," McDaniel said. "I have taken care of my five nieces and nephews, and friends, and the rest will go to FSU."

McDaniel had kept her wealth and her plans to give to FSU a secret from her family and friends, so they were surprised to read about her gift in the Daytona Beach paper. By the time the story ran, McDaniel was on a plane bound for Germany and to meet volleyball team who had left a few days before.

The former volleyball coach spent fourteen days with the women, observing practices, matches, shopping and sightseeing in three different countries. "I had more fun with them than I would have if I went with a bunch of my friends," McDaniel said. "They are in high gear or dead stop. Playing matches, shopping, on walking tours and then dead asleep on the bus in between. It was a wonderful time and I don't think anyone ever got as much for \$50,000 as I did."

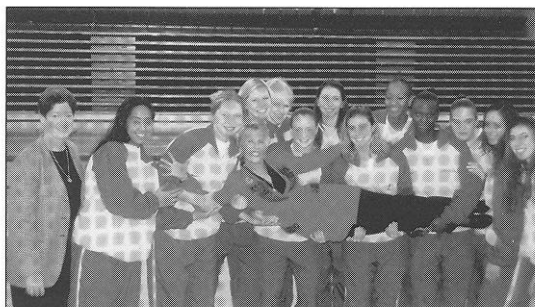
McDaniel has a lifetime of memories of the tour. "When the kids knew that I was taking them, I got darling thank-you notes and when I got home I'd received seven or eight thank-you notes from the parents, which I was not expecting," she said. "I made myself a scrapbook of all the letters."

On November 2nd 2000 in a special ceremony, Florida State dedicated the Tully Gym volleyball floor to Lucy McDaniel, the first woman in the state of Florida to donate more than one million dollars to a women's athletics program. Beginning this season at volleyball matches, the facility will be known as the Lucy McDaniel Volleyball Arena at volleyball events in Tully Gymnasium, in honor of the wonderful gifts and support that McDaniel has provided to the Lady Seminole volleyball program and Florida State athletics.

"I'm truly grateful to Lucy for feeling that strongly about our program and I know when we announced it to our student athletes, they just don't get how much money that is and how historic of a gift it is to women's athletics," Reynaud said. "When she first told me she was going to do it, I was typing on my computer and I caught myself saying, ok, put your work down and listen to this. Listen to this because this is a historical conversation you are having. Nationally, people are going to be very impressed. We have now recognized her at national conventions for her leadership and generosity."



Lucy McDaniel with former Head Coach Dr. Cecile Reynaud and the Seminole Volleyball team.



ENDOWED SCHOLARSHIPS

Established in 1986 under the direction of William M. Parker of Clearwater, the Seminole Boosters Endowed Scholarship Program is the final step toward perpetual funding of all scholarships for student-athletes at Florida State. Florida State attracts student-athletes from coast to coast as well as internationally. These young people work very hard and represent the University with an enormous amount of pride. Seven scholarships have been established for volleyball:



Cecile Reynaud Scholarship

Recognized in America and internationally for her pioneering leadership in the teaching and coaching of championship volleyball, Coach Cecile Reynaud, now in her 26th year at the helm of the FSU volleyball program, has been honored by her former students through the establishment of an endowed scholarship in her name.



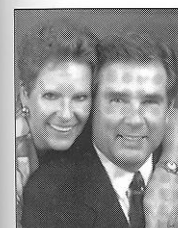
Claude R. Flory Scholarship

Drs. Claude and Daisy Flory, retired FSU faculty whose names are synonymous with the highest standards of both the character and accomplishment of Seminole athletics, established a fully endowed scholarship for volleyball in the name of Claude Flory.



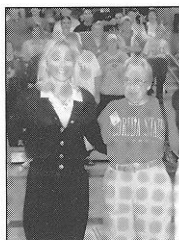
Lucy McDaniel Scholarship

A 1959 graduate of Florida State, Lucy McDaniel is known for her outstanding service and leadership to education and women's athletics, not only in the state of Florida, but in the Southeast region as well. A former collegiate volleyball coach herself, she established a fully endowed scholarship for volleyball.



Nan Mitchem Scholarship

A scholarship was established for volleyball in the name of Nancy Cooper (Nan) Mitchem, a 1967 graduate of FSU. Nan was a member of the Varsity "F" Club, a lifetime member of the Alumni Association and a Golden Chief and Tribal Chief with the Seminole Boosters. Her enthusiasm for FSU and positive attitude about life was a great example to all who knew her.



Dr. Billie Jones and Dr. Janet Wells Scholarship

Initiated by former FSU Women's Basketball Coach Dr. Dianne Murphy, former students and athletes have established a scholarship for volleyball in honor of former head coach Dr. Billie Jones and Dr. Janet Wells and their dedication to women's athletics at FSU. Retired professors in physical education, Dr. Jones and Dr. Wells have each been honored with the distinction of Professor Emerita. It has been their vision, dedication and persistence that has played a major role in paving the way for the success of women's athletics at FSU.



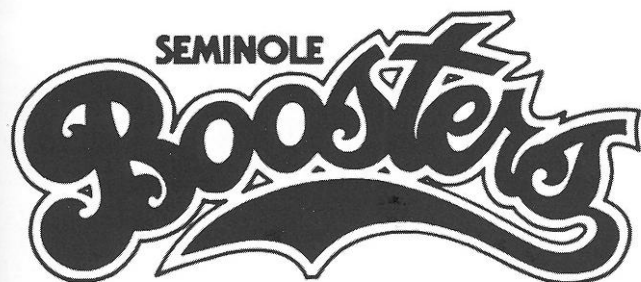
Jane Gray Parrish Scholarship

Another endowment for volleyball is the Jane Gray Parrish Scholarship for Volleyball. A 1968 graduate of Florida State University, Parrish is known equally for her dedication to her work as a supervisor of playgrounds, city-wide events and day camps for the Clearwater Parks Department of Recreation, as she is for her devotion to Florida State athletics. Parrish competed in volleyball at the intramural level at FSU before the program turned varsity in 1968.



Barbara June Reynaud Scholarship

Barbara June Reynaud has supported her daughter's education and volleyball hopes and dreams throughout the years. Attending every home match possible and often traveling to support the team, Barbara June has always been there for Cecile and her athletes. In recognition and celebration of Cecile Reynaud's 25 years of coaching volleyball at FSU the many friends of Cecile have honored her and her greatest fan by establishing an endowed scholarship in volleyball in the name of Barbara June Reynaud.



EXCERPT FROM SHAPE MAGAZINE,
August 2000

Attention to detail. Unwavering concentration. Not just hoping, but expecting to succeed. These are key to getting superior results from working out. Take Olympic track-and-field athlete Marion Jones, a competitor I — and the rest of the world — have admired for years. Next month, at the Olympic Games in Sydney, Australia, all eyes will be on her: an athlete with an obsessive attention to detail, who trains with fierce concentration. Jones, the fastest female runner in the world, isn't just a gold medal hopeful, she's intent on winning. "I know I'm capable of this," she recently told the New York Times Magazine. Not satisfied with merely being the fastest woman alive, Jones wants to be the fastest female athlete on the planet.

In this issue of Shape we salute such champions - and the gold medalist in you. Throughout these pages, we show you how to get to the next level in your fitness, and how to achieve the pinnacle of what you are capable of, a la Marion Jones. In "Got Muscle?" on page 142, 1996 gold-medal winning athletes Jennifer Azzi and Lisa Leslie display the rewards (more muscle tone of course) of effective training for the WNBA. We've incorporated some of their best moves into a single routine for you, a workout that's both a timesaver and challenging enough to yield results.

Today, thankfully, real beauty means putting on some muscle. So it's no accident that Gabrielle Reece is this month's cover model. A professional athlete, 6-foot-3-inch Gabby, 30, is redefining beauty standards by combining athleticism with femininity. Her beauty, though, is not just on the outside. When I met Gabby more than 10 years ago, she was a volleyball player under Cecile Reynaud (who also coached me at Florida State University; in fact, it was Cecile's call to me that landed Gabby on her first Shape cover in April 1990). I learned then that her true beauty came from being real and from being true to her goals. Years ago I asked her about her goals. Her definitive reply: "A volleyball player first, a model second." A volleyball player is who she is; modeling is something she does.

Beauty isn't something you look at, says author/fitness trainer Ray Kybartas in *Fitness Is A Religion* (Simon & Shuster, 1997). It's something you live. Just ask Gabrielle Reece, or Marion Jones, or Jennifer Azzi or Lisa Leslie. Beauty is more than a perfectly posed photo. It's something we can all poses by being true to who we are and what we want from life. Focus on your goals; pay attention to details. Expect yourself to achieve and you will. Never lose faith in the process. Be yourself first because that's real beauty. And it reaps real rewards.

BARBARA HARRIS,
EDITOR IN CHIEF
FSU CLASS OF '76

Gabrielle Reece

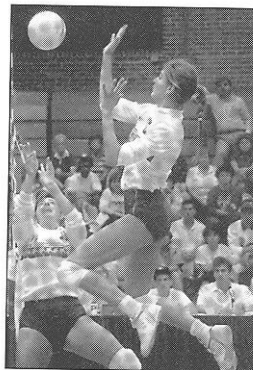
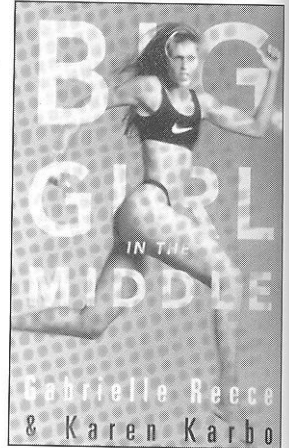
The most famous alumni of Florida State volleyball, Gabrielle Reece went on to pursue a career in the sport that she loves. Captaining Team Nike for the Bud Light four-woman tour is just the beginning of what she has accomplished. On the court, Reece led Team Nike to the Tour championship and has twice been named WBVL Offensive Player of the Year while leading the league in kills four times.

After a stint on a popular MTV sports television show as co-host with Dan Cortese,

Reece had her own syndicated show "The Extremist" which aired on CBS. She has also written articles for "Sports for Women" and had a monthly column in *Conde Naste* and was featured on Lifetime Television's *Intimate Portrait*.

A role model for all athletes, Reece served as a feature commentator for the 1998 Goodwill Games held in New York. She also co-authored her first book entitled *Big Girl in the Middle* in 1997.

Along with her television and volleyball careers, Reece finds time to be a supermodel. Named one of the 50 most beautiful women in the world by *ELLE* magazine, Reece also serves as the spokesperson for Coppertone skin

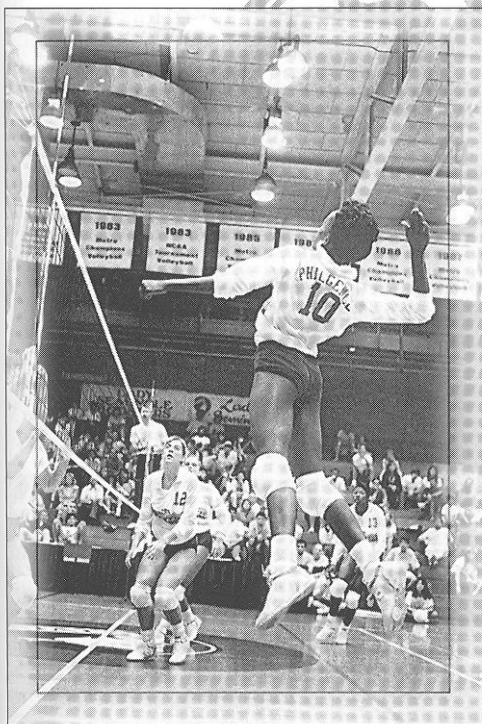
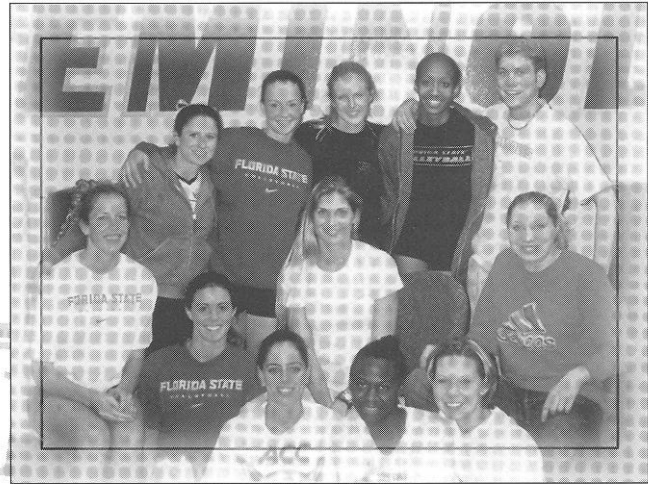


FAMOUS ALUMNI

products. Currently Reece is trying to qualify for the LPGA Tour.

Despite her hectic work and travel schedule, Reece is devoted to helping Florida State athletics. Reece returned to Tallahassee to unveil Florida State's logo for the 30th anniversary of women's athletics. On a previous visit, she worked with the volleyball team in spring practice and offered words of advice to the team on success in the world of sports.

Reece was selected to the Florida State Athletics Hall of Fame in 1997.

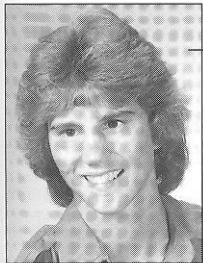


Maggie Philgence

In her senior season, Philgence was named to five all-tournament teams, selected Metro Conference Player of the Week twice, as well as being listed on the All-Metro Conference team and American Volleyball Coaches Association All-South Region team. Her statistics also ranked in the top around the nation. She has left her mark in the Florida State record books as well as with the NCAA. Philgence is ranked 17th in the NCAA for her career kills (2,110) and tops the FSU career charts. She also led the Metro in hitting percentage (.333) and kills per game (4.41) throughout her final season.

After breaking six school records during the 1990 season, Philgence was drafted to the South Team for the Olympic Festival in Los Angeles. Philgence helped lead her team to the championship game where the South defeated the West to claim the gold medal.

Upon graduation, Philgence traveled overseas to play professional volleyball with the international league in France. She was inducted into the FSU Athletics Hall of Fame in 1998.



Karen Palgut

A three-sport athlete at Florida State, Palgut lettered in volleyball (four), basketball (one) and softball (two) from 1982-86. After a successful collegiate career that saw her named to the All-Metro Tournament team three

times, including the distinction of MVP, she competed in the 1982 Olympic Festival on the East team. Upon graduation, Palgut joined the U.S. Women's National Team for Handball and had a successful career. She participated in the Goodwill games, the Pan American Games (Gold Medal) and the 1988 and 1992 Olympics receiving a 7th and 6th place respectively.

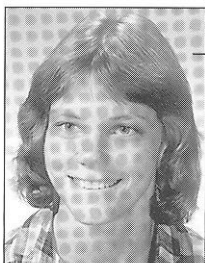


Barbara Harris

After a playing career spanning from 1974-77, Harris has had a successful career in the magazine industry as Editor-in-Chief at Shape.

Harris returned to campus in 1999 when she was honored as a "Grad Made Good" during Homecoming Ceremonies.

The Florida State Athletics Hall of Fame enjoys a rich tradition as its first and largest class (15) was inducted in 1977. At least six individuals have been selected each year since, with the exception of 1996 when no class was inducted as Florida State celebrated its 50th Year Anniversary of Athletics. There are a total of 188 members in the Florida State Athletics Hall of Fame including the 2002 class to be inducted on August 30th.

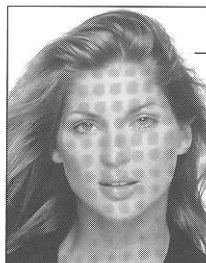


Margie Wessel Scott

1988 Inductee

Named team MVP the last three years of her college career, Margie Wessel led the Lady Seminole volleyball team to a 127-60 record during her four years at Florida

State. Twice during her career, the Seminoles advanced to the AIAW National Tournament. The Miami native was co-captain of the Florida State squad as a senior and was named to the AIAW Region III all-star team in 1979 and 1980.



Gabrielle Reece

1997 Inductee

A Lady Seminole from 1987-90, Gabrielle Reece quickly established herself as a force on the volleyball court. She holds the FSU career and single-season records for solo blocks

(240 and 69) as well as the career record for total blocks (747). She garnered AVCA All-Region honors in 1989 and was a Metro All-Conference selection in 1989 and 1990. As a junior, Reece was named to the Metro All Tournament Team after helping to lead Florida State to the Metro Conference Championship. Reece did not go unnoticed nationally either.

She was pegged the 1989 Dodge National Athletic Awards Most Inspiring Collegiate Athlete and was among Rolling Stone Magazine's Wonder Women of Sport that same year. Reece went on to play professional volleyball as the captain of Team Nike for the Bud Light four-woman beach volleyball tour. In addition to her playing career, Reece is also a supermodel and television celebrity. She added "author" to her resumé, when she co-authored her first book, "Big Girl in the Middle," which was released in the summer of 1997.



Dr. Billie Jones

1998 Inductee

As head coach of the Lady Seminole volleyball (1970, 1972-75) and softball (1971, 1972-74) programs, Dr. Billie Jones played a major role in paving the way for the

success of women's athletics at Florida State University. Dr. Jones earned her Ph.D. from Florida State in 1972 and began serving as an Associate Professor in the Department of Movement Science and Physical Education in addition to her coaching duties. Under Dr. Jones' direction, the volleyball program compiled a remarkable 107-22 record and made appearances at the AIAW National Championship Tournament in 1973, 1974 and 1975 while competing for state and regional championships along the way. Dr. Jones also coached the 1971 softball team to the state championship and the 1974 squad to a runner-up finish. Dr. Jones devoted her time to teaching full-time in 1975, but continued to be instrumental in the advancement of women's athletics at Florida State. She was recognized for service and dedication to FSU's women's athletics when she was given the Herb Morgan Award in 1982. In 1985, Dr. Jones became a Service Professor in the Department of Movement Science and Physical Education and in 1989, she was honored with the distinction of Professor Emerita. Among her many accomplishments, Dr. Jones has also co-authored four books on coaching and fitness. A scholarship by an anonymous donor, given in the name of Dr. Jones, is awarded annually in the College of Education to a female student who intends to coach.



Maggie Philgence

1998 Inductee

A member of the Florida State volleyball team from 1987-90, Maggie Philgence made a name for herself not only at FSU, but at the conference and national levels as

well. Philgence broke six school records during her senior season, three of which still stand, and earned All-Metro Conference and AVCA All-South Region team honors. A powerful hitter, she still ranks among FSU's Top 10 in 14 statistical categories and remains the FSU leader in career kills (2,110) and kill attempts (4,793) as well as single-season kills with 579 in 1990. Upon graduation, Philgence was drafted to the South Team for the Olympic Festival in Los Angeles and helped lead her team to a gold medal. She went on to play professionally with the international league in France.

LUCY McDANIEL ARENA AT TULLY GYMNASIUM

Tully Gymnasium has been home to Florida State volleyball for many years. Overall, the friendly confines of the gymnasium have been good to the Seminoles, as they have accumulated a record of 265-92 on their home court for a winning percentage of .742 in the past 26 years in the facility.

The facility, which was constructed in 1956, was named for the late Robert Henry (Bobby) Tully, a 1952 FSU graduate and football player. Active on campus, Tully was a member of the Gold Key, ODK, the Arnold Air Society and Alpha Tau Omega fraternity. He died in May of 1954 after battling illness.

With a capacity of 2,500, the gymnasium has undergone several renovations in recent years. Prior to the 1999 season, the playing floor was resurfaced and repainted and new lighting was added. Tully Gymnasium features new arena-style padded seating with armrests, which were installed to create a more comfortable atmosphere for Seminole fans, while watching Florida State volleyball.

On November 2, 2000 in a special ceremony, Florida State dedicated the floor of Tully Gymnasium to Lucy McDaniel, the first woman in the state of Florida to donate more than one million dollars to a women's athletic program. The facility became known as the Lucy McDaniel Volleyball Arena at Tully Gymnasium prior to the 2001 season, in honor of the wonderful gifts and support that McDaniel has provided to the Lady Seminole volleyball program and Florida State athletics.

The dedication ceremony included an address from Athletic Director Dave Hart, Jr., as well as an appearance by University President and Florida State volleyball fan, Sandy D'Alemberte. Former head coach Dr. Cecile Reynaud said a few words

regarding the magnificent gift, which was followed by a touching tribute by FSU volleyball players Kristin Frye and Martha Hamilton. Frye presented McDaniel with a ball signed by all the players followed by a poem written by Hamilton about the relationship of the 2000 squad with McDaniel.

McDaniel first gave \$100,000 to endow a volleyball scholarship at Florida State and later donated another \$50,000 so the team could take a European tour in May of 2000. McDaniel wanted to do more, so she asked her accountant to run through her financial statements to see what she would be able to give now and later in her will. After gathering the information from her accountant, she called Seminole Boosters' Planned Giving Director Joel Padgett and started

the process.

In addition to the always-exciting Atlantic Coast Conference schedule, the 2002 Seminoles will host the FSU Invitational. The Seminoles will take on LSU Louisiana-Lafayette and Brown in this Invitational Tournament. Non-conference opponents slated to visit Tully include, Pac-10 opponent, Oregon, Florida A&M and Jacksonville.

TULLY GYM FACILITY RECORDS

1976	5-2	1989	17-1
1977	2-3	1990	15-1
1978	4-2	1991	8-7
1979	7-1	1992	11-2
1980	10-1	1993	13-2
1981	19-3	1994	11-6
1982	13-5	1995	6-8
1983	8-0	1996	8-6
1984	8-4	1997	13-3
1985	8-8	1998	14-1
1986	11-3	1999	6-11
1987	12-4	2000	15-5
1988	11-0	2001	10-3
Overall		265-92	
		(.742)	



Since its beginning in 1968 with a group of physical education students and a volunteer coach, Florida State volleyball, which is considered FSU's first women's intercollegiate sport, shed its club team roots to become one of the nation's premiere programs.

In its infancy, it was not uncommon for the group of aspiring athletes and teachers to pay their own way to tournaments and share warm-up suits with the other women's club teams. The club struggled to become established in those early years as team members were faced with having to find a new volunteer head coach each of the program's first five years.

After Florida State made its first ever appearance at the AIAW National Tournament in 1971, Dr. Billie Jones assumed the coaching duties on a permanent basis for the next six seasons. Under Jones' direction, the Seminoles amassed a record of 107-22, and volleyball at Florida State became a mainstay.

Success continued for the program as it returned to the AIAW National Tournament in 1973, '74 and '75, while competing for state and regional championships along the way. Popularity for the sport began to grow. In just a few short years, Florida State volleyball became recognized as one of the sport's up-and-coming programs.

Former head coach Dr. Cecile Reynaud, who served as head coach from 1976-2001, continued to build on the foundation laid by her predecessors. Under Reynaud's guidance, FSU qualified for the AIAW National Tournament three more times. After its AIAW appearance in 1981, Florida State joined the NCAA and

began competing as a member of the Metro Conference in 1982.

Before FSU joined the Atlantic Coast Conference in 1992, the Seminoles dominated the Metro Conference, capturing six league titles. Florida State seized its first ACC Championship in 1998. Overall, in 11 years of ACC play, Florida State has an ACC regular season co-championship to its credit and has played in four ACC Tournament title matches.

Since Florida State became a NCAA volleyball member in 1982, the Seminoles have qualified for the National Championship Tournament 10 times, including five times in the '90's.

Several of FSU's volleyball alumni have gone on to play professionally. Whether it be in Europe or the sandy shores of California, Florida State's top athletes often choose to continue playing the game they love. In recent years, three former FSU volleyball players have been on tour with the professional beach circuit.

Perhaps the most famous of the FSU volleyball alumni is world-class model Gabrielle Reece. After enjoying a standout career at Florida State, Reece went on to captain Team Nike on the pro beach circuit. She has had a fitness column in ELLE Magazine and appeared on MTV Sports. Reece co-authored her first book *Big Girl in the Middle* and has been featured on Lifetime Television's *Intimate Portrait*.

In the 34 years since its inception, Florida State volleyball has prided itself in giving athletes the opportunity to reach their full potential both on the court and in the classroom. Pride, tradition and success are all part of what is known as Seminole volleyball.



Dr. Linda Warren, Dr. Judy Blucher, Dr. Billie Jones, Martha Pat Moore, Dr. Cecile Reynaud.



1968, FSU's first volleyball team



1998, ACC Champions

NCAA CHAMPIONSHIPS

YEAR	SITE	OPPONENT	SCORE
1983	Tallahassee	Tennessee	15-12, 15-12, 1-15, 10-15, 8-15
1985	Athens	Georgia	6-15, 1-15, 11-15
1987	Austin	Texas	6-15, 11-15, 9-15
1988	Tallahassee	Colorado St.	3-15, 5-15, 15-9, 7-15
1989	Tallahassee	California	15-11, 11-15, 13-15, 13-15
1990	Lexington	Kentucky	12-15, 10-15, 15-10, 10-15
1992	Gainesville	Florida	9-15, 3-15, 10-15
1993	Tallahassee	DePaul	15-8, 7-15, 15-10, 15-13
	Tallahassee	Pacific	6-15, 17-15, 6-15, 9-15
1997	Gainesville	South Florida	15-8, 4-15, 13-15, 15-7, 9-15
1998	Louisville, KY	Northern Illinois	15-10, 11-15, 10-15, 12-15

FSU VOLLEYBALL COACHES

1968	Martha Pat Moore
1969	Dr. Judy Blucher
1970	Dr. Billie Jones
1971	Dr. Linda Warren
1972-75	Dr. Billie Jones (107-22)
1976-2001	Dr. Cecile Reynaud (635-315)
2002-present	Todd Kress

AIAW CHAMPIONSHIPS



1971
1973
1974
1975
1978
1980
1981

Conference Tournament History

CONF.	YEAR	SITE	HOST	FINISH
METRO	1982	Tallahassee, FL	FSU	3rd Place
METRO	1983	Louisville, KY	Louisville	Champions
METRO	1984	Columbia, SC	South Carolina	3rd Place
METRO	1985	Hattiesburg, MS	Southern Miss	Champions
METRO	1986	Blacksburg, VA	Virginia Tech	Champions
METRO	1987	Memphis, TN	Memphis State	Champions
METRO	1988	Cincinnati, OH	Cincinnati	Champions
METRO	1989	Tallahassee, FL	FSU	Champions
METRO	1990	Louisville, KY	Louisville	3rd Place
ACC	1991	Charlottesville, VA	Virginia	3rd Place
ACC	1992	College Park, MD	Maryland	Runner-up
ACC	1993	Durham, NC	Duke	Runner-up
ACC	1994	Chapel Hill, NC	North Carolina	3rd Place
ACC	1995	Clemson, SC	Clemson	3rd Place
ACC	1996	Atlanta, GA	Georgia Tech	5th Place
ACC	1997	Raleigh, NC	NC State	3rd Place
ACC	1998	College Park, MD	Maryland	Champions
ACC	1999	Orlando, FL	ACC	9th Place
ACC	2000	Winston Salem, NC	Wake Forest	5th Place
ACC	2001	Tallahassee, FL	Florida State	Runner-up

2002 OPPONENTS

FLORIDA STATE UNIVERSITY

ILLINOIS STATE UNIVERSITY

Fri., Aug. 30, Normal Ill.
 Location Normal, Ill.
 Enrollment 21,035
 Nickname Redbirds
 Colors Red and White
 Arena/Capacity Redbird Arena/10,200
 Conference Missouri Valley Conference
 Conference Record/Finish 11-7/4th
 2001 Overall Record 16-14
 Post season Play NA
 Head Coach/Alma Mater Sharon Dingman/Northern Michigan '84
 Record at School/Years 35-24/2 Years
 Career Record/Years 224-137/11 Years
 Starters Returning/Lost 3/3
 Letterwinners Returning/Lost 11/4
 Volleyball Contact/Phone Tom Lamonica/ (309) 438-5746
 SID Fax (309) 438-5634
 Website www.Redbirds.org

UNIVERSITY OF ALABAMA

Sat., Aug. 31, Normal Ill.
 Location Tuscaloosa, Ala.
 Enrollment 19,400
 Nickname Crimson Tide
 Colors Crimson and White
 Arena/Capacity The CAVE (Coleman Auxiliary Volleyball Extension)/1,000
 Conference Southeastern Conference
 Conference Record/Finish 10-5/2nd in West
 2001 Overall Record 22-9
 Post season Play NA
 Head Coach/Alma Mater Judy Green/Western Carolina '84
 Record at School/Years 89-104/6 Years
 Career Record/Years 485-178/16 Years
 Starters Returning/Lost 7/0
 Letterwinners Returning/Lost 9/5
 Volleyball Contact/Phone Brian Morgan/ (205) 348-6084
 SID Fax (205) 348-8841
 Website www.rolltide.com

MARSHALL UNIVERSITY

Sat., Aug. 31, Normal Ill.
 Location Huntington, W.V.
 Enrollment 16,000
 Nickname Thundering Herd
 Colors Green and White
 Arena/Capacity The Henderson Center/9,043
 Conference Mid-American Conference
 Conference Record/Finish 4-14/6th in East
 2001 Overall Record 6-21
 Post season Play NA
 Head Coach/Alma Mater Mitch Jacobs/Iowa '91
 Record at School/Years First Year
 Career Record/Years 182-111/9 Years
 Starters Returning/Lost 6/0
 Letterwinners Returning/Lost 11/1
 Volleyball Contact/Phone Andy Boggs/ (304) 696-2418
 SID Fax (304) 696-2325
 Website www.Herdzone.com

JACKSONVILLE UNIVERSITY

Wed., Sept. 4, Tallahassee, Fla.
 Location Jacksonville, Fla.
 Enrollment 2,095
 Nickname Dolphins
 Colors Green and White
 Arena/Capacity Swisher Gymnasium/1,500
 Conference Atlantic Sun Conference
 Conference Record/Finish 6-4/5th
 2001 Overall Record 8-17
 Post season Play NA
 Head Coach/Alma Mater Robin Mignerey/Clemson '95
 Record at School/Years 25-28/2 Years
 Career Record/Years 25-28/2 Years
 Starters Returning/Lost 4/2
 Letterwinners Returning/Lost 6/2
 Volleyball Contact/Phone Russell Reneau/ (904) 745-7402
 SID Fax (904) 745-7179
 Website www.judolphins.com

UNIVERSITY OF OREGON

Tues., Sept. 10, Tallahassee, Fla.
 Location Eugene, Ore.
 Enrollment 19,091
 Nickname Ducks
 Colors Green and Yellow
 Arena/Capacity McArthur Court/9,087
 Conference Pacific-10 Conference
 Conference Record/Finish 0-18/10th
 2001 Overall Record 9-21
 Post season Play NA
 Head Coach/Alma Mater Carl Ferreira/Fresno State '93
 Record at School/Years 19-41/2 Years
 Career Record/Years 167-97/8 Years
 Starters Returning/Lost 4/2
 Letterwinners Returning/Lost 11/5
 Volleyball Contact/Phone Allison Ross/ (541) 346-0962
 SID Fax (541) 346-5449
 Website www.goducks.com

UNIVERSITY OF MIAMI

Fri., Sept. 13, Miami, Fla.
 Location Coral Gables, Fla.
 Enrollment 14,436
 Nickname Hurricanes
 Colors Orange, Green and White
 Arena/Capacity Knight Sports Complex/1,200
 Conference Big East Conference
 Conference Record/Finish NA
 2001 Overall Record 17-7
 Post season Play NA
 Head Coach/Alma Mater Nicole Lantagne/Maryland '94
 Record at School/Years 17-7/1 Year
 Career Record/Years 17-7/1 Year
 Starters Returning/Lost 4/2
 Letterwinners Returning/Lost 7/2
 Volleyball Contact/Phone David Cruz/ (305) 284-3244
 SID Fax (305) 284-2807
 Website www.hurricanesports.com

2002 OPPONENTS

FLORIDA INTERNATIONAL UNIVERSITY

Fri., Sept. 13, Miami, Fla.

Location Miami, Fla.
 Enrollment 31,822
 Nickname Golden Panthers
 Colors Blue and Gold
 Arena/Capacity University Park/1,500
 Conference Sun Belt Conference
 Conference Record/Finish 9-5/3rd
 2001 Overall Record 24-8
 Post season Play NCAA 1-1 (lost to Florida 0-3)
 Head Coach/Alma Mater Cookie Stevens/Florida International '81
 Record at School/Years 47-48/3 Years
 Career Record/Years 564-235/22 Years
 Starters Returning/Lost 6/0
 Letterwinners Returning/Lost 10/3
 Volleyball Contact/Phone (305) 348-6666
 SID Fax (305) 348-2963
 Website www.fiu.edu/~athletic/

INDIANA UNIVERSITY-PURDUE UNIVERSITY AT INDIANAPOLIS

Sat., Sept. 14, Miami, Fla.

Location Indianapolis, Ind.
 Enrollment 27,587
 Nickname Jaguars
 Colors Red, Gold and Black
 Arena/Capacity IUPUI Gymnasium/2,000
 Conference Mid Continent Conference
 Conference Record/Finish 6-6/4th
 2001 Overall Record 8-21
 Post season Play NA
 Head Coach/Alma Mater Steve Payne/Northern Illinois University '87
 Record at School/Years 67-90/5 Years
 Career Record/Years 67-90/5 Years
 Starters Returning/Lost 2/4
 Letterwinners Returning/Lost 7/5
 Volleyball Contact/Phone Kevin Buerge/ (317) 278-3619
 SID Fax (317) 278-2683
 Website www.iupui.edu/~jagsport

UNIVERSITY OF LOUISIANA-LAFAYETTE

Fri., Sept. 20, Tallahassee, Fla.

Location Lafayette, La.
 Enrollment 15,407
 Nickname Ragin' Cajuns
 Colors Vermilion and White
 Arena/Capacity Earl K. Long Gym/1,500
 Conference Sun Belt Conference
 Conference Record/Finish 8-7/2nd in West
 2001 Overall Record 14-11
 Post season Play NA
 Head Coach/Alma Mater Becky Madden/Purdue '89
 Record at School/Years First Year
 Career Record/Years 29-63/3 Years
 Starters Returning/Lost 4/2
 Letterwinners Returning/Lost 8/3
 Volleyball Contact/Phone Rob Broussard/ (337) 482-6331
 SID Fax (337) 482-6649
 Website www.ragincajuns.com

BROWN UNIVERSITY

Sat., Sept. 21, Tallahassee, Fla.

Location Providence, R.I.
 Enrollment 5,722
 Nickname Bears
 Colors Seal Brown, Cardinal Red and White
 Arena/Capacity Pizzitola Memorial Sports Center/2,800
 Conference Ivy League
 Conference Record/Finish 11-3/T-1st
 2001 Overall Record 16-11
 Post season Play NA
 Head Coach/Alma Mater Diane Short/ Rhode Island '86
 Record at School/Years 122-133/9 Years
 Career Record/Years 122-133/9 Years
 Starters Returning/Lost 11/3
 Letterwinners Returning/Lost 11/3
 Volleyball Contact/Phone (401) 863-2219
 SID Fax (401) 863-1436
 Website www.brownbears.com

LOUISIANA STATE UNIVERSITY

Fri., Sept. 20, Tallahassee, Fla.

Location Baton Rouge, La.
 Enrollment 30,977
 Nickname Tigers or Fighting Tigers
 Colors Purple and Gold
 Arena/Capacity Pete Maravich Assembly Center/14,164
 Conference Southeastern Conference
 Conference Record/Finish 10-5/T-2nd in West
 2001 Overall Record 16-11
 Post season Play NA
 Head Coach/Alma Mater Fran Flory/ Texas '84
 Record at School/Years 63-59/4 Years
 Career Record/Years 173-173/11 Years
 Starters Returning/Lost 3/3
 Letterwinners Returning/Lost 9/4
 Volleyball Contact/Phone Melissa Reynaud/ (225) 578-8226
 SID Fax (225) 578-1861
 Website www.LSUports.net

UNIVERSITY OF FLORIDA

Tues., Sept. 24, Gainesville, Fla.

Location Gainesville, Fla.
 Enrollment 44,841
 Nickname Gators
 Colors Orange and Blue
 Arena/Capacity Stephen C. O'Connell Center/12,000
 Conference Southeastern Conference
 Conference Record/Finish 14-0/1st Overall
 2001 Overall Record 28-2
 Post season Play NCAA 3-1 (lost to Nebraska 2-3)
 Head Coach/Alma Mater Mary Wise/ Purdue '81
 Record at School/Years 361-38/ 12 Years
 Career Record/Years 442-101/16 Years
 Starters Returning/Lost 4/2
 Letterwinners Returning/Lost 11/2
 Volleyball Contact/Phone LeeAnne Sears/ (352) 375-4683 ext.6120
 SID Fax (352) 375-4809
 Website www.gatorzone.com

WAKE FOREST UNIVERSITY

Fri., Sept. 27, Tallahassee, Fla.; Sun., Oct. 20, Winston-Salem, N.C.

Location.....Winston-Salem, N.C.
 Enrollment.....3,950
 Nickname.....Demon Deacons
 Colors.....Old Gold and Black
 Arena/Capacity.....Reynolds Gym/2,000
 Conference.....Atlantic Coast Conference
 Conference Record/Finish.....10-6/T-4th
 2001 Overall Record.....20-11
 Post season Play.....NA
 Head Coach/Alma Mater.....Valorie Baker/Eastern Kentucky '91
 Record at School/Years.....41-20/2 Years
 Career Record/Years.....41-20/2 Years
 Starters Returning/Lost.....6/2
 Letterwinners Returning/Lost.....11/3
 Volleyball Contact/Phone.....Bill Newton/ (336) 758-5640
 SID Fax.....(336) 758-5140
 Website.....www.wakeforestsports.com

DUKE UNIVERSITY

Sat., Sept. 28, Tallahassee, Fla.; Sat., Oct. 19, Durham, N.C.

Location.....Durham, N.C.
 Enrollment.....6,202
 Nickname.....Blue Devils
 Colors.....Royal Blue and White
 Arena/Capacity.....Cameron Indoor Stadium/9,314
 Conference.....Atlantic Coast Conference
 Conference Record/Finish.....13-3/1st
 2001 Overall Record.....23-5
 Post season Play.....NCAA 1-1 (lost to Southern California 0-3)
 Head Coach/Alma Mater.....Jolene Nagel/Edinboro '83
 Record at School/Years.....57-32/3 Years
 Career Record/Years.....295-168/14 Years
 Starters Returning/Lost.....4/2
 Letterwinners Returning/Lost.....9/4
 Volleyball Contact/Phone.....Melanie McCullough/ (919) 684-2633
 SID Fax.....(919) 684-2489
 Website.....www.goduke.com

CLEMSON UNIVERSITY

Sat., Oct. 5, Clemson, S.C.; Sat., Nov. 9, Tallahassee, Fla.

Location.....Clemson, S. C.
 Enrollment.....16,982
 Nickname.....Tigers
 Colors.....Orange and Purple
 Arena/Capacity.....Jervey Gym/1,000
 Conference.....Atlantic Coast Conference
 Conference Record/Finish.....4-12/7th
 2001 Overall Record.....11-17
 Post season Play.....NA
 Head Coach/Alma Mater.....Jolene Jordan Hoover/Illinois State '86
 Record at School/Years.....187-81/9 Years
 Career Record.....279-112/12 Years
 Starters Returning/Lost.....4/2
 Letterwinners Returning/Lost.....11/4
 Volleyball Contact/Phone.....Anne Miller/ (864) 656-1920
 SID Fax.....(864) 656-0299
 Website.....www.clemsonigers.com

GEORGIA TECH UNIVERSITY

Sun., Oct. 6, Atlanta, Ga.; Fri., Nov. 8, Tallahassee, Fla.

Location.....Atlanta, Ga.
 Enrollment.....14,000
 Nickname.....Yellow Jackets
 Colors.....Old Gold and Yellow
 Arena/Capacity.....O'Keefe Gymnasium/2,000
 Conference.....Atlantic Coast Conference
 Conference Record/Finish.....12-4/T-2nd
 2001 Overall Record.....19-8
 Post season Play.....NCAA 0-1 (lost to Louisville 2-3)
 Head Coach/Alma Mater.....Bond Shymansky/Iowa '95
 Record at School/Years.....First Year
 Career Record/Years.....First Year
 Starters Returning/Lost.....5/3
 Letterwinners Returning/Lost.....8/6
 Volleyball Contact/Phone.....Melissa Jenkins/ (404) 894-5445
 SID Fax.....(404) 894-1248
 Website.....www.ramblinwreck.com

UNIVERSITY OF VIRGINIA

Fri., Oct. 11, Tallahassee, Fla.; Sun., Nov. 3, Charlottesville, Va.

Location.....Charlottesville, Va.
 Enrollment.....18,550
 Nickname.....Cavaliers, Hoos, or Wahooos
 Colors.....Navy and Orange
 Arena/Capacity.....University Hall/8,392
 Conference.....Atlantic Coast Conference
 Conference Record/Finish.....3-13/8th
 2001 Overall Record.....9-18
 Post season Play.....NA
 Head Coach/Alma Mater.....Melissa Aldrich Shelton/William & Mary '91
 Record at School/Years.....121-102/7 Years
 Career Record/Years.....121-102/7 Years
 Starters Returning/Lost.....5/1
 Letterwinners Returning/Lost.....11/2
 Volleyball Contact/Phone.....Bill Hurd/ (434) 982-5500
 SID Fax.....(434) 982-5525
 Website.....www.virginiasports.com

UNIVERSITY OF MARYLAND

Sat., Oct. 12, Tallahassee, Fla.; Sat., Nov. 2, College Park, Md.

Location.....College Park, Md.
 Enrollment.....33,006
 Nickname.....Terrapins, Terps
 Colors.....Red, White, Black and Gold
 Arena/Capacity.....Ritchie Coliseum/1,700
 Conference.....Atlantic Coast Conference
 Conference Record/Finish.....7-9/6th
 2001 Overall Record.....12-14
 Post season Play.....NA
 Head Coach/Alma Mater.....Janice Kruger/Nebraska '77
 Record at School/Years.....259-176/14 Years
 Career Record/Years.....634-272/24 Years
 Starters Returning/Lost.....5/1
 Letterwinners Returning/Lost.....11/6
 Volleyball Contact/Phone.....Kevin Messenger/ (301) 314-7066
 SID Fax.....(301) 314-9094
 Website.....www.umterps.com

2002 OPPONENTS

FLORIDA A&M UNIVERSITY

Wed., Oct. 16, Tallahassee, Fla.

Location	Tallahassee, Fla.
Enrollment	13,527
Nickname	Rattlerettes
Colors	Orange and Green
Arena/Capacity	Gaither Gym/3,365
Conference	Mid-Eastern Athletic Conference
Conference Record/Finish	14-0/1st
2001 Overall Record	27-3
Post season Play	NCAA 0-1 (lost to Florida 0-3)
Head Coach/Alma Mater	Tony Trifonov/Bulgarian Nat'l Sports Academy '90
Record at School/Years	100-53/5 Years
Career Record/Years	100-53/5 Years
Starters Returning/Lost	5/1
Letterwinners Returning/Lost	7/3
Volleyball Contact/Phone	Kelly O'Neill/ (850) 561-2701
SID Fax	(850) 599-3206
Website	www.famu.edu/athletics

UNIVERSITY OF SOUTH FLORIDA

Tues., Oct. 29, Tampa, Fla.

Location	Tampa, Fla.
Enrollment	37,000
Nickname	Bulls
Colors	Green and Gold
Arena/Capacity	The Corral/1,000
Conference	Conference USA
Conference Record/Finish	13-3/T-2nd
2001 Overall Record	21-9
Post season Play	NA
Head Coach/Alma Mater	Nancy Mueller/University of Tennessee '93
Record at School/Years	64-33/3 Years
Career Record/Years	64-33/3 Years
Starters Returning/Lost	5/1
Letterwinners Returning/Lost	9/1
Volleyball Contact/Phone	Jodi Smith/ (813) 974-7099
SID Fax	(813) 974-5328
Website	www.gousfbulls.com

NORTH CAROLINA STATE UNIVERSITY

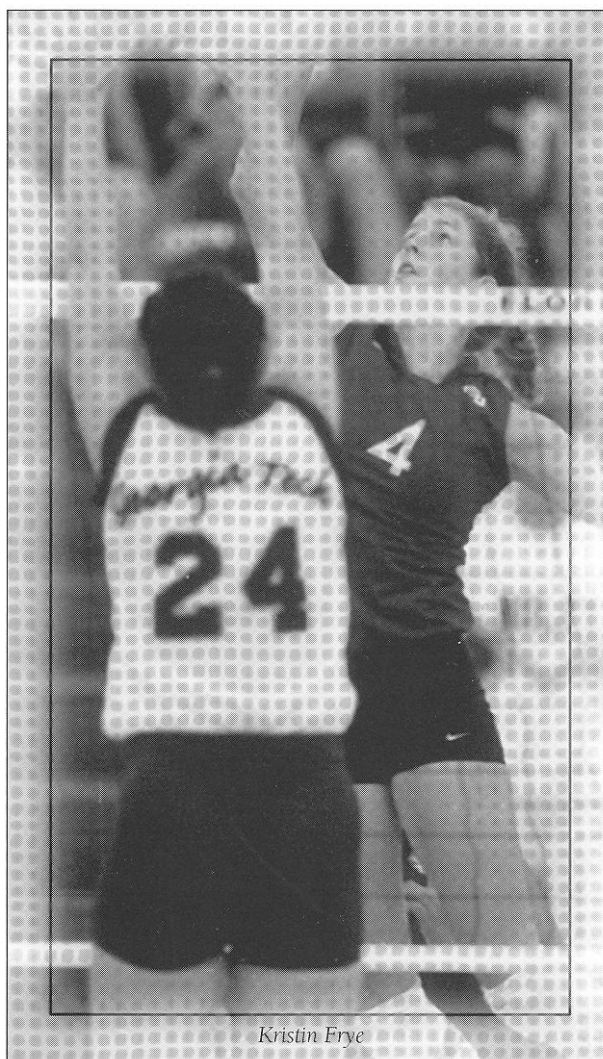
Fri., Oct. 25, Tallahassee, Fla.; Fri., Nov. 15, Raleigh, N.C.

Location	Raleigh, N.C.
Enrollment	28,619
Nickname	Wolfpack
Colors	Red and White
Arena/Capacity	Reynolds Coliseum/12,400
Conference	Atlantic Coast Conference
Conference Record/Finish	1-15/9th
2001 Overall Record	6-21
Post season Play	NA
Head Coach/Alma Mater	Mary Byrne/Nebraska '85
Record at School/Years	6-21/1 Year
Career Record/Years	181-109/9 Years
Starters Returning/Lost	4/2
Letterwinners Returning/Lost	7/6
Volleyball Contact/Phone	Justin Sellers/ (919) 515-2102
SID Fax	(919) 515-2898
Website	www.gopack.com

UNIVERSITY OF NORTH CAROLINA

Sun., Oct. 27, Tallahassee, Fla.; Sat., Nov. 16, Chapel Hill, N.C.

Location	Chapel Hill, N.C.
Enrollment	24,635
Nickname	Tar Heels
Colors	Carolina Blue and White
Arena/Capacity	Carmichael Auditorium/10,180
Conference	Atlantic Coast Conference
Conference Record/Finish	12-4/2nd
2001 Overall Record	24-9
Post season Play	NCAA 1-1 (lost to Pepperdine 0-3)
Head Coach/Alma Mater	Joe Sagula/S.U.N.Y. '78
Record at School/Years	239-158/12 Years
Career Record/Years	442-281/21 Years
Starters Returning/Lost	5/1
Letterwinners Returning/Lost	10/2
Volleyball Contact/Phone	David Applegate/ (919) 843-6397
SID Fax	(919) 962-0612
Website	www.TarHeelBlue.com



Kristin Erye

SERIES RECORDS

TEAM	LAST MEETING	W-L
ALABAMA	2000	10-10
Alabama-Birmingham	1991	6-1
Appalachian State	1981	2-0
Arizona	1985	0-3
Arizona State	1984	0-1
Arkansas State	1993	2-1
Auburn	1999	8-1
Ball State	2000	0-2
Baylor	1990	2-0
Berry College	1976	2-1
Boston College	1997	1-0
Brigham Young	1989	1-4
Butler	1990	1-0
Cal-Berkeley	1998	2-1
Cal-Irvine	1991	0-1
Central Florida	2001	26-7
Cincinnati	1990	15-2
CLEMSON	2001	17-10
College of Charleston	1975	1-1
Colorado	1990	0-1
Colorado State	1988	0-1
Columbus College	1978	2-0
DePaul	1994	2-0
DUKE	2001	7-22
East Tennessee State	1981	2-0
Eastern Kentucky	1988	3-4
Eastern Michigan	1997	1-0
Eastern Washington	1990	1-0
Flagler College	1981	4-0
FLORIDA	2001	21-25
FLORIDA A&M	2001	18-0
Florida Atlantic	2000	8-0
Florida Institute of Technology	1987	1-0
FLORIDA INTERNATIONAL	1999	12-4
Florida Junior College	1980	2-0
Florida Southern	1982	4-1
Fresno State	2001	1-2
George Mason	1995	0-1
George Washington	1990	1-1
Georgetown	1992	2-0
Georgia	1996	11-9
Georgia Southern	1997	2-0
Georgia State	1997	4-0
GEORGIA TECH	2001	6-16
Gulf Coast Community College	1979	2-0
Hofstra	1992	3-0
Houston	1995	4-8
Idaho	1991	1-0
Illinois	2000	1-1
Illinois-Chicago	1987	2-1
ILLINOIS STATE	1989	4-1
Indiana	1999	0-1
Indiana-Evansville	1984	1-0
Indian River Community College	1981	1-0
Iowa	1994	0-2
Iowa State	1979	1-0
JACKSONVILLE	2001	26-0
Kentucky	1990	4-5
Lake City Community College	1980	6-0
Lamar	1988	2-0
LaSalle	1992	1-0
Liberty	1999	1-0
Long Beach State	1998	0-3
LOUISIANA STATE	1994	10-8
Louisville	1990	9-5
Loyola Marymount	1993	2-1
MARYLAND	2001	9-15
McNeese State	1992	1-0
Memphis	1995	16-2
Mercer	1997	1-0
MIAMI	1901	12-8
Miami of Ohio	1996	0-1
Miami Dade-North CC	1976	1-0
Miami Dade-South CC	1980	3-4
Michigan	1997	1-0
Michigan State	1986	1-1
Middle Tennessee State	1981	1-0
Milligan College	1977	1-0
Minnesota	1994	6-7
Mississippi	1986	3-0
Mississippi State	1982	6-0
Mississippi University for Women	1980	7-5
Montevallo	1980	2-0
Montana	1997	1-0
Morehead State	1990	4-0
Nebraska	1982	0-2
New Mexico	1986	0-1
New Orleans	1995	7-0

TEAM	LAST MEETING	W-L
Nichols State	1981	1-0
North Alabama	1976	1-0
NORTH CAROLINA	2001	22-12
North Carolina-Greensboro	1976	1-0
NC STATE	2001	19-5
North Florida Junior College	1979	2-0
North Texas State	1978	0-1
Northeast Louisiana	1991	1-0
Northern Arizona	2001	1-1
Northern Illinois	1999	1-1
Northern Iowa	1998	1-0
Northwestern	1985	1-1
Northwest Louisiana	1977	1-0
Notre Dame	2000	1-2
Ohio State	1981	0-1
Oklahoma	1979	1-0
Oklahoma State	1980	1-0
Pacific	1993	0-1
Penn State	1994	1-2
Pepperdine	2001	0-3
Pittsburgh	1992	2-2
Portland State	1981	0-1
Purdue	1997	3-3
Rice	1993	4-0
Rhode Island	1995	1-1
Rollins College	1981	1-0
Rutgers	1982	0-2
Sam Houston State	1981	2-1
San Diego State	1983	0-1
Santa Clara	1999	1-1
South Alabama	1997	13-0
South Carolina	1999	16-8
South Carolina-Spartanburg	1980	1-0
SOUTH FLORIDA	2001	32-4
Southeast Louisiana	1998	2-0
Southern University	1983	1-0
Southern Illinois	1996	3-2
Southern Mississippi	2000	15-0
Southeast Missouri State	2000	1-0
Southwest Missouri State	1993	1-6
Southwest Texas State	1991	3-1
Southwestern Louisiana	1977	1-0
St. Louis University	1980	0-2
Stetson University	1983	1-0
Syracuse	1992	1-0
Tampa	1988	1-0
Temple	1991	1-0
Tennessee	1989	8-6
Tennessee-Chattanooga	1983	4-0
Tennessee Tech	1982	2-0
Texas	2001	0-6
Texas A&M	2001	3-5
Texas-Arlington	1999	1-4
Texas Tech	1986	4-1
Troy State	1996	2-0
Tulane	1990	9-1
Tuskegee Institute	1976	1-0
UCLA	1996	0-4
UC Santa Barbara	1999	0-2
Utah State	1998	1-1
Valdosta State	1977	1-0
VIRGINIA	2001	17-7
Virginia Tech	1990	13-0
WAKE FOREST	2001	11-3
Washington	1995	0-1
West Georgia State	1977	2-0
West Virginia	1980	2-0
William & Mary	1992	2-1
Winthrop College	1980	2-0
Wyoming	1990	0-1
Xavier	1985	1-0

TEAM	FIRST MEETING	W-L
BROWN	2002	-
INDIANA-PURDUE AT INDIANAPOLIS	2002	-
LOUISIANA-LAFAYETTE	2002	-
MARSHALL	2002	-
OREGON	2002	-

RECORDS VS. ACC & FLORIDA

CLEMSON

Overall (17-10), Home (9-3), Away (5-6), Neutral (2-1)			
10/10/81	H	W	15-10, 15-5
9/3/83	N1	W	15-7, 15-0, 15-4
10/8/83	H	W	15-8, 15-7, 15-4
11/1/83	H	W	15-17, 15-11, 15-7, 15-9
11/8/91	A	W	15-12, 15-9, 15-9
10/24/92	H	W	15-8, 15-7, 15-4
9/24/93	H	W	15-7, 16-14, 8-15, 12-15, 15-11
11/6/93	A	L	4-15, 10-15, 4-15
11/20/93	N2	W	17-15, 15-12, 15-7
9/30/94	H	W	13-15, 15-5, 15-4, 10-15, 15-11
11/11/94	A	L	6-15, 3-15, 5-15
9/23/95	A	L	3-15, 15-13, 7-15, 16-18
10/7/95	H	L	16-14, 1-15, 9-15, 15-9, 3-15
11/16/95	A	W	15-8, 6-15, 6-15, 16-14, 15-13
9/27/96	H	L	15-7, 15-8, 12-15, 10-15, 17-19
10/11/96	A	L	13-15, 16-14, 14-16, 5-15
10/3/97	H	W	15-13, 14-16, 15-4, 15-13
10/26/97	A	W	5-15, 15-6, 15-5, 20-18
9/26/98	A	L	5-15, 13-15, 15-6, 17-15, 13-15
11/1/98	H	W	15-9, 15-5, 11-15, 15-11
10/8/99	A	L	2-15, 5-15, 7-15
11/5/99	H	L	15-11, 3-15, 8-15, 4-15
11/19/99	N3	L	4-15, 5-15, 8-15
10/15/00	H	W	15-13, 15-6, 13-15, 15-8
11/11/00	A	W	15-4, 6-15, 15-6, 15-9
9/21/01	A	W	30-23, 30-32, 30-26, 30-23
10/26/01	H	W	30-28, 30-23, 30-14

N1 - LSU Invitational, Baton Rouge, LA
 N2 - ACC Tournament, Durham, NC
 N3 - ACC Tournament, Orlando, FL

DUKE

Overall (7-22), Home (2-8), Away (2-11), Neutral (3-3)			
11/1/83	N1	W	15-9, 11-15, 15-8, 15-8
11/14/86	A	L	10-15, 14-16, 12-15
11/13/87	H	W	15-12, 15-6, 11-15, 15-5
9/3/89	N2	W	15-7, 15-7, 7-15, 13-15, 15-5
10/20/91	H	L	16-14, 6-15, 15-12, 14-16, 13-15
10/2/92	A	L	6-15, 13-15, 15-12, 3-15
11/22/92	N3	L	9-15, 15-9, 15-11, 11-15, 11-15
10/22/93	H	L	13-15, 15-11, 9-15, 13-15
11/12/93	A	L	3-15, 12-15, 6-15
11/21/93	A	L	6-15, 6-15, 5-15
9/23/94	A	L	4-15, 6-15, 10-15
10/24/94	H	L	4-15, 9-15, 7-15
11/19/94	N4	L	8-15, 7-15, 8-15
9/29/95	A	L	1-15, 7-15, 12-15
11/4/95	H	L	10-15, 5-15, 9-15
10/4/96	H	L	9-15, 10-15, 10-15
11/3/96	A	L	15-13, 13-15, 5-15, 11-15
10/17/97	H	L	7-15, 15-8, 13-15, 11-15
11/16/97	A	W	13-15, 15-7, 15-7, 14-16, 15-10
10/3/98	H	W	15-8, 15-7, 15-9
10/23/98	A	W	15-13, 15-12, 15-4
9/24/99	A	L	8-15, 11-15, 15-9, 8-15
10/29/99	H	L	3-15, 15-7, 13-15, 11-15
10/7/00	A	L	19-17, 4-15, 8-15, 15-7, 8-15
11/17/00	N5	L	14-16, 10-15, 15-4, 10-15
10/12/01	H	L	25-30, 23-30, 24-30
11/2/01	A	L	27-30, 28-30, 30-20, 28-20
11/17/01	N6	W	32-30, 30-21, 13-30, 30-20

N1 - North Carolina Invitational, Chapel Hill, NC
 N2 - George Washington Labor Day Fest, Washington, DC
 N3 - ACC Tournament, College Park, MD
 N4 - ACC Tournament, Chapel Hill, NC
 N5 - ACC Tournament, Winston-Salem, NC
 N6 - ACC Tournament, Tallahassee, FL

GEORGIA TECH

Overall (6-16), Home (4-5), Away (2-10), Neutral (0-1)			
10/11/91	A	L	13-15, 7-15, 15-7, 15-4, 11-15
10/17/92	H	W	15-12, 12-15, 15-6, 7-15, 15-12
9/25/93	A	W	15-8, 15-6, 15-9
11/5/93	A	L	8-15, 10-15, 15-9, 12-15
10/1/94	H	L	14-16, 7-15, 1-15
11/12/94	A	L	14-16, 7-15, 1-15
9/22/95	A	L	4-15, 16-14, 6-15, 13-15
10/6/95	H	L	11-15, 14-16, 9-15
9/29/96	H	L	11-15, 12-15, 15-11, 12-15
10/13/96	A	L	4-15, 15-9, 6-15, 6-15
11/22/96	A	L	8-15, 12-15, 8-15
10/5/97	H	W	15-12, 15-9, 9-15, 16-14
10/25/97	A	L	13-15, 15-8, 9-15, 7-15
11/22/97	N1	L	14-16, 10-15, 15-5, 6-15
9/27/98	A	L	12-15, 8-15, 15-8, 5-15
10/3/98	H	W	15-6, 16-14, 15-11
10/9/99	A	L	7-15, 14-16, 7-15
11/7/99	H	L	15-10, 5-15, 12-15, 2-15
10/13/00	H	L	15-9, 15-13, 6-15, 9-15, 10-15
11/10/00	A	W	15-11, 15-5, 9-15, 15-10
9/22/01	A	L	25-30, 26-30, 24-30
10/28/01	H	W	25-30, 21-30, 30-24, 30-26, 15-12

N1 - ACC Tournament, Raleigh, NC

MARYLAND

Overall (9-15), Home (4-6), Away (3-8), Neutral (2-1)			
1976	N1	W	15-3, 1-15, 15-13
10/18/91	H	L	12-15, 8-15, 15-1, 17-15, 16-18
11/6/92	A	W	15-13, 6-15, 15-9, 15-13
11/21/92	A	W	8-15, 15-8, 12-15, 15-10, 15-8
10/16/93	A	L	13-15, 14-16, 14-16
10/30/93	H	W	15-9, 15-12, 15-11
10/21/94	A	L	15-7, 13-15, 11-15, 7-15
11/4/94	H	W	15-10, 3-15, 16-14, 15-12
11/18/94	N2	W	16-14, 15-6, 5-15, 15-12
10/28/95	A	L	5-15, 5-15, 11-15
11/11/95	H	L	15-5, 13-15, 11-15, 7-15
11/17/95	N3	L	9-15, 11-15, 3-15
9/21/96	A	L	5-15, 4-15, 4-15
11/10/96	H	L	3-15, 12-15, 16-14, 13-15
10/13/97	A	L	15-8, 8-15, 7-15, 12-15
11/7/97	H	L	13-15, 9-15, 15-10, 8-15
10/18/98	H	W	15-12, 15-2, 15-10
11/13/98	A	L	12-15, 15-9, 15-5, 13-15, 14-16
10/1/99	H	L	6-15, 15-13, 8-15, 11-15
10/23/99	A	L	9-15, 13-15, 3-15
9/22/00	A	L	15-6, 6-15, 13-15, 15-12, 13-15
10/29/00	H	W	15-10, 15-12, 15-13, 15-3
9/28/01	H	L	30-24, 28-30, 30-22, 24-30, 13-15
10/20/01	A	W	30-28, 29-31, 30-27, 25-30, 15-9

N1 - UNC-Greensboro Invitational, Greensboro, NC
 N2 - ACC Tournament, Chapel Hill, NC
 N3 - ACC Tournament, Clemson, SC

NORTH CAROLINA

Overall (22-12), Home (16-3), Away (4-8), Neutral (2-1)			
1976	H	W	11-15, 15-10, 15-13
10/12/79	H	W	15-10, 15-10, 15-12
10/13/79	H	W	15-11, 15-12
10/10/81	H	W	15-4, 15-11
12/10/81	H	W	15-5, 15-10, 15-1
10/9/82	H	W	15-9, 15-6
10/10/83	H	W	15-7, 15-5, 15-12
11/1/83	A	W	15-13, 15-12, 15-10
11/2/86	H	W	9-15, 7-15, 16-14, 15-8, 15-6
11/15/87	A	L	7-15, 9-15, 15-13, 3-15
10/12/91	A	L	13-15, 7-15, 13-15
11/22/91	A	W	15-7, 15-6, 15-6
10/3/92	A	W	15-8, 15-11, 15-8
10/23/93	H	W	15-13, 8-15, 15-4, 15-12
11/13/93	H	W	15-10, 15-12, 13-15, 15-12
11/19/93	N1	W	15-13, 15-3, 15-7
9/24/94	A	L	11-15, 15-8, 12-15, 15-12, 15-17
10/29/94	H	W	15-7, 15-13, 15-12
10/13/95	H	W	8-15, 15-10, 15-11, 10-15, 17-15
10/14/95	H	L	13-15, 15-13, 15-5, 3-15, 10-15
10/18/96	A	W	15-11, 16-14, 6-15, 15-8
10/23/96	H	W	10-15, 15-8, 9-15, 15-7, 15-10
9/26/97	A	L	13-15, 6-15, 6-15
10/31/97	H	W	15-12, 9-15, 15-10, 15-13
10/9/98	A	L	15-6, 7-15, 11-15, 8-15
11/8/98	H	W	15-0, 12-15, 8-15, 15-6, 13-15
11/22/98	N2	W	15-8, 15-1, 15-10
10/15/99	H	L	5-15, 8-15, 8-15
11/12/99	A	L	6-15, 5-15, 13-15
10/1/00	H	L	9-15, 15-2, 15-6, 9-15, 13-15
10/20/00	A	L	10-15, 15-11, 10-15, 8-15
10/5/01	A	L	22-30, 28-30, 30-20, 34-32, 13-15
11/9/01	H	W	30-20, 30-28, 30-24
11/8/01	N3	L	20-30, 27-30, 30-28, 22-30

N1 - ACC Tournament, Durham, NC
 N2 - ACC Tournament, College Park, MD
 N3 - ACC Tournament, Tallahassee, FL

NC STATE

Overall (19-5), Home (10-1), Away (8-4), Neutral (1-0)			
11/2/83	N1	W	15-6, 15-3, 15-7
10/28/84	A	W	15-5, 15-9, 15-8
10/13/86	H	W	15-10, 15-3, 15-9
11/14/87	A	L	9-15, 15-11, 12-15, 15-3, 6-15
10/11/91	A	L	11-15, 15-4, 15-12, 11-15, 9-15
11/14/92	H	W	15-6, 15-5, 15-11
10/1/93	H	W	15-12, 15-8, 15-13
10/2/93	H	W	15-3, 15-7, 15-8
10/7/94	A	W	14-16, 15-5, 15-13, 15-13
10/8/94	A	W	15-12, 15-11, 15-5
9/30/95	A	L	15-11, 5-15, 15-9, 11-15, 11-15
11/3/95	H	L	16-18, 12-15, 8-15
10/19/96	A	W	9-15, 7-15, 15-10, 15-10, 15-12
10/27/96	H	W	13-11, 8-15, 15-13, 15-6
9/27/97	A	W	15-5, 15-8, 15-3
11/1/97	H	W	15-3, 10-15, 15-12, 15-6
10/10/98	A	W	15-5, 15-13, 15-13
11/6/98	H	W	15-5, 15-4, 15-10
10/17/99	H	W	15-12, 16-14, 13-15, 15-0
11/13/99	A	L	11-15, 15-12, 10-15, 8-15
9/29/00	H	W	15-7, 9-15, 15-7, 15-10
10/21/00	A	W	15-11, 15-10, 15-8
10/6/01	A	W	28-30, 30-13, 30-16, 30-14
11/17/01	H	W	30-16, 30-15, 30-25

N1 - North Carolina Invitational, Chapel Hill, NC

VIRGINIA

Overall (17-7), Home (8-2), Away (7-5), Neutral (2-0)			
10/17/87	N1	W	15-10, 15-6, 15-12
10/1/88	A	W	17-15, 15-11, 15-8
9/26/91	H	W	15-13, 6-15, 15-10, 15-6
11/23/91	A	L	11-15, 9-15, 16-14, 6-15
11/7/92	A	W	15-9, 15-7, 15-3
11/20/92	N2	W	15-7, 15-3, 15-4
10/15/93	A	W	15-9, 15-5, 15-10
10/28/93	H	W	15-6, 15-8, 15-12
10/22/94	A	W	15-6, 15-6, 15-9
11/5/94	H	W	15-8, 15-12, 4-15, 14-16, 20-18
10/27/95	A	W	13-15, 15-8, 15-10, 15-13
11/10/95	H	W	15-9, 15-11, 15-12
9/22/96	A	L	15-13, 13-15, 9-15, 5-15
11/8/96	H	L	15-7, 11-15, 5-15, 10-15
10/10/97	A	W	15-8, 6-15, 15-6, 15-9
11/8/97	H	W	15-0, 15-6, 15-6
10/16/98	H	W	15-1, 15-12, 15-5
11/14/98	A	L	7-15, 15-2, 15-11, 1-15, 19-21
10/3/99	H	L	15-9, 15-11, 14-16, 12-15, 10-15
10/22/99	A	L	8-15, 13-15, 5-15
9/23/00	A	L	9-15, 16-14, 8-15, 6-15
10/27/00	H	W	15-4, 13-15, 16-14, 7-15, 15-13
9/30/01	H	W	30-21, 30-20, 30-26, 30-15
10/19/01	A	W	26-30, 30-20, 30-26, 30-21

N1 - South Florida Volleyball Showcase, Tampa, FL
 N2 - ACC Tournament, College Park, MD

WAKE FOREST

Overall (11-3), Home (5-1), Away (4-2), Neutral (2-0)			
10/6/96	H	W	10-15, 15-9, 15-6, 15-9
11/1/96	A	W	15-12, 15-8, 15-7
10/19/97	H	W	11-15, 15-12, 15-6, 15-4
11/15/97	A	W	15-3, 15-10, 15-2
10/2/98	H	W	7-15, 15-12, 3-15, 15-11, 15-7
10/24/98	A	W	15-11, 15-10, 15-6
11/20/98	N1	W	15-6, 15-11, 15-11
9/25/99	A	L	5-15, 18-20, 11-15
10/31/99	H	L	11-15, 10-15, 6-15
10/6/00	A	W	15-12, 15-8, 16-14
11/3/00	H	W	15-8, 1-15, 8-15, 15-7, 18-16

AVCA ALL-REGION

Carol Forsten, '84
Joan Morris, '86
Julie Todd, '87
Nancy Gaspardarek, '87, '88, '89
Maggie Philgence, '87, '88, '89, '90
Deanne Kaleta, '88
Gabrielle Reece, '89
Luiza Ramos, '92, '93, '94
Sherry Cowling, '92
Bianca Stevens, '92
Vicki Zinkil, '93
Fiona Bolten, '97, '98
Holly Schneider, '98
Aisha Thornton, '98
Norisha Campbell, '00, '01

ACC PLAYER OF THE WEEK

Kristine Cousins, '91
Bianca Stevens, '92
Luiza Ramos, '93
Vicki Zinkil, '93
Adria Ciraco, '94
LaToya (Presberry) Washington, '96, '97
Aisha Thornton, '97, '98 (twice)
Fiona Bolten, '98
Jennifer Werrick, '98
Erica Bunch, '00, '01
Norisha Campbell, '00, '01 (twice)

ACC ROOKIE OF THE WEEK

Maureen McCarthy, '94
Holly Schneider, '95
LaToya (Presberry) Washington, '95
Aisha Thornton, '96
Kate Hemlepp, '97 (three times)
Jennifer Werrick, '97 (three times)
Norisha Campbell, '98
Jennifer Anderson, '00

ACC ROOKIE OF THE YEAR

Kate Hemlepp, '97

ACC ALL-FRESHMAN TEAM

Maureen McCarthy, '94
Holly Schneider, '95
Aisha Thornton, '96
Kate Hemlepp, '97
Jennifer Werrick, '97
Jennifer Anderson, '00

ACC ALL-CONFERENCE PLAYERS

Kristine Cousins, '91
Sherry Cowling, '92
Bianca Stevens, '92
Luiza Ramos, '92, '93, '94
Vicki Zinkil, '93
Fiona Bolten, '97, '98

Susan Hawks, '97
Holly Schneider, '97, '98
Aisha Thornton, '98
Norisha Campbell, '00, '01
Jennifer Werrick, '00

ACC COACH OF THE YEAR

Cecile Reynaud, '92, '00

ACC ALL-TOURNAMENT TEAM

Deanna Bosschaert, '91
Sherry Cowling, '92
Bianca Stevens, '92
Luiza Ramos, '92, '93, '94
Franci Rard, '93
LaToya (Presberry) Washington, '95
Holly Schneider, '95, '97, '98
Susan Hawks, '98
Fiona Bolten, '98
Norisha Campbell, '01
Jennifer Anderson, '01

ACC TOURNAMENT MVP

Fiona Bolten, '98

ACC ACADEMIC HONOR ROLL

Catie Lotarski, '91, '93, '94
Jennifer McCall, '91, '92, '93
Vicki Zinkil, '91
Deanna Bosschaert, '92, '93, '94
Jennifer Cichy, '92
Franci Rard, '93
Valerie Broussard, '94, '95, '96
Adria Ciraco, '94
Susan Johnson, '94, '95, '96
Maureen McCarthy, '94, '95, '96
Christy Minko, '94, '95, '96
Luiza Ramos, '94
Patty Diamond, '95, '96
LaToya (Presberry) Washington, '95, '96, '97
Holly Schneider, '95, '96, '97, '98
Sarah Rickertsen, '95, '96, '97, '98
Aisha Thornton, '97, '99
Fiona Bolten, '98
Courtney Dipert, '98, '99
Kensy Zulueta, '98
Kristin Frye, '99, '00, '01
Elizabeth Pound, '99, '00, '01
Alex Sevillano, '99, '00, '01
Jennifer Anderson, '00, '01
Dawn Hough, '00, '01
Cerina Pele, '00, '01
Jennifer Werrick, '00
Chrissy Bloomgren, '01
Aisha Carr, '01
Ashley Meyer, '01
Kameelah Omar, '01

METRO CONFERENCE PLAYER OF THE WEEK

Nancy Gaspardarek, '87

Maggie Philgence, '89, '90
Gabrielle Reece, '89, '90

METRO ALL-CONFERENCE PLAYERS

Donna Krai, '85
Joan Morris, '85, '86
Julie Todd, '86, '87
Nancy Gaspardarek, '87, '88, '89
Deanne Kaleta, '87, '88
Maggie Philgence, '88, '89, '90
Gabrielle Reece, '89, '90

CONFERENCE METRO ROOKIE OF THE YEAR

Lynne Fullhart, '85
Nancy Gaspardarek, '86
Maggie Philgence, '87

METRO CONFERENCE ALL-TOURNAMENT

Marie Sanders, '80
Shannon Lages, '80
Alicia Cross, '82
Karyn Palgut, '82, '83, '84
Marie Sanders, '82, '83
Sally Summer, '83
Joan Morris, '85, '86
Donna Krai, '85
Julie Todd, '85, '86, '87
Deanne Kaleta, '86, '87, '88
Julie Plattner, '86
Nancy Gaspardarek, '87, '88, '89
Maggie Philgence, '88, '89, '90
Sonia Trevino, '89
Gabrielle Reece, '89

METRO CONFERENCE COACH OF THE YEAR

Cecile Reynaud, '88, '89

AVCA SOUTH REGION TOURNAMENT MVP

Karyn Palgut, '82
Joan Morris, '85, '86

FLORIDA AIAW COACH OF THE YEAR

Cecile Reynaud, '91

AVCA SOUTH REGION COACH OF THE YEAR

Cecile Reynaud, '89

METRO CONFERENCE TOURNAMENT MVP

Karyn Palgut, '82
Joan Morris, '85, '86
Julie Todd, '87
Deanne Kaleta, '88
Nancy Gaspardarek, '89

ACADEMIC ALL-AMERICAN

Carol Forsten, '84
Sonia Trevino, '89
Sherry Cowling, '92

Jennifer McCall, '93
Sherry Cowling, '92

DODGE NATIONAL ATHLETIC AWARDS MOST INSPIRING COLLEGIATE ATHLETE

Gabrielle Reece, '89

AUSTRALIAN NATIONAL TEAM

Carol Forsten, '82

OLYMPIC FESTIVAL

Julie Todd, '85
Sherry Cowling, '90
Maggie Philgence, '91

USA VOLLEYBALL

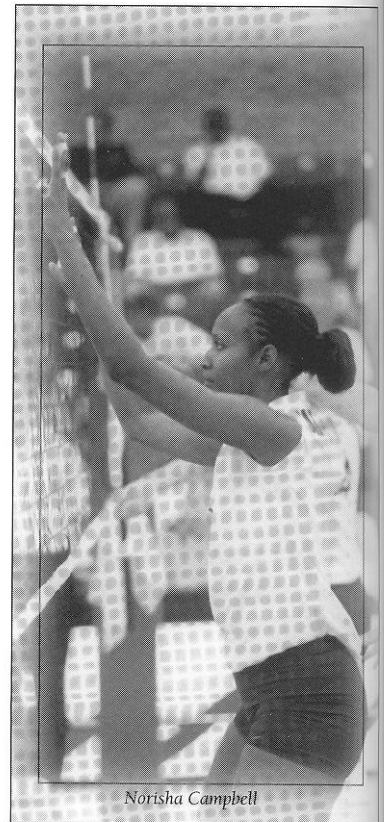
Norisha Campbell, '98 Junior National Team, '00 A2 Team
Coach Cecile Reynaud, '83 World Univ. Games, '85 USA Junior National Team

ROLLING STONE MAGAZINE WONDERWOMEN OF SPORT

Gabrielle Reece, '89

PROFESSIONAL VOLLEYBALL

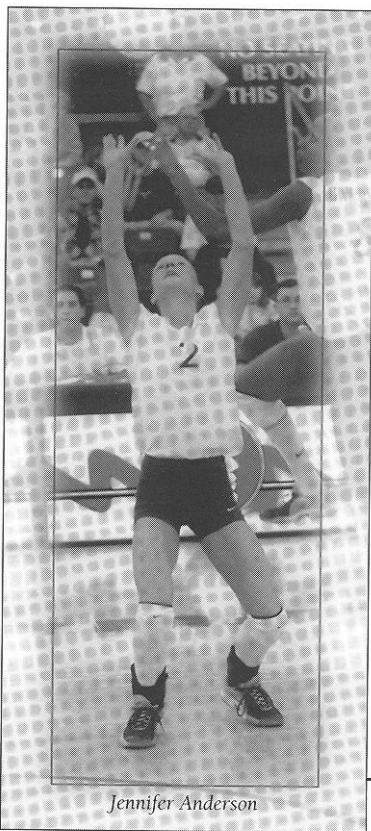
Gabrielle Reece, Team Lady Footlocker (Bud Light Four-Woman Tour) '92, Team Nike (Bud Light Four-Woman Tour) '93-'97
Maggie Philgence, France, '90



Norisha Campbell

ALL-TIME LETTERWINNERS

Alyn Airaghi	1968	Jametta Jackson	1984	Candi Orsini	1974-77
Laura Arnold	1994-97	Linda Johnson	1978	Karyn Palgut	1981-84
Jennifer Anderson	2000-Present	Susan Johnson	1994-97	Bobbie Parr	1972
Luana Ruiz Azevedo	1998-01	Jennifer Jones	1991-92	Maggie Philgence	1987-90
Barbara Barnes	1978-79	Deanne Kaleta	1985-88	Cerina Pele	2000-Present
Debbie Belcher	1973	Shannon Kelly	1987-88	Rhonda Petty	1980-81
Gloria Bennett	1968	Marian King	1968	Marie Persson	2000
Shelly Birkholz	1982-85	Nancy Kinnunen	1975-76	Julie Plattner	1986
Sharon Bjork	1976	Donna Krai	1982-85	Elizabeth Pound	1998-01
Charlene Blair	1972	Peggy Krause	1969-71	Sonia Preocanin	1993-95
Melanie Blajean	1970	Jamie Kuhn	1979-80	Deborah Price	1976
Joy Blanchard	1978-82	Shannon Lages	1980-83	Luiza Ramos	1991-94
Chrissy Bloomgren	2001	Avis Latham	1968	Franci Rard	1993
Fiona Bolten	1997-98	Catie Lotarski	1991-94	Marci Rard	1987
Deanna Bosschaert	1991-94	Maria Magoulas	1986-89	Gabrielle Reece	1987-90
Kim Britt	1984-86	Wendy Markham	1985	Patrice Reid	1969-70
Amy Bronson	1988-90	Jennifer Marraffino	1987-90	Marlene Reimsberger	1972-75
Valerie Broussard	1993-95	Charlotte Martin	1974-77	Yolanda Restrepo	1976-80
Julie Brown	1979-83	Christina Martinez	1972-73	Sarah Rickertsen	1995-98
Kathy Broxson	1970	Jennifer McCall	1990-93	Debra Ann Riley	1976
Erica Bunch	1999-Present	Maureen McCarthy	1994-96	Marie Sanders	1980-83
Margaret Cain	1969	Suzanne McDonald	1974-75	Chiquita Sanford	1971
Cordelia Campbell	1978	Yvette McKinney	1973-74	Patricia Sargeant	1971-74
Norisha Campbell	1998-01	Gloria McIntosh	1981	Stacey Saunier	1979
Aisha Carr	2001-Present	Rebecca McQuillen	1969-70	Holly Schneider	1995-98
Jennifer Cichy	1990-92	Barbara Mellen	1979-81	Alex Sevillano	1999-Present
Adria Ciraco	1991-94	Debbie Meyer	1987-90	JoAnne Sharpe	1973, 75
Nancy Colton	1968	Christy Minko	1995-97	Lisa Smith	1983-84
Diana Connell	1976	Stacy Moneymaker	1983	Sherry Smith	1984
Carol Conrad	1976	Kathy Monroe	1972	Heidi Sorensen	1993-94
Cathy Copeland	1987	Lucy Moody	1969-70	Margaret Stephens	1977-81
Kristine Cousins	1990-91	Ann Moore	1968	Bianca Stevens	1989-92
Sherry Cowling	1992	Joan Morris	1983-86	Cynthia Strauss	1973-74
Melissa Crews	1998	Gina Muensterman	1985-86	Sally Summer	1980-83
Alicia Cross	1979-82	Arlene Nicholson	1968-69	Marybeth Sutcliffe	1987-90
Linda Crutchfield	1971-72	Pat Nicholson	1971	Jeanna Thompson	1974-75
Brandi Cumin	1990-91	Jean Olsson	1968	Aisha Thornton	1996-99
Camy Davies	1979-82	Kameelah Omar	2001-Present	Marsha Tiller	1977
Laura Davis	1973-76	Patricia O'Neal	1976	Marianne Tobolski	1985
Miranda Davis	1979			Julie Todd	1984-87
Patty Diamond	1993-96			Darlene Towne	1970
Courtney Dipert	1996-99			Nancy Townsend	1977-80
Carolyn Doctor	1974-75			Sonia Trevino	1988-89
Denise Douceete	1972			Sue Usher	1976-80
Carol Forsten	1981-84			Myda Valdez	1973-74
Sue Foster	1968			Tara Visser	1999
Kristin Frye	1999-Present			Twanna Walker	1985-89
Lynne Fullhart	1985			Lisa Warman	1981-84
Nancy Gaspadarek	1986-89			LaToya Washington	1995-98
Jana Gomez	1970-71			Kim Weekley	1975
Pam Griffin	1973-76			Jennifer Werrick	1997-00
Nancy Griffin	1976			Margie Wessel	1977-80
Pamela Haizlip	1986			Rebecca White	1988
Martha Hamilton	1999-00			Mary Williams	1981-83
Barbara Harris	1974-77			Dawn Wilson	1972-75
Valene Harris	1974-77			Marcells Wise	1968
Peggy Haskin	1972			Wendy Wood	1970-71
Peggy Harstsvedt	1974-76			Velma Wright	1978-80
Susan Hawks	1995-98			Jackie Young	1981-84
Nancy Helms	1971-72			Vicki Zinkil	1989-93
Kate Hemlepp	1997-98			Charlene Zorn	1973-74
Jamie Hibbard	1999-00			Kensy Zulueta	1996-99
Dawn Hough	1999-Present				
Colette Housh	1983				
Terry Hume	1973-76				
Janice Hunt	1977-78				
Michele Hurd	1974-77				



Jennifer Anderson

INDIVIDUAL TEAM RECORDS SINCE 1976

TEAM SEASON RECORDS

KILLS

1. 1998	2189
2. 1993	1946
3. 2000	1930
4. 1997	1904
5. 1988	1883

HITTING %

1. 1980	330
2. 1981	308
3. 1988	286
4. 1987	264
5. 1998	261

ATTEMPTS

1. 1998	5328
2. 1993	4888
3. 1982	4876
4. 1986	4839
5. 1989	4761

ACES

1. 1983	333
2. 1982	317
3. 1984	267
4. 1994	249
5. 1992	236

DIGS

1. 1986	2241
2. 1990	2181
3. 1993	2109
4. 1998	2081
5. 1992	1987

ASSISTS

1. 1998	1962
2. 1993	1788
3. 2000	1721
4. 1988	1648
5. 1997	1643

TOTAL BLOCKS

1. 1987	865
2. 1989	793
3. 1986	793
4. 1981	658
5. 1990	632

BLOCK ASSISTS

1. 1987	709
2. 1986	684
3. 1989	634
4. 1988	524
5. 1981	517

BLOCK SOLOS

1. 1989	159
2. 1987	156
3. 1983	153
4. 1990	150
5. 1991	144

YEAR-BY-YEAR TEAM RECORDS SINCE 1979

KILLS

1979	1057
1980	1022
1981	1840
1982	1816
1983	1674
1984	1693
1985	1470
1986	1860
1987	1642
1988	1883
1989	1838
1990	1861
1991	1668
1992	1784
1993	1946
1994	1722
1995	1513
1996	1753
1997	1904
1998	2189
1999	1510
2000	1930
2001	1689

HITTING PCT.

1979	.150
1980	.330
1981	.308
1982	.215
1983	.238
1984	.255
1985	.222
1986	.229
1987	.264
1988	.286
1989	.231
1990	.258
1991	.197
1992	.236
1993	.235
1994	.181
1995	.199
1996	.214
1997	.260
1998	.261
1999	.189
2000	.249
2001	.246

ATTEMPTS

1979	3342
1980	1956
1981	4012
1982	4876
1983	4140
1984	3875

1985	3722
1986	4839
1987	4034
1988	4721
1989	4761
1990	4667
1991	4342
1992	4210
1993	4888
1994	4736
1995	4127
1996	4686
1997	4681
1998	5328
1999	3926
2000	4577
2001	4138

ACES

1982	317
1983	333
1984	267
1985	189
1986	200
1987	165
1988	225
1989	219
1990	217
1991	213
1992	236
1993	224
1994	249
1995	146
1996	192
1997	218
1998	190
1999	143
2000	187
2001	181

DIGS

1982	282
1983	141
1984	1417
1985	1383
1986	2241
1987	1558
1988	1816
1989	1951
1990	2181
1991	1885
1992	1987
1993	2109
1994	1820
1995	1649
1996	1714
1997	1894
1998	2081

1999	1344
2000	1716
2001	1564

TOTAL BLOCKS

1981	658
1982	493
1983	585
1984	524
1985	518
1986	793
1987	865
1988	660
1989	793
1990	632
1991	453
1992	440
1993	493
1994	203
1995	234
1996	229
1997	281
1998	320
1999	232
2000	279
2001	277

BLOCK ASSISTS

1980	163
1981	517
1982	388
1983	432
1984	455
1985	376
1986	684
1987	709
1988	524
1989	634
1990	482
1991	309
1992	309
1993	428
1994	261
1995	348
1996	291
1997	422
1998	452
1999	284
2000	385
2001	432

BLOCK SOLOS

1980	47
1981	141
1982	105
1983	153
1984	69
1985	142

1986	109
1987	156
1988	136
1989	159
1990	150
1991	144
1992	131
1993	65
1994	72
1995	60
1996	83
1997	70
1998	94
1999	90
2000	86
2001	61

ASSISTS

1979	1105
1980	796
1981	1570
1983	1330
1984	1269
1985	1342
1986	1514
1987	1441
1988	1648
1989	1573
1990	1620
1991	1444
1992	1556
1993	1788
1994	1539
1995	1341
1996	1528
1999	1353
2000	1721
2001	1541

Team All-Time Records

- Best Overall Record: 30-5 (.857) in 1989
- Worst Overall Record: 8-23 (.348) in 1999
- Most Wins: 43 in 1981
- Most Losses: 23 in 1999
- Longest Game Winning Streak: 35 in 1981
- Longest Match Winning Streak: 21 in 1981
- Best Metro Conference Record: 10-0 in 1983 and 1989
- Best Metro Conference Finish: 1st in, 1983, 85, 86, 87, 88 and 89
- Best ACC Record: 11-5 in 1997 and 1998
- Best ACC Finish: Tied for 1st in 1992
- Best ACC Tournament Finish: 1st in 1998
- Best NCAA Regular Season Ranking: 15th in 1983
- Best AIAW National Tournament Finish: 4th in 1981
- Best NCAA Tournament Finish: 2nd Round in 1983

Team Match Records

- Best Attack Percentage: .610 vs. Florida A&M in 1981
- Most Digs: 123 vs. Georgia Tech in 1992
- Most Block Assists: 48 vs. Illinois-Chicago in 1987
- Most Solo Blocks: 18 vs. Minnesota in 1992
- Most Assists: 88 vs. Duke in 1992 and vs. UT-Arlington in 1999
- Most Service Aces: 17 vs. Florida A&M in 1990