

INDIVIDUAL MATCH RECORDS

Most Aces 9 by Amy Bronson vs. Northern Arizona in 1989
9 by Luiza Ramos vs. Auburn in 1993

Most Kills 35 by Joan Morris vs. Sam Houston State in 1986

Most Digs 38 by Luiza Ramos vs. Loyola Marymount in 1991

Most Block Assists 17 by Julie Todd vs. Tulane in 1987

Most Solo Blocks 8 by Deanne Kaleta vs. South Florida in 1987
8 by Bianca Stevens vs. Georgia Tech in 1992

Most Assists 81 by Fiona Bolten vs. Virginia in 1997

Most Consecutive Games Played 391 by Deanne Kaleta in 1986-89

Most Consecutive Matches Played 189 by Sally Summer in 1980-83



Dawn Hough, Alex Sevillano, Erica Bunch, and Kameelah Omar.

INDIVIDUAL CAREER RECORDS SINCE 1976

MATCHES PLAYED

1. Sally Summer	189, 1980-83
2. Alicia Cross	188, 1979-82
3. Camy Davis	175, 1979-83
4. Marie Sanders	164, 1980-83
5. Julie Brown	155, 1979-83
6. Karyn Palgut	153, 1981-84
7. Carol Forsten	145, 1981-84
8. Shannon Lages	143, 1980-83
9. Maggie Philgence	138, 1987-90
10. Deanne Kaleta	137, 1985-88

KILL ATTEMPTS

1. Maggie Philgence	4793, 1987-90
2. Holly Schneider	4615, 1995-98
3. Luiza Ramos	4321, 1991-94
4. Deanna Bosschaert	3749, 1991-94
5. Julie Todd	3470, 1984-87
6. LaToya Washington	3269, 1995-98
7. Jennifer Werrick	3252, 1997-00
8. Deanne Kaleta	3191, 1985-88
9. Joan Morris	3189, 1983-86
10. Vicki Zinkil	2800, 1989-93

KILLS

1. Maggie Philgence	2110, 1987-90
2. Luiza Ramos	1847, 1991-94
3. Holly Schneider	1704, 1995-98
4. Julie Todd	1615, 1984-87
5. Deanna Bosschaert	1436, 1991-94
6. Aisha Thornton	1420, 1996-99
7. Jennifer Werrick	1298, 1997-00
8. Norisha Campbell	1289, 1998-01
9. Joan Morris	1285, 1983-86
10. LaToya Washington	1271, 1995-98

HITTING PERCENTAGE

1. Alicia Cross	360, 1979-82
2. Aisha Thornton	332, 1996-99
3. Norisha Campbell	321, 1998-01
4. Donna Krai	306, 1982-85
5. Maggie Philgence	306, 1987-90
6. Julie Brown	301, 1979-83
7. Susan Hawks	299, 1995-98
8. Julie Todd	295, 1984-87
9. Karyn Palgut	285, 1981-84
10. Vicki Zinkil	273, 1989-93

SERVICE ACES

1. Donna Krai	188, 1982-85
2. Luiza Ramos	183, 1991-94
3. Deanna Bosschaert	170, 1991-94
4. Holly Schneider	169, 1995-98
5. Julie Todd	133, 1984-87
6. Karyn Palgut	132, 1981-84
7. Maggie Philgence	118, 1987-90
8. Deanne Kaleta	117, 1985-88
9. Jennifer McCall	111, 1990-93
10. Nancy Gaspardarek	104, 1986-89

SOLO BLOCKS

1. Gabrielle Reece	240, 1987-90
2. Vicki Zinkil	179, 1989-93
3. Aisha Thornton	147, 1996-99
4. Bianca Stevens	129, 1989-92
5. Julie Brown	127, 1979-83
6. Julie Todd	126, 1984-87
7. Deanne Kaleta	116, 1985-88
8. Norisha Campbell	90, 1998-01
9. Susan Hawks	79, 1995-98
10. Valerie Broussard	71, 1993-95

BLOCK ASSISTS

1. Julie Todd	609, 1984-87
2. Gabrielle Reece	507, 1987-90
3. Vicki Zinkil	432, 1989-93
4. Deanne Kaleta	402, 1985-89
5. Aisha Thornton	329, 1996-99
6. Maggie Philgence	315, 1987-90
7. Norisha Campbell	278, 1998-01
8. Susan Hawks	274, 1995-98
9. Julie Brown	270, 1979-83
10. Nancy Gaspardarek	262, 1986-89

TOTAL BLOCKS

1. Gabrielle Reece	747, 1987-90
2. Julie Todd	735, 1984-87
3. Vicki Zinkil	611, 1989-90
4. Alicia Cross	594, 1979-83
5. Deanne Kaleta	518, 1985-88
6. Julie Brown	504, 1979-83
7. Aisha Thornton	476, 1996-99
8. Maggie Philgence	384, 1987-90
9. Norisha Campbell	368, 1998-01
10. Susan Hawks	353, 1995-98

SET ASSISTS

1. Nancy Gaspardarek	4804, 1986-89
2. Fiona Bolten	2979, 1997-98
3. Jennifer McCall	2888, 1990-93
4. Marie Sanders	2815, 1980-83
5. Maureen McCarthy	2297, 1994-96
6. Jennifer Anderson	2281, 2000-01
7. Donna Krai	2050, 1982-85
8. Jamie Hibbard	1782, 1999-00
9. Barb Mellen	1589, 1979-81
10. Sherry Cowling	1348, 1992

DIGS

1. Luiza Ramos	1771, 1991-94
2. Holly Schneider	1426, 1995-98
3. Maggie Philgence	1185, 1987-90
4. Nancy Gaspardarek	1150, 1986-89
5. Deanne Kaleta	1083, 1985-88
6. Jennifer Werrick	1080, 1997-00
7. Deanna Bosschaert	1054, 1991-94
8. LaToya Washington	1019, 1995-98
9. Joan Morris	985, 1983-86
10. Julie Todd	908, 1984-87

INDIVIDUAL SEASON RECORDS SINCE 1976

HITTING PERCENTAGE

1.	Margie Wessel	.420,	1980
2.	Julie Brown	.382,	1981
3.	Shannon Lages	.360,	1980
4.	Aisha Thornton	.366,	1997
	Norisha Campbell	.366,	2001
6.	Alicia Cross	.356,	1981
7.	Aisha Thornton	.352,	1998
8.	Julie Todd	.351,	1987
	Norisha Campbell	.351,	2000
10.	Aisha Thornton	.344,	1999

SERVICE ACES

1.	Donna Krai	.90,	1983
2.	Holly Schneider	.57,	1997
3.	Karyn Palgut	.55,	1984
4.	Karyn Palgut	.54,	1982
	Luiza Ramos	.54,	1992
6.	Marie Sanders	.53,	1983
7.	Alicia Cross	.52,	1982
8.	Marie Sanders	.51,	1982
	Luiza Ramos	.51,	1994
10.	Kristine Cousins	.49,	1990

KILLS

1.	Maggie Philgence	.579,	1990
	Luiza Ramos	.579,	1994
3.	Joan Morris	.571,	1986
	Maggie Philgence	.571,	1989
5.	Maggie Philgence	.546,	1988
6.	Julie Todd	.513,	1986
7.	Norisha Campbell	.488,	2001
8.	Holly Schneider	.480,	1998
9.	Julie Todd	.466,	1987
10.	Luiza Ramos	.451,	1992

DIGS

1.	Luiza Ramos	.507,	1994
2.	Joan Morris	.460,	1986
3.	Luiza Ramos	.450,	1992
4.	Kristine Cousins	.440,	1990
5.	Holly Schneider	.421,	1998
6.	Luiza Ramos	.419,	1991
7.	Sonia Trevino	.403,	1989
8.	Holly Schneider	.401,	1997
9.	Maggie Philgence	.399,	1990
10.	Luiza Ramos	.394,	1993

KILL ATTEMPTS

1.	Luiza Ramos	.1402,	1994
2.	Joan Morris	.1389,	1986
3.	Holly Schneider	.1321,	1998
4.	Maggie Philgence	.1305,	1989
5.	Maggie Philgence	.1265,	1990
6.	Deanna Bosschaert	.1237,	1994
7.	Maggie Philgence	.1217,	1988
8.	Holly Schneider	.1160,	1997
9.	Kristine Cousins	.1149,	1990
10.	Julie Todd	.1135,	1986
	LaToya Washington	.1135,	1996

BLOCK ASSISTS

1.	Julie Todd	.223,	1987
2.	Julie Todd	.199,	1986
3.	Gabrielle Reece	.143,	1989
4.	Deanne Kaleta	.137,	1988
5.	Julie Brown	.134,	1983
	Deanne Kaleta	.134,	1986
7.	Vicki Zinkil	.133,	1993
8.	Julie Brown	.132,	1981
	Gabrielle Reece	.132,	1987
10.	Vicki Zinkil	.127,	1989

TOTAL BLOCKS

1.	Cordelia Campbell	.286,	1979
2.	Julie Todd	.273,	1987
3.	Alicia Cross	.270,	1979
4.	Julie Todd	.238,	1986
5.	Gabrielle Reece	.212,	1989
6.	Julie Brown	.195,	1983
7.	Julie Brown	.194,	1981
8.	Gabrielle Reece	.189,	1990
9.	Deanne Kaleta	.181,	1986
10.	Gabrielle Reece	.175,	1987

SOLO BLOCKS

1.	Gabrielle Reece	.69,	1989
2.	Gabrielle Reece	.68,	1990
3.	Julie Brown	.62,	1981
4.	Julie Brown	.61,	1983
5.	Gabrielle Reece	.60,	1988
6.	Vicki Zinkil	.53,	1991
7.	Bianca Stevens	.52,	1991
8.	Julie Todd	.50,	1987
9.	Deanne Kaleta	.47,	1986
10.	Marianne Tobolski	.45,	1985

SET ASSISTS

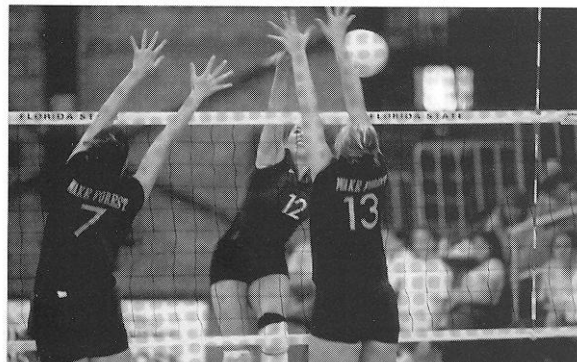
1.	Fiona Bolten	.1744,	1998
2.	Jennifer McCall	.1452,	1993
3.	Nancy Gaspardarek	.1410,	1989
4.	Jennifer Anderson	.1401,	2001
5.	Sherry Cowling	.1348,	1992
6.	Fiona Bolten	.1235,	1997
7.	Nancy Gaspardarek	.1216,	1986
8.	Nancy Gaspardarek	.1159,	1987
9.	Jamie Hibbard	.1125,	1999
10.	Marie Sanders	.1112,	1982

BLOCKS PER GAME

1.	Julie Todd	.2.26,	1987
2.	Vicki Zinkil	.1.87,	1990
3.	Julie Todd	.1.76,	1986
4.	Vicki Zinkil	.1.68,	1989
5.	Gabrielle Reece	.1.65,	1989
6.	Gabrielle Reece	.1.64,	1987
7.	Julie Brown	.1.55,	1983
	Gabrielle Reece	.1.55,	1987
9.	Julie Brown	.1.50,	1981
	Gabrielle Reece	.1.50,	1990

KILLS PER GAME

1.	Luiza Ramos	.4.87,	1994
2.	Luiza Ramos	.4.60,	1993
3.	Maggie Philgence	.4.41,	1990
4.	Norisha Campbell	.4.40,	2001
5.	Maggie Philgence	.4.32,	1989
6.	Joan Morris	.4.26,	1986
7.	Maggie Philgence	.4.16,	1988
8.	LaToya Washington	.3.88,	1996
9.	Aisha Thornton	.3.87,	1998
10.	Julie Todd	.3.85,	1987



Players participated in at least 75% of season's matches.

INDIVIDUAL YEAR-BY-YEAR LEADERS SINCE 1979

KILLS

1979	Nancy Townsend	273
1980	Margie Wessel	200
1981	Alicia Cross	330
1982	Karyn Palgut	394
1983	Sally Summer	300
1984	Karyn Palgut	328
1985	Julie Todd	361
1986	Joan Morris	571
1987	Julie Todd	466
1988	Maggie Philgence	546
1989	Maggie Philgence	571
1990	Maggie Philgence	579
1991	Kristine Cousins	385
1992	Luiza Ramos	451
1993	Luiza Ramos	446
1994	Luiza Ramos	579
1995	Holly Schneider	411
1996	LaToya Washington	438
1997	Holly Schneider	400
1998	Holly Schneider	480
1999	Aisha Thornton	314
2000	Norisha Campbell	447
2001	Norisha Campbell	488

HITTING PERCENTAGE

1979	Nancy Townsend	370
1980	Alicia Cross	520
1981	Julie Brown	382
1982	Shannon Lages	278
1983	Donna Krai	296
1984	Donna Krai	490
1985	Julie Todd	278
1986	Julie Todd	297
1987	Julie Todd	351
1988	Maggie Philgence	329
1989	Gabrielle Reece	279
1990	Maggie Philgence	333
1991	Kristine Cousins	230
1992	Sherry Cowling	390
1993	Vicki Zinkil	318
1994	Valerie Broussard	268
1995	Valerie Broussard	270
1996	Aisha Thornton	264
1997	Aisha Thornton	366
1998	Norisha Campbell	360
1999	Aisha Thornton	344
2000	Norisha Campbell	351
2001	Norisha Campbell	366

ATTEMPTS

1979	Nancy Townsend	773
1980	Margie Wessel	375
1981	Carol Forsten	693
1982	Sally Summer	1054
1983	Sally Summer	779
1984	Joan Morris	754
1985	Joan Morris	834
1986	Joan Morris	1389
1987	Maggie Philgence	1006
1988	Maggie Philgence	1217
1989	Maggie Philgence	1305
1990	Maggie Philgence	1265
1991	Kristine Cousins	1040
1992	Luiza Ramos	1032
1993	Luiza Ramos	998
1994	Luiza Ramos	1402
1995	Holly Schneider	1035
1996	LaToya Washington	1135
1997	Holly Schneider	1160
1998	Holly Schneider	1321
1999	Erica Bunch	829
2000	Jennifer Werrick	969
2001	Alex Sevillano	986

ACES

1982	Karyn Palgut	54
1983	Donna Krai	90
1984	Karyn Palgut	55
1985	Lynne Fullhart	48
1986	Joan Morris	45
1987	Julie Todd	35
1988	Deanne Kaleta	44
1989	Amy Bronson	47
1990	Kristine Cousins	49
1991	Deanna Bosschaert	42
1992	Luiza Ramos	54
1993	Luiza Ramos	45
1994	Luiza Ramos	51
1995	Holly Schneider	29
1996	Holly Schneider	37
1997	Holly Schneider	57
1998	Holly Schneider	44
1999	Courtney Dipert	29
2000	Jennifer Werrick/Kristin Frye	36
2001	Kristin Frye	49

DIGS

1982	Karyn Palgut	62
1983	Sally Summer	228
1984	Karyn Palgut	335
1985	Joan Morris	309
1986	Joan Morris	460
1987	Deanne Kaleta	285
1988	Deanne Kaleta	327
1989	Sonia Trevino	403
1990	Kristine Cousins	440
1991	Luiza Ramos	419
1992	Luiza Ramos	450
1993	Luiza Ramos	394
1994	Luiza Ramos	507
1995	Holly Schneider	303
1996	LaToya Washington	345
1997	Holly Schneider	401
1998	Jennifer Werrick	354
1999	Jamie Hibbard	253
2000	Jennifer Werrick	334
2001	Alex Sevillano	332

ASSISTS

1979	Barbara Mellen	492
1980	Marie Sanders	565
1981	Barbara Mellen	984
1983	Marie Sanders	732
1984	Donna Krai	604
1985	Donna Krai	994
1986	Nancy Gaspardarek	1216
1987	Nancy Gaspardarek	1159
1988	Nancy Gaspardarek	1019
1989	Nancy Gaspardarek	1410
1990	Jennifer McCall	893
1991	Brandi Cumin	837
1992	Sherry Cowling	1348
1993	Jennifer McCall	1452
1994	Maureen McCarthy	1101
1995	Maureen McCarthy	773
1996	Kensy Zulueta	802
1997	Fiona Bolten	1235
1998	Fiona Bolten	1744
1999	Jamie Hibbard	1125
2000	Jennifer Anderson	880
2001	Jennifer Anderson	1401

TOTAL BLOCKS

1979	Cordelia Campbell	286
1980	Alicia Cross	68
1981	Julie Brown	194
1982	Shannon Lages	122
1983	Julie Brown	195
1984	Joan Morris	121
1985	Marianne Tobolski	134
1986	Julie Todd	238
1987	Julie Todd	273
1988	Gabrielle Reece	171
1989	Gabrielle Reece	212
1990	Gabrielle Reece	189
1991	Vicki Zinkil	131
1992	Bianca Stevens	133
1993	Vicki Zinkil	164
1994	Valerie Broussard	87
1995	Valerie Broussard	105
1996	Aisha Thornton	120
1997	Susan Hawks	135
1998	Aisha Thornton	134
1999	Aisha Thornton	99
2000	Norisha Campbell	119
2001	Norisha Campbell	139

BLOCK ASSISTS

1980	Alicia Cross	45
1981	Julie Brown	132
1982	Alicia Cross	92
1983	Julie Brown	134
1984	Joan Morris	100
1985	Julie Todd	93
1986	Julie Todd	199
1987	Julie Todd	223
1988	Deanne Kaleta	137
1989	Gabrielle Reece	143
1990	Gabrielle Reece	121
1991	Vicki Zinkil	80
1992	Vicki Zinkil	74
1993	Vicki Zinkil	133
1994	Valerie Broussard	59
1995	Valerie Broussard	81
1996	Aisha Thornton	80
1997	Susan Hawks	104
1998	Susan Hawks	104
1999	Norisha Campbell	62
2000	Norisha Campbell	83
2001	Norisha Campbell	111

BLOCK SOLOS

1980	Alicia Cross	23
1981	Julie Brown	62
1982	Shannon Lages	32
1983	Julie Brown	61
1984	Joan Morris	21
1985	Marianne Tobolski	45
1986	Deanne Kaleta	47
1987	Julie Todd	50
1988	Gabrielle Reece	60
1989	Gabrielle Reece	69
1990	Gabrielle Reece	68
1991	Vicki Zinkil	53
1992	Bianca Stevens	60
1993	Vicki Zinkil	31
1994	Valerie Broussard	28
1995	Valerie Broussard	24
1996	Aisha Thornton	40
1997	Susan Hawks	31
1998	Aisha Thornton	38
1999	Aisha Thornton	43
2000	Norisha Campbell	34
2001	Norisha Campbell	28

YEAR-BY-YEAR RECORDS

1976 (33-14)

HEAD COACH Cecile Reynaud



MUW INVITATIONAL

LSU	L	2-15, 15-7, 14-16
Montevallo	W	15-3, 15-9
North Alabama	W	15-8, 15-12
MUW	W	15-0, 15-3
Mississippi	L	13-15-, 15-8, 9-15
Berry College	W	15-11, 6-15, 19-17

UNC-GREENSBORO INVITATIONAL

Eastern Kentucky	W	10-15, 15-5, 15-12
UNC-Greensboro	W	15-9, 14-16, 15-6
George Washington	L	11-15, 15-7, 10-15
Miami-Dade South	L	3-15, 7-15
Maryland	W	15-3, 1-15, 15-13
Illinois-Chicago	L	5-15, 3-15

FSU INVITATIONAL (3rd Place)

Auburn	W	15-13, 15-9
MUW	W	17-5, 15-13
North Carolina	W	11-15, 15-10, 15-13
Flagler	W	15-4, 15-9
Central Florida	W	15-9, 15-9
Alabama	L	10-15, 11-15
MUW	L	15-7, 8-15, 13-15

GEORGIA INVITATIONAL (1st Place)

Auburn	W	10-15, 15-6, 15-4
West Georgia	W	15-6, 15-11
Tenn-Chattanooga	W	15-11, 15-2
Berry College	L	15-1, 6-15, 6-15
South Carolina	W	15-7, 13-15, 15-11
Mississippi St.	W	15-7, 15-10
Berry College	W	18-16, 15-4

WEST GEORGIA INVITATIONAL (2nd Place)

Tuskegee	W	15-1, 15-6
Tennessee	W	6-15, 15-6, 16-14
FIU	L	11-15, 12-15
Tennessee	W	15-5, 15-8
MUW	L	16-18, 11-15
South Florida	W	15-8, 15-5
Tennessee	W	15-6, 15-4
FIU	W	15-8, 15-13
MUW	L	14-16, 7-15

FLAGLER INVITATIONAL (2nd Place)

Lake City CC	W	15-8, 15-8
Central Florida	W	15-4, 15-12
Miami-Dade North	W	15-12, 6-15, 15-2
South Florida	W	15-5, 15-5
Jacksonville	W	15-3, 15-12
Flagler	W	15-8, 15-12
Miami-Dade South	L	15-17, 7-15

STATE TOURNAMENT (2nd Place)

Florida	W	15-0, 15-7
FIU	L	7-15, 9-15
Florida	W	15-3, 9-15, 15-1
FIU	W	13-15, 15-3, 15-13
FIU	L	6-15, 8-15

1977 (25-13)

HEAD COACH Cecile Reynaud



MUW INVITATIONAL

Nicholls State	W	16-14, 10-15, 15-9
Mississippi	W	7-15, 17-15, 15-8
Columbus College	W	15-2, 15-10
Alabama	L	10-15, 3-15
MUW	L	15-6, 10-15, 11-15
LSU	L	1-15, 11-15

NEW ORLEANS INVITATIONAL (3rd Place)

South Alabama	W	15-8, 15-5
Tulane	W	15-8, 15-13
SW Louisiana	W	15-8, 15-6
Northwestern St.	W	15-1, 8-15, 15-3
Central Florida	L	8-15, 15-13, 10-15
Nicholls State	W	15-5, 15-3

FSU INVITATIONAL (5th Place)

Georgia	W	16-14, 15-10
Central Florida	L	6-15, 4-15
Tenn.-Chattanooga	W	15-10, 15-3
South Carolina	L	11-15, 15-11, 12-15
Miami-Dade South	L	10-15, 2-15

GEORGIA INVITATIONAL

South Carolina	L	9-15, 15-7, 8-15
West Georgia	W	15-10, 15-0
Tenn.-Chattanooga	W	15-13, 15-11
Georgia State	W	15-4, 15-7
Mississippi St.	W	15-8, 15-17, 15-4
College of Charleston	L	12-15, 15-7, 7-15

West Georgia Invitational (2nd Place)

Valdosta State	W	15-2, 15-4
Milligan College	W	15-3, 15-7
Georgia	W	9-15, 15-2, 15-7
Appalachian St.	W	15-11, 15-2
E. Tennessee St.	W	15-9, 15-1
South Carolina	L	15-7, 9-15

STATE TOURNAMENT (1st Place)

Florida	W	10-15, 15-13, 15-7
South Florida	W	15-11, 10-15, 15-13
South Florida	W	2-15, 15-11, 17-15

REGIONAL TOURNAMENT (4th Place)

Mississippi St.	W	15-1, 15-10
Florida	W	11-15, 15-10, 15-13
Alabama	L	9-15, 10-15
South Florida	W	15-12, 15-0, 11-15, 16-14
Alabama	L	3-15, 14-16, 15-11, 9-15
MUW	L	10-15, 13-15, 15-5, 15-7, 17-19

YEAR-BY-YEAR RECORDS

1978 (28-14)

HEAD COACH Cecile Reynaud



MUW INVITATIONAL

Arkansas St.	L	15-5, 17-19, 15-17
Columbus College	W	15-1, 15-0
Memphis State	W	15-11, 15-3
MUW	W	15-2, 15-11
New Orleans	W	15-3, 15-13
Mississippi	L	10-15, 15-8, 3-15, 15-5, 11-15

MIAMI-DADE INVITATIONAL (2nd Place)

Florida Southern	W	16-14, 15-10
South Florida	W	15-10, 15-7
Miami-Dade South	W	11-15, 16-14, 17-15
South Florida	W	12-15, 15-9, 15-9
Miami-Dade South	W	7-15, 15-6, 15-12
Florida Tech	L	14-16, 5-15
FIU	W	15-6, 16-14
Florida Tech	L	9-15, 7-15

FSU INVITATIONAL

New Orleans	W	15-5, 15-3
Florida Southern	W	16-14, 15-6
South Carolina	W	16-14, 15-13
Tennessee	L	12-15, 8-15
Miami	W	15-3, 15-4
South Carolina	L	15-7, 8-15, 10-15

SW MISSOURI ST. INVITATIONAL

Illinois State	W	15-12, 15-12
Texas A&M	W	15-10, 16-14
Cincinnati	W	15-12, 15-11, 15-12
Nebraska	L	12-15, 15-10, 12-15
North Texas St.	L	5-15, 10-15

ALABAMA INVITATIONAL

Alabama	L	7-15, 10-15, 11-15
Mississippi	W	5-15, 15-12, 15-8, 15-11
Cincinnati	W	15-12, 15-11, 15-12
MUW	W	15-6, 11-15, 8-15, 15-10, 15-5

STATE TOURNAMENT (1st Place)

South Florida	W	15-5, 7-15, 15-9
Miami	W	15-4, 15-9, 15-4, 15-9
Florida	W	15-5, 13-15, 15-7

REGIONAL TOURNAMENT (1st Place)

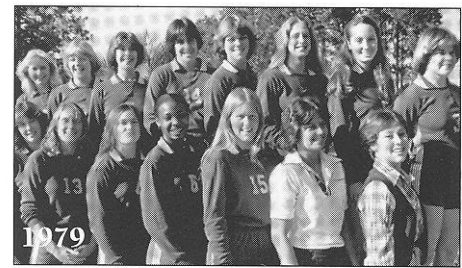
Georgia State	W	15-4, 15-4
Mississippi St.	W	15-9, 15-2
Alabama	W	15-3, 15-2
Alabama	W	15-13, 15-13, 15-4
Mississippi	W	15-12, 10-15, 15-11, 13-15, 15-2

NATIONAL AIAW TOURNAMENT

SW Missouri St.	L	15-12, 11-15, 6-15
Arizona	L	11-15, 16-14, 1-15
Texas A&M	L	9-15, 8-15
Pepperdine	L	5-15, 15-12, 3-15
UCLA	L	2-15, 15-12, 7-15

1979 (31-19)

HEAD COACH Cecile Reynaud



ALABAMA INVITATIONAL (3rd Place)

South Carolina	W	15-10, 3-15, 15-8
MUW	W	15-12, 15-7
Central Florida	L	2-15, 15-7, 8-15
Miami	W	15-10, 16-14
Alabama	L	9-15, 11-15
Oklahoma	W	15-7, 7-15, 16-14

MUW INVITATIONAL (1st Place)

Arkansas St.	W	15-10, 15-8
SE Louisiana	W	15-4, 15-5
Nicholls State	W	15-6, 20-18
MUW	W	15-9, 15-12
Memphis State	W	15-8, 13-15, 15-12, 15-8
Alabama	W	15-7, 15-6, 15-10

CENTRAL FLORIDA INVITATIONAL

Oklahoma	L	9-15, 12-15
Alabama	L	11-15, 15-8, 5-15
Miami-Dade South	L	8-15, 11-15
LSU	W	15-6, 13-15, 15-13
Auburn	W	15-5, 15-7
Central Florida	L	7-15, 6-15
Miami	L	9-15, 15-10, 14-16
N. Florida JC	W	15-2, 15-5, 14-16, 15-12
Lake City CC	W	15-8, 15-5, 15-11

FSU INVITATIONAL

South Florida	W	15-8, 15-7
Auburn	W	15-6, 15-10
North Carolina	W	15-10, 10-15, 15-12
Florida Southern	W	15-8, 15-8
Miami	L	12-15, 15-7, 12-15
North Carolina	W	15-11, 15-12
South Alabama	W	15-6, 16-14
Gulf Coast CC	W	15-1, 15-5

SW MISSOURI ST. INVITATIONAL

SW Missouri St.	L	2-15, 3-15
Houston	L	5-15, 13-15
Iowa State	W	15-1, 15-6
Minnesota	L	15-9, 12-15, 7-15
Cincinnati	L	11-15, 9-15
Gulf Coast CC	W	15-2, 15-2
N. Florida JC	W	15-8, 15-2, 15-1
Lake City JC	W	15-11, 15-0, 18-16

STATE TOURNAMENT (2nd Place)

Miami	L	10-15, 14-16, 7-15
-------	---	--------------------

REGIONAL TOURNAMENT (1st Place)

Georgia	W	6-15, 15-7, 15-6
Alabama	L	13-15, 15-13, 12-15
Mississippi St.	W	15-6, 15-11
Alabama	W	15-13, 15-6
Miami	L	9-15, 18-16, 8-15
Alabama	W	14-16, 15-11, 15-10
Miami	W	15-9, 4-15, 15-9
Miami	W	8-15, 15-6, 15-12

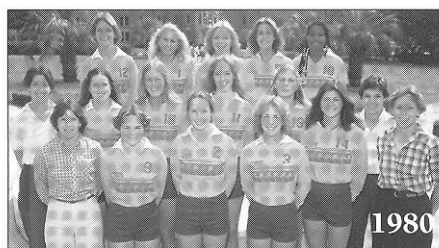
YEAR-BY-YEAR RECORDS

AIAW NATIONAL TOURNAMENT

Brigham Young	L	16-14, 7-15, 7-15
Houston	L	9-15, 8-15
UCLA	L	9-15, 5-15
Purdue	L	14-16, 14-16
Tennessee	L	15-4, 7-15, 10-15, 8-15

1980 (43-14)

HEAD COACH Cecile Reynaud



ALABAMA INVITATIONAL

Central Florida	L	8-15, 8-15
Texas Tech	W	15-6, 10-15, 15-10
Alabama-Birm.	W	15-9, 15-4
Memphis State	L	13-15, 8-15

METRO CONFERENCE TOURNAMENT (2nd Place)

Louisville	W	15-7, 15-9
Virginia Tech	W	13-15, 15-4, 15-2
Memphis State	W	15-8, 15-9
St. Louis	L	17-15, 12-15, 11-15
Tulane	W	15-11, 16-14
Cincinnati	W	15-6, 16-14
Memphis State	W	10-15, 15-12, 15-10
St. Louis	L	12-15, 15-7, 6-15
Flagler	W	15-1, 15-2
Jacksonville	W	15-4, 15-9
Florida JC	W	15-1, 15-1

CENTRAL FLORIDA INVITATIONAL (4th Pla)

FIU	L	10-15, 9-15
Miami	W	15-10, 15-7
Central Florida	W	15-11, 15-10
SC-Spartanburg	W	15-2, 15-3
LSU	W	15-7, 15-4
Miami	L	10-15, 13-15
LSU	W	15-13, 15-5
Alabama	L	10-15, 7-15
South Alabama	W	15-5, 15-1
Lake City CC	W	15-7, 15-6

FSU INVITATIONAL

MUW	W	15-10, 15-9
South Florida	W	15-0, 15-2
Oklahoma State	W	15-6, 15-7
Jacksonville	W	15-0, 15-5
Miami	W	15-13, 17-15
Tennessee	L	15-8, 3-15, 11-15
South Alabama	W	15-12, 15-12, 15-9

JACKSONVILLE INVITATIONAL (1st Place)

Lake City CC	W	15-5, 15-9
Central Florida	W	16-14, 15-11
Montevallo	W	15-0, 15-4
Winthrop College	W	15-6, 15-11
Winthrop College	W	16-14, 15-2
Central Florida	W	15-0, 15-5
Miami	W	17-15, 10-15, 15-7

MIAMI INVITATIONAL (3rd Place)

Florida Southern	W	15-8, 16-14
FIU	W	9-15, 16-14, 15-3
Central Florida	W	15-1, 15-3
Miami	L	10-15, 15-13, 9-15
Miami-Dade South	W	15-10, 15-12
Miami	L	8-15, 8-15
Jacksonville	W	15-6, 15-4, 15-5
Lake City CC	W	15-5, 15-11, 15-11
Florida JC	W	15-8, 15-1
Florida A&M	W	15-1, 16-14

STATE TOURNAMENT (1st Place)

Miami	W	15-10, 9-15, 15-8, 16-14
-------	---	--------------------------

AIAW REGIONAL TOURNAMENT (3rd Place)

South Alabama	W	15-5, 15-5
Auburn	W	15-1, 15-2
Mississippi	L	15-1, 9-15, 14-16
Mississippi	W	15-8, 15-6
Alabama	L	14-16, 15-11, 11-15
Miami	L	13-15, 4-15
Central Florida	W	17-15, 15-13
Ohio State	L	12-15, 9-15

1981 (43-8)

HEAD COACH Cecile Reynaud



ALABAMA INVITATIONAL (1st Place)

Georgia	W	14-16, 15-8, 15-11
Baylor	W	15-4, 15-1
Minnesota	W	15-12, 7-15, 15-11
Alabama	W	15-9, 15-7
Miami	W	15-10, 15-2
Texas Tech	W	8-15, 15-2, 15-8
Minnesota	W	15-8, 15-12
Georgia	W	16-14, 15-9, 15-3

SW MISSOURI ST. INVITATIONAL

SW Missouri St.	L	4-15, 13-15
Northwestern	L	7-15, 8-15
Houston	W	15-5, 15-11
Minnesota	L	12-15, 7-15
Purdue	W	15-7, 16-14

FSU INVITATIONAL (1st Place)

Jacksonville	W	15-1, 15-5
South Carolina	W	15-8, 15-4
Alabama-Birm.	W	15-6, 15-11
Alabama	W	15-7, 15-4
North Carolina	W	15-2, 15-11
Alabama	W	15-10, 15-10
Clemson	W	15-10, 15-5
Central Florida	W	15-5, 15-2, 15-4

TENNESSEE INVITATIONAL (1st Place)

Middle Tenn. St.	W	15-7, 15-3, 15-8
Rollins College	W	15-9, 15-0, 15-4

E. Tennessee St.	W	15-2, 15-6, 15-11
Memphis State	W	15-13, 15-13, 15-4
Appalachian St.	W	15-1, 15-8, 15-8
Tennessee	W	15-9, 15-11, 10-15, 15-12
Eastern Kentucky	W	15-3, 3-15, 15-4, 15-10
Kentucky	W	15-8, 4-15, 15-13, 12-15, 16-14

LSU INVITATIONAL (3rd Place)

Nicholls State	W	15-3, 15-3
Tennessee	W	15-10, 15-3
Sam Houston	W	15-13, 15-10
New Orleans	W	6-15, 15-4, 15-7
LSU	L	15-8, 9-15, 7-15
Sam Houston	W	15-9, 15-9
Indian River CC	W	15-5, 15-8, 16-14
Flagler	W	15-4, 15-10
Florida A&M	W	15-1, 15-2

FAIAW STATE CHAMPIONSHIP (1st Place)

Central Florida	W	15-7, 15-3, 16-14
-----------------	---	-------------------

AIWA REGION III TOURNAMENT (1st Place)

Mississippi	W	15-3, 15-8
Miami	W	15-8, 15-12
Central Florida	W	15-12, 15-9
Georgia	W	15-1, 15-5

AIWA NATIONAL CHAMPIONSHIP (4th Place)

North Carolina	W	15-5, 15-10, 15-1
Portland State	L	15-7, 9-15, 10-15, 18-20
Minnesota	W	15-6, 15-13, 15-11
Texas	L	15-12, 3-15, 15-5, 11-15, 15-12
Texas-Arlington	W	15-11, 18-20, 15-11
Utah State	L	9-15, 15-13, 10-15

1982 (27-17)

HEAD COACH Cecile Reynaud



LSU INVITATIONAL (1st Place)

Tulane	W	15-2, 15-10, 15-13
LSU	W	15-8, 15-8, 15-8
South Alabama	W	15-4, 11-15, 15-11, 15-8
New Orleans	W	15-0, 15-4, 15-0
Central Florida	W	15-9, 15-3, 15-10

SW MISSOURI ST. INVITATIONAL

Illinois State	W	15-13, 15-4, 13-15, 15-8
Texas Tech	W	15-7, 15-2, 15-4
SW Missouri State	W	15-8, 15-8, 7-15, 15-9
Nebraska	L	9-15, 5-15, 15-3, 15-12, 7-15
Texas-Arlington	L	7-15, 15-8, 15-2, 7-15, 11-15
Moorehead State	W	15-9, 15-1, 8-15, 15-10

FSU INVITATIONAL (2nd Place)

Mississippi St.	W	15-4, 15-6
Illinois	W	15-4, 15-6
Jacksonville	W	15-7, 15-12
Eastern Kentucky	L	15-17, 1-15

South Florida	W	15-2, 15-7
North Carolina	W	15-9, 15-6
Minnesota	W	15-11, 8-15, 15-13
Eastern Kentucky	L	15-2, 10-15, 3-15
Rutgers	L	13-15, 9-15
Central Florida	W	15-10, 15-7
Rutgers	L	9-15, 13-15
Florida Southern	L	12-15, 15-13, 12-15
Florida A&M	W	15-4, 15-10, 15-6
Texas	L	15-8, 2-15, 15-17, 15-4, 12-15

TEXAS A&M CLASSIC

SW Missouri State	L	8-15, 15-8, 14-16, 12-15
Texas A&M	L	5-15, 16-14, 6-15, 12-15
LSU	W	15-10, 13-15, 15-4, 15-3
Kentucky	L	8-15, 15-10, 14-16, 15-3, 11-15
SW Missouri State	L	15-4, 7-15, 15-5, 5-15, 13-15

MOREHEAD STATE INVITATIONAL (1st Place)

Morehead State	W	15-10, 15-7
Memphis State	W	15-7, 15-10
Eastern Kentucky	L	8-15, 10-15
Tennessee Tech	W	15-10, 15-10
Morehead State	W	15-12, 13-15, 10-15, 15-6, 15-8
Kentucky	L	15-4, 7-15, 9-15, 15-12, 3-15

METRO CONFERENCE CHAMPIONSHIP (3rd Place)

Tulane	W	15-5, 15-12
Memphis State	W	15-7, 15-1
Cincinnati	L	15-10, 13-15, 5-15
Southern Miss	W	15-3, 15-2
Virginia Tech	W	15-11, 15-3
Louisville	L	13-15, 15-12, 12-15
Louisville	L	12-15, 15-11, 16-14, 13-15, 13-15
Memphis State	W	15-5, 15-5, 15-7

1983 (31-6)

HEAD COACH Cecile Reynaud



LSU INVITATIONAL (1st Place)

Clemson	W	15-7, 15-0, 15-4
Rice	W	15-13, 15-9, 15-7
New Orleans	W	15-9, 15-5, 15-4
Southern	W	15-8, 15-4, 15-2
LSU	W	13-15, 15-11, 8-15, 15-10, 15-8

PITT INVITATIONAL (3rd Place)

Pittsburgh	L	13-15, 5-15, 15-11, 9-15
Penn State	W	15-12, 15-7, 13-15, 15-6
Louisville	L	10-15, 13-15, 15-12, 6-15
Louisville	W	15-1, 15-10, 15-3
Virginia Tech	W	14-16, 15-4, 15-9, 15-5
Cincinnati	W	12-15, 15-11, 15-12, 15-12
South Florida	W	15-5, 15-9, 15-5

FSU INVITATIONAL (1st Place)

Tenn. Chattanooga	W	15-3, 15-3, 15-9
South Carolina	W	15-12, 15-8, 15-4
Clemson	W	15-8, 15-7, 15-4
South Florida	W	15-6, 15-3, 15-10

YEAR-BY-YEAR RECORDS

North Carolina	W	15-7, 15-5, 15-12
Memphis State	W	15-1, 15-8, 8-15, 15-11
Southern Miss	W	15-2, 15-1, 15-4
South Carolina	W	13-15, 15-4, 9-15, 15-8, 16-14
Tulane	W	15-13, 15-5, 15-3
Florida A&M	W	15-2, 15-6, 15-8
Stetson	W	15-3, 15-2, 15-7

LONGHORN INVITATIONAL (3rd Place)

Texas	L	6-15, 13-15, 3-15
LSU	W	15-6, 15-4, 15-10
San Diego State	L	11-15, 7-15, 11-15
Houston	L	15-11, 8-15, 8-15, 15-8, 14-16
Clemson	W	15-17, 15-11, 15-7, 15-9

NORTH CAROLINA INVITATIONAL (1st Place)

Duke	W	15-9, 11-15, 15-8, 15-8
Georgia	W	15-5, 15-7, 15-12
North Carolina	W	15-13, 15-12, 15-10
NC State	W	15-6, 15-3, 15-7
Rhode Island	W	15-12, 10-15, 15-3, 12-15, 15-10

METRO CONFERENCE TOURNAMENT (1st Place)

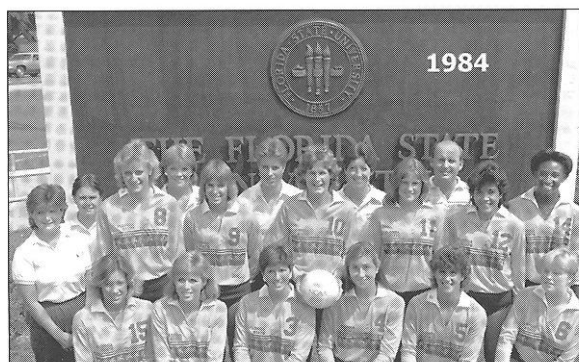
Southern Miss	W	15-0, 15-0, 15-4
Cincinnati	W	13-15, 15-12, 15-12, 15-9
South Carolina	W	13-15, 15-8, 15-9, 10-15, 15-4

NCAA TOURNAMENT 1st Round

Tennessee	L	15-12, 15-12, 1-15, 10-15, 8-15
-----------	---	---------------------------------

1984 (20-13)

HEAD COACH Cecile Reynaud



Minnesota	W	8-15, 15-10, 15-13, 15-9
Lamar	W	15-11, 15-6, 15-11
Illinois State	L	1-15, 6-15, 4-15
Texas A&M	L	4-15, 1-15, 16-14, 11-15
Southern Illinois	L	13-15, 15-12, 14-16, 15-17
LSU	W	11-15, 12-15, 15-8, 15-13, 15-8
Houston	L	15-12, 8-15, 7-15, 11-15
Central Florida	W	15-13, 15-2, 15-4
Tulane	W	15-9, 15-2, 15-10
New Orleans	W	8-15, 15-3, 15-10, 15-2
Southern Miss	W	15-8, 15-3, 15-8
Florida	W	15-11, 15-9, 15-11
Tennessee	L	8-15, 7-15, 9-15
Memphis State	W	15-2, 16-14, 15-7
Florida A&M	W	15-1, 15-2, 15-7
Florida	W	15-10, 15-5, 15-4
South Florida	W	15-11, 16-14, 15-7
Virginia Tech	W	15-10, 15-11, 15-10
South Carolina	W	7-15, 15-6, 15-10, 13-15, 16-14
Central Florida	W	15-3, 15-9, 15-8
NC State	W	15-5, 15-9, 15-11
Louisville	L	6-15, 8-15, 11-15

Cincinnati	W	15-7, 13-15, 15-5, 15-11
Eastern Kentucky	L	14-16, 7-15, 12-15
Hofstra	W	9-15, 15-11, 15-13, 9-15, 15-12
Georgia	L	10-15, 15-13, 13-15, 15-5, 13-15

METRO CONFERENCE TOURNAMENT

Virginia Tech	W	15-1, 15-6, 15-8
South Carolina	L	11-15, 11-15, 11-15
Evansville	W	15-8, 15-4, 15-4
LSU	L	11-15, 15-12, 9-15, 13-15
Brigham Young	L	14-16, 0-15, 2-15
Arizona State	L	10-15, 7-15, 4-15
Iowa	L	3-15, 2-15, 12-15

1985 (22-10)

HEAD COACH Cecile Reynaud



Georgia	L	4-15, 10-15, 6-15
Florida	L	15-1, 15-4, 6-15, 1-15, 14-16
Florida	W	15-8, 12-15, 15-7, 4-15, 17-15
Central Florida	W	15-10, 15-5, 15-8
South Florida	W	17-15, 8-15, 15-9, 15-3
Florida	W	4-15, 15-7, 9-15, 15-6, 15-7
Memphis State	W	15-5, 15-13, 12-15, 15-2
Xavier	W	15-3, 15-7, 15-10
Southern Illinois	W	15-6, 3-15, 5-15, 15-12, 15-13
Florida A&M	W	15-9, 15-4, 15-2
South Florida	W	15-9, 15-4, 15-2
South Carolina	L	9-15, 15-6, 7-15, 15-3, 13-15
Virginia Tech	W	15-6, 15-13, 15-6
Mississippi	W	7-15, 15-10, 13-15, 15-1, 15-4
South Alabama	W	15-12, 15-0, 15-7
Arizona	L	7-15, 4-15, 7-15
Tennessee	W	8-15, 15-11, 15-11, 16-14
Central Florida	W	15-10, 15-9, 15-3
Kentucky	L	14-16, 18-16, 17-15, 13-15, 7-15
Southern Miss	W	15-6, 15-7, 15-8
Tulane	W	15-8, 13-15, 15-10, 15-9
Texas-Arlington	L	4-15, 14-16, 2-15
Louisville	W	16-14, 15-6, 15-5
Cincinnati	W	15-3, 15-9, 15-7
Northwestern	W	9-15, 16-14, 8-15, 15-9, 15-11
LSU	L	13-15, 16-14, 15-9, 7-15, 8-15
Florida	W	15-8, 15-8, 15-7

METRO CONFERENCE TOURNAMENT (1st Place)

Southern Miss	W	15-13, 15-13, 15-3
South Carolina	W	15-1, 15-3, 13-15, 15-12
Brigham Young	L	2-15, 6-15, 5-15
Georgia	L	9-15, 16-14, 7-15, 11-15

NCAA TOURNAMENT (1st Round)

Georgia	L	6-15, 1-15, 11-15
---------	---	-------------------

YEAR-BY-YEAR RECORDS

1986 (25-11)

HEAD COACH Cecile Reynaud



Florida	W	15-11, 9-15, 15-7, 13-15, 15-10
Michigan State	W	15-10, 11-15, 15-13, 15-8
Illinois	L	11-15, 10-15, 0-15
Central Florida	W	15-3, 15-8, 15-2
Michigan State	L	13-15, 13-15, 4-15
Georgia	L	12-15, 15-13, 5-15, 4-15
South Florida	W	8-15, 15-11, 9-15, 15-4, 15-3
Florida	W	9-15, 15-1, 15-6, 15-8
Central Florida	W	15-9, 15-8, 15-8
New Mexico	L	2-15, 13-15, 13-15
LSU	L	8-15, 0-15, 6-15
Sam Houston State	L	15-13, 6-15, 14-16, 15-9, 14-16
Mississippi	W	15-13, 15-11, 15-7
Southern Miss.	W	15-1, 15-2, 15-5
South Alabama	W	15-4, 15-5, 15-7
South Florida	W	13-15, 15-5, 15-12, 15-13
South Carolina	W	6-15, 15-8, 15-8, 15-8
Virginia Tech	W	15-7, 15-3, 15-11
Florida A&M	W	15-2, 15-6, 15-4
Memphis State	W	15-10, 15-8, 13-15, 10-15, 15-4
NC State	W	15-10, 15-3, 15-9
Tennessee	L	10-15, 15-7, 15-4, 13-15, 10-15
Jacksonville	W	15-12, 15-4, 11-15, 6-15, 15-7
Purdue	L	9-15, 10-15, 13-15
Tennessee	W	13-15, 15-9, 16-14, 15-6
Pittsburgh	W	15-12, 17-15, 11-15, 5-15, 15-13
Cincinnati	W	15-8, 15-8, 15-3
Louisville	W	15-11, 15-12, 17-15
North Carolina	W	9-15, 7-15, 16-14, 15-8, 15-6
Texas Tech	L	10-15, 12-15, 12-15
Duke	L	10-15, 14-16, 12-15
Florida	W	8-15, 15-5, 15-1, 15-9

METRO CONFERENCE TOURNAMENT (1st Place)

Virginia Tech	W	15-7, 16-14, 15-10
South Carolina	W	7-15, 15-13, 15-3, 15-7
Brigham Young	L	9-15, 7-15, 15-9, 5-15
Cal-Berkeley	W	15-12, 15-9, 11-15, 4-15, 15-9

1987 (22-11)

HEAD COACH Cecile Reynaud



South Alabama	W	15-5, 15-7, 15-1
Minnesota	L	12-15, 6-15, 14-16
Alabama-Birm	W	15-5, 15-4, 15-4
South Florida	W	15-2, 16-14, 15-3
Georgia	W	16-14, 15-8, 15-11

FLORIDA EIGHT TOURNAMENT

Jacksonville	W	15-5, 15-3, 15-11
Florida	L	3-15, 15-8, 15-6, 10-15, 8-15
Florida Tech	W	15-4, 15-0, 15-2
South Carolina	W	15-9, 15-12, 13-15, 11-15, 15-4
Virginia Tech	W	15-5, 15-9, 15-8
Florida A&M	W	15-2, 15-12, 15-6
Florida	W	15-3, 10-15, 15-9, 15-13
Southern Miss	W	15-7, 15-0, 15-5
Jacksonville	W	15-12, 15-3, 15-10
Tulane	L	15-1, 15-12, 11-15, 16-18, 13-15
South Florida	W	15-6, 15-4, 15-10
Virginia	W	15-10, 15-6, 15-12
SW Texas State	L	15-6, 12-15, 7-15, 11-15
Louisville	W	15-7, 15-12, 15-10
Cincinnati	W	15-12, 15-10, 7-15, 7-15, 15-8
Illinois-Chicago	W	15-10, 15-4, 15-5
Memphis State	W	15-7, 15-2, 15-9
Kentucky	L	13-15, 7-15, 4-15
Central Florida	W	15-4, 15-13, 15-4
Florida	L	15-8, 12-15, 11-15, 17-15, 9-15
Duke	W	15-12, 15-6, 11-15, 15-5
NC State	L	9-15, 15-11, 12-15, 15-3, 6-15
North Carolina	L	7-15, 9-15, 15-13, 3-15

METRO CONFERENCE TOURNAMENT

South Carolina	W	15-9, 15-4, 12-15, 15-8
Cincinnati	W	15-4, 15-12, 6-15, 15-11
Houston	L	15-7, 15-3, 11-15, 8-15, 11-15
Long Beach State	L	10-15, 17-15, 15-2, 9-15, 11-15

NCAA TOURNAMENT (1st Round)

Texas	L	6-15, 11-15, 9-15
-------	---	-------------------

YEAR-BY-YEAR RECORDS

1988 (28-8)

HEAD COACH Cecile Reynaud



Alabama-Birm.	W	15-2, 15-5, 15-1
Jacksonville	W	15-10, 15-11, 15-12
Texas-Arlington	L	4-15, 7-15, 11-15
Penn State	L	15-13, 13-15, 8-15, 5-15

FLORIDA EIGHT CLASSIC (2nd Place)

Florida International	W	15-0, 15-1, 15-1
South Florida	W	15-13, 15-5, 15-8
Florida	L	16-14, 11-15, 13-15, 14-16
Florida A&M	W	15-6, 15-6, 15-7
Georgia	W	15-8, 15-11, 12-15, 15-9
Florida	L	10-15, 7-15, 11-15
South Carolina	L	10-15, 13-15, 15-17
Virginia	W	17-15, 15-11, 15-8
Virginia Tech	W	15-6, 15-6, 15-7
Houston	L	15-1, 5-15, 15-3, 3-15, 4-15
Lamar	W	15-7, 10-15, 15-1, 15-4
Rice	W	12-15, 11-15, 15-6, 15-9, 15-2
Memphis State	W	13-15, 15-1, 9-15, 15-5, 15-13
Central Florida	W	15-8, 15-0, 15-1
Jacksonville	W	15-4, 15-8, 15-7
Tampa	W	15-13, 15-3, 15-8
South Florida	W	15-10, 12-15, 14-16, 15-13, 15-12
Florida	W	5-15, 15-3, 15-11, 15-10
Cincinnati	W	12-15, 15-13, 13-15, 15-13, 15-4
Louisville	W	15-7, 15-6, 15-5
William & Mary	W	15-3, 11-15, 15-10, 12-15, 15-10
South Florida	W	9-15, 15-5, 15-5, 12-15, 15-7
West Virginia	W	15-12, 15-8, 11-15, 14-16, 15-4
Southern Miss.	W	15-8, 15-6, 15-5
LSU	L	10-15, 9-15, 22-20, 10-15

KENTUCKY WILDCAT CLASSIC (1st Place)

Eastern Kentucky	W	15-9, 15-13, 15-4
Kentucky	W	15-10, 16-14, 13-15, 15-12
SW Texas State	W	10-15, 18-16, 15-9, 13-15, 15-1

METRO CONFERENCE TOURNAMENT (1st Place)

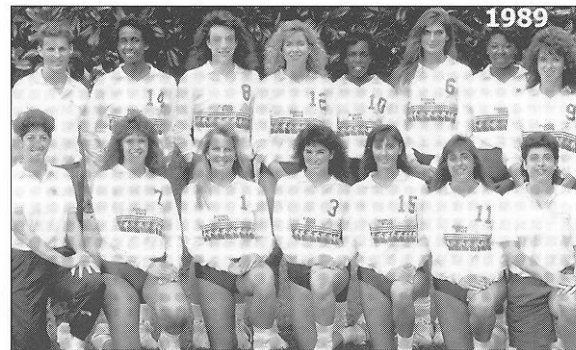
Southern Miss	W	15-9, 15-13, 15-4
South Carolina	W	15-8, 15-13, 15-6
Cincinnati	W	10-15, 15-10, 15-7, 15-9

NCAA TOURNAMENT (1st Round)

Colorado State	L	3-15, 5-15, 15-9, 7-15
----------------	---	------------------------

1989 (30-5)

HEAD COACH Cecile Reynaud



GEORGE WASHINGTON LABOR DAY FESTIVAL (2nd Place)

Northern Arizona	W	15-17, 15-4, 15-7, 15-3
Georgetown	W	15-6, 15-9, 15-4
Minnesota	L	8-15, 17-15, 7-15, 7-15
Duke	W	15-7, 15-7, 7-15, 13-15, 15-5
Minnesota	L	8-15, 13-15, 11-15
Florida	W	9-15, 15-12, 15-6, 13-15, 15-10

FLORIDA EIGHT CLASSIC (1st Place)

Florida International	W	15-2, 13-15, 15-8, 15-2
South Florida	W	15-13, 15-8, 7-15, 10-15, 15-13
Florida	W	15-12, 15-5, 15-4
Illinois State	W	12-15, 15-7, 12-15, 15-6, 15-9
Morehead State	W	15-4, 15-2, 15-11
Illinois State	W	15-11, 15-8, 2-15, 15-7
Kentucky	W	15-13, 6-15, 15-13, 11-15, 16-14
Tennessee	W	15-10, 16-14, 15-11
Florida A&M	W	15-6, 15-5, 15-2
Southern Miss	W	15-6, 15-6, 15-7
Tulane	W	15-4, 15-0, 11-15, 15-5
Jacksonville	W	15-1, 15-1, 15-2
Louisville	W	15-5, 15-10, 15-7
Cincinnati	W	15-8, 15-4, 8-15, 15-11
Purdue	W	15-12, 15-13, 15-13
South Alabama	W	15-8, 15-10, 15-9
South Florida	L	15-3, 5-15, 13-15, 12-15
Alabama-Birm	W	13-15, 15-6, 15-11, 15-10
Memphis State	W	14-16, 8-15, 15-11, 15-9, 15-11
Louisiana State	W	12-15, 15-9, 7-15, 15-5, 15-9
South Carolina	W	15-8, 15-4, 15-2
Virginia Tech	W	15-4, 15-9, 15-5
Florida	L	13-15, 15-9, 11-15, 10-15

KENTUCKY WILDCAT CLASSIC (1st Place)

Brigham Young	W	15-6, 15-17, 8-15, 15-11, 15-11
Kentucky	W	8-15, 6-15, 15-10, 15-5, 15-5

METRO CONFERENCE TOURNAMENT (1st Place)

Southern Miss	W	15-2, 15-3, 15-7
Louisville	W	15-2, 15-7, 15-9
Cincinnati	W	15-12, 15-4, 15-7

NCAA TOURNAMENT (1st Round)

California	L	15-11, 11-15, 13-15, 13-15
------------	---	----------------------------

YEAR-BY-YEAR RECORDS

1990 (25-10)

HEAD COACH Cecile Reynaud



UNIVERSITY OF GEORGIA TOURNAMENT (2nd Place)

Alabama-Birm	W	15-7, 15-13, 15-11
Butler	W	13-15, 15-9, 15-10, 15-3
Georgia	L	15-10, 15-12, 11-15, 8-15, 14-16
Eastern Washington	W	9-15, 15-5, 15-3, 15-3
Southern Miss	W	15-8, 15-9, 15-5

FLORIDA CLASSIC (1st Place)

South Florida	W	15-5, 15-11, 15-5
Florida	L	11-15, 16-14, 11-15, 15-5, 12-15
Florida International	W	16-14, 15-9, 15-1
Georgia Southern	W	15-2, 15-1, 15-7

COLORADO CLASSIC (4th Place)

Wyoming	L	16-14, 11-15, 15-6, 2-15, 13-15
Loyola-Marymount	L	7-15, 15-9, 4-15, 15-13, 6-15
Colorado	L	4-15, 5-15, 15-9, 5-15
SW Texas State	W	15-8, 15-6, 15-6
Texas	L	8-15, 15-11, 9-15, 15-9, 5-15
Tulane	W	15-8, 15-7, 15-12
Virginia Tech	W	15-4, 15-4, 15-5
South Carolina	W	15-5, 15-8, 15-6
South Florida	W	11-15, 15-10, 15-4, 15-12
Florida	W	15-12, 10-15, 15-4, 15-12
Memphis State	L	16-14, 15-11, 8-15, 8-15, 11-15
Florida A&M	W	15-1, 15-2, 15-4
Baylor	W	15-5, 15-7, 15-4
Florida International	W	15-10, 15-4, 15-3
Auburn	W	15-7, 15-6, 15-3
Jacksonville	W	15-4, 15-2, 15-7
Georgia	W	15-4, 15-6, 15-12
Florida	W	15-5, 15-6, 15-12
Cincinnati	W	15-8, 14-16, 15-4, 15-17, 15-9
Louisville	W	15-13, 15-3, 15-13

FLORIDA STATE CLASSIC (2nd Place)

Fresno State	L	15-7, 11-15, 4-15, 15-17
George Washington	W	15-2, 16-18, 15-6, 3-15, 15-3
Houston	W	15-6, 12-15, 15-10, 15-4

METRO CONFERENCE TOURNAMENT (3rd Place)

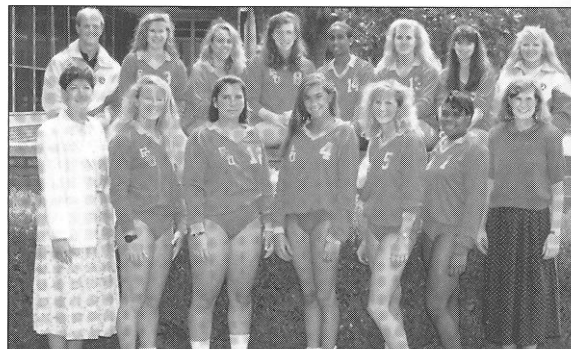
Virginia Tech	W	15-11, 15-9, 15-4
Louisville	L	15-3, 6-15, 14-16, 15-10, 14-16

NCAA TOURNAMENT (1st Round)

Kentucky	L	12-15, 10-15, 15-10, 10-15
----------	---	----------------------------

1991 (16-15)

HEAD COACH Cecile Reynaud



Northeast Louisiana	W	15-3, 15-2, 15-11
Central Florida	W	15-10, 15-1, 15-7

ANTEATER INVITATIONAL, IRVINE, CA (2nd Place)

Loyola Marymount	W	18-16, 13-15, 20-18, 17-15
Idaho	W	16-14, 15-2, 15-6
UC-Irvine	L	18-16, 15-13, 13-15, 8-15, 13-15

FLORIDA 4 TOURNAMENT (2nd Place)

Florida	L	12-15, 5-15, 12-15
Florida International	W	15-6, 15-9, 15-7
South Florida	W	15-9, 15-13, 15-3
Virginia	W	15-13, 6-15, 15-10, 15-6
Rice	W	15-3, 15-8, 15-11
Jacksonville	W	15-8, 15-6, 15-12
Texas A&M	W	15-7, 15-11, 11-15, 15-8
Houston	L	8-15, 7-15, 15-13, 3-15
Florida A&M	W	15-1, 15-8, 15-3
NC State	L	11-15, 15-4, 15-12, 11-15, 9-15
North Carolina	L	13-15, 7-15, 13-15
SW Texas State	W	15-13, 15-11, 15-13
Maryland	L	12-15, 8-15, 15-1, 17-15, 16-18
Duke	L	16-14, 6-15, 15-12, 14-16, 13-15
Georgia	L	13-15, 15-13, 15-17, 15-12, 13-15
Hofstra	W	15-3, 15-5, 9-15, 15-8
William & Mary	L	13-15, 15-13, 15-17, 15-12, 13-15
Clemson	W	15-12, 15-9, 15-9
Georgia	L	9-15, 12-15, 1-15
Georgia Tech	L	13-15, 7-15, 15-7, 15-4, 11-15

FLORIDA STATE CLASSIC (3rd Place)

Pittsburgh	L	13-15, 3-15, 15-9, 2-15
Alabama-Birm	L	15-11, 8-15, 15-4, 13-15, 12-15
Temple	W	15-1, 15-11, 15-6
Florida	L	5-15, 11-15, 5-15

ACC TOURNAMENT (3rd Place)

North Carolina	W	15-7, 15-6, 15-6
Virginia	L	11-15, 9-15, 16-14, 6-15

YEAR-BY-YEAR RECORDS

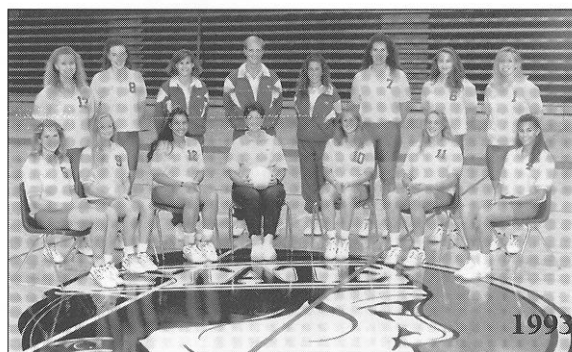
1992 (26-8)

HEAD COACH Cecile Reynaud



1993 (24-10)

HEAD COACH Cecile Reynaud



GATOR INVITATIONAL

Georgia State	W	15-7, 15-2, 15-3
South Florida	W	15-3, 15-11, 15-10
Florida	L	5-15, 6-15, 5-15

FLORIDA STATE CLASSIC

Minnesota	L	15-12, 14-16, 5-15, 5-15
Minnesota	W	15-7, 13-15, 13-15, 15-13, 15-6
McNeese State	W	15-6, 15-3, 15-12

SOUTH FLORIDA TOURNAMENT

Georgetown	W	15-8, 15-11, 15-5
Alabama	W	15-10, 15-12, 15-3
South Florida	W	15-6, 15-4, 16-14
Houston	W	11-15, 15-13, 11-15, 15-6, 15-8
Texas A&M	W	15-7, 15-8, 16-14
Jacksonville	W	15-7, 15-3, 15-7
Duke	L	6-15, 13-15, 15-12, 3-15
North Carolina	W	15-8, 15-11, 15-8

NOTRE DAME CLASSIC

Notre Dame	L	15-12, 5-15, 15-7, 1-15, 15-17
Long Beach State	L	15-11, 2-15, 9-15, 11-15
Pittsburgh	W	15-6, 12-15, 9-15, 15-10, 15-11
Florida A&M	W	15-2, 15-5, 15-1
Georgia Tech	W	15-12, 12-15, 15-6, 7-15, 15-12
South Alabama	W	15-5, 15-10, 15-3
Clemson	W	15-8, 15-7, 15-4

HOFSTRA CLASSIC

Syracuse	W	15-10, 15-10, 15-12
Hofstra	W	15-5, 15-11, 15-5
LaSalle	W	15-6, 15-1, 15-8
Maryland	W	15-13, 6-15, 15-9, 15-13
Virginia	W	15-9, 15-7, 15-3
William & Mary	W	15-10, 12-15, 15-1, 15-10
Central Florida	W	15-10, 15-2, 15-3
NC State	W	15-6, 15-5, 15-11
Florida	L	8-15, 8-15, 11-15

ACC TOURNAMENT

Virginia	W	15-7, 15-3, 15-4
Maryland	W	8-15, 15-8, 12-15, 15-10, 15-8
Duke	L	9-15, 15-9, 15-11, 11-15, 11-15

NCAA CHAMPIONSHIP (1st Round)

Florida	L	9-15, 3-15, 10-15
---------	---	-------------------

FLORIDA STATE CLASSIC

Auburn	W	15-6, 15-4, 15-3
South Florida	W	13-15, 15-8, 15-10, 12-15, 15-10
SW Missouri State	L	16-14, 0-15, 6-15, 7-15
Florida	W	15-0, 8-15, 4-15, 15-13, 15-13

LSU TOURNAMENT

LSU	W	15-12, 15-4, 10-15, 15-7
Loyola Marymount	W	15-12, 12-15, 15-2, 15-10
Southern Miss	W	15-6, 15-3, 15-8
Texas A&M	L	13-15, 13-15, 16-14, 11-15
Houston	W	15-11, 15-9, 15-2
Rice	W	15-10, 15-9, 8-15, 15-10
Clemson	W	15-7, 16-14, 8-15, 12-15, 15-11
Georgia Tech	W	15-8, 15-6, 15-9
Jacksonville	W	15-7, 13-15, 15-7, 15-3
NC State	W	15-12, 15-8, 15-13
NC State	W	15-3, 15-7, 15-8
Arkansas State	W	15-3, 15-9, 15-2
Florida Atlantic	W	15-8, 15-6, 15-4
Virginia	W	15-9, 15-5, 15-10
Maryland	L	13-15, 14-16, 14-16
Duke	L	13-15, 15-11, 9-15, 13-15
North Carolina	W	15-13, 8-15, 15-4, 15-12
Virginia	W	15-6, 15-8, 15-12
Maryland	W	15-9, 15-12, 15-11
Georgia Tech	L	8-15, 10-15, 15-9, 12-15
Clemson	L	4-15, 10-15, 4-15
Florida	L	6-15, 11-15, 14-16
Duke	L	3-15, 12-15, 6-15
North Carolina	W	15-10, 15-12, 13-15, 15-12
Troy State	W	15-6, 15-5, 15-3

ACC TOURNAMENT

North Carolina	W	15-13, 15-3, 15-7
Clemson	W	17-15, 15-12, 15-7
Duke	L	6-15, 6-15, 5-15

NCAA TOURNAMENT (1st Round)

DePaul	W	15-8, 7-15, 15-10, 15-13
--------	---	--------------------------

NCAA TOURNAMENT (2nd Round)

Pacific	L	6-15, 17-15, 6-15, 9-15
---------	---	-------------------------

YEAR-BY-YEAR RECORDS

1994 (17-16)

HEAD COACH Cecile Reynaud



Southern Illinois	W	15-7, 15-4, 15-6
Iowa	L	8-15, 6-15, 11-15
Southern Illinois	W	9-15, 15-5, 15-10, 15-7

VOLLEYBALL MONTHLY INVITATIONAL

Louisiana State	L	12-15, 15-12, 15-5, 13-15, 13-15
Penn State	L	4-15, 3-15, 10-15
UCLA	L	4-15, 6-15, 4-15
Florida	L	8-15, 12-15, 2-15

MINNESOTA CLASSIC

DePaul	W	15-11, 11-15, 14-16, 17-15, 15-4
Fresno State	L	15-7, 13-15, 9-15, 14-16
Minnesota	L	3-15, 6-15, 10-15
Duke	L	4-15, 6-15, 10-15
North Carolina	L	11-15, 15-8, 12-15, 15-12, 15-17
Clemson	W	13-15, 15-5, 15-4, 10-15, 15-11
Georgia Tech	L	14-16, 7-15, 1-15
NC State	W	14-16, 15-5, 15-13, 15-13
NC State	W	15-12, 15-11, 15-5
Florida Atlantic	W	15-7, 15-2, 15-7
Jacksonville	W	15-1, 15-3, 15-10
Maryland	L	15-7, 13-15, 11-15, 7-15
Virginia	W	15-6, 15-6, 15-9
Notre Dame	W	15-10, 8-15, 17-15, 15-12
Duke	L	4-15, 9-15, 7-15
North Carolina	W	15-7, 15-13, 15-12
Florida	W	15-9, 15-13, 15-12
Maryland	W	15-10, 3-15, 16-14, 15-12
Virginia	W	15-8, 15-12, 4-15, 14-16, 20-18
Clemson	L	6-15, 3-15, 5-15
Georgia Tech	L	14-16, 7-15, 1-15
Central Florida	W	15-5, 15-17, 15-13, 15-13

ACC TOURNAMENT

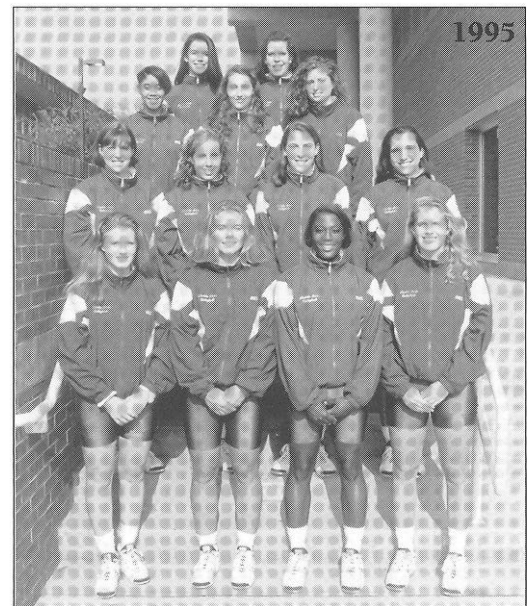
Maryland	W	16-14, 15-6, 5-15, 15-12
Duke	L	8-15, 7-15, 8-15

GEORGIA HOLIDAY CLASSIC

South Florida	W	11-15, 16-14, 15-6, 15-7
Georgia	L	8-15, 15-5, 6-15, 6-1

1995 (11-19)

HEAD COACH Cecile Reynaud



SOUTH FLORIDA CLASSIC

Tennessee Tech	W	15-5, 15-7, 7-15, 15-8
Memphis	W	15-10, 15-1, 15-10
South Florida	L	15-13, 8-15, 3-15, 5-15
Jacksonville	W	15-2, 15-4, 15-7

RHODE ISLAND CLASSIC

Rhode Island	L	14-16, 3-15, 2-15
Washington	L	1-15, 14-16, 5-15
George Mason	L	11-15, 7-15, 9-15
College of Charleston	W	15-5, 15-8, 15-10
Houston	L	13-15, 15-12, 9-15, 3-15
Georgia Tech	L	4-15, 16-14, 6-15, 13-15
Clemson	L	3-15, 15-13, 7-15, 16-18
Duke	L	1-15, 7-15, 12-15
NC State	L	15-11, 5-15, 15-9, 11-15, 11-15
Georgia Tech	L	11-15, 14-16, 9-15
Clemson	L	16-14, 1-15, 9-15, 15-9, 3-15
Florida	L	15-12, 5-15, 10-15, 6-15
North Carolina	W	8-15, 15-10, 15-11, 10-15, 17-15
North Carolina	L	13-15, 15-13, 15-5, 5-15, 10-15
Jacksonville	W	15-8, 12-15, 15-9, 15-6
New Orleans	W	15-11, 15-07, 15-3
Virginia	W	13-15, 15-8, 15-10, 15-13
Maryland	L	5-15, 5-15, 11-15
Florida	L	4-15, 3-15, 2-15
NC State	L	16-18, 12-15, 8-15
Duke	L	10-15, 5-15, 9-15
South Alabama	W	15-11, 15-4, 15-8
Virginia	W	15-9, 15-11, 15-12
Maryland	L	15-5, 13-15, 11-15, 7-15

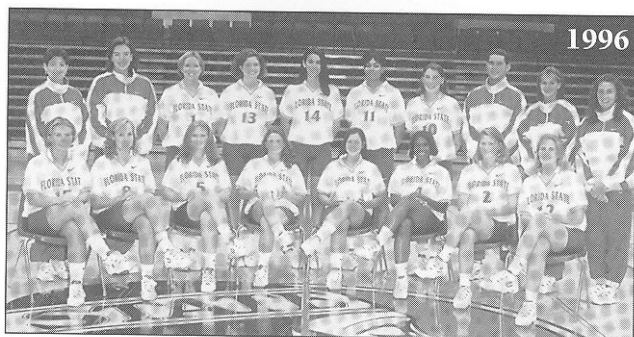
ACC TOURNAMENT

Clemson	W	15-8, 6-15, 6-15, 16-14, 15-13
Maryland	L	9-15, 11-15, 3-15

YEAR-BY-YEAR RECORDS

1996 (12-19)

HEAD COACH Cecile Reynaud



Florida Atlantic	W	15-5, 15-9, 15-7
Florida Atlantic	W	15-1, 15-7, 15-3

PURDUE INVITATIONAL

Southern Illinois	L	11-15, 15-9, 15-11, 8-15, 10-15
Miami (Ohio)	L	13-15, 10-15, 14-16
Purdue	L	11-15, 15-6, 9-15, 4-15
Jacksonville	W	13-15, 15-1, 15-6, 15-9

FLORIDA CLASSIC

Florida	L	3-15, 11-15, 0-15
UCLA	L	2-15, 9-15, 13-15
Ball State	L	7-15, 8-15, 8-15
Maryland	L	5-15, 4-15, 4-15
Virginia	L	15-13, 13-15, 9-15, 5-15
Clemson	L	15-7, 15-8, 12-15, 10-15, 17-19
Georgia Tech	L	11-15, 12-15, 15-11, 12-15
Auburn	L	3-15, 8-15, 12-15
Duke	L	9-15, 10-15, 10-15
Wake Forest	W	10-15, 15-9, 15-6, 15-9
Clemson	L	13-15, 16-14, 14-16, 5-15
Georgia Tech	L	4-15, 15-9, 6-15, 6-15
North Carolina	W	15-11, 16-14, 6-15, 15-8
NC State	W	9-15, 7-15, 15-10, 15-10, 15-12
North Carolina	W	10-15, 15-8, 9-15, 15-7, 15-10
NC State	W	15-11, 8-15, 15-13, 15-6
Jacksonville	W	15-3, 16-14, 15-2
Wake Forest	W	15-12, 15-8, 15-7
Duke	L	15-13, 13-15, 5-15, 11-15
Virginia	L	15-7, 11-15, 5-15, 10-15
Maryland	L	3-15, 12-15, 16-14, 13-15
Florida	L	11-15, 11-15, 8-15
Georgia	W	3-15, 2-15, 16-14, 15-12, 16-14
Troy State	W	15-1, 15-9, 15-6

ACC TOURNAMENT

Georgia Tech	L	8-15, 12-15, 8-15
--------------	---	-------------------

1997 (25-9)

HEAD COACH Cecile Reynaud



FLORIDA STATE CLASSIC

Boston College	W	15-7, 15-4, 15-11
Mississippi State	W	15-5, 15-12, 15-8
Purdue	W	15-13, 15-7, 15-4

MICHIGAN ALLSPORT CLASSIC

Michigan	W	7-15, 15-5, 15-6, 15-12
Montana	W	15-8, 15-3, 15-8
Eastern Michigan	W	15-13, 15-10, 15-5
Georgia Southern	W	15-5, 15-0, 15-3
Florida Atlantic	W	15-3, 15-3, 15-7
Georgia State	W	15-11, 15-4, 15-6

FLORIDA ATLANTIC TOURNAMENT

Florida International	W	15-9, 15-5, 15-4
Florida Atlantic	W	15-3, 15-7, 15-6
Mercer	W	15-9, 15-7, 15-7
Florida	L	11-15, 11-15, 10-15
North Carolina	L	13-15, 6-15, 6-15
NC State	W	15-5, 15-8, 15-3
Clemson	W	15-13, 14-16, 15-4, 15-13
Georgia Tech	W	15-12, 15-9, 9-15, 16-14
Virginia	W	15-8, 6-15, 15-6, 15-9
Maryland	L	15-8, 8-15, 7-15, 12-15
South Alabama	W	15-4, 15-3, 15-7
Duke	L	7-15, 15-8, 13-15, 11-15
Wake Forreest	W	11-15, 15-12, 15-6, 15-4
Georgia Tech	L	13-15, 15-8, 9-15, 7-15
Clemson	W	5-15, 15-6, 15-5, 20-18
North Carolina	W	15-12, 9-15, 15-10, 15-13
NC State	W	15-3, 10-15, 15-12, 15-6
Florida	L	7-15, 5-15, 1-15
Maryland	L	13-15, 9-15, 15-10, 8-15
Virginia	W	15-0, 15-6, 15-6
Wake Forreest	W	15-3, 15-10, 15-2
Duke	W	13-15, 15-7, 15-7, 14-16, 15-10

ACC TOURNAMENT

Virginia	W	15-9, 9-15, 17-15, 13-15, 15-8
Georgia Tech	L	14-16, 10-15, 15-5, 6-15

NCAA TOURNAMENT

South Florida	L	15-8, 4-15, 13-15, 15-7, 9-15
---------------	---	-------------------------------

YEAR-BY-YEAR RECORDS

1998 (25-11)

HEAD COACH Cecile Reynaud



FLORIDA STATE CLASSIC

SE Louisiana	W	15-7,15-11,15-5
Fla International	W	15-10,15-9,15-5
Northern Iowa	W	15-11,15-5,8-15,12-15,15-12
Central Florida	W	15-6,15-9,15-6

USF CLASSIC

South Florida	W	15-11,15-7,15-6
Cal-Berkeley	W	16-14,15-8,15-10
Utah State	W	6-15,15-4,16-14,15-12

UCSB/BELLOMO CLASSIC

UC Santa Barbara	L	13-15,17-19,10-15
Long Beach State	L	7-15,5-15,4-15
Pepperdine	L	13-15,8-15,15-11,11-15
Santa Clara	W	15-2,15-9,17-15
Florida	L	15-5,8-15,11-15,10-15
Clemson	L	5-15,13-15,15-6,17-15,13-15
Georgia Tech	L	12-15,8-15,15-8,5-15
Jacksonville	W	15-4,15-5,15-8
Wake Forest	W	7-15,15-12,3-15,15-11,15-7
Duke	W	15-8,15-7,15-9
North Carolina	L	15-6,7-15,11-15,8-15
NC State	W	15-5,15-13,15-13
Florida A&M	W	15-2,15-6,15-1
Virginia	W	15-1,15-12,15-5
Maryland	W	15-12,15-2,15-10
Duke	W	15-13,15-12,15-4
Wake Forest	W	15-11,15-10,15-6
Georgia Tech	W	15-6,16-14,15-11
Clemson	W	15-9,15-5,11-15,15-11
Florida	L	7-15,12-15,15-17
NC State	W	15-5,15-4,15-10
North Carolina	W	15-0,12-15,8-15,15-6,15-13
Jacksonville	W	15-6,13-15,15-3,15-8
Maryland	L	12-15,15-9,15-5,13-15,14-16
Virginia	L	7-15,15-2,15-11,1-15,19-21

ACC TOURNAMENT

Wake Forest	W	15-6,15-11,15-11
Virginia	W	15-10,15-12,15-9
North Carolina	W	15-8,15-1,15-10

NCAA TOURNAMENT

Northern Illinois	L	15-10,11-15,10-15,12-15
-------------------	---	-------------------------

1999 (8-23)

HEAD COACH Cecile Reynaud



Auburn	W	7-15,17-15,15-11,6-15,15-12
--------	---	-----------------------------

FLORIDA STATE CLASSIC

South Carolina	L	11-15,8-15,4-15
Fla International	W	15-3,15-8,15-13
Indiana	L	6-15,14-16,4-15

NIU INVITATIONAL

UT-Arlington	L	15-10,7-15,13-15,16-18
Santa Clara	L	8-15,4-15,10-15
Northern Illinois	W	15-3,15-11,15-9
UC Santa Barbara	L	3-15,5-15,6-15
Florida Atlantic	W	15-11,16-14,15-13
Liberty	W	15-12,13-15,15-9,14-16,15-7
Duke	L	8-15,11-15,15-9,8-15
Wake Forest	L	5-15,18-20,11-15
Florida	L	5-15,4-15,9-15
Maryland	L	6-15,15-13,8-15,11-15
Virginia	L	15-9,15-11,14-16,12-15,10-15
Clemson	L	2-15,5-15,7-15
Georgia Tech	L	7-15,14-16,7-15
Florida A&M	W	15-12,15-8,15-9
North Carolina	L	6-15,8-15,8-15
NC State	W	15-12,16-14,13-15,15-6
Jacksonville	W	15-12,15-2,15-9
Virginia	L	8-15,13-15,5-15
Maryland	L	9-15,13-15,3-15
Duke	L	3-15,15-7,13-15,11-15
Wake Forest	L	11-15,10-15,6-15
Clemson	L	15-11,3-15,8-15,4-15
Georgia Tech	L	15-10,5-15,12-15,2-15
Florida	L	3-15,5-15,4-15
North Carolina	L	6-15,5-15,13-15
NC State	L	11-15,15-12,10-11,5,8-15

ACC TOURNAMENT

Clemson	L	4-15,5-15,8-15
---------	---	----------------

YEAR-BY-YEAR RECORDS

2000 (21-11)

HEAD COACH Cecile Reynaud



2001 (17-12)

HEAD COACH Cecile Reynaud



FLORIDA STATE TOURNAMENT

Southern Miss	W	15-7,15-1,15-12
Florida Atlantic	W	15-11,15-2,15-12
Charleston Southern	W	15-8,15-8,15-4
Illinois	W	15-11,15-6,15-6
Alabama	W	6-15,14-16,15-5,15-12,15-13

BALL STATE TOURNAMENT

Southeast Missouri St.	W	15-13,15-11,15-5
Texas El Paso	W	6-15,14-16,15-5,15-12,15-13
Jacksonville	W	15-3,15-6,15-8

LADY SEMINOLE CLASSIC

Samford	W	15-2,15-4,15-4
Notre Dame	L	10-15,8-15,15-8,2-15
Florida A&M	W	15-5,15-6,15-1
Central Florida	W	15-7,14-16,15-3,15-7
Maryland	L	15-6,6-15,13-15,15-12,13-15
Virginia	L	9-15,16-14,8-15,6-15
Florida	L	8-15,8-15,16-14,5-15
NC State	W	15-7,9-15,15-7,15-10
North Carolina	L	9-15,15-2,15-6,9-15,13-15
Wake Forest	W	15-12,15-8,16-14
Duke	L	19-17,4-15,8-15,15-7,8-15
Florida A&M	W	15-5,15-5,15-1
Georgia Tech	L	15-9,15-13,6-15,9-15,10-15
Clemson	W	15-13,15-6,13-15,15-8
North CarolinaA	L	9-15,15-2,15-6,9-15,13-15
Wake Forest	W	15-12,15-8,16-14
Duke	L	19-17,4-15,8-15,15-7,8-15
Florida A&M	W	15-5,15-5,15-1
Georgia Tech	L	15-9,15-13,6-15,9-15,10-15
Clemson	W	15-13,15-6,13-15,15-8
North Carolina	L	10-15,15-11,10-15,8-15
NC State	W	15-11,15-10,15-8
Virginia	W	15-4,13-15,16-14,7-15,15-13
Maryland	W	15-10,15-12,15-13
Wake Forest	W	15-8,1-15,8-15,15-7,18-16
Duke	L	15-6,8-15,11-15,14-16
Georgia Tech	W	15-11,15-9,15-15,15-10
Clemson	W	15-4,6-15,15-6,15-9

ACC TOURNAMENT

Duke	L	14-16,10-15,15-4,10-15
------	---	------------------------

PEPPERDINE TOURNAMENT

Fresno State	W	32-30, 37-35, 31-33, 30-32, 18-16
Northern Arizona	L	22-30, 30-17, 30-20, 29-31, 13-15
Pepperdine	L	21-30, 24-30, 29-31

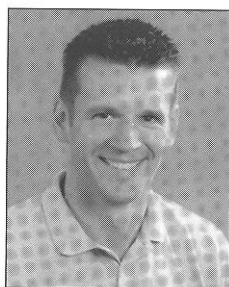
TEXAS A&M TOURNAMENT

Texas A&M	L	25-30, 18-30, 19-30
Texas	L	20-30, 34-32, 29-31, 21-30
South Florida	L	29-31, 30-28, 24-30, 24-30
Clemson	W	30-23, 30-32, 30-26, 30-23
Georgia Tech	L	25-30, 26-30, 24-30
Maryland	L	30-24, 28-30, 30-22, 24-30, 13-15
Virginia	W	30-21, 30-26, 30-15
Miami	W	30-16, 30-16, 30-21
North Carolina	L	22-30, 28-30, 30-20, 34-32, 13-15
NC State	W	28-30, 30-13, 30-16, 30-14
Florida A&M	W	30-19, 31-33, 30-19, 32-30
Duke	L	25-30, 23-30, 24-30
Wake Forest	W	31-29, 30-22, 30-25
Virginia	W	26-30, 30-20, 30-26, 30-21
Maryland	W	30-28, 29-31, 30-27, 25-30, 15-9
Jacksonville	W	30-17, 30-21, 30-19
Clemson	W	30-28, 30-23, 30-14
Georgia Tech	W	25-30, 21-30, 30-24, 30-26, 15-12
Duke	L	27-30, 28-30, 30-20, 28-30
Wake Forest	L	30-21, 30-26, 28-30, 27-30, 8-15
Central Florida	W	30-16, 27-30, 30-17, 30-22
North Carolina	W	30-20, 30-28, 30-24
NC State	W	30-16, 30-15, 30-25

ACC TOURNAMENT

Wake Forest	W	30-23, 30-26, 30-27
Duke	W	32-30, 30-21, 13-30, 30-20
North Carolina	L	20-30, 27-30, 30-28, 23-30

PHOTO SPEED CHART



TODD KRESS
Head Coach



#1 ASHLEY MEYER
6'1" • Sophomore
Luling, Louisiana
Middle Hitter



#2 JENNIFER ANDERSON
5'9" • Junior
Minier, Illinois
Setter



#3 KAMEELAH OMAR
5'5" • Sophomore
Rockford, Illinois
Defensive Specialist



#4 KRISTIN FRYE
6'0" • Senior
Ft. Wayne, Indiana
Outside Hitter



#5 AISHA CARR
6'0" • Freshman
Dallas, Texas
Outside Hitter



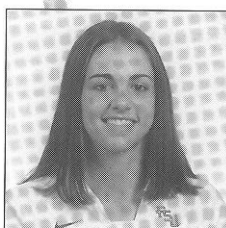
#6 TRENESHA BIGGERS
6'2" • Junior
Jacksonville, Illinois
Middle Hitter



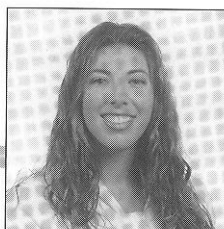
#8 CERINA PELE
5'10" • Junior
Gardena, California
Outside Hitter
Setter



#10 CATHY CLINE
5'8" • Junior
Lake Worth, Florida
Defensive Specialist



#11 CARLY ADAMS
6'1" • Freshman
Miami, Florida
Setter
Outside Hitter



#12 ALEX SEVILLANO
5'8" • Junior
Clearwater, Florida
Outside Hitter
Defensive Specialist



#13 ERICA BUNCH
6'2" • Junior
Crawfordville, Florida
Outside Hitter



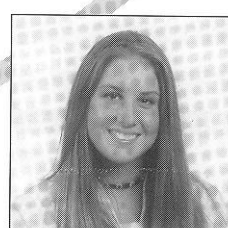
#14 DAWN HOUGH
6'2" • Junior
Brandon, Florida
Middle Hitter



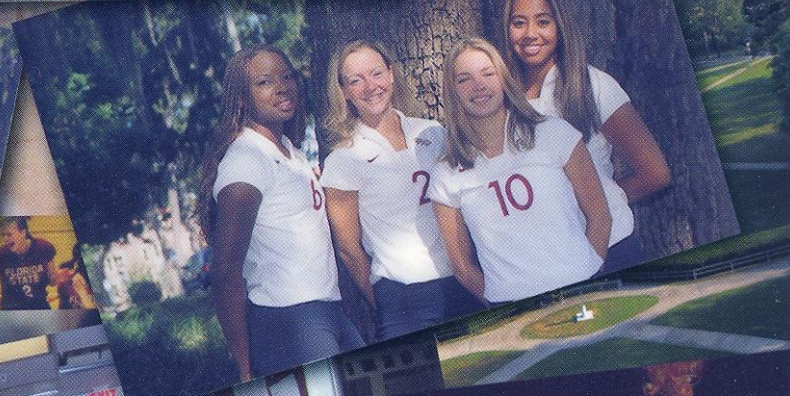
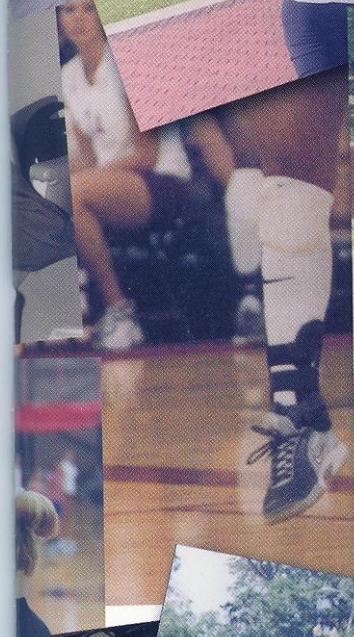
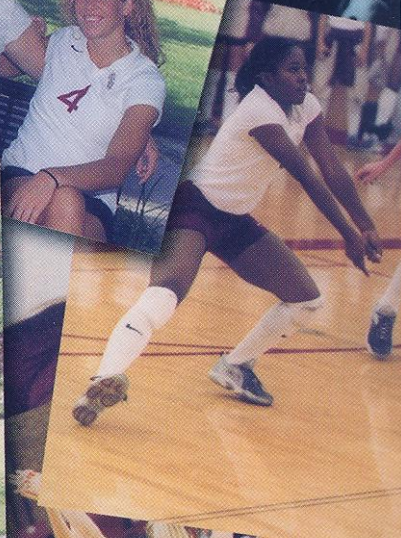
#15 KRISTEN RUST
6'2" • Freshman
Cincinnati, Ohio
Outside Hitter
Middle Hitter



#16 JENNIFER ORŁOWSKI
5'11" • Freshman
LaPorte, Indiana
Outside Hitter
Defensive Specialist

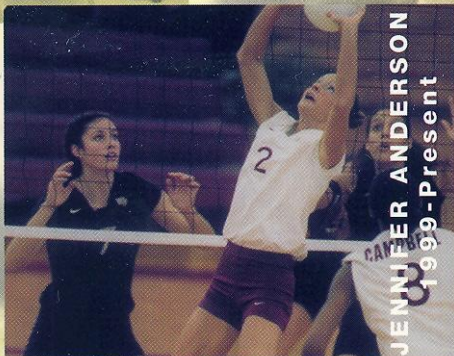


#17 ASHLEY DENBOW
5'11" • Freshman
Austin, Texas
Outside Hitter

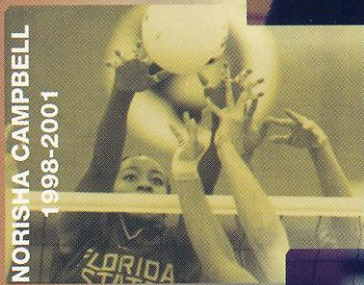




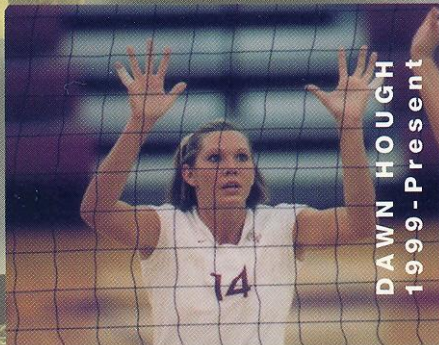
LATOYA WASHINGTON
1995-1998



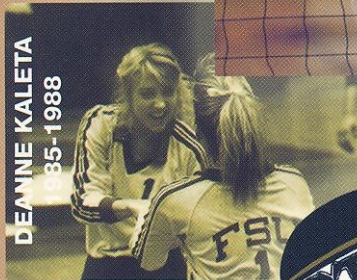
JENNIFER ANDERSON
1999-Present



NORISHA CAMPBELL
1998-2001



DAWN HOUGH
1999-Present



DEANNE KALETA
1985-1988



LUIZA RAMOS
1991-1994

2002 FLORIDA STATE VOLLEYBALL SCHEDULE

August

30-31	<i>at Illinois State Tournament</i>	
	Illinois State University	7:00 p.m.
	Alabama	10:00 a.m.
	Marshall	5:00 p.m.

September

4	Jacksonville	7:00 p.m.
10	Oregon	7:00 p.m.
13-14	<i>at Florida International Tournament</i>	
	Miami	11:00 a.m.
	Florida International	7:00 p.m.
	IUPUI	5:00 p.m.
20-21	<i>FSU Invitational</i>	
	Louisiana-Lafayette	12:00 p.m.
	LSU	7:00 p.m.
	Brown	1:00 p.m.
24	<i>at Florida</i>	7:00 p.m.
27	Wake Forest*	7:00 p.m.
28	Duke*	7:00 p.m.

October

5	<i>at Clemson*</i>	4:00 p.m.
6	<i>at Georgia Tech*</i>	3:00 p.m.
11	Virginia*	7:00 p.m.
12	Maryland*	7:00 p.m.
16	Florida A&M	7:00 p.m.
19	<i>at Duke*</i>	5:00 p.m.
20	<i>at Wake Forest*</i>	5:00 p.m.
25	North Carolina State*	7:00 p.m.
27	North Carolina*	1:00 p.m.
29	<i>at South Florida</i>	7:00 p.m.

November

2	<i>at Maryland*</i>	3:00 p.m.
3	<i>at Virginia*</i>	1:00 p.m.
8	Georgia Tech*	7:00 p.m.
9	Clemson*	7:00 p.m.
15	<i>at North Carolina State*</i>	7:00 p.m.
16	<i>at North Carolina*</i>	6:00 p.m.
21-24	ACC Tournament	TBA

December

6-7	NCAA Tournament 1 & 2	TBA
13-14	NCAA Tournament 3 & 4	TBA

Home games in Bold

*ACC games