



OUTLOOK





SEASON PREVIEW

With apologies to last year's seniors, the 2006 season actually began for the Florida State University volleyball team at the end of last October. That's when the Seminoles regrouped to turn around their season and finish at .500 in the Atlantic Coast Conference and set the tone for this year.

Another reason for optimism in 2006 is that this year's senior class is the first full class to come through head coach Todd Kress' system. While departed senior Kristen Rust was his first recruit at Florida State, current seniors Sarah Griffin and Jessica Skower have been helping Kress lay down the foundation the last three seasons and will provide valuable leadership as the Seminoles take the next step.



The Seminoles have laid the foundation and are poised for success in 2006.



2006 PRESEASON ACC POLL

Team	Points	'05 Record
1. Duke (8)	139	24-8
2. Virginia (3)	127	20-11
3. Georgia Tech (1)	114	16-15
4. North Carolina	103	23-10
5. Maryland	98	28-5
6. Florida State	83	13-17
7. Miami	73	16-14
8. Clemson	66	12-18
9. Wake Forest	59	17-14
10. Virginia Tech	33	13-18
11. Boston College	24	9-22
12. NC State	17	7-23

2006 PRESEASON ALL-ACC TEAM

Player	School
Jeannette Abbott	Clemson
Allison Anderson	Boston College
Amy Beaver	North Carolina
Jade Brown	Maryland
Carrie DeMange	Duke
Katie Esbrook	Virginia Tech
Beth Gillming	Maryland
Ali Hausfeld	Duke
Talisa Kellogg	Georgia Tech
Emily Kirkwood	Virginia
Sarah Kirkwood	Virginia
Natalie Mullikin	Wake Forest
Jill Robinson	Miami
Brittany Ross	Clemson
Francheska Savage	Miami
Jenny Shull	Duke
Ulrike Stegemann	Georgia Tech
Makini Thompson	Florida State

"We finished the year on a high note and that carried us into the spring and summer," Kress said. "We had a great spring season and everyone has worked hard over the summer on the court and also in the weight room. I think everyone feels that we have some unfinished business from the end of last year and we have a good group of seniors and they want to make a strong push for the ACC in their final year."

While it may not show in the win column, Kress has been poising this team to be among the elite schools in the conference with the bigger picture of being a national contender on the horizon. After playing catch-up on the recruiting trail during his first four seasons, Kress has brought in his best class by far for the 2006 season with seven freshmen and a sophomore transfer that will have a tremendous impact on this year's team.

"The newcomers are going to play a big role for us based on what we lost," Kress added. "They've got some big shoes to fill from last year's seniors. Kristen Rust and Andreza Santos were some big point scorers for us and they had a big impact on our team. We have to get some production from the freshmen, but the upperclassmen are going to fight for their spots and it's going to create some great competition. If we can come together as a team and get some leadership from the upperclassmen, we could have a very special season."

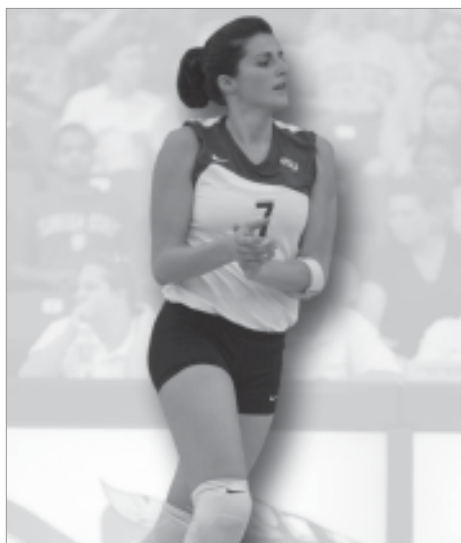
In addition, Kress has a staff in place that is hard-working, no-nonsense and determined to get Florida State to the next level. First-year associate head coach Melissa Batie knows the ACC very well after a two-year stint at Wake Forest as well as the state of Florida as the head coach at Nova Southeastern last year to go along with a Sweet 16 appearance while at Florida. New assistant coach Mitch Sadowsky spent two years in the Big East at Georgetown after playing and coaching at Ball State, which has produced some of the top coaches in the country.

Here is a position-by-position look at this year's team:

SETTERS

No area on the court is more experienced than the setter position. Last year, seniors Jessica Skower and Zrinka Tomic split time at the position with Skower seeing slightly more time while Tomic was hurt. The 6-foot-1 Skower continued her ascension up the career assist chart with 954 helpers in 2005 to increase her career-total to 2,906, which ranks fourth in Seminole history. Capitalizing on her athletic ability, Skower will split time between setter and opposite this season.

SEASON PREVIEW



Zrinka Tomic

Injuries plagued Tomic last year as she missed over a month during the beginning part of the season. When she was back at 100 percent she found her groove towards the end of the year, setting primarily out of the back row. Tomic averaged 6.16 assists per game overall and upped her production during conference matches. A pair of freshmen will challenge for playing time at setter and will be the future for Florida State at the position. Nikki Baker is a highly-touted AAU All-America setter out of Findlay, Ohio, while Caitlin Belvin was a three-time All-State setter at Winter Park High School in Orlando.

HRESS
on the setters

"We're so deep at the setter position that it has allowed us to move Jessica to the opposite and train her at a new position. It was huge for us to have Zrinka step up in the spring so we could make the move with Jessica. She's come in and really embraced the new position

and she could really have a breakout year. Nikki Baker has done great things with her club team and she and Zrinka will battle it out."

MIDDLE BLOCKERS

If there is a signature position on any Todd Kress squad it's the middle blocker. Florida State's first AVCA All-American – Amanda Santos – played the position and the middle blocker has made more improvements in his first four years than any other position on the court.

With the importance of the middle blocker spot, 2006 could be a season of growing pains as it will be the position with the least experience but perhaps tremendous upside. The only returning player at middle blocker wasn't a middle when the 2005 season began. Due to injuries to Andreza Santos and Lauren Scott, senior Sarah Griffin showed why she's the ultimate team player and captain by stepping in at the position. Standing in at just 5-foot-11 she rose to the occasion and produced career-highs for block assists and solo blocks thanks to some big games like five blocks at Georgia Tech and six versus Wake Forest.

When it came time to recruit the 2006 class, Kress and his staff went after some of the best middle blockers and got a pair of Top 100 players who can stuff it with the best of them. Kress kept one of the best recruits in the state as 6-foot-3 Brianna Barry was a Fab 50 selection by PrepVolleyball.com at Winter Springs and has been in the USA Volleyball system the last two years. Standing in at 6-foot-2, Lauren Young was a three-sport star at Van High School in Texas and brings a host of accolades, including All-State honors.

HRESS
on the middle blockers

"Brianna Barry was one of the top middles in the country. She played with the Junior National team last year and has played at a high level with her club team. Sarah



Sarah Griffin

Griffin has done everything we've ever asked her to do and she is the ultimate team player. She sets the tone as far as work ethic and holds her teammates to a higher standard. She's only 5-11 but not many middles in the conference are going to do more with what they have than Sarah. Even though we're young there, we're going to be a lot better at the middle position than we have in the past; it's going to be a very solid position."

OUTSIDE HITTERS

Much like the middle blocker position, the outside hitter spot has a great veteran to mentor a talented group of newcomers. After a year at Long Beach State, junior Makini Thompson came to Florida State and made an instant impact. The Quincy, Mass., native was the only player on the squad to rank in the top three of kills (third – 295), blocks (third – 75) and points (third – 345.0). Thompson had FSU's best three-game and four-game matches with 20 kills against Wake Forest (three games) and Clemson (four games). She tied Lauren Scott for the best blocking performance in 2005 as she had nine stuffs against Houston.



Jessica Skower



SEASON PREVIEW



Makini Thompson

A Top 100 recruit, Jackie BonSalle will have a big impact on this year's squad. The 6-foot-3, Albuquerque, N.M., native won a pair of state titles during her prep career and was a four-year All-State selection. BonSalle has played for various USA National teams over the last three years. In addition to her duties at setter, Skower will see some time at opposite and freshman Malorie Wessel will challenge for time on the outside.

HRESS on the outside hitters

"Because of injuries last year Makini played all three positions in the front row, but she's back being our top outside, it's her natural position and she's very comfortable there. It's also huge for the team as a whole knowing who your L1 is going into the preseason. Jessica is going to be there on the left side and we will have a pair of freshmen battling for the last spot between Jackie BonSalle and Malorie Wessel. We have enough depth there that depending on who has the better preseason or even who is hot that night will get the last spot. Like every spot on the floor it's going to be a very competitive position."

LIBERO/DEFENSIVE SPECIALISTS

Even though she's on track to break the school record for digs, that doesn't mean libero Summer Weissing can rest on her laurels. The junior rewrote an 11-year record when she tallied 513 digs in 2005. Weissing recorded double-digit digs in 27 matches with 11 20-dig contests and a 30-dig output against Boston College. She is 37 digs away from cracking the school's career digs list

and if she stays on her current pace she will surpass Luiza Ruiz's career mark of 1,771 digs.

Along with setter, the libero/defensive specialist position will be the most competitive. Outgoing Weissing's single-season school record of 513 digs last year is incoming sophomore Alex Plummer from Birmingham Southern who amassed 514 digs while earning First-Team All-Big South Conference honors and a spot on the Big South All-Freshman team. Also pushing for the position is highly-touted freshman Malorie Wessel, a native of West Chester, Ohio.

The two newcomers won't be the only ones fighting for time in a defensive role. Senior Kim Crawford had her best season as a Seminole last year, starting in six matches while averaging 1.91 digs per match. Junior Lauren Walker also cracked the starting line-up on three occasions and posted 1.07 dpg.

HRESS on the libero/def. specialist

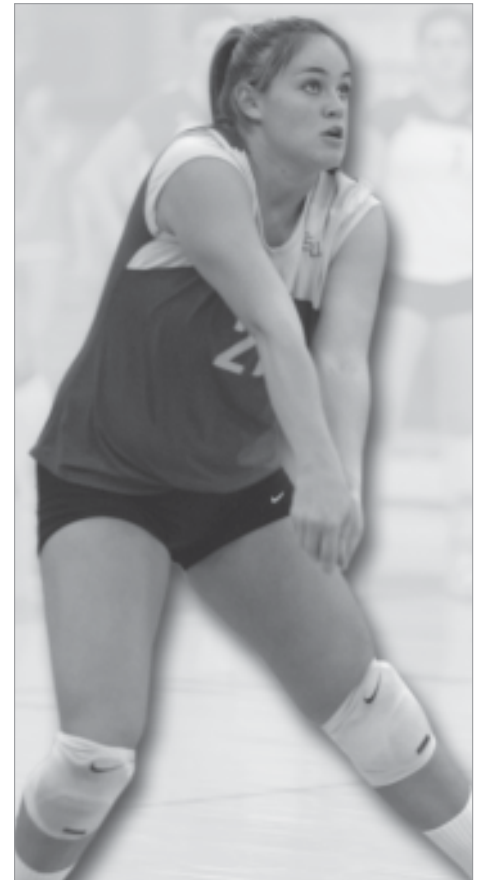
"We're in a situation that we've never been in before in that our ball control should be better than it ever has been. Between Summer, Alex Plummer, Malorie and Sarah we've got a group of players that has as good of ball control as anyone in the ACC. I've always said that defense wins championships and for the first time since I've been here we're going to have a defensive-minded team so we're going to go at it on that side of the ball."

SCHEDULE

Every season Kress puts together a tough non-conference schedule in order to get his team prepared for the challenging, double-round robin 22-match ACC slate. Three strong teams travel to Tallahassee for the Florida State Invitational, September 1-2, then it's on the road to Columbia, S.C., for the Gamecock Invitational. Headlining the tournament is No. 14 USC who is three years removed from back-to-back national championships. Just before the ACC schedule begins, FSU plays host to in-state rival and fifth-ranked Florida.

Much like every sport in the league, the ACC keeps getting better and better every year in volleyball. Over the last four seasons, six different conference teams have played in the NCAA Tournament, including Duke and Maryland last season. Once again there will be no ACC Tournament with the regular season champion getting the league's automatic bid.

"We start with our home tournament then the schedule crescendos up to the ACC. With USC and Florida on the schedule our opponents get tougher and tougher and that's by design because the ACC is going to be a pretty good conference. Last season it was a young conference but now those players are a year older and it's going to be a tough league."



Summer Weissing



2006 roster

NUMERICAL ROSTER

No	Name	Po.	Ht.	Cl.	Hometown (High School/Last School)
1	Makini Thompson	OH	6-0	JR	Quincy, Mass. (North Quincy/Long Beach State)
2	Jackie BonSalle	OH	6-3	FR	Albuquerque, N.M. (St. Pius X)
3	Caitlin Belvin	S	5-7	FR	Winter Park, Fla. (Winter Park)
4	Brittany Byrd	DS	5-4	FR	Orlando, Fla. (Lake Highlands Prep)
5	Brianna Barry	MB	6-3	FR	Winter Springs, Fla. (Winter Springs)
6	Kim Crawford	DS	5-7	SR	Ft. Myers, Fla. (Ft. Myers)
7	Zrinka Tomic	S	5-11	SR	Nustar, Croatia (Mutija Anton Relkadic/Garden City CC)
8	Nikki Baker	S	5-7	FR	Findlay, Ohio (Findlay)
9	Alex Plummer	OH/DS	5-10	SO	Woodbury, Minn. (Cretin-Derham Hall/Birmingham-Southern)
10	Lauren Walker	DS	5-7	JR	Missouri City, Texas (Hightower)
13	Sarah Griffin	MB	5-11	SR	Hereford, Texas (Hereford)
14	Jessica Skower	OH/S	6-1	SR	Naples, Fla. (Naples)
15	Malorie Wessel	OH/DS	5-7	FR	West Chester, Ohio (Mount Notre Dame)
21	Summer Weissing	DS	5-9	JR	Boca Raton, Fla. (Olympic Heights)
23	Lauren Young	MB	6-2	FR	Ben Wheeler, Texas (Van)

Head Coach: Todd Kress, Fifth Season (Cincinnati '92)

Associate Head Coach: Melissa Batie, First Season (Southern Mississippi '91)

Assistant Coach: Mitch Sadowsky, First Season (Ball State '98)



ALPHABETICAL ROSTER

No.	Name	Pos.	Ht.	Cl.
8	Nikki Baker	S	5-7	FR
5	Brianna Barry	MB	6-3	FR
3	Caitlin Belvin	S	5-7	FR
2	Jackie BonSalle	OH	6-3	FR
4	Brittany Byrd	DS	5-4	FR
6	Kim Crawford	DS	5-7	SR
13	Sarah Griffin	MB	5-11	SR
9	Alex Plummer	OH/DS	5-10	SO
14	Jessica Skower	OH/S	6-1	SR
1	Makini Thompson	OH	6-0	JR
7	Zrinka Tomic	S	5-11	SR
10	Lauren Walker	DS	5-7	JR
21	Summer Weissing	DS	5-9	JR
15	Malorie Wessel	OH/DS	5-7	FR
23	Lauren Young	MB	6-2	FR



PRONUNCIATION GUIDE

BRIANNA Barry	brie-AN-ah
Caitlin BELVIN	BELL-vin
Mitch SADOWSKY	sa-DOW-ski
ZRINKA TOMIC	za-RINK-ah tom-ITCH
Summer WEISSING	why-SING
Malorie WESSELL	WES-el



ROSTER BREAKDOWN



BY STATE

Florida	6	Brianna Barry (Winter Springs/Winter Springs) Caitlin Belvin (Winter Park/Winter Park) Brittany Byrd (Orlando/Lake Highlands Prep) Kim Crawford (Ft. Myers/Ft. Myers) Jessica Skower (Naples/Naples) Summer Weissing (Boca Raton/Olympic Heights)
Texas	3	Sarah Griffin (Hereford/Hereford) Lauren Walker (Missouri City/Hightower) Lauren Young (Ben Wheeler/Van)
Ohio	2	Nikki Baker (Findlay/Findlay) Malorie Wessel (West Chester/Mount Notre Dame)
Massachusetts	1	Makini Thompson (Quincy/North Quincy)
Minnesota	1	Alex Plummer (Woodbury/Cretin-Derham Hall)
New Mexico	1	Jackie BonSalle (Albuquerque/St. Pius X)
Croatia	1	Zrinka Tomic (Nustar/Garden City CC)

BY POSITION

Libero/Defensive Specialist	6	Brittany Byrd Kim Crawford Alex Plummer Lauren Walker Malorie Wessel Summer Weissing
Outside Hitter	4	Jackie BonSalle Jessica Skower Makini Thompson Malorie Wessel
Middle Blocker	3	Brianna Barry Sarah Griffin Lauren Young
Setter	4	Nikki Baker Caitlin Belvin Jessica Skower Zrinka Tomic

BY CLASS

Seniors	4	Kim Crawford Sarah Griffin Jessica Skower Zrinka Tomic
Juniors	3	Makini Thompson Lauren Walker Summer Weissing
Sophomores	1	Alex Plummer
Freshmen	7	Brianna Barry Nikki Baker Caitlin Belvin Jackie BonSalle Brittany Byrd Malorie Wessel Lauren Young

BY HEIGHT

6-3	2	Jackie BonSalle Brianna Barry
6-2	1	Lauren Young
6-1	1	Jessica Skower
6-0	1	Makini Thompson
5-11	2	Zrinka Tomic Sarah Griffin
5-10	1	Alex Plummer
5-9	1	Summer Weissing
5-7	5	Nikki Baker Caitlin Belvin Kim Crawford Lauren Walker Malorie Wessel
5-4	1	Brittany Byrd

SCHEDULE CALENDAR

AUGUST

Fri., Aug. 25
at Mercer
8:00 PM



SEPTEMBER

SUNDAY	MONDAY	TUESDAY	WEDNESDAY	THURSDAY	FRIDAY	SATURDAY
					1 STETSON 6:00 PM 	2 SOUTH ALABAMA 10 AM EASTERN ILLINOIS 7:00 PM
3	4 <i>Labour Day</i>	5	6	7	8 vs. Southern Cal 12:00 PM vs. St. John's 5:30 PM 	9 at South Carolina 1:30 PM
10	11	12 FLORIDA 7:00 PM 	13	14	15	16
17	18	19 at Miami 6:00 PM 	20	21	22 MARYLAND 7:00 PM 	23
24 BOSTON COLLEGE 1:00 PM 	25	26	27	28	29 at Georgia Tech 7:00 PM 	30 at Clemson 6:00 PM

OCTOBER

SUNDAY	MONDAY	TUESDAY	WEDNESDAY	THURSDAY	FRIDAY	SATURDAY
1	2	3	4	5	6 NORTH CAROLINA 7:00 PM 	7 NC STATE 7:00 PM
8	9	10	11	12	13 at Virginia Tech 7:00 PM 	14 at Virginia 7:00 PM
15	16	17 MIAMI 7:00 PM 	18	19	20 WAKE FOREST 7:00 PM 	21
22 DUKE 1:00 PM 	23	24	25	26	27 at Boston College 8:00 PM 	28
29 at Maryland 1:00 PM 	30	31				



SCHEDULE CALENDAR

NOVEMBER

SUNDAY	MONDAY	TUESDAY	WEDNESDAY	THURSDAY	FRIDAY	SATURDAY
			1	2	3 CLEMSON 7:00 PM 	4
5 GEORGIA TECH 1:00 PM 	6	7	8	9	10 VIRGINIA 7:00 PM 	11
12 VIRGINIA TECH 1:00 PM 	13	14	15	16 at North Carolina 7:00 PM 	17 vs. NC State 7:00 PM 	18
19	20	21 at Wake Forest 7:00 PM 	22 at Duke 7:00 PM 	23	24	25
26	27	28	29	30		

DECEMBER

Nov. 30-Dec. 2 NCAA 1st & 2nd Rounds TBA 	Dec. 7-10 NCAA Regionals TBA 	Dec. 14-16 NCAA Semifinals & Finals TBA
---	---	--

TOURNAMENT SCHEDULE

FSU INVITATIONAL

September 1-2 :: Lucy McDaniel Court at Tully Gym
Tallahassee, Fla.

PARTICIPANTS

Florida State Eastern Illinois
South Alabama Stetson

SCHEDULE

FRIDAY :: SEPT. 1

South Alabama vs. Eastern Illinois
4:30 PM

Florida State vs. Stetson
7:00 PM

SATURDAY :: SEPT. 2

Florida State vs. South Alabama
10:00 AM

Stetson vs. Eastern Illinois
12:30 PM

South Alabama vs. Stetson
4:30 PM

Florida State vs. Eastern Illinois
7:00 PM



MEDIA INFORMATION

Host Florida State
Number of Teams 4
Host SID Michael Smoose
SID Phone (850) 644-4836
SID Fax (850) 644-3820
SID Email msmoose@mailier.fsu.edu
Website www.seminoles.com

SOUTH CAROLINA TOURNAMENT

September 8-9 :: Volleyball Competition Facility
Columbia, S.C.

PARTICIPANTS

Florida State St. John's
South Carolina Southern Cal

SCHEDULE

FRIDAY :: SEPT. 8

South Carolina vs. St. John's
10:00 AM

Florida State vs. Southern Cal
12:00 PM

Florida State vs. St. John's
5:30 PM

Southern Cal vs. South Carolina
8:00 PM

SATURDAY :: SEPT. 9

Southern Cal vs. St. John's
11:00 AM

Florida State vs. South Carolina
1:30 PM



MEDIA INFORMATION

Host South Carolina
Number of Teams 4
Host SID Matt Freed
SID Phone (803) 777-9917
SID Fax (803) 777-2967
SID Email mfreed@gwm.sc.edu
Website www.uscspports.com



ACC COMPOSITE SCHEDULE

August

Friday, August 25

Virginia Tech vs. Furman 4:00 p.m.
East Carolina Tournament - Greenville, N.C.
 NC State vs. The Citadel 4:30 p.m.
Spring Hill Suites Classic - Charlotte, N.C.
 Clemson vs. Bradley 5:00 p.m.
Mortar Board Premier - West Lafayette, Ind.
 North Carolina vs. Idaho 5:00 p.m.
Sooner Legends Nike Invitational - Norman, Okla.
 Florida State at Mercer 6:00 p.m.
 Marquette at Duke 7:00 p.m.
Duke Invitational - Durham, N.C.
 Miami at Alabama 7:00 p.m.
Academy Sports Invitational - Tuscaloosa, Ala.
 Virginia at Tennessee 7:00 p.m.
Comcast Lady Vol Classic - Knoxville, Tenn.
 Gardner-Webb at Duke 10:00 a.m.
Duke Invitational - Durham, N.C.

Saturday, August 26

Virginia vs. Miami University 10:00 a.m.
Comcast Lady Vol Classic - Knoxville, Tenn.
 Virginia Tech vs. William & Mary 10:00 a.m.
East Carolina Tournament - Greenville, N.C.
 Miami vs. Kansas 11:00 a.m.
Academy Sports Invitational - Tuscaloosa, Ala.
 Clemson vs. Northern Iowa 12:00 p.m.
Mortar Board Premier - West Lafayette, Ind.
 NC State vs. East Tennessee State 1:00 p.m.
Spring Hill Suites Classic - Charlotte, N.C.
 North Carolina vs. Arkansas 2:00 p.m.
Sooner Legends Nike Invitational - Norman, Okla.
 Miami vs. Alabama A&M 4:30 p.m.
Academy Sports Invitational - Tuscaloosa, Ala.
 Virginia vs. Centenary 5:00 p.m.
Comcast Lady Vol Classic - Knoxville, Tenn.
 Clemson at Purdue 7:00 p.m.
Mortar Board Premier - West Lafayette, Ind.
 Virginia Commonwealth at Duke 7:00 p.m.
Duke Invitational - Durham, N.C.
 NC State at Charlotte 7:00 p.m.
Spring Hill Suites Classic - Charlotte, N.C.
 North Carolina at Oklahoma 7:00 p.m.
Sooner Legends Nike Invitational - Norman, Okla.
 Virginia Tech at East Carolina 7:00 p.m.
East Carolina Tournament - Greenville, N.C.

Thursday, August 31

Clemson vs. South Carolina 7:00 p.m.
Big Orange Bash - Clemson, S.C.

SEPTEMBER

Friday, September 1

Clemson vs. Western Carolina 11:30 a.m.
Big Orange Bash - Clemson, S.C.
 Mississippi State at Georgia Tech 12:30 p.m.
Regency Suites Midtown Invitational - Atlanta, Ga.
 Maryland vs. Chicago State 4:00 p.m.
IU Classic - Bloomington, Ind.
 Miami vs. Eastern Michigan 4:00 p.m.
Michigan State Tournament - East Lansing, Mich.
 Virginia Tech at Purdue 4:00 p.m.
Auburn/Mizuno Challenge - Auburn, Ala.
 Duke vs. West Virginia 5:00 p.m.
Penn State Invitational - University Park, Pa.
 Boston College vs. Belmont 5:00 p.m.
Miami (OH) Classic - Oxford, Ohio
 North Carolina vs. Utah 5:00 p.m.
Loyola Marymount Tournament - Los Angeles, Calif.
 Georgia at Georgia Tech 6:00 p.m.
Regency Suites Midtown Invitational - Atlanta, Ga.
 Stetson at Florida State 7:00 p.m.
FSU Invitational - Tallahassee, Fla.
 Miami at Michigan State 7:00 p.m.
Michigan State Tournament - East Lansing, Mich.
 Winthrop at NC State 7:00 p.m.
Wolfpack Classic - Raleigh, N.C.
 Georgetown at Virginia 7:00 p.m.
Jefferson Cup Volleyball Tournament - Charlottesville, Va.
 Wake Forest at Colorado State 7:00 p.m.
Colorado State Tournament - Fort Collins, Colo.
 Clemson vs. Tennessee State 7:30 p.m.
Big Orange Bash - Clemson, S.C.

Saturday, September 2

Georgia State at Georgia Tech 9:30 a.m.
Regency Suites Midtown Invitational - Atlanta, Ga.
 Boston College vs. Western Kentucky 10:00 a.m.
Miami-Ohio Classic (Oxford, Ohio)
 South Alabama at Florida State 10:00 a.m.
FSU Invitational - Tallahassee, Fla.
 Maryland vs. Marshall 10:00 a.m.
IU Classic - Bloomington, Ind.
 Wake Forest vs. James Madison 10:00 a.m.
Colorado State Tournament - Fort Collins, Colo.
 Miami vs. Villanova 11:00 a.m.
Michigan State Tournament - East Lansing, Mich.
 Wright State at Virginia 11:00 a.m.
Jefferson Cup Volleyball Tournament - Charlottesville, Va.
 U-Tenn-Chattanooga at NC State 12:00 p.m.
Wolfpack Classic - Raleigh, N.C.
 Virginia Tech vs. Arizona State 12:00 p.m.
Auburn/Mizuno Challenge - Auburn, Ala.
 Clemson vs. Charlotte 12:30 p.m.
Big Orange Bash - Clemson, S.C.
 Duke vs. Eastern Kentucky 1:00 p.m.
Penn State Invitational - University Park, Pa.
 North Carolina vs. Tennessee 1:00 p.m.
Loyola Marymount Tournament - Los Angeles, Calif.
 Northern Iowa at Georgia Tech 3:30 p.m.
Regency Suites Midtown Invitational - Atlanta, Ga.

Virginia Tech vs. Purdue 4:00 p.m.
Auburn/Mizuno Challenge - Auburn, Ala.
 Wake Forest vs. Florida Atlantic 6:00 p.m.
Colorado State Tournament - Fort Collins, Colo.
 Boston College at Miami (OH) 7:00 p.m.
Miami (OH) Classic (Oxford, Ohio)
 Eastern Illinois at Florida State 7:00 p.m.
FSU Invitational - Tallahassee, Fla.
 Maryland at Indiana 7:00 p.m.
IU Classic - Bloomington, Ind.
 Northern Colorado at NC State 7:00 p.m.
Wolfpack Classic - Raleigh, N.C.
 North Carolina at Loyola Marymount 7:00 p.m.
Loyola Marymount Tournament - Los Angeles, Calif.
 East Carolina at Virginia 7:00 p.m.
Jefferson Cup Volleyball Tournament - Charlottesville, Va.
 Duke at Penn State 8:00 p.m.
Penn State Invitational - University Park, Pa.

Friday, September 8

Georgia Tech vs. Villanova 11:00 a.m.
Kentucky Classic - Lexington, Ky.
 Maryland vs. Albany 11:30 a.m.
Stony Brook Invitational - Long Island, N.Y.
 Florida State vs. Southern Cal 12:00 p.m.
South Carolina Tournament - Columbia, S.C.
 Virginia vs. Pacific 1:00 p.m.
Michigan/Pepsi Challenge - Ann Arbor, Mich.
 Maryland vs. Ohio 4:00 p.m.
Stony Brook Invitational - Long Island, N.Y.
 Wake Forest vs. Indiana 4:30 p.m.
Marriott Flyer Invitational - Dayton, Ohio
 Georgia Tech vs. Toledo 5:00 p.m.
Kentucky Classic - Lexington, Ky.
 NC State vs. Chicago State 5:00 p.m.
Kent State Invitational - Kent, Ohio
 Florida State vs. St. John's 5:30 p.m.
South Carolina Tournament - Columbia, S.C.
 Illinois at North Carolina 7:00 p.m.
GlaxoSmithKline UNC Volleyball Classic - Chapel Hill, N.C.
 George Washington at Virginia Tech 7:00 p.m.
Hokie Invitational - Blacksburg, Va.
 Boston College at Connecticut 7:30 p.m.
UConn Toyota Classic - Storrs, Conn.
 Virginia at Michigan 7:30 p.m.
Michigan/Pepsi Challenge - Ann Arbor, Mich.

Saturday, September 9

Boston College vs. Northern Illinois 10:00 a.m.
UConn Toyota Classic - Storrs, Conn.
 Wake Forest at Dayton 11:00 a.m.
Marriott Flyer Invitational - Dayton, Ohio
 College of Charleston at North Carolina 12:00 p.m.
GlaxoSmithKline UNC Volleyball Classic - Chapel Hill, N.C.
 Virginia vs. Marquette 12:00 p.m.
Michigan/Pepsi Challenge - Ann Arbor, Mich.
 Liberty at Virginia Tech 12:00 p.m.
Hokie Invitational - Blacksburg, Va.
 NC State vs. Murray State 12:30 p.m.
Kent State Invitational - Kent, Ohio
 Florida State at South Carolina 1:30 p.m.
South Carolina Tournament - Columbia, S.C.
 Boston College vs. Quinnipiac 3:00 p.m.
UConn Toyota Classic - Storrs, Conn.
 Georgia Tech at Kentucky 4:00 p.m.
Kentucky Classic - Lexington, Ky.
 Maryland at Stony Brook 5:00 p.m.
Stony Brook Invitational - Long Island, N.Y.
 Wake Forest vs. LSU 5:00 p.m.
Marriott Flyer Invitational - Dayton, Ohio
 Wichita State at North Carolina 5:30 p.m.
GlaxoSmithKline UNC Volleyball Classic - Chapel Hill, N.C.
 Appalachian State at Virginia Tech 7:00 p.m.
Hokie Invitational - Blacksburg, Va.
 NC State at Kent State 7:30 p.m.
Kent State Invitational - Kent, Ohio

Tuesday, September 12

Florida at Florida State 7:00 p.m.

Friday, September 15

Duke vs. Butler 3:00 p.m.
Sun Devil Volleyball Classic - Tempe, Ariz.
 Boston College vs. Towson 4:00 p.m.
Rhode Island Invitational - Kingston, R.I.
 *NC State at North Carolina 7:00 p.m.
 *Virginia at Virginia Tech 7:00 p.m.
 Long Island at Maryland 7:00 p.m.
Hilton Garden Inn Greenbelt Invitational
 Florida A&M at Miami 7:00 p.m.
Miami Hurricane Invitational - Coral Gables, Fla.
 George Washington at Wake Forest 7:00 p.m.
Black and Gold Challenge - Winston-Salem, N.C.
 South Florida at Georgia Tech 7:30 p.m.
Regency Suites Midtown Classic - Atlanta, Ga.
 Duke at Arizona State 10:00 p.m.
Sun Devil Volleyball Classic - Tempe, Ariz.

Saturday, September 16

Florida International at Maryland 10:00 a.m.
Hilton Garden Inn Greenbelt Invitational
 Boston College vs. Seton Hall 11:00 a.m.
Rhode Island Invitational - Kingston, R.I.
 Stetson at Georgia Tech 12:00 p.m.
Regency Suites Midtown Classic - Atlanta, Ga.
 Jacksonville at Miami 12:30 p.m.
Miami Hurricane Invitational - Coral Gables, Fla.
 Davidson at Wake Forest 12:30 p.m.
Black and Gold Challenge - Winston-Salem, N.C.
 Furman at Clemson 2:00 p.m.

Boston College at Rhode Island 6:00 p.m.
Rhode Island Invitational - Kingston, R.I.
 Duke vs. Notre Dame 7:00 p.m.
Sun Devil Volleyball Classic - Tempe, Ariz.
 Winthrop at Wake Forest 7:00 p.m.
Black and Gold Challenge - Winston-Salem, N.C.
 Sam Houston State at Georgia Tech 7:30 p.m.
Regency Suites Midtown Classic - Atlanta, Ga.
 *UCLA at Maryland 7:30 p.m.
Hilton Garden Inn Greenbelt Invitational
 Loyola Marymount at Miami 7:30 p.m.
Miami Hurricane Invitational - Coral Gables, Fla.

Tuesday, September 19

*Florida State at Miami 8:00 p.m.

Thursday, September 21

*North Carolina at Virginia Tech 7:00 p.m.

Friday, September 22

*Clemson at Duke 7:00 p.m.
 *Maryland at Florida State 7:00 p.m.
 *Georgia Tech at Wake Forest 7:00 p.m.
 *North Carolina at Virginia 7:00 p.m.
 *NC State at Virginia Tech 7:00 p.m.
 *Boston College at Miami 8:00 p.m.

Saturday, September 23

*NC State at Virginia 5:00 p.m.
 *Clemson at Wake Forest 6:00 p.m.
 *Georgia Tech at Duke 7:00 p.m.

Sunday, September 24

*Boston College at Florida State 1:00 p.m.
 *Maryland at Miami 1:00 p.m.

Tuesday, September 26

*Virginia Tech at Virginia 7:00 p.m.

Wednesday, September 27

*Duke at NC State 7:00 p.m.
 *Wake Forest at North Carolina 7:30 p.m.
 *Virginia at Boston College 7:00 p.m.

Friday, September 29

*Miami at Clemson 7:00 p.m.
 *Florida State at Georgia Tech 7:00 p.m.
 *Virginia Tech at Maryland 7:00 p.m.

Saturday, September 30

*Virginia at Maryland 5:00 p.m.
 *Florida State at Clemson 6:00 p.m.
 *Wake Forest at NC State 6:00 p.m.
 *Duke at North Carolina 6:00 p.m.
 *Miami at Georgia Tech 7:00 p.m.

OCTOBER

Sunday, October 1

*Virginia Tech at Boston College 1:00 p.m.

Tuesday, October 3

*Maryland at Boston College 6:00 p.m.

Friday, October 6

*Clemson at Boston College 6:00 p.m.
 *Virginia at Duke 7:00 p.m.
 *North Carolina at Florida State 7:00 p.m.
 *Georgia Tech at Maryland 7:00 p.m.
 *Virginia Tech at Wake Forest 7:00 p.m.
 *NC State at Miami 8:00 p.m.

Saturday, October 7

*Virginia Tech at Duke 7:00 p.m.
 *NC State at Florida State 7:00 p.m.
 *Virginia at Wake Forest TBA

Sunday, October 8

*Georgia Tech at Boston College 1:00 p.m.
 *Clemson at Maryland 1:00 p.m.
 *North Carolina at Miami 1:00 p.m.

Tuesday, October 10

*Duke at Wake Forest 7:00 p.m.

Thursday, October 12

*Maryland at Duke 7:00 p.m.

Friday, October 13

*NC State at Clemson 7:00 p.m.
 *Boston College at Duke 7:00 p.m.
 *North Carolina at Georgia Tech 7:00 p.m.
 *Miami at Virginia 7:00 p.m.
 *Florida State at Virginia Tech 7:00 p.m.
 *Maryland at Wake Forest 7:00 p.m.

Saturday, October 14

*North Carolina at Clemson 6:00 p.m.
 *Miami at Virginia Tech 6:00 p.m.
 *Boston College at Wake Forest 6:00 p.m.
 *NC State at Georgia Tech 7:00 p.m.
 *Florida State at Virginia 1:00 p.m.

Tuesday, October 17

*Georgia Tech at Clemson 7:00 p.m.
 *Miami at Florida State 7:00 p.m.

Friday, October 20

*Duke at Miami 7:00 p.m.
 *Wake Forest at Florida State 7:00 p.m.
 *Boston College at NC State 7:00 p.m.
 *Maryland at North Carolina 7:00 p.m.
 *Clemson at Virginia 7:00 p.m.
 *Georgia Tech at Virginia Tech 7:00 p.m.

Saturday, October 21

*Georgia Tech at Virginia 5:00 p.m.
 *Maryland at NC State 6:00 p.m.
 *Boston College at North Carolina 6:00 p.m.

Sunday, October 22

*Wake Forest at Miami 12:00 p.m.
 *Duke at Florida State 1:00 p.m.
 *Clemson at Virginia Tech 1:00 p.m.

Thursday, October 26

*Virginia Tech at North Carolina 7:00 p.m.

Friday, October 27

*Wake Forest at Clemson 7:00 p.m.
 *Duke at Georgia Tech 7:00 p.m.
 *Miami at Maryland 7:00 p.m.
 *Virginia Tech at NC State 7:00 p.m.
 *Virginia at North Carolina 7:00 p.m.
 *Florida State at Boston College 8:00 p.m.

Saturday, October 28

*Duke at Clemson 6:00 p.m.
 *Virginia at NC State 6:00 p.m.
 *Wake Forest at Georgia Tech 7:00 p.m.

Sunday, October 29

*Miami at Boston College 12:00 p.m.
 *Florida State at Maryland 1:00 p.m.

NOVEMBER

Wednesday, November 1

*NC State at Duke 7:00 p.m.
 *North Carolina at Wake Forest 7:30 p.m.

Friday, November 3

*Georgia Tech at Miami 4:00 p.m.
 *North Carolina at Duke 7:00 p.m.
 *Clemson at Florida State 7:00 p.m.
 *Maryland at Virginia 7:00 p.m.
 *Boston College at Virginia Tech 7:00 p.m.
 *NC State at Wake Forest 7:00 p.m.

Saturday, November 4

*Boston College at Virginia 5:00 p.m.
 *Maryland at Virginia Tech 6:00 p.m.

Sunday, November 5

*Clemson at Miami 1:00 p.m.
 *Georgia Tech at Florida State 1:00 p.m.

Tuesday, November 7

*Boston College at Maryland 6:00 p.m.
 *Wake Forest at Duke 7:00 p.m.
 *North Carolina at NC State 7:00 p.m.

Friday, November 10

*Virginia at Florida State 7:00 p.m.
 *Duke at Maryland 7:00 p.m.
 *Virginia Tech at Miami 7:00 p.m.
 *Clemson at North Carolina 7:00 p.m.
 *Georgia Tech at NC State 7:00 p.m.
 *Wake Forest at Boston College 8:00 p.m.

Saturday, November 11

*Clemson at NC State 6:00 p.m.
 *Virginia at Miami 7:30 p.m.

Sunday, November 12

*Duke at Boston College 12:00 p.m.
 *Virginia Tech at Florida State 1:00 p.m.
 *Wake Forest at Maryland 1:00 p.m.
 *Georgia Tech at North Carolina 1:00 p.m.

Tuesday, November 14

*Clemson at Georgia Tech 7:00 p.m.

Thursday, November 16

*Florida State at North Carolina 7:00 p.m.
 *Duke at Virginia 7:00 p.m.

Friday, November 17

*Maryland at Clemson 7:00 p.m.
 *Boston College at Georgia Tech 7:00 p.m.
 *Miami at North Carolina 7:00 p.m.
 *Florida State at NC State 7:00 p.m.
 *Wake Forest at Virginia 7:00 p.m.
 *Duke at Virginia Tech 7:00 p.m.

Saturday, November 18

*Boston College at Clemson 6:00 p.m.
 *Miami at NC State 6:00 p.m.
 *Wake Forest at Virginia Tech 6:00 p.m.
 *Maryland at Georgia Tech 6:00 p.m.

Tuesday, November 21

*Florida State at Wake Forest 7:00 p.m.

Wednesday, November 22

*Virginia Tech at Clemson 6:00 p.m.
 *Florida State at Duke 7:00 p.m.
 *Miami at Wake Forest 7:00 p.m.

Friday, November 24

*Miami at Duke 12:00 p.m.
 *North Carolina at Boston College 1:00 p.m.
 *NC State at Maryland 2:00 p.m.
 *Virginia at Clemson 6:00 p.m.
 *Virginia Tech at Georgia Tech 7:00 p.m.

Saturday, November 25

*NC State at Boston College 1:00 p.m.
 *Virginia at Georgia Tech 7:00 p.m.
 *North Carolina at Maryland TBA

NOVEMBER-DECEMBER

November 30-December 3 TBA
 NCAA 1st & 2nd Rounds (Campus Sites) TBA

December 8-9

NCAA Regionals (Campus Sites) TBA

December 14 & 16

NCAA Final Four (Campus Sites) TBA

* ACC match



LUCY McDANIEL COURT AT TULLY GYMNASIUM

TULLY GYM RECORD

Year	Record
1976	5-2
1977	2-3
1978	4-2
1979	7-1
1980	10-1
1981	19-3
1982	13-5
1983	8-0
1984	8-4
1985	8-8
1986	11-3
1987	12-4
1988	11-0
1989	17-1
1990	15-1
1991	8-7
1992	11-2
1993	13-2
1994	11-6
1995	6-8
1996	8-6
1997	13-3
1998	14-1
1999	6-11
2000	15-5
2001	10-3
2002	12-2
2003	10-5
2004	11-5
2005	7-8
Overall	305-112 (.731)

Tully Gymnasium has been home to Florida State volleyball for many years. Overall, the friendly confines of the gymnasium have been good to the Seminoles, as they have accumulated a record of 305-112 on their home court for a winning percentage of .731 in the past 30 years in the facility.

The facility, which was constructed in 1956, was named for the late Robert Henry (Bobby) Tully, a 1952 FSU graduate and football player. Active on campus, Tully was a member of the Gold Key, ODK, the Arnold Air Society and Alpha Tau Omega fraternity. He died in May of 1954 after battling illness.

With a capacity of 1,162, the gymnasium has undergone several renovations in recent years. Prior to the 2004 season, the playing floor was replaced with a new state-of-the-art Nike Shox floor. New lighting was added before the 1999 season. Tully Gymnasium features new arena-style padded seating with armrests, which were installed to create a more comfortable atmosphere for Seminole fans, while watching Florida State volleyball.

On November 2, 2000 in a special ceremony, Florida State dedicated the floor of Tully Gymnasium to Lucy McDaniel, the first woman in the state of Florida to donate more than one million dollars to a women's athletic program.

The facility became known as the Lucy McDaniel Volleyball Court at Tully Gymnasium prior to the 2001 season, in honor of the wonderful gifts and support that McDaniel has provided to the Lady Seminole volleyball program and Florida State athletics.

The dedication ceremony included an address from Athletic Director Dave Hart, Jr., as well as an appearance by former University President and Florida State volleyball fan, Sandy D'Alemberte. Former head coach Dr. Cecile Reynaud said a few words regarding the magnificent gift, which was followed by a touching tribute by FSU volleyball players Kristin Frye and Martha Hamilton. Frye presented McDaniel with a ball signed by all the players followed by poem written by Hamilton about the relationship of the 2000 squad with McDaniel.

McDaniel first gave \$100,000 to endow volleyball scholarships at Florida State and later donated another \$50,000 so the team could take a European tour in May of 2000. McDaniel wanted to do more, she asked her accountant to run through her financial statements to see what she would be able to give now and later in her will. After gathering the information from her accountant, she called Seminole Boosters' Planned Giving Director Joel Padgett and started the process.

DIRECTIONS

FROM INTERSTATE 10

I-10 to Exit 209A. Go West on HWY 90 to Monroe St. Make a left and go South on Monroe St. to Jefferson St. Make a right (Becomes Pensacola St.) and follow to Chieftan Way. Make a right onto Chieftan Way into campus. The Bobby E. Leach Recreation Center will be the first building on your right, followed by Tully Gymnasium.

FROM AIRPORT

Go South on Capital Circle to Lake Bradford Rd. Make a left and take Lake Bradford Rd. to Stadium Dr. Make a right onto Stadium Dr. and follow to Pensacola St. Make a left onto Pensacola St., follow to Chieftan Way and make a right. The Bobby E. Leach Recreation Center will be the first building on your right, followed by Tully Gymnasium.

FROM HWY 90 WEST (QUINCY)

Go East on HWY 90 (Tennessee St.) to Ocala St. Make a right and take Ocala St. to Pensacola St. Make a left and go East on Pensacola St. to Chieftan Way. Make a left onto Chieftan Way. The Bobby E. Leach Recreation Center will be the first building on your right, followed by Tully Gymnasium.

FROM ROUTE 319 (THOMASVILLE RD.)

Take Thomasville Rd. to Monroe St. Make a left and go South on Monroe St. to Jefferson St. Make a right onto Jefferson St. (Becomes Pensacola St.) and follow to Chieftan Way. Make a right onto Chieftan Way. The Bobby E. Leach Recreation Center will be the first building on your right, followed by Tully Gymnasium.

