

OPPONENTS



SEMINOLE



VOLLEYBALL

RELENTLESS

2007 OPPONENTS

UNC ASHEVILLE

Aug. 25 - FSU Invitational



Julie Torbett



Ashley Wrightenberry



GENERAL INFORMATION

Location – Asheville, N.C.
Enrollment – 3,500
Nickname – Bulldogs
Colors – Royal Blue and White
Conference – Big South
Chancellor – Dr. Anne Ponder
Athletics Director – Janet Cone
Arena – Justice Center (1,100)

COACHING STAFF

Head Coach – Julie Torbett
Record at School – 230-203/13 seasons
Career Record – 230-203/13 years
Office Phone – (828) 251-6928

TEAM INFORMATION

2006 Record (Conf/Finish) – 15-18 (10-4/2nd)
Starters Returning/Lost – 5/1
Letterwinners Returning/Lost – 9/2
Final 2006 Ranking – NR
Series Record – first meeting

MEDIA INFORMATION

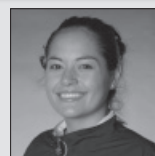
Sports Information Contact – Everett Hutto
SID E-mail – ehutto@unca.edu
Office Phone – (828) 251-6931
Fax Number – (828) 251-6386
Website – uncabulldogs.com

TCU

Aug. 25 - FSU Invitational



Prentice Lewis



Nirelle Hampton



GENERAL INFORMATION

Location – Fort Worth, TX
Enrollment – 8,749
Nickname – Horned Frogs
Colors – Purple and White
Conference – Mountain West
Chancellor – Dr. Victor Bosschini
Athletics Director – Dr. Daniel B. Morrison, Jr.
Arena – University Recreation Center (1,500)

COACHING STAFF

Head Coach – Prentice Lewis
Record at School – 88-76/5 seasons
Career Record – 88-76/5 years
Office Phone – (817) 257-7360

TEAM INFORMATION

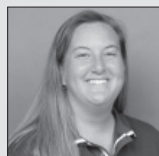
2006 Record (Conf/Finish) – 17-15 (5-11/T-6th)
Starters Returning/Lost – 4/2
Letterwinners Returning/Lost – 9/3
Final 2006 Ranking – NR
Series Record – first meeting

MEDIA INFORMATION

Sports Information Contact – Brandie Davidson
SID E-mail – b.i.davidson@tcu.edu
Office Phone – (817) 257-7479
Fax Number – (817) 257-7964
Website – GoFrogs.com

MISSOURI STATE

Aug. 31 - Spartan Invitational



Melissa Stokes



Katelyn Panzau



GENERAL INFORMATION

Location – Springfield, Mo.
Enrollment – 20,962
Nickname – Bears
Colors – Maroon and White
Conference – Missouri Valley
President – Dr. Michael Nietzel
Athletics Director – Bill Rowe
Arena – John Q. Hammons Student Center (8,846)

COACHING STAFF

Head Coach – Melissa Stokes
Record at School – 245-114/11 seasons
Career Record – 245-114/11 years
Office Phone – (417) 836-8384

TEAM INFORMATION

2006 Record (Conf/Finish) – 27-9 (14-4/3rd)
Starters Returning/Lost – 3/3 +libero
Letterwinners Returning/Lost – 8/4
Final 2006 Ranking – NR
Series Record – first meeting

MEDIA INFORMATION

Sports Information Contact – Mark Stillwell
SID E-mail – MarkStillwell@missouristate.edu
Office Phone – (417) 836-5402
Fax Number – (417) 836-4868
Website – missouristatebears.com

KANSAS

Sept. 1 - Spartan Invitational



Ray Bechard



Emily Brown



GENERAL INFORMATION

Location – Lawrence, Kan.
Enrollment – 28,849
Mascot – Jayhawks
Colors – Crimson and Blue
Conference – Big 12
Chancellor – Dr. Robert E. Hemenway
Athletics Director – Lew Perkins
Arena – Horejsi Family Athletics Center (1,300)

COACHING STAFF

Head Coach – Ray Bechard
Record at School – 148-127/9 seasons
Career Record – 864-187/22 years
Office Phone – (785) 864-7989

TEAM INFORMATION

2006 Record (Conf/Finish) – 10-19 (3-17/11th)
Starters Returning/Lost – 4/3
Letterwinners Returning/Lost – 9/6
Final 2006 Ranking – NR
Series Record – first meeting

MEDIA INFORMATION

Sports Information Contact – Christine Dieckmann
SID E-mail – cdieck@ku.edu
Office Phone – (785) 864-7942
Fax Number – (785) 864-7944
Website – kuathletics.com

This Is FSU - University Opponents History Review Players Coaches Outlook Media

2007 OPPONENTS

MICHIGAN STATE

Sept. 1 - Spartan Invitational





Cathy George

Katie Johnson

GENERAL INFORMATION

Location – East Lansing, Mich.
Enrollment – 45,520
Nickname – Spartans
Colors – Green and White
Conference – Big Ten
President – Dr. Lou Anna K. Simon
Athletics Director – Ron Mason
Arena – Jenison Field House (5,017)

COACHING STAFF

Head Coach – Cathy George
Record at School – 31-30/2 seasons
Career Record – 396-254/20 years
Office Phone – (517) 355-4750

TEAM INFORMATION




2006 Record (Conf/Finish) – 19-12 (10-10/6th)
Starters Returning/Lost – 5/2
Letterwinners Returning/Lost – 9/4
Final 2006 Ranking – NR
Series Record – tied 1-1

MEDIA INFORMATION

Sports Information Contact – Emily Feeney
SID E-mail – emily_feeney@ath.msu.edu
Office Phone – (517) 432-8014
Fax Number – (517) 535-9636
Website – msuspartans.com

FLORIDA

Sept. 5 - Away

Mary Wise

Angie McGinnis

GENERAL INFORMATION

Location – Gainesville, Fla.
Enrollment – 49,000
Nickname – Gators
Colors – Orange and Blue
Conference – Southeastern
President – Dr. J. Bernard Machen
Athletics Director – Jeremy Foley
Arena – Stephen C. O'Connell Center (12,000)

COACHING STAFF

Head Coach – Mary Wise
Record at School – 522-54/16 seasons
Career Record – 603-117/20 years
Office Phone – (352) 375-4683, ext. 5510

TEAM INFORMATION

2006 Record (Conf/Finish) – 30-3 (19-1/1st)
Starters Returning/Lost – 7/0 +libero
Letterwinners Returning/Lost – 10/3
Final 2006 Ranking – 10th
Series Record – Florida leads 21-29

MEDIA INFORMATION

Sports Information Contact – Cory Walton
SID E-mail – coryw@gators.uua.ufl.edu
Office Phone – (352) 375-4683, ext. 6120
Fax Number – (352) 375-4809
Website – gatorzone.com

WASHINGTON

Sept. 7 - Long Beach State Invitational





Jim McLaughlin

Christal Mossison

GENERAL INFORMATION

Location – Seattle, Wash.
Enrollment – 37,000
Nickname – Huskies
Colors – Purple and Gold
Conference – Pacific-10
President – Dr. Mark Emmert
Athletics Director – Todd Turner
Arena – Bank of America Arena (10,000)

COACHING STAFF

Head Coach – Jim McLaughlin
Record at School – 143-45/7 seasons
Career Record – 367-163/17 years
Office Phone – (206) 616-9060

TEAM INFORMATION

2006 Record (Conf/Finish) – 29-5 (15-3/t-2nd)
Starters Returning/Lost – 6+libero/1
Letterwinners Returning/Lost – 10/2
Final 2006 Ranking – NCAA Semifinalist/t-3rd
Series Record – Washington leads 0-1

MEDIA INFORMATION

Sports Information Contact – Misty Tucci
SID E-mail – mistyrc@u.washington.edu
Office Phone – (206) 685-3119
Fax Number – (206) 543-5000
Website – gohuskies.com

LONG BEACH STATE

Sept. 8 - Long Beach State Invitational





Brian Gimmillaro

Alexis Crimes

GENERAL INFORMATION

Location – Long Beach, Calif.
Enrollment – 35,600
Nickname – 49ers
Colors – Black and Gold
Conference – Big West
President – Dr. F. King Alexander
Athletics Director – Vic Cegles
Arena – The Walter Pyramid (5,000)

COACHING STAFF

Head Coach – Brian Gimmillaro
Record at School – 604-141/22 seasons
Career Record – 604-141/22 years
Office Phone – (562) 985-8366

TEAM INFORMATION

2006 Record (Conf/Finish) – 26-6 (12-2/2nd)
Starters Returning/Lost – 5+libero/1
Letterwinners Returning/Lost – 10/
Final 2006 Ranking – NR
Series Record – Long Beach State leads 0-3

MEDIA INFORMATION

Sports Information Contact – Roger Kirk
SID E-mail – rkirk@csulb.edu
Office Phone – (562) 985-8569
Fax Number – (562) 985-1549
Website – longbeachstate.com

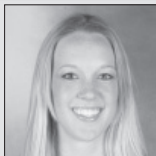
2007 OPPONENTS

MIAMI

Sept. 14 - Home, Oct. 23 - Away



Lantagne Welch



Ciara Michel



GENERAL INFORMATION

Location – Coral Gables, Fla.
Enrollment – 15,250
Nickname – Hurricanes
Colors – Orange, Green and White
Conference – Atlantic Coast
President – Dr. Donna E. Shalala
Athletics Director – Paul Dee
Arena – Knight Sports Complex (1,200)

COACHING STAFF

Head Coach – Nicole Lantagne Welch
Record at School – 111-64/7 seasons
Career Record – 111-64/7 years
Office Phone – (305) 284-5765

TEAM INFORMATION

2006 Record (Conf/Finish) – 12-9 (9-13/t-9th)
Starters Returning/Lost – 3+libero/4
Letterwinners Returning/Lost – 9/4
Final 2006 Ranking – NR
Series Record – FSU leads 14-12

MEDIA INFORMATION

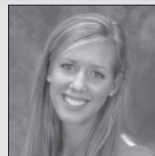
Sports Information Contact – Mark Pray
SID E-mail – mpray@miami.edu
Office Phone – (305) 284-3231
Fax Number – (305) 284-2807
Website – hurricanesports.com

VIRGINIA

Sept. 20 - Away, Oct. 27 - Home



Melissa Shelton



Sarah Kirkwood



GENERAL INFORMATION

Location – Charlottesville, Va.
Enrollment – 20,399
Nickname – Cavaliers
Colors – Navy and Orange
Conference – Atlantic Coast
President – John T. Casteen III
Athletics Director – Craig Littlepage
Arena – Memorial Gymnasium (836)

COACHING STAFF

Head Coach – Melissa Aldrich Shelton
Record at School – 217-166/12 seasons
Career Record – 217-166/12 years
Office Phone – (434) 982-5307

TEAM INFORMATION

2006 Record (Conf/Finish) – 23-8 (16-6/2nd)
Starters Returning/Lost – 5/2
Letterwinners Returning/Lost – 9/4
Final 2006 Ranking – NR
Series Record – FSU leads 23-12

MEDIA INFORMATION

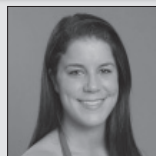
Sports Information Contact – Katharine Palmer
SID E-mail – kpalmer@virginia.edu
Office Phone – (434) 982-5532
Fax Number – (434) 982-5525
Website – virginiasports.com

VIRGINIA TECH

Sept. 21 - Away, Oct. 26 - Home



Chris Riley



Taylor Parrish



GENERAL INFORMATION

Location – Blacksburg, Va.
Enrollment – 28,000
Nickname – Hokies
Colors – Chicago Maroon and Burnt Orange
Conference – Atlantic Coast
President – Dr. Charles W. Steger
Athletics Director – Jim Weaver
Arena – Cassell Coliseum (9,847)

COACHING STAFF

Head Coach – Chris Riley
Record at School – 17-14/1 season
Career Record – 161-68/7 years
Office Phone – (540) 231-5037

TEAM INFORMATION

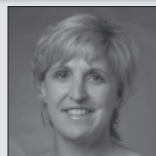
2006 Record (Conf/Finish) – 17-14 (11-11/6th)
Starters Returning/Lost – 4+libero/24+libero/2
Letterwinners Returning/Lost – 7/7
Final 2006 Ranking – NR
Series Record – FSU leads 18-1

MEDIA INFORMATION

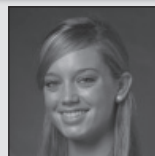
Sports Information Contact – Amanda McClure
SID E-mail – mccluras@vt.edu
Office Phone – (540) 231-6984
Fax Number – hokiesports.com

DUKE

Sept. 28 - Home, Nov. 3 - Away



Jolene Nagel



Ali Hausfeld



GENERAL INFORMATION

Location – Durham, N.C.
Enrollment – 6,558
Nickname – Blue Devils
Colors – Royal Blue and White
Conference – Atlantic Coast
President – Dr. Richard Brodhead
Athletics Director – Joe Alleva
Arena – Cameron Indoor Stadium (9,314)

COACHING STAFF

Head Coach – Jolene Nagel
Record at School – 164-83/8 seasons
Career Record – 367-223/19 years
Office Phone – (919) 684-2778

TEAM INFORMATION

2006 Record (Conf/Finish) – 29-4 (21-1/1st)
Starters Returning/Lost – 5+libero/1
Letterwinners Returning/Lost – 11/4
Final 2006 Ranking – NR
Series Record – Duke leads 8-29

MEDIA INFORMATION

Sports Information Contact – Chris Cook
SID E-mail – cook@duaa.duke.edu
Office Phone – (919) 684-8708
Fax Number – (919) 684-2489
Website – goduke.com

2007 OPPONENTS

WAKE FOREST

Sept. 30 - Home, Nov. 2 - Away



Heather Kahl Holmes



Natalie Mullikin



GENERAL INFORMATION

Location - Winston-Salem, N.C.

Enrollment - 4,321

Nickname - Demon Deacons

Colors - Old Gold and Black

Conference - Atlantic Coast

President - Dr. Nathan O. Hatch

Athletics Director - Ron Wellman

Arena - Reynolds Gym (2,000)

COACHING STAFF

Head Coach - Heather Kahl Holmes

Record at School - 31-31/2 seasons

Career Record - 31-31/2 years

Office Phone - (336) 758-6992

TEAM INFORMATION

2006 Record (Conf/Finish) -

14-17 (10-12/t-7th)

Starters Returning/Lost - 4/3

Letterwinners Returning/Lost - 11/3

Final 2006 Ranking - NR

Series Record - FSU leads 17-6

MEDIA INFORMATION

Sports Information Contact -

Scott Wortman

SID E-mail - wortmasm@wfu.edu

Office Phone - (336) 758-5640

Fax Number - (336) 758-5140

GEORGIA TECH

Oct. 5 - Home, Nov. 17 - Away



Bond Shymansky



Ulrike Stegemann



GENERAL INFORMATION

Location - Atlanta, Ga.

Enrollment - 16,793

Nickname - Yellow Jackets

Colors - Old Gold and White

Conference - Atlantic Coast

President - Dr. G. Wayne Clough

Athletics Director - Dan Radakovich

Arena - O'Keefe Gymnasium (2,000)

COACHING STAFF

Head Coach - Bond Shymansky

Record at School - 130-44/5 seasons

Career Record - 130-44/5 years

Office Phone - (404) 894-5453

TEAM INFORMATION

2006 Record (Conf/Finish) -

20-12 (12-10/5th)

Starters Returning/Lost - 7/libero

Letterwinners Returning/Lost - 12/1

Final 2006 Ranking - NR

Series Record - Georgia Tech leads 8-24

MEDIA INFORMATION

Sports Information Contact -

Cheryl Watts

SID E-mail - cwatts@athletics.gatech.edu

Office Phone - (404) 894-5445

Fax Number - (404) 894-1248

Website - ramblinwreck.com

CLEMSON

Oct. 7 - Home, Nov. 16 - Away



Jolene Hoover



Daniel Hepburn



GENERAL INFORMATION

Location - Clemson, S.C.

Enrollment - 17,135

Nickname - Tigers

Colors - Burnt Orange and Northwest

Purple

Conference - Atlantic Coast

President - James F. Barker

Athletics Director - Dr. Terry Don Phillips

Stadium - Jervy Gym (2,000)

COACHING STAFF

Head Coach - Jolene Jordan Hoover

Record at School - 285-171/ 14 seasons

Career Record - 377-202/ 17 years

Office Phone - (864) 656-1931

TEAM INFORMATION

2006 Record (Conf/Finish) -

20-10 (15-7/3rd)

Starters Returning/Lost - 6+libero/0

Letterwinners Returning/Lost - 11/3

Final 2006 Ranking - NR

Series Record - FSU leads 21-16

MEDIA INFORMATION

Sports Information Contact -

Christine Long

SID E-mail - longc@clemson.edu

Office Phone - (864) 656-1920

Fax Number - (864) 656-0299

Website - clemson.tigers.com

MARYLAND

Oct. 12 - Away, Nov. 10 - Home



Janice Kruger



Jade Brown



GENERAL INFORMATION

Location - College Park, M.d.

Enrollment - 35,102

Nickname - Terrapins

Colors - Red, White, Black and Gold

Conference - Atlantic Coast

President - Dr. C.D. Mote, Jr.

Athletics Director - Deborah A. Yow

Stadium - Comcast Center Pavilion

(1,500)

COACHING STAFF

Head Coach - Janice Kruger

Record at School - 363-236/ 19 seasons

Career Record - 738-341/ 30 years

Office Phone - (301) 314-9839

TEAM INFORMATION

2006 Record (Conf/Finish) -

13-18 (6-16/11th)

Starters Returning/Lost - 6/0

Letterwinners Returning/Lost - 11/2

Final 2006 Ranking - NR

Series Record - Maryland leads 13-21

MEDIA INFORMATION

Sports Information Contact -

Ben Dooling

SID E-mail - bdooling@umd.edu

Office Phone - (301) 314-7068

Fax Number - (301) 314-9094

Website - umterps.com

2007 OPPONENTS

BOSTON COLLEGE

Oct. 13 - Away, Nov. 9 - Home



Andrea Leonard



Kelsey Johnson



GENERAL INFORMATION

Location - Chestnut Hill, Ma.
Enrollment - 14,500
Nickname - Eagles
Colors - Maroon and Gold
Conference - Atlantic Coast
President - Rev. William P. Leahy, S.J.
Athletics Director - Gene DeFilippo
Stadium - Power Gym (1,000)

COACHING STAFF

Head Coach - Andrea Leonard
Record at School - 58-65/4 seasons
Career Record - 58-65/4 years
Office Phone - (617) 552-1822

TEAM INFORMATION

2006 Record (Conf/Finish) - 12-19 (10-12/8th)
Starters Returning/Lost - 4/3
Letterwinners Returning/Lost - 7/7
Final 2006 Ranking - NR
Series Record - FSU leads 5-0

MEDIA INFORMATION

Sports Information Contact - Ben Warnick
SID E-mail - warnickb@bc.edu
Office Phone - (617) 552-3004
Fax Number - (617) 552-4903
Website - bceagles.com

NORTH CAROLINA

Oct. 19 - Away, Nov. 23 - Home



Joe Sagula



Stephanie Jansma



GENERAL INFORMATION

Location - Chapel Hill, N.C.
Enrollment - 27,700
Nickname - Tar Heels
Colors - Caroline Blue and White
Conference - Atlantic Coast
Chancellor - Dr. James Moeser
Athletics Director - Dick Baddour
Stadium - Carmichael Auditorium (8,010)

COACHING STAFF

Head Coach - Joe Sagula
Record at School - 344-219/17 seasons
Career Record - 547-342/26 years
Office Phone - (919) 962-5228

TEAM INFORMATION

2006 Record (Conf/Finish) - 11-20 (9-13/9th)
Starters Returning/Lost - 5+libero/1
Letterwinners Returning/Lost - 12/2
Final 2006 Ranking - NR
Series Record - FSU leads 28-17

MEDIA INFORMATION

Sports Information Contact - Bobby Hundley
SID E-mail - bhundley@unca.unc.edu
Office Phone - (919) 843-5678
Fax Number - (919) 962-0612
Website - tarheelblue.com

NORTH CAROLINA ST.

Oct. 20 - Away, Nov. 21 - Home



Charita J. Stubbs



Aiwane Iboaya



GENERAL INFORMATION

Location - Raleigh, N.C.
Enrollment - 29,416
Nickname - Wolfpack
Colors - Red and White
Conference - Atlantic Coast
Chancellor - Dr. James L. Oblinger
Athletics Director - Lee Fowler
Stadium - Reynolds Coliseum (12,400)

COACHING STAFF

Head Coach - Charita J. Stubbs
Record at School - 2-29/1 season
Career Record - 2-29/1 year
Office Phone - (919) 515-3826

TEAM INFORMATION

2006 Record (Conf/Finish) - 2-29 (0-22/12th)
Starters Returning/Lost - 6/2+ libero
Letterwinners Returning/Lost - 9/6
Final 2006 Ranking - NR
Series Record - FSU leads 30-5

MEDIA INFORMATION

Sports Information Contact - Brandon Yopp
SID E-mail - brandon_yopp@ncsu.edu
Office Phone - (919) 513-8195
Fax Number - (919) 515-2898
Website - gopack.com



ATLANTIC COAST CONFERENCE

Brian Morrison Assistant Commissioner
 (bmorrison@theacc.org)
Lindsey Rogers Associate Director
 (lrogers@theacc.org)
Kristie Le Assistant Director - Volleyball Contact
 (kle@theacc.org)
Barb Dery Administrative Assistant
 (bdery@theacc.org)
Mailing PO Drawer ACC, Greensboro, NC 27417-6724
Shipping 4512 Weybridge Lane, Greensboro, NC 27407
Phone (336) 851-6062
Fax (336) 854-8797
Website www.TheACC.com