

Official Program
Twenty-five Cents

November 26, 1949
8:00 P. M.



FLORIDA STATE UNIVERSITY
VS
TROY STATE TEACHERS COLLEGE

CENTENNIAL FIELD

TALLAHASSEE, FLA.



Welcome

Welcome to the final game of our 1949 Florida State University football schedule which brings together the Seminoles and the Red Wave of Troy, Alabama, State Teachers College.

On behalf of the football team, which has just won its second consecutive Dixie Conference championship, and all the rest of us associated with Florida State University, I wish to thank you for your loyal support of our Seminoles during this current season.

We know you will congratulate the Seminoles for qualifying to play in the Cigar Bowl at Tampa on January 2, 1950. We hope that many of you will find it possible to be in Tampa with us for that game.

DOAK S. CAMPBELL
President
The Florida State University



ATHLETIC COMMITTEE MEMBER

Dr. Harold F. Richards, head of the Physics Department, has been at FSU since 1925. He received his A.B., Master's and PhD degrees from the University of Cincinnati. Author of **The Universe Surveyed** and numerous periodical articles, Dr. Richards has been active in campus activities for many years. He is a member of Phi Beta Kappa and several other leading societies.

SEASON RECORDS

FLORIDA STATE UNIVERSITY

Won 7, lost 1

FSU 74—Whiting Field 0
FSU 33—Mississippi College 12
FSU 27—Erskine College 7
FSU 6—Sewanee 0
FSU 33—Stetson 14
FSU 6—Livingston 13
FSU 40—Millsaps 0
FSU 34—Tampa 7

TROY STATE TEACHERS

Won 6, lost 2, tied 1

Troy 33—Union University 6
Troy 25—S. W. Louisiana 48
Troy 6—Pensacola Navy 12
Troy 10—Stetson 0
Troy 27—Jacksonville State 6
Troy 6—Austin Peay 0
Troy 19—Florence State 6
Troy 27—Howard College 0
Troy 7—Livingston 7



Florida State University has accepted a bid to play in the Cigar Bowl at Tampa January 2. Troy is reported considering several bids to post-season bowl games.



ATHLETIC COMMITTEE MEMBER

Miss Mary Kate Miller, associate professor of physical education at FSU, came here in 1947. She received her B.S. and Master's degrees from Peabody College in Nashville, Tenn. Before coming to FSU, she was with Oklahoma College for Women for ten years and with the Navy for three. Miss Miller has done advanced study for her PhD degree at Columbia Teachers' College.

For Officials' Signals and Penalties, see Page 18

FLORIDA STATE SONGS

ALMA MATER

High o'er the towering pines our voices swell,
Praising these Gothic spires we love so well:
Here sons and daughters stand, faithful and true,
Praising our Alma Mater, F. S. U.

ONWARD, SEMINOLES (Tune: On Wisconsin)

Onward Seminoles, onward Seminoles,
Fight for F. S. U.
With your name you must have fame
As all brave warriors do.
Sis! Boom! Bah!

On to glory, on to glory
You must ne'er be slow.
Fight team, for if you do
You'll reach your goal.

THE VICTORY SONG

We want a touchdown:
You hear us sing, we want a touchdown—
That's the thing!
We want a great big bruiser
Husky and tall, to carry the ball.
In no time at all
We'll have a touchdown.
And when it's over
Let us hear you make some noise.

V - I - C - T - O - R - Y

We want a touchdown, boys!
(Fanfare)

Fight! Fight! Fight!

(Eight fanfares followed by "Fight! Fight!
Fight!", then start song over again.)

Won't you
HAV-A-TAMPA

Cigar

Eli Witt Tobacco & Candy Co.

TALLAHASSEE, FLORIDA



Dub Kendrick—T

"KEEP YOUR FAITH IN THE SEMINOLES . . .
PUT YOUR DUDS IN OUR SUDS"



BRANCH OFFICE WEST CAMPUS

GENE'S LAUNDRY, Inc.



Ken MacLean—HB



Frank Marcus—G



**"Whatever the Sport We
Furnish the Equipment"**



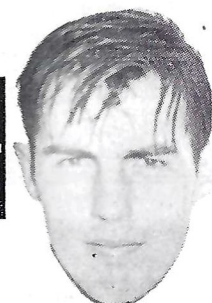
Distributors for

**RAWLINGS • REACH • WRIGHT
& DITSON • SPALDING • VOIT
SPOTBILT SHOES
GRANDVILLE AWARD SWEATERS**



HARRY FINKELSTEIN CO.

633 West Bay St. • Jacksonville, Fla.



Irwin Hanson—FB



Joe Marcus—C

P. W. WILSON COMPANY

TALLAHASSEE'S BEST STORE

SINCE 1837

**Men's Clothing
and Furnishings
Shoes**

**Ladies' Ready-to-Wear
Home Furnishings
Piece Goods
Millinery
Notions**

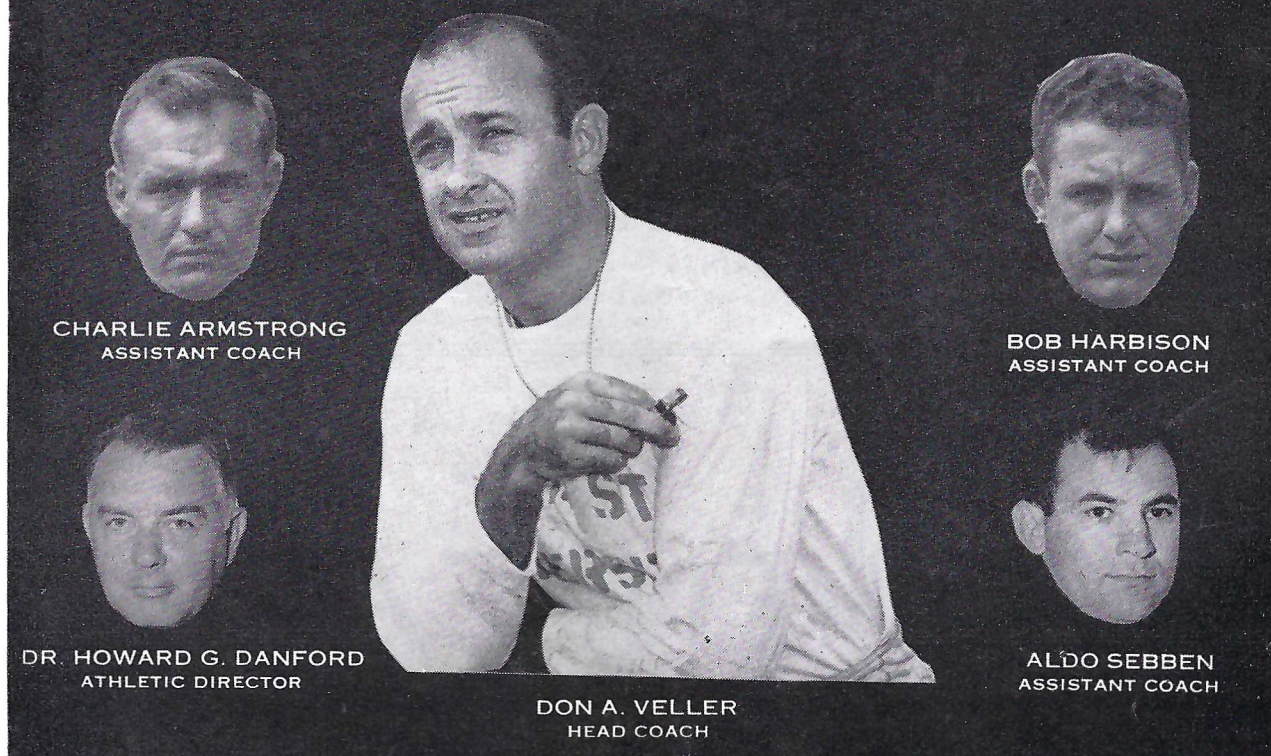


Dwight Osha—T

TELEPHONE 88

TALLAHASSEE, FLORIDA

F. S. U. COACHING STAFF



THE FLORIDA STATE UNIVERSITY ATHLETIC STAFF

DR. DOAK S. CAMPBELL, University President.

RODERICK K. SHAW, University Business Manager and member of the Athletic Committee.

DR. J. BROWARD CULPEPPER, Dean of Student Welfare and member of the Athletic Committee.

DR. HOWARD G. DANFORD, Athletic Director, Chairman of the Athletic Committee and Director of Men's Physical Education.

DON A. VELLER, Head Football Coach.

CHARLIE ARMSTRONG, Assistant Football Coach and Head Baseball Coach.

BOB HARBISON, Assistant Football Coach and Head Golf Coach.

ALDO SEBBEN, Graduate Assistant Football Coach.

J. K. "BUD" KENNEDY, Athletic Business Manager and Head Basketball Coach.

E. P. "NED" WEST, Director of Sports Publicity.

DONALD LOUCKS, Head Tennis Coach.

N. B. STULTS, Head Swimming Coach.

DR. KENNETH MILLER, Head Track Coach.

BILL ODENEAL, Head Volleyball Coach.

DR. HARTLEY S. PRICE, Head Gymnastics Coach.

ED WILLIAMSON, Intramural Director.

EDDIE KWEST, Team Trainer.

DR. TOM BROOKS, Athletic Physician.

BILL LANG and RANDY BRADY, Football Student Managers.

GEORGE HAYGOOD, Graduate Assistant to the Athletic Business Manager.

MEMBERS OF THE UNIVERSITY ATHLETIC COMMITTEE:
Dr. Howard G. Danford (Chairman), Dr. J. Broward Culpepper, Roderick K. Shaw, John Newton Baker, Dr. Coyle E. Moore, Dr. Harold F. Richards, Dr. Samuel R. Neel, Jr., Dr. Katherine W. Montgomery and Miss Mary Kate Miller. Student Members J. T. Carey and Bobbie Cowdery.

GOOD LUCK SEMINOLES!

Tallahassee Builders Supply, INC.

Corner Gaines Street and Woodard Avenue

PHONES 65 and 2926

SHERWIN-WILLIAMS PAINTS

BARRETT ROOFING



Bill Dawkins—G



Red Parish—HB

SEVEN SEAS

Corner Monroe and Pensacola—Next to the Capitol

Tallahassee's Finest

WE WILL BE HAPPY TO SERVE YOU AFTER THE GAME!



Bob Schmelz—G



Norman Eubanks—E

CARTER'S

YOUR FRIENDLY SPORT STORE

The Home of MacGregor-Goldsmith Sports Equipment

"IT PAYS TO PLAY"

117 South Adams Street
Tallahassee, Florida

PHONE 32

MEET THE SEMINOLES

TACKLE HUGH ADAMS, who was named to several Little All-American teams last Fall, treasures still more the fact his teammates selected him to captain the 1949 eleven . . . Hugh is the inspirational type of leader who believes in setting a good example by his own play . . . tackle W. A. "DUB" KENDRICK is one of the most deceiving men on the Seminole line . . . small for a tackle at 185 pounds, Dub makes up for his lack of weight by agility and the fire of his charge . . . he loves best of all to play in the opponents' backfield . . . tackle ED FOX, only other letterman at this position, was injured during pre-season practice and will be lost for the first few games . . . tackle DWIGHT OSHA is a transfer from Wabash College where he was an outstanding freshman lineman last Fall . . . he is considered by the coaching staff as one of the most promising of the

touchdown against the Hatters last Fall . . . ends LEONARD MELTON and CHRIS BANAKAS, lettermen, are defensive experts . . . Leonard will be remembered best for his great game against Troy last year soon after he was shifted to this position from halfback . . . Chris, a fine team man, may also be used some at guard this Fall . . . outstanding newcomers at end include CURTIS CAMPBELL, VIC SZCZEPANIK, LOUIS SUTTON, GEORGE EDMISTON, GLENN ALLEN and BOB MCGINNIS . . .

GUARD BILL DAWKINS was rated by many along with Captain Adams as the Seminoles' outstanding lineman last Fall . . . Bill added about ten pounds to his weight this summer, which shouldn't hurt his effectiveness at all . . . guard BOB SCHMELZ played some great ball as a Freshman in 1948 and is being counted on to improve as a Sophomore . . . he is at his best on defense . . . guard DAN McCCLURE, a letterman in 1947, is a hard worker and should be a lot of help again this year . . . guard JERRY MORRICAL is probably the outstanding transfer on the Florida State squad . . . he was a letterman at Indiana University in 1946, 1947 and 1948 . . . Coach Veller will use him at guard on offense, backing up the line or tackle on defense . . . guards LOREN MALTBY, GEORGE SPURLING, BOB TULLY, BOB WAFF and FRANK MARCUS, all newcomers, are expected to provide the depth this position needs . . .

CENTER JOE MARCUS, the Seminoles' "sixty minute man" of 1948, is back for his senior year . . . Joe took on added responsibilities just before the season opened, bringing his bride of one week with him when he reported for pre-season practice . . . center MONTE MAY, the other letterman at the pivot spot, will have help in relieving Joe this Fall from newcomers JOHN NEWLAND, RAULIE RAULERSON, RIN GROSSMAN and ED LOCKARD . . .

QUARTERBACK WALTER "FOEY" FOY may be called upon to do a lot more running with the ball this Fall, instead of being limited to blocking as he was most of last season . . . Coach Veller will use him at left half as well as at quarter, and he can go! . . . quarterback MARVIN "WHITEY" URQUHART is another one of the two position men on the Seminole squad, often playing end on defense . . . he does a capable job at either assignment . . . newcomer at quarterback TIFF GOZA, lacks experience . . .

LEFT HALFBACK KEN MacLEAN from nearby Quincy is big, fast and rated the Seminoles' outstanding offensive runner . . . Ken is a true triple threat back, being a fine punter and better than fair passer . . . a senior, he should have his greatest year . . . left halfback DICK PETERSON may be the passer Coach Veller has been so eagerly seeking for two years . . . he throws long and accurately, and also runs well when called upon to do so . . . HARRY BRINGGER seems to be the best of the newcomers at this position . . .

RIGHT HALFBACK WYATT "RED" PARISH, the "Bonifay Flash," specializes in long touchdown jaunts . . . and is also a fine pass receiver . . . right halfback ERNIE REDDICK is the Seminoles' top punt return artist and probably the shiftest back on the squad . . . DAN MADY and CHARLIE JOHNSON are the first year men being counted on to help . . .

FULLBACK BUDDY STRAUSS got off to a slow start last year because of injuries . . . Buddy worked hard to get in top condition for the 1949 campaign and is being counted upon to have his best season . . . he likes to run right over the opposition, and often does . . . fullback RALPH CHAUDRON, the team's best punter, has high aims . . . his card file records his ambition "to be a millionaire" . . . fullback BO MANUEL, like Chaudron, will be seeking his third letter as a Seminole, excelling defensively and punting . . . fullbacks JOHN QUINN, DICK TURK and IRWIN HANSON are rated by the coaching staff as outstanding prospects among the large crop of Freshmen backs . . . all three are hard runners, and Quinn will also probably do some of the team's punting . . .

newcomers . . . tackles BOB DUCKWORTH, BOB JOHNSON, ROSCOE BARBER and DAVID WATFORD are also first year men with the Seminoles and are being counted on to furnish the reserve strength so sorely lacking last Fall . . .

END NORMAN EUBANKS, the squad comedian, is a more than capable performer offensively and defensively . . . Norm proved last season he was the best pass target on the team, usually coming down with the ball if it is thrown anywhere near him . . . he is used sometimes as safety man on defense because of his knack for breaking up or intercepting enemy passes . . . end TED HEWITT is also counted on to hold down two positions—end on offense and halfback on defense . . . it was Ted that intercepted a Stetson pass and ran it back 99 yards for the clinching



CAPTAIN HUGH ADAMS



Walter Foy—QB

SHOUT FOR THE SEMINOLES

AND

BANK WITH US!

THE LEWIS STATE BANK
SINCE 1856
Florida's Oldest
TALLAHASSEE



Marvin Urquhart—QB



Bo Manuel—FB

YEA SEMINOLES!
BEFORE AND AFTER THE GAME

MEET YOUR FRIENDS

AT

THE MECCA

111 South Copeland Street

QUICK SERVICE

GOOD FOOD AND SUNDRIES



Dick Peterson—HB



DRINK
Coca-Cola
REG. U.S. PAT. OFF.

TROY STATE ROSTER

No.	NAME	POS.	WT.	CLASS	HOMETOWN
3	James Gorum	T	194	Fresh.	Georgiana, Ala.
4	Allen Harrell	QB	160	Fresh.	Montgomery, Ala.
5	**Charles Cox	HB	155	Junior	Clanton, Ala.
7	*Dewey Renfroe	QB	150	Soph.	Montgomery, Ala.
8	Bartow Jenkins	C	168	Soph.	LaGrange, Ga.
11	Jack Healy	HB	165	Soph.	Augusta, Ga.
12	Sam Williams	HB	155	Fresh.	Eufaula, Ala.
13	Joe Seymour	E	190	Fresh.	Pinson, Ala.
14	Fred Hatfield	HB	190	Fresh.	Tallassee, Ala.
15	Charles Sandusky	C	175	Fresh.	Montgomery, Ala.
16	**Ted Franklin	HB	165	Junior	Birmingham, Ala.
18	**Shelby Searcy	HB	155	Junior	Andalusia, Ala.
19	James Hollis	C	180	Fresh.	Brantley, Ala.
21	*J. T. Elmore	FB	170	Soph.	Reform, Ala.
22	***Gene Norman	HB	185	Senior	Luverne, Ala.
23	**Mack Rooks	FB	165	Junior	Marianna, Fla.
24	Carrol Roney	G	195	Junior	Newville, Ala.
26	Jim Beavers	FB	170	Soph.	Tallassee, Ala.
28	Ed Tatum	E	195	Fresh.	Valley Head, Ala.
29	Ennis Sellers	T	195	Soph.	Georgiana, Ala.
30	*Sanford Toole	E	168	Soph.	DeFuniak Springs, Fla.
31	Jackie Davis	E	195	Fresh.	Tallahassee, Ala.
32	Earl Dennis	E	190	Fresh.	Tallahassee, Ala.
33	Cecil Langcuster	G	165	Soph.	Russellville, Ala.
36	***Carlos Bassett	T	190	Senior	Roanoke, Ala.
51	Ford Taylor	QB	170	Junior	Troy, Ala.
52	Guy Wilkes	E	185	Soph.	Eufaula, Ala.
53	Bill Sanford	QB	159	Soph.	Birmingham, Ala.
54	*Aubrey Hicks	C	193	Junior	Phenix City, Ala.
55	***Spencer Davis (C)	G	185	Senior	St. Andrews, Fla.
56	J. D. Chesteen	G	200	Fresh.	Brantley, Ala.
57	*Chase Riddle	FB	180	Soph.	Columbus, Ga.
58	**Johnny Kries	E	190	Senior	Troy, Ala.
59	***Paul Cayton	T	195	Senior	Prattville, Ala.
60	*John Terry	G	215	Junior	Birmingham, Ala.
61	*Mitchell Kirkland	G	202	Soph.	Abbeville, Ala.
62	*Kenneth Avinger	T	220	Soph.	Foley, Ala.
63	James Perkins	E	185	Soph.	Eufaula, Ala.
64	Dave Kress	T	215	Soph.	Rutherford, N. J.

Tallahassee Coca-Cola Bottling Co.

TROY STATE TEACHERS COLLEGE

Probable Starting Lineup

LHB		FB		RHB	
Franklin	16	Riddle or Elmore	57 21	Healy	11
QB					
Renfroe					
7					
LE	LT	LG	C	RG	RT
Wilkes	Bassett	Terry	Hicks	Davis	Avinger
52	36	60	54	55	62
RE					
Kries					
58					

THE SQUAD

3 Gorum, LT	21 Elmore, FB	52 Wilkes, LE
4 Harrell, QB	22 Norman, LHB	53 Sanford, QB
5 Cox, LHB	23 Rooks, FB	54 Hicks, C
7 Renfroe, QB	24 Roney, LG	55 Davis (Capt.), RG
8 Jenkins, C	26 Beavers, FB	56 Chesteen, RG
11 Healy, RHB	28 Tatum, LE	57 Riddle, FB
12 Williams, LHB	29 Sellers, RT	58 Kries, RE
13 Seymour, RE	30 Toole, RE	59 Cayton, LT
14 Hatfield, RHB	31 Davis, LE	60 Terry, LG
15 Sandusky, C	32 Dennis, RE	61 Kirkland, RG
16 Franklin, LHB	33 Langcuster, LG	62 Avinger, RT
18 Searcy, RHB	36 Bassett, LT	63 Perkins, LE
19 Hollis, C	51 Taylor, QB	64 Kress, RT

OFFICIALS

Field Judge—Joe Johnson (Rollins)
Head Linesman—G. Swartout (Indiana)

CHESTERFIELD
RADIO AND TELEVISION

"Smoke Out"
Always Buy



ARTHUR
GODFREY



ARTHUR GODFREY—Next-door neighbor
to 90 million people! You look at him —
listen to him — laugh with him and love him!

ALL CBS RADIO AND TELEVISION STATIONS

Copyright 1949, Liggett & Myers Tobacco Co.

MILDER CHESTERFIELD

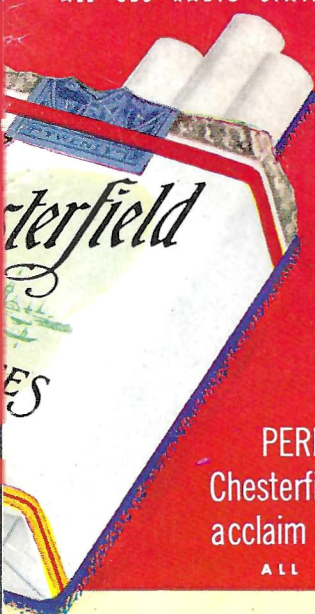
D'S BIG THREE
VISION STARS SAY...

BR cigarette
"Chesterfield"

BING
CROSBY

BING CROSBY—Through his records,
movies, and his radio programs,
he has brought more pleasure to more
people than any other living man.

ALL CBS RADIO STATIONS



PERRY

PERRY COMO—Now in his seventh year as
Chesterfield's great radio and recording star. Today, millions
acclaim him as television's greatest singing star.

ALL NBC RADIO AND TELEVISION STATIONS

FLORIDA STATE UNIVERSITY

Probable Starting Lineup

LHB			FB		RHB	
Peterson			Strauss		Parish	
31			44		32	
			QB			
			Urquhart			
			37			
LE	LT	LG	C	RG	RT	RE
Hewitt	Kendrick	Dawkins	J. Marcus	Morrical	Adams	Banakas
25	50	39	40	53	54	52

THE SQUAD

20 Reddick, RH	38 Tully, LG	56 Duckworth, RT
21 Chaudron, QB	39 Dawkins, LG	57 Allen, LE
22 Quinn, FB	40 J. Marcus, C	58 Grossman, LT
23 McGinnis, RE	41 Osha, LT	59 Schmelz, LG
24 Hanson, FB	42 Foy, LH, QB	
25 Hewitt, LE	43 Turk, FB	
26 Mady, RH	44 Strauss, FB	
27 Sutton, RE	45 Campbell, RE	
28 Goza, QB	46 F. Marcus, LG	
29 C. Johnson, RH	47 May, C	
30 Szczepanik, LE	48 R. Johnson, C	
31 Peterson, LH	49 Bringger, LH	
32 Parish, RH	50 Kendrick, LT	
33 Manuel, FB	51 Eubanks, RE	
34 Spurling, RG	52 Banakas, RE	
35 McClure, LT	53 Morrival, RG	
36 Waff, RG	54 Adams (Capt.), RT	
37 Urquhart, QB	55 Maltby, RT	

DUPLICATE NUMBERS (if dressed for game)

20 Leddy, RHB
21 Thixton, HB
31 Delaney, RG
40 Lockard, C
52 Chaires, RE
54 Newland, C

OFFICIALS

Referee—J. H. Harwell (Vanderbilt)
Umpire—Ben Cimock (Michigan)

COMO

Largest selling cigarette in America's Colleges
(BY LATEST NATIONAL SURVEY)



DRINK
Coca-Cola
REG. U.S. PAT. OFF.

FLORIDA STATE UNIVERSITY ROSTER

NO.	NAME	POS.	CLASS	WT.	HT.	HOMETOWN
20	*Ernie Reddick	RHB	Sr.	153	5'8½"	Chipley, Fla.
21	*Ralph Chaudron	QB	Jr.	170	5'7"	Pensacola, Fla.
22	John Quinn	FB	Fresh.	175	5'10"	Live Oak, Fla.
23	Bob McGinnis	RE	Fresh.	180	6'	Orlando, Fla.
24	Irwin Hanson	FB	Fresh.	170	5'10"	Port Orange, Fla.
25	*Ted Hewitt	LE	Jr.	172	5'10½"	Detroit, Mich.
26	Dan Mady	RHB	Fresh.	163	5'10"	Mishawaka, Ind.
27	Louis Sutton	RE	Fresh.	162	5'10"	Tallahassee, Fla.
28	Tiff Goza	QB	Sr.	175	5'11"	Tucker, Ga.
29	Charlie Johnson	RHB	Fresh.	150	5'10"	St. Augustine, Fla.
30	Vic Szczepanik	LE	Fresh.	180	5'10½"	Rochester, Pa.
31	*Dick Peterson	LHB	Sr.	160	5'9"	Chicago, Ill.
32	*Wyett "Red" Parish	RHB	Jr.	170	5'10"	Bonifay, Fla.
33	*Bo Manuel	FB	Jr.	190	5'7"	Newberry, Fla.
34	George Spurling	RG	Fresh.	190	5'9½"	Miami, Fla.
35	*Dan McClure	LT	Jr.	200	5'11"	Stuart, Fla.
36	Bob Waff	RG	Fresh.	185	5'9½"	Tallahassee, Fla.
37	*Marvin Urquhart	QB	Sr.	182	6'1"	Bonifay, Fla.
38	Bob Tully	LG	Fresh.	165	5'9"	Tallahassee, Fla.
39	*Bill Dawkins	LG	Soph.	190	5'11"	Miami, Fla.
40	*Joe Marcus	C	Sr.	180	5'9"	Uniontown, Pa.
41	Dwight Osha	LT	Soph.	193	6'2"	Linton, Ind.
42	*Walter Foy	QB, LHB	Sr.	198	5'11½"	St. Augustine, Fla.
43	Dick Turk	FB	Fresh.	190	5'10"	South Bend, Ind.
44	*Buddy Strauss	FB	Sr.	185	5'10½"	Tallahassee, Fla.
45	Curtis Campbell	RE	Fresh.	165	6'1"	Pensacola, Fla.
46	Frank Marcus	LG	Jr.	185	5'10"	Uniontown, Pa.
47	*Monte May	C	Jr.	192	6'2"	Miami, Fla.
48	Bob Johnson	C	Soph.	185	6'1"	Rochester, Pa.
49	Harry Bringger	LHB	Fresh.	155	5'11"	Winter Haven, Fla.
50	*W. A. "Dub" Kendrick	LT	Jr.	180	6'	Center Hill, Fla.
51	*Norman Eubanks	RE	Jr.	190	6'2"	Clearwater, Fla.
52	*Chris Banakas	RE	Sr.	188	6'	Pensacola, Fla.
53	Jerry Morrical	RG	Sr.	220	6'1"	South Bend, Ind.
54	*Hugh Adams (Capt)	RT	Sr.	205	6'	Punta Gorda, Fla.
55	Loren "Duke" Maltby	RT	Jr.	210	5'11"	Dade City, Fla.
56	Bob Duckworth	RT	Fresh.	220	6'	Port Orange, Fla.
57	Glenn Allen	LE	Soph.	175	6'	Clearwater, Fla.
58	Rin Grossman	LT	Sr.	195	5'9"	Ft. Wayne, Ind.
59	*Bob Schmelz	LG	Soph.	190	6'	Willoughby, Ohio

INJURED LETTERMEN NOT DRESSED

*Leonard Melton	RE	Jr.	155	6'	Tallahassee, Fla.
*Ed Fox	LT	Jr.	188	6'	Fremont, Ohio
*Ken MacLean	LHB	Sr.	190	6'	Quincy, Fla.

DUPLICATE NUMBERS (If Dressed for game)

20	Hal Leddy	RHB	Fresh.	151	5'7"	New York, N. Y.
21	Don Thixton	HB	Fresh.	175	5'9½"	Ft. Lauderdale, Fla.
31	Bob Delaney	RG	Fresh.	165	5'8½"	Miami, Fla.
40	Ed Lockard	C	Fresh.	200	6'1"	Jacksonville, Fla.
52	Dave Chaires	RE	Fresh.	150	5'11"	Chaires, Fla.
54	John Newland	C	Jr.	205	6'	Winter Haven, Fla.

*Asterisks indicate number of years earned letter at Florida State.

Tallahassee Coca-Cola Bottling Co.

FOR THE RECORD



It's distance gained that counts in football, and the team that averages the greatest number of yards gained on every play is usually the winning team.

★ ★ ★ ★

You get extra distance from every gallon of Amoco-Gas—the original special motor fuel. You get finer performance, too . . . at less cost per mile.



A fast backfield star is in motion within one second from the time the ball is snapped.

★ ★ ★ ★

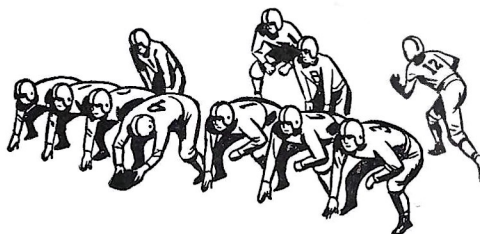
An Amoco Battery is delivering full power within a split second after you touch the starter button. From Maine to Florida, Amoco Batteries are famous for fast starts!



It's the blocking backs who open the holes for the winning plays. They take out tacklers, protect the man carrying the ball.

★ ★ ★ ★

Permalube Motor Oil gives double protection to your car's engine. It cleans as it lubricates—"blocks out" dirt and dust and saves expensive wear.



Every player on the team has an important job to do on both offense and defense. Each man knows what to do each time a signal is called.

★ ★ ★ ★

Lubricants for your car are of prime importance, too. Approved Amoco Lubricants are designed to factory specifications. The Amoco Chek-Chart "calls the signals" for correct lubrication—listing every point on every model of every car—and specifying the right lubricant to keep that point protected against wear.



FROM MAINE TO FLORIDA

AMOCO-GAS

the original special motor fuel

PERMALUBE MOTOR OIL

the oil that cleans as it lubricates

AMOCO LUBRICANTS

factory-approved for every car

AMOCO BATTERIES

extra-powered for extra-fast starts

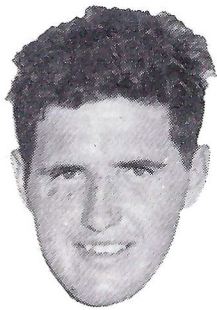
AMOCO TIRES

the tires experience built

A great name on the road



AMERICAN OIL COMPANY



Monte May—C

For
**CORDIAL
 PROGRESSIVE
 FRIENDLY**
Banking

think first of

CAPITAL CITY NATIONAL BANK

of Tallahassee

— MEMBER —
 FEDERAL DEPOSIT INSURANCE CORPORATION
 FEDERAL RESERVE BANK



Buddy Strauss—FB



Chris Banakas—E

**GOOD
 LUCK
 SEMINOLES**



FISK TIRES

Seat Covers
 Batteries
 Tire Repair
 Road Service

SHELL OIL PRODUCTS

Lubrication
 Washing
 Simonizing
 Steam Cleaning

TOM BROWN'S

Opposite Bus Station

TALLAHASSEE, FLA.

(USE OUR BUDGET PLAN)

Phone 2422



Ralph Chaudron—FB



Leonard Melton—E

AFTER THE GAME MEET AT

UNIVERSITY GRILL

123 S. COPELAND

(Across from the Music Building)

REGULAR MEALS • SANDWICHES
COMPLETE FOUNTAIN SERVICE

WHERE YOU GET THE THICK MILK SHAKES



Ernie Reddick—HB



Harry Bringger—HB

THE SPORTSMAN

"For the Man Who Demands the Best"

SPALDING & WILSON ATHLETIC EQUIPMENT



Dan McClure—G

GOOD LUCK SEMINOLES!

AIRWAYS COFFEE SHOP

Open 7 Days a Week from
7:00 A. M. to 12:00 P. M.

SERVING
THREE MEALS A DAY • SHORT ORDERS
SOFT DRINKS • SUNDRIES



Jerry Morrical—G

TEST YOUR FOOTBALL I. Q.

1. What is the weight of an official football?
2. To what air pressure is an official football inflated?
3. How many cleats are on each football shoe?
4. What is the height of the cross bar on the goal post?

(Reverse page for answers.)

RAWLINGS • SPALDING • SPOT-BILT

TAMPA, FLORIDA
117 E. Lafayette St.

FOSTER-MOYE, INC.

"For Your Athletic Requirements
Consult Our Specialists"

- ANSWERS
1. From 14-15 ounces.
 2. Thirteen pounds.
 3. Seven cleats on each shoe.
 4. Ten feet from ground.

ROYAL SANDWICH CO.

P. O. Box 641

Phone 535-W

— WHOLESALE DISTRIBUTORS OF SANDWICHES —

Salted Peanuts • Peanut Butter Sandwiches • Potato Chips
Pop Corn • Cookies • Candy

"FRESH AS A DAISY"



Bob Duckworth—T



Loren Maltby—T



Rin Grossman—C

THE SWEET SHOP

GOOD FOOD

DELICIOUS SODAS

DRUG SUNDRIES

Meet Your Friends Here Before and After the Game

FOLLOW THE SEMINOLES

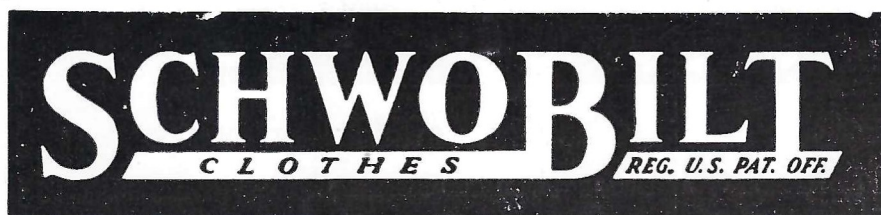


Ted Hewitt—E



John Quinn—FB

THE BEST DRESSED MEN WEAR



A GREAT NAME IN CLOTHING

"SCHWOBILT SUITS THE SOUTH"

CORNER COLLEGE & ADAMS

Tickets for all home games may be purchased here.



Dan Mady—HB

*Here's the Signal for
Perfect Smoking Pleasure!*

NO CIGARETTE HANGOVER

when you smoke

PHILIP MORRIS

Because PHILIP MORRIS is definitely less
irritating than any other leading brand!

© 1949 Philip Morris & Co.



1 OFF-SIDE



2 ILLEGAL POSITION
or PROCEDURE



3 ILLEGAL MOTION
or SHIFT



4 DELAY
of
GAME



5 PERSONAL FOUL



6 CLIPPING



7 ROUGHING
KICKER



8 UNSPORTSMANLIKE
CONDUCT



9 HOLDING by
DEFENSE



10 ILLEGAL USE of
HANDS and ARMS



11 INTENTIONAL
GROUNDING



12 ILLEGALLY
PASSING
or
HANDING
BALL
FORWARD



13 FORWARD PASS
or FAIR CATCH
INTERFERENCE



14 INELIGIBLE RECEIVER DOWN FIELD
on PASS



15 BALL ILLEGALLY TOUCHED,
KICKED or BATTED



16 INCOMPLETE FORWARD PASS,
PENALTY DECLINED;
NO PLAY or NO SCORE



17 CRAWLING;
HELPING the RUNNER
or INTERLOCKED
INTERFERENCE



18 TOUCHDOWN or
FIELD GOAL



19 SAFETY



20 TIME-OUT

Yes! You'll be glad tomorrow
... you smoked
PHILIP MORRIS today!

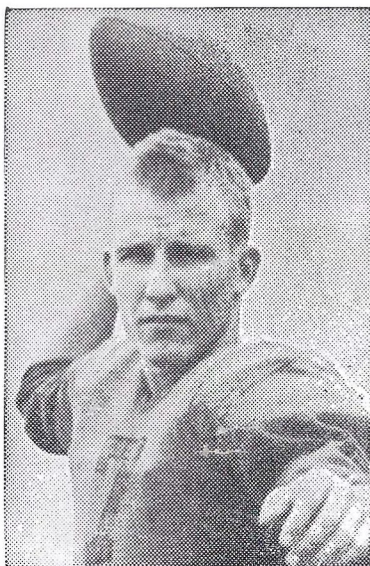


THE TROY STATE TEACHERS COLLEGE RED WAVE

The State Teachers College of Troy, Alabama, is expected to field the best team Florida State University has been asked to face this season. The visiting Red Wave gridgers have won 6, lost 2 and tied 1 game. The deadlock was a 7-7 contest with Livingston State Teachers last Saturday night, which puts the visitors in the role of pre-game favorites as FSU lost to this same Livingston team 6-13.

Troy Coach Buddy McCollum, a former Auburn University star, has had 17 lettermen to work with this season. Three of his most outstanding players — Quarterback Dewey Renfro, Tackle Ken Avinger and Fullback Chase Riddle — are only

Sophomores, which indicates the Wave is going to be tough for several years to come as well as

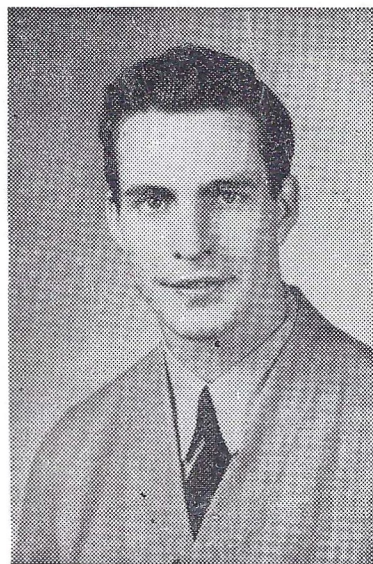
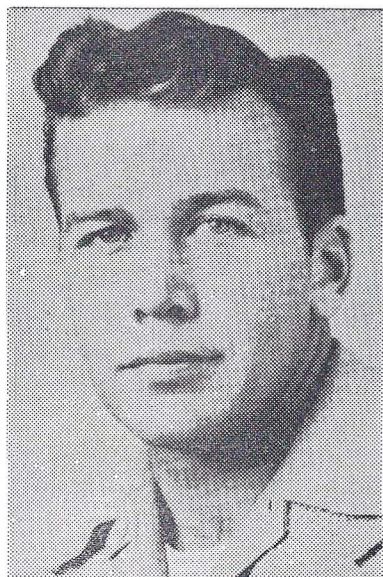


DEWEY RENFROE—QB

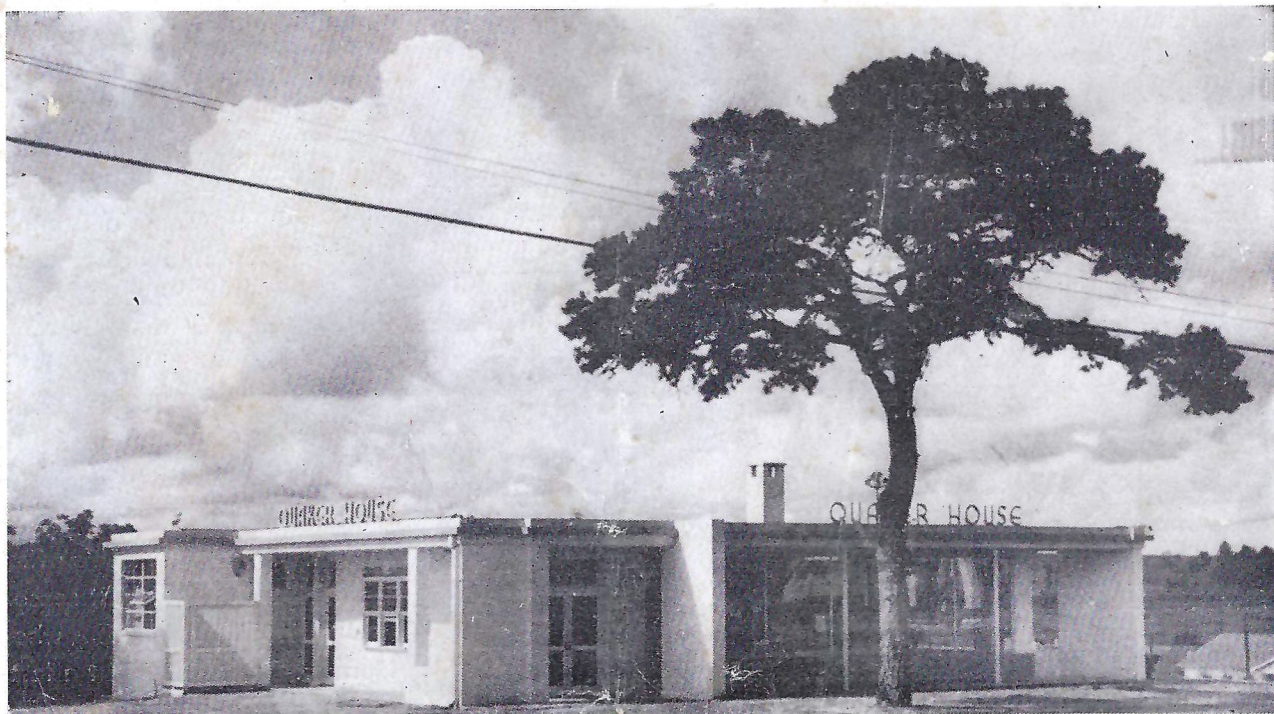
this Fall. Also listed on the Troy roster is Carrol Roney, a Little All-America guard when he

played for South Georgia College in 1948; Captain Spencer "Onion" Davis, a great guard from Panama City, Florida, and many other highly regarded players.

Tonight's FSU-Troy State contest will be the third between the two schools. The Red Wave gridgers walloped F. S. U.'s first team 36-6 in 1947. Last season FSU triumphed 20-13 when Norman Eubanks caught a last-quarter pass from Walter Foy and fell over the Troy goal line with the winning marker. Football fans of both schools rated this game as the most exciting one of the 1948 season, and tonight's contest gives promise of being just as interesting.



THE TROY COACHING STAFF.—Left to right, Assistant Coach Al Alford, Head Coach F. G. "Buddy" McCollum (Auburn 1934), and End Coach Fuller "Buddy" Brooks.



After the Game

COME OUT TO

THE QUAKER HOUSE

For Delicious Duchess Ice Cream, Drinks and
Sandwiches



NEW QUINCY HIGHWAY

One Block West of the Duchess Ice Cream Plant

