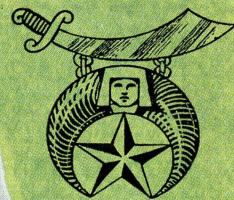


SHRINE CIGAR BOWL GAME



For The Benefit of
Shriners' Hospitals
for
Crippled Children

Presented by

LIBRA EGYPT TEMPLE SHRINE
FLORIDA STATE UNIVERSITY
TALLAHASSEE, FLORIDA

TAMPA, FLORIDA

JANUARY 2, 1950

2:30 P.M.

PHILLIPS FIELD

Dine in Tampa's Finest Atmosphere

Dance To Herbie Gaile and His Orchestra

Entertainment by Harry Jarkey Comedy Sensation



See Tampa's Skyline

from the

SKYLINE ROOMS

atop

BAYSHORE ROYAL HOTEL

PHONE H-3870
P.O. BOX 956



Egypt Temple

A. A. O. N. M. S.

402 SOUTH BOULEVARD • TAMPA, FLORIDA

FRIENDS:

We take this opportunity to thank each and every one of you for your wonderful support in this great combined project of sport and aid towards the Shriners Hospitals for Crippled Children.

We Americans are indeed the world's most fortunate people. In the midst of a crescendo of bands and crowds cheering their favorite teams on to victory, it is appropriate that we should take enough time to think of others in far away places. People, and especially little children, who are still suffering the consequences of a horrible war.

The members of Egypt Temple who sponsor this game, the fourth annual Cigar Bowl football classic, are grateful to all of you for your personal interest and whole hearted support in contributing to the rehabilitation of our many crippled and underprivileged children.

And to those of you who served on the various committees to help make the Cigar Bowl Sports Week festival the great success that it is, to the participants in the pageant and the officials and members of both teams, Egypt Temple is extremely grateful.

Gratefully yours,

Illustrious Potentate

A SALUTE TO THE

SHRINE

CIGAR BOWL GAME

from

**EAGLE ROOFING &
ART METAL WORKS**

1002 MADISON STREET

2-1585



Wholesale Roofing and
Sheet Metal



J. G. ANDERSON, President



Tampa's beautiful Bayshore Drive.

PENNEY'S
J. C. PENNEY COMPANY INC.
Department Stores
TAMPA . . . YBOR CITY



HOTEL
FLORIDAN

AIR CONDITIONED

Tampa's newest and largest hotel welcomes you!

NINETEEN FLOORS OF SOLID COMFORT

JAMES B. PICKARD, Manager

Phillips Field, scene of Annual Shrine Cigar Bowl Game

L. B. McSWAIN

REALTOR & INSUROR

307 N. Franklin Tampa, Fla.

HANKINS REALTY CO.

Established 1921

Phone 2-2201

1008 Tampa St. Tampa, Fla.

WILSON SAMMON CO.

Funeral Home—Ambulance Service

Phone 2-2727

Florida Ave. at Palm Tampa, Fla.

**R. J. GOULD WELDING
& ERECTING CO.**

301 S. Florida Ave. Tampa

COSTA BROOM WORKS

BROOMS & MOPS

Wholesale Only

3606 - 4th Ave. Tampa, Fla.

**FORTIETH STREET
LIQUOR STORE and BAR**

JOE VAZQUEZ, Prop.

4014 E. Broadway Tampa

ANDERSON'S MARKET

Phone Y 1133

4015 - 7th Ave. Tampa, Fla.

Compliments

Dr. Louis O. Pasetti

DENTIST

409 Stovall Office Bldg.

WALTERS FUNERAL HOME

24 HOUR AMBULANCE SERVICE

Phone H 1777

106 Crescent Place Tampa

FLORIDA RADIATOR SERVICE

McCord & Harrison Radiators & Cores

Phone 2-1409

1506 Florida Ave. Tampa, Fla.

MILIAN'S SANDWICH SHOP

As ever "A GOOD GAME"

Florida & Lake Ave. Tampa

Compliments

BELL BAKERIES

Turner Marble & Granite Co.

PH. Y 1126

P. O. BOX 2230

2606 E. Broadway (7th Ave.) Tampa

WE ARE GLAD TO HAVE YOU
IN TAMPA

TAMPA MOTOR CLUB



Compliments of

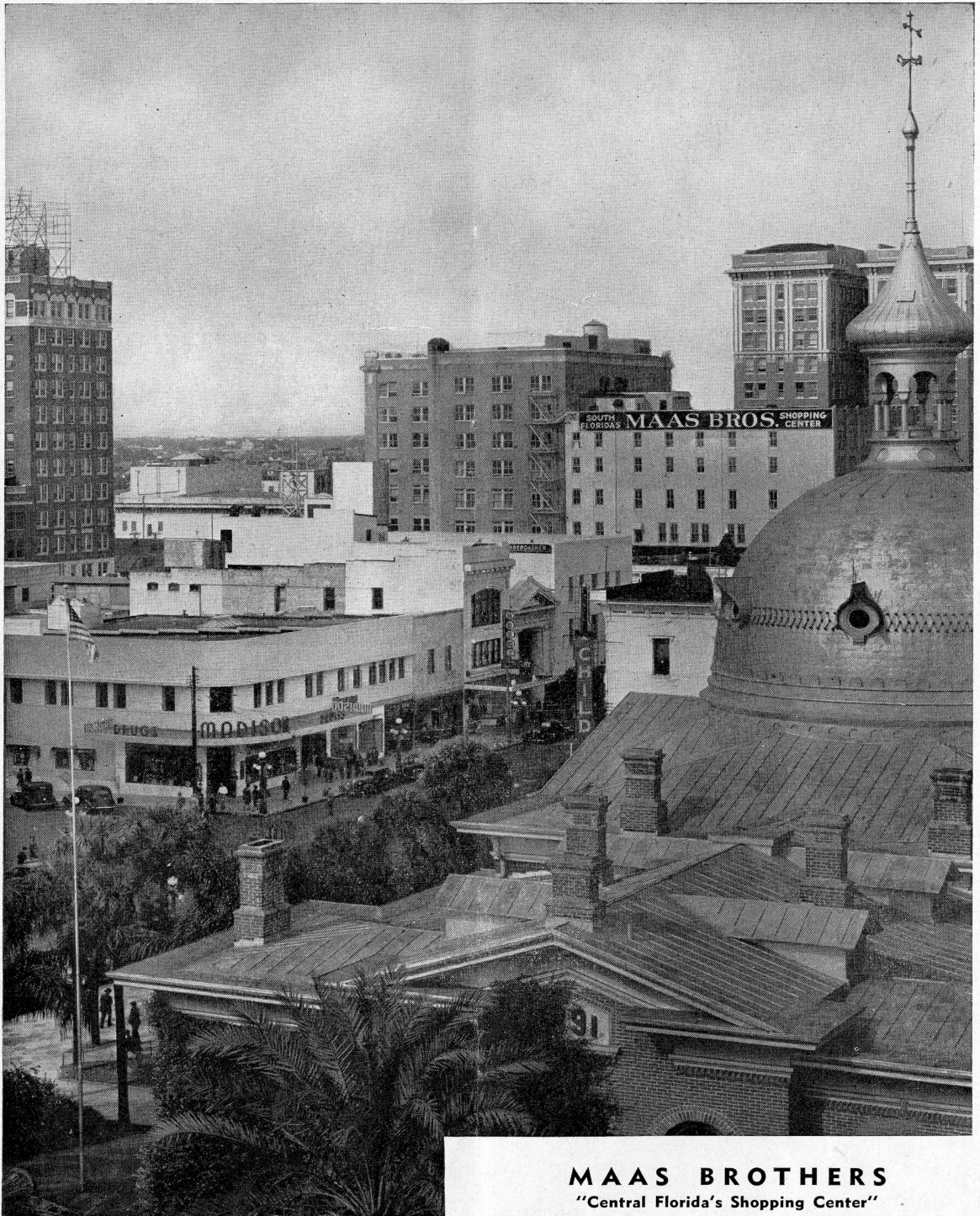
ONEAL FURNITURE CO.

Compliments of

JAKE MALOOF

SILVER COACH DINER

206 North Franklin



In the heart of Tampa's fashionable shopping center. Turreted building in foreground is county courthouse.

MAAS BROTHERS
 "Central Florida's Shopping Center"
TAMPA • ST. PETERSBURG

5th AVENUE
BUILDER'S SUPPLY, INC.

COMPLETE LINE OF
HARDWARE AND
BUILDING MATERIALS

COMMERCIAL
AND
RESIDENTIAL

SETTECASI & CHILLURA
Gen. Contractors

Hats For Father and Son

Phone H 44-243

HATS CLEANED AND BLOCKED
FOR EVERYONE

ADAMS CITY HATTERS
620 Tampa St.

E. M. EVANS
AUTO PAINT SHOP

DUCO DeLUX and LACQUER REFINISHING
With a Guarantee That Counts

137 Parker Street Tampa, Florida

Compliments of

Pepsi-Cola Bottling Co.

Phone 2-9634

1208 E. Lafayette St. Tampa

Compliments of

SEARS
ROEBUCK & CO.

**To Make Your Home
More Comfortable**



HEATING, VENTILATING
AND AIR CONDITIONING
EQUIPMENT AND SERVICE

PIONEER

TAMPA at
WASHINGTON



PHONE
2-1951

WOFFORD

Phil Dickens, Coach

PROBABLE STARTING LINEUP

LE	LT	C	RT	RE
Hoffmeister 185	Hammett 200	Moyer 210	Thurston 212	Loveday 200
LG	QB	RG		
Quick 215	Prevatte 180	Corn 195		
LH	FB	RH		
Sewell 155	Rowell 190	Harrison 160		
Charles Blakely	Chester, S. C.	Jr.	E	165
Duan Cannon	Spartanburg, S. C.	Jr.	E	170
Allen Clark	Spartanburg, S. C.	Jr.	E	185
Jimmy Gordon	Mullins, S. C.	Jr.	E	175
Earl Hoffmeister	Knoxville, Tenn.	Jr.	E	185
Doug Loveday	Middlesboro, Ky.	Jr.	E	200
Gerald Moody	Dillon, S. C.	So.	E	185
Joe Pate	Birmingham, Ala.	Jr.	E	205
Bill Croach	N. Augusta, S. C.	So.	T	206
Elby Hammett	Spartanburg, S. C.	So.	T	200
Stuart Shuford	Walhalla, S. C.	So.	T	205
Bill Thomas	Laurinburg, N. C.	So.	T	197
Bill Thurston	Spartanburg, S. C.	So.	T	212
Will Verner	Spartanburg, S. C.	So.	T	220
John Vislosky	Republic, Pa.	Jr.	T	210
Wade Carter	Spartanburg, S. C.	Jr.	G	195
Gene Huff	Knoxville, Tenn.	Jr.	G	185
Glenn Miller	Greer, S. C.	Jr.	G	190
Bob Pollard	Knoxville, Tenn.	Jr.	G	190
Glenn Quick	Laurinburg, N. C.	Jr.	G	215
John Cottingham	Charleston, S. C.	So.	G	190
Gene Ram	Spartanburg, S. C.	So.	G	190
John Chambers	Kannapolis, N. C.	So.	G	212
Jim Hudson	Hendersonville, N. C.	Jr.	C	180
Robbie Cannon	Spartanburg, S. C.	Jr.	C	200
Harvey Moyer	Knoxville, Tenn.	Jr.	C	180
Bob Prevatte	Laurinburg, N. C.	Jr.	C	180
John Whitted	Panama City, Fla.	Jr.	C	150
John Fleming	Augusta, Ga.	Jr.	C	150
Phil Walpole	Johns Island, S. C.	Jr.	B	160
Eliot Cleatham	Knoxville, Tenn.	Jr.	B	160
Junior Harrison	Waycross, Ga.	Jr.	B	150
Dave Rice	Greensboro, N. C.	Jr.	B	150
Bob Harrison	Waycross, Ga.	Jr.	B	190
Webster Rowell	Andrews, S. C.	Jr.	B	220
John Clabo	Knoxville, Tenn.	Jr.	B	155
Rockwood, Tenn.		Jr.	B	155
Sammy Sewell	Spartanburg, S. C.	Jr.	B	165
Bob Starnes	Chattanooga, Tenn.	So.	B	170
Jimmy Brock	Spartanburg, S. C.	Jr.	B	165
Phil Clark	Spartanburg, S. C.	Jr.	B	170
Luther Glenn	Greenville, S. C.	Jr.	B	165

SCORE	1	2	3	4	TOTAL

OFFICIALS

Referee: Milton McEwen (Florida)
 Umpire: Julian Lane (Florida)
 Linesman: Jack Puryear (Oglethorpe)
 Field Judge: Ed O'Reilly (Tampa)
 Sideline Judge: Joe Dalton (Florida)

FLORIDA STATE UNIVERSITY

Don Vetter, Coach

PROBABLE STARTING LINEUP

LE	LT	C	RT	RE
Hewitt 172	Kendrick 180	Marcus 180	Adams 205	Eubanks 190
LG	QB	RG		
Dawkins 190	Foy 198	Morrison 220		
LHB	FB	RHB		
MacLean 190	Strauss 185	Parish 170		
Ernie Reddick	Chipley, Fla.	Sr.	B	153
Ralph Chaudron	Pensacola, Fla.	Jr.	B	170
John Quinn	Live Oak, Fla.	Jr.	B	175
Leonard Melton	Tallahassee, Fla.	Jr.	E	155
Ted Hewitt	Detroit, Mich.	Jr.	E	172
Louis Sartton	Mishawaka, Ind.	Fr.	E	163
Vic Szecepanik	Tallahassee, Fla.	Fr.	E	162
Bick Peterson	Rochester, Pa.	Fr.	E	180
Wyatt Parish	Chicago, Ill.	Jr.	B	190
Bo Mangel	Bonifay, Fla.	Jr.	B	170
George Spurling	Newbury, Fla.	Fr.	T	200
Dan McCure	Stuart, Fla.	Jr.	T	181
Bob Watt	Tallahassee, Fla.	Fr.	G	185
Marvin Ughart	Bonifay, Fla.	Fr.	G	181
Bob Tully	Tallahassee, Fla.	Fr.	G	165
Joe Marcus	Miami, Fla.	So.	T	190
Dwight Osha	Uniontown, Pa.	Jr.	C	180
Walter Foy	St. Augustine, Fla.	Jr.	C	198
Ken MacLean	Quincy, Fla.	Jr.	B	190
Buddy Strauss	Tallahassee, Fla.	Jr.	B	185
Curtis Campbell	Pensacola, Fla.	Fr.	G	161
Frank Marcus	Uniontown, Pa.	Jr.	C	185
Monte May	Miami, Fla.	Jr.	C	192
Bob Johnson	Rochester, Pa.	So.	B	155
Harry Bringer	Winter Haven, Fla.	Fr.	E	180
W. A. Dub Kendrick	Center Hill, Fla.	So.	E	190
Norman Eubanks	Clearwater, Fla.	Jr.	E	188
Chris Banakas	Panama City, Fla.	Jr.	T	220
Jerry Morrill	South Bend, Ind.	Jr.	G	205
Hugh Adams	Punta Gorda, Fla.	Jr.	T	210
Loren Malby	Port Orange, Fla.	Jr.	T	175
Bob Duckworth	Clearwater, Fla.	Jr.	E	195
Glenn Allen	Port Wayne, Ind.	Fr.	T	175
Jim Grossman	Willoughby, Ohio	So.	T	190
Bob Schmelz				

Footballs for the game provided by Knight & Wall Hardware Co. as a gift to the Shrine Hospital Fund.

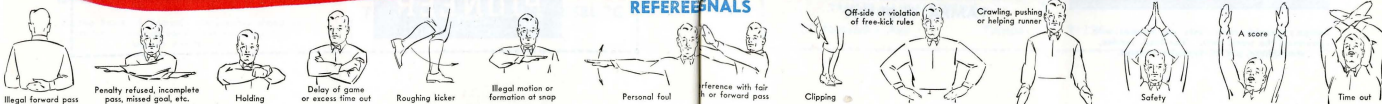
Coke=Coca-Cola

"Coca-Cola" and its abbreviation "Coke" are the registered trademarks which distinguish the product of The Coca-Cola Company.

Have a Coke

Coca-Cola

REFEREES





COLUMBIA
Gem of Spanish Restaurants
TAMPA, FLORIDA

Tampa's Spanish restaurants are famous with gourmets the world over. The food, service, atmosphere, are all typically Spanish.

SALLY'S GRILL

**Fast Courteous and
Friendly Service**

612 Franklin St. Tampa, Fla.

Compliments

U. S. TIRE SUPPLY, INC.

B. K. McCULLOUGH

Lafayette & Morgan Tampa, Fla.

Latin-American Furniture Co.

Phone Y 1584

1721 E. Broadway Tampa, Fla.

SPARKS & JORDAN CO.

**PAINTS
HARDWARE
SPORTING GOODS**

5511 Nebraska Ave. Tampa, Fla.

TONY WEIR USED CARS

HILLSBORO SHOE HOSPITAL

HATS CLEANED & BLOCKED

**SERVICE WHILE YOU WAIT
PHONE 2-61902**

410 Tampa St. Opposite Gas Co.

LANGS ICE CREAM

WEST COAST TRAILER SALES

**RETAIL SALES & PARTS
TRAILER MANUFACTURING**

5100 Nebraska Ave. Tampa

Compliments of

UNIVERSITY OF TAMPA

First on the West
Coast

TAMPA TRIBUNE

COLONIAL COFFEE MILLS

TAMPA, FLA.

Compliments

ARTILLERY SERVICE STATION

Cor. Howard & Cass Tampa, Fla.

OUR NEW HOME DeSOTO BATTERY AND ELECTRIC CO.

Cass at Central Tampa

ALPAUGH PLUMBING SUPPLY

2308 Florida Ave. Tampa

WE WELCOME YOU TO PADDOCK BAR AND COCKTAIL LOUNGE

309 Morgan St. Tampa, Fla.

ANDREW SANCHEZ

**SPANISH SAUSAGES
CHORIZOS**

2112 - 12th Ave. Tampa, Fla.



The Midway amusement area at the Florida State Fair grounds is always the center of attraction at Fair time.

THE HOME OF
ROYAL AMERICAN SHOWS
THE WORLD'S LARGEST MIDWAY
TAMPA, FLORIDA



Borden's

HOMOGENIZED
VITAMIN D MILK

PASTEURIZED MILK

CHOCOLATE MILK

CREAM

BUTTERMILK

COTTAGE CHEESE

ICE CREAM

Lady Borden ICE CREAM

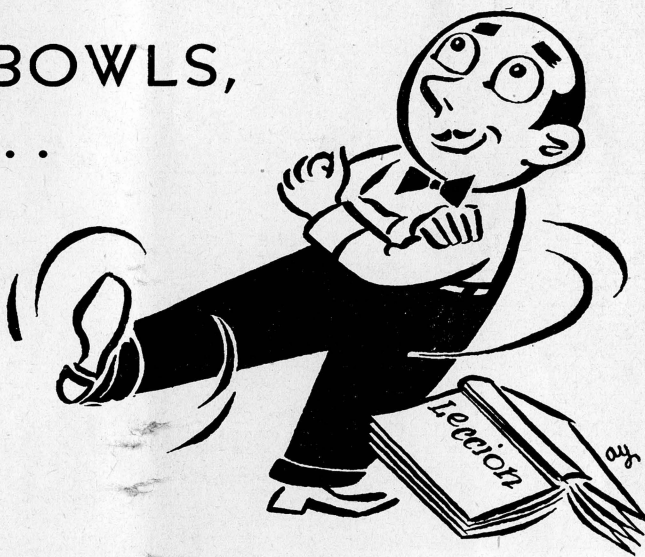


IF IT'S BORDEN'S, IT'S GOT TO BE GOOD



Speaking of BOWLS,
amigos . . .

... MY DELICIOUS
SPANISH BEAN SOUP
IS A MIGHTY POPULAR
BOWL, TOO.
ENJOY IT OFTEN!



Phone Y-1191

Spanish Park

RESTAURANT



Ah, amigos . . . whether my tasty Spanish Bean Soup is your favorite "bowl"—or my thick, juicy filet the "dish" you desire—my menu is filled to capacity with delicious Spanish dishes that have been scoring with delighted diners for years. Si, si . . . you'll be pleased with our colorful atmosphere, gracious service and sensible prices, too!

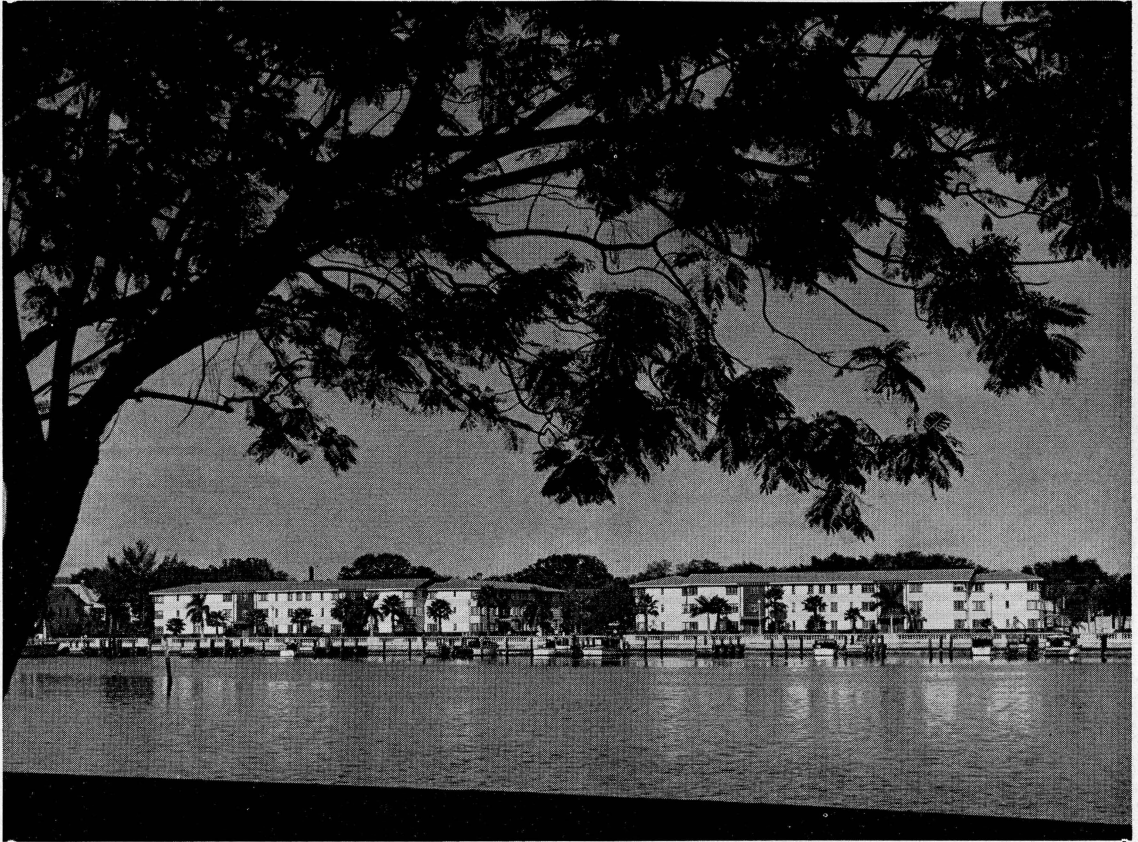
FELIPE,
the Spanish Park waiter



**HOTEL
THOMAS JEFFERSON**

FRANKLIN AND WASHINGTON STS.

Bayshore Gardens



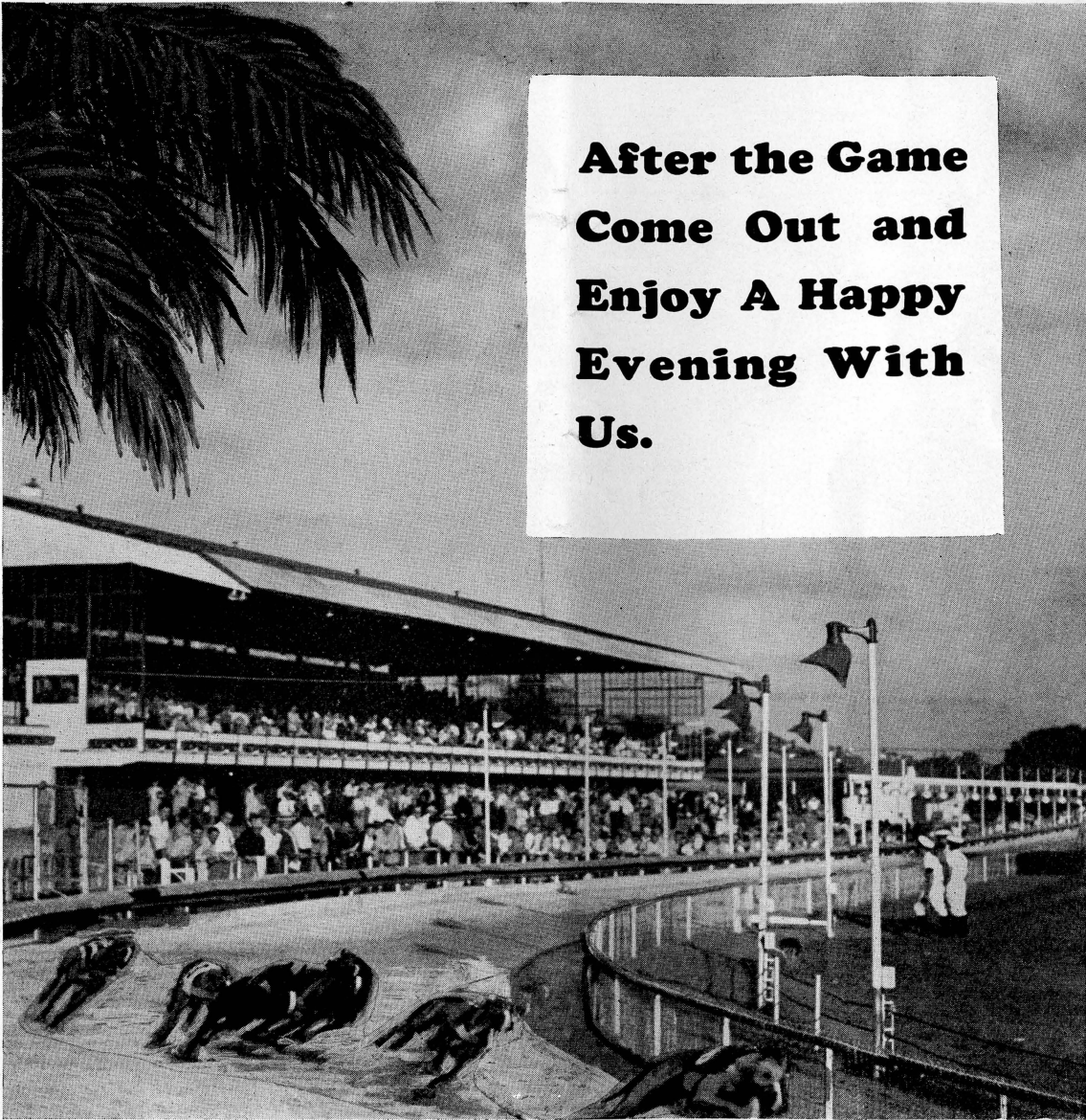
Tampa's Newest and Finest
APARTMENTS

Phone H5954



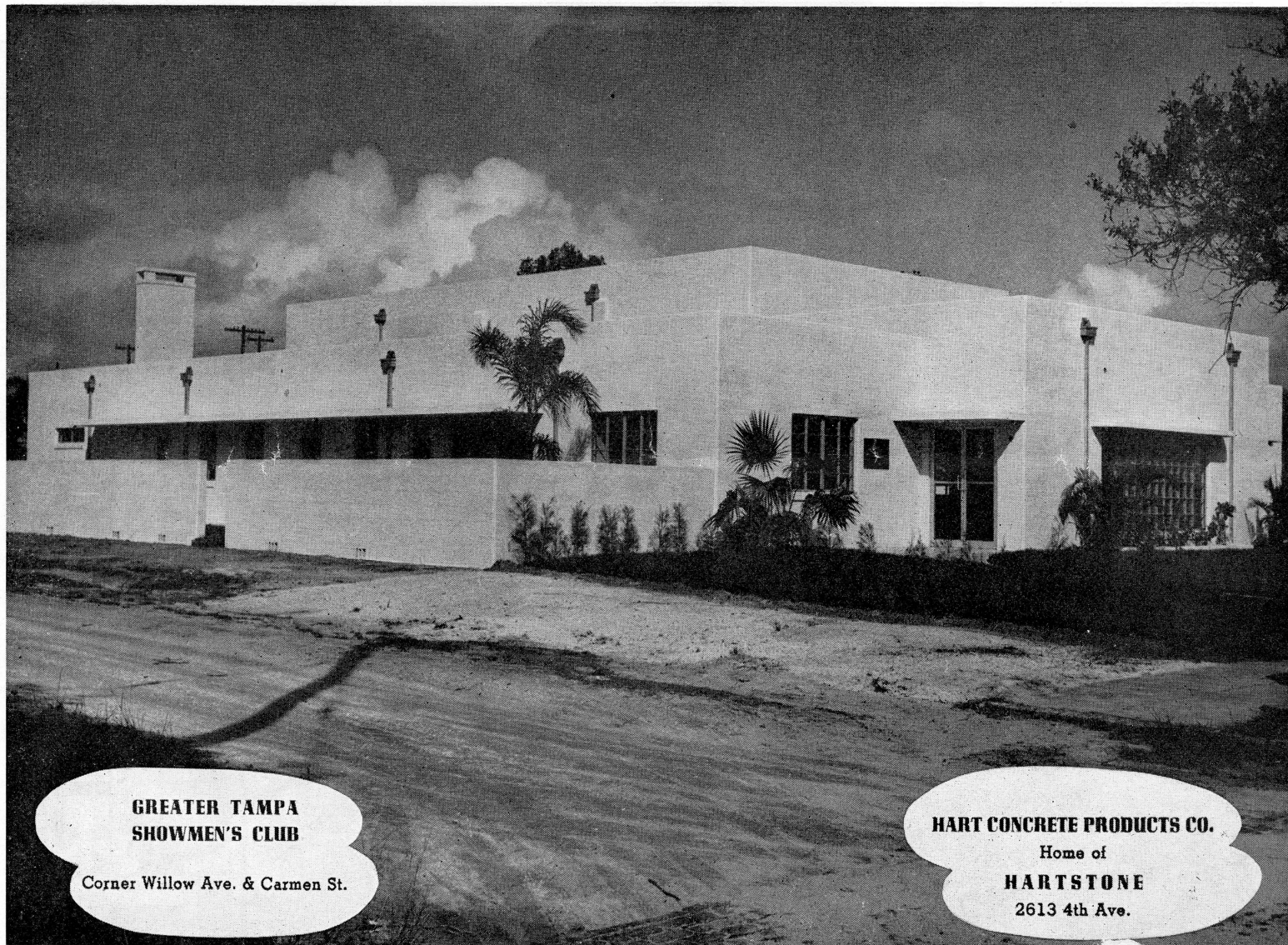
CIGAR INDUSTRY OF TAMPA

The skilled fingers of native Cuban workmen
produce "The Aristocrat of Cigars"
the Tampa hand-made clear Havana.



**After the Game
Come Out and
Enjoy A Happy
Evening With
Us.**

TAMPA DOG TRACK
"The Finest In Greyhound Racing"
TAMPA DOG TRACK



**GREATER TAMPA
SHOWMEN'S CLUB**

Corner Willow Ave. & Carmen St.

HART CONCRETE PRODUCTS CO.

Home of

HARTSTONE

2613 4th Ave.