

Doak S. Campbell

Stadium

Tallahassee, Fla.

Saturday Night

November 18, 1950

8:00 p.m.



LIBRARY
FLORIDA STATE UNIVERSITY
TALLAHASSEE, FLORIDA

FLORIDA STATE UNIVERSITY

MISSISSIPPI COLLEGE # 7

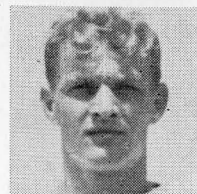
**OFFICIAL PROGRAM
TWENTY-FIVE CENTS**



DOUBLE YOUR SAVINGS

it's easy!

Higher than average dividends
increase your savings income.



Tom Brown
Halfback

DOUBLE YOUR PROTECTION

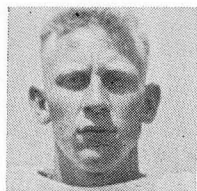
Savings Now Insured To
\$10,000.00

By

Federal Savings & Loan Insurance Corp.

**Tallahassee Federal Savings
& Loan Association**

115 East Park Avenue



Gary Folsom
Halfback

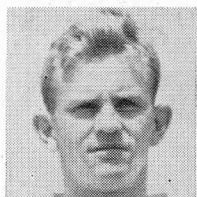
Won't you

HAV-A-TAMPA

Cigar

Eli Witt Tobacco & Candy Co.

TALLAHASSEE, FLORIDA



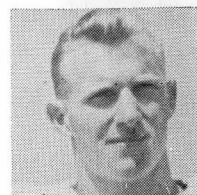
Eddie Gray
Halfback

"Keep your faith in the Seminoles . . .
Put your duds in our suds."



ACE Laundry & Dry Cleaning, Inc.

BRANCH OFFICE WEST CAMPUS



James Arnold
End



Welcome

Florida State University is pleased to be host today to Mississippi College of Clinton, Mississippi. This institution, established in 1826, is one of the oldest Colleges in the entire South and has a notable history in the development of substantial leadership.

Athletic relations with this institution have been pleasant since we began intercollegiate athletics. The Seminoles consider the Choctaws as worthy adversaries.

Sincerely,

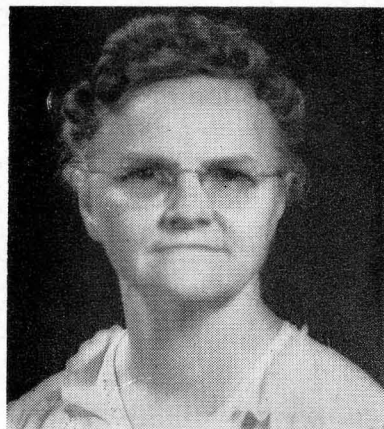
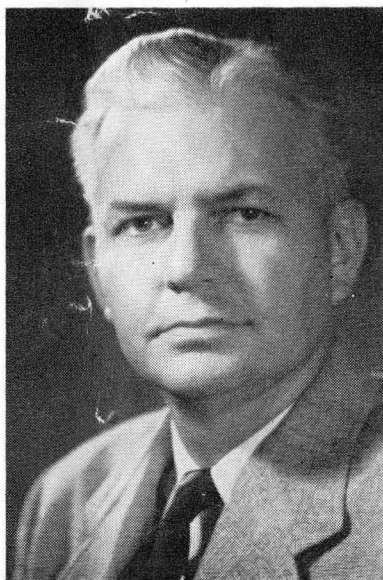
President.

ATHLETIC COMMITTEE MEMBERS



JOHN NEWTON BAKER, Director of Public Relations, came to Florida State University in April, 1948. He is a graduate of the University of Tennessee where he received his BS, AB and MA degrees. Baker has written a textbook on social sciences which is used in many schools today. Very active in civic affairs of the community, he is program chairman of the Tallahassee Rotary Club. Baker has been a member of the Athletic Committee since July, 1948.

DR. J. BROWARD CULPEPPER, Dean of Student Welfare, has been at Florida State since July, 1946. Dr. Culpepper received his AB and MAE degrees from the University of Florida, his MA and Ed.D degrees from Columbia University. He is co-author of "The Emotionalized Attitudes," a contribution of research to teachers concerned with learning conduct and character. He has been a member of the Athletic Committee since its inception in 1947.



DR. KATHERINE W. MONTGOMERY, Director of Physical Education for Women at Florida State University, has been on the FSU faculty since her graduation from FSCW in 1918. She has held her present position since the department was created in 1923. Dr. Montgomery received her AB degree from FSCW, her MA from Columbia University and her Ed.D degree from New York University. She is author of the much used textbook, "Volleyball for Women." Miss Montgomery has been a member of the Athletic Committee since July, 1949.



Mac Huey
Quarterback



**"Whatever the Sport We
Furnish the Equipment"**



Distributors for

RAWLINGS • REACH • WRIGHT
& DITSON • SPALDING • VOIT
SPOTBILT SHOES
GRANDVILLE AWARD SWEATERS



HARRY FINKELSTEIN CO.

633 West Bay St.

• Jacksonville, Fla.



Bob O'Connell
Center



Preston Bradley
Fullback

P. W. WILSON COMPANY

TALLAHASSEE'S BEST STORE

SINCE 1837

Men's Clothing
and Furnishings

Shoes

Ladies' Ready-to-Wear
Home Furnishings
Piece Goods
Millinery
Notions



Pat Harris
End

TELEPHONE 2-2310

TALLAHASSEE, FLORIDA

F. S. U. COACHING STAFF



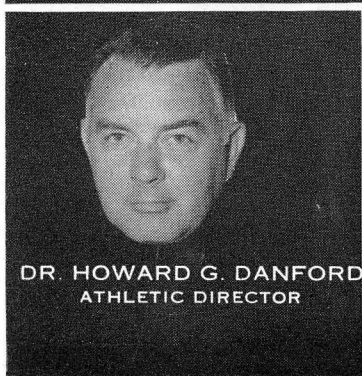
CHARLIE ARMSTRONG
ASSISTANT COACH



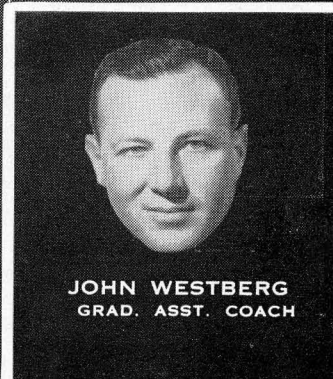
DON A. VELLER
HEAD COACH



BOB HARBISON
ASSISTANT COACH



DR. HOWARD G. DANFORD
ATHLETIC DIRECTOR



JOHN WESTBERG
GRAD. ASST. COACH

THE FLORIDA STATE UNIVERSITY MEN'S PHYSICAL EDUCATION STAFF

DR. HOWARD G. DANFORD, Athletic Director and Director of Men's Physical Education.

DR. DONALD A. VELLER, Head Football Coach and Chairman of Intercollegiate Athletics.

J. K. "BUD" KENNEDY, Head Basketball Coach.

BILL WEIGEL, Graduate Assistant Basketball Coach.

DR. KENNETH MILLER, Head Track Coach.

DR. HARTLEY S. PRICE, Head Gymnastics Coach.

N. B. "BIM" STULTS, Head Swimming Coach.

BILL ODENEAL, Head Volleyball Coach.

JACK HASKINS, Director of FSU Circus.

CHARLIE ARMSTRONG, Assistant Football Coach and Head Baseball Coach.

BOB HARBISON, Assistant Football Coach and Head Golf Coach.

JOHN WESTBERG, Graduate Assistant Football Coach in charge of "B" Squad.

RALPH MATHERLY, Graduate Assistant Football Coach.

DAVE THOMAS, Graduate Student assisting the Football Staff.

DONALD LOUCKS, Head Tennis Coach. (On year leave.)

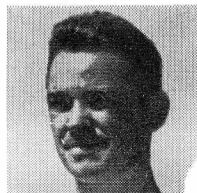
GEORGE HAYGOOD, Athletic Business Manager.

DR. TOM BROOKS, Team Physician, all sports.

EDDIE KWEST, Head Trainer, all sports.

E. P. "NED" WEST, Director of Sports Publicity.

SCOTT MARSHALL, student assistant to Sports Publicity Director.



Dave Thomas

JIM DeCOSMO, Assistant Director of FSU Circus.

MAX BAYARD, Graduate Assistant with the Circus.

ED WILLIAMSON, Director of Intramural Athletics.

SHELDON HILAMAN, Student Assistant of Intramural Athletics.



Ralph Matherly

See Page 22 for Officials' Signals and Penalties



Ernest Huggett
Halfback

CARTER'S

YOUR FRIENDLY SPORT STORE

The Home of MacGregor-Goldsmith Sports Equipment

NO-AWL TENNIS RACKET RESTRINGING MACHINE

"IT PAYS TO PLAY"

117 South Adams Street

TALLAHASSEE, FLORIDA

DIAL 2-0054



Earl McPherson
Center

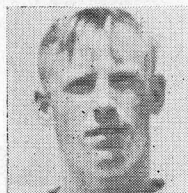


Vic Szczepanik
Tackle

SHOUT FOR THE SEMINOLES

AND

BANK WITH US!

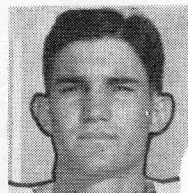


Phillip Alvers
Halfback



Fred Moates
Guard

THE LEWIS STATE BANK
SINCE 1856
Florida's Oldest
TALLAHASSEE



Curt Campbell
End

MEMBER FEDERAL DEPOSIT INSURANCE CORPORATION

Scalp 'em Seminoles!

Seabrook Hardware Company

HEADQUARTERS FOR WILSON SPORTING GOODS

JOHNSON OUTBOARD MOTORS

FISHING TACKLE

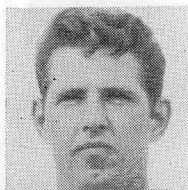
FIREARMS



Leslie High
Center

213 S. Adams

Telephone 2-5850



Bill Driver
Quarterback

MEET THE SEMINOLES

Tackle LOREN "DUKE" MALTBY will captain the 1950 Florida State University football team. . . . Duke's value to the team can best be illustrated by saying he may be used at tackle, guard and center before the season is over. . . . He does a fine job at all three positions and is a hard working leader. . . .

End JAMES ARNOLD is the smallest man on the Florida State squad, yet his defensive play rates him with the best. . . . He is a Freshman. . . . Tackle SAM BAKER is one of the largest boys on the squad at 220 pounds and he likes the going rough. . . . Halfback WAYNE BENNER runs and punts well, but is outstanding as a passer. . . . Much of Florida State's success this season will depend on his good right arm. . . . Halfback HARRY BRINGGER was one of the few Freshmen to earn a letter last Fall. . . . He is at his best on defense, being particularly adept at knocking down or intercepting enemy passes. . . . Halfback TOM BROWN is rated top defensive back on the squad. . . . Tom recently returned to the team after missing several games due to injuries. . . . Guard BILL DAWKINS, an outstanding player at Florida State the past two seasons, needs no introduction. . . . Bill is a top candidate for Little All-America honors. . . . Quarterback BILL DRIVER, a lanky newcomer, passes well and is a capable play selector. . . .

End NORMAN "CHIEF" EUBANKS has the biggest hands on the squad, and you'd swear there is glue all over them when he makes those "impossible" pass catches. . . . End TED HEWITT, also a letterman at basketball and golf at Florida State, will play end on offense and halfback on defense for the Seminoles. . . . Quarterback MAC HUEY is one of the top Freshmen on the squad. . . . He is an excellent blocker and lacks only experience. . . . Halfback ERNIE HUGGETT is expected to fill a need that Florida State has had ever since it became co-educational in 1947. . . . Hug can kick those extra points after touchdowns, and he has looked very good as a kick-off artist. . . . Halfback NELSON ITALIANO runs well, blocks well, throws well—what more can you say? . . . Center STEVE KALENICH is a Freshman who is coming right along in his attempt to fill the shoes of graduated Joe Marcus, last year's most valuable player. . . .

Tackle W. A. "DUB" KENDRICK will also be used at end by Coach Veller this Fall. . . . Dub has been one of the big reasons Florida State has had championship teams the past two years. . . . Fullback DICK TURK, a hard running Sophomore, has been the surprise of early season games. . . . Tackle CARMINE LOMBARDI is rated one of the Seminole's best Freshmen linemen. . . . He's a standout on defense. . . . Center MONTE MAY will be seeking his third letter at Florida State and is also used some at guard. . . . Guard WALT MILLER is big and powerful. . . . He will see plenty of action this Fall. . . . Guard EARL O'NEAL is a Georgia boy with junior college experience who doesn't talk much but plays lots of football. . . . Tackle DWIGHT OSHA will also be used at end this Fall. . . . "Big Osh" is rated by many as one of Florida State's all-time great linemen. . . . Halfback EDDIE GRAY, a former Leon High of Tallahassee star, is showing up well at right halfback. . . . He is just a Freshman. . . . End CLIFFORD POWELL is a big boy from Wrightsville, Georgia, who blocks and tackles well. . . . He is a Freshman. . . . Guard BOB SCHMELZ, injured most of last season, figures heavily in Coach Veller's plans for 1950. . . . He will play some at end on defense. . . . Fullback MILAN "MIKE" SELLERS has consistently been Florida State's big gun this Fall. . . . Mike hits hard into the line and can go all the way with hips flying if he gets into the secondary. . . . Tackle VIC SZCZEPANIK showed much promise as a Freshman last year and should be at his best in 1950. . . .

Freshmen ends PAT HARRIS, JOE WHITE, DICK SUTHERLAND, CLINT THOMAS and JOHN HEDRICK are all coming along fine and will see action this Fall. . . . With just a little improvement tackles BILL HOPPE, LAWRENCE MERO or BOB WODRICH could be pushing for a starting berth at their position. . . . Looking best of the Freshmen guards are WENDELL DENNIS and FRED MOATES. . . . JACK PHILLIPS and GEORGE SPURLING have been held back by injuries. . . . Center candidates in addition to Kalenich and May, include BOB O'CONNELL, TOMMY OWEN, LESLIE HIGH and ED LOCKARD, any of which might move up if the others falter. . . . DON GLADDEN is a promising Freshman quarterback. Held back by injuries earlier this season, Gladden has moved up fast in recent weeks. . . . PRESTON BRADLEY, RAY INLOW and DON LINTON are battling with Sellers and Turk for the fullback job, while among the better halfback prospects not mentioned before are PHILIP ALVERS, GARY FOLSOM (who may turn out to be a great passer), JOE WELLS and JACK TINNEY. . . .



CAPTAIN LOREN "DUKE" MALTBY

I lead the crowd in "Rah Rah Rah"
To cheer the team we like;
But when it comes to cigarettes
I cheer for Lucky Strike!

I really am a Lucky guy,
Just got my Ph. D.
To prove to you how much I know,
L.S., sir means F.T.



Be Happy- Go Lucky!

Enjoy your cigarette! Enjoy truly fine tobacco
that combines both perfect mildness and rich
taste in one great cigarette - Lucky Strike!

Perfect mildness? You bet. Scientific tests,
confirmed by three independent consulting
laboratories, prove that Lucky Strike is milder
than any other principal brand. *Rich taste?*
Yes, the full, rich taste of truly fine tobacco.

Only fine tobacco gives you both real mildness
and rich taste. And Lucky Strike means fine
tobacco. So enjoy the happy blending that com-
bines perfect mildness with a rich, true tobacco
taste. Be Happy—Go Lucky!



LS./M.F.T.-
Lucky Strike
Means Fine Tobacco

Some claim this and some claim that,
But when all is said and done...
For full, rich taste and mildness, too,
Lucky Strike's the one!

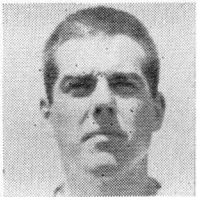




**BEST OF LUCK . . .
SEMINOLES!**



Bill Dawkins
Guard



Bill Hoppe
Tackle

**J. D. WILLIAMSON
ED STEINMEYER
JANIE BIXLER
MARVIN COLLINS, JR.
MERRIE BLAND**



Tommy Owen
Center-End

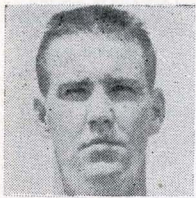


Don Gladden
Quarterback

Williamson & Steinmeyer
REAL ESTATE • INSURANCE

Washington Square Bldg.

Telephone 3-0360



Dwight Osha
Tackle

For
**CORDIAL
PROGRESSIVE
FRIENDLY**
Banking

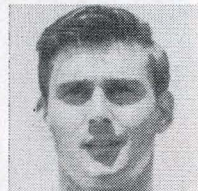
think first of

CAPITAL CITY NATIONAL BANK

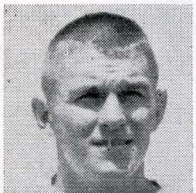
of Tallahassee

— MEMBER —

FEDERAL DEPOSIT INSURANCE CORPORATION
FEDERAL RESERVE BANK



Nelson Italiano
Halfback



Wayne Benner
Halfback

Rock 'em Seminoles!

Wash Your Dirty Clothes at
THE

Laundromat

Equipped with Westinghouse
Automatic Washers

Gets clothes snowy-white,
shiny-bright!

Drying and Folding Service
Tintexing • Dry Cleaning

POPULAR PRICES

PHONE 3-1789

SCORE A TOUCHDOWN!

Take Your Car to

Tom Brown's

SHELL OIL PRODUCTS

Lubrication • Washing • Tires and
Tubes • Batteries • Accessories •
Steam Cleaning • Wheel Balancing
• Polishing • Simonizing.

OUR SERVICE IS COURTEOUS—OUR
WORK IS GUARANTEED

PHONE 3-1427

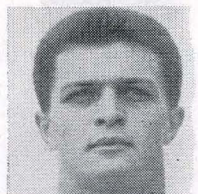
TOM BROWN'S

LAUNDROMAT
115 W. Tennessee

Next door to

SERVICE STATION
Tennessee & Adams

WHERE GOOD SERVICE IS A HABIT



Mike Sellers
Fullback

Have a Coke

DRINK

Coca-Cola

TRADE-MARK ®

FLORIDA STATE LINE-UP (OFFENSE)

SINGLE WING, UNBALANCED LINE

LE	LT	C	RG	RT	LG	RE
25 Hewitt	50 Kendrick	35 Kalenich	57 O'Neal	56 Baker	59 Schmelz	51 Eubanks
45 Campbell	30 Szczepanik	47 May	40 Osha	55 Maltby	39 Dawkins	23 Arnold
52 Powell	58 Lombardi	36 Lockard	38 Miller	33 Wodrich	12 Dennis	10 Thomas
						RH
						49 Bringer
						22 Gray
						20 Brown
						QB
						32 Driver
						40 Gladden
						24 Huey
						LH
						42 Italiano
						43 Benner
						21 Folsom
						FB
						44 Sellers
						34 Turk
						14 Inlow

MISSISSIPPI COLLEGE LINE-UP (DEFENSE)

SIX, TWO, TWO, ONE

<u>LE</u>	<u>LT</u>	<u>LG</u>	<u>RG</u>	<u>RT</u>	<u>RE</u>
84	66	72	64	75	83
Case	B. Wilson	J. Wilson	Wills	Thornton	Macunas
	<u>FB</u>		<u>C</u>		
	32		54		
	Roberts		Allen		
<u>LH</u>		<u>SAFETY</u>			<u>RH</u>
43					25
Rogers		34			McNeil
		Cassell			

(See line-ups on page 14 for Mississippi College offense and FSU defense.)

OFFICIALS

Referee—Duck Rahaim (Georgetown); Judge—Archie Carter (Auburn);
Umpire—G. C. Monroe (Jax Jr. College); Lineman—Holmes Tucker (Yale).

Tallahassee Coca-Cola Bottling Company

FLORIDA STATE SQUAD

(Asterisk indicates letterman)

No.	Name	Class	Pos.	Age	Ht.	Wt.
10	Clint Thomas	'54	E	18	5-11	158
11	Joe Wells	'54	HB	20	5-7½	160
12	Wendell Dennis	'54	G	18	5-10½	170
13	Joe White	'53	E	18	6-	171
14	Ray Inlow	'54	FB	19	5-10	170
15	Jack Tinney	'54	HB	19	5-9	160
16	Tommy Owen	'54	C	18	6-½	170
18	Fred Moates	'54	G	17	6-	165
19	Phillip Alvers	'54	HB	19	5-11	175
20	Tom Brown	'53	HB	21	5-11	155
21	Gary Foisom	'54	HB	18	5-11½	155
22	Eddie Gray	'54	HB	18	5-10	155
23	James Arnold	'54	E	19	5-8½	152
24	Mac Huey	'54	QB	17	5-10½	190
25	*Ted Hewitt	'51	E	24	5-10½	167
26	Bob O'Connell	'53	C	20	6-1	175
27	Preston Bradley	'52	FB	23	5-6	175
28	Pat Harris	'54	E	18	6-	173
29	Ernest Huggett	'52	HB	23	5-8½	177
30	*Vic Szczepanik	'53	T	22	5-10½	190
32	Bill Driver	'51	QB	22	6-2	205
33	Bob Wodrich	'54	G-T	19	6-½	190
34	Dick Turk	'53	FB	21	5-10	190
35	Steve Kalenich	'54	C	21	5-11	180
36	Ed Lockard	'53	C	18	6-1	186
37	Dick Sutherland	'54	HB-E	19	5-11	170
38	Walt Miller	'51	G	23	5-11	195
39	*Bill Dawkins	'52	G	21	5-11	195
40	Don Gladden	'54	QB	19	5-10½	177
41	*Dwight Osha	'52	T	20	6-1	220
42	Nelson Italiano	'52	HB	22	5-11	177
43	Wayne Benner	'51	HB	23	5-11	190
44	Mike Sellers	'52	FB	23	6-1	215
45	Curtis Campbell	'53	E	21	6-1	170
46	Jack Phillips	'52	G	20	6-	195
47	*Monte May	'52	C	20	6-1½	188
49	*Harry Bringger	'53	HB	20	5-11	164
50	*Dub Kendrick	'51	T	24	6-	185
51	*Norman Eubanks	'51	E	21	6-2	185
52	Cliff Powell	'54	E	22	6-½	200
53	John Hedrick	'54	E	18	6-1½	180
54	Don Linton	'53	HB	22	6-	205
55	*Duke Maltby (Capt.)	'51	T	23	5-11	225
56	Sam Baker	'51	T	24	6-3	226
57	Earl O'Neal	'53	G	22	6-	197
58	Carmine Lombardi	'54	T	18	5-10	200
59	*Bob Schmelz	'52	G	23	6-	195
60	Bill Hoppe	'53	T	19	5-11	205
61	Lawrence Mero	'54	T	19	6-1	175
62	Earl McPherson	'54	C	18	6-	175
63	George Spurling	'53	G	19	5-9½	200
64	Leslie High	'51	C	23	5-10½	180

THE LARGEST SELLING CIGARETTE IN AMERICA'S COLLEGES

BY LATEST NATIONAL SURVEY



MISSISSIPPI COLLEGE SQUAD

No.	Name	Pos.	Age	Ht.	Wt.
21	James Henderson	B	20	5-8	160
22	Billy Lowe	B	19	5-8	160
23	Bobby Spell	B	20	5-11	160
24	Wayne Black	B	19	6-	170
25	Van McNeil	B	18	5-10	160
26	David Lee	B	21	5-11	160
27	Stanley Martin	B	19	6-	160
28	Bob Smith	E	20	6-1	200
31	H. O. Parker	B	20	5-6	150
32	Billy Roberts	B	21	5-9	160
33	William Causey	B	20	5-10	160
34	William Cassell	B	22	6-1	170
41	John Byrd	B	19	5-10	160
42	J. T. Gilbert	B	20	5-9	160
43	Milben Rogers	B	22	5-11	160
44	Chas. Fail	B	21	5-10	180
52	Richard McWilliams	C	19	5-9	170
54	Gene Allen	C	22	6-	190
56	Murphy Lowther	G	24	6-	220
62	Charles Warwick	T	19	6-	190
64	Robert Wills	G	22	5-11	190
65	Arnold Gordon	G	22	5-11	176
66	Bill Wilson	G	20	6-2	190
67	Arthur Culpepper	T	20	6-	185
71	Robert McRae	T	22	6-	200
72	James Wilson	T	23	6-1	192
73	Lester Ray	T	22	6-	200
75	Hansel Thornton	T	20	6-	200
76	Wade Bass	T	23	5-10	220
77	Michel Mullins	G	22	6-	210
81	Bob Clark	E	20	6-	170
82	John Curlee	E	23	5-10	170
83	Leonard Macunas	E	24	5-10	170
84	Robert Case	E	23	6-	170
85	Walter Holland	E	19	5-8	165
86	Ruel Denson	E	20	6-2	205
87	Bobby Hannah	E	19	5-11	167

Always **B**uy **MUCH** **MILDER** **C**CHESTERFIELD

Have a Coke

DRINK

Coca-Cola

TRADE-MARK ®

MISSISSIPPI COLLEGE LINE-UP (OFFENSE)

DOUBLE WING, UNBALANCED LINE

LE 84 Case	LG 72 J. Wilson	C 54 Allen	RG 56 Lowther	RT 75 Thornton	LT 66 B. Wilson	RE 83 Macunas
LH 34 Cassell				QB 43 Rogers		RH 24 Black
		FB 26 Lee				

FLORIDA STATE LINE-UP (DEFENSE)

SIX, TWO, TWO, ONE

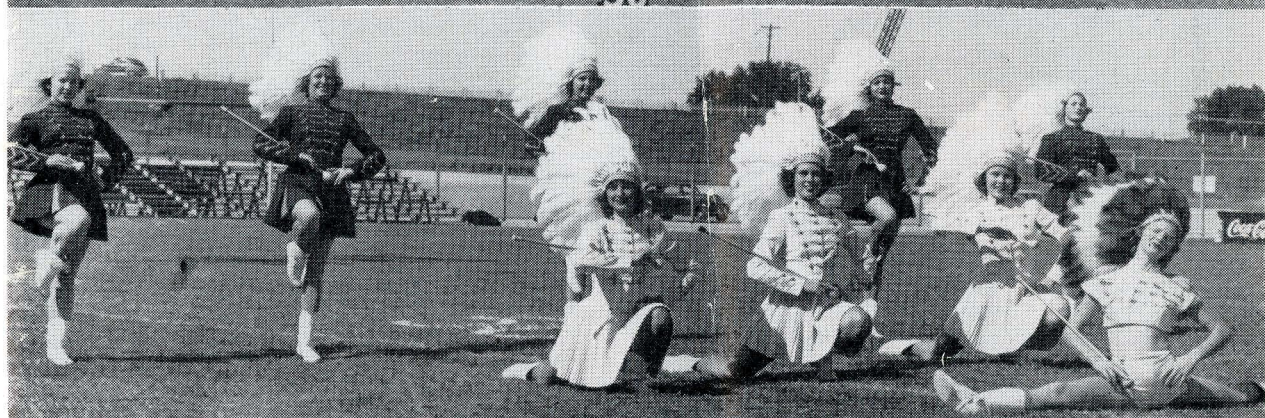
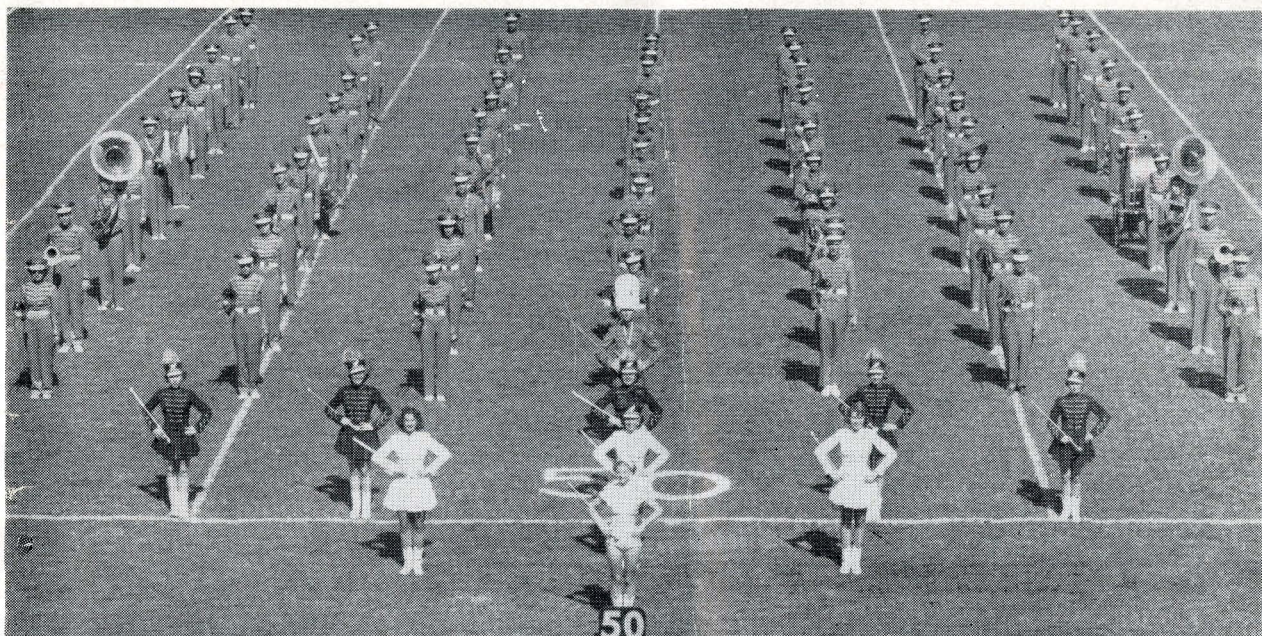
LE 23 Arnold 52 Powell	LT 59 Schmelz 33 Wodrich	LG 56 Baker 58 Lombardi	RG 50 Kendrick 30 Szczepanik	RT 41 Osha 55 Maliby	RE 24 Huey 53 Hedrick
	FB 44 Sellers 36 Lockard		C 39 Dawkins 40 Gladden		
LH 43 Benner 32 Driver		SAFETY 20 Brown 49 Bringger			RH 25 Hewitt 22 Gray

(See line-ups on page 11 for FSU offense and Mississippi College defense.)

OFFICIALS

Referee—Duck Rahaim (Georgetown); Judge—Archie Carter (Auburn);
Umpire—G. C. Monroe (Jax Jr. College); Lineman—Holmes Tucker (Yale).

Tallahassee Coca-Cola Bottling Company



Jack Phillips
Guard

YEA SEMINOLES!
BEFORE AND AFTER THE GAME



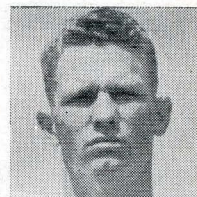
George Spurling
Guard

MEET YOUR FRIENDS
AT
THE MECCA

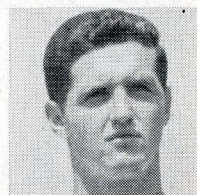
111 South Copeland Street

QUICK SERVICE

GOOD FOOD AND SUNDRIES



Ray Inlow
Fullback

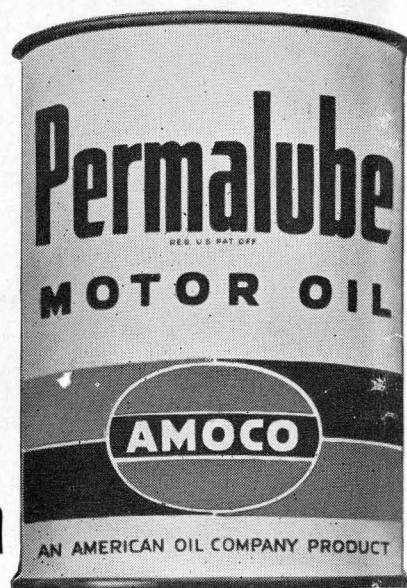


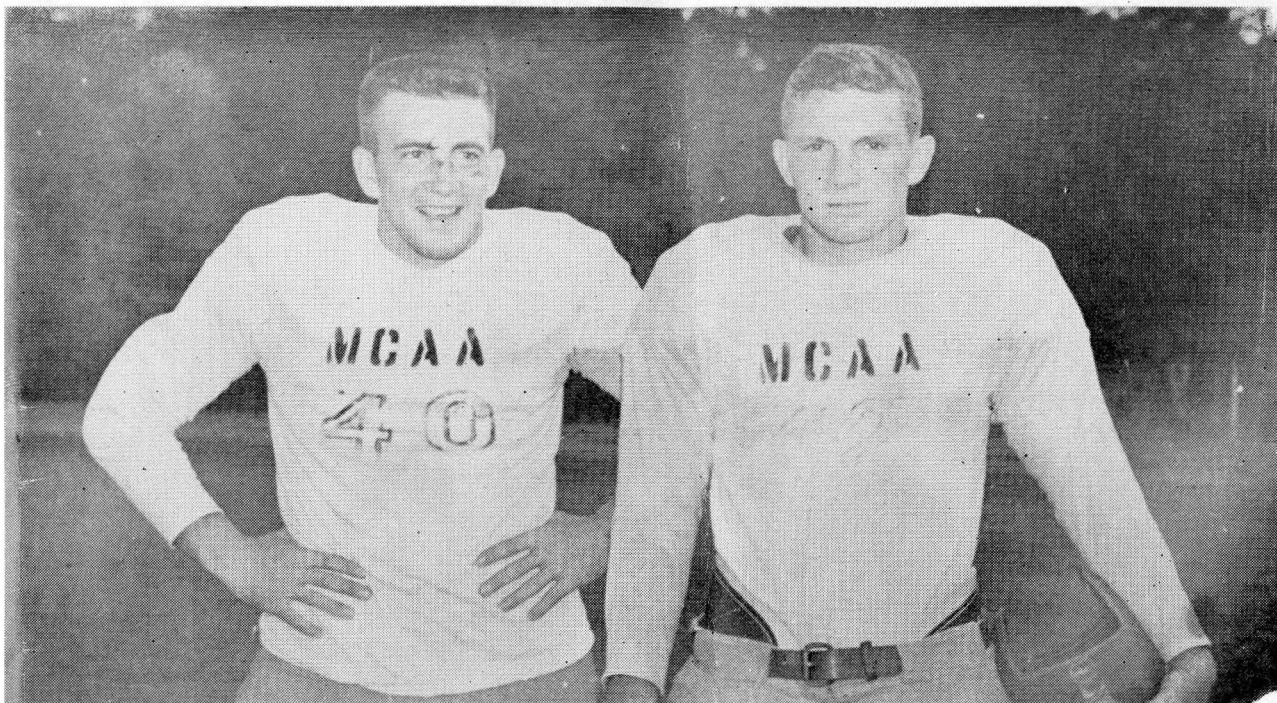
Monte May
Center

Gain more distance with



Block out engine wear with





Bill (left) and Jim Wilson, Choctaw linemen.

THE MISSISSIPPI COLLEGE CHOCTAWS of Clinton, Mississippi

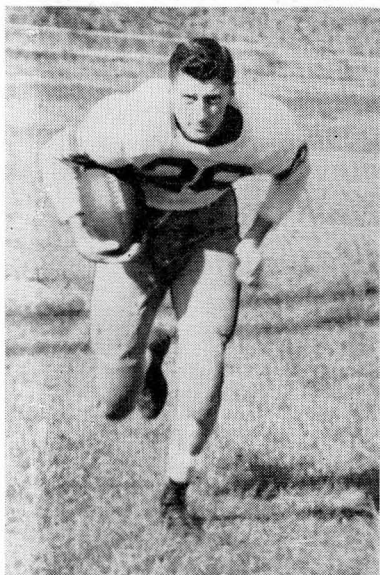
The Mississippi College Choctaws bring to Tallahassee perhaps the finest team to meet the Florida State University Seminoles in Doak S. Campbell Stadium this Fall. The Choctaws go on the field tonight with a record of six victories against only one defeat.

Mississippi College opened its 1950 season in the red by losing to Arkansas A. & M. 27-0. Since then, however, the Choctaws have defeated in succession Union University, Marion Institute, Southwestern of Memphis, University of the South (Sewanee), Millsaps College and Howard College.

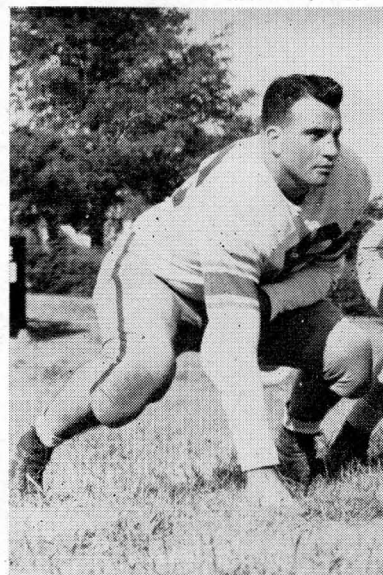
Mississippi College is coached by Stanley S. Robinson, who is also the school's Athletic Director and is President of the Dixie Conference. Coach Robinson was a star halfback at Colgate University from 1911 through 1914. He served on the coaching staff of Mississippi State University before coming to Mississippi College as head coach in 1920. During the recent World War II, when Mississippi College did not field a team, "Robby" was line coach at Baylor University.

Coach Robinson has three capable assistants, all graduates of Mississippi College. Line Coach Wilson "Lefty" Fulton was a Little All-America end for the Choctaws in 1941, and also played pro ball with the Detroit Lions. Backfield Coach James McLeon played at Mississippi College from 1939 through 1941, and B team Coach Hollis Rutter quarterbacked the Choctaws in 1946 through 1949.

Mississippi College will operate from a double wing formation that features the running and passing of Fullback David Lee. All indications point to a great game today between the Choctaws and Florida State.



DAVID LEE
Fullback



MURPHY LOWTHER
Guard



Norman Eubanks
End

THE SWEET SHOP

GOOD FOOD

DELICIOUS SODAS

DRUG SUNDRIES

Meet Your Friends Here Before and
After the Game!

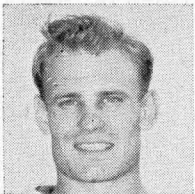
FOLLOW THE SEMINOLES!



Walt Miller
Guard



Harry Bringer
Halfback



Ted Hewitt
End



Dub Kendrick
Tackle

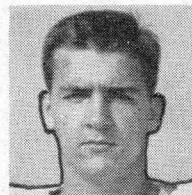
Victor's TALLAHASSEE CAFE

Wishes the Grid Team A
Successful Season
and
We Extend A Cordial
Invitation to
All Members, Students and
Fans to Dine with

VICTOR

WHERE FINE MEALS ARE SERVED
AT POPULAR PRICES

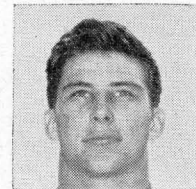
119 S. Adams, next to College Ave.



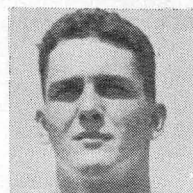
Ed Lockard
Center



Lawrence Mero
Tackle



Bob Wodrich
Tackle



John Hedrick
End



Dick Sutherland
End

C
H
E
E
R
S

L
E
A
D
E
R
S

*Scalp 'em
Seminoles*



Cliff Powell
End

GOOD LUCK SEMINOLES!

AIRWAYS COFFEE SHOP

Open 7 Days a Week from

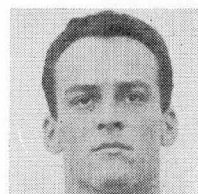
7:00 A. M. to 12:00 P. M.

SERVING THREE MEALS A DAY • SHORT ORDERS

SOFT DRINKS



SUNDRIES



Steve Kalenich
Center



Don Linton
Fullback

Use the Service of the . . .

Tallahassee State Bank

Calhoun at Jefferson Street

FRIENDLY ★ CONVENIENT ★ SUBSTANTIAL

Auto Teller Window ★ Checking Accounts ★ Savings Accounts

MEMBER FEDERAL INSURANCE CORPORATION

FOSTER-MOYE, Inc.

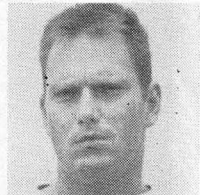
117 E. Lafayette Street

TAMPA, FLORIDA

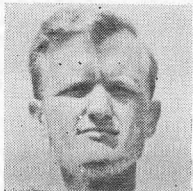
Distributor for

RAWLINGS • SPALDING • SPOTBILT SHOES

FINEST IN SOUTH FLORIDA



Sam Baker
Tackle



Earl O'Neal
Guard

Royal Sandwich Company

P. O. Box 641

Phone 2-0699

— WHOLESALE DISTRIBUTORS OF SANDWICHES —

Salted Peanuts • Peanut Butter Sandwiches • Potato Chips
Pop Corn • Cookies • Candy

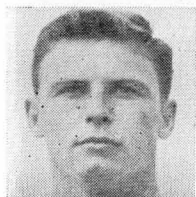
"FRESH AS A DAISY"



Carmine Lombardi
Tackle



F.S.U.
Circus
Scenes



Bob Schmelz
Guard

AFTER THE GAME

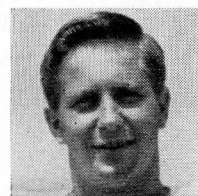
Refresh Yourself At

The University Grill

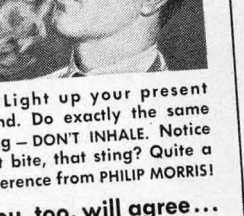
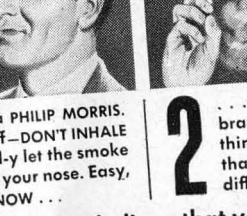
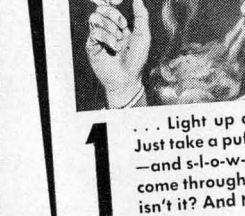
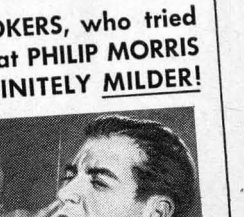
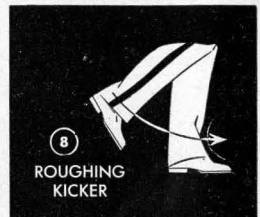
103 S. Copeland

The best in food and drink

Come On Seminoles



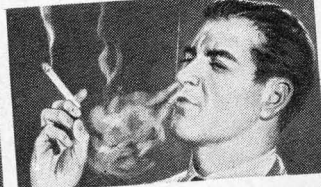
Dick Turk
Fullback



WE DARE THEM ALL!

PHILIP MORRIS challenges any other leading brand to suggest this test!

HUNDREDS OF THOUSANDS OF SMOKERS, who tried this test, report in signed statements that **PHILIP MORRIS** is **DEFINITELY LESS IRRITATING, DEFINITELY Milder!**



1 ... Light up a PHILIP MORRIS. Just take a puff—DON'T INHALE—and s-l-o-w-l-y let the smoke come through your nose. Easy, isn't it? And NOW ...

2 ... Light up your present brand. Do exactly the same thing—DON'T INHALE. Notice that bite, that sting? Quite a difference from PHILIP MORRIS!

Try this simple test. We believe that you, too, will agree... **PHILIP MORRIS** is indeed, America's **FINEST** Cigarette!

NO CIGARETTE HANGOVER

means **MORE SMOKING PLEASURE!**



CALL FOR

PHILIP MORRIS

TENTATIVE SCHEDULES OF FLORIDA STATE UNIVERSITY TEAMS FOR THE YEAR 1950-1951

FOOTBALL 1950

- 30 Sept.—at Troy State
- 7 Oct.—Randolph-Macon
- 14 Oct.—Howard College
- 21 Oct.—at Newberry
- 28 Oct.—Sewanee (Homecoming)
- 4 Nov.—Open
- 10 Nov.—at Stetson
- 18 Nov.—Mississippi College
- 25 Nov.—University of Tampa

BASKETBALL 1950-1951

- 9 Dec.—at College of Charleston
- 11 Dec.—at Mercer
- 14 Dec.—Connecticut State
- 15 Dec.—Howard College
- 16 Dec.—at Florida Southern
- 19 Dec.—at University of Miami
- 5 Jan.—at David Lipscomb
- 9 Jan.—University of Mississippi
- 12 Jan.—Stetson
- 13 Jan.—Florida Southern
- 17 Jan.—University of Tampa
- 19 Jan.—at Howard College
- 20 Jan.—at Troy State
- 25 Jan.—at University of Tampa
- 27 Jan.—at Stetson
- 1 Feb.—at Rollins
- 5 Feb.—S. W. Memphis
- 8 Feb.—Troy State
- 9 Feb.—Loyola
- 14 Feb.—at University of Mississippi
- 15 Feb.—at Mississippi College
- 17 Feb.—Mercer
- 23 Feb.—Rollins
- 26-28 Feb.—at Dixie Conference

SWIMMING 1951

- 20 Jan.—Pensacola Navy
- 27 Jan.—at University of Georgia
- 9 Feb.—at Emory
- 10 Feb.—at Georgia Tech
- 17 Feb.—at University of Miami
- 23 Feb.—University of Georgia
- 24 Feb.—Emory
- 1 Mar.—University of Miami
- 2-3 Mar.—at S.E. A.A.U.
- 9-10 Mar.—Florida A.A.U.
- 17 Mar.—at Pensacola Navy
- 22-23 Mar.—at National Collegiates
- 29-30 Mar.—at National A.A.U.

TRACK 1951

- 31 Mar.—at Mercer
- 7 Apr.—Open
- 14 Apr.—at Southern Relays
- 21 Apr.—Emory
- 28 Apr.—Florida Southern
- 5 May.—Mississippi College
- 12 May.—at Dixie Conference

FOOTBALL 1951

(not complete)

- 29 Sept.—Troy State
- 6 Oct.—at Mississippi College
- 13 Oct.—Open
- 20 Oct.—Open
- 27 Oct.—at Sewanee
- 3 Nov.—at Howard
- 10 Nov.—Wofford
- 17 Nov.—at University of Tampa
- 24 Nov.—Open
- 1 Dec.—Stetson

FSU CIRCUS 1950-1951

- 22-24 Feb.—Central Florida Exposition, Orlando, Fla.
- 19-21 Apr.—Annual FSU Circus, Campbell Stadium, Tallahassee, Fla.
- 22 May.—Watermelon Festival, Leesburg, Fla.



Wendell Dennis
Guard

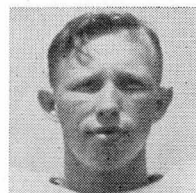
THE BEST DRESSED MEN WEAR



A GREAT NAME IN CLOTHING

"SCHWOBILT SUITS THE SOUTH"

CORNER COLLEGE & ADAMS

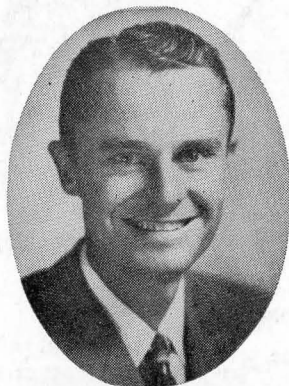


Clint Thomas
End

You'll Always WIN at - - -

RAINEY CAWTHON'S

FRED PIERSON



MONROE at BREVARD
DIAL
2-1865

☆SINCLAIR PRODUCTS

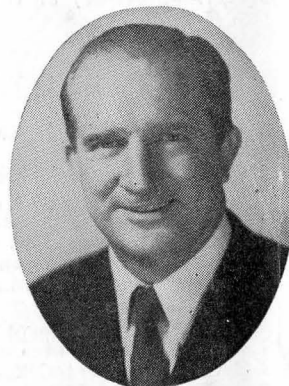
☆GOODYEAR TIRES

☆WESTINGHOUSE APPLIANCES

☆RCA RADIOS

*Rain or Shine . . . it's always
Rainey Cawthon Time!*

RAINEY CAWTHON



MONROE at PARK
DIAL
2-1862

SEVEN SEAS

Corner Monroe and Pensacola—Next to the Capitol

Tallahassee's Finest

WE WILL BE HAPPY TO SERVE YOU AFTER THE GAME!