

OFFICIAL PROGRAM
TWENTY-FIVE CENTS

FLORIDA STATE UNIVERSITY

SEP 26 '51

DOAK S. CAMPBELL STADIUM

TALLAHASSEE, FLORIDA

2:00 P. M.

SATURDAY, NOVEMBER, 25, 1950

UNIVERSITY OF TAMPA

K
♥

♥
K



LIBRARY
FLORIDA STATE UNIVERSITY
TALLAHASSEE, FLORIDA



DOUBLE YOUR SAVINGS

it's easy!

Higher than average dividends
increase your savings income.



Tom Brown
Halfback

DOUBLE YOUR PROTECTION

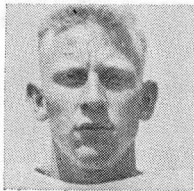
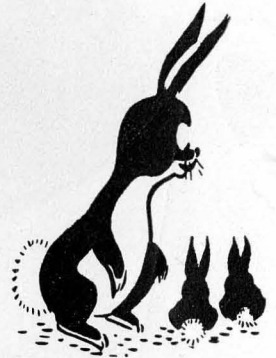
Savings Now Insured To
\$10,000.00

By

Federal Savings & Loan Insurance Corp.

**Tallahassee Federal Savings
& Loan Association**

115 East Park Avenue



Gary Folsom
Halfback

Won't you

HAV-A-TAMPA

Cigar

Eli Witt Tobacco & Candy Co.

TALLAHASSEE, FLORIDA



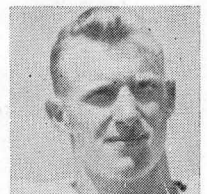
Eddie Gray
Halfback

"Keep your faith in the Seminoles . . .
Put your duds in our suds."

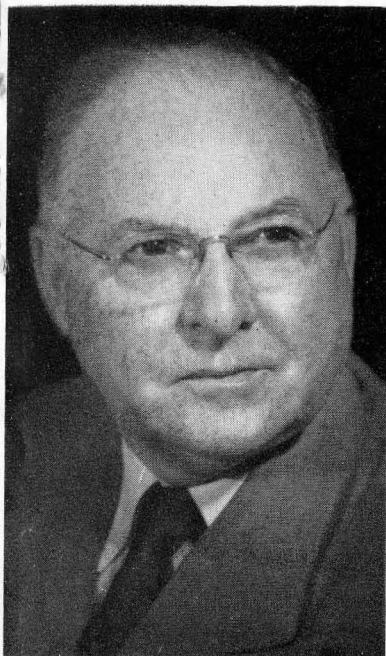


ACE Laundry & Dry Cleaning, Inc.

BRANCH OFFICE WEST CAMPUS



James Arnold
End



Appreciation

As we come to the close of our 1950 football season we express appreciation to all who have supported our program this year. The Seminoles have again made a creditable record and we commend each member of the squad who has helped to make this year's football history.

Today we are host to the Spartans from the University of Tampa. This institution has made notable progress in its educational program in recent years and we look forward to its continued substantial development.

Sincerely,

Doak Campbell

President.



MEMBER ATHLETIC COMMITTEE

DR. CHRISTINE FOSTER, professor of women's physical education, came to FSU in September, 1949.

Dr. Foster has taught in high schools and colleges in North Carolina and Tennessee, and during the war was U. S. Army Special Services officer.

She was educated at the Maryville, Tenn., College, University of Tennessee, Vanderbilt University, and recently received her Doctor of Education degree from Columbia.

Dr. Foster is active in several national physical education and university women's societies. This is her first year on the Athletic Committee.

SEASON RECORDS

FLORIDA STATE UNIVERSITY

FSU 26—Troy State 7
FSU 40—Randolph-Macon 7
FSU 20—Howard 6
FSU 24—Newberry 0
FSU 14—Sewanee 8
FSU 27—Stetson 7
FSU 33—Mississippi College 0

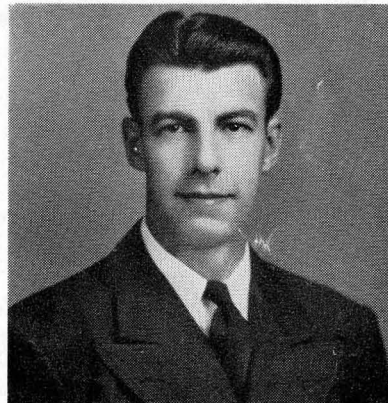
Won 7, lost 0, tied 0.

★

UNIVERSITY OF TAMPA

Tampa 13—Camp LeJeune 7
Tampa 7—Jacksonville State 20
Tampa 13—Wofford 0
Tampa 27—Stetson 20
Tampa 19—Appalachian 36
Tampa 41—Livingston 39
Tampa 34—Delta State 6
Tampa 0—Quantico 48

Won 5, lost 3, tied 0.



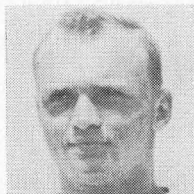
MEMBER ATHLETIC COMMITTEE

DR. CLARENCE W. EDNEY came to Florida State University in September, 1948, to become professor and head of the department of speech.

A native of Nebraska, he was educated in the public schools there, the University of Nebraska, and holds the Doctor of Philosophy degree from Iowa University.

He holds membership in several honorary and speech societies, and has been author or co-author of three books on speech. Under his direction, in two short years the speech department has added not only study leading to the master's degree, but also to the doctorate.

Dr. Edney is serving his first year on the Athletic Committee.



Mac Huey
Quarterback



**"Whatever the Sport We
Furnish the Equipment"**



Distributors for

RAWLINGS • REACH • WRIGHT
& DITSON • SPALDING • VOIT
SPOTBILT SHOES
GRANDVILLE AWARD SWEATERS



HARRY FINKELSTEIN CO.

633 West Bay St.

Jacksonville, Fla.



Bob O'Connell
Center



Preston Bradley
Fullback

P. W. WILSON COMPANY

TALLAHASSEE'S BEST STORE

SINCE 1837

Men's Clothing
and Furnishings

Shoes

Ladies' Ready-to-Wear
Home Furnishings
Piece Goods
Millinery
Notions



Pat Harris
End

TELEPHONE 2-2310

TALLAHASSEE, FLORIDA

F.S.U. COACHING STAFF



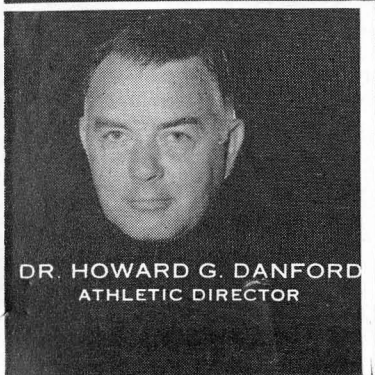
CHARLIE ARMSTRONG
ASSISTANT COACH



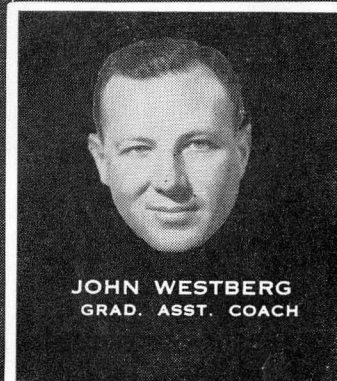
DON A. VELLER
HEAD COACH



BOB HARBISON
ASSISTANT COACH



DR. HOWARD G. DANFORD
ATHLETIC DIRECTOR



JOHN WESTBERG
GRAD. ASST. COACH

THE FLORIDA STATE UNIVERSITY MEN'S PHYSICAL EDUCATION STAFF

DR. HOWARD G. DANFORD, Athletic Director and Director of Men's Physical Education.

DR. DONALD A. VELLER, Head Football Coach and Chairman of Intercollegiate Athletics.

J. K. "BUD" KENNEDY, Head Basketball Coach.

BILL WEIGEL, Graduate Assistant Basketball Coach.

DR. KENNETH MILLER, Head Track Coach.

DR. HARTLEY S. PRICE, Head Gymnastics Coach.

N. B. "BIM" STULTS, Head Swimming Coach.

BILL ODENEAL, Head Volleyball Coach.

JACK HASKINS, Director of FSU Circus.

JIM DeCOSMO, Assistant Director of FSU Circus.

MAX BAYARD, Graduate Assistant with the Circus.

ED WILLIAMSON, Director of Intramural Athletics.

SHELDON HILAMAN, Student Assistant of Intramural Athletics.

CHARLIE ARMSTRONG, Assistant Football Coach and Head Baseball Coach.

BOB HARBISON, Assistant Football Coach and Head Golf Coach.

JOHN WESTBERG, Graduate Assistant Football Coach in charge of "B" Squad.

RALPH MATHERLY, Graduate Assistant Football Coach.

DAVE THOMAS, Graduate Student assisting the Football Staff.

DONALD LOUCKS, Head Tennis Coach. (On year leave.)

GEORGE HAYGOOD, Athletic Business Manager.

DR. TOM BROOKS, Team Physician, all sports.

EDDIE KWEST, Head Trainer, all sports.

E. P. "NED" WEST, Director of Sports Publicity.

SCOTT MARSHALL, student assistant to Sports Publicity Director.



Dave Thomas



Ralph Matherly

See Page 22 for Officials' Signals and Penalties



Ernest Huggett
Halfback

CARTER'S

YOUR FRIENDLY SPORT STORE

The Home of MacGregor-Goldsmith Sports Equipment

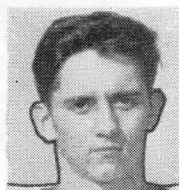
NO-AWL TENNIS RACKET RESTRINGING MACHINE

"IT PAYS TO PLAY"

117 South Adams Street

TALLAHASSEE, FLORIDA

DIAL 2-0054



Earl McPherson
Center

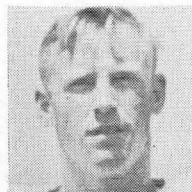


Vic Szczepanik
Tackle

SHOUT FOR THE SEMINOLES

AND

BANK WITH US!

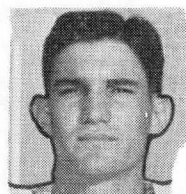


Phillip Alvers
Halfback



Fred Moates
Guard

THE LEWIS STATE BANK
SINCE 1856
Florida's Oldest
TALLAHASSEE



Curt Campbell
End

MEMBER FEDERAL DEPOSIT INSURANCE CORPORATION

Scalp 'em Seminoles!

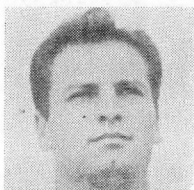
Seabrook Hardware Company

HEADQUARTERS FOR WILSON SPORTING GOODS

JOHNSON OUTBOARD MOTORS

FISHING TACKLE

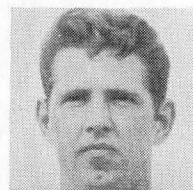
FIREARMS



Leslie High
Center

213 S. Adams

Telephone 2-5850



Bill Driver
Quarterback

MEET THE SEMINOLES

Tackle LOREN "DUKE" MALTBY will captain the 1950 Florida State University football team. . . . Duke's value to the team can best be illustrated by saying he may be used at tackle, guard and center before the season is over. . . . He does a fine job at all three positions and is a hard working leader. . . .

End JAMES ARNOLD is the smallest man on the Florida State squad, yet his defensive play rates him with the best. . . . He is a Freshman. . . . Tackle SAM BAKER is one of the largest boys on the squad at 220 pounds and he likes the going rough. . . . Halfback WAYNE BENNER runs and punts well, but is outstanding as a passer. . . . Much of Florida State's success this season will depend on his good right arm. . . . Halfback HARRY BRINGGER was one of the few Freshmen to earn a letter last Fall. . . . He is at his best on defense, being particularly adept at knocking down or intercepting enemy passes. . . . Halfback TOM BROWN is rated top defensive back on the squad. . . . Tom recently returned to the team after missing several games due to injuries. . . . Guard BILL DAWKINS, an outstanding player at Florida State the past two seasons, needs no introduction. . . . Bill is a top candidate for Little All-America honors. . . . Quarterback BILL DRIVER, a lanky newcomer, passes well and is a capable play selector. . . .

End NORMAN "CHIEF" EUBANKS has the biggest hands on the squad, and you'd swear there is glue all over them when he makes those "impossible" pass catches. . . . End TED HEWITT, also a letterman at basketball and golf at Florida State, will play end on offense and halfback on defense for the Seminoles. . . . Quarterback MAC HUEY is one of the top Freshmen on the squad. . . . He is an excellent blocker and lacks only experience. . . . Halfback ERNIE HUGGETT is expected to fill a need that Florida State has had ever since it became co-educational in 1947. . . . Hug can kick those extra points after touchdowns, and he has looked very good as a kick-off artist. . . . Halfback NELSON ITALIANO runs well, blocks well, throws well—what more can you say? . . . Center STEVE KALENICH is a Freshman who is coming right along in his attempt to fill the shoes of graduated Joe Marcus, last year's most valuable player. . . .

Tackle W. A. "DUB" KENDRICK will also be used at end by Coach Veller this Fall. . . . Dub has been one of the big reasons Florida State has had championship teams the past two years. . . . Fullback DICK TURK, a hard running Sophomore, has been the surprise of early season games. . . . Tackle CARMINE LOMBARDI is rated one of the Seminole's best Freshmen linemen. . . . He's a standout on defense. . . . Center MONTE MAY will be seeking his third letter at Florida State and is also used some at guard. . . . Guard WALT MILLER is big and powerful. . . . He will see plenty of action this Fall. . . . Guard EARL O'NEAL is a Georgia boy with junior college experience who doesn't talk much but plays lots of football. . . . Tackle DWIGHT OSHA will also be used at end this Fall. . . . "Big Osh" is rated by many as one of Florida State's all-time great linemen.

. . . Halfback EDDIE GRAY, a former Leon High of Tallahassee star, is showing up well at right halfback. . . . He is just a Freshman. . . . End CLIFFORD POWELL is a big boy from Wrightsville, Georgia, who blocks and tackles well. . . . He is a Freshman. . . . Guard BOB SCHMELZ, injured most of last season, figures heavily in Coach Veller's plans for 1950. . . . He will play some at end on defense. . . . Fullback MILAN "MIKE" SELLERS has consistently been Florida State's big gun this Fall. . . . Mike hits hard into the line and can go all the way with hips flying if he gets into the secondary. . . . Tackle VIC SZCZEPANIK showed much promise as a Freshman last year and should be at his best in 1950. . . .

Freshmen ends PAT HARRIS, JOE WHITE, DICK SUTHERLAND, CLINT THOMAS and JOHN HEDRICK are all coming along fine and will see action this Fall. . . . With just a little improvement tackles BILL HOPPE, LAWRENCE MERO or BOB WODRICH could be pushing for a starting berth at their position. . . . Looking best of the Freshmen guards are WENDELL DENNIS and FRED MOATES. . . . JACK PHILLIPS and GEORGE SPURLING have been held back by injuries. . . . Center candidates in addition to Kalenich and May, include BOB O'CONNELL, TOMMY OWEN, LESLIE HIGH and ED LOCKARD, any of which might move up if the others falter. . . . DON GLADDEN is a promising Freshman quarterback. Held back by injuries earlier this season, Gladden has moved up fast in recent weeks. . . . PRESTON BRADLEY, RAY INLOW and DON LINTON are battling with Sellers and Turk for the fullback job, while among the better halfback prospects not mentioned before are PHILIP ALVERS, GARY FOLSOM (who may turn out to be a great passer), JOE WELLS and JACK TINNEY. . . .



CAPTAIN LOREN "DUKE" MALTBY

I lead the crowd in "Rah Rah Rah"
To cheer the team we like;
But when it comes to cigarettes
I cheer for Lucky Strike!

I really am a Lucky guy,
Just got my Ph.D.
To prove to you how much I know,
L.S., sir means F.T.



Be Happy- Go Lucky!

Enjoy your cigarette! Enjoy truly fine tobacco
that combines both perfect mildness and rich
taste in one great cigarette - Lucky Strike!

Perfect mildness? You bet. Scientific tests,
confirmed by three independent consulting
laboratories, prove that Lucky Strike is milder
than any other principal brand. *Rich taste?*
Yes, the full, rich taste of truly fine tobacco.

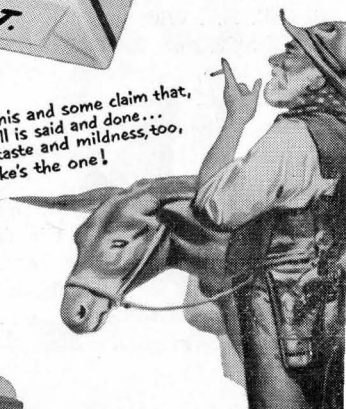
Only fine tobacco gives you both real mildness
and rich taste. And Lucky Strike means fine
tobacco. So enjoy the happy blending that com-
bines perfect mildness with a rich, true tobacco
taste. Be Happy—Go Lucky!

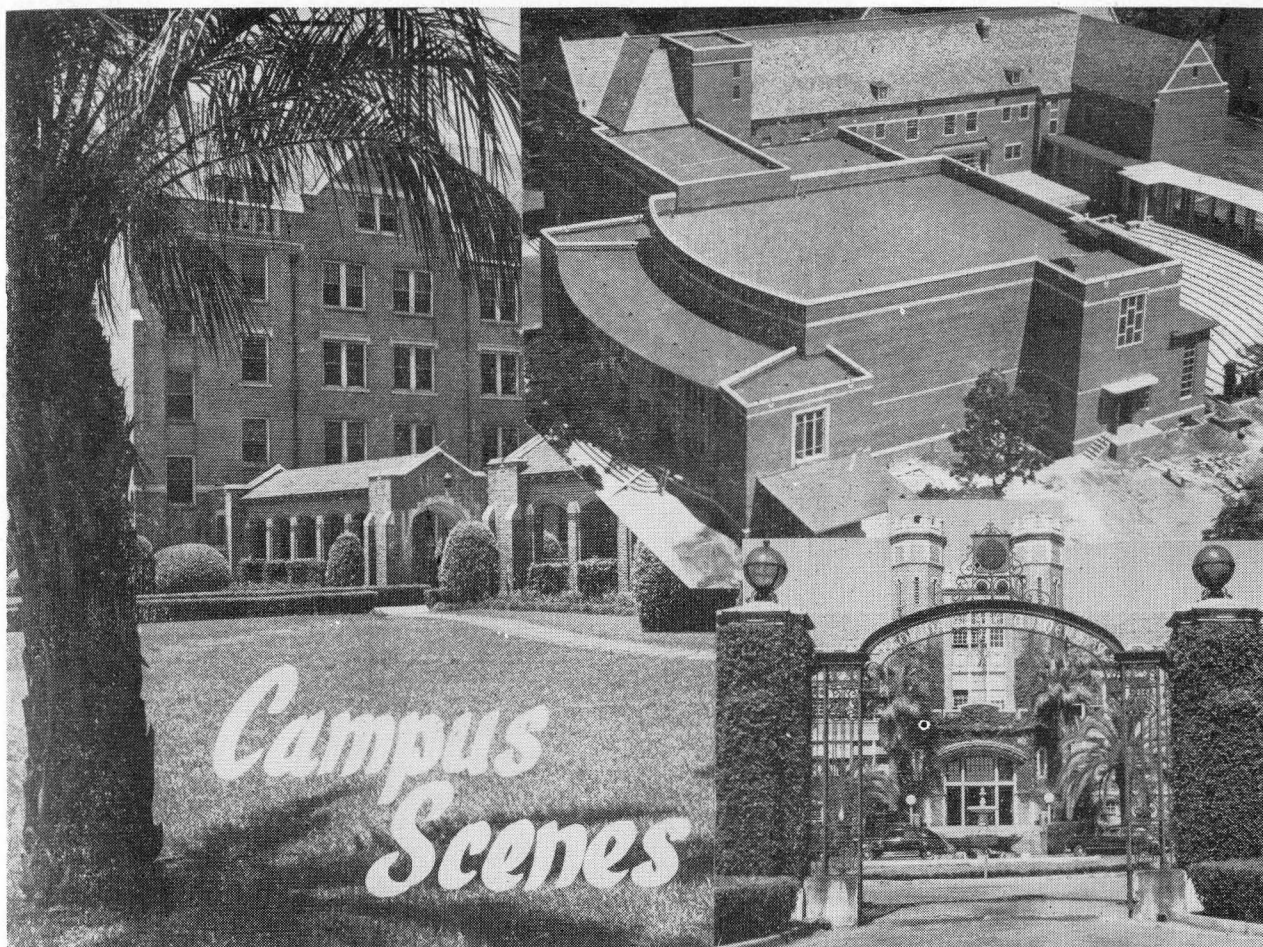


L.S./M.F.T.-
Lucky Strike
Means Fine Tobacco

COPR., THE AMERICAN TOBACCO COMPANY

Some claim this and some claim that,
But when all is said and done...
For full, rich taste and mildness, too,
Lucky Strike's the one!

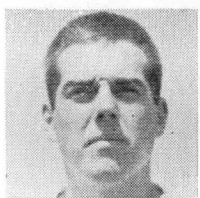




**BEST OF LUCK . . .
SEMINOLES!**

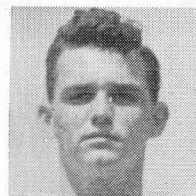


Bill Dawkins
Guard



Bill Hoppe
Tackle

**J. D. WILLIAMSON
ED STEINMEYER
JANIE BIXLER
MARVIN COLLINS, JR.
MERRIE BLAND**



Tommy Owen
Center-End



Don Gladden
Quarterback

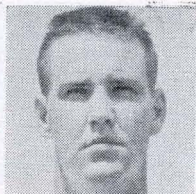
Williamson & Steinmeyer

REAL ESTATE

INSURANCE

Washington Square Bldg.

Telephone 3-0360



Dwight Osha
Tackle

For
**CORDIAL
PROGRESSIVE
FRIENDLY**
Banking

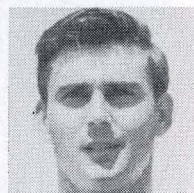
think first of

CAPITAL CITY NATIONAL BANK

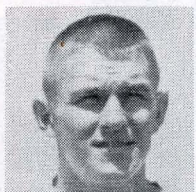
of Tallahassee

— MEMBER —

FEDERAL DEPOSIT INSURANCE CORPORATION
FEDERAL RESERVE BANK



Nelson Italiano
Halfback



Wayne Benner
Halfback

Rock 'em Seminoles!

Wash Your Dirty Clothes at
THE

Laundromat

Equipped with Westinghouse
Automatic Washers

Gets clothes snowy-white,
shiney-bright!

Drying and Folding Service
Tintexing • Dry Cleaning

POPULAR PRICES

PHONE 3-1789

SCORE A TOUCHDOWN!

Take Your Car to

Tom Brown's

SHELL OIL PRODUCTS

Lubrication • Washing • Tires and
Tubes • Batteries • Accessories •
Steam Cleaning • Wheel Balancing
• Polishing • Simonizing.

OUR SERVICE IS COURTEOUS—OUR
WORK IS GUARANTEED

PHONE 3-1427

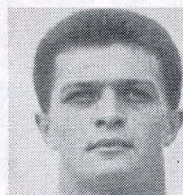
TOM BROWN'S

LAUNDROMAT
115 W. Tennessee

Next door to

SERVICE STATION
Tennessee & Adams

WHERE GOOD SERVICE IS A HABIT



Mike Sellers
Fullback

Have a Coke

DRINK

Coca-Cola

TRADE-MARK ®

FLORIDA STATE LINE-UP (OFFENSE)

SINGLE WING, UNBALANCED LINE

LE	LT	C	RG	RT	LG	RE
25	30	35	57	56	59	51
Hewitt	Szczepanik	Kalenich	O'Neal	Baker	Schmelz	Eubanks
45	58	47	40	55	39	23
Campbell	Lombardi	May	Osha	Maltby	Dawkins	Arnold
52	60	36	38	33	12	10
Powell	Hoppe	Lockard	Miller	Wodrich	Dennis	Thomas

QB	RH
32	49
Driver	Bringger
40	22
Gladden	Gray
24	20
Huey	Brown

LH	FB
42	44
Italiano	Sellers
43	34
Benner	Turk
21	27
Folsom	Bradley

UNIVERSITY OF TAMPA LINE-UP (DEFENSE)

SIX, TWO, TWO, ONE

LE	LT	LG	RG	RT	RE
55	46	35	32	41	51
McCluney	Lovely	Rubio	Marley	Ried	Escobar

FB	C
80	38
Battaglia	Meares

LH	SAFETY	RH
85	61	86
Pancoast	Sliman	Chicko

(See line-ups on page 14 for Tampa offense and FSU defense.)

OFFICIALS

Referee—Duck Rahaim (Georgetown); Judge—Archie Carter (Auburn);
Umpire—L. Arnold (Stetson); Lineman—Holmes Tucker (Yale).

Tallahassee Coca-Cola Bottling Company

FLORIDA STATE SQUAD

(Asterisk indicates letterman)

No.	Name	Class	Pos.	Age	Ht.	Wt.
10	Clint Thomas	'54	E	18	5-11	158
11	Joe Wells	'54	HB	20	5-7 1/2	160
12	Wendell Dennis	'54	G	18	5-10 1/2	170
13	Joe White	'53	E	18	6-	171
14	Ray Inlow	'54	FB	19	5-10	170
15	Jack Tinney	'54	HB	19	5-9	160
16	Tommy Owen	'54	C	18	6- 1/2	170
18	Fred Moates	'54	G	17	6-	165
19	Phillip Alvers	'54	HB	19	5-11	175
20	Tom Brown	'53	HB	21	5-11	155
21	Gary Folsom	'54	HB	18	5-11 1/2	155
22	Eddie Gray	'54	HB	18	5-10	155
23	James Arnold	'54	E	19	5-8 1/2	152
24	Mac Huey	'54	QB	17	5-10 1/2	190
25	*Ted Hewitt	'51	E	24	5-10 1/2	167
26	Bob O'Connell	'53	C	20	6-1	175
27	Preston Bradley	'52	FB	23	5-6	175
28	Pat Harris	'54	E	18	6-	173
29	Ernest Huggett	'52	HB	23	5-8 1/2	177
30	*Vic Szczepanik	'53	T	22	5-10 1/2	190
32	Bill Driver	'52	QB	22	6-2	205
33	Bob Wodrich	'54	G-T	19	6- 1/2	190
34	Dick Turk	'53	FB	21	5-10	190
35	Steve Kalenich	'54	C	21	5-11	180
36	Ed Lockard	'53	C	18	6-1	186
37	Dick Sutherland	'54	HB-E	19	5-11	170
38	Walt Miller	'52	G	23	5-11	195
39	*Bill Dawkins	'52	G	21	5-11	195
40	Don Gladden	'54	QB	19	5-10 1/2	177
41	*Dwight Osha	'52	T	20	6-1	220
42	Nelson Italiano	'52	HB	22	5-11	177
43	Wayne Benner	'51	HB	23	5-11	190
44	Mike Sellers	'52	FB	23	6-1	215
45	Curtis Campbell	'53	E	21	6-1	170
46	Jack Phillips	'52	G	20	6-	195
47	*Monte May	'52	C	20	6-1 1/2	188
49	*Harry Bringger	'53	HB	20	5-11	164
50	*Dub Kendrick	'51	T	24	6-	185
51	*Norman Eubanks	'51	E	21	6-2	185
52	Cliff Powell	'54	E	22	6- 1/2	200
54	Don Linton	'53	HB	22	6-	205
55	*Duke Maltby (Capt.)	'51	T	23	5-11	225
56	Sam Baker	'51	T	24	6-3	226
57	Earl O'Neal	'53	G	22	6-	197
58	Carmine Lombardi	'54	T	18	5-10	200
59	*Bob Schmelz	'52	G	23	6-	195
60	Bill Hoppe	'53	T	19	5-11	205
61	Lawrence Mero	'54	T	19	6-1	175
62	Earl McPherson	'54	C	18	6-	175
63	George Spurling	'53	G	19	5-9 1/2	200

THE LARGEST SELLING CIGARETTE IN AMERICAN COLLEGES

BY LATEST NAAL SURVEY



UNIVERSITY OF TAMPA SQUAD

No.	Name	Class	Pos.	Ht.	Wt.
20	Cecil Perrette	'53	G	5-8	195
31	Jack Barker	'54	G	5-11	195
32	Jack Marley	'52	G	5-8	185
33	Sam Puleo	'53	G	5-11	210
34	Jim Mitchell	'53	E	6-1	210
35	Ernest Rubio	'52	T	6-2	214
37	Lou Sequella	'52	HB	5-8	165
38	Bill Meares	'51	C	6-0	195
40	Tony Jonatis	'53	T	6-2	205
41	Ernest Reid	'52	T	6-0	230
42	Tom Mahin	'54	T	6-5	235
43	James Burnette	'54	C	6-0	205
46	Bob Lovely	'52	T	6-2	205
47	Joseph Ryan	'52	HB	5-9	170
50	Eldridge Beach	'51	HB	6-1	195
53	Holland Aplin	'52	E	6-4	200
54	L. H. Hiers	'53	E	6-4	200
55	Jack McCluney	'52	E	6-0	190
60	James Jackson	'52	QB	6-0	195
61	Dan Sliman	'52	QB	5-11	170
70	Milo Marovich	'52	FB	6-0	200
71	Carl Cowden	'53	FB	5-10	180
72	Frank Sinkwich	'52	FB	6-1	205
80	Tom Battaglia	'54	FB	5-11	175
81	Gene King	'52	HB	5-8	165
82	Sam Sloan	'54	HB	5-8	165
83	Bill Hovance	'54	T	6-1	195
84	Charles Harris	'54	HB	5-11	175
85	Fred Pancoast	'53	HB	5-8	175
86	Vince Chiko	'52	HB	5-11	182
—	K. O. Royal	'52	HB	5-7	160
—	Jim Mathis	'53	HB	5-11	175
—	Pete Milian	'54	G	5-8	205
—	Lawrence Seigel	'54	T	6-1	220
—	Emil Schoyone	'52	HB	5-9	185
—					
—					
—					

Always **B**uy **MUCH MILD** **C**CHESTERFIELD

Have a Coke

DRINK

Coca-Cola

TRADE-MARK ®

UNIVERSITY OF TAMPA LINE-UP (OFFENSE)

T FORMATION, BALANCED LINE

LE	LT	LG	C	RG	RT	RE
54 Hiers	42 Mahin	20 Perrette	38 Meares	31 Barker	46 Lovely	53 Aplin
QB 60 Jackson						
LH 37 Sequella			FB 70 Marovich	RH 81 King		

FLORIDA STATE LINE-UP (DEFENSE)

SIX, TWO, TWO, ONE

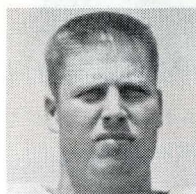
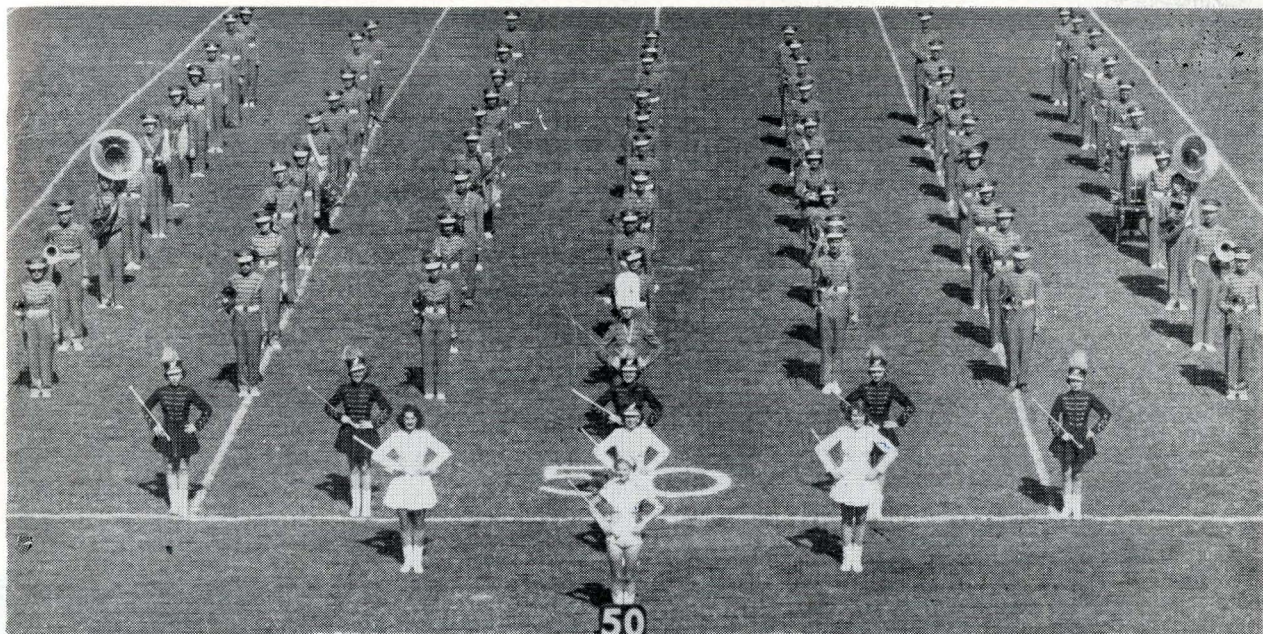
LE	LT	LG	RG	RT	RE
23 Arnold 52 Powell	59 Schmelz 33 Wodrich	56 Baker 58 Lombardi	55 Maltby 30 Szczepanik	41 Osha 47 May	24 Huey 45 Campbell
FB 44 Sellers 36 Lockard			C 39 Dawkins 40 Gladden		
LH 43 Benner 32 Driver	SAFETY 20 Brown 49 Bringger				RH 25 Hewitt 22 Gray

(See line-ups on page 11 for FSU offense and Tampa defense.)

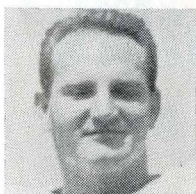
OFFICIALS

Referee—Duck Rahaim (Georgetown); Judge—Archie Carter (Auburn);
Umpire—L. Arnold (Stetson); Lineman—Holmes Tucker (Yale).

Tallahassee Coca-Cola Bottling Company



Jack Phillips
Guard



George Spurling
Guard

YEA SEMINOLES!
BEFORE AND AFTER THE GAME

MEET YOUR FRIENDS
AT
THE MECCA

111 South Copeland Street

QUICK SERVICE

GOOD FOOD AND SUNDRIES

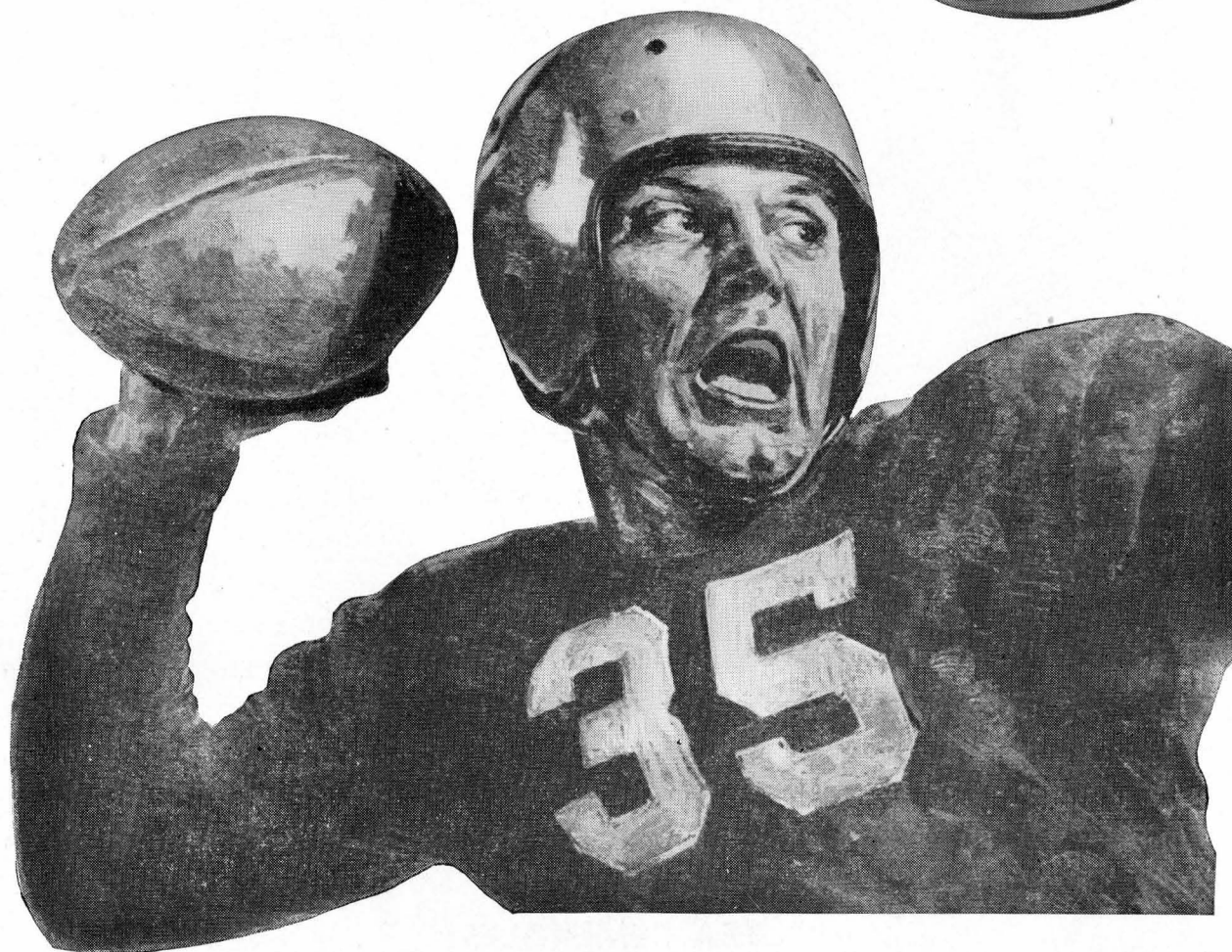
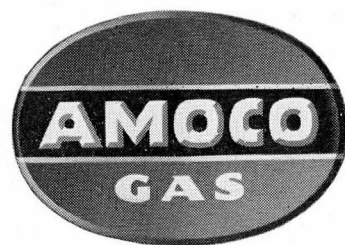


Ray Inlow
Fullback

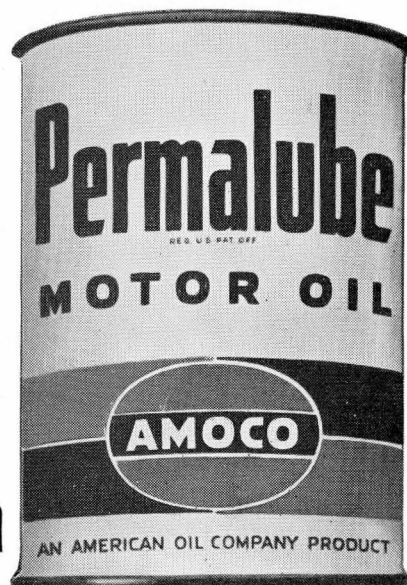


Monte May
Center

Gain more distance with



Block out engine wear with



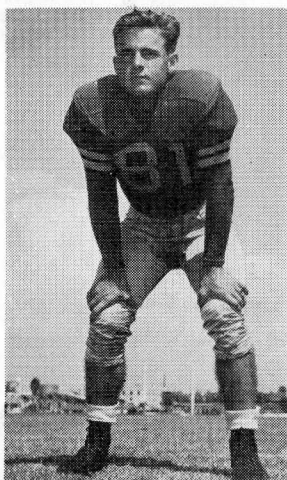


THE SPARTANS' FOOTBALL COACHING STAFF.—Standing, left to right, Athletic Director Paul L. Myers, Assistant Coach Marcelina Huerta, Assistant Coach John Vardian, Assistant Coach Sam Bailey. Kneeling, Head Coach Frank Sinkwich.

THE UNIVERSITY OF TAMPA SPARTANS of Tampa, Florida

The University of Tampa Spartans bring to Doak S. Campbell Stadium today a squad that has played in and out ball all season. When the Spartans were "on" and rolling nothing could stand in their way. When they were "off" they were just another ball club. For example, their 27-20 victory over Stetson University featured both the "on" and "off" club. The team was "on" during the first half of the contest, piling up 27 points while holding Stetson scoreless. The boys were complacent and "off" the second half, failing to score as Stetson got all of its 20 points.

The word comes from Tampa that the Spartans are definitely ready and expected to be "on" all the way against Florida State today. Coach Frank Sinkwich, closing his first sea-



HALFBACK GENE KING

son in the intercollegiate coaching ranks, knows that a victory today over the undefeated Seminoles will make his year a successful one. The players know it too, and are primed for an upset. There are all the ingredients for a close and interesting ball game. Add to them the fact that this is the final contest of the season for both clubs and you know it should be a battle from the opening whistle.



Norman Eubanks
End

THE SWEET SHOP

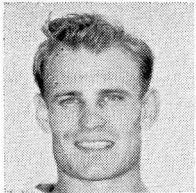
GOOD FOOD

DELICIOUS SODAS

DRUG SUNDRIES

Meet Your Friends Here Before and
After the Game!

FOLLOW THE SEMINOLES!



Ted Hewitt
End



Walt Miller
Guard



Harry Bringer
Halfback



Dub Kendrick
Tackle

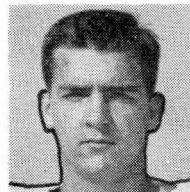
Victor's TALLAHASSEE CAFE

Wishes the Grid Team A
Successful Season
and
We Extend A Cordial
Invitation to
All Members, Students and
Fans to Dine with

VICTOR

WHERE FINE MEALS ARE SERVED
AT POPULAR PRICES

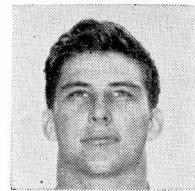
119 S. Adams, next to College Ave.



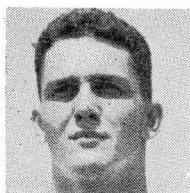
Ed Lockard
Center



Lawrence Mero
Tackle



Bob Wodrich
Tackle



John Hedrick
End

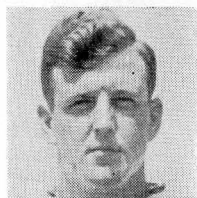


Dick Sutherland
End

C
H
E
E
R
S

L
E
A
D
E
R
S

*Scalp 'em
Seminoles*



Cliff Powell
End

GOOD LUCK SEMINOLES!

AIRWAYS COFFEE SHOP

Open 7 Days a Week from

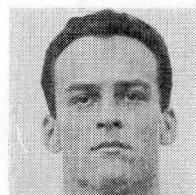
7:00 A. M. to 12:00 P. M.

SERVING THREE MEALS A DAY • SHORT ORDERS

SOFT DRINKS



SUNDRIES



Steve Kalenich
Center



Don Linton
Fullback

Use the Service of the . . .

Tallahassee State Bank

Calhoun at Jefferson Street

FRIENDLY ★ CONVENIENT ★ SUBSTANTIAL

Auto Teller Window ★ Checking Accounts ★ Savings Accounts

MEMBER FEDERAL INSURANCE CORPORATION

FOSTER-MOYE, Inc.

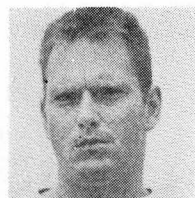
117 E. Lafayette Street

TAMPA, FLORIDA

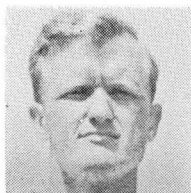
Distributor for

RAWLINGS • SPALDING • SPOTBILT SHOES

FINEST IN SOUTH FLORIDA



Sam Baker
Tackle



Earl O'Neal
Guard

Royal Sandwich Company

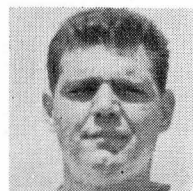
P. O. Box 641

Phone 2-0699

— WHOLESALE DISTRIBUTORS OF SANDWICHES —

Salted Peanuts • Peanut Butter Sandwiches • Potato Chips
Pop Corn • Cookies • Candy

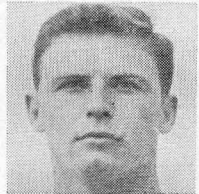
"FRESH AS A DAISY"



Carmine Lombardi
Tackle



F.S.U.
Circus
Scenes



Bob Schmelz
Guard

AFTER THE GAME

Refresh Yourself At

The University Grill

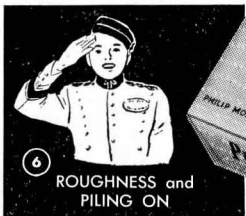
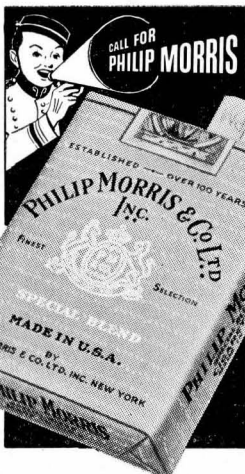
103 S. Copeland

The best in food and drink

Come On Seminoles



Dick Turk
Fullback



WE DARE THEM ALL!
PHILIP MORRIS challenges any other leading brand to suggest this test!



HUNDREDS OF THOUSANDS OF SMOKERS, who tried this test, report in signed statements that PHILIP MORRIS is DEFINITELY LESS IRRITATING, DEFINITELY MILDER!

1 ... Light up a PHILIP MORRIS. Just take a puff—DON'T INHALE—and s-l-o-w-l-y let the smoke come through your nose. Easy, isn't it? And NOW ...

2 ... Light up your present brand. Do exactly the same thing—DON'T INHALE. Notice that bite, that sting? Quite a difference from PHILIP MORRIS!

Try this simple test. We believe that you, too, will agree...
PHILIP MORRIS is indeed, America's **FINEST** Cigarette!



NO CIGARETTE HANGOVER
 means **MORE SMOKING PLEASURE!**



CALL FOR PHILIP MORRIS

TENTATIVE SCHEDULES OF FLORIDA STATE UNIVERSITY TEAMS FOR THE YEAR 1950-1951

FOOTBALL 1950

- 30 Sept.—at Troy State
- 7 Oct.—Randolph-Macon
- 14 Oct.—Howard College
- 21 Oct.—at Newberry
- 28 Oct.—Sewanee (Homecoming)
- 4 Nov.—Open
- 10 Nov.—at Stetson
- 18 Nov.—Mississippi College
- 25 Nov.—University of Tampa

BASKETBALL 1950-1951

- 9 Dec.—at College of Charleston
- 11 Dec.—at Mercer
- 14 Dec.—Connecticut State
- 15 Dec.—Howard College
- 16 Dec.—at Florida Southern
- 19 Dec.—at University of Miami
- 5 Jan.—at David Lipscomb
- 9 Jan.—University of Mississippi
- 12 Jan.—Stetson
- 13 Jan.—Florida Southern
- 17 Jan.—University of Tampa
- 19 Jan.—at Howard College
- 20 Jan.—at Troy State
- 25 Jan.—at University of Tampa
- 27 Jan.—at Stetson
- 1 Feb.—at Rollins
- 5 Feb.—S. W. Memphis
- 8 Feb.—Troy State
- 9 Feb.—Loyola
- 14 Feb.—at University of Mississippi
- 15 Feb.—at Mississippi College
- 17 Feb.—Mercer
- 23 Feb.—Rollins
- 26-28 Feb.—at Dixie Conference

SWIMMING 1951

- 20 Jan.—Pensacola Navy
- 27 Jan.—at University of Georgia
- 9 Feb.—at Emory
- 10 Feb.—at Georgia Tech
- 17 Feb.—at University of Miami
- 23 Feb.—University of Georgia
- 24 Feb.—Emory
- 1 Mar.—University of Miami
- 2-3 Mar.—at S.E. A.A.U.
- 9-10 Mar.—Florida A.A.U.
- 17 Mar.—at Pensacola Navy
- 22-23 Mar.—at National Collegiates
- 29-30 Mar.—at National A.A.U.

TRACK 1951

- 31 Mar.—at Mercer
- 7 Apr.—Open
- 14 Apr.—at Southern Relays
- 21 Apr.—Emory
- 28 Apr.—Florida Southern
- 5 May.—Mississippi College
- 12 May.—at Dixie Conference

FOOTBALL 1951

(not complete)

- 29 Sept.—Troy State
- 5 Oct.—at Miami
- 13 Oct.—Open
- 20 Oct.—Open
- 27 Oct.—at Sewanee
- 3 Nov.—at Howard
- 10 Nov.—Wofford
- 17 Nov.—at University of Tampa
- 24 Nov.—Open
- 1 Dec.—Stetson

FSU CIRCUS 1950-1951

- 16 Jan.—Festival of States, St. Petersburg, Fla.
- 22-24 Feb.—Central Florida Exposition, Orlando, Fla.
- 19-21 Apr.—Annual FSU Circus, Campbell Stadium, Tallahassee, Fla.
- 22 May.—Watermelon Festival, Leesburg, Fla.



Wendell Dennis
Guard

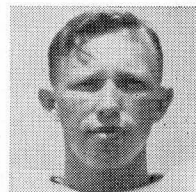
THE BEST DRESSED MEN WEAR



A GREAT NAME IN CLOTHING

"SCHWOBILT SUITS THE SOUTH"

CORNER COLLEGE & ADAMS

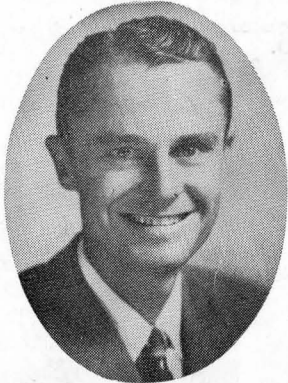


Clint Thomas
End

You'll Always WIN at - - -

RAINEY CAWTHON'S

FRED PIERSON

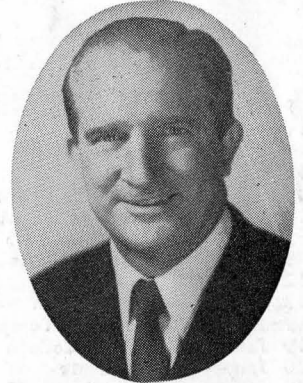


MONROE at BREVARD
DIAL
2-1865

- ☆ SINCLAIR PRODUCTS
- ☆ GOODYEAR TIRES
- ☆ WESTINGHOUSE APPLIANCES
- ☆ RCA RADIOS

*Rain or Shine . . . it's always
Rainey Cawthon Time!*

RAINEY CAWTHON



MONROE at PARK
DIAL
2-1862

SEVEN SEAS

Corner Monroe and Pensacola—Next to the Capitol

Tallahassee's Finest

WE WILL BE HAPPY TO SERVE YOU AFTER THE GAME!