

PRICE 25c

1953 #8

HOMECOMING

FLORIDA STATE UNIVERSITY

vs.

STETSON UNIVERSITY

NOVEMBER 21 :: 2:30 P. M.  
DOAK S. CAMPBELL STADIUM  
TALLAHASSEE



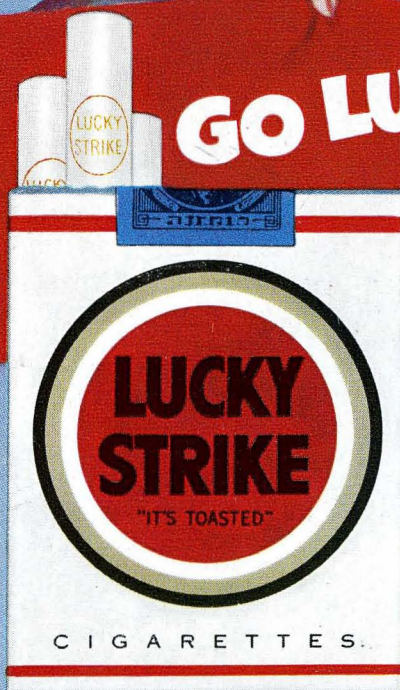


LUCKIES TASTE BETTER!

Cleaner, Fresher,  
Smoother!

Be Happy

GO LUCKY!





# Welcome



We welcome today the Stetson Hatters along with many of the alumni and friends of Stetson University. Chartered in 1883, this splendid institution has served with distinction in the field of higher education and has assisted materially in the development of education in the South.

To our alumni and other friends of Florida State University, we extend a hearty welcome to the 1953 Homecoming. Your presence is an inspiration to our Seminoles.

*Frank S. Campbell*

President,  
The Florida State University



**Whatever the Sport**  
**We Furnish**  
**The Equipment**

Finkelstein's has served Florida schools and universities for nearly half a century. Our sports experts are always anxious to advise you on any problem regarding sports equipment.

**We feature such outstanding sports equipment as:**

★ SPALDING

★ SPOTBILT

★ RAWLINGS

★ WRIGHT & DITSON

**HARRY FINKELSTEIN CO.**

633 W. Bay, Cor. Jefferson

JACKSONVILLE, FLA.



Represented for National Advertising by Don Spencer Company, Inc., 271 Madison Ave., New York City

#### DIRECTOR OF ATHLETICS HOWARD DANFORD

From a pickup schedule of five games in 1947 with minor teams to a full ten-game slate in 1953 including VMI, Furman, Miami (Fla.), North Carolina State and others sums up the growth of FSU football under Director of Athletics Howard Danford.

Danford heads up the athletic program at Florida State as athletic director and director of physical education for men. Danford came to FSU in 1947 from Madison (Wis.) where he had served as director of health, physical education, recreation and safety for the Madison public school system.



DANFORD

Under Danford's guidance the FSU Department of Athletics has been expanded greatly, both from a standpoint of curriculum and personnel. A well-rounded program has been developed at FSU. The university competes in nine intercollegiate sports (football, basketball, swimming, tennis, gymnastics, volleyball, golf, track, baseball). In addition the university athletic department sponsors the nationally famous student circus, "Flying High", and the equally renowned production, "Gymkana."

Danford received his bachelor's degree from Ohio University and later was awarded his masters and doctorate degree at NYU in 1943.

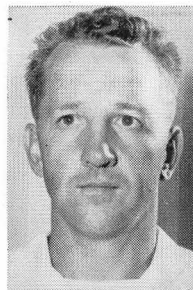
Author of numerous magazine articles, Danford has held positions of prominence in national organizations. He is current president of the College Recreation Association and regional representative of Region VI of the United States Volleyball Association. He is past president of the Florida Recreation Association and is chairman of the public relations committee of the Florida Health, Physical Education and Recreation Association.

Danford's wife's name is Helen. They have two children — Martha 9, Danny 7.

#### ASSISTANT COACH WINSTON SIEGFRIED

Winston Siegfried comes to FSU this fall after eight highly successful seasons of coaching at the prep school level in Virginia and North Carolina.

A player under Wallace Wade on the 1938, '39, '40, and '41 Duke University teams, Siegfried was an all-Southern conference and second team all-America fullback selection in 1941. He played in the Rose Bowl game that year against Oregon State.



SIEGFRIED

Siegfried served in the Navy three-and-one-half years, getting in two seasons of play with the Bainbridge (Md.) team. He played pro ball with the Washington Redskins in 1945, then coached two seasons at Fork Union (Va.) Military Academy. His next stop was a two-year stand at Varina High in Richmond where his teams had a 13-5-1 mark.

Siegfried continued his climb up the prep coaching ladder and in 1948 served as backfield coach at Hampton (Va.) where the team won the state title.

The 1949 and 1950 campaigns found him at Sanford (N.C.) High as head coach where his teams posted identical 9-3 marks and gained two regional titles.

He moved to Henderson (N.C.) in 1951 and there his team won nine, lost none, and tied for the Eastern championship. His 1952 team was runnerup for the North Carolina AA championship, losing in the state playoff, after copping the regional and Eastern crowns.

At FSU Siegfried will work principally with the backs.

Winston is married — his wife's name is Ann. They have three children — Judy 9, Nancy 6, and Tommy 3.

WON'T YOU

HAV-A-TAMPA

CIGAR

Eli Witt Tobacco & Candy Company

TALLAHASSEE, FLORIDA

*A Great Name in Clothing*



"SUITS THE SOUTH"



#### ASSISTANT COACH BOB HARBISON

Bob Harbison, an outstanding guard for the late 'Bo' McMillan at Indiana University in 1945, '46, and '47, begins his sixth season as an assistant coach at FSU. Harby is one of the Tribe's line coaches.



HARBISON

Harbison came to FSU in 1948 under the then head coach Don Veller. He has worked with guards and tackles, primarily, here, and is credited with developing Bill Dawkins, little All-America guard in 1951 and Hugh Adams, little All-America tackle in 1949.

A native of Evansville (Ind.), Harbison was elected to the North squad for the annual Blue-Gray game in Montgomery in 1947.

Harbison received his masters degree in physical education at FSU in

August of this year.

A rock 'em sock 'em player in his days at Indiana, Harby likes the same brand of play from his charges.

Bob is married — his wife's name is Jane. They have two daughters, Paula 3 and Susan 1.

#### ATHLETIC TRAINER FRED ('DOC') HOOVER



HOOVER

Fred ('Doc') Hoover, one of FSU's own sons, begins his first season as athletic trainer, after four years' service here as assistant trainer.

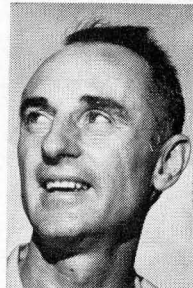
Hoover, 23, is one of the nation's youngest college athletic trainers. He is a member of the National Athletic Trainers Association and holds an associate membership in the Southeastern Conference Trainers Association.

A native of Jacksonville, 'Doc' is single.

At FSU Hoover plans the menu for athletes, is responsible for physical condition of squad.

#### ASSISTANT COACH MIKE LONG

Mike Long joins the FSU football and basketball coaching staffs this fall after 10 seasons in the Florida high school ranks.



LONG

Long will assist with football until November 1, then work with basketball.

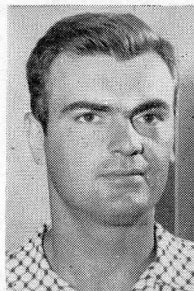
A graduate of the University of Minnesota in 1937, Long was a stand-out track performer there. He copped the regional Olympic tryout title in the pole vault in 1936.

For the last seven years Long was head cage coach and assistant football coach at Ft. Myers (Fla.) High. Previously, he had coached three years at Sarasota (Fla.) High.

Mike is married — his wife's name is Louise. They have four sons — Steve 14, Terry 12, Curtis 10, Jim 5.

#### ASSISTANT COACH VINCE RAGUNAS

Vince Ragunas commences his first season with the Seminoles, coming to State from VMI where he served as backfield coach three seasons under his present chief, Tom Nugent.



RAGUNAS

Ragunas is a graduate of VMI where he played fullback and blocking back on the Keydet varsity teams of 1946, '47, and '48. He had played on the frosh team in '42 before going into the service and three years with an Army tank corps in Europe.

After graduation, Ragunas played a year of pro ball with the Pittsburgh Steelers.

After a year with the pros, Vince heeded the call to join Tom Nugent back at old VMI. He served with Nugent at VMI during the 1950, '51, and '52 seasons.

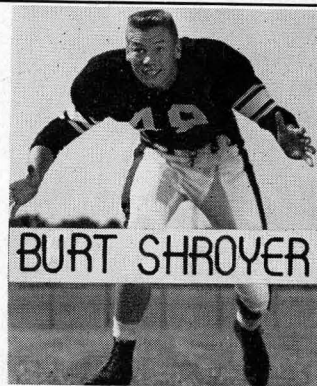
At FSU Ragunas will work with the backs. He is single.

## D. T. O'HARA, JR.

PRODUCE • POULTRY and EGGS • FROZEN FOODS

Phone 2-8641 • 717 W. Gaines St.

TALLAHASSEE, FLORIDA



BURT SHROYER

## BENNETT'S DRUG STORE

- Fountain
- Cafe
- Cosmetics
- Drugs

- Prescriptions
- Cameras
- Sundries
- Gifts

MEET AT BENNETT'S BEFORE AND AFTER THE GAME!

Corner Monroe and College Streets

PHONES 2-8980 — 2-4450





Fiveash

## P. W. WILSON COMPANY

Tallahassee's Best Store

Since 1837

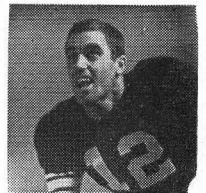
Men's Clothing  
and Furnishings  
Men's Shoes by  
Freeman and Edwin Clapp  
Sportswear  
Luggage

Ladies' Ready-to-Wear  
Infants' Wear  
Teen-Agers' Wear  
Home Furnishings  
Piece Goods  
Millinery  
Notions



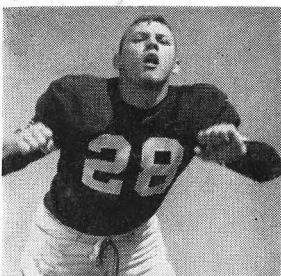
TELEPHONE 2-2310

TALLAHASSEE, FLORIDA



Bryant

## Compliments of a Friend



J. Jacobs

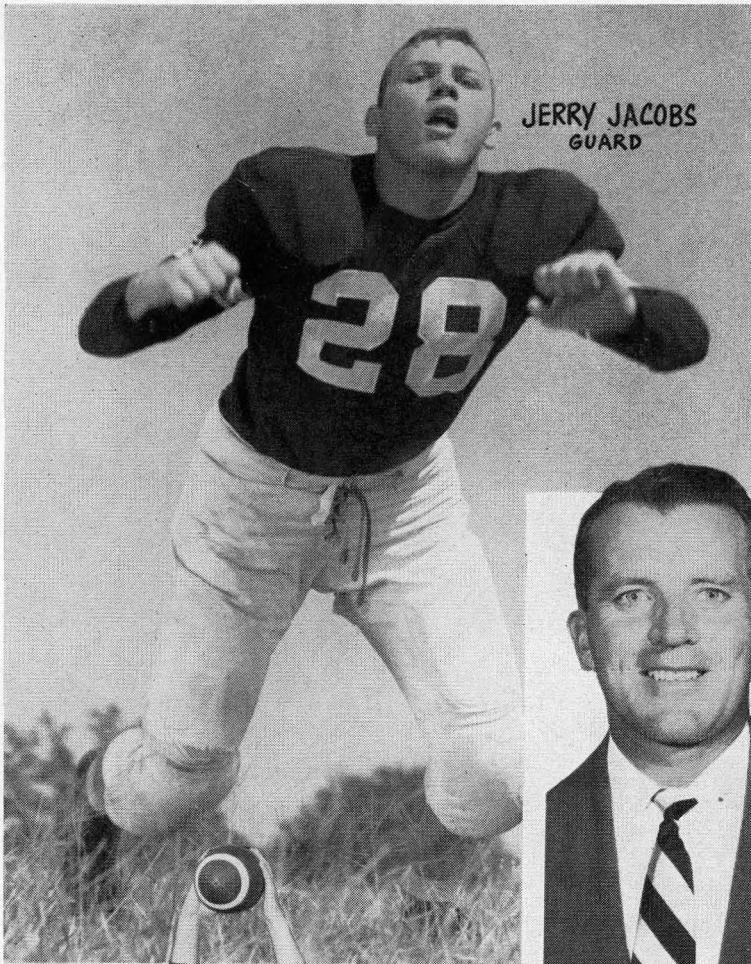
*Scalp 'em  
Seminoles!*

# FLORIDA THEATRE

WEDNESDAY thru SATURDAY







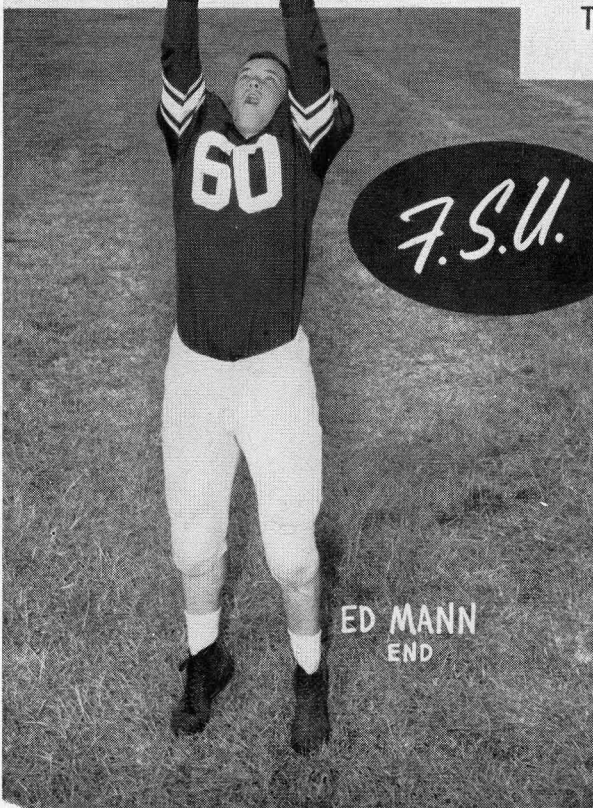
JERRY JACOBS  
GUARD



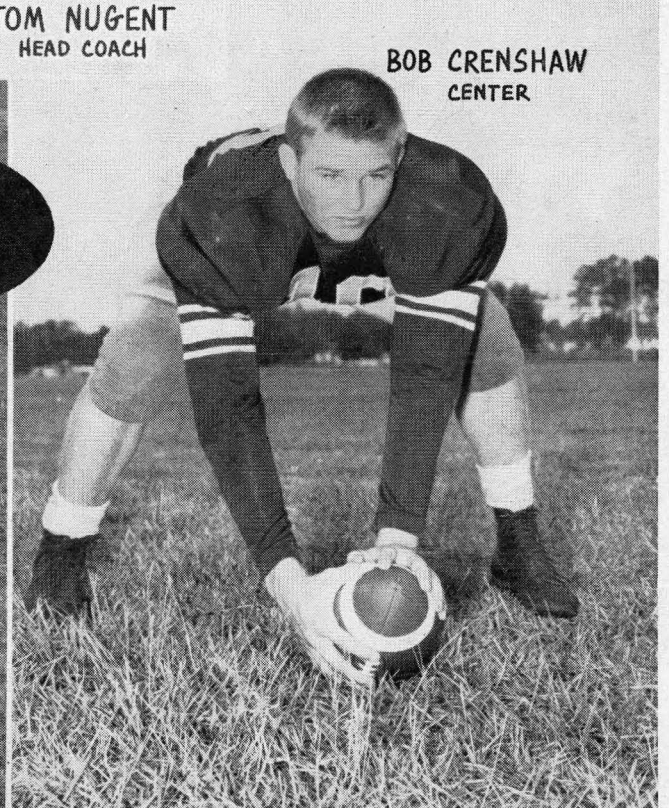
JIMMY MESSINERE  
BACK



TOM NUGENT  
HEAD COACH



ED MANN  
END



BOB CRENSHAW  
CENTER



---

---

*"Serving Tallahassee"*



**Industrial Bank of Tallahassee**



**Lewis State Bank**



**Capital City National Bank**



**Tallahassee State Bank & Trust  
COMPANY**



**ALL BANKS ARE MEMBERS OF THE  
FEDERAL DEPOSIT INSURANCE CORPORATION**

---

---





**DOUBLE  
YOUR SAVINGS**

Higher than average dividends  
increase your savings income.

**DOUBLE  
YOUR PROTECTION**

Savings Now Insured To  
**\$10,000.00**

By  
Federal Savings & Loan Insurance Corp.

**Tallahassee Federal Savings  
& Loan Association**

115 East Park Avenue

---



Fiveash

***Seven Seas***

Corner Monroe and Pensacola—Next to the Capitol

Recommended by AAA

***Tallahassee's Finest***

**WE WILL BE HAPPY TO SERVE YOU AFTER THE GAME!**

**AIR CONDITIONED**

---



## FLORIDA STATE UNIVERSITY ROSTER

No.	Name	Pos.	Ht.	Wt.	Yr.	Home Town
11	Corso, L.	QB	5'10"	165	1	Miami, Fla.
12	*Bryant, B.	RE	6'3"	190	4	Perry, Fla.
13	Harper, W. L.	QB	6'	151	1	Cairo, Ga.
14	Price, T.	LE	6'	193	1	Miami, Fla.
15	Dollar, Fred	LH	6'	175	1	Cairo, Georgia
16	*Mann, Ed	LE	6'1"	190	2	Ashford, Ala.
18	Metts, T.	LH	5'10"	170	1	Sanford, Fla.
19	Grenn, R.	FB	6'1"	181	3	Brookhaven, Miss.
20	Holden, W.	LG	5'11"	170	1	Atlanta, Ga.
21	*Griner, J.	LH	5'11"	170	2	Jacksonville, Fla.
22	Grenn, C.	RH	5'10"	175	3	Brookhaven, Miss.
23	Titus, Ed	RT	6'	190	1	Thomasville, Ga.
24	*Jacobs, J.	LG	6'	195	2	South Bend, Ind.
25	Holt, Joe	FB	5'10"	181	1	Graham, N. C.
26	Jacobs, C.	RG	5'8"	178	2	Miami, Fla.
27	Graham, B.	RH	6'	183	2	Bogalusa, La.
28	*Fiveash, B.	LH	5'11"	180	3	Bainbridge, Ga.
31	*Taylor, J.	LE	5'9"	185	3	Tampa, Fla.
32	Twomey, F.	RE	6'1"	183	1	Gloucester, Mass.
33	Pacetti, B.	RH	6'1"	170	1	St. Augustine, Fla.
35	*Kalenich, S.	C	5'11"	193	4	Akron, Ohio
36	Davies, Gerald	RH	5'9"	165	1	Lancaster, N. Y.
37	Massey, H.	QB	5'10"	185	3	Canton, Miss.
39	*Johnson, E.	E	5'11"	198	2	Charleston, W. Va.
40	Phillips, E.	LT	6'1"	200	1	Belle Glade, Fla.
41	Fancher, B.	RT	5'11"	200	1	Alabama City, Ala.
43	Barber, B.	RT	6'	210	1	Belle Glade, Fla.
44	Leonard, B.	RE	6'	182	1	Ocala, Fla.
45	Bates, Bob	RG	5'11"	205	3	Bogalusa, La.
46	*Dobosz, S.	RH	5'9"	185	2	East Chicago, Ind.
48	Swantic, L.	QB	5'11"	178	1	Columbus, Ga.
49	Shroyer, B.	RT	6'1"	185	1	Valdosta, Ga.
50	Rooks, G.	QB	5'9"	170	1	Orlando, Fla.
51	*Powell, D.	LT	6'	214	2	Birmingham, Ala.
52	*Messinese, J.	LH	5'10"	175	4	Jacksonville, Fla.
53	Hathcock, M.	RT	6'5"	250	1	Alabama City, Ala.
54	Pacifico, Al	RG	5'8"	206	1	Altoona, Pa.
55	*Boyer, G.	C	6'2"	220	2	Jacksonville, Fla.
57	*King, R.	FB	6'1"	205	3	Daytona Beach
59	*Crenshaw, B.	C	5'9"	188	2	Miami, Fla.
60	Olsen, J.	LT	6'3"	220	2	Tallahassee, Fla.
62	Makowiecki, Al	LT	6'	200	2	Manaca, Pa.
63	Manning, L.	RE	5'11"	190	1	Delray Beach, Fla.
64	Staab, R.	RG	6'1"	195	1	Charleston, W. Va.

\*—denotes lettermen

## STETSON UNIVERSITY ROSTER

No.	Name and Age	Hgt.	P.	Wt.	Home Town
20	*Knowles, H. 19	5-8	FB	180	Green Cove Spgs.
24	Brady, Jim 19	5-11	FB	185	Orlando, Fla.
27	Bedan, Jim 19	5-11	FB	190	Jeffersonville, Ind.
33	Driver, Fred 19	6-	QB	190	Niagara Falls
35	Semaniz, F. 19	5-10	QB	194	Spr'field, Mass.
37	Imgrund, J. 21	6-4	QB	190	W. Orange, N. J.
44	*Colantuono, N. 20	5-10	HB	160	Cliffside, N. J.
43	*Marks, Stan 22	5-9	QB	165	Miami, Florida
45	Koster, Bob 18	5-5	HB	162	W. New York, NJ
	Weightman, T. 17	5-11	QB	165	Dade City, Florida
	Frith, Herb 18	5-10	HB	170	Miami, Florida
50	McBryde, L. 20	5-10	HB	165	Sanford, N. C.
52	*Park, Art 20	6-	HB	165	Atlanta, Ga.
55	Stephenson, G. 18	5-9	HB	160	Winter Park, Fla.
59	McLin, W. 18	6-	HB	174	Tallahassee, Fla.
61	Booth, L. 20	5-8	G	180	Miami, Florida
62	Siekaniac, J. 20	5-11	G	210	Pittsburgh, Pa.
64	*Golde, Walt 21	5-10	G	190	Hicksville, N. Y.
65	Poole, S. 18	5-10	G	202	Belle Glade, Fla.
66	Schmidt, Jim 18	5-11	G	189	W. New York, NJ
68	West, Doyle 19	5-10	G	168	Lakeland, Fla.
68	Marshall, F. 17	5-11	G	188	Greensboro, N.C.
69	*Appel, Charlie 23	5-9	G	190	Miami Beach, Fla.
70	Vas, Pete 20	5-10	T	200	Toledo, Ohio
71	Copeland, D. 18	6-1	T	206	W. Branch, Mich.
72	Greiger, J. 18	6-1	T	230	Dade City, Fla.
74	Wolfe, Ralph 18	6-2	T	200	Prescott, Mich.
75	*Boyer, Hank 20	6-	T	185	Neptune Beach
76	Hough, Joe 18	5-10	T	180	Pensacola, Fla.
78	*Jochem, G. 21	6-	T	195	Miami, Florida
79	*Reinke, Del 22	6-2	T	200	Lorain, Ohio
	Blitch, Jeff 17	6-2	T	210	Dade City, Fla.
80	Hoffard, M. 20	6-1	E	185	Johnson City, Ill.
81	Casey, John 18	6-	E	190	W. Palm Beach
84	Shamrock, K. 18	6-1	E	183	Uniontown, Pa.
85	Revak, Ted 18	6-2	E	209	Uniontown, Pa.
86	*Edgington, J. 21	6-1	E	180	Miami, Fla.
88	Hendley, Jim 19	6-	E	195	Miami, Fla.
89	Davis, N. 22	6-	E	168	Jacksonville, Fla.
90	Hopkins, J. 21	6-9	C	175	Lake Worth, Fla.
92	Gerencir, J. 19	5-10	C	180	Charleston, W. Va.
95	*Proctor, Bill 20	6-4	C	235	Winter Park, Fla.
99	Best, Dave 21	6-	C	185	Ft. Meade

\*—Letterman

## ASSISTANT COACH VAUGHN MANCHA



Mancha

Vaughn Mancha, former all-America center at the University of Alabama, begins his second season in Seminole livery as an assistant coach. At FSU Mancha works with the forward wall. Symbolic of the Tide's greatest era, Mancha lettered on the 'Bama teams of 1944, '45, '46, and '47. He was an all-Southeastern and all-America selection as he helped pace the Red Elephants to an undefeated season and to a 34-14 win over Southern Cal in the 1946 Tournament of Roses. Big Vaughn played in two Sugar Bowl games (New Year's of '45 against Duke and New Year's of '48 against Texas).

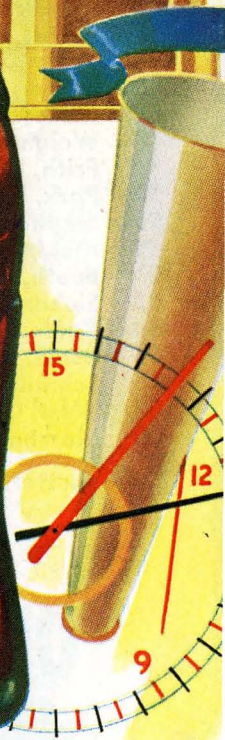
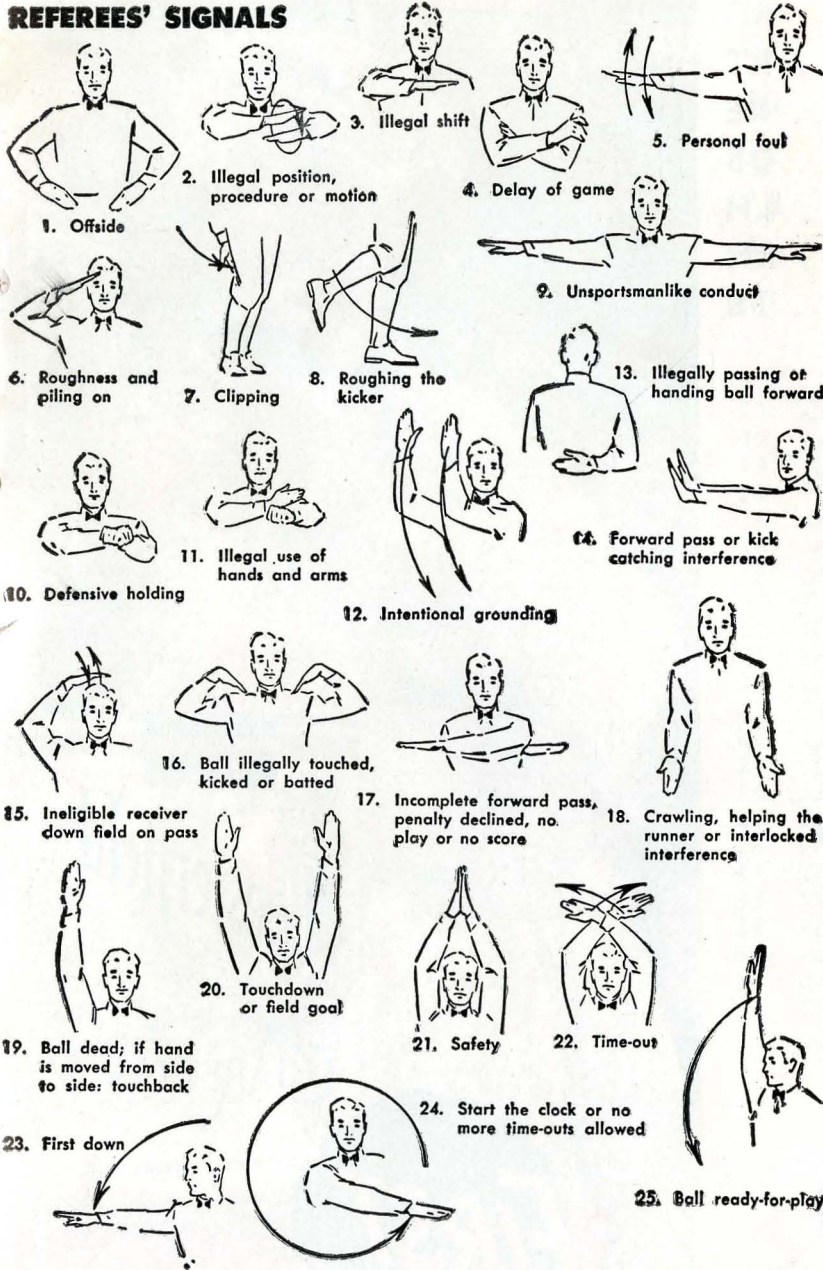
After receiving his bachelor's degree at the Capstone in 1948, Mancha played a year of pro ball with the Boston Yanks. He then re-entered 'Bama and received his masters degree in 1949. He came to FSU last season after a highly successful three-year tenure as head coach at Livingston (Ala.) Teachers College. His teams there posted a respectable 21-7 mark. Mancha is married — his wife's name is Sybil. They have two daughters, Nan 4 and Claire 2.



# REFRESHING



## REFEREES' SIGNALS



COPYRIGHT 1933, THE COCA-COLA COMPANY

**TALLAHASSEE COCA-COLA BOTTLING COMPANY**  
1370 South Monroe



## STETSON UNIVERSITY

### PROBABLE STARTING LINEUP

NO.	NAME	POSITION
80	MARK HOFFORD . . . .	LE
70	PETE VAS . . . . .	LT
69	CHARLIE APPEL . . . .	LG
75	HANK BOYER . . . . .	C
64	WALT GOLDE . . . . .	RG
78	GEORGE JOCHEM . . . .	RT
84	KEITH SHAMROCK . . . .	RE
37	JOHN IMGRUND . . . .	QB
55	GENE STEPHENSON . . .	LH
44	NICK COLANTUONO . . .	RH
20	HAROLD KNOWLES . . .	FB

### THE HATTER SQUAD

20 *Knowles, FB	69 *Appel, G
24 Brady, FB	70 Vas, T
27 Bedan, FB	71 Copeland, T
33 Driver, QB	72 Geiger, T
35 Semanie, QB	74 Wolfe, T
37 Imgrund, QB	75 Boyer, T
43 *Marks, QB	76 Hough, T
44 *Colantuono, HB	78 *Jochem, T
45 Koster, HB	79 *Reinke, T
50 McBryde, HB	Blitch, T
Weightman, QB	80 Hofford, E
Frith, HB	81 Casey, E
52 *Park, HB	82 Livingston, E
55 Stephenson, HB	84 Shamrock, E
59 McLin, HB	85 Revak, E
61 Booth, G	86 *Edgington, E
62 Siekaniec, G	88 Henley, E
64 *Golde, G	89 Davis, E
65 Poole, G	90 *Hopkins, C
66 Schmidt, G	92 Gerencir, C
67 West, G	95 *Proctor, C
68 Marshall, G	99 Best, C

\*—Letterman

**CHESTERFIELD**  
**BEST FOR YOU**

*Choice of Young America*  
**CHESTERFIELD**



## FLORIDA STATE

### PROBABLE STARTING LINEUP

NO.	NAME	POSITION
31	JIMMY TAYLOR . . . .	LE
62	AL MAKOWIECKI . . .	LT
24	JERRY JACOBS . . . .	LG
55	GEORGE BOYER . . . .	C
54	AL PACIFICO . . . . .	RG
43	BOB BARBER . . . . .	RT
39	EDDIE JOHNSON . . . .	RE
37	HARRY MASSEY . . . .	QB
18	TAL METTS . . . . .	LH
46	STAN DOBOSZ . . . . .	RH
21	JOHN GRINER . . . . .	FB

### FLORIDA STATE SQUAD

11 Corso, QB	37 Massey, QB
12 *Bryant, RE	39 *Johnson, E
13 Harper, QB	40 Phillips, LT
14 Price, LE	41 Fancher, RT
15 Dollar, LH	43 Barber, RT
16 *Mann, LE	44 Leonard, RE
18 Metts, LH	45 Bates, RG
19 Grenn, R., FB	46 *Dobosz, RH
20 Holden, LG	48 Swantic, QB
21 *Griner, LH	49 Shroyer, RT
22 Grenn, C., RH	50 Rooks, QB
23 Titus, RT	51 *Powell, LT
24 *Jacobs, LG	52 *Messinese, LH
25 Holt, FB	53 Hathcock, RT
26 Jacobs, C., RG	54 Pacifico, RG
27 Graham, RH	55 *Boyer, RT
28 *Fiveash, LH	57 *King, FB
31 *Taylor, LE	56 Feamster, RE
32 Twomey, RE	59 *Crenshaw, C
33 Pacetti, RH	60 Olsen, LT
34 Lane, LE	62 Makowiecki, LT
35 *Kalenich, C	63 Manning, RE
36 Davies, RH	64 Staab, RG

\*—Letterman

**CHESTERFIELD**  
**BEST FOR YOU**





# DELICIOUS



## PENALTIES

### LOSS OF FIVE YARDS

1. Taking more than five times out during either half (except for replacement of injured player).
2. Illegal delay of game.
3. Failure to complete substitution before play starts.
4. Violation of kickoff formation.
5. Player out of bounds when scrimmage begins.
6. Putting ball in play before Referee signals "Ready-for-play".
7. Failure to maintain proper alignment of offensive team when ball is snapped. Also, backfield man illegally in motion.
8. Offside by either team or encroachment on neutral zone.
9. Attempt to draw opponents offside.
10. Crawling by runner.
11. Illegal forward pass (includes intentional grounding of forward pass). Also loss of down.
12. Taking more than two steps after Fair Catch is made.
13. Player on line receiving snap.
14. Any violation of the scrimmage formation.

### LOSS OF FIFTEEN YARDS

15. Team not ready to play at scheduled time.
16. Violation of rules during intermission.
17. Illegal return of suspended player.
18. Interference by member of offensive team with defensive player making pass interception. (Also loss of down.)
19. Interference with opportunity of player of receiving team to catch a kick.
20. Illegal use of hands or arms by offensive player.
21. Tackling or blocking defensive player who has made fair catch.
22. Roughing the kicker.
23. Piling up, hurdling, clipping.
24. Tackling player out of bounds, or running into player obviously out of play.
25. Coaching from sidelines.
26. Failure to stop one full second following shift.
27. Defensive holding.
28. Invalid Signal for Fair Catch.

### OTHER PENALTIES

29. Striking an opponent with fist, forearm, elbow or locked hands, kicking or kneeling — Mandatory disqualification of offending player plus loss of fifteen yards.
30. Foul within the one yard line — half the distance to the goal.
31. Interference by defensive team on forward pass — passing team's ball at spot of foul and first down.
32. Forward pass being touched by ineligible receiver beyond the line of scrimmage — loss of fifteen yards from spot of preceding down and loss of a down.
33. Illegal touching of kicked ball within opponent's ten yard line — touchback.
34. Flagrantly rough play or unsportsmanlike conduct — Mandatory disqualification plus loss of fifteen yards.
35. Eligible pass receiver who goes out of bounds and later touches a forward pass—loss of down.

**TALLAHASSEE COCA-COLA BOTTLING COMPANY**

**1370 South Monroe**



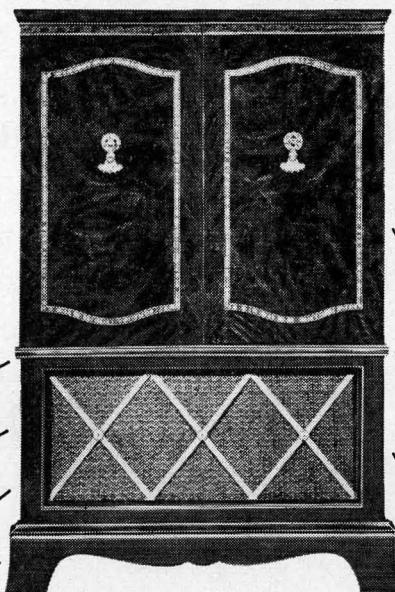
# MAKE DuMont Television YOUR GOAL

*for the best football season of your life!*

DuMont Invites  
**COMPLETE\***  
**COMPARISON**

*...feature by feature  
...at every price!*

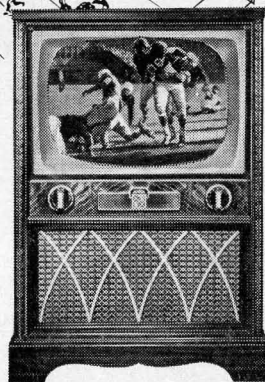
- ★ **New Clear-Picture Power**  
High-resolution picture tubes!
- ★ **DuMont Selfocus\* Tube**  
First with automatic focus!
- ★ **Optional 82-Channel Tuning**  
Most sensitive tuning in television!
- ★ **Fringe Area Excellence**  
Best reception everywhere!
- ★ **Truer Tone**  
Finer circuits, choice woods!



**DuMont de Luxe WINDSOR**  
21-inch DuMont Selfocus\* tube. Fine 18th Century cabinet on casters, hand-rubbed mahogany finish. Phono jack. 82-channel tuning optional. Built-in UHF-VHF antenna.

Be as proud and happy as the man with seats on the 50-yard line! Follow the game, close up, to either goal! You'll never see better football on television than you see with the new DuMont — first to match or surpass *every* other set in *every* feature at *every* price!

- ★ **Custom-Crafted Cabinets**  
Famous design, finish, construction!
- ★ **Quality Controls**  
— of materials, parts, production!
- ★ **Thrifter Ownership**  
Save on set operation...servicing...trade-ins!



**DuMont de Luxe BRADFORD**  
English Traditional cabinet, mahogany finish. 21-inch DuMont Selfocus\* tube. Phono jack. Built-in UHF-VHF antenna. Optional 82-channel tuning.

Imagine owning **DU MONT®** *...from \$199<sup>95</sup>\*\**  
**QUALITY TELEVISION**

\*Trade Mark

( for 17" table model, )  
not illustrated )

\*\*NO EXTRA CHARGES for full-year picture tube Warranty, 90-day parts Warranty, Federal Excise Tax, built-in UHF-VHF antenna, or mahogany finish. Limed oak or blond finish slightly higher.

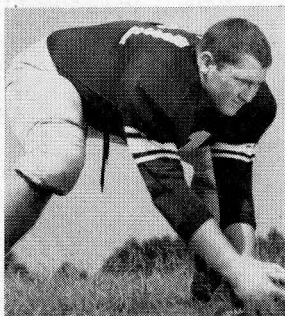
**AT YOUR AUTHORIZED DU MONT DEALER'S NOW!**  
**ALLEN B. DuMONT LABORATORIES, INC.**

700 N. E. Fourth Court, Miami

213 N. Willow, Tampa, Fla.

730 Dellwood Ave., Jacksonville, Fla.





Boyer

## THE SWEET SHOP

GOOD FOOD

DELICIOUS SODAS

### DRUG SUNDRIES

Meet Your Friends Here Before and

After the Game!

### FOLLOW THE SEMINOLES!

---

---

#### Rock 'Em Seminoles!

Wash Your Dirty Clothes at

THE

### LAUNDROMAT

•

Equipped with Westinghouse  
Automatic Washers

•

Gets clothes snowy-white,  
shiny-bright!

•

Drying and Folding Service  
Tintexing • Dry Cleaning

•

### LAUNDROMAT

115 W. Tennessee Street

PHONE 3-1789

1005 North Monroe

PHONE 2-3792

SCORE A TOUCHDOWN!

Take Your Car to

### TOM BROWN'S

SHELL OIL PRODUCTS

•

Lubrication • Washing • Tires and  
Tubes • Batteries • Accessories •  
Steam Cleaning • Wheel Balancing  
• Polishing • Simonizing.

•

OUR SERVICE IS COURTEOUS—OUR  
WORK IS GUARANTEED

•

### TOM BROWN'S

Tennessee and Adams

PHONE 2-3940



---

---

## SCALP 'EM SEMINOLES

Meet Your Friends at

# *The Amber House*

— for —

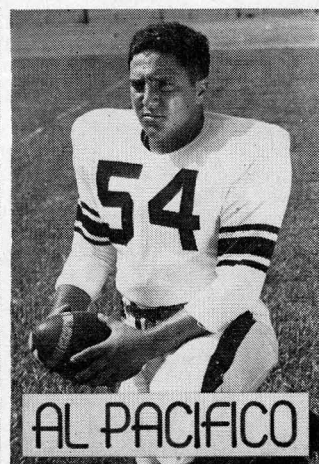
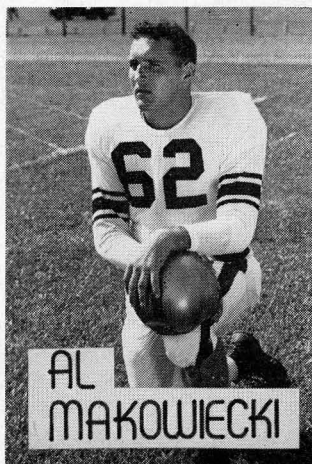
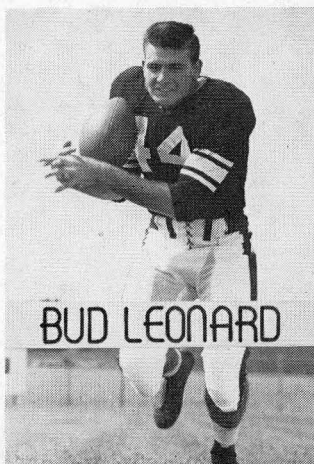
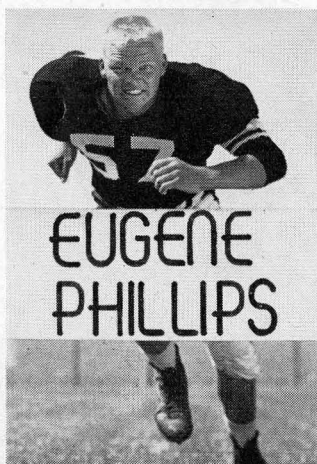
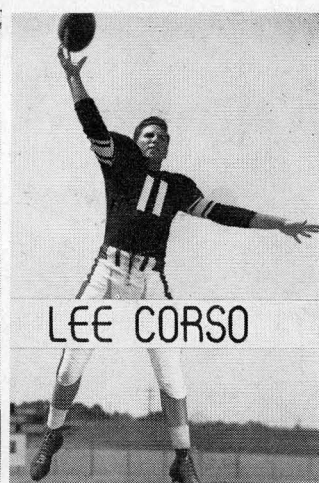
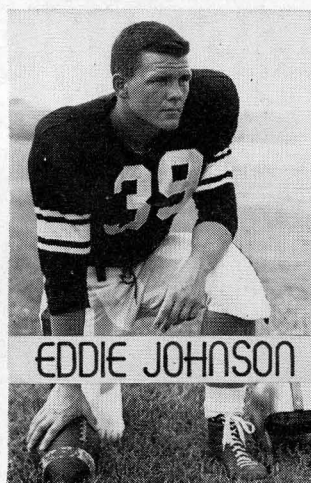
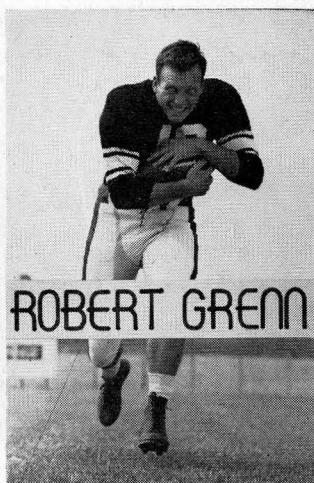
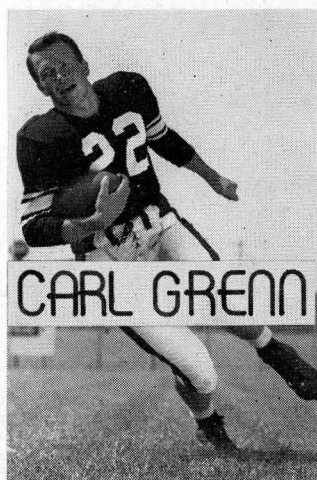
FOOD THAT'S FINE

**Before and After the Game**

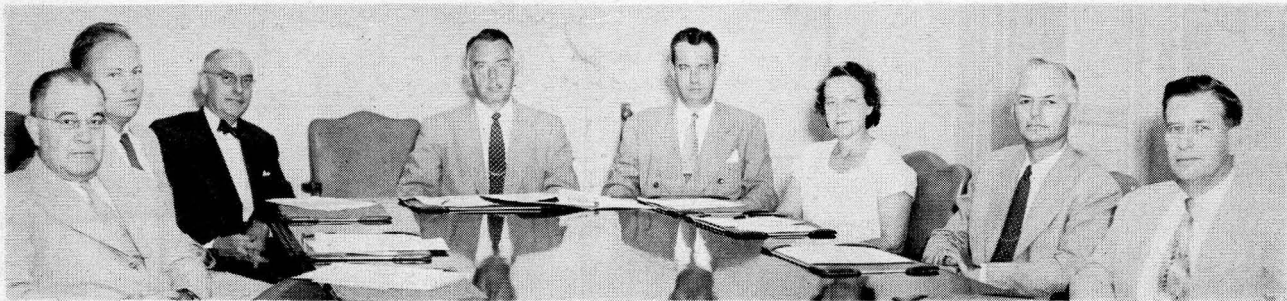
Across the Street from University on Corner of Copeland and Park

---

---







### FLORIDA STATE UNIVERSITY ATHLETIC COMMITTEE

Left to right: Dr. Coyle E. Moore, Dr. Nelson Marshall, Mr. Rod K. Shaw, Dr. Howard Danford, Dr. A. B. Martin, Dr. Grace I. Fox, Dr. J. Broward Culpepper and Dr. Charles S. Davis. (Not in picture: Dr. Mode L. Stone.)

Hear the "SEMINOLE PIGSKIN PREVIEW" featuring FSU's head football coach Tom Nugent over the following stations each week. (Get the inside story on Saturday's big FSU game.)

Station and Place	Program Time	Station and Place	Program Time
WLAB—Albany (Ga.)	Saturday, 1 p. m.	WDLP—Panama City	Friday, 8 p. m.
WMGR—Bainbridge (Ga.)	Thursday, 8 p. m.	WCOA—Pensacola	Saturday, 1:30 p. m.
WMBR—Jacksonville	Thursday, 11:15 p. m.	WCNH—Quincy	Friday, 6 p. m.
WTYS—Marianna	Friday, 7 p. m.	WSUN—St. Petersburg	Friday, 6 p. m.
WINZ—Miami	Friday, 6:15 p. m.	WTNT—Tallahassee	Friday, 7:30 p. m.
WHOO—Orlando	Thursday, 6:15 p. m.	WKTG—Thomasville (Ga.)	Saturday, 1:55 p. m.

(THIS PROGRAM PRODUCED BY THE FLORIDA STATE UNIVERSITY LOCATED IN FLORIDA'S CAPITAL CITY, TALLAHASSEE.)

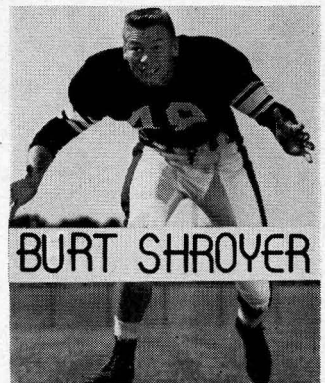
## HOLLAND'S RESTAURANT

Facing the Capitol at 106 E. Pensacola Street  
TALLAHASSEE, FLORIDA

Serving Our Own Blend of Coffee  
Famous for Home-made Pies and Hot Biscuits  
U. S. Prime and U. S. Choice Steaks

*AIR CONDITIONED and ULTRA MODERN*

N. T. HOLLAND, Owner and Manager



# Gilberg's

*"The House Of 1000 Fabrics"*

108 East Jefferson Street  
TALLAHASSEE, FLA.

220 Broad Avenue  
ALBANY, GA.

26 North Palafox Street  
PENSACOLA, FLA.

*Ready Made*

**BEDSPREADS**

**DRAPERIES**

**UPHOLSTERY FABRICS**

**SLIPCOVER FABRICS**

**DRAPERY FABRICS**

**DRESS FABRICS**

**PATTERNS • BUTTONS**

**SEWING NOTIONS**



## The Stetson University Hatters

Stetson University's colorful Hatters provide the Homecoming opposition today, a role they occupied just two years ago when some 13,700 fans sat in on one of the finest games ever played in Doak S. Campbell stadium. FSU edged through, 13-10. Not until the final gun had sounded was the issue determined.

The 1951 Hatter team went on to the Tangerine Bowl where it routed a strong Arkansas State team.

Today, the Hatters again can be expected to give the Seminoles a battle all the way. Stetson-FSU games have always been marked by close, spirited play, neither team able to get a long jump on the other. Last year's contest ended in a 6-6 deadlock.

Stetson enters today's game with a 3-4 record, FSU has a 2-5 mark. Both have played some of the nation's leading teams this season. Stetson lost to Florida and Auburn; FSU lost to Miami, Mississippi Southern, Furman.

On the positive side, both teams have impressive wins. Stetson defeated Tampa, Western Kentucky, and Morehead State while FSU beat Louisville and VMI.

Ably coached by headmaster Jay Pattee, the Hatters employ a wide-open attack including plenty of passes. Coach Pattee today is expected to unveil his top quarterback, John Imgrund, injured in



**DR. J. OLLIE EDMUNDS, President**

the opening game with Auburn, subsequently sidelined since that time.

Imgrund, who stands 6-3, weighs 190, reportedly is one of the finest field generals in the state. He's a fine passer, runner, and his presence in the lineup is always a threat to the opposition.

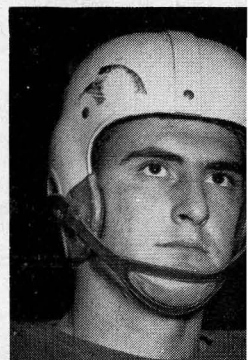
With Imgrund out this season, Pattee has developed two additional quarterbacks in Stan Marks and Fred Seimaine. Halfbacks Nick Colantuono and Gene Stephenson both can carry the mail along with fullback Harold Knowles. And today's tilt has a most unique feature. At center for Stetson is Hank Boyer, No. 75, senior. For FSU at center is George Boyer, No. 55. On defense they're both linebackers. Yes, you're right! They are brothers!!

Today's game is the seventh in the Stetson-FSU series, which began in 1947.

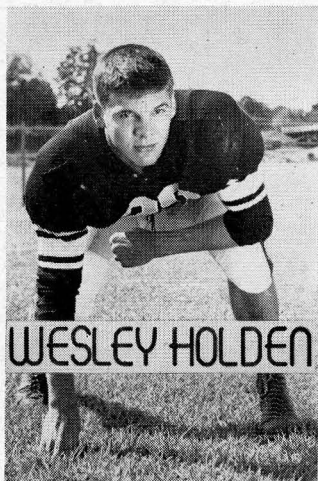
**JAY PATTEE**  
Head Football  
Coach



**HANK BOYER**  
Center







## **ROYAL SANDWICH COMPANY**

**P. O. Box 641**

**Phone 2-0699**

— **WHOLESALE DISTRIBUTORS OF SANDWICHES** —

**Salted Peanuts • Peanut Butter Sandwiches • Potato Chips**

**Pop Corn • Cookies • Candy**

**"FRESH AS A DAISY"**

---

---

**Scalp 'Em Seminoles!**

**"EVERYTHING FOR THE STUDENT"**

**WE BUY AND SELL**

# **USED BOOKS**

**UNIVERSITY**



**BOOKSTORE**

---

---

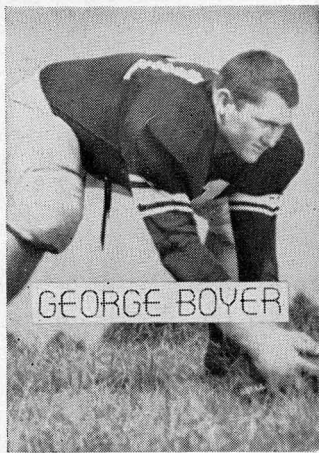
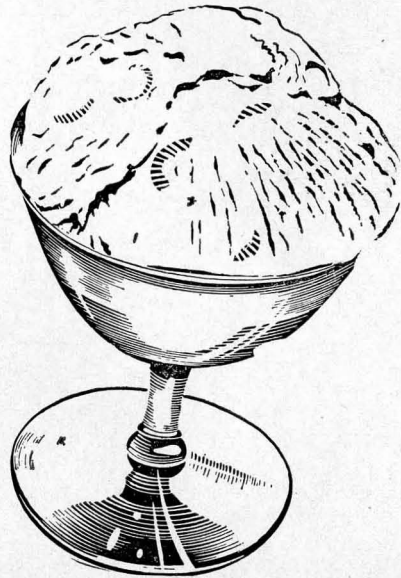


---

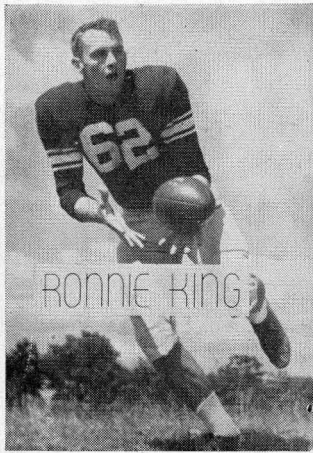
# *Velda* Ice Cream

*"Floridas Own"*

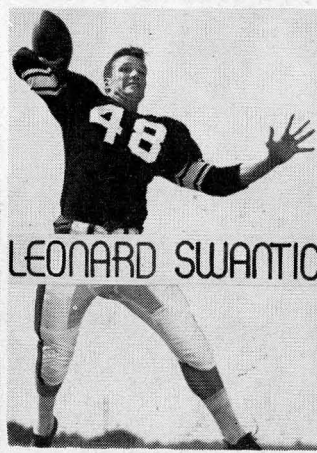
⋮



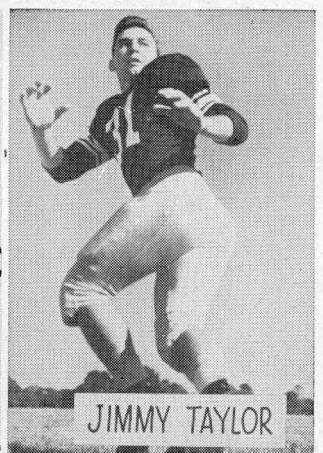
GEORGE BOYER



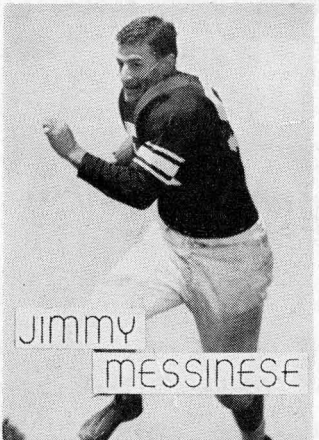
RONNIE KING



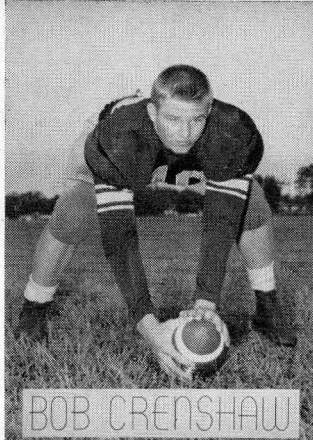
LEONARD SWANTIC



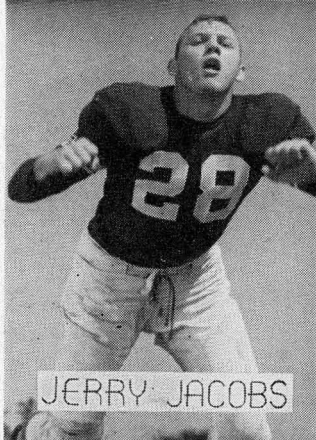
JIMMY TAYLOR



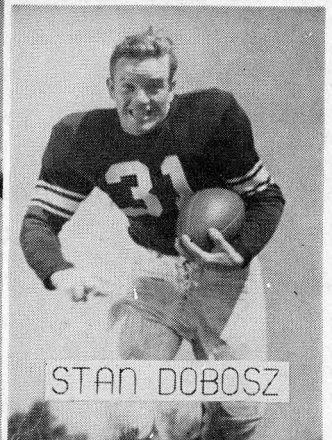
JIMMY  
MESSINESE



BOB CRENSHAW

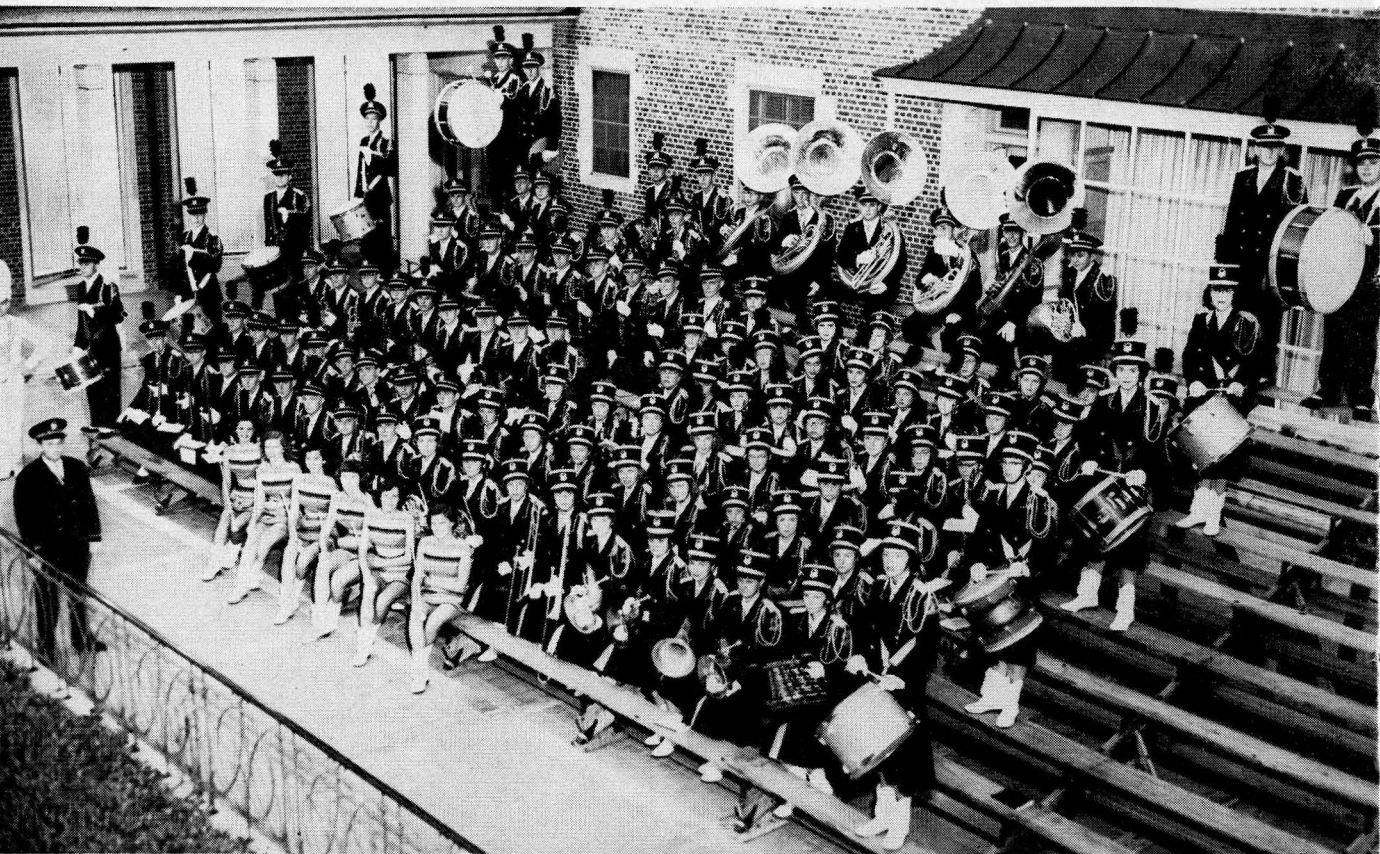


JERRY JACOBS



STAN DOBOSZ





**FLORIDA STATE UNIVERSITY MARCHING CHIEFS**

## **HOTEL FLORIDAN**

The Community Host to Traveling America

**You'll Enjoy Dining in  
THE GREEN ROOM**

## **Gandy Motor Hotel**

Tallahassee's Outstanding Court  
**SKYLINE RESTAURANT ADJOINING**  
**U.S. 90 WEST**

•  
Rest Assured  
in  
Tallahassee



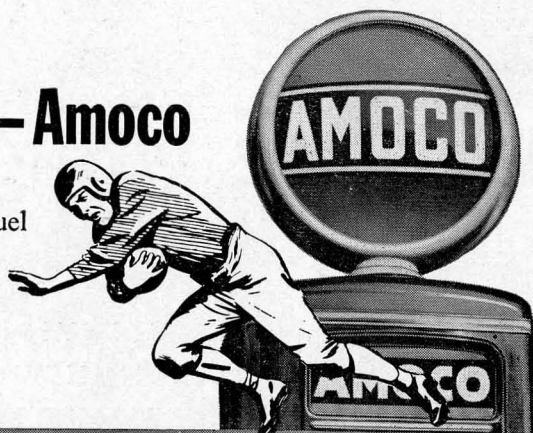
**NIC'S  
TOGGERY  
Scalp 'Em Seminoles!**



# ALL AMERICAN!

## Best distance gainer — Amoco

AMOCO-GAS — the original special motor fuel outstanding for power and mileage. Amoco-Gas burns cleanly in combustion chambers, leaves no metallic deposit!



## Best wear-blocker — Permalube

PERMALUBE MOTOR OIL — cleans as it lubricates, protects against dirt and friction. So new, so advanced, it's the oil of the future!



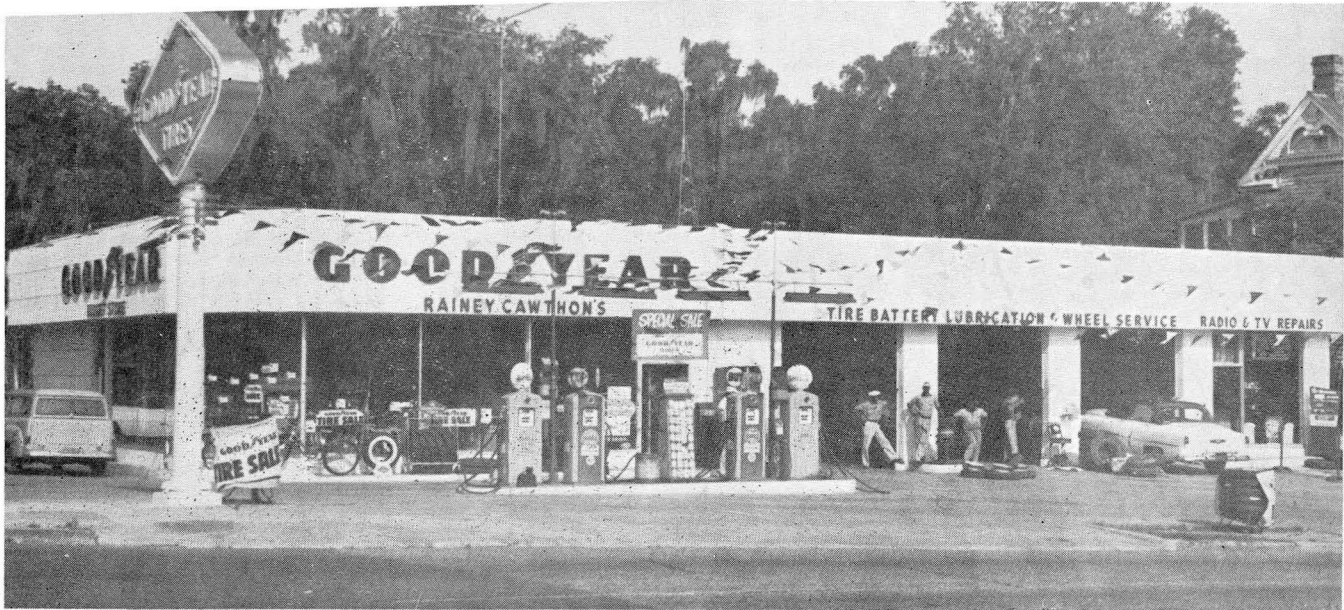
## Best line anywhere

*Stop at the sign of greater values*

AMERICAN OIL COMPANY from Maine to Florida







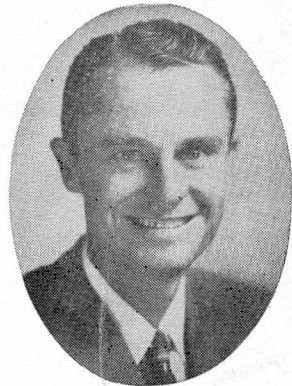
RAINEY CAWTHON

# Rainey Cawthon's

- ★ RCA TELEVISION and RADIO
- ★ WESTINGHOUSE APPLIANCES
- ★ SHELL PRODUCTS ★ GOODYEAR TIRES

"WE SERVICE WHAT WE SELL"

● ROAD SERVICE ● PHONE 2-1865 ●



FRED PIERSON

Alford Chevrolet Co.

John Manthey, Inc.

Capital Lincoln-Mercury, Inc. Mayo-Mingledorff Motors, Inc.

Cordell Motors

Proctor & Proctor

Dean Motors

Ivey Motors, Inc.

Dodson Buick

Redmon Auto Parts

Drake Motors, Inc.

Tallahassee Motors, Inc.

Compliments of

**TALLAHASSEE  
AUTOMOBILE DEALERS ASSOCIATION**