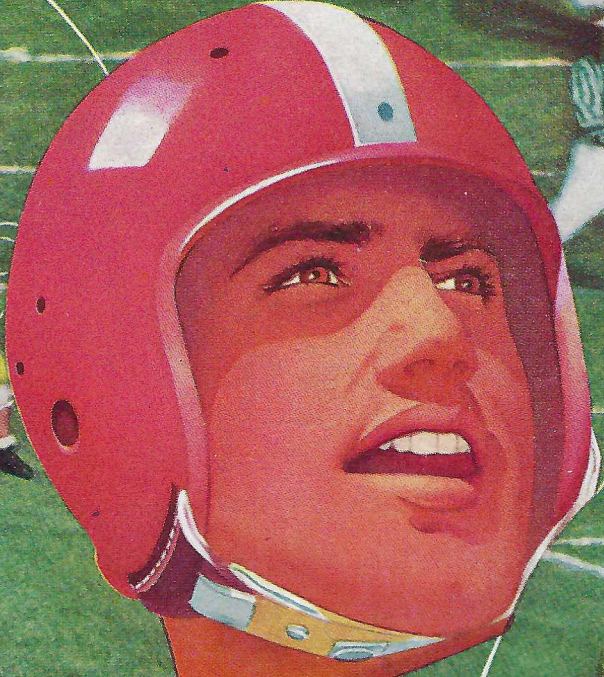


Price 25c

High o'er the tow'ring pines our voices swell,
Praising these Gothic spires, we love so well;
Here sons and daughters stand, faithful and true
Praising our Alma Mater, F. S. U.



FLORIDA STATE UNIVERSITY

vs.

FURMAN

NOVEMBER 13 2:30 P.M.

DOAK S. CAMPBELL STADIUM
TALLAHASSEE

HOMECOMING

1954



RAINEY CAWTHON

Rainey Cawthon's

- * RCA TELEVISION and RADIO
- * SHELL PRODUCTS * GOODYEAR TIRES
- "WE SERVICE WHAT WE SELL"
- ROAD SERVICE • PHONE 2-1865 •



FRED PIERSON

Compliments of

TALLAHASSEE AUTOMOBILE DEALERS ASSOCIATION

Alford Chevrolet Co.

John Manthey, Inc.

Capital Lincoln-Mercury, Inc. Mayo-Mingledorff Motors, Inc.

Cordell Motors

Proctor & Proctor

Dean Motors

Ivey Motors, Inc.

Drake Motors, Inc.

Tallahassee Motors, Inc.

1954

Greetings Alumni:



DR. DOAK S. CAMPBELL
President

We welcome today a multitude of alumni who have returned to the campus for Homecoming. We hope you have found opportunity to re-live many of the experiences of your own college days.

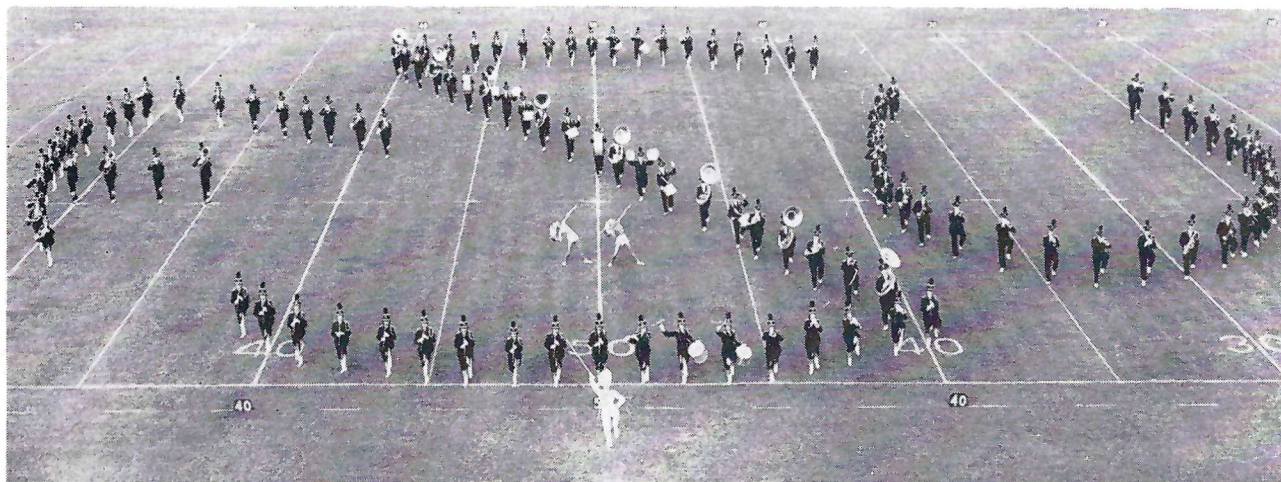
We express appreciation to the many friends of the University who have made this homecoming possible. Your unflinching support has been generous.

We have as our special guests today representatives of our government; members of our National Congress, of the Cabinet, the Supreme Court, and the Legislature. We welcome these citizens upon whom the University depends so much for its continued support.

Our guests on the gridiron today are the Hurricanes from Furman University. This well-known institution, located in Greenville, South Carolina, was established by the Baptists of South Carolina in 1826. This University has made substantial contribution through the years to the leadership of its own state as well as to the southern region.

President
Florida State University

FSU MARCHING CHIEFS



Shown above are the Florida State University Marching Chiefs as they perform one of the many intricate formations planned for the entertainment of the homecoming alumni this week. The Marching Chiefs, under the direction of Manley Whitcomb, are recognized as one of the finest college band groups in the nation.



Whatever the Sport
We Furnish
The Equipment

Finkelstein's has served Florida schools and universities for nearly half a century. Our sports experts are always anxious to advise you on any problem regarding sports equipment.

We feature such outstanding sports equipment as:

- ★ SPALDING
- ★ SPOTBILT
- ★ RAWLINGS
- ★ WRIGHT & DITSON

HARRY FINKELSTEIN CO.
 633 W. Bay, Cor. Jefferson



WON'T YOU

HAV-A-TAMPA
CIGAR

Eli Witt Tobacco & Candy Company
 TALLAHASSEE, FLORIDA

THE LAUNDROMAT

CLOTHES - RUGS - BLANKETS

Washed Clean — Fluff Dried and Folded
"Your Satisfaction Is Our Goal"

PHONE
 3-1789

115 W. Tennessee — 1005 N. Monroe

PHONE
 2-3792

SHIRT FINISHING
DRY CLEANING
TINTEXING

Florida
 Tallaha
 from ev
 was est
 1851.
 of the
 men an
 In 1'
 change
 came a
 Florida
 College
 Campb
 largest,
 in Ame
 the co-
 enrollm
 have al



Wescott Administration Building

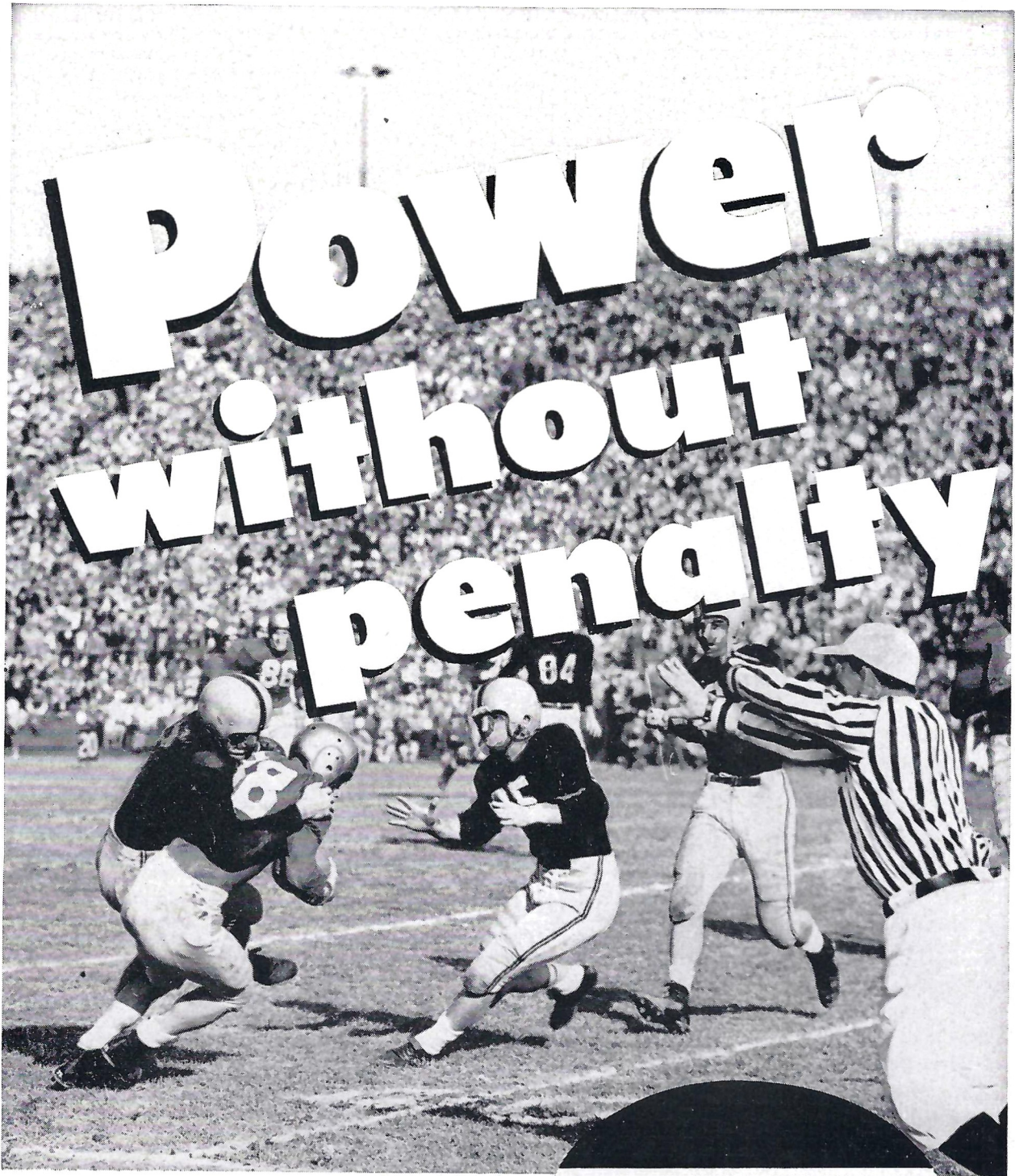
FLORIDA STATE UNIVERSITY

Florida State University, located in Florida's capital city of Tallahassee, is easily accessible by auto, bus, rail, and plane from every section of the state and from adjoining states. It was established by the Legislature of Florida in January of 1851. The University came into being as the Seminary West of the Suwannee. Original enrollment numbered about 200 men and women.

In 1901 the name of this co-educational institution was changed to Florida State College. In 1905, the school became a women's college and the name was changed to the Florida Female College. In 1909 it became the Florida State College for Women. In October of 1941 Dr. Doak Sheridan Campbell became President. By 1946 FSCW was the second largest, and one of the most distinguished Women's Colleges in America. In May, 1947, by legislative act, FSCW became the co-educational Florida State University. Since that date enrollment, faculty and staff, and major instructional divisions have all tripled in number.

Florida State University boasts a faculty and staff of approximately 900, of whom some 500 are faculty members. There are approximately 8,600 students in all departments, and men and women students are about equal in number. The regular school year is composed of two semesters. The fall semester begins in mid-September and the winter semester in mid-February. There is also a half-semester of nine weeks in the summer starting in mid-June.

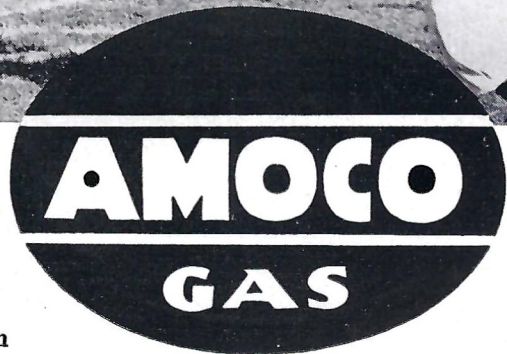
Major divisions of the Florida State University include the following: The College of Arts and Sciences; The School of Business; The School of Education; The Division of General Education; The School of Home Economics; The School of Journalism; The School of Library Training and Service; The School of Music; The School of Nursing; The School of Public Administration; The School of Social Welfare; Air ROTC; Army Ordnance ROTC; The Home Demonstration Office; The University Extension Division; and The Graduate School.



In a football game, the power of the whole team can be wasted by penalties.

So, too, in motor fuels. An additive in a premium gasoline can cause a harmful metallic deposit—can make your car pay a penalty in lost power.

Amoco-Gas has no additive because it needs none. It's *pure* petroleum. It delivers power without penalty. Just *test* it!



AMERICAN OIL COMPANY

wr
one
pic
hea

for
the
Va
ele

nea
ent
of

Aft
and
wh

foo
in
tea

foo
of
clu
ent
qui
for

coa
ath
Hig
rec

Arr

VA

FSU'S HEAD FOOTBALL COACH TOM NUGENT

Tom Nugent, originator of the "I" formation, the type-writer huddle, the double quarterback, and recognized as one of the nation's most imaginative young football coaches, picks up the reins this fall for his second campaign as headmaster of Florida State University football fortunes.

Nugent came to State last year from a highly-successful four-year tenure as boss man of VMI's colorful Keydets of the Southern Conference. In four seasons at the Lexington, Va., institution, Nugent injected new life into the VMI eleven. His record there was a respectable 19-18-2.

Nugent took over the Seminoles in 1953 and did the near-impossible. Starting with only 13 holdovers and an entirely new system, Nugent built a team that won half of its 10 games, the last three in a row.

Nugent's coaching record dates back to his college days. After starring on the Ithaca College eleven three seasons and graduating in 1936, Nugent coached the Ithaca frosh while doing graduate work.

A native of Lawrence, Mass., Tom became head coach of football, basketball, and baseball at Essex Training School in his hometown. Three seasons produced two undefeated teams.

The Air Force summoned Nugent in 1941. But Tom and football soon joined forces again. He was named head coach of the Rosecrans (Mo.) Air Base Flyers. Other duties included writing, directing, and presenting shows for the entertainment of troops. Nugent was then—and still is—quite a song and dance man. He's a showman, as his formations and style of play of his teams attest.

After his discharge in 1946, Nugent was appointed head coach at Williamsburg, Va., High, coached four undefeated athletic teams there in '46, then moved to Hopewell, Va., High. Three years of high school coaching produced a record of 24 wins, 4 losses for Nugent.

Then came Nugent's big chance—head coach at VMI. Armed with the same optimistic outlook and that "Nugent



TOM NUGENT

Head Coach of FSU

Golden Touch," Tom stepped into the VMI job. It wasn't long before VMI hit the headlines, sharing the Southern Conference title with Maryland in 1951, when the Keydets won seven and lost three.

Tom and Mrs. Nugent (Peg) have six children: Tommy 11, Kerry 10, Peggy 8, Terrance Daniel 5, Pattie 4, and Timothy David, four months.

F. S. U. ASSISTANT COACHES



VAUGHN MANCHA



BOB HARBISON



"WIN" SIEGFREID



VINCE RAGUNAS



MIKE LONG

Coaches Not Shown: Frank Toomey, Owen Hale, Steve Kalenich, Jimmy Messines



**"SAVE
WITH
SAFETY"**

—at—

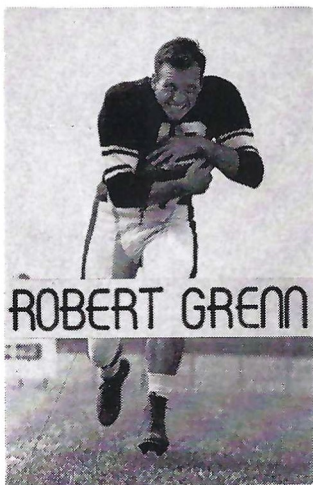


LEON FEDERAL

Savings and Loan Association

Monroe at Park

Tallahassee



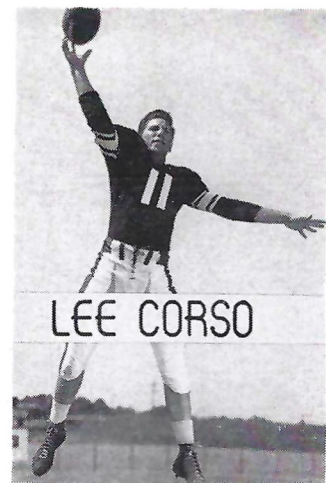
Meet Me at the

MECCA

111 South Copeland St.

and Enjoy the Fine

Food and Friendly Atmosphere



Front row
Metts,
Bisbee,
Olson,
Ted Ro

Florida State University Football Squad



Front row, left to right: Billy Graham, Bill Brown, Al Pacifico, Lee Corso, Al Makowiecki, Ronnie King, Don Powell, Jim Olsen, Buck Metts. Second row: Buddy Reynolds, Hubert Ackerman, Carl Grenn, Jerry Jacobs, Robert Grenn, Bill Weaver, Bill Odom, Hamilton Bisbee, Jimmy Lee Taylor. Third row: Tommy Bouchlas, Tommy Thompson, Bill Swilley, Bill Cullom, Ronnie Schomburger, Norman Olson, Mike Norman, Gene Cox. Fourth row: Bob Morris, Leon Bryant, Don McCormick, Bob Barber, Bob Crenshaw, John Griner, Ted Rodrigue, Bud Leonard. Fifth row: Tom Feamster, Harry Massey, Pat Versprille, Jimmy Trado, Joe Holt, Ray Staab, Len Swantic.



NIC'S TOGGERY

Scalp 'Em
Seminoles!

MILK and ICE CREAM



**Foremost
International Dairies**

**Faiver's Drive In
and Restaurant**

Two to Serve You
1312 West Tennessee
1804 South Monroe

The Last Word in Fine Food

This Page of
F.S.U. Seminoles
Compliments of
THE CORRAL

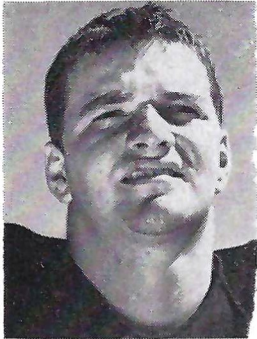
Y'all Come to---

THE CORRAL

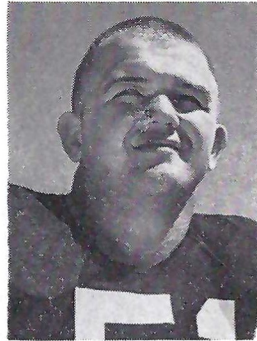
1620 South Monroe

Telephone 2-8208

JOE HARRINGTON, Owner



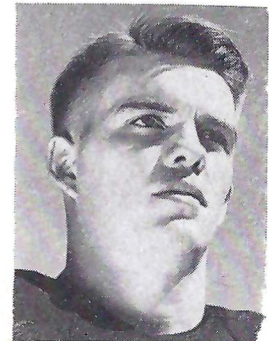
Joe Holt—FB



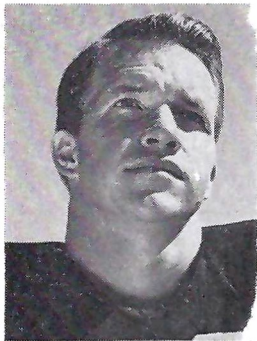
Don Powell—RT



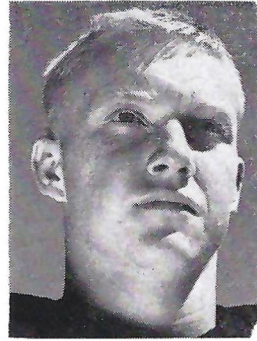
Al Makowiecki—LT



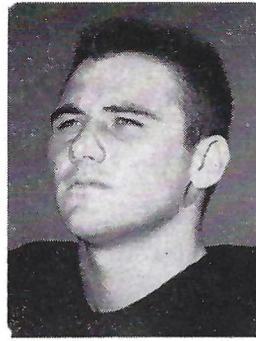
John Griner—FB



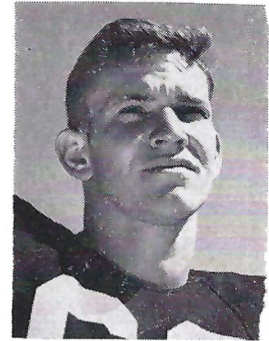
Carl Grenn—RH



Billy Odom—RH



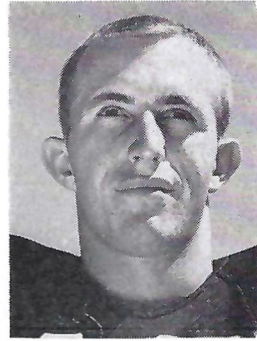
Leon Bryant—G



Jimmy Trado—LE



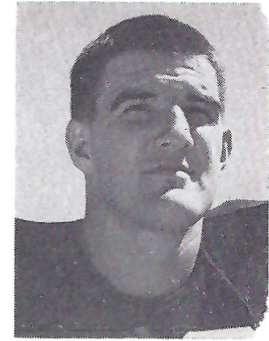
Billy Graham—RH



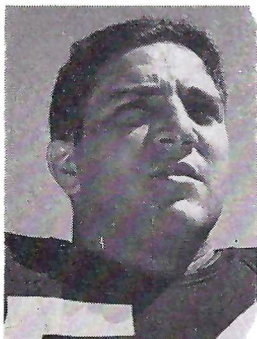
Buck Metts—LH



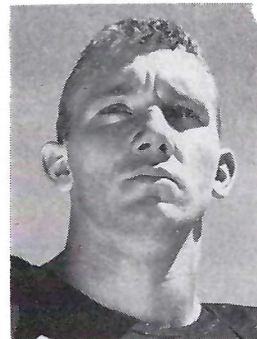
Robert Grenn—RE



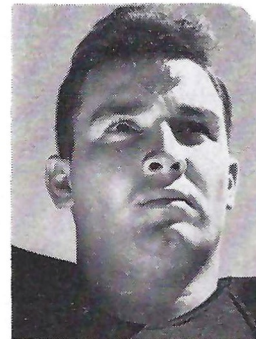
Tom Feamster—RE



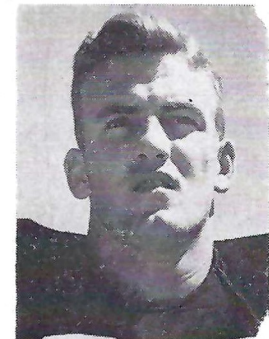
Al Pacifico—RG



Ray Staab—RT



Jimmy L. Taylor—LE



Harry Massey—QB

SINCLAIR DEALERS

15 SERVICE STATIONS FOR YOUR CONVENIENCE

YELL—Scalp'em Seminoles!

POWER UP WITH POWER-X!

—at—

AUBREY BARROW'S

Thomasville Rd. at Glenview Drive

ELI ROBERTS

1 BLOCK FROM FSU

Tennessee and Copeland Sts.

R & R

SERVICE STATION

Tennessee and Duval Sts.

BURNS AUTO SERVICE

Top of Hill S. Monroe St.

SHOPPING CENTER

North Monroe at 4th Avenue

RALPH HADLEY

811 West Brevard Street

BIG OAK

SERVICE STATION

Old Quincy Highway

BRADFORDVILLE

SERVICE STATION

Thomasville Highway

AMONIA STORE

Thomasville Highway

JOT-EM-DOWN

SERVICE STATION

Woodville, Florida

ROBINSON

South Adams Street

CAPITAL CITY ICE

South Adams St. at Railroad

MOODY

GROCERY & SERVICE

New Crawfordville Highway

GILLIAM

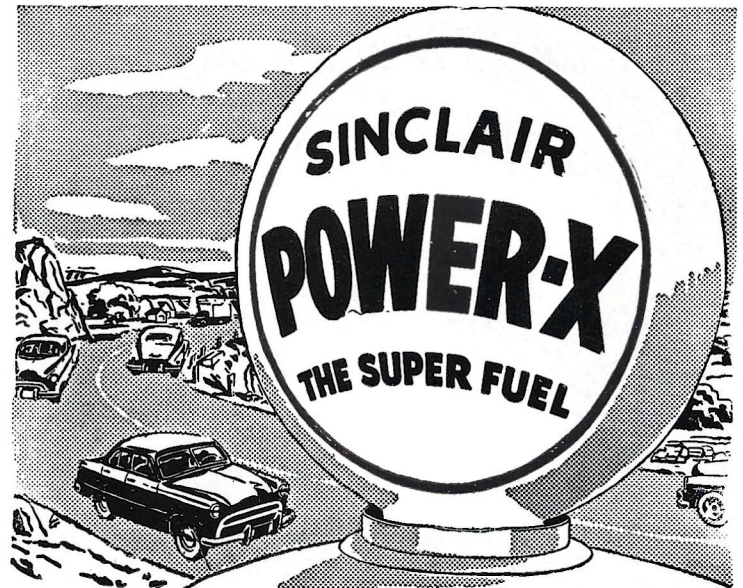
GROCERY & SERVICE

W. Brevard Street

BARWICK

SERVICE STATION

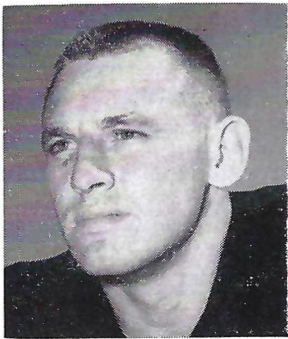
Panacea, Florida



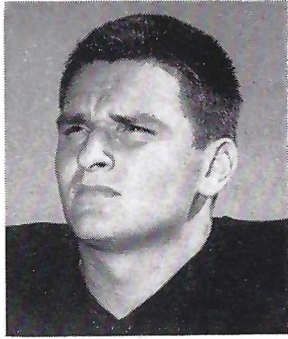
2 to 18% MORE

KNOCK-FREE POWER

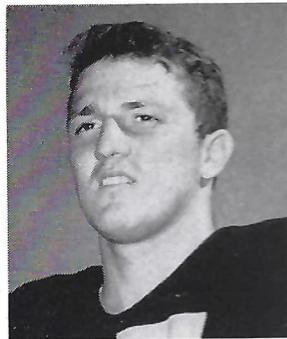
RALPH D. NEWMAN OILS, Inc.
MARKETER OF SINCLAIR PRODUCTS



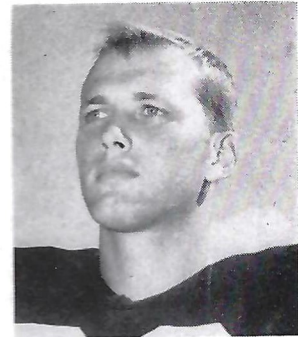
Vince Gibson—G



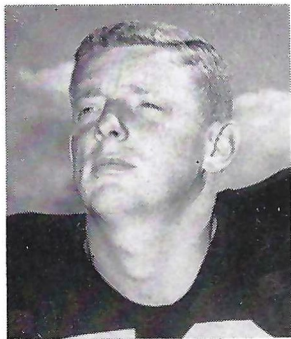
Tommy Thompson—FB



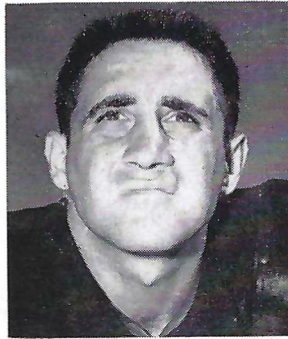
Tommy Bouchlas—C



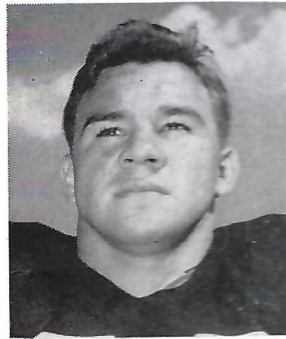
Bill Swilley—E



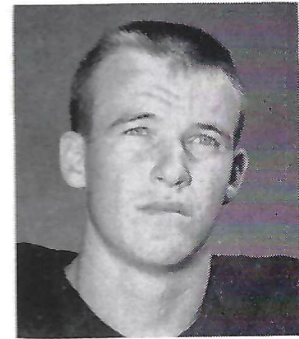
Bill Cullon—C



Ted Rodrigue—QB



Gene Cox—FB



Don McCormick—LH

Scalp 'Em Seminoles

"Everything for the Students"

We Buy and Sell

USED BOOKS

UNIVERSITY



BOOKSTORE

IN THE STUDENT CENTER

The
There i
landsc
year M
cowo v
vide sv
and the
land.
mile of
Ther
structio
Tudor
being
more t
cipal b
Music
Alumni
Campb



Florida Hall — Women's Dormitory



West Hall — Men's Eleven Story Dormitory

The Florida State University Campus

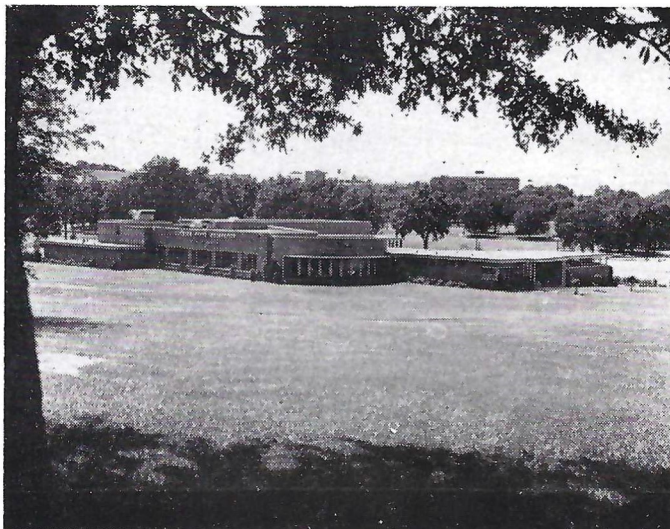
The Florida State University grounds consist of 1,319 acres. There is the campus, with its three hundred acres beautifully landscaped and ideally planned for future expansion (a 50-year Master campus plan is used as a guide): Camp Flastacowo with its 59 acres of land facing Lake Bradford to provide swimming, boating, picnicking and recreational training; and the Farm, with its 960 acres of wooded and agricultural land. The main campus is located within less than half a mile of downtown Tallahassee.

There are 35 modern brick buildings of permanent construction on the campus. The general architectural theme is Tudor Gothic with the more recently constructed buildings being of harmonious modern design. In addition there are more than 200 other university buildings. Among the principal buildings are the Administration Building, Westcott Hall, Music Building, Education, History, Science, Student Union, Alumni Building, Library, Women's Gymnasium, Doak S. Campbell Stadium, Geology, nine women's residence halls,

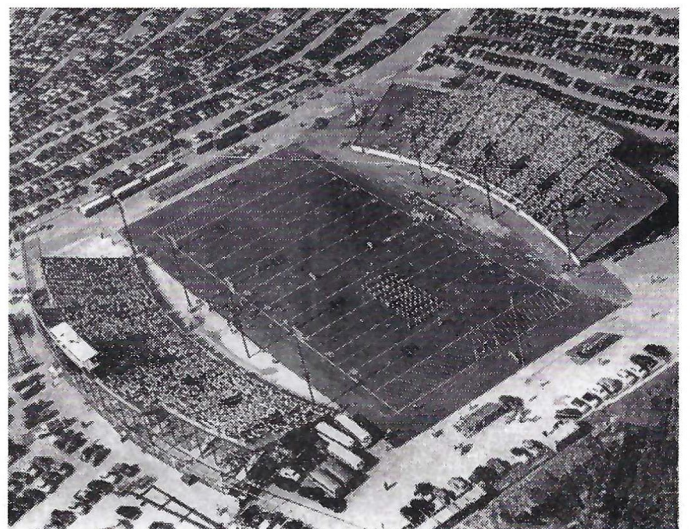
and ten men's residence halls. Conducted tours for interested individuals or groups may be arranged by the Public Relations Office.

The present value of the FSU physical plant is \$25,000,000. FSU has a 50-year master campus plan which was developed in 1949 by nationally and internationally known architects to co-ordinate and guide the growth of the physical plant of the University for the next half-century. It is based on an eventual enrollment of 10,000.

FSU has a modern 15,000 seat stadium of steel construction, so planned that every seat gives a splendid view of the entire field. The University has an excellent Art Gallery, and also a splendid archaeological Museum. The library at FSU is one of the few University libraries in the United States where students, as well as faculty, may enter the stacks and make selections directly from the shelves. It contains more than 300,000 volumes of books and periodicals and it subscribes to 1,780 newspapers and magazines.



Student Center



Campbell Stadium

Tallahassee Banking Association

Industrial Bank of Tallahassee

Tallahassee State Bank & Trust Co.

Capital City National Bank

Lewis State Bank

All Banks Are Members of
FEDERAL DEPOSIT INSURANCE CORPORATION

Owned and Operated by
Frank and James Chase

Skyline Restaurant

U. S. Highways 90 and 20
1 Mile West of City Limits

TALLAHASSEE, FLORIDA
Telephone 2-9144

"Serving Good Food for Fine People"

Buddy's Hardware and Sporting Goods

A Complete Line of
RAWLINGS EQUIPMENT

203 S. Monroe

We're Always for The Seminoles

WIN, LOSE or DRAW

State Office Supply

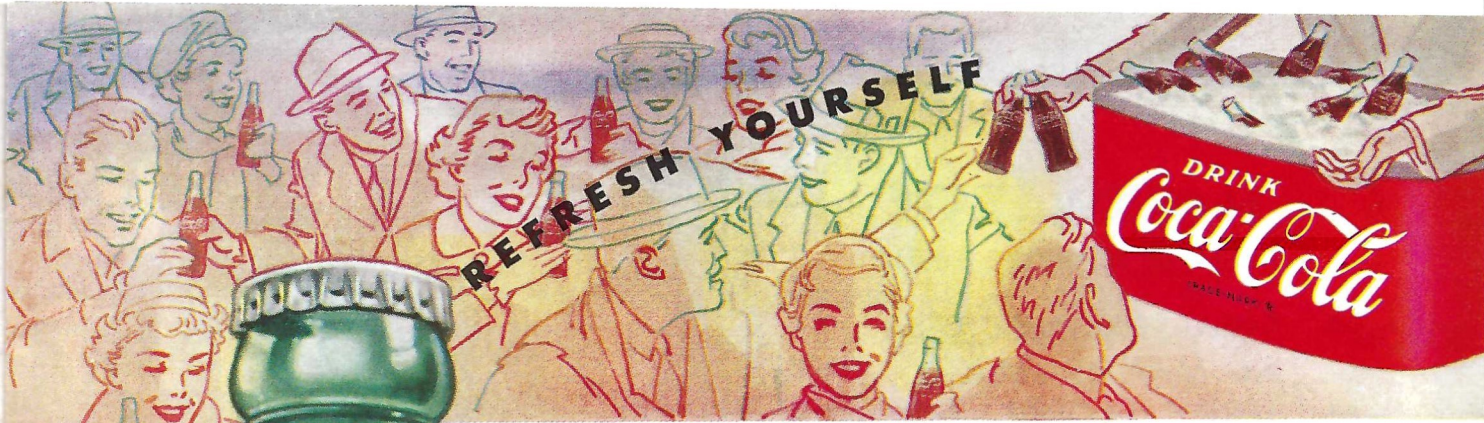
207 S. Adams Phone 2-2607

SCALP 'EM SEMINOLES

Brown's Men's Wear

Monroe at Park





REFEREES' SIGNALS

1. Offside
2. Illegal procedure or position
3. Illegal motion
4. Illegal shift
5. Illegal substitution
6. Delay of game
7. Personal foul
8. Roughness and piling on
9. Clipping
10. Roughing the kicker
11. Unsportsmanlike conduct
12. Defensive holding
13. Illegal use of hands and arms
14. Intentional grounding
15. Illegally passing or handing ball forward
16. Forward pass or kick catching interference
17. Ineligible receiver down field on pass
18. Ball illegally touched, kicked or batted
19. Incomplete forward pass, penalty declined, no play or no score
20. Crawling, helping the runner or interlocked interference
21. Ball dead; if hand is moved from side to side: touchback
22. Touchdown or field goal
23. Safety
24. Time-out
25. First down
26. Ball ready-for-play
27. Start the clock or no more time-outs allowed

COPYRIGHT 1954, THE COCA-COLA COMPANY

TALLAHASSEE COCA-COLA BOTTLING COMPANY, TALLAHASSEE, FLORIDA

FLORIDA STATE

PROBABLE STARTING LINEUP

NO.	NAME	POSITION
34	RON SCHOMBURGER	LE
62	AL MAKOWIECKI	LT
24	JERRY JACOBS	LG
59	BOB CRENSHAW	C
54	AL PACIFICO	RG
43	BOB BARBER	RT
56	TOM FEAMSTER	RE
35	VIC PRINZI	QB
11	LEE CORSO	LH
18	BUCK METTS	RH
21	JOHN GRINER	FB

FLORIDA STATE SQUAD

10	Odom, RH	37	Massey, QB
11	Corso, LH	40	Gibson, RG
12	McCormick, LH	41	Versprille, QB
16	Weaver, RH	42	Ward, RG
18	Metts, LH	43	Barber, LT
17	Whittington, FB	44	Leonard, LE
19	R. Grenn, RE	45	Morris, RG
21	Griner, FB	46	Reynolds, LH
22	C. Grenn, RH	47	Gardner, RT
23	Bisbee, RE	48	Swantic, QB
24	J. Jacobs, LG	49	Bryant, RG
25	Holt, FB	50	Baggett, LG
26	C. Jacobs, LG	51	Powell, RT
27	Graham, RH	52	Cullom, C
29	Swilley, LE	54	Pacifico, RG
30	Ackerman, C	56	Feamster, RE
31	Taylor, LE	57	King, FB
32	Rodrigue, QB	59	Crenshaw, C
33	Cox, FB	61	Thompson, FB
34	Schomburger, RE	62	Makowiecki, LT
35	Prinzi, QB	63	Trado, LE
36	Brown, LT	64	Staab, RT



HIGHEST FILTER

EXCLUSIVE L&M miracle filter tip contains Alpha Cellulose...for most effective filtration. Much more flavor...much less nicotine.



MORE FLAVOR



LESS NICOTINE

HIGHEST QUALITY FILTER CIGARETTE

filter tip contains
effective filtra-
much less nicotine.

MIRACLE TIP



*King Size
or Regular*

THE
DISTINCTIVE
L&M
MONOGRAM CIGARETTE
*Light and
Mild*

F U R M A N

PROBABLE STARTING LINEUP

NO.	NAME	POSITION
60	L. G. HIGHTOWER . . .	LE
65	JACKIE HARRIS	LT
42	DALE HAMEL	LG
46	JOHN SOCHA	C
47	WEBSTER WILLIAMS .	RG
59	DAVE YOUNG	RT
61	SID MADDOX	RE
37	JIM BOYLE	QB
16	TED YAKIMOWICZ . .	LH
28	JOHN POPSON	RH
24	BOB DELLINGER	FB

FURMAN SQUAD

12	Carter, QB	48	Hall, G
13	Penland, HB	49	Bolick, G
15	Jennings, FB	51	Beck, T
16	Yakimowicz, HB	52	Seay, T
17	Albert, FB	53	Freeman, T
20	Weir, HB	54	Reugner, T
22	Coker, FB	55	Lyle, T
24	Dellinger, FB	56	Craven, T
26	Petty, HB	57	Mincey, T
27	Edwards, FB	58	Halford, T
28	Popson, HB	59	Young, T
30	Bradham, QB	60	Hightower, E
31	Kolans, QB	61	Maddox, E
32	Grant, HB	62	Medlin, E
34	Pringels, QB	63	Barefoot, E
36	Ward, HB	64	Pfeifer, E
37	Boyle, QB	65	Harris, T
41	Anderson, G	66	Johnson, G
42	Hamel, G	67	Dacus, T
43	Tzouvelekas, G	69	Cubbage, T
44	Bielecki, G	71	Stokes, G
45	Lindler, G	72	Bagwell, C
46	Socha, G	74	Garrison, C
47	Williams, G	75	Clardy, C-T



MORE FLAVOR



LESS NICOTINE



PENALTIES

LOSS OF FIVE YARDS

1. Taking more than five times out during either half (except for replacement of injured player).
2. Illegal delay of game.
3. Failure to complete substitution before play starts.
4. Violation of kickoff formation.
5. Player out of bounds when scrimmage begins.
6. Putting ball in play before Referee signals "Ready-for-play".
7. Failure to maintain proper alignment of offensive team when ball is snapped. Also, backfield man illegally in motion.
8. Offside by either team or encroachment on neutral zone.
9. Attempt to draw opponents offside.
10. Crawling by runner.
11. Illegal forward pass (includes intentional grounding of forward pass). Also loss of down.
12. Taking more than two steps after Fair Catch is made.
13. Player on line receiving snap.
14. Any violation of the scrimmage formation.

LOSS OF FIFTEEN YARDS

15. Team not ready to play at scheduled time.
16. Violation of rules during intermission.
17. Illegal return of suspended player.
18. Interference by member of offensive team with defensive player making pass interception. (Also loss of down.)
19. Interference with opportunity of player of receiving team to catch a kick.
20. Illegal use of hands or arms by offensive player.
21. Tackling or blocking defensive player who has made fair catch.
22. Roughing the kicker.
23. Piling up, hurdling, clipping.
24. Tackling player out of bounds, or running into player obviously out of play.
25. Coaching from sidelines.
26. Failure to stop one full second following shift.
27. Defensive holding.
28. Invalid Signal for Fair Catch.

OTHER PENALTIES

29. Striking an opponent with fist, forearm, elbow or locked hands, kicking or kneeling — Mandatory disqualification of offending player plus loss of fifteen yards.
30. Foul within the one yard line—half the distance to the goal.
31. Interference by defensive team on forward pass—passing team's ball at spot of foul.
32. Forward pass being touched by ineligible receiver beyond the line of scrimmage—loss of fifteen yards from spot of preceding down and loss of a down.
33. Illegal touching of kicked ball within opponent's ten yard line — touchback.
34. Flagrantly rough play or unsportsmanlike conduct — Mandatory disqualification plus loss of fifteen yards.
35. Eligible pass receiver who goes out of bounds and later touches a forward pass — loss of down.



No.	
12	CH
13	Jer
15	Bo
16	Te
17	Jol
20	Bil
22	Jin
24	Bo
26	Bil
27	Ve
28	Jol
30	Ri
31	Di
32	Jir
34	Gu
36	Pe
37	Jir
41	Ja
42	Dr
43	Ni
44	Ar
45	Fr
46	Jol
47	W
48	Ro
49	Ho
51	Ge
52	Lo
53	Ju
54	En
55	Gr
56	Pe
57	Ro
58	Bo
59	Dr
60	L.
61	Si
62	Bo
63	Ro
64	Di
65	Ja
66	Jol
67	Co
69	Lo
71	Bo
72	Cl
74	Dr
75	C



FURMAN ROSTER

No.	Name	Pos.	Wt.	Year	Hometown
12	Charles Carter	QB	181	2	Greenville, S. C.
13	Jerry Penland	HB	170	1	Greer, S. C.
15	Bobby Jennings	FB	176	2	Columbia, S. C.
16	Ted Yakimowicz, c	HB	180	4	Wallington, N. J.
17	John Albert	FB	225	1	N. Brunswick, N. J.
20	Bill Weir	HB	165	1	Columbia, S. C.
22	Jimmie Coker	FB	200	1	Holly Hill, S. C.
24	Bob Dellinger	FB	180	3	Hickory, N. C.
26	Bill Petty	HB	177	1	Gaffney, S. C.
27	Vernon Edwards	FB	190	1	Hartwell, Ga.
28	John Popson	HB	195	3	Sawyer, Pa.
30	Richard Bradham	QB	165	1	Sumter, S. C.
31	Dick Kolans	QB	171	1	Raritan, N. J.
32	Jimmy Grant	HB	196	1	Rock Hill, S. C.
34	Gus Pringels	QB	166	3	Sumter, S. C.
36	Pete Ward	HB	165	1	Centreville, Va.
37	Jim Boyle	QB	171	3	Lancaster, S. C.
41	Jack Anderson	G	195	1	Hartwell, Ga.
42	Dale Hamel	G	192	2	Massilon, Ohio
43	Nick Tzouvelekas	G	190	1	Greenville, S. C.
44	Andy Bielecki	G	220	3	E. Rutherford, N. J.
45	Francis Lindler	G	193	2	Savannah, Ga.
46	John Socha	G	191	4	Wallington, N. J.
47	Webster Williams	G	205	4	Florence, S. C.
48	Roger Hall	G	180	1	Greenville, S. C.
49	Harold Bolick	G	190	1	Clark T'ship, N. J.
51	George Beck	T	193	1	Holly Hill, S. C.
52	Larry Seay	T	200	2	Boiling Spgs, S. C.
53	Julian Freeman	T	197	2	Lanett, Ala.
54	Emil Reugner	T	200	1	Union, N. J.
55	Grady Lyle	T	214	1	Rock Hill, S. C.
56	Paul Craven	T	194	2	Charleston, S. C.
57	Ronnie Mincey	T	218	1	Citra, Fla.
58	Bob Halford	T	205	2	Columbia, S. C.
59	Dave Young	T	210	3	Asheville, N. C.
60	L. G. Hightower	E	195	3	Bamberg, S. C.
61	Sidney Maddox	E	180	2	LaGrange, Ga.
62	Bob Medlin	E	185	2	Florence, S. C.
63	Roland Barefoot, a c	E	185	4	Lancaster, S. C.
64	Dick Pfeifer	E	205	1	Hasbrouck Hts, NJ
65	Jackie Harris	T	200	4	Sulligent, Ala.
66	Johnny Johnson	G	182	2	Charleston, S. C.
67	Curtis Dacus	T	202	2	Greer, S. C.
69	Ladson Cabbage	T	230	2	Sumter, S. C.
71	Bobby Stokes	G	185	1	Bishopville, S. C.
72	Charles Bagwell	C	185	1	Easley, S. C.
74	Donnie Garrison	C	192	2	Liberty, S. C.
75	Cecil Clardy	C-T	220	3	Liberty, S. C.

*—denotes lettermen

FLORIDA STATE ROSTER

No.	Name	Pos.	Wt.	Year	Hometown
10	Billy Odom	RH	165	2	Mt. Dora
11	Lee Corso*	LH	165	2	Miami
12	Don McCormick	LH	176	1	Panama City
18	Buck Metts*	LH	173	2	Sanford
19	Robert Grenn	RE	179	4	Brookhaven, Miss.
21	John Griner*	FB	170	3	Jacksonville
22	Carl Grenn*	RH	165	4	Brookhaven, Miss.
23	Hamilton Bisbee	RE	171	1	Sanford
24	Jerry Jacobs*	LG	208	3	South Bend, Ind.
25	Joe Holt*	FB	181	2	Graham, N. C.
26	Charles Jacobs	G	185	3	Miami
27	Billy Graham*	RH	178	4	Bogalusa, La.
29	William Swilley	LE	172	1	Albany, Ga.
30	Hubert Ackerman	C	190	1	Hopewell, Va.
31	Jimmy Lee Taylor*	LE	190	4	Jacksonville
32	Ted Rodrigue	QB	192	1	Lynn, Mass.
33	Gene Cox	FB	184	3	Lake City
34	Ronnie Schomburger	RE	190	1	Pittsburgh, Pa.
35	Vick Prinzi	QB	175	1	Waverly, N. Y.
36	Bill Brown	LT	191	1	Orlando
37	Harry Massey*	QB	185	4	Canton, Miss.
39	Jere Daniels	RG	190	1	Gainesville, Fla.
40	Vince Gibson	G	186	3	Birmingham, Ala.
41	Patrick Versprille	QB	176	1	Norfolk, Va.
42	Rod Ward	G	209	1	Fairfield, Ala.
43	Bob Barber*	LT	212	2	Belle Glade
44	Bud Leonard*	C	196	2	Ocala
45	Bob Morris	RG	202	1	Panama City
46	Buddy Reynolds	LH	171	1	West Palm Beach
47	Willie Gardner	RT	205	1	Tampa, Florida
48	Len Swantic*	QB	175	2	Columbus, Ga.
49	Leon Bryant	RG	196	1	So. Norfolk, Va.
50	Leo Baggett	LG	203	1	Panama City
51	Don Powell*	RT	215	3	Birmingham, Ala.
52	Bill Cullom	C	190	1	Huntsville, Ala.
54	Al Pacifico*	RG	206	2	Altoona, Pa.
56	Tom Feamster	RE	249	3	Warwick, Va.
57	Ronnie King*	FB	217	4	Daytona Beach
59	Bob Crenshaw*	C	178	3	Miami
61	Tommy Thompson	FB	220	1	Springfield, Mass.
62	Al Mackowiecki*	RT	215	4	Monaca, Pa.
63	Jimmy Trado	LE	182	1	Henderson, N. C.
64	Ray Staab*	RT	203	2	Charleston, W. Va.

*—denotes lettermen

Scalp 'em
Seminoles

**FLORIDA
THEATRE**

Now Showing

Rex Harrison
George Sanders

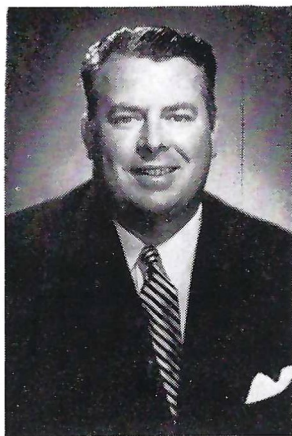
Virginia Mayo
Laurence Harvey

IN
KING RICHARD

AND THE
CRUSADERS

in Cinemascope

THE FURMAN COACHING STAFF



BILL YOUNG

Many of the major corrections in Furman's football play were born at 11 p.m. or later, on any given night. While the players slept soundly in their dorm next door, wide awake Bill Young used movies, memory and mental experiment in visualizing improvements in his Purple Hurricanes.

That he has been increasingly successful is supported by three "best-yet" years. In 1950, two victories; in 1951 three victories; in 1952, six victories and in 1953, seven victories. And many of them have taken shape in the small office of William A. Young, former Alabama and Washington Redskin tackle, and now in his fifth year as head football coach at Furman. From 9 a.m. until practice time, with a period out for lunch, and from practice time until he has answered the questions of his own mind, Young is between projector, blackboard and consultations with his staff in that office.

Except for his golf game, he is all football, the year around. And he has been for quite a long time.

Young was born in North Little Rock, Arkansas in 1914. He began his varsity play at Alabama in 1933 and was a starter on Bama's Rose Bowl champions of 1935. His seven years as regular tackle for the professional Washington Redskins were interrupted by three years in the Navy during World War II.

The Furman athletic director has always been the big, fast man. He is 6-2, weighs 240 pounds. He has opened the eyes of his football pupils with the way he moves around in on-the-field demonstrations.

He came to Furman in 1948 from Alabama's athletic front office. He built defiant defensive lines as line coach in 1948 and 1949 and became head coach in 1950 and athletic director in December 1952.

One of the South's finest amateur golfers, Young is invited to play in many top tournaments and accepts where his schedule will permit. He has been Greenville Optimist Tournament champion for the past two years. He coaches the Furman golf team in the spring.

Young is assisted by Tom Fetzler, Jim McQueen, and Frazier Bailey.

Seven Seas

Corner Monroe and Pensacola—Next to the Capitol

Recommended by AAA

Tallahassee's Finest

WILL BE HAPPY TO SERVE YOU AFTER THE GAME!

Air Conditioned

Gilberg's

"The House Of 1000 Fabrics"

108 East Jefferson Street
TALLAHASSEE, FLA.

220 Broad Avenue
ALBANY, GA.

26 North Palafox Street
PENSACOLA, FLA.

Ready Made
BEDSPREADS
DRAPERIES
UPHOLSTERY FABRICS
SLIPCOVER FABRICS
DRAPERY FABRICS
DRESS FABRICS
PATTERNS • BUTTONS
SEWING NOTIONS

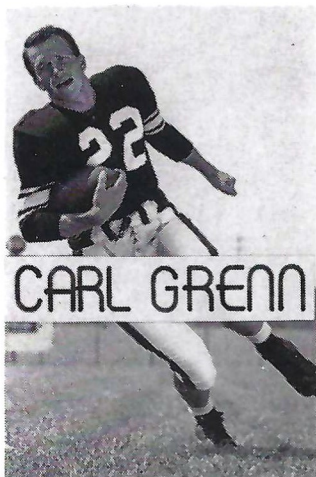
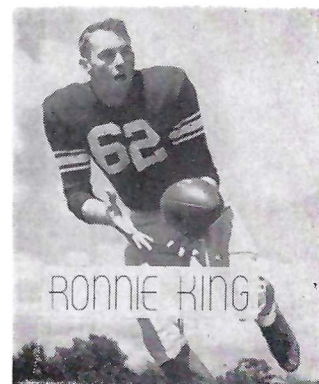
HOLLAND'S RESTAURANT

Facing the Capitol at 106 E. Pensacola Street
TALLAHASSEE, FLORIDA

Serving Our Own Blend of Coffee
Famous for Home-made Pies and Hot Biscuits
U. S. Prime and U. S. Choice Steaks

Air Conditioned and Ultra Modern

N. T. HOLLAND, Owner and Manager



ROYAL SANDWICH COMPANY

P. O. Box 641

• Phone 2-0699

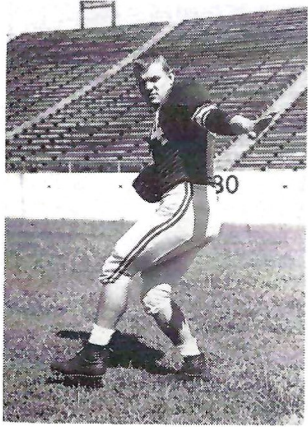
—WHOLESALE DISTRIBUTORS OF SANDWICHES—

Salted Peanuts • Peanut Butter Sandwiches • Potato Chips

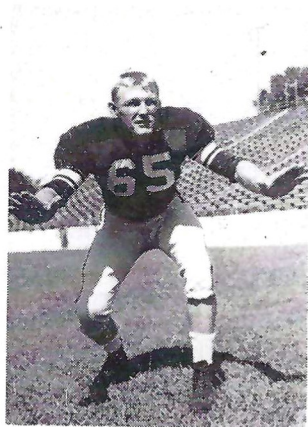
Pop Corn • Cookies • Candy

"FRESH AS A DAISY"

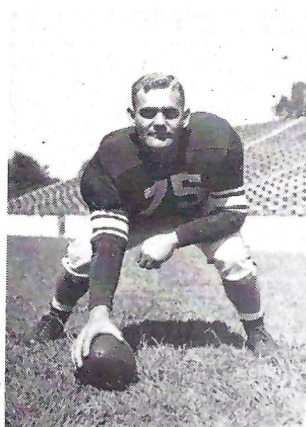
THE HURRICANE



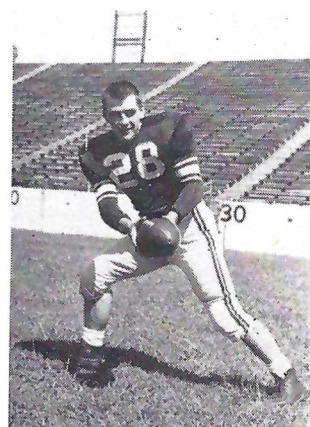
BOB DELLINGER
Fullback



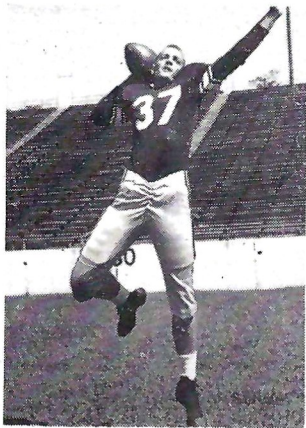
JACKIE HARRIS
Tackle



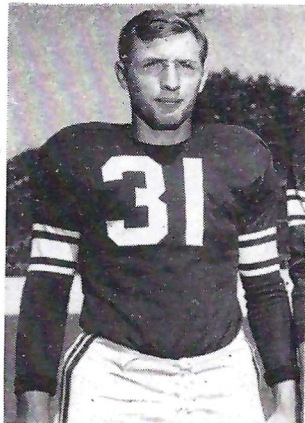
CECIL CLARDY
Center



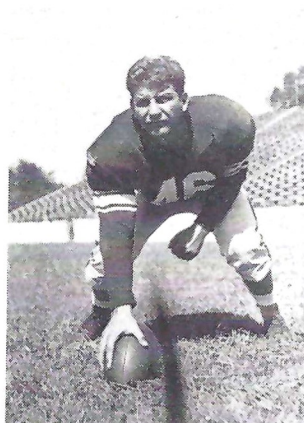
JOHN POPSON
Halfback



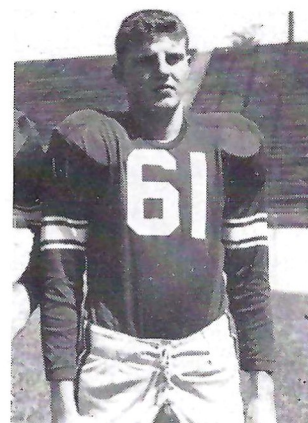
JIMMY BOYLE
Quarterback



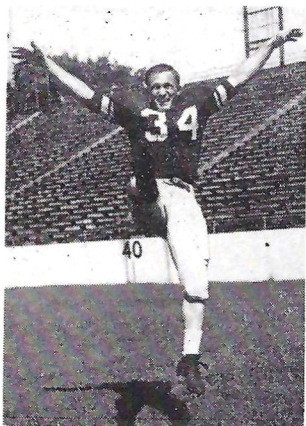
DICK KOLANS
Quarterback



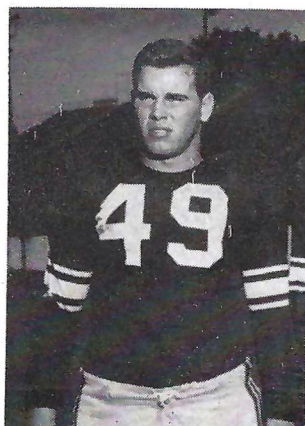
JOHN SOCHA
Center



SIDNEY MADDOX
Right End



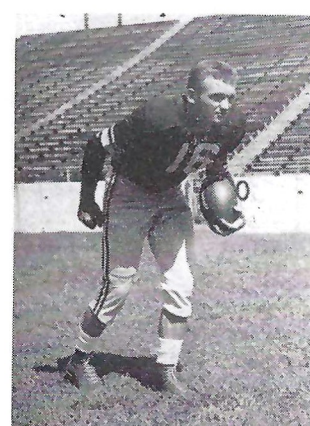
GUS PRINGELS
Quarterback



HAROLD BOLICK
Guard



WEBSTER WILLIAMS
Right Guard



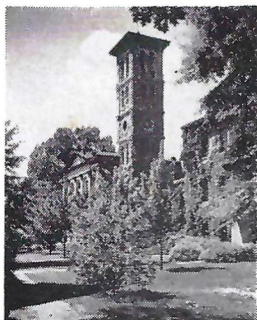
TED YAKIMOWICZ
Captain and Halfback

F
had
subs
Win
Grec
Bapt

distr
Con:
und
new
E:
Furr
Caro
The
stan
accr
ciati
ence
is o
Univ
Wor
men

ABOUT FURMAN UNIVERSITY

Furman University, the South's oldest Baptist college, had its beginning at Edgefield, S. C., in 1826 and was subsequently located at High Hills of Santee and at Winnsboro, both in South Carolina, before moving to Greenville in 1851. It is the mother of the Southern Baptist Theological Seminary, Louisville, Kentucky, the latter having been an out-growth of the Department of Theology at Furman in 1859.



OLD MAIN BUILDING

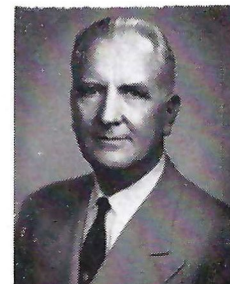
Except for the period from 1893 through 1900, Furman was a men's college until 1933, when Greenville Woman's College, founded in the early 19th century, was merged with it. Since that time the University has operated buses to provide transportation between the two campuses for students and faculty.

Furman has secured a new campus site on a 1,100-acre tract five miles north of the Greenville business district and plans to build a \$15,000,000 new campus. Construction of the first buildings was expected to get underway by late summer, 1954, and it is hoped the new campus can be occupied by the fall of 1957.

Established primarily as a ministerial training school, Furman has been owned and operated by the South Carolina Baptist State Convention from its founding. The University has long since become one of the outstanding liberal arts institutions in the Southeast. Fully accredited, Furman is a member of the Southern Association of College, of the Southern University Conference, and of the Association of American Universities and the American Association of University Women and since 1938 it has been a liberal arts college member of the National Association of Schools of Music.

Dr. John Laney Plyler, now in his 16th year as president of his alma mater, was graduated from Furman University in 1913 with magna cum laude honors.

Dr. Plyler rose from private to the rank of second Lieutenant as a volunteer in World War I. After the war he received an LL.B. from Harvard and began the practice of law in Greenville, S. C. In 1935, he was chosen Judge of the Greenville County Court. He had been re-elected for a second term when friends persuaded him to become President of Furman.



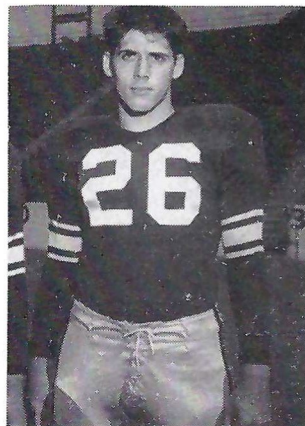
DR. PLYLER

Under his administration the faculty has been greatly increased in size and academic training and the University has been admitted to the Southern University Conference, the Association of American Colleges, and is now on the approved list of the Association of American Universities and of the American Association of University Women.

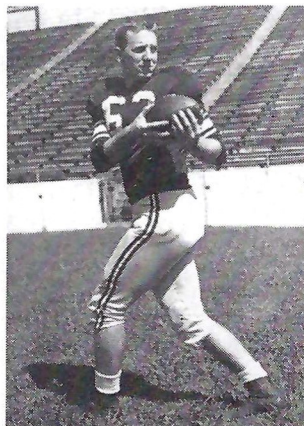
In 1948 he served as president of the South Carolina Baptist Convention. Erskine College honored him in 1939 with the LL.D. degree, and in 1953 he received the LL.D. degree from Wofford College. In 1946-47 he was vice-chairman of Church-Related Colleges in the Southeast and, in 1951-52, president of the South Carolina Association of Colleges. As a member of an 11-man national committee of college presidents named in 1951, he helped work out recommendations on college football which were widely adopted.

Perhaps his greatest contribution thus far has been his leadership in planning and promoting the forthcoming removal of Furman to a new campus five miles north of the present location.

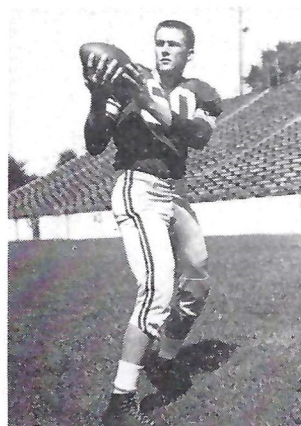
HURRICANE



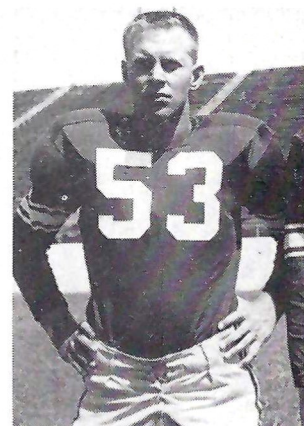
BILL PETTY
Left Halfback



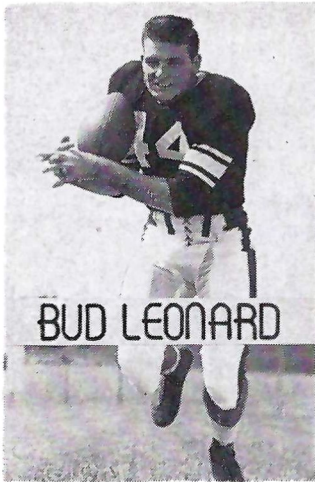
ROLAND BAREFOOT
Right End



L. E. HIGHTOWER
Left End



JULIAN FREEMAN
Left Tackle



The Sweet Shop

GOOD FOOD

DELICIOUS SODAS

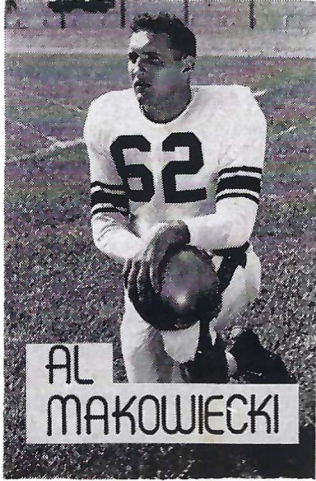
DRUG SUNDRIES

Meet Your Friends Here Before and
After the Game!

FOLLOW THE SEMINOLES!



Above are finalists in the 1954 Miss Gymkana Contest. They were chosen from 60 contestants in preliminary judging last week. Front, l. to r.: Mary Bolton, Gail Byrd, Sue Scott, Mary Margaret Williams, Sharon Benton, Allison Templeman, Myra Ann Fay, Bobbye Craig, Margaret McLean, and Faye Anthony. Back, l. to r.: Layte Bodwen, Joyce Slater, Ruth Shuman, Kathy Johnson, Barbara Emmett, Bobbie Lou Lester, Janice Eberly, Maynell Williams, Anita Anderson, and Edmarie Muniz. The winner will be awarded a 16-inch trophy engraved with her name.



AL
MAKOWIECKI

DOUBLE YOUR SAVINGS

Higher than average dividends
increase your savings income.

DOUBLE YOUR PROTECTION

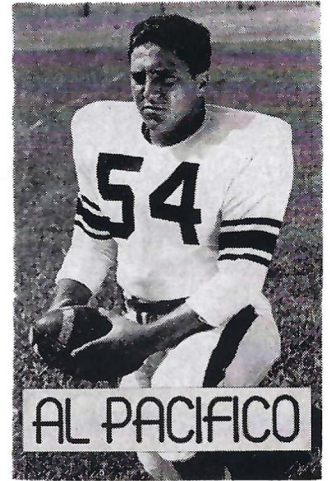
Savings Now Insured To
\$10,000.00

By

Federal Savings & Loan Insurance Corp.

Tallahassee Federal Savings & Loan Association

115 East Park Avenue



AL PACIFICO

BENNETT'S DRUG STORE

- Prescriptions
- Cameras
- Sundries
- Gifts
- Fountair
- Cafe
- Cosmetics
- Drugs

MEET AT BENNETT'S BEFORE AND AFTER THE GAME!

Corner Monroe and College Streets

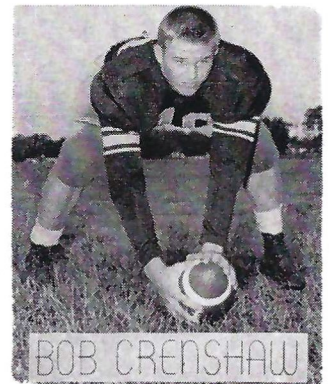
PHONES 2-8980 — 2-4450

D. T. O'HARA, JR.

PRODUCE ● POULTRY ● FROZEN FOODS

Phone 2-2128 ● 717 W. Gaines St.

TALLAHASSEE, FLORIDA



BOB CRENSHAW

Velda Ice Cream

"Florida's Own"

SCALP 'EM SEMINOLES

Meet Your Friends at

The Amber House

— for —

FOOD THAT'S FINE

Before and After the Game

Across the Street from University on Corner of Copeland and Park

PHONE 2-2502

WHOLESALE AND RETAIL

FOSTER-MOYE, INC.,
Athletic Equipment

DISTRIBUTORS: }

RAWLINGS MFG. CO.

A. G. SPALDING BROS.

SPOT-BILT SHOES

117 E. Lafayette Street

Tampa 2, Florida

Represented for National Advertising by DON SPENCER COMPANY, INC., 271 Madison Ave., New York City

P. W. Wilson

Fashions for Men, Women, Children

Telephone 2-2310

TALLAHASSEE, FLORIDA

OLYMPIC FUNDS NEEDED

Dear Friend of Athletics:

If the United States is to be represented at the next Olympic and Pan-American Games, \$1,100,000 must be raised within the next two years.

Although the teams of many countries are state-controlled and their expenses are paid by their government, in our Democracy the Olympic movement has always been supported by the generosity and pride of the sports-loving public.

The Pan-American Games will be held at Mexico City next year, with the Winter Olympic Games at Cortina D'Ampezzo, Italy, and the Olympic Games at Melbourne, Australia, in 1956. In all probability 90 per cent of the United States teams that go to these games will again be made up of college-trained athletes, and we

are all particularly anxious to see that no deserving athlete is left at home through lack of funds.

We are grateful for your generous support of the NCAA's Olympic Fund drives in the past. If you have not had an opportunity to contribute to the fund for the 1956 Olympic Games, we invite you at this time to place your contributions in the containers as they are circulated throughout the stadium by members of the Tallahassee Junior Chamber of Commerce.

Or, if you prefer, write a check in the amount you wish, payable to the NCAA Olympic Fund, and mail it to the undersigned.

Sincerely,

DR. HOWARD G. DANFORD
FSU Director of Athletics

SEMINOLE FOOTBALL NETWORK

This year, for the first time, FSU's football games are being broadcast throughout the state over the Seminole Football Network. Ben Letson, owner-manager of WCNH, Quincy, is the network director and supervises the broadcasts.

Actual play-by-play duties are handled by Jim Kirk, manager of WMOP, Ocala. Kirk is a graduate of FSU and a former member of the Seminole football squad.

Vernon Arnette, also from WMOP, Ocala, handles the color and statistics on all the broadcasts.

Stations having carried Seminole games this season are: WCNH, Quincy; WTAL, Tallahassee; WFSU, Tallahassee; WWPF, Palatka; WMOP, Ocala; WTAN, Clearwater; WTRR, Sanford; WDLF, Panama City; and WIPC, Lake Wales.



BEN LETSON
Director
Seminole Football Network



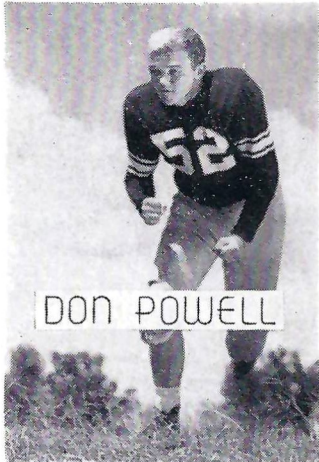
JIM KIRK
Play-by-Play Announcer



VERNON ARNETTE
Color Announcer

W E L C O M E

Graddy Bros. Gulf Stations



"WE LIKE EVERYBODY"

Full Line
GULF PRODUCTS
LUBRICATION SPECIALIST
ROAD SERVICE

1458 SOUTH MONROE
Phone 3-0077

640 WEST TENNESSEE
Phone 2-3584

After the Ball Game

Drive Carefully, You May Hit One of Our Customers

Good Luck Seminoles

Malone's Book Store

**Books, School Supplies
and Sundries**

HOTEL FLORIDAN

The Community Host to Traveling America

You'll Enjoy Dining in

THE GREEN ROOM

—For FINE FOOD Visit—

Tallahassee's Most Exclusive Dining Room

The SILVER SLIPPER

Try Our Famous Charcoal Broiled Steaks

10% Discount to Faculty and Students

Facilities for South Monroe St.

Weddings-Parties-Banquets Dial 2-4961

James Kalfas—Owner-Manager

Gandy Motor Hotel

Tallahassee's ..Outstanding ..Court

**SKYLINE RESTAURANT ADJOINING
U.S. 90 WEST**

●
Rest Assured
in
Tallahassee

STUDENT GOVERNMENT AT FSU

By PETER NIMKOFF
Student Body President

Those of you who were undergraduates here may remember FSU Student Government in its infancy. Though it still faces a long road to maturity, the efforts of students, faculty, and administration have carried it far forward.



PETE NIMKOFF
President, Student Body
Tallahassee

Student Government at FSU is a training-school for Florida's future statesmen. It is also the vehicle for hard work of young men and women who want to make this college community a better place in which to live.

The constitution and statutes of the student body provide for self-government with America's traditional separation of powers. The Student Senate studies campus problems and creates the law, the President, his cabinet, and committees enforce the law, and the judicial system interprets it.

Thus, these three divisions help the students to direct their own lives. Student Government checks the budgets and constitutions of hundreds of campus organizations, handles more than \$60,000 per semester in activity fees, assists students in finding jobs.

Student Government promotes our university through career days and intercollegiate public

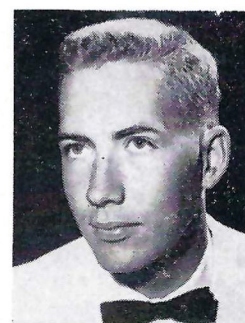


BOB CRENSHAW
Junior Class President
Miami

relations, governs all campus elections and honorary selections, regulates the conduct of candidates and political parties. And a host of other tasks are fulfilled in the public welfare.

In these services, the class presidents whose portraits appear here have played important roles also. For the interest of student leaders lies in not just one area of campus life, or in government per se, but in the general welfare of this university.

It is vitally important, I believe, that we remember that this university's great potential for progress lies in many fields, some less publicized than Student Government and others. I know you, as alumni and friends, will continue to support those phases of this university that hold your special interest and affection, while ours and future classes attempt to justify your dedication.



PAUL ORT
Sophomore Class Pres.
Clearwater

The results of the final balloting for Freshman Class officers were not known in time to meet the picture deadline for this program. Thus, the picture of the new President of the Freshman Class, Graham Tesche, of Euclid, Ohio, does not appear on this page.



HARRY MASSEY
Senior Class President
Canton, Miss.

1955 SEMINOLE SCHEDULE

DATE	Opponent	Location
Sept. 17	NORTH CAROLINA STATE	TALLAHASSEE
Sept. 24	LOUISVILLE	TALLAHASSEE
Sept. 30	MIAMI	MIAMI
Oct. 8	VPI	TALLAHASSEE
Oct. 15	GEORGIA	TALLAHASSEE
Oct. 22	GEORGIA TECH	ATLANTA
Oct. 29	Open	
Nov. 5	VILLANOVA	TALLAHASSEE
Nov. 12	FURMAN	GREENVILLE, S. C.
Nov. 19	Open	
Nov. 26	MISSISSIPPI SOUTHERN	HATTIESBURG, MISS.
Dec. 3	TAMPA	TAMPA

FLORIDA STATE SONGS



1. Margaret Ann Ballinger, Tallahassee; 2. Sarah Hambley, Miami; 3. Betty Ann Munroe, Tallahassee; 4. Tommy Waits, Jacksonville; 5. Sticks Steinburg, Augusta, Georgia; 6. E. L. Allen, Miami; 7. Billy Kirkland, Tallahassee; 8. Pat Harris, Jacksonville.

1.

YEA GARNET, YEA GOLD
Yea Garnet!
Yea Gold!
Yea Seminoles
Knock 'Em Cold!

2.

RAH, RAH, RAH
Rah, Rah, Rah, Rah,
Florida State, Florida State!
Rah, Rah, Rah, Rah,
Florida State, Florida State!
Rah, Rah, Rah, Rah,
Florida State, Florida State!
Scalp 'Em!

3.

GO SEMINOLES
Go Seminoles!
Go Seminoles!
Team Fight!

4.

WHO? HOW? WHY?
Who? Seminoles!
How? Fight!
Why? Win!
Who Fight?
We Fight!
Seminoles Fight!

5.

da dum Yea Team!
da dum Whose Team?
da dum Our Team!
Touchdown That's The Thing
We Want A Touchdown,
Hear Us Sing
We Want A Great Big Bruiser, Huskey
And Tall,
To Carry The Ball, In No Time At All,
We'll Have a Touchdown,
And When It's Over
You Can Hear Us Make Some Noise!
V-I-C-T-O-R-Y
We Want A Touchdown, Boys!
da dum Fight! Fight (Seven Times)
(Repeat Song)

6.

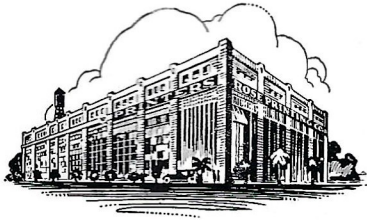
F-I-G-H-T
We're Gonna
F-(Clap) I-(Clap) G-H-T
We're Gonna
F-(Clap) I-(Clap) G-H-T
We're Gonna
F-(Clap) I-(Clap) G-H-T
We're Gonna Fight!

7.

S- E- YELL
S-E, S-E
S-E-M-I
N-O, N-O
O-L-E-S
Fight Seminoles!

8.

ONWARD SEMINOLES
Onward, Seminoles, Onward Seminoles,
Fight For F. S. U.
With Your Name You Must Have Fame
As All Brave Warriors Do.
Sts - Boom - Bah!
On To Glory, On To Glory,
You Must Ne'er Be Slow.
Fight Team, For If You Do
You'll Reach Your Goal!



WE STRIVE for our customers' goodwill
and we are creating it every day. We do
so by giving complete satisfaction with
our service, and by combining excellent
facilities and skilled craftsmanship to
produce fine printing at a fair price.

Rose PRINTING COMPANY, INC.
ROSE BUILDING • TALLAHASSEE, FLORIDA
A complete printing service

1955

What makes
a Lucky
taste better?

"IT'S TOASTED"
to taste better!

LUCKIES TASTE BETTER

CLEANER,
FRESHER,
SMOOTHER!

COPR., THE AMERICAN TOBACCO COMPANY

