

A brown leather football with white laces is positioned diagonally across the upper half of the image. It is surrounded by a dense layer of autumn leaves in various shades of orange, red, yellow, and green. The background is a soft, out-of-focus orange.

**FLORIDA STATE UNIVERSITY**

**VERSUS**

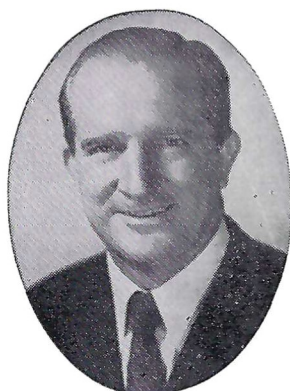
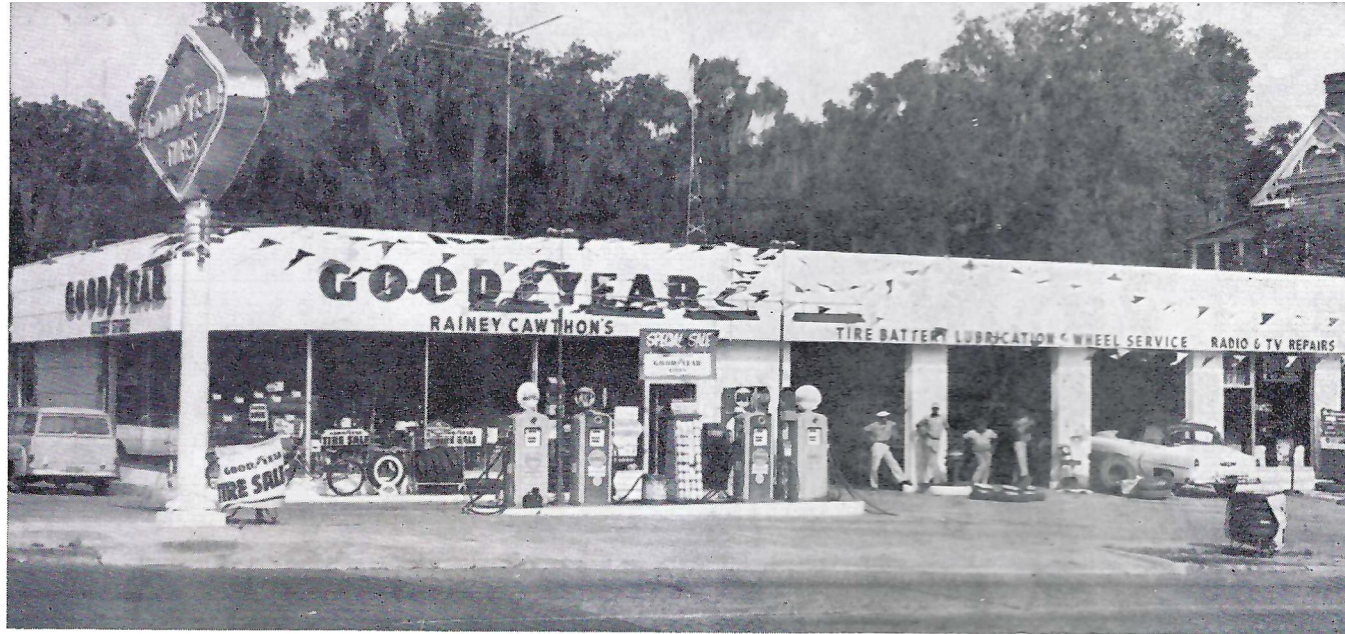
**N. C. STATE**

**SEPTEMBER 17, 8:00 P. M.**

**DOAK S. CAMPBELL STADIUM**

**TALLAHASSEE**

**Price 35c**



RAINEY CAWTHON

# Rainey Cawthon's

- ★ RCA TELEVISION and RADIO
- ★ SHELL PRODUCTS ★ GOODYEAR TIRES

"WE SERVICE WHAT WE SELL"

- ROAD SERVICE ● PHONE 2-1865 ●



FRED PIERSON

Compliments of

**TALLAHASSEE**

## **AUTOMOBILE DEALERS ASSOCIATION**

**Alford Chevrolet Co.**

**Capital Lincoln-Mercury, Inc.**

**Carr Buick**

**Cordell Motors**

**Dean Motors**

**Drake Motors**

**Mayo-Mingledorff Motors, Inc.**

**John Manthey, Inc.**

**Proctor & Proctor**

**Ivey Motors, Inc.**

**Tallahassee Motors, Inc.**



## WELCOME TO FSU

As we open the 1955-56 season of intercollegiate athletics, we extend this word of greeting and sincere welcome to the many friends of Florida State University.

We welcome to our campus today the splendid team from the North Carolina State College of Agriculture and Engineering. This substantial institution, established in 1887, is one of three incorporated units of the University of North Carolina. Its contribution to the people of North Carolina and to our Nation has been outstanding.

Florida State University  
President

## IMPORTANT INFORMATION

### PARKING

There are no reserved parking areas at Doak Campbell Stadium except for the "Dollar Parking" area between the east end zone and the golf course. There is a reserved parking section just behind the concession stands on the West Side for members of the working press.

### CONCESSIONS

Concession stands are located beneath the East and the West stands. The following prices will prevail throughout the season unless otherwise noted:

Cold drinks .....	10c
Coffee .....	10c
Peanuts .....	10c
Crackerjacks .....	10c
Hot Dogs .....	20c
Sandwiches .....	25c
Cushion rental .....	25c
Sun Shades .....	20c

For any questions or information concerning the concession stands, contact Mr. Clyde Spencer.

### LOST AND FOUND

Any lost or found article should be taken to the Press Box in the West Stands. The public address announcer shall advise the patrons of any article turned in during or after the game. These articles may be picked up at the Press Box after the contest.

### DOCTORS

Doctors may register at the Press Box before a game for emergency call. The team physician will be on the field and available for any emergency should a doctor not be available in the stands.

### TICKET INFORMATION

All requests for tickets should be made to the Athletic Business Office, Florida State University.

### USE OF STRETCHERS

Attention is called to the fact that all players receiving joint injuries to the lower extremity and certain other injuries, are removed from the field on a stretcher to prevent further damage to the injured part. This is true in the case of minor injuries and should cause no alarm to the player's family and friends.



**EARLE EDWARDS**  
N.C. State Head Coach



**ROY CLOGSTON**  
N.C. State Director of Athletics



**TOM NUGENT**  
Florida State Head Football Coach



**DR. HOWARD DANFORD**  
Florida State Director of Athletics

W  
Im  
Co  
Se  
In  
Se  
Se  
M  
Fl  
Fl  
Ro  
Fl  
N.  
Fl  
N.  
N.  
N.

# Seminole

# ATHLETIC NEWS

FLORIDA STATE UNIVERSITY

## Seminoles and Wolfpack Open 1955 Season

### TABLE OF CONTENTS

Welcome .....	3
Important Information .....	3
Coaches and Athletic Directors .....	4
Seminole Athletic News .....	5
In the Press Box .....	6
Seminole Football Network .....	6
Seminole Profiles .....	8
Marching Chiefs Band .....	10
Florida State Roster .....	12
Florida State Coaches .....	14
Rosters .....	16-17
Florida State Players .....	19-21-23
N.C.A.A. Anniversary .....	25
Florida State Songs .....	26
N.C. State Roster .....	27
N.C. State Coaches .....	28
N.C. State Players .....	29-30

Two of the south's most talked-about football teams pry the lid off the 1955 football campaign tonight under the lights at Campbell Stadium.

Coach Earle Edwards, former assistant coach at Michigan State, was called upon to bolster the lagging and sagging fortunes at N. C. State, and the popular Greensburg, Pennsylvania, native has responded to the call with fervor and enthusiasm.

Tom Nugent was brought to Tallahassee to send the Seminoles upward to national prominence, and Nugent has moved ahead with the express like rapidity of the Santa Fe Chief.

Now, the two bright mentors meet for the second time as opposing head coaches. Last year, Nugent's Indians trimmed the vastly improving Wolfpack in one of the tightest struggles of the campaign by a small 13-7 count.

This season, N. C. State is one of the most talked about teams in the Atlantic Coast Conference. The Wolfpack has 20 returning lettermen to throw at the early season injured Tribe, plus an array of sophomores that is staggering to behold. These sophs posted one of the best freshman records ever seen in Raleigh last year, including a convincing win over Miami's touted yearlings.

The Seminoles should be tougher, but the Wolfpack is much tougher. No one predicts an outcome. The flip of the coin will establish a favorite. But the fates will decide the winner.

---

---

## IN THE PRESS BOX

Coach Earle Edwards, the man with the multiple offense, will be bringing his second edition of the N. C. State Wolfpack into Campbell Stadium tonight . . . and Edwards will be after his first win over Tom Nugent's Seminoles . . . last season the Tribe played one of their best games in overcoming a rugged and improving Wolfpack eleven by a hard-earned 13-7 margin . . . interesting news has reached the press box concerning the summer trip taken by Dr. Howard G. Danford, FSU's genial director of athletics . . . seems the good Doctor has always wondered what would happen to one of the millions of motorists who pass through such instruments as the Holland and Lincoln tunnels if he should have a flat tire smack dab in the middle . . . well, he found out . . . he had a flat tire smack dab in the middle of the Liberty tunnel leading into Pittsburgh . . . what did he do? . . . "I rode out on the flat tire," was his typical causal comment . . . but that wasn't all . . . he ran out of gas, had his battery go dead, and had some guy open the door to his parked car just as Danford passed him . . . result, one busted fender . . . other than that, he had a fine trip . . . but glad to get back in one piece, we'll wager . . . Tom Nugent had everyone really concerned when he went down in a pile during a practice scrimmage and had his ankle badly sprained . . . "It wouldn't have

been so bad," smiled Tom, "if I had been knocked down by one of the players . . . but it was the manager!" . . . the talk around Carolina is that George Marinkov is another Choo Choo Justice . . . well, here's hoping this latest express from the Tar Heel state is late getting under way . . . tonight's show could develop into a real corker between Lee Corso and Marinkov . . . the little scooter from Lebanon, Pa., is making the Nawth Carolina folks get a little misty around the eye-lids when they reminisce about the famed Choo Choo of the immediate post-war era . . . Marinkov has exhausted adjective department for most sports scribes in Carolina, and all are predicting he will set new records at State . . . Corso, on the other hand, doesn't exactly have his feet tied together . . . Coach Nugent is unsparing in his praise of the Miami Meteor, saying that he is one of the finest halfbacks in the south . . . and who should know better than Nugent, who has seen the best? . . . a little blocking both in the line and downfield, and Lightnin' Lee will go all the way . . . but while many are watching the antics of the backs, the glamour boys, this game tonight could well be won on line play . . . whether it be the Seminoles or the Wolfpack, the best performance by the forwards could well mean victory, Marinkov and Corso notwithstanding.

---

---

## THE SEMINOLE FOOTBALL NETWORK

For the second straight year, the Seminole Football Network will carry all the FSU games.

Originating from station WCNH in Quincy, under the directorship of station manager Ben Letson, the Seminole Network is keeping pace with the rapidly expanding football fortunes of the Florida State football squad.

This year 13 stations throughout Florida have become affiliated with the network, and Letson predicts that by 1957 the Seminole network should be much larger.

With veteran sportscaster Bill Snyder of station WPDQ in Jacksonville handling the play by play, and Jim Kirk of station WMOP in Ocala doing the color, the Seminole network has two of the best in the business bringing game action to the FSU fans in Florida.

Stations affiliated with the network include: WTAL, Tallahassee (For 7 games); WMEN, Tallahassee (2 games); WCNH, Quincy; WPDQ, Jacksonville; WMAP, Ocala; WGGG, Gainesville; WPCF, Panama City; WTYS, Marianna; WCOA, Pensacola; WBSR, Pensacola; WIPN, Lake Wales; WTAN, Clearwater; and WLOF, Orlando.

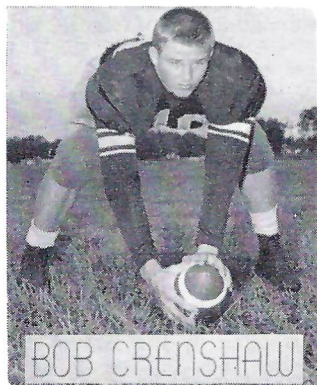
All FSU games will be heard in Tallahassee with WTAL doing 7 games: N. C. State, V.P.I., Georgia, Georgia Tech, Furman, Mississippi Southern, and Tampa. WMEN will carry the Villanova and Citadel contests, while WTNT, an affiliate of the University of Miami network, will carry the FSU-Miami game.

---

---

**W E L C O M E**

# **GRADDY BROS. GULF STATIONS**



**"WE LIKE EVERYBODY"**

Full Line  
**GULF PRODUCTS**  
**LUBRICATION SPECIALIST**  
**ROAD SERVICE**

**1458 SOUTH MONROE**

**Phone 3-0077**

**640 WEST TENNESSEE**

**Phone 2-3584**

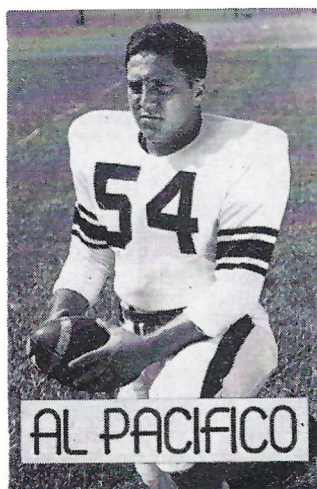
**After the Ball Game**

**Drive Carefully, You May Hit One of Our Customers**

---

---

# **ROYAL SANDWICH COMPANY**



**P. O. Box 641**

**Phone 2-0699**

**— WHOLESALE DISTRIBUTORS OF SANDWICHES —**

**Salted Peanuts • Peanut Butter Sandwiches • Potato Chips**

**Pop Corn • Cookies • Candy**

**"FRESH AS A DAISY"**

---

---

# SEMINOLE PROFILES

## SEMINOLE LETTERMEN

### ENDS

**TOM FEAMSTER** . . . senior . . . 6-7 . . . 250 pounds . . . 24 years old . . . calls Warwick, Virginia home . . . this lad is probably the largest end in collegiate football, and undoubtedly one of the finest . . . fast and rangy, he has excellent pass catching abilities as the record will show . . . in 1954, Feamster hauled in 28 aerials for a net yardage gain of 442 yards and six touchdowns . . . prime All-American candidate, this should be his greatest year.

**RONNIE SCHOMBURGER** . . . sophomore . . . 6-1 . . . 190 pounds . . . hails from Pittsburgh, Pa. . . 22 years old . . . showed splendid form last season as a freshman, and appears ready now to hold down the starting berth at left end . . . fast offensively and a strong defensive terminal player . . . caught 5 passes in 1954 for 164 yards and two TD's . . . strong All-Florida prospect.

### TACKLES

**DON POWELL** . . . senior . . . co-captain of the Seminoles . . . 21 years old . . . 6-0 . . . 207 pounds . . . born in Birmingham, Alabama . . . top tackle prospect for this year's squad . . . fast, with quick reaction, is good blocker and excellent defensive player . . . will see a lot of two way duty this season.

**TROY BARNES** . . . sophomore . . . 6-2 . . . 206 pounds . . . 22 years old . . . hails from Chickasaw, Alabama . . . Troy lettered in 1952 as a freshman, then went into the service . . . his return to the Seminole camp will give added experienced strength where most needed.

**BOB BARBER** . . . junior . . . 5-11 . . . 210 pounds . . . 20 years old . . . comes from Belle Glade . . . tabbed by Coach Tom Nugent as one of the top linemen in the south, this fella will cause a lot of trouble for Seminole opponents this fall . . . has plenty of speed for man his size, quick reaction, will get starting nod at right tackle . . . good All-Florida and All-American bet.

### GUARDS

**JERRY JACOBS** . . . senior . . . 6-1 . . . 205 pounder . . . 21 years old . . . calls South Bend, Indiana home . . . considered one of the finest blockers on the team . . . not only good offensive operator, but top flight defensive product . . . tabbed for starting duty at left guard when season opens.

**VINCE GIBSON** . . . senior . . . 5-10 . . . 185 pounds . . . 22 years of age . . . comes from Birmingham, Alabama . . . will in all probability get opening game call at right guard . . . good defensive player, and can move fast on offense.

**LEO BAGGETT** . . . sophomore . . . 5-9 . . . 195 pounds . . . 19 years old . . . calls Panama City home . . . got his first letter last season as a freshman . . . has three more years of good football for the Seminoles . . . on the stocky side, Baggett can move well and fast . . . fine two-way prospect.

**AL PACIFICO** . . . junior . . . 5-7 . . . 203 pounder . . . 24 years old . . . comes from Altoona, Pennsylvania . . . Pacifico has been a two year regular on the Seminole squad, and well see plenty of action again this season . . . small, but aggressive, he will give added strength to the middle of the line.

### CENTERS

**BOB CRENSHAW** . . . senior . . . co-captain . . . 5-9 . . . 190 pounds . . . 21 years old . . . comes from Miami . . . though small in size, there's no lack of ability in this lad . . . an outstanding player for Miami Edison high school, Crenshaw played splendid football for the Seminoles last season and will again be the big gun at the pivot post this season.

**RAY STAAB** . . . junior . . . 5-11 . . . 205 pounds . . . 21 years of age . . . hails from Charleston, West

Virginia . . . will be at a new position this fall, having played tackle in previous seasons . . . a back injury necessitated moving Staab to center, and Coach Nugent thinks the big fellow will help take up some slack.

### QUARTERBACKS

**VIC PRINZI** . . . sophomore . . . 6-0 . . . 175 pounds . . . 19 years old . . . comes from Waverly, N. Y. . . filled in capably for starter Harry Massey last season . . . passing record showed 13 completions in 27 attempts in 1954 for 373 yards and 4 TD tosses . . . passing percentage was 48.1 . . . should come into his own this year with added responsibility.

**LEE SWANTIC** . . . junior . . . 5-11 . . . 180 pounds . . . 23 years old . . . Len had a fine record last season completing 28 passes in 55 attempts for 355 yards and 4 TD's for an average of 51 per cent . . . this Columbus, Georgia native could be in line for a terrific year in '55 . . . he threw three touchdown heaves against Villanova last season.

### HALFBACKS

**LEE CORSO** . . . junior . . . 5-11 . . . 170 pounds . . . 20 years old . . . hails from Miami . . . Corso is called one of the finest halfbacks in the nation by Coach Tom Nugent, and he has seen plenty of them . . . the gallopin' little sunshine scooter toured the turf last season for a record of 273 yards in 72 attempts for an average of 3.8 yards per carry . . . Lee scored 3 TD's, and most of this damage was done in a substitute's role, but in spring practice this year, he really kicked up his heels, and this season he should come into his own as the best in Florida and the south.

**BUCK METTS** . . . junior . . . 5-10 . . . 175 pounds . . . 19 years old . . . comes from Sanford . . . this youngster is the big gun in the punting department . . . Metts punted 12 times last season for 478 yards for an average of 39.8 yards per effort . . . punting is not his only forte, however, as he is a good, fast, elusive halfback, and will do plenty of running this season.

**BILLY ODOM** . . . junior . . . 5-8 . . . 165 pounds . . . 20 years old . . . first saw the light of day in Mt. Dora . . . very fleet runner, used mostly as a spot player in 1954 . . . Coach Nugent will count heavily on this youngster to do a lion's share of work this coming season . . . carried 26 times for 147 yards for a 5.6 average in 1954.

**BILLY WEAVER** . . . sophomore . . . 6-0 . . . 180 pounds . . . 18 years old . . . here's a youngster who is tabbed by Coach Nugent as a strong possibility to develop into top flight material . . . comes from Miami.

### FULLBACKS

**JOE HOLT** . . . sophomore . . . 5-10 . . . 180 pounder . . . hails from Graham, North Carolina . . . this 20 year old plunger will be getting the starting call at the fullback slot this year . . . Holt carried the ball 21 times and picked up 126 yards last season for an average of 5.7 yards per haul . . . though small in stature for a fullback, this husky little Tar Heel may well be the answer to Nugent's hopes at the fullback post.

**BUD LEONARD** . . . junior . . . 5-11 . . . 200 pounds . . . 21 years old . . . from Ocala . . . Leonard excelled last season on defense, being one of the Seminoles' ball hawks on pass defense . . . plenty of size and good speed, he will give Holt a good run for the starting call at fullback.

**JOHN GRINER** . . . senior . . . 5-10 . . . 175 pounds . . . 22 years old . . . from Jacksonville . . . this youngster could well have his best season in this, his final year with the Seminoles . . . Griner hauled the mail for 103 yards last season to average almost 3 yards per carry, and expects to swing into high gear this fall . . . could be a sleeper at the plunging spot.



good news

It's Always Easy  
To Be On Time  
**DIAL 2-5510**

**TALLAHASSEE FEDERAL  
SAVINGS AND LOAN ASSOCIATION**

115 E. PARK AVE.

TALLAHASSEE, FLORIDA

WON'T YOU . . .

**HAV-A-TAMPA**

. . . CIGAR

**Eli Witt Tobacco & Candy Company**

TALLAHASSEE, FLORIDA

*you'll enjoy*

**TOWN HOUSE**

**COFFEE SHOP**

DUVAL HOTEL

---

---

**We're Always for The Seminoles**

**WIN, LOSE or DRAW**

**STATE OFFICE SUPPLY**

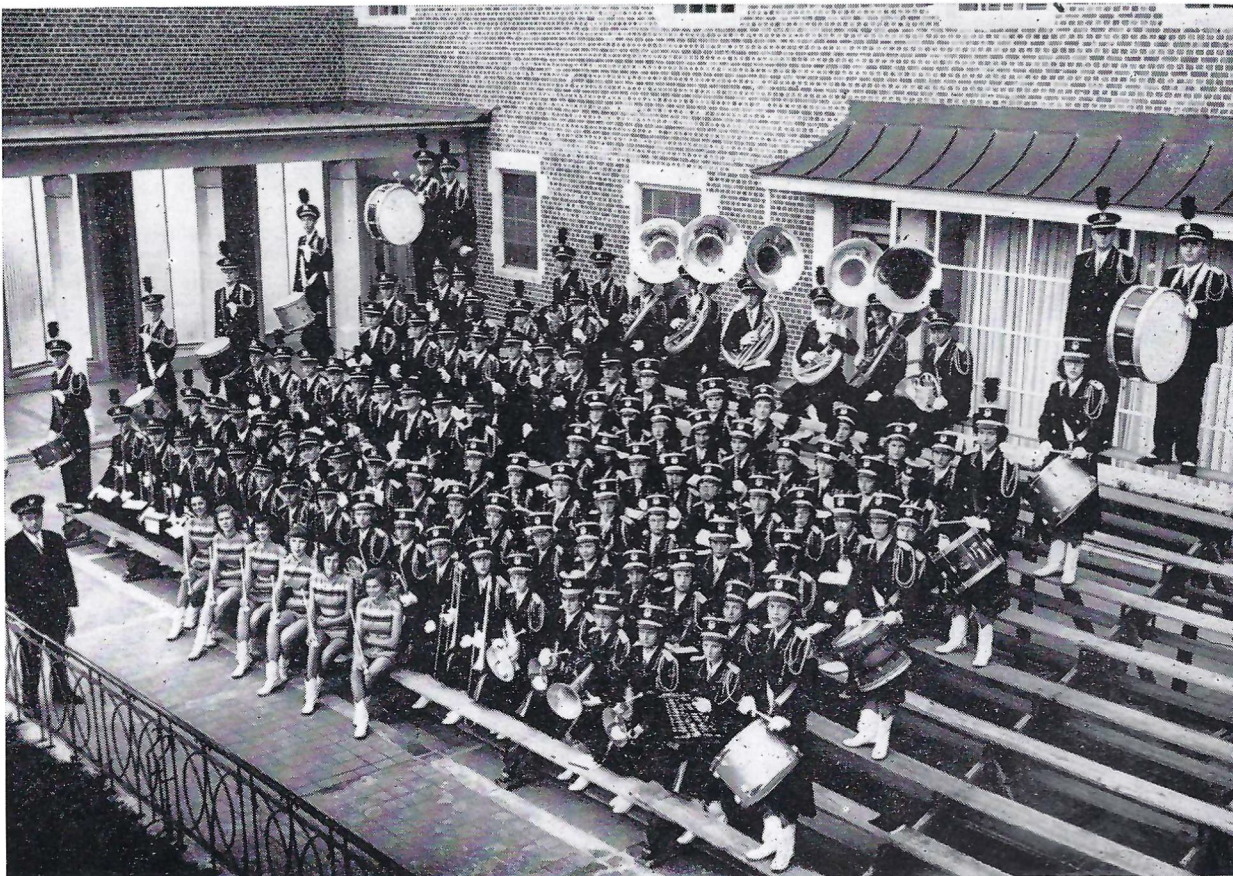
**207 S. Adams**

**Phone 2-2607**

---

---

**MARCHING CHIEFS BAND**



---

---

Meet Me at the

**MECCA**

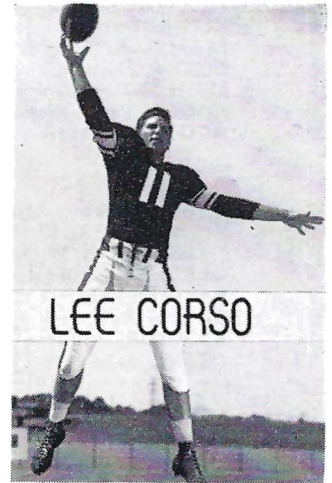
**111 South Copeland St.**

and Enjoy the Fine

**Food and Friendly Atmosphere**

---

---



---

---

# ***Tallahassee Banking Association***

**Industrial Savings Bank**

**The Tallahassee Bank & Trust Co.**

**Capital City National Bank**

**Lewis State Bank**

All Banks Are Members of

**FEDERAL DEPOSIT INSURANCE CORPORATION**

---

---

# FLORIDA STATE VARSITY FOOTBALL ROSTER

## ENDS

NO.	NAME	HT.	WT.	AGE	CLASS	HOME TOWN
80	SCHOMBURGER, Ronald *	6-1	190	22	So.	Pittsburgh, Pa.
81	BISBEE, Hamilton	6-1	175	19	So.	Sanford
82	OVERTON, Jonah	6-1	180	20	Jr.	Chicago, Ill.
83	FOUNTAIN, Robert Graham	6-2	190	17		Crestview
84	KEENE, David	6-3	200	17	Fr.	Bethlehem, Pa.
85	FEAMSTER, Thomas *	6-7	250	24	Sr.	Warwick, Va.
86	OLSON, Norman	5-7	171	20	Jr.	Chicago, Ill.
87	SWILLEY, William	6-1	185	19	So.	Albany, Ga.
88	CURRY, Peter Richard	6-1	185	20		Medford, Mass.
89	DOUGLAS, Robert	6-1	196	17	Fr.	Dayton, Ohio

## TACKLES

70	POWELL, Don * (co-capt.)	6-0	205	21	Sr.	Birmingham, Ala.
71	KICKLIGHTER, Charles	6-1	211	24	Sr.	Savannah, Ga.
73	MUSSELMAN, William	5-11	210	19	So.	Lynchburg, Va.
74	GARDNER, Willie	6-0	220	19	So.	Tampa
75	BARBER, Robert *	5-11	207	20	Jr.	Belle Glade
76	STAAB, Raymond	5-11	205	21	Jr.	Charleston, W. Va.
77	PROCTOR, William	6-4	235	22	Sr.	Winter Park
78	CRAIG, John	6-1	200	18	So.	Orlando

## GUARDS

60	BAGGETT, Paul *	5-9	195	19	So.	Panama City
61	JACOBS, Jerry *	6-1	200	21	Sr.	South Bend, Ind.
64	THOMAS, Robert	6-0	180	17	Fr.	Mansfield, Mass.
65	GIBSON, Harold *	5-10	190	22	Sr.	Birmingham, Ala.
66	PACIFICO, Al *	5-7	203	24	Jr.	Altoona, Pa.
67	ELLIOT, Robert	5-11	185	21	Jr.	St. Petersburg
69	RODRIGUE, Theodore	5-11	187	24	So.	Lynn, Mass.

## CENTERS

50	CRENSHAW, Bob * (co-capt.)	5-9	165	21	Sr.	Miami
51	ACKERMAN, Hobo	5-11	190	20	So.	Hopewell, Va.
52	BARNES, Troy *	6-2	206	22	So.	Chickasaw, Ala.
53	PHILION, Leonard	5-11	176	22	Fr.	Highland Park, Mich.
54	LITTLE, Lester	6-3	203	17	Fr.	Nitro, W. Va.

## QUARTERBACKS

10	PRINZI, Victor *	6-0	175	19	So.	Waverly, N. Y.
12	SWANTIC, Len	5-11	180	23	Jr.	Columbus, Ga.
13	VERSPRILLE, Patrick	6-2	190	20	So.	Norfolk, Va.
15	NORMAN, George	5-10	185	24	Jr.	Tallahassee

## HALFBACKS

20	CORSO, Lee *	5-11	165	20	Jr.	Miami
21	ODOM, William *	5-8	165	20	Jr.	Mt. Dora
22	METTS, Talmadge *	5-10	168	19	Jr.	Sanford
23	HENDERSON, Jerry	5-11	160	19	So.	Pensacola
25	REYNOLDS, Byron	5-10	180	19	So.	West Palm Beach
26	WEAVER, William	6-0	180	18	So.	Miami
27	COX, Gene	5-10	175	21	Sr.	Lake City
28	DEAN, Stephen	5-10	173	19	So.	Oxford, N. C.
29	BATTAGLIA, Carmen	5-8	180	20	So.	Niagara Falls, N. Y.

## FULLBACKS

41	HOLT, Joseph *	5-10	176	20	So.	Graham, N. C.
42	GRINER, John *	5-10	175	22	Sr.	Jacksonville
43	ABOOD, Emil	5-9	170	19	So.	Jacksonville
44	LEONARD, William *	5-11	200	21	Jr.	Ocala

\* Denote Lettermen.

Compliments of  
**SOUTHERN ELECTRIC**

Your **GENERAL ELECTRIC** Headquarters

BUDDY STRAUSS — SPURGEON CAMP

116 S. Calhoun

Phone 2-2880

---

---

## BENNETT'S DRUG STORE

- Prescriptions
- Cameras
- Sundries
- Gifts

- Fountain
- Cafe
- Cosmetics
- Drugs

MEET AT BENNETT'S BEFORE AND AFTER THE GAME!

Corner Monroe and College Streets

Phones 2-8980 — 2-4450

---

---

# *Gilberg's*

*"The House Of 1000 Fabrics"*

108 East Jefferson Street  
TALLAHASSEE, FLA.

220 Broad Avenue  
ALBANY, GA.

READY MADE  
BEDSPREADS  
DRAPERIES  
UPHOLSTERY FABRICS  
SLIPCOVER FABRICS  
DRAPERY FABRICS  
DRESS FABRICS  
PATTERNS • BUTTONS  
SEWING NOTIONS

26 North Palafox Street  
PENSACOLA, FLA.

---

---

## D. T. O'HARA, JR.

PRODUCE • POULTRY • FROZEN FOODS

Phone 2-2128 • 717 W. Gaines St.

TALLAHASSEE, FLORIDA

---

---

SCALP 'EM SEMINOLES

### Brown's Men's Wear

Monroe at Park

## Buddy's Hardware and Sporting Goods

A Complete Line of

RAWLINGS EQUIPMENT

203 S. Monroe

---

---



**TOM NUGENT**  
Head Coach

**WIN  
SIEGFRIED**

**FRANK  
TOOMEY**

**VAUGHN  
MANCHA**

**BOB  
HARBISON**

**VINCE  
RAGUNAS**



**Insured Savings  
Above Average  
Dividends**

— AT —



# LEON FEDERAL

**Savings and Loan Association**

**Monroe at Park**

**Tallahassee**

*"The Strength of America Lies in Her Homes"*



COPYRIGHT 1935, THE COCA-COLA COMPANY

Delicious and Refreshing



## PENALTIES

### LOSS OF FIVE YARDS

1. Taking more than five times out during either half (except for replacement of injured player).
2. Illegal delay of game.
3. Failure to complete substitution before play starts.
4. Violation of kickoff formation.
5. Player out of bounds when scrimmage begins.
6. Putting ball in play before Referee signals "Ready-for-play".
7. Failure to maintain proper alignment of offensive team when ball is snapped. Also, backfield man illegally in motion.
8. Offside by either team or encroachment on neutral zone.
9. Attempt to draw opponents offside.
10. Crawling by runner.
11. Illegal forward pass (includes intentional grounding of forward pass). Also loss of down.
12. Taking more than two steps after Fair Catch is made.
13. Player on line receiving snap.
14. Any violation of the scrimmage formation.

### LOSS OF FIFTEEN YARDS

15. Team not ready to play at scheduled time.
16. Violation of rules during intermission.
17. Illegal return of suspended player.
18. Interference by member of offensive team with defensive player making pass interception. (Also loss of down.)
19. Interference with opportunity of player of receiving team to catch a kick.
20. Illegal use of hands or arms by offensive player.
21. Tackling or blocking defensive player who has made fair catch.
22. Roughing the kicker.
23. Piling up, hurdling, clipping.
24. Tackling player out of bounds, or running into player obviously out of play.
25. Coaching from sidelines.
26. Failure to stop one full second following shift.
27. Defensive holding.
28. Invalid Signal for Fair Catch.

### OTHER PENALTIES

29. Striking an opponent with fist, forearm, elbow or locked hands, kicking or kneeling — Mandatory disqualification of offending player plus loss of fifteen yards.
30. Foul within the one yard line—half the distance to the goal.
31. Interference by defensive team on forward pass—passing team's ball at spot of foul.
32. Forward pass being touched by ineligible receiver beyond the line of scrimmage—loss of fifteen yards from spot of preceding down and loss of a down.
33. Illegal touching of kicked ball within opponent's ten yard line — touchback.
34. Flagrantly rough play or unsportsmanlike conduct — Mandatory disqualification plus loss of fifteen yards.
35. Eligible pass receiver who goes out of bounds and later touches a forward pass — loss of down.

TALLAHASSEE COCA-COLA BOTTLING COMPANY

# FLORIDA STATE

## PROBABLE STARTING LINEUP

No.	Name	Position
80	RONNIE SCHOMBURGER	LE
70	DON POWELL	LT
61	JERRY JACOBS	LG
50	BOB CRENSHAW	C
65	VINCE GIBSON	RG
75	BOB BARBER	RT
85	TOM FEAMSTER	RE
12	LEN SWANTIC	QB
20	LEE CORSO	LH
22	BUCK METTS	RH
41	JOE HOLT	FB

## THE FLORIDA STATE SQUAD

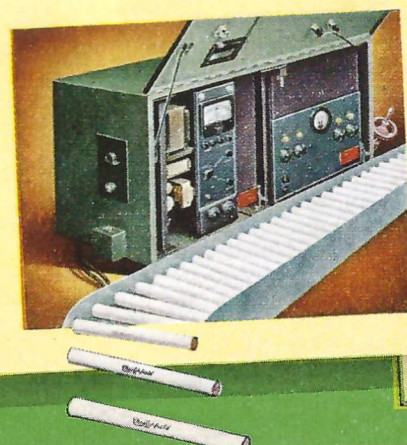
10	Prinzi, B	64	Thomas, G
12	Swantic, B	65	Gibson, G
13	Versprille, B	66	Pacifico, G
15	Norman, B	67	Elliott, G
20	Corso, B	69	Rodrique, G
21	Odom, B	70	Powell, T
22	Metts, B	71	Kicklighter, T
23	Henderson, B	73	Musselman, T
25	Reynolds, B	74	Gardner, T
26	Weaver, B	75	Barber, T
27	Cox, B	76	Staab, T
28	Dean, B	77	Proctor, T
29	Battaglia, B	78	Craig, T
41	Holt, B	80	Schomburger, E
42	Griner, B	81	Bisbee, E
43	Abood, B	82	Overton, E
44	Leonard, B	83	Fountain, E
50	Crenshaw, C	84	Keene, E
51	Ackerman, C	85	Feamster, E
52	Barnes, C	86	Olson, E
53	Philon, C	87	Swilley, E
54	Little, C	88	Curry, E
60	Baggett, G	89	Douglas, E
61	Jacobs, G		



*America's*

**Only Chesterfield is Made the  
Modern Way—with *AccuRay***

Today—discover for yourself what modern science can do to increase your cigarette enjoyment! Try Chesterfield —the cigarette made the modern way... measurably smoother... cooler... best for you!



**TH**  
fil  
Tip  
an  
wh  
**L**



## N.C. STATE

### PROBABLE STARTING LINEUP

No.	Name	Position
86	RONNIE GALL . . . . .	LE
70	JOHN SZUCHAN . . . . .	LT
64	MIKE NARDONE . . . . .	LG
50	DICK TONN . . . . .	C
68	AL D'ANGELO . . . . .	RG
66	JOHN BAGONIS . . . . .	RT
81	JOHN LOWE . . . . .	RE
17	EDDIE WEST . . . . .	QB
20	GEORGE MARINKOV . .	LH
43	JOHN ZUBATY . . . . .	RH
30	HARRISON MAKEEVER .	FB

### THE N.C. STATE SQUAD

12	Franklin, B	63	Barchiesi, G
15	Micklem, B	64	Nardone, G
16	Katich, B	65	Hordubay, G
17	West, B	66	Bagonis, T
20	Marinkov, B	67	Monahan, G
22	Hunter, B	68	D'Angelo, G
23	Meloni, B	69	Dalatri, T
24	Trowbridge, B	70	Szuchan, T
30	Makeever, B	71	Tom Guerrieri, T
31	Prince, B	72	Dess, T
32	Meadlock, B	73	DeAngelis, T
33	T. Guerrieri, B	74	Spivey, T
34	Vitek, B	75	Price, T
40	Christy, B	76	Dunnigan, T
41	Kilyk, B	77	Galifianakas, G
42	Pineda, B	78	Leone, G
43	Zubaty, B	80	Beacon, E
44	Miller, B	81	Lowe, E
50	Tonn, C	82	Miketa, E
51	Goudie, C	83	Kennel, E
52	Oddo, C	84	D. Odom, E
53	Henery, C	85	Armit, E
54	Daskal, C	86	Gall, E
60	Pierce, G	87	Becker, E
61	Tokar, G	88	Collar, E
62	Compton, G	89	Turner, E

**THIS IS IT!** L&M has the purest and best filter your lips ever touched . . . the pure, white Miracle Tip. What's more, L&M gives you a rich, good tasting, and fully satisfying smoke. No wonder smokers everywhere say, "L&M's got everything!"

**L&M** — America's Best Filter Cigarette!



There's nothing  
like a Coke

## REFEREES' SIGNALS

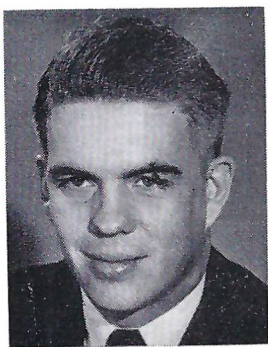
1. Offside
2. Illegal procedure or position
3. Illegal motion
4. Illegal shift
5. Illegal substitution
6. Delay of game
7. Personal foul
8. Roughness and piling on
9. Clipping
10. Roughing the kicker
11. Unsportsmanlike conduct
12. Defensive holding
13. Illegal use of hands and arms
14. Intentional grounding
15. Illegally passing or handing ball forward
16. Forward pass or kick catching interference
17. Ineligible receiver down field on pass
18. Ball illegally touched, kicked or batted
19. Incomplete forward pass, penalty declined, no play or no score
20. Crawling, helping the runner or interlocked interference
21. Ball dead; if hand is moved from side to side: touchback
22. Touchdown or field goal
23. Safety
24. Time-out
25. First down
26. Ball ready-for-play
27. Start the clock or no more time-outs allowed



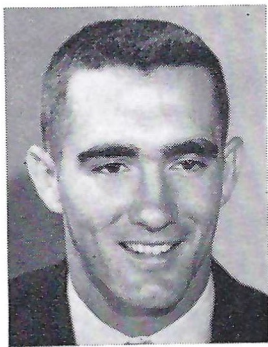
DRINK  
*Coca-Cola*  
REG. U.S. PAT. OFF.  
IN BOTTLES

"COKE" IS A REGISTERED TRADE-MARK

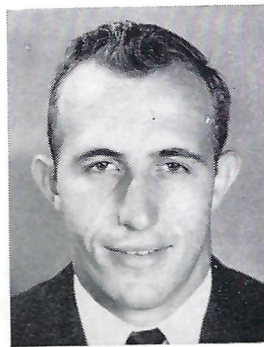
TALLAHASSEE COCA-COLA BOTTLING COMPANY



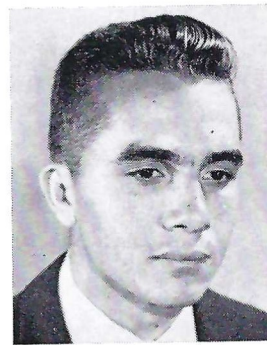
JOHN GRINER



HAM BISBEE



BUCK METTS

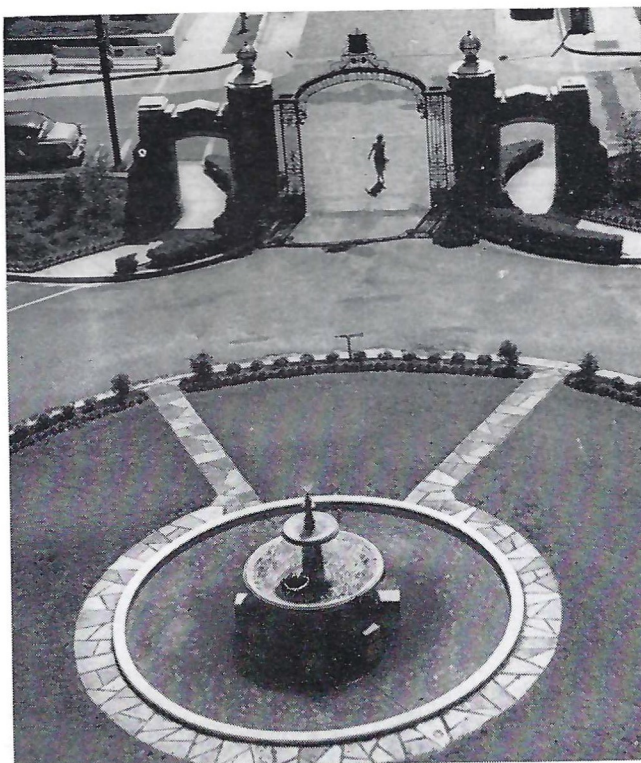


HAL CUMMINGS

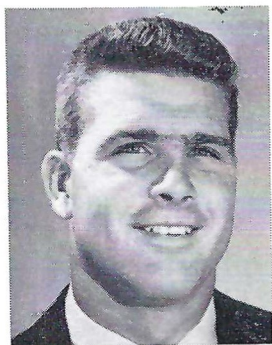
## FLORIDA STATE



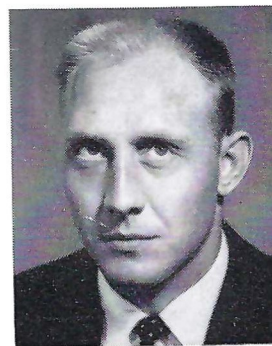
BILL SWILLEY



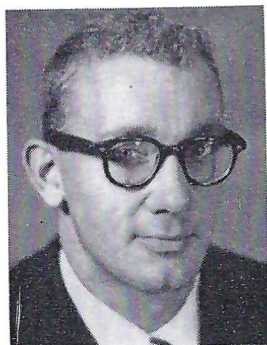
BOB BARBER



BUD LEONARD



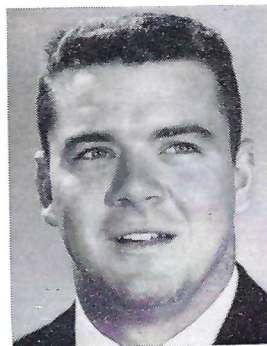
CHAS. KICKLIGHTER



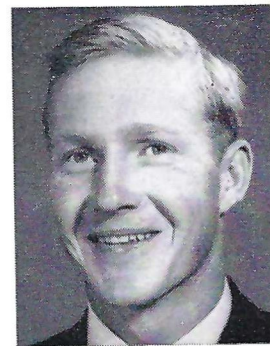
RAY STAAB



VINCE GIBSON



LEO BAGGETT



BILLY ODOM

---

---

**Scalp 'Em Seminoles**

***'Everything for the Students'***

We Buy and Sell

**USED BOOKS**

**UNIVERSITY**



**BOOKSTORE**

IN THE STUDENT CENTER

---

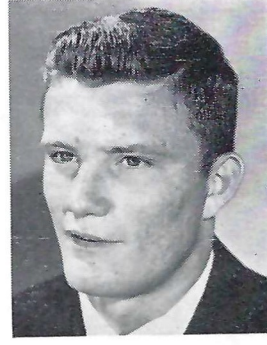
---



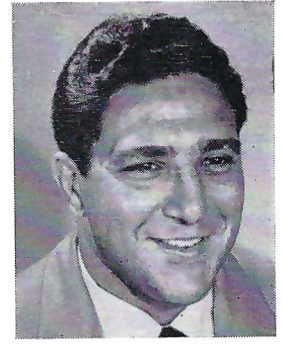
TED RODRIQUE



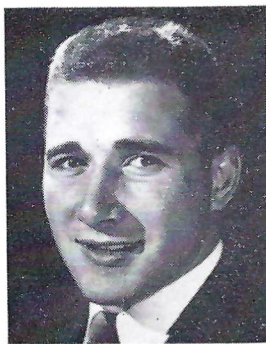
GENE COX



PAT VERSPRILLE

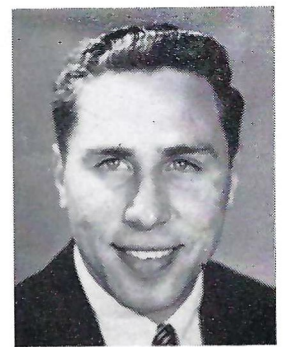


AL PACIFICO



CARMEN BATTAGLIA

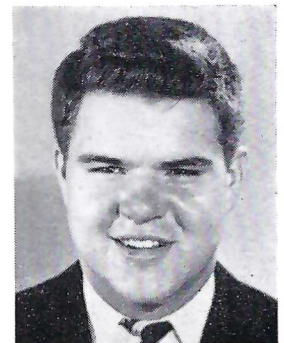
## FLORIDA STATE



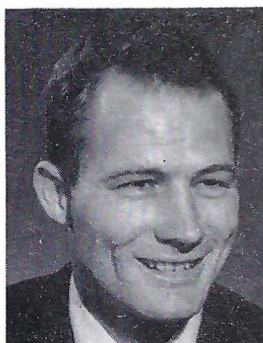
LEE CORSO



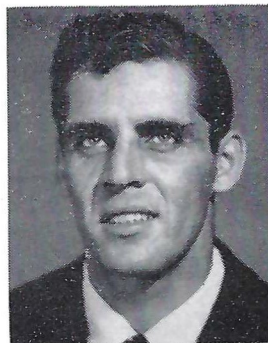
RON SCHOMBURGER



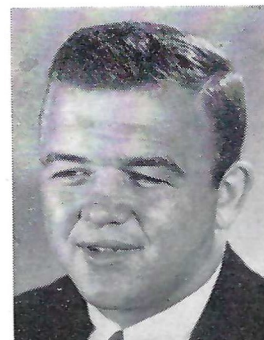
JOHN CRAIG



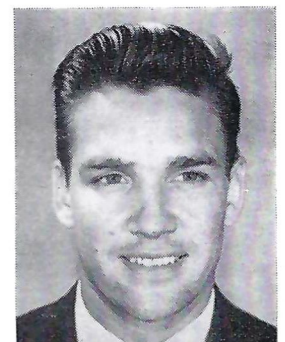
PETE OVERTON



MIKE NORMAN



DON POWELL



LEN SWANTIC

---

---

# **SEVEN SEAS**

Corner Monroe and Pensacola — Next to the Capitol

## ***Tallahassee's finest***

WILL BE HAPPY TO SERVE YOU AFTER THE GAME!

*Air Conditioned*

---

---

## **THE LAUNDROMAT**

CLOTHES — RUGS — BLANKETS

Washed Clean — Fluff Dried and Folded  
*"Your Satisfaction Is Our Goal"*

PHONE  
3-1789

115 W. Tennessee — 1005 N. Monroe

PHONE  
2-3792

SHIRT FINISHING  
DRY CLEANING  
TINTEXING

---

---

## **P. W. Wilson Company**

TALLAHASSEE'S FAVORITE STORE

*Since 1837*

Fashions for

**MEN, WOMEN, CHILDREN**

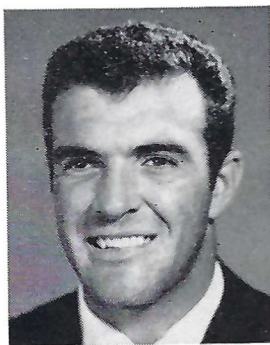
**Tallahassee, Florida**

---

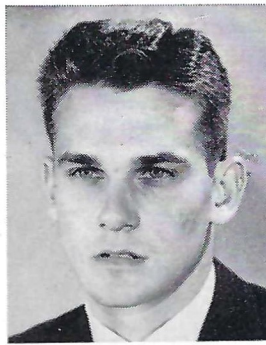
---



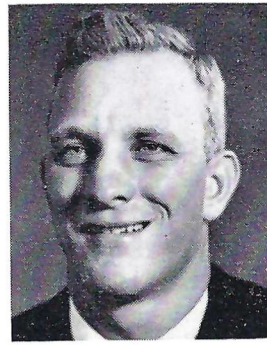
BOB CRENSHAW



HUBERT ACKERMAN

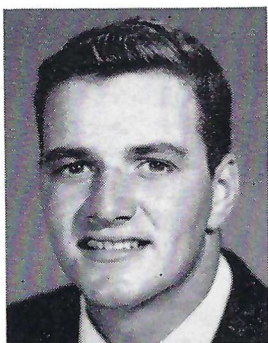


BILL WEAVER

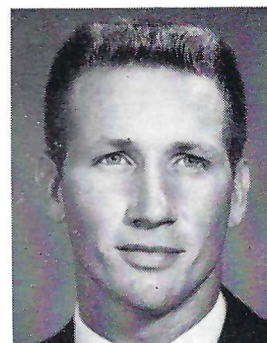


BILL PROCTOR

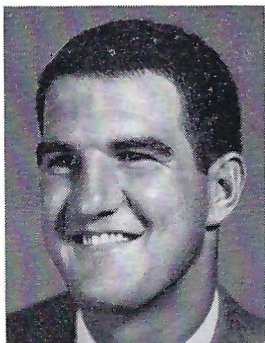
## FLORIDA STATE



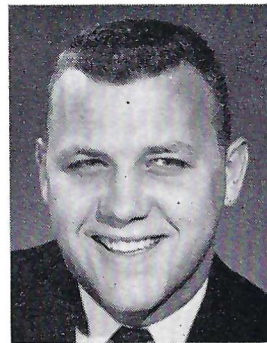
JOE HOLT



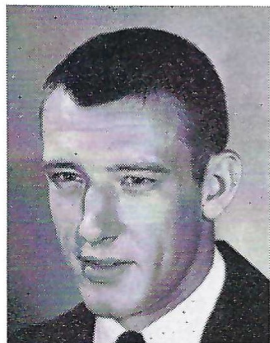
JERRY HENDERSON



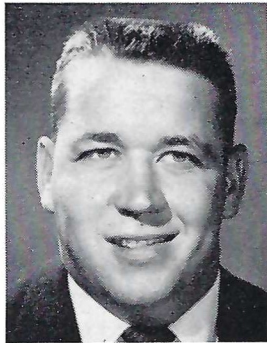
TOM FEAMSTER



JERRY JACOBS



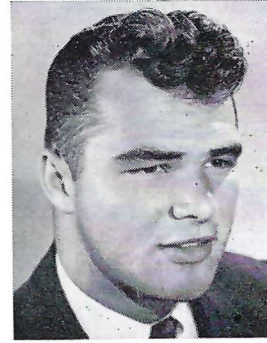
TROY BARNES



JIM YOUNG



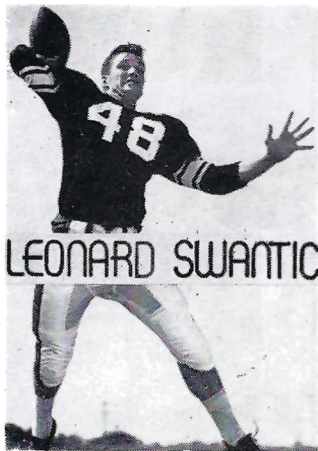
VIC PRINZI



BUDDY REYNOLDS

---

# THE SWEET SHOP



GOOD FOOD

DELICIOUS SODAS

DRUG SUNDRIES

Meet Your Friends Here Before and  
After the Game!

**FOLLOW THE SEMINOLES!**

---

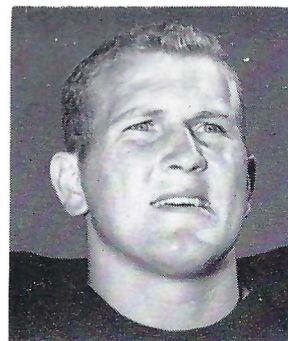
## HOLLAND'S RESTAURANT

Facing the Capitol at 106 E. Pensacola Street  
TALLAHASSEE, FLORIDA

Serving Our Own Blend of Coffee  
Famous for Home-made Pies and Hot Biscuits  
U. S. Prime and U. S. Choice Steaks

*Air Conditioned and Ultra Modern*

**N. T. HOLLAND, Owner and Manager**



BOB BARBER



---

## AUBREY BARROW'S SERVICE STATION

1853 Thomasville Road

Phone 2-5224

---

# Intercollegiate Athletics Observes NCAA'S

## 50th Anniversary



**I**NTERCOLLEGIATE ATHLETICS, during the current college year, 1955-56, commemorates the golden jubilee of the National Collegiate Athletic Association. The universities and colleges of the nation take pleasure in observing their national organization's 50th anniversary because the development and progress of the NCAA is the story of intercollegiate athletics' own expansion and improvement.

Fifty years is a long time. In 1905, the key offense in college football was the flying wedge . . . organized track and field competition was just getting under way . . . the original peach basket goal was about to be replaced by the open metal hoop in basketball but the sport still was new and strange to most sections of the nation . . .

The NCAA evolved from a meeting of 13 colleges and universities called in 1905 to reorganize the game of intercollegiate football. (The rugged nature of the game was causing too many injuries and deaths.) A permanent organization was established, March 31, 1906.

Today, the NCAA is composed of more than 465 colleges and universities, athletic conferences and associations, devoted to the sound administration of intercollegiate athletics. Also today, the member institutions of the NCAA provide intercollegiate athletic competition for more than 130,000 students annually in more than 26 different sports. The men responsible for the coaching and administration of intercollegiate sports firmly believe that these competitive athletic programs are a vital part of the educational system which prepares our youth for future productive careers in society.

The universities and colleges of the nation have joined together in one Association—the NCAA—for purposes of athletic discussion, legislation and administration at the national level. The NCAA is solely and completely responsive to the will of its members as expressed by their governing boards and chief executive officers. The NCAA concerns itself with any phase of college athletics which spreads across regional lines and becomes

national in character, and a majority of the member institutions concur that national action is needed.

These member institutions carry on many diversified activities through the NCAA. For example, they:

- establish and maintain athletic standards.
- formulate and publish the official playing rules for college sports.
- conduct National Collegiate Championship events in 13 sports.
- maintain the official national statistics and records of college sports.
- provide financial and other assistance to groups interested in the promotion and encouragement of intercollegiate and intramural athletics.
- conduct studies as a means of developing solutions to athletic problems; i.e., the recent surveys on television, post-season events, length and time of playing and practice seasons, admission taxes, college baseball, etc.
- participate in the U. S. Olympic and Pan American movements in matters of fund-raising, sports organization and the selection of coaches and athletes for United States teams.
- administer a group insurance program providing catastrophe medical coverage.
- maintain a large film library covering play in National Collegiate Championship events.

The development and expanded activities of the NCAA reflect the progress of intercollegiate athletics over the past half century. The NCAA and its member institutions, in the years ahead, will continue to make every effort to provide maximum opportunities for our youth to enjoy the experience of competitive athletics as an integrated part of their over-all college education.

# FLORIDA STATE SONGS



1.  
YEA GARNET, YEA GOLD  
Yea Garnet!  
Yea Gold!  
Yea Seminoles  
Knock 'Em Cold!

2.  
RAH, RAH, RAH  
Rah, Rah, Rah, Rah,  
Florida State, Florida State!  
Rah, Rah, Rah, Rah,  
Florida State, Florida State!  
Rah, Rah, Rah, Rah,  
Florida State, Florida State!  
Scalp 'Em!

3.  
GO SEMINOLES  
Go Seminoles!  
Go Seminoles!  
Team Fight!

4.  
WHO? HOW? WHY?  
Who? Seminoles!  
How? Fight!  
Why? Win!  
Who Fight?  
We Fight!  
Seminoles Fight!

5.  
da dum Yea Team!  
da dum Whose Team?  
da dum Our Team!  
Touchdown That's The Thing  
We Want A Touchdown,  
Hear Us Sing  
We Want A Great Big Bruiser, Huskey  
And Tall,  
To Carry The Ball, In No Time At All,  
We'll Have A Touchdown,  
And When It's Over  
You Can Hear Us Make Some Noise!  
V-I-C-T-O-R-Y  
We Want A Touchdown, Boys!  
da dum Fight! Fight (Seven Times)  
(Repeat Song)

6.  
F-I-G-H-T  
We're Gonna  
F-(Clap) I-(Clap) G-H-T  
We're Gonna  
F-(Clap) I-(Clap) G-H-T  
We're Gonna  
F-(Clap) I-(Clap) G-H-T  
We're Gonna Fight!

7.  
S- E- YELL  
S-E, S-E  
S-E-M-I  
N-O, N-O  
O-L-E-S  
Fight Seminoles!

8  
ONWARD SEMINOLES  
Onward, Seminoles, Onward Seminoles,  
Fight For F. S. U.  
With Your Name You Must Have Fame  
As All Brave Warriors Do.  
Sts - Boom - Bah!  
On To Glory, On To Glory,  
You Must Ne'er Be Slow.  
Fight Team, For If You Do  
You'll Reach Your Goal!

NO.  
85  
80  
87  
88  
86  
83  
81  
82  
84  
89  
  
66  
69  
73  
72  
76  
71  
78  
75  
74  
70  
  
63  
62  
68  
77  
65  
67  
64  
60  
61  
  
54  
51  
53  
52  
50  
  
12  
16  
15  
42  
17  
  
22  
20  
44  
24  
  
40  
41  
23  
43  
  
33  
30  
32  
31  
34

# 1955 N. C. STATE COLLEGE FOOTBALL ROSTER

NO.	NAME	ENDS		AGE	CLASS	HOME TOWN
		HT.	WT.			
85	ED ARMIT	6-2	205	21	Jr.	Turtle Creek, Pa.
80	JAY BEACON	6-2	178	20	So.	Universal, Pa.
87	BOB BECKER	6-0	191	21	Sr.	Newark, N. J.
88	JOHN COLLAR	6-2	205	19	So.	Washington, Pa.
86	RONNIE GALL *	6-4	201	20	Jr.	New Castle, Pa.
83	BOB KENNEL	5-11	178	19	So.	New Bern, N. C.
81	JOHN LOWE *	6-0	190	21	Jr.	Delmar, Del.
82	DON MIKETA	5-11	177	20	So.	Baden, Pa.
84	DAVID ODOM	6-2	190	21	Jr.	Plumtree, N. C.
89	BOB TURNER	6-2	182	19	So.	Cherryville, N. C.
TACKLES						
66	JOHN BAGONIS *	5-10	201	22	Sr.	Luzerne, Pa.
69	DICK DALATRI	6-1	214	22	So.	Spring Valley, N. Y.
73	AMEDEO DeANGELIS	6-1	202	19	So.	Reading, Pa.
72	DARRELL DESS	6-0	210	20	Jr.	New Castle, Pa.
76	BOB DUNNIGAN *	6-0	200	23	Jr.	Burgaw, N. C.
71	TOM GUERRIERI	5-11	191	18	So.	N. Braddock, Pa.
78	TONY LEONE *	6-1	194	23	Sr.	Bronx, N. Y.
75	C. M. PRICE *	6-2	212	23	Sr.	Prospect, Va.
74	HANK SPIVEY *	6-5	216	21	Sr.	Garner, N. C.
70	JOHN SZUCHAN *	6-0	217	20	Jr.	Phoenixville, Pa.
GUARDS						
63	JOHN BARCHIESI	5-10	190	20	Jr.	Greensburg, Pa.
62	JULIUS COMPTON	6-0	185	20	So.	Durham, N. C.
68	AL D'ANGELO *	5-11	191	20	Sr.	Crabtree, N. C.
77	HARRY GALIFIANAKAS	5-8	197	20	So.	Durham, N. C.
65	ED HORDUBAY	5-10	179	19	So.	Windber, Pa.
67	JOE MONAHAN	5-11	190	21	So.	Aliquippa, Pa.
64	MIKE NARDONE *	5-8	190	22	Sr.	Peekskill, N. Y.
60	HUGH PIERCE *	6-1	202	23	Jr.	Plymouth, N. C.
61	FRANCIS TOKAR	5-11	193	19	So.	Charleroi, Pa.
CENTERS						
54	JOHN DASKAL	6-1	197	21	Jr.	Fayetteville, N. C.
51	DICK GOUDIE	5-10	175	19	So.	Downingtown, Pa.
53	ALLEN HENERY *	5-11	190	21	Jr.	Merrick, L. I., N. Y.
52	JIM ODDO	5-11	182	19	So.	Wilmington, Del.
50	DICK TONN *	5-11	205	22	Sr.	Cleveland, Ohio
QUARTERBACKS						
12	BILLY FRANKLIN *	6-0	196	21	Jr.	Farmville, Va.
16	TOM KATICH	5-9	171	19	So.	Pittsburgh, Pa.
15	COLBERT MICKLEM	5-10	170	22	Jr.	Hopewell, Va.
42	JOE PINEDA	5-11	181	19	So.	Key West, Fla.
17	EDDIE WEST *	6-2	195	22	Sr.	Alexandria, Va.
LEFT HALFBACKS						
22	DICK HUNTER	5-7	155	19	So.	Leechburg, Pa.
20	GEORGE MARINKOV *	5-7	172	21	Jr.	Lebanon, Pa.
44	MIKE MILLER	5-9	151	20	Jr.	Allentown, Pa.
24	KEN TROWBRIDGE	5-8	167	20	So.	Plymouth, N. C.
RIGHT HALFBACKS						
40	DICK CHRISTY	5-10	183	20	So.	Chester, Pa.
41	TED KILYK *	6-0	177	22	Sr.	Phoenixville, Pa.
23	DAVE MELONI	5-11	171	19	Jr.	Pittsburgh, Pa.
43	JOHN ZUBATY *	6-0	200	21	Sr.	Blairsville, Pa.
FULLBACKS						
33	TONY GUERRIERI	5-6	175	20	So.	Orange, N. J.
30	HARRISON MAKEEVER *	6-0	195	21	Jr.	Greensboro, N. C.
32	JIM MEADLOCK	6-0	175	21	Sr.	Taylorsville, N. C.
31	WALLACE PRINCE	6-0	182	20	Jr.	Cairo, Ga.
34	STEVE VITEK	5-10	186	19	So.	Lansford, Pa.

\* Denote Lettermen.

## F & T RESTAURANT

For Good Food and Quick Service

113 S. Monroe

Phone 2-8917

Air Conditioned

## NORTH CAROLINA STATE COACHES



**AL MICHAELS**  
Backfield Coach

**CAREY BREWBAKER**  
Line Coach

**EARLE EDWARDS**  
Head Coach

**PAT PEPPER**  
Assistant Coach

**BILL SMALTZ**  
Freshman Coach

---

# NEXT HOME GAME!!

---

**VIRGINIA TECH**

**CAMPBELL STADIUM — 8:00 P.M.**

**OCTOBER 8**

---

**Tickets Now on Sale — All Ticket Requests Should Be  
Addressed to Athletic Ticket Office, Florida State University.**

**RESERVED SEATS — \$3.00**

**END ZONE — \$1.50**

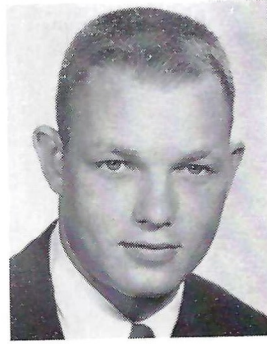
---



JOHN COLLAR



RONNIE GALL



EDDIE WEST

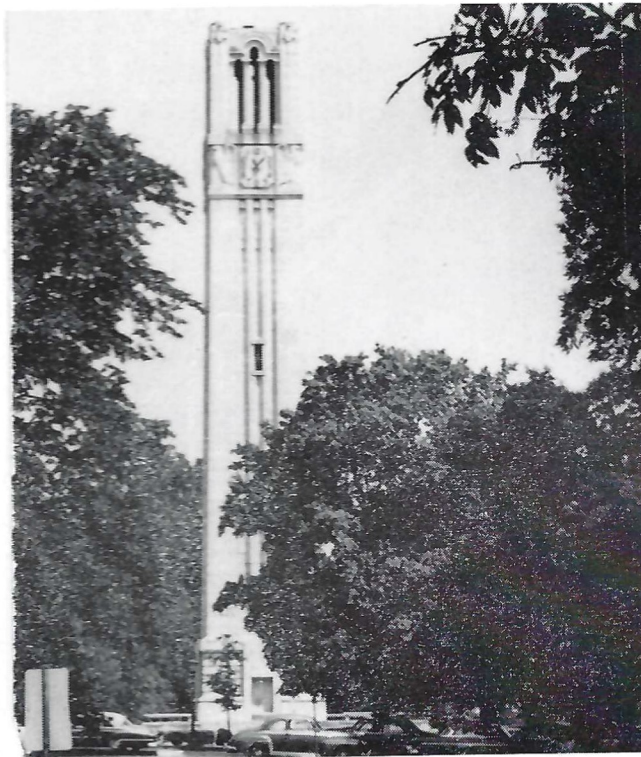


JAY BEACON

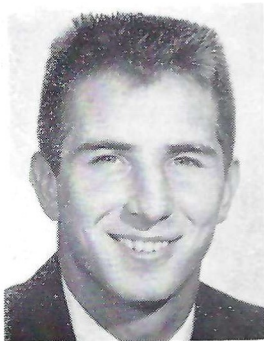
## N. C. STATE



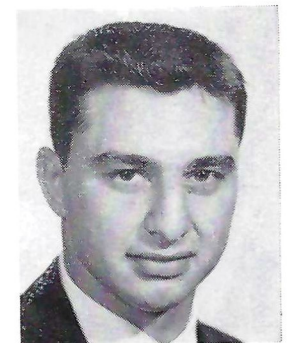
DARRELL DESS



JOHN ZUBATTY



TED KILYK



AL D'ANGELO



GEORGE MARINKOV



JOHN LOWE



JIM ODDO



DICK HUNTER



HUGH PIERCE



COLBERT MICKLEM



ALLEN HENERY



JOHN SZUCHAN

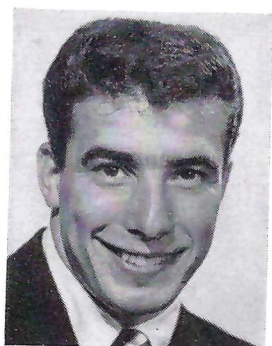
## N. C. STATE



BILLY FRANKLIN



JOHN BAGONIS



TONY GUERRIERI



DICK CHRISTY



TOM GUERRIERI



C. M. PRICE



MIKE NARDONE



HARRISON MAKEEVER



WE STRIVE for our customers' goodwill  
and we are creating it every day. We do  
so by giving complete satisfaction with  
our service, and by combining excellent  
facilities and skilled craftsmanship to  
produce fine printing at a fair price.

**Rose** PRINTING COMPANY, INC.  
ROSE BUILDING • TALLAHASSEE, FLORIDA  
*A complete printing service*



*Light up a Lucky—  
it's light-up time!*

**LUCKIES  
TASTE BETTER**

**Cleaner, Fresher, Smoother!**



**"IT'S  
TOASTED"  
to taste  
better!**