

FLORIDA STATE

— vs. —

N. C. STATE

RIDDICK STADIUM, 8:00 P.M.

OCTOBER 13, 1956

Price 50 cents

L. W. KELLEN



The Model 12

International® Payloader®

If it's speed, maneuverability and big capacity you want in a crawler-loader, try the new International 1¾ yard Model 12 Payloader. This loader has "power-shift" transmission teamed with Torque-Converter advantages to give you maximum possible material-moving capacity and speed in any given condition.

Let us show you the Model 12 Payloader and the complete new line of International Bonus Powered Crawler Tractors with newly designed IH blades matched to tractor power.



Construction, Industrial and Logging Equipment

NORTH CAROLINA EQUIPMENT COMPANY

RALEIGH • GREENVILLE • WILMINGTON • GREENSBORO • CHARLOTTE • ASHEVILLE



CAREY H. BOSTIAN, Chancellor

E

Lightweight... rugged performer!



SYLVANIA[®]
Big Screen
PORTABLE TV

brings in best possible pictures
 anywhere you take it!

Famous Sylvania dependability and performance now can be yours in portable TV! The new Sylvania *Fiesta* is compact—only 13⁷/₈" wide—weighs only 28 lbs. Equipped with a special filter to keep out glare and reflection.



The FIESTA

Your choice of 3 color combinations.

Big Screen Sylvania Portable TV
 priced from only **\$119.95***

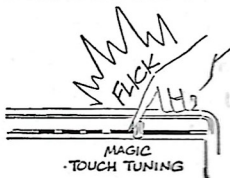
*Manufacturer's suggested price

New magic!  New Low prices!

SYLVANIA TV
"Cabinet of Light"
 WITH
MAGIC TOUCH TUNING

Magic at your fingertips!

Sylvania's new Magic Touch Tuning lets you select up to 3 channels at a touch. Ask for a demonstration.



Magic for your eyes!

HaloLight[®] eliminates the harsh contrast between bright picture and dark frame—makes TV easy on your eyes!



The WARWICK

New Cabinet of Light TV features HaloLight[®] and Magic Touch Tuning. Your choice of finishes.

NEXT BEST THING TO SEEING IT IN PERSON—SEE IT ON SYLVANIA TV NOW AT—

See Your Local Sylvania Dealer

MAJOR APPLIANCE DISTRIBUTORS, INC.

1213 WEST MOREHEAD STREET

CHARLOTTE, N. C.

SYLVANIA DISTRIBUTORS

F
 bur
 his
 C
 coa
 in 1
 Sta
 mat
 U
 sho
 iron
 tha
 pre
 reb
 det
 nin
 ma
 in
 F
 for
 Nit
 Ind
 J
 ath
 aft
 eng

EARLE EDWARDS

Head Football Coach



Earle Edwards, 48-year-old native of Greensburg, Pa., is embarking on the third year of his tenure at North Carolina State.

One of the most gentlemanly and best-liked coaches in the business, Edwards came to State in 1954 after serving as end coach at Michigan State for five years and Penn State, his alma mater, for 13 years.

Under Edwards' guidance, the Wolfpack has shown tremendous improvement on the gridiron. His first year, Edwards inherited a team that won only one game and lost nine the previous season, yet he went about the job of rebuilding State's football dynasty with a grim determination, despite a 2-8 record as a beginning. Last year's team came up with a 4-5-1 mark and was one of the most colorful squads in the ACC.

Edwards was a football star at Penn State for three years where he played end for the Nittany Lions, graduating with a degree in Industrial Engineering in 1931.

Following his graduation, Edwards passed up athletics for a crack at the business world, but after two years in Lambertville, N. J., as an engineer, he returned to football, his first love.

Edwards began coaching on the high school level in 1933 at Princeton (N. J.) Prep. After one year he was named head coach at Ebensburg (Pa.) High where he remained until 1936.

Bob Higgins, the Penn State coach who Edwards had played under, selected his former star as end coach and Edwards returned to his Alma Mater to begin a 13-year tenure with the Nittany Lions, which was climaxed with a trip to the Cotton Bowl in 1948.

Also in 1948, Biggie Munn, the successful Michigan State coach, offered Edwards a position as end coach and chief scout for the Spartans, a job he held until 1954 when he left to assume the head coaching duties at State. Michigan State was twice undefeated and won the Rose Bowl game in 1954, Edwards last season there.

Besides his degree in Industrial Engineering, the Wolfpack coach holds a Master's Degree in Physical Education from Penn State. He served on the physical education staffs of both Penn State and Michigan State in addition to his football duties.

Edwards, who stands 5-foot-10, weighs 200, likes to play golf, fish and swim during his free time, which he has too little of these days. An entertaining speaker, he is sought after for banquets, civic club meetings and other functions. A master of football strategy, fundamentals and techniques, he is often asked to conduct grid clinics.

Edwards was married to the former Mary Rogers of Greensburg, Pa., in 1931. They have three children: Jack, 23, presently in the Army and a graduate of Michigan State; Mary Ann, 21, a graduate of the University of North Carolina; and Bob, 18, a sophomore at UNC.

Edwards has made innumerable friends at State and his personality and winning smile have won him many rabid supporters among non-State alumni as well as students, faculty and alumni. He was given a new five-year contract this year which runs through 1960.

Carolina Builders Company

C. L. BENSON, Executive Vice-President
RALPH INGRAM, Vice-President & Treasurer
J. Y. HORNBUCKLE, Secretary

※ ※ ※

**WATERPROOFING — BUILDING MATERIALS — LUMBER
MILLWORK — ATHEYS PAINTS — RUSSWIN & SCHLAGE**

※ ※ ※

217 N. Dawson Street, Phone TE 2-7563, Raleigh, N. C.
Grady Boykins—Manager, Hardware Department

W. H. KING DRUG CO.

**WHOLESALE DRUGGISTS
Raleigh, N. C.**

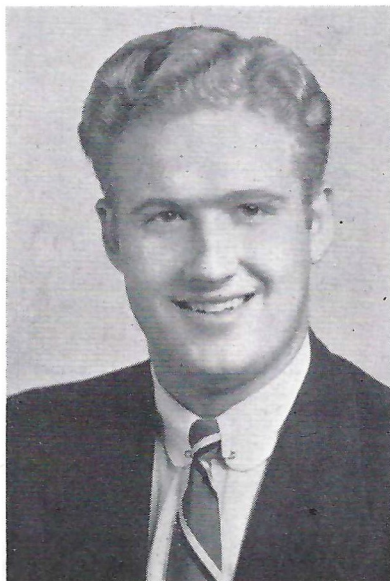
For Courteous, Dependable Service
Shop at your Neighborhood Drug Store



The House of Friendly and Dependable Service



ROY CLOGSTON
Athletic Director



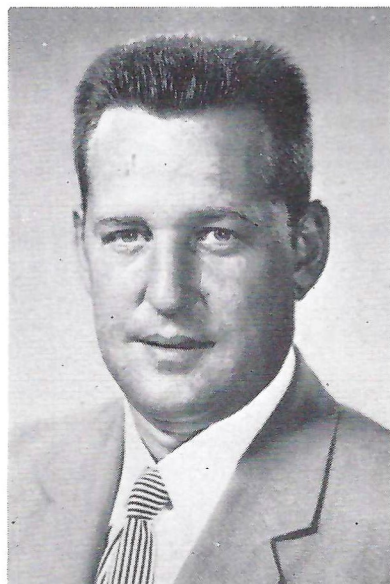
HERMAN BUNCH, JR.
Trainer



PAT PEPPLER
Assistant Coach



CAREY BREWBAKER
Assistant Coach



BILL SMALTZ
Assistant Coach



AL MICHAELS
Assistant Coach

FLITE FUEL

**PHILLIPS
TROP-ARTIC OIL**

All Weather Motor Oil

**PHILLIPS
FURNACE OIL**



BRYAN-COOPER OIL CO., Inc.

KEEPING RALEIGH WARM SINCE 1938

"WE STRESS PERSONALIZED SERVICE"

METERED TRUCKS

1601 Wake Forest Road

**N. C. STATE
COLLEGE
WOLFPACK**



Don Miketa



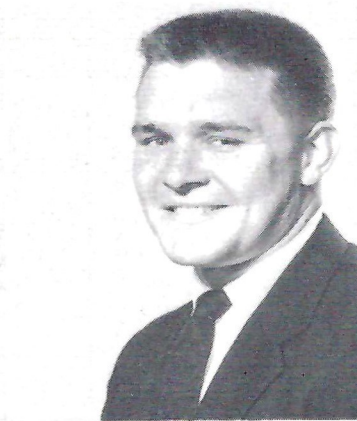
Dick Goudie



Dick Christy



Julius Compton



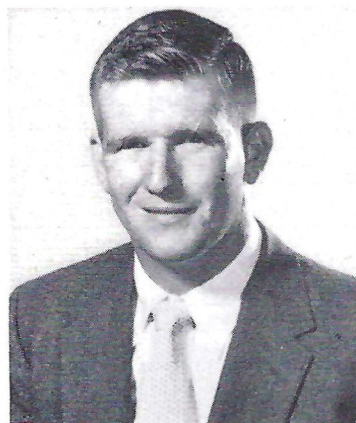
Darrell Dess



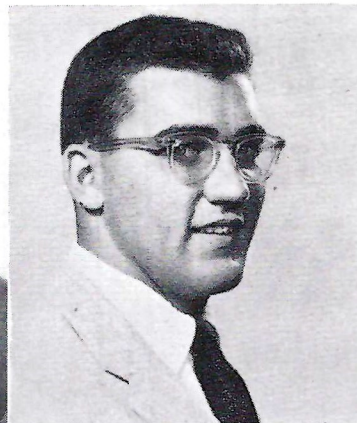
Bill Franklin



Larry Cox



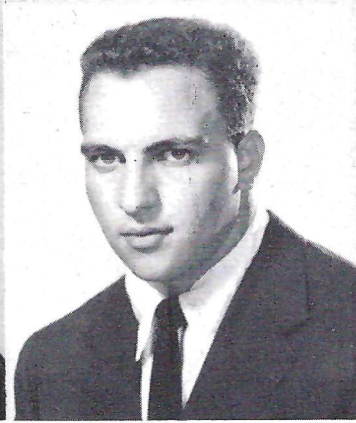
Larry Dixon



Francis Tokar



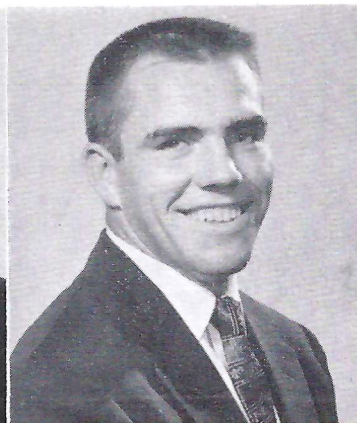
Steve Vitek



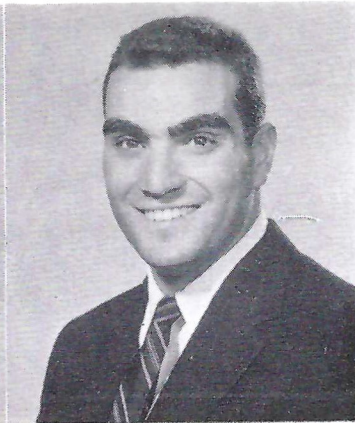
Tom Guerrieri



Ken Trowbridge



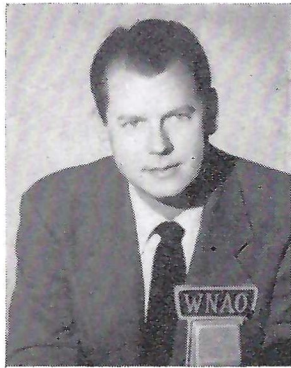
Arnold Nelson



Francis Palandrani



Dave Meloni



Jimmy Simpson
The Ole Sportsman

For the 9th Straight Year!

WKIX

FOLLOWS THE WOLFPACK

8 5 0

On Your
Dial

At Home and Away—Football & Basketball

ALSO ON WKIX THIS SEASON
NOTRE DAME SCHEDULE
BALTIMORE COLTS SCHEDULE
RALEIGH HIGH SCHEDULE

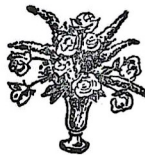
Check News and
Observer and
Raleigh Times for
Time of Games

Tops in Sports DAILY on WKIX-WNAO-TV

Flowers By—

FALLON'S

—Are Distinctive



Phone TE 2-8347

205 FAYETTEVILLE STREET

YOUR MONEY BUYS MORE AT LAND'S

LAND'S

THE HOME OF

NATIONALLY KNOWN PRODUCTS

Elgin
Bulova
Hamilton
Longines
Simmons
Rolf Wallets
Westlock
R.C.A.
Ronson Shavers
Schick Shavers
Remington Shavers

G.E. Radios
Samsonite
Eastman Kodaks
G.E. Appliances
1847 Rogers
Sheaffer Pens
Parker Pens
Royal Typewriters
Remington Typewriters
Sunbeam
Trifari Jewelry

FINE

DIAMONDS

EASY CREDIT TERMS
NEVER ANY
INTEREST OR CARRYING CHARGES

LAND'S

RALEIGH'S LEADING CREDIT JEWELERS
137 FAYETTEVILLE ST. PHONE TE 2-3751

**N. C. STATE
COLLEGE
WOLFPACK**



Mike Miller



John Barchiesi



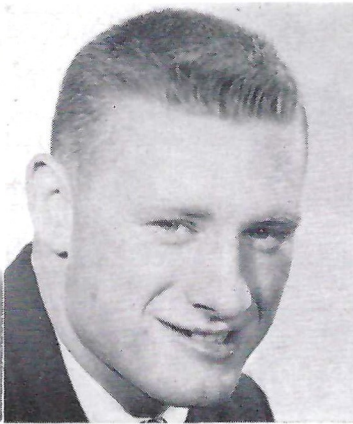
Jay Margerum



John Daskal



Frank Cackovic



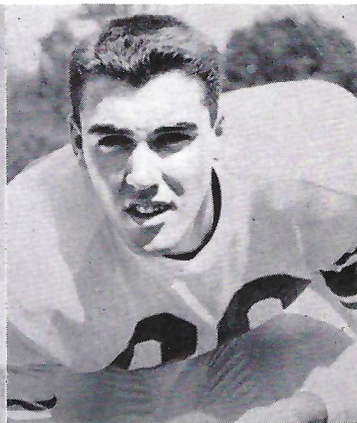
Allen Henery



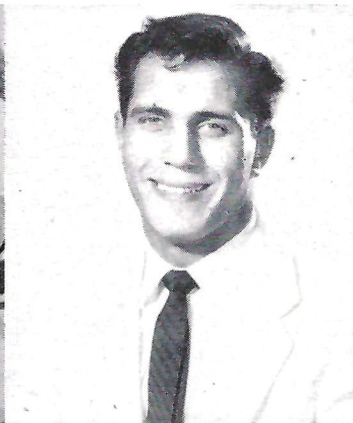
Bob Kennel



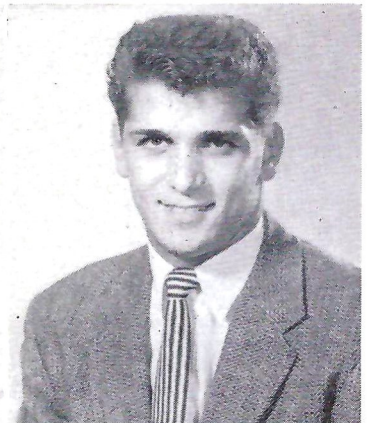
Jay Beacon



Ronnie Gall



Jim Oddo



Bob Pepe



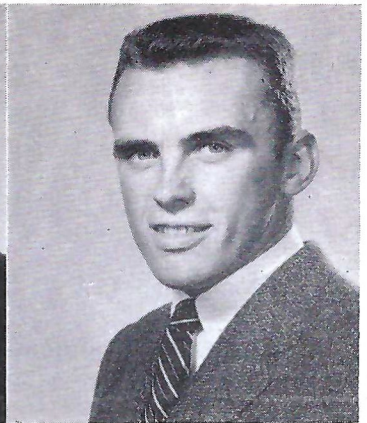
Henry Spivey



Ronald Savage



Bill Rearick



Dave Odom



RALEIGH SEA FOOD COMPANY

The Finest Seafood in Season – Fresh Daily



PROMPT DELIVERY SERVICE



CORNER DAVIE and EAST STREETS



Phone TE 2-7748

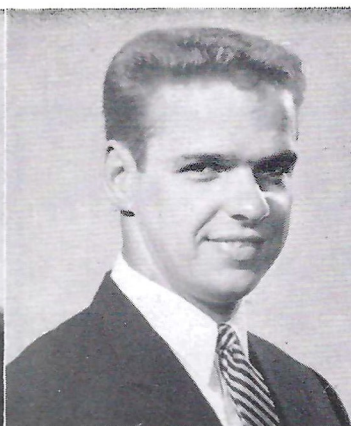
N. C.
CO
WO



**N. C. STATE
COLLEGE
WOLFPACK**



Wallace Prince



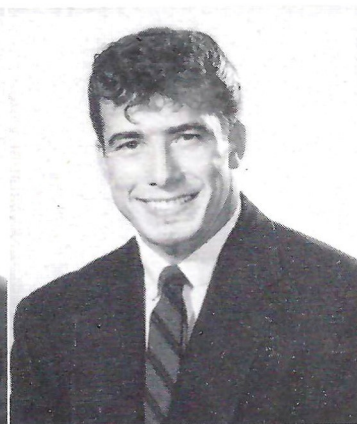
John Collar



Joe Rodri



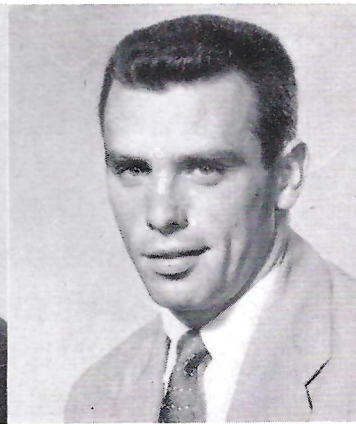
Tom Katich



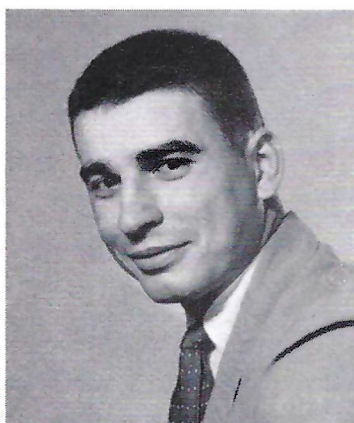
Tony Guerrieri



Dick DeAngelis



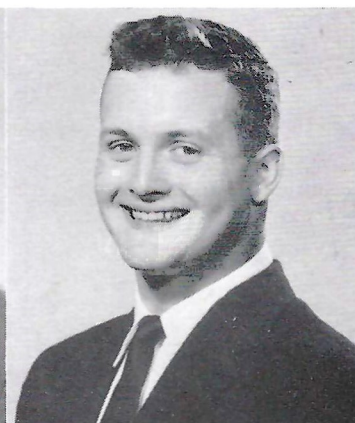
Dick Hunter



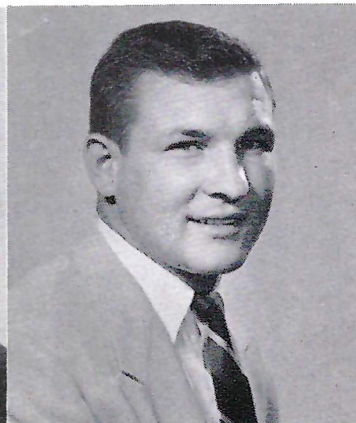
George Marinkov



John Lowe



Ed Hordubay



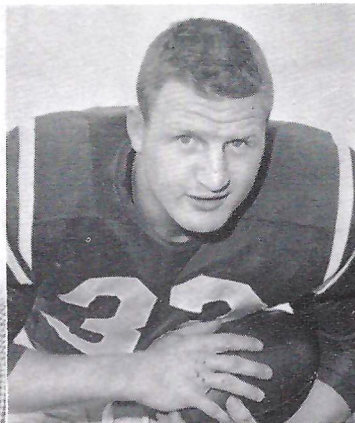
John Szuchan



Colbert Micklem



Ernie Driscoll



Don Hafer

WE'RE FOR N. C. STATE

WIN OR LOSE

Insure with us and
you **CAN'T** Lose

ASSOCIATED INSURERS, INC.

RALEIGH

331 Fayetteville Street Phone TE 3-2861

HUGH H. MURRAY, N.C.S. '32, President

BOB KING, Duke '35, Exec. V-Pres.

BILL ALDRIDGE, Carolina '51, V-Pres.

CHARLIE WASON, Wisconsin '34, V-Pres.

RECAPPING

VULCANIZING



H. H. TIRE RETREADING CO.



FISK Tires and Tubes



T. V. FERGUSON, '26—Owner



119 East Davie Street

Phone TE 2-0492

Raleigh, N. C.

Peanut Butter Sandwiches

Sweet Fill Sandwiches

TAYLOR

BISCUIT COMPANY

MAKERS OF

TAYLORED TO TASTE

FOOD PRODUCTS

VENDORS FOR ALL LOCATIONS

Potato Chips

Peanut Butter

**GASTON DYEING
MACHINE COMPANY**

Stanly, N. C.



RAW STOCK, TOP, BEAM & PACKAGE

**Dyeing & Drying
Machinery**

THE WOLFPACK CONTINUES TO WEAR

"The Finest In The Field"

ATHLETIC EQUIPMENT

By

RAWLINGS

Sold Exclusively In This Territory By

JOHNSON-LAMBE CO.

116-118 S. Salisbury St., Raleigh, N. C.

TE 2-8848

Dependable for 22 years



Red Johnson of Johnson-Lambe shows off brand new Rawlings pads to North Carolina State coaches, Al Michaels, left and Carey Brewbaker, right.

CADILLAC — OLDSMOBILE

Sales and Service

THOMPSON CADILLAC-OLDSMOBILE, INC.

421 FAYETTEVILLE ST., RALEIGH

PHONE TE 4-0311

noted for their good taste

*you'll love the farm-fresh
goodness and delicious flavor
of all Pine State Dairy Foods*



MILK
ICE CREAM

*North Carolina's
Choice Since
1919*

REFRESH



- 1 Offside
- 2 Illegal procedure, position or substitution
- 3 Illegal motion
- 4 Illegal shift
- 5 Illegal return
- 6 Delay of game
- 7 Personal foul
- 8 Clipping
- 9 Roughing the kicker
- 10 Unsportsmanlike conduct
- 11 Illegal use of hands and arms
- 12 Intentional grounding
- 13 Illegally passing or handing ball forward
- 14 Forward pass or kick catching interference
- 15 Ineligible receiver downfield on pass
- 16 Ball illegally touched, kicked or batted
- 17 Incomplete forward pass, penalty declined, no play or no score
- 18 Crawling, helping runner or interlocked interference.
- 19 Ball dead
- 20 Touchdown or field goal
- 21 Safety
- 22 Time-out
- 23 First down
- 24 Ball ready for play
- 25 Start the clock

See Page 20 For Penalties



Live Modern, Boy...Smoke **L&M!**

My



STATE

THE SQUAD

PROBABLE STARTING LINEUPS

88 John Collar	LE	12 Franklin, QB	44 Miller, RH	71 Guerrieri, T
70 John Szuchan	LT	15 Micklem, QB	50 Scott, C	72 Dess, T
61 Francis Tokar	LG	16 Katich, QB	51 Goudie, C	73 DeAngelis, T
52 Jim Oddo	C	17 Cackovic, QB	52 Oddo, C	74 Spivey, T
62 Julius Compton	RG	18 Driscoll, QB	53 Henery, C	75 Dixon, T
73 Dick DeAngelis	RT	20 Marinkov, LH	54 Balonick, C	76 Harriger, T
85 Bob Pepe or	RE	21 Margerum, LH	55 Savage, C	77 Palandrani, T
81 John Lowe	RE	22 Hunter, LH	60 Rearick, G	78 Paroli, T
16 Tom Katich	QB	24 Trowbridge, LH	61 Tokar, G	79 Daskal, T
22 Dick Hunter	LH	31 Prince, FB	62 Compton, G	80 Beacon, E
40 Dick Christy	RH	32 Nelson, FB	63 Barchiesi, G	81 Lowe, E
31 Wally Prince	FB	33 Guerrieri, FB	64 Cox, G	82 Miketa, E
		34 Vitek, FB	65 Hordubay, G	83 Kennel, E
		36 Hafer, FB	66 Marocco, G	84 Odom, E
		40 Christy, RH	67 Sherron, G	85 Pepe, E
		41 Meloni, RH	68 Minyard, G	86 Gall, E
		42 Podwika, RH	69 Rodri, G	88 Collar, E
		43 Adams, RH	70 Szuchan, T	89 Read, E

My Chesterfields *Satisfy* the Most!



FLORIDA STATE

PROBABLE STARTING LINEUP

80 Schomburger	LE	10 Prinzi, QB
73 Musselman	LT	11 Rodrique, QB
64 Leonard	LG	12 Swantic, QB
52 Barnes	C	14 Henderson, QB
66 Pacifico	RG	15 Renn, QB
79 Graham	RT	20 Corso, HB
85 Nellums	RE	21 Odom, HB
15 Renn	QB	22 Metts, HB
20 Corso	LHB	24 Atkins, HB
22 Metts	RHB	25 Versprille, HB
41 Holt	FB	27 Dobosz, HB
		28 Weber, HB
		29 Battaglia, HB

THE SQUAD

41 Holt, FB	70 Thomas, T
42 Scheible, FB	73 Musselman, T
43 Abood, FB	76 Keys, T
44 Johnson, FB	78 Craig, T
50 Davis, C	79 Graham, T
51 Pope, C	80 Schomburger, E
52 Barnes, C	81 Bisbee, E
53 Keith, C	83 Fountain, E
54 Boyer, C	84 Kimber, E
60 Baggett, G	85 Nellums, E
64 Leonard, G	86 Arnold, E
66 Pacifico, G	89 Philp, E
67 Elliott, G	

PAUSE



LOSS OF FIVE YARDS

- 1—Taking more than five times out during either half (except for replacement of injured player).
- 2—Illegal delay of game.
- 3—Failure to complete substitution before play starts.
- 4—Violation of kickoff formation.
- 5—Player out of bounds when scrimmage begins.
- 6—Putting ball in play before Referee signals "Ready-for-play".
- 7—Failure to maintain proper alignment of offensive team when ball is snapped. Also, backfield man illegally in motion.
- 8—Offside by either team or encroachment on neutral zone.
- 9—Attempt to draw opponents offside.
- 10—Crawling by runner.
- 11—Illegal forward pass (includes intentional grounding of forward pass). Also loss of down.
- 12—Taking more than two steps after Fair Catch is made.
- 13—Player on line receiving snap.
- 14—Any violation of the scrimmage formation.

LOSS OF FIFTEEN YARDS

- 15—Team not ready to play at scheduled time.
- 16—Violation of rules during intermission.
- 17—Illegal return of suspended player.
- 18—Interference by member of offensive team with defensive player making pass interception. (Also loss of down).
- 19—Interfering with the opportunity of a player of the receiving

PENALTIES

- team to catch a kick.
- 20—Illegal use of hands or arms by offensive player.
- 21—Tackling or blocking defensive player who has made fair catch.
- 22—Roughing the kicker.
- 23—Piling up, hurdling, clipping.
- 24—Tackling player out of bounds, or running into player obviously out of play.
- 25—Coaching from sidelines.
- 26—Failure to stop one full second following shift.
- 27—Defensive holding.
- 28—Invalid Signal for Fair Catch.

OTHER PENALTIES

- 29—Striking an opponent with fist, forearm, elbow or locked hands, kicking or kneeling — Mandatory disqualification of offending player plus loss of fifteen yards.
- 30—Foul within the one yard line — half the distance to the goal.
- 31—Interference by defensive team on forward pass — passing team's ball at spot of foul.
- 32—Forward pass being touched by ineligible receiver beyond the line of scrimmage—loss of fifteen yards from spot of preceding down and loss of a down.
- 33—Illegal touching of kicked ball within opponent's ten yard line — touchback.
- 34—Flagrantly rough play or unsportsmanlike conduct — Mandatory disqualification plus loss of fifteen yards.
- 35—Eligible pass receiver who goes out of bounds and later touches a forward pass — loss of down.

See Page 17 For Official Signals

DRINK

Coca-Cola

REG. U.S. PAT. OFF.

OFFICIAL WATCH FOR



U. S. OLYMPIC
COMMITTEE
1948-1952-1956



NAT'L AERONAUTIC
ASSN.



NAT'L COLLEGIATE
ATHLETIC ASSN.
CHAMPIONSHIPS



AMERICAN AUTO-
MOBILE ASSN.



NATIONAL SKI
ASSN.



AMERICAN
POWERBOAT
ASSN.



AAU
CHAMPIONSHIPS



NATIONAL HORSE
SHOW ASSN.

and many others

Longines

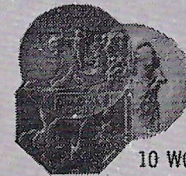
THE WORLD'S MOST HONORED WATCH

Official Watch for the

**N. C. State vs.
Florida State**

Longines, first watch of sport, is recognized as official for timing world records and international events by all international sports and contest associations. Every Longines watch, for whatever its use, is made to be the best of its kind. For yourself, as a gift, no other name on a watch means so much as Longines, the world's most honored watch.

Longines-Wittnauer Watch Company



10 WORLD'S FAIR
GRAND PRIZES
28 GOLD MEDALS



Longines watches to cope with outdoor life—fully protected against all common watch hazards. For her—Longines Skylark "A.P." For him—Longines Sportsman "D", each \$89.50. Other Longines watches from \$71.50.

DIXIE CLASSIC

DECEMBER 27-28-29

Utah-DePaul-West Virginia

Iowa-Carolina-Duke

State-Wake Forest

"Basketball at It's Best"

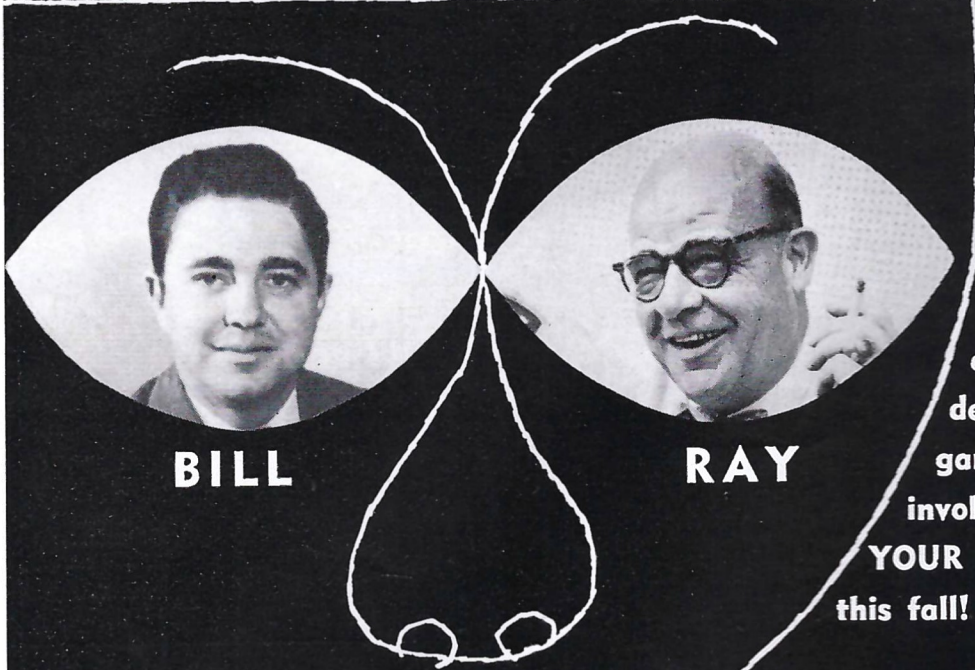
SEASON TICKETS \$7.00, \$10.00 AND \$14.00

MAIL ORDER TO COLISEUM BOX OFFICE

N. C. STATE COLLEGE

WRAL, Raleigh, Presents

OUR tsn* TEAM



BILL

RAY

will be
watching
and
describing
games
involving
YOUR TEAM
this fall!

HEAR

Ray Reeve
and Bill Currie on
your nearby
***TOBACCO SPORTS
NETWORK**
station

And when the football
season is over, Tobacco
Sports Network listeners
have over **60 Big Four** basketball
games coming up.

No.
12 *B
15 *C
16 T
17 F
18 F

20 *G
21 J
22 *D
24 K

31 W
32 A
33 *T
34 S
36 D

40 *D
41 D
42 R
43 R
44 *M

50 G
51 D
52 *J
53 *A
54 P
55 R

60 B
61 *F
62 *J
63 J
64 L
65 F
66 F
67 J
68 K
69 J

70 *J
71 T
72 *D
73 *D
74 *I
75 L
76 J
77 F
78 *B
79 J

80 *J
81 *J
82 D
83 B
84 D
85 B
86 *R
88 *J
89 F
* Den

1956 NORTH CAROLINA STATE NUMERICAL FOOTBALL ROSTER

QUARTERBACKS

No.	Name	Ht.	Wt.	Age	Class	Hometown
12	*Bill Franklin	6-0	195	22	Sr.	Farmville, Va.
15	*Colbert Micklem	5-10	170	22	Sr.	Hopewell, Va.
16	Tom Katich	5-10	170	20	Jr.	Pittsburgh, Pa.
17	Frank Cackovic	5-11	165	20	So.	Steelton, Pa.
18	Ernie Driscoll	6-2	195	24	So.	Pittsburgh, Pa.

LEFT HALFBACKS

20	*George Marinkov	5-7	176	21	Sr.	Lebanon, Pa.
21	Jay Margerum	6-0	200	21	So.	Absecon, N. J.
22	*Dick Hunter	5-7	158	20	Jr.	Leechburg, Pa.
24	Ken Trowbridge	5-9	174	21	So.	Plymouth, N. C.

FULLBACKS

31	Wallace Prince	6-0	176	21	Jr.	Cairo, Ga.
32	Arnold Nelson	6-0	190	19	So.	Charleroi, Pa.
33	*Tony Guerrieri	5-7	173	21	Jr.	Orange, N. J.
34	Steve Vitek	5-10	186	20	Jr.	Lansford, Pa.
36	Don Hafer	5-11	199	20	So.	Port Clinton, Pa.

RIGHT HALFBACKS

40	*Dick Christy	5-10	176	20	Jr.	Brookhaven, Pa.
41	Dave Meloni	5-11	174	20	Jr.	Pittsburgh, Pa.
42	Ron Podwika	5-11	170	19	So.	Charleroi, Pa.
43	Bill Adams	6-2	183	20	So.	New Castle, Del.
44	*Mike Miller	5-8	154	21	Sr.	Allentown, Pa.

CENTERS

50	George Scott	6-1	190	23	So.	Elizabeth City, N. C.
51	Dick Goudie	5-10	176	20	Jr.	Downingtown, Pa.
52	*Jim Oddo	5-11	186	20	Jr.	Wilmington, Del.
53	*Allen Henery	5-11	204	22	Sr.	Merrick, N. Y.
54	Paul Balonick	6-2	182	18	So.	DuBois, Pa.
55	Ronald Savage	6-2	197	19	So.	Chincoteague, Va.

GUARDS

60	Bill Rearick	5-10	190	19	So.	DuBois, Pa.
61	*Francis Tokar	5-11	196	20	Jr.	Charleroi, Pa.
62	*Julius Compton	6-0	190	21	Jr.	Durham, N. C.
63	John Barchiesi	5-9	184	21	Sr.	Greenburg, Pa.
64	Larry Cox	5-10	188	19	So.	Greensboro, N. C.
65	Ed Hordubay	5-10	184	20	Jr.	Windber, Pa.
66	Frank Marocco	5-9	184	19	So.	Aliquippa, Pa.
67	Jim Sherron	5-11	204	24	So.	Fuquay Springs, N. C.
68	Kelly Minyard	6-0	214	20	So.	Reidsville, N. C.
69	Joe Rodri	6-0	204	23	So.	Downingtown, Pa.

TACKLES

70	*John Szuchan	6-0	211	22	Sr.	Phoenixville, Pa.
71	Tom Guerrieri	5-10	210	20	Jr.	North Braddock, Pa.
72	*Darrell Dess	6-0	221	21	Sr.	New Castle, Pa.
73	*Dick DeAngelis	6-1	211	20	Jr.	Reading, Pa.
74	*Henry Spivey	6-5	216	22	Sr.	Garner, N. C.
75	Larry Dixon	6-1	214	19	So.	Washington, N. C.
76	Jack Harriger	6-1	207	19	So.	Falls Creek, Pa.
77	Francis Palandrani	6-1	224	20	So.	Wilmington, Del.
78	*Bob Paroli	6-1	235	25	Jr.	Poughkeepsie, N. Y.
79	John Daskal	6-1	200	21	Sr.	Fayetteville, N. C.

ENDS

80	*Jay Beacon	6-1	195	22	Jr.	Pittsburgh, Pa.
81	*John Lowe	6-0	196	23	Sr.	Delmar, Del.
82	Don Miketa	6-0	176	21	Jr.	Baden, Pa.
83	Bob Kennel	5-11	181	20	Jr.	New Bern, N. C.
84	Dave Odom	6-2	190	22	Sr.	Plumtree, N. C.
85	Bob Pepe	6-2	204	20	So.	Pittsburgh, Pa.
86	*Ronnie Gall	6-4	205	21	Sr.	New Castle, Pa.
88	*John Collar	6-2	201	20	Jr.	Washington, Pa.
89	Finley Read	6-3	210	23	So.	Warrenton, N. C.

* Denotes Lettermen

FLORIDA STATE ROSTER

QUARTERBACKS

No.	Name	Ht.	Wt.	Age	Class	Hometown
14	Jerry Henderson	5-11	175	20	Jr.	Pensacola
10	*Vic Prinzi	6-0	178	20	Jr.	Waverly, N. Y.
15	Bobby Renn	5-11	170	22	So.	Henderson, N. C.
11	Ted Rodrigue	5-11	180	26	Jr.	Lynn, Mass.
12	*Len Swantic	5-10	176	25	Sr.	Columbus, Ga.

FULLBACKS

43	Emil Abood	5-10	182	20	Jr.	Jacksonville
41	*Joe Holt	5-10	183	21	Sr.	Graham, N. C.
44	*Eddie Johnson	5-10	205	21	Jr.	Charleston, W. Va.
42	Frank Scheible	5-7	187	24	Jr.	Milwaukee, Wis.

HALFBACKS

24	Billy Pat Atkins	5-10	177	19	So.	Chipley
29	Carmen Battaglia	5-8	178	21	Jr.	Niagara Falls, N. Y.
20	*Lee Corso	5-10	166	21	Sr.	Miami
27	*Stan Dobosz	5-8	185	21	Jr.	E. Chicago, Ind.
22	*Buck Metz	5-9	180	20	Sr.	Sanford
21	*Billy Odom	5-8	164	21	Sr.	Mt. Dora
25	*Pat Versprille	6-2	190	21	Jr.	Norfolk, Va.
28	Larry Weber	5-9	173	20	Jr.	Corpus Christi, Tex.

CENTERS

52	*Troy Barnes	6-2	198	24	Jr.	Chickasaw, Ala.
54	*George Boyer	6-0	223	21	Jr.	Jacksonville
50	Millard Davis	6-1	195	20	Jr.	Atlanta, Ga.
53	Stuart Keith	5-11	188	19	So.	Panama City
51	Melvin Pope	6-1	216	23	So.	Tallahassee

GUARDS

60	*Leo Baggett	5-8	209	20	Jr.	Panama City
67	Bob Elliott	6-1	195	21	Jr.	St. Petersburg
64	*Bud Leonard	5-11	192	22	Sr.	Ocala
66	*Al Pacifico	5-7	205	24	Sr.	Altoona, Pa.

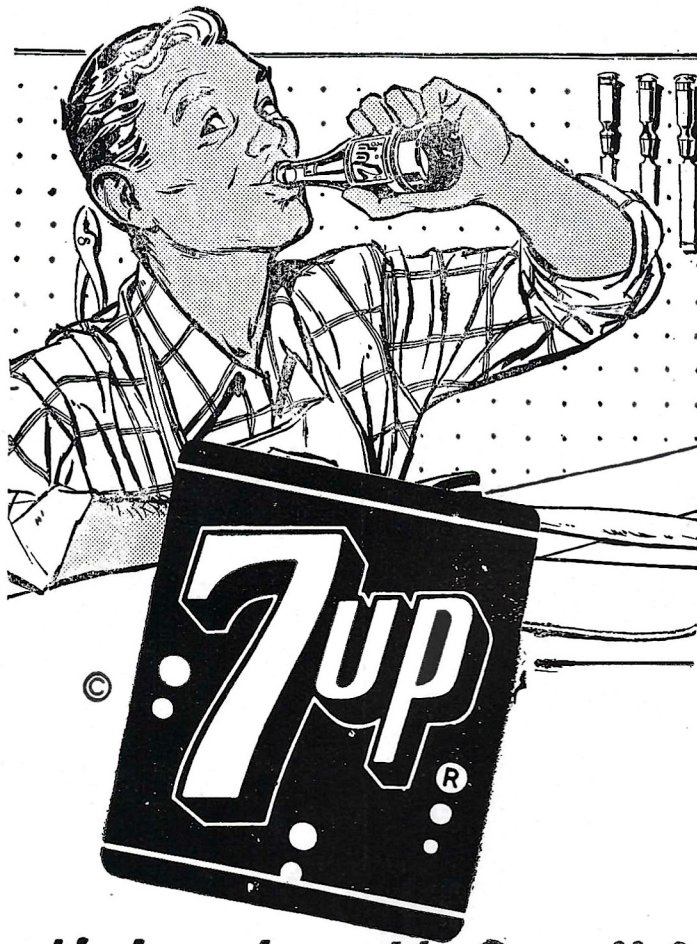
TACKLES

78	John Craig	6-0	217	19	Jr.	Orlando
79	Jerry Graham	6-0	202	18	So.	Chicago, Ill.
76	Bobby Keys	5-9	192	20	Jr.	Ringgold, Ga.
73	Bill Musselman	5-11	215	20	Jr.	Lynchburg, Va.
70	Bob Thomas	5-11	198	18	So.	Mansfield, Ohio

ENDS

86	*Jim Arnold	5-8	170	25	Jr.	Bainbridge, Ga.
81	*Ham Bisbee	6-0	172	20	Jr.	Sanford
83	Bob Fountain	5-11	187	19	So.	Crestview
84	Bill Kimber	6-1	185	20	So.	Winter Park
85	Bob Nellums	6-1	201	24	Jr.	Pensacola
89	Gerald Philp	5-11	188	23	Jr.	Royal Oak, Mich.
80	*Ronnie Schomburger	6-2	192	22	Jr.	Pittsburgh, Pa.

Fix that thirst but good... with the
***real thirst-
quencher!***



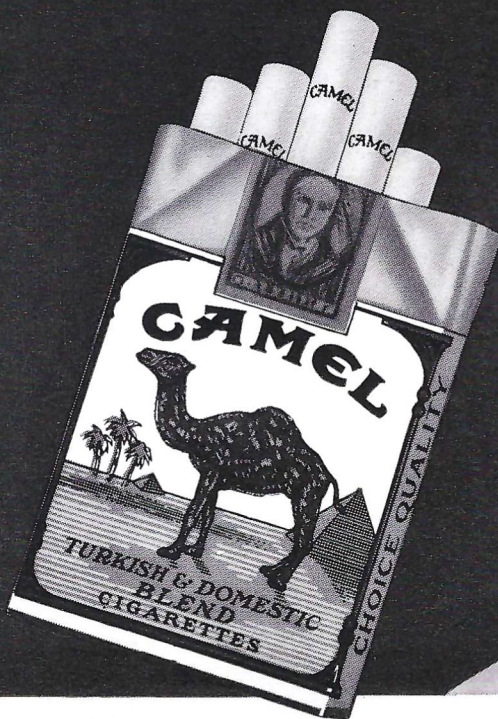
Nothing does it like Seven-Up!

LOVE THAT CAMEL!

WATCH

Phil Silvers

AS SGT. BILKO ON THE
"PHIL SILVERS SHOW" CBS-TV



R. J. Reynolds Tobacco Co., Winston-Salem, N. C.

HAVE A REAL CIGARETTE

...have a Camel!

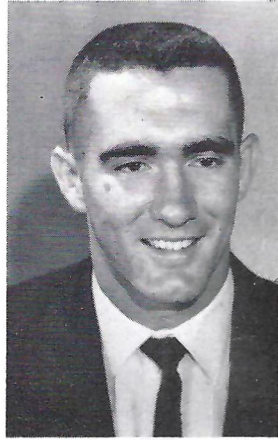
Discover the difference between "just smoking" and Camels!

Taste the difference! Camels are rich, full-flavored, and deeply satisfying — pack after pack. *Feel* the difference! The exclusive Camel blend of quality tobaccos has never

been equalled for smooth, agreeable smoking. *Enjoy* the cigarette smoked by more people, year after year, than any other brand. Try Camels — they've really got it!



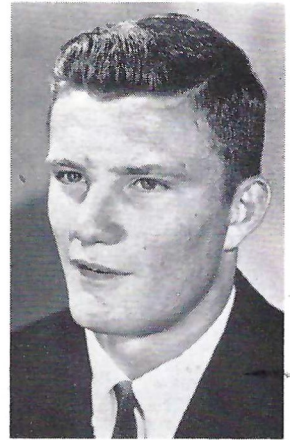
Bill Musselman



Ham Bisbee



Troy Barnes

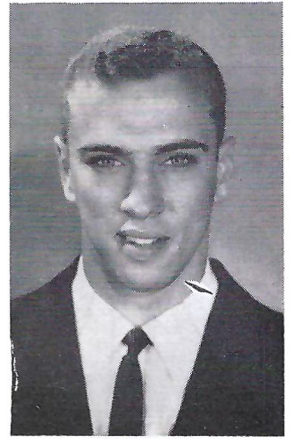


Pat Versprille

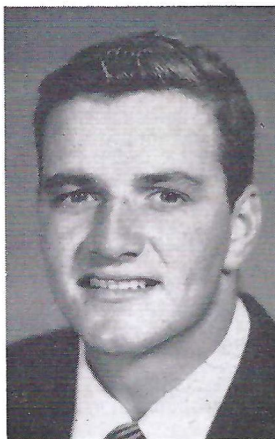


Vic Prinzi

FLORIDA STATE



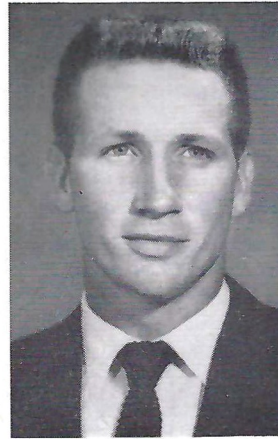
Emil Abood



Joe Holt



Al Pacifico



Jerry Henderson



Bud Leonard

Welcome!

FLORIDA STATE

Enjoy the
Light
refreshment

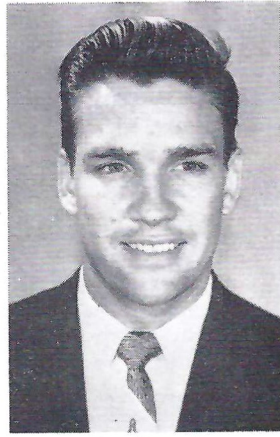
Today's Pepsi-Cola, reduced in calories, refreshes without filling—keeps pace with the up-to-date trend to lighter foods. Have a Pepsi.

*Refresh
without
filling*

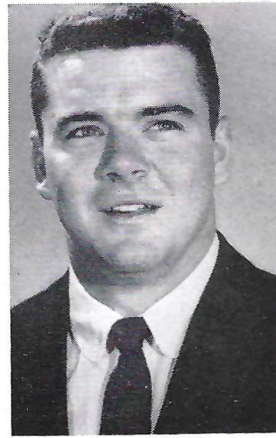




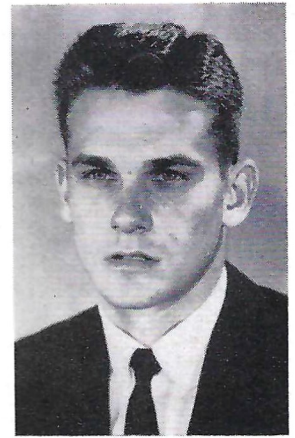
Carmen Battaglia



Len Swantic



Leo Baggett

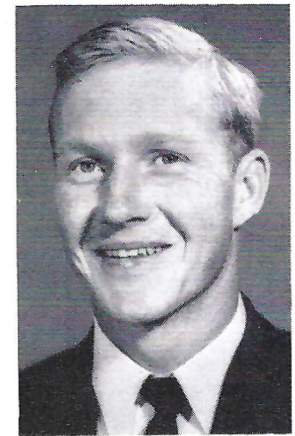


Billy Weaver



Ronnie Schomburger

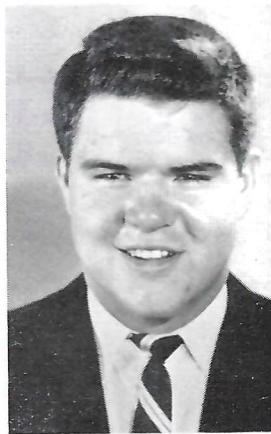
FLORIDA STATE



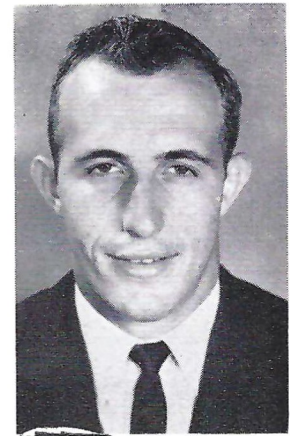
Billy Odom



Lee Carso



John Craig



Buck Metts

A

mis
of
info

D
N.
Car
dent
Mas
sch
chie
den

W
Chil
Uni
Chil
tant
Nor
offi
Sch

R
N. C
N.
Sta
For
mar
Nor
ump

D
Gre
uat
Qua
den
ass
Ass

C
tow
Uni

G
Pos
Col
Eau
Men
Chi


J
Ma
Md
Coa
mon
Ass
of l
of S
den

V
Gul
of
den


F
tur
two
YM

ATLANTIC COAST CONFERENCE FOOTBALL OFFICIALS

The Atlantic Coast Conference assigns its football officials direct from the Office of the Commissioner, and such assignments are not made public until the day of the game. Brief sketches of the 28 regularly-assigned football officials of the conference staff are listed below for your information and convenience, as follows:




DR. W. H. BREELAND, dental surgeon, Belmont, N. C. Graduate Emory University. Member North Carolina state board of dental examiners. Past president 1st District Dental Society of N. C. Former master Masonic Lodge. Former member city council, member school board. 27 years officiating. Former assistant chief, Southern Football Officials Assn. Former president North State Football Officials Assn.



WILBURN C. CLARY, assistant superintendent, The Children's Home Inc., Winston-Salem, N. C. Graduate University of South Carolina. Since 1937, coach at Children's Home, became principal 1944, became assistant superintendent 1949. Executive secretary Western North Carolina High School Activities Assn. 14 years officiating. President-secretary North Carolina High School Officials Assn.

ROBERT A. COLLIER, attorney at law, Statesville, N. C. Graduate Wake Forest College. Former president N. C. State (Class D) baseball league. Former mayor Statesville. President 15th Judicial District Bar Assn. Former president Rotary Club. In 1929 national commander VFW. 28 years officiating. Former president North State Football Officials Assn., former chief umpire Southern Football Officials Assn.



D. A. (BABE) DANIEL, state director of sales, Great Central Insurance Co., Charlotte, N. C. Graduate University of North Carolina. Member Charlotte Quarterback Club. 20 years officiating. Former president North State Football Officials Assn., former assistant chief umpire Southern Football Officials Assn.

CARL B. DEANE, sportings goods dealer, Downtown Athletic Store, Charlottesville, Va. Graduate Duke University. Member Elks Club. 9 years officiating.

GIBBES DEHIHNS, letter carrier, United States Post Office, Columbia, S. C. Graduate Lenoir Rhyne College. Member of recreation Eau Claire, S. C. Coach Eau Claire American Legion Junior Baseball Team. Member Fraternal Order of Eagles. 20 years officiating. Chief umpire South Carolina Football Officials Assn.

JOHN C. DONOHUE, general agent for the state of Maryland, Penn Mutual Life Insurance Co., Baltimore, Md., Graduate St. Johns College of Annapolis, Md. Coach at St. Johns until 1939. Former president Baltimore Life Underwriters Assn. Trustee of National Assn. of Life Underwriters. Former state chairman of Heart Fund. Member board of visitors and governors of St. Johns College. 17 years officiating. Former president Maryland Board of Football Officials.

WILLIAM R. DUKES, service station owner, Dukes Gulf Service, Orangeburg, S. C. Graduate University of South Carolina. 22 years officiating. Former president Southern Football Officials Assn.

PAUL DUNHAM, assistant manager, Rustin Furniture Co., Salisbury, N. C. Graduate University of Tulsa, two years at George Williams College for special YMCA training. Member official board First Methodist

Church. Member Civitan Club. 23 years officiating. Former president North State Football Officials Assn., former executive secretary NSOA booking office.

CHARLES D. EDMONDS, senior budget examiner, Veterans Administration, Arlington, Va. Attended University of Illinois, graduate Transylvania College. Masters degree in physical education Columbia University. Member Masonic Lodge. Rank of lieutenant colonel U. S. Army reserve corps. 9 years officiating.

WILLIAM R. EDWARDS, principal of elementary school, The Children's Home, Inc., Winston-Salem, N. C. Graduate Appalachian State Teachers College. Member Sertoma Club. 9 years officiating.

TATUM W. GRESSETTE, director, South Carolina Retirement System, Columbia, S. C. Graduate University of South Carolina. Administrator of South Carolina Public Employees Social Security Agency. Member Lions Club. 16 years officiating. Former secretary-treasurer and chief judge Southern Football Officials Assn.

JAMES W. GREY, secretary, Adon Smith Associates (consultants for employer-employee benefit plans), Charlotte, N. C. Graduate Davidson College. Coaches in Charlotte schools. Insurance business since 1931. Member Charlotte Estate Planning Council. Deacon in First Presbyterian Church. Member Rotary Club. 26 years officiating. Former president North State Football Officials Assn.

BEE HARPER, owner of Bee Insurance Agency, Columbia, S. C. Attended University of South Carolina. Athletic director American Legion Post. Director of Navy Legion Club. Member VFW. Member Masonic Lodge, Shriner. 21 years officiating. Former president Southern Football Officials Assn. Chief linesman South Carolina Football Officials Assn.

H. C. (JOBY) HAWN, recreation director, P. H. Hanes Knitting Co., Winston-Salem, N. C. Graduate Lenoir Rhyne College. Past president North Carolina Recreation Society. Member of American Recreation Society Industrial Group. Member Civitan Club. 18 years officiating. Former president, former chief judge Southern Football Officials Assn.

SIDNEY M. HUGHES, JR., partner Frito Co. and sales manager Dr. Pepper Bottling Co., Norfolk, Va. Graduate Springfield College. Member Norfolk Sports Club. Member Norfolk Yacht Club. 16 years officiating. Former president Southeastern Virginia Football Officials Assn.

DAVID KAUFMAN, administrative department, Baltimore City College, Baltimore, Md., and owner-director of Camp Ha-Wa-Ya, Harrison, Maine. Graduate Johns Hopkins University. Coached football at Johns Hopkins and Baltimore City College. Member Masonic Order. 27 years of officiating. Former president Eastern Football Officials Assn. Former chief referee Southern Football Officials Assn.

JOHN W. (JACK) LINDSAY, assistant counsel, Liberty Life Insurance Co., Greenville, S. C. Graduate University of North Carolina. Staff officer in South Carolina National Guard. Member Masonic Order, Greenville Touchdown Club, South Carolina Bar Assn. 8 years of officiating.

GEORGE MANNING, design engineer, Cocker Machine & Foundry Co., Gastonia, N. C. Graduate Georgia Tech, masters degree in engineering. 13 years officiating. Formerly officiated in Southeastern Conference.

HARRY MARCHANT, sporting goods salesman, Johnson-Lambe Co., Raleigh, N. C. Graduate Durham High School. Member Junior Chamber of Commerce. Former president Durham Emergency and Rescue Squad. 10 years officiating.

M. E. McCLENNY, owner-operator, Mickey's Pastry Shop, Goldsboro, N. C. Graduate Goldsboro High School. President Wayne County Boys Club. Former member Wayne Recreation Council. Member Lions Club, Loyal Order of Moose, American Legion, 40 and 8. Trustee of Friends Church. 10 years officiating.

RAY MOORE, sales representative, B. C. Remedy Co., Columbia, S. C. Graduate Camden High School. Former president Pharmaceutical Assn. TMA. Former district governor South Carolina Junior Chamber of Commerce. 32nd degree Mason and Shriner. Deacon in Sherwood Forest Associated Reformed Presbyterian Church. 18 years officiating. Chief umpire South Carolina Football Officials Assn.

ROBERT E. SANDELL, soccer and lacrosse coach, University of Virginia, Charlottesville, Va. Graduate Johns Hopkins University. Former All-America lacrosse

player. Member Junior Chamber of Commerce. 7 years officiating.

HARWOOD T. SMITH, supervisor, American Tobacco Co., Durham, N. C. Graduate Duke University. Assistant coach at Duke several years. 10 years officiating.

CHARLIE TIMMONS, industrial engineer, Gulf Oil Co., Greenville, S. C. Graduate Clemson College. Former pro-player Brooklyn Dodgers of All-American Conference. Member Greenville Touchdown Club. Sunday School teacher at St. Paul Methodist Church. 6 years officiating.

BERNARD ULMAN, salesman, National Pharmaceutical Mfg. Co., Baltimore, Md. Graduate University of Maryland. President Travelers Auxiliary of Maryland Pharmaceutical Assn. 13 years officiating. President Maryland Board of Football Officials. Former president Southern Lacrosse Officials Assn.

W. M. WILBANKS, recreation director, Ware Shoals Community Foundation of Riegel Textile Corp., Ware Shoals, S. C. Attended Washington College. President Southern Textile Athletic Assn. Instructor in first aid American Red Cross. Member Lions Club, American Legion, Masonic Lodge. 16 years officiating. Vice president South Carolina Football Officials Assn.

PAUL K. WOOD, associate engineer, Sanitary Engineering Service (of Atlanta, Ga.), Lexington, N. C. Attended Georgia Tech, graduated North Carolina State College, bachelor of civil engineering degree. Member American Society of Civil Engineers. North Carolina Society of Engineers. 9 years officiating. Member board of directors North State Football Officials Assn.

SERVING TWO GREAT
NORTH CAROLINA CITIES
HOTEL WASHINGTON
DUKE

DURHAM, N. C.
William E. Stubbs, Mgr.

HOTEL SIR WALTER

RALEIGH, N. C.
Arthur E. Buddenhagen, Mgr.

"FAMOUS FOR PRIME RIBS OF BEEF"

TWO FINE MEYER HOTELS
100% Air Conditioned

SHOP

Hudson - Belk

Eastern Carolina's Largest Store

CONVENIENT CUSTOMER PARKING

CHARGE ACCOUNT PLANS

LAY-AWAY DEPARTMENT



To all men drivers who like women . . .

There's nothing a woman admires more than a man who acts like a man behind the wheel of the car. It's childish to speed. It's boyish to want to catch up with that wise guy who raced past you.

It's something less than mannish to risk your neck and her's too just to get there a minute sooner.

So after the ballgame today . . . Relax. A real man doesn't have to prove anything to anybody! Please take it easy when you're driving to that victory celebration. Drive carefully . . . get home safely . . . and next week you'll be able to see your team in action again.



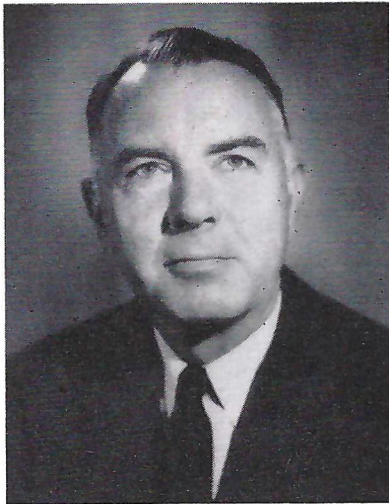
home office: Columbus, Ohio

Regional Office: Raleigh, North Carolina

FLORIDA STATE



Head Coach Tom Nugent



Dr. Howard Danford
Athletic Director



Dr. Doak Sheridan Campbell
President

BEST WISHES TO THE WOLFPACK



SANDERS MOTOR COMPANY

CARS
TRUCKS
TRACTORS
IMPLEMENTS
GENUINE PARTS
USED CARS AND TRUCKS
BAKED ENAMEL PAINT SHOP
AUTHORIZED FACTORY SERVICE
MODERN BODY AND TRIM SHOP

YOUR FRIENDLY FORD DEALER AT

329 S. Blount St.

RALEIGH, N. C.

HAROLD PITSER
General Manager

Security

National

Bank

Serves

North Carolina

Business

See Security

Now for the

best in **B**anking

GREENSBORO • BURLINGTON • HIGH POINT

RALEIGH • TARBORO • WILMINGTON



Member Federal Reserve System
Member Federal Deposit Insurance Corporation

FOLLOW THE
Washington Redskins

OVER THESE

TOBACCO RADIO NETWORK STATIONS

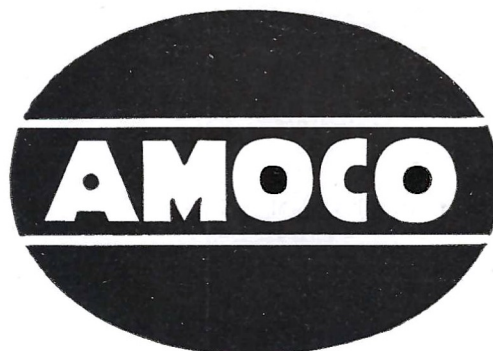
WFNC Fayetteville	1390 KC	WRAL Raleigh	1240 KC
WFNC FM Fayetteville	98.1 MG	WRAL FM Raleigh	101.5 MG
WGBR Goldsboro	1150 KC	WCEC Rocky Mount	810 KC
WEQR Goldsboro	96.9 KC	WFMA Rocky Mount	100.7 MG
WGTC Greenville	1590 KC		

1956 American Oil Company Pro-Football Schedule

	Date	Starting Time
Washington at Pittsburgh Steelers	Sept. 30 (Sun.)	1:00 p.m. EST
Washington at Philadelphia Eagles	Oct. 6 (Sat.)	7:15 p.m. EST
Chicago Cardinals at Washington	Oct. 14 (Sun.)	1:00 p.m. EST
Cleveland Browns at Washington	Oct. 21 (Sun.)	1:00 p.m. EST
Washington at Chicago Cardinals	Oct. 28 (Sun.)	2:00 p.m. EST
N. Y. Giants at Pittsburgh Steelers	Nov. 4 (Sun.)	2:00 p.m. EST
Detroit Lions at Washington	Nov. 11 (Sun.)	2:00 p.m. EST
N. Y. Giants at Washington	Nov. 18 (Sun.)	2:00 p.m. EST
Washington at Cleveland Browns	Nov. 25 (Sun.)	2:00 p.m. EST
Washington at N. Y. Giants	Dec. 2 (Sun.)	2:00 p.m. EST
Philadelphia Eagles at Washington	Dec. 9 (Sun.)	2:00 p.m. EST
Pittsburgh Steelers at Washington	Dec. 16 (Sun.)	2:00 p.m. EST
Baltimore Colts at Washington	Dec. 23 (Sun.)	2:00 p.m. EST

PRESENTED BY YOUR

LOCAL



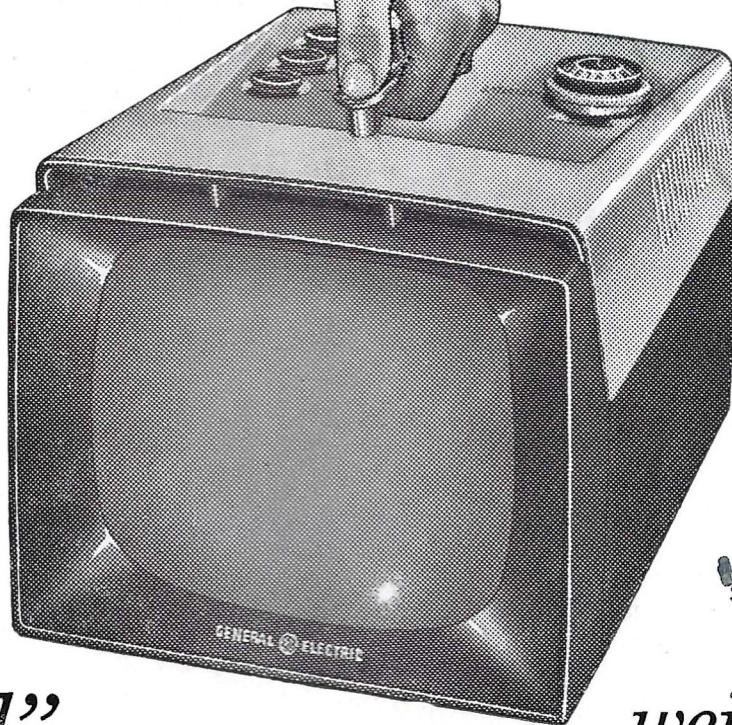
DEALER

T
 r
 S
 P
 L
 te
 ★
 ★
 ★
 W

Take it with you

Anywhere!

new



★
★
ELLIOTT SIDFY
814 Nectarine Ave.
Sunnyvale, Calif.

★
40 square inches
of viewable area
Model
9T001

★
★
ELLIOTT SIDFY
814 Nectarine Ave.
Sunnyvale, Calif.
★

"Personal"

PORTABLE TV

★ *weighs* ★
★ *less than* ★
13 POUNDS!

*Lightest, most portable
television ever produced!*

- ★ Plugs in anywhere
- ★ Powered for extra-sharp picture
- ★ Your choice of Bermuda Brown or Peacock Blue and Ivory

Distributed By

Walker Martin, Inc.

Raleigh — Greensboro — Charlotte — Asheville

ONLY

\$99.95

EASY TERMS

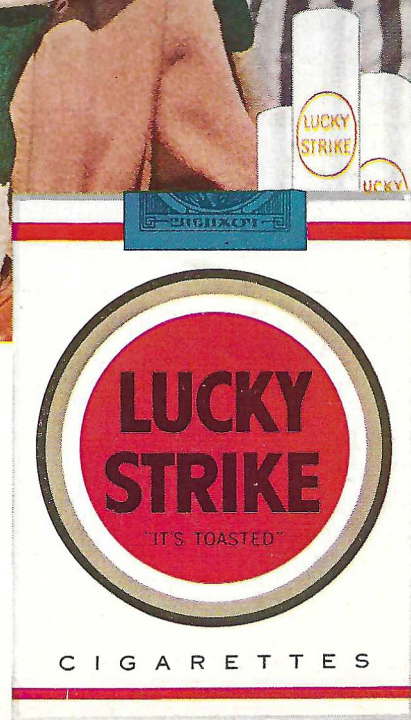
**See Your Nearest
General Electric
Dealer**

Light up a Lucky—
it's light-up time!



Luckies
Taste Better

Cleaner, Fresher, Smoother!



**"IT'S
TOASTED"**
to taste
better!

©A. T. Co. PRODUCT OF *The American Tobacco Company* AMERICA'S LEADING MANUFACTURER OF CIGARETTES