

PRICE 35c

ARCHIVES  
F. S. U. LIBRARY

**FLORIDA STATE UNIVERSITY**

**VERSUS**

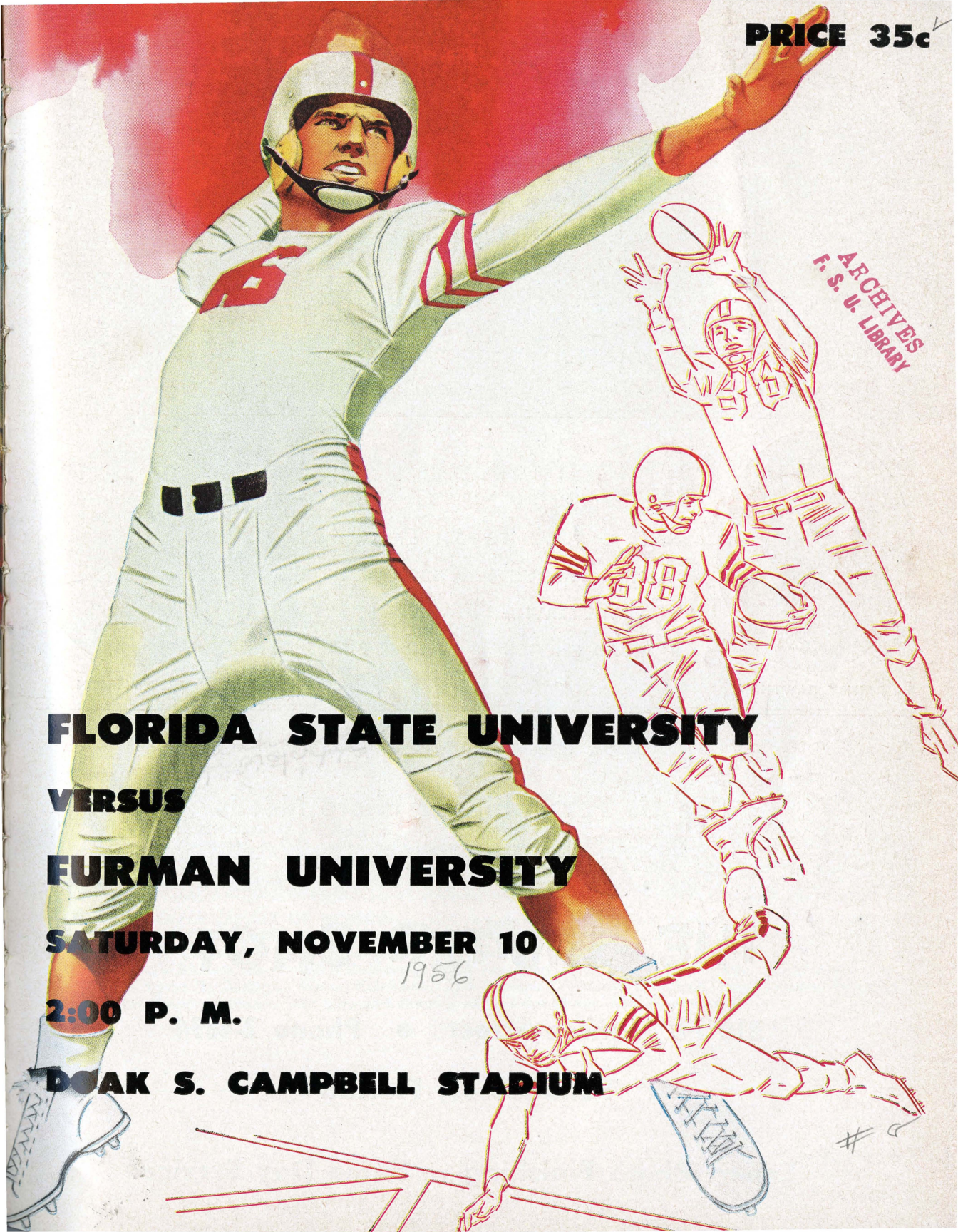
**FURMAN UNIVERSITY**

**SATURDAY, NOVEMBER 10**

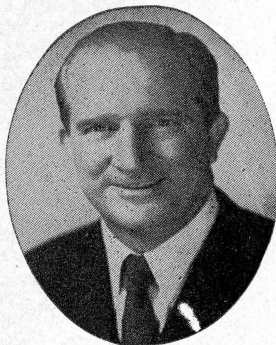
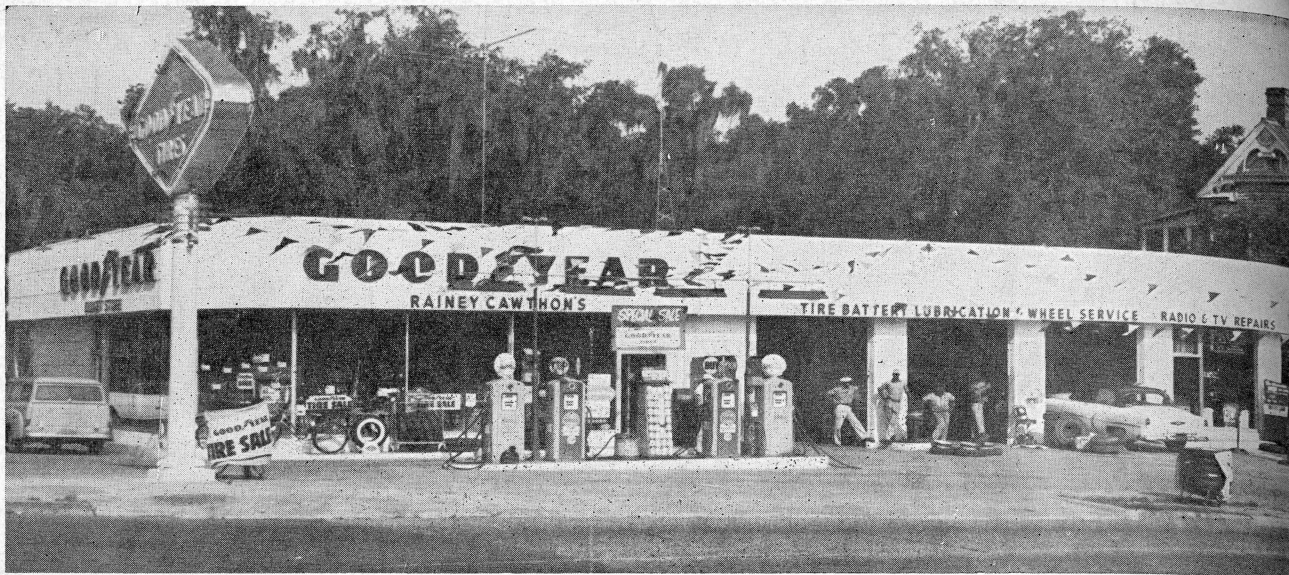
1956

**2:00 P. M.**

**DOAK S. CAMPBELL STADIUM**







RAINEY CAWTHON

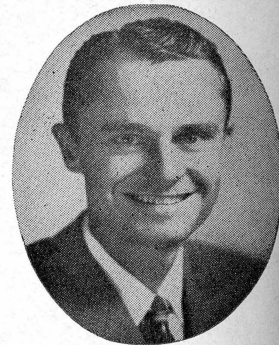
# Rainey Cawthon's

★ RCA TELEVISION and RADIO

★ SHELL PRODUCTS ★ GOODYEAR TIRES

"WE SERVICE WHAT WE SELL"

● ROAD SERVICE ● PHONE 2-1865 ●



FRED PIERSON

**See Us For All Your Photo Needs**

*"TALLAHASSEE'S FRIENDLIEST"*

## THE SHUTTER SHOP

**310 N. Monroe Street ● Phone 2-4894**

**Tallahassee, Florida**

**Expert Photo Finishing — Same Day Service**

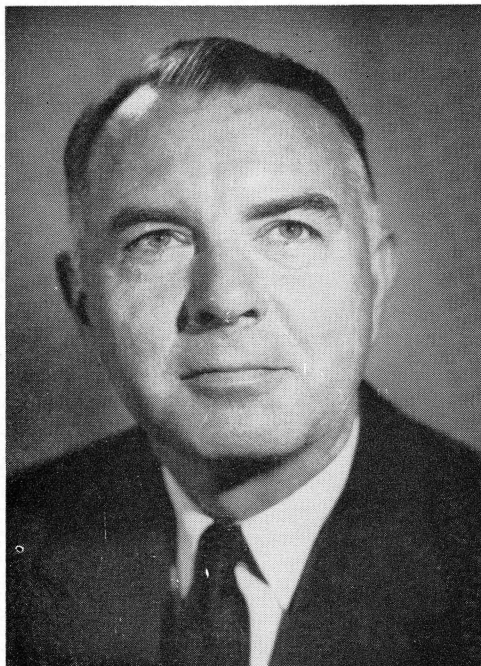


# SEE THESE BEAUTIFUL CO-EDS IN F.S.U. GYM KANA SHOW, NOV. 12-17



1956-57 GYM KANA COURT OF HONOR—Front row, left to right: Ann Williams, Carol Ann Brown, Kay Lloyd, Jean Hayden, Margaret Wunderlich, Vangie Carruthers, and Beverly Laurent. Middle row, left to right: Carla McKinney, Charlotte Ott, Jackie Soud, Arva Moore, Cynthia Courtney, Martha Douglas, Barbara Bishop, and Sandra Calhoun. Back row, left to right: Judy Turner, Myra Anne Lay, Linda Jones, Lynn LaGrange, Jeani Kitchens, Jan Hinson, Patricia Mitchell, and Sandra Higgins. The Gymkana Court of Honor was selected from a record-breaking 146 contestants.





**DR. H. G. DANFORD**  
FSU Athletic Director

# ***Support Your Olympic Teams***

Dear Friend of Athletics:

This is Olympic year. The United States will be represented at the XVI Olympiad in Melbourne, Australia, November 22 - December 8, 1956.

Our U. S. Olympic Teams urgently need your help now. You and other sports-loving Americans like you are the sole source of funds with which to finance the long trip to Australia. Our participation in the Olympic Games has never depended on government support in this country — but instead on the interest and generosity of the sports-loving American public.

We are grateful for your generous support of Olympic Fund drives in the past. We feel certain you will want to share with millions of other sports-minded Americans, in a nation-wide effort to raise the funds necessary to finance our Olympic teams. We invite you at this time to place your contributions in the containers as they are circulated throughout the stadium by members of the Village Vamps, an F. S. U. Student organization.

Or, if you prefer, write a check in the amount you wish payable to the U. S. Olympic Committee, and mail it to the undersigned.

Sincerely,

Howard G. Danford  
Director of Physical Education  
and Athletics



## Florida State Host to Furman

### TABLE OF CONTENTS

F. S. U. Gymkana Court .....	3
Dr. Danford's Letter .....	4
Seminole Athletic News .....	5
FSU Cheerleaders .....	6
Football Network .....	6
Seminole Profiles .....	8, 9, 10, 11, 12, 13
The FSU Coaches .....	14
Probable Starting Line-Ups .....	16-17
About Furman .....	27
FSU Roster .....	21
Furman Coaches .....	27
Furman Players .....	28, 29
Furman Roster .....	30

### For You Dad, It's FSU-Furman

"... a greatly underrated Furman Purple Hurricane" fought powerful South Carolina right down to the wire today before falling, 13-6.

That, in so many words, is the story told in the Sunday papers last week after ambitious Furman battled the heavily-favored Gamecocks to a near standoff.

And only the day before the papers were humming like a funeral hymn the tale of Miami's crushing 20-7 triumph over Florida State's Seminoles.

Those two games cast an odd light on this afternoon's FSU-Furman contest.

Two weeks ago, Florida State — as was South Carolina — would probably have been a big favorite to win this one. Today, however, the Seminoles are expected to just slip by.

The psychological side might mean a lot, also.

Furman is rising, and after giving the Gamecocks such a rough time they're pointing for Florida State as a chance to jump up and win today.

And, doubtless, the Seminoles come on the field today a little red-faced and still bewildered. Whether they'll come romping back or remain discouraged, we'll know in a couple of hours.

Anyway, Dad, it's for you.





**FLORIDA STATE UNIVERSITY CHEERLEADERS**, from left to right: Boys—Jim Julian, "Sticks" Steinberg and Charlie Johnson. Girls—Nancy Fowler, Donna Huggins and Judy Deikle.

## THE SEMINOLE FOOTBALL NETWORK

Florida State University's football contests are carried to every part of the state this year by the ever-growing voice of the Seminole Football Network.

Entering its fourth year, the network now boasts a total of 12 stations located throughout Florida. (See the listings below.)

Again, the veteran trio of Bill Snyder, Ben Letson and Jim Kirk are handling the mikeside duties for the network. They've been greatly responsible for the growth and success of the broadcasts.

Snyder, of WPDQ in Jacksonville, is the play-by-play man. He began his professional career by working the games of the old professional baseball club, the St. Louis Browns.

Kirk does the color. As sports director of station WMOP in Ocala, he's been with the network from its beginning.

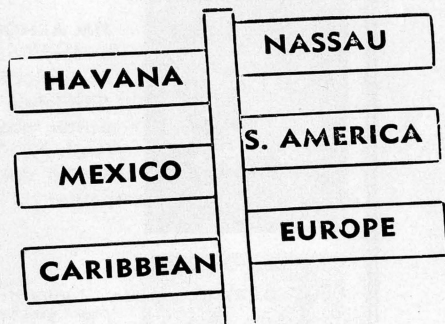
Letson, owner and manager of WCNH in Quincy, engineers the broadcasts.

The Seminole Network stations:

<b>Quincy</b> .....	<b>WCNH</b>
<b>Ocala</b> .....	<b>WMOP</b>
<b>Gainesville</b> .....	<b>WGGG</b>
<b>Tallahassee</b> .....	<b>WTNT</b>
<b>Jacksonville</b> .....	<b>WMBR</b>
<b>Clearwater</b> .....	<b>WTAN</b>
<b>Sanford</b> .....	<b>WTRR</b>
<b>Bradenton</b> .....	<b>WTRL</b>
<b>Lake Wales</b> .....	<b>WIPC</b>
<b>Panama City</b> .....	<b>WPCF</b>
<b>Ft. Walton Beach</b> .....	<b>WFBS</b>
<b>Pensacola</b> .....	<b>WBSP</b>



**"How,  
and  
where  
in  
the  
world  
are  
you  
going . . . ."**



FOR COMPLETE AND ACCURATE TRAVEL INFORMATION, CALL

## **GENERAL TRAVEL SERVICE**

109 E. Call St., Tallahassee

Next to Chamber of Commerce

Phone 3-4567

Whether by . . .

**AIR - BOAT - BUS or RAIL**

Let GENERAL TRAVEL plan  
your trip . . .

**There Is No Charge  
For Our Service**

**GO SEMINOLES — GO SEMINOLES**

*AT Home and Away*

*We're Pulling for YOU*

## **HOLLAND'S RESTAURANT**

Facing the Capitol at 106 E. Pensacola Street

**TALLAHASSEE, FLORIDA**

Serving Our Own Blend of Coffee

Famous for Home-made Pies and Hot Biscuits

U. S. Prime and U. S. Choice Steaks

*Air Conditioned and Ultra Modern*

**N. T. HOLLAND, Owner and Manager**

## *Gilberg's*

**"The House of 1000 Fabrics"**

108 East Jefferson Street

**TALLAHASSEE, FLA.**

220 Broad Avenue

**ALBANY, GA.**

109 W. University Ave.

**GAINESVILLE, FLA.**

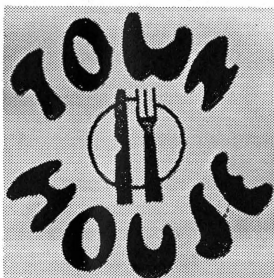
26 North Palafox Street

**PENSACOLA, FLA.**

535 Harrison Ave.

**Panama City, Fla.**

*Fabrics from All Over the World*



## COFFEE SHOP

CHARCOAL BROILED  
STEAKS

TRAVELING  
DESSERT TRAYS

•  
DUVAL HOTEL

## TALLAHASSEE MUSIC COMPANY

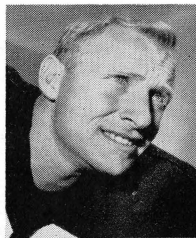
*"Service Built This Company"*

Phone 3-1246

225 W. Carolina St.

TALLAHASSEE, FLORIDA

## SEMINOLE



**JIM ARNOLD**, end. Junior from Bainbridge, Ga. . . . 5' 8", 170 pounds. Ex-serviceman . . . honorable mention All-Florida in 1950 . . . Tough competitor, good tackler. Very strong defensively, needs work offensively. Should develop into top-flight competitor.

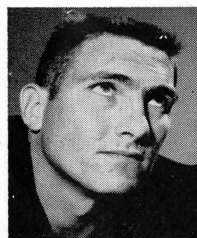
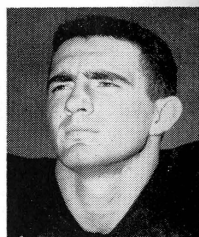


**TROY BARNES**, center. Junior from Chickasaw, Ala. . . . 6' 2", 198 pounds. No. 1 center . . . has good size and excellent speed . . . he's an outstanding pursuit man. Was the best linebacker on the squad during the spring drills.



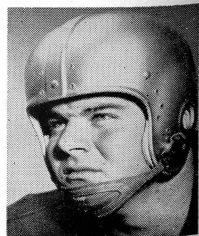
**CARMEN BATTAGLIA**, fullback. Junior from Niagara Falls, N. Y. Good, driving type of runner. Moves well in close . . . Fair defensively . . . develop his defensive game and he'll see a lot of action . . . point after touchdown kicker.

**HAM BISBEE**, end. Junior from Sanford. 6', 175 pounds. Has good speed . . . better than average defensively . . . good blocker . . . Has the needed game experience. In contention for a starting post . . . averaged 23.6 yards on five passes received in 1955.



**GEORGE BOYER**, tackle. Junior from Jacksonville. 6', 225 pounds. He's a service returnee . . . honorable mention All-Army in 1955. Number one performer as a center at FSU as a freshman and sophomore . . . Fundamentally sound . . . has good speed along with his size.

**LEO BAGGETT**, guard. Junior from Panama City. 5' 8", 209 pounds. Starting right guard . . . excellent speed. Strong man, fine blocker . . . sharp tackler. Needs only game experience to become great. Watch him.



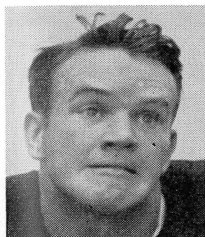
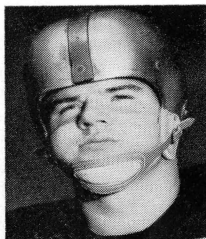


# PROFILES



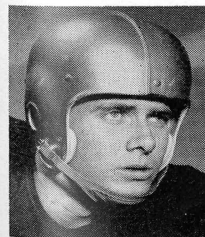
**LEE CORSO**, quarterback. Senior from Miami. 5' 10", 170 pounds. Switched from halfback where he was a sensation for two years. Flashy . . . outstanding runner . . . top defensive player. Death on enemy aerials . . . Top ground gainer in 1955.

**JOHN CRAIG**, tackle. Junior from Orlando. 6', 215 pounds. Hard, conscientious worker . . . showed much improvement during spring. You'll see a lot of him as the season goes on . . . Needs only game experience.



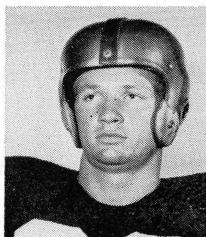
**STAN DOBOSZ**, halfback. Junior from East Chicago, Ind. 5' 8", 185 pounds. Service returnee . . . the Seminoles' No. 1 ground-gainer in 1952 . . . a regular in 1953. Excellent speed and power . . . watch him come back.

**BOB ELLIOTT**, tackle. Junior from St. Petersburg. Big surprise in the spring . . . fastest lineman on the squad. Should see much service . . . they call him "Red". Was president of Student Council at St. Paul High.



**BOB FOUNTAIN**, end. Sophomore from Crestview. 5' 11", 190 pounds. He's a "comer" . . . knocking on the door at the starting right end position. Good blocker . . . very fine offensively. Needs only game experience.

**JERRY HENDERSON**, halfback. Junior from Pensacola. 5' 11", 175 pounds. Started as a quarterback . . . switched when needed. He's a good thrower . . . kicks nice with his left foot. Fair speed . . . good defensively.



For Brighter  
Tomorrows . . .



## TALLAHASSEE FEDERAL SAVINGS AND LOAN ASSOCIATION



Compliments of

**TALLAHASSEE  
AUTOMOBILE  
DEALERS  
ASSOCIATION**

**Alford Chevrolet Co.**

**Capital Lincoln-Mercury, Inc.**

**Carr Buick**

**Dean Motors**

**Drake Motors**

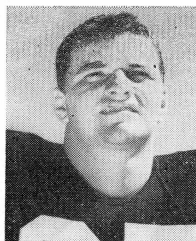
**Mayo-Mingledorff Motors, Inc.**

**John Manthey, Inc.**

**Proctor & Proctor**

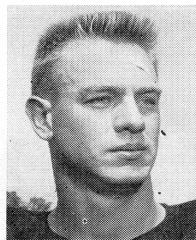
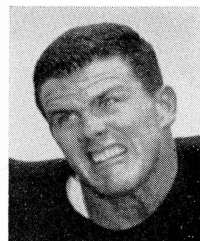
**Tallahassee Motors, Inc.**

# SEMINOLE



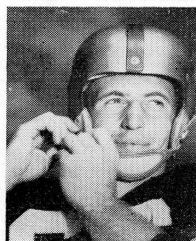
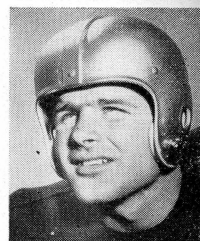
**JOE HOLT**, fullback. Senior from Graham, N. C. 5' 10", 183 pounds. Number one fullback for past two years . . . Joltin' Joe, they call him . . . Good blocker and pass receiver . . . fair ball carrier . . . has the needed experience.

**EDDIE JOHNSON**, fullback. Junior from Charleston, W. Va. 5' 10", 205 pounds. Excellent speed . . . he's trying to move into the No. 1 spot. He's good defensively, is an excellent blocker. Played regularly as a soph . . . a service returnee.



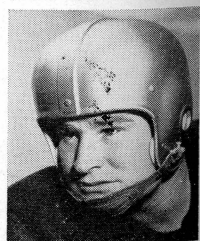
**BILL KIMBER**, end. Sophomore from Winter Park. 6' 1", 185 pounds. An injured knee just before the opening game set him back . . . good speed, better than average receiver. Stronger than average defensively . . . needs work offensively.

**BUD LEONARD**, center. Senior from Ocala. 5' 11", 192 pounds. He's a converted fullback . . . good linebacker. Excellent speed . . . a strong man. Has plenty of game experience . . . should make this final season a big one for himself.



**BUCKY METTS**, halfback. Senior from Sanford. 5' 9", 180 pounds. Starter at right halfback . . . a top punter, excellent runner and tough defensively. Good pass receiver . . . leading scorer last season.

**BILL MUSSELMAN**, tackle. Junior from Lynchburg, Va. 5' 11", 215 pounds. He's quick for his size . . . no excess heavy stuff. Well named . . . plenty strong. Labeled as a dark-horse for honors this fall. Starting left tackle.



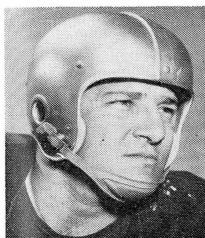
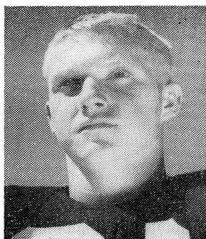


# PROFILES



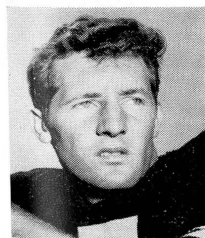
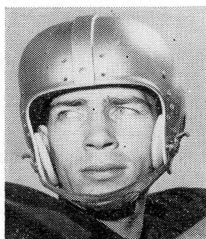
**BOB NELLUMS**, end. Junior from Pensacola. Junior college grad . . . plenty of experience. Big surprise during the practice sessions . . . top contender for starting left end post. Labeled by coaches as having "top potential."

**BILLY ODOM**, halfback. Senior from Mt. Dora. 5' 8", 165 pounds. Offensive standout . . . tremendous break-away runner. Averaged 27.5 yards on 13 kickoff returns to rank sixth in nation last season. Needs only defensive improvement.



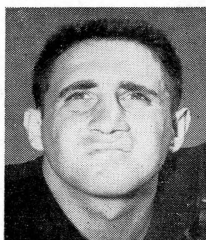
**AL PACIFICO**, guard. Senior from Altoona, Pa. 5' 7", 209 pounds. Begins his fourth year as an FSU starter . . . 'nuff said. He's solid fundamentally . . . tough competitor. Has everything that points to a great season.

**VIC PRINZI**, quarterback. Junior from Waverly, N. Y. 6', 180 pounds. Experienced . . . strong arm. Fair speed . . . can play a top notch defensive game. Late start this year . . . may develop fast and move into a possible starting position.



**BOBBY RENN**, halfback. Sophomore from Henderson, N. C. 5' 11", 170 pounds. Transfer from Davidson where he intercepted 14 passes as a freshman. Has top flight defensive ability . . . good speed. Top all-around player.

**TED RODRIQUE**, quarterback. Junior from Lynn, Mass. 5' 11", 180 pounds. Good kicker and passer. Needs to develop defensively . . . has experience. May surprise at any time . . . was All-Army in Japan in 1953.



## GANDY MOTOR HOTEL

WEST ON U. S. 90 and 20

**Private Phones**

An Alsonett Motor Hotel

**Fine Restaurant Adjoining**

TALLAHASSEE, FLA.

---

---

SCALP 'EM SEMINOLES

**BROWN'S MEN'S WEAR**

Monroe at Park

---

---

**F & T RESTAURANT**

For Good Food and Quick Service

113 S. Monroe

Phone 2-8917

**Air Conditioned**

# Arnold's★

## The Young Man's Shop

Formerly  
Troxler's

105 S. MONROE



*Everything for the Young Man*

FROM SIZE 6  
TO  
STUDENT SIZE 40

WON'T YOU...

HAV-A-TAMPA

...CIGAR

Eli Witt Tobacco & Candy Co.

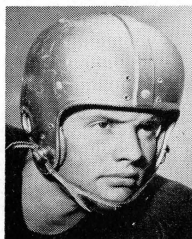
TALLAHASSEE, FLA.

## The Players —



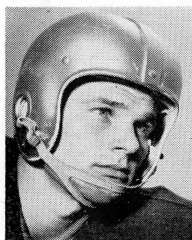
**LEN SWANTIC**, quarterback. Senior from Columbus, Ga. 5' 10", 176 pounds. Most experienced quarterback . . . good passer. A little slow, but a smart runner. Ranked fourth in the nation last year with 37 pass completions.

**RONNIE SCHOMBURGER**, end. Junior from Pittsburgh, Pa. 6' 1", 195 pounds. Top performer at left end . . . best all-round end during the spring. Fine receiver . . . tops defensively. This should be his year.



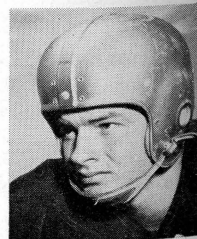
**BOB THOMAS**, tackle. Sophomore from Mansfield, Ohio. 5' 11", 198 pounds. Top defensive lineman . . . lags a little offensively. Should develop into an outstanding player within a year. Could break into starting lineup at any point.

**PAT VERSPRILLE**, halfback. Junior from Norfolk, Va. 6' 2", 190 pounds. Top halfback during the spring drills. But an injury during the fall session threatens to set him back for the whole season. Has outstanding potential.



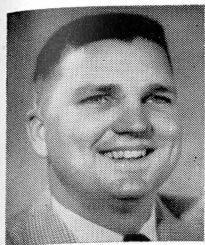
**BILLY WEAVER**, halfback. Junior from Miami. 5' 10", 175 pounds. Hard, driving type of runner. Good speed . . . solid tackler. Great competitor . . . this should be a big season for him.

**HENRY WETHERINGTON**, end. Sophomore from Valdosta, Ga. 6', 196 pounds. Didn't participate during the spring, but is expected to rise fast as the season goes on. Very fast . . . slowed by recent knee operation.





## The Coaches —

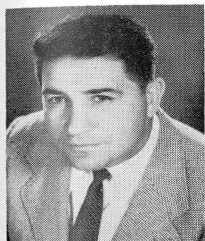


**HUGH ADAMS.** Little All-America tackle on FSU's 1949 team. First year as a full assistant . . . was a graduate last season. A Punta Gorda native . . . coached at Leon High School in 1950.

**BOB HARBISON.** The dean of the FSU coaching staff . . . begins his ninth season as a line coach. Played under the late Bo McMillan at Indiana University . . . a native of Evansville, Ind.



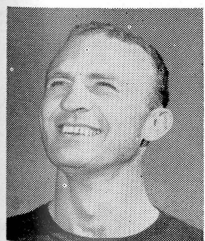
**VAUGHAN MANCHA.** One of the University of Alabama's greatest centers . . . starts his fifth season as an FSU assistant coach. Made the first team SEC and All-America squads in 1947. Works with the line . . . played a year with the old Boston Yanks in pro ball.



**PAUL ODOM.** New full assistant basketball coach. Mount Dora . . . brother of FSU halfback Billy . . . He was a tackle for Rollins in his playing days, later switched to Stetson where he was team captain in 1950.



**HUGH "BONES" TAYLOR.** Begins his first year as an FSU great. If you've followed football you've heard of him . . . one of professional football's all-time great ends. A star with the Washington Redskins for many years.



**FRANK TOOMEY.** Begins his third season as an FSU assistant coach. A graduate of Ithaca College in New York, he lettered in all sports during his competitive days. Coached at Ithaca after graduation for a while.



## BRINKLEY BROS.

HOMER A. BRINKLEY

ROBERT T. BRINKLEY

REALTORS • INSURANCE

MORTGAGE LOANS

*"A Brinkley Buy Is a Better Buy"*

BRINKLEY BLDG. — 306 N. MONROE ST.

TELEPHONE 3-0918

Tallahassee, Fla.

Developers of beautiful Waverly Hills

Co-developers of St. George Island

---

---

*"Serving Good Food for Fine People"*

**Stege's Cafeteria**

Adams at Pensacola

2-1286

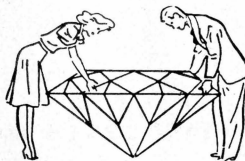
**Plantation Restaurant**

U. S. Highway 27

1324 Perry Highway

Telephone 2-9092

Tallahassee, Fla.



In Diamonds, Cutting, Color, Clarity, and Carat-Weight Determine Their Value. May Our Gemologist Explain This to You?

"Our Terms  
Will Please You"

*Moon's*  
REGISTERED JEWELERS —  
American Gem Society

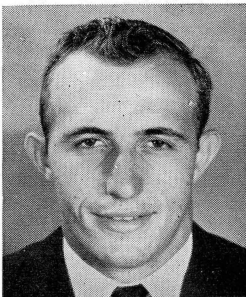
## THE FSU COACHING STAFF



HEAD COACH Tom Nugent, center. Surrounding him, left to right, assistant coaches Frank Toomey, Hugh Adams, Paul Odom, Hugh Taylor, Bob Harbison, and Vaughan Mancha.

---

# WELCOME GRADDY BROS. GULF STATIONS



BUCK METTS

"WE LIKE EVERYBODY"

Full Line

**GULF PRODUCTS**

**LUBRICATION SPECIALIST**

**ROAD SERVICE**

**1458 SOUTH MONROE**

**Phone 3-0077**

**640 WEST TENNESSEE**

**Phone 2-3584**

After the Ball Game

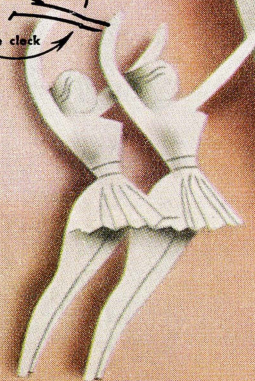
**Drive Carefully, You May Hit One of Our Customers**



# REFRESH



- 1 Offside
- 2 Illegal procedure, position or substitution
- 3 Illegal motion
- 4 Illegal shift
- 5 Illegal return
- 6 Delay of game
- 7 Personal foul
- 8 Clipping
- 9 Roughing the kicker
- 10 Unsportsmanlike conduct
- 11 Illegal use of hands and arms
- 12 Intentional grounding
- 13 Illegally passing or handing ball forward
- 14 Forward pass or kick catching interference
- 15 Ineligible receiver downfield on pass
- 16 Ball illegally touched, kicked or batted
- 17 Incomplete forward pass, penalty declined, no play or no score
- 18 Crawling, helping runner or interlocked interference
- 19 Ball dead
- 20 Touchdown or field goal
- 21 Safety
- 22 Time-out
- 23 First down
- 24 Ball ready for play
- 25 Start the clock



**TALLAHASSEE COCA-COLA BOTTLING COMPANY**  
TALLAHASSEE, FLORIDA



Live Modern, Boy...Smoke **LM!**



My Chesterfields *Satisfy* the Most!



## FLORIDA STATE

### PROBABLE STARTING LINEUP

NO.	NAME	POS.
80	RONNIE SCHOMBURGER	LE
73	BILL MUSSELMAN	LT
60	LEO BAGGETT	LG
52	TROY BARNES	C
66	AL PACIFICO	RG
77	GEORGE BOYER	RT
85	BOB NELLUMS	RE
20	LEE CORSO	QB
15	BOB RENN	LH
41	JOE HOLT	FB
22	BUCK METTS	RH

## THE FLORIDA STATE SQUAD

10	Prinzi, b	60	Baggett, g
11	Rodrigue, b	61	McCee, g
12	Swantic, b	64	Leonard, c
14	Henderson, b	66	Pacifico, g
15	Renn, b	67	Elliot, t
20	Corso, b	68	Williams, g
21	Odum, b	70	Thomas, t
22	Metts, b	71	Holton, t
25	Versprille, b	73	Musselman, t
26	Weaver, b	74	Gardner, t
27	Dobosz, b	76	Keys, t
28	Minton, b	77	Boyer, t
29	Battaglia, b	78	Craig, t
41	Holt, b	79	Graham, t
43	Aboud, b	80	Schomburger, g
44	Johnson, b	81	Bisbee, e
50	Davis, c	83	Fountain, e
51	Pope, c	84	Kimber, e
52	Barnes, c	85	Nellums, e
53	Keith, c	86	Arnold, e
		89	Philp, e

## FURMAN

### PROBABLE STARTING LINEUP

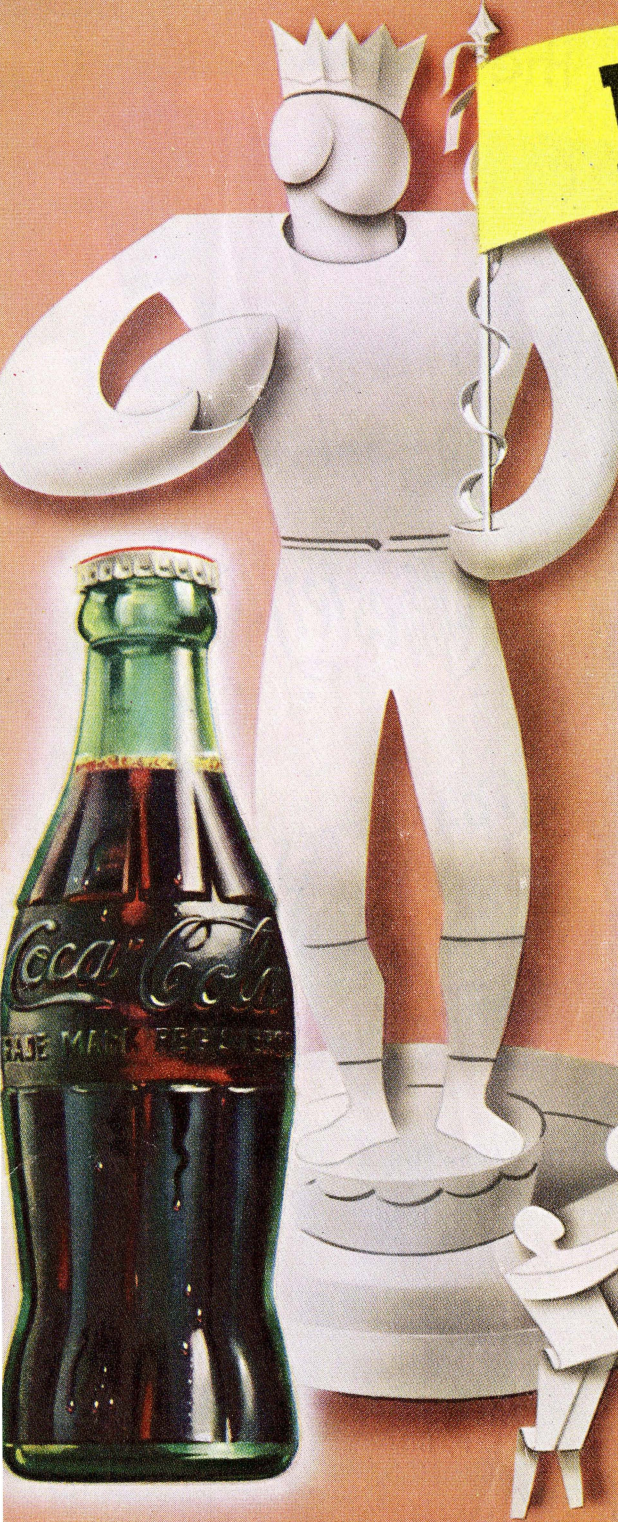
NO.	NAME	POS.
80	MACK EDWARDS	LE
43	WALTER EAVES	LT
67	H. DAVIS	LG
50	B. JENNINGS	C
62	GENE HEAD	RG
70	DON MARKOFSKI	RT
86	TOM AVERY	RE
14	BILL BAKER	QB
40	JERRY PENLAND	LH
31	JIMMY GRANT	FB
41	J. JENNINGS	RH

## THE FURMAN SQUAD

10	Moore, b	52	Walton, c
12	Linder, b	53	Baroff, c
14	Baker, b	60	Brinson, g
16	Horton, b	61	Harrison, g
20	Weir, b	62	Head, g
22	Nickles, b	64	Hill, g
24	Powers, b	65	Brown, g
26	Hanson, b	66	Tzouvelekas, g
28	Yates, b	67	Davis, c
31	Grant, b	73	Eliaides, t
32	Show, b	74	Shill, t
40	Penland, b	75	Aiken, t
41	J. Jennings, b	78	Sutz, t
43	Eaves, t	80	Edwards, t
44	Cox, b	82	Stewart, e
50	B. Jennings, c	84	Siminski, e
51	Edge, c	86	Avery, e



# PAUSE



## LOSS OF FIVE YARDS

- 1—Taking more than five times out during either half (except for replacement of injured player).
- 2—Illegal delay of game.
- 3—Failure to complete substitution before play starts.
- 4—Violation of kickoff formation.
- 5—Player out of bounds when scrimmage begins.
- 6—Putting ball in play before Referee signals "Ready-for-play".
- 7—Failure to maintain proper alignment of offensive team when ball is snapped. Also, backfield man illegally in motion.
- 8—Offside by either team or encroachment on neutral zone.
- 9—Attempt to draw opponents offside.
- 10—Crawling by runner.
- 11—Illegal forward pass (includes intentional grounding of forward pass). Also loss of down.
- 12—Taking more than two steps after Fair Catch is made.
- 13—Player on line receiving snap.
- 14—Any violation of the scrimmage formation.

## LOSS OF FIFTEEN YARDS

- 15—Team not ready to play at scheduled time.
- 16—Violation of rules during intermission.
- 17—Illegal return of suspended player.
- 18—Interference by member of offensive team with defensive player making pass interception. (Also loss of down).
- 19—Interfering with the opportunity of a player of the receiving

## PENALTIES

- team to catch a kick.
- 20—Illegal use of hands or arms by offensive player.
- 21—Tackling or blocking defensive player who has made fair catch.
- 22—Roughing the kicker.
- 23—Piling up, hurdling, clipping.
- 24—Tackling player out of bounds, or running into player obviously out of play.
- 25—Coaching from sidelines.
- 26—Failure to stop one full second following shift.
- 27—Defensive holding.
- 28—Invalid Signal for Fair Catch.

## OTHER PENALTIES

- 29—Striking an opponent with fist, forearm, elbow or locked hands, kicking or kneeling — Mandatory disqualification of offending player plus loss of fifteen yards.
- 30—Foul within the one yard line — half the distance to the goal.
- 31—Interference by defensive team on forward pass — passing team's ball at spot of foul.
- 32—Forward pass being touched by ineligible receiver beyond the line of scrimmage — loss of fifteen yards from spot of preceding down and loss of a down.
- 33—Illegal touching of kicked ball within opponent's ten yard line — touchback.
- 34—Flagrant rough play or unsportsmanlike conduct — Mandatory disqualification plus loss of fifteen yards.
- 35—Eligible pass receiver who goes out of bounds and later touches a forward pass — loss of down.

DRINK

*Coca-Cola*

REG. U.S. PAT. OFF.



# THE MARCHING CHIEFS



HOMEcoming, 1955

Manley Whitcomb will direct Florida State's Marching Chiefs, hailed by Atlanta newspapers as the best university marching group in the south, in at least seven halftime performances this year.

Shows are planned for all home games—Ohio University, Virginia Tech, Wake Forest, Furman and Mississippi Southern—and it's likely the band will perform at Philadelphia October 27 and Miami November 2.

FSU has in Whitcomb one of the nation's foremost masters of band music. He came to Florida State in 1953 following a record 17 years at Ohio State where he led the famous Buckeye band to national recognition.

Since coming to FSU Whitcomb has developed the 128-piece Marching Chiefs into one of the most outstanding musical organizations of its kind in the nation.

At Ohio State he directed the university band in its famous westward jaunt to the Rose Bowl in 1950. Whitcomb has appeared as lecturer, guest conductor, clinician and adjudicator in 12 states. He saw service as a combat infantryman in World War II and

was twice awarded the Bronze Star for meritorious service in combat in France.

The Marching Chiefs, which includes 180 personnel, is truly an all-southern band due to its appearances throughout the south and its predominantly all-southern personnel. The Marching Chiefs have appeared in Alabama, Florida, Georgia, Mississippi and Texas with a possibility of adding Pennsylvania to the list this year.

Whitcomb, also a music professor, received Bachelor of Music and Masters degrees from Northwestern University. He's a native of Mellon, Wisconsin.

Band Day at Florida State, planned October 6 this year, is one of the highlights of the Marching Chiefs' spectacular shows because it brings together some of the finest high school bands in Florida, Georgia and Alabama.

Band Day was first inaugurated at FSU in 1951 and it has grown from some 13 bands to over 30. This will be the sixth annual edition of the event and promises to top all the rest.

# ALFORD BROTHERS

FINE WEARABLES FOR MEN

CAMPUS-TOGS CLOTHES

McGREGOR SPORTSWEAR

212 SOUTH MONROE ST.



*"Two Points that put you out in front!"*

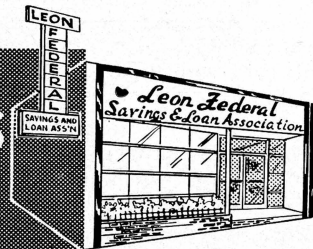
**Insured Savings**

**Above Average Dividends"**

*—Davy Dividend*

**LEON FEDERAL SAVINGS**  
*and Loan Association*

MONROE AT PARK AVENUE — PHONE 2-0827



**SAVINGS AND INVESTMENTS INSURED**

*Up to \$10,000 by Federal Savings and Loan Insurance Corporation*

# 1956 FLORIDA STATE UNIVERSITY FOOTBALL ROSTER

NO.	NAME	AGE	ENDS		CLASS	HOMETOWN
			HT.	WT.		
86	JIM ARNOLD	25	5-8	170	Jr.	Bainbridge, Ga.
81	HAM BISBEE	20	6-0	172	Jr.	Sanford
83	BOB FOUNTAIN	19	5-11	187	So.	Crestview
84	BILL KIMBER	20	6-0	185	So.	Winter Park
85	BOB NELLUMS	24	6-1	201	Jr.	Pensacola
89	GERALD PHILP	23	5-11	188	Jr.	Royal Oak, Mich.
80	RONNIE SCHOMBURGER	22	6-2	192	Jr.	Pittsburgh, Pa.
TACKLES						
74	WILLIE GARDNER	19	6-0	217	Jr.	Tampa
77	GEORGE BOYER	21	6-0	223	Jr.	Jacksonville
78	JOHN CRAIG	19	6-0	217	Jr.	Orlando
76	BOBBY KEYS	20	5-9	172	Jr.	Ringgold, Ga.
73	BILL MUSSELMAN	20	5-11	215	Jr.	Lynchburg, Va.
70	BOB THOMAS	18	5-11	198	So.	Mansfield, Ohio
71	STEVE HOLTON	22	6-1	205	Jr.	Perry
79	JERRY GRAHAM	20	6-0	217	Jr.	Tampa
GUARDS						
60	LEO BAGGETT	20	5-8	209	Jr.	Panama City
67	BOB ELLIOTT	21	6-1	195	Jr.	St. Petersburg
64	BUD LEONARD	22	5-11	192	Sr.	Ocala
66	AL PACIFICO	24	5-7	205	Sr.	Altosna, Pa.
68	TED WILLIAMS	23	5-9	180	So.	Tallahassee
61	JOE McGEE	20	5-8	191	So.	Raleigh, N. C.
CENTERS						
52	TROY BARNES	24	6-2	198	Jr.	Chickasaw, Ala.
50	MILLARD DAVIS	20	6-1	195	Jr.	Atlanta, Ga.
53	STUART KEITH	19	5-11	188	So.	Panama City
51	MELVIN POPE	23	6-1	216	So.	Tallahassee
QUARTERBACKS						
20	LEE CORSO	21	5-10	166	Sr.	Miami
14	JERRY HENDERSON	20	5-11	175	Jr.	Pensacola
10	VIC PRINZI	20	6-0	178	Jr.	Waverly, N. Y.
11	TED RODRIQUE	26	5-11	180	Jr.	Lynn, Mass.
12	LEN SWANTIC	25	5-10	180	Sr.	Columbus, Ga.
HALFBACKS						
29	CARMEN BATTAGLIA	21	5-8	178	Jr.	Niagara Falls, N. Y.
27	STAN DOBOSZ	21	5-8	185	Jr.	E. Chicago, Ind.
22	BUCK METTS	20	5-9	180	Sr.	Sanford
21	BILLY ODOM	21	5-8	164	Sr.	Mt. Dora
15	BOBBY RENN	22	5-11	170	So.	Henderson, N. C.
25	PAT VERSPRILLE	21	6-2	190	Jr.	Norfolk, Va.
26	BILLY WEAVER	20	5-10	175	Jr.	Miami
28	WES MINTON	22	6-0	180	So.	Jacksonville Beach
	GENE GRIFFIN	19	5-8	150	So.	Augusta, Ga.
FULLBACKS						
43	EMIL ABOOD	20	5-10	182	Jr.	Jacksonville
41	JOE HOLT	21	5-10	183	Sr.	Graham, N. C.
44	EDDIE JOHNSON	21	5-10	205	Jr.	Charleston, W. Va.

*Eat at*

## TALLAHASSEE DINING ROOM

ON U. S. 27 — ONE MILE NORTH



Recommended by Duncan Hines



# STUDENT SAVING CENTER

- School Supplies
- Pennants and Novelties
- Gifts
- Art Supplies
- Greeting Cards
- Stationery
- Drafting Equipment
- Pen Repair Service
- Sundries
- Camera Supplies & Developing Service

We Buy and Sell Books

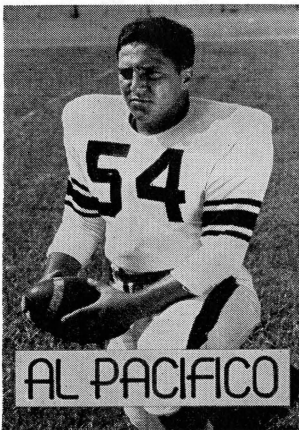
NEW and USED

## UNIVERSITY BOOKSTORE

In the Student Center

---

# ROYAL SANDWICH COMPANY



P. O. Box 641

•

Phone 2-0699

— WHOLESALE DISTRIBUTORS OF SANDWICHES —

Salted Peanuts • Peanut Butter Sandwiches • Potato Chips

Pop Corn • Cookies • Candy

*"FRESH AS A DAISY"*

OWNED AND OPERATED BY FRANK AND JAMES CHASE

## *Skyline Restaurant*

U. S. Highways 90 and 20

1 Mile West of City Limits

TALLAHASSEE, FLORIDA



RONALD SCHOMBURGER

*"Serving Good Food for Fine People"*

## **BENNETT'S DRUG STORE**

- Prescriptions
- Cameras
- Sundries
- Gifts
- Fountain
- Cafe
- Cosmetics
- Drugs

MEET AT BENNETT'S  
BEFORE AND AFTER THE GAME!

Corner Monroe and College Streets

Phones 2-8980 — 2-4450

# The Vogue

TALLAHASSEE  
FLORIDA

Meet Me at the

# MECCA

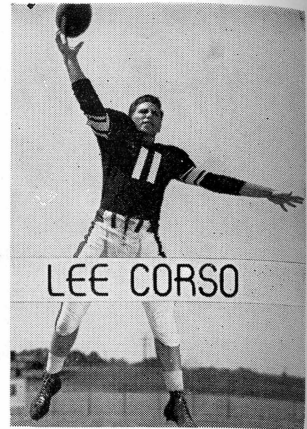
111 South Copeland St.

and Enjoy the Fine

Food and Friendly Atmosphere

The Master Chef

Floyd Whiddon Insurance Agency



## D. T. O'HARA, JR.

PRODUCE • POULTRY • FROZEN FOODS

Phone 2-2128 • 717 W. Gaines St.

TALLAHASSEE, FLORIDA

## THE LAUNDROMATS

115 W. Tennessee — 1005 N. Monroe

Phone 3-1789

Phone 2-3792

CLOTHES — RUGS — BLANKETS

Washed Clean — Fluff Dried and Folded

SHIRT FINISHING

DRY CLEANING • TINTEXING

"Your Satisfaction Is Our Goal"



## **BILL'S BOOK STORE**

**BOOKS**

**SUPPLIES**

**SUNDRIES**

**PRIVATELY OWNED AND OPERATED**

---

## **LITTLE FOLKS STORE INC.**

**133 North Monroe Street**

**CHILDREN'S FURNITURE • TOYS**

**NOVELTIES • GIFTS • HOBBIES**

*"The Capital's Major for Minors"*

**Phone 2-1146**

**TALLAHASSEE, FLORIDA**

## **THE SWEET SHOP**

**GOOD FOOD**

**DELICIOUS SODAS**

**DRUG SUNDRIES**

**Meet Your Friends Here Before  
and After the Game!**

***Follow the Seminoles!***

***GOOD LUCK SEMINOLES!***

## **SEVEN SEAS**

**Corner Monroe and Pensacola**

**Next to the Capitol**

## **Tallahassee's Finest**

**Will be Happy to Serve You After the Game!**

***EVERY SUNDAY AFTERNOON***

**We Feature a Special Smorgasbord Table**

## **Buddy's Hardware and Sporting Goods**

***We Have the Leading Lines!***

***If It's Sports — We Have It!***

**203 S. Monroe**

**BUDDY BRANDT, Owner**

---

## **DANLEY FURNITURE COMPANY**

**611 N. MONROE ST.**

***All Types of Furnishings  
for Your Home***

# **S H A W ' S**

Furnishings for Your Home

**COLLEGE AVE. at DUVAL ST.**

*"Good Taste Costs No More"*

---

It's Fun . . .  
to be nice to people

**M & N CAFE**

*Fine Food Since 1925*

The Best Place in Town to Eat

---

## **AUBREY BARROW SERVICE STATION**

**1853**

**THOMASVILLE**

**ROAD**

**Phone 2-5224**

## **FAIVER'S For Chicken Pizza Pie**

•

**Half-Fry Chicken  
Italian Spaghetti  
Sandwiches — All Types**

•

**1312 WEST TENNESSEE STREET  
TALLAHASSEE, FLORIDA**

---

## **MIDYETTE-MOOR Insurance Agency**

*"Ask Those We Serve"*

**Complete Insurance and Bond Service**

**PHONE 2-3456**

**MIDYETTE-MOOR BUILDING  
TALLAHASSEE, FLORIDA**

**SAYS**

**Scalp 'em Seminoles !**



**PAYNE H. MIDYETTE  
FRANK D. MOOR  
EDWIN M. CLARK  
A. WINSLOW SULLIVAN  
ROBT. M. DICKINSON  
PAUL L. LEWIS  
PAYNE H. MIDYETTE, JR.  
WM. L. MOOR**

## A black and white photograph of four men sitting on a grassy field. From left to right: a man in a white polo shirt and light trousers; a man in a 'JUNIOR' t-shirt and dark shorts; a man in a 'TURNER' t-shirt and dark shorts; and a man in a 'TURNER' t-shirt and light shorts. They are all looking towards the right.

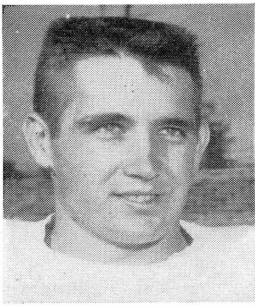
**FURMAN UNIVERSITY 1956 FOOTBALL COACHING STAFF**—left to right: Trainer Lewis Martin, Assistant Coach Billy Henderson, Head Coach Homer B. Hobbs, Assistant Coach Dixie Howell. Not shown Assistant Coach Frank Sinkwich.

# ABOUT FURMAN

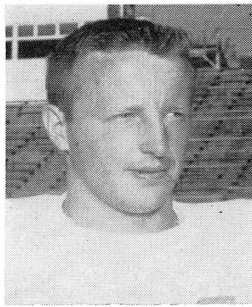
Official Name \_\_\_\_\_ Furman University  
Location \_\_\_\_\_ Greenville, S. C.  
Founded \_\_\_\_\_ 1826  
Denomination \_\_\_\_\_ Baptist  
Enrollment \_\_\_\_\_ 1,300 (Co-Educational)  
President \_\_\_\_\_ Dr. John Laney Plyler  
Administrative Director,  
\_\_\_\_\_ Dr. Julian H. Scarborough  
Director of Public Relations \_\_\_\_\_ Dyar Massey  
Nickname \_\_\_\_\_ Purple Hurricane  
Colors \_\_\_\_\_ Purple and White  
Stadium \_\_\_\_\_ Sirrine Stadium  
(18,000 capacity with added bleachers)  
Stadium Location \_\_\_\_\_ Below Furman  
Campus on Cleveland Street and University  
Ridge  
Press Box and Radio \_\_\_\_\_ West Side of Stadium  
Practice Field \_\_\_\_\_ Manly Field, on Campus  
Athletic Conference \_\_\_\_\_ Southern

Faculty Athletic Chairman, Dr. Winston C. Babb	
Athletic Director _____	Dr. Julian H. Scarborough
Head Football Coach _____	Homer B. Hobbs
Assistant Coach _____	Billy Henderson
Assistant Coach _____	David (Dixie) Howell
Assistant Coach _____	Dave Young
Assistant Coach _____	Jim Boyle
Assistant Coach _____	Bobby Dellinger
Trainer _____	Lewis Martin
Head Basketball Coach _____	Lyles Alley
Assistant Basketball Coach _____	Bill Kerr
Baseball Coach _____	Bill Kerr
Track Coach _____	Billy Henderson
Golf Coach _____	Bentley Hines
Tennis Coach _____	Bill Delany
Football Publicity _____	Joe Axelson
Basketball Publicity _____	Dan Foster
Team Doctors _____	Dr. Dwight Smith
	Dr. Charles B. Thomas

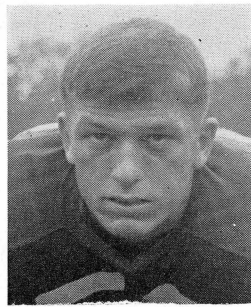




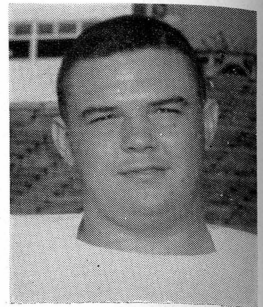
**TOM AVERY**  
E



**BILL BAKER**  
B



**JIM BOROFF**  
C

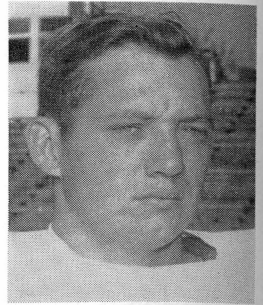
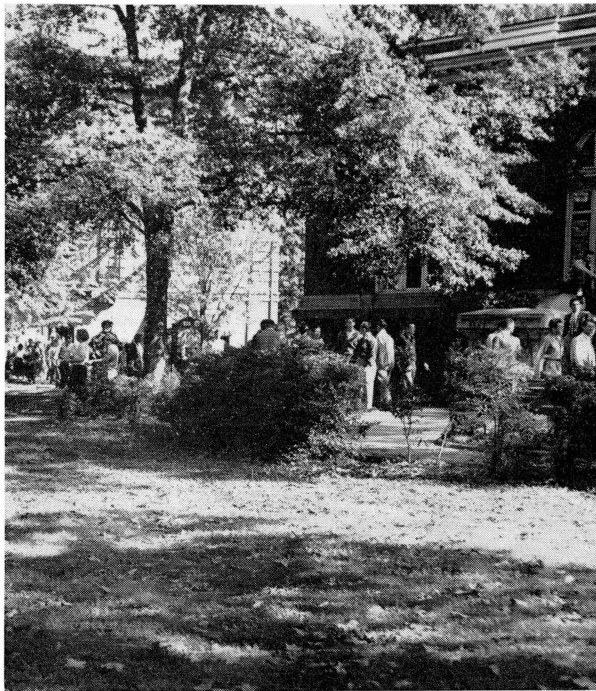


**RONNIE BROWN**  
G

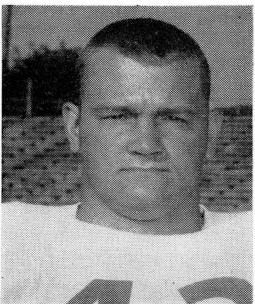


**PETE COX**  
B

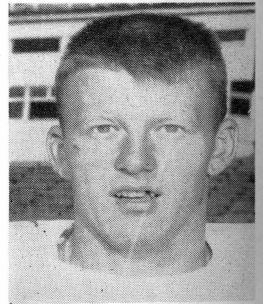
## FURMAN CAMPUS



**HINTON DAVIS**  
T



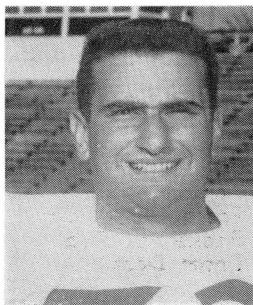
**WALT EAVES**  
T



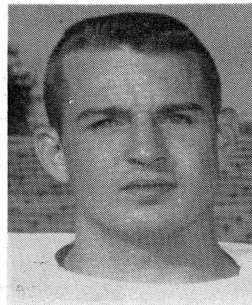
**JOHN EDGE**  
C



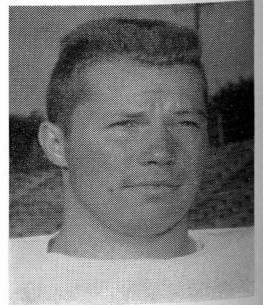
**MACK EDWARDS**  
E



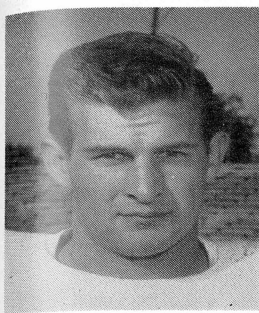
**GEORGE ELIADES**  
T



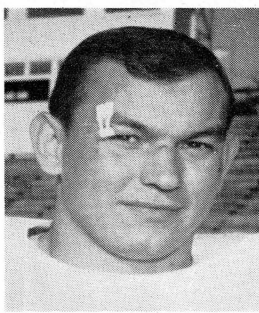
**JIM GRANT**  
B



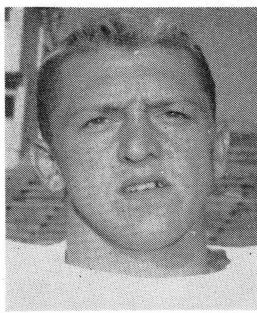
**ED HANSON**  
B



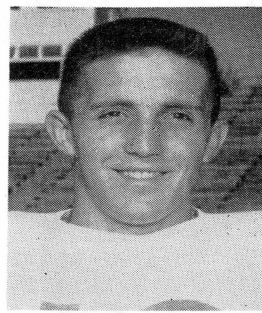
GENE HEAD  
G



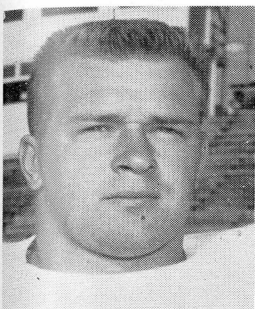
BOBBY JENNINGS  
C



JIM JENNINGS  
B

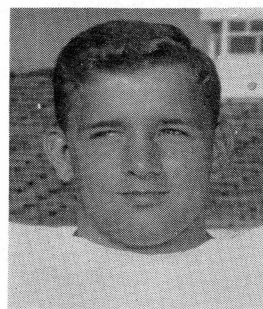
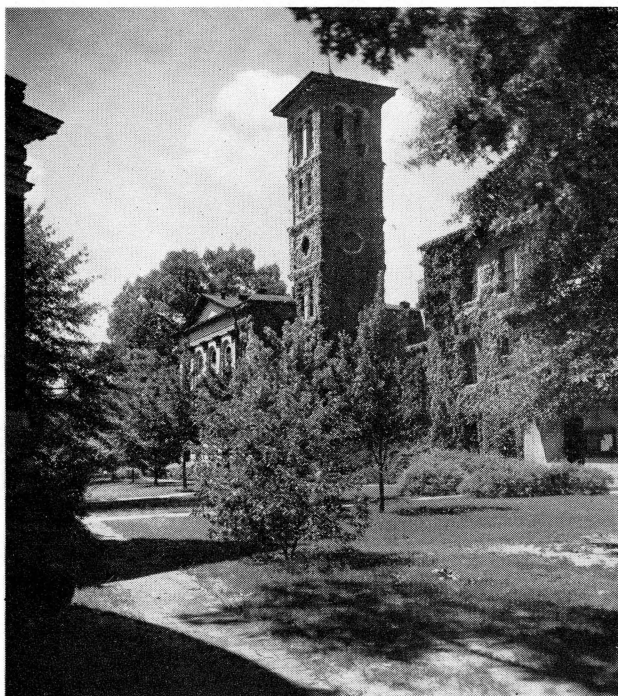


CHARLEY LINDER  
B

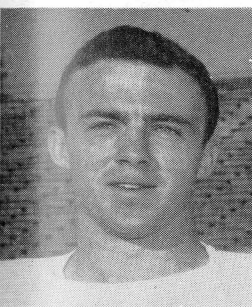


DON MARKOFSKI  
T

## FURMAN BELL TOWER



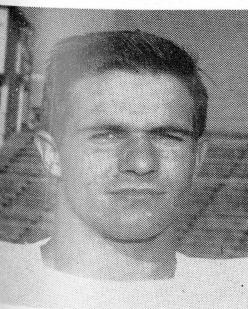
CHARLEY MOORE  
B



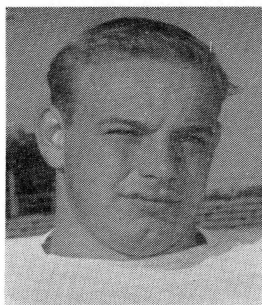
ROY NICKLES  
B



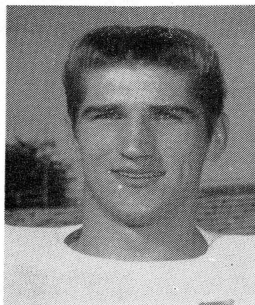
JERRY PENLAND  
B



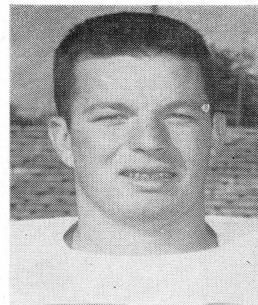
JACKIE POWERS  
B



MICK SHILL  
T



RAY SIMINSKI  
E



BUDDY WALTON  
T

# FURMAN'S FOOTBALL ROSTER

NO.	NAME	POS.	AGE	HT.	WT.	YEAR	HOMETOWN
10	CHARLEY MOORE	QB	19	5-9	160	2	Savannah, Ga.
12	CHARLEY LINDER	QB	19	5-9	160	2	Macon, Ga.
14	BILL BAKER	QB	18	5-10	175	1	Rossville, Ga.
16	HICKEY HORTON	QB	18	6-2	175	1	Hephzibah, Ga.
20	BILLY WEIR	LHB	20	5-10	175	3	Columbia, S. C.
22	ROY NICKLES	LHB	19	5-7	155	2	Greenwood, S. C.
24	JACKIE POWERS	LHB	20	5-11	175	4	Mullins, S. C.
26	ED HANSON	LHB	18	5-11	185	1	Athens, Ga.
28	TOMMY YATES	LHB	18	5-8	175	1	Avery, S. C.
31	JIMMY GRANT	FB	20	6-2	195	3	Rock Hill, S. C.
32	RICHARD SHAW	FB	23	6-0	175	1	Greenville, S. C.
40	JERRY PENLAND	RHB	20	5-11	175	3	Greer, S. C.
41	JIM JENNINGS	RHB	18	6-2	175	1	Americus, Ga.
43	WALTER EAVES	T	19	6-0	200	1	Elberton, Ga.
44	PETE COX	RHB	22	5-11	165	3	Albany, Ga.
50	BOBBY JENNINGS (Capt.)	C	21	6-0	195	4	Columbia, S. C.
51	JOHN EDGE	C	21	6-0	175	4	Americus, Ga.
52	BUDDY WALTON	C	19	6-0	195	2	Atlanta, Ga.
53	JIM BOROFF	C	20	6-1	200	1	Lima, Ohio
60	HOMER BRINSON	G	22	5-11	185	4	Lyons, Ga.
61	GEORGE HARRISON	G	19	5-11	190	2	Phenix City, Ala.
62	GENE HEAD	G	22	6-0	190	2	Central, S. C.
64	DAVID HILL	G	20	5-10	210	4	Savannah, Ga.
65	RONNIE BROWN	G	20	5-10	200	2	Atlanta, Ga.
66	NICK TZOUVELEKAS	G	20	5-10	180	3	Greenville, S. C.
67	HINTON DAVIS	G	18	6-1	210	1	Savannah, Ga.
70	DON MARKOFSKI	T	19	6-0	200	2	Chester, Pa.
72	MURIEL DAVIS	C	19	5-10	180	1	Smyrna, Ga.
73	GEORGE ELIADES	T	20	5-11	190	2	Washington, D. C.
74	MIKE SHILL	T	22	6-4	235	3	Akron, Ohio
75	BOBBY AIKEN	T	18	6-1	200	1	Decatur, Ga.
78	JORDAN SUTZ	T	24	6-1	220	1	Brooklyn, N. Y.
80	MACK EDWARDS	E	20	6-1	175	2	Athens, Ga.
82	WOODY STEWART	E	18	6-0	175	1	Jefferson, Ga.
84	RAY SIMINSKI	E	19	6-3	195	2	Chester, Pa.
86	TOM AVERY	E	19	6-0	175	2	Americus, Ga.



# Rose PRINTING CO., INC.



*Always  
the Finest  
Printing*



ROSE BUILDING

PHONE 2-0230

T A L L A H A S S E E , F L O R I D A



# Light up a Lucky—

*it's light-up time!*



## Luckies Taste Better

*Cleaner, Fresher, Smoother!*



**"IT'S  
TOASTED"**  
to taste  
better!