

PRICE 35¢

ARCHIVES
F. S. U. LIBRARY

FLORIDA STATE UNIVERSITY

VERSUS

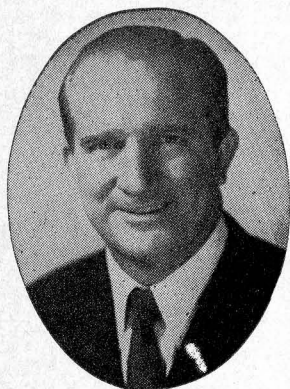
MISSISSIPPI SOUTHERN

SATURDAY, NOVEMBER 17, 1956

2:00 P. M.

DOAK S. CAMPBELL STADIUM

#9



RAINEY CAWTHON

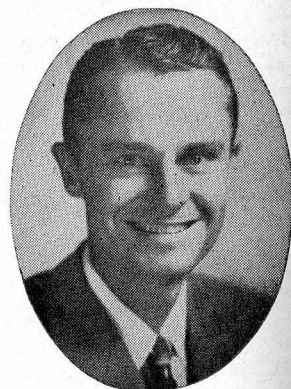
Rainey Cawthon's

★ RCA TELEVISION and RADIO

★ SHELL PRODUCTS ★ GOODYEAR TIRES

"WE SERVICE WHAT WE SELL"

● ROAD SERVICE ● PHONE 2-1865 ●



FRED PIERSON

See Us For All Your Photo Needs

"TALLAHASSEE'S FRIENDLIEST"

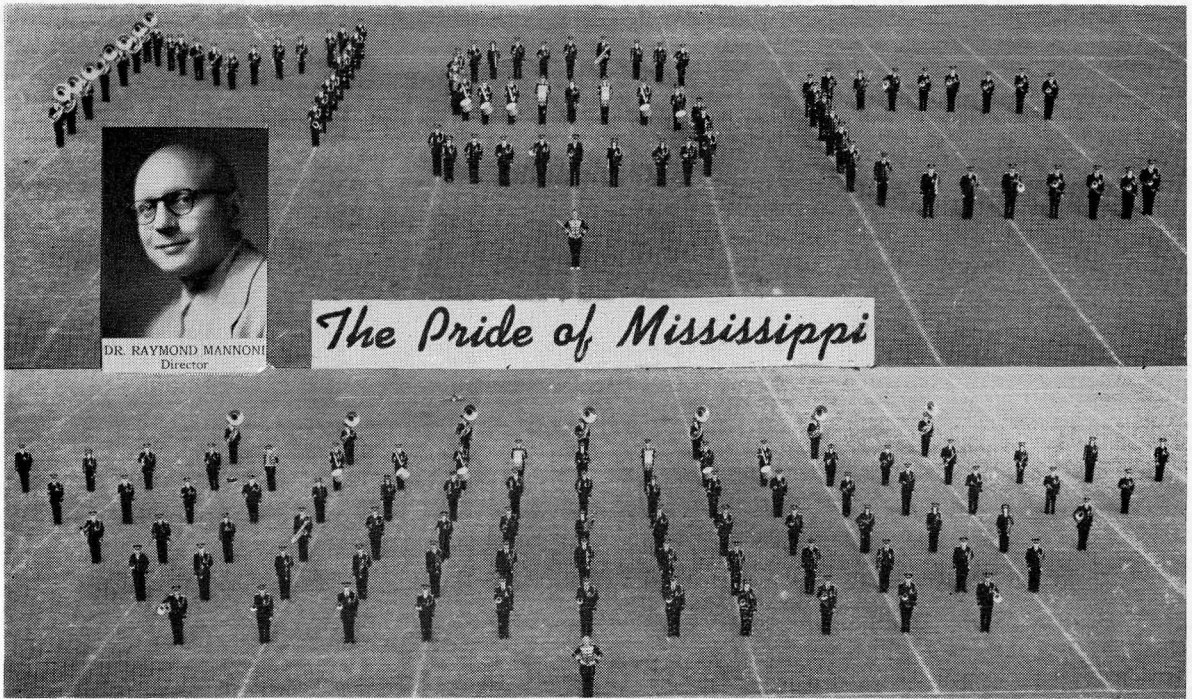
THE SHUTTER SHOP

310 N. Monroe Street ● Phone 2-4894

Tallahassee, Florida

Expert Photo Finishing — Same Day Service

WELCOME, MISSISSIPPI SOUTHERN



DIXIE DARLINGS



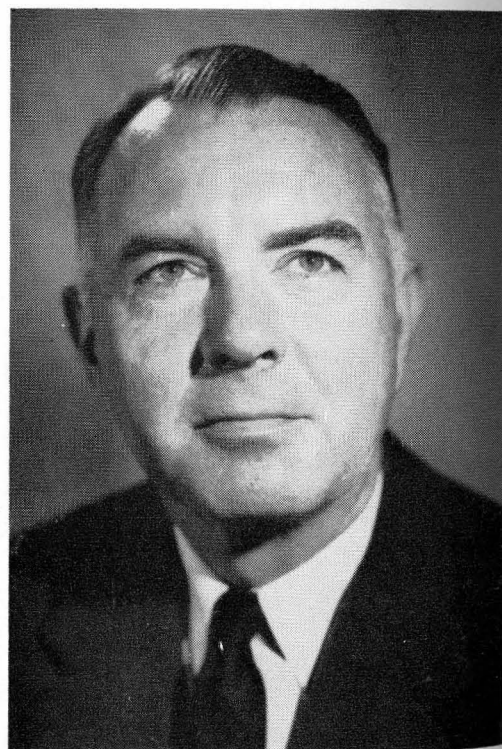
From left to right: Faye Brooks, Vicksburg; Kathleen Covert, Meridian; Kay Cleveland, Opelousas, La.; Ann Laseter, Morton; Mary Jo O'Quinn, Brookhaven; Vi Tarrer, Forest; Maurine Priebe, Purvis; Pat Speck, Blytheville, Ark.; Ann Fiebelkorn, Fort Walton, Fla.; and Sonja Weill, Biloxi.



The Mississippi Southern football staff, considered the finest of its size in the country, consists of: seated, from left, Athletic Director Reed Green and Head Coach Thad Vann; standing, from left, Line Coach Roland Dale, Backfield Coach Clyde Stuart, and End Coach C. J. Taylor.



TOM NUGENT
FSU Head Coach



DR. H. G. DANFORD
FSU Athletic Director

FSU Hosts Mississippi Southern

TABLE OF CONTENTS

Welcome, Mississippi Southern	3
Seminole Athletic News	5
FSU Cheerleaders	6
Football Network	6
Seminole Profiles	8, 9, 10, 11, 12, 13
The FSU Coaches	14
Probable Starting Line-Ups	16-17
FSU Roster	21
Mississippi Southern Campus Scenes	27
Mississippi Southern Players	28, 29
Mississippi Southern Roster	30

Florida State's Seminoles, fresh from a resounding 42-7 triumph over Furman last week, have their work cut out for them today.

In Mississippi Southern, they have what Head Coach Tom Nugent has labeled "the toughest opponent we'll meet all season."

Nugent has plenty of reason for his statement. The Southerners enter today's contest unbeaten in six games to date. And they have the kind of a team that's always given the Tribe trouble.

With a 212-pound starting fullback and a pair of tackles that weigh 248 and 234 pounds respectively, they're the kind of a team that can give anyone trouble on the right day.

All America candidate Don Owens is the 248 pounder. P. W. Underwood is his 234-pound running mate.

The folks who know have predicted that this Southern team will become FSU's No. 1 rival as the years roll by. Both schools picked up football at about the same time.

Florida State whipped the Southerners here two years ago, 19-18. But at Hattiesburg last year, the Tribe got pushed around a bit and fell, 21-6.

Today? Well, we'll see.



FLORIDA STATE UNIVERSITY CHEERLEADERS, from left to right: Boys—Jim Julian, "Sticks" Steinberg and Charlie Johnson. Girls—Nancy Fowler, Donna Huggins and Judy Deikle.

THE SEMINOLE FOOTBALL NETWORK

Florida State University's football contests are carried to every part of the state this year by the ever-growing voice of the Seminole Football Network.

Entering its fourth year, the network now boasts a total of 12 stations located throughout Florida. (See the listings below.)

Again, the veteran trio of Bill Snyder, Ben Letson and Jim Kirk are handling the mikeside duties for the network. They've been greatly responsible for the growth and success of the broadcasts.

Snyder, of WPDQ in Jacksonville, is the play-by-play man. He began his professional career by working the games of the old professional baseball club, the St. Louis Browns.

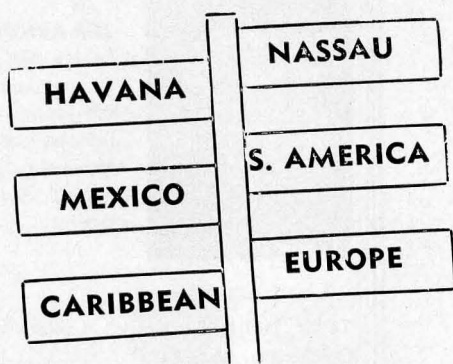
Kirk does the color. As sports director of station WMOP in Ocala, he's been with the network from its beginning.

Letson, owner and manager of WCNH in Quincy engineers the broadcasts.

The Seminole Network stations:

Quincy	WCNH
Ocala	WMOP
Gainesville	WGGG
Tallahassee	WTNT
Jacksonville	WMBR
Clearwater	WTAN
Sanford	WTRR
Bradenton	WTRL
Lake Wales	WIPC
Panama City	WPCF
Ft. Walton Beach	WFBS
Pensacola	WBSP

**"How,
and
where
in
the
world
are
you
going"**



FOR COMPLETE AND ACCURATE TRAVEL INFORMATION, CALL

GENERAL TRAVEL SERVICE

109 E. Call St., Tallahassee

Phone 3-4567

Next to Chamber of Commerce

Whether by . . .

AIR - BOAT - BUS or RAIL

Let GENERAL TRAVEL plan
your trip . . .

**There Is No Charge
For Our Service**

GO SEMINOLES — GO SEMINOLES

AT Home and Away

We're Pulling for YOU

HOLLAND'S RESTAURANT

Facing the Capitol at 106 E. Pensacola Street

TALLAHASSEE, FLORIDA

Serving Our Own Blend of Coffee

Famous for Home-made Pies and Hot Biscuits

U. S. Prime and U. S. Choice Steaks

Air Conditioned and Ultra Modern

N. T. HOLLAND, Owner and Manager

Gilberg's

"The House of 1000 Fabrics"

108 East Jefferson Street

220 Broad Avenue

TALLAHASSEE, FLA.

ALBANY, GA.

109 W. University Ave.

26 North Palafox Street

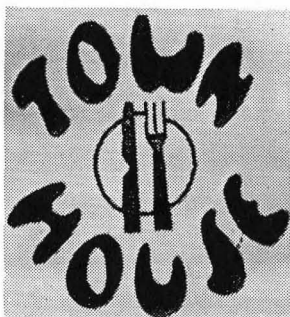
GAINESVILLE, FLA.

PENSACOLA, FLA.

535 Harrison Ave.

Panama City, Fla.

Fabrics from All Over the World



COFFEE SHOP

CHARCOAL BROILED
STEAKS

TRAVELING
DESSERT TRAYS



DUVAL HOTEL

TALLAHASSEE MUSIC COMPANY

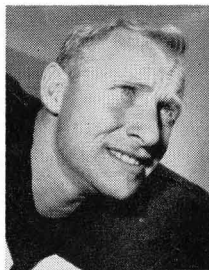
"Service Built This Company"

Phone 3-1246

225 W. Carolina St.

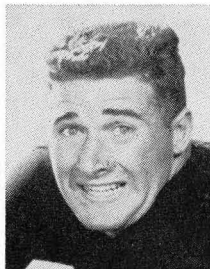
TALLAHASSEE, FLORIDA

SEMINOLE



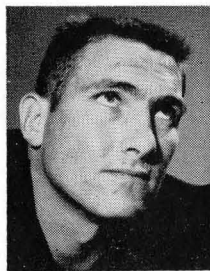
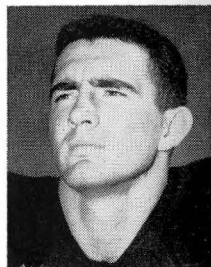
JIM ARNOLD, end. Junior from Bainbridge, Ga. . . . 5' 8", 170 pounds. Ex-serviceman . . . honorable mention All-Florida in 1950 . . . Tough competitor, good tackler. Very strong defensively, needs work offensively. Should develop into top-flight competitor.

TROY BARNES, center. Junior from Chickasaw, Ala. . . . 6' 2", 198 pounds. No. 1 center . . . has good size and excellent speed . . . he's an outstanding pursuit man. Was the best linebacker on the squad during the spring drills.



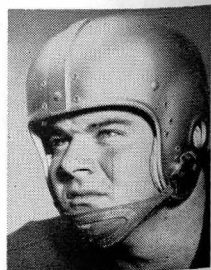
CARMEN BATTAGLIA, fullback. Junior from Niagara Falls, N. Y. Good, driving type of runner. Moves well in close . . . Fair defensively . . . develop his defensive game and he'll see a lot of action . . . point after touchdown kicker.

HAM BISBEE, end. Junior from Sanford. 6', 175 pounds. Has good speed . . . better than average defensively . . . good blocker . . . Has the needed game experience. In contention for a starting post . . . averaged 23.6 yards on five passes received in 1955.



GEORGE BOYER, tackle. Junior from Jacksonville. 6', 225 pounds. He's a service returnee . . . honorable mention All-Army in 1955. Number one performer as a center at FSU as a freshman and sophomore . . . Fundamentally sound . . . has good speed along with his size.

LEO BAGGETT, guard. Junior from Panama City. 5' 8", 209 pounds. Starting right guard . . . excellent speed. Strong man, fine blocker . . . sharp tackler. Needs only game experience to become great. Watch him.

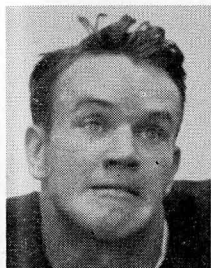
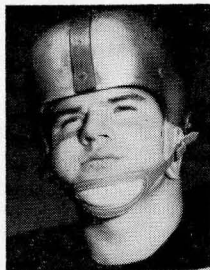


PROFILES



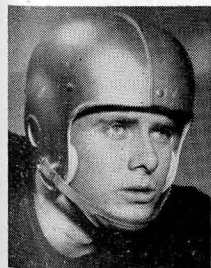
LEE CORSO, quarterback. Senior from Miami. 5' 10", 170 pounds. Switched from halfback where he was a sensation for two years. Flashy . . . outstanding runner . . . top defensive player. Death on enemy aerals . . . Top ground gainer in 1955.

JOHN CRAIG, tackle. Junior from Orlando. 6', 215 pounds. Hard, conscientious worker . . . showed much improvement during spring. You'll see a lot of him as the season goes on . . . Needs only game experience.



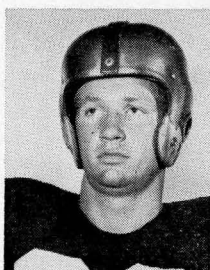
STAN DOBOSZ, halfback. Junior from East Chicago, Ind. 5' 8", 185 pounds. Service returnee . . . the Seminoles' No. 1 ground-gainer in 1952 . . . a regular in 1953. Excellent speed and power . . . watch him come back.

BOB ELLIOTT, tackle. Junior from St. Petersburg. Big surprise in the spring . . . fastest lineman on the squad. Should see much service . . . they call him "Red". Was president of Student Council at St. Paul High.

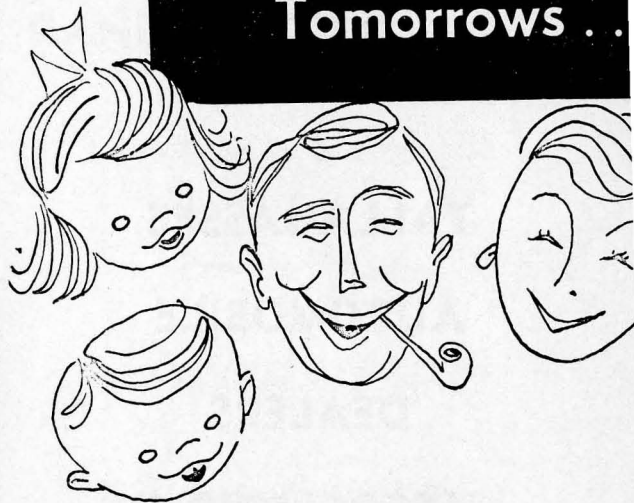


BOB FOUNTAIN, end. Sophomore from Crestview. 5' 11", 190 pounds. He's a "comer" . . . knocking on the door at the starting right end position. Good blocker . . . very fine offensively. Needs only game experience.

JERRY HENDERSON, halfback. Junior from Pensacola. 5' 11", 175 pounds. Started as a quarterback . . . switched when needed. He's a good thrower . . . kicks nice with his left foot. Fair speed . . . good defensively.



For Brighter
Tomorrows . .



TALLAHASSEE FEDERAL SAVINGS AND LOAN ASSOCIATION



Compliments of

TALLAHASSEE

AUTOMOBILE

DEALERS

ASSOCIATION

Alford Chevrolet Co.

Capital Lincoln-Mercury, Inc.

Carr Buick

Dean Motors

Drake Motors

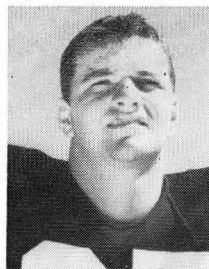
Mayo-Mingledorff Motors, Inc.

John Manthey, Inc.

Proctor & Proctor

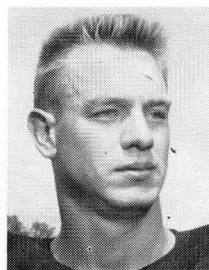
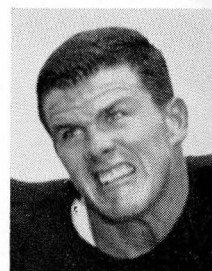
Tallahassee Motors, Inc.

SEMINOLE



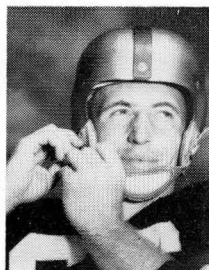
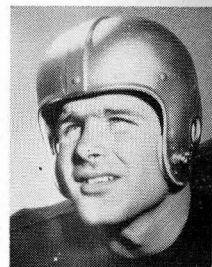
JOE HOLT, fullback. Senior from Graham, N. C. 5' 10", 183 pounds. Number one fullback for past two years . . . Joltin' Joe, they call him . . . Good blocker and pass receiver . . . fair ball carrier . . . has the needed experience.

EDDIE JOHNSON, fullback. Junior from Charleston, W. Va. 5' 10", 205 pounds. Excellent speed . . . he's trying to move into the No. 1 spot. He's good defensively, is an excellent blocker. Played regularly as a soph . . . a service returnee.



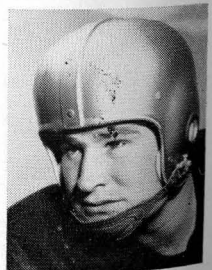
BILL KIMBER, end. Sophomore from Winter Park. 6' 1", 185 pounds. An injured knee just before the opening game set him back . . . good speed, better than average receiver. Stronger than average defensively . . . needs work offensively.

BUD LEONARD, center. Senior from Ocala. 5' 11", 192 pounds. He's a converted fullback . . . good linebacker. Excellent speed . . . a strong man. Has plenty of game experience . . . should make this final season a big one for himself.



BUCK METTS, halfback. Senior from Sanford. 5' 9", 180 pounds. Starter at right halfback . . . a top punter, excellent runner and tough defensively. Good pass receiver . . . leading scorer last season.

BILL MUSSELMAN, tackle. Junior from Lynchburg, Va. 5' 11", 215 pounds. He's quick for his size . . . no excess heavy stuff. Well named . . . plenty strong. Labeled as a dark-horse for honors this fall. Starting left tackle.

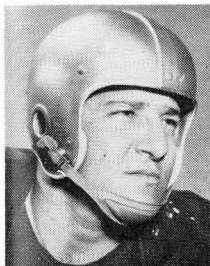
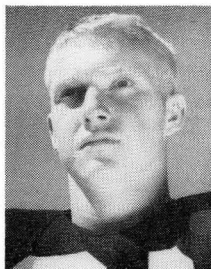


PROFILES



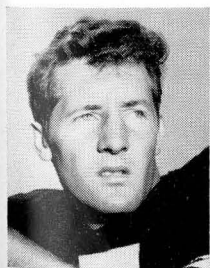
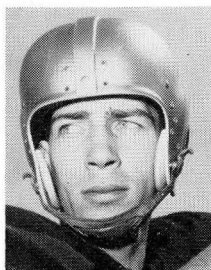
BOB NELLUMS, end. Junior from Pensacola. Junior college grad . . . plenty of experience. Big surprise during the practice sessions . . . top contender for starting left end post. Labeled by coaches as having "top potential."

BILLY ODOM, halfback. Senior from Mt. Dora. 5' 8", 165 pounds. Offensive standout . . . tremendous break-away runner. Averaged 27.5 yards on 13 kickoff returns to rank sixth in nation last season. Needs only defensive improvement.



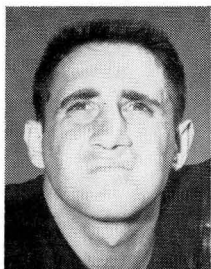
AL PACIFICO, guard. Senior from Altoona, Pa. 5' 7", 209 pounds. Begins his fourth year as an FSU starter . . . 'nuff said. He's solid fundamentally . . . tough competitor. Has everything that points to a great season.

VIC PRINZI, quarterback. Junior from Waverly, N. Y. 6', 180 pounds. Experienced . . . strong arm. Fair speed . . . can play a top notch defensive game. Late start this year . . . may develop fast and move into a possible starting position.



BOBBY RENN, halfback. Sophomore from Henderson, N. C. 5' 11", 170 pounds. Transfer from Davidson where he intercepted 14 passes as a freshman. Has top flight defensive ability . . . good speed. Top all-around player.

TED RODRIQUE, quarterback. Junior from Lynn, Mass. 5' 11", 180 pounds. Good kicker and passer. Needs to develop defensively . . . has experience. May surprise at any time . . . was All-Army in Japan in 1953.



GANDY MOTOR HOTEL

WEST ON U. S. 90 and 20

Private Phones

An Alsonett Motor Hotel

Fine Restaurant Adjoining

TALLAHASSEE, FLA.

SCALP 'EM SEMINOLES

BROWN'S MEN'S WEAR

Monroe at Park

F & T RESTAURANT

For Good Food and Quick Service

113 S. Monroe

Phone 2-8917

Air Conditioned

Arnold's★

The Young Man's Shop

Formerly
Troxler's

105 S. MONROE



Everything for the Young Man

FROM SIZE 6
TO
STUDENT SIZE 40

WON'T YOU...

HAV-A-TAMPA

...CIGAR

Eli Witt Tobacco & Candy Co.

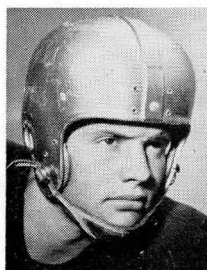
TALLAHASSEE, FLA.

The Players —



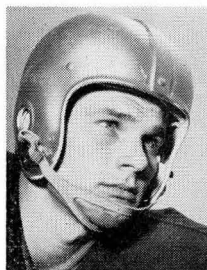
LEN SWANTIC, quarterback. Senior from Columbus, Ga. 5' 10", 175 pounds. Most experienced quarterback . . . good passer. A little slow, but a smart runner. Ranked fourth in the nation last year with 37 pass completions.

RONNIE SCHOMBURGER, end. Junior from Pittsburgh, Pa. 6' 1", 195 pounds. Top performer at left end . . . best all-round end during the spring. Fine receiver . . . tops defensively. This should be his year.



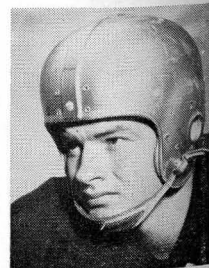
BOB THOMAS, tackle. Sophomore from Mansfield, Ohio. 5' 11", 198 pounds. Top defensive lineman . . . lags a little offensively. Should develop into an outstanding player within a year. Could break into starting lineup at any point.

PAT VERSPRILLE, halfback. Junior from Norfolk, Va. 6' 2", 190 pounds. Top halfback during the spring drills. But an injury during the fall session threatens to set him back for the whole season. Has outstanding potential.

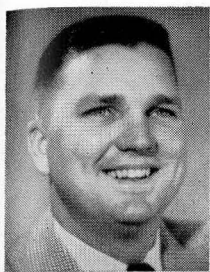


BILLY WEAVER, halfback. Junior from Miami. 5' 10", 175 pounds. Hard, driving type of runner. Good speed . . . solid tackler. Great competitor . . . this should be a big season for him.

HENRY WETHERINGTON, end. Sophomore from Valdosta, Ga. 6', 196 pounds. Didn't participate during the spring, but is expected to rise fast as the season goes on. Very fast . . . slowed by recent knee operation.

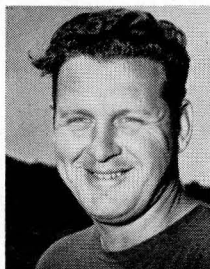


The Coaches —



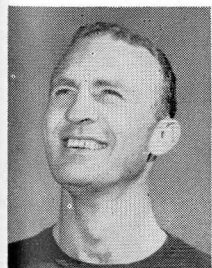
HUGH ADAMS. Little All-America tackle on FSU's 1949 team. First year as a full assistant . . . was a graduate last season. A Punta Gorda native . . . coached at Leon High School in 1950.

BOB HARBISON. The dean of the FSU coaching staff . . . begins his ninth season as a line coach. Played under the late Bo McMillan at Indiana University . . . a native of Evansville, Ind.



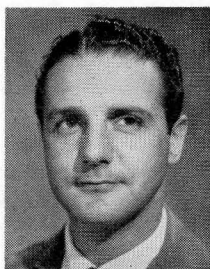
VAUGHAN MANCHA. One of the University of Alabama's greatest centers . . . starts his fifth season as an FSU assistant coach. Made the first team SEC and All-America squads in 1947. Works with the line . . . played a year with the old Boston Yanks in pro ball.

PAUL ODOM. New full assistant basketball coach. Mount Dora . . . brother of FSU halfback Billy . . . He was a tackle for Rollins in his playing days, later switched to Stetson where he was team captain in 1950.



HUGH "BONES" TAYLOR. Begins his first year as an FSU great. If you've followed football you've heard of him . . . one of professional football's all-time great ends. A star with the Washington Redskins for many years.

FRANK TOOMEY. Begins his third season as an FSU assistant coach. A graduate of Ithaca College in New York, he lettered in all sports during his competitive days. Coached at Ithaca after graduation for a while.



BRINKLEY BROS.

HOMER A. BRINKLEY

ROBERT T. BRINKLEY

REALTORS • INSURANCE

MORTGAGE LOANS

"A Brinkley Buy Is a Better Buy"

BRINKLEY BLDG. — 306 N. MONROE ST.

TELEPHONE 3-0918

Tallahassee, Fla.

Developers of beautiful Waverly Hills

Co-developers of St. George Island

"Serving Good Food for Fine People"

Stege's Cafeteria

Adams at Pensacola

2-1286

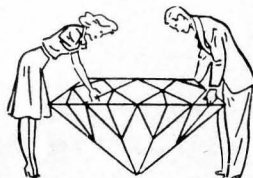
Plantation Restaurant

U. S. Highway 27

1324 Perry Highway

Telephone 2-9092

Tallahassee, Fla.



In Diamonds, Cutting, Color, Clarity, and Carat-Weight Determine Their Value. May Our Gemologist Explain This to You?

"Our Terms
Will Please You"

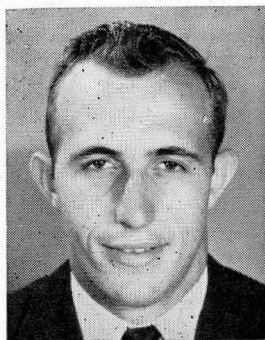
Moon's
REGISTERED JEWELERS —
American Gem Society

THE FSU COACHING STAFF



HEAD COACH Tom Nugent, center. Surrounding him, left to right, assistant coaches Frank Toomey, Hugh Adams, Paul Odom, Hugh Taylor, Bob Harbison, and Vaughan Mancha.

WELCOME GRADDY BROS. GULF STATIONS



BUCK METTS

"WE LIKE EVERYBODY"

Full Line

GULF PRODUCTS

LUBRICATION SPECIALIST

ROAD SERVICE

1458 SOUTH MONROE

Phone 3-0077

640 WEST TENNESSEE

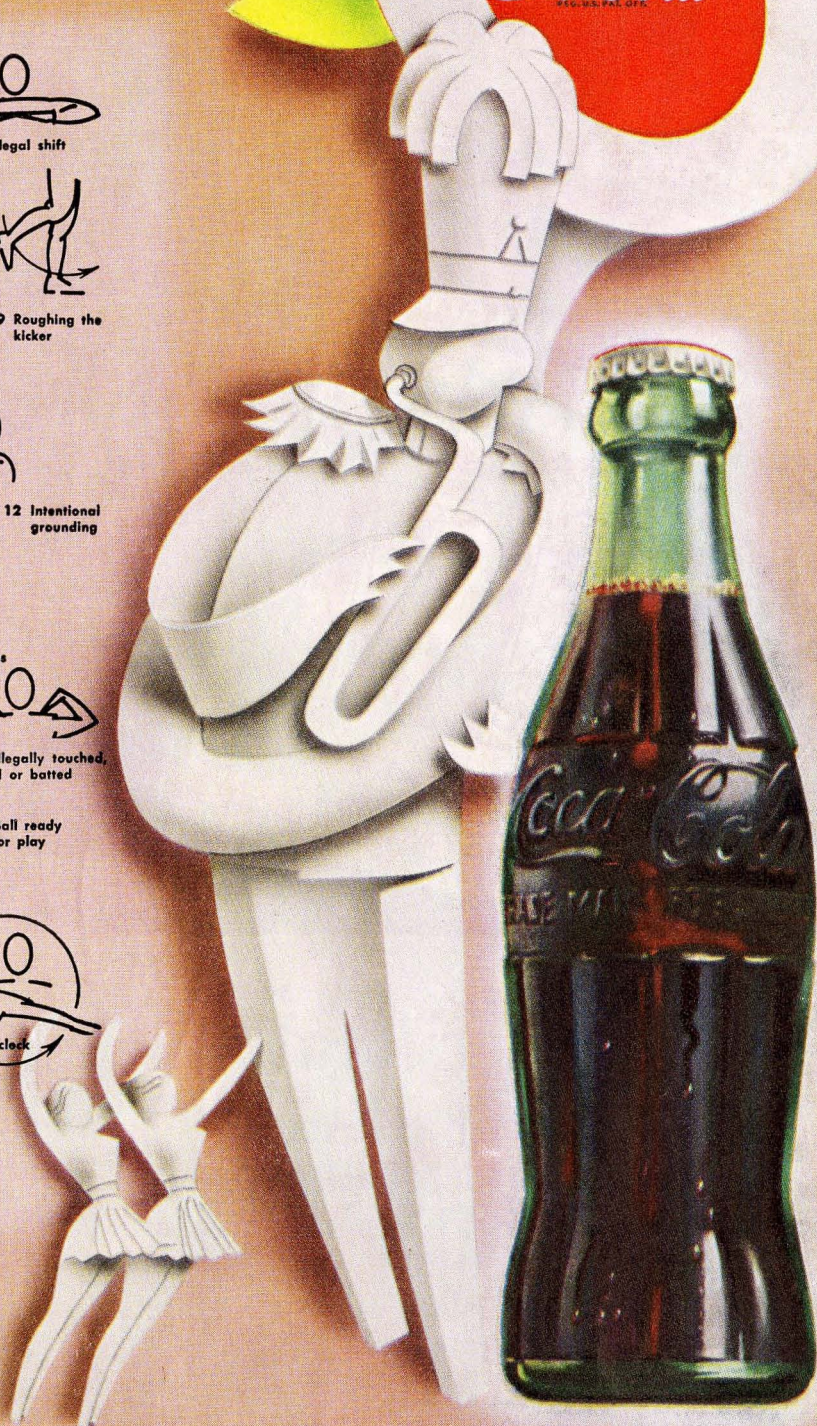
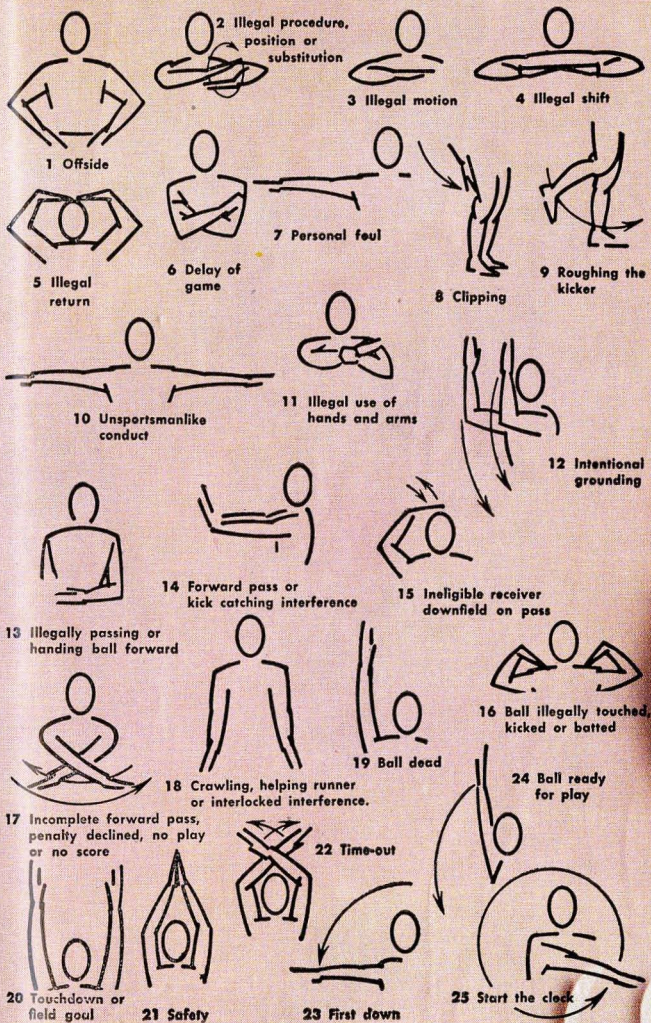
Phone 2-3584

After the Ball Game

Drive Carefully, You May Hit One of Our Customers

REFRESH

DRINK
Coca-Cola
REG. U.S. PAT. OFF.



TALLAHASSEE COCA-COLA BOTTLING COMPANY
TALLAHASSEE, FLORIDA

Live **M**odern, Boy...Smoke **L&M**!

My Chesterfields *Satisfy* the Most!



FLORIDA STATE

PROBABLE STARTING LINEUP

NO.	NAME	POS.
80	RONNIE SCHOMBURGER	LE
73	BILL MUSSELMAN	LT
60	LEO BAGGETT	LG
52	TROY BARNES	C
66	AL PACIFICO	RG
77	GEORGE BOYER	RT
85	BOB NELLUMS	RE
20	LEE CORSO	QB
15	BOB RENN	LH
41	JOE HOLT	FB
22	BUCK METTS	RH

THE FLORIDA STATE SQUAD

10	Prinzi, b	60	Baggett, g
11	Rodrique, b	61	McGee, g
12	Swantic, b	64	Leonard, c
14	Henderson, b	66	Pacifico, g
15	Renn, b	67	Elliot, t
20	Corso, b	68	Williams, g
21	Odom, b	70	Thomas, t
22	Metts, b	71	Holton, t
25	Versprille, b	73	Musselman, t
26	Weaver, b	74	Gardner, t
27	Dobosz, b	76	Keys, t
28	Minton, b	77	Boyer, t
29	Battaglia, b	78	Craig, t
	Griffen, b	79	Graham, t
41	Holt, b	80	Schomburger, e
43	Abood, b	81	Bisbee, e
44	Johnson, b	83	Fountain, e
50	Davis, c	84	Kimber, e
51	Pope, c	85	Nellums, e
52	Barnes, c	86	Arnold, e
53	Keith, c	89	Philp, e

MISSISSIPPI SOUTHERN

PROBABLE STARTING LINEUP

NO.	NAME	POS.
88	HAROLD CLARK	LE
78	DON OWENS	LT
65	DAVE FITZGERALD	LG
56	BILL MARTIN	C
67	AL TREGLE	RG
72	P. W. UNDERWOOD	RT
83	CURRY JUNEAU	RE
15	BOBBY HUGHES	QB
41	J. C. ARBAN	LH
25	R. L. DICKINSON	FB
20	DALLAS WHITFIELD	RH

THE MISSISSIPPI SOUTHERN SQUAD

10	Morrow, b	44	Doggett, b	70	Tuccio, t
11	Coats, b	45	Purvis, b	71	Brumfield, t
12	Barfield, b	46	Supple, b	72	P. Underwood, t
14	Larson, b	49	Speights, b	73	Blackmon, t
15	Hughes, b	52	Johnston, c	74	Lott, t
20	Whitfield, b	55	Ellsey, c	75	G. Underwood, t
22	McInnis, b	56	Martin, c	78	Owens, t
25	Dickinson, b	57	Rinehart, c	79	Russell, t
26	Meeks, b	61	Little, g	80	Taylor, e
27	Seligman, b	63	Rich, g	81	Crawford, e
33	McArthur, b	64	Battaglia, g	82	Yencho, e
34	Spence, b	65	Fitzgerald, g	83	Juneau, e
35	Berke, b	66	Shows, g	85	Waits, e
41	Arban, b	67	Tregle, g	86	Hefner, e
42	May, b	68	Taylor, g	87	Marshall, e
43	Lance, b	69	Godwin, g	88	Clark, e

PAUSE



LOSS OF FIVE YARDS

- 1—Taking more than five times out during either half (except for replacement of injured player).
- 2—Illegal delay of game.
- 3—Failure to complete substitution before play starts.
- 4—Violation of kickoff formation.
- 5—Player out of bounds when scrimmage begins.
- 6—Putting ball in play before Referee signals "Ready-for-play".
- 7—Failure to maintain proper alignment of offensive team when ball is snapped. Also, backfield man illegally in motion.
- 8—Offside by either team or encroachment on neutral zone.
- 9—Attempt to draw opponents offside.
- 10—Crawling by runner.
- 11—Illegal forward pass (includes intentional grounding of forward pass). Also loss of down.
- 12—Taking more than two steps after Fair Catch is made.
- 13—Player on line receiving snap.
- 14—Any violation of the scrimmage formation.

LOSS OF FIFTEEN YARDS

- 15—Team not ready to play at scheduled time.
- 16—Violation of rules during intermission.
- 17—Illegal return of suspended player.
- 18—Interference by member of offensive team with defensive player making pass interception. (Also loss of down).
- 19—Interfering with the opportunity of a player of the receiving

PENALTIES

- team to catch a kick.
- 20—Illegal use of hands or arms by offensive player.
 - 21—Tackling or blocking defensive player who has made fair catch.
 - 22—Roughing the kicker.
 - 23—Piling up, hurdling, clipping.
 - 24—Tackling player out of bounds, or running into player obviously out of play.
 - 25—Coaching from sidelines.
 - 26—Failure to stop one full second following shift.
 - 27—Defensive holding.
 - 28—Invalid Signal for Fair Catch.

OTHER PENALTIES

- 29—Striking an opponent with fist, forearm, elbow or locked hands, kicking or kneeing — Mandatory disqualification of offending player plus loss of fifteen yards.
- 30—Foul within the one yard line — half the distance to the goal.
- 31—Interference by defensive team on forward pass — passing team's ball at spot of foul.
- 32—Forward pass being touched by ineligible receiver beyond the line of scrimmage — loss of fifteen yards from spot of preceding down and loss of a down.
- 33—Illegal touching of kicked ball within opponent's ten yard line — touchback.
- 34—Flagrantly rough play or unsportsmanlike conduct — Mandatory disqualification plus loss of fifteen yards.
- 35—Eligible pass receiver who goes out of bounds and later touches a forward pass — loss of down.



DRINK

Coca-Cola

REG. U.S. PAT. OFF.

COPYRIGHT 1956, THE COCA-COLA COMPANY

TALLAHASSEE COCA-COLA BOTTLING COMPANY

TALLAHASSEE, FLORIDA

THE MARCHING CHIEFS



HOMECOMING, 1955

Manley Whitcomb will direct Florida State's Marching Chiefs, hailed by Atlanta newspapers as the best university marching group in the south, in at least seven halftime performances this year.

Shows are planned for all home games—Ohio University, Virginia Tech, Wake Forest, Furman and Mississippi Southern—and it's likely the band will perform at Philadelphia October 27 and Miami November 2.

FSU has in Whitcomb one of the nation's foremost masters of band music. He came to Florida State in 1953 following a record 17 years at Ohio State where he led the famous Buckeye band to national recognition.

Since coming to FSU Whitcomb has developed the 128-piece Marching Chiefs into one of the most outstanding musical organizations of its kind in the nation.

At Ohio State he directed the university band in its famous westward jaunt to the Rose Bowl in 1950. Whitcomb has appeared as lecturer, guest conductor, clinician and adjudicator in 12 states. He saw service as a combat infantryman in World War II and

was twice awarded the Bronze Star for meritorious service in combat in France.

The Marching Chiefs, which includes 180 personnel, is truly an all-southern band due to its appearances throughout the south and its predominantly all-southern personnel. The Marching Chiefs have appeared in Alabama, Florida, Georgia, Mississippi and Texas with a possibility of adding Pennsylvania to the list this year.

Whitcomb, also a music professor, received Bachelor of Music and Masters degrees from Northwestern University. He's a native of Mellon, Wisconsin.

Band Day at Florida State, planned October 6 this year, is one of the highlights of the Marching Chiefs' spectacular shows because it brings together some of the finest high school bands in Florida, Georgia and Alabama.

Band Day was first inaugurated at FSU in 1951 and it has grown from some 13 bands to over 30. This will be the sixth annual edition of the event and promises to top all the rest.

ALFORD BROTHERS

FINE WEARABLES FOR MEN

CAMPUS-TOGS CLOTHES

McGREGOR SPORTSWEAR

212 SOUTH MONROE ST.



"Two Points that put you out in front!"

Insured Savings

Above Average Dividends"

—Davy Dividend

LEON FEDERAL SAVINGS
and Loan Association

MONROE AT PARK AVENUE — PHONE 2-0827



SAVINGS AND INVESTMENTS INSURED

Up to \$10,000 by Federal Savings and Loan Insurance Corporation

1956 FLORIDA STATE UNIVERSITY FOOTBALL ROSTER

NO.	NAME	AGE	ENDS		CLASS	HOMETOWN
			HT.	WT.		
86	JIM ARNOLD	25	5-8	170	Jr.	Bainbridge, Ga.
81	HAM BISBEE	20	6-0	172	Jr.	Sanford
83	BOB FOUNTAIN	19	5-11	187	So.	Crestview
84	BILL KIMBER	20	6-0	185	So.	Winter Park
85	BOB NELLUMS	24	6-1	201	Jr.	Pensacola
89	GERALD PHILP	23	5-11	188	Jr.	Royal Oak, Mich.
80	RONNIE SCHOMBURGER	22	6-2	192	Jr.	Pittsburgh, Pa.
TACKLES						
74	WILLIE GARDNER	19	6-0	217	Jr.	Tampa
77	GEORGE BOYER	21	6-0	223	Jr.	Jacksonville
78	JOHN CRAIG	19	6-0	217	Jr.	Orlando
76	BOBBY KEYS	20	5-9	172	Jr.	Ringgold, Ga.
73	BILL MUSSELMAN	20	5-11	215	Jr.	Lynchburg, Va.
70	BOB THOMAS	18	5-11	198	So.	Mansfield, Ohio
71	STEVE HOLTON	22	6-1	205	Jr.	Perry
79	JERRY GRAHAM	20	6-0	217	Jr.	Tampa
GUARDS						
60	LEO BAGGETT	20	5-8	209	Jr.	Panama City
67	BOB ELLIOTT	21	6-1	195	Jr.	St. Petersburg
64	BUD LEONARD	22	5-11	192	Sr.	Ocala
66	AL PACIFICO	24	5-7	205	Sr.	Altosna, Pa.
68	TED WILLIAMS	23	5-9	180	So.	Tallahassee
61	JOE McGEE	20	5-8	191	So.	Raleigh, N. C.
CENTERS						
52	TROY BARNES	24	6-2	198	Jr.	Chickasaw, Ala.
50	MILLARD DAVIS	20	6-1	195	Jr.	Atlanta, Ga.
53	STUART KEITH	19	5-11	188	So.	Panama City
51	MELVIN POPE	23	6-1	216	So.	Tallahassee
QUARTERBACKS						
20	LEE CORSO	21	5-10	166	Sr.	Miami
14	JERRY HENDERSON	20	5-11	175	Jr.	Pensacola
10	VIC PRINZI	20	6-0	178	Jr.	Waverly, N. Y.
11	TED RODRIQUE	26	5-11	180	Jr.	Lynn, Mass.
12	LEN SWANTIC	25	5-10	180	Sr.	Columbus, Ga.
HALFBACKS						
29	CARMEN BATTAGLIA	21	5-8	178	Jr.	Niagara Falls, N. Y.
27	STAN DOBOSZ	21	5-8	185	Jr.	E. Chicago, Ind.
22	BUCK METTS	20	5-9	180	Sr.	Sanford
21	BILLY ODOM	21	5-8	164	Sr.	Mt. Dora
15	BOBBY RENN	22	5-11	170	So.	Henderson, N. C.
25	PAT VERSPRILLE	21	6-2	190	Jr.	Norfolk, Va.
26	BILLY WEAVER	20	5-10	175	Jr.	Miami
28	WES MINTON	22	6-0	180	So.	Jacksonville Beach
	GENE GRIFFIN	19	5-8	150	So.	Augusta, Ga.
FULLBACKS						
43	EMIL ABOOD	20	5-10	182	Jr.	Jacksonville
41	JOE HOLT	21	5-10	183	Sr.	Graham, N. C.
44	EDDIE JOHNSON	21	5-10	205	Jr.	Charleston, W. Va.

Eat at

TALLAHASSEE DINING ROOM

ON U. S. 27 — ONE MILE NORTH



Recommended by Duncan Hines

STUDENT SAVING CENTER

- School Supplies
- Pennants and Novelties
- Gifts
- Art Supplies
- Greeting Cards
- Stationery
- Drafting Equipment
- Pen Repair Service
- Sundries
- Camera Supplies & Developing Service

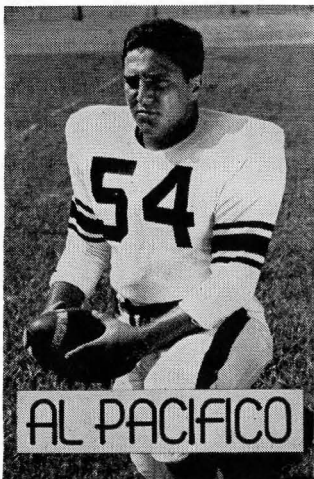
We Buy and Sell Books

NEW and USED

UNIVERSITY BOOKSTORE

In the Student Center

ROYAL SANDWICH COMPANY



P. O. Box 641

• Phone 2-0699

— WHOLESALE DISTRIBUTORS OF SANDWICHES —

Salted Peanuts • Peanut Butter Sandwiches • Potato Chips

Pop Corn • Cookies • Candy

"FRESH AS A DAISY"

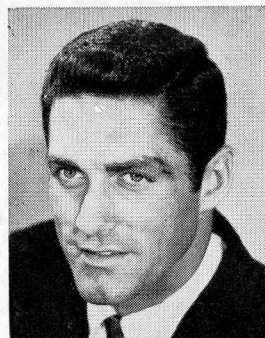
OWNED AND OPERATED BY FRANK AND JAMES CHASE

Skyline Restaurant

U. S. Highways 90 and 20

1 Mile West of City Limits

TALLAHASSEE, FLORIDA



RONALD SCHOMBURGER

"Serving Good Food for Fine People"

BENNETT'S DRUG STORE

- Prescriptions
- Cameras
- Sundries
- Gifts
- Fountain
- Cafe
- Cosmetics
- Drugs

MEET AT BENNETT'S
BEFORE AND AFTER THE GAME!

Corner Monroe and College Streets

Phones 2-8980 — 2-4450

The Vogue

TALLAHASSEE
FLORIDA

Meet Me at the

MECCA

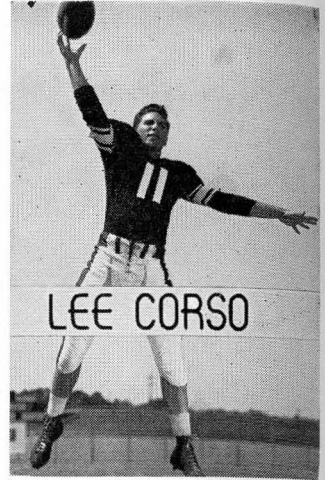
111 South Copeland St.

and Enjoy the Fine

Food and Friendly Atmosphere

The Master Chef

Floyd Whiddon Insurance Agency



D. T. O'HARA, JR.

PRODUCE • POULTRY • FROZEN FOODS

Phone 2-2128 • 717 W. Gaines St.

TALLAHASSEE, FLORIDA

THE LAUNDROMATS

115 W. Tennessee — 1005 N. Monroe

Phone 3-1789

Phone 2-3792

CLOTHES — RUGS — BLANKETS

Washed Clean — Fluff Dried and Folded

SHIRT FINISHING

DRY CLEANING • TINTEXING

"Your Satisfaction Is Our Goal"

BILL'S BOOK STORE

BOOKS

SUPPLIES

SUNDRIES

PRIVATELY OWNED AND OPERATED

LITTLE FOLKS STORE

INC.

133 North Monroe Street

CHILDREN'S FURNITURE • TOYS

NOVELTIES • GIFTS • HOBBIES

"The Capital's Major for Minors"

Phone 2-1146

TALLAHASSEE, FLORIDA

THE SWEET SHOP

GOOD FOOD

DELICIOUS SODAS

DRUG SUNDRIES

**Meet Your Friends Here Before
and After the Game!**

Follow the Seminoles!

GOOD LUCK SEMINOLES!

SEVEN SEAS

Corner Monroe and Pensacola

Next to the Capitol

Buddy's Hardware and Sporting Goods

We Have the Leading Lines!

If It's Sports — We Have It!

203 S. Monroe

BUDDY BRANDT, Owner

Tallahassee's Finest

Will be Happy to Serve You After the Game!

EVERY SUNDAY AFTERNOON

We Feature a Special Smorgasbord Table

DANLEY FURNITURE COMPANY

611 N. MONROE ST.

***All Types of Furnishings
for Your Home***

S H A W ' S

Furnishings for Your Home

COLLEGE AVE. at DUVAL ST.

"Good Taste Costs No More"

It's Fun...
to be nice to people

M & N CAFE

Fine Food Since 1925

The Best Place in Town to Eat

AUBREY BARROW SERVICE STATION

1853

THOMASVILLE

ROAD

Phone 2-5224

FAIVER'S For Chicken Pizza Pie

•

**Half-Fry Chicken
Italian Spaghetti
Sandwiches - All Types**

•

**1312 WEST TENNESSEE STREET
TALLAHASSEE, FLORIDA**

MIDYETTE-MOOR Insurance Agency

"Ask Those We Serve"

Complete Insurance and Bond Service

PHONE 2-3456

**MIDYETTE-MOOR BUILDING
TALLAHASSEE, FLORIDA**

—SAYS—

Scalp 'em Seminoles!



**PAYNE H. MIDYETTE
FRANK D. MOOR
EDWIN M. CLARK
A. WINSLOW SULLIVAN
ROBT. M. DICKINSON
PAUL L. LEWIS
PAYNE H. MIDYETTE, JR.
WM. L. MOOR**

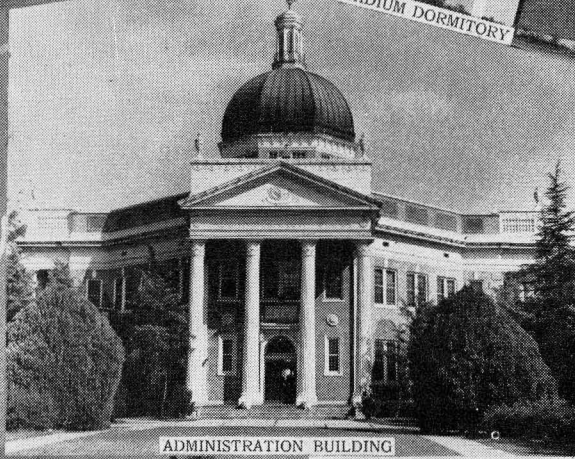
Mississippi Southern



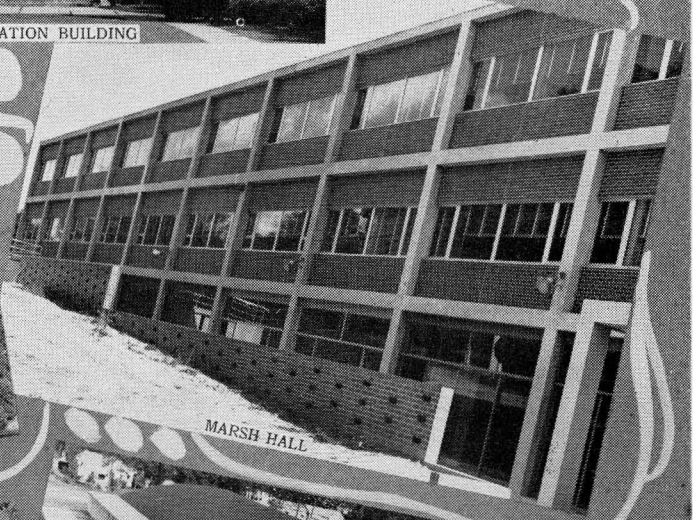
LIBRARY

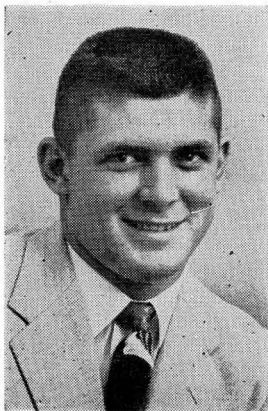


CAMPUS

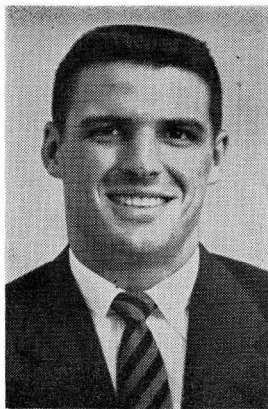


SCENES

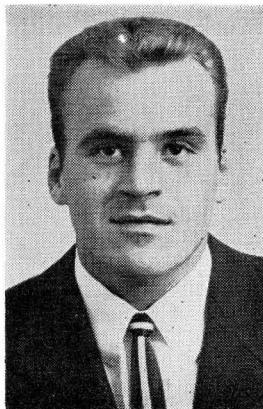




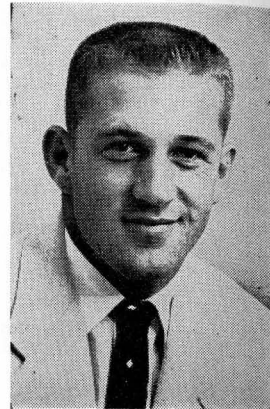
JIMMY TAYLOR



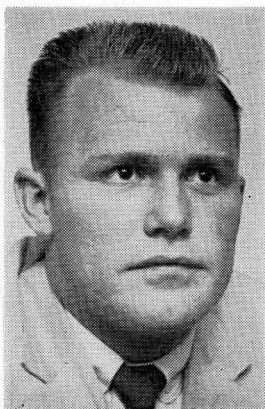
LAWRENCE MEES



DON OWENS



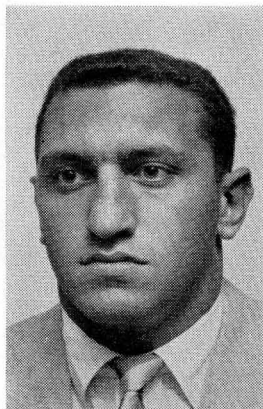
DALLAS WHITFIELD



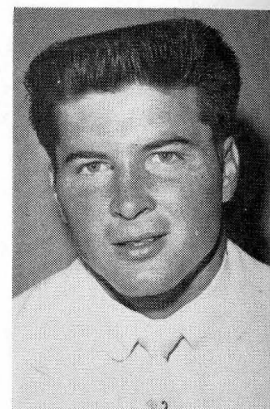
HAROLD CLARK



AL TREGLE



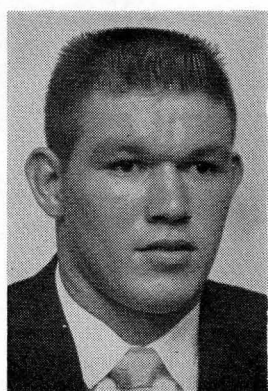
HARVEY SELIGMAN



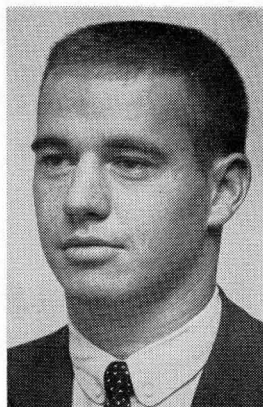
JOE BATTAGLIA



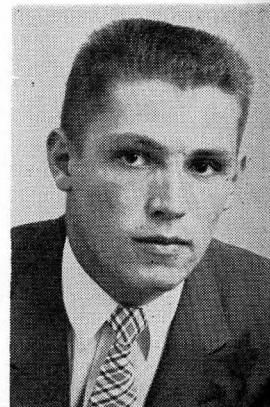
LARRY RICH



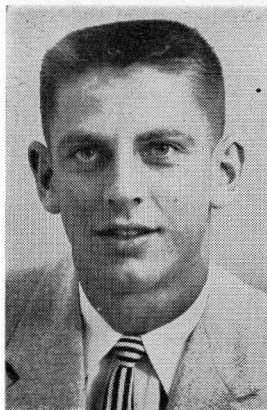
RICHARD JOHNSTON



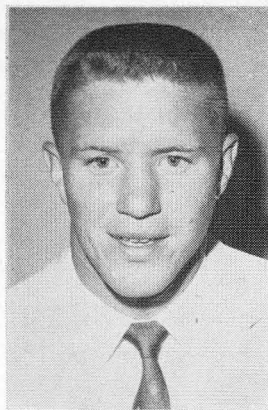
BILL MARTIN



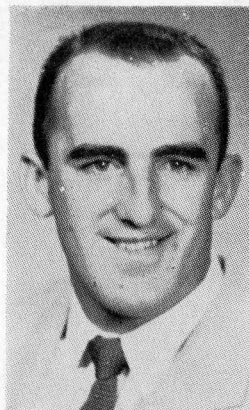
DAVE FITZGERALD



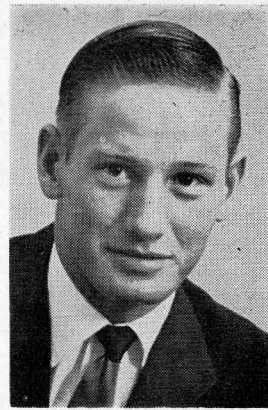
DOUG BARFIELD



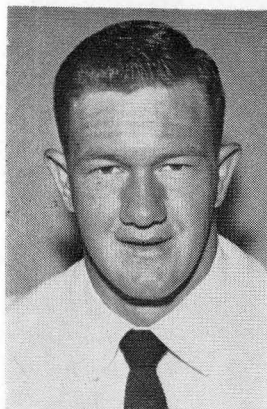
JOE DOGGETT



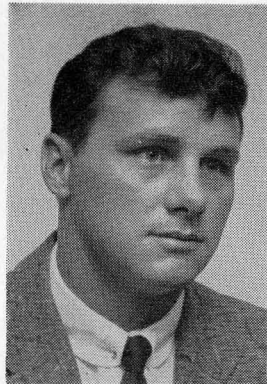
CURRY JUNEAU



JERRY TAYLOR



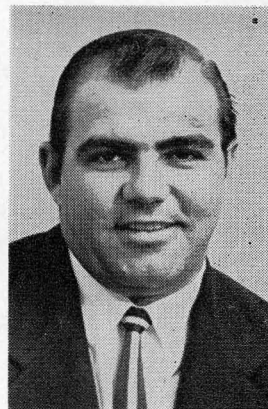
BO DICKINSON



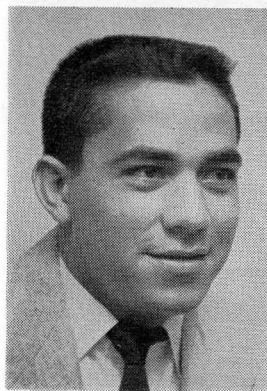
JACK MAY



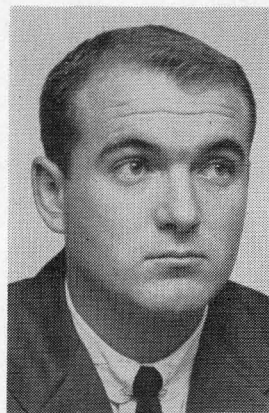
JOHN RUSSELL



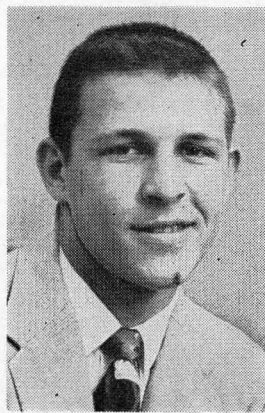
P. W. UNDERWOOD



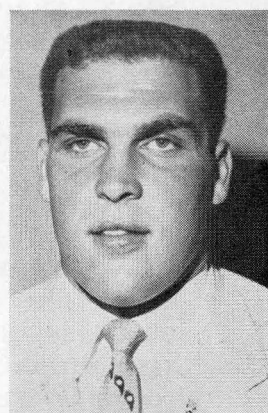
J. C. ARBAN



BOBBY HUGHES



BOB YENCHO



SAM TUCCIO

MISSISSIPPI SOUTHERN FOOTBALL ROSTER

NO.	NAME	POS.	AGE	HGT.	WT.	CLASS	HOMETOWN
10	TOMMY MORROW	HB	18	6-0	175	Fr.	Georgiana, Ala.
11	WILLIE GENE COATS	QB	20	5-9	170	So.	Stonewall, Miss.
12	DOUG BARFIELD	QB	20	6-0	184	Sr.	Grove Hill, Ala.
14	BILLY LARSON	QB	18	5-9	156	Fr.	Pascagoula, Miss.
15	BOBBY HUGHES	QB	22	6-5	220	Sr.	Fort Worth, Texas
20	DALLAS WHITFIELD	HB	22	5-9	170	Sr.	Picayune, Miss.
22	HUGH McINNIS	FB	18	6-3	220	Fr.	Leakesville, Miss.
25	R. L. DICKINSON	FB	20	6-2	212	So.	Hattiesburg, Miss.
26	LAWRENCE MEEKS	FB	20	5-11	200	Jr.	Kossuth, Miss.
27	HARVEY SELIGMAN	FB	22	5-10	185	Sr.	Brooklyn, N. Y.
33	CHARLES McARTHUR	HB	18	5-9	165	Fr.	Laurel, Miss.
34	ARNOLD SPENCE	HB	18	5-10	165	Fr.	Picayune, Miss.
35	JOHNNY BERKE	HB	20	5-10	180	Jr.	Dallas, Texas
41	J. C. ARBAN	HB	22	5-11	180	So.	Athens, Ala.
42	JACK MAY	HB	24	5-10	185	Jr.	Milwaukee, Wis.
43	BOBBY LANCE	HB	20	5-7	164	So.	Philipp, Miss.
44	JOE DOGGETT	HB	18	6-0	183	So.	Hattiesburg, Miss.
45	TOMMY PURVIS	HB	17	5-7	165	Fr.	Ferriday, La.
46	BUDDY SUPPLE	FB	18	5-9	175	So.	Hope Hull, Ala.
49	EDWIN SPEIGHTS	HB	20	5-10	163	Jr.	Prentiss, Miss.
52	RICHARD JOHNSTON	C	20	6-3	212	So.	Biloxi, Miss.
55	CHARLES ELLZEY	C	19	6-2	195	Fr.	Meridian, Miss.
56	BILL MARTIN	C	21	5-11	207	Sr.	Cullman, Ala.
57	BOB RINEHART	C	19	6-0	205	So.	Brewton, Ala.
61	BOBBY LITTLE	G	18	6-0	195	Fr.	Enterprise, Miss.
63	LARRY RICH	G	20	5-11	196	Sr.	Pell City, Ala.
64	JOE BATTAGLIA	G	19	6-0	210	So.	New Orleans, La.
65	DAVE FITZGERALD	G	21	5-11	198	Sr.	McKeesport, Pa.
66	WILLIAM SHOWS	G	19	6-0	185	Fr.	Montgomery, Ala.
67	AL TREGLE	G	22	6-0	195	Sr.	Metairie, La.
68	JIMMY TAYLOR	G	19	5-9	195	So.	Biloxi, Miss.
69	EDDY GODWIN	G	19	6-1	195	So.	Selma, Ala.
70	SAM TUCCIO	T	19	6-1	225	So.	Vicksburg, Miss.
71	DENMAN BRUMFIELD	T	21	6-1	205	Sr.	Franklinton, La.
72	P. W. UNDERWOOD	T	24	5-11	234	Sr.	Cordova, Ala.
73	BURNETT BLACKMON	T	23	5-11	217	So.	Jackson, Miss.
74	BOBBY LOTT	T	19	6-3	210	So.	Sumrall, Miss.
75	GEORGE UNDERWOOD	T	18	6-2	200	Fr.	Cordova, Ala.
78	DON OWENS	T	24	6-6	248	Sr.	St. Louis, Mo.
79	JOHN RUSSELL	T	20	5-8	220	So.	Monticello, Miss.
80	JERRY TAYLOR	E	20	6-0	190	Sr.	Columbia, Miss.
81	TED CRAWFORD	E	18	6-2	174	Fr.	Mobile, Ala.
82	BOB YENCHO	E	20	6-0	195	So.	McKeesport, Pa.
83	CURRY JUNEAU	E	22	6-0	205	Jr.	New Orleans, La.
86	REECE HEFNER	E	21	5-11	205	Sr.	Kingsport, Tenn.
85	DONNIE WAITS	E	19	6-0	190	Jr.	Hattiesburg, Miss.
87	XEARL MARSHALL	E	19	6-0	190	Jr.	Philadelphia, Miss.
88	HAROLD CLARK	E	21	6-0	198	Sr.	Shubuta, Miss.

Rose PRINTING CO., INC.



*Always
the Finest
Printing*



ROSE BUILDING

PHONE 2-0230

T A L L A H A S S E E , F L O R I D A

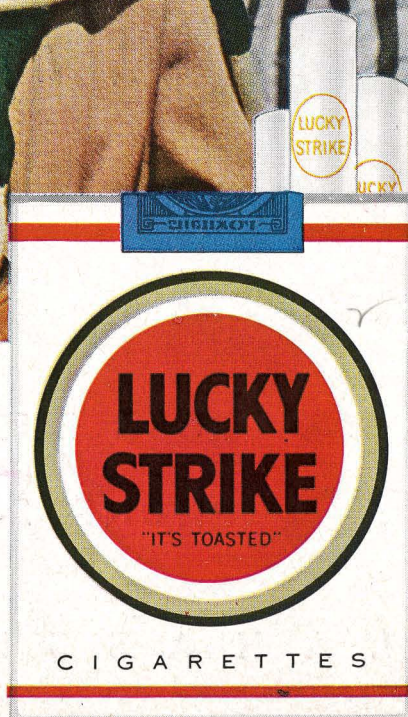
Light up a Lucky—

it's light-up time!



Luckies Taste Better

Cleaner, Fresher, Smoother!



**"IT'S
TOASTED"**
to taste
better!