

OFFICIAL PROGRAM • FIFTY CENTS

FURMAN FLORIDA STATE

SEPTEMBER 21 • 1957 • CAMPBELL STADIUM

ARCHIVES
F. S. II. LIBRARY

A Welcome

from

Dr. Robert M. Strozier

President, Florida State University



I am eagerly anticipating the first game I see Florida State University play in Campbell Stadium.

We are happy to have the Furman University team as our guests on this occasion.

It is encouraging to know that the citizens of Florida are supporting this university, not only on the football field but in all areas. The people of Tallahassee have been particularly helpful in giving the kind of warm and continued support which a university must have to achieve its goals.

We want to win—in the educational field, in the area of sports, and in the development of enlightened citizens.



HOMER HOBBS
Coach



LYLES ALLEY
Athletic Director

INFORMATION ABOUT FURMAN

By **DAN FOSTER**

The team which faces Florida State tonight is Head Coach Homer Hobbs' third year team, and it is the one which Hobbs two years ago said would probably be his first real competitive unit.

It is manned in several spots by men who entered Furman at Hobbs' invitation and have already absorbed two tough seasons of Collegiate competition.

Part of their fire bath was administered by their adversary tonight, and while the Hurricane players have a high regard for Florida State's machine, they have also acquired some self assurance of their own in two seasons.

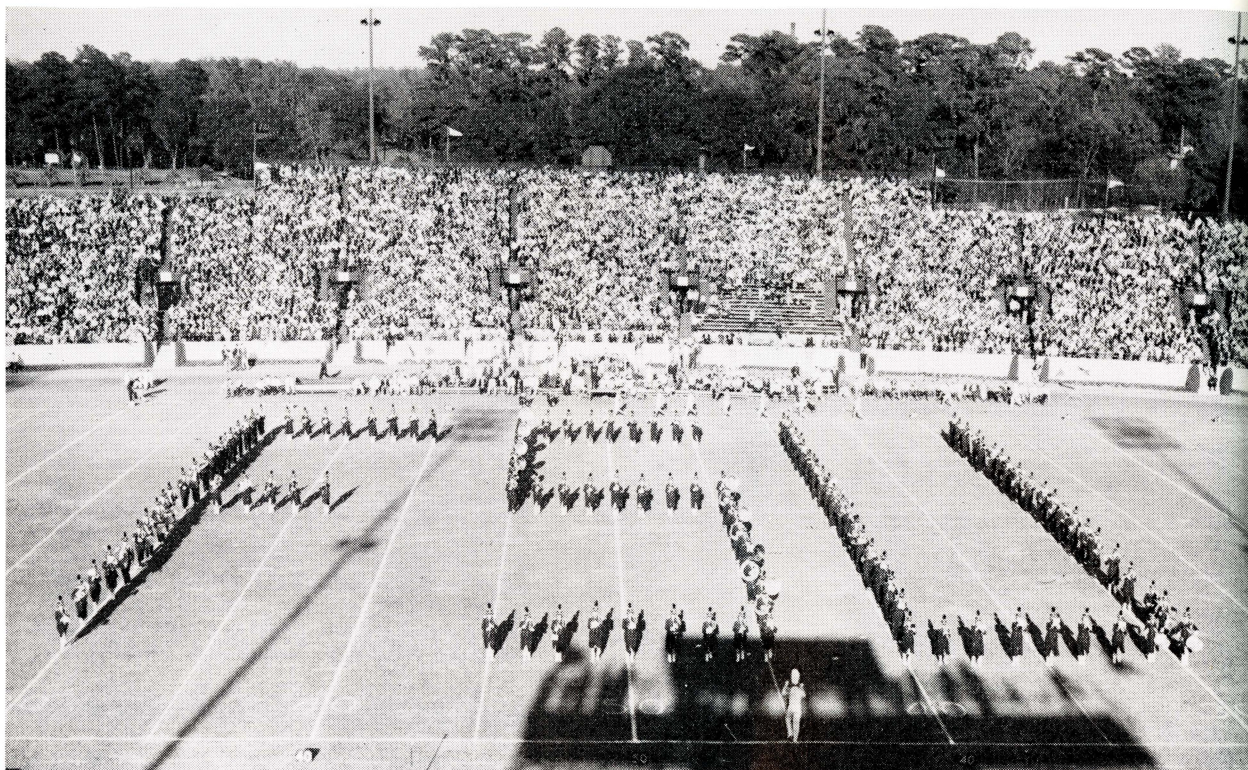
The last time that Furman beat Florida State was in 1953 by 14-7, but the present Furman squad finds little consolation in that, since none of them had stepped onto a college field that far back.

They were disappointed over last season's 42-7 setback at the hands of the Seminoles, and their opinion that they were a better team was somewhat borne out when they held powerful West Virginia to a 6-0 triumph the following week.

Furman's optimism is inspired no little by captain and halfback Jerry Penland, one of the top ground gainers in the Southern Conference last season and a three-year letterman.

He, along with fullback Jim Grant, tackle Don Markofski and end Ray Siminski should give highly creditable individual performances.

Three of the last five games between these two teams ended in margins of less than 14 points, so precedence, as well as the Hurricane squad, is inclined toward a tighter game tonight than last year.



The Florida State University Marching Chiefs in Formation.

THE FSU MARCHING CHIEFS

Present

SALUTE TO FRESHMEN

Manley R. Whitcomb, Director

Robert Braunagel, Asst. Director

Charles Carter, Music Arranger

Terry Johnston, Drum Major

Jackie Hailey, Head Majorette

Bee Carroll, Ted Daniels, Flying Seminoles

FORMATION

Rat Cap
 Freshman Exam
 Cash Register (Pay your fees)
 Indian Wigwam
 Esky Face
 Four Leaf Clover
 Tom
 Crew Cut Face
 RMS (our new president)
 FSU

MUSIC

Washington and Lee Swing
 Brain Music
 I Got Plenty of Nothin'
 Standing On The Corner
 Ma, He's Making Eyes At Me
 I'm Looking Over, A Four Leaf Clover
 Little Bit of Luck
 You'll Never Walk Alone
 Getting to Know You
 FSU Fight Song

— ALL EXPENSE TOURS — CRUISES — INDEPENDENT TRAVEL —

**"How,
and
where
in
the
world
are
you
going...."**

HAVANA

MEXICO

CARIBBEAN

NASSAU

S. AMERICA

EUROPE

Whether by...

AIR - BOAT - BUS or RAIL

Let GENERAL TRAVEL plan
your trip...

**There Is No Charge
For Our Service**

FOR COMPLETE AND ACCURATE TRAVEL INFORMATION, CALL

GENERAL TRAVEL SERVICE

109 E. Call St., Tallahassee

Phone 3-4567

Next to Chamber of Commerce

GO SEMINOLES — GO SEMINOLES

At Home and Away

We're Pulling for YOU

— AIRLINE AND STEAMSHIP TICKETS ANYWHERE IN THE WORLD —



Gilberg's

"The House of 1000 Fabrics"

123 South Monroe Street
TALLAHASSEE, FLA.

220 Broad Avenue
ALBANY, GA.

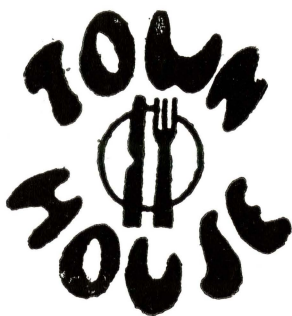
109 W. University Ave.
GAINESVILLE, FLA.

26 North Palofax Street
PENSACOLA, FLA.

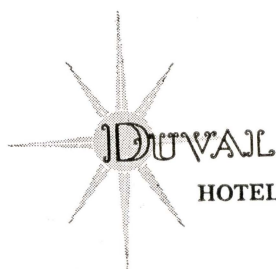
535 Harrison Ave. Panama City, Fla.

Fabrics From All Over the World

**TRAVELING
DESSERT TRAYS**



**CHARCOAL BROILED
STEAKS**



HOTEL • TALLAHASSEE, FLORIDA

TALLAHASSEE MUSIC COMPANY

"Service Built This Company"

Phone 3-1246

225 W. Carolina St.

TALLAHASSEE, FLORIDA

Buddy's Hardware and Sporting Goods

We Have the Leading Lines!

If It's Sports — We Have It!

203 S. Monroe

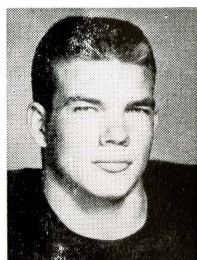
BUDDY BRANDT, Owner

SEMINOLE



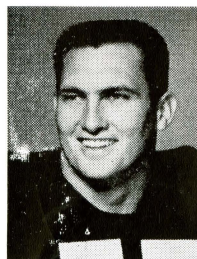
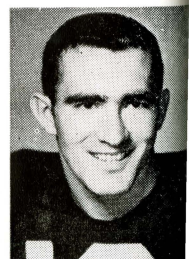
52 TROY BARNES. Senior, 6-1, 190 pounds, from Chickasaw, Ala. Did a tremendous job as the Seminole's pivot man last fall and should repeat this year. One of the most reliable men on the field at all times. Always there and always a threat.

42 CARMEN BATTAGLIA. Senior, 5-9, 175 pounds, from Niagara Falls, N. Y. Always a hard competitor, Carmen could blossom out this fall for his final season. Runs good in close, is an excellent pass catcher and has a big heart on defense.



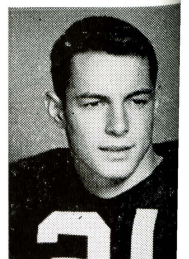
63 ABNER BIGBIE. Sophomore, 5-9, 180 pounds, of West Palm Beach. Another rugged sophomore with a great future. He's only 19 and FSU coaches regard him as an outstanding offensive prospect. A success story in the process of being written.

81 HAM BISBEE. Senior, 6-1, 176 pounds, from Sanford, Fla. A steady competitor all through his three years at FSU. Outstanding as an offensive player with a bulldog-knack for hanging in there on defense. His final year could be his best.



77 GEORGE BOYER. Senior, 6-2, 220 pounds from Jacksonville. Often referred to as the perfect physical specimen for a football player. Moves exceptionally well for his size, excels in pursuit. A bulldog on defense, stays with the best of them.

21 BOBBY CARNES. Soph., 5-11, 175 pounds, Tallahassee. One of the Seminoles' prime candidates at half-back, Carnes could be the outstanding sophomore back in camp this season.

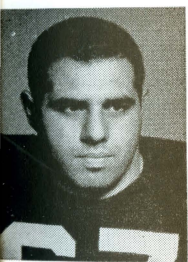
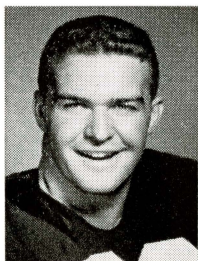


PROFILES



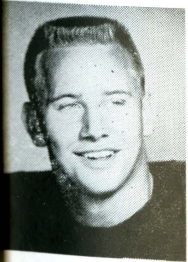
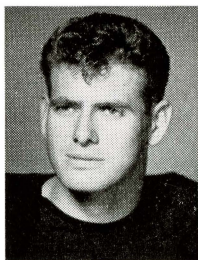
27 STAN DOBOSZ. Senior, 5-8, 185 pounds, of East Chicago, Ind. "Stumpy" they call him. He's a hard runner and a rugged defensive player. Thrives on conditioning and could become one of the best running half-backs in the south this fall.

66 BOB DOUGLAS. Sophomore, 6-0, 198 pounds from Dayton, O. Just turning 20, he's already a seasoned and rugged competitor. Played four years of guard at Fairmont High School in Dayton. One of FSU's toughest sophs in years.



78 TONY FEKANY. Sophomore, 5-9, 220 pounds of Jacksonville. Has all the beef a guard needs and if he can develop the speed and ability to move this season he'll figure big next fall when FSU tackles that mammoth schedule.

65 BOB FOUNTAIN. Junior, 5-11, 188 pounds of Crestview, Fla. A former end, this 21-year-old athlete has made the switch to guard with relative ease. FSU coaches expect him to be an outstanding performer this fall.

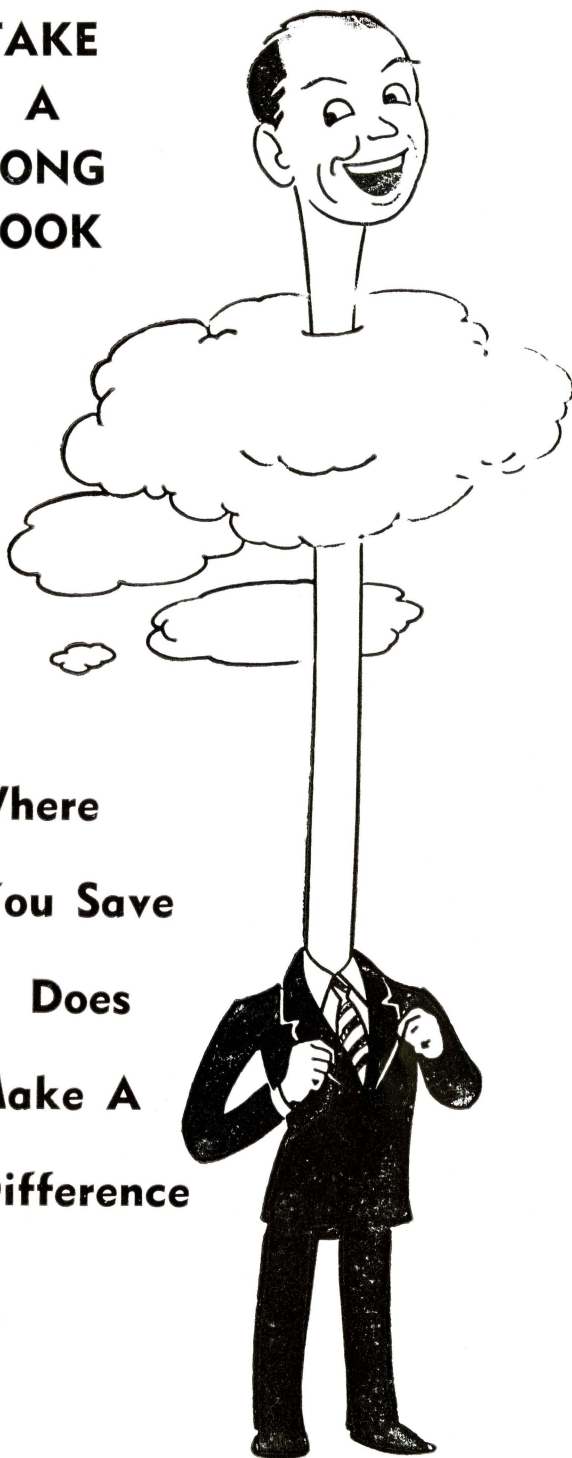


67 JERRY GRAHAM. Junior, 6-0, 180 pounds of Chicago, Ill. Tough on defense with ability to pull out and lead the sweeps around end. One of the bright spots in FSU's guard picture, coaches expect him to show well this year.

14 JERRY HENDERSON. Senior, 6-0, 175, from Pensacola. Like Renn, Jerry is a converted halfback who figures to make good as a signal-caller. He could be number two behind Bobby before the season is out.



TAKE A LONG LOOK



Where
You Save
Does
Make A
Difference

TALLAHASSEE
FEDERAL
SAVINGS & LOAN
115 E. Park Ph. 2-0950

TALLAHASSEE AUTOMOBILE DEALERS ASSOCIATION

Alford Chevrolet Co.

Capital Lincoln-Mercury, Inc.

Carr Buick

Dean Motors

Drake Motors

Mayo-Mingledorff Motors, Inc.

John Manthey, Inc.

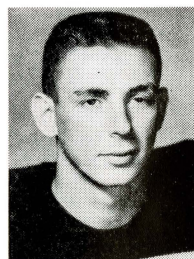
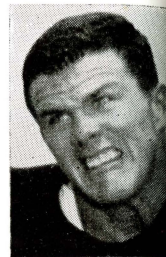
Proctor & Proctor

Capital Plymouth, Inc.

Tallahassee Motors, Inc.

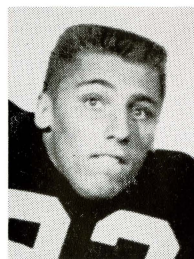
SEMINOL

44 EDDIE JOHNSON. Senior, 5-10, 190 pounds, from Charleston, W. Va. Moves well for his hefty size and could be a real offensive threat. Tough in pursuit from the linebacker spot and could give Seminoles real defensive boost.



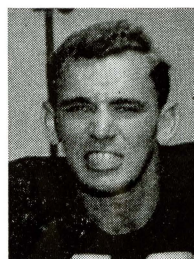
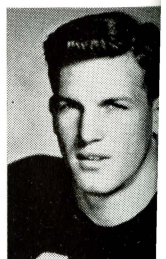
53 STUART KEITH. Junior, 5-10, 190 pounds from Panama City, Fla. A big surprise during the fall drill he's come along rapidly and will be one of the Tribe's regular performers this fall. Moves well from that linebacker backing spot and does the job on defense.

70 JERRY LANE. Sophomore, 6-1, 205 pounds, from Lakeland, Fla. Young at 20 and still growing. Was an end and center in high school. Likes to play defense. If he continues to develop, he'll be an outstanding pro football prospect.



22 LENNY LEVY. Sophomore, 5-10, 180, of Miami. One of the bright sophomores in the early fall practice. Levy could break into the starting lineup before the season is over. A lot of drive and really comes to play.

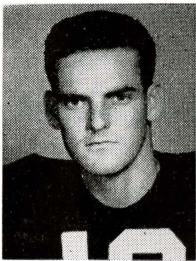
13 JOE MAJORS. Sophomore, 6-0, 175 pounds, from Huntland, Tenn. Younger brother of Tennessee's All-American tailback Johnny Majors has shown spurts of greatness at times at the quarterback slot. Is a fine passer, could really help the Seminoles this year.



43 LOU MANNING. Senior, 5-10, 192 pounds of Delray Beach, Fla. service returnee, Manning brings plenty of punch back to FSU's back spot. He could be the big surprise on the team this fall.

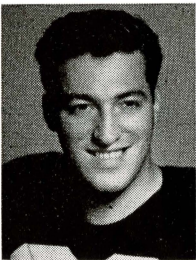
PROFILES

12 GENE McCORMICK. Sophomore, 5-8, 160, from Miami. One of the Seminoles' more talented sophomores, McCormick figures highly in FSU quarterback plans. An excellent passer, he could break through.



61 JOE McGEE. Junior, 21, 5-9, 192 pounds of Raleigh, N. C. He'll take up a lot of the sag at the pullout spot this fall, and coaches think he'll do it well. Always reliable, he should clock a lot of game time this fall.

69 PATSY MONACO. Sophomore, 19, 5-10, 200 pounds of Balston, N. Y. Came to FSU as a fullback, he's been shifted to guard and coaches expect him to develop rapidly. Still moves like a fullback and he's big enough to make himself felt at guard.



73 BILL MUSSELMAN. Senior, 5-11, 210, of Lynchburg, Va. Nugent once said if Musselman had been a guard, he'd have been the best in the country. But he's been doing a great job holding down the left tackle post for three years.

85 BOB NELLUMS. Senior, 6-1, 201 pounds, of Pensacola. His status will have a lot of bearing on FSU's success this fall. He led in scoring with 31 points last fall even though he played only half the games. He suffered a knee injury and is in the process of recovering.



74 MEL POPE. Senior, 6-0, 215 pounds from Tallahassee. Pope has come along well during recent drills and he'll play a lot of football this fall. He's a big boost to the center post and this year it'll have plenty of depth.

BRINKLEY BROS.

HOMER A. BRINKLEY ROBERT T. BRINKLEY
REALTORS • INSURANCE

MORTGAGE LOANS

"A Brinkley Buy Is a Better Buy"

BRINKLEY BLDG. — 306 N. MONROE ST.

TELEPHONE 3-0918

*"Florida's Most Complete Store
For Boys and Young Men"*

Arnold's ★
The Young Man's Shop
105 S. MONROE

•
FROM SIZE 6 TO STUDENT SIZE 40

SCALP 'EM SEMINOLES

BROWN'S MEN'S WEAR

Monroe at Park

F & T RESTAURANT

For Good Food and Quick Service

113 S. Monroe

Phone 2-8917

Air Conditioned

MIDYETTE-MOOR Insurance Agency

"Ask Those We Serve"

Complete Insurance and Bond Service

PHONE 2-3456

MIDYETTE-MOOR BUILDING
TALLAHASSEE, FLORIDA

SAYS

Scalp 'em Seminoles!



PAYNE H. MIDYETTE
FRANK D. MOOR
EDWIN M. CLARK
A. WINSLOW SULLIVAN
ROBERT M. DICKINSON
PAUL L. LEWIS
PAYNE H. MIDYETTE, JR.
WILLIAM L. MOOR
GLENN SEARS
REX SIKES
FRANK KOUBA

WON'T YOU...

HAV-A-TAMPA

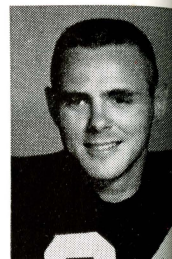
...CIGAR

Eli Witt Tobacco & Candy Co.

TALLAHASSEE, FLA.

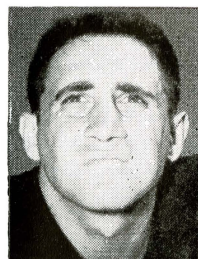
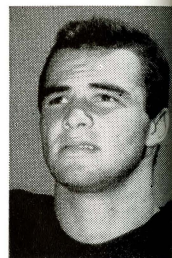
SEMINOL

24 GERALD PHILP. Senior, 5-11, 185 pounds, from Royal Oak, Mich. A converted end now slated for a right halfback post. Philp was a dependable pass catcher last year, but Nugent elected to move him to halfback to give his backfield more depth. Figures highly in Seminole plans.



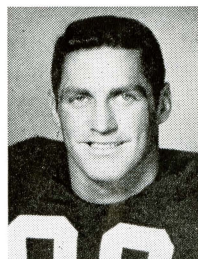
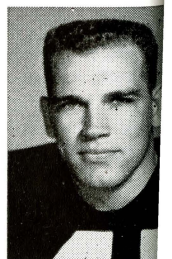
15 BOB RENN. Junior, 5-10, 185 pounds, from Henderson, N. C. switch from halfback where he was on team in ground-gaining last year. Renn has developed fast as a team leader. Flashy runner with an excellent pass, he could be dark horse for All-America honors.

20 BUDDY REYNOLDS. Junior, 21, 5-10, 178 pounds of West Palm Beach. A returnee after sitting out a couple of years with a knee injury, Buddy could hit his stride this fall and make the Seminoles go.



11 TED RODRIQUE. Senior, 5-11, 185 pounds, of Lynn, Mass. "Rock" has had his ups and downs, but he is still the best passer FSU has and always manages to get the tough pass down when it's needed most. Rock is the FSU offensive system like he has vented it.

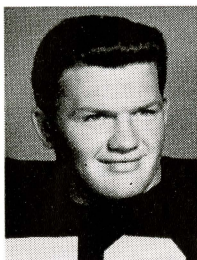
29 RICHARD ROZMAN. Sophomore, 5-8, 180 pounds, Tallahassee. A hard-driving back, Rozman could be up among the top backs before the season is out.



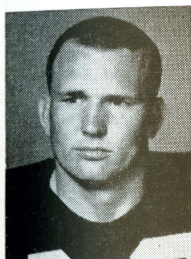
80 RON SCHOMBURGER. Senior, 6-2, 192 pounds, of Pittsburgh, Pa. A unanimous choice for team captain, he is possessed with great inspirational qualities. Coaches expect this to be a great year for him. He has started in every game since a freshman. FSU's All-America candidate.

PROFILES

50 PAUL SLATON. Sophomore, 5-9, 205 pounds, from Miami. Short, but there's a lot of power packed in his frame and he moves it very well. One of the brightest sophomore prospects with the Tribe, he could be a big surprise this fall.



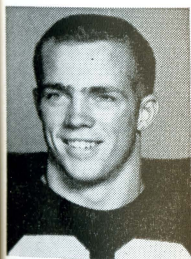
87 JOHN SPIVEY. Sophomore, 6-2, 200 pounds of Panama City, Fla. Another of those players who can play just about any position on the line. He's presently an end but he might be playing a lot of positions before the season is out.



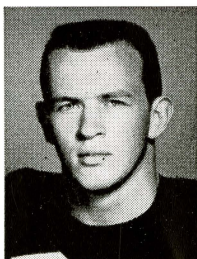
40 TERRELL TEAGUE. Sophomore, 6-0, 195 pounds, Auburndale. Here may be the possible solution to Nugent's long search for a hard-driving fullback. Another of many bright sophs, Teague could also be in the opening lineup before too long.



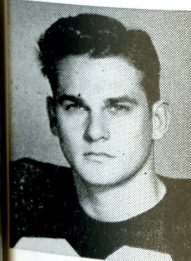
62 AL ULMER. Sophomore, 5-10, 178 pounds of Clearwater, Fla. One of those shoestring guards you hear about every so often, but he's still growing and knows no peer for courage. Excels in rugged defensive work, he steps right along with the 'backs on the pullouts.



79 LOU WALLACE. Sophomore, 6-0, 200 pounds of Atlanta, Ga. He's a little light for a tackle but he's the bruising kind and he bounces back hard when he's been hit. A 19-year-old soph, he has plenty of time to develop.



26 BILL WEAVER. Senior 5-10, 182 pounds, of Miami. Always a rugged competitor, Weaver is back this year in excellent condition. Runs like a fullback and plays defense like a linebacker. He's the senior class prexy and an outstanding student.



THE LAUNDROMATS

115 W. Tennessee — 1005 N. Monroe

Phone 3-1789

Phone 2-3792

CLOTHES — RUGS — BLANKETS

Washed Clean — Fluff Dried and Folded

SHIRT FINISHING

DRY CLEANING • TINTEXING

"Your Satisfaction Is Our Goal"

Eat at

TALLAHASSEE

DINING ROOM

On U.S. 27



Phone 2-3428

Banquet Facilities

THE SPOTLIGHT IS ON THE SEMINOLE CLUB

Why not drop by the Seminole Club today. More beautiful than ever and completely redecorated in keeping with the South's most beautiful campus.

Finest Cuisine At Student Prices

Only U. S. CHOICE meats—fresh Florida fruit juice each day—Highest grade coffee—vegetables fresh daily—Delicious desserts.

● SEMINOLE CLUB

Br. 7:00 a. m. — 9:30 a. m.

L. 11:00 a. m. — 2:00 p. m.

D. 5:00 p. m. — 7:00 p. m.

● STUDENT CENTER

Br. 7:00 a. m. — 10:00 a. m.

L. 11:00 a. m. — 1:30 p. m.

D. 5:00 p. m. — 7:00 p. m.

Soda Fountain open to 11:00.

● SODA SHOP

7:30 a. m. — 5:00 p. m.

Weekdays and Saturdays

MORRISON'S FOOD SERVICE

ALFORD BROTHERS

FINE WEARABLES FOR MEN

CAMPUS-TOGS CLOTHES

McGREGOR SPORTSWEAR

MANHATTAN FURNISHINGS

ARROW SHIRTS

FLORSHEIM SHOES

JARMAN SHOES

212 SOUTH MONROE ST.

Downtown Sales Office for FSU Football Tickets

FLORIDA STATE UNIVERSITY

1957 FOOTBALL ROSTER

No.	NAME	Pos.	AGE	HT.	WT.	YR.	HOMETOWN
11	*TED RODRIQUE	QB	25	5-10	185	Sr.	Lynn, Mass.
12	GENE McCORMICK	QB	22	5-9	152	So.	Miami
13	JOE MAJORS	QB	20	6-0	172	So.	Huntland, Tenn.
14	JERRY HENDERSON	QB	21	6-0	176	Sr.	Pensacola
15	*BOBBY RENN	QB	23	5-11	175	Jr.	Henderson, N. C.
20	*BUDDY REYNOLDS	HB	21	5-10	178	Jr.	West Palm Beach
21	BOBBY CARNES	HB	20	6-0	175	So.	Tallahassee
22	LENNY LEVY	HB	18	5-8	182	So.	Miami Beach
23	*JOHNNY SHEPPARD	HB	24	5-8	190	Jr.	Tallahassee
24	*JERRY PHILP	HB	25	6-0	187	Sr.	Royal Oak, Mich.
25	FRED PICKARD	HB	19	5-9	161	So.	Columbia, Tenn.
26	*BILLY WEAVER	HB	21	5-10	174	Sr.	Miami
27	*STAN DOBOSZ	HB	24	5-9	189	Sr.	East Chicago, Ind.
28	PETE OVERTON	HB	25	6-2	165	So.	Henderson, N. C.
29	RICHARD ROZMAN	HB	23	5-9	185	So.	Tallahassee
40	TERRELL TEAGUE	FB	20	6-1	198	So.	Auburndale
42	CARMEN BATTAGLIA	FB	22	5-10	180	Sr.	Niagara Falls, N. Y.
43	LOU MANNING	FB	23	5-10	192	So.	Delray Beach
44	*EDDIE JOHNSON	FB	22	5-10	195	Sr.	Charleston, W. Va.
50	PAUL SLATON	C	19	5-8	205	So.	Miami
51	RAMON ROGERS	C	19	5-11	195	So.	Pensacola
52	*TROY BARNES	C	25	6-2	197	Sr.	Chickasaw, Ala.
53	*STU KEITH	C	20	6-0	184	Jr.	Panama City
54	RONNIE CLARK	C	19	6-0	179	So.	Palatka
60	DON SPEIRS	G	23	5-11	194	So.	St. Petersburg
61	*JOE McGEE	G	21	5-9	192	Jr.	Raleigh, N. C.
62	AL ULMER	G	18	5-10	173	So.	Clearwater
63	ABNER BIGBIE	G	19	5-10	189	So.	West Palm Beach
64	JIM ROGERS	G	19	5-9	195	So.	Miami
65	*BOB FOUNTAIN	G	20	6-0	192	Jr.	Crestview
66	BOB DOUGLAS	G	20	6-0	194	So.	Dayton, O.
67	*JERRY GRAHAM	G	19	6-0	205	Jr.	Chicago, Ill.
68	JON JENKINS	G	19	5-8	182	So.	Miami
69	PATSY MONACO	G	19	5-10	200	So.	Balston, N. Y.
70	JERRY LANE	T	22	6-2	205	So.	Lakeland
71	STEVE HOLTON	T	24	6-2	206	Jr.	Perry
72	DAN STRICKLAND	T	23	6-2	230	So.	Sopchoppy
73	*BILL MUSSELMAN	T	21	6-0	215	Sr.	Lynchburg, Va.
74	MELVIN POPE	T	24	6-0	207	Sr.	Tallahassee
75	PAUL SMITH	T	21	6-2	235	Jr.	Miami
76	JERRY MOORE	T	19	6-2	206	So.	Miami
77	*GEORGE BOYER	T	22	6-1	220	Sr.	Jacksonville
78	TONY FEKANY	T	20	5-9	222	So.	Jacksonville
79	LOU WALLACE	T	19	6-2	202	So.	Atlanta, Ga.
80	*RONNIE SCHOMBURGER (Capt.)	E	23	6-1	197	Sr.	Pittsburgh, Pa.
81	*HAM BISBEE	E	21	6-1	178	Sr.	Sanford
82	BILL JACOBS	E	19	6-1	175	So.	Lake City
83	CLARE BAGNALL	E	24	6-1	203	So.	Battle Creek, Mich.
84	BILL KIMBER	E	21	6-3	192	Jr.	Winter Park
85	*BOB NELLUMS	E	24	6-1	199	Sr.	Pensacola
86	*JIM ARNOLD	E	26	5-10	182	Sr.	Bainbridge, Ga.
87	JOHN SPIVEY	E	19	6-2	203	So.	Panama City
88	JAMES HOOKS	E	22	5-9	175	So.	West Palm Beach
89	JIM ELK	E	19	6-2	185	So.	Miami

*Denotes letterman.

Live Modern..

Hey Dad, light
into that
Live Modern
flavor!

...b
Either way y

FURMAN

PROBABLE STARTING LINEUP

No.	Name	Pos.
84	RAY SIMINSKI	LE
77	VIRGIL GAMBRELL	LT
65	BUDDY WALTON	LG
53	JIM BOROFF	C
62	GENE HEAD	RG
70	DON MARKOFSKI	RT
85	DICK PFEIFER	RE
14	BILLY BAKER	QB
40	JERRY PENLAND	LH
20	BILL WEIR	RH
31	JIM GRANT	FB

Smoke modern **L&M**

I'm way ahead
of you Son!
L&M wins for
taste and flavor!

handy pack ...
n today with **L&M**

FLORIDA STATE

PROBABLE STARTING LINEUP

No.	Name	Pos.
80	RONNIE SCHOMBURGER	LE
73	BILL MUSSELMAN	LT
65	BOB FOUNTAIN	LG
52	TROY BARNES	C
67	JERRY GRAHAM	RG
77	GEORGE BOYER	RT
85	BOB NELLUMS	RE
15	BOBBY RENN	QB
27	STAN DOBOSZ	LH
26	BILLY WEAVER	RH
44	EDDIE JOHNSON	FB

FURMAN UNIVERSITY FOOTBALL ROSTER

No.	NAME	Pos.	AGE	HT.	WT.	YR.	HOMETOWN
10	*DICK KOLANS	QB	21	5-9	175	4	Raritan, N. J.
12	SAM TAYLOR	QB	17	5-10	165	1	Avondale, Ga.
14	*BILLY BAKER	QB	19	5-11	175	2	Rossville, Ga.
15	MARVIN STARR	QB	19	6-2	180	2	Avondale, Ga.
20	*BILL WEIR	RHB	21	5-10	175	4	Columbia, S. C.
21	CHARLIE MOSS	LHB	18	5-9	157	1	Greenville, S. C.
25	*ROY NICKLES	RHB	20	5-7	160	3	Greenwood, S. C.
27	SHELLY SUTTON	QB	18	5-9	150	1	Fort Mill S. C.
28	*CHARLIE LINDER	RHB	20	5-10	175	3	Macon, Ga.
30	RAY WALLS	FB	19	6-0	180	2	Decatur, Ga.
31	*JIM GRANT (Capt)	FB	21	6-2	205	4	Rock Hill, S. C.
32	LEON BAIREFOOT	FB	18	5-11	187	1	Darlington, S. C.
33	*HICKY HORTON	FB	19	6-2	185	2	Hephzibah, Ga.
40	*JERRY PENLAND (Capt)	LHB	21	5-11	175	4	Greer, S. C.
42	CHARLIE GAY	LHB	19	6-1	175	2	College Park, Ga.
43	*MACK EDWARDS	LHB	20	6-0	175	3	Athens, Ga.
44	RICHARD SHAW	RHB	24	6-0	180	2	Detroit, Mich.
50	BRANDON HAYES	C	19	5-10	175	1	Pickens, S. C.
51	JERRY INGRAM	C	18	6-1	195	1	Opelika, Ala.
52	*EMIL REUGNER	C	21	6-0	200	4	Union, N. J.
53	*JIM BOROFF	C	23	6-1	205	2	Lima, O.
60	JIM SLATON	LG	19	5-11	190	3	Phenix City, Ala.
61	*GEORGE HARRISON	RG	20	5-11	195	3	Phenix City, Ala.
62	*GENE HEAD	RG	23	6-0	190	3	Central, S. C.
64	JIM LYDA	RG	18	5-9	190	1	Greenwood, S. C.
65	*BUDDY WALTON	LG	20	6-2	205	3	Atlanta, Ga.
66	*NICK TZOUVELEKAS	LG	21	5-10	185	4	Greenville, S. C.
67	JIM JOHNSON	LG	18	5-11	205	1	Warrenton, Ga.
70	*DON MARKOFSKI	RT	20	6-0	220	3	Chester, Pa.
71	BILL HOWES	LG	20	6-2	185	3	Arlington, Va.
72	JOE OLLIFF	RT	18	6-0	205	1	Statesboro, Ga.
73	*GEORGE ELIADES	RT	21	5-11	205	3	Washington, D. C.
74	JOHN HARRINGTON	RT	26	6-2	230	1	Union, Mass.
75	BOBBY AIKEN	LT	19	6-1	210	2	Decatur, Ga.
76	JAMES HOFFMAN	LT	18	6-1	195	1	Wheeling, Ill.
77	VIRGIL GAMBRELL	LT	19	6-3	215	2	Blacksburg, S. C.
78	LEO BLAND	C	23	6-5	250	2	Akron, Ohio
81	GARY POWERS	RE	19	6-2	185	2	Macon, Ga.
82	*WOODY STEWART	LE	19	6-1	180	2	Jefferson, Ga.
83	DON GRANTHAM	RE	19	6-0	175	2	Augusta, Ga.
84	*RAY SIMINSKI	LE	20	6-3	195	3	Chester, Pa.
85	*DICK PFEIFER (Capt)	RE	21	6-2	205	4	Hasbrock Heights, N. J.
86	*TOM AVERY	RE	20	6-0	180	3	Americus, Ga.
87	JACKIE RUSSELL	LE	18	6-4	195	1	Copperhill, Tenn.

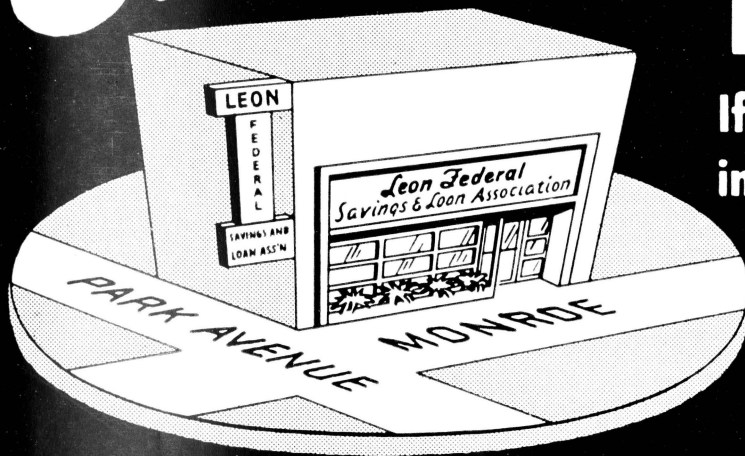
*Denotes lettermen

Save at

LEON

FEDERAL

If you can't come
in, Save by Mail



Savings
insured to
\$10,000

The Financial Center of Tallahassee

STUDENT SAVING CENTER

- School Supplies
- Pennants and Novelties
- Gifts
- Art Supplies
- Greeting Cards
- Stationery
- Drafting Equipment
- Pen Repair Service
- Sundries
- Camera Supplies & Developing Service

We Buy and Sell Books

NEW and USED

UNIVERSITY BOOKSTORE

In the Student Center

OWNED AND OPERATED BY FRANK AND JAMES CHASE

Skyline Restaurant

1 Mile West of City Limits

U. S. Highways 90 and 20

TALLAHASSEE, FLORIDA

"Serving Good Food for Fine People"

BENNETT'S DRUG STORE

- Prescriptions
- Cameras
- Sundries
- Gifts
- Fountain
- Cafe
- Cosmetics
- Drugs

MEET AT BENNETT'S
BEFORE AND AFTER THE GAME!
Corner Monroe and College Streets
Phone 2-8980 — 2-4450

The Vogue

TALLAHASSEE, FLORIDA

THE SEMINOLE FOOTBALL NETWORK



Bill Snyder
Seminole Network

Florida State University's football contests are carried to every part of the state again this year by the growing voice of the Seminole Football Network.

Entering its fifth year, the network boasts close to 20 stations this fall—a big increase over the 12 that carried the contests last year.

Perhaps the biggest step the network is taking this year is the fact that an Atlanta, Ga., station is being added to the network. This adds thousands of square miles to the FSU coverage area.

Handling the mikeside duties for the broadcasts are veteran Bill Snyder and newcomer Alan Robinson. Snyder has done the play-by-play of the FSU games the past two years. Robinson, of Public Relations of Florida, joins the network for the first time.

Snyder has been around the sports circuit for a long time. He began his career by working the games of the old professional baseball club, the St. Louis Browns.

All ten of the FSU games will be broadcast, including the road games to Boston, Philadelphia, Hattiesburg, Miss., and Tampa. They may be heard locally on station WTAL.

THE SWEET SHOP

GOOD FOOD

DELICIOUS SODAS

DRUG SUNDRIES

Meet Your Friends Here Before
and After the Game!

Follow the Seminoles!

BILL'S BOOK STORE

BOOKS

SUPPLIES

SUNDRIES

PRIVATELY OWNED AND OPERATED

S H A W ' S

Furnishings for Your Home

COLLEGE AVE. at DUVAL ST.

"Good Taste Costs No More"

Meet Me at the

M E C C A

111 South Copeland St.

and Enjoy the Fine

Food and Friendly Atmosphere

ALSO

The Master Chef

Open Forever

W E L C O M E

GRADDY BROS. GULF STATIONS

"WE LIKE EVERYBODY"

Full Line

GULF PRODUCTS

LUBRICATION SPECIALIST

ROAD SERVICE

1458 SOUTH MONROE

Phone 3-0077

640 WEST TENNESSEE

Phone 2-3584

After the Ball Game

Drive Carefully, You May Hit One of Our Customers



FLORIDA STATE COACHES (left to right). Front row—Frank Toomey, Herbert Hughes, Head Coach Tom Nugent, Charlie LaPradd. Back row—Paul Odom, Bob Harbison, Hugh Adams and Hugh Taylor.

D. T. O'HARA, JR.

PRODUCE • POULTRY • FROZEN FOODS

Phone 2-2128 • 717 W. Gaines St.

TALLAHASSEE, FLORIDA

FAIVER'S

For Chicken Pizza Pie

•

**Half-Fry Chicken
Italian Spaghetti
Sandwiches – All Types**

•

**1312 WEST TENNESSEE STREET
TALLAHASSEE, FLORIDA**



Front Row (Left to Right): Guard, Jerry Graham; Tackle, Bill Musselman; End, Ron Schomburger; Coach, Tom Nugent. Standing: Fullback, Eddie Johnson; and Quarterback, Bobby Renn.

GOOD LUCK SEMINOLES!

SEVEN SEAS

Corner Monroe and Pensacola

Next to the Capitol

Tallahassee's Finest

**Will be Happy to Serve You
After the Game!**

FACTS ABOUT FURMAN

Location—Greenville, S. C.
Enrollment—men, 812; women, 567.
Denomination—Baptist
Colors—Purple and White
Nickname of team—Purple Hurricane
Band—30 men; 15 women
Stadium—Sirriner, 18,000 capacity
Conference—Southern
Athletic Director—J. Lyles Alley
Sports Publicity Director—Daniel M. Foster
Football Coaching staff—Head Coach, Homer B. Hobbs; assistants, Bill Crutchfield and Dixie Howell.

1956 RESULTS

Furman	0	George Washington	-----
Furman	0	Auburn	-----
Furman	6	Wofford	-----
Furman	7	Newberry	-----
Furman	7	Citadel	-----
Furman	6	South Carolina	-----
Furman	7	Florida State	-----
Furman	0	West Virginia	-----
Furman	27	Davidson	-----
Furman	7	Clemson	-----
		Won 2, Lost 8	

FLORIDA STATE UNIVERSITY CHEERS

1. Beat, Florida State

Beat Florida State!
 Beat (Stomp, Stomp)
 Beat Florida State!
 Beat (Stomp, Stomp)
 Beat Florida State
 Beat (Stomping)

2. Freshman, Flunky

Freshman, Flunky, Student, Scholar
 All good Seminoles, Stand up and holler.

3. Garnet and Gold

Garnet and Gold, Fight, Fight!
 Garnet and Gold, Fight, Fight!
 Who fight? We fight!
 Garnet and Gold, Fight! Fight!

4. IS Everybody Happy?

CL : Is Everybody happy?
 Aud: Hell, yes!
 CL : Is anybody downhearted?
 Aud: Hell, no!
 CL : Then let's railroad Seminoles
 and take it slow!
 ALL: S-E-M-I-N-O-L-E-S
 (Spell three times)
 ALL: Seminoles!

5. Locomotive

Rah, rah, rah, rah,
 Go team, go team
 Rah, rah, rah, rah,
 Go team, go team
 Rah, rah, rah, rah,
 Go team, go team
 Fight!

6 Alma Mater

High o'er the towering pines
 our voices swell
 Praising these gothic spires
 We love so well:
 Here sons and daughters stand,
 faithful and true
 Praising our Alma Mater
 F. S. U.

7. Tom Nugent Cheer (We've Got the Coach)

We've got the coach (clap, clap)
 We've got the team (clap, clap)
 We've got the pep (clap, clap)
 We've got the steam (clap, clap)
 Coach, team, pep, steam.
 Fifteen rahs for Nugent's team.
 Rah-rah, rah, rah, rah;
 Rah-rah, rah, rah, rah;
 Rah-rah, rah, rah, rah.
 Fight, team!

8. Sittin' in a Wigwam

Sittin' in a wigwam
 Beatin' on a tom-tom
 Who come?
 We come.
 Everybody will come.
 Scalp 'em, (clap, clap), Scalp 'em
 (Clap, clap), etc.

9. Seminoles

(spell out)
 S (4 claps) E (4 claps) M (etc.) I (etc.)
 S (1 clap) E (1 clap) M (etc.) I (etc.)

10. Go Seminoles

(All hands in the air)
 Go - - - O Seminoles (clap, clap)
 Go - - - O Seminoles (clap, clap)
 Team fight!

11. Touchdown Song

Da dum Yea Team!
 Da dum Whose Team!
 Da dum Our Team!
 Touchdown, that's the thing
 We want a touchdown,
 Hear us sing
 We want a touchdown
 Hear us sing
 We want a great big bruiser, husky and tall,
 To carry the ball, in no time at all
 We'll have a touchdown
 And when it's over
 You can hear us make some noise!
 V-i-c-t-o-r-y
 We want a touchdown, boys!
 Da da dum Fight! Fight! (seven times)

12. Fight Song

We're going to fight, fight fight for FSU
 You got to scalp 'Um, Seminoles,
 You got to win, win, win, win, that game
 And roll on down and make those goals.
 For FSU is on the warpath now,
 And at the battle's end, she's great,
 So fight, fight, fight, fight to victory
 Our Seminoles from Florida State.
 F-L-O-R-I-D-A S-T-A-T-E
 Florida State!
 Florida State!
 Florida State!

13. Hi, Florida!

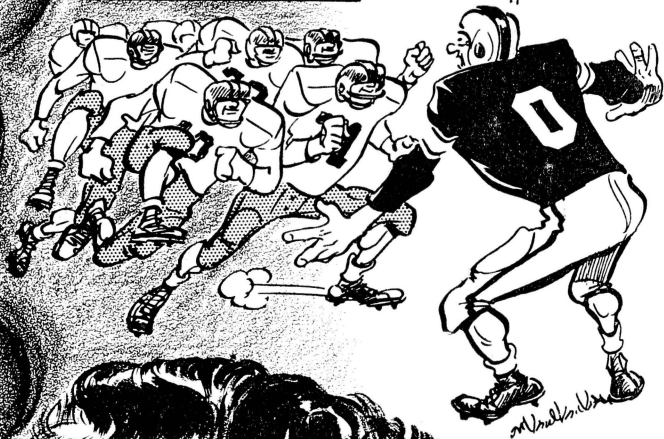
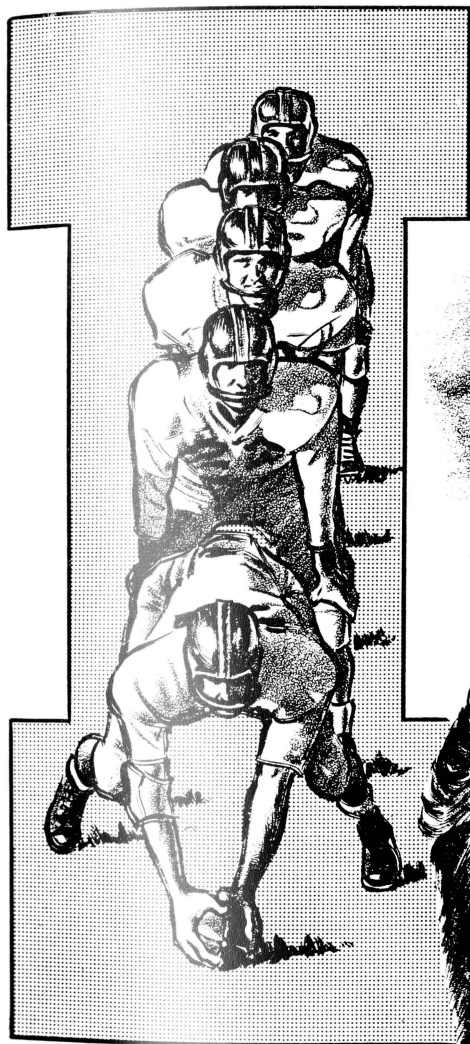
Hi, Florida!
 Hi, State,
 Hi, Hi, Florida State!



SCALP 'EM SEMINOLES

FLORIDA STATE'S
I-FORMATION WAS
ORIGINALLY DREAMT
UP TO MASS GREAT
POWER FOR OFF-
TACKLE SMASHES...

MAN,
THE I'S
REALLY HAVE
IT



...THE BRAINCHILD
OF FORWARD-
THINKING TOM
NUGENT...

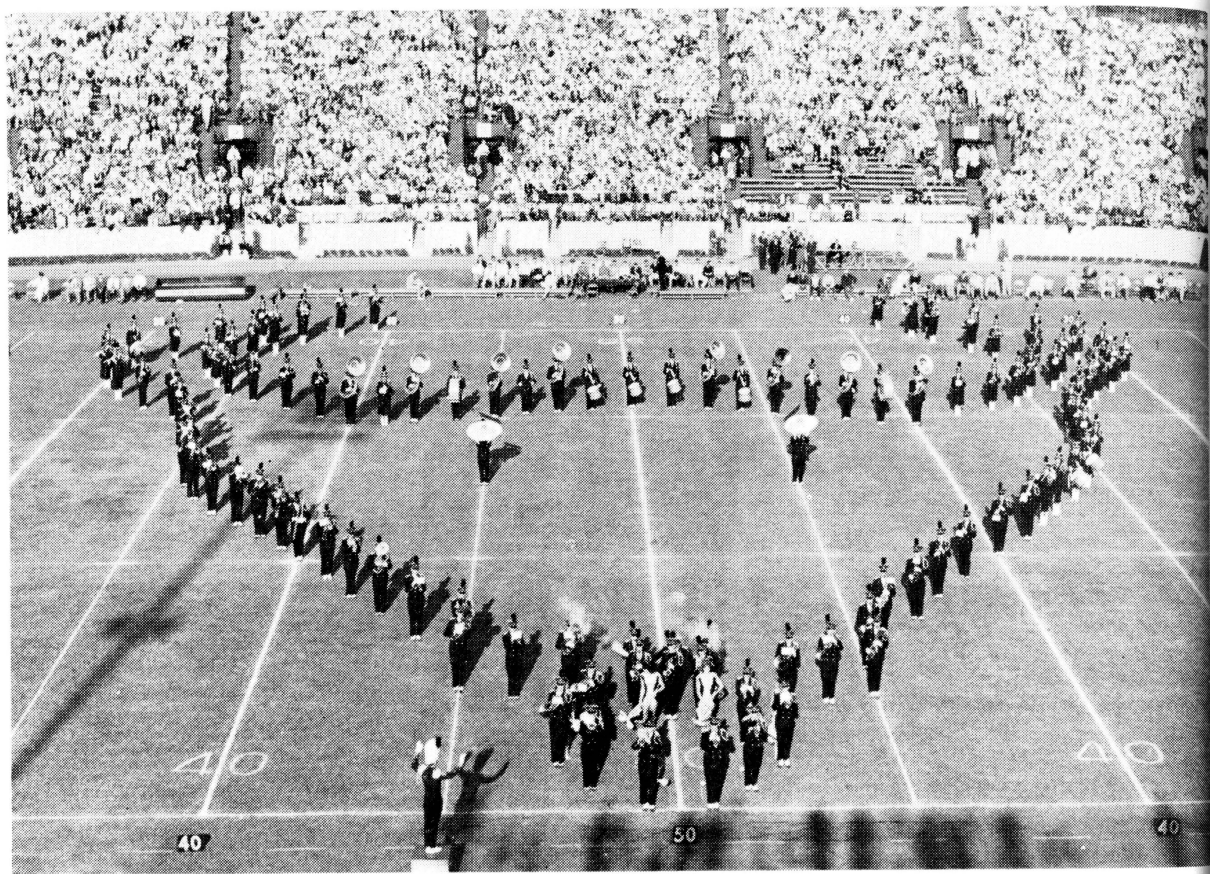


AND I CAN'T
COMPLAIN 'BOUT
THE PAST OR
PRESENT EITHER,
COACH

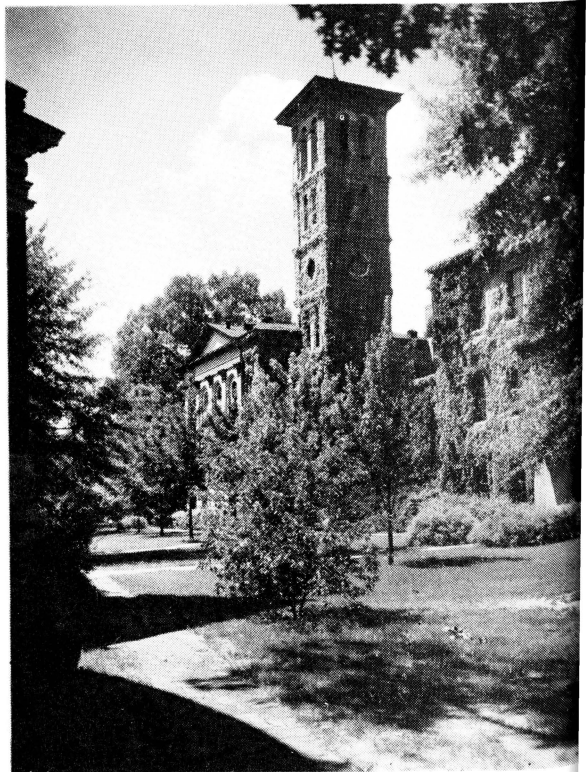
...WHOSE
COACHING
INGENUITY
HAS BEEN
TRANSLATED
INTO A BRIGHT
SEMINOLE
FOOTBALL
FUTURE?



TURRAY
GLDERMAN

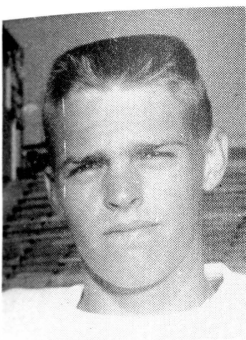


MARCHING CHIEFS

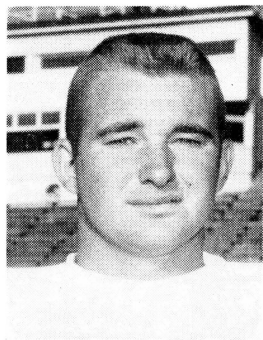


FURMAN CAMPUS SCENES

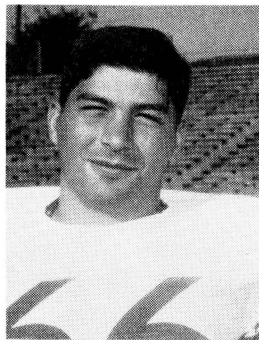
FURMAN PLAYERS



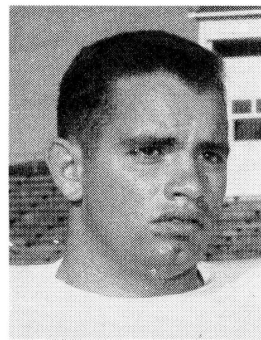
Marvin Starr
QB



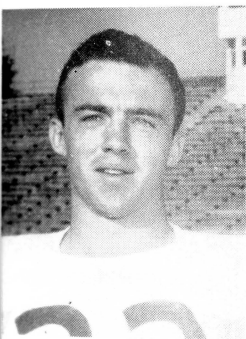
Ray Walls
FB



Nick Tzoveleskas
G



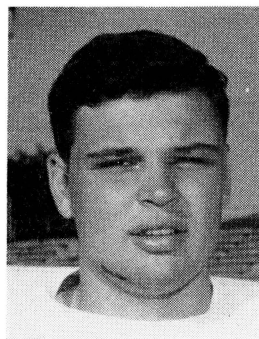
Bobby Aiken
T



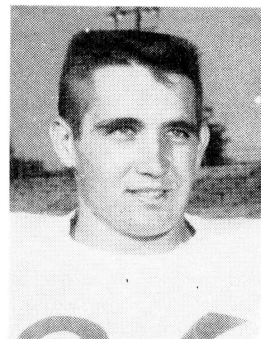
Roy Nickels
HB



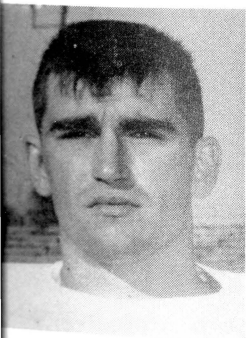
George Harrison
G



John Ridgway
G



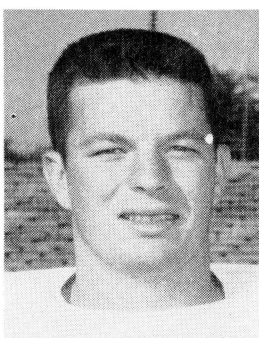
Tom Avery
E



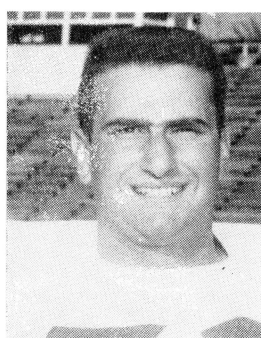
Tommy Blair
G



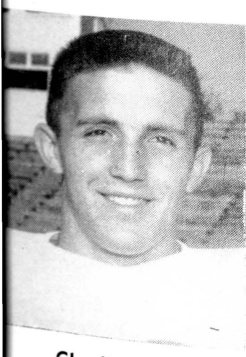
Dick Kolans
QB



Bobby Walton
C



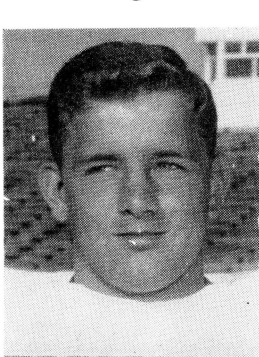
George Eliades
T



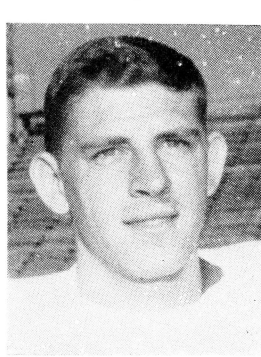
Charlie Linder
HB



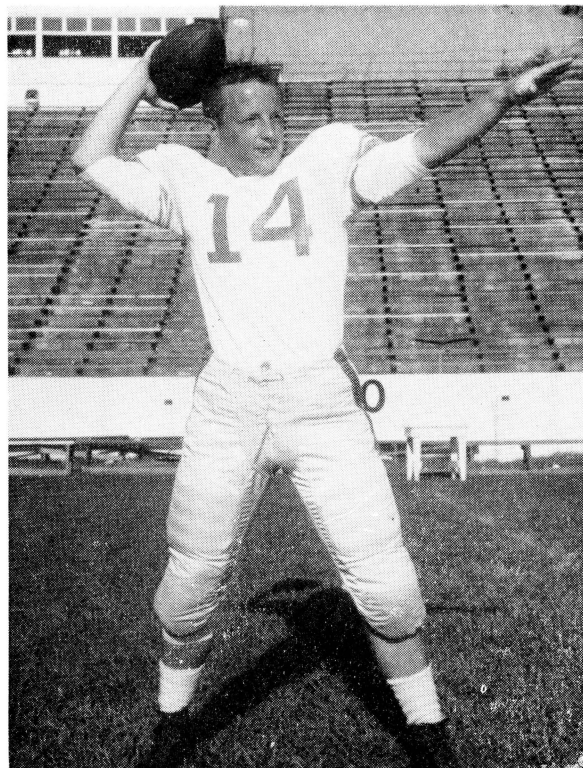
Mack Edwards
E



Charlie Moore
QB



Gene Head
G



Billy Baker
QB



Dick Pfeifer
E



Jerry Penland
HB



Jimmy Grant
FB

Rose PRINTING CO., INC.



*Always
the Finest
Printing*



ROSE BUILDING

PHONE 2-0230

T A L L A H A S S E E , F L O R I D A

LIKE YOUR PLEASURE **BIG?**

*MORE FULL-FLAVORED
SATISFACTION...FROM THE
WORLD'S BEST TOBACCOS!*

*PLUS KING-SIZE
FILTER ACTION!*

*A BETTER TOBACCO
FILTER BECAUSE IT'S
PACKED SMOOTHER
BY ACCU•RAY!*

*SO HAVE YOUR FUN AND MILDNESS, TOO!
SMOKE FOR REAL... SMOKE CHESTERFIELD
—KING OR REGAL REGULAR*

CHESTERFIELD KING HAS EVERYTHING