



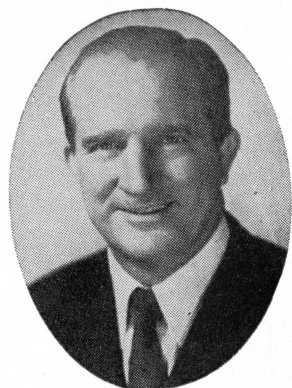
ARCHIVES  
F. S. U. LIBRARY

# **FLORIDA STATE ABILENE CHRISTIAN**

OCTOBER 19, 1957  
CAMPBELL STADIUM  
OFFICIAL PROGRAM 50c

# 5-





RAINEY CAWTHON

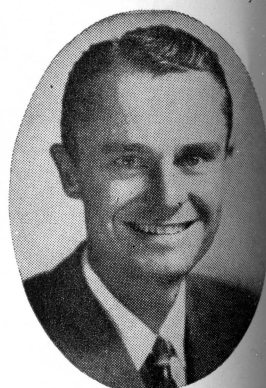
# Rainey Cawthon's

★ RCA TELEVISION and RADIO

★ SHELL PRODUCTS ★ GOODYEAR TIRES

"WE SERVICE WHAT WE SELL"

• ROAD SERVICE • PHONE 2-1865 •



FRED PIERSON

*patronize...*  
**STADIUM**

# CONCESSIONS

*Located beneath the stands on each side of stadium*

**COLD DRINKS..... 15¢**  
**HOT COFFEE..... 15¢**  
**SANDWICHES..... 30¢**  
**HOT DOGS..... 25¢**  
**PEANUTS..... 10¢**  
**POP CORN..... 10¢**

**SOUVENIR ITEMS**  
**PENNANTS**  
**BADGES**  
**SUN VISORS**  
**ASPRIN**

**All Cigarettes 35¢**

*established prices*



## REBOUNDBING FSU HOSTS ACC

By Pierce Lehmbeck

### TABLE OF CONTENTS

|                                     |       |
|-------------------------------------|-------|
| Seminole Athletic News.....         | 3     |
| The President and the Coach.....    | 4     |
| A.C.C. Personnel.....               | 5     |
| About A.C.C.....                    | 5     |
| The Marching Chiefs Present.....    | 6     |
| Seminole Profiles.....              | 8-13  |
| F.S.U. Roster.....                  | 15    |
| Starting Lineups.....               | 16-17 |
| A.C.C. Roster.....                  | 18    |
| F.S.U. Cheerleaders and Cheers..... | 24-25 |
| A.C.C. Players.....                 | 29-30 |
| The Seminole Football Network.....  | 31    |

Florida State's rebounding Seminoles have a chance to become the storied "spoiler" tonight as they host a surging Abilene Christian football team.

The Texans haven't been beaten to date. And the only blemish on their record is a tie with rugged little Chattanooga.

Tonight's game has particular significance for A.C.C. because if it can win there's a possibility the 'Cats may go unbeaten.

That, stacked on the fact that FSU hasn't been able to beat A.C.C. in two previous meetings, could cause this to develop into quite a football game.

Florida State looked very good last week in fighting nationally ranked North Carolina State right down to the wire before losing, 7-0. And Coach Tom Nugent has reason to think the Seminoles will be up again tonight.

"Our injury situation should be better for A.C.C. than at any time since the season began," he said. "And after losing three games in a row, we're anxious to get back on the winning side."

F.S.U. opened with a 27-7 triumph over Furman, then lost successive games to Boston College, Villanova and N. C. State.

If you're checking off stars again tonight, look for A.C.C.'s Jimmy Hirth to do a lot of hoofing. He's the guy that makes the Texan offense go.

And F.S.U.'s Bobby Renn showed last week that he has everything people have always said he has. His outstanding running kept F.S.U. in control of the ball a great deal of the time and his kicking kept the Wolfpack deep in the shadow of its own goalposts.



# THE PRESIDENT

Florida State University's recently named new President—Dr. Robert M. Strozier—is professed as an avid football fan.

Dr. Strozier, who took over the post just in time for football season, was named FSU President late in June after the beloved Dr. Doak S. Campbell retired after 16 years.

**At 51, Dr. Strozier is one of the youngest University Presidents in the country. It was Governor Collins' expressed desire that the new FSU President should be a "young man with the vision and foresight" to go with growing Florida State University.**

Though coming to Florida State from the University of Chicago, where he was Dean of Students, Dr. Strozier is a native southerner. He was born and raised in nearby McRae, Georgia, and attended Emory University in Atlanta. He was on the faculty of the University of Georgia at one time.

His brother, newsman Fred Strozier, is a former resident of Tallahassee and headed the local Associated Press Bureau for three years. Fred Strozier is now the AP's chief executive in its Latin American Bureau.

## THE VICE PRESIDENT

Serving as president from July 1 until Dr. Strozier arrived to assume the position on September 1 was Dr. A. B. Martin, the FSU Vice President. Like Dr. Strozier, Dr. Martin is also an avid football fan.

Born in Africa of American parents serving as Methodist missionaries, Dr. Martin spent the greater part of his life in Texas, where he was identified with educational and civic affairs. The prominent Southern educator came to FSU in 1951.



# THE FOOTBALL COACH

Florida State University football coach Tom Nugent has made great strides with FSU football.

**Now entering his fifth year as the propelling force behind the Seminoles, Nugent has attained a record of 42 wins, against 35 defeats and three ties.**

He's also become nationally known for his bright innovations. It was Nugent who invented the typewriter huddle, the double quarter back and the "I" formation used so effectively by his own Seminoles.

A native of Lawrence, Mass., the 44-year-old coach came to Florida State in 1953 after completing four highly successful years as head coach at Virginia Military Institute.

**Within three years after Nugent joined the obscure VMI Keydets, he had won a Southern Conference crown and had pulled an upset victory over mighty Georgia Tech.**

Nugent graduated from Ithaca College in 1936 and coached the frosh team there while he continued with graduate work. Later, he returned to Lawrence and directed the Essex Training School team in football, basketball and baseball. Four years at Essex produced two undefeated football teams and a 35-3 record.

After serving with the Air Force from 1941 to 1946, Nugent became Head Football Coach at Williamsburg, Va., High School where he won nine in a row. He then moved to Hopewell, Va., where in two years won 15 of 19 games.





**N. L. NICHOLSON**  
Head Coach



**DON H. MORRIS**  
A.C.C. President

## ABOUT ABILENE CHRISTIAN

By **RUDOLPH PATE**

Abilene Christian College will be out to keep its record clean against Florida State when the two teams collide Oct. 19. In two previous meetings between the Teams A.C.C. has come out on top both times, and the Wildcats appear to have a reasonable chance of doing it again.

Coach N. L. (Nick) Nicholson, in his second year at A.C.C., has 23 lettermen on hand, with experienced personnel two deep at almost every position.

He has a speedier backfield than last season when the Wildcats won four and lost six. Of special help has been the return of halfback Jimmy Hirth from the service. In three previous years at A.C.C. Hirth dashed for 1,618 yards. His speed gives the Cats a one-two punch, since left half Jimmy Thomas also is a sprinter.

Thomas demonstrated his talent in this season's opener against Chattanooga by picking up

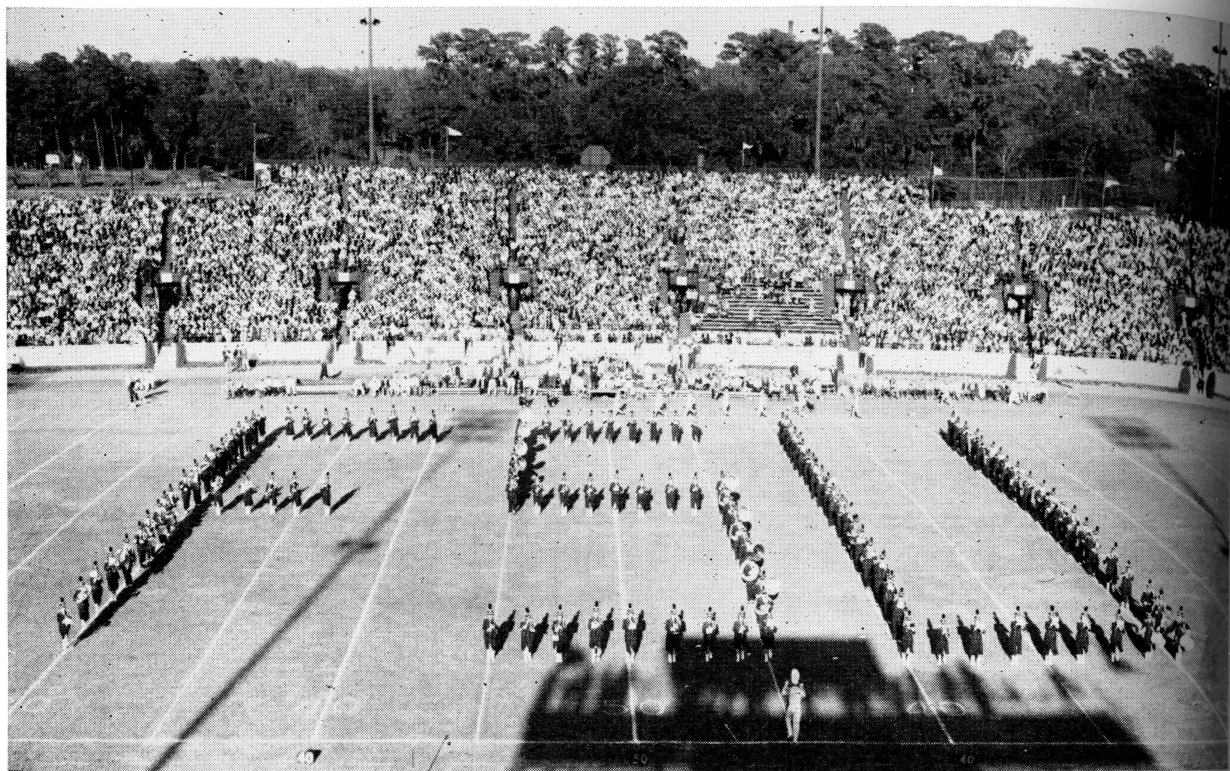
108 yards in 13 tries, including one 50-yard scamper. Fullback Bill Lovelace also is a fast runner.

Quarterback Don Harber gives the Cats experienced leadership, and last season Harber was the team's top passer with 471 yards on 38 completions in 70 attempts.

Seniors give the starting line strength and experience: Guard Luther Thomas, Center Mac Starnes, Guard Herb Gibson and Tackle Pete Dean. The other starters are ends Keith Davis and Robert Nickerson, both juniors, and sophomore giant Byron Bradfute at left tackle.

The Cats operate from a straight T and balanced line. So far this season they have been primarily a running team, but passing is expected to be emphasized more and more by Coach Nicholson.





The Florida State University Marching Chiefs in Formation.

# THE FSU MARCHING CHIEFS

Present

## BANDS THRU THE AGES

(pre-game entertainment)

**Manley R. Whitcomb**, Director  
**Robert Braunagel**, Asst. Director  
**Charles Carter**, Music Arranger

**Terry Johnson**, Drum Major  
**Jackie Hailey**, Head Majorette  
**Bee Carroll, Ted Daniels**, Flying Seminoles

### FORMATIONS

1. Entry .....
2. Eagle .....
3. A Salute to the old German Band .....
4. Clarinet .....
5. Concert Band Formation .....
6. SOUSA  
 (Changes to U.S.A. and Shield)
7. U.S.A. with Shield .....

### MUSIC

- "Quo Vadis"  
 "Quo Vadis"  
 "Beer Barrel Polka"  
 "When the Saints Go Marching In"  
 "Poet & Peasant"—Suppe  
 "Toccator & Fugue"—Bach  
 "Five Bird Suite"—Strauinsky  
 "El Capitan"  
 "Stars & Stripes"  
 "Star Spangled Banner"

### HALF TIME ENTERTAINMENT SEVENTH ANNUAL BAND DAY presents

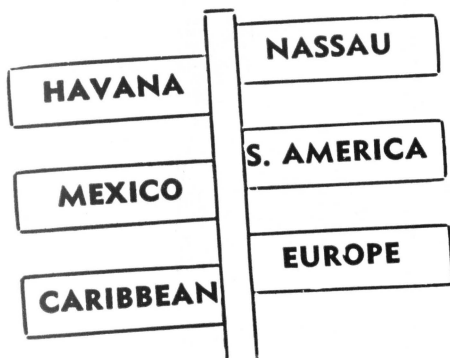
### THE MUSIC OF IRVING BERLIN

1. MUSIC .....
2. Christmas tree with Bells and Star .....
3. Two Flags with Shield .....
- "Say It With Music"
- "White Christmas"
- "God Bless America"



— ALL EXPENSE TOURS — CRUISES — INDEPENDENT TRAVEL —

*"How,  
and  
where  
in  
the  
world  
are  
you  
going . . . ."*



FOR COMPLETE AND ACCURATE TRAVEL INFORMATION, CALL

## GENERAL TRAVEL SERVICE

109 E. Call St., Tallahassee

Next to Chamber of Commerce

Phone 3-4567

— AIRLINE AND STEAMSHIP TICKETS ANYWHERE IN THE WORLD —

Whether by...

**AIR - BOAT - BUS or RAIL**

Let GENERAL TRAVEL plan  
your trip...

**There Is No Charge  
For Our Service**

GO SEMINOLES — GO SEMINOLES

*At Home and Away*

*We're Pulling for YOU*



*Gilberg's*

*"The House of 1000 Fabrics"*

123 South Monroe Street  
TALLAHASSEE, FLA.

220 Broad Avenue  
ALBANY, GA.

109 W. University Ave.  
GAINESVILLE, FLA.

26 North Palofax Street  
PENSACOLA, FLA.

535 Harrison Ave. Panama City, Fla.

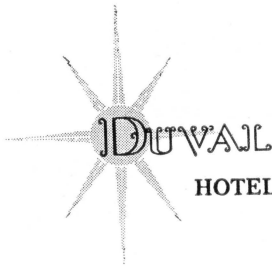
*Fabrics From All Over the World*



**TRAVELING  
DESSERT TRAYS**



**CHARCOAL BROILED  
STEAKS**



HOTEL • TALLAHASSEE, FLORIDA

**TALLAHASSEE  
MUSIC COMPANY**

*"Service Built This Company"*

Phone 3-1246

225 W. Carolina St.

TALLAHASSEE, FLORIDA

**Buddy's Hardware  
and Sporting Goods**

*We Have the Leading Lines!*

*If It's Sports — We Have It!*

203 S. Monroe

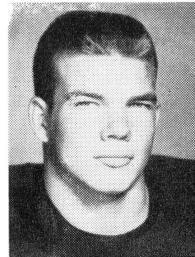
BUDDY BRANDT, Owner

**SEMINOLE**



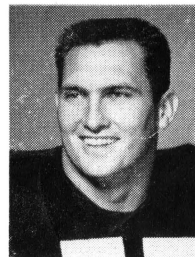
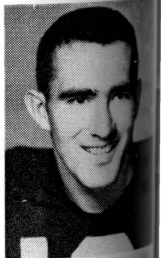
**52 TROY BARNES.** Senior, 6-1, 190 pounds, from Chickasaw, Ala. Did tremendous job as the Seminole's pivot man last fall and should repeat year. One of the most reliable men on the field at all times. Always there and always a threat.

**42 CARMEN BATTAGLIA.** Senior, 5-9, 175 pounds, from Niagara Falls, N. Y. Always a hard competitor, Carmen could blossom out this fall for his final season. Runs good in close, is an excellent pass catcher and has a big heart on defense.



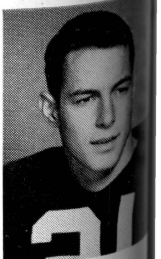
**63 ABNER BIGBIE.** Sophomore, 5-10, 180 pounds, of West Palm Beach. Another rugged sophomore with great future. He's only 19 and FSU coaches regard him as an outstanding offensive prospect. A success story in the process of being written.

**81 HAM BISBEE.** Senior, 6-1, 176 pounds, from Sanford, Fla. A steady competitor all through his three years at FSU. Outstanding as an offensive player with a bulldog-knack for hanging in there on defense. His final year could be his best.



**77 GEORGE BOYER.** Senior, 6-0, 220 pounds from Jacksonville. Often referred to as the perfect physical specimen for a football player. Moves exceptionally well for his size, excels in pursuit. A bulldog on defense, stays with the best of them.

**21 BOBBY CARNES.** Soph., 5-11, 175 pounds, Tallahassee. One of the Seminoles' prime candidates at half-back, Carnes could be the outstanding sophomore back in camp this season.

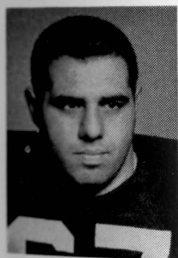
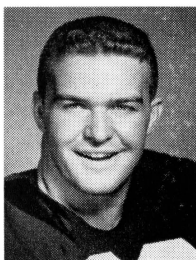


# PROFILES



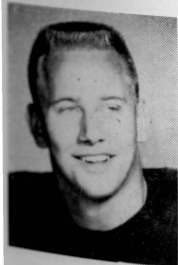
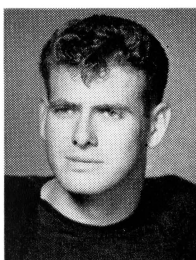
**27 STAN DOBOSZ.** Senior, 5-8, 185 pounds, of East Chicago, Ind. "Stumpy" they call him. He's a hard runner and a rugged defensive player. Thrives on conditioning and could become one of the best running half-backs in the south this fall.

**66 BOB DOUGLAS.** Sophomore, 6-0, 198 pounds from Dayton, O. Just turning 20, he's already a seasoned and rugged competitor. Played four years of guard at Fairmont High School in Dayton. One of FSU's toughest sophs in years.



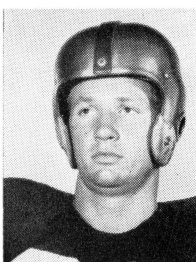
**78 TONY FEKANY.** Sophomore, 5-9, 220 pounds of Jacksonville. Has all the beef a guard needs and if he can develop the speed and ability to move this season he'll figure big next fall when FSU tackles that mammoth schedule.

**65 BOB FOUNTAIN.** Junior, 5-11, 188 pounds of Crestview, Fla. A former end, this 21-year-old athlete has made the switch to guard with relative ease. FSU coaches expect him to be an outstanding performer this fall.



**67 JERRY GRAHAM.** Junior, 6-0, 180 pounds of Chicago, Ill. Tough on defense with ability to pull out and lead the sweeps around end. One of the bright spots in FSU's guard picture, coaches expect him to show well this year.

**14 JERRY HENDERSON.** Senior, 6-0, 175, from Pensacola. Like Renn, Jerry is a converted halfback who figures to make good as a signal-caller. He could be number two behind Bobby before the season is out.



## TAKE A LONG LOOK



Where  
You Save  
Does  
Make A  
Difference

## TALLAHASSEE FEDERAL

SAVINGS & LOAN

115 E. Park

Ph. 2-0950



# **TALLAHASSEE AUTOMOBILE DEALERS ASSOCIATION**

**Alford Chevrolet Co.**

**Capital Lincoln-Mercury, Inc.**

**Carr Buick**

**Dean Motors**

**Drake Motors**

**Mayo-Mingledorff Motors, Inc.**

**John Manthey, Inc.**

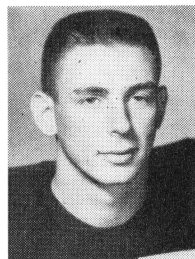
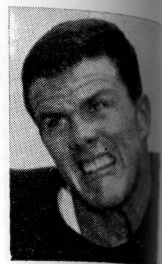
**Proctor & Proctor**

**Capital Plymouth, Inc.**

**Tallahassee Motors, Inc.**

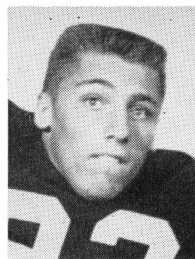
## **SEMINOLE**

**44 EDDIE JOHNSON.** Senior, 5-10, 190 pounds, from Charleston, W. Va. Moves well for his hefty size and could be a real offensive threat. Tough in pursuit from the linebacker spot and and could give Seminoles real defensive boost.



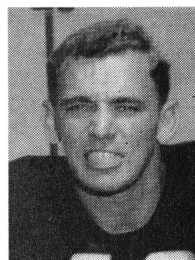
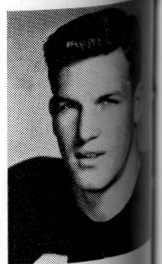
**53 STUART KEITH.** Junior, 5-11, 190 pounds from Panama City, Fla. A big surprise during the fall drills he's come along rapidly and will be one of the Tribe's regular performers this fall. Moves well from that line-backing spot and does the job on offense.

**70 JERRY LANE.** Sophomore, 6-1, 205 pounds, from Lakeland, Fla. Young at 20 and still growing. Was an end and center in high school. Likes to play defense. If he continues to develop, he'll be an outstanding pro football prospect.



**22 LENNY LEVY.** Sophomore, 5-8, 180, of Miami. One of the brightest sophomores in the early fall practice. Levy could break into the starting lineup before the season is over. He has a lot of drive and really comes to play.

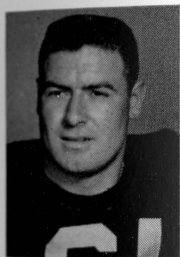
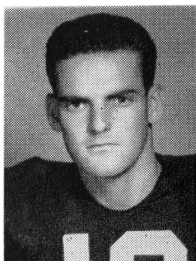
**13 JOE MAJORS.** Sophomore, 6-0, 175 pounds, from Huntland, Tenn. Younger brother of Tennessee's All-American tailback Johnny Majors has shown spurts of greatness at times at the quarterback slot. Is a fine passer, could really help the Seminoles this year.



**43 LOU MANNING.** Senior, 5-11, 192 pounds of Delray Beach, Fla. service returnee, Manning brings plenty of punch back to FSU's line-back spot. He could be the big surprise on the team this fall.

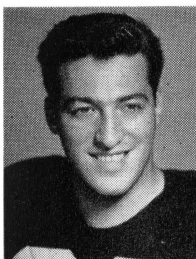
## PROFILES

**12 GENE McCORMICK.** Sophomore, 5-8, 160, from Miami. One of the Seminoles' more talented sophomores, McCormick figures highly in FSU quarterback plans. An excellent passer, he could break through.



**61 JOE McGEE.** Junior, 21, 5-9, 192 pounds of Raleigh, N. C. He'll take up a lot of the sag at the pullout spot this fall, and coaches think he'll do it well. Always reliable, he should clock a lot of game time this fall.

**69 PATSY MONACO.** Sophomore, 19, 5-10, 200 pounds of Balston, N. Y. Came to FSU as a fullback, he's been shifted to guard and coaches expect him to develop rapidly. Still moves like a fullback and he's big enough to make himself felt at guard.



**73 BILL MUSSELMAN.** Senior, 5-11, 210, of Lynchburg, Va. Nugent once said if Musselman had been a guard, he'd have been the best in the country. But he's been doing a great job holding down the left tackle post for three years.



**85 BOB NELLUMS.** Senior, 6-1, 201 pounds, of Pensacola. His status will have a lot of bearing on FSU's success this fall. He led in scoring with 31 points last fall even though he played only half the games. He suffered a knee injury and is in the process of recovering.



**74 MEL POPE.** Senior, 6-0, 215 pounds from Tallahassee. Pope has come along well during recent drills and he'll play a lot of football this fall. He's a big boost to the center post and this year it'll have plenty of depth.



## BRINKLEY BROS.

HOMER A. BRINKLEY

ROBERT T. BRINKLEY

REALTORS • INSURANCE

MORTGAGE LOANS

*"A Brinkley Buy Is a Better Buy"*

BRINKLEY BLDG. — 306 N. MONROE ST.

TELEPHONE 3-0918

**"Florida's Most Complete Store  
For Boys and Young Men"**

*Arnold's* ★

**The Young Man's Shop**

**105 S. MONROE**

FROM SIZE 6 TO STUDENT SIZE 40

SCALP 'EM SEMINOLES

## BROWN'S MEN'S WEAR

Monroe at Park

## F & T RESTAURANT

For Good Food and Quick Service

113 S. Monroe

Phone 2-8917

*Air Conditioned*



# MIDYETTE-MOOR Insurance Agency

"Ask Those We Serve"

Complete Insurance and Bond Service

PHONE 2-3456

MIDYETTE-MOOR BUILDING  
TALLAHASSEE, FLORIDA

SAYS

## Scalp 'em Seminoles!



PAYNE H. MIDYETTE  
FRANK D. MOOR  
EDWIN M. CLARK  
A. WINSLOW SULLIVAN  
ROBERT M. DICKINSON  
PAUL L. LEWIS  
PAYNE H. MIDYETTE, JR.  
WILLIAM L. MOOR  
GLENN SEARS  
REX SIKES  
FRANK KOUBA

WON'T YOU...

## HAV-A-TAMPA

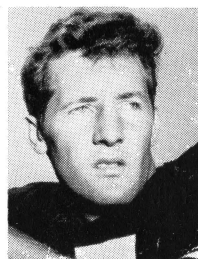
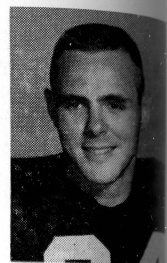
...CIGAR

Eli Witt Tobacco & Candy Co.

TALLAHASSEE, FLA.

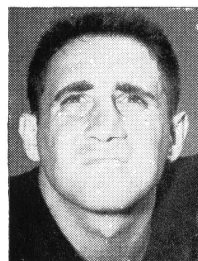
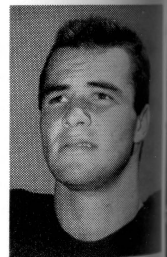
# SEMINOLE

**24 GERALD PHILP.** Senior, 5-11, 185 pounds, from Royal Oak, Mich. A converted end now slated for a right halfback post. Philp was a dependable pass catcher last year, but Nugent elected to move him to halfback to give his backfield more depth. Figures highly in Seminole plans.



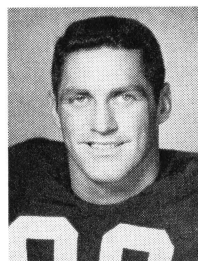
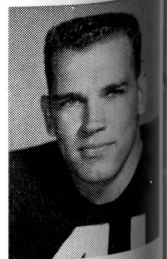
**15 BOB RENN.** Junior, 5-10, 173 pounds, from Henderson, N. C. A switch from halfback where he led team in ground-gaining last year. Renn has developed fast as a team leader. Flashy runner with an excellent pass, he could be dark horse for All-America honors.

**20 BUDDY REYNOLDS.** Junior, 21, 5-10, 178 pounds of West Palm Beach. A returnee after sitting out a couple of years with a knee injury, Buddy could hit his stride this fall and make the Seminoles go.



**11 TED RODRIQUE.** Senior, 5-11, 185 pounds, of Lynn, Mass. "Rocky" has had his ups and downs, but he's still the best passer FSU has and he always manages to get the touch down when it's needed most. Run the FSU offensive system like he invented it.

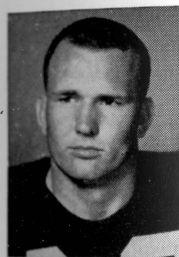
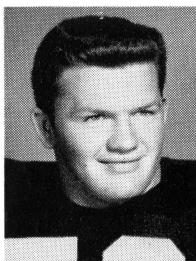
**29 RICHARD ROZMAN.** Sophomore, 5-8, 180 pounds, Tallahassee. A hard-driving back, Rozman could be up among the top backs before the season is out.



**80 RON SCHOMBURGER.** Senior, 6-2, 192 pounds, of Pittsburgh, Pa. A unanimous choice for team captain, he is possessed with great inspirational qualities. Coaches expect this to be a great year for him. He has started every game since a freshman—FSU's All-America candidate.

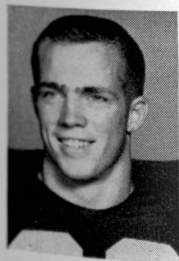
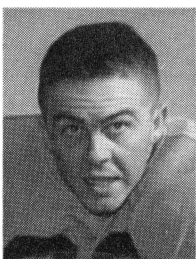
## PROFILES

**50 PAUL SLATON.** Sophomore, 5-9, 205 pounds, from Miami. Short, but there's a lot of power packed in his frame and he moves it very well. One of the brightest sophomore prospects with the Tribe, he could be a big surprise this fall.



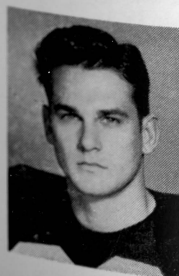
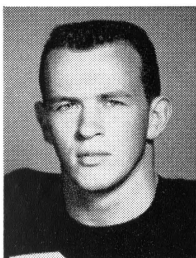
**87 JOHN SPIVEY.** Sophomore, 6-2, 200 pounds of Panama City, Fla. Another of those players who can play just about any position on the line. He's presently an end but he might be playing a lot of positions before the season is out.

**40 TERRELL TEAGUE.** Sophomore, 6-0, 195 pounds, Auburndale. Here may be the possible solution to Nugent's long search for a hard-driving fullback. Another of many bright sophs, Teague could also be in the opening lineup before too long.



**62 AL ULMER.** Sophomore, 5-10, 178 pounds of Clearwater, Fla. One of those shoestring guards you hear about every so often, but he's still growing and knows no peer for courage. Excels in rugged defensive work, he steps right along with the 'backs on the pullouts.

**79 LOU WALLACE.** Sophomore, 6-0, 200 pounds of Atlanta, Ga. He's a little light for a tackle but he's the bruising kind and he bounces back hard when he's been hit. A 19-year-old soph, he has plenty of time to develop.



**26 BILL WEAVER.** Senior 5-10, 182 pounds, of Miami. Always a rugged competitor, Weaver is back this year in excellent condition. Runs like a fullback and plays defense like a linebacker. He's the senior class prexy and an outstanding student.

## THE LAUNDROMATS

115 W. Tennessee — 1005 N. Monroe

Phone 3-1789

Phone 2-3792

CLOTHES — RUGS — BLANKETS

Washed Clean — Fluff Dried and Folded

SHIRT FINISHING

DRY CLEANING • TINTEXING

"Your Satisfaction Is Our Goal"

*Eat at*

TALLAHASSEE  
DINING ROOM

On U.S. 27



Phone 2-3428

Banquet Facilities



# THE SPOTLIGHT IS ON THE SEMINOLE CLUB

Why not drop by the Seminole Club today. More beautiful than ever and completely redecorated in keeping with the South's most beautiful campus.

## Finest Cuisine At Student Prices

Only U. S. CHOICE meats—fresh Florida fruit juice each day—Highest grade coffee—vegetables fresh daily—Delicious desserts.

### ● SEMINOLE CLUB

Br. 7:00 a. m. — 9:30 a. m.  
L. 11:00 a. m. — 2:00 p. m.  
D. 5:00 p. m. — 7:00 p. m.

### ● STUDENT CENTER

Br. 7:00 a. m. — 10:00 a. m.  
L. 11:00 a. m. — 1:30 p. m.  
D. 5:00 p. m. — 7:00 p. m.  
Soda Fountain open to 11:00.

### ● SODA SHOP

7:30 a. m. — 5:00 p. m.

Weekdays and Saturdays

# MORRISON'S FOOD SERVICE

## ALFORD BROTHERS

*FINE WEARABLES FOR MEN*

CAMPUS-TOGS CLOTHES

McGREGOR SPORTSWEAR

MANHATTAN FURNISHINGS

ARROW SHIRTS

FLORSHEIM SHOES

JARMAN SHOES

212 SOUTH MONROE ST.

Downtown Sales Office for FSU Football Tickets

# FLORIDA STATE UNIVERSITY

## 1957 FOOTBALL ROSTER

| No. | NAME                        | Pos. | AGE | HT.  | WT. | YR. | HOMETOWN             |
|-----|-----------------------------|------|-----|------|-----|-----|----------------------|
| 11  | *TED RODRIQUE               | QB   | 25  | 5-10 | 185 | Sr. | Lynn, Mass.          |
| 12  | GENE McCORMICK              | QB   | 22  | 5-9  | 152 | So. | Miami                |
| 13  | JOE MAJORS                  | QB   | 20  | 6-0  | 172 | So. | Huntland, Tenn.      |
| 14  | JERRY HENDERSON             | QB   | 21  | 6-0  | 176 | Sr. | Pensacola            |
| 15  | *BOBBY RENN                 | QB   | 23  | 5-11 | 175 | Jr. | Henderson, N. C.     |
| 20  | *BUDDY REYNOLDS             | HB   | 21  | 5-10 | 178 | Jr. | West Palm Beach      |
| 21  | BOBBY CARNES                | HB   | 20  | 6-0  | 175 | So. | Tallahassee          |
| 22  | LENNY LEVY                  | HB   | 18  | 5-8  | 182 | So. | Miami Beach          |
| 23  | *JOHNNY SHEPPARD            | HB   | 24  | 5-8  | 190 | Jr. | Tallahassee          |
| 24  | *JERRY PHILP                | HB   | 25  | 6-0  | 187 | Sr. | Royal Oak, Mich.     |
| 25  | FRED PICKARD                | HB   | 19  | 5-9  | 161 | So. | Columbia, Tenn.      |
| 26  | *BILLY WEAVER               | HB   | 21  | 5-10 | 174 | Sr. | Miami                |
| 27  | *STAN DOBOSZ                | HB   | 24  | 5-9  | 189 | Sr. | East Chicago, Ind.   |
| 28  | PETE OVERTON                | HB   | 25  | 6-2  | 165 | So. | Henderson, N. C.     |
| 29  | RICHARD ROZMAN              | HB   | 23  | 5-9  | 185 | So. | Tallahassee          |
| 40  | TERRELL TEAGUE              | FB   | 20  | 6-1  | 198 | So. | Auburndale           |
| 42  | CARMEN BATTAGLIA            | FB   | 22  | 5-10 | 180 | Sr. | Niagara Falls, N. Y. |
| 43  | LOU MANNING                 | FB   | 23  | 5-10 | 192 | So. | Delray Beach         |
| 44  | *EDDIE JOHNSON              | FB   | 22  | 5-10 | 195 | Sr. | Charleston, W. Va.   |
| 50  | PAUL SLATON                 | C    | 19  | 5-8  | 205 | So. | Miami                |
| 51  | RAMON ROGERS                | C    | 19  | 5-11 | 195 | So. | Pensacola            |
| 52  | *TROY BARNES                | C    | 25  | 6-2  | 197 | Sr. | Chickasaw, Ala.      |
| 53  | *STU KEITH                  | C    | 20  | 6-0  | 184 | Jr. | Panama City          |
| 54  | RONNIE CLARK                | C    | 19  | 6-0  | 179 | So. | Palatka              |
| 60  | DON SPEIRS                  | G    | 23  | 5-11 | 194 | So. | St. Petersburg       |
| 61  | *JOE McGEE                  | G    | 21  | 5-9  | 192 | Jr. | Raleigh, N. C.       |
| 62  | AL ULMER                    | G    | 18  | 5-10 | 173 | So. | Clearwater           |
| 63  | ABNER BIGBIE                | G    | 19  | 5-10 | 189 | So. | West Palm Beach      |
| 64  | JIM ROGERS                  | G    | 19  | 5-9  | 195 | So. | Miami                |
| 65  | *BOB FOUNTAIN               | G    | 20  | 6-0  | 192 | Jr. | Crestview            |
| 66  | BOB DOUGLAS                 | G    | 20  | 6-0  | 194 | So. | Dayton, O.           |
| 67  | *JERRY GRAHAM               | G    | 19  | 6-0  | 205 | Jr. | Chicago, Ill.        |
| 68  | JON JENKINS                 | G    | 19  | 5-8  | 182 | So. | Miami                |
| 69  | PATSY MONACO                | G    | 19  | 5-10 | 200 | So. | Balston, N. Y.       |
| 70  | JERRY LANE                  | T    | 22  | 6-2  | 205 | So. | Lakeland             |
| 71  | STEVE HOLTON                | T    | 24  | 6-2  | 206 | Jr. | Perry                |
| 72  | DAN STRICKLAND              | T    | 23  | 6-2  | 230 | So. | Sopchoppy            |
| 73  | *BILL MUSSELMAN             | T    | 21  | 6-0  | 215 | Sr. | Lynchburg, Va.       |
| 74  | MELVIN POPE                 | T    | 24  | 6-0  | 207 | Sr. | Tallahassee          |
| 75  | PAUL SMITH                  | T    | 21  | 6-2  | 235 | Jr. | Miami                |
| 76  | JERRY MOORE                 | T    | 19  | 6-2  | 206 | So. | Miami                |
| 77  | *GEORGE BOYER               | T    | 22  | 6-1  | 220 | Sr. | Jacksonville         |
| 78  | TONY FEKANY                 | T    | 20  | 5-9  | 222 | So. | Jacksonville         |
| 79  | LOU WALLACE                 | T    | 19  | 6-2  | 202 | So. | Atlanta, Ga.         |
| 80  | *RONNIE SCHOMBURGER (Capt.) | E    | 23  | 6-1  | 197 | Sr. | Pittsburgh, Pa.      |
| 81  | *HAM BISBEE                 | E    | 21  | 6-1  | 178 | Sr. | Sanford              |
| 82  | BILL JACOBS                 | E    | 19  | 6-1  | 175 | So. | Lake City            |
| 83  | CLARE BAGNALL               | E    | 24  | 6-1  | 203 | So. | Battle Creek, Mich.  |
| 84  | BILL KIMBER                 | E    | 21  | 6-3  | 192 | Jr. | Winter Park          |
| 85  | *BOB NELLUMS                | E    | 24  | 6-1  | 199 | Sr. | Pensacola            |
| 86  | *JIM ARNOLD                 | E    | 26  | 5-10 | 182 | Sr. | Bainbridge, Ga.      |
| 87  | JOHN SPIVEY                 | E    | 19  | 6-2  | 203 | So. | Panama City          |
| 88  | JAMES HOOKS                 | E    | 22  | 5-9  | 175 | So. | West Palm Beach      |
| 89  | JIM ELK                     | E    | 19  | 6-2  | 185 | So. | Miami                |

\*Denotes letterman.



# Live Modern.

Hey Dad, light  
into that  
Live Modern  
flavor!



Either way y

## ABILENE CHRISTIAN Probable Starting Lineup

| NO. | NAME                     | POS. |
|-----|--------------------------|------|
| 84  | Kieth Davis .....        | LE   |
| 72  | Byron Bradfute .....     | LT   |
| 68  | Herb Gibson .....        | LG   |
| 52  | Mac Starnes .....        | C    |
| 63  | Ray Thomas .....         | RG   |
| 70  | Pete Dean .....          | RT   |
| 86  | Charles Richardson ..... | RE   |
| 11  | Don Harber .....         | QB   |
| 44  | Jimmy Thomas .....       | LH   |
| 43  | Jimmy Hirth .....        | RH   |
| 22  | Billie .....             | FB   |



Smoke modern **L&M**



**FLORIDA STATE  
PROBABLE STARTING LINEUP**

| NO. | NAME                  | POS. |
|-----|-----------------------|------|
| 80  | Ron Schomburger ..... | LE   |
| 73  | Bill Musselman .....  | LT   |
| 62  | Al Ulmer .....        | LG   |
| 52  | Troy Barnes .....     | C    |
| 63  | Abner Bigbie .....    | RG   |
| 77  | George Boyer .....    | RT   |
| 85  | Bob Nellums .....     | RE   |
| 14  | Jerry Henderson ..... | QB   |
| 15  | Bob Renn .....        | LH   |
| 27  | Stan Dobosz .....     | RH   |
| 44  | Eddie Johnson .....   | EB   |



# ABILENE CHRISTIAN ROSTER

| ENDS            |                    |      |     |      |     |       |                    |
|-----------------|--------------------|------|-----|------|-----|-------|--------------------|
| No.             | NAME               | Exp. | Age | Ht.  | Wt. | Class | HOMETOWN           |
| 80              | Richard Scott      | Sqd. | 19  | 6-3  | 170 | So.   | Wewoka, Okla.      |
| 81              | Robert Nickerson   | 2L   | 20  | 6-3  | 188 | Jr.   | Seymour            |
| 82              | Bill Cramer        | 1L   | 22  | 6-1  | 190 | Sr.   | Coahoma            |
| 84              | Keith Davis        | 1L   | 19  | 6-0  | 170 | So.   | Littlefield        |
| 85              | Don Raney          | 2L   | 20  | 6-2  | 187 | Jr.   | Childress          |
| 86              | Charles Richardson | 2L   | 22  | 6-3  | 190 | Jr.   | Quanah             |
| 88              | Donald L. Davis    | Tr.  | 24  | 6-4  | 230 | So.   | Oklahoma City      |
| TACKLES         |                    |      |     |      |     |       |                    |
| 70              | Pete Dean          | 1L   | 21  | 6-1  | 198 | Sr.   | Jasper             |
| 71              | Cramer Adams       | Sqd. | 19  | 6-2  | 195 | So.   | Fort Worth         |
| 72              | Byron Bradfute     | 1L   | 19  | 6-4  | 210 | So.   | Beeville           |
| 73              | Pat Farr           | Sqd. | 20  | 6-2  | 190 | So.   | San Augustine      |
| 74              | Standley Scott     | 2L   | 21  | 6-1  | 208 | Jr.   | Fort Worth         |
| 76              | Herman Phillips    | HS   | 18  | 6-2  | 180 | Fr.   | Eldorado           |
| 77              | H. B. Rogers       | 1L   | 20  | 6-2  | 215 | Jr.   | Mercedes           |
| GUARDS          |                    |      |     |      |     |       |                    |
| 60              | Millard Glass      | 1L   | 21  | 6-1  | 190 | Jr.   | Vernon             |
| 61              | John Gibson        | Sqd. | 21  | 5-10 | 190 | Sr.   | Wichita, Kan.      |
| 63              | Luther Ray Thomas  | 2L   | 22  | 6-0  | 210 | Sr.   | Huntsville         |
| 64              | Dale Reynolds      | HS   | 18  | 6-0  | 190 | Fr.   | McCamey            |
| 65              | Bobby Heath        | Tr.  | 19  | 6-0  | 195 | So.   | Dallas             |
| 66              | Kenneth Greene     | 1L   | 20  | 5-11 | 185 | Jr.   | Texarkana          |
| 67              | Thomas Armstrong   | HS   | 18  | 5-10 | 180 | Fr.   | Fort Stockton      |
| 68              | Herb Gibson        | 2L   | 21  | 6-0  | 197 | Sr.   | Dallas             |
| 75              | Jimmy Roberts      | HS   | 18  | 5-11 | 170 | Fr.   | Winters            |
| CENTERS         |                    |      |     |      |     |       |                    |
| 35              | Richard Gibson     | Sqd. | 19  | 6-3  | 200 | So.   | Dallas             |
| 50              | Moody Conner       | 2L   | 19  | 5-11 | 185 | Jr.   | Plainview          |
| 51              | Paul Slaughter     | 1L   | 22  | 6-2  | 209 | Sr.   | Corsicana          |
| 52              | Mac Starnes        | 2L   | 21  | 6-3  | 212 | Sr.   | Abilene            |
| 53              | Don Freiling       | Sqd. | 20  | 6-1  | 185 | So.   | San Antonio        |
| QUARTERBACKS    |                    |      |     |      |     |       |                    |
| 10              | Johnny Veltman     | HS   | 18  | 5-11 | 165 | Fr.   | San Antonio        |
| 11              | Don Harber         | 2L   | 20  | 5-10 | 165 | Sr.   | Abilene            |
| 12              | Bobby Powell       | Sqd. | 20  | 6-0  | 176 | Jr.   | Amarillo           |
| 14              | H. P. Hawkins      | Tr.  | 20  | 5-10 | 160 | Jr.   | Abilene            |
| RIGHT HALFBACKS |                    |      |     |      |     |       |                    |
| 21              | Jim Armstrong      | Sqd. | 23  | 5-10 | 165 | Jr.   | Midlothian         |
| 22              | Jerry Holley       | 1L   | 20  | 6-0  | 180 | Jr.   | Waco               |
| 30              | David Rucker       | HS   | 18  | 5-10 | 178 | Fr.   | West Chicago, Ill. |
| 43              | Jimmy Hirth        | 3L   | 23  | 5-10 | 180 | Sr.   | Groesbeck          |
| LEFT HALFBACKS  |                    |      |     |      |     |       |                    |
| 23              | Veon Scott         | Tr.  | 19  | 5-11 | 185 | So.   | Chillicothe        |
| 24              | Maurice Peterson   | HS   | 18  | 5-11 | 163 | Fr.   | Fort Worth         |
| 31              | Kermit Rutledge    | HS   | 18  | 6-1  | 165 | Fr.   | Merkel             |
| 41              | Hendrix Wheeler    | 1L   | 19  | 6-2  | 192 | Jr.   | Brownwood          |
| 44              | Jimmy Thomas       | 2L   | 21  | 5-7  | 165 | Jr.   | White Oak          |
| FULLBACKS       |                    |      |     |      |     |       |                    |
| 20              | Dick Marcear       | Sqd. | 19  | 5-11 | 185 | So.   | Tulsa, Okla.       |
| 32              | Bill Lovelace      | 1L   | 20  | 5-11 | 180 | Jr.   | Vernon             |
| 33              | Allen Gray         | HS   | 17  | 5-11 | 180 | Fr.   | Hilliard, O.       |
| 34              | Bill Locke         | Sqd. | 19  | 6-0  | 180 | So.   | San Benito         |
| 42              | Don Rhoden         | 2L   | 21  | 5-10 | 170 | Sr.   | Clyde              |

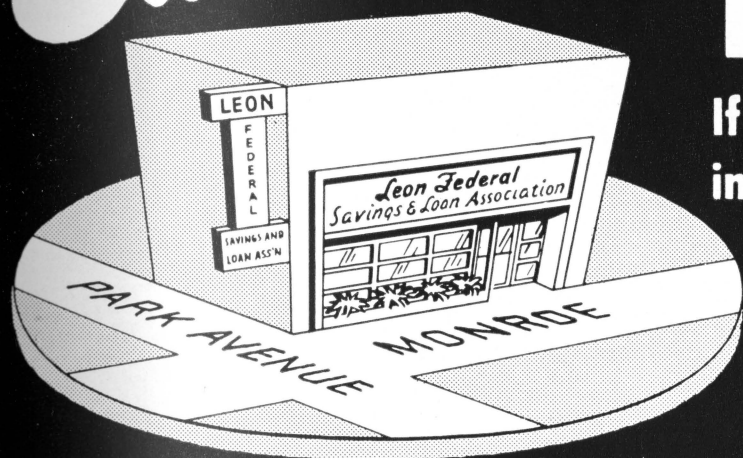


# Save at

# LEON

## FEDERAL

If you can't come  
in, Save by Mail



Savings  
insured to  
\$10,000

The Financial Center of Tallahassee

## STUDENT SAVING CENTER

- School Supplies
- Art Supplies
- Drafting Equipment
- Pennants and Novelties
- Greeting Cards
- Pen Repair Service
- Gifts
- Stationery
- Sundries
- Camera Supplies & Developing Service

We Buy and Sell Books

NEW and USED

## UNIVERSITY BOOKSTORE

In the Student Center

OWNED AND OPERATED BY FRANK AND JAMES CHASE

# *Skyline Restaurant*

1 Mile West of City Limits

U. S. Highways 90 and 20

TALLAHASSEE, FLORIDA

*"Serving Good Food for Fine People"*

---

## **BENNETT'S DRUG STORE**

- Prescriptions
- Cameras
- Sundries
- Gifts
- Fountain
- Cafe
- Cosmetics
- Drugs

MEET AT BENNETT'S

BEFORE AND AFTER THE GAME!

Corner Monroe and College Streets

Phone 2-8980 — 2-4450

*The Vogue*

TALLAHASSEE, FLORIDA



Front Row (Left to Right): Guard, Jerry Graham; Tackle, Bill Musselman; End, Ron Schomburger; Coach, Tom Nugent. Standing: Fullback, Eddie Johnson; and Quarterback, Bobby Renn.

## THE SWEET SHOP

GOOD FOOD

DELICIOUS SODAS

DRUG SUNDRIES

Meet Your Friends Here Before  
and After the Game!

*Follow the Seminoles!*

## BILL'S BOOK STORE

BOOKS

SUPPLIES

SUNDRIES

PRIVATELY OWNED AND OPERATED

## S H A W ' S

Furnishings for Your Home

COLLEGE AVE. at DUVAL ST.

*"Good Taste Costs No More"*



Meet Me at the

**MECCA**

**111 South Copeland St.**

and Enjoy the Fine

**Food and Friendly Atmosphere**

ALSO

**The Master Chef**

**Open Forever**

---

**W E L C O M E**

**GRADDY BROS. GULF STATIONS**

**"WE LIKE EVERYBODY"**

Full Line

**GULF PRODUCTS**

**LUBRICATION SPECIALIST**

**ROAD SERVICE**

**1458 SOUTH MONROE**

**640 WEST TENNESSEE**

**Phone 3-0077**

**Phone 2-3584**

After the Ball Game

**Drive Carefully, You May Hit One of Our Customers**



FLORIDA STATE COACHES (left to right). Front row—Frank Toomey, Herbert Hughes, Head Coach Tom Nugent, Charlie LaPradd. Back row—Paul Odom, Bob Harbison, Hugh Adams and Hugh Taylor.

**D. T. O'HARA, JR.**

PRODUCE • POULTRY • FROZEN FOODS

Phone 2-2128 • 717 W. Gaines St.

TALLAHASSEE, FLORIDA

# FAIVER'S

## For Chicken Pizza Pie

•

**Half-Fry Chicken  
Italian Spaghetti  
Sandwiches — All Types**

•

**1312 WEST TENNESSEE STREET  
TALLAHASSEE, FLORIDA**



F. S. U. Cheerleaders: Left to right; front row, Maralyn Teare, Nancy Fowler, Betty Lovan. back row, Dick Ainsworth, Jim Julian, Charles Johnson.

**GOOD LUCK SEMINOLES!**

## **SEVEN SEAS**

Corner Monroe and Pensacola

Next to the Capitol

**Tallahassee's Finest**

**Will be Happy to Serve You  
After the Game!**



**SCALP 'EM  
SEMINOLES!**



# FLORIDA STATE UNIVERSITY CHEERS

## 1. Beat, Florida State

Beat . . . . . Florida State!  
Beat . . . . . (Stomp, Stomp)  
Beat . . . . . Florida State!  
Beat . . . . . (Stomp, Stomp)  
Beat . . . . . Florida State  
Beat . . . . . (Stomping)

## 2. Freshman, Flunky

Freshman, Flunky, Student, Scholar  
All good Seminoles, Stand up and holler.

## 3. Garnet and Gold

Garnet and Gold, Fight, Fight!  
Garnet and Gold, Fight, Fight!  
Who fight? We fight!  
Garnet and Gold, Fight! Fight!

## 4. IS Everybody Happy?

CL : Is Everybody happy?  
Aud: Hell, yes!  
CL : Is anybody downhearted?  
Aud: Hell, no!  
CL : Then let's railroad Seminoles  
and take it slow!  
ALL: S-E-M-I-N-O-L-E-S  
(Spell three times)  
ALL: Seminoles!

## 5. Locomotive

Rah, rah, rah, rah,  
Go team, go team  
Rah, rah, rah, rah,  
Go team, go team  
Rah, rah, rah, rah,  
Go team, go team  
Fight!

## 6 Alma Mater

High o'er the towering pines  
our voices swell  
Praising these gothic spires  
We love so well;  
Here sons and daughters stand,  
faithful and true  
Praising our Alma Mater  
F. S. U.

## 7. Tom Nugent Cheer (We've Got the Coach)

We've got the coach (clap, clap)  
We've got the team (clap, clap)  
We've got the pep (clap, clap)  
We've got the steam (clap, clap)  
Coach, team, pep, steam.  
Fifteen rahs for Nugent's team.  
Rah-rah, rah, rah, rah;  
Rah-rah, rah, rah, rah;  
Rah-rah, rah, rah, rah.  
Fight, team!

## 8. Sittin' in a Wigwam

Sittin' in a wigwam  
Beatin' on a tom-tom  
Who come?  
We come.  
Everybody will come.  
Scalp 'em, (clap, clap), Scalp 'em  
(Clap, clap), etc.

## 9. Seminoles

(spell out)  
S (4 claps) E (4 claps) M (etc.) I (etc.)  
S (1 clap) E (1 clap) M (etc.) I (etc.)

## 10. Go Seminoles

(All hands in the air)  
Go - - - O Seminoles (clap, clap)  
Go - - - O Seminoles (clap, clap)  
Team fight!

## 11. Touchdown Song

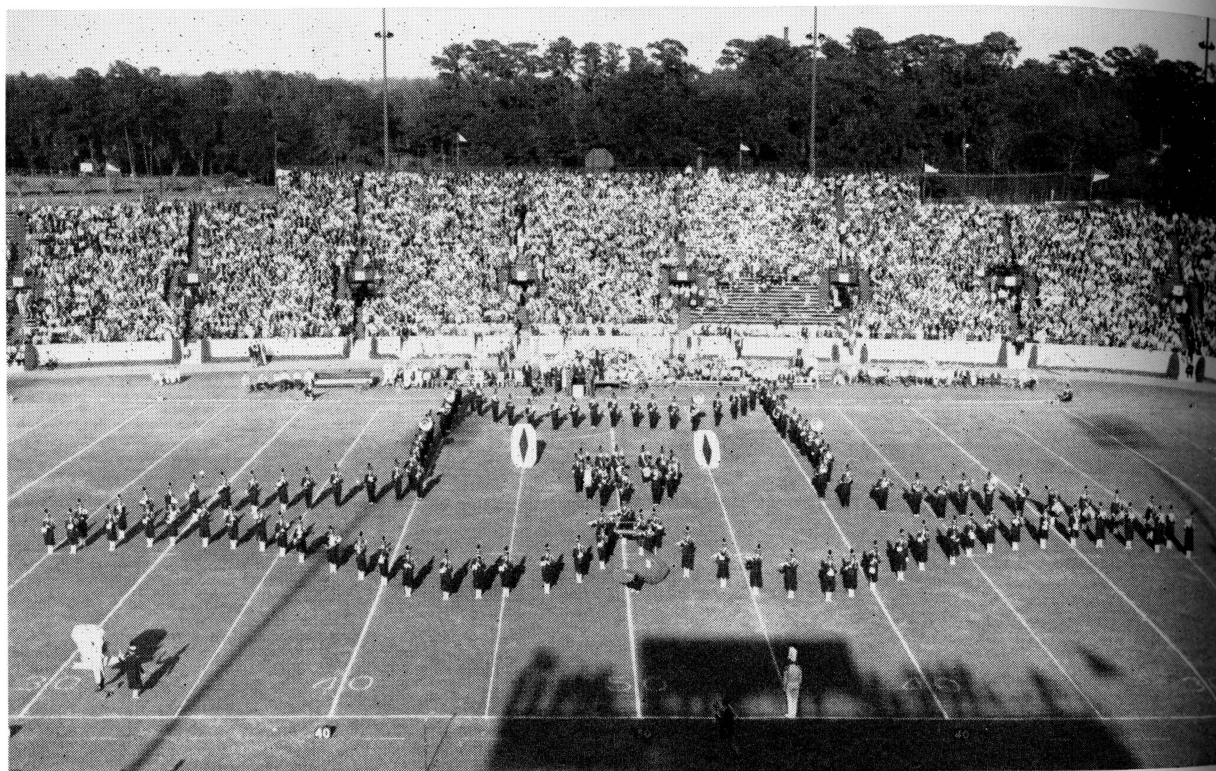
Da dum Yea Team!  
Da dum Whose Team!  
Da dum Our Team!  
Touchdown, that's the thing  
We want a touchdown,  
Hear us sing  
We want a touchdown  
Hear us sing  
We want a great big bruiser, husky and tall,  
To carry the ball, in no time at all  
We'll have a touchdown  
And when it's over  
You can hear us make some noise!  
V-i-c-t-o-r-y  
We want a touchdown, boys!  
Da da dum Fight! Fight! (seven times)

## 12. Fight Song

We're going to fight, fight fight for FSU  
You got to scalp 'Um, Seminoles,  
You got to win, win, win, win, that game  
And roll on down and make those goals.  
For FSU is on the warpath now,  
And at the battle's end, she's great,  
So fight, fight, fight, fight to victory  
Our Seminoles from Florida State.  
F-L-O-R-I-D-A S-T-A-T-E  
Florida State!  
Florida State!  
Florida State!

## 13. Hi, Florida!

Hi, Florida!  
Hi, State,  
Hi, Hi, Florida State!



**CHIEFS IN FORMATION**

## **ABOUT FLORIDA STATE UNIVERSITY**

Located in Tallahassee, Florida State University is one of the fastest growing universities in the country. Already, it is literally bursting at its seams with an estimated 10,000 students expected by 1960.

The campus consists of 297 acres, the older part of which overlooks the capital city.

**The new portion of the campus follows a 50-year master plan developed by well-known architects. It stretches westward along Highway 90.**

Growing by leaps and bounds, the campus has an 11-floor dormitory with three more just like it expected in the near future. A million dollar physical education plant is less than a year old as is the multi-million dollar library building.

Other new buildings include a new Geology Building, a new Science Building, a new School for Home Economics,

a new Zoology and Botany classroom building and a student center.

**A recent act of the legislature granted the University \$2,300,000 for developing basic nuclear studies which will put FSU to the fore in the nuclear field.**

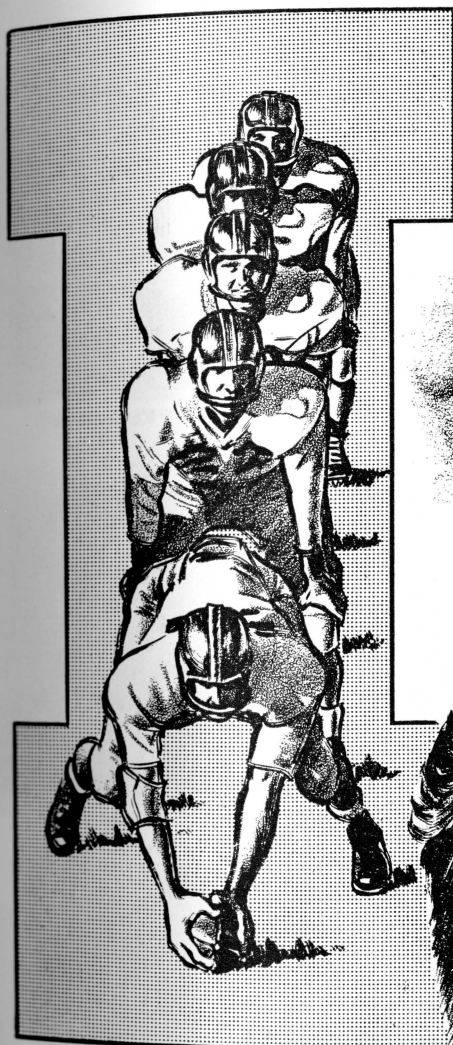
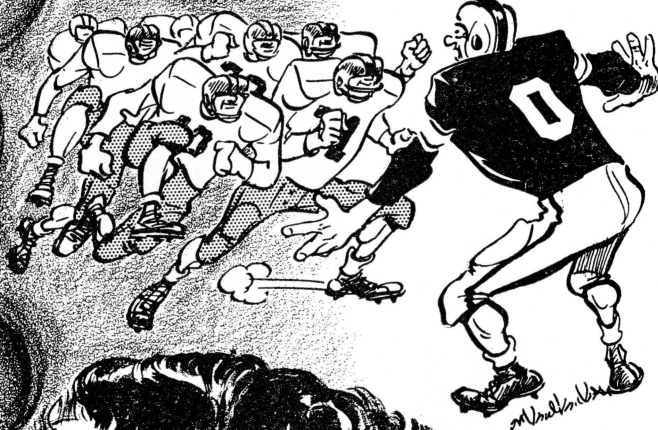
In 1851 the legislature passed an act establishing seminaries of learning to be situated upon the east and west sides of the famous Suwannee River.

The Florida Institute, then established at Tallahassee the site of the present Florida State University, was transferred to the state. During the next 54 years the institution was known as the West Florida Seminary, Florida University and Florida State College.

The Buckman Act of 1905 made the school into Florida State College for Women, which it remained until it became the present Florida State University on May 15, 1947.

FLORIDA STATE'S  
I-FORMATION WAS  
ORIGINALLY DREAMT  
UP TO MASS GREAT  
POWER FOR OFF-  
TACKLE SMASHES...

MAN,  
THE I'S  
REALLY HAVE  
IT

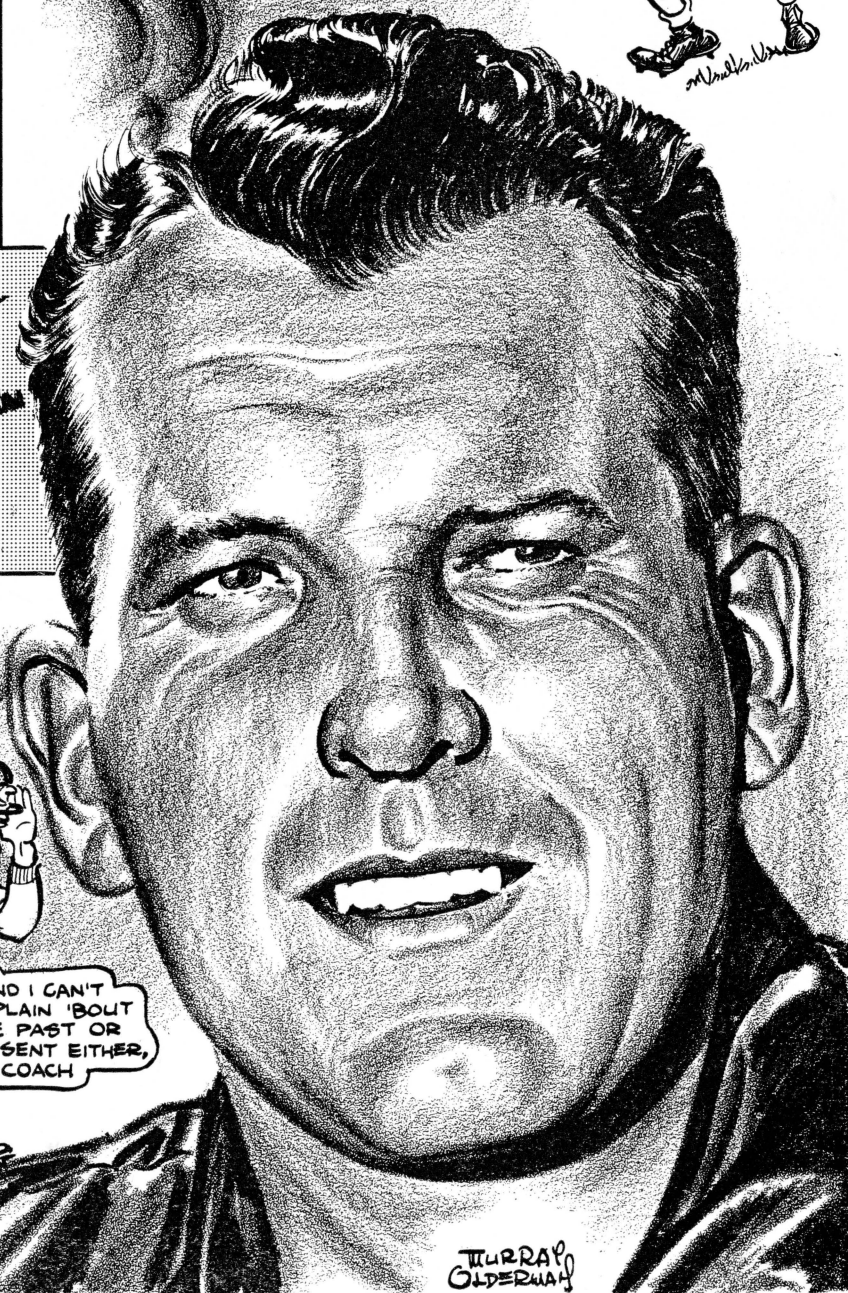


...THE BRAINCHILD  
OF FORWARD-  
THINKING TOM  
NUGENT...



AND I CAN'T  
COMPLAIN 'BOUT  
THE PAST OR  
PRESENT EITHER,  
COACH

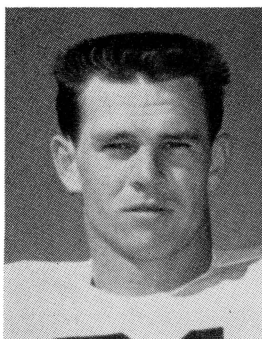
...WHOSE  
COACHING  
INGENUITY  
HAS BEEN  
TRANSLATED  
INTO A BRIGHT  
SEMINOLE  
FOOTBALL  
FUTURE?



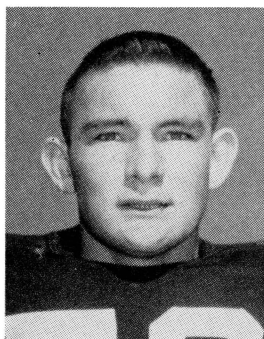
TURRAY  
GLDERWAY



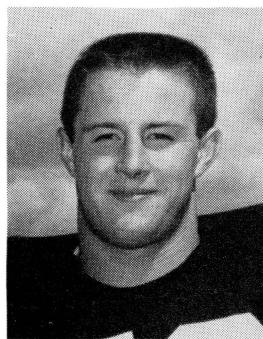
## ABILENE CHRISTIAN PLAYERS



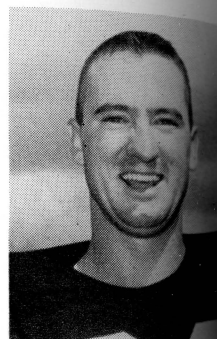
Jim Armstrong  
RH



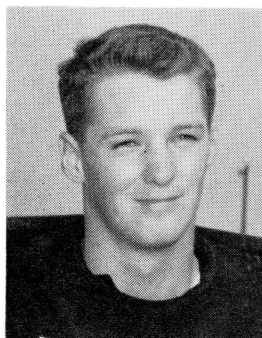
Byron Bradfute  
T



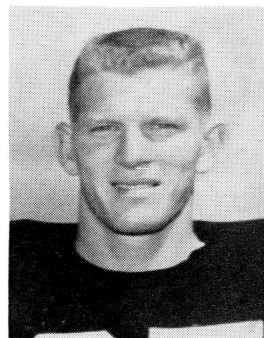
Moody Conner  
C



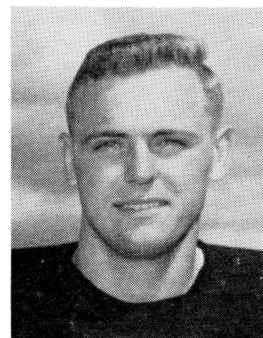
Keith Davis  
E



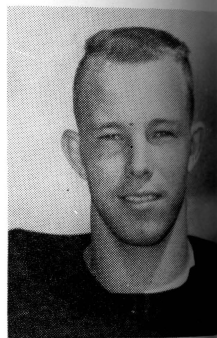
Pete Dean  
T



Pat Farr  
T



John Gibson  
G



Millard Glass  
G

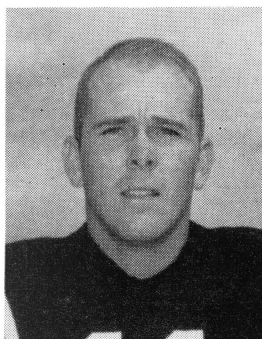


Line Coach Les Wheeler gives pointers to a couple of Abilene Christian College linemen. They are Herb Gibson, left, and Luther Ray Thomas, both seniors and starting guards for A.C.C.

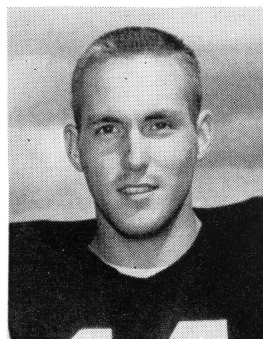
## ABILENE CHRISTIAN PLAYERS



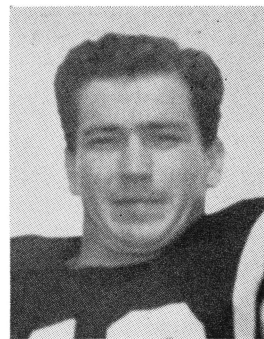
Kenneth Greene  
G



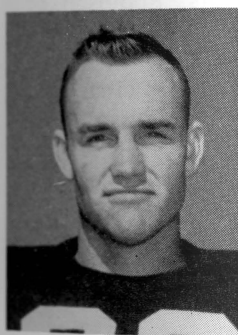
Don Harber  
QB



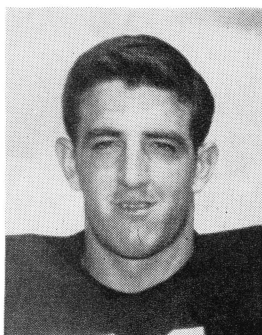
H. P. Hawkins  
QB



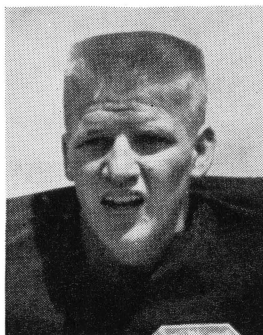
Jimmy Hirth  
HB



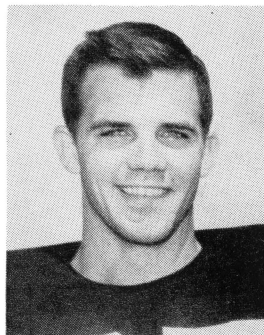
Bill Lovelace  
FB



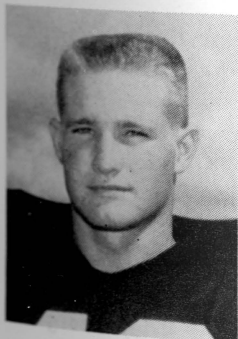
Robert Nickerson  
E



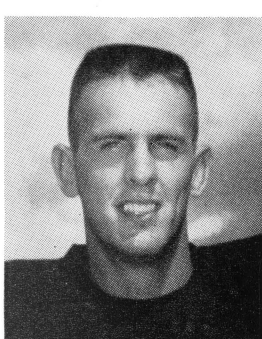
Bobby Powell  
QB



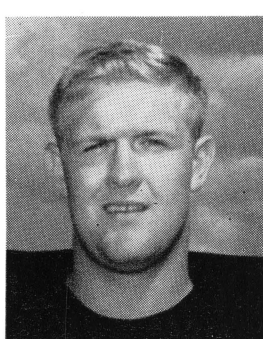
Don Raney  
E



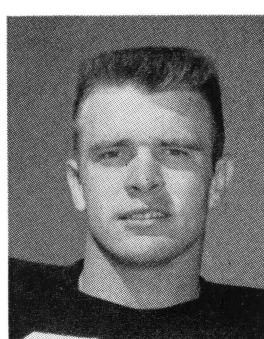
Don Rhoden  
FB



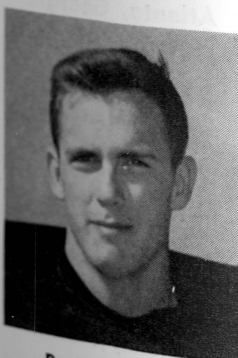
Charles Richardson  
E



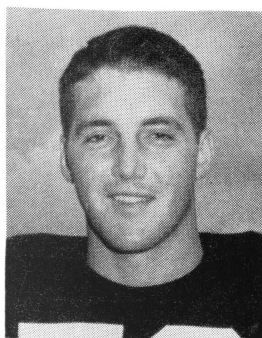
Stanley Scott  
T



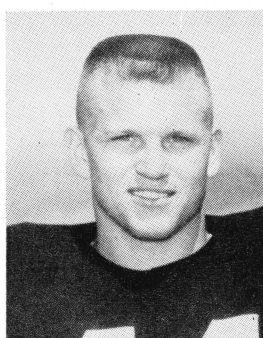
Veon Scott  
LH



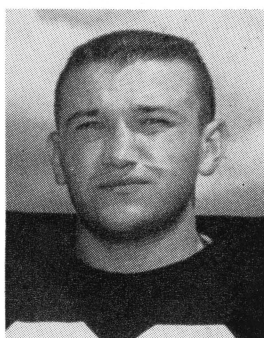
Paul Slaughter  
C



Mac Starnes  
C



Jimmy Thomas  
LH



Luther Thomas  
G

# THE SEMINOLE FOOTBALL NETWORK



**Bill Snyder**  
Seminole Network

Florida State University's football contests are carried to every part of the state again this year by the growing voice of the Seminole Football Network.

Entering its fifth year, the network boasts close to 20 stations this fall—a big increase over the 12 that carried the contests last year.

Perhaps the biggest step the network is taking this year is the fact that an Atlanta, Ga., station is being added to the network. This adds thousands of square miles to the FSU coverage area.

Handling the mikeside duties for the broadcasts are veteran Bill Snyder and newcomer Alan Robinson. Snyder has done the play-by-play of the FSU games the past two years. Robinson, of Public Relations of Florida, joins the network for the first time.

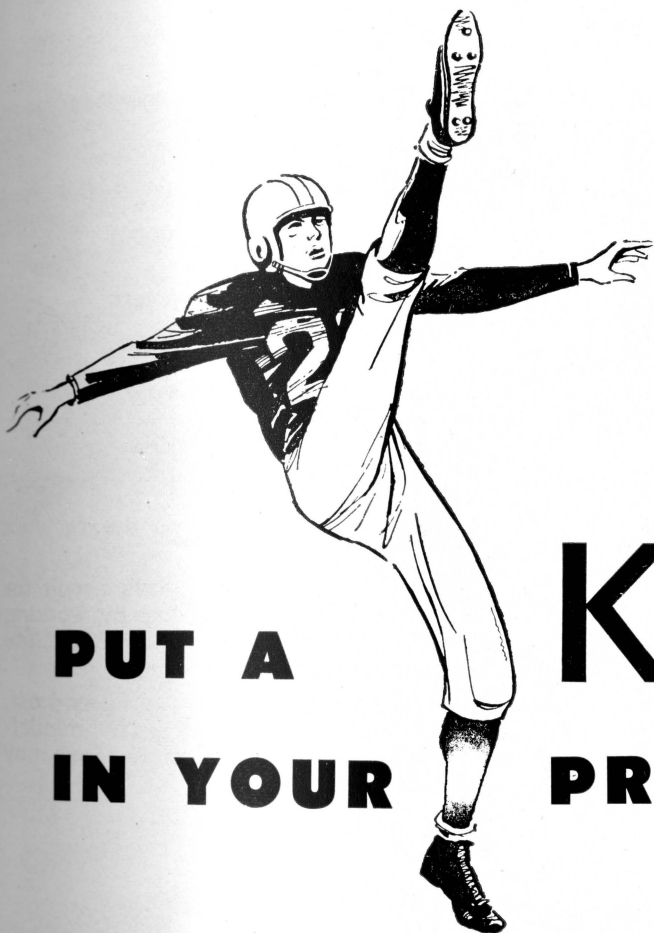
Snyder has been around the sports circuit for a long time. He began his career by working the games of the old professional baseball club, the St. Louis Browns.

All ten of the FSU games will be broadcast, including the road games to Boston, Philadelphia, Hattiesburg, Miss., and Tampa. They may be heard locally on station WTAL.

## THE NET WORK STATIONS

|      |                            |
|------|----------------------------|
| WFBS | Fort Walton Beach, Florida |
| WTAL | Tallahassee, Florida       |
| WDSP | DeFuniak Springs, Florida  |
| WKIS | Orlando, Florida           |
| WMBR | Jacksonville, Florida      |
| WJSB | Crestview, Florida         |
| WRUF | Gainesville, Florida       |
| WMGA | Moultrie, Georgia          |
| WPCF | Panama City, Florida       |
| WAGA | Atlanta, Georgia           |
| WMAF | Madison, Florida           |
| WNER | Live Oak, Florida          |
| WGAF | Valdosta, Georgia          |
| WSUN | St. Petersburg, Florida    |
| WCNH | Quincy, Florida            |
| WTYS | Marianna, Florida          |
| WSIR | Winter Haven, Florida      |
| WLCO | Eustis, Florida            |
| WIPC | Lake Wales, Florida        |





**PUT A KICK  
IN YOUR PRINTING!**

Let **ROSE** print your next order  
of

- LETTERHEADS
- OFFICE AND FACTORY FORMS
- BOOKLETS AND BROADSIDES
- CIRCULARS
- WEDDING ANNOUNCEMENTS
- HOUSE ORGANS
- DIRECT BY MAIL ADVERTISING

Phone **2-0230**

FOR A REPRESENTATIVE

**ROSE PRINTING COMPANY, INC.**

MIAMI

TALLAHASSEE

JACKSONVILLE



# LIKE YOUR PLEASURE **BIG?**

*MORE FULL-FLAVORED  
SATISFACTION...FROM THE  
WORLD'S BEST TOBACCOS!*

***PLUS KING-SIZE  
FILTER ACTION!***

*A BETTER TOBACCO  
FILTER BECAUSE IT'S  
PACKED SMOOTHER  
BY ACCU•RAY!*

***SO HAVE YOUR FUN AND MILDNESS, TOO!***  
SMOKE FOR REAL... SMOKE CHESTERFIELD  
—KING OR REGAL REGULAR

# CHESTERFIELD KING HAS EVERYTHING