

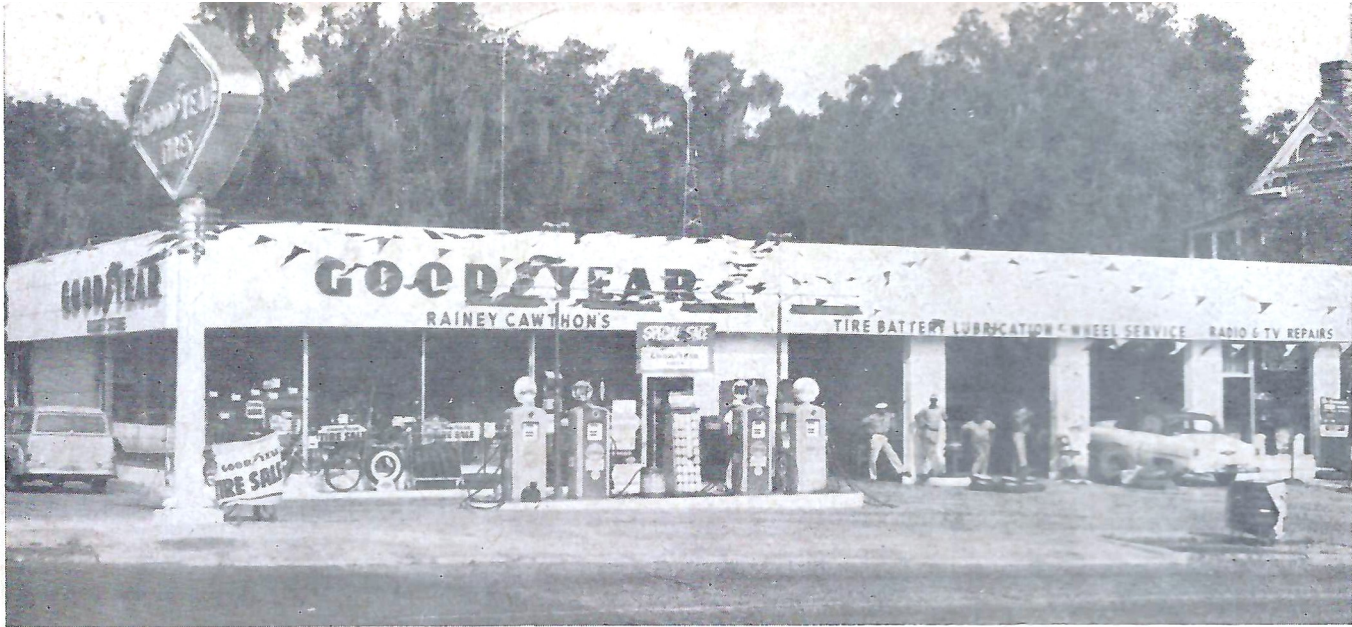
SEPTEMBER 20, 1958 - CAMPBELL STADIUM



OFFICIAL PROGRAM - FIFTY CENTS

FLORIDA STATE - FURMAN

Lon Keaton



RAINEY CAWTHON

Rainey Cawthon's

★ RCA TELEVISION and RADIO

★ SHELL PRODUCTS ★ GOODYEAR TIRES

"WE SERVICE WHAT WE SELL"

• ROAD SERVICE • PHONE 2-1865 •



FRED PIERSON

patronize...
STADIUM

CONCESSIONS

Located beneath the stands on each side of stadium

COLD DRINKS..... 15¢

HOT COFFEE..... 15¢

SANDWICHES..... 30¢

HOT DOGS..... 25¢

PEANUTS..... 10¢

POP CORN..... 10¢

SOUVENIR ITEMS
PENNANTS
BADGES
SUN VISORS
ASPRIN

All Cigarettes 35¢

please pay no more than established prices

Hurricane Warning: Passing Game One To Watch

TABLE OF CONTENTS

Seminole Athletic News	3
The President and Head Football Coach	4
Information About Florida State	5
Florida State Players	8-9-13
Florida State Roster	10
Florida State Coaches	14
Probable Starting Lineups	16-17
Furman Roster	23
Florida State Cheers	25
Information About Furman	27
Furman Players	28
Seminole Football Network	29
The Marching Chiefs	30

With 22 of 28 1957 Furman lettermen back—including one of the nation's top passers—Coach Tom Nugent's Seminoles must be on their toes tonight. The Purple Hurricane, charged with new enthusiasm under new head coach Robert King, may fill the air with passes.

The air game is elementary with the Purple Hurricane, because quarterback Billy Baker (14) and standout ends Tom Avery (86) and Ray Siminski (84) are back in harness. Last season, Baker was the nation's fifth best passer in completing 88 of 150 passes. He led the nation in total completions at one stage and hit a high of 27 completions in 40 attempts against The Citadel.

Baker and some fine ends elevate Furman's passing potential above its ground promise. But the Seminoles aren't overlooking the running threat of veteran halfbacks Hicky Horton (40) and Mack Edwards (27) and 206-pound fullback Rodney Sampson (31).

Florida State is aiming for its fifth victory in seven meetings with tonight's Southern Conference opponent. Last year, the Seminoles dumped the Purple Hurricane, 27-7. And, take note, the one Furman TD came on a 13-yard touchdown strike from Baker to Siminski.

With last week's sound 22-7 verdict over Tennessee Tech as a booster, the Seminoles will try to keep their 1958 record spotless. Quarterback Vic Prinzi (10), who scored 14 big points against Tennessee Tech, will be guiding the Seminoles with Bobby Renn (20), Jack Espenship (27) and Dink Lawrence (41) lending support along with other talented backs.

Other Seminoles to watch are sophomores Terry Moran (63), leading tackler as a guard last week; right end Tony Romeo (80), who caught a payoff pitch from Renn last week; tackle Bob Swoszowski (71), halfback Bud Whitehead (26) and quarterback Bobby Conrad (11).

The President . . .

DR. ROBERT M. STROZIER

Florida State University's President, Dr. Robert M. Strozier, is a football enthusiast who will be "playing" his second year for the Seminoles.

When Dr. Strozier came to Florida State in September, 1957, it was homecoming for the popular new president. Born in McRae, Ga., he was reared in Moultrie, Ga., and was graduated from Emory University. He earned his Ph.D. at the University of Chicago.

President Strozier began his professional career as professor of romance languages at Georgia State College for Men at Tifton. From 1933-1940 he served as professor of French and dean of men at West Georgia College.

In 1940 he went to the University of Georgia as associate dean of students and associate professor of romance languages. Later he served as director of the Army Special Training Program unit there.

In May, 1945, he joined the University of Chicago faculty as associate director of International House and in 1946 he became dean of students.

President Strozier's first year at Florida State has been one of accomplishment from the start. At Commencement last May he reported an accumulative total of research grants and contract funds of \$1,225,000, greater by 487,000 than in any previous year. Among these contracts is one with the United States Air Force amounting to \$217,260 for nuclear research, the largest single contract ever negotiated in support of research at Florida State.



The Head Coach . . .

TOM NUGENT

"Sometimes when you talk to Tom Nugent," wrote the Atlanta Journal's Jim Minter, "you feel as though Mike Todd is still with us." Minter's point was simple. Florida State's energetic Athletic Director and Head Football Coach, in the colossal style of the late Mike Todd, does things first class.

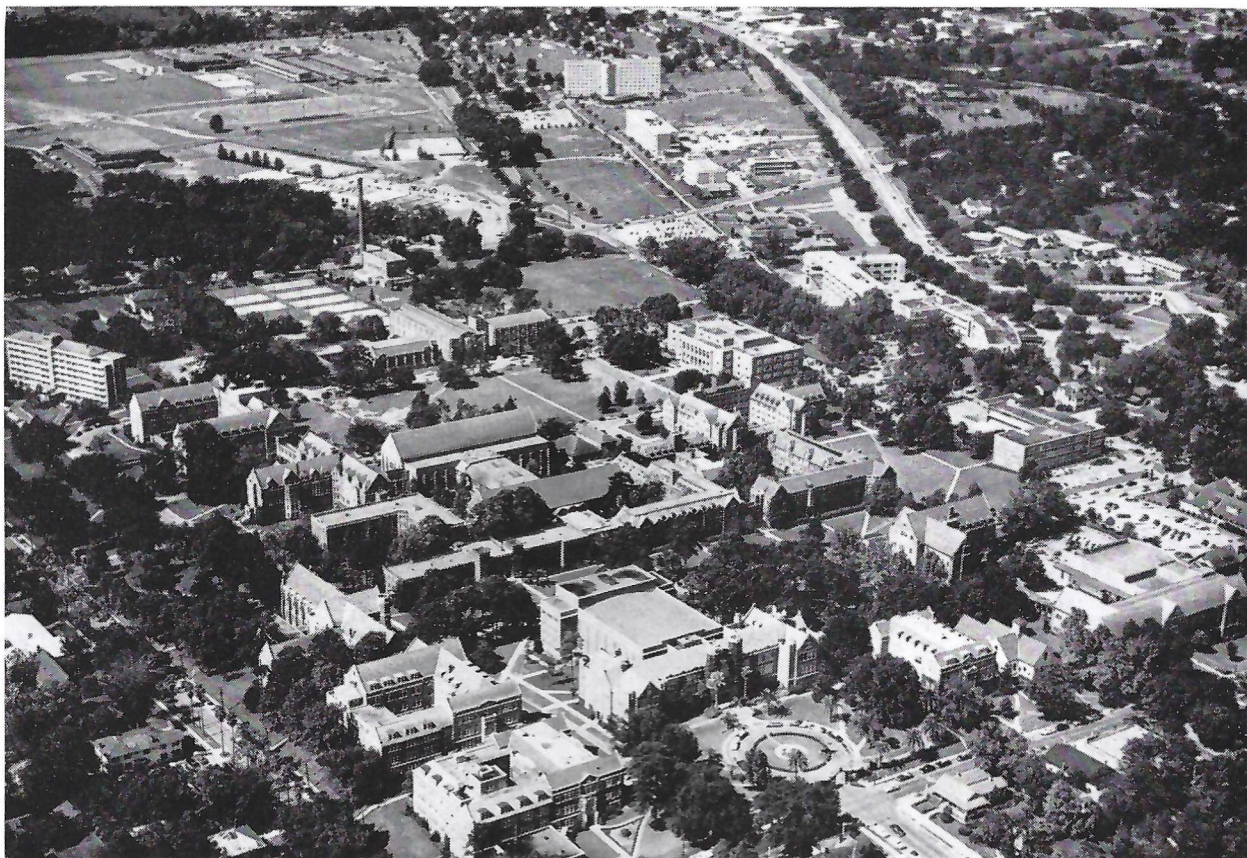
It's been that way with Thomas Norman Nugent since, at age 15, he wrote he would be a head college football coach some day. That day arrived when he assumed command of VMI's football fortunes. It was in 1949, and within three years after Nugent joined the obscure VMI Keydets, he had won a Southern Conference championship and pulled an upset over mighty Georgia Tech.

Nugent came to FSU in 1953 and thanks to his magnetic touch, football at Florida State has grown from a pickup sport in 1947 to a 1958 position that finds the Seminoles playing such tradition-steeped opponents as Georgia Tech, Georgia, Tennessee, Florida, and Miami (Fla.).

Nugent's enthusiastic interest in the entire program of intercollegiate athletics at FSU resulted in his appointment as Director of Athletics last May. In his sixth year as the propelling force behind the Seminoles, Nugent has attained a record of 27 victories against 24 losses and one tie.

He has also become nationally known for his bright innovations. It was Nugent who presented to football the typewriter huddle, the double quarterback and the "I" formation used so effectively by his own Seminoles. Florida State's annual June coaching clinic, which he fathered five years ago, is probably football's finest. A native of Lawrence, Mass., the 45-year-old coach was graduated from Ithaca College in 1936.





ABOUT FLORIDA STATE UNIVERSITY

Located in Tallahassee, Florida State University is one of the fastest growing universities in the country. Already it is literally bursting at its seams with an estimated 10,000 students expected by 1960.

The campus consists of 297 acres, the older part of which overlooks the capital city.

The new portion of the campus follows a 50-year master plan developed by well-known architects. It stretches westward along Highway 90.

Growing by leaps and bounds, the campus has an 11-floor dormitory with three more just like it expected in the near future. A million dollar physical education plant is a year-and-a-half old as is the multi-million dollar library building.


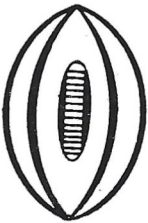

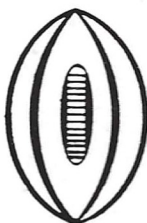

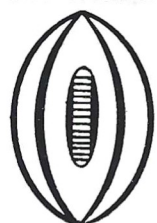



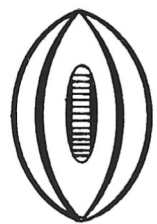
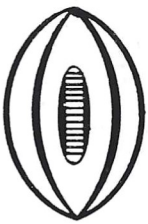

New buildings completed this year are the School of Business and the School of Education, and a Geology addition.

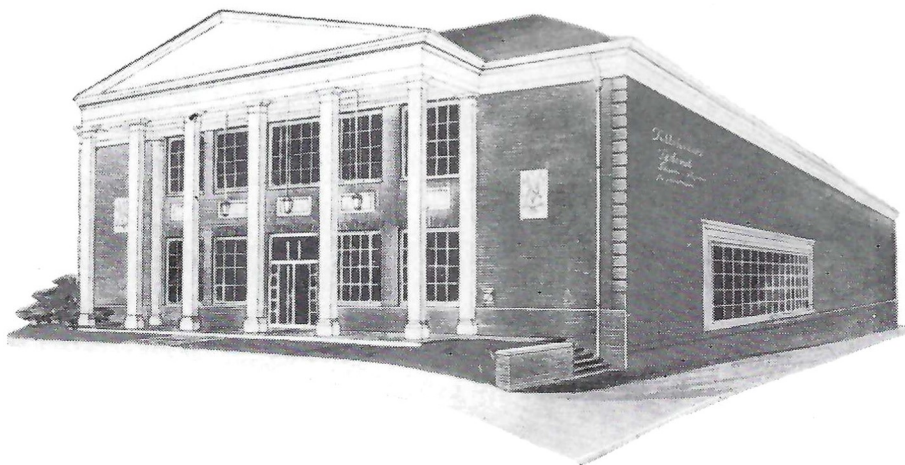
A recent act of the Legislature granted the University \$2,300,000 for developing basic nuclear studies which will put Florida State to the fore in the nuclear field.

Authorized by the 1851 Legislature, the institution was first established as the "Seminary West of the Suwannee," and was opened on a portion of its present campus. The name was changed to "Florida State College" in 1901 and the school remained coeducational until 1905. Then it became the "Florida Female College" and was renamed in 1909, "The Florida State College for Women."

By act of the 1947 Legislature, the institution again became coeducational as The Florida State University.

When We Have the Ball

LEFT END	LEFT TACKLE	LEFT GUARD	CENTER	RIGHT GUARD	RIGHT TACKLE	RIGHT END	LEFT
							
89 Fleming 87 Hinson 84 Kimber	71 Swoszowski 79 Graham 75 Strickland	62 Ulmer 64 Lamb 68 Keith	54 Hardy 53 Rogers 52 Bell	63 Moran 61 McGee 60 Baggett	77 Spivey 69 Brown, B. 74 Bagnall	80 Romeo 83 Fountain 81 Kavanaugh	80 Stewa 84 Simin 81 Chew
QUARTERBACK							
LEFT HALFBACK				RIGHT HALFBACK			
		10 Prinzi 13 Majors 11 Conrad					
20 Renn 22 Levy 25 Meyer		FULLBACK					
							
		41 Lawrence 43 Pickard 44 Calhoon					



OUR NEW HOME

ll

When Furman Has the Ball

END



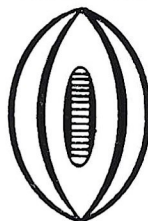
tain
naugh

LEFT END



80 Stewart
84 Siminski
81 Chewing

LEFT TACKLE



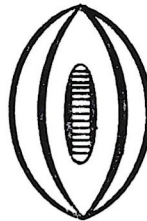
77 Boroff
75 Aiken
76 Carter

LEFT GUARD



61 Harrison
63 Belskis
62 Arndt

CENTER



52 Walton
51 Clemminshaw
50 Jacobson

RIGHT GUARD



65 Ingram
66 Granade
60 Heine

RIGHT TACKLE



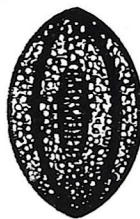
70 Markofski
78 Bland
72 Olliff

RIGHT END



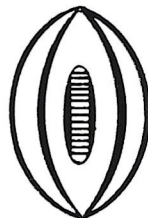
86 Avery
87 Brown
82 Nery

QUARTERBACK



14 Baker
12 Taylor
10 Revels

LEFT HALFBACK



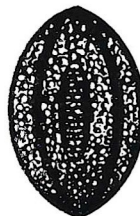
40 Horton
44 Nickles
42 Dean

RIGHT HALFBACK



27 Edwards
26 Morrison
20 Linder

FULLBACK



31 Sampson
32 Behlke
33 Hancock

TALLAHASSEE
FEDERAL
SAVINGS & LOAN

115 E. Park

TALLAHASSEE

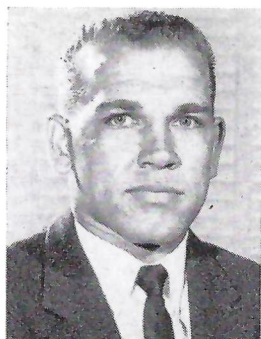
FSU Players



Bob Conrad—QB



Jack Espenship—HB



Pappy Rozman—FB



Ron Hinson—E



Joe Majors—QB



John Bell—C



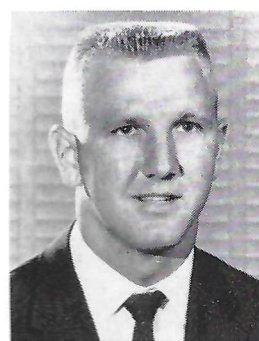
Bob Stewart—E



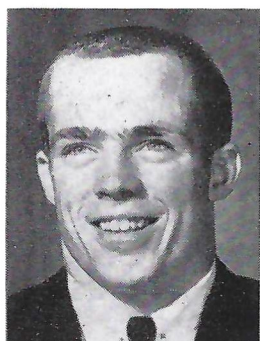
Bud Whitehead—HB



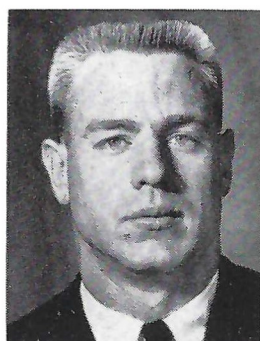
Bob Fountain—E



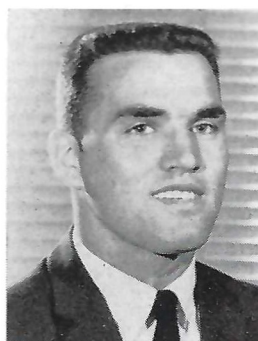
Carl Meyer—HB



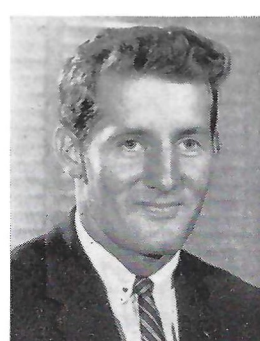
Al Ulmer—G



Bill Kimber—E



Terry Moran—G



Bobby Renn—HB



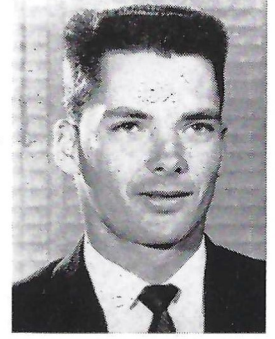
Joe McGee—G



Jim Hooks—HB



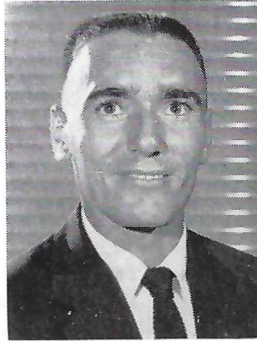
Bob Douglas—T



John Slaton—E



Jim Daniel—E



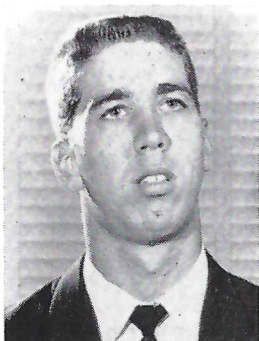
Frank Springer—QB



Bob Carnes—HB



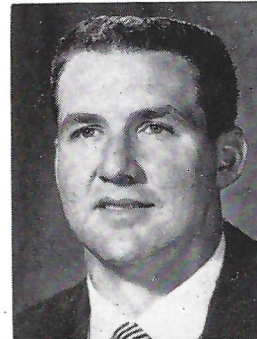
Ken Kestner—C



Bob Swoszowski—T



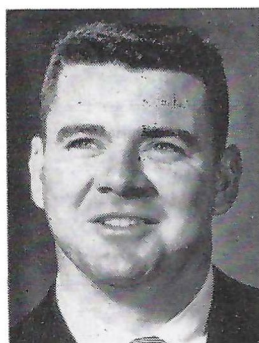
Tony Romeo—E



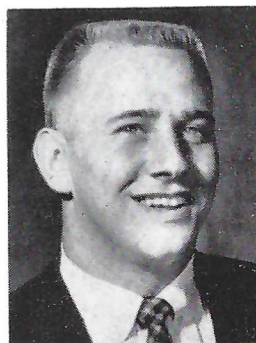
Dink Lawrence—FB



Jack Hardy—C



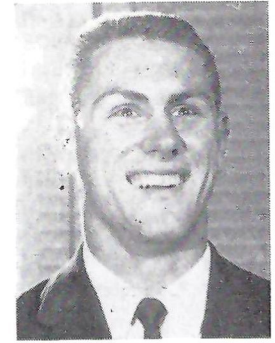
Leo Baggett—G



Jerry Graham—T



Lou Wallace—T



Denny Schou—G

FLORIDA STATE UNIVERSITY 1958 FOOTBALL ROSTER

NO.	NAME	POS.	AGE	HT.	WT.	YR.	HOMETOWN
10	*VIC PRINZI	QB	22	6-0	178	Sr.	Waverly, N. Y.
11	BOBBY CONRAD	QB	20	6-0	181	So.	Marianna
12	GENE McCORMICK	QB	22	5-9	151	So.	Miami
13	*JOE MAJORS	QB	20	6-0	176	Jr.	Huntland, Tenn.
14	FRANK SPRINGER	QB	24	5-11	180	So.	Delray Beach
20	*BOBBY RENN	HB	24	5-11	175	Sr.	Henderson, N. C.
21	BOBBY CARNES	HB	20	6-0	176	Jr.	Tallahassee
22	LENNY LEVY	HB	19	5-8	180	Jr.	Miami Beach
23	*JOHN SHEPPARD	HB	24	5-8	182	Sr.	Tallahassee
24	KEN CONE	HB	19	6-0	173	So.	Lakeland
25	CARL MEYER	HB	20	5-11	177	So.	Melbourne
26	BUD WHITEHEAD	HB	19	5-10	171	So.	Marianna
27	JACK ESPENSHIP	HB	19	6-2	185	So.	Lake City
28	*JIM HOOKS	HB	22	5-9	173	Jr.	West Palm Beach
40	PAUL PASQUALE	FB	21	5-8	186	So.	Binghamton, N. Y.
41	FLOYD LAWRENCE	FB	22	6-0	202	Jr.	Saltville, Va.
42	PAPPY ROZMAN	FB	23	5-9	182	Jr.	Tallahassee
43	*FRED PICKARD	FB	20	5-9	165	Jr.	Columbia, Tenn.
44	JIM CALHOUN	FB	23	6-1	191	So.	Winslow, Ariz.
50	KEN KESTNER	C	20	5-9	200	So.	Cleveland, Ohio
51	BO DAVIS	C	21	6-2	195	Sr.	Hapeville, Ga.
52	JOHN BELL	C	18	6-0	199	So.	Atlanta, Ga.
53	RAMON ROGERS	C	20	5-11	182	Jr.	Pensacola
54	JACK HARDY	C	19	5-10	191	So.	Miami
60	*LEO BAGGETT	G	22	5-10	191	Sr.	Panama City
61	*JOE McGEE	G	22	5-9	186	Sr.	Raleigh, N. C.
62	*AL ULMER	G	19	5-10	176	Jr.	Clearwater
63	TERRY MORAN	G	18	5-9	180	So.	New Orleans, La.
64	RAY LAMB	G	20	6-0	182	So.	Atlanta, Ga.
65	LOU BARONA	G	20	5-9	175	So.	Miami
66	DENNY SCHOU	G	18	5-8	185	So.	Delray Beach
67	JIM ROGERS	G	20	5-10	180	Jr.	Miami
68	*STU KEITH	G	21	6-0	183	Sr.	Panama City
69	BILL BROWN	T	23	6-0	200	So.	Orlando
70	JIM WORTHINGTON	T	20	6-1	198	So.	Oak Ridge, Tenn.
71	BOB SWOSZOWSKI	T	18	6-3	192	So.	Orlando
73	BOB DOUGLAS	T	20	6-0	192	Jr.	Dayton, Ohio
74	*CLARE BAGNALL	T	25	6-1	208	Jr.	Battle Creek, Mich.
75	DAN STRICKLAND	T	23	6-1	214	So.	Sopchoppy
76	*LOU WALLACE	T	19	6-2	197	Jr.	Atlanta, Ga.
77	*JOHN SPIVEY	T	20	6-2	200	Jr.	Panama City
78	*JOHN CRAIG	T	21	6-0	214	Sr.	Orlando
79	*JERRY GRAHAM	T	20	6-0	224	Sr.	Chicago, Ill.
80	TONY ROMEO	E	20	6-0	200	So.	Tampa
81	BOB KAYANAUGH	E	18	6-0	200	So.	Miami
82	JOHN SLATON	E	18	6-1	183	So.	Coral Gables
83	*BOB FOUNTAIN	E	21	6-0	190	Sr.	Crestview
84	*BILL KIMBER	E	22	6-2	193	Sr.	Winter Park
85	HERMAN BROWN	E	20	6-0	174	So.	Auburndale
86	JIM DANIEL	E	19	6-3	180	So.	Atlanta, Ga.
87	RON HINSON	E	19	6-0	193	So.	Waycross, Ga.
88	BOB STEWART	E	18	5-10	183	So.	St. Petersburg
89	PETE FLEMING	E	21	6-0	177	Jr.	Pensacola
	GEORGE CANNING	G	20	5-10	193	So.	Mobile, Ala.
	ROY JONES	E	21	6-2	181	So.	Tallahassee

* Denotes Letterman.

OWNED AND OPERATED BY FRANK AND JAMES CHASE

Skyline Restaurant

1 Mile West of City Limits

U. S. Highways 90 and 20

TALLAHASSEE, FLORIDA

"Serving Good Food for Fine People"



MIDYETTE-MOOR Insurance Agency

"Ask Those We Serve"

Complete Insurance and Bond Service

PHONE 2-3456

**MIDYETTE-MOOR BUILDING
TALLAHASSEE, FLORIDA**

—SAYS—

Scalp 'em Seminoles!



**PAYNE H. MIDYETTE
FRANK D. MOOR
EDWIN M. CLARK
A. WINSLOW SULLIVAN
ROBERT M. DICKINSON
PAUL L. LEWIS
PAYNE H. MIDYETTE, JR.
WILLIAM L. MOOR
GLENN SEARS
REX SIKES
FRANK KOUBA
ROY SOLOMON
TROY BARNES**

**TALLAHASSEE
AUTOMOBILE
DEALERS
ASSOCIATION**

Alford Chevrolet Co.

Capital Lincoln-Mercury, Inc.

Carr Buick

Drake Motors

Mayo-Mingledorff Motors, Inc.

John Manthey, Inc.

Proctor & Proctor

Capital Plymouth, Inc.

Tallahassee Motors, Inc.

Collins Motors, Inc.

THE LAUNDROMATS

115 W. Tennessee — 1005 N. Monroe

Phone 3-1789

Phone 2-3792

CLOTHES — RUGS — BLANKETS

Washed Clean — Fluff Dried and Folded

SHIRT FINISHING

DRY CLEANING • TINTEXING

"Your Satisfaction Is Our Goal"

SCALP 'EM SEMINOLES!

BROWN'S MEN'S WEAR

MONROE AT PARK

F & T RESTAURANT

For Good Food and Quick Service

113 S. Monroe

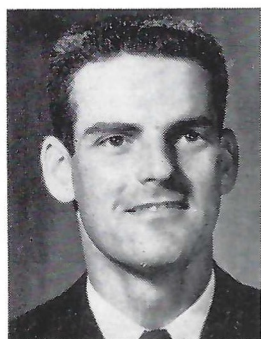
Phone 2-8917

Air Conditioned

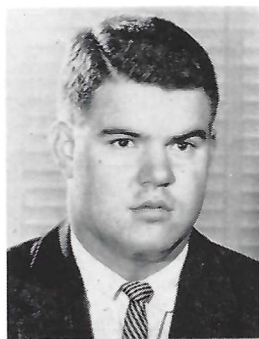
FSU Players



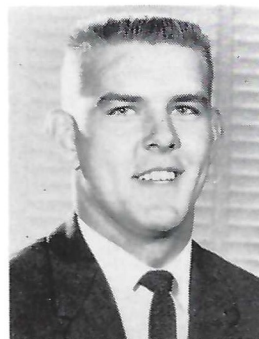
Clare Bagnall—T



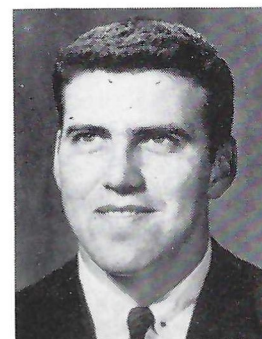
Gene McCormick—QB



John Craig—T



Jim Worthington—T



Bo Davis—C



Jim Calhoon—FB



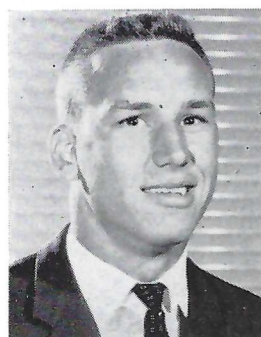
Bill Brown—T



Lenny Levy—HB



Dan Strickland—T



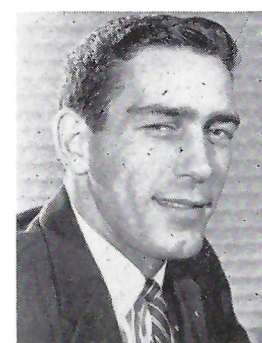
Ray Lamb—G



Stuart Keith—G



Herman Brown—E



Vic Prinzi—QB

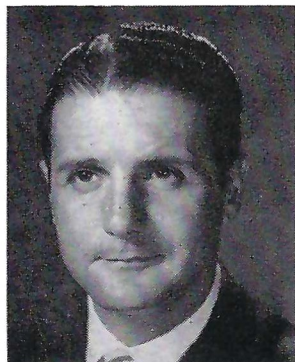
The FSU Coaching Staff



HARBISON

BOB HARBISON, 31, is a real veteran of the Seminole coaching staff in terms of longevity. Harbison begins his 11th full season with Florida State this fall. Back in his playing days, Bob was an outstanding guard for the late Bo McMillin at Indiana University from 1945-47. A native of Evansville, Ind., Harbison came to Florida State in 1948. He is credited with developing Little All-America linemen Bill Dawkins in 1951 and fellow coach Hugh Adams in 1949.

FRANK TOOMEY, 35, a native of Niagara Falls, N. Y., is in his fifth season as one of Coach Tom Nugent's right-hand men. A graduate of Ithaca College, Toomey has a lot to do with making the Seminole backfield go. He is also regarded as one of the best defensive coaches around. He came to Florida State in 1954 after coaching football and baseball at Waverly, N. Y., High School from 1948.



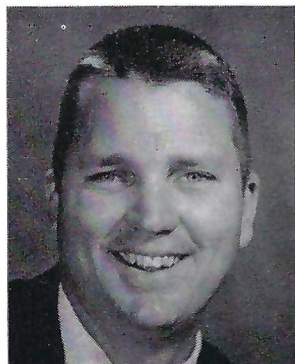
TOOMEY

HUGH ADAMS, 30, a Little All-America on Florida State's 1949 team, returns for his third season with the Seminoles.

A graduate assistant in 1955, Hugh was the first Florida State graduate to hold an assistant coaching position with the Seminoles.

The Punta Gorda native was an assistant coach and mathematics instructor at Tallahassee's Leon High School in 1950-51. He served in the Navy before returning to Florida State in 1955 to earn his master's degree.

PAUL ODOM, 31, coached Florida State's high-powered freshman teams during the past three years. A graduate assistant in 1955, Odom was elevated from freshman coach to the varsity coaching staff last June. A native of Mount Dora, Odom played tackle for Rollins College in 1947-48. After Rollins dropped football, Paul switched to Stetson and captained the Hatters during the 1950 season.



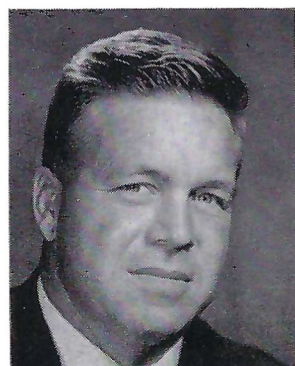
ADAMS

CHARLIE LAPRADD, All-America tackle at the University of Florida in 1952, is the second newest full member of Florida State's coaching staff. LaPradd is expected to develop into an excellent football coach, primarily because of the way the young Seminoles respect him. A native of St. Augustine, Charlie, 30, was graduated from the University of Florida in 1953 before serving in the Air Force. He was a graduate assistant at FSU in 1956. He became a full member of the staff last season.

HERB HUGHES, 27, former University of New Mexico quarterback, takes over the reigns of Florida State's freshman football squad this season. Hughes assisted with the Seminole freshmen in 1956 and worked with the varsity last season. He showed an early inclination to become a football coach at New Mexico, where he was graduated in 1956. His shrewd knowledge of football is helping greatly in his coaching efforts.

LEE CORSO, the newest full-time member of the coaching staff — appointed last June — is one of the brighter names in Florida State's brief football history.

A native of Miami, where he was a three-sport All-Stater at Miami Jackson, 22-year-old Corso has always expressed a desire to coach. "Lee has that rare ability of being able to impart the knowledge he has," Coach Tom Nugent says. "I think he has a big future in coaching." Corso was graduated from Florida State in 1956 and served as freshman backfield coach last season.



ODOM



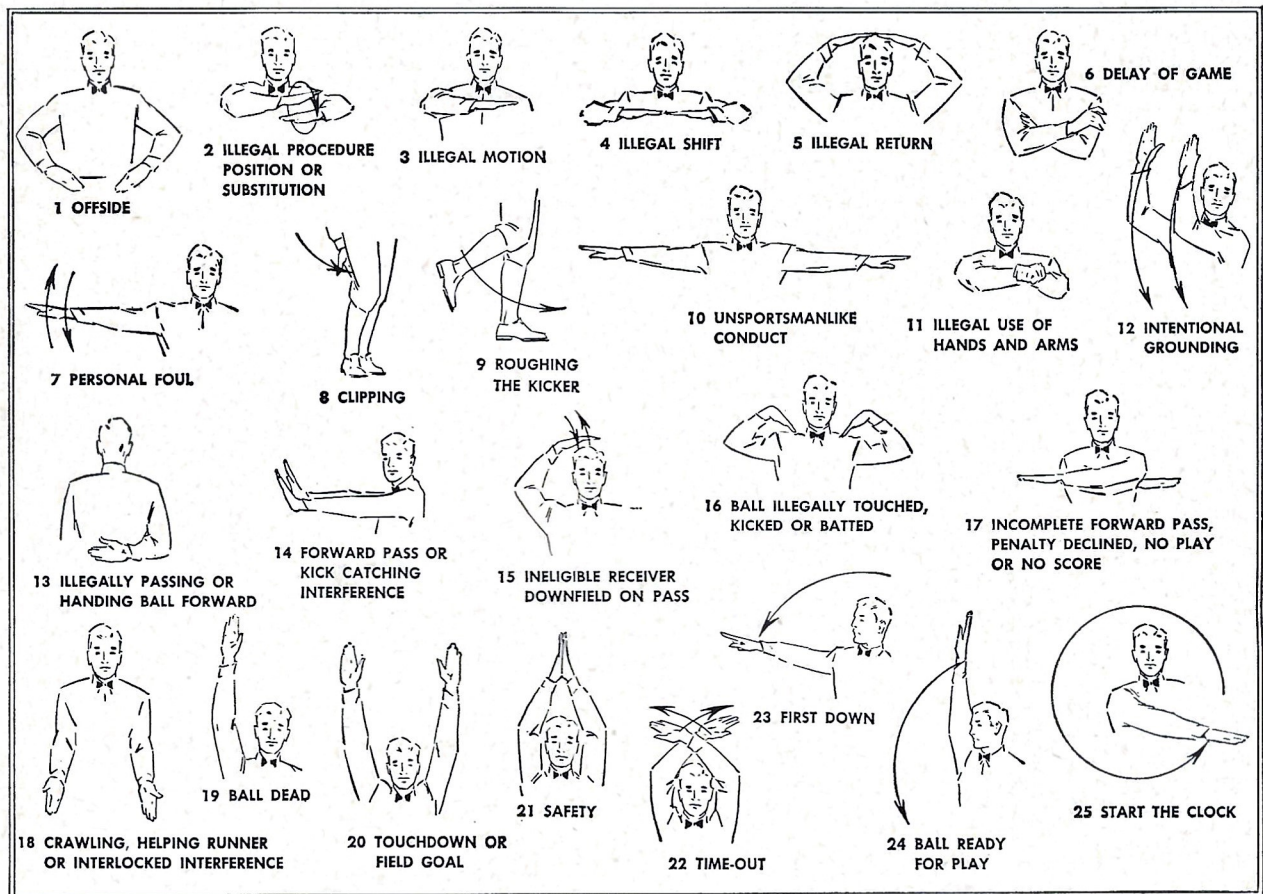
LAPRADD



HUGHES



CORSO







1-hour free parking at
Park and Shop Garage.

SIGN OF *SAFE SAVING*

Your savings at Leon Federal are insured up to \$10,000 by a U. S. Government Agency. Insured savings up to \$30,000 are possible for husband and wife through joint accounts. Start saving safely at Leon Federal today.

LEON

FEDERAL SAVINGS AND LOAN ASSOCIATION

111 S. Monroe Street
Tallahassee, Florida

CHESTERFIELD SALUTE

FLORIDA STATE

PROBABLE STARTING LINEUP

NO.	NAME	POS.
89	PETE FLEMING	LE
71	BOB SWOSZOWSKI	LT
62	AL ULMER	LG
54	JACK HARDY	C
63	TERRY MORAN	RG
77	JOHN SPIVEY	RT
80	TONY ROMEO	RE
10	VIC PRINZI	QB
20	BOB RENN	LH
27	JACK ESPENSHIP	RH
41	FLOYD LAWRENCE	FB

THE FLORIDA STATE SQUAD

10	Prinzi, b	50	Kestner, c	75	Strickland, t
11	Conrad, b	51	Davis, c	76	Wallace, t
12	McCormick, b	52	Bell, c	77	Spivey, t
13	Majors, b	53	R. Rogers, c	78	Craig, t
14	Springer, b	54	Hardy, c	79	Graham, t
20	Renn, b	60	Baggett, g	80	Romeo, e
21	Carnes, b	61	McGee, g	81	Kavanaugh, e
22	Levy, b	62	Ulmer, g	82	Slaton, e
23	Sheppard, b	63	Moran, g	83	Fountain, e
24	Cone, b	64	Lamb, g	84	Kimber, e
25	Meyer, b	65	Barona, g	85	H. Brown, e
26	Whitehead, b	66	Schou, g	86	Daniel, e
27	Espenship, b	67	J. Rogers, g	87	Hinson, e
28	Hooks, b	68	Keith, g	88	Stewart, e
40	Pasquale, b	69	B. Brown, t	89	Fleming, e
41	Lawrence, b	70	Worthington, t		Canning, g
42	Rozman, b	71	Swoszowski, t		Jones, e
43	Pickard, b	73	Douglas, t		
44	Calhoun, b	74	Bagnall, t		



NOTHING SATISFIES LIKE THE BIG CLEAN TASTE OF

SALUTES THE FOOTBALL MEN OF AMERICA

FURMAN

PROBABLE STARTING LINEUP

NO.	NAME	POS.
80	WOODY STEWART	LE
77	JIM BOROFF	LT
61	GEORGE HARRISON	LG
52	BUDDY WALTON	C
65	JERRY INGRUM	RG
70	DON MARKOFSKI	RT
86	TOM AVERY	RE
14	BILLY BAKER	QB
40	HICKY HORTON	LH
27	MACK EDWARDS	RH
31	RODNEY SAMPSON	FB

THE FURMAN SQUAD

10	Revels, b	42	Dean, b	71	Seelbach, t
11	Sutton, b	43	Campbell, b	72	Olliff, t
12	Taylor, b	44	Nickles, b	73	Maisey, t
13	Przybyla, b	45	Gillis, b	74	Young, t
14	Baker, b	50	Jacobson, c	75	Aiken, t
15	Canty, b	51	Cleminshaw, c	76	Carter, t
20	Linder, b	52	Walton, c	77	Boroff, t
22	Gay, b	53	Sharp, c	78	Bland, t
23	Fowler, b	60	Heine, g	80	Stewart, e
24	Tony, b	61	Harrison, g	81	Chewning, e
26	Morrison, b	62	Arndt, g	82	Nery, e
27	Edwards, b	63	Belskis, g	83	Newman, e
30	Angelica, b	64	Mondo, g	84	Siminski, e
31	Sampson, b	65	Ingrum, g	85	Banes, e
32	Behlke, b	66	Granade, g	86	Avery, e
33	Hancock, b	67	Scott, g	87	Brown, e
40	Horton, b	68	Tew, g	88	Grove, e
41	Yates, b	70	Markofski, t		



Chesterfield
CIGARETTES
LIGGETT & MYERS TOBACCO CO.

**KING
AND
REGULAR**

ASTE OF TOP-TOBACCO IN **CHESTERFIELD**

PENALTIES

1. **OFFSIDE** by either team; Violation of scrimmage or free kick formation; Encroachment on neutral zone—Loss of Five Yards.
2. **ILLEGAL PROCEDURE, POSITION OR SUBSTITUTION**—Putting ball in play before Referee signals "Ready-for-play"; Failure to complete substitution before play starts; Player out of bounds when scrimmage begins; Failure to maintain proper alignment of offensive team when ball is snapped; False start or simulating start of a play; Taking more than two steps after Fair Catch is made; Player on line receiving snap—Loss of Five Yards.
3. **ILLEGAL MOTION**—Offensive player illegally in motion when ball is snapped—Loss of Five Yards.
4. **ILLEGAL SHIFT**—Failure to stop one full second following shift—Loss of Fifteen Yards.
5. **ILLEGAL RETURN** of substitute not previously disqualified—Loss of Fifteen Yards.
6. **ILLEGAL DELAY OF GAME**; Taking more than four times out during either half (except for replacement of injured player)—Loss of Five Yards. Team not ready to play at start of either half—Loss of Fifteen Yards.
7. **PERSONAL FOUL** — Tackling or blocking defensive player who has made fair catch; Piling on; Hurdling; Grasping face mask of opponent; Tackling player out of bounds, or running into player obviously out of play; Striking an opponent with fist, forearm, elbow or locked hands; Kicking or kneeing—Loss of Fifteen Yards (Flagrant offenders will be disqualified.)
8. **CLIPPING**—Loss of Fifteen Yards.
9. **ROUGHING THE KICKER** or holder—Loss of Fifteen Yards.
10. **UNSPORTSMANLIKE CONDUCT**—Violation of rules during intermission; Illegal return of suspended player; Coaching from sidelines; Invalid signal for Fair Catch; Persons illegally on field—Loss of Fifteen Yards. (Flagrant offenders will be disqualified.)
11. **ILLEGAL USE OF HANDS AND ARMS** by offensive or defensive player; Defensive holding—Loss of Fifteen Yards.
12. **INTENTIONAL GROUNDING** of forward pass—Loss of Five Yards Plus Loss of Down.
13. **ILLEGALLY PASSING OR HANDING BALL FORWARD**—Loss of Five Yards Plus Loss of Down.
14. **FORWARD PASS OR KICK CATCHING INTERFERENCE**—Interference with opportunity of player of receiving team to catch a kick—Loss of Fifteen Yards. Interference by member of offensive team with defensive player making pass interception—Loss of Fifteen Yards Plus Loss of Down. Interference by defensive team on forward pass—Passing Team's Ball at Spot of Foul and First Down.
15. **INELIGIBLE RECEIVER DOWN-FIELD ON PASS**—Loss of Fifteen Yards.
16. **BALL ILLEGALLY TOUCHED, KICKED OR BATTED**—Forward pass being touched by ineligible receiver beyond the line of scrimmage—Loss of Fifteen Yards from Spot of Preceding Down and Loss of a Down. Eligible pass receiver who goes out of bounds and later touches a forward pass—Loss of Down. Illegal touching of kicked ball within opponent's ten yard line—Touchback.
17. **PENALTY DECLINED**; Incomplete forward pass; No play or no score.
18. **CRAWLING** by runner—Loss of Five Yards. Interlocked Interference—Loss of Fifteen Yards.

Have you "SAMPLED" THE SERVICE AT LEON FEDERAL?

Stop in. You'll get "V.I.P. treatment" at Leon Federal. Take advantage of the tops in personal service and up-to-the-minute facilities that make saving a real pleasure.



Forging ahead with
Fabulous Florida

3½% current dividend • Savings insured to \$10,000

LEON FEDERAL SAVINGS AND LOAN ASSOCIATION

111 S. Monroe Street • Tallahassee, Florida



WON'T YOU...

HAV-A-TAMPA

...CIGAR

Eli Witt Tobacco & Candy Co.

TALLAHASSEE, FLORIDA

D. T. O'HARA, JR.

PRODUCE • POULTRY • FROZEN FOODS

Phone 2-2128 • 717 W. Gaines St.

TALLAHASSEE, FLORIDA

BILL'S BOOK STORE

BOOKS

SUPPLIES

SUNDRIES

PRIVATELY OWNED AND OPERATED

S H A W ' S

Furnishings for Your Home

COLLEGE AVE. at DUVAL ST.

"Good Taste Costs No More"

Gilberg's

"The House of 1000 Fabrics"

**123 South Monroe Street
TALLAHASSEE, FLA.**

**220 Broad Avenue
ALBANY, GA.**

**109 W. University Ave.
GAINESVILLE, FLA.**

**8 North Palofax Street
PENSACOLA, FLA.**

**535 Harrison Ave.
PANAMA CITY, FLA.**

**106 E. Main St.
LAKELAND, FLA.**

Fabrics From All Over the World

".....it's a date!"

MORRISON'S
Cafeteria



The Vogue

TALLAHASSEE, FLORIDA

BRINKLEY BROS.

HOMER A. BRINKLEY

ROBERT T. BRINKLEY

REALTORS • INSURANCE

CARL BRINKLEY, Mgr. Insurance Dept.

MORTGAGE LOANS

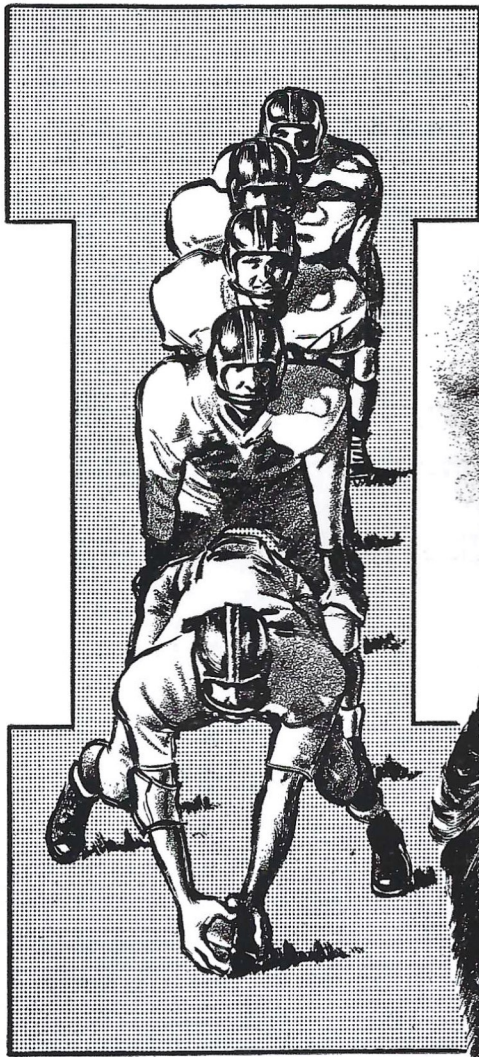
"A Brinkley Buy Is a Better Buy"

BRINKLEY BLDG. — 306 N. MONROE ST.

TELEPHONE 3-0918

...T
OF
TH.
N

...V
COA
ING
HAS
TRAN
INTO
SEI
FOU
FLU



FLORIDA STATE'S
I-FORMATION WAS
ORIGINALLY DREAMT
UP TO MASS GREAT
POWER FOR OFF-
TACKLE SMASHES...

MAN,
THE I'S
REALLY HAVE
IT



...THE BRAINCHILD
OF FORWARD-
THINKING TOM
NUGENT...



...WHOSE
COACHING
INGENUITY
HAS BEEN
TRANSLATED
INTO A BRIGHT
SEMINOLE
FOOTBALL
FUTURE?

AND I CAN'T
COMPLAIN 'BOUT
THE PAST OR
PRESENT EITHER,
COACH



TURRAY
GILDERMAN

FAIVER'S

For Chicken Pizza Pie

•
Half-Fry Chicken
Italian Foods

*While in Tallahassee
visit our Italian Room*

•

1312 WEST TENNESSEE STREET
TALLAHASSEE, FLORIDA

Learn to Fly at SEMINOLE FLYING SERVICE

Municipal Airport
Tallahassee, Fla.

Rides, Instruction, Charter,
Rental, Aerial Photography

See The New CESSNA
for the
MAN ON THE MOVE

Look Up – A New CESSNA
May Be Overhead

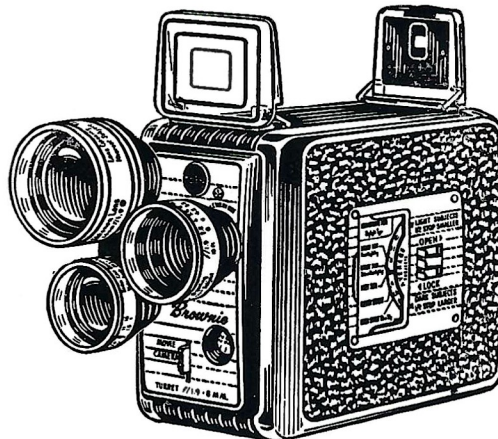
Your MEMORIES LIVE FOREVER

WHEN RECORDED ON FILM!

TALLAHASSEE

CAMERA CENTER

123 NORTH MONROE ST.
ACROSS FROM THE FLORIDA THEATRE



FURMAN

1958 FOOTBALL ROSTER

NO.	NAME	POS.	AGE	HT.	WT.	YR.	HOMETOWN
10	JAMES REVELS	QB	17	6-2	180	Fr.	Hattiesburg, Miss.
11	SHELLY SUTTON	QB	19	5-9	155	So.	Fort Mill, S. C.
12	SAM TAYLOR	QB	19	5-10	170	So.	Avondale, Ga.
13	DAN PRZYBYLA	QB	18	5-11	173	Fr.	Hinsdale, Ill.
14	BILLY BAKER	QB	20	5-11	180	Jr.	Rossville, Ga.
15	BILL CANTY	QB	18	6-1	173	Fr.	Pascagoula, Miss.
20	CHARLES LINDER	HB	21	5-10	175	Sr.	Macon, Ga.
22	CHARLES GAY	HB	20	6-1	175	Jr.	College Park, Ga.
23	J. BRADLEY FOWLER	HB	18	5-10	170	Fr.	Greenwood, S. C.
24	CARMIGNANI TONY	HB	18	5-10	174	Fr.	Clarendon Hills, Ill.
26	GARY MORRISON	HB	19	6-0	180	Fr.	Camden, N. J.
27	MACK EDWARDS	HB	21	6-0	175	Sr.	Athens, Ga.
30	GEORGE ANGELICA	FB	17	6-1	205	Fr.	Paterson, N. J.
31	RODNEY SAMPSON	FB	18	5-10	206	Fr.	Covington, Ohio
32	MARVIN BEHLKE	FB	20	6-1	210	So.	Fort Lauderdale, Fla.
33	GARY HANCOCK	FB	18	5-10	183	Fr.	N. Charleston, S. C.
40	HICKY HORTON	HB	20	6-2	185	Jr.	Hepzibah, Ga.
41	TOMMY YATES	HB	20	5-9	185	Jr.	Alcoa, Tenn.
42	ROY DEAN	HB	18	5-10	195	Fr.	Chicago, Ill.
43	TOM CAMPBELL	HB	19	5-9	185	Fr.	Plymouth Meeting, Va.
44	ROY NICKLES	HB	21	5-7	160	Sr.	Greenwood, S. C.
45	BILL GILLIS	HB	18	6-0	165	Fr.	Gainesville, Fla.
50	JOHN JACOBSON	C	18	6-1	215	Fr.	Canton, Ohio
51	JAMES CLEMINSHAW	C	18	6-1	187	Fr.	Short Hills, N. J.
52	BUDDY WALTON	C	21	6-2	205	Sr.	Atlanta, Ga.
53	JACK SHARP	C	18	6-1	195	Fr.	Atlanta, Ga.
60	TOM HEINE	G	18	5-11	215	Fr.	Massilon, Ohio
61	GEORGE HARRISON	G	21	5-11	195	Sr.	Phenix City, Ala.
62	NED ARNDT	G	18	6-1	192	Fr.	Royalton, Pa.
63	WAYNE BELSKIS	G	19	5-11	195	Fr.	Chicago, Ill.
64	BOB MONDO	G	17	5-11	230	Fr.	Oak Park, Ill.
65	JERRY INGRUM	G	19	6-1	195	So.	Opelika, Ala.
66	HUGH GRANADE	G	18	5-8	190	Fr.	Greer, S. C.
67	EDDIE SCOTT	G	18	5-11	195	Fr.	Greenville, S. C.
68	JOHN TEW	G	17	6-0	190	Fr.	Sebring, Fla.
70	DON MARKOFSKI	T	21	6-0	220	Sr.	Chester, Pa.
71	CHARLES SEELBACH	T	19	6-4	200	Fr.	Greenville, S. C.
72	JOE OLLIFF	T	19	6-2	205	So.	Statesboro, Ga.
73	HAROLD MAISEY	T	19	6-2	210	Fr.	Cleveland, Ohio
74	TIM YOUNG	T	17	6-3	205	Fr.	West Reading, Pa.
75	BOBBY AIKEN	T	20	6-1	210	Jr.	Decatur, Ga.
76	RICHARD CARTER	T	19	6-7	245	Fr.	Urbana, Ill.
77	JIM BOROFF	T	24	6-1	205	Jr.	Lima, Ohio
78	LEO BLAND	T	25	6-5	250	Jr.	Akron, Ohio
80	WOODY STEWART	E	20	6-1	180	Jr.	Jefferson, Ga.
81	PHILLIP CHEWNING	E	18	6-2	191	Fr.	Bishopville, S. C.
82	TOM NERY	E	19	6-3	191	Fr.	Cheswick, Pa.
83	BILL NEWMAN	E	17	6-2	190	Fr.	Chicago, Ill.
84	RAY SIMINSKI	E	21	6-2	195	Sr.	Chester, Pa.
85	JOHN BANES	E	18	6-3	195	Fr.	Ft. Washington, Pa.
86	TOM AVERY	E	21	6-0	180	Sr.	Americus, Ga.
87	TIM BROWN	E	18	6-2	185	Fr.	Greenville, S. C.
88	WAYNE GROVE	E	18	6-2	190	Fr.	Maywood, Ill.

STUDENT SAVING CENTER

- School Supplies
- Pennants and Novelties
- Gifts
- Art Supplies
- Greeting Cards
- Stationery
- Drafting Equipment
- Pen Repair Service
- Sundries
- Camera Supplies & Developing Service

We Buy and Sell Books

NEW and USED

UNIVERSITY BOOKSTORE

In the Student Center

CARNES PLAYTHINGS

Largest Selection of Toys in the "Big Bend"

DOLL HEADQUARTERS

TOYS — GIFTS and PLAYTOGS

"Across From Jitney Jungle No. 1"

1302 N. Monroe

Phone 2-2480

TALLAHASSEE, FLORIDA

QUALITY CLEANERS

Two Plants To Serve You

Downtown

215 W. COLLEGE AVE. — DIAL 2-5097

Opposite Jitney Jungle

1306 N. MONROE — DIAL 2-1651

ONE DAY SERVICE

PICK-UP and DELIVERY

Quality Laundry Service

EXPERT TAILORING and ALTERATIONS

ZIPPERS REPAIRED

FLORIDA STATE UNIVERSITY CHEERS

1. Beat, Florida State

Beat Florida State!
 Beat (Stomp, Stomp)
 Beat Florida State!
 Beat (Stomp, Stomp)
 Beat Florida State!
 Beat (Stomping)

2. Freshman, Flunky

Freshman, Flunky, Student, Scholar
 All good Seminoles, Stand up and holler.

3. Garnet and Gold

Garnet and Gold, Fight, Fight!
 Garnet and Gold, Fight, Fight!
 Who fight? We fight!
 Garnet and Gold, Fight, Fight!

4. IS Everybody Happy?

CL : Is Everybody happy?
 Aud: Hell, yes!
 CL : Is anybody downhearted?
 Aud: Hell, no!
 CL : Then let's railroad Seminoles
 and take it slow!
 ALL: S-E-M-I-N-O-L-E-S
 (Spell three times)
 ALL: Seminoles!

5. Locomotive

Rah, rah, rah, rah,
 Go team, go team
 Rah, rah, rah, rah,
 Go team, go team
 Rah, rah, rah, rah,
 Go team, go team
 Fight!

6. Alma Mater

High o'er the towering pines
 our voices swell
 Praising these gothic spires
 We love so well:
 Here sons and daughters stand,
 faithful and true
 Praising our Alma Mater
 F. S. U.

7. Tom Nugent Cheer (We've Got the Coach)

We've got the coach (clap, clap)
 We've got the team (clap, clap)
 We've got the pep (clap, clap)
 We've got the steam (clap, clap)
 Coach, team, pep, steam.
 Fifteen rahs for Nugent's team.
 Rah-rah, rah, rah, rah;
 Rah-rah, rah, rah, rah;
 Rah-rah, rah, rah, rah.
 Fight, team!

8. Sittin' in a Wigwam

Sittin' in a wigwam
 Beatin' on a tom-tom
 Who come?
 We Come.
 Everybody will come.
 Scalp 'em, (clap, clap), Scalp 'em
 (Clap, clap), etc.

9. Seminoles

(spell out)
 S (4 claps) E (4 claps) M (etc.) I (etc.)
 S (1 clap) E (1 clap) M (etc.) I (etc.)

10. Go Seminoles

(All hands in the air)
 Go - - - O Seminoles (clap, clap)
 Go - - - O Seminoles (clap, clap)
 Team fight!

11. Touchdown Song

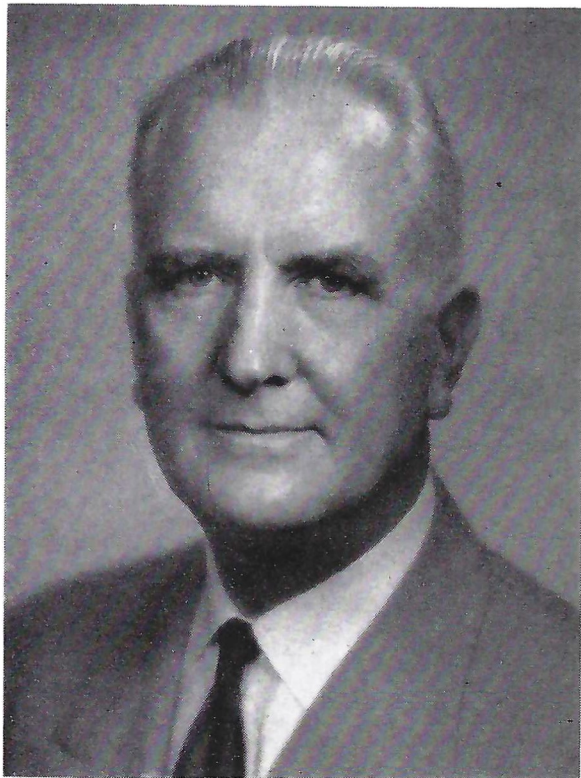
Da dum Yea Team!
 Da dum Whose Team!
 Da dum Our Team!
 Touchdown, that's the thing
 We want a touchdown,
 Hear us sing
 We want a touchdown
 Hear us sing
 We want a great big bruiser, husky and tall,
 To carry the ball, in no time at all
 We'll have a touchdown
 And when it's over
 You can hear us make some noise!
 V-i-c-t-o-r-y
 We want a touchdown, boys!
 Da da dum Fight! Fight! (seven times)

12. Fight Song

We're going to fight, fight fight for FSU
 You got to scalp 'Um, Seminoles,
 You got to win, win, win, win, that game
 And roll on down and make those goals.
 For FSU is on the warpath now,
 And at the battle's end, she's great,
 So fight, fight, fight, fight to victory
 Our Seminoles from Florida State.
 F-L-O-R-I-D-A S-T-A-T-E
 Florida State!
 Florida State!
 Florida State!

13. Hi, Florida

Hi, Florida!
 Hi, State,
 Hi, Hi, Florida State!



President John L. Plyier

ABOUT FURMAN

By DAN FOSTER

Sports Publicity Director

This is Furman's first season with Bob King as head coach. King's announced objective is to gradually elevate the status of Furman football. He has made it quite plain that he is placing emphasis on building a sound foundation and not upon a flashy single season.

Of course he has no objection to winning football games this season, but where the "now" and the "future" conflict, the issues will be resolved in favor of the future.

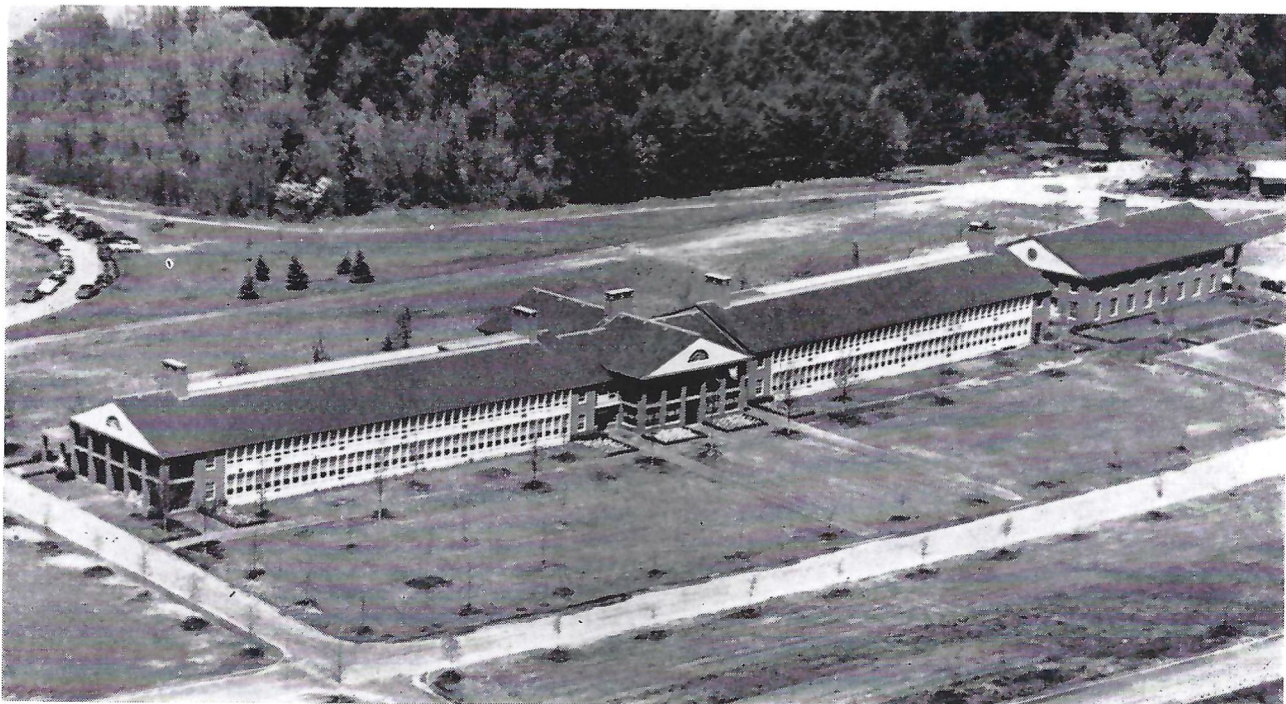
King began his practice sessions with 80 candidates, of which some 56 were freshmen and two were transfers. He is to play freshmen on the varsity this season but this is the last such season. Success marked his first recruiting campaign. Only four frosh candidates who were expected to report did not sign in with Furman. What King inherits in the way of experience is a pretty good end corps, an accurate passer in quarterback Billy Baker, and a thinly-manned inner-line.

Ray Siminski and Tom Avery are veterans at end, unlikely to be moved by frosh. There are experienced men at tackle. Don Markofski is a sound football player and Jim Boroff was a line pillar last season. Bobby Aiken returns to try and win his own position back.

Guard is a problem in that no returning regulars were initially candidates. Buddy Walton, a three-letterman senior was moved to center. The performance of transfer Wayne Belskis, a sophomore, and Jerry Ingram, a returnee sophomore in last springs drills, earned them clear paths to starting positions along with letterman George Harrison.

Billy Baker, who completed 88 of 150 passes for 846 yards last season to become the fifth ranking major college passer is supported by Sam Taylor and Shelly Sutton at quarterback. Hicky Horton and Mack Edwards are the top halfbacks.

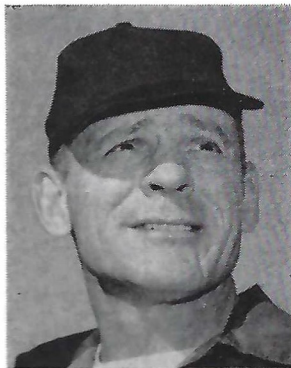
Marvin Behlke, a transfer from the University of Florida who was ineligible last season, opened as the top fullback candidate.



The New James C. Furman Classroom Building



Tom Avery—E



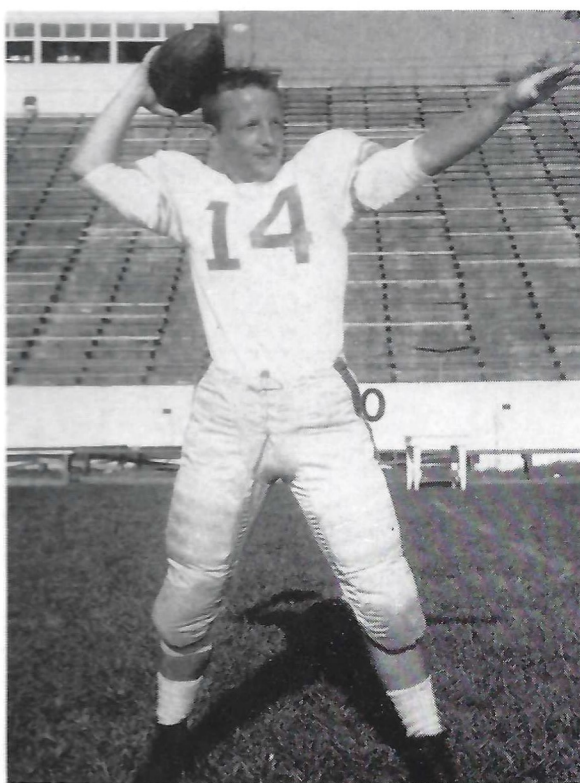
ROBERT B. KING
Head Coach



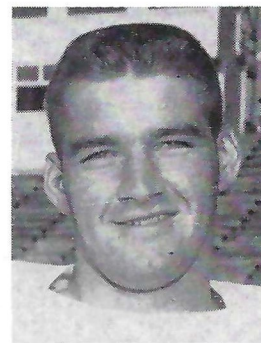
Mack Edward—HB



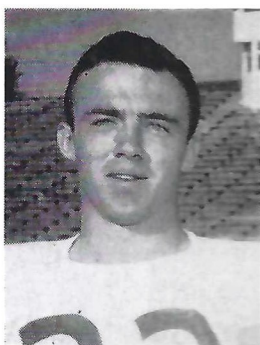
Buddy Walton—C



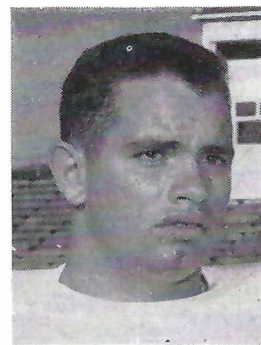
Quarterback Bill Baker



George Harrison—G



Roy Nickles—HB



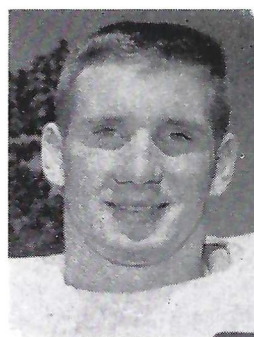
Bobby Aiken—T



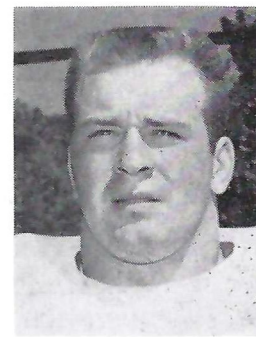
Charlie Linder—HB



Hicky Horton—HB



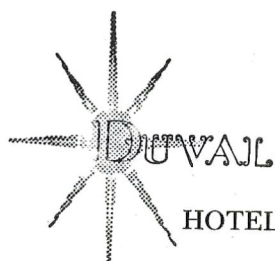
Rodney Sampson—FB



Don Markofski—T

**TRAVELING
DESSERT TRAYS**

**CHARCOAL
BROILED
STEAKS**



HOTEL • TALLAHASSEE, FLORIDA

BENNETT'S DRUG STORE

- Prescriptions
- Cameras
- Sundries
- Gifts
- Fountain
- Cafe
- Cosmetics
- Drugs

**MEET ME AT BENNETT'S
BEFORE AND AFTER THE GAME!**
Corner Monroe and College Streets
Phone 2-8980 — 2-4450



Versatile halfback Bobby Renn (15) deals as Seminoles spring from explosive "I" formation.

SEMINOLE FOOTBALL NETWORK

Florida State University's football games are carried to every part of the state again this season by the growing voice of the Seminole Football Network. Entering its sixth year, the Network is operated by the University's Department of Intercollegiate Athletics. Dr. Don Veller, Assistant Director of Athletics, is Network supervisor.

The Seminole Football Network boasts close to 25 stations in Florida and Georgia this year—a big increase over the 18 stations that carried the games last year.

Handling the broadcasts are Bill Snyder, Sports Director of Station WJAX, Jacksonville, and Jack Edger, Sports Director, WTNT, Tallahassee. Snyder has done the play-by-play of Seminole games for the past three years. A native of Orlando, Snyder, 35, has handled play-by-play of the St. Louis Browns (1950) and for the past few years has broadcast games of the Jacksonville Braves of the South Atlantic League. Snyder also is serving as technical director of the Seminole Network.

Edger, 35, is thoroughly familiar with the Florida State sports scene. Handling the color commentary this year, Edger did the play-by-play of Florida State games in 1953. All 10 of the Seminole games will be broadcast, including the road games to Atlanta, Jacksonville, Knoxville, Miami, and Gainesville (broadcast to areas not covered by the University of Florida Network).



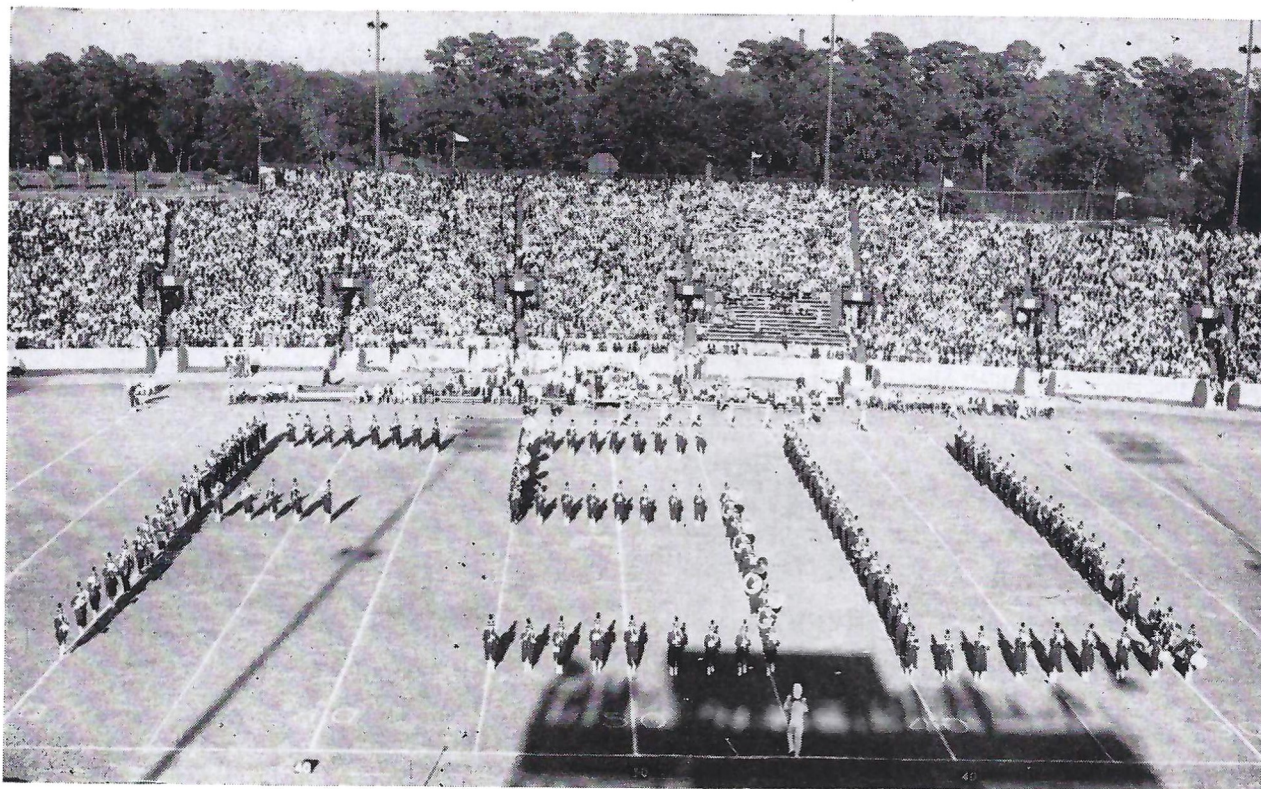
Bill Snyder



Jack Edger

THE NETWORK STATIONS

WTAL	Tallahassee	WBSR	Pensacola
WPCF	Panama City	WCNH	Quincy
WTAN	Clearwater	WWIL	Fort Lauderdale
WIRK	West Palm Beach	WKIS	Orlando
WMBR	Jacksonville	WWPF	Palatka
WJAX	Jacksonville	WMGA	Moultrie, Ga.
WRUF	Gainesville	WACL	Waycross, Ga.
WONN	Lakeland	WGAF	Valdosta, Ga.



THE MARCHING CHIEFS

MUSIC AT HALFTIME

FLORIDA STATE UNIVERSITY MARCHING CHIEFS

Manley R. Whitcomb, Director

Robert T. Braunagel, Associate Director

Charles Carter, Arranger

Terry Johnson, Drum Major

Bill Tallman, Prop Manager

Virginia Carney, Uniform Manager

Linda Bean, Head Majorette

Frances Grey, Librarian

Bob Reeley, Field Manager

THEME: CAMPUS PARADE

FORMATION

MUSIC

1. **Hula Girl**—A salute to the Light Opera Guild "Nothin' Like A Dame"
2. **Anvil**—Forming the anvil the chiefs salute opera with "Il Trovatore." "Anvil Chorus"
3. **Mermaid**—The majorettes give their version of "By the Sea" in a salute to the Tarpon Club. "By the Sea"
4. **Basketball Player**—Representing the many sports on campus. Watch the basketball player make a basket. "Our Boys will Shine Tonight"
5. **Clown**—Both Gymkana and Circus provide the campus with entertainment. We salute them with a clown. "Flying High"
6. **Harp**—We salute the many events (Modern Dance, Plays, Music Concerts), with a harp. "Pictures at an Exhibition"
7. **F. S. U.** "Fight Song"

Rose PRINTING CO., INC.



*Always
the Finest
Printing*



ROSE BUILDING

PHONE 2-0230

T A L L A H A S S E E , F L O R I D A

A new idea in smoking!

Salem refreshes your taste



★ **menthol
fresh**

Salem brings a wholly new quality to smoking...Spring-time softness in every puff. Salem refreshes your taste the way a Spring morning refreshes you.

★ **rich tobacco
taste**

Smoking was never like this before! You taste that rich tobacco...then, surprise!...there's an unexpected softness that gives smoking new comfort and ease.

★ **modern filter,
too**

Through Salem's pure-white, modern filter flows the freshest taste in cigarettes. You smoke refreshed, pack after pack, when you buy Salems by the carton.



Created by R. J. Reynolds Tobacco Company

Represented for National Advertising by SPENCER ADVERTISING COMPANY, INC., 271 Madison Ave., New York City