

OFFICIAL PROGRAM * FIFTY CENTS



Band Day

Florida State

Wake Forest

OCTOBER 4 * 1958 * CAMPBELL STADIUM

JOE
LITTLE



RAINEY CAWTHON

Rainey Cawthon's

★ RCA TELEVISION and RADIO

★ SHELL PRODUCTS ★ GOODYEAR TIRES

"WE SERVICE WHAT WE SELL"

• ROAD SERVICE • PHONE 2-1865 •



FRED PIERSON

patronize...
STADIUM

CONCESSIONS

Located beneath the stands on each side of stadium

COLD DRINKS..... 15¢

HOT COFFEE..... 15¢

SANDWICHES..... 30¢

HOT DOGS..... 25¢

PEANUTS..... 10¢

POP CORN..... 10¢

SOUVENIR ITEMS
PENNANTS
BADGES
SUN VISORS
ASPRIN

All Cigarettes 35¢

please pay no more than established prices

Seminole

ATHLETIC NEWS

WAKE FOREST IS NEWEST "CINDERELLA" TEAM

TABLE OF CONTENTS

Seminole Athletic News	3
The President and Head Football Coach	4
Information About Florida State	5
Florida State Players	8-9-13
Florida State Roster	10
Florida State Coaches	14
Probable Starting Lineups	16-17
Wake Forest Roster	23
Florida State Cheers	25
Wake Forest Staff	26
Wake Forest Players	27
Seminole Football Network	29
Band Day, 1958	30

One of the nation's most surprising football teams invades Campbell Stadium tonight and it's no small wonder they're calling Wake Forest's Demon Deacons the newest "Cinderella" team.

Coach Paul Amen's Fighting Deacons stunned the nation with a 34-0 thrashing of Maryland two weeks ago, then turned on Virginia Tech last Saturday night at Roanoke for a 13-6 verdict. So here's the situation:

Coach Tom Nugent's Seminoles will collide with a spirited, heavy, undefeated eleven that didn't register a victory in 1957. Catching fire under sophomore quarterback sensation Norman Snead, the Demon Deacons are having their biggest football revival in years.

Snead, a poised newcomer who was a high school All-American at Warwick, Va., tossed three scoring passes against Maryland to tie an Atlantic Coast Conference record. His heroics against Maryland snapped a 12-game Wake Forest losing streak.

But Snead isn't the only quarterback the Seminoles must watch. Charlie Carpenter, No. 2 passer in the ACC in 1956, is back after a ruptured spinal disk and an arm fracture kept him out last season and early this season. And there's Charles (Preacher) Parker to lend outstanding quarterback depth.

Wake Forest has no worries at fullback, either. Neil MacLean, last year's leading scorer and ground-gainer, is one of 20 lettermen in the Deacon camp. MacLean is regarded as one of the Atlantic Coast Conference's most dangerous runners.

It will be the second meeting between Florida State and Wake Forest and many fans here tonight will remember the dramatic game played as the Seminole homecoming in 1956. It ended in a 14-14 tie on a muddy, rainsoaked field.

Bolstered by a superb showing in a 17-3 setback to Georgia Tech in Atlanta last week, the Seminoles will be trying to keep their 1958 home record spotless after fine victories over Tennessee Tech and Furman.

The President . . .

DR. ROBERT M. STROZIER

Florida State University's President, Dr. Robert M. Strozier, is a football enthusiast who will be "playing" his second year for the Seminoles.

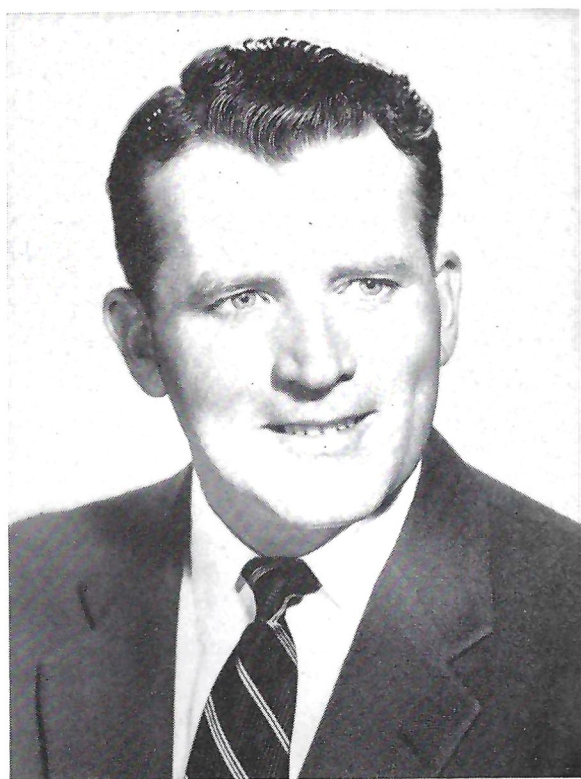
When Dr. Strozier came to Florida State in September, 1957, it was homecoming for the popular new president. Born in McRae, Ga., he was reared in Moultrie, Ga., and was graduated from Emory University. He earned his Ph.D. at the University of Chicago.

President Strozier began his professional career as professor of romance languages at Georgia State College for Men at Tifton. From 1933-1940 he served as professor of French and dean of men at West Georgia College.

In 1940 he went to the University of Georgia as associate dean of students and associate professor of romance languages. Later he served as director of the Army Special Training Program unit there.

In May, 1945, he joined the University of Chicago faculty as associate director of International House and in 1946 he became dean of students.

President Strozier's first year at Florida State has been one of accomplishment from the start. At Commencement last May he reported an accumulative total of research grants and contract funds of \$1,225,000, greater by 487,000 than in any previous year. Among these contracts is one with the United States Air Force amounting to \$217,260 for nuclear research, the largest single contract ever negotiated in support of research at Florida State.



The Head Coach . . .

TOM NUGENT

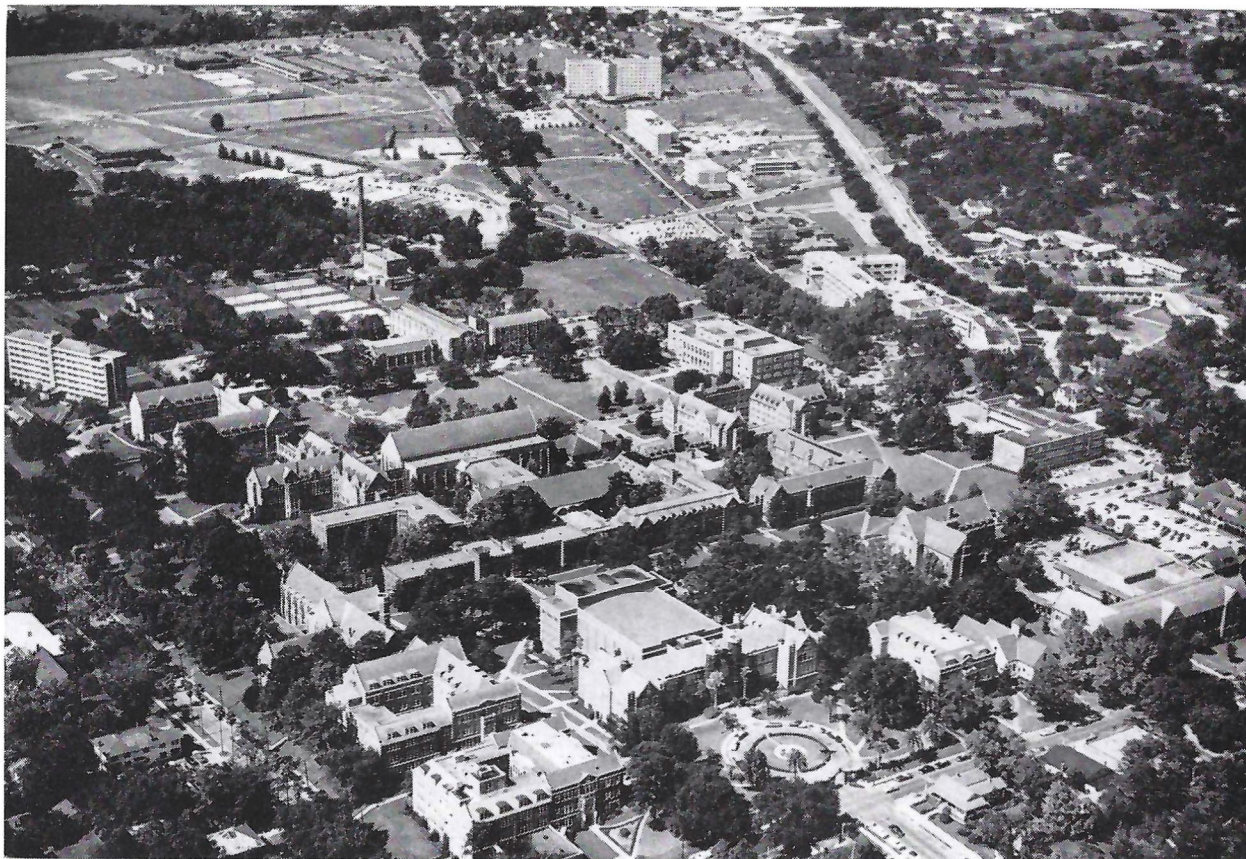
"Sometimes when you talk to Tom Nugent," wrote the Atlanta Journal's Jim Minter, "you feel as though Mike Todd is still with us." Minter's point was simple. Florida State's energetic Athletic Director and Head Football Coach, in the colossal style of the late Mike Todd, does things first class.

It's been that way with Thomas Norman Nugent since, at age 15, he wrote he would be a head college football coach some day. That day arrived when he assumed command of VMI's football fortunes. It was in 1949, and within three years after Nugent joined the obscure VMI Keydets, he had won a Southern Conference championship and pulled an upset over mighty Georgia Tech.

Nugent came to FSU in 1953 and thanks to his magnetic touch, football at Florida State has grown from a pickup sport in 1947 to a 1958 position that finds the Seminoles playing such tradition-steeped opponents as Georgia Tech, Georgia, Tennessee, Florida, and Miami (Fla.).

Nugent's enthusiastic interest in the entire program of intercollegiate athletics at FSU resulted in his appointment as Director of Athletics last May. In his sixth year as the propelling force behind the Seminoles, Nugent has attained a record of 27 victories against 24 losses and one tie.

He has also become nationally known for his bright innovations. It was Nugent who presented to football the typewriter huddle, the double quarterback and the "I" formation used so effectively by his own Seminoles. Florida State's annual June coaching clinic, which he fathered five years ago, is probably football's finest. A native of Lawrence, Mass., the 45-year-old coach was graduated from Ithaca College in 1936.



ABOUT FLORIDA STATE UNIVERSITY

Located in Tallahassee, Florida State University is one of the fastest growing universities in the country. Already it is literally bursting at its seams with an estimated 10,000 students expected by 1960.

The campus consists of 297 acres, the older part of which overlooks the capital city.

The new portion of the campus follows a 50-year master plan developed by well-known architects. It stretches westward along Highway 90.

Growing by leaps and bounds, the campus has an 11-floor dormitory with three more just like it expected in the near future. A million dollar physical education plant is a year-and-a-half old as is the multi-million dollar library building.

New buildings completed this year are the School of Business and the School of Education, and a Geology addition.

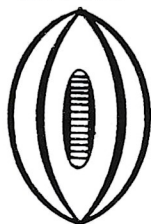
A recent act of the Legislature granted the University \$2,300,000 for developing basic nuclear studies which will put Florida State to the fore in the nuclear field.

Authorized by the 1851 Legislature, the institution was first established as the "Seminary West of the Suwannee," and was opened on a portion of its present campus. The name was changed to "Florida State College" in 1901 and the school remained coeducational until 1905. Then it became the "Florida Female College" and was renamed in 1909, "The Florida State College for Women."

By act of the 1947 Legislature, the institution again became coeducational as The Florida State University.

WHEN WE HAVE THE BALL

LEFT END



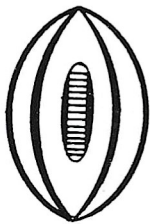
89 Fleming
87 Hinson
84 Kimber
82 Slaton

LEFT TACKLE



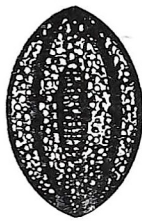
71 Swoszowski
75 Strickland
79 Graham
70 Worthington
76 Wallace

LEFT GUARD



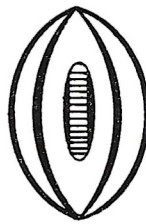
62 Ulmer
64 Lamb
68 Keith
65 Barona

CENTER



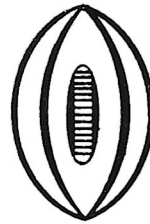
50 Kestner
51 Davis
52 Bell
53 Rogers
54 Hardy

RIGHT GUARD



63 Moran
61 McGee
60 Baggett
67 Rogers
66 Schou

RIGHT TACKLE



77 Spivey
69 Brown, B.
74 Bagnall
78 Craig

RIGHT END



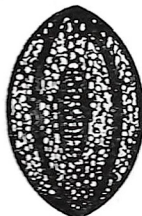
80 Romeo
85 Brown
81 Kavanaugh
83 Fountain
86 Daniel

LEFT EN



83 Mann
81 Currie
86 L. Le

QUARTERBACK



10 Prinzi
13 Majors
11 Conrad
14 Springer
12 McCormick

LEFT HALFBACK



20 Renn
26 Whitehead
25 Meyer
23 Sheppard
21 Carnes

RIGHT HALFBACK

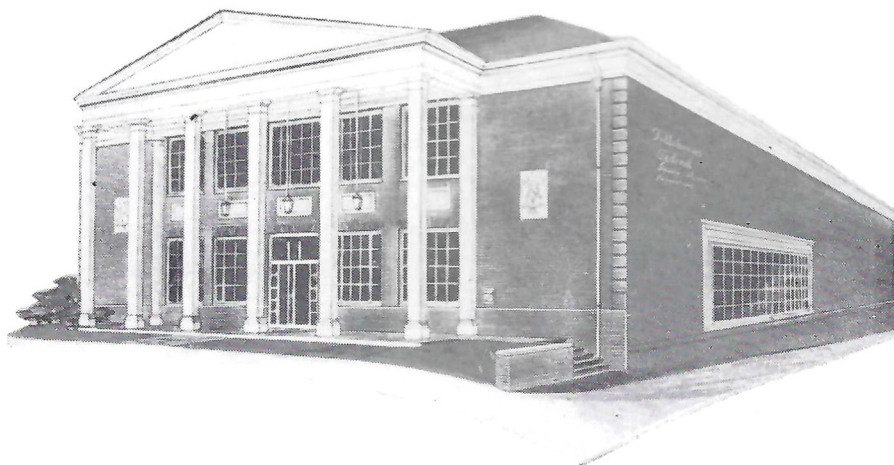


27 Espenship
22 Levy
28 Hooks
24 Cone

FULLBACK



43 Pickard
41 Lawrence
40 Pasquale
42 Rozman



OUR NEW HOME

WHEN WAKE FOREST HAS THE BALL

T END



omeo
rown
vannah
untain
aniel

LEFT END



83 Manning
81 Currie
86 L. Lewis

LEFT TACKLE



75 Thompson
71 Smith
73 Conover

LEFT GUARD



64 H. Lewis
65 Smathers
63 Pearce

CENTER



50 Jolly
51 Munn
54 Lanier

RIGHT GUARD



61 Patella
53 Spicer
67 Butler

RIGHT TACKLE



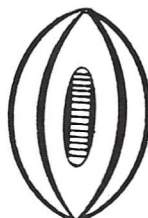
72 Ladd
78 Wolff
74 McCreary

RIGHT END



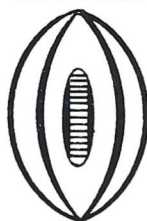
84 Herring
89 Niznik
80 Allen

QUARTERBACK



16 Snead
14 Parker
17 Carpenter

LEFT HALFBACK



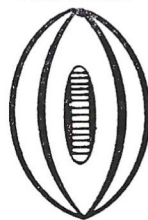
44 Dalrymple
45 Robinson
47 Ferrell

RIGHT HALFBACK



24 Ledford
25 Futch
26 Ball

FULLBACK



31 MacLean
36 Bonecutter
37 Skippon

TALLAHASSEE FEDERAL

SAVINGS & LOAN

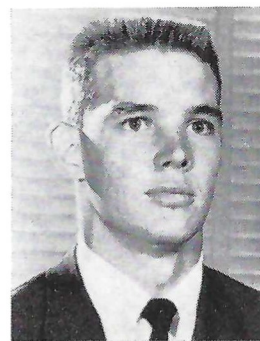
115 E. Park

TALLAHASSEE

FSU Players



Bob Conrad—QB



Jack Espenship—HB



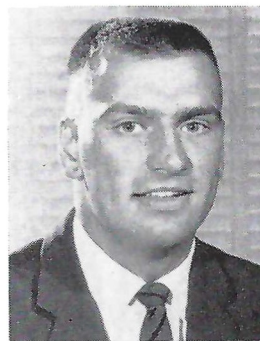
Pappy Rozman—FB



Ron Hinson—E



Joe Majors—QB



John Bell—C



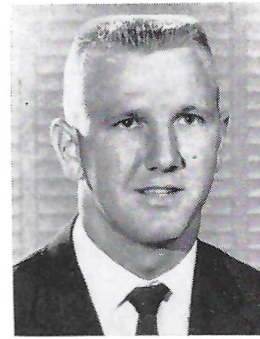
Bob Stewart—E



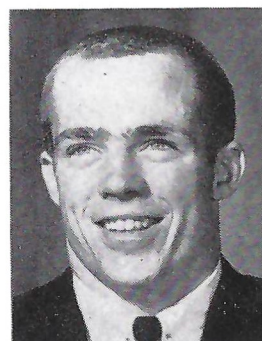
Bud Whitehead—HB



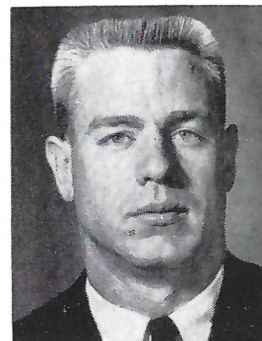
Bob Fountain—E



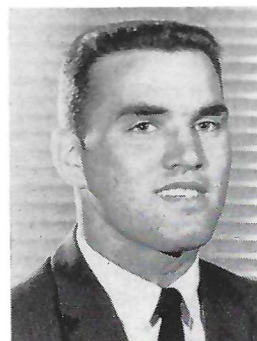
Carl Meyer—HB



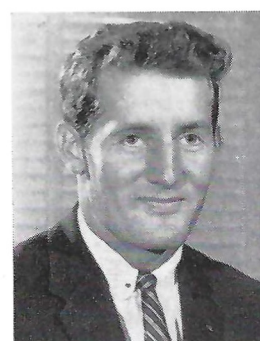
Al Ulmer—G



Bill Kimber—E



Terry Moran—G



Bobby Renn—HB



Joe McGee—G



Jim Hooks—HB



Bob Douglas—T



John Slaton—E



Jim Daniel—E



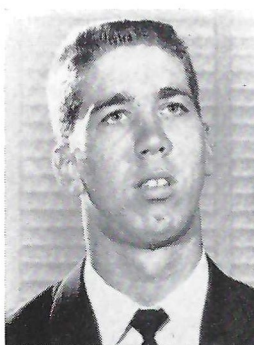
Frank Springer—QB



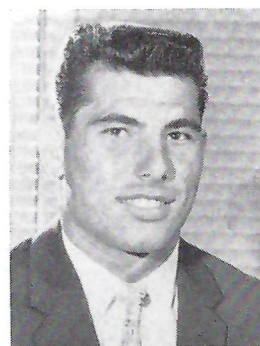
Bob Carnes—HB



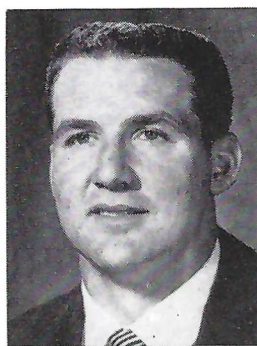
Ken Kestner—C



Bob Swoszowski—T



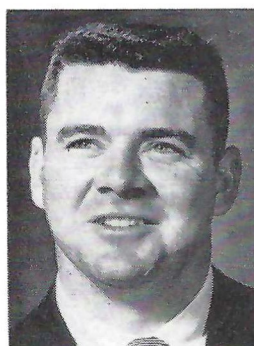
Tony Romeo—E



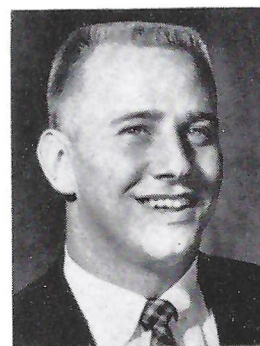
Dink Lawrence—FB



Jack Hardy—C



Leo Baggett—G



Jerry Graham—T



Lou Wallace—T



Denny Schou—G

FLORIDA STATE UNIVERSITY 1958 FOOTBALL ROSTER

OW

NO.	NAME	POS.	AGE	HT.	WT.	YR.	HOMETOWN
10	*VIC PRINZI	QB	22	6-0	178	Sr.	Waverly, N. Y.
11	BOBBY CONRAD	QB	20	6-0	181	So.	Marianna
12	GENE McCORMICK	QB	22	5-9	151	So.	Miami
13	*JOE MAJORS	QB	20	6-0	176	Jr.	Huntland, Tenn.
14	FRANK SPRINGER	QB	24	5-11	180	So.	Delray Beach
20	*BOBBY RENN	HB	24	5-11	175	Sr.	Henderson, N. C.
21	BOBBY CARNES	HB	20	6-0	176	Jr.	Tallahassee
22	LENNY LEVY	HB	19	5-8	180	Jr.	Miami Beach
23	*JOHN SHEPPARD	HB	24	5-8	182	Sr.	Tallahassee
24	KEN CONE	HB	19	6-0	173	So.	Lakeland
25	CARL MEYER	HB	20	5-11	177	So.	Melbourne
26	BUD WHITEHEAD	HB	19	5-10	171	So.	Marianna
27	JACK ESPENSHIP	HB	19	6-2	185	So.	Lake City
28	*JIM HOOKS	HB	22	5-9	173	Jr.	West Palm Beach
40	PAUL PASQUALE	FB	21	5-8	186	So.	Binghamton, N. Y.
41	FLOYD LAWRENCE	FB	22	6-0	202	Jr.	Saltville, Va.
42	PAPPY ROZMAN	FB	23	5-9	182	Jr.	Tallahassee
43	*FRED PICKARD	FB	20	5-9	165	Jr.	Columbia, Tenn.
44	JIM CALHOUN	FB	23	6-1	191	So.	Winslow, Ariz.
50	KEN KESTNER	C	20	5-9	200	So.	Cleveland, Ohio
51	BO DAVIS	C	21	6-2	195	Sr.	Hapeville, Ga.
52	JOHN BELL	C	18	6-0	199	So.	Atlanta, Ga.
53	RAMON ROGERS	C	20	5-11	182	Jr.	Pensacola
54	JACK HARDY	C	19	5-10	191	So.	Miami
60	*LEO BAGGETT	G	22	5-10	191	Sr.	Panama City
61	*JOE McGEE	G	22	5-9	186	Sr.	Raleigh, N. C.
62	*AL ULMER	G	19	5-10	176	Jr.	Clearwater
63	TERRY MORAN	G	18	5-9	180	So.	New Orleans, La.
64	RAY LAMB	G	20	6-0	182	So.	Atlanta, Ga.
65	LOU BARONA	G	20	5-9	175	So.	Miami
66	DENNY SCHOU	G	18	5-8	185	So.	Delray Beach
67	JIM ROGERS	G	20	5-10	180	Jr.	Miami
68	*STU KEITH	G	21	6-0	183	Sr.	Panama City
69	GEORGE CANNING	G	20	5-10	193	So.	Mobile, Ala.
70	JIM WORTHINGTON	T	20	6-1	198	So.	Oak Ridge, Tenn.
71	BOB SWOSZOWSKI	T	18	6-3	192	So.	Orlando
73	BILL BROWN	T	23	6-0	200	So.	Orlando
74	*CLARE BAGNALL	T	25	6-1	208	Jr.	Battle Creek, Mich.
75	DAN STRICKLAND	T	23	6-1	214	So.	Sopchoppy
76	*LOU WALLACE	T	19	6-2	197	Jr.	Atlanta, Ga.
77	*JOHN SPIVEY	T	20	6-2	200	Jr.	Panama City
78	*JOHN CRAIG	T	21	6-0	214	Sr.	Orlando
79	*JERRY GRAHAM	T	20	6-0	224	Sr.	Chicago, Ill.
80	TONY ROMEO	E	20	6-0	200	So.	Tampa
81	BOB KAVANAUGH	E	18	6-0	200	So.	Miami
82	JOHN SLATON	E	18	6-1	183	So.	Coral Gables
83	*BOB FOUNTAIN	E	21	6-0	190	Sr.	Crestview
84	*BILL KIMBER	E	22	6-2	193	Sr.	Winter Park
85	HERMAN BROWN	E	20	6-0	174	So.	Auburndale
86	JIM DANIEL	E	19	6-3	180	So.	Atlanta, Ga.
87	RON HINSON	E	19	6-0	193	So.	Waycross, Ga.
88	BOB STEWART	E	18	5-10	183	So.	St. Petersburg
89	PETE FLEMING	E	21	6-0	177	Jr.	Pensacola

* Denotes Letterman.

OWNED AND OPERATED BY FRANK AND JAMES CHASE

Skyline Restaurant

1 Mile West of City Limits

U. S. Highways 90 and 20

TALLAHASSEE, FLORIDA

"Serving Good Food for Fine People"



MIDYETTE-MOOR Insurance Agency

"Ask Those We Serve"

Complete Insurance and Bond Service

PHONE 2-3456

**MIDYETTE-MOOR BUILDING
TALLAHASSEE, FLORIDA**

—SAYS—

Scalp 'em Seminoles!

★

**PAYNE H. MIDYETTE
FRANK D. MOOR
EDWIN M. CLARK
A. WINSLOW SULLIVAN
ROBERT M. DICKINSON
PAUL L. LEWIS
PAYNE H. MIDYETTE, JR.
WILLIAM L. MOOR
GLENN SEARS
REX SIKES
FRANK KOUBA
ROY SOLOMON
TROY BARNES**

**TALLAHASSEE
AUTOMOBILE
DEALERS
ASSOCIATION**

Alford Chevrolet Co.

Capital Lincoln-Mercury, Inc.

Carr Buick

Drake Motors

Mayo-Mingledorff Motors, Inc.

John Manthey, Inc.

Proctor & Proctor

Capital Plymouth, Inc.

Tallahassee Motors, Inc.

Collins Motors, Inc.

THE LAUNDROMATS

115 W. Tennessee — 1005 N. Monroe

Phone 3-1789

Phone 2-3792

CLOTHES — RUGS — BLANKETS

Washed Clean — Fluff Dried and Folded

SHIRT FINISHING

DRY CLEANING • TINTEXING

"Your Satisfaction Is Our Goal"

SCALP 'EM SEMINOLES!

BROWN'S MEN'S WEAR

MONROE AT PARK

F & T RESTAURANT

For Good Food and Quick Service

113 S. Monroe

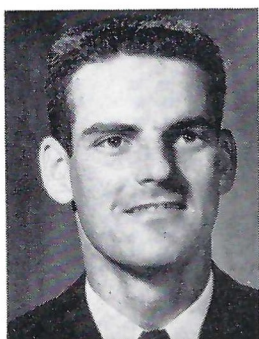
Phone 2-8917

Air Conditioned

FSU Players



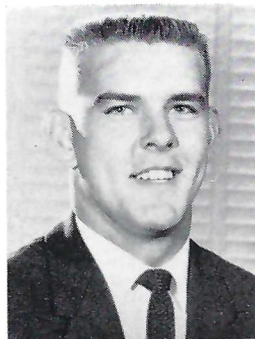
Clare Bagnall—T



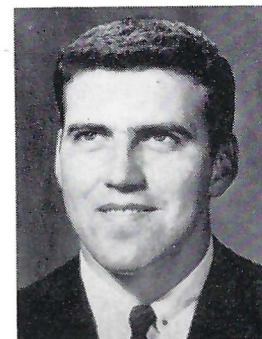
Gene McCormick—QB



John Craig—T



Jim Worthington—T



Bo Davis—C



Jim Calhoon—FB



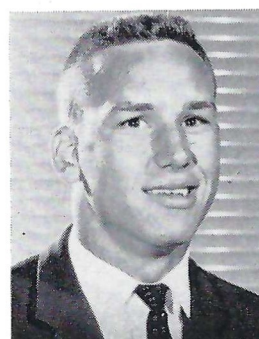
Bill Brown—T



Lenny Levy—HB



Dan Strickland—T



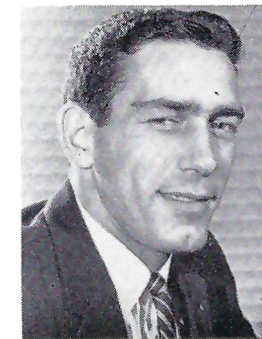
Ray Lamb—G



Stuart Keith—G



Herman Brown—E



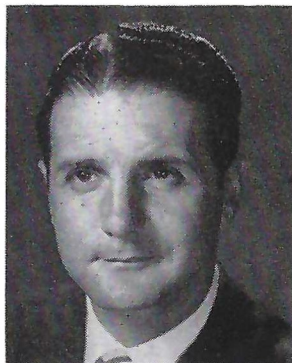
Vic Prinzi—QB

The FSU Coaching Staff



HARBISON

BOB HARBISON, 31, is a real veteran of the Seminole coaching staff in terms of longevity. Harbison begins his 11th full season with Florida State this fall. Back in his playing days, Bob was an outstanding guard for the late Bo McMillin at Indiana University from 1945-47. A native of Evansville, Ind., Harbison came to Florida State in 1948. He is credited with developing Little All-America linemen Bill Dawkins in 1951 and fellow coach Hugh Adams in 1949.



TOOMEY

FRANK TOOMEY, 35, a native of Niagara Falls, N. Y., is in his fifth season as one of Coach Tom Nugent's right-hand men. A graduate of Ithaca College, Toomey has a lot to do with making the Seminole backfield go. He is also regarded as one of the best defensive coaches around. He came to Florida State in 1954 after coaching football and baseball at Waverly, N. Y., High School from 1948.

HUGH ADAMS, 30, a Little All-America on Florida State's 1949 team, returns for his third season with the Seminoles.

A graduate assistant in 1955, Hugh was the first Florida State graduate to hold an assistant coaching position with the Seminoles.

The Punta Gorda native was an assistant coach and mathematics instructor at Tallahassee's Leon High School in 1950-51. He served in the Navy before returning to Florida State in 1955 to earn his master's degree.



ADAMS

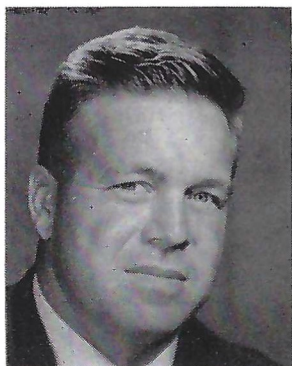
PAUL ODOM, 31, coached Florida State's high-powered freshman teams during the past three years. A graduate assistant in 1955, Odom was elevated from freshman coach to the varsity coaching staff last June. A native of Mount Dora, Odom played tackle for Rollins College in 1947-48. After Rollins dropped football, Paul switched to Stetson and captained the Hatters during the 1950 season.

CHARLIE LAPRADD, All-America tackle at the University of Florida in 1952, is the second newest full member of Florida State's coaching staff. LaPradd is expected to develop into an excellent football coach, primarily because of the way the young Seminoles respect him. A native of St. Augustine, Charlie, 30, was graduated from the University of Florida in 1953 before serving in the Air Force. He was a graduate assistant at FSU in 1956. He became a full member of the staff last season.

HERB HUGHES, 27, former University of New Mexico quarterback, takes over the reigns of Florida State's freshman football squad this season. Hughes assisted with the Seminole freshmen in 1956 and worked with the varsity last season. He showed an early inclination to become a football coach at New Mexico, where he was graduated in 1956. His shrewd knowledge of football is helping greatly in his coaching efforts.

LEE CORSO, the newest full-time member of the coaching staff — appointed last June — is one of the brighter names in Florida State's brief football history.

A native of Miami, where he was a three-sport All-Stater at Miami Jackson, 22-year-old Corso has always expressed a desire to coach. "Lee has that rare ability of being able to impart the knowledge he has," Coach Tom Nugent says. "I think he has a big future in coaching." Corso was graduated from Florida State in 1956 and served as freshman backfield coach last season.



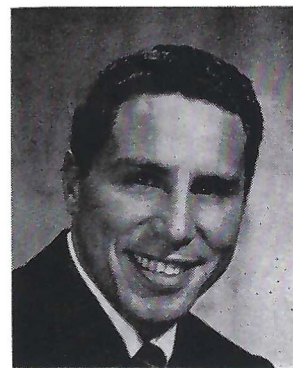
ODOM



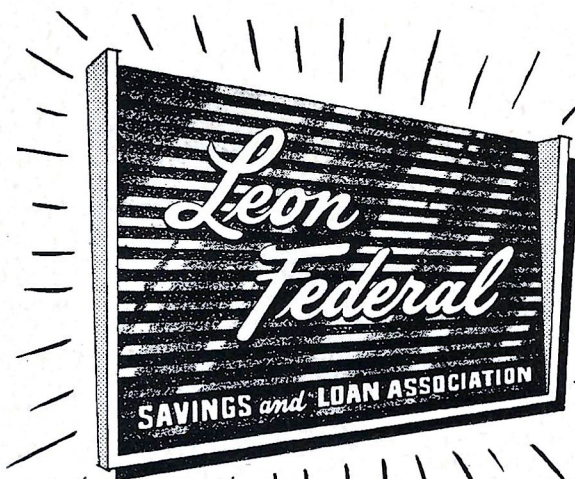
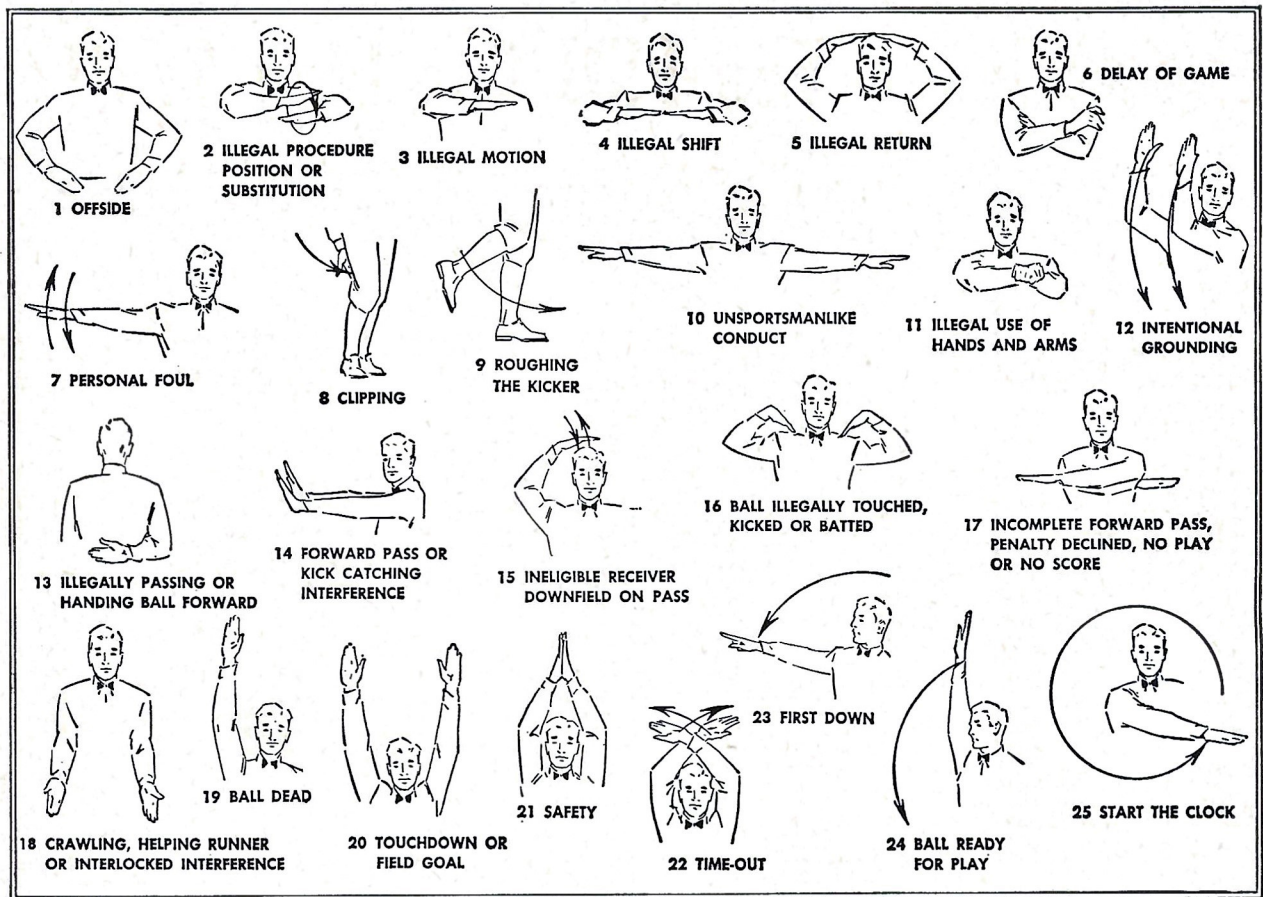
LAPRADD



HUGHES



CORSO



1-hour free parking at
Park and Shop Garage.

SIGN OF SAFE SAVING

Your savings at Leon Federal are insured up to \$10,000 by a U. S. Government Agency. Insured savings up to \$30,000 are possible for husband and wife through joint accounts. Start saving safely at Leon Federal today.

LEON FEDERAL SAVINGS
AND LOAN ASSOCIATION

111 S. Monroe Street
Tallahassee, Florida

They said it couldn't be done - BUT HERE IT IS!

PUFF BY PUFF
TODAY'S L&M
GIVES YOU ...

Less tars & M



FLORIDA STATE PROBABLE STARTING LINEUP

NO.	NAME	POS.
89	PETE FLEMING	LE
71	BOB SWOSZOWSKI	LT
62	AL ULMER	LG
51	BO DAVIS	C
63	TERRY MORAN	RG
77	JOHN SPIVEY	RT
80	TONY ROMEO	RE
10	VIC PRINZI	QB
20	BOB RENN	LH
27	JACK ESPENSHIP	RH
43	FRED PICKARD	FB

THE FLORIDA STATE SQUAD

10	Prinzi, b	44	Calhoun, b	73	B. Brown, t
11	Conrad, b	50	Kestner, c	74	Bagnall, t
12	McCormick, b	51	Davis, c	75	Strickland, t
13	Majors, b	52	Bell, c	76	Wallace, t
14	Springer, b	53	R. Rogers, c	77	Spivey, t
20	Renn, b	54	Hardy, c	78	Craig, t
21	Carnes, b	60	Baggett, g	79	Graham, t
22	Levy, b	61	McGee, g	80	Romeo, e
23	Sheppard, b	62	Ulmer, g	81	Kavanaugh, e
24	Cone, b	63	Moran, g	82	Slaton, e
25	Meyer, b	64	Lamb, g	83	Fountain, e
26	Whitehead, b	65	Barona, g	84	Kimber, e
27	Espenship, b	66	Schou, g	85	H. Brown, e
28	Hooks, b	67	J. Rogers, g	86	Daniel, e
40	Pasquale, b	68	Keith, g	87	Hinson, e
41	Lawrence, b	69	Canning, g	88	Stewart, e
42	Rozman, b	70	Worthington, t	89	Fleming, e
43	Pickard, b	71	Swoszowski, t		

Light into that **Live Modern** flavor!

83
75
64
50
61
72
84
16
44
24
31

rs & **More** taste
than ever before!



WAKE FOREST

PROBABLE STARTING LINEUP

83	PETE MANNING	LE	12	Kupis'ski, qb	46	Blum, hb	73	Conover, t
75	FRANK THOMPSON	LT	14	Parker, qb	47	Ferrell, hb	74	McCreary, t
64	HUGH LEWIS	LG	15	Little, qb	50	Jolly, c	75	Thompson, t
50	BUCK JOLLY	C	16	Snead, qb	51	Munn, c	76	Goodyear, t
61	NICK PATELLA	RG	17	Carpenter, qb	52	Bowers, c	77	Mahovich, t
72	EDDIE LADD	RT	24	Ledford, hb	53	Spicer, g	78	Wolff, t
84	DAN HERRING	RE	25	Futch, hb	54	Lanier, c	79	Padula, g
16	NORMAN SNEAD	QB	26	Ball, hb	60	Peil, c	80	Allen, e
44	JIM DALRYMPLE	LH	31	MacLean, fb	61	Patella, g	81	Currie, e
24	BUSTER LEDFORD	RH	32	McDonnel, fb	63	Pearce, g	82	Nation, e
31	NEIL MACLEAN	FB	36	Bonecutter, fb	64	Lewis, g	83	Manning, e
			37	Skippon, fb	65	Smathers, g	84	Herring, e
			40	Rogers, hb	66	Fleisher, g	86	Lewis, e
			42	Gelona, hb	67	Butler, g	88	Reese
			43	Brooks, hb	70	Hedgpeth, t	89	Niznik, e
			44	Dalrymple, hb	71	Smith, t		
			45	Robinson, hb	72	Ladd, t		

WAKE FOREST SQUAD

L&M... Best tastin' smoke you'll ever find!

PENALTIES

1. **OFFSIDE** by either team; Violation of scrimmage or free kick formation; Encroachment on neutral zone—Loss of Five Yards.
2. **ILLEGAL PROCEDURE, POSITION OR SUBSTITUTION**—Putting ball in play before Referee signals "Ready-for-play"; Failure to complete substitution before play starts; Player out of bounds when scrimmage begins; Failure to maintain proper alignment of offensive team when ball is snapped; False start or simulating start of a play; Taking more than two steps after Fair Catch is made; Player on line receiving snap—Loss of Five Yards.
3. **ILLEGAL MOTION**—Offensive player illegally in motion when ball is snapped—Loss of Five Yards.
4. **ILLEGAL SHIFT**—Failure to stop one full second following shift—Loss of Fifteen Yards.
5. **ILLEGAL RETURN** of substitute not previously disqualified—Loss of Fifteen Yards.
6. **ILLEGAL DELAY OF GAME**; Taking more than four times out during either half (except for replacement of injured player)—Loss of Five Yards. Team not ready to play at start of either half—Loss of Fifteen Yards.
7. **PERSONAL FOUL** — Tackling or blocking defensive player who has made fair catch; Piling on; Hurdling; Grasping face mask of opponent; Tackling player out of bounds, or running into player obviously out of play; Striking an opponent with fist, forearm, elbow or locked hands; Kicking or kneeling—Loss of Fifteen Yards (Flagrant offenders will be disqualified.)
8. **CLIPPING**—Loss of Fifteen Yards.
9. **ROUGHING THE KICKER** or holder—Loss of Fifteen Yards.
10. **UNSPORTSMANLIKE CONDUCT**—Violation of rules during intermission; Illegal return of suspended player; Coaching from sidelines; Invalid signal for Fair Catch; Persons illegally on field—Loss of Fifteen Yards. (Flagrant offenders will be disqualified.)
11. **ILLEGAL USE OF HANDS AND ARMS** by offensive or defensive player; Defensive holding—Loss of Fifteen Yards.
12. **INTENTIONAL GROUNDING** of forward pass—Loss of Five Yards Plus Loss of Down.
13. **ILLEGALLY PASSING OR HANDING BALL FORWARD**—Loss of Five Yards Plus Loss of Down.
14. **FORWARD PASS OR KICK CATCHING INTERFERENCE**—Interference with opportunity of player of receiving team to catch a kick—Loss of Fifteen Yards. Interference by member of offensive team with defensive player making pass interception—Loss of Fifteen Yards Plus Loss of Down. Interference by defensive team on forward pass—Passing Team's Ball at Spot of Foul and First Down.
15. **INELIGIBLE RECEIVER DOWN-FIELD ON PASS**—Loss of Fifteen Yards.
16. **BALL ILLEGALLY TOUCHED, KICKED OR BATTED**—Forward pass being touched by ineligible receiver beyond the line of scrimmage—Loss of Fifteen Yards from Spot of Preceding Down and Loss of a Down. Eligible pass receiver who goes out of bounds and later touches a forward pass—Loss of Down. Illegal touching of kicked ball within opponent's ten yard line—Touchback.
17. **PENALTY DECLINED**; Incomplete forward pass; No play or no score.
18. **CRAWLING** by runner—Loss of Five Yards. Interlocked Interference—Loss of Fifteen Yards.

Have you "SAMPLED" THE SERVICE AT LEON FEDERAL?

Stop in. You'll get "V.I.P. treatment" at Leon Federal. Take advantage of the tops in personal service and up-to-the-minute facilities that make saving a real pleasure.



Forging ahead with
Fabulous Florida

3½% current dividend • Savings insured to \$10,000

LEON FEDERAL SAVINGS AND LOAN ASSOCIATION

111 S. Monroe Street • Tallahassee, Florida



WON'T YOU...

HAV-A-TAMPA

...CIGAR

Eli Witt Tobacco & Candy Co.

TALLAHASSEE, FLORIDA

D. T. O'HARA, JR.

PRODUCE • POULTRY • FROZEN FOODS

Phone 2-2128 • 717 W. Gaines St.

TALLAHASSEE, FLORIDA

BILL'S BOOK STORE

BOOKS

SUPPLIES

SUNDRIES

PRIVATELY OWNED AND OPERATED

S H A W ' S

Furnishings for Your Home

COLLEGE AVE. at DUVAL ST.

"Good Taste Costs No More"

Gilberg's

"The House of 1000 Fabrics"

123 South Monroe Street
TALLAHASSEE, FLA.

220 Broad Avenue
ALBANY, GA.

109 W. University Ave.
GAINESVILLE, FLA.

8 North Palofax Street
PENSACOLA, FLA.

535 Harrison Ave.
PANAMA CITY, FLA.

106 E. Main St.
LAKE LAND, FLA.

Fabrics From All Over the World

".....it's a date!"

MORRISON'S
Cafeteria



The Vogue

TALLAHASSEE, FLORIDA

BRINKLEY BROS.

HOMER A. BRINKLEY

ROBERT T. BRINKLEY

REALTORS • INSURANCE

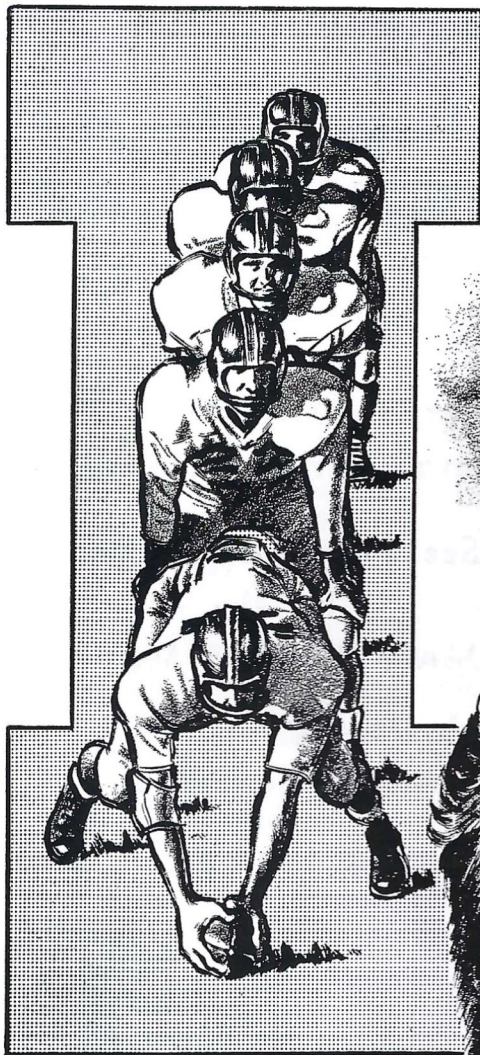
CARL BRINKLEY, Mgr. Insurance Dept.

MORTGAGE LOANS

"A Brinkley Buy Is a Better Buy"

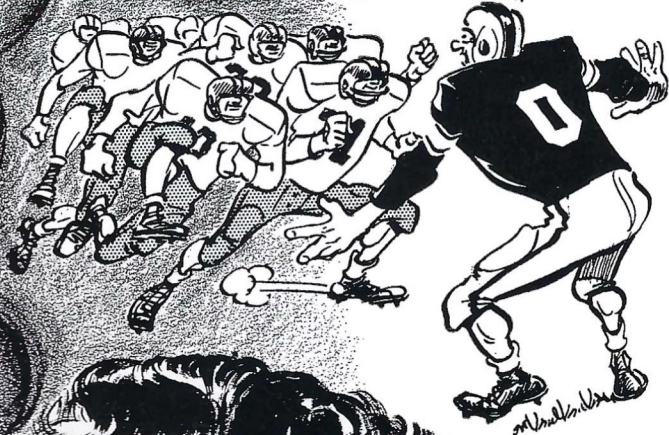
BRINKLEY BLDG. — 306 N. MONROE ST.

TELEPHONE 3-0918



FLORIDA STATE'S
I-FORMATION WAS
ORIGINALLY DREAMT
UP TO MASS GREAT
POWER FOR OFF-
TACKLE SMASHES...

MAN,
THE I'S
REALLY HAVE
IT



...THE BRAINCHILD
OF FORWARD-
THINKING TOM
NUGENT...

...WHOSE
COACHING
INGENUITY
HAS BEEN
TRANSLATED
INTO A BRIGHT
SEMINOLE
FOOTBALL
FUTURE?



AND I CAN'T
COMPLAIN 'BOUT
THE PAST OR
PRESENT EITHER,
COACH



FAIVER'S

For Chicken Pizza Pie

•
Half-Fry Chicken
Italian Foods

*While in Tallahassee
visit our Italian Room*

•

1312 WEST TENNESSEE STREET
TALLAHASSEE, FLORIDA

Learn to Fly at SEMINOLE FLYING SERVICE

Municipal Airport
Tallahassee, Fla.

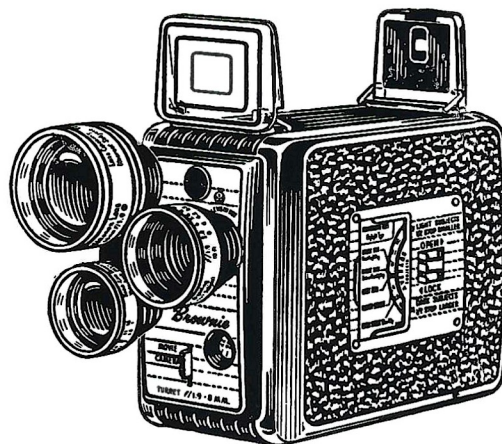
Rides, Instruction, Charter,
Rental, Aerial Photography

See The New CESSNA
for the
MAN ON THE MOVE

Look Up – A New CESSNA
May Be Overhead

Your MEMORIES LIVE FOREVER

WHEN RECORDED ON FILM!



TALLAHASSEE

CAMERA CENTER

123 NORTH MONROE ST.
ACROSS FROM THE FLORIDA THEATRE

WAKE FOREST

1958 FOOTBALL ROSTER

NO.	NAME	POS.	AGE	HT.	WT.	YR.	HOMETOWN
12	BOB KUPISZEWSKI	QB	21	5-10	175	Jr.	East Stroudsburg, Pa.
14	CHARLES PARKER	QB	22	6-2	180	Jr.	New Bern, N. C.
15	CLIFT LITTLE	QB	19	6-0	170	So.	Montgomery, Ala.
16	NORMAN SNEAD	QB	19	6-4	177	So.	Warwick, Va.
17	CHARLIE CARPENTER	QB	22	6-2	168	Sr.	Canton, N. C.
24	BUSTER LEDFORD	HB	22	5-9	165	Sr.	Shelby, N. C.
25	WINSTON FUTCH	HB	19	6-0	160	So.	Wilmington, N. C.
26	JERRY BALL	HB	19	6-1	190	So.	Troutman, N. C.
31	NEIL MACLEAN	FB	24	6-0	193	Jr.	Lumberville, Pa.
32	BRUCE MCDONNEL	FB	19	6-1	180	So.	Barrington, N. J.
36	JOE BONECUTTER	FB	19	6-3	190	So.	Shelby, Ohio
37	BILL SKIPPON	FB	19	6-2	185	So.	Conneaut, Ohio
40	LARRY ROGERS	HB	19	5-10	170	So.	Greensboro, N. C.
42	BOB GELONA	HB	20	6-0	175	So.	Atlantic City, N. J.
43	LARRY BROOKS	HB	22	5-9	166	Sr.	Danville, Va.
44	JIM DALRYMPLE	HB	24	6-0	165	Sr.	Phillsburg, N. J.
45	BOBBY ROBINSON	HB	19	5-8	170	So.	Clinton, N. C.
46	CARL BLUM	HB	18	6-2	195	So.	Paulsboro, N. J.
47	KENNY FERRELL	HB	20	5-10	185	Jr.	Durham, N. C.
50	BUCK JOLLY	C	21	6-0	190	Jr.	Chadbourn, N. C.
51	KARL MUNN	C	21	5-10	197	Sr.	Rock Hill, S. C.
52	BUDDY BOWERS	C	19	5-11	188	So.	Spray, N. C.
53	TOM SPICER	G	19	6-1	215	So.	Massillon, Ohio
54	JIMMY LANIER	C	19	6-2	185	So.	Warsaw, N. C.
60	JIMMY PELL	C	18	6-2	200	So.	Mount Airy, N. C.
61	NICK PATELLA	G	20	6-0	205	Jr.	East Stroudsburg, Pa.
63	WILL PEARCE	G	18	6-0	195	So.	Spring Hope, N. C.
64	HUGH LEWIS	G	22	6-0	200	Sr.	Warsaw, N. C.
65	BRUCE SMATHERS	G	22	5-11	192	Sr.	Canton, N. C.
66	LARRY FLEISHER	G	23	5-8	198	Jr.	Montreal, Canada
67	SAM BUTLER	G	22	5-11	185	Sr.	Morgonton, N. C.
70	CAREY HEDGPETH	T	20	6-0	225	Jr.	Fairmont, N. C.
71	BOB SMITH	T	19	6-2	227	So.	Laurel Springs, N. J.
72	EDDIE LADD	T	22	6-3	210	Sr.	Durham, N. C.
73	AL CONOVER	T	19	6-1	235	So.	Largo, Fla.
74	BOB MCCREARY	T	19	6-5	237	So.	Lenoir, N. C.
75	FRANK THOMPSON	T	22	6-3	210	Sr.	Chadbourn, N. C.
76	JIM GOODYEAR	T	19	6-1	200	So.	Philadelphia, Pa.
77	STEVE MAHOVLICH	T	19	6-3	225	So.	Monessen, Pa.
78	WAYNE WOLFF	T	20	6-2	220	So.	Greensburg, Pa.
79	FRANK PADULA	G	19	6-0	210	So.	Greensburg, Pa.
80	BOBBY ALLEN	E	19	6-2	187	So.	Warwick, Va.
81	AUBREY CURRIE	E	20	5-11	191	Jr.	Laurel Hill, N. C.
82	BRUCE NATION	E	19	6-3	195	So.	West Hartford, Conn.
83	PETE MANNING	E	21	6-3	195	Jr.	Hudson, Mass.
84	DAN HERRING	E	25	6-2	200	Jr.	Rocky Mountain, N. C.
86	LEON LEWIS	E	21	6-2	185	Sr.	Gastonia, N. C.
88	SAMMY REESE	E	21	6-2	186	Jr.	Mars Hill, N. C.
89	JOHN NIZNIK	E	25	6-3	195	Jr.	Yatesboro, Pa.

STUDENT SAVING CENTER

- School Supplies
- Pennants and Novelties
- Gifts
- Art Supplies
- Greeting Cards
- Stationery
- Drafting Equipment
- Pen Repair Service
- Sundries
- Camera Supplies & Developing Service

We Buy and Sell Books

NEW and USED

UNIVERSITY BOOKSTORE

In the Student Center

CARNES PLAYTHINGS

Largest Selection of Toys in the "Big Bend"

DOLL HEADQUARTERS

TOYS — GIFTS and PLAYTOGS

"Across From Jitney Jungle No. 1"

1302 N. Monroe

Phone 2-2480

TALLAHASSEE, FLORIDA

QUALITY CLEANERS

Two Plants To Serve You

Downtown

215 W. COLLEGE AVE. — DIAL 2-5097

Opposite Jitney Jungle

1306 N. MONROE — DIAL 2-1651

ONE DAY SERVICE

PICK-UP and DELIVERY

Quality Laundry Service

EXPERT TAILORING and ALTERATIONS

ZIPPER REPAIRED

FLORIDA STATE UNIVERSITY CHEERS

1. Beat, Florida State

Beat Florida State!
 Beat (Stomp, Stomp)
 Beat Florida State!
 Beat (Stomp, Stomp)
 Beat Florida State!
 Beat (Stomping)

2. Freshman, Flunky

Freshman, Flunky, Student, Scholar
 All good Seminoles, Stand up and holler.

3. Garnet and Gold

Garnet and Gold, Fight, Fight!
 Garnet and Gold, Fight, Fight!
 Who fight? We fight!
 Garnet and Gold, Fight, Fight!

4. IS Everybody Happy?

CL : Is Everybody happy?
 Aud: Hell, yes!
 CL : Is anybody downhearted?
 Aud: Hell, no!
 CL : Then let's railroad Seminoles
 and take it slow!
 ALL: S-E-M-I-N-O-L-E-S
 (Spell three times)
 ALL: Seminoles!

5. Locomotive

Rah, rah, rah, rah,
 Go team, go team
 Rah, rah, rah, rah,
 Go team, go team
 Rah, rah, rah, rah,
 Go team, go team
 Fight!

6. Alma Mater

High o'er the towering pines
 our voices swell
 Praising these gothic spires
 We love so well:
 Here sons and daughters stand,
 faithful and true
 Praising our Alma Mater
 F. S. U.

7. Tom Nugent Cheer (We've Got the Coach)

We've got the coach (clap, clap)
 We've got the team (clap, clap)
 We've got the pep (clap, clap)
 We've got the steam (clap, clap)
 Coach, team, pep, steam.
 Fifteen rahs for Nugent's team.
 Rah-rah, rah, rah, rah;
 Rah-rah, rah, rah, rah;
 Rah-rah, rah, rah, rah.
 Fight, team!

8. Sittin' in a Wigwam

Sittin' in a wigwam
 Beatin' on a tom-tom
 Who come?
 We Come.
 Everybody will come.
 Scalp 'em, (clap, clap), Scalp 'em
 (Clap, clap), etc.

9. Seminoles

(spell out)
 S (4 claps) E (4 claps) M (etc.) I (etc.)
 S (1 clap) E (1 clap) M (etc.) I (etc.)

10. Go Seminoles

(All hands in the air)
 Go - - - O Seminoles (clap, clap)
 Go - - - O Seminoles (clap, clap)
 Team fight!

11. Touchdown Song

Da dum Yea Team!
 Da dum Whose Team!
 Da dum Our Team!
 Touchdown, that's the thing
 We want a touchdown,
 Hear us sing
 We want a touchdown
 Hear us sing
 We want a great big bruiser, husky and tall,
 To carry the ball, in no time at all
 We'll have a touchdown
 And when it's over
 You can hear us make some noise!
 V-i-c-t-o-r-y
 We want a touchdown, boys!
 Da da dum Fight! Fight! (seven times)

12. Fight Song

We're going to fight, fight fight for FSU
 You got to scalp 'Um, Seminoles,
 You got to win, win, win, win, that game
 And roll on down and make those goals.
 For FSU is on the warpath now,
 And at the battle's end, she's great,
 So fight, fight, fight, fight to victory
 Our Seminoles from Florida State.
 F-L-O-R-I-D-A S-T-A-T-E
 Florida State!
 Florida State!
 Florida State!

13. Hi, Florida

Hi, Florida!
 Hi, State,
 Hi, Hi, Florida State!

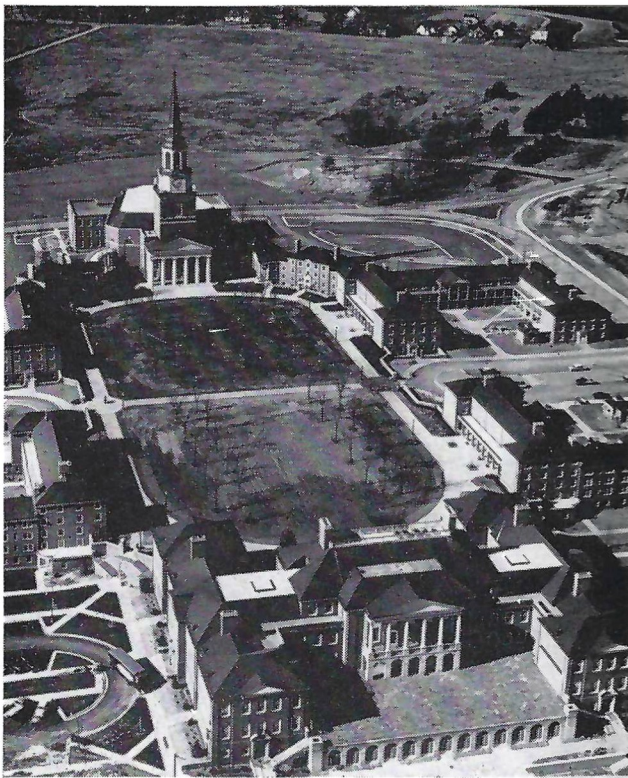


PAUL J. AMEN
Head Football Coach



DR. HAROLD W. TRIBBLE
President

WAKE FOREST

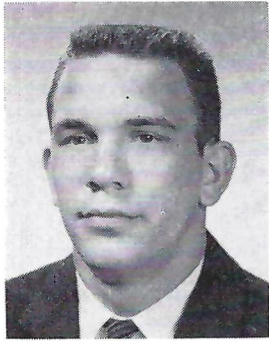


VIEW OF THE CAMPUS

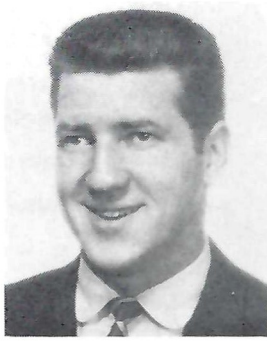


THE NEW GYMNASIUM

Wake Forest Players



JOE BONECUTTER



EDDIE LADD



NICK PATELLA



ROY LEDFORD



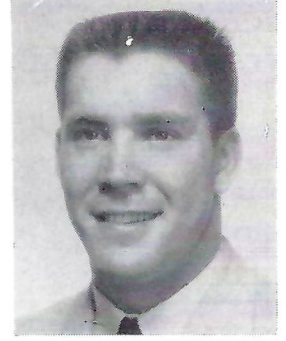
BOB SMITH



JIM DALRYMPLE



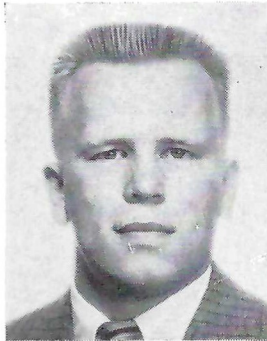
CHARLIE CARPENTER



HUGH LEWIS



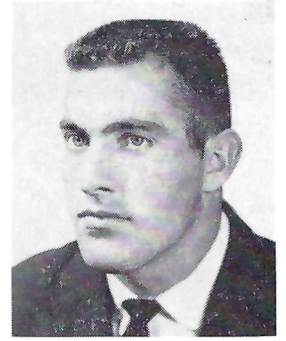
BOBBY ROBINSON



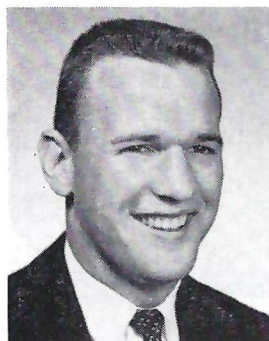
KARL MUNN



BRUCE SMATHERS



FRANK THOMPSON



BOBBY ALLEN



NEIL MACLEAN



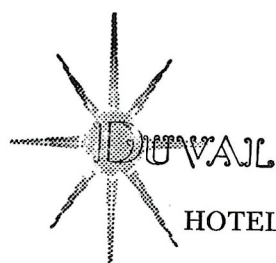
DAN HERRING



PETE MANNING

**TRAVELING
DESSERT TRAYS**

**CHARCOAL
BROILED
STEAKS**



HOTEL • TALLAHASSEE, FLORIDA

BENNETT'S DRUG STORE

- Prescriptions
- Cameras
- Sundries
- Gifts
- Fountain
- Cafe
- Cosmetics
- Drugs

**MEET ME AT BENNETT'S
BEFORE AND AFTER THE GAME!
Corner Monroe and College Streets
Phone 2-8980 — 2-4450**



Versatile halfback Bobby Renn (15) deals as Seminoles spring from explosive "I" formation.

SEMINOLE FOOTBALL NETWORK

Florida State University's football games are carried to every part of the state again this season by the growing voice of the Seminole Football Network. Entering its sixth year, the Network is operated by the University's Department of Intercollegiate Athletics. Dr. Don Veller, Assistant Director of Athletics, is Network supervisor.

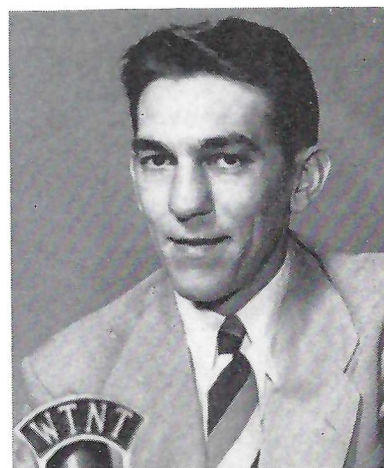
The Seminole Football Network boasts close to 25 stations in Florida and Georgia this year—a big increase over the 18 stations that carried the games last year.

Handling the broadcasts are Bill Snyder, Sports Director of Station WJAX, Jacksonville, and Jack Edger, Sports Director, WTNT, Tallahassee. Snyder has done the play-by-play of Seminole games for the past three years. A native of Orlando, Snyder, 35, has handled play-by-play of the St. Louis Browns (1950) and for the past few years has broadcast games of the Jacksonville Braves of the South Atlantic League. Snyder also is serving as technical director of the Seminole Network.

Edger, 35, is thoroughly familiar with the Florida State sports scene. Handling the color commentary this year, Edger did the play-by-play of Florida State games in 1953. All 10 of the Seminole games will be broadcast, including the road games to Atlanta, Jacksonville, Knoxville, Miami, and Gainesville (broadcast to areas not covered by the University of Florida Network).



Bill Snyder



Jack Edger

THE NETWORK STATIONS

WTAL	Tallahassee	WBSR	Pensacola
WPCF	Panama City	WCNH	Quincy
WTAN	Clearwater	WWIL	Fort Lauderdale
WIRK	West Palm Beach	WKIS	Orlando
WMBR	Jacksonville	WWPF	Palatka
WJAX	Jacksonville	WMGA	Moultrie, Ga.
WRUF	Gainesville	WACL	Waycross, Ga.
WONN	Lakeland	WGAF	Valdosta, Ga.

FSU EIGHTH ANNUAL BAND DAY

October 4, 1958

FLORIDA STATE UNIVERSITY MARCHING CHIEFS

Manley R. Whitcomb, Director

Robert T. Braunagel, Associate Director

Charles Carter, Arranger

George A. Booker, Band Day Coordinator

Terry Johnson, Drum Major
Bill Tallman, Prop Manager
Virginia Carney, Uniform Manager

Linda Bean, Head Majorette
Frances Gray, Librarian
Bob Reely, Field Manager

THEME: COLUMBUS DAY

Formation

1. **Nina, Pinta, Santa Maria** -----
2. **Three Seminole Teepee** -----
3. **U. S. A.** -----

Music

- "Sailing, Sailing, Sailing"
"Ten Little Indians"
"America the Beautiful"

GUESTS

Adel, Ga., Cook High Band, Robert N. Pierce
Altha, Florida, Altha High Band, H. R. Leas
Bainbridge, Ga., Bainbridge High Band, R. C. Muench
Blountstown, Fla., Blountstown High Band, R W. Philemon, Jr.
Bowden, Ga., Bowden High Band, Norman Padgett
Branford, Fla., Branford Public Band, Kenneth Wolf
Cairo, Ga., Cairo High Band, Wm. T. Verran
Chattahoochee, Fla., Chattahoochee High Band, Jack Powell
Chipley, Fla., Washington County High Band, Dan Jensen
Colquitt, Ga., Miller County High Band, Don Robinson
Cordele, Ga., Crisp County High Band, Gene Lail
DeFuniak Springs, Fla., Walton County High Band, Charles Burns
Fitzgerald, Ga., Fitzgerald High Band, G. McLendon
Gonzalez, Fla., Tate High Band, Joyce Sidorfsky
Graceville, Fla., Graceville High Band, Miss Shirley Wallace
Greensboro, Fla., Greensboro Public Band, Evans Hartzog
Griffin, Ga., Spalding Jr. High Band, Harold Bradley

Homerville, Ga., Clinch County High Band, Archie Sharretts
Lake City, Fla., Columbia High Band, Lenvil H. Dicks
Madison, Fla., Madison High Band, Frank Fansler
Mayo, Fla., Lafayette High Band, Carl H. Rathke
Milton, Fla., Milton High Band, John H. Chalker
Monticello, Fla., Jefferson High Band, Romulus Thompson
Panama City, Fla., Everitt Junior High Band, Prentiss Melder
Panama City, Fla., Jinks Junior High Band, Bill Bennett
Pelham, Ga., Pelham High Band, Richard Reis
Perry, Fla., Taylor County High Band, Dean Mann
Quincy, Fla., Quincy High Band, H. Carlton Mason
Quitman, Ga., Quitman High School Band, Sanford B. Campbell
Sneads, Fla., Sneads High Band, F. G. Freedman
Tallahassee, Fla., Florida High Band, Glenn Heinlen
Tallahassee, Fla., Leon High Band, Oliver Hobbs
Thomasville, Ga., Thomasville High Band, Wm. J. Harrington
Warner Robins, Ga., Warner Robins High Band, Richard Hawkins

*Pre-game entertainment will be provided by the Florida State Marching Chiefs and a mass twirling routine by all the high school majorettes. It will be taught by Linda Bean and the F.S.U. majorettes.



**PUT A
IN YOUR KICK
PRINTING!**

Let **ROSE** print your next order
of

- LETTERHEADS
- OFFICE AND FACTORY FORMS
- BOOKLETS AND BROCHURES
- CIRCULARS
- WEDDING ANNOUNCEMENTS
- HOUSE ORGANS
- DIRECT BY MAIL ADVERTISING

Phone **2-0230**

FOR A REPRESENTATIVE

ROSE PRINTING COMPANY, INC.

MIAMI

TALLAHASSEE

JACKSONVILLE

In judging a modern filter cigarette...

IT'S WHAT'S UP FRONT THAT COUNTS



R. J. REYNOLDS TOBACCO CO., WINSTON-SALEM, N. C.

"Winston has got it," says Garry Moore, "because Winston's got a secret! It's **Filter-Blend**—fine, mild tobaccos specially processed for filter smoking!"

"A cigarette without flavor is like a world without women. Who wants it?" says the star of Winston's television hit, "I've Got a Secret!". "After all, if you don't get flavor . . . you're missing the whole idea of smoking!"

"Winston *has* got flavor! Because up ahead of Winston's pure modern filter is **Filter-Blend**—a Winston exclusive! This secret—**Filter-Blend**—is what makes Winston America's best-tasting filter cigarette. Try Winston!"



America's best-selling filter cigarette!

WINSTON TASTES GOOD

LIKE A CIGARETTE SHOULD !

Represented for National Advertising by SPENCER ADVERTISING COMPANY, INC., 271 Madison Ave., New York City