

OFFICIAL PROGRAM * FIFTY CENTS

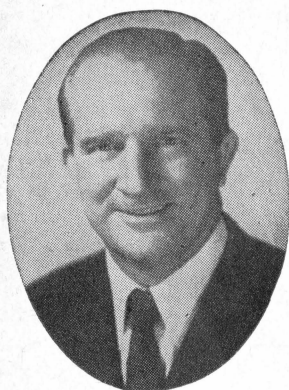
Florida State

CAMPBELL STADIUM

ARCHIVES
F. S. U. LIBRARY

OCTOBER 18 * 1958
6

Virginia Tech



RAINEY CAWTHON

Rainey Cawthon's

★ RCA TELEVISION and RADIO

★ SHELL PRODUCTS ★ GOODYEAR TIRES

"WE SERVICE WHAT WE SELL"

• ROAD SERVICE • PHONE 2-1865 •



FRED PIERSON

patronize...
STADIUM

CONCESSIONS

Located beneath the stands on each side of stadium

COLD DRINKS..... 15¢
HOT COFFEE..... 15¢
SANDWICHES..... 30¢
HOT DOGS..... 25¢
PEANUTS..... 10¢
POP CORN..... 10¢

SOUVENIR ITEMS
PENNANTS
BADGES
SUN VISORS
ASPRIN

All Cigarettes 35¢

please pay no more than established prices

TABLE OF CONTENTS

Seminole Athletic News	3
The President and Head Football Coach	4
Information About Florida State	5
Florida State Players	8-9-13
Florida State Roster	10
Florida State Coaches	14
Probable Starting Lineups	16-17
Virginia Tech Roster	23
Florida State Cheers	25
Virginia Tech Staff and Players	26-27
Seminole Football Network	29
The Marching Chiefs	30

FIRED-UP GOBBLERS HAVE SIZE & SPEED

Red-hot Virginia Tech invades Campbell Stadium today for the fourth straight year and Tallahassee fans can expect a thriller whenever the Gobblers and Seminoles get together.

Coach Frank Moseley's spirited Gobblers roll in with a 3-1 record that includes victories over West Texas (28-12), William & Mary (27-15) and Virginia (22-13). Virginia Tech shocked Virginia last week after Virginia had bowled over Duke, 15-12.

The lone Virginia Tech loss was a 13-7 setback at Wake Forest's hands in a 50-mile hurricane gale at Norfolk three weeks ago. Coach Tom Nugent's Seminoles turned in one of their most sparkling performances to trim Wake Forest, 27-24, here two weeks ago.

The Gobblers boast one of the nation's leaders in total offense. He is senior quarterback Billy Holsclaw, a passing, running Gobbler who chalked up 180 yards against Virginia. And the Gobblers have one of America's best ends in Carroll Dale, a three-year veteran who does everything well. Then there's tackle Jim Burks, a 6-3, 227-pound senior who is no bigger than another handful of giant Virginia Tech linemen.

Banged up in an all-out effort against Georgia at Jacksonville last week, the Seminoles (3-2) will not be at full strength today. Sophomore guard Terry Moran has a battered shoulder and soph end Herman Brown a bum knee. Neither is expected to play today, and other Seminoles will see only limited service because of various ailments.

Past the halfway mark, Florida State's young squad has proved it never gives up. The Seminoles fought back against Georgia, only to lose in the fading moments. Florida State, 20-7 Homecoming victory over Virginia Tech here a year ago, will be trying to square the series with the Gobblers today.

The President . . .

DR. ROBERT M. STROZIER

Florida State University's President, Dr. Robert M. Strozier, is a football enthusiast who will be "playing" his second year for the Seminoles.

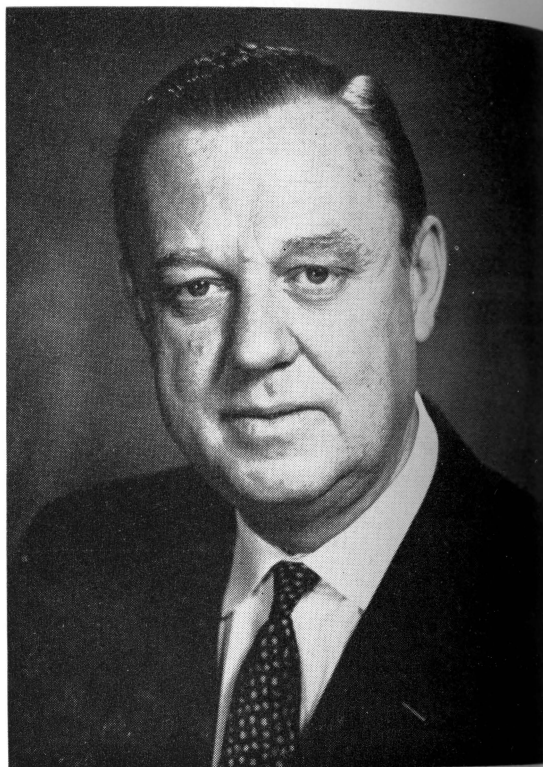
When Dr. Strozier came to Florida State in September, 1957, it was homecoming for the popular new president. Born in McRae, Ga., he was reared in Moultrie, Ga., and was graduated from Emory University. He earned his Ph.D. at the University of Chicago.

President Strozier began his professional career as professor of romance languages at Georgia State College for Men at Tifton. From 1933-1940 he served as professor of French and dean of men at West Georgia College.

In 1940 he went to the University of Georgia as associate dean of students and associate professor of romance languages. Later he served as director of the Army Special Training Program unit there.

In May, 1945, he joined the University of Chicago faculty as associate director of International House and in 1946 he became dean of students.

President Strozier's first year at Florida State has been one of accomplishment from the start. At Commencement last May he reported an accumulative total of research grants and contract funds of \$1,225,000, greater by 487,000 than in any previous year. Among these contracts is one with the United States Air Force amounting to \$217,260 for nuclear research, the largest single contract ever negotiated in support of research at Florida State.



The Head Coach . . .

TOM NUGENT

"Sometimes when you talk to Tom Nugent," wrote the Atlanta Journal's Jim Minter, "you feel as though Mike Todd is still with us." Minter's point was simple. Florida State's energetic Athletic Director and Head Football Coach, in the colossal style of the late Mike Todd, does things first class.

It's been that way with Thomas Norman Nugent since, at age 15, he wrote he would be a head college football coach some day. That day arrived when he assumed command of VMI's football fortunes. It was in 1949, and within three years after Nugent joined the obscure VMI Keydets, he had won a Southern Conference championship and pulled an upset over mighty Georgia Tech.

Nugent came to FSU in 1953 and thanks to his magnetic touch, football at Florida State has grown from a pickup sport in 1947 to a 1958 position that finds the Seminoles playing such tradition-steeped opponents as Georgia Tech, Georgia, Tennessee, Florida, and Miami (Fla.).

Nugent's enthusiastic interest in the entire program of intercollegiate athletics at FSU resulted in his appointment as Director of Athletics last May. In his sixth year as the propelling force behind the Seminoles, Nugent has attained a record of 27 victories against 24 losses and one tie.

He has also become nationally known for his bright innovations. It was Nugent who presented to football the typewriter huddle, the double quarterback and the "I" formation used so effectively by his own Seminoles. Florida State's annual June coaching clinic, which he fathered five years ago, is probably football's finest. A native of Lawrence, Mass., the 45-year-old coach was graduated from Ithaca College in 1936.





ABOUT FLORIDA STATE UNIVERSITY

Located in Tallahassee, Florida State University is one of the fastest growing universities in the country. Already it is literally bursting at its seams with an estimated 10,000 students expected by 1960.

The campus consists of 297 acres, the older part of which overlooks the capital city.

The new portion of the campus follows a 50-year master plan developed by well-known architects. It stretches westward along Highway 90.

Growing by leaps and bounds, the campus has an 11-floor dormitory with three more just like it expected in the near future. A million dollar physical education plant is a year-and-a-half old as is the multi-million dollar library building.

New buildings completed this year are the School of Business and the School of Education, and a Geology addition.

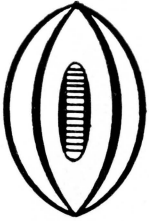
A recent act of the Legislature granted the University \$2,300,000 for developing basic nuclear studies which will put Florida State to the fore in the nuclear field.

Authorized by the 1851 Legislature, the institution was first established as the "Seminary West of the Suwannee," and was opened on a portion of its present campus. The name was changed to "Florida State College" in 1901 and the school remained coeducational until 1905. Then it became the "Florida Female College" and was renamed in 1909, "The Florida State College for Women."

By act of the 1947 Legislature, the institution again became coeducational as The Florida State University.

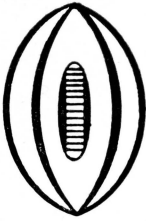
WHEN WE HAVE THE BALL

LEFT END



89 Fleming
87 Hinson
84 Kimber
82 Slaton

LEFT TACKLE



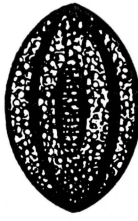
71 Swoszowski
75 Strickland
78 Craig
70 Worthington

LEFT GUARD



62 Ulmer
64 Lamb
68 Keith
65 Barona

CENTER



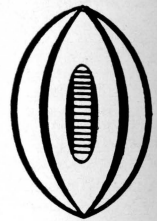
51 Davis
52 Bell
54 Hardy
53 Rogers
50 Kestner

RIGHT GUARD



79 Graham
61 McGee
60 Baggett
67 Rogers
66 Schou
63 Moran

RIGHT TACKLE



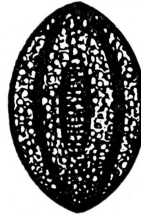
77 Spivey
69 Brown, B.
76 Wallace
74 Bagnall

RIGHT END



80 Romeo
83 Fountain
81 Kavanagh
86 Daniel
85 Brown

QUARTERBACK



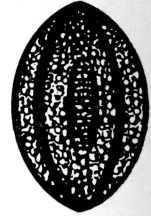
10 Prinzi
12 McCormick
13 Majors
14 Springer

LEFT HALFBACK



20 Renn
11 Conrad
26 Whitehead
23 Sheppard
21 Carnes

RIGHT HALFBACK

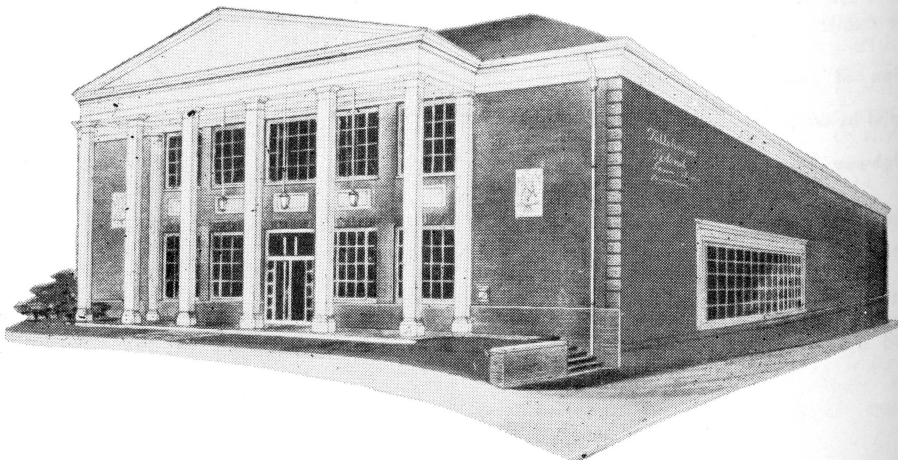


27 Espenship
25 Meyer
28 Hooks
24 Cone
22 Levy

FULLBACK



43 Pickard
41 Lawrence
40 Pasquale
44 Calhoon
42 Rozman



OUR NEW HOME

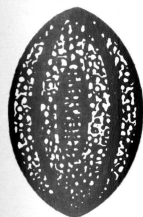
WHEN VIRGINIA TECH. HAS THE BALL

LEFT END



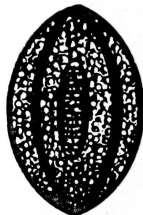
Dale
Brinkley
Ferr

LEFT TACKLE



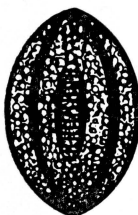
71 Oakes
72 B. Harris
70 Moss

LEFT GUARD



68 Zeno
65 Davison
63 Jones

CENTER



50 Mihalas
51 Stephens
53 Sibley

RIGHT GUARD



64 D. Holsclaw
69 O'Brien
66 Eller

RIGHT TACKLE



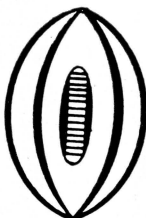
77 Burks
75 Vishneski
73 Bartrug

RIGHT END



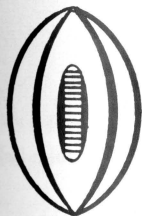
85 Whittier
81 Byrd
86 W. Harris

QUARTERBACK



12 B. Holsclaw
10 Barnette
20 Kosko

LEFT HALFBACK



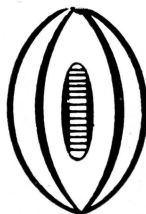
25 Whitesell
22 Pugh
21 Snead

RIGHT HALFBACK



23 Henry
45 Ringer
40 Watkins

FULLBACK



42 Shaffer
33 Cranwell
30 Vaught

TALLAHASSEE FEDERAL

SAVINGS & LOAN

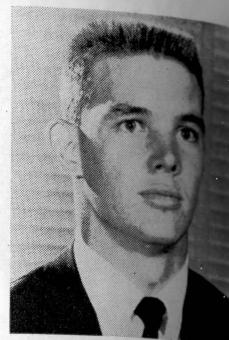
115 E. Park

TALLAHASSEE

FSU Players



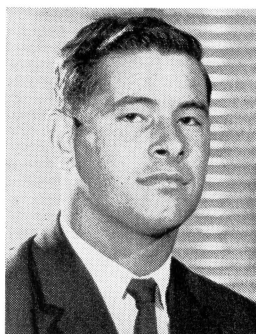
Bob Conrad—QB



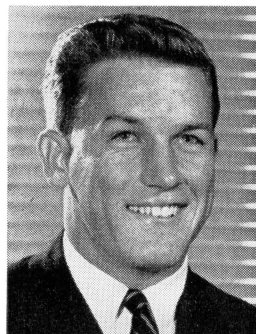
Jack Espenship—HB



Pappy Rozman—FB



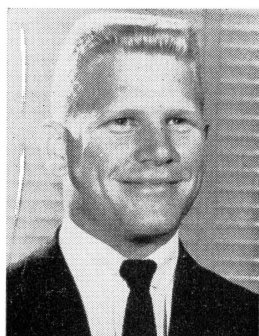
Ron Hinson—E



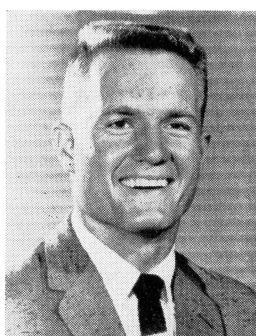
Joe Majors—QB



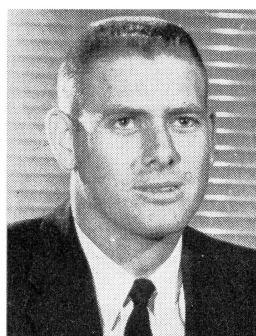
John Bell—C



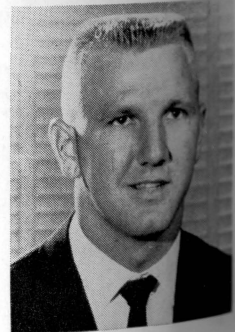
Bob Stewart—E



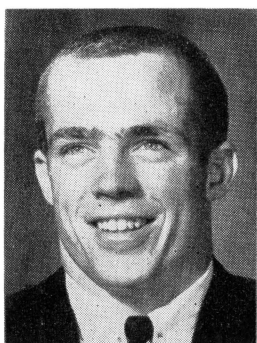
Bud Whitehead—HB



Bob Fountain—E



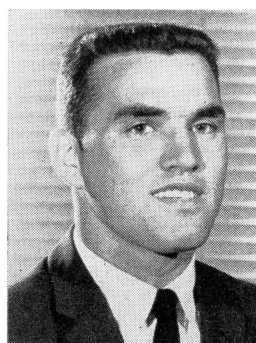
Carl Meyer—HB



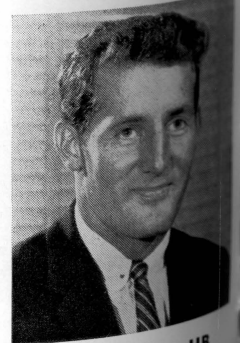
Al Ulmer—G



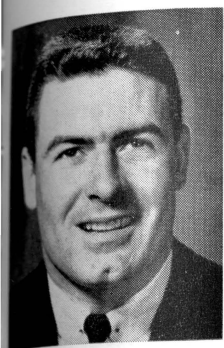
Bill Kimber—E



Terry Moran—G



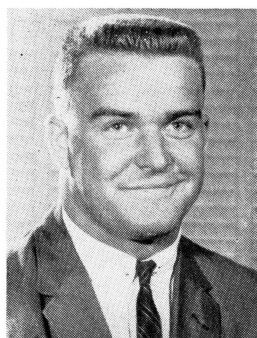
Bobby Renn—HB



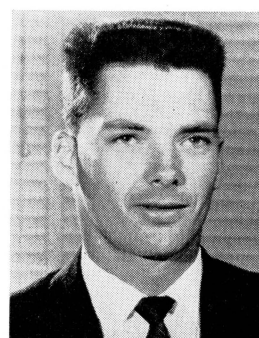
Joe McGee—G



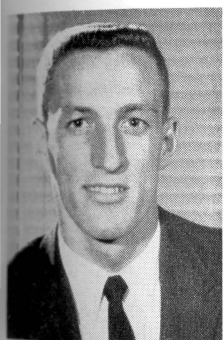
Jim Hooks—HB



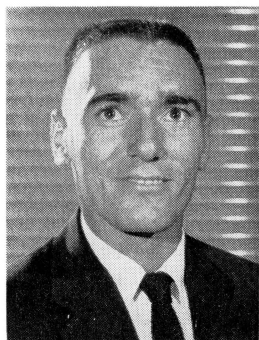
Bob Douglas—T



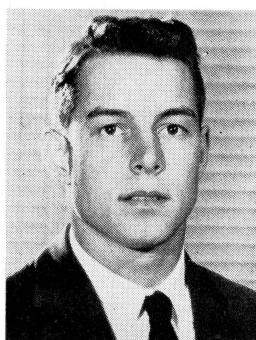
John Slaton—E



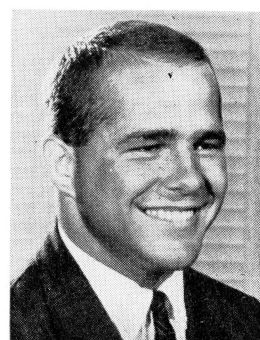
Jim Daniel—E



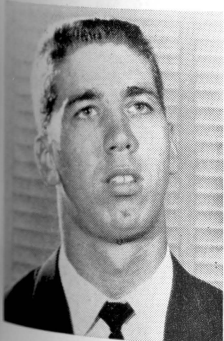
Frank Springer—QB



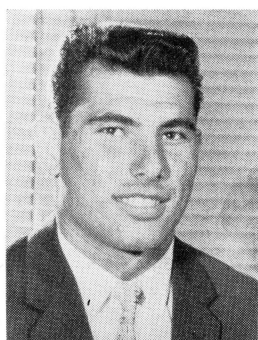
Bob Carnes—HB



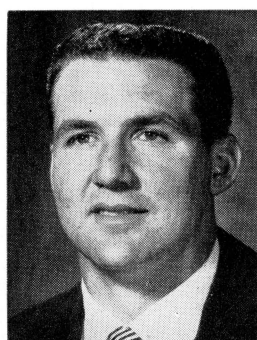
Ken Kestner—C



Bob Swoszowski—T



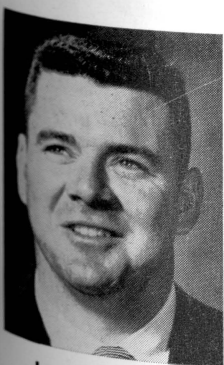
Tony Romeo—E



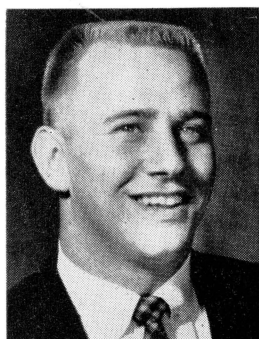
Dink Lawrence—FB



Jack Hardy—C



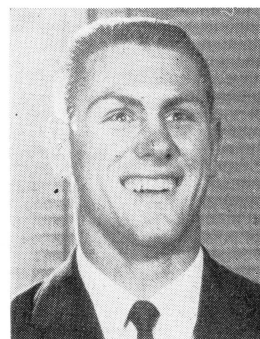
Leo Baggett—G



Jerry Graham—T



Lou Wallace—T



Denny Schou—G

FLORIDA STATE UNIVERSITY 1958 FOOTBALL ROSTER

NO.	NAME	POS.	AGE	HT.	WT.	YR.	HOMETOWN
10	*VIC PRINZI	QB	22	6-0	178	Sr.	Waverly, N. Y.
11	BOBBY CONRAD	QB	20	6-0	181	So.	Marianna
12	GENE McCORMICK	QB	22	5-9	151	So.	Miami
13	*JOE MAJORS	QB	20	6-0	176	Jr.	Huntland, Tenn.
14	FRANK SPRINGER	QB	24	5-11	180	So.	Delray Beach
20	*BOBBY RENN	HB	24	5-11	175	Sr.	Henderson, N. C.
21	BOBBY CARNES	HB	20	6-0	176	Jr.	Tallahassee
22	LENNY LEVY	HB	19	5-8	180	Jr.	Miami Beach
23	*JOHN SHEPPARD	HB	24	5-8	182	Sr.	Tallahassee
24	KEN CONE	HB	19	6-0	173	So.	Lakeland
25	CARL MEYER	HB	20	5-11	177	So.	Melbourne
26	BUD WHITEHEAD	HB	19	5-10	171	So.	Marianna
27	JACK ESPENSHIP	HB	19	6-2	185	So.	Lake City
28	*JIM HOOKS	HB	22	5-9	173	Jr.	West Palm Beach
40	PAUL PASQUALE	FB	21	5-8	186	So.	Binghamton, N. Y.
41	FLOYD LAWRENCE	FB	22	6-0	202	Jr.	Saltville, Va.
42	PAPPY ROZMAN	FB	23	5-9	182	Jr.	Tallahassee
43	*FRED PICKARD	FB	20	5-9	165	Jr.	Columbia, Tenn.
44	JIM CALHOON	FB	23	6-1	191	So.	Winslow, Ariz.
50	KEN KESTNER	C	20	5-9	200	So.	Cleveland, Ohio
51	BO DAVIS	C	21	6-2	195	Sr.	Hapeville, Ga.
52	JOHN BELL	C	18	6-0	199	So.	Atlanta, Ga.
53	RAMON ROGERS	C	20	5-11	182	Jr.	Pensacola
54	JACK HARDY	C	19	5-10	191	So.	Miami
60	*LEO BAGGETT	G	22	5-10	191	Sr.	Panama City
61	*JOE McGEE	G	22	5-9	186	Sr.	Raleigh, N. C.
62	*AL ULMER	G	19	5-10	176	Jr.	Clearwater
63	TERRY MORAN	G	18	5-9	180	So.	New Orleans, La.
64	RAY LAMB	G	20	6-0	182	So.	Atlanta, Ga.
65	LOU BARONA	G	20	5-9	175	So.	Miami
66	DENNY SCHOU	G	18	5-8	185	So.	Delray Beach
67	JIM ROGERS	G	20	5-10	180	Jr.	Miami
68	*STU KEITH	G	21	6-0	183	Sr.	Panama City
69	GEORGE CANNING	G	20	5-10	193	So.	Mobile, Ala.
70	JIM WORTHINGTON	T	20	6-1	198	So.	Oak Ridge, Tenn.
71	BOB SWOSZOWSKI	T	18	6-3	192	So.	Orlando
73	BILL BROWN	T	23	6-0	200	So.	Orlando
74	*CLARE BAGNALL	T	25	6-1	208	Jr.	Battle Creek, Mich.
75	DAN STRICKLAND	T	23	6-1	214	So.	Sopchoppy
76	*LOU WALLACE	T	19	6-2	197	Jr.	Atlanta, Ga.
77	*JOHN SPIVEY	T	20	6-2	200	Jr.	Panama City
78	*JOHN CRAIG	T	21	6-0	214	Sr.	Orlando
79	*JERRY GRAHAM	T	20	6-0	224	Sr.	Chicago, Ill.
80	TONY ROMEO	E	20	6-0	200	So.	Tampa
81	BOB KAVANAUGH	E	18	6-0	200	So.	Miami
82	JOHN SLATON	E	18	6-1	183	So.	Coral Gables
83	*BOB FOUNTAIN	E	21	6-0	190	Sr.	Crestview
84	*BILL KIMBER	E	22	6-2	193	Sr.	Winter Park
85	HERMAN BROWN	E	20	6-0	174	So.	Auburndale
86	JIM DANIEL	E	19	6-3	180	So.	Atlanta, Ga.
87	RON HINSON	E	19	6-0	193	So.	Waycross, Ga.
88	BOB STEWART	E	18	5-10	183	So.	St. Petersburg
89	PETE FLEMING	E	21	6-0	177	Jr.	Pensacola

* Denotes Letterman.

OWNED AND OPERATED BY FRANK AND JAMES CHASE

Skyline Restaurant

1 Mile West of City Limits

U. S. Highways 90 and 20

TALLAHASSEE, FLORIDA

"Serving Good Food for Fine People"



MIDYETTE-MOOR Insurance Agency

"Ask Those We Serve"

Complete Insurance and Bond Service

PHONE 2-3456

MIDYETTE-MOOR BUILDING
TALLAHASSEE, FLORIDA

—SAYS—

Scalp 'em Seminoles!



PAYNE H. MIDYETTE
FRANK D. MOOR
EDWIN M. CLARK
A. WINSLOW SULLIVAN
ROBERT M. DICKINSON
PAUL L. LEWIS
PAYNE H. MIDYETTE, JR.
WILLIAM L. MOOR
GLENN SEARS
REX SIKES
FRANK KOUBA
ROY SOLOMON
TROY BARNES

**TALLAHASSEE
AUTOMOBILE
DEALERS
ASSOCIATION**

Alford Chevrolet Co.

Capital Lincoln-Mercury, Inc.

Carr Buick

Drake Motors

Mayo-Mingledorff Motors, Inc.

John Manthey, Inc.

Proctor & Proctor

Capital Plymouth, Inc.

Tallahassee Motors, Inc.

Collins Motors, Inc.

THE LAUNDROMATS

115 W. Tennessee — 1005 N. Monroe

Phone 3-1789

Phone 2-3792

CLOTHES — RUGS — BLANKETS

Washed Clean — Fluff Dried and Folded

SHIRT FINISHING

DRY CLEANING • TINTEXING

"Your Satisfaction Is Our Goal"

SCALP 'EM SEMINOLES!

BROWN'S MEN'S WEAR

MONROE AT PARK

F & T RESTAURANT

For Good Food and Quick Service

113 S. Monroe

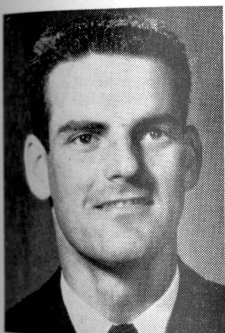
Phone 2-8917

Air Conditioned

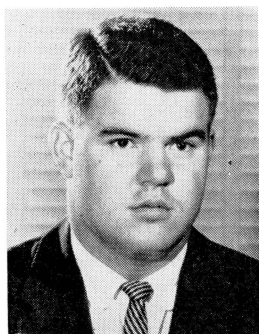
FSU Players



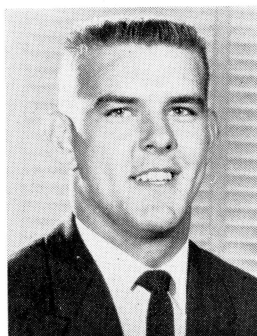
Clare Bagnall—T



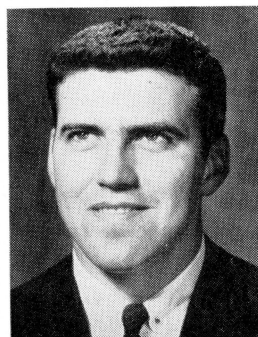
Gene McCormick—QB



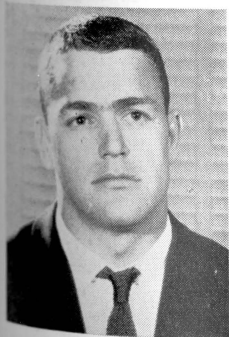
John Craig—T



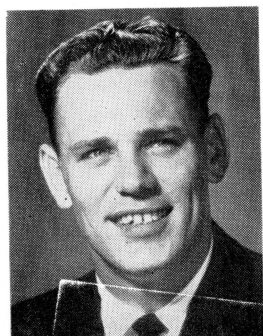
Jim Worthington—T



Bo Davis—C



Jim Calhoon—FB



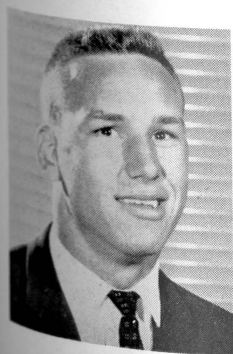
Bill Brown—T



Lenny Levy—HB



Dan Strickland—T



Ray Lamb—G



Stuart Keith—G



Herman Brown—E



Vic Prinzi—QB

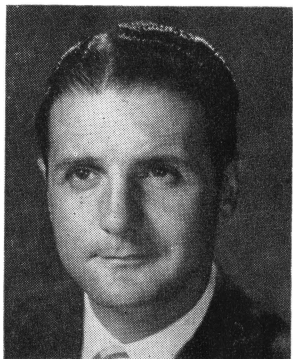
The FSU Coaching Staff



HARBISON

BOB HARBISON, 31, is a real veteran of the Seminole coaching staff in terms of longevity. Harbison begins his 11th full season with Florida State this fall. Back in his playing days, Bob was an outstanding guard for the late Bo McMillin at Indiana University from 1945-47. A native of Evansville, Ind., Harbison came to Florida State in 1948. He is credited with developing Little All-America linemen Bill Dawkins in 1951 and fellow coach Hugh Adams in 1949.

FRANK TOOMEY, 35, a native of Niagara Falls, N. Y., is in his fifth season as one of Coach Tom Nugent's right-hand men. A graduate of Ithaca College, Toomey has a lot to do with making the Seminole backfield go. He is also regarded as one of the best defensive coaches around. He came to Florida State in 1954 after coaching football and baseball at Waverly, N. Y., High School from 1948.

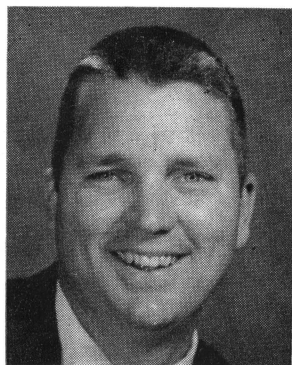


TOOMEY

HUGH ADAMS, 30, a Little All-America on Florida State's 1949 team, returns for his third season with the Seminoles. A graduate assistant in 1955, Hugh was the first Florida State graduate to hold an assistant coaching position with the Seminoles.

The Punta Gorda native was an assistant coach and mathematics instructor at Tallahassee's Leon High School in 1950-51. He served in the Navy before returning to Florida State in 1955 to earn his master's degree.

PAUL ODOM, 31, coached Florida State's high-powered freshman teams during the past three years. A graduate assistant in 1955, Odom was elevated from freshman coach to the varsity coaching staff last June. A native of Mount Dora, Odom played tackle for Rollins College in 1947-48. After Rollins dropped football, Paul switched to Stetson and captained the Hatters during the 1950 season.



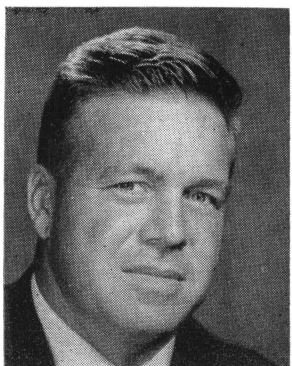
ADAMS

CHARLIE LAPRADD, All-America tackle at the University of Florida in 1952, is the second newest full member of Florida State's coaching staff. LaPradd is expected to develop into an excellent football coach, primarily because of the way the young Seminoles respect him. A native of St. Augustine, Charlie, 30, was graduated from the University of Florida in 1953 before serving in the Air Force. He was a graduate assistant at FSU in 1956. He became a full member of the staff last season.

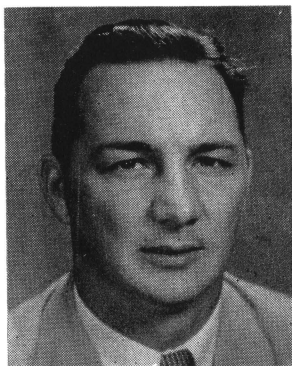
HERB HUGHES, 27, former University of New Mexico quarterback, takes over the reigns of Florida State's freshman football squad this season. Hughes assisted with the Seminole freshmen in 1956 and worked with the varsity last season. He showed an early inclination to become a football coach at New Mexico, where he was graduated in 1956. His shrewd knowledge of football is helping greatly in his coaching efforts.

LEE CORSO, the newest full-time member of the coaching staff — appointed last June — is one of the brighter names in Florida State's brief football history.

A native of Miami, where he was a three-sport All-Stater at Miami Jackson, 22-year-old Corso has always expressed a desire to coach. "Lee has that rare ability of being able to impart the knowledge he has," Coach Tom Nugent says. "I think he has a big future in coaching." Corso was graduated from Florida State in 1956 and served as freshman backfield coach last season.



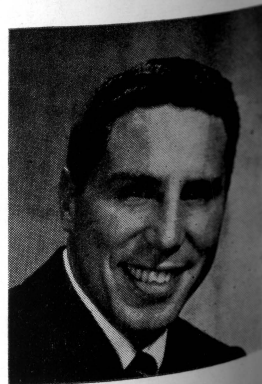
ODOM



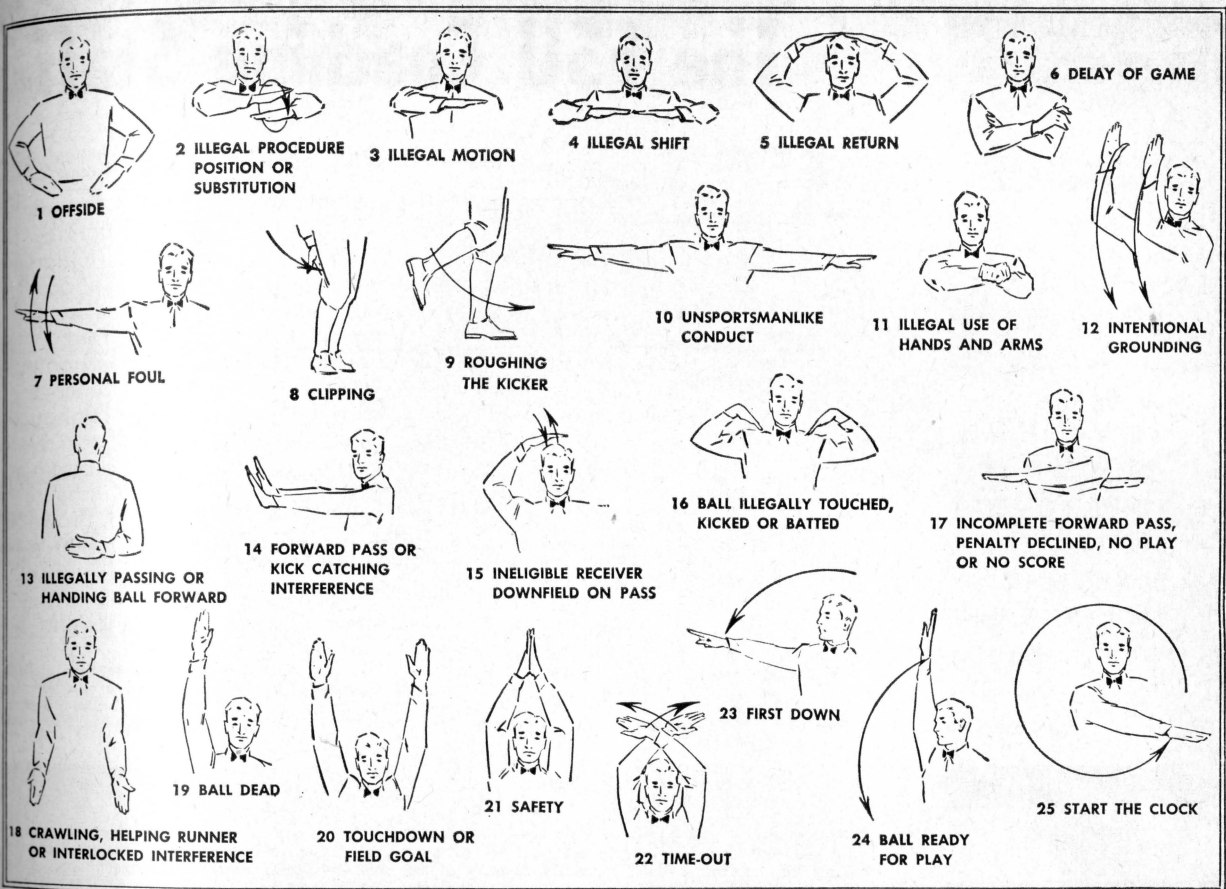
LAPRADD



HUGHES



CORSO







1-hour free parking at
Park and Shop Garage.

SIGN OF *SAFE SAVING*

Your savings at Leon Federal are insured up to \$10,000 by a U. S. Government Agency. Insured savings up to \$30,000 are possible for husband and wife through joint accounts. Start saving safely at Leon Federal today.

LEON FEDERAL SAVINGS AND LOAN ASSOCIATION

111 S. Monroe Street
Tallahassee, Florida

CHESTERFIELD SA

FLORIDA STATE

PROBABLE STARTING LINEUP

NO.	NAME	POS.
89	PETE FLEMING	LE
71	BOB SWOSZOWSKI	LT
62	AL ULMER	LG
51	BO DAVIS	C
79	JERRY GRAHAM	RG
77	JOHN SPIVEY	RT
80	TONY ROMEO	RE
10	VIC PRINZI	QB
20	BOB RENN	LH
27	JACK ESPENSHIP	RH
43	FRED PICKARD	FB

THE FLORIDA STATE SQUAD

10	Prinzi, b	44	Calhoun, b	73	B. Brown, t
11	Conrad, b	50	Kestner, c	74	Bagnall, t
12	McCormick, b	51	Davis, c	75	Strickland, t
13	Majors, b	52	Bell, c	76	Wallace, t
14	Springer, b	53	R. Rogers, c	77	Spivey, t
20	Renn, b	54	Hardy, c	78	Craig, t
21	Carnes, b	60	Baggett, g	79	Graham, t
22	Levy, b	61	McGee, g	80	Romeo, e
23	Sheppard, b	62	Ulmer, g	81	Kavanaugh, e
24	Cone, b	63	Moran, g	82	Slaton, e
25	Meyer, b	64	Lamb, g	83	Fountain, e
26	Whitehead, b	65	Barona, g	84	Kimber, e
27	Espenship, b	66	Schou, g	85	H. Brown, e
28	Hooks, b	67	J. Rogers, g	86	Daniel, e
40	Pasquale, b	68	Keith, g	87	Hinson, e
41	Lawrence, b	69	Canning, g	88	Stewart, e
42	Rozman, b	70	Worthington, t	89	Fleming, e
43	Pickard, b	71	Swoszowski, t		



NOTHING SATISFIES LIKE THE BIG CLEAN TASTE

SALES THE FOOTBALL MEN OF AMERICA

VIRGINIA TECH

PROBABLE STARTING LINEUP

NO.	NAME
84	CARROLL DALE
71	DON OAKES
68	MIKE ZENO
50	NICK MIHALAS
64	DUNCAN HOLSCLAW
77	JIM BURKS
85	ALLEN WHITTIER
12	BILLY HOLSCLAW
25	JAY WHITESELL
23	PAT HENRY
42	SAM SHAFFER

POS.	NAME	POS.	NAME	POS.	NAME
LE	10 Barnette, b	42	Shaffer, b	71	Oakes, t
LT	12 B. Holsclaw, b	43	Blankenship, b	72	Harris, t
LG	20 Kosko, b	45	Ringer, b	73	Bartrug, t
C	21 Snead, b	50	Mihalas, c	74	McGinnis, t
RG	22 Pugh, b	51	Stephens, c	75	Vishnesai, t
RT	23 Henry, b	53	Sibley, c	76	Story, t
RE	24 Hunter, b	60	Jones, g	77	Burkes, t
QB	25 Whitesell, b	64	D. Holsclaw, g	80	Brinkley, e
LH	30 Vaught, b	65	Davison, g	81	Byrd, e
RH	31 Tomblin, b	66	Eller, g	82	Farr, e
FB	33 Cranwell, b	68	Zeno, g	84	Dale, e
	40 Watkins, b	69	O'Brien, g	85	Whittier, e
	41 Betz, b	70	Moss, t	86	Harris, e

THE VIRGINIA TECH SQUAD



KING
AND
REGULAR

TOP TOBACCO IN CHESTERFIELD

PENALTIES

1. **OFFSIDE** by either team; Violation of scrimmage or free kick formation; Encroachment on neutral zone—Loss of Five Yards.
2. **ILLEGAL PROCEDURE, POSITION OR SUBSTITUTION**—Putting ball in play before Referee signals "Ready-for-play"; Failure to complete substitution before play starts; Player out of bounds when scrimmage begins; Failure to maintain proper alignment of offensive team when ball is snapped; False start or simulating start of a play; Taking more than two steps after Fair Catch is made; Player on line receiving snap—Loss of Five Yards.
3. **ILLEGAL MOTION**—Offensive player illegally in motion when ball is snapped—Loss of Five Yards.
4. **ILLEGAL SHIFT**—Failure to stop one full second following shift—Loss of Fifteen Yards.
5. **ILLEGAL RETURN** of substitute not previously disqualified—Loss of Fifteen Yards.
6. **ILLEGAL DELAY OF GAME**; Taking more than four times out during either half (except for replacement of injured player)—Loss of Five Yards. Team not ready to play at start of either half—Loss of Fifteen Yards.
7. **PERSONAL FOUL** — Tackling or blocking defensive player who has made fair catch; Piling on; Hurdling; Grasping face mask of opponent; Tackling player out of bounds, or running into player obviously out of play; Striking an opponent with fist, forearm, elbow or locked hands; Kicking or kneeling—Loss of Fifteen Yards (Flagrant offenders will be disqualified.)
8. **CLIPPING**—Loss of Fifteen Yards.
9. **ROUGHING THE KICKER** or holder—Loss of Fifteen Yards.
10. **UNSPORTSMANLIKE CONDUCT**—Violation of rules during intermission; Illegal return of suspended player; Coaching from sidelines; Invalid signal for Fair Catch; Persons illegally on field—Loss of Fifteen Yards. (Flagrant offenders will be disqualified.)
11. **ILLEGAL USE OF HANDS AND ARMS** by offensive or defensive player; Defensive holding—Loss of Fifteen Yards.
12. **INTENTIONAL GROUNDING** of forward pass—Loss of Five Yards Plus Loss of Down.
13. **ILLEGALLY PASSING OR HANDING BALL FORWARD**—Loss of Five Yards Plus Loss of Down.
14. **FORWARD PASS OR KICK CATCHING INTERFERENCE**—Interference with opportunity of player of receiving team to catch a kick—Loss of Fifteen Yards. Interference by member of offensive team with defensive player making pass interception—Loss of Fifteen Yards Plus Loss of Down. Interference by defensive team on forward pass—Passing Team's Ball at Spot of Foul and First Down.
15. **INELIGIBLE RECEIVER DOWNFIELD ON PASS**—Loss of Fifteen Yards.
16. **BALL ILLEGALLY TOUCHED, KICKED OR BATTED**—Forward pass being touched by ineligible receiver beyond the line of scrimmage—Loss of Fifteen Yards from Spot of Preceding Down and Loss of a Down. Eligible pass receiver who goes out of bounds and later touches a forward pass—Loss of Down. Illegal touching of kicked ball within opponent's ten yard line—Touchback.
17. **PENALTY DECLINED**; Incomplete forward pass; No play or no score.
18. **CRAWLING** by runner—Loss of Five Yards. Interlocked Interference—Loss of Fifteen Yards.

Have you "SAMPLED" THE SERVICE AT LEON FEDERAL?

Stop in. You'll get "V.I.P. treatment" at Leon Federal. Take advantage of the tops in personal service and up-to-the-minute facilities that make saving a real pleasure.



Forging ahead with
Fabulous Florida

3 1/2% current dividend • Savings insured to \$10,000

LEON FEDERAL SAVINGS AND LOAN ASSOCIATION

111 S. Monroe Street • Tallahassee, Florida



WON'T YOU...

HAV-A-TAMPA

...CIGAR

Eli Witt Tobacco & Candy Co.

TALLAHASSEE, FLORIDA

D. T. O'HARA, JR.

PRODUCE • POULTRY • FROZEN FOODS

Phone 2-2128 • 717 W. Gaines St.

TALLAHASSEE, FLORIDA

BILL'S BOOK STORE

BOOKS

SUPPLIES

SUNDRIES

PRIVATELY OWNED AND OPERATED

S H A W ' S

Furnishings for Your Home

COLLEGE AVE. at DUVAL ST.

"Good Taste Costs No More"

Gilberg's

"The House of 1000 Fabrics"

123 South Monroe Street
TALLAHASSEE, FLA.

220 Broad Avenue
ALBANY, GA.

109 W. University Ave.
GAINESVILLE, FLA.

8 North Palofax Street
PENSACOLA, FLA.

535 Harrison Ave.
PANAMA CITY, FLA.

106 E. Main St.
LAKELAND, FLA.

Fabrics From All Over the World

".....it's a date!"

MORRISON'S
Cafeteria



The Vogue

TALLAHASSEE, FLORIDA

BRINKLEY BROS.

HOMER A. BRINKLEY

ROBERT T. BRINKLEY

REALTORS • INSURANCE

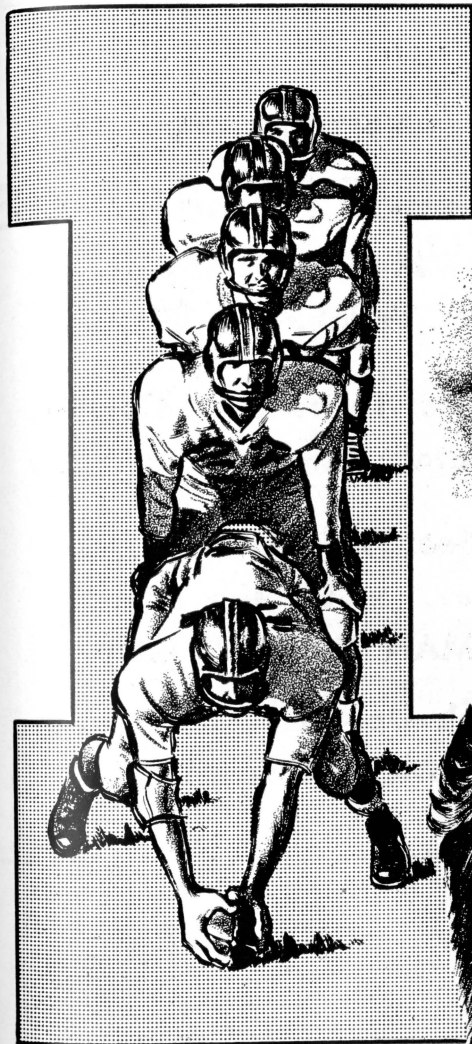
CARL BRINKLEY, Mgr. Insurance Dept.

MORTGAGE LOANS

"A Brinkley Buy Is a Better Buy"

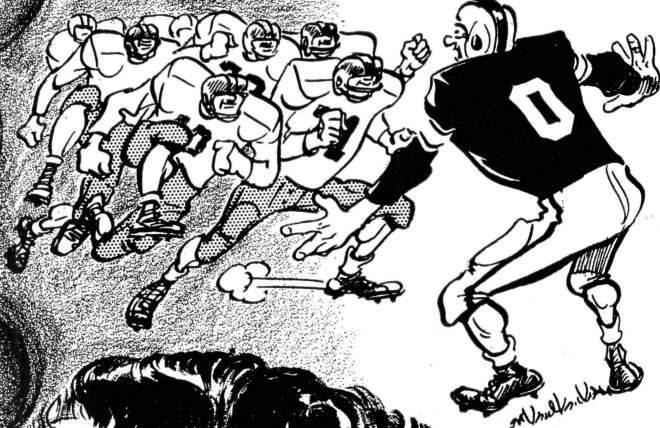
BRINKLEY BLDG. — 306 N. MONROE ST.

TELEPHONE 3-0918

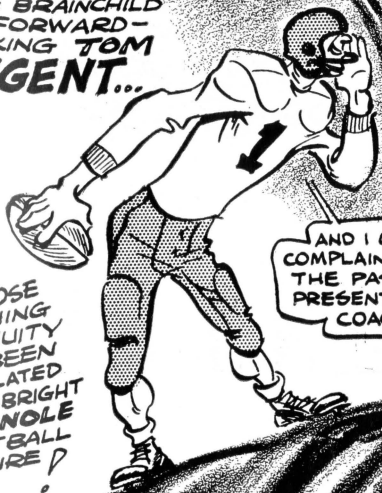


FLORIDA STATE'S
I-FORMATION WAS
ORIGINALLY DREAMT
UP TO MASS GREAT
POWER FOR OFF-
TACKLE SMASHES...

MAN,
THE I'S
REALLY HAVE
IT



...THE BRAINCHILD
OF FORWARD-
THINKING TOM
NUGENT...



...WHOSE
COACHING
INGENUITY
HAS BEEN
TRANSLATED
INTO A BRIGHT
SEMINOLE
FOOTBALL
FUTURE?

AND I CAN'T
COMPLAIN 'BOUT
THE PAST OR
PRESENT EITHER,
COACH



FAIVER'S

For Chicken Pizza Pie

•
Half-Fry Chicken
Italian Foods

*While in Tallahassee
visit our Italian Room*

•

1312 WEST TENNESSEE STREET
TALLAHASSEE, FLORIDA

Learn to Fly at SEMINOLE FLYING SERVICE

Municipal Airport
Tallahassee, Fla.

Rides, Instruction, Charter,
Rental, Aerial Photography

See The New CESSNA
for the
MAN ON THE MOVE

Look Up – A New CESSNA
May Be Overhead

Your

MEMORIES

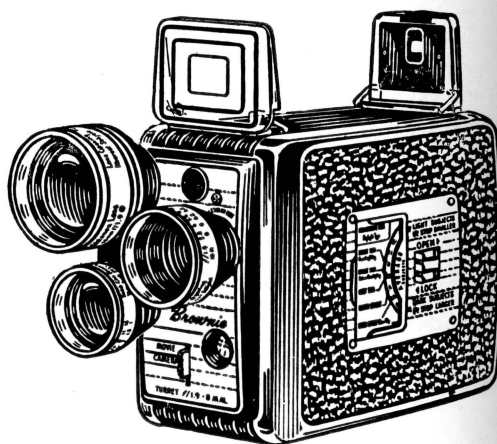
LIVE FOREVER

WHEN RECORDED ON FILM!

TALLAHASSEE

CAMERA CENTER

123 NORTH MONROE ST.
ACROSS FROM THE FLORIDA THEATRE



VIRGINIA TECH

1958 FOOTBALL ROSTER

NO.	NAME	POS.	AGE	HT.	WT.	YR.	HOMETOWN
10	CLYDE BARNETTE	QB	20	5-11	168	So.	Norfolk, Va.
12	BILLY HOLSCLOW	QB	22	5-11	170	Sr.	Charleston, W. Va.
20	JIM KOSKO	QB	21	6-1	198	Jr.	Duquesne, Pa.
21	DICK SNEAD	HB	21	5-10	173	Jr.	Covington, Va.
22	ALGER PUGH	HB	22	5-11	177	Jr.	Fredericksburg, Va.
23	PAT HENRY	HB	18	5-9	168	So.	Hagerstown, Md.
24	BEN HUNTER	HB	20	5-9	165	Jr.	Johnson City, Tenn.
25	JAY WHITESELL	HB	21	6-0	181	Sr.	Waynesboro, Va.
30	DON VAUGHT	FB	20	5-11	174	So.	Roanoke, Va.
31	LEON TOMBLIN	FB	20	6-1	191	So.	Berryville, Va.
33	BOB CRANWELL	FB	20	5-10	197	So.	Richlands, Va.
40	JOHNNY WATKINS	HB	20	5-7	162	So.	Norfolk, Va.
41	TOMMY BETZ	HB	21	5-7	163	Jr.	Norfolk, Va.
42	SAM SHAFFER	FB	21	5-10	172	Jr.	Williamsport, Pa.
43	CHARLEY BLANKENSHIP	QB	20	6-0	173	So.	Bluefield, W. Va.
45	DICK RINGER	HB	22	5-8	155	Sr.	Hagerstown, Md.
50	NICK MAHALAS	C	21	5-11	200	Sr.	Norfolk, Va.
51	CHUCK STEPHENS	C	19	5-10	185	Jr.	Roanoke, Va.
53	CHARLIE SIBLEY	C	20	6-1	213	So.	Chester, Va.
60	HAROLD JONES	G	21	5-10	206	So.	Madison, Va.
64	DUNCAN HOLSCLOW	G	20	5-9	201	Jr.	Charleston, W. Va.
65	BLOICE DAVISON	G	19	5-10	203	So.	Hagerstown, Md.
66	BOB ELLER	G	18	5-11	216	So.	Marion, Va.
68	MIKE ZENO	G	19	5-11	232	So.	Akron, Ohio
69	TOM O'BRIEN	G	20	5-9	222	So.	Appomattox, Va.
70	JOE MOSS	T	21	6-4	216	So.	Burkes Garden, Va.
71	DON OAKES	T	20	6-2	240	So.	Salem, Va.
72	BOB HARRIS	T	19	6-3	230	So.	Galax, Va.
73	ED BARTRUG	T	20	6-1	193	Jr.	Charleston, W. Va.
74	BILL McGINNIS	T	20	6-3	207	Jr.	Charleston, W. Va.
75	BERNIE VISHNESAI	T	20	6-3	226	So.	Spring Hill, Pa.
76	BILL STORY	T	20	6-4	203	So.	South Norfolk, Va.
77	JIM BURKES	T	25	6-3	227	Sr.	Bedford, Va.
80	ED BRINKLEY	E	23	6-0	185	Sr.	Roanoke, Va.
81	KEN BYRD	E	20	6-1	184	Jr.	Durham, N. C.
82	JIM FARR	E	20	6-1	186	So.	Knoxville, Tenn.
84	CARROLL DALE	E	20	6-2	197	Jr.	Wise, Va.
85	ALLEN WHITTIER	E	20	6-2	203	So.	Norfolk, Va.
86	WALTER HARRIS	E	19	6-0	177	So.	Richmond, Va.

STUDENT SAVING CENTER

- School Supplies
- Pennants and Novelties
- Gifts
- Art Supplies
- Greeting Cards
- Stationery
- Drafting Equipment
- Pen Repair Service
- Sundries
- Camera Supplies & Developing Service

We Buy and Sell Books

NEW and USED

UNIVERSITY BOOKSTORE

In the Student Center

CARNES PLAYTHINGS

Largest Selection of Toys in the "Big Bend"

DOLL HEADQUARTERS

TOYS — GIFTS and PLAYTOGS

"Across From Jitney Jungle No. 1"

1302 N. Monroe

Phone 2-2480

TALLAHASSEE, FLORIDA

QUALITY CLEANERS

Two Plants To Serve You

Downtown

215 W. COLLEGE AVE. — DIAL 2-5097

Opposite Jitney Jungle

1306 N. MONROE — DIAL 2-1651

ONE DAY SERVICE

PICK-UP and DELIVERY

Quality Laundry Service

EXPERT TAILORING and ALTERATIONS

ZIPPERS REPAIRED

FLORIDA STATE UNIVERSITY CHEERS

1. Beat, Florida State

Beat Florida State!
 Beat (Stomp, Stomp)
 Beat Florida State!
 Beat (Stomp, Stomp)
 Beat Florida State!
 Beat (Stomping)

2. Freshman, Flunky

Freshman, Flunky, Student, Scholar
 All good Seminoles, Stand up and holler.

3. Garnet and Gold

Garnet and Gold, Fight, Fight!
 Garnet and Gold, Fight, Fight!
 Who fight? We fight!
 Garnet and Gold, Fight, Fight!

4. IS Everybody Happy?

CL : Is Everybody happy?
 Aud: Hell, yes!
 CL : Is anybody downhearted?
 Aud: Hell, no!
 CL : Then let's railroad Seminoles
 and take it slow!
 ALL: S-E-M-I-N-O-L-E-S
 (Spell three times)
 ALL: Seminoles!

5. Locomotive

Rah, rah, rah, rah,
 Go team, go team
 Rah, rah, rah, rah,
 Go team, go team
 Rah, rah, rah, rah,
 Go team, go team
 Fight!

6. Alma Mater

High o'er the towering pines
 our voices swell
 Praising these gothic spires
 We love so well:
 Here sons and daughters stand,
 faithful and true
 Praising our Alma Mater
 F. S. U.

7. Tom Nugent Cheer (We've Got the Coach)

We've got the coach (clap, clap)
 We've got the team (clap, clap)
 We've got the pep (clap, clap)
 We've got the steam (clap, clap)
 Coach, team, pep, steam.
 Fifteen rahs for Nugent's team.
 Rah-rah, rah, rah, rah;
 Rah-rah, rah, rah, rah;
 Rah-rah, rah, rah, rah.
 Fight, team!

8. Sittin' in a Wigwam

Sittin' in a wigwam
 Beatin' on a tom-tom
 Who come?
 We Come.
 Everybody will come.
 Scalp 'em, (clap, clap), Scalp 'em
 (Clap, clap), etc.

9. Seminoles

(spell out)
 S (4 claps) E (4 claps) M (etc.) I (etc.)
 S (1 clap) E (1 clap) M (etc.) I (etc.)

10. Go Seminoles

(All hands in the air)
 Go - - - O Seminoles (clap, clap)
 Go - - - O Seminoles (clap, clap)
 Team fight!

11. Touchdown Song

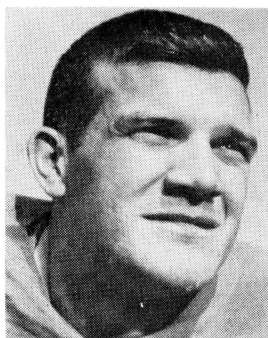
Da dum Yea Team!
 Da dum Whose Team!
 Da dum Our Team!
 Touchdown, that's the thing
 We want a touchdown,
 Hear us sing
 We want a touchdown
 Hear us sing
 We want a great big bruiser, husky and tall,
 To carry the ball, in no time at all
 We'll have a touchdown
 And when it's over
 You can hear us make some noise!
 V-i-c-t-o-r-y
 We want a touchdown, boys!
 Da da dum Fight! Fight! (seven times)

12. Fight Song

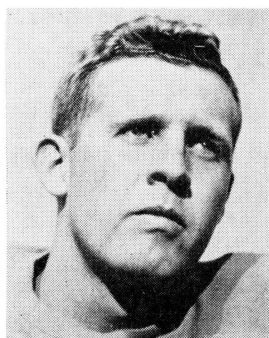
We're going to fight, fight fight for FSU
 You got to scalp 'Um, Seminoles,
 You got to win, win, win, win, that game
 And roll on down and make those goals.
 For FSU is on the warpath now,
 And at the battle's end, she's great,
 So fight, fight, fight, fight to victory
 Our Seminoles from Florida State.
 F-L-O-R-I-D-A S-T-A-T-E
 Florida State!
 Florida State!
 Florida State!

13. Hi, Florida

Hi, Florida!
 Hi, State,
 Hi, Hi, Florida State!



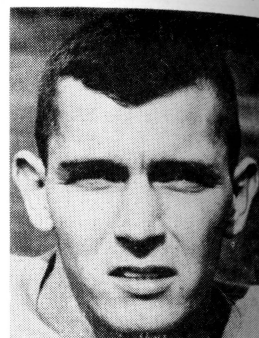
Alger Pugh



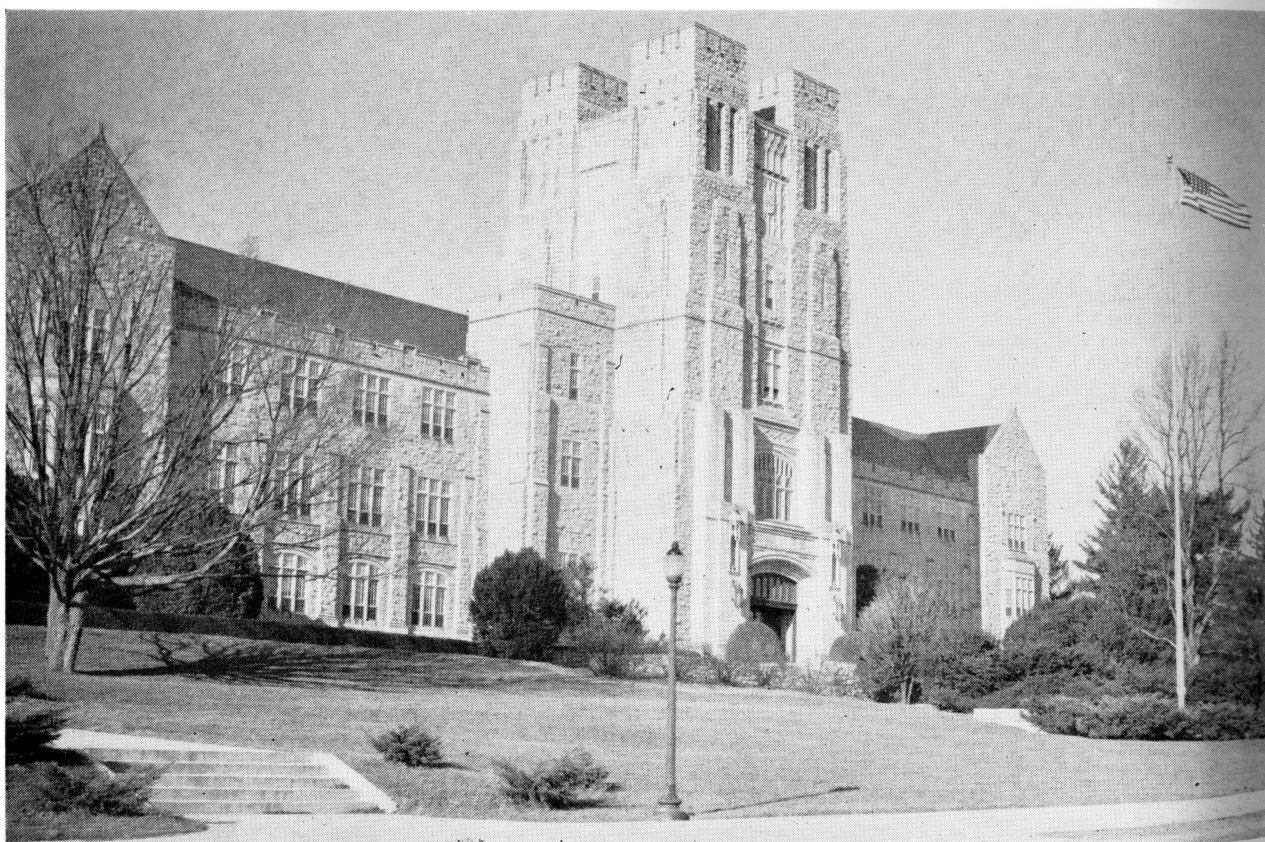
Dickie Snead



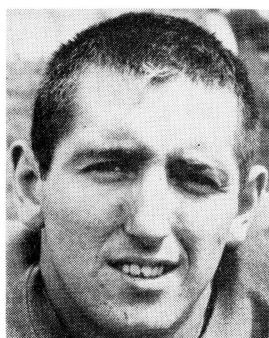
Ed Bartrug



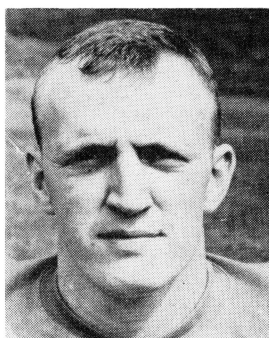
Ed Brinkley



The Virginia Tech Campus



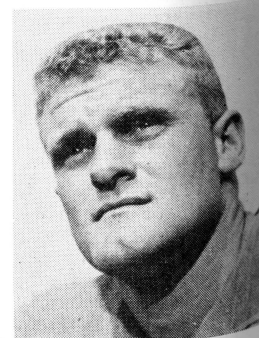
Bobby Cranwell



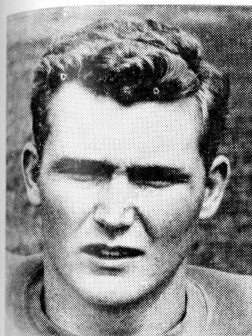
Horace Van Meter



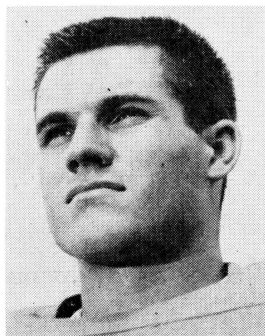
Nick Mihalas



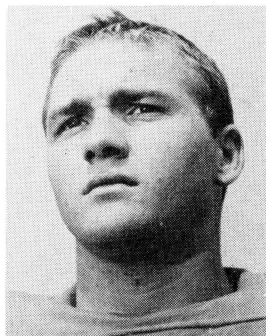
Sam Shaffer



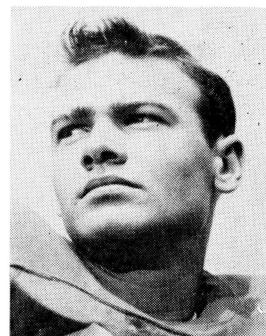
Leon Tomblin



Jay Whitesell



Johnny Watkins



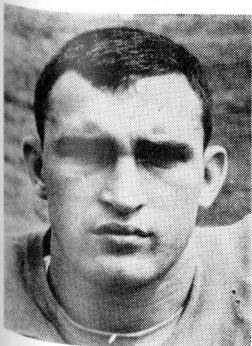
Pat Henry



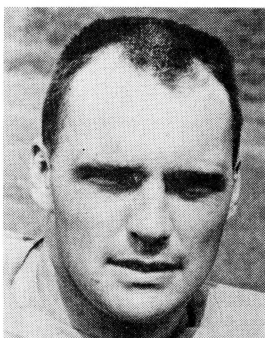
FRANK MOSELEY
Coach of Virginia Tech



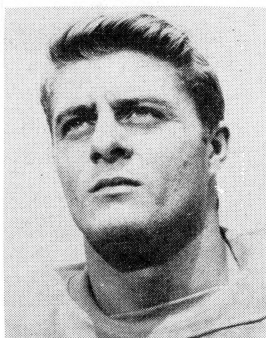
DR. WALTER S. NEWMAN
President of Virginia Tech



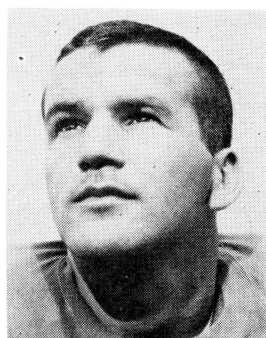
Chuck Stephens



Jim Burks



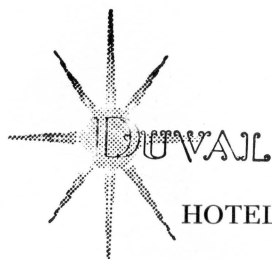
Dick Ringer



Billy Holsclaw

**TRAVELING
DESSERT TRAYS**

**CHARCOAL
BROILED
STEAKS**



HOTEL • TALLAHASSEE, FLORIDA

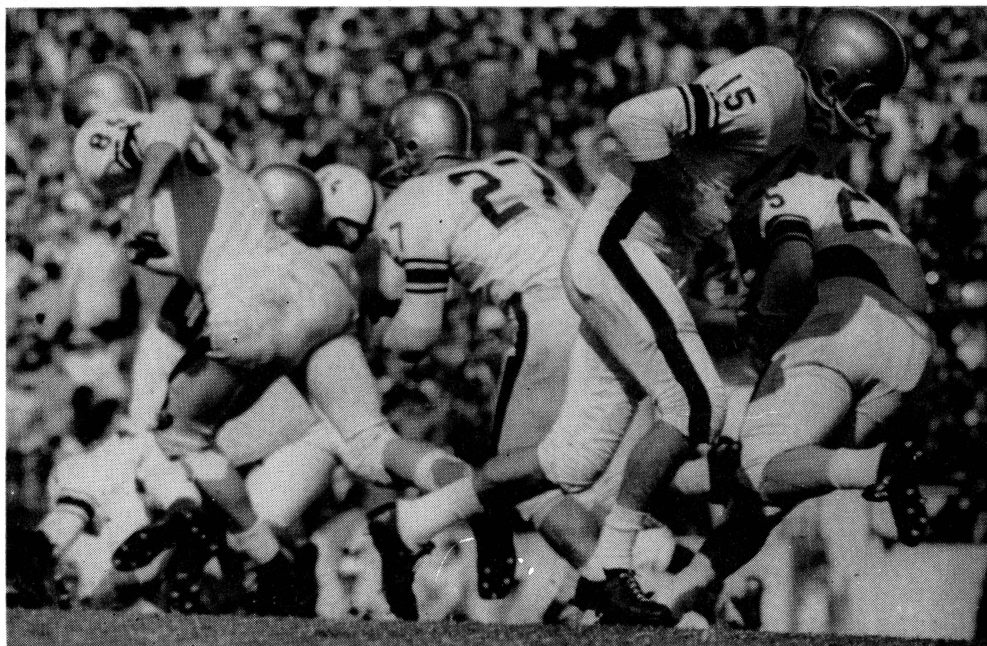
BENNETT'S DRUG STORE

- Prescriptions
- Cameras
- Sundries
- Gifts
- Fountain
- Cafe
- Cosmetics
- Drugs

**MEET ME AT BENNETT'S
BEFORE AND AFTER THE GAME!**

Corner Monroe and College Streets

Phone 2-8980 — 2-4450



Versatile halfback Bobby Renn (15) deals as Seminoles spring from explosive "I" formation.

SEMINOLE FOOTBALL NETWORK

Florida State University's football games are carried to every part of the state again this season by the growing voice of the Seminole Football Network. Entering its sixth year, the Network is operated by the University's Department of Intercollegiate Athletics. Dr. Don Veller, Assistant Director of Athletics, is Network supervisor.

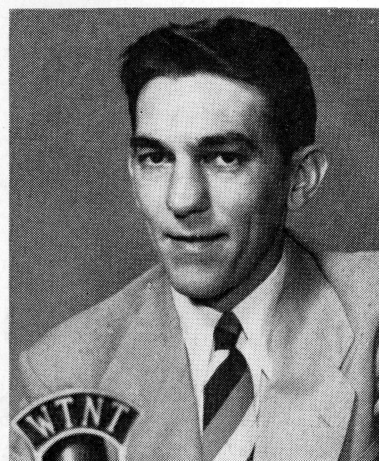
The Seminole Football Network boasts close to 25 stations in Florida and Georgia this year—a big increase over the 18 stations that carried the games last year.

Handling the broadcasts are Bill Snyder, Sports Director of Station WJAX, Jacksonville, and Jack Edger, Sports Director, WTNT, Tallahassee. Snyder has done the play-by-play of Seminole games for the past three years. A native of Orlando, Snyder, 35, has handled play-by-play of the St. Louis Browns (1950) and for the past few years has broadcast games of the Jacksonville Braves of the South Atlantic League. Snyder also is serving as technical director of the Seminole Network.

Edger, 35, is thoroughly familiar with the Florida State sports scene. Handling the color commentary this year, Edger did the play-by-play of Florida State games in 1953. All 10 of the Seminole games will be broadcast, including the road games to Atlanta, Jacksonville, Knoxville, Miami, and Gainesville (broadcast to areas not covered by the University of Florida Network).



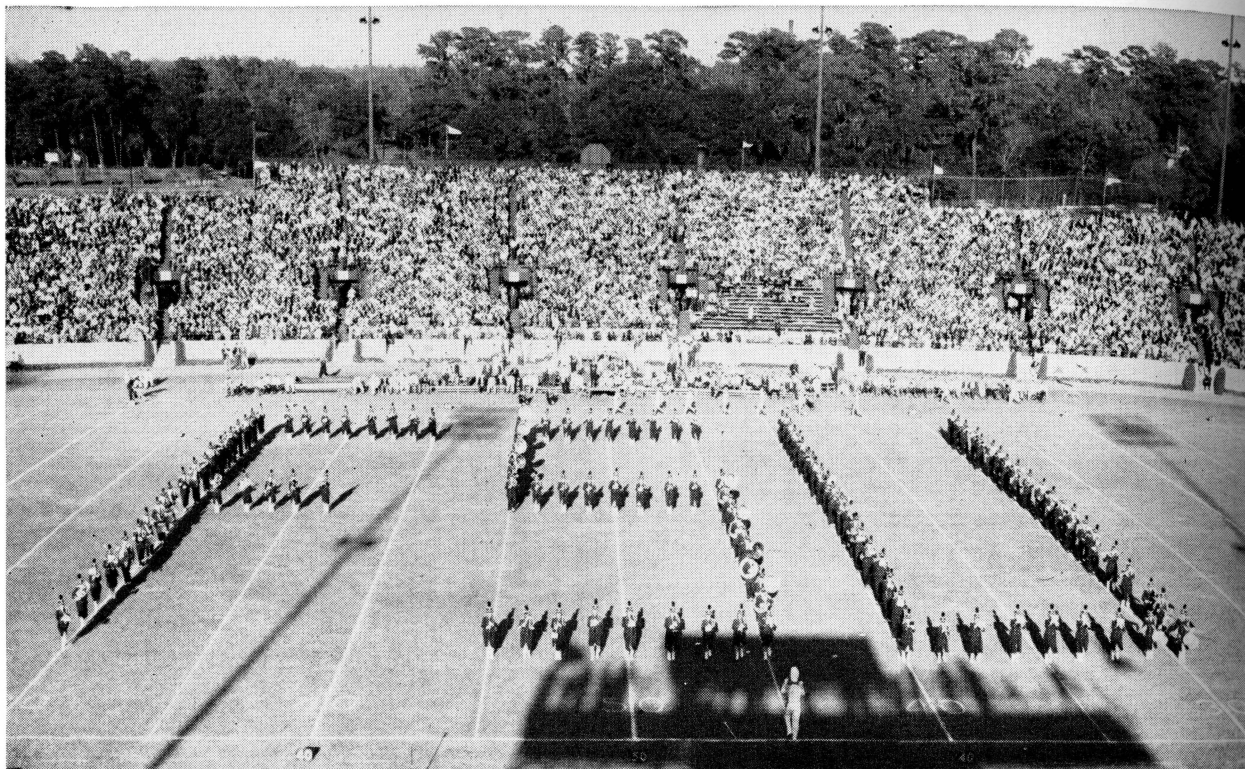
Bill Snyder



Jack Edger

THE NETWORK STATIONS

WTAL	Tallahassee	WBSR	Pensacola
WPCF	Panama City	WCNH	Quincy
WTAN	Clearwater	WWIL	Fort Lauderdale
WIRK	West Palm Beach	WKIS	Orlando
WMBR	Jacksonville	WWPF	Palatka
WJAX	Jacksonville	WMGA	Moultrie, Ga.
WRUF	Gainesville	WACL	Waycross, Ga.
WONN	Lakeland	WGAF	Valdosta, Ga.



THE MARCHING CHIEFS

MUSIC AT HALFTIME

FLORIDA STATE UNIVERSITY MARCHING CHIEFS

Manley R. Whitcomb, Director

Robert T. Braunagel, Associate Director

Charles Carter, Arranger

Terry Johnson, Drum Major
Bill Tallman, Prop Manager
Virginia Carney, Uniform Manager

Linda Bean, Head Majorette
Frances Gray, Librarian
Bob Reely, Field Manager

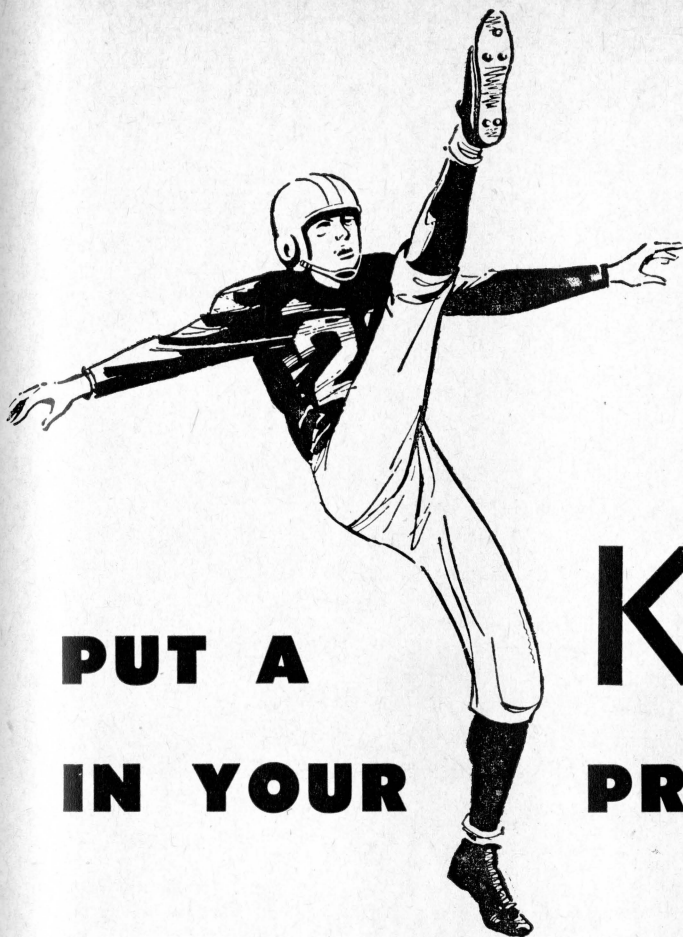
THEME: HIT PARADE

Formation

1. Drill _____
2. Sugar Bowl _____
3. Kewpie Doll _____
4. Three Lollipops _____
5. Witch Doctor's Mask _____
 Purple People Eater is played by Fred Hollis
6. Circle FSU _____

Music

- Seventy-six Trombones
 Sugartime
 Kewpie Doll
 Lollipop
 Witch Doctor
 FSU Fight Song



**PUT A
IN YOUR**

**KICK
PRINTING!**

Let **ROSE** print your next order
of

- LETTERHEADS
- OFFICE AND FACTORY FORMS
- BOOKLETS AND BROCHURES
- CIRCULARS
- WEDDING ANNOUNCEMENTS
- HOUSE ORGANS
- DIRECT BY MAIL ADVERTISING

Phone **2-0230**

FOR A REPRESENTATIVE

ROSE PRINTING COMPANY, INC.

MIAMI

TALLAHASSEE

JACKSONVILLE

A new idea in smoking!

Salem refreshes your taste



★ **menthol
fresh**

Salem brings a wholly new quality to smoking...Spring-time-softness in every puff. Salem refreshes your taste the way a Spring morning refreshes you.

★ **rich tobacco
taste**

Smoking was never like this before! You taste that rich tobacco...then, surprise!...there's an unexpected softness that gives smoking new comfort and ease.

★ **modern filter,
too**

Through Salem's pure-white, modern filter flows the freshest taste in cigarettes. You smoke refreshed, pack after pack, when you buy Salems by the carton.

