

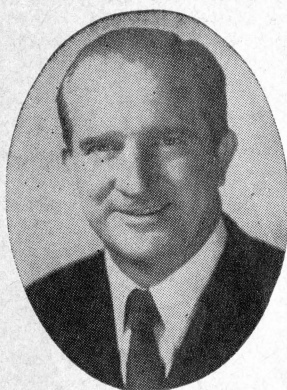
OFFICIAL PROGRAM • FIFTY CENTS

Florida State

Wake Forest

ARCHIVES
F. S. U. LIBRARY

SEPTEMBER 19 • 1959 • CAMPBELL STADIUM



RAINEY CAWTHON

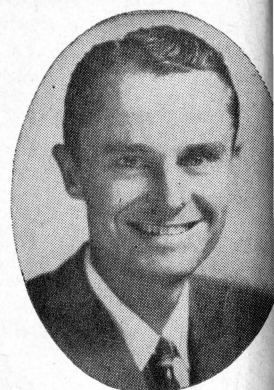
Rainey Cawthon's

★ RCA TELEVISION and RADIO

★ SHELL PRODUCTS ★ GOODYEAR TIRES

"WE SERVICE WHAT WE SELL"

• ROAD SERVICE • PHONE 2-1865 •



FRED PIERSON

patronize...
STADIUM

CONCESSIONS

Located beneath the stands on each side of stadium

COLD DRINKS..... 15¢

HOT COFFEE..... 15¢

SANDWICHES..... 30¢

HOT DOGS..... 25¢

PEANUTS..... 10¢

POP CORN..... 10¢

SOUVENIR ITEMS

PENNANTS

BADGES

SUN VISORS

ASPRIN

All Cigarettes 35¢

please pay no more than established prices

WAKE FOREST DEACONS ARE ON THE RISE

By **PAT HOGAN**
FSU Sports Publicity Director

TABLE OF CONTENTS

Seminole Athletic News	3
The President and The Athletic Director	4
Information About Florida State	5
Florida State Players	8-9-13
Florida State Roster	10
Florida State Coaches	14
Probable Starting Lineups	16-17
Miss FSU Football	21
Wake Forest Roster	23
Florida State Songs and Cheers	25
Wake Forest Staff	26
Wake Forest Players	27
Bay-Seminole Network	29
The Marching Chiefs	30

Perry Moss, Florida State University's energetic new athletic director, makes his college head coaching debut tonight. His first football team faces a giant opening task against a heavy, experienced Wake Forest team tagged for darkhorse honors in the rugged Atlantic Coast Conference.

There is a good chance every fan who sat in on Florida State's 1958 battle with Wake Forest will occupy a Campbell Stadium seat tonight. For the Seminoles and Demon Deacons staged one of the wildest games ever seen here. The lead changed hands five times before the Seminoles emerged with a 27-24 victory. The teams' only other meeting, in 1956, ended in a 14-14 tie.

Coach Paul Amen's spirited Deacons, cheered by 20 lettermen, return with the same "names" that appeared here in '58. Every Wake Forest player who had a hand in the scoring against FSU last year is back.

The most talked-about Deacon performer is quarterback Norman Snead (No. 16), the junior passing sensation who is one reason Wake Forest is holding its biggest football revival in years. Snead completed 10 of 18 passes for 199 yards here last season. Before the year was out, Snead set new Deacon records for most passes thrown and completed (67 of 151) and for most yards gained passing in a single season (1,003). Snead has gained some 30 pounds since last season, now packs 200 pounds on his 6-4 frame.

Snead has some excellent receivers with end Pete Manning (83) an outstanding target. Guard Nick Patella (61) and center Buck Jolly (50) are line mainstays. Wake's tackle corps weighs from 215 to 240 pounds. Wake Forest has no worries at fullback, where workhorse Neil MacLean (31), the team's leading scorer and ground-gainer the past two campaigns, returns for his final year. MacLean rushed for 81 yards against the Seminoles last year.

Familiar Seminoles to watch tonight include a pair of All-America candidates, right halfback Fred Pickard (43) and junior end Tony Romeo (80); co-captains Al Ulmer (62) and John Spivey (77), quarterback Joe Majors (13), left half Bud Whitehead (26), and fullback Jack Espenship (27).

The President . . .

DR. ROBERT M. STROZIER

Now in his third year at Florida State University, President Robert M. Strozier has seen a rapid growth in its size and, more important to his educational philosophy, in the "university spirit" pervading the institution.

An evidence of the increasing importance of the University in only one field, graduate study, is the fact that FSU has been awarded the second largest number of fellowships for graduate study under the new National Defense Education Act, which provides for 1,000 nationally. FSU will have 20 of these, held by students starting out their doctoral studies in history, mathematics, and humanities.

Another evidence is the increased outside financial support for graduate study and research. At the last commencement Dr. Strozier reported gifts and grants to the University totaling \$3,230,000 since the beginning of the academic year 1957.

Dr. Strozier assumed his duties as president of FSU on Sept. 3, 1957, coming here from the University of Chicago. He was at Chicago 12 years, most of the time as dean of students and professor of romance languages. The president is a 53-year-old native of McRae, Ga., and before joining the Chicago faculty he served on the faculties of Georgia State College for Men, West Georgia College and the University of Georgia.

A teacher of French throughout his professional career, he continues to direct an occasional seminar in addition to carrying on the administrative duties of the University. The University of Miami recently recognized his scholarly contributions by awarding him the honorary degree of Doctor of Letters.

The son of a college president, Strozier was born July 20, 1906, and the family lived at various times in McRae, Vienna, and Moultrie, Ga. He went to Emory University where he earned the bachelor's degree in 1929 and the master's degree in 1930. Later he received the Ph.D. degree from Chicago.



The Athletic Director and Head Coach . . .

PERRY MOSS

Before and since he pitched a surprise 44-yard pass to Julie Rykovich on the opening play of the 1947 Rose Bowl game, thereby starting a Big Ten domination at Pasadena, Athletic Director Perry Moss has been making headlines.

A tireless worker who was a unanimous selection to become head coach at Florida State last January, Moss has enjoyed a varied career as a player and as a coach. And, unlike the mythical King Midas, just about everything Moss has touched has turned to success.

Moss, a native of Tulsa, Okla., played one semester of football at Tulsa University in 1944, playing in the Orange Bowl. After two years in the Air Force, he quarterbacked Illinois to a Big Ten championship in 1946, playing a vital part in the 45-14 trouncing Illinois handed UCLA in the inaugural (1947) Rose Bowl game between the Big Ten and Pacific Coast Conferences.

While at Illinois, he was an All-Big Ten quarterback for the 1946 and 1947 seasons. He won honorable mention on various All-America teams in 1944, 1946, and 1947. In 1947, Moss became the first recipient of the Nelson Award for Sportsmanship.

After his collegiate career, Moss played one season with the professional Green Bay Packers. His coaching experience dates from 1949, when he was freshman coach at Illinois. In 1950 and 1951 he was backfield coach at the University of Washington (Seattle) and served in the same capacity at LSU (1952-53), Miami (1954-56) and Wisconsin (1957-58).

An optimist, Moss has a wide reputation for his ingenuity on offense. The Seminoles this fall are using Perry's own "Finesse Drive" attack, a composite of several types of offenses. Perry holds a B. S. degree from Illinois and a Master's Degree from Washington.



ABOUT FLORIDA STATE UNIVERSITY

Located in Tallahassee, Florida State University is one of the fastest growing universities in the country. Already it is bursting at its seams with a present enrollment of approximately 8,000 students.

The main campus of 300 acres, stretching for a half-mile along Highway 90, includes a cluster of older buildings of Tudor Gothic architecture, with many newer buildings of functional design to the west of these. There is an 11-story dormitory for men and work is being completed on a second 11-story dormitory to house 563 more men students. A new eight-story women's dormitory housing 270 is being put into use this year.

There is a new library and School of Education and School of Business buildings, along with a new million-dollar physical education building, Tully Gymnasium.

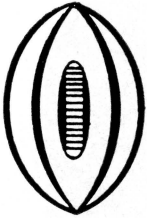
Among the newer structures are underground vaults with thick concrete walls which are housing two nuclear accelerators the university is installing this year. The larger of the accelerators is the third of its type to be installed on this continent and scientists, already with more than a million dollars in contracts for nuclear research, are planning to use these and other new tools in a bold program of basic research.

Authorized by the 1851 Legislature, the institution was first established as the "Seminary West of the Suwannee," and was changed to "Florida State College" in 1901 and the school remained co-educational until 1905. Then it became the "Florida Female College" and was renamed in 1909, "The Florida State College for Women."

By act of the 1947 Legislature, the institution again became co-educational as The Florida State University.

WHEN FSU HAS THE BALL

LEFT END



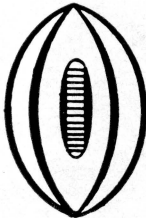
85 Grimes
86 Daniel
89 Alvarez
84 Ehlers

LEFT TACKLE



73 Klesius
78 Verbinski
71 Swoszowski

LEFT GUARD



62 Ulmer
64 Lamb
68 Bigbie

CENTER



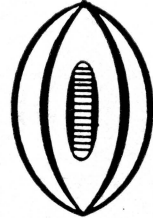
53 Rogers
54 Hardy
50 Brown
51 Worthington
52 Sellers

RIGHT GUARD



63 Moran
60 DeFrancesco
66 Kestner

RIGHT TACKLE



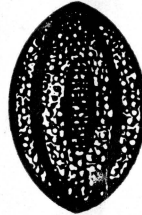
77 Spivey
75 Donatelli
70 Morrow

RIGHT END



80 Romeo
82 Slaton
81 Tyre

QUARTERBACK



13 Majors
15 Bickford
12 McCormick

LEFT HALFBACK



26 B. Whitehead
20 W. Whitehead
28 Hooks
21 Mustain

R. HALFBACK



43 Pickard
29 Hinson
41 Schou
24 Cone

FULLBACK



27 Espenship
42 Andrews
44 Calhoon



MEMBER

Federal Home Loan Bank System

Federal Savings and Loan Insurance Corporation

WHERE you save DOES make a difference!

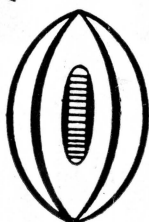
WHEN WAKE FOREST HAS THE BALL

LEFT END LEFT TACKLE LEFT GUARD CENTER RIGHT GUARD RIGHT TACKLE RIGHT END

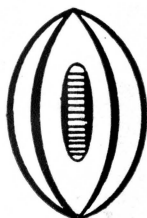


83 Manning	73 Conover	61 Patella	50 Jolly	66 Fleisher	78 Wolff	80 Allen
85 B. Hull	71 Smith	65 Martineau	54 Lanier	70 Cox	74 McCreary	82 Ruby
81 Currie	76 J. Williams	63 Pearce	51 Coker	68 Tabor	72 Muse	88 Reese

QUARTERBACK



LEFT HALFBACK



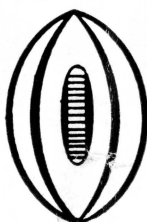
37 Skippon
45 Robinson
35 Ferrell

R. HALFBACK



26 Ball
25 Futch
20 White

FULLBACK



31 MacLean
36 Bonecutter
32 McDonnell

Tallahassee Federal Savings

AND LOAN ASSOCIATION

440 N. MONROE STREET

TALLAHASSEE, FLORIDA

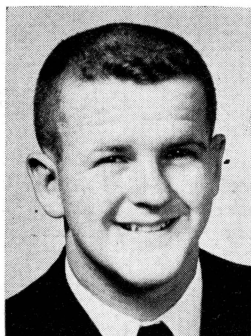
TELEPHONE 4-2161

HOURS: Monday-Thursday, 8:30 a.m. to 3 p.m.

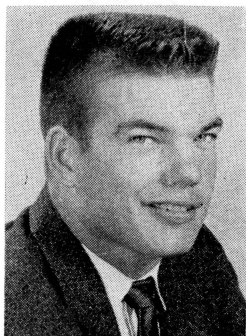
Friday, 8:30 a.m. to 6 p.m.



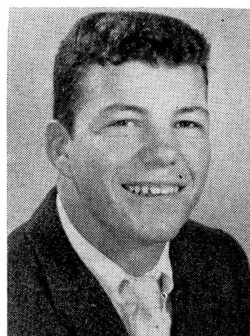
FLORIDA STATE



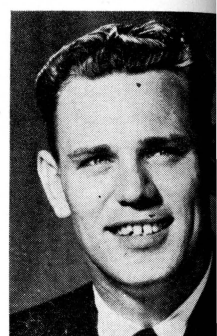
Paul Andrews—FB



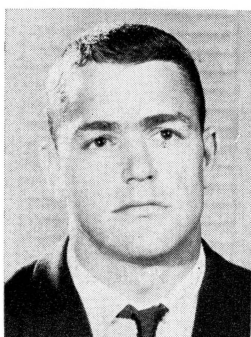
Abner Bigbie—G



Roy Bickford—QB



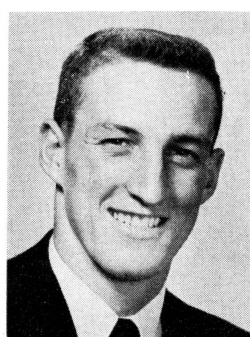
Bill Brown—C



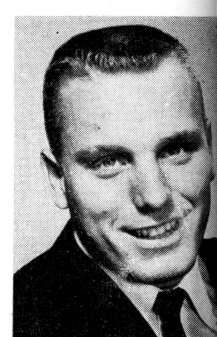
Jim Calhoon—FB



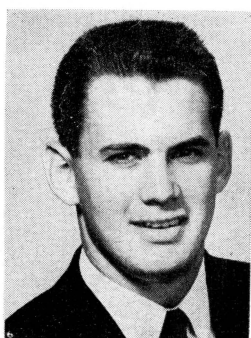
Ken Cone—HB



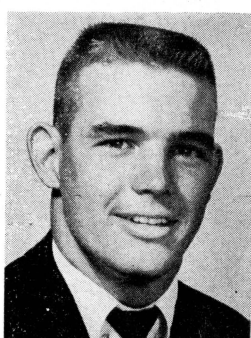
Jim Daniel—E



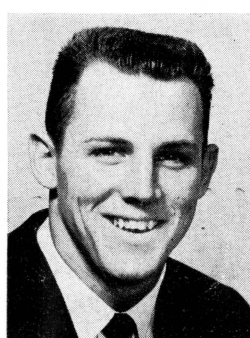
Frank DeFrancesco—



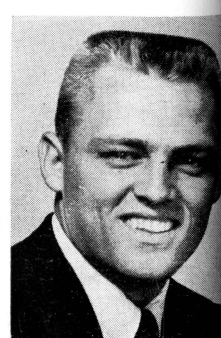
Don Donatelli—T



Jack Espenship—FB



Fred Grimes—E



Jack Hardy—C

PLAYERS



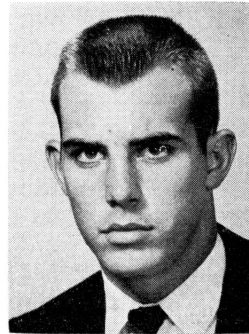
Ron Hinson—HB



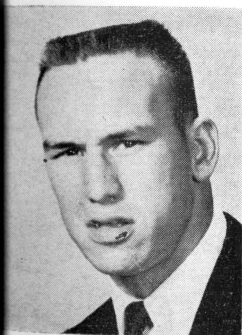
Jim Hooks—HB



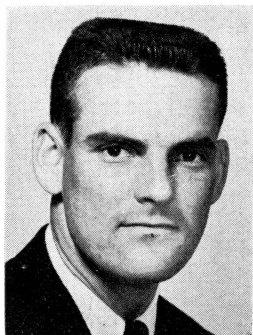
Ken Kestner—G



Steve Klesius—T



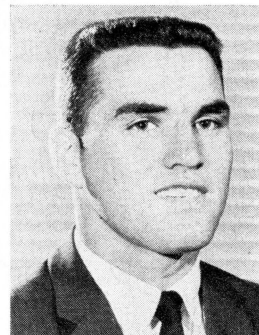
Ray Lamb—G



Gene McCormick—QB



Joe Majors—QB



Terry Moran—G



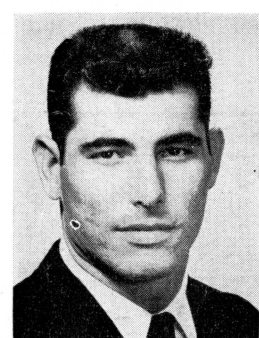
Fred Pickard—HB



Don Sellers—C



Ramon Rogers—C



Tony Romeo—E

FLORIDA STATE UNIVERSITY

1959 FOOTBALL ROSTER

NO.	NAME	POS.	AGE	HT.	WT.	YR.	HOMETOWN
12	*GENE McCORMICK	QB	23	5-9	150	Jr.	Miami
13	**JOE MAJORS	QB	22	6-0	171	Sr.	Huntland, Tenn.
15	ROY BICKFORD	QB	19	5-11	177	So.	Miami
20	WILLIE WHITEHEAD	HB	18	5-10	165	So.	Marianna
21	DON MUSTAIN	HB	19	6-0	168	Jr.	Miami, Okla.
24	KEN CONE	HB	20	6-1	180	Jr.	Lakeland
26	*BUD WHITEHEAD	HB	20	5-11	178	Jr.	Marianna
27	*JACK ESPENSHIP	FB	20	6-3	195	Jr.	Lake City
28	**JIM HOOKS	HB	24	5-8	175	Sr.	West Palm Beach
29	*RON HINSON	HB	21	6-0	191	Jr.	Waycross, Ga.
41	DENNY SCHOU	HB	20	5-9	180	So.	Fort Lauderdale
42	PAUL ANDREWS	FB	18	5-10	186	So.	Greenville
43	**FRED PICKARD	HB	21	5-9	165	Sr.	Columbia, Tenn.
44	JIM CALHOON	FB	25	6-1	188	Jr.	Winslow, Ariz.
50	*BILL BROWN	C	24	6-0	215	Sr.	Orlando
51	JIM WORTHINGTON	C	21	6-2	198	So.	Oak Ridge, Tenn.
52	DON SELLERS	C	25	6-2	198	Jr.	Barberton, O.
53	*RAMON ROGERS	C	21	5-11	187	Sr.	Pensacola
54	*JACK HARDY	C	20	5-10	192	Jr.	Miami
60	FRANK DEFRANCESCO	G	19	5-10	200	So.	Miami
62	**AL ULMER	G	20	5-10	178	Sr.	Clearwater
63	*TERRY MORAN	G	19	5-9	186	Jr.	New Orleans, La.
64	*RAY LAMB	G	21	6-0	180	Jr.	Atlanta, Ga.
66	*KEN KESTNER	G	21	5-10	190	Jr.	Cleveland, O.
68	*ABNER BIGBIE	G	21	5-10	185	Jr.	West Palm Beach
70	BOB MORROW	T	23	5-10	194	So.	Miami
71	*BOB SWOSZOWSKI	T	19	6-3	196	Jr.	Orlando
73	STEVE KLESIOUS	T	18	6-1	210	So.	St. Petersburg
75	DON DONATELLI	T	18	6-2	210	So.	Pittsburgh, Pa.
77	**JOHN SPIVEY	T	22	6-2	208	Sr.	Panama City
78	JOE VERBINSKI	T	21	6-1	210	So.	Willow Grove, Pa.
80	*TONY ROMEO	E	21	6-1	200	Jr.	Tampa
81	BILL TYRE	E	19	6-1	198	So.	Sanford
82	JOHN SLATON	E	20	6-1	188	So.	Miami
84	GEORGE EHLERS	E	21	6-2	190	Jr.	Moss Point, Miss.
85	FRED GRIMES	E	19	6-1	184	So.	Hialeah
86	JIM DANIEL	E	20	6-4	185	So.	Atlanta, Ga.
89	JIM ALVAREZ	E	20	6-1	195	Jr.	Jacksonville

*—Denotes lettermen.



1818 W. Tennessee

Howdy Podner . . . Me and the boys jest want to not everybody that we are serven them Notorious and Dillicious charcoal broiled Steerbrugers and Steak Samwiches at our hantsome new Drive-Resterant, jest 2 passes & a fumball offen the campus on West Tennessee see where Call St. comes in.

Yours truly,
OLE TEX.

OWNED AND OPERATED BY FRANK AND JAMES CHASE

Skyline Restaurant & Skyline Motor Lodge

1 Miles West of City Limits

U. S. Highways 90 and 20

TALLAHASSEE, FLORIDA

"Serving Good Food for Fine People"



MIDYETTE-MOOR Insurance Agency

"Ask Those We Serve"

Complete Insurance and Bond Service

PHONE 2-3456

**MIDYETTE-MOORE BUILDING
TALLAHASSEE, FLORIDA**

SAYS

SCALP 'EM SEMINOLES!



**PAYNE H. MIDYETTE
FRANK D. MOOR
EDWIN M. CLARK
A. WINSLOW SULLIVAN
ROBERT M. DICKINSON
PAUL L. LEWIS
PAYNE H. MIDYETTE, JR.
WILLIAM L. MOOR
GLENN SEARS
FRANK KOUBA
REX SIKES
ROY SOLOMON
BOB LEE**

**TALLAHASSEE
AUTOMOBILE
DEALERS
ASSOCIATION**

Alford Chevrolet Co.

Capital Lincoln-Mercury, Inc.

Carr Buick

Dean Motors

Drake Motors

Mayo-Mingledorff Motors, Inc.

John Manthey, Inc.

Proctor & Proctor

Capital Plymouth, Inc.

Tallahassee Motors, Inc.

Collins Motors, Inc.

Sports Car Center

THE LAUNDROMATS

115 W. Tennessee — 1005 N. Monroe

Phone 3-1789

Phone 2-3792

CLOTHES — RUGS — BLANKETS

Washed Clean — Fluff Dried and Folded

SHIRT FINISHING

DRY CLEANING • TINTEXING

"Your Satisfaction Is Our Goal"

Scalp 'em Seminoles!

BROWN'S MEN'S WEAR

MONROE AT PARK

F & T RESTAURANT

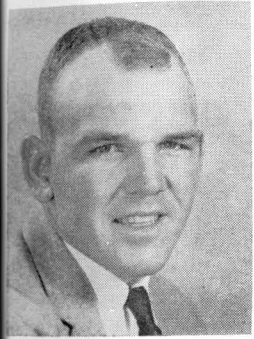
For Good Food and Quick Service

113 S. Monroe

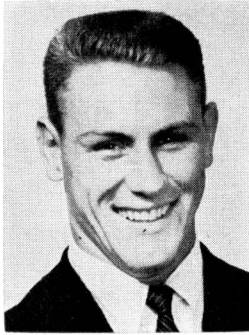
Phone 2-8917

Air Conditioned

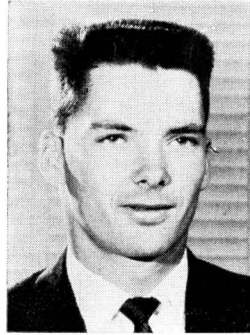
FSU PLAYERS



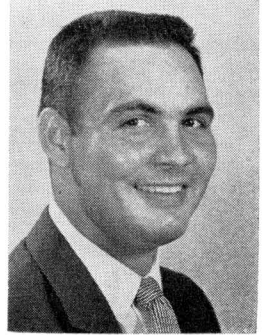
Bob Morrow—T



Denny Schou—HB



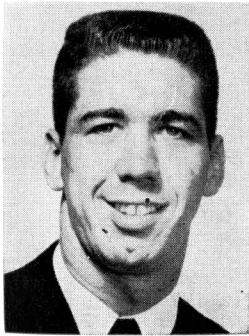
John Slaton—E



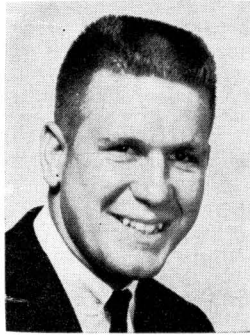
Jim Alvarez—E



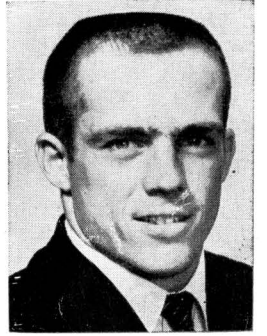
John Spivey—T



Bob Swoszowski—T



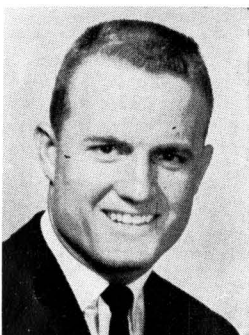
Bill Tyre—E



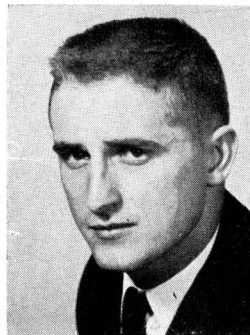
Al Ulmer—G



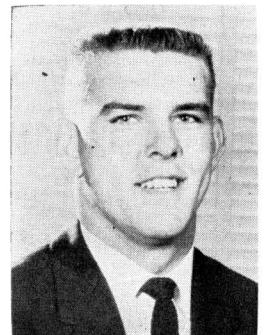
Joe Verbinski—T



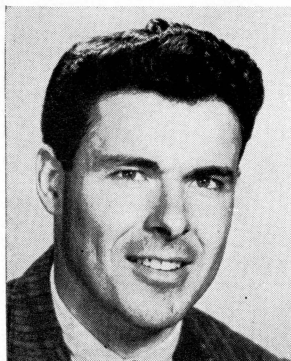
Bud Whitehead—HB



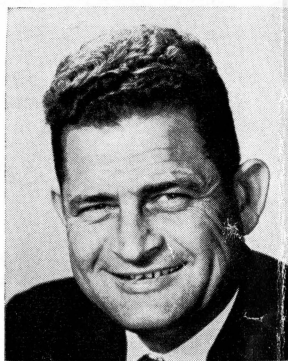
Willie Whitehead—HB



Jim Worthington—C



COATTA



FLOWERS



GIBSON



HARBISON

THE FSU COACHING STAFF

DICK FLOWERS, a native of Mobile, Ala., is in his first season as one of Coach Perry Moss's right-hand men. A graduate of Alabama, where he was a first-team tackle from 1945-48, Flowers played in the 1945 Rose Bowl and 1947 Sugar Bowl games.

Flowers was an assistant coach at Alabama in 1949-50 and at LSU in 1951-52. He coached one year at Live Oak, Fla., High School (1953) and was out of coaching in 1954 before taking over as head coach and athletic director at Gainesville, Fla., High School.

BOB HARBISON, in terms of longevity, is the real veteran of the Seminole coaching staff. Harbison is in his 12th full season. In his playing days, Bob was an outstanding guard for the late Bo McMillin at Indiana University from 1945-47. A native of Evansville, Ind., Harbison came to Florida State in 1948. He is credited with developing Little All-Americans Bill Dawkins in 1951 and former Seminole coach Hugh Adams, in 1949.

JOHN COATTA, one of the sharpest passing quarterbacks in Big Ten history, came to Florida State this year from Wisconsin. He had been an assistant coach with the Badgers for the past four years. A native of Dearborn, Mich., Coatta was a passing whiz for Coach Ivy Williamson at Wisconsin from 1949-51. In 1950, John set an all-time Big Ten pass completion record with a percentage of .642. He was named to the All-Big Ten and All Mid-West honor teams following the 1951 season.

DON JAMES has packed a lot of football experience into his 26 years. The Massillon, O. native came to Florida State this year from Southwest High School in Miami where he was backfield coach for the past two years. Don was an outstanding high school quarterback at Massillon, O. He played quarterback for the University of Miami, lettering in 1952 and 1953.

KENNETH SHIPP, erstwhile halfback standout at Middle Tennessee State, came to Florida State this year on two campaigns as backfield coach at Trinity University. Shipp grew up at Murfreesboro, Tenn., and attended Baylor Prep School at Chattanooga, Tenn. From 1946-48, Ken was at Middle Tennessee State. In 1950, Shipp was assistant coach at Gallatin, Tenn., High School. From 1951 to 1953, he was head coach at Fayetteville, Tenn. High School, then returned to his alma mater as backfield coach from 1954-56.

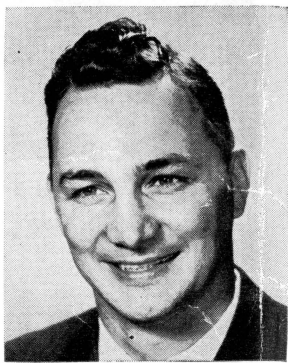
BUBBA MCGOWAN has the distinction of being the first person to have coached football at both the University of Florida and Florida State University. A former left halfback at Florida, McGowan was Florida's freshman backfield coach in 1952. The Dothan, Ala. native in 1953-54 was coach at Fort Jackson, S. C. More recently, McGowan has been track coach and football assistant to fellow coach Dick Flowers at Gainesville High School.

VINCE GIBSON, one of the toughest guards in Florida State's relatively brief football background, will assist Charlie LaPradd with the freshman team this year. Following graduation from Florida State in 1955, Vince became coach and basketball and track coach at South Georgia College. The Birmingham, Ala. native produced some outstanding results during the past three seasons at South Georgia.

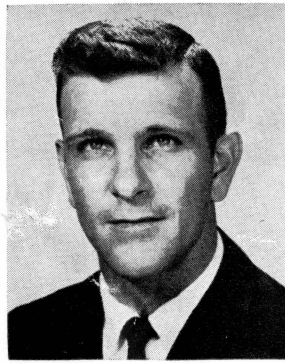
CHARLIE LAPRADD, All-America tackle at the University of Florida, is the second oldest FSU coaching staff member—in terms of service. A native of St. Augustine, Charlie was graduated from Florida in 1953 before serving in the Air Force. He was a graduate assistant at Florida State in 1956 and became a full member of the staff in 1957. A keen student, LaPradd will be head coach of the freshman team this season while working toward his doctorate degree.



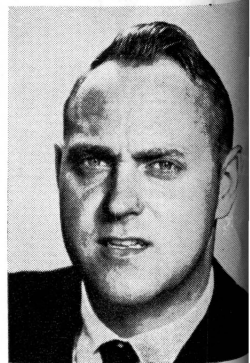
JAMES



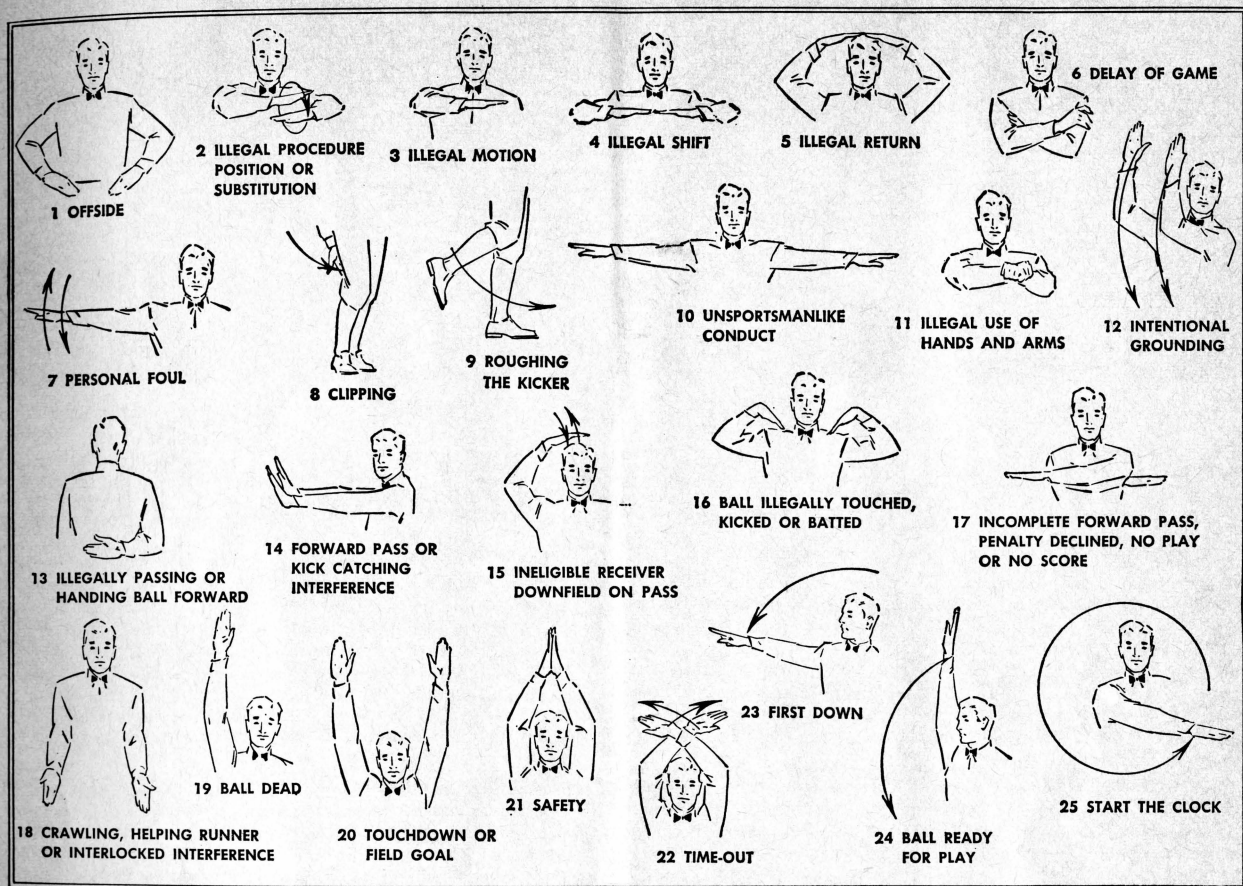
LaPRADD



McGOWAN



SHIPP



*for comfort while in the Capital City
and convenience to the FSU Campus...*

CHECK IN FOR FINE HOSPITALITY

at Tallahassee's Newest

The Lafayette Motel

825 WEST TENNESSEE

and One of the Finest

The Ponce De Leon Motel

1801 WEST TENNESSEE

They said it couldn't be done...

They said nobody could do it...

but **L&M** is

LOW
in tar

FLORIDA STATE

PROBABLE STARTING LINEUP

No.	Name	Pos.
85	FRED GRIMES	LE
73	STEVE KLESIOUS	LT
62	AL ULMER	LG
53	RAMON ROGERS	C
63	TERRY MORAN	RG
77	JOHN SPIVEY	RT
80	TONY ROMEO	RE
13	JOE MAJORS	QB
26	BUD WHITEHEAD	LH
43	FRED PICKARD	RH
27	JACK ESPENSHIP	FB

THE FLORIDA STATE SQUAD

12	McCormick, b	44	Calhoon, b	71	Swoszowski, b
13	Majors, b	50	Brown, c	73	Klesius, t
15	Bickford, b	51	Worthington, c	75	Donatelli, b
20	W. Whitehead, b	52	Sellers, c	77	Spivey, t
21	Mustain, b	53	Rogers, c	78	Verbinski, b
24	Cone, b	54	Hardy, c	80	Romeo, e
26	B. Whitehead, b	60	DeFrancesco, g	81	Tyre, e
27	Espenship, b	62	Ulmer, g	82	Slaton, e
28	Hooks, b	63	Moran, g	84	Ehlers, e
29	Hinson, b	64	Lamb, g	85	Grimes, e
41	Schou, b	66	Kestner, g	86	Daniel, e
42	Andrews, b	68	Bigbie, g	89	Alvarez, e
43	Pickard, b	70	Morrow, t		

L&M...**KINDEST TO YOUR TASTE!**



with
More
taste to it

WAKE FOREST

PROBABLE STARTING LINEUP

No.	Name	Pos.
83	PETE MANNING	LE
73	AL CONOVER	LT
61	NICK PATELLA	LG
50	BUCK JOLLY	C
66	LARRY FLEISHER	RG
78	WAYNE WOLFF	RT
80	BOBBY ALLEN	RE
16	NORMAN SNEAD	QB
37	BILL SKIPPON	LH
26	JERRY BALL	RH
31	NEIL MacLEAN	FB

THE WAKE FOREST SQUAD

11 Reiley, b	45 Robinson, b	71 Smith, t
14 Parker, b	50 Jolly, c	72 Muse, t
16 Snead, b	51 Coker, c	73 Conover, t
18 Rolli, b	52 Pell, c	74 McCreary, t
20 White, b	53 Passarelli, c	75 Williamson, g
22 Morris, b	54 Lanier, c	76 J. Williams, t
25 Futch, b	58 Johnson, t	77 Nation, e
26 Ball, b	60 Irwin, g	78 Wolff, t
31 MacLean, b	61 Patella, g	79 Cichewicz, t
32 McDonnell, b	62 Hartman, g	80 Allen, e
35 Ferrell, b	63 Pearce, g	81 Currie, e
36 Bonecutter, b	65 Martineau, g	82 Ruby, e
37 Skippon, b	66 Fleisher, g	83 Manning, e
38 C. Williams, b	68 Tabor, g	84 Mudd, e
40 Tesh, b	69 K. Hull, g	85 B. Hull, e
41 Ogborne, b	70 Cox, g	88 Reese, e

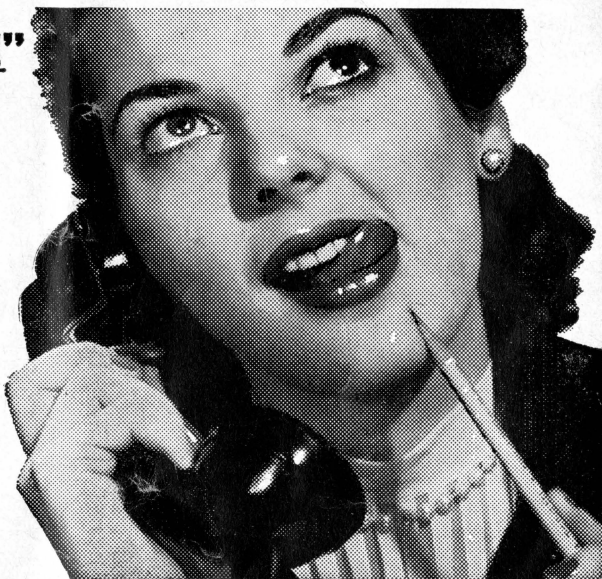
L&M...**KINDEST TO YOUR TASTE!**

PENALTIES

1. **OFFSIDE** by either team; Violation of scrimmage or free kick formation; Encroachment on neutral zone—Loss of Five Yards.
2. **ILLEGAL PROCEDURE, POSITION OR SUBSTITUTION**—Putting ball in play before Referee signals "Ready-for-play"; Failure to complete substitution before play starts; Player out of bounds when scrimmage begins; Failure to maintain proper alignment of offensive team when ball is snapped; False start or simulating start of a play; Taking more than two steps after Fair Catch is made; Player on line receiving snap—Loss of Five Yards.
3. **ILLEGAL MOTION**—Offensive player illegally in motion when ball is snapped—Loss of Five Yards.
4. **ILLEGAL SHIFT**—Failure to stop one full second following shift—Loss of Fifteen Yards.
5. **ILLEGAL RETURN** of substitute not previously disqualified—Loss of Fifteen Yards.
6. **ILLEGAL DELAY OF GAME**; Taking more than four times out during either half (except for replacement of injured player)—Loss of Five Yards. Team not ready to play at start of either half—Loss of Fifteen Yards.
7. **PERSONAL FOUL** — Tackling or blocking defensive player who has made fair catch; Piling on; Hurdling; Grasping face mask of opponent; Tackling player out of bounds, or running into player obviously out of play; Striking an opponent with fist, forearm, elbow or locked hands; Kicking or kneeing—Loss of Fifteen Yards (Flagrant offenders will be disqualified.)
8. **CLIPPING**—Loss of Fifteen Yards.
9. **ROUGHING THE KICKER** or holder—Loss of Fifteen Yards.
10. **UNSPORTSMANLIKE CONDUCT**—Violation of rules during intermission; Illegal return of suspended player; Coaching from sidelines; Invalid signal for Fair Catch; Persons illegally on field—Loss of Fifteen Yards. (Flagrant offenders will be disqualified.)
11. **ILLEGAL USE OF HANDS AND ARMS** by offensive or defensive player; Defensive holding—Loss of Fifteen Yards.
12. **INTENTIONAL GROUNDING** of forward pass—Loss of Five Yards Plus Loss of Down.
13. **ILLEGALLY PASSING OR HANDING BALL FORWARD**—Loss of Five Yards Plus Loss of Down.
14. **FORWARD PASS OR KICK CATCHING INTERFERENCE**—Interference with opportunity of player of receiving team to catch a kick—Loss of Fifteen Yards. Interference by member of offensive team with defensive player making pass interception—Loss of Fifteen Yards Plus Loss of Down. Interference by defensive team on forward pass—Passing Team's Ball at Spot of Foul and First Down.
15. **INELIGIBLE RECEIVER DOWN-FIELD ON PASS**—Loss of Fifteen Yards.
16. **BALL ILLEGALLY TOUCHED, KICKED OR BATTED**—Forward pass being touched by ineligible receiver beyond the line of scrimmage—Loss of Fifteen Yards from Spot of Preceding Down and Loss of a Down. Eligible pass receiver who goes out of bounds and later touches a forward pass—Loss of Down. Illegal touching of kicked ball within opponent's ten yard line—Touchback.
17. **PENALTY DECLINED**; Incomplete forward pass; No play or no score.
18. **CRAWLING** by runner—Loss of Five Yards. Interlocked Interference—Loss of Fifteen Yards.

".....it's a date!"

MORRISON'S
Food Service





HAV-A-TAMPA JEWEL

The s-m-o-o-t-h
cigar with the
built-in mouthpiece

ALL NATURAL-LEAF
FINE TOBACCO . . .
TOPS IN TASTE AND
SMOKING PLEASURE

*Ask for the
Brand Name*

HAV-A-TAMP/
CIGAR

Distributed by **Eli Witt Tobacco & Candy Co.**
Tallahassee, Florida

D. T. O'HARA, JR.

PRODUCE • POULTRY • FROZEN FOODS

PHONE 2-2128

717 W. Gaines St.

TALLAHASSEE, FLORIDA

BILL'S BOOK STORE

BOOKS

SUPPLIES

SUNDRIES

PRIVATELY OWNED AND OPERATED

S H A W ' S

Furnishings for Your Home

COLLEGE AVE. at DUVAL ST.

"Good Taste Costs No More"

Gilberg's

The House of 1000 Fabrics

Featuring Home Decorator Service
Custom Made Draperies And Slip Covers

Fashion Fabrics From The World's
Foremost Mills

Stores In:

TALLAHASSEE

PENSACOLA

PANAMA CITY

GAINESVILLE

LAKELAND

CLEARWATER

ALBANY, GA.

The Vogue

TALLAHASSEE, FLORIDA

BRINKLEY BROS.

HOMER A. BRINKLEY

ROBERT T. BRINKLEY

REALTORS • INSURANCE

CARL BRINKLEY, Mgr. Insurance Dept.

MORTGAGE LOANS

"A Brinkley Buy Is a Better Buy"

BRINKLEY BLDG. — 306 N. MONROE ST.

TELEPHONE 3-0918

1959-60 FLORIDA STATE BASKETBALL SCHEDULE

DATE	OPPONENT	SITE
Dec. 1	L. S. U.	Baton Rouge
Dec. 2	Loyola	New Orleans
Dec. 5	Florida	Gainesville
Dec. 12	Auburn	Auburn
Dec. 14	Alabama	Tuscaloosa
Dec. 18	Clemson	Clemson
Dec. 28	Auburn	Tallahassee
Dec. 29-30	GATOR BOWL TOURNAMENT	Jacksonville
Jan. 4	South Carolina	Tallahassee
Jan. 5	Citadel	Tallahassee
Jan. 7	Centenary	Tallahassee
Jan. 9	Mississippi Southern	Hattiesburg
Jan. 11	Memphis State	Memphis
Jan. 14	Tampa	Tallahassee
Jan. 16	Miami	Tallahassee
Jan. 30	Moorehead	Tallahassee
Feb. 1	Tampa	Tampa
Feb. 9	Memphis State	Tallahassee
Feb. 11	Rollins	Tallahassee
Feb. 13	Furman	Greenville
Feb. 15	Citadel	Charleston
Feb. 22	Loyola	Tallahassee
Feb. 27	Miami	Miami
Feb. 29	Georgia	Tallahassee

GET YOUR TICKETS EARLY!

"MISS FSU FOOTBALL"



LINDA GORMLEY
Tallahassee

Linda Gormley, 19-year-old Florida State University sophomore from Tallahassee, was named "Miss FSU Football" for 1959 at halftime ceremonies of the Seminoles' annual Garnet and Gold intrasquad game last spring. She was crowned by 1959 Seminole co-captains John Spivey and Al Ulmer. A Seminole cheerleader and a former girl's state high school and junior Olympic diving champion, Miss Gormley was sponsored by the Kappa Alpha Theta sorority. Twenty-one Florida State coeds competed in a student election for the title of "Miss FSU Football." Making up the "Miss FSU Football" court are Carolyn Ann Reeves, Panama City sophomore; Willou Copeland, junior from Brunswick, Ga.; Barbara Nichols, Coral Gables sophomore; Karen Ekman, Fort Lauderdale sophomore, and June Vaughn, sophomore from Tampa.

FAIVER'S For Chicken Pizza Pie

• Half-Fry Chicken
Italian Foods

• While in Tallahassee
visit our Italian Room

1312 WEST TENNESSEE STREET
TALLAHASSEE, FLORIDA



SOUTHERNAIRE

MOTEL

Mr. and Mrs. Al. Alligood
Mgrs.

Across from F.S.U. • Adjacent to 3 Restaurants • T.V.
Air Conditioned • Room Phones • Swimming Pool
Phone 3-4710 • US 90 West • Tallahassee, Fla.
100 Air Conditioned Rooms • Central Heat

Learn to Fly at SEMINOLE FLYING SERVICE

Municipal Airport
Tallahassee, Fla.

Rides, Instruction, Charter
Rental, Aerial Photography

Buy The New CESSNA
Leave Your Competition Behind
Look Up - A New CESSNA
May Be Overhead



North Florida's Most Complete
Camera Store

123 N. MONROE

"Across from the Florida Theatre"

For All Your Photographic Needs

TALLAHASSEE

CAMERA CENTER



WAKE FOREST COLLEGE

1959 FOOTBALL ROSTER

NO.	NAME	POS.	AGE	HT.	WT.	YR.	HOMETOWN
11	CHUCK REILEY	QB	19	5-11	175	So.	Decatur, Ga.
14	CHARLES PARKER	QB	23	6-2	190	Sr.	New Bern, N. C.
16	NORMAN SNEAD	QB	20	6-4	200	Jr.	Warwick, Va.
18	JIM ROLLI	QB	19	6-0	185	So.	New Philadelphia, O.
20	ALAN WHITE	HB	19	6-0	180	So.	Elm City, N. C.
22	JOHN MORRIS	HB	19	5-11	160	So.	Murphy, N. C.
25	WINSTON FUTCH	HB	20	6-0	165	Jr.	Wilmington, N. C.
26	JERRY BALL	HB	20	6-1	200	Jr.	Troutman, N. C.
31	NEIL MACLEAN	FB	25	6-0	200	Sr.	Lumberville, Pa.
32	BRUCE MCDONNELL	FB	20	6-1	185	So.	Varrington, N. J.
35	KENNY FERRELL	HB	21	5-10	190	Sr.	Durham, N. C.
36	JOE BONECUTTER	FB	20	6-3	210	Jr.	Shelby, O.
37	BILL SKIPPON	HB	20	6-2	190	Jr.	Conneaut, O.
38	CRAVEN WILLIAMS	FB	19	6-2	200	So.	Monroe, N. C.
40	JACK TESH	FB	19	6-1	190	So.	Newport News, Va.
41	MIKE OGBORNE	HB	19	6-2	190	So.	Freehold, N. J.
45	BOBBY ROBINSON	HB	20	5-9	170	Jr.	Clinton, N. C.
50	BUCK JOLLY	C	22	6-0	200	Sr.	Chadbourn, N. C.
51	LARRY COKER	C	19	6-2	187	So.	Pompano, Fla.
52	JIMMY PELL	C	19	6-2	210	So.	Mount Airy, N. C.
53	FRANK PASSARELLI	C	18	6-0	210	So.	Paterson, N. J.
54	JIMMY LANIER	C	20	6-2	198	Jr.	Warsaw, N. C.
58	JAMES JOHNSON	T	18	6-5	215	So.	Albermarle, N. C.
60	BOB IRWIN	G	18	6-2	200	So.	Paden City, W. Va.
61	NICK PATELLA	G	21	6-0	215	Sr.	East Stroudsburg, Pa.
62	TOM HARTMAN	G	19	6-2	215	So.	New Castle, Pa.
63	JIM PEARCE	G	19	6-0	195	Jr.	Spring Hope, N. C.
65	PAUL MARTINEAU	G	19	6-2	210	So.	Manchester, N. H.
66	LARRY FLEISHER	G	24	5-8	213	Sr.	Winnipeg, Man., Canada
68	BILL TABOR	G	20	6-0	200	So.	Logan, W. Va.
69	KEN HULL	G	20	6-1	200	So.	Lancaster, Pa.
70	WESLEY COX	G	19	6-2	228	So.	Memphis, Tenn.
71	BOB SMITH	T	20	6-3	230	Jr.	Laurel Spring, N. J.
72	JOHN MUSE	T	19	6-6	235	So.	Nashville, Tenn.
73	AL CONOVER	T	20	6-1	225	Jr.	Largo, Fla.
74	BOB MCCREARY	T	20	6-5	240	Jr.	Lenoir, N. C.
75	BENNETT WILLIAMSON	G	19	6-3	230	So.	Clarkton, N. C.
76	JAMES WILLIAMS	T	19	6-4	214	So.	Durham, N. C.
77	BRUCE NATION	E	20	6-3	208	So.	West Hartford, Conn.
78	WAYNE WOLFF	T	21	6-2	220	Jr.	Greensburg, Pa.
79	ED CICHEWICZ	T	19	6-3	225	So.	Bergenfield, N. J.
80	BOBBY ALLEN	E	20	6-2	190	Jr.	Warwick, Pa.
81	AUBREY CURRIE	E	21	5-11	195	Sr.	Laurel Hill, N. C.
82	BILL RUBY	E	20	6-0	203	So.	Hubbard, O.
83	PETE MANNING	E	22	6-3	195	Sr.	Hudson, Mass.
84	BRENT MUDD	E	20	6-1	190	So.	Wadesboro, N. C.
85	BILL HULL	E	19	6-6	215	So.	Tarboro, N. C.
88	SAMMY REESE	E	22	6-2	195	Sr.	Mars Hill, N. C.

Two Twelve South Monroe The Big Bend's Sportswear Center

For Style-Conscious Men

McGregor Sportswear
Society Brand and Campus Togs
Suits and Sport Coats
Florsheim and Jarman Shoes
Manhattan and Arrow
Furnishings

ALFORD BROTHERS

For Sports-Conscious Women

Lady Manhattan Shirts and
Co-ordinates
Koret of California Co-ordinates
Darlene Sweaters
Junior Miss Sports Dresses and
Co-ordinates

CASUAL AIRE

STUDENT SAVING CENTER

- School Supplies
- Pennants and Novelties
- Gifts
- Art Supplies
- Greeting Cards
- Stationery
- Drafting Equipment
- Pen Repair Service
- Sundries
- Camera Supplies & Developing Service

We Buy and Sell Books

NEW and USED

UNIVERSITY BOOKSTORE

Owned and operated by Florida State University

In the Student Center

*We're
Backing
the Seminoles!*



QUAKER HOUSE RESTAURANT

*Dining Room
and Curb Service*

QUALITY CLEANERS

Two Plants To Serve You

Downtown

215 W. COLLEGE AVE. — DIAL 2-5097

Opposite Jitney Jungle

1306 N. MONROE — DIAL 2-1651

ONE DAY SERVICE

PICK-UP and DELIVERY

Quality Laundry Service

EXPERT TAILORING and ALTERATIONS

ZIPPERS REPAIRED

SEMINOLE SONGS AND CHEERS

1. Beat, Florida State

Beat Florida State!
 Beat (Stomp, Stomp)
 Beat Beat State!
 Beat (Stomp, Stomp)
 Beat Beat State!
 Beat (Stomping)

2. Freshman, Flunky

Freshman, Flunky, Student Scholar
 All good Seminoles, Stand up and holler.

3. Garnet and Gold

Garnet and Gold, Fight, Fight!
 Garnet and Gold, Fight, Fight!
 Who fight? We fight!
 Garnet and Gold, Fight, Fight

4. Is Everybody Happy?

CL :Is Everybody happy?
 Aud: Hell, yes
 CL :Is anybody downhearted?
 Aud: Hell, no!
 CL :Then let's railroad Seminoles
 and take it slow!
 ALL: S-E-M-I-N-O-L-E-S
 (Spell three times)
 ALL: Seminoles!

5. Locomotive

Rah, rah, rah, rah,
 Go team, go team
 Rah, rah, rah, rah,
 Go team, go team
 Rah, rah, rah, rah,
 Go team, go team
 Fight!

6. Alma Mater

High o'er the towering pines
 our voices swell
 Praising these gothic spires
 We love so well:
 Here sons and daughters stand,
 faithful and true
 Praising our Alma Mater
 F. S. U.

7. Perry Moss Cheer (We've Got the Coach)

We've got the coach (clap, clap)
 We've got the team (clap, clap)
 We've got the pep (clap, clap)
 We've got the steam (clap, clap)
 Coach, team, pep, steam.
 Fifteen rahs for Moss' team.
 Rah-rah, rah, rah, rah;
 Rah-rah, rah, rah, rah;
 Rah-rah, rah, rah, rah.
 Fight, team!

8. Sittin' in a Wigwam

Sittin' in a wigwam
 Beatin' on a tom-tom
 Who come?
 We come.
 Everybody will come.
 Scalp 'em, (clap, clap), Scalp 'em
 (Clap, clap), etc.

9. Seminoles

(spell out)
 S (4 claps) E (4 claps) M (etc.) I (etc.)
 S (1 clap) E (1 clap) M (etc.) I (etc.)

10. Go Seminoles

(All hands in the air)
 Go - - - O Seminoles (clap, clap)
 Go - - - O Seminoles (clap, clap)
 Team fight!

11. Touchdown Song

Da dum Yea Team!
 Da dum Whose Team!
 Da Dum Our Team!
 Touchdown, that's the thing
 We want a touchdown,
 Hear us sing
 We want a touchdown
 Hear us sing
 We want a great big bruiser, husky and tall,
 To carry the ball, in no time at all
 We'll have a touchdown
 And when it's over
 You can hear us make some noise!
 V-i-c-t-o-r-y
 We want a touchdown, boys!
 Da da dum Fight! Fight! (seven times)

12. Fight Song

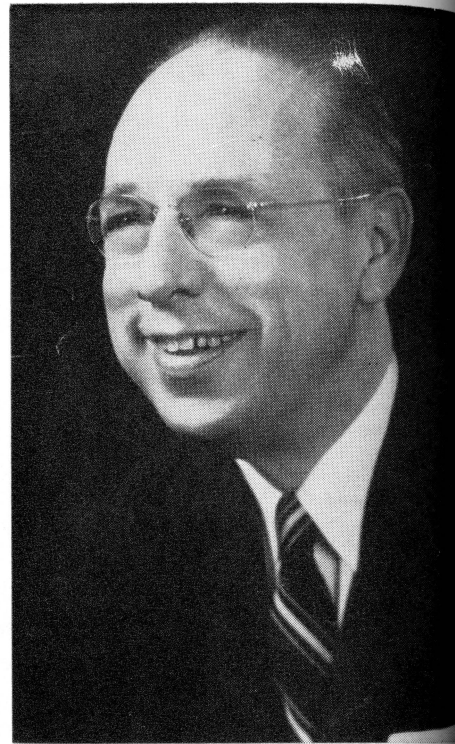
We're going to fight, fight fight for FSU
 You got to scalp 'Um Seminoles,
 You got to win, win, win, win, that game
 And roll on down and make those goals.
 For FSU is on the warpath now,
 And at the battle's end, she's great
 So fight, fight, fight, fight to victory
 Our Seminoles from Florida State.
 F-L-O-R-I-D-A S-T-A-T-E
 Florida State!
 Florida State!
 Florida State!

13. Hi, Florida

Hi, Florida!
 Hi, State,
 Hi, Hi, Florida State!



PAUL J. AMEN
Head Football Coach

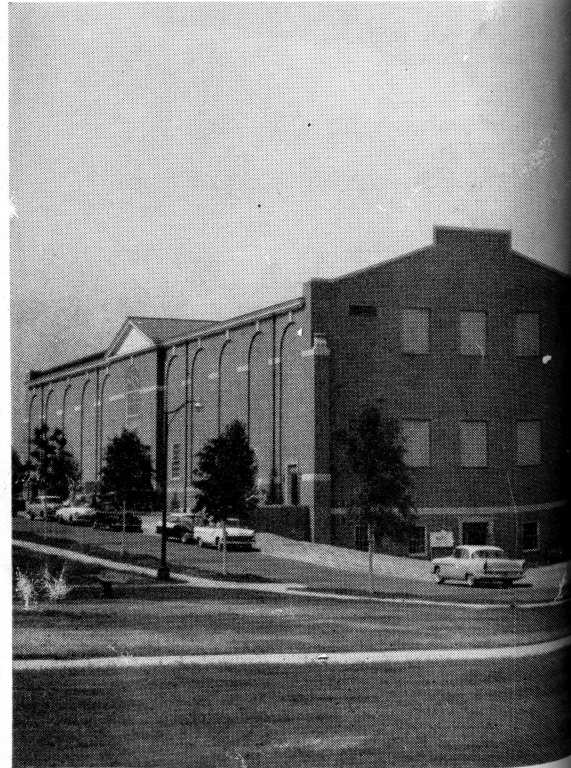


DR. HAROLD W. TRIBBLE
President

WAKE FOREST

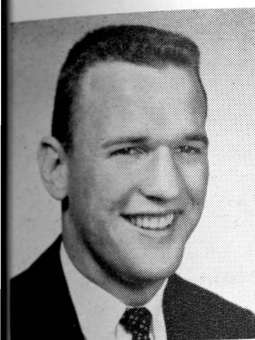


VIEW OF THE CAMPUS

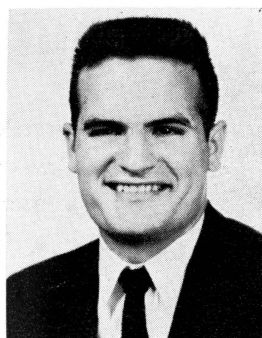


THE NEW GYMNASIUM

Wake Forest Players



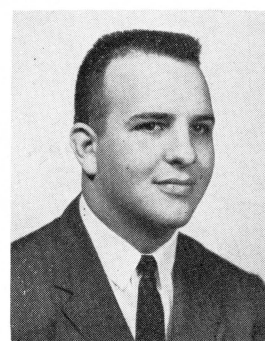
BOBBY ALLEN



JERRY BALL



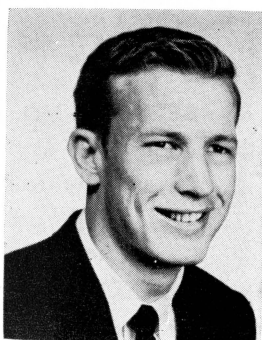
JOE BONECUTTER



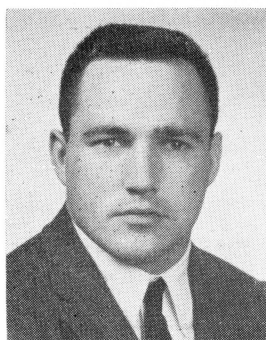
AL CONOVER



KENNY FERRELL



BUCK JOLLY



NEIL MACLEAN



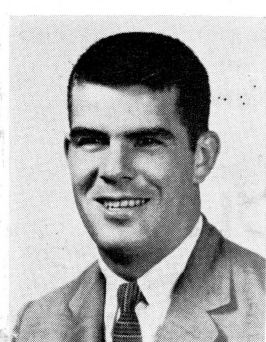
PETE MANNING



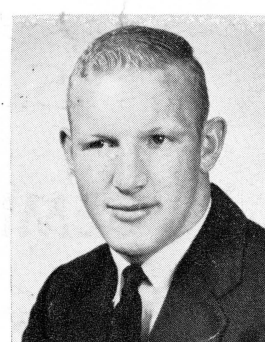
CHARLES PARKER



NICK PATELLA



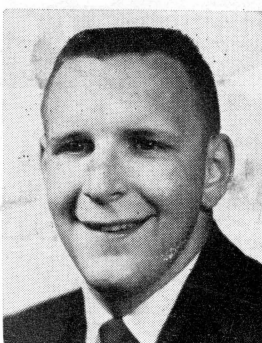
JIM PEARCE



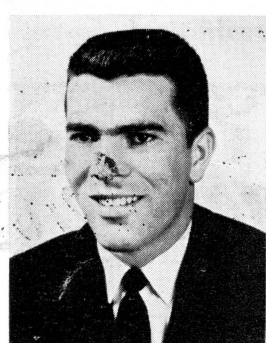
SAM REESE



BOBBY ROBINSON



BOB SMITH



NORMAN SNEED



WAYNE WOLFF

TRAVELING
DESSERT TRAYS

CHARCOAL
BROILED
STEAKS



Scalp 'em

SEMINOLES

Good Luck, Seminoles!



106 S. Monroe

"Your Friendly Jeweler"

BENNETT'S DRUG STORE

- Prescriptions
- Cameras
- Sundries
- Gifts
 - Fountain
 - Cafe
 - Cosmetics
 - Drugs

MEET ME AT BENNETT'S

BEFORE AND AFTER THE GAME!

Corner Monroe and College Streets

Phone 2-8980 — 2-4450

*Good Luck
Seminoles!*

★
NOBODY...
BUT NOBODY
UNDERSELLS.
★

**SOUTHERN
ELECTRIC**

Three Fine Stores

TALLAHASSEE

AND VALDOSTA

BAY-SEMINOLE NETWORK

Florida State University's football games will be carried over a two-state network for the next three years by Bay Petroleum Company. Entering its seventh year, the network will be known for the first time this season as the Bay-Seminole Network.

The Bay-Seminole Network covers thousands of square miles in Florida and South Georgia. Broadcast of the games are produced by the Galen E. Broyles Company of Denver, Colo.

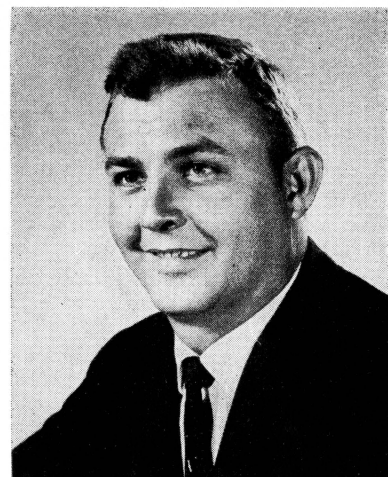
Handling the broadcasts are Charlie Harville, Sports Director of Station WFMY-TV, Greensboro, N. C., and Ken Brown, General Manager of Station WHYS, Ocala. Harville will do the play-by-play and Brown the color commentary.

A native of High Point, N. C., Harville broadcast play-by-play accounts of the University of Virginia games for four years and has done color for the Washington Redskins Network and regional television in the Atlantic Coast Conference area.

Brown is thoroughly familiar with football in Florida. For the past 10 years he has broadcast high school football. More recently, he has done play-by-play for University of Florida freshman games and for the Florida High School All-Star games.



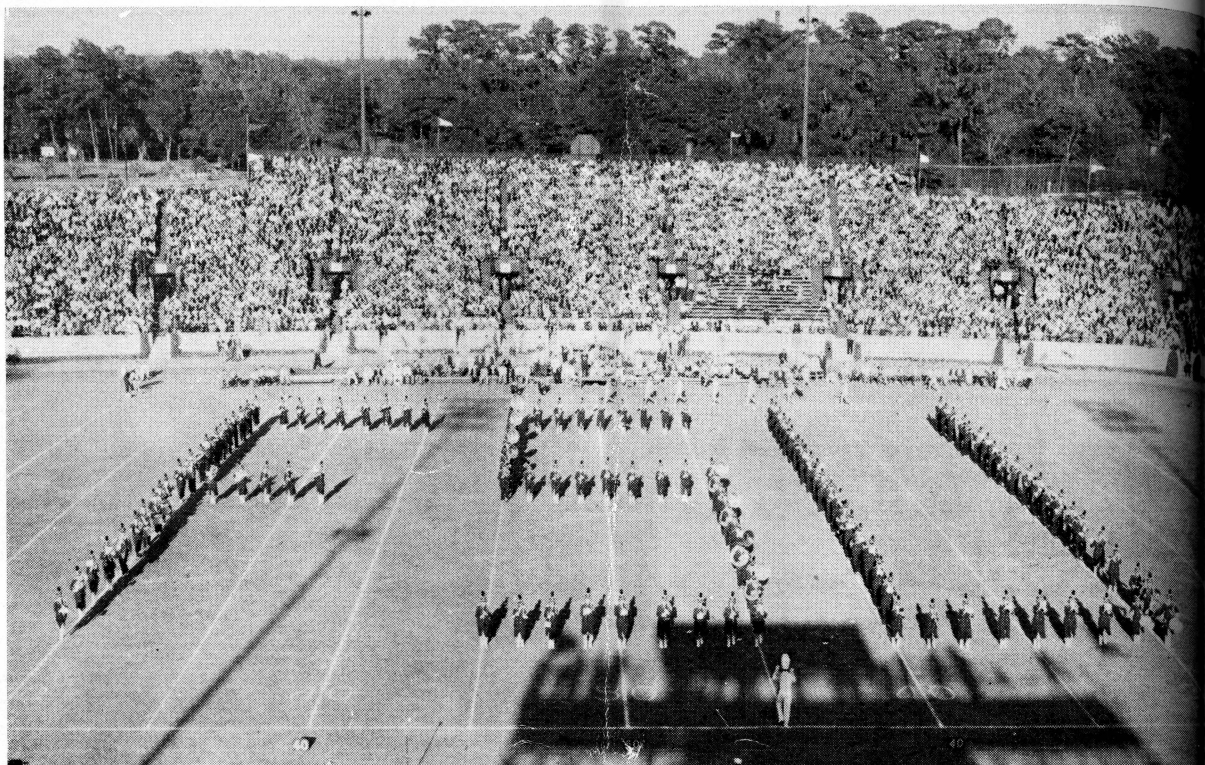
Charlie Harville



Ken Brown

THE NETWORK STATIONS

WTAL	Tallahassee	WFLA	Tampa
WPCF	Panama City	WKIS	Orlando
WCNH	Quincy	WMET	Miami Beach
WTYS	Marianna	WSIR	Winter Haven
WJAX	Jacksonville	WPAX	Thomasville, Ga.
WFOY	St. Augustine	WMGA	Moultrie, Ga.
WTMC	Ocala	WVLD	Valdosta, Ga.



MUSIC AT HALFTIME

FLORIDA STATE UNIVERSITY MARCHING CHIEFS

Dr. Manley R. Whitcomb, Director

Robert Braunagel, Associate Director

Charles Carter, Arranger

Terry Johnson, Drum Major

John Bowen, Prop Manager

Penny McArthur, Head Major

Mary Barnette, Librarian

Bob Reely, Field Manager

THEME: WELCOME TO PERRY MOSS

Music

Fanfare

Presentation Music

"Garnet and Gold" March

"Illinois Loyalty" March

"Hail to Miami U"

"On Wisconsin"

"I'm Looking Over a Four Leaf Clover"

"You Gotta Be a Football Hero"

"FSU Fight Song"

"High O'er the Towering Pines"

Formation

Artists Path

Majorette Presentation

Presentation of Garnet and Gold

Beverly Calvert, Majorette

Janice Freeman, Artist

Block

(Perry played at Illinois)

Block

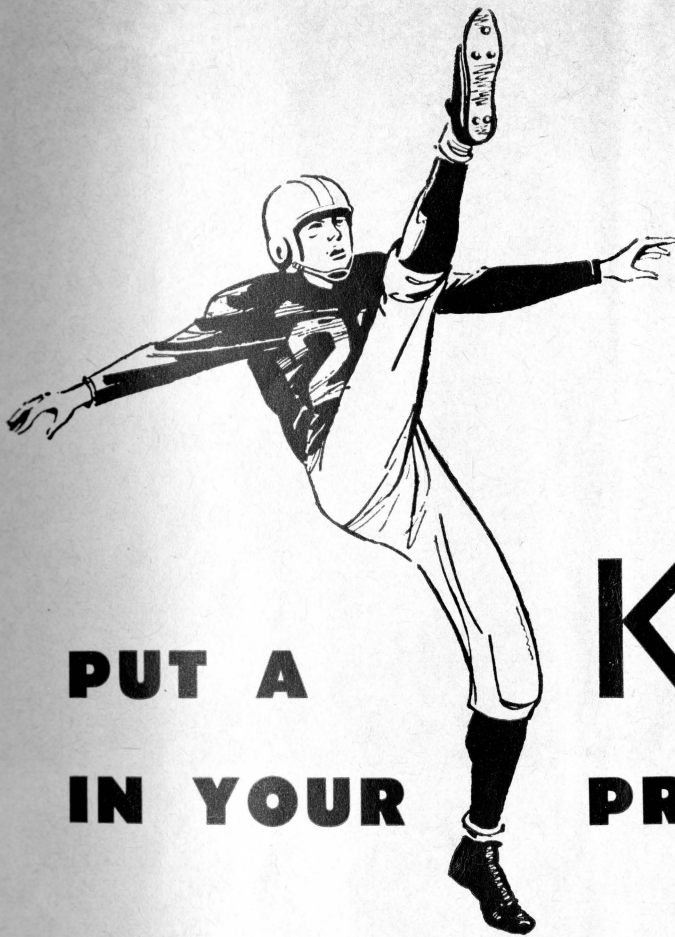
(coached at Miami)

Block

(and Wisconsin)

Four Leaf Clover

(best of luck at Miami)



**PUT A
IN YOUR KICK
PRINTING!**

The "KICK" we refer to is good design, the right choice of materials and quality workmanship.

With this combination, your printing will do a better job for you, whether it be a sparkling new letterhead, a form for office use, a color brochure advertising your latest product or service or a complete catalog of your entire line.

For a representative that is experienced and trained to put a "KICK" in your printing.

Phone

ROSE PRINTING COMPANY, INC.

MIAMI
Phone PL 4-5475

TALLAHASSEE
Phone 2-0230

JACKSONVILLE
Phone EX 8-5768

*It's what's up front
that counts!*



Only Winston has

FILTER-BLEND up front



If you're a Winston smoker, you *know* that the big difference in filter smoking is *ahead* of the filter. It's **FILTER-BLEND**. The Winston secret of tobaccos specially selected and specially processed for *filter smoking*. **FILTER-BLEND** up front is a mighty good reason for *anybody* to smoke Winston. So, next time you buy cigarettes, enjoy America's best-selling filter cigarette!

R. J. REYNOLDS TOBACCO CO., WINSTON-SALEM, N.C.

WINSTON TASTES GOOD *like a cigarette should*