



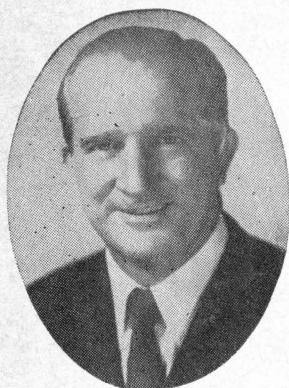
# Florida State

## The Citadel

#2 ARCHIVES  
F. S. U. LIBRARY

SEPTEMBER 26 • 1959 • CAMPBELL STADIUM





RAINEY CAWTHON

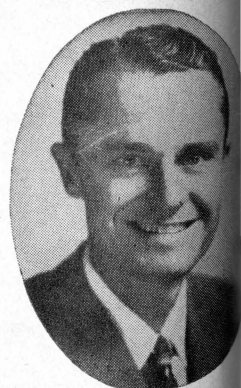
# Rainey Cawthon's

★ RCA TELEVISION and RADIO

★ SHELL PRODUCTS ★ GOODYEAR TIRES

"WE SERVICE WHAT WE SELL"

• ROAD SERVICE • PHONE 2-1865 •



FRED PIERSON

*patronize...*  
**STADIUM**

**CONCESSIONS**

*Located beneath the stands on each side of stadium*

**COLD DRINKS..... 15¢**

**HOT COFFEE..... 15¢**

**SANDWICHES..... 30¢**

**HOT DOGS..... 25¢**

**PEANUTS..... 10¢**

**POP CORN..... 10¢**

**SOUVENIR ITEMS**

**PENNANTS**

**BADGES**

**SUN VISORS**

**ASPRIN**

**All Cigarettes 35¢**

*please pay no more than established prices*



## LIKE FSU, THE CITADEL OFFERS SPEED AND SPIRIT

By **PAT HOGAN**  
FSU Sports Publicity Director

### TABLE OF CONTENTS

Seminole Athletic News .....	3
The President and The Athletic Director .....	4
Information About Florida State .....	5
Florida State Players .....	8-9-13
Florida State Roster .....	10
Florida State Coaches .....	14
Probable Starting Lineups .....	16-17
Miss FSU Football .....	21
The Citadel Roster .....	23
Florida State Songs and Cheers .....	25
The Citadel Staff .....	26
The Citadel Players .....	27
Bay-Seminole Network .....	29
The Marching Chiefs .....	30

The conference affiliation shifts tonight from the Atlantic Coast Conference (Wake Forest) to the Southern Conference, but the method of attack may be similar. For The Citadel went to air to score five touchdowns in a seven-touchdown, 48-0 rout of Newberry last week.

The Citadel, after a mediocre 1958 season, is looking toward better things this trip. And Coach Eddie Teague's space-minded Cadets have the goods for improvement. There is quarterback Jerry Nettles (No. 11), the smooth-throwing junior who tossed three TD passes last week. There is All-Conference end Paul Maguire (86), an excellent punter who caught the three TD passes from Nettles a week ago.

Halfbacks Bob Daugherty (21), and Bill Hughes (23) lend plenty of support. Hughes last week set an all-time Citadel record by returning an intercepted pass 102 yards for a touchdown. For power, the Bulldogs can count on Barry Thomas (35), a determined 220-pound senior who rolled up 86 yards on 18 carries last week.

Up front, co-captain Jim Gulliford (74), George Garrison (51), and co-captain Tom Hemingway (84) are solid at tackle, center, and end, respectively. On offense, Coach Eddie Teague's Bulldogs show a wide-open style, employing a split end (Maguire) much of the time.

Florida State's Seminoles will be battling for Coach Perry Moss' first college victory as a head coach, after coming so close (20-22) in last week's heart-breaking opener against Wake Forest. They will play tonight without the services of both their No. 1 and No. 2 right ends. Junior All-America candidate Tony Romeo and sophomore Paul Slaton both are sidelined with leg ailments.

Ready and able, however, are Quarterback Joe Majors (13), who completed 10 of 16 passes for 102 yards and a touchdown against Wake Forest, and Fred Pickard (43), the mighty mite at right half who scored once last week on a 30-yard interception return and had a 45-yard pass reception TD called back.



## The President . . .

### DR. ROBERT M. STROZIER

Now in his third year at Florida State University, President Robert M. Strozier has seen a rapid growth in its size and, more important to his educational philosophy, in the "university spirit" pervading the institution.

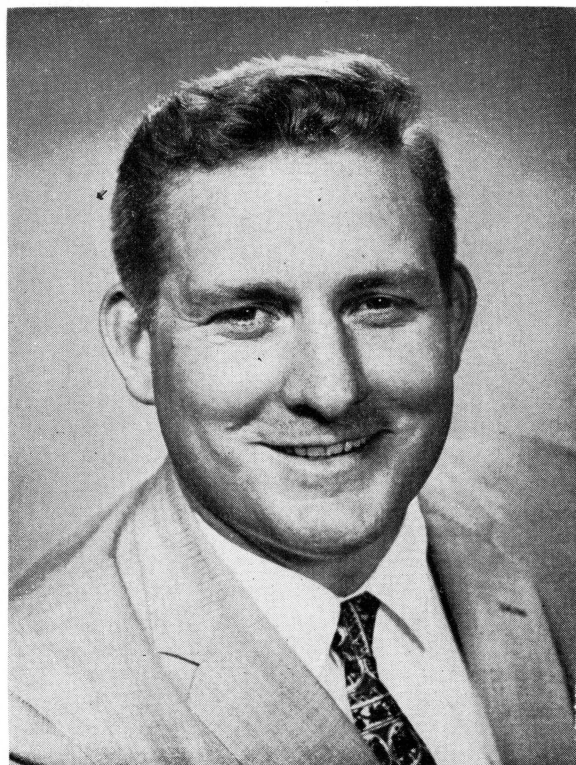
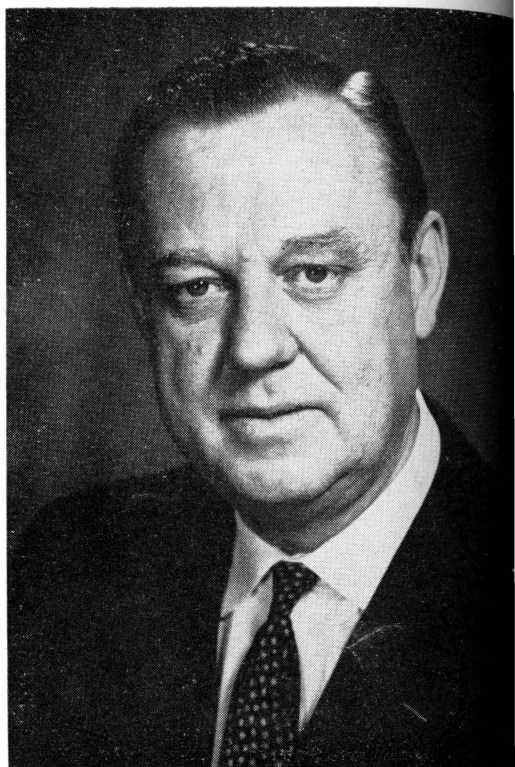
An evidence of the increasing importance of the University in only one field, graduate study, is the fact that FSU has been awarded the second largest number of fellowships for graduate study under the new National Defense Education Act, which provides for 1,000 nationally. FSU will have 20 of these, held by students starting out their doctoral studies in history, mathematics, and humanities.

Another evidence is the increased outside financial support for graduate study and research. At the last commencement Dr. Strozier reported gifts and grants to the University totaling \$3,230,000 since the beginning of the academic year 1957.

Dr. Strozier assumed his duties as president of FSU on Sept. 3, 1957, coming here from the University of Chicago. He was at Chicago 12 years, most of the time as dean of students and professor of romance languages. The president is a 53-year-old native of McRae, Ga., and before joining the Chicago faculty he served on the faculties of Georgia State College for Men, West Georgia College and the University of Georgia.

A teacher of French throughout his professional career, he continues to direct an occasional seminar in addition to carrying on the administrative duties of the University. The University of Miami recently recognized his scholarly contributions by awarding him the honorary degree of Doctor of Letters.

The son of a college president, Strozier was born July 20, 1906, and the family lived at various times in McRae, Vienna, and Moultrie, Ga. He went to Emory University where he earned the bachelor's degree in 1929 and the master's degree in 1930. Later he received the Ph.D. degree from Chicago.



## The Athletic Director and Head Coach . . .

### PERRY MOSS

Before and since he pitched a surprise 44-yard pass to Julie Rykovich on the opening play of the 1947 Rose Bowl game, thereby starting a Big Ten domination at Pasadena, Athletic Director Perry Moss has been making headlines.

A tireless worker who was a unanimous selection to come head coach at Florida State last January, Moss has enjoyed a varied career as a player and as a coach. And, unlike the mythical King Midas, just about everything he has touched has turned to success.

Moss, a native of Tulsa, Okla., played one semester of football at Tulsa University in 1944, playing in the Orange Bowl. After two years in the Air Force, he quarterbacked Illinois to a Big Ten championship in 1946, playing a part in the 45-14 trouncing Illinois handed UCLA in the inaugural (1947) Rose Bowl game between the Big Ten and Pacific Coast Conferences.

While at Illinois, he was an All-Big Ten quarterback in the 1946 and 1947 seasons. He won honorable mention on various All-America teams in 1944, 1946, and 1947. In 1947, Moss became the first recipient of the Nelson Award for Sportsmanship.

After his collegiate career, Moss played one season for the professional Green Bay Packers. His coaching experience dates from 1949, when he was freshman coach at Illinois. In 1950 and 1951 he was backfield coach at the University of Washington (Seattle) and served in the same capacity at LSU (1952-53), Miami (1954-56) and the University of Wisconsin (1957-58).

An optimist, Moss has a wide reputation for his ingenuity on offense. The Seminoles this fall are using Perry's "Finesse Drive" attack, a composite of several types of offenses. Perry holds a B. S. degree from Illinois and a Master's Degree from Washington.





## ABOUT FLORIDA STATE UNIVERSITY

Located in Tallahassee, Florida State University is one of the fastest growing universities in the country. Already it is bursting at its seams with a present enrollment of approximately 8,000 students.

The main campus of 300 acres, stretching for a half-mile along Highway 90, includes a cluster of older buildings of Tudor Gothic architecture, with many newer buildings of functional design to the west of these. There is an 11-story dormitory for men and work is being completed on a second 11-story dormitory to house 563 more men students. A new eight-story women's dormitory housing 270 is being put into use this year.

There is a new library and School of Education and School of Business buildings, along with a new million-dollar physical education building, Tully Gymnasium.

Among the newer structures are underground vaults with thick concrete walls which are housing two nuclear accelerators the university is installing this year. The larger of the accelerators is the third of its type to be installed on this continent and scientists, already with more than a million dollars in contracts for nuclear research, are planning to use these and other new tools in a bold program of basic research.

Authorized by the 1851 Legislature, the institution was first established as the "Seminary West of the Suwannee," and was changed to "Florida State College" in 1901 and the school remained co-educational until 1905. Then it became the "Florida Female College" and was renamed in 1909, "The Florida State College for Women."

By act of the 1947 Legislature, the institution again became co-educational as The Florida State University.



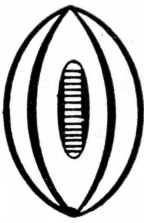
# WHEN FSU HAS THE BALL

LEFT END



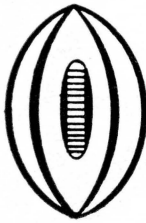
86 Daniel  
89 Alvarez  
83 Sellers  
88 Hooks

LEFT TACKLE



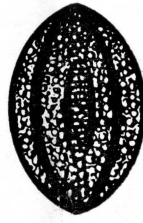
73 Klesius  
78 Verbinski  
71 Swoszowski

LEFT GUARD



62 Ulmer  
64 Lamb  
66 Kestner

CENTER



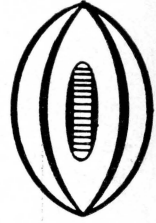
53 Rogers  
54 Hardy  
50 Brown  
51 Worthington

RIGHT GUARD



63 Moran  
60 DeFrancesco  
61 Tyre

RIGHT TACKLE



77 Spivey  
75 Donatelli  
70 Morrow

RIGHT



85 Grime  
87 Bigbie  
84 Ehlers  
80 Rome  
82 Slaton

QUARTERBACK



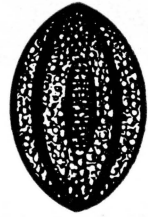
13 Majors  
15 Bickford  
12 McCormick

LEFT HALFBACK



26 B. Whitehead  
24 Cone  
20 W. Whitehead  
21 Mustain

R. HALFBACK



43 Pickard  
29 Hinson  
41 Schou

FULLBACK



27 Espenship  
42 Andrews  
44 Calhoon



**MEMBER**

**Federal Home Loan Bank System**

**Federal Savings and Loan Insurance Corporation**

**WHERE you save DOES make a difference**



# WHEN THE CITADEL HAS THE BALL

LEFT END      LEFT TACKLE      LEFT GUARD      CENTER      RIGHT GUARD      RIGHT TACKLE      RIGHT END



84 Hemingway  
89 Alexander  
87 Mura

74 Gulliford  
79 Baldwin  
71 Brines

62 Johnson  
61 Reeves  
68 Spellman

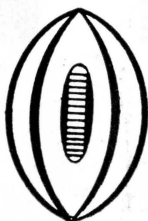
51 Garrison  
54 Rakowski  
63 Cook

69 Harrington  
65 Reiney  
60 Hearn

77 Stewart  
73 Davidson  
75 Wheelchel

86 Maguire  
82 Gilgo  
85 Allen

QUARTERBACK



LEFT HALFBACK



21 Daugherty  
41 Crouch  
33 Gambrell

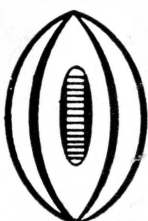
11 Nettles  
17 Whaley  
19 Sharpe

R. HALFBACK



23 Hughes  
43 Eastburn  
22 Clancy

FULLBACK



35 Thomas  
31 McRee  
30 Dykes

## Tallahassee Federal Savings

AND LOAN ASSOCIATION

440 N. MONROE STREET

TALLAHASSEE, FLORIDA

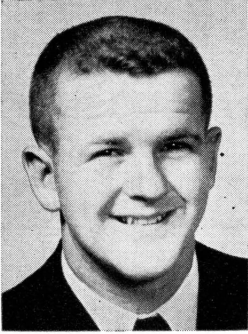
TELEPHONE 4-2161

HOURS: Monday-Thursday, 8:30 a.m. to 3 p.m.  
Friday, 8:30 a.m. to 6 p.m.

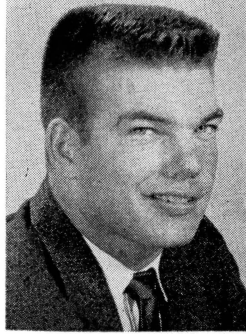




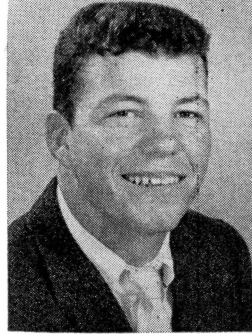
# FLORIDA STATE



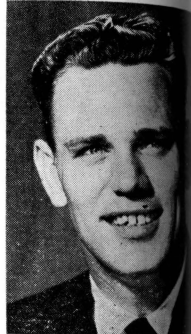
Paul Andrews—FB



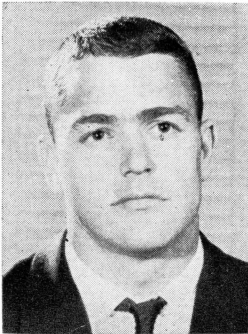
Abner Bigbie—G



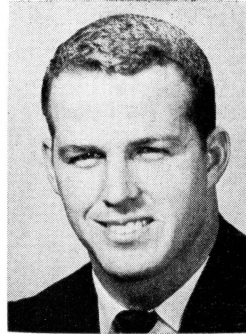
Roy Bickford—QB



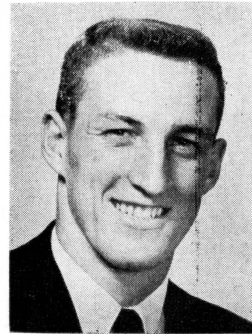
Bill Brown—C



Jim Calhoon—FB



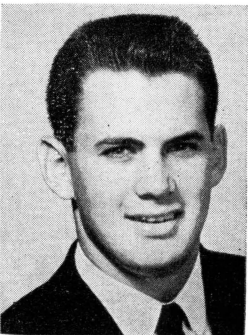
Ken Cone—HB



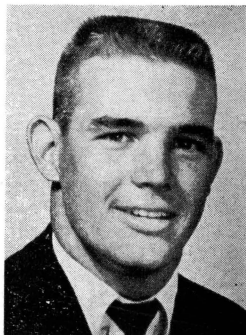
Jim Daniel—E



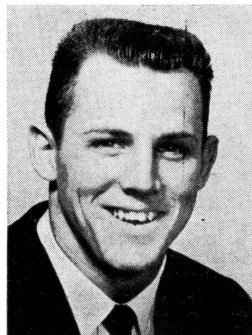
Frank DeFrancesco—



Don Donatelli—T



Jack Espenship—FB



Fred Grimes—E

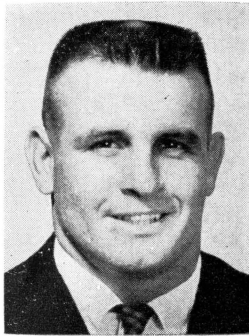


Jack Hardy—

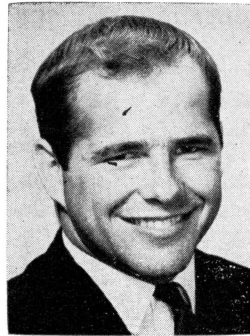
# PLAYERS



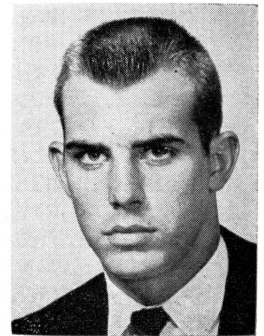
Ron Hinson—HB



Jim Hooks—HB



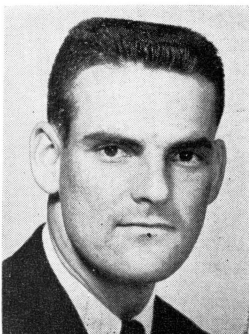
Ken Kestner—G



Steve Klesius—T



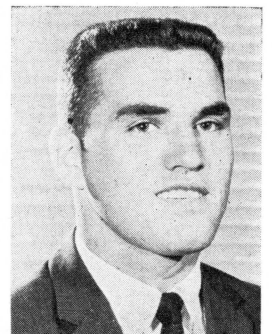
Ray Lamb—G



Gene McCormick—QB



Joe Majors—QB



Terry Moran—G



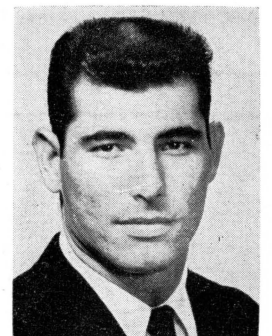
Fred Pickard—HB



Don Sellers—C



Ramon Rogers—C



Tony Romeo—E



# FLORIDA STATE UNIVERSITY

## 1959 FOOTBALL ROSTER

NO.	NAME	POS.	AGE	HT.	WT.	YR.	HOMETOWN
12	*GENE McCORMICK	QB	23	5-9	150	Jr.	Miami
13	**JOE MAJORS	QB	22	6-0	171	Sr.	Huntland, Tenn.
15	ROY BICKFORD	QB	19	5-11	177	So.	Miami
20	WILLIE WHITEHEAD	HB	18	5-10	165	So.	Marianna
21	DON MUSTAIN	HB	19	6-0	168	Jr.	Miami, Okla.
24	KEN CONE	HB	20	6-1	180	Jr.	Lakeland
26	*BUD WHITEHEAD	HB	20	5-11	178	Jr.	Marianna
27	*JACK ESPENSHIP	FB	20	6-3	195	Jr.	Lake City
29	*RON HINSON	HB	21	6-0	191	Jr.	Waycross, Ga.
41	DENNY SCHOU	HB	20	5-9	180	So.	Fort Lauderdale
42	PAUL ANDREWS	FB	18	5-10	186	So.	Greenville
43	**FRED PICKARD	HB	21	5-9	165	Sr.	Columbia, Tenn.
44	JIM CALHOON	FB	25	6-1	188	Jr.	Winslow, Ariz.
50	*BILL BROWN	C	24	6-0	215	Sr.	Orlando
51	JIM WORTHINGTON	C	21	6-2	198	So.	Oak Ridge, Tenn.
53	*RAMON ROGERS	C	21	5-11	187	Sr.	Pensacola
54	*JACK HARDY	C	20	5-10	192	Jr.	Miami
60	FRANK DEFRANCESCO	G	19	5-10	200	So.	Miami
61	BILL TYRE	G	19	6-1	198	So.	Sanford
62	**AL ULMER	G	20	5-10	178	Sr.	Clearwater
63	*TERRY MORAN	G	19	5-9	186	Jr.	New Orleans, La.
64	*RAY LAMB	G	21	6-0	180	Jr.	Atlanta, Ga.
66	*KEN KESTNER	G	21	5-10	190	Jr.	Cleveland, O.
70	BOB MORROW	T	23	5-10	194	So.	Miami
71	*BOB SWOSZOWSKI	T	19	6-3	196	Jr.	Orlando
73	STEVE KLESIUS	T	18	6-1	210	So.	St. Petersburg
75	DON DONATELLI	T	18	6-2	210	So.	Pittsburgh, Pa.
77	**JOHN SPIVEY	T	22	6-2	208	Sr.	Panama City
78	JOE VERBINSKI	T	21	6-1	210	So.	Willow Grove, Pa.
80	*TONY ROMEO	E	21	6-1	200	Jr.	Tampa
82	JOHN SLATON	E	20	6-1	188	So.	Miami
83	DON SELLERS	E	25	6-2	198	Jr.	Barberton, O.
84	GEORGE EHLERS	E	21	6-2	190	Jr.	Moss Point, Miss.
85	FRED GRIMES	E	19	6-1	184	So.	Hialeah
86	JIM DANIEL	E	20	6-4	185	So.	Atlanta, Ga.
87	*ABNER BIGBIE	E	21	5-10	185	Jr.	West Palm Beach
88	**JIM HOOKS	E	24	5-8	175	Sr.	West Palm Beach
89	JIM ALVAREZ	E	20	6-1	195	Jr.	Jacksonville



1818 W. Tennessee

Howdy Podner . . . Me and the boys jest want to not  
 everbody that we are serven them Notorious and Dillicious charco  
 broiled Steerbrugers and Steak Samwiches at our hantsome new Drive  
 Resterant, jest 2 passes & a fumball offen the campus on West Tenn  
 see where Call St. comes in.

Yours truly,  
 OLE TEX.

OWNED AND OPERATED BY FRANK AND JAMES CHASE

# *Skyline Restaurant & Skyline Motor Lodge*

1 Miles West of City Limits

U. S. Highways 90 and 20

TALLAHASSEE, FLORIDA

*"Serving Good Food for Fine People"*



## **MIDYETTE-MOOR Insurance Agency**

*"Ask Those We Serve"*

**Complete Insurance and Bond Service**

**PHONE 2-3456**

**MIDYETTE-MOORE BUILDING  
TALLAHASSEE, FLORIDA**

—SAYS—

**SCALP 'EM SEMINOLES!**



**PAYNE H. MIDYETTE  
FRANK D. MOOR  
EDWIN M. CLARK  
A. WINSLOW SULLIVAN  
ROBERT M. DICKINSON  
PAUL L. LEWIS  
PAYNE H. MIDYETTE, JR.  
WILLIAM L. MOOR  
GLENN SEARS  
FRANK KOUBA  
REX SIKES  
ROY SOLOMON  
BOB LEE**



**TALLAHASSEE  
AUTOMOBILE  
DEALERS  
ASSOCIATION**

**Alford Chevrolet Co.**

**Capital Lincoln-Mercury, Inc.**

**Carr Buick**

**Dean Motors**

**Drake Motors**

**Mayo-Mingledorff Motors, Inc.**

**John Manthey, Inc.**

**Proctor & Proctor**

**Capital Plymouth, Inc.**

**Tallahassee Motors, Inc.**

**Collins Motors, Inc.**

**Sports Car Center**

---

**THE LAUNDROMATS**

115 W. Tennessee — 1005 N. Monroe

Phone 3-1789

Phone 2-37

**CLOTHES — RUGS — BLANKETS**

**Washed Clean — Fluff Dried and Folded**

**SHIRT FINISHING**

**DRY CLEANING • TINTEXING**

*"Your Satisfaction Is Our Goal"*

---

**Scalp 'em Seminoles!**

**BROWN'S MEN'S WEAR**

**MONROE AT PARK**

---

**F & T RESTAURANT**

**For Good Food and Quick Service**

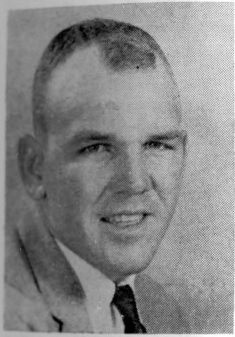
113 S. Monroe

Phone 2-8

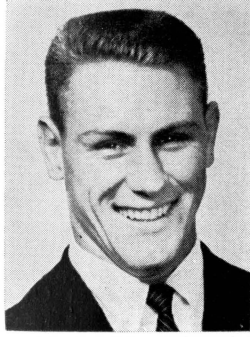
***Air Conditioned***

---

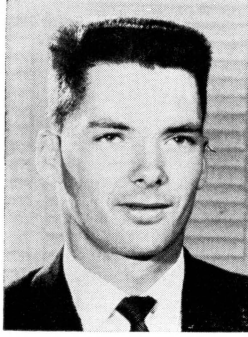
# FSU PLAYERS



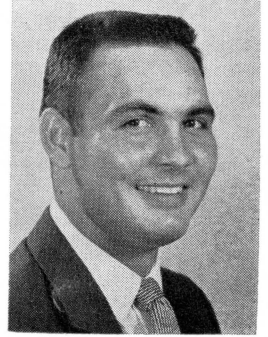
Bob Morrow—T



Denny Schou—HB



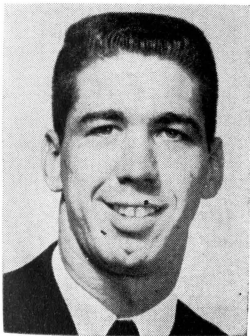
John Slaton—E



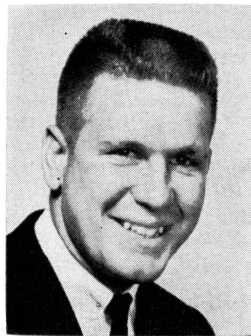
Jim Alvarez—E



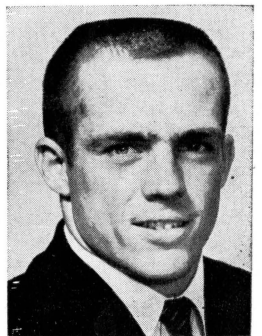
John Spivey—T



Bob Swoszowski—T



Bill Tyre—E



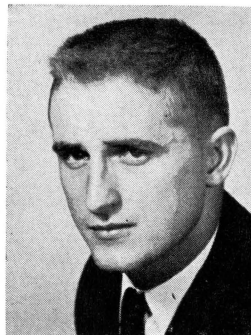
Al Ulmer—G



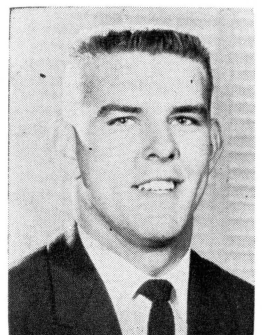
Joe Verbinski—T



Bud Whitehead—HB

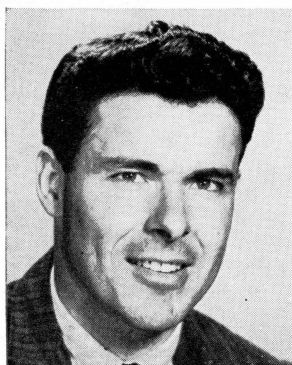


Willie Whitehead—HB

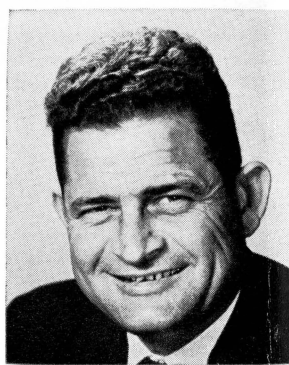


Jim Worthington—C

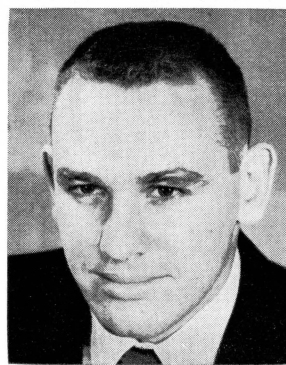




COATTA



FLOWERS



GIBSON



HARBISON

# THE FSU COACHING STAFF

**DICK FLOWERS**, a native of Mobile, Ala., is in his first season as one of Coach Perry Moss's right-hand men. A graduate of Alabama, where he was a first-team tackle from 1945-48, Flowers played in the 1945 Rose Bowl and 1947 Sugar Bowl games.

Flowers was an assistant coach at Alabama in 1949-50 and at LSU in 1951-52. He coached one year at Live Oak, Fla., High School (1953) and was out of coaching in 1954 before taking over as head coach and athletic director at Gainesville, Fla., High School.

**BOB HARBISON**, in terms of longevity, is the real veteran of the Seminole coaching staff. Harbison is in his 12th full season. In his playing days, Bob was an outstanding guard for the late Bo McMillin at Indiana University from 1945-47. A native of Evansville, Ind., Harbison came to Florida State in 1948. He is credited with developing Little All-Americans Bill Dawkins in 1951 and former Seminole coach Hugh Adams, in 1949.

**JOHN COATTA**, one of the sharpest passing quarterbacks in Big Ten history, came to Florida State this year from Wisconsin. He had been an assistant coach with the Badgers for the past four years. A native of Dearborn, Mich., Coatta was a passing whiz for Coach Ivy Williamson at Wisconsin from 1949-51. In 1950, John set an all-time Big Ten pass completion record with a percentage of .642. He was named to the All-Big Ten and All Mid-West honor teams following the 1951 season.

**DON JAMES** has packed a lot of football experience into his 26 years. The Massillon, O. native came to Florida State this year from Southwest High School in Miami where he was backfield coach for the past two years. Don was an outstanding high school quarterback at Massillon, O. He played quarterback for the University of Miami, lettering in 1952 and 1953.

**KENNETH SHIPP**, erstwhile halfback standout at Middle Tennessee State, came to Florida State this year on two campaigns as backfield coach at Trinity University. Shipp grew up at Murfreesboro, Tenn., and attended Baylor Prep School at Chattanooga, Tenn. From 1946-48, Ken was at Middle Tennessee State. In 1950, Shipp was assistant coach at Gallatin, Tenn., High School. From 1951 to 1953, he was head coach at Fayetteville, Tenn. High School, then returned to his alma mater as backfield coach from 1954-56.

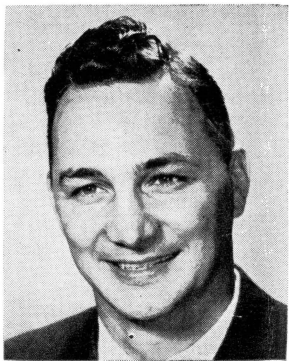
**BUBBA MCGOWAN** has the distinction of being the first person to have coached football at both the University of Florida and Florida State University. A former left halfback at Florida, McGowan was Florida's freshman backfield coach in 1952. The Dothan, Ala. native in 1953-54 was coach at Fort Jackson, S. C. More recently, McGowan has been track coach and football assistant to fellow coach Dick Flowers at Gainesville High School.

**VINCE GIBSON**, one of the toughest guards in Florida State's relatively brief football background, will assist Coach LaPradd with the freshman team this year. Following graduation from Florida State in 1955, Vince became coach and basketball and track coach at South Georgia College. The Birmingham, Ala. native produced some outstanding results during the past three seasons at South Georgia.

**CHARLIE LAPRADD**, All-America tackle at the University of Florida, is the second oldest FSU coaching member—in terms of service. A native of St. Augustine, Charlie was graduated from Florida in 1953 before serving in the Air Force. He was a graduate assistant at Florida State in 1956 and became a full member of the staff in 1957. A keen student, LaPradd will be head coach of the freshman team this season while working toward his doctorate degree.



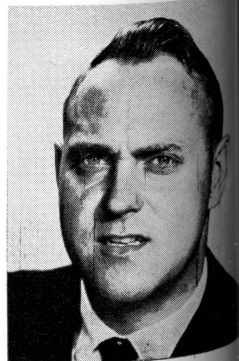
JAMES



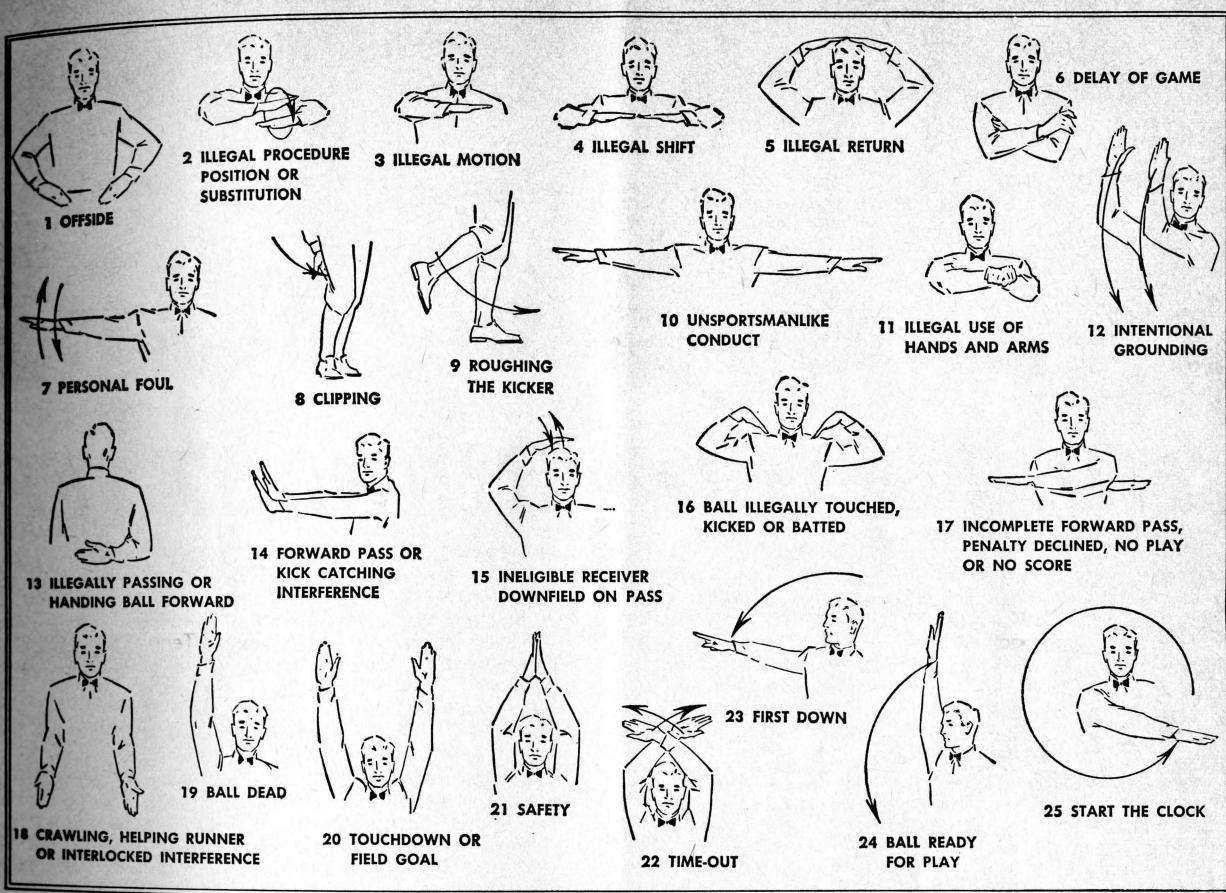
LaPRADD



McGOWAN



SHIPP



*for comfort while in the Capital City  
and convenience to the FSU Campus...*

CHECK IN FOR FINE HOSPITALITY

at Tallahassee's Newest

*The Lafayette Motel*

825 WEST TENNESSEE

and One of the Finest

*The Ponce De Leon Motel*

1801 WEST TENNESSEE



They said it couldn't be done...

They said nobody could do it...



but **L&M** is



**L**ov  
in tar



## FLORIDA STATE

### PROBABLE STARTING LINEUP

No.	Name	Pos.
86	JIM DANIEL	LE
73	STEVE KLESIOUS	LT
62	AL ULMER	LG
53	RAMON ROGERS	C
63	TERRY MORAN	RG
77	JOHN SPIVEY	RT
85	FRED GRIMES	RE
13	JOE MAJORS	QB
26	BUD WHITEHEAD	LH
43	FRED PICKARD	RH
27	JACK ESPENSHIP	FB

### THE FLORIDA STATE SQUAD

12 McCormick, b	50 Brown, c	75 Donatelli, b
13 Majors, b	51 Worthington, c	77 Spivey, t
15 Bickford, b	53 Rogers, c	78 Verbinski, b
20 W. Whitehead, b	54 Hardy, c	80 Romeo, e
21 Mustain, b	60 DeFrancesco, g	82 Slaton, e
24 Cone, b	61 Tyre, g	83 Sellers, e
26 B. Whitehead, b	62 Ulmer, g	84 Ehlers, e
27 Espenship, b	63 Moran, g	85 Grimes, e
29 Hinson, b	64 Lamb, g	86 Daniel, e
41 Schou, b	66 Kestner, g	87 Bigbie, e
42 Andrews, b	70 Morrow, t	88 Hooks, e
43 Pickard, b	71 Swoszowski, t	89 Alvarez, e
44 Calhoon, b	73 Klesius, t	

**L&M**...**KINDEST TO YOUR TASTE!**





with  
**More**  
taste to it



## THE CITADEL

### PROBABLE STARTING LINEUP

No.	Name	Pos.
84	TOM HEMINGWAY	LE
74	JIM GULLIFORD	LT
62	BILL JOHNSON	LG
51	GEORGE GARRISON	C
69	ED HARRINGTON	RG
77	WAYNE STEWART	RT
86	PAUL MAGUIRE	RE
11	JERRY NETTLES	QB
21	BOB DAUGHERTY	LH
23	BILL HUGHES	RH
35	BARRY THOMAS	FB

### THE CITADEL SQUAD

44 Edwards, b	74 Gulliford, t
51 Garrison, c	75 Whelchel, t
54 Rakowski, c	76 Wunderler, t
60 Fred Hearn, g	77 Stewart, t
61 Aubrey Reeves, g	79 Baldwin, t
62 Johnson, g	80 Layton, e
63 Cook, c	82 Gilgo, e
65, Reiney, g	84 Hemingway, e
68 Spellman, g	85 Allen, e
69 Harrington, g	86 Maguire, e
70 Coury, t	87 Mura, e
71 Brines, t	88 Baldwin, e
72 Davis, t	89 Alexander, e
73 Davidson, t	

**L&M**...KINDEST TO YOUR TASTE!

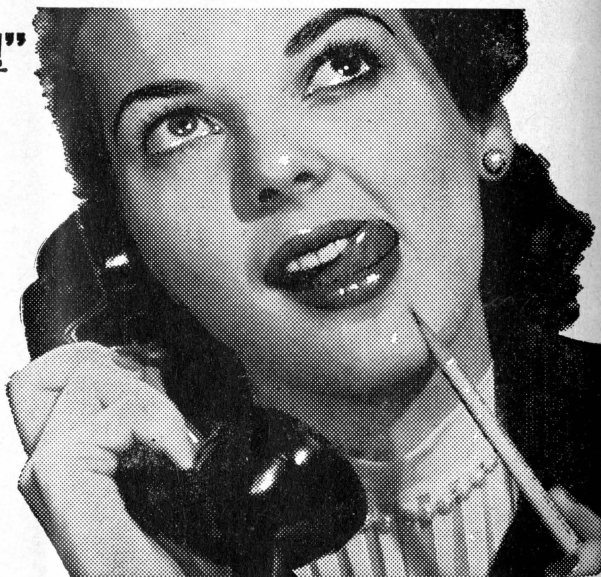


# PENALTIES

1. **OFFSIDE** by either team; Violation of scrimmage or free kick formation; Encroachment on neutral zone—Loss of Five Yards.
2. **ILLEGAL PROCEDURE, POSITION OR SUBSTITUTION**—Putting ball in play before Referee signals "Ready-for-play"; Failure to complete substitution before play starts; Player out of bounds when scrimmage begins; Failure to maintain proper alignment of offensive team when ball is snapped; False start or simulating start of a play; Taking more than two steps after Fair Catch is made; Player on line receiving snap—Loss of Five Yards.
3. **ILLEGAL MOTION**—Offensive player illegally in motion when ball is snapped—Loss of Five Yards.
4. **ILLEGAL SHIFT**—Failure to stop one full second following shift—Loss of Fifteen Yards.
5. **ILLEGAL RETURN** of substitute not previously disqualified—Loss of Fifteen Yards.
6. **ILLEGAL DELAY OF GAME**; Taking more than four times out during either half (except for replacement of injured player)—Loss of Five Yards. Team not ready to play at start of either half—Loss of Fifteen Yards.
7. **PERSONAL FOUL** — Tackling or blocking defensive player who has made fair catch; Piling on; Hurdling; Grasping face mask of opponent; Tackling player out of bounds, or running into player obviously out of play; Striking an opponent with fist, forearm, elbow or locked hands; Kicking or kneeing—Loss of Fifteen Yards (Flagrant offenders will be disqualified.)
8. **CLIPPING**—Loss of Fifteen Yards.
9. **ROUGHING THE KICKER** or holder—Loss of Fifteen Yards.
10. **UNSPORTSMANLIKE CONDUCT**—Violation of rules during intermission; Illegal return of suspended player; Coaching from sidelines; Invalid signal for Fair Catch; Persons illegally on field—Loss of Fifteen Yards. (Flagrant offenders will be disqualified.)
11. **ILLEGAL USE OF HANDS AND ARMS** by offensive or defensive player; Defensive holding—Loss of Fifteen Yards.
12. **INTENTIONAL GROUNDING** of forward pass—Loss of Five Yards Plus Loss of Down.
13. **ILLEGALLY PASSING OR HANDING BALL FORWARD**—Loss of Five Yards Plus Loss of Down.
14. **FORWARD PASS OR KICK CATCHING INTERFERENCE**—Interference with opportunity of player of receiving team to catch a kick—Loss of Fifteen Yards. Interference by member of offensive team with defensive player making pass interception—Loss of Fifteen Yards Plus Loss of Down. Interference by defensive team on forward pass—Passing Team's Ball at Spot of Foul and First Down.
15. **INELIGIBLE RECEIVER DOWN-FIELD ON PASS**—Loss of Fifteen Yards.
16. **BALL ILLEGALLY TOUCHED, KICKED OR BATTED**—Forward pass being touched by ineligible receiver beyond the line of scrimmage—Loss of Fifteen Yards from Spot of Preceding Down and Loss of a Down. Eligible pass receiver who goes out of bounds and later touches a forward pass—Loss of Down. Illegal touching of kicked ball within opponent's ten yard line—Touchback.
17. **PENALTY DECLINED**; Incomplete forward pass; No play or no score.
18. **CRAWLING** by runner—Loss of Five Yards. Interlocked Interference—Loss of Fifteen Yards.

**".....it's a date!"**

**MORRISON'S**  
*Food Service*







## HAV-A-TAMPA JEWEL

The s-m-o-o-t-h  
cigar with the  
built-in mouthpiece

ALL NATURAL-LEAF  
FINE TOBACCO . . .  
TOPS IN TASTE AND  
SMOKING PLEASURE

*Ask for the  
Brand Name*

HAV-A-TAMP/  
CIGAR

Distributed by **Eli Witt Tobacco & Candy Co.**  
Tallahassee, Florida

## D. T. O'HARA, JR.

PRODUCE • POULTRY • FROZEN FOODS

**PHONE 2-2128**

717 W. Gaines St.

TALLAHASSEE, FLORIDA

## BILL'S BOOK STORE

BOOKS

SUPPLIES

SUNDRIES

PRIVATELY OWNED AND OPERATED

## S H A W ' S

Furnishings for Your Home

COLLEGE AVE. at DUVAL ST.

*"Good Taste Costs No More"*

## Gilberg's

*The House of 1000 Fabrics*

Featuring Home Decorator Service  
Custom Made Draperies And Slip Covers

Fashion Fabrics From The World's  
Foremost Mills

Stores In:

TALLAHASSEE

PENSACOLA

PANAMA CITY

GAINESVILLE

LAKELAND

CLEARWATER

ALBANY, GA.

# The Vogue

TALLAHASSEE, FLORIDA

## BRINKLEY BROS.

HOMER A. BRINKLEY

ROBERT T. BRINKLEY

REALTORS • INSURANCE

CARL BRINKLEY, Mgr. Insurance Dept.

MORTGAGE LOANS

*"A Brinkley Buy Is a Better Buy"*

BRINKLEY BLDG. — 306 N. MONROE ST.

TELEPHONE 3-0918

## 1959-60 FLORIDA STATE BASKETBALL SCHEDULE

DATE	OPPONENT	SITE
Dec. 1	L. S. U.	Baton Rouge
Dec. 2	Loyola	New Orleans
Dec. 5	Florida	Gainesville
Dec. 12	Auburn	Auburn
Dec. 14	Alabama	Tuscaloosa
Dec. 18	Clemson	Clemson
Dec. 28	Auburn	Tallahassee
Dec. 29-30	GATOR BOWL TOURNAMENT	Jacksonville
Jan. 4	South Carolina	Tallahassee
Jan. 5	Citadel	Tallahassee
Jan. 7	Centenary	Tallahassee
Jan. 9	Mississippi Southern	Hattiesburg
Jan. 11	Memphis State	Memphis
Jan. 14	Tampa	Tallahassee
Jan. 16	Miami	Tallahassee
Jan. 30	Moorehead	Tallahassee
Feb. 1	Tampa	Tampa
Feb. 9	Memphis State	Tallahassee
Feb. 11	Rollins	Tallahassee
Feb. 13	Furman	Greenville
Feb. 15	Citadel	Charleston
Feb. 22	Loyola	Tallahassee
Feb. 27	Miami	Miami
Feb. 29	Georgia	Tallahassee

GET YOUR TICKETS EARLY!

## "MISS FSU FOOTBALL"



**LINDA GORMLEY**  
Tallahassee

Linda Gormley, 19-year-old Florida State University sophomore from Tallahassee, was named "Miss FSU Football" for 1959 at halftime ceremonies of the Seminoles' annual Garnet and Gold intrasquad game last spring. She was crowned by 1959 Seminole co-captains John Spivey and Al Ulmer. A Seminole cheerleader and a former girl's state high school and junior Olympic diving champion, Miss Gormley was sponsored by the Kappa Alpha Theta sorority. Twenty-one Florida State coeds competed in a student election for the title of "Miss FSU Football." Making up the "Miss FSU Football" court are Carolyn Ann Reeves, Panama City sophomore; Willou Copeland, junior from Brunswick, Ga.; Barbara Nichols, Coral Gables sophomore; Karen Ekman, Fort Lauderdale sophomore, and June Vaughn, sophomore from Tampa.



## FAIVER'S For Chicken Pizza Pie

• Half-Fry Chicken  
Italian Foods

• While in Tallahassee  
visit our Italian Room

1312 WEST TENNESSEE STREET  
TALLAHASSEE, FLORIDA



**SOUTHERNAIRE**

**MOTEL**

Mr. and Mrs. Al. Alligood  
Mgrs.

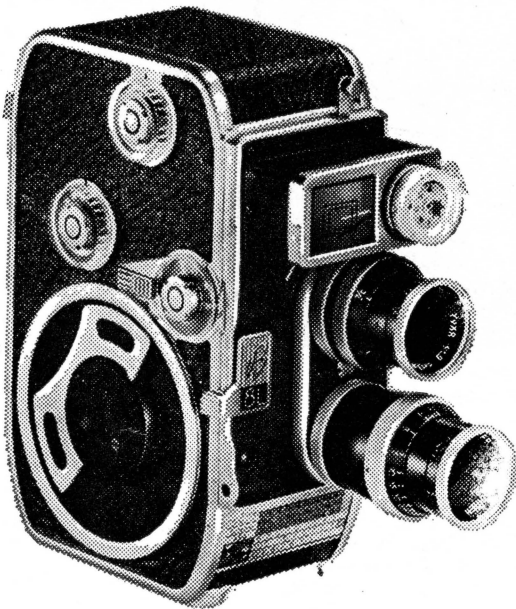
Across from F.S.U. • Adjacent to 3 Restaurants • T.V.  
Air Conditioned • Room Phones • Swimming Pool  
Phone 3-4710 • US 90 West • Tallahassee, Fla.  
100 Air Conditioned Rooms • Central Heat

## Learn to Fly at SEMINOLE FLYING SERVICE

Municipal Airport  
Tallahassee, Fla.

Rides, Instruction, Charter  
Rental, Aerial Photography

Buy The New CESSNA  
Leave Your Competition Behind  
Look Up - A New CESSNA  
May Be Overhead



North Florida's Most Complete  
Camera Store

123 N. MONROE

"Across from the Florida Theatre"

For All Your Photographic Needs

TALLAHASSEE

## CAMERA CENTER



Let us help you improve  
your pictures . . . stop in today

# THE CITADEL

## 1959 FOOTBALL ROSTER

NO.	NAME	POS.	HT.	WT.	YR.	HOMETOWN
11	JERRY NETTLES	QB	6-1	170	Jr.	Summerville, S.
14	JACK GRIFFIN	QB	6-2	205	Sr.	Hamburg, N.Y.C.
17	BILL WHALEY	QB	6-0	180	So.	Clearwater, S. C.
19	BUCKY SHARPE	QB	6-1	190	So.	Florence, S. C.
21	BOB DAUGHERTY	HB	5-11	180	Sr.	Chicago, Ill.
22	JOHN CLANCY	HB	5-10	175	So.	Savannah, Ga.
23	BILL HUGHES	HB	5-10	175	Sr.	Greenwood, S. C.
30	BELTON DYKES	FB	6-1	195	So.	Savannah, Ga.
31	MARSHALL McREE	FB	5-10	190	Jr.	Newton, N. C.
33	MIKE GAMBRELL	HB	6-0	190	Jr.	Great Falls, S. C.
35	BARRY THOMAS	FB	6-1	220	Sr.	Sellersville, PA.
38	HAL CHAPMAN	FB	6-2	190	So.	Orlando, Fla.
41	BOB CROUCH	HB	5-11	175	So.	Salisbury, N. C.
43	EARLEY EASTBURN	HB	6-0	180	So.	Mobile, Ala.
44	TOMMY EDWARDS	HB	5-10	170	So.	Ayden, N. C.
51	GEORGE GARRISON	C	6-1	195	Jr.	Anderson, S. C.
54	HARRY RAKOWSKI	C	6-3	225	Jr.	Gwynedd, Pa.
60	FRED HEARN	G	5-8	195	So.	St. Augustine, Fla.
61	AUBREY REEVES	G	6-1	190	So.	Cherokee, Ga.
62	BILL JOHNSON	G	6-1	210	Jr.	New Castle, Del.
63	GIBSON COOK	C	6-0	200	So.	N. Augusta, S. C.
65	JIM REINEY	G	5-11	190	So.	Charlotte, N. C.
68	DON SPELLMAN	G	5-10	190	Jr.	Jacksonville, Fla.
69	ED HARRINGTON	G	6-1	205	So.	Gaffney, S. C.
70	DAN COURY	T	6-3	225	So.	Pittsburgh, Pa.
71	DOUG BRINES	T	6-2	210	So.	Concord, N. C.
72	JOE DAVIS	T	6-7	235	Sr.	Fort Meade, Fla.
73	PETE DAVIDSON	T	6-4	225	Sr.	Dayton, O.
74	JIM GULLIFORD	T	6-3	220	Sr.	Gary, Ind.
75	JOHN WHELCHER	T	6-1	195	So.	Statesboro, Ga.
76	CARL WUNDERLER	T	6-2	215	Sr.	Northampton, Pa.
77	WAYNE STEWART	T	6-2	230	Sr.	Alexandria, Va.
79	BOB BALDWIN	T	6-4	225	Sr.	Rahway, N. J.
80	KEITH LAYTON	E	6-2	180	So.	Kings Mts., N. C.
82	BILL GILGO	E	6-0	190	Jr.	Washington, N. C.
84	TOM HEMINGWAY	E	6-1	185	Jr.	29 Palms, Calif.
85	BILL ALLEN	E	6-2	180	So.	Salisbury, N. C.
86	PAUL MAGUIRE	E	6-1	195	Sr.	Youngstown, O.
87	HENRY MURA	E	6-0	175	So.	Augusta, Ga.
88	BOB BALDWIN	E	6-4	220	Sr.	Rahway, N. J.
89	JIM ALEXANDER	E	6-1	205	Jr.	Charlotte, N. C.

### Two Twelve South Monroe The Big Bend's Sportswear Center

#### For Style-Conscious Men

McGregor Sportswear  
Society Brand and Campus Togs  
Suits and Sport Coats  
Florsheim and Jarman Shoes  
Manhattan and Arrow  
Furnishings

## ALFORD BROTHERS

#### For Sports-Conscious Women

Lady Manhattan Shirts and  
Co-ordinates  
Koret of California Co-ordinates  
Darlene Sweaters  
Junior Miss Sports Dresses and  
Co-ordinates

## CASUAL AIRE

# STUDENT SAVING CENTER

- School Supplies
- Pennants and Novelties
- Gifts
- Art Supplies
- Greeting Cards
- Stationery
- Drafting Equipment
- Pen Repair Service
- Sundries
- Camera Supplies & Developing Service

We Buy and Sell Books

NEW and USED

## UNIVERSITY BOOKSTORE

Owned and operated by Florida State University

In the Student Center

*We're  
Backing  
the Seminoles!*



## QUAKER HOUSE RESTAURANT

*Dining Room  
and Curb Service*

## QUALITY CLEANERS

Two Plants To Serve You

Downtown

215 W. COLLEGE AVE. — DIAL 2-5097

Opposite Jitney Jungle

1306 N. MONROE — DIAL 2-1651

ONE DAY SERVICE

**PICK-UP and DELIVERY**

**Quality Laundry Service**

EXPERT TAILORING and ALTERATIONS

ZIPPER REPAIRED



# SEMINOLE SONGS AND CHEERS

## 1. Beat, Florida State

Beat ..... Florida State!  
 Beat ..... (Stomp, Stomp)  
 Beat ..... Beat State!  
 Beat ..... (Stomp, Stomp)  
 Beat ..... Beat State!  
 Beat ..... (Stomping)

## 2. Freshman, Flunky

Freshman, Flunky, Student Scholar  
 All good Seminoles, Stand up and holler.

## 3. Garnet and Gold

Garnet and Gold, Fight, Fight!  
 Garnet and Gold, Fight, Fight!  
 Who fight? We fight!  
 Garnet and Gold, Fight, Fight

## 4. Is Everybody Happy?

CL :Is Everybody happy?  
 Aud: Hell, yes  
 CL :Is anybody downhearted?  
 Aud: Hell, no!  
 CL :Then let's railroad Seminoles  
 and take it slow!  
 ALL: S-E-M-I-N-O-L-E-S  
 (Spell three times)  
 ALL: Seminoles!

## 5. Locomotive

Rah, rah, rah, rah,  
 Go team, go team  
 Rah, rah, rah, rah,  
 Go team, go team  
 Rah, rah, rah, rah,  
 Go team, go team  
 Fight!

## 6. Alma Mater

High o'er the towering pines  
 our voices swell  
 Praising these gothic spires  
 We love so well:  
 Here sons and daughters stand,  
 faithful and true  
 Praising our Alma Mater  
 F. S. U.

## 7. Perry Moss Cheer (We've Got the Coach)

We've got the coach (clap, clap)  
 We've got the team (clap, clap)  
 We've got the pep (clap, clap)  
 We've got the steam (clap, clap)  
 Coach, team, pep, steam.  
 Fifteen rahs for Moss' team.  
 Rah-rah, rah, rah, rah;  
 Rah-rah, rah, rah, rah;  
 Rah-rah, rah, rah, rah.  
 Fight, team!

## 8. Sittin' in a Wigwam

Sittin' in a wigwam  
 Beatin' on a tom-tom  
 Who come?  
 We come.  
 Everybody will come.  
 Scalp 'em, (clap, clap), Scalp 'em  
 (Clap, clap), etc.

## 9. Seminoles

(spell out)  
 S (4 claps) E (4 claps) M (etc.) I (etc.)  
 S (1 clap) E (1 clap) M (etc.) I (etc.)

## 10. Go Seminoles

(All hands in the air)  
 Go - - - O Seminoles (clap, clap)  
 Go - - - O Seminoles (clap, clap)  
 Team fight!

## 11. Touchdown Song

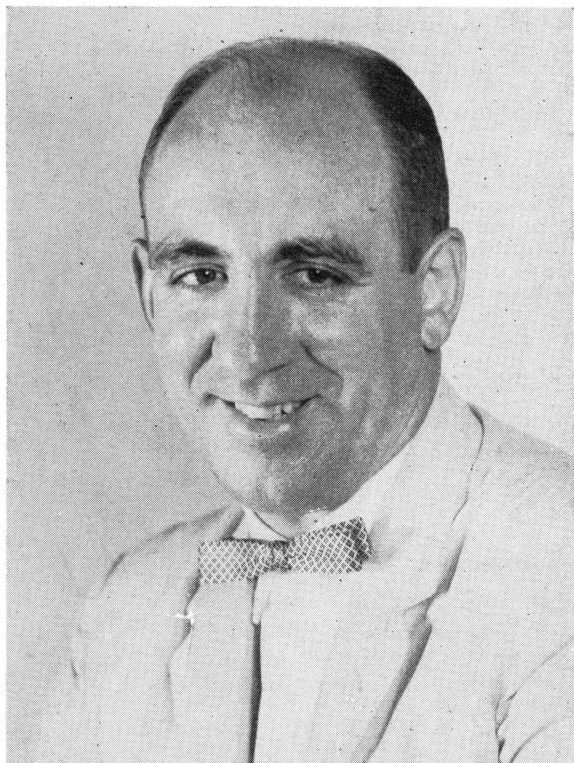
Da dum Yea Team!  
 Da dum Whose Team!  
 Da Dum Our Team!  
 Touchdown, that's the thing  
 We want a touchdown,  
 Hear us sing  
 We want a touchdown  
 Hear us sing  
 We want a great big bruiser, husky and tall,  
 To carry the ball, in no time at all  
 We'll have a touchdown  
 And when it's over  
 You can hear us make some noise!  
 V-i-c-t-o-r-y  
 We want a touchdown, boys!  
 Da da dum Fight! Fight! (seven times)

## 12. Fight Song

We're going to fight, fight fight for FSU  
 You got to scalp 'Um Seminoles,  
 You got to win, win, win, win, that game  
 And roll on down and make those goals.  
 For FSU is on the warpath now,  
 And at the battle's end, she's great  
 So fight, fight, fight, fight to victory  
 Our Seminoles from Florida State.  
 F-L-O-R-I-D-A S-T-A-T-E  
 Florida State!  
 Florida State!  
 Florida State!

## 13. Hi, Florida

Hi, Florida!  
 Hi, State,  
 Hi, Hi, Florida State!

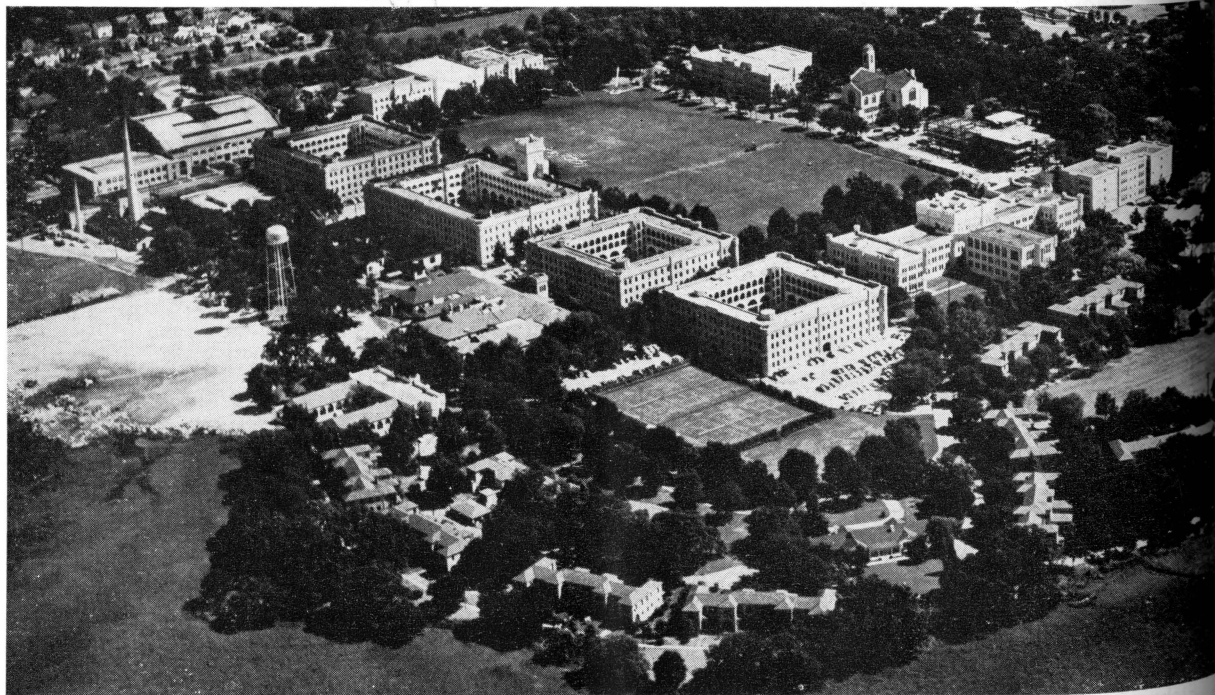


**EDWARD L. TEAGUE**  
Athletic Director



**GENERAL MARK W. CLARK**  
President

# THE CITADEL

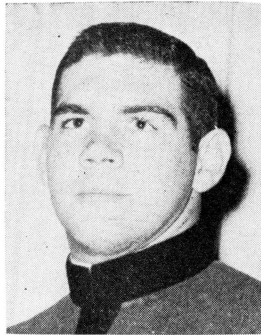


**VIEW OF THE CITADEL CAMPUS**

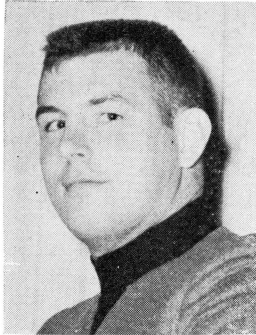
# Citadel Players



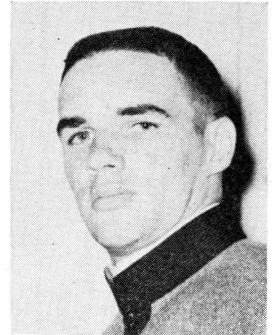
Crouch—HB



Daugherty—HB



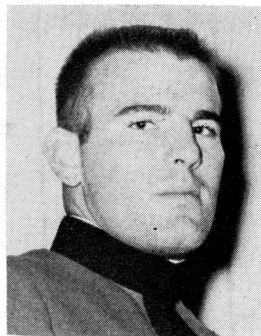
Davidson—T



Eastburn—HB



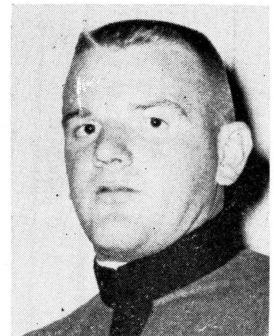
Garrison—C



Gilgo—E



Gulliford—T



Harrington—G



Hemingway—E



Hughes—HB



Johnson—G



Maguire—E



McRee—FB



Nettles—QB



Stewart—T

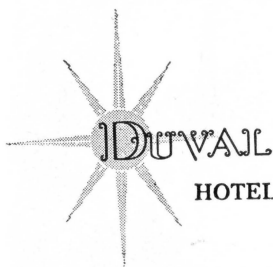


Thomas—FB



TRAVELING  
DESSERT TRAYS

CHARCOAL  
BROILED  
STEAKS



HOTEL • TALLAHASSEE, FLORIDA

*Scalp 'em*

**SEMINOLES**

*Good Luck, Seminoles!*



106 S. Monroe  
"Your Friendly Jeweler"

## BENNETT'S DRUG STORE

- Prescriptions
- Cameras
- Sundries
- Gifts
- Fountain
- Cafe
- Cosmetics
- Drugs

MEET ME AT BENNETT'S

BEFORE AND AFTER THE GAME!

Corner Monroe and College Streets

Phone 2-8980 — 2-4450

*Good Luck  
Seminoles!*

★  
NOBODY...  
BUT NOBODY  
UNDERSELLS.  
★

**SOUTHERN  
ELECTRIC IN**

*Three Fine Stores*

TALLAHASSEE

AND VALDOSTA

# BAY-SEMINOLE NETWORK

Florida State University's football games will be carried over a two-state network for the next three years by Bay Petroleum Company. Entering its seventh year, the network will be known for the first time this season as the Bay-Seminole Network.

The Bay-Seminole Network covers thousands of square miles in Florida and South Georgia. Broadcast of the games are produced by the Galen E. Broyles Company of Denver, Colo.

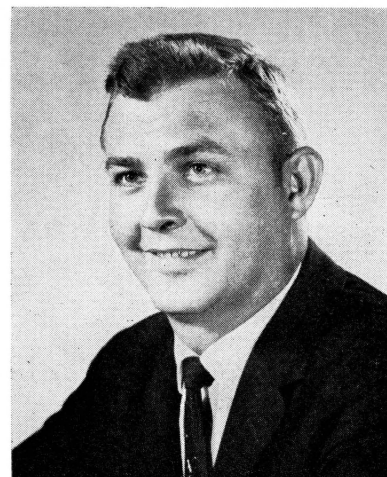
Handling the broadcasts are Charlie Harville, Sports Director of Station WFMY-TV, Greensboro, N. C., and Ken Brown, General Manager of Station WHYS, Ocala. Harville will do the play-by-play and Brown the color commentary.

A native of High Point, N. C., Harville broadcast play-by-play accounts of the University of Virginia games for four years and has done color for the Washington Redskins Network and regional television in the Atlantic Coast Conference area.

Brown is thoroughly familiar with football in Florida. For the past 10 years he has broadcast high school football. More recently, he has done play-by-play for University of Florida freshman games and for the Florida High School All-Star games.



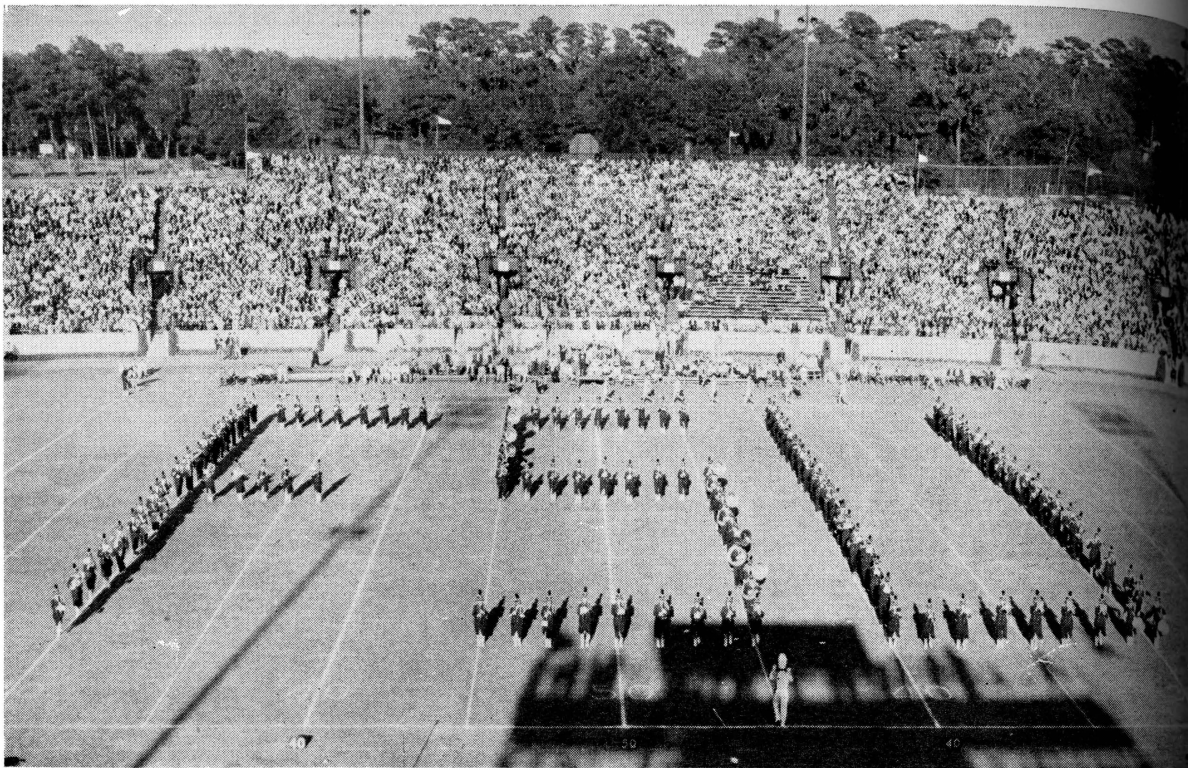
**Charlie Harville**



**Ken Brown**

## THE NETWORK STATIONS

WTAL	Tallahassee	WFLA	Tampa
WPCF	Panama City	WKIS	Orlando
WCNH	Quincy	WMET	Miami Beach
WTYS	Marianna	WSIR	Winter Haven
WJAX	Jacksonville	WPAX	Thomasville, Ga.
WFOY	St. Augustine	WMGA	Moultrie, Ga.
WTMC	Ocala	WVLD	Valdosta, Ga.



## MUSIC AT HALFTIME

SEPTEMBER 26, 1959

### FLORIDA STATE UNIVERSITY MARCHING CHIEFS

Dr. Manley R. Whitcomb, Director

Robert Braunagel, Associate Director

Charles Carter, Arranger

Terry Johnson, Drum Major  
Our Garnet and Gold Girls  
Beverly Calvert in Gold  
Janice Freeman in Garnet

Penny McArthur, Head Manager  
Mary Barnette, Librarian  
Bob Reely, Field Manager  
John Bowen, Prop Manager

### THEME: REPORT ON THE COLD WAR

#### Music

#### Formation

#### Fanfare

"Anything You Can Do I Can Do Better".....

"Rum and Coca-Cola".....

"Coca-Cola Theme".....

"I've Got You Under My Skin".....

"Anchors Aweigh".....

"Deep in the Heart of Texas".....

Tchaikowsky "Piano Concerto".....

(featuring the Garnet and Gold Girls)

#### Rocket Music

"Where! Oh where! Has My Little Dog Gone".....

"Suwannee River".....

FSU Fight Song.....

Coca-Cola Bot

(American soft drink superior)

Hypodermic nee

(Russian medical proce

Atomic Submar

(Americans are scientific, t

(Van Cliburn showed American artist

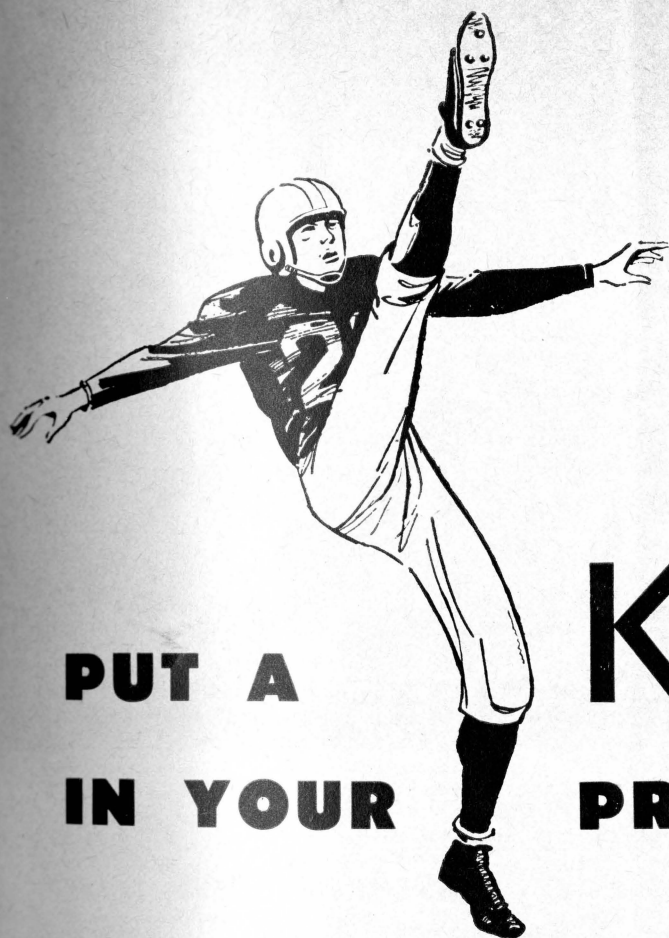
Rocket S

(Those Russians and their satell

Map of Flori

(If Khrushchev just could visit Tallahas





**PUT A  
IN YOUR KICK  
PRINTING!**

The "KICK" we refer to is good design, the right choice of materials and quality workmanship.

With this combination, your printing will do a better job for you, whether it be a sparkling new letterhead, a form for office use, a color brochure advertising your latest product or service or a complete catalog of your entire line.

For a representative that is experienced and trained to put a "KICK" in your printing.

Phone

**ROSE PRINTING COMPANY, INC.**

MIAMI  
Phone PL 4-5475

TALLAHASSEE  
Phone 2-0230

JACKSONVILLE  
Phone EX 8-5768



# Salem's new cigarette paper discovery "air-softens" every puff

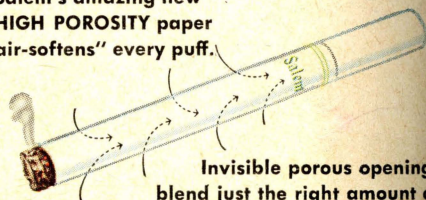
## Now even the paper adds to Salem's Springtime Freshness

An important break-through in Salem's research laboratories now brings you an entirely new kind of cigarette paper — HIGH POROSITY paper — which breathes new freshness into the flavor.

Each puff on a Salem draws just enough fresh air in through the paper to make the smoke taste softer, fresher, more *flavorful* than ever. If you've enjoyed Salem's springtime freshness before, you'll be even more pleased now. Smoke refreshed — smoke Salem!

Created by R. J. Reynolds Tobacco Company

Salem's amazing new  
**HIGH POROSITY** paper  
"air-softens" every puff.



Invisible porous openings  
blend just the right amount of  
air with each puff to give you a  
softer, fresher, even more flavorful smoke.



- menthol fresh
- rich tobacco taste
- modern filter, too

# Salem refreshes your taste