



ARCHIVES  
F. S. U. LIBRARY

# F. S. U. vs Florida

## November 21, 1959

#9

Price 50c





# Copeland

*makes 'em all...*

**GOOD!**



COPELAND SAUSAGE CO., ALACHUA, FLA.

## Pepper Printing Company

ESTABLISHED 1904

*Quality Printing*

BOOKLETS — FOLDERS — BUMPER STRIPS — OFFICE FORMS

Black and White or Color Printing

EAST OF POST OFFICE BUILDING

GAINESVILLE, FLORIDA



Tallahassee

Marianna



# UofF salutes

*The University of Florida  
proudly salutes some of the  
outstanding cities and areas  
in the state of Florida and  
the thousands of alumni who  
live in these communities.*

J. WAYNE REITZ  
PRESIDENT





# TALLAHASSEE

Tallahassee is one of the most progressive cities in the South and is properly called the "fabulous" capital city of the state of Florida.

This fast growing metropolis serves as the hub of state governmental activity.

It claims a population of 45,000 and constant growth.

Tallahassee is small enough to be friendly, yet large enough to provide excellent schools, two well-equipped state universities, civic, cultural, agricultural and recreational facilities.

Thousands of people visit the city each year to take advantage of these opportunities offered.

The picture above is a view of the downtown area of Tallahassee. This is the Capitol Center, the area which houses the various departments of the progressive state government, plus many fine retail stores in the area.

The presence of the state government plays a major role in the economy and activity of this bustling northwest Florida city.



From a log cabin in 1824, Florida's Capitol has grown into the imposing structure of today (right).

The Tallahassee area produces more tung oil (a paint base oil) than any other area within the United States. A scene is pictured below. Killearn Gardens, state park, emphasizes the beauty of the city here showing both natural and feminine charm.

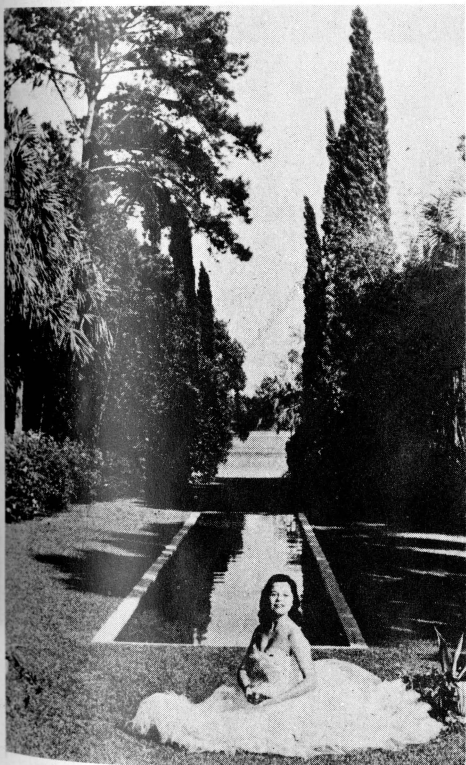


## Southern Charm

Much of the grace and charm of Old South living is present today in Tallahassee.

Tallahassee's way of life is mirrored in these pictures of the city's interesting architecture, the agriculture of the community and the pleasant surroundings in parks and gardens.

As we attend this renewal of the UF-FSU gridiron classic, the vitality of our capital city provides a fitting background for this spirited rivalry.







## Accent on Learning

Over 12,000 students annually enroll in the two state institutions of higher learning in Tallahassee, Florida State University and Florida Agricultural and Mechanical University.

FSU was founded in 1851 and now has 16 schools and colleges serving its student body. It came coeducational in 1947.

An expansion program added many fine new buildings to the thriving FSU campus. An example is the new music building above.

Florida A & M University is one of the leading Negro institutions in the nation. It is fully accredited with a proud tradition of outstanding scholarly accomplishment.

A columned-structure on campus is pictured at left.

Florida A & M has received national acclaim for its show marching band and many times winning of the National Collegiate Negro Football Championship.

Tallahassee is indeed a "college town."

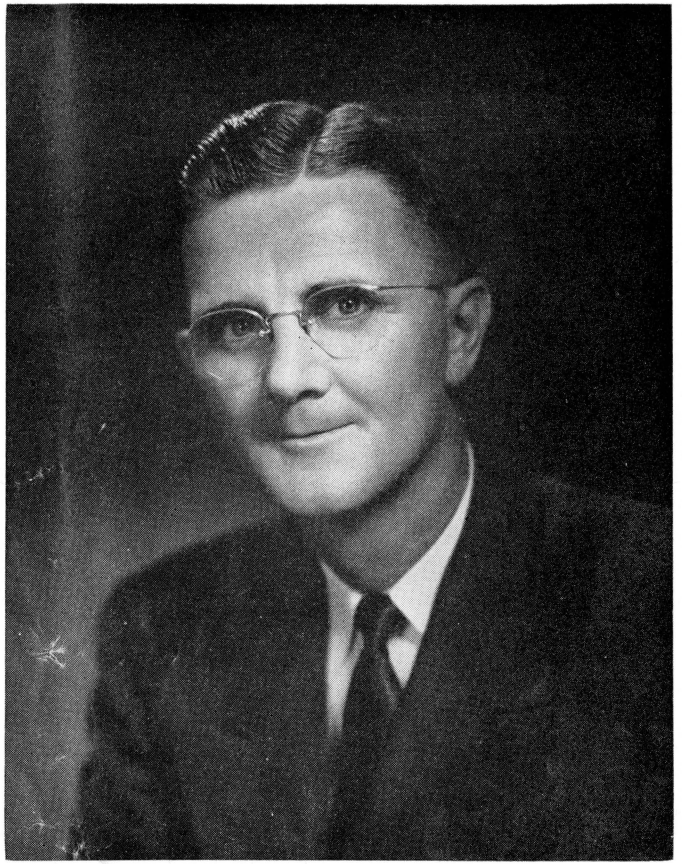


## PRESIDENT J. WAYNE REITZ

Dr. Reitz, a native of Olathe, Kansas, began his work with the University of Florida in 1934. Since that time he has served continuously on the campus with the exception of five years when he was agricultural economics counsel to the United Growers and Shippers Association of Orlando and chief of the citrus fruit division of the production and marketing administration of the U. S. Department of Agriculture.

He did his undergraduate work at Colorado A & M where he was student body president. Dr. Reitz received his Master of Science from the University of Illinois and his Doctor of Philosophy from the University of Wisconsin.

Dr. Reitz is an authority in the field of agricultural economics and has served as Extension Economist at Colorado A & M; Assistant Extension Economist at the University of Illinois; Junior Economist, Farm Credit Administration; Assistant Professor of Agriculture Economics, University of Florida; Provost of Agriculture, University of Florida; and President, University of Florida from 1955.



PRESIDENT J. WAYNE REITZ



COACH BOB WOODRUFF

## GEORGE R. (BOB) WOODRUFF

Since coming to Florida 10 years ago as head football coach and Athletic Director, Bob Woodruff, has brought the Gators from the Southeastern Conference "patsy" to a tough title contender. Woodruff's won-loss record as a head coach ranks him in the top 25 among active major college coaches.

As a player, Woodruff was a standout tackle for Tennessee in the years 1936-37-38. He was assistant coach with the Vols for two years after his graduation and from there he coached at West Point where he helped produce national championship teams in 1944 and 1945. After a year as assistant coach at Georgia Tech, he became head coach at Baylor. At Baylor he brought the Bears into national prominence in three years, his 1949 team winning eight games while losing only two.

In 1950 he accepted his present position at the U. of F. Since that time he has guided the Gators into two bowl games—the first ever in nearly 50 years of football. The Gators won-loss record in the SEC for the past three years leaves them in fourth place among the rugged 12-team conference.



*"It's a pleasure to bank at The Atlantic"*

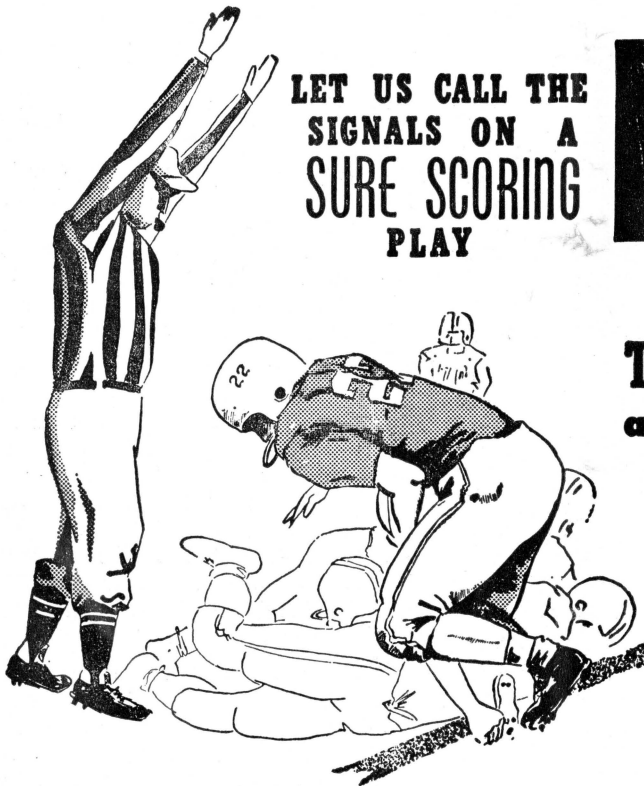
# *The* ATLANTIC

**NATIONAL BANK**  
OF JACKSONVILLE



*Organized 1903*

MEMBER FEDERAL DEPOSIT INSURANCE CORPORATION



**LET US CALL THE  
SIGNALS ON A  
SURE SCORING  
PLAY**

OUR TRAINED AND EXPERIENCED  
TEAM OF AGENTS CAN EXECUTE  
A WINNING LIFE INSURANCE PLAN  
FOR YOU, AND YOUR FAMILY.

**THE INDEPENDENT LIFE  
and Accident Insurance Co.**

**Jacksonville, Florida**

*There is No Substitute  
for Life Insurance*





*Hobe Hooser*



*John Mauer*

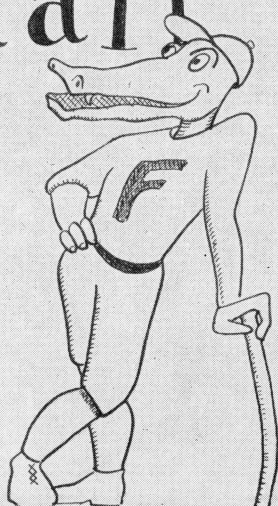


*Harvey Robinson*

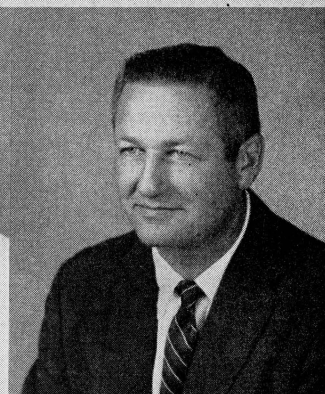


*Hank Foldberg*

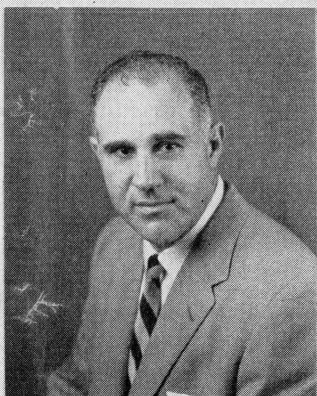
# florida coaching staff



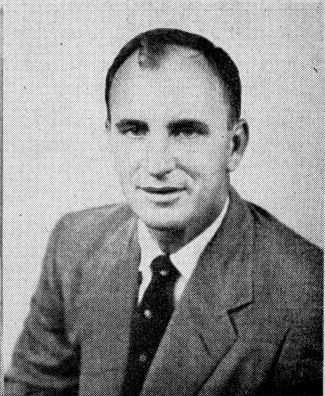
*Dave Fuller*



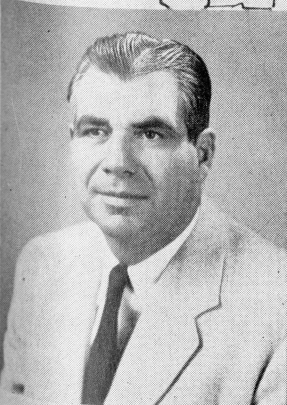
*John Eibner*



*Mac Cara*



*Earl Scarborough*



*Dick Jones*



*Jim Powell*



*Sam Lyle*



*Sam Lankford  
Trainer*

FLORIDA NATIONAL BANK  
of Jacksonville  
FLORIDA NATIONAL BANK &  
TRUST COMPANY at Miami  
FLORIDA NATIONAL BANK  
at St. Petersburg  
FLORIDA NATIONAL BANK  
at Orlando  
FLORIDA NATIONAL BANK  
at Pensacola  
FLORIDA NATIONAL BANK &  
TRUST CO., at West Palm Beach  
FLORIDA NATIONAL BANK  
at Coral Gables  
FLORIDA BANK & TRUST CO.  
at Daytona Beach  
FLORIDA NATIONAL BANK  
at Lakeland  
FLORIDA NATIONAL BANK  
at Key West  
FLORIDA NATIONAL BANK  
at Bartow  
FLORIDA NATIONAL BANK  
at Gainesville  
FLORIDA NATIONAL BANK  
at Ocala  
FLORIDA BANK  
at Fort Pierce

# 28 STRONG BANKS

serving

**ALL**

**Florida**

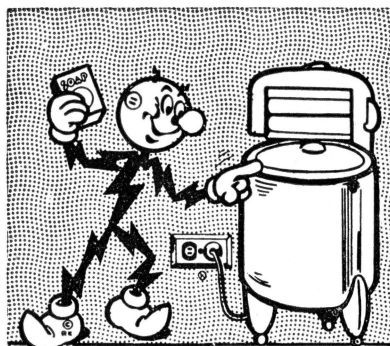
## FLORIDA National Group of Banks

28 Banks in the Florida National Group



FLORIDA NATIONAL BANK  
at Fernandina Beach  
FLORIDA BANK  
at Deland  
FLORIDA NATIONAL BANK  
at Port St. Joe  
FLORIDA DEALERS AND  
GROWERS BANK at Jacksonville  
FLORIDA BANK  
at Starke  
FLORIDA NATIONAL BANK  
at Belle Glade  
FLORIDA BANK  
at Port St. Joe  
FLORIDA BANK  
at Madison  
FLORIDA NATIONAL BANK  
at Arlington  
FLORIDA BANK  
at Chipley  
FLORIDA BANK  
at Bushnell  
FLORIDA NATIONAL BANK  
at Brent  
FLORIDA NATIONAL BANK  
at Vero Beach  
FLORIDA NORTHSIDE BANK  
of Jacksonville

MEMBERS FEDERAL DEPOSIT INSURANCE CORPORATION



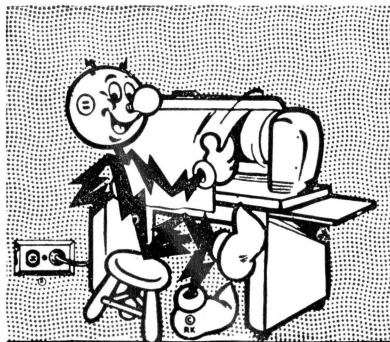
**WASHING**

### THE WINNING TEAM

... and Reddy Kilowatt fills  
every position on the house-  
work team to help you Live  
Better ... Electrically!



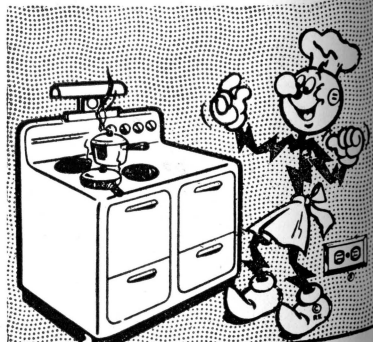
**CLEANING**



**IRONING**

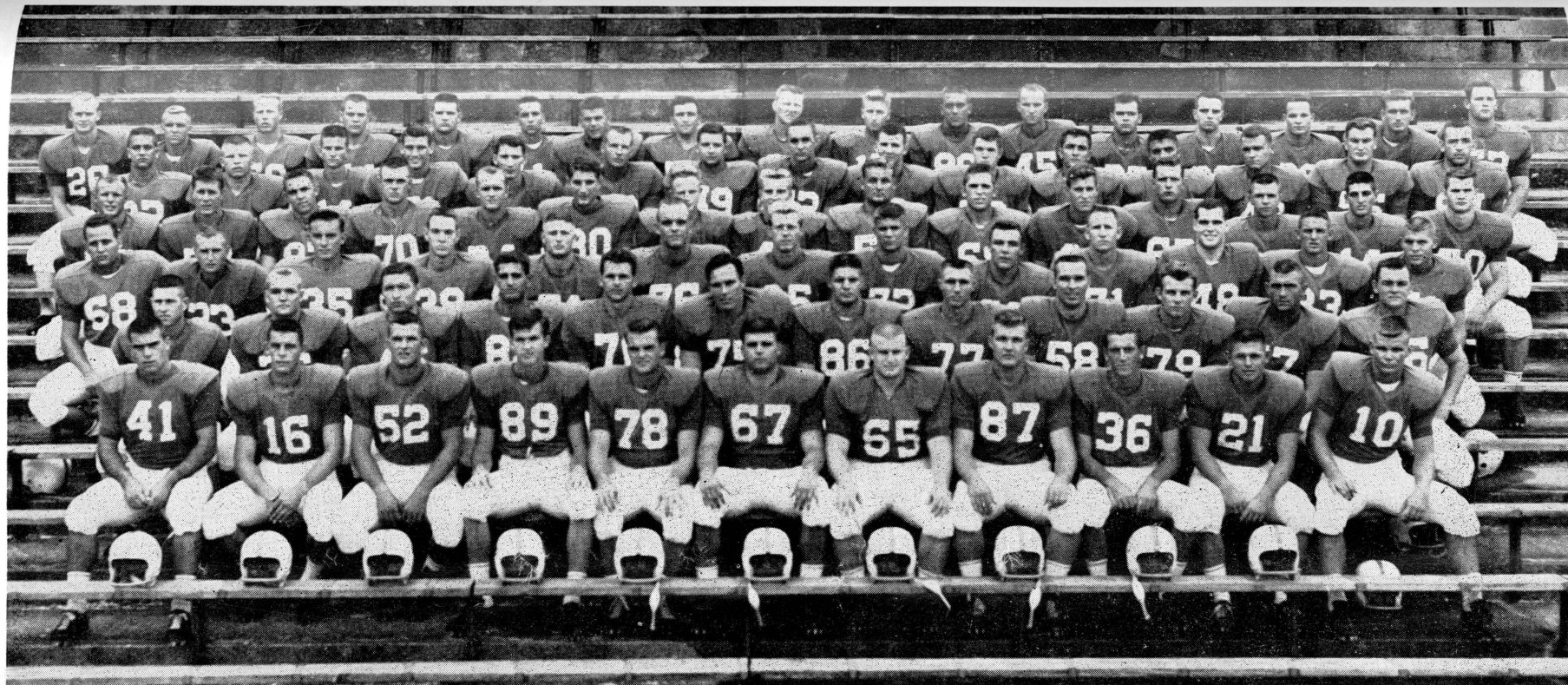
### FLORIDA POWER & LIGHT COMPANY

Helping Build Florida



**COOKING**





### 1959 FIGHTING GATOR FOOTBALL SQUAD

**First Row:** Bob Milby, Wayne Williamson, Bill Hood, Dan Edgington, Dick Brantley, Lawrin Giannamore, Asa Cox, Dave Hudson, Bobby Green, Don Deal, Jack Woodall.

**Second Row:** Doug Partin, Gene Page, Jon MacBeth, Nick Arfaras, Jim Beaver, Ronnie Slack, Pat Patchen, Danny Royal, Bob Wehking, Chet Collins, Dee Loftin, Jim Shuck.

**Third Row:** Dave Mensh, Ed Braddy, Howie Howard, Mickey Dechman, Gene O'Steen, L. E. Hicks, Tom Smith, Lloyd Jones, Don Senterfitt, Roger Seals, Dick Jones, Don Goodman, Larry Travis.

**Fourth Row:** Rick Sweazie, Jim Miller, Bill Hart, Floyd Dean, Clyde Butz, Bob Pracek, Paul White, Paul Vargecko, Lee Causey, Ken Norris, Henry Farmer, Houston Mills, David Blutworth, Larry Libertore, Will McMullian.

**Fifth Row:** Sam Mack, Tom Hay, Tom Batten, Tom Gregory, Ray Thomas, Scotty Dunlop, Clayton Pickels, Mike McVay, Norman Anderson, Jim Young, Jack Jones, Jack Westbrook, David Fee, Dick Sniscak, Mike Goldwire.

**Sixth Row:** Tom Kelley, Wayne Hansen, Don Johnson, Bobby Hosack, David Loucks, Tommy Donahoo, Dick Camiletti, Eddie Dunn, Bobby Erwin, Dick Allen, George Tedder, Lamar Peace, Gene DeFiore, Jim Eadens, Wayne Nalls, Harold Holton, Ed Titus.

OFFICIAL WATCH  
FOR THE



U.S. OLYMPIC  
COMMITTEE



OLYMPIC WINTER  
GAMES 1960



PAN-AMERICAN  
GAMES 1959



NAT'L AERONAUTIC  
ASSN.



NAT'L  
SKI ASSN.



AMERICAN  
POWERBOAT ASSN.



NAT'L HORSE  
SHOW ASSN.



NAT'L FOOTBALL  
LEAGUE



MAJOR LEAGUE  
BASEBALL



NAT'L COLLEGIATE  
ATHLETIC ASSN.

# LONGINES

THE WORLD'S MOST HONORED WATCH

Longines, first watch of sport, is recognized as official for timing world records and international events by all international sports and contest associations. Every Longines watch, for whatever its use, is made to be the best of its kind. For yourself, or as a gift, no other name on a watch means so much as Longines, the world's most honored watch.

OFFICIAL WATCH FOR THE

## FLORIDA GAMES



ILLUSTRATED  
Longines Starlight Serenade  
"B", elegant 14 K gold watch  
with 6 diamonds, \$175;  
Longines Presidency "E",  
14 K gold case, \$125.  
Other models from \$71.50.  
Federal tax included.

LONGINES-WITTNAUER WATCH COMPANY

# Wayside Press

## PRINTING

*"As You Like It"*

OFFSET or LETTERPRESS

Phone FR 6-3471

15 S.E. 2nd Avenue



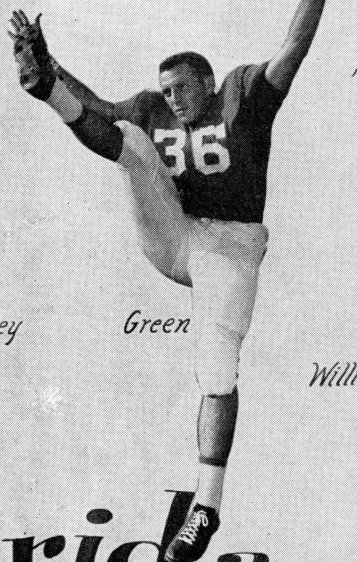
seniors



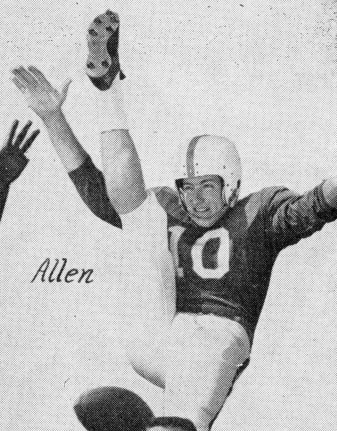
*Pracek*



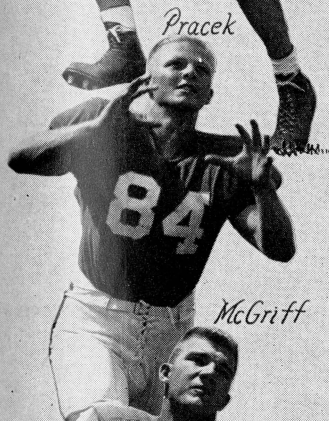
*Brantley*



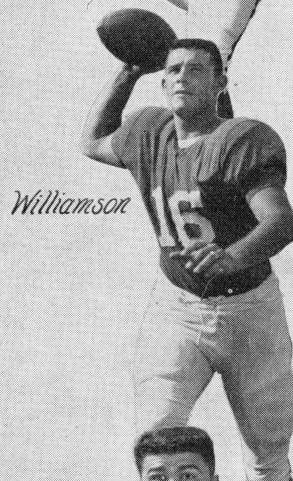
*Green*



*Allen*

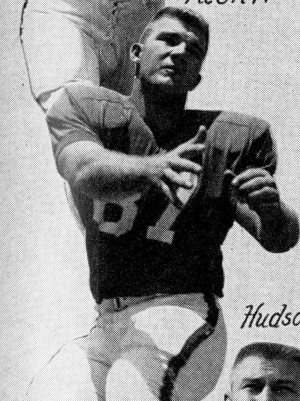


*McGriff*



*Williamson*

# florida gators



*Hudson*



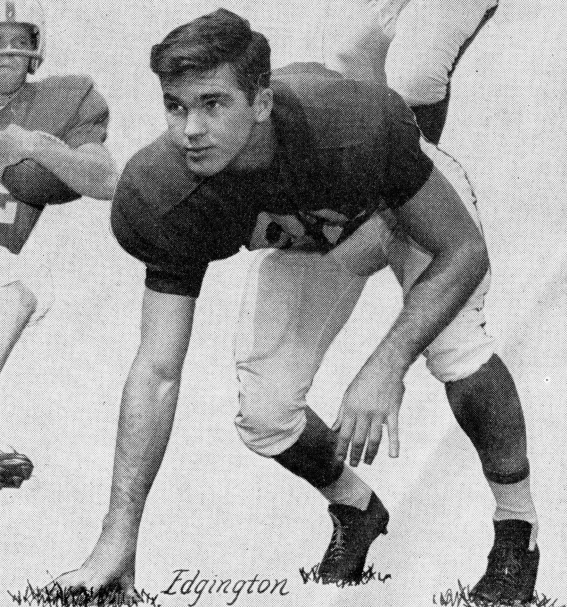
*Giannamore*



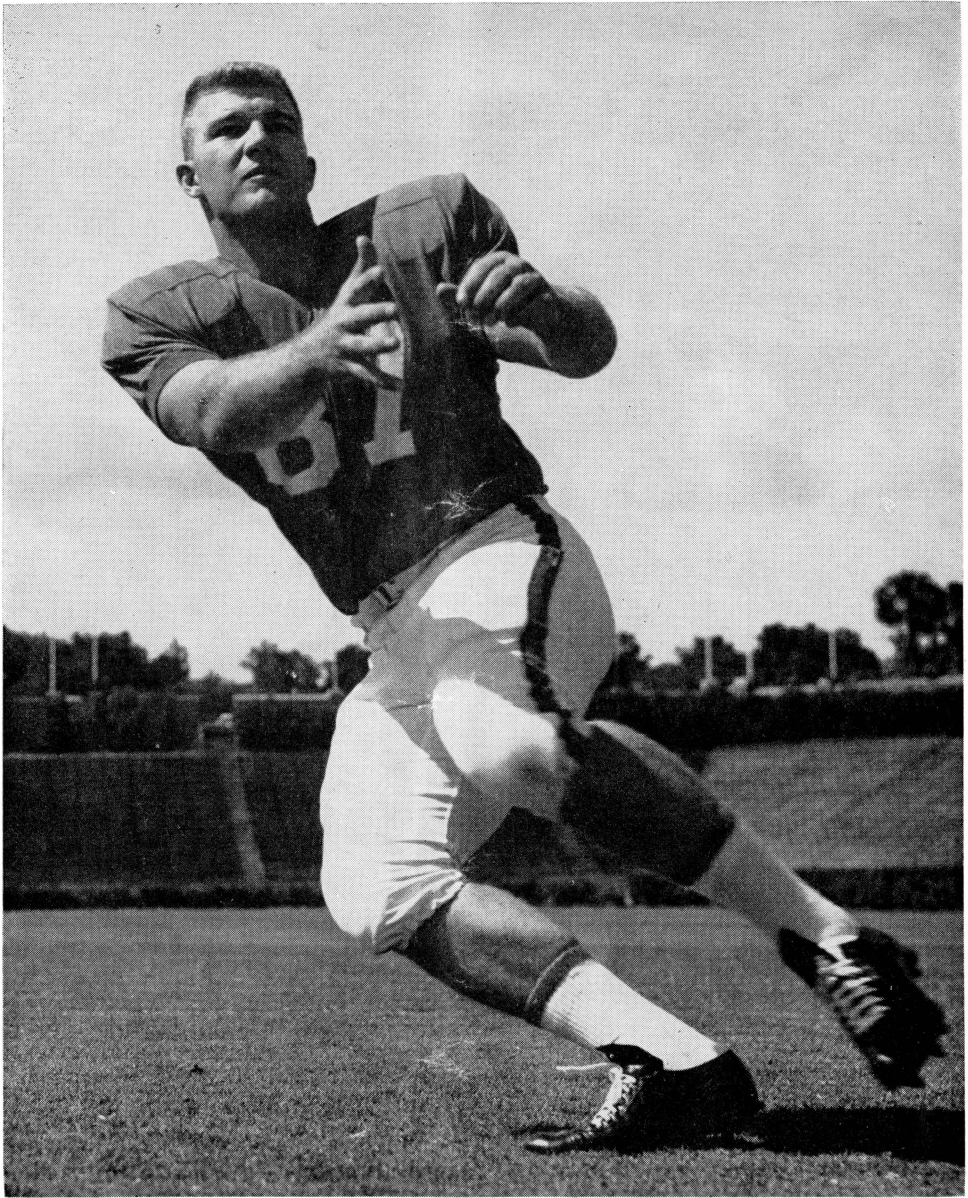
*Cox*



*Butz*



*Edgington*



## CAPTAIN DAVE HUDSON

Dave Hudson, 225-pound end and prime All-America candidate, is Florida's 1959 captain. Surely, the Gators have never presented a more formidable physical specimen for the honor.

Carrying his poundage on a square six-foot frame, the Pensacola senior is rated one of the strongest ends ever to wear the raiment of the Gators. Hudson made the All-SEC third team last year, but his crashing play on national television in the Gator Bowl game against Ole Miss last New Year's Day stamped him as a strong All-American contender.



## STADIUM INFORMATION

### REST ROOMS

**WOMEN**—Under west stands opposite Sections 8 and 9, and at northwest corner. Also near Florida student entrance.

**MEN**—Under west stands opposite Sections 12 and 13, and at northeast corner. Also near Florida student entrance.

### LOST AND FOUND

Lost and found articles should be reported or turned in to the **INFORMATION WINDOW** by gate 3 on the west side of the Stadium.

### DRINKING

The use of alcoholic beverages is prohibited on University of Florida property. This includes the Stadium as well as all other athletic contest areas on the campus.

### TELEPHONES

There are public telephones located under the west stands between gates 3 and 4.

### FIRST AID

Ambulances will be parked by Gate 3 and at the south end of the football field. The attendants are available to render first aid.

## CONCESSION PRICES

Coca-Cola and Pepsi-Cola .....	.15
Peanuts (2 oz. bags) .....	.15
Popcorn (king size only) .....	.25
Hot Dogs (foil bags) .....	.25
Cuban Sandwiches .....	.50
Cigars—Tampa Nuggets .....	.15
Cigarettes .....	.35
SnoCones .....	.15
Ice Cream .....	.15
Ice Cream (Sundaes) .....	.30
Candy .....	.15
Coffee .....	.15
Gum .....	.10
Aspirin .....	.25
(At Stands 7, 10 and 11 only)	
Cushions .....	.25
Cardboard Seat Backs .....	.50

## GET THE MESSAGE ACROSS with MOTION PICTURES



PHOTO COURTESY NBC

At the American National Exhibit in Moscow,  
Russians view the 16 mm color movie  
"THE JACKSONVILLE STORY"

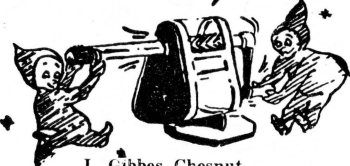
Produced by

# RUSSELL-BARTON

## Film Company

JACKSONVILLE, FLORIDA

*We're makin' a point —*



J. Gibbs Chesnut

TO MAKE

## CHESNUT'S

Your Shopping Center for Office and School Supplies  
Books, Stationery, Picture Framing  
Greeting Cards, Art Supplies

106 W. Univ. Ave.

Phone FR 2-8421



Potato — Chips

Made in Florida

Compliments of

**FLORIDA TITLE**  
and  
**MORTGAGE CO.**

Florida Title Bldg.

**JACKSONVILLE, FLORIDA**

Phone EL 6-6331

. . . Home Loans . . .  
. . . Construction Loans . . .  
. . . Insurance . . .

**GOOD LUCK 1959-60 'GATORS**

**AWARD**

**SWEATERS AND JACKETS**

Direct from Mill

Send for Catalog

**Nelson Knitting Mills Co.**

Established 1892

2105 W. Superior St.      Duluth 6, Minn.

We Specialize in

**FRIED CHICKEN and HUSH PUPPIES**

**RUBY'S RESTAURANT**

15 Miles South of

**GAINESVILLE, FLORIDA**

Hi-Way 441

McIntosh LY 1-2483



Distributed by

**JIMMIE HUGHES SPORTING  
GOODS CO.**

1113 W. University Avenue  
GAINESVILLE, FLORIDA

Compliments of

**H. E. WOLFE  
CONSTRUCTION  
COMPANY, Inc.**

Exchange Bank Building

**ST. AUGUSTINE, FLORIDA**

**TEAMWORK . . .**

Just as teamwork is essential in Football, so it is vital to the proper operation of fine Hotels. The Management of Kloeppel Hotels is proud of the Teamwork of its personnel and thus are confident you will enjoy your next stay with us.

**KLOEPPEL HOTELS**

Jacksonville: Hotel George Washington, Hotel  
Mayflower, Hotel Jefferson

West Palm Beach: Hotel George Washington,  
Hotel Pennsylvania



# FLORIDA ROSTER

No.	Name	Pos.	Age	Ht.	Wt.	Letters	Hometown	Class
10	Jack Jones	QB	21	5-11	190	0	Commerce, Okla.	Jr.
11	Tommy Donahoo	QB	19	5-11	154	0	Jacksonville	So.
12	Mike McVay	QB	20	6-2	185	0	Lake Worth	So.
14	Tom Batten	QB	18	5-11	151	0	Miami	So.
15	Dick Allen	QB	25	6-0	175	2	Atlanta, Ga.	Sr.
16	Wayne Williamson	QB	21	6-2	193	2	Tampa	Sr.
20	Jim Eadens	LH	18	6-1	185	0	Sarasota	So.
21	Don Deal	RH	22	5-9	185	1	Corpus Christi, Texas	Jr.
22	Scotty Dunlop	LH	20	6-0	184	0	Daytona Beach	So.
23	Ed Braddy	RH	19	5-10	168	0	Ft. Lauderdale	So.
24	Clyde Butz	LH	22	6-0	190	0	Lancaster, Pa.	Sr.
25	Dave Blutworth	LH	19	5-8	150	0	DeFuniak Springs	So.
31	Paul White	RH	20	6-0	175	0	Bartow	So.
32	Doug Partin	LH	21	5-9	165	1	St. Cloud	Jr.
33	Don Goodman	RH	20	6-0	190	0	Miami	So.
34	Jack Westbrook	RH	21	5-10	187	1	Miami	Sr.
35	Gene Page	RH	20	5-11	190	0	Tallahassee	Jr.
36	Bobby Joe Green	LH	23	5-11	175	1	Bartlesville, Okla.	Sr.
37	Gene DeFiore	RH	20	5-11	180	0	Allentown, Pa.	So.
41	Bob Milby	FB	19	6-0	200	1	Ocala	Jr.
43	Paul Vargecko	FB	19	5-10	185	0	Steubenville, Ohio	So.
44	Ray Thomas	FB	21	6-2	200	0	Cowan, Tennessee	So.
46	Jon MacBeth	FB	20	5-8	195	1	Pensacola	Jr.
48	Dickey Jones	C	18	6-3	215	0	Gainesville	So.
49	Clayton Pickels	FB	21	5-10	185	0	Jacksonville	So.
52	Bill Hood	C	21	6-1	201	1	Lakeland	Jr.
53	Eddie Dunn	C	19	5-10	187	0	Daytona Beach	So.
57	Lee Causey	C	20	6-2	228	0	Jacksonville	So.
58	Bob Wehking	C	22	6-4	226	0	St. Augustine	Jr.
59	Jim Young	C	21	5-11	198	0	Vero Beach	So.
60	Norman Anderson	LG	19	6-1	205	0	Miami	So.
61	Chet Collins	RG	21	6-1	210	0	Bartow	Jr.
62	Houston Mills	RG	20	6-1	211	0	Panama City	So.
63	Gene O'Steen	LG	19	6-0	220	0	Alachua	So.
64	Tom Hay	LG	19	6-0	194	0	Decatur, Ga.	So.
65	Asa Cox	LG	21	5-8	230	2	Gainesville	Sr.
66	Don Senterfitt	RG	21	5-8	197	0	Pensacola	So.
67	Lawrin Giannamore	RG	20	6-2	220	2	Steubenville, Ohio	Sr.
68	Ken Norris	LG	20	6-0	215	0	Belle Glade	So.
70	Jim Beaver	RT	19	6-1	230	0	West Palm Beach	So.
71	Roger Seals	RT	21	6-2	215	0	Tampa	Jr.
72	Lloyd Jones	RT	18	6-2	205	0	Jacksonville	So.
73	David Fee	LE	20	6-1	200	0	Ft. Pierce	So.
74	Floyd Dean	LT	19	6-4	220	0	Eagle Lake	So.
75	Ronnie Slack	LT	20	6-2	216	1	West Palm Beach	Jr.
76	L. E. Hicks	LT	19	6-5	230	0	Tampa	So.
77	Danny Royal	RT	20	6-1	210	1	Camilla, Ga.	Jr.
78	Dick Brantley	LT	20	5-11	210	2	St. Augustine	Sr.
79	Ed Titus	LT	18	6-1	212	0	Miami	So.
80	Bob Pracek	RE	22	6-4	190	0	Jeannette, Pa.	Sr.
81	Henry Farmer	RE	20	6-3	185	0	Atlanta, Ga.	So.
82	Nick Arfaras	RE	20	6-1	205	1	Tarpon Springs	Jr.
83	Bill Hart	LE	19	6-2	190	0	Miami	So.
84	Perry McGriff	LE	22	6-1	185	1	Gainesville	Sr.
85	Tom Smith	LE	20	6-2	187	0	Atlanta, Ga.	So.
86	Pat Patchen	LE-C	21	6-0	194	1	Steubenville, Ohio	Jr.
87	Dave Hudson (Capt.)	RE	22	6-1	225	2	Pensacola	Sr.
88	Lamar Peace	RE	19	6-2	210	0	Lakeland	So.
89	Dan Edgington	LE	22	6-2	191	2	Miami	Jr.



**the Diners' Club**

We Honor

American Express



Credit Cards

*Allen East Blanche*

## AFTER THE GAME

Candler Reese invites you to visit the Brahma Restaurant and Cocktail lounge in Ocala for a "tropical adventure" in fine eating. No finer food served anywhere.

South on 4 Lane Hwy at 17th St.  
Phone MA 2-4311  
OCALA, FLORIDA



Florida

## About Today's Game

# Gator-Hunting Seminoles, Led by Perry Moss, Meet Florida for Second Time in History

By NORRIS ANDERSON

Director of Sports Publicity, University of Florida

That nonpareil optimist, Perry Moss, old Mr. Controversy Personified, wheels his Florida State team into Florida Field today.

Moss, never lacking in bravura, is expected to shoot the works, go for the inside straight, the royal flush.

The old Illinois quarterback, unabashedly enamored of one Perry Moss, is forever one to exude controlled confidence.

Back when he was an assistant at U-Miami, I used to golf with this fiercely-competitive young coach.

We used to blast around Biltmore in the Gables, a course made miserable for wild home run sluggers like Moss and myself because of numerous water holes.

Some fiend designed one hole so that a wide stream crosses the fairway some 210 yards from the tee. It takes a 265-yard drive to get across it.

Any conservative would play it safe, easing a shot to the tee-side of the water, then coasting into the green from there. Not Moss.

He would go-for-broke, aiming for that nigh-impossible green-side of the water—and, usually, his shot would plunk in the drink. One successful carry over the water, however, would assuage the pain for Moss of all of those lost in the water.

That is the way he plays the game, any game, including the one on Florida Field today.

They say Perry is on his way to coach Montreal after the Seminoles close against Oklahoma State next Saturday.

Mrs. Moss, a pretty dark-eyed patient soul named Jane, thus will be moving into her 10th house (or is it the 12th) since her restless husband got in this coaching business.

The way station: U-Illinois, 1949, assistant to Ray Eliot; 1950-51, backfield coach at Washington; 1952-53, aide at LSU; 1954-56, aide at U-Miami; 1955, summer assistant for Hamilton of Canadian league; 1957-58, backfield coach at Wisconsin; then Florida State.

Meanwhile, Coach Bob Woodruff, has stayed on 10 years at U-Florida, quietly building the Gators from nowhere into a feared Southeastern Conference power.

As athletic director, Woodruff has doubled the capacity of Florida Field, given U-Florida one of the best all-around programs in the SEC and contributed immeasurably to developing the physical facilities of the Gator athletic department.

Woodruff's 18-8-3 record the past three years ranks with the top four in the rugged 12-team SEC.

So what happens today when wild-swinging young Perry Moss tangles with the bulldog determination of solid Bob Woodruff?

It's anyone's guess. Have one—on the house.

### SERIES SCORES

	Fla.	Fla. State
1958 .....	21	7

Ed Pope, Miami Herald pundit, called Tom Nugent's Seminole attack "the science fiction" offense as the men from Tallahassee boomed into a 7-0 lead in the first three minutes last year.

In the first match between the two schools, Seminole Bobby Renn shocked a SRO crowd with a 78-yard return of the opening kickoff.

The Gator Bowl-bound Gators then went to work. End Dave Hudson blocked a punt, picked up the loose ball and tossed his 225 pounds into the end zone for a touchdown. Jimmy Dunn crossed the goal on runs of 9 and 11 yards.

Nugent's science fiction attack (I formation, type-writer huddle and about everything else in the books) will be supplanted today by Moss' wide-open-at-the-throttle attack.

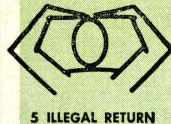
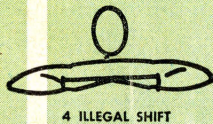
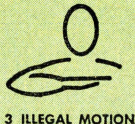
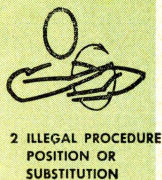
### GATOR SCHEDULE

Sept. 18	Florida 30, Tulane 0, at New Orleans.
Sept. 26	Florida 14, Miss. State 13, at Gainesville.
Oct. 3	Florida 55, Virginia 10, at Gainesville.
Oct. 10	Florida 13, Rice 13, at Houston.
Oct. 17	Vanderbilt 13, Florida 6, at Nashville
Oct. 24	Louisiana 9, Florida 0, at Gainesville.
Oct. 31	Auburn 6, Florida 0, at Auburn.
Nov. 7	Georgia 21, Florida 10, at Jacksonville.
Nov. 21	Florida State at Gainesville—2:00 P.M.
Nov. 28	Miami at Jacksonville—2:00 P.M.





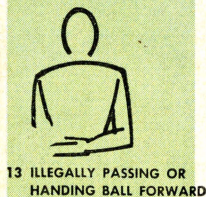
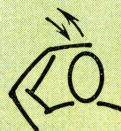
# ENJOY COCA-COLA



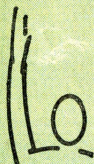
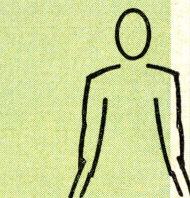
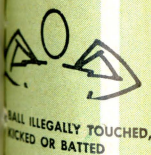
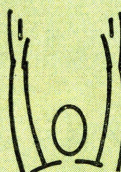
9 ROUGHING  
THE KICKER



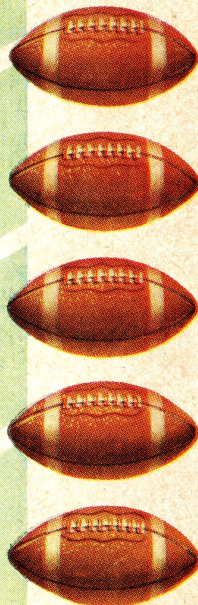
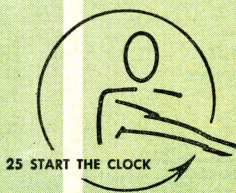
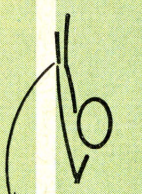
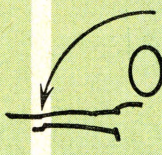
10 UNSPORTSMANLIKE  
CONDUCT



15 INELIGIBLE RECEIVER  
DOWNFIELD ON PASS



20 TOUCHDOWN OR  
FIELD GOAL



COCA-COLA AND COKE ARE REGISTERED TRADEMARKS

Gainesville Coca-Cola Bottling Company — Gainesville, Florida



They said it couldn't be done...  
 They said nobody could do it...  
 but **L&M** is

**Low**  
 in tar



## FLORIDA

### PROBABLE STARTING LINEUP

No.	Name	Pos.
89	DAN EDGINGTON	LE
78	DICK BRANTLEY	LT
65	ASA COX	LG
52	BILL HOOD	C
67	LAWRIN GIANNAMORE	RG
77	DANNY ROYAL	RT
87	DAVE HUDSON	RE
16	WAYNE WILLIAMSON	QB
33	DON GOODMAN	LH
34	JACK WESTBROOK	RH
46	JON MacBETH	FB

## FLORIDA SQUAD

10 J. Jones, QB	43 Vargecko, FB	71 Seals, RT
11 Donahoo, QB	44 Thomas, FB	72 L. Jones, RT
12 McVay, QB	46 MacBeth, FB	73 Fee, LE
14 Batten, QB	48 D. Jones, C	74 Dean, LT
15 Allen, QB	49 Pickels, FB	75 Slack, LT
16 Williamson, QB	52 Hood, C	76 Hicks, LT
20 Eadens, LH	53 Dunn, C	77 Royal, RT
21 Deal, RH	57 Causey, C	78 Brantley, LT
22 Dunlop, LH	58 Wehking, C	79 Titus, LT
23 Braddy, RH	59 Young, C	80 Pracek, RE
24 Butz, LH	60 Anderson, LG	81 Farmer, RE
25 Bludworth, LH	61 Collins, RG	82 Arfaras, RE
31 White, RH	62 Mills, RG	83 Hart, LE
32 Partin, LH	63 O'Steen, LG	84 McGriff, LE
33 Goodman, RH	64 Hay, LG	85 Smith, LE
34 Westbrook, RH	65 Cox, LG	86 Patchen, LE
35 Page, RH	66 Senterfitt, RG	87 Hudson, RE
36 Green, LH	67 Giannamore, RG	88 Peace, RE
37 DeFiore, RH	68 Norris, LG	89 Edgington, LE
41 Milby, FB	70 Beaver, RT	

**L&M**...KINDEST TO YOUR TASTE!





with  
**More**  
taste to it

## F. S. U.

### PROBABLE STARTING LINEUP

No.	Name	Pos.
29	RON HINSON	LE
78	JOE VERBINSKI	LT
62	AL ULMER	LG
54	JACK HARDY	C
60	FRANK DE FRANCESCO	RG
75	DON DONATELLI	RT
85	FRED GRIMES	RE
13	JOE MAJORS	QB
24	KEN CONE	LH
43	FRED PICKARD	RH
27	JACK ESPENSHIP	FB

## F. S. U. SQUAD

12 McCormick, QB	44 Calhoon, FB	71 Swoszowski, LT
13 Majors, QB	50 Brown, C	73 Klesius, LT
15 Bickford, QB	51 Worthington, C-LT	75 Donatelli, RT
20 W. Whitehead, LH	53 Rogers, C	77 Spivey, RT
21 Mustain, RH	54 Hardy, C	78 Verbinski, LT
24 Cone, LH	60 DeFrancesco, RG	80 Romeo, RE
26 B. Whitehead, LH	61 Tyre, RG	82 Slaton, LE
27 Espenship, FB	62 Ulmer, LG	84 Ehlers, RE
29 Hinson, RH	63 Moran, RG	85 Grimes, RE
41 Schou, RH	64 Lamb, LG	86 Daniel, LE
42 Andrews, FB	66 Kestner, LG	87 Bigbie, RE
43 Pickard, RH	70 Morrow, RT	88 Hooks, LE
		89 Alvarez, LE
		83 Sellers, LE

**L&M**...**KINDEST TO YOUR TASTE!**



# BE REALLY REFRESHED



## PENALTIES

1. **OFFSIDE** by either team; violation of scrimmage or free kick formation; encroachment of neutral zone—Loss of Five Yards.
2. **ILLEGAL PROCEDURE, POSITION OR SUBSTITUTION**—Putting ball in play before referee signals "ready-for-play"; failure to complete substitution before play starts; player out of bounds when scrimmage begins; failure to maintain proper alignment of offensive team when ball is snapped; false or simulating start of a play; taking more than two steps after fair catch is made; player on line receiving snap—Loss of Five Yards.
3. **ILLEGAL MOTION**—Offensive player illegally in motion when ball is snapped—Loss of Five Yards.
4. **ILLEGAL SHIFT**—Failure to stop one full second following shift—Loss of 15 Yards.
5. **ILLEGAL RETURN** of substitute not previously disqualified—Loss of 15 Yards.
6. **ILLEGAL DELAY OF GAME**; Taking more than four times out during either half (except for replacement of injured player)—Loss of Five Yards. Team not ready to play at start of either half—Loss of 15 Yards.
7. **PERSONAL FOUL**—Tackling or blocking defensive player who has made fair catch; piling on; hurdling; grasping face mask of opponent; tackling player out of bounds, or running into player obviously out of play; striking an opponent with fist, forearm, elbow or locked hands; kicking or kneeling—Loss of 15 Yards. (Flagrant offenders will be disqualified.)
8. **CLIPPING**—Loss of 15 Yards.
9. **ROUGHING THE KICKER** or holder—Loss of 15 Yards.
10. **UNSPORTSMANLIKE CONDUCT**—Violation of rules during intermission; illegal return of suspended player; coaching from side-lines; invalid signal for fair catch; persons illegally on field—Loss of 15 Yards. (Flagrant offenders will be disqualified.)
11. **ILLEGAL USE OF HANDS AND ARMS** by offensive or defensive player; defensive holding—Loss of 15 Yards.
12. **INTENTIONAL GROUNDING** of forward pass—Loss of Five Yards from Spot of Pass, Plus Loss of Down.
13. **ILLEGALLY PASSING OR HANDING BALL FORWARD**—Loss of Five Yards, Plus Loss of Down.
14. **FORWARD PASS OR KICK CATCHING INTERFERENCE**—Interference with opportunity of player of receiving team to catch a kick—Loss of 15 Yards. Interference by members of offensive team with defensive player making pass interception—Loss of 15 Yards, Plus Loss of Down. Interference by defensive team on forward pass—Passing Team's Ball at Spot of Foul, and First Down.
15. **INELIGIBLE RECEIVER DOWNFIELD ON PASS**—Loss of 15 Yards.
16. **BALL ILLEGALLY TOUCHED, KICKED OR BATTED**—Forward pass being touched by ineligible receiver beyond the line of scrimmage—Loss of 15 Yards from Spot of Preceding Down, and Loss of a Down. Eligible pass receiver going out of bounds and later touching a forward pass—Loss of Down. Illegal touching of kicked ball within opponent's ten-yard line—Touchback.
17. **PENALTY DECLINED**—Incomplete forward pass; no play or no score.
18. **CRAWLING** by runner—Loss of Five Yards. Interlocked interference—Loss of 15 Yards.

COCA-COLA AND CONE ARE REGISTERED TRADEMARKS

**Gainesville Coca-Cola Bottling Company — Gainesville, Florida**



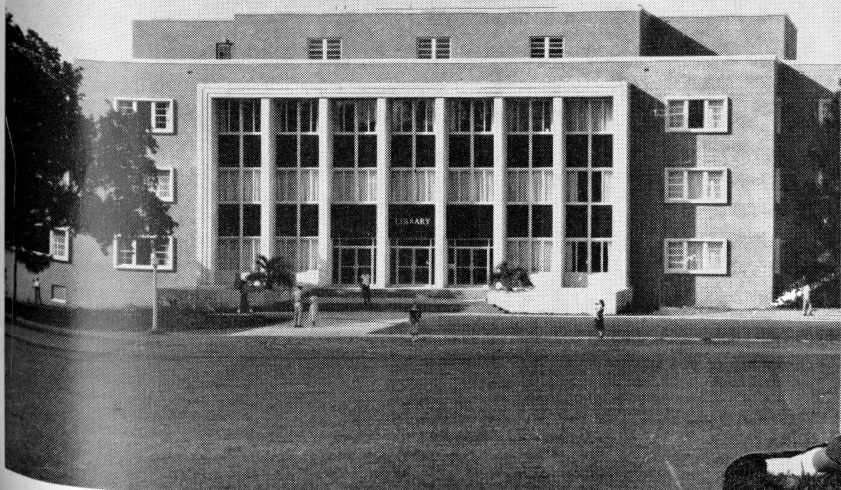


*Dr. Robert M. Strozier  
President*



*Perry Moss  
Athletic Director  
and Head Coach*

# florida state university



## F. S. U. ROSTER

No.	Name	Pos.	Age	Ht.	Wt.	Letters	Hometown	Class
12	Gene McCormick	QB-LH	23	5-9	150	1	Miami	Jr.
13	Joe Majors	QB	22	6-0	171	2	Huntland, Tenn.	Sr.
15	Roy Bickford	QB	19	5-11	177	0	Miami	So.
20	Willie Whitehead	LH	18	5-10	165	0	Marianna	So.
21	Don Mustain	RH	19	6-0	168	0	Miami, Okla.	Jr.
24	Ken Cone	LH	20	6-1	180	0	Lakeland	Jr.
26	Bud Whitehead	LH	20	5-11	178	1	Marianna	Jr.
27	Jack Espenship	FB	20	6-3	195	1	Lake City	Jr.
29	Ron Hinson	RH	21	6-0	191	1	Waycross, Ga.	Jr.
41	Denny Schou	RH	20	5-9	180	0	Fort Lauderdale	So.
42	Paul Andrews	FB	18	5-10	186	0	Greenville	So.
43	Fred Pickard	RH	21	5-9	165	2	Columbia, Tenn.	Sr.
44	Jim Calhoon	FB	25	6-1	188	0	Winslow, Ariz.	Jr.
50	Bill Brown	C	24	6-0	215	1	Orlando	Sr.
51	Jim Worthington	C-LT	21	6-2	198	0	Oak Ridge, Tenn.	So.
53	Ramon Rogers	C	21	5-11	187	1	Pensacola	Sr.
54	Jack Hardy	C	20	5-10	192	1	Miami	Jr.
60	Frank DeFrancesco	RG	19	5-10	200	0	Miami	So.
61	Bill Tyre	RG	19	6-1	198	0	Sanford	So.
62	Al Ulmer	LG	20	5-10	178	2	Clearwater	Sr.
63	Terry Moran	RG	19	5-9	180	1	New Orleans, La.	Jr.
64	Ray Lamb	LG	21	6-0	180	1	Atlanta, Ga.	Jr.
66	Ken Kestner	LG	21	5-10	190	1	Cleveland, Ohio	Jr.
70	Bob Morrow	RT	23	5-10	194	0	Miami	So.
71	Bob Swoszowski	LT	19	6-3	196	1	Orlando	Jr.
73	Steve Klesius	LT	18	6-1	210	0	St. Petersburg	So.
75	Don Donatelli	RT	18	6-2	210	0	Pittsburgh, Pa.	So.
77	John Spivey	RT	22	6-2	202	2	Panama City	Sr.
78	Joe Verbinski	LT	21	6-1	210	0	Willow Grove, Pa.	So.
80	Tony Romeo	RE	21	6-1	200	1	Tampa	Jr.
82	John Slaton	LE	20	6-1	188	0	Miami	So.
84	George Ehlers	RE	21	6-2	190	0	Moss Point, Miss.	Jr.
85	Fred Grimes	RE	19	6-1	184	0	Hialeah	So.
86	Jim Daniel	LE	20	6-4	185	0	Atlanta, Ga.	So.
87	Abner Bigbie	RE	21	5-10	185	1	West Palm Beach	Jr.
88	Jim Hooks	LE	24	5-8	175	2	West Palm Beach	Sr.
89	Jim Alvarez	LE	20	6-1	195	0	Jacksonville	Jr.
83	Don Sellers	LE	25	6-2	198	0	Barberton, Ohio	Jr.

## FLORIDA PEST CONTROL & CHEMICAL CO.

**Termite Control—Household and Commercial Pest and Rodent Control**

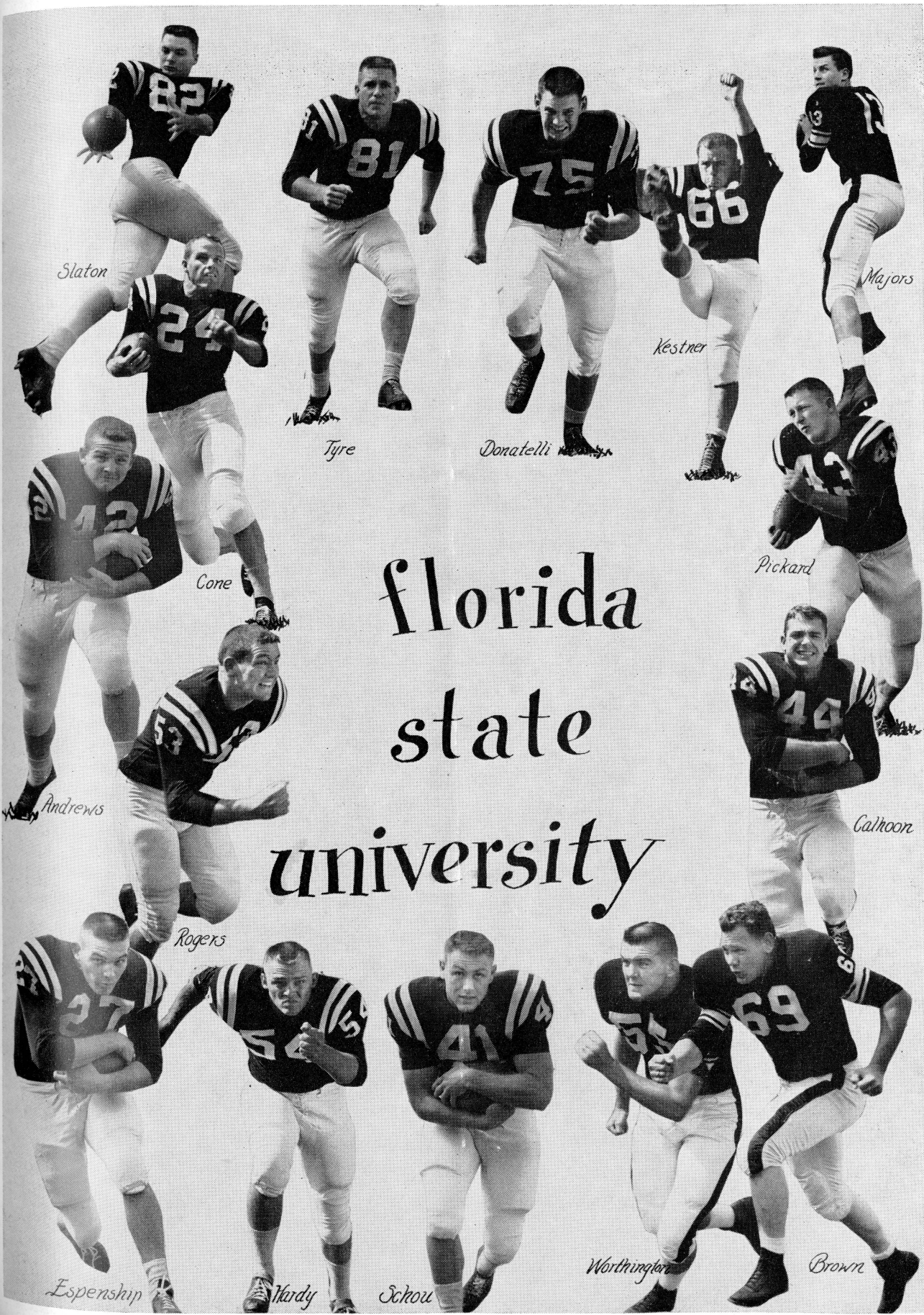
**Lawn, Ornamental Shrubbery and Grove Spraying—Spanish Moss Control**

**Home Office: GAINESVILLE, FLORIDA—Branches: LAKE CITY, OCALA, PALATKA, STARKE**

All work supervised by University of Florida Graduate Entomologists

**CALL FOR FREE ESTIMATES**





florida  
state  
university

Slaton

Majors

Kestner

Tyre

Donatelli

Pickard

Cone

Calhoun

Rogers

Andrews

Worthington

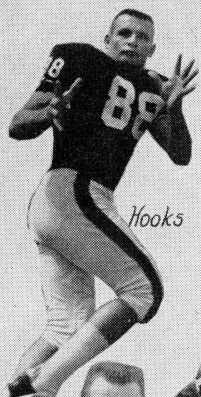
Brown

Espenship

Hardy

Schou





*Hooks*



*Daniel*



*Lamb*



*McCormick*



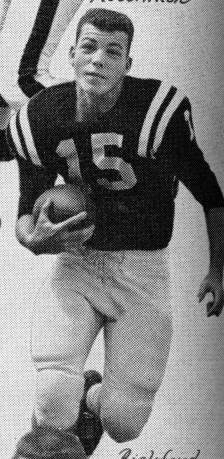
*Grimes*



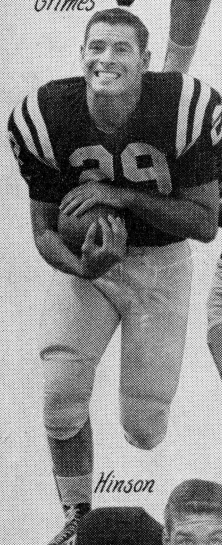
*Spivey*



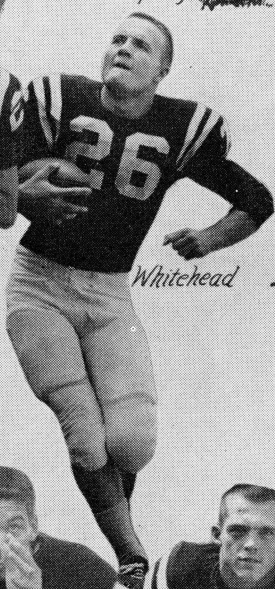
*DeFrancesco*



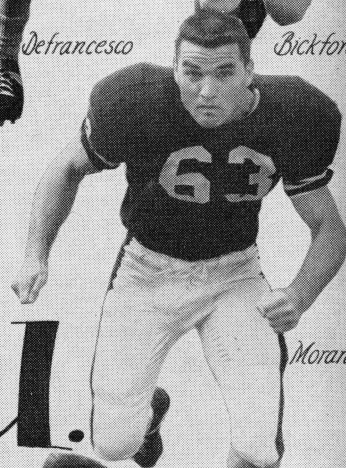
*Bickford*



*Hinson*

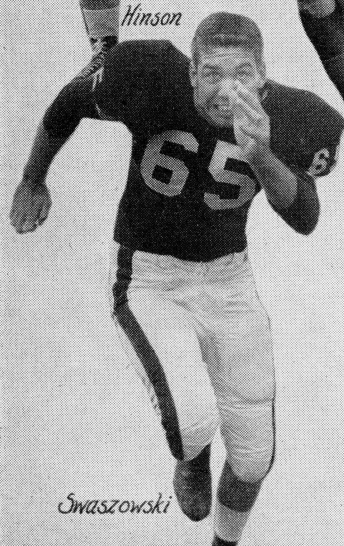


*Whitehead*



*Moran*

*f.s.u.*



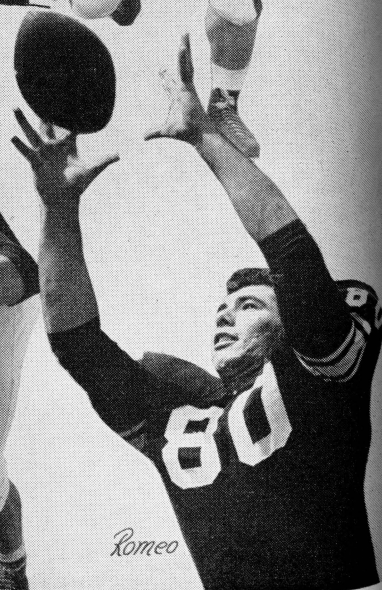
*Swaszowski*



*Ulmer*



*Verbinski*



*Romeo*



Ocala's Finest  
**HOTEL MARION**

And Its Famous  
**Town and Country Restaurant**  
and  
Cypress Room Cocktail Lounge

Albert S. Wing, Mgr.

An Alsonett Hotel

**A. R. COGSWELL**

"Since 1921"

THE FINEST . . . in Engineering Instruments and  
Supplies, Architectural Supplies and Reproduction  
Equipment and Supplies.

433 West Bay Street  
**JACKSONVILLE, FLORIDA**

**THE SINCLAIR EATON  
COMPANY**

SANITARY—MAINTENANCE AND JANITOR  
SUPPLIES

PAINTS—FLOOR COVERINGS—FLOOR  
MACHINES—SANDERS—ELECTRIC TOOLS

"Tool Rentals"

716 N. Main Street

Gainesville, Florida

For the Best in  
Roasted, Salted and Raw Peanuts

Ask for  
**NANCY FANCY BRAND**



**JIMBO'S JUMBOS, INC.**  
Edenton, N. C.



National—first with jets in the  
U.S.A.—flies the world's most modern airliners.  
Boeing 707 jet service resumes November 1.  
And this winter, National will introduce its  
New Douglas DC-8 Jets. For fast flights  
and superb service, fly National.

**NATIONAL SERVES MORE FLORIDA CITIES THAN ANY OTHER AIRLINE**



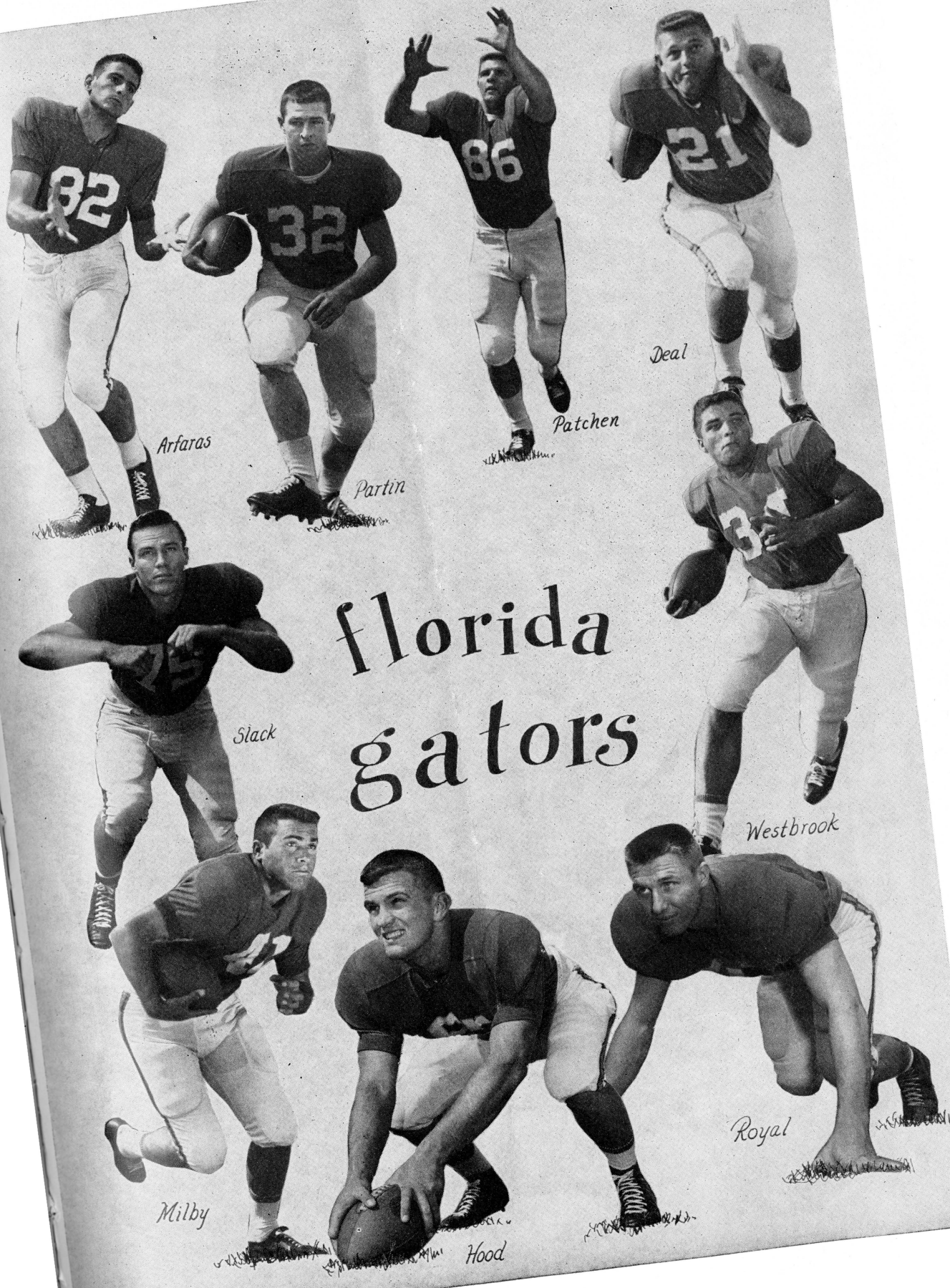
## Visit The Prudential Building

Next time you're in Jacksonville, you're invited to see the beautiful and efficient South-Central Home Office Building of The Prudential Insurance Company. Trained guides will conduct you on special tours every day, Monday through Friday, 10:30 a.m. and 3:00 p.m. (No admission charge.) Bring your camera and make your own aerial view of Jacksonville.

**THE PRUDENTIAL**  
INSURANCE COMPANY OF AMERICA  
SOUTH-CENTRAL HOME OFFICE • JACKSONVILLE, FLORIDA







# florida gators

*Arfaras*

*Partin*

*Patchen*

*Deal*

*Slack*

*Westbrook*

*Milby*

*Hood*

*Royal*





# All 1959 Games of UNIVERSITY OF FLORIDA

with  
**Otis Boggs**

brought to you  
on the

## HOME GAMES

Mississippi State	Sept. 26
Virginia	Oct. 3
L.S.U. (Homecoming)	Oct. 24
Georgia (Jacksonville)	Nov. 7
Florida State	Nov. 21
Miami (Jacksonville)	Nov. 28

## GAMES AWAY

*Tulane	Sept. 18
*Rice	Oct. 10
*Vanderbilt	Oct. 17
Auburn	Oct. 31

\* Night Game

**STANDARD  
OIL**

# STANDARD OIL NETWORK

**WRUF**  
GAINESVILLE

**WMBR**  
JACKSONVILLE

**WGBS**  
MIAMI

**WHOO**  
ORLANDO

**WBSR**  
PENSACOLA

**WDAE**  
TAMPA

# SAFWAY

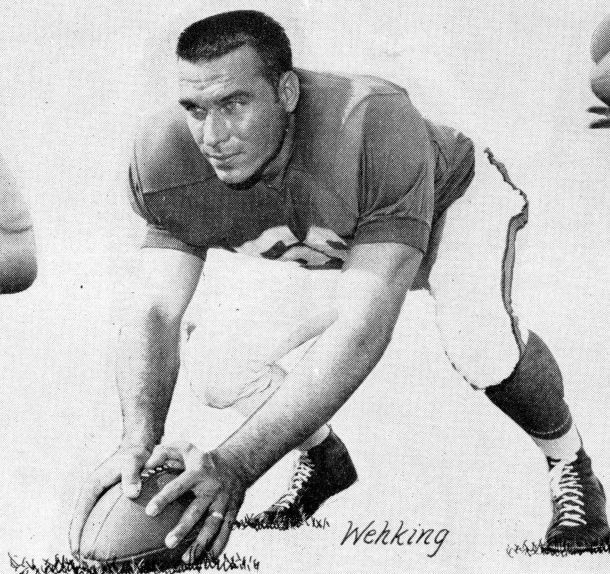
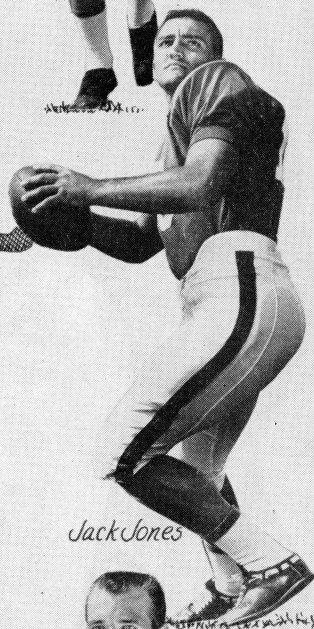
# SALUTES

## THE UNIVERSITY OF FLORIDA

SPECTATOR BLEACHER SEATING  
Safway Steel Products, Inc.

MILWAUKEE, WISCONSIN





*Dickey Jones*

*McVay*

*Smith*

*Goodman*

*Jack Jones*

*Anderson*

*Wetking*

*Dunlop*

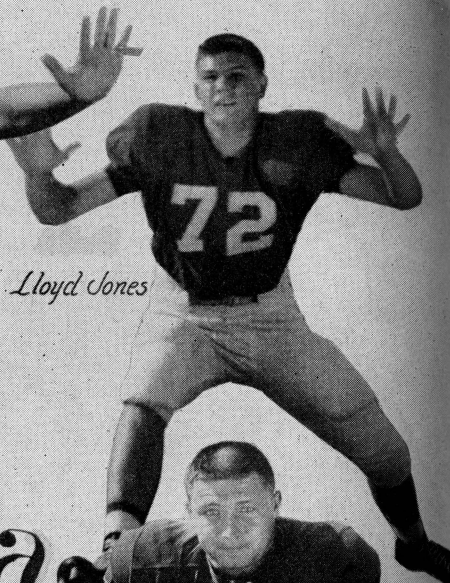
# florida gators



*Pickels*

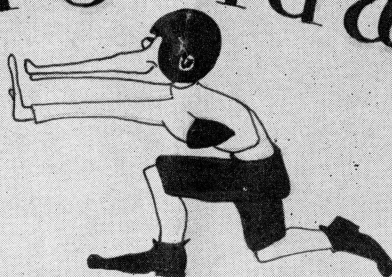


*Mills*

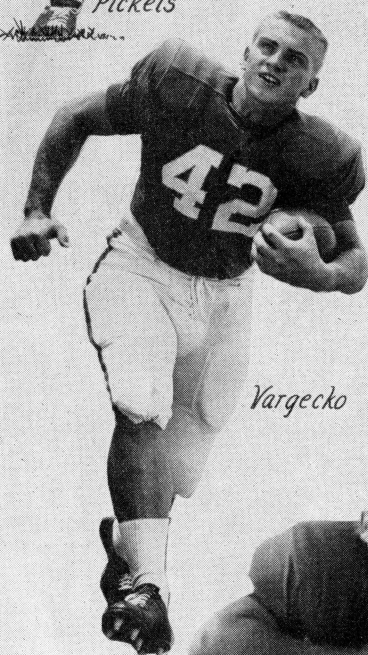


*Lloyd Jones*

florida

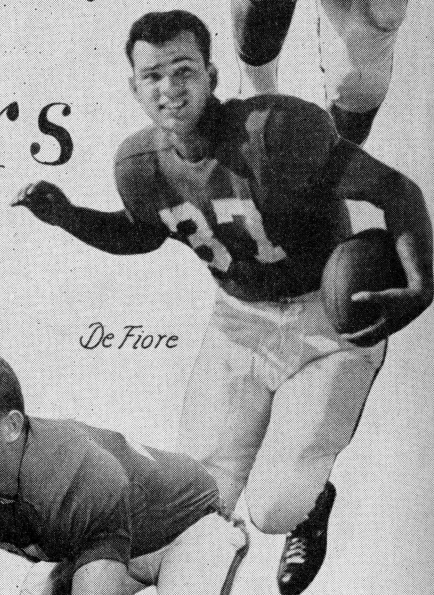


*Mac Beth*

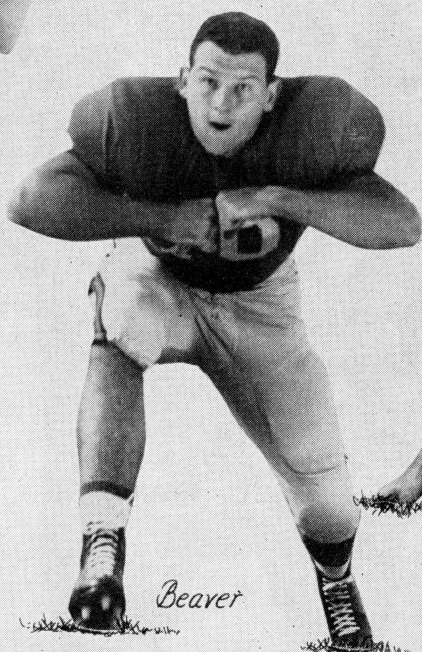


*Vargecko*

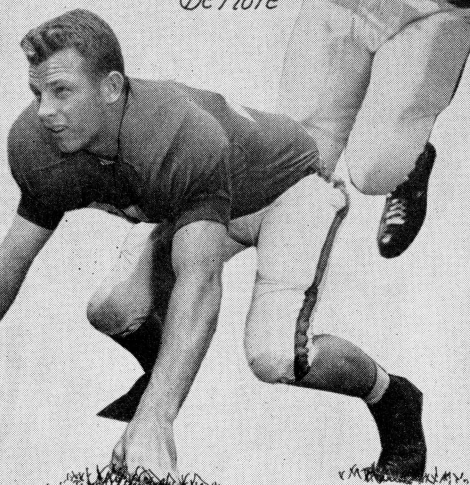
gators



*De Fiore*



*Beaver*



*Collins*

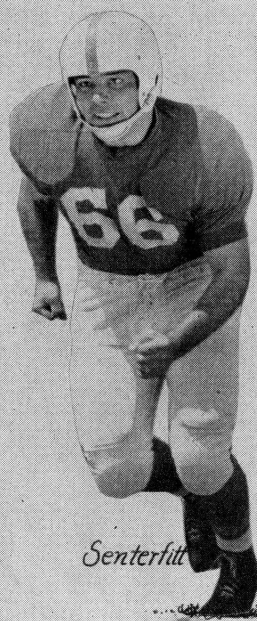




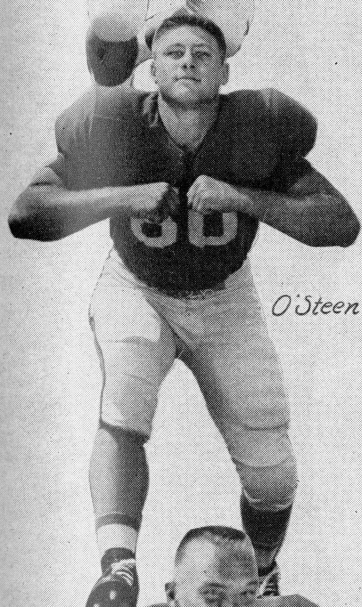
*Page*



*Farmer*

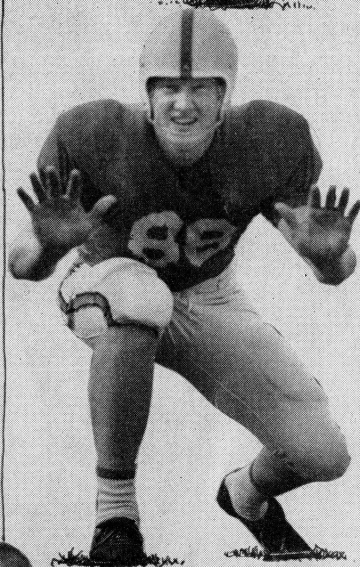


*Senterfitt*



*O'Steen*

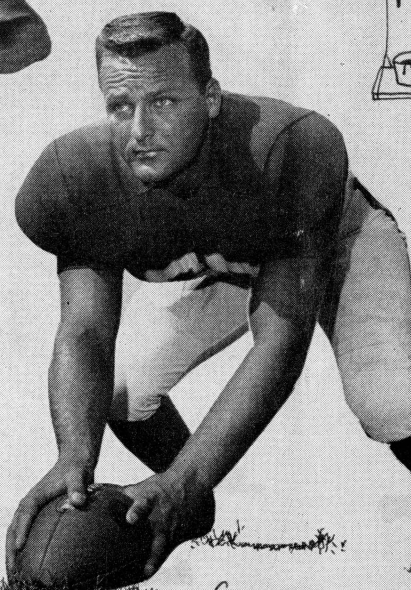
# Florida gators



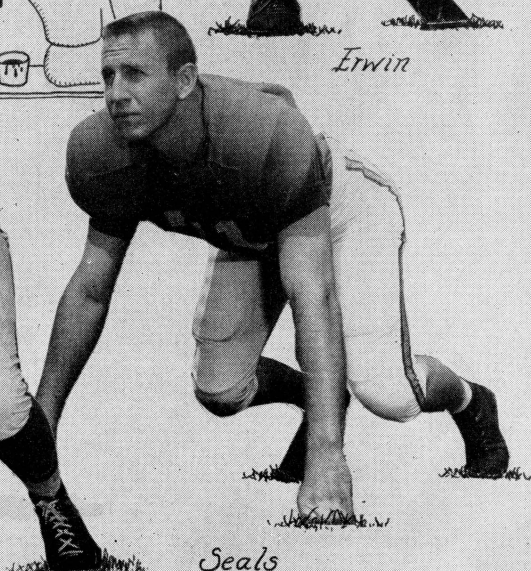
*Erwin*



*Hicks*



*Causey*

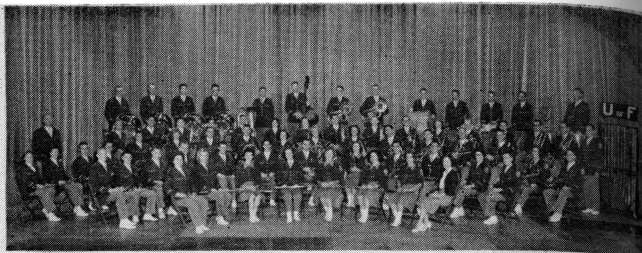


*Seals*

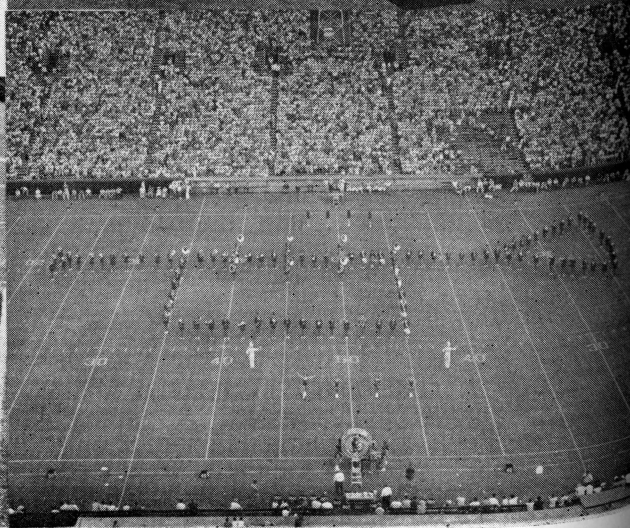




*Reid Poole  
Director  
Richard W. Bowles  
Assistant Director*



# the fighting gator band





# A SPORTSMAN'S PARADISE



Tallahassee is full of lakes and streams making the city and surrounding areas a sportsman's paradise.

The salt water marshes, such as that in the picture below, provide excellent seasonal hunting grounds for Canadian geese and ducks.

Governor LeRoy Collins displays a string of black bass caught one morning in a lake near Tallahassee.

The lakes are also full of finny fighters, and are only a few minutes away from the heart of the city.

Boats, motors and over-night accommodations are available.

This capital City is truly a haven for the wildlife fan.





## Who Will Occupy These Offices

The business of state government of Florida is a continuing process. Progressive state leaders are always at work for the good of the Sunshine State.

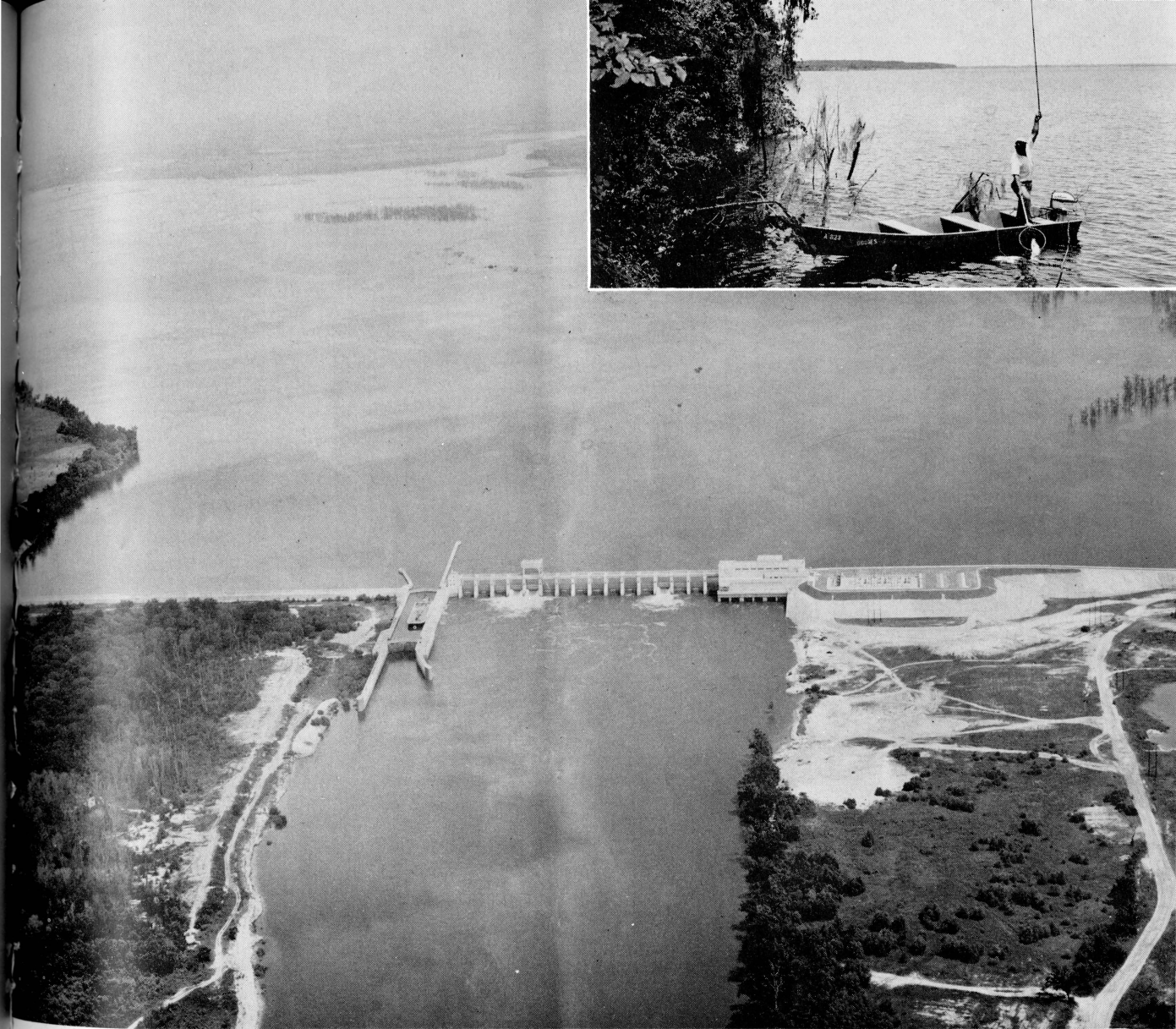
Elections will be held next Fall for the governorship of Florida and for two of the six justices on Florida's State Supreme Court.

The Governor will reside in the spacious, columned Executive Mansion pictured above. The mansion is located eight blocks north of the Capitol.

The Supreme Court justices occupy the spacious, white-domed building pictured below.







# MARIANNA

Marianna is the county seat, approximately 8,500 population, in Jackson County.

It is the largest city on the old Spanish Trail between Tallahassee and Pensacola.

This community is the home of Chipola Junior College, Florida Caverns, Florida School for Boys, and Graham Air Force Base, one of the important contract flying schools of the U. S. Air Force.

Marianna is the seat of government for thriving Jackson County.

The county is a bustling agricultural and business community of small cities and towns. Near

to, but apart from crowded playgrounds and tourist centers, Jackson County offers you gracious living . . . economic well-being . . . and recreational advantages brought together on a large and balanced scale.

Pictured above is the famous Jim Woodruff Dam completed on November 1, 1956.

The inset photo is illustrative of the excellent fishing for sportsmen available in the area of the Jim Woodruff Dam.

Construction of this 6,200 foot dam keynotes the growth and development of vigorous Marianna and Jackson County.



## A PROGRESSIVE COMMUNITY

Educational facilities and agricultural development keynote the Marianna community.

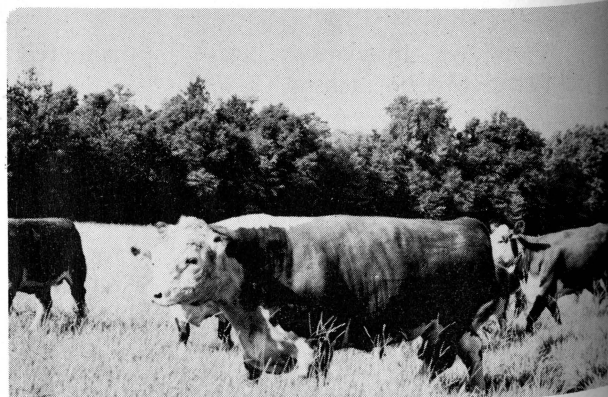
Only 12 years old, Chipola Junior College has a plant valued at \$1,100,000. It has an enrollment of 351 (1958-59) and 29 teachers.

President of this progressive educational institution is K. G. Skaggs.

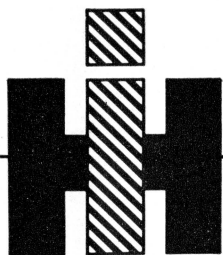
One of the modern buildings is viewed above.

The Jackson County area was designated by the New York Times in 1957 as "Industry's New Frontier." Yet the area has great vitality in its agricultural facilities.

The herefords pasturing in the photo at right are part of the great agricultural center in the county.







# **INTERNATIONAL**

## **A Sign of Good Construction Equipment**

**CRAWLER TRACTORS With Matched  
Dozers, Loaders and Scrapers  
PAY SCRAPERS • PAY HAULERS • POWER UNITS**



# **Florida-Georgia Tractor Company**

**JACKSONVILLE**

**LAKELAND**

**TAMPA**

**TALLAHASSEE**

**ORLANDO**

**N. MIAMI BEACH**



# Salem's new cigarette paper discovery "air-softens" every puff

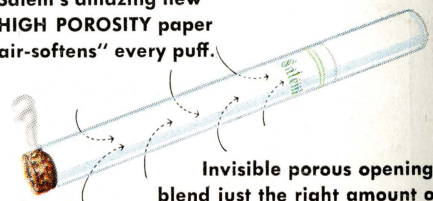
Created by R. J. Reynolds Tobacco Company

## Now even the paper adds to Salem's Springtime Freshness

An important break-through in Salem's research laboratories now brings you an entirely new kind of cigarette paper — HIGH POROSITY paper — which breathes new freshness into the flavor.

Each puff on a Salem draws just enough fresh air in through the paper to make the smoke taste softer, fresher, more *flavorful* than ever. If you've enjoyed Salem's springtime freshness before, you'll be even more pleased now. Smoke refreshed — smoke Salem!

Salem's amazing new  
HIGH POROSITY paper  
"air-softens" every puff.



Invisible porous openings  
blend just the right amount of  
air with each puff to give you a  
softer, fresher, even more flavorful smoke.



- menthol fresh
- rich tobacco taste
- modern filter, too

# Salem refreshes your taste