



# **F. S. U. vs Florida**

## **September 30, 1961**

**Price 50c**



**The South's  
Flavor-ite  
Way  
To Start  
The Day.**



COPELAND SAUSAGE CO., INC., ALACHUA, FLA.

---

# Pepper Printing Company

ESTABLISHED 1904

## *Quality Printing*

BOOKLETS — FOLDERS — BUMPER STRIPS — OFFICE FORMS

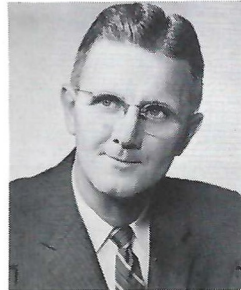
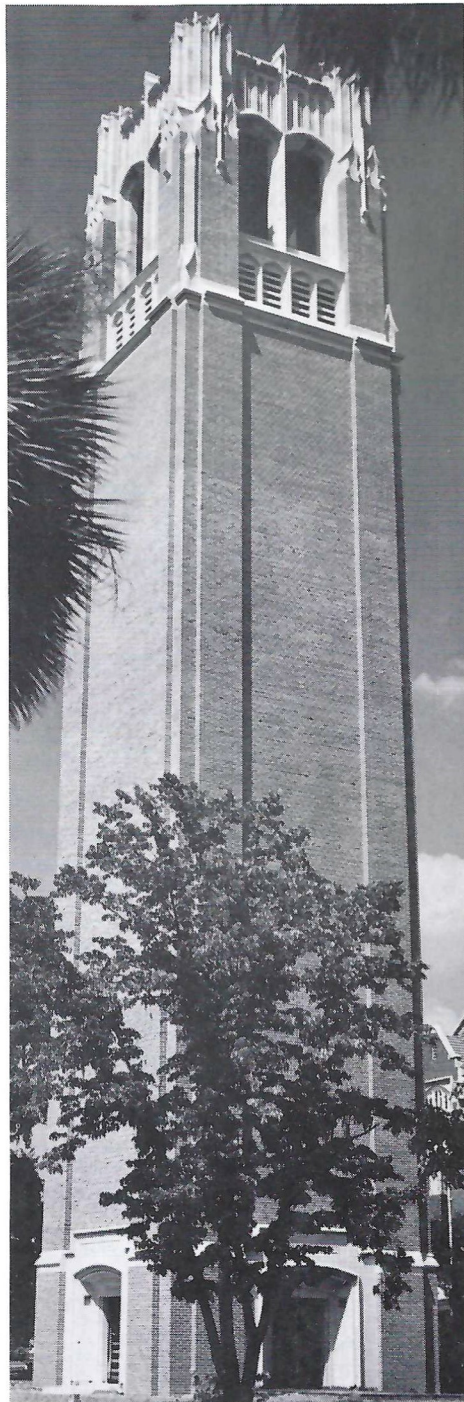
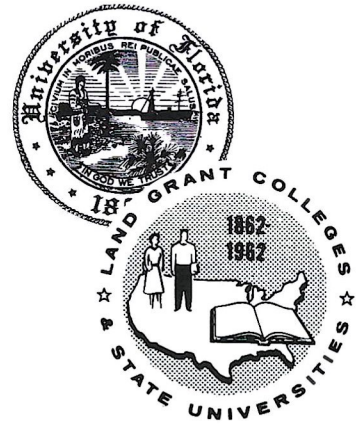
Black and White or Color Printing

EAST OF POST OFFICE BUILDING

GAINESVILLE, FLORIDA

---

# Land-Grant Centennial



President J. Wayne Reitz speaks for the University of Florida on the observance of the 100th anniversary of the Morrill Land-Grant Act.

## The University of Florida

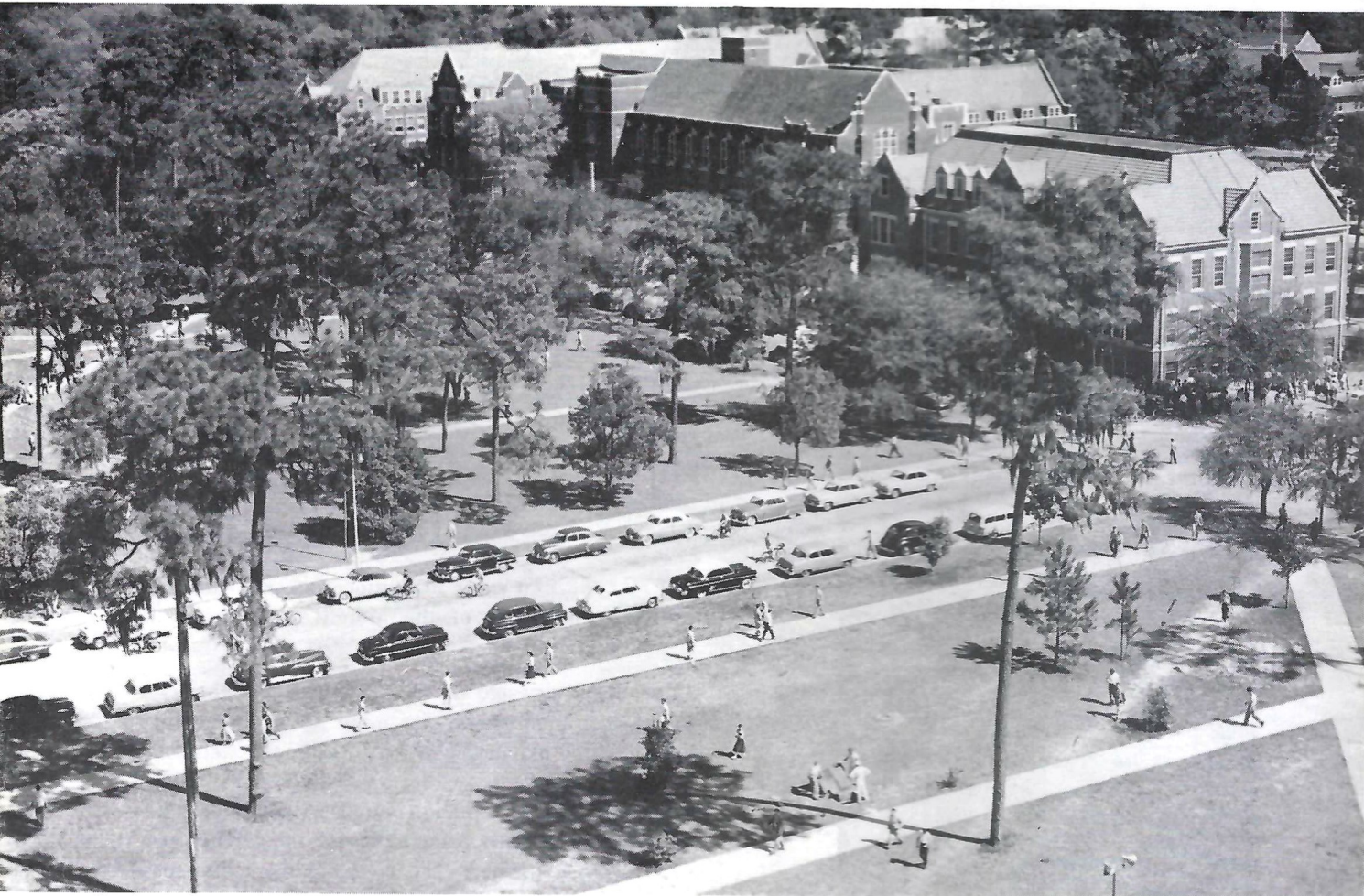
joins 67 Land-Grant sister institutions in commemorating the 100th anniversary of the Morrill Act during the academic year 1961-62.

A scant century ago the opportunity for higher education in this country was far more often than not restricted to those privileged by birth, by social status and by wealth. For these, college education was mainly based on classical British and continental models. It was intended to fit students principally for the learned professions as then defined. Today the old exclusiveness is gone. Higher education has become both more widely practical and more widely available. No longer the privilege of the few, it is an opportunity open to all who can benefit from it and have the will to meet its demands. This educational revolution, as far-reaching in its effects as the industrial and economic revolution itself, was brought about in large measure through the establishment of a new system of public higher education—by new institutions known as Land-Grant colleges and universities.

# Across The Campus

## A Cross View of a Land-Grant Institution in Action

“Not only the traditional scholastic and professional subjects but a work-a-day agriculture and the commercial and industrial arts brought into the environment of higher learning and research—gaining dignity and academic integrity thereby.”



Under the Morrill Act of 1862 Land-Grant colleges were to be financed through revenue derived from the sale of Federal lands. Each state was to be granted 30,000 acres of land for each of its members of Congress. Florida became a land-grant member in 1870 when the state was granted 90,000 acres of Federal lands which were sold to buy dividend-

paying bonds which still contribute to the support of the University.

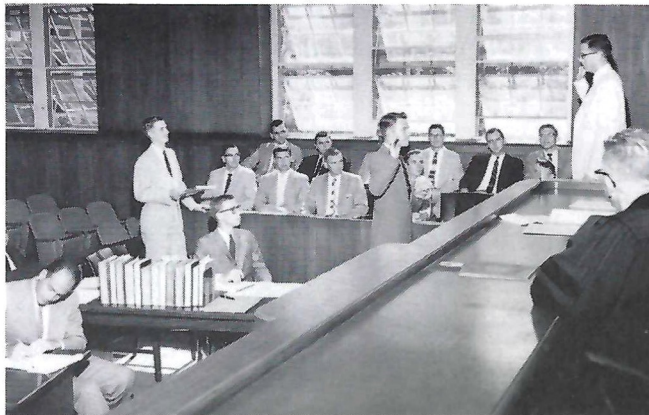
Land-Grant institutions such as the University of Florida number less than four percent of the nation's colleges, yet they enroll about 20 percent of the country's undergraduate students and grant nearly 40 percent of all doctoral degrees in every field of study.

in  
the  
ing  
rol  
ye  
pro  
con  
tio  
em  
mo  
as

ple  
tor  
61,  
ful  
als  
fes



# Land - Grant In Action



## College of Law

A practice court in the College of Law.

Founded in 1909, the College of Law takes pride in pointing to its alumni who have distinguished themselves in government and legal fields. Employing the concept that its graduates be prepared for roles of leadership, in addition to being efficient lawyers, the Florida College of Law is recognized for its progressive curriculum. The development of keen, competent lawyers who respect the ideals and traditions of the professions results from the policy which emphasizes practical skills as well as legal theory, modern and historical perspective and creative as well as technical writing.

A new wing to the Law Building, nearing completion, combined with the modern courtroom auditorium constructed in 1950 and a law library housing 61,000 volumes, comprise a physical plant which fulfills not only the needs of its 350 students but also serves as a law center for the state's legal profession.

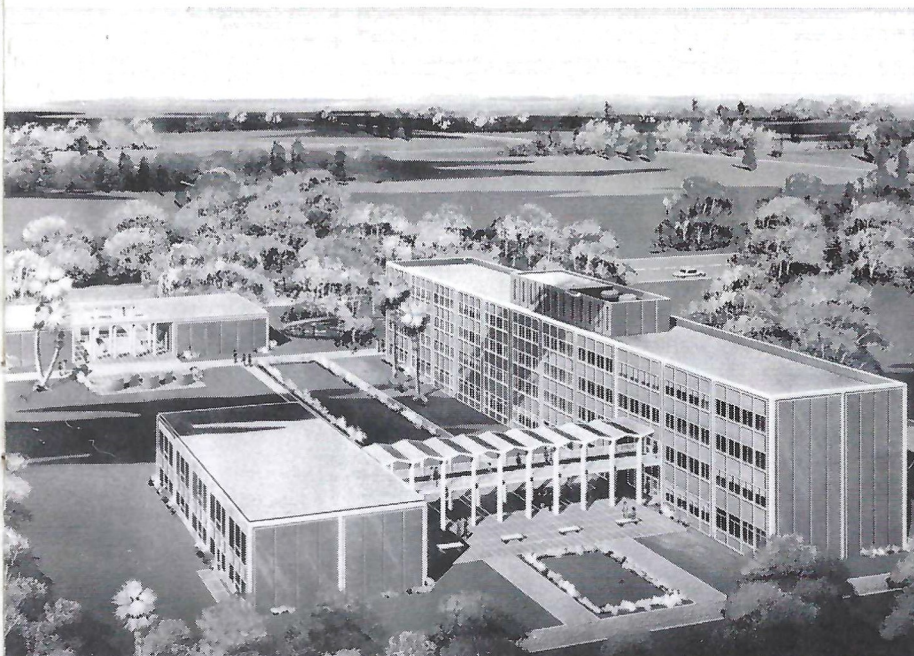


A portion of the Law Building showing recently added wing.

## Architecture and Fine Arts

Prominent among plans in the state's \$15 million building program for state universities is the proposed University of Florida College of Architecture and Fine Arts, shown at left. The \$1.7 million structure will contain a large library and administrative offices in a two-story unit, classrooms and laboratory space for architecture, building construction and art, and a smaller separate building for an art gallery and lecture halls.

Creative and cultural opportunities for professional purposes and personal enrichment are available to students through the College of Architecture and Fine Arts. Professional programs of study lead to undergraduate degrees in architecture, building construction, interior design, landscape architecture, music, art education, fine arts, history of art, crafts and advertising design.



# Land-Grant In Action

## College of Arts and Sciences



A foreign language laboratory.



A fossil collection in anthropology.

The backbone of any university is its curriculum of Arts and Sciences. Here at the University of Florida, the College of Arts and Sciences offers bachelors degrees in 25 fields, masters degrees in 17 and the Ph.D. in 12.

Because the bulk of the Arts and Sciences curriculum is concerned with fundamental knowledge and liberal education, nine out of ten graduates do not enter the job market but

continue in such fields as law, medicine and theology. Seventy-five percent of its students come from other colleges to fulfill pre-professional requirements.

The College of Arts and Sciences represents the basic strength of the graduate school, conferring almost half the Ph.D. degrees granted by the University.



A history lecture.



A geology student.



## RAY GRAVES

Last year, in his first season as Florida's head football coach, Ray Graves led the Gators to their finest record in history (nine victories and two defeats); guided the Gators to their highest ranking in the Southeastern Conference (one-half game out of first place); sent them to a bowl game (13-12 victory over Baylor in the Gator Bowl); and saw his players lavished with honors.

Graves, himself, received well-deserved recognition for the job he did in 1960. He was named Coach of the Year in the Southeastern Conference and was this district's nominee for Coach of the Year in the Nation. The Orlando Sentinel named him "Man of the Year" in Florida.

Success is no stranger to the Gator's Athletic Director and head football coach.

Graves was an outstanding player (a center) in high school, college and professional football. He was named captain of every football team on which he played. As an assistant coach at Tennessee and Georgia Tech, Graves saw 13 players who were directly in his charge selected to All-America teams. He has participated, as player and coach, in 13 post-season contests, including all of the major Bowl games.

Although football is his first athletic love, Graves is an enthusiastic and expert fisherman and is quick to accept a challenge to a tennis match.

He is married to the former Opal Richardson of Tazewell, Tenn., and they have three daughters.

THE OFFICIAL WATCH  
FOR THIS GAME

LONGINES



*The World's Most Honored Watch*

- \* Winner of 10 World's Fair Grand Prizes
- \* 28 World's Fair Gold Medals
- \* Highest Observatory Honors for Accuracy

*Premier Product of*

*Longines-Wittnauer*  
WATCH COMPANY

For Almost 100 Years, Maker of Watches  
of the Highest Character



Throughout the world, no other  
name on a watch means so much as

LONGINES

*The World's Most Honored Watch*  
OFFICIAL WATCH

1960 OLYMPIC WINTER GAMES • 1959 PAN AMERICAN GAMES • 1960 U. S. OLYMPIC TRIALS • MAJOR NATIONAL AND WORLD CHAMPIONSHIPS IN ALL FIELDS BOTH HERE AND ABROAD

At Authorized

*Longines-Wittnauer*  
JEWELERS

---

# THE ATLANTIC GROUP

**THE ATLANTIC NATIONAL BANK**  
of Jacksonville, Florida

**LAKE FOREST ATLANTIC BANK**  
Jacksonville, Florida

**SOUTHSIDE ATLANTIC BANK**  
Jacksonville, Florida

**SPRINGFIELD ATLANTIC BANK**  
Main Street  
Jacksonville, Florida

**THE FIRST NATIONAL BANK**  
of Gainesville, Florida

**FIRST ATLANTIC NATIONAL BANK**  
of Daytona Beach, Florida

**THE PALATKA ATLANTIC  
NATIONAL BANK**  
Palatka, Florida

**THE SANFORD ATLANTIC  
NATIONAL BANK**  
Sanford, Florida

**ATLANTIC NATIONAL BANK  
OF WEST PALM BEACH**  
West Palm Beach, Florida

## *The* ATLANTIC

**NATIONAL BANK**  
OF JACKSONVILLE



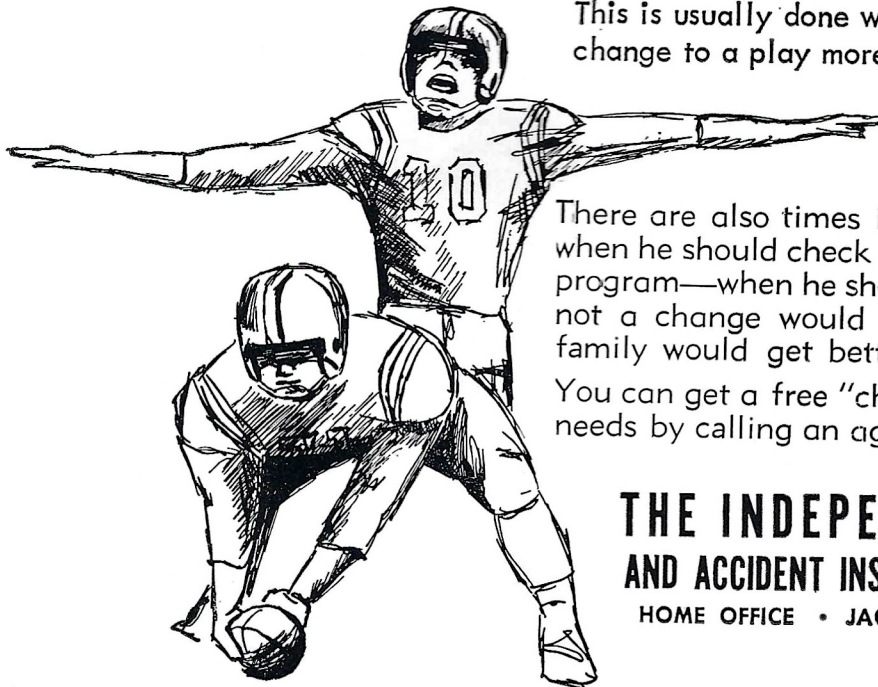
Organized 1903

Members Federal Deposit Insurance Corporation

---

## It's Smart to Know When to Change

There are times in every football game when the quarterback checks signals. This is usually done when a chance is seen to change to a play more likely to succeed.



There are also times in the life of every man when he should check signals on his insurance program—when he should find out whether or not a change would make sure he and his family would get better protection.

You can get a free "check" on your insurance needs by calling an agent of our Company.

**THE INDEPENDENT LIFE  
AND ACCIDENT INSURANCE COMPANY**

HOME OFFICE • JACKSONVILLE, FLORIDA

---

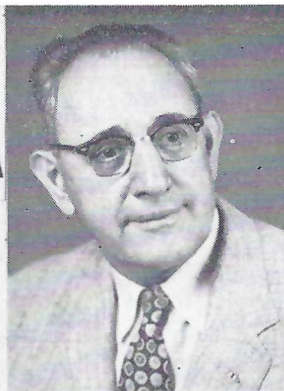
"THERE IS NO SUBSTITUTE FOR LIFE INSURANCE"



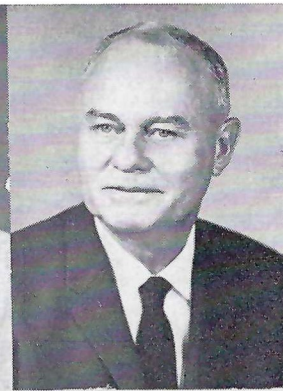
# FLORIDA STAFF



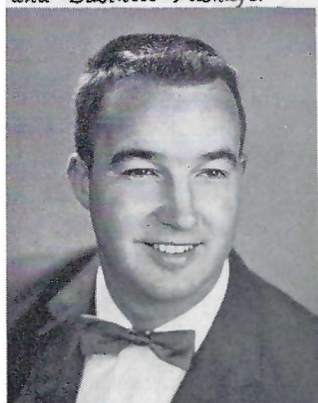
*Percy Beard  
Assistant Athletic Director  
and Business Manager*



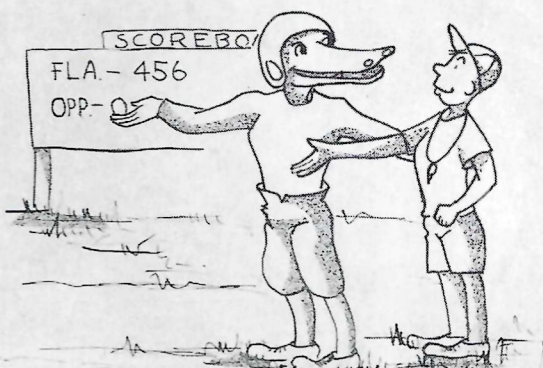
*Col. Everett M. Yon  
Director of Public  
Relations*



*Hobe Hooser  
Administrative Assistant to  
the Athletic Director*



*Pepper Rodgers*



## COACHES



*Jack Green*



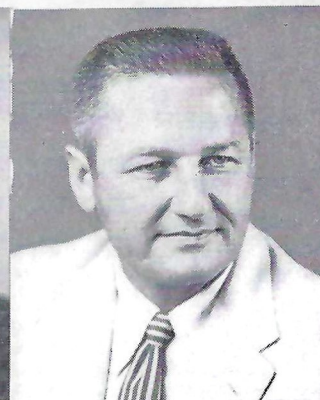
*Gene Ellenson*



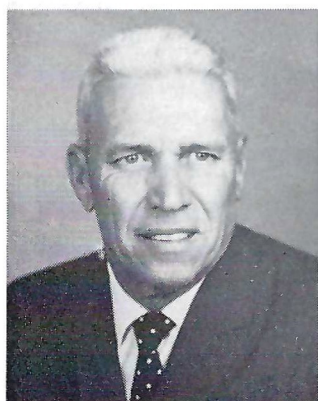
*Jim Powell*



*John Donaldson*



*John Fibner*



*Sterling Dupree*



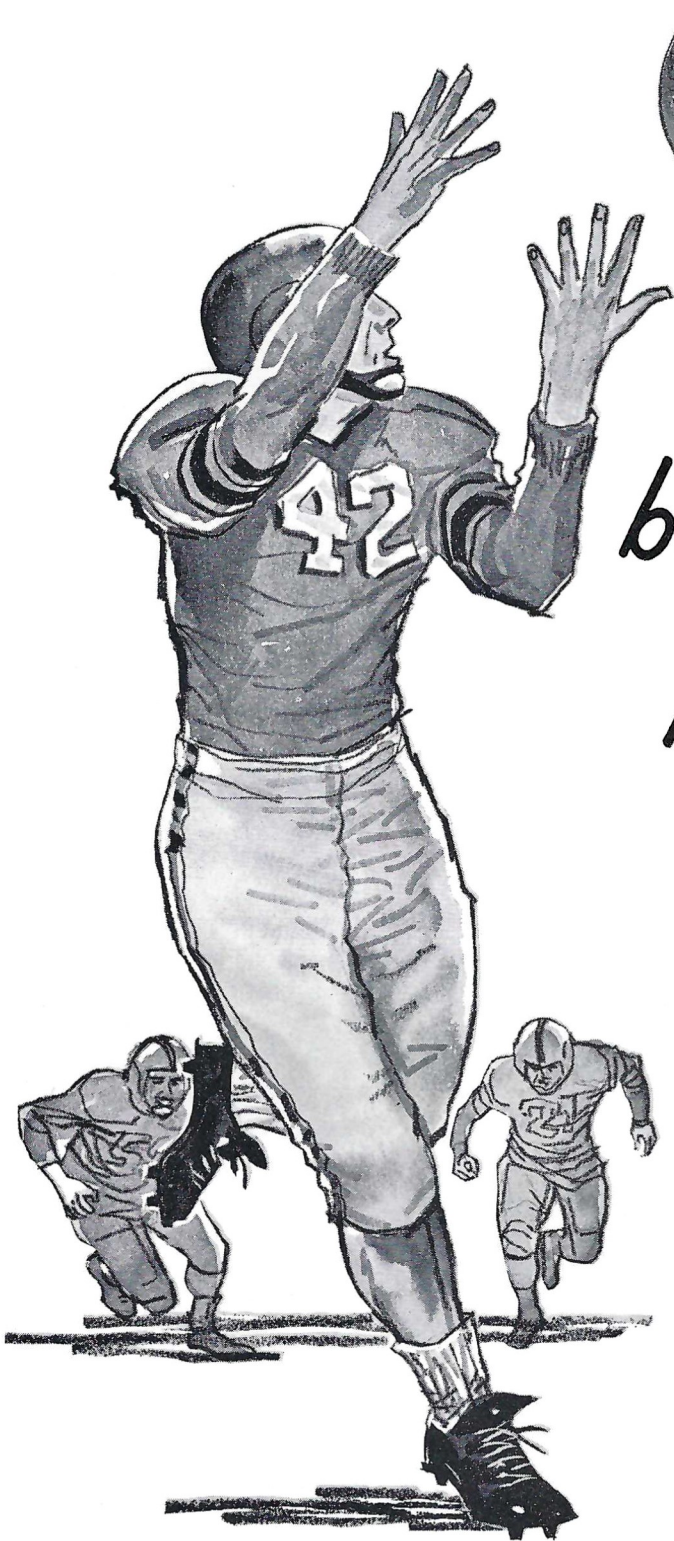
*Dave Fuller*



*Jimmy Dunn*



*Sam Lankford, Trainer*



*Our  
banking team  
is also  
hard to beat!*

FLORIDA NATIONAL BANK  
of Jacksonville

FLORIDA NATIONAL BANK & TRUST CO.  
at Miami

FLORIDA NATIONAL BANK  
at St. Petersburg

FLORIDA NATIONAL BANK  
at Orlando

FLORIDA NATIONAL BANK  
at Pensacola

FLORIDA NATIONAL BANK & TRUST CO.  
at West Palm Beach

FLORIDA NATIONAL BANK  
at Coral Gables

FLORIDA BANK & TRUST CO.  
at Daytona Beach

FLORIDA NATIONAL BANK  
at Lakeland

FLORIDA NATIONAL BANK  
at Bartow

FLORIDA NATIONAL BANK  
at Key West

FLORIDA NATIONAL BANK  
at Gainesville

FLORIDA NATIONAL BANK  
at Ocala

FLORIDA BANK  
at DeLand

FLORIDA DEALERS AND GROWERS BANK  
at Jacksonville

FLORIDA BANK  
at Fort Pierce

FLORIDA NATIONAL BANK  
at Fernandina Beach

FLORIDA NATIONAL BANK  
at Arlington

FLORIDA NATIONAL BANK  
at Vero Beach

FLORIDA NATIONAL BANK  
at Perry

FLORIDA BANK  
at Starke

FLORIDA NATIONAL BANK  
at Belle Glade

FLORIDA NATIONAL BANK  
at Port St. Joe

FLORIDA BANK  
at Madison

FLORIDA NORTHSIDE BANK  
of Jacksonville

FLORIDA NATIONAL BANK  
at Brent

FLORIDA BANK  
at Chipley

FLORIDA BANK  
At Bushnell

FLORIDA NATIONAL BANK  
at Opa-Locka



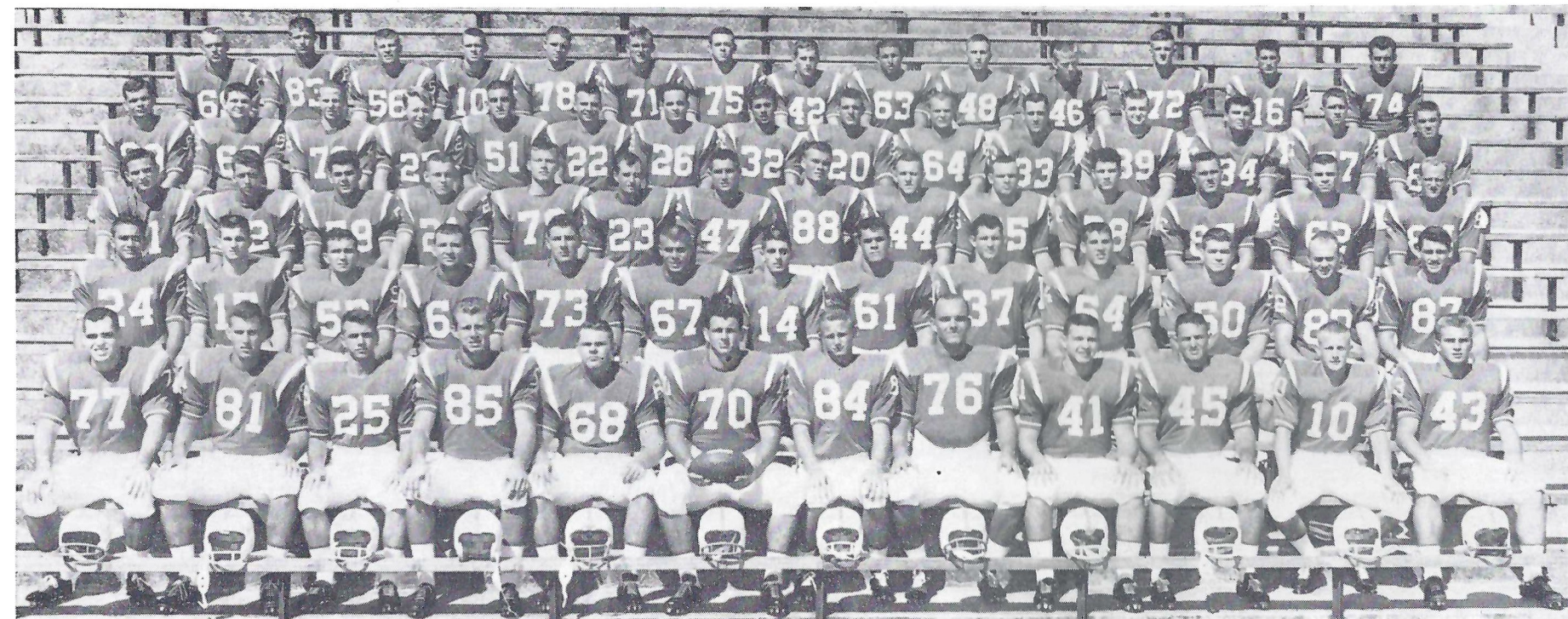
# FLORIDA NATIONAL GROUP OF BANKS

*29 Banks In The Florida National Group*

MEMBERS FEDERAL DEPOSIT INSURANCE CORPORATION

★

OVER \$60,000,000 IN CAPITAL FUNDS



### 1961 FLORIDA GATORS FOOTBALL SQUAD

(Left to Right)

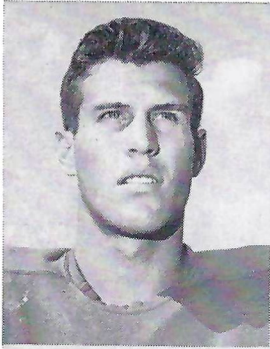
FIRST ROW: Dick Jones, Henry Farmer, Dave Bludworth, Tom Smith, Charlie Gill, Jim Beaver (Captain), Paul White, L. E. Hicks, Cecil Ewell, Don Goodman, Don Ringgold, Paul Vargecko.

SECOND ROW: Sam Mack, Tom Batten, Eddie Dunn, Norman Anderson, Anton Peters, Larry Travis, Larry Libertore, John Oliva, Bruce Starling, John Dent, Bruce Culpepper, Tom Kelley, Tom Gregory.

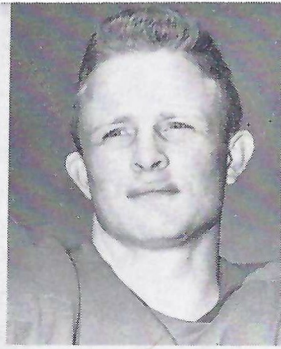
THIRD ROW: Bobby Dodd, Rod Albaugh, Dick Camiletti, Ron Stoner, Larry Fairall, Ed Braddy, Tom Campbell, Dave Tyler, Jim O'Donnell, Wade Entzminger, Jimmy Elliott, John Sexton, Jerome Jones, Bob Lindsey

FOURTH ROW: Jack Woodall, Don Loucks, Don Johnson, Walt H'ckenlooper, Russ Staples, Tom Alderson, Wayne Nalls, Dennis Agliano, Hagood Clarke, Bob Hosack, Lindy Infante, Billy Cash, Bob Hoover, Thad Green, Sam Holland.

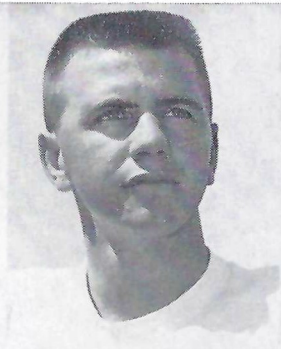
FIFTH ROW: Dick Roberts, Russ Brown, Jim Bernhart, Pat Willingham, Fred Pearson, Bob Thompson, Pete Smith, Jack Thompson, Bob Johnson, Bill Sollee, Bob Cook, Ken Russell, Floyd Dean.



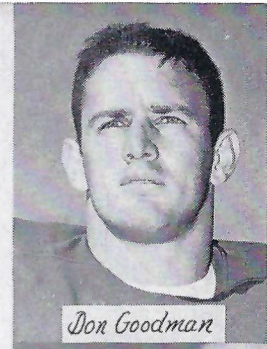
*Henry Farmer*



*Paul White*

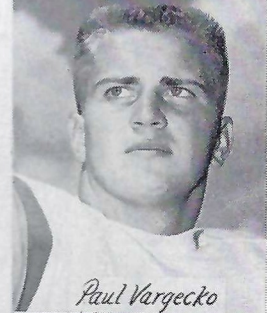


*David Bludworth*

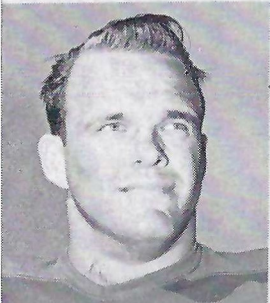


*Don Goodman*

# FLORIDA SENIORS



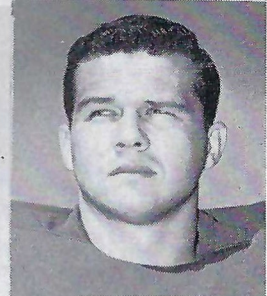
*Paul Vargecko*



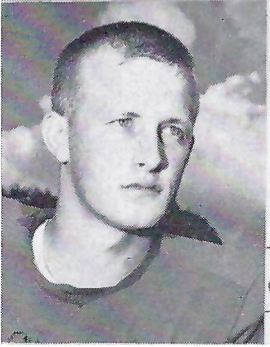
*L.E. Hicks*



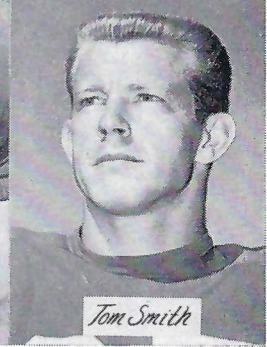
*Jim Beaver  
Captain*



*Cecil Ewell*



*Don Ringgold*



*Tom Smith*

Florida Fighting Gators want the best . . .  
that is why Nelson's Award Sweaters and  
Jackets are their choice.

Buy direct from the Mill. You are assured  
of high quality and good delivery.

Send for our Athletic Catalog

**Nelson Knitting Mills Co.**

2105 W. Superior St. Duluth 6, Minn.  
Est. 1892

Compliments of

**SAN MARCO  
CONTRACTING COMPANY**

ST. AUGUSTINE, FLORIDA

## JOHNSON & FARIS, INC.

Seeds, Feeds, Fertilizers, Insecticides  
and Garden Supplies

224 N.W. Eighth Avenue      P. O. Box 286  
GAINESVILLE, FLORIDA



*Gas Genie Says*

It's Clean  
It's Fast  
It's

**Natural Gas**  
from

**Gainesville Gas Company**

237 W. Univ. Ave.

Ph. FR 2-8511

**Rexall**

## McCOLLUM DRUG CO.

Complete Prescription, Cosmetic and  
Fountain Services

Robert H. McCollum      James L. Cooper  
1124 W. University Ave.      Phone FR 6-5356

A quiet, restful place to stay . . .

An excellent place to eat . . .

A quiet, restful atmosphere to enjoy.

**HOTEL THOMAS**  
*Gainesville, Florida*

# THE FIGHTING GATORS

# FLY NATIONAL

*Florida's own airline.* Again this year, Football Stars of the University of Florida select NATIONAL, Airline of the Stars, to fly them to all "away" games. On your next trip—North, South, East or West—you, too, can enjoy the luxury

of flying National. Only National offers direct jet service between *FLORIDA* and *CALIFORNIA*.

**NATIONAL**

FIRST WITH JETS IN THE U. S. A.

**FRED ABOOD'S**  
**Steer Room Restaurant**

Featuring

**PRIME CHARCOAL BROILED STEAKS**

On the Farmer's Market

Foot W. Beaver St. Viaduct

JACKSONVILLE, FLORIDA

Telephone ELgin 4-9136

*Blanch's*  
Where Gainesville's Smartest Dressers Shop

*Where Gainesville's Smart Dressers Shop*

and

**Blanch's Beauty Salon**

*Where Smart Styling is Created*

REPUTATION BY RECOMMENDATION

PHONE FR 6-5997

We Specialize in

**FRIED CHICKEN and HUSH PUPPIES**

**RUBY'S RESTAURANT**

15 Miles South of

**GAINESVILLE, FLORIDA**

Hi-Way 441

McIntosh LY 1-2483

BRINGING TO YOU---

*12 months of seasonal sports!*



*The Times-Union's Sports Staff is headed by Bill Kastelz, Sports Editor. His daily columns provide comments and opinions on the inside of sports.*

Whatever the month on the calendar—some sport is in season.

Fall brings football and stadiums of fans; in winter basketball hits its stride; spring and summer are baseball time. Tennis, golf, fishing, boxing, wrestling and bowling—all are popular the year 'round. News, views and results on spectator and active sports are reported in

**The Florida Times-Union**

EVERY MORNING

No  
10  
11  
12  
14  
15  
16  
20  
21  
23  
24  
25  
26  
27  
33  
34  
37  
41  
43  
44  
45  
46  
47  
50  
51  
52  
53  
56  
57  
59  
60  
61  
62  
63  
64  
65  
66  
67  
68  
69  
70  
71  
73  
74  
76  
77  
78  
79  
80  
81  
82  
83  
84  
85  
86  
87  
88  
89

# FLORIDA ROSTER

| No. | Name                | Pos. | Age | Ht.  | Wt. | Letters | Hometown           | Class |
|-----|---------------------|------|-----|------|-----|---------|--------------------|-------|
| 10  | Don Ringgold (Punt) | QB   | 21  | 5-9  | 154 | 1       | Tulsa, Okla.       | Sr.   |
| 11  | Bobby Dodd, Jr.     | QB   | 19  | 6-0  | 173 | 1       | Atlanta, Ga.       | Jr.   |
| 12  | Rod Albaugh         | QB   | 19  | 6-0  | 180 | 0       | Wheeling, W. Va.   | So.   |
| 14  | Larry Libertore     | QB   | 21  | 5-8  | 138 | 1       | Miami              | Jr.   |
| 15  | Tom Batten          | QB   | 20  | 5-11 | 158 | 0       | Miami              | Jr.   |
| 16  | Ken Russell         | QB   | 20  | 5-11 | 157 | 0       | Midland, Pa.       | So.   |
| 20  | Hagood Clarke       | LH   | 19  | 6-0  | 185 | 0       | Miami              | So.   |
| 21  | Ron Stoner          | RH   | 21  | 5-10 | 171 | 0       | Troy, Ohio         | Jr.   |
| 23  | Ed Braddy           | RH   | 21  | 5-11 | 169 | 0       | Ft. Lauderdale     | Jr.   |
| 24  | Sam Mack            | LH   | 20  | 5-10 | 172 | 0       | Tarpon Springs     | Jr.   |
| 25  | Dave Blutworth      | LH   | 20  | 5-8  | 158 | 0       | DeFuniak Springs   | Sr.   |
| 26  | Wayne Nalls         | RH   | 21  | 5-8  | 170 | 0       | Ocala              | Jr.   |
| 27  | Walt Hickenlooper   | RH   | 19  | 5-11 | 170 | 1       | Palatka            | Jr.   |
| 33  | Lindy Infante       | LH   | 20  | 5-11 | 178 | 1       | Miami              | Jr.   |
| 34  | Bob Hoover          | RH   | 20  | 6-0  | 197 | 1       | Jacksonville       | Jr.   |
| 37  | Bruce Starling      | LH   | 19  | 6-1  | 175 | 1       | Ocala              | Jr.   |
| 41  | Cecil Ewell         | FB   | 21  | 6-0  | 194 | 1       | Chicago, Ill.      | Sr.   |
| 43  | Paul Vargecko       | FB   | 20  | 5-11 | 193 | 1       | Steubenville, Ohio | Sr.   |
| 44  | Jim O'Donnell       | FB   | 19  | 5-11 | 188 | 0       | Clearwater         | So.   |
| 45  | Don Goodman         | FB   | 22  | 6-0  | 203 | 2       | Miami              | Sr.   |
| 46  | Bill Sollee         | FB   | 19  | 5-10 | 175 | 0       | Jacksonville       | So.   |
| 47  | Tom Campbell        | FB   | 20  | 6-1  | 203 | 0       | Miami              | So.   |
| 50  | Bruce Culpepper     | C    | 19  | 6-1  | 225 | 1       | Tallahassee        | Jr.   |
| 51  | Russ Staples        | C    | 20  | 6-1  | 205 | 0       | Palatka            | So.   |
| 52  | Tom Kelley          | C    | 20  | 6-0  | 190 | 1       | Birmingham, Ala.   | Jr.   |
| 53  | Eddie Dunn          | C    | 21  | 5-9  | 190 | 0       | Daytona Beach      | Jr.   |
| 56  | Jim Bernhart        | C    | 19  | 5-11 | 190 | 0       | Miami              | So.   |
| 57  | Thad Green          | C    | 19  | 6-2  | 204 | 0       | Canton, Ga.        | So.   |
| 59  | Dick Camiletti      | RT   | 19  | 5-11 | 201 | 0       | Wellsburg, W. Va.  | Jr.   |
| 60  | Norman Anderson     | LG   | 21  | 6-0  | 221 | 0       | Miami              | Jr.   |
| 61  | Bob Cook            | LG   | 19  | 6-1  | 210 | 0       | Bunnell            | So.   |
| 62  | Jerome Jones        | RG   | 19  | 6-0  | 206 | 0       | Jacksonville       | So.   |
| 63  | Jack Thompson       | RG   | 19  | 5-9  | 185 | 0       | Savannah, Ga.      | So.   |
| 64  | Bob Hosack          | LG   | 20  | 5-9  | 200 | 0       | Miami              | Jr.   |
| 65  | Wade Entzminger     | RG   | 19  | 5-10 | 185 | 0       | Tampa              | Jr.   |
| 66  | John Dent           | RT   | 19  | 6-2  | 217 | 0       | Tampa              | So.   |
| 67  | Larry Travis        | LG   | 20  | 6-0  | 200 | 1       | Miami              | Jr.   |
| 68  | Charley Gill        | LG   | 24  | 6-0  | 221 | 1       | Dennison, Texas    | Jr.   |
| 69  | John Oliva          | RG   | 19  | 6-1  | 220 | 0       | Tampa              | So.   |
| 70  | Jim Beaver (Capt.)  | RT   | 22  | 6-1  | 230 | 2       | West Palm Beach    | Sr.   |
| 71  | Fred Pearson        | LT   | 19  | 6-2  | 229 | 0       | Ocala              | So.   |
| 73  | Anton Peters        | RT   | 20  | 6-4  | 232 | 0       | Tampa              | Jr.   |
| 74  | Floyd Dean          | LT   | 20  | 6-4  | 245 | 1       | Eagle Lake         | Jr.   |
| 76  | L. E. Hicks         | LT   | 21  | 6-3  | 230 | 0       | Tampa              | Sr.   |
| 77  | Dick Jones          | LT   | 19  | 6-2  | 218 | 0       | Gainesville        | Jr.   |
| 78  | Wayne McLeroy       | RT   | 19  | 5-11 | 218 | 0       | Cocoa Beach        | So.   |
| 79  | Larry Fairall       | LT   | 19  | 6-2  | 211 | 0       | Jacksonville       | So.   |
| 80  | Sam Holland         | RE   | 19  | 6-1  | 190 | 1       | Key West           | Jr.   |
| 81  | Henry Farmer        | RE   | 21  | 6-3  | 214 | 0       | Atlanta, Ga.       | Sr.   |
| 82  | John Sexton         | LE   | 19  | 6-1  | 195 | 0       | St. Petersburg     | So.   |
| 83  | Russ Brown          | LE   | 19  | 6-2  | 200 | 0       | Miami              | So.   |
| 84  | Paul White (Safety) | LE   | 22  | 5-11 | 179 | 2       | Bartow             | Sr.   |
| 85  | Tom Smith           | LE   | 22  | 6-2  | 198 | 2       | Atlanta, Ga.       | Sr.   |
| 86  | Bob Lindsey         | LE   | 20  | 6-4  | 204 | 0       | Alachua            | So.   |
| 87  | Tom Gregory         | RE   | 21  | 6-2  | 191 | 1       | Griffin, Ga.       | Jr.   |
| 88  | David Tyler         | LE   | 19  | 6-2  | 195 | 0       | Palmetto           | So.   |
| 89  | Bill Cash           | RE   | 19  | 6-1  | 190 | 1       | Tallahassee        | Jr.   |

We Honor

American Express    Credit Cards

Hilton

Curle Blanche

AAA

The Diners Club

## AFTER THE GAME

Candler Reese invites you to visit the Brahma Restaurant and Cocktail Lounge in Ocala for a "tropical adventure" in fine eating. No finer food served anywhere.

South on 4 Lane Hwy. at 17th St.  
Phone MA 2-4311  
OCALA, FLORIDA

The Brahma

**COFFEE SHOP RESTAURANT**

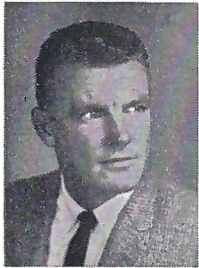
COCKTAILS

# ABOUT TODAY'S GAME

By Jimmy Gay

Head of Sports Publicity, University of Florida

Two of the nation's mightiest midget quarterbacks face each other today, when Florida and Florida State open the fourth chapter of a growing gridiron story.



Jimmy Gay

The previous three stanzas belonged to Florida, although, hard-fought contests were the order. The Gators took the opener 21-7 in 1958, 18-8 in '59 and 3-0 last year, in a game rocked by a bribe scandal and a courageous performance of Florida fullback Jon MacBeth in fooling the gamblers.

Jimmy Dunn and Jack Espenship provided the offensive punch in the opener of the series, Jack Westbrook took the spotlight in the second game, and last year, it was FSU's mighty mouse, Eddie Feely.

Ironically, Feely is a Gainesville boy. However, it was a 35-yard field goal by Billy Cash, a Tallahassee boy, which won the game.

This year, Coach Ray Graves expects five touchdowns to be scored. The reason is obvious with Feely returning for his junior year to match option runs with Florida's Wild Mouse Larry Libertore.

Libertore displayed his slippery style against Clemson last week for a grand total of 161 yards against one of the ruggedest lines in the country. Just the week before, Feely pitched and ran the Seminoles to a 15-7 win over George Washington and was named Back of the Week among Florida colleges for his efforts.

These two are not the only offensive spark in the Sunshine State arsenals. Florida's backfield is chock-full of All-America potential with 205-pound batt ring ram Don Goodman at fullback and Bob (the Mover) Hoover and Lindy Infante at halfback. Hoover broke through the Clemson defenders for a 21-yard gain in the opener—the second longest of the young season—while Infante scored all three Gator TD's. Also on hand to liven up the Florida offense is passing whiz Bobby Dodd, who set a percentage accuracy record last year, and outstanding receivers Bruce Starling and Russ Brown.

Even with Gene Roberts on the sideline, the Seminole attack is formidable. Marion Roberts, a bruising sophomore runner, takes over the brunt of the inside work with fleet Tom Hillabrand—who doubles as a top-notch pass receiver—taking the outside road. Big Ed Trancygier gives Coach Bill Peterson a powerful one-two quarterback punch.

Both teams enter the game with unblemished 1-0 marks. A sellout crowd of 44,000 people are expected to be on hand. Both clubs are primed for this one as the Seminoles always point to the Gators and Florida remembers last year's close call.

Graves has pointed out that each team is capable of moving the ball and scoring three times. It should be a wide-open one for the fans.

## ALMA MATER

Florida, our Alma Mater,  
Thy glorious name we praise;  
All thy loyal sons and daughters  
A joyous song shall raise.  
Where palm and pine are blowing,  
Where Southern seas are flowing.  
Shine forth thy noble Gothic walls,  
Thy lovely vine-clad halls.  
'Neath the Orange and Blue victorious  
Our love shall never fail.  
There's no other name so glorious—  
All Hail, Florida, Hail.

## STADIUM INFORMATION

### REST ROOMS

**WOMEN**—Under west stands opposite Sections 8 and 9, and at northwest corner. Also near Florida student entrance.

**MEN**—Under west stands opposite Sections 12 and 13, and at northeast corner. Also near Florida student entrance.

### DRINKING

The use of alcoholic beverages is prohibited on University of Florida property. This includes the Stadium as well as all other athletic contest areas on the campus.

### LOST AND FOUND

Lost and found articles should be reported or turned in to the **INFORMATION WINDOW** by Gate 3 on the west side of the Stadium.

### TELEPHONES

There are public telephones located under the west stands between gates 3 and 4.

### FIRST AID

Ambulances will be parked by Gate 3 and at the south end of the football field. The attendants are available to render first aid.

## CONCESSIONS PRICES

|                               |       |
|-------------------------------|-------|
| Coca-Cola and Pepsicola ..... | \$.15 |
| Peanuts .....                 | .15   |
| Popcorn .....                 | .25   |
| Hot Dogs (foil bags) .....    | .25   |
| Cigars (Tampa Nuggets) .....  | .10   |
| Cigarettes .....              | .35   |
| Ice Cream .....               | .15   |
| Candy .....                   | .15   |
| Coffee .....                  | .15   |
| Gum .....                     | .10   |
| Aspirin .....                 | .25   |
| Seat Cushions (Rental) .....  | .25   |

### TAKE HOME A NOVELTY GIFT

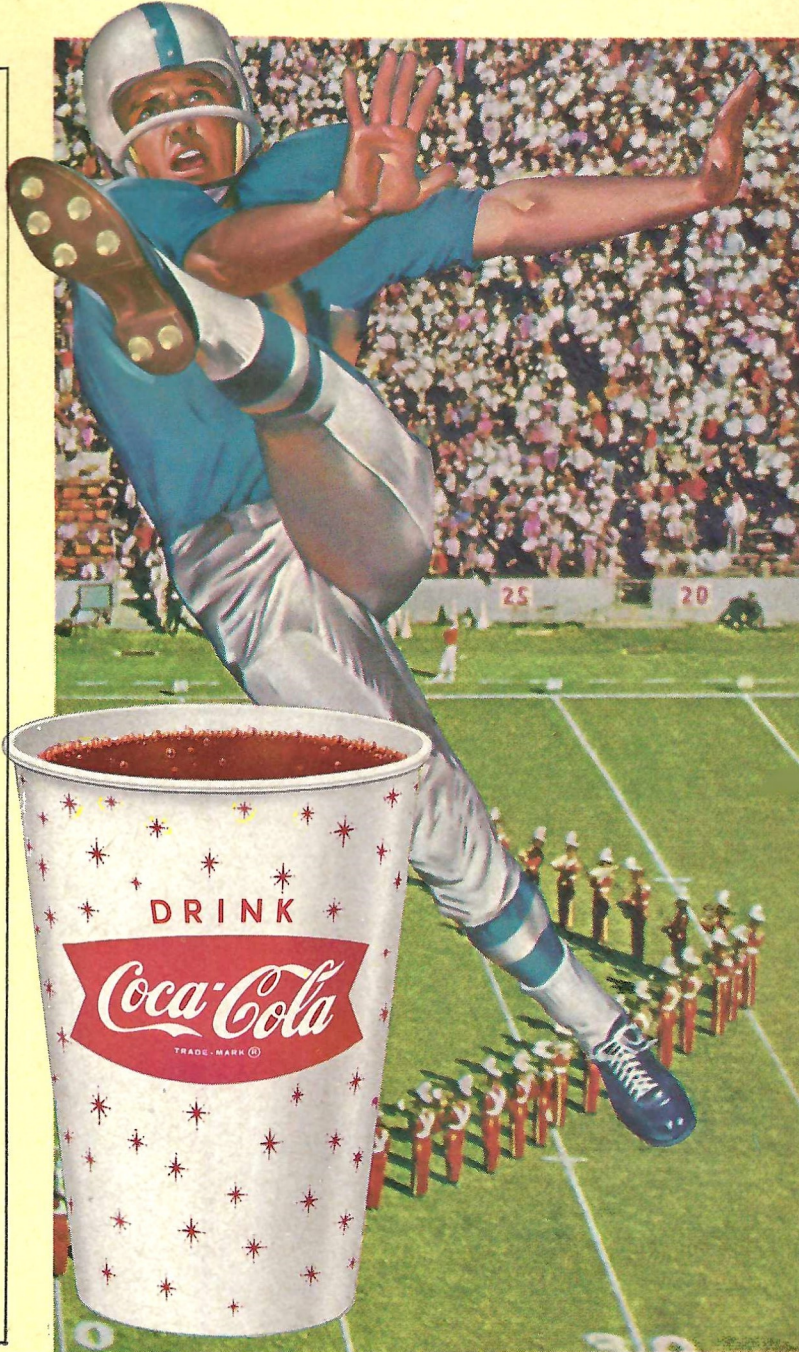
Concessions in this Stadium are operated by the University Athletic Association, Inc.





# ZING!

- 1 OFFSIDE
- 2 ILLEGAL PROCEDURE POSITION OR SUBSTITUTION
- 3 ILLEGAL MOTION
- 4 ILLEGAL SHIFT
- 5 ILLEGAL RETURN
- 6 DELAY OF GAME
- 7 PERSONAL FOUL
- 8 CLIPPING
- 9 ROUGHING THE KICKER
- 10 UNSPORTSMANLIKE CONDUCT
- 11 ILLEGAL USE OF HANDS AND ARMS
- 12 INTENTIONAL GROUNDING
- 13 ILLEGALLY PASSING OR HANDING BALL FORWARD
- 14 FORWARD PASS OR KICK CATCHING INTERFERENCE
- 15 INELIGIBLE RECEIVER DOWNFIELD ON PASS
- 16 BALL ILLEGALLY TOUCHED, KICKED OR BATTED
- 17 INCOMPLETE FORWARD PASS, PENALTY DECLINED, NO PLAY OR NO SCORE
- 18 HELPING RUNNER OR INTERLOCKED INTERFERENCE
- 19 BALL DEAD, IF HAND IS MOVED FROM SIDE TO SIDE: TOUCHBACK.
- 20 TOUCHDOWN OR FIELD GOAL
- 21 SAFETY
- 22 TIME-OUT
- 23 FIRST DOWN
- 24 BALL READY FOR PLAY
- 25 START THE CLOCK



Gainesville Coca-Cola Bottling Company — Gainesville, Florida

# VICEROY'S got it a

GOT THE FILTER! GOT THE BLEND



## FLORIDA

### Probable Starting Lineup

| No. | Name            | Pos. |
|-----|-----------------|------|
| 85  | TOM SMITH       | LE   |
| 71  | FRED PEARSON    | LT   |
| 67  | LARRY TRAVIS    | LG   |
| 50  | BRUCE CULPEPPER | C    |
| 65  | WADE ENTZMINGER | RC   |
| 70  | JIM BEAVER      | RT   |
| 80  | SAM HOLLAND     | RE   |
| 14  | LARRY LIBERTORE | QB   |
| 33  | LINDY INFANTE   | LH   |
| 34  | BOB HOOVER      | RH   |
| 45  | DON GOODMAN     | FB   |

## FLORIDA SQUAD

|                     |                  |                  |
|---------------------|------------------|------------------|
| 10 Ringgold, QB     | 45 Goodman, FB   | 69 Oliva, RG     |
| 11 Dodd, QB         | 46 Sollee, FB    | 70 Beaver, RT    |
| 12 Albaugh, QB      | 47 Campbell, FB  | 71 Pearson, LT   |
| 14 Libertore, QB    | 50 Culpepper, C  | 73 Peters, RT    |
| 15 Batten, QB       | 51 Staples, C    | 74 Dean, LT      |
| 16 Russell, QB      | 52 Kelley, C     | 76 Hicks, LT     |
| 20 Clarke, LH       | 53 Dunn, C       | 77 Jones, D., LT |
| 21 Stoner, RH       | 56 Bernhart, C   | 78 McLeroy, RT   |
| 23 Braddy, RH       | 57 Green, C      | 79 Fairall, LT   |
| 24 Mack, LH         | 59 Camiletti, RT | 80 Holland, RE   |
| 25 Bludworth, LH    | 60 Anderson, LG  | 81 Farmer, RE    |
| 26 Nalls, RH        | 61 Cook, LG      | 82 Sexton, LE    |
| 27 Hick'n'l'per, RH | 62 Jones, J., LG | 83 Brown, LE     |
| 33 Infante, LH      | 63 Thompson, RG  | 84 White, LE     |
| 34 Hoover, RH       | 64 Hosack, LG    | 85 Smith, LE     |
| 37 Starling, LH     | 65 Entzinger, RG | 86 Lindsey, LE   |
| 41 Ewell, FB        | 66 Dent, RT      | 87 Gregory, RE   |
| 43 Vargecko, FB     | 67 Travis, LG    | 88 Tyler, LE     |
| 44 O'Donnell, FB    | 68 Gill, LG      | 89 Cash, RE      |

Don't smoke another cigarette until... you learn what

# t it at both ends ...

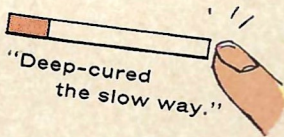
THE BLEND!



"At both ends ... really?"



"Imagine!  
A Deep-Weave Filter!"



"Deep-cured  
the slow way."



"You get more to enjoy."

**SHE:** I'd heard about the famous filter, never knew Viceroy had the best taste, too.  
**HE:** You get both! Viceroy's Deep-Weave\* Filter and the rich tobacco blend!

**Compare the filter:** Only Viceroy has the Deep-Weave Filter. Viceroy's Deep-Weave Filter is woven from a vegetable substance that's pure, and safe!

**Compare the blend:** Only Viceroy has this rich tobacco blend, deep-cured the slow way to bring real taste to filter smoking!

**SHE:** Mmm, now I've really got it! Viceroy's Deep-Weave Filter and the best taste, too!

**HE:** You'll feel a big difference in pleasure... because Viceroy's got it at both ends. Got the filter! Got the blend!

\*Reg. U.S. Pat. Office

## F.S.U.

### Probable Starting Lineup

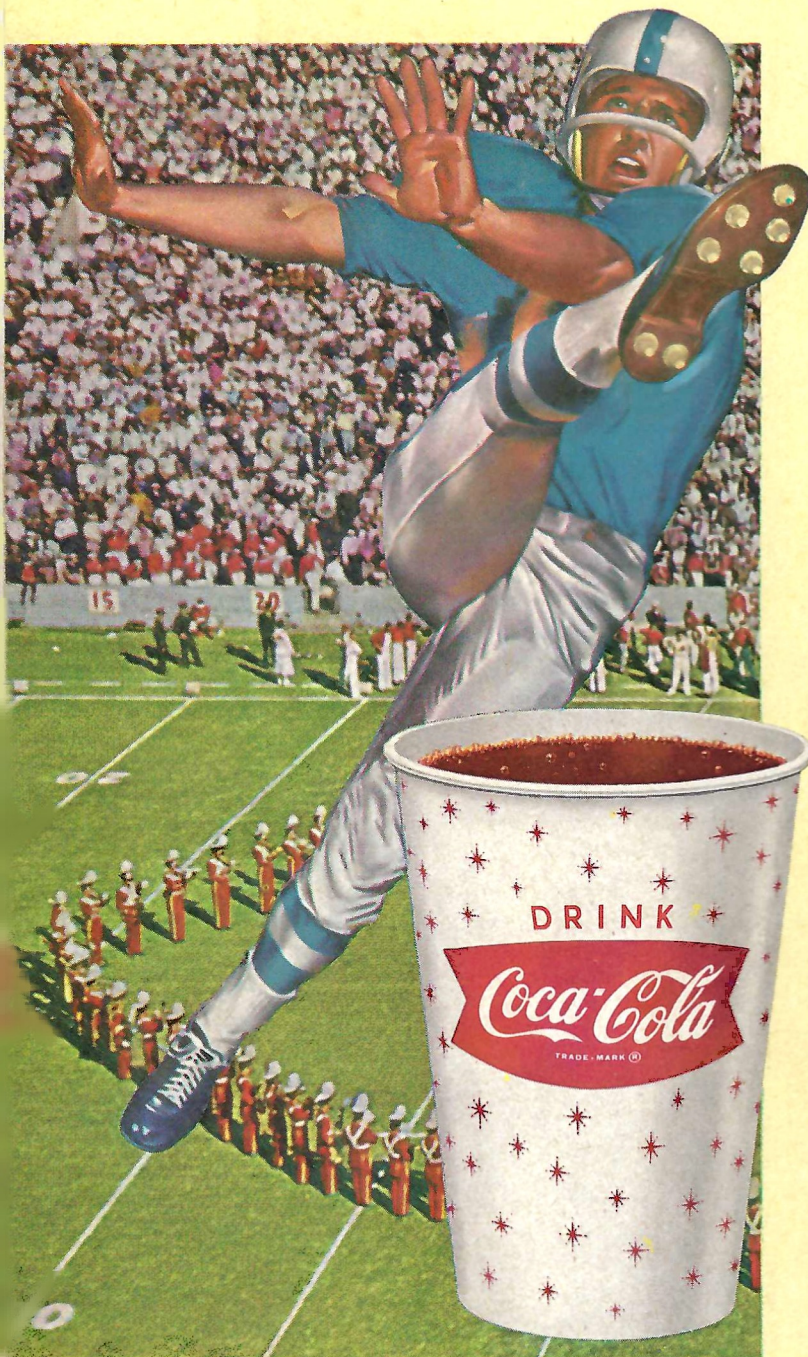
| No. | Name            | Pos. |
|-----|-----------------|------|
| 86  | JIM DANIEL      | LE   |
| 71  | JIM SIMS        | LT   |
| 67  | JERRY BRUNER    | LG   |
| 64  | BRUCE DARSEY    | C    |
| 65  | JOHN LEVINGS    | RG   |
| 75  | DON DONATELLI   | RT   |
| 89  | J. McCONNAUGHAY | RE   |
| 14  | EDDIE FEELY     | QB   |
| 25  | RICHIE WEBER    | LH   |
| 29  | TOM HILLABRAND  | RH   |
| 44  | MARION ROBERTS  | FB   |

## F.S.U. SQUAD

|                    |                    |                     |
|--------------------|--------------------|---------------------|
| 10 Trancygier, QB  | 42 Andrews, FB     | 71 Sims, T          |
| 11 Calhoun, QB     | 43 Raduenzel, FB   | 73 Klesius, T       |
| 12 Harlee, FB      | 44 Roberts, M., HB | 74 Tyre, T          |
| 13 Fick, HB        | 50 Tinsley, C      | 75 Donatelli, T     |
| 14 Feely, QB       | 51 Hood, C         | 76 Andrews, T       |
| 15 Bickford, QB    | 52 Robinson, C     | 77 Thompson, T      |
| 20 Snyder, HB      | 53 Rodgers, C      | 78 Verbinski, T     |
| 21 Brinkley, HB    | 54 Dawson, C       | 79 Blazovich, T     |
| 22 Russom, HB      | 60 Henry, G        | 80 Wachtel, E       |
| 23 Forehand, HB    | 61 Klores, G       | 82 Logay, E         |
| 24 Yarbrough, HB   | 63 McDowell, G     | 83 Parker, E        |
| 25 Weber, HB       | 64 Darsey, G       | 84 Sytsma, E        |
| 26 Kinderman, HB   | 65 Levings, G      | 85 Grimes, E        |
| 27 Haney, HB       | 66 DeFrancesco, G  | 86 Daniel, E        |
| 28 Floyd, HB       | 67 Bruner, G       | 87 McNeese, E       |
| 29 Hillabrand, HB  | 68 Daly, G         | 88 Gunter, E        |
| 40 Messer, HB      | 69 Wade, G         | 89 McCon'aug'hay, E |
| 41 Roberts, G., FB | 70 Slicker, T      |                     |

Learn what Viceroy can do for your smoking pleasure!

# Enjoy that **REFRESHING** **NEW** **FEELING!**



## **PENALTIES**

**1. OFFSIDE** by either team; Violation of scrimmage or free kick formation; Encroachment on neutral zone—Loss of Five Yards.

**2. ILLEGAL PROCEDURE, POSITION OR SUBSTITUTION**—Putting ball in play before Referee signals "Ready-for-Play"; Failure to complete substitution before play starts; Player out of bounds when scrimmage begins; Failure to maintain proper alignment of offensive team when ball is snapped; False start or simulating start of a play; Taking more than two steps after Fair Catch is made; Player on line receiving snap—Loss of Five Yards.

**3. ILLEGAL MOTION**—Offensive player illegally in motion when ball is snapped—Loss of Five Yards.

**4. ILLEGAL SHIFT**—Failure to stop one full second following shift—Loss of 15 Yards.

**5. ILLEGAL RETURN** of ineligible substitute—Loss of 15 Yards.

**6. DELAY OF GAME**—Consuming more than 25 seconds in putting the ball in play after it is declared ready for play; interrupting the 25-second count for any reason other than a free or excess time out granted by Referee; Failure to remove injured player for whom excess time out was granted—Loss of Five Yards. Team not ready to play at start of either half—Loss of 15 Yards.

**7. PERSONAL FOUL**—Tackling or blocking defensive player who has made fair catch; Piling on; Hurdling; Grasping face mask of opponent; Tackling player out of bounds, or running into player obviously out of play; Striking an opponent with fist, forearm, elbow or locked hands; Kicking or kneeling—Loss of 15 Yards. (Flagrant offenders will be disqualified.)

**8. CLIPPING**—Loss of 15 Yards.

**9. ROUGHING THE KICKER**, or holder—Loss of 15 Yards.

**10. UNSPORTSMANLIKE CONDUCT**—Violation of rules during intermission; Illegal return of suspended player; Coaching from side lines; Invalid signal for Fair Catch; Persons illegally on field—Loss of 15 Yards. (Flagrant offenders will be disqualified.)

**11. ILLEGAL USE OF HANDS AND ARMS** by offensive or defensive player—Loss of 15 Yards.

**12. INTENTIONAL GROUNDING** of forward pass—Loss of Five Yards from spot of pass Plus Loss of Down.

**13. ILLEGALLY PASSING OR HANDING BALL FORWARD**—Loss of Five Yards from spot of foul Plus Loss of Down.

**14. FORWARD PASS OR KICK CATCHING INTERFERENCE**—Interference with opportunity of player of receiving team to catch a kick—Loss of 15 Yards. Interference by member of offensive team with defensive player making pass interception—Loss of 15 Yards Plus Loss of Down. Interference by defensive team on forward pass — Passing Team's Ball at Spot of Foul and First Down.

**15. INELIGIBLE RECEIVER DOWNFIELD ON PASS**—Loss of 15 Yards.

**16. BALL ILLEGALLY TOUCHED, KICKED OR BATTED** — Forward pass being touched by ineligible receiver beyond the line of scrimmage—Loss of 15 Yards from Spot of Preceding Down and Loss of a Down. Eligible pass receiver going out of bounds and later touching a forward pass—Loss of Down. Illegal touching of a scrimmage kick within opponent's 10-yard line—Touchback.

**17. PENALTY DECLINED:** Incomplete forward pass; No play or no score.

**18. CRAWLING** by runner—Loss of Five Yards. Interlocked Interference—Loss of 15 Yards.

**Gainesville Coca-Cola Bottling Company — Gainesville, Florida**

G

THE KICKER  
15 Yards.  
UNLIKE CON-  
of rules dur-  
illegal return  
er; Coaching  
invalid signal  
ersons illegally  
15 Yards.  
will be dis-

OF HANDS  
ensive or de-  
s of 15 Yards.  
GROUND-  
pass—Loss of  
spot of pass

PASSING OR  
FORWARD—  
from spot of  
own.

LOSS OR KICK  
REFERENCE—  
opportunity of  
team to catch  
Yards. Inter-  
of offensive  
a player mak-  
ion—Loss of  
ss of Down.  
fensive team  
s — Passing  
t of Foul and

RECEIVER  
PASS—Loss

LY TOUCH-  
BATTED —  
g touched by  
beyond the  
—Loss of 15  
of Preceding  
a Down. Eli-  
r going out  
r touching a  
ss of Down.  
a scrimmage  
ent's 10-yard

CLINED: In-  
pass; No play

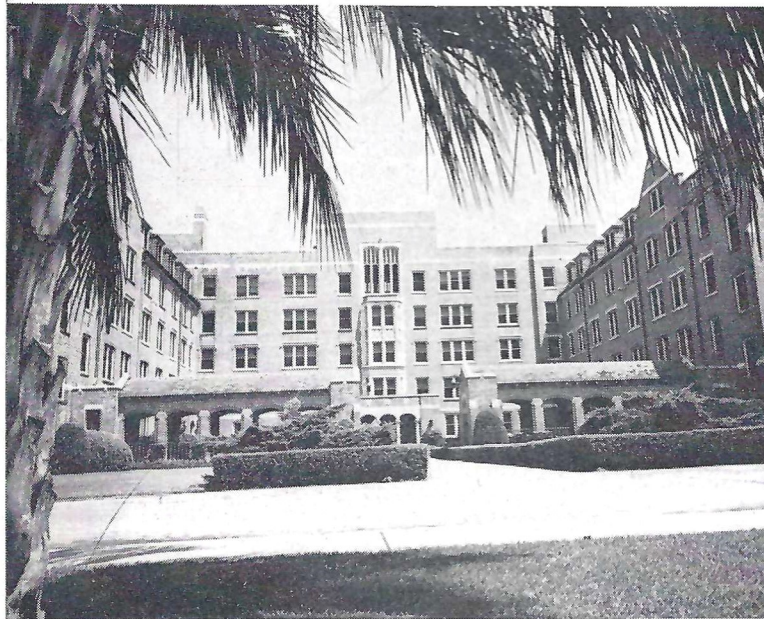
by runner—  
. Interlocked  
of 15 Yards.

da

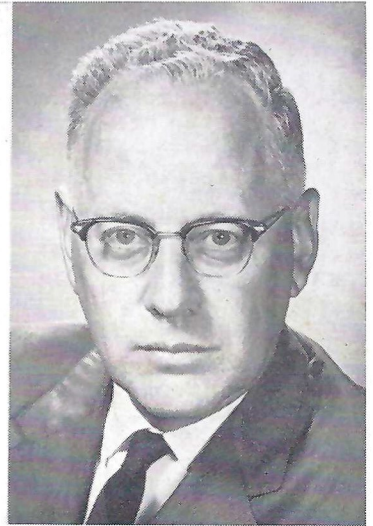


*Main Gate, Administration Building*

# FLORIDA STATE UNIVERSITY



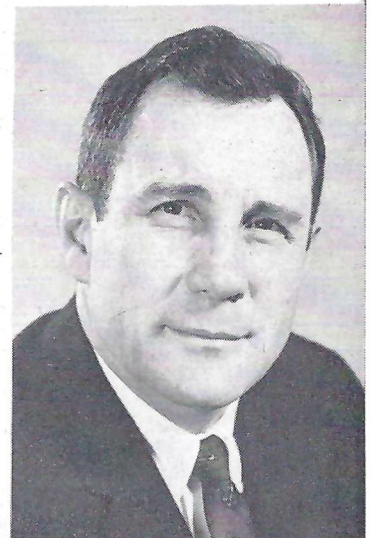
*Landis Hall*



*Dr. Gordon Blackwell  
President*



*Vaughn Mancha  
Athletic Director*



*Bill Peterson  
Head Football Coach*

## F.S.U. ROSTER

| No. | Name                | Pos. | Age | Ht.  | Wt. | Hometown             | Class |
|-----|---------------------|------|-----|------|-----|----------------------|-------|
| 10  | *Trancygier, Ed     | QB   | 22  | 6-0  | 207 | Wyandotte, Mich.     | Sr.   |
| 11  | Calhoun, Charlie    | QB   | 18  | 5-10 | 163 | Tallahassee          | So.   |
| 12  | Harlee, John        | FB   | 18  | 6-1  | 210 | Palmetto             | So.   |
| 13  | *Fick, Happy        | HB   | 20  | 5-9  | 173 | Miami                | Jr.   |
| 14  | *Feely, Eddie       | QB   | 20  | 5-7  | 160 | Gainesville          | Jr.   |
| 15  | *Bickford, Roy      | QB   | 21  | 6-0  | 178 | Miami                | Sr.   |
| 20  | Snyder, Dave        | HB   | 19  | 5-10 | 170 | Jacksonville         | So.   |
| 21  | Brinkley, Larry     | HB   | 19  | 6-0  | 175 | Willoughby, Ohio     | So.   |
| 22  | *Russom, Ken        | HB   | 20  | 6-0  | 170 | Gainesville          | Jr.   |
| 23  | Forehand, Jack      | HB   | 21  | 5-9  | 172 | Enterprise, Ala.     | Sr.   |
| 24  | Yarbrough, Buddy    | HB   | 20  | 6-2  | 185 | Arcadia              | So.   |
| 25  | Weber, Richie       | HB   | 20  | 5-8  | 160 | Miami                | So.   |
| 26  | Kinderman, Keith    | HB   | 21  | 6-0  | 195 | Chicago, Ill.        | Jr.   |
| 27  | Haney, Tom          | HB   | 19  | 6-1  | 170 | Panama City          | So.   |
| 28  | Floyd, Don          | HB   | 19  | 6-1  | 180 | Madison              | So.   |
| 29  | *Hillabrand, Tom    | HB   | 20  | 6-0  | 170 | Perrysburg, Ohio     | Jr.   |
| 40  | Messer, Doug        | HB   | 19  | 6-0  | 182 | LaGrange, Ga.        | So.   |
| 41  | Roberts, Gene       | FB   | 19  | 6-1  | 205 | High Springs         | So.   |
| 42  | *Andrews, Paul      | FB   | 20  | 5-9  | 185 | Greenville           | Sr.   |
| 43  | Raduenzel, Dick     | FB   | 19  | 6-2  | 175 | Highland, Ind.       | So.   |
| 44  | Roberts, Marion     | HB   | 18  | 6-0  | 185 | Ocilla, Ga.          | So.   |
| 50  | Tinsley, Bill       | C    | 20  | 5-10 | 184 | Green Cove Springs   | So.   |
| 51  | Hood, Larry         | C    | 21  | 6-0  | 194 | Lakeland             | Sr.   |
| 52  | Robinson, Chuck     | C    | 19  | 5-11 | 210 | East Palestine, Ohio | So.   |
| 53  | Rodgers, Joe        | C    | 18  | 6-2  | 192 | Birmingham, Ala.     | So.   |
| 54  | Dawson, Bill        | C    | 18  | 6-3  | 198 | Valdosta, Ga.        | So.   |
| 60  | Henry, Ferrell      | G    | 19  | 6-1  | 192 | Colquitt, Ga.        | So.   |
| 61  | Klores, Jeff        | G    | 20  | 6-1  | 208 | Miami                | So.   |
| 63  | *McDowell, Gene     | G    | 21  | 5-11 | 184 | Waycross, Ga.        | Jr.   |
| 64  | *Darsey, Bruce      | G    | 20  | 5-11 | 208 | Largo                | Jr.   |
| 65  | *Levings, John      | G    | 20  | 5-11 | 211 | Fort Worth, Texas    | Jr.   |
| 66  | *DeFrancesco, Frank | G    | 21  | 5-11 | 203 | Miami                | Sr.   |
| 67  | Bruner, Jerry       | G    | 19  | 5-10 | 220 | Evansville, Ind.     | So.   |
| 68  | Daly, Bill          | G    | 18  | 6-1  | 205 | Jacksonville         | So.   |
| 69  | Wade, Jim           | G    | 19  | 5-10 | 193 | Atlanta, Ga.         | Jr.   |
| 70  | *Slicker, Tom       | T    | 20  | 6-2  | 216 | Massillon, Ohio      | Jr.   |
| 71  | *Sims, Jim          | T    | 22  | 6-0  | 195 | LaGrange, Ga.        | Jr.   |
| 73  | *Klesius, Steve     | T    | 20  | 6-1  | 220 | St. Petersburg       | Sr.   |
| 74  | Tyre, Bill          | T    | 21  | 6-2  | 206 | Sanford              | Jr.   |
| 75  | *Donatelli, Don     | T    | 20  | 6-2  | 233 | Pittsburgh, Pa.      | Sr.   |
| 76  | Andrews, Max        | T    | 19  | 6-2  | 190 | Dothan, Ala.         | So.   |
| 77  | Thompson, Ken       | T    | 19  | 5-11 | 225 | Palatka              | So.   |
| 78  | *Verbinski, Joe     | T    | 23  | 6-2  | 207 | Willow Grove, Pa.    | Sr.   |
| 79  | *Blazovich, Mike    | T    | 20  | 6-0  | 220 | Utica, N. Y.         | Jr.   |
| 80  | Wachtel, John       | E    | 19  | 6-0  | 188 | Massillon, Ohio      | So.   |
| 82  | Logay, Bill         | E    | 18  | 6-1  | 195 | Miami                | So.   |
| 83  | *Parker, Ed         | E    | 21  | 6-4  | 215 | Leesburg             | Sr.   |
| 84  | Sytsma, Hank        | E    | 19  | 6-3  | 187 | Sarasota             | So.   |
| 85  | *Grimes, Fred       | E    | 21  | 6-2  | 186 | Hialeah              | Sr.   |
| 86  | *Daniel, Jim        | E    | 22  | 6-4  | 185 | Atlanta, Ga.         | Sr.   |
| 87  | McNeese, Y. C.      | E    | 25  | 6-0  | 210 | Leland, Miss.        | Jr.   |
| 88  | Gunter, Cliff       | E    | 19  | 6-3  | 185 | Dothan, Ala.         | So.   |
| 89  | *McConnaughay, John | E    | 19  | 6-0  | 186 | Ocala                | Jr.   |

\* Denotes letterman.

## FLORIDA PEST CONTROL & CHEMICAL CO.

Termite Control—Household and Commercial Pest and Rodent Control  
Lawn, Ornamental Shrubbery and Grove Spraying—Spanish Moss Control

Home Office: GAINESVILLE, FLORIDA—Branches: LAKE CITY, OCALA, PALATKA, STARKE

All work supervised by University of Florida Graduate Entomologists

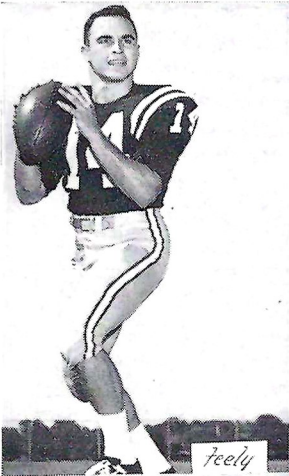
CALL FOR FREE ESTIMATES



"OFFICIAL WATCH FOR THIS GAME — LONGINES — THE WORLD'S MOST HONORED WATCH"



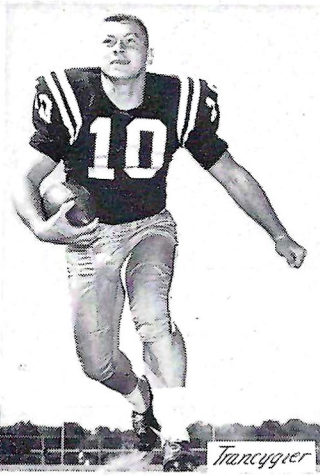




*Feely*



*Robinson*



*Trancyger*



*Weber*



*Roberts*

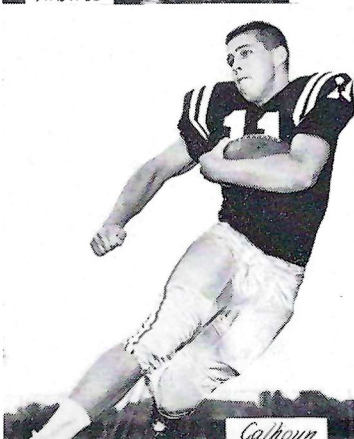
# FLORIDA STATE UNIVERSITY



*Hick*



*Forehand*



*Calhoun*



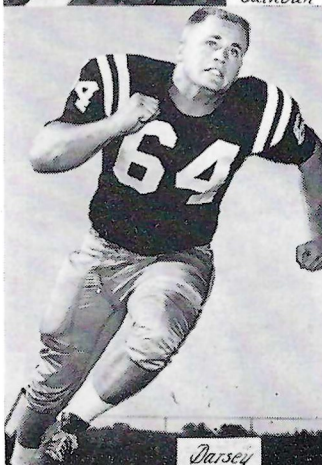
*Russom*



*Hillbrand*



*Roberts*



*Darsey*



*Brnkley*



*Andrews*



*Bickford*

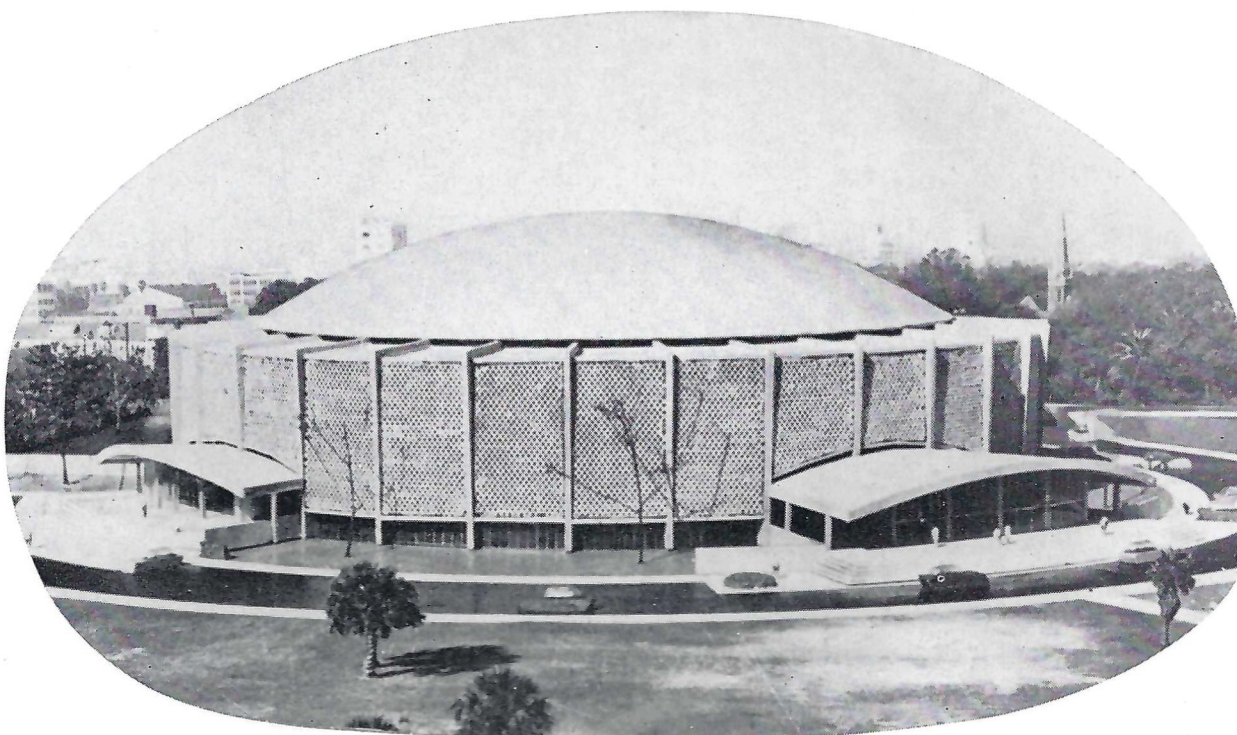


A Salute to the Florida Gators

from

**JACKSONVILLE**

**THE SPORTS CENTER OF THE SOUTH**



Jacksonville's NEW \$3,500,000 COLISEUM

**SUCH ATTRACTIONS AS**

- ★ HOCKEY
- ★ BASKETBALL
- ★ TENNIS
- ★ BOXING
- ★ WRESTLING  
(Every Thursday Night)
- ★ PUBLIC ICE SKATING  
(Every day except when other events  
are scheduled)
- ★ "HOLIDAY ON ICE" 1962  
March 13-18
- ★ RINGLING BROTHERS BARNUM &  
BAILEY CIRCUS  
January 31 thru February 4
- ★ THE FABULOUS GLOBE TROTTERS  
March 11 - 12





## Visit The Prudential Building

When in Jacksonville, you're invited to see the beautiful and efficient South-Central Home Office Building of The Prudential Insurance Company of America. Trained guides will conduct you on special tours every day, Monday through Friday, 10:30 a.m. and 3:00 p.m. (No admission charge.) Bring your camera and make your own aerial view of Jacksonville.

**The PRUDENTIAL INSURANCE COMPANY OF AMERICA**  
SOUTH-CENTRAL HOME OFFICE • JACKSONVILLE, FLORIDA

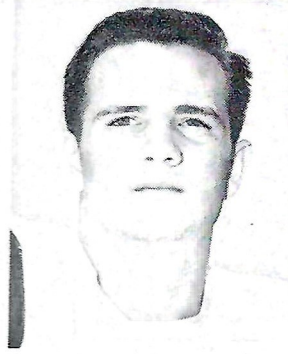




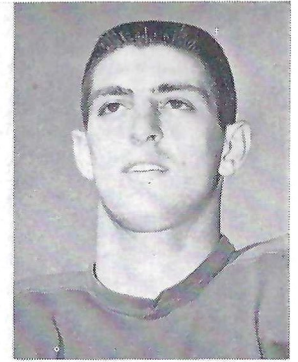
*Bob Hoover*



*Jerome Jones*

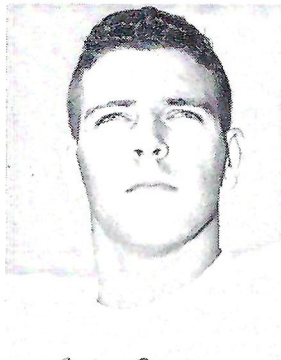
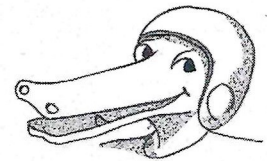


*Bobby Dodd Jr.*



*Larry Libertore*

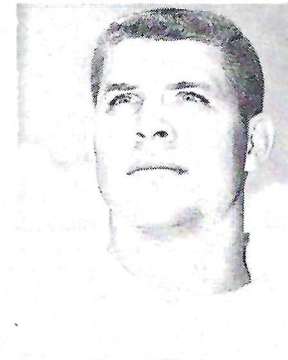
# FLORIDA GATORS



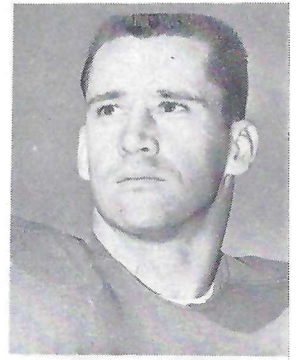
*Anton Peters*



*Ron Stoner*



*Larry Travis*



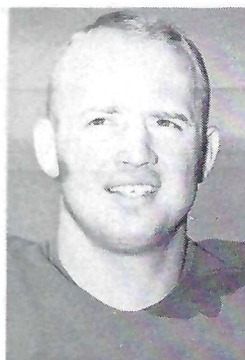
*Lindy Infante*



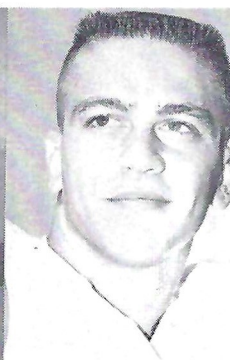
*Bruce Starling*



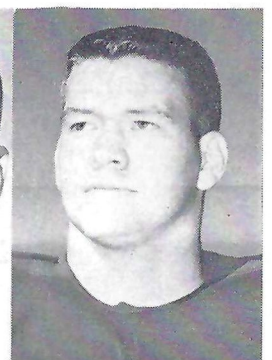
*Dick Jones*



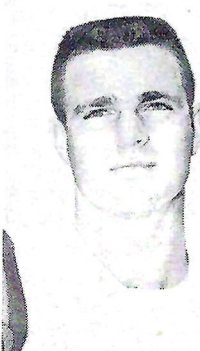
*Tommy Kelley*



*Sam Mack*



*Bruce Culpepper*



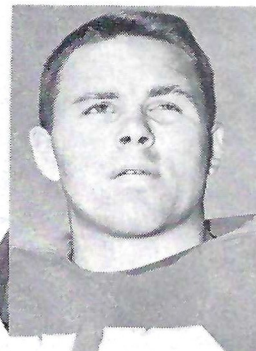
*Floyd Dean*



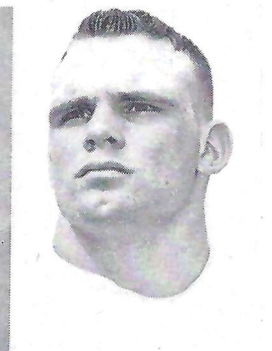
*Tom Gregory*



*Sam Hallard*

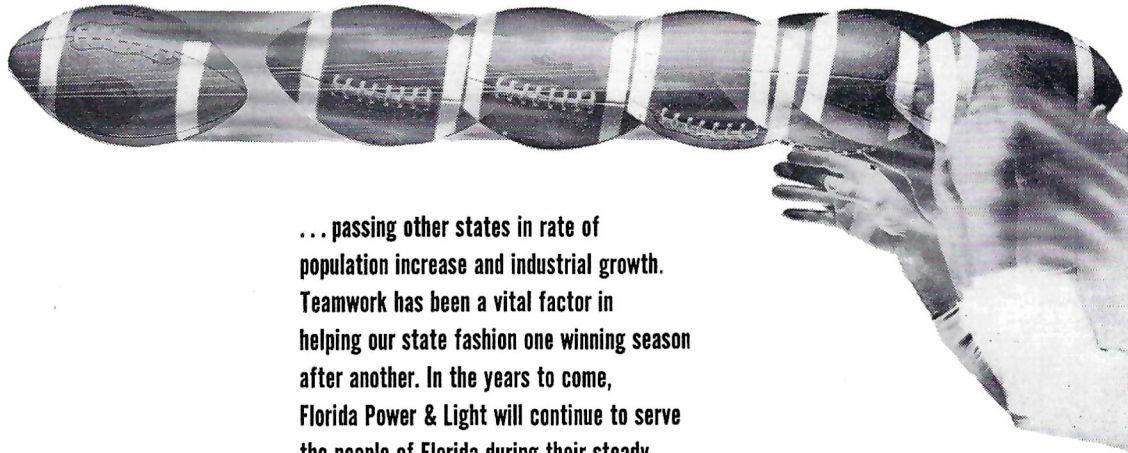


*Jack Thompson*



*Wade Entzminger*

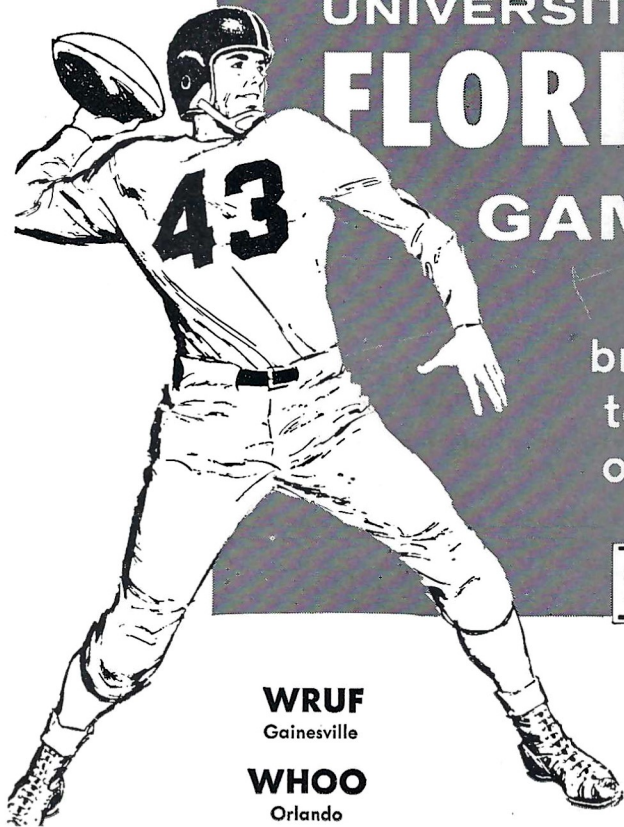
# FLORIDA EXCELS IN PASSING



... passing other states in rate of population increase and industrial growth. Teamwork has been a vital factor in helping our state fashion one winning season after another. In the years to come, Florida Power & Light will continue to serve the people of Florida during their steady march along the path of progress.

## FLORIDA POWER & LIGHT COMPANY

Helping Build Florida 



### ALL UNIVERSITY OF FLORIDA GAMES

brought  
to you  
on the

**STANDARD  
OIL**

Network  
OF  
6 Stations

**WRUF**  
Gainesville

**WHOO**  
Orlando

**WMBR**  
Jacksonville

**WCOA**  
Pensacola

**WGBS**  
Miami

**WDAE**  
Tampa

#### HOME GAMES

Sept. 23rd . . . . . Clemson  
Sept. 30th . . . . . F.S.U.  
Oct. 28th (Homecoming) . . L.S.U.  
Nov. 11th (Jacksonville) . Georgia  
Dec. 2nd . . . . . Miami

#### GAMES AWAY

\*Oct. 6th . . . . . Tulane  
\*Oct. 14th . . . . . Rice  
\*Oct. 21st . . . . . Vanderbilt  
Nov. 4th . . . . . Ga. Tech  
Nov. 25th . . . . . Auburn

\*Night Games



*McKeese*



*Daniel*



*Grimes*



*Gunter*



*McConnaughay*



*De Francisco*

# FLORIDA STATE UNIVERSITY



*Donatelli*



*Slicker*



*Tyre*



*Sims*



*Blazontch*



*Bruner*



*McDowell*



*Verbinsky*



*Klesius*

# Wayside Press

## PRINTING

*"As You Like It"*

OFFSET or LETTERPRESS

Phone FR 6-3471

15 S.E. 2nd Avenue



**HOLIDAY INN**  
**Restaurant and Motel**  
South 13th Street on U.S. 441  
GAINESVILLE, FLORIDA

*Facilities for  
Small or Large Private Parties*

Just a Few Steps Off Campus  
for complete

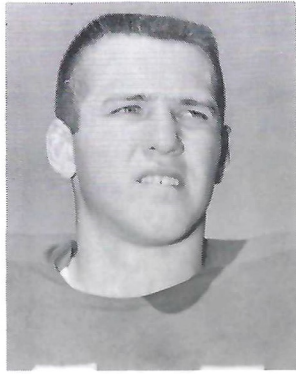
ONE-STOP BANKING SERVICE

*Where You Are Always Welcome*

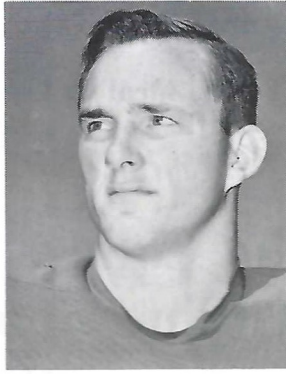


1116 W. University Ave.

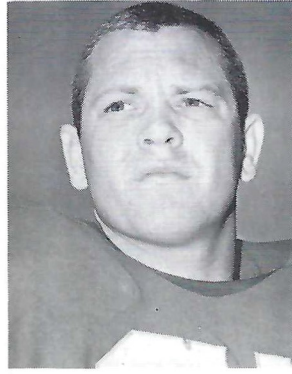
Member: FEDERAL DEPOSIT INSURANCE CORP.



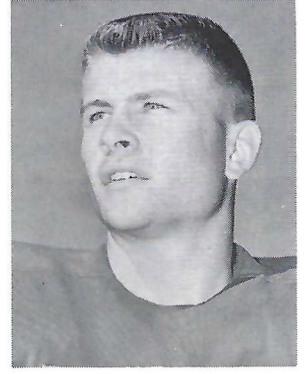
*Jim O'Donnell*



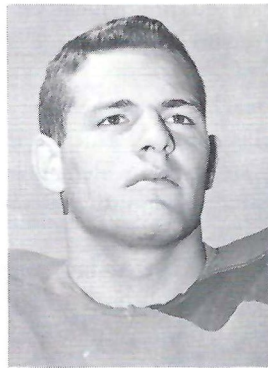
*Fred Pearson*



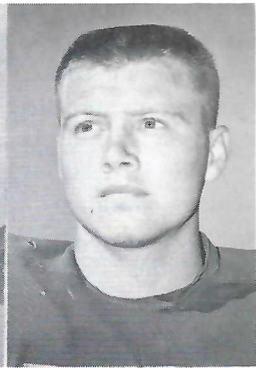
*Bob Hosack*



*Jim Bernhart*

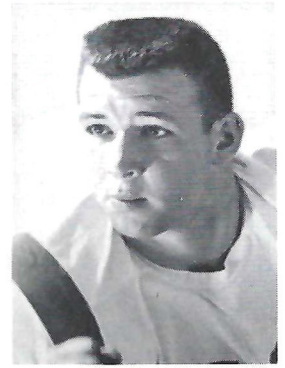


*Hagood Clarke*



*Larry Fairall*

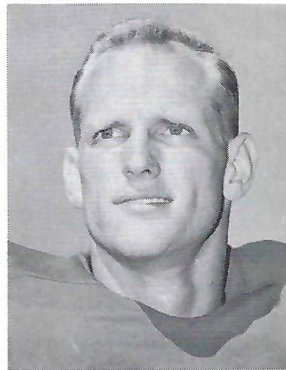
# FLORIDA GATORS



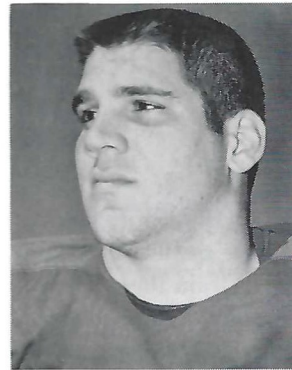
*Norman Anderson*



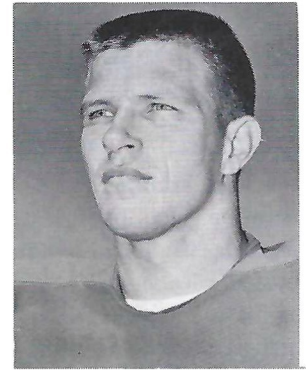
*Charlie Gill*



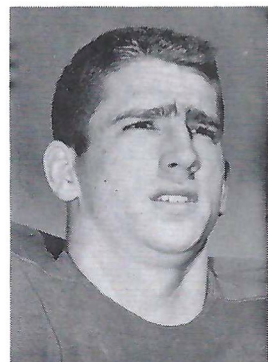
*Bob Lindsey*



*John Dent*



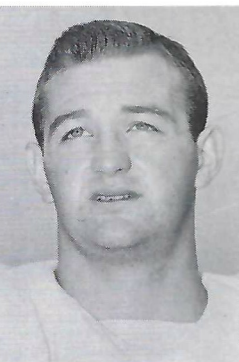
*Russ Brown*



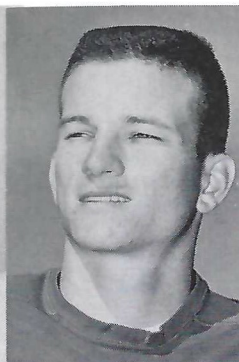
*Thad Green*



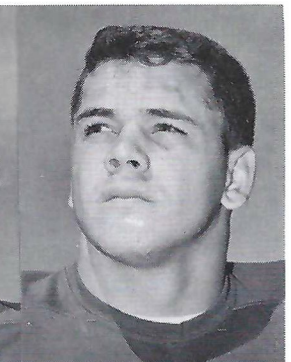
*Walt Hickenlooper*



*Billy Cash*



*Tom Batten*



*John Oliva*

# Land-Grant In Action

"The ideal of learning not for its own sake but in service to society."

## The College of Education



Florida's public schools depend on the College of Education for a high percentage of their teachers. Filling this important quota of quality educators is its primary function; the ever-present shortage of teachers its constant concern.

The intern, or practice teacher, has become a familiar person in Florida classrooms. During the senior year the College sends students in elementary and secondary education out into the public schools for 10 to 13 weeks of internship.

In the College classroom, teachers-to-be study human growth and development, schools and society, and a great body of subject matter useful to the teacher, and learn better practices and methods in applying the principles of education in the classroom.



An intern teacher at work.

## The College of Business Administration

Business today requires not only experience but scientific training. The College of Business Administration attempts to provide students with fundamentals of business, to prepare them to become business leaders and executives, to train them to serve as business technicians, to develop college teachers and to pursue research. The state's future insurance executives, realtors, accountants, transportation spe-

cialists and labor mediators will be products of the College.

The Bureau of Economic Research, a department of the Business College carries out research undertakings designed to contribute to economic and business knowledge with primary emphasis on the economy of Florida and the Southeast.



Matherly Hall (right) is the home of business education. (Left), a laboratory class in statistics.





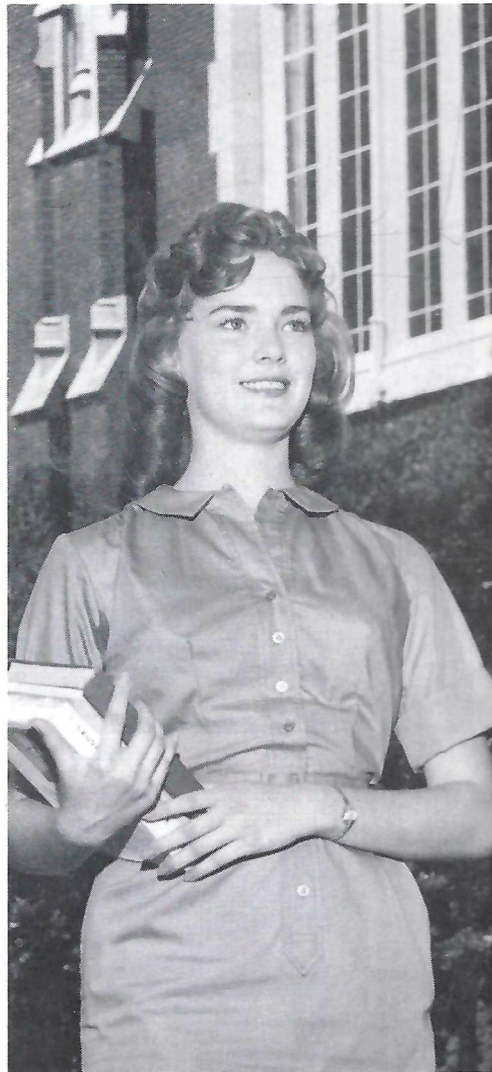
# Land - Grant In Action

“Education not only for men but for women.”

Before the advent of Land-Grant the doors to higher education were all but closed to women. Today, all the doctorates awarded to women in agriculture, engineering and law are conferred by Land-Grant institutions. One-fourth of the doctorates awarded to women in all fields are conferred by Land-Grant institutions.



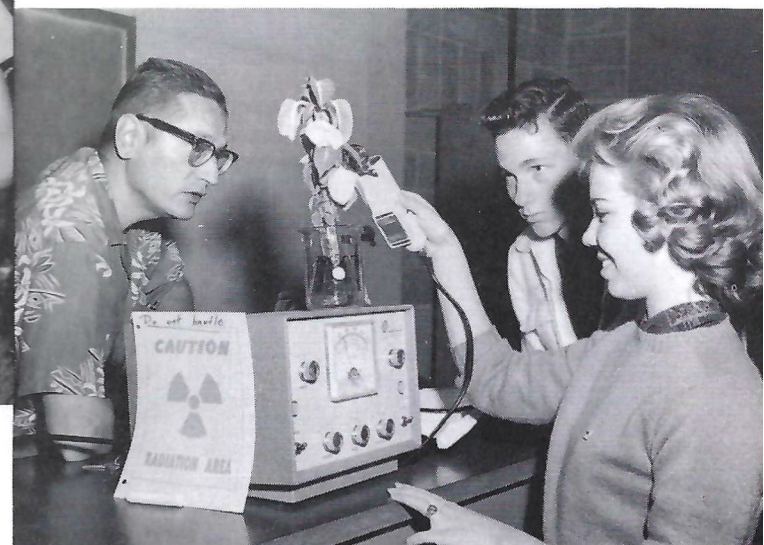
C  
O  
E  
D  
U  
C  
A  
T  
I  
O  
N



Miss University of Florida, Avie Maria Jenkins of Fort Pierce, is majoring in political science.



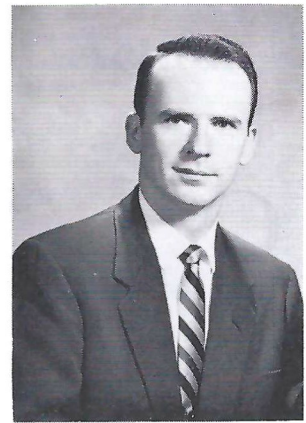
(Above), An advertising class in the School of Journalism and Communications. (Below), A botany experiment in the College of Agriculture.



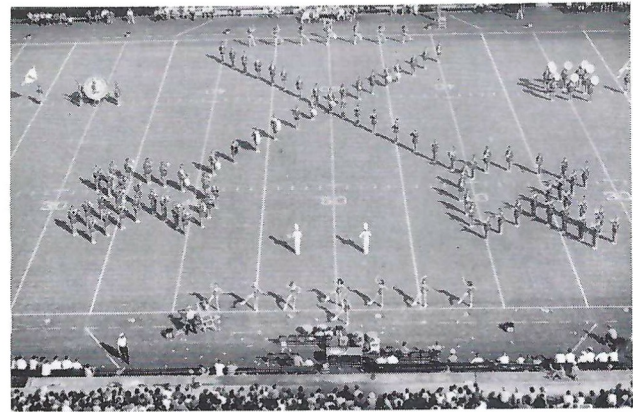
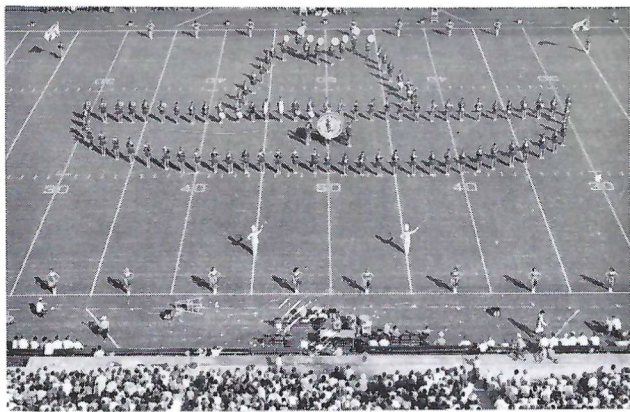
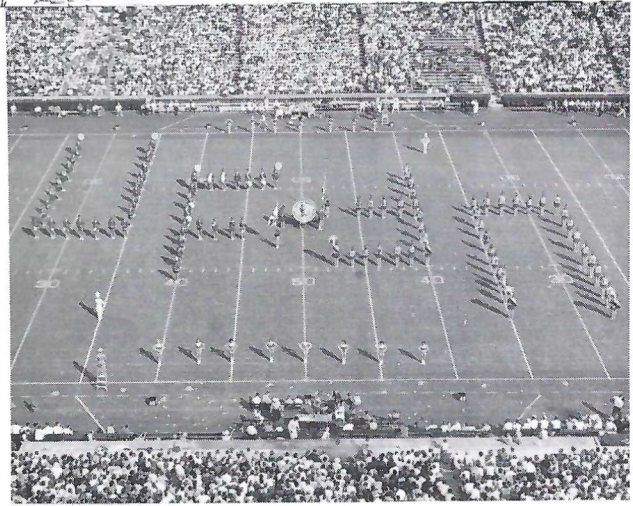


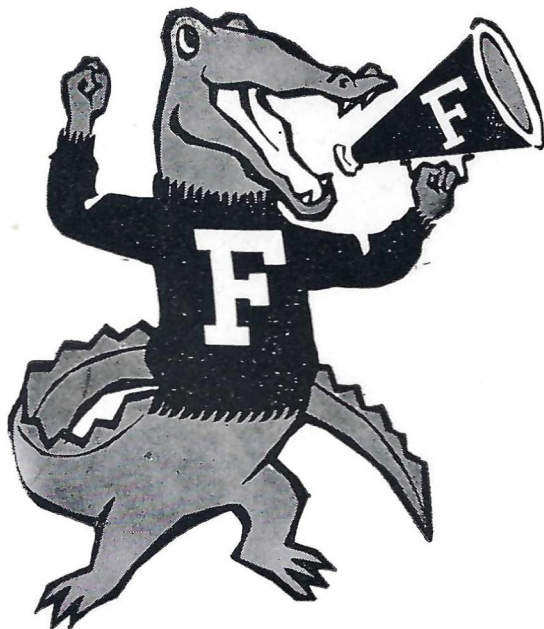
*Richard W. Bowles  
Director of Bands*

# GATOR BAND



*Conrad Bauschka  
Assistant Director*





## GREEN'S FUEL

The "All Florida"  
Natural Gas

Salutes

### THE GATORS — All Florida's Champions

Best Wishes for a Stellar Season from the Following Florida

#### GREEN'S FUEL L-P GAS DISTRIBUTORS

Bi-County Fuel Co., Inc.  
205 N. Sixth Street  
Wauchula, Florida

DeSoto Gas Company  
200 West Oak Street  
Arcadia, Florida

Green's Fuel of Gainesville, Inc.  
613 W. University Avenue  
Gainesville, Florida

Harrison Gas Service, Inc.  
3301 14th Street, West  
Bradenton, Florida

Modern Gas & Appliance Corp.  
830 N. Ridgewood  
Daytona Beach, Florida

Henry W. Brown & Sons, Inc.  
Orange Street and Safford Avenue  
Tarpon Springs, Florida

Atlantic Fuel Company  
Lake Worth and Ft. Lauderdale

Green's Fuel of DeLand, Inc.  
339 N. Boulevard  
DeLand, Florida

Green's Fuel of Live Oak  
106 E. Howard Street  
Live Oak, Florida

Green's Fuel Gas Service, Inc.  
115 E. Pine Street  
Inverness, Florida

Ridge Fuel Company  
1 South Lake Avenue  
Avon Park, Florida

Green's Fuel of Florida Corporation  
Sarasota—Venice—Lakeland—Tampa  
Bartow—Dade City—Lake Wales  
Plant City—Winter Haven—Haines City  
St. Augustine—Green Cove Springs—Lake City

Green's Fuel for Cooking—Refrigeration—Water Heating  
Carburetion—Home Heating—Air Conditioning



## It's what's up front that counts

**FILTER-BLEND** a Winston exclusive, is one reason why Winston continues to be America's best-selling filter cigarette year after year. Winston delivers *flavor*—twenty times a pack, thanks to **FILTER-BLEND** up front—rich golden tobaccos specially selected and processed for filter smoking. Try Winston.

R. J. REYNOLDS TOBACCO CO., WINSTON-SALEM, N. C.



Also available in crush-proof box.

**WINSTON TASTES GOOD** *like a cigarette should!*