

OFFICIAL
PROGRAM

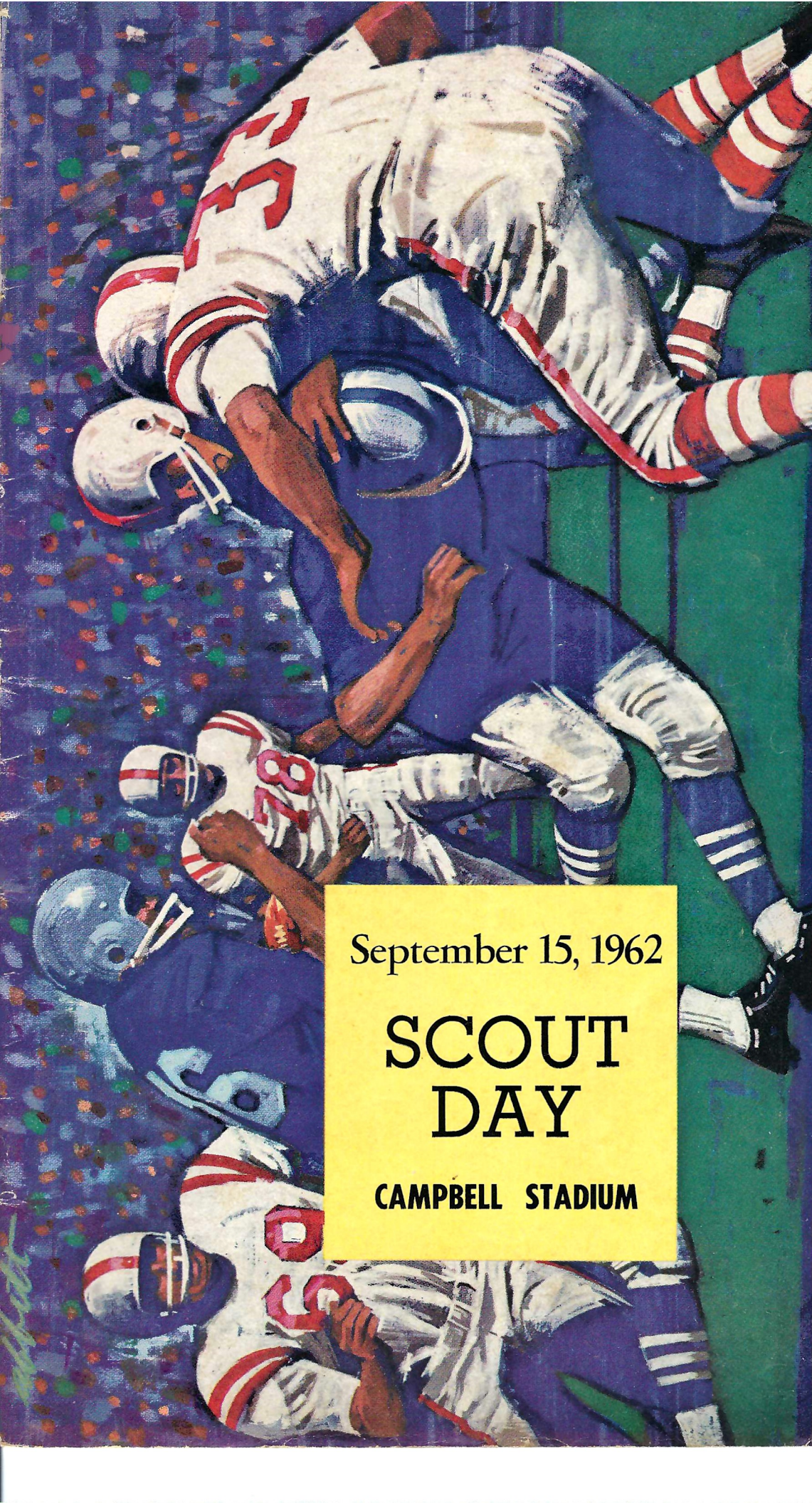
50c

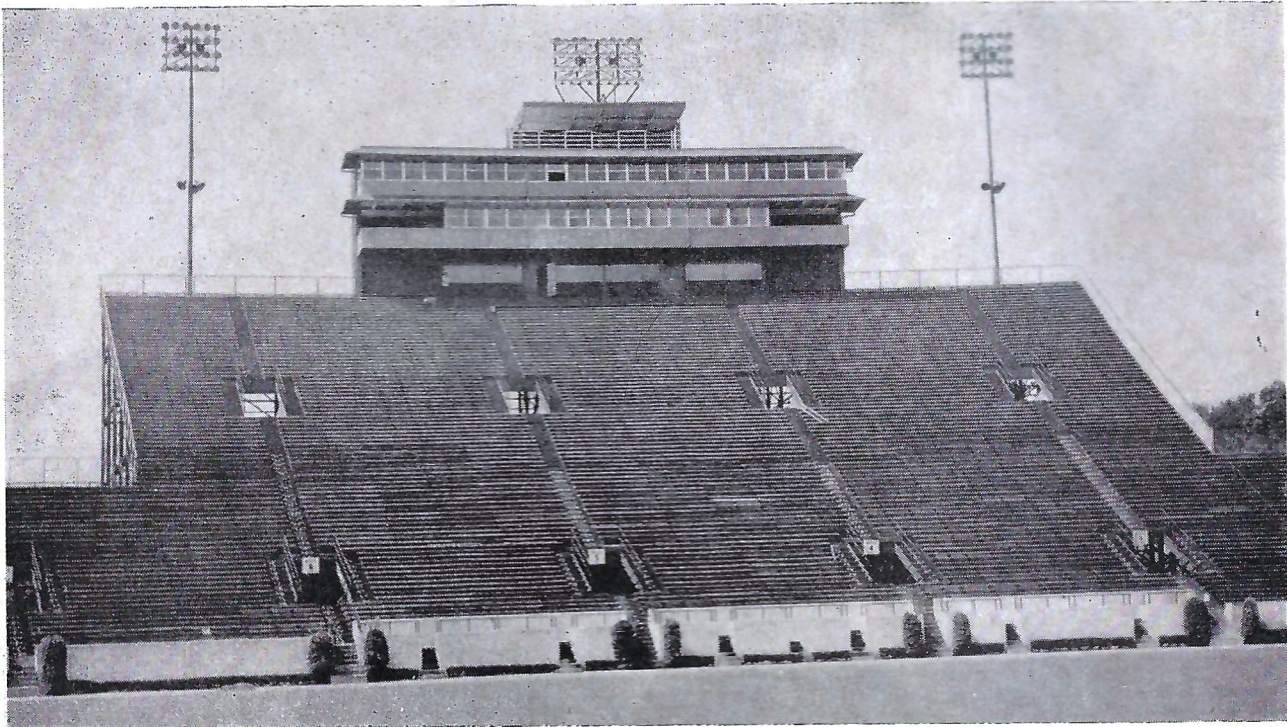
**F
S
U**
v
s.
**THE
C
I
T
A
D
E
L**

September 15, 1962

**SCOUT
DAY**

CAMPBELL STADIUM





"Constructed By"
BEAR CONSTRUCTION CO., INC.
 PHONE 222-8489

D. L. COOKSEY

B. R. DRAUGHAR

patronize...
STADIUM

CONCESSIONS

Located beneath the stands on each side of stadium

- COLD DRINKS..... 15¢**
- HOT COFFEE..... 15¢**
- SANDWICHES..... 30¢**
- HOT DOGS..... 25¢**
- PEANUTS..... 10¢**
- POP CORN..... 10¢**

- SOUVENIR ITEMS**
- PENNANTS**
- BADGES**
- SUN VISORS**
- ASPRIN**

All Cigarettes 35¢

please pay no more than established prices



FSU FOOTBALL 1962...

IN THIS ISSUE:

| | |
|---------------------------------|----------------|
| About the University | 4, 5, 8 |
| FSU Three Deep | 6 |
| Opponent Three-Deep | 7 |
| FSU Numerical Roster | 10 |
| Guest Column | 12 |
| FSU All-Time Records | 12 |
| Seminole Football Family | 14 |
| The 1962 Seminoles | 15, 16, 17, 18 |
| Starting Lineup, FSU | 20 |
| Starting Lineup, Opponent | 21 |
| Seminole Boosters, Inc. | 25 |
| Opponent Numerical Roster | 27 |
| About Today's Opponent | 29, 30, 31 |
| Seminole on the Air | 33 |
| The Marching Chiefs | 34 |
| FSU's '62 Freshmen | 37 |
| Seminole Songs and Cheers | 38 |

SEMINOLES ON THE WARPATH ...

| | | | |
|----------|---------------------------------|----------------|-----------------|
| Sept. 15 | THE CITADEL | Tallahassee | 8 p.m. |
| Sept. 22 | Kentucky | Lexington, Ky. | 8 p.m. |
| Sept. 29 | FURMAN | Tallahassee | 8 p.m. |
| Oct. 5 | Miami | Miami | 8:15 p.m. |
| Oct. 13 | Open Date | | |
| Oct. 20 | Georgia | Athens, Ga. | 2 p.m. |
| Oct. 27 | VIRGINIA TECH | Tallahassee | 8 p.m. |
| Nov. 3 | HOUSTON (Homecoming) | Tallahassee | 2:30 p.m. |
| Nov. 10 | Georgia Tech | Atlanta | 2:30 p.m. |
| Nov. 17 | Florida | Gainesville | 2 p.m. (CST) |
| Nov. 24 | Auburn | Auburn, Ala. | 2 p.m. (CST) |



FSU: Emphasis on Excellence

DR. GORDON W. BLACKWELL
President, Florida State University

Florida State University has been "keeping school" on the same campus for 105 years, when the Institute West of the Suwannee began holding classes. This fall, with more than 10,000 students, the campus shows additional signs of the university's dynamic development in recent years. Among them are a new five-story building—the Molecular Biophysics Building—where teams of physical scientists and biologists are at work on the Atomic Energy Commission-financed study of life at the molecular level. The building houses FSU's Institute of Molecular Biophysics.

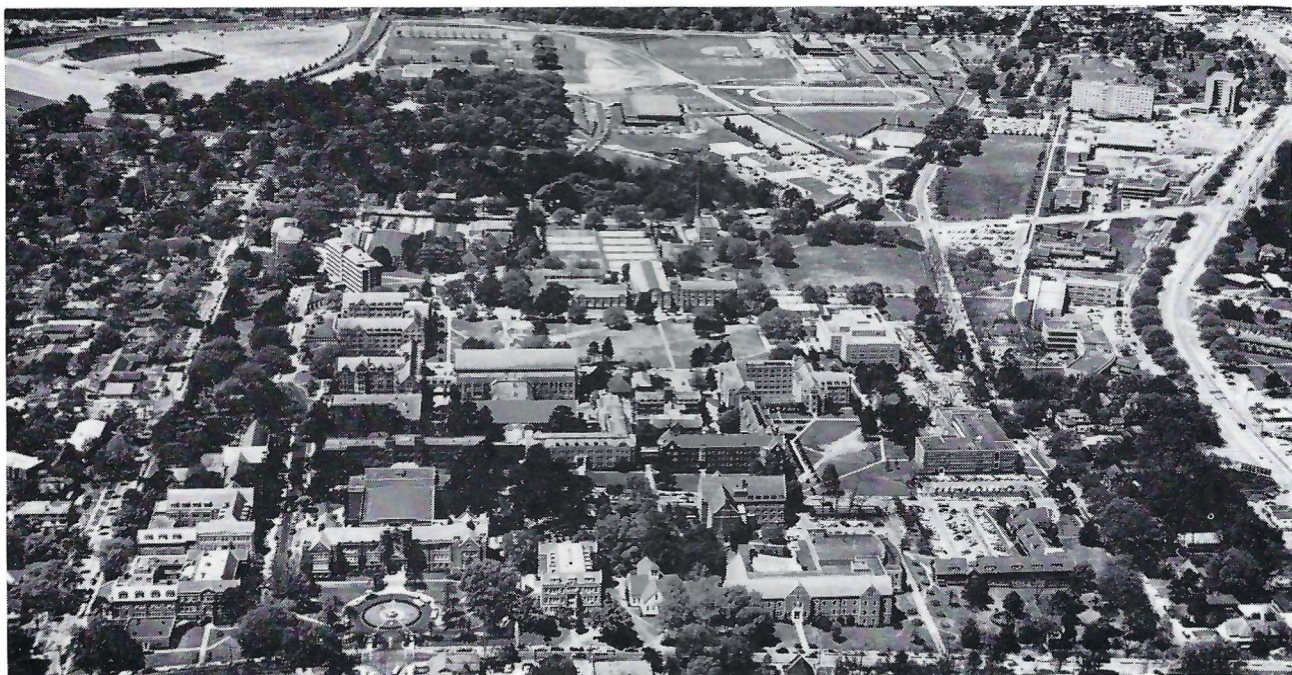
Another institute, one in space biosciences, is at work on some basic problems of space biology under a large grant from the National Aeronautics and Space Administration.

A third story is being added to the Nuclear Research Building, housing a tandem Van de Graaff accelerator on which nuclear physicists are conducting advanced research 24 hours a day. Among other new and expanding programs are those in engineering science and in statistics, both

with an emphasis in advanced and postgraduate education. More than \$3 million from outside research funds was expended by FSU last year.

FSU, which was Florida State College For Women for some 40 years until it returned to coeducational status in 1947, long has been known for its excellent programs in the liberal arts, music, home economics and education. It has added several professional fields since becoming a university—notably library science, social welfare, business, and nursing. All but nursing have advanced graduate work and during the present year 94 doctorates have been conferred by FSU.

For the third year, FSU has at the helm a social scientist of note, Dr. Gordon W. Blackwell, as president. Dr. Blackwell had been president of the Women's College, University of North Carolina, before assuming the presidency here in 1960. For many years he directed the Institute for Research in Social Science at the University of North Carolina.



WHAT IS A UNIVERSITY?

A university today is very different from a university of 1900, or even 1940. Formerly a center for the preparation of doctors, lawyers, and ministers, the university today prepares these but also many others: scientists, communication specialists, artists, humanists, and experts in foreign culture, to name only a few.

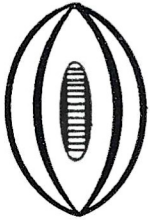
As it has changed, the modern university has come to play a more and more important role in state, national, and world affairs. As a nation, we are increasingly involved in world affairs, and the university must prepare its students to understand not only America, but also other cultures, other political systems, and other economies. Today science provides a major force for economic development, progress in health, and the defense of the nation. Scientific achievements helped to put America in the center of the world arena, but further scientific progress will be necessary to keep her there. Here, too, the university plays a central role.

The demands of our complex urban economy for professionals and specialists of all kinds also have served to change and greatly enlarge the universities. A developing economy needs graduates of the university. Our cultural development is keyed to the university in many ways—in art, in recreation, in philosophy and religion. From the point of view of the individual in a highly organized and complex life, a university education is increasingly a necessity for effective participation in a democracy and for ability to earn a living.

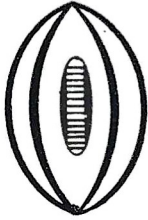


WHEN FSU HAS THE BALL

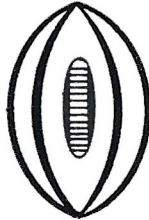
LEFT END



LEFT TACKLE



LEFT GUARD



CENTER



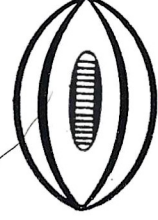
RIGHT GUARD



RIGHT TACKLE



RIGHT END



89 McConaughay
88 Gunter
81 Floyd

70 Slicker
74 Tyre
75 MacKenzie

52 Robinson
60 Henry
67 Bruner

64 Darsey
53 Daly
55 Edwards

63 McDowell
66 Hermann
65 Levings

71 Sims
73 Sumner
79 Blazovich

82 Causey
83 Dawson
84 Sytsma

85
87
83

QUARTERBACK



LEFT HALFBACK



26 Kinderman
21 Brinkley
23 Loftin

14 Feely
11 Calhoun
13 Tensi

RIGHT HALFBACK



22 Russom
29 Hillabrand
28 Bailey

FULLBACK



44 M. Roberts
42 Norman
41 G. Roberts

(Note: First player listed at each position is starter for Chiefs (offense) unit, second Renegades (defense), third Warriors (two-way).)



MEMBER

Federal Home Loan Bank System

Federal Savings and Loan Insurance Corporation

FOR CORRECT TIME DIAL 222-5510

WHERE you save DOES make a difference

WHEN THE CITADEL HAS THE BALL

LEFT END



85 Boyte
87 Gould
83 Hunt

LEFT TACKLE



79 Evans
77 Alderman
70 Zalaznik

LEFT GUARD



60 Dice
61 Stork
66 Wofford

CENTER



50 Buckner
52 Hinshaw
55 Reardon

RIGHT GUARD



67 Turbeville
64 Missar
63 Crisman

RIGHT TACKLE



75 Ross
78 Bradburn
74 Shaffer

RIGHT END



84 Brendle
88 Petno
81 Marsh

QUARTERBACK



16 Mitchell
11 St. John
17 Cannarella

LEFT HALFBACK



45 Taylor
43 Street
42 Chellis

RIGHT HALFBACK



20 Brinson
46 Perrin
22 Parker

FULLBACK



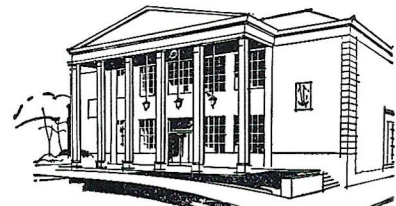
38 Jackson
32 DiLoreto
35 Whitney

Tallahassee Federal

SAVINGS AND LOAN
ASSOCIATION

440 N. Monroe Street ★ Tallahassee, Florida
TELEPHONE 224-2161

HOURS: Monday-Thursday, 8:30 a.m. to 3 p.m.—Friday, 8:30 a.m. to 6 p.m.



THE GOALS OF FSU

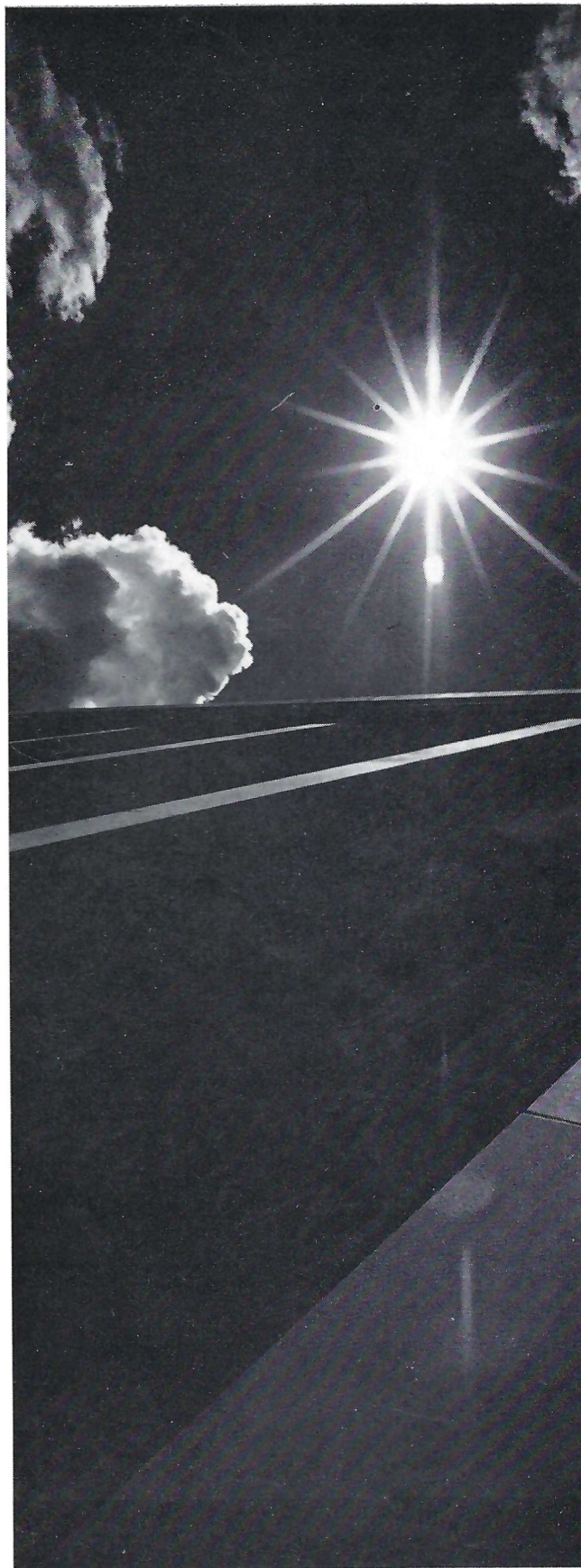
The major purpose of the Florida State University is to establish an intellectual climate in which students develop respect for truth and excitement in discovery. Recognizing this, the University must provide opportunity for inquiry and creative activity and must offer such instruction as will enable its students to become leaders in their chosen fields and in the public service. Recognizing further its responsibility to serve the people of the State, the University must provide new knowledge useful for economic improvement, political enlightenment, and cultural development.

The Florida State University must maintain a standard of scholarship which will attract to it students, teachers, and research scholars not only of Florida but also from other parts of the country and from other nations of the world. It should transmit the heritage of learning and extend present frontiers through the creative efforts of its students and its faculty. In this atmosphere of research and inquiry students will develop creative insight, critical judgment, and skills which are necessary to the fullest development of their potential as individuals and as members of society.

As a senior member in Florida's system of public higher education, the University is especially concerned with its continuing development as a primary center of advanced professional and graduate studies. It should engage in bold exploration to extend the edge of knowledge through discovery and through search for yet undisclosed relationships among traditional disciplines.

If the University is to attract properly prepared students who are determined to profit from their education, it must retain a superior teaching faculty who are themselves engaged in original research and creative work. The faculty must lead students in a zeal for new historical and cultural insight, new scientific discovery, new works of art, and new professional competence; must teach them to understand their present environment through analytical observation and critical examination of the past; and must guide them to develop sound judgment of fact and value, sensitive social conscience, as well as respect for truth.

Such education of students is the chief concern of the University. The whole citizenry, however, should share in its benefits. Therefore, the University should continue to develop as a research and fine arts center and extend its program of public information and service throughout the State.



OWNED AND OPERATED BY FRANK CHASE & SONS

Skyline Restaurant

1 Mile West of City Limits

U. S. Highways 90 and 20

OPEN 6 A.M. TO 11 P.M.

TALLAHASSEE, FLORIDA

"Serving Good Food for Fine People"

Private Rooms and Banquet Facilities

**SOUTHERNAIRE MOTEL &
SKYLINE MOTOR LODGE**



Quality people always seek
quality accommodations

MIDYETTE-MOOR Insurance Agency

"Ask Those We Serve"

Complete Insurance and Bond Service

PHONE 222-3456

MIDYETTE-MOOR BUILDING
TALLAHASSEE, FLORIDA

SAYS

SCALP 'EM SEMINOLES!



PAYNE MIDYETTE
FRANK MOOR
ED. CLARK
WINSLOW SULLIVAN
BOB DICKINSON
PAUL LEWIS
PAYNE MIDYETTE, JR.

BILL MOOR
MILTON WYNN
GLENN SEARS
PAUL McCARTNEY
REX SIKES
JIM MILLHOFF
JOHN CHIDLEY

FLORIDA STATE

1962 FOOTBALL ROSTER

| No. | Name | Pos. | Ht. | Wt. | Age | Class | Hometown |
|-----|-------------------------|------|------|-----|-----|-------|--------------------|
| 10 | Tom Eckert | QB | 6-0 | 190 | 19 | So. | Massillon, O. |
| 11 | *Charlie Calhoun | QB | 5-10 | 180 | 19 | Jr. | Tallahassee, Fla. |
| 12 | *John Harllee | QB | 6-1 | 209 | 19 | Jr. | Palmetto, Fla. |
| 13 | Steve Tensi | QB | 6-5 | 195 | 19 | So. | Cincinnati, O. |
| 14 | **Eddie Feely | QB | 5-7 | 159 | 21 | Sr. | Gainesville, Fla. |
| 15 | Jim Massey | QB | 5-11 | 178 | 19 | So. | Cairo, Ga. |
| 20 | *Dave Snyder | FB | 5-10 | 180 | 20 | Jr. | Jacksonville, Fla. |
| 21 | *Larry Brinkley | HB | 6-0 | 185 | 20 | Jr. | Willoughby, O. |
| 22 | *Ken Russom | HB | 6-0 | 179 | 21 | Sr. | Gainesville, Fla. |
| 23 | Jim Loftin | HB | 6-1 | 180 | 19 | So. | Pensacola, Fla. |
| 24 | John Roberts | FB | 6-0 | 190 | 19 | So. | Orlando, Fla. |
| 26 | Keith Kinderman | HB | 6-0 | 205 | 22 | Sr. | Chicago, Ill. |
| 27 | Phil Spooner | HB | 5-11 | 170 | 18 | So. | Ft. Myers, Fla. |
| 28 | Terry Hollman | HB | 6-0 | 206 | 19 | So. | St. Marys, O. |
| 29 | **Tom Hillbrand | HB | 6-0 | 175 | 21 | Sr. | Perrysburg, O. |
| 40 | *Doug Messer | HB | 6-0 | 183 | 20 | Jr. | LaGrange, Ga. |
| 41 | *Gene Roberts | FB | 6-1 | 210 | 20 | Jr. | High Springs, Fla. |
| 42 | Ralph Norman | FB | 5-11 | 180 | 20 | So. | Thomasville, Ga. |
| 44 | *Marion Roberts | FB | 6-0 | 190 | 19 | Jr. | Ocilla, Ga. |
| 51 | *Y. C. McNease | C | 6-0 | 220 | 26 | Sr. | Leland, Miss. |
| 52 | *Chuck Robinson | G | 5-11 | 215 | 20 | Jr. | East Palestine, O. |
| 53 | *Bill Daly | C | 6-1 | 195 | 19 | Jr. | Jacksonville, Fla. |
| 55 | Jack Edwards | C | 6-2 | 215 | 19 | So. | Tampa |
| 60 | *Ferrell Henry | G | 6-1 | 195 | 20 | Jr. | Colquitt, Ga. |
| 61 | Jeff Klores | T | 6-0 | 204 | 21 | Jr. | Miami, Fla. |
| 62 | Steve Slay | G | 5-10 | 206 | 19 | So. | Atlanta, Ga. |
| 62 | **Gene McDowell (Capt.) | G | 5-11 | 195 | 22 | Sr. | Waycross, Ga. |
| 64 | **Bruce Darsey | C | 5-11 | 205 | 21 | Sr. | Largo, Fla. |
| 65 | **John Levnigs | G | 6-0 | 214 | 21 | Sr. | Ft. Worth, Texas |
| 66 | Dick Hermann | G | 6-0 | 198 | 20 | So. | Marianna, Fla. |
| 67 | *Jerry Bruner | G | 5-10 | 220 | 20 | Jr. | Evansville, Ind. |
| 68 | Jack Shinholser | G | 6-2 | 210 | 20 | So. | Tampa, Fla. |
| 69 | Jim Wade | G | 5-10 | 174 | 20 | Sr. | Atlanta, Ga. |
| 70 | **Tom Slicker | T | 6-2 | 220 | 21 | Sr. | Massillon, O. |
| 71 | **Jim Sims | T | 6-0 | 205 | 23 | Sr. | LaGrange, Ga. |
| 73 | Avery Summer | T | 6-0 | 217 | 20 | So. | Adel, Ga. |
| 74 | *Bill Tyre | T | 6-1 | 210 | 22 | Sr. | Sanford, Fla. |
| 75 | Dale MacKenzie | T | 6-2 | 220 | 19 | So. | Clearwater, Fla. |
| 76 | Max Andrews | T | 6-1 | 198 | 21 | So. | Dothan, Ala. |
| 79 | *Mike Blazovich | T | 6-0 | 225 | 21 | Sr. | Utica, N.Y. |
| 80 | *John Wachtel | E | 6-0 | 205 | 20 | Jr. | Massillon, O. |
| 81 | Don Floyd | E | 6-1 | 204 | 20 | So. | Madison, Fla. |
| 82 | Jim Causey | E | 6-1 | 210 | 21 | So. | Miami, Fla. |
| 83 | Bill Dawson | E | 6-3 | 214 | 19 | So. | Valdosta, Ga. |
| 84 | Hank Sytsma | E | 6-3 | 195 | 20 | So. | Sarasota, Fla. |
| 85 | Fred Biletnikoff | E | 6-1 | 183 | 19 | So. | Erie, Pa. |
| 87 | Terry Garvin | E | 5-11 | 194 | 19 | So. | Pensacola, Fla. |
| 88 | *Cliff Gunter | E | 6-3 | 190 | 20 | Jr. | Dothan, Ala. |
| 89 | *J. McConaughay | E | 6-0 | 195 | 20 | Sr. | Ocala, Fla. |

*Denotes Letters Won



1818 W. Tennessee

Howdy Podner . . . Me and the boys jest want to notafy everbody that we are still serven them Notorious and Dillicious char-coal-broiled Steerbrugers and Steak Samwiches at our fine Drive-In Resterant, jest 2 passes & a fumball offen the campus on West Tennessee where Call St. comes in. See you at the Seven Steers.

Yours truly,
OLE TEX.



"Just wash it"

It's time for this '62 Buick to have its 1,000 mile inspection but the only way to know it is to read the odometer. The owner can't think of a thing his new Buick needs except a wash job.

This is happening hundreds of times every day in Buick Dealers' Service Departments right across the country.

The 1962 Buick is setting records for trouble-free performance. And this is no accident. This '62 Buick is the end product of intense "reliability programming" at every step of the way, in design, in engineering, and in the manufacturing and inspection of every one of its nearly 7500 components.

Behind this car is 3,400,000 miles of testing in 33 states

—over all kinds of roads, in all kinds of weather, through all kinds of traffic. Why has all this been done? A matter of pride and good business . . . to make certain that the 1962 Buick will be as fine a performer and as reliable a car—regardless of price—that anyone can own today.

By the way, the Buick Service Manager will do more than wash this car. He'll give it a good thorough check-up, just because he loves it.

It's a great experience to own and drive a 1962 Buick. Why not make this your Buick year? Your nearest quality Buick Dealer will put you at the wheel of any Buick you choose. Buick Motor Division, General Motors Corporation.

BUICK

WHEN BETTER AUTOMOBILES ARE BUILT, BUICK WILL BUILD THEM

The View From Above



By **BILL MCGROTHA**, Sports Editor
The Tallahassee Democrat

Dozens of pleasant Saturdays have rolled by and—well, this is my 10th straight year of following the Florida State football team.

Since the fall of 1953—road and home, from El Paso to Philadelphia—I've missed just two games. Unhappily, this is no record. Tillman Dixon, the team's equipment manager, started in '53, too. He holds the record. Hasn't missed one.

Many memories of many games dissolve, generally, into a great blur. Some stand out.

Tears in dressing rooms . . . the quiet on a plane winging homeward at midnight as dog-tired players sleep . . . the shrill tongue-lashing Tennessee's Bowden Wyatt gave his players after Fred Pickard helped spark an upset ("You let that little so-and-so run all over you!") . . . the bone-chilling weather in the Bluegrass Bowl . . . two Seminoles engaging in a brief scuffle at 12,000 feet.

Three coaches . . . Tom Nugent, Perry Moss, Bill Peterson . . . so different, and so alike. All football coaches work more, worry more than most people know.

Bob Harbison, the assistant coach, served with all three of those coaches, and with Don Veller before them. Harbie has become a firm part of FSU's growing football tradition. Despite his longer association, he holds no games-seen record because he's often away scouting future foes; all of the head coaches have praised his scouting. Few people find such a fascination with football as does this man. Loyalty might be his middle name.

The biggest moment in FSU football? Nothing is quite so vivid as Bobby Renn's big runback of the opening kickoff in the first game with Florida in '58. He was stopped by Jimmy Dunn a few yards short of a touchdown, which the Seminoles soon got anyhow.

Biggest victory? Must have been the 10-0 upset of Tennessee in '58. Personally, I've always relished the 19-18 decision over a strong Mississippi Southern team in '54—an exciting mastery of great odds at that time.

. . . For what it's worth, I sure like the looks of this 1962 team.

FSU Records

SINGLE GAME

INDIVIDUAL

LONGEST TOUCHDOWN RUN FROM SCRIMMAGE—80 yards by Fred Pickard vs. Virginia Tech, 1957.

LONGEST TOUCHDOWN PASS—80 yards, Nelosn Italiano to Eddie Gray vs. Newberry, 1950.

LONGEST TOUCHDOWN RUN ANY SITUATION—

LONGEST RUN FROM SCRIMMAGE WITHOUT SCORING—76 yards by Roy Thompson vs. Stetson, 1951.

LONGEST INTERCEPTION RETURN—99 yards by Ted Hewitt vs. Stetson, 1948.

LONGEST PUNT RETURN—80 yards by Billy Odom vs. Stetson, 1954.

LONGEST KICKOFF RETURN—89 yards by Odom vs. Virginia Tech, 1955.

MOST TIMES RUSHING—29 by Pickard vs. Georgia, 1959.

MOST YARDS RUSHING—161 by Buddy Strauss vs. Mississippi College, 1949.

MOST YARDS PASSING—313 by Majors vs. Tampa, 1949.

MOST TOTAL OFFENSE—369 yards (56 rushing, 313 passing) by Majors vs. Tampa, 1959.

MOST PASSES ATTEMPTED—32 by Joe Mapors vs. Tampa, 1959.

MOST PASSES COMPLETED—20 by Majors vs. Tampa, 1959.

MOST PASSES CAUGHT—9 by Bud Whitehead vs. Tampa, 1959.

MOST YARDS RECEIVING PASSES—123 by Harry Bringger vs. Mississippi College, 1950.

MOST PASSES INTERCEPTED—3 by Tommy Brown vs. Stetson, 1950 and vs. Georgia Tech, 1952; Lee Corso vs. Georgia 1954; Whitehead vs. Virginia Tech, 1959.

LONGEST PUNT—84 yards by Brown vs. Tampa, 1950.

LONGEST FIELD GOAL—32 yards by Johnny Shepard vs. Miami, 1958.

TEAM

MOST POINTS—74 vs. Whiting Field 0, 1949.

GREATEST MARGIN OF VICTORY—74-0 vs. Whiting Field, 1949.

GREATEST MARGIN OF DEFEAT—0-42 vs. Georgia, 1959.

MOST YARDS RUSHING—383 vs. Abilene Christian, 1957.

MOST YARDS PASSING—355 vs. Villanova, 1954.

MOST TOTAL OFFENSE—514 yards vs. The Citadel, 1959 (307 rushing, 207 passing).

MOST PASSES ATTEMPTED—34 vs. Tampa, 1959 (completed 20).

MOST PASSES COMPLETED—20 vs. Tampa, 1959 (attempted 34).

MOST PASSES INTERCEPTED—7 vs. Virginia Tech, 1959.

MOST PUNTS—10 vs. Stetson and Georgia Tech, 1955.

MOST POINTS—60 by Red Parrish, 1949.

GE—
57.
elosl
ON—
OUT
tson,
s by
Ddom
Ddom
Geor-
rauss
mpa,
hing,
s vs.
vs.
d vs.
Harry
rown
Lee
ginia
mpa,
hep-
hit-
rgia,
hris-
954.
Cit-
959
959
ech,
ech,



a **LEADER**
for over
12 years
in cold
control...

CORICIDIN[®]

(brand of antihistamine-analgesic-antipyretic compound)

SCHERING CORPORATION • BLOOMFIELD, NEW JERSEY



FSU'S 1962 FOOTBALL COACHES: (Front row, L-R) Ken Meyer, Bill Peterson, Don James; (Back row) Bubba McGowan, Dick Flowers, John Coatta, Vince Gibson, Bob Harbison.



BILL PETERSON
Head Football Coach

*The
Seminole
Football
Family*



VAUGHN MANCHA
Athletic Director



TILLMAN DIXON
Equipment Custodian



JIM MARTIN
Official Photographer



PAUL HEMPHILL
Sports Publicity
Director



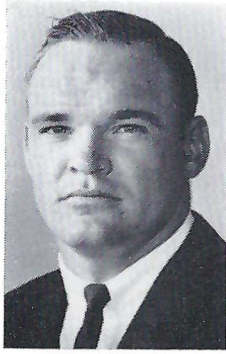
RONALD MELTON
Athletic Business
Manager



DR. R. A. JOHNSON
Team Physician



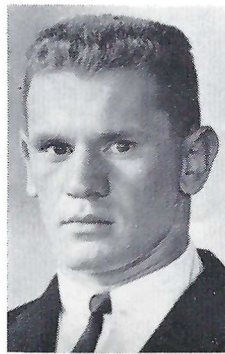
DON FAULS
Team Trainer



John Roberts



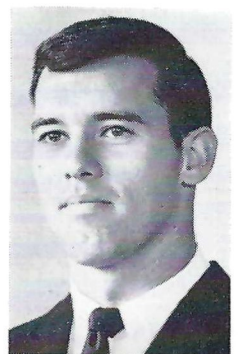
Terry Garvin



John Wachtel



Jeff Klores



Ken Russom



Eddie Feely

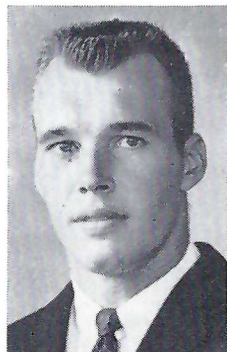


Tom West

F
S
U



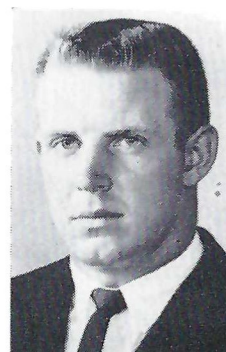
Bill Tyre



Cliff Gunter



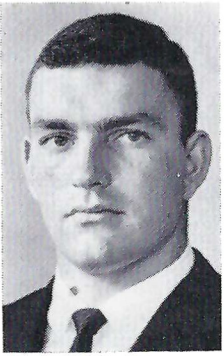
Max Andrews



Doug Messer



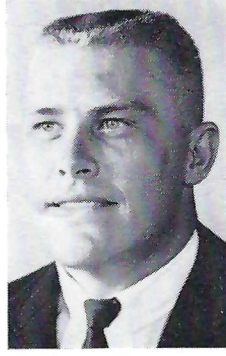
Keith Kinderman



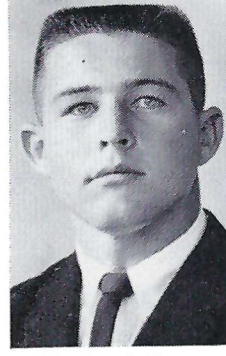
Billy Daly



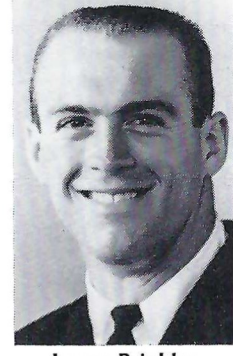
Ferrell Henry



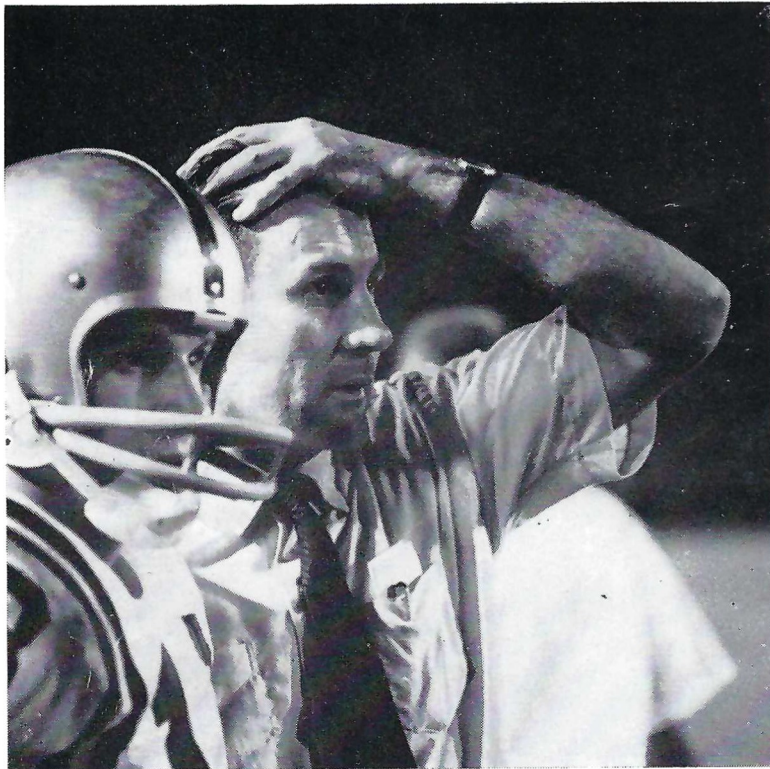
Avery Sumner



Charlie Calhoun



Larry Brinkley

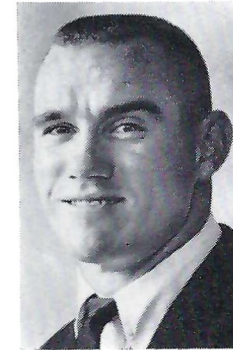


F



Ralph Norman

S

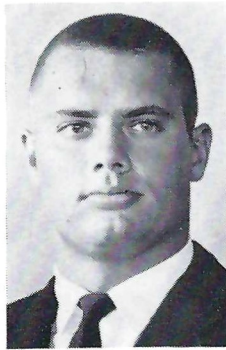


Jim Loftin

U



Gene Roberts



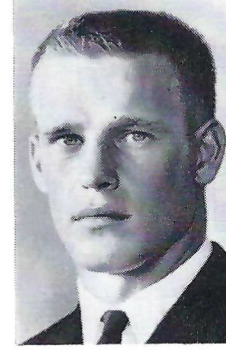
Dale MacKenzie



Hank Sytsma



Gene McDowell



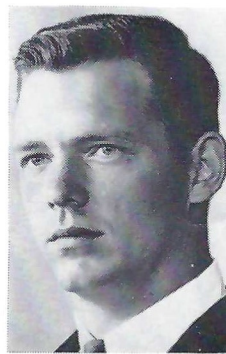
Tom Hillbrand



Jack Edwards



John Levings



Jack Shinholser



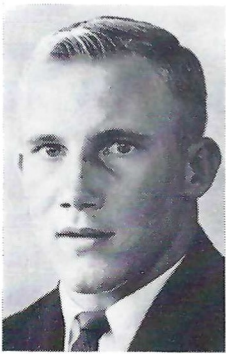
Fred Biletnikoff



Bruce Darsey



Chuck Robinson



Dick Hermann

F

S

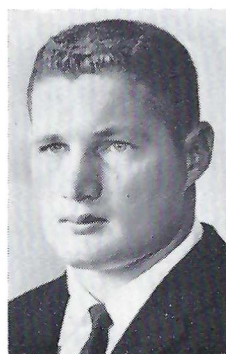
U



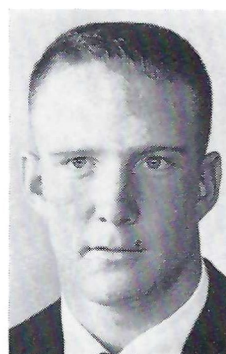
Y. C. McNease



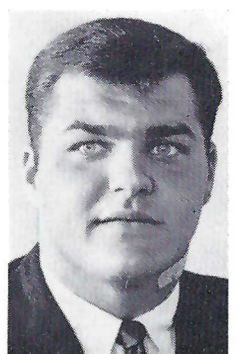
Steve Slay



Jim Causey



Bill Dawson



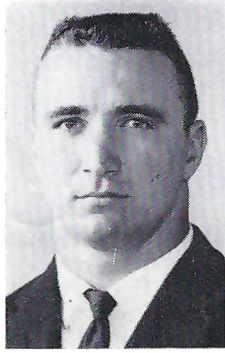
Mike Blazovich



Tom Slicker



Jim Sims



Don Floyd



John Harlee



Marion Roberts



F



Jim Wade

S



Terry Hollman

U



Tom Eckert



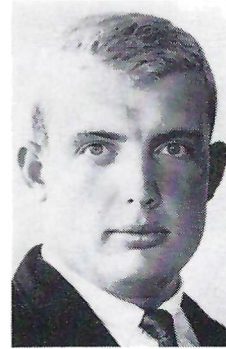
Jim Massey



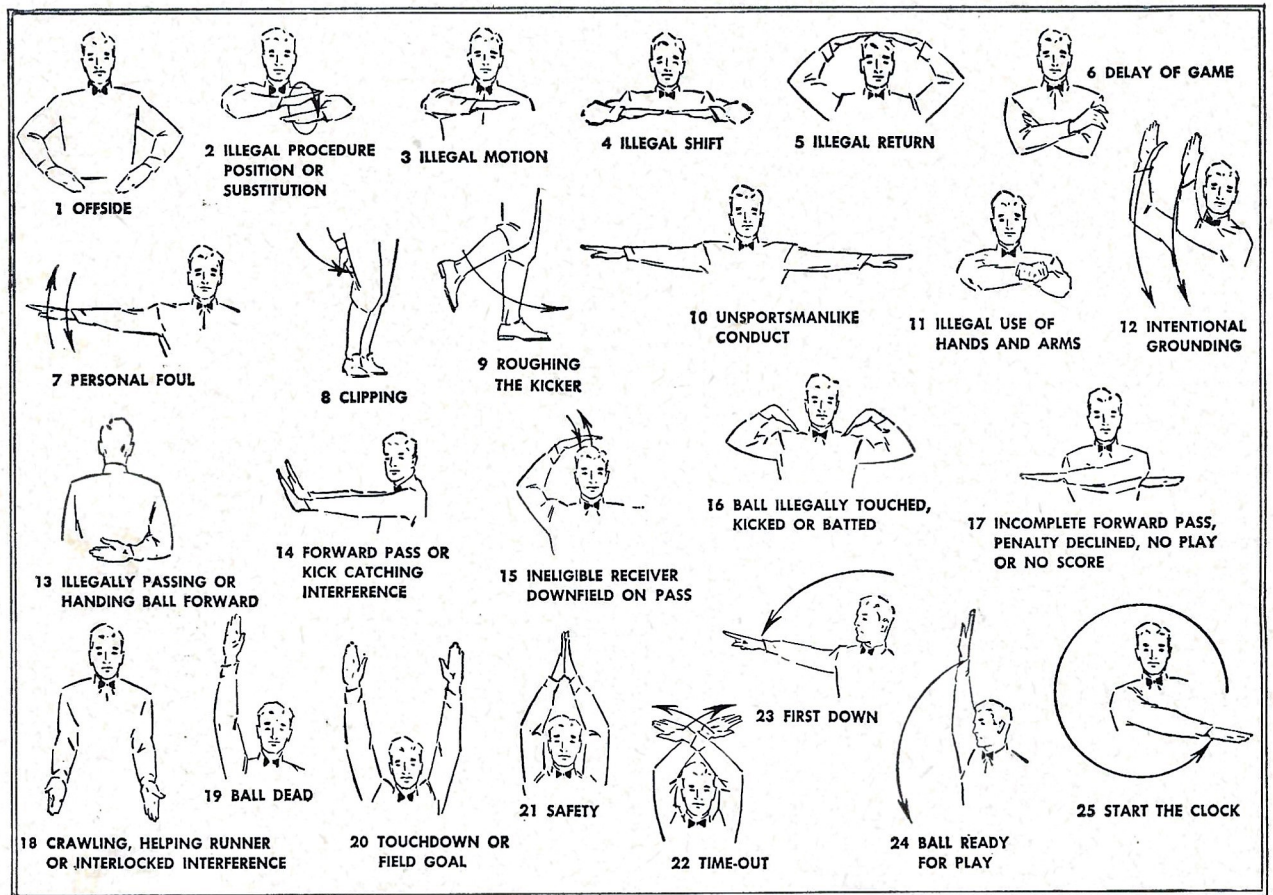
John McConaughay



Winfred Bailey

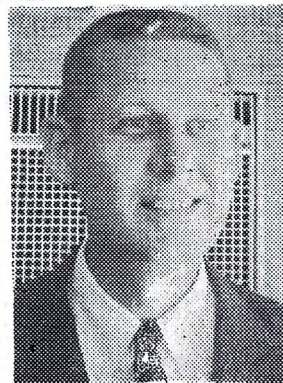


Rod Luce



**TRAVELING
DESSERT TRAYS**

**FAMOUS
TOWN HOUSE
ROAST
PRIME RIB
OF BEEF**



SPURGEON CAMP

*Good Luck
Seminoles!*

★
**NOBODY...
BUT NOBODY
UNDERSELLS.**
★

**SOUTHERN
ELECTRIC INC.**

4-Store Purchasing Power

Saves You Money on G-E Appliances!

| | | |
|--|--|---------------------------------|
| Tallahassee Downtown and Capital Plaza | Perry, Fla. 115 E. Green St. on the Square | Valdosta, Ga. 117 W. Central |
|--|--|---------------------------------|

"Viceroy's got the taste tha



THE SEMINOLE SQUAD

FLORIDA STATE

FSU Starting Lineup

| No. | Name | Pos. |
|-----|-----------------|------|
| 89 | J. McCONNAUGHAY | LE |
| 70 | TOM SLICKER | LT |
| 52 | CHUCK ROBINSON | LG |
| 64 | BRUCE DARSEY | C |
| 63 | GENE McDOWELL | RG |
| 71 | JIM SIMS | RT |
| 82 | JIM CAUSEY | RE |
| 14 | EDDIE FEELY | QB |
| 26 | KEITH KINDERMAN | LH |
| 22 | KEN RUSSOM | RH |
| 44 | MARION ROBERTS | FB |

| | |
|----|----------------|
| 10 | Eckert, QB |
| 11 | Calhoun, QB |
| 12 | Harllee, KS |
| 13 | Tensi, QB |
| 14 | Feely, QB |
| 15 | Massey, QB |
| 20 | Snyder, FB |
| 21 | Brinkley, HB |
| 22 | Russom, HB |
| 23 | Loftin, HB |
| 24 | J. Roberts, FB |
| 26 | Kinderman, HB |
| 27 | Spooner, HB |
| 28 | Hollman, HB |
| 29 | Hillabrand, HB |
| 40 | Messer, HB |
| 41 | G. Roberts, FB |

| | |
|----|----------------|
| 42 | Norman, FB |
| 44 | M. Roberts, FB |
| 51 | McNease, C |
| 52 | Robinson, G |
| 53 | Daly, C |
| 55 | Edwards, C |
| 60 | Henry, G |
| 61 | Klores, T |
| 62 | Slay, G |
| 63 | McDowell, G |
| 64 | Darsey, G |
| 65 | Levings, G |
| 66 | Hermann, G |
| 67 | Bruner, G |
| 68 | Shinholser, G |
| 69 | Wade, G |
| 70 | Slicker, T |

| | |
|----|-----------------|
| 71 | Sims, T |
| 73 | Sumner, T |
| 74 | Tyre, T |
| 75 | MacKenzie, T |
| 76 | Andrews, T |
| 79 | Blazovich, T |
| 80 | Wachtel, E |
| 81 | Floyd, E |
| 82 | Causey, E |
| 83 | Dawson, E |
| 84 | Sytsma, E |
| 85 | Biletnikoff, E |
| 87 | Garvin, E |
| 88 | Gunter, E |
| 89 | McConnaughay, E |

ste that's right!"



Smoke all seven filter brands and you'll agree: some taste too strong . . . some too light . . .

but Viceroy's got the taste that's right!

That's right!

THE CITADEL

Starting Lineup

| No. | Name | Pos. |
|-----|-----------------|------|
| 85 | BILL BOYTE | LE |
| 79 | JOHN EVANS | LT |
| 60 | GENE DICE | LG |
| 50 | JOE BUCKNER | C |
| 67 | JOE TURBEVILLE | RG |
| 75 | LARRY ROSS | RT |
| 84 | CHARLIE BRENDLE | RE |
| 16 | SID MITCHELL | QB |
| 45 | EDDIE TAYLOR | LH |
| 20 | ROY BRINSON | RH |
| 38 | BOB JACKSON | FB |

| | |
|----|----------------|
| 11 | St. John, QB |
| 12 | Brewster, QB |
| 15 | Breedlove, QB |
| 16 | Mitchell, QB |
| 17 | Cannarella, QB |
| 19 | Hill, QB |
| 20 | Brinson, HB |
| 22 | Parker, HB |
| 23 | Stoudemire, HB |
| 24 | Mathews, HB |
| 32 | DiLoreto, FB |
| 33 | Lane, FB |
| 35 | Whitney, FB |
| 38 | Jackson, FB |
| 41 | Johnson, HB |
| 42 | Chellis, HB |

THE CADET SQUAD

| | | | |
|----|---------------|----|-------------|
| 43 | Street, HB | 70 | Zalaznik, T |
| 44 | Lybrand, HB | 71 | Ferguson, T |
| 45 | Taylor, HB | 72 | Lewis, T |
| 46 | Perrin, HB | 73 | Foster, T |
| 50 | Buckner, C | 74 | Shaffer, T |
| 52 | Hinshaw, C | 75 | Ross, T |
| 53 | Zaytoun, C | 77 | Alderman, T |
| 55 | Reardon, C | 79 | Evans, T |
| 60 | Dice, G | 80 | Bills, E |
| 61 | Stork, G | 81 | Addison, E |
| 62 | Bradburn, G | 82 | Marsh, E |
| 63 | Crisman, G | 83 | Hunt, E |
| 64 | Missar, G | 84 | Brendle, EA |
| 67 | Turbeville, G | 85 | Boyte, E |
| 68 | Keating, G | 86 | Gould, E |
| 69 | Bohn, G | 88 | Petno, E |

PENALTIES

1. **OFFSIDE** by either team; Violation of scrimmage or free kick formation; Encroachment on neutral zone—Loss of Five Yards.
2. **ILLEGAL PROCEDURE, POSITION OR SUBSTITUTION**—Putting ball in play before Referee signals "Ready-for-play"; Failure to complete substitution before play starts; Player out of bounds when scrimmage begins; Failure to maintain proper alignment of offensive team when ball is snapped; False start or simulating start of a play; Taking more than two steps after Fair Catch is made; Player on line receiving snap—Loss of Five Yards.
3. **ILLEGAL MOTION**—Offensive player illegally in motion when ball is snapped—Loss of Five Yards.
4. **ILLEGAL SHIFT**—Failure to stop one full second following shift—Loss of Fifteen Yards.
5. **ILLEGAL RETURN** of substitute not previously disqualified—Loss of Fifteen Yards.
6. **ILLEGAL DELAY OF GAME**; Taking more than four times out during either half (except for replacement of injured player)—Loss of Five Yards. Team not ready to play at start of either half—Loss of Fifteen Yards.
7. **PERSONAL FOUL** — Tackling or blocking defensive player who has made fair catch; Piling on; Hurdling; Grasping face mask of opponent; Tackling player out of bounds, or running into player obviously out of play; Striking an opponent with fist, forearm, elbow or locked hands; Kicking or kneeling—Loss of Fifteen Yards (Flagrant offenders will be disqualified.)
8. **CLIPPING**—Loss of Fifteen Yards.
9. **ROUGHING THE KICKER** or holder—Loss of Fifteen Yards.
10. **UNSPORTSMANLIKE CONDUCT**—Violation of rules during intermission; Illegal return of suspended player; Coaching from sidelines; Invalid signal for Fair Catch; Persons illegally on field—Loss of Fifteen Yards. (Flagrant offenders will be disqualified.)
11. **ILLEGAL USE OF HANDS AND ARMS** by offensive or defensive player; Defensive holding—Loss of Fifteen Yards.
12. **INTENTIONAL GROUNDING** of forward pass—Loss of Five Yards Plus Loss of Down.
13. **ILLEGALLY PASSING OR HANDING BALL FORWARD**—Loss of Five Yards Plus Loss of Down.
14. **FORWARD PASS OR KICK CATCHING INTERFERENCE**—Interference with opportunity of player of receiving team to catch a kick—Loss of Fifteen Yards. Interference by member of offensive team with defensive player making pass interception—Loss of Fifteen Yards Plus Loss of Down. Interference by defensive team on forward pass—Passing Team's Ball at Spot of Foul and First Down.
15. **INELIGIBLE RECEIVER DOWNFIELD ON PASS**—Loss of Fifteen Yards.
16. **BALL ILLEGALLY TOUCHED, KICKED OR BATTED**—Forward pass being touched by ineligible receiver beyond the line of scrimmage—Loss of Fifteen Yards from Spot of Preceding Down and Loss of a Down. Eligible pass receiver who goes out of bounds and later touches a forward pass—Loss of Down. Illegal touching of kicked ball within opponent's ten yard line—Touchback.
17. **PENALTY DECLINED**; Incomplete forward pass; No play or no score.
18. **CRAWLING** by runner—Loss of Five Yards. Interlocked Interference—Loss of Fifteen Yards.

".....it's a date!"

**WILL IT BE
PIZZAS AT
SMITH HALL**

OR

QUICKIE BURGERS

AND EXTRA THICK MALTS AT THE STUDENT CENTER

"Fine See You There!"





HAV-A-TAMPA JEWEL

The s-m-o-o-t-h
cigar with the
built-in mouthpiece

ALL NATURAL-LEAF
FINE TOBACCO . . .
TOPS IN TASTE AND
SMOKING PLEASURE

Ask for the
Brand Name

HAV-A-TAMPA
CIGAR

Distributed by **Eli Witt Tobacco & Candy Co.**
Tallahassee, Florida

Frisbie Restaurant

(Formerly Faiver's)

West Tennessee at Brevard

222-4578

Full Service Restaurant &

Fast Efficient Delivery

Student Food Plan

**Dine and Dance in Scarlet Key Room
Upstairs**

BENNETT'S DRUG STORE

- Prescriptions
- Cameras
- Sundries
- Gifts
- Fountain
- Cafe
- Cosmetics
- Drugs

MEET ME AT BENNETT'S

BEFORE AND AFTER THE GAME!

Corner Monroe and College Streets

Phone 222-8980 — 222-4450

Benhil's Butler's
Lerner's Neisner's
Stein's Sears
Stafford's
Walgreen's

**Parkway
SHOPPING CENTER**

Winn Dixie
Chick 'N Treat
Colonial Stores
One Hour Valet
Parkway Bakery
Parkway Package
Sears Roebuck &
Co.
Leon Federal
Co.

Southland Draperies
Tallahassee Barber College
Thom McAn Shoes
Personal Finance
Co.

Good Luck, Seminoles!

CHANELO'S PIZZA HOUSE

618 WEST TENNESSEE STREET

Pizza Made to Order
Sandwichs

SUBMARINE

MEAT BALL

Italian Salad

Open Sunday thru Thursday: 11 A.M. to 1 A.M.

Friday and Saturday: 11 A.M. to 2 A.M.

PHONE 224-2187

FREE CAMPUS DELIVERY

BEAT THE GATORS

MEET YOUR FRIENDS

(AND THE GATORS)

BEFORE AND AFTER

THE GAME AT

Garcia's

320 E. TENNESSEE ST.

223-1177

TALLAHASSEE AUTOMOBILE DEALERS ASSOCIATION

Alford Chevrolet Co.

Auto Imports

Capital Lincoln-Mercury, Inc.

Capital Plymouth, Inc.

Collins Motors, Inc.

Drake Motors

Mingledorff Motors, Inc.

John Manthey, Inc.

Palmer-Harrell Buick Co.

Proctor & Proctor

Stout Equipment Co.

Tallahassee Motors, Inc.

BE A SEMINOLE BOOSTER



Syde P. Deeb

This organization—devoted entirely to assisting FSU in athletic and scholarship programs, with particular emphasis on athletics—is comprised of persons interested in FSU athletics, many of whom never actually attended the school. Membership is open to everyone with a sincere interest in the University's athletic welfare.

Minimum annual dues are \$10, but many persons see fit to contribute more. This money is handled directly through the University

treasurer's office. Members of Seminole Boosters receive a colorful automobile license plate (provides reserved parking at stadium), membership card, a weekly fall publication called "The Grandstand Coach," and certain priorities on season and individual football tickets.

Serving as president of Seminole Boosters, Inc., is Syde P. Deeb, a Tallahassee contractor. Hard-working secretary-treasurer of the organization is Robert L. Bannerman, Jr., director of FSU alumni affairs.



Bob Lee Bannerman

GOOD LUCK SEMINOLES!

LUIS' *Seafood*

"A BANQUET IN A BOX"

featuring Seafood & Chicken

With over 18 different items to carry out in over 50 different sizes.

620 W. Tennessee St.

Ph. 224-1181

Be sure and visit our other location in Gainesville, Fla.
309 N. W. 13th St.

We also have an air conditioned area if you so desire.

FOREMOST

ICE CREAM
PHONE • 224-7136

**SUNSHINE STATE
DAIRYMEN'S COOP.**

QUALITY CLEANERS

215 W. COLLEGE AVE.—DIAL 222-5097

The Finest in Modern Cleaning
Equipment to Serve You

ONE DAY SERVICE

PICK-UP and DELIVERY

Quality Laundry Work

Fluff Dry Service

EXPERT TAILORING and ALTERATIONS

ZIPPERS REPAIRED

Learn to Fly at **Seminole Flying Service, Inc.**

**Municipal Airport
Tallahassee, Fla.**

One of Florida's Oldest Flying Schools

AIRPLANE RIDES - FLIGHT INSTRUCTIONS

Charter - Sales: New & Used

Aerial Photography

Fly & Buy A New CESSNA

**LOOK UP — A NEW CESSNA
WILL BE OVERHEAD**

Everybody **STOPS AT McDonald's**

the drive-in with the arches



1701 W. TENN. ST.

THE CITADEL

1962 FOOTBALL ROSTER

| No. | Name | Pos. | Ht. | Wt. | Age | Class | Hometown |
|-----|--------------------------|------|------|-----|-----|-------|----------------------|
| 11 | Wade St. John | QB | 6-0 | 177 | 20 | Jr. | Atlanta, Ga. |
| 12 | Ed Brewster | QB | 6-0 | 170 | 19 | So. | Rome, Ga. |
| 15 | John Breedlove | QB | 6-2 | 182 | 19 | So. | Macon, Ga. |
| 16 | *Sid Mitchell | QB | 5-10 | 182 | 22 | Sr. | Asheville, N. C. |
| 17 | Joe Cannarella | QB | 6-2 | 187 | 20 | Jr. | Sumter, S. C. |
| 19 | Ben Hill | QB | 5-11 | 190 | 21 | Sr. | Tampa, Fla. |
| 20 | LeRoy Brinson | HB | 5-10 | 176 | 21 | Sr. | Charleston, S. C. |
| 22 | Converse Chellis | HB | 5-9 | 165 | 19 | So. | Summerville, S. C. |
| 23 | Julian Stoudemire | HB | 6-0 | 188 | 21 | Sr. | Walhalla, S. C. |
| 24 | Wes Mathews | HB | 6-0 | 193 | 20 | Jr. | Alapaha, Ga. |
| 32 | *Nick DiLoreto | FB | 5-10 | 192 | 20 | Jr. | Wollaston, Mass. |
| 33 | Mike Lane | FB | 5-10 | 189 | 19 | So. | Albany, Ga. |
| 35 | Bruce Whitney | FB | 5-10 | 172 | 21 | Jr. | Beaufort, S. C. |
| 38 | *Bobby Jackson | FB | 5-11 | 200 | 22 | Sr. | Rome, Ga. |
| 41 | Eric Johnson | HB | 6-2 | 195 | 21 | Sr. | Bellevue, Ohio |
| 42 | Jim Parker | HB | 5-9 | 170 | 19 | So. | Kings Mt., N. C. |
| 43 | Dwight Street | HB | 5-11 | 187 | 19 | So. | Shelby, N. C. |
| 44 | Dave Lybrand | HB | 6-1 | 180 | 21 | Sr. | Edisto Beach, S. C. |
| 45 | *Eddie Taylor | HB | 5-11 | 195 | 20 | Sr. | Columbia, S. C. |
| 46 | Mickey Perrin | HB | 5-10 | 170 | 20 | Jr. | Villa Rica, Ga. |
| 50 | *Joe Buckner | C | 5-11 | 210 | 20 | Jr. | Greenville, S. C. |
| 52 | Bill Hinshaw | C | 6-0 | 200 | 21 | Sr. | Greensboro, N. C. |
| 53 | Louis Zaytoun | C | 6-0 | 208 | 20 | Sr. | New Bern, N. C. |
| 55 | Mike Reardon | C | 6-2 | 225 | 21 | Sr. | Westport, Conn. |
| 60 | *Gene Dice (Capt.) | G | 5-11 | 201 | 20 | Sr. | Pittsburgh, Pa. |
| 61 | Paul Stork | G | 6-1 | 180 | 20 | Jr. | Charlotte, N. C. |
| 62 | *Hugh Bradburn | G | 6-0 | 200 | 21 | Sr. | Brevard, N. C. |
| 63 | Cris Crisman | G | 5-11 | 195 | 20 | Jr. | Pittsburgh, Pa. |
| 64 | Joe Missar | G | 6-1 | 212 | 19 | So. | Alexandria, Va. |
| 67 | *Joe Turbeville | G | 5-11 | 209 | 21 | Sr. | Mullins, S. C. |
| 68 | Ed Keating | G | 6-0 | 210 | 21 | Jr. | Rye, N. Y. |
| 69 | Bruce Bohn | G | 5-11 | 187 | 19 | Jr. | Philadelphia, Pa. |
| 70 | Jim Zalaznik | T | 6-1 | 210 | 20 | So. | Ft. Lauderdale, Fla. |
| 71 | Frank Ferguson | T | 6-3 | 233 | 20 | So. | Winter Park, Fla. |
| 72 | Jim Lewis | T | 6-4 | 240 | 20 | So. | Dravosburg, Pa. |
| 73 | Mitchell Foster | T | 6-4 | 234 | 20 | So. | Chester, S. C. |
| 74 | Doug Shaffer | T | 6-2 | 221 | 20 | Jr. | Pittsburgh, Pa. |
| 75 | *Larry Ross | T | 6-3 | 220 | 21 | Sr. | Ahoskie, N. C. |
| 77 | Jim Alderman | T | 6-1 | 220 | 20 | Jr. | Jacksonville, Fla. |
| 79 | John Evans | T | 5-11 | 218 | 21 | Sr. | Brown Summit, N. C. |
| 80 | Dick Bills | E | 6-0 | 201 | 19 | So. | Plant City, Fla. |
| 81 | Mike Addison | E | 6-1 | 194 | 19 | So. | Anderson, S. C. |
| 82 | *Clyde Marsh | E | 6-2 | 195 | 21 | Sr. | Sparta, Ga. |
| 83 | Marshal Hunt | E | 6-1 | 203 | 20 | Jr. | Savannah, Ga. |
| 84 | *Charlie Brendle (Capt.) | E | 6-3 | 211 | 22 | Sr. | Winston-Salem, N. C. |
| 85 | Bill Boyte | E | 6-4 | 202 | 21 | Sr. | Lake Wales, Fla. |
| 86 | *Ed Gould | E | 6-1 | 204 | 21 | Sr. | Wilson, N. C. |
| 88 | *Vince Petno | E | 6-1 | 193 | 20 | Jr. | Uniontown, Pa. |

* Denotes letterman

GOLF

at

Oak Valley

GOLF CLUB

CLUBS
FOR RENT

LIGHTED
FOR NITE

PLAY

- Golf Course
- Driving Range
- Putting Range
- Snack Bar
- Pro-Shop
- Supervised Play Area

555 Ocala Road off West Tennessee

"Open Daily"

TED & SARA RODRIGUE,
OWNERS

The Vogue

TALLAHASSEE, FLORIDA

Before Or After
Game

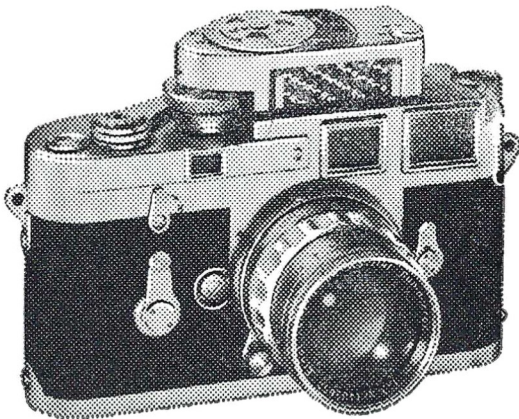
CHICKEN IN THE ROUGH
COPYRIGHT 1937 BY BEVERLY OSBORNE

QUAKER HOUSE



RESTAURANT

*Dining Room
and Curb Service*



**FOOTBALL FANS
YOU WILL FIND EVERYTHING
PHOTOGRAPHIC**

- FILMS
- CAMERAS
- ACCESSORIES
- RENTALS
- COMPLETE PHOTOFINISHING SERVICE

AT

TALLAHASSEE CAMERA CENTER

117 North Monroe St.

Ph. 222-8771

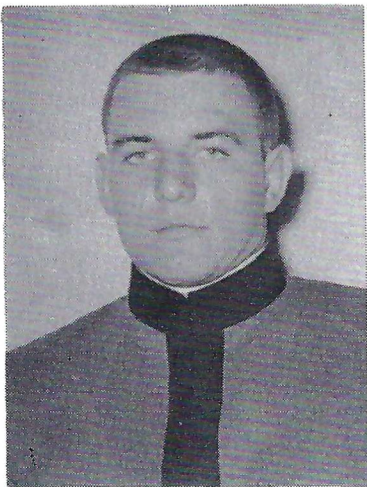
"Across from the Florida Theatre"

THE

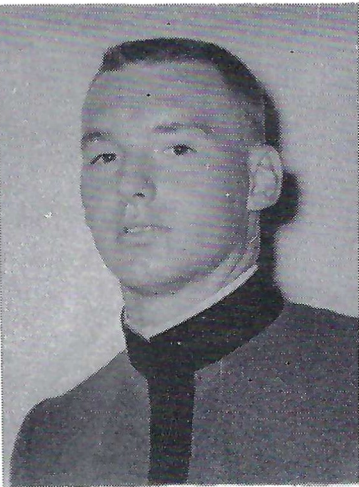
C I T A D E L

FACTS ABOUT THE CITADEL

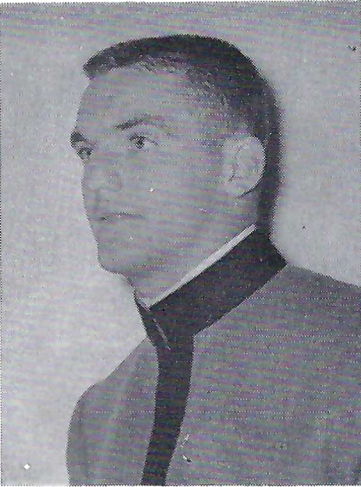
Location Charleston, S. C.
President Gen. Mark Wayne Clark
Nickname Cadets or Bulldogs
Colors Blue and White
Conference Southern
Head Coach, Athletic Director Eddie Teague
Sports Publicist Bill Stewart
1961 Record 7-3 (Conference Champion)



Joe Buckner



Ed Gould



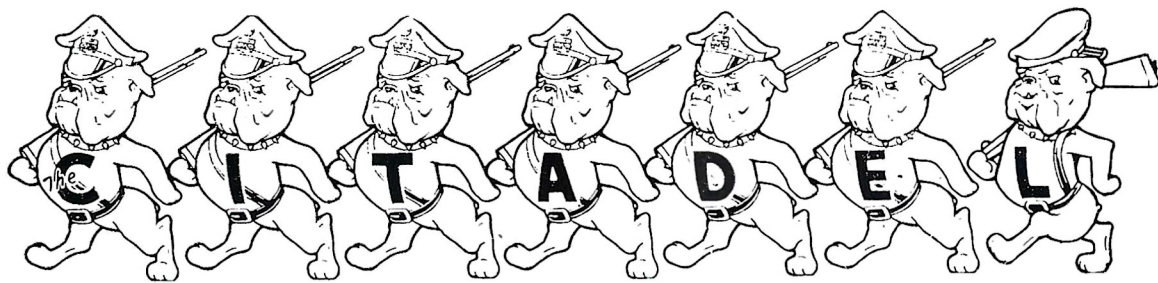
LeRoy Brinson



Clyde Marsh



Ch...

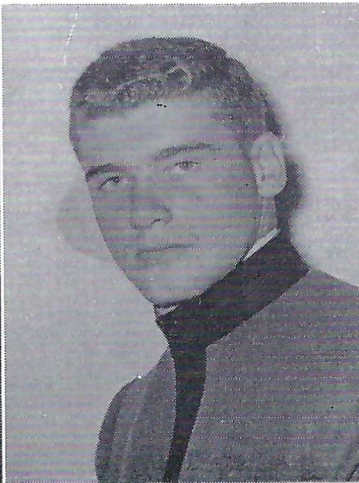


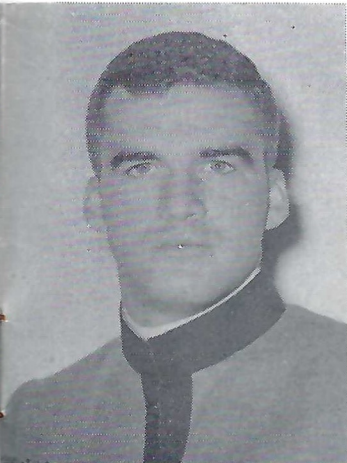
Sid Mitchell

Nick DiLoreto

Mike Reardon

Gene Dice

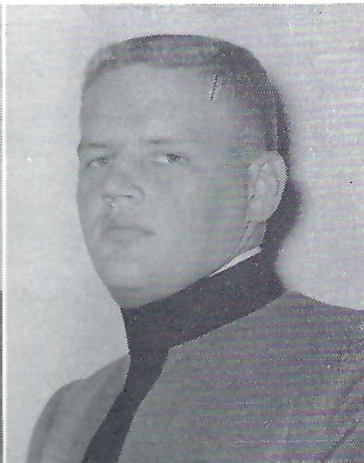




Charlie Brendle



Hugh Bradburn



John Evans



Larry Ross

rsh



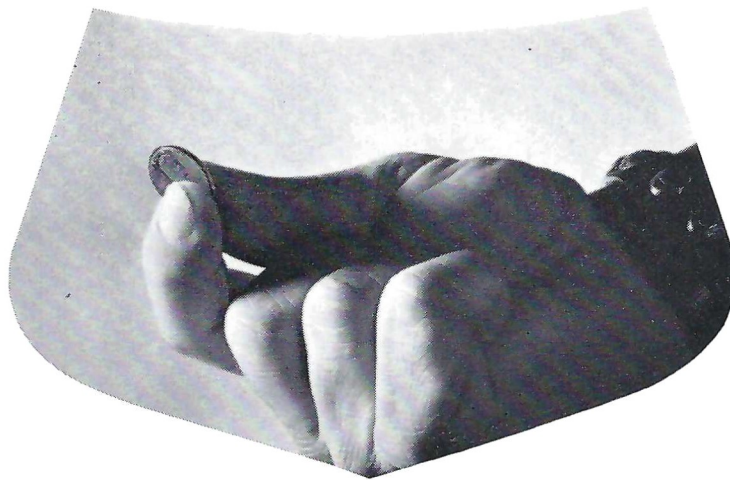
ce

Bobby Jackson

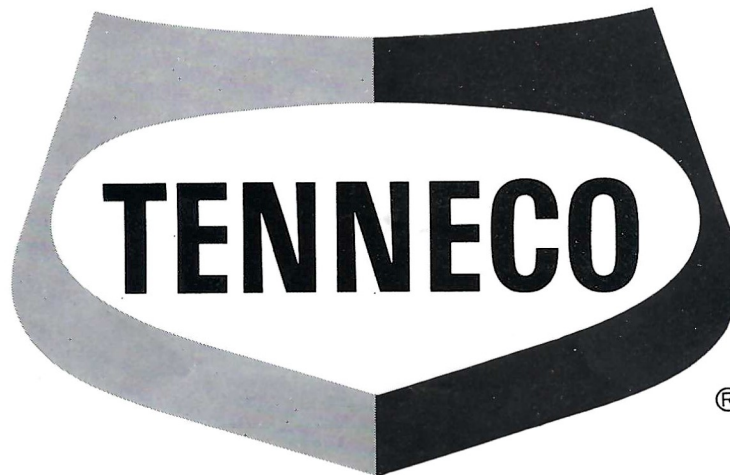
Joe Turbeville

Dave LyBrand





NEW TENNECON—PENNY PINCHING—POWER PACKED



TENNECON...is our new economy gasoline. It was specifically made to satisfy the needs of many of the new 6-cylinder and smaller V-8 engines. **TENNECON** is also power-perfect for many older cars, compacts, and foreign makes...cars that do not need a high-octane, high-additive fuel to perform their best. Why pay for power your car can't use? Try new low-priced **TENNECON**. It makes sense and saves you dollars. Try a tankful of **TENNECON** in your car today.

ALSO TWO GREAT NEW GASOLINES FOR CARS THAT NEED HIGH-OCTANE, HIGH-ADDITIVE FUEL

NEW TENNECO SUPER REGULAR... a totally new kind of gasoline... power-perfect for 3 out of 4 cars on the road today. It has a higher-than-Regular octane plus all the Premium additives we put into our Premium gasoline. If your car needs Premium additives... but not Premium octane... get new **TENNECO SUPER REGULAR**.

NEW TENNECO PREMIUM... designed for the big cars with high-compression engines. It has all the octane, all the additives any car could ask for. **TENNECO PREMIUM** meets or exceeds all the requirements set by automobile manufacturers themselves.

NEW TENNECON, NEW TENNECO SUPER REGULAR, NEW TENNECO PREMIUM... one of these 3 great gasolines is power-right, performance-right, price-right for your car. Pull up to your pump at Tenneco. See if our sign isn't really a signpost, a beacon, something new to guide by.

TENNECO...SIGNPOST FOR THE SIXTIES • TENNECO OIL COMPANY...A MAJOR COMPONENT OF TENNESSEE GAS TRANSMISSION CO.

SEMINOLES ON THE AIR!



CHARLIE HARVILLE, WALT DUNBAR

"Good evening, ladies and gentlemen, this is Charlie Harville and Walt Dunbar . . . bringing you Florida State University football . . ."

For the third year in a row, FSU football fans unable to attend in person will be nearing that introduction over the 23-station Tenneco-Seminole Network.

It's been that long since Charlie Harville and Walt Dunbar got together and began their radio broadcasts of FSU games under the sponsorship of the Tenneco Oil Company. Play-by-play man is Harville, sports director for WFMY-TV in Greensboro, N. C., while color commentary is handled by Dunbar, sports director for WFGA-TV in Jacksonville.

During the '62 football season the Tenneco-Seminole Network will be beamed by 23 stations, blanketing thousands of square miles over Florida and Georgia.

Carrying all ten games this season are WBGC, Chipley; WJAX, Jacksonville; WLAK, Lakeland; WBSR, Pensacola; WTOT, Marianna; WKIS, Orlando; WTAL, Tallahassee; WGAF, Valdosta, Ga.; WNSM, Valparaiso; WKTG, Thomasville, Ga.; WAYX, Waycross, Ga.; WSEB, Sebring, and WLDP, Panama City. Airing selected games will be WAXE, Vero Beach; WMAF, Madison; WKOS, Ocala; WFLA, Tampa; WBRD, Bradenton; WLBE, Leesburg; WSIR, Winter Haven; WCNH, Quincy; WIPC, Lake Wales, and WNER, Live Oak.



JOHN HOY

*Wherever
You Go . . .
FSU Football*

It'll be difficult to miss the sights and sounds of FSU football this Fall.

Adding spice to the regular newspaper coverage and "live" game broadcasts will be an unprecedented schedule of television and radio "extras" throughout the season.

Personable John Hoy, sports director for WCTV (Channel 6) in Tallahassee, leads the way with two important shows: a Sunday afternoon game review with Seminole Coach Bill Peterson and a Monday night spot over WFSU-TV (Channel 11) with FSU Sports Publicist Paul Hemphill.

Additionally, Hoy and WFSU-TV will film all Seminole games for statewide dissemination . . . and Hemphill will be distributing taped radio interview with FSU coaches and players.

All of this, plus the usual fine coverage given FSU sports by area radio and television stations, makes it a promising year for the Armchair Quarterback.



LEFT TO RIGHT: Dr. Manley R. Whitcomb, Director of Bands; Garnet Girl Janice Freeman, Atlanta; Gold Girl Beverly Calvert, Miami; Drum Major Roger McLendon, Fitzgerald, Ga.

MUSIC AT HALF-TIME

THE FLORIDA STATE UNIVERSITY SCHOOL OF MUSIC

Dr. K. O. Kuersteiner, Dean

presents

THE MARCHING CHIEFS

Manley R. Whitcomb, Director of Bands

Robert T. Braunagel, Associate Director

Charles Carter, Assistant Director & Arranger

Music

FSU Fanfare

Garnet and Gold March

Volga Boatman

Garnet and Gold March

Atom Splitting Music

Syncopated Clock

Ain't Misbehavin'

When you Wish Upon a Star

Fight Song
Alma Mater

Janice Freeman & Beverly Calvert,
Garnet and Gold Girls

Roger McLendon, Drum Major

Jo Ann Beazley, Head Majorette

Formation

Company Front Entrance

Four company fronts move downfield

Two triangles (representing year-round operation in the trimester system)

An atom—as the band splits the atom in a salute to the new Molecular Biophysics Building

A wrist watch—All freshman girls better watch the clock on dates

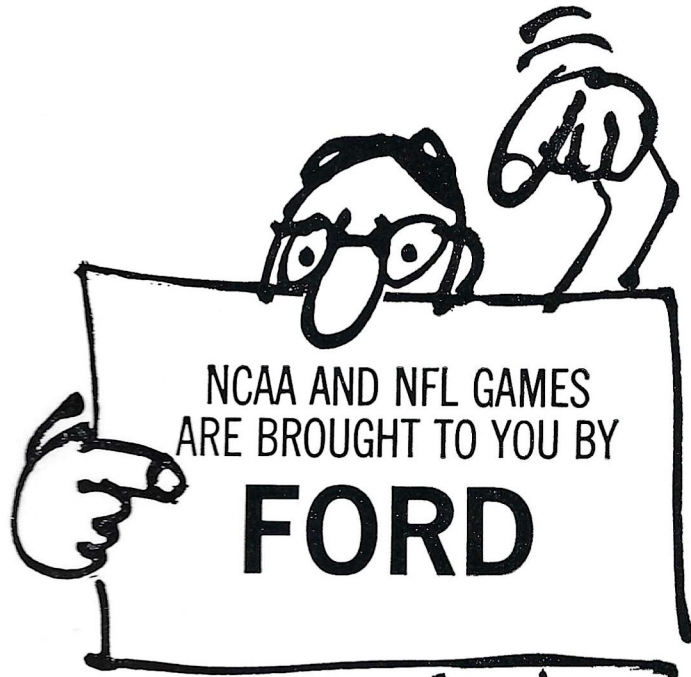
They provide an excuse if you're late.
The Majorettes and Garnet and Gold Girls.

Car—It will be a while before new freshman can have cars—but watch those parking tickets

Star—a wish of good luck to all freshmen advising them to aim high and to wish upon a star.

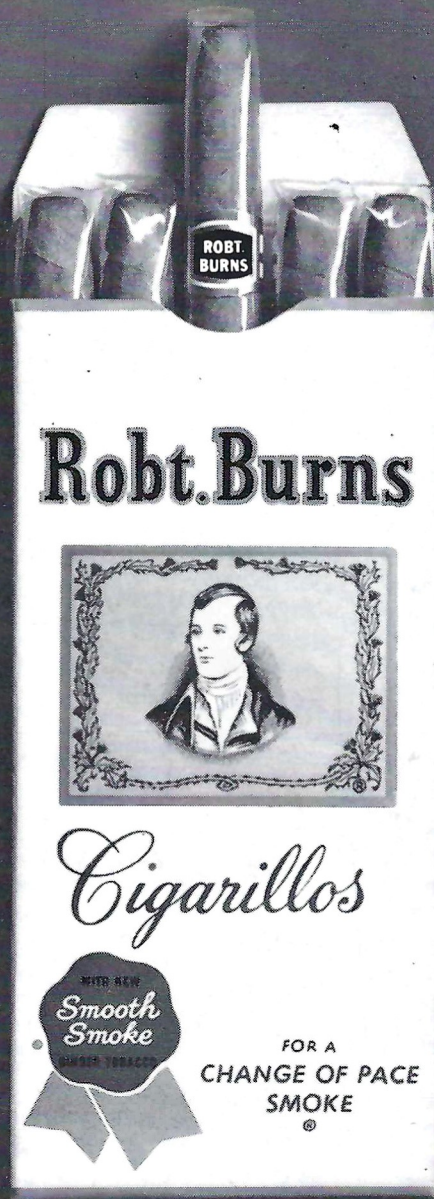
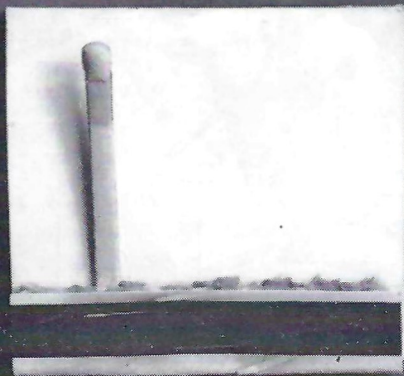
FSU

IT'S A BEAUTIFUL
DAY FOR FOOTBALL,
FANS...AND AS YOU
KNOW, THESE TELECASTS
ARE BROUGHT TO YOU
BY.....SAY RED, WHO
IS OUR SPONSOR?



FORD DIVISION
Ford
MOTOR COMPANY

SEARCH NO LONGER! ALL NCAA COLLEGE GAMES AND ALL NFL PRO GAMES ON TV
ARE SPONSORED BY FORD. SEE YOUR LOCAL NEWSPAPER FOR TIME AND STATION



Let your next match start
you on a change of pace.

You'll be striking up a lasting friendship, too. You'll discover Robt. Burns Cigarillos are just different enough to provide a stimulating change of pace. Size it up. The Cigarillo is not so long you need a lunch hour to enjoy it. Not too long. Not too short. Just the right

size. Just the right mildness, too. Cigarillo's fine blend of tobaccos sees to that. It's mild but full of flavor—the kind of flavor you don't have to inhale to enjoy. Change of pace. Peace of mind. Only 5¢ each. Remember, if it's not a Robt. Burns, it's not the Cigarillo.

Robt. Burns Cigarillos are on sale at this stadium.

BC
1323 N.W. Sixth Place
Gville



SEMINOLE CHEERLEADERS—Front row: Myra Morris (left), Anna Maria Island, and Judy Patton, Panama City. Center: Head Cheerleader Bill Harnage, St. Petersburg. Back row, left to right: Linda Duyck, Plant City; Sherry Harris, Merritt Island, and Carolyn Duyck, Plant City. Not pictured are Kay Leever, Tampa; Roger McDonald, Miami; Mike Van Horn, Panama City, and Dee Weber, West Palm Beach.

ALMA MATER

High O'er the Towering Pines our voices swell
Praising those Gothic spires we love so well
Here sons and daughters stand, faithful and true
Hailing our Alma Mater—F S U .

FIGHT SONG

We're going to fight, fight, fight, for FSU
We're going to scalp 'em, Seminoles,
We're going to win, win, win, win this game
And roll on down and make those goals!
For FSU is on the warpath now,
And at the battle's end she's great;
So fight, fight, fight, fight, for victory
Our Seminoles of Florida State
F-L-O-R-I-D-A S-T-A-T-E!
Florida State! Florida State! Florida State!

THREE GARNETS

Give me a Garnet, Garnet, Garnet Garnet Garnet
Give me a Gold, Gold, Gold Gold Gold
Garnet, Gold
Garnet, Gold
Go Seminoles Go!

SITTIN' IN A WIGWAM

Sittin' in a wigwam
Beatin' on a tom- tom
Who come? We come!
Everybody will come.
Scalp 'em (clap, clap), Scalp 'em
(Clap, clap), etc.

FRESHMAN, FLUNKY

Freshman, Flunky, Student, Scholar,
All good Seminoles, stand up and holler!

GO FLORIDA STATE

Go-o-o-o-o-o-o-o-o-o, Florida!
Go-o-o-o-o-o-o-o-o-o, State!
Go! Go!
Florida State!

GARNET AND GOLD

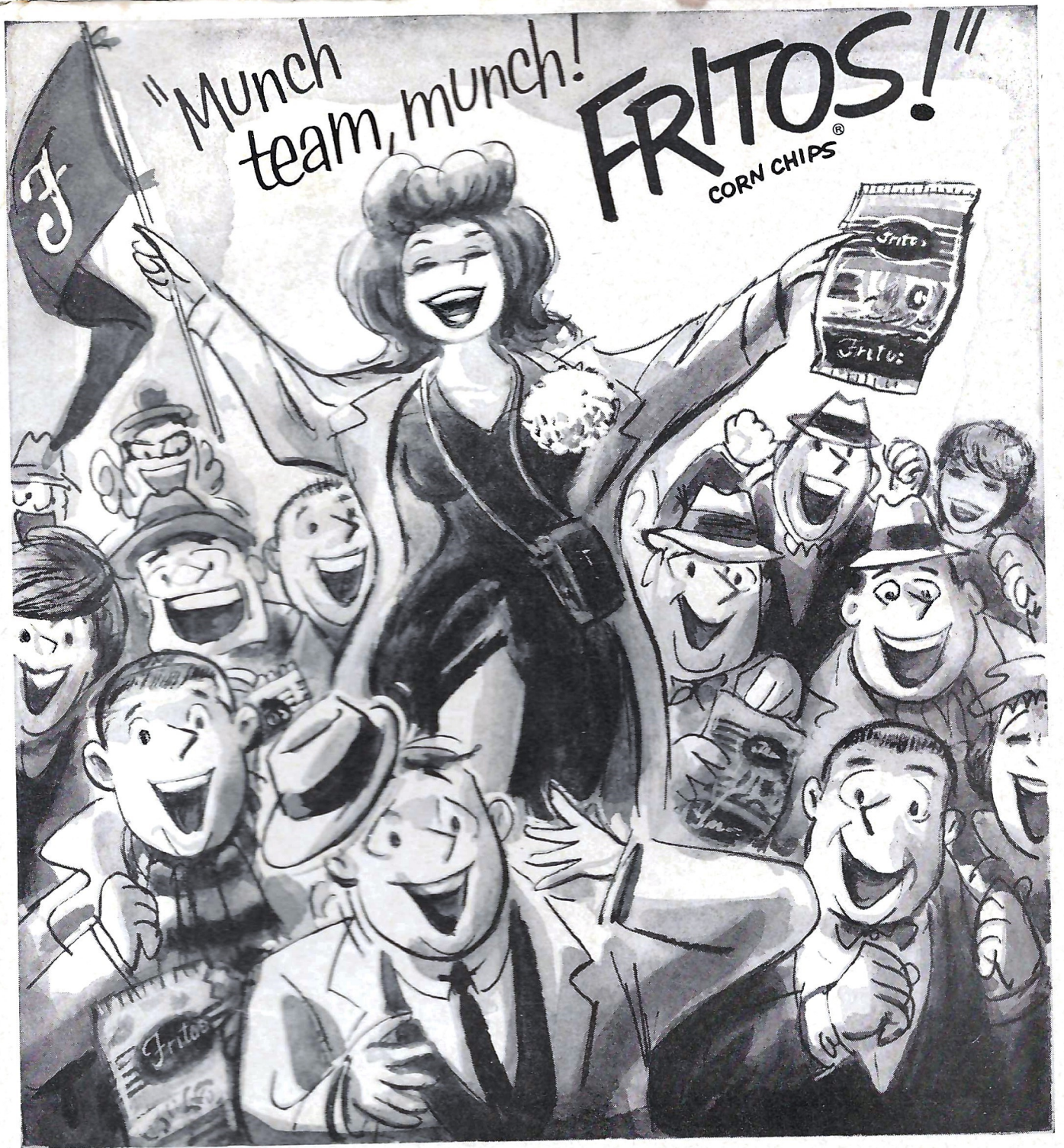
Garnet and Gold, fight, fight!
Garnet and Gold, fight, fight!
Who fight? We fight!
Garnet and Gold, fight, fight!

IS EVERYBODY HAPPY?

Is everybody happy?
AUD: Hell, yes!
Is anybody sad?
AUD: Hell, no!
Well if everybody's happy
And nobody's sad,
We'll beat _____
And beat 'em..bad!

FSU CLAP CHEER

(Stomp clap, stomp clap, stomp clap-clap-clap-clap-clap)
Repeat 3 times, then:
F (clap, stomp clap, stomp clap-clap-clap-clap)
S (clap, stomp clap, stomp clap-clap-clap-clap)
U (clap, stomp clap, stomp clap-clap-clap-clap)
F (clap) S (clap) U (clap-clap-clap-clap)
Go!!



Munch a bunch of Fritos corn chips!

Enjoy the game more . . . by enjoying the lightly-toasted, lightly-roasted flavor of Fritos corn chips. *Everybody* wins with Fritos . . . 'cause they're *made* to munch!



FRITOS IS A REGISTERED TRADEMARK OF FRITO-LAY, INC.

ter:
erritt
orn,

clap)



Take a puff...it's Springtime!

Salem refreshes your taste —air-softens— every puff

In the rich taste of a Salem cigarette, you'll notice a softness very like the clear, mild springtime air. You'll find Salem refreshes your taste, just as springtime refreshes you.

● menthol fresh

● rich tobacco taste

● modern filter, too

Created by R. J. Reynolds Tobacco Company