

GA. TECH VS. F.S.U.

Grant Field • Nov. 10, 1962 • Souvenir Program 50¢



*... the most natural thing in the world is for a man to
want to look his success ... to stand out ... and that is
where Hickey-Freeman customized clothes can do so much*

MUSKIE atlanta

the style center of the South ... downtown and lenox square

Depth
Featur
Grant
Officia
Officia
Roster
Southe
Sports
Startin
Tech A
Tech B
Tech C
Tech C



OFFICIAL

THE OFFICIAL 1962 GEORGIA TECH PROGRAM

TABLE OF CONTENTS

See tearout PRESS CARD, a new program feature, between pages 40 and 41

Depth Charts (Both Teams)	Press Card	Tech Football Managers' Picture	29
Feature Page	3	Tech Football Staff Pictures	7, 13, 15
Grant Field	41	Tech History	21
Officials for Today's Game	11	Tech Songs	33
Officials' Signals	35	Tech Players' Pictures	42, 43, 46, 47
Rosters (Both Teams)	24, 25 and Press Card	Tech's Depth Chart	Press Card
Southeastern Conference Schedule	27	Tech's Player Roster	24 and Press Card
Sportswriters and Sportscasters.	31	Today's Game	11
Starting Lineups	24, 25 and Press Card	Visiting Team's Officials	9
Tech Athletic Board	5	Visiting Team's Depth Chart	Press Card
Tech Basketball Schedule	19	Visiting Team's Players' Pictures	37, 38, 39
Tech Captain	45	Visiting Team's Roster	25 and Press Card
Tech Cheer Leaders' Picture	17		

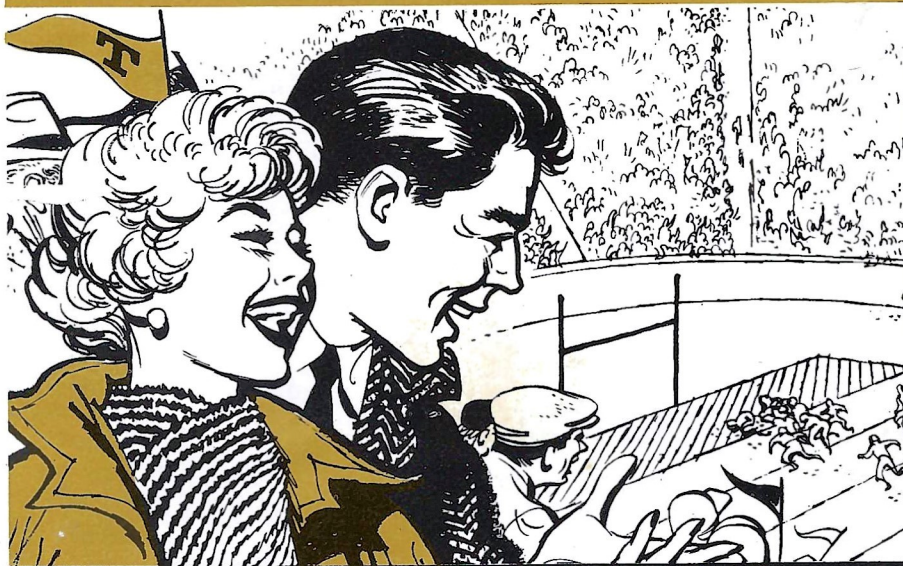
E. P. (NED) WEST, Program Editor

R. E. (BOB) ESKEW, Program Advertising

CONCESSIONS	Cigarettes	35c	Popcorn	25c
	Cushion Rental	25 & 50c	Raincoats	\$1.00
	Hot Dogs	25c	Snow Cones	15c
	Official Programs	50c	Soft Drinks	15c
	Peanuts	10c	Sun Visors	25c

Represented for National Advertising by SPENCER ADVERTISING COMPANY, INC., 271 Madison Ave., New York City

When you can't go to the Game—follow GA. TECH on the Standard Oil Radio Network



SCHEDULE

HOME GAMES

Sept. 22nd	Clemson
Oct. 6th	L.S.U.
Oct. 13th	Tennessee
Oct. 27th	Tulane
Nov. 10th	Florida State
Nov. 17th	Alabama

GAMES AWAY

Sept. 29th	Florida
Oct. 20th	Auburn
Nov. 3rd	Duke
Dec. 1st	Georgia



WGST — Atlanta
WNEX — Macon

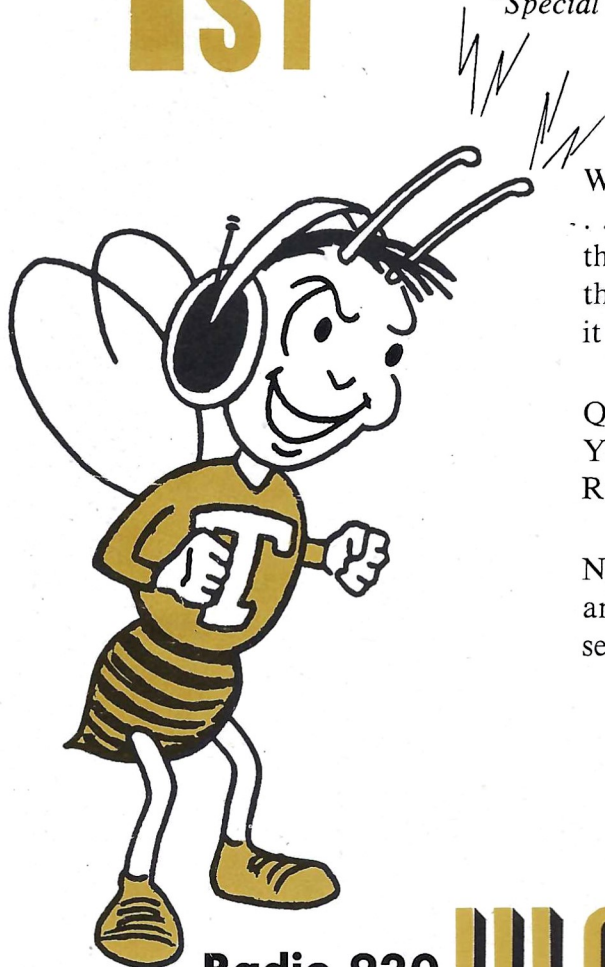
WDAK — Columbus
WGAC — Augusta

WTOC — Savannah
WALG — Albany

Only One Station Can Say

1ST

- *In Quality of Programming . . .*
- *In Sports Broadcasting in Georgia*
- *Georgia radio or television station to win "Special Award in Superior Public Service"*



WGST puts it on the air—if it has Quality . . . in Music, from Metropolitan Opera to the best from the latest Broadway hits—the tried and proven, the old, the new if it meets our standards.

Quality in athletics, from Georgia Tech's Yellow Jackets to Indianapolis Automobile Races . . . local, national or network . . .

News . . . without fear or favor, wherever and whenever it breaks, by a news staff second to none in alertness and training.

From WGST Comes Always
"The Quality Sound in Town"

Radio 920 **WGST** Atlanta

The Georgia Tech Station

165 Eighth Street, N.E. — Telephone TRinity 5-8441

. . . ABC Radio in Atlanta . . .

Written by Frank C. Bigger

SCIENCE AND / TODAY TECHNOLOGY / V

Edited by Bob Wallace, Jr.



A Tech researcher prepares for the ride

Tech's Whirling Movies May Help Solve Age-old Problems of Motion

MOVIES MAY be better than ever, but a research engineer at Georgia Tech is about to produce a flicker of sorts that could leave you sick and suffering.

So who needs it, you ask? Psychologists at the U. S. Naval School of Aviation Medicine at Pensacola, Fla., that's who. They want to know more about optical illusions, disorientation and the bodily mechanism that makes us motion sick.

The actors in this whirling epic will be mere strips of light. But it will be a fairly exclusive saga. You see, the theater is quite small and only one person can view it at a time. Nevertheless, this production is guaranteed to leave you with opto-kinetic stimulation. Sounds thrilling, doesn't it?

Chances are, you have been opto-kinetically stimulated before without even realizing it. "Opto" pertains to vision; "kinetic" to motion. Ever feel a little dizzy from watching the rotating blades of a fan, or cars on a passing train? If so, you are acquainted with opto-kinetic stimulation.

Well, there is a direct link between eye stimulation and the mechanism in the inner ear which disorients us and makes us motion sick. Science wants to know more about this link. When it is understood, perhaps motion sickness can be controlled and the most skittish of digestive systems can cross an ocean by ship or plane without a single qualm.

The opto-kinetic stimulator will be constructed at Georgia Tech by Winston Boteler, 41, who has both a bachelor's and master's degree in mechani-

cal engineering. Boteler's other recent work involved design and construction of vestibular (inner ear) stimulators in motion sickness studies being conducted by the Army and Air Force.

Naval psychologists need a precision instrument for their studies. The Boteler device will consist of a Stille-Werner rotating chair completely enclosed in a totally dark sphere which will be seven feet in diameter. The sphere's inside walls will serve as the screen. The "movie" will come from a projector located directly above the head of the subject. Inside the projector, which will be slotted to allow light to pass through, will be a xenon arc lamp producing a brilliance near that of the sun. The projector will rotate, flashing strips of light continuously around the screen. These strips can be made to lean at different angles from the perpendicular.

Now remember, the chair is not stationary. It can be controlled to move at varying velocities in the same direction as the lights, or in the opposite direction.

These movements are certain to produce in the subject a condition known as nystagmus. Nystagmus is a back and forth movement of the eyes produced when the body is rotated. Electrodes attached to the subject's head will measure nystagmus. The subject will also be questioned while he is watching the movie and asked to make certain judgments about what is taking place. Some subjects may become sick, depending on the speed of the chair and the lights. The chair has a maximum velocity of 200 degrees per second. That's 33 revolutions a minute. The strips can be projected at a maximum velocity of 100 revolutions per minute.

The problems of motion-sickness and disorientation are as old as man. Although crowds won't come running to see the show, Tech's whirling movie may help solve them.



STOP!

DON'T FIGHT TRAFFIC!
PARKING PROBLEMS!
FATIGUE!

shop the easy way ...

SELECT FROM OVER 140,000
ITEMS IN SEARS CATALOGS ...

Dial TR.3-2311



SEARS CATALOG TELEPHONE SHOPPING



MAKE YOUR GOAL
an **ALUMINIZED HOME**
with REYNOLDS ALUMINUM!



ALUMINUM PATIO COVER • ALUMINUM SOFFIT
ALUMINUM GUTTERS & GUTTER SCREENS
ALUMINUM SHUTTERS • ALUMINUM RAILING
ALUMINUM AWNINGS • ALUMINUM SCREENS

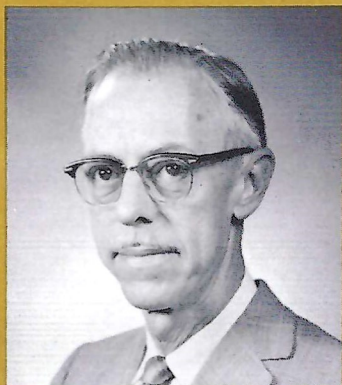
SOLD, INSTALLED, and FINANCED by
REYNOLDS ALUMINUM APPLIED PRODUCTS
DIVISION OF REYNOLDS ALUMINUM SUPPLY COMPANY
TRinity 3-2818 568 14th Street, N.W. ATLANTA 13, GA.



GEORGIA TECH ATHLETIC BOARD

DR. EDWIN D. HARRISON

President of Georgia
Institute of Technology
CHAIRMAN



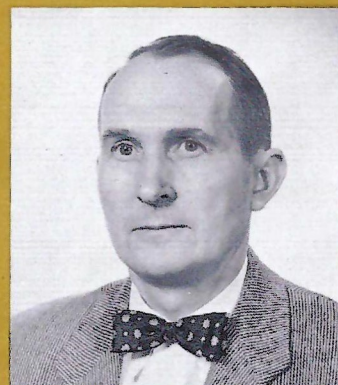
DR. PAUL WEBER

Dean of Faculties
VICE-CHAIRMAN



DR. JESSE W. MASON

Dean of Engineering
FACULTY CHAIRMAN



DR. WALDEMAR T. ZIEGLER

Regents Professor,
Chemical Engineering
SECRETARY

BOARD MEMBERS

COACH ROBERT L. DODD

Director of Athletics

MR. PAUL A. DUKE

Alumnus

MR. THOMAS K. WININGER

Football Captain

MR. WILLIAM L. CARMICHAEL

Faculty Representative

MR. OSCAR G. DAVIS

Alumnus

MR. W. GERALD COX

President of the Student Body

MR. JAMIE R. ANTHONY

Faculty Representative

MR. EWELL G. POPE, JR.

Alumnus

MR. MICHAEL L. ROGERS

Editor of the Technique

MR. MAURICE R. BREWSTER

Faculty Representative

MR. LAWRENCE W. ROBERT, JR.

Honorary

MR. ARTHUR M. COLEMAN

Assistant Athletic Director

MR. G. ARTHUR HOWELL

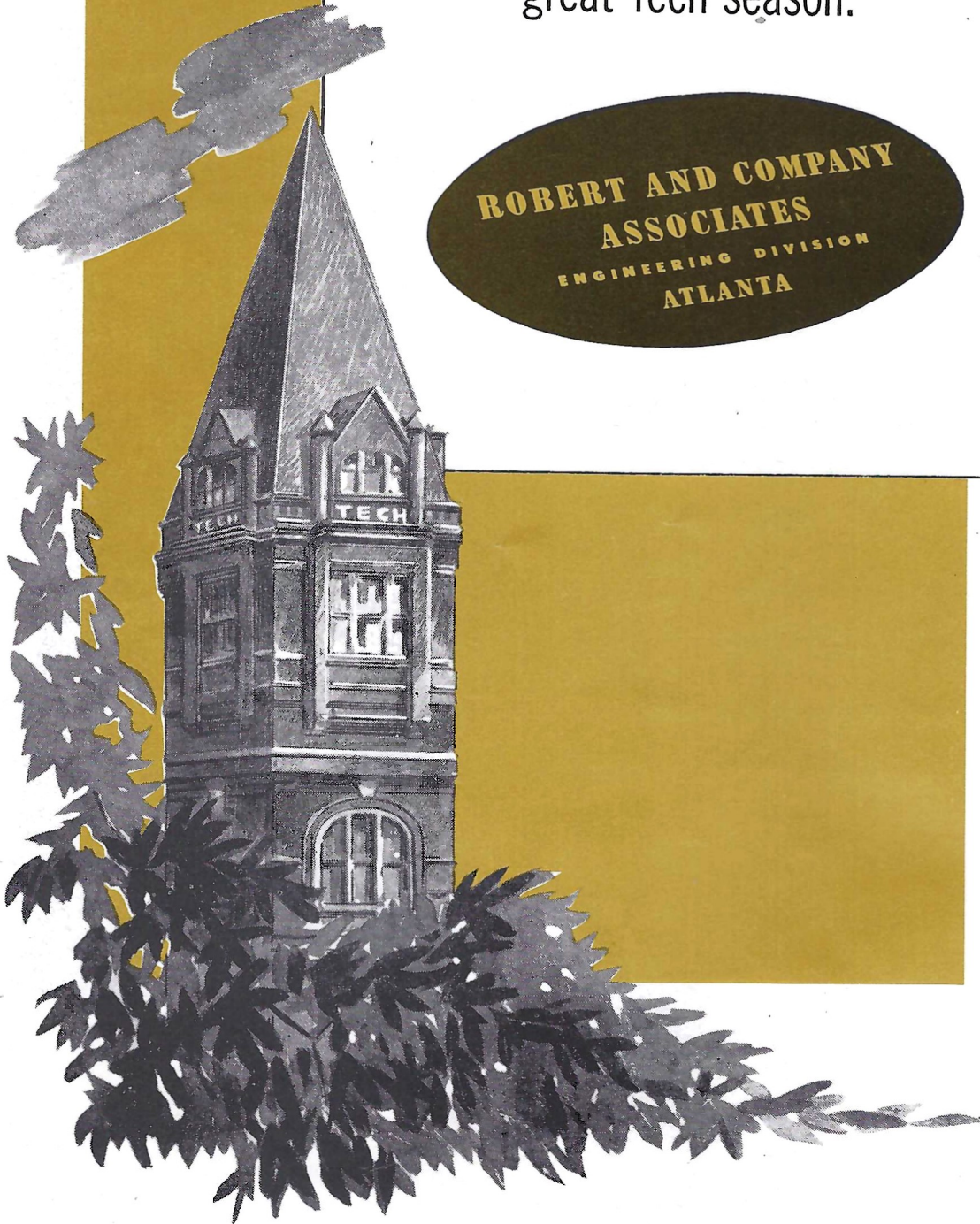
Attorney

MR. ROBERT E. ESKEW

Business Manager-Treasurer

We extend sincere
wishes for another
great Tech season.

**ROBERT AND COMPANY
ASSOCIATES**
ENGINEERING DIVISION
ATLANTA





ROBERT LEE "BOBBY" DODD

Head Coach and Director of Athletics

BOBBY DODD, only the third man employed as a head football coach in Georgia Tech's history, has completed his 17th season at the Tech football helm. Coach Dodd's great record against major competition for those 17 years includes 128 wins, just 50 defeats and 6 ties. Ten of Dodd's teams have been invited to play in post-season bowl games and they won 8 of the 10 games played. By winning in the 1952 Orange Bowl; the 1953, 1954 and 1956 Sugar Bowl; the 1955 Cotton Bowl; and the 1956 Gator Bowl, Georgia Tech under Dodd became the first school and only school to win in 6 major bowl games in successive years. Georgia Tech has won more bowl games than any college, 11 and is tied with Southern California for the most consecutive bowl games won, 8. The Jackets were the first school to win in each of the five major bowls and the only team to own four Sugar Bowl titles. Also since Dodd became the head coach, Georgia Tech has played in 12 nationally televised games, winning all but two.

In his 17 years as Tech Burgomaster, Bobby Dodd has received many national and sectional honors. His 1951 and 1952 teams were Southeastern Conference Champions. He was selected as head coach of the College All-Stars for their game with the national professional champions in 1952 and 1953, making a good showing both years. In the fall of 1950 he directed the South squad to victory in the Shrine North-South game at Miami, and his South team lost a real thriller at the same site in 1957. After the 1951 season Dodd was named "Southeastern Conference Coach of the Year" by his colleagues. At the close of the Jackets' great 1952 season he was designated, following a nation-wide poll, as "College Coach of the Year" by the New York Daily News. Sixteen Georgia Tech players have been honored by selection to "recognized" All-America teams since Dodd has been the bossman.



ROBERT E. "BOB" ESKEW

Business Manager of Athletics



ARTHUR M. "TONTO" COLEMAN

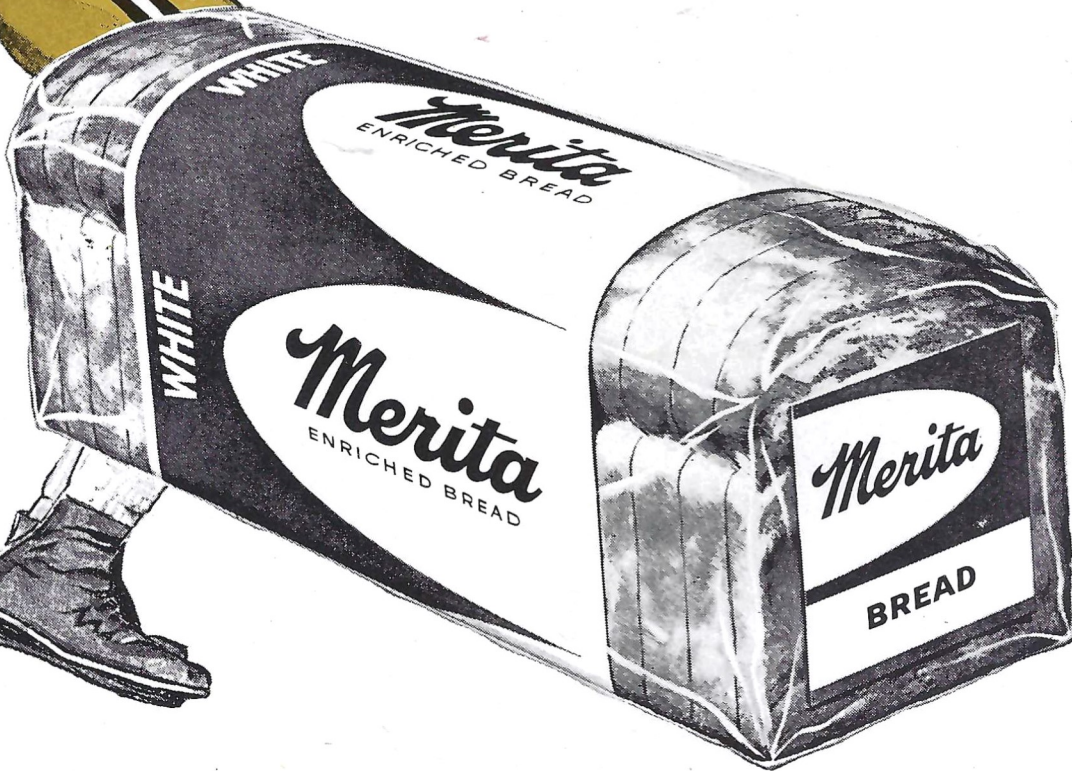
Assistant Athletic Director and Advisory Coach



Merita

**VITAMIN-ENRICHED
BREAD**

For Real
Bread Flavor

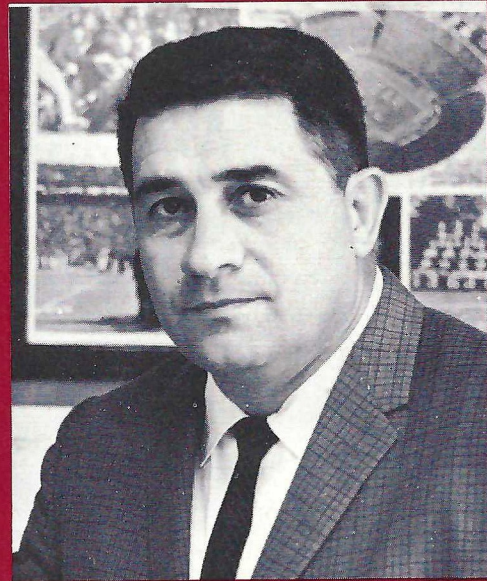


TEAR HERE TO REMOVE HANDY PRESS BOX FLIP CARD

F. S. U.



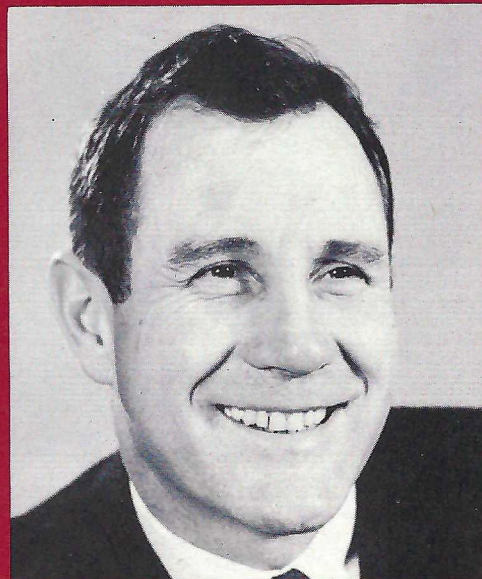
DR. GORDON W. BLACKWELL
President



VAUGHN MANCHA
Director of Athletics



RONALD MELTON
Business Manager of Athletics



BILL PETERSON
Head Football Coach



Should a gentleman offer a Tiparillo to a lady?

What is the story of this remarkable new smoke by Robt. Burns?

If she enjoys smoking a cigarette, why not? The Tiparillo* is slim, neat, mild as mild can be. Go ahead, offer her one.

But although Tiparillo is not "men only" it is "men mainly."

And that new pliable, pearly tip pays more than just lip service to your smoking pleasure. It's your mouthpiece to the careful blending of choicest imported tobaccos. Tiparillo has

the kind of flavor you don't have to inhale to enjoy... peace of mind in every puff. Moreover, there's the exclusive veinless Ultra Cigar Wrapper* that burns so evenly and smoothly it insures complete mildness.

The surprisingly whiter ash is visible evidence of Tiparillo mildness. And that's your best smoking tip for today. Only 5¢ each. ONLY 5¢? Yes, only 5¢.

*T. M. GENERAL CIGAR CO., INC.

Tiparillos are on sale at this stadium.

No
This
Jacke
a foo
"as d
playe
Th
Louis
conte
feats
with
ginia
versit
field
Flo
its str
the U
Sever
withi
ball c
by H
Str

OFFICIAL

This afternoon on Grant Field the Georgia Tech Yellow Jackets will face the Florida State University Seminoles, a football team that Tech Coach Bobby Dodd has said is "as dangerous on a given Saturday as anyone we have played."

The Florida State football team, coached by former Louisiana State aid Bill Peterson, comes into today's contest with a fine season record of four wins, two defeats and a tie. The Seminoles have won their games with Citadel 49-0, Furman 42-0, Georgia 18-0 and Virginia Tech 20-7. They played a scoreless tie with University of Kentucky, pushing the Wildcats all over the field but not being able to get across a score.

Florida State probably gained the most respect for its strength and ability when they lost a heartbreaker to the University of Miami at Miami by one point, 6-7. Several times during this contest the Seminoles drove within touchdown and field goal range only to lose the ball on fumbles. Last week they were "upset" in the rain by Houston University 0-7 at Tallahassee.

Strength of this Florida State team is also reflected in

the National Major College statistics which show the Seminoles number seven in the nation, passing with an average of 166.7 yards per game through the air; eighth in total defense, having allowed the opposition just 180.7 yards per game; ninth in forward pass defense in which they have limited the opposition to an average 68.0 yards per game; and second in the nation in defense against scoring, having allowed an average of just three points a game (21 points in 7 games).

The Georgia Tech Yellow Jackets, with star quarterback Billy Lothridge having one of his best days, defeated the Duke Blue Devils 20-9 at Durham, N. C., this past Saturday to bring their record to 5 wins against 2 defeats. Other victories have been over Clemson 26-9, Florida 17-0, Tennessee 17-0 and Tulane 42-12. The Yellow Jackets lost to Louisiana State 7-10 and to Auburn 14-17.

Every Georgia Tech football game this fall has been a thriller and today's contest should be another in that pattern.

OFFICIALS: Referee, James M. Artley, Savannah, Ga. **Umpire,** Harold F. Johnson, Jackson, Tenn. **Linesman,** A. C. Williams, Jr., Memphis, Tenn. **Field Judge,** Doug Moseley, Shreveport, La. **Back Judge,** Paul Hicks, Memphis, Tenn. **Electric Clock,** W. H. "Bill" Henderson, Tuscaloosa, Ala.

BRING THE WHOLE FAMILY TO DINNER!

PICKANINNY COFFEE SHOP

WORLD'S BEST PECAN PIE

MAMMY'S SHANTY OR BUST!

WORLD'S TASTIEST FOOD!
High-chairs for the Tots.
1480 PEACHTREE ST.
TR. 2-3551

The Pickaninny Coffee Shop is always open for that snack, and is featuring a Rib Steak with Salad, Baked Potato, Hot Biscuits and Creamery Butter for \$1.65.

face of
veinless
othly it

iparillo
Only 5¢
R CO., INC.

SHAPES FROM BOILER PLATES SINCE 1888!



tanks
storage heaters
pressure vessels
heaters

The Finnigan Company will soon celebrate a Diamond Jubilee! Yes, after 74 years the primary code of this old established Atlanta manufacturer still remains the same... *up-to-date design and fabrication of steel and alloys into the highest-quality boilers and tanks.*

Industrial vessels *must* serve through the years. Materials alone do not make these products but consistent Finnigan craftsmanship does! Why? Because from raw materials to final test, every step of Finnigan production is executed with *lasting* performance in mind!

Synonymous with storage, heating and tank fabrication, the Finnigan name on any product guarantees it to meet or exceed ASME, API and Government Specifications. When you specify Finnigan... you specify *quality!* Let our trained engineering staff assist you soon with *your* next job.

W. J. McAlpin,
President, '27
F. P. DeKoning,
Secretary, '48

J. J. FINNIGAN COMPANY, INC.

722 MARIETTA STREET, N. W. □ ATLANTA 18, GEORGIA

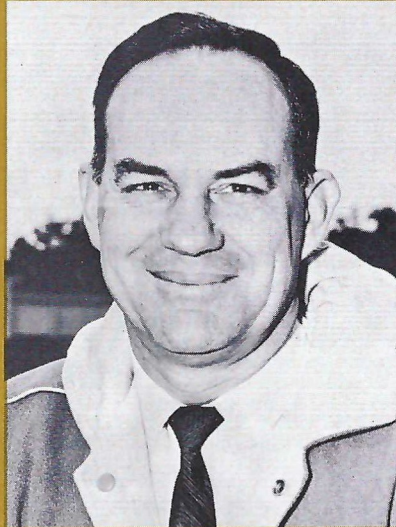
REPRESENTATION FROM COAST TO COAST • Birmingham 5, Alabama, P. O. Box 3285A • Dallas 19, Texas, P. O. Box 6597 • Houston 6, Texas, P. O. Box 66099 • Jacksonville 3, Florida, P. O. Box 2527 • Denver 22, Colorado, P. O. Box 22121 • Kansas City 41, Missouri, P. O. Box 462 • Little Rock, Arkansas, 4108 C Street • Memphis 11, Tennessee, 3683 Southern Ave. • New Orleans 25, Louisiana, Box 13214 • Richmond 28, Va., 8506 Ridgeview Dr. • Tucson, Arizona, 2020 East 13th Street • El Paso, Texas, 2137 Mills Avenue • San Antonio, Texas, 5108 Broadway • Jackson, Miss., 5044 North State St. • Miami 34, Florida, 581 SW 47th Ave. • Tampa 9, Florida, P. O. Box 10613 • Mobile, Alabama, P. O. Box 6163



GEORGIA TECH



LEWIS WOODRUFF
Assistant Coach



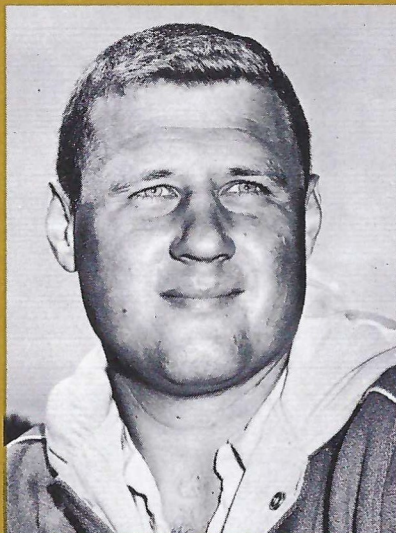
JOHN ROBERT BELL
Assistant Coach



JACK GRIFFIN
Assistant Coach



DICK INMAN
Assistant Coach

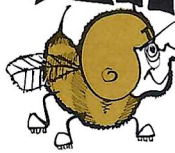


JIM CARLEN
Assistant Coach



CHARLIE TATE
Assistant Coach

Just Like The YELLOWJACKETS



Boy's football uniforms

Boys' football uniforms, authentic in every detail...
Real protective equipment... IDEAL CHRISTMAS
GIFTS... ORDER YOURS TODAY... Sold in
complete uniforms or separate pieces.

TO: REEDER & McGAUGHEY, INC. — 52 Broad Street, N.W. — Atlanta 3, Georgia

Please ship the following GEORGIA TECH football uniforms for boys:

- JERSEYS: White with Navy and Gold Sleeve Stripes, Navy Numbers.
 Sizes: S (26), M (30), L (34), XL (36) \$3.95 ea.
- PANTS: White with Navy and Gold Stripe down sides, Built-in Hip, Thigh and Knee Pads.
 Waist Sizes: 22, 24, 26, 28, 30 6.25 pr.
- HELMETS: Gold with double face bar attached. Sizes: S, M, L 5.95 ea.
- SHOULDER PADS: SRN Cantilever Pad... Real Protection 3.95 ea.

I enclose \$_____ (check or money order.) Please include 3% state sales tax plus 35c for postage and handling.

Name _____ Street Number _____
 City _____ State _____

Reeder & McGaughey, Inc.

"Specialists in Sports"
 52 Broad Street, N.W.
 Atlanta, Georgia



NEHI flavor scores again!

Call for Nehi...
your biggest flavor buy

JESSE BERRY
Assistant Coach
and Scout



JIM LUCK
Assistant Coach
and Scout



GEORGIA

BILLY GOODLOE
Assistant Coach
and Recruiter



TECH

SPEC LANDRUM
Assistant Coach
and Chief Recruiter



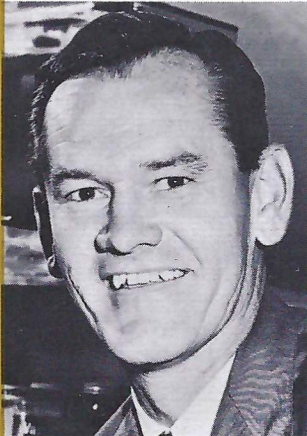
JOE PITTARD
Assistant Coach
working with Freshmen



ART DAVIS
Head Freshman
Coach



BUCK ANDEL
Head Trainer

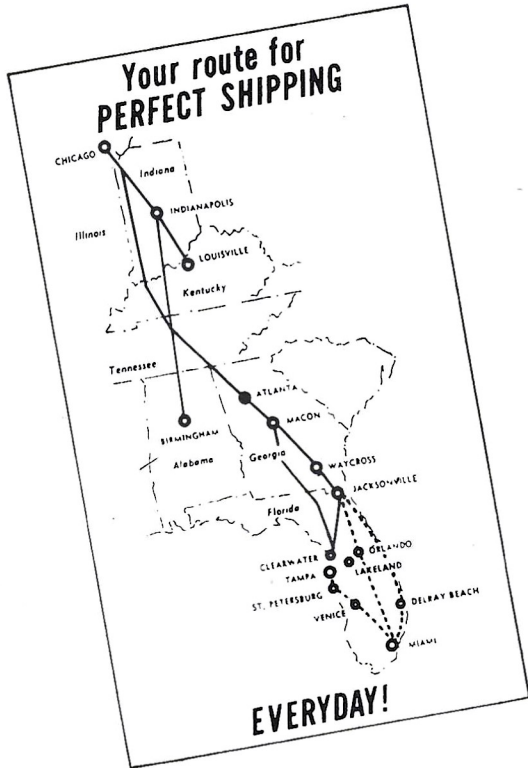


NED WEST
Sports Information
Director



SHIP

**TROUBLE FREE
WITH DOUBLE T!**



TERMINALS:

- ATLANTA, GA.
- BIRMINGHAM, ALA.
- CHICAGO, ILL.
- DELRAY BEACH, FLA.
- INDIANAPOLIS, IND.
- JACKSONVILLE, FLA.
- LOUISVILLE, KY.
- MACON, GA.
- MIAMI, FLA.
- ORLANDO, FLA.
- TAMPA, FLA.
- VENICE, FLA.
- WAYCROSS, GA.



THE DOUBLE "T" LINE

TERMINAL

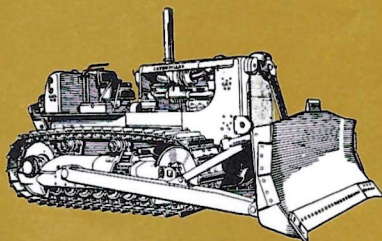
TRANSPORT CO., INC.

Executive Offices:
248 Chester Avenue, S.E.
Atlanta 16, Georgia
Tel: 524-5831



GEORGIA TECH CHEER LEADERS. Left to right: kneeling—Jo Ann Freeman, Carolynrose McKown, Captain Dave Richardson, Melanie Medlin, Sharon Carter; standing—Steve Innis, Ed McCabe, Buddy Akins, John Kirkpatrick, Val Coever, Howard Duvall, John Donaldson.

The **FINEST** in the field
CATERPILLAR
®
 ROAD BUILDING MACHINERY



Yancey Bros.
 CO.

ATLANTA

1540 Northside Drive, N.W. — Phone TR 6-3741

AUGUSTA

1781 Fifteenth Street
 Phone RE 3-2241

MACON

4660 Broadway
 Phone SH 5-9261

Caterpillar and Cat are Registered Trademarks of Caterpillar Tractor Co.

BACK BETTER ROADS



*The Home of Rogers Peet, Kuppenheimer, Varsity-Town
and Duo-Wear Clothes*

PARKS-CHAMBERS

ESTABLISHED 1896

43 Peachtree at Five Points
and Lenox Square on the Mall

dale's CELLAR RESTAURANT



PEACHTREE AND IVY STREETS

JA 4-7741

Basement Imperial Hotel

OPEN 11 A.M. TO 11 P.M. (Except Sunday)

When in Homewood visit
When in Birmingham visit
When in Montgomery visit
When in Huntsville visit
When in Panama City visit

dale's

**DALE'S HIDEAWAY, 1907 - 28th Avenue South
CELLAR RESTAURANT, 1927 - 7th Avenue North
PENTHOUSE RESTAURANT, Atop Walter Bragg Smith
Apartments
RESTAURANT, Memorial Parkway
RESTAURANT, West Beach Drive**

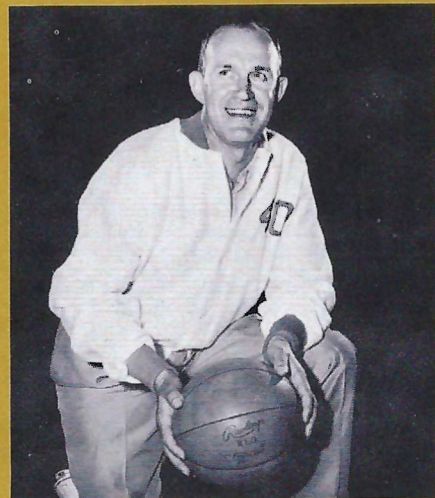


All Home Games Will Begin at 8:00 P.M. EST and Will Be Played in Georgia Tech's Alexander Memorial Coliseum

GEORGIA TECH 1962-63 BASKETBALL SCHEDULE

DATE	OPPONENT	SITE OF GAME
Fri., Nov. 30	Rice	Atlanta, Ga.
Mon., Dec. 3	Furman	Greenville, S. C.
Thu., Dec. 6	Southern Methodist	Atlanta, Ga.
Mon., Dec. 17	Alabama	Tuscaloosa, Ala.
Wed., Dec. 19	No. Carolina State	Atlanta, Ga.
Thu., Dec. 27	‡ _____	Jacksonville, Fla.
Fri., Dec. 28	‡ _____	Jacksonville, Fla.
Wed., Jan. 2	Air Force Academy	Atlanta, Ga.
Sat., Jan. 5	*Kentucky	Lexington, Ky.
Wed., Jan. 9	Georgia	Athens, Ga.
Sat., Jan. 12	*Mississippi	Oxford, Miss.
Mon., Jan. 14	*Mississippi State	Starkville, Miss.
Sat., Jan. 19	Florida State	Atlanta, Ga.
Tue., Jan. 22	*Auburn	Atlanta, Ga.
Sat., Jan. 26	*Tennessee	Atlanta, Ga.
Mon., Jan. 28	*Kentucky	Atlanta, Ga.
Sat., Feb. 2	*Alabama	Atlanta, Ga.
Mon., Feb. 4	William & Mary	Atlanta, Ga.
Fri., Feb. 8	*Tulane	New Orleans, La.
Sat., Feb. 9	*Louisiana State	Baton Rouge, La.
Wed., Feb. 13	*Vanderbilt	Atlanta, Ga.
Sat., Feb. 16	Louisville	Atlanta, Ga.
Tue., Feb. 19	*Tennessee	Knoxville, Tenn.
Sat., Feb. 23	*Georgia	Atlanta, Ga.
Mon., Feb. 25	*Florida	Atlanta, Ga.
Sat., Mar. 2	*Vanderbilt	Nashville, Tenn.

*Game counts towards Southeastern Conference Championship.
‡Gator Bowl Tournament at Jacksonville, Florida, with Rice, V.P.I. and Florida.



TECH CAGE FACTS • HEAD COACH: John C. (Whack) Hyder; ASSISTANT COACH: Byron Gilbreath; FROSH COACH: Joe Helms; CAPTAIN: Alan Nass

1962 RECORD: All games, 10-16; SEC, 4-10

TICKET INFORMATION

14 Home Games

All seats for all home games will be reserved. A season ticket includes all 14 home games. Season tickets in the chair seats will be \$35.00 each, the bench seat sections will be \$21.00 each. Applications for season tickets will be given preference over applications for individual game tickets. There is no limit to the number of season tickets an individual may purchase unless the demand exceeds the supply before the October 27th priority deadline.

Unsold individual game tickets to all home games will be available at the Georgia Tech Athletic Office after November 19, and at the gate each night. Individual game tickets will be \$2.50 each for chair seats and \$1.50 each for bench seats.

Basketball fans who did not receive ticket applications last year and would like to have them should write Basketball Tickets, Georgia Tech A. A., 190 Third Street, N.W., Atlanta 13, Georgia.

WILDCAT!



All new! All muscle! All glamour! That's the '63 Buick WILDCAT! America's only luxury sports car with Advanced Thrust engineering now features three new models—convertible, hardtop, coupe; room for five fullbacks; colorful vinyl bucket seat interior; and an almost neurotic urge to get going! Very definitely for the sports-minded male and his equally adventuresome mate. There's a WILDCAT at your dealer's now—just rarin' for someone like you to give it a brisk workout. Why not take time out to do it this weekend?

Buick Motor Division—General Motors Corporation

**'63 BUICK
WILDCAT**

Anatomy of a Buick WILDCAT!

Engine: 90° V-8 valve in head. Displacement: 401 cu. in. Maximum h.p.: 325 @ 4400 rpm. Maximum torque: 445 ft.-lbs. @ 2800 rpm. Compression: 10.25:1. Bore and stroke: 4.3125x3.64. Carburetor: one 4-bbl. downdraft. Valves: hydraulic lifter type. Rear Axle: hypoid semi-floating. Gear ratio: 3.42. Transmission: automatic, torque converter type. Brakes: 12" Duo-servo. Finned aluminum up front. Advanced Thrust engineering gives straight tracking, flat cornering.

1885 - GEORGIA TECH - 1962

The South's largest technological institution was chartered in 1885 by the State of Georgia and officially opened on October 7, 1888, under the title of The Georgia School of Technology. In 1948 the present title, The Georgia Institute of Technology, was adopted in order that the degree-granting departments could attain school status.

The first class of 130 students (129 of them were from Georgia) entered Tech in 1888 to pursue Bachelor of Science degrees in Mechanical Engineering. At the present time approximately 6,054 students (42 states and 46 foreign countries now furnish Tech with students) are studying for degrees in the 16 different schools of the Institute. The original 5-acre campus with its two buildings has expanded to a modern 143-acre campus dotted with 98 buildings.

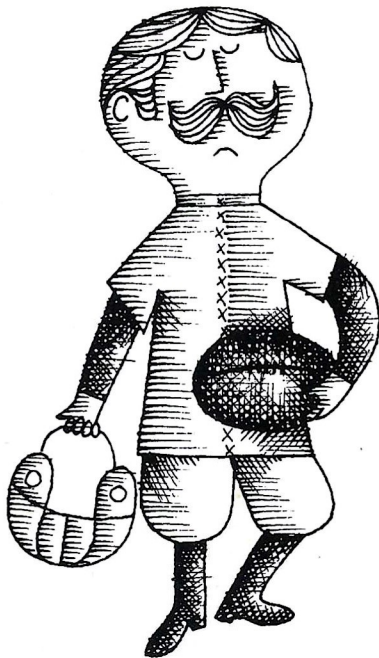
Over 90 acres of this land have been acquired during the past 15 years. During this same period, 24 new buildings (including eight residence halls, eight apartment houses, the textile, architecture, highway and library buildings, the Alexander Memorial Coliseum, a new Classroom Building, the Radioisotopes and Bio-engineering Laboratory, and the new student Infirmary) were constructed. And, over the same time span, extensive additions were made to several campus structures including the administration and research buildings and the football stadium. Tech is now in the midst of the largest building program in its history. Recently com-

pleted or under construction at the present time are new buildings valued at over \$14,000,000. Included in this program are Annex to the chemistry building, a new electrical engineering building, a nuclear reactor, a new chemical engineering-ceramic engineering building, a new central warehouse and shops building and double decking of the East Stands at Grant Field.

Paralleling Georgia Tech's growth as the leading technological institution of the South, has been the growth of the Engineering Experiment Station, now the South's largest industrial and engineering research agency. Last year, Georgia Tech had a research volume of over \$4,000,000 to lead its closest competitor in the South by over \$1,000,000.

Georgia Tech's famous song, "Rambling Wreck from Georgia Tech," has been heard throughout the world and has helped immensely to keep the Institute's name before the public. There is considerable doubt as to the origin of this song. Arrangements of it have been copyrighted by Frank "Wop" Roman, Tech Bandmaster, 1913-28, and Mike Greenblatt, First Tech Bandmaster. Actually the tune is an old drinking song of the ballad type that has been handed down by word of mouth for generations. Several other schools claim to have had a version of this first song before Tech, but Tech's was the one that caught on with the public. And the other schools' claims have been in vain.

Un-ramble & relax!



Join the gang at the Coach and Six Georgia Tech Football Party before and after the Game.

Luncheon served from 11:00. Leave your car parked at the Coach and Six. Chartered buses will take you right to the stadium and back after the game. Bus fare is just \$1 round trip.

For reservations, call: 873-2741



1776 Peachtree Road, N. W.
Atlanta 9, Georgia
Ample Free Parking

with
five
for
W—
nd?

CAT!
place-
25 @
ft-lbs.
. Bore
retor:
raulic
semi-
sson:
akes:
n up
gives



Whirlpool EXCLUSIVE!

NOW FOR THE FIRST TIME! 2 SPEEDS IN BOTH WASHER & DRYER



**NEW, BIGGER
12 lb. CAPACITY
2 SPEED WASHER**

- Washes from 1 lb. of delicates to a 12 lb. heavy fabric load!
- Additional deep agitation time now in the wash cycle!
- Exclusive Surgilator Agitator creates a "million" currents that remove stubborn soil!
- New recontoured tub, improved spray rinsing and deep-agitated rinsing thoroughly removes suds!

MODEL LJA-44

**6 CYCLE, 3 HEAT
2 SPEED DRYER**

- Two speed dryer gives you twice the convenience . . . twice the flexibility in drying!
- Normal Setting . . . dries with soft, soothing heat and steady breeze of a balmy spring day!
- Super Speed Setting . . . the timesaver you'll love! Large, bulky loads dry in record time!

AVAILABLE IN ELECTRIC (Model LJD-42)
OR GAS (Model LJD-47) MODELS

- Magic-Mix Dispenser Filter "combs" out lint and blends in liquid or powdered detergent automatically!
- 3 Level Water Selector automatically provides High, Medium or Low settings!
- 2 Automatic Washing Speeds—Normal & Gentle Action!
- 6 Drying Cycles—a setting for every type fabric . . . from sheets and delicates to quilts and rugs!
- Equa-Flow Tempered Heat allows clothes to circulate through warm air, not against direct heat radiation!

RCA WHIRLPOOL Quality Costs No More!

SEE YOUR FAVORITE



Whirlpool

**DEALER
NOW!**



FLYING YELLOW JACKETS RIDE HIGH ON ELEPHANTS TO DELTA'S BIG JETS

Georgia Tech football teams have ridden everything from circus elephants to Delta Air Lines jets.

Back in 1907, after defeating the University of Georgia in old Ponce de Leon Park, the Georgia Tech football team rode triumphantly into downtown Atlanta on the backs of a herd of elephants.

The manager of the Bostock Animal Show, then playing at the St. Nicholas Skating Rink, had promised the Tech players a regal ride into the city if they defeated Georgia. They did. The players climbed aboard the elephants and as *The Atlanta Constitution* reported, "Atlanta was treated to the novel sight of a football team riding on the backs of a herd of elephants."

In September, 1961, Georgia Tech's football team scored another travel first. This time it was the employment of two Douglas DC-8 jets for

the trip to Los Angeles to play Southern California—the first college football team to charter a jet for a regular season game.

It was Georgia Tech's annual "family trip," including players, coaches and wives, athletic office personnel, the athletic board and members of the press. There were 179 people aboard the two jets and after an impressive victory in Los Angeles' huge Coliseum, the Yellow Jackets' official party flew home in two Convair 880's setting an unofficial speed record of 3 hours, 33 minutes; approximately 15 minutes faster than the then existing official mark.

Delta has flown Tech on most of its trips since World War II, or in more familiar terms, "The Bobby Dodd Era." Since Dodd assumed the head coaching job in 1945 he has strongly advocated air travel for his teams and Delta has been the school's official air carrier for regular season and bowl games.

At one time, Delta enjoyed the distinction of flying the Yellow Jackets to six bowl appearances in as many years. And each one was victorious. Tech has flown with Delta to every major bowl game — (Sugar, Orange, Cotton and Gator) in which it has played except the Rose Bowl. And the Engineers' appearance in the Pasadena Classic came in the days (1926) when the airplane of the day was the Travelaire, which flew at 90 miles per hour and carried six passengers.



Tech's 1960 Gator Bowl Team Takes to the Air — on Delta!

"Viceroy's got the taste tha



GEORGIA TECH

PROBABLE STARTING LINEUP

No.	Name	Position
86	TED DAVIS	LE
72	ED GRIFFIN	LT
63	RUFUS GUTHRIE . . .	LG
55	BOBBY CALDWELL . .	C
60	DAVE WATSON . . .	RG
70	LARRY STALLINGS .	RT
88	BILLY MARTIN . . .	RE
18	BILLY LOTHRIDGE .	QB
23	GERRY BUSSELL . .	LH
28	ZOLLIE SIRCY . . .	RH
46	MIKE McNAMES . .	FB

12	Gann, QB
14	Fischer, QB
15	Jordan, QB
16	Priestley, QB
17	Sewell, QB
18	Lothridge, QB
21	Haddock, LH
22	Auer, LH
23	Bussell, LH
25	Winingder, RH-LH
26	Jackson, RH-LH
27	Toner, DS
28	Sircy, RH

THE YELLOW JACKET SQUAD

29	Barber, FB
30	Gresham, RH
31	Cooper, LH
33	J. Davis, LH
34	Nix, RH-LH
40	Weinman, DS
41	Mendheim, FB
43	J. Martin, DS
46	McNames, FB
47	Lafkowitz, FB
50	Curry, C
54	Chancey, C-LT
55	Caldwell, C

57	Matlock, C
60	Watson, RG
61	Simmons, RG
62	Seward, RG
63	Guthrie, LG
64	Thomas, LT-RG
65	Lee, LG
68	Shell, LG
69	Yates, LG
70	Stallings, RT
72	Griffin, LT
75	Chapman, LT

76	Haycock, RT
77	Farrington, RT
78	Watkins, RT
79	Ballard, LT
80	Emerson, RE-LE
81	Sexton, LE
82	Copeland, RE
83	Morris, LE
84	Wright, RE
86	T. Davis, LE
87	Austin, RE
88	B. Martin, RE

DS—Defensive Specialist

SEE ROSTER WITH ADDITIONAL INFORMATION OPPOSITE PAGE 40

ste that's right!"



Smoke all seven filter brands and you'll agree: some taste too strong . . . some too light . . .

but Viceroy's got the taste that's right!

That's right!

FLORIDA STATE

PROBABLE STARTING LINEUP

No.	Name	Position
89	JOHN McCON-NAUGHAY . . .	LE
70	TOM SLICKER . . .	LT
52	CHUCK ROBINSON . . .	LG
64	BRUCE DARSEY . . .	C
63	GENE McDOWELL (C) .	RG
71	JIM SIMS	RT
82	JIM CAUSEY	RE
14	EDDIE FEELY	QB
26	KEITH KINDERMAN . . .	LH
29	TOM HILLABRAND .	RH
20	DAVE SNYDER . . .	FB

THE SEMINOLE SQUAD

11 Calhoun, QB	29 Hillabrand, HB	63 McDowell, G	76 West, T
12 Harlee, Kicker	40 Messer, HB	64 Darsey, C	77 Mangan, T
13 Tensi, QB	41 G. Roberts, FB	65 Levings, G	81 Floyd, E
14 Feely, QB	42 Norman, FB	66 Hermann, G	82 Causey, E
20 Snyder, FB	43 D'Allessandro, FB	67 Bruner, G	83 Dawson, E
21 Brinkley, HB	44 M. Roberts, FB	68 Womack, G	84 Sytsma, E
22 Russom, HB	52 Robinson, G	69 Wade, G	85 Biletnikoff, E
23 Loftin, HB	53 Daly, C	70 Slicker, T	86 Bibent, E
24 J. Roberts, FB	55 Edwards, C	71 Sims, T	87 McNease, E
26 Kinderman, HB	60 Henry, G	73 Sumner, T	88 Gunter, E
27 Spooner, HB	61 Klores, T	74 Tyre, T	89 McConnaughay, E
28 Bailey, HB	62 Slay, G	75 MacKenzie, T	

ATTENTION REBELS!

FOLLOW ME TO

The world's best charcoal broiled steaks and hamburgers. Confederate Fried Chicken would taste good after the game, wouldn't it? Cha-Cha Jackson plays your favorite college songs tonight and every night at Johnny Reb's Dixieland. Meet your friends there—or one of the three other Johnny Reb's—TONIGHT.



JOHNNY REB'S

- DIXIELAND** • Marietta Hwy.
- KITCHEN** • College Park
- CANTEEN** • 101 Forsyth
- BROILER** • 857 W. P'tree

**FARM FRESH VEGETABLES •
WE MAKE OUR OWN DESSERTS •**

Davis Bros.' West Peachtree Cafeteria is within walking distance of Grant Field. Why not have a delicious supper before going home? Or try one of Davis Bros.' other fine restaurants or cafeterias. 104 Luckie Street is open all night tonight and every night.



Davis Bros.

- 820 W. Peachtree
- 642 Lee Street, West End • 104 Luckie
- State Farmers Market
- Belvedere Plaza • Highway 41 South
- Marietta • Highway 41 North

1962 Southeastern Conference Football Schedule 1962

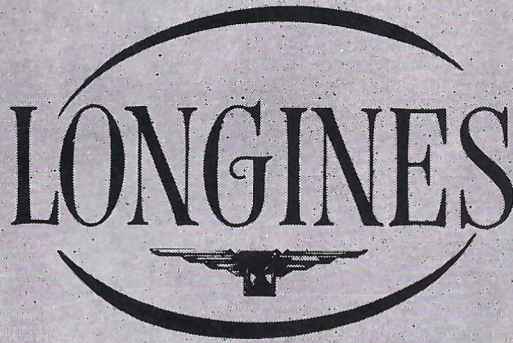
	Sept. 22	Sept. 29	Oct. 6	Oct. 13	Oct. 20	Oct. 27	Nov. 3	Nov. 10	Nov. 17	Nov. 24	Dec. 1
Alabama	Georgia B'gham★#	Tulane New Or'l'ns†	Vanderbilt B'gham★#	Houston Tuscaloosa #	Tennessee Knoxville	Tulsa Tuscaloosa #	Miss. State Starkville	Miami Tuscaloosa #	Ga. Tech Atlanta		Auburn B'gham #
Auburn		Tennessee B'gham #	Kentucky Lexington★	Chatt'ga Auburn #	Ga. Tech B'gham #	Clemson	Florida Gainesville	Miss. State Auburn #	Georgia Auburn #	Fla. State Auburn #	Alabama B'gham #
Florida	Miss. State Jackson★	Ga. Tech G'nesville #	Duke Jacksonville #	Texas A&M Gainesville #	Vanderbilt Gainesville #	L.S.U. B. Rouge★	Auburn Gainesville #	Georgia Jacksonville #	Fla. State Gainesville #		Miami Miami★
Georgia	Alabama B'gham★	Vanderbilt Nashville★	S. Carolina Columbia	Clemson Clemson	Fla. State Athens #	Kentucky Athens #	N.C. State Athens #	Florida Jacksonville	Auburn Auburn		Ga. Tech Athens #
Ga. Tech	Clemson Atlanta #	Florida G'nesville #	L.S.U. Atlanta #	Tennessee Atlanta #	Auburn Birmingham #	Tulane Atlanta #	Duke Durham	Fla. State Atlanta #	Alabama Atlanta #		Georgia Athens
Kentucky	Fla. State Lexington★ #	Mississippi Jackson★	Auburn Lexington★ #	Detroit Detroit†	L.S.U. Lexington★ #	Georgia Athens	Miami Miami†	Vanderbilt Lexington #	Xavier Lexington #	Tennessee Knoxville	
L.S.U.	Texas A&M B. Rouge★ #	Rice B. Rouge★ #	Ga. Tech Atlanta	Miami B. Rouge★ #	Kentucky Lexington★	Florida B. Rouge★ #	Mississippi B. Rouge★ #	T.C.U. B. Rouge★ #	Miss. State Jackson★	Tulane New Orleans	
Mississippi	Memphis St. Memphis★	Kentucky Jackson★ #	Houston Oxford #		Tulane Jackson★ #	Vanderbilt Memphis★	L.S.U. B. Rouge★	Chatt'ga Oxford #	Tennessee Knoxville		Miss. State Oxford #
Mississippi State	Florida Jackson★ #	Tampa Starkville #	Tennessee Memphis #	Tulane N. Or'l'ns†	Houston Houston★	Memphis St. Starkville #	Alabama Starkville #	Auburn Auburn	L.S.U. Jackson★ #		Mississippi Oxford
Tennessee		Auburn Birmingham	Miss. State Memphis	Ga. Tech Atlanta	Alabama Knoxville #	Chatt'ga Knoxville #	Wake Forest Knoxville #	Tulane Knoxville #	Mississippi Knoxville #	Kentucky Knoxville #	Vanderbilt Nashville
Tulane	Stanford N. Or'l'ns† #	Alabama N. Or'l'ns† #	Texas Austin★	Miss. State N. Or'l'ns† #	Mississippi Jackson★	Ga. Tech Atlanta	V.P.I. N. Or'l'ns #	Tennessee Knoxville	Vanderbilt Nashville	L.S.U. N. Or'l'ns #	
Vanderbilt	West Va. Morgantown	Georgia Nashville #	Alabama B'gham★	Citadel Nashville #	Florida Gainesville	Mississippi Memphis★	Boston Col. Nashville #	Kentucky Lexington	Tulane Nashville #		Tennessee Nashville #

★Night Game

†To be played Friday night

Home Game

THE OFFICIAL WATCH
FOR THIS GAME



The World's Most Honored Watch

- ★ Winner of 10 World's Fair Grand Prizes
- ★ 28 World's Fair Gold Medals
- ★ Highest Observatory Honors for Accuracy

Premier Product of

Longines-Wittnauer
WATCH COMPANY

For Almost 100 Years, Maker of Watches
of the Highest Character



Throughout the world, no other
name on a watch means so much as

LONGINES

The World's Most Honored Watch
OFFICIAL WATCH

1960 OLYMPIC WINTER GAMES • 1959 PAN AMERICAN GAMES • 1960 U. S. OLYMPIC TRIALS • MAJOR NATIONAL AND WORLD CHAMPIONSHIPS IN ALL FIELDS BOTH HERE AND ABROAD

At Authorized

Longines-Wittnauer
JEWELERS



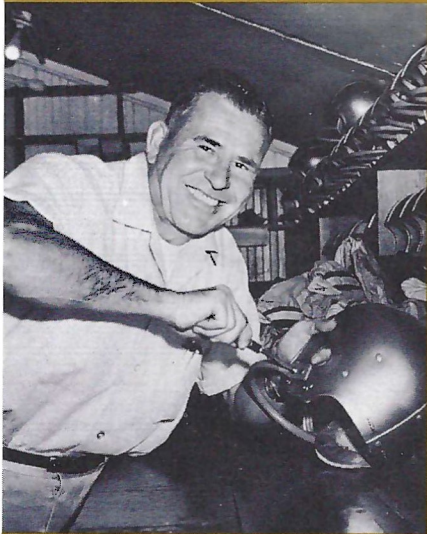
a **LEADER**
for over
12 years
in cold
control...

CORICIDIN[®]

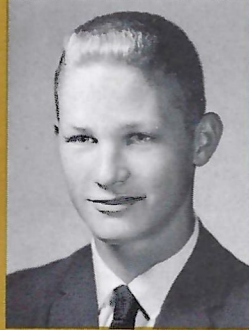
(brand of antihistamine-analgesic-antipyretic compound)

SCHERING CORPORATION • BLOOMFIELD, NEW JERSEY

GEORGIA TECH MANAGERS



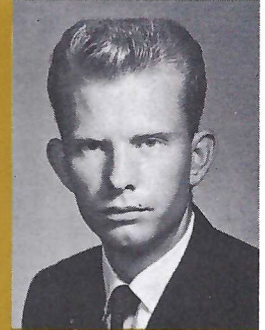
SGT. EDGAR HODGES
Equipment Manager



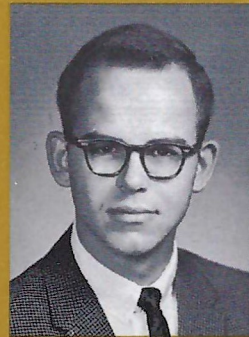
ALLEN DEAN
Student Manager



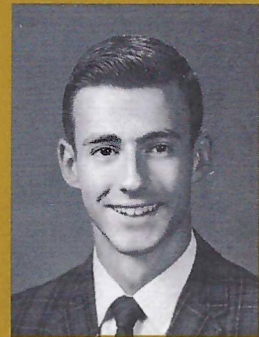
TOMMY HENDRICKS
Student Manager



JOE MORTON
Student Manager



JIM WOODRUFF
Student Trainer



FREDDIE BRIGGS
Student Trainer



HS&M 75th Anniversary Collection of distinguished clothing for fall

You are cordially invited to see this newly arrived collection of Hart Schaffner & Marx clothing which represents three-quarters of a century's experience in tailoring suits, topcoats and sportswear. May we suggest you stop in soon while our HS&M "Anniversary Collection" is most complete.

ZACHRY

87 PEACHTREE AND LENOX SQUARE



"I'd even go North for SOUTHERN Tender-Mix Bread" TRADE MARK



TRADE MARK®



BAKED FRESH
HOURLY AT 20 MODERN
PLANTS THROUGHOUT THE SOUTH -
FAST DELIVERY BY OVER 800 TRUCKS
SERVING 50,000 OUTLETS DAILY

NO HOLES! NO STREAKS!

NO LEAKS!



GEORGIA BLUE PRINT CO. ESTABLISHED 1910

SPROCKETS to ROCKETS • they all start from

BLUEPRINTS

WE CAN PROVIDE THE LATEST TECHNOLOGY
IN EQUIPMENT and PROCESSING TO FULFILL
YOUR REPRODUCTION REQUIREMENTS

GEORGIA BLUE PRINT CO.

Phone JA. 4-8881-2-3-4

119 LUCKIE STREET, N.W. • ATLANTA, GEORGIA

DEALER FOR

- Eugene Dietzgen Co. • Lufkin Rule Co. • W. & L. E. Gurley Co. •
- Hamilton Manufacturing Co. • Fredrick Post Co. • Clearprint
- Tracing Papers • Chart-Pak Tapes
- KODAK TYPE -C- COLOR PHOTOGRAPHY



Follow the Jackets in Print and on the Air with ...



FURMAN BISHER
Sports Editor
Atlanta Journal



JACK HURST
Program Manager, WGST
Play-by-play Announcer of
Tech Football Games



JESSE OUTLAR
Sports Editor
Atlanta Constitution



AL CIRALDO
Sports Director, WGST
Color Announcer of
Football Games,
Play-by-play of
Tech Basketball Games

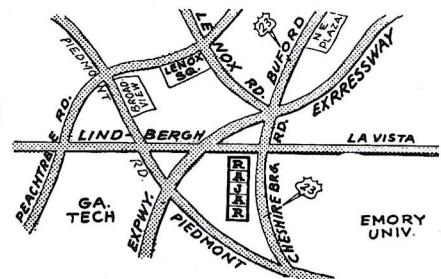
You Can't Top It...



For Quality and Good Taste

RAJAR

We're happy to bring you every Saturday Al Ciraldo's **Press-Box** Previews on WGST-920 on your dial.



DELIGHTFUL FOOD

Courteous Service

Conveniently Located

SERVUS-FONE ORDERING

DRIVE-IN RESTAURANT

1085 Lindbergh Drive, N.E.

CE. 7-6533

J. A. JONES CONSTRUCTION COMPANY

CONTRACTORS

Atlanta



ENGINEERS

Charlotte

JOHN M. RAINE, Class of '38

Raine & Company

Insurance • Bonds



Yachts and Boats Insurance
A Specialty

TRinity 5-2791
81 Peachtree Place, N.E.
Atlanta 9, Georgia



DON'T MISS
THE SENSATIONAL

Polynesian Lounge

(Four Short Blocks Away)

SOUTH SEA VOLUPTUOUSNESS
EXQUISITE BEVERAGES
AND DELICACIES

ALSO

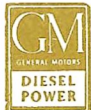
- * **RENDEZ-VOUS LOUNGE**
After the game tete-a-tete.
- * **THE BILTMORE CAFETERIA**
Table service or cafeteria.
- * **THE EMPIRE ROOM**
Dining, dancing, entertainment.
- * **THE SNACK BAR**
Twenty-four hour service.



Atlanta Biltmore

BLALOCK MACHINERY & EQUIPMENT COMPANY, INC.

CONSTRUCTION EQUIPMENT



225 Forsyth Street, S.W., Atlanta, Georgia



BRANCH: 105 S. Slappey Drive, Albany, Georgia

G.A. TECH

UP WITH THE WHITE AND GOLD

Just one big yell for White and Gold
And then we'll raise that banner bold,
A battle flag that can't be beat.
For (Georgia's) team it means defeat.
We'll fight like hell for victory!
Pull me down the (Red) and (Black) you see.
For Georgia Tech will win today
We are all glad to say:

Chorus

Oh well, it's up with the White and Gold,
Down with the (red) and (black).
Georgia Tech is out for victory,
We'll drop our battle axe on (Georgia's) head,
When we meet her our team is sure to beat her.
Down on the old farm there'll be no sound
Till our bow-wows rip through the air;
When the battle is over (Georgia's) team will be
found
With the Yellow Jackets swarming 'round.

SONGS

THE RAMBLING WRECK

I'm a rambling wreck from Georgia Tech
And a hell of an engineer—
A helluva, helluva, helluva,
helluva, hell of an engineer.
Like all the jolly good fellows,
I'll drink my whiskey clear,
I'm a rambling wreck from Georgia Tech
And a hell of an engineer.

Oh! If I had a daughter, sir,
I'd dress her in White and Gold
And put her on the campus
To cheer the Brave and Bold.
But if I had a son, sir,
I'll tell you what he'd do,
He would yell: "To hell with Georgia."
Like his daddy used to do.

Oh! I wish I had a barrel of rum,
And sugar three thousand pounds,
A college bell to put it in,
And a clapper to stir it 'round
I'd drink to all good fellows
Who come from far and near.
I'm a rambling, gambling,
Hell of an engineer.



GEORGIA TECH ALMA MATER

Oh, sons of Tech, arise, behold!
The banner as it reigns supreme,
For from on high the White and Gold
Waves in its triumphant gleam.
The spirit of the cheering throng
Resounds with joy revealing
A brotherhood in praise and song,
In memory of the days gone by.
Oh, Scion of the Southland,
In our hearts you shall forever fly.

We cherish thoughts so dear for thee,
Oh, Alma Mater, in our prayer,
We plead for you in victory,
And in the victory we share!
But when the battle seems in vain
Our spirit never falters,
We're ever one in joy or pain,
And our union is a lasting bond.
Oh! may we be united
Till the victory of life is won.

All American... In the Field of

PEST CONTROL
and
TERMITE CONTROL

Bess Myerson says:

call **Orkin**
for the sake of your home



ADAIR REALTY AND LOAN COMPANY

Established 1865

Jack Adair '33
President

REALTORS
56 Peachtree Street, N.W.

Jas. M. Crawford '35
Vice-President

Berman-Lipton Company



● BUSINESS FORMS

● STATIONERY AND SUPPLIES

● OFFICE OUTFITTERS



666 Parkway Drive, N.E.
Atlanta 8, Georgia

A
Good
"Team Builder"



ARISTOCRAT
Delicious Ice Cream

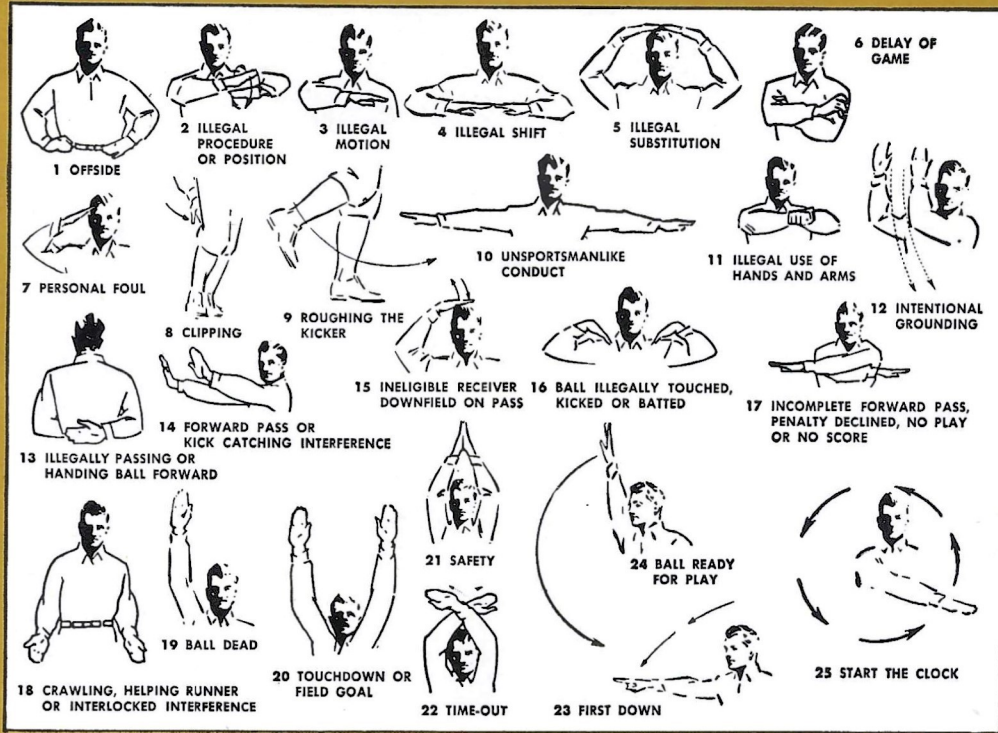
ARISTOCRAT DAIRY PRODUCTS CO.

BROOKS-ALLISON COMPANY

ELECTRICAL
CONTRACTORS . . ENGINEERS

Atlanta

OFFICIAL SIGNALS



PIEDMONT
DRIVE-IN THEATRE

PIEDMONT & LINDBERGH



STEWART
DRIVE-IN THEATRE

STEWART & CLEVELAND AVE.



Operated by

DIXIE DRIVE-IN THEATRES

"Strictly a Southern Institution"

ATHLETIC OUTFITTERS

Headquarters for
SCHOOLS • TEAMS • INDIVIDUALS

Tech Jackets by Hatchers



Team Equipment by

Rawlings
Pennsylvania
Table Tennis Corp.
Beconta

Riddell
Sportcraft
Voit
U. S. Rubber Co.

Spalding
Cramer
Seamless
Wayne Watson
Dunlop

Russell - Southern
B. F. Goodrich Co.
Worth
Dodge Trophies

TED ZUBER • TOM GROOVER • ROLAND HESMONDHALGH
Representatives

It Pays to Play



TECH ALUMNI
JAMES T. MILLS
CHARLES ALLEN
HERMAN SWINT
BILL WALDEN

*Complete and Competent Life Insurance
for Personal Protection
Business Insurance
Estate Conservation and Taxation
Pension and Profit Sharing Plans*

The **BEALY SMITH Agency**

Fulton Federal Building

Atlanta 3, Georgia JA. 2-5455

Connecticut Mutual Life

INSURANCE COMPANY

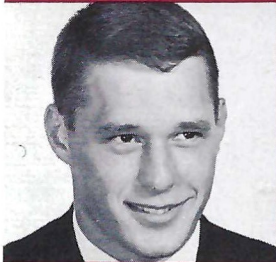
F. S. U.



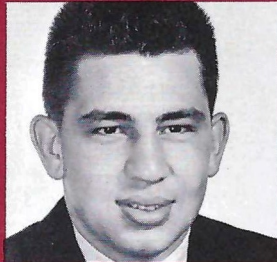
TACKLE BILL TYRE
Sanford, Fla.



GUARD JERRY BRUNNER
Evansville, Ind.



TACKLE JIM SIMS
LaGrange, Ga.



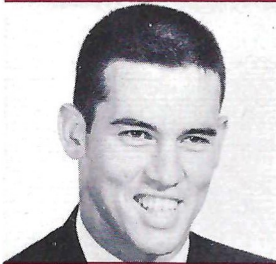
TACKLE TOM SLICKER
Massilon, Ohio



QB CHARLIE CALHOUN
Tallahassee, Fla.

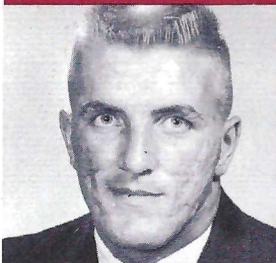


TACKLE AVERY SUMNER
Adel, Ga.



HB KEN RUSSOM
Gainesville, Fla.

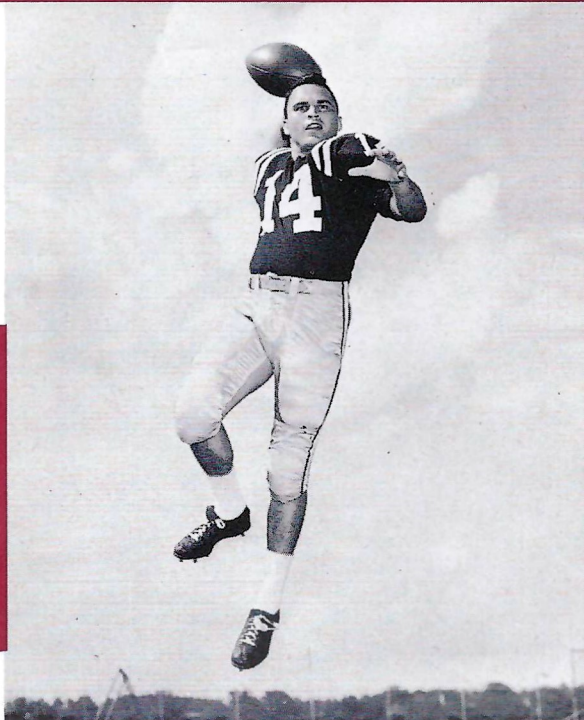
**QUARTERBACK
EDDIE FEELY**



END HANK SYTSMA
Sarasota, Fla.



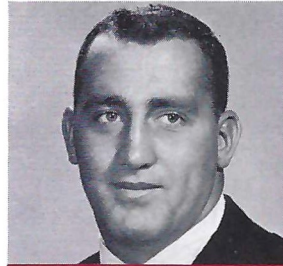
QB EDDIE FEELY
Gainesville, Fla.



F. S. U.



HB TOM
Perry



GUARD CHUCK ROBINSON
East Palestine, Ohio



HB DOUG MESSER
LaGrange, Ga.



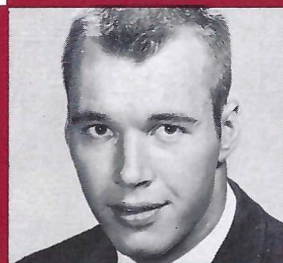
GUARD
Ca



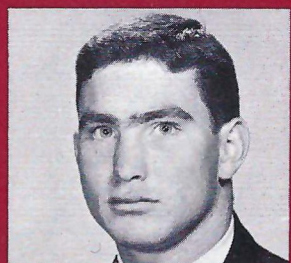
END JOHN McCONNAUGHAY
Ocala, Fla.



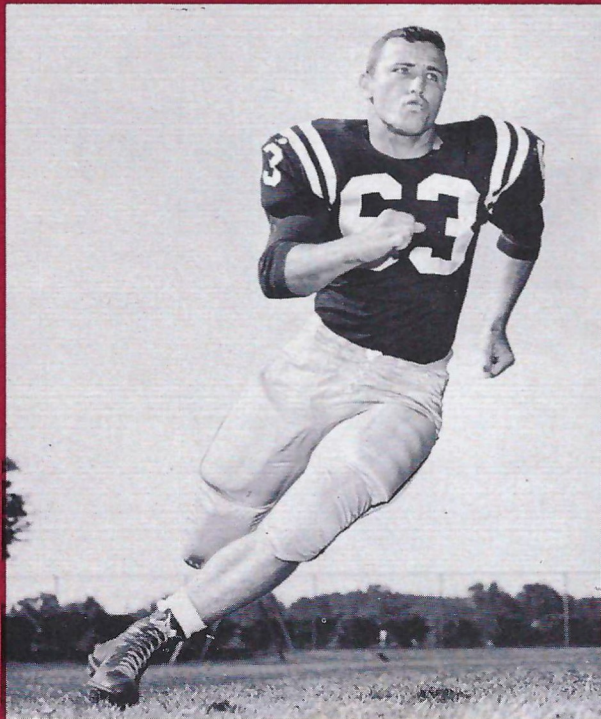
FB GENE ROBERTS
High Springs, Fla.



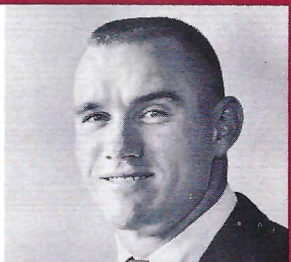
END CLIFF GUNTER
Dothan, Ala.



FB DAVE SNYDER
Jacksonville, Fla.



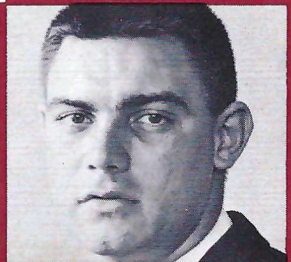
GUARD GENE McDOWELL



HB JIM LOFTIN
Pensacola, Fla.



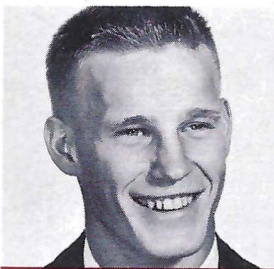
GUARD GENE McDOWELL
Waycross, Ga.



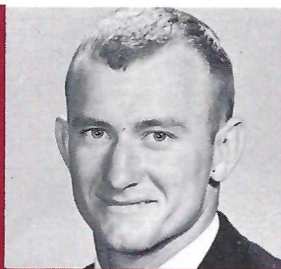
GUARD STEVE SLAY
Atlanta, Ga.



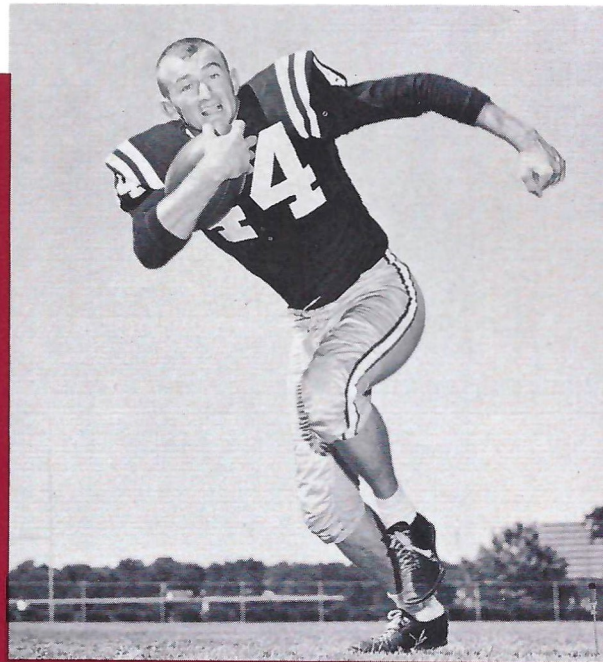
HB LAR
Will



HB TOM HILLABRAND
Perrysburgh, Ohio



FB MARION ROBERTS
Ocilla, Ga.



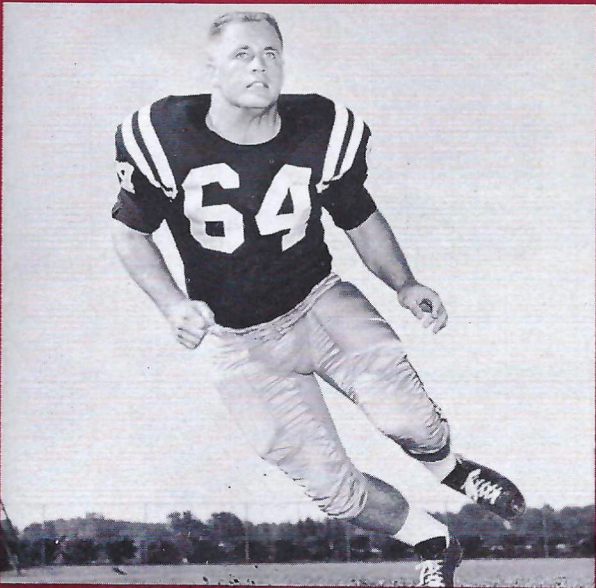
FULLBACK MARION ROBERTS



GUARD FERRELL HENRY
Colquitt, Ga.



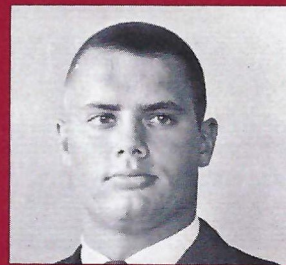
END BILL DAWSON
Valdosta, Ga.



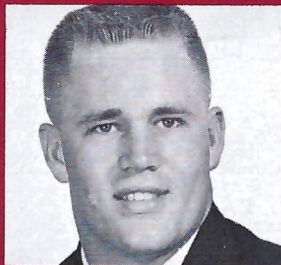
CENTER BRUCE DARSEY



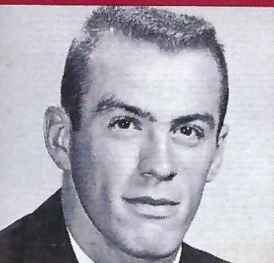
HB KEITH KINDERMAN
Chicago, Ill.



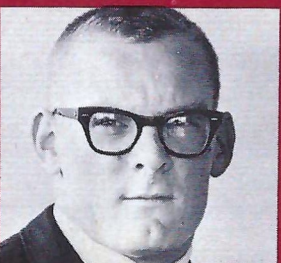
TACKLE DALE MacKENZIE
Clearwater, Fla.



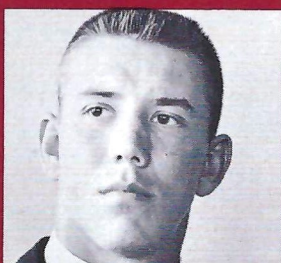
CENTER BRUCE DARSEY
Largo, Fla.



HB LARRY BRINKLEY
Willoughby, Ohio



FB RALPH NORMAN
Thomasville, Ga.



HB WINFRED BAILEY
Atlanta, Ga.



CENTER BILL DALY
Jacksonville, Fla.

ZERO, THE COACH
WANTS ME TO
EXPLORE YOUR
PSYCHE FOR TO
FIND VY YOUR
PUNTING HAS
FALLEN OFF TO A
3.6 YARD AVERAGE.

WOTS' WRONG KID?



WELL, HERR MATTRESS
I DON'T KNOW.....
BUT I JUST FEEL
INFERIOR, LIKE I
HAVE THIS COMPLEX.

WELL, ALL MY FRIENDS
DRIVE NEW FORD GALAXIES
WITH SUPER TORQUE. I USE
ROLLER SKATES, YOU KNOW,
FOR STRONG ANKLES....
BUT WITH EVERYONE
WHIZZING BY, HAVING FUN,
I GET A BIG INFERIORITY
.... LIKE I'M A SQUARE
PEG OR SOMETHING.

UND HOW COME?



TEN DOLLARS!!
BUT YOU HAVEN'T
ANALYZED ME,
OR ANYTHING!
WHAT ABOUT MY
INFERIORITY
COMPLEX??

OKAY, THAT WILL
BE \$10. GOOD
LUCK TO YOU



LISTEN, BUSTER,
YOU SAY YOU FEEL
INFERIOR BECAUSE
YOU'RE NOT DRIVING
A NEW FORD GALAXIE
MIT ZUPER TORQUE.
LET'S FACE IT
DUMKOFF, A COMPLEX
YOU AIN'T GOT....
YOU ARE
INFERIOR!



FANS—WATCH THE EXCITING NCAA COLLEGE FOOTBALL GAMES AND NFL PRO GAMES ON TV
THEY'RE BROUGHT TO YOU BY FORD. CHECK NEWSPAPER FOR TIME AND STATION.

A PRODUCT OF

MOTOR COMPANY

GEORGIA TECH YELLOW JACKETS

No.	Name	Pos.	Age	Ht.	Wt.	Class	Lt.	Hometown	High/Prep
12	Stan Gann	QB	22	5-8	165	Sr.	2	Atlanta, Ga.	Northside
14	Bruce Fischer	QB	19	5-8	161	Soph.	0	Coral Gables, Fla.	Coral Gables
15	Eddie Jordan	QB	20	6-0	183	Soph.	0	Atlanta, Ga.	Brown
16	Jerry Priestley	QB	19	6-2	188	Soph.	0	N. Augusta, S. C.	N. Augusta
17	Dave Sewell	QB	20	6-3	198	Soph.	0	Atlanta, Ga.	Roosevelt
18	Billy Lothridge	QB	20	6-1	184	Jr.	1	Gainesville, Ga.	Gainesville
21	Terry Haddock	LH	20	5-11	173	Soph.	0	Florence, Ala.	Coffee
22	Joe Auer	LH	21	6-1	194	Jr.	1	Coral Gables, Fla.	Coral Gables
23	Gerry Bussell	LH	19	6-0	175	Soph.	0	Jacksonville, Fla.	Englewood
25	Tom Winingder (C)	RH-LH	21	6-1	196	Sr.	2	Norfolk, Va.	Granby
26	Tommy Jackson	RH-LH	20	5-11	181	Soph.	0	Miami, Fla.	Jackson
27	Don Toner	DS	21	5-8½	174	Sr.	1	Bessemer, Ala.	Bessemer
28	Zollie Sirey	RH	22	5-10	174	Sr.	2	Old Hickory, Tenn.	Columbia M.A.
29	Jimmy Barber	FB	21	5-9½	173	Jr.	0	Waycross, Ga.	Waycross
30	Johnny Gresham	RH	19	5-8	164	Soph.	0	Washington, Ga.	Wash.-Wilkes
31	Doug Cooper	LH	21	6-0	186	Jr.	1	Atlanta, Ga.	Sylvan
33	Jeff Davis	LH	19	6-0	196	Soph.	0	Jefferson, Ga.	Jefferson
34	Johnny Nix	RH-LH	20	5-10	173	Soph.	0	Bay Minette, Ala.	Baldwin Co.
40	Ed Weinman	DS	20	5-11	191	Jr.	1	Steuvenville, Ohio	Steuvenville
41	Ray Mendheim	FB	20	6-0	193	Jr.	1	Dothan, Ala.	Dothan
43	Jon Martin	DS	22	5-10	184	Jr.	1	Washington, Ga.	Baylor Prep
46	Mike McNames	FB	22	5-10	198	Sr.	2	Vidalia, Ga.	Vidalia
47	Larry Laikowitz	FB	23	5-6	191	Sr.	2	Atlanta, Ga.	Grady
50	Bill Curry	C	19	6-2	221	Soph.	0	College Park, Ga.	College Park
54	Ed Chancey	C-LT	22	6-2	212	Sr.	2	Enterprise, Ala.	Enterprise
55	Bobby Caldwell	C	21	6-1	212	Sr.	2	Columbus, Miss.	S. D. Lee
57	John Matlock	C	21	6-0	215	Jr.	1	Norfolk, Va.	Norview
60	Dave Watson	RG	21	6-1	221	Sr.	2	Eufaula, Ala.	Eufaula
61	Dave Simmons	RG	19	6-3	221	Soph.	0	El Paso, Tex.	Austin
62	Jimmy Seward	RG	19	6-2	218	Soph.	0	Macon, Ga.	Lanier
63	Rufus Guthrie	LG	21	6-1	231	Sr.	2	Smyrna, Ga.	Baylor Prep
64	Doane Thomas	LT-RG	21	6-0	208	Jr.	0	Wildwood, Fla.	Wildwood
65	Gary Lee	LG	20	5-9	201	Soph.	0	Charleston, W. Va.	Charleston
68	Bubba Shell	LG	19	6-2	202	Soph.	0	Newnan, Ga.	Newnan
69	Brad Yates	LG	20	6-0	212	Soph.	0	Amityville, N. Y.	Greenbrier M.A.
70	Larry Stallings (A-C)	RT	20	6-2	221	Sr.	2	Evansville, Ind.	Memorial
71	Dick Crum	RT	20	6-2	221	Soph.	0	Birmingham, Ala.	Ramsay
72	Ed Griffin	LT	22	6-1	214	Sr.	1	Moultrie, Ga.	Moultrie
75	Joe Chapman	LT	22	6-1	214	Jr.	1	Pensacola, Fla.	Pensacola
76	Mike Haycock	RT	20	6-6	251	Jr.	0	Annandale, Va.	Annandale
77	Bill Farrington	RT	23	6-3	211	Jr.	1	Fairfield, Ala.	Fairfield
78	Randy Watkins	RT	19	6-1	201	Soph.	0	Rome, Ga.	West Rome
79	Tom Ballard	LT	18	6-0	219	Soph.	0	Homestead, Fla.	South Dade
80	Dick Emerson	RE-LE	19	6-2	203	Soph.	0	Miami, Fla.	Miami Senior
81	Frank Sexton	LE	20	6-1	191	Jr.	1	Knoxville, Tenn.	Central
82	Steve Copeland	RE	19	6-0	203	Soph.	0	Gadsden, Ala.	Gadsden
83	George Morris	LE	18	6-3	196	Soph.	0	Birmingham, Ala.	Banks
84	John Wright	RE	21	6-1½	192	Sr.	1	Madisonville, Ky.	Madisonville
86	Ted Davis	LE	20	6-1½	224	Jr.	1	Memphis, Tenn.	Messick
87	Dave Austin	RE	19	6-3	215	Soph.	0	Ft. Lauderdale, Fla.	Stranahan
88	Billy Martin	RE	19	6-4	232	Jr.	1	Gainesville, Ga.	Gainesville

DS—defensive specialist.

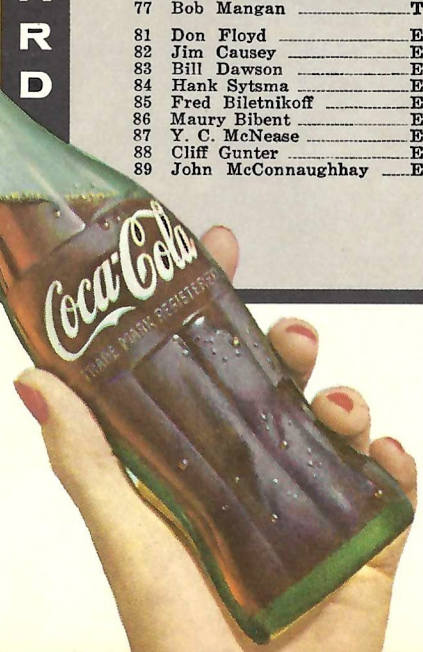
PRESS BOX FLIP CARD

F.S.U. SEMINOLES

No.	Name	Pos.	Age	Ht.	Wt.	Class	Lt.	Hometown
11	Charlie Calhoun	QB	19	5-10	180	Jr.	1	Tallahassee, Fla.
12	John Harlee	Kicker	19	6-1	209	Jr.	1	Palmetto, Fla.
13	Steve Tensi	QB	19	6-5	195	Soph.	0	Cincinnati, Ohio
14	Eddie Feely	QB	21	5-7	159	Sr.	2	Gainesville, Fla.
20	Dave Snyder	FB	20	5-10	180	Jr.	1	Jacksonville, Fla.
21	Larry Brinkley	HB	20	6-0	185	Jr.	1	Willoughby, Ohio
22	Ken Russom	HB	21	6-0	179	Sr.	2	Gainesville, Fla.
23	Jim Loftin	HB	19	6-1	180	Soph.	0	Pensacola, Fla.
24	John Roberts	FB	19	6-0	190	Soph.	0	Orlando, Fla.
26	Keith Kinderman	HB	22	6-0	205	Sr.	0	Chicago, Ill.
27	Phil Spooner	HB	18	5-11	170	Soph.	0	Ft. Myers, Fla.
28	Winfred Bailey	HB	20	6-1	182	Soph.	0	Atlanta, Ga.
29	Tom Hillabrand	HB	21	6-0	175	Sr.	2	Perrysburg, Ohio
40	Doug Messer	HB	20	6-0	183	Jr.	1	LaGrange, Ga.
41	Gene Roberts	FB	20	6-1	210	Jr.	1	High Springs, Fla.
42	Ralph Norman	FB	20	5-11	180	Soph.	0	Thomasville, Ga.
43	George D'Allesandro	FB	19	5-10	209	Soph.	0	Ft. Myers, Fla.
44	Marion Roberts	FB	19	6-0	190	Jr.	1	Ocala, Fla.
52	Chuck Robinson	G	20	5-11	215	Jr.	1	East Palestine, Ohio
53	Bill Daly	C	19	6-1	195	Jr.	1	Jacksonville, Fla.
55	Jack Edwards	C	19	6-2	215	Soph.	0	Tampa, Fla.
60	Ferrell Henry	G	20	6-1	195	Jr.	1	Colquitt, Ga.
61	Jeff Klores	T	21	6-0	204	Jr.	0	Miami, Fla.
62	Steve Slay	G	19	5-10	206	Soph.	0	Atlanta, Ga.
63	Gene McDowell (capt.)	G	22	5-11	195	Sr.	2	Waycross, Ga.
64	Bruce Darsey	C	21	5-11	205	Sr.	2	Largo, Fla.
65	John Levings	G	21	6-0	214	Sr.	2	Ft. Worth, Texas
66	Dick Hermann	G	20	6-0	198	Soph.	0	Marianna, Fla.
67	Jerry Bruner	G	20	5-10	220	Jr.	1	Evansville, Indiana
68	Chester Womack	G	19	6-1	203	Soph.	0	Doraville, Ga.
69	Jim Wade	G	20	5-10	174	Sr.	0	Atlanta, Ga.
70	Tom Slicker	T	21	6-2	220	Sr.	2	Massillon, Ohio
71	Jim Sims	T	23	6-0	205	Sr.	2	LaGrange, Ga.
73	Avery Sumner	T	20	6-0	217	Soph.	0	Adel, Ga.
74	Bill Tyre	T	22	6-1	210	Sr.	1	Sanford, Fla.
75	Dale MacKenzie	T	19	6-2	220	Soph.	0	Clearwater, Fla.
76	Tom West	T	19	6-3	215	Soph.	0	Headland, Ala.
77	Bob Mangan	T	20	6-0	240	Soph.	0	Decatur, Ga.
81	Don Floyd	E	20	6-1	204	Soph.	0	Madison, Fla.
82	Jim Causey	E	21	6-1	210	Soph.	0	Miami, Fla.
83	Bill Dawson	E	19	6-3	214	Soph.	0	Valdosta, Ga.
84	Hank Sytsma	E	20	6-3	195	Soph.	0	Sarasota, Fla.
85	Fred Biletnikoff	E	19	6-1	183	Soph.	0	Erie, Penn.
86	Maury Bibent	E	19	5-11	215	Soph.	0	Cincinnati, Ohio
87	Y. C. McNease	E	26	6-0	190	Sr.	0	Leland, Miss.
88	Cliff Gunter	E	20	6-3	190	Jr.	1	Dothan, Ala.
89	John McConaughay	E	20	6-0	195	Sr.	1	Ocala, Fla.

Enjoy that
**REFRESHING
NEW FEELING**

ATLANTA COCA-COLA BOTTLING COMPANY, ATLANTA, GEORGIA



LEFT ENDS

86 TED DAVIS
81 FRANK SEXTON
83 GEORGE MORRIS

LEFT TACKLES

72 ED GRIFFIN
79 TOM BALLARD
75 JOE CHAPMAN
64 DOANE THOMAS

LEFT GUARDS

63 RUFUS GUTHRIE
69 BRAD YATES
65 GARY LEE

CENTERS

55 BOBBY CALDWELL
57 JOHN MATLOCK
50 BILL CURRY
54 ED CHANCEY

RIGHT GUARDS

60 DAVE WATSON
62 JIMMY SEWARD
61 DAVE SIMMONS

RIGHT TACKLES

70 LARRY STALLINGS
71 DICK CRUM
77 BILL FARRINGTON
78 RANDY WATKINS
76 MIKE HAYCOCK

RIGHT ENDS

88 BILLY MARTIN
84 JOHN WRIGHT
82 STEVE COPELAND

DEFENSIVE SPECIALISTS

27 DON TONER
43 JON MARTIN
40 ED WEINMAN

QUARTERBACKS

18 BILLY LOTHRIDGE
12 STAN GANN
17 DAVE SEWELL

LEFT HALFBACKS

23 GERRY BUSSELL
33 JEFF DAVIS
31 DOUG COOPER

RIGHT HALFBACKS

28 ZOLLIE SIRCY
26 TOMMY JACKSON
25 TOM WININGDER

FULLBACKS

46 MIKE McNAMES
41 RAY MENDHEIM
47 LARRY LAFKOWITZ
29 JIMMY BARBER

GEORGIA TECH

QUARTERBACKS

14 EDDIE FEELY
11 CHARLEY CALHOUN
13 STEVE TENSI

LEFT HALFBACKS

26 KEITH KINDERMAN
21 LARRY BRINKLEY
27 PHIL SPOONER

RIGHT HALFBACKS

29 TOM HILLABRAND
22 KEN RUSSOM
28 WINFRED BAILEY

FULLBACKS

20 DAVE SNYDER
44 MARION ROBERTS
41 GENE ROBERTS

Note: First player listed at each position is starter for Chiefs, second for Renegades, third for Warriors.

F. S. U.

LEFT ENDS

89 JOHN McCONAUGHAY
88 CLIFF GUNTER
81 DON FLOYD

LEFT TACKLES

70 TOM SLICKER
74 BILL TYRE
75 DALE MacKENZIE

LEFT GUARDS

52 CHUCK ROBINSON
62 STEVE SLAY
67 JERRY BRUNER

CENTERS

64 BRUCE DARSEY
53 BILL DALY
55 JACK EDWARDS

RIGHT GUARDS

63 GENE McDOWELL
66 DICK HERMANN
65 JOHN LEVINGS

RIGHT TACKLES

71 JIM SIMS
73 AVERY SUMNER
76 TOM WEST

RIGHT ENDS

82 JIM CAUSEY
83 RED DAWSON
84 HANK SYTSMA

GEORGIA TECH SPECIALISTS

PUNTERS: 18 Billy Lothridge, 47 Larry Lafkowitz,
17 Dave Sewell

PLACE-KICKERS: 18 Billy Lothridge, 54 Ed Chancey

HOLDERS: Quarterbacks

KICKOFFS: 18 Billy Lothridge, 54 Ed Chancey

PASSERS: Quarterbacks

GEORGIA TECH'S STATISTICAL LEADERS

Rushing	Atts.	Net		Long	
		Yards	Avg.	Run	Run
Billy Lothridge	92	382	4.2	41	
Mike McNames	53	199	3.8	11	
Ray Mendheim	28	130	4.6	19	
Zollie Sircy	26	125	4.8	20	
Joe Auer	30	90	3.0	15	
Tommy Jackson	9	72	8.0	37	
Passing	Atts.	Compl.	Inte'd	Yards	For TD
Billy Lothridge	111	62	6	775	6
Stan Gann	13	5	1	43	1
Pass Receiving	Rec'd	Yards	For TD		
Billy Martin	17	284	4		
Joe Auer	12	123	1		
Ted Davis	10	134	1		
Johnny Gresham	5	45	0		
Gerry Bussell	5	37	0		
Punting	No.	Avg.	Long		
Billy Lothridge	33	40.3	57		



FLORIDA STATE SPECIALISTS

PUNTERS: 11 Charlie Calhoun, 14 Eddie Feely

PLACE KICKERS: 40 Doug Messer, 12 John Harllee

HOLDERS: Quarterbacks

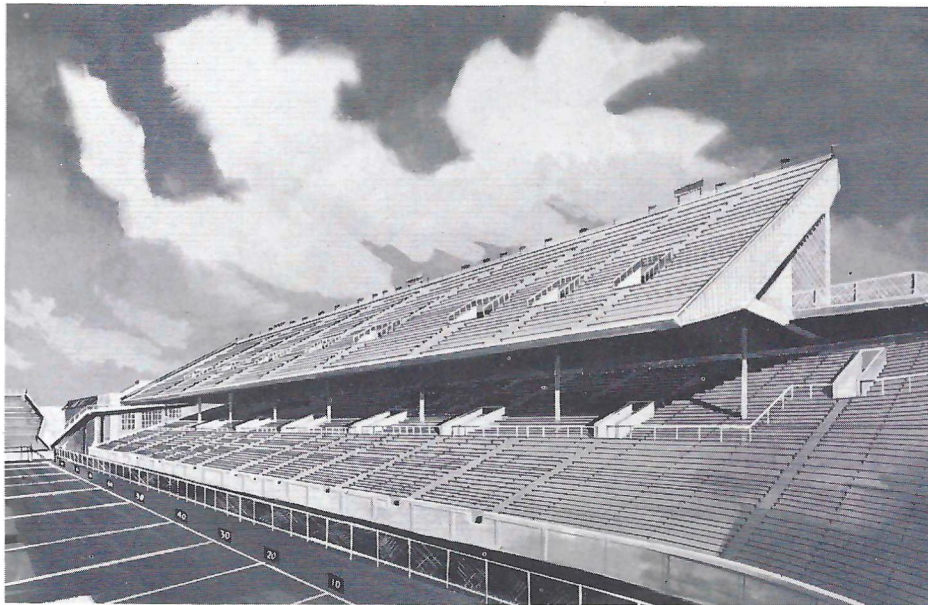
KICKOFFS: 40 Doug Messer, 12 John Harllee

PASSERS: Quarterbacks

FLORIDA STATE'S STATISTICAL LEADERS

Rushing	Atts.	Net		Long	
		Yards	Avg.	Run	Run
Gene Roberts	45	227	5.1		
Marion Roberts	59	210	3.6		
Phil Spooner	43	193	4.5		
Keith Kinderman	61	193	3.2		
Eddie Feely	47	140	3.2		
Passing	Atts.	Compl.	Inte'd	Yards	For TD
Eddie Feely	71	42	3	593	4
Steve Tensi	83	42	2	540	4
Pass Receiving	Rec'd	Yards	For TD		
Keith Kinderman	17	238	2		
Hank Sytsma	13	145	1		
Don Floyd	12	214	2		
Winfred Bailey	12	153	0		
Ken Russom	9	132	2		
Punting	No.	Avg.			
Charlie Calhoun	35	36.7			

GRANT FIELD - Home of the YELLOW JACKETS



New double-decked East Stands, Georgia Tech's Grant Field.

Grant Field, Georgia Tech's famous football stadium, is right on the Tech campus. It was named Hugh Inman Grant Field in 1924 at the request of John W. Grant, member of the Board of Trustees and a well known Atlanta merchant. Grant gave \$50,000 to start a stadium enlargement building fund in memory of his son who had died.

The original concrete West Stands seated 5,600. In 1924 the concrete East Stands were completed and the stadium became known as Grant Field. A year later the "U" shaped South Stands were finished, bringing the cost of the stadium at that time to \$300,000 and seating approximately 30,000.

In 1948 the West Stands were rebuilt and a new press box added to raise capacity to 40,000. The all-steel North Stands were constructed in 1958 to make the seating limit of 44,015. Double decking of the East Stands was completed in August, 1962, bringing the stadium capacity to approximately 52,000.

- LEFT ENDS
- 86 TED DAVIS
- 81 FRANK SEXTON
- 83 GEORGE MORRIS
- LEFT TACKLES
- 72 ED GRIFFIN
- 79 TOM BALLARD
- 75 JOE CHAPMAN
- LEFT GUARDS
- 63 RUFUS GUTHRIE
- 69 BRAD YATES
- 65 GARY LEE
- CENTERS
- 55 BOBBY CALDWELL
- 57 JOHN MATLOCK
- 50 BILL CURRY
- RIGHT GUARDS
- 60 DAVE WATSON
- 62 JIMMY SEWARD
- 61 DAVE SIMMONS
- RIGHT TACKLES
- 70 LARRY STALLINGS
- 71 DICK CRUM
- 77 BILL FARRINGTON
- RIGHT ENDS
- 88 BILLY MARTIN
- 84 JOHN WRIGHT
- 82 STEVE COPELAND

Go Colonial!

ATLANTA'S

NO. 1 TEAM

When it comes to food folks, the number one team is in action week in and week out at your number one food store in Atlanta. Number one—because of friendly, courteous service in the traditional Southern manner. Number one—because of the experience and know-how gained from serving more customers. Join the crowds . . . GO COLONIAL!

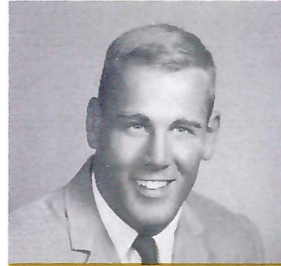


COLONIAL STORES

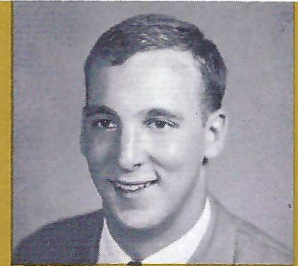
Get more gifts Faster with **GOLD BOND** Stamps



GA. TECH



GUARD BRAD YATES
Amityville, N. Y.



END TED DAVIS
Memphis, Tenn.



HB JOE AUER
Coral Gables, Fla.



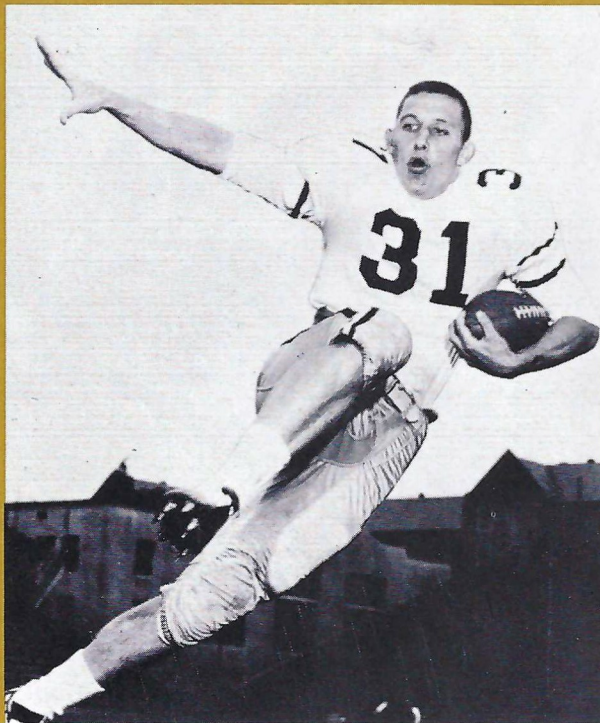
TACKLE LARRY STALLINGS
Evansville, Ind.



CENTER BOBBY CALDWELL
Columbus, Miss.



HB JEFF DAVIS
Jefferson, Ga.



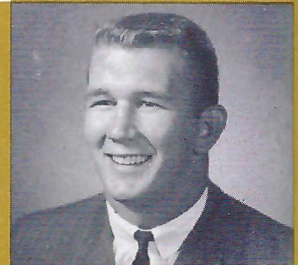
HALFBACK DOUG COOPER



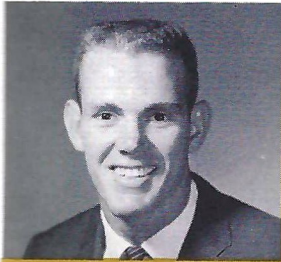
TACKLE ED GRIFFIN
Moultrie, Ga.



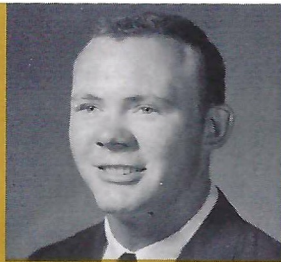
QB BILLY LOTHRIDGE
Gainesville, Ga.



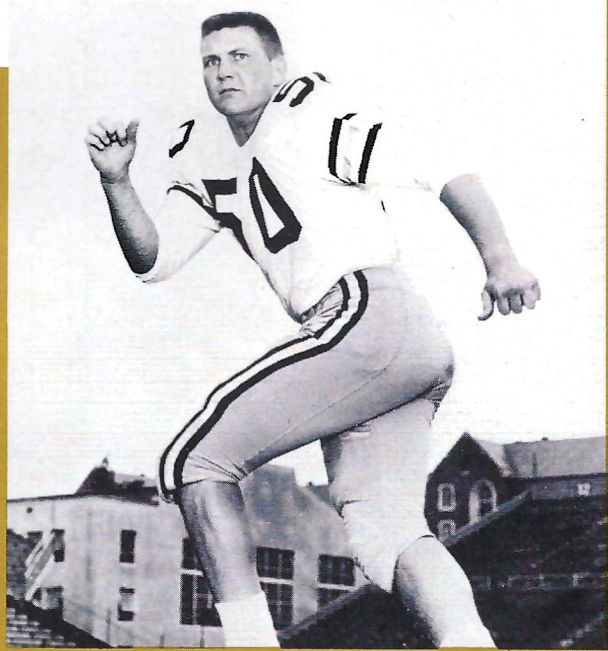
END JOE CHAPMAN
Pensacola, Fla.



GUARD DOANE THOMAS
Wildwood, Fla.



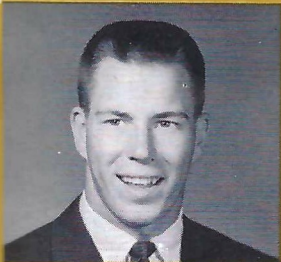
HB ZOLLIE SIRCY
Old Hickory, Tenn.



CENTER BILL CURRY



AVIS
enn.



QB STAN GANN
Atlanta, Ga.



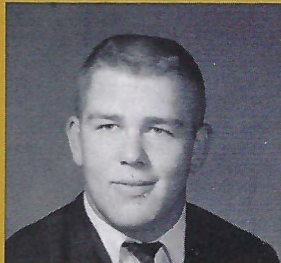
END FRANK SEXTON
Knoxville, Tenn.



AVIS
Ga.



FULLBACK JIMMY BARBER



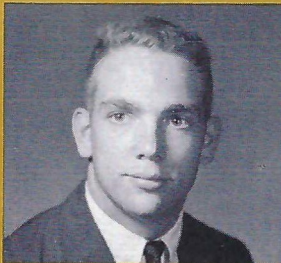
GUARD RUFUS GUTHRIE
Smyrna, Ga.



GUARD DAVE WATSON
Eufaula, Ala.



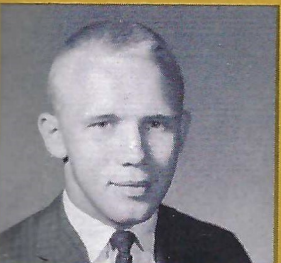
GRIFFIN
Ga.



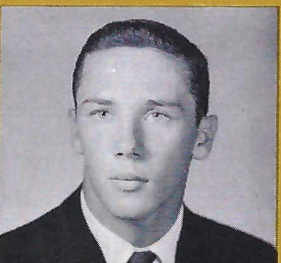
FB-HB TOM WININGDER
Norfolk, Va.



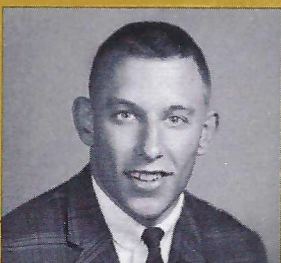
APMAN
Fla.



DEF. SPEC. DON TONER
Bessemer, Ala.



FB MIKE McNAMES
Vidalia, Ga.



HB DOUG COOPER
Atlanta, Ga.



TACKLE BILL PASCHAL
Atlanta, Ga.

Koffee Kup, Inc.

*A Complete Automatic
Vending Service*



560 MONROE PLACE, N.E.

TRinity 6-8201

McIntosh Paving Co., Inc.

382 Trabert Avenue, N.W.

Atlanta, Georgia

TRinity 6-4838



All Types of Asphalt Paving

Roads • Streets

Driveways • Parking Lots

**"Make Your Home
Your Hobby"**



manford

DO-IT-YOURSELF STORES

44 Stores in 7 Southeastern States

**FOR THE BEST IN ROASTED,
SALTED AND RAW PEANUTS
ASK FOR**

NANCY FANCY OR JIMBO'S JUMBOS

JIMBO'S JUMBOS, INC.

EDENTON, N. C.

In Atlanta Call or Contact

JACK BOWEN CO.

113 Courtland Street, S.E.

Atlanta 3, Georgia

Telephone JA. 5-2429

GEORGIA TECH

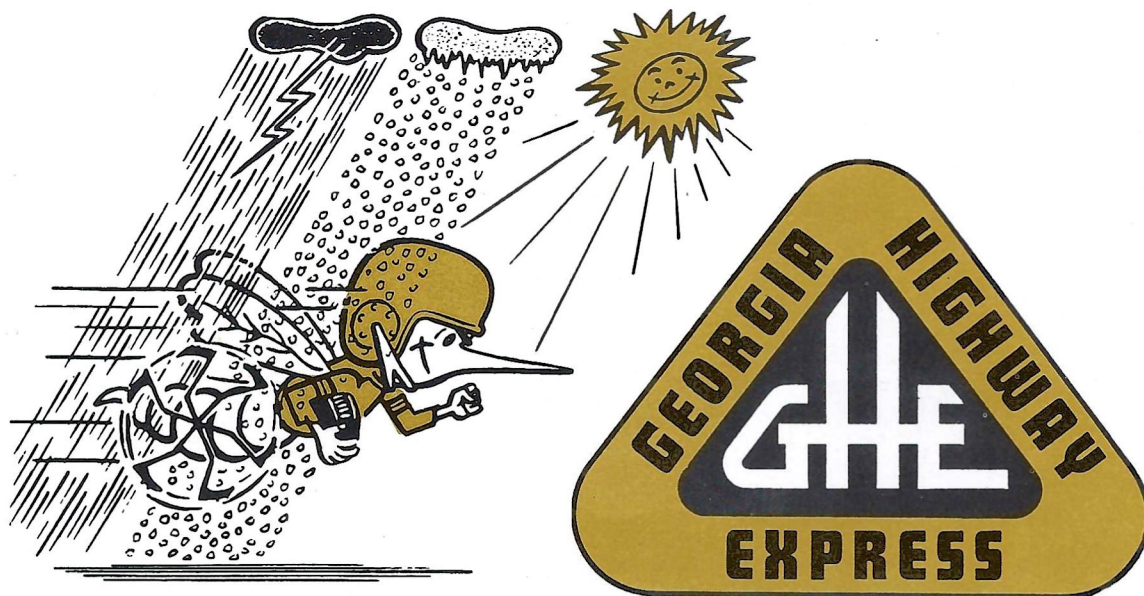
CAPTAIN



1962

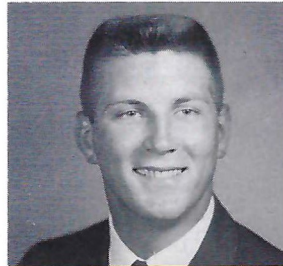
FULLBACK-HALFBACK TOM WININGDER

TOUCHDOWN SERVICE!



Dependable Motor Express Service

GA. TECH



CENTER BILL CURRY
College Park, Ga.



END BILLY MARTIN
Gainesville, Ga.



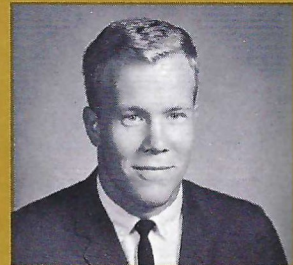
GUARD GARY LEE
Charleston, W. Va.



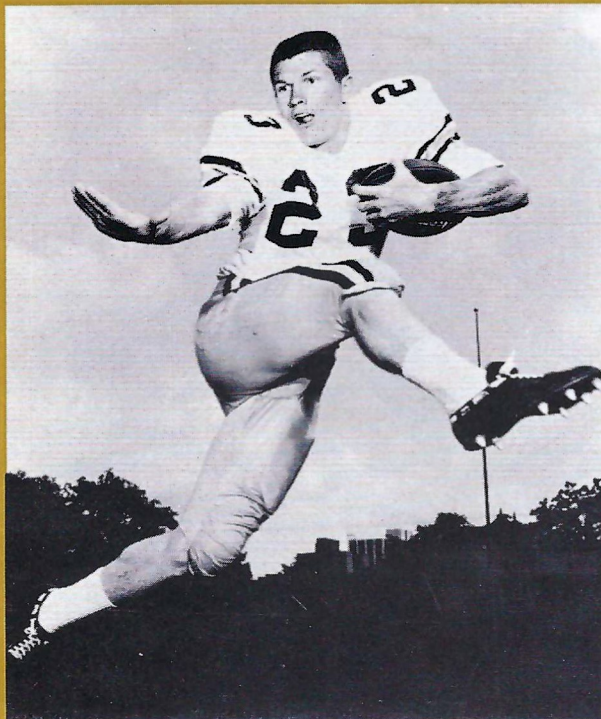
HB TOMMY JACKSON
Miami, Fla.



CENTER ED CHANCEY
Enterprise, Ala.



TACKLE TOM BALLARD
Homestead, Fla.



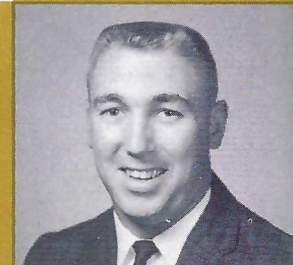
HALFBACK GERRY BUSELL



FB LARRY LAFKOWITZ
Atlanta, Ga.



CENTER JOHN MATLOCK
Norfolk, Va.



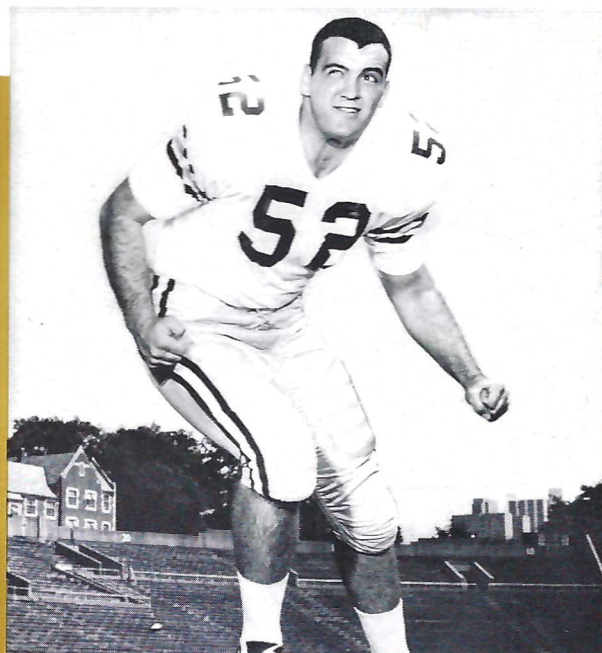
END STEVE COPELAND
Gadsden, Ala.



GUARD DAVE SIMMONS
El Paso, Texas



QB BRUCE FISCHER
Coral Gables, Fla.



GUARD JIMMY SEWARD



MARTIN
Ga.



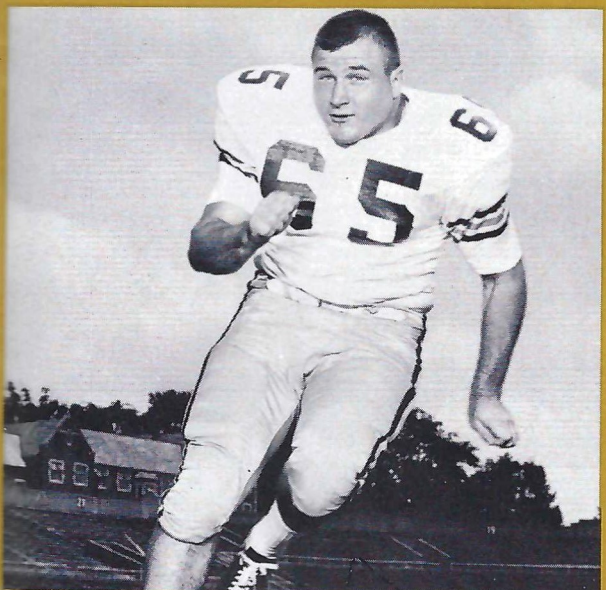
END JOHN WRIGHT
Madisonville, Ky.



DEF. SPEC. JON MARTIN
Washington, Ga.



BALLARD
Fla.



GUARD GARY LEE



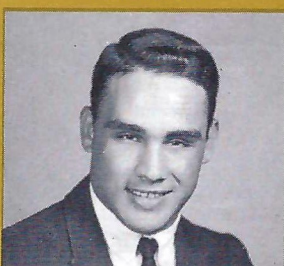
TACKLE BILL FARRINGTON
Fairfield, Ala.



FB JIMMY BARBER
Waycross, Ga.



KOWITZ
Ga.



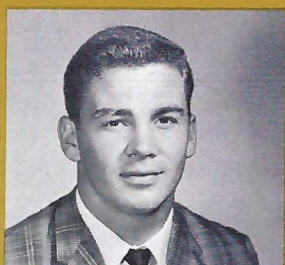
FB RAY MENDHEIM
Dothan, Ala.



PELAND
Ala.



TACKLE DICK CRUM
Birmingham, Ala.



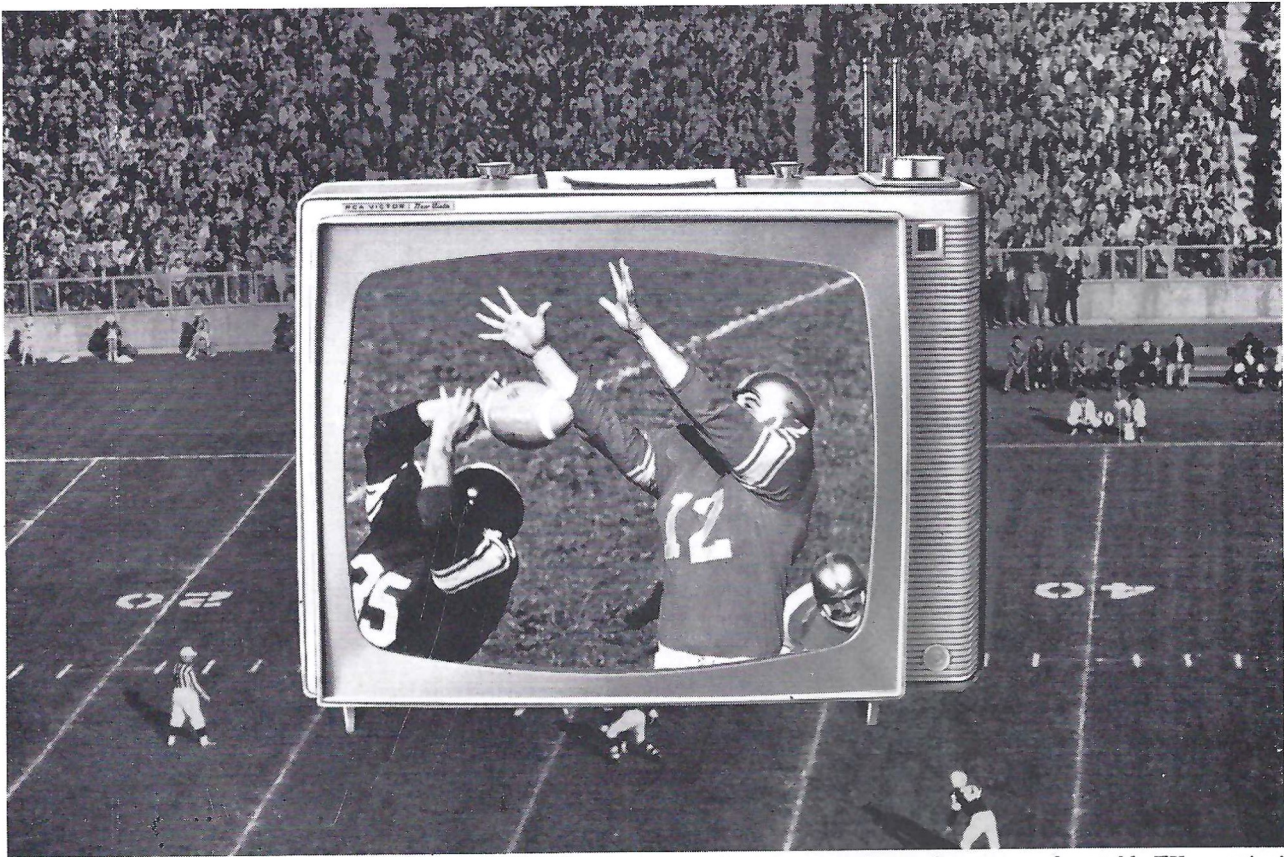
HB JOHNNY GRESHAM
Washington, Ga.



GUARD JIMMY SEWARD
Macon, Ga.



HB GERRY BUSSELL
Jacksonville, Fla.



THE SPORTSMAN, combines smart styling and unsurpassed portable TV reception!

Compare it against *all* others...*anywhere*...on *any* channel


RCA VICTOR NEW VISTA TV

New Vista TV is the most powerful, most dependable TV ever built by RCA Victor.

- **New Vista Tuner**—most powerful RCA tuner ever designed. Unsurpassed performance . . . unexcelled picture detail from many hard-to-get stations.

- **Power-boosted New Vista Chassis** with precision-crafted Security Sealed Circuits and top-quality components assure outstanding performance, long-life dependability.

- **Automatic Channel Equalizer** “locks in” bright, crisp pictures . . . guards against interference and picture fade-out.

See the New Vista TV line, from portables to master-crafted consoles. (P.S. Christmas is coming!) Come in and say “Show Me” 

See Walt Disney’s “Wonderful World of Color,” Sundays, NBC-TV Network.



The Most Trusted Name in Television

Tmk (s) ©



THE OWENS

Budget-priced Contemporary console, new compact style. Built-in antenna. Brilliant performance!

SEE YOUR
FAVORITE

RCA VICTOR

DEALER
NOW!



Gulf[®] Deluxe Crown Tires keep rolling along

*giving you more
driving miles for
your tire buying
dollars*

Here is the premium tire with built-in driving economy—costs you less per mile than original equipment tires. The extra wide, deep tread means longer tread life, more traction and skid resistance for greater safety. Special rubber compounds give quiet, no squeal performance, while all-nylon cord construction resists bruises and blowouts.

For long tire life and thousands of extra, trouble-free miles, get quality-built Gulf Deluxe Crown Tires from your nearby Gulf dealer.



FOR TIRE VALUES YOU CAN TRUST, STOP AT THE SIGN OF THE GULF ORANGE DISC.

Gulf Tire and Supply Company

Heart of Atlanta
MOTEL

Heart of Atlanta

RESORT MOTEL

2 blocks from downtown Peachtree St.

MU 8-1682 • TWX AT 104

