

FLORIDA STATE

VS

WAKE FOREST

OCTOBER 12, 1963

**DOAK S. CAMPBELL
STADIUM**

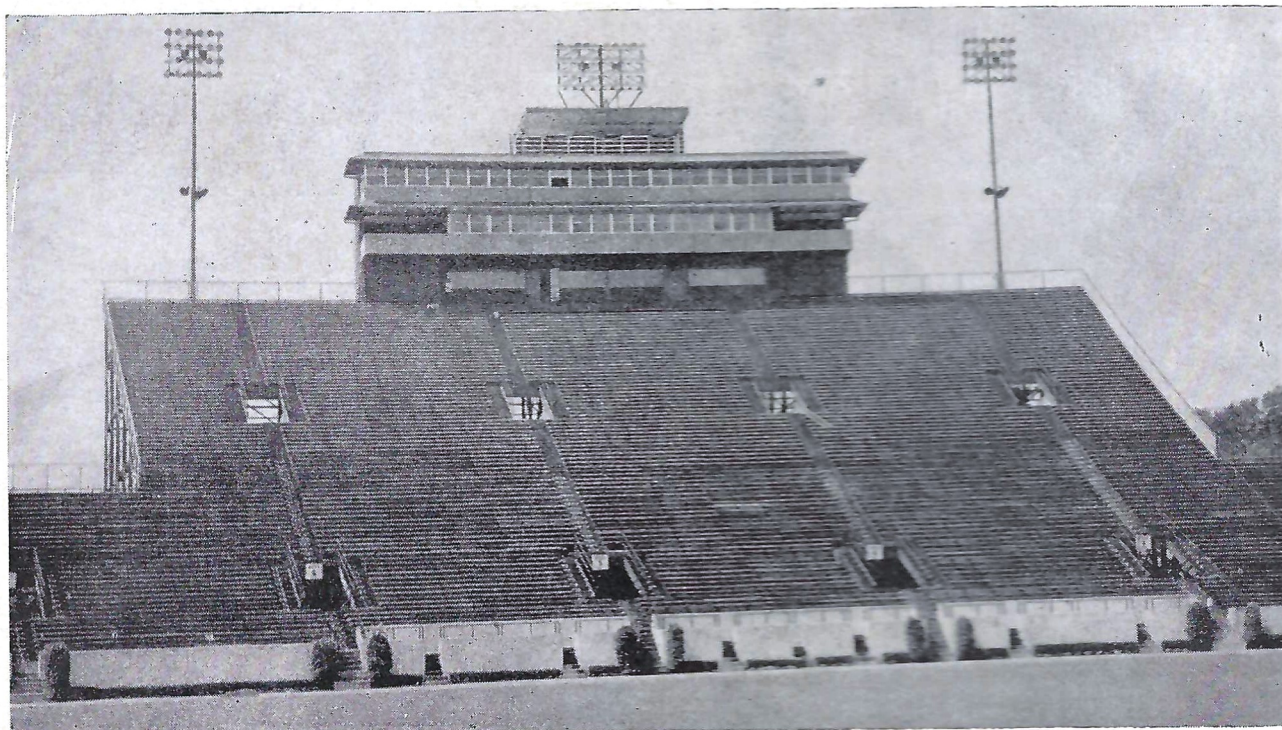
**LEGISLATIVE
RECOGNITION
DAY**



**OFFICIAL
PROGRAM**

50c

Joe Little



"Constructed By"
BEAR CONSTRUCTION CO., INC.
 PHONE 222-8489

D. L. COOKSEY

B. R. DRAUGHON



patronize...
STADIUM

CONCESSIONS

Located beneath the stands on each side of stadium

- COLD DRINKS..... 15¢**
- HOT COFFEE..... 15¢**
- SANDWICHES..... 30¢**
- HOT DOGS..... 25¢**
- PEANUTS..... 15¢**
- POP CORN..... 15¢**

- SOUVENIR ITEMS*
- PENNANTS*
- BADGES*
- SUN VISORS*
- ASPIRIN*

All Cigarettes 40¢

please pay no more than established prices

FSU FOOTBALL 1963...



IN THIS ISSUE:

The University	4, 5, 8
FSU Depth Chart	6
Opponent Depth Chart	7
FSU Numerical Roster	11
Guest Column	9
FSU All-Time Records	9
Seminole Football Family	14
The 1963 Seminoles	15, 16, 17, 18
Starting Lineup, FSU	20
Starting Lineup, Opponent	21
Seminole Boosters, Inc.	25
Opponent Numerical Roster	32
Today's Opponent	33, 34, 35
Seminole Network	27
WFSU-TV Football Programs	29
The Marching Chiefs	38
The Athletic Committee	31
Comparing Today's Teams	31
FSU's '63 Freshmen	37
Seminole Songs and Cheers	30
FSU Basketball, 1963-64	39

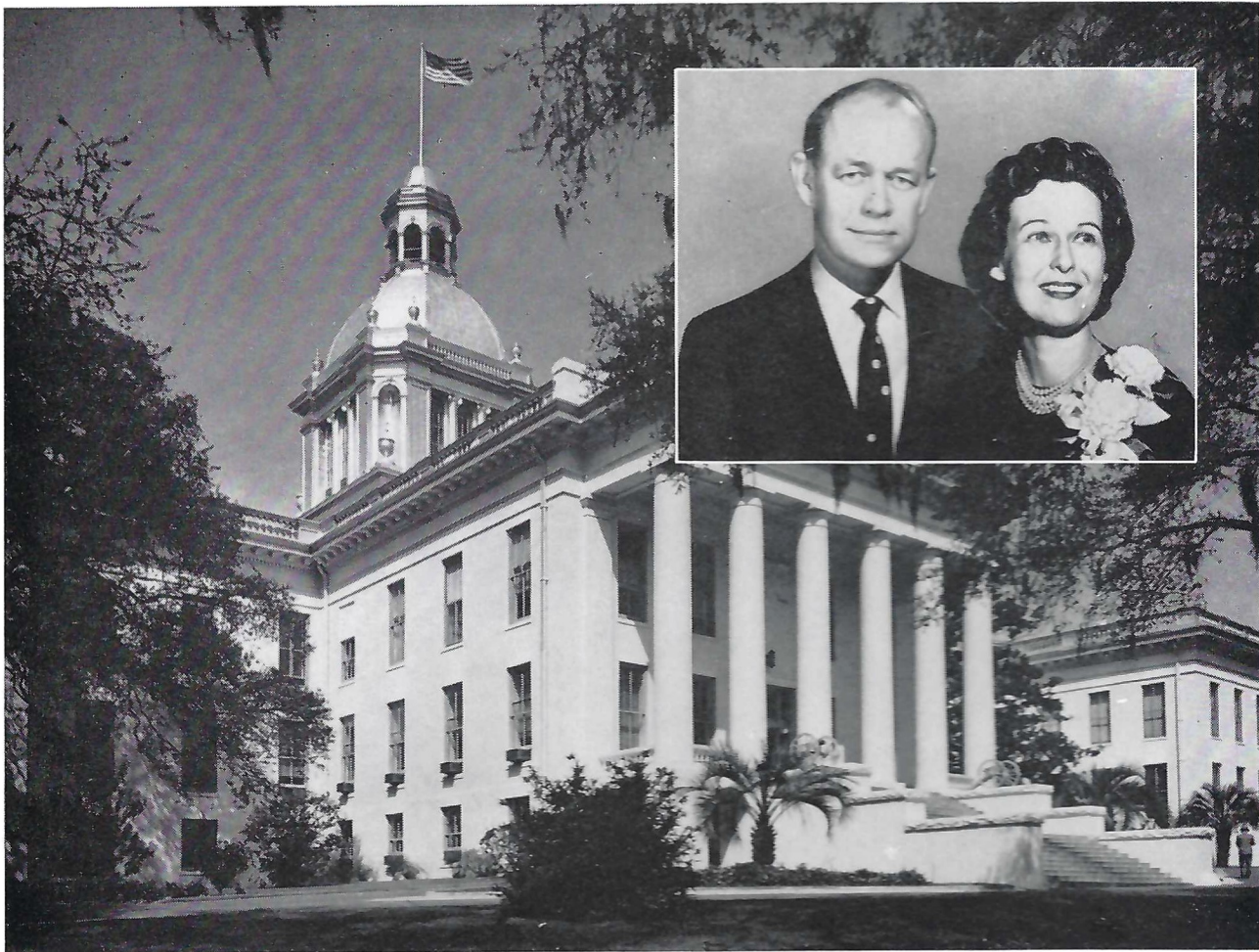
SEMINOLES ON THE WARPATH...

Sept. 20	Miami	Miami 8:15 p.m.
Sept. 28	TEXAS CHRISTIAN	Tallahassee 8:00 p.m.
Oct. 12	Wake Forest	Tallahassee 2:00 p.m.
Oct. 19	So. Miss.	Mobile, Ala. 8:00 p.m. (CST)
Oct. 26	VIRGINIA TECH	Tallahassee 2:00 p.m.
Nov. 2	FURMAN	Tallahassee 2:00 p.m.
Nov. 9	Georgia Tech	Atlanta, Ga. 2:00 p.m.
Nov. 16	N. C. STATE (Homecoming)	Tallahassee 2:00 p.m.
Nov. 23	Auburn	Auburn, Ala. 2:00 p.m. (CST)
Nov. 30	Florida	Gainesville 2:00 p.m.

*Compliments and
Best Wishes from*



**YOUR APPLIANCE
HEADQUARTERS**
611 N. Monroe St.



The Capitol of Florida, The Governor and First Lady

In Florida, education and the legislative function have become so very close in day-to-day operation that it is only fitting that this day should be observed. Throughout this nation today Florida is looked upon as one of the most progressive of all states in the field of higher education. That this is so is because of the members of the Legislature whose interest and activities have reflected accurately the desires of the people of Florida for basic and advanced educational opportunities second to none in the nation.

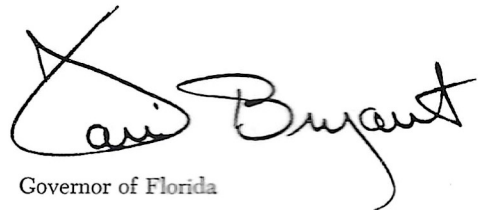
As we pause today to honor these men and women who have done so much for our system of higher education, we would be less than honest if we did not look also at what is still to be done and how we must go about doing that which is needed.

On November 5, Floridians must make a decision that will determine the course we are to follow for the next

several decades. In its wisdom the Legislature passed and presented for a vote of approval a Constitutional Amendment that calls for the issuance of bonds for the securing of funds for college building and for junior college expansion.

The people of this fastest growing state in the nation can do no less for themselves and for the future of their children than to follow the lead of their chosen representatives and approve overwhelmingly the College Building Amendment on November 5.

I want to extend my sincere best wishes to Florida State University and to the leadership of Florida which is being honored here today. May the score of the game reflect favorably on our desire to win all our undertakings for the university system.



Carl Albert Bryant

Governor of Florida

New Dimensions in Engineering

The new School of Engineering Science at Florida State University is dedicated to the preparation of engineering scientists for careers in Florida's research and development industries. It differs from traditional engineering schools in its emphasis of graduate education and its stress on the new fields of engineering which cut across such conventional areas as electrical and mechanical engineering.

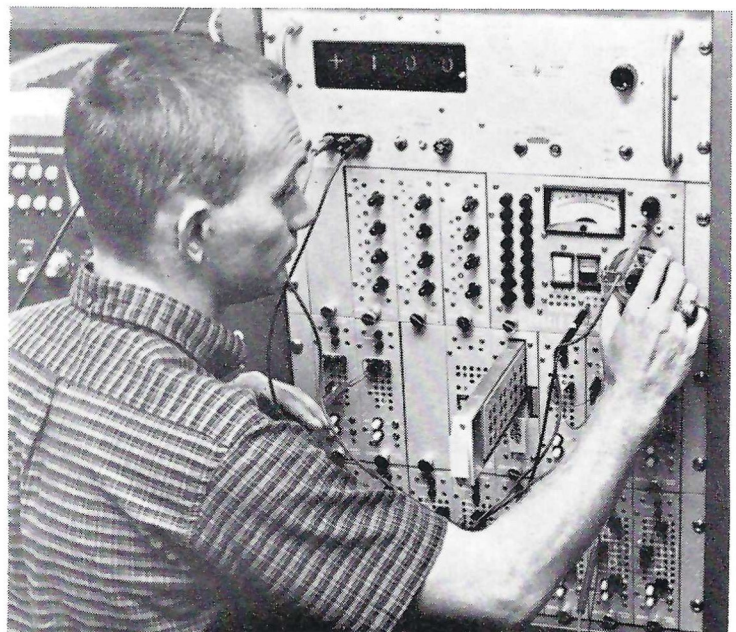
Four of the new fields now being developed at Florida State are Engineering Electronics, Engineering Materials, Engineering Mechanics, and Engineering Systems. Each requires an unusually broad background in modern physics and advanced mathematics.

Other distinguishing features of the new school are its high admissions standards (an overall quality point average of 2.75 being required for admission to the junior year), an independent research program for seniors and a co-operative undergraduate work-study program with industry.

Six of the nation's leading private universities have engineering programs such as the one at FSU, but the School of Engineering Science at Florida State is unique among state universities. It is the first new school to be inaugurated at FSU since the School of Social Welfare was established in 1950.



Engineering Science Dean Grover L. Rogers and Instructor Harold Hosack peer into Oscilloscope in FSU Electronics Laboratory.



Instructor Thomas Fisher at the Console of a 50-Amplifier Analog Computer.

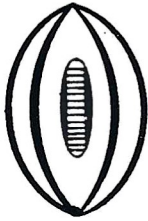
WHEN FSU HAS THE BALL

LEFT END



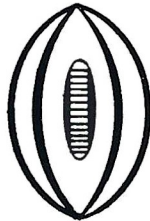
81 Floyd
82 Causey
89 Wettstein

LEFT TACKLE



67 Bruner
79 Pennie
76 West

LEFT GUARD



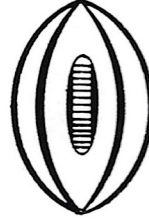
66 Hermann
68 Parrish
61 Shinholser

CENTER



55 Edwards
53 Daly
51 Avezzano

RIGHT GUARD



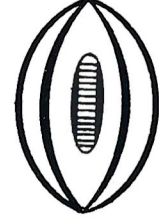
52 Robinson
63 McDowell
65 Wooten

RIGHT TACKLE



73 Sumner
60 Henry
77 Mangan

RIGHT END



83 Dawson
84 D'Allessandro
88 J. Roberts

QUARTERBACK



13 Tensi
11 Calhoun
12 Gero

LEFT HALFBACK



20 Snyder
22 Bibent
29 Petko

RIGHT HALFBACK



25 Biletnikoff
28 Bailey
23 Loftin

FULLBACK



44 M. Roberts
21 Brinkley
41 G. Roberts

(Note: First player listed at each position is starter for Chiefs (two-way) unit, second Renegades (defense), third Warriors (offense).

MEMBER

Federal Home Loan Bank System

Federal Savings and Loan Insurance Corporation

FOR CORRECT TIME DIAL 222-5510



WHERE you save DOES make a difference

WHEN WAKE FOREST HAS THE BALL

LEFT END



83 Cameron
85 Berra
82 Grimes

LEFT TACKLE



78 Mayo
74 Jurkovec
73 Cox

LEFT GUARD



52 Egge
62 Marks
61 Russell

CENTER



54 Duncan
56 Unger
51 Hopkins

RIGHT GUARD



69 Kadon
63 Shearer
66 Underwood

RIGHT TACKLE



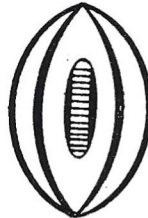
77 Salter
71 Faircloth, Wm.
75 Hauer

RIGHT END



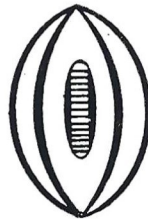
80 Tejcek
81 Faircloth,
Wilbert
89 Coleman

QUARTERBACK



14 Sweetan
18 Bridwell
11 Mackovic

LEFT HALFBACK



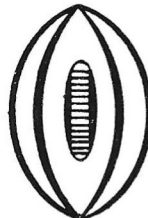
20 Decker
40 Welborn
41 Carazo

RIGHT HALFBACK



27 Bedgood
45 Golightly
26 Emmons

FULLBACK



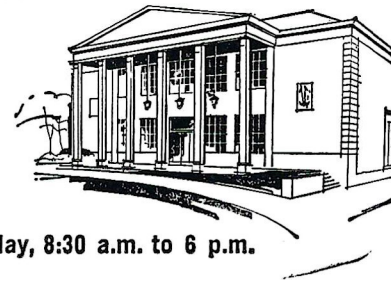
31 Piccolo
19 Brandewiede
34 Miller

Tallahassee Federal

SAVINGS AND LOAN
ASSOCIATION

440 N. Monroe Street ★ Tallahassee, Florida
TELEPHONE 224-2161

HOURS: Monday-Thursday, 8:30 a.m. to 3 p.m.—Friday, 8:30 a.m. to 6 p.m.



State Symphony-Opera Association Inaugurates First Season

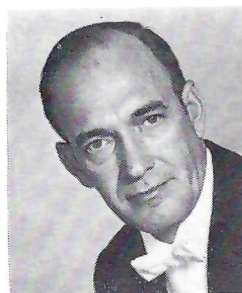
The State Opera Association of Florida, staffed at Florida State University, inaugurates its first season at FSU Oct. 17-19 with the presentation of Prof. Carlisle Floyd's widely acclaimed opera, *Susannah*. Miss Ethel Donaldson (right) of Palatka will alternate in the lead role. Pictured with Miss Donaldson is Walter James of the music faculty, who will sing the role of Sam, brother of *Susannah*.



DEAN KARL O. KUERSTEINER
Executive Chairman



RICHARD L. COLLINS
Opera Director



ROBERT N. SEDORE
Symphony Conductor

Florida's Symphony-Opera Association created by the 1963 Legislature is staffed by the Florida State University School of Music and will inaugurate its first season this month.

Recognized as a growing musical center in the nation, FSU now offers students in music a rich field of orchestral literature. The standard repertoire of overtures, operas, symphonies, ballets, and concertos from the masters are performed in their original setting.

Dr. Karl O. Kuersteiner, Dean of the School of Music, is executive chairman of the Symphony-Opera Association. Richard L. Collins is opera director and Robert N. Sedore is symphony conductor.

FSU Professor of Music Carlisle Floyd's opera, *Susannah*, will be presented October 17, 18, and 19 as the first of three stellar events. The opera first was presented at FSU in 1955 and since has been acclaimed around the world. The New York production won for Floyd the New York Music Critics Circle Award for the best opera of the year.

Scheduled to appear with the Symphony this season are Richard Burgin, violinist and associate conductor of the Boston Symphony, and Violinist Henryk Szeryng, who is internationally known as a concert and recording artist.

The View From Above



By **BILL BUNKER**, Sports Publicity Director
Florida State University

Today's game marks the renewal of one of the most exciting rivalries in Florida State's short football history. This is the sixth time the Seminoles have met the Demon Deacons from Wake Forest, and in none of the previous meetings has the margin of difference between the two teams exceeded a touchdown.

Wake Forest is winless this year. In fact, the Deacons have lost their last 13 games.

"This team is hungry," says FSU Coach Bill Peterson. We're going to have to watch out for them, because they want to win one badly."

The Deacons have lost to East Carolina, Virginia Tech and North Carolina, while the Seminoles have defeated Miami and lost to Texas Christian. However, past performances point towards an eventful afternoon.

The first meeting of these two teams was in 1956. It was a rainy homecoming, and Wake Forest clubbed out a 14-14 tie with Florida State behind the power running of All-American fullback Bill Barnes.

The year 1958 was one of FSU's best, but the Seminoles had to take a safety in the last quarter to hold off Wake Forest 27-24 in what is considered one of the wildest games ever played in Campbell Stadium. A big fellow named Norman Snead, now with the Washington Redskins in the National Football League, completed 11 of 23 passes and gave the Seminoles the scare of their life.

Vic Prinzi, now an FSU freshman coach, provided nine pass completions out of 14 attempts and two touchdowns for the Seminoles.

The Deacons won their only game of the FSU series in 1959, riding the rifle-shots of Snead to a 22-20 victory over the Seminoles in the season opener. The Wake Forest quarterback had to come up with two touchdowns in the last six minutes to win; the last one with 1:56 left on the clock. The lead changed hands three times in a typical Seminole-Deacon thriller.

The closing minutes in 1960 were just as frantic, only this time it was FSU's Bud Whitehead who carried over the winning touchdown with 1:58 left to give the Seminoles a 14-6 victory over a Wake Forest team regarded as one of the strongest in the Atlantic Coast Conference. The Seminoles fought for their lives in that one, stopping the Deacons a foot short of the goal line on one occasion.

Now comes 1963. FSU looks "up" and Wake Forest looks "down." If history means anything, however, the only justifiable prediction is that 60 minutes of thrilling football will be played this afternoon.

FSU Records

SINGLE GAME

INDIVIDUAL

LONGEST TOUCHDOWN RUN FROM SCRIMMAGE—80 yards by Fred Pickard vs. Virginia Tech, 1957.

LONGEST TOUCHDOWN PASS—80 yards, Nelson Italiano to Eddie Gray vs. Newberry, 1950.

LONGEST TOUCHDOWN RUN ANY SITUATION—99 yards by Ted Hewitt vs. Stetson, 1949, and by Fred Biletnikoff vs. Miami, 1963.

LONGEST RUN FROM SCRIMMAGE WITHOUT SCORING—76 yards by Roy Thompson vs. Stetson, 1951.

LONGEST INTERCEPTION RETURN—99 yards by Ted Hewitt vs. Stetson, 1949, and by Fred Biletnikoff vs. Miami, 1963.

LONGEST PUNT RETURN—80 yards by Billy Odom vs. Stetson, 1954.

LONGEST KICKOFF RETURN—89 yards by Odom vs. Virginia Tech, 1955.

MOST TIMES RUSHING—29 by Pickard vs. Georgia, 1959.

MOST YARDS RUSHING—161 by Buddy Strauss vs. Mississippi College, 1949.

MOST YARDS PASSING—355 vs. Villanova, 1954, 1949.

MOST TOTAL OFFENSE—369 yards (56 rushing, 313 passing) by Majors vs. Tampa, 1959.

MOST PASSES ATTEMPTED—32 by Joe Majors vs. Tampa, 1959.

MOST PASSES COMPLETED—20 by Majors vs. Tampa, 1959.

MOST PASSES CAUGHT—9 by Bud Whitehead vs. Tampa, 1959.

MOST YARDS RECEIVING PASSES—123 by Harry Bringer vs. Mississippi College, 1950.

MOST PASSES INTERCEPTED—3 by Tommy Brown vs. Stetson, 1950 and vs. Georgia Tech, 1952; Lee Corso vs. Georgia 1954; Whitehead vs. Virginia Tech, 1959.

LONGEST PUNT—84 yards by Brown vs. Tampa, 1950.

LONGEST FIELD GOAL—32 yards by Johnny Shepard vs. Miami, 1958.

TEAM

MOST POINTS—74 vs. Whiting Field 0, 1949.

GREATEST MARGIN OF VICTORY—74-0 vs. Whiting Field, 1949.

GREATEST MARGIN OF DEFEAT—0-42 vs. Georgia, 1959.

MOST YARDS RUSHING—383 vs. Abilene Christian, 1957.

MOST YARDS PASSING—355 vs. Villanova, 1954.

MOST TOTAL OFFENSE—514 yards vs. The Citadel, 1959 (307 rushing, 207 passing).

MOST PASSES ATTEMPTED—34 vs. Tampa, 1959 (completed 20).

MOST PASSES COMPLETED—20 vs. Tampa, 1959 (attempted 34).

MOST PASSES INTERCEPTED—7 vs. Virginia Tech, 1959.

MOST PUNTS—10 vs. Stetson and Georgia Tech, 1955.

MOST POINTS—60 by Red Parrish, 1949.



Is the '64 Buick Wildcat really wild?

...the wildest!

Wish we could show you a picture of the '64 Buick Wildcat instead of just "Wildcat people". But that would spoil the surprise in store for you on October 4th. That's when the new Wildcat (and all the other beautiful '64 Buicks) go on display at your local Buick dealer's. Until then, a few tidbits to whet your appetite: three new Wildcat V-8 engines ranging up to 360 hp. Three new transmissions, including a new Super Turbine torque converter automatic with lots more thrust on lots less gas. Four new models: 4-door hardtop; 2-door sport coupe; 4-door sedan; convertible. Above all, they're Buicks!

BUICK MOTOR DIVISION

FLORIDA STATE 1963 FOOTBALL ROSTER

No.	Name	Pos.	Ht.	Wt.	Age	Class	Hometown
11	*Charlie Calhoun	QB	5-10	171	20	Sr.	Tallahassee
12	Tony Gero	QB	5-10	183	19	So.	Madison, N. J.
13	*Steve Tensi	QB	6-5	201	20	Jr.	Cincinnati, O.
14	Jim Massey	QB	5-11	176	20	So.	Cairo, Ga.
15	Russ Fischer	QB	6-1	184	20	So.	Melbourne
16	Ed Pritchett	QB	6-2	177	22	So.	Decatur, Ga.
20	*Dave Snyder	HB	5-10	184	21	Sr.	Jacksonville
21	*Larry Brinkley	FB	5-11	190	21	Sr.	Willoughby, O.
22	Maury Bibent	HB	6-0	186	20	So.	Cincinnati, O.
23	*Jim Loftin	HB	6-1	181	20	Jr.	Pensacola
24	Mario DeLiberty	HB	5-9	184	19	So.	Havertown, Pa.
25	*Fred Biletnikoff	HB	6-1	186	20	Jr.	Erie, Pa.
26	Bill Hammond	HB	5-11	181	21	So.	Melbourne
28	*Winfred Bailey	HB	6-0	186	21	Jr.	Atlanta, Ga.
29	Joe Petko	HB	5-9	186	19	So.	Shaker Heights, O.
40	*Doug Messer	HB	6-1	188	21	Sr.	LaGrange, Ga.
41	*Gene Roberts	FB	6-0	200	21	Sr.	High Springs
42	Les Murdock	FB	6-2	213	21	Jr.	Hollywood
43	Howard Ehler	FB	6-1	190	19	So.	Tavares
44	*Marion Roberts	FB	6-0	197	20	Sr.	Ocilla, Ga.
51	Joe Avezzano	C	6-1	223	20	So.	Miami
52	*Chuck Robinson	G	5-11	218	21	Sr.	E. Palestine, O.
53	*Bill Daly	C	6-1	209	20	Sr.	Jacksonville
54	Jay Mac Matthews	C	6-1	216	19	So.	Chiefland
55	*Jack Edwards	C	6-1	221	20	Jr.	Tampa
60	*Ferrell Henry	C	6-1	212	21	Sr.	Colquitt, Ga.
61	Jack Shinholser	G	6-1	200	21	So.	Tampa
62	Gene Parish	G	6-3	196	21	So.	Headland, Ala.
63	Bill McDowell	G	6-1	191	19	So.	Tallahassee
64	David Pitts	G	5-9	211	19	So.	Blountstown
65	Jerry Wooten	G	6-1	195	19	So.	Geneva, Ala.
66	*Dick Hermann	G	6-0	200	21	Jr.	Marianna
67	*Jerry Bruner	T	5-10	232	21	Sr.	Evansville, Ind.
68	Joe Parrish	G	6-1	193	20	So.	Auburndale
69	Steve Watson	T	5-10	215	19	So.	Rossford, O.
70	Larry Strobel	T	5-11	227	19	So.	Massilon, O.
71	Darrell Willett	T	6-1	231	20	So.	Tifton, Ga.
73	*Avery Sumner	T	6-2	216	21	Jr.	Adel, Ga.
75	*Dale MacKenzie	T	6-2	227	20	Jr.	Clearwater
76	*Tom West	T	6-4	222	20	Jr.	Headland, Ala.
77	Bob Mangan	T	6-1	231	21	So.	Atlanta, Ga.
78	Max Andrews	T	6-1	203	21	So.	Rehobeth, Ala.
79	Frank Pennie	T	6-4	242	20	So.	Hollywood
80	*John Wachtel	E	6-1	193	21	Jr.	Massilon, O.
81	*Don Floyd	E	6-1	197	21	Jr.	Madison
82	*Jim Causey	E	6-1	209	22	Jr.	Miami
83	*Bill Dawson	E	6-3	231	20	Jr.	Valdosta, Ga.
84	George D'Allessandro	E	5-10	205	20	So.	Fort Myers
85	Dale Twitchell	E	6-1	205	20	So.	Florala, Ala.
86	Buddy Blankenship	E	6-3	200	19	So.	Atlanta, Ga.
87	Terry Garvin	E	5-11	206	20	So.	Pensacola
88	John Roberts	E	6-0	190	21	So.	Orlando
89	Max Wettstein	E	6-3	203	19	So.	Leesburg

* Denotes letterman
1963 CO-CAPTAINS RG Chuck Robinson and QB Charlie Calhoun



1818 W. Tennessee

Howdy Podner . . . Me and the boys jest want to notafy everbody that we are still serven them Notorious and Dillicious charcoal-broiled Steerbrugers and Steak Samwiches at our fine Drive-In Resterant, jest 2 passes & a fumbball offen the campus on West Tennessee where Call St. comes in. See you at the Seven Steers.

Yours truly,
OLE TEX.

OWNED AND OPERATED BY FRANK CHASE & SONS, FRANK JR.,
CHARLES, ROBERT, RICHARD, RAYMOND

Skyline Restaurant

1 Mile West of City Limits

U. S. Highways 90 and 20

OPEN 6 A.M. TO 11 P.M.

TALLAHASSEE, FLORIDA

"Serving Good Food for Fine People"

Private Rooms and Banquet Facilities

**SOUTHERNAIRE MOTEL &
SKYLINE MOTOR LODGE**



Quality people always seek
quality accommodations

MIDYETTE-MOOR Insurance Agency

"Ask Those We Serve"

Complete Insurance and Bond Service

PHONE 222-3456



MIDYETTE-MOOR BUILDING
TALLAHASSEE, FLORIDA

—SAYS—

SCALP 'EM SEMINOLES!



PAYNE MIDYETTE

FRANK MOOR

BILL MOOR

ED. CLARK

GLENN SEARS

WINSLOW SULLIVAN

PAUL McCARTNEY

BOB DICKINSON

REX SIKES

PAUL LEWIS

JIM MILLHOFF

PAYNE MIDYETTE, JR.

JOHN REEVES



Penny Edwards—"MISS TIPARILLO."

What does she mean "cigars...cigarettes...Tiparillos"?

You'll be hearing that chant more and more—now that Tiparillos have arrived. And arrived they have. In all the right places. With all the right people.

The new Tiparillo has a neat, trim shape. It looks young and debonair. And its pearly, pliable tip pays more than lip service to your smoking pleasure.

And never before such mildness! The most careful blending of choicest imported tobaccos has seen to that. So, too, has the exclusive, veinless Ultra Cigar Wrapper* that burns so evenly and smoothly it insures complete mildness.

You can even see the mildness. The

surprisingly whiter ash is visible evidence. Smoker's proof. Here is flavor you don't have to inhale to enjoy.

"Cigars...cigarettes...?" Who knows, maybe someday it will be just "Tiparillos!"

Why don't you ask for one today?

*T.M. GENERAL CIGAR

Tiparillos are on sale at this stadium.



FSU'S 1963 COACHING STAFF: (Front row, L-R) Bobby Bowden, Bubba McGowan, Bill Peterson, Vince Gibson; (Back row) Y. C. McNease, Bill Proctor, Don James, John Coatta, Bob Harbison, Lou Luce.



BILL PETERSON
Head Football Coach

*The
Seminole
Football
Family*



VAUGHN MANCHA
Athletic Director



RONALD MELTON
Athletic Business
Manager



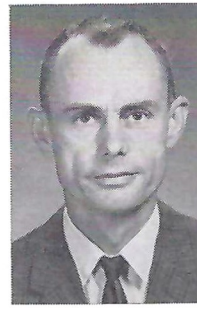
DON FAULS
Team Trainer



DR. R. A. JOHNSON
Team Physician



BILL BUNKER
Sports Publicity
Director



CLAUDE THIGPEN
Ticket Manager



TILLMAN DIXON
Equipment Custodian



Joe Avezzano



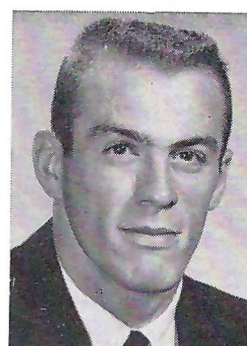
Winfred Bailey



Maury Bibent



Fred Biletnikoff



Larry Brinkley



Jerry Bruner

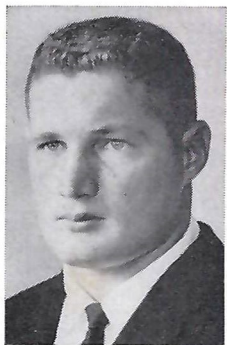
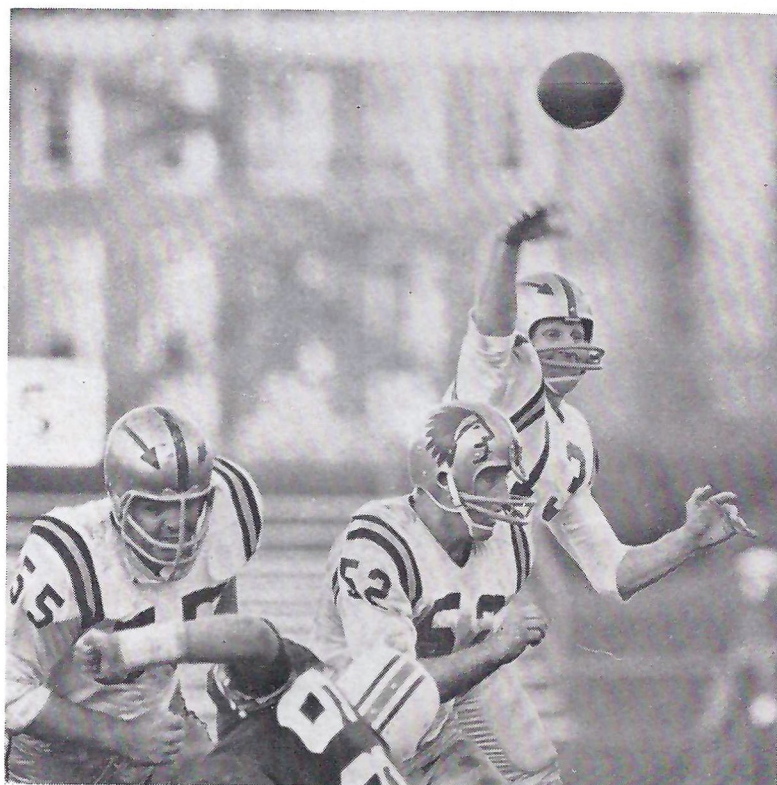


Charlie Calhoun

F

S

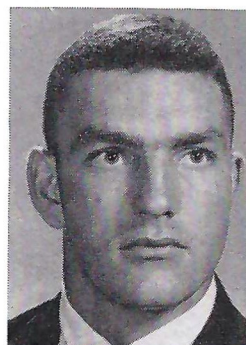
U



Jim Causey



George D'Allessandro



Bill Daly



Bill Dawson



Jack Edwards



Howard Ehler



Don Floyd



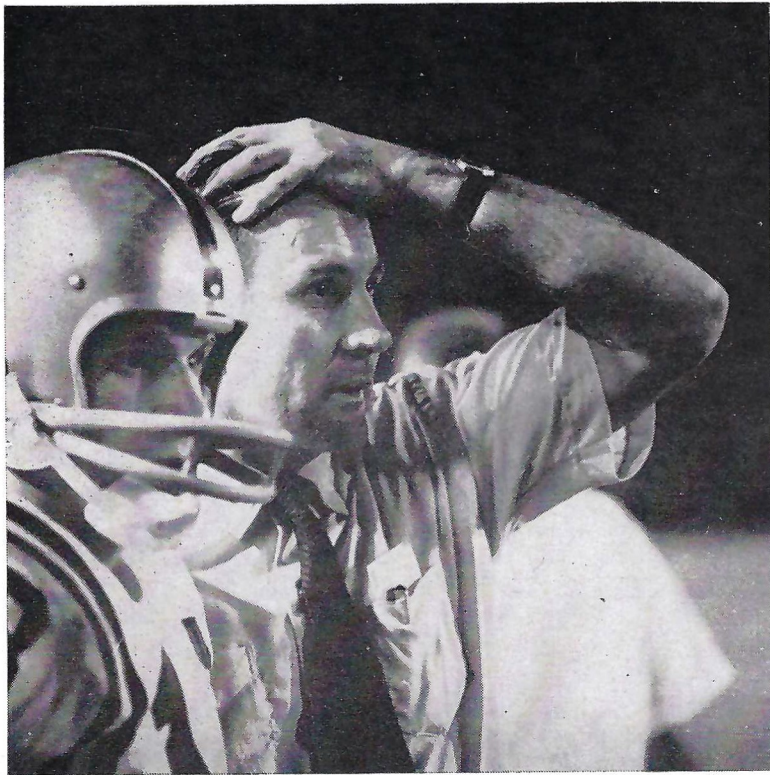
Ken Frazier



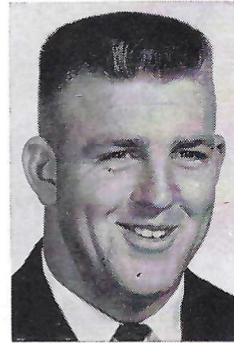
Terry Garvin



Tony Gero

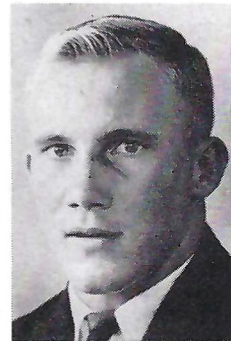


F



Ferrell Henry

S



Dick Hermann

U



Jim Loftin



Dale MacKenzie



Bob Mangan



Jim Massey



Jay Mac Matthews



Bill McDowell



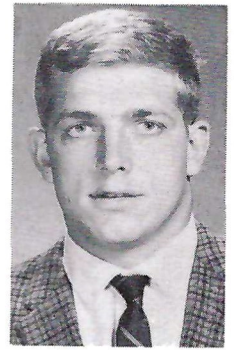
Doug Messer



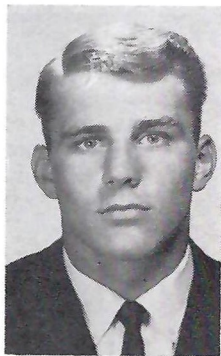
Les Murdock



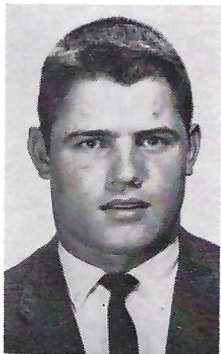
Joe Parrish



Frank Pennie



Joe Petko

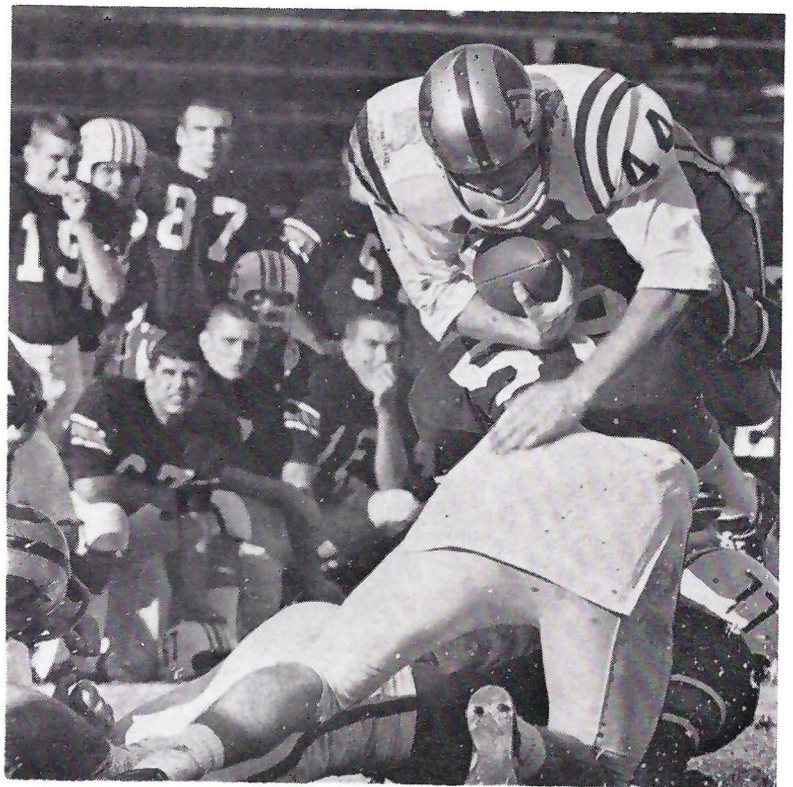


Ed Pope

F

S

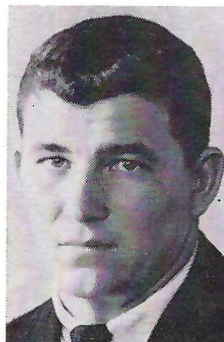
U



Ed Pritchett



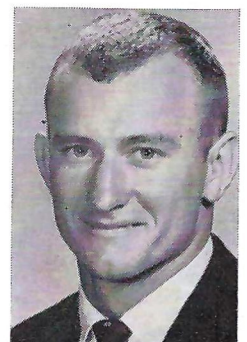
Elton Revell



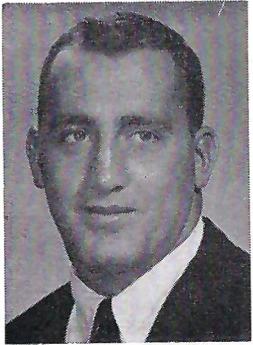
Gene Roberts



John Roberts



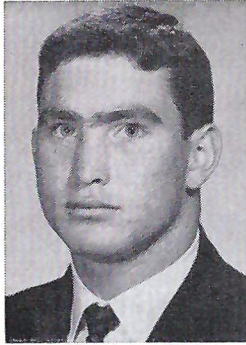
Marion Roberts



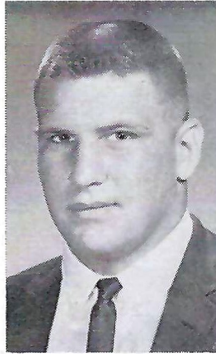
Chuck Robinson



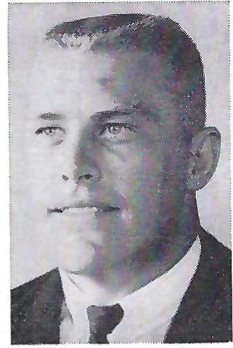
Jack Shinholser



Dave Snyder



Larry Strobel



Avery Sumner

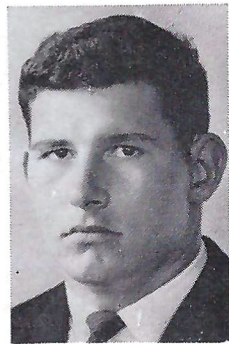


F



Steve Tensi

S

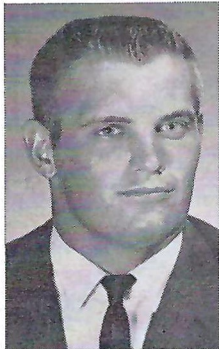


Dale Twitchell

U



John Wachtel



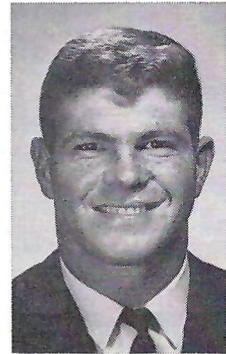
David Pitts



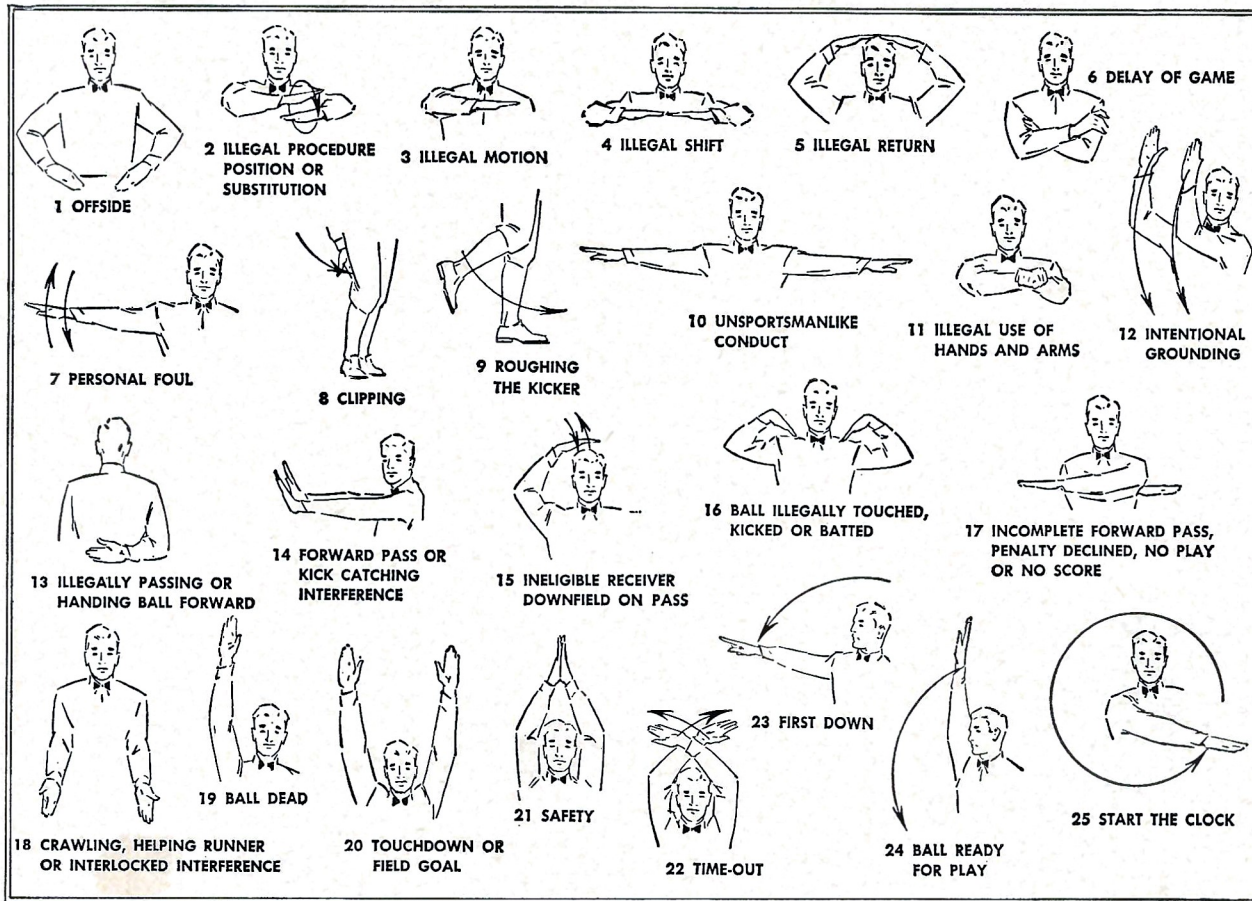
Tom West



Max Wettstein

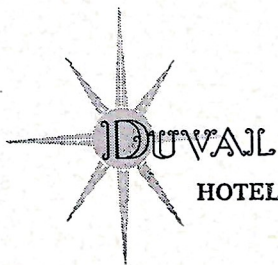


Jerry Wooten



**TRAVELING
DESSERT TRAYS**

**FAMOUS
TOWN HOUSE
ROAST
PRIME RIB
OF BEEF**



HOTEL • TALLAHASSEE, FLORIDA



SPURGEON CAMP

*Good Luck
Seminoles!*

★ NOBODY... BUT NOBODY UNDERSELLS. ★

**SOUTHERN
ELECTRIC INC.**

**5-Store Purchasing Power
Saves You Money on G-E Appliances!**

Tallahassee
Downtown and
Capital Plaza

Perry, Fla.
115 E. Green St.
on the Square

Valdosta, Ga.
117 W. Central

Albany, Ga.
225 W. Ogle-
thorpe St.

WAKE FOREST

Starting Lineup

No.	Name	Pos.
83	RICHARD CAMERON	LE
78	JIM MAYO	LT
52	FARRELL EGGE	LG
54	LEWIS DUNCAN	C
69	RON KADON	RG
77	WILLIAM SALTER	RT
80	JIM TEJECK	RE
14	KARL SWEETAN	QB
20	SAMMY DECKER	LHB
27	JIMMY BEDGOOD	RHB
31	BRIAN PICCOLO	FB

THE DEACON SQUAD

11 Mackovic, QB	45 Golightly, HB	73 Cox, T
12 Shillinglaw, QB	50 Beaudoin, C	74 Jurkovec, T
14 Sweetan, QB	51 Hopkins, C	75 Hauer, T
15 Polshaw, QB	52 Egge, G	77 Salter, T
18 Bridwell, QB	54 Duncan, C	78 Mayo, T
19 Brandewiede, FB	55 Howie, G	79 Holcher, T
20 Decker, HB	56 Unger, C	80 Tejeck, E
25 Miner, HB	61 Russell, G	81 Faircloth, E
26 Emmons, HB	62 Marks, G	82 Grimes, E
27 Bedgood, HB	63 Shearer, G	83 Cameron, E
29 Kelly, HB	64 Baldwin, G	84 Bazler, E
31 Piccolo, FB	66 Underwood, G	85 Berra, E
34 Miller, FB	67 Cooper, G	86 Muncy, E
35 McKinney, FB	69 Kadon, G	87 Hall, E
40 Welborn, HB	70 Sonsky, T	88 Slone, E
41 Carazo, HB	71 Faircloth, T	89 Coleman, E
43 Davis, HB	72 Reeder, T	

Viceroy's got

SMOKE ALL 7

Smoke all 7 filter brands and you'll agree: some taste as if they had no filter at all... others filter the fun and flavor out of smoking. But Viceroy tastes the way you'd like a filter cigarette to taste!

FLORIDA STATE

Starting Lineup

No.	Name	Pos.
81	DON FLOYD _____	LE
67	JERRY BRUNER _____	LT
66	DICK HERMANN _____	LG
55	JACK EDWARDS _____	C
52	CHUCK ROBINSON _____	RG
73	AVERY SUMNER _____	RT
83	BILL DAWSON _____	RE
13	STEVE TENSI _____	QB
20	DAVE SNYDER _____	LHB
25	FRED BILETNIKOFF _____	RHB
44	MARION ROBERTS _____	FB

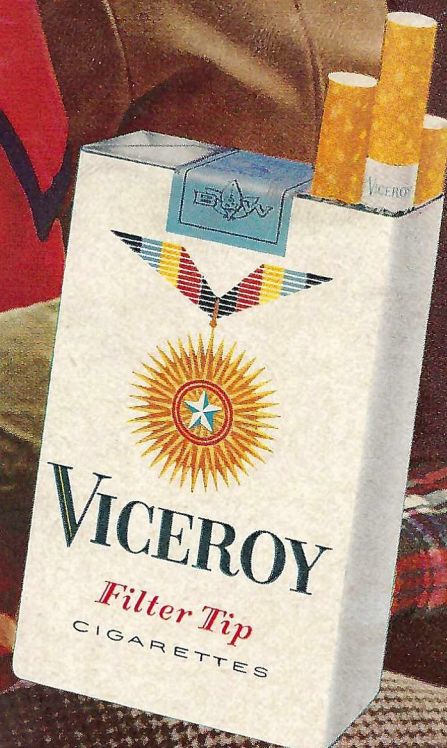
THE SEMINOLE SQUAD

11 Calhoun, QB	43 Ehler, FB	71 Willett, T
12 Gero, QB	44 Roberts, M., FB	73 Sumner, T
13 Tensi, QB	51 Avezzano, C	75 MacKenzie, T
15 Fischer, QB	52 Robinson, G	76 West, T
14 Massey, QB	53 Daly, C	77 Mangan, T
16 Pritchett, QB	54 Matthews, C	78 Andrews, T
20 Snyder, HB	55 Edwards, C	79 Pennie, T
21 Brinkley, FB	60 Henry, T	80 Wachtel, E
22 Bibent, HB	61 Shinholser, G	81 Floyd, E
23 Loftin, HB	62 Parish, G	82 Causey, E
24 DeLiberty, HB	63 McDowell, G	83 Dawson, E
25 Biletnikoff, HB	64 Pitts, G	84 D'Allessandro, E
26 Hammond, HB	65 Wooten, G	85 Twitchell, E
28 Bailey, HB	66 Hermann, G	86 Blankenship, E
29 Petko, HB	67 Bruner, T	87 Garvin, E
40 Messer, HB	68 Parrish, G	88 Roberts, J., E
41 Roberts, G., FB	69 Watson, T	89 Wettstein, E
42 Murdock, FB	70 Strobel, T	

the taste that's right!

not too strong...not too light...

Viceroy's got-the
taste that's right!



PENALTIES

1. **OFFSIDE** by either team; Violation of scrimmage or free kick formation; Encroachment on neutral zone—Loss of Five Yards.
2. **ILLEGAL PROCEDURE, POSITION OR SUBSTITUTION**—Putting ball in play before Referee signals "Ready-for-play"; Failure to complete substitution before play starts; Player out of bounds when scrimmage begins; Failure to maintain proper alignment of offensive team when ball is snapped; False start or simulating start of a play; Taking more than two steps after Fair Catch is made; Player on line receiving snap—Loss of Five Yards.
3. **ILLEGAL MOTION**—Offensive player illegally in motion when ball is snapped—Loss of Five Yards.
4. **ILLEGAL SHIFT**—Failure to stop one full second following shift—Loss of Fifteen Yards.
5. **ILLEGAL RETURN** of substitute not previously disqualified—Loss of Fifteen Yards.
6. **ILLEGAL DELAY OF GAME**; Taking more than four times out during either half (except for replacement of injured player)—Loss of Five Yards. Team not ready to play at start of either half—Loss of Fifteen Yards.
7. **PERSONAL FOUL** — Tackling or blocking defensive player who has made fair catch; Piling on; Hurdling; Grasping face mask of opponent; Tackling player out of bounds, or running into player obviously out of play; Striking an opponent with fist, forearm, elbow or locked hands; Kicking or kneeing—Loss of Fifteen Yards (Flagrant offenders will be disqualified.)
8. **CLIPPING**—Loss of Fifteen Yards.
9. **ROUGHING THE KICKER** or holder—Loss of Fifteen Yards.
10. **UNSPORTSMANLIKE CONDUCT**—Violation of rules during intermission; Illegal return of suspended player; Coaching from sidelines; Invalid signal for Fair Catch; Persons illegally on field—Loss of Fifteen Yards. (Flagrant offenders will be disqualified.)
11. **ILLEGAL USE OF HANDS AND ARMS** by offensive or defensive player; Defensive holding—Loss of Fifteen Yards.
12. **INTENTIONAL GROUNDING** of forward pass—Loss of Five Yards Plus Loss of Down.
13. **ILLEGALLY PASSING OR HANDING BALL FORWARD**—Loss of Five Yards Plus Loss of Down.
14. **FORWARD PASS OR KICK CATCHING INTERFERENCE**—Interference with opportunity of player of receiving team to catch a kick—Loss of Fifteen Yards. Interference by member of offensive team with defensive player making pass interception—Loss of Fifteen Yards Plus Loss of Down. Interference by defensive team on forward pass—Passing Team's Ball at Spot of Foul and First Down.
15. **INELIGIBLE RECEIVER DOWN-FIELD ON PASS**—Loss of Fifteen Yards.
16. **BALL ILLEGALLY TOUCHED, KICKED OR BATTED**—Forward pass being touched by ineligible receiver beyond the line of scrimmage—Loss of Fifteen Yards from Spot of Preceding Down and Loss of a Down. Eligible pass receiver who goes out of bounds and later touches a forward pass—Loss of Down. Illegal touching of kicked ball within opponent's ten yard line—Touchback.
17. **PENALTY DECLINED**; Incomplete forward pass; No play or no score.
18. **CRAWLING** by runner—Loss of Five Yards. Interlocked Interference—Loss of Fifteen Yards.

"....it's a date!"

**WILL IT BE
PIZZAS AT
SMITH HALL**

OR

QUICKIE BURGERS

**AND EXTRA THICK MALTS AT THE STUDENT CENTER
DINING HALL & SODA SHOP ALSO AVAILABLE TO SERVE YOU**

"Fine See You There!"





HAV-A-TAMPA JEWEL

The s-m-o-o-t-h
cigar with the
built-in mouthpiece

ALL NATURAL-LEAF
FINE TOBACCO . . .
TOPS IN TASTE AND
SMOKING PLEASURE

*Ask for the
Brand Name*

HAV-A-TAMPA
CIGAR

Distributed by **Eli Witt Tobacco & Candy Co.**
Tallahassee, Florida

QUALITY CLEANERS

215 W. COLLEGE AVE.—DIAL 222-5097

ONE DAY SERVICE

PICK-UP and DELIVERY

Quality Laundry Work

Fluff Dry Service

EXPERT TAILORING and ALTERATIONS

ZIPPERS REPAIRED

BENNETT'S DRUG STORE

- Prescriptions
- Cameras
- Sundries
- Gifts
- Fountain
- Cafe
- Cosmetics
- Drugs

MEET ME AT BENNETT'S

BEFORE AND AFTER THE GAME!

Corner Monroe and College Streets

Phone 222-8980 — 222-4450

LITTLE FOLKS STORE, Inc.

133 North Monroe Street

TALLAHASSEE, FLORIDA

Toys, Hobbies, Children's Furniture

Jack L. Finley

Phone 222-1146

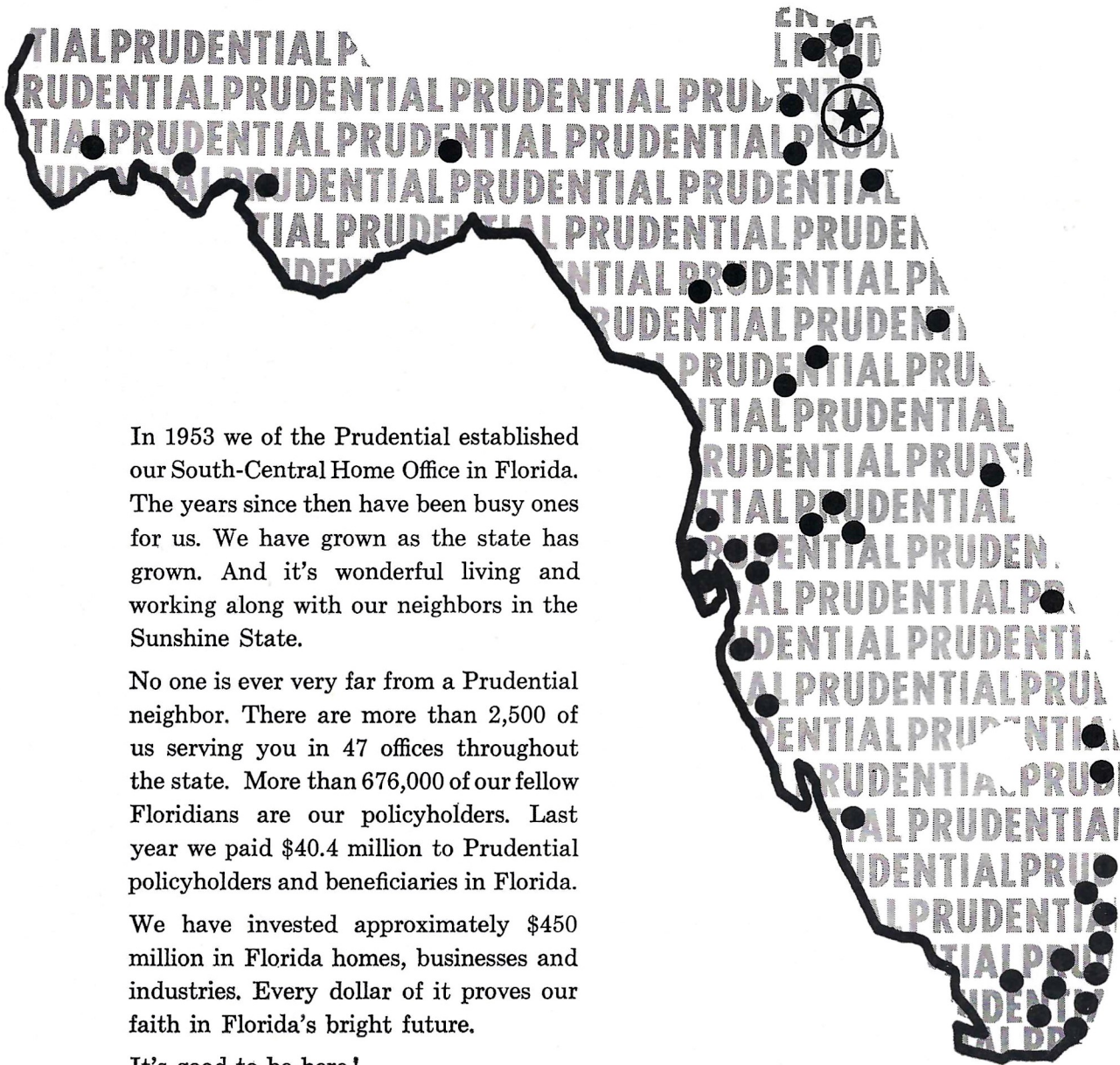
*First choice of those who appreciate
the finest in foods and service!
Open Breakfast, Lunch and Dinner*

BRUCE BISHOP'S

1921 W. Tennessee

THE
FOUNTAIN
RESTAURANT

We like the State we're in

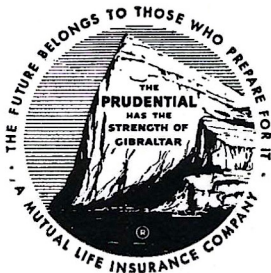


In 1953 we of the Prudential established our South-Central Home Office in Florida. The years since then have been busy ones for us. We have grown as the state has grown. And it's wonderful living and working along with our neighbors in the Sunshine State.

No one is ever very far from a Prudential neighbor. There are more than 2,500 of us serving you in 47 offices throughout the state. More than 676,000 of our fellow Floridians are our policyholders. Last year we paid \$40.4 million to Prudential policyholders and beneficiaries in Florida.

We have invested approximately \$450 million in Florida homes, businesses and industries. Every dollar of it proves our faith in Florida's bright future.

It's good to be here!



THE PRUDENTIAL INSURANCE COMPANY OF AMERICA

SOUTH-CENTRAL HOME OFFICE • JACKSONVILLE, FLORIDA

BE A SEMINOLE BOOSTER

"The Seminole Boosters provide the margin of difference between a good team and a great team."

Thus Florida State's Bill Peterson sums up his feelings toward the Seminole Boosters, Inc., an organization devoted to the support of FSU athletics with emphasis on the football program.

Membership in the Boosters—the group numbers approximately 1200 now—is open to anyone with a sincere interest in the University's athletic welfare. Minimum contribution for an individual membership is \$10, for a business membership, \$25.

Contributions are administered in accordance with NCAA regulations and in conjunction with the FSU Department of Intercollegiate Athletics.

Boosters receive a colorful automobile license plate which provides reserved parking at the stadium, a membership card, a weekly fall publication called "The Grandstand Coach," and certain priorities on season and individual football tickets.

Serving his initial term as president of Seminole Boosters, Inc., is F. Wilson (Bill) Carraway, Jr., Secretary and Manager of the Coca-Cola Bottling Co., Tallahassee. Hardworking executive secretary of the organization is Thomas A. Waits, Director of FSU Alumni Affairs.



Tom Waits and Bill Carraway

GOOD LUCK SEMINOLES!

LOUIS' SEAFARE

"A BANQUET IN A BOX"

featuring Seafood & Chicken

With over 18 different items to carry out in over 50 different sizes.

620 W. Tennessee St.

Ph. 224-1181

Be sure and visit our other location in Gainesville, Fla.
309 N. W. 13th St.

We also have an air conditioned area if you so desire.

FOREMOST

ICE CREAM

PHONE • 224-7136

SUNSHINE STATE DAIRYMEN'S COOP.

PHONE • 222-5303

Garcia's

OPEN 11 A.M. TO MIDNIGHT DAILY

"HOME OF FINE COOKED
SPANISH-MEXICAN &
AMERICAN FOODS"

320 E. TENNESSEE ST.

223-1177

Learn to Fly at Seminole Flying Service, Inc.

Municipal Airport

Phone 222-3121

Tallahassee, Fla.

- AIRPLANE RIDES
- FLIGHT INSTRUCTION
- AERIAL PHOTOGRAPHY
- CHARTER FLIGHTS

FLY the best—A New Cessna

"Look up—a new CESSNA will be overhead"

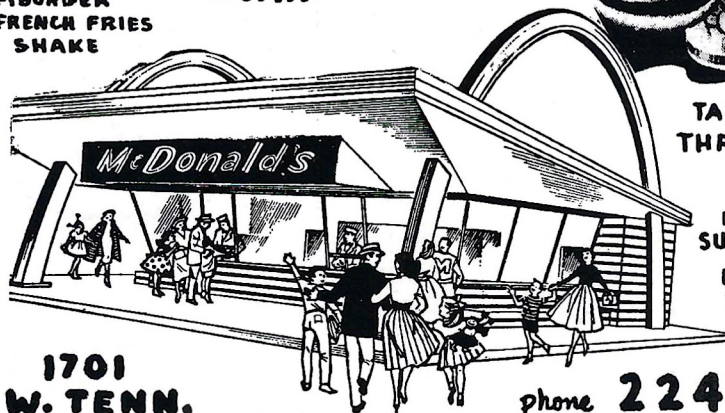
McDonald's HAMBURGERS

a safe choice
anytime, anywhere



McDonald's
ALL AMERICAN

- 100% PURE BEEF HAMBURGER
- CRISP GOLDEN BROWN FRENCH FRIES
- TRIPLE THICK DAIRY SHAKE



1701
W. TENN.

phone 224-3631



TASTY FOOD
THRIFTY PRICES

OPEN
11:30 TO 11:30
SUN. thru THURS
11:30 TO 1 AM
FRI. & SAT.

THE FLORIDA STATE FOOTBALL NETWORK

... Follow the Seminoles at Home and Away



Bo Mitchell



John Hoy

"Good afternoon, ladies and gentlemen, this is Bo Mitchell and John Hoy bringing you Florida State University football. . . ."

The voices are new, but the play-by-play thrill brought to FSU fans at home over the Seminole Football Network for the past three years remain the same.

Energetic new "voice" of the Seminoles is Bo Mitchell of Pensacola. His partner at the FSU microphone is Tallahassee's John Hoy who does pre-game, halftime and "time out" color commentary.

Mitchell is vice-president and station manager of radio station WCOA, Pensacola. The ex-naval aviator brings 15 years of sportscasting experience to the growing Seminole Network which carries Florida State Football to thousands of listeners in Georgia and Florida.

In addition to his network chores, Hoy, who is sports director of Tallahassee's WCTV, is host to the "Bill Peterson Show" every Sunday afternoon, and has a daily sports program.

Completing the team is Art Deters, chief engineer and organizer of this year's network. Deters is station manager of radio station WTAL, Tallahassee.

During the 1963 season the Seminole Network will be carried by 18 Florida stations.

You can follow the Seminoles this year over WKIS, Orlando; WALT, Tampa; WOOO, DeLand; WCNH, Quincy; WPCF, Panama City; WMOP, Ocala; WSRA, Milton; WIOD, Miami; WCOA, Pensacola; WMYR, Fort Myers; WGRO, Lake City; WTOT, Marianna; WTAL, Tallahassee; WNSN, Valparaiso; WROD, Daytona Beach; WAVP, Avon Park; WPAX, Thomasville; WJAX, Jacksonville; WMAF, Madison; and WWPF, Palatka.

The Vogue

TALLAHASSEE, FLORIDA

Before Or After

Game

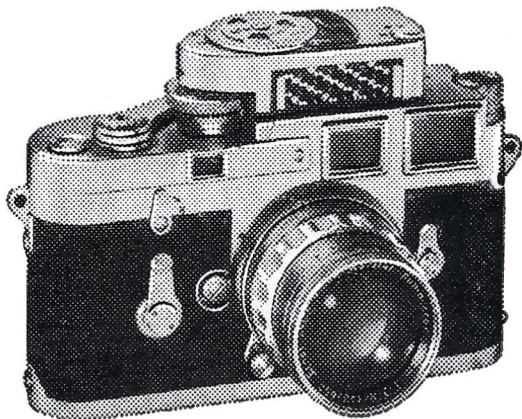
CHICKEN IN THE ROUGH
COPYRIGHT 1977 BY BEVERLY OSBORN

QUAKER HOUSE



RESTAURANT

*Dining Room
and Curb Service*



**FOOTBALL FANS
YOU WILL FIND EVERYTHING
PHOTOGRAPHIC**

- FILMS
- CAMERAS
- ACCESSORIES
- RENTALS
- COMPLETE PHOTOFINISHING SERVICE

AT

TALLAHASSEE CAMERA CENTER

117 North Monroe St.

Ph. 222-8771

"Across from the Florida Theatre"

WFSU-TV—THE SEMINOLE STATION

There's more football action than ever over WFSU-TV this fall.

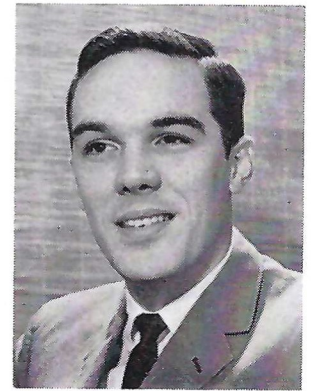


Mike Shaara

Florida State's educational television station (Channel 11) is keeping pace with the increased interest in the Seminoles with feature programs which give the armchair fan a close look at games upcoming and past, plus reports on future FSU opponents.

Leading off every football week this year will be a complete showing of the previous Saturday's game on Monday nights at 10. WCTV's Roy Weissinger does the play-by-play and Mike Shaara of the FSU English Department brings a wide sports background into his color commentary.

At 8 p.m. on Thursday is John Hoy's football preview show, "63 Seminoles." This hour-long program presents FSU's "Scout of the Week" with information on the coming Saturday's foe. Members of the Seminole squad and other outstanding guests will also be presented.



Roy Weissinger

ENJOY THE GAME MORE!

Treat yourself to **m&m's** Candies



ON SALE AT THIS STADIUM NOW!



SEMINOLE CHEERLEADERS—Front row, left to right: Linda Duyck, Plant City; Bill Harnage, St. Petersburg; Kay Lewis, Arcadia; Bill Whidden, Kissimmee; Carolyn Duyck, Plant City. Second row: Dee Weber, West Palm Beach; Head Cheerleader Sherry Harris, Merritt Island; and Linda Hagan, Orlando.

ALMA MATER

High O'er the Towering Pines our voices swell
 Praising these Gothic spires we love so well
 Here sons and daughters stand, faithful and true
 Hailing our Alma Mater—F S U.

FIGHT SONG

We're going to fight, fight, fight, for FSU
 We're going to scalp 'em, Seminoles,
 We're going to win, win, win, win this game
 And roll on down and make those goals!
 For FSU is on the warpath now,
 And at the battle's end she's great;
 So fight, fight, fight, fight, for victory
 Our Seminoles of Florida State
 F-L-O-R-I-D-A S-T-A-T-E!
 Florida State! Florida State! Florida State!

THREE GARNETS

Give me a Garnet, Garnet, Garnet Garnet Garnet
 Give me a Gold, Gold, Gold Gold Gold
 Garnet, Gold
 Garnet, Gold
 Go Seminoles Go!

SITTIN' IN A WIGWAM

Sittin' in a wigwam
 Beatin' on a tom- tom
 Who come? We come!
 Everybody will come.
 Scalp 'em (clap, clap), Scalp 'em
 (Clap, clap), etc.

FRESHMAN, FLUNKY

Freshman, Flunky, Student, Scholar,
 All good Seminoles, stand up and holler!

GO FLORIDA STATE

Go-o-o-o-o-o-o-o-o-o, Florida!
 Go-o-o-o-o-o-o-o-o-o, State!
 Go! Go!
 Florida State!

GARNET AND GOLD

Garnet and Gold, fight, fight!
 Garnet and Gold, fight, fight!
 Who fight? We fight!
 Garnet and Gold, fight, fight!

IS EVERYBODY HAPPY?

Is everybody happy?
 AUD: Hell, yes!
 Is anybody low?
 AUD: Hell, no!
 Let's railroad Seminoles
 And take it slow!
 (Spell Seminoles 3 times)
 Go, Seminoles!

FSU CLAP CHEER

(Stomp clap, stomp clap, stomp clap-clap-clap-clap-clap)
 Repeat 3 times, then:
 F (clap, stomp clap, stomp clap-clap-clap-clap)
 S (clap, stomp clap, stomp clap-clap-clap-clap)
 U (clap, stomp clap, stomp clap-clap-clap-clap)
 F (clap) S (clap) U (clap-clap-clap-clap)
 Go!!

THE ATHLETIC COMMITTEE

The Athletic Committee, appointed by the President, is the governing body of intercollegiate athletics at Florida State University.

The Committee has the responsibility of seeing that athletics are conducted primarily in the interests of the students, but with due regard for a proper, continuing and healthy interest of the alumni and the citizens of Florida, as well as the athletic heritage and prestige of the University.

Mode L. Stone, Dean of the School of Education is the Committee chairman. Members are Mary V. Alexander, Claude Flory, Coyle Moore, J. M. Plant, Elston Roady and Thomas Wright. Ex-officio non-voting members are Vaughn Mancha, the FSU Alumni President, the Seminole Booster President and the President of the Student Body.



Mode L. Stone



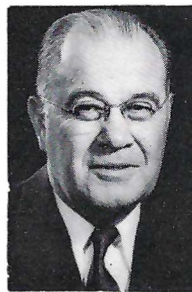
Thomas Wright



J. M. Plant



Claude Flory



Coyle Moore



Mary Alexander



Elston Roady

TODAY'S TEAMS—HOW THEY RATE

Results

FLORIDA STATE (1-1)

Miami	24-0
Texas Christian	0-13

WAKE FOREST (0-3)

East Carolina	10-20
Virginia Tech	0-27
North Carolina	0-21

Individual Leaders

FLORIDA STATE

Player	Att.	Yds.	Ave.
Snyder	31	126	4.1
Bibent	6	32	5.3
Ehler	6	27	4.4
G. Roberts	11	17	1.5

WAKE FOREST

RUSHING

Player	Att.	Yds.	Ave.
Piccolo	22	94	4.3
Bedgood	19	64	3.4
Welborn	18	39	2.2

PASSING

	Att.	Comp.	Yds.	TD		Att.	Comp.	Yds.	TD
Tensi	34	19	226	2	Sweetan	30	8	25	0

RECEIVING

	Ct.	Yds.	TD		Ct.	Yds.	TD
Biletnikoff	5	83	2	Welborn	9	66	0
Dawson	3	49	0	Tejeck	3	5	0
Snyder	3	25	0	Davis	2	21	0
Floyd	3	24	0	Bedgood	2	19	0

SCORING

	TD	Kick	P-R	FG	Pts.		TD	Kick	P-R	FG	Pts.
Biletnikoff	3	0-0	0-0	0	18	Piccolo	1	1-1	0-0	1	10
Messer	0	3-3	0-0	1	6						

WAKE FOREST 1963 FOOTBALL ROSTER

No.	Name	Pos.	Ht.	Wt.	Age	Class	Hometown
11	*John Mackovic	QB	6-0	165	19	Jr.	Barberton, O.
12	Ron Shillinglaw	QB	6-0	185	19	So.	Blacksburg, S. C.
14	Karl Sweetan	QB	6-1	195	21	Jr.	Dallas, Tex.
15	Joe Polshaw	QB	6-3	191	21	So.	Steubenville, O.
18	*Wally Bridwell	QB	5-10	160	21	Sr.	Kingsport, Tenn.
19	*Ralph Brandewiede	QB	6-3	202	21	Jr.	Garden City, N.Y.
20	Sammy Decker	HB	5-11	169	19	So.	Valdese
25	Phil Miner	HB	5-11	172	20	So.	Marietta, O.
26	George Emmons	HB	6-1	170	19	Jr.	Riverton, N.J.
27	Jimmy Bedgood	HB	6-0	166	21	So.	Selma, Ala.
29	Mike Kelly	HB	5-11	186	20	Jr.	Kingsport, Tenn.
31	*Brian Piccolo	FB	5-11	200	19	Sr.	Ft. Lauderdale, Fla.
34	Bob Miller	FB	5-10	185	22	So.	Uhrichsville, O.
35	Eddie McKinney	FB	5-7	180	19	Jr.	Winston-Salem
40	*Wayne Welborn	HB	5-9	178	20	So.	Wake Forest
41	Joe Carazo	HB	5-10	165	20	So.	Palmerton, Pa.
43	Donald Davis	FB	5-9	175	19	So.	New Bern
45	Doug Golightly	HB	5-9	181	19	So.	Morganton
50	Jim Beaudoin	C	6-0	193	20	Jr.	Hubbard, O.
51	*Bill Hopkins	C	6-2	214	20	Sr.	Lancaster, Pa.
52	*Farrell Egge	G	6-0	203	21	So.	Montgomery, Ala.
54	Lewis Duncan	C	5-11	204	19	So.	Haw River
55	Dick Howie	G	6-3	178	19	So.	Monroe
56	Steve Unger	C	6-2	189	20	So.	Northampton, Pa.
61	Frank Russell	G	6-1	203	18	So.	Tupelo, Miss.
62	Bill Marks	G	6-2	204	20	Sr.	Florence, Ala.
63	*Paul Shearer	G	6-0	200	21	So.	Woodbury, N.J.
64	Woody Baldwin	G	5-10	203	19	So.	Durham
66	Jeff Underwood	G	5-9	203	19	So.	Albermarle
67	Charles Cooper	G	6-0	190	19	Sr.	Fairborn, O.
69	*Ron Kadon	G	6-1	198	22	So.	River Forest, Ill.
70	Larry Sonsky	T	6-2	200	18	Sr.	Cleveland, O.
71	*William Faircloth	T	6-2	207	21	Jr.	Clinton
72	Bill Reeder	T	6-0	215	20	So.	Shippensburg, Pa.
73	Leland Cox	T	6-6	231	19	Jr.	Rockingham
74	John Jurkovec	T	6-2	228	21	So.	Pittsburgh, Pa.
75	Werner Hauer	T	6-0	214	19	So.	Hamilton, O.
77	William Salter	T	6-4	240	20	Jr.	Ft. Lauderdale, Fla.
78	*James Mayo	T	5-11	224	19	So.	Philadelphia, Pa.
79	Max Holcher	T	6-4	202	19	Sr.	Asheville
80	*Jim Tejeck	E	6-1	197	22	Jr.	Berwyn, Ill.
81	*Wilbert Faircloth	E	6-3	194	21	Jr.	Clinton
82	*John Grimes	E	6-0	200	20	Jr.	Cooleemee
83	*Richard Cameron	E	6-4	195	21	So.	Scottsdale, Pa.
84	Bill Bazler	E	6-2	196	19	So.	Columbus, O.
85	Joe Berra	E	6-1	195	18	So.	Trevorton, Pa.
86	Glen Muncy	E	6-2	189	19	So.	Kent, O.
87	David Hall	E	6-1	176	19	So.	St. Albans, W. Va.
88	Elton Slone	E	6-0	190	20	So.	Roanoke, Va.
89	Earl Coleman	E	5-10	181	19	So.	Gastonia

*Denotes Letters Won

STOP
Before and
After Game



Steaks
Seafood

Wake Forest . . .

Where Tradition And Progress Meet

At a time when education has claimed its rightfully important place in this country, Wake Forest College has staked out its own claim to extraordinary accomplishment and excellence, particularly in the last decade.

An institution with the usual rich trappings of tradition, Wake Forest has made unusual strides in recent years. It has had, as have other colleges, the impetus provided by Russia's sputnik and the subsequent wave of public interest in education.

Additionally, it has had the unusual experience of moving 110 miles from its original site to its present new campus at Winston-Salem, N. C. The move and the growing interest in education stimulated a chain reaction which has made Wake Forest one of the outstanding institutions in the South.

Wake Forest was founded in 1834 by the Baptist State Convention of North Carolina in a grove of trees sixteen miles north of Raleigh, the state capital. Enrollment that first semester was 16 but the college grew and prospered.

In 1946 the college encountered a new opportunity when the Z. Smith Reynolds Foundation offered to pay Wake Forest \$350,000 annually if the friends of the college would provide necessary buildings at a site in Winston-Salem. The grant was increased to \$500,000 annually in 1956. Ten years later the college made the historic move and now occupied a new campus valued at more than \$25 million. The Bowman Gray School of Medicine of the college had been moved to Winston-Salem in 1941 when it received the resources of the Bowman Gray Foundation.

Wake Forest consists of the following divisions: the School of Arts and Sciences, the School of Law, the Bowman Gray School of Medicine, the School of Business Administration and the Division of Graduate Studies. The College and its schools are approved by the standard accrediting agencies. The college has chapters of the principal national social fraternities, professional fraternities and honor societies, including Phi Beta Kappa.

The College believes that its emphasis on the basic liberal arts is the avenue to training for successful living whatever the graduate plans to do. One of the attractions Wake Forest offers to the exceptional student is an honors program which has two phases. One crosses departmental lines and consists of such courses as Approaches to Human Experience, Darwinism and the Modern World, The Ideal Society, Romanticism and the Comic View. The second phase of the honors program is departmental and is reserved for highly qualified majors who undertake research projects and are given a comprehensive oral examination.

Each year the college attracts outstanding speakers and entertainers. It also offers a number of art exhibits and a series of the world's best movies.

The college, which now has an enrollment of about 3,000, distributes over \$250,000 in the form of scholarships. In the School of Arts and Sciences, the School of Business Administration and the School of Law they range up to \$1,500 annually and in the School of Medicine up to \$4,800 annually.

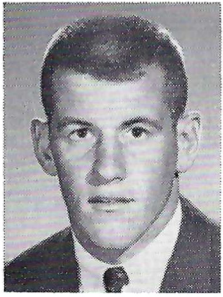
Wake Forest participates in all major intercollegiate sports. As a member of the Atlantic Coast Conference, it competes with some of the best teams in the country. Its 1961-62 basketball team ranked third in the NCAA finals. An extensive intramural program is offered for all men and women.

Wake Forest's current president is Dr. Harold W. Tribble who is the 10th man to lead the institution since it was founded.



Dr. Harold W. Tribble
President





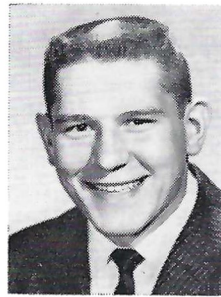
Wilbert Faircloth



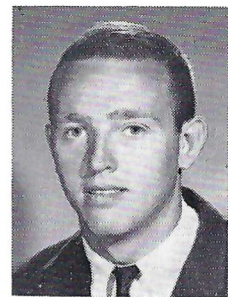
Sammy Decker



Wally Bridwell



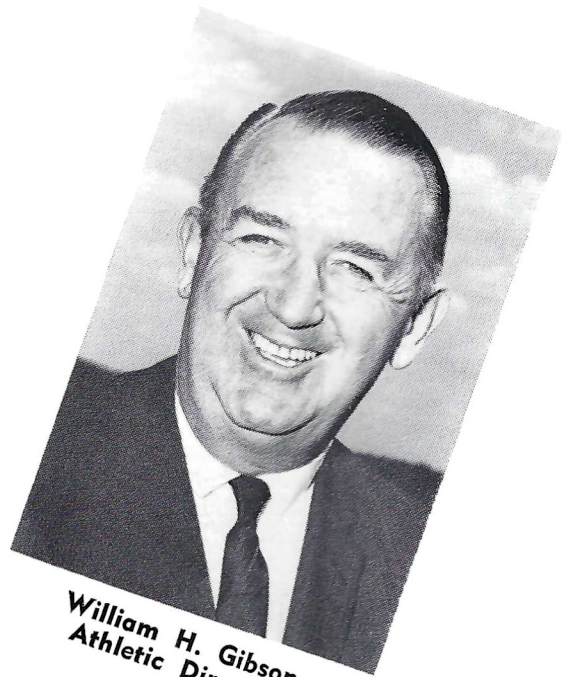
John Jurkovec



Ralph Brandewiede

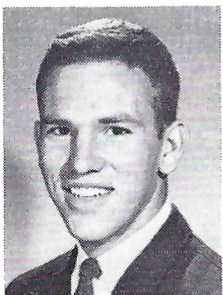


Billy Hildebrand
Head Coach



William H. Gibson
Athletic Director

WAKE FOREST . . .



Joe Carazo



Jimmy Bedgood



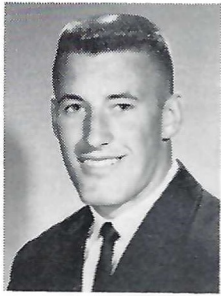
William Faircloth



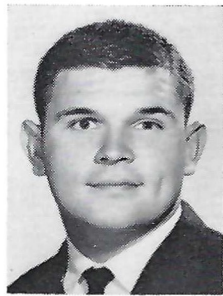
Bill Marks



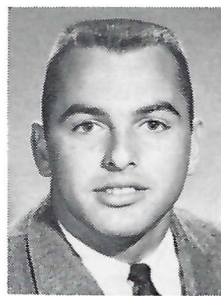
Ron Kadon



George Emmons



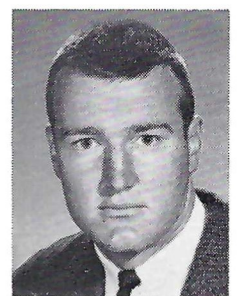
William Salter



Brian Piccolo



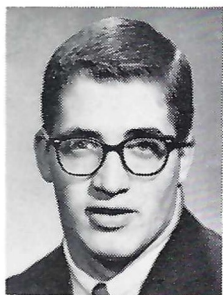
Bill Hopkins



Leland Cox



Don Davis



Paul Shearer



Farrell Egge



Richard Cameron



Jim Mayo

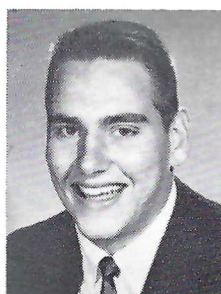


Karl Sweetan

... DEMON DEACONS



Wayne Welborn



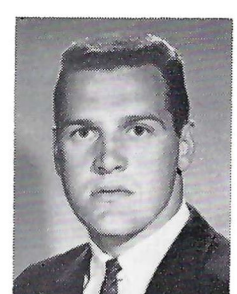
Joe Beaudoin



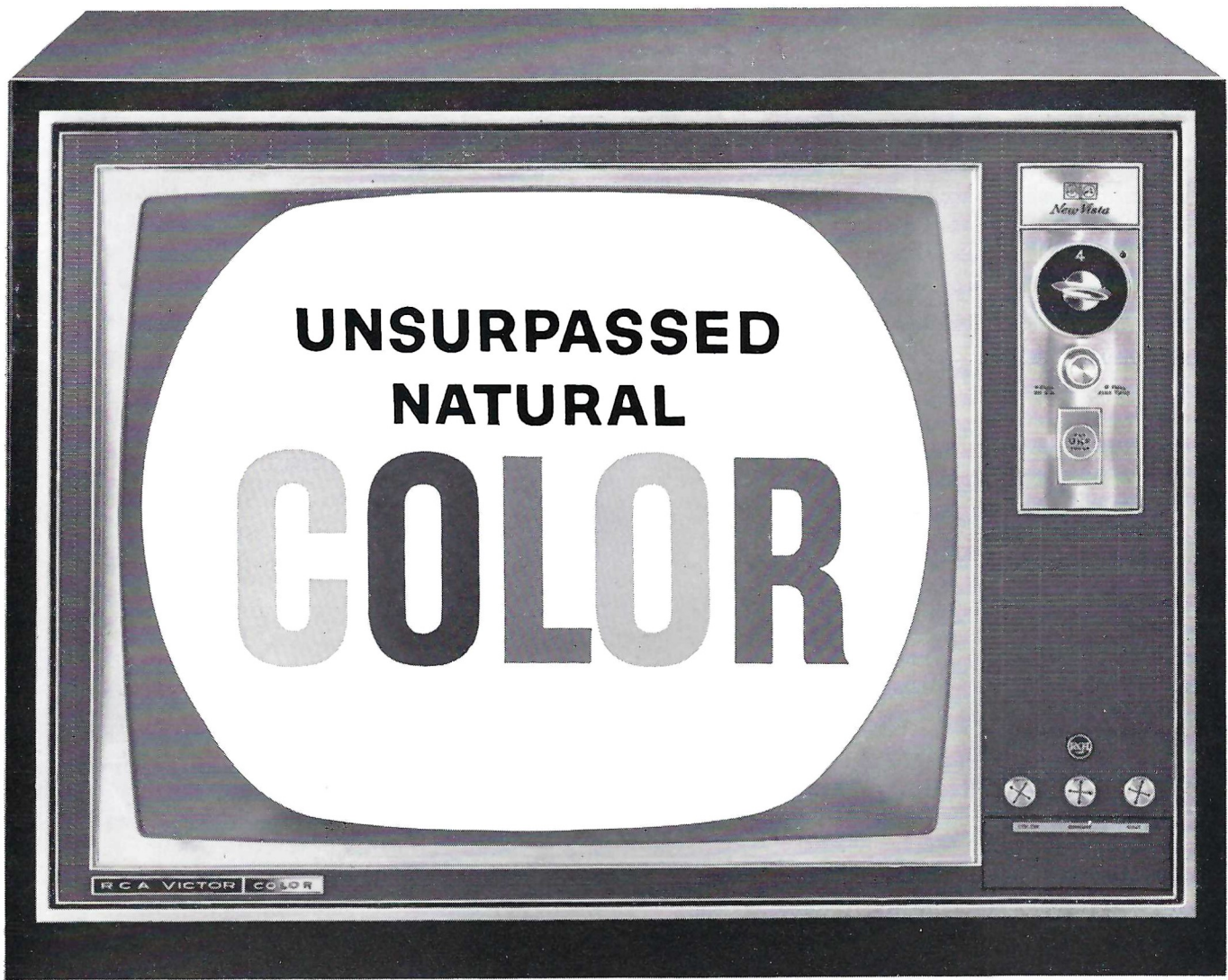
Frank Russell



Jim Tejeck



Joe Berra



The *Radnor*, lowest priced RCA Victor Color TV ever!

RCA Victor New Vista® Color TV gives you unsurpassed natural color, brighter than ever before!

In 1964 RCA Victor New Vista Color TV you get a sharper, brighter color picture . . . so sharp and bright you have to see it to believe it!

Three years ago RCA introduced the High Fidelity Color Picture Tube to make color up to 50% brighter than previous color tubes. Now RCA engineering advances bring you an even

better, even brighter color picture. And it's the most *dependable* Color TV in RCA Victor's history, with all the modern advantages of Space Age Sealed Circuitry.

The UHF emblem on New Vista Color TV means you're buying the set for tomorrow *today*. All-channel UHF tuning can be added easily to

all models. Most models of RCA Victor New Vista Color TV also can be ordered with UHF tuners already built in as an optional extra.

Be sure to see New Vista Color TV for yourself.



The Most Trusted Name in Television

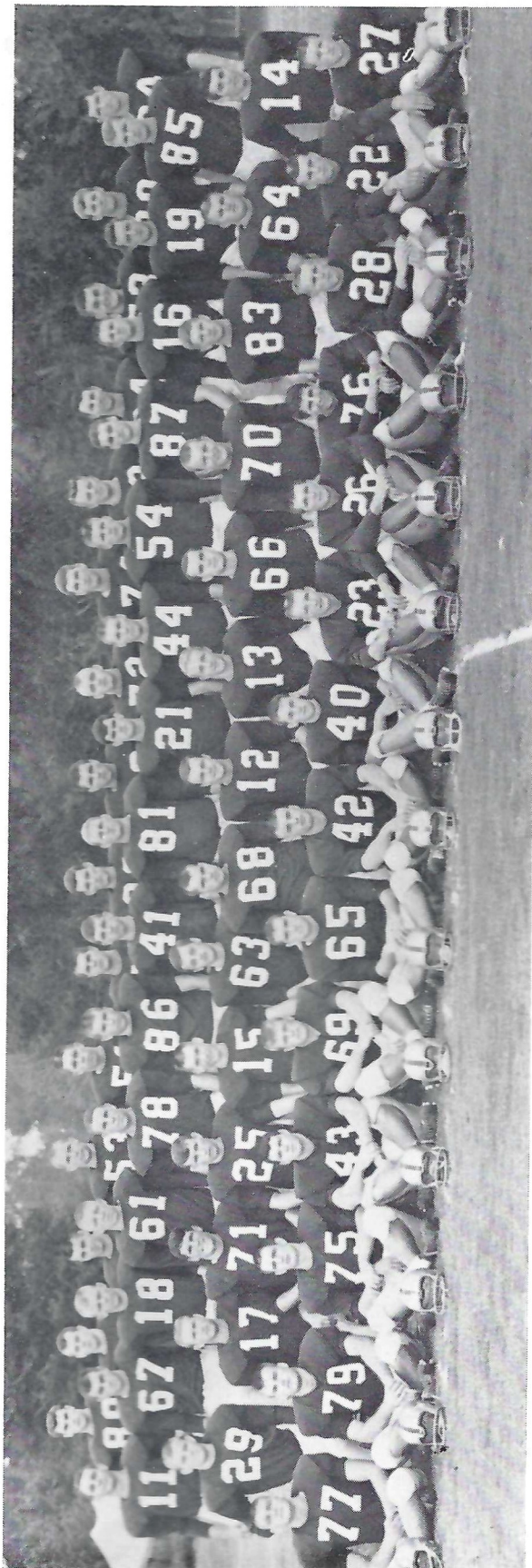
Tmk(s)®

MORE PEOPLE OWN RCA VICTOR TELEVISION THAN ANY OTHER KIND . . . BLACK AND WHITE OR COLOR.

Rainey Cawthon's Inc.

Monroe at Brevard

Phone 222-1865



1963 FRESHMAN FOOTBALL ROSTER

Name	Pos.	Ht.	Wt.	Hometown
Tom, Allen	QB	6-0	169	New Martinsville, W. Va.
Greg Bagget	FB	6-1	217	Panama City
Mike Belbeck	C	6-1	200	Winter Park
Dick Bender	E	6-1	168	Valdosta
Jim Berry	QB	6-0	173	Atlanta, Ga.
Bill Betts	G	6-0	223	Birmingham, Ala.
Mike Brady	G	6-0	189	Coral Gables
Bill Campbell	HB	5-9	170	Tampa
Pat Conway	HB	5-10	172	Miami
Jerry Corbitt	HB	6-1	172	Jesup, Ga.
Stan Croley	E	6-2	177	Dade City
Tom Delopez	FB	6-2	197	Miami
Charles Fuchs	E	6-2	209	Homestead
Phil Galioto	HB	5-10	185	West Palm Beach
Joe Gatlin	T	6-5	224	Coral Gables
Wayne Giardino	QB	5-10	189	West Palm Beach
Larry Green	HB	5-10	177	Cairo, Ga.
Kim Hammond	QB	6-1	182	Melbourne
Chipper High	HB	5-11	174	Reddick
John Hosack	HB	5-10	192	Miami
Fred Hudson	E	6-1	197	Milton
Ken Johnson	T	6-2	213	Jacksonville
Don Jones	HB	6-1	176	Lakeland
Leslie King	FB	5-11	186	Winter Park
Vernon Korhn	QB	5-11	170	Tampa
Allen LaMarche	HB	5-11	185	Hollywood
Felton Lancaster	T	6-2	244	Cross Keys, Ga.
Nick Maracic	C	6-2	190	Hollywood
Scott McCord	T	6-2	218	Atlanta, Ga.
Wayne McDuffie	E	6-2	197	Hawkinsville, Ga.
Phil McKinnon	G	5-11	195	Birmingham, Ala.
Jim McNeil	G	6-3	186	Panama City
Bill Meadows	C	6-1	194	Birmingham, Ala.
Bob Mendez	HB	5-10	176	Key West
Bill Moremen	HB	5-11	171	Daytona Beach
Lee Narramore	FB	6-0	206	Pensacola
Larry Overton	G	5-11	195	Pensacola
Bob Patterson	T	5-11	216	Tampa
Charles Pennie	T	6-4	222	Hollywood
Jim Perry	QB	5-11	178	Logan, W. Va.
Charles Randall	T	6-1	217	Savannah, Ga.
Bill Richardson	QB	5-9	173	Jesup, Ga.
Jim Riser	HB	6-0	175	Sanford
Rick Saunders	FB	6-1	181	Macon, Ga.
Phil Sims	G	6-1	191	Atlanta, Ga.
John Stephens	C	6-1	191	Tallahassee
Helge Swanson	C	6-3	214	Milton
Cary Thompson	G	6-3	202	Marietta, Ga.
Tom Thompson	C	6-3	247	Waycross, Ga.
H. T. Waller	QB	6-1	177	Vernon
T. K. Wetherell	HB	5-11	169	Daytona Beach
Del Williams	T	6-2	218	Live Oak
Paul Williams	E	6-2	205	Hollywood
Larry Williamson	C	5-11	193	Macon, Ga.
Tom, Yates	G	6-1	214	Atlanta, Ga.

1963 FRESHMAN SCHEDULE

Oct. 5	Florida at Tallahassee
Oct. 12	Miami at Tampa
Oct. 31	Southern Mississippi at Pensacola
Nov. 14	N.C. State at Daytona Beach



INSET, LEFT TO RIGHT: Robert T. Braunagel, Director; Feature Baton Artist Cookie Winchester, Miami; Drum Major Roger McLendon, Fitzgerald, Ga.

MUSIC AT HALF-TIME THE FLORIDA STATE UNIVERSITY SCHOOL OF MUSIC

Dr. K. O. Kuersteiner, Dean
Dr. Manley R. Whitcomb, Director of Bands

presents

THE MARCHING CHIEFS

Robert T. Braunagel, Director
Clifford K. Madsen, Associate Director
Charles Carter, Assistant Director and Arranger

Roger McLendon, Drum Major
Janice Eddins, Head Majorette
Cookie Winchester, Feature Baton Artist

THEME: PRECISION DRILL SALUTATION

Formation

Music

Fanfare
Lover

Mr. Touchdown
Notre Dame Victory
Illinois Loyalty
Lovely To Look At
Nothing Like A Dame
Bloody Mary
Do Re Mi
Gee, Officer Krupke
Tonight
Suwannee River
Yankee Doodle Dandy
Grand Old Flag
Fight Song
Alma Mater

COMPANY FRONT AND DIAMOND SEQUENCE—The Marching Chiefs present a precision drill salutation to the 1963 football audience. First we salute college lovers as the band forms a diamond.

DRILL SEQUENCE—The colorful patterns of a kaleidoscope are set to music as The Chiefs salute college football across the nation.

DRUM MAJOR—As the band forms a high-stepping drum major we feature our majorettes and solo twirler with "There Is Nothing Like a Dame."

CONCERT FORMATION—As the band assumes a concert formation, we feature our arranger Charles Carter with two wonderful tunes from *West Side Story*.

GRAND FINALE AND COMPANY FRONT—The band now salutes the legislators with a medley of patriotic music especially prepared for Legislative Day.

FSU.



Coach J. K. "Bud" Kennedy

FSU BASKETBALL 1963-64

Florida State University basketball enters its 16th season with Coach J. K. "Bud" Kennedy at the helm, and prospects look better than ever.

Early reports are that the Seminoles will be big and fast in 1963-64. Perhaps big enough and fast enough to win against the toughest schedule in FSU history.

Added impetus will be given basketball this year with the formation of the Tip-Off Club, an organization similar to football's Seminole Boosters.

A strong home schedule assures plenty of basketball action at FSU's Robert Tully Gymnasium.

ORDER YOUR TICKETS EARLY

Season Ticket, 10 Home Games \$15.00

Individual tickets, all home games \$2.00

Order tickets from:

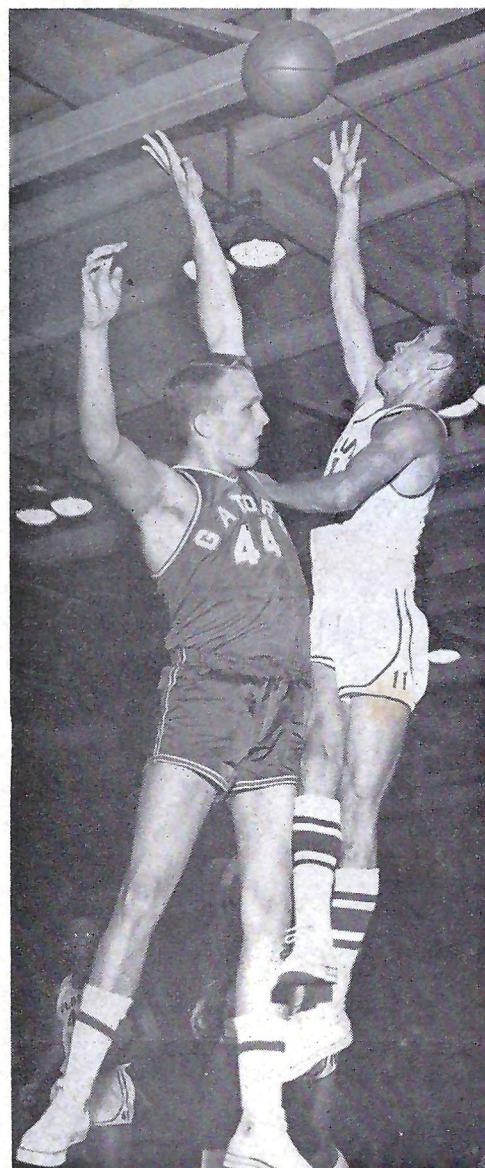
**ATHLETIC TICKET OFFICE
FLORIDA STATE UNIVERSITY
TALLAHASSEE, FLORIDA**

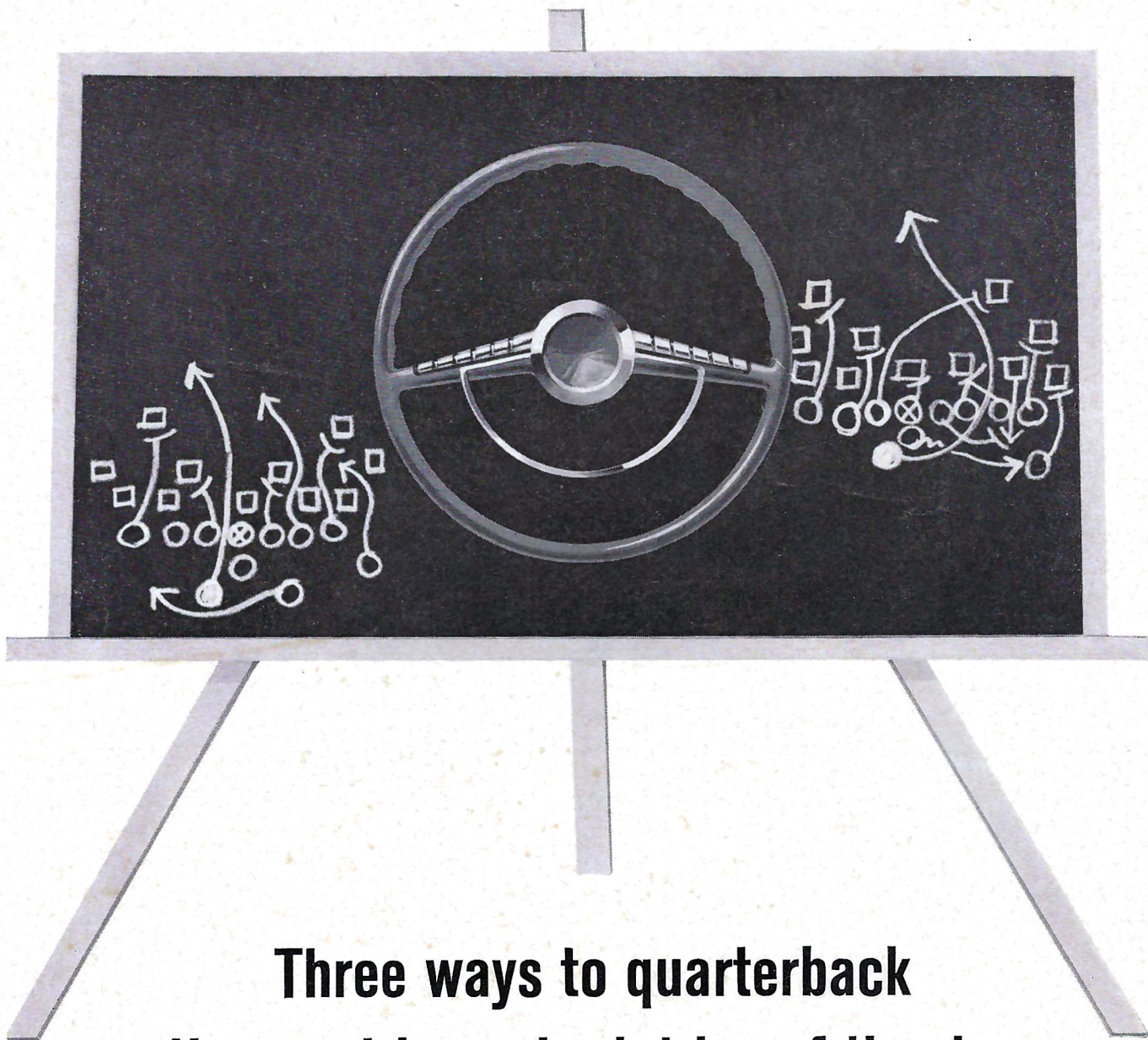
All Home Games 7:45 p.m. EST, Robert Tully Gym

1963-64 FSU BASKETBALL SCHEDULE

DATE	OPPONENT	SITE
Dec. 3	Florida	Away
Dec. 7	Auburn	HOME
Dec. 9	Alabama	Away
Dec. 11	Rice	Away
Dec. 12	Texas Christian	Away
Dec. 21	Tampa	HOME
Dec. 23	Tulsa	HOME
Dec. 26, 27	Gator Bowl Tournament	*Away
Jan. 2	Richmond	Away
Jan. 4	VMI	Away
Jan. 11	Miami	HOME
Jan. 16	Memphis State	HOME
Jan. 18	Georgia	HOME
Jan. 23	Florida	HOME
Jan. 28	Auburn	Away
Jan. 29	Alabama	HOME
Feb. 6	Furman	HOME
Feb. 8	Centenary	Away
Feb. 10	Memphis State	Away
Feb. 15	Georgia Tech	Away
Feb. 22	Jacksonville U.	HOME
Feb. 27	Stetson	Away
Feb. 29	Miami	Away
Mar. 3	Georgia	Away

* Jacksonville





Three ways to quarterback the most important drive of the day —your drive home

1. Don't buck the line of traffic, stay in it. Fancy open field running doesn't pay on the highway.
2. When dusk falls and your visibility is limited, slow down and turn on your lights. What you can't see can hurt you.
3. Don't try to beat the clock by speeding. Remember, when time runs out on the highway, everybody loses.

*Presented in the interest of safe and sane driving
by the R. J. Reynolds Tobacco Company.*