

Official Program 50c



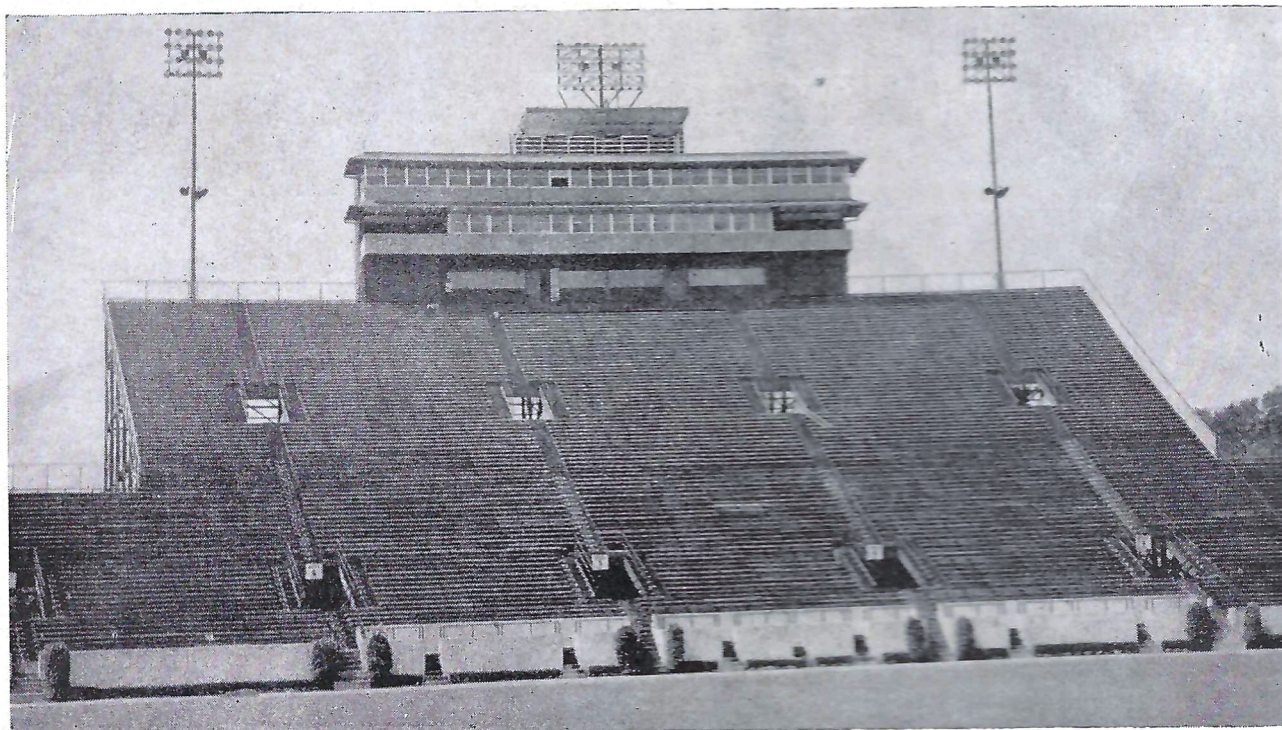
**FLORIDA STATE**  
VS  
**VIRGINIA TECH**

OCTOBER 26, 1963

DOAK S. CAMPBELL STADIUM

DADS' DAY

SCOUT DAY



*"Constructed By"*  
**BEAR CONSTRUCTION CO., INC.**  
 PHONE 222-8489

D. L. COOKSEY

B. R. DRAUGHON



*patronize...*  
**STADIUM**

# CONCESSIONS

*Located beneath the stands on each side of stadium*

- COLD DRINKS..... 15¢**
- HOT COFFEE..... 15¢**
- SANDWICHES..... 30¢**
- HOT DOGS..... 25¢**
- PEANUTS..... 15¢**
- POP CORN..... 15¢**

- SOUVENIR ITEMS*
- PENNANTS*
- BADGES*
- SUN VISORS*
- ASPIRIN*

*All Cigarettes 40¢*

*please pay no more than established prices*

# FSU FOOTBALL 1963...



## IN THIS ISSUE:

The University .....	4, 5, 8
FSU Depth Chart .....	6
Opponent Depth Chart .....	7
FSU Numerical Roster .....	11
Guest Column .....	9
FSU All-Time Records .....	9
Seminole Football Family .....	14
The 1963 Seminoles .....	15, 16, 17, 18
Starting Lineup, FSU .....	20
Starting Lineup, Opponent .....	21
Seminole Boosters, Inc. ....	25
Opponent Numerical Roster .....	32
Today's Opponent .....	33, 34, 35
Seminole Network .....	27
WFSU-TV Football Programs .....	29
The Marching Chiefs .....	38
The Athletic Committee .....	31
Comparing Today's Teams .....	31
FSU's '63 Freshmen .....	37
Seminole Songs and Cheers .....	30
FSU Basketball, 1963-64 .....	39

## SEMINOLES ON THE WARPATH...

Sept. 20	Miami	Miami 8:15 p.m.
Sept. 28	TEXAS CHRISTIAN	Tallahassee 8:00 p.m.
Oct. 12	Wake Forest	Tallahassee 2:00 p.m.
Oct. 19	So. Miss.	Mobile, Ala. 8:00 p.m. (CST)
Oct. 26	VIRGINIA TECH	Tallahassee 2:00 p.m.
Nov. 2	FURMAN	Tallahassee 2:00 p.m.
Nov. 9	Georgia Tech	Atlanta, Ga. 2:00 p.m.
Nov. 16	N. C. STATE (Homecoming)	Tallahassee 2:00 p.m.
Nov. 23	Auburn	Auburn, Ala. 2:00 p.m. (CST)
Nov. 30	Florida	Gainesville 2:00 p.m.

*Compliments and  
Best Wishes from*



**YOUR APPLIANCE  
HEADQUARTERS**  
611 N. Monroe St.

# State Future at Stake November 5

Florida voters will provide the answer Nov. 5 to a decision of critical importance to the future of Florida State and the whole of higher education in Florida.

An amendment to the State Constitution authorizing the issuance of bonds for construction of urgently-needed facilities at the state's universities and junior colleges is the most talked-about issue on the ballot. The long-term, low-interest bonds would be paid off with revenue derived from the utilities gross receipts tax currently levied throughout the state.

The program would not raise the current level of state taxes.

By more than a three-fourths vote of both houses, Florida's 1963 Legislature agreed to place the amendment before the voters Nov. 5. It will appear on the ballot as Amendment No. 2, entitled "Constitutional Amendment to Article XII," and is popularly known as the College Building Amendment.

The Legislature, looking at the needs for mushrooming enrollments, based its bond issue proposal on a 1951 precedent when the state's voters approved an amendment earmarking a portion of automobile tag receipts to repay bonds issued to construct public school buildings. That emergency amendment has been an unqualified success, making it possible for Florida's counties to meet pressing school building needs.

Passage of the College Building Amendment would immediately provide \$75 million for classrooms, laboratories and other essential facilities on the campuses of 23 junior colleges, five existing universities, one new university in east-central Florida, one new state college at Pensacola, and to plan for the orderly development of vocational technical schools. (See map). The universities would get \$45 million and the junior colleges \$30 million.

The program would give FSU \$9.6 million for capital expansion this biennium. (See project list in this section).

The College Building Amendment has numerous financial safeguards. Features of the proposal include:

- A ceiling of \$75 million on the amount of bonds which may be issued before July 1, 1965, and a limit of \$50 million for any biennium thereafter, subject to review by the legislature.
- Earmarking of the existing utilities tax to retire the bonds instead of directly increasing taxes.

## The College Building Amendment

No educational issue as important as the College Building Amendment has been placed before Florida voters in the history of the Florida State University. For this reason, the University is providing on Pages 4, 5, and 8 of today's program basic information about the College Building Amendment.



Blackwell

The voters of Florida are entitled to full information about this program. They should know that the universities are making a major effort with our present resources.

Under the trimester system we are serving more students and using our classrooms, laboratories, and libraries more efficiently than ever before—stretching our budget dollars as far as possible. Even so, increasing numbers of Florida youth will have no place to go unless the junior colleges, colleges and universities build now.

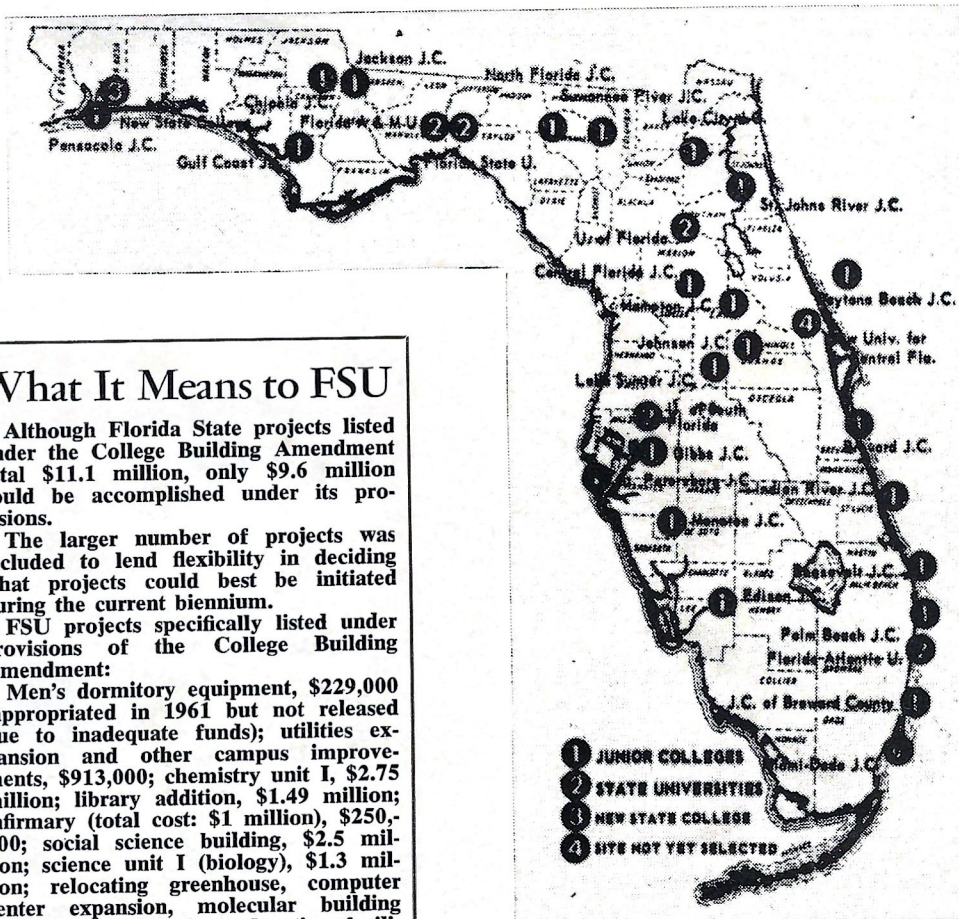
This is the compelling reason for state-wide approval of the College Building Amendment on Nov. 5. There is no other feasible way.

With approval of this amendment, our University will receive some \$9.6 million to be used in this biennium. This will be a great assist but will fall far short of our actual building needs. Earlier the Board of Control had approved our long-range building plan calling for \$29 million in this biennium and \$17 million in 1965-67. These needs are so great because the State funded only \$18.9 million for capital outlay at Florida State during the last 12 years of rapid enrollment growth.

We must provide educational opportunities for the floodtide of students coming to our colleges. The College Building Amendment must pass!

—Gordon W. Blackwell  
President, Florida State University

# Colleges to Benefit from Issue 2



## What It Means to FSU

Although Florida State projects listed under the College Building Amendment total \$11.1 million, only \$9.6 million could be accomplished under its provisions.

The larger number of projects was included to lend flexibility in deciding what projects could best be initiated during the current biennium.

FSU projects specifically listed under provisions of the College Building Amendment:

Men's dormitory equipment, \$229,000 (appropriated in 1961 but not released due to inadequate funds); utilities expansion and other campus improvements, \$913,000; chemistry unit I, \$2.75 million; library addition, \$1.49 million; infirmary (total cost: \$1 million), \$250,000; social science building, \$2.5 million; science unit I (biology), \$1.3 million; relocating greenhouse, computer center expansion, molecular building loading ramp, physical education facilities, \$215,000; women's dormitory (matching), \$921,000; land acquisition, \$350,000; Oceanography Institute coastal facilities, \$200,000. Total: \$11.1 million.

## Florida Citizens at Work

Thousands of Florida citizens are working to win voter approval of the College Building Amendment on Nov. 5.

CITIZENS FOR FLORIDA'S FUTURE, a non-partisan citizens group of men and women from all areas of the state, is spearheading a cooperative citizen effort to insure passage of Issue 2 on the ballot.

State chairman of the campaign is Thomas F. Fleming Jr., chairman of the board of the First Bank and Trust Co., Boca Raton. Women's division chairman is Mrs. William R. Kidd of Tallahassee. Finance chairman is Stanton D. Sanson, Bal Harbour civic leader, and speakers bureau chairman is Earl Faircloth, state representative from Miami.

## The Students Are Concerned

On Nov. 5, Florida residents will have the opportunity to vote on a borrowing plan which will provide needed finances for expansion in our state universities and junior colleges. FSU students recognize the urgent need for these buildings. Higher education—our younger brothers and sisters—will suffer greatly if they are not constructed.

The inadequacy of present facilities is more alarming when we consider the greater and greater numbers of students enrolling in our universities and junior colleges each year. We must act NOW to insure a solid, progressive foundation for Florida's educational future.

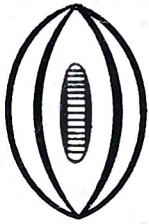


Smith

—Johnny Smith  
Student Body President

# WHEN FSU HAS THE BALL

LEFT END



81 Floyd  
82 Causey  
89 Wettstein

LEFT TACKLE



77 Mangan  
79 Pennie  
76 West

LEFT GUARD



66 Hermann  
68 Parrish  
61 Shinholser

CENTER



55 Edwards  
53 Daly  
51 Avezzano

RIGHT GUARD



52 Robinson  
63 McDowell  
65 Wooten

RIGHT TACKLE



73 Sumner  
60 Henry  
75 MacKenzie

RIGHT END



83 Dawson  
84 D'Allessandro  
80 Wachtel

QUARTERBACK



13 Tensi  
11 Calhoun  
16 Pritchett

LEFT HALFBACK



20 Snyder  
22 Bibent  
29 Petko

RIGHT HALFBACK



28 Bailey  
25 Biletnikoff  
23 Loftin

FULLBACK



44 M. Roberts  
21 Brinkley  
43 Ehler

(Note: First player listed at each position is starter for Chiefs (two-way) unit, second Renegades (defense), third Warriors (offense).

MEMBER

Federal Home Loan Bank System

Federal Savings and Loan Insurance Corporation

FOR CORRECT TIME DIAL 222-5510



WHERE you save DOES make a difference

# WHEN VPI HAS THE BALL

LEFT END



85 Marvin  
80 Shipley  
82 Leland

LEFT TACKLE



74 Breen  
63 Green  
70 Jeffrey

LEFT GUARD



60 Hvozovic  
64 Hickam  
51 Saunders

CENTER



55 Albright  
52 Rodgers  
50 Hanly

RIGHT GUARD



65 Green  
68 Kreiter  
67 Bloomer

RIGHT TACKLE



73 Jones  
71 Frank  
66 Philpot

RIGHT END



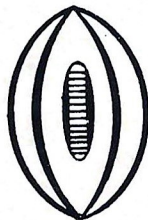
86 Adams  
88 Edwards  
83 Churchill

QUARTERBACK



10 Schweickert  
11 Owens  
14 Vance

LEFT HALFBACK



30 Cary  
24 Messamore  
54 Weihe

RIGHT HALFBACK



43 Hawkins  
40 Walker  
41 Ulery

FULLBACK



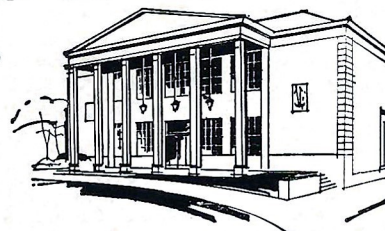
34 Utz  
31 Page  
32 Whitley

## Tallahassee Federal

SAVINGS AND LOAN  
ASSOCIATION

440 N. Monroe Street ★ Tallahassee, Florida  
TELEPHONE 224-2161

HOURS: Monday-Thursday, 8:30 a.m. to 3 p.m.—Friday, 8:30 a.m. to 6 p.m.



The voters of Florida are being asked to approve the constitutional bond plan adopted by the 1963 Legislature. What is most important is that the voters decide whether Florida will provide a



**Carraway**

college or university opening for every qualified high school graduate throughout the state in the years ahead. . . . We cannot afford to overlook or misinterpret the question that will be asked Nov. 5. Support of the College Building Amendment will provide educational opportunities for every capable youngster in the state and will enhance our ability to attract desirable business and industry from other parts of the nation.

—**Senator Wilson Carraway**  
President, The Florida Senate

The tremendous numbers of young people wanting to go to college are a blessing, not a problem. Their minds are our greatest asset.

Amendment No. 2—the College Building Amendment—to be presented to the voters of Florida Nov. 5, carries the unqualified endorsement and support of the Florida State Chamber of Commerce. The Chamber's Education Committee



**Fleming**

pioneered in this field of ways and means to meet Florida's capital outlay problems in higher education two years ago. It was their conclusion that the most successful businesslike methods used by America's great corporations to finance their capital outlay expansions should be adopted by the State of Florida. It has proven itself to be the most effective method.

Industry and labor are uniting with the businessmen of Florida in an all-out support of this amendment. Its adoption will mean the start of a new era of social and economic prosperity in our state.

—**Thomas F. Fleming, Jr.**  
Chairman, Education Committee  
Florida State Chamber of Commerce

# LEADERS BACK AMENDMENT

We have before us a plan to help meet the critical need for expansion of facilities in our institutions of higher



**Horne**

learning . . . a program (which) would make it possible for our state to hold its own in this era of vast scientific and technical advancement. . . . Florida, in my opinion, has well established itself in avenues of sound progress. It is important that it continue to advance along routes that will enhance the soundness of social, economic and industrial elements of its complex makeup. Approval of the amendment will insure our state's "progress capability" in a rapidly moving age.

—**Mallory E. Horne**  
Speaker, House of Representatives

Serving as women's chairman of the volunteer group, CITIZENS FOR FLORIDA'S FUTURE, for passage of our College Building Amendment has been one of the most rewarding experiences of my life.

Feeling that a concentrated effort should be made toward explaining this education amendment to the women of Florida, the Governor appointed me to work with our state chairman,



**Mrs. Kidd**

Mr. Tom Fleming of Boca Raton. Women throughout the state have been organized into county and city councils, armed with information, and sent out to tell the story of our college and university building needs—and what we can do about them.

From Pensacola to Key West, and Jacksonville to Naples, I have attended organizational meetings. Everywhere I go there are FSU alumnae anxious to help. It has truly been a reunion of college friendships.

These women are solidly behind our College Building Amendment and we all encourage you to vote YES for Issue 2 on Nov. 5.

—**Aleene Pridgen (Mrs. William R.) Kidd**  
Class of 1943



# The View From Above



By **NORM FROSCHER**  
Assistant Sports Editor  
Jacksonville Journal

When the gun sounds this afternoon at around 4:20 o'clock Florida State's Seminoles will be exactly halfway through their 1963 football schedule.

Whether they have a clear-cut winning record at that time depends on the outcome of this afternoon's game with Virginia Tech.

More than that, however, the results of today's contest may give us a good idea of how the Tribe can be expected to fare as it goes against that brace of toughies wearing the colors of Georgia Tech, North Carolina State, Auburn and Florida.

Saturday's scoreless deadlock with Southern Mississippi was no fluke, but then neither was that opening game victory over Miami.

This ball club believed in itself before the season started and the hunch is here these young men still have pride in themselves.

After all, the only way you can measure a guy's mettle is when the chips are down. If a fellow's going to quit, he's not going to quit while riding the crest of success and everything's just rosy.

So what's that got to do with today's game against Virginia Tech?

Just, that today, probably more than at any time this season we'll have a chance to see if Florida State can come back after a "setback."

The Seminoles did come back after losing to Texas Christian—and beat Wake Forest, 35-0. Make no mistake, Virginia Tech's tough. The Gobblers lost only that opening game to Kentucky and they come in here with memory of last season's 20-7 loss to spur them on.

Florida State should be "up" for today's game. It should also be up for the remainder of the schedule, starting with the Furman game here next week.

The Seminoles have still lost only one game. That one in a deluge and near flood as any of the 16,000 loyal fans who were here will agree. They still have not given up a touchdown rushing, the only points coming on an interception runback and two field goals.

Those statistics may be changed in about two hours or less, but the squad won't. They're still the young men who believed in themselves before the season. Again, we think they still do.

And whether they can put that belief to work for them, along with their natural talents, should go a long way in determining how the Seminoles will wind up this season.

## FSU Records

### SINGLE GAME

#### INDIVIDUAL

**LONGEST TOUCHDOWN RUN FROM SCRIMMAGE**—80 yards by Fred Pickard vs. Virginia Tech, 1957.

**LONGEST TOUCHDOWN PASS**—80 yards, Nelson Italiano to Eddie Gray vs. Newberry, 1950.

**LONGEST TOUCHDOWN RUN ANY SITUATION**—99 yards by Ted Hewitt vs. Stetson, 1949, and by Fred Biletnikoff vs. Miami, 1963.

**LONGEST RUN FROM SCRIMMAGE WITHOUT SCORING**—76 yards by Roy Thompson vs. Stetson, 1951.

**LONGEST INTERCEPTION RETURN**—99 yards by Ted Hewitt vs. Stetson, 1949, and by Fred Biletnikoff vs. Miami, 1963.

**LONGEST PUNT RETURN**—80 yards by Billy Odom vs. Stetson, 1954.

**LONGEST KICKOFF RETURN**—89 yards by Odom vs. Virginia Tech, 1955.

**MOST TIMES RUSHING**—29 by Pickard vs. Georgia, 1959.

**MOST YARDS RUSHING**—161 by Buddy Strauss vs. Mississippi College, 1949.

**MOST YARDS PASSING**—355 vs. Villanova, 1954, 1949.

**MOST TOTAL OFFENSE**—369 yards (56 rushing, 313 passing) by Majors vs. Tampa, 1959.

**MOST PASSES ATTEMPTED**—32 by Joe Majors vs. Tampa, 1959.

**MOST PASSES COMPLETED**—20 by Majors vs. Tampa, 1959.

**MOST PASSES CAUGHT**—9 by Bud Whitehead vs. Tampa, 1959.

**MOST YARDS RECEIVING PASSES**—123 by Harry Bringger vs. Mississippi College, 1950.

**MOST PASSES INTERCEPTED**—3 by Tommy Brown vs. Stetson, 1950 and vs. Georgia Tech, 1952; Lee Corso vs. Georgia 1954; Whitehead vs. Virginia Tech, 1959.

**LONGEST PUNT**—84 yards by Brown vs. Tampa, 1950.

**LONGEST FIELD GOAL**—32 yards by Johnny Shepard vs. Miami, 1958.

#### TEAM

**MOST POINTS**—74 vs. Whiting Field 0, 1949.

**GREATEST MARGIN OF VICTORY**—74-0 vs. Whiting Field, 1949.

**GREATEST MARGIN OF DEFEAT**—0-42 vs. Georgia, 1959.

**MOST YARDS RUSHING**—383 vs. Abilene Christian, 1957.

**MOST YARDS PASSING**—355 vs. Villanova, 1954.

**MOST TOTAL OFFENSE**—514 yards vs. The Citadel, 1959 (307 rushing, 207 passing).

**MOST PASSES ATTEMPTED**—34 vs. Tampa, 1959 (completed 20).

**MOST PASSES COMPLETED**—20 vs. Tampa, 1959 (attempted 34).

**MOST PASSES INTERCEPTED**—7 vs. Virginia Tech, 1959.

**MOST PUNTS**—10 vs. Stetson and Georgia Tech, 1955.

**MOST POINTS**—60 by Red Parrish, 1949.



***Sports lovers of the world, unite... let's all go Wildcat-ing!***

Face it—if you're the rocking chair, watch-it-on-TV type, forget the wild, wild '64 Buick Wildcat. But if you like your action furious and first-hand, Wildcat is for you! You can bark your signals to a regular 325 hp V-8 formation, or really take to the air with a 340\* or 360\* hp passer. Three scat-back transmissions add to your fun: 3-speed synchromesh; 4-speed synchro stick shift on the floor\*, or Buick's new trigger-quick Super Turbine 400 automatic\* (very sparing with gas, too!). Four new models: 4-dr. hardtop; 2-dr. sport coupe; 4-dr. sedan; convertible. Give one a workout; see why we say . . .

\*Optional at extra cost.

Buick Motor Division

***above all, it's a BUICK!***

## FLORIDA STATE 1963 FOOTBALL ROSTER

No.	Name	Pos.	Ht.	Wt.	Age	Class	Hometown
11	*Charlie Calhoun	QB	5-10	171	20	Sr.	Tallahassee
12	Tony Gero	QB	5-10	183	19	So.	Madison, N. J.
13	*Steve Tensi	QB	6-5	201	20	Jr.	Cincinnati, O.
14	Jim Massey	QB	5-11	176	20	So.	Cairo, Ga.
15	Russ Fischer	QB	6-1	184	20	So.	Melbourne
16	Ed Pritchett	QB	6-2	177	22	So.	Decatur, Ga.
20	*Dave Snyder	HB	5-10	184	21	Sr.	Jacksonville
21	*Larry Brinkley	FB	5-11	190	21	Sr.	Willoughby, O.
22	Maury Bibent	HB	6-0	186	20	So.	Cincinnati, O.
23	*Jim Loftin	HB	6-1	181	20	Jr.	Pensacola
24	Mario DeLiberty	HB	5-9	184	19	So.	Havertown, Pa.
25	*Fred Biletnikoff	HB	6-1	186	20	Jr.	Erie, Pa.
26	Bill Hammond	HB	5-11	181	21	So.	Melbourne
28	*Winfred Bailey	HB	6-0	186	21	Jr.	Atlanta, Ga.
29	Joe Petko	HB	5-9	186	19	So.	Shaker Heights, O.
40	*Doug Messer	HB	6-1	188	21	Sr.	LaGrange, Ga.
41	*Gene Roberts	FB	6-0	200	21	Sr.	High Springs
42	Les Murdock	FB	6-2	213	21	Jr.	Hollywood
43	Howard Ehler	FB	6-1	190	19	So.	Tavares
44	*Marion Roberts	FB	6-0	197	20	Sr.	Ocilla, Ga.
51	Joe Avezzano	C	6-1	223	20	So.	Miami
52	*Chuck Robinson	G	5-11	218	21	Sr.	E. Palestine, O.
53	*Bill Daly	C	6-1	209	20	Sr.	Jacksonville
54	Jay Mac Matthews	C	6-1	216	19	So.	Chiefland
55	*Jack Edwards	C	6-1	221	20	Jr.	Tampa
60	*Ferrell Henry	C	6-1	212	21	Sr.	Colquitt, Ga.
61	Jack Shinholser	G	6-1	200	21	So.	Tampa
62	Gene Parish	G	6-3	196	21	So.	Headland, Ala.
63	Bill McDowell	G	6-1	191	19	So.	Tallahassee
64	David Pitts	G	5-9	211	19	So.	Blountstown
65	Jerry Wooten	G	6-1	195	19	So.	Geneva, Ala.
66	*Dick Hermann	G	6-0	200	21	Jr.	Marianna
67	*Jerry Bruner	T	5-10	232	21	Sr.	Evansville, Ind.
68	Joe Parrish	G	6-1	193	20	So.	Auburndale
69	Steve Watson	T	5-10	215	19	So.	Rossford, O.
70	Larry Strobel	T	5-11	227	19	So.	Massilon, O.
71	Darrell Willett	T	6-1	231	20	So.	Tifton, Ga.
73	*Avery Sumner	T	6-2	216	21	Jr.	Adel, Ga.
75	*Dale MacKenzie	T	6-2	227	20	Jr.	Clearwater
76	*Tom West	T	6-4	222	20	Jr.	Headland, Ala.
77	Bob Mangan	T	6-1	231	21	So.	Atlanta, Ga.
78	Max Andrews	T	6-1	203	21	So.	Rehobeth, Ala.
79	Frank Pennie	T	6-4	242	20	So.	Hollywood
80	*John Wachtel	E	6-1	193	21	Jr.	Massilon, O.
81	*Don Floyd	E	6-1	197	21	Jr.	Madison
82	*Jim Causey	E	6-1	209	22	Jr.	Miami
83	*Bill Dawson	E	6-3	231	20	Jr.	Valdosta, Ga.
84	George D'Allessandro	E	5-10	205	20	So.	Fort Myers
85	Dale Twitchell	E	6-1	205	20	So.	Florala, Ala.
86	Buddy Blankenship	E	6-3	200	19	So.	Atlanta, Ga.
87	Terry Garvin	E	5-11	206	20	So.	Pensacola
88	John Roberts	E	6-0	190	21	So.	Orlando
89	Max Wettstein	E	6-3	203	19	So.	Leesburg

\* Denotes letterman  
1963 CO-CAPTAINS RG Chuck Robinson and QB Charlie Calhoun



1818 W. Tennessee

Howdy Podner . . . Me and the boys jest want to notafy everbody that we are still serven them Notorious and Dillicious charcoal-broiled Steerbrugers and Steak Samwiches at our fine Drive-In Resterant, jest 2 passes & a fumbball offen the campus on West Tennessee where Call St. comes in. See you at the Seven Steers.

Yours truly,  
OLE TEX.

---

OWNED AND OPERATED BY FRANK CHASE & SONS, FRANK JR.,  
CHARLES, ROBERT, RICHARD, RAYMOND

# *Skyline Restaurant*

1 Mile West of City Limits

U. S. Highways 90 and 20

OPEN 6 A.M. TO 11 P.M.

TALLAHASSEE, FLORIDA

*"Serving Good Food for Fine People"*

Private Rooms and Banquet Facilities

---

**SOUTHERNAIRE MOTEL &  
SKYLINE MOTOR LODGE**



Quality people always seek  
quality accommodations

## **MIDYETTE-MOOR Insurance Agency**

*"Ask Those We Serve"*

Complete Insurance and Bond Service

PHONE 222-3456



MIDYETTE-MOOR BUILDING  
TALLAHASSEE, FLORIDA

—SAYS—

**SCALP 'EM SEMINOLES!**



PAYNE MIDYETTE

FRANK MOOR

BILL MOOR

ED. CLARK

GLENN SEARS

WINSLOW SULLIVAN

PAUL McCARTNEY

BOB DICKINSON

REX SIKES

PAUL LEWIS

JIM MILLHOFF

PAYNE MIDYETTE, JR.

JOHN REEVES



Penny Edwards—"MISS TIPARILLO."

## What does she mean "cigars...cigarettes...Tiparillos"?

You'll be hearing that chant more and more—now that Tiparillos have arrived. And arrived they have. In all the right places. With all the right people.

The new Tiparillo has a neat, trim shape. It looks young and debonair. And its pearly, pliable tip pays more than lip service to your smoking pleasure.

And never before such mildness! The most careful blending of choicest imported tobaccos has seen to that. So, too, has the exclusive, veinless Ultra Cigar Wrapper\* that burns so evenly and smoothly it insures complete mildness.

You can even see the mildness. The

surprisingly whiter ash is visible evidence. Smoker's proof. Here is flavor you don't have to inhale to enjoy.

"Cigars...cigarettes...?" Who knows, maybe someday it will be just "Tiparillos!"

Why don't you ask for one today?

\*T.M. GENERAL CIGAR

**Tiparillos are on sale at this stadium.**



**FSU'S 1963 COACHING STAFF:** (Front row, L-R) Bobby Bowden, Bubba McGowan, Bill Peterson, Vince Gibson; (Back row) Y. C. McNease, Bill Proctor, Don James, John Coatta, Bob Harbison, Lou Luce.



**BILL PETERSON**  
Head Football Coach

*The  
Seminole  
Football  
Family*



**VAUGHN MANCHA**  
Athletic Director



**RONALD MELTON**  
Athletic Business  
Manager



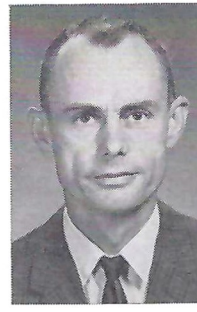
**DON FAULS**  
Team Trainer



**DR. R. A. JOHNSON**  
Team Physician



**BILL BUNKER**  
Sports Publicity  
Director



**CLAUDE THIGPEN**  
Ticket Manager



**TILLMAN DIXON**  
Equipment Custodian



Joe Avezano



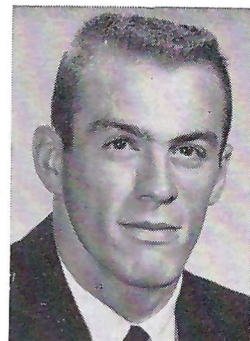
Winfred Bailey



Maury Bibent



Fred Biletnikoff



Larry Brinkley



Jerry Bruner

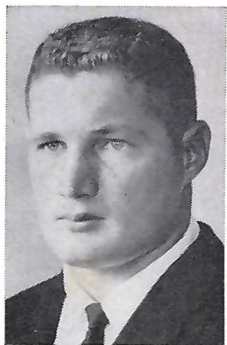
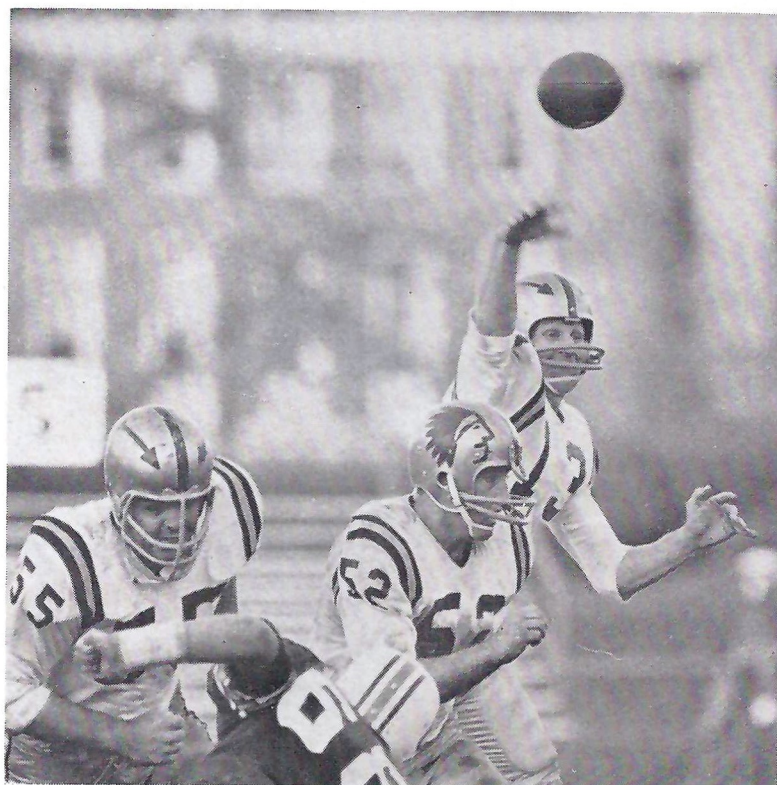


Charlie Calhoun

**F**

**S**

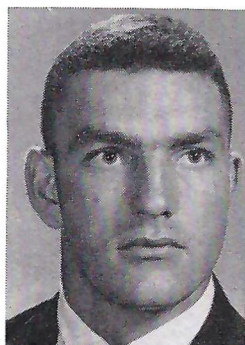
**U**



Jim Causey



George D'Allessandro



Bill Daly



Bill Dawson



Jack Edwards



Howard Ehler



Don Floyd



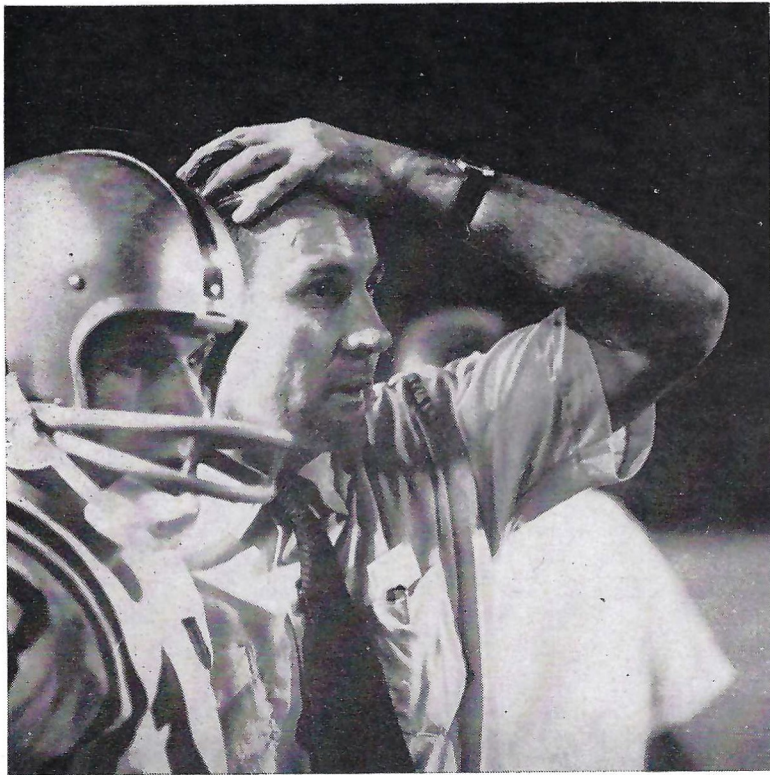
Ken Frazier



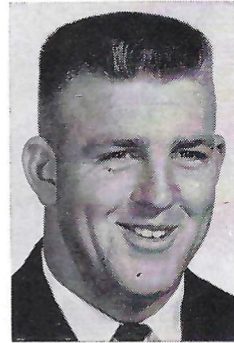
Terry Garvin



Tony Gero

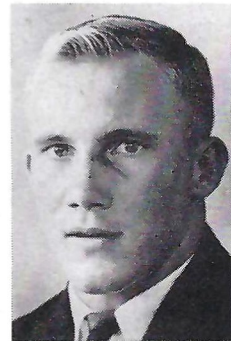


F



Ferrell Henry

S



Dick Hermann

U



Jim Loftin



Dale MacKenzie



Bob Mangan



Jim Massey



Jay Mac Matthews





Bill McDowell



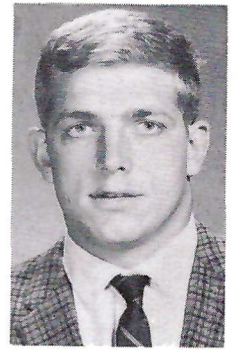
Doug Messer



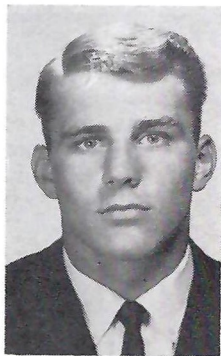
Les Murdock



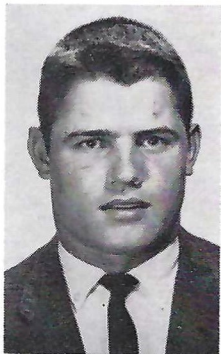
Joe Parrish



Frank Pennie



Joe Petko

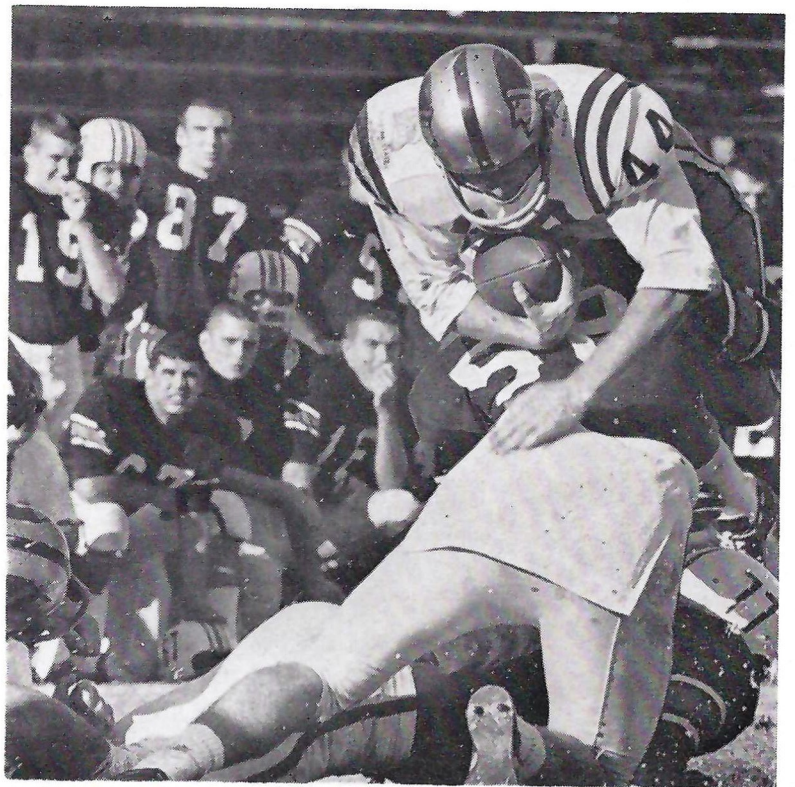


Ed Pope

**F**

**S**

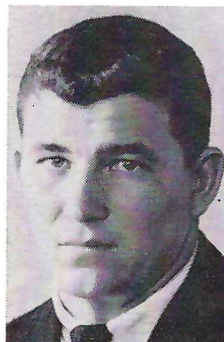
**U**



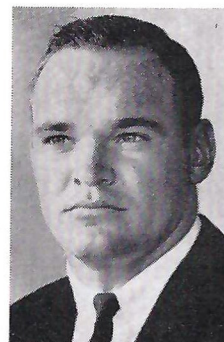
Ed Pritchett



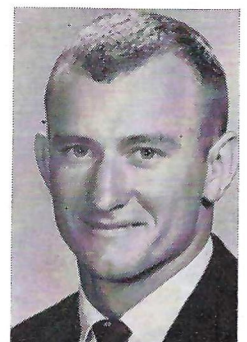
Elton Revell



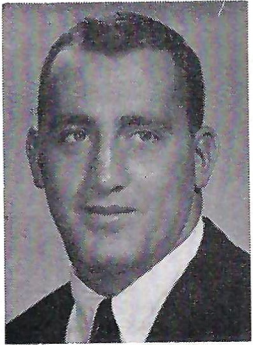
Gene Roberts



John Roberts



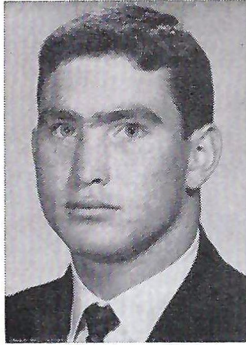
Marion Roberts



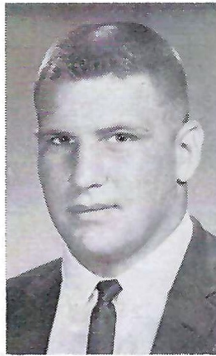
Chuck Robinson



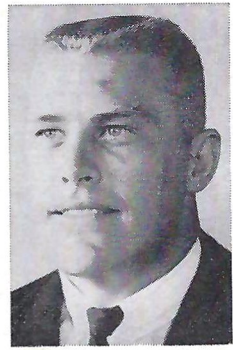
Jack Shinholser



Dave Snyder



Larry Strobel



Avery Sumner

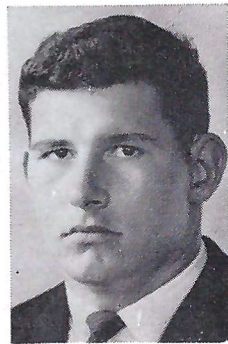


**F**



Steve Tensi

**S**

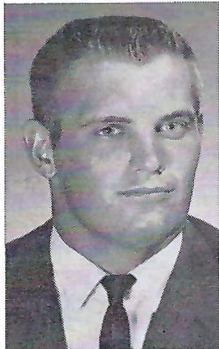


Dale Twitchell

**U**



John Wachtel



David Pitts



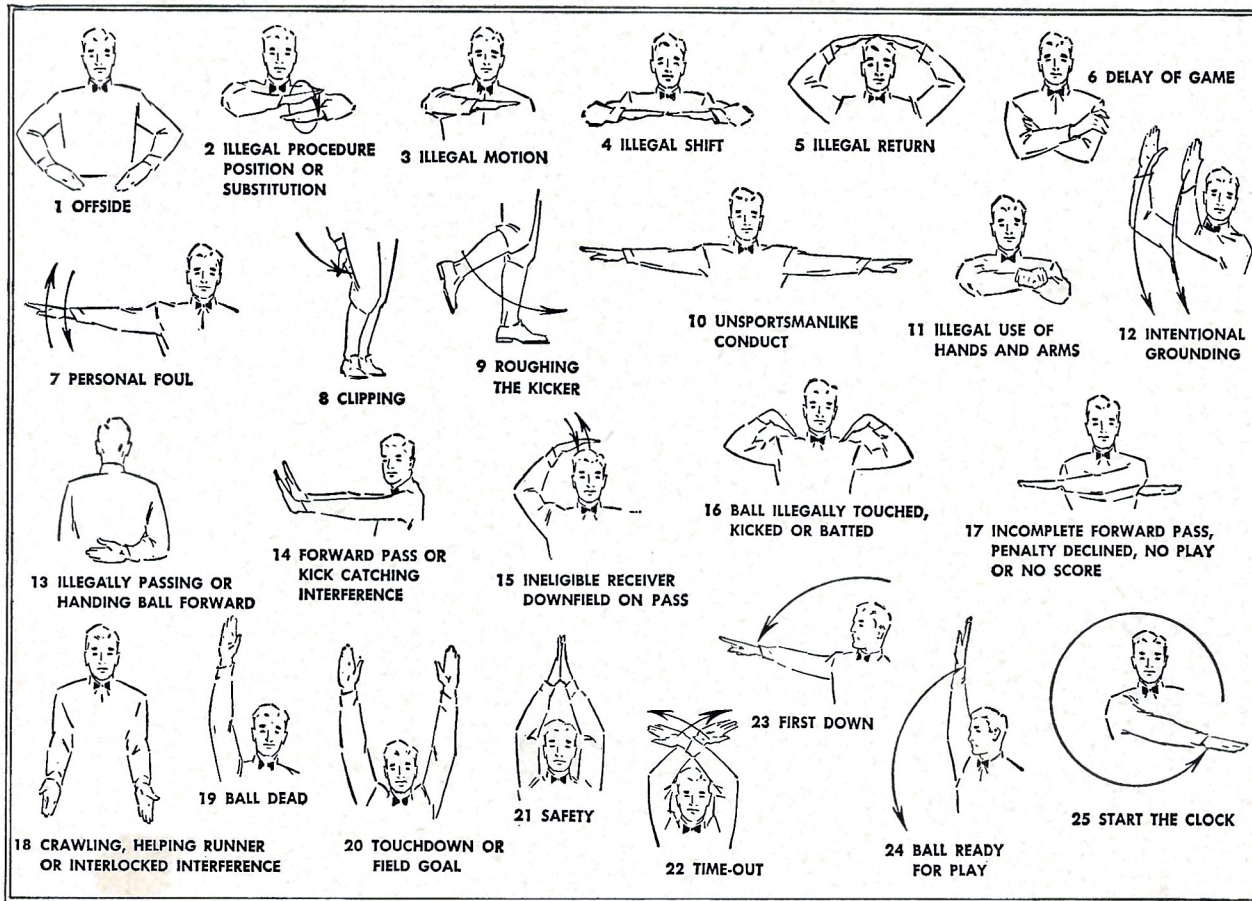
Tom West



Max Wettstein



Jerry Wooten



**TRAVELING  
DESSERT TRAYS**

**FAMOUS  
TOWN HOUSE  
ROAST  
PRIME RIB  
OF BEEF**



SPURGEON CAMP

*Good Luck  
Seminoles!*

★  
**NOBODY...  
BUT NOBODY  
UNDERSELLS.**  
★

**SOUTHERN  
ELECTRIC INC.**

**5-Store Purchasing Power  
Saves You Money on G-E Appliances!**

Tallahassee  
Downtown and  
Capital Plaza

Perry, Fla.  
115 E. Green St.  
on the Square

Valdosta, Ga.  
117 W. Central

Albany, Ga.  
225 W. Ogle-  
thorpe St.

## FLORIDA STATE

Starting Lineup

No.	Name	Pos.
81	<b>DON FLOYD</b> _____	<b>LE</b>
67	<b>JERRY BRUNER</b> _____	<b>LT</b>
66	<b>DICK HERMANN</b> _____	<b>LG</b>
55	<b>JACK EDWARDS</b> _____	<b>C</b>
52	<b>CHUCK ROBINSON</b> _____	<b>RG</b>
73	<b>AVERY SUMNER</b> _____	<b>RT</b>
83	<b>BILL DAWSON</b> _____	<b>RE</b>
13	<b>STEVE TENSI</b> _____	<b>QB</b>
20	<b>DAVE SNYDER</b> _____	<b>LHB</b>
25	<b>FRED BILETNIKOFF</b> _____	<b>RHB</b>
44	<b>MARION ROBERTS</b> _____	<b>FB</b>

## THE SEMINOLE SQUAD

11 Calhoun, QB	43 Ehler, FB	71 Willett, T
12 Gero, QB	44 Roberts, M., FB	73 Sumner, T
13 Tensi, QB	51 Avezzano, C	75 MacKenzie, T
15 Fischer, QB	52 Robinson, G	76 West, T
14 Massey, QB	53 Daly, C	77 Mangan, T
16 Pritchett, QB	54 Matthews, C	78 Andrews, T
20 Snyder, HB	55 Edwards, C	79 Pennie, T
21 Brinkley, FB	60 Henry, T	80 Wachtel, E
22 Bibent, HB	61 Shinholser, G	81 Floyd, E
23 Loftin, HB	62 Parish, G	82 Causey, E
24 DeLiberty, HB	63 McDowell, G	83 Dawson, E
25 Biletnikoff, HB	64 Pitts, G	84 D'Allessandro, E
26 Hammond, HB	65 Wooten, G	85 Twitchell, E
28 Bailey, HB	66 Hermann, G	86 Blankenship, E
29 Petko, HB	67 Bruner, T	87 Garvin, E
40 Messer, HB	68 Parrish, G	88 Roberts, J., E
41 Roberts, G., FB	69 Watson, T	89 Wettstein, E
42 Murdock, FB	70 Strobel, T	

the taste that's right!

not too strong...not too light...

Viceroy's got-the  
taste that's right!



# PENALTIES

1. **OFFSIDE** by either team; Violation of scrimmage or free kick formation; Encroachment on neutral zone—Loss of Five Yards.
2. **ILLEGAL PROCEDURE, POSITION OR SUBSTITUTION**—Putting ball in play before Referee signals "Ready-for-play"; Failure to complete substitution before play starts; Player out of bounds when scrimmage begins; Failure to maintain proper alignment of offensive team when ball is snapped; False start or simulating start of a play; Taking more than two steps after Fair Catch is made; Player on line receiving snap—Loss of Five Yards.
3. **ILLEGAL MOTION**—Offensive player illegally in motion when ball is snapped—Loss of Five Yards.
4. **ILLEGAL SHIFT**—Failure to stop one full second following shift—Loss of Fifteen Yards.
5. **ILLEGAL RETURN** of substitute not previously disqualified—Loss of Fifteen Yards.
6. **ILLEGAL DELAY OF GAME**; Taking more than four times out during either half (except for replacement of injured player)—Loss of Five Yards. Team not ready to play at start of either half—Loss of Fifteen Yards.
7. **PERSONAL FOUL** — Tackling or blocking defensive player who has made fair catch; Piling on; Hurdling; Grasping face mask of opponent; Tackling player out of bounds, or running into player obviously out of play; Striking an opponent with fist, forearm, elbow or locked hands; Kicking or kneeling—Loss of Fifteen Yards (Flagrant offenders will be disqualified.)
8. **CLIPPING**—Loss of Fifteen Yards.
9. **ROUGHING THE KICKER** or holder—Loss of Fifteen Yards.
10. **UNSPORTSMANLIKE CONDUCT**—Violation of rules during intermission; Illegal return of suspended player; Coaching from sidelines; Invalid signal for Fair Catch; Persons illegally on field—Loss of Fifteen Yards. (Flagrant offenders will be disqualified.)
11. **ILLEGAL USE OF HANDS AND ARMS** by offensive or defensive player; Defensive holding—Loss of Fifteen Yards.
12. **INTENTIONAL GROUNDING** of forward pass—Loss of Five Yards Plus Loss of Down.
13. **ILLEGALLY PASSING OR HANDING BALL FORWARD**—Loss of Five Yards Plus Loss of Down.
14. **FORWARD PASS OR KICK CATCHING INTERFERENCE**—Interference with opportunity of player of receiving team to catch a kick—Loss of Fifteen Yards. Interference by member of offensive team with defensive player making pass interception—Loss of Fifteen Yards Plus Loss of Down. Interference by defensive team on forward pass—Passing Team's Ball at Spot of Foul and First Down.
15. **INELIGIBLE RECEIVER DOWNFIELD ON PASS**—Loss of Fifteen Yards.
16. **BALL ILLEGALLY TOUCHED, KICKED OR BATTED**—Forward pass being touched by ineligible receiver beyond the line of scrimmage—Loss of Fifteen Yards from Spot of Preceding Down and Loss of a Down. Eligible pass receiver who goes out of bounds and later touches a forward pass—Loss of Down. Illegal touching of kicked ball within opponent's ten yard line—Touchback.
17. **PENALTY DECLINED**; Incomplete forward pass; No play or no score.
18. **CRAWLING** by runner—Loss of Five Yards. Interlocked Interference—Loss of Fifteen Yards.

**"....it's a date!"**

**WILL IT BE  
PIZZAS AT  
SMITH HALL**

**OR**

**QUICKIE BURGERS**

**AND EXTRA THICK MALTS AT THE STUDENT CENTER  
DINING HALL & SODA SHOP ALSO AVAILABLE TO SERVE YOU**

**"Fine . . . . See You There!"**





## HAV-A-TAMPA JEWEL

The s-m-o-o-t-h  
cigar with the  
built-in mouthpiece

ALL NATURAL-LEAF  
FINE TOBACCO . . .  
TOPS IN TASTE AND  
SMOKING PLEASURE

*Ask for the  
Brand Name*

HAV-A-TAMPA  
CIGAR

*Distributed by* **Eli Witt Tobacco & Candy Co.**  
Tallahassee, Florida

## QUALITY CLEANERS

215 W. COLLEGE AVE.—DIAL 222-5097

**ONE DAY SERVICE**

**PICK-UP and DELIVERY**

**Quality Laundry Work**

**Fluff Dry Service**

EXPERT TAILORING and ALTERATIONS

ZIPPERS REPAIRED

## BENNETT'S DRUG STORE

- Prescriptions
- Cameras
- Sundries
- Gifts
- Fountain
- Cafe
- Cosmetics
- Drugs

MEET ME AT BENNETT'S

BEFORE AND AFTER THE GAME!

Corner Monroe and College Streets

Phone 222-8980 — 222-4450

## LITTLE FOLKS STORE, Inc.

133 North Monroe Street

TALLAHASSEE, FLORIDA

Toys, Hobbies, Children's Furniture

Jack L. Finley

Phone 222-1146

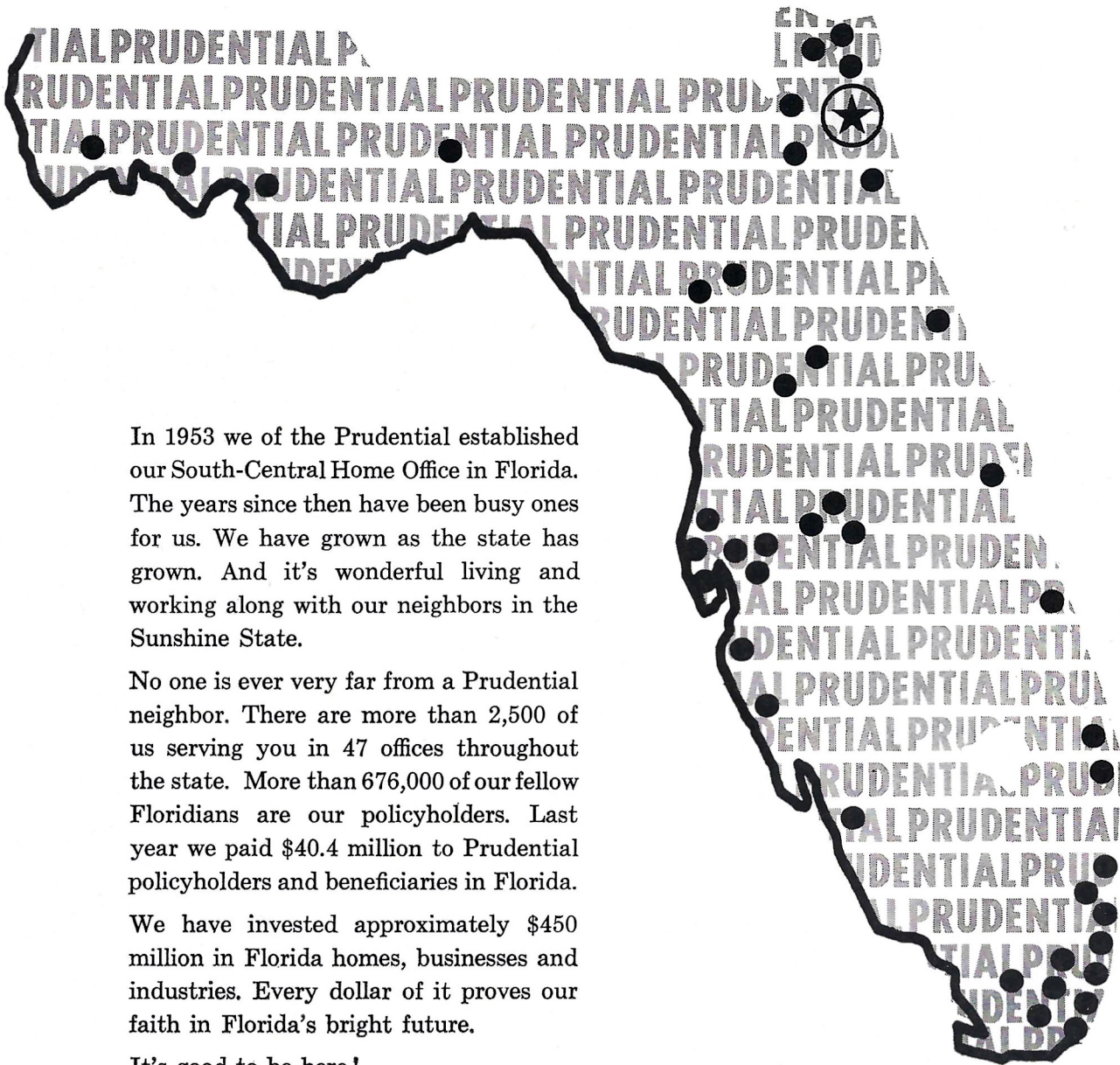
*First choice of those who appreciate  
the finest in foods and service!  
Open Breakfast, Lunch and Dinner*

BRUCE BISHOP'S

1921 W. Tennessee

THE  
FOUNTAIN  
RESTAURANT

*We like the State we're in*

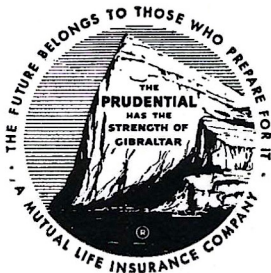


In 1953 we of the Prudential established our South-Central Home Office in Florida. The years since then have been busy ones for us. We have grown as the state has grown. And it's wonderful living and working along with our neighbors in the Sunshine State.

No one is ever very far from a Prudential neighbor. There are more than 2,500 of us serving you in 47 offices throughout the state. More than 676,000 of our fellow Floridians are our policyholders. Last year we paid \$40.4 million to Prudential policyholders and beneficiaries in Florida.

We have invested approximately \$450 million in Florida homes, businesses and industries. Every dollar of it proves our faith in Florida's bright future.

It's good to be here!



## **THE PRUDENTIAL INSURANCE COMPANY OF AMERICA**

**SOUTH-CENTRAL HOME OFFICE • JACKSONVILLE, FLORIDA**

# BE A SEMINOLE BOOSTER

"The Seminole Boosters provide the margin of difference between a good team and a great team."

Thus Florida State's Bill Peterson sums up his feelings toward the Seminole Boosters, Inc., an organization devoted to the support of FSU athletics with emphasis on the football program.

Membership in the Boosters—the group numbers approximately 1200 now—is open to anyone with a sincere interest in the University's athletic welfare. Minimum contribution for an individual membership is \$10, for a business membership, \$25.

Contributions are administered in accordance with NCAA regulations and in conjunction with the FSU Department of Intercollegiate Athletics.

Boosters receive a colorful automobile license plate which provides reserved parking at the stadium, a membership card, a weekly fall publication called "The Grandstand Coach," and certain priorities on season and individual football tickets.

Serving his initial term as president of Seminole Boosters, Inc., is F. Wilson (Bill) Carraway, Jr., Secretary and Manager of the Coca-Cola Bottling Co., Tallahassee. Hardworking executive secretary of the organization is Thomas A. Waits, Director of FSU Alumni Affairs.



Tom Waits and Bill Carraway

GOOD LUCK SEMINOLES!

## LOUIS' SEAFARE

"A BANQUET IN A BOX"

*featuring Seafood & Chicken*

With over 18 different items to carry out in over 50 different sizes.

620 W. Tennessee St.

Ph. 224-1181

Be sure and visit our other location in Gainesville, Fla.  
309 N. W. 13th St.

We also have an air conditioned area if you so desire.

## FOREMOST

ICE CREAM

PHONE • 224-7136

## SUNSHINE STATE DAIRYMEN'S COOP.

PHONE • 222-5303



*Garcia's*

OPEN 11 A.M. TO MIDNIGHT DAILY

"HOME OF FINE COOKED  
SPANISH-MEXICAN &  
AMERICAN FOODS"

320 E. TENNESSEE ST.

223-1177

*Learn to Fly at*

**Seminole Flying Service, Inc.**

**Municipal Airport**

Phone 222-3121

Tallahassee, Fla.

- AIRPLANE RIDES
- FLIGHT INSTRUCTION
- AERIAL PHOTOGRAPHY
- CHARTER FLIGHTS

FLY the best—A New Cessna

"Look up—a new CESSNA will be overhead"

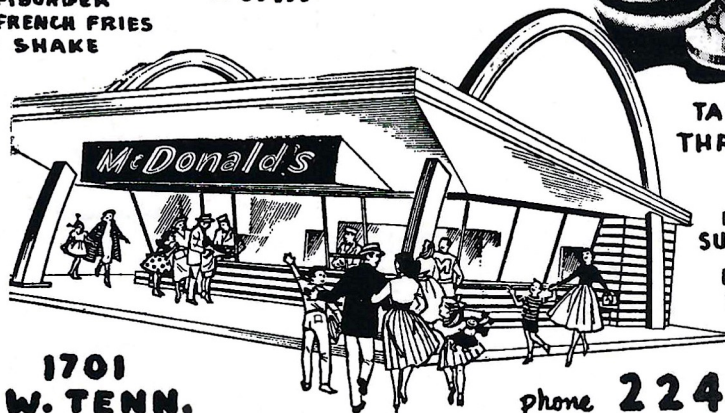
# McDonald's HAMBURGERS

a safe choice  
anytime, anywhere



McDonald's  
**ALL AMERICAN**

- 100% PURE BEEF HAMBURGER
- CRISP GOLDEN BROWN FRENCH FRIES
- TRIPLE THICK DAIRY SHAKE



1701  
W. TENN.

phone **224-3631**

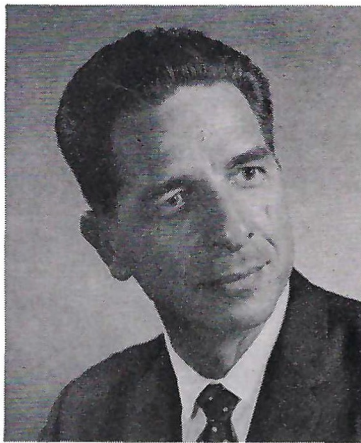


**TASTY FOOD  
THRIFTY PRICES**

**OPEN**  
11:30 TO 11:30  
SUN. thru THURS  
11:30 TO 1 AM  
FRI. & SAT.

# THE FLORIDA STATE FOOTBALL NETWORK

... Follow the Seminoles at Home and Away



**Bo Mitchell**



**John Hoy**

"Good afternoon, ladies and gentlemen, this is Bo Mitchell and John Hoy bringing you Florida State University football. . . ."

The voices are new, but the play-by-play thrill brought to FSU fans at home over the Seminole Football Network for the past three years remain the same.

Energetic new "voice" of the Seminoles is Bo Mitchell of Pensacola. His partner at the FSU microphone is Tallahassee's John Hoy who does pre-game, halftime and "time out" color commentary.

Mitchell is vice-president and station manager of radio station WCOA, Pensacola. The ex-naval aviator brings 15 years of sportscasting experience to the growing Seminole Network which carries Florida State Football to thousands of listeners in Georgia and Florida.

In addition to his network chores, Hoy, who is sports director of Tallahassee's WCTV, is host to the "Bill Peterson Show" every Sunday afternoon, and has a daily sports program.

Completing the team is Art Deters, chief engineer and organizer of this year's network. Deters is station manager of radio station WTAL, Tallahassee.

During the 1963 season the Seminole Network will be carried by 18 Florida stations.

You can follow the Seminoles this year over WKIS, Orlando; WALT, Tampa; WOOO, DeLand; WCNH, Quincy; WPCF, Panama City; WMOP, Ocala; WSRA, Milton; WIOD, Miami; WCOA, Pensacola; WMYR, Fort Myers; WGRO, Lake City; WTOT, Marianna; WTAL, Tallahassee; WNSN, Valparaiso; WROD, Daytona Beach; WAVP, Avon Park; WPAX, Thomasville; WJAX, Jacksonville; WMAF, Madison; and WWPF, Palatka.

# The Vogue

TALLAHASSEE, FLORIDA

**Before Or After**

**Game**

**CHICKEN IN THE ROUGH**  
COPYRIGHT 1977 BY BEVERLY OSBORN

**QUAKER HOUSE**



**RESTAURANT**

*Dining Room  
and Curb Service*



**FOOTBALL FANS  
YOU WILL FIND EVERYTHING  
PHOTOGRAPHIC**

- FILMS
- CAMERAS
- ACCESSORIES
- RENTALS
- COMPLETE PHOTOFINISHING SERVICE

AT

**TALLAHASSEE CAMERA CENTER**

117 North Monroe St.

Ph. 222-8771

*"Across from the Florida Theatre"*

# WFSU-TV—THE SEMINOLE STATION

There's more football action than ever over WFSU-TV this fall.

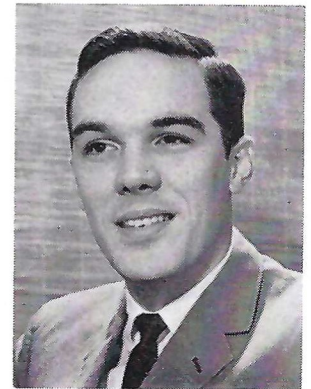


Mike Shaara

Florida State's educational television station (Channel 11) is keeping pace with the increased interest in the Seminoles with feature programs which give the armchair fan a close look at games upcoming and past, plus reports on future FSU opponents.

Leading off every football week this year will be a complete showing of the previous Saturday's game on Monday nights at 10. WCTV's Roy Weissinger does the play-by-play and Mike Shaara of the FSU English Department brings a wide sports background into his color commentary.

At 8 p.m. on Thursday is John Hoy's football preview show, "63 Seminoles." This hour-long program presents FSU's "Scout of the Week" with information on the coming Saturday's foe. Members of the Seminole squad and other outstanding guests will also be presented.



Roy Weissinger

ENJOY THE GAME MORE!

Treat yourself to **m&m's** Candies



**ON SALE AT THIS STADIUM NOW!**



**SEMINOLE CHEERLEADERS**—Front row, left to right: Linda Duyck, Plant City; Bill Harnage, St. Petersburg; Kay Lewis, Arcadia; Bill Whidden, Kissimmee; Carolyn Duyck, Plant City. Second row: Dee Weber, West Palm Beach; Head Cheerleader Sherry Harris, Merritt Island; and Linda Hagan, Orlando.

### ALMA MATER

High O'er the Towering Pines our voices swell  
 Praising these Gothic spires we love so well  
 Here sons and daughters stand, faithful and true  
 Hailing our Alma Mater—F S U.

### FIGHT SONG

We're going to fight, fight, fight, for FSU  
 We're going to scalp 'em, Seminoles,  
 We're going to win, win, win, win this game  
 And roll on down and make those goals!  
 For FSU is on the warpath now,  
 And at the battle's end she's great;  
 So fight, fight, fight, fight, for victory  
 Our Seminoles of Florida State  
 F-L-O-R-I-D-A S-T-A-T-E!  
 Florida State! Florida State! Florida State!

### THREE GARNETS

Give me a Garnet, Garnet, Garnet Garnet Garnet  
 Give me a Gold, Gold, Gold Gold Gold  
 Garnet, Gold  
 Garnet, Gold  
 Go Seminoles Go!

### SITTIN' IN A WIGWAM

Sittin' in a wigwam  
 Beatin' on a tom- tom  
 Who come? We come!  
 Everybody will come.  
 Scalp 'em (clap, clap), Scalp 'em  
 (Clap, clap), etc.

### FRESHMAN, FLUNKY

Freshman, Flunky, Student, Scholar,  
 All good Seminoles, stand up and holler!

### GO FLORIDA STATE

Go-o-o-o-o-o-o-o-o-o, Florida!  
 Go-o-o-o-o-o-o-o-o-o, State!  
 Go! Go!  
 Florida State!

### GARNET AND GOLD

Garnet and Gold, fight, fight!  
 Garnet and Gold, fight, fight!  
 Who fight? We fight!  
 Garnet and Gold, fight, fight!

### IS EVERYBODY HAPPY?

Is everybody happy?  
 AUD: Hell, yes!  
 Is anybody low?  
 AUD: Hell, no!  
 Let's railroad Seminoles  
 And take it slow!  
 (Spell Seminoles 3 times)  
 Go, Seminoles!

### FSU CLAP CHEER

(Stomp clap, stomp clap, stomp clap-clap-clap-clap-clap)  
 Repeat 3 times, then:  
 F (clap, stomp clap, stomp clap-clap-clap-clap)  
 S (clap, stomp clap, stomp clap-clap-clap-clap)  
 U (clap, stomp clap, stomp clap-clap-clap-clap)  
 F (clap) S (clap) U (clap-clap-clap-clap)  
 Go!!

# THE ATHLETIC COMMITTEE

The Athletic Committee, appointed by the President, is the governing body of intercollegiate athletics at Florida State University.

The Committee has the responsibility of seeing that athletics are conducted primarily in the interests of the students, but with due regard for a proper, continuing and healthy interest of the alumni and the citizens of Florida, as well as the athletic heritage and prestige of the University.

Mode L. Stone, Dean of the School of Education is the Committee chairman. Members are Mary V. Alexander, Claude Flory, Coyle Moore, J. M. Plant, Elston Rody and Thomas Wright. Ex-officio non-voting members are Vaughn Mancha, the FSU Alumni President, the Seminole Booster President and the President of the Student Body.



Mode L. Stone



Thomas Wright



J. M. Plant



Claude Flory



Coyle Moore



Mary Alexander



Elston Rody

## TODAY'S TEAMS—HOW THEY RATE

### Results

#### FLORIDA STATE (2-1-1)

Miami .....	24-0
Texas Christian .....	0-13
Wake Forest .....	35-0
Southern Mississippi .....	0-0

#### VIRGINIA TECH (4-1)

Kentucky .....	14-33
Wake Forest .....	27-0
Virginia .....	10-0
George Washington .....	22-8
William and Mary .....	28-13

### Individual Leaders

#### FLORIDA STATE

Player	Att.	Yds.	Avg.
Snyder .....	54	208	3.8
M. Roberts .....	22	67	3.0
Brinkley .....	6	57	9.5
Bibent .....	12	50	4.2

#### VIRGINIA TECH

#### RUSHING

	Att.	Yds.	Avg.
Schweickert .....	70	387	5.5
Utz .....	53	237	4.5
Page .....	39	132	3.4
Walker .....	21	66	3.1

#### PASSING

Tensi	Att.	Comp.	Yds.	TD
.....	80	41	514	5

Schweickert	Att.	Comp.	Yds.	TD
.....	64	33	410	3

#### RECEIVING

	Ct.	Yds.	TD
Wettstein .....	11	97	2
Biletnikoff .....	10	161	3
Dawson .....	6	86	0
Floyd .....	4	36	0

	Ct.	Yds.	TD
Marvin .....	17	220	1
Walker .....	5	58	1
B. Edwards .....	4	65	0
Cahill .....	4	44	1

#### SCORING

	TD	Kick	P-R	FG	Pts.
Biletnikoff .....	4	0-0	0-0	0	24
Wettstein .....	2	0-0	0-0	0	12
Messer .....	0	8-8	0-0	1	11
Snyder .....	1	0-0	0-0	0	6
M. Roberts .....	1	0-0	0-0	0	6

	TD	Kick	P-R	FG	Pts.
Schweickert .....	4	0-0	0-0	0	24
Utz .....	4	0-0	0-0	0	24
Cranwell .....	0	9-9	0-0	2	15
Walker .....	2	0-0	0-0	0	12

## VIRGINIA TECH 1963 FOOTBALL ROSTER

No.	Name	Pos.	Ht.	Wt.	Age	Class	Hometown
10	*Schweickert, Bob	QB	6-1	188	20	Jr.	Bon Air
11	Owens, Bobby	QB	5-10	173	19	So.	Richmond
12	*Edwards, Lacy	QB	5-8	180	21	Jr.	Roanoke
14	Vance, Skip	QB	6-1	168	21	Jr.	Hagerstown, Md.
21	Hewitt, Wayne	FB	5-8	175	19	Jr.	Waynesboro
22	*Cahill, Mike	HB	5-11	170	20	Sr.	Louisville, Ky.
23	*Babb, Billy	HB	5-9	169	20	Jr.	Suffolk
24	Messamore, Claude	HB	5-9	186	18	So.	Knoxville, Tenn.
27	Kelly, Dickie	HB	5-10	168	20	Jr.	Charlotte, N.C.
30	Cary, Phil	FB	5-8	182	21	Sr.	Norfolk
31	*Page, Darrell	FB	5-8	167	19	Jr.	Waycross, Ga.
32	Whitley, Ken	FB	5-8	190	19	So.	Norfolk
33	Cranwell, Dickie	FB	5-11	160	19	Jr.	Richlands
34	*Utz, Sonny	FB	5-11	200	20	Jr.	Annandale
40	*Walker, Tommy	HB	5-9	170	22	Sr.	Norfolk
43	*Hawkins, Tommy	HB	5-9	177	21	Sr.	Hagerstown, Md.
45	*Weihe, Buddy	HB	5-10	175	21	Sr.	Louisville, Ky.
50	Hanly, Les	C	5-10	195	19	So.	Waycross, Ga.
51	Saunders, Mike	G	6-0	195	18	So.	Lynchburg
52	*Rodgers, Burton Mack	C	6-2	212	19	Jr.	Rand, W. Va.
53	*Camaioni, Alex	C	5-9	206	23	Sr.	Martins Creek, Pa.
55	*Albright, Kyle	C	6-2	195	21	Sr.	Gadsden, Ala.
60	*Hvozdovic, Mike	G	5-10	204	20	Jr.	Wilkes-Barre, Pa.
61	Jaworski, Ken	G	6-0	204	20	So.	Miami, Fla.
63	**Green, Dave	T	5-11	210	21	Sr.	Bristol
64	*Hickam, Jim	G	6-0	195	21	Sr.	Coalwood, W. Va.
65	**Green, Newt	G	6-1	200	21	Sr.	Wooten, Ky.
66	*Philpot, Larry	T	6-3	244	20	Sr.	Tuscaloosa, Ala.
67	*Bloomer, Joe	G	6-1	207	19	Jr.	Williamson, W. Va.
68	*Kreiter, Vic	G	5-10	207	20	Jr.	Highland Springs
70	Jeffrey, Ed	T	6-1	210	19	So.	Springfield
71	*Frank, Ron	T	6-3	237	24	Sr.	Burkeville
72	Mullins, Johnny	T	6-0	200	19	Jr.	Bradshaw, W. Va.
73	*Jones, Lynn	T	6-1	217	20	Jr.	Bayside
74	**Breen, Gene	T	6-1	202	21	Sr.	Pittsburgh, Pa.
75	Sheehy, John	G	5-11	195	20	So.	New York, N.Y.
80	Shipley, John	E	6-1	190	19	So.	Kingsport, Tenn.
81	*Bailey, Darryl	E	5-10	178	19	Jr.	Tuscaloosa, Ala.
82	Leland, Harry	E	6-0	188	18	So.	Springfield
83	*Churchill, Bob	E	5-11	182	20	Jr.	Roanoke
85	*Marvin, Tommy	E	6-0	180	21	Jr.	Williamsburg
86	**Adams, Jake	E	6-5	218	21	Sr.	Highland Springs
87	*Holbrook, Wynston	E	6-2	208	20	Jr.	Eunice, W. Va.
88	Edwards, Billy	E	6-1	191	19	So.	Orange

\*—Denotes Letters Won

**STOP**  
**Before and**  
**After Game**



**Steaks**  
**Seafood**

# Virginia Polytechnic Institute

Virginia Polytechnic Institute was established in 1872 as the Virginia Agricultural and Mechanical College. It is now familiarly known as "Virginia Tech" or "V.P.I."

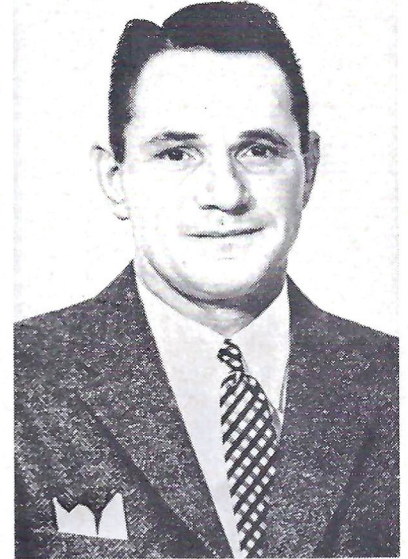
The institution is one of the country's land-grant colleges authorized by the Morrill Act of 1862. Blacksburg, the location of the university, is 2,100 feet above the sea, and was laid out in 1797 on the side of Draper's Meadow, the first white settlement west of the Alleghanies. The university grounds cover approximately 2,300 acres, of which 300 acres are in the campus.

The university enrolled a total of 132 students in its first session in 1872. The enrollment has grown steadily, reaching a pre-war peak of more than 3,200. Registration for the fall quarter of 1948 exceeded 5,500 students. The more than 20,000 graduates of the university, together with some 39,000 former students, have served the ends of science, engineering, agriculture, and business the world over. Nearly 8,000 V.P.I. men served their country in World War II, and more than 300 of these gave their lives.

Instruction in agriculture, engineering, applied sciences, and business administration, offered in 37 curricula, provides preparation for hundreds of specific vocations. V.P.I. also offers graduate work in 38 fields of study leading to the master of science and in 15 fields leading to the doctorate. It is the purpose of the university to supplement basic technical knowledge and skills with general education so that the V.P.I. graduate can take his place in the world not only as a trained specialist but also as a citizen who is aware of the other values which make up the good life.



**Jerry Claiborne**  
Head Coach



**Frank Moseley**  
Athletic Director

Before World War II, Virginia Polytechnic Institute could provide instructional facilities and housing for approximately 3,000 students. To care for the educational needs of thousands of veterans after the war and a normal quota of other students, considerable expansion has been necessary. Because of the continuing steady growth of the university and the increase in population, additional long-range plans have been developed to provide educational opportunities for the increasing number of students now and in the future. The university has recently completed new classroom buildings and dormitories, and other facilities are now under construction. It is doubtful, however, whether expansion of facilities can keep pace with the increasing requests for admission. Consequently, to protect everyone concerned from the ills of overcrowding, the university will have to be more and more selective in its admissions by accepting students who show by their scholastic records and other qualifications an adequate background for successful college work.





Dave Green



Buddy Weihe



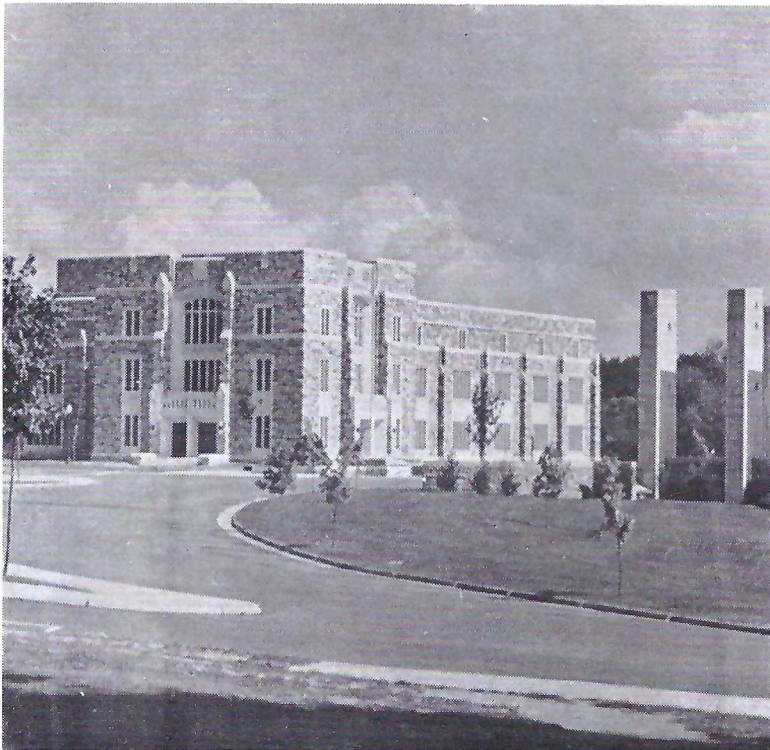
Kyle Albright



Mike Hvozdovic



Billy Edwards



Carol M. Newman Library

V



Sonny Utz

P



Tommy Marvin

I



Larry Philpot



Phil Cary



Tommy Walker



John Shipley



Ron Frank



rd



Mike Cahill



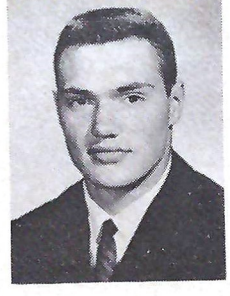
Tommy Hawkins



Gene Breen



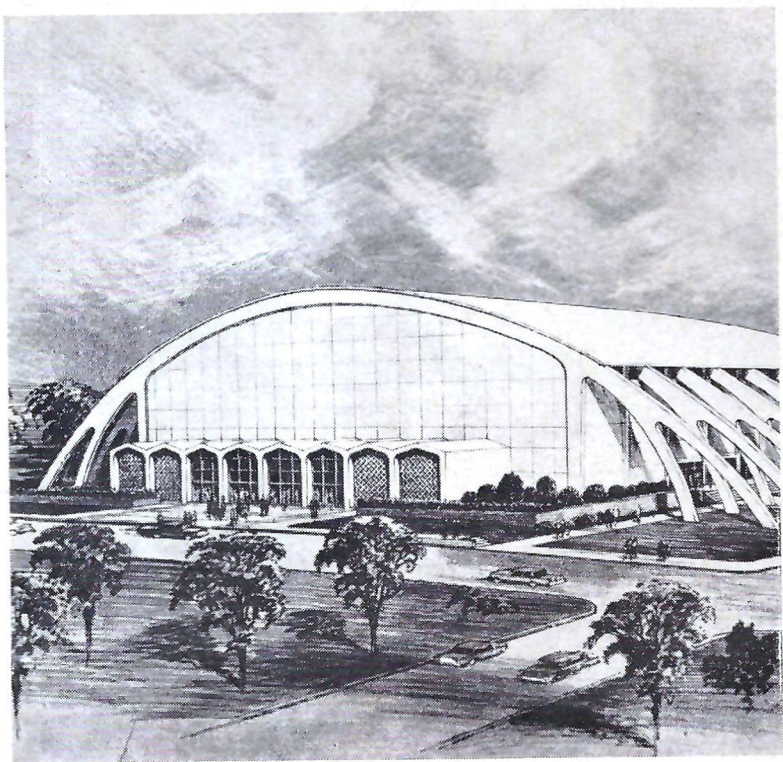
Dick Kelly



Jake Adams

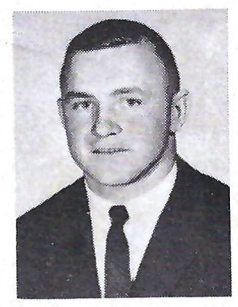


tz

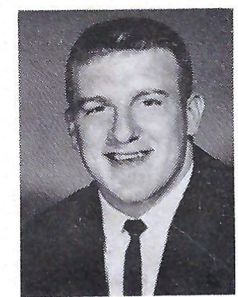


Virginia Tech Coliseum

V  
P  
I



Darrell Page



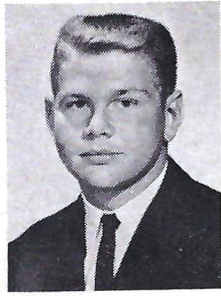
Vic Kreiter



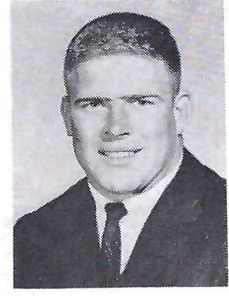
irvin



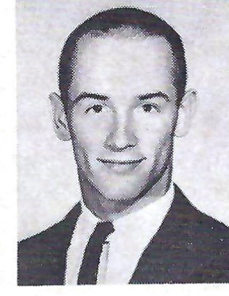
Newt Green



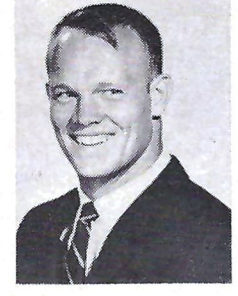
Jim Hickam



Ken Whitley



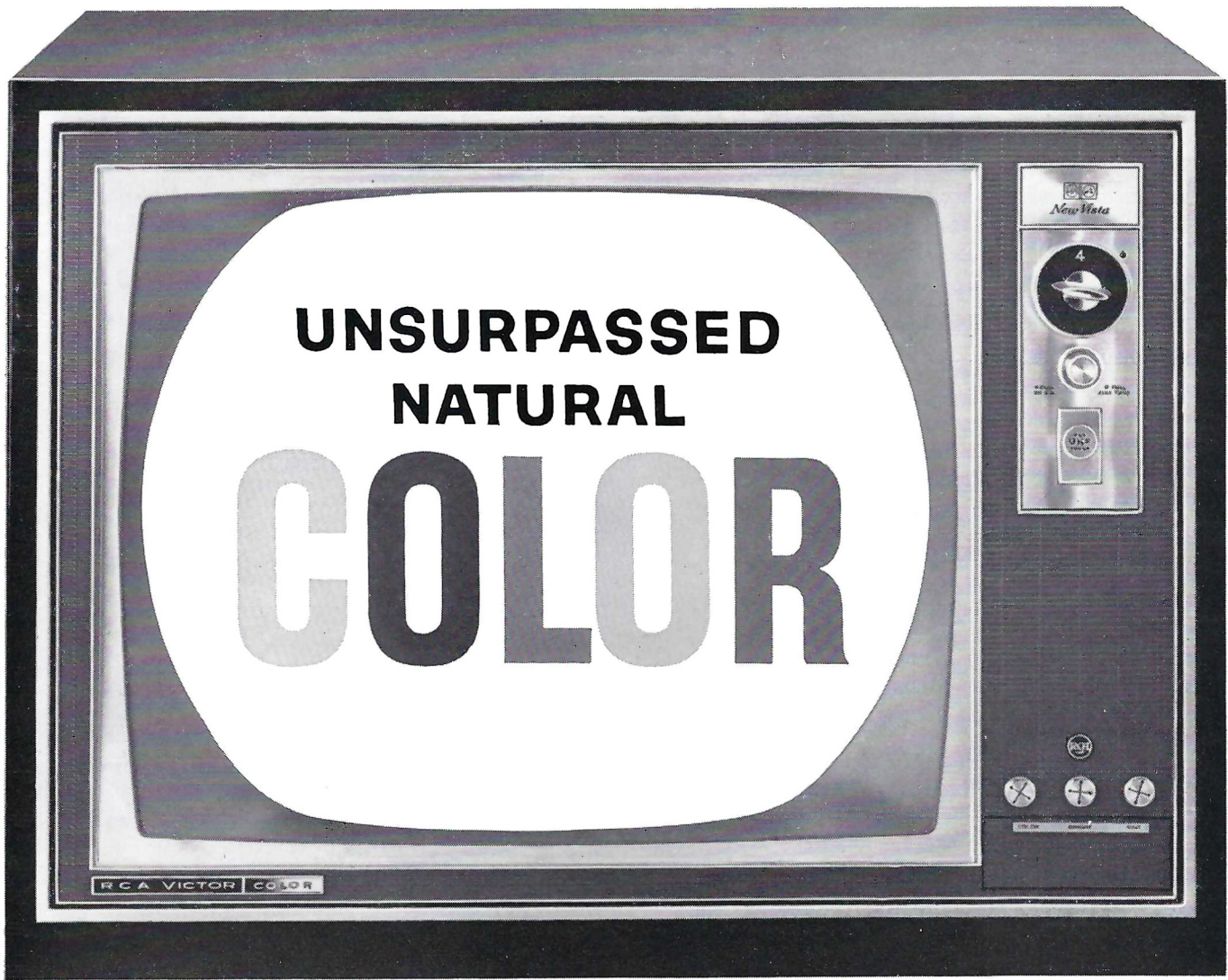
Bob Schweickert



Burt Rodgers



nk



The *Radnor*, lowest priced RCA Victor Color TV ever!

## RCA Victor New Vista® Color TV gives you unsurpassed natural color, brighter than ever before!

In 1964 RCA Victor New Vista Color TV you get a sharper, brighter color picture . . . so sharp and bright you have to see it to believe it!

Three years ago RCA introduced the High Fidelity Color Picture Tube to make color up to 50% brighter than previous color tubes. Now RCA engineering advances bring you an even

better, even brighter color picture. And it's the most *dependable* Color TV in RCA Victor's history, with all the modern advantages of Space Age Sealed Circuitry.

The UHF emblem on New Vista Color TV means you're buying the set for tomorrow *today*. All-channel UHF tuning can be added easily to

all models. Most models of RCA Victor New Vista Color TV also can be ordered with UHF tuners already built in as an optional extra.

Be sure to see New Vista Color TV for yourself.



The Most Trusted Name in Television

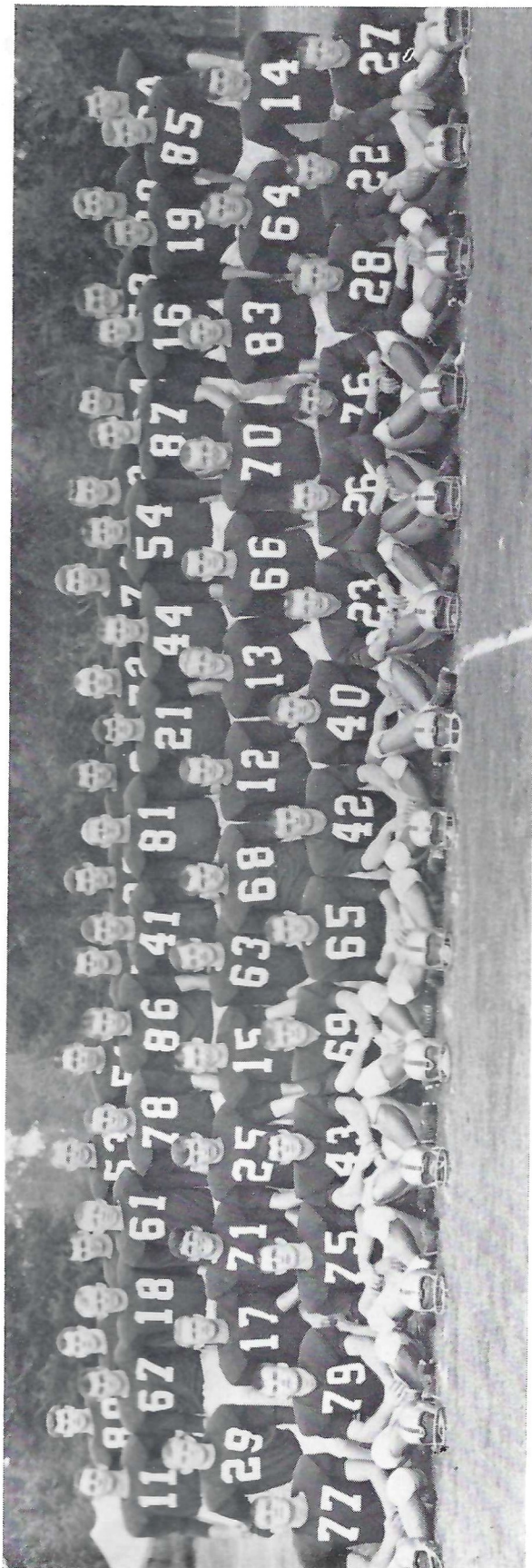
Tmk(s)®

MORE PEOPLE OWN RCA VICTOR TELEVISION THAN ANY OTHER KIND . . . BLACK AND WHITE OR COLOR.

### Rainey Cawthon's Inc.

Monroe at Brevard

Phone 222-1865



## 1963 FRESHMAN FOOTBALL ROSTER

Name	Pos.	Ht.	Wt.	Hometown
Tom, Allen	QB	6-0	169	New Martinsville, W. Va.
Greg Bagget	FB	6-1	217	Panama City
Mike Belbeck	C	6-1	200	Winter Park
Dick Bender	E	6-1	168	Valdosta
Jim Berry	QB	6-0	173	Atlanta, Ga.
Bill Betts	G	6-0	223	Birmingham, Ala.
Mike Brady	G	6-0	189	Coral Gables
Bill Campbell	HB	5-9	170	Tampa
Pat Conway	HB	5-10	172	Miami
Jerry Corbitt	HB	6-1	172	Jesup, Ga.
Stan Croley	E	6-2	177	Dade City
Tom Delopez	FB	6-2	197	Miami
Charles Fuchs	E	6-2	209	Homestead
Phil Galioto	HB	5-10	185	West Palm Beach
Joe Gatlin	T	6-5	224	Coral Gables
Wayne Giardino	QB	5-10	189	West Palm Beach
Larry Green	HB	5-10	177	Cairo, Ga.
Kim Hammond	QB	6-1	182	Melbourne
Chipper High	HB	5-11	174	Reddick
John Hosack	HB	5-10	192	Miami
Fred Hudson	E	6-1	197	Milton
Ken Johnson	T	6-2	213	Jacksonville
Don Jones	HB	6-1	176	Lakeland
Leslie King	FB	5-11	186	Winter Park
Vernon Korhn	QB	5-11	170	Tampa
Allen LaMarche	HB	5-11	185	Hollywood
Felton Lancaster	T	6-2	244	Cross Keys, Ga.
Nick Maracic	C	6-2	190	Hollywood
Scott McCord	T	6-2	218	Atlanta, Ga.
Wayne McDuffie	E	6-2	197	Hawkinsville, Ga.
Phil McKinnon	G	5-11	195	Birmingham, Ala.
Jim McNeil	G	6-3	186	Panama City
Bill Meadows	C	6-1	194	Birmingham, Ala.
Bob Mendez	HB	5-10	176	Key West
Bill Moremen	HB	5-11	171	Daytona Beach
Lee Narramore	FB	6-0	206	Pensacola
Larry Overton	G	5-11	195	Pensacola
Bob Patterson	T	5-11	216	Tampa
Charles Pennie	T	6-4	222	Hollywood
Jim Perry	QB	5-11	178	Logan, W. Va.
Charles Randall	T	6-1	217	Savannah, Ga.
Bill Richardson	QB	5-9	173	Jesup, Ga.
Jim Riser	HB	6-0	175	Sanford
Rick Saunders	FB	6-1	181	Macon, Ga.
Phil Sims	G	6-1	191	Atlanta, Ga.
John Stephens	C	6-1	191	Tallahassee
Helge Swanson	C	6-3	214	Milton
Cary Thompson	G	6-3	202	Marietta, Ga.
Tom Thompson	C	6-3	247	Waycross, Ga.
H. T. Waller	QB	6-1	177	Vernon
T. K. Wetherell	HB	5-11	169	Daytona Beach
Del Williams	T	6-2	218	Live Oak
Paul Williams	E	6-2	205	Hollywood
Larry Williamson	C	5-11	193	Macon, Ga.
Tom, Yates	G	6-1	214	Atlanta, Ga.

## 1963 FRESHMAN SCHEDULE

Oct. 5	Florida at Tallahassee
Oct. 12	Miami at Tampa
Oct. 31	Southern Mississippi at Pensacola
Nov. 14	N.C. State at Daytona Beach



INSET, LEFT TO RIGHT: Robert T. Braunagel, Director; Feature Baton Artist Cookie Winchester, Miami; Drum Major Roger McLendon, Fitzgerald, Ga.

## MUSIC AT HALF-TIME THE FLORIDA STATE UNIVERSITY SCHOOL OF MUSIC

Dr. K. O. Kuersteiner, Dean  
Dr. Manley R. Whitcomb, Director of Bands

presents

### THE MARCHING CHIEFS

Robert T. Braunagel, Director  
Clifford K. Madsen, Associate Director  
Charles Carter, Assistant Director and Arranger

Roger McLendon, Drum Major  
Janice Eddins, Head Majorette  
Cookie Winchester, Feature Baton Artist

#### THEME: PRECISION DRILL SALUTATION

##### Formation

#### Music

Fanfare  
Lover

Mr. Touchdown  
Notre Dame Victory  
Illinois Loyalty  
Lovely To Look At  
Nothing Like A Dame  
Bloody Mary  
Do Re Mi  
Gee, Officer Krupke  
Tonight  
Suwannee River  
Yankee Doodle Dandy  
Grand Old Flag  
Fight Song  
Alma Mater

**COMPANY FRONT AND DIAMOND SEQUENCE**—The Marching Chiefs present a precision drill salutation to the 1963 football audience. First we salute college lovers as the band forms a diamond.

**DRILL SEQUENCE**—The colorful patterns of a kaleidoscope are set to music as The Chiefs salute college football across the nation.

**DRUM MAJOR**—As the band forms a high-stepping drum major we feature our majorettes and solo twirler with "There Is Nothing Like a Dame."

**CONCERT FORMATION**—As the band assumes a concert formation, we feature our arranger Charles Carter with two wonderful tunes from *West Side Story*.

**GRAND FINALE AND COMPANY FRONT**—The band now salutes the legislators with a medley of patriotic music especially prepared for Legislative Day.

FSU.



Coach J. K. "Bud" Kennedy

# FSU BASKETBALL 1963-64

Florida State University basketball enters its 16th season with Coach J. K. "Bud" Kennedy at the helm, and prospects look better than ever.

Early reports are that the Seminoles will be big and fast in 1963-64. Perhaps big enough and fast enough to win against the toughest schedule in FSU history.

Added impetus will be given basketball this year with the formation of the Tip-Off Club, an organization similar to football's Seminole Boosters.

A strong home schedule assures plenty of basketball action at FSU's Robert Tully Gymnasium.

## ORDER YOUR TICKETS EARLY

Season Ticket, 10 Home Games ..... \$15.00

Individual tickets, all home games ..... \$2.00

Order tickets from:

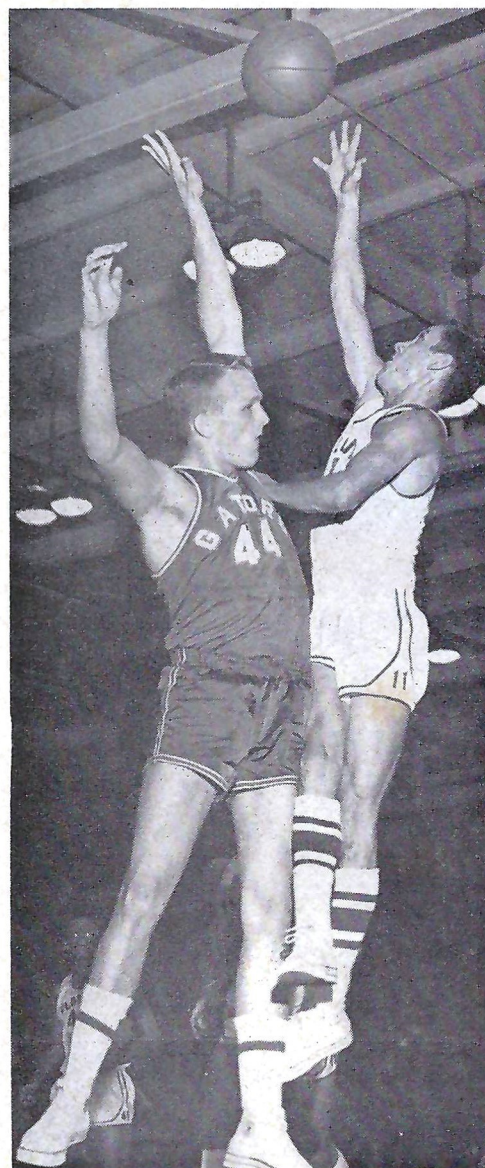
**ATHLETIC TICKET OFFICE  
FLORIDA STATE UNIVERSITY  
TALLAHASSEE, FLORIDA**

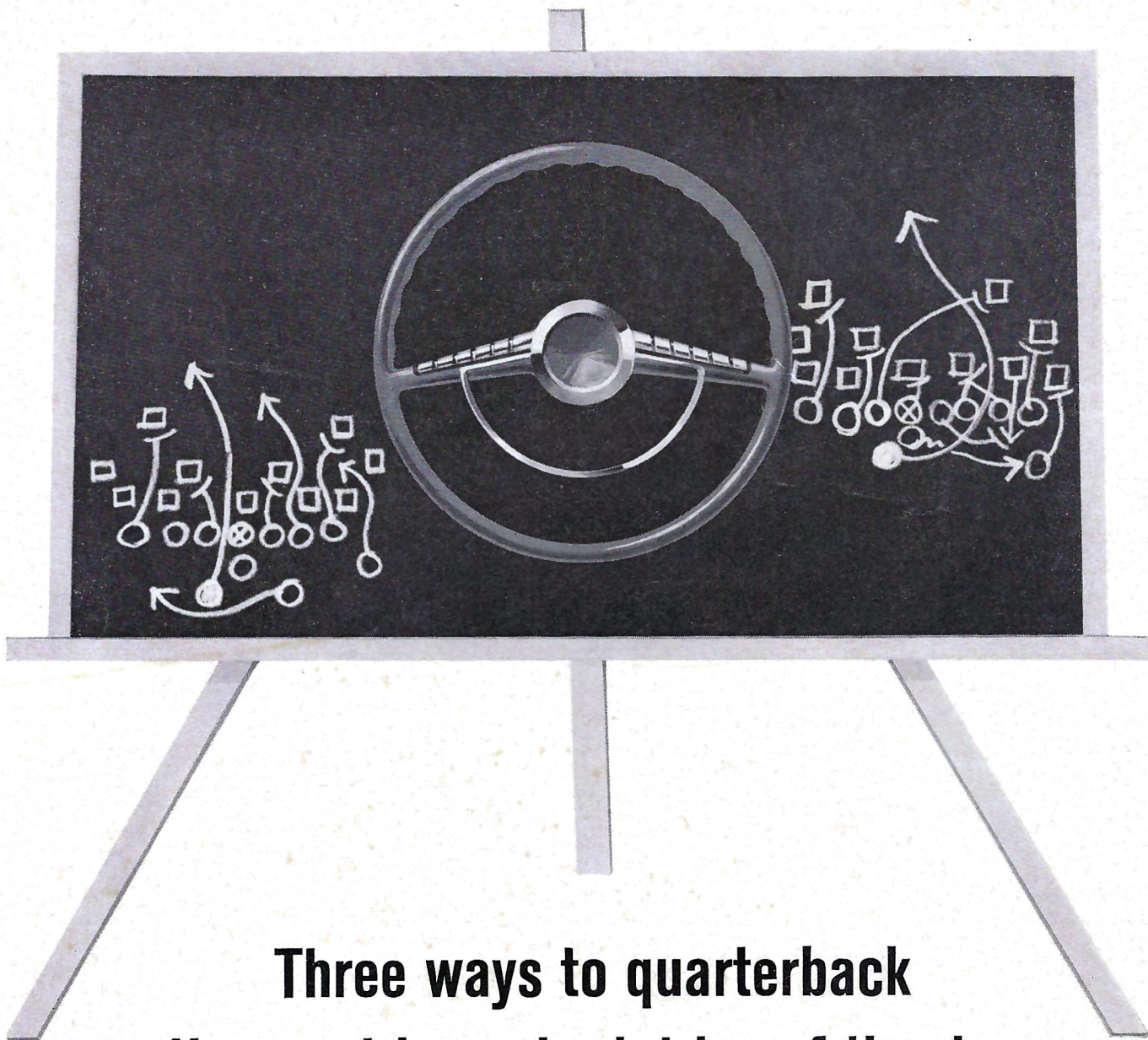
All Home Games 7:45 p.m. EST, Robert Tully Gym

## 1963-64 FSU BASKETBALL SCHEDULE

DATE	OPPONENT	SITE
Dec. 3	Florida .....	Away
Dec. 7	<b>Auburn</b> .....	<b>HOME</b>
Dec. 9	Alabama .....	Away
Dec. 11	Rice .....	Away
Dec. 12	Texas Christian .....	Away
Dec. 21	<b>Tampa</b> .....	<b>HOME</b>
Dec. 23	<b>Tulsa</b> .....	<b>HOME</b>
Dec. 26, 27	Gator Bowl Tournament .....	*Away
Jan. 2	Richmond .....	Away
Jan. 4	VMI .....	Away
Jan. 11	<b>Miami</b> .....	<b>HOME</b>
Jan. 16	<b>Memphis State</b> .....	<b>HOME</b>
Jan. 18	<b>Georgia</b> .....	<b>HOME</b>
Jan. 23	<b>Florida</b> .....	<b>HOME</b>
Jan. 28	Auburn .....	Away
Jan. 29	<b>Alabama</b> .....	<b>HOME</b>
Feb. 6	<b>Furman</b> .....	<b>HOME</b>
Feb. 8	Centenary .....	Away
Feb. 10	Memphis State .....	Away
Feb. 15	Georgia Tech .....	Away
Feb. 22	<b>Jacksonville U.</b> .....	<b>HOME</b>
Feb. 27	Stetson .....	Away
Feb. 29	Miami .....	Away
Mar. 3	Georgia .....	Away

\* Jacksonville





## Three ways to quarterback the most important drive of the day —your drive home

1. Don't buck the line of traffic, stay in it. Fancy open field running doesn't pay on the highway.
2. When dusk falls and your visibility is limited, slow down and turn on your lights. What you can't see can hurt you.
3. Don't try to beat the clock by speeding. Remember, when time runs out on the highway, everybody loses.

*Presented in the interest of safe and sane driving  
by the R. J. Reynolds Tobacco Company.*