

## Three ways to quarterback the most important drive of the day —your drive home

1. Don't buck the line of traffic, stay in it. Fancy open field running doesn't pay on the highway.
2. When dusk falls and your visibility is limited, slow down and turn on your lights. What you can't see can hurt you.
3. Don't try to beat the clock by speeding. Remember, when time runs out on the highway, everybody loses.

*Presented in the interest of safe and sane driving  
by the R. J. Reynolds Tobacco Company.*

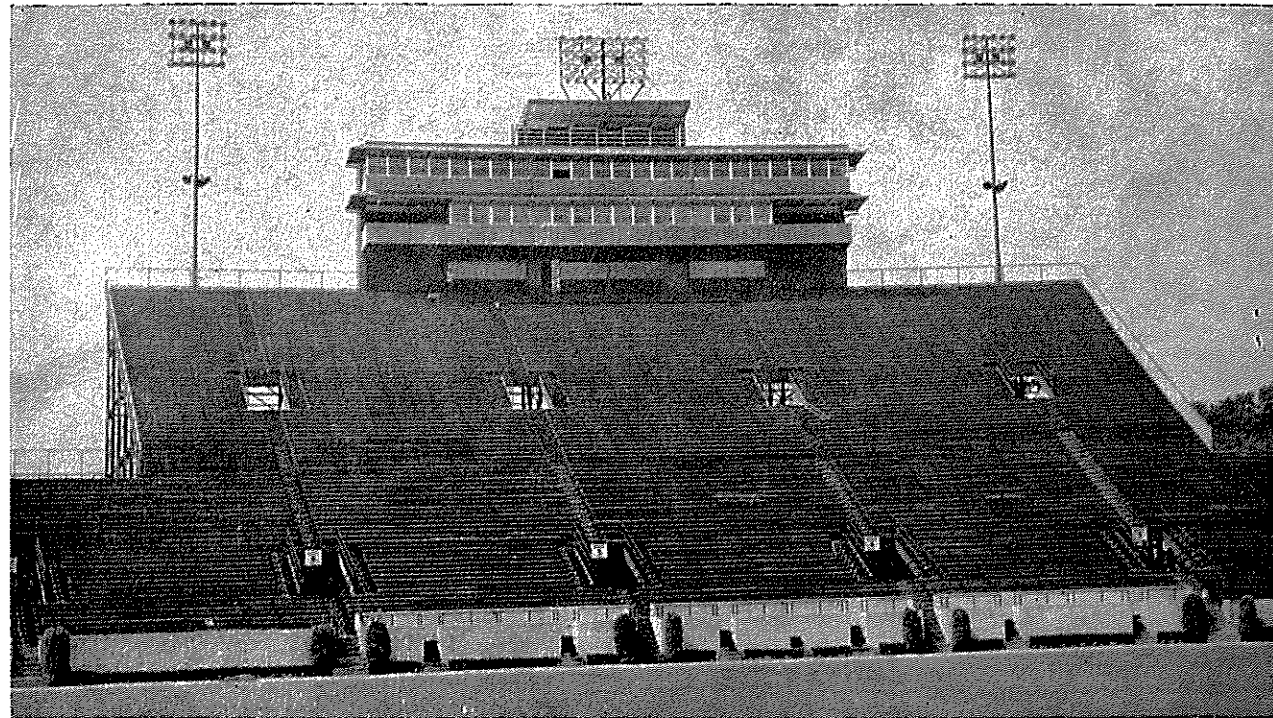


**FLORIDA STATE**  
**COMPLIMENTARY**  
**vs**  
**FURMAN**

**Official Program 50c**

**NOVEMBER 2, 1963**  
**DOAK S. CAMPBELL STADIUM**  
**BAND DAY**





*"Constructed By"*  
**BEAR CONSTRUCTION CO., INC.**  
 PHONE 222-8489

D. L. COOKSEY

B. R. DRAUGHON

*patronize...*  
**STADIUM**

**CONCESSIONS**

*Located beneath the stands on each side of stadium*

**COLD DRINKS..... 15¢**  
**HOT COFFEE..... 15¢**  
**SANDWICHES..... 30¢**  
**HOT DOGS..... 25¢**  
**PEANUTS..... 15¢**  
**POP CORN..... 15¢**

**SOUVENIR ITEMS**  
**PENNANTS**  
**BADGES**  
**SUN VISORS**  
**ASPIRIN**

*All Cigarettes 40¢*

*please pay no more than established prices*

# FSU FOOTBALL 1963...

## IN THIS ISSUE:

The University .....	4, 5, 8
FSU Depth Chart .....	6
Opponent Depth Chart .....	7
FSU Numerical Roster .....	11
Guest Column .....	9
FSU All-Time Records .....	9
Seminole Football Family .....	14
The 1963 Seminoles .....	15, 16, 17, 18
Starting Lineup, FSU .....	20
Starting Lineup, Opponent .....	21
Seminole Boosters, Inc. ....	25
Opponent Numerical Roster .....	32
Today's Opponent .....	33, 34, 35
Seminole Network .....	27
WFSU-TV Football Programs .....	29
The Marching Chiefs .....	38
The Athletic Committee .....	31
Comparing Today's Teams .....	31
FSU's '63 Freshmen .....	37
Seminole Songs and Cheers .....	30
FSU Basketball, 1963-64 .....	39

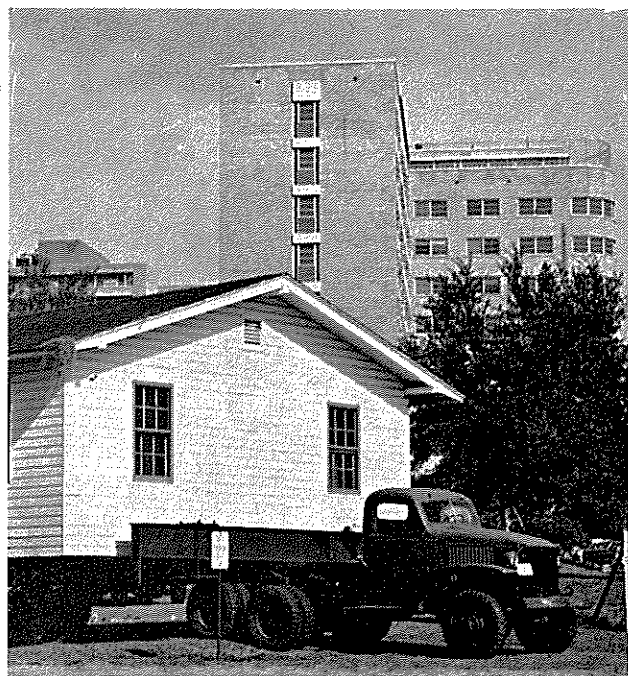
## SEMINOLES ON THE WARPATH...

Sept. 20	Miami	Miami 8:15 p.m.
Sept. 28	TEXAS	
	CHRISTIAN	Tallahassee 8:00 p.m.
Oct. 12	Wake Forest	Tallahassee 2:00 p.m.
Oct. 19	So. Miss.	Mobile, Ala. 8:00 p.m. (CST)
Oct. 26	VIRGINIA	
	TECH	Tallahassee 2:00 p.m.
Nov. 2	FURMAN	Tallahassee 2:00 p.m.
Nov. 9	Georgia Tech	Atlanta, Ga. 2:00 p.m.
Nov. 16	N. C. STATE	
	(Homecoming)	Tallahassee 2:00 p.m.
Nov. 23	Auburn	Auburn, Ala. 2:00 p.m. (CST)
Nov. 30	Florida	Gainesville 2:00 p.m.

*Compliments and  
 Best Wishes from*



**YOUR APPLIANCE  
 HEADQUARTERS**  
 611 N. Monroe St.



Rolling . . . Rolling . . . Rolling . . .

An architectural motif which might be called "domestic Gothic" has literally been rolling across the Florida State University campus where it contrasts with the "college Gothic" of the older buildings and the modern architecture of the new.

The motif is supplied by 23 white frame cottages which have been cleared from a portion of the 101-unit Mabry Heights village for married students on the edge of the campus to make room for a new dormitory which will take care of 540 students.

Since the first of the year FSU has been hoisting the small white clapboard houses on wheels and hauling them by truck to "temporary" locations over the campus to take care of a pressing need for laboratory, classroom, research and storage space.

President Gordon W. Blackwell called the attention of legislators to the units when they were on campus during Legislative Recognition Day and stressed that the term "temporary" was relative—they might be there for quite a spell.

FSU's student population has been shooting skyward even faster than Florida's population—there are 711 more students this year than last; research programs have been expanding in dozens of fields; and the space provided by permanent buildings has simply not kept up with growth.

## A CAMPUS ON THE MOVE!

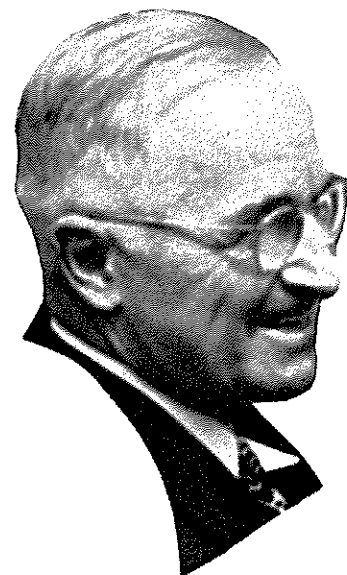
With approval of the College Building Amendment to be voted on by Florida citizens Tuesday, Nov. 5, FSU would receive some \$9.6 million for urgently-needed expansion in this biennium.



. . . End of Journey: A Classroom

## Gentleman From Missouri

A gentleman from Missouri who as president was responsible for some of the most momentous decisions this country has ever taken in periods of crisis will be the Homecoming Banquet speaker at FSU on Nov. 15.



## . . . HOMECOMING BANQUET SPEAKER

HARRY S. TRUMAN'S use of the power and prestige of the presidency to institute the Truman Doctrine and Marshall Plan to establish the North Atlantic Treaty Alliance, to carry out the Berlin Airlift and to oppose aggression in Korea led Winston Churchill to tell him in 1952:

"You, more than any other man, have saved Western Civilization."

A lifetime of reading history and biography probably gave Mr. Truman his keen awareness of the uses of the presidency and 30 years of political experience before becoming president provided him with another earmark—political loyalty.

Some expected Mr. Truman to desert his old ally, Tom Pendergast, after Pendergast's downfall, but Truman said "when Tom Pendergast was down and out, a convicted man, people wanted me to denounce him. I refused. I wouldn't kick a friend." In 1945, six days after Truman became vice-president, Pendergast died and Truman attended his funeral in Kansas City.

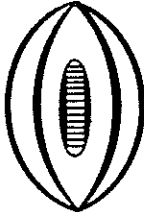
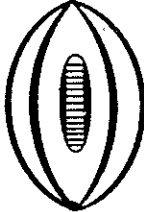

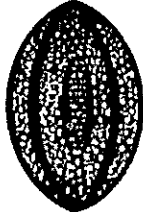

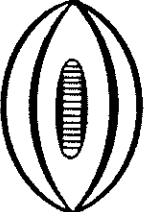
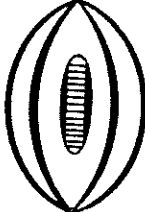
At 79, Mr. Truman is more active than many much younger men. Only recently, as "politician in residence" at Grinnell University, he jibed at newsmen and others trying to keep up with him on a walk: "I don't like to poke along. If you guys can't keep up, then drop out."

Truman will be the speaker at the Homecoming Banquet at 6 p.m. Friday, Nov. 15—first day of Homecoming.

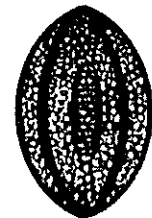


ONE OF THESE SIX COEDS will be crowned 1963 Homecoming Queen Nov. 15. Homecoming court finalists are, from left, Patty Warren of Jacksonville, Clyda Stokes of Jacksonville, Jackie Mathis of Tampa, Carolyn Duyck of Plant City, Ley Hulsey of Tampa, and Carolyn Wronske of Miami.

## WHEN FSU HAS THE BALL

LEFT END	LEFT TACKLE	LEFT GUARD	CENTER	RIGHT GUARD	RIGHT TACKLE	RIGHT END
						
81 Floyd 82 Causey 89 Wettstein	77 Mangan 79 Pennie 76 West	66 Hermann 68 Parrish 65 Wooten	53 Daly 55 Edwards 54 Matthews	52 Robinson 63 McDowell 75 MacKenzie	73 Sumner 61 Shinholser 51 Avezzano	83 Dawson 84 D'Allessandro 80 Wachtel

### QUARTERBACK



### LEFT HALFBACK



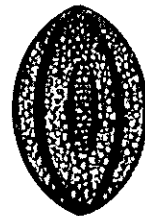
20 Snyder  
22 Bibert  
29 Petko

### RIGHT HALFBACK



28 Bailey  
25 Biletnikoff  
23 Loftin

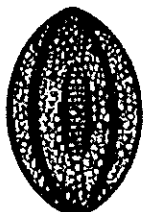
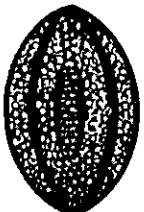
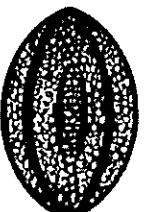
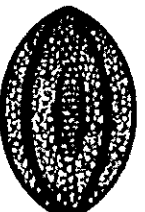

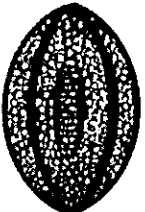
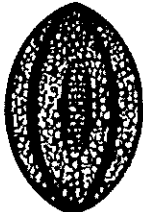
### FULLBACK



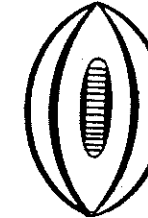
21 Brinkley  
44 M. Roberts  
43 Ehler

(Note: First player listed at each position is starter for Chiefs (two-way) unit, second Renegades (defense), third Warriors (offense).

## WHEN FURMAN HAS THE BALL

LEFT END	LEFT TACKLE	LEFT GUARD	CENTER	RIGHT GUARD	RIGHT TACKLE	RIGHT END
						
81 Luongo 80 Crawford 86 Kimbell	74 Floyd 75 Jepson 76 Harper	64 Carnes 65 Greene 67 Holloway	51 Stacks 50 Owens 54 McEwen	66 Preston 60 Walton 62 Withers	77 Gettys 78 Williams 71 Geddie	82 Hays 84 Shaw 83 Gilstrap

### QUARTERBACK



### LEFT HALFBACK



25 Cook  
20 Kerr  
24 Chastain

### RIGHT HALFBACK



22 Pickens  
43 McTeer  
41 Burrell

### FULLBACK



30 Zuberer  
31 Turner  
34 Buzzell



**MEMBER**  
Federal Home Loan Bank System  
Federal Savings and Loan Insurance Corporation  
FOR CORRECT TIME DIAL 222-5510

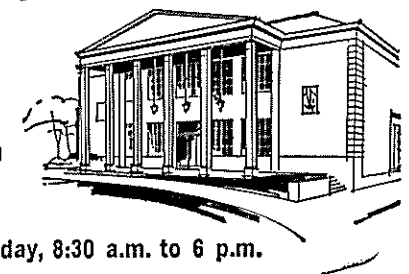
**WHERE you save DOES make a difference**

## Tallahassee Federal

SAVINGS AND LOAN  
ASSOCIATION

440 N. Monroe Street ★ Tallahassee, Florida  
TELEPHONE 224-2161

HOURS: Monday-Thursday, 8:30 a.m. to 3 p.m.—Friday, 8:30 a.m. to 6 p.m.





## Homecoming Tickets!

Reservations for FSU Homecoming activities Nov. 15-16 will be accepted on a first-come, first-serve basis, according to Thomas A. Waits, director of alumni affairs.

Checks must accompany all requests for tickets. Make checks payable to the FSU Alumni Association and mail to 114 Longmire Building, FSU, Tallahassee. Requests for tickets to be mailed must be accompanied by a self-addressed envelope. Otherwise, tickets will be held at the Alumni Registration Desk for distribution during scheduled registration hours.

## Homecoming Schedule

Friday, November 15

- 9:00 a.m. ALUMNI REGISTRATION OPENS—Longmire Alumni Building.
- 12:00 noon CLASSES DISMISSED.
- 3:30 p.m. PARADE—Begins at Westcott Gate.
- 6:00 p.m. BANQUET — Suwannee Room—Tickets \$2.50 each.
- 8:30 p.m. POW WOW — Campbell Stadium.
- 9:30 p.m. INFORMAL DANCE — Tully Gym—Tickets \$2 a couple.

Saturday, November 16

- 8:00 a.m. ALUMNI BREAKFAST—Suwannee Room—Tickets \$1 each.
- 9:00 a.m. ALUMNI BUSINESS MEETING — Suwannee Room.
- 10:30 a.m. FACULTY - ALUMNI COFFEE AND LECTURE—Longmire Alumni Building.
- 12:00 noon BARBECUE—Tully Gym—Tickets \$1.75 each.
- 2:00 p.m. FSU vs. N.C. STATE—Campbell Stadium—Tickets \$4 each.
- 5:00 p.m. OPEN HOUSE—Fraternities, Sororities, Residence Halls.
- 6:00 p.m. LEON COUNTY ALUMNI CLUB SOCIAL—Holiday Inn—Tickets \$1.50 at door.
- 7:00 p.m. WESTCOTT SHOW—Hollywood Hootenanny—Tickets \$2.50 (Specify performance).
- 9:00 p.m. SEMI-FORMAL DANCE—Suwannee Room—Tickets \$1 a couple.

NOTE: Classes scheduled for reunions are 1913, 1921, 1922, 1923, 1924, 1940, 1941, 1942, 1943, 1959, 1960, 1961, 1962 and 1963.



Alumna Nancy Culp of CBS-TV  
Toastmistress for Homecoming Banquet

## The View From Above



By BILL BUNKER  
Sports Publicity Director  
Florida State University

A big question rests uneasily in the minds of Florida State coaches and fans this week. That question: Will the Seminoles be able to forget early-season disappointments and come back to win against some of the toughest opposition in the country?

The question sought an answer last week, but Florida State's best offensive effort of the season was not enough to overcome mistakes which presented a strong Virginia Tech team four touchdowns, a field goal, and a 31-23 victory.

Last Saturday's dismal, if spectacular, loss lends added emphasis to today's game with Furman's Purple Paladins. Florida State should be favored, but then predictions have been with the Seminoles since their stunning 24-0 defeat of Miami in the season opener.

Furman is unusually strong this year. The Paladins have won six times, losing only to William and Mary, 27-17, in their fourth game. The South Carolinians play only two games after this one, so beating the Seminoles would be highly desirable, and this has to be considered a big game on their schedule.

This means that Florida State will meet a fired-up team for the fourth consecutive week. The Miami victory and the lighter schedule played by several Seminole opponents make FSU a team to beat—as proved by the Southern Mississippi and Virginia Tech games.

Last year, Florida State humiliated Furman, 42-0, in the third game of the season. This time around, the Paladins are more impressive, and will no doubt be out for revenge.

The Seminoles have demonstrated occasional brilliance during the first half of a frustrating season. On other occasions, however, mistakes have forced them to fight uphill against stubborn opponents.

Shake up everything in one basket, and it comes out this way: A key game for the Seminoles—possibly the first step in a long trek back to the top; an equally important game for the Paladins—a victory will increase their prestige and protect a fine season record.

These components nearly always produce exciting football.

## FSU Records

### SINGLE GAME

#### INDIVIDUAL

**LONGEST TOUCHDOWN RUN FROM SCRIMMAGE**—80 yards by Fred Pickard vs. Virginia Tech, 1957.

**LONGEST TOUCHDOWN PASS**—80 yards, Nelson Italiano to Eddie Gray vs. Newberry, 1950.

**LONGEST TOUCHDOWN RUN ANY SITUATION**—99 yards by Ted Hewitt vs. Stetson, 1949, and by Fred Biletnikoff vs. Miami, 1963.

**LONGEST RUN FROM SCRIMMAGE WITHOUT SCORING**—76 yards by Roy Thompson vs. Stetson, 1951.

**LONGEST INTERCEPTION RETURN**—99 yards by Ted Hewitt vs. Stetson, 1949, and by Fred Biletnikoff vs. Miami, 1963.

**LONGEST PUNT RETURN**—80 yards by Billy Odom vs. Stetson, 1954.

**LONGEST KICKOFF RETURN**—89 yards by Odom vs. Virginia Tech, 1955.

**MOST TIMES RUSHING**—29 by Pickard vs. Georgia, 1959.

**MOST YARDS RUSHING**—161 by Buddy Strauss vs. Mississippi College, 1949.

**MOST YARDS PASSING**—355 vs. Villanova, 1954, 1949.

**MOST TOTAL OFFENSE**—369 yards (56 rushing, 313 passing) by Majors vs. Tampa, 1959.

**MOST PASSES ATTEMPTED**—32 by Joe Majors vs. Tampa, 1959.

**MOST PASSES COMPLETED**—20 by Majors vs. Tampa, 1959.

**MOST PASSES CAUGHT**—9 by Bud Whitehead vs. Tampa, 1959.

**MOST YARDS RECEIVING PASSES**—123 by Harry Bringer vs. Mississippi College, 1950.

**MOST PASSES INTERCEPTED**—3 by Tommy Brown vs. Stetson, 1950 and vs. Georgia Tech, 1952; Lee Corso vs. Georgia 1954; Whitehead vs. Virginia Tech, 1959.

**LONGEST PUNT**—84 yards by Brown vs. Tampa, 1950.

**LONGEST FIELD GOAL**—44 yards by Les Murdock vs. V.P.I., 1963.

#### TEAM

**MOST POINTS**—74 vs. Whiting Field O, 1949.

**GREATEST MARGIN OF VICTORY**—74-0 vs. Whiting Field, 1949.

**GREATEST MARGIN OF DEFEAT**—0-42 vs. Georgia, 1959.

**MOST YARDS RUSHING**—383 vs. Abilene Christian, 1957.

**MOST YARDS PASSING**—355 vs. Villanova, 1954.

**MOST TOTAL OFFENSE**—514 yards vs. The Citadel, 1959 (307 rushing, 207 passing).

**MOST PASSES ATTEMPTED**—34 vs. Tampa, 1959 (completed 20).

**MOST PASSES COMPLETED**—20 vs. Tampa, 1959 (attempted 34).

**MOST PASSES INTERCEPTED**—7 vs. Virginia Tech, 1959.

**MOST PUNTS**—10 vs. Stetson and Georgia Tech, 1955.





*Is the '64 Buick Wildcat really wild?*

*...the wildest!*

Wish we could show you a picture of the '64 Buick Wildcat instead of just "Wildcat people". But that would spoil the surprise in store for you on October 4th. That's when the new Wildcat (and all the other beautiful '64 Buicks) go on display at your local Buick dealer's. Until then, a few tidbits to whet your appetite: three new Wildcat V-8 engines ranging up to 360 hp. Three new transmissions, including a new Super Turbine torque converter automatic with lots more thrust on lots less gas. Four new models: 4-door hardtop; 2-door sport coupe; 4-door sedan; convertible. Above all, they're Buicks!

BUICK MOTOR DIVISION

## FLORIDA STATE 1963 FOOTBALL ROSTER

No.	Name	Pos.	Ht.	Wt.	Age	Class	Hometown
11	*Charlie Calhoun	QB	5-10	171	20	Sr.	Tallahassee
12	Tony Gero	QB	5-10	183	19	So.	Madison, N. J.
13	*Steve Tensi	QB	6-5	201	20	Jr.	Cincinnati, O.
14	Jim Massey	QB	5-11	176	20	So.	Cairo, Ga.
15	Russ Fischer	QB	6-1	184	20	So.	Melbourne
16	Ed Pritchett	QB	6-2	177	22	So.	Dacula, Ga.
20	*Dave Snyder	HB	5-10	184	21	Sr.	Jacksonville
21	*Larry Brinkley	FB	5-11	190	21	Sr.	Willoughby, O.
22	Maury Bibent	HB	6-0	186	20	So.	Cincinnati, O.
23	*Jim Loftin	HB	6-1	181	20	Jr.	Pensacola
24	Mario DeLiberty	HB	5-9	184	19	So.	Havertown, Pa.
25	*Fred Biletnikoff	HB	6-1	186	20	Jr.	Erie, Pa.
26	Bill Hammond	HB	5-11	181	21	So.	Melbourne
28	*Winfred Bailey	HB	6-0	186	21	Jr.	Atlanta, Ga.
29	Joe Petko	HB	5-9	186	19	So.	Shaker Heights, O.
40	*Doug Messer	HB	6-1	188	21	Sr.	LaGrange, Ga.
41	*Gene Roberts	FB	6-0	200	21	Sr.	High Springs
42	Les Murdock	FB	6-2	213	21	Jr.	Hollywood
43	Howard Ehler	FB	6-1	190	19	So.	Tavares
44	*Marion Roberts	FB	6-0	197	20	Sr.	Ocala, Ga.
51	Joe Avezzano	C	6-1	223	20	So.	Miami
52	*Chuck Robinson	G	5-11	218	21	Sr.	E. Palestine, O.
53	*Bill Daly	C	6-1	209	20	Sr.	Jacksonville
54	Jay Mac Matthews	C	6-1	216	19	So.	Chiefland
55	*Jack Edwards	C	6-1	221	20	Jr.	Tampa
60	*Ferrell Henry	C	6-1	212	21	Sr.	Colquitt, Ga.
61	Jack Shinholser	G	6-1	200	21	So.	Tampa
62	Gene Parish	G	6-3	196	21	So.	Headland, Ala.
63	Bill McDowell	G	6-1	191	19	So.	Tallahassee
64	David Pitts	G	5-9	211	19	So.	Blountstown
65	Jerry Wooten	G	6-1	195	19	So.	Geneva, Ala.
66	*Dick Hermann	G	6-0	200	21	Jr.	Marianna
67	*Jerry Bruner	T	5-10	232	21	Sr.	Evansville, Ind.
68	Joe Parrish	G	6-1	193	20	So.	Auburndale
69	Steve Watson	T	5-10	215	19	So.	Rosford, O.
70	Larry Strobel	T	5-11	227	19	So.	Massilon, O.
71	Darrell Willett	T	6-1	231	20	So.	Tifton, Ga.
73	*Avery Sumner	T	6-2	216	21	Jr.	Adel, Ga.
75	*Dale MacKenzie	T	6-2	227	20	Jr.	Clearwater
76	*Tom West	T	6-4	222	20	Jr.	Headland, Ala.
77	Bob Mangan	T	6-1	231	21	So.	Atlanta, Ga.
78	Max Andrews	T	6-1	203	21	So.	Rehobeth, Ala.
79	Frank Pennie	T	6-4	242	20	So.	Hollywood
80	*John Wachtel	E	6-1	193	21	Jr.	Massilon, O.
81	*Don Floyd	E	6-1	197	21	Jr.	Madison
82	*Jim Causey	E	6-1	209	22	Jr.	Miami
83	*Bill Dawson	E	6-3	231	20	Jr.	Valdosta, Ga.
84	George D'Allessandro	E	5-10	205	20	So.	Fort Myers
85	Dale Twitchell	E	6-1	205	20	So.	Florala, Ala.
86	Buddy Blankenship	E	6-3	200	19	So.	Atlanta, Ga.
87	Terry Garvin	E	5-11	206	20	So.	Pensacola
88	John Roberts	E	6-0	190	21	So.	Orlando
89	Max Wettstein	E	6-3	203	19	So.	Leesburg

\* Denotes letterman  
1963 CO-CAPTAINS RG Chuck Robinson and QB Charlie Calhoun



1818 W. Tennessee

Howdy Podner . . . Me and the boys jest want to notafy everbody that we are still serven them Notorious and Dillicious charcoal-broiled Steerbrugers and Steak Samwiches at our fine Drive-In Resterant, jest 2 passes & a fumball offen the campus on West Tennessee where Call St. comes in. See you at the Seven Steers.

Yours truly,  
OLE TEX.



OWNED AND OPERATED BY FRANK CHASE & SONS, FRANK JR.,  
CHARLES, ROBERT, RICHARD, RAYMOND

## Skyline Restaurant

1 Mile West of City Limits

U. S. Highways 90 and 20

OPEN 6 A.M. TO 11 P.M.

TALLAHASSEE, FLORIDA

*"Serving Good Food for Fine People"*

Private Rooms and Banquet Facilities

### SOUTHERNAIRE MOTEL & SKYLINE MOTOR LODGE



Quality people always seek  
quality accommodations

### MIDYETTE-MOOR Insurance Agency

*"Ask Those We Serve"*

Complete Insurance and Bond Service

PHONE 222-3456



MIDYETTE-MOOR BUILDING  
TALLAHASSEE, FLORIDA

SAYS

SCALP 'EM SEMINOLES!



PAYNE MIDYETTE

FRANK MOOR

BILL MOOR

ED. CLARK

GLENN SEARS

WINSLOW SULLIVAN

PAUL McCARTNEY

BOB DICKINSON

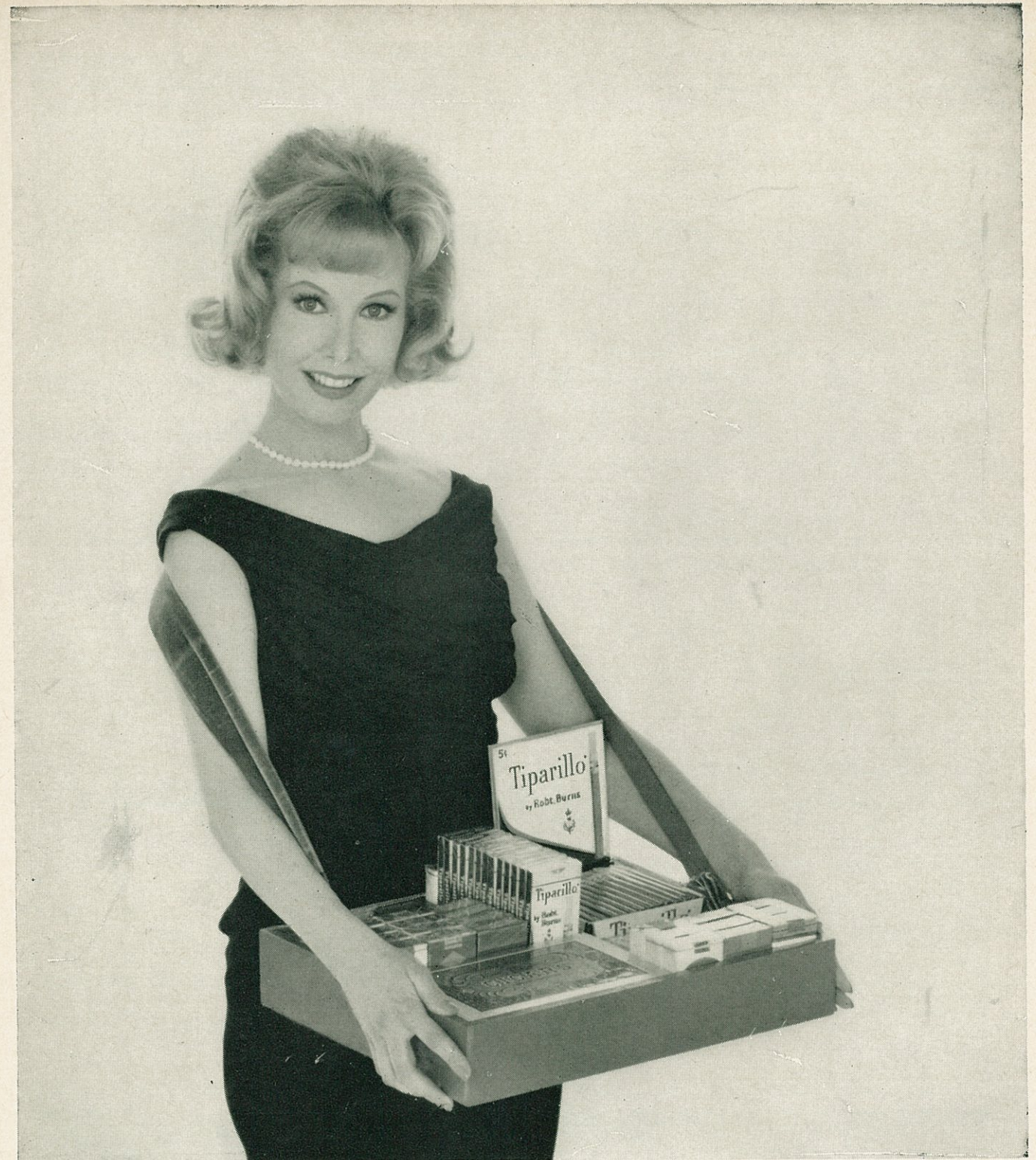
REX SIKES

PAUL LEWIS

JIM MILLHOFF

PAYNE MIDYETTE, JR.

JOHN REEVES



Penny Edwards—"MISS TIPARILLO."

### What does she mean "cigars...cigarettes...Tiparillos"?

You'll be hearing that chant more and more—now that Tiparillos have arrived. And arrived they have. In all the right places. With all the right people.

The new Tiparillo has a neat, trim shape. It looks young and debonair. And its pearly, pliable tip pays more than lip service to your smoking pleasure.

And never before such mildness! The most careful blending of choicest imported tobaccos has seen to that. So, too, has the exclusive, veinless Ultra Cigar Wrapper\* that burns so evenly and smoothly it insures complete mildness.

You can even see the mildness. The

surprisingly whiter ash is visible evidence. Smoker's proof. Here is flavor you don't have to inhale to enjoy.

"Cigars...cigarettes...?" Who knows, maybe someday it will be just "Tiparillos!"

Why don't you ask for one today?

\*T.M. GENERAL CIGAR CO.

**Tiparillos are on sale at this stadium.**





**FSU'S 1963 COACHING STAFF:** (Front row, L-R) Bobby Bowden, Bubba McGowan, Bill Peterson, Vince Gibson; (Back row) Y. C. McNease, Bill Proctor, Don James, John Coatta, Bob Harbison, Lou Luce.



**BILL PETERSON**  
Head Football Coach

## *The Seminole Football Family*



**VAUGHN MANCHA**  
Athletic Director



**RONALD MELTON**  
Athletic Business  
Manager



**DON FAULS**  
Team Trainer



**DR. R. A. JOHNSON**  
Team Physician



**BILL BUNKER**  
Sports Publicity  
Director



**CLAUDE THIGPEN**  
Ticket Manager



**TILLMAN DIXON**  
Equipment Custodian



**Joe Avezzano**



**Winfred Bailey**



**Maury Bibent**



**Fred Biletnikoff**



**Larry Brinkley**

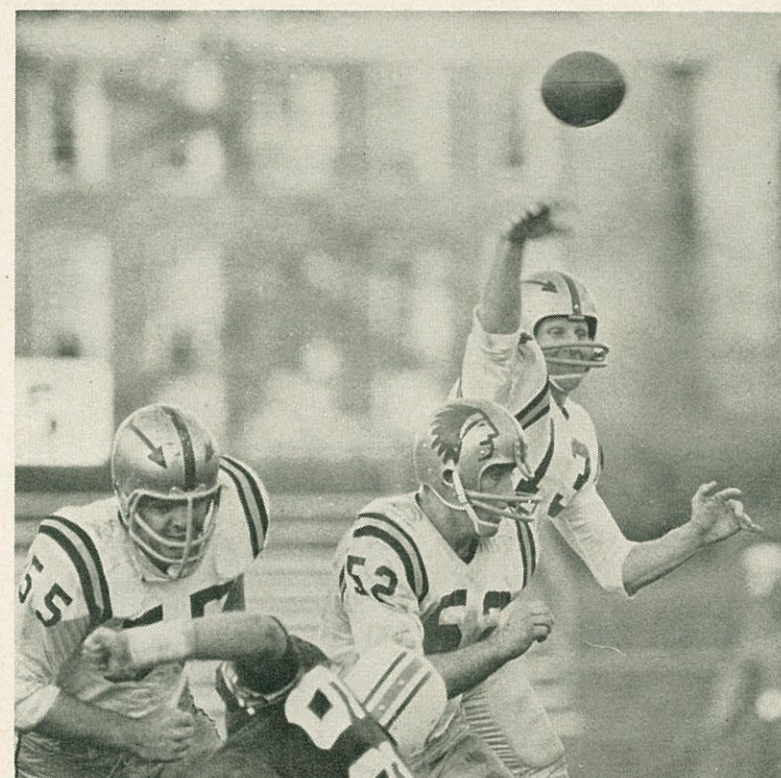


**Jerry Bruner**



**Charlie Calhoun**

**F  
S  
U**



**Jim Causey**



**George D'Allessandro**



**Bill Daly**



**Bill Dawson**

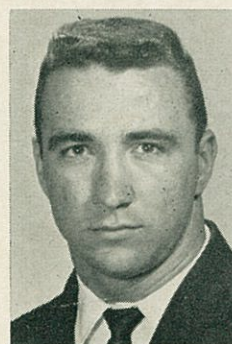


**Jack Edwards**





Howard Ehler



Don Floyd



Ken Frazier



Terry Garvin



Tony Gero



Bill McDowell



Doug Messer



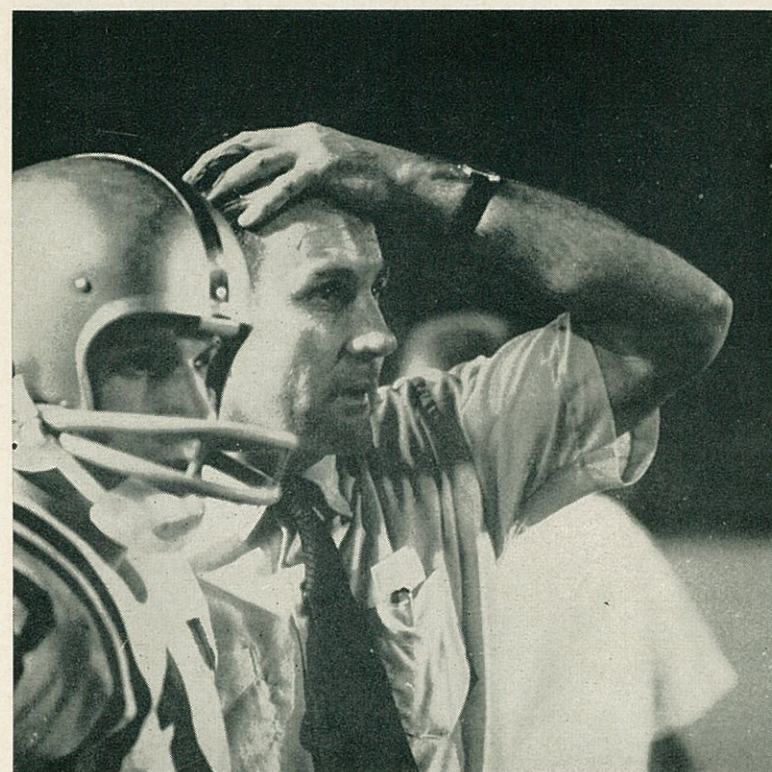
Les Murdock



Joe Parrish



Frank Pennie



F  
S  
U



Ferrell Henry



Dick Hermann

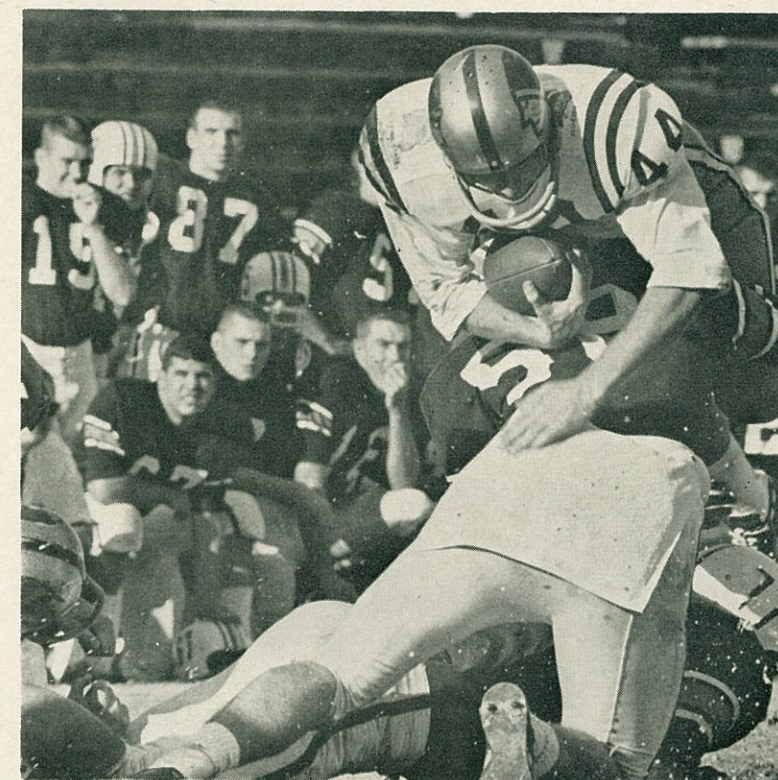


Joe Petko



Ed Pope

F  
S  
U



Jim Loftin



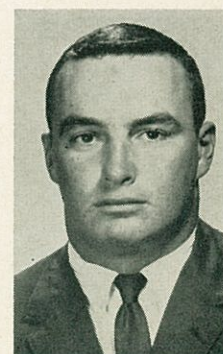
Dale MacKenzie



Bob Mangan



Jim Massey



Jay Mac Matthews



Ed Pritchett



Elton Revell



Gene Roberts



John Roberts

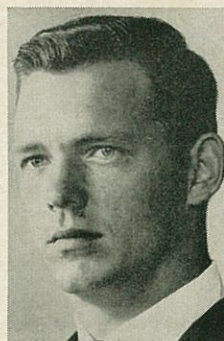


Marion Roberts





Chuck Robinson



Jack Shinholser



Dave Snyder



Larry Strobel



Avery Sumner



F

S

U



Steve Tensi



Dale Twitchell



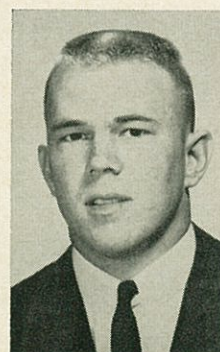
John Wachtel



David Pitts



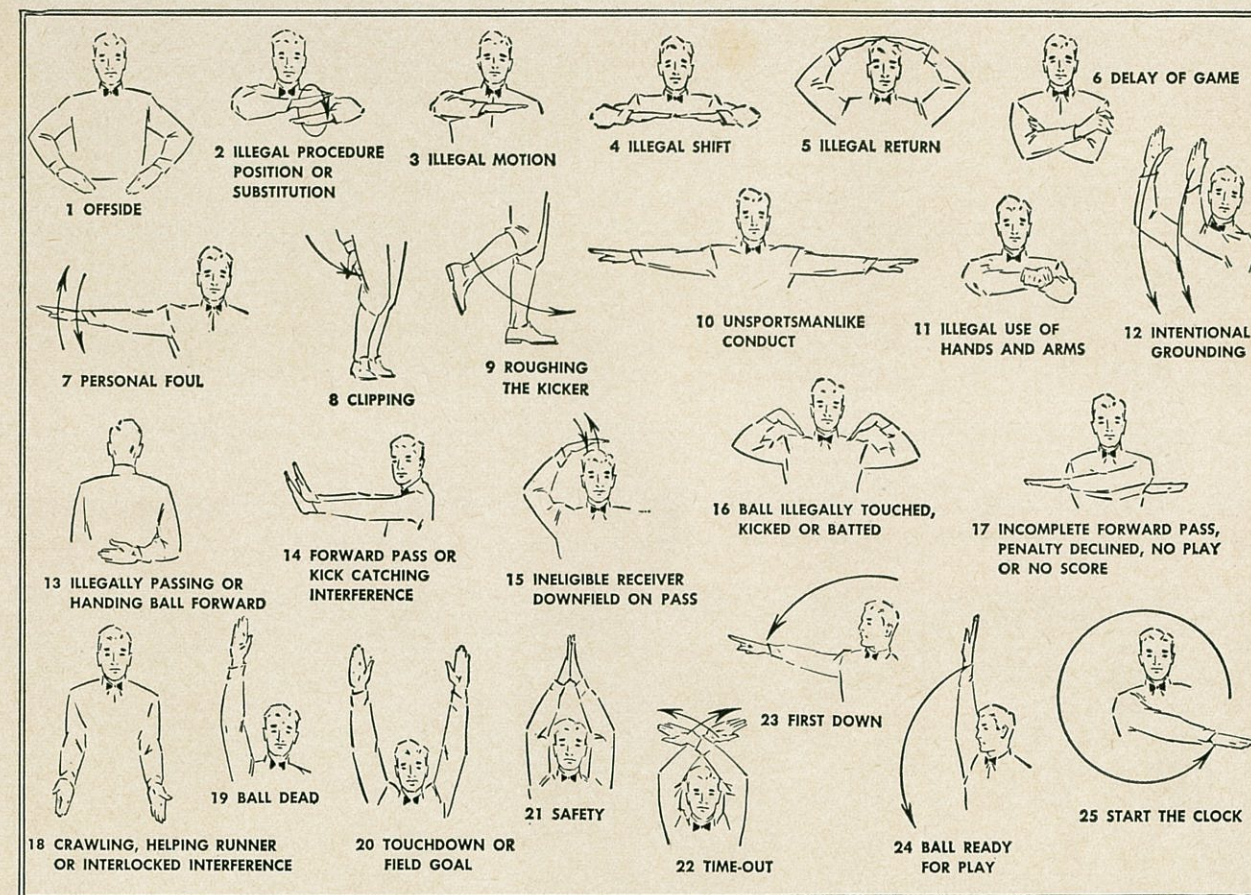
Tom West



Max Wettstein

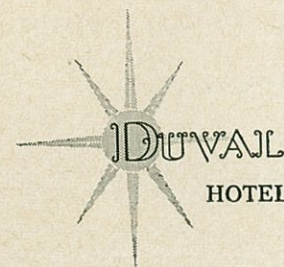
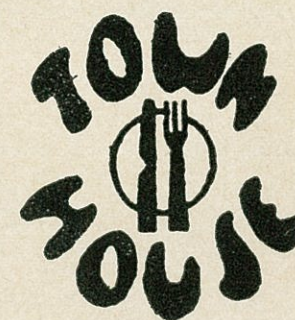


Jerry Wooten



TRAVELING  
DESSERT TRAYS

FAMOUS  
TOWN HOUSE  
ROAST  
PRIME RIB  
OF BEEF



HOTEL • TALLAHASSEE, FLORIDA



SPURGEON CAMP

Good Luck  
Seminoles!

NOBODY...  
BUT NOBODY  
UNDERSELLS.

SOUTHERN  
ELECTRIC INC.

5-Store Purchasing Power  
Saves You Money on G-E Appliances!

Tallahassee Downtown and Capital Plaza	Perry, Fla. 115 E. Green St. on the Square	Valdosta, Ga. 117 W. Central	Albany, Ga. 225 W. Ogle- thorpe St.
--	--	---------------------------------	---



## FLORIDA STATE

Starting Lineup

No.	Name	Pos.
81	DON FLOYD	LE
77	BOB MANGAN	LT
66	DICK HERMANN	LG
53	BILL DALY	C
52	CHUCK ROBINSON	RG
73	AVERY SUMNER	RT
83	BILL DAWSON	RE
13	STEVE TENSI	QB
20	DAVE SNYDER	LHB
28	WINFRED BAILEY	RHB
21	LARRY BRINKLEY	FB

## THE SEMINOLE SQUAD

11 Calhoun, QB	43 Ehler, FB	71 Willett, T
12 Gero, QB	44 Roberts, M., FB	73 Sumner, T
13 Tensi, QB	51 Avezzano, C	75 MacKenzie, T
15 Fischer, QB	52 Robinson, G	76 West, T
14 Massey, QB	53 Daly, C	77 Mangan, T
16 Pritchett, QB	54 Matthews, C	78 Andrews, T
20 Snyder, HB	55 Edwards, C	79 Pennie, T
21 Brinkley, FB	60 Henry, T	80 Wachtel, E
22 Bibent, HB	61 Shinholser, G	81 Floyd, E
23 Loftin, HB	62 Parish, G	82 Causey, E
24 DeLiberty, HB	63 McDowell, G	83 Dawson, E
25 Biletnikoff, HB	64 Pitts, G	84 D'Allessandro, E
26 Hammond, HB	65 Wooten, G	85 Twitchell, E
28 Bailey, HB	66 Hermann, G	86 Blankenship, E
29 Petko, HB	67 Bruner, T	87 Garvin, E
40 Messer, HB	68 Parrish, G	88 Roberts, J., E
41 Roberts, G., FB	69 Watson, T	89 Wettstein, E
42 Murdock, FB	70 Strobel, T	

## FURMAN

Starting Lineup

No.	Name	Pos.
81	PETE LUONGO	LE
74	CHARLES FLOYD	LT
64	JULIAN CARNES	LG
51	DOUG STACKS	C
66	WALTER PRESTON	RG
77	JOHN GETTYS	RT
82	HAYDEN HAYS	RE
10	DANNY DONOVAN	QB
25	JOHN COOK	LHB
22	SAMMY PICKENS	RHB
30	ERNEST ZUBERER	FB

## THE PALADIN SQUAD

10 Donovan, QB	43 McTeer, HB	71 Geddie, T
11 Nixon, QB	45 Lewis, HB	74 Floyd, T
12 Rhoads, QB	50 Owens, C	75 Jepson, T
15 Wyche, QB	51 Stacks, C	76 Harper, T
20 Kerr, HB	54 McEwen, C	77 Gettys, T
21 Crosby, HB	55 Devaney, G	78 Williams, T
22 Pickens, HB	60 Walton, G	80 Crawford, E
24 Chastain, HB	61 Boyd, G	81 Luongo, E
25 Cook, HB	62 Withers, G	82 Hays, E
30 Zuberer, FB	63 Cordell, G	83 Gilstrap, E
31 Turner, FB	64 Carnes, G	84 Shaw, E
34 Buzzell, FB	65 Greene, G	86 Kimbell, E
35 Haley, FB	66 Preston, G	89 Godsey, E
41 Burrell, HB	67 Holloway, G	

Viceroy's got

the taste that's right!

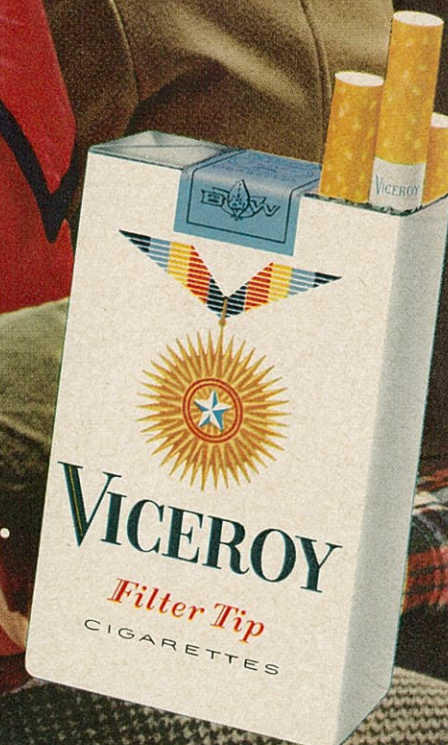
SMOKE ALL 7



Smoke all 7 filter brands and you'll agree: some taste as if they had no filter at all... others filter the fun and flavor out of smoking. But Viceroy tastes the way you'd like a filter cigarette to taste!

not too strong...not too light...

Viceroy's got-the  
taste that's right!



© 1963. Brown & Williamson Tobacco Corporation



## PENALTIES

1. **OFFSIDE** by either team; Violation of scrimmage or free kick formation; Encroachment on neutral zone—Loss of Five Yards.
2. **ILLEGAL PROCEDURE, POSITION OR SUBSTITUTION**—Putting ball in play before Referee signals "Ready-for-play"; Failure to complete substitution before play starts; Player out of bounds when scrimmage begins; Failure to maintain proper alignment of offensive team when ball is snapped; False start or simulating start of a play; Taking more than two steps after Fair Catch is made; Player on line receiving snap—Loss of Five Yards.
3. **ILLEGAL MOTION**—Offensive player illegally in motion when ball is snapped—Loss of Five Yards.
4. **ILLEGAL SHIFT**—Failure to stop one full second following shift—Loss of Fifteen Yards.
5. **ILLEGAL RETURN** of substitute not previously disqualified—Loss of Fifteen Yards.
6. **ILLEGAL DELAY OF GAME**; Taking more than four times out during either half (except for replacement of injured player)—Loss of Five Yards. Team not ready to play at start of either half—Loss of Fifteen Yards.
7. **PERSONAL FOUL** — Tackling or blocking defensive player who has made fair catch; Piling on; Hurdling; Grasping face mask of opponent; Tackling player out of bounds, or running into player obviously out of play; Striking an opponent with fist, forearm, elbow or locked hands; Kicking or kneeing—Loss of Fifteen Yards (Flagrant offenders will be disqualified.)
8. **CLIPPING**—Loss of Fifteen Yards.
9. **ROUGHING THE KICKER** or holder—Loss of Fifteen Yards.
10. **UNSPORTSMANLIKE CONDUCT**—Violation of rules during intermission; Illegal return of suspended player; Coaching from sidelines; Invalid signal for Fair Catch; Persons illegally on field—Loss of Fifteen Yards. (Flagrant offenders will be disqualified.)
11. **ILLEGAL USE OF HANDS AND ARMS** by offensive or defensive player; Defensive holding—Loss of Fifteen Yards.
12. **INTENTIONAL GROUNDING** of forward pass—Loss of Five Yards Plus Loss of Down.
13. **ILLEGALLY PASSING OR HANDING BALL FORWARD**—Loss of Five Yards Plus Loss of Down.
14. **FORWARD PASS OR KICK CATCHING INTERFERENCE**—Interference with opportunity of player of receiving team to catch a kick—Loss of Fifteen Yards. Interference by member of offensive team with defensive player making pass interception—Loss of Fifteen Yards Plus Loss of Down. Interference by defensive team on forward pass—Passing Team's Ball at Spot of Foul and First Down.
15. **INELIGIBLE RECEIVER DOWN-FIELD ON PASS**—Loss of Fifteen Yards.
16. **BALL ILLEGALLY TOUCHED, KICKED OR BATTED**—Forward pass being touched by ineligible receiver beyond the line of scrimmage—Loss of Fifteen Yards from Spot of Preceding Down and Loss of a Down. Eligible pass receiver who goes out of bounds and later touches a forward pass—Loss of Down. Illegal touching of kicked ball within opponent's ten yard line—Touchback.
17. **PENALTY DECLINED**; Incomplete forward pass; No play or no score.
18. **CRAWLING** by runner—Loss of Five Yards. Interlocked Interference—Loss of Fifteen Yards.

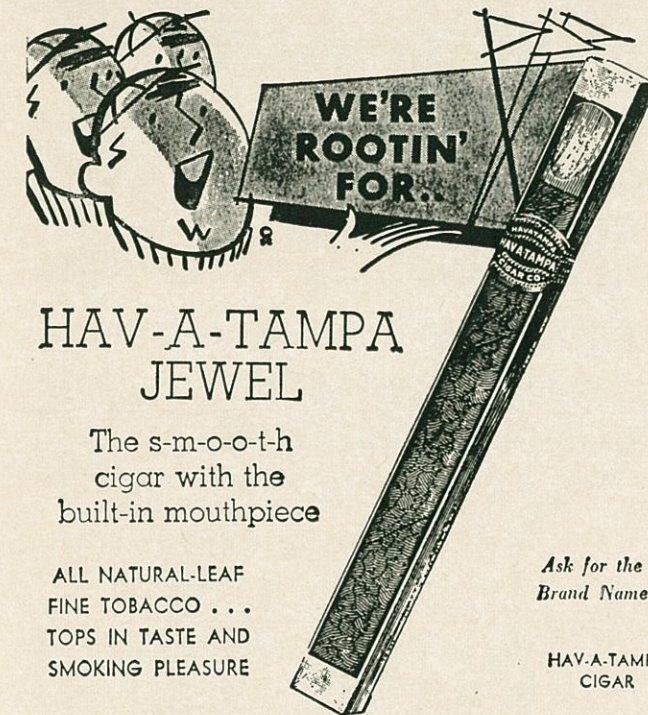
**".....it's a date!"**

**WILL IT BE  
PIZZAS AT  
SMITH HALL**

**OR**

**QUICKIE BURGERS  
AND EXTRA THICK MALTS AT THE STUDENT CENTER  
DINING HALL & SODA SHOP ALSO AVAILABLE TO SERVE YOU**

**"Fine . . . . See You There!"**

Distributed by **Eli Witt Tobacco & Candy Co.**  
Tallahassee, Florida

## QUALITY CLEANERS

215 W. COLLEGE AVE.—DIAL 222-5097

**ONE DAY SERVICE**

**PICK-UP and DELIVERY**

**Quality Laundry Work**

**Fluff Dry Service**

EXPERT TAILORING and ALTERATIONS

ZIPPERS REPAIRED

## BENNETT'S DRUG STORE

- Prescriptions
- Cameras
- Sundries
- Gifts
- Fountain
- Cafe
- Cosmetics
- Drugs

**MEET ME AT BENNETT'S**

**BEFORE AND AFTER THE GAME!**

**Corner Monroe and College Streets**

**Phone 222-8980 — 222-4450**

## LITTLE FOLKS STORE, Inc.

133 North Monroe Street

TALLAHASSEE, FLORIDA

Toys, Hobbies, Children's Furniture

**Jack L. Finley**

**Phone 222-1146**

*First choice of those who appreciate  
the finest in foods and service!  
Open Breakfast, Lunch and Dinner*

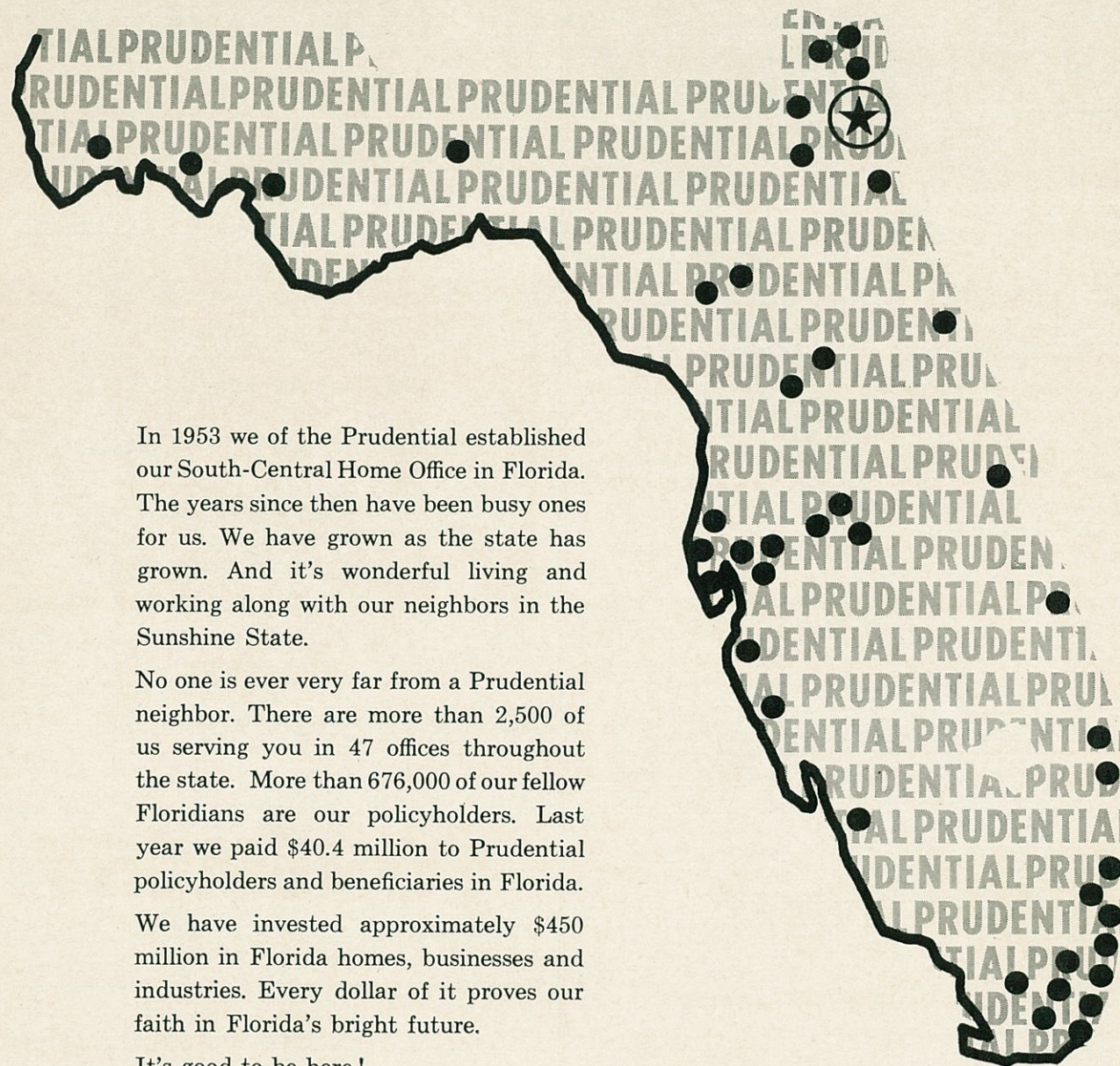
**BRUCE BISHOP'S**

**1921 W. Tennessee**

**THE  
FOUNTAIN  
RESTAURANT**



*We like the State we're in*

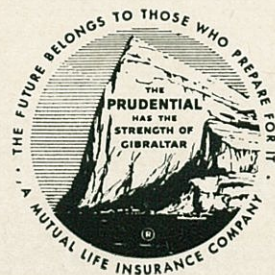


In 1953 we of the Prudential established our South-Central Home Office in Florida. The years since then have been busy ones for us. We have grown as the state has grown. And it's wonderful living and working along with our neighbors in the Sunshine State.

No one is ever very far from a Prudential neighbor. There are more than 2,500 of us serving you in 47 offices throughout the state. More than 676,000 of our fellow Floridians are our policyholders. Last year we paid \$40.4 million to Prudential policyholders and beneficiaries in Florida.

We have invested approximately \$450 million in Florida homes, businesses and industries. Every dollar of it proves our faith in Florida's bright future.

It's good to be here!



**THE PRUDENTIAL INSURANCE COMPANY  
OF AMERICA**

SOUTH-CENTRAL HOME OFFICE • JACKSONVILLE, FLORIDA

## BE A SEMINOLE BOOSTER

"The Seminole Boosters provide the margin of difference between a good team and a great team."

Thus Florida State's Bill Peterson sums up his feelings toward the Seminole Boosters, Inc., an organization devoted to the support of FSU athletics with emphasis on the football program.

Membership in the Boosters—the group numbers approximately 1200 now—is open to anyone with a sincere interest in the University's athletic welfare. Minimum contribution for an individual membership is \$10, for a business membership, \$25.

Contributions are administered in accordance with NCAA regulations and in conjunction with the FSU Department of Intercollegiate Athletics.

Boosters receive a colorful automobile license plate which provides reserved parking at the stadium, a membership card, a weekly fall publication called "The Grandstand Coach," and certain priorities on season and individual football tickets.

Serving his initial term as president of Seminole Boosters, Inc., is F. Wilson (Bill) Carraway, Jr., Secretary and Manager of the Coca-Cola Bottling Co., Tallahassee. Hardworking executive secretary of the organization is Thomas A. Waits, Director of FSU Alumni Affairs.



Tom Waits and Bill Carraway

GOOD LUCK SEMINOLES!

**LOUIS' SEAFARE**

"A BANQUET IN A BOX"

*featuring Seafood & Chicken*

With over 18 different items to  
carry out in over 50 different sizes.

620 W. Tennessee St.

Ph. 224-1181

Be sure and visit our other  
location in Gainesville, Fla.  
309 N. W. 13th St.

We also have an air conditioned area if you so desire.

**FOREMOST**

ICE CREAM

PHONE • 224-7136

**SUNSHINE STATE  
DAIRYMEN'S COOP.**

PHONE • 222-5303



*Garcia's*

OPEN 11 A.M. TO MIDNIGHT DAILY

"HOME OF FINE COOKED  
SPANISH-MEXICAN &  
AMERICAN FOODS"

320 E. TENNESSEE ST. 223-1177

Learn to Fly at  
**Seminole Flying Service, Inc.**

Municipal Airport  
Phone 222-3121 Tallahassee, Fla.

- AIRPLANE RIDES
- FLIGHT INSTRUCTION
- AERIAL PHOTOGRAPHY
- CHARTER FLIGHTS

FLY the best—A New Cessna

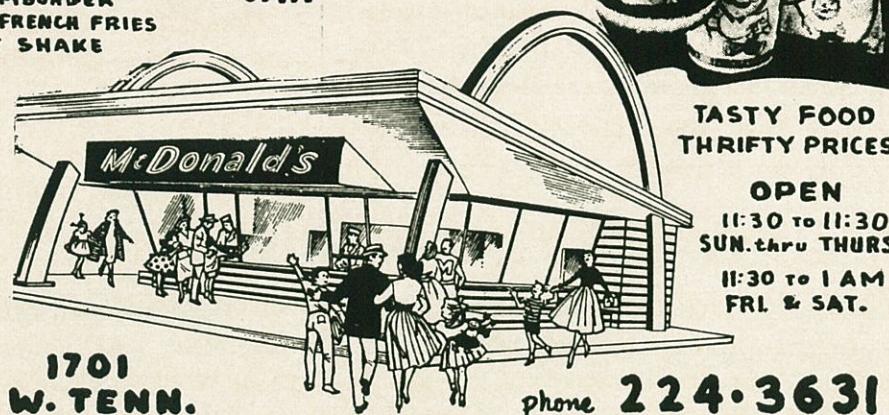
"Look up—a new CESSNA will be overhead"

# McDonald's HAMBURGERS

a safe choice  
anytime, anywhere

McDonald's  
ALL AMERICAN

- 100% PURE BEEF HAMBURGER
- CRISP GOLDEN BROWN FRENCH FRIES
- TRIPLE THICK DAIRY SHAKE



TASTY FOOD  
THRIFTY PRICES

OPEN  
11:30 to 11:30  
SUN. thru THURS  
11:30 to 1 AM  
FRI. & SAT.

1701  
W. TENN.

phone 224-3631

## THE FLORIDA STATE FOOTBALL NETWORK

... Follow the Seminoles at Home and Away



Bo Mitchell



John Hoy

"Good afternoon, ladies and gentlemen, this is Bo Mitchell and John Hoy bringing you Florida State University football. . . ."

The voices are new, but the play-by-play thrill brought to FSU fans at home over the Seminole Football Network for the past three years remain the same.

Energetic new "voice" of the Seminoles is Bo Mitchell of Pensacola. His partner at the FSU microphone is Tallahassee's John Hoy who does pre-game, halftime and "time out" color commentary.

Mitchell is vice-president and station manager of radio station WCOA, Pensacola. The ex-naval aviator brings 15 years of sportscasting experience to the growing Seminole Network which carries Florida State Football to thousands of listeners in Georgia and Florida.

In addition to his network chores, Hoy, who is sports director of Tallahassee's WCTV, is host to the "Bill Peterson Show" every Sunday afternoon, and has a daily sports program.

Completing the team is Art Deters, chief engineer and organizer of this year's network. Deters is station manager of radio station WTAL, Tallahassee.

During the 1963 season the Seminole Network will be carried by 18 Florida stations.

You can follow the Seminoles this year over WKIS, Orlando; WALT, Tampa; WOOO, DeLand; WCNH, Quincy; WPCF, Panama City; WMOP, Ocala; WSRA, Milton; WIOD, Miami; WCOA, Pensacola; WMYR, Fort Myers; WGRO, Lake City; WTOT, Marianna; WTAL, Tallahassee; WNSN, Valparaiso; WROD, Daytona Beach; WAVP, Avon Park; WPAX, Thomasville; WJAX, Jacksonville; WMAF, Madison; and WWPF, Palatka.



# The Vogue

TALLAHASSEE, FLORIDA

Before Or After  
Game

**CHICKEN IN THE ROUGH**  
COPYRIGHT 1927 BY BEVERLY OSBORN

**QUAKER HOUSE**



**RESTAURANT**

Dining Room  
and Curb Service



FOOTBALL FANS  
YOU WILL FIND EVERYTHING  
PHOTOGRAPHIC

- FILMS
- CAMERAS
- ACCESSORIES
- RENTALS
- COMPLETE PHOTOFINISHING SERVICE

AT

**TALLAHASSEE CAMERA CENTER**

117 North Monroe St.

Ph. 222-8771

*"Across from the Florida Theatre"*

## WFSU-TV—THE SEMINOLE STATION

There's more football action than ever over WFSU-TV this fall.



Mike Shaara

Florida State's educational television station (Channel 11) is keeping pace with the increased interest in the Seminoles with feature programs which give the armchair fan a close look at games upcoming and past, plus reports on future FSU opponents.

Leading off every football week this year will be a complete showing of the previous Saturday's game on Monday nights at 10. WCTV's Roy Weissinger does the play-by-play and Mike Shaara of the FSU English Department brings a wide sports background into his color commentary.

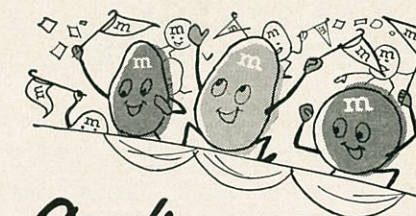
At 8 p.m. on Thursday is John Hoy's football preview show, "63 Seminoles." This hour-long program presents FSU's "Scout of the Week" with information on the coming Saturday's foe. Members of the Seminole squad and other outstanding guests will also be presented.



Roy Weissinger

ENJOY THE GAME MORE!

Treat yourself to **m&m's** Candies



ON SALE AT THIS STADIUM NOW!





**SEMINOLE CHEERLEADERS**—Front row, left to right: Linda Duyck, Plant City; Bill Harnage, St. Petersburg; Kay Lewis, Arcadia; Bill Whidden, Kissimmee; Carolyn Duyck, Plant City. Second row: Dee Weber, West Palm Beach; Head Cheerleader Sherry Harris, Merritt Island; and Linda Hagan, Orlando.

### ALMA MATER

High O'er the Towering Pines our voices swell  
Praising these Gothic spires we love so well  
Here sons and daughters stand, faithful and true  
Hailing our Alma Mater—F S U.

### FIGHT SONG

We're going to fight, fight, fight, for FSU  
We're going to scalp 'em, Seminoles,  
We're going to win, win, win, win this game  
And roll on down and make those goals!  
For FSU is on the warpath now,  
And at the battle's end she's great;  
So fight, fight, fight, fight, for victory  
Our Seminoles of Florida State  
F-L-O-R-I-D-A S-T-A-T-E!  
Florida State! Florida State! Florida State!

### THREE GARNETS

Give me a Garnet, Garnet, Garnet Garnet Garnet  
Give me a Gold, Gold, Gold Gold Gold  
Garnet, Gold  
Garnet, Gold  
Go Seminoles Go!

### SITTIN' IN A WIGWAM

Sittin' in a wigwam  
Beatin' on a tom-tom  
Who come? We come!  
Everybody will come.  
Scalp 'em (clap, clap), Scalp 'em  
(Clap, clap), etc.

### FRESHMAN, FLUNKY

Freshman, Flunky, Student, Scholar,  
All good Seminoles, stand up and holler!

### GO FLORIDA STATE

Go-o-o-o-o-o-o-o-o-o, Florida!  
Go-o-o-o-o-o-o-o-o-o, State!  
Go! Go!  
Florida State!

### GARNET AND GOLD

Garnet and Gold, fight, fight!  
Garnet and Gold, fight, fight!  
Who fight? We fight!  
Garnet and Gold, fight, fight!

### IS EVERYBODY HAPPY?

Is everybody happy?  
AUD: Hell, yes!  
Is anybody low?  
AUD: Hell, no!  
Let's railroad Seminoles  
And take it slow!  
(Spell Seminoles 3 times)  
Go, Seminoles!

### FSU CLAP CHEER

(Stomp clap, stomp clap, stomp clap-clap-clap-clap-clap)  
Repeat 3 times, then:  
F (clap, stomp clap, stomp clap-clap-clap-clap)  
S (clap, stomp clap, stomp clap-clap-clap-clap)  
U (clap, stomp clap, stomp clap-clap-clap-clap)  
F (clap) S (clap) U (clap-clap-clap-clap)  
Go!!

## THE ATHLETIC COMMITTEE

The Athletic Committee, appointed by the President, is the governing body of intercollegiate athletics at Florida State University.

The Committee has the responsibility of seeing that athletics are conducted primarily in the interests of the students, but with due regard for a proper, continuing and healthy interest of the alumni and the citizens of Florida, as well as the athletic heritage and prestige of the University.

Mode L. Stone, Dean of the School of Education is the Committee chairman. Members are Mary V. Alexander, Claude Flory, Coyle Moore, J. M. Plant, Elston Roady and Thomas Wright. Ex-officio non-voting members are Vaughn Mancha, the FSU Alumni President, the Seminole Booster President and the President of the Student Body.



Mode L. Stone



Thomas Wright



J. M. Plant



Claude Flory



Coyle Moore



Mary Alexander



Elston Roady

## TODAY'S TEAMS—HOW THEY RATE

### Results

FLORIDA STATE (2-2-1)			FURMAN (6-1)		
Miami	24-0	Davidson	17-0		
Texas Christian	0-13	Vanderbilt	14-13		
Wake Forest	35-0	George Washington	29-14		
Southern Mississippi	0-0	William and Mary	17-27		
Virginia Tech	31-23	Wofford	21-19		
		Mississippi College	41-13		
		Citadel	34-25		

### Individual Leaders

FLORIDA STATE				FURMAN			
RUSHING				PASSING			
Player	Att.	Yds.	Avg.	Player	Att.	Yds.	Avg.
Snyder	65	256	3.9	Zuberer	94	409	4.3
Brinkley	19	174	9.1	Donovan	75	279	3.7
M. Roberts	27	85	3.5	Cook	32	160	5.0
Bibent	15	49	3.3	Pickens	34	167	4.9
RECEIVING				SCORING			
Player	Ct.	Yds.	TD	Player	TD	Kick	P-R
Biletnikoff	12	193	3	Zuberer	5	0-0	0-1
Wettstein	12	114	2	Pickens	4	0-0	1-0
Dawson	8	119	0	Cordell	0	20-19	0-0
Bailey	5	58	1	Donovan	3	0-0	0-0
Floyd	5	51	0				
KICKING				PUNTING			
Player	TD	Kick	P-R	Player	TD	Kick	P-R
Biletnikoff	4	0-0	0-0	Zuberer	5	0-0	0-1
Messer	0	10-10	0-0	Pickens	4	0-0	1-0
Snyder	2	0-0	0-0	Cordell	0	20-19	0-0
Wettstein	2	0-0	0-0	Donovan	3	0-0	0-0



# FURMAN

## 1963 FOOTBALL ROSTER

No.	Name	Pos.	Ht.	Wt.	Age	Class	Hometown
10	*Danny Donovan	QB	5-9	165	22	Sr.	Easley, S.C.
11	Jimmy Mixon	QB	6-1	160	18	So.	Ocilla, Ga.
12	Tommy Rhoads	QB	6-0	175	20	Sr.	Henderson, Ky.
15	Sammy Wyche	QB	6-3	195	18	So.	Atlanta, Ga.
20	Jimmy Kerr	HB	5-11	171	18	So.	Woodruff, S.C.
21	*Walter Crosby	HB	5-11	165	21	Sr.	Ridgeland, S.C.
22	*Sammy Pickens	HB	6-2	185	21	Sr.	Greenwood, S.C.
24	Bill Chastain	HB	6-0	175	21	Sr.	Tailors, S.C.
25	*John Cook	HB	6-0	175	21	Sr.	Florence, S.C.
30	*Ernest Zuberer	FB	6-0	195	20	Sr.	Paterson, N.J.
31	Billy Turner	FB	6-0	187	18	So.	Jackson, Ga.
34	Robert Buzzell	FB	6-1	195	18	So.	Malden, Mass.
35	Ingram Haley	FB	5-11	180	18	So.	Pinewood, S.C.
41	Johnny Burrell	HB	6-1	185	18	So.	Silver Springs, Md.
43	*Everett McTeer	HB	5-11	180	21	Jr.	Haines City, Fla.
45	Wayne Lewis	HB	6-1	198	20	Jr.	Greenwood, S.C.
50	*Gerry Owens	C	6-0	195	20	Jr.	Pichens, S.C.
51	*Doug Stacks	C	6-0	195	21	Sr.	Decatur, Ga.
54	Tappy McEwen	C	6-0	195	19	Jr.	Sumter, S.C.
55	Pat Devaney	G	5-11	175	18	So.	Sumter, S.C.
60	Dan Walton	G	5-11	205	18	So.	Atlanta, Ga.
61	Dale Boyd	G	6-2	200	18	So.	Greenwood, S.C.
62	Robert Withers	G	6-0	230	18	So.	Newark, N.J.
63	Brownie Cordell	G	6-1	215	20	Jr.	Greenville, S.C.
64	*Julian Carnes	G	6-1	215	20	Jr.	Jonesboro, Ga.
65	Tommy Greene	G	6-1	190	18	So.	Savannah, Ga.
66	*Walter Preston	G	5-10	195	20	Jr.	Atlanta, Ga.
67	Charles Holloway	G	5-9	199	20	Jr.	Atlanta, Ga.
71	Gray Geddie	T	6-2	200	18	So.	Mount Olive, N.C.
74	*Charles Floyd	T	6-3	218	22	Sr.	Loris, S.C.
75	*Dennis Jepson	T	6-1	215	20	Jr.	Ashtabula, Ohio
76	Richard Harper	T	6-0	220	18	So.	Jesup, Ga.
77	*John Gettys	T	6-2	205	21	Sr.	Union, S.C.
78	James Williams	T	6-4	197	18	So.	Milledgeville, Ga.
80	Tim Crawford	E	6-0	190	18	So.	Pacolet, S.C.
81	*Pete Luongo	E	6-1	210	21	Sr.	Teaneck, N.J.
82	*Hayden Hays	E	6-2	210	21	Sr.	Decatur, Ga.
83	Rick Gilstrap	E	6-1	181	18	So.	Charleston, S.C.
84	*Doug Shaw	E	6-2	205	21	Sr.	Winnsboro, S.C.
86	Walker Kimbell	E	6-1	185	18	So.	Clayton, Ga.
89	Richard Godsey	E	5-10	175	18	So.	Palmer Park, Md.

\*—Denotes Lettermen

STOP  
Before and  
After Game



Steaks  
Seafood

# Furman University...

## A Greater Tomorrow

Furman University traces its origin to "The Furman Academy and Theological Institution," authorized in 1825 by the South Carolina State Baptist Convention. The new institution, organized in 1826, opened its doors in Edgefield in 1827. Inspiration for its establishment came primarily from Dr. Richard Furman, under whose leadership the State Baptist Convention was organized in 1821 with a seminary of learning as a major objective.

The South's oldest Baptist institution of higher learning, Furman has been operated by the South Carolina Baptist Convention since its beginning and now receives substantial financial support from the Convention both for current operations and for building needs. A board of 25 Trustees, named five each year by the Convention for five-year terms, governs the institution.

Dr. James Clement Furman, son of Dr. Richard Furman, was elected in 1844 to the position of senior professor, a post similar to that of president. His coming brought more vigor and a larger vision to the institution. Courses were arranged to cover three years and the name changed to "The Furman Theological Seminary."

In 1850 the State Convention authorized the Furman removal to Greenville from Winnsboro with the institution chartered as "The Furman University." Greenville was then a small town of about 1,300 people. A wooded hill overlooking the town became the campus site—a location which would be surrounded by dense business and residential areas in less than a century.

Dr. James C. Furman became in 1859 the first man to hold the title of President of the University. His administration was interrupted as the University closed from 1862 until 1866 because of the War Between The States.

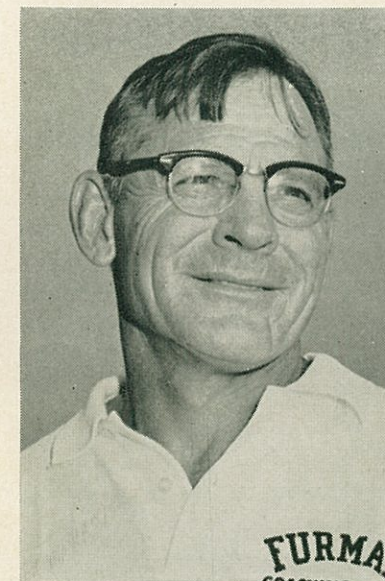
Presidents in addition to Dr. Furman have been Dr. Charles Manly, Dr. A. P. Montague, Dr. E. M. Poteat, Dr. W. J. McGlothlin, Dr. B. E. Geer, and Dr. John L. Plyler. President Plyler, who began his duties in 1939, has served longer as president than anyone.

In 1950 the Trustees purchased a tract of land five miles north of downtown Greenville. Construction began on the new campus in October, 1954. When completed, this campus will include more than 20 major buildings and will enable the University to serve at least 2,000 students. The new campus occupies a beautifully designed area on a 1,200 acre tract owned by the University. The transition to the new campus came in 1958.

"A greater Furman of a Greater Tomorrow" expresses a current aim deeply rooted in the performance of the past. History repeats itself in the progress of Furman through an ever-increasing service.

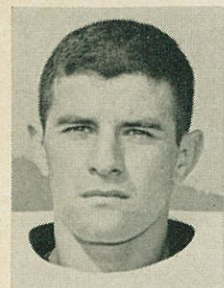


Lyles Alley  
Athletic Director

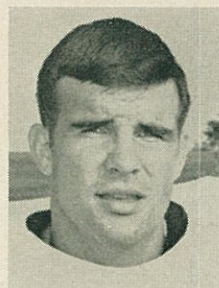


Bob King  
Head Coach





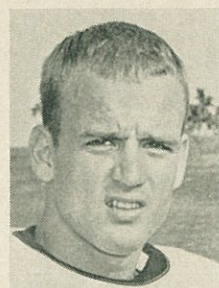
Walter Crosby



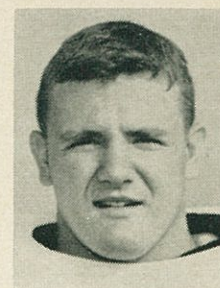
Hayden Hays



Dennis Jepson



Bill Chastain



Charles Holloway



John Cook



Doug Shaw



Richard Harper



Tommy Greene

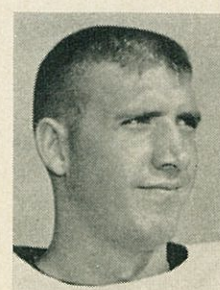


Dan Walton



Buchanan Duke Library

# FURMAN



Walker Kimbell



Charlie Floyd

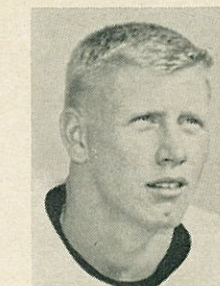


McAlister Auditorium

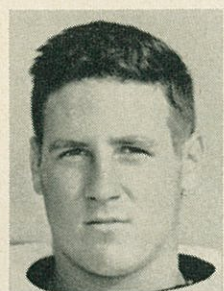
# FURMAN



Gerry Owens



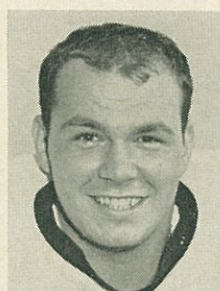
Jimmy Kerr



Richard Godsey



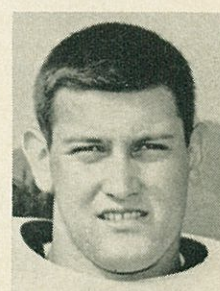
Sammy Wyche



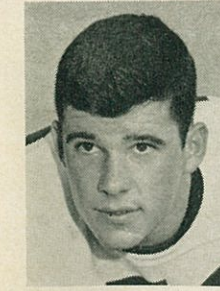
Bob Withers



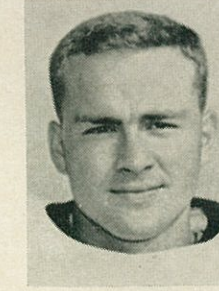
Billy Turner



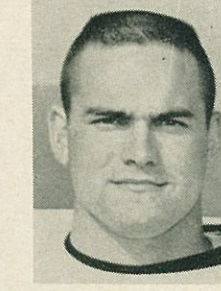
Dale Boyd



Gray Geddie



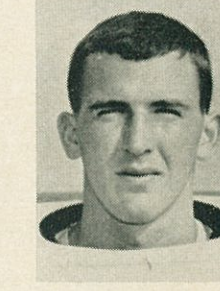
Everett McTeer



Julian Carnes



Sammy Pickens



James Williams





The Radnor, lowest priced RCA Victor Color TV ever!

## RCA Victor New Vista® Color TV gives you unsurpassed natural color, brighter than ever before!

In 1964 RCA Victor New Vista Color TV you get a sharper, brighter color picture . . . so sharp and bright you have to see it to believe it!

Three years ago RCA introduced the High Fidelity Color Picture Tube to make color up to 50% brighter than previous color tubes. Now RCA engineering advances bring you an even

better, even brighter color picture. And it's the most *dependable* Color TV in RCA Victor's history, with all the modern advantages of Space Age Sealed Circuitry.

The UHF emblem on New Vista Color TV means you're buying the set for tomorrow *today*. All-channel UHF tuning can be added easily to

all models. Most models of RCA Victor New Vista Color TV also can be ordered with UHF tuners already built in as an optional extra.

Be sure to see New Vista Color TV for yourself.



The Most Trusted Name in Television



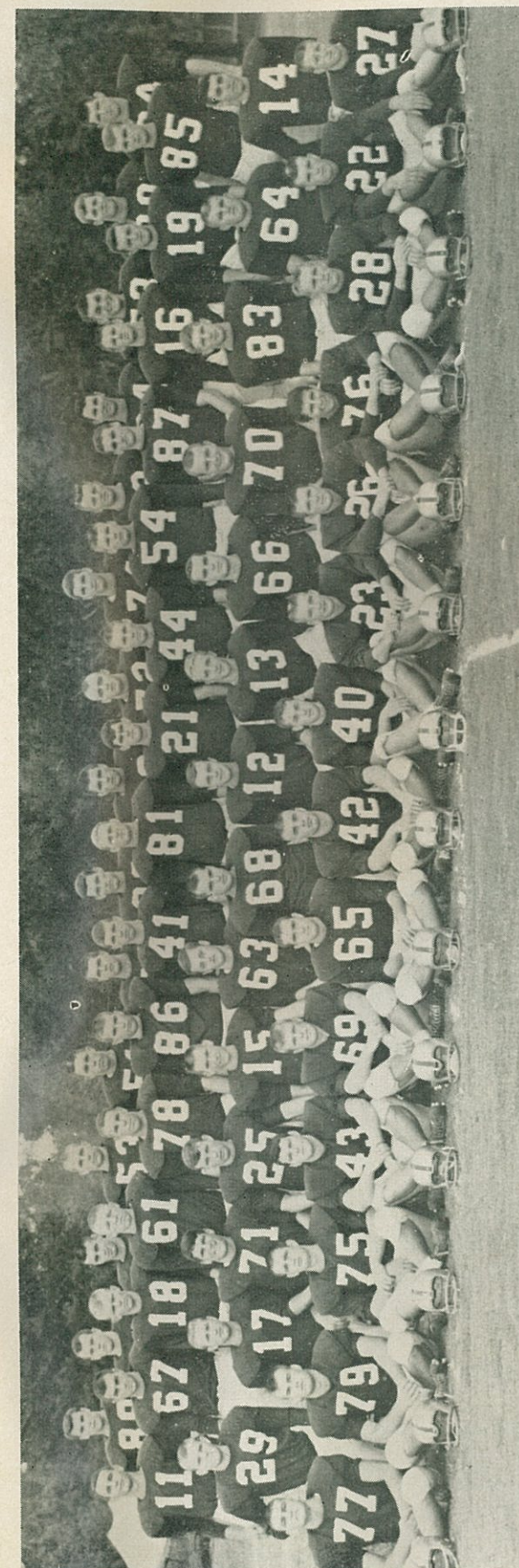
Tmk(s)®

MORE PEOPLE OWN RCA VICTOR TELEVISION THAN ANY OTHER KIND . . . BLACK AND WHITE OR COLOR.

### Rainey Cawthon's Inc.

Monroe at Brevard

Phone 222-1865



## 1963 FRESHMAN FOOTBALL ROSTER

Name	Pos.	Ht.	Wt.	Hometown
Tom Allen	QB	6-0	169	New Martinsville, W. Va.
Greg Bagget	FB	6-1	217	Panama City
Mike Belbeck	C	6-1	200	Winter Park
Dick Bender	E	6-1	168	Valdosta
Jim Berry	QB	6-0	173	Atlanta, Ga.
Bill Betts	G	6-0	223	Birmingham, Ala.
Mike Brady	G	6-0	189	Coral Gables
Bill Campbell	HB	5-9	170	Tampa
Pat Conway	HB	5-10	172	Miami
Jerry Corbitt	HB	6-1	172	Jesup, Ga.
Stan Croley	E	6-2	177	Dade City
Tom Delopez	FB	6-2	197	Miami
Charles Fuchs	E	6-2	209	Homestead
Phil Galioto	HB	5-10	185	West Palm Beach
Joe Gatlin	T	6-5	224	Coral Gables
Wayne Giardino	QB	5-10	189	West Palm Beach
Larry Green	HB	5-10	177	Cairo, Ga.
Kim Hammond	QB	6-1	182	Melbourne
Chipper High	HB	5-11	174	Reddick
John Hosack	HB	5-10	192	Miami
Fred Hudson	E	6-1	197	Milton
Ken Johnson	T	6-2	213	Jacksonville
Don Jones	HB	6-1	176	Lakeland
Leslie King	FB	5-11	186	Winter Park
Vernon Korhn	QB	5-11	170	Tampa
Allen LaMarche	HB	5-11	185	Hollywood
Felton Lancaster	T	6-2	244	Cross Keys, Ga.
Nick Maracic	C	6-2	190	Hollywood
Scott McCord	T	6-2	218	Atlanta, Ga.
Wayne McDuffie	E	6-2	197	Hawkinsville, Ga.
Phil McKinnon	G	5-11	195	Birmingham, Ala.
Jim McNeil	G	6-3	186	Panama City
Bill Meadows	C	6-1	194	Birmingham, Ala.
Bob Mendez	HB	5-10	176	Key West
Bill Moremen	HB	5-11	171	Daytona Beach
Lee Narramore	FB	6-0	206	Pensacola
Larry Overton	G	5-11	195	Pensacola
Bob Patterson	T	5-11	216	Tampa
Charles Pennie	T	6-4	222	Hollywood
Jim Perry	QB	5-11	178	Logan, W. Va.
Charles Randall	T	6-1	217	Savannah, Ga.
Bill Richardson	QB	5-9	173	Jesup, Ga.
Jim Riser	HB	6-0	175	Sanford
Rick Saunders	FB	6-1	181	Macon, Ga.
Phil Sims	G	6-1	191	Atlanta, Ga.
John Stephens	C	6-1	191	Tallahassee
Helge Swanson	C	6-3	214	Milton
Cary Thompson	G	6-3	202	Marietta, Ga.
Tom Thompson	C	6-3	247	Waycross, Ga.
H. T. Waller	QB	6-1	177	Vernon
T. K. Wetherell	HB	5-11	169	Daytona Beach
Del Williams	T	6-2	218	Live Oak
Paul Williams	E	6-2	205	Hollywood
Larry Williamson	C	5-11	193	Macon, Ga.
Tom Yates	G	6-1	214	Atlanta, Ga.

## 1963 FRESHMAN SCHEDULE

Oct. 5	Florida at Tallahassee
Oct. 12	Miami at Tampa
Oct. 31	Southern Mississippi at Pensacola
Nov. 14	N.C. State at Daytona Beach



# MUSIC AT HALF-TIME THE FLORIDA STATE UNIVERSITY SCHOOL OF MUSIC

Dr. K. O. Kuersteiner, Dean  
Dr. Manley R. Whitcomb, Director of Bands

presents

## THE MARCHING CHIEFS

Robert T. Braunagel, Director  
Clifford K. Madsen, Associate Director  
Charles Carter, Assistant Director and Arranger

Roger McLendon, Drum Major  
Janice Eddins, Head Majorette  
Cookie Winchester, Feature Baton Artist

### THEME: FROM RAGTIME TO HI-FI

#### MUSIC

Fanfare  
I Feel A Song  
Pretty Baby

Yes Sir, That's My Baby  
Muskrat Ramble

The Song Is You  
Leap Frog

Over The Rainbow

Of Thee I Sing

#### FORMATION

Sideline entrance in a salute to popular music from Ragtime to Hi-Fi.

**VICTROLA**—Forming an old-time victrola, the Band features the style of the early ragtime bands.

**RECORD CHANGES**—Changing style to that of New Orleans Dixieland, we feature our majorettes with Muskrat Ramble.

**TAPE RECORDER**—In the style of the Big Band Era—the Chiefs give you Les Brown's "Leap Frog".

**HI-FI SPEAKERS**—Combining the musicians from 39 high school bands from Ala., Fla., & Ga. in two stereo speakers we present in stereo-sound "Over the Rainbow".

**HI-FI**—As the combined bands spell out HI-FI we close the Band Day with "Of Thee I Sing".

### 1963 BAND DAY Guest Bands

#### SCHOOL

Albany High School  
Bainbridge High School  
Berrien High School  
Blackshear High School  
Blountstown High School  
Bowdon High School  
Brooks County High School  
Cairo High School  
Central High School  
Central High School  
Chattahoochee High School  
Clinch County High School  
Cochran High School  
Columbia County High School  
Cook County High School  
Crisp County High School  
Dodge County High School  
Englewood High School  
Fitzgerald High School  
Florida High School  
Graceville High School  
Greensboro High School  
Greenville High School  
Havana High School  
Jefferson County High School  
Leon High School  
Mitchell County High School  
Macon County High School  
Pelham High School  
Randolph County High School  
Sneads High School  
Sopchoppy High School  
Thomasville High School  
Turner County High School  
Vienna High School  
Walton High School  
Wewahatchka High School  
Worth County High School  
Fort Valley High School

#### HOMETOWN

Albany, Ga.  
Bainbridge, Ga.  
Nashville, Ga.  
Blackshear, Ga.  
Blountstown  
Bowdon, Ga.  
Quitman, Ga.  
Cairo, Ga.  
Phenix City, Ala.  
Thomasville, Ga.  
Chattahoochee  
Homerville, Ga.  
Cochran, Ga.  
Lake City  
Adel, Ga.  
Cordele, Ga.  
Eastman, Ga.  
Jacksonville  
Fitzgerald, Ga.  
Tallahassee  
Graceville  
Greensboro  
Greenville  
Havana  
Monticello  
Tallahassee  
Camilla, Ga.  
Montezuma, Ga.  
Pelham, Ga.  
Cuthbert, Ga.  
Sneads  
Sopchoppy  
Thomasville, Ga.  
Ashburn, Ga.  
Vienna, Ga.  
DeFuniak Springs  
Wewahatchka  
Sylvester, Ga.  
Fort Valley, Ga.

#### BAND DIRECTOR

Harry Martin  
E. C. Warnock  
Lane Smith  
Milton P. Norris  
Frank Fansler  
Norman L. Padgett  
Sanford B. Campbell  
Tommy Greenhaw  
Billy T. Cooper  
Ray DeMaris  
Brook Jones  
Cranford Sutton  
A. O. (Lon) Turner  
Lenville Dicks  
Edward C. Leichner  
Bill Lane  
Ronald Brooks  
George F. Paugh  
Guyton McLendon  
G. Heinlen  
Harvie B. McClure  
Larry Bohannon  
William S. Lee  
Early G. Brackin  
Romulus Thompson  
Oliver Hobbs  
Robert K. Hall  
B. G. Moores  
Rod Medders  
Budd E. Malchus  
Bill Miller  
Jack Birch  
Bill Harriston  
Gilbert F. Acosta  
Gene Lail  
Fred L. Turner  
Tony McCarty  
Eugene H. Wyles  
Ray Berry



Coach J. K. "Bud" Kennedy

# FSU BASKETBALL 1963-64

Florida State University basketball enters its 16th season with Coach J. K. "Bud" Kennedy at the helm, and prospects look better than ever.

Early reports are that the Seminoles will be big and fast in 1963-64. Perhaps big enough and fast enough to win against the toughest schedule in FSU history.

Added impetus will be given basketball this year with the formation of the Tip-Off Club, an organization similar to football's Seminole Boosters.

A strong home schedule assures plenty of basketball action at FSU's Robert Tully Gymnasium.

## ORDER YOUR TICKETS EARLY

Season Ticket, 10 Home Games ..... \$15.00  
Individual tickets, all home games ..... \$2.00

Order tickets from:

ATHLETIC TICKET OFFICE  
FLORIDA STATE UNIVERSITY  
TALLAHASSEE, FLORIDA

All Home Games 7:45 p.m. EST, Robert Tully Gym

## 1963-64 FSU BASKETBALL SCHEDULE

DATE	OPPONENT	SITE
Dec. 3	Florida .....	Away
Dec. 7	Auburn .....	HOME
Dec. 9	Alabama .....	Away
Dec. 11	Rice .....	Away
Dec. 12	Texas Christian .....	Away
Dec. 21	Tampa .....	HOME
Dec. 23	Tulsa .....	HOME
Dec. 26, 27	Gator Bowl Tournament .....	*Away
Jan. 2	Richmond .....	Away
Jan. 4	VMI .....	Away
Jan. 11	Miami .....	HOME
Jan. 16	Memphis State .....	HOME
Jan. 18	Georgia .....	HOME
Jan. 23	Florida .....	HOME
Jan. 28	Auburn .....	Away
Jan. 29	Alabama .....	HOME
Feb. 6	Furman .....	HOME
Feb. 8	Centenary .....	Away
Feb. 10	Memphis State .....	Away
Feb. 15	Georgia Tech .....	Away
Feb. 22	Jacksonville U. ....	HOME
Feb. 27	Stetson .....	Away
Feb. 29	Miami .....	Away
Mar. 3	Georgia .....	Away

\* Jacksonville

