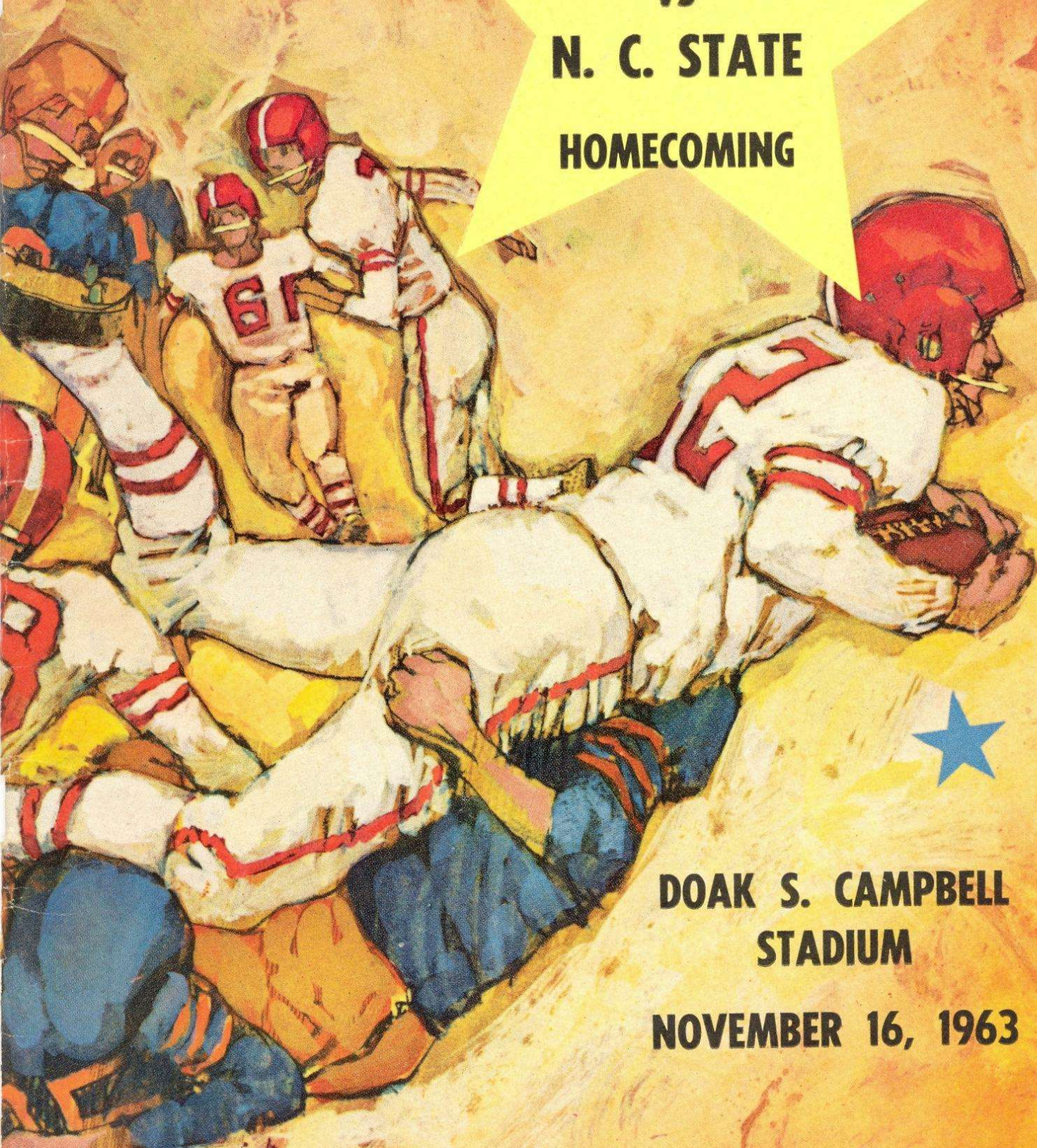


Official Program 50c

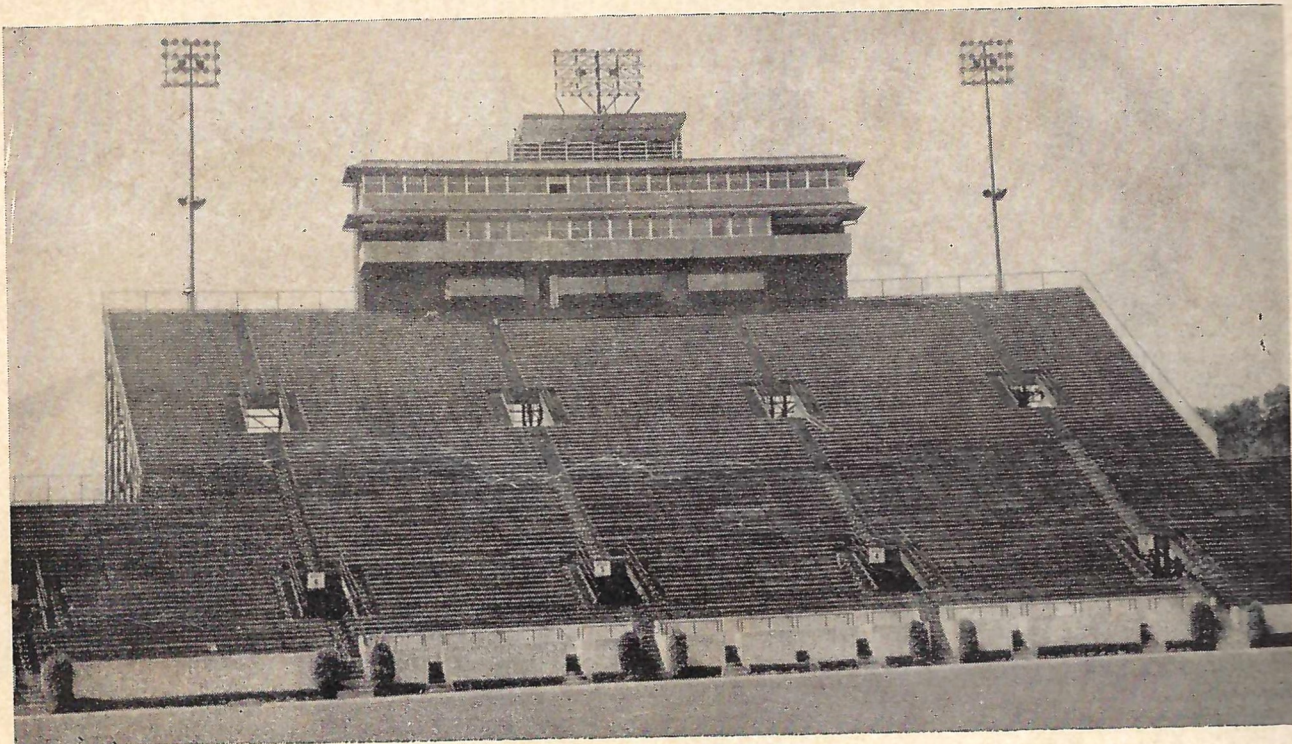
**FLORIDA STATE
VS
N. C. STATE
HOMECOMING**



**DOAK S. CAMPBELL
STADIUM**

NOVEMBER 16, 1963

George Moeriak



"Constructed By"
BEAR CONSTRUCTION CO., INC.
 PHONE 222-8489

D. L. COOKSEY

B. R. DRAUGHON

patronize . . .
STADIUM

CONCESSIONS

Located beneath the stands on each side of stadium

- COLD DRINKS 15¢**
- HOT COFFEE 15¢**
- SANDWICHES 30¢**
- HOT DOGS 25¢**
- PEANUTS 15¢**
- POP CORN 15¢**

- SOUVENIR ITEMS
- PENNANTS
- BADGES
- SUN VISORS
- ASPIRIN

All Cigarettes 40¢

please pay no more than established prices



FSU FOOTBALL 1963...

IN THIS ISSUE:

The University	4, 5, 8
FSU Depth Chart	6
Opponent Depth Chart	7
FSU Numerical Roster	11
Guest Column	9
FSU All-Time Records	9
Seminole Football Family	14
The 1963 Seminoles	15, 16, 17, 18
Starting Lineup, FSU	20
Starting Lineup, Opponent	21
Seminole Boosters, Inc.	25
Opponent Numerical Roster	32
Today's Opponent	33, 34, 35
Seminole Network	27
WFSU-TV Football Programs	29
The Marching Chiefs	38
The Athletic Committee	31
Comparing Today's Teams	31
FSU's '63 Freshmen	37
Seminole Songs and Cheers	30
FSU Basketball, 1963-64	39

SEMINOLES ON THE WARPATH...

Sept. 20	Miami	Miami 8:15 p.m.
Sept. 28	TEXAS CHRISTIAN	Tallahassee 8:00 p.m.
Oct. 12	Wake Forest	Tallahassee 2:00 p.m.
Oct. 19	So. Miss.	Mobile, Ala. 8:00 p.m. (CST)
Oct. 26	VIRGINIA TECH	Tallahassee 2:00 p.m.
Nov. 2	FURMAN	Tallahassee 2:00 p.m.
Nov. 9	Georgia Tech	Atlanta, Ga. 2:00 p.m.
Nov. 16	N. C. STATE (Homecoming)	Tallahassee 2:00 p.m.
Nov. 23	Auburn	Auburn, Ala. 2:00 p.m. (CST)
Nov. 30	Florida	Gainesville 2:00 p.m.



*Compliments and
Best Wishes from*



**YOUR APPLIANCE
HEADQUARTERS**
611 N. Monroe St.



*Greetings
from your
Alumni
Association*

Welcome Home, Seminoles!

No one single event quite occupies the place of honor in a university's crowded calendar as does Homecoming—a custom started 16 years ago by the Florida State University. This year's program, "Greater Goals for Seminoles," is an exception only in its degree of superiority.

Homecoming is a time, traditionally, for nostalgia and remembrance, for renewing old friendships, and for joining in the "Fighting Seminole" spirit. I am certain that in 1963 it also is a time for looking ahead and repledging ourselves to helping build here a more distinguished University.

I have been most pleased with the enthusiasm and response from alumni and students during this Homecoming and am confident that it will rank as one of the most memorable ever at our Alma Mater. I join with the Alumni Association in extending a personal and warm welcome to all.

Edward M. Eissey
President
FSU Alumni Association



1962 QUEEN KITTY (MILLER) RISENBURG
Crowned by 1961 Queen Carolyn (Reeves) Boyer

Welcome Alums

PARADE OF BEAUTY

FSU Homecoming Queens

1963
1962 Kitty (Miller) Risenburg
1961 Carolyn (Reeves) Bayer
1960 Charlotte Goodman
1959 Joyce (Combs) Fechtel
1958 Arielou (Johnson) Marcy
1957 Lynn (LaGrange) Francis
1956 Layte Bowden
1955	.. Margaret Ann (Ballinger) Miller
1954 Betty Wilmon
1953 Ann (Yates) Burst
1952 Marlies (Gessler) Limmiatis
1951 Sarah (Kennedy) Turner
1950 Jessie (Monroe) Schmelz
1949 Barbara J. (Pettit) Hansen
1948 Clara (Howell) McKay
1947 None Selected

It's that time again The time set aside on the calendar when old friends join together to share college-day memories, when the University's most poised and beautiful vie for the coveted queen title, when the football team tries particularly hard to impress the old grads. . . . Parades. . . . Parties. . . . Reunions. . . . Outstanding football. . . . Crowds. . . . It's that time again. . . . It's Homecoming!

1963 QUEEN AND COURT—Front row: Carolyn Wronske (left) of Miami and Ley Hulsey of Tampa. Back row, from left: Patty Warren of Jacksonville, Clyda Stokes of Jacksonville, Jackie Mathis of Tampa, and Carolyn Duyck of Plant City.



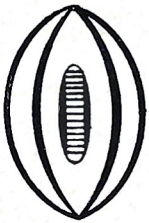
FSU'S HOMECOMING RECORD

(Won 9, Lost 6, Tied 1)

	FSU	Opp.
1963—North Carolina State	?	?
1962—Houston	0	7
1961—Miss. Southern	0	12
1960—Kentucky	0	23
1959—William & Mary	0	9
1958—Tampa	43	0
1957—Virginia Tech	20	7
1956—Wake Forest	14	14
1955—The Citadel	39	0
1954—Furman	33	14
1953—Stetson	13	6
1952—Furman	0	9
1951—Stetson	13	10
1950—Sewanee	14	8
1949—Millsaps	40	0
1948—Tampa	33	12
1947—Tennessee Tech	6	27

WHEN FSU HAS THE BALL

LEFT END



81 Floyd
82 Causey
89 Wettstein

LEFT TACKLE



77 Mangan
79 Pennie
76 West

LEFT GUARD



66 Hermann
68 Parrish
65 Wooten

CENTER



55 Edwards
53 Daly
51 Avezzano

RIGHT GUARD



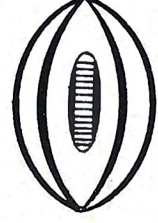
52 Robinson
63 McDowell
75 MacKenzie

RIGHT TACKLE



73 Sumner
61 Shinholser
67 Bruner

RIGHT END



83 Dawson
84 D'Allessandro
80 Wachtel

LEFT



84 M
86 H
81 M

QUARTERBACK



13 Tensi
11 Calhoun
16 Pritchett

LEFT HALFBACK



20 Snyder
22 Bibent
29 Petko

RIGHT HALFBACK



25 Biletnikoff
28 Bailey
23 Loftin

FULLBACK



21 Brinkley
44 M. Roberts
43 Ehler

(Note: First player listed at each position is starter for Chiefs (two-way) unit, second Renegades (defense), third Warriors (offense).



MEMBER

Federal Home Loan Bank System

Federal Savings and Loan Insurance Corporation

FOR CORRECT TIME DIAL 118

WHERE you save DOES make a difference

WHEN N. C. STATE HAS THE BALL

LEFT END



84 Montgomery
86 Hall
81 Mann

LEFT TACKLE



70 Amato
74 Wachtel
77 Parker

LEFT GUARD



60 Williams
80 Martin
69 Simpson

CENTER



54 Overcash
51 DeAngelis
55 Topinka

RIGHT GUARD



67 Snow
65 Schafer
66 Powell

RIGHT TACKLE



73 Wilder
75 Sasser
71 Ellis

RIGHT END



83 Barlow
87 Faircloth
82 Golmont

QUARTERBACK



14 Rossi
12 Barnes
15 Skosnik

LEFT HALFBACK



40 Koszarsky
22 Clark
23 Mansfield

RIGHT HALFBACK



44 Scarpati
42 Guin
41 Watkins

FULLBACK



33 Falzarano
30 Houtz
34 Andrews

Tallahassee Federal

SAVINGS AND LOAN
ASSOCIATION

440 N. Monroe Street * Tallahassee, Florida
TELEPHONE 224-2161

HOURS: Monday-Thursday, 8:30 a.m. to 3 p.m.—Friday, 8:30 a.m. to 6 p.m.



Some Eye-Rubbing Changes

By CLIF PAISLEY
Editor, FSU News Bureau

Students who were enrolled in the 1880's would rub their eyes at the changes which have taken place if they returned for the first time at a diamond jubilee homecoming at Florida State University.

The campus, it's true, would be at a familiar location, just a short buggy-drive down Clinton Street (since renamed College Avenue) from downtown Tallahassee, and Westcott Building would probably be reminiscent of the lone "college" building in the '80's since it's on the same site.

But there the similarity would end. In the 1880's FSU wasn't even a college, although an up-grading to college status had begun and the Seminary West of The Suwannee River had a collegiate department offering two courses of study—a "classical course" and a "literary course."

The 76 students enrolling there in the fall of 1887 included a goodly number in the high school division. A "no student under 12" rule was yet to be established and according to the 1887 catalog a student could qualify for admission if he could "pass a creditable examination in arithmetic to percentage, in the etymology of English grammar, in United States history and geography, and be able to read, write and spell reasonably well."

Only 10 of the students enrolled for regular classes that year were from outside Leon County. The outsiders that year included one from Thomasville, Ga., and one or two students each from Escambia, Jefferson, Putnam, Gadsden, Walton and Suwannee counties.

School started the first Monday in October and "kept" for 36 weeks divided equally into two terms. Tuition was free to Florida students and out-of-town students could find room and board in private homes. Living expenses at that time were something! The catalog said board was available in private homes at \$12 to \$20 a month, washing

cost \$1 to \$1.50 a month and books could be bought "at reasonable rates."

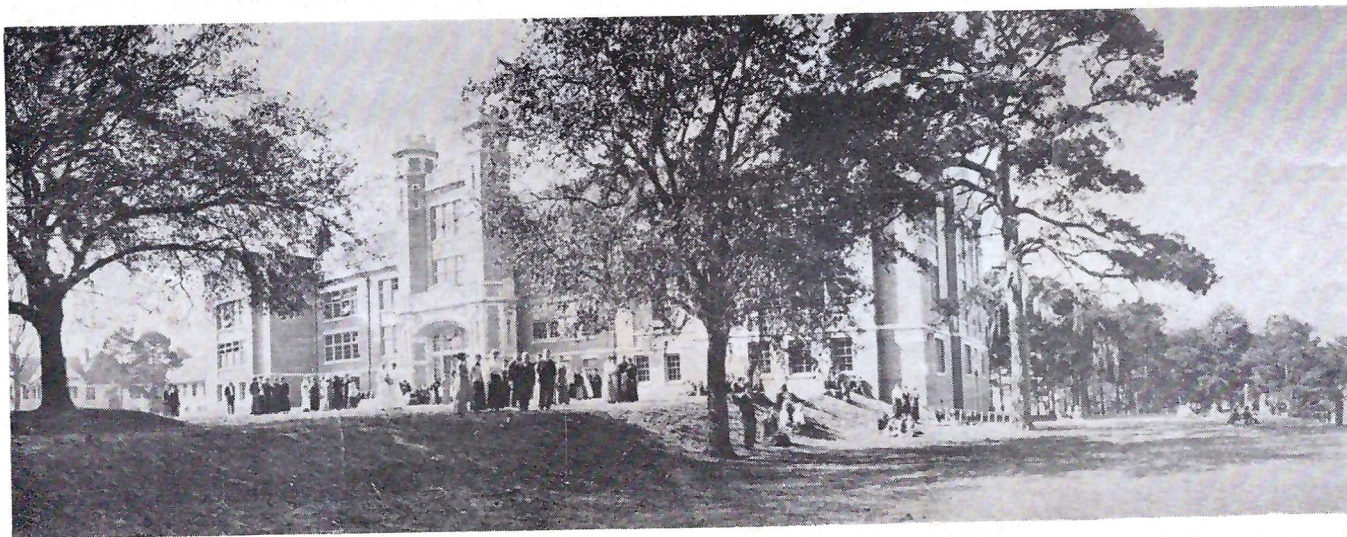
Classes had been held on this same campus since 1857. The Seminary West of the Suwannee, a coeducational school, was operated even during the Civil War and just a month and a half before the war ended several 14-year-old cadets were called out to help the Confederate home guard repel a Federal attack on Tallahassee in the Battle of Natural Bridge.

In 1901 the seminary was renamed Florida State College and in 1905 this became a woman's college. Florida State College for Women continued until in 1946, following World War II, the demand of GI men for a college education resulted in classes being held for men students. In the spring of 1947 FSCW was officially converted to coeducational Florida State University. Today, there are 11,102 students with the prospect of 15,000 by 1970.

Developments came swiftly. There were four major divisions before this—arts and sciences, education, music and home economics. Such professional schools as business, social welfare, nursing and library were added and in the fall of this year the School of Engineering Science.

At the same time FSU began building the strength of its undergraduate and graduate programs in such fields as chemistry, psychology, biology, geology and the new field of meteorology. In 1963 the number of doctorates given by FSU passed the 500 mark and the institution has given nearly 5,000 master's degrees.

The program in nuclear physics, spurred along by the provision of a tandem van de Graaff accelerator by the 1957 Legislature, has accounted for an increasing number of Ph. D. candidates. Graduate research has received impetus also from large grants backing programs in a number of fields.



WESTCOTT OF 50 YEARS AGO—The 1963 Homecoming honors the Class of 1913 and this photograph of Westcott Building, believed taken in or near that year, should remind honorees of a familiar scene. Miss Eloise McGriff (B.S. '12, M.S. '14) of Tallahassee says white frame building in left background is old East Hall, which also housed the main dining room of that time at Florida State College for Women.

The View From Above

By **RAY CHARLESTON**
Assistant Sports Editor
Florida Times-Union



Florida State, a team capable of catching fire, is also a team with a mission.

Seven games into the season with an even-Stephen record, the Seminoles can be counted upon to adopt some go-for-broke tactics the rest of the way in shots for a winning campaign.

It is an uphill fight starting with the Homecoming battle with solid North Carolina State, a team that has been pulling some surprises enroute to a superb season.

The once-beaten Wolfpack shapes up as a stern test for the Seminoles. Then comes Auburn and the University of Florida in a gruelling closing grind for Coach Bill Peterson's Garnet and Gold.

Florida State is a better team than its 3-3-1 record indicates. The Tribe has flashed some dangerous passing and running and excellent defensive play in spots. Mistakes cost the Seminoles dearly in several games thus far, miscues that prevented a much better won-lost record.

Florida State's hopes of launching a successful closing drive against North Carolina State rest primarily on three Seminoles—fullback Larry Brinkley, halfback Dave Snyder and quarterback Steve Tensi.

Brinkley, after missing two games because of injuries, has developed into an exciting runner capable of spotting a block in the line and zipping through the hole.

Snyder is probably the most determined back in FSU football history. Few players match his desire when he goes ramming up the middle of the line, a tough assignment.

Tensi, an on-target passer capable of riddling the opposition, has thrown for nine touchdowns. He is a major headache for the other team's defenses.

The Seminoles boast some aggressive linemen who are also key performers in the run to the wire. They include ends Red Dawson, Don Floyd and Max Wettstein, tackles Avery Sumner, Jack Shinholser, Bob Mangan and Frank Pennie, guards Dick Hermann, Chuck Robinson and Bill McDowell along with centers Jack Edwards and Bill Daly.

Florida State has displayed ability to bounce back this season after bitter setbacks, a factor that keeps the Seminoles' hopes alive of a fine showing the remainder of the campaign.

FSU has recovered brilliantly twice. After losing to Texas Christian in the rain, the Seminoles shattered Wake Forest. Following a defeat to Virginia Tech in a game in which everything went wrong for the Tribe, it rolled back the following week to slash Furman.

Florida State has displayed the right to wear a "dangerous" label several times this year. Miami was engulfed in the Seminoles' fury and went down, 24-0. Wake Forest was fractured, 35-0, and Furman suffered a 49-6 lashing.

Last week FSU went in front early against Georgia Tech, 7-0, and only a brilliant performance enabled the Southeastern Conference Yellow Jackets to pull out a 15-7 decision.

Georgia Tech's Coach Bobby Dodd was another enemy mentor who praised the Seminoles highly this season.

It is an uphill fight for the Seminoles the rest of the way. But, Coach Peterson's crew has pulled itself together before and could do it again.

So, Seminoles with a mission face a Wolfpack team driving toward a great record—all of which makes for an exciting football game before an FSU Homecoming throng.

FSU Records

SINGLE GAME

INDIVIDUAL

LONGEST TOUCHDOWN RUN FROM SCRIMMAGE—80 yards by Fred Pickard vs. Virginia Tech, 1957.

LONGEST TOUCHDOWN PASS—80 yards, Nelson Italiano to Eddie Gray vs. Newberry, 1950.

LONGEST TOUCHDOWN RUN ANY SITUATION—99 yards by Ted Hewitt vs. Stetson, 1949, and by Fred Biletnikoff vs. Miami, 1963.

LONGEST RUN FROM SCRIMMAGE WITHOUT SCORING—76 yards by Roy Thompson vs. Stetson, 1951.

LONGEST INTERCEPTION RETURN—99 yards by Ted Hewitt vs. Stetson, 1949, and by Fred Biletnikoff vs. Miami, 1963.

LONGEST PUNT RETURN—80 yards by Billy Odom vs. Stetson, 1954.

LONGEST KICKOFF RETURN—89 yards by Odom vs. Virginia Tech, 1955.

MOST TIMES RUSHING—29 by Pickard vs. Georgia, 1959.

MOST YARDS RUSHING—161 by Buddy Strauss vs. Mississippi College, 1949.

MOST YARDS PASSING—355 vs. Villanova, 1954, 1949.

MOST TOTAL OFFENSE—369 yards (56 rushing, 313 passing) by Majors vs. Tampa, 1959.

MOST PASSES ATTEMPTED—32 by Joe Majors vs. Tampa, 1959.

MOST PASSES COMPLETED—20 by Majors vs. Tampa, 1959.

MOST PASSES CAUGHT—9 by Bud Whitehead vs. Tampa, 1959.

MOST YARDS RECEIVING PASSES—123 by Harry Bringer vs. Mississippi College, 1950.

MOST PASSES INTERCEPTED—3 by Tommy Brown vs. Stetson, 1950 and vs. Georgia Tech, 1952; Lee Corso vs. Georgia 1954; Whitehead vs. Virginia Tech, 1959.

LONGEST PUNT—84 yards by Brown vs. Tampa, 1950.

LONGEST FIELD GOAL—44 yards by Les Murdock vs. V.P.I., 1963.

TEAM

MOST POINTS—74 vs. Whiting Field 0, 1949.

GREATEST MARGIN OF VICTORY—74-0 vs. Whiting Field, 1949.

GREATEST MARGIN OF DEFEAT—0-42 vs. Georgia, 1959.

MOST YARDS RUSHING—383 vs. Abilene Christian, 1957.

MOST YARDS PASSING—355 vs. Villanova, 1954.

MOST TOTAL OFFENSE—514 yards vs. The Citadel, 1959 (307 rushing, 207 passing).

MOST PASSES ATTEMPTED—34 vs. Tampa, 1959 (completed 20).

MOST PASSES COMPLETED—20 vs. Tampa, 1959 (attempted 34).

MOST PASSES INTERCEPTED—7 vs. Virginia Tech, 1959.

MOST PUNTS—10 vs. Stetson and Georgia Tech, 1955.



Sports lovers of the world, unite . . . let's all go Wildcat-ing!

Face it—if you're the rocking chair, watch-it-on-TV type, forget the wild, wild '64 Buick Wildcat. But if you like your action furious and first-hand, Wildcat is for you! You can bark your signals to a regular 325 hp V-8 formation, or really take to the air with a 340* or 360* hp passer. Three scat-back transmissions add to your fun: 3-speed synchromesh; 4-speed synchro stick shift on the floor*, or Buick's new trigger-quick Super Turbine 400 automatic* (very sparing with gas, too!). Four new models: 4-dr. hardtop; 2-dr. sport coupe; 4-dr. sedan; convertible. Give one a workout; see why we say . . .

*Optional at extra cost.

Buick Motor Division

above all, it's a BUICK!

FLORIDA STATE 1963 FOOTBALL ROSTER

No.	Name	Pos.	Ht.	Wt.	Age	Class	Hometown
11	*Charlie Calhoun	QB	5-10	171	20	Sr.	Tallahassee
12	Tony Gero	QB	5-10	183	19	So.	Madison, N. J.
13	*Steve Tensi	QB	6-5	201	20	Jr.	Cincinnati, O.
14	Jim Massey	QB	5-11	176	20	So.	Cairo, Ga.
15	Russ Fischer	QB	6-1	184	20	So.	Melbourne
16	Ed Pritchett	QB	6-2	177	22	So.	Decatur, Ga.
20	*Dave Snyder	HB	5-10	184	21	Sr.	Jacksonville
21	*Larry Brinkley	FB	5-11	190	21	Sr.	Willoughby, O.
22	Maury Bibent	HB	6-0	186	20	So.	Cincinnati, O.
23	*Jim Loftin	HB	6-1	181	20	Jr.	Pensacola
24	Mario DeLiberty	HB	5-9	184	19	So.	Havertown, Pa.
25	*Fred Biletnikoff	HB	6-1	186	20	Jr.	Erie, Pa.
26	Bill Hammond	HB	5-11	181	21	So.	Melbourne
28	*Winfred Bailey	HB	6-0	186	21	Jr.	Atlanta, Ga.
29	Joe Petko	HB	5-9	186	19	So.	Shaker Heights, O.
40	*Doug Messer	HB	6-1	188	21	Sr.	LaGrange, Ga.
41	*Gene Roberts	FB	6-0	200	21	Sr.	High Springs
42	Les Murdock	FB	6-2	213	21	Jr.	Hollywood
43	Howard Ehler	FB	6-1	190	19	So.	Tavares
44	*Marion Roberts	FB	6-0	197	20	Sr.	Ocilla, Ga.
51	Joe Avezzano	C	6-1	223	20	So.	Miami
52	*Chuck Robinson	G	5-11	218	21	Sr.	E. Palestine, O.
53	*Bill Daly	C	6-1	209	20	Sr.	Jacksonville
54	Jay Mac Matthews	C	6-1	216	19	So.	Chiefland
55	*Jack Edwards	C	6-1	221	20	Jr.	Tampa
60	*Ferrell Henry	C	6-1	212	21	Sr.	Colquitt, Ga.
61	Jack Shinholser	G	6-1	200	21	So.	Tampa
62	Gene Parish	G	6-3	196	21	So.	Headland, Ala.
63	Bill McDowell	G	6-1	191	19	So.	Tallahassee
64	David Pitts	G	5-9	211	19	So.	Blountstown
65	Jerry Wooten	G	6-1	195	19	So.	Geneva, Ala.
66	*Dick Hermann	G	6-0	200	21	Jr.	Marianna
67	*Jerry Bruner	T	5-10	232	21	Sr.	Evansville, Ind.
68	Joe Parrish	G	6-1	193	20	So.	Auburndale
69	Steve Watson	T	5-10	215	19	So.	Rossford, O.
70	Larry Strobel	T	5-11	227	19	So.	Massilon, O.
71	Darrell Willett	T	6-1	231	20	So.	Tifton, Ga.
73	*Avery Sumner	T	6-2	216	21	Jr.	Adel, Ga.
75	*Dale MacKenzie	T	6-2	227	20	Jr.	Clearwater
76	*Tom West	T	6-4	222	20	Jr.	Headland, Ala.
77	Bob Mangan	T	6-1	231	21	So.	Atlanta, Ga.
78	Max Andrews	T	6-1	203	21	So.	Rehobeth, Ala.
79	Frank Pennie	T	6-4	242	20	So.	Hollywood
80	*John Wachtel	E	6-1	193	21	Jr.	Massilon, O.
81	*Don Floyd	E	6-1	197	21	Jr.	Madison
82	*Jim Causey	E	6-1	209	22	Jr.	Miami
83	*Bill Dawson	E	6-3	231	20	Jr.	Valdosta, Ga.
84	George D'Allessandro	E	5-10	205	20	So.	Fort Myers
85	Dale Twitchell	E	6-1	205	20	So.	Floral, Ala.
86	Buddy Blankenship	E	6-3	200	19	So.	Atlanta, Ga.
87	Terry Garvin	E	5-11	206	20	So.	Pensacola
88	John Roberts	E	6-0	190	21	So.	Orlando
89	Max Wettstein	E	6-3	203	19	So.	Leesburg

* Denotes letterman
1963 CO-CAPTAINS RG Chuck Robinson and QB Charlie Calhoun



1818 W. Tennessee

Howdy Podner . . . Me and the boys jest want to notafy everbody that we are still serven them Notorious and Dillicious charcoal-broiled Steerbrugers and Steak Samwiches at our fine Drive-In Resterant, jest 2 passes & a fumball offen the campus on West Tennessee where Call St. comes in. See you at the Seven Steers.

Yours truly,
OLE TEX.

OWNED AND OPERATED BY FRANK CHASE & SONS, FRANK JR.,
CHARLES, ROBERT, RICHARD, RAYMOND

Skyline Restaurant

1 Mile West of City Limits

U. S. Highways 90 and 20

OPEN 6 A.M. TO 11 P.M.

TALLAHASSEE, FLORIDA

"Serving Good Food for Fine People"

Private Rooms and Banquet Facilities

**SOUTHERNAIRE MOTEL &
SKYLINE MOTOR LODGE**



Quality people always seek
quality accommodations

MIDYETTE-MOOR Insurance Agency

"Ask Those We Serve"

Complete Insurance and Bond Service

PHONE 222-3456



MIDYETTE-MOOR BUILDING
TALLAHASSEE, FLORIDA

SAYS

SCALP 'EM SEMINOLES!



PAYNE MIDYETTE

FRANK MOOR	BILL MOOR
ED. CLARK	GLENN SEARS
WINSLOW SULLIVAN	PAUL McCARTNEY
BOB DICKINSON	REX SIKES
PAUL LEWIS	JIM MILLHOFF
PAYNE MIDYETTE, JR.	JOHN REEVES



Penny Edwards—"MISS TIPARILLO."

What does she mean "cigars...cigarettes...Tiparillos"?

You'll be hearing that chant more and more—now that Tiparillos have arrived. And arrived they have. In all the right places. With all the right people.

The new Tiparillo has a neat, trim shape. It looks young and debonair. And its pearly, pliable tip pays more than lip service to your smoking pleasure.

And never before such mildness! The most careful blending of choicest imported tobaccos has seen to that. So, too, has the exclusive, veinless Ultra Cigar Wrapper* that burns so evenly and smoothly it insures complete mildness.

You can even see the mildness. The

surprisingly whiter ash is visible evidence. Smoker's proof. Here is flavor you don't have to inhale to enjoy.

"Cigars...cigarettes...?" Who knows, maybe someday it will be just "Tiparillos!"

Why don't you ask for one today?

*T.M. GENERAL CIGAR CO.

Tiparillos are on sale at this stadium.



FSU'S 1963 COACHING STAFF: (Front row, L-R) Bobby Bowden, Bubba McGowan, Bill Peterson, Vince Gibson; (Back row) Y. C. McNease, Bill Proctor, Don James, John Coatta, Bob Harbison, Lou Luce.



BILL PETERSON
Head Football Coach

*The
Seminole
Football
Family*



VAUGHN MANCHA
Athletic Director



RONALD MELTON
Athletic Business
Manager



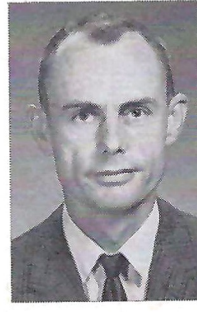
DON FAULS
Team Trainer



DR. R. A. JOHNSON
Team Physician



BILL BUNKER
Sports Publicity
Director



CLAUDE THIGPEN
Ticket Manager



TILLMAN DIXON
Equipment Custodian



Joe Avezzano



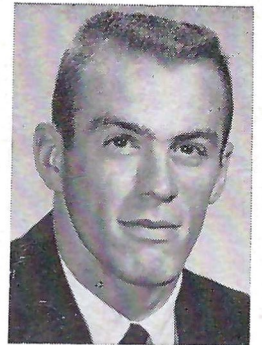
Winfred Bailey



Maury Bibent



Fred Biletnikoff



Larry Brinkley



Jerry Bruner

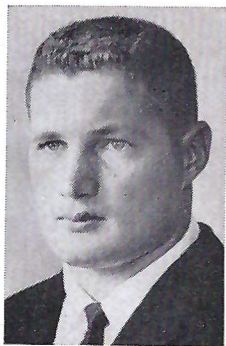
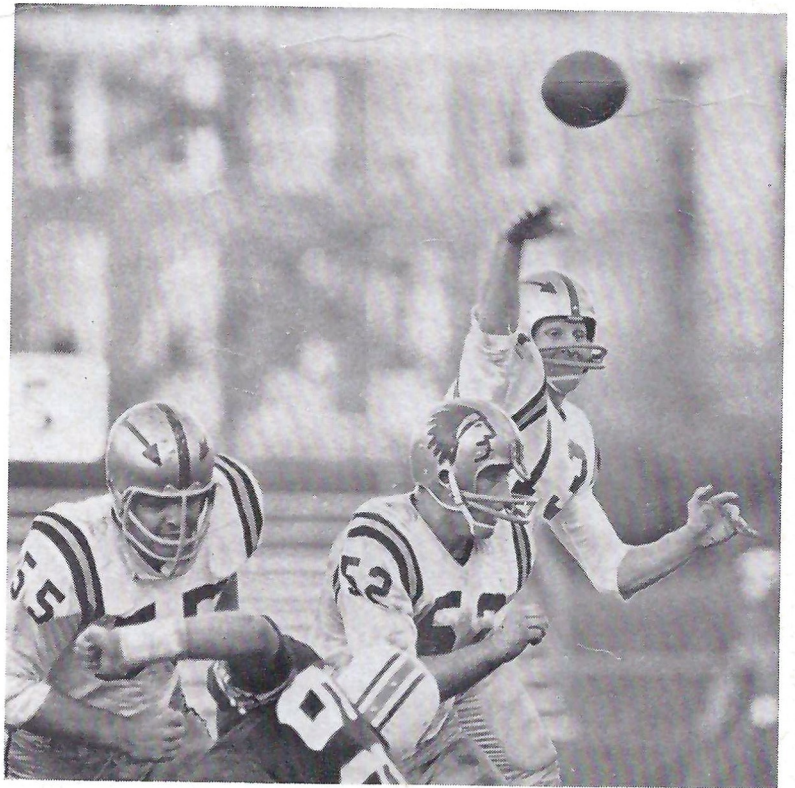


Charlie Calhoun

F

S

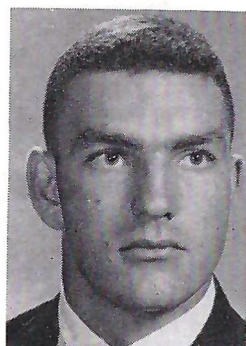
U



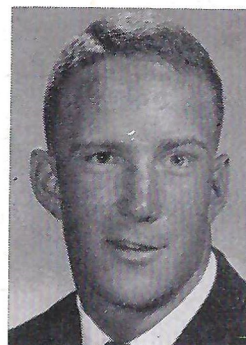
Jim Causey



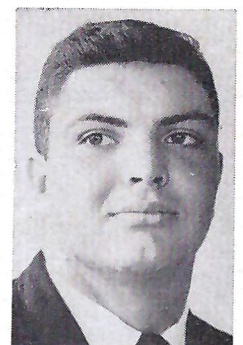
George D'Allessandro



Bill Daly



Bill Dawson



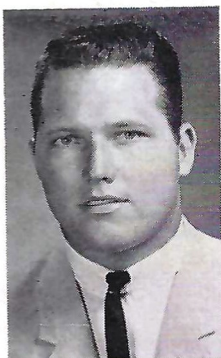
Jack Edwards



Howard Ehler



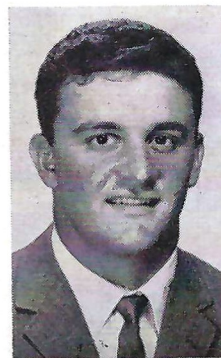
Don Floyd



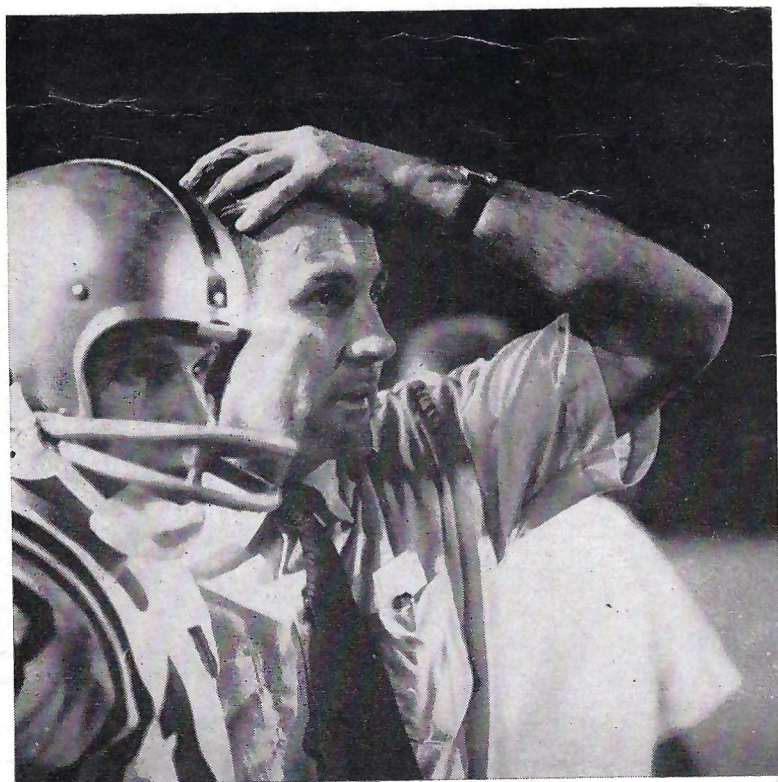
Ken Frazier



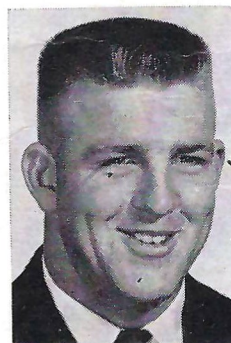
Terry Garvin



Tony Gero

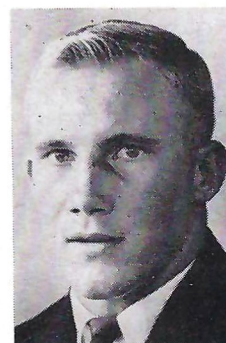


F



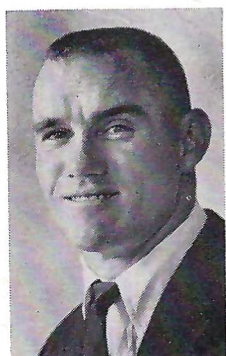
Ferrell Henry

S



Dick Hermann

U



Jim Loftin



Dale MacKenzie



Bob Mangan



Jim Massey



Jay Mac Matthews



Bill McDowell



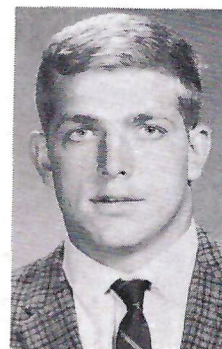
Doug Messer



Les Murdock



Joe Parrish



Frank Pennie



Joe Petko



Ed Pope

F

S

U



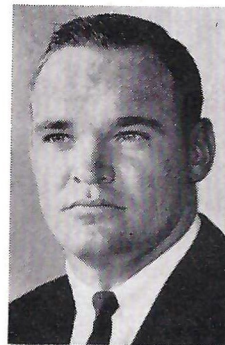
Ed Pritchett



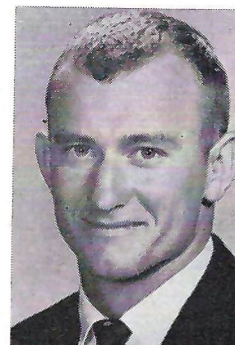
Elton Revell



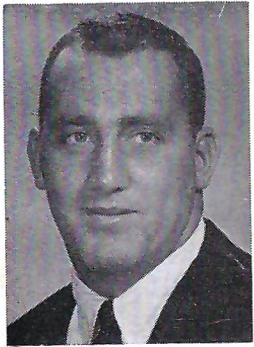
Gene Roberts



John Roberts



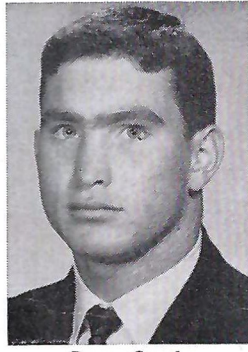
Marion Roberts



Chuck Robinson



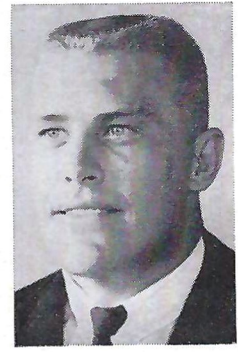
Jack Shinholser



Dave Snyder



Larry Strobel



Avery Sumner



F



Steve Tensi

S

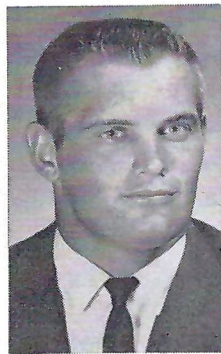


Dale Twitchell

U



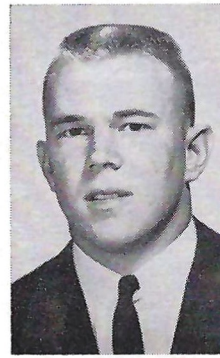
John Wachtel



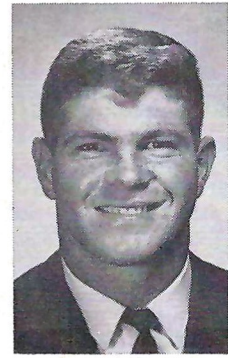
David Pitts



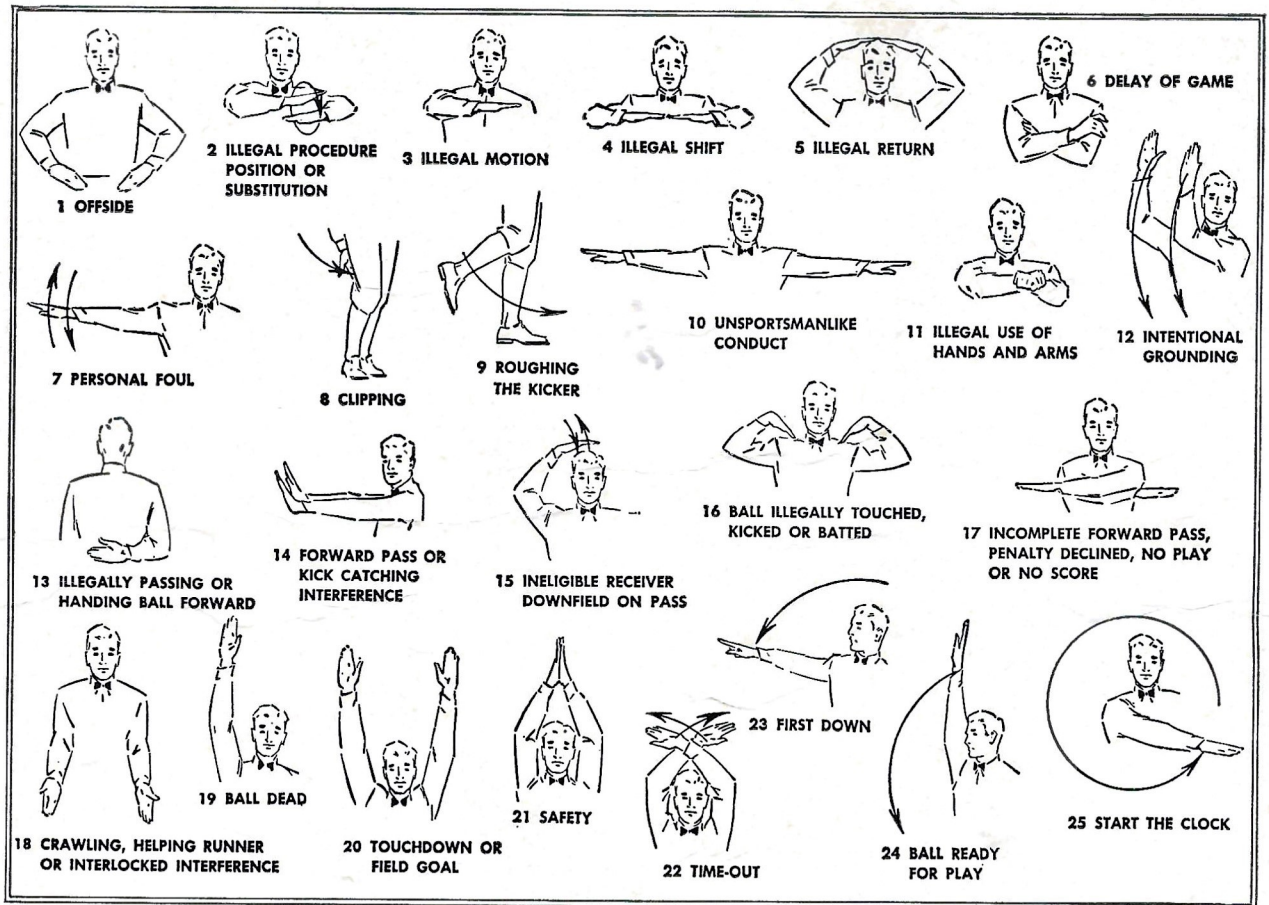
Tom West



Max Wettstein



Jerry Wooten



**TRAVELING
DESSERT TRAYS**

**FAMOUS
TOWN HOUSE
ROAST
PRIME RIB
OF BEEF**



SPURGEON CAMP

*Good Luck
Seminole!*

**NOBODY...
BUT NOBODY
UNDERSELLS.**

**SOUTHERN
ELECTRIC INC.**

**5-Store Purchasing Power
Saves You Money on G-E Appliances!**

Tallahassee Downtown and Capital Plaza	Perry, Fla. 115 E. Green St. on the Square	Valdosta, Ga. 117 W. Central	Albany, Ga. 225 W. Ogle- thorpe St.
--	--	---------------------------------	---

FLORIDA STATE

Starting Lineup

No.	Name	Pos.
81	DON FLOYD	LE
77	BOB MANGAN	LT
66	DICK HERMANN	LG
53	BILL DALY	C
52	CHUCK ROBINSON	RG
73	AVERY SUMNER	RT
83	BILL DAWSON	RE
13	STEVE TENSI	QB
20	DAVE SNYDER	LHB
25	FRED BILETNIKOFF	RHB
21	LARRY BRINKLEY	FB

THE SEMINOLE SQUAD

11	Calhoun, QB	43	Ehler, FB	71	Willett, T
12	Gero, QB	44	Roberts, M., FB	73	Sumner, T
13	Tensi, QB	51	Avezzano, C	75	MacKenzie, T
15	Fischer, QB	52	Robinson, G	76	West, T
14	Massey, QB	53	Daly, C	77	Mangan, T
16	Pritchett, QB	54	Matthews, C	78	Andrews, T
20	Snyder, HB	55	Edwards, C	79	Pennie, T
21	Brinkley, FB	60	Henry, T	80	Wachtel, E
22	Bibent, HB	61	Shinholser, G	81	Floyd, E
23	Loftin, HB	62	Parish, G	82	Causey, E
24	DeLiberty, HB	63	McDowell, G	83	Dawson, E
25	Biletnikoff, HB	64	Pitts, G	84	D'Allessandro, E
26	Hammond, HB	65	Wooten, G	85	Twitchell, E
28	Bailey, HB	66	Hermann, G	86	Blankenship, E
29	Petko, HB	67	Bruner, T	87	Garvin, E
40	Messer, HB	68	Parrish, G	88	Roberts, J., E
42	Murdock, FB	70	Strobel, T	89	Wettstein, E

N.C. STATE

Starting Lineup

No.	Name	Pos.
84	DON MONTGOMERY ..	LE
70	ROSIE AMATO	LT
60	BENNETT WILLIAMS ..	LG
54	OSCAR OVERCASH	C
65	JACK SCHAFER	RG
73	BERT WILDER	RT
83	RAY BARLOW	RE
14	JIM ROSSI	QB
40	TONY KOZARSKY	LHB
44	JOE SCARPATI	RHB
33	PETE FALZARANO	FB

THE WOLFPACK SQUAD

12 Barnes, QB	44 Scarpati, HB	71 Ellis, T
14 Rossi, QB	50 Cockerham, C	73 Wilder, T
15 Skosnik, QB	51 DeAngelis, C	74 Wachtel, T
16 Ashby, QB	54 Overcash, C	75 Sasser, T
19 Noggle, QB	55 Topinka, C	76 Brackett, T
22 Clark, HB	60 Williams, G	77 Parker, T
23 Mansfield, HB	62 Hamilton, G	78 Carter, T
30 Houtz, FB	63 Sullivan, G	80 Martin, E
31 Golden, FB	64 Wood, G	81 Mann, E
33 Falzarano, FB	65 Schafer, G	82 Golmont, E
34 Andrews, FB	66 Powell, G	83 Barlow, E
40 Kozarsky, HB	67 Snow, G	84 Montgomery, E
41 Watkins, HB	69 Simpson, G	86 Hall, E
42 Guin, HB	70 Amato, T	87 Faircloth, E

PENALTIES

1. **OFFSIDE** by either team; Violation of scrimmage or free kick formation; Encroachment on neutral zone—Loss of Five Yards.
2. **ILLEGAL PROCEDURE, POSITION OR SUBSTITUTION**—Putting ball in play before Referee signals "Ready-for-play"; Failure to complete substitution before play starts; Player out of bounds when scrimmage begins; Failure to maintain proper alignment of offensive team when ball is snapped; False start or simulating start of a play; Taking more than two steps after Fair Catch is made; Player on line receiving snap—Loss of Five Yards.
3. **ILLEGAL MOTION**—Offensive player illegally in motion when ball is snapped—Loss of Five Yards.
4. **ILLEGAL SHIFT**—Failure to stop one full second following shift—Loss of Fifteen Yards.
5. **ILLEGAL RETURN** of substitute not previously disqualified—Loss of Fifteen Yards.
6. **ILLEGAL DELAY OF GAME**; Taking more than four times out during either half (except for replacement of injured player)—Loss of Five Yards. Team not ready to play at start of either half—Loss of Fifteen Yards.
7. **PERSONAL FOUL** — Tackling or blocking defensive player who has made fair catch; Piling on; Hurdling; Grasping face mask of opponent; Tackling player out of bounds, or running into player obviously out of play; Striking an opponent with fist, forearm, elbow or locked hands; Kicking or kneeling—Loss of Fifteen Yards (Flagrant offenders will be disqualified.)
8. **CLIPPING**—Loss of Fifteen Yards.
9. **ROUGHING THE KICKER** or holder—Loss of Fifteen Yards.
10. **UNSPORTSMANLIKE CONDUCT**—Violation of rules during intermission; Illegal return of suspended player; Coaching from sidelines; Invalid signal for Fair Catch; Persons illegally on field—Loss of Fifteen Yards. (Flagrant offenders will be disqualified.)
11. **ILLEGAL USE OF HANDS AND ARMS** by offensive or defensive player; Defensive holding—Loss of Fifteen Yards.
12. **INTENTIONAL GROUNDING** of forward pass—Loss of Five Yards Plus Loss of Down.
13. **ILLEGALLY PASSING OR HANDING BALL FORWARD**—Loss of Five Yards Plus Loss of Down.
14. **FORWARD PASS OR KICK CATCHING INTERFERENCE**—Interference with opportunity of player of receiving team to catch a kick—Loss of Fifteen Yards. Interference by member of offensive team with defensive player making pass interception—Loss of Fifteen Yards Plus Loss of Down. Interference by defensive team on forward pass—Passing Team's Ball at Spot of Foul and First Down.
15. **INELIGIBLE RECEIVER DOWN-FIELD ON PASS**—Loss of Fifteen Yards.
16. **BALL ILLEGALLY TOUCHED, KICKED OR BATTED**—Forward pass being touched by ineligible receiver beyond the line of scrimmage—Loss of Fifteen Yards from Spot of Preceding Down and Loss of a Down. Eligible pass receiver who goes out of bounds and later touches a forward pass—Loss of Down. Illegal touching of kicked ball within opponent's ten yard line—Touchback.
17. **PENALTY DECLINED**; Incomplete forward pass; No play or no score.
18. **CRAWLING** by runner—Loss of Five Yards. Interlocked Interference—Loss of Fifteen Yards.

"....it's a date!"

**WILL IT BE
PIZZAS AT
SMITH HALL**

OR

QUICKIE BURGERS

**AND EXTRA THICK MALTS AT THE STUDENT CENTER
DINING HALL & SODA SHOP ALSO AVAILABLE TO SERVE YOU**

"Fine . . . See You There!"





HAV-A-TAMPA JEWEL

The s-m-o-o-t-h
cigar with the
built-in mouthpiece

ALL NATURAL-LEAF
FINE TOBACCO . . .
TOPS IN TASTE AND
SMOKING PLEASURE

*Ask for the
Brand Name*

HAV-A-TAMPA
CIGAR

Distributed by **Eli Witt Tobacco & Candy Co.**
Tallahassee, Florida

BENNETT'S DRUG STORE

- Prescriptions
- Cameras
- Sundries
- Gifts
- Fountain
- Cafe
- Cosmetics
- Drugs

MEET ME AT BENNETT'S

BEFORE AND AFTER THE GAME!

Corner Monroe and College Streets

Phone 222-8980 — 222-4450

QUALITY CLEANERS

215 W. COLLEGE AVE.—DIAL 222-5097

ONE DAY SERVICE

PICK-UP and DELIVERY

Quality Laundry Work

Fluff Dry Service

EXPERT TAILORING and ALTERATIONS

ZIPPERS REPAIRED

LITTLE FOLKS STORE, Inc.

133 North Monroe Street

TALLAHASSEE, FLORIDA

Toys, Hobbies, Children's Furniture

Jack L. Finley

Phone 222-1146

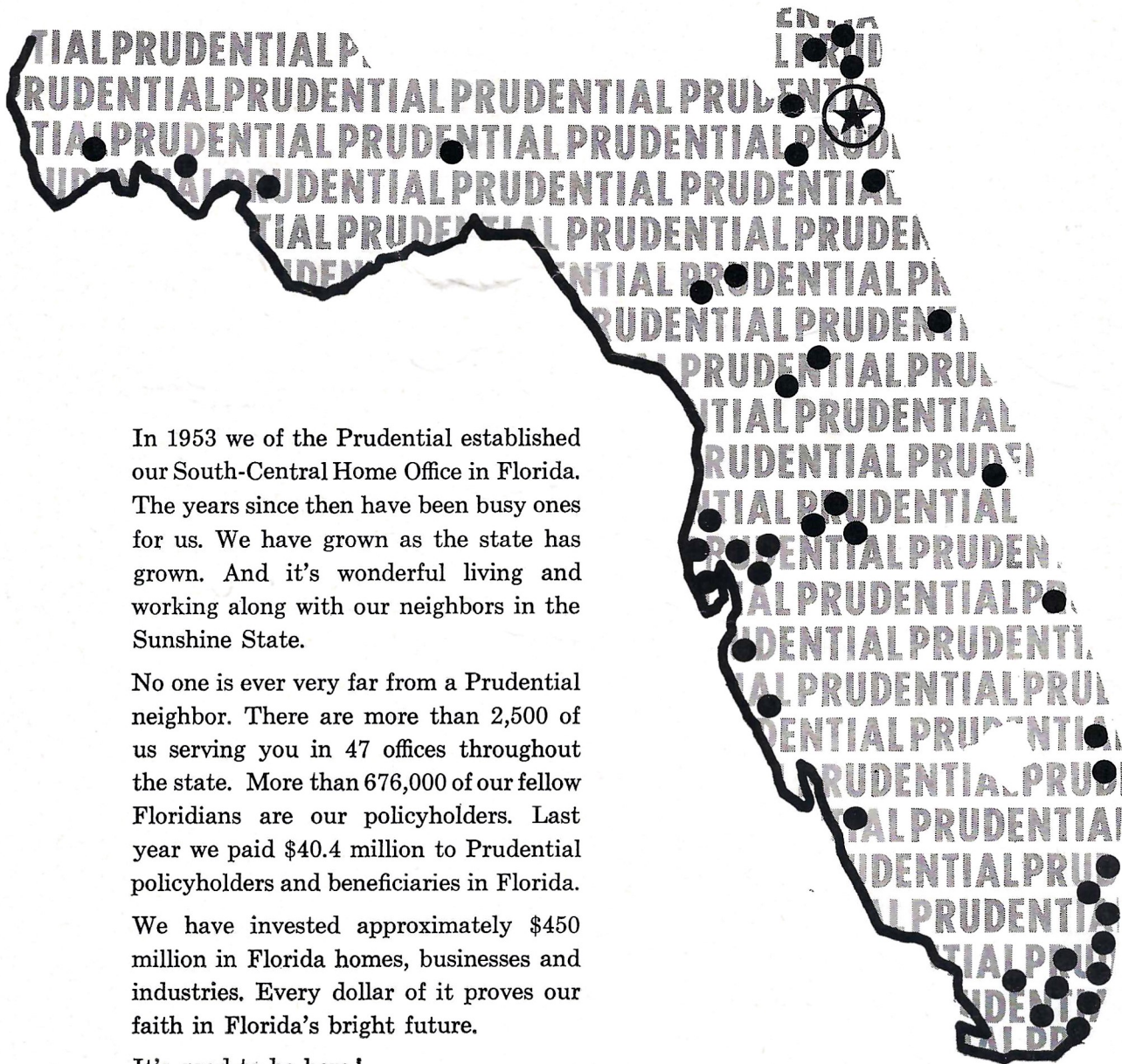
*First choice of those who appreciate
the finest in foods and service!
Open Breakfast, Lunch and Dinner*

BRUCE BISHOP'S

1921 W. Tennessee

THE
FOUNTAIN
RESTAURANT

We like the State we're in

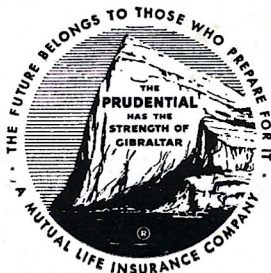


In 1953 we of the Prudential established our South-Central Home Office in Florida. The years since then have been busy ones for us. We have grown as the state has grown. And it's wonderful living and working along with our neighbors in the Sunshine State.

No one is ever very far from a Prudential neighbor. There are more than 2,500 of us serving you in 47 offices throughout the state. More than 676,000 of our fellow Floridians are our policyholders. Last year we paid \$40.4 million to Prudential policyholders and beneficiaries in Florida.

We have invested approximately \$450 million in Florida homes, businesses and industries. Every dollar of it proves our faith in Florida's bright future.

It's good to be here!



**THE PRUDENTIAL INSURANCE COMPANY
OF AMERICA**

SOUTH-CENTRAL HOME OFFICE • JACKSONVILLE, FLORIDA

BE A SEMINOLE BOOSTER

"The Seminole Boosters provide the margin of difference between a good team and a great team."

Thus Florida State's Bill Peterson sums up his feelings toward the Seminole Boosters, Inc., an organization devoted to the support of FSU athletics with emphasis on the football program.

Membership in the Boosters—the group numbers approximately 1200 now—is open to anyone with a sincere interest in the University's athletic welfare. Minimum contribution for an individual membership is \$10, for a business membership, \$25.

Contributions are administered in accordance with NCAA regulations and in conjunction with the FSU Department of Intercollegiate Athletics.

Boosters receive a colorful automobile license plate which provides reserved parking at the stadium, a membership card, a weekly fall publication called "The Grandstand Coach," and certain priorities on season and individual football tickets.

Serving his initial term as president of Seminole Boosters, Inc., is F. Wilson (Bill) Carraway, Jr., Secretary and Manager of the Coca-Cola Bottling Co., Tallahassee. Hardworking executive secretary of the organization is Thomas A. Waits, Director of FSU Alumni Affairs.



Tom Waits and Bill Carraway

GOOD LUCK SEMINOLES!

LOUIS' Seafood

"A BANQUET IN A BOX"

featuring Seafood & Chicken

With over 18 different items to carry out in over 50 different sizes.

620 W. Tennessee St.

Ph. 224-1181

Be sure and visit our other location in Gainesville, Fla.
309 N. W. 13th St.

We also have an air conditioned area if you so desire.

FOREMOST

ICE CREAM

PHONE • 224-7136

SUNSHINE STATE DAIRYMEN'S COOP.

PHONE • 222-5303

Garcia's

OPEN 11 A.M. TO MIDNIGHT DAILY

"HOME OF FINE COOKED
SPANISH-MEXICAN &
AMERICAN FOODS"

320 E. TENNESSEE ST.

223-1177

Learn to Fly at

Seminole Flying Service, Inc.

Municipal Airport

Phone 222-3121

Tallahassee, Fla.

- AIRPLANE RIDES
- FLIGHT INSTRUCTION
- AERIAL PHOTOGRAPHY
- CHARTER FLIGHTS

FLY the best—A New Cessna

"Look up—a new CESSNA will be overhead"

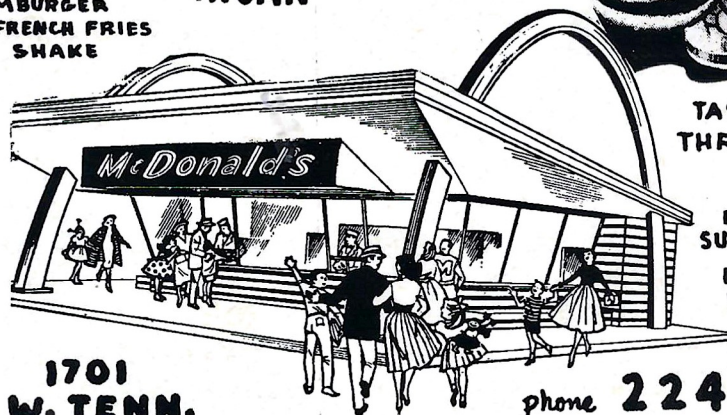
McDonald's HAMBURGERS

a safe choice
anytime, anywhere



McDonald's
ALL AMERICAN

- 100% PURE BEEF HAMBURGER
- CRISP GOLDEN BROWN FRENCH FRIES
- TRIPLE THICK DAIRY SHAKE



1701
W. TENN.

phone 224-3631



TASTY FOOD
THRIFTY PRICES

OPEN
11:30 to 11:30
SUN. thru THURS
11:30 to 1 AM
FRI. & SAT.

THE FLORIDA STATE FOOTBALL NETWORK

... Follow the Seminoles at Home and Away



Bo Mitchell



John Hoy

"Good afternoon, ladies and gentlemen, this is Bo Mitchell and John Hoy bringing you Florida State University football. . . ."

The voices are new, but the play-by-play thrill brought to FSU fans at home over the Seminole Football Network for the past three years remain the same.

Energetic new "voice" of the Seminoles is Bo Mitchell of Pensacola. His partner at the FSU microphone is Tallahassee's John Hoy who does pre-game, halftime and "time out" color commentary.

Mitchell is vice-president and station manager of radio station WCOA, Pensacola. The ex-naval aviator brings 15 years of sportscasting experience to the growing Seminole Network which carries Florida State Football to thousands of listeners in Georgia and Florida.

In addition to his network chores, Hoy, who is sports director of Tallahassee's WCTV, is host to the "Bill Peterson Show" every Sunday afternoon, and has a daily sports program.

Completing the team is Art Deters, chief engineer and organizer of this year's network. Deters is station manager of radio station WTAL, Tallahassee.

During the 1963 season the Seminole Network will be carried by 18 Florida stations.

You can follow the Seminoles this year over WKIS, Orlando; WALT, Tampa; WOOO, DeLand; WCNH, Quincy; WPCF, Panama City; WMOP, Ocala; WSRA, Milton; WIOD, Miami; WCOA, Pensacola; WMYR, Fort Myers; WGRO, Lake City; WTOT, Marianna; WTAL, Tallahassee; WNSN, Valparaiso; WROD, Daytona Beach; WAVP, Avon Park; WPAX, Thomasville; WJAX, Jacksonville; WMAF, Madison; and WWPF, Palatka.

The Vogue

TALLAHASSEE, FLORIDA

Before Or After

Game

CHICKEN IN THE ROUGH
COPYRIGHT 1937 BY BEVERLY OSSQAND

QUAKER HOUSE



RESTAURANT

*Dining Room
and Curb Service*



AT

FOOTBALL FANS

**YOU WILL FIND EVERYTHING
PHOTOGRAPHIC**

- FILMS
- CAMERAS
- ACCESSORIES
- RENTALS
- COMPLETE PHOTOFINISHING SERVICE

TALLAHASSEE CAMERA CENTER

117 North Monroe St.

Ph. 222-8771

"Across from the Florida Theatre"

WFSU-TV—THE SEMINOLE STATION

There's more football action than ever over WFSU-TV this fall.

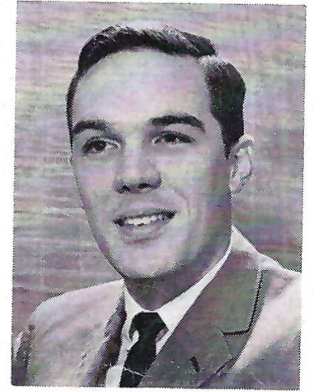


Mike Shaara

Florida State's educational television station (Channel 11) is keeping pace with the increased interest in the Seminoles with feature programs which give the armchair fan a close look at games upcoming and past, plus reports on future FSU opponents.

Leading off every football week this year will be a complete showing of the previous Saturday's game on Monday nights at 10. WCTV's Roy Weissinger does the play-by-play and Mike Shaara of the FSU English Department brings a wide sports background into his color commentary.

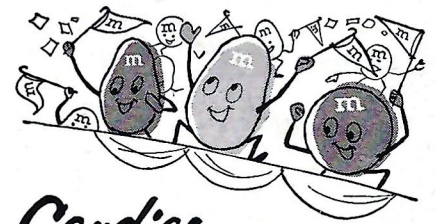
At 8 p.m. on Thursday is John Hoy's football preview show, " '63 Seminoles." This hour-long program presents FSU's "Scout of the Week" with information on the coming Saturday's foe. Members of the Seminole squad and other outstanding guests will also be presented.



Roy Weissinger

ENJOY THE GAME MORE!

Treat yourself to **m&m's** Candies



ON SALE AT THIS STADIUM NOW!



SEMINOLE CHEERLEADERS—Front row, left to right: Linda Duyck, Plant City; Bill Harnage, St. Petersburg; Kay Lewis, Arcadia; Bill Whidden, Kissimmee; Carolyn Duyck, Plant City. Second row: Dee Weber, West Palm Beach; Head Cheerleader Sherry Harris, Merritt Island; and Linda Hagan, Orlando.

ALMA MATER

High O'er the Towering Pines our voices swell
Praising these Gothic spires we love so well
Here sons and daughters stand, faithful and true
Hailing our Alma Mater—F S U.

FIGHT SONG

We're going to fight, fight, fight, for FSU
We're going to scalp 'em, Seminoles,
We're going to win, win, win, win this game
And roll on down and make those goals!
For FSU is on the warpath now,
And at the battle's end she's great;
So fight, fight, fight, fight, for victory
Our Seminoles of Florida State
F-L-O-R-I-D-A S-T-A-T-E!
Florida State! Florida State! Florida State!

THREE GARNETS

Give me a Garnet, Garnet, Garnet Garnet Garnet
Give me a Gold, Gold, Gold Gold Gold
Garnet, Gold
Garnet, Gold
Go Seminoles Go!

SITTIN' IN A WIGWAM

Sittin' in a wigwam
Beatin' on a tom- tom
Who come? We come!
Everybody will come.
Scalp 'em (clap, clap), Scalp 'em
(Clap, clap), etc.

FRESHMAN, FLUNKY

Freshman, Flunky, Student, Scholar,
All good Seminoles, stand up and holler!

GO FLORIDA STATE

Go-o-o-o-o-o-o-o-o-o, Florida!
Go-o-o-o-o-o-o-o-o-o, State!
Go! Go!
Florida State!

GARNET AND GOLD

Garnet and Gold, fight, fight!
Garnet and Gold, fight, fight!
Who fight? We fight!
Garnet and Gold, fight, fight!

IS EVERYBODY HAPPY?

Is everybody happy?
AUD: Hell, yes!
Is anybody low?
AUD: Hell, no!
Let's railroad Seminoles
And take it slow!
(Spell Seminoles 3 times)
Go, Seminoles!

FSU CLAP CHEER

(Stomp clap, stomp clap, stomp clap-clap-clap-clap-clap)
Repeat 3 times, then:
F (clap, stomp clap, stomp clap-clap-clap-clap)
S (clap, stomp clap, stomp clap-clap-clap-clap)
U (clap, stomp clap, stomp clap-clap-clap-clap)
F (clap) S (clap) U (clap-clap-clap-clap)
Go!!

TODAY'S TEAMS—HOW THEY RATE

Results

FLORIDA STATE (3-3-1)		N.C. STATE (7-1)	
Miami	24-0	Maryland	36-14
Texas Christian	0-13	Southern Mississippi	14-0
Wake Forest	35-0	Clemson	7-3
Southern Mississippi	0-0	South Carolina	18-6
Virginia Tech	23-31	North Carolina	10-31
Furman	49-6	Duke	21-7
Georgia Tech	7-15	Virginia	15-9
		Virginia Tech	14-7

Individual Leaders

FLORIDA STATE				N.C. STATE							
RUSHING											
Player	Att.	Yds.	Avg.	Player	Att.	Yds.	Avg.				
Snyder	87	439	5.0	Rossi	105	304	2.9				
Brinkley	44	285	6.5	Falzarano	65	266	4.6				
Roberts	38	126	3.3	Clark	39	181	4.6				
				Koszarsky	60	177	3.0				
PASSING											
Player	Att.	Comp.	Yds.	TD	Player	Att.	Comp.	Yds.	TD		
Tensi	130	74	851	9	Rossi	120	61	665	7		
RECEIVING											
Player	Ct.	Yds.	TD	Player	Ct.	Yds.	TD				
Biletnikoff	15	263	4	Scarpati	20	228	2				
Dawson	13	180	1	Guin	8	90	0				
Wettstein	12	114	2	Clark	8	53	0				
SCORING											
Player	TD	Kick	P-R	FG	Pts.	Player	TD	Kick	P-R	FG	Pts.
Biletnikoff	5	0-0	0-0	0	30	Koszarsky	5	0-0	0-0	0	30
Brinkley	4	0-0	0-1	0	26	Scarpati	3	0-0	0-0	0	18
Messer	0	17-16	0-0	1	19	Andrews	0	16-13	0-0	1	16
Snyder	3	0-0	0-0	0	18						

THE ATHLETIC COMMITTEE



Mode L. Stone

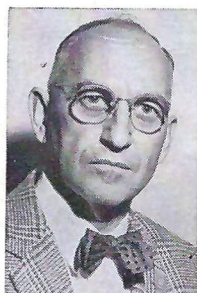
The Athletic Committee, appointed by the President, is the governing body of intercollegiate athletics at Florida State University.

The Committee has the responsibility of seeing that athletics are conducted primarily in the interests of the students, but with due regard for a proper, continuing and healthy interest of the alumni and the citizens of Florida, as well as the athletic heritage and prestige of the University.

Mode L. Stone, Dean of the School of Education is the Committee chairman. Members are Mary V. Alexander, Claude Flory, Coyle Moore, J. M. Plant, Elston Roady and Thomas Wright. Ex-officio non-voting members are Vaughn Mancha, the FSU Alumni President, the Seminole Booster President and the President of the Student Body.



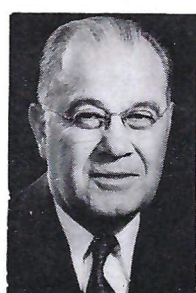
Thomas Wright



J. M. Plant



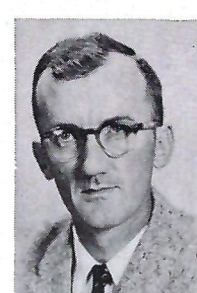
Claude Flory



Coyle Moore



Mary Alexander



Elston Roady

NORTH CAROLINA STATE

1963 FOOTBALL ROSTER

No.	Name	Pos.	Ht.	Wt.	Age	Class	Hometown
12	*Merrick Barnes	QB	6-1	185	22	Sr.	Philadelphia, Pa.
14	*Jim Rossi	QB	5-10	175	21	Sr.	Asheville
15	Ron Skosnik	QB	6-2	195	20	Jr.	McKees Rocks, Pa.
16	Page Ashby	QB	6-1	178	20	So.	Exmore, Va.
19	Charles Noggle	QB	6-2	197	19	So.	Shelby
22	*Mike Clark	HB	5-10	176	22	Sr.	Canton
23	Shelby Mansfield	HB	6-1	188	20	So.	Camden
30	*Dave Houtz	FB	5-11	195	23	Sr.	Rutledge, Pa.
33	*Pete Falzarano	FB	5-10	201	21	Sr.	Stirling, N. J.
34	Gus Andrews	FB	5-8	200	19	So.	Tarboro
40	Tony Koszarsky	HB	5-10	174	20	Sr.	Bridgeville, Pa.
41	Deal Watkins	HB	5-10	181	20	Jr.	Raleigh
42	*Jimmy Guin	HB	6-0	170	20	Jr.	Raeform
44	*Joe Scarpati	HB	5-10	180	20	Sr.	Fanwood, N. J.
50	Vance Cockerham	C	6-2	195	21	Jr.	Charlotte
51	*Lou DeAngelis	C	6-0	197	20	Jr.	Reading
54	*Oscar Overcash	C	6-2	238	22	Sr.	Landis
55	Gerald Topinka	C	6-0	198	21	Jr.	Herminie, Pa.
60	*Bennett Williams	G	5-10	185	21	Jr.	Ahoskie
62	Don Hamilton	G	5-10	185	19	So.	Charlotte
63	*Bill Sullivan	G	5-10	215	21	Sr.	Statesville
64	Roy Wood	G	5-9	198	22	Sr.	Fayetteville
65	Jack Schafer	G	5-7	200	23	Sr.	Pittsburgh, Pa.
66	Pat Powell	G	5-8	210	23	Sr.	Canton
67	*Silas Snow	G	5-10	203	21	Jr.	Rocky Mount
69	Golden Simpson	G	5-11	207	20	Jr.	Plymouth
70	Rosie Amato	T	6-0	221	21	Jr.	Easton, Pa.
71	Dave Ellis	T	6-4	221	19	So.	Yorktown, Va.
73	*Bert Wilder	T	6-3	227	24	Sr.	Greensboro
74	*Chuck Wachtel	T	6-3	220	22	Sr.	Spring Hope
75	*Glenn Sasser	T	6-4	215	20	Jr.	Tarboro
76	Doug Brackett	T	6-5	215	20	Jr.	Charlotte
77	*Steve Parker	T	6-3	243	21	Jr.	Durham
78	Dave Carter	T	6-1	210	22	Jr.	Lynchburg, Va.
80	James Martin	E	6-2	190	21	Jr.	Florence, S. C.
81	Will Mann	E	6-1	178	20	So.	Durham
82	Tony Golmont	E	6-2	176	19	So.	Beaver Falls, Pa.
83	*Ray Barlow	E	6-2	201	20	Jr.	Crewe, Va.
84	*Don Montgomery	E	6-2	208	22	Sr.	Albemarle
86	*William Hall	E	6-0	188	20	Jr.	Plymouth
87	*Bob Faircloth	E	6-4	197	22	Sr.	Fayetteville

* Denotes lettermen

STOP
Before and
After Game



Steaks
Seafood

NORTH CAROLINA STATE

North Carolina State was founded by the General Assembly of 1887. It is a scientific and technological institution of higher education and research, and the State's land-grant university. Located in the capital city of Raleigh, the institution also operates extensive educational and agricultural extension and research programs throughout the State.

It has a regular enrollment exceeding 7,200 students. More than 1,000 students are enrolled for graduate study in the university's 57 master's and 24 Ph.D. programs. International students are enrolled from more than 50 countries.

Chief executive of the university at Raleigh is Dr. John T. Caldwell, past-president of the American Association of State Universities and Land-Grant Colleges and now chairman of its executive committee.

North Carolina State is composed of nine schools offering degree work—Agriculture, Design (including architecture and landscape architecture), Education, Engineering, Forestry, Liberal Arts, Physical Sciences and Applied Mathematics, Textiles, and the Graduate School.

The educational program of the university is offered through 54 instructional departments and its research program is conducted through several special institutes, the departments and agricultural research stations.

State's physical plant is valued at more than \$50,000,000 and includes forest laboratories in four regions of North Carolina, engineering facilities in Asheville, Gastonia and Charlotte, and 16 branch agricultural research stations in the State. Currently underway is more than \$8,000,000 of grant and contract research. There are more than 3,000 staff members at North Carolina State and its offices throughout the State.

In recent years the institution has been nationally acclaimed as one of the leading scientific and technological institutions of the Nation and stands as a living monument to the far-sighted individualists who, roughly 80 years ago, aroused the State with their inspired crusade for practical and scientific education in agriculture and technological subjects.

An \$8,000,000 construction program is currently nearing completion. A new physical sciences building and a food science building are to be built on the campus in the near future, bringing total major buildings to more than 80.

Enrollment of the university is expected to reach more than 10,000 in the next few years.



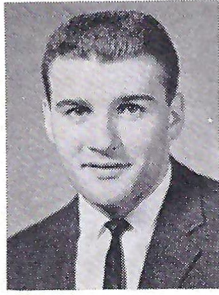
Ray Clogston
Athletic Director



Earle Edwards
Head Coach



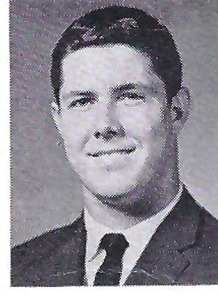
Don Montgomery



Joe Scarpati



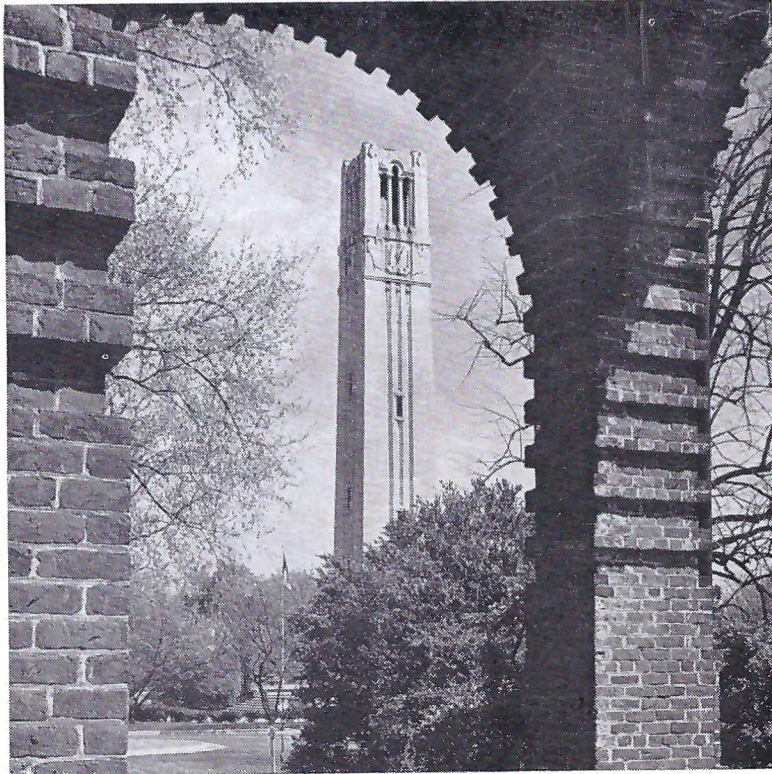
Ray Barlow



Silas Snow



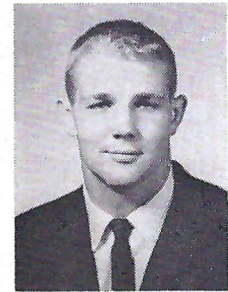
Bert Wilder



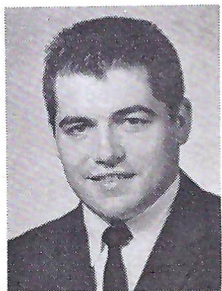
**N.
C.
S
T
A
T
E**



Dave Houtz



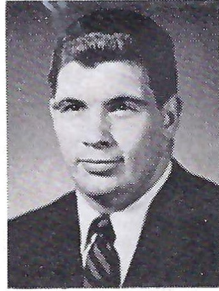
Chuck Wachtel



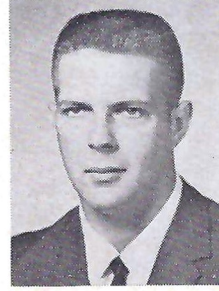
Jack Schafer



Ron Skosnik



Steve Parker



Oscar Overcash



Lou DeAngelis



Tony Kozarsky



Pete Falzarano



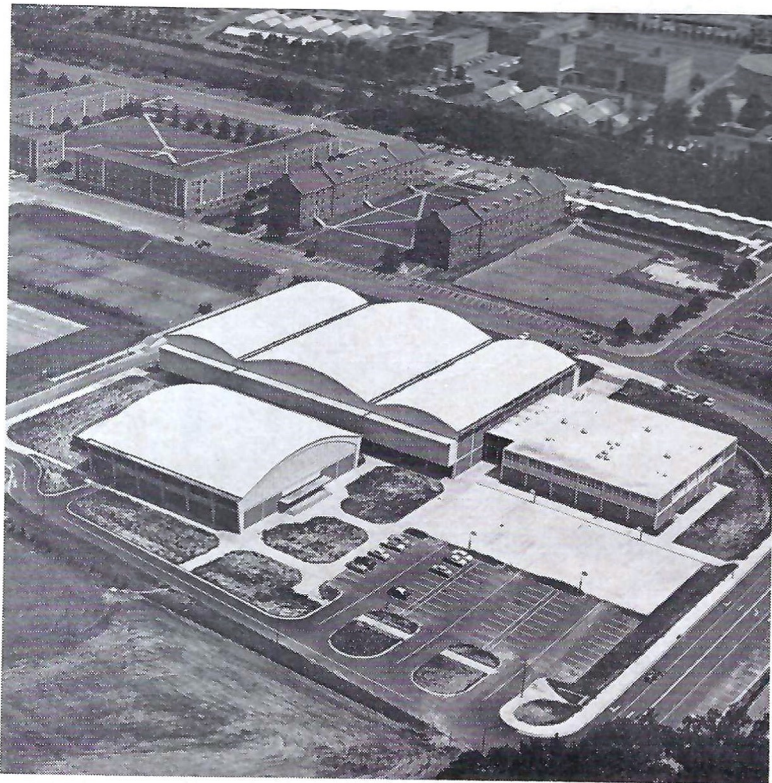
Bob Faircloth



Glenn Sasser



Bill Sullivan



N.
C.
S
T
A
T
E



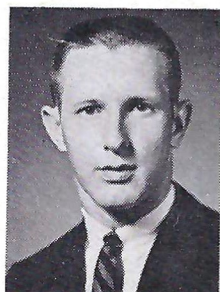
Jim Rossi



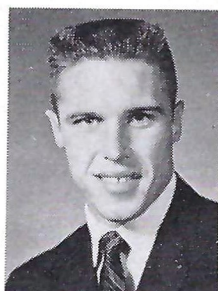
Deal Watkins



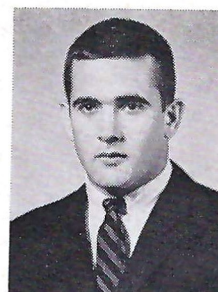
Mike Clark



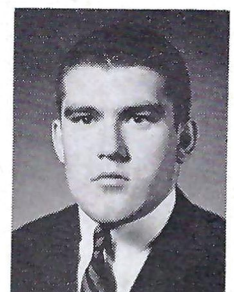
Jimmy Guin



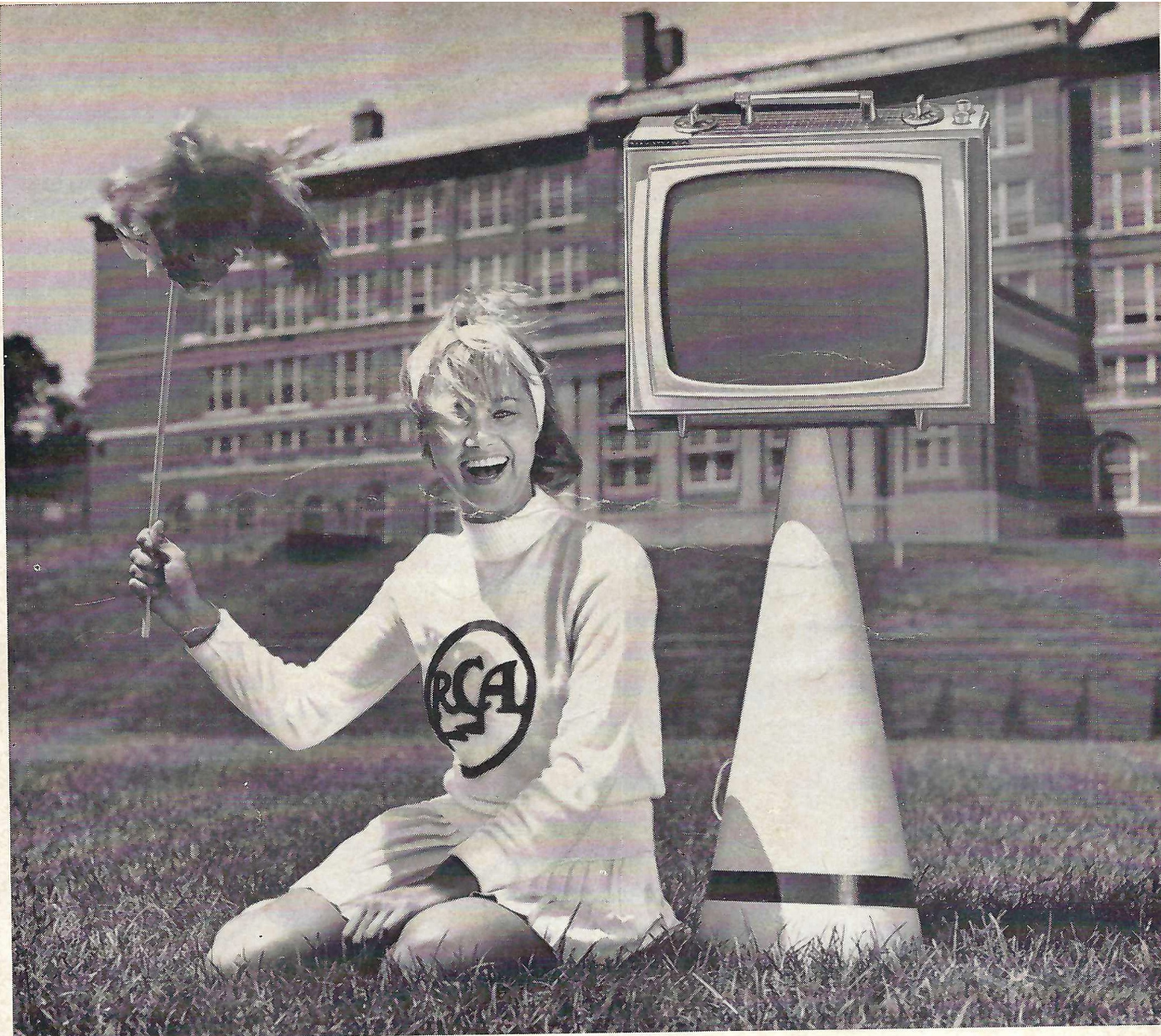
Merrick Barnes



Golden Simpson



Bill Hall



Meet "SWEET SIXTEEN" by RCA Victor

(16" TUBE OVERALL DIAGONAL. 125 SQ. IN. PICTURE)

Here's the new sweetheart of the portables... "Sweet Sixteen," the slim, trim, power-packed portable from RCA Victor.

Compare "Sweet Sixteen" for performance with any other light-weight portable... anywhere... on any channel. "Sweet Sixteen"

goes everywhere easily... fits anywhere beautifully. Ideal as a "second set," too.

Christmas isn't far off, so you'd better make a date to see this slim, trim, power-packed beauty soon... the new "Sweet Sixteen" by RCA Victor!

See Walt Disney's "Wonderful World of Color," Sundays, NBC-TV Network.



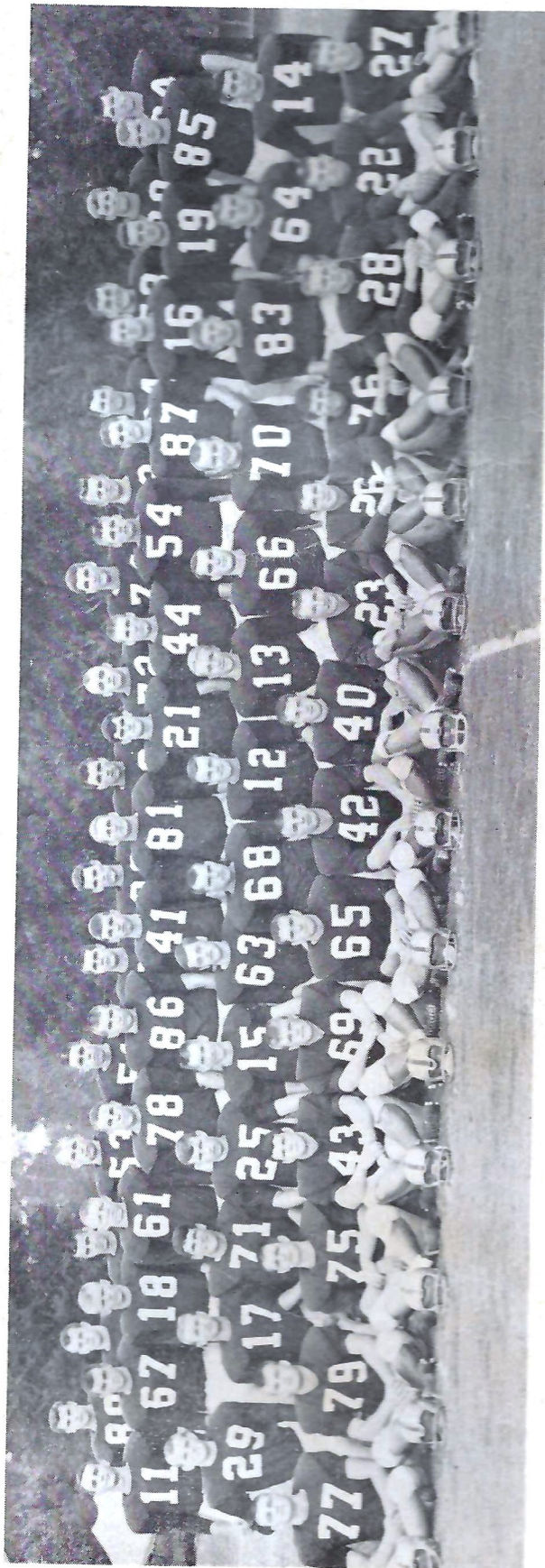
The Most Trusted Name
in Television

Tmk(s)®



MORE PEOPLE OWN RCA VICTOR TELEVISION THAN ANY OTHER KIND... BLACK AND WHITE OR COLOR.

Rainey Cawthon's
Monroe at Brevard Phone 222-1865



1963 FRESHMAN FOOTBALL ROSTER

Name	Pos.	Ht.	Wt.	Hometown
Tom Allen	QB	6-0	169	New Martinsville, W. Va.
Greg Bagget	FB	6-1	217	Panama City
Mike Belbeck	C	6-1	200	Winter Park
Dick Bender	E	6-1	168	Valdosta
Jim Berry	QB	6-0	173	Atlanta, Ga.
Bill Betts	G	6-0	223	Birmingham, Ala.
Mike Brady	G	6-0	189	Coral Gables
Bill Campbell	HB	5-9	170	Tampa
Pet Conway	HB	5-10	172	Miami
Jerry Corbitt	HB	6-1	172	Jesup, Ga.
Stan Croley	E	6-2	177	Dade City
Tom Delopez	FB	6-2	197	Miami
Charles Fuchs	E	6-2	209	Homestead
Phil Galioto	HB	5-10	185	West Palm Beach
Joe Gatlin	T	6-5	224	Coral Gables
Wayne Giardino	QB	5-10	189	West Palm Beach
Larry Green	HB	5-10	177	Cairo, Ga.
Kim Hammond	QB	6-1	182	Melbourne
Chipper High	HB	5-11	174	Reddick
John Hosack	HB	5-10	192	Miami
Fred Hudson	E	6-1	197	Milton
Ken Johnson	T	6-2	213	Jacksonville
Don Jones	HB	6-1	176	Lakeland
Leslie King	FB	5-11	186	Winter Park
Vernon Korhn	QB	5-11	170	Tampa
Allen LaMarche	HB	5-11	185	Hollywood
Felton Lancaster	T	6-2	244	Cross Keys, Ga.
Nick Maracic	C	6-2	190	Hollywood
Scott McCord	T	6-2	218	Atlanta, Ga.
Wayne McDuffie	E	6-2	197	Hawkinsville, Ga.
Phil McKinnon	G	5-11	195	Birmingham, Ala.
Jim McNeil	G	6-3	186	Panama City
Bill Meadows	C	6-1	194	Birmingham, Ala.
Bob Mendez	HB	5-10	176	Key West
Bill Moremen	HB	5-11	171	Daytona Beach
Lee Narramore	FB	6-0	206	Pensacola
Larry Overton	G	5-11	195	Pensacola
Bob Patterson	T	5-11	216	Tampa
Charles Pennie	T	6-4	222	Hollywood
Jim Perry	QB	5-11	178	Logan, W. Va.
Charles Randall	T	6-1	217	Savannah, Ga.
Bill Richardson	QB	5-9	173	Jesup, Ga.
Jim Riser	HB	6-0	175	Sanford
Rick Saunders	FB	6-1	181	Macon, Ga.
Phil Sims	G	6-1	191	Atlanta, Ga.
John Stephens	C	6-1	191	Tallahassee
Helge Swanson	C	6-3	214	Milton
Cary Thompson	G	6-3	202	Marietta, Ga.
Tom Thompson	C	6-3	247	Waycross, Ga.
H. T. Waller	QB	6-1	177	Vernon
T. K. Wetherell	HB	5-11	169	Daytona Beach
Del Williams	T	6-2	218	Live Oak
Paul Williams	E	6-2	205	Hollywood
Larry Williamson	C	5-11	193	Macon, Ga.
Tom Yates	G	6-1	214	Atlanta, Ga.

1963 FRESHMAN SCHEDULE

Oct. 5	Florida at Tallahassee
Oct. 12	Miami at Tampa
Oct. 31	Southern Mississippi at Pensacola
Nov. 14	N.C. State at Daytona Beach



INSET, LEFT TO RIGHT: Robert T. Braunagel, Director; Feature Baton Artist Cookie Winchester, Miami; Drum Major Roger McLendon, Fitzgerald, Ga.

MUSIC AT HALF-TIME THE FLORIDA STATE UNIVERSITY SCHOOL OF MUSIC

Dr. K. O. Kuersteiner, Dean
Dr. Manley R. Whitcomb, Director of Bands

presents

THE MARCHING CHIEFS

Robert T. Braunagel, Director
Clifford K. Madsen, Associate Director
Charles Carter, Assistant Director and Arranger

Roger McLendon, Drum Major
Janice Eddins, Head Majorette
Cookie Winchester, Feature Baton Artist

MUSIC

Fanfare
BAND BALLET

Crown Imperial
Hiawatha Land
Fight Song
Alma Mater

FORMATION

Entrance

DESIGN IN ABSTRACTION—The Florida State University School of Music is pleased to present an innovation in the history of half-time entertainment.

The Marching Chiefs will perform an original composition written especially for the marching band by Dr. John Boda, associate professor of composition in the School of Music.

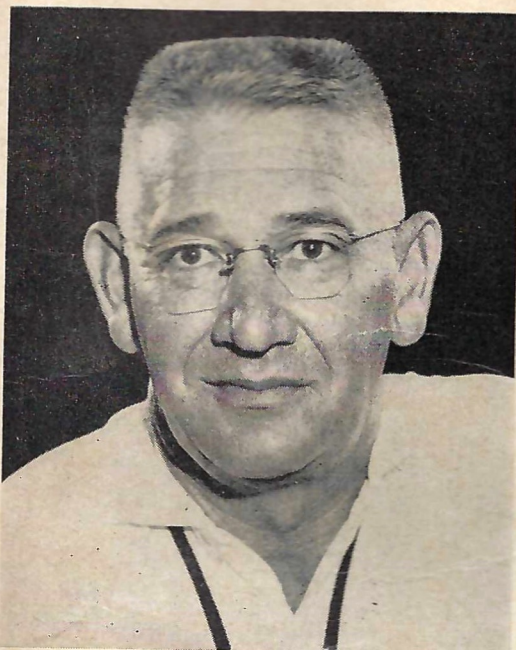
Dr. Boda is one of the outstanding composers of the 20th Century and today's performance represents the first time in the musical history of the nation that a serious work has been specifically written and performed by a marching band.

The Marching Chiefs welcome you to the premier performance of "Band Ballet"—formations by Robert T. Braunagel, music by John Boda.

TEEPEE—A welcome to all grads and friends of Florida State University.

Presentation of Homecoming Queen and her Court.

A salute to all loyal Seminoles.



Coach J. K. "Bud" Kennedy

FSU BASKETBALL 1963-64

Florida State University basketball enters its 16th season with Coach J. K. "Bud" Kennedy at the helm, and prospects look better than ever.

Early reports are that the Seminoles will be big and fast in 1963-64. Perhaps big enough and fast enough to win against the toughest schedule in FSU history.

Added impetus will be given basketball this year with the formation of the Tip-Off Club, an organization similar to football's Seminole Boosters.

A strong home schedule assures plenty of basketball action at FSU's Robert Tully Gymnasium.

ORDER YOUR TICKETS EARLY

Season Ticket, 10 Home Games \$15.00
 Individual tickets, all home games \$2.00

Order tickets from:

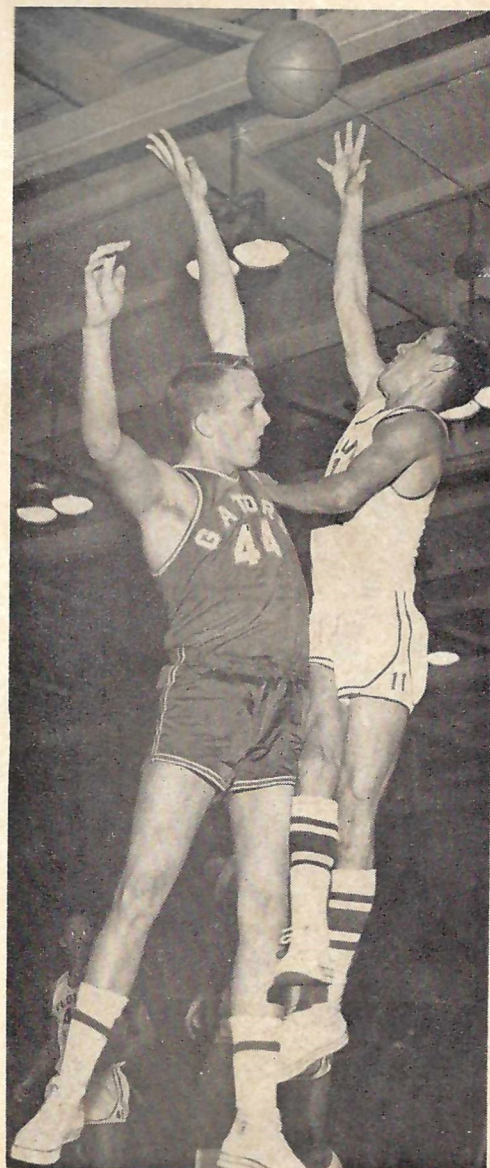
**ATHLETIC TICKET OFFICE
 FLORIDA STATE UNIVERSITY
 TALLAHASSEE, FLORIDA**

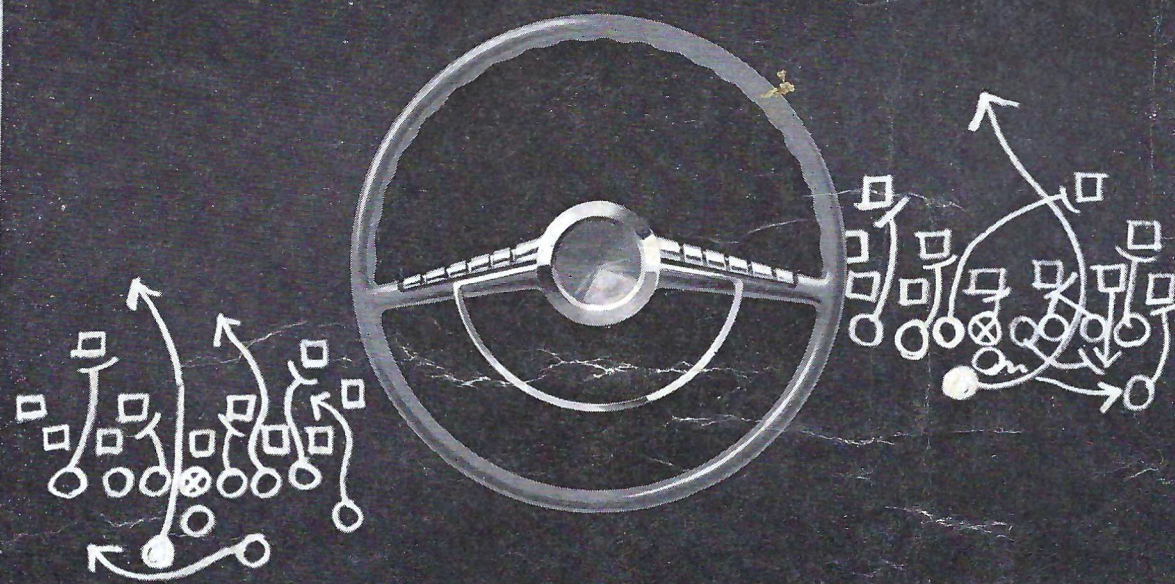
All Home Games 7:45 p.m. EST, Robert Tully Gym

1963-64 FSU BASKETBALL SCHEDULE

DATE	OPPONENT	SITE
Dec. 3	Florida	Away
Dec. 7	Auburn	HOME
Dec. 9	Alabama	Away
Dec. 11	Rice	Away
Dec. 12	Texas Christian	Away
Dec. 21	Tampa	HOME
Dec. 23	Tulsa	HOME
Dec. 26, 27	Gator Bowl Tournament	*Away
Jan. 2	Richmond	Away
Jan. 4	VMI	Away
Jan. 11	Miami	HOME
Jan. 16	Memphis State	HOME
Jan. 18	Georgia	HOME
Jan. 23	Florida	HOME
Jan. 28	Auburn	Away
Jan. 29	Alabama	HOME
Feb. 6	Furman	HOME
Feb. 8	Centenary	Away
Feb. 10	Memphis State	Away
Feb. 15	Georgia Tech	Away
Feb. 22	Jacksonville U.	HOME
Feb. 27	Stetson	Away
Feb. 29	Miami	Away
Mar. 3	Georgia	Away

* Jacksonville





Three ways to quarterback the most important drive of the day —your drive home

1. Don't buck the line of traffic, stay in it. Fancy open field running doesn't pay on the highway.
2. When dusk falls and your visibility is limited, slow down and turn on your lights. What you can't see can hurt you.
3. Don't try to beat the clock by speeding. Remember, when time runs out on the highway, everybody loses.

*Presented in the interest of safe and sane driving
by the R. J. Reynolds Tobacco Company.*