



PUT VITALITY ON YOUR TEAM!

Drink Milk, the Vitality Beverage! It's your ticket to vigor and verve that really lasts. And cool, refreshing milk helps keep you bright and in the fun game all day long. So heed the cheer for milk—"put vitality on your team!"

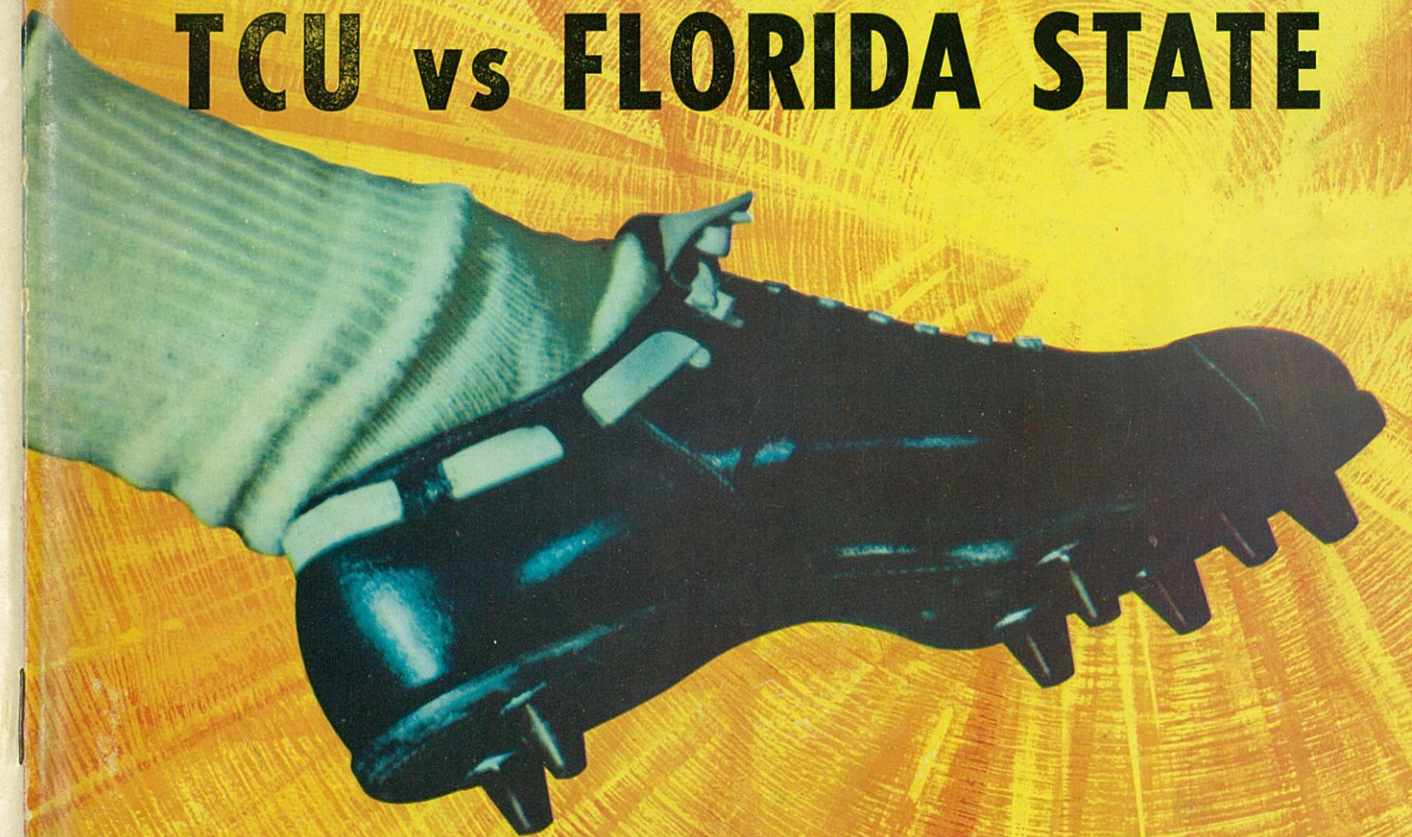


a message from dairy farmer members of
american dairy association

1964 FOOTBALL SCHEDULE

SEPT. 19	KANSAS
*SEPT. 26	FLA. STATE
*OCT. 3	ARKANSAS
*OCT. 10	TEXAS TECH
OCT. 17	TEXAS A&M
*OCT. 24	CLEMSON
*OCT. 31	BAYLOR
*NOV. 14	TEXAS
NOV. 21	RICE
NOV. 28	SMU
*Home Games	

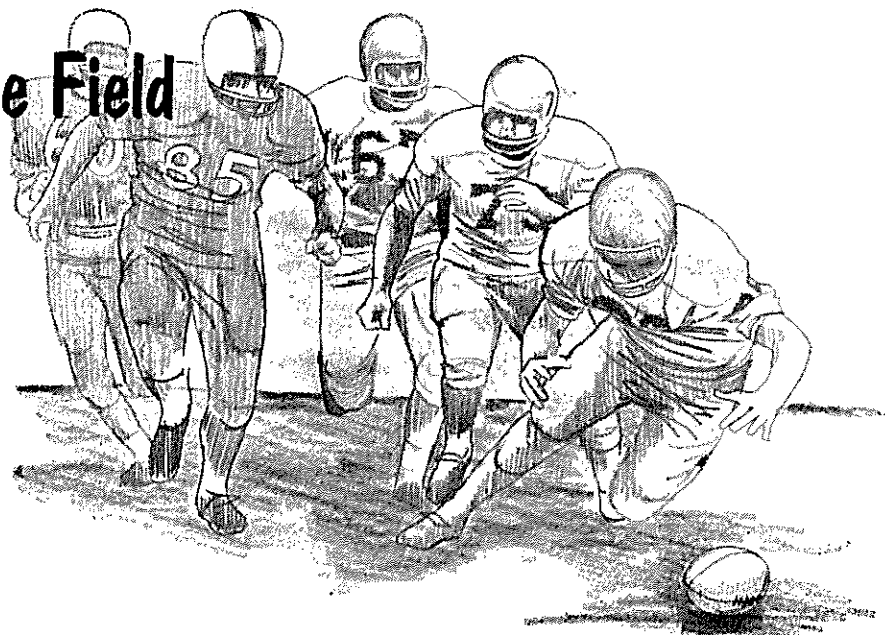
TCU vs FLORIDA STATE



TCU-AMON CARTER STADIUM • SEPTEMBER 26, 1964, 7:30 PM • OFFICIAL PROGRAM 25c

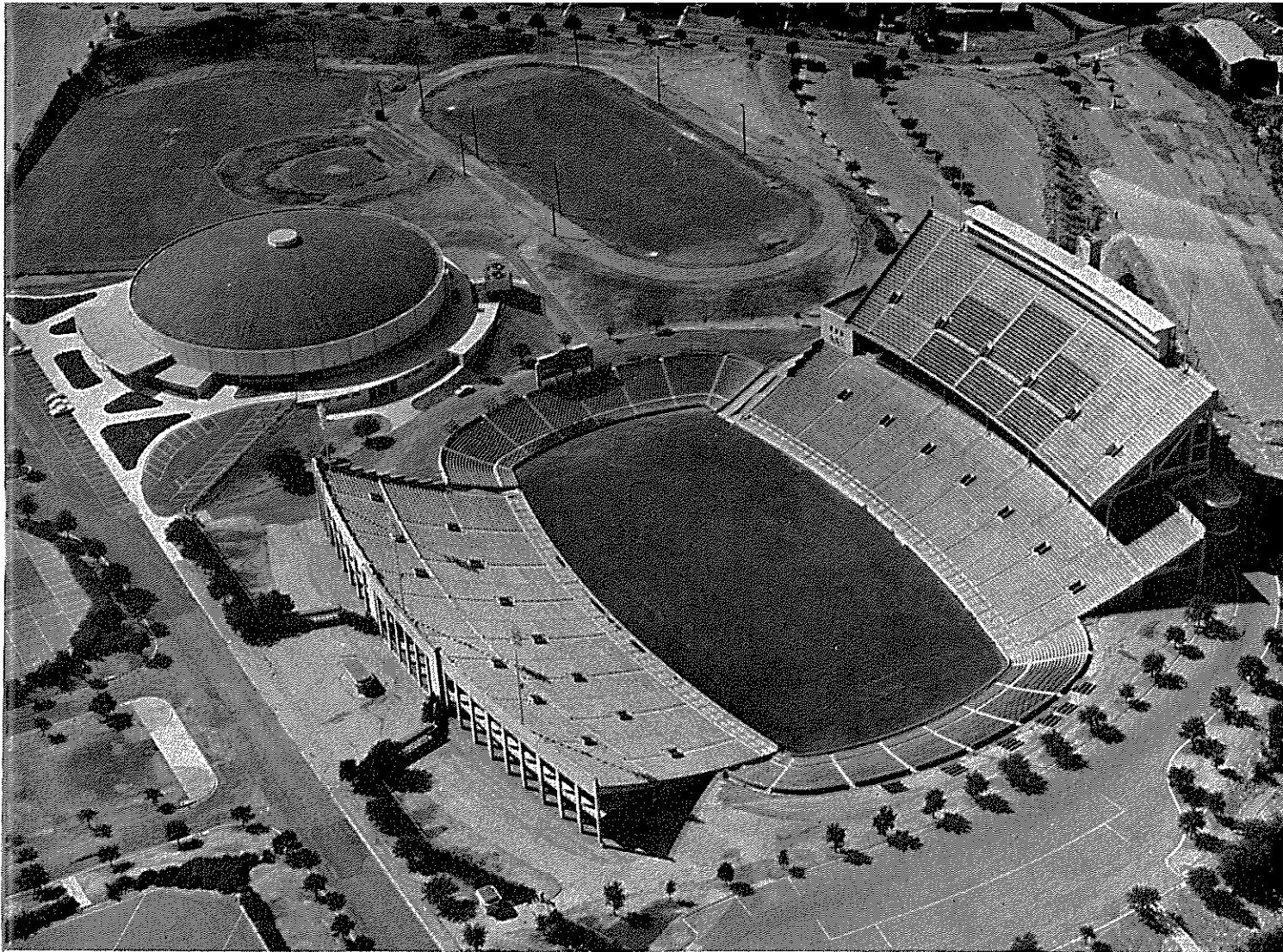
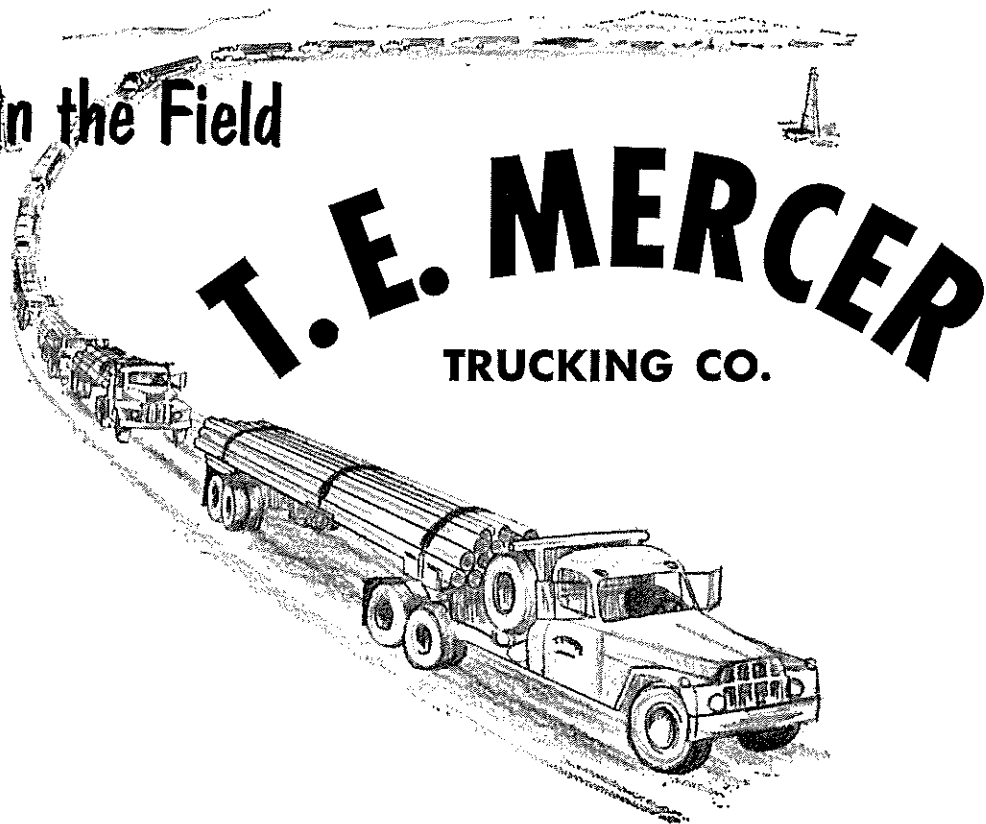
THERE'S NO SUBSTITUTE FOR TEAMWORK

On the Field



TEAMWORK — the right combination — pays off . . . on the Football field or in the Oilfield. Since 1910, the T. E. MERCER TRUCKING CO. — with terminals in Fort Worth, Houston, Lone Star, Texas and Vidalia, Louisiana — has built a winning team in Oilfield Hauling, Pipe Storage, and Pipe Line Stringing.

...Or in the Field



TCU vs FSU

Chancellor's Welcome	2	TCU Roster	35
Tonight's Game	5-6	Past Results, SWC Champs	36
A Look at the Seminoles	6	Frog Reserves	38
Athletic Director Abe Martin	9	1964 Squad Picture	42
Frog Athletic Staff	11	Frog Captains	44
The 1964 Frogs	12, 14, 16, 18, 19, 20, 22	Purple Trainers	45
TCU Begins 92nd Session	24	TCU Band	46-47
Florida State Roster	26	TCU Cheerleaders, Yells	48
Florida State Depth Chart	28	TCU Basketball	50-51
Starting Lineups	30-31	Florida State Team Pictures	53, 54, 55
TCU Depth Chart	33	Frog Club Membership Roster	56-60

NEXT HOME GAME: 1:30 P. M., SAT., OCTOBER 3, 1964 — TCU vs. ARKANSAS



A Most Cordial Welcome to You All--

For the 24th straight autumn, it is my pleasure to extend a warm and cordial personal welcome to all those visiting on the T.C.U. campus for this very fine athletic event. We are indeed delighted to have you all.

Especially are we pleased to welcome the students, faculty members and many friends of our sister institution. While our young men may compete fiercely on the field, all of us feel the kinship of great goals and mission shared.

This is T.C.U.'s 92nd year. Since 1896, football has been a cherished and exciting part of the University's overall program. Always we have found these stirring contests serving really worthwhile purposes. We are confident that today's event will be in that tradition.

Again, we welcome you one and all to the campus and express the sincere hope that you have a wonderful time.

Most cordially yours,

M.E. Sadler

Chancellor, Texas Christian University

Serving Texans In 50 Counties

Elliott & Waldron Abstract Companies



Elliott & Waldron Title And Guaranty Company

DEPENDABLE ABSTRACTS AND TITLE INSURANCE

Home Office:

616 W. 7th
Fort Worth, Texas
Telephone ED 5-3305

Hurst Office:

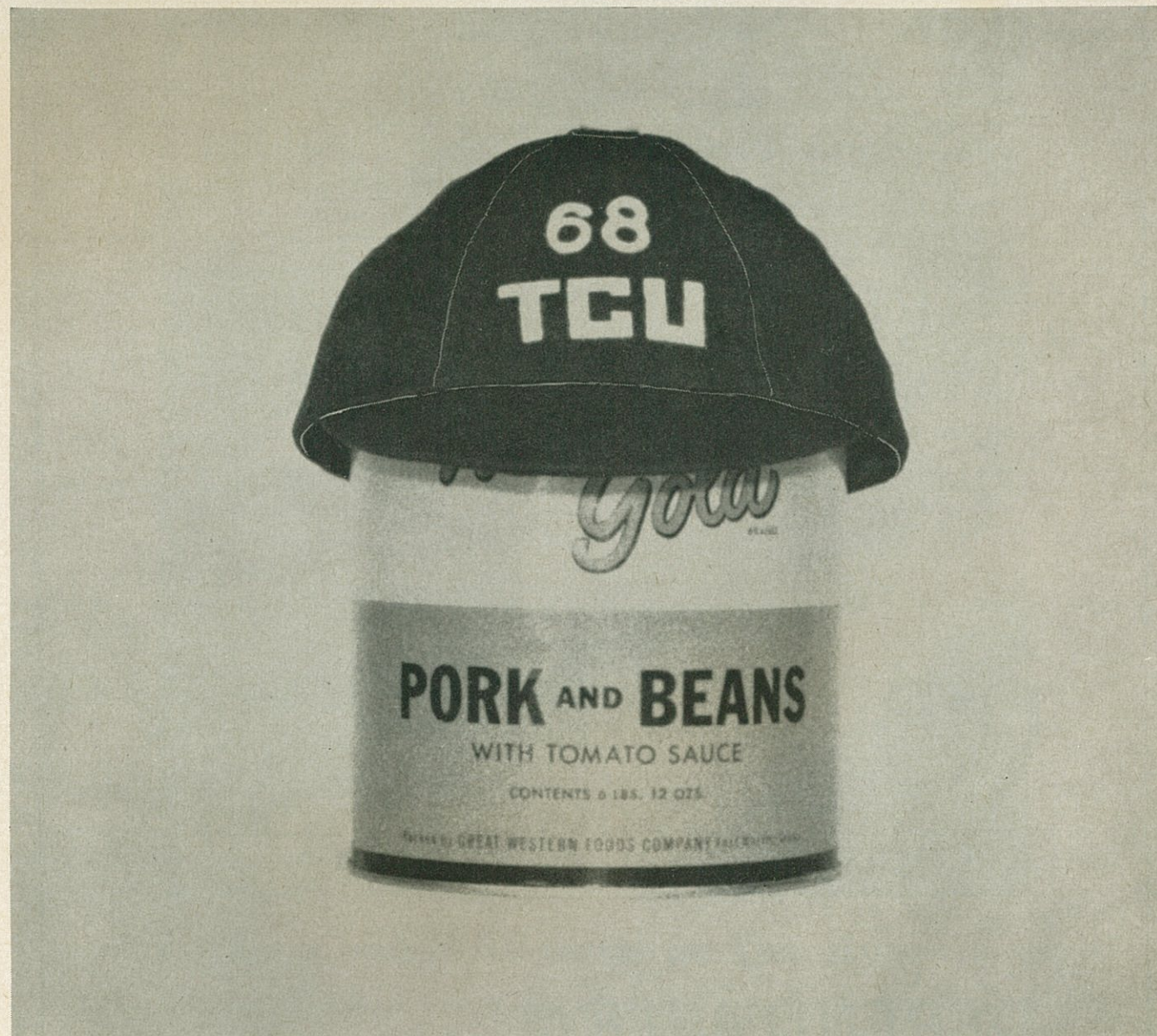
525 Bedford-Eules Rd. W.
Telephone BU 2-2565

Richland Hills Office:

6821 E. Baker Blvd.
Telephone AT 4-9269

Arlington Office:

208 W. Main
Telephone CR 5-2381



Pork and Beanies

Pork and beans aren't bad. In fact, they're fairly nourishing. But, everybody needs a change once in awhile. Grab your beanie and live it up . . . eat out. You need not carry a bunch of bills along if you have a "TCU Special" checking

account from University State Bank. Exclusively for TCU students and faculty from

**UNIVERSITY
STATE BANK**

'round the corner from the campus
2712 W. Berry St. WA 4-4271

Member Federal Deposit Insurance Corporation

FSU Boasts Top Aerial Attack;

Frogs Look Improved, So This One . . .

Should Be A Battle!

BY JIM BROCK

Sports Information Director

One of the South's top football machines, the air-minded Florida State Seminoles, opens TCU's home season here tonight.

It's the first of six home bouts for the Horned Frogs and Coach Abe Martin and his Purples would like nothing better to get off on the right foot before the partisan fans. Martin knows the Frogs are in for a shooting match, and the Christian boss is anxious to see how his lads will fare against the visitors from Tallahassee.

Florida State started 1964 off with a bang last weekend by winning an easy 14-0 verdict over Miami while TCU just missed in the final seconds upsetting a highly-favored Kansas eleven. The Jayhawks stopped a Purple drive on the one-foot line by recovering a fumble, to preserve a 7-3 triumph.

TCU and FSU met for the first time in 1963, with the visiting Purple turning in one of its finest games of the year, to post a 13-0 victory in the mud and rain at Tallahassee.

Halfback Jim Fauver staked the Frogs to a 7-0 lead in the first quarter, when he picked off a Seminole pass and "swam" 46 yards down the sidelines for the score. Then Jim McAteer put further icing on the cake with a pair of 22-yard field goals in the second half. FSU made more first downs, 13-11; and tied the Frogs in total offense with 185 net yards, but its air game seemed to be hampered by the rain and slick ball.

The same combination that Frog followers feared in 1963 is back, and Quarterback Steve Tensi, a 6-5 sharpshooter; and Flankerback Fred Biletnikoff, a 195-pound flyer; offer perhaps the best aerial combination in the country. Last week against Miami, the two seniors collaborated for the two touchdowns with Biletnikoff grabbing nine of Tensi's shots for 165 yards. The Seminole air-attack made 226 yards on 16 hits in 21 tries, despite heavy rains in the second half in the Orange Bowl. The Miami performance wasn't anything new to these two lads. In 1963, Tensi hit 71 of 147 attempts for 915 yards and nine touchdowns; while Biletnikoff grabbed 24 of those for 358 yards and four touchdowns. Little wonder both are regarded as top pro prospects.

Seminoles Own Experience

Coach Bill Peterson, beginning his fifth year at FSU, has the Seminole football program on the rise, and feels he could field a fine team this fall. He started the fall with 27 of 39 returning lettermen and eight regulars from his 1963 squad. Some key players were lost, but Peterson smiles when talking about his returning talent. Tensi and Biletnikoff head the list, but Ends Don

Floyd, Red Dawson; Guard Dick Hermann; and Tackle Avery Sumner, are top all-star candidates.

Tensi and Junior Ed Pritchett are Peterson's big hopes for success in 1964, as both are, naturally, key figures in the Pro-T offense. Pritchett is a dangerous runner as well as a top passer. And both are blessed with outstanding receiving.

Peterson can't say enough about Linebacker Hermann, a bruising 205-pound senior, who he calls "as good as any linebacker I've seen." One with great speed, he's hailed the top Seminole player.

Florida State plays an independent schedule, and is hopeful of Southeastern Conference membership in the near future. It first made application to the SEC in 1956, and was proposed for membership in 1963. The school became co-educational in 1947, and has enrollment of about 12,000. A \$26 million building program is underway on the 315-acre campus.

Back to football and a closer look at the home-team Horned Frogs who made such a noise in Lawrence last Saturday.

"Dual" Makes Debut

Purple fans will be looking at the new Dual offense for the first time under fire tonight. Martin liked the debut of the Dual against Kansas, as Halfback Jim Fauver enjoyed a field day tearing for 120 net yards in 19 carries, the best evening for a Purple halfback in many years.

Fauver will lead a line-up against the Seminoles which will have eight seniors and three juniors. Larry Perry and Joe Ball, two talented juniors, are at ends; Norman Evans, one of the tri-captains; and improved Bobby Smith man the tackles; quick Harvey Reeves and Steve Garmon, probably the Frogs' top all-round player, are the guards; while giant Ken Henson is at the pivot.

Randy Howard, who just missed the winning TD against Kansas, gets the call at quarterback. He'll have Fauver at halfback or the running back; dependable Larry Bulaich at fullback; and Bobby Batton, a good receiver, at the wingback slot.

"We were real proud of the effort against Kansas,"

1964 Programs Prepared and Edited By

JIM BROCK

Sports Information Director

TOM PROUSE, Sales Manager

Represented for national advertising by the Spencer Advertising Company, Inc., 271 Madison Avenue, New York 16, N. Y. Local advertising rates on request.

said Martin earlier this week. "Our blocking looked much improved for a first game over recent seasons. We met a fine team in Kansas, and the game turned out to be a top defensive battle."

Martin called Florida State "one of the most dangerous and underrated teams in the South. FSU has a fine football team—one with good speed, size, depth and experience. Tensi can throw well; and Biletnikoff is a receiver out of this world."

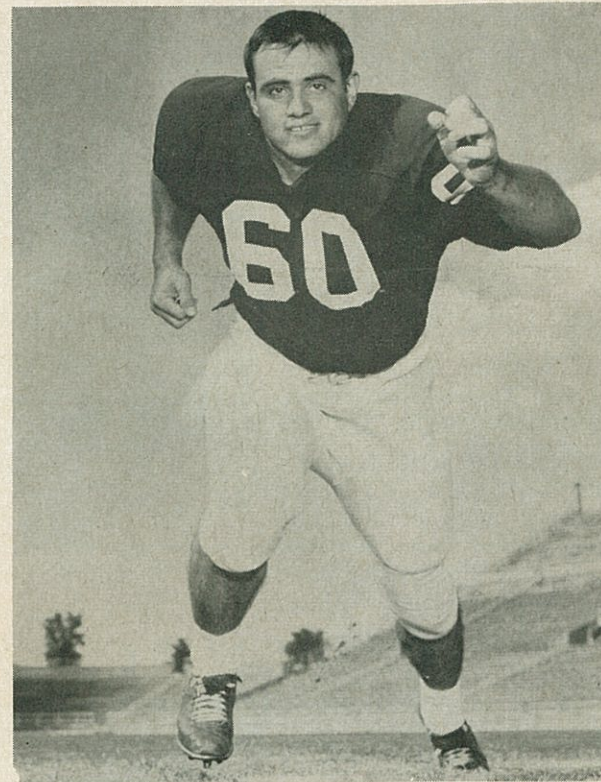
Several other Frogs figure into Martin's plans tonight. Two sophomores, Frank Horak and John Richards, join Junior Dan Jones in the important secondary. Juniors Russell Stout, Billy Snow and Sophomore Bobby Nelson will see heavy duty from linebacker on the defense.

Either Junior John Hulse or Soph Jerry Cannaday will spell Howard at the up-back slot. Kent Nix, the talented junior passer, suffered cartilage damage late in the Kansas game, and is expected to sit this one out.

Pesky Arkansas Next

Next Saturday afternoon, the Arkansas Razorbacks move into town to battle the Frogs. Coach Frank Broyles brings another top-flight team from the Hills, and this game promises to be one of the year thrillers. TCU hasn't beaten the Hogs since 1958, and Purple followers would like nothing more than a victory.

Ticket Manager Frank Windegger said good seats still remain. They are on sale at the Daniel-Meyer office just south of the stadium between 9 a.m.-5:30 p.m.; and at the Amusement Ticket office in the Blackstone Hotel, 8 a.m.-6 p.m.



STEVE GARMON — TCU

This Frog guard is called the finest all-round player on the Purple squad. He's a top bet for all-star honors.

A Look At The Seminoles

GENERAL

President: Dr. Gordon W. Blackwell.

Enrollment: 12,000.

Location: Tallahassee, capital city of Florida.

Colors: Garnet and Gold.

1963 Record: Won 4, Lost 5, Tied 1.

THE SEMINOLE STAFF

Athletic Director: Vaughn Mancha, Alabama.

Head Football Coach: Bill Peterson, Ohio Northern.

Assistant Football Coaches: Don James, Miami; Bill Crutchfield, North Carolina; John Coatta, Wisconsin; Bob Harbison, Indiana; Bobby Bowden, Howard; Don Powell, Florida State; Bill Proctor, Florida State.

Head Trainer: Don Faults, Ithaca.

Team Physician: Tillman Dixon.

Business Manager: Ronald Melton, Florida State.

FLORIDA STATE 1964 SCHEDULE

FSU 14, Miami 0

Sept. 26—TCU at Fort Worth

Oct. 3—New Mexico State at Tallahassee

Oct. 10—Kentucky at Tallahassee

Oct. 17—Georgia at Athens

Oct. 24—Virginia Tech at Blacksburg

Oct. 31—So. Mississippi at Tallahassee

Nov. 7—Houston at Houston

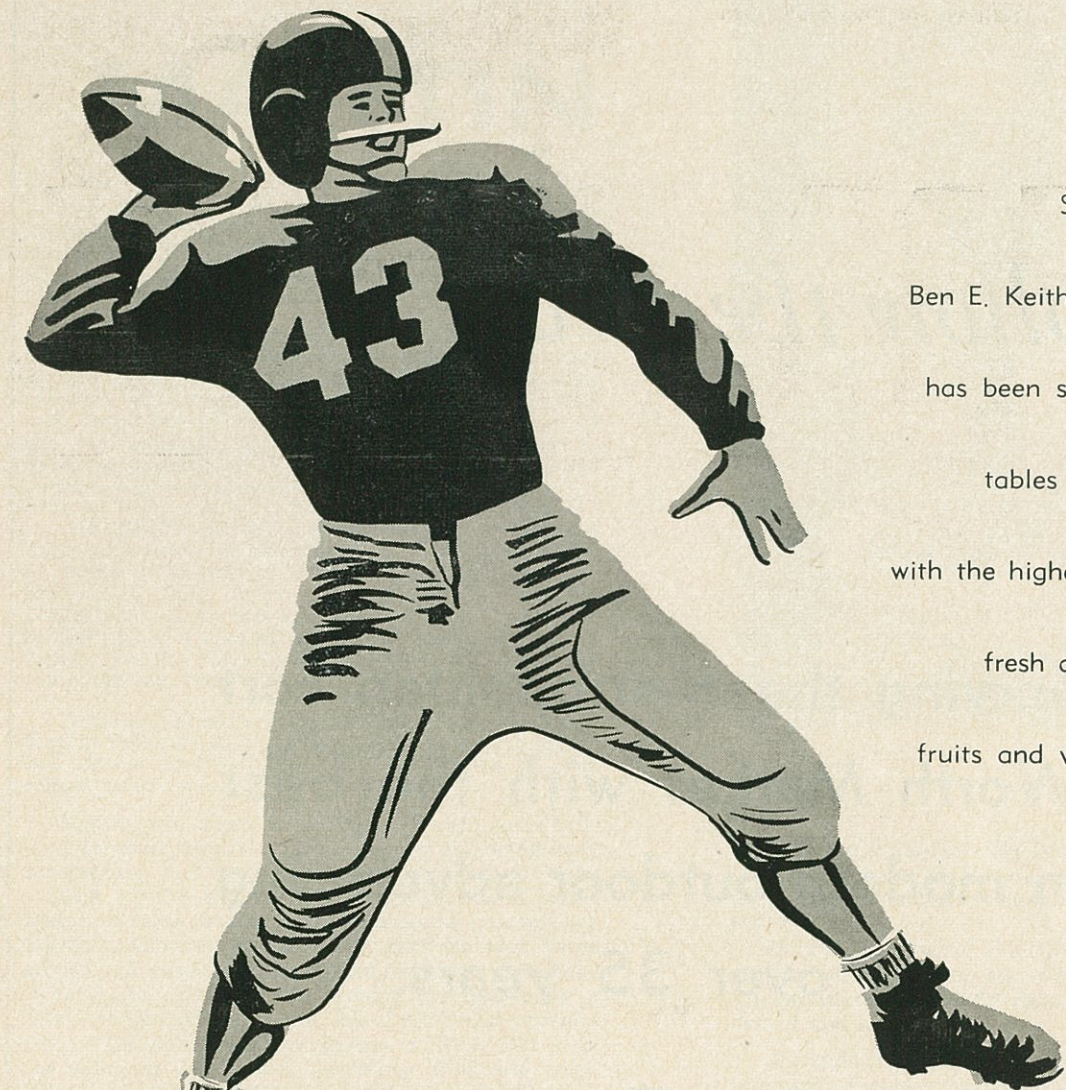
Nov. 14—N. C. State at Tallahassee

Nov. 21—Florida at Tallahassee

THE 1964 SEMINOLES

Captains: 83 RE Bill Dawson and 25 RHB Fred Biletnikoff, two-year letterman seniors.

Returning Lettermen: 27 of 39 from 1963 squad, including eight regulars.



**BEN E. KEITH
COMPANY**



fresh-from Keith's

Since 1906

Ben E. Keith Company

has been serving the

tables of Texans

with the highest quality

fresh and frozen

fruits and vegetables.

FORT WORTH • DALLAS • WICHITA FALLS • LUBBOCK • ABILENE • LONGVIEW

Follow the Frogs in '64!

Serving the Metropolitan Fort
Worth Market with the best
in modern outdoor advertising
... for over 35 years.



Advertising Company

Painted Bulletins | Posters | Spectaculars
2108 W. FREEWAY, FORT WORTH

ABE MARTIN

One of the most dedicated men in intercollegiate athletics, and the first vice-president of the American Football Coaches Association, tall and personable Abe Martin serves his Alma Mater as both athletic director and head football coach.

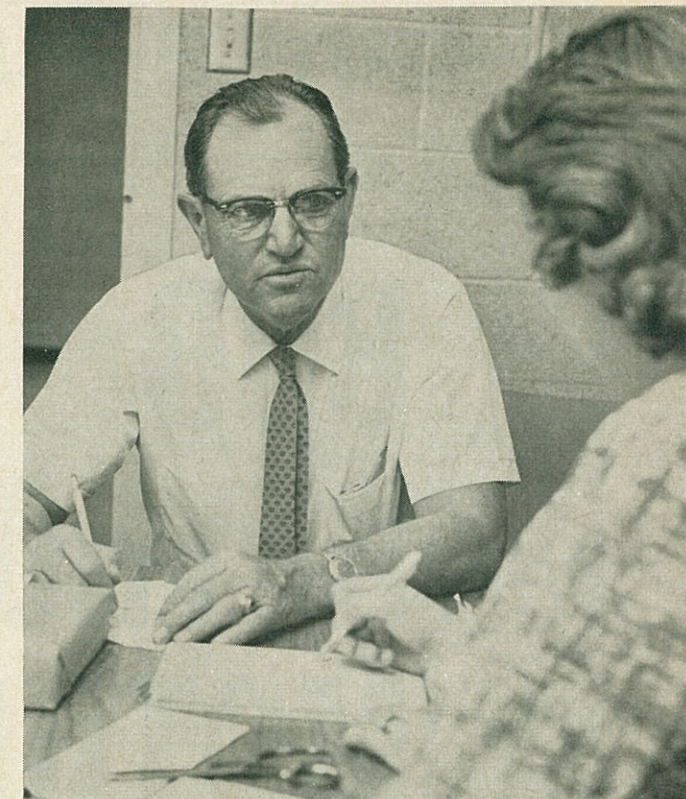
Martin succeeded the famed L. R. (Dutch) Meyer, who retired in June, 1963, after more than 40 years service to the University. Abe has compiled an outstanding record tutoring the Purples since taking over those duties from Meyer in 1953. And now in the dual capacity, the new Frog boss continues to keep the department in its proper place among the nation's top collegiate athletic groups.

Abe Martin started his football career playing high school ball at Jacksboro, a small community 60 miles northwest of Fort Worth. He then performed at TCU under the late Francis Schmidt (1928-1930) as an end and was assistant line coach in 1931 while finishing his B.A. degree. He was a regular on the school's first Southwest Conference championship team in 1929.

After a successful fling at high school coaching, Martin returned to TCU in 1945 to be in charge of the offense under Meyer until 1953 when he was named head coach.

Martin, who along with Meyer flashed some brilliant football from the famed spread and wing-back formations, had yearned for many years to take a crack at the popular T-offense. It was a tough season in 1953 without an experienced quarterback for the important up-back job. Still he won three games and gave national-ranked Michigan State and Penn State quite a scare. Losing six games by a total margin of 39 points, his first frosh recruits from 1953 won only four games in 1954. But with the fabulous Jim Swink rewriting TCU and SWC history in 1955, Abe's men rambled to the Conference title and a grand 9-1 record. In 1956, it was a close second to a fine Texas A&M squad, and won another Bowl assignment with a 7-3 mark. In 1957, the Frogs were the tops defensively but lacked a balanced offense and ended with a 5-4-1 record. Another junior-soph crop, plus exceptional quarterbacking from Hunter Enis, paved the way to the SWC crown in 1958. Then came a furious finish in 1959, winning five straight SWC games, to tie Texas and Arkansas for the title. In 1960, many labeled the Purple title-timber again, but lack of a scoring punch left the Frogs with a 4-4-1 mark, but did include an upset of Southern Cal and a tie with mighty Pitt. In 1961, it was a most unusual season, with a final 3-5-2 record. Included was that great 6-0 upset of Texas, and a 7-7 tie with National Champion Ohio State. The 1962 season proved better, as the Frogs posted a 6-4 mark and finished third in the SWC race. Last fall, Abe had to settle for a 4-5-1 record.

Despite being surrounded by the smallest staff in college ranks, having but five full-time assistants and freshman coach, Abe truly has compiled an outstanding record. Only three other coaches in SWC history have won more titles—Matty Bell, Jess Neely and Dana X. Bible. Also his offense produced the SWC rushing champion four years—1955, 1956, 1957 and 1959. And a TCU back was second in 1958, 1961 and 1962. He also had the best defensive team



three straight years—1957, 1958 and 1959. Abe's 11-year mark shows 62-45-7 overall and 36-31-4 in SWC play. Also his teams have played in four bowl games.

In the high school ranks, Abe also had the victory formula—winning seven district titles and tying for two others over a 10-year span. He won 95, lost but 14 and had one tie.

Martin's tremendous job has won the praise and approval of many, including the University's Board of Trustees who voted him life tenure in 1956.

Sincerely concerned with the welfare of young people, he is highly popular with both boys and girls and develops a deep loyalty among his players. He has many beliefs and philosophies on football, people or just life in general—good reasons why he is such a "close" pal of each boy he has coached for the past three decades.

Abe has been honored in many ways for his devotion to football. He was named Coach of Year in Texas in both 1955 and 1958. He also has been guest lecturer at many clinics including the 1956 Air Force clinic in Europe. He now represents District Six on the National Football Rules Committee. And it was Abe who helped to bring into existence the all-America Bowl game sponsored by the coaches each June at Buffalo, N.Y.

Abe and his wife, Sally, are proud of their son, Don, who was an honor graduate of TCU and Medical School, is a medical officer in the Air Force. Young Martin received his medical license the summer of 1962.

TCU is fortunate to have a man like Abe Martin—one of soundness and simplicity, and one who is devoted to his profession, his University, his staff and his players.

BOB REYNOLDS MOTOR COMPANY

NEW AND USED CARS

BANK FINANCING, INSURANCE

303 N. HENDERSON, ED 6-2373

Where Sports Fans Meet

THE PURPLE STAFF



VARSITY STAFF—All former TCU grid stars, this is the 1964 TCU varsity staff. Left to right, Head Coach and Athletic Director Abe Martin; Allie White, defensive line; Walter Roach, defensive backs; Mal Fowler, offensive backs; Hunter Enis, quarterbacks and offense; Don Jackson, offensive line; Fred Taylor, ends and head freshman coach. Jackson is a new-comer, joining the staff in August.



Buster Brannon
Head Basketball
Coach



Johnny Swaim
Assistant to
Athletic Director,
Ass't Basketball



Frank Windegger
Business Manager,
Ticket Mgr. and
Baseball Coach



Elmer Brown
Head Trainer



Dr. Henry Hardt
Faculty
Representative



Ted Hajek
Assistant Ticket
Manager, Ass't
Track Coach



Tom Prouse
Golf Coach



Ken Crawford
Tennis Coach



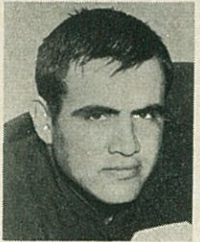
Jim Brock
Director of
Sports Information

THE TOP FROGS



73 NORMAN EVANS, 6-5, 224, 2L, senior. One of team captains, this one has the equipment to be a fine Conference tackle . . . does all things pretty well, but lack of speed has proven biggest handicap . . . "I like Norman as a football player," says Coach Abe Martin. "He makes up for some quickness by being a determined and conscientious worker. He has a great heart for football." . . .

Evans came to TCU with a top rating, winning all-state honors at Donna . . . then he was a top pick for all-frosh honors . . . enjoyed a fine soph season, starting several games (played 145 minutes that year) . . . knee injury slowed him some in 1963, but again closed with some fine play . . . tireless work and a stout heart could pay big dividends in 1964 . . . is married and father of a girl.



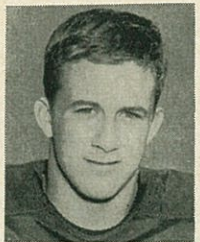
60 STEVE GARMION, 6-0, 211, 2L, senior. One of the finest all-round guards in the Southwest . . . seems headed for finest year after gaining much all-SWC recognition in 1963 . . . "If I had a whole line of Garmons, I wouldn't have any problems," reminds Coach Abe Martin . . . quick, strong and intelligent, it seems Steve always turns in a strong game . . . was valedictorian of

his class at Groom, located just outside of Amarillo . . . ankle injury knocked him out of 1961 play, but was alternate regular in 1962 before his splendid year last fall . . . makes Frog middle tough on the opponent . . . wants to go into State Department work after graduation . . . one of the team captains, and a good one.



21 JIM FAUVER, 5-10, 185, 2L, senior. The finest all-round halfback on the TCU squad . . . will make strong bid for all-Southwest Conference honors . . . regular for past two seasons . . . this lad owns speed, quickness, balance, is a superb blocker and is a nifty pass receiver . . . expected to make the big play in 1964 . . . came to TCU from Houston Milby, where was blocking back for

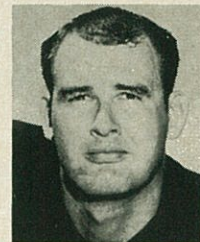
ex-Frog Gil Bartosh . . . as freshman, led Wog ground gainers and made all-SWC frosh unit . . . was No. 2 ground gainer in 1962 and 1963 behind all-America Tommy Crutcher . . . also due to handle punting chores . . . is excellent defensive player, but may not see duty here this fall . . . also is track letterman, and would like to coach the sport some day . . . "One of the finest backs I've ever coached," says his Coach, Abe Martin . . . one of team captains, and is married.



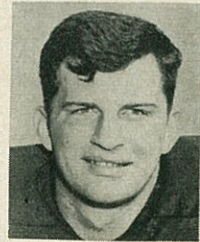
14 JOHN RICHARDS, 6-0, 175, FL, sophomore. Won the praise of entire staff for his tireless efforts in spring training . . . has good speed, and is top blocker, and defense most of time is above average . . . "One of the finest lads to coach I've had in a long time," reminds Coach Abe Martin . . . fine open-field tackler, so has a shot at No. 1 defensive halfback in early fall work . . . won all-

district honors at Fort Worth Arlington Heights . . . fine prospect, this lad.

51 KEN HENSON, 6-6, 245, 2L, senior. One of the finest centers to ever wear the Purple . . . this big lad has all the equipment . . . enjoyed fine spring and early fall drills, and Purple coaches see fine season ahead for this powerful 21-year old youngster . . . missed 1961 play due to hernia operation on second day of fall work . . . starter past two seasons at the important offensive slot, and one of the middle guards on defense, his blocking at times amazes folks . . . already drafted by the pros (Los Angeles in the NFL; and Houston, AFL) there seems to be a fine year ahead there for him . . . named to Tom Harmon's pre-season all-America team for two straight years . . . "I'm predicting a great season for Kenny," said Abe Martin. "I wouldn't trade him for any in the Southwest." . . . former all-state star and great weight man for San Angelo High . . . this could be his year.



26 LARRY BULAICH, 6-3, 197, 2L, senior. One of the big keys to the 1964 Purple season . . . a converted halfback, where has been an alternate regular the past two years . . . took to new spot with ease, causing raves from the rail-birds at practice sessions . . . "Larry is a solid football player," praises Coach Abe Martin. "He gave me a big lift this spring. With power and quickness, his running reminds us of Jack Spikes. If he stays free of injury, he'll be tough to handle this fall." . . . A real tough runner, especially to the inside, and has enough speed to go wide . . . works hard, as goes wide open at all times . . . as a freshman, had a 5.1 rushing average, and was all-SWC frosh pick . . . as soph in 1962, had top days against Texas A&M and Texas, splitting starting duty entire year . . . last year, had best running game against SMU . . . may not see any defense during 1964, as has no experience at linebacker . . . spring work was tops, but foot injury cut short his work . . . if stays well as Abe says, then look for a surprise among the top SWC rushers this fall . . . his running is that good.



22 BOBBY SANDERS, 5-10, 167, 2L, senior. One with the little extra, and seems dedicated to doing his best at all times . . . a converted end, where he was an all-state choice at Fort Worth Paschal and a top performer the past three years in Purple, he seemed natural choice for Abe Martin's new wing-back position this spring . . . size has been handicap at times, but he's above-average as blocker, usually getting the job done . . . has sure hands, so is fine pass receiver . . . tough and aggressive, has already been in on several big plays here . . . "Bobby has the ability to be a fine wing-back for us," said Martin. "He's never short on try, and I like that." . . . Sanders also has two baseball letters, being both a catcher and outfielder . . . was a quarterback in junior high, before becoming fixture at end in high school . . . one of the best all-round "little" men in League.



Bobby Malone

John L. (Whitey) Blackwell

BOBBY MALONE INSURANCE AGENCY

Suite 244 - Ridglea Bank Bldg. - PE 8-0962

AUTOMOBILE - FIRE - LIABILITY - BONDS
WORKMEN'S COMPENSATION

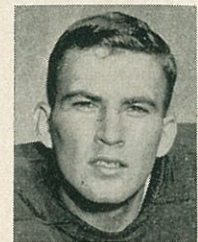
FREE AUDIT SERVICE

COMPETITIVE WE ARE

THE TOP FROGS



46 RANDY HOWARD, 5-11, 179, 1L, senior. One of the Frogs who will be closely watched by all in early 1964 play . . . many think this lad could be key to any Purple success . . . will definitely start the fall work in the No. 1 slot after showing in spring drills . . . this lad is a fine runner, in fact above average for quarter-backs . . . but his passing game has just been average, though showed vast improvement in the spring session . . . "Randy has some things going for him," reminds Coach Abe Martin. "He's a fine runner, not a real good passer, but he uses the pass to complement his running game. This spring, he handled the duties real well. I think he has jelled into a top flight QB for us. He is daring, and has confidence. I just feel he will do well." . . . Randy was an unknown Class B star at Dawson, but as a freshman, carried the Wogs to a 4-1 mark, had a 4.3 rushing average, hit 19 of 35 shots for 283 yards and 3 TDs, and led scorers with 30 points . . . as soph in 1962, just missed a letter but fans remember his great 42-yard sprint against Texas Tech . . . then last fall, was making knots until a sideline tackle, breaking his ribs, stopped him in Texas Tech game and for several outings . . . best day running was 8 for 81 in the mud-rain in the Florida State game . . . as for passing, hit 3 or 4 against LSU, one a fine TD shot . . . developed important leadership in spring . . . a good year here, could bring dividends to Purples this fall.

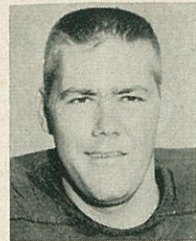


86 JOE BALL, 6-3, 199, 1L, junior. Tabbed the best all-round end on squad, and could make big move for all-Conference honors this fall . . . had a better-than-average sophomore season, despite plagued with knee injury . . . "When Joe was hurt our defensive end play just wasn't up to par," reminds Coach Abe Martin. "I think Ball is the best defensive end here since Bubba Meyer on our 1958-59 championship teams" . . . he has the defensive reputation, and the lad's offense seems to improve with each practice, as Joe is a top blocker, and above-average receiver . . . led freshmen receivers in 1962 with 15 for 155 yards, but didn't catch one last fall . . . tough, dependable and aggressive, this lad could have a big year . . . was all-round athlete at Graham High School.



63 HARVEY REEVES, 5-9, 188, 2L, senior. "When you see or hear a good hard, tough lick, it's usually Harvey who got it," reminds Coach Abe Martin . . . this short, stocky youngster hits with authority from the important linebacker post, where he has been a spring standout the past three years . . . thus, the "Lil Pony" will start his final season with his defense ahead of his offense . . . despite lack of height and overall speed, this lad makes up for a lot with his hard-nosed, aggressive play . . . has some valuable experience, as having played quite a bit the past two seasons . . . was a top all-round player for Port Arthur High, and this youngster figures to be in some big plays in 1964.

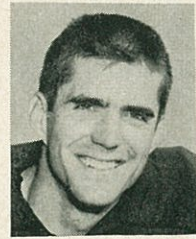
11 KENT NIX, 6-2, 184, 1L, junior. Blessed with an outstanding arm, this youngster is expected to split time with Randy Howard at the important up-back post . . . easily the best passer on the squad, and his coach, Abe Martin, feels the former Corpus Christi Ray all-state star could develop into one of the finest chunkers TCU has had in some time . . . "Kent showed a lot of improvement this spring," says Martin. "He seems a little more mature over a year ago. And his arm is a great one. He will help us, I'm sure." . . . Nix had the fans buzzing his freshman year in 1962, when he posted an all-time TCU frosh passing mark, hitting 54 of 112 passes for 685 yards and 3 TDs . . . in his first Wog game, he connected on 18 of 29 for 192 yards and 3 TDs against Texas A&M . . . many thought the handsome youngster would be red-shirted in 1963, but an injury to Randy Howard brought the fellow into view . . . top day was in the SMU victory, when he hit 6 of 8 for 98 yards, one a 32-yard TD heave . . . but in finale against Rice, everything seemed to go wrong, as he had six intercepted . . . lack of speed is main handicap, and this means trouble at times when rushed . . . son of Emery Nix, the Frogs' great passing star of 1941 . . . Emery threw that historic pass that upset Texas, 14-7, in the final 8 seconds, and then set a Frog record in the Baylor game, that still stands, with his 10 of 26 for 337 net yards . . . a lot of potential here, especially in Kent's fine arm.



81 LARRY PERRY, 6-1, 175, 1L, junior. Should be outstanding receiver on 1964 squad . . . only average size, but his blocking at times amazes folks . . . one of the most conscientious on squad . . . "One blessed with fine pair of hands and a fiery spirit," says Coach Abe Martin . . . owns good moves in secondary . . . will be used a lot at split-end . . . as frosh star, grabbed 13 for 179 and TD . . . last fall, saw only 73 minutes, but had best day against Texas, catching four of Kent Nix's tosses for 34 yards late in game . . . was also top baseball star at Dallas South Oak Cliff . . . is tabbed for a top offensive year this fall.

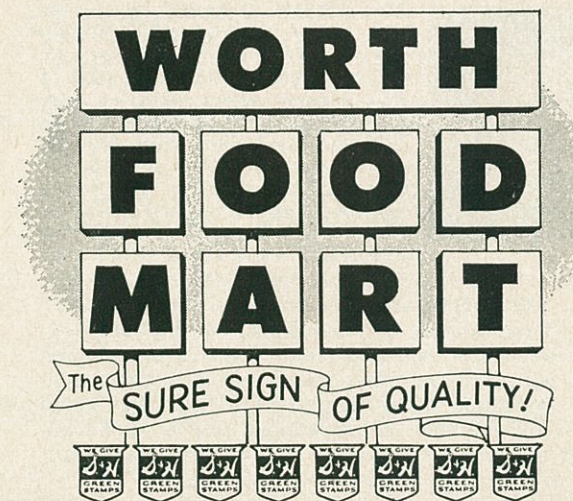


18 DAN JONES, 6-2, 178, 1L, junior. One of the finest all-round backs on Purple squad . . . a fine runner, who hasn't much power, but uses his fine speed and balance to his advantage . . . the top-ranking Purple athlete academically, the former Fort Worth Carter star athlete is "heads" up on his grid play, too . . . played nearly all defense last fall, where he had one int. return of 43 for score against Texas Tech . . . if Jim Fauver holds up at the top HB spot this fall, then Dan may return to full-time duty as the safety in the secondary . . . was named Fort Worth's top schoolboy athlete in 1961, then as Wog, made top unit, before suffering a broken right arm in second game against North Texas State frosh . . . arm seemed healed in spring, though he had to miss baseball . . . carried the ball but once last fall, gaining one yard, but offense returned to form in spring . . . is married.



FINEST

Your family can depend on meats purchased at your friendly Worth Food Mart. Rigid quality control on every item in Worth Food Mart is your assurance of the best at everyday low prices.



THE TOP FROGS

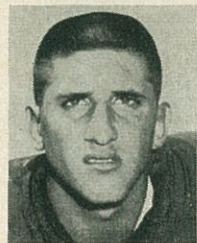


76 BOBBY SMITH, 6-2, 209, 1L, senior. One of the more experienced linemen on team . . . picked up a lot on offense during 1963, and then really came forth as a fine all-round tackle in spring drills . . . just missed a letter in 1962, having around 50 minutes of play . . . top size and agility receives Class A grading from Purple staff . . . "I look for a good year from this fellow this fall," says Head Coach Abe Martin. "His spring work was real good, in fact, outstanding at times." . . . Was everyone's all-state tackle while in high school at San Antonio Burbank . . . is married.



69 RUSSELL STOUT, 6-0, 196, 1L, junior. Like Harvey Reeves, this youngster likes to rock and sock folks . . . used only at line-backer in 1963, Coach Abe Martin feels the former Port Arthur end star is ready for offensive duty . . . however, he and Reeves appear to be the best Purple line-backers after spring work, so Stout could be used as a defensive specialist again this year . . .

tough and aggressive, he could use more mobility to be top all-round guard . . . his play could depend a lot on any Frog success this fall . . . has many possibilities.



19 FRANK HORAK, 6-0, 178, FL, sophomore. One of few sophomores who will see top duty in 1964 . . . slated for starting work at the important safety spot on defense . . . former all-district star, who has the speed to make the big play . . . Abe Martin and staff had plaudits for the overall work of this tough youngster in both spring training and fall sessions . . . a fine open-field tackler . . . one who could make the defensive losses from 1963 seem a little lighter, if he continues to show same improvement . . . fine sophomore.



40 JOHN HULSE, 6-0, 174, 2Sq, junior. One of the hard-luck guys on Frog team . . . everyone was anxious to take a long look at this former Newcastle ace last season, but a shoulder injury in fall work sidelined him for the entire season . . . then this spring, he rehurt the shoulder, and it was operated on during spring work . . . "One of the quickest arms I've seen," says Head Coach Abe

Martin. "But injuries have kept him on the sidelines. Still might see some work this fall, though." . . . Understanding of football has come a long way . . . defense is real good, and there is top chance, John will spell the other quarterbacks in the secondary some this fall . . . as soph in 1962, was voted the most valuable non-squadman award, as he enjoyed top practice sessions . . . his rifle and accurate arm may be turned loose this fall.

78 ADON SITRA, 5-11, 197, 1Sq, sophomore. Lack of height seems only handicap, as this lad owns fine speed and ability, and enjoys the tough, aggressive play . . . "Adon gave me a shot in the arm this spring—he made some moves, especially his ability to recover, and get away from the offensive charge while on defense." . . . Nicknamed the "Duck," Sitra did have a top spring at his new tackle slot . . . at the moment, defense ahead of the offense . . . was all-state guard at Austin McCallum . . . watch this lad.



91 BRUCE ALFORD, JR., 6-0, 176, FL, sophomore. One of the finest place kickers to enroll at TCU . . . had an amazing streak at Fort Worth Paschal, where he made all-district honors, and continued his top kicking with Wogs last fall . . . including high school (32 of 32) and as freshman (4 of 4) has made 36 in a row . . . actually missed one his junior year, so has 64 of his last 65 attempts . . . also kicks the field goal, booting two last year . . . will also handle the kickoff chores for the Frogs . . . dad, Bruce, Sr., was TCU all-SWC end in 1941-42, captain and most valuable player in 1942 and later a pro grid star with the old New York Yanks . . . this lad is certain to join the list of all-time Purple toemen.



85 CHARLES CAMPBELL, 6-2, 196, 1Sq, sophomore. "Sonny," as tagged by teammates and coaches, had another terrific spring session this year . . . in spring finale, made some unbelievable catches for long yardage . . . probably best on squad at moves to get open . . . as a 1962 freshman, caught two TDs (one a 44-yarder against Texas) among his 7 for 141 yards . . . defense is only fair, but expected to improve with time . . . could be used for much "spot" duty this fall . . . tough and has great hands . . . former Fort Worth Haltom all-district star . . . dad is ad executive with Fort Worth Star-Telegram.



88 DARRELL MOTT, 5-11, 169, 2L, senior. The most experienced end on team, this youngster is one of the top defensive wingmen in League . . . size has been disadvantage at times, but quickness usually wins over the opponent . . . like Larry Perry and Charles Campbell, he is a fiery competitor . . . has played mostly defense at TCU as has only two receptions for 12 yards, both last fall . . . was a great all-round athlete at Taylor High School, winning all-state end honors . . . played 100 minutes in 1962; 141 last year . . . another who makes end a bright spot for the Frogs in 1964.



C & S SPORTING GOODS COMPANY

— THE HOUSE OF SERVICE —

JIM REYNOLDS

OMAR KEETON

FRANK GASCA

ALVIN MCFARLAND

BILL WEAVER

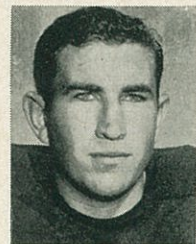
1660 UNIVERSITY DRIVE

PHONE ED 2-7139 OR ED 2-9826

THE TOP FROGS

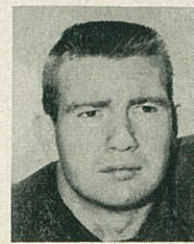


70 RICHARD SULLIVAN, 6-0, 212, 2Sq, junior. Another blessed with physical ability to be a fine tackle . . . owns top speed, quickness and overall ability that a coach wants in a lineman . . . "Sullivan has matured a lot, and showed the staff in spring work, he could be ready for business this fall," reminds Coach Abe Martin . . . enjoyed a top freshman year in 1961 . . . then rib injury cut short his spring work, and he missed the 1962 season . . . saw only 30 minutes play last season . . . was state shot put champion at Whitney High . . . if comes through, could give Purple needed relief at this spot.



61 GARY COOPER, 6-0, 209, 1L, junior. Came along fast in 1963, after not given much chance before the season . . . in fact, his defensive play was rated solid at end of the campaign . . . continued same pace in spring session, and seemed to improve in every way . . . staff actually feels this lad could make some other first-teams in League, thus, making the spot with Steve Garmon a strong one-two punch for the Purple . . . has good understanding of football, and if offense shows some improvement in fall drills, then look for a top job again in 1964 . . . former Everman all-district fullback.

82 DOYLE JOHNSON, 6-2, 199, 1Sq, sophomore. A red-shirt in 1963, this tough youngster made a top bid in spring work . . . defense right now a little ahead of offense, but all believe he could be a good one in time . . . former all-state end at Galena Park High, where he made defense a by-word . . . caught two passes for 29 yards as 1962 freshman . . . rangy and rugged, one with a good future at TCU.



67 BILLY SNOW, 6-1, 206, 2Sq, junior. Frog staff has waited a long time for this youngster . . . sidelined via scholastic difficulties the past two years, this natural football player could bounce back in a big way this fall . . . star of both the 1962-63 spring drills, play seemed a little ragged this past spring . . . coaches say this lad has the agility and ability to be a top pulling guard, and has the knack of making the big block . . . could develop into the No. 1 offensive guard in fall work . . . also above-average at linebacker, where he's tabbed a top tackler . . . former Fort Worth Arlington Heights star . . . many feel this lad has the equipment to solve a lot of problems before he's through at TCU . . . a long wait, but one that could be well worth it.



THE HOUSE OF MOLÉ

PRESENTS

CHICKEN RIBS **MOLÉ** THAT SALAD!

Fort Worth's Most Unique Restaurant

Your Host:
HOWIE WRENTMORE

C
H
O
P
S

S
T
E
A
K
S

B
R
O
I
L
E
D

C
H
A
R
C
O
A
L

2200 PARK HILL DRIVE
Open 5 PM to 11 PM Daily
WA 1-1682

SAMPLEY'S T. C. U. "Frogs" CLEANERS

W. S. SAMPLEY, Prop.

"Where Better Cleaning is Done"

LAUNDRY SERVICE

Plant: 3007 University Dr. - - - Ph. WA 4-4196
Sub-Station: 2911 W. Berry - - - Ph. WA 4-2516
Sub-Station: 4626 Granbury Rd. - Ph. WA 1-1121
Sub-Station: 3012 Vaughn - - - - Ph. JE 5-9493



Weldon's Flowers

Wear a "Mum" to
the Game

ED 6-4444

Flowers Are "Well Done"

The Sign of
Good Insurance



Since 1889

Associates: Bryan Engram, Skip Few

1407 TEXAS AT SUMMIT

Fort Worth, Texas

HERMAN GARTNER
W. J. BLOUNT
W. W. TAYLOR
FRANK L. THOMPSON
GEORGE GARTNER
D. W. SWEENEY
W. J. BLOUNT, JR.
JOHN A. MAXWELL
ORVILLE NEAL
ROBERT McFAIL
C. B. SMITH
JOHN POLK
DELBERT W. TUCKER
E. L. MOORE

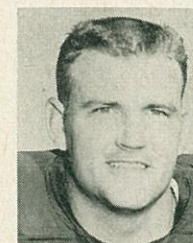
THE TOP FROGS



57 JIM NAYFA, 6-3, 239, 1Sq, sophomore. The "Buffalo" as is called by all, could enjoy a fine first season this fall, especially on offense . . . can make the big block . . . size and strength big assets for this lad, who won all-district honors at Fort Worth Paschal . . . enjoyed a fine spring, though it was apparent he could use more quickness . . . gives Purple a top replacement for

Ken Henson, as is hard worker and wants to learn . . . in time, could become a starter before he's through at TCU.

34 ERNEST BAYER, 6-1, 200, 1L, junior. A tough, dedicated runner who runs low and hard . . . doesn't have any speed, but seems to make his yards . . . "This guy likes the game of football," brags Coach Abe Martin . . . is rated fine linebacker, and made some fine plays here in 1963 . . . led 1962 Wogs with 3.9 average on 34 tries . . . didn't see much offense last fall, but was running in fine form in spring . . . a consistent short gainer, he should make a top relief here . . . former all-district pick at Cameron High.



41 CARROLL DUBOSE, 6-0, 199, 1L, junior. Had a fine season last fall, playing most of time behind all-America Tom Crutcher . . . not rated a power runner, he seems to glide into the line, and picks his holes well . . . also above-average at linebacker, and is particularly strong against the pass . . . a converted quarterback, had a 69-yard scoring dash against SMU as freshman . . .

best running day in 1963 was 33 net yards in SMU game . . . this lad is good insurance at the deep slot this fall, and he could go even higher without much surprise . . . is called "Biddy" by teammates.

84 BILL BOWERS, 6-5, 219, 2L, senior. A top offensive performer, whose size and range make him a top pass target . . . lack of speed is main handicap . . . has been alternate end past two seasons, with best game as starter against Rice in 1962, catching 4 for 64, including nifty TD grabs of 4 and 37 yards . . . was both quarterback and end at Fort Worth Carter, where also was front-line cage star . . . as soph, caught 6 for 93, and last season, had 4 for 44 including the amazing end zone TD catch against SMU . . . definitely a "spot" player for 1964.



THE TOP FROGS



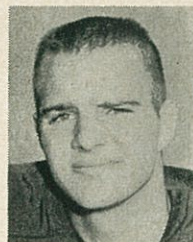
while at Hubbard High, had some great moments as a runner . . . is married.

48 BOBBY BATTON, 6-1, 174, 1L, junior. Another who can catch the football, and could be a top hand at his new spot this fall . . . doesn't have great speed, but owns quick moves and good balance . . . had a second-straight good spring . . . had big day against SMU, catching a 32-yard pass for TD . . . Bobby was hit with a fever his freshman season, and had to drop out of school . . .



better newcomers expected to make his mark this fall . . . also sprinter in track.

25 GENE UPTGRAPH, 6-3 179, 1Sq, sophomore. A holdout in 1963, this lad came to front this spring . . . tall, lanky, Gene owns fine hands . . . fine size makes him top target for passers . . . was all-district choice at San Benito High . . . starter as freshman in 1962, snaring 13 passes for 167 yards and TD . . . defense also got raves, and could be used here some in 1964 . . . one of the



80 JOE SHERRELL, 6-1, 189, FL, sophomore. One who likes aggressive defensive play . . . came along fast in spring work, and is expected to help Purple on defense this season . . . Coach Abe Martin bubbles over this youngster's size and strength, and sees a bright future here . . . a top competitor . . . a fine all-round athlete at Irving High School . . . this lad could be somebody . . . led Frosh receivers with 9 for 130 and one TD.



72 RONNIE NIXON, 6-1, 209, 1Sq, sophomore. A converted full-back, who moved to new spot midway through spring drills . . . "I have high hopes for a good tackle here," exclaimed Coach Abe Martin . . . blessed with above average speed for interior lineman, but this was a shortcoming as a full-back . . . highly-sought high school star at Houston Milby, where he also rocked folks from linebacker . . . conscientious, aggressive and wants to learn his new assignment . . . could help this fall.

Compliments

★ ★ ★

THOS. S. BYRNE, INC.

ENGINEERS AND GENERAL CONTRACTORS

★ ★ ★

FORT WORTH, TEXAS

Telephone ED 5-3406

Compliments of

BARRON McCULLOCH & CO.

INVESTMENT SECURITIES

STOCKS - BONDS



100 W. Seventh

Fort Worth 2, Texas



1220 Pennsylvania • ED 2-2265
6200 Camp Bowie • PE 8-9288

MRS. GRUBBS POTATO CHIPS



3565 McCART STREET

- CORNIES
 - PIGSKINS
 - PEANUTS
 - PECANS
- FINE EATING — ANYTIME
- FORT WORTH, TEXAS

The Blackstone Hotel

FORT WORTH'S "HOTEL OF DISTINCTION"

INTERNATIONAL ROOM — PRIVATE CLUBS — POOL IN THE SKY

20 to 300 Seating Capacity for
Private Breakfasts, Luncheons, Dinners, Meetings and Conventions

Telephone EDison 5-4381 — 601 Main Street

FREE PARKING FOR GUESTS

CHARLES A. PARISEAU, Gen. Mgr.

THE TOP FROGS



71 HARRY LANTZ, 6-2, 206, 1Sq, sophomore. Blessed with desire, speed and size, this lad could become outstanding before he's finished at TCU . . . missed most of spring work with a knee operation, having a cartilage removed . . . was top high school player at Donna, where Norman Evans was the other tackle when Harry was a junior. "With time, I don't see how Harry can miss,"

Coach Abe Martin said . . . aggressive, tough and likes the game of football.



53 BOBBY NELSON, 6-0, 190, FL, sophomore. One of the big stars of the 1963 freshmen, especially on defense, where he made sensational plays from linebacker . . . one, who tackles well, and has the quickness to make the big play . . . suffered head injury in Texas frosh game, and seemed to be slowed some this spring . . . still, the Frog staff sees a fine linebacker prospect, one who could

break into the top defense in 1964 . . . "Bobby's battle makes up for his size," says Coach Abe Martin . . . was top all-district star at Fort Worth Haltom . . . watch this lad.

33 DAVID SMITH, 6-0, 198, 1Sq, sophomore. Blessed with top balance and speed, this husky Fort Worth Carter ex-star could help the Frogs at either halfback or fullback in the new Dual offense this fall . . . enjoyed top fall drills at both spots . . . strong and quick runner, has troubles at times holding on to ball . . . this lad could be a big surprise to Frog fans in 1964.



27 CUBBY HUDLER, 5-10, 160, FL, sophomore. Fine all-round back from freshman team, where he seemed to do everything well . . . was near unanimous all-SWC freshman HB choice . . . having good all-round speed, this tough youngster made headlines while a three-year performer at Victoria High . . . was the No. 3

Wog ground gainer, and enjoyed best night in opener against Texas A&M Fish, where he also had top defensive game . . . in fact, may get some top duty at the important secondary this fall . . . quick and aggressive, looks like a good future here for this lad.



FOLLOW THE FROGS IN 1964!

Slim Steadman Sporting Goods

"House of Experience"

2410 Forest Park Blvd. WA 4-1291

MR. QUICK DRIVE INS Home of the 15c Char Broiled Hamburgers

— 3 Convenient Locations —

1501 E. Berry 1908 E. Lancaster
2832 W. 7th St.

Neatness Denotes Pride

JET CLEANERS & LAUNDRY

Jess Norris - Owner

Across from Campus

Complete
Sports Equipment

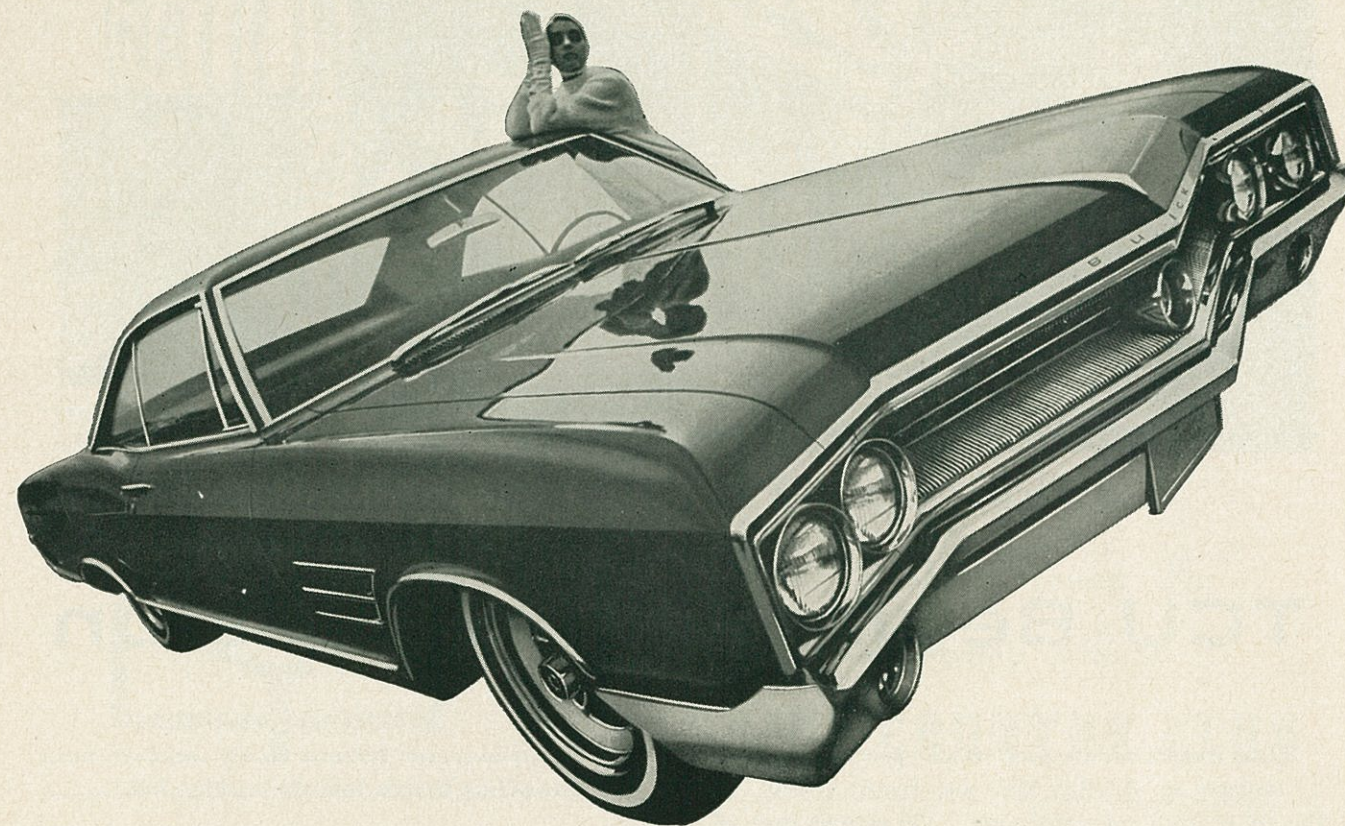


2704 W. Berry

WA 3-0817

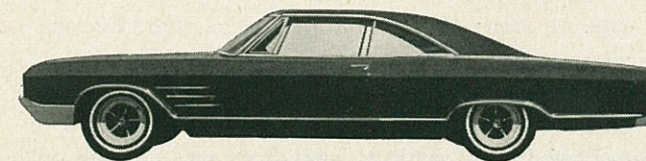
Open 9-6

Buick
&
Buick



We changed the Buick a lot this year. And you may never be the same again yourself.

We doubt you'll want to be the same. Not once you set eyes on our new Buicks. On the Buick Special and the Skylark. The LeSabre, Electra 225, Riviera. And on the sleek, modified fastback of the wild, wilder, Wildcat in the picture. True, there's a new high-style touch. But that's hardly all. Engineering still has the emphasis. It's a Buick tradition. So are the extras Buick spends a little extra on. Like brakes that do a little better. And smoother drivelines. A tuned suspension to smooth ribcage roads. Now add Buick's Super Turbine transmissions—and you have an idea of what Buick owners have always liked about Buick. We think you'll feel the same.



Wouldn't you really rather have a Buick?



DR. JAMES M. MOUDY
Executive Vice Chancellor

TCU Begins 92nd Session

Texas Christian University, which opened its doors to 13 students as "AddRan Male and Female College" in the fall of 1873, registered some 7,300 persons from all 50 states and 30 foreign lands Sept. 14-16 as it moved into its 92nd session.

Marking the second year of the ninth decade of West Texas' oldest institution of higher learning will be a number of developments:

1) Six new buildings, five dormitories and a dining hall costing \$4,500,000, will go into service. They bring to 34 the number of buildings erected, renovated and/or enlarged or acquired since 1942.

2) An IBM 1401 computer, supplementing the university's 1620 system, goes into operation.

3) The new Honors Program moves into its third year and first graduates with "University Honors" are due next spring.

4) Five Doctor of Philosophy degree programs—in physics, psychology, mathematics, English and chemistry—will be in full operation with a sixth area, history, to be added in the near future. So far, 11 doctorates have been awarded over the last year.

5) In an administrative change, Dr. James M. Moudy becomes executive vice-chancellor after serving as dean of the Graduate School and vice-chancellor for academic affairs.

6) Thirty-nine new fulltime faculty members, many with outstanding records, join the teaching force.

7) A number of new programs, including a five-year study of perceptually handicapped children by the new Neeley Center and a division to promote the study of the history of the U. S. free enterprise system, will begin.

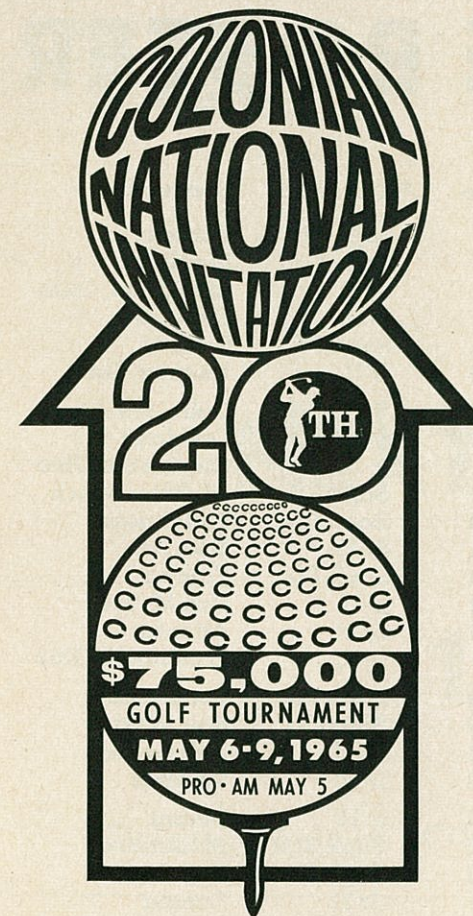
8) More than 30 research projects ranging from perception in space to rare chemical compounds will continue under grants totaling some \$1,000,000.

Negro students are enrolled in all university divisions as they were during the spring semester. Approximately a dozen are in the undergraduate colleges with others in Graduate School and Evening College.

Graduate School is again expected to be the fastest growing division. With 1,243 students, it had an increase of some 25 per cent last school year. Evening College was up 12 per cent last year.

A new "Special Courses" division, which will have supervision of all seminars, workshops and institutes on campus, will be under the direction of Dr. Howard G. Wible. A large number of such special events is planned.

Dr. M. E. Sadler, who became the TCU president in 1941, is now in his 24th year. He was made chancellor and continued as chief executive officer in 1959.



FORT WORTH'S SPORTS SPECTACULARS

★ T.C.U. *fighting frogs*

★ * COLONIAL NATIONAL
INVITATION

* Golf Tournament Held in May

* Tennis Tournament Held in Sept.

*See the Greatest Names In
Golf and Tennis At...*

COLONIAL COUNTRY CLUB

Enjoy The New

ABE MARTIN SHOW

EVERY SUNDAY AFTERNOON
4 P. M.

ON

WBAP-TV Channel 5

Brought to You in Living Color

FLORIDA STATE ROSTER

(Numerical)

No.	Name	Pos.	Wt.	Ht.	Age	#Class-Exp.	Hometown
11	H. T. Waller	QB	185	6-1	19	Soph-FN	Vernon
12	Tony Gero	QB	183	5-10	20	Soph-Sqd	Madison, N. J.
13	Steve Tensi	QB	194	6-5	21	Sr-2L	Cincinnati, Ohio
14	Jim Massey	QB	181	5-11	21	Jr-1L	Cairo, Ga.
15	Pat Conway	HB	186	5-10	19	Soph-FN	Sanford
16	Ed Pritchett	QB	185	6-2	23	Jr-1L	Decatur, Ga.
20	Larry Green	HB	181	5-10	19	Soph-FN	Cairo, Ga.
21	Donovan Jones	HB	193	6-1	19	Soph-FN	Lakeland
22	Maury Bibent	HB	188	6-0	21	Jr-1L	Cincinnati, Ohio
23	Wayne Giardino	FB	190	5-10	20	Soph-FN	W. Palm Beach
24	Elton Revell	HB	176	6-0	20	Soph-Sqd	Tallahassee
25	Fred Biletnikoff	HB	192	6-1	21	Sr-2L	Erie, Pa.
26	Bill Campbell	HB	180	5-9	19	Soph-FN	Tampa
27	Phil Spooner	HB	182	5-11	20	Jr-1L	Fort Myers
28	Winfred Bailey	HB	183	6-0	22	Sr-2L	Atlanta
29	Joe Petko	HB	185	5-9	21	Jr-1L	Cincinnati, Ohio
40	Lee Narramore	FB	209	5-10	19	Soph-FN	Pensacola
41	Bob Menendez	HB	185	5-10	19	Soph-FN	Key West
42	Les Murdock	FB	233	6-2	23	Sr-1L	Hollywood
43	Howard Ehler	FB	195	6-1	20	Jr-1L	Tavares
51	Joe Avezzano	G	228	6-2	20	Jr-1L	Miami
53	David Pitts	C	223	5-9	20	Soph-Sqd	Blountstown
54	John Stephens	C	198	6-1	18	Soph-FN	Tallahassee
55	Jack Edwards	C	217	6-1	21	Sr-2L	Tampa
60	Larry Williamson	G	200	5-11	19	Soph-FN	Macon, Ga.
61	Jack Shinholser	C	212	6-1	22	Jr-1L	Tampa
62	Howard Lurie	G	205	6-0	20	Jr-Sqd	Northridge, Calif.
63	Bill McDowell	G	201	6-1	20	Jr-1L	Tallahassee
64	David Braggins	T	226	6-2	19	Soph-Sqd	Lake Wales
66	Dick Hermann	G	200	6-0	22	Sr-2L	Marianna
68	Joe Parrish	G	194	6-1	21	Jr-1L	Auburndale
69	Ed Pope	G	196	6-1	20	Soph-Sqd	Waycross, Ga.
70	Del Williams	T	213	6-2	18	Soph-FN	Live Oak
73	Avery Sumner	T	219	6-2	22	Sr-2L	Adel, Ga.
74	Jay Mac Matthews	T	219	6-1	20	Soph-Sqd	Chiefland
75	Dale MacKenzie	G	218	6-2	21	Sr-2L	Clearwater
76	Tom West	T	216	6-4	21	Sr-2L	Headland, Ala.
77	Bob Mangan	T	222	6-1	22	Jr-1L	Atlanta, Ga.
78	Charles Pennie	T	221	6-4	19	Soph-FN	Hollywood
79	Frank Pennie	T	242	6-4	21	Jr-2L	Hollywood
80	John Wachtel	E	203	6-1	22	Sr-2L	Massillon, Ohio
81	Don Floyd	E	195	6-1	22	Sr-2L	Madison
82	Wayne McDuffie	E	198	6-2	19	Soph-FN	Hawkinsville, Ga.
83	Bill Dawson	E	220	6-3	21	Sr-2L	Valdosta, Ga.
84	George D'Allessandro	E	195	5-10	21	Jr-1L	Fort Myers
85	John Hosack	HB	196	5-10	19	Soph-FN	Miami
86	Buddy Blankenship	E	200	6-3	20	Soph-Sqd	Atlanta, Ga.
87	Terry Garvin	E	190	5-11	21	Jr-Sqd	Pensacola
88	Cliff Gunter	E	187	6-3	22	Sr-Sqd	Dothan, Ala.
89	Max Wettstein	E	206	6-3	20	Jr-1L	Leesburg

LEGEND: #Denotes eligibility in football; L—varsity letter; Sqd—varsity squad; FN—freshman letter.

❖ "OFFICIAL WATCH FOR THIS GAME — LONGINES — THE WORLD'S MOST HONORED WATCH" ❖

Represented for National Advertising by SPENCER ADVERTISING COMPANY, INC., 271 Madison Ave., New York City

TCU - ARKANSAS

HERE

NEXT SATURDAY

1:30 P.M.

Tickets on Sale at TCU Daniel-Meyer Coliseum and Blackstone Hotel

**GIVE
and
SUPPORT
THE
FUND
UNITED**

LEADING FROG SCORERS SINCE 1923

1923—Bill Honey, hb..... 18	1944—Merle Gibson, e..... 36
Harry Taylor, hb..... 18	
1924—Jim Cantrill, fb..... 18	1945—Norman Cox, fb..... 30
	Jessie Mason, hb..... 30
1925—Harry Taylor, hb..... 24	1946—Pete Stout, fb..... 24
1926—Bernard Williams, fb 51	1947—Pete Stout, fb..... 54
1927—N. L. Clark, qb..... 24	1948—Pete Stout, fb..... 42
1928—Austin Griffith, fb..... 38	1949—John Morton, fb..... 42
1929—Cy Leland, hb..... 78	1950—Bobby Floyd, fb..... 48
1930—Cy Leland, hb..... 60	1951—Bobby Floyd, fb..... 48
1931—Richard Oliver, hb..... 24	1952—Ronald Clinkscale, qb 24
Blair Spearman, hb..... 24	Bob Blair, e..... 24
1932—Richard Oliver, hb..... 72	1953—Ray McKown, qb-fb.. 38
1933—Charles Casper, hb..... 60	1954—Jim Swink, hb..... 37
1934—Jimmy Lawrence, hb 42	1955—Jim Swink, hb..... 125
1935—Jimmy Lawrence, hb 48	1956—Ken Wineburg, hb.... 42
1936—Harold McClure, hb.. 36	1957—Jim Shofner, hb..... 40
1937—David O'Brien, qb..... 55	1958—Marshall Harris, hb.. 26
1938—Connie Sparks, fb..... 66	1959—Harry Moreland, hb.. 36
	Marvin Lasater, hb.... 36
1939—Kyle Gillespie, qb..... 30	1960—Sonny Gibbs, qb..... 24
1940—Dean Bagley, qb..... 24	1961—Sonny Gibbs, qb..... 18
1941—Frank Kring, fb..... 42	Tommy Crutcher fb..... 18
1942—Beecher Montgomery, qb..... 19	1962—Sonny Gibbs, qb..... 42
1943—Jim Lucas, qb..... 25	1963—Jimmy McAteer, kicking specialist..... 23

Florida State Depth Chart

PROBABLE ORDER OF APPEARANCE



81 Floyd

84 D'Allessandro

88 Gunter



70 Williams

79 F. Pennie

64 Braggins



51 Avezzano

66 Hermann

69 Pope



55 Edwards

61 Shinholser

54 Stephens



75 MacKenzie

63 McDowell

60 Williamson



76 West

73 Sumner

77 Mangan



83 Dawson

89 Wettstein

80 Wachtel



13 Tensi

16 Pritchett

14 Massey



27 Spooner

22 Bibent

20 Green



25 Biletnikoff

28 Bailey

24 Revell



40 Narramore

43 Ehler

29 Petko

Kickoffs: 42 Murdock

Punter: 16 Pritchett

(See complete Florida State roster on Page 26)

PAT: 42 Murdock

"Welcome Fans"

BEFORE AND AFTER THE GAME . . .

TRY OUR

"FROG SPECIAL"

Every Saturday Nite—5 to 11 p.m. During Football Season—

Complete Smorgasbord (you help yourself) . . . 1.50



Golden fin

SEAFOOD RESTAURANT
(also Char-broiled Steaks)

1901 Montgomery Street

(2 minutes from Amon Carter Stadium)

Reservations PE 8-9877

Plymouth roars into '65 with 4 great new sports!



'65 Sport Fury

The biggest, plushiest Plymouth ever. A brand-new "ultra-everything" Plymouth that's still solidly in the low-price field.



'65 Valiant Signet

The compact that hasn't forgotten why you buy a compact. Still the best all-around compact, proving that Valiant didn't have to go big-car in price or size to give you big-car performance.



'65 Belvedere Satellite

A new way to swing without going out on a limb. For the buyer who knows that, when it's Plymouth, pride of ownership can still go hand-in-hand with low price.



'65 Barracuda Fastback

The fast-moving fastback at a spectacular low price. America's best combination yet of sports-car look, youthful vitality, all-purpose versatility, and all-around economy.

Get your free copy of the NCAA Football Almanac at your nearest participating Plymouth Dealer's.

THE ROARING '65s
FURY
BELVEDERE
VALIANT
BARRACUDA
Plymouth



things go
better
with
Coke



TCU

PROBABLE STARTING LINE-UP

No.	Name	Position
81	LARRY PERRY	TE
73	NORMAN EVANS	TT
63	HARVEY REEVES	TG
51	KEN HENSON	C
60	STEVE GARMON	PG
76	BOBBY SMITH	PT
86	JOE BALL	PE
10	RANDY HOWARD	QB
21	JIM FAUVER	HB
48	BOBBY BATTON	WB
26	LARRY BULAICH	FB

THE HORNFROG SQUAD

10 Howard, QB	27 Hudler, HB	60 Garmon, PG	77 Phillips, PT
11 Nix, QB	33 D. Smith, HB	61 G. Cooper, PG	78 Sitra, PT
12 Westbrook, HB	34 Bayer, FB	62 Gilliam, PG	79 Clore, PT
14 Richards, WB	38 Defee, FB	63 Reeves, TG	80 Sherrell, TE
15 Hennessee, QB	40 Hulse, QB	65 Williams, PG	81 Perry, TE
18 Jones, HB	41 DuBose, FB	67 Snow, TG	82 Johnson, PE
19 Horak, WB	46 Cannaday, QB	69 Stout, TG	83 Barker, PE
21 Fauver, HB	48 Batton, WB	70 Sullivan, TT	84 Bowers, PE
22 Sanders, WB	51 Henson, C	71 Lantz, TT	85 Campbell, TE
23 Duffey, HB	52 Carter, C	72 Nixon, TT	86 Ball, PE
24 P. Smith, WB	53 Nelson, C	73 Evans, TT	87 Hughey, TE
25 Uptegraph, WB	54 Lester, TG	75 R. Cooper, PT	88 Mott, TE
26 Bulaich, FB	57 Nayfa, C	76 B. Smith, PT	91 Alford, PE

FLORIDA STATE

PROBABLE STARTING LINE-UP

No.	Name	Position
81	DON FLOYD	LE
70	DEL WILLIAMS	LT
51	JOE AVEZZANO	LG
55	JACK EDWARDS	C
75	DALE MacKENZIE	RG
76	TOM WEST	RT
83	BILL DAWSON	RE
13	STEVE TENSI	QB
27	PHIL SPOONER	LH
25	FRED BILETNIKOFF	RH
40	LEE NARRAMORE	FB

THE SEMINOLE SQUAD

11 Waller, QB	27 Spooner, HB	61 Shinholser, C	78 C. Pennie, T
12 Gero, QB	28 Bailey, HB	62 Lurie, G	79 F. Pennie, T
13 Tensi, QB	29 Petko, HB	63 McDowell, G	80 Washtel, E
14 Massey, QB	34 Hosack, HB	64 Braggins, T	81 Floyd, E
15 Conway, HB	40 Narramore, FB	66 Herman, G	82 McDuffie, E
16 Pritchett, QB	41 Menendez, HB	68 Parrish, G	83 Dawson, E
20 Green, HB	42 Murdock, FB	69 Pope, G	84 D'Allessandro, E
21 Jones, HB	43 Ehler, FB	70 Williams, T	85 Saunders, E
22 Bibent, HB	51 Avezzano, G	73 Sumner, T	86 Blankinship, E
23 Giardino, FB	53 Pitts, C	74 Matthews, T	87 Garvin, E
24 Revell, HB	54 Stephens, C	75 MacKenzie, G	88 Gunter, E
25 Biletnikoff, HB	55 Edwards, C	76 West, T	89 Wettstein, E
26 Campbell, HB	60 Williamson, G	77 Mangan, T	

OFFICIALS

Referee: Pat McHugh
Head Linesman: A. C. Williams

Umpire: Louis Schaufele
Field Judge: Robert Gary

Backfield Judge: Barney Welch
Electric Clock Operator: Bill Boswell



Hotnew!

**Dodge at a
new lower price.
Coronet '65.
Bigger? Than the both
of them: Chevelle and
Fairlane. In wheelbase. In power.
Inside.
Buckets.
Bomb.
Bonus.
Check the price.
Surprise again. Right
down with the little ones.
It figures. It comes from
Dodge.
And Dodge comes on big
for 1965.**

'65 Dodge Coronet

DODGE COMES ON BIG FOR '65 • DART • CORONET • POLARA • CUSTOM 880 • MONACO



TCU DEPTH CHART

PROBABLE ORDER OF APPEARANCE



81 Perry
88 Mott
85 Campbell



73 Evans
70 Sullivan
72 Nixon



63 Reeves
69 Stout
67 Snow



51 Henson
57 Nayfa
52 Carter



60 Garmon
61 G. Cooper
65 Williams



76 B. Smith
78 Sitra
77 Phillips



86 Ball
82 Johnson
84 Bowers



10 Howard
40 Hulse
46 Cannaday



21 Fauver
18 Jones
33 D. Smith



26 Bulaich
34 Bayer
41 DuBose



48 Batton
22 Sanders
25 G. Uptegraph

KO, PAT, FG: 91 Alford

Punter: Fauver

Defense: 14 Richards, 19 Horak, 53 Nelson

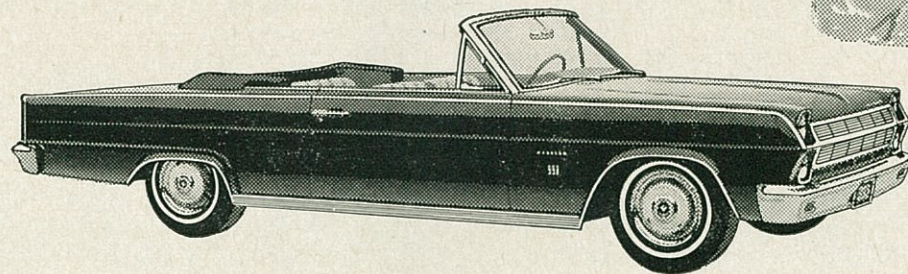
(See complete TCU roster on Page 35)

HIGH SCHOOL GAME OF THE WEEK

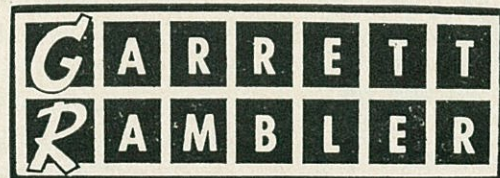
FRIDAYS **KFJZ** 7:25 PM
RADIO
1270

BILL ENIS • Play by Play

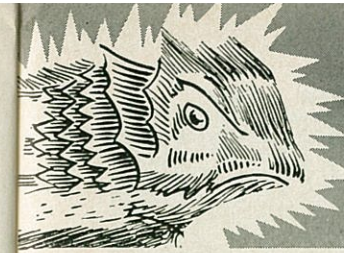
SURPRISE CARS of '65 RAMBLER



SEE 'EM
DRIVE 'EM
BUY 'EM
AT
SOUTHWEST LEADING
RAMBLER DEALER



811 SO. UNIVERSITY DR. ED 5-4835
BANK RATE FINANCING



HORNED FROG ROSTER

(NUMERICAL)

No.	Name	Pos.	Wt.	Ht.	Age	# Class-Exp.	Hometown (School)	High School Coach
10	Randy Howard	QB	175	5-11	21	Sr-1L	Dawson	Edd Burleson
11	Kent Nix	QB	184	6-2	20	Jr-1L	Corpus Christi (Ray)	Bill Stages
12	Richard Westbrook	HB	183	6-1	20	Soph-1-Sq	Thorndale	Evan Weaver
14	John Richards	WB	175	6-0	19	Soph-FN	Ft. Worth (Arl. Hts.)	Homer Ludiker
15	Gary Hennessee	QB	170	6-0	19	Soph-FN	Meridian	Reg Reynolds
18	Dan Jones	HB	172	6-2	20	Jr-1L	Ft. Worth (Carter)	Buster Dixon
19	Frank Horak	WB	178	6-0	19	Soph-FN	Caldwell	Morris Stone
21	Jim Fauver	HB	185	5-10	21	Sr-2L	Houston (Milby)	Gil Bartosh
22	Bobby Sanders	WB	167	5-10	21	Sr-2L	Ft. Worth (Paschal)	Bill Allen
23	Jimmy Duffey	HB	165	5-10	19	Soph-FN	Dallas (Kimball)	Bo Campbell
24	Paul Smith	WB	178	6-1	20	Soph-1-Sq	Franklin	Joe Headrick
25	Gene Uptegraph	WB	179	6-3	20	Soph-1-Sq	San Benito	J. W. Helms
26	Larry Bulaich	FB	197	6-3	20	Sr-2L	LaMarque	Orville Etheridge
27	Cubby Hudler	HB	160	5-10	19	Soph-FN	Victoria	Tom Pruitt
33	David Smith	HB	198	6-0	22	Soph-1-Sq	Ft. Worth (Carter)	Buster Dixon
34	Ernest Bayer	FB	200	6-1	20	Jr-1L	Cameron	Billy Bates
38	Bill Defee	FB	190	6-0	19	Soph-FN	Amarillo (Tascosa)	R. M. Patterson
40	John Hulse	QB	174	6-0	21	Jr-2Sq	Newcastle	Johnny Vaughan
41	Carroll DuBose	FB	199	6-0	21	Jr-1L	Devine	Marvin Gustafson
46	Jerry Cannady	QB	173	6-1	20	Soph-1-Sq	Pittsburg	Leonard Cannady
48	Bobby Batton	WB	174	6-1	20	Jr-1L	Hubbard	Jack Schrader
51	Ken Henson	C	245	6-6	21	Sr-2L	San Angelo	Bob Harrell
52	Benny Carter	C	204	6-3	21	Jr-2Sq	McKinney	Charles Qualls
53	Bobby Nelson	C	185	6-0	19	Soph-FN	Ft. Worth (Haltom)	John Hugh Smith
54	Darrell Lester	TG	199	6-2	21	Jr-2Sq	Houston (Bellaire)	Scat Sullivan
57	Jim Nayta	C	231	6-3	19	Soph-1-Sq	Ft. Worth (Paschal)	Bill Allen
60	Steve Garmon	PG	211	6-0	22	Sr-2L	Groom	Weldon Bates
61	Gary Cooper	PG	209	6-0	21	Jr-1L	Everman	Neil Hoskins
62	Butch Gilliam	PG	219	6-0	21	Soph-1-Sq	Belton	Cedric Bettis
63	Harvey Reeves	TG	190	5-9	21	Sr-2L	Port Arthur	C. E. Underwood
65	Porter Williams	PG	208	6-0	20	Soph-1-Sq	Corpus Christi (Carroll)	Cotton Ashton
67	Billy Snow	TG	201	6-1	21	Jr-2Sq	Ft. Worth (Arl. Hts.)	Homer Ludiker
69	Russell Stout	TG	196	6-0	21	Jr-1L	Port Arthur	C. E. Underwood
70	Richard Sullivan	TT	212	6-0	21	Jr-2Sq	Whitney	Fred Smith
71	Harry Lantz	TT	206	6-2	21	Soph-1-Sq	Donna	Earl Scott
72	Ronny Nixon	TT	209	6-1	20	Soph-1-Sq	Houston (Milby)	Gil Bartosh
73	Norman Evans	TT	224	6-5	21	Sr-2L	Donna	Earl Scott
75	Ronny Cooper	PT	209	6-4	20	Soph-1-Sq	Ft. Worth (Paschal)	Bill Allen
76	Bobby Smith	PT	209	6-2	21	Sr-1L	San Antonio (Burbank)	Roy Wallace
77	Preston Phillips	PT	207	6-4	21	Jr-2Sq	Kerrville	Tom Daniels
78	Adon Sitra	PT	197	5-11	20	Soph-1-Sq	Austin (McCallum)	Curtis Shiflet
79	Larry Clore	PT	214	6-4	20	Soph-1-Sq	Ft. Worth (Paschal)	Bill Allen
80	Joe Sherrell	TE	189	6-1	19	Soph-FN	Irving	Bob Harrell
81	Larry Perry	TE	175	6-1	20	Jr-1L	Dallas (S. Oak Cliff)	Raymond Mattingly
82	Doyle Johnson	PE	198	6-2	20	Soph-1-Sq	Galena Park	Paul Smith
83	Bobby Barker	PE	205	6-1	21	Sr-2Sq	LaMarque	Orville Etheridge
84	Bill Bowers	PE	214	6-5	21	Sr-2L	Ft. Worth (Carter)	Buster Dixon
85	Charles Campbell	TE	196	6-2	20	Soph-1-Sq	Ft. Worth (Haltom)	John Hugh Smith
86	Joe Ball	PE	199	6-3	19	Jr-1L	Graham	Roy Curry
87	Jim Hughey	TE	190	6-3	20	Soph-1-Sq	Mineral Wells	Glen Johnson
88	Darrell Mott	TE	171	5-11	21	Sr-2L	Taylor	Bill Ford
91	Bruce Alford, Jr.	PE	176	6-0	19	Soph-FN	Ft. Worth (Paschal)	Bill Allen

NOTE: Class designates player's eligibility in football; L—varsity letter; Sq—varsity squad; FN—freshman numeral.

TCU VARSITY COACHING STAFF—Abe Martin, head coach; Allie White, defensive line; Walter Roach, defensive backs; Mal Fowler, offensive backs; Hunter Enis, offense and quarterbacks; Don Jackson, offensive line; Fred Taylor, ends and freshmen.

1964 TCU TRI-CAPTAINS—Tackle Norman Evans, Halfback Jim Fauver and Guard Steve Garmon.



"OFFICIAL WATCH FOR THIS GAME — LONGINES — THE WORLD'S MOST HONORED WATCH"



PAST RESULTS

WITH KANSAS

1942-TCU, 41-6	1950-TCU, 14-7	1957-tie, 13-13
1944-TCU, 7-0	1951-Kan., 27-13	1958-TCU, 42-0
1945-TCU, 18-0	1952-Kan., 13-0	1959-TCU, 14-7
1946-tie, 0-0	1953-TCU, 13-0	1960-Kan., 21-7
1947-tie, 0-0	1954-TCU, 27-6	1961-TCU, 17-16
1948-TCU, 14-13	1955-TCU, 47-14	1962-TCU, 6-3
1949-TCU, 28-0	1956-TCU, 32-0	1963-TCU, 10-6

TCU has won 15, Kansas has won 3. Tied 3.

WITH FLORIDA STATE

1963-TCU, 13-0

WITH ARKANSAS

1920-TCU, 19-2	1938-TCU, 21-14	1951-TCU, 17-7
1921-TCU, 19-14	1939-Ark., 14-13	1952-TCU, 13-7
1924-Ark., 20-0	1940-TCU, 20-0	1953-Ark., 13-6
1925-TCU, 3-0	1941-TCU, 9-0	1954-Ark., 20-13
1926-TCU, 10-7	1942-TCU, 13-6	1955-TCU, 26-0
1927-Ark., 10-3	1943-TCU, 13-0	1956-TCU, 41-6
1930-TCU, 40-0	1944-tie, 6-6	1957-Ark., 20-7
1931-TCU, 7-0	1945-Ark., 27-14	1958-TCU, 12-7
1932-TCU, 34-12	1946-Ark., 34-14	1959-Ark., 3-0
1933-Ark., 13-0	1947-Ark., 6-0	1960-Ark., 7-0
1934-Ark., 24-10	1948-Ark., 27-14	1961-Ark., 28-3
1935-TCU, 13-7	1949-Ark., 27-7	1962-Ark., 42-14
1936-TCU, 18-14	1950-TCU, 13-6	1963-Ark., 18-3
1937-tie, 7-7		

TCU has won 20, Arkansas has won 18. Tied 2.

WITH TEXAS TECH

1926-TCU, 28-16	1943-Tech, 40-20	1958-TCU, 26-0
1927-TCU, 16-6	1944-TCU, 14-0	1959-TCU, 14-8
1928-TCU, 28-6	1945-Tech, 12-0	1960-TCU, 21-7
1929-TCU, 22-0	1950-TCU, 19-6	1961-Tech, 10-0
1930-TCU, 26-0	1951-Tech, 33-19	1962-TCU, 35-13
1936-Tech, 7-0	1955-TCU, 32-0	1963-TCU, 35-3
1942-Tech, 13-6	1956-Tech, 21-7	

TCU has won 13, Tech has won 7. Tied 0.

WITH TEXAS A&M

1897-TCU, 30-6	1925-TCU, 3-0	1945-TCU, 13-12
1898-A&M, 16-0	1926-tie, 13-13	1946-A&M, 14-0
1902-A&M, 22-0	1927-tie, 0-0	1947-TCU, 26-0
1903-A&M, 14-6	1928-TCU, 6-0	1948-TCU, 27-14
A&M, 16-0	1929-TCU, 13-7	1949-TCU, 28-6
A&M, 11-0	1930-TCU, 3-0	1950-A&M, 42-23
1904-A&M, 29-0	1931-TCU, 6-0	1951-TCU, 20-14
1905-A&M, 20-0	1932-TCU, 17-0	1952-tie, 7-7
A&M, 24-11	1933-TCU, 13-7	1953-A&M, 20-7
1906-A&M, 42-0	1934-TCU, 13-0	1954-TCU, 21-20
A&M, 22-0	1935-TCU, 19-14	1955-A&M, 19-16
1907-A&M, 32-5	1936-A&M, 18-7	1956-A&M, 7-6
1908-A&M, 13-10	1937-tie, 7-7	1957-A&M, 7-0
1909-tie, 0-0	1938-TCU, 34-6	1958-TCU, 24-8
1910-A&M, 35-0	1939-A&M, 20-6	1959-TCU, 39-6
A&M, 23-6	1940-A&M, 21-7	1960-tie, 14-14
1914-A&M, 40-0	1941-A&M, 14-0	1961-TCU, 15-14
1915-A&M, 13-10	1942-TCU, 7-2	1962-TCU, 20-14
1919-A&M, 48-0	1943-A&M, 13-0	1963-tie, 14-14
1924-A&M, 28-0	1944-TCU, 13-7	

TCU has won 23, A&M has won 29. Tied 7.

WITH CLEMSON

1959—Clemson, *23-7

*Bluebonnet Bowl.

WITH BAYLOR

1899-tie, 0-0	1911-Baylor, 12-0	1939-Baylor, 27-0
1901-Baylor, 36-0	1912-TCU, 22-0	1940-TCU, 14-12
Baylor, 42-0	1914-Baylor, 28-14	1941-TCU, 23-12
1902-tie, 0-0	1915-Baylor, 51-0	1942-Baylor, 10-7
Baylor, 20-0	1916-Baylor, 32-14	1945-TCU, 7-6
1903-Baylor, 14-0	1917-TCU, 34-0	1946-TCU, 19-16
Baylor, 5-0	1918-TCU, 12-7	1947-TCU, 14-7
1904-tie, 0-0	1919-Baylor, 7-0	1948-Baylor, 6-3
Baylor, 17-0	1920-TCU, 21-9	1949-Baylor, 40-14
TCU, 5-0	1925-tie, 7-7	1950-Baylor, 20-14
1905-TCU, 16-0	1926-tie, 7-7	1951-TCU, 20-7
Baylor, 10-6	1927-TCU, 14-0	1952-tie, 20-20
TCU, 17-0	1928-Baylor, 7-6	1953-Baylor, 25-7
1907-tie, 6-6	1929-TCU, 34-7	1954-Baylor, 12-7
TCU, 11-10	1930-Baylor, 35-14	1955-TCU, 28-6
Baylor, 16-3	1931-TCU, 19-6	1956-TCU, 7-6
1908-TCU, 15-0	1932-TCU, 27-0	1957-TCU, 19-6
TCU, 10-6	1933-Baylor, 7-0	1958-TCU, 22-0
Baylor, 23-8	1934-TCU, 34-12	1959-TCU, 14-0
1909-TCU, 9-0	1935-TCU, 28-0	1960-TCU, 14-6
TCU, 11-0	1936-TCU, 28-0	1961-Baylor, 28-14
Baylor, 6-3	1937-Baylor, 6-0	1962-TCU, 28-26
1910-Baylor, 52-0	1938-TCU, 39-7	1963-Baylor, 32-13
Baylor, 10-3		

TCU has won 33, Baylor has won 30. Tied 7.

WITH TEXAS

1897-Texas, 18-10	1932-TCU, 14-0	1948-Texas, 14-7
1898-Texas, 16-0	1933-TCU, 30-0	1949-TCU, 14-13
Texas, 29-0	1934-Texas, 20-19	1950-Texas, 21-7
1904-Texas, 40-0	1935-TCU, 28-0	1951-Texas, 32-21
1905-Texas, 11-0	1936-TCU, 27-6	1952-Texas, 14-7
1906-Texas, 22-0	1937-TCU, 14-0	1953-Texas, 13-3
1908-Texas, 11-6	1938-TCU, 28-6	1954-Texas, 35-34
1909-Texas, 24-0	1939-Texas, 25-19	1955-TCU, 47-20
1912-Texas, 30-10	1940-Texas, 21-14	1956-TCU, 46-0
1915-Texas, 72-0	1941-TCU, 14-7	1957-Texas, 14-2
1918-Texas, 19-0	1942-TCU, 13-7	1958-TCU, 22-8
1924-Texas, 13-0	1943-Texas, 46-7	1959-TCU, 14-9
1927-tie, 0-0	1944-TCU, 7-6	1960-Texas, 3-2
1928-Texas, 6-0	1945-Texas, 20-0	1961-TCU, 6-0
1929-TCU, 15-12	1946-TCU, 14-0	1962-Texas, 14-0
1930-Texas, 7-0	1947-Texas, 20-0	1963-Texas, 17-0
1931-Texas, 10-0		

TCU has won 17, Texas has won 31. Tied 1.

WITH RICE

1914-tie, 0-0	1936-TCU, 13-0	1950-TCU, 26-14
1915-Rice, 33-3	1937-TCU, 7-2	1951-TCU, 23-6
1916-tie, 7-7	1938-TCU, 29-7	1952-Rice, 12-7
1917-Rice, 26-0	1939-TCU, 21-0	1953-Rice, 19-6
1923-TCU, 6-0	1940-Rice, 14-6	1954-Rice, 6-0
1924-tie, 7-3	1941-tie, 0-0	1955-TCU, 35-0
1928-TCU, 7-0	1942-Rice, 26-0	1956-TCU, 20-17
1929-TCU, 24-0	1943-Rice, 13-3	1957-Rice, 20-0
1930-TCU, 20-0	1944-TCU, 9-6	1958-TCU, 21-10
1931-TCU, 7-6	1945-TCU, 14-13	1959-TCU, 35-6
1932-TCU, 16-6	1946-Rice, 13-0	1960-Rice, 23-0
1933-TCU, 26-3	1947-Rice, 7-0	1961-Rice, 35-16
1934-TCU, 7-2	1948-Rice, 21-7	1962-TCU, 30-7
1935-TCU, 27-6	1949-Rice, 20-14	1963-Rice, 33-7

TCU has won 22, Rice has won 17. Tied 3.

WITH SMU

1915-TCU, 43-0	1934-SMU, 19-0	1949-TCU, 21-13
1916-TCU, 48-3	1935-SMU, 20-14	1950-TCU, 27-13
1917-TCU, 21-0	1936-tie, 0-0	1951-TCU, 13-2
1918-SMU, 1-0	1937-TCU, 3-0	1952-TCU, 14-7
1921-TCU, 13-6	1938-TCU, 20-7	1953-TCU, 13-0
1922-tie, 0-0	1939-SMU, 14-7	1954-SMU, 21-6
1923-SMU, 40-0	1940-SMU, 16-0	1955-TCU, 20-13
1924-SMU, 6-0	1941-TCU, 15-13	1956-TCU, 21-6
1926-SMU, 14-13	1942-TCU, 14-6	1957-TCU, 21-0
1927-SMU, 28-6	1943-SMU, 20-0	1958-SMU, 20-13
1928-TCU, 15-6	1944-SMU, 9-6	1959-TCU, 19-0
1929-tie, 7-7	1945-SMU, 34-0	1960-TCU, 13-0
1930-TCU, 13-0	1946-SMU, 30-13	1961-Tie, 28-28
1931-tie, 0-0	1947-tie, 19-19	1962-TCU, 14-9
1932-TCU, 8-0	1948-tie, 7-7	1963-TCU, 22-15
1933-TCU, 26-6		

TCU has won 24, SMU has won 15. Tied 7.

*Forfeit, when TCU bus stuck in mud and failed to show up for game.

SOUTHWEST CONFERENCE CHAMPIONS

1915—Baylor	1940—Texas A&M and SMU
1916—No champion	1941—Texas A&M
1917—Texas A&M	1942—Texas
1918—No champion	1943—Texas
1919—Texas A&M	1944—TEXAS CHRISTIAN
1920—Texas	1945—Texas
1921—Texas A&M	1946—Rice and Arkansas
1922—Baylor	1947—SMU
1923—SMU	1948—SMU
1924—Baylor	1949—Rice
1925—Texas A&M	1950—Texas
1926—SMU	1951—TEXAS CHRISTIAN
1927—Texas A&M	1952—Texas
1928—Texas	1953—Texas and Rice
1929—TEXAS CHRISTIAN	1954—Arkansas
1930—Texas	1955—TEXAS CHRISTIAN
1931—SMU	1956—Texas A&M
1932—TEXAS CHRISTIAN	1957—Rice
1933—No champion	1958—TEXAS CHRISTIAN
1934—Rice	1959—TEXAS CHRISTIAN,
1935—SMU	Texas and Arkansas
1936—Arkansas	1960—Arkansas
1937—Rice	1961—Arkansas and Texas
1938—TEXAS CHRISTIAN	1962—Texas
1939—Texas A&M	1963—Texas

UNMISTAKABLY...THE FINEST



King's

The Royal Family of Fine

CHOCOLATES

KING CANDY COMPANY • SINCE 1906 • FORT WORTH, TEXAS

THE WORLD'S MOST HONORED WATCH



LONGINES

Official Watch for these Games
and for Leading National and
International Sports Associations
Throughout The World

Major College Football Games • National Football League Games
• American Football League Games • Major League Baseball
Games, including the World Series • U.S. Olympic Trials 1964 •
President's Cup Regatta • Pike's Peak Hill Climb • Mobilgas
Economy Run • 100,000 Mile Mercury-Comet Record • North
American Ski Championships • SCCA National Rallies • National
Bobsled Championships • National Speed Skating Championships
• World Professional Ski Championships • National Horse Shows
• National Outdoor Men's & Women's Swimming Championships
• World Automobile Speed Record-Lake Eyre, Australia • Grand
Prix de Monaco • Monte Carlo Rally • Austrian Rowing Champions-
hips • Swiss Rowing Championships • Int. Ireland Automobile
Rally • Int. Akropolis Automobile Rally—Greece • Tour of Britain
(Cycling)—London • Tour de France (Cycling)—Paris • Giro
d'Italia (Cycling)—Milan • Shell 5000 Rally—Vancouver—
Montreal

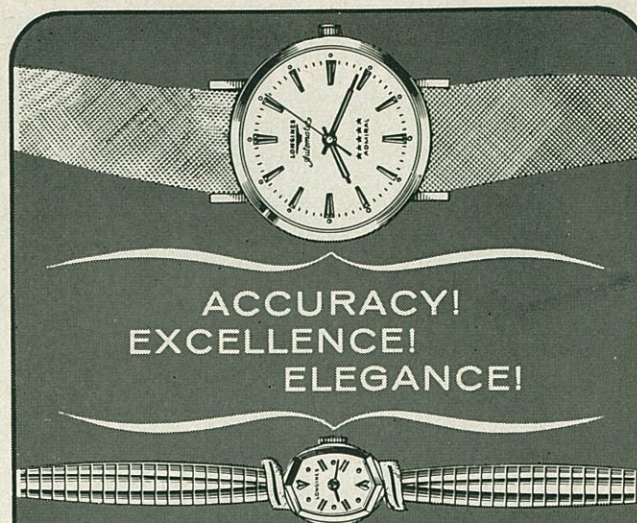
LONGINES, The World's Most Honored Watch

10 World's Fair Grand Prizes

28 Gold Medal Awards

Highest Observatory Honors for Accuracy
Premier Watch of Science, Aviation and Exploration

LONGINES-WITTNAUER WATCH COMPANY



ACCURACY!
EXCELLENCE!
ELEGANCE!

LONGINES has been proven superior in open com-
petition with the world's costliest timepieces. Longines is chosen year after year to time almost
all major championship sports events throughout
the world. Longines watches are sold and serviced
in 150 countries of the free world.

Illustrated—
Longines Grand Prize Admiral
Automatic Calendar Watch,
Gold Filled. Mesh bracelet.
From \$135.

Longines Lady's World's Fair
Solid 14K gold with faceted
unbreakable synthetic
sapphire crystal. From \$125.

At Franchised
LONGINES-WITTNAUER JEWELERS

THE HORNED FROG VARSITY RESERVES

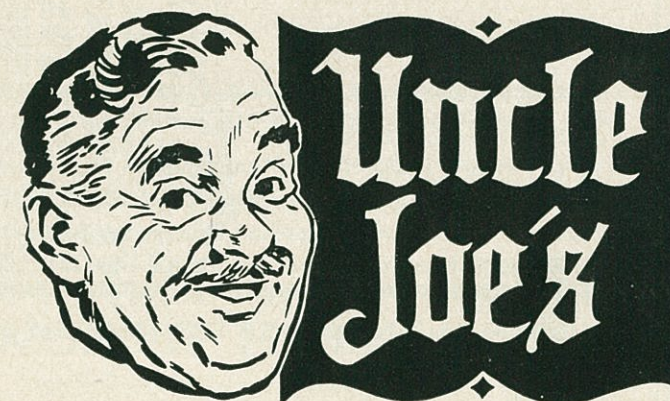
(Alphabetical)

Name—	Pos.	Wt.	Ht.	Age	Class-Exp.	Hometown - Hi.Schl.
Adams, Mike	QB	174	6-0	19	Soph-FN	Henderson
Bennett, Paul	PE	187	6-1	19	Soph-FN	Amarillo (Tascosa)
Blankinship, Ed	C	195	6-1	19	Soph-FN	Houston (Bellaire)
Clary, Jimmy	HB	190	6-4	19	Soph-FN	Everman
DiCuffa, Jim	C	210	6-0	19	Soph-FN	Dimmitt
Halbert, James	PE	206	6-0	19	Soph-FN	Whitney
Herrington, Charles	TG	207	6-0	19	Soph-FN	Orange (Little Cyp.)
Johnson, Mike	HB	165	6-0	19	Soph-FN	Nacogdoches
Lloyd, Doug	TG	214	6-0	20	Soph-FN	LaMarque
Lucas, James	TT	216	6-0	19	Soph-FN	Rosebud
McMillon, Ron	TE	193	6-2	19	Soph-FN	Lawn
Manka, Leroy	PT	213	6-4	19	Soph-FN	Karnes City
Mitchell, Charles	PT	220	6-6	19	Soph-FN	Horatio, Ark.
Powell, Jack	FB	209	5-11	19	Soph-FN	Granbury
Pyle, Louis	PG	204	6-0	19	Soph-FN	Houston (Sp. Branch)
Ray, Don	C	196	6-0	19	Soph-FN	McAllen
Smith, Freddy	PG	218	5-9	19	Soph-FN	Knox City
Thurman, Dave	FB	195	6-0	19	Soph-FN	Rocksprings
Uptegraph, Don	WB	184	6-2	18	Soph-FN	San Benito
Vestal, Richard	FB	190	6-0	19	Soph-FN	Houston (Sp. Branch)
Young, Charles	TT	200	6-2	19	Soph-FN	Everman

BUDDIES

SUPER MARKETS

"Your dollar buys more at Buddies"



HOME OF UNCLE
JOE'S PRODUCTS



Ask for it by name
1414 JONES STREET

BIG 4

AUTO SUPPLY CO., INC.

Charles Anton.

Supporter of T. C. U. and the
FIGHTING FROGS

**Berry Bros. and
Donohue, Inc.**
Cleaners and Dyers

Pennsylvania, Between Henderson and Fifth Avenue

THE GRIDDLE SYSTEM

HAMBURGERS — MALTS — FRENCH FRIES

NINE CONVENIENT LOCATIONS

NO. 2 1417 VAUGHN BLVD.

NO. 11 3210 E. BELKNAP

NO. 4 4735 CAMP BOWIE BLVD.

NO. 12 4013 E. LANCASTER

NO. 5 2006 NORTH MAIN

NO. 14 5149 RIVER OAKS BLVD.

NO. 8 1729 8TH AVE.

NO. 18 3148 SO. RIVERSIDE DR.

NO. 21 3113 DENTON HWY.

Drop by to see us after the game!



DR. HENRY HARDT

Men Behind The Frogs

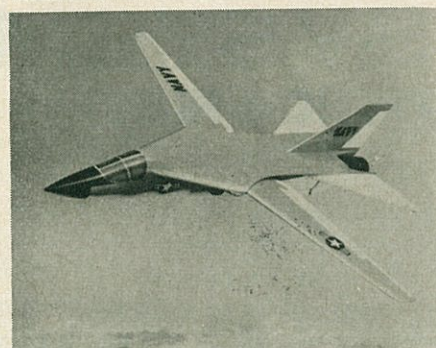
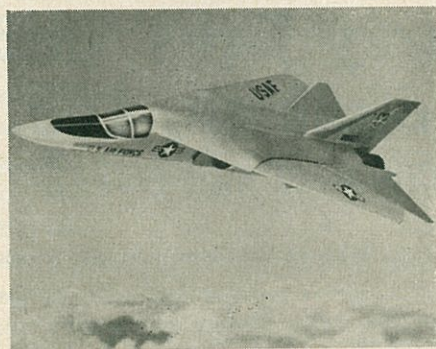
TCU athletics are controlled by the faculty and Board of Trustees. Members of the athletic committee of the Board and the Athletic Council of the faculty give enthusiastic support and close supervision to the University's program.

Carlos Ashley, a TCU graduate, chairmans the Board committee, and Lorin Boswell, another graduate, is chairman of the Board. He succeeded the late Milton Daniel of Breckenridge in 1958.

Other members are Drew Ellis, Perryton; Andrew A. Bradford, Midland; and Y. Q. McCammon, Fort Worth.

Dr. Henry Hardt, former president of NCAA and the Southwest Conference, continues as chairman of the Athletic Council and represents TCU in the Southwest Conference. Council members are Dr. George Tade, Dr. Ken Herrick, Dr. Gustave Ferre, Dr. Leslie Evans, Dr. Gentry Shelton, Abe Martin, Dr. Cecil Jarman, and one student.

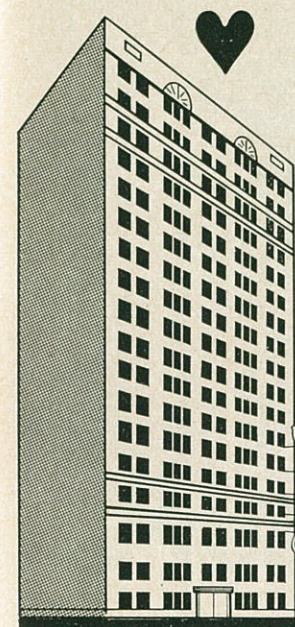
A Winning Combination . . .



Take an Air Force tactical fighter and a Navy multi-purpose fighter — combine them into one basic airplane — and you have a winning combination. It's the F-111 supersonic bi-service fighter now being developed at General Dynamics/Fort Worth. Like the B-36 and the B-58 before it, the F-111 will bolster the strength of the nation and the Free World.

GENERAL DYNAMICS | FORT WORTH

IN THE HEART OF DOWNTOWN FORT WORTH . . .



Where the new Convention Center is to be constructed. Ft. Worth is growing and going forward, and The Worth is keeping step with this progress.

8 Newly decorated and enlarged meeting and banquet rooms to accommodate up to 300 guests for private functions.

300 Beautifully and comfortably furnished guest bedrooms, studio rooms and suites.

800 Car garage to provide FREE parking.

Charter member of Independent Innkeepers International to give you FREE reservation and immediate confirmation service at outstanding member hotels in Louisiana, Oklahoma, Tennessee, Texas, and Mexico.

WORTH HOTEL

"aglow with Western Hospitality"

7th & Taylor • Jack Farrell, mgr.



**ARE YOU GOOD ENOUGH
TO BE AN ARMY OFFICER?
IF YOU ARE, DON'T SETTLE
FOR LESS!**



**STAY
IN
ARMY R.O.T.C.**

Enjoy Freshman Football at its Best!

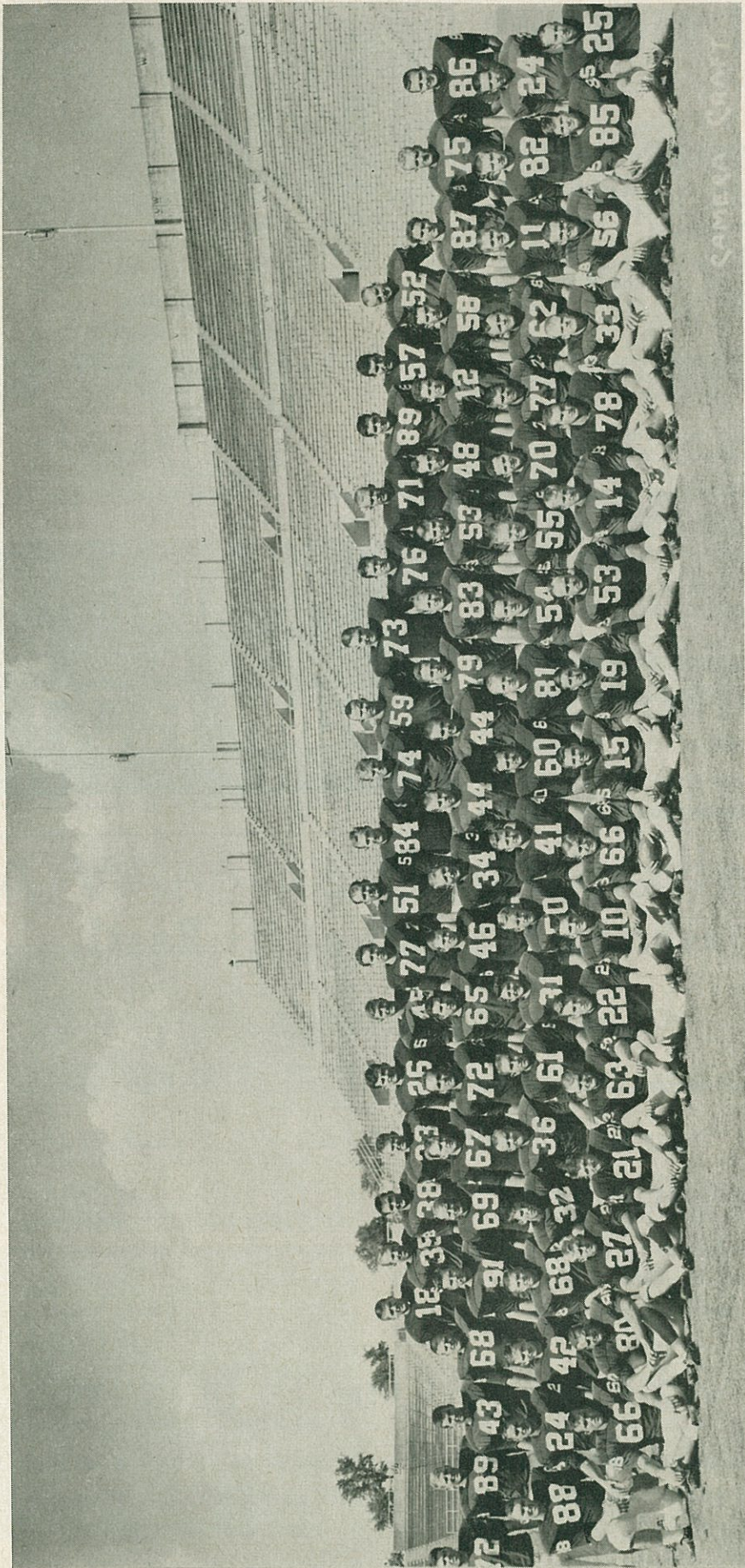
TCU WOGS' 1964 SCHEDULE

Oct. 7—*Texas A&M Fish, 7:30 p.m.	Fort Worth
Oct. 14—North Texas State Eaglets, 7:30 p.m.	Fort Worth
Oct. 29—Baylor Cubs, 7:30 p.m.	Waco
Nov. 6—Texas Shorthorns, 2 p.m.	Austin
Nov. 20—SMU Colts, 2 p.m.	Fort Worth

SEE ALL THE WOG HOME GAMES HERE AT THE STADIUM

NOTE: *Designates annual game sponsored by the TCU Ex-Lettermens Association. Pick up your tickets at numerous Fort Worth business firms. With a special ticket, admission is only 25 cents.

TCU VARSITY FOOTBALL SQUAD - 1964



TOP ROW, 1 to 11—Dan Jones, Tommy Kimbrough, Bill Defee, Mike Adams, Larry Bulaich, Charles Young, Preston Phillips, Ken Henson, Bill Bowers, Larry Clore, Charles Mitchell, Norman Evans, Bobby Smith, Harry Lantz, Jim Hughey, Jim Nayfa, Benny Carter.

THIRD ROW, 1 to 11—Leroy Manka, Paul Bennett, Leroy McGirk, Doug Lloyd, Bruce Alford, Jr., Russell Stout, Billy Snow, Ronny Nixon, Porter Williams, Jerry Cannaday, Ernest Bayer, Richard Vestal, Dave Thurman, Charles Herrington, Bobby Barker, Don Ray, Bobby Batton, Richard Westbrook, Ed Blankinship, Jimmy Clary, Ronny Cooper, Joe Ball.

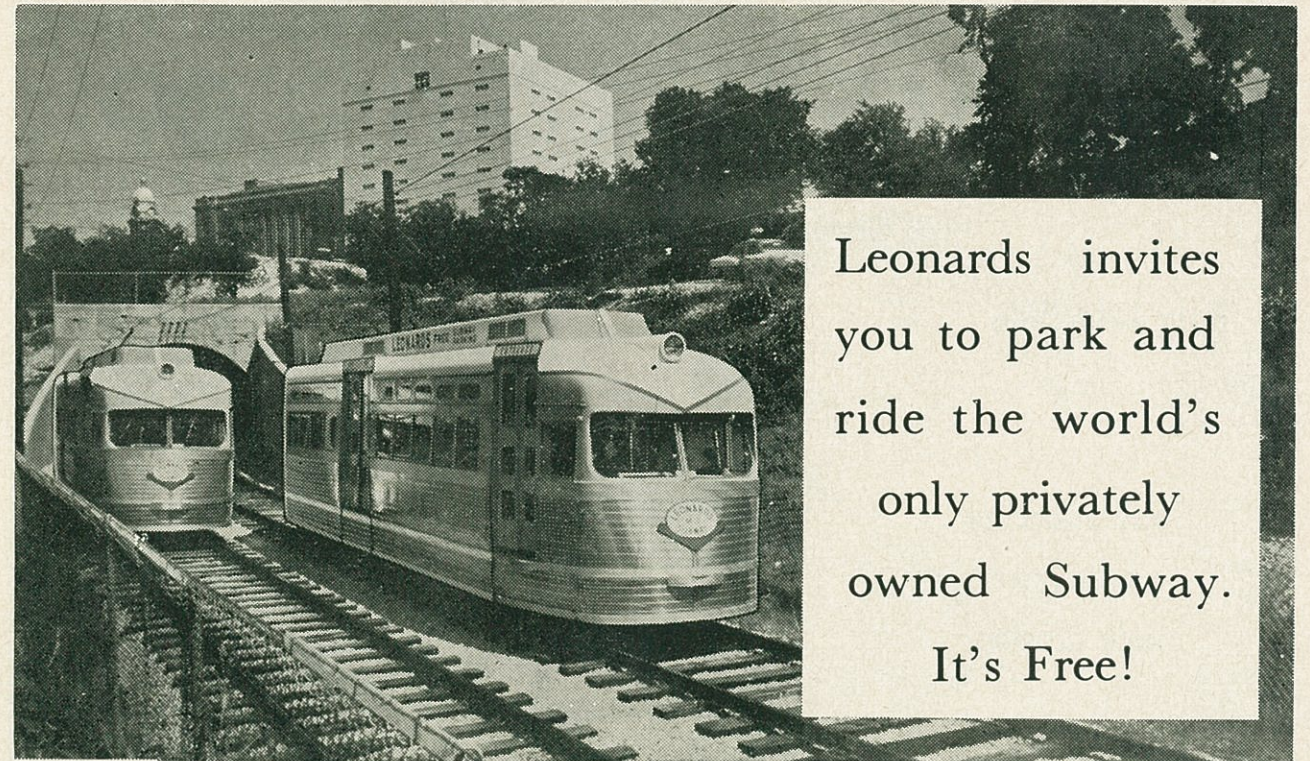
SECOND ROW, 1 to 11—Darrell Mott, Paul Smith, Mike Johnson, James Lucas, Gary Hennessee, Jack Powell, Gary Cooper, Harry Fowler, Jim DiCuffa, Carroll DuBose, Steve Garmon, Larry Perry, Darrell Lester, Jacky Huffman, Richard Sullivan, James Halbert, Butch Gilliam, Kent Nix, Doyle Johnson, Don Uptegraph.

FRONT ROW, 1 to 11—Louis Pyle, Joe Sherrell, Cubby Hudler, Jim Fauver, Harvey Reeves, Bobby Sanders, Randy Howard, Freddy Smith, Jimmy Duffey, Frank Horak, Bobby Nelson, John Richards, Adon Sitra, David Smith, Ron McMillon, Charles Campbell, Gene Uptegraph. Not pictured—John Hulse.



Protein-Power MILK

Boswell's Milk builds muscle . . . helps you make the health team. The extra creamy taste of Boswell's Milk means pure, wholesome nourishment for school, work or play. Drink Boswell's Milk everyday.



Leonards invites you to park and ride the world's only privately owned Subway. It's Free!



PURPLE LEADERS—Head Coach Abe Martin takes time to pose with his 1964 Horned Frog captains. They are, left to right, Jim Fauver, Steve Garmon and Norman Evans. All are seniors.

THOMAS M. RYAN & CO.

General Insurance and Bonds

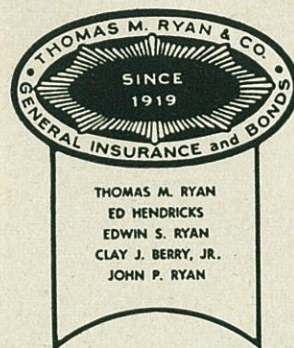
First Life Bldg.

ED 5-1276

RAY ANDERSON

JULIAN SCOTT, JR.

NICK GEORGES



PAUL O. SMITH

JIMMY ROBERTS



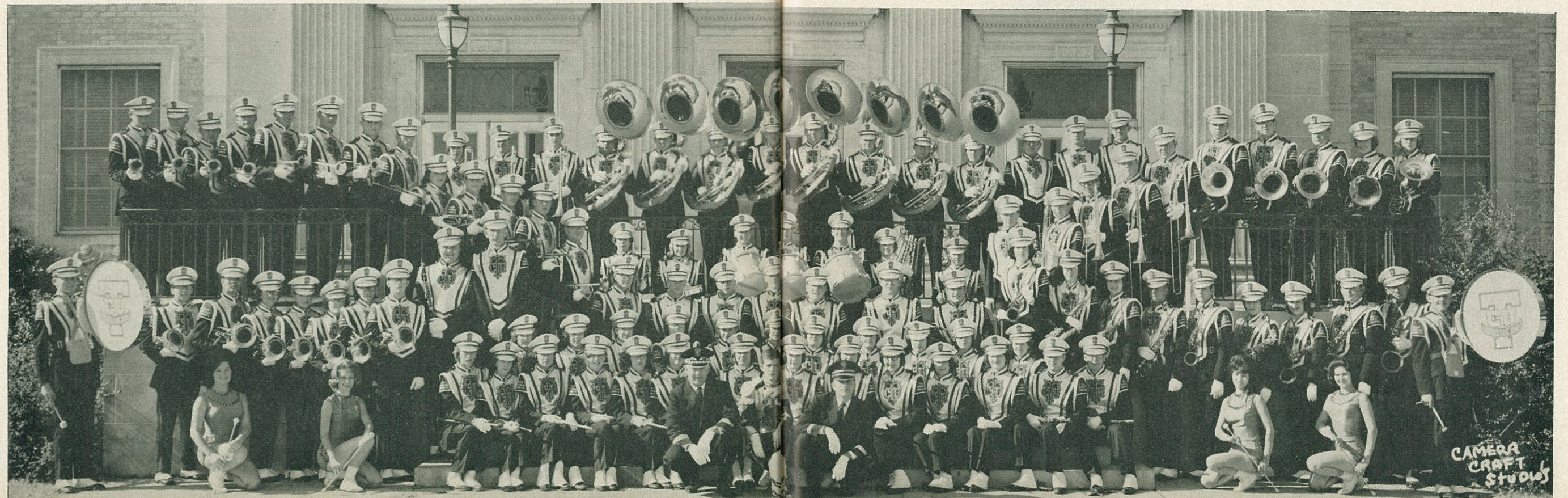
FROG TRAINERS—Elmer Brown, far right, is recognized as one of the nation's finest athletic trainers. His assistants for 1964 are, front row, l to r—John Lally, Aubry Fisk, Jerry Ball and Doug Gibbins; back row, l to r—Rhea Chafin, James Ketcham and Amos Ketcham.

We invite you to

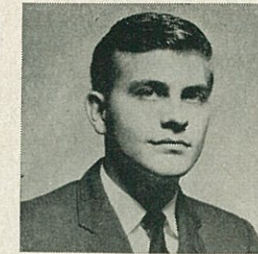
"SING ALONG WITH THE BAND" TCU ALMA MATER HYMN

Words and Music by
GLEN CANFIELD, '28

Arrangement by
JOHN GIORDANO, '60



James A. Jacobsen
Director of TCU Bands



Curtis Wilson
Asst. Dir. of Bands

The Show-Window of TCU:

The Horned Frog Band

"And the Band played on." Still one of the most traditional, colorful and fun-for-all attractions at any football game is the halftime program presented by the Band. One of the nation's outstanding collegiate bands is the famed TCU Horned Frog Band, which under the direction of James A. Jacobsen, celebrates its 59th anniversary this fall. It was in 1905 when the first Frog band took the field.

Jacobsen, who begins his 10th year as director, holds a B.A. degree from Colorado State College and a Master of Music Education from TCU. After serving in the Air Force, he was Director of Bands at Midwestern University for ten years, where his bands gained national prominence. Jacobsen has done graduate work with the Vandercook College of Music in Chicago and holds the honorary doctor of music degree from the Southern College of Fine Arts in Houston.

The Hal Leonard Publishing Company of Winona, Minn., recently published a "canned" band show that Jacobsen created. First presented by the TCU band during a football halftime in 1958, it is entitled "Atom and Eve."

Much practice is required by the more than 120 members of the TCU Band to perfect their halftime shows of music and maneuver. Today the University Bands not only include the Horned Frog "marching" band, but also the Symphonic "Concert" band and the Stage band, which is a training unit for jazz musicians.

Assisting Jacobsen is Curtis Wilson, a 1963 TCU graduate with a Bachelor of Music Education Degree. Now working toward a master's degree in music theory and composition at TCU he serves as director of the stage band and assistant director of the marching and concert bands. Student Assistant Director is Phillip L. Aikman, senior from Norfolk, Va.

Drum major is Wilson Friberg, a junior from Wichita Falls. Twirlers are Jackie Fatheree, a graduate student from Fort Worth; Michaelen Ferstl, a senior from Fort Worth; Linda Crow, a junior from Belton; and Karen McMillan, a senior from Maplewood, Louisiana.

The Band Council is comprised of Ronnie Puckett, a senior from Texas City, and band president; Wilson Friberg, president of Kappa Kappa Psi, band national fraternity, and Linda White, president of Tau Beta Sigma, band national sorority, and a senior from Texas City.

Staff members for the band include Secretary to the Director, Carol Jacobsen, freshman from Fort Worth; Equipment Manager, Lewis Dingman, senior from Grand Prairie; Music Librarian, Michaelen Ferstl, senior from Fort Worth; Assistant Music Librarian, Linda White, senior from Texas City.

CHEERLEADERS



DICK HANLEY



JERRY LOFTIN



KAKI SIMONS



HARRIETT EAKER



DONNA BONER

These five cheerleaders, along with Mike Hall, of Houston, symbolize the spirit of which Horned Frogs are justly proud.

YELLS AND SONGS

The Alma Mater

Hail, all hail, TCU
Mem'ries sweet, Comrades true;
Light of Faith, follow through,
Praise to Thee, TCU.
Hail, all hail, Glory Bright.
Purple Frogs, Honor White;
Victory! Spirits true . . .
Praise to Thee, TCU.

Fight Song

We'll raise a song, both loud and long,
To cheer our team to victory;
For TCU, so tried and true,
We pledge eternal loyalty.
Rah Rah!
Fight on, boys, fight, with all
your might,
Roll up the scores for TCU
Hail white and purple flag whose
heroes never lag,
Horned Frogs, we are all for you.

Whisper Yell

F! F! FRO (softly)
O! O! OGS
FRO OGS, Frogs
(repeat 3 times, getting louder)

Chant

F R O G S
F R O G S
F R O G S
F! R! O! G! S!
Frogs!

Riff Ram

Riff Ram Bah Zoo
Lickety Lickety Zoo oo,
Who Wah, Wah Who
Let 'er Go, TCU.

Fight Song Chant

F-R-O-G-S
F-I-G-H-T
Purple, White, Fight, Fight, Fight
Victory, Victory, Right, Right, Right
F-R-O-G-S
F-I-G-H-T
Go. Go, Horned Frogs Go
TCU Frogs Fight!



PENNY EDWARDS—"MISS TIPARILLO"

What does she mean "cigars...cigarettes...Tiparillos"?

You'll be hearing that chant more and more—now that Tiparillos have arrived. And arrived they have. In all the right places. With all the right people.

The new Tiparillo has a neat, trim shape. It looks young and debonair. And its pearly, pliable tip pays more than lip service to your smoking pleasure.

And never before such mildness! The most careful blending of choicest imported tobaccos has seen to that. So, too, has the exclusive, veinless Ultra Cigar Wrapper* that burns so evenly and smoothly it insures complete mildness.

You can even see the mildness. The

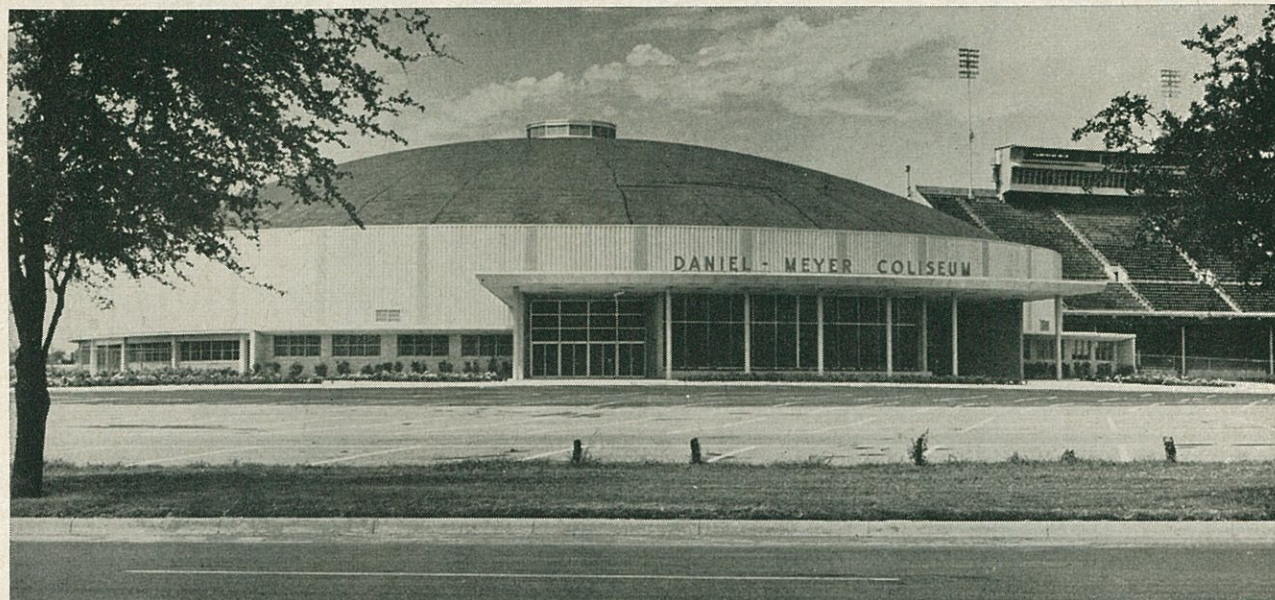
surprisingly whiter ash is visible evidence. Smoker's proof. Here is flavor you don't have to inhale to enjoy.

"Cigars . . . cigarettes . . . ?" Who knows, maybe someday it will be just "Tiparillos!"

Why don't you ask for one today?

*T.M. GENERAL CIGAR CO.

Tiparillos are on sale at this stadium.



DANIEL-MEYER COLISEUM—With the TCU Stadium in the background, shown is the Daniel-Meyer Coliseum, which was completed in December 1961. Located on the southwest side of the campus, the beautiful structure is one of the nation's finest. It is completely air-conditioned, and has a seating capacity of 7,155—all arm-chair seats. The TCU athletic and ticket offices are also located inside the domed building.

T. C. U. VARSITY BASKETBALL SCHEDULE FOR 1964-65

Non-Conference

Dec. 1.....Austin College at Fort Worth
 Dec. 5.....Ohio State at Fort Worth
 Dec. 7.....Arlington State at Fort Worth
 Dec. 10.....Houston at Fort Worth
 Dec. 12.....Loyola (New Orleans) at Fort Worth
 Dec. 17.....Loyola (New Orleans) at New Orleans
 Dec. 21.....Centenary at Fort Worth
 Dec. 29-30.....Sun Carnival at El Paso (two games to be played)
 Jan. 18.....Houston at Houston

NOTE: *Indicates afternoon games at 2 p.m.

Southwest Conference

Jan. 5.....Arkansas at Fort Worth
 *Jan. 9.....Texas at Fort Worth
 Jan. 12.....Texas A&M at College Station
 *Jan. 30.....Texas Tech at Fort Worth
 Feb. 2.....SMU at Dallas
 *Feb. 6.....Baylor at Fort Worth
 Feb. 9.....Rice at Houston
 *Feb. 13.....Arkansas at Fayetteville
 Feb. 16.....SMU at Fort Worth
 Feb. 20.....Baylor at Waco
 Feb. 23.....Texas A&M at Fort Worth
 Feb. 26.....Texas Tech at Lubbock
 Mar. 2.....Texas at Austin
 Mar. 4.....Rice at Fort Worth

ALL HOME GAMES TO BE PLAYED AT DANIEL-MEYER COLISEUM

—Follow the Frogs again over Radio Station WBAP—

Exclusive Distributors of

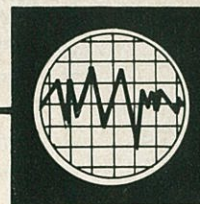


SOUND SYSTEMS

Fort Worth's Leading Quality Sound Contractors

THOMAS ELECTRONICS

3024 BRYAN • WA 1-1411 • FORT WORTH, TEXAS • 76110



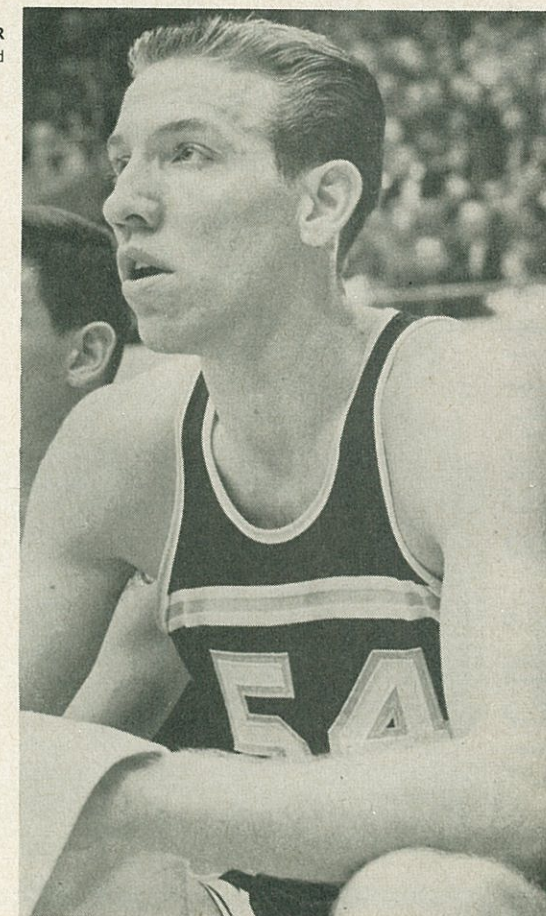
TCU Cage Outlook

With one of the finest home schedules in recent years, Coach Buster Brannon is hoping his 1964-65 TCU varsity basketball team will be improved this season.

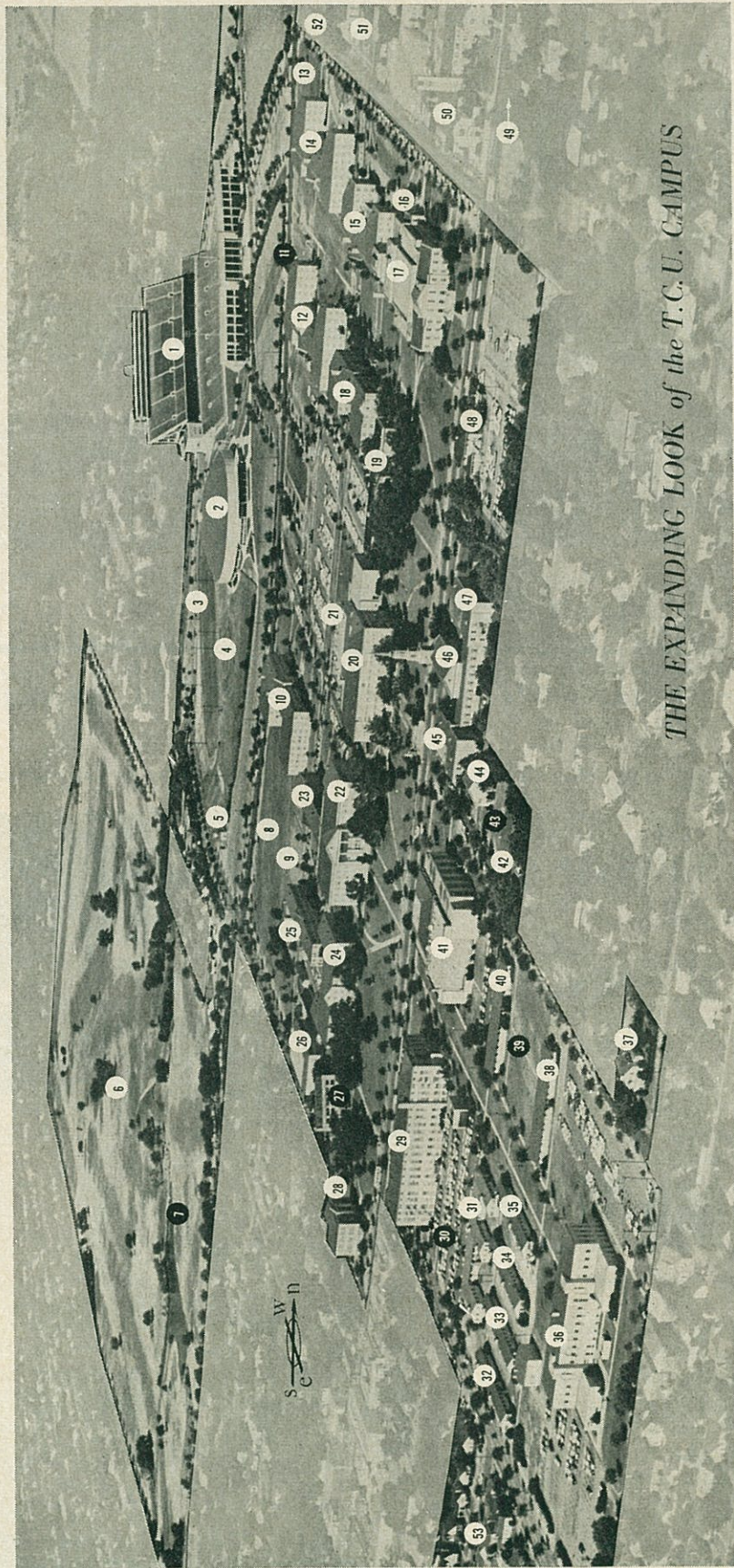
Brannon could have a fine team. He will have seven lettermen returning, including the talented Gary Turner. The 6-6 Turner had a fabulous sophomore season last winter. He had an 18.8 average in 24 games, and added 11.7 more rebounds per outing. Five sophomores, Guard Wayne Kreis, Forward Rodney Chitsey, Guard-Forward Rich Sauer, Guard Garvin Isaacs and Center Stan Farr will make stout bids for starting roles.

Ohio State heads the list of intersectional games in the Daniel-Meyer Coliseum. The strong Buckeyes and 12 other teams will be here. Season ticket information can be obtained from the ticket office in the Daniel-Meyer Coliseum. The phone number is WA 4-5184.

GARY TURNER
Forward



You're always invited to
SEE TCU'S BEAUTIFUL CAMPUS IN FRIENDLY FORT WORTH



THE EXPANDING LOOK of the T.C.U. CAMPUS

Guide to Buildings and New or Planned Construction

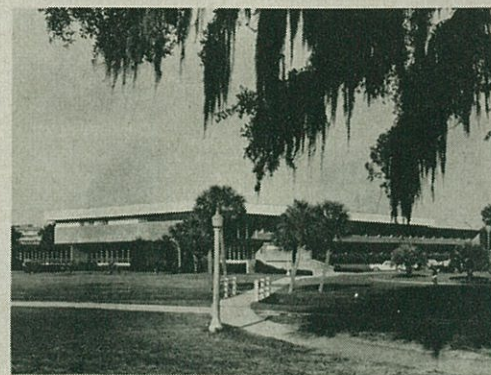
- | | | | | | | |
|-------------------------------------|---|---------------------------------|---|--|---|-------------------------------------|
| 1. Anson Carter Stadium | 16. Little Theatre | 23. Tom Brown Dormitory (Men) | 29. Winton-Scott Hall (Science) | 34. Temporary Bldg. 4 — Engineering | 40. Temporary Bldg. 6 — Psychology Laboratories | 47. Undergraduate Religion Clinic |
| 2. Daniel-Meyer Coliseum | 17. Ed Landreth Fine Arts Building and Auditorium | 24. Clark Dormitory (Men) | 30. Proposed T.C.U. Research Laboratories | 35. Temporary Bldg. 5 — Maintenance | 41. Mary Coats Burnett Library | 48. Speech-Hearing Therapy Clinic |
| 3. Track | 18. Foster Dormitory (Women) | 25. Felt Wright Dormitory (Men) | 31. Temporary Bldg. 1 — Psychology Laboratory | 36. Dan Rogers Hall (Business) | 42. T.C.U. Nursery School | 49. T.C.U.-R.M. Means Apts. |
| 4. Baseball Diamond | 19. Jarvis Dormitory (Women) | 26. Practice Gymnasium | 32. Temporary Bldg. 2 — Girl Physical Ed. Bldg. (Possible Location) | 37. Home Management House | 43. Proposed Home Economics Bldg. (Possible Location) | 50. University Christian Church |
| 5. Ames Observatory | 20. Dave Reed Hall (Women) | 27. Building Education | 33. Temporary Bldg. 3 — Ballet | 38. Testing and Guidance Bldg. (Possible Location) | 44. Home Economics Classroom | 51. University Baptist Church |
| 6. Worth Hills Property | 21. Brown-Lupton Student Center | 28. Bailey Building — Education | | 39. Temporary Bldg. 8 — Testing and Guidance Bldg. (Possible Location) | 45. Home Economics Classroom | 52. Alice Carlson Elementary School |
| 7. ROTC Drill Field and Intramurals | 22. M. E. Sadler Hall | | | 46. Robert Carr Chapel | 46. Robert Carr Chapel | 53. Ministerial Apartments |
| 8. ROTC Drill Field and Intramurals | | | | | | ● New or Planned Construction |
| 9. Tennis Courts | | | | | | |

and we invite you to visit the Stafford-Lowdon Co.—for the finest in printing, lithography, office equipment

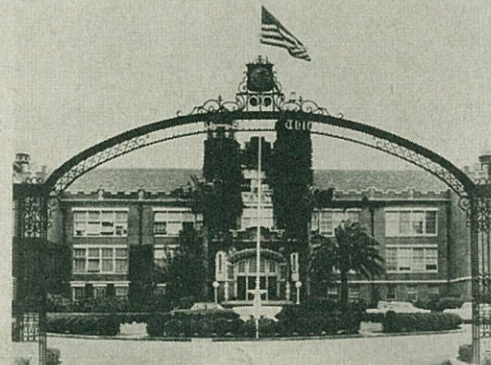
STAFFORD-LOWDON CO.

ED 6-2401, FORT WORTH, TEXAS

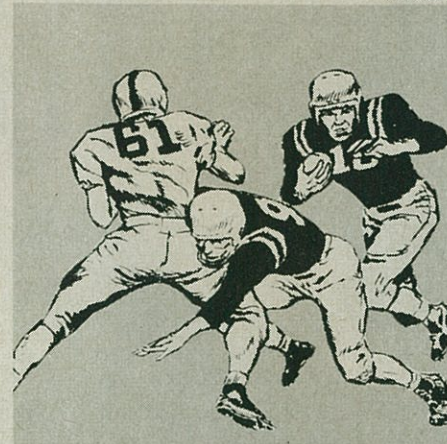
PRINTING • LITHOGRAPHING • OFFICE EQUIPMENT • A. B. DICK DUPLICATING EQUIPMENT



Tully Gymnasium



Main Administration Building



BILL PETERSON
Head Football Coach



VAUGHN MANCHA
Athletic Director

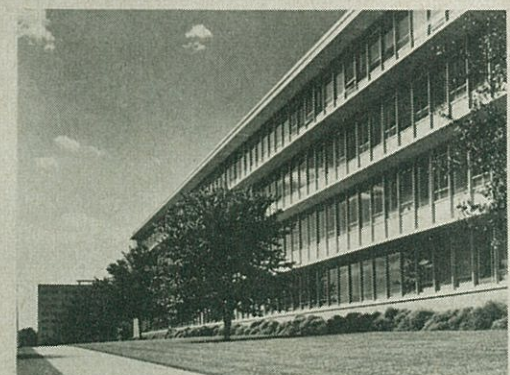


DR. GORDON W. BLACKWELL
President

FLORIDA STATE

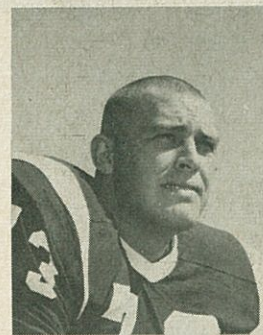


Robert Manning Strozier Library



School of Education





AVERY SUMNER



MAURY BIBENT



STEVE TENSI

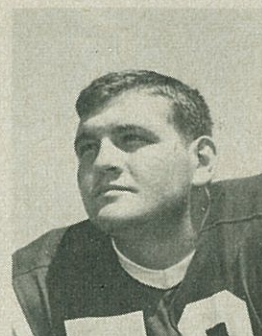


MAX WETTSTEIN

FLORIDA STATE



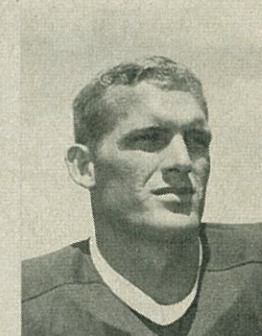
ELTON REVELL



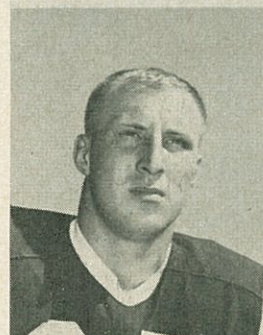
DELL WILLIAMS



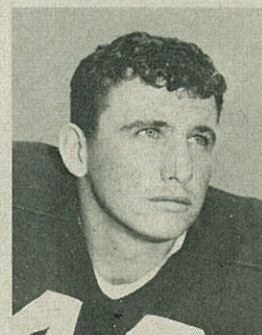
ED PRITCHETT



PHIL SPOONER



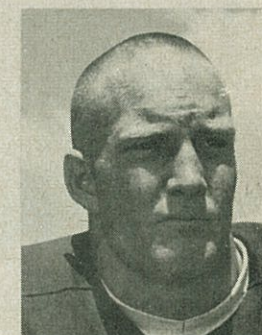
FRED BILETNIKOFF



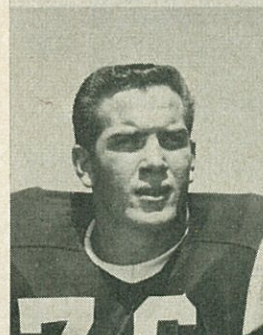
LEE NARRAMORE



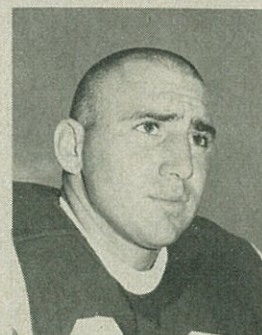
JIM MASSEY



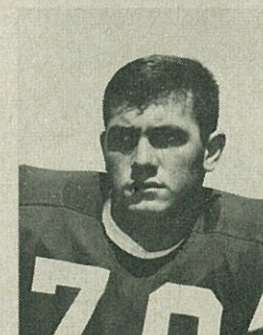
BILL DAWSON



TOM WEST



GEORGE D'ALLESANDRE



CHARLES PENNIE



HOWARD LURIE



DON FLOYD



DICK HERMANN



BOB MANGAN



DALE MacKENZIE

SEMINOLES



LARRY GREEN



WINFRED BAILEY



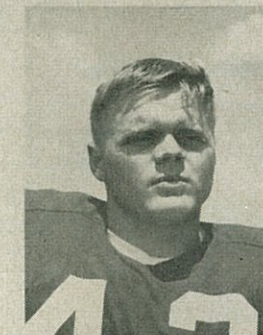
LES MURDOCK



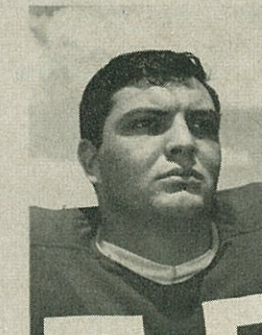
JOE PARRISH



BILL McDOWELL



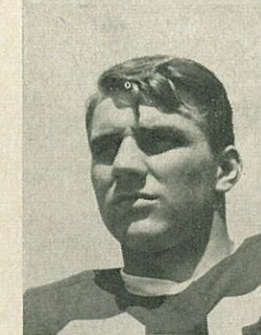
HOWARD EHLER



JACK EDWARDS



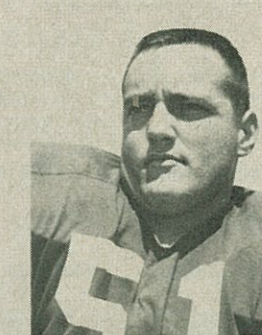
JACK SHINHOLSER



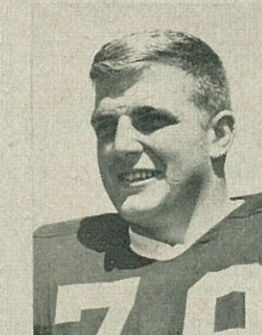
JOE PETKO



JAY M. MATTHEWS



JOE AVEZZANO



FRANK PENNIE



THE FROG CLUB

AN ORGANIZATION OF FRIENDS OF TCU

1964-65 OFFICERS AND ADVISORY BOARD MEMBERS

OFFICERS

<div>President</div> <div>R. M. (DICK) HAZLEWOOD</div> <div>TCU, '34</div>				
<div>Executive Vice-President</div> <div>DAVID O'BRIEN</div> <div>TCU, '39</div>		<div>First Vice-President</div> <div>LEE HERTEL</div> <div>no college affiliation</div>		<div>Second Vice-President</div> <div>BOB BAIRD</div> <div>no college affiliation</div>
<div>Vice-Presidents</div>				
<div>CARL T. ANDERSON</div> <div>TCU, '41</div>	<div>KEN W. DAVIS</div> <div>no college affiliation</div>	<div>A. H. (CHIEF) LIGHTFOOT</div> <div>Texas, '27</div>	<div>ROGER B. OWINGS</div> <div>Swarthmore, '15</div>	<div>LARRY THOMAS</div> <div>TCU, '59</div>
<div>CHARLES ANTON</div> <div>no college affiliation</div>	<div>JAMES H. FLEMING</div> <div>Texas A&M, '33</div>	<div>DICK LOWE</div> <div>TCU, '51</div>	<div>MARTIN A. ROSE, JR.</div> <div>TCU, '58</div>	<div>GLEN TURBEVILLE</div> <div>TCU, '25</div>
<div>LORIN A. BOSWELL</div> <div>TCU, '37</div>	<div>MRS. W. W. FLEMMING</div> <div>TCU, '45</div>	<div>BOBBY MALONE</div> <div>TCU, '50</div>	<div>ARCH H. ROWAN</div> <div>no college affiliation</div>	<div>ROBERT L. WARD</div> <div>TCU, '38</div>
<div>V. W. BOSWELL</div> <div>Texas A & M, '26</div>	<div>T. F. HODGE</div> <div>no college affiliation</div>	<div>TOMMY G. MERCER</div> <div>TCU, '53</div>	<div>W. M. SHERLEY</div> <div>TCU, '24</div>	<div>JACK K. WILLIAMS</div> <div>Arizona, '36</div>
<div>R. B. CANNON</div> <div>no college affiliation</div>	<div>DR. GEORGE LACY</div> <div>TCU, '25</div>	<div>CHARLES W. NEEDHAM</div> <div>TCU, '37</div>	<div>J. HULBERT SMITH</div> <div>SMU, '41</div>	<div>J. VAUGHN WILSON</div> <div>Oklahoma, '33</div>
<div>I. B. CHAPMAN, JR.</div> <div>TCU, '61</div>	<div>REV. JOHN R. LEATHERBURY</div> <div>Virginia, '30</div>	<div>RICHARD L. OLSON</div> <div>TCU, '50</div>	<div>ERNEST A. STRANGE</div> <div>TCU, '30</div>	<div>DON WOODARD</div> <div>TCU, '57</div>
<div>Secretary</div> <div>JOHN S. JUSTIN, JR.</div> <div>TCU, '39</div>		<div>Treasurer</div> <div>W. A. LANDRETH</div> <div>Texas, '39</div>		<div>Executive Secretary</div> <div>PAUL O. RIDINGS</div> <div>TCU, '38</div>
				<div>Assistant Executive Secretary</div> <div>MRS. MYRTLE HIRSTINE</div> <div>no college affiliation</div>

EXECUTIVE COMMITTEE

Chairman (& Immediate Past President) TOM McCANN no college affiliation		(Past Presidents)		Honorary Chairman of the Board NEVILLE G. PENROSE no college affiliation	
CLAY J. BERRY Southwestern, '25	G. BURDETE BRANTS no college affiliation	GEORGE LISER New Mexico, '32	BARRON McCULLOCH Texas, '26	RAY McCULLOCH TCU, '32	CLIFTON H. MORRIS Texas, '16

FINANCE COMMITTEE

Y. Q. McCAMMON Texas, '16	W. L. STEWART Colorado, '16
-------------------------------------	---------------------------------------

ADVISORY BOARD

J. L. ABBOTT Manitoba, '25	AMON G. CARTER, JR. Texas, '46	HERMAN GARTNER no college affiliation	J. T. LUTHER, JR. Missouri, '33	ROY G. RALLS no college affiliation
PAUL J. ADAM Kansas, '33	F. DILL COLE Texas A & M, '37	MRS. ROBT. D. GOODRICH Oklahoma, '18	J. C. MAXWELL no college affiliation	LISTON W. SLACK no college affiliation
LEE BASSINGER TCU, '34	MRS. RUDY COPELAND, JR. no college affiliation	JOE GUMINSKI no college affiliation	R. B. MONCRIEF Texas, '44	MARC B. SMITH Texas, '22
ROLAND S. BOND SMU, '19	R. W. CREAMER LSU, '41	HAL A. HEDBERG no college affiliation	W. A. MONCRIEF, JR. Texas, '42	W. T. SNIPES no college affiliation
VICTOR E. BONELLI Jefferson Medical, '07	MARK FREDERICK TCU, '22	CHARLES J. HOFFMAN Oklahoma, '18	I. G. PARKER no college affiliation	W. B. STIRMAN TCU, '15
MALCOLM K. BRACHMAN Yale, '45	H. B. FUQUA Oklahoma, '19	G. W. HORAN, SR. no college affiliation	LEO POTISHMAN no college affiliation	GEORGE THOMPSON, III Texas, '49
ROBERT G. CARR Kentucky Wesleyan, '17		RALPH LOWE no college affiliation		MRS. BRUCE YOUNG no college affiliation



THE FROG CLUB

AN ORGANIZATION OF FRIENDS OF TCU

1963-64 MEMBERSHIP ROSTER

J. L. Abbott Thos. F. Abbott, Jr. W. H. Abington Ray L. Able Bullett Abshire Harold M. Achziger A. S. Acker Sam W. Acola E. T. Adair Paul J. Adam Bill Adams George S. Adams L. T. Adams Duane Adcock A. E. Addyman S. B. Adler John F. Agee Errett R. Albritton Carl J. Aldenhoven Ross D. Alderson C. W. Alexander Dwight Alexander Dr. John W. Alexander Mrs. Lou Alexander Walker L. Alexander Bruce Alford Mary Jean Allcorn A. C. Allen J. Harvey Allen Clifford W. Alley W. Bradley Alley William W. Almond Dr. F. E. Altaras Joseph D. Ambrose Van Amis Aubrey C. Anderson Carl T. Anderson Gayle W. Anderson C. "Andy" Anderson John L. Anderson Oscar W. Anderson R. S. Anderson T. C. (Skip) Anderson David Benson Willard S. Anderson A. R. Andrews Felix Ankele Dr. W. P. Anthony Charles Anton H. C. Apperson Mrs. H. C. Apperson Mrs. Dorrit Appieman R. C. Archenhold Geo. W. Armstrong, Jr. O. C. Armstrong R. Wright Armstrong, Jr. George Arnold Carl Arthur H. C. Ashburn Carlos C. Ashley, Jr. David W. Ashley David W. Ashley, Jr. Otis Ashworth H. J. Aston Milt A. Atkinson, Jr. Wm. R. Auld, Jr. Ronald Aultman F. L. Aurin Harve H. Avants Forrest Franklin Aven E. G. Aycock R. E. Ayers Mrs. R. E. Ayers Glynn Babb Roy Bacus W. J. Bacus E. T. Bagaley W. R. Bagg James J. Baggett Dan L. Baggus Frank Bailey, Jr. Harold B. Bailey Morris Bailey	Dr. Noel R. Bailey Tom Bailey Blanche Baird Bob Baird W. Hoyt Baird Bill J. Baker Ed Baker, Jr. Ray C. Baker Jerrell L. Baldridge Calvin C. Baldwin Leon Baldwin Ray L. Baldwin Vic Ball Joe P. Bandor W. A. Barber, Jr. W. T. Barber Jim D. Barbour Jack S. Barefield Lenn Barnard, Jr. Lenn Barnard, Sr. Mrs. Ora Barnard Charles Everett Barnes Lou Barnett G. O. Barney Dr. I. P. Barrett Dr. Chas. W. Barrier Sonny Barton Bernard "Tut" Bartzon Seth Barwise Lee Bassinger Ed Bateman Dale D. Baucum Everett L. Bauer Kenneth Baum C. C. Bearden, Jr. Theo P. Beasley J. P. Beatty James P. Becker Patrick Beckham Dr. Grant F. Begley Alwyn E. Belcher J. A. Bell George B. Bennett Le Bennett M. S. Bennett David Benson Frank M. Benton Mrs. Frank M. Benton W. R. Berger E. T. Berndt Clay J. Berry Clay J. Berry, Jr. Lindy Berry Sam H. Berry Lionel W. Bevan, Sr. William Bever Dr. D. D. Beyer Dr. R. B. Beyer Pete Beyette Richard T. Bibb George K. Bigley R. B. Billingsley S. M. Bingham Philip R. Bishop Mrs. Philip R. Bishop R. S. Bishop Bob Bizzell Bill N. Blackmon Roy H. Blackmon, Sr. W. G. Blackmon B. R. Blanton C. A. Blanton W. J. Blount Dave Bloxom A. S. Boarnet Louis Bockstein William D. Bodiford Henry Bodzy Glenn E. Boehmer Lacy Boggess Dan L. Boggus W. P. Bomar Lewis H. Bond Roland S. Bond	Dr. Tom B. Bond Dr. Victor E. Bonelli Arnold Bookout Bettye Beverly Boone G. W. Boone Loran A. Borah David E. Borg, Jr. Emile Borne Bruce L. Boswell Gordon Boswell Gordon Boswell, Jr. Lorin Boswell V. W. Boswell W. E. Boswell, Jr. Louis Bothe, Jr. David A. Boulton Vergal Bourland J. F. Bouse Hollis Bowen Jack E. Bowers Joe P. Bowlin Ellis Boyd Norton Boyd Malcolm K. Brachman Sol Brachman Arthur M. Brackett Phillip W. Bradbury J. Weldon Bradley Amos Bradshaw Dr. W. V. Bradshaw, Jr. Bryant T. Brame Mrs. Bryant T. Brame Jim Branch O. J. Branch Paul H. Brandt Buster Brannon L. H. Brantley Clayton Brants Fred M. Brants G. B. Brants Howard C. Brants Dr. H. L. Brasher N. R. Brasted J. Y. Bratcher Phil M. Bratten Walker A. Brents Dave Brewer Rex Brewer Judge Harris Brewster H. W. Brian W. T. (Jack) Bridges Clint Briggs, Sr. Jack K. Briggs T. O. Briggs R. C. Bright Woodrow Brillhart Ralph A. Bristol Bill Brock Chas H. Brock Jack Brock Jeff J. Brock Jim Brock L. E. Brock Robert Lee Brock Rowland Broiles Joe Bronstein Edward J. Brook A. E. Brooks Henry Brooks R. J. (Chub) Brooks J. V. Brookshear Ronald W. Brookshire T. C. Brookshire Loyd D. Brotherton E. H. Brougher Jim Browder A. K. Brown Cecil C. Brown Elmer A. Brown George R. Brown, Jr. Jack Brown, Jr. Johnnie Brown Dr. Porter Brown R. D. Brown, Jr. Robert H. Brown Robert L. Brown	Robert Lee Brown Dr. Robt. W. Brown Way D. Brown Terry Browne Dr. Jack D. Brownfield Orein Browning Roy Browning J. L. Brownlee Curly Broyles Jimmy E. Broyles Milton Broyles Bert Bruce Bobby L. Bruner Tom Brunner Cecil C. Bryant A. F. Buck Raymond Buck Raymond Buck, Jr. C. S. Buckelew J. D. Buckman Jack Burge John J. Burgess Wm. B. Burkhardt R. L. Burnam Mrs. R. L. Burnam Lloyd H. Burns, Jr. Joseph P. Burt Lester H. Burton, Jr. George D. Busch Dr. Joe L. Bussey Ira Butler J. D. Butler, Jr. Tom Butler John T. Cadenhead Ann Cadwallader John Cadwallader Bill Cady Gene L. Cagle Frank Caiello Lloyd E. Cain Owen E. Cain James T. Caldwell C. H. Cale Dick Callaghan Floyd A. Calvery K. Joe Cameron Bob Campbell C. J. Campbell Clifford J. Campbell Clyde Campbell I. Dee Campbell Dr. J. Franklin Campbell Jack W. Campbell Jim Campbell Ralph G. Campbell William R. Campbell A. B. Canning R. B. Cannon Milton B. Capers M. R. Carh M. R. Carh, Jr. Harry Carlisle O. G. Carlson Dr. E. P. Carlton Nathan C. Carpenter Larry M. Carper Dr. Robt. E. Carr Robert G. Carr Howard Carrico Dr. E. H. Carriker Don Carson H. H. Carson Amon Carter, Jr. Billy D. Carter Eugene H. Carter O. B. Carter Richard K. Cartlidge Frank P. Carvey, Jr. John O. Casey Robert L. Casey C. E. "Spud" Cason Charles Casper Floyd C. Casstevens, Jr. Paul D. Cato	Mrs. Inez Caviness Col. W. B. Cayce Herbert D. Chafin Fred E. Chambers E. J. Chancy Clark Chandler Mrs. Carol Chapman I. B. Chapman, Jr. Johnny L. Chapman Ralph Chapman M. E. Chappell C. L. Charles H. T. Chenault John E. Cherry N. R. Chico George W. Childs, Jr. H. E. Chiles C. I. Clark Earle Clark G. D. Clark H. A. Clark H. H. Clark Herman E. Clark Herman K. Clark Joe L. Clark Lester Clark Mack "Poss" Clark O. T. Clark, Jr. W. Scott Clark Dr. Joe L. Bussey Ira Butler J. D. Butler, Jr. Tom Butler John T. Cadenhead Ann Cadwallader John Cadwallader Bill Cady Gene L. Cagle Frank Caiello Lloyd E. Cain Owen E. Cain James T. Caldwell C. H. Cale Dick Callaghan Floyd A. Calvery K. Joe Cameron Bob Campbell C. J. Campbell Clifford J. Campbell Clyde Campbell I. Dee Campbell Dr. J. Franklin Campbell Jack W. Campbell Jim Campbell Ralph G. Campbell William R. Campbell A. B. Canning R. B. Cannon Milton B. Capers M. R. Carh M. R. Carh, Jr. Harry Carlisle O. G. Carlson Dr. E. P. Carlton Nathan C. Carpenter Larry M. Carper Dr. Robt. E. Carr Robert G. Carr Howard Carrico Dr. E. H. Carriker Don Carson H. H. Carson Amon Carter, Jr. Billy D. Carter Eugene H. Carter O. B. Carter Richard K. Cartlidge Frank P. Carvey, Jr. John O. Casey Robert L. Casey C. E. "Spud" Cason Charles Casper Floyd C. Casstevens, Jr. Paul D. Cato	H. E. Cave Mrs. Inez Caviness Col. W. B. Cayce Herbert D. Chafin Fred E. Chambers E. J. Chancy Clark Chandler Mrs. Carol Chapman I. B. Chapman, Jr. Johnny L. Chapman Ralph Chapman M. E. Chappell C. L. Charles H. T. Chenault John E. Cherry N. R. Chico George W. Childs, Jr. H. E. Chiles C. I. Clark Earle Clark G. D. Clark H. A. Clark H. H. Clark Herman E. Clark Herman K. Clark Joe L. Clark Lester Clark Mack "Poss" Clark O. T. Clark, Jr. W. Scott Clark Dr. Joe L. Bussey Ira Butler J. D. Butler, Jr. Tom Butler John T. Cadenhead Ann Cadwallader John Cadwallader Bill Cady Gene L. Cagle Frank Caiello Lloyd E. Cain Owen E. Cain James T. Caldwell C. H. Cale Dick Callaghan Floyd A. Calvery K. Joe Cameron Bob Campbell C. J. Campbell Clifford J. Campbell Clyde Campbell I. Dee Campbell Dr. J. Franklin Campbell Jack W. Campbell Jim Campbell Ralph G. Campbell William R. Campbell A. B. Canning R. B. Cannon Milton B. Capers M. R. Carh M. R. Carh, Jr. Harry Carlisle O. G. Carlson Dr. E. P. Carlton Nathan C. Carpenter Larry M. Carper Dr. Robt. E. Carr Robert G. Carr Howard Carrico Dr. E. H. Carriker Don Carson H. H. Carson Amon Carter, Jr. Billy D. Carter Eugene H. Carter O. B. Carter Richard K. Cartlidge Frank P. Carvey, Jr. John O. Casey Robert L. Casey C. E. "Spud" Cason Charles Casper Floyd C. Casstevens, Jr. Paul D. Cato	R. T. Cowan Robert E. Cowan W. C. "Red" Cowen Ernest Cox R. E. Cox, Jr. Thomas E. Cox Clark Chandler Mrs. Carol Chapman I. B. Chapman, Jr. Johnny L. Chapman Ralph Chapman M. E. Chappell C. L. Charles H. T. Chenault John E. Cherry N. R. Chico George W. Childs, Jr. H. E. Chiles C. I. Clark Earle Clark G. D. Clark H. A. Clark H. H. Clark Herman E. Clark Herman K. Clark Joe L. Clark Lester Clark Mack "Poss" Clark O. T. Clark, Jr. W. Scott Clark Dr. Joe L. Bussey Ira Butler J. D. Butler, Jr. Tom Butler John T. Cadenhead Ann Cadwallader John Cadwallader Bill Cady Gene L. Cagle Frank Caiello Lloyd E. Cain Owen E. Cain James T. Caldwell C. H. Cale Dick Callaghan Floyd A. Calvery K. Joe Cameron Bob Campbell C. J. Campbell Clifford J. Campbell Clyde Campbell I. Dee Campbell Dr. J. Franklin Campbell Jack W. Campbell Jim Campbell Ralph G. Campbell William R. Campbell A. B. Canning R. B. Cannon Milton B. Capers M. R. Carh M. R. Carh, Jr. Harry Carlisle O. G. Carlson Dr. E. P. Carlton Nathan C. Carpenter Larry M. Carper Dr. Robt. E. Carr Robert G. Carr Howard Carrico Dr. E. H. Carriker Don Carson H. H. Carson Amon Carter, Jr. Billy D. Carter Eugene H. Carter O. B. Carter Richard K. Cartlidge Frank P. Carvey, Jr. John O. Casey Robert L. Casey C. E. "Spud" Cason Charles Casper Floyd C. Casstevens, Jr. Paul D. Cato
--	--	---	---	--	--	---

IF YOUR NAME IS NOT ON THIS LIST OF FROG CLUB MEMBERS FOR 1963-64, IT SHOULD BE!
YOU CAN JOIN THE FROG CLUB FOR 1964-65 BY USING THE COUPON AT THE BOTTOM OF PAGE 60!!

1963-64 FROG CLUB MEMBERSHIP ROSTER (cont'd)

William B. Douglas
Joe A. Dowell
Chas. M. Drake, Jr.
D. L. Draper
Dr. R. H. W. Drchsel, Sr.
Joe Driskell
Ira C. Driver
J. S. DuBoise
William S. DuBoise
C. E. Dugan
J. H. Dulaney
Allen Duncan
Horace O. Duncan
T. H. Duncan
James P. Dunigan
Lewis W. Dunn
Stanley S. Durham
Earl E. Dyess
Jim Eagle
Norman T. Earl
R. C. Earl, Jr.
W. P. Earnsey, Jr.
V. J. Earnheart
Gordon Eastman
Gladys Andre Eberhardt
K. J. Eberly
Walter Echols
William W. Echols
E. H. Eddie
W. J. "Red" Eddie
Frank B. Edmonds
L. C. Edmonds
Hassell Edwards
Dr. Walter T. Edwards
John W. Eggleston
A. E. Eismann
L. P. Ekstrom
Ray Eller
Dr. Edwin A. Elliott
Alston Ellis
Bob F. Ellis
Dr. Dan G. Ellis
Drew Ellis
Jackie Ellis
Raymond E. Ellis
Bill Ellison
B. E. Elman
Gwen Engert
John D. Engert
John Robert Engert
Ronald Engert
Bryan H. Engram
Bill Enis
Hunter Enis
W. C. Enis
Price Erickson
Cal Estill
Max Eubank
Fred J. Eudey
J. Harold Evans
Leslie P. Evans
Lon Evans
Ruth Evans
Ted Fahn
Bruce D. Fallis
Frank Farkas
Frank M. Farley, Sr.
Hugh Farnsworth
C. J. (Jack) Farrell
Geo. B. Faulder
K. F. Feltz
J. Ernest Fender, Jr.
Lt. Col. J. S. Fenton, Jr.
Ben M. Ferguson
John K. Ferguson
John R. Ferguson, Jr.
Dr. Gus Ferre
B. G. "Skin" Few
Billy R. Field
Dick Fillingim
F. M. Fillingim, Jr.
Lundy H. Finch
F. G. Fincher
Ray Finley
David Finney
John H. Firestone
Beeman Fisher
Dr. Roy B. Fisher
Malcolm B. Fleet
J. H. Fleming
J. Harlon Fleming
W. W. Flemming
Mrs. W. W. Flemming
Dr. William E. Flood
Heard L. Floore
Shag Floore
James M. Floyd
Clyde Foltz
Dr. Gaston Foote
W. Al Ford
Wm. E. Forehand
Douglas Forshagen
Ben J. Fortson

Eldred Foster
Hubert G. Foster
Hubert J. Foster
J. E. Foster, III
Joe A. Foster
Andy Fournier
Mal Fowler
Wendell C. Fowler
Wilson H. Fox
Chuck Fraley
Wm. R. Francis
Nathan Frankel
R. E. Frankenfield
Johnny Franko
Norman H. Frankrich
Mark Frederick
Mark V. Frederick
Pete Frederick
Robert K. Freebairn
W. O. Freeman
Dr. Wm. G. Frick
Bayard Friedman
James E. Friend
Bonner Frizzell
C. Ferd Fry
Gene Fulgham
Geo. M. Fuller, Jr.
James C. Fuller
Bill Fullhart
Wilford Fultz
H. B. Fuqua
Albert Gackle
Ralph M. Gage
Edward Gaines
Jack Gaither
James C. Galbraith
Elgin Gandy
Max J. Gardner, Jr.
George Gartner
Herman Gartner
Fred L. Gary
Jeff Geil
J. E. Gerard
Preston Geren, Jr.
Bob Germond
John H. Gibbs
A. C. Gibson
Leroy A. Gilbert
Clarke B. Gillespie
G. M. Gillespie
D. E. Gilley
Timon T. Gillis
John T. Gincchio
Arthur I. Ginsburg
Marcus Ginsburg
Charles H. Gipson
H. A. Glass
Walter G. Glaze
B. J. Glover
Louis R. Godwin
Dr. A. I. Goldberg
Dore Goldstein
Jules Goldstein
Ray A. Hayes
Carroll E. Hays
Don F. Hays
Jack C. Hays
W. G. Hazen
Calvin Hazlewood
Dick Hazlewood
Barton E. Head
Dr. W. M. Head
A. S. Headley
Dr. K. C. Heald
Russell C. Hector
H. A. Hedberg
Wyatt C. Hedrick
Dale Heiskell
R. E. Henderson
Sam F. Henderson
W. C. Henry
Boad E. Hensley
Erwin T. Herbert
Jack Gray
John H. Gray
Jos. F. Greathouse
H. S. Green, Sr.
John C. Green
Judge Green
R. F. Green
Wm. T. Green
L. A. Greene
H. K. Greenleaf
Jack N. Greenman, III
Mike Greenwall
Ansel Greer
Bryan Gregory
Dr. Abe Greines
C. C. Griffin
Dr. O. P. Griffin
Walter B. Griffin
John M. Griffith, Jr.

Dale Griggs
George L. Grimes
Arthur L. Grimm
Mrs. Peggie Grubbs
C. N. Guinn
Joe Guminski
Mrs. Joe Guminski
Ike Haas
Arthur G. Hagar
Jack Haggard
Ted E. Hajek
I. B. Hale
Shadie F. Hale
Flem Hall
H. Earl Hall, Jr.
L. M. Hall, Jr.
Louis Hall
Robert H. Hall
Wm. E. Hall
Vernon Hallbeck
Dr. James A. Hallmark
C. A. Haltom
E. P. Haltom
Rev. Leslie Hames
E. G. Hamilton
E. H. Hamilton, Jr.
Walter Hamilton
Cedric G. Hammett
Wilton N. Hammond
Hillard Hammond
Glen A. Hanan
Robert W. Hancock
Leo O. House
B. M. Housewright
Jack Howard
Dr. Rex J. Howard
F. E. Howe
Jack D. Howell
John S. Howell
A. C. Howerton
Roy D. Hoyt
Floyd Hubert
Gerald D. Huck
R. K. Huddleston
Donald Hudgins
W. P. Hudgins
Ed Hudson
Edric Hudson
William Hudson
Ed Huffman
Howard P. Huffman
Bob Hughes
Hal P. Hughes
Kenneth N. Hull
Dr. Sim Hulsey
Walter R. Humphrey
Sam M. Humphreys
L. J. Hunt
Earl E. Hunter
Hal B. Hunter
Jerry Hurster
Fred Hyer
Col. J. F. Isbell
A. C. Isham
Sig Iversen, Jr.
Alfred J. Jackson, Jr.
Bill M. Jackson
Charles R. Jackson
Donald W. Jackson
Mrs. Donald W. Jackson
J. I. Jackson
Jas. A. Jacobsen
Ned James
J. B. Jarratt
John D. Jarratt, Jr.
B. G. Jenkins
W. R. Jenkins
Wayne E. Jenkins
Thos. N. Jenness
Howard Jennings
S. C. Johndroe, Jr.
F. Kirk Johnson, Jr.
Dr. F. Melvin Johnson
J. Lee Johnson, III
Ken Johnson
Paul Johnson
R. E. (Rip) Johnson
W. T. Johnson
Robert J. Johnston
Joe H. Jones
Richard M. Jones
W. Felix Jones
W. W. Jones
Worley Jones
H. C. Jordan
Chas. B. Joslin
W. B. Joslin
Yvon E. Juge
Joe F. Juran
John S. Justin, Jr.
Keith Kahle
C. R. Kamprath
Dr. A. F. Kauffmann

Jim Hill
Lynn A. Hill
R. Hunter Hill
Charlie Hillard
Bill Hilliard
L. J. Hilscher
M. E. Hinesley
John L. Hirstine, Jr.
Mrs. John L. Hirstine, Jr.
T. F. Hodge
Art Hoera, Jr.
Chas. J. Hoffman
Joe B. Hogsett
T. C. Hoke
Thad Colson Hoke
Chester Hollis
Gus Holmstrom
Dr. E. E. Holt
B. N. Honea
Frank Hopkins
Robert H. Hopkins, Jr.
C. W. Horan, Jr.
C. W. Horan, Sr.
Robert R. Horan
W. A. Horan
Dr. Jack Horn
W. S. Horn, Jr.
Neal L. Hoppers
John Hostetter
Harold V. Hough
R. C. Houlihan
Leo O. House
B. M. Housewright
Jack Howard
Dr. Rex J. Howard
F. E. Howe
Jack D. Howell
John S. Howell
A. C. Howerton
Roy D. Hoyt
Floyd Hubert
Gerald D. Huck
R. K. Huddleston
Donald Hudgins
W. P. Hudgins
Ed Hudson
Edric Hudson
William Hudson
Ed Huffman
Howard P. Huffman
Bob Hughes
Hal P. Hughes
Kenneth N. Hull
Dr. Sim Hulsey
Walter R. Humphrey
Sam M. Humphreys
L. J. Hunt
Earl E. Hunter
Hal B. Hunter
Jerry Hurster
Fred Hyer
Col. J. F. Isbell
A. C. Isham
Sig Iversen, Jr.
Alfred J. Jackson, Jr.
Bill M. Jackson
Charles R. Jackson
Donald W. Jackson
Mrs. Donald W. Jackson
J. I. Jackson
Jas. A. Jacobsen
Ned James
J. B. Jarratt
John D. Jarratt, Jr.
B. G. Jenkins
W. R. Jenkins
Wayne E. Jenkins
Thos. N. Jenness
Howard Jennings
S. C. Johndroe, Jr.
F. Kirk Johnson, Jr.
Dr. F. Melvin Johnson
J. Lee Johnson, III
Ken Johnson
Paul Johnson
R. E. (Rip) Johnson
W. T. Johnson
Robert J. Johnston
Joe H. Jones
Richard M. Jones
W. Felix Jones
W. W. Jones
Worley Jones
H. C. Jordan
Chas. B. Joslin
W. B. Joslin
Yvon E. Juge
Joe F. Juran
John S. Justin, Jr.
Keith Kahle
C. R. Kamprath
Dr. A. F. Kauffmann

Maurice M. Kay
E. L. Kayler
Marvin Keith
Fritz J. Keller
Dr. John H. Keller, Jr.
C. C. Kellow
Dee J. Kelly
Raymond B. Kelly
W. O. Kelly
Glenn H. Kelsay
Dr. Aubrey S. Kelson
George C. Kemble
W. S. Kemble, Jr.
President John F. Kennedy
Joseph D. Kennedy
Frank Kent
Seth Kerr
Dr. Walter Kerr
Sam Ketcham
L. G. Key
Al Kilgore
Roy H. Kimble
T. R. Kimzey
Bill King
James R. King
Porter King
Robert H. King
Dr. H. B. Kingsbury
John B. Kinnaird
J. R. Kinney
H. H. Kinzy
A. B. Kirby
R. H. Kirby
R. G. Klawetter
Walter Klein
Henry L. Kleinschmidt
Dr. O. W. Koberg
Paul Koeppe
Milton L. Korman
Bob Koslow
W. F. Krause
Murray Kyger
Dr. Ross Kyger, Jr.
R. R. Kyner
Marvin Labovitz
Sheldon Labovitz
Dr. Geo. W. Lacy
Mrs. Geo. W. Lacy
Wm. J. Laidlaw, Jr.
Hibbetts M. Lano
Tom Land
C. Richard Landers
W. A. Landreth
Judge Jack M. Langdon
B. C. Langford
Dr. Travis L. Lanham
Rex Lanier
Charles F. Lanter
Christopher Larkin
Dan B. LaRue, Sr.
Sidney Latham
Mrs. Sidney Latham
Guy W. Latimer
Harry Laue
A. W. Lauritzen
Blair Lavell
E. R. Laverty
Cliff May
Oscar R. May
Richard R. May
R. J. Mayer
M. O. Mayes
Mason Mayne
Charles D. Mays
Woodrow W. Mays
Dewey Mayton
A. J. Mazurek
Obel L. McAllister
Martin W. McAllister
Mary McAnally
Wm. D. McBee
Clyde McCall
D. R. McCallum
Y. Q. McCammon
Ralph L. McCann
Thomas A. McCann
Joe McCarthv
George M. McClain
John B. McClane
Pete McCleskey
John P. McClung
Ben McClure
E. A. McClure
Robert C. McComb
Hal B. McCord
Donald E. McCue
Ned B. McCulley
Barron McCulloch
Ray McCulloch
E. J. McCurdy, Jr.
Atwood McDonald

George Liser
Dean Litsey
Mrs. Betty Little
C. D. Little
J. D. Lively
John Loffland, Jr.
Harry L. Logan, Jr.
Walter Logan, Sr.
James R. Long
Lee L. Longinotti
Don Looney
Marcus Lopin
William M. Lourcey
Ken Love
Jerry C. Lovell
Dr. Claxton E. Lovin
R. R. Lowdon, Jr.
W. C. Lowdon
Dick Lowe
Ralph Lowe
Marc H. Lowrance, Jr.
L. D. Lowry, Jr.
Bealy Lucius
G. E. Luck
Homer Ludiker
Edgar Luhn
Dr. Geo. J. Luibel
Mary D. Lukas
Dr. Edward A. Luke
J. T. Luther, Jr.
Ron Luther
Joe W. Lydick
Stuart Lydick
Orville Lyles
Ed H. Lysaght
W. F. Lytle
James L. Mabe
Dr. Stephen G. Maddox
T. C. Meek
Carl Koch
Kurt Meer
Chas. J. Mehl
Rodger Meier
George A. Melhaus
Roy R. Meinen
Robert D. Mellor
Amos Melton
David (Bud) Melton
Mart Melton, Jr.
S. M. Melton
Tommy G. Mercer
Henry Merino
B. E. Merrell
Ham Metcalf
J. M. Meyer
L. R. Meyer
Joseph D. Meyers
Richard S. Miles
L. N. Miles
William Miller
Ivan J. Miller
Les Miller
Dr. M. S. Miller
Paul Miller
Harvey G. Mills
Dr. Harold B. Mindell
John H. Minton
E. L. Misenheimer
Chas. C. Mitchell
Dick Mitchell
Richard Mitchell
John L. Moe
R. B. Moncrief
W. A. Moncrief, Jr.
Bob Monier
Vic Montgomery
R. W. Monzingo
T. Waller Moody
Paul B. Moon
Fran A. Moor
Dick Moore
Joe Dan Moore
Marline K. Moore
Wm. S. Moore
Scott Mooring
H. I. Moreland, Jr.
Harry Moreland, Jr.
Buz Morgan
Cecil Morgan
Dr. Douglas Morgan
Earl C. Morgan
Ernest F. Morgan
J. Blake Morgan
Monty Morgan
R. W. Morgan
Meyer Moritz
Larry Morrell
Clifton H. Morris
Jimmy Morris
Dr. M. J. Morris
J. S. Morrison
H. H. Morse

Ben McDonald
Durward McDonald, Jr.
Dr. H. C. McDonald
H. W. McDonald
Dr. R. P. McDonald
Buster G. McDuff
Don McFall
Tom McGinley
Alex McGlinchey
Alex H. McGlinchey
Dr. Glenn C. McGouirk
Bill B. McHarg
Dick McHargue
Willis McIntosh
W. E. (Bill) McKay
U. L. (Mike) McKeever
K. D. McKenzie
Dr. Walter H. McKenzie
Frank S. McKeown
J. E. McKinney
K. L. McKinney
Dr. Chas. B. McKissick
Allen McLean
John McLean
Wm. Hunter McLean
Don H. McLeland
John W. McMackin
David A. McMahon
A. K. McMillan
John P. McNaughton
George F. McQueen
J. W. McQuerry
Walter T. McRae
R. E. McReynolds, Jr.
W. H. McReynolds, Jr.
N. W. McVean
Henry A. Meadows
Frank J. Medanich
T. C. Meek
Carl Koch
Kurt Meer
Chas. J. Mehl
Rodger Meier
George A. Melhaus
Roy R. Meinen
Robert D. Mellor
Amos Melton
David (Bud) Melton
Mart Melton, Jr.
S. M. Melton
Tommy G. Mercer
Henry Merino
B. E. Merrell
Ham Metcalf
J. M. Meyer
L. R. Meyer
Joseph D. Meyers
Richard S. Miles
L. N. Miles
William Miller
Ivan J. Miller
Les Miller
Dr. M. S. Miller
Paul Miller
Harvey G. Mills
Dr. Harold B. Mindell
John H. Minton
E. L. Misenheimer
Chas. C. Mitchell
Dick Mitchell
Richard Mitchell
John L. Moe
R. B. Moncrief
W. A. Moncrief, Jr.
Bob Monier
Vic Montgomery
R. W. Monzingo
T. Waller Moody
Paul B. Moon
Fran A. Moor
Dick Moore
Joe Dan Moore
Marline K. Moore
Wm. S. Moore
Scott Mooring
H. I. Moreland, Jr.
Harry Moreland, Jr.
Buz Morgan
Cecil Morgan
Dr. Douglas Morgan
Earl C. Morgan
Ernest F. Morgan
J. Blake Morgan
Monty Morgan
R. W. Morgan
Meyer Moritz
Larry Morrell
Clifton H. Morris
Jimmy Morris
Dr. M. J. Morris
J. S. Morrison
H. H. Morse

Jim Morse
Robert E. Moss
David Foist Motheral
J. M. Moudy
H. D. Mouzon, III
John Muller, III
J. Robert Muncy
Mrs. Marilyn Muncy
Dr. J. D. Murphy
J. Nolan Murphy, Jr.
Chas. J. Murray
Gene Murray
Edward M. Muse
C. F. Musgrave
Ray Musser
Mrs. Ray Musser
William H. Myers
A. L. Myrick, Jr.
Arch L. Myrick
Howard Namey
Roy M. Naugle
Frank A. Naylor
Dr. Robert E. Naylor
Aubrey L. Neal
Orville Neal
Chas. W. Needham
M. J. Neeley
Harold G. Neely
Ralph B. Neely
Dr. Dewitt Neighbors
W. H. Nelms
Dr. A. J. Nelson
J. B. Nelson
John Nelson
Edwin K. Neville
Bob Newkirk
Guy Newman
W. L. Newsom
Wayne E. Newton
Charles S. Nichols, Jr.
Dan G. Nichols
Raymond Nichols
D. R. Nicholson
Joe Nicholson
Ken Noel
M. D. Nolan
Dan H. Nordstrom
Allene A. Norman
M. E. Norman
Noble T. Norman
R. H. Norris
Wirt M. Norris, Jr.
Phil North
Clark Nowlin
Harold C. Nowlin
W. T. Nowlin
Chas. G. Nunn
David O'Brien
Dennis O'Brien
S. M. O'Brien
George O'Conner
Leo W. O'Dell
J. K. O'Dowd
W. D. (Bill) O'Grady
Jack Oliver
Sheldon Olmsted
E. W. Olson
Edward Olson
Richard Olson
Robert M. Olson
William H. O'Neal
Dr. Joseph R. Ordle
Ellsworth Alan Ott
Dr. M. C. Overton, Jr.
Joe B. Owen
Dr. May Owen
Roger B. Owings
Theron D. Oxley
J. C. Pace, Jr.
T. W. Painter
W. C. Painter
Arthur J. Panfeld
Al Panzer
Frank Pardue
Earl P. Paris, Jr.
H. M. Park
Jack Park
David B. Parker
E. G. Parker
I. C. Parker
Joseph P. Parker
Craig W. Parris
Sam C. Parrish
N. R. Parsons
A. M. Paskin, Jr.
B. W. Patton
J. D. Patton
Mrs. J. D. Patton
Lee Allen Paulsel
Dwight P. Payne
John Houston Payne
Ollie C. Payne
Russell Pearson

Dr. G. F. Pease
Mack Pegues
John R. Penn, Jr.
Ted Penner
Neville G. Penrose
J. R. Peoples
Robert C. Pepper
Cy Perkins
G. L. Perkinson
H. A. Perry
Ralph Perry
Ted C. Peters
Ted C. Peters
Ted C. Peters, Jr.
Geo. W. Peterson
L. F. Peterson
W. H. Peterson
Joe Pettit
R. L. Pettit
Leeland Petty
Charley Phillips
F. F. Phillips
H. W. Phillips
J. F. Phillips
Jas. H. Phillips, Jr.
Jas. H. Phillips III
Jim R. Phillips
Martin Phillips
Russell A. Phillips, Jr.
George C. Pierce
J. P. Pierce
W. J. Pierre
Mrs. Ann Pierson
Don Pierson
Reed Pigman
T. A. Pirtle
D. C. (Dave) Pitts, Jr.
William V. Plankley
T. A. Platt
Dan G. Poland
Alex Pope
G. J. Post, Jr.
Leo Potishman
Mrs. John W. Potter
Mrs. Katherine Powell
R. C. Prater
Luther Prescott
B. K. Presley
Andrew F. Price
Guy Price
Mike Price
Dr. R. V. Price
W. H. Price
W. T. Pickett
Francis Prinz
Charles G. Prior
C. R. Pritchard
Ed Pritchard, Jr.
Dr. Ben H. Procter
Lewis A. Provasek
Cecil Provine
Leonard Pugh
C. A. Pulliam
J. E. Pulliam, Jr.
R. N. Pulsifer
M. A. Punched
Jess Purvine
Bill Quimby
Francis Quinn
Joe J. Rady
Barney Rains
Roy G. Ralls
Jack K. Ramsay
C. Maurice Ramsey
Hartwell M. Ramsey
Ray T. Ramstrom
Paul Randels
John Randol
David H. Rankin
H. B. Ransom
Aaron Rashtl
E. N. Ratliff
Jack Rattlikin
Earl Ray
C. W. Read
Julian Read
L. L. Rector
Cecil D. Redford
Arthur J. Redland, Jr.
E. P. Reed
John H. Reed
John Reeder
Oscar E. Reeder
Elbert S. Reese
Bill Reid
A. T. Remington
R. W. Renfro
A. A. Repper
W. C. Reppeto
Leo Rettig
Jack C. Scrungs
Dr. Burgess Sealy

Hal B. Richards
J. H. Richards, Sr.
Dr. John H. Richards
C. E. Richardson
Dr. J. J. Richardson, Jr.
James E. Richardson
Dr. Lloyd W. Richardson
Dr. Robert C. Richardson
Cyrus K. Rickel, Jr.
Cyrus K. Rickel, Sr.
Grover C. Riddle, Jr.
Mrs. Freddie Ridings
Hugh Ridings, Jr.
Paul O. Ridings
Paul O. Ridings, Jr.
William Rigg
John L. Riggs, Jr.
Kent J. Riley
Randall C. Riley
L. E. Rivers
Bill Roach
Jesse E. Roach
Walter P. Roach
John C. Roberts, Jr.
Wayne E. Roberts
W. E. Robertson
Willard Robertson
E. J. Robnett
Earl F. Robinson
Harry F. Robinson
Marshall T. Robinson
Joe Roddy
Dan D. Rogers
E. M. Rogers
Frank D. Rogers
Jack Rogers
W. H. Rogers, Jr.
Dr. Vern Rohrer
R. C. Roland
O. B. Rominger
Dr. O. B. Rominger
Henry R. Rose
Martin A. Rose
Jerry Rosenberg
Lynn Ross
Jack D. Rotman
R. E. Rouer
Henry F. Rounsaville, Jr.
Lucien L. Rouze
Arch H. Rowan
Chas. W. Royer
W. Allen Rubottom
Matt Rudd
V. G. Runnion, Jr.
Dr. Wm. F. Runyon
June Leach Russell
Roy Russell
Dr. A. H. Rutledge
James W. Rutledge
Dr. Robb H. Rutledge
Bill Ryan
David Ryan
Edwin S. Ryan
John C. Ryan, III
W. T. Ryan
Dr. Paul G. Rydell
Dr. M. E. Sadler
Doc St. Clair
John St. John
Everett S. Salley
Kathleen Salley
T. C. Salmon
Earnest E. Sanders
Wm. T. Sanders
Dr. John C. Saunders
Dr. Hugh W. Savage
Reagan Savers
Edgar Scaring
Byron Scarborough
Gordon Scarborough
Hugh Scarborough
A. Schaffer
Dr. Earl U. Schaff, Jr.
Dr. Wm. C. Scheiuing
J. L. Schell
C. E. Scherbeck
Stan Schiller
W. A. Schmid, Jr.
Dr. H. W. Schmuck
Paul Schneider
H. Schroeder
Bob Schutts
Harold Schweiss
C. W. Scott
Claude T. Scott
Fred Scott
Howard S. Scott
Julian Scott, Sr.
W. E. Scott
Jack C. Scrungs
Dr. Burgess Sealy

Donald E. Sears
Dr. Herman C. Sehested
Harold Seimworth
W. H. Sellers
L. C. Sentker
P. O. Settle, Jr.
R. R. Severns
J. M. Shackelford
R. O. Shackle
H. V. Shank
Ralph B. Shank
Carl Shanks
Ogden K. Shannon, Jr.
Ogden K. Shannon, III
Bill Shaw
Jack Shaw
Ernest Sheehan
Floyd O. Shelton
Jack Shepard
W. M. Sherley
J. R. Sherman
George Sherry
Dewey S. Shilling, Jr.
Dr. Harold C. Shilling
Dr. T. J. W. Shoemaker
John V. Shoffit
John Shofner
Guido Shumake
Wm. N. Shurtleff
Martin O. Sigmund
Edwin M. Sigel
Mrs. Frances M. Sigel
John C. Sikes
Ray W. Silcox
Craig B. Silverthorne
Dave Simmons
Ellis L. Simmons
James C. Simmons
Dr. Peter Simon
Richard U. Simon
Robert V. Simons
Patrick M. Sims
Robert J. Sittton
Robert J. Sivalls
Dr. F. M. Slack, Jr.
Liston W. Slack
Jack Slate
Dub Slater
Geo. M. Slaughter, III
Jimmy Slay
Vernon H. Slocumb
Dr. Houston Small
B. D. Smith
Bert K. Smith, Jr.
Mrs. Bert K. Smith, Sr.
Bill Smith
Cecil B. Smith
Donald W. Smith
E. L. Smith
Emmitt Smith
Curtis Thomas
Jack E. Thomas
James Earl Thomas
John R. Thomas
Larry L. Thomas
T. Thomas
Tim L. Thomas
W. J. "Bill" Thomas
B. V. Thompson, Jr.
Chas. H. Thompson
Geo. Thompson, III
Dr. J. R. Thompson
John R. Thompson
Leslie C. Thompson
Ody Thomson
Preston Thompson
Tommy Thompson
Jack R. Thomsen
C. V. Thornton
Leigh Thornton
Bill Thurman
Dr. W. K. Thurmond
Art Ticknor
Roy T. Tillery
Nancy Sharon Tilley
Rice M. Tilley
John J. Tivatt
J. M. Spreklemeyer
Lyle R. Sproules
Don M. Squires
Rudy Stalliers
Charles R. Stanley
Marion F. Stanley
Homer R. Stansbury
E. T. Stearns
Lowell W. Stephens
Uel Stenhus
Leo F. Stevens
Marvin C. Stevens
Paul I. Stevens
L. W. Stevenson
Joe Stewart
John C. Stewart
R. J. Stewart
W. L. Stewart
W. B. Stirman
C. W. "Dub" Stocker, Jr.

Wm. Stoddard, Jr.
Green Stoker
James J. Stoker
L. K. Stoker
Ray Stokes
Garner Stokley
G. C. Stolz
Brandon Stone
Lawrence M. Story
Dr. James G. Stouffer
C. V. Stoughton
James W. Stovall
Jim Stovall
R. M. Stovall
E. A. Strange, Jr.
Ernest Strange
John G. Street, Jr.
Charles Stringer
W. K. Stripling, Jr.
Jake Stroud
D. J. Stubblefield, Jr.
Dr. Jerry E. Stubblefield
J. Lamar Stuckert, Jr.
H. F. Stute, Jr.
W. B. Stute
C. T. Sumner
Dr. Wendell W. Sumner
Floyd E. Sumrow
Harry Fuller Sutherland
Mark Sutphen
K. W. Sutton
Meredith L. Sutton
Johnny R. Swaim
W. R. Swaim
W. H. Swain
David W. Sweeney
Robert E. Sweeney
Guy C. Victory
Agnes Talley
Frank Talley, Jr.
J. E. Taubert
Emery Taylor
Fred A. Taylor
Harry Taylor
Herb Taylor
J. B. Taylor
Kimmel Taylor
Kirby Taylor
Louis E. Taylor
Dr. Ray Taylor, II
Tom D. Taylor
John B. Teel
Scott Teel
J. C. Terrell
M. K. Terrell
Dr. T. C. Terrell
J. Marvin Terry, Jr.
Curtis Thomas
Jack E. Thomas
James Earl Thomas
John R. Thomas
Larry L. Thomas
T. Thomas
Tim L. Thomas
W. J. "Bill" Thomas
B. V. Thompson, Jr.
Chas. H. Thompson
Geo. Thompson, III
Dr. J. R. Thompson
John R. Thompson
Leslie C. Thompson
Ody Thomson
Preston Thompson
Tommy Thompson
Jack R. Thomsen
C. V. Thornton
Leigh Thornton
Bill Thurman
Dr. W. K. Thurmond
Art Ticknor
Roy T. Tillery
Nancy Sharon Tilley
Rice M. Tilley
John J. Tivatt
J. M. Spreklemeyer
Lyle R. Sproules
Don M. Squires
Rudy Stalliers
Charles R. Stanley
Marion F. Stanley
Homer R. Stansbury
E. T. Stearns
Lowell W. Stephens
Uel Stenhus
Leo F. Stevens
Marvin C. Stevens
Paul I. Stevens
L. W. Stevenson
Joe Stewart
John C. Stewart
R. J. Stewart
W. L. Stewart
W. B. Stirman
C. W. "Dub" Stocker, Jr.

J. F. Tucker, Jr.
Jack C. Tunstall
Glen Turbeville
R. P. Turbeville
Ray Stokes
Garner Stokley
G. C. Stolz
Brandon Stone
Lawrence M. Story
Dr. James G. Stouffer
C. V. Stoughton
James W. Stovall
Jim Stovall
R. M. Stovall
E. A. Strange, Jr.
Ernest Strange
John G. Street, Jr.
Charles Stringer
W. K. Stripling, Jr.
Jake Stroud
D. J. Stubblefield, Jr.
Dr. Jerry E. Stubblefield
J. Lamar Stuckert, Jr.
H. F. Stute, Jr.
W. B. Stute
C. T. Sumner
Dr. Wendell W. Sumner
Floyd E. Sumrow
Harry Fuller Sutherland
Mark Sutphen
K. W. Sutton
Meredith L. Sutton
Johnny R. Swaim
W. R. Swaim
W. H. Swain
David W. Sweeney
Robert E. Sweeney
Guy C. Victory
Agnes Talley
Frank Talley, Jr.
J. E. Taubert
Emery Taylor
Fred A. Taylor
Harry Taylor
Herb Taylor
J. B. Taylor
Kimmel Taylor
Kirby Taylor
Louis E. Taylor
Dr. Ray Taylor, II
Tom D. Taylor
John B. Teel
Scott Teel
J. C. Terrell
M. K. Terrell
Dr. T. C. Terrell
J. Marvin Terry, Jr.
Curtis Thomas
Jack E. Thomas
James Earl Thomas
John R. Thomas
Larry L. Thomas
T. Thomas
Tim L. Thomas
W. J. "Bill" Thomas
B. V. Thompson, Jr.
Chas. H. Thompson
Geo. Thompson, III
Dr. J. R. Thompson
John R. Thompson
Leslie C. Thompson
Ody Thomson
Preston Thompson
Tommy Thompson
Jack R. Thomsen
C. V. Thornton
Leigh Thornton
Bill Thurman
Dr. W. K. Thurmond
Art Ticknor
Roy T. Tillery
Nancy Sharon Tilley
Rice M. Tilley
John J. Tivatt
J. M. Spreklemeyer
Lyle R. Sproules
Don M. Squires
Rudy Stalliers
Charles R. Stanley
Marion F. Stanley
Homer R. Stansbury
E. T. Stearns
Lowell W. Stephens
Uel Stenhus
Leo F. Stevens
Marvin C. Stevens
Paul I. Stevens
L. W. Stevenson
Joe Stewart
John C. Stewart
R. J. Stewart
W. L. Stewart
W. B. Stirman
C. W. "Dub" Stocker, Jr.

W. Earl White
Willard White
Dr. Wm. R. Whitehouse
B. A. Whiteley
Ralph E. Whitley
James M. Whittsett
W. R. Whitten
J. A. Whitworth, Jr.
Kenneth L. Wickett
Chas. P. Widger
Henry E. Wier
Dr. John A. Wiggins
Dr. R. B. Wilchar
Gordon Wiley
B. C. Williams
Ed P. Williams
George S. Williams
H. Richard Williams
Dr. J. C. Williams
J. M. Williams
Jack Williams
Jay D. Williams
Joe F. Williams
Mrs. Joe F. Williams
Joe W. Williams
Lawton Williams
Morgan K. Williams
Robt. W. Williams
Mrs. Robert W. Williams
Dr. Wilson B. Williams
Dick Williamson
H. R. Williamson
Doyle Willis
Barney Willmon
Don Willoughby
Bob Wilson
Earl Wilson
Edwin E. Wilson
Finis E. Wilson, Jr.
J. C. Wilson, Jr.
J. Vaughn Wilson
K. W. Wilson
Stan Wilson
Frank Windigger
R. F. Windfohr
Lester Winger
John W. Winter, III
Dr. J. R. Winteringer
J. Elwood Winters
Cdr. R. D. Wise
C. H. (Chuck) Wisner
Jerry Withers
Jerry Wolens
R. B. (Bear) Wolf
Delmar Wolfe
Hugh Wolfe
A. J. Wolff
Ernest N. Wolff
David Wolverson
Emil G. Wood
Frank M. Wood
Dr. Gene Wood
H. F. Wood
R. W. Wood
Wilson F. Wood
Z. T. Wood
Billy Woodard
Charles Woodard
Don Woodard
Guy F. Woodard
V. E. Woodard
James A. Woodfin
S. P. Woodson
Fred N. Woodridge
Wheeler Worley
R. R. Wortham, Jr.
Gerald C. Wren
Howard W. Wrentmore
L. C. (Pete) Wright
Ellis Wurzbach
W. H. Wyatt
Sproesser Wynn
Allott W. Yador
Chas. E. Yager
W. H. (Bill) Yancey
W. R. Yancey
Dale E. Yant
Dr. T. F. Yater
Mrs. T. F. Yater
Leslie E. Yates
Thomas L. Yates
T. Kay Yeoman
Mrs. Bruce Young
Robert Young
Travis P. Young
V. W. (Buddy) Young, Jr.
Vick Young
Paul J. Youngdale
Claude D. Youts
J. M. Zachary
Robert Zodin
Mrs. Alice Zurivitz

IF YOUR NAME IS NOT ON THIS LIST OF FROG CLUB MEMBERS FOR 1963-64, IT SHOULD BE!

1963-64 FROG CLUB MEMBERSHIP ROSTER (cont'd)

William B. Douglas
Joe A. Dowell
Chas. M. Drake, Jr.
D. L. Draper
Dr. R. H. W. Drchsel, Sr.
Joe Driskell
Ira C. Driver
J. S. DuBoise
William S. DuBoise
C. E. Dugan
J. H. Dulaney
Allen Duncan
Horace O. Duncan
T. H. Duncan
James P. Dunigan
Lewis W. Dunn
Stanley S. Durham
Earl E. Dyess
Jim Eagle
Norman T. Earl
R. C. Earl, Jr.
W. P. Earnsey, Jr.
V. J. Earnheart
Gordon Eastman
Gladys Andre Eberhardt
K. J. Eberly
Walter Echols
William W. Echols
E. H. Eddie
W. J. "Red" Eddie
Frank B. Edmonds
L. C. Edmonds
Hassell Edwards
Dr. Walter T. Edwards
John W. Eggleston
A. E. Eismann
L. P. Ekstrom
Ray Eller
Dr. Edwin A. Elliott
Alston Ellis
Bob F. Ellis
Dr. Dan G. Ellis
Drew Ellis
Jackie Ellis
Raymond E. Ellis
Bill Ellison
B. E. Elman
Gwen Engert
John D. Engert
John Robert Engert
Ronald Engert
Bryan H. Engram
Bill Enis
Hunter Enis
W. C. Enis
Price Erickson
Cal Estill
Max Eubank
Fred J. Eudey
J. Harold Evans
Leslie P. Evans
Lon Evans
Ruth Evans
Ted Fahn
Bruce D. Fallis
Frank Farkas
Frank M. Farley, Sr.
Hugh Farnsworth
C. J. (Jack) Farrell
Geo. B. Faulder
K. F. Feltz
J. Ernest Fender, Jr.
Lt. Col. J. S. Fenton, Jr.
Ben M. Ferguson
John K. Ferguson
John R. Ferguson, Jr.
Dr. Gus Ferre
B. G. "Skin" Few
Billy R. Field
Dick Fillingim
F. M. Fillingim, Jr.
Lundy H. Finch
F. G. Fincher
Ray Finley
David Finney
John H. Firestone
Beeman Fisher
Dr. Roy B. Fisher
Malcolm B. Fleet
J. H. Fleming
J. Harlon Fleming
W. W. Flemming
Mrs. W. W. Flemming
Dr. William E. Flood
Heard L. Floore
Shag Floore
James M. Floyd
Clyde Foltz
Dr. Gaston Foote
W. Al Ford
Wm. E. Forehand
Douglas Forshagen
Ben J. Fortson

Eldred Foster
Hubert G. Foster
Hubert J. Foster
J. E. Foster, III
Joe A. Foster
Andy Fournier
Mal Fowler
Wendell C. Fowler
Wilson H. Fox
Chuck Fraley
Wm. R. Francis
Nathan Frankel
R. E. Frankenfield
Johnny Franko
Norman H. Frankrich
Mark Frederick
Mark V. Frederick
Pete Frederick
Robert K. Freebairn
W. O. Freeman
Dr. Wm. G. Frick
Bayard Friedman
James E. Friend
Bonner Frizzell
C. Ferd Fry
Gene Fulgham
Geo. M. Fuller, Jr.
James C. Fuller
Bill Fullhart
Wilford Fultz
H. B. Fuqua
Albert Gackle
Ralph M. Gage
Edward Gaines
Jack Gaither
James C. Galbraith
Elgin Gandy
Max J. Gardner, Jr.
George Gartner
Herman Gartner
Fred L. Gary
Jeff Geil
J. E. Gerard
Preston Geren, Jr.
Bob Germond
John H. Gibbs
A. C. Gibson
Leroy A. Gilbert
Clarke B. Gillespie
G. M. Gillespie
D. E. Gilley
Timon T. Gillis
John T. Gincchio
Arthur I. Ginsburg
Marcus Ginsburg
Charles H. Gipson
H. A. Glass
Walter G. Glaze
B. J. Glover
Louis R. Godwin
Dr. A. I. Goldberg
Dore Goldstein
Jules Goldstein
Ray A. Hayes
Carroll E. Hays
Don F. Hays
Jack C. Hays
W. G. Hazen
Calvin Hazlewood
Dick Hazlewood
Barton E. Head
Dr. W. M. Head
A. S. Headley
Dr. K. C. Heald
Russell C. Hector
H. A. Hedberg
Wyatt C. Hedrick
Dale Heiskell
R. E. Henderson
Sam F. Henderson
W. C. Henry
Boad E. Hensley
Erwin T. Herbert
Jack Gray
John H. Gray
Jos. F. Greathouse
H. S. Green, Sr.
John C. Green
Judge Green
R. F. Green
Wm. T. Green
L. A. Greene
H. K. Greenleaf
Jack N. Greenman, III
Mike Greenwall
Ansel Greer
Bryan Gregory
Dr. Abe Greines
C. C. Griffin
Dr. O. P. Griffin
Walter B. Griffin
John M. Griffith, Jr.

Dale Griggs
George L. Grimes
Arthur L. Grimm
Mrs. Peggie Grubbs
C. N. Guinn
Joe Guminski
Mrs. Joe Guminski
Ike Haas
Arthur G. Hagar
Jack Haggard
Ted E. Hajek
I. B. Hale
Shadie F. Hale
Flem Hall
H. Earl Hall, Jr.
L. M. Hall, Jr.
Louis Hall
Robert H. Hall
Wm. E. Hall
Vernon Hallbeck
Dr. James A. Hallmark
C. A. Haltom
E. P. Haltom
Rev. Leslie Hames
E. G. Hamilton
E. H. Hamilton, Jr.
Walter Hamilton
Cedric G. Hammett
Wilton N. Hammond
Hillard Hammond
Glen A. Hanan
Robert W. Hancock
Leo O. House
B. M. Housewright
Jack Howard
Dr. Rex J. Howard
F. E. Howe
Jack D.

YOU ARE INVITED TO JOIN



THE FROG CLUB

AN ORGANIZATION OF FRIENDS OF TCU

The Frog Club is purely and simply a booster organization for TCU Frog teams in all sports.

The Frog Club's sole purpose is to provide TCU's athletic program with every possible assistance (and "with no strings attached").

And, as explained in the first column, everybody in accord with this purpose is eligible for membership in The Frog Club.

Further, as explained in the third column, by joining The Frog Club, you will not only help sports at TCU, you will also "help yourself" to 10 big benefits of Frog Club membership.

HOW DO YOU JOIN THE FROG CLUB?

All you have to do to join The Frog Club is:

Make a contribution to The Frog Club (and your contribution is deductible for income tax purposes).

Contributions of from \$10 as a minimum to \$250 as a maximum are suggested.

Just ask yourself: How much do I want to help TCU athletics?

Then mail in your contribution with the reply form below. By return mail, you will receive your Frog Club membership card.

USE THIS COUPON

CAN ANYBODY JOIN THE FROG CLUB?

Yes, everybody can join The Frog Club.

—NOT JUST ALUMNI AND EX-STUDENTS OF TCU.

There are more members of The Frog Club who did not go to TCU than there are those who did.

—NOT JUST THOSE WHO CAN ATTEND FROG CLUB MEETINGS.

The great majority of Frog Club members never attend a meeting of the club.

The Frog Club is for everybody, especially those interested in sports.

IF YOU ARE A SPORTS FAN LIVING IN FORT WORTH, YOU SHOULD BELONG TO THE FROG CLUB because you know it is good for Fort Worth for TCU to have the best possible athletic program.

You can belong to The Frog Club and still cheer for your own school when it plays TCU. A lot of Frog Club members do.

IF YOU ARE A TCU FAN, NO MATTER WHERE YOU LIVE, YOU SHOULD BELONG TO THE FROG CLUB because this is the easiest and best way for you to support TCU's entire athletic program.

HOW WILL YOU BENEFIT BY JOINING THE FROG CLUB?

1 You and your family can attend (free) TCU's annual fall pre-season training game.

2 You and your family can attend (free) TCU's annual spring training game.

3 You will be admitted free to TCU's first home basketball game.

4 You will be admitted free to TCU's first Southwest Conference home baseball game.

5 You can attend The Frog Club's Monday luncheons (weekly in the Fall; monthly in the Spring).

6 You and your family can attend The Frog Club's annual spring outing honoring all TCU athletes.

7 You will be given special ticket purchase opportunities for TCU's out-of-town football games.

8 You and your family can ride The Frog Club's chartered planes and busses.

9 You will receive regular mailings to keep you fully posted on the Club and TCU.

10 Most important, you will have the satisfaction of knowing that you have done your part to help sports at TCU.

THE FROG CLUB
3467 West Rosedale
Fort Worth, Texas 76107

☐ Herewith is my contribution of \$_____. Enroll me as a member of The Frog Club for the school year of 1964-65 (Sept. 1, 1964, through Aug. 31, 1965).

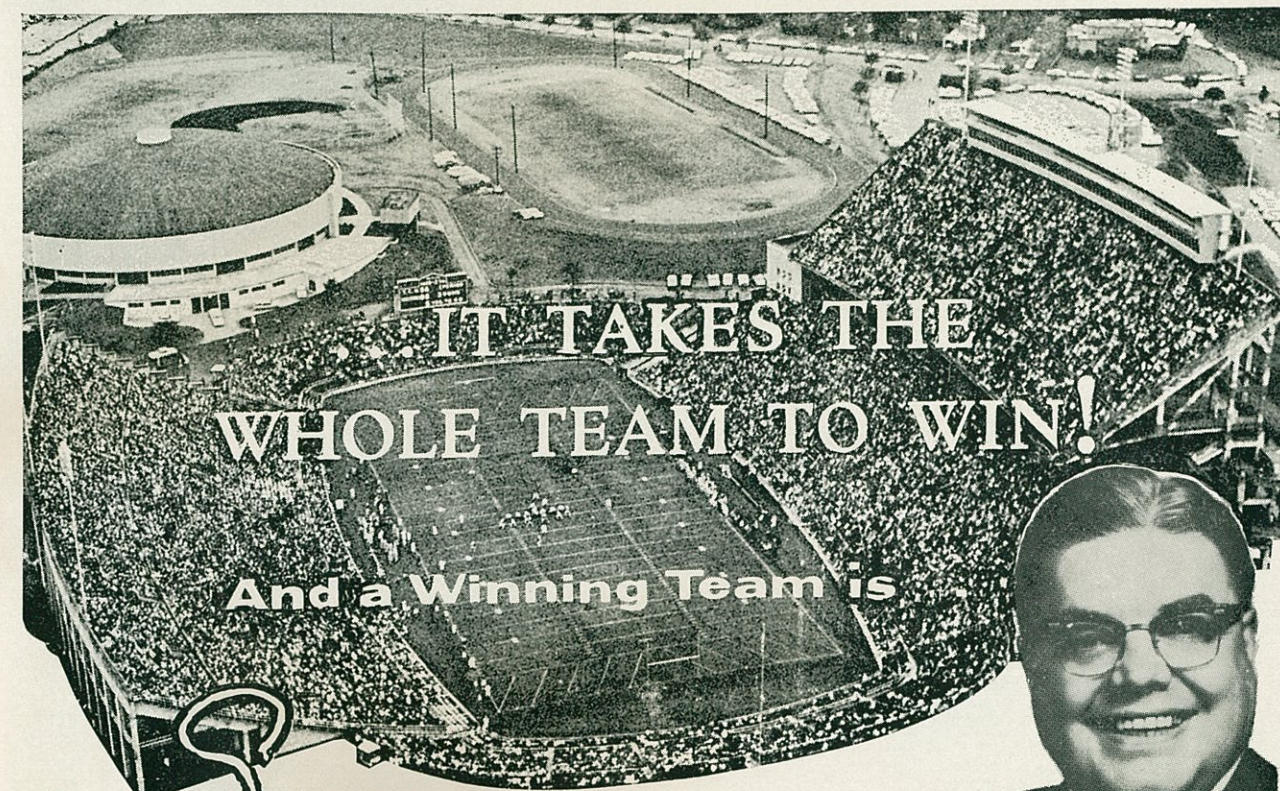
or

☐ I am interested in becoming a member of The Frog Club but would like more information, so please send me your free 20-page Frog Club Information Booklet.

Name: _____

Address: _____

City, State and Zip Code: _____



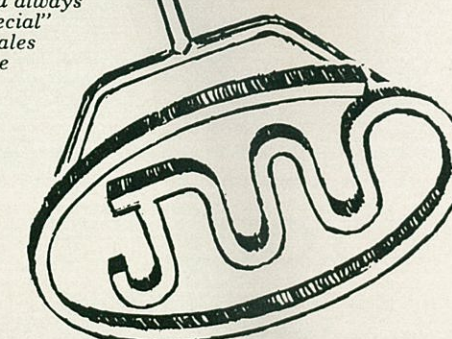
...IT TAKES THE
WHOLE TEAM TO WIN!

And a Winning Team is

Jack Williams

CHEVROLET

Where you always
find a "special"
brand of sales
and service



"Nearly Everybody Likes
Jack Williams Chevrolet"

One Policy for All

We conduct a responsible business, according to the highest ethical standards recognized by the business community, to create a climate in which Quality Salesmen can better serve you.

We are dedicated to furnishing and maintaining proper facilities, equipment and physical surroundings which are in keeping with the job of Quality Salesmanship and service.

We strive to build public regard for this dealership and its salesmen by maintaining the highest level of advertising, promotion, service and a continuous program of owner satisfaction.

Jack Williams Dealer



1300 S. UNIVERSITY DRIVE • ED 6-0471