



**Official Program 50c**

**OCTOBER 10th,  
1964**

**2:30 p. m.**

**Florida State  
vs.**

**University of Kentucky**

**DOAK S. CAMPBELL STADIUM**

**HOMECOMING**



GO TO

**McDONALD'S**

FOR A

**PURE BEEF HAMBURGER**

Right off the Grill on a Plump Toasted Bun

**TRIPLE THICK SHAKE**

M'M'M' Creamy Luscious to the Very Last Drop

**GOLDEN BROWN FRENCH FRIES**

Piping Hot and Done to a Crisp Perfection

Home of America's Favorite Hamburger  
More Than a Billion Sold

LOOK FOR THE GOLDEN ARCHES

**McDONALD'S**

1701 W. TENNESSEE ST.  
CORNER WHITEHALL

*patronize...*  
**STADIUM**

**CONCESSIONS**

*Located beneath the stands on each side of stadium*

**COLD DRINKS..... 15¢**  
**HOT COFFEE..... 15¢**  
**SANDWICHES..... 30¢**  
**HOT DOGS..... 25¢**  
**PEANUTS..... 15¢**  
**POP CORN..... 15¢**

**SOUVENIR ITEMS**  
**PENNANTS**  
**BADGES**  
**SUN VISORS**  
**ASPIRIN**

*All Cigarettes 40¢*

*please pay no more than* **established prices**

The 1964  
*Homecoming Court*



*The Queen And Her Court*

Queen of the 1964 Homecoming festivities is Miss Sue Mauger (center) of Pompano Beach. The ladies of her court are, left to right: Miss Sally Sparks of West Palm Beach; Miss Jan Brantley of Jacksonville; Miss Dottie Kohlman of North Miami; and Miss Sheila Clarke of Winter Park. The five lovely seniors were selected by campus-wide ballot.



*Greetings  
from your  
Alumni  
Association*

### Welcome Home Seminoles:

It is a real pleasure to welcome back to campus our many alumni and friends for Florida State's 1964 Homecoming. This year's theme is "Victory and More in '64." It promises to be the greatest ever.

Homecoming is traditionally a time for nostalgia and remembrance, for renewing old friendships, and for joining in the Spirit of the Garnet and Gold. As we review the greatness of the past we must also rededicate ourselves to the building of an even greater future.

New, exciting things are in store for the year ahead and for the years to come.

The interest and enthusiasm of the students, faculty, and alumni for this Homecoming is indicative of what can be expected in the coming months as we set ourselves firmly on the path toward our goal of educational excellence at our Alma Mater.

*Charles F. Nixon, Jr.*

President, 1964-65

Florida State University Alumni Association



# FSU FOOTBALL 1964...



## IN THIS ISSUE:

University Features .....	6, 7, 8
Guest Column .....	9
FSU All-Time Records .....	9
Athletic Committee .....	10
Comparing Today's Teams .....	10
Seminole Football Family .....	11
The 1964 Seminoles .....	12, 13, 14, 15
Officials' Signals .....	17
FSU's '64 Freshman Team .....	18
Starting Lineup, FSU .....	20
Starting Lineup, Opponent .....	21
Seminole Boosters, Inc. ....	25
WFSU-TV Football Schedule .....	26
Seminole Radio Network .....	27
Penalties .....	29
Seminole Songs and Cheers .....	30
The Marching Chiefs .....	36
Depth Charts, Rosters, Officials .....	Flip Card
FSU Basketball, 1964-65 .....	39

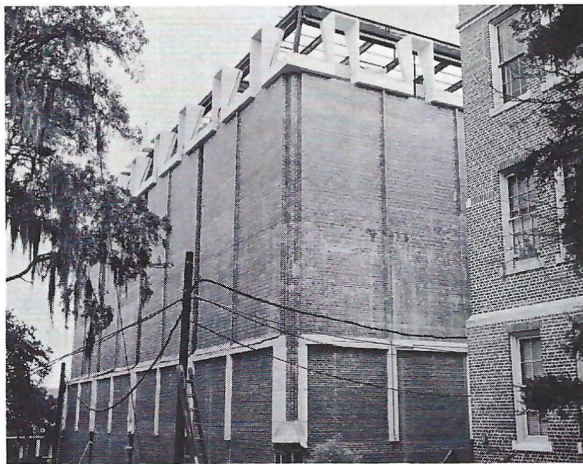
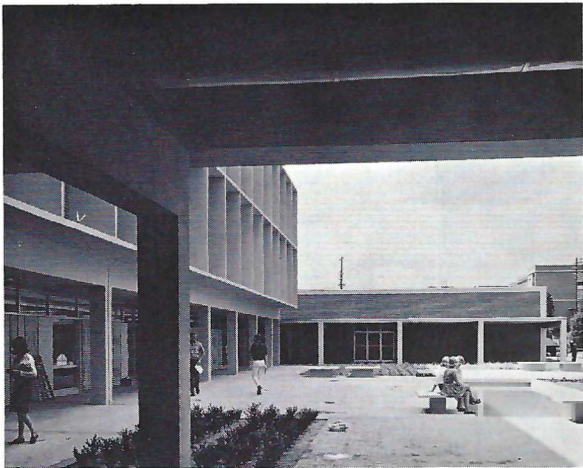
## SEMINOLES ON THE WARPATH

Sept. 19 Miami	Miami 8:00 p.m. EST
Sept. 26 Texas Christian	Fort Worth 7:30 p.m. CST
Oct. 3 New Mexico State	Tallahassee 8:00 p.m. EST
Oct. 10 Kentucky (Homecoming)	Tallahassee 2:30 p.m. EST
Oct. 17 Georgia	Athens 2:00 p.m. EST
Oct. 24 Virginia Tech	Blacksburg 2:00 p.m. EST
Oct. 31 So. Mississippi	Tallahassee 8:00 p.m. EST
Nov. 7 Houston	Houston 2:00 p.m. CST
Nov. 14 N. C. State	Tallahassee 8:00 p.m. EST
Nov. 21 Florida	Tallahassee 2:00 p.m. EST

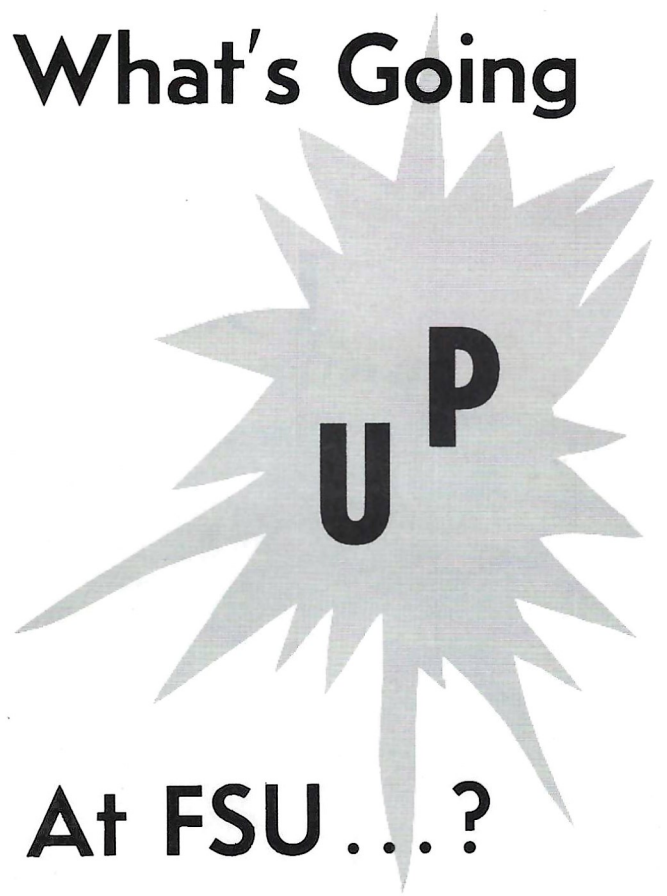
*Compliments and  
Best Wishes from*



**YOUR APPLIANCE  
HEADQUARTERS  
611 N. Monroe St.**



# What's Going



## At FSU ... ?

**EVERYTHING!** Enrollment at Florida State has skyrocketed — from 9,000 students just four years ago, to a record 12,137 this Fall.

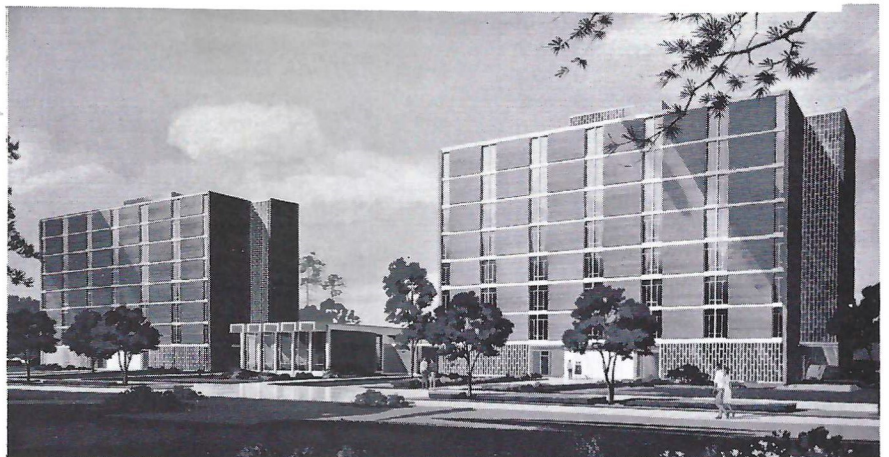
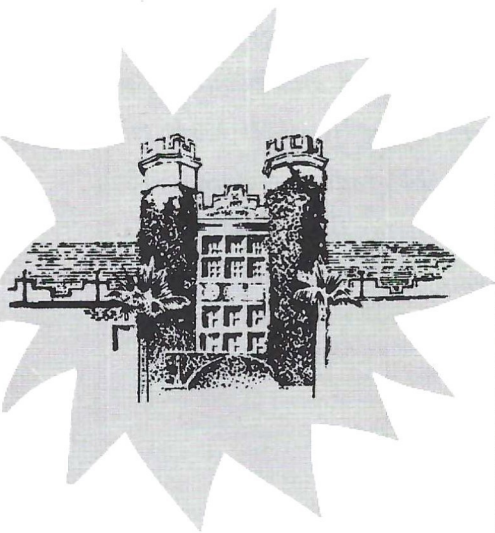
Keeping up with these increases is no small problem for the University. Each year brings new demands for more dormitories, classrooms, laboratories and teaching facilities and staff, to meet the continuing needs for quality in the face of quantity demands.

Construction just completed, underway, and still on the architects' drafting boards amounts to a \$26 million building program, largest in the University's history. Yet that sum is but a beginning in terms of meeting the demands ahead. Well spent, it is yielding a long-awaited University Union (*upper left*), a Psychology Research Building (*center left*), a Physics Research Building (*lower left*), and a new residence hall (*at right*). Among other projects included in this sum are renovations of the old student center to increase postal and other services vital to large student bodies, additions to the Nuclear Building and Alumni Village, and expansion of the stadium.



**NEW RESIDENCE HALL NAMED FOR NATHANIEL MOSS SALLEY**

Florida State University's newest dormitory—a 586-student, twin-towered structure—was dedicated and named in ceremonies held yesterday by officials of the University and the State of Florida. Pictured above in a campus scene, and below in an architect's rendering, the residence hall is named for the late Dean of Florida State's School of Education, Nathaniel Moss Salley.



## PARADE OF BEAUTY

### FSU Homecoming Queens

1964	.....	(See Page 3)
1963	.....	Clyda Stokes
1962	.....	Kitty (Miller) Risenburg
1961	.....	Carolyn (Reeves) Bayer
1960	.....	Charlotte Goodman
1959	.....	Joyce (Combs) Fachtel
1958	.....	Arielou (Johnson) Marcy
1957	.....	Lynn (LaGrange) Francis
1956	.....	Layte Bowden
1955	.....	Margaret Ann (Ballinger) Miller
1954	.....	Betty Wilmon
1953	.....	Ann (Yates) Burst
1952	.....	Marlies (Gessler) Limmiatis
1951	.....	Sarah (Kennedy) Turner
1950	.....	Jessie (Monroe) Schmelz
1949	.....	Barbara J. (Pettit) Hansen
1948	.....	Clara (Howell) McKay
1947	.....	None Selected



1963 Queen — Clyda Stokes of Jacksonville  
Crowned by 1962 Queen — Kitty (Miller) Risenburg

# Florida State Homecomings Revisited

## FSU'S HOMECOMING RECORD

(Won 10, Lost 6, Tied 1)

	FSU	Opp.
1964—Kentucky	?	?
1963—NC State	14	0
1962—Houston	0	7
1961—Miss. Southern	0	12
1960—Kentucky	0	23
1959—Wm. & Mary	0	9
1958—Tampa	43	0
1957—Virginia Tech	20	7
1956—Wake Forest	14	14
1955—The Citadel	39	0
1954—Furman	33	14
1953—Stetson	13	6
1952—Furman	0	9
1951—Stetson	13	10
1950—Sewanee	14	8
1949—Millsaps	40	0
1948—Tampa	33	12
1947—Tenn. Tech	6	27

*It's that time again. . . . The time set aside on the calendar when old friends join together to share college-day memories, when the University's most poised and beautiful vie for the coveted queen title, when the football team tries particularly hard to impress the old grads. . . . Parades. . . . Parties. . . . Reunions. . . . Outstanding football. . . . Crowds. . . . It's that time again. . . . It's Homecoming!*



## The View From Above

By **BILL BUNKER**  
Sports Publicity Director  
Florida State University



Every team plays several big football games during the course of a season, and it's hard to determine which of these is THE big game.

However, it's not too difficult to say that today's game with Kentucky could easily go down as THE game for Florida State this year.

A glance at the record shows two undefeated teams meeting in a game which will have tremendous bearing on the status of each for the rest of the season. In the struggle for national recognition, Kentucky has been the surprise team of this young season. The Wildcats have upset nationally-ranked Mississippi and Auburn and come to Tallahassee riding the crest of the biggest wave of success the Blue Grass State has seen in many a year.

Florida State can match the undefeated Wildcat record and go one better. Going into today's game, the Seminoles are the nation's only unscored upon team. However, the "Seven Magnificents" and their backfield mates have yet to meet an opponent as ferocious as Kentucky.

One of today's highlights should be the expected duel between two of the country's top passing combinations.

Kentucky's Rick Norton has completed 33 of 58 passes for 464 yards and three touchdowns. Florida State's Steve Tensi has found his target 26 out of 40 times for 399 yards and four touchdowns.

Ken Kestner, the Associated Press "Lineman of the Week" as a result of his performance against Ole Miss, has caught 17 passes for 278 yards and four touchdowns. Florida State's Fred Biletnikoff is just off that pace with 15 receptions for 239 yards and three touchdowns.

Kentucky also has an explosive running back in Rodger Bird, who has flashed for 280 yards and three touchdowns on the ground. Bird is also the Wildcat punter, and enters today's game with a 38.7 average. One of the few genuine "triple threat" men in the game, the Corbin, Ky. junior also handles a share of the passing duties.

The Seminoles unwrapped a bevy of smart-looking runners in last week's New Mexico State game. Phil Spooner, a junior from Fort Myers, leads the crop with 124 yards in 36 carries, followed by Pensacola sophomore Lee Narramore who has 111 yards in 30 attempts.

A capsule summary might rate this a contest between Florida State's defense and Kentucky's proven offensive attack. Don't forget, however, that the Wildcats held a high-powered Auburn team scoreless last weekend.

No matter how the game develops, it should be an exciting one, and a fitting climax to the Homecoming festivities.

# FSU Records

## SINGLE GAME

### INDIVIDUAL

**LONGEST TOUCHDOWN RUN FROM SCRIMMAGE**—80 yards by Fred Pickard vs. Virginia Tech, 1957.

**LONGEST TOUCHDOWN PASS**—80 yards, Nelson Italiano to Eddie Gray vs. Newberry, 1950.

**LONGEST TOUCHDOWN RUN ANY SITUATION**—99 yards by Ted Hewitt vs. Stetson, 1949, and by Fred Biletnikoff vs. Miami, 1963.

**LONGEST RUN FROM SCRIMMAGE WITHOUT SCORING**—76 yards by Roy Thompson vs. Stetson, 1951.

**LONGEST INTERCEPTION RETURN**—99 yards by Ted Hewitt vs. Stetson, 1949, and by Fred Biletnikoff vs. Miami, 1963.

**LONGEST PUNT RETURN**—80 yards by Billy Odom vs. Stetson, 1954.

**LONGEST KICKOFF RETURN**—89 yards by Odom vs. Virginia Tech, 1955.

**MOST TIMES RUSHING**—29 by Pickard vs. Georgia, 1959.

**MOST YARDS RUSHING**—161 by Buddy Strauss vs. Mississippi College, 1949.

**MOST YARDS PASSING**—355 vs. Villanova, 1954, 1949.

**MOST TOTAL OFFENSE**—369 yards (56 rushing, 313 passing) by Majors vs. Tampa, 1959.

**MOST PASSES ATTEMPTED**—32 by Joe Majors vs. Tampa, 1959.

**MOST PASSES COMPLETED**—20 by Majors vs. Tampa, 1959.

**MOST PASSES CAUGHT**—9 by Bud Whitehead vs. Tampa, 1959 and by Fred Biletnikoff vs. Miami, 1964.

**MOST YARDS RECEIVING PASSES**—165 by Fred Biletnikoff vs. Miami, 1964.

**MOST PASSES INTERCEPTED**—3 by Tommy Brown vs. Stetson, 1950 and vs. Georgia Tech, 1952; Lee Corso vs. Georgia 1954; Whitehead vs. Virginia Tech, 1959.

**LONGEST PUNT**—84 yards by Brown vs. Tampa, 1950.

**LONGEST FIELD GOAL**—44 yards by Les Murdock vs. VPI, 1963.

### TEAM

**MOST POINTS**—74 vs. Whiting Field 0, 1949.

**GREATEST MARGIN OF VICTORY**—74-0 vs. Whiting Field, 1949.

**GREATEST MARGIN OF DEFEAT**—0-42 vs. Georgia, 1959.

**MOST YARDS RUSHING**—383 vs. Abilene Christian, 1957.

**MOST YARDS PASSING**—355 vs. Villanova, 1954.

**MOST TOTAL OFFENSE**—514 yards vs. The Citadel, 1959 (307 rushing, 207 passing).

**MOST PASSES ATTEMPTED**—34 vs. Tampa, 1959 (completed 20).

**MOST PASSES COMPLETED**—20 vs. Tampa, 1959 (attempted 34).

**MOST PASSES INTERCEPTED**—7 vs. Virginia Tech, 1959.

**MOST PUNTS**—10 vs. Stetson and Georgia Tech, 1955.

**MOST POINTS**—60 by Red Parrish, 1949.

# TODAY'S TEAMS — HOW THEY RATE

## Results

FLORIDA STATE (3-0)			KENTUCKY (3-0)		
Miami .....	14-0	Detroit .....	13-6		
Texas Christian .....	10-0	Mississippi .....	27-21		
New Mexico State .....	36-0	Auburn .....	20-0		

## Individual Leaders

FLORIDA STATE				RUSHING			KENTUCKY				
Player	Att.	Yards	Avg.	Player	Att.	Yards	Avg.	Player	Att.	Yards	Avg.
Spooner .....	36	124	3.4	Bird .....	52	280	5.6	McGraw .....	35	135	3.8
Narramore .....	30	111	3.7	Antonini .....	15	60	4.0				
Green .....	24	99	4.1								

FLORIDA STATE				PASSING				KENTUCKY						
Player	Att.	Comp.	Yds.	TD	Player	Att.	Comp.	Yds.	TD	Player	Att.	Comp.	Yds.	TD
Tensi .....	40	26	399	4	Norton .....	58	33	464	3					
Pritchett .....	17	11	126	0										
Gero .....	6	4	35	0										

FLORIDA STATE				RECEIVING				KENTUCKY			
Player	Caught	Yds.	TD	Player	Caught	Yds.	TD	Player	Caught	Yds.	TD
Biletnikoff .....	15	239	3	Kestner .....	17	278	4	Becherer .....	6	75	0
Floyd .....	6	95	1								
Wachtel .....	6	55	0								

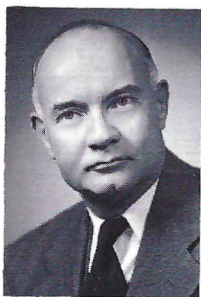
FLORIDA STATE				SCORING				KENTUCKY			
Player	TD	PAT Kick	FG	Pts.	Player	TD	PAT Kick	FG	Pts.		
Biletnikoff .....	3			18	Kestner .....	4			24		
Spooner .....	2			12	Bird .....	4			24		
Murdock .....		6-8	2	12							

## THE ATHLETIC COMMITTEE

The Athletic Committee, appointed by the President, is the governing body of inter-collegiate athletics at Florida State University.

The Committee has the responsibility of seeing that athletics are conducted primarily in the interests of the students, but with due regard for a proper, continuing and healthy interest of the alumni and the citizens of Florida, as well as the athletic heritage and prestige of the University.

Mode L. Stone, Dean of the School of Education is the Committee chairman. Members are Robert C. Earnest, Mary V. Alexander, Claude Flory, Coyle Moore, J. M. Plant, Elston Roady and Thomas Wright, Ex-officio non-voting members are Vaughn Mancha, the FSU Alumni President, the Seminole Booster President and the President of the Student Body.



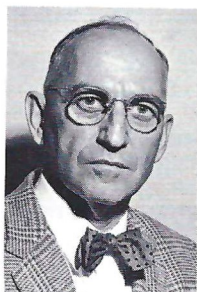
Mode L. Stone



Robert C. Earnest



Thomas Wright



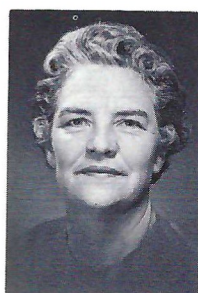
J. M. Plant



Claude Flory



Coyle Moore



Mary Alexander



Elston Roady

# The Seminole Football Family



**BILL PETERSON**  
Head Football Coach



**VAUGHN MANCHA**  
Athletic Director



**DON JAMES**  
First Assistant  
Defensive Chief



**BILL CRUTCHFIELD**  
Offensive Chief



**BOB HARBISON**  
Defensive Line



**BOBBY BOWDEN**  
Receivers



**KEN MacLEAN**  
Head Recruiter



**JOHN COATTA**  
Defensive Ends,  
Linebackers



**DON POWELL**  
Offensive Line



**DON FAULS**  
Head Trainer



**CHRIS PATRICK**  
Trainer



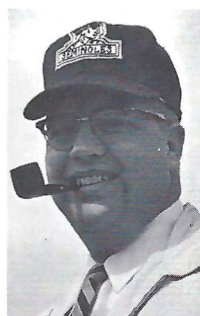
**BILL PROCTOR**  
Freshman Coach



**RONALD MELTON**  
Athletic Business  
Manager



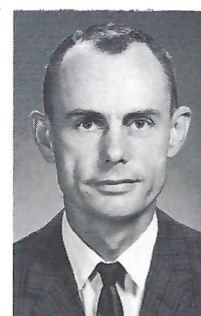
**JEFF SAVAGE**  
Academic Advisor



**DR. R. P. JOHNSON**  
Team Physician



**BILL BUNKER**  
Sports Publicity  
Director

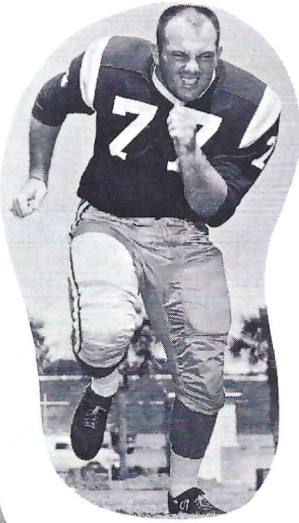


**CLAUDE THIGPEN**  
Ticket Manager



**TILLMAN DIXON**  
Equipment Custodian

Bob Mangan



Joe Parrish

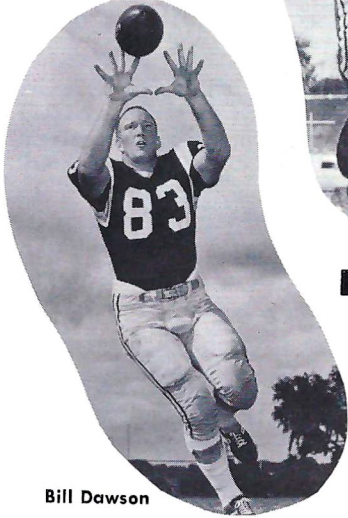


John Hosack



# THE 1964 S

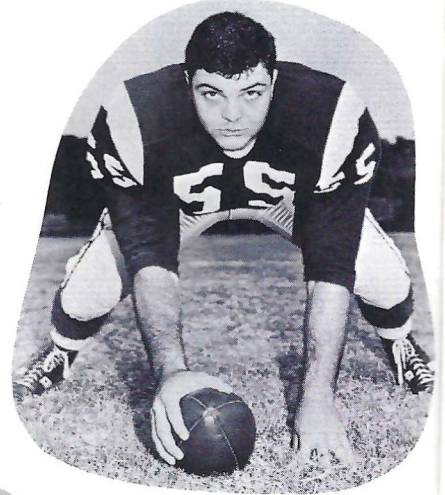
Bill Dawson



Del Williams



Jack Edwards



Elton Revell



Avery Sumner



Dick Hermann



Charles Pennie

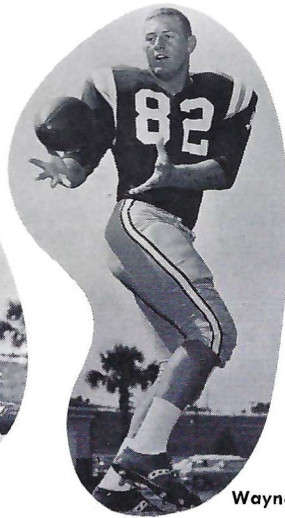


Ed Pritchett





Joe Avezzano



Wayne McDuffie



Tom West



Joe Petko

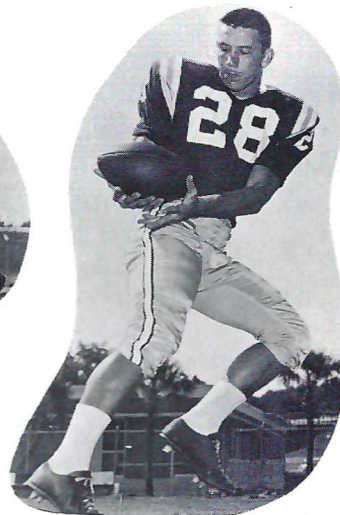
# 4 SEMINOLEES



Bill McDowell



Steve Tensi



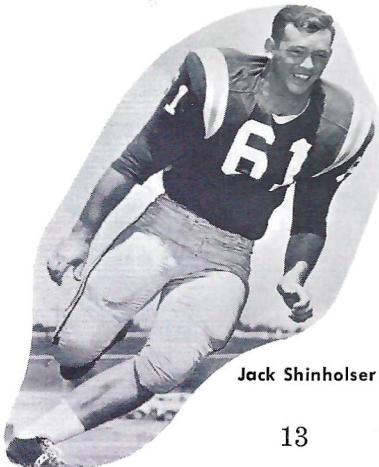
Winfred Bailey



Les Murdock



Howard Ehler



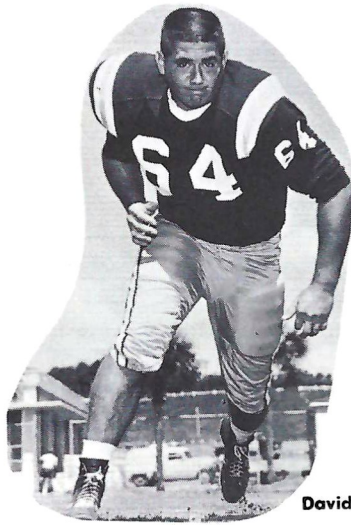
Jack Shinholser



Lee Narramore



Jim Massey



David Braggins

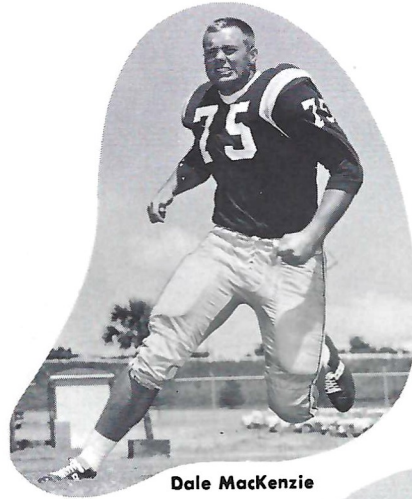


John Stephens

# THE 1964 S



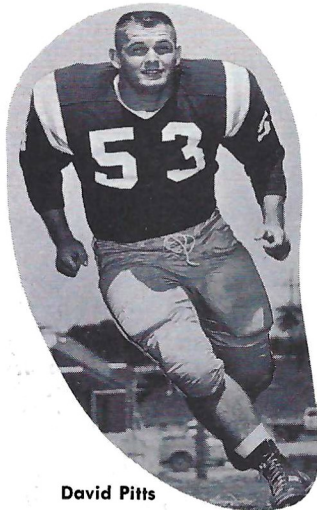
Larry Williamson



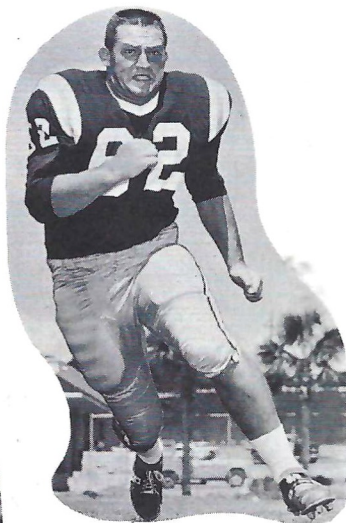
Dale MacKenzie



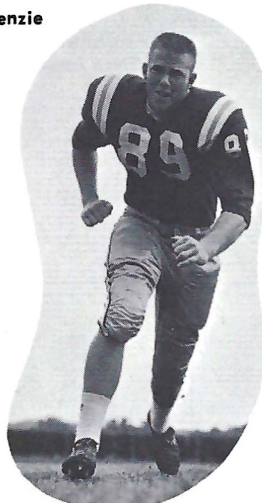
Terry Garvin



David Pitts



Howard Lurie



Max Weffstein



John Wachtel



hens



Phil Spooner



Tony Gero



Jay Mac Matthews

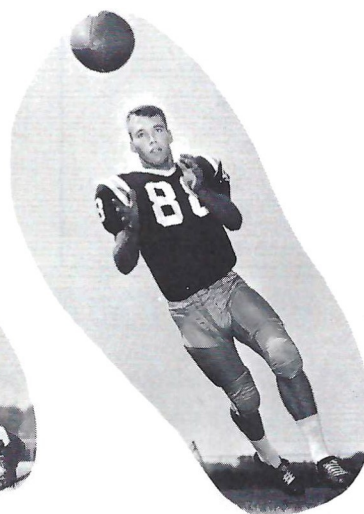
# 4 SEMINOLEES



Maury Bibent



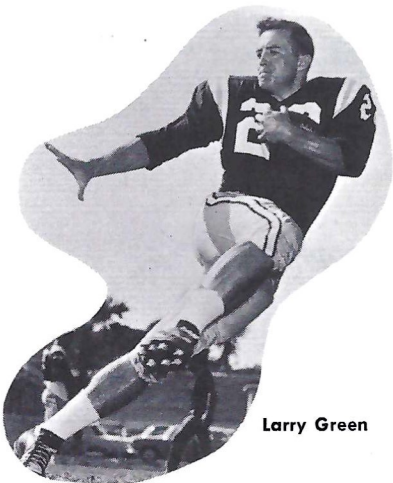
Don Floyd



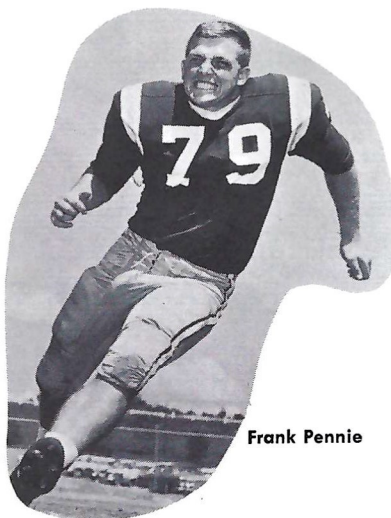
Cliff Gunter



Fred Biletnikoff



Larry Green



Frank Pennie



George D'Allessandro

**SOUTHERNAIRE MOTEL &  
SKYLINE MOTOR LODGE**



Quality people always seek  
quality accommodations

**MIDYETTE-MOOR  
Insurance Agency**

"Ask Those We Serve"

Complete Insurance and Bond Service

PHONE 222-3456



MIDYETTE-MOOR BUILDING  
TALLAHASSEE, FLORIDA

—SAYS—

SCALP 'EM SEMINOLES!



PAYNE MIDYETTE

FRANK MOOR	BILL MOOR
ED. CLARK	GLENN SEARS
WINSLOW SULLIVAN	PAUL McCARTNEY
BOB DICKINSON	REX SIKES
PAUL LEWIS	JIM MILLHOFF
PAYNE MIDYETTE, JR.	JOHN REEVES

OWNED AND OPERATED BY FRANK CHASE & SONS, FRANK JR., RICHARD, RAYMOND

*Skyline Restaurant*

1 Mile West of City Limits

U. S. Highways 90 and 20

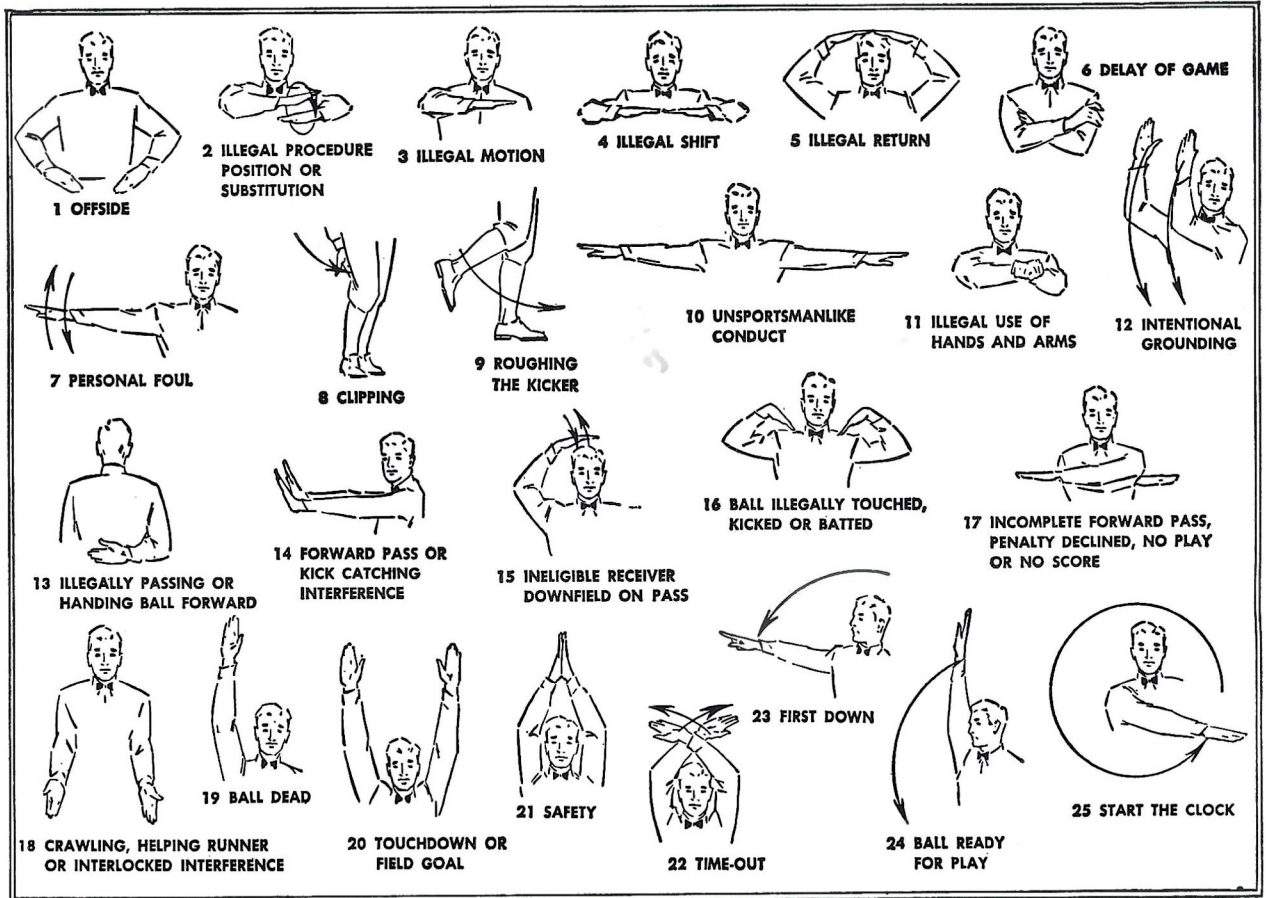
OPEN 6 A.M. TO 11 P.M.

TALLAHASSEE, FLORIDA

*"Serving Good Food for Fine People"*

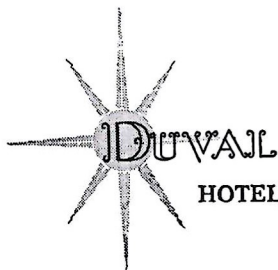
Private Rooms and Banquet Facilities





**TRAVELING  
DESSERT TRAYS**

**FAMOUS  
TOWN HOUSE  
ROAST  
PRIME RIB  
OF BEEF**



HOTEL • TALLAHASSEE, FLORIDA



SPURGEON CAMP

*Good Luck  
Seminole!*

★  
**NOBODY...  
BUT NOBODY  
UNDERSELLS.**  
★

**SOUTHERN  
ELECTRIC INC.**

**5-Store Purchasing Power  
Saves You Money on G-E Appliances!**

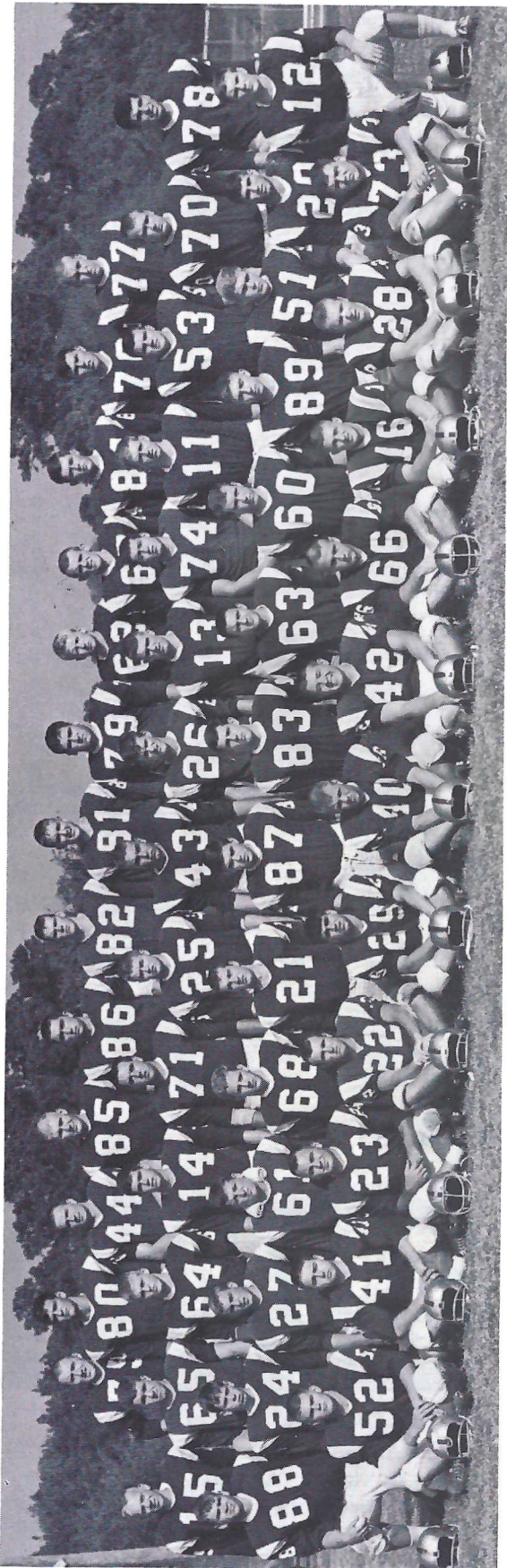
Tallahassee  
Downtown and  
Capital Plaza

Perry, Fla.  
115 E. Green St.  
on the Square

Valdosta, Ga.  
117 W. Central

Albany, Ga.  
225 W. Ogle-  
thorpe St.

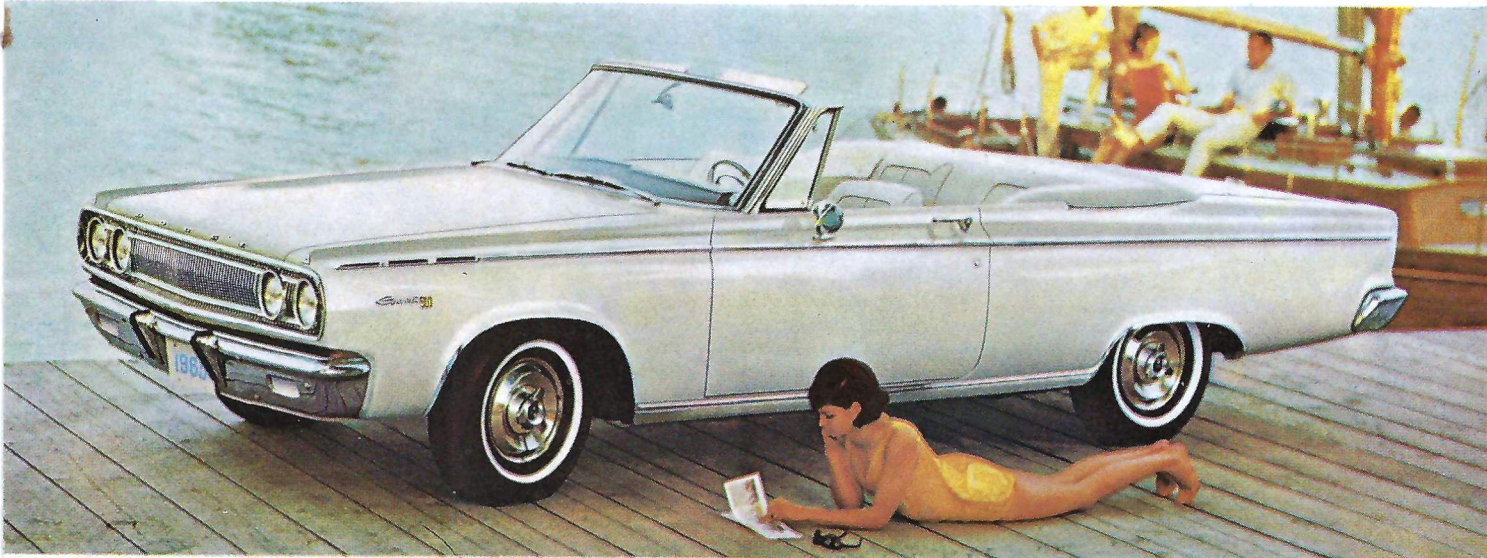
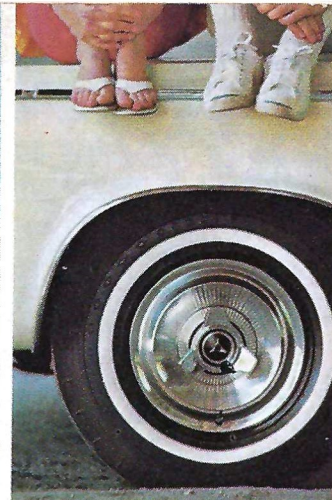
**FLORIDA STATE FRESHMEN  
1964**



No.	Pos.	Name	Ht.	Wt.	Hometown
11	QB	Burkart, William	6'1"	175	Rocky River, Ohio
12	QB	Kolbus, Martin	6'2"	184	E. Chicago, Ind.
13	QB	Lewis, Dale	6'1"	180	Middletown, Ohio
14	QB	Roylance, Steve	6'0"	170	Miami, Florida
15	QB	Sabo, Bob	6'0"	170	Maynard, Ohio
16	QB	Pickens, Chuck	5'8"	165	Athens, Tennessee
20	LHB	Blatt, Mike	5'11"	183	Key West, Florida
21	LHB	Gunter, Bill	6'0"	165	Dothan, Alabama
22	LHB	Knowlton, Cabot	5'10"	160	Pompano Beach, Fla.
23	LHB	Mercer, Ron	5'11"	180	Dinsmore, Florida
24	RHB	Bailey, James	6'1"	175	Wilmington, Ohio
25	RHB	Cox, Bill	6'1"	170	Atlanta, Georgia
26	RHB	Doyle, Dennis	6'2"	185	Jacksonville, Fla.
27	RHB	Elliott, Chuck	6'0"	190	Troy, Ohio
28	RHB	Manning, Bud	5'11"	170	Gainesville, Fla.
29	RHB	Turbow, Brent	5'8"	160	Jacksonville, Fla.
40	FB	Benson, Joe	5'11"	185	Birmingham, Ala.
41	FB	Culliton, Tom	5'11"	185	Dade City, Fla.
42	FB	Flores, Chuck	5'11"	185	Perry, Fla.
43	FB	Gielow, Russ	6'2"	188	Vero Beach, Fla.
68	FB	Paulson, Andy	5'11"	170	Waukesha, Wisc.
44	FB	Skinner, Sherril	6'1"	185	Live Oak, Fla.
51	C	East, Dick	6'1"	190	Bessemer, Ala.
52	C	Walther, Wayne	6'0"	190	Cantonment, Fla.
53	C	Wilcox, Newt	6'1"	205	College Park, Ga.
60	G	Bugar, Mike	6'1"	190	Youngstown, Ohio
61	G	Donohue, Mike	6'2"	190	Youngstown, Ohio
62	G	Holloway, Sherman	6'2"	197	Homewood, Ala.
63	G	Lenker, Mark	6'0"	185	Jacksonville, Fla.
64	G	McLean, Richard	6'0"	180	Holly Hill, Fla.
65	G	McNeil, Charlie	5'11"	185	Macon, Georgia
66	G	Sauls, Tim	5'10"	185	Tallahassee, Fla.
67	G	Pendleton, Larry	6'0"	188	Winter Garden, Fla.
70	T	Bizik, Dan	6'2"	205	E. Chicago, Ind.
71	T	Ellers, Don	6'2"	206	Marietta, Ga.
74	T	Kramer, Jim	6'2"	210	Dayton, Ohio
75	T	LeMont, Byron	6'0"	200	Eau Gallie, Fla.
76	T	Mills, Ken	6'1"	200	Tampa, Florida
77	T	Murphy, Jerry	6'1"	205	Jacksonville, Fla.
78	T	Panza, Tom	6'2"	210	Miami, Florida
79	T	Vistart, Romney	6'3"	245	Colquitt, Ga.
80	E	Broxson, Tim	6'4"	185	Milton, Florida
81	E	Fenner, Lane	6'5"	190	Evansville, Ind.
82	E	Fenwick, Jack	6'4"	195	Cincinnati, Ohio
83	E	Frazier, James	6'2"	180	Atlanta, Georgia
84	E	Hart, Ken	6'3"	190	Groveland, Fla.
85	E	Krebs, Ed	6'3"	190	Marietta, Ga.
86	E	Taylor, Thurston	6'2"	210	College Park, Ga.
87	E	Urich, Bob	6'2"	190	Toronto, Ohio
88	E	Yavelak, Bill	6'3"	190	St. Clairsville, Ohio
89		Loney, Bill	5'10"	160	Thomasville, Ga.

**Coaches:** Bill Proctor — Head Coach  
 Jerry Bruner — Line Coach  
 Ken Russom — Defensive Backfield Coach  
 Doug Messer — Offensive Backfield Coach  
 Dave Snyder — End Coach

**Manager:** Mike Mullins



# Hotnew!

**Dodge at a  
new lower price.  
Coronet '65.**

**Bigger? Than the both  
of them: Chevelle and  
Fairlane. In wheelbase. In power.**

**Inside.  
Buckets.  
Bomb.  
Bonus.**

**Check the price.  
Surprise again. Right  
down with the little ones.  
It figures. It comes from  
Dodge.**

**And Dodge comes on big  
for 1965.**

## '65 Dodge Coronet

DODGE COMES ON BIG FOR '65 • DART • CORONET • POLARA • CUSTOM 880 • MONACO

DODGE DIVISION  CHRYSLER  
MOTORS CORPORATION

Ohio  
nd.  
Ohio  
a  
nio  
essee  
orida  
ama  
ach, Fla.  
orida  
Ohio  
rgia  
Fla.  
Fla.  
Fla.  
Ala.  
a.  
Fla.  
/isc.  
.  
Fla.  
Ga.  
Ohio  
Ohio  
Ala.  
Fla.  
.  
gia  
Fla.  
n, Fla.  
d.  
a.  
a  
Fla.  
.  
l.  
nio  
gia  
a.  
Ga.  
Ohio  
a.



## FLORIDA STATE

### STARTING LINE-UP

No.	Name	Position
81	DON FLOYD	LE
70	DEL WILLIAMS	LT
51	JOE AVEZZANO	LG
55	JACK EDWARDS	C
75	DALE MacKENZIE	RG
76	TOM WEST	RT
83	BILL DAWSON	RE
13	STEVE TENSI	QB
27	PHIL SPOONER	LH
25	FRED BILETNIKOFF	RH
40	LEE NARRAMORE	FB

## THE SEMINOLE SQUAD

12 Gero, QB	28 Bailey, HB	62 Lurie, G	79 F. Pennie, T
13 Tensi, QB	29 Petko, FB	63 McDowell, G	80 Wachtel, E
14 Massey, QB	40 Narramore, FB	64 Braggins, T	81 Floyd, E
15 Conway, HB	41 Menendez, HB	66 Hermann, G	82 McDuffie, E
16 Pritchett, QB	42 Murdock, FB	68 Parrish, G	83 Dawson, E
20 Green, HB	43 Ehler, FB	69 Pope, G	84 D'Allessandro, E
21 D. Jones, HB	44 Mankins, FB	70 Williams, T	85 Hosack, HB
22 Bibent, HB	51 Avezzano, G	73 Sumner, T	86 Blankenship, E
23 Giardino, FB	53 Pitts, C	74 Matthews, T	87 Garvin, E
24 Revell, HB	54 Stephens, C	75 MacKenzie, G	88 Gunter E
25 Biletnikoff, HB	55 Edwards, C	76 West, T	89 Wettstein, E
26 Campbell, HB	60 Williamson, G	77 Mangan, T	
27 Spooner, HB	61 Shinholser, C	78 C. Pennie, T	

No.
80
77
60
50
67
73
81
11
21
30
40



things go  
better  
with  
**Coke**



### KENTUCKY

#### STARTING LINE-UP

No.	Name	Position
80	RICK KESTNER	LE
77	TONY MANZONELLI	LT
60	ED STANKO	LG
50	JIM MILES	C
67	RICH MACHEL	RG
73	SAM BALL	RT
81	BILL JENKINS	RE
11	RICK NORTON	QB
21	RODGER BIRD	LH
30	TOM BECHERER	RH
40	MIKE MCGRAW	FB

### THE WILDCAT SQUAD

11 Norton, QB	34 Goins, HB	60 Stanko, G	75 Arp, T
12 Ishmael, QB	35 Settle, HB	61 Hart, G	76 Averitt, T
14 Smith, QB	36 Carroll, HB	62 Clark, G	77 Manzonelli, T
15 Todd, QB	40 McGraw, FB	63 Keyes, G	78 Mullins, T
18 Cain, QB	41 Britton, FB	64 Foley, G	80 Kestner, E
20 Fee, HB	45 Swart, FB	66 Brown, G	81 Jenkins, E
21 Bird, HB	46 Danko, FB	67 Machel, G	82 Spanish, E
22 J. Davis, HB	47 Griest, FB	68 Murphy, G	83 Komara, E
24 Pickett, HB	50 Miles, C	71 D. Davis, T	84 Andrighetti, E
25 Antonini, HB	51 Beirne, C	72 Schornick, T	86 McClellan, E
30 Becherer, HB	52 Chapala, C	73 Ball, T	87 Anderson, E
32 Seiple, HB	54 Withrow, C	74 Tucci, T	88 Cassity, E

# Plymouth roars into '65 with 4 great new sports!



## '65 Sport Fury

The biggest, plushest Plymouth ever. A brand-new "ultra-everything" Plymouth that's still solidly in the low-price field.



## '65 Valiant Signet

The compact that hasn't forgotten why you buy a compact. Still the best all-around compact, proving that Valiant didn't have to go big-car in price or size to give you big-car performance.



## '65 Belvedere Satellite

A new way to swing without going out on a limb. For the buyer who knows that, when it's Plymouth, pride of ownership can still go hand-in-hand with low price.



## '65 Barracuda Fastback

The fast-moving fastback at a spectacular low price. America's best combination yet of sports-car look, youthful vitality, all-purpose versatility, and all-around economy.

Get your free copy of the NCAA Football Almanac at your nearest participating Plymouth Dealer's.

THE ROARING '65s  
FURY  
BELVEDERE  
VALIANT  
BARRACUDA

**Plymouth**

PLYMOUTH DIVISION

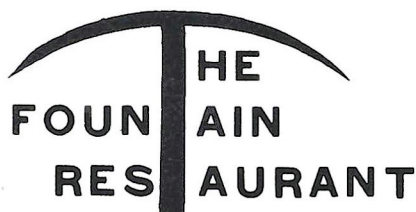


CHRYSLER  
MOTORS CORPORATION

Florida State University's intercollegiate athletic program is one of the most complete in the nation, with varsity sports competition in football, basketball, baseball, swimming, golf, track, tennis and cross country. The finest facilities are provided, including 40,500 seat football stadium, 4200 seat field house, major league quality baseball diamond, olympic-sized swimming pool, excellent clay track, and numerous clay and asphalt tennis courts. The completion of a new football field house with coaches' offices and dressing facilities, coupled with the existing facilities in Tully Gymnasium, insure that Seminole athletes are among the most comfortable in the South.

*First choice of those who appreciate  
the finest in foods and service!  
Open Breakfast, Lunch and Dinner*

BRUCE BISHOP'S 1921 W. Tennessee



## QUALITY CLEANERS

215 W. COLLEGE AVE.—DIAL 222-5097

**ONE DAY SERVICE**

**PICK-UP and DELIVERY**

**Quality Laundry Work**

**Fluff Dry Service**

EXPERT TAILORING and ALTERATIONS

ZIPPERS REPAIRED

## Learn to Fly at G. C. Shuler Seminole Flying Service, Inc.

**Municipal Airport**

Phone 222-3121

Tallahassee, Fla.

- AIRPLANE RIDES
- FLIGHT INSTRUCTION
- AERIAL PHOTOGRAPHY
- CHARTER FLIGHTS

FLY the best—A New Cessna

"Look up—a new CESSNA will be overhead"

## BENNETT'S DRUG STORE

- Prescriptions
- Cameras
- Sundries
- Gifts
- Fountain
- Cafe
- Cosmetics
- Drugs

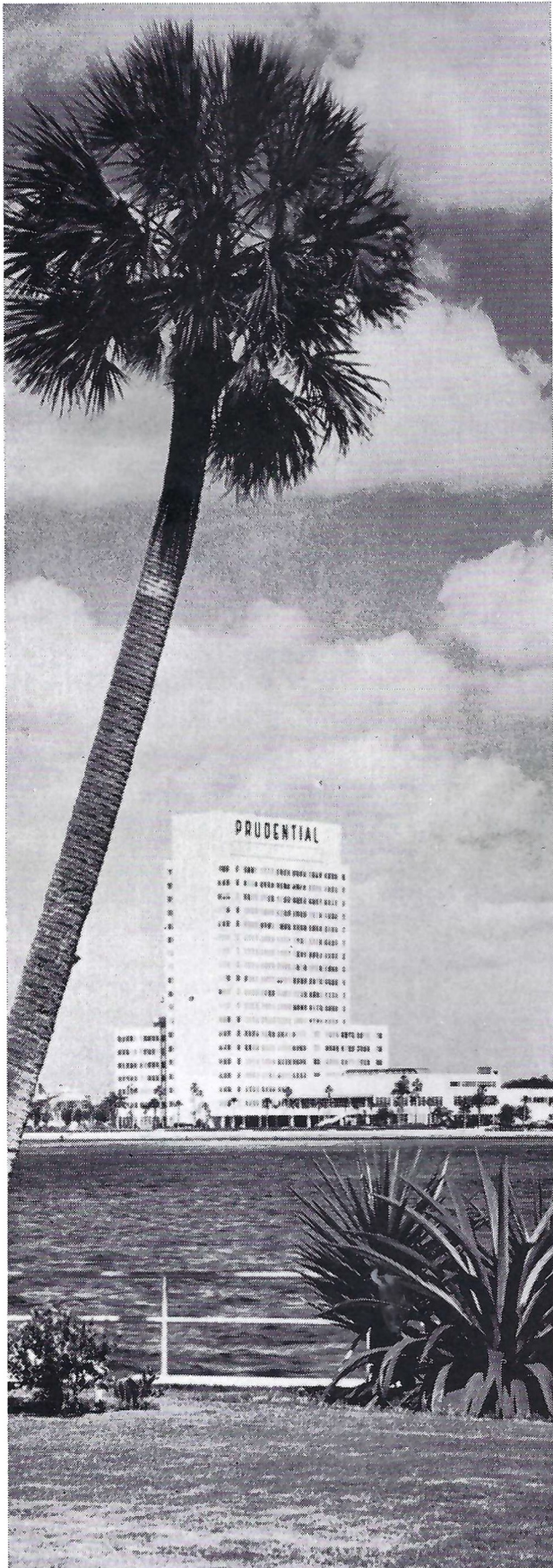
MEET ME AT BENNETT'S

BEFORE AND AFTER THE GAME!

Corner Monroe and College Streets

Phone 222-8980 — 222-4450

*We  
like  
the  
state  
we're  
in...*



In 1953, we of  
The Prudential established  
our South-Central Regional  
Home Office in Florida. From  
this location we are able  
to provide fast, efficient  
life insurance service  
to the people of Florida  
and our 10-state area.

We are proud to be  
a part of the growth and  
progress here in Florida,  
and the past 11 years have  
been busy and rewarding  
ones for us. We salute  
Florida State University  
for its efforts in preparing  
our youth today for the  
even bigger things to come.



**THE PRUDENTIAL**  
INSURANCE COMPANY OF AMERICA

SOUTH CENTRAL HOME OFFICE  
JACKSONVILLE, FLORIDA



# SEMINOLE BOOSTERS, INC.

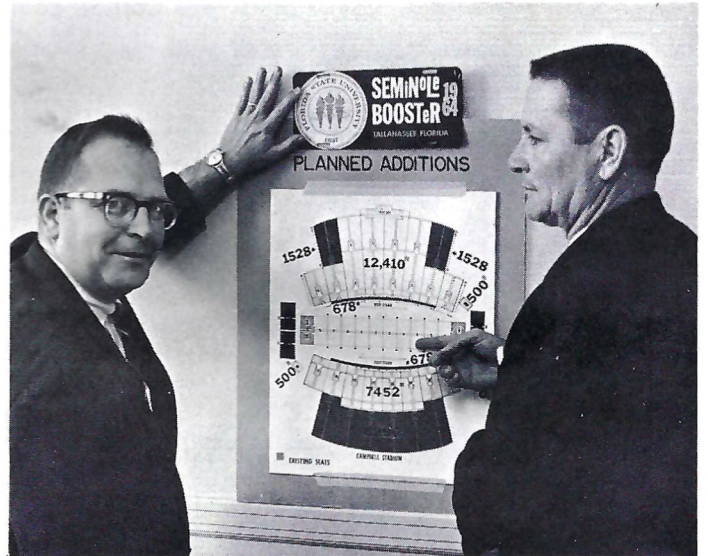
Seminole Boosters, Inc. is an organization devoted entirely to the support of the Florida State University athletic program with emphasis on football.

Membership in the Boosters—the group numbers approximately 1200—is open to anyone with a sincere interest in the University's athletic welfare. Minimum contribution for an individual membership is \$10. A business membership costs \$25.

Contributions are administered in accordance with NCAA regulations and in conjunction with the FSU Department of Intercollegiate Athletics.

Boosters receive a colorful automobile license plate which provides reserved parking at the stadium, a membership card, a weekly fall publication called "The Grandstand Coach," and certain priorities on season and individual football tickets.

President of the group for 1964 is Louis Hill, president of the People's Bank of Tallahassee. Hardworking executive secretary of the organization is Thomas A. Waits, Director of Alumni Affairs at Florida State University.



Tom Waits

Louis Hill

Boosters receive special seating and parking privileges

**GOOD LUCK SEMINOLES!**

## LOUIS SEAFARE

**"A BANQUET IN A BOX"**

*featuring Seafood & Chicken*

With over 18 different items to carry out in over 50 different sizes.

620 W. Tennessee St. Ph. 224-1181

Be sure and visit our other location in Gainesville, Fla.  
309 N. W. 13th St.

## FOREMOST

ICE CREAM

PHONE • 224-7136

## SUNSHINE STATE DAIRYMEN'S COOP.

PHONE • 222-5303



1818 W. Tennessee

Howdy Podner . . . Me and the boys jest want to notafy everbody that we are still serven them Notorious and Dillicious char-coal-broiled Steerbrugers and Steak Samwiches at our fine Drive-In Resterant, jest 2 passes & a fumball offen the campus on West Tennessee where Call St. comes in. See you at the Seven Steers.

Yours truly,  
OLE TEX.

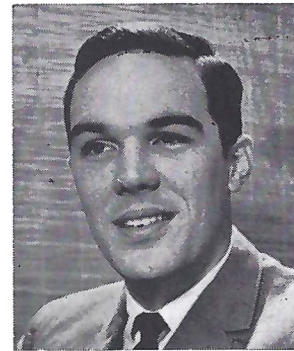
## WFSU-TV -- THE SEMINOLE STATION

Roy Weissinger brings play-by-play action to the Tallahassee area every Monday night during the season over WFSU-TV, Channel 11.

All Seminole home games are video-taped at the stadium for later showing, and game films of all away games are shown and narrated.

In addition, the Seminole games may be seen on WTHS in Miami on Wednesday nights, and WEDU in Tampa on Thursday nights.

Air time in Tallahassee is 10 p.m.



**HAV-A-TAMPA JEWEL**

The s-m-o-o-t-h cigar with the built-in mouthpiece

ALL NATURAL-LEAF FINE TOBACCO . . . TOPS IN TASTE AND SMOKING PLEASURE

*Ask for the Brand Name*

HAV-A-TAMPA CIGAR

Distributed by **Eli Witt Tobacco & Candy Co.**  
Tallahassee, Florida

**ARE YOU GOOD ENOUGH  
TO BE AN ARMY OFFICER?  
IF YOU ARE, DON'T SETTLE  
FOR LESS!**



**STAY  
IN  
ARMY R.O.T.C.**

# THE FLORIDA STATE FOOTBALL NETWORK



Follow the Seminoles at home and away with Bo Mitchell and John Haughee on the Seminole Network.

Back at the Seminole microphone for the second season are Bo Mitchell and John Haughee, bringing Florida State football to thousands of listeners throughout Georgia and Florida.

The energetic Mitchell, an ex-naval aviator with over 15 years of broadcasting experience, calls the play-by-play action for all Seminole games at home and away. Mitchell is vice-president and station manager of radio station WCOA, Pensacola.

Haughee, his partner at the mike, is sports director of WCTV for Tallahassee. An Indiana native who adopted Florida as his home over ten years ago. Haughee does the pre-game, half-time and time-out color commentary for the Seminoles.

Originating station for Florida State football games is WTNT, Tallahassee.

You can hear the entire Seminole schedule over the following stations this year: WCOA, Pensacola; WSRA, Milton; WNSM, Valparaiso; WPCF, Panama City; WTNT, Tallahassee; WDSR, Lake City; WJAX, Jacksonville; WROD, Daytona Beach; WGGG, Gainesville; WMOP, Ocala; WLBE, Leesburg; WKIS, Orlando; WDAE, Tampa.

(Stations carrying a partial schedule are WMYR, Fort Myers; WTOT, Marianna; WPAX, Thomasville, Ga.; WOOO, Deland; WCNH, Quincy; and WPRY, Perry.

**Before Or After**

**Game**

**CHICKEN IN THE ROUGH**  
COPYRIGHT 1937 BY BEVERLY OSBORN

**QUAKER HOUSE**



**RESTAURANT**

*Dining Room  
and Curb Service*

*The Vogue*

**TALLAHASSEE, FLORIDA**

- CAMERAS
- FILM
- ACCESSORIES
- RENTALS
- FAST PHOTOFINISHING



FOCUS ON

**TALLAHASSEE  
CAMERA  
CENTER, INC.**

**FOR ALL OF YOUR PHOTO NEEDS**

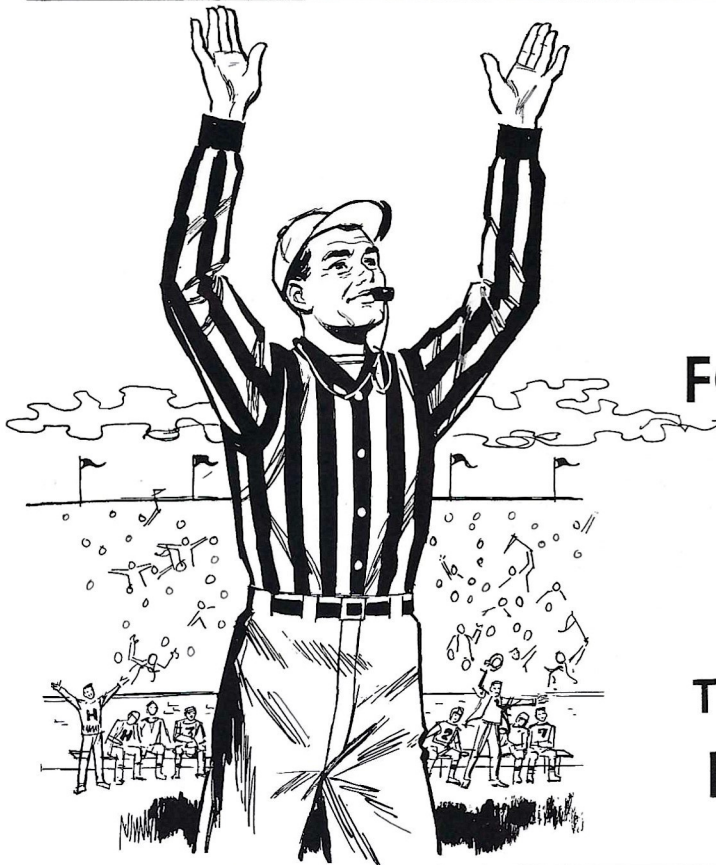
**117 NORTH MONROE ST.**

**PH. 222-8771**

**"ACROSS FROM THE FLORIDA THEATER"**

# PENALTIES

1. **OFFSIDE** by either team; Violation of scrimmage or free kick formation; Encroachment on neutral zone—Loss of Five Yards.
2. **ILLEGAL PROCEDURE, POSITION OR SUBSTITUTION**—Putting ball in play before Referee signals "Ready-for-play"; Failure to complete substitution before play starts; Player out of bounds when scrimmage begins; Failure to maintain proper alignment of offensive team when ball is snapped; False start or simulating start of a play; Taking more than two steps after Fair Catch is made; Player on line receiving snap—Loss of Five Yards.
3. **ILLEGAL MOTION**—Offensive player illegally in motion when ball is snapped—Loss of Five Yards.
4. **ILLEGAL SHIFT**—Failure to stop one full second following shift—Loss of Fifteen Yards.
5. **ILLEGAL RETURN** of substitute not previously disqualified—Loss of Fifteen Yards.
6. **ILLEGAL DELAY OF GAME**; Taking more than four times out during either half (except for replacement of injured player)—Loss of Five Yards. Team not ready to play at start of either half—Loss of Fifteen Yards.
7. **PERSONAL FOUL** — Tackling or blocking defensive player who has made fair catch; Piling on; Hurdling; Grasping face mask of opponent; Tackling player out of bounds, or running into player obviously out of play; Striking an opponent with fist, forearm, elbow or locked hands; Kicking or kneeling—Loss of Fifteen Yards (Flagrant offenders will be disqualified.)
8. **CLIPPING**—Loss of Fifteen Yards.
9. **ROUGHING THE KICKER** or holder—Loss of Fifteen Yards.
10. **UNSPORTSMANLIKE CONDUCT**—Violation of rules during intermission; Illegal return of suspended player; Coaching from sidelines; Invalid signal for Fair Catch; Persons illegally on field—Loss of Fifteen Yards. (Flagrant offenders will be disqualified.)
11. **ILLEGAL USE OF HANDS AND ARMS** by offensive or defensive player; Defensive holding—Loss of Fifteen Yards.
12. **INTENTIONAL GROUNDING** of forward pass—Loss of Five Yards Plus Loss of Down.
13. **ILLEGALLY PASSING OR HANDING BALL FORWARD**—Loss of Five Yards Plus Loss of Down.
14. **FORWARD PASS OR KICK CATCHING INTERFERENCE**—Interference with opportunity of player of receiving team to catch a kick—Loss of Fifteen Yards. Interference by member of offensive team with defensive player making pass interception—Loss of Fifteen Yards Plus Loss of Down. Interference by defensive team on forward pass—Passing Team's Ball at Spot of Foul and First Down.
15. **INELIGIBLE RECEIVER DOWNFIELD ON PASS**—Loss of Fifteen Yards.
16. **BALL ILLEGALLY TOUCHED, KICKED OR BATTED**—Forward pass being touched by ineligible receiver beyond the line of scrimmage—Loss of Fifteen Yards from Spot of Preceding Down and Loss of a Down. Eligible pass receiver who goes out of bounds and later touches a forward pass—Loss of Down. Illegal touching of kicked ball within opponent's ten yard line—Touchback.
17. **PENALTY DECLINED**; Incomplete forward pass; No play or no score.
18. **CRAWLING** by runner—Loss of Five Yards. Interlocked Interference—Loss of Fifteen Yards.



# TIME! OUT!

FOR YOUR FAVORITE

## Meal or Snack

AFTER THE GAME AT  
THE **UNIVERSITY UNION**  
FSU FOOD SERVICE



**SEMINOLE CHEERLEADERS**—Kneeling are John Sweets, Chattanooga, Tennessee; and David Deutsch, Palatka. Standing with them, left to right, are Dee Weber, West Palm Beach; Toni Beals, Sumpter, South Carolina; Head Cheerleader Kay Lewis, Arcadia; Peggy Thompson, Ormond Beach; and Susan Reinhart, Cocoa Beach.

## SONGS AND YELLS

### ALMA MATER

High O'er the Towering Pines our voices swell  
 Praising these Gothic spires we love so well  
 Here sons and daughters stand, faithful and true  
 Hailing our Alma Mater—FSU.

### FIGHT SONG

We're going to fight, fight, fight, for FSU  
 We're going to scalp 'em, Seminoles,  
 We're going to win, win, win, win this game  
 And roll on down and make those goals!  
 For FSU is on the warpath now,  
 And at the Battle's end she's great;  
 So fight, fight, fight, fight for victory  
 Our Seminoles of Florida State  
 F-L-O-R-I-D-A S-T-A-T-E!  
 Florida State! Florida State! Florida State!

—Written by Dr. Thomas Wright,  
 Associate Professor of Music

### FSU CLAP CHEER

(Stomp clap, stomp clap,  
 stomp clap-clap-clap-clap-clap)  
 Repeat 3 times, then:  
 F (clap, stomp clap, stomp clap-clap-clap-clap)  
 S (clap, stomp clap, stomp clap-clap-clap-clap)  
 U (clap, stomp clap, stomp clap-clap-clap-clap)  
 F (clap) S (clap) U (clap-clap-clap-clap)  
 Go!!

### THREE GARNETS

Give me a Garnet, Garnet, Garnet, Garnet, Garnet  
 Give me a Gold, Gold, Gold Gold Gold  
 Garnet, Gold  
 Garnet, Gold  
 Go Seminoles Go!

### GO FLORIDA STATE

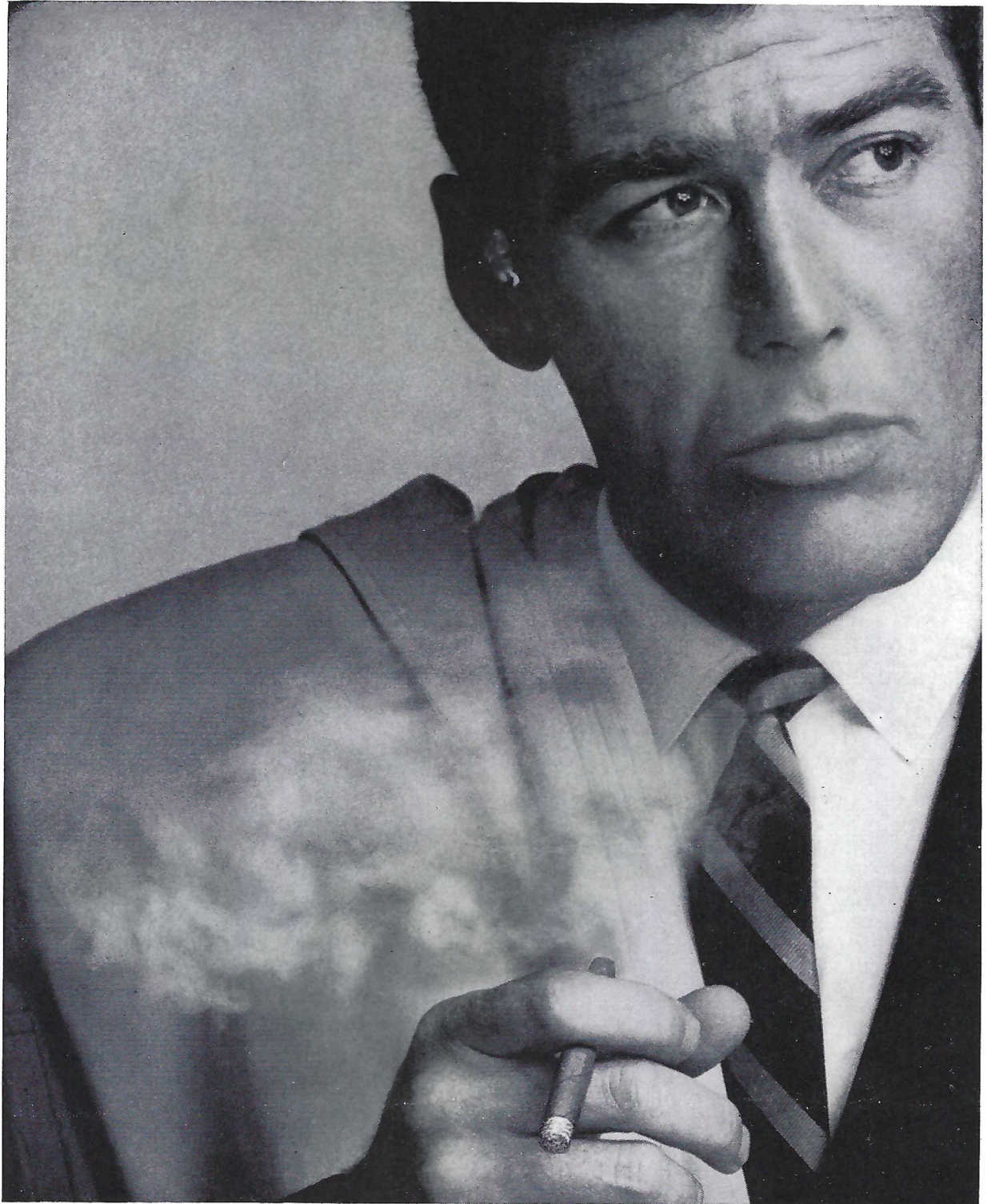
G-o-o-o-o-o-o-o-o-o, Florida!  
 G-o-o-o-o-o-o-o-o-o, State!  
 Go! Go!  
 Florida State!

### IS EVERYBODY HAPPY!

Is everybody happy?  
 AUD: Hell, yes!  
 Is anybody low?  
 AUD: Hell, no!  
 Let's railroad Seminoles  
 And take it slow!  
 (Spell Seminoles 3 times)  
 Go, Seminoles!

### VICTORY

With a V, With an I,  
 With a C, T, O, R, Y!  
 With a V, With an I,  
 With a C, T, O, R, Y!  
 With a V I C T O R Y!  
 VICTORY!!



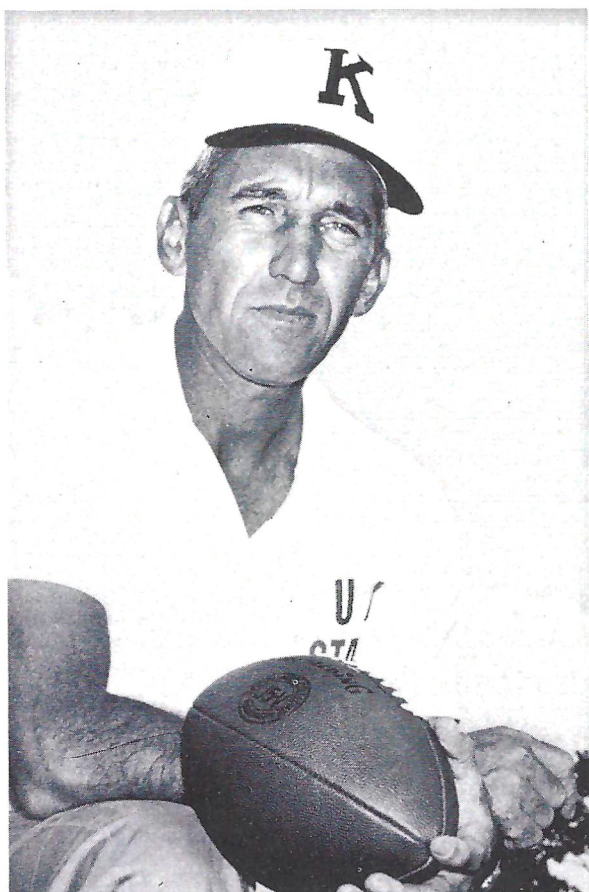
**You look good with a Robt. Burns Cigarillo**

Here's flavor you don't have to inhale to enjoy.  
A short smoke when time is precious. Long  
enough to satisfy. Ideal for the man on the move.  
Smoke it. You'll look good with it.  
Robt. Burns Cigarillo . . . for the "mover."  
Cigarillos are on sale at this stadium.





**JOHN W. OSWALD**  
President  
University of Kentucky



**CHARLIE BRADSHAW**  
Head Football Coach  
University of Kentucky



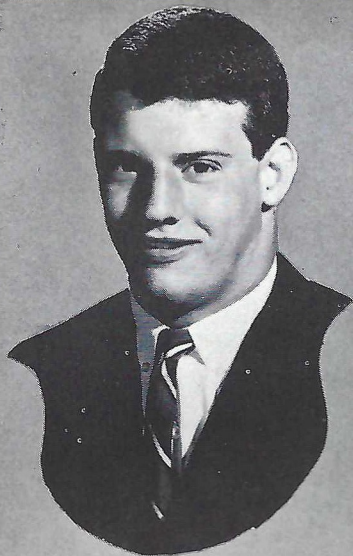
**BERNIE A. SHIVELY**  
Director of Athletics  
University of Kentucky



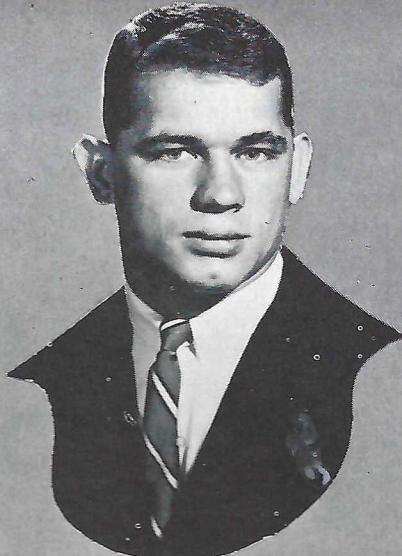
TOM

MIKE

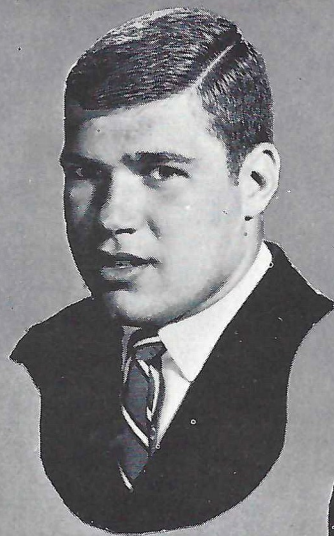




RICK KESTNER



RODGER BIRD



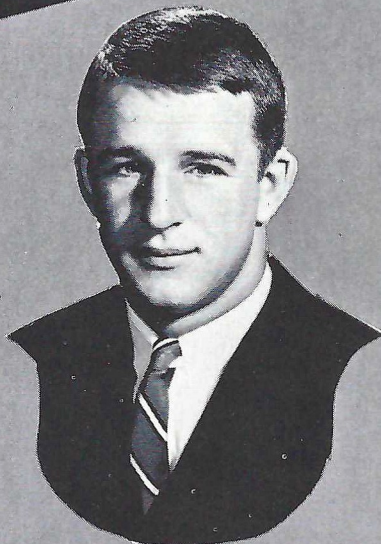
RICH TUCCI



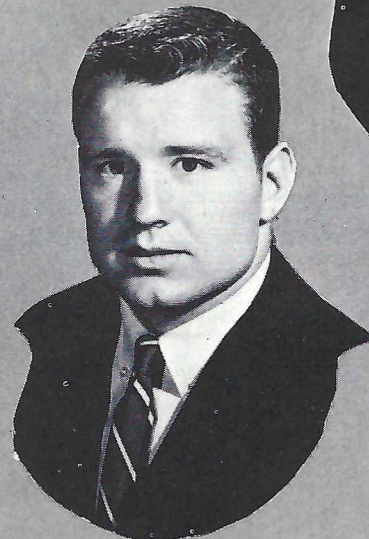
JIM MILES



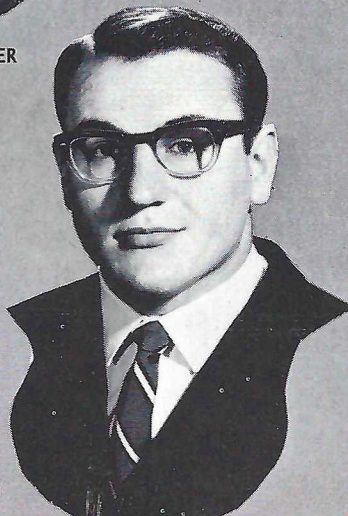
TOM BECHERER



RICK NORTON



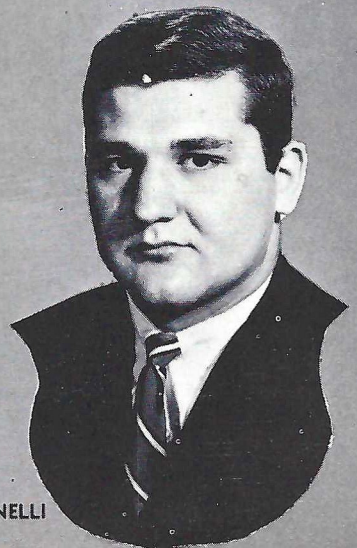
JIM FOLEY



MIKE McGRAW



BILL JENKINS



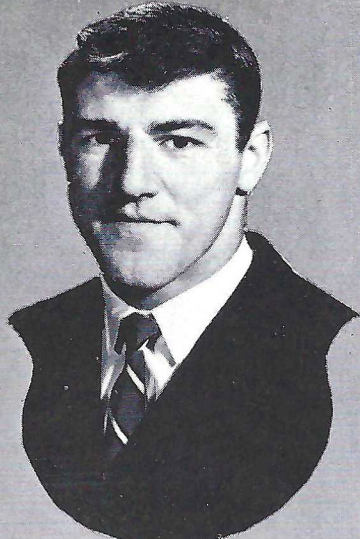
TONY MANZONELLI



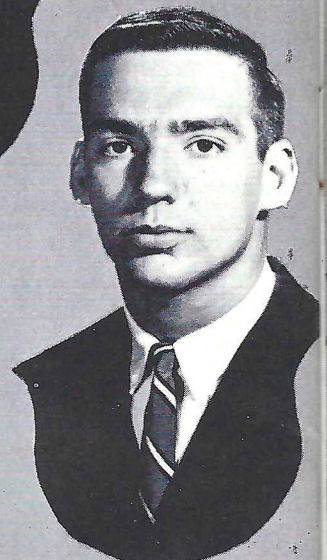
JOHN ANDRIGHETTI



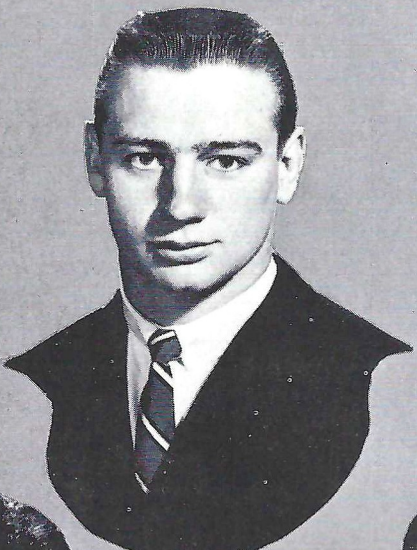
GERRY MURPHY



JIM KOMARA



TALBOTT TODD



CALVIN WITHROW



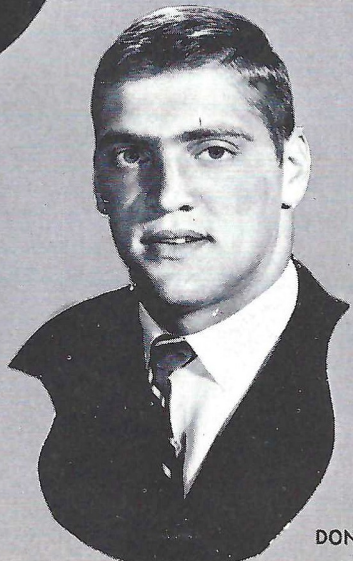
SAM BALL



ED STANKO



JERRY DAVIS



DON DANKO



FRANK ANTONINI



BOB



DAN SPANISH



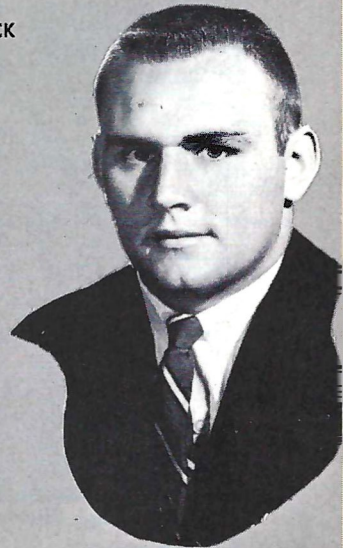
LARRY SEIPLE



JOHN SCHORNICK



TODD



DOUG DAVIS



BOB BROWN



BENNIE ARP



J. D. SMITH



O



RICH MACHEL



TERRY CLARK



JIM SWART

# MUSIC AT HALF-TIME

## The Florida State University School of Music

Dr. K. O. Kuersteiner, Dean  
Dr. Manley R. Whitcomb, Director of Bands

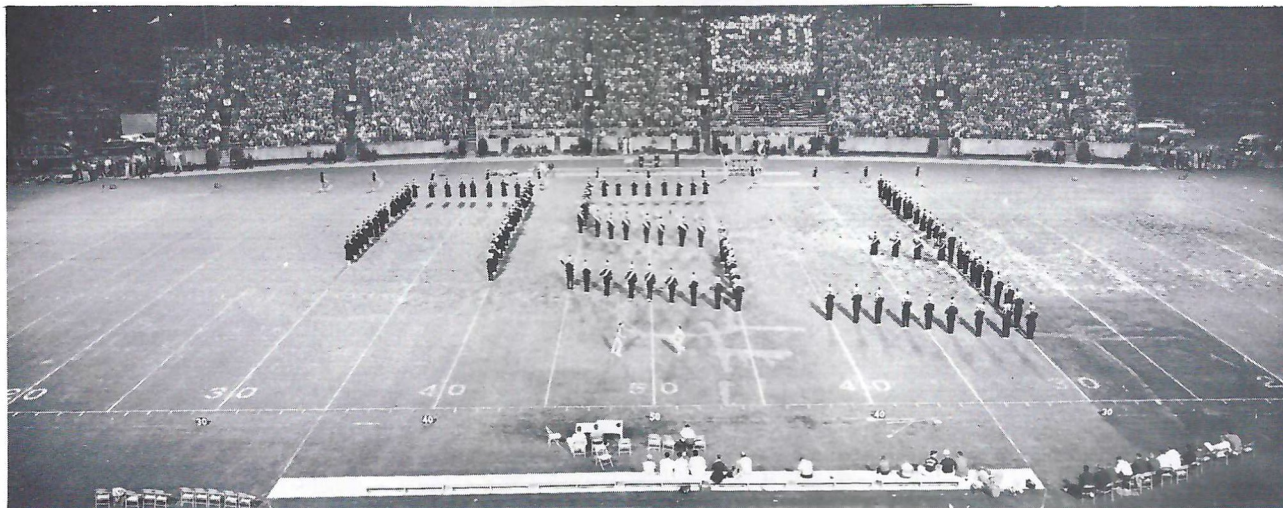
Presents

### THE MARCHING CHIEFS

Robert T. Braunagel, Director  
Clifford K. Madsen, Associate Director  
Charles Carter, Assistant Director and Arranger

Roger McLendon, Drum Major  
Janice Eddins, Head Majorette  
Cookie Winchester, Feature Twirler

Bookie Reynolds & Jerry Williams, Seminole Twins



The Marching Chiefs in Action

#### THEME: FSU IN REVIEW

##### MUSIC

FANFARE  
HELLO MY BABY  
MEMORIES  
SCHOOL DAYS  
VICTORY SONG  
RITES OF SPRING

NIGHT AND DAY

BIDING MY TIME

I CAN'T GIVE YOU  
ANYTHING BUT LOVE  
PENNIES FROM HEAVEN

GARNET & GOLD MARCH  
QUEEN'S FANFARE  
FSU FIGHT SONG  
ALMA MATER:

##### FORMATION

HELLO GRADS — The band welcomes all former FSU students and friends with formation.

PENNANT — The band salutes the student body with a waving pennant featuring the majorettes.

IBM MACHINE — The machine age is here to stay; and the test of a college education is to learn how to write around the holes on the IBM cards?

TRIANGLE — The band forms a triangle representing the trimester and the continuous activities of students working night and day. Featured in the center is Cookie Winchester.

HOOR GLASS — Time is at a premium under the trimester and there is little time for anything except study, study, study . . .

GIRL'S FIGURE — Somehow, students find time for amour.

DOLLAR SIGN — Under the trimester, parents are left with nothing but . . . pennies from heaven.


STADIUM — Watch the stadium grow . . . and grow.

INTRODUCTION OF HOMECOMING QUEEN AND COURT.

All stand and join in. Words on Page 30.

FLORIDA STATE'S 1964 SCHEDULE (3-0)

- Sept. 19 Miami at Miami—14-0
- Sept. 26 TCU at Ft. Worth—10-0
- Oct. 3 New Mexico State—36-0
- Oct. 10 Kentucky
- Oct. 17 Georgia at Athens
- Oct. 24 VPI at Blacksburg
- Oct. 31 Southern Mississippi
- Nov. 7 Houston at Houston
- Nov. 14 N. C. State
- Nov. 21 Florida



**TALLAHASSEE FEDERAL  
SAVINGS & LOAN  
ASSOCIATION**

UNIVERSITY OF KENTUCKY, 1964 (3-0)

- Sept. 19 Detroit—13-6
- Sept. 26 Miss.—27-21
- Oct. 3 Auburn—20-0
- Oct. 10 Florida State
- Oct. 17 Louisiana State
- Oct. 24 Georgia
- Oct. 31 West Virginia
- Nov. 7 Vanderbilt
- Nov. 14 Baylor
- Nov. 21 Tennessee

OFFICIALS: Referee: James Artley  
Umpire: Harold Johnson

Head Linesman: Ed Copeland  
Field Judge: Bill Conway

Backfield Judge: Jimmy Cole  
Electric Clock Operator: Daniel Lyons

FSU SPECIALISTS: Punters: 16 Pritchett, 85 Hosack. Kickoffs: 42 Murdock. Placements: 42 Murdock

FSU CO-CAPTAINS: 25 Fred Biletnikoff, 83 Bill Dawson

KENTUCKY SPECIALISTS: Kickoffs-FG-PAT: Spanish (82), Tucci (74). Holders—Quarterbacks. Punters: Bird (21), Seiple (32). Passers: Quarterbacks.

KENTUCKY CO-CAPTAINS: Foley (64) and Jenkins (81)

37

LEFT END	LEFT TACKLE	LEFT GUARD	CENTER	RIGHT GUARD	RIGHT TACKLE	RIGHT END
81 Don Floyd	70 Del Williams	51 Joe Avezzano	55 Jack Edwards	75 Dale MacKenzie	76 Tom West	83 Bill Dawson
84 George D'Allessandro	79 Frank Pennie	66 Dick Hermann	61 Jack Shinholser	63 Bill McDowell	73 Avery Sumner	89 Max Wettstein
88 Cliff Gunter	64 David Braggins	60 Larry Williamson	54 John Stephens	69 Ed Pope	77 Bob Mangan	80 John Wachtel

**FLORIDA STATE**

QUARTERBACK	LEFT HALFBACK	FULLBACK	RIGHT HALFBACK
13 Steve Tensi	27 Phil Spooner	40 Lee Narramore	25 Fred Biletnikoff
14 Jim Massey	22 Maury Bibent	43 Howard Ehler	28 Winfred Bailey
16 Ed Pritchett	20 Larry Green	29 Joe Petko	24 Elton Revell

**SEMINOLES**

NOTE: First listed are offensive starters; second, defensive; third, number two offensive

LEFT END	LEFT TACKLE	LEFT GUARD	CENTER	RIGHT GUARD	RIGHT TACKLE	RIGHT END
80 Rick Kestner	77 Tony Manzonelli	60 Ed Stanko	50 Jim Miles	67 Rich Machel	73 Sam Ball	81 Bill Jenkins
82 Dan Spanish	74 Rich Tucci	68 Gerry Murphy	54 Calvin Withrow	66 Bob Brown	71 Doug Davis	84 John Andrighetti
12 David Ishmael	76 Don Averitt	63 Howard Keyes	64 Jim Foley	62 Terry Clark	72 John Schornick	87 Tom Anderson

**KENTUCKY**

QUARTERBACK	TAILBACK	FULLBACK	WINGBACK
11 Rick Norton	21 Rodger Bird	40 Mike McGraw	30 Tom Becherer
15 Talbott Todd	24 Phil Pickett	45 Jim Swart	32 Larry Seiple
14 J. D. Smith	25 Frank Antonini	46 Don Danko	36 Joe Carroll

**WILDCATS**

FLORIDA STATE'S 1964 VARSITY FOOTBALL ROSTER

No.	Name	Pos.	Class	Age	Ht.	Wt.	Hometown
12	Tony Gero	QB	Soph	20	5-10	183	Madison, N. J.
13	Steve Tensi	QB	Sr.	21	6-5	194	Cincinnati, O.
14	Jim Massey	QB	Jr.	21	5-11	181	Cairo, Ga.
15	Pat Conway	HB	Soph	19	5-10	186	Miami
16	Ed Pritchett	QB	Jr.	23	6-2	185	Decatur, Ga.
20	Larry Green	HB	Soph	19	5-10	181	Cairo, Ga.
21	Donovan Jones	HB	Soph	19	6-1	193	Lakeland
22	Maury Bibent	HB	Jr.	21	6-0	188	Cincinnati, O.
23	Wayne Giardino	FB	Soph	20	5-10	190	W. Palm Beach
24	Elton Revell	HB	Soph	20	6-0	176	Tallahassee
25	Fred Biletnikoff	HB	Sr.	21	6-1	192	Erie, Pa.
26	Bill Campbell	HB	Soph	19	5-9	180	Tampa
27	Phil Spooner	HB	Jr.	20	5-11	182	Fort Myers
28	Winfred Bailey	HB	Sr.	22	6-0	183	Atlanta
29	Joe Petko	HB	Jr.	21	5-9	185	Cincinnati, O.
40	Lee Narramore	FB	Soph	19	5-10	209	Pensacola
41	Bob Menendez	HB	Soph	19	5-10	185	Key West
42	Les Murdock	FB	Sr.	23	6-2	233	Hollywood
43	Howard Ehler	FB	Jr.	20	5-10	195	Tavares
44	Jim Mankins	FB	Jr.	20	6-2	228	King City, Calif.
51	Joe Avezzano	G	Jr.	20	6-2	228	Miami
53	David Pitts	C	Soph	20	5-9	223	Blountstown
54	John Stephens	C	Soph	18	6-1	198	Tallahassee
55	Jack Edwards	C	Sr.	21	6-1	217	Tampa
60	Larry Williamson	G	Soph	19	5-11	200	Macon
61	Jack Shinholser	C	Jr.	22	6-1	212	Tampa
62	Howard Lurie	G	Jr.	20	6-0	205	Northridge, Calif.
63	Bill McDowell	G	Jr.	20	6-1	201	Tallahassee
64	David Braggins	T	Soph	19	6-2	226	Lake Wales
66	Dick Hermann	G	Sr.	22	6-0	200	Marianna
68	Joe Parrish	G	Jr.	21	6-1	194	Auburndale
69	Ed Pope	G	Soph	20	6-1	196	Waycross, Ga.
70	Del Williams	T	Soph	18	6-2	213	Live Oak
73	Avery Sumner	T	Sr.	22	6-2	219	Adel, Ga.
74	Jay Mac Matthews	T	Soph	20	6-1	219	Chiefland
75	Dale MacKenzie	G	Sr.	21	6-2	218	Clearwater
76	Tom West	T	Sr.	21	6-4	216	Headland, Ala.
77	Bob Mangan	T	Jr.	22	6-1	222	Atlanta, Ga.
78	Charles Pennie	T	Soph	19	6-4	221	Hollywood
79	Frank Pennie	T	Jr.	21	6-4	242	Hollywood
80	John Wachtel	E	Sr.	22	6-1	203	Massillon, O.
81	Don Floyd	E	Sr.	22	6-1	195	Madison
82	Wayne McDuffie	E	Soph	19	6-2	198	Hawkinsville, Ga.
83	Bill Dawson	E	Sr.	21	6-3	220	Valdosta, Ga.
84	George D'Allessandro	E	Jr.	21	5-10	195	Fort Myers
85	John Hosack	HB	Soph	19	5-11	192	Miami
86	Bud Blankenship	E	Soph	20	6-3	200	Atlanta, Ga.
87	Terry Garvin	E	Jr.	21	5-11	190	Pensacola
88	Cliff Gunter	E	Sr.	22	6-3	187	Dothan, Ala.
89	Max Wettstein	E	Jr.	20	6-3	206	Leesburg

UNIVERSITY OF KENTUCKY FOOTBALL ROSTER

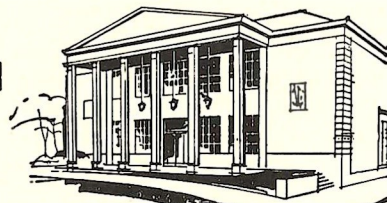
No.	Name	Pos.	Class	Age	Ht.	Wt.	Hometown
11	Rick Norton	QB	Jr.	20	6-1	193	Louisville, Ky.
12	David Ishmael	QB	Soph.	19	6-1	176	Mt. Sterling, Ky.
14	J. D. Smith	QB	Soph.	19	6-1	193	Mayfield, Ky.
15	Talbott Todd	QB	Jr.	20	6-1	207	Richmond, Ky.
18	Johnny Cain	QB	Soph.	19	5-11	185	Cumberland, Ky.
21	Rodger Bird	HB	Jr.	21	5-11	193	Corbin, Ky.
22	Jerry Davis	HB	Soph.	20	5-10	183	Fairborn, O.
24	Phil Pickett	HB	Jr.	21	5-10	181	Huntsville, Ala.
25	Frank Antonini	HB	Soph.	20	5-11	207	Ambridge, Pa.
30	Tom Becherer	HB	Jr.	20	5-10	170	Canton, O.
32	Larry Seiple	HB	Soph.	19	5-11	196	Allentown, Pa.
34	Homer Goins	HB	Soph.	20	5-11	185	Evarts, Ky.
35	Ed Settle	HB	Soph.	18	6-0	189	Princeton, Ky.
36	Joe Carroll	HB	Soph.	19	5-9	188	Sharon Hill, Pa.
40	Mike McGraw	FB	Soph.	19	5-11	193	Ft. Thomas, Ky.
41	Don Britton	FB	Soph.	20	5-10	190	Broomall, Pa.
45	Jim Swart	FB	Soph.	19	6-2	215	Louisville, Ky.
46	Don Danko	FB	Soph.	19	5-11	212	Pocahontas, Va.
47	Jim Griest	FB	Soph.	19	6-1	209	Xenia, O.
50	Jim Miles	C	Jr.	20	6-0	196	Finley, Ky.
51	Mike Beirne	C	Soph.	19	6-1	192	McKeesport, Pa.
52	Tom Chapala	C	Jr.	21	5-11	207	Ambridge, Pa.
54	Calvin Withrow	C	Soph.	19	6-0	216	Kettering, O.
60	Ed Stanko	G	Jr.	20	6-1	211	McKeesport, Pa.
61	Rodger Hart	G	Soph.	19	5-9	174	Albertville, Ala.
62	Terry Clark	G	Jr.	21	6-0	198	Owensboro, Ky.
63	Howard Keyes	G	Jr.	20	5-10	189	Altoona, Pa.
64	Jim Foley	G	Sr.	21	5-11	195	Lexington, Ky.
66	Bob Brown	G	Sr.	21	5-11	190	Darlington, Pa.
67	Rich Machel	G	Soph.	19	5-11	191	Pittsburgh, Pa.
68	Gerry Murphy	G	Jr.	19	5-11	195	Latrobe, Pa.
71	Doug Davis	T	Jr.	20	6-4	235	Centerburg, O.
72	John Schornick	T	Jr.	20	6-0	207	Ebensburg, Pa.
73	Sam Ball	T	Jr.	20	6-4	226	Henderson, Ky.
74	Rich Tucci	T	Jr.	19	6-1	229	Youngwood, Pa.
75	Bennie Arp	T	Soph.	18	5-10	202	Oak Ridge, Tenn.
76	Don Averitt	T	Soph.	19	6-3	215	Hopkinsville, Ky.
77	Tony Manzonelli	T	Jr.	19	6-0	227	Pittsburgh, Pa.
80	Rick Kestner	E	Jr.	19	6-1	205	Stone, Ky.
81	Bill Jenkins	E	Sr.	21	6-2	216	Elizabethtown, Ky.
82	Dan Spanish	E	Soph.	19	5-10	191	New Castle, Pa.
83	Jim Komara	E	Sr.	22	6-0	187	Conneautville, Pa.
84	John Andrighetti	E	Jr.	20	6-0	202	Grapeville, Pa.
86	George McClellan	E	Soph.	21	5-10	178	Bristol, Tenn.
87	Tom Anderson	E	Soph.	20	6-0	182	Birmingham, Ala.
88	Mike Cassidy	E	Soph.	19	6-2	212	Xenia, O.

82

# Tallahassee Federal

SAVINGS AND LOAN  
ASSOCIATION

440 N. Monroe Street \* Tallahassee, Florida



HOURS: Monday-Thursday, 8:30 a.m. to 3 p.m. - Friday, 8:30 a.m. to 6 p.m.

TELEPHONE 224-2161

# FLORIDA STATE BASKETBALL

## 1964-65



Head Coach J. K. "Bud" Kennedy

Coach Bud Kennedy has eight lettermen, four of them starters, returning from last year's team to build his 16th team at Florida State. Six-foot-six center Gary Schull, leading scorer and rebounder as a sophomore, returns and will team at forward with 6-4 soph Ron Malmen, who led the frosh team in scoring with a 21.3 per game average.

The Seminoles play in two nationally-known tournaments, the Vanderbilt Invitational and the Oklahoma City All-College, then return home to encounter a home schedule that includes Florida, Miami, Memphis State, Georgia Tech, Auburn, and Alabama.

### 1964-65 FSU BASKETBALL SCHEDULE

Dec. 1	Valdosta State .....	Tallahassee
Dec. 3	V.M.I. ....	Tallahassee
Dec. 5	Auburn .....	Auburn, Ala.
Dec. 7	Alabama .....	Tuscaloosa, Ala.
Dec. 9	Florida .....	Tallahassee
Dec. 18, 19	VANDERBILT INVITATIONAL TOURNEY... Nashville, Tenn.	
Dec. 22	Tennessee .....	Memphis, Tenn.
Dec. 26	Tulsa .....	Tulsa, Okla.
Dec. 28, 29, 30	ALL-COLLEGE TOURNAMENT..... Oklahoma City, Okla.	
Jan. 7	Georgia .....	Athens, Ga.
Jan. 9	Miami .....	Tallahassee
Jan. 16	Memphis State .....	Tallahassee
Jan. 20	Georgia Tech .....	Tallahassee
Jan. 25	Auburn .....	Tallahassee
Jan. 30	Alabama .....	Tallahassee
Feb. 4	Duquesne .....	Baltimore, Md.
Feb. 6	Memphis State .....	Memphis, Tenn.
Feb. 10	Jacksonville .....	Tallahassee
Feb. 15	Georgia Tech .....	Atlanta, Ga.
Feb. 20	Tampa .....	Tampa
Feb. 23	Florida .....	Gainesville
Mar. 1	Miami .....	Miami
Mar. 6	Georgia .....	Tallahassee

#### ORDER TICKETS FROM:

ATHLETIC TICKET OFFICE  
FLORIDA STATE UNIVERSITY  
TALLAHASSEE, FLORIDA 32306

Season Ticket\* ..... \$15.00

Individual Game Tickets ..... \$ 2.00

\*10 home games

HOME GAMES BEGIN 7:45 P.M. EST  
ROBERT TULLY GYMNASIUM



Florida State vs. Florida, January 1964. FSU's Pete Gonzalez (10) and Bob Lovell (34) move against UF's Henderson (25) and Baxley (22).



## PUT VITALITY ON YOUR TEAM!

Drink Milk, the Vitality Beverage! It's your ticket to vigor and verve that really lasts. And cool, refreshing milk helps keep you bright and in the fun game all day long. So heed the cheer for milk—"put vitality on your team!"



a message from dairy farmer members of  
**american dairy association**