

Official Program 50c

**OCTOBER 31st,
1964**

8:00 p. m.



Florida State

vs.

U. of Southern Mississippi

DOAK S. CAMPBELL STADIUM

Band Day

JOE
LITTLE



GO TO

McDONALD'S

FOR A

PURE BEEF HAMBURGER

Right off the Grill on a Plump Toasted Bun

TRIPLE THICK SHAKE

M'M'M' Creamy Luscious to the Very Last Drop

GOLDEN BROWN FRENCH FRIES

Piping Hot and Done to a Crisp Perfection

Home of America's Favorite Hamburger

More Than a Billion Sold

LOOK FOR THE GOLDEN ARCHES

McDONALD'S

1701 W. TENNESSEE ST.

CORNER WHITEHALL

patronize...
STADIUM

CONCESSIONS

Located beneath the stands on each side of stadium

COLD DRINKS... 15¢
HOT COFFEE... 15¢
SANDWICHES... 30¢
HOT DOGS... 25¢
PEANUTS... 15¢
POP CORN... 15¢

SOUVENIR ITEMS
PENNANTS
BADGES
SUN VISORS
ASPIRIN

All Cigarettes 40¢

please pay no more than established prices

11 8/16 ComS
 46 32 1/2 ConE
 14 1/4 11 1/2 ConD
 22 14 3/8 ConE
 10 3/8 8 3/4 Cong
 65 1/4 35 Con
 97 81 5/8 ConE
 08 1/2 105 ConE
 50 7/8 35 1/2 ConE
 63 5/8 45 3/4 ConF
 38 1/2 29 1/4 CnLa
 73 1/4 60 3/4 CnNC
 59 1/4 47 1/2 Const
 56 1/4 43 3/8 Consl
 02 96 1/2 ConP
 95 91 ConP
 34 3/8 28 3/4 Conta
 29 5/8 13 1/4 Cont
 61 7/8 48 3/4 Conf
 09 105 ClBal
 53 7/8 42 3/4 Cont
 9 1/4 41 Cont
 63 1/4 54 1/2 Cont
 13 1/4 11 1/2 Cont
 74 7/8 60 Cont
 61 1/4 53 3/4 Cont
 61 1/4 54 3/4 Contr
 26 1/4 21 1/4 Contr
 33 3/8 30 1/4 Cook
 37 3/8 30 1/4 Coop
 21 1/4 14 Coop
 28 5/8 21 Copel
 39 1/4 26 5/8 Coppe
 61 7/8 39 1/4 Copw
 67 3/8 52 5/8 Corn
 41 1/2 20 1/2 Corng
 29 7/8 20 1/4 CoxB
 7 3/8 54 Crane
 14 10 1/4 Cresc
 34 3/8 23 3/8 Crom
 26 1/4 18 Crow
 34 3/8 26 1/4 Crow
 50 45 Crow
 60 1/4 51 Crow
 99 94 5/8 Crn
 26 3/8 21 3/8 CruC
 09 103 1/2 CruS
 30 7/8 19 3/8 CTS
 70 54 Cudat
 54 1/4 49 Cunn
 27 7/8 19 Cunnl
 19 1/4 6 3/4 Curtie
 46 3/8 31 CurPt
 15 3/8 10 1/4 Cur.6
 20 1/2 16 3/4 Curt
 80 1/2 56 Cutler
 20 1/4 16 3/8 DanR
 49 3/4 41 Dana
 24 19 1/4 Dayco
 33 3/8 27 5/8 Day 1
 86 82 3/4 DPL
 47 5/8 34 1/4 Deere
 38 1/4 21 Del&F
 64 3/8 57 5/8 Delta
 24 1/4 19 3/8 DenRi
 24 3/8 17 1/4 DeSo
 35 3/8 31 3/8 DetEd
 17 3/8 13 1/4 Det S
 59 7/8 49 1/4 Dia
 77 55 1/2 Diam
 14 1/4 8 3/4 Diana
 24 3/8 14 1/4 DiGlo
 28 1/4 20 3/8 Diner
 49 1/2 38 Disney
 25 1/2 20 1/4 Divco
 19 13 3/8 Dobbs
 35 27 3/8 DrPe
 33 1/4 25 3/8 Dome
 22 3/8 20 3/8 DomF
 36 27 3/8 Donll
 32 3/8 21 3/8 DougA
 48 3/8 31 3/8 Dover
 76 1/4 65 3/8 Dow
 38 3/8 25 1/4 Dress
 20 14 1/4 Drewr
 38 3/8 31 3/4 Drexel
 30 3/8 25 Duffy
 36 3/8 35 3/8 DukeP
 14 15 3/8 Dunhil
 24 1/4 15 1/2 Duplar
 78 238 duFon
 08 1/2 103 1/4 duFon
 86 3/8 81 3/8 duFon
 34 1/4 30 3/4 Duq I
 46 1/4 43 DuqLt
 43 40 3/8 Dq 3.
 30 1/2 20 DWGC
 60 3/8 24 3/8 Dymol
 11 1/4 8 Dynam
 73 1/2 17 3/4 Dynam
 26 7/8 22 3/8 Eagle
 43 3/8 26 3/8 East
 19 3/8 14 3/8 EastSS
 86 3/8 114 3/8 EastK
 48 1/2 36 3/8 Eaton
 14 1/2 11 3/4 Echlin
 37 1/2 28 3/8 Ekco
 29 3/8 24 3/8 ElastS
 37 3/8 27 3/4 ElBonc
 4 3/4 3 1/2 El
 45 37 1/4 ElStor
 27 3/8 20 3/8 Elect
 30 1/4 17 3/8 Electr
 13 1/2 8 1/4 Elgin
 22 1/4 18 1/4 ElPas
 31 24 3/8 EltraC
 33 3/8 30 1/4 Eltra
 45 3/8 36 1/4 Emers
 11 1/4 9 3/8 EmerF
 35 24 Emery
 57 3/8 42 1/2 Emhar
 36 3/4 32 EmpDi
 47 47 3/8 EmpC

Table of stock prices and market data, including columns for company names, prices, and percentages. Includes a large watermark 'The Blue Chip Story on Florida State'.

N-O-P

Table of stock prices and market data for companies starting with N, O, and P. Includes columns for company names, prices, and percentages.

ATHLETICS AT FLORIDA STATE

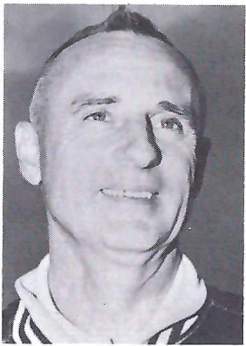
A COMPLETE PROGRAM



J. K. "BUD" KENNEDY
Basketball Coach
1963-64: W 14, L 14



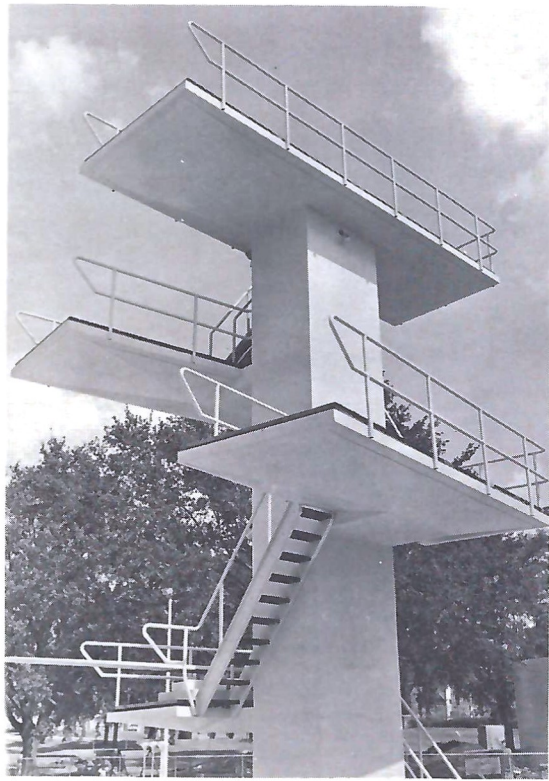
N. B. "BIM" STULTS
Swimming Coach
1964: W 7, L 0



MIKE LONG
Track Coach
1964: W 5, L 0



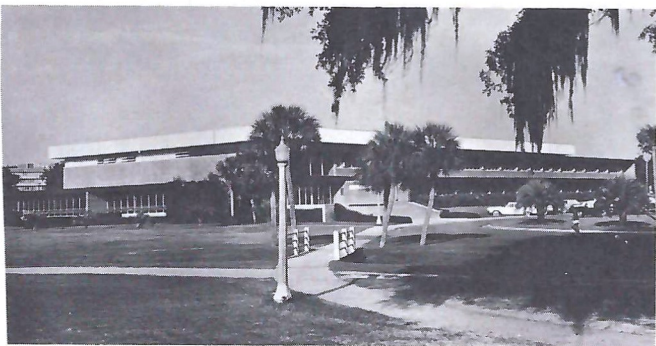
FRED HATFIELD
Baseball Coach
1964: W 23, L 13



10-Meter Diving Tower
Rises Above FSU's New Olympic Pool



HUGH DURHAM
Golf Coach
1964: W 12, L 0



Tully Gym



LEX WOOD
Tennis Coach
1964: W 11, L 10



FSU FOOTBALL 1964...



IN THIS ISSUE:

University Features	6, 7, 8
Guest Column	9
FSU All-Time Records	9
Athletic Committee	10
Comparing Today's Teams	10
Seminole Football Family	11
The 1964 Seminoles	12, 13, 14, 15
Officials' Signals	17
FSU's '64 Freshman Team	18
Starting Lineup, FSU	20
Starting Lineup, Opponent	21
Seminole Boosters, Inc.	25
WFSU-TV Football Schedule	26
Seminole Radio Network	27
Penalties	29
Seminole Songs and Cheers	30
The Marching Chiefs	36
Depth Charts, Rosters, Officials	Flip Card
FSU Basketball, 1964-65	39

SEMINOLES ON THE WARPATH

Sept. 19 Miami	Miami 8:00 p.m. EST
Sept. 26 Texas Christian	Fort Worth 7:30 p.m. CST
Oct. 3 New Mexico State	Tallahassee 8:00 p.m. EST
Oct. 10 Kentucky (Homecoming)	Tallahassee 2:30 p.m. EST
Oct. 17 Georgia	Athens 2:00 p.m. EST
Oct. 24 Virginia Tech	Blacksburg 2:00 p.m. EST
Oct. 31 So. Mississippi	Tallahassee 8:00 p.m. EST
Nov. 7 Houston	Houston 2:00 p.m. CST
Nov. 14 N. C. State	Tallahassee 8:00 p.m. EST
Nov. 21 Florida	Tallahassee 2:00 p.m. EST

*Compliments and
Best Wishes from*



**YOUR APPLIANCE
HEADQUARTERS
611 N. Monroe St.**

Florida State—The Best Stock on Today's Educational Market



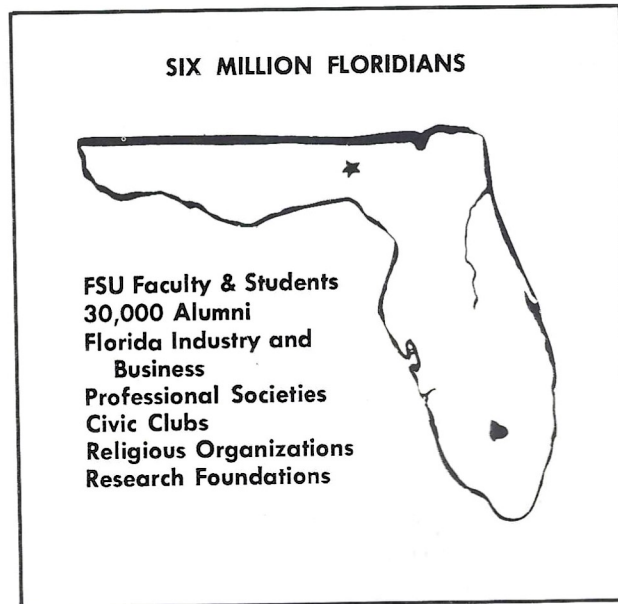
Now Providing
Preferred Education
For 12,137 Futures

FSU	FSU	FSU	FSU	FSU
105 1/8	105 7/8	106 1/4	106 3/4	

The Shareholders

The list of those who hold "shares" in Florida State University's future is growing longer than the state's coastline and wider than its tax rolls. For investments in higher education — above and beyond appropriations — are fast being recognized by private citizens and perceptive businessmen as the best means of increasing Florida's progress and profits in the years ahead.

Contributions of private support to the state's universities provide the vital margin needed for excellence — the elbowroom for quality in education. It has been estimated that Florida will have 360,000 residents of college age in 1965, all "shareholders" in the future of higher education.

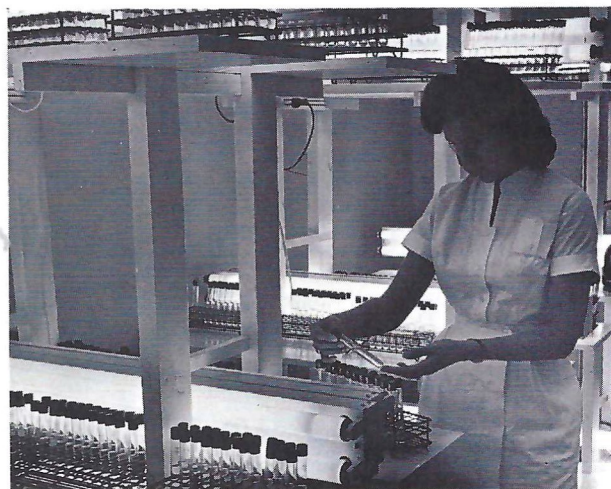


The Dividends

Knowledge is and always will be its own dividend. But the application of knowledge to technological and cultural advancement is the keystone of this state's progress.

There are no greater profits to be held and shared by all, than those which guarantee the best leadership for tomorrow and the highest humanitarian uses of today's discoveries and resources.

Now offering doctoral degrees in 35 fields and having launched successfully six major research institutes, Florida State is dedicated to the quest for dividends of discovery. Exploring problems like cancer and red tide, solving nuclear and molecular biophysical mysteries and studying industrial and human reactions to space-age urbanization, the University's sphere of profit-sharing is limitless.



Economic And Social Progress Through Research
Each Ph.D. Between 200 & 250 New Jobs
College Graduates Needed for Space-Age Industries
Cultural and Scientific Development of Florida
Quality Education And Service To The State

Investment Opportunities

The Florida State University Foundation, Inc., established in 1960 and recently re-organized, is the non-profit corporation through which all private contributions to the University are administered.

There are many ways and means of assisting Florida State and adding to its margin of excellence. The Foundation welcomes all contributions, tangible and intangible in value, and seeks to strengthen not only the monetary latitude of the University, but its permanent collections of historic and academic treasures as well. Information on tax-deductible gifts to education may be obtained at the University's Office of Development, Westcott Building, FSU.



Scholarships And Professorships
Library, Art And Rare Book Collections
University Expansion, Educational "Extras"

The FSU Prospectus—Research

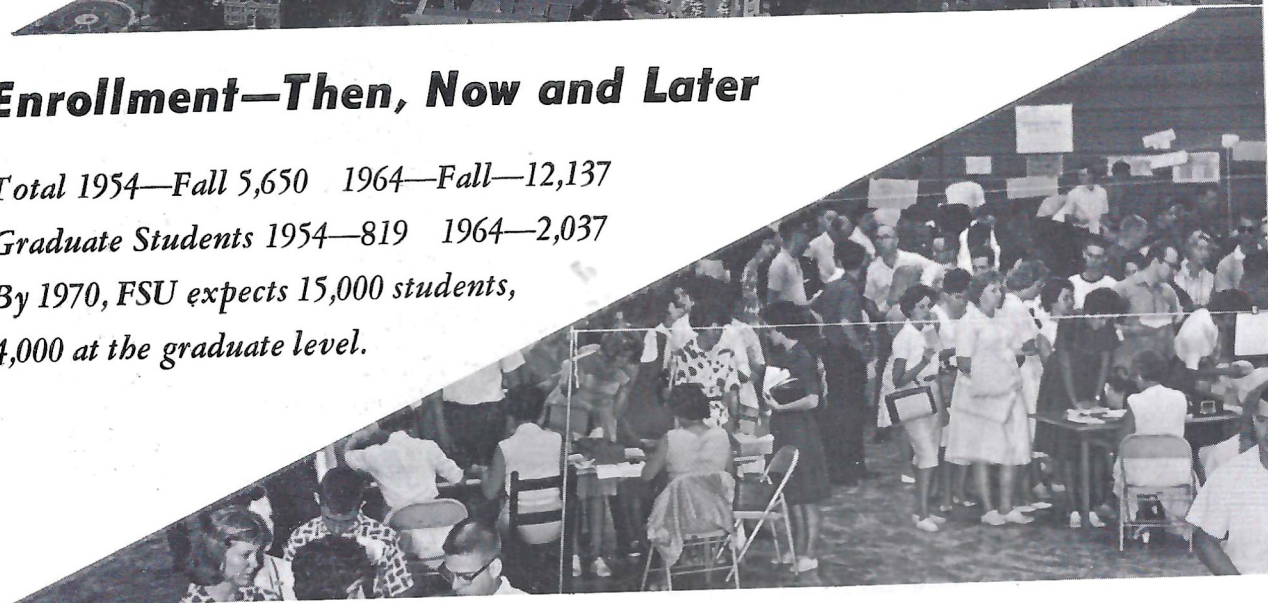
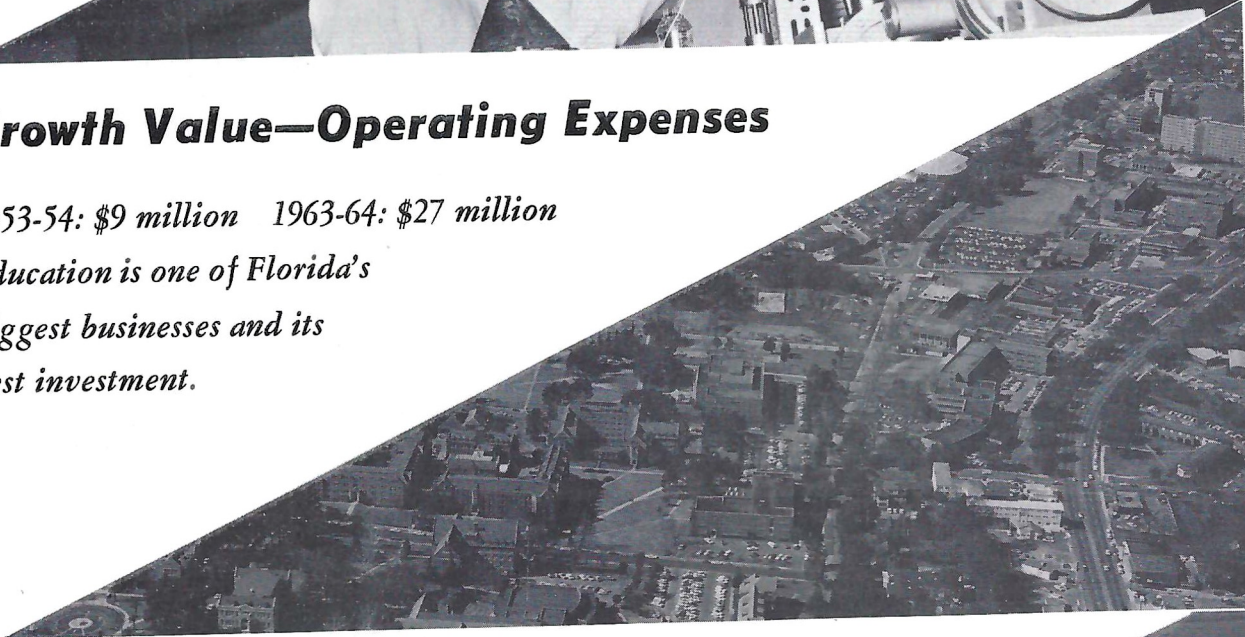
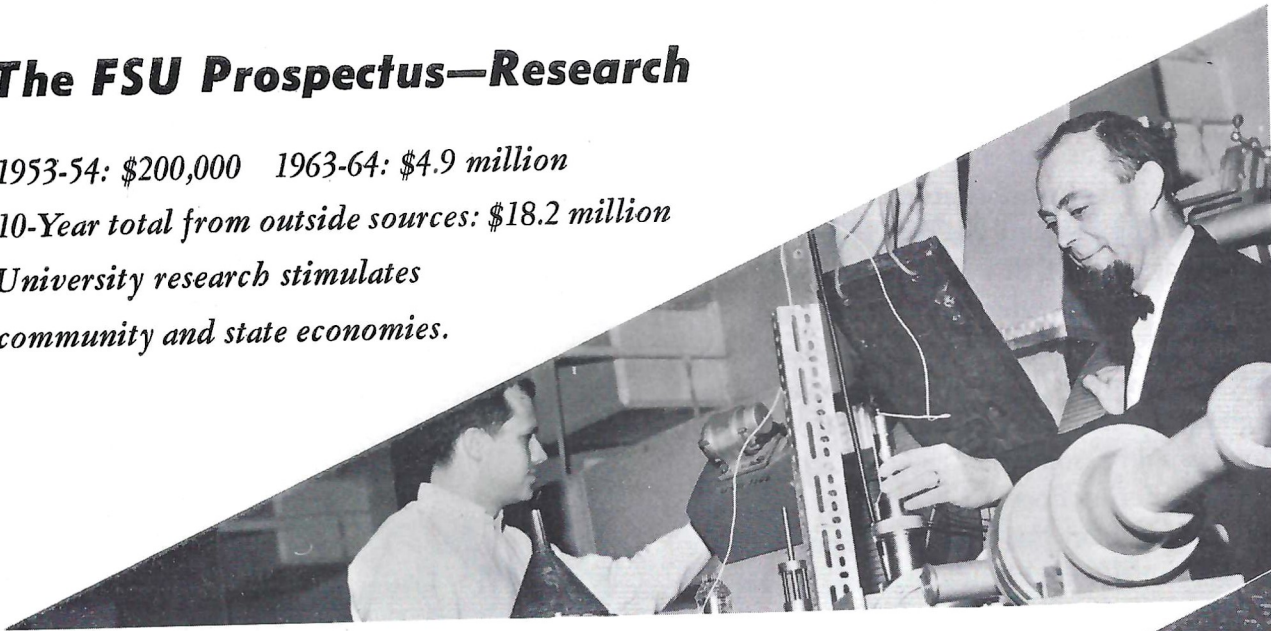
1953-54: \$200,000 1963-64: \$4.9 million
10-Year total from outside sources: \$18.2 million
*University research stimulates
community and state economies.*

Growth Value—Operating Expenses

1953-54: \$9 million 1963-64: \$27 million
*Education is one of Florida's
biggest businesses and its
best investment.*

Enrollment—Then, Now and Later

Total 1954—Fall 5,650 1964—Fall—12,137
Graduate Students 1954—819 1964—2,037
*By 1970, FSU expects 15,000 students,
4,000 at the graduate level.*



The View From Above

By **BILL BUNKER**
Sports Publicity Director
Florida State University

Southern Mississippi, perennially one of the sharpest thorns in the Seminoles' side, comes to Doak Campbell Stadium tonight in the wake of Florida State's first defeat of the season.

For Coach Bill Peterson and the Seminoles, the Southerners represent an opportunity to recover ground lost in last week's 20-11 defeat at the hands of VPI in Blacksburg, Va.

Standing in the path of the temporarily sidetracked Seminoles is Coach Thad "Pie" Vann with a career record of 113 victories, 39 defeats and two ties in 15 years at one of the South's most powerful — if least publicized — football schools.

Florida State has defeated Southern Mississippi only twice in nine meetings. Both of these victories were by one point. The single tie in the series came last year when the teams fought to a scoreless decision in Mobile's Ladd Stadium.

The Southerners, like the Seminoles, are on the rebound tonight. After rolling up impressive victories in their first three games, Vann's crew was defeated by Mississippi State, 48-7, and Auburn, 14-7 in the last two outings. Southern's victims have been Southwest Louisiana, Richmond and highly-regarded Memphis State.

Florida State has one of the nation's top offensive teams, headed by brilliant Steve Tensi-Fred Biletnikoff passing combination. Before running into Mississippi State, Southern was leading the nation in total defense.

The Seminole passing pair had one of their greatest days in defeat last week, personally breaking four single game records. Tensi threw 39 passes, completed 21. Both were records. Biletnikoff hauled in 11 for 182 yards, breaking two of his own marks.

Tensi has now rolled up 1,002 yards passing, including nine touchdowns. Biletnikoff has caught 38 for 639 yards and seven touchdowns.

In addition to a tenacious defense, Southern brings to town essentially the same backfield which gave FSU so much trouble in last year's scoreless tie.

Quarterback Vic Purvis is a roll-out operator who has 777 yards in total offense this season. Fullback Harmon Brannan and halfback Herman Nall are both powerful runners, weighing in at over 190 pounds. Center Larry Ecuyer was one of the outstanding defensive men to play against the Seminoles last season.

It's one of Florida State's longest rivalries, and one of the most exciting down through the years.

FSU Records SINGLE GAME

INDIVIDUAL

LONGEST TOUCHDOWN RUN FROM SCRIMMAGE—80 yards by Fred Pickard vs. Virginia Tech, 1957.

LONGEST TOUCHDOWN PASS—80 yards, Nelson Italiano to Eddie Gray vs. Newberry, 1950.

LONGEST TOUCHDOWN RUN ANY SITUATION—99 yards by Ted Hewitt vs. Stetson, 1949, and by Fred Biletnikoff vs. Miami, 1963.

LONGEST RUN FROM SCRIMMAGE WITHOUT SCORING—76 yards by Roy Thompson vs. Stetson, 1951.

LONGEST INTERCEPTION RETURN—99 yards by Ted Hewitt vs. Stetson, 1949, and by Fred Biletnikoff vs. Miami, 1963.

LONGEST PUNT RETURN—80 yards by Billy Odom vs. Stetson, 1954.

LONGEST KICKOFF RETURN—89 yards by Odom vs. Virginia Tech, 1955.

MOST TIMES RUSHING—29 by Pickard vs. Georgia, 1959.

MOST YARDS RUSHING—161 by Buddy Strauss vs. Mississippi College, 1949.

MOST YARDS PASSING—355 vs. Villanova, 1954, 1949.

MOST TOTAL OFFENSE—369 yards (56 rushing, 313 passing) by Majors vs. Tampa, 1959.

MOST PASSES ATTEMPTED: 39 by Steve Tensi vs. Virginia Tech, 1964.

MOST PASSES COMPLETED: 21 by Steve Tensi vs. Virginia Tech, 1964.

MOST PASSES CAUGHT: 11 by Fred Biletnikoff vs. Virginia Tech, 1964.

MOST YARDS RECEIVING PASSES: 182 by Fred Biletnikoff vs. Virginia Tech, 1964.

MOST PASSES INTERCEPTED—3 by Tommy Brown vs. Stetson, 1950 and vs. Georgia Tech, 1952; Lee Corso vs. Georgia 1954; Whitehead vs. Virginia Tech, 1959.

LONGEST PUNT—84 yards by Brown vs. Tampa, 1950.

LONGEST FIELD GOAL—44 yards by Les Murdock vs. VPI, 1963.

TEAM

MOST POINTS—74 vs. Whiting Field O, 1949.

GREATEST MARGIN OF VICTORY—74-0 vs. Whiting Field, 1949.

GREATEST MARGIN OF DEFEAT—0-42 vs. Georgia, 1959.

MOST YARDS RUSHING—383 vs. Abilene Christian, 1957.

MOST YARDS PASSING—355 vs. Villanova, 1954.

MOST TOTAL OFFENSE—514 yards vs. The Citadel, 1959 (307 rushing, 207 passing).

MOST PASSES ATTEMPTED: 40 vs. Virginia Tech, 1964 (Completed 22)

MOST PASSES COMPLETED: 22 vs. Virginia Tech, 1964 (Attempted 39)

MOST PASSES INTERCEPTED—7 vs. Virginia Tech, 1959.

MOST PUNTS—10 vs. Stetson and Georgia Tech, 1955.

FIRST AID

For your convenience and safety First Aid facilities are located at the South end of the stadium. A Registered nurse is on duty throughout the game.

TODAY'S TEAMS — HOW THEY RATE

Results

FLORIDA STATE (5-1)		SOUTHERN MISSISSIPPI (3-2)	
Miami	14-0	S. W. Louisiana	30-0
Texas Christian	10-0	Richmond	14-9
New Mexico State	36-0	Memphis State	20-14
Kentucky	48-6	Mississippi State	7-48
Georgia	17-14	Auburn	7-14
Virginia Tech	11-20		

Individual Leaders

FLORIDA STATE				RUSHING			SOUTHERN MISSISSIPPI				
Player	Att.	Yards	Avg.	Player	Att.	Yards	Avg.	Player	Att.	Yards	Avg.
Spooner	71	285	4.0	Purvis	67	347	5.2				
Narramore	68	250	3.7	Brannan	46	188	4.3				
Green	32	135	4.2	Nall	25	118	4.7				

PASSING				RECEIVING				
Player	Att.	Comp.	Yds.	TD	Player	Caught	Yds.	TD
Tensi	118	71	1,002	9	Purvis	9	187	1
Pritchett	23	15	171	0	McLellan	20	98	0

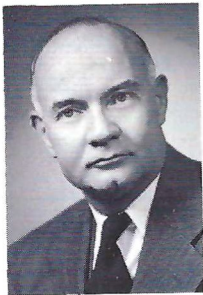
SCORING				PAT							
Player	TD	Kick	Run-Pass	FG	Pts.	Player	TD	Kick	Run-Pass	FG	Pts.
Biletnikoff	7		1		44	Purvis	3				18
Murdock		14-17		4	26	Brannan	3				18
Spooner	4				24	Nall	3				18

THE ATHLETIC COMMITTEE

The Athletic Committee, appointed by the President, is the governing body of inter-collegiate athletics at Florida State University.

The Committee has the responsibility of seeing that athletics are conducted primarily in the interests of the students, but with due regard for a proper, continuing and healthy interest of the alumni and the citizens of Florida, as well as the athletic heritage and prestige of the University.

Mode L. Stone, Dean of the School of Education is the Committee chairman. Members are Robert C. Earnest, Mary V. Alexander, Claude Flory, Coyle Moore, J. M. Plant, Elston Roady and Thomas Wright, Ex-officio non-voting members are Vaughn Mancha, the FSU Alumni President, the Seminole Booster President and the President of the Student Body.



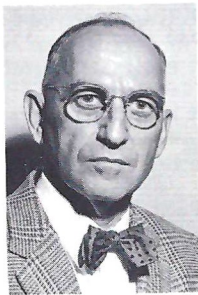
Mode L. Stone



Robert C. Earnest



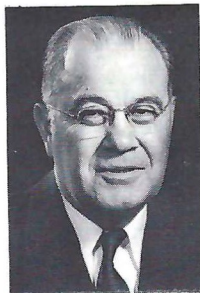
Thomas Wright



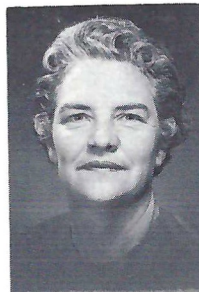
J. M. Plant



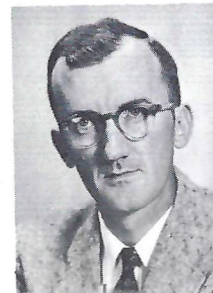
Claude Flory



Coyle Moore



Mary Alexander



Elston Roady

The Seminole Football Family



BILL PETERSON
Head Football Coach



VAUGHN MANCHA
Athletic Director



DON JAMES
First Assistant
Defensive Chief



BILL CRUTCHFIELD
Offensive Chief



BOB HARBISON
Defensive Line



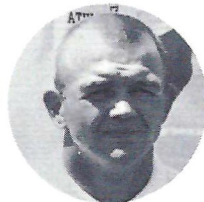
BOBBY BOWDEN
Receivers



KEN MacLEAN
Head Recruiter



JOHN COATTA
Defensive Ends,
Linebackers



DON POWELL
Offensive Line



DON FAULS
Head Trainer



CHRIS PATRICK
Trainer



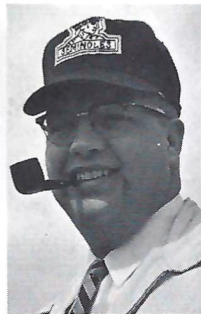
BILL PROCTOR
Freshman Coach



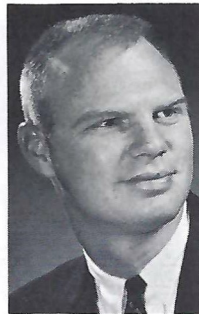
RONALD MELTON
Athletic Business
Manager



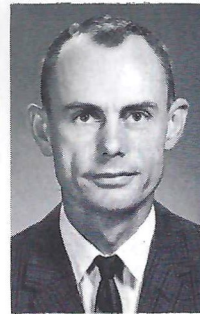
JEFF SAVAGE
Academic Advisor



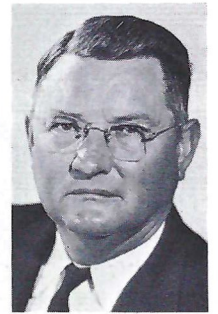
DR. R. P. JOHNSON
Team Physician



BILL BUNKER
Sports Publicity
Director

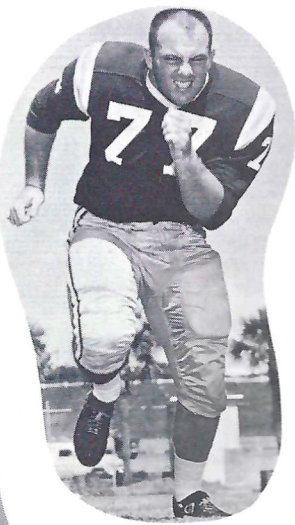


CLAUDE THIGPEN
Ticket Manager



TILLMAN DIXON
Equipment Custodian

Bob Mangan



Joe Parrish

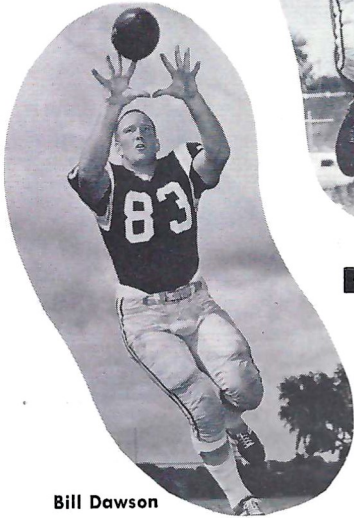


John Hosack

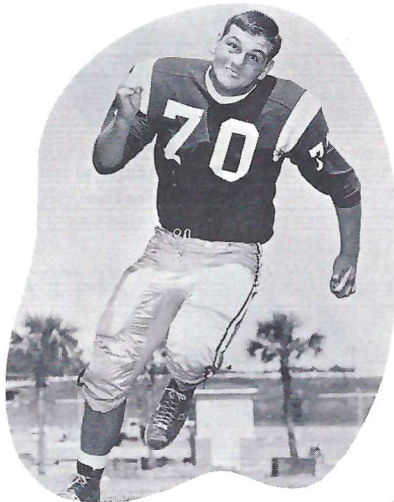


THE 1964 S

Bill Dawson



Del Williams



Jack Edwards



Elton Revell



Avery Sumner



Dick Hermann



Charles Pennie



Ed Pritchett





Joe Avezzano



Wayne McDuffie



Tom West



Joe Petko

4 SEMINOLEES



Bill McDowell



Steve Tensi



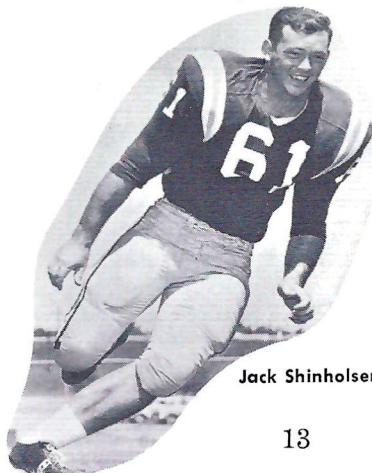
Winfred Bailey



Les Murdock



Howard Ehler



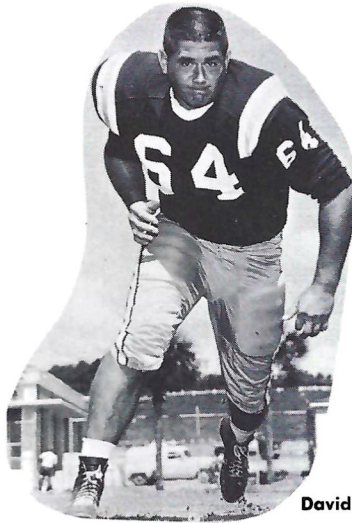
Jack Shinholser



Lee Narramore



Jim Massey



David Braggins

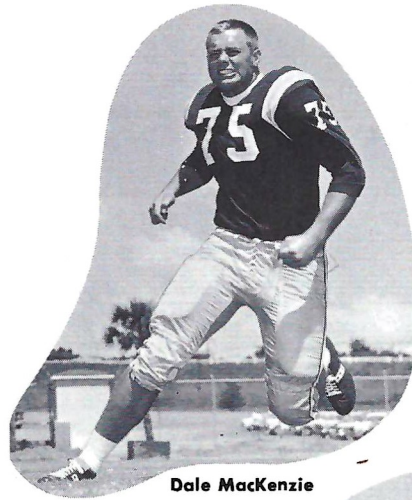


John Stephens

THE 1964 S



Larry Williamson



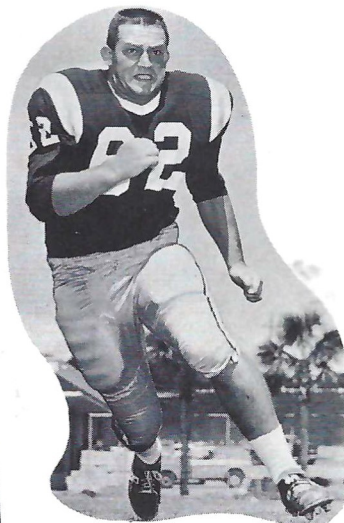
Dale MacKenzie



Terry Garvin



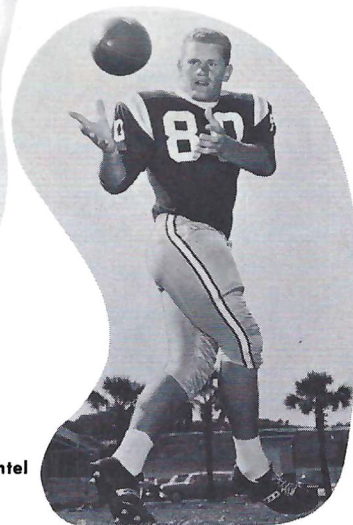
David Pitts



Howard Lurie



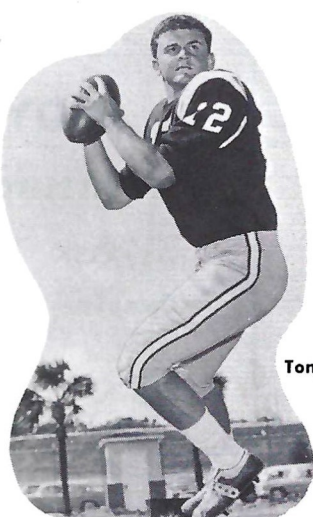
Max Wettstein



John Wachtel



Phil Spooner



Tony Gero

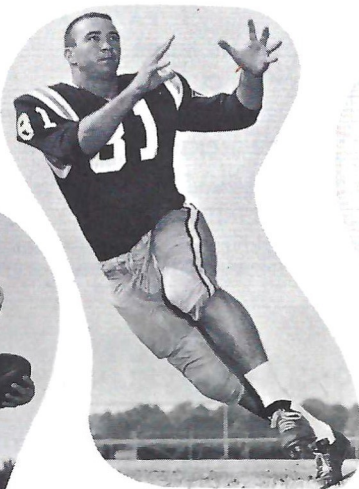


Jay Mac Matthews

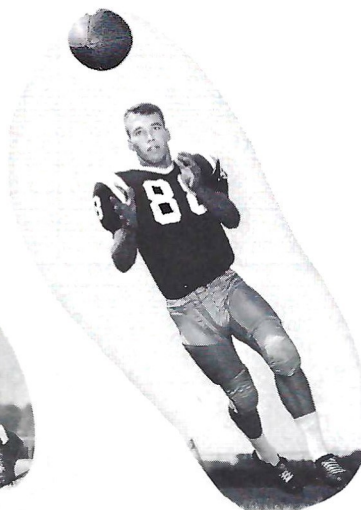
4 SEMINOLEES



Maury Bibent



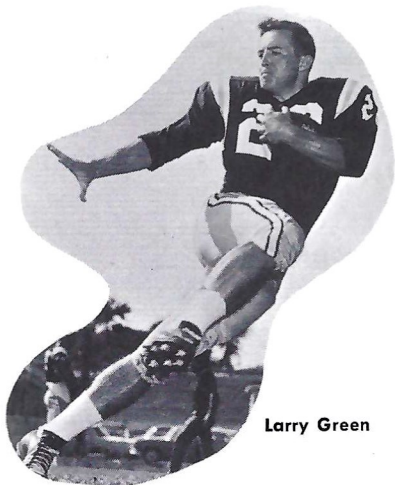
Don Floyd



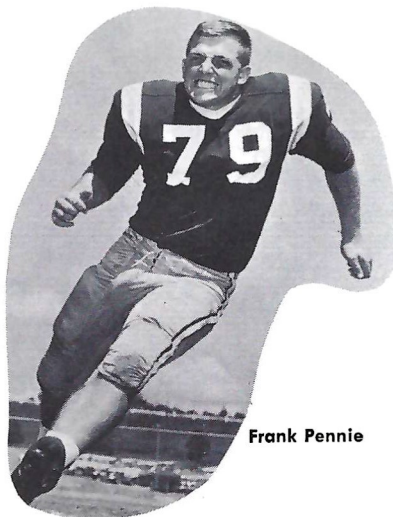
Cliff Gunter



Fred Biletnikoff



Larry Green



Frank Pennie



George D'Allessandro

**SOUTHERNAIRE MOTEL &
SKYLINE MOTOR LODGE**



Quality people always seek
quality accommodations

**MIDYETTE-MOOR
Insurance Agency**

"Ask Those We Serve"

Complete Insurance and Bond Service

PHONE 222-3456



MIDYETTE-MOOR BUILDING
TALLAHASSEE, FLORIDA

—SAYS—

SCALP 'EM SEMINOLES!



PAYNE MIDYETTE

FRANK MOOR	BILL MOOR
ED. CLARK	GLENN SEARS
WINSLOW SULLIVAN	PAUL McCARTNEY
BOB DICKINSON	REX SIKES
PAUL LEWIS	JIM MILLHOFF
PAYNE MIDYETTE, JR.	JOHN REEVES

OWNED AND OPERATED BY FRANK CHASE & SONS, FRANK JR., RICHARD, RAYMOND

Skyline Restaurant

1 Mile West of City Limits

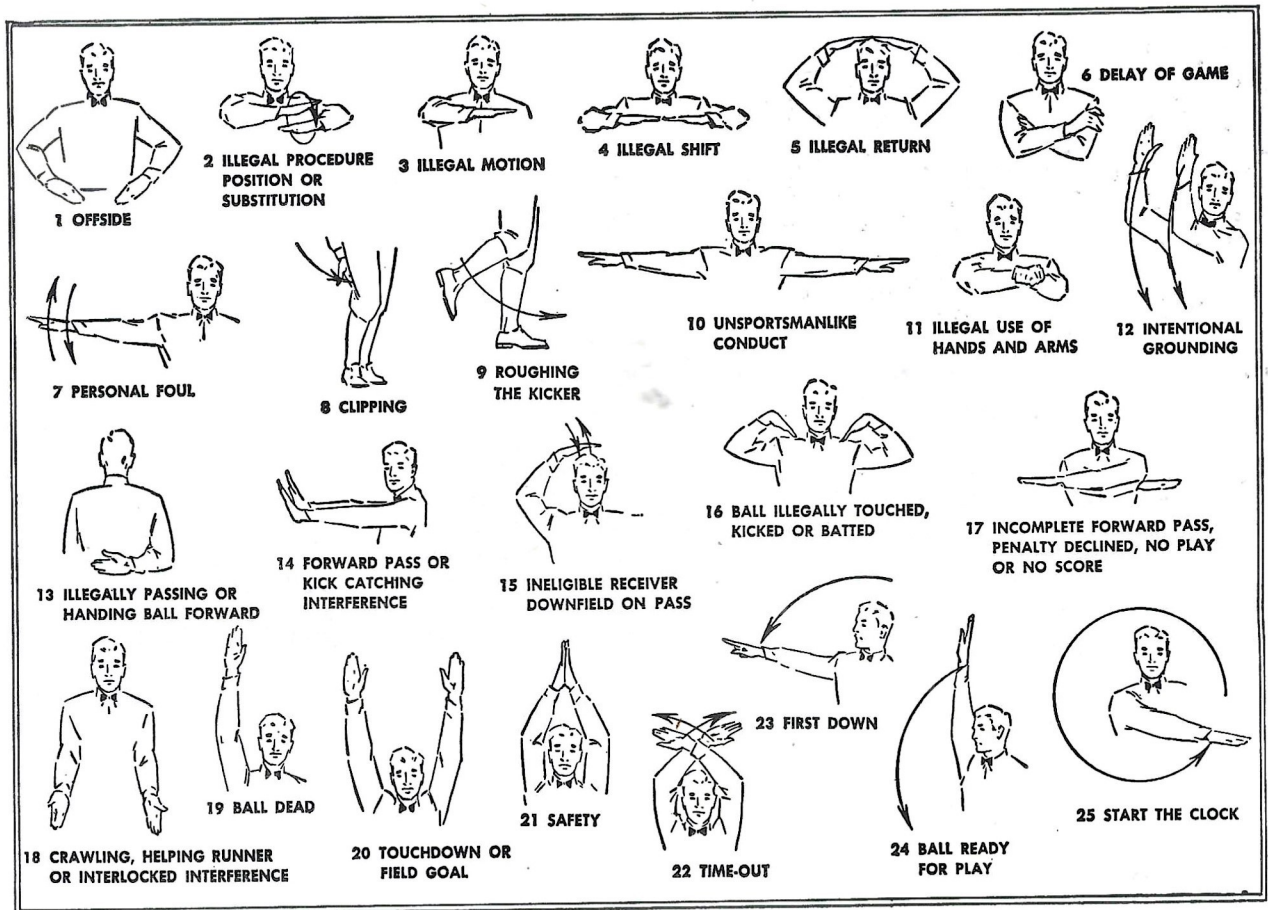
U. S. Highways 90 and 20

OPEN 6 A.M. TO 11 P.M.

TALLAHASSEE, FLORIDA

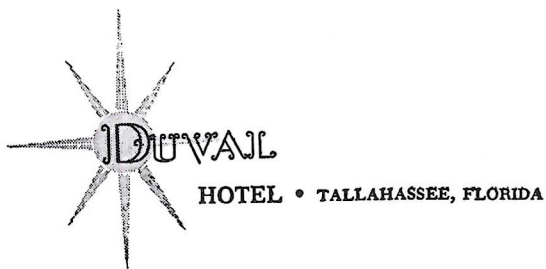
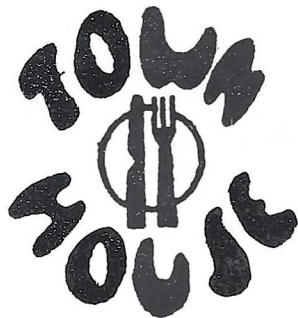
"Serving Good Food for Fine People"

Private Rooms and Banquet Facilities



**TRAVELING
DESSERT TRAYS**

**FAMOUS
TOWN HOUSE
ROAST
PRIME RIB
OF BEEF**



SPURGEON CAMP

*Good Luck
Seminoles!*

★
NOBODY...
BUT NOBODY
UNDESELS.
★

**SOUTHERN
ELECTRIC INC.**

**5-Store Purchasing Power
Saves You Money on G-E Appliances!**

Tallahassee
Downtown and
Capital Plaza

Perry, Fla.
115 E. Green St.
on the Square

Valdosta, Ga.
117 W. Central

Albany, Ga.
225 W. Ogle-
thorpe St.

FLORIDA STATE FRESHMEN 1964



No.	Pos.	Name	Ht.	Wt.	Hometown
11	QB	Burkart, William	6'1"	175	Rocky River, Ohio
12	QB	Kolbus, Martin	6'2"	184	E. Chicago, Ind.
13	QB	Lewis, Dale	6'1"	180	Middletown, Ohio
14	QB	Roylance, Steve	6'0"	170	Miami, Florida
15	QB	Sabo, Bob	6'0"	170	Maynard, Ohio
16	QB	Pickens, Chuck	5'8"	165	Athens, Tennessee
20	LHB	Blatt, Mike	5'11"	183	Key West, Florida
21	LHB	Gunter, Bill	6'0"	165	Dothan, Alabama
22	LHB	Knowlton, Cabot	5'10"	160	Pompano Beach, Fla.
23	LHB	Mercer, Ron	5'11"	180	Dinsmore, Florida
24	RHB	Bailey, James	6'1"	175	Wilmington, Ohio
25	RHB	Cox, Bill	6'1"	170	Atlanta, Georgia
26	RHB	Doyle, Dennis	6'2"	185	Jacksonville, Fla.
27	RHB	Elliott, Chuck	6'0"	190	Troy, Ohio
28	RHB	Manning, Bud	5'11"	170	Gainesville, Fla.
29	RHB	Turbow, Brent	5'8"	160	Jacksonville, Fla.
40	FB	Benson, Joe	5'11"	185	Birmingham, Ala.
41	FB	Culliton, Tom	5'11"	185	Dade City, Fla.
42	FB	Flores, Chuck	5'11"	185	Perry, Fla.
43	FB	Gielow, Russ	6'2"	188	Vero Beach, Fla.
68	FB	Paulson, Andy	5'11"	170	Waukesha, Wisc.
44	FB	Skinner, Sherril	6'1"	185	Live Oak, Fla.
51	C	East, Dick	6'1"	190	Bessemer, Ala.
52	C	Walther, Wayne	6'0"	190	Cantonment, Fla.
53	C	Wilcox, Newt	6'1"	205	College Park, Ga.
60	G	Bugar, Mike	6'1"	190	Youngstown, Ohio
61	G	Donohue, Mike	6'2"	190	Youngstown, Ohio
62	G	Holloway, Sherman	6'2"	197	Homewood, Ala.
63	G	Lenker, Mark	6'0"	185	Jacksonville, Fla.
64	G	McLean, Richard	6'0"	180	Holly Hill, Fla.
65	G	McNeil, Carlisle	5'11"	185	Macon, Georgia
66	G	Sauls, Tim	5'10"	185	Tallahassee, Fla.
67	G	Pendleton, Larry	6'0"	188	Winter Garden, Fla.
70	T	Bizik, Dan	6'2"	205	E. Chicago, Ind.
71	T	Ellers, Don	6'2"	206	Marietta, Ga.
74	T	Kramer, Jim	6'2"	210	Dayton, Ohio
75	T	LeMont, Byron	6'0"	200	Eau Gallie, Fla.
76	T	Mills, Ken	6'1"	200	Tampa, Florida
77	T	Murphy, Jerry	6'1"	205	Jacksonville, Fla.
78	T	Panza, Tom	6'2"	210	Miami, Florida
79	T	Vistart, Romney	6'3"	245	Colquitt, Ga.
80	E	Broxson, Tim	6'4"	185	Milton, Florida
81	E	Fenner, Lane	6'5"	190	Evansville, Ind.
82	E	Fenwick, Jack	6'4"	195	Cincinnati, Ohio
83	E	Frazier, James	6'2"	180	Atlanta, Georgia
84	E	Hart, Ken	6'3"	190	Groveland, Fla.
85	E	Krebs, Ed	6'3"	190	Marietta, Ga.
86	E	Taylor, Thurston	6'2"	210	College Park, Ga.
87	E	Urich, Bob	6'2"	190	Toronto, Ohio
88	E	Yavelak, Bill	6'3"	190	St. Clairsville, Ohio
89		Loney, Bill	5'10"	160	Thomasville, Ga.

Coaches: Bill Proctor — Head Coach
 Jerry Bruner — Line Coach
 Ken Russom — Defensive Backfield Coach
 Doug Messer — Offensive Backfield Coach
 Dave Snyder — End Coach

Manager: Mike Mullins

Plymouth roars into '65 with 4 great new sports!



'65 Sport Fury

The biggest, plushiest Plymouth ever.
A brand-new "ultra-everything"
Plymouth that's still solidly
in the low-price field.



'65 Valiant Signet

The compact that hasn't forgotten
why you buy a compact. Still the best
all-around compact, proving that
Valiant didn't have to go big-car
in price or size to give you
big-car performance.



'65 Belvedere Satellite

A new way to swing without going out
on a limb. For the buyer who knows that,
when it's Plymouth, pride of ownership
can still go hand-in-hand with low price.



'65 Barracuda Fastback

The fast-moving fastback at a spectacular
low price. America's best combination
yet of sports-car look, youthful vitality,
all-purpose versatility, and all-around economy.

Get your free copy of the NCAA Football Almanac
at your nearest participating Plymouth Dealer's.

THE ROARING '65s
FURY
BELVEDERE
VALIANT
BARRACUDA
Plymouth



FLORIDA STATE

STARTING LINE-UP

No.	Name	Position
81	DON FLOYD	LE
70	DEL WILLIAMS	LT
51	JOE AVEZZANO	LG
55	JACK EDWARDS	C
75	DALE MacKENZIE	RG
76	TOM WEST	RT
83	BILL DAWSON	RE
13	STEVE TENSI	QB
27	PHIL SPOONER	LH
25	FRED BILETNIKOFF	RH
40	LEE NARRAMORE	FB

12	Gero, QB
13	Tensi, QB
14	Massey, QB
15	Conway, HB
16	Pritchett, QB
20	Green, HB
21	D. Jones, HB
22	Bibent, HB
23	Giardino, FB
24	Revell, HB
25	Biletnikoff, HB
26	Campbell, HB
27	Spooner, HB

THE SEMINOLE SQUAD

28	Bailey, HB
29	Petko, FB
40	Narramore, FB
41	Menendez, HB
42	Murdock, FB
43	Ehler, FB
44	Mankins, FB
51	Avezzano, G
53	Pitts, C
54	Stephens, C
55	Edwards, C
60	Williamson, G
61	Shinholser, C

62	Lurie, G
63	McDowell, G
64	Braggins, T
66	Hermann, G
68	Parrish, G
69	Pope, G
70	Williams, T
73	Sumner, T
74	Matthews, T
75	MacKenzie, G
76	West, T
77	Mangan, T
78	C. Pennie, T

79	F. Pennie, T
80	Wachtel, E
81	Floyd, E
82	McDuffie, E
83	Dawson, E
84	D'Allessandro, E
85	Hosack, HB
86	Blankenship, E
87	Garvin, E
88	Gunter, E
89	Wettstein, E

SO

No.
81
79
67
56
62
78
80
15
42
40
28

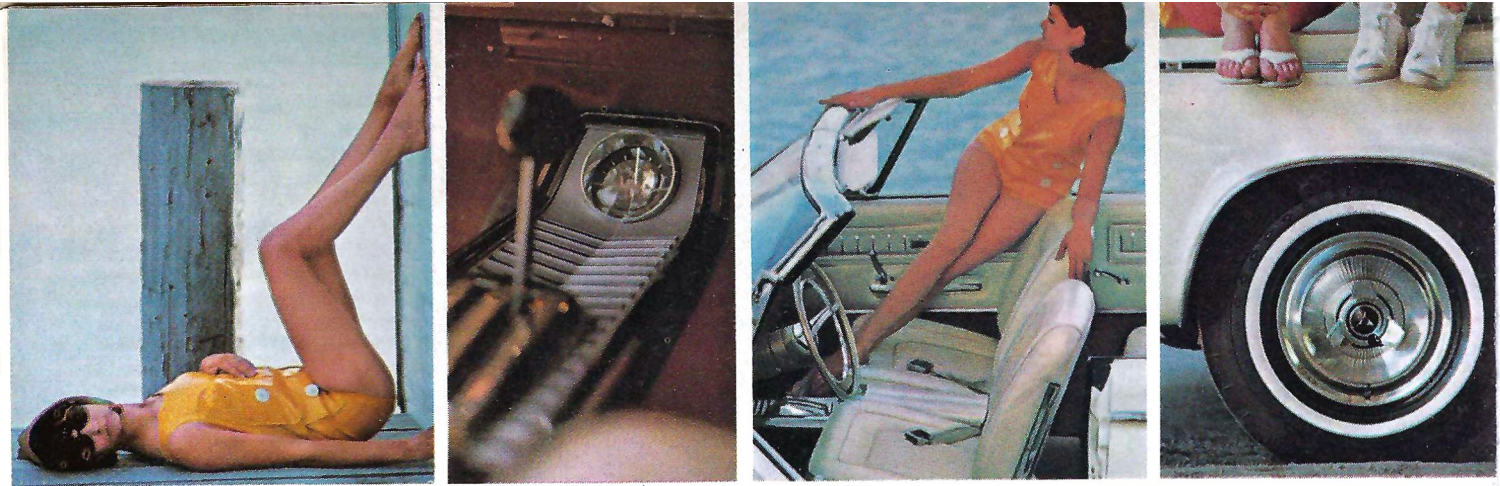


SOUTHERN MISSISSIPPI

STARTING LINE-UP

No.	Name	Position
81	CRAFT	LE
79	J. MELTON	LT
67	SATCHER	LG
56	ECUYER	C
62	KING	RG
78	ARMOND	RT
80	GORNEY	RE
15	PURVIS	QB
42	R. BROWN	WB
40	NALL	TB
28	BRANNAN	FB

10 Bynum, QB	35 Wilkes, TB	61 Armstrong, G	77 Gill, T
12 Atkins, QB	40 Nall, TB	62 King, G	78 Armond, T
14 Barger, QB	41 Sumrall, FB	63 Malone, G	79 Melton, J., T
15 Purvis, QB	42 Brown, R., WB	64 Stringfellow, G	80 Gorney, E
16 McClellan, QB	43 Brennan, WB	66 Mahoney, G	81 Craft, E
21 Lovette, TB	44 Usher, WB	67 Satcher, G	82 Brown, J., E
25 Dowd, TB-FB	45 Youmans, WB	69 Hunter, G	83 Hodges, E
26 Fry, FB	51 Laird, C	71 Huelsbeck, T	84 Wright, E
28 Brannan, FB	52 Fareri, C	72 Willoughby, T	85 Hinton, E
30 Lippincott, FB	56 Ecuver, C	73 Mangum, T	86 Favre, E
31 Ward, WB	58 Avery, C	74 Kirke, T	87 Hitt, E
32 Letort, TB	59 Wright, C	75 Swindoll, T	88 Macdonald, E
33 Devrow, WB	60 Trone, G	76 Melton, T., G	89 Rodman, E



Hotnew!

**Dodge at a
new lower price.
Coronet '65.**

**Bigger? Than the both
of them: Chevelle and
Fairlane. In wheelbase. In power.**

**Inside.
Buckets.
Bomb.
Bonus.**

**Check the price.
Surprise again. Right
down with the little ones.
It figures. It comes from
Dodge.**

**And Dodge comes on big
for 1965.**

'65 Dodge Coronet

DODGE COMES ON BIG FOR '65 • DART • CORONET • POLARA • CUSTOM 880 • MONACO

DODGE DIVISION  **CHRYSLER**
MOTORS CORPORATION

Florida State University's intercollegiate athletic program is one of the most complete in the nation, with varsity sports competition in football, basketball, baseball, swimming, golf, track, tennis and cross country. The finest facilities are provided, including 40,500 seat football stadium, 4200 seat field house, major league quality baseball diamond, olympic-sized swimming pool, excellent clay track, and numerous clay and asphalt tennis courts. The completion of a new football field house with coaches' offices and dressing facilities, coupled with the existing facilities in Tully Gymnasium, insure that Seminole athletes are among the most comfortable in the South.

*First choice of those who appreciate
the finest in foods and service!
Open Breakfast, Lunch and Dinner*

BRUCE BISHOP'S 1921 W. Tennessee

**THE
FOUNTAIN
RESTAURANT**

QUALITY CLEANERS

215 W. COLLEGE AVE.—DIAL 222-5097

ONE DAY SERVICE

PICK-UP and DELIVERY

Quality Laundry Work

Fluff Dry Service

EXPERT TAILORING and ALTERATIONS

ZIPPERS REPAIRED

Learn to Fly at G. C. Shuler Seminole Flying Service, Inc.

Municipal Airport

Phone 222-3121

Tallahassee, Fla.

- AIRPLANE RIDES
- FLIGHT INSTRUCTION
- AERIAL PHOTOGRAPHY
- CHARTER FLIGHTS

FLY the best—A New Cessna

"Look up—a new CESSNA will be overhead"

BENNETT'S DRUG STORE

- Prescriptions
- Cameras
- Sundries
- Gifts
- Fountain
- Cafe
- Cosmetics
- Drugs

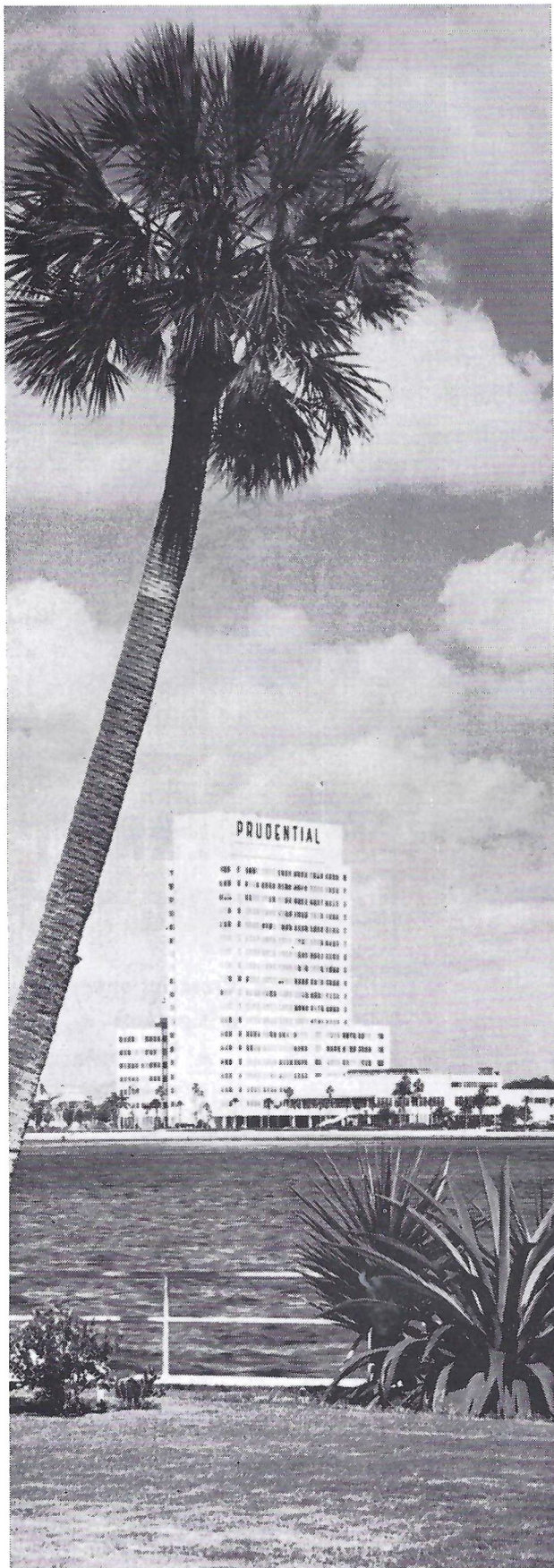
MEET ME AT BENNETT'S

BEFORE AND AFTER THE GAME!

Corner Monroe and College Streets

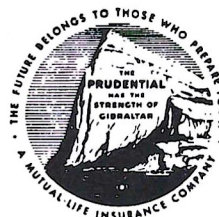
Phone 222-8980 — 222-4450

*We
like
the
state
we're
in...*



In 1953, we of
The Prudential established
our South-Central Regional
Home Office in Florida. From
this location we are able
to provide fast, efficient
life insurance service
to the people of Florida
and our 10-state area.

We are proud to be
a part of the growth and
progress here in Florida,
and the past 11 years have
been busy and rewarding
ones for us. We salute
Florida State University
for its efforts in preparing
our youth today for the
even bigger things to come.



THE PRUDENTIAL
INSURANCE COMPANY OF AMERICA

SOUTH CENTRAL HOME OFFICE
JACKSONVILLE, FLORIDA

SEMINOLE BOOSTERS, INC.

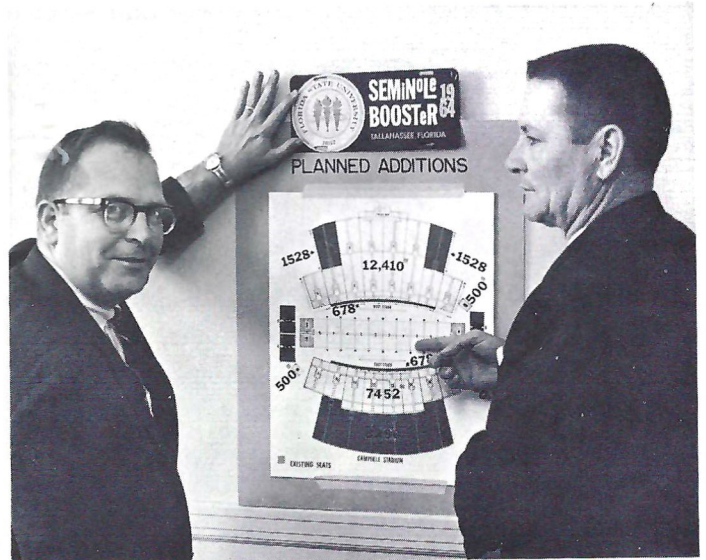
Seminole Boosters, Inc. is an organization devoted entirely to the support of the Florida State University athletic program with emphasis on football.

Membership in the Boosters—the group numbers approximately 1200—is open to anyone with a sincere interest in the University's athletic welfare. Minimum contribution for an individual membership is \$10. A business membership costs \$25.

Contributions are administered in accordance with NCAA regulations and in conjunction with the FSU Department of Intercollegiate Athletics.

Boosters receive a colorful automobile license plate which provides reserved parking at the stadium, a membership card, a weekly fall publication called "The Grandstand Coach," and certain priorities on season and individual football tickets.

President of the group for 1964 is Louis Hill, president of the People's Bank of Tallahassee. Hardworking executive secretary of the organization is Thomas A. Waits, Director of Alumni Affairs at Florida State University.



Tom Waits

Louis Hill

Boosters receive special seating and parking privileges

GOOD LUCK SEMINOLES!

LOUIS SEAFARE

"A BANQUET IN A BOX"

featuring Seafood & Chicken

With over 18 different items to carry out in over 50 different sizes.

620 W. Tennessee St. Ph. 224-1181

Be sure and visit our other location in Gainesville, Fla.
309 N. W. 13th St.

FOREMOST

ICE CREAM

PHONE • 224-7136

SUNSHINE STATE DAIRYMEN'S COOP.

PHONE • 222-5303



1818 W. Tennessee

Howdy Podner . . . Me and the boys jest want to notafy everbody that we are still serven them Notorious and Dillicious charcoal-broiled Steerbrugers and Steak Samwiches at our fine Drive-In Resterant, jest 2 passes & a fumbball offen the campus on West Tennessee where Call St. comes in. See you at the Seven Steers.

Yours truly,
OLE TEX.

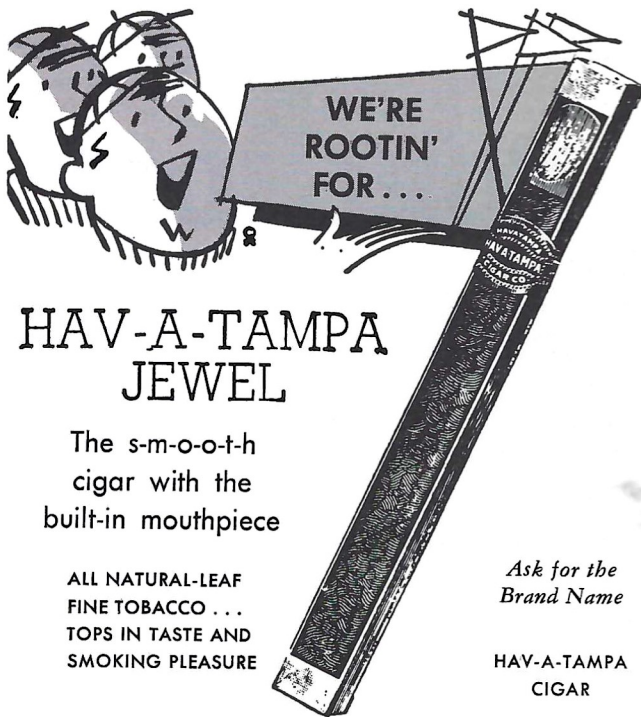
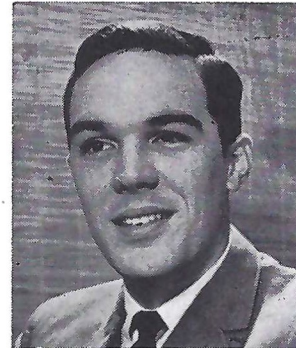
WFSU-TV -- THE SEMINOLE STATION

Roy Weissinger brings play-by-play action to the Tallahassee area every Monday night during the season over WFSU-TV, Channel 11.

All Seminole home games are video-taped at the stadium for later showing, and game films of all away games are shown and narrated.

In addition, the Seminole games may be seen on WTHS in Miami on Wednesday nights, and WEDU in Tampa on Thursday nights.

Air time in Tallahassee is 10 p.m.



HAV-A-TAMPA JEWEL

The s-m-o-o-t-h
cigar with the
built-in mouthpiece

ALL NATURAL-LEAF
FINE TOBACCO . . .
TOPS IN TASTE AND
SMOKING PLEASURE

Ask for the
Brand Name

HAV-A-TAMPA
CIGAR

Distributed by **Eli Witt Tobacco & Candy Co.**
Tallahassee, Florida

**ARE YOU GOOD ENOUGH
TO BE AN ARMY OFFICER?
IF YOU ARE, DON'T SETTLE
FOR LESS!**



**STAY
IN
ARMY R.O.T.C.**

THE FLORIDA STATE FOOTBALL NETWORK



Follow the Seminoles at home and away with Bo Mitchell and John Haughee on the Seminole Network.

Back at the Seminole microphone for the second season are Bo Mitchell and John Haughee, bringing Florida State football to thousands of listeners throughout Georgia and Florida.

The energetic Mitchell, an ex-naval aviator with over 15 years of broadcasting experience, calls the play-by-play action for all Seminole games at home and away. Mitchell is vice-president and station manager of radio station WCOA, Pensacola.

Haughee, his partner at the mike, is sports director of WCTV for Tallahassee. An Indiana native who adopted Florida as his home over ten years ago, Haughee does the pre-game, half-time and time-out color commentary for the Seminoles.

Originating station for Florida State football games is WTNT, Tallahassee.

You can hear the entire Seminole schedule over the following stations this year: WCOA, Pensacola; WSRA, Milton; WNSM, Valparaiso; WPCF, Panama City; WTNT, Tallahassee; WDSR, Lake City; WJAX, Jacksonville; WROD, Daytona Beach; WGGG, Gainesville; WMOP, Ocala; WLBE, Leesburg; WKIS, Orlando; WDAE, Tampa.

(Stations carrying a partial schedule are WMYR, Fort Myers; WTOT, Marianna; WPAX, Thomasville, Ga.; WOOO, Deland; WCNH, Quincy; and WPRY, Perry.)

Before Or After

Game

CHICKEN IN THE ROUGH
COPYRIGHT 1977 BY BEVERLY OSBORN

QUAKER HOUSE



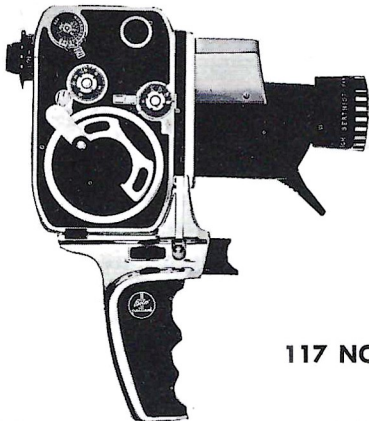
RESTAURANT

*Dining Room
and Curb Service*

The Vogue

TALLAHASSEE, FLORIDA

- CAMERAS
- FILM
- ACCESSORIES
- RENTALS
- FAST PHOTOFINISHING



FOCUS ON

**TALLAHASSEE
CAMERA
CENTER, INC.**

FOR ALL OF YOUR PHOTO NEEDS

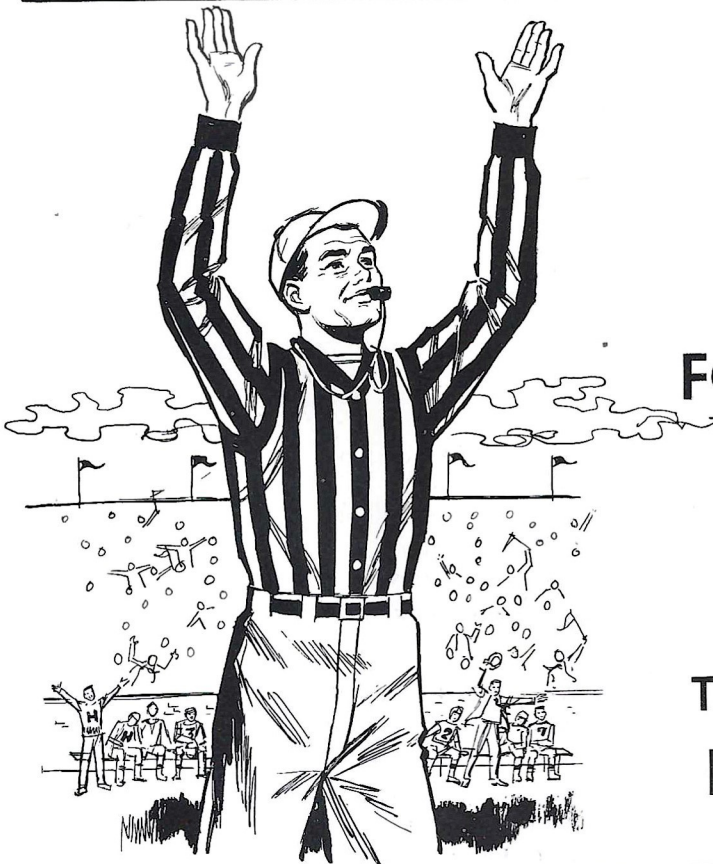
117 NORTH MONROE ST.

PH. 222-8771

"ACROSS FROM THE FLORIDA THEATER"

PENALTIES

1. **OFFSIDE** by either team; Violation of scrimmage or free kick formation; Encroachment on neutral zone—Loss of Five Yards.
2. **ILLEGAL PROCEDURE, POSITION OR SUBSTITUTION**—Putting ball in play before Referee signals "Ready-for-play"; Failure to complete substitution before play starts; Player out of bounds when scrimmage begins; Failure to maintain proper alignment of offensive team when ball is snapped; False start or simulating start of a play; Taking more than two steps after Fair Catch is made; Player on line receiving snap—Loss of Five Yards.
3. **ILLEGAL MOTION**—Offensive player illegally in motion when ball is snapped—Loss of Five Yards.
4. **ILLEGAL SHIFT**—Failure to stop one full second following shift—Loss of Fifteen Yards.
5. **ILLEGAL RETURN** of substitute not previously disqualified—Loss of Fifteen Yards.
6. **ILLEGAL DELAY OF GAME**; Taking more than four times out during either half (except for replacement of injured player)—Loss of Five Yards. Team not ready to play at start of either half—Loss of Fifteen Yards.
7. **PERSONAL FOUL** — Tackling or blocking defensive player who has made fair catch; Piling on; Hurdling; Grasping face mask of opponent; Tackling player out of bounds, or running into player obviously out of play; Striking an opponent with fist, forearm, elbow or locked hands; Kicking or kneeling—Loss of Fifteen Yards (Flagrant offenders will be disqualified.)
8. **CLIPPING**—Loss of Fifteen Yards.
9. **ROUGHING THE KICKER** or holder—Loss of Fifteen Yards.
10. **UNSPORTSMANLIKE CONDUCT**—Violation of rules during intermission; Illegal return of suspended player; Coaching from sidelines; Invalid signal for Fair Catch; Persons illegally on field—Loss of Fifteen Yards. (Flagrant offenders will be disqualified.)
11. **ILLEGAL USE OF HANDS AND ARMS** by offensive or defensive player; Defensive holding—Loss of Fifteen Yards.
12. **INTENTIONAL GROUNDING** of forward pass—Loss of Five Yards Plus Loss of Down.
13. **ILLEGALLY PASSING OR HANDING BALL FORWARD**—Loss of Five Yards Plus Loss of Down.
14. **FORWARD PASS OR KICK CATCHING INTERFERENCE**—Interference with opportunity of player of receiving team to catch a kick—Loss of Fifteen Yards. Interference by member of offensive team with defensive player making pass interception—Loss of Fifteen Yards Plus Loss of Down. Interference by defensive team on forward pass—Passing Team's Ball at Spot of Foul and First Down.
15. **INELIGIBLE RECEIVER DOWN-FIELD ON PASS**—Loss of Fifteen Yards.
16. **BALL ILLEGALLY TOUCHED, KICKED OR BATTED**—Forward pass being touched by ineligible receiver beyond the line of scrimmage—Loss of Fifteen Yards from Spot of Preceding Down and Loss of a Down. Eligible pass receiver who goes out of bounds and later touches a forward pass—Loss of Down. Illegal touching of kicked ball within opponent's ten yard line—Touchback.
17. **PENALTY DECLINED**; Incomplete forward pass; No play or no score.
18. **CRAWLING** by runner—Loss of Five Yards. Interlocked Interference—Loss of Fifteen Yards.



**TIME!
OUT!**

FOR YOUR FAVORITE
Meal or Snack

AFTER THE GAME AT
THE UNIVERSITY UNION
FSU FOOD SERVICE



SEMINOLE CHEERLEADERS—Kneeling are John Sweets, Chattanooga, Tennessee; and David Deutsch, Palatka. Standing with them, left to right, are Dee Weber, West Palm Beach; Toni Beals, Sumpter, South Carolina; Head Cheerleader Kay Lewis, Arcadia; Peggy Thompson, Ormond Beach; and Susan Reinhart, Cocoa Beach.

SONGS AND YELLS

ALMA MATER

High O'er the Towering Pines our voices swell
 Praising these Gothic spires we love so well
 Here sons and daughters stand, faithful and true
 Hailing our Alma Mater—FSU.

FIGHT SONG

We're going to fight, fight, fight, for FSU
 We're going to scalp 'em, Seminoles,
 We're going to win, win, win, win, win this game
 And roll on down and make those goals!
 For FSU is on the warpath now,
 And at the Battle's end she's great;
 So fight, fight, fight, fight for victory
 Our Seminoles of Florida State
 F-L-O-R-I-D-A S-T-A-T-E!
 Florida State! Florida State! Florida State!

—Written by Dr. Thomas Wright,
 Associate Professor of Music

FSU CLAP CHEER

(Stomp clap, stomp clap,
 stomp clap-clap-clap-clap-clap)
 Repeat 3 times, then:
 F (clap, stomp clap, stomp clap-clap-clap-clap)
 S (clap, stomp clap, stomp clap-clap-clap-clap)
 U (clap, stomp clap, stomp clap-clap-clap-clap)
 F (clap) S (clap) U (clap-clap-clap-clap)
 Go!!

THREE GARNETS

Give me a Garnet, Garnet, Garnet, Garnet, Garnet
 Give me a Gold, Gold, Gold Gold Gold
 Garnet, Gold
 Garnet, Gold
 Go Seminoles Go!

GO FLORIDA STATE

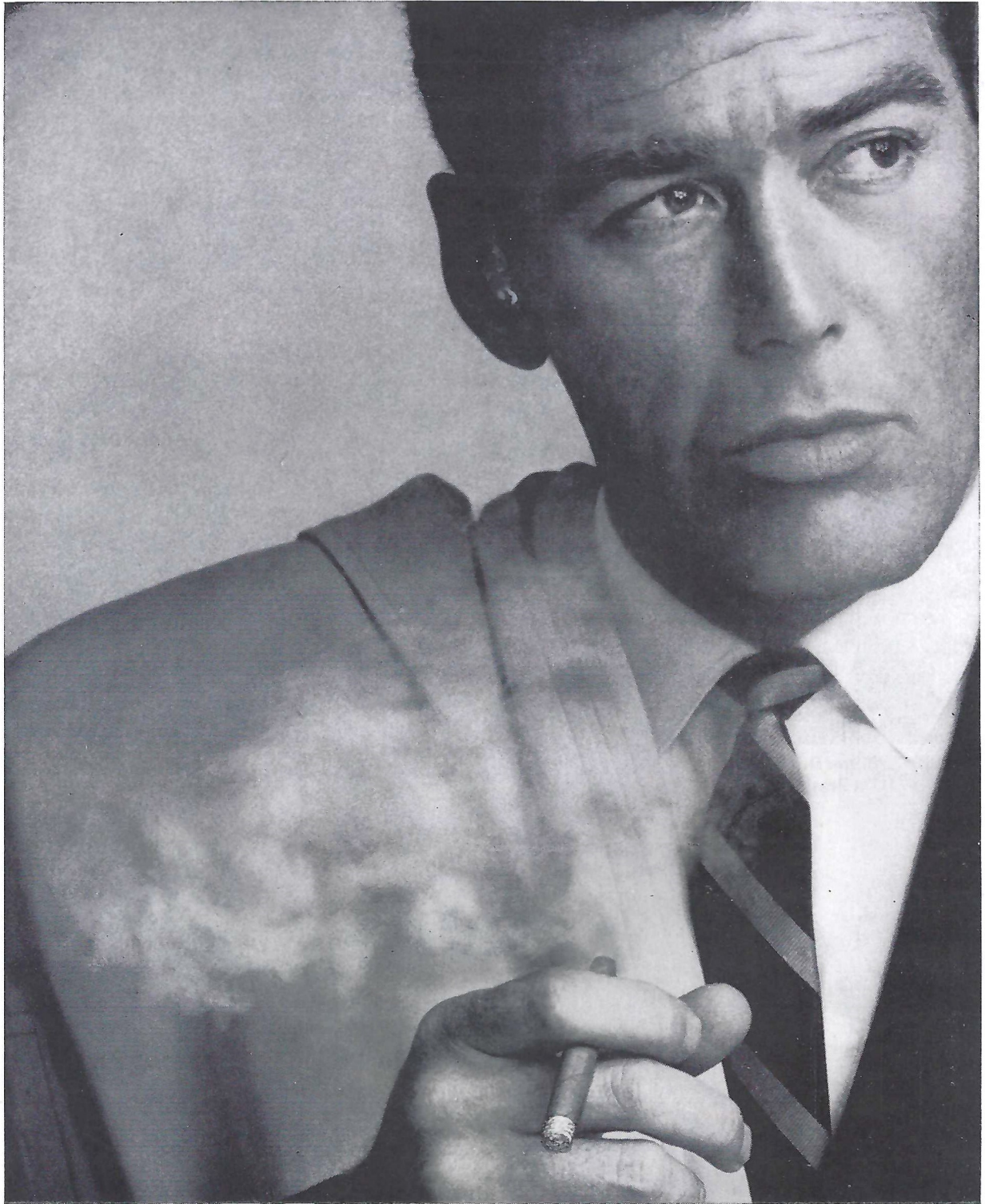
G-o-o-o-o-o-o-o-o-o, Florida!
 G-o-o-o-o-o-o-o-o-o, State!
 Go! Go!
 Florida State!

IS EVERYBODY HAPPY!

Is everybody happy?
 AUD: Hell, yes!
 Is anybody low?
 AUD: Hell, no!
 Let's railroad Seminoles
 And take it slow!
 (Spell Seminoles 3 times)
 Go, Seminoles!

VICTORY

With a V, With an I,
 With a C, T, O, R, Y!
 With a V, With an I,
 With a C, T, O, R, Y!
 With a V I C T O R Y!
 VICTORY!!



You look good with a Robt. Burns Cigarillo

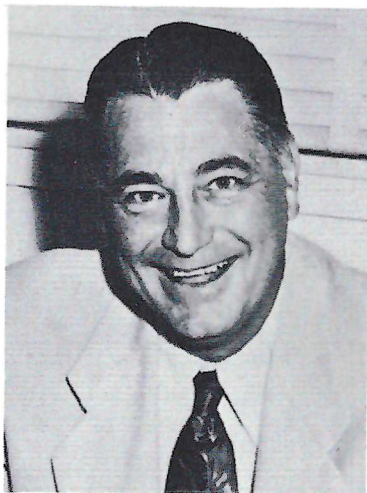
Here's flavor you don't have to inhale to enjoy.
A short smoke when time is precious. Long
enough to satisfy. Ideal for the man on the move.
Smoke it. You'll look good with it.
Robt. Burns Cigarillo . . . for the "mover."
Cigarillos are on sale at this stadium.



university of southern mississippi



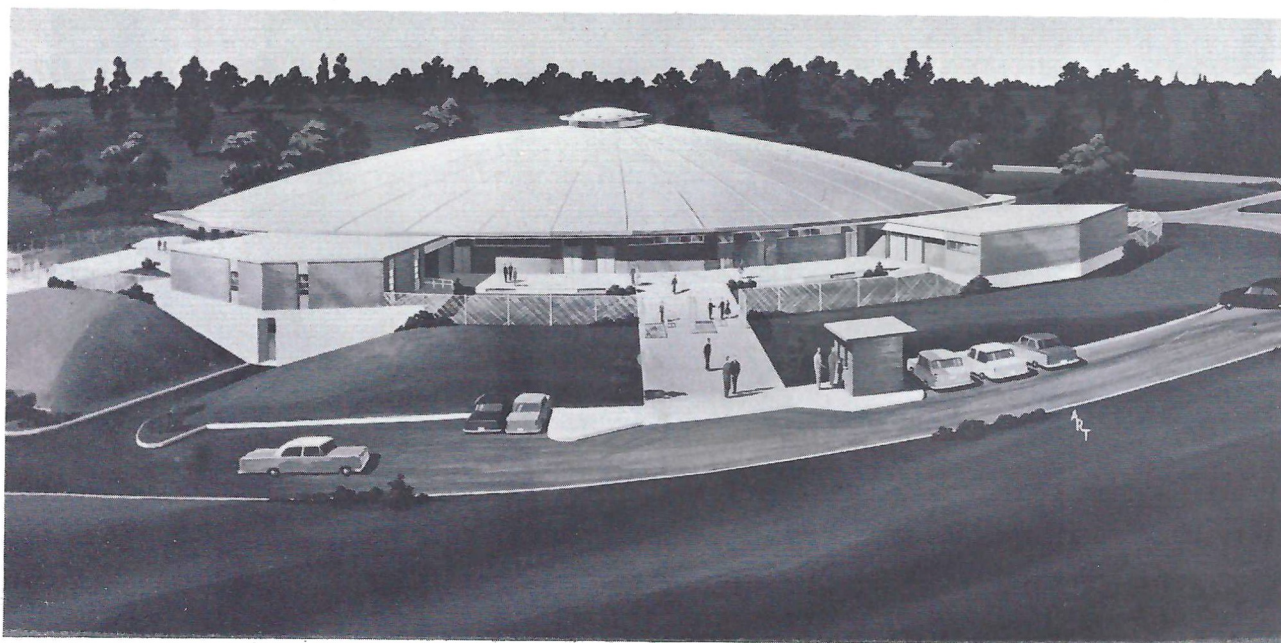
Dr. William D. McCain
USM President



Thad "Pie" Vann
USM Coach



Reed Green
USM Athletic Director



Artist's drawing of University of Southern Mississippi Coliseum . . . now under construction.



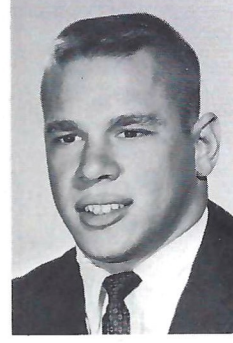
Chuck Armond



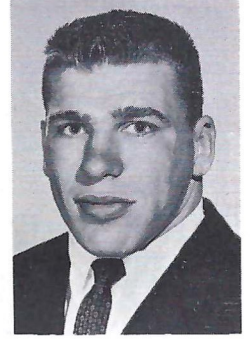
Andy Armstrong



Sid Atkins



Ken Avery



Harmon Brannan

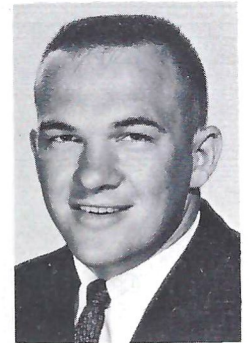


Administration Building . . . University of Southern Mississippi

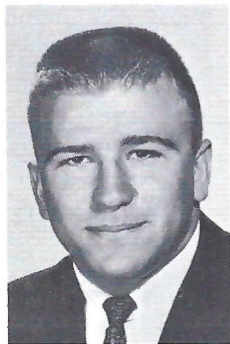
SOUTHERNERS



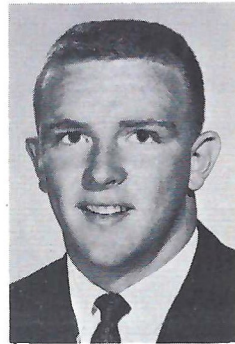
Tommy Brennan



Jesse Brown



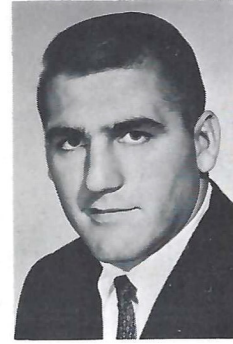
Rabbit Brown



Glen Bynum



Troy Craft



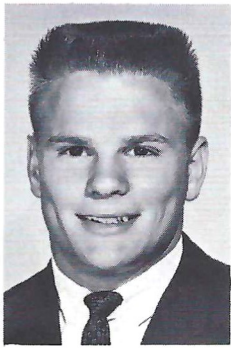
Larry Ecuyer



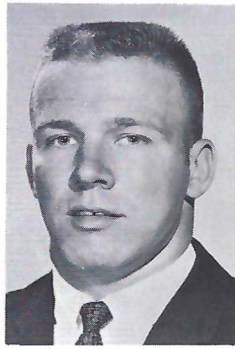
Rusty Fry



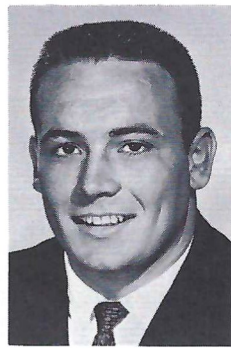
Bill Gorney



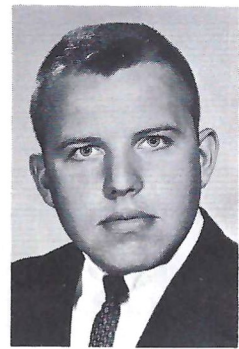
Chuck Hinton



Harold Hitt



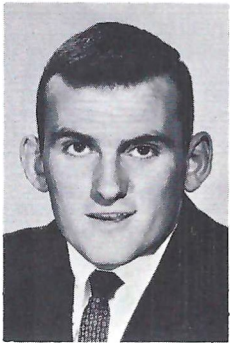
Jim King



John Kirke

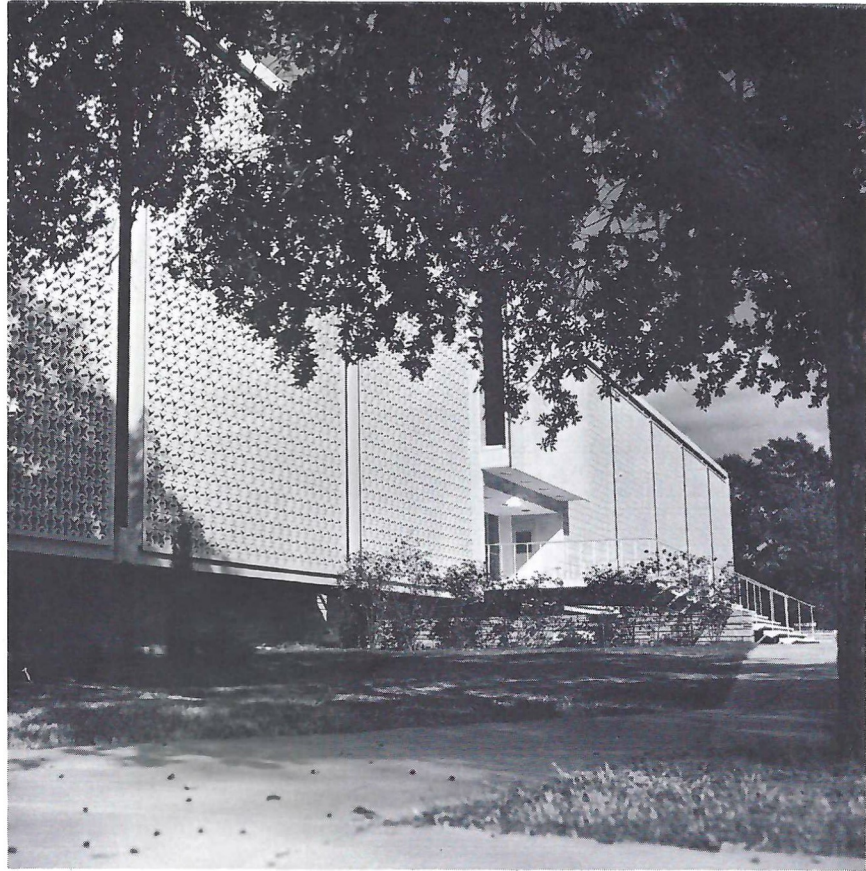


John Laird

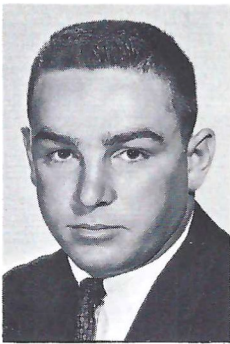


Mike Lawrence

SOUTHERNERS



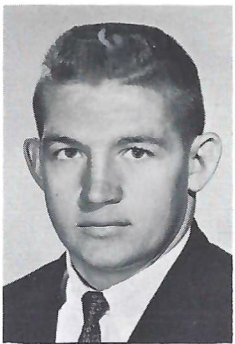
Joe Cook Memorial Library



Henry Letort



Dooney Lippincott



Sidney Malone



Mike McLellan



John Melton



Tommy Melton



Herman Nall



Victor Purvis



George Rodman

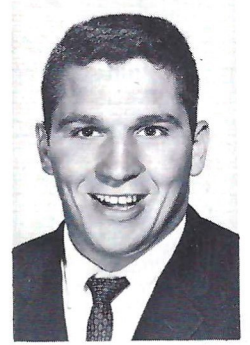


Doug Satcher

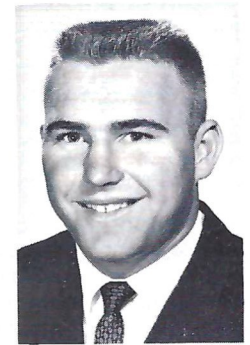


Fine Arts Building

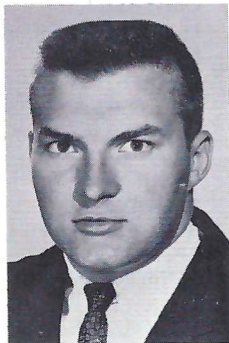
SOUTHERNERS



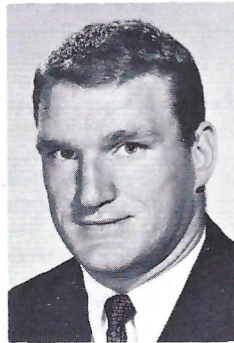
Poochie Stringfellow



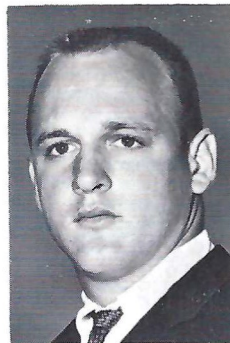
George Sumrall



Paul Swindoll



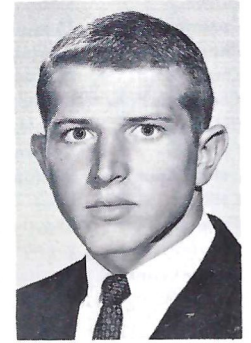
Elbert Trone



Will Willoughby



Larry Wright



Tommy Youmans

MUSIC AT HALF-TIME 1964 BAND DAY

THEME: POLITICAL SPECTACULAR

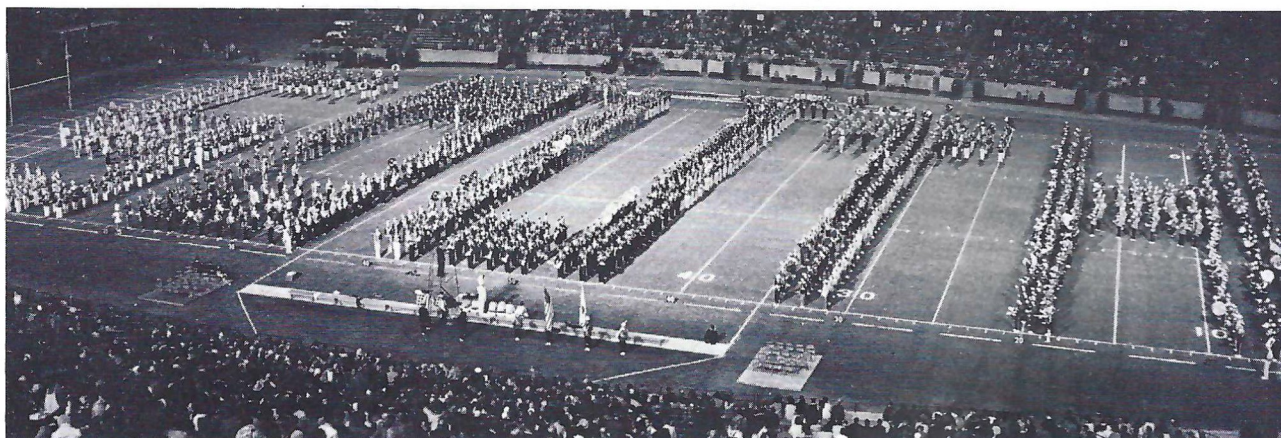
DRILL SEQUENCE — The band performs a drill sequence which ends in several "x's" to remind all voters to cast their ballot on Nov. 3. Music includes "Happy Days" and "Hot Time."

AuH₂O — The bands salute the Republican candidate with his chemical slogan, while playing campaign songs, "Goldwater's Bandwagon" and "Go With Goldwater."

LBJ — The bands salute the Democratic candidate with formation of his initials and campaign song, "Hello Lyndon."

VOTE — Forty-eight bands from Alabama, Florida and Georgia present a patriotic medley, conducted by Dr. Manley R. Whitcomb, director of bands, F.S.U.

U. S. SHIELD — The political spectacular closes with a shield formation and the song, "This Is My Country."

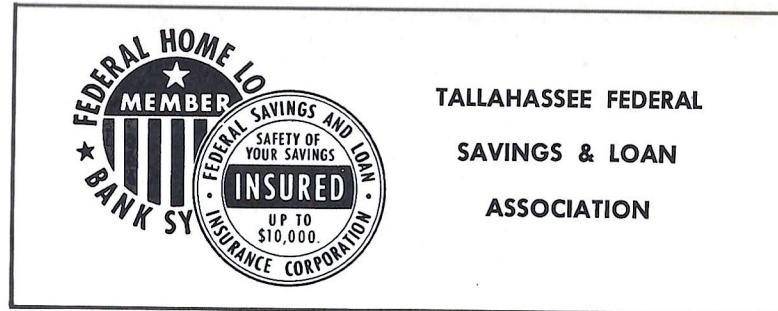


1964 BAND DAY Guest Bands

HIGH SCHOOL	HOMETOWN	BAND DIRECTOR	HIGH SCHOOL	HOMETOWN	BAND DIRECTOR
Bainbridge	Bainbridge, Georgia	E. C. Warnock	Florida	Tallahassee, Florida	Glenn Heinlen
Berrien	Nashville, Georgia	Lane Smith	Fort Valley	Fort Valley, Georgia	Ray Berry
Blackshear	Blackshear, Georgia	Milton P. Norras	Graceville	Graceville, Florida	Harvie B. McClure
Blountstown	Blountstown, Florida	Herbert J. Holeman	Grand Ridge	Grand Ridge, Florida	Carolyn Russell
Bowdon High	Bowdon, Georgia	Norman L. Padgett	Greenville	Greenville, Florida	William S. Lee
Bradford High	Starke, Florida	Elden W. Mathews	Hahira	Hahira, Georgia	Robert A. Wells
Brooks County	Quitman, Georgia	Leon Cole, Jr.	Havana	Havana, Florida	Grady Brackin
Cairo High	Cairo, Georgia	Sanford B. Campbell	Irwin County	Ocilla, Georgia	Leonard P. Wagner
Carrabelle	Carrabelle, Florida	Richard F. Folsom	Jefferson	Monticello, Florida	Romulus Thompson
Carroll	Ozark, Alabama	John H. Mosley	Leon	Tallahassee, Florida	Oliver Hobbs
Central	Thomasville, Georgia	Ray DeMaris	Miller County	Colquitt, Georgia	Chester H. Baggett
Chapman	Apalachicola, Florida	Andrew Valkuchak	Pelham	Pelham, Georgia	E. C. Warnock
Charlton County	Folkston, Georgia	Reginald Jackson	Quincy	Quincy, Florida	Charles A. Burns
Chattahoochee	Chattahoochee, Florida	Brooks Jones	Randolph County	Cuthbert, Georgia	David P. Krug
Chipley	Chipley, Florida	Dan Jensen	Rickards	Tallahassee, Florida	Fred H. Boska
Cochran	Cochran, Georgia	A. O. Turner	Sneads	Sneads, Florida	Bill Miller
Coffee County	Douglas, Georgia	John M. Maley	Sopchoppy	Sopchoppy, Florida	Gene Boone
Cook	Adel, Georgia	Ed Leichner	Terrell	Dawson, Georgia	Thelma Mallard
Cottdale	Cottdale, Florida	Hugh M. Jones	Thomasville	Thomasville, Georgia	William J. Harrington
Crawfordville	Crawfordville, Florida	Dave Collings	Turner County	Ashburn, Georgia	Gilbert Acosta
Dodge County	Eastman, Georgia	Ronald Brooks	Vernon	Vernon, Florida	Carl H. Rathke
Dooly County	Vienna, Georgia	Gene Lail	Waycross	Waycross, Georgia	Huey Kent
Englewood	Jacksonville, Florida	George F. Paugh, Sr.	Wilcox Central	Rochelle, Georgia	Mrs. C. E. McDonald
Fitzgerald	Fitzgerald, Georgia	Guyton McLendon	Worth County	Sylvester, Georgia	Eugene H. Wyles

FLORIDA STATE'S 1964 SCHEDULE (5-1)

- Sept. 19 Miami at Miami—14-0
- Sept. 26 TCU at Ft. Worth—10-0
- Oct. 3 New Mexico State—36-0
- Oct. 10 Kentucky—48-6
- Oct. 17 Georgia at Athens—17-14
- Oct. 24 VPI at Blacksburg—11-20
- Oct. 31 Southern Mississippi
- Nov. 7 Houston at Houston
- Nov. 14 N. C. State
- Nov. 21 Florida



SOUTHERN MISSISSIPPI 1964 SCHEDULE (3-2)

- Sept. 26 S.W. Louisiana—30-0
- Oct. 3 Richmond—14-9
- Oct. 10 Memphis State—20-14
- Oct. 17 Mississippi State—7-48
- Oct. 24 Auburn—7-14
- Oct. 31 Florida State at Tallahassee
- Nov. 7 Chattanooga at Hattiesburg
- Nov. 14 Louisiana Tech at Hattiesburg
- Nov. 21 Memphis State at Jackson, Miss.

OFFICIALS: Referee: Pete Williams, Miami, Fla.

Head Linesman: George Morris, Columbus, Ga.

Umpire: Harold Johnson, Jackson, Tenn.

Field Judge: Jack Langford, Atlanta, Ga.

Backfield Judge: John O'Neill, Atlanta, Ga.

Electric Clock Operator: Bill Conway, Mobile, Ala.

FSU SPECIALISTS: Punters: 16 Pritchett, 85 Hosack. Kickoffs: 42 Murdock. Placements: 42 Murdock

FSU CO-CAPTAINS: 25 Fred Biletnikoff, 83 Bill Dawson

SO. MISS. SPECIALISTS: Punters: 51 Laird, 45 Youmans. Kickoffs: 51 Laird, 41 Sumrall. Placements: 51 Laird, 41 Sumrall.

SO. MISS. CAPTAINS: Game Captains

37

LEFT END	LEFT TACKLE	LEFT GUARD	CENTER	RIGHT GUARD	RIGHT TACKLE	RIGHT END
81 Don Floyd	70 Del Williams	51 Joe Avezzano	55 Jack Edwards	75 Dale MacKenzie	76 Tom West	83 Bill Dawson
84 George D'Allessandro	79 Frank Pennie	66 Dick Hermann	61 Jack Shinholser	63 Bill McDowell	73 Avery Sumner	87 Terry Garvin
88 Cliff Gunter	64 David Braggins	60 Larry Williamson	54 John Stephens	69 Ed Pope	77 Bob Mangan	80 John Wachtel

FLORIDA STATE	QUARTERBACK	LEFT HALFBACK	FULLBACK	RIGHT HALFBACK	SEMINOLES
	13 Steve Tensi	27 Phil Spooner	40 Lee Narramore	25 Fred Biletnikoff	
	14 Jim Massey	22 Maury Bibent	43 Howard Ehler	28 Winfred Bailey	
	16 Ed Pritchett	20 Larry Green	29 Joe Petko	24 Elton Revell	

NOTE: First listed are offensive starters; second, defensive; third, number two offensive

LEFT END	LEFT TACKLE	LEFT GUARD	CENTER	RIGHT GUARD	RIGHT TACKLE	RIGHT END
81 Troy Kraft	79 John Melton	67 Doug Satcher	56 Larry Ecuyer	62 Jim King	77 Art Gill	80 Bill Gorney
89 George Rodman	73 John Mangum	76 Tommy Melton	58 Ken Avery	64 Poochie Stringfellow	75 Paul Swindoll	82 Jesse Brown
85 Chuck Hinton	74 John Kirke	66 Mike Mahoney	59 James Wright	72 Will Willoughby	72 Will Willoughby	84 Terry Wright

SOUTHERN MISSISSIPPI	QUARTERBACK	LEFT HALFBACK	FULLBACK	RIGHT HALFBACK	SOUTHERNERS
	15 Vic Purvis	40 Herman Nall	28 Harmon Brannon	42 Rabbit Brown	
	16 Mike McLellan	32 Hank Letort	26 Rusty Fry	45 Tommy Youmans	
	14 Jimmy Barger	25 Clyde Dowd	43 Tommy Brennan	33 Billy Devrow	

FLORIDA STATE'S 1964 VARSITY FOOTBALL ROSTER

No.	Name	Pos.	Class	Age	Ht.	Wt.	Hometown
12	Tony Gero	QB	Soph	20	5-10	183	Madison, N. J.
13	Steve Tensi	QB	Sr.	21	6-5	194	Cincinnati, O.
14	Jim Massey	QB	Jr.	21	5-11	181	Cairo, Ga.
15	Pat Conway	HB	Soph	19	5-10	186	Miami
16	Ed Pritchett	QB	Jr.	23	6-2	185	Decatur, Ga.
20	Larry Green	HB	Soph	19	5-10	181	Cairo, Ga.
21	Donovan Jones	HB	Soph	19	6-1	193	Lakeland
22	Maury Bibent	HB	Jr.	21	6-0	188	Cincinnati, O.
23	Wayne Giardino	FB	Soph	20	5-10	190	W. Palm Beach
24	Elton Revell	HB	Soph	20	6-0	176	Tallahassee
25	Fred Biletnikoff	HB	Sr.	21	6-1	192	Erie, Pa.
26	Bill Campbell	HB	Soph	19	5-9	180	Tampa
27	Phil Spooner	HB	Jr.	20	5-11	182	Fort Myers
28	Winfred Bailey	HB	Sr.	22	6-0	183	Atlanta
29	Joe Petko	HB	Jr.	21	5-9	185	Cincinnati, O.
40	Lee Narramore	FB	Soph	19	5-10	209	Pensacola
41	Bob Menendez	HB	Soph	19	5-10	185	Key West
42	Les Murdock	FB	Sr.	23	6-2	233	Hollywood
43	Howard Ehler	FB	Jr.	20	5-10	195	Tavares
44	Jim Mankins	FB	Jr.	20	6-2	228	King City, Calif.
51	Joe Avezzano	G	Jr.	20	6-2	228	Miami
53	David Pitts	C	Soph	20	5-9	223	Blountstown
54	John Stephens	C	Soph	18	6-1	198	Tallahassee
55	Jack Edwards	C	Sr.	21	6-1	217	Tampa
60	Larry Williamson	G	Soph	19	5-11	200	Macon
61	Jack Shinholser	C	Jr.	22	6-1	212	Tampa
62	Howard Lurie	G	Jr.	20	6-0	205	Northridge, Calif.
63	Bill McDowell	G	Jr.	20	6-1	201	Tallahassee
64	David Braggins	T	Soph	19	6-2	226	Lake Wales
66	Dick Hermann	G	Sr.	22	6-0	200	Marianna
68	Joe Parrish	G	Jr.	21	6-1	194	Auburndale
69	Ed Pope	G	Soph	20	6-1	196	Waycross, Ga.
70	Del Williams	T	Soph	18	6-2	213	Live Oak
73	Avery Sumner	T	Sr.	22	6-2	219	Adel, Ga.
74	Jay Mac Matthews	T	Soph	20	6-1	219	Chiefland
75	Dale MacKenzie	G	Sr.	21	6-2	218	Clearwater
76	Tom West	T	Sr.	21	6-4	216	Headland, Ala.
77	Bob Mangan	T	Jr.	22	6-1	222	Atlanta, Ga.
78	Charles Pennie	T	Soph	19	6-4	221	Hollywood
79	Frank Pennie	T	Jr.	21	6-4	242	Hollywood
80	John Wachtel	E	Sr.	22	6-1	203	Massilon, O.
81	Don Floyd	E	Sr.	22	6-1	195	Madison
82	Wayne McDuffie	E	Soph	19	6-2	198	Hawkinsville, Ga.
83	Bill Dawson	E	Sr.	21	6-3	220	Valdosta, Ga.
84	George D'Allessandro	E	Jr.	21	5-10	195	Fort Myers
85	John Hosack	HB	Soph	19	5-11	192	Miami
86	Bud Blankenship	E	Soph	20	6-3	200	Atlanta, Ga.
87	Terry Garvin	E	Jr.	21	5-11	190	Pensacola
88	Cliff Gunter	E	Sr.	22	6-3	187	Dothan, Ala.
89	Max Wettstein	E	Jr.	20	6-3	206	Leesburg

UNIVERSITY OF SOUTHERN MISSISSIPPI FOOTBALL ROSTER

No.	Name	Pos.	Ht.	Wt.	Class	Hometown
10	Glen Bynum	QB	5-9	180	Soph.	Baker, La.
12	Sid Atkins	QB	5-11	192	Jr.	Columbus, Miss.
14	Jimmy Barger	QB	5-10	181	Soph.	Memphis, Tenn.
15	Victor Purvis	QB	5-11	181	Jr.	Puckett, Miss.
16	Mike McLellan	QB	6-0	190	Jr.	Heidelberg, Miss.
21	Jimmy Lovette	TB	5-8	175	Soph.	Red Bay, Ala.
25	Clyde Dowd	TB-FB	6-1	195	Soph.	Shelby, N. C.
26	Rusty Fry	FB	5-9	195	Soph.	Lake Charles, La.
28	Harmon Brannan	FB	5-11	195	Jr.	Rocky Creek, Miss.
30	Dooney Lippincott	FB	5-9	170	Jr.	Hattiesburg, Miss.
31	Steve Ward	WB	5-10	178	Soph.	Mobile, Ala.
32	Henry Letort	TB	6-0	190	Jr.	Biloxi, Miss.
33	Billy Devrow	WB	6-1	175	Soph.	Hattiesburg, Miss.
35	Chuck Wilkes	TB	5-10	170	Soph.	Biloxi, Miss.
40	Herman Nall	TB	5-10	190	Sr.	Alexandria, La.
41	George Sumrall	FB	5-10	175	Soph.	Biloxi, Miss.
42	Rabbit Brown	WB	5-11	190	Jr.	Pensacola, Fla.
43	Tommy Brennan	WB	5-10	195	Soph.	Savannah, Ga.
44	Chico Usher	WB	5-11	160	Soph.	Meridian, Miss.
45	Tommy Youmans	WB	5-11	175	Jr.	Quitman, Ga.
51	John Laird	C	6-0	185	Sr.	Smithdale, Miss.
52	Joe Fareri	C	6-0	212	Soph.	Ozone Park, N. Y.
56	Larry Ecuyer	C	6-0	210	Sr.	New Orleans, La.
58	Ken Avery	C	6-0	205	Soph.	Miami, Fla.
59	James Wright	C	6-0	215	Jr.	Oxford, Miss.
60	Elbert Trone	G	5-11	195	Soph.	Biloxi, Miss.
61	Andy Armstrong	G	5-11	212	Soph.	Meridian, Miss.
62	Jim King	G	6-0	205	Sr.	Adamsville, Ala.
63	Sidney Malone	G	5-11	191	Jr.	Hattiesburg, Miss.
64	Poohie Stringfellow	G	5-9	200	Soph.	Lucedale, Miss.
66	Mike Mahoney	G	6-0	230	Jr.	Vicksburg, Miss.
67	Doug Satcher	G	5-11	212	Jr.	Sandersville, Miss.
69	Buddy Hunter	G	5-11	220	Soph.	Pensacola, Fla.
71	Harry Huelsbeck	T	6-0	206	Soph.	Pensacola, Fla.
72	Will Willoughby	T	6-1	215	Jr.	Liberty, Miss.
73	John Mangum	T	6-3	250	Jr.	Magee, Miss.
74	John Kirke	T	6-0	209	Jr.	Picayune, Miss.
75	Paul Swindoll	T	6-2	238	Jr.	Winona, Miss.
76	Tommy Melton	T	6-1	200	Jr.	Pascagoula, Miss.
77	Arthur Gill	T	6-0	222	Soph.	Biloxi, Miss.
78	Chuck Armond	T	6-1	235	Jr.	Chalmette, La.
79	John Melton	T	6-2	236	Jr.	Baker, Fla.
80	Bill Gorney	E	6-1	197	Jr.	Orland Park, Ill.
81	Troy Craft	E	6-1	192	Soph.	Biloxi, Miss.
82	Jesse Brown	E	5-11	189	Jr.	Georgiana, Ala.
83	Bill Hodges	E	6-2	185	Soph.	Biloxi, Miss.
84	Larry Wright	E	6-0	184	Soph.	Homestead, Fla.
85	Chuck Hinton	E	6-1	200	Jr.	Hattiesburg, Miss.
86	James Favre	E	6-0	200	Jr.	Gulfport, Miss.
87	Harold Hitt	E	5-11	200	Sr.	Mobile, Ala.
88	Don MacDonald	E	6-1	205	Soph.	Memphis, Tenn.
89	George Rodman	E	6-2	215	Jr.	Levittown, Pa.

88

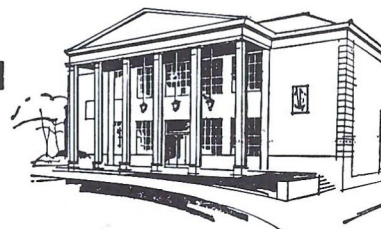
Tallahassee Federal

440 N. Monroe Street * Tallahassee, Florida

HOURS: Monday-Thursday, 8:30 a.m. to 3 p.m.—Friday, 8:30 a.m. to 6 p.m.

SAVINGS AND LOAN ASSOCIATION

TELEPHONE 224-2161



FLORIDA STATE BASKETBALL

1964-65



Head Coach J. K. "Bud" Kennedy

Coach Bud Kennedy has eight lettermen, four of them starters, returning from last year's team to build his 16th team at Florida State. Six-foot-six center Gary Schull, leading scorer and rebounder as a sophomore, returns and will team at forward with 6-4 soph Ron Malmen, who led the frosh team in scoring with a 21.3 per game average.

The Seminoles play in two nationally-known tournaments, the Vanderbilt Invitational and the Oklahoma City All-College, then return home to encounter a home schedule that includes Florida, Miami, Memphis State, Georgia Tech, Auburn, and Alabama.

1964-65 FSU BASKETBALL SCHEDULE

Dec. 1	Valdosta State	Tallahassee
Dec. 3	V.M.I.	Tallahassee
Dec. 5	Auburn	Auburn, Ala.
Dec. 7	Alabama	Tuscaloosa, Ala.
Dec. 9	Florida	Tallahassee
Dec. 18, 19	VANDERBILT INVITATIONAL TOURNEY... Nashville, Tenn.	
Dec. 22	Tennessee	Memphis, Tenn.
Dec. 26	Tulsa	Tulsa, Okla.
Dec. 28, 29, 30	ALL-COLLEGE TOURNAMENT..... Oklahoma City, Okla.	
Jan. 7	Georgia	Athens, Ga.
Jan. 9	Miami	Tallahassee
Jan. 16	Memphis State	Tallahassee
Jan. 20	Georgia Tech	Tallahassee
Jan. 25	Auburn	Tallahassee
Jan. 30	Alabama	Tallahassee
Feb. 4	Duquesne	Baltimore, Md.
Feb. 6	Memphis State	Memphis, Tenn.
Feb. 10	Jacksonville	Tallahassee
Feb. 15	Georgia Tech	Atlanta, Ga.
Feb. 20	Tampa	Tampa
Feb. 23	Florida	Gainesville
Mar. 1	Miami	Miami
Mar. 6	Georgia	Tallahassee

ORDER TICKETS FROM:

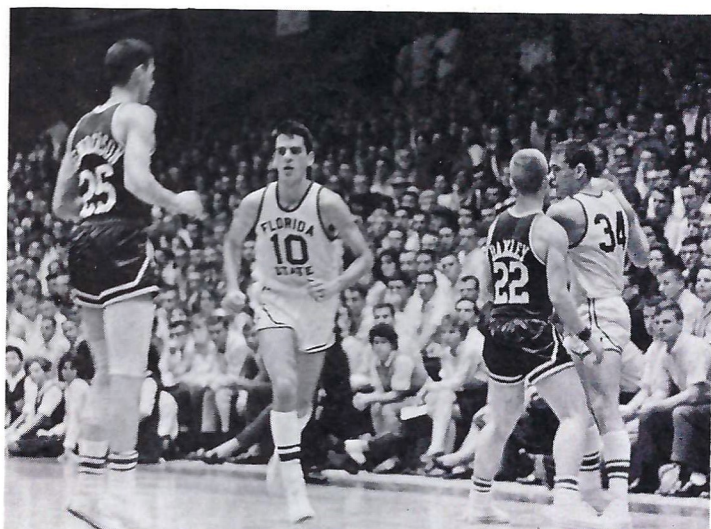
ATHLETIC TICKET OFFICE
FLORIDA STATE UNIVERSITY
TALLAHASSEE, FLORIDA 32306

Season Ticket* \$15.00

Individual Game Tickets \$ 2.00

*10 home games

HOME GAMES BEGIN 7:45 P.M. EST
ROBERT TULLY GYMNASIUM



Florida State vs. Florida, January 1964. FSU's Pete Gonzalez (10) and Bob Lovell (34) move against UF's Henderson (25) and Baxley (22).



PUT VITALITY ON YOUR TEAM!

Drink Milk, the Vitality Beverage! It's your ticket to vigor and verve that really lasts. And cool, refreshing milk helps keep you bright and in the fun game all day long. So heed the cheer for milk - "put vitality on your team!"



a message from dairy farmer members of
american dairy association