

# FLORIDA STATE vs. BAYLOR

OCTOBER 2, 1965  
8:00 p. m.

OFFICIAL  
PROGRAM  
50c



DOAK S. CAMPBELL  
STADIUM  
•  
Legislative  
Day







LOOK FOR ME  
WHEREVER YOU GO

**Jerry's**  
**RESTAURANTS**

*Scalp'em Seminoles*





# FSU FOOTBALL ... 1965

## TABLE OF CONTENTS

Guest Column .....	4	Seminole Network .....	25
University Features .....	5, 6, 7	Stadium Information .....	27
Athletic Committee .....	8	Cheerleaders, School Songs .....	29
Seminole Football Family .....	9	Seminole Boosters, Inc. ....	30
Tonight's Teams, A Statistical Comparison .....	10	Officials' Signals .....	31
FSU All Time Records .....	11	Opponent's Pictures .....	33, 34, 35
1965 Schedule Analysis .....	12	The Marching Chiefs .....	36
FSU Player Photos .....	13, 15, 16, 17	Rosters, Depth Charts .....	Flip Card
Starting Lineups, Officials .....	20, 21	Florida State Cross Country .....	39
Penalties .....	23		

*Compliments and  
Best Wishes from*



**YOUR APPLIANCE  
HEADQUARTERS**  
611 N. Monroe St.



# The View From Above

By RAY CHARLESTON

*Editor's Note: Today's columnist covered Florida State football for 10 years for Jacksonville's Florida Times-Union, before retiring at the end of last season to assume a public relations job with the Florida Publishing Co. Tonight, he gives you his memories of those years with the Seminoles.*



Show me a school that can match Florida State's football showing and I'll eat my hat. Major college football competition is among the toughest in amateur sports yet the Seminoles came off the floor to vault among the elite in the short span of 10 seasons.

The road was rocky from 1955 through 1963 before the Seminoles cashed in big with their remarkable 1964 campaign climaxed with a 36-19 Gator Bowl win over Oklahoma.

Even to a sports writer who had covered the Seminoles over the 10 seasons, the 1964 record came as a shock. The Tallahassee team turned into a terror to surprise even their closest followers.

As the Seminoles zoomed to the heights, memories of the Garnet and Gold's struggle to the top came flooding back to the writer who had observed the road to glory.

There were high spots, low spots and humor along the way. But, win, lose, draw or laugh it was always interesting to see.

Two near-misses back in 1956 put a "dangerous" label on the Tallahassee school's football team. Georgia escaped with a 3-0 win and Auburn struggled for a 13-7 verdict.

The "Day" arrived in 1958 in Knoxville when the Seminoles shattered Tennessee's Volunteers, 10-0, for their first triumph over a "Big One." Two weeks later Miami's Hurricanes fell in the Orange Bowl, 17-6, and the football world took a closer look at the upstarts from FSU.

It was on to the illfated Bluegrass Bowl for the 1958 Seminoles and anyone who was there will never forget that one. It was nine degrees above zero with a stiff north wind all during the game. A writer termed it the "blue-lipped Bluegrass Bowl" and FSU's 15-6 loss to Oklahoma State didn't have anything to do with the selection of the label.

It was the first time Florida State writers had purchased long johns, ear muffs and wore two pairs of socks. They didn't help, nothing did.

Tom Nugent departed to become Maryland's head coach and Perry Moss arrived to lead the 1959 Seminoles. That year's FSU-Miami game was a thriller with the Seminoles trailing, 6-7, missing two points on a running play.

After that game Bill McGrotha, the Tallahassee Democrat's crackerjack sports editor, started his lead "Thumbing their bruised noses at a tie . . ." The other writers are still talking about McGrotha's classic.

Bill Peterson came from Louisiana State to take over as head coach in 1960 with gilded credentials and Seminole supporters said: "Go, go, go." Peterson's first Florida State team lost to big rival Florida by only 3-0.

Peterson's 1961 outfit caused a stir when the Seminoles fought Florida to a 3-3 stalemate, the best showing ever for the Tallahassee team in Gainesville. Mighty Mississippi whacked FSU, 33-0, the next week but the Seminoles showed their remarkable spunk by beating Georgia, 3-0, on the rebound.

The season of 1962 was a weird one. Whoever heard of a 4-3-3 record? But, as usual, it was exciting because the Seminoles came sooo close to some sparkling triumphs.

They nailed Georgia, 18-0, and then tied no less than three Southeastern Conference teams—Kentucky, Georgia Tech and Auburn. FSU's future foes were beginning to worry now.

FSU opened the 1963 season on a happy note, smashing Miami, 24-0, and visions of glory flicked before the Seminoles' eyes. The next game ended all that as Texas Christian blanked the Seminoles, 13-0, in the rain. It was a bitter loss.

Then came 1964 with everyone knowing the Seminoles would be hard to handle but no one realizing the "great days" were ahead.

After Miami, Texas Christian and New Mexico State were blanked in the first three games, Florida State supporters proudly pointed to the fact that their team was the only unscored upon team in major college football.

Kentucky arrived in Doak Campbell Stadium and it is still hard to believe what happened. Kentucky was a powerhouse with a record to prove it and FSU's 48-6 victory has to be one of the biggest shockers in football history. It was apparent now that the Seminoles were on the verge of greatness.

After the Kentucky game, Georgia staged a magnificent battle and it appeared the dreams of FSU glory would vanish in a hurry. With the FSU people in a virtual state of shock, a Seminole pass winged true and the Seminoles stayed on the undefeated and untied trail. But, Seminole fans shook for days.

However, the bitter blow fell the next week and it was entirely unexpected. As Seminole fans looked on in absolute astonishment the Seminoles lost to Virginia Tech. People who saw the game will never figure that one out. FSU made enough yardage to win three football games. That has to be the biggest puzzler in Florida State football history.

The tie with Houston wasn't as bitter as the VPI loss. The Seminoles came so close to victory that the Cougars can be thankful. FSU was brilliant in a late drive down the field to put the ball into field goal position. The ball soared just off to the right to snatch a win away from the team. It was so close.

However, the Seminoles got the one they always wanted in the Florida game and stamped themselves as top bowl candidates.

Then came the great day before a national television audience when football buffs saw the greatest team in FSU history put on a remarkable display.

Florida State is now a respected member of major college football's elite. Their story is one of the most remarkable in football history.

## OFFICIAL WATCH FOR THIS GAME



## LONGINES THE WORLD'S MOST HONORED WATCH

10 WORLD'S FAIR  
GRAND PRIZES  
28 GOLD MEDALS

Longines watches are recognized as OFFICIAL for timing world championships and Olympic sports in all fields throughout the world.



Longines 5-Star Admiral Automatic with Calendar, All-Proof®, sweep-second, 14K gold strap—\$185.00

### *The Longines Credo*

Every Longines watch, whatever its type, for whatever its use, today, as for almost a century, is manufactured to be the finest of its kind and worthy in every respect to be called The World's Most Honored Watch

**LONGINES-WITTNAUER WATCH CO.**

MONTREAL • NEW YORK • GENEVA  
Maker of Watches of the Highest Character Since 1867





## A Message To Florida State Fans

### Friends of Florida State University—

At our first home football game of the season we are pleased to honor the members of the Florida Legislature who have through the years supported quality higher education at Florida State, and throughout Florida.

As you pass through the campus of Florida State University today, you see tangible evidence of the Legislature's interest in higher education. There are many new buildings in use, other new buildings under construction and still more new buildings on the drawing boards. All of these were approved by the far-sighted members of the Legislature who believe, as we do, that our state and nation's future depends on a quality educational system.

More important, however, than new buildings, badly needed as they are, is the excellence of our faculty and staff. We have at Florida State University a dynamic, enthusiastic group of men and women who are dedicated to the proposition that this University must provide quality education for all who study with us. We have a faculty and staff which recognizes the responsibility to serve the people of Florida. We have a faculty and staff which almost daily discovers and produces new knowledge for the benefit of all mankind. Public support reflected through legislative action has made this high calibre faculty and staff a reality of today rather than just a dream for tomorrow.

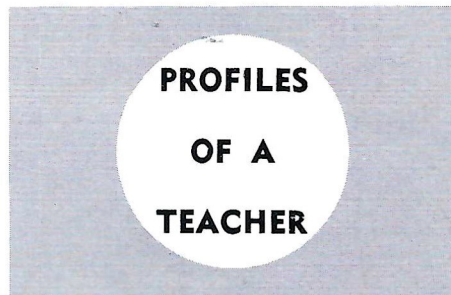
We welcome today also the growing number of Florida State University supporters from Tallahassee and many surrounding counties, some from far away.

On behalf of our faculty, staff and our 13,200 outstanding students, I extend a very warm welcome to each of you. You are always welcome at the Florida State University.

*From The President*

Cordially,  
John E. Champion

**"... Let the soldier be abroad if he will; he can do nothing in this age. There is another personage, a personage less imposing in the eyes of some, perhaps insignificant. The Schoolmaster is abroad, and I trust to him, armed with his primer, against the soldier in full military array." —Lord Brougham, Speech, Opening Parliament, January 29, 1828.**



PLEASE TURN THE PAGE

**Florida State's salute to the teacher in today's Legislative Recognition Day Program brings to bear the enduring significance of these words in 1965 . . .**

### Geology Building Named for Senator F. Wilson Carraway

*Highlighting today's round of activities for legislators and state officials were the 2 p.m. ceremonies naming Florida State's Geology Building in honor of Leon County's distinguished Senator, the Hon. F. Wilson Carraway Sr., "who has diligently espoused the cause of the University and higher education."*





# Legislating . . . . . and For

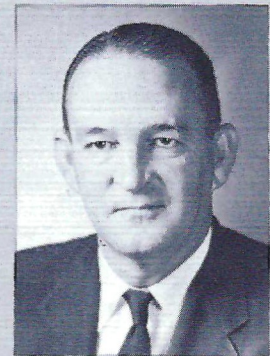


*The influence which men of state exert on the state of mankind can be no more sharply defined than in the context of their support of higher education. Florida State today pays tribute to members of the 1965 Legislature and state government agencies, in gratitude for the growing strength of their contributions to this state's institutions of higher learning, and thereby, to its future.*



Hon. J. E. (Nick) Connor  
President of the Senate

LEGISLATIVE  
RECOGNITION DAY  
1965



Hon. E. C. Rowell  
Speaker of the House

## FSU Says Thank You To Legislators . . .

- For authorizing the establishment of a college of law at Florida State University.
- For creating a chancellorship and granting greater autonomy to the State Board of Regents in the advocacy and advancement of the University System.
- For appropriating new scholarship and student loan funds administered by the Board of Regents.
- For creating a State Theater from Florida State's annual Asolo Theater Festival at Sarasota.



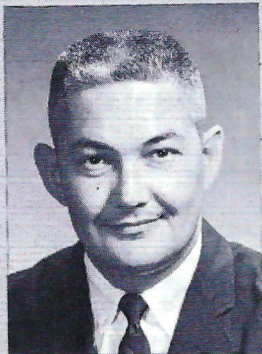
Governor Haydon Burns signs bill creating a State Theater of Florida, as FSU's Dick Fallon and Wayne Minnick look on.

Guests of honor at tonight's game with Baylor University are members of the legislature and state government officials and their wives. Co-sponsored by the Tallahassee Chamber of Commerce and Florida State University, the annual program included a poolside coffee and a noon barbecue at the Union, an informative program silhouetting the qualities of excellence and dedication which mark Florida State's faculty, and a buffet dinner preceding the game.



# Educating Florida's Future

*The "primer" from which today's master teacher transmits the wisdom of the ages and pushes back the boundaries of knowledge may be a book, an accelerator or a computer. But the zeal and conviction of his dedication to "teaching" are the qualities by which a student is inspired to "learning" the facts presented. Great homage is due, and paid, to such teachers at Florida State.*



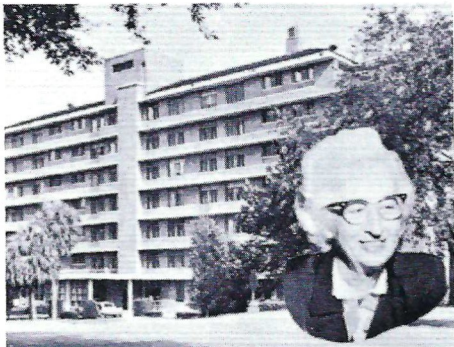
**Dr. Steve Edwards**  
Holds 1965 Moore Teaching Award

## PROFILES OF A TEACHER



**Dr. Betty M. Watts**  
Distinguished Professor  
Of the Year

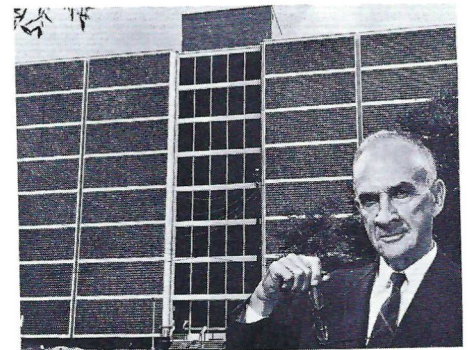
## FSU Commemorates The Master Teachers



The memory of a master teacher of zoology is perpetuated in the Ezda May Deviney Residence Hall, dedicated at FSU in July, 1965.

Creativity in the classroom . . . enthusiasm . . . knowledge and comprehension of the new as well as the old . . . and the all-important ability to communicate with, as well as to, the student—these are the elements of exceptional teaching ability which Florida State recognizes and seeks to uphold among its faculties.

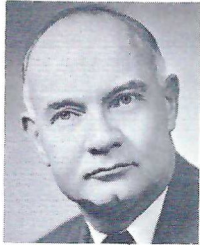
Young or old . . . physicist, food scientist, artist or philosopher . . . the "teacher" molds the destiny of mankind, as he fires and develops the minds of youth.



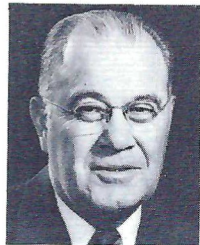
Enshrining 42 years of dedicated teaching, William Hudson Rogers Hall was named Sept. 20 for the noted professor emeritus of English.



# FLORIDA STATE'S ATHLETIC COMMITTEE



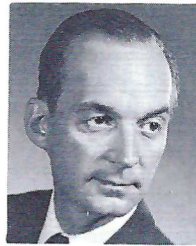
**Mode L. Stone,**  
Chairman  
Dean, School of  
Education



**Coyle E. Moore**  
Dean, School of  
Social Welfare



**Elston Roady**  
Professor,  
Government



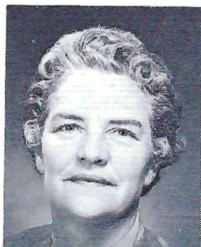
**Thomas Wright**  
Assoc. Professor,  
Music



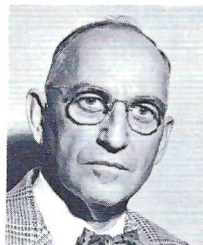
**Claude Flory**  
Professor, English



**Robert Earnest**  
Professor, Business



**Mary Alexander**  
Assoc. Professor,  
Physical Education  
and Recreation



**J. M. Plant**  
Assoc. Professor,  
Engineering Science

**GO-GO SEMINOLES**

**CHICK-N-TREAT**

**TAKE OUT BOXES**

**Located Two Blocks**

**From Stadium**

**1342 Jackson Bluff Rd.—224-4425**

## MIDYETTE-MOOR Insurance Agency

"Ask Those We Serve"

Complete Insurance and Bond Service

PHONE 222-3456



MIDYETTE-MOOR BUILDING  
TALLAHASSEE, FLORIDA

SAYS

SCALP 'EM SEMINOLES!



Payne Midyette  
Frank Moor  
Ed Clark  
Winslow Sullivan  
Bob Dickinson  
Paul Lewis  
Payne Midyette, Jr.

Bill Moor  
Bill Franklin  
Glenn Sears  
Dick Wall  
Don Northcut  
Rex Sikes  
Mike Lee

## BENNETT'S DRUG STORE

- Prescriptions
- Cameras
- Sundries
- Gifts
- Fountain
- Cafe
- Cosmetics
- Drugs

MEET ME AT BENNETT'S

BEFORE AND AFTER THE GAME!

Corner Monroe and College Streets

Phone 222-8980 — 222-4450



**DON JAMES**  
First Assistant  
Defensive Chief



**BOB HARBISON**  
Defensive Line



**NEIL SCHMIDT**  
Defensive Ends,  
Linebackers



**KEN MacLEAN**  
Head Recruiter



**BILL CRUTCHFIELD**  
Offensive Chief



**DON POWELL**  
Offensive Line



**BOBBY BOWDEN**  
Receivers



**BILL PROCTOR**  
Freshman



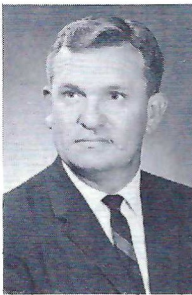
**BILL PETERSON**  
Head Football Coach

# THE SEMINOLE FOOTBALL FAMILY

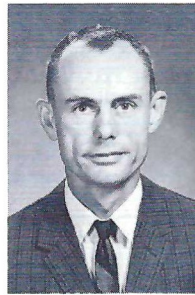
**RONALD MELTON**  
Business  
Manager



**JEFF SAVAGE**  
Academic  
Advisor



**CLAUDE THIGPEN**  
Ticket Manager



**BILL BUNKER**  
Sports  
Information



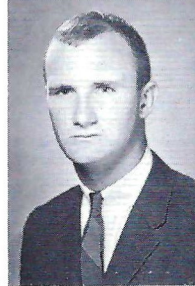
**VAUGHN MANCHA**  
Director of Athletics



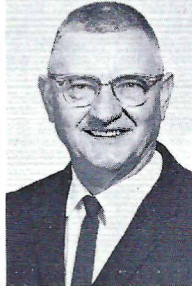
**DR. R. P. JOHNSON**  
Team Physician



**DON FAULS**  
Head Trainer



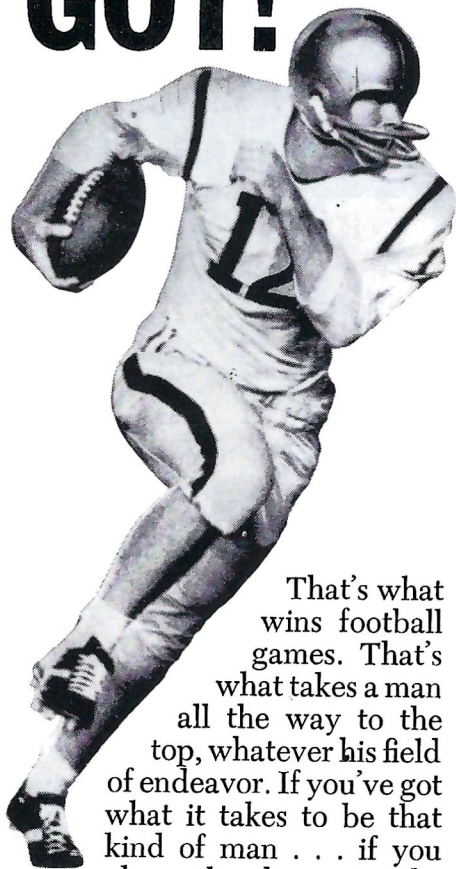
**PHIL CALLICUTT**  
Trainer



**TILLMAN DIXON**  
Equipment  
Manager



# GIVE IT EVERY-THING YOU'VE GOT!



That's what wins football games. That's what takes a man all the way to the top, whatever his field of endeavor. If you've got what it takes to be that kind of man . . . if you have the chance to take ROTC, make what you've got count. Go for an Army commission. That way, come commencement, you'll have two good things going for you: your college degree, and the gold bars that mark you a leader of men . . . tested, trained, trusted.

## GET IN—STAY IN ARMY ROTC!

## TONIGHT'S TEAMS A Statistical Comparison

**FLORIDA STATE**  
Results (0-1)  
3 TCU 7

**BAYLOR**  
Results (2-0)  
14 Auburn 8  
17 Washington 14

### TEAM STATISTICS

108	Yards Rushing	187
128	Yards Passing	481
236	Total Offense	668
29	Passes Attempted	65
14	Passes Completed	36
2	Passes Had Intercepted	2
5	Punts	15
33.8	Punting Average	30.4

### INDIVIDUAL LEADERS

#### Rushing

Name	Times	Yards	Avg.	Name	Times	Yards	Avg.
Petko	11	40	3.6	Defee	21	125	5.9
Spooner	4	23	5.7	Hayes	20	71	3.5
Giardino	9	19	2.1	Wilson	9	38	4.2

#### Passing

Name	Att	Comp	Yards	TD	Name	Att	Comp	Yards	TD
Pritchett	29	14	128	0	Southall	65	36	481	3

#### Receiving

Name	Caught	Yards	TD	Name	Caught	Yards	TD
Wettstein	4	42	0	Lane	19	219	0
Blankenship	3	28	0	Cheshire	6	138	2
Spooner	2	13	0	Becton	3	40	0
				Walker	3	29	0

#### Punting

Name	No.	Avg.	Name	No.	Avg.
Hosack	5	33.8	Head	15	30.4

#### Scoring

Name	TD	FG	PAT	Total	Name	TD	FG	PAT	Total
Roberts	0	1	0	3	Cheshire	2			12
					Purvis	0	1	4	7



## ALL TIME FLORIDA STATE RECORDS

### SINGLE GAME

#### Individual

- TOUCHDOWNS SCORED**—4 by Fred Biletnikoff vs. Oklahoma, Gator Bowl, 1965
- LONGEST TOUCHDOWN RUN FROM SCRIMMAGE**—80 yards by Fred Pickard vs. Virginia Tech, 1957
- LONGEST TOUCHDOWN PASS**—80 yards, Nelson Italiano to Eddie Gray vs. Newberry, 1950
- LONGEST TOUCHDOWN RUN ANY SITUATION**—99 yards by Ted Hewitt vs. Stetson, 1948 and Fred Biletnikoff vs. Miami, 1963 (interception return)
- LONGEST RUN FROM SCRIMMAGE WITHOUT SCORING**—76 yards by Roy Thompson vs. Stetson, 1951
- LONGEST INTERCEPTION RETURN**—99 yards by Ted Hewitt vs. Stetson, 1948 and Fred Biletnikoff vs. Miami, 1963
- LONGEST PUNT RETURN**—80 yards by Billy Odom vs. Stetson, 1954
- LONGEST KICKOFF RETURN**—89 yards by Billy Odom vs. Va. Tech, 1955
- LONGEST PUNT**—84 yards by Tommy Brown vs. Tampa, 1950
- LONGEST FIELD GOAL**—44 yards by Les Murdock vs. Virginia Tech, 1963
- TIMES RUSHING**—29 by Fred Pickard vs. Georgia, 1949
- YARDS RUSHING**—161 by Buddy Strauss vs. Mississippi College, 1949
- PASSES ATTEMPTED**—39 by Steve Tensi vs. Virginia Tech, 1964
- PASSES COMPLETED**—23 by Steve Tensi vs. Oklahoma, Gator Bowl, 1965
- YARDS PASSING**—313 by Joe Majors vs. Tampa, 1959
- TOUCHDOWN PASSES**—5 by Steve Tensi vs. Oklahoma, Gator Bowl, 1965
- TOTAL OFFENSE**—369 yards by Joe Majors vs. Tampa, 1959 (56 rush, 313 pass)
- PASSES CAUGHT**—13 by Fred Biletnikoff vs. Oklahoma, Gator Bowl, 1965
- YARDS RECEIVING PASSES**—192 by Fred Biletnikoff vs. Oklahoma, Gator Bowl, 1965
- TOUCHDOWN PASSES CAUGHT**—4 by Fred Biletnikoff vs. Oklahoma, Gator Bowl, 1965
- PASSES INTERCEPTED**—3 by Tommy Brown vs. Stetson, 1950; and Georgia Tech, 1952; Lee Corso vs. Georgia, 1954; and Bud Whitehead vs. Virginia Tech, 1959
- FIELD GOALS**—3 by Les Murdock vs. Florida, 1964.

#### TEAM

- POINTS SCORED**—74 vs. Whiting Field, 1949
- MARGIN OF VICTORY**—74-0 vs. Whiting Field, 1949
- MARGIN OF DEFEAT**—0-42 vs. Georgia, 1959
- YARDS RUSHING**—383 vs. Abilene Christian, 1957
- YARDS PASSING**—355 vs. Villanova, 1954
- TOTAL OFFENSE**—526 vs. Furman, 1962 (277 rush, 239 pass)
- PASSES ATTEMPTED**—40 vs. Virginia Tech, 1964
- PASSES COMPLETED**—23 vs. Oklahoma, Gator Bowl, 1965
- PASSES INTERCEPTED**—7 vs. Virginia Tech, 1959
- PUNTS**—10 vs. Georgia Tech and Stetson, 1955

# The Vogue

TALLAHASSEE, FLORIDA

TRAVELING  
DESSERT TRAYS

FAMOUS  
TOWN HOUSE  
ROAST  
PRIME RIB  
OF BEEF





# SEMINOLES ON THE WARPATH

## An Analysis of Florida State's 1965 Schedule

### TEXAS CHRISTIAN

An inconsistent offense and a 47-yard TCU march in the third quarter gave the Horned Frogs an upset 7-3 victory in the season's opener. The Seminoles won in almost every statistical category, but a 23 yard field goal by Pete Roberts in the second period was the extent of FSU's scoring. Time ran out with the ball on TCU's four yard line.

AT FORT WORTH, Sept. 25 7:30 p.m.

### BAYLOR

Picked to challenge Texas and Arkansas for the Southwest Conference title. The pass-minded Bears feature quarterback Terry Southall, one of the nation's best passers, and a wide-open game is forecast. Baylor jumped off to a good start by beating Auburn, 14-8, in the opener, and Washington, 17-14, last weekend.

AT TALLAHASSEE, Oct. 2 8:00 p.m.

### KENTUCKY

Undefeated in two games, the Wildcats are as tough as pre-season predictions have said. Coach Charlie Bradshaw's troops have defeated Missouri and Ole Miss, and were favored to beat Auburn this afternoon.

AT LEXINGTON, Oct. 9 8 p.m.

### GEORGIA

In the short space of two weeks, Georgia has become the team to beat in the Southeast Conference. After a thrilling upset victory over Alabama in the season's opener, the Bulldogs showed solid power by defeating Vanderbilt.

AT TALLAHASSEE, Oct. 16 8 p.m.

### ALABAMA

The Seminoles will go to Tuscaloosa for the first time this year. It will be Bama's Homecoming. Stung by an opening defeat at the hands of Georgia, Coach Paul Bryant smashed Tulane last weekend and should win over Mississippi today.

AT TUSCALOOSA, Oct. 23 1:30 p.m. CST

### VIRGINIA TECH

The Gobblers joined the ranks of Southern Independents this season, after many years in the Southern Conference. Always a tough opponent for the Seminoles, Coach Jerry Claiborne has defeated Wake Forest and Richmond so far this season.

AT TALLAHASSEE, Oct. 30 8 p.m.

### WAKE FOREST

It's Homecoming at Florida State when Atlantic Coach Conference "Coach of the Year" Bill Tate brings his rejuvenated Deacons to Tallahassee. Wake Forest lost to VPI and N. C. State, two other Seminole opponents, and faced a rough Vanderbilt team today.

AT TALLAHASSEE, Nov. 6 2 p.m.

### N. C. STATE

Defeated by Clemson in its opening defense of the ACC title. Coach Earle Edwards' Wolfpack rebounded with a victory over Wake Forest last weekend. Today's opponent is conference foe South Carolina.

AT RALEIGH, Nov. 13 1:30 p.m.

### HOUSTON

Another Seminole nemesis. The Cougars have looked unimpressive in two starts, but they always play well against Florida State.

AT TALLAHASSEE, Nov. 20 8 p.m.

### FLORIDA

The big one. Winners over Northwestern, upset loser to Mississippi State, the Gators faced another tough test in LSU today.

AT GAINESVILLE, Nov. 27 2 p.m.

## SOUTHERNAIRE MOTEL & SKYLINE MOTOR LODGE



Quality people always seek  
quality accommodations



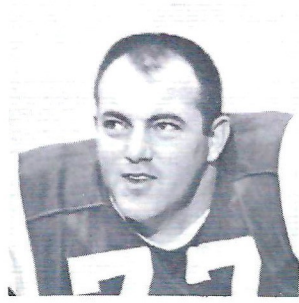
OPEN TILL 2 AM  
FRI. & SAT.

LIVE ENTERTAINMENT

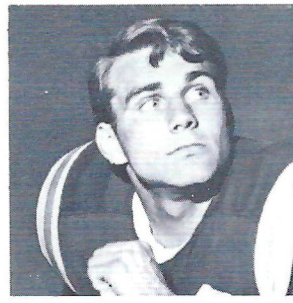
**Talem**  
lounge coffee shop

506 S. WOODWARD  
1 BLOCK FROM STADIUM

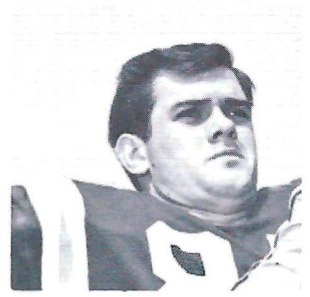




Bob Mangan



Joe Petko

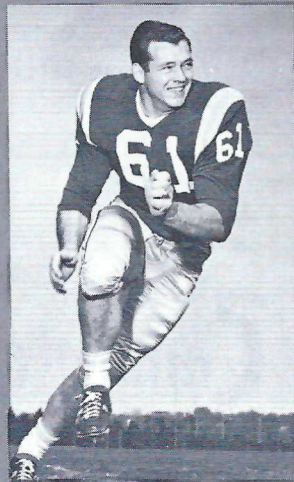


John Hosack

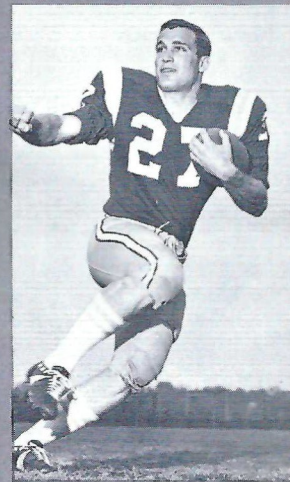
# Introducing...the FLORIDA STATE UNIVERSITY 65 SEMINOLES



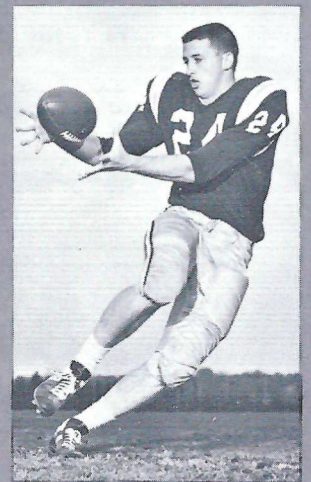
Bill Campbell



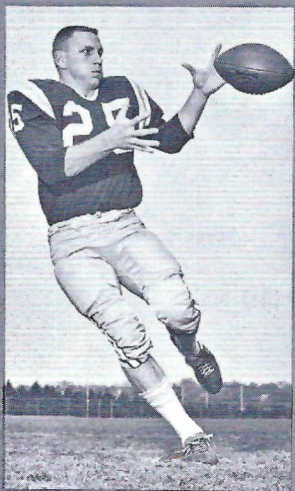
Jack Shinholser



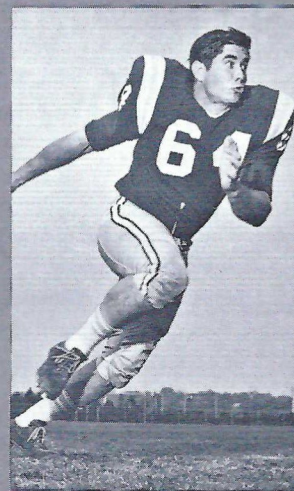
Phil Spooner



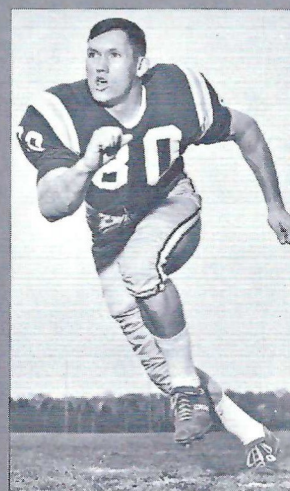
Elton Revell



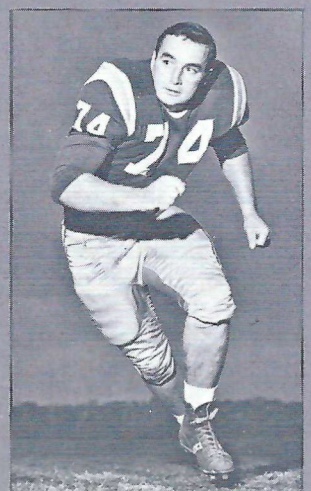
T. K. Wetherell



Dave Braggins



H. T. Waller



Jay Matthews



*Learn to Fly at*  
G. C. Shuler  
**Seminole Flying Service, Inc.**

**Municipal Airport**

Phone 222-3121

Tallahassee, Fla.

- STUDENT CLUBS
- AIRPLANE RIDES
- FLIGHT INSTRUCTION
- AERIAL PHOTOGRAPHY
- CHARTER FLIGHTS
- AIRCRAFT RENTAL

FLY the best—A New Cessna

"Look up—a new CESSNA will be overhead"

**The  
Association  
of  
Tallahassee Banks**

Lewis State Bank  
The Peoples Bank  
Industrial Savings Bank  
Parkway National Bank  
The Tallahassee Bank & Trust Co.  
Capital City First National Bank

**All Members of F.D.I.C.**

**Before Or After  
Game**

**CHICKEN IN THE ROUGH**  
COPYRIGHT 1937 BY BEVERLY OSBORN

**QUAKER HOUSE**



**RESTAURANT**

*Dining Room  
and Curb Service*

Tennessee Street

Next to Lafayette Motel

**Collins furniture co.**  
INCORPORATED

1117 THOMASVILLE ROAD  
PH. 222-1415

**TALQUIN INN**

on

**RESTAURANT ROW**

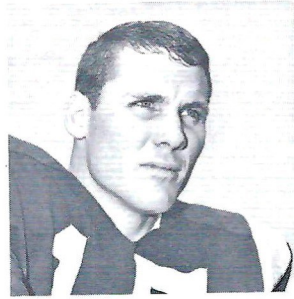
Open 5:00 p.m. - 12:30 a.m.

Closed Sundays

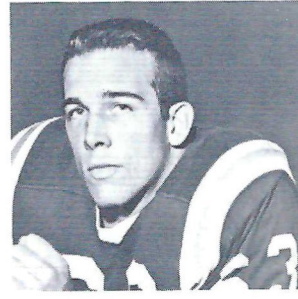




**Jim Massey**



**Pat Conway**



**Bill McDowell**

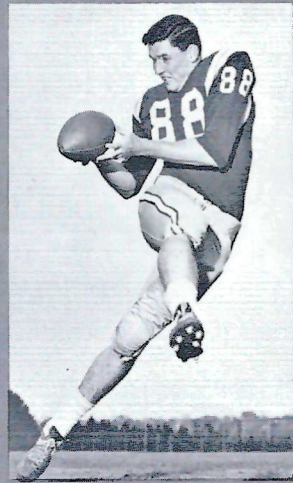


**Thurston Taylor**

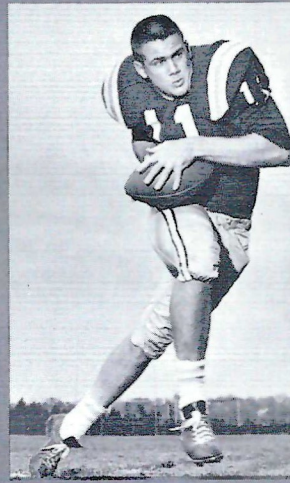
# FLORIDA STATE UNIVERSITY 65 SEMINOLES



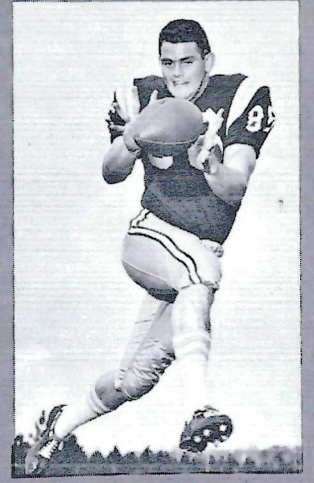
**Joe Avezzano**



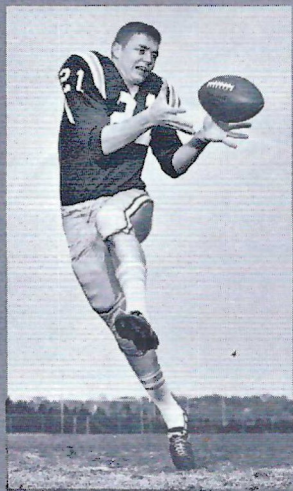
**Stan Croley**



**Kim Hammond**



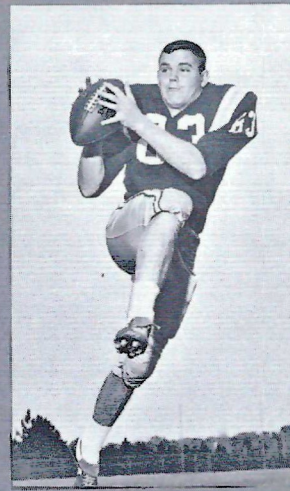
**Buddy Blankenship**



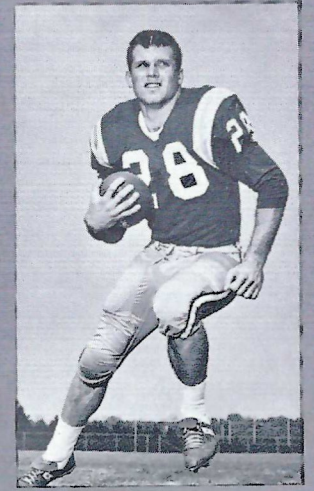
**Bill Cox**



**John Stephens**

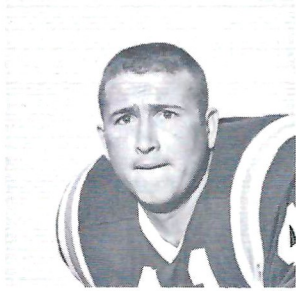


**Jerry Jones**

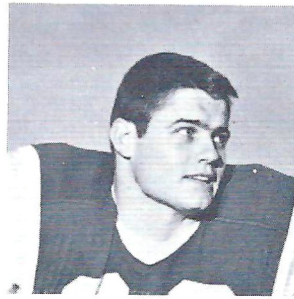


**Bill Moreman**

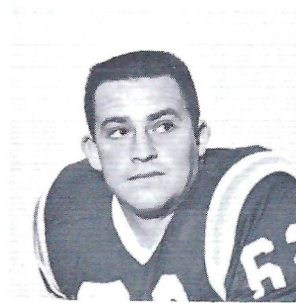




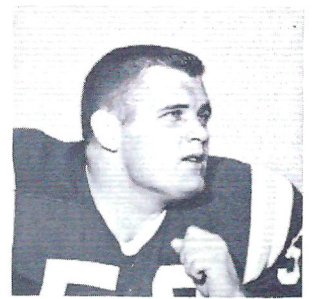
**Bob Menendez**



**Edwin Pope**



**Howard Lurie**



**David Pitts**

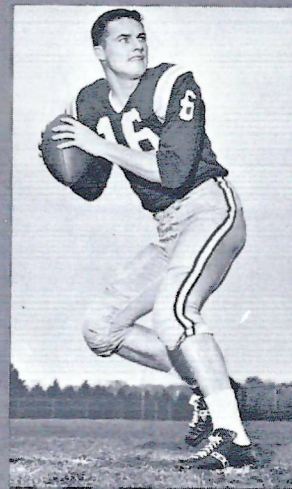
# the FLORIDA STATE UNIV



**Frank Pennie**



**Donovan Jones**



**Ed Pritchett**



**Bill Richardson**



**Joe Parrish**



**Howard Ehler**

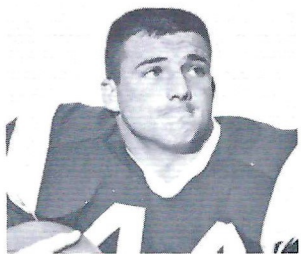


**Larry Williamson**



**Wayne Giardino**

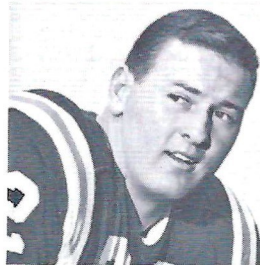




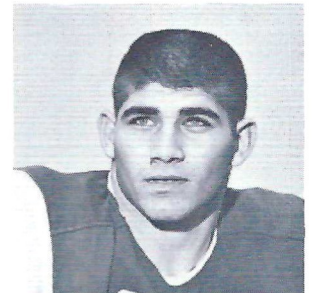
**Jim Mankins**



**Terry Garvin**



**Wayne McDuffie**



**Mike Blatt**

# UNIVERSITY 1965 SEMINOLES



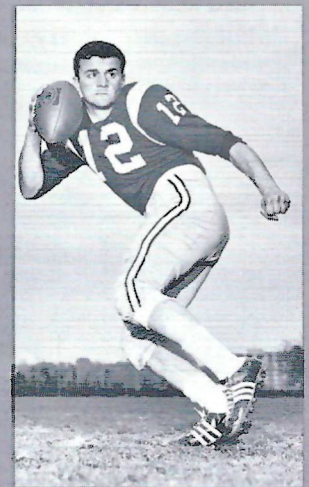
**Charles Pennie**



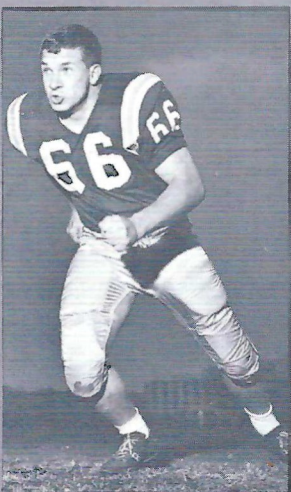
**Maury Bibent**



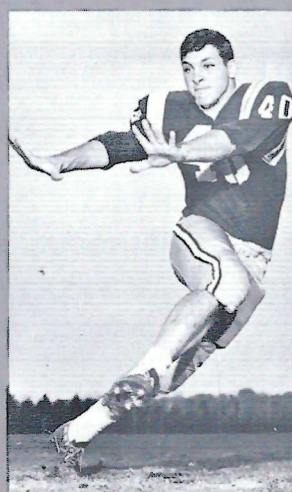
**George D'Alessandro**



**Tony Gero**



**Carl McNeil**



**James Riser**



**Dave Hall**



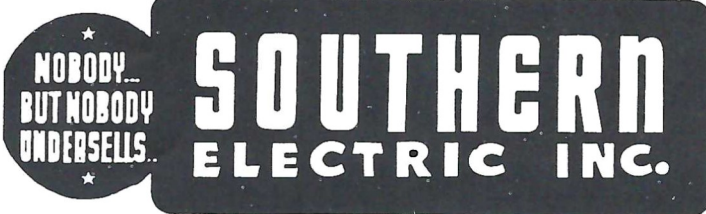
**Max Wettstein**





SPURGEON CAMP

*"Let's Be  
#1  
In 1965"*



**5-Store Purchasing Power**

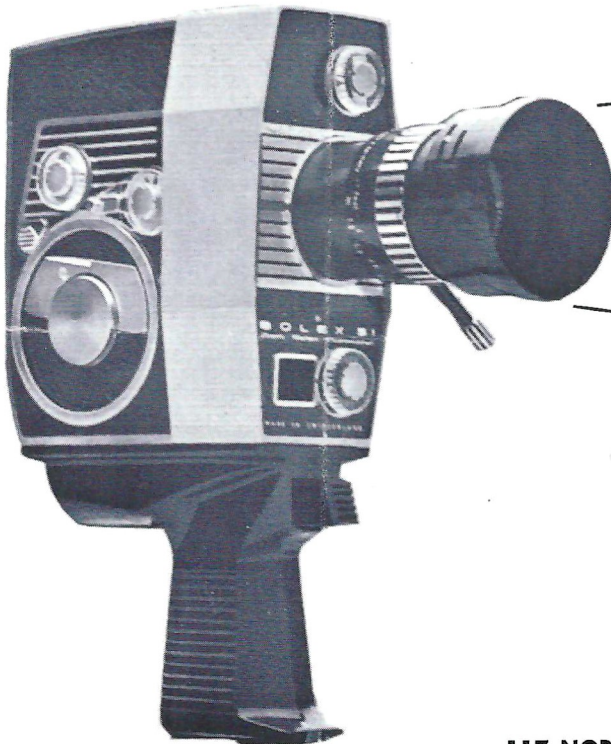
**Saves You Money on G-E Appliances!**

Tallahassee Downtown and Capital Plaza	Perry, Fla. 115 E. Green St. on the Square	Valdosta, Ga. 117 W. Central	Albany, Ga. 225 W. Ogle- thorpe St.
--	--	---------------------------------	---



**WHERE YOU  
WILL FIND  
YOUR FRIENDS**

701 W. JEFFERSON  
South Gate F.S.U.



FOCUS ON

**TALLAHASSEE  
CAMERA  
CENTER, INC.**

**FOR ALL OF YOUR PHOTO NEEDS**

- CAMERAS
- FILM
- ACCESSORIES
- RENTALS
- BINOCULARS
- FAST PHOTO FINISHING

117 NORTH MONROE ST.

PH. 222-8771

"ACROSS FROM THE FLORIDA THEATER"



In 1963, we called Riviera "America's bid for a great new international classic car."

If imitation is any sign, we were pretty good prophets.



There are a lot of rough copies of Riviera on the road these days. (Even some of the cars made across the seas are straining to look like our Riviera.) And it flatters us. It seems our prediction has come true. Riviera is America's great international classic car. And it also seems to us that you would greatly prefer to own an original, not a counterfeit. Mainly because if you do settle for one of the imitations, you'll be nagged by doubts. "Wouldn't Riviera's Super Turbine transmission do a better job of easing me through that traffic jam?" "Would Riviera's plush bucket seats and squishy carpets and eye-soothing instrument panel make me feel more relaxed after a long trip?" "Would Riviera's incredible suspension and steering do a better job on that tight corner?" There is only one way to forestall these bothersome thoughts. Ask yourself first—"Wouldn't I really rather have America's one and only international classic car?"

**Wouldn't you really rather have a Buick?**





things go  
better  
with  
**Coke**  
TRADE-MARK ®

- OFFENSE**
- 21 DONOVAN JONES ..... LE
  - 70 DEL WILLIAMS ..... LT
  - 69 EDWIN POPE ..... LG
  - 54 JOHN STEPHENS ..... C
  - 51 JOE AVEZZANO ..... RG
  - 64 DAVID BRAGGINS ..... RT
  - 89 MAX WETTSTEIN ..... RE
  - 16 ED PRITCHETT ..... QB
  - 44 JIM MANKINS ..... FB
  - 28 T. K. WETHERELL ..... RH
  - 23 WAYNE GIARDINO ..... LH

**Fl**  
**S**

Probable

**FLORIDA**

- |                  |                   |         |
|------------------|-------------------|---------|
| 11 Hammond, QB   | 27 Spooner, HB    | 43 Ehle |
| 12 Gero, QB      | 28 Wetherell, HB  | 44 Mar  |
| 14 Massey, DB    | 29 Petko, FB      | 51 Ave  |
| 15 Conway, DB    | 30 Moreman, HB    | 52 McF  |
| 16 Pritchett, QB | 31 Cox, HB        | 53 Pitt |
| 17 Kolbus, QB    | 32 Richardson, DB | 54 Step |
| 21 Jones, E      | 33 Riser, DB      | 55 Uric |
| 22 Bibent, DB    | 35 Hosack, HB     | 60 Will |
| 23 Giardino, FB  | 40 Blatt, LB      | 61 Shir |
| 24 Revell, HB    | 41 Menendez, DB   | 62 Luri |
| 26 Campbell, DB  | 42 LaMarche, DB   | 63 McI  |

- OFFENSE**
- 26 GEORGE CHESHIRE ..... SE
  - 75 TOMMY SCHAFFNER ..... LT
  - 60 BENNY BROTT ..... LG
  - 51 DAVID PORTER ..... C
  - 67 MIKE BOURLAND ..... RG
  - 79 RALPH DUNLAP ..... RT
  - 83 WILLIE WALKER ..... TE
  - 16 TERRY SOUTHALL ..... QB
  - 47 RICHARD DEFEE ..... RHB
  - 87 HARLAN LANE ..... RH
  - 35 MIKE MARSHALL ..... FB

**Ba**

Probable

**BAYLOR**

- |                    |                    |          |
|--------------------|--------------------|----------|
| 11 Purvis, QB      | 28 Jones, FHB      | 47 Defe  |
| 12 R. Marshall, QB | 29 Pittard, FHB    | 49 Pulli |
| 14 Davila, QB      | 30 Ortiz, LBR      | 51 Pone  |
| 15 Laurence, LBR   | 33 Behringer, FB   | 52 How   |
| 16 Southall, QB    | 35 M. Marshall, FB | 53 Burk  |
| 17 Stockdale, QB   | 37 Wilson, FB      | 55 R. Sn |
| 20 Bector, FHB     | 40 Whiddon, RHB    | 60 Brott |
| 22 Emfinger, FHB   | 41 Trice, RHB      | 61 Ferg  |
| 23 Hunt, FHB       | 42 Green, FHB      | 62 Pipes |
| 24 Mitchell, FB    | 44 Hayes, RHB      | 63 B. Sn |
| 26 Cheshire, FHB   | 45 Gibson, RHB     | 64 Wats  |
| 27 Bridges, RHB    | 46 Head, FHB       | 65 Witc  |

**OFFI**

Referee—Clifford Domingue, Port Arthur, Texas  
 Umpire—George Hecht, Miami, Fla.  
 Linesman—Roscoe Ivy, Garland, Texas



ida  
 te  
 ng Lineup

**DEFENSE**  
 84 GEO. D'ALESSANDRO RE  
 79 FRANK PENNIE RT  
 61 JACK SHINHOLSER MG  
 78 CHARLES PENNIE LT  
 87 TERRY GARVIN LE  
 68 JOE PARRISH LB  
 63 BILL McDOWELL LB  
 43 HOWARD EHLER CB  
 22 MAURY BIBENT CB  
 15 PAT CONWAY LS  
 26 BILL CAMPBELL RS

**TE SQUAD**

64 Braggins, T	79 F. Pennie, DT
67 Bugar, DT	80 Croley, DE
68 Parrish, LB	81 Waller, DE
69 Pope, G	83 Taylor, T
70 Williams, T	84 D'Alessandro, DE
73 Kissam, T	85 Roberts, PK
74 Matthews, DT	86 Blankenship, E
75 Vistart, DT	87 Garvin, DE
76 Ellers, T	88 Jones, E
77 Mangan, T	89 Wettstein, E
78 C. Pennie, DT	

lar  
 ng Lineup

**DEFENSE**  
 15 DON LAURENCE LE  
 76 JERRY HANEY LT  
 77 KEN VAN ZANDT LG  
 74 DWIGHT HOOD RG  
 61 BILL FERGUSON RT  
 86 DAVID ANDERSON RE  
 33 RANDY BEHRINGER LB  
 30 RAUL ORTIZ LB  
 40 EDDIE WHIDDON LH  
 48 RICKY HEAD RH  
 28 JOE JONES S

**S SQUAD**

66 Firestone, LG	78 Davis, RT
67 Bourland, LG	79 Dunlap, LT
68 Dewlen, RG	80 Denton, TE
69 Conner, RT	81 Alexander, SE
70 Thomas, LT	82 Jackson, TE
71 Smith, RG	83 Walker, TE
72 Hetrick, LT	84 Eisenhart, TE
73 Jurecek, RT	85 Muniz, TE
74 Hood, LG	86 Anderson, SE
75 Schaffner, LT	87 Lane, SE
76 Haney, LT	88 Deutrich, SE
77 Van Zandt, LG	89 T. Smith, SE

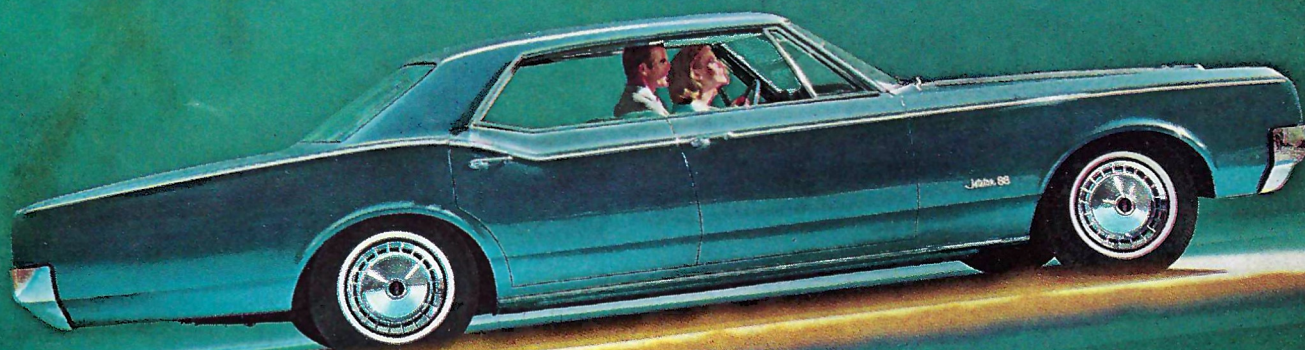
LS  
 Judge—Paul Sprayberry, Shreveport, La.  
 Judge—Billy Teas, Atlanta, Ga.  
 o.—Dick Pace, Maitland, Fla.



things go  
 better  
 with  
**Coke**  
 TRADE-MARK ®



There's a lot to be said for Rocket action priced this low.  
And the Jetstar 88 says it all... *beautifully.*



Smooth talker, this Jetstar 88. Flatters you *outrageously!* Like the proud way it makes you feel behind the wheel. Like the way it pampers you with its velvety coil-spring ride. Like the way its Jetfire Rocket V-8 responds to your every command. And wait till it talks price . . . sweet and low. That's Jetstar 88—Oldsmobile's *lowest-priced full-size series.* Give it half a listen, and it'll talk you right into Oldsmobile ownership. Oldsmobile Division • General Motors Corporation

'65  OLDSMOBILE  
*The Rocket Action Car!*



# PENALTIES

1. **OFFSIDE** by either team; Violation of scrimmage or free kick formation; Encroachment on neutral zone—Loss of Five Yards.
2. **ILLEGAL PROCEDURE, POSITION OR SUBSTITUTION**—Putting ball in play before Referee signals "Ready-for-play"; Failure to complete substitution before play starts; Player out of bounds when scrimmage begins; Failure to maintain proper alignment of offensive team when ball is snapped; False start or simulating start of a play; Taking more than two steps after Fair Catch is made; Player on line receiving snap—Loss of Five Yards.
3. **ILLEGAL MOTION**—Offensive player illegally in motion when ball is snapped—Loss of Five Yards.
4. **ILLEGAL SHIFT**—Failure to stop one full second following shift—Loss of Fifteen Yards.
5. **ILLEGAL RETURN** of substitute not previously disqualified—Loss of Fifteen Yards.
6. **ILLEGAL DELAY OF GAME**; Taking more than four times out during either half (except for replacement of injured player)—Loss of Five Yards. Team not ready to play at start of either half—Loss of Fifteen Yards.
7. **PERSONAL FOUL**—Tackling or blocking defensive player who has made fair catch; Piling on; Hurdling; Grasping face mask of opponent; Tackling player out of bounds, or running into player obviously out of play; Striking an opponent with fist, forearm, elbow or locked hands; Kicking or kneeling—Loss of Fifteen Yards (Flagrant offenders will be disqualified.)
8. **CLIPPING**—Loss of Fifteen Yards.
9. **ROUGHING THE KICKER** or holder—Loss of Fifteen Yards.
10. **UNSPORTSMANLIKE CONDUCT**—Violation of rules during intermission; Illegal return of suspended player; Coaching from sidelines; Invalid signal for Fair Catch; Persons illegally on field—Loss of Fifteen Yards. (Flagrant offenders will be disqualified.)
11. **ILLEGAL USE OF HANDS AND ARMS** by offensive or defensive player; Defensive holding—Loss of Fifteen Yards.
12. **INTENTIONAL GROUNDING** of forward pass—Loss of Five Yards Plus Loss of Down.
13. **ILLEGALLY PASSING OR HANDING BALL FORWARD**—Loss of Five Yards Plus Loss of Down.
14. **FORWARD PASS OR KICK CATCHING INTERFERENCE**—Interference with opportunity of player of receiving team to catch a kick—Loss of Fifteen Yards. Interference by member of offensive team with defensive player making pass interception—Loss of Fifteen Yards Plus Loss of Down. Interference by defensive team on forward pass—Passing Team's Ball at Spot of Foul and First Down.
15. **INELIGIBLE RECEIVER DOWNFIELD ON PASS**—Loss of Fifteen Yards.
16. **BALL ILLEGALLY TOUCHED, KICKED OR BATTED**—Forward pass being touched by ineligible receiver beyond the line of scrimmage—Loss of Fifteen Yards from Spot of Preceding Down and Loss of a Down. Eligible pass receiver who goes out of bounds and later touches a forward pass—Loss of Down. Illegal touching of kicked ball within opponent's ten yard line—Touchback.
17. **PENALTY DECLINED**; Incomplete forward pass; No play or no score.
18. **CRAWLING** by runner—Loss of Five Yards. Interlocked Interference—Loss of Fifteen Yards.

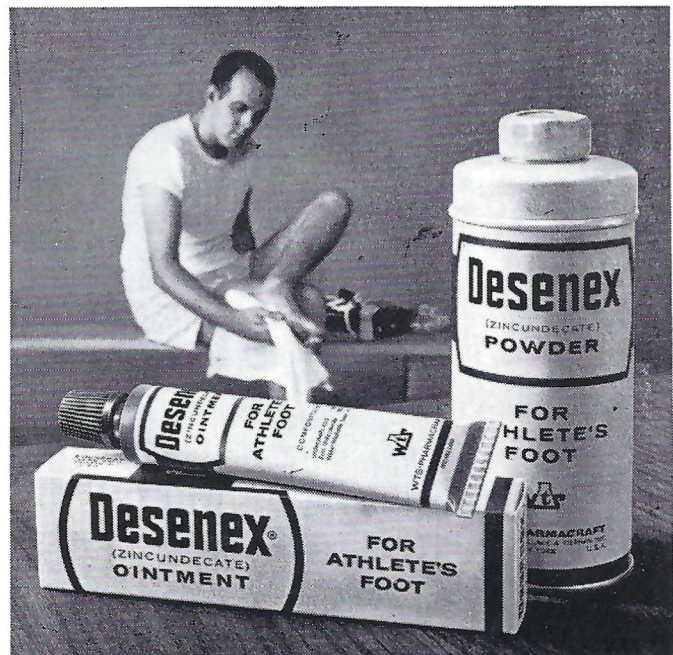
## How do athletes handle athlete's foot?

**They follow their trainers' advice and use Desenex® for prevention and treatment**

It's excellent protection against itching, cracking and irritation of Athlete's Foot. Helps prevent spreading, too. No wonder Desenex is the Athlete's Foot treatment most widely used by college football trainers.

We know you don't have a trainer to keep you on your toes. But that's no reason to suffer from Athlete's Foot. Start using Desenex yourself. Avoid Athlete's Foot problems with Desenex Powder or new, cooling Desenex Aerosol—and for treatment use Desenex Ointment. Desenex is guaranteed to work or your money back.

**WTS-PHARMACRAFT, Rochester, N.Y. 14603**





First choice of those who appreciate  
the finest in foods and service!  
Open Breakfast, Lunch and Dinner

BRUCE BISHOP'S 1921 W. Tennessee

THE  
FOUNTAIN  
RESTAURANT

GOOD LUCK SEMINOLES!  
VARSITY THEATRE

1833 W. Tennessee  
Phone 224-8636

NEXT TO THE FOUNTAIN RESTAURANT

BOWLING'S GREAT

the Perfect date

AFTER THE GAME  
MEET YOUR FRIENDS  
AT THE

*Parkway Bowl*

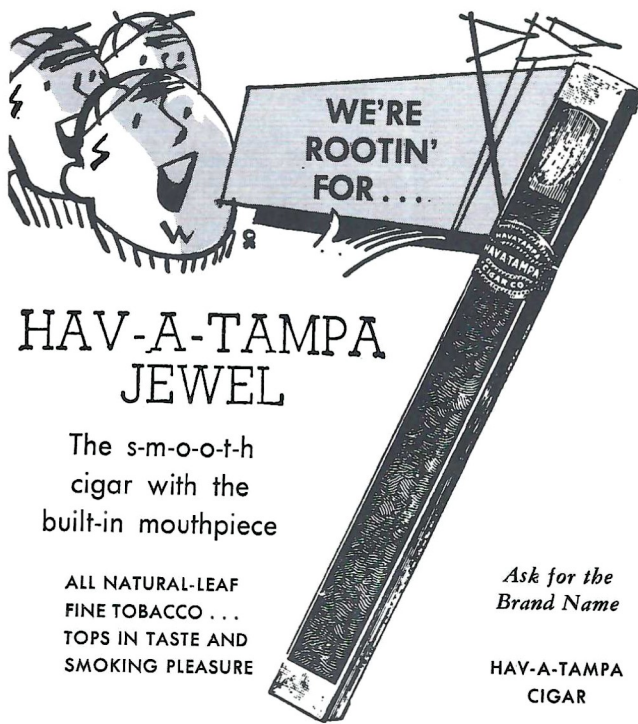
COFFEE SHOP

1230 Apalachee Parkway  
TALLAHASSEE, FLORIDA

And Enjoy



WAFFLE VARIETIES  
With Your Favorite Beverage  
or Rich Creamy Hot Chocolate



HAV-A-TAMPA  
JEWEL

The s-m-o-o-t-h  
cigar with the  
built-in mouthpiece

ALL NATURAL-LEAF  
FINE TOBACCO . . .  
TOPS IN TASTE AND  
SMOKING PLEASURE

Ask for the  
Brand Name

HAV-A-TAMPA  
CIGAR

Distributed by **Eli Witt Tobacco & Candy Co.**  
Tallahassee, Florida

QUALITY CLEANERS

215 W. COLLEGE AVE.—DIAL 222-5097

ONE DAY SERVICE

PICK-UP and DELIVERY

Quality Laundry Work

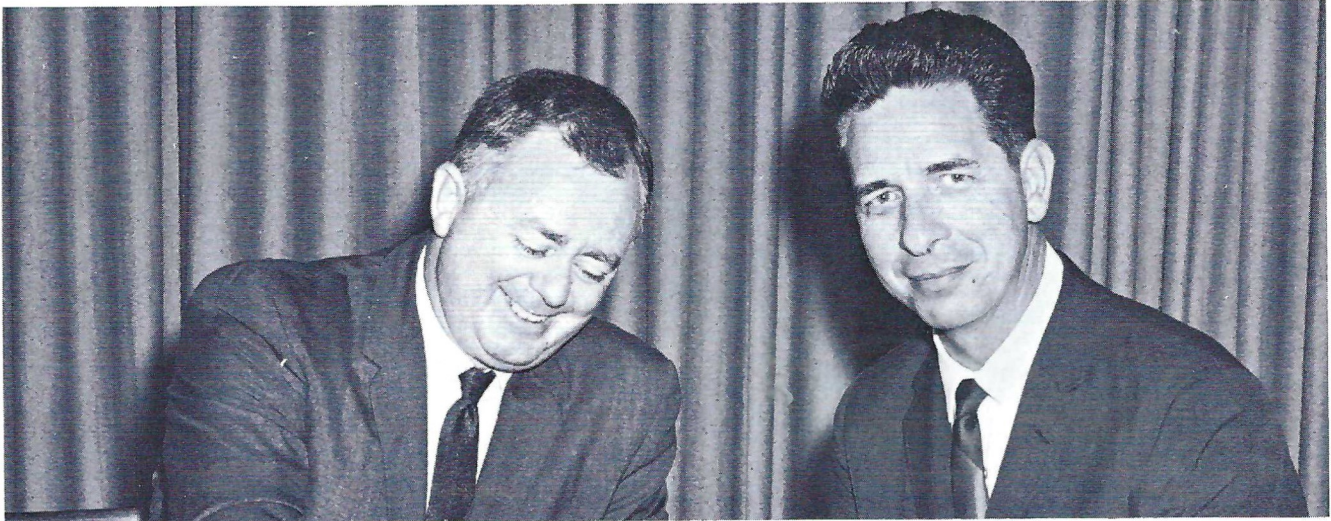
Fluff Dry Service

EXPERT TAILORING and ALTERATIONS

ZIPPERS REPAIRED



# THE WTNT SEMINOLE NETWORK



**HARRY HUGHEY**

**BO MITCHELL**

Popular Bo Mitchell returns to the Seminole microphone for the third straight season, bringing play-by-play action to every corner of the Sunshine State.

The energetic Mitchell, an ex-naval aviator with more than 16 years broadcasting experience, is vice-president and station manager of station WCOA, Pensacola.

His partner at the mike this season is Harry Hughey, a former Florida State football player. A veteran radio man, Hughey handles pre-game, half-time and time-out commentary.

Originating station for the network is WTNT, Tallahassee.

## THE SEMINOLE NETWORK

- |                       |                        |
|-----------------------|------------------------|
| WCOA Pensacola        | WSPB Sarasota          |
| WZET Defuniak Springs | WMYR Fort Myers        |
| WPCF Panama City      | WGBS Miami             |
| WTOT Marianna         | WTRK West Palm Beach   |
| WTNT Tallahassee      | WLBE Leesburg          |
| WDSR Lake City        | WCNH Quincy            |
| WPRY Perry            | WFTW Fort Walton Beach |
| WJAX Jacksonville     | WMAF Madison           |
| WGGG Gainesville      | WFOY St. Augustine     |
| WMOP Ocala            | WYDE Birmingham, Ala.  |
| WKIS Orlando          | WPAX Thomasville, Ga.  |
| WLAK Lakeland         | WSB Atlanta, Ga.       |
| WDAE Tampa            |                        |

# Follow the SEMINOLES

IN '65

**STANDARD  
OIL**

**RADIO NETWORK**

**WJAX**  
Jacksonville

**WGBS**  
Miami

**WDAE**  
Tampa

**WTNT**  
Tallahassee

**WCOA**  
Pensacola

**WKIS**  
Orlando



**YOUNG HO!  
GO CHEVRON!**

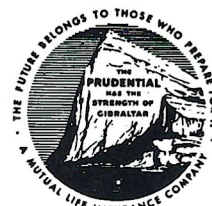


*We  
like  
the  
state  
we're  
in...*



In 1953, we of  
The Prudential established  
our South-Central Regional  
Home Office in Florida. From  
this location we are able  
to provide fast, efficient  
life insurance service  
to the people of Florida  
and our 10-state area.

We are proud to be  
a part of the growth and  
progress here in Florida,  
and the past 12 years have  
been busy and rewarding  
ones for us. We salute  
Florida State University  
for its efforts in preparing  
our youth today for the  
opportunities of tomorrow.



**THE PRUDENTIAL**  
INSURANCE COMPANY OF AMERICA

SOUTH-CENTRAL HOME OFFICE  
JACKSONVILLE, FLORIDA



### STADIUM INFORMATION

**Rest Rooms**—Located on concourse and on ground level on both east and west sides.

**First Aid**—Located in southwest corner of stadium. Registered nurse on duty.

**Lost and Found:** Items may be claimed or turned in at the ticket booth next to the press box elevator, west side.

**Public Telephones:** Located ground level, west side.

**Public Address:** No special announcements are made over the stadium public address system except in cases of emergency.

**Field Regulations:** No spectators are allowed on the field, either during or after the game. Please leave the stadium by ramp and section exits rather than field level exits.

**Drive Carefully**—Your cooperation with law enforcement officers will help speed the flow of traffic away from the stadium.

**"WE FEED BOTH  
SEMINOLES AND  
GATORS"**

**GARCIA'S**  
320 E. Tennessee

*Go Injun's*

*Pike's Studio*

*Patronize Stadium*

## CONCESSIONS

Located beneath the stands on each side of stadium

COLD DRINKS .....	small 15¢	large 25¢
HOT COFFEE .....		15¢
SANDWICHES .....		30¢
HOT DOGS .....		25¢
PEANUTS .....		15¢
POP CORN .....		15¢

*SOUVENIR ITEMS - PENNANTS - BADGES*

*SUN VISORS - ASPIRIN*

*Please pay no more than*

**ESTABLISHED PRICES**

# FOREMOST

ICE CREAM

PHONE • 224-7136

**SUNSHINE STATE  
DAIRYMEN'S COOP.**

PHONE • 222-5303



---

**COMPLIMENTS  
OF  
TALLAHASSEE AUTOMOBILE  
DEALERS ASSOCIATION**

**ALFORD CHEVROLET COMPANY  
CAPITAL LINCOLN & MERCURY, INC.**

**CAPITAL PLYMOUTH, INC.**

**BOB DRAKE DODGE, INC.**

**KEY RAMBLER, INC.**

**KINNEBREW MOTORS, INC.**

**MINGLEDORF MOTORS, INC.**

**PALMER-HARRELL BUICK COMPANY**

**PROCTOR & PROCTOR, INC.**

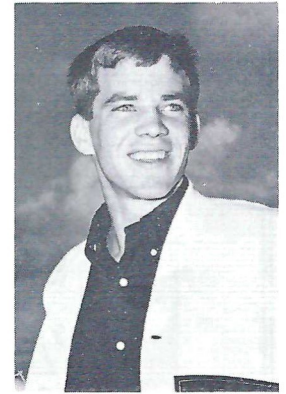
**TALLAHASSEE MOTORS, INC.**





## SEMINOLE CHEERLEADERS

The 1965 Seminole Cheerleader Squad takes its signals from Head Cheerleader Toni Beals (*above center*), a winsome junior from St. Augustine. Shown to her left is a newcomer to the squad, sophomore Joyce Howser of West Palm Beach; and to her right, Peggy Thompson, a junior from Ormond Beach. Senior member of the team is Elbert Lambert (*at right*) of Tallahassee. Sophomore Dave Deutsch (*at left*) of Palatka, is another seasoned member of the squad.



### THE ALMA MATER

High o'er the towering pines our voices swell  
 Praising these Gothic spires we love so well;  
 Here sons and daughters stand . . .  
 Faithful and True, Hailing our Alma Mater  
 F . . . S . . . U . . .

### FSU FIGHT SONG\*

We're going to FIGHT, FIGHT, FIGHT,  
 for FSU  
 We're going to scalp 'em Seminoles . . .  
 We're going to WIN, WIN, WIN, WIN,  
 WIN this game . . . and roll on down and  
 make those goals!  
 For FSU is on the warpath now, and at the  
 battle's end she's great . . .  
 So FIGHT, FIGHT, FIGHT, FIGHT for  
 victory  
 Our Seminoles of Florida State . . .  
 F-L-O-R-I-D-A S-T-A-T-E  
 FLORIDA STATE! (3 times)

### THE FLORIDA STATE VICTORY MARCH\*

Onward to victory, Seminoles, GO! FORWARD MARCH, we must move out together and . . .  
 FORWARD MARCH, it's always marching weather when thousands strong, we swing along.  
 All in step for VIC . . . TO . . . RY. Our F-S-U and all our loyal Seminoles, ON-WARD  
 GO . . . To conquer all our savage foes . . . won't be long . . . we can't go wrong . . . we  
 will crush the EN . . . E . . . MY . . . So SCALP'EM . . . SCALP'EM . . . SCALP'EM . . .  
 It's a case of do or die . . .  
 Strike the fatal thrust, we'll be victorious; with terrible tenacity we can, we will, we must!

FORWARD MARCH, we'll ride the swelling battle tide  
 FORWARD MARCH, we'll face the future side by side  
 With our might, we'll FIGHT, FIGHT, FIGHT!  
 And we'll win our VIC-TO-RY.  
 . . . For Florida State University.

\* Written by Thomas G. Wright, Associate Professor Music at Florida State University.

# University Union . . . . .

*"Serving the entire University Community"*

Lounges

Color Television

Bicycle Rental

Food Service

Faculty-Staff Lounge

Swimming Pool

Barber Shop

Games Check-Out

Art Exhibits

Beauty Salon

Union Store

Ticket Office

Bowling

Bookstore

Billiards

**CAMPUS INFORMATION CALL 3317**



# BE A BOOSTER

Seminole Boosters are people like yourself:



All kinds  
of guys.



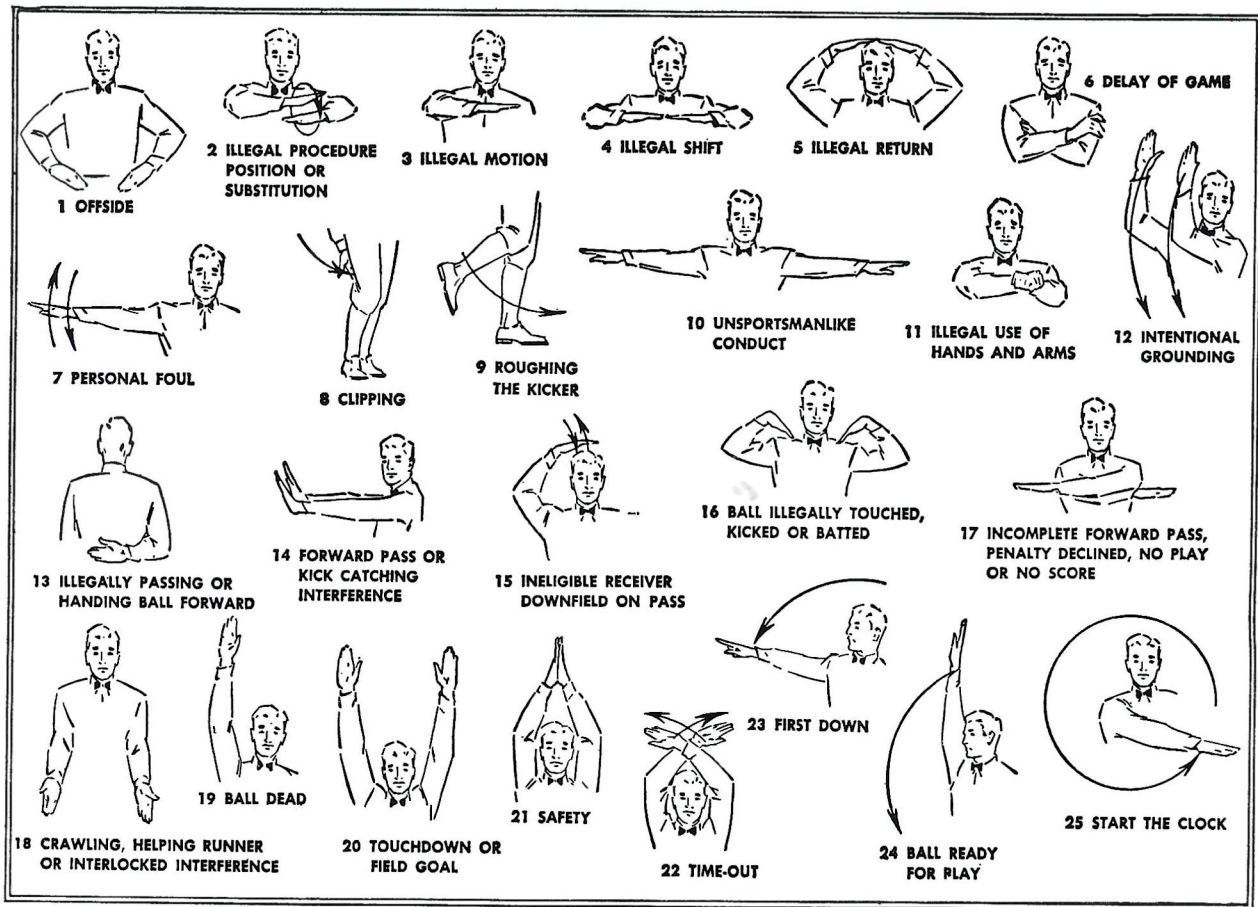
And even housewives.  
Boosters help recruit  
Florida State football teams.

# BE A BOOSTER

And park real close to your seats, the best in the stadium.  
Share the pride of a winning football team. Membership  
only costs \$15 for an individual, or \$30 for a business firm.

*For information: contact Seminole Boosters Inc. 222-0995.*





OWNED AND OPERATED BY FRANK, RICHARD & RAYMOND CHASE

# *Skyline Restaurant*

1 Mile West of City Limits

U. S. Highways 90 and 20

OPEN 6 A.M. TO 11 P.M.

TALLAHASSEE, FLORIDA

*"Serving Good Food for Fine People"*

Private Rooms and Banquet Facilities





FENNY EDWARDS—"MISS TIPARILLO"

## What does she mean "cigars...cigarettes...Tiparillos"?

You'll be hearing that chant more and more—now that Tiparillos have arrived. And arrived they have. In all the right places. With all the right people.

The new Tiparillo has a neat, trim shape. It looks young and debonair. And its pearly, pliable tip pays more than lip service to your smoking pleasure.

And never before such mildness! The most careful blending of choicest imported tobaccos has seen to that. So, too, has the exclusive, veinless Ultra Cigar Wrapper\* that burns so evenly and smoothly it insures complete mildness.

You can even see the mildness. The

surprisingly whiter ash is visible evidence. Smoker's proof. Here is flavor you don't have to inhale to enjoy.

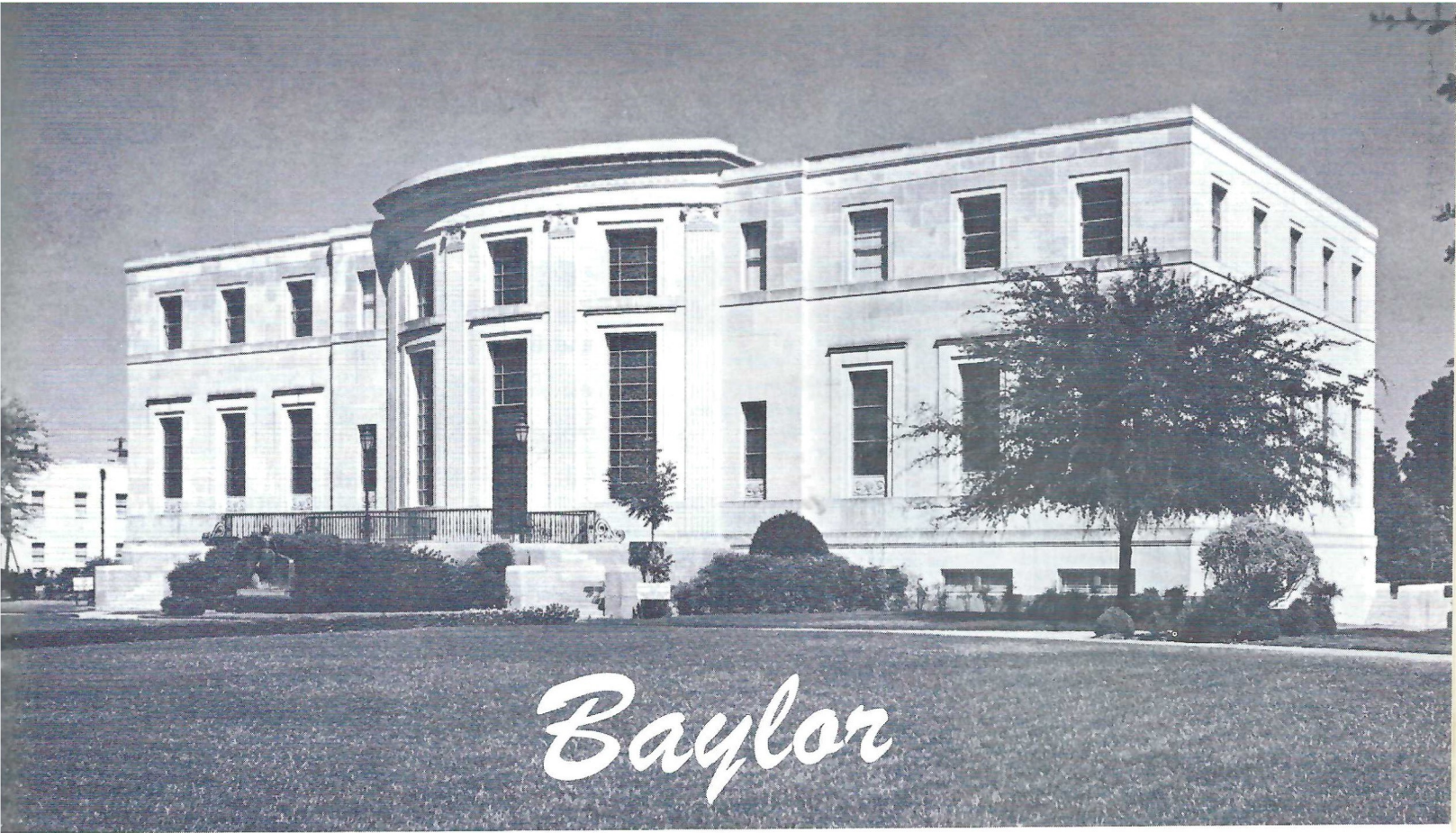
"Cigars . . . cigarettes . . . ?" Who knows, maybe someday it will be just "Tiparillos!"

Why don't you ask for one today?

\*T.M. GENERAL CIGAR CO.

**Tiparillos are on sale at this stadium.**





**Armstrong-Browning Library**

Baylor University is one of the oldest universities in Texas, being formed in 1845 at Independence, Texas, back when Texas was a Republic before joining the United States. Baylor enters its 121st year this September of 1965, continuing its service to higher education.

Baylor was named after one of its three founders, Judge Robert Emmet Bledsoe Baylor, native of Kentucky, veteran of the War of 1812, member of the Kentucky legislature, a supreme court justice of the Republic of Texas. Baylor was founded under charter granted by the Republic of Texas, later moved to Waco.

The co-founders were Rev. James E. Huckins, native of New Hampshire, principal, at Galveston, of Texas' first public school, and Rev. William M. Tryon, native of New York City, who became chaplain of the Congress of the Republic of Texas.

Baylor is a Baptist university, world's largest for this denomination, but has many students of other denominations, including Catholics, Episcopalians, Methodists, Presbyterians and more than 30 other denominations and faiths, many of which have their own campus clubs and participate in Baylor athletics and other activities. The university's facilities and all activities were racially integrated two years ago.

Baylor has received tremendous aid from the Baylor-Waco Foundation and an Urban Renewal program in adding steadily to recent growth, has added more than \$12 million in new buildings in a decade, will be adding even more to its buildings and campus area in the next several years.

The huge new Lake Waco, completed and filled this spring, is expected to add accelerated growth to the City of Waco and Baylor with the greatly increased water supply. Waco is a city of 112,000 located in the Heart of Texas.

The beautiful new Marris McLean Science Building, Hankamer School of Business, New Hall Dormitory for Women, Penland Hall Dormitory for Men, Book Store Building are among more recent campus additions.

Others of recent construction include Morrison Constitution Hall for the Law School, the Music Building, Ruth Collins Dormitory for Women, Student Union Building, Armstrong Browning Library, Tidwell Bible Building, Allen and Dawson Dormitory for Women, D. K. Martin Hall Dormitory for Men and the Speight-Jenkins married students' dormitory.

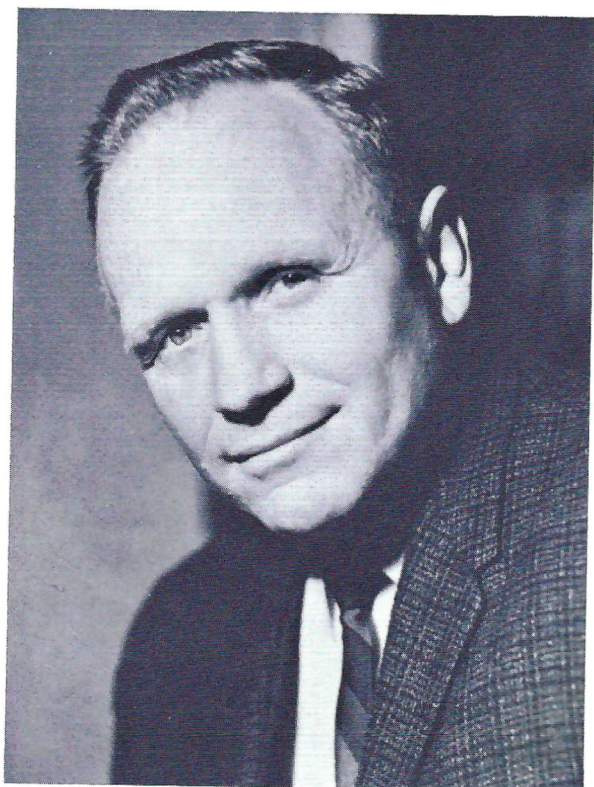
Baylor University also includes the College of Medicine in Houston, the College of Dentistry and Graduate Research Institute, both in Dallas. The main Waco campus includes the College of Arts and Sciences, the Schools of Business, Law, Education, Music, Religion, Nursing and the Graduate School.

The university has a strong, very active unit of the Air Force ROTC training young officers for the service. The ROTC unit has been active since World War II days.

Varsity and freshman home football games are played in lighted 50,000-seat Baylor Stadium, sunken concrete bowl built in 1950. Playing surface is 26 feet below surrounding ground level. The stadium has very large surrounding parking area. Curved sides make this one of the finest of all stadiums for watching a football game.

Basketball is played in 7,600-seat Heart O'Texas Coliseum. Baseball games are in 5,000-seat Dutton Park. Tennis is played on new concrete courts on campus and the golf team plays at Ridgewood Country Club. Baylor's track team, Conference champions three of the past six years, uses a new 5,200-seat track stadium with eight-lane quarter-mile red cinder track and 10-lane 220-yard straightaway, located at north edge of the football stadium parking lot.





**JOHN D. BRIDGERS**

**Athletic Director and Head Football Coach**

## *Baylor University*

Location: Waco, Texas

President: Dr. Abner V. McCall

Enrollment: 6,129

Conference: Southwest

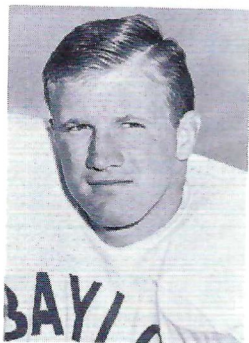
Athletic Director and Head Football Coach:  
John D. Bridgers

Colors: Green and Gold

Nickname: Bears

## THE BAYLOR BEARS

**MIKE BOURLAND**



**JERRY HANEY**



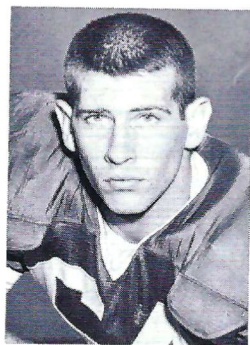
**TOMMY  
SCHAFFNER**



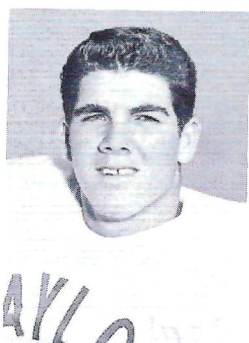
**GEORGE  
CHESHIRE**



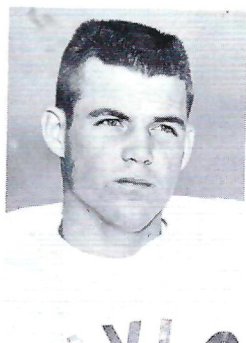
**HARLAN LANE**



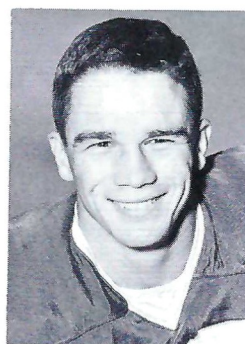
**MIKE DEWLEN**



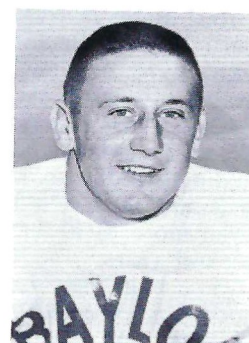
**MIKE WAYNE  
MARSHALL**



**ROGER MIKE  
MARSHALL**



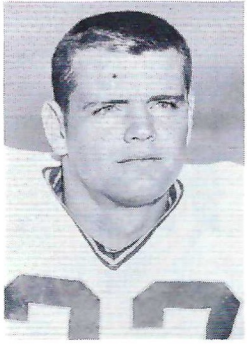
**PAUL BECTON**



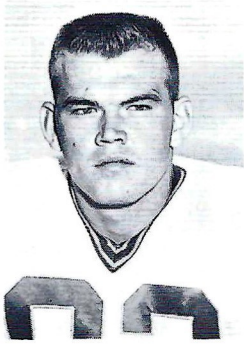
**RICHARD DEFEЕ**



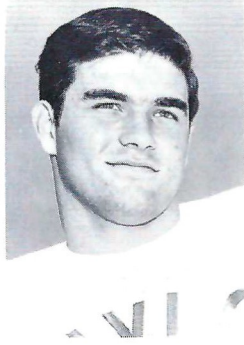
**RANDY  
BEHRINGER**



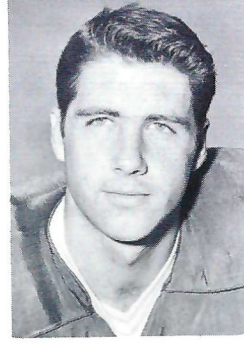
**DAVID ANDERSON**



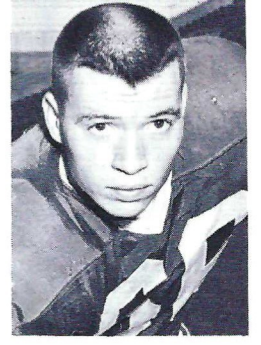
**TERRY SOUTHALL**



**DWIGHT HOOD**

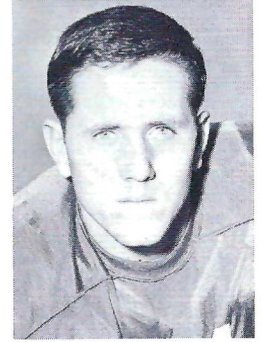


**BILL FERGUSON**

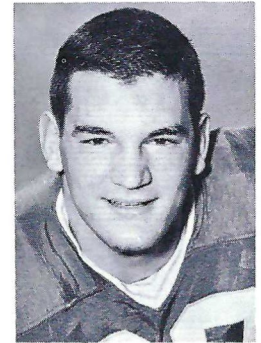


**PAT NEFF HALL—ADMINISTRATION BUILDING**

**B  
E  
A  
R  
S**



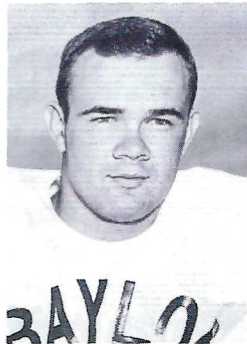
**CALVIN KIRKHAM**



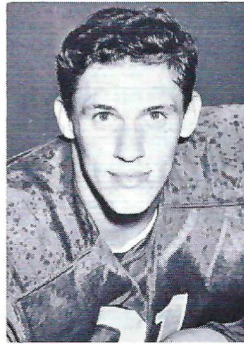
**JACK EISENHART**



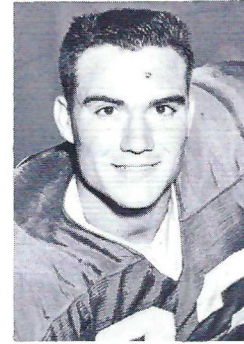
**RICKY HEAD**



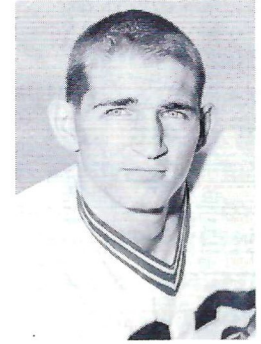
**EDDIE WHIDDON**



**JOE JONES**



**WILL WALKER**



**CHARLES WILSON**





THE SEMINOLE  
"TWINNS"

Bookie Reynolds & Jerry Williams

# MEET THE BAND

**MUSIC AT HALF TIME**

October 2, 1965

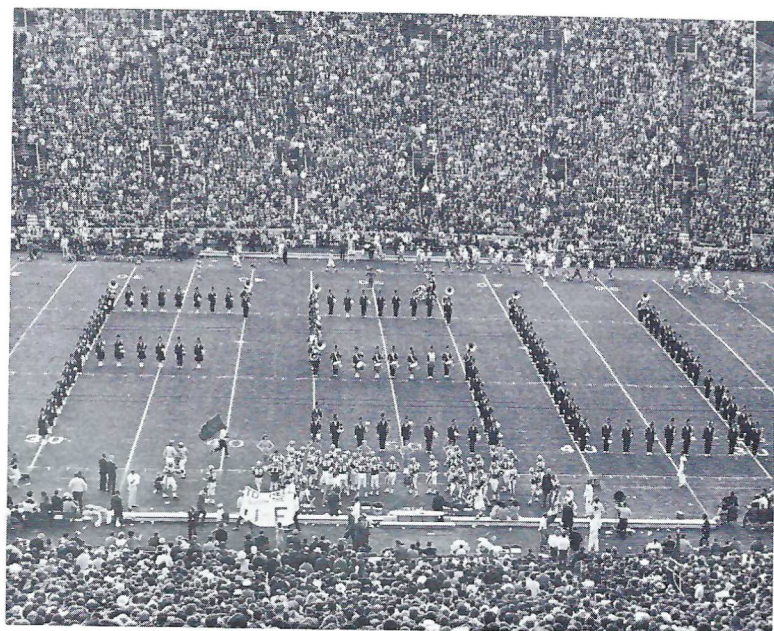
## THE MARCHING CHIEFS



**Robert T. Braunagel**, Director  
**Clifford K. Madsen**, Associate Director  
**Charles Carter**, Asst. Dir. & Arranger



**Camp Kirkland**, Drum Major  
**Paulette Gergen**, Head Majorette  
**"Cookie" Winchester**, Baton Artist



### MUSIC

MEET THE BAND

SILENT DRILL

KREUTZER ETUDE

WHO

HEY, LOOK ME OVER!

VOLGA BOATMAN

BEGIN THE BEGUINE

GARNET & GOLD MARCH

COMING HOME

FIGHT SONG

### FORMATIONS

INTRODUCTION of the various sections of the band—the tubas . . . trombones . . . french horns . . . trumpets . . . woodwinds . . . majorettes . . . Seminole twins . . . and solo twirler.

A SILENT DRILL sequence involving the basic marching fundamentals.

A-B-C . . . Band sections audition for musical examination & grades.

QUESTION MARK . . . "Who" will make the band?

LYRE . . . Band shows off new uniforms in this instrument formation.

BAND BLOCK . . . Signifies hard work and many hours of band practice.

DRILL . . . Combines precision drills to musical selection.

CHIEFS . . . Features a salute to 150 members of the Marching Chiefs.

TREBLE AND BASS CLEF . . . Grand finale and salute to the audience.

F-S-U . . . Band forms letters on the field while stadium fans sing.



## FLORIDA STATE'S 1965 VARSITY FOOTBALL ROSTER

## 1965 BAYLOR FOOTBALL ROSTER

No.	Name	Pos.	Class	Age	Ht.	Wt.	Hometown
11	Kim Hammond	QB	Soph.	21	6-1	185	Melbourne
12	Tony Gero	QB	Jr.	21	5-10	186	Madison, N. J.
14	Jim Massey**	DB	Sr.	22	5-11	175	Cairo, Ga.
15	Pat Conway*	DB	Jr.	20	5-10	180	Miami
16	Ed Pritchett**	QB	Sr.	24	6-2	181	Decatur, Ga.
17	Marty Kolbus	QB	Soph.	19	6-2	185	East Chicago, Ind.
21	Donovan Jones	OE	Jr.	20	6-1	196	Lakeland
22	Maury Bibent**	DB	Sr.	23	6-0	193	Cincinnati, O.
23	Wayne Giardino*	FB	Jr.	22	5-10	192	West Palm Beach
24	Elton Revell	HB	Jr.	21	6-0	174	Tallahassee
26	Bill Campbell	DB	Jr.	20	5-9	177	Tampa
27	Phil Spooner**	HB	Sr.	22	5-11	185	Fort Meyers
28	T. K. Wetherell	HB	Soph.	20	5-10	185	Daytona Beach
29	Joe Pefko**	FB	Sr.	22	5-9	194	Shaker Heights, O.
30	Bill Moremen	HB	Soph.	20	5-11	181	Daytona Beach
31	Bill Cox	HB	Soph.	19	6-1	178	Atlanta, Ga.
32	Bill Richardson	DB	Soph.	20	6-0	189	Jesup, Ga.
33	Butch Riser	DB	Soph.	20	6-0	181	Sanford
34	Frank Lonner	PK	Soph.	20	6-0	195	Thomasville, Ga.
35	John Hosack	HB	Jr.	20	5-10	194	Miami
40	Mike Blatt	LB	Soph.	19	5-11	202	Key West
41	Bob Menendez	DB	Jr.	20	5-10	194	Key West
42	Alan LaMarche	DB	Soph.	20	5-11	190	Hollywood
43	Howard Ehler**	DB	Sr.	21	5-10	195	Tavares
44	Jim Mankins	HB	Jr.	21	6-2	221	King City, Calif.
51	Joe Avezzano**	OG	Sr.	22	6-2	229	Miami
52	Wayne McDuffie*	C	Jr.	21	6-2	208	Hawkinsville, Ga.
53	David Pitts**	MG	Jr.	21	5-9	202	Blountstown
54	John Stephens*	C	Jr.	20	6-1	201	Tallahassee
55	Bob Urich	C	Soph.	19	6-2	198	Toronto, O.
60	Larry Williamson	OG	Jr.	20	5-11	215	Macon, Ga.
61	Jack Shinholser**	MG	Sr.	23	6-1	217	Tampa
62	Howard Lurie*	LB	Sr.	21	6-0	201	Northridge, Calif.
63	Bill McDowell**	LB	Sr.	21	6-1	208	Tallahassee
64	Dave Braggins	OT	Jr.	20	6-2	223	Lake Wales
67	Mike Bugar	DT	Soph.	19	6-1	204	Youngstown, O.
68	Joe Parrish**	LB	Sr.	23	6-1	194	Auburndale
69	Edwin Pope	OG	Jr.	21	6-1	208	Waycross, Ga.
70	Del Williams*	OT	Jr.	20	6-2	230	Live Oak
73	Larry Kissam	OT	Jr.	20	6-0	223	Inglewood, Calif.
74	Jay Mac Matthews	DT	Jr.	21	6-1	229	Chieffland
75	Rommy Vistart	DT	Soph.	20	6-3	270	Colquitt, Ga.
76	Donnie Ellers	OT	Soph.	19	6-3	234	Bessemer, Ala.
77	Bob Mangan**	OT	Sr.	23	6-1	229	Atlanta, Ga.
78	Charles Pennie	DT	Jr.	20	6-4	240	Hollywood
79	Frank Pennie**	DT	Sr.	22	6-4	252	Hollywood
80	Stan Croley	DE	Soph.	20	6-2	192	Dade City
81	H. T. Waller	DE	Soph.	20	6-1	186	Vernon
83	Thurston Taylor	OT	Soph.	19	6-2	216	College Park, Ga.
84	George D'Alessandro**	DE	Sr.	22	5-11	202	Fort Meyers
85	Pete Roberts	PK	Soph.	20	5-11	200	Gainesville
86	Buddy Blankenship	OE	Jr.	21	6-3	200	Atlanta, Ga.
87	Terry Garvin*	DE	Sr.	22	5-11	205	Pensacola
88	Jerry Jones	OE	Soph.	20	6-1	185	Jesup, Ga.
89	Max Wettstein**	OE	Sr.	21	6-3	214	Leesburg

NOTE: \* Denotes letters won.

No.	Name	Pos.	Class	Age	Ht.	Wt.	Hometown
11	Bob Purvis	QB	Jr.	21	5-8	192	Waco
12	Roger Mike Marshall*	QB	Jr.	21	6-1	187	Irving
15	Donnie Laurence**	LBR	Sr.	21	6-0	205	Rockdale
16	Terry Southall*	QB	Jr.	20	5-11	180	Brownwood
17	Kenny Stockdale	QB	Soph.	20	5-11	180	Ardmore, Okla.
20	Paul Becton	FHB	Jr.	20	6-0	165	Little Rock, Ark.
22	Max Emfinger	FHB	Jr.	21	5-11	172	Brownwood
23	Bobby Hunt	FHB	Jr.	21	6-1	173	Hallsville
24	Clint Mitchell**	FB	Sr.	22	6-0	200	Carrollton
26	George Cheshire	FHB	Soph.	19	5-11	173	Pasadena
27	Gary Bridges	RHB	Soph.	19	6-0	171	Garland
28	Joe Jones**	FHB	Sr.	21	5-10	182	Marlin
29	Knox Pittard	FHB	Sr.	21	6-1	190	Mozelle
30	Raul Ortiz	LBR	Soph.	20	6-2	198	Corpus Christi
32	Roger Webb	FN	Soph.	19	5-11	195	Ft. Worth
33	Randy Behringer	FB	Soph.	20	6-0	197	Waco
35	Mike Wayne Marshall*	FB	Sr.	21	5-11	198	Mt. Pleasant
37	Charles Wilson	FB	Soph.	19	6-4	203	Pt. Arthur
40	Eddie Whiddon*	RHB	Sr.	21	6-0	183	Amarillo
41	Phil Trice	RHB	Soph.	21	5-10	170	Gilmer
42	Bobby Green	FHB	Soph.	20	6-0	178	Austin
44	Billy Hayes	RHB	Soph.	20	6-2	200	Tyler
45	Ridley Gibson	RHB	Soph.	19	6-2	190	Quanah
46	Rickey Head	FHB	Soph.	19	5-11	170	Bastrop, La.
47	Richard Defee*	RHB	Jr.	20	5-9	170	Livingston
51	David Porter	C	Soph.	18	6-2	194	Shreveport, La.
52	Gary Don Howell	C	Soph.	20	6-3	205	Odessa
53	Billy Burk	C	Jr.	20	5-11	198	Andrews
55	Robert Smith	C	Jr.	21	6-2	215	Dallas, Texas
60	Benny Broth	RG	Soph.	20	6-2	210	Iowa Park
61	Bill Ferguson*	RT	Sr.	22	6-1	201	Hurst
62	Greg Pipes	RG	Soph.	19	5-11	228	Ft. Worth
63	Bobby Morris Smith	LG	Soph.	19	6-1	224	Kingsville
64	Jay Don Watson	RT	Soph.	20	6-0	206	Caldwell
65	Bill Witcher	LT	Soph.	19	6-2	227	Ft. Worth
66	Barry Firestone	LG	Soph.	20	5-11	190	Shreveport, La.
67	Mike Bourland*	LG	Sr.	21	6-0	197	Ft. Worth
68	Mike Dewlen	RG	Jr.	21	6-1	194	Amarillo
69	Coye Conner	RT	Soph.	19	6-2	207	Big Spring
70	Mike Thomas*	LT	Jr.	21	6-1	205	DeLeon
72	Phil Hetrick	LT	Soph.	19	6-3	200	Pharr
73	Mike Jurecek	RT	Jr.	21	6-2	207	Eldorado
74	Dwight Hood*	LG	Jr.	20	6-4	228	Waco
75	Tommy Schaffner*	LT	Jr.	21	6-2	209	Odessa
76	Jerry Haney*	LT	Jr.	20	6-2	218	Sulphur Springs
77	Ken Van Zandt	LG	Soph.	20	6-2	214	Crane
78	George Davis	RT	Soph.	20	6-3	208	San Antonio
79	Ralph Dunlap	LT	Jr.	21	6-3	240	Seattle, Wash.
80	Tommy Denton	TE	Soph.	19	6-0	195	Amarillo
81	Gary Alexander	SE	Soph.	19	6-1	179	Corpus Christi
82	James Jackson	TE	Soph.	20	6-2	198	Mesquite
83	Willie Walker*	TE	Jr.	21	6-3	213	Carrollton
84	Jack Eisenhart*	TE	Jr.	20	6-2	204	San Antonio
86	David Anderson	SE	Soph.	20	6-0	187	Haskell
87	Harlan Lane*	SE	Sr.	21	6-0	185	Valley Mills
88	Raymond Deutrich	SE	Soph.	20	6-2	192	Bellville

FHB—Flanker

RHB—Running HB

SE—Split End

TE—Tight End

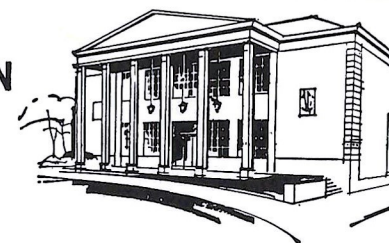
# Tallahassee Federal

440 N. Monroe Street \* Tallahassee, Florida

HOURS: Monday-Thursday, 8:30 a.m. to 3 p.m.—Friday, 8:30 a.m. to 6 p.m.

## SAVINGS AND LOAN ASSOCIATION

TELEPHONE 224-2161





## FLORIDA STATE

### OFFENSE

LE 21	Donovan Jones	88	Jerry Jones
LT 70	Del Williams	64	Donnie Ellers
LG 69	Edwin Pope	73	Larry Kissam
C 54	John Stephens	55	Bob Urich
RG 51	Joe Avezzano	60	Larry Williamson
RT 64	David Braggins	77	Bob Mangan
RE 89	Max Wettstein	83	Thurston Taylor
QB 16	Ed Pritchett	11	Kim Hammond
LH 23	Wayne Giardino	27	Phil Spooner
RH 28	T. K. Wetherell	29	Joe Petko
FB 44	Jim Mankins	24	Elton Revell

### DEFENSE

LE 87	Terry Garvin	80	Stan Croley
LT 78	Charles Pennie	74	Jay Mac Matthews
MG 61	Jack Shinholser	53	David Pitts
RT 79	Frank Pennie	67	Mike Bugar
RE 84	Geo. D'Alessandro	81	H. T. Waller
LB 63	Bill McDowell	40	Mike Blatt
LB 68	Joe Parrish	62	Howard Lurie
CB 22	Maury Bibent	41	Bob Menendez
CB 43	Howard Ehler	32	Bill Richardson
S 26	Bill Campbell	33	Butch Riser
S 15	Pat Conway	14	Jim Massey

### CAPTAINS

84 George D'Alessandro 89 Max Wettstein  
63 Bill McDowell

### SPECIALISTS

**Punters:** 35 John Hosack, 16 Ed Pritchett  
**Placements:** 85 Pete Roberts, 34 Frank Loner

## BAYLOR

### OFFENSE

SE 26	George Cheshire	42	Bobby Green
LT 75	Tommy Schaffner	69	Coy Conner
LG 60	Benny Brott	68	Mike Dewlen
C 51	David Porter	55	Robert Smith
RG 67	Mike Bourland	63	Bobby Smith
RT 79	Ralph Dunlap	73	Mike Jurecek
TE 83	Willie Walker	82	Bucky Bovenzi
QB 16	Terry Southall	12	Roger Mike Marshall
LH 44	Billy Hayes	47	Richard Defee
RH 87	Harlan Lane	22	Max Emfinger
FB 35	Wayne Marshall	24	Clint Mitchell

### DEFENSE

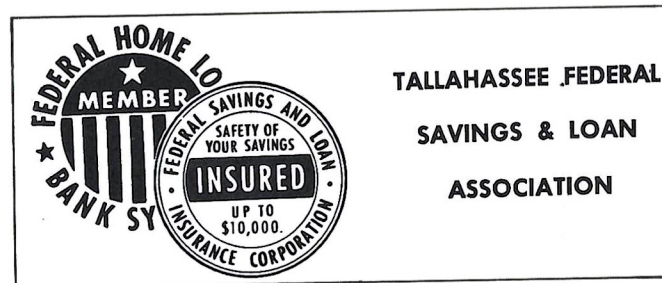
LE 88	Raymond Deutrich	15	Donnie Laurence
LT 76	Jerry Haney	70	Mike Thomas
LG 77	Ken Van Zandt	62	Greg Pipes
RG 74	Dwight Hood	65	Bill Richter
RT 61	Bill Ferguson	64	Jay Don Watson
RE 86	David Anderson	84	Jack Eisenhart
LB 33	Randy Behringer	32	Roger Webb
LB 30	Raul Ortiz	53	Billy Burke
LH 40	Eddie Whiddon	41	Phil Trice
RH 48	Ricky Head	25	Ridley Gibson
S 28	Joe Jones	23	Bobby Hunt

### CAPTAINS

67 Mike Bourland  
61 Bill Ferguson

### SPECIALISTS

**Punters:** 48 Ricky Head, 40 Eddie Whiddon  
**Placements:** 18 Bob Purvis







GO TO

## **McDONALD'S**

FOR A

### **PURE BEEF HAMBURGER**

Right off the Grill on a Plump Toasted Bun

### **TRIPLE THICK SHAKE**

M'M'M' Creamy Luscious to the Very Last Drop

### **GOLDEN BROWN FRENCH FRIES**

Piping Hot and Done to a Crisp Perfection

Home of America's Favorite Hamburger  
More Than a Billion Sold

LOOK FOR THE GOLDEN ARCHES

## **McDONALD'S**

1701 W. TENNESSEE ST.  
CORNER WHITEHALL



**THE 1965 FLORIDA STATE CROSS-COUNTRY TEAM:** Front row, left to right: Ross Winter, Al Bassett, Sid Merchant, and John Brogle. Second row: Tom Graham, Richard Carrico, Coach Dick Roberts, Bob Hohnadel, and Bill Nelson.

## **Florida State University Cross-Country**

### **1965 Schedule**

DATE	TEAM	PLACE
Sept.		
25	South Florida at	Tampa
28	Chipola Jr. Col. at	Tallahassee
Oct.		
11	Florida at	Gainesville
15	Ga. Tech Inv. at	Atlanta, Ga.
23	Callaway G. Inv. at	Pine Mountain Ga.
26	Auburn at	Tallahassee
Nov.		
6	Uni. South Florida at	Tallahassee
15	Florida at	Tallahassee
20	Miami at	Miami
27	Fla. St. Champ. at	Gainesville
Dec.		
4	Troy Invitational at	Troy, Ala.





## HALF TIME-ANYTIME-MAKE IT MILK!

Busy football weekends call for extra energy. And that calls for a refreshing glass of milk. Milk is nature's vitality drink . . . that helps you stay in peak condition, sees you through the busiest fall days.

Half time; snacktime, anytime—when you take a break, make it milk. Keep up with the fun with milk's vitality!



a message from dairy farmer members of  
**american dairy association**